

## **Historic, archived document**

Do not assume content reflects current scientific knowledge, policies, or practices.



52,09

LIBRARY

RECEIVED

★ JAN 7 1933 ★

U. S. Department of Agriculture.

# WHAT TO PLANT

1933

**FANCHER CREEK**  
*&*  
**FRESNO NURSERIES**

F R E S N O

CALIFORNIA

INFORMATION FOR PURCHASERS

**USE THE ORDER SHEET**, which you will find in the back of this catalogue.

**PRICES:**—All prices quoted in this list are for stock at Fresno.

**TERMS:**—Cash must accompany order unless stock is to be shipped C.O.D. Send post-office money order, express order, bank draft or check. C.O.D. orders will be shipped, provided one-half the amount is sent with the order.

NUMBER OF TREES OR PLANTS TO AN ACRE

SQUARE METHOD

6x 6 . . . . .	1210	16x16 . . . . .	170
6x 8 . . . . .	907	20x20 . . . . .	109
6x10 . . . . .	726	20x24 . . . . .	90
6x12 . . . . .	605	22x22 . . . . .	90
8x 8 . . . . .	680	24x24 . . . . .	75
8x10 . . . . .	544	25x25 . . . . .	69
8x12 . . . . .	454	30x30 . . . . .	48
10x10 . . . . .	435	35x35 . . . . .	35
10x12 . . . . .	363	40x40 . . . . .	27
12x12 . . . . .	302	50x50 . . . . .	18

**RULE:** Multiply the distance in feet between the trees by the distance the plants are apart in the rows, and the product divided into 43,560 will give the number of plants or trees to the acre.

VALUABLE INFORMATION TO THE ORCHARDIST

**Spraying:** Orchards should be sprayed in December and January with bluestone and lime for blight and gum diseases, and to keep the orchard clean. Ten pounds of bluestone and 12 pounds of lime to 100 gallons of water is a very desirable formula.

Lime sulphur solution is a good winter spray for curl leaf, scales and fungus diseases.

For leaf chewing insects, use arsenate of lead—2 pounds to 50 gallons of water.

For mildew, dust the vines or plants with powdered sulphur early before any signs of mildew show up.

For aphids, thrips and red spider, use black leaf 40—1 pound of black leaf 40 to 200 gallons of water and 5 pounds of fish oil soap.

**Whitewash Formula That Sticks:** Fifteen pounds lime, 5 pounds beef tallow, 2½ pounds salt. Add the rendered tallow and salt when slacking the lime. Mix to the thickness of good paint and paint the trunks of young or old trees to avoid sunburn and protect them from rabbits and squirrels. Also good for white-washing buildings, etc.

**Effective Squirrel Poisons:** Use strychnine coated barley in the dry season, scattering it around the holes; and carbon bisulfide in the damp or wet seasons. Put the carbon bisulfide into the holes when occupied by the squirrels by saturating waste balls and rolling them down the holes, and then close the holes.

**Grape Vine Hoppers:** Use Red Arrow for the successful eradication of this pest.

PLANTING DISTANCES

Variety	Feet Apart
Almond . . . . .	20 to 25
Apple . . . . .	20 to 35
Apricot, Cherry, Peach, Plum . . . . .	20 to 25
Citrus Trees . . . . .	20 to 25
Olive . . . . .	30 to 35
Walnut . . . . .	40 to 60
Grape Vines . . . . .	6 to 12
Blackberry . . . . .	6 by 7
Dewberry . . . . .	6 by 7
Loganberry . . . . .	3 by 5
Raspberry . . . . .	3 by 5
Strawberry . . . . .	1½ by 3

# Reliability Quality and Service

*for Half a Century  
has made us one of the*

**LEADING NURSERIES OF THE STATE**

## OUR NURSERIES

have been serving the public in the way of furnishing nursery stock for the planting of orchards, vineyards and ornamental gardens in California and adjoining States since the year 1884.

It gives us great pleasure to be able to point with pride to some of the very best orchards in the State, which have been grown with our trees.

We are always ready and willing to help our customers solve their planting or pruning problems, or give them the best advice we can as to the most suitable and profitable varieties to plant for their section and conditions. Being fruit growers ourselves, as well as growers of Nursery Stock, we feel that we are in a position to render valuable information along this particular line.

You are cordially invited to visit and inspect our Nurseries at any time and see the care exercised by us in the growing, digging, handling and shipping of your stock.

**FANCHER CREEK & FRESNO NURSERIES**  
**FRESNO, CALIFORNIA**

**SALES YARDS:**

COR. BELMONT & THORNE AVENUES  
3000 STATE HIGHWAY, SOUTH



Delicious

## FRUIT TREE DEPARTMENT

Whether you own a large ranch or only a small city lot, and regardless of whether you wish to plant one tree or several thousand you will find listed in this catalogue worthwhile commercial and home orchard varieties of fruit trees, grapevines and berry plants.

**RIPENING DATES:**—The season for ripening as given with the descriptions are at the best only approximate, and apply more especially to the San Joaquin Valley. In the coastal regions and higher mountain valleys the season will be a little later.

### THE APPLE

Apples do exceedingly well in all the coast counties as well as in the foothills and mountains of the Sierra Nevada, but broadly speaking, the hot interior valleys are not suitable to commercial apple culture; hence in these sections farmers should limit planting to a few trees and sorts for family or local use.

Our list includes all the desirable varieties for home and commercial planting on the Pacific Coast.

PRICE EACH	1 to 10 Trees	11 to 49 Trees	50 or More
6 to 8 ft. ( $\frac{3}{4}$ " up).....	\$ .55	\$ .40	\$ .30
4 to 6 ft. ( $\frac{1}{2}$ " up).....	.50	.35	.25
3 to 4 ft. ( $\frac{3}{8}$ " up).....	.45	.30	.20
2 to 3 ft. ( $\frac{1}{4}$ " up).....	.40	.25	.15

**Arkansas Black.** Medium to large, with a smooth waxy skin of a most beautiful dark red color, turning almost black on the sides exposed to the sun. The flesh is decidedly yellow tinged, fine, firm and crisp. Ripens in December and keeps well until April.

**Delicious.** The fruit of this variety is all that its name implies. It is large and uniform in size and its shape is long and tapering, being uniquely ribbed and having distinct knobs at the blossom end of the fruit. The skin is thin and tough, yellow in color, marked with dark red, with a crimson cheek on the sunny side. The flesh is white, fine grained, crisp, juicy, melting, sweet, slightly acid, and has a very fragrant aroma. Nov.

**Early Harvest.** Medium size and quite roundish; the skin is very smooth, of a bright straw color with a few faint dots of white. The flesh is white, juicy and crisp with a rich sub-acid flavor, which makes it very valuable among early apples for its high cooking qualities. Late July.

**Gravenstein.** A most popular market, shipping and culinary fruit. It is of uniform size but irregular shape; skin a greenish yellow, striped with light and dark red shadings; flesh yellow, of good texture, crisp, juicy and tender. Tree a robust grower. Being one of the earliest commercial varieties the fruit commands a good price on the market. August.

**Jonathan.** Fruit medium size, roundish and oval; skin bright red, on the sunny side quite dark and in some specimens almost black; flesh a delicate cream with a faint suggestion of red; flavor excellent. It does well in practically all sections. October.

**Red Astrachan.** The fruit is of medium size, roundish and flat, sides somewhat unequal. Skin thin, tender, smooth, of a yellow or greenish tinge, usually striped with deep crimson or carmine, and dotted with numerous whitish dots. The flesh is of a whitish tinge, sometimes bearing a small trace of red, tender, crisp and juicy with a sub-acid flavor. July.

## FANCHER CREEK & FRESNO NURSERIES

---

**Red June.** Roundish and uniform, having a tender, smooth glossy skin, of pale yellow or greenish overspread with a deep red, sometimes very dark on the exposed cheek. Flesh white, tender, juicy and of a rich sub-acid flavor. Used principally as a dessert fruit. July.

**Rome Beauty.** Large; yellow striped with bright red; very handsome; flesh tender juicy, sprightly. A long keeper. October.

**Stayman Winesap.** Does well in the interior valleys and foothills, although there are also successful orchards in the coastal regions. Fruit large and round; skin dull carmine, smooth and thick; flesh greenish yellow, firm, and quite acid in flavor. Tree vigorous, spreading and open. Dec.

**White Astrachan.** Large size, roundish and flat at both ends and is very attractive. The skin is a deep waxen yellow color, showing faint streaks of red or pink. Flesh is white and quite acid, making it highly prized for culinary purposes. Early July.

**White Winter Permain.** The fruit is medium to large in size, very uniform and of a roundish oblong shape. The skin is smooth, greenish at first, then gradually turning to a pale waxen yellow flushed on the sunny side with a brownish red and covered with numerous pale or russet dots. The flesh is of a yellow tinge, firm and fine grained, tender, crisp, juicy, with a pleasing aroma. November.

**Winter Banana.** Fruit large, almost round, somewhat conical and flattened at base; skin thick, tough, yellow in color with a dark pink cheek on sunny side; flesh crisp and tender, subacid in flavor and of good quality. October.

**Yellow Belleflower.** The fruit is large conical and ribbed which is intensified toward the blossom end; skin yellow suffused with a tinge of green, pink blush on sunny side; flesh nearly white, firm, tender and juicy. October.

**Yellow Newtown Pippin.** The fruit is irregular, oblate and somewhat angular; skin rather tough, overspread with russet dots. Yellow in color shading to pink; flesh cream white, firm, tender and slightly acid. December.

### THE RICHARED DELICIOUS APPLE

PRICE EACH	1 to 10 Trees	11 to 49 Trees	50 to 299 Trees	300 or More
4 to 6 ft. ( $\frac{1}{2}$ " up).....	\$ .75	\$ .60	\$ .50	\$ .40
3 to 4 ft. ( $\frac{3}{8}$ " up).....	.70	.55	.45	.35

The Richared Delicious colors two weeks earlier than the common Delicious, and becomes a solid blood-red (no stripes), the most beautiful, gorgeous-looking apple in existence. It colors solid red even in the shade of the trees, which common Delicious does not do.

Aside from the color it is identical with the common Delicious in shape, texture and flavor. Owing to the fact that it colors very early, it can be picked while hard-ripe, which is a distinct advantage in a shipping apple.

All purchasers of these trees are required to sign an agreement not to sell any bud wood or grafting scions nor to propagate any of the trees for sale.



**White Winter Pearmain**

THE CRABAPPLE

PRICE EACH	1 to 10 Trees	11 to 49 Trees	50 or More
6 to 8 ft. ( $\frac{3}{4}$ " up).....	\$ .55	\$ .40	\$ .30
4 to 6 ft. ( $\frac{1}{2}$ " up).....	.50	.35	.25
3 to 4 ft. ( $\frac{3}{8}$ " up).....	.45	.30	.20
2 to 3 ft. ( $\frac{1}{4}$ " up).....	.40	.25	.15

**Red Siberian.** Fine for cooking and preserving. Fruit rather small, round, and somewhat flat at the base; skin a bright red on a yellow field; flesh sub-acid, fine for cider making, jellies and spiced sweet pickles. Tree hardy, vigorous, long lived and a good bearer. Grown successfully in all parts of California. August.

**Transcendent.** Fruit is rather large, flattened at the end, of a golden yellow color, with a rich red cheek, and covered with a delicate pale blue bloom when ripe. September.

**Yellow Siberian.** The fruit is of a large size, beautiful golden yellow or amber in color, and is borne in clusters. The flesh is a beautiful amber color, juicy, sub-acid and highly prized for the making of preserves and jellies. September.

THE APRICOT

The apricot thrives particularly well in the coast counties as well as in the warm interior valleys. The fact that the apricot ripens so far in advance of the prune and at a time when there is no danger from rain should prove an incentive for prune growers to plant them in connection with their prune orchards.

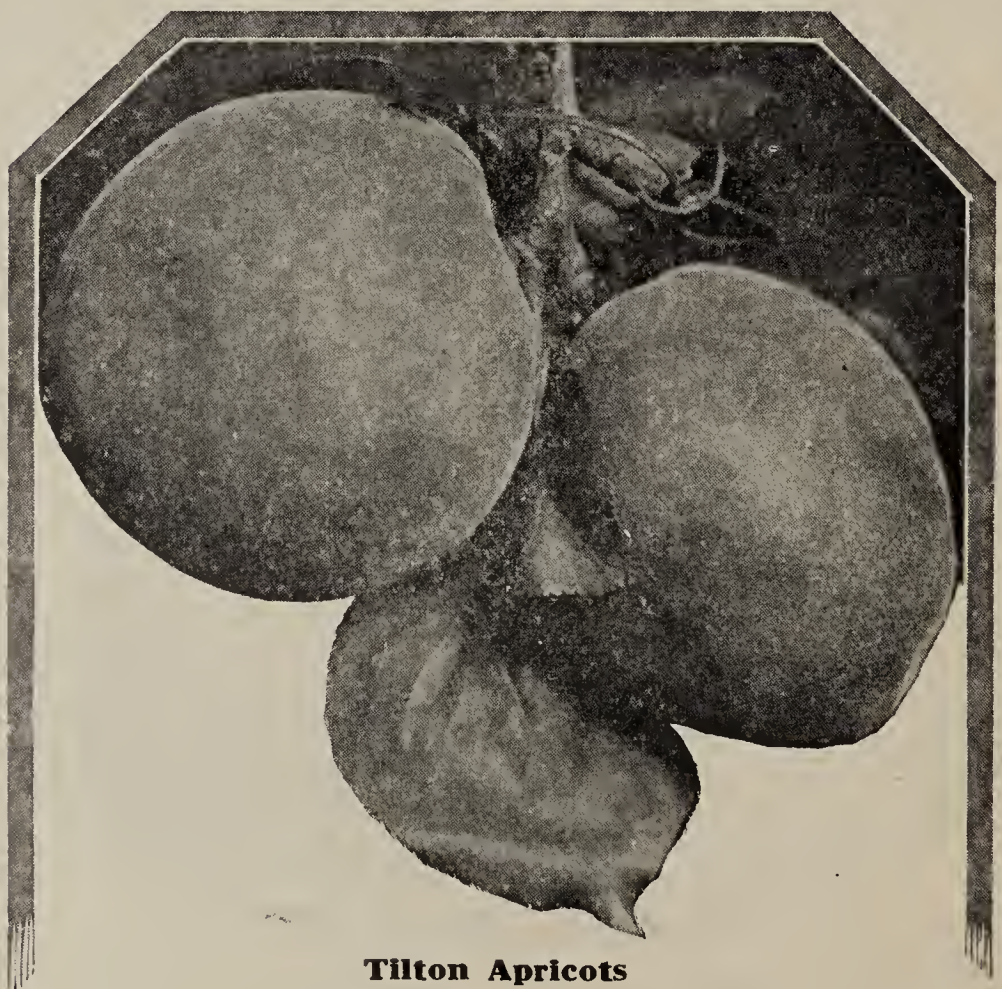
For canning, evaporating and drying, as well as in the fresh state this fruit can hardly be excelled.

On Apricot, Myrobolan and Peach Roots:

PRICE EACH	1 to 10 Trees	11 to 49 Trees	50 or More
4 to 6 ft. ( $\frac{1}{2}$ " up).....	\$ .50	\$ .35	\$ .25
3 to 4 ft. ( $\frac{3}{8}$ " up).....	.45	.30	.20
2 to 3 ft. ( $\frac{1}{4}$ " up).....	.40	.25	.15

**Blenheim.** The fruit is above medium in size, oval in shape, and of a deep orange color. The flesh is a beautiful yellow color, juicy and possesses a very fine flavor. We do not hesitate in recommending this variety to planters in all apricot sections, as it has proven to be a money-maker wherever planted. Ripens early part of June.

**Derby Royal.** Practically the same as the old Royal with the exception of ripening a trifle earlier, which, of course makes it very desirable for early shipping purposes.



Tilton Apricots



## FANCHER CREEK & FRESNO NURSERIES

---

**Hemskirke.** On account of its large size and fine quality it is highly appreciated in the local markets and by home orchardists in general. Ripens the latter part of June.

**Newcastle Early.** Originated at Newcastle, California, and is valued for market purposes on account of its early ripening period. The fruit is medium size, freestone, rich in flavor, juicy, and highly colored.

**Routier's Peach.** Large, yellow in color; deep orange mottled or splashed with red in the sun; flesh juicy and rich, with high flavor. July.

**Royal.** Large; roundish, oval and slightly compressed. The skin is a deep yellow flushed with red on the sunny side. The flesh is of a light yellow color, juicy, firm and has a most delicious flavor. Early June.

**Tilton.** Large in size, somewhat flat in shape and orange color. The flesh is a light orange yellow, firm, and has a delightful apricot flavor, and ripens very uniformly on the tree. Excellent for canning, but also valuable for shipping and drying. Ripens middle of June.

### THE CHERRY

Cherry producing sections of California are limited mainly to the counties near San Francisco Bay. In the counties north of the bay where the benefit of the mild sea air is felt cherry growing should be encouraged. In the upper San Joaquin Valley and in sections of the Sacramento Valley and the adjacent foothills there are many good cherry orchards.

The ever increasing demand for this popular fruit should be an incentive to plant more orchards. In the hot dry interior sections cherries should be planted for home use only.

**The sweets and sour.** The Hearts or Bigarreus, are the sweet cherries, the trees being strong, and vigorous growers. These are designated by the letter "H"; the Dukes, or Morellos, which are the sour cherries, by the letter "D". These grow slowly, the branches are slender; the leaves are thicker, smaller and of a deeper green.

On Mazzard and Mahaleb Roots:

PRICE EACH	1 to 10 Trees	11 to 49 Trees	50 or More
<b>6 to 8 ft.</b> ( $\frac{3}{4}$ " up).....	\$ .55	\$ .45	\$ .35
<b>4 to 6 ft.</b> ( $\frac{1}{2}$ " up).....	.50	.40	.30
<b>3 to 4 ft.</b> ( $\frac{3}{8}$ " up).....	.45	.35	.25
<b>2 to 3 ft.</b> ( $\frac{1}{4}$ " up).....	.40	.30	.20

**Bing. (H)** The fruit is very large, heart-shaped, and when fully ripe the skin is almost black. The flesh is firm, meaty, sweet and delicious and is of a purplish red color. Considered one of the best of the black sweet cherries. Ripens middle of June.

**Black Tartarian. (H)** This is a great favorite on account of its delicious flavor and productiveness. The fruit is large, heart-shaped and the skin black and glossy. The flesh is reddish purple in color, tender, with a small stone, and is of unsurpassed quality. Ripens the middle of June.

**Chapman. (H)** Fruit medium size and of heart formation; skin purplish black and thin; flesh deep pink with dark colored juice, meaty, tender, melting and of good quality. Tree large and spreading, vigorous and productive. One of the earliest cherries, which insures a good market at top prices. Ripens in April and May.

**Early Richmond. (D)** Is very productive and a good market variety of the sour cherry type. The fruit is used for canning purposes, it being too tart for dessert use. The skin begins to color red at an early stage and becomes a beautiful dark red when fully ripe, at which period the fruit has a very delicious sprightly acid flavor and is very juicy.

**English Morello. (D)** Ripens in July; valuable for home use, market and canning. Fruit round-cordate, uniform and solid; skin dark red to black with numerous russet-like dots; flesh red with dark juice, tender, melting and tart. Tree small, round headed and drooping.

**Governor Wood. (H)** An excellent variety for canning and table use. Fruit large and of good shape; skin bright pink yellow shaded; flesh quite tender, juicy and pleasantly acidulous. Tree an upright grower and productive. A favorite in the interior valleys and also in the coastal counties. Early June.

**Lambert. (H)** One of the leading market varieties ripening in June. Fruit heart-shaped, compressed and uniform; skin thin, dark red changing to black; flesh dark red with a lighter red colored juice, firm, sweet and fine flavored. Tree large, healthy, productive and upright-spreading. Not a heavy bearer unless pollinated.

**Lewelling. (H)** A splendid variety and exceptionally profitable as a shipping cherry. Fruit large, cordate and somewhat compressed; skin purplish black, splashed and netted with russet-like dots; flesh firm, abundant, yellowish white tinged with red, tender sprightly and pleasantly acid. Tree of medium growth, vase form, robust, and a good bearer. Also known as the Oregon Black; popular throughout the Pacific Coast.



**Black Tartarian Cherries**

**Royal Ann. (Napoleon Bigarreau). (H)** The fruit is pale yellow to amber color, overspread with a bright red. Is rather long and heart-shaped. Flesh yellow, juicy and possesses a mild sweet flavor. The most extensively planted variety of all the sweet cherries. Ripens late June.

**THE FIG**

PRICE EACH	1 to 10 Trees	11 to 49 Trees	50 or More
<b>4 to 6 ft.</b> ( $\frac{1}{2}$ " up).....	\$ .50	\$ .35	\$ .25
<b>3 to 4 ft.</b> ( $\frac{3}{8}$ " up).....	.45	.30	.20
<b>2 to 3 ft.</b> ( $\frac{1}{4}$ " up).....	.40	.25	.15

(Purchasers should order Capri Fig trees with all orders of Calimyrna trees.)

**Calimyrna.** (Genuine Smyrna.) A name originating with us to give distinction to the real Smyrna fig after the introduction of the fig wasp. Fruit large to very large, turbinate, pyriform, very short, stalk short, ribs distinct, orifice large, of a pale ochre color and widely opened when the fig is matured or before shriveling; skin lemon yellow; flesh reddish amber, sometimes pale amber, turning to dark amber just before galling. Flavor and quality unsurpassed. To grow this variety successfully it is necessary to have the aid of the wasp; *Blastophaga grossorum*; which dwells in the wild or Capri varieties and conveys the pollen into the edible fig.

**Kadota.** The canning and preserving fig of California. Fruit of medium size and good shape; skin thin and light green in color; flesh white tinged with pink and of good flavor.

**Mission.** The best black fig. Fruit medium to large, long neck and short stalk, ribbed; skin rough, mahogany violet; flesh good grain, dull red of brownish amber, very sweet and good flavor.

**White Adriatic.** The fruit is of medium size, roundish, with a medium neck. Skin is very thin, greenish in shade, turning to yellow when ripe. The pulp is of a white color with violet streaks. Ripens middle of August.

**CAPRI FIGS (Non-edible)**

**Roeding's Capri No. 1.** Particularly valuable on account of producing all the crops necessary for successfully carrying through all the generations of the *Blastophaga*. A rapid grower and produces an abundance of all crops.

**Roeding's Capri No. 3.** Figs of the Profichi crop very large, heavily ribbed and developing a larger number of galls with insects than either of the other varieties; much heavier and more closely jointed than Nos. 1 and 2; leaves small and serrate. The first figs ripening June 8. A rather uncertain bearer of the other crops.

## THE NECTARINE

There is a prevailing opinion among many people that the nectarine is a hybrid, the result of crossing the peach with some other fruit, while really it is nothing more nor less than a smooth skinned peach of extraordinary flavor.

For canning, drying, and shipping, it has so many points in its favor that it is difficult indeed to comprehend why planters have not engaged in nectarine culture more extensively than they have.

PRICE EACH	1 to 10 Trees	11 to 49 Trees	50 or More
4 to 6 ft. ( $\frac{1}{2}$ " up).....	\$ .50	\$ .35	\$ .25
3 to 4 ft. ( $\frac{3}{8}$ " up).....	.45	.30	.20
2 to 3 ft. ( $\frac{1}{4}$ " up).....	.40	.25	.15

**Boston.** Large, bright yellow with red cheek; flesh yellow, sweet and pleasant flavor; freestone. The leading yellow-fleshed nectarine. August.

**Gower.** Fruit medium size and round; skin yellowish-green overspread with deep red; flesh creamy white, reddish pink at the pit. Fine for early market. Ripens early July.

**Humboldt.** Fruit large, oblong-oval and reasonably uniform; Skin yellow orange, stained and streaked dull red; flesh yellow orange, tender juicy, red to the pit, sweet, rich and aromatic. Tree a robust grower and consistant bearer. Valuable for home orchard planting. August.

**New White.** Fruit quite large and nearly round; skin greenish-white with an occasional touch of red; flesh, white, tender, juicy with a rich vinous flavor. Early July.

**Stanwick.** The stanwick originated in England and is the recognized leader among nectarines, being of large size and particularly valuable for shipping, drying and canning purposes. The fruit is exceptionally large in size, with a pale greenish skin shaded deep rich violet. The flesh is white, very tender, juicy and separates freely from the pit. Ripens in August.

**Victoria.** The fruit is exceptionally large, round in form and somewhat flat at the top. The skin is of a yellow color on a greenish ground, blushed with deep rich red on the side exposed to the sun. Flesh is very sweet, rich and delicious. August.

## THE PEACH

The California peach needs no introduction. Our list comprises all of the desirable varieties for commercial and home orchard plantings.

PRICE EACH	1 to 10 Trees	11 to 49 Trees	50 or More
4 to 6 ft. ( $\frac{1}{2}$ " up).....	\$ .50	\$ .35	\$ .25
3 to 4 ft. ( $\frac{3}{8}$ " up).....	.45	.30	.20
2 to 3 ft. ( $\frac{1}{4}$ " up).....	.40	.25	.15

**Admiral Dewey or Triumph.** Fruit roundish in shape but somewhat irregular, with medium sized pit; skin orange yellow blushed with dark red, tender and adhering; flesh yellow, veering to red toward the pit; juicy, melting, sweet and of a pleasant flavor. Much in demand for the early market. Ripens middle of June.

**Alexander.** Medium to large in size and very uniform in shape. The skin is of a greenish white color, partly covered with a deep red; the flesh is white, juicy and of good flavor. We highly recommend the planting of this variety to those who wish to supply their local markets, as well as to all who intend planting in family orchards. Ripens about the 10th of June.

**Bilyeu Late.** To those desiring a superb freestone peach which is suitable for table use or for furnishing local markets late in the season, we do not hesitate in recommending the Bilyeu Late. The tree is an exceptionally strong grower, bearing fruits of large, uniform size, greenish white in color, blushed red on sunny side. The flesh is white and of fine flavor. October.

**Blood Cling.** Highly prized for pickling and the making of preserves. The flesh is very red and preserves made from this variety present an attractive appearance. The fruit is large, skin dark red in color, clouded with purplish red. Ripens in July.

**Briggs Red May.** The fruit is of large size, greenish white in color, with a red cheek on the sunny side. The flesh is greenish white, juicy and melting. Ripens middle of June.

**Early Crawford.** This is one of the earliest and best known freestones. The fruit is large in size, having a skin of yellow color tinged with red. The flesh is yellow, rich and of good flavor. Ripens middle of July.

**Early Imperial.** The tree is a vigorous, strong grower, bearing fruit of good size, deep yellow in color, with a dark red cheek. It is very juicy and firm, for an early variety, which makes it profitable as an early shipper. It is also highly valuable for the home orchard, being of fine flavor when used as a dessert fruit. Ripens last of June.

## FANCHER CREEK & FRESNO NURSERIES

**Elberta.** The Elberta enjoys the distinction of being the best known peach throughout the United States. The fruit is very large, round and of a golden yellow color, faintly striped with red. The flesh is yellow, juicy, with a very high flavor. Ripens last of July.

**Foster.** The fruit is large and uniform in size, slightly flattened. The skin is a deep orange in color, with a dark red cheek in the sun. Flesh is bright yellow in color, rich and juicy. It is highly recommended for its table uses and for its fine shipping and drying qualities. Ripens middle of July.

**Guame Cling.** A variety of recent introduction of the same type as the Peak and Palora Cling. Flesh clear yellow and of good texture. One of the varieties preferred by the canning industry. August.

**Hale's Early.** One of the very best early white peaches. Skin greenish, mottled with red when ripe; the flesh is white, melting and rich. A fine variety for home use. Early July.

**J. H. Hale.** Originated by J. H. Hale, of Georgia, and is heralded throughout the country as one of the greatest peaches ever discovered. The tree is a very strong and vigorous grower, having much the appearance of the Elberta. The fruit is a deep golden yellow color, overspread with bright red; has a smooth, thick skin and compares very favorably with the Elberta in shape. The flesh is firm, fine grained, and deep yellow in color. Ripens last of July.

**Hauss Cling.** A mid-summer cling, ripening just after the Tuscan. The fruit is of good size, round in shape, and clear yellow to the pit, which is very small. Ripens August 1st to 10th.

**Heath Cling.** Fruit very large. Skin creamy white, having a faint tinge of red on the sunny side. Flesh greenish white, very tender, possessing a rich flavor and a pleasing aroma, which is unequaled by any other of the late canning varieties. Ripens the middle of September.

**Late Crawford.** The fruit is large, roundish, having a yellow skin and a dark red cheek. The flesh is deep yellow in color, inclined to be reddish at pit. Ripens early in August.

**Lovell.** Tree is a vigorous grower and a heavy bearer. The fruit is very uniform in size, almost perfectly round; yellow in color. The flesh is fine, firm, yellow to the pit and contains a large percentage of sugar.

The Lovell is the best canning, drying and shipping freestone peach grown. We do not hesitate to state that we consider this variety one of the very best peaches to plant. Ripens last of August.



**Palora or Peak Cling**



**Red Bird**

**Mayflower.** This is one of the earliest freestone varieties and is highly regarded by all lovers of peaches for dessert purposes. The tree is a strong grower, late bloomer and consequently favored by those growing peaches for early market purposes. The fruit is of a light green color nearly covered with red. Flesh is creamy white, fine grained, and delicious. Ripens early in May.

**McKevitt Cling.** The fruit is of a beautiful white color, with a faint blush of red; has a very firm, fine grained flesh, sugary, rich and possessing an extremely high flavor. Ripens the last of August.

**Muir.** The Muir is the King or Queen, as it might be called, of all the freestone peaches for drying purposes in California. It is very large in size and a perfect freestone, having a clear yellow flesh, which certainly presents a most beautiful appearance when properly dried.

In addition to its attractive appearance, it contains more sugar qualities than any other peach, which allows it to dry exceedingly heavy, making it a very profitable variety to the producer. We feel that this peach is so widely known and favored among California planters that it is needless for us to mention all of its good qualities. Time of ripening, latter part of July.

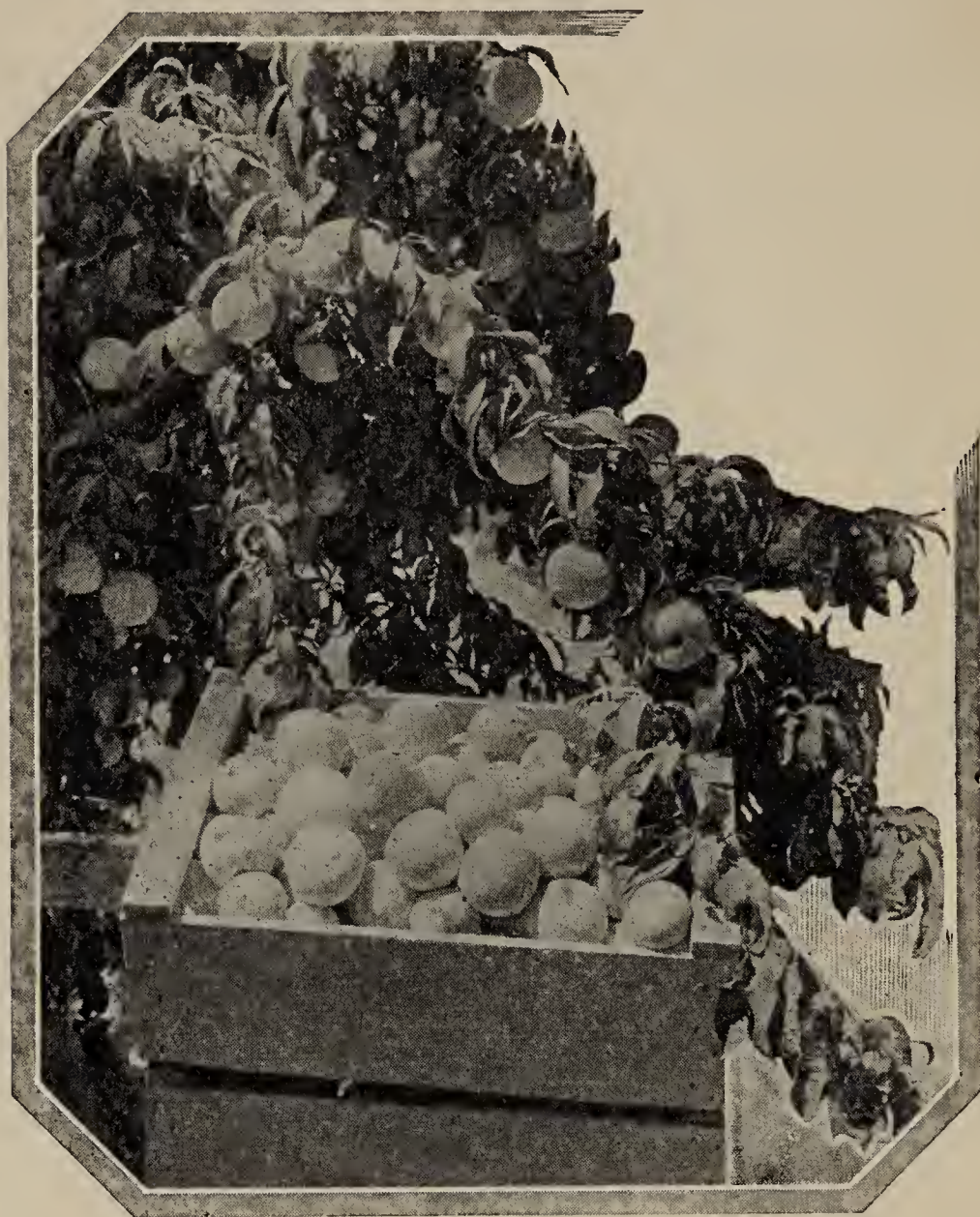
**Miller's Late.** There are few peaches ripening after the Salway; hence a good peach ripening as late as November is a valuable acquisition. Miller's Late is a fine yellow freestone of the Salway type, having better flavor and quality than the latter; a heavy bearer. November.

**Palora or Peak Cling.** A popular midsummer variety which is similar to the Phillips Cling, but ripens much earlier, making it a very desirable variety for commercial canning. Tree is a strong grower and heavy producer.

**Phillips Cling.** Even size, practically the same color all through; has a very small pit, is exceedingly rich in flavor and highly colored. Flesh is very fine grained and of a lemon yellow color. The tree is a very vigorous grower and a heavy producer and for this reason is a great favorite among orchardists. Ripens early in September.

**Red Bird.** An exceptionally high colored peach of excellent quality. Skin creamy white, overspread with bright, glowing red. Extra large in size for an early peach. A fine shipper. Beyond question one of the most attractive peaches of all on account of its large size and its wonderful cream white and red color. Early June.

**Runyon's Orange Cling.** The tree is a strong grower and a heavy producer. The fruit is very large, yellow with a crimson cheek on the sunny side. The flesh is fine, rich and of high flavor. Aside from being a favorite for canning it is an excellent shipper. Early August.



**Strawberry Cling** The finest of all for home canning

**Salway.** The late ripening of this peach makes it a great favorite in California, for dessert purposes, coming at a time when practically all other freestones are gone. The skin is of yellow color, having a brown or red cheek. The flesh is yellow and inclined to be red at the pit. Late Sept.

**Sellers Orange Cling.** Fruit large, uniform in size and a beautiful golden color. Flesh deep golden, very firm and of good flavor. Early August.

**Sims Cling.** The fruit is medium to large; golden yellow, with faint blush. Flesh deep yellow, of fine texture; pit small. Ripens middle of Aug.

**Strawberry Cling.** This is a large, beautifully colored cling, somewhat splashed with a bright red. The flesh is white, and inclined to be slightly red around the pit. On account of its attractive appearance, high quality and pleasant aroma, it is one of the very best for home canning and for this reason sells very readily on all local markets. September.

**Strawberry Free.** To those desiring a good early white peach we recommend the Strawberry Free. The skin is of a creamy white color, partly covered with a dark red. Flesh is very white, with a tendency to be quite red near the pit; juicy and possesses a rich flavor. We recommend the planting of this variety in all home orchards. Ripens early July.

**Tuscan Cling.** The fruit is very large and yellow in color, presenting a fine appearance when canned. We know of Tuscan Cling orchards that under good care and cultivation have produced from twelve to fifteen tons of fruit per acre. Late July.

**Yellow St. John.** The tree is a vigorous, strong grower, bearing fruit of good size, deep yellow in color with a dark red cheek. It is very juicy and firm, for an early variety, which makes it profitable as an early shipper. It is also highly valuable for the home orchard, being of fine flavor when used as a dessert fruit. Ripens last of June.

---

**Our Choice for home canning is the Strawberry Cling for a White Peach; the Palora, Orange Cling or Phillips for the best yellow varieties.**

THE PEAR

Our Pear trees are budded on French root.  
Beurre Hardy on Quince Root also.

PRICE EACH	1 to 10 Trees	11 to 49 Trees	50 or More
6 to 8 ft. ( $\frac{3}{4}$ " up).....	\$ .55	\$ .40	\$ .30
4 to 6 ft. ( $\frac{1}{2}$ " up).....	.50	.35	.25
3 to 4 ft. ( $\frac{3}{8}$ " up).....	.45	.30	.20
2 to 3 ft. ( $\frac{1}{4}$ " up).....	.40	.25	.15

**Bartlett.** There has undoubtedly been more money made through the growing of Bartlett pears than from any other variety. The fruit is of large size, skin bright yellow when ripe, inclined to blush on the sunny side, and is oblong shape, tapering toward the stem. The flesh is exceedingly fine grained, white and buttery, full of juice and very highly perfumed. It is especially adapted to river bottom soils, but if properly cultivated will thrive in clay loams and even adobe. Ripens in August.

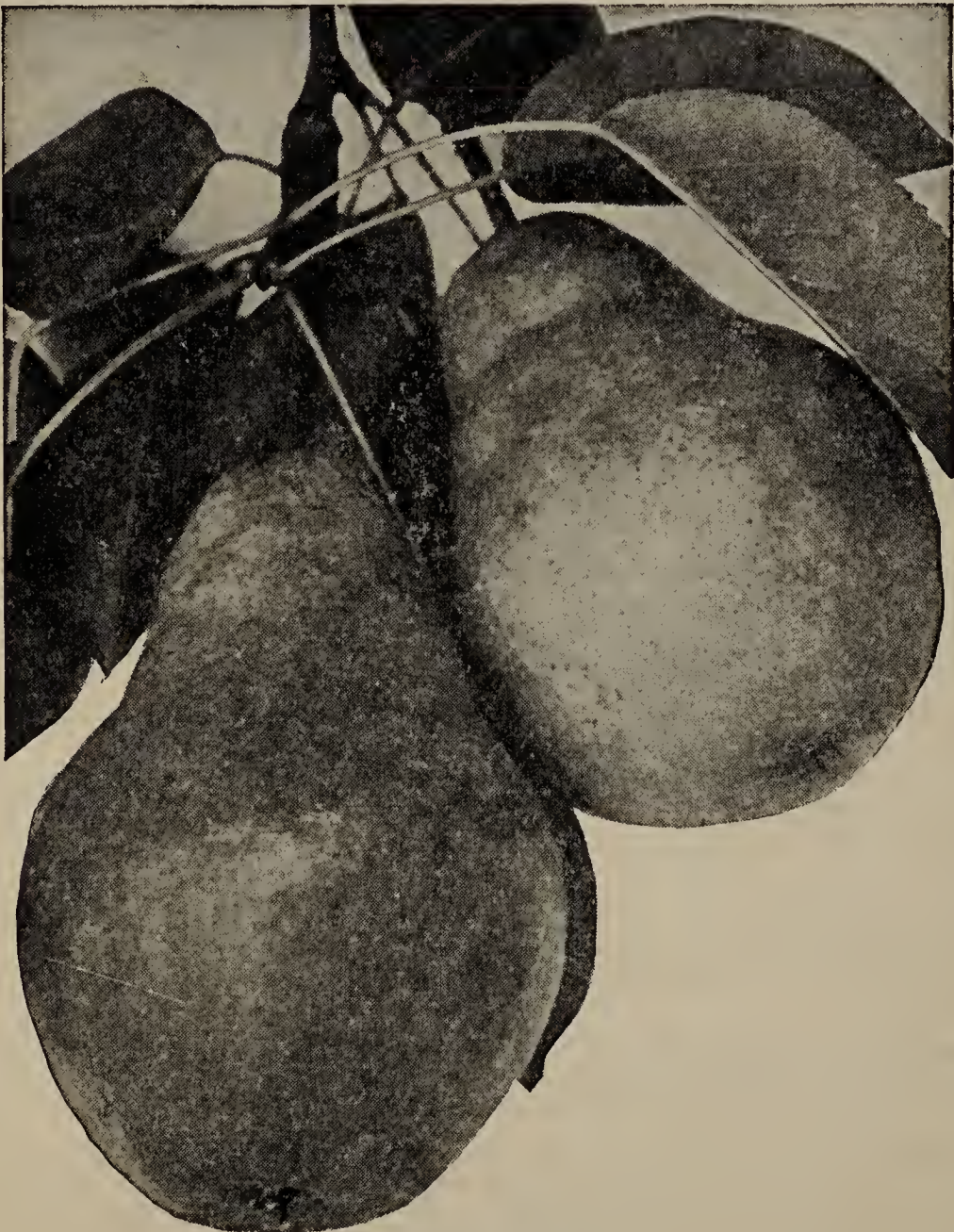
**Beurre Bosc.** The fruit is large with long neck; skin smooth dark yellow, streaked and dotted with cinnamon russet. Flesh is white, very rich, melting, delicious and highly perfumed. Ripens last of September.

**Beurre d'Anjou.** A fine variety for table and market. Fruit is large, russet yellow, shaded with crimson; juicy and delicious. Tree is medium size and of upright habit. September.

**Beurre Hardy.** Large fruit of a greenish color covered with light russet, which is shaded with brownish red and sprinkled with brown dots. The flesh is buttery, melting, juicy and highly perfumed. This variety can be grown very successfully on the alluvial soils of the valley and especially on river bottoms. The Buerre Hardy is considered a good commercial sort and by all means a tree or two should be found in all family orchards. Ripens in September.

**Doyenne Du Comice.** The fruit is large, roundish, tapering towards the stem end; skin greenish-yellow shaded crimson on sunny side; flesh rich, buttery, melting and aromatic. October.

**Easter Beurre.** The fruit is large, with a skin of yellowish green, sprinkled with many russet dots and often more or less covered with russet. The flesh is white, fine grained, melting and juicy, with a very rich, sweet flavor. Ripens in October.



Bartlett Pears

## FANCHER CREEK & FRESNO NURSERIES

---

**Madeline.** Medium size, yellowish green; very juicy, melting and sweet the earliest sort we have. June and July.

**Seckel.** The Seckel pear, or Summer Seckel, as it is often called, is known to many pear growers throughout the East and West as one of the richest and most exquisitely flavored varieties in existence. The fruit while small, is regularly formed, having a skin of brownish green at first with a lively russet red cheek. The flesh is whitish, buttery, very juicy, containing a rich spicy flavor and aroma. August.

**Winter Nellis.** This is without exception the finest winter variety yet produced. The tree is very hardy and a very heavy cropper. Fruit is of medium size and roundish in appearance, yellow in color, covered with russet. The flesh is yellow, sweet and fine grained. Unexcelled for quality when fully ripe. Owing to the fine keeping qualities of this pear, it is unexcelled as a good shipper. December.

### THE PLUM

On Apricot, Myrobolan and Peach Roots:

PRICE EACH	1 to 10 Trees	11 to 49 Trees	50 or More
<b>6 to 8 ft.</b> ( $\frac{3}{4}$ " up).....	\$ .55	\$ .40	\$ .30
<b>4 to 6 ft.</b> ( $\frac{1}{2}$ " up).....	.50	.35	.25
<b>3 to 4 ft.</b> ( $\frac{3}{8}$ " up).....	.45	.30	.20
<b>2 to 3 ft.</b> ( $\frac{1}{4}$ " up).....	.40	.25	.15

**Beauty.** Is of exceptional value for shipping to Eastern markets, as the fruit, when picked green, will color up and develop its delicious flavor later. Owing to its earliness, showy appearance and size, which runs from two to two and one-quarter inches in diameter, it commands the highest prices on all markets.

The fruit is decidedly heart-shaped and for this reason makes an easy and attractive pack. The skin being a beautiful crimson color, freely sprinkled with whitish dots, presents a fine appearance on the market. The flesh is amber in color, permeated with crimson. Ripens early June.

**Becky Smith.** This variety is undoubtedly the best highly colored plum for late shipment yet propagated. In size and color it resembles the Santa Rosa very much, being of medium size with a fine red color, which of course makes it a very attractive variety for market purposes.

In addition to its attractive appearance, it ripens and reaches the market when all other highly colored plums are gone. It is of good flavor, a perfect freestone and holds up in shipment almost as well as the Kelsey. Ripening period about the middle of September.

**Burbank.** Is considered one of the best of the Japanese type. The fruit is large, bright red in color, slightly mottled with yellow. Flesh is rich yellow, juicy and very sweet. Late June.

**Climax.** Originated by Luther Burbank, and on account of its early ripening period and its good shipping and market qualities is one of the standard varieties.

The fruit is quite large, heart-shaped, and a very dark red in color; flesh yellow and of good flavor. Ripens middle of June.

**Damson.** This variety enjoys the distinction of being more widely planted and better known to planters of home orchards than any other plum. Its qualities for the making of preserves, jellies, pies, dumplings, etc., are unequaled by any other plum.

The fruit is small, oval in shape, with a purple skin covered with a thick blue bloom. The flesh is tart and separates readily from the pit. Sept.

**Formosa.** The fruit is heart-shaped, uniform in size, averaging in circumference six inches one way to seven and one-half the other way. The skin is of a light cherry red color with a very pale bloom changing when fully ripe to a rich deep red. The flesh is of a delicate yellow, firm, juicy and very delicious. Ripens in June.

**Grand Duke.** The fruit is very large and attractive, having a dark skin, almost black, covered with a deep blue bloom. The flesh is firm, with a yellow tinge, and has a slight tendency to cling to the pit. Its time of ripening and also its attractive appearance make it a very valuable plum for shipment to the Eastern Market. The Grand Duke is also very valuable as a pollenizer for the Tragedy.

**Kelsey Japan.** The Kelsey plum is of Japanese origin and has been extensively planted in California since 1870. Its size and good keeping qualities have made it a favorite among the late shipping varieties. The flesh is yellow, very firm, and adheres slightly to the pit. Ripens July to September.

**President.** Fruit uniform, large and egg shaped; skin purple with a deep bloom; flesh yellow and of fine texture. Tree an upright grower, free branching, vigorous and a good bearer. September.

**Santa Rosa.** Is one of the best of the late Burbank introductions and, owing to its large oval shape and beautiful purplish crimson color it is an excellent plum for shipping purposes. The plum is large and uniform in size. Skin purplish crimson color with a pale yellow bloom. Flesh is yellow, streaked and mottled with red, juicy and of rich flavor. Early June.





**Santa Rosa Plums**

**Satsuma.** The fruit is large and almost round and of a deep, dark red color. Flesh is firm, blood red, juicy and of good flavor with a very small pit. The tree is a strong grower and a heavy producer. It ripens July to September.

**Simon** (*Prunus Simoni*). The tree is very handsome and often planted for ornamental purposes. The fruit is large, brick red; the flesh is yellow firm, with pineapple and banana flavor. Ripens early July.

**Tragedy.** Beautiful dark purple in color, being elongated in shape; flesh is of a yellowish green, very rich and juicy; its early ripening has also much to do with making it a favorite among prune and plum growers. While it is particularly adapted for shipping purposes, on account of its good carrying qualities, it also makes a fair dried product. Ripens early July.

**Vesuvius.** This variety is sometimes known as the purple leaved plum and on account of its beautiful foliage is found valuable for grouping in parks or home grounds.

The tree is a strong grower of upright habit. Leaves are of a beautiful dark purple in color. While it is a fruit producing tree its chief use is as an ornamental.

**Wickson.** The fruit of Wickson resembles the Kelsey in a great many ways, but is more symmetrical and when ripe ranges from a deep cherry red to rich scarlet. The flesh is of an amber tinge and quite juicy, with a very small pit, and is valuable for its long keeping qualities. Ripens in August.

**Yellow Egg.** Is often called the Egg Plum on account of its shape. It is very popular and highly regarded for its canning qualities. Fruit is of large size, often measuring as much as six inches by its longest circumference. The skin is yellow, often bearing white dots, covered with a thin white bloom. Flesh yellow, rather acid, but becomes sweet when fully ripe, and has a tendency to cling to the pit. Ripens July and August.

**THE PRUNE**

The area for growing prunes is being extended very rapidly to almost every section of California. The coastal regions from San Luis Obispo County northward and the silty soils of the river bottoms of the Sacramento and San Joaquin valleys not only produce thrifty orchards but are very dependable in their production of crops.

On Myrobolan and Peach Roots:

PRICE EACH	1 to 10 Trees	11 to 49 Trees	50 or More
6 to 8 ft. ( $\frac{3}{4}$ " up).....	\$ .55	\$ .40	\$ .30
4 to 6 ft. ( $\frac{1}{2}$ " up).....	.50	.35	.25
3 to 4 ft. ( $\frac{3}{8}$ " up).....	.45	.30	.20
2 to 3 ft. ( $\frac{1}{4}$ " up).....	.40	.25	.15

Add 5c per tree to above prices for Burton Prunes.

**Burton.** (New) This is pre-eminently a drying fruit, meeting every requirement of a superior dried product. In type it is like the French prune; Petite d'Agen; but in size the largest and best drying commercial prune yet introduced; in shape obovate, necked at the base. The skin a rich violet purple covered with a light blue bloom; flesh a rich golden yellow, fine grained, tender, sweetly acidulous, aromatic; pit oval, flattened and somewhat ribbed; separates freely from the flesh when fully ripe. The pit is small when compared to the immense size of the fruit, which averages 20-30 to the pound. Tree a strong, vigorous, upright grower, a consistent and regular bearer of good crops, leaves very large, thick, smooth, with serrated margins; resistant to the attacks of red spider.



Burton

French Improved

**Double XX French.** The famous prune of the Saratoga; Santa Clara County district. Fruit of fine shape and good size; skin a deep purple blue overspread with a light blue bloom; flesh abundant, sweet and sugary, yielding a very high sugar content; pit small and somewhat flat. Dries to the larger sizes. Tree strong, upright grower, free branching and free fruiting. August.

**French Improved.** The French (or Petite d'Agen) enjoys the reputation of being more widely grown in California than any other prune. The tree is a very vigorous grower, and bears abundantly in almost all sections of the state. The fruit is of medium size, egg-shaped, has rather a thin neck and a deep violet color. The flesh is of good quality, sweet, and very sugary.

**Hungarian.** This variety invariably brings good prices on the Eastern market in the fresh state. Fruit large, ovate, tapering to the stalk, good shape and regular; skin good protective quality; reddish violet with brown dots and covered with bloom, very showy; flesh abundant, good grain, juicy and of a sprightly flavor. Tree a strong grower and regular bearer. August-September.

**Imperial Epineuse.** Fruit is large, uniform and of a beautiful violet purple color, with a dark blue bloom. The flesh is of a greenish yellow, very sweet and contains a small pit. Ripens August and September.

**Robe de Sargent.** Valuable for both drying and preserving. Fruit medium to large and somewhat oval; skin deep purple with thick blue bloom, flesh greenish yellow, sweet and good. August-September.

**Standard.** A variety originated by Luther Burbank, and is a cross between the Sugar and Tragedy. It is of large size, purple in color, overspread with a thick blue bloom. Flesh is amber, fine grained and of good flavor. In addition to making a fine dried product, it is also a good shipper. Ripens middle of August to middle of September.

**Sugar.** Extremely early, very large, tender and sugary. Skin dark purple covered with thick white bloom. A heavy bearer. Early August.

## THE QUINCE

Though a fruit long and widely cultivated in many regions the quince has never attained commercial rank in the fruit trade of America. This is somewhat anomalous, as its fine qualities for jellies, preserves and sauces are superior to those of any other fruit. Such varieties as Pineapple and Smyrna are ideal for culinary purposes. Of late there has been a wider interest manifested in quince culture in California, resulting in carload shipments to eastern markets. It thrives best in a deep loamy, moist soil and is particularly adapted to planting on low damp land where other kinds of fruit will not thrive.

PRICE EACH	1 to 10 Trees	11 to 49 Trees	50 or More
6 to 8 ft. ( $\frac{3}{4}$ " up).....	\$ .55	\$ .45	\$ .35
4 to 6 ft. ( $\frac{1}{2}$ " up).....	.50	.40	.30
3 to 4 ft. ( $\frac{3}{8}$ " up).....	.45	.35	.25
2 to 3 ft. ( $\frac{1}{4}$ " up).....	.40	.30	.20

**Apple or Orange.** Ripens in September; fine for shipping, market and home use. Fruit large, roundish with small neck; skin smooth and of a rich golden color; flesh orange yellow; fine grained of a rich aromatic flavor.

**Pineapple.** This Quince has a flavor suggestive of Pineapple. The fruit is apple-shaped and nearly round; skin smooth and light golden in color; flesh white, tender.

**FANCHER CREEK & FRESNO NURSERIES**

---

**Smyrna.** The fruit is large, round-oblong, surface lightly furrowed; skin a beautiful shade of lemon yellow, flesh tender, aromatic; mildly sub-acid. September.

**THE PERSIMMON**

PRICE EACH	1 to 10 Trees	11 to 49 Trees
<b>4 to 6 ft.</b> ( $\frac{1}{2}$ ' up).....	<b>\$1.25</b>	<b>\$1.00</b>
<b>3 to 4 ft.</b> ( $\frac{3}{8}$ ' up).....	<b>1.00</b>	<b>.90</b>

**Hachiya.** Tree is a very vigorous grower, of upright habit and very shapely. The fruit is pronounced by growers of persimmons as the largest and finest specimen of all persimmons, and of extremely high quality. It is of oblong shape, has rather a short point, and a skin of bright dark red, covered with dark blotches. Ripens October.

**THE POMEGRANATE**

The Wonderful pomegranate finds conditions to its liking in the San Joaquin Valley, where a number of commercial orchards are proving quite profitable, the bulk of the crop being sent east. In addition to its economic values the pomegranate also possesses distinction as an ornamental tree. Its glossy green foliage contrasts beautifully with its scarlet red flowers; later the large magenta red fruits appear like crimson globes among the leaves, while as a packed product they form a conspicuous feature on fruit stands.

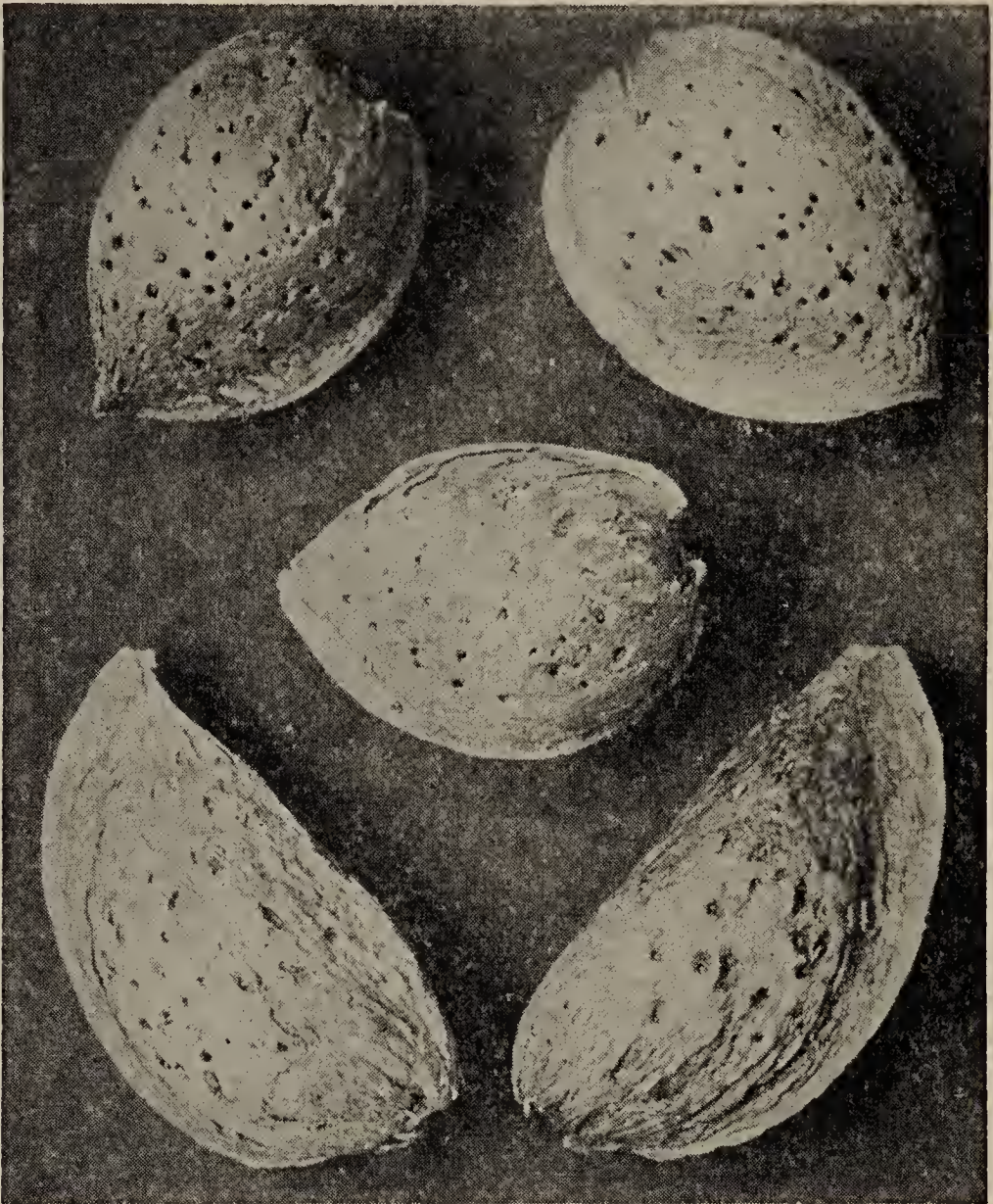
PRICE EACH	1 to 10 Trees	11 to 49 Trees	50 or More
<b>4 to 6 ft.</b> ( $\frac{1}{2}$ ' up).....	<b>\$ .50</b>	<b>\$ .35</b>	<b>\$ .25</b>
<b>3 to 4 ft.</b> ( $\frac{3}{8}$ ' up).....	<b>.45</b>	<b>.30</b>	<b>.20</b>
<b>2 to 3 ft.</b> ( $\frac{1}{4}$ ' up).....	<b>.40</b>	<b>.25</b>	<b>.15</b>

**Wonderful.** The fruit is of yellow color overspread with red and often blushed with deep scarlet. The pulp is a rich garnet color, with an abundance of juice, of a dark color and very pleasing flavor, slightly sub-acid. Ripens in October.



**Wonderful Pomegranates**

Valuable for its superb fruits, handsome foliage and gorgeous flowers.



**Commercial Almonds**  
 Top I.X.L., center Drake Seedling, lower Ne Plus Ultra

**THE ALMOND**

Almond trees are budded on almond and peach roots. The peach root should be given the preference on loamy, compact soils, which are retentive of moisture. A well drained warm soil and a locality where there is not too frequent an occurrence of frost in the spring are the requisites to make almond culture a success. Cross-pollination is an interesting phase of almond culture and alternating three to six rows of a variety has a very marked effect on improving the yield.

On Almond and Peach Roots:

PRICE EACH	1 to 10 Trees	11 to 49 Trees	50 or More
4 to 6 ft. ( $\frac{1}{2}$ " up).....	\$ .50	\$ .35	\$ .25
3 $\frac{1}{2}$ to 4 ft. ( $\frac{3}{8}$ " up).....	.45	.30	.20
2 to 3 ft. ( $\frac{1}{4}$ " up).....	.40	.25	.15

**Drake Seedling.** Originated on the grounds of Mr. Drake, of Suisun, California. The tree is a strong grower and a heavy bearer; in fact, it has the reputation of bearing regularly in all sections. One reason for its heavy bearing is the fact that it is very late in blooming, consequently is more free from frost than any other variety.

**I.X.L.** The tree of the I.X.L. is a sturdy upright grower, producing large nuts which are very easily hulled. The shell is soft and smooth; the kernel is large and very plump.

One of the features which makes this variety in demand is the fact that the shell possesses a fine color without bleaching.

**Ne Plus Ultra.** The tree is a strong grower and inclined to have a drooping habit. The nut is long and narrow in shape and has a soft shell. The kernel is very large, sweet and highly flavored. Hulls freely and is considered a favorite among almond growers for commercial purposes. Blooming period middle of March.

**Nonpareil.** The tree is a very strong grower and a heavy and regular bearer. The nut is large, long and narrow, having a thin shell and a good color. The kernel is long, fills the shell well and possesses an excellent flavor. It commands the highest prices on the market, selling from one to three cents higher than other varieties.

## FANCHER CREEK & FRESNO NURSERIES

**Texas Prolific.** The tree is equal to that of the Drakes Seedling for its heavy bearing qualities, but grows much larger. It is of an upright habit, having a smooth wood and a fine foliage. It is a late bloomer, consequently is almost sure to escape damage from late frosts. The nut is of medium size, having a soft shell, which is white in color. The kernel is short, plump and very sweet. Its value as a pollenizer must not be overlooked. Blooms last of March.

### THE PECAN

The trees thrive in a great variety of soils, doing well in a stiff clay, or porous sand. The planting of trees should be confined to soils where moisture is either supplied by natural means or irrigation.

	Each
4 to 6 ft.....	\$1.00
3 to 4 ft.....	.75

Seedlings grown from select, first generation seed, which bear large, fine soft shell Pecans, equal to the budded or grafted varieties.

### THE WALNUT

No nut yields larger or more profitable crops than the walnut. While it prefers a rather loamy, deep rich soil and responds quickly to good cultivation, it yields excellent crops even under adverse conditions.

The walnut makes a splendid shade and sidewalk tree and should be given due consideration in making up your planting list. The varieties which we list are adapted to climatic conditions of the San Joaquin and Sacramento Valleys.

Grafted on California Black:

PRICE EACH	1 to 10 Trees	11 to 49 Trees	50 or More
8 to 10 ft.....	\$1.50	\$1.35	\$1.25
6 to 8 ft.....	1.25	1.10	1.00
4 to 6 ft.....	1.00	.85	.75
3 to 4 ft.....	.75	.60	.50

**Eureka.** The tree is a strong upright grower and a heavy producer. The nuts are of large size, soft shell, smooth in appearance and highly valued for commercial purposes. The kernel is of good color, plump, and very rich in flavor.

**Franquette.** Is more widely known and planted throughout the different walnut sections of California, Oregon and Washington than any other variety.

The tree is a strong grower and a very prolific bearer. The nuts are of large size, long and smooth. The shell is of medium thickness, bearing a full, sweet and very rich kernel, of high flavor.

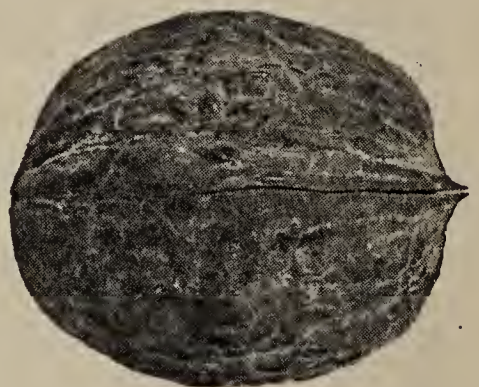
**Mayette.** One of the most popular varieties grown in the northern walnut districts. Nut large and uniform; shell light colored; blooms late in the spring and bears abundantly; tree hardy. A standard commercial sort.

For pollination purposes it is advisable to plant it with the Franquette, as both trees will then bear more abundantly than if planted alone.

**Payne's.** A very promising new variety, and does exceptionally well in the San Joaquin and Sacramento Valleys. The tree is a vigorous grower and comes into bearing at an earlier age than any other variety. It produces good crops of very fine nuts.



**Franquette**



**Mayette**

#### PRICE OF CALIFORNIA BLACK WALNUT SEEDLINGS

PRICE EACH	1 to 10 Trees	11 to 49 Trees	50 or More
6 to 8 ft.....	\$ .55	\$ .40	\$ .30
4 to 6 ft.....	.50	.35	.25
3 to 4 ft.....	.45	.30	.20
2 to 3 ft.....	.40	.25	.15

**California Black.** The tree grows to an exceptional size, is very hardy, and considered very valuable for its wood, which is used largely for cabinet making. The nut is of medium size, has a very hard shell, and possesses a plump kernel, which has a fine rich flavor.

## THE CHESTNUT

This nut tree does best when planted on river bottom land; nevertheless good specimens may be seen at different points throughout the state growing in soils varying from sandy to loamy, and even heavy clay. The requisite being plenty of moisture with subsoil that will permit free root penetration.

	Each
<b>4 to 6 ft.</b> .....	<b>\$1.00</b>
<b>3 to 4 ft.</b> .....	<b>.75</b>

**Italian or Spanish.** Nuts large and hull readily; shell thin and a handsome shade of brown in color; kernel large, plump, full and sweet. Tree a strong grower, finely spreading umbrageous top; highly ornamental and well suited to roadside plantings and the adornment of parks and gardens.

## THE LOQUAT

A beautiful evergreen shrub or tree attaining a height of fifteen to twenty feet, bearing pear-shaped fruit of a pleasant acidulous flavor and of lemon-yellow color. The fruit is used for making jellies, jams and preserves. Trees are easily grown and may be planted 20 to 24 feet apart.

<b>Five Gallon Container, 3 to 4 ft.</b> .....	<b>\$1.50</b>
--	---------------

**Select Seedlings.** Fruit medium, borne in immense clusters, varying in color from yellow to deep orange. Flesh melting, juicy and sweet.

## THE OLIVE

The olive does well in all sections of California, as we possess a similar soil and climate to its native habitat the Mediterranean region. Olive trees are now a pronounced feature of our California landscape being used extensively as border and avenue trees, and are not only very ornamental but profitable as well.

PRICE EACH	1 to 4 Trees	5 or More
<b>1/2 to 5/8 inch caliper</b> (Balled).....	<b>\$1.00</b>	<b>\$ .90</b>
<b>3/8 to 1/2 inch caliper</b> (Balled).....	<b>.90</b>	<b>.75</b>
<b>1/4 to 3/8 inch caliper</b> (Gallon Containers).....	<b>.75</b>	<b>.60</b>

**Manzanillo.** A splendid pickling and oil making variety. Fruit nearly round, large, with a round-oval pit; skin a pronounced purplish black, covered with specks of a lighter shade; flesh solid, good grain and oil content. Tree hardy, robust and free fruiting. Earliest variety to ripen. October.

**Mission.** The oldest variety grown in California, and one of the best. Fruit medium large and oval in shape, pit medium in size; skin deep purple veering to black; flesh abundant, firm, of good texture and oil content. Tree handsome and upright, productive; valuable for roadside and border planting. October.

**Sevillano.** (True Spanish Queen) The tree is a strong grower with branches spreading and leaves large and long. The fruit, picked green, is pickled and exported from Spain to all parts of the world under the name of the "Queen Olive."

## THE JUJUBE

A comparatively little known fruit from China, where it is known as the Chinese Date because when processed it much resembles that fruit. Tree upright spreading with dark green glossy foliage, rendering it desirable for ornamental planting. The method of processing is simple. First select good firm fruits, After passing them over a pricking board to perforate the skin, they should be placed in a syrup composed of one cup of sugar to one cup of water and boiled for twenty minutes. They should then be removed, the syrup permitted to drain and placed on drying trays in the sun for two or three days. They will then not only have the appearance of the date but will have a flavor even superior to it.

PRICE EACH	1 to 4 Trees	5 or More
<b>4 to 6 ft.</b> (1/2" up).....	<b>\$1.75</b>	<b>\$1.50</b>
<b>3 to 4 ft.</b> (3/8" up).....	<b>1.50</b>	<b>1.25</b>
<b>2 to 3 ft.</b> (1/4" up).....	<b>1.25</b>	<b>1.00</b>

**Mu Shing Hong.** "Chinese Date." Season, September-October; quality, home use, preserving and confections. Fruit long pear-shaped; skin smooth and a reddish mahogany in color; flesh fine grained and when processed flavored like the date. Tree thrifty, good cropper and does well in soils heavily impregnated with alkali.



**Marsh Seedless Pomelo** (Grapefruit)

**CITRUS FRUITS**

Taking inception in the warm belt of Southern California, citrus culture has gradually found its way farther north year by year until now these trees are successfully grown within the very shadow of Mount Shasta. There are few soils in California where the citrus tree will not thrive, though they are partial to a friable sandy loam, retentive of moisture but well drained. Like the olive, citrus trees are also being planted for their landscape effect. The golden and yellow fruits contrasting against the dark green foliage of the trees add beauty to any landscape.

<b>5/8 to 3/4 inch caliper</b> .....	<b>Each</b> <b>\$1.50</b>
<b>1/2 to 5/8 inch caliper</b> .....	<b>1.25</b>

**Marsh Seedless Pomelo.** "Grape Fruit." The dominant variety in our leading markets; a good shipper. Fruit medium to large and practically seedless, skin of good texture and protective quality; flesh juicy, melting, free from rag and a delightful aromatic flavor. Tree a fine grower, well branched, robust and free fruiting. January.

**Eureka Lemon.** The tree is a vigorous grower and unlike other varieties is practically free from thorns. The fruit is of medium size, smooth glossy and an excellent keeper. In many sections of the State it blooms and sets lemons all the year around.

**Bearss Seedless Lime.** The largest and finest lime, the fruit resembling a small lemon. Seedless; very juicy; a high degree of acidity and an abundance of the delicate lime flavor. A vigorous, dense, round-topped tree.

**Satsuma Orange.** The tree is of a spreading and drooping habit and bears fruit at an early age. The fruit is of medium size and rather flat in shape and deep orange in color. Flesh is fine grained, tender, sweet, delicious and so few seeds are ever found that it is termed seedless. This is undoubtedly one of the best of the Mandarin family and on account of its heavy bearing qualities, its early ripening and its many other attractive features, should be found in all home grounds. Ripens October to Dec.

**Valencia Late Orange.** The great summer market orange of California. Fruit oblong-roundish, medium and regular in size; skin pale yellow, fine grained and good protective quality; flesh ample, juicy, crisp, amber in color and decidedly aromatic and sweet. Tree large, good and regular bearer. Season, April-September.

**Washington Navel Orange.** The orange that made Riverside, the place of its introduction, famous. Fruit medium to large, solid and heavy; skin of fine texture and substance, smooth with a kidglove surface and bright orange in color, flesh juicy, melting, sprightly, sweet and agreeable, and practically seedless with no rag. Tree a good bearer, medium thorny and a healthy grower. Season November to March.



**Dried Muscat** California's finest raisin grape

**THE GRAPE**

PRICE EACH	1 to 10 Vines	11 to 49 Vines	50 or More
<b>Standard No. 1 Grade</b> .....	<b>\$ .15</b>	<b>\$ .10</b>	<b>\$ .04</b>
<b>Light No. 1 grade</b> .....	.....	.....	<b>.03</b>

**RAISIN VARIETIES**

**Muscat.** The renowned raisin and table grape. Berries large, slightly oval, produced in large clusters; skin pale amber covered with a thin white bloom; flesh firm, with a very distinct aroma and pleasing flavor. Sept.

**Thomson Seedless.** Immense quantities are now being used in breads cakes and for confections. It is much in demand for shipping. Berry oval and seedless on long cylindrical clusters; skin greenish-yellow; flesh abundant, mildly flavored. Vine a vigorous grower. Should be cane pruned. Valuable as an arbor grape. August.

**Zante Currant.** The trade name of the Black Cornith grape of Greece. Bunches medium; berries small, seedless. This variety produces the so-called currant of commerce. Vine a strong grower and a good producer. It has been thoroughly tested and found well adapted to our climatic and soil conditions. August.

**TABLE VARIETIES**

**Black Cornichon.** Desirable for its handsome appearance, late ripening and shipping qualities. Berries long, borne in long loose bunches; skin thick, dark and spotted, covered with bloom, flesh firm and good. Vine a medium grower, short jointed wood, large leaves; a good bearer. October.

**Black Prince.** Syn. Rose of Peru. Valuable for home use and shipping. Berry large, round, borne on shouldered clusters; skin brownish-black with a thick bloom; flesh dark, juicy and sweet. From a standpoint of growth and production is in a class by itself. September.



## FANCHER CREEK & FRESNO NURSERIES

---

**Emperor.** An excellent shipping table grape of wide culture in the Sacramento and San Joaquin Valleys. Berry long, oblong and large, borne in heavy bunches; skin deep rose colored covered with bloom; flesh crisp, abundant and of good flavor. Vine a strong grower and heavy bearer. Used largely for storage, packed in drums with redwood sawdust. October.

**Flame Tokay.** Extensively planted shipping grape in favored districts; in some sections does not color up well. Berry large and oblong, borne in immense bunches; skin pale red covered with lilac bloom; flesh firm, juicy, crackling, abundant and good vinous flavor. Vine a good grower, robust, with light green foliage. September.

**Fresno Beauty.** Another name for Gros Colman, one of the recognized hot house grapes of Europe. Berry large as a Damson plum, set on a loose cluster; skin thin, dark, covered with bloom; flesh firm and of a pleasant vinous flavor. Vine a strong grower with large, dark green, glossy leaves, downy beneath, a wonderful producer. October.

**Malaga.** The popular California white grape for Eastern shipments. Berry of good size, oval in shape, borne on loose clusters; skin tender, yellowish-green; flesh sweet, tender, crackling and good flavor. Vine a strong grower and producer. August.

### JUICE VARIETIES

**Alicante Bouschet.** Our most popular juice grape. Berry medium, round, borne in compact bunches; skin black and thick; flesh high in sugar, juice red, somewhat tart. Vine medium grower and an enormous producer; comes into bearing early. Fruit used largely for coloring soft drinks, ices, confections, etc. September.

**Black Malvoise.** Widely grown in California as an early wine grape. Berries medium size and oblong, borne on loose branching bunches; skin reddish black with faint bloom; flesh firm, juicy sweet and of good flavor. Vine vigorous and productive. Also desirable as a dessert fruit. August.

**Carignan.** One of the leading wine grapes. Berries very large and round, borne on medium sized, compact clusters; skin a deep blue-black and tough; flesh amber, very juicy and sweet. Vine a strong grower, heavy bearer and adapted to a wide condition of soils and climate. Brings high prices as a wine making grape for Eastern shipments. September.

**Grenache.** A strong-growing variety; bunches conical, rather loose; berries bluish black; makes excellent wine, but requires age. September.

**Mission.** Berry medium size and round; skin purple black; flesh crackling, sweet and delicious. Vine a good grower and free fruiting. This is the original wine grape introduced by the Padres in the early gardens of the California Missions. September.

**Zinfandel.** Widely used as a juice grape. Berry round borne in compact clusters; skin dark purple covered with a heavy bloom; flesh abundant, juicy and a good vinous flavor. Vine a medium grower and good bearer. August.

### LATE INTRODUCTIONS

PRICE EACH	1 to 10 Vines	11 to 49 Vines	50 or More
<b>Standard No. 1 grade</b> .....	<b>\$ .15</b>	<b>\$ .10</b>	<b>\$ .05</b>
<b>Light No. 1 grade</b> .....	.....	.....	<b>.04</b>

**Dizmar.** Promises to become a leading shipping, table and market variety, because of its early ripening qualities. Berry medium to large somewhat flattened at the ends; skin a rich yellow, semi-transparent; flesh firm, crisp, tender, with a sweet but pleasant flavor. Vine a strong grower with large, dark-green glossy foliage; a good bearer if properly long pruned. July.

**Maraville de Malaga.** (Red Malaga). One of the few hard grapes noted for its fine flavor and aroma; commands good prices in the Eastern market. Berry large, conical, oval on long and loose clusters; skin a beautiful sparkling red; flesh firm, crisp, crackling and delicious flavor. Vine a strong grower and heavy bearer. September.

**Olivette Blanche.** Sometimes called the Salad Grape owing to its large size, firm flesh and beautiful rich color. Delightful for preserves and fruit salads. Berry large, oblong, tapering to a point on the lady finger type, borne on large solid conical shaped clusters; skin thick, yellowish white; flesh amber in color and firm, juicy, sweet and crackling. Vine prolific, with long canes and spreading habit. A splendid producer and wonderful shipper. September.

**Ribier.** One of the largest grapes grown, and at the same time one of the most handsome. Extremely large, round, perfectly black berries in medium size bunches, very sweet and rich in flavor. Ripens in August, but will stay on vine until late September. Unexcelled for home and market.

# FANCHER CREEK & FRESNO NURSERIES

## AMERICAN VARIETIES

The criticism that the American grapes fail to bear in California is not in keeping with the facts, for experience has demonstrated that when properly cared for good crops are the rule. They are especially desirable for arbors and to run over unsightly outhouses and should be planted much more largely than they are.

PRICE EACH	1 to 10 Vines	11 to 49 Vines	50 or More
<b>Standard No. 1 Grade</b> .....	<b>\$ .20</b>	<b>\$ .15</b>	<b>\$ .10</b>

**Concord.** The standard table grape of the Eastern states; fine for its juice and jelly making. Berry round and solid on medium sized compact clusters; skin thick and blue black; flesh somewhat coarse, abundant, with a decided musky tang. Vine productive and relatively immune to disease. One of the best in the American class. August.

## RESISTANT VINES

PRICE EACH	1 to 10 Vines	11 to 49 Vines	50 or More
<b>Standard No. 1 grade</b> .....	<b>\$ .15</b>	<b>\$ .10</b>	<b>\$ .04</b>
<b>Light No. 1 grade</b> .....	.....	.....	<b>.03</b>

**Aramon X Rupestris Ganzin No. 1.** Said without question to be one of the best of the Franco-Rupestris, and which has given excellent results and general satisfaction. Thrives well on a light and heavy, compact soil, and grows luxuriantly on a soil containing a large percentage of lime. It is better adapted to moist than to dry soils. Grafts well.

**Rupestris St. George.** Adapts itself to a great range of soils, does equally as well in a moist, very heavy compact clay soil as in the driest hillsides, providing they are deep, having the remarkable faculty of sending its roots straight down in search of moisture. In rich virgin soils they must be generously pruned to allow plenty of wood to bear the fruit and regulate the vegetation. Will thrive in soils with a moderate amount of lime but should never be planted in shallow soils.

## BUSH FRUITS

### BLACKBERRIES

<b>Price Each</b> .....	1 to 10 <b>\$ .15</b>	11 to 50 <b>\$ .10</b>
-------------------------	--------------------------	---------------------------

**Mammoth Blackberry.** A superb local market and shipping variety. Fruit long, full and large; color a deep purple glossy black; flesh abundant, juicy, and of a delightful sweet blackberry flavor. Canes are good growers and enormously productive in early spring.

**Cory's Thornless Blackberry.** Valuable and pre-eminently fine for local market, shipping and culinary purposes. Fruit very large, sometimes two inches long, core small; skin tender, color glossy black; flesh sweet, delightfully acidulous; flavor piquant and suggestive of wild raspberry, heavy and firm. Vine vigorous, sending out strong stocky canes in early spring, which are absolutely thornless; thrives in any good garden soil. Season, May to August.

### DEWBERRIES

<b>Price Each</b> .....	1 to 10 <b>\$ .15</b>	11 to 50 <b>\$ .10</b>
-------------------------	--------------------------	---------------------------

**Lucretia Dewberry.** The dewberries or trailing blackberries are very popular, both as a home fruit and the local market. Berries extremely large and good substance; color a rich glossy black; flesh sweet, melting and of fine flavor. Vine a good grower, dense foliage and good bearer. Plants should be set four feet apart, and the rows six feet. May.

### LOGANBERRIES

<b>Price Each</b> .....	1 to 10 <b>\$ .15</b>	11 to 50 <b>\$ .10</b>
-------------------------	--------------------------	---------------------------

**Loganberry.** Distinctly desirable for shipping, local market, and culinary purposes and summer drinks. Fruit large, round elongated and solid; color a deep purplish red; flesh abundant, deep red in color with a pleasant tart flavor suggestive of a blend of blackberry and raspberry. Vine a vigorous and rampant grower and very prolific; should be trellised or staked. May.

### RASPBERRIES

<b>Price Each</b> .....	1 to 10 <b>\$ .15</b>	11 to 50 <b>\$ .10</b>
-------------------------	--------------------------	---------------------------

**St. Regis Raspberry.** The earliest and best raspberry to date; quality local market and home use. Fruit round-oval and large; color a clean bright magenta red; flesh rich, full and a pronounced raspberry flavor. Vine a strong grower with abundant foliage.



**Cory Thornless Blackberries**

**YOUNGBERRY**

<b>Price Each</b> .....	1 to 10	11 to 50
	\$ .15	\$ .10

**Youngberry.** A comparatively new berry on the Pacific Coast although it originated in Louisiana on the B. M. Young ranch nearly 20 years ago. It is said to be a cross between the Dewberry and Loganberry, purplish black in color, large in size, and with a flavor similar to the Raspberry. The berries are very sweet and make excellent preserves. A prime favorite with the bakers. The vines are strong growers and very productive.

**STRAWBERRIES**

<b>Price Each</b> .....	1 to 49	50 or More
	\$ .03	\$ .01 1/2

**Banner Strawberry.** The queen of the strawberry family; for California planters it has no equal. Fruit medium to large, firm and heavy; color a deep red; flesh sweetly acidulous, melting, and deliciously piquant. Vine robust and free fruiting. May to September.

**CURRANTS**

<b>Price Each</b> .....	1 to 10	11 or More
	\$ .20	\$ .15

**Cherry.** A fine variety for the local market and home garden. Fruit round and large, on somewhat short clusters; color a clear crimson red; firm, juicy and a delightful tart flavor. Bush a good grower, vigorous and productive when grown on good soil and properly cultivated. May-June.

**GOOSEBERRIES**

<b>Price Each</b> .....	1 to 10	11 or More
	\$ .20	\$ .15

**Oregon Champion.** A general favorite in California, valuable for shipping, culinary and local market. Berry large, round-oval; skin greenish-yellow to clear yellow, thin and smooth; flesh juicy, sprightly sweet and buttery. Bush medium size, vigorous and productive, free from mildew.

**RHUBARB**

<b>Price Each</b> .....	1 to 10	11 or More
	\$ .20	\$ .15



## BEAUTIFY YOUR HOME GROUNDS WITH ORNAMENTAL PLANTS

We have the largest and most complete assortment of ornamental plants in the San Joaquin Valley, but owing to lack of space in this catalogue, we do not attempt to list our many varieties and sizes.

We cordially invite you to visit our extensive Plant Store, located corner of Belmont and Thorne Avenues, adjacent to Belmont Subway, and let us help you select the plants most suitable to your garden.

You are invited to bring in a sketch of your home grounds and discuss planting problems with our landscape department or if it is not convenient for you to call, just send in your sketch by mail and we will gladly give you our suggestion of plants for your garden.

We make no charge for our landscape service and you will find our prices on plants are reasonable.

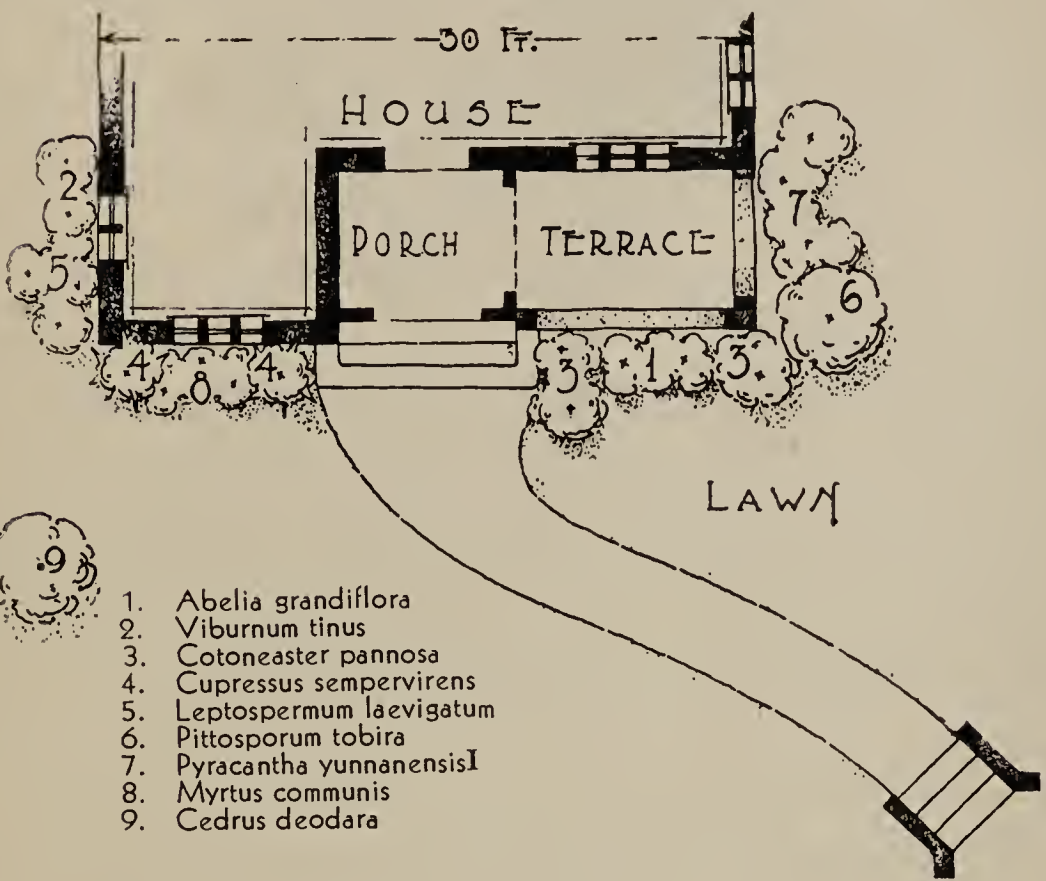
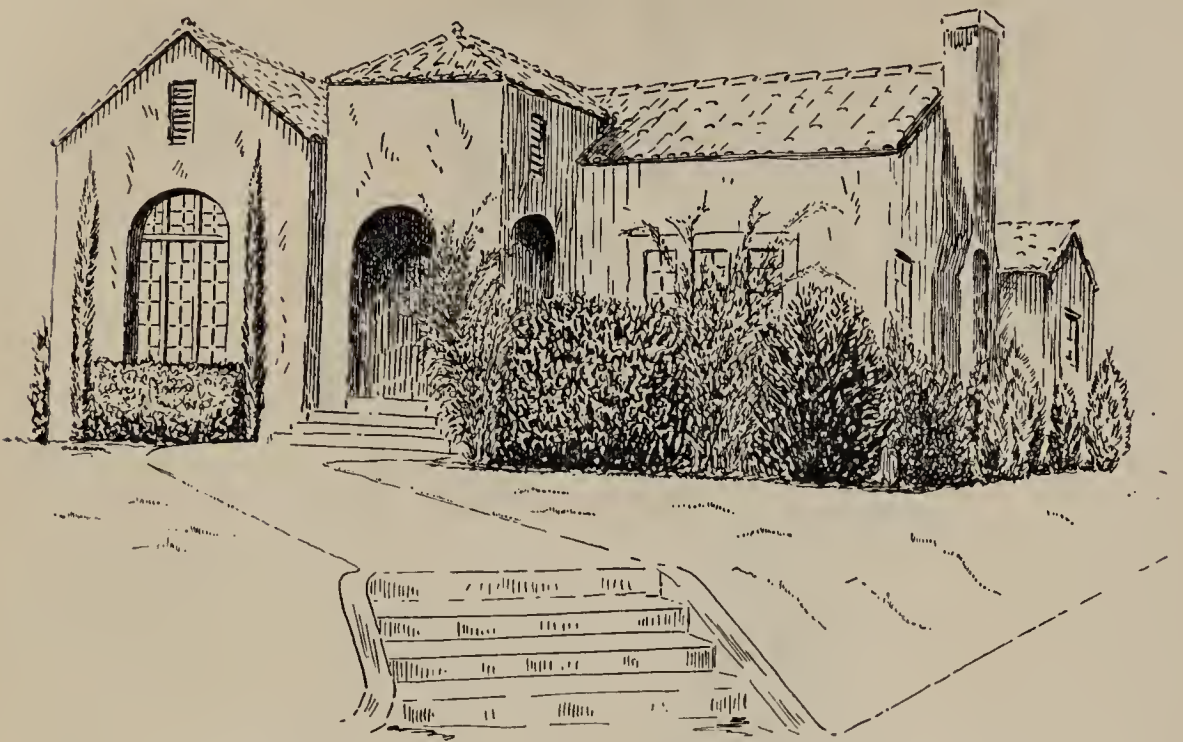
In our Plant Store you will find large, well formed, balled plants which make an immediate showing, at very moderate prices, and you will also find the same varieties in smaller plants at much lower prices. In fact, we can supply you with ornamental plants in varieties and sizes to plant your garden to your entire satisfaction, both from the standpoint of appearance and price.



### LANDSCAPE SERVICE

We suggest that you make use of our free landscape service, as often mistakes are made in planting, such as placing tall growing shrubs in front of windows when a low growing shrub is desired and quite often plants not suited to location or climate are planted with unsatisfactory results.

These mistakes can be avoided by consulting our landscape department.



## HOME PLANTING SPECIAL

**T**HE ABOVE represents a very attractive and moderate priced planting on a 50-foot corner lot, and would also be a very suitable planting for a 50-foot inside lot. The varieties of plants included in this planting are all strong growing shrubs and will do well in practically any section of California.

We will duplicate this planting, which requires 20 PLANTS, in medium sized, strong, healthy shrubs, for \$12.50.

why not  
*a living*  
**Christmas**  
**TREE ?**



When landscaping and planting your garden, be sure to reserve a prominent place for your Living Christmas Tree.

The practice of growing Living Christmas Trees in the front yard and decorating and illuminating them at Christmas time has become universal and nothing is more attractive and more fitting at this time of the year than a well grown and well decorated Cedrus Deodara or better known as "Living Christmas Tree".

We have a wonderful assortment of these trees in all sizes and will be glad to quote you prices on any size and quantity you desire.

To those preferring other varieties of Evergreen Trees to be used as Christmas Trees, we suggest any of the following varieties:

**Abies concolor**

**Abies pinsapo**

**Araucaria bidwilli**

**Cedrus atlantica**

**Cedrus atlantica glauca**

**Cedrus deodara**

**Cedrus deodara verticillata glauca**

**Chamaecyparis lawsoniana alumni**

**Cupressus arizonica**

**Libocedrus decurrens**

**Picea pungens kosteriana**

**Pinus radiata**

**Pseudotsuga douglasi**

**Sequoia gigantea**

**Sequoia sempervirens**



## YOU WILL ENJOY CREATING AN OUT-DOOR LIVING ROOM

THE VOGUE for beauty *outside* the home, as well as within, is upon us—and this new vogue finds its most charming expression in the modern outdoor living room. ¶ This new fashion results from more than the public's consciousness of "backyard" barrenness. It is the home owner's own solution to the problem of how to get the most value out of his property, and the most enjoyment out of living. The charm of flowering plants tastefully arranged to create a veritable living room outdoors is irresistible; and the prospect of planning a place outdoors which is attractive, liveable and comfortable—where the whole family can find countless hours of enjoyment—is fraught with expectant adventure. Think of the pleasant summer evenings that you will spend in this outdoor living room.

A few of the most desirable berry producing shrubs:

- Cotoneaster franchetti** (orange berries)
- Cotoneaster horizontalis** (red berries)
- Cotoneaster pannosa** (red berries)
- Mahonia aquifolium** (blue-black berries)
- Myrtus communis** (blue-black berries)
- Photinia arbutifolia** (red berries)
- Pyracantha lalandi** (orange berries)
- Pyracantha crenulata** (red berries)
- Pyracantha yunnanensis** (red berries)
- Raphiolepis japonica** (black berries)

Climbing and trailing plants suitable for porches and pergolas:

- Ampelopsis quinquefolia** (Virginia Creeper)
- Ampelopsis veitchi** (Boston Ivy)
- Bignonia grandiflora** (Trumpet Vine)
- Ficus repens** (Climbing Fig)
- Hedera helix** (English Ivy)
- Lonicera halliana japonica** (Evergreen Honeysuckle)
- Jasminum nudiflorum** (Yellow Jasmine)
- Wisteria multijuga** (Purple Wisteria)

## DECIDUOUS SHADE TREES

**Acer dasycarpum.** "Silver (or Soft) Maple". Eastern N. America. 60 feet. A large tree of rapid growth; foliage bright green above, silvery beneath. A favorite tree for streets and parks; grows well in the interior valleys. The foliage assumes beautiful autumnal tints in the fall.

**Betula Alba.** "White European Birch." 40 feet. Tree medium to large with white bark on the older limbs and trunks; branches of a drooping habit; growth irregular but robust. Valuable either as a specimen or grouped in masses. Will thrive in any soil, even though of poor quality.

**Melia azedarach umbraculiformis.** "Texas Umbrella." 30 feet. One of the handsomest shade trees of umbrella form; shade very dense; foliage dark green; produces lilac-colored flowers.

**Platanus.** "Sycamore." 60 feet. Erect growing tree, with bright green foliage and beautiful mottled trunk. In great demand for shade and avenue planting; a rapid symmetrical grower, thriving in almost any soil. Regarded as one of the best trees for California and the Southwest.

**Populus balsamifera.** "Balm of Gilead." N. America. 75 feet. A handsome, upright, spreading tree, rendering it fine for avenue planting, aligning driveways; foliage a glossy green and abundant, giving a dense shade. These trees are very rapid growers and do not bear the objectionable cottony seed. Where quick shade is desired they have no equal.

**Robina pseudacacia decalnsneana.** "Pink Flowering Locust." Handsome spring pink-flowering tree with pea shaped blooms borne on long racemes. A fast grower and very hardy. Makes a very desirable shade tree.

**Ulmus americana.** "American or White Elm." Tall-growing and stately, one of the grandest of American trees.

## WEEPING DECIDUOUS TREES

**Salix babylonica aurea.** "Golden Weeping Willow." 40 feet. Of identical habit with common weeping willow. Differs in the intense golden hue of the branches, making it particularly handsome during the winter.

**Salix discolor.** "Pussy Willow." 15 feet, Small bushy tree covered in the spring of the year with long, silky catkins.

## FLOWERING TREES

**Cercis canadensis.** "American Redbud." 20 feet. A beautiful object in the spring when covered with a mass of rose-tinted colored flowers. Fine as a specimen plant or for grouping. Very ornamental.

**Crataegus monogyna pauli.** "Paul's Double Scarlet Thorn." 12 feet. Tree rather small but erect in habit and a quick grower; flowers bright carmine and double; berries dull red and free fruiting. One of the most showy small deciduous trees.

**Cydonia Japonica.** "Japanese Scarlet Quince." 10 feet. The Japanese quinces are beautiful dwarf species, remarkable for the brilliancy of their blossoms, which vary from the richest scarlet to the most delicate blush color. They are well adapted for single plants, on the lawn, for the edges or borders of groups of trees and for planting ornamental hedges. The foliage is very ornamental. The fruit has a delicious fragrance but is worthless.

**Prunus pissardi.** "Purple Leaf Plum." Very ornamental small tree. Leaves deep purple in spring, gradually becoming greenish. Flowers numerous, white tinted pink, appearing before the leaves. Fruit reddish purple. Doubly beautiful and desirable for both blossom and foliage.

## PERSICA. Flowering Peach.

**Double Red.** 15 feet. Flowers semi-double, bright red.

**Double Pink.** 15 feet. Flowers Double Pink. Very beautiful and in demand by florists.

**Double White.** 15 feet. Flowers large, double and pure white. Branches covered with bloom in the spring.





Lady Hillingdon

ROSES

Price Each .....	1 to 4 \$ .50	5 or More \$ .40
<b>Angele Pernet.</b> Flaming orange.		
<b>Betty Uprichard.</b> Coppery red.		
<b>Chas. P. Kilham.</b> Orange red.		
<b>Constance.</b> Buds orange; blooms yellow.		
<b>Cuba.</b> Orange and vermillion.		
<b>Dame Edith Helen.</b> Brilliant pink.		
<b>Dutchess of Athol.</b> Apricot and gold, flushed with rose.		
<b>E. G. Hill.</b> Dark red.		
<b>Etoile de Hollande.</b> Bright red.		
<b>Gen. Mac Arthur.</b> Bright scarlet.		
<b>George Arends.</b> Clear, even pink.		
<b>Golden Embiem.</b> Golden yellow.		
<b>Hoosier Beauty.</b> Velvety red.		
<b>Independence Day.</b> Apricot yellow.		
<b>Irish Fireflame.</b> Single; bright pink.		
<b>Joanna Hill.</b> Indian yellow center; cream petals.		
<b>K. A. Victoria.</b> Creamy white.		
<b>Lady Hillingdon.</b> Deep apricot-yellow.		
<b>Lady Margaret Stewart.</b> Coppery yellow.		
<b>Lord Charlemont.</b> Red with black shadings.		
<b>Los Angeles.</b> Flame pink.		
<b>Margaret McGredy.</b> Rosy red.		
<b>Mme. Butterfly.</b> Light pink, suffused with apricot and gold.		
<b>Mme. Ed. Herriot.</b> Coral and coppery red.		
<b>Mrs. Aaron Ward.</b> Indian yellow, washed salmon-rose.		
<b>Mrs. E. P. Thom.</b> Clear, even yellow.		
<b>Mrs. Henry Bowles.</b> Pink, flushed with salmon.		
<b>Mrs. Henry Morse.</b> Interior flesh-cream; outside bright rose.		
<b>Mrs. Lovell Swisher.</b> Coppery salmon, shading to flesh.		
<b>Mrs. W. C. Miller.</b> Clear rose and soft pink.		
<b>Ophelia.</b> Salmon-flesh, shaded with rose.		
<b>Patience.</b> Buds orange-scarlet; blooms dark rosy carmine.		
<b>Paul Neyron.</b> Pure rose-red.		
<b>Pink Maman Cochet.</b> Rose-pink.		

- Pres. Herbert Hoover.** Pink and yellow.  
**Rev. F. Page Roberts.** Coppery yellow.  
**Sally Tite.** Dark scarlet.  
**Sunburst.** Apricot-yellow with orange center.  
**Talisman.** Gold, apricot, pink and carmine.  
**Ulrich Brunner.** Geranium red.  
**White Maman Cochet.** White.  
**Ville de Paris.** Bright yellow.

**CLIMBERS**

- Black Boy.** Dark red.  
**Chaplin's Pink Climber.** Clear, soft pink.  
**Cherokee Pink.** Ruddy pink.  
**Clg. Cecile Brunner.** Rosy pink, salmon center.  
**Clg. Golden Emblem.** Golden yellow.  
**Clg. Hoosier Beauty.** Velvety red.  
**Clg. K. A. Victoria.** Creamy white.  
**Clg. Lady Hillingdon.** Deep apricot-yellow.  
**Clg. Los Angeles.** Flame pink.  
**Clg. Mme. Butterfly.** Light pink, suffused with apricot and gold.  
**Clg. Mme. Ed. Herriot.** Coral and coppery red.  
**Clg. Mrs. Aaron Ward.** Indian yellow, washed salmon-rose.  
**Clg. Red Radiance.** Light cherry red.  
**Clg. Sunburst.** Apricot-yellow with orange center.  
**Marechal Niel.** Deep lemon yellow.  
**Paul's Scarlet Climber.** Vivid scarlet.



**Paul's Scarlet Climber**

We have found **RED ARROW SPRAY** most effective for the eradication of aphids and rose bugs.

For the ordinary garden, a one ounce bottle of **RED ARROW** will be sufficient. We can supply this one ounce size for 35c.

On small orders please include 5c for postage.





# FANCHER CREEK & FRESNO NURSERIES

## INDEX

### FRUIT TREE DEPARTMENT

	Page		Page
Almonds	16-17	Nectarines	7
Apples	2-3	Olives	18
Apricots	4-5	Oranges	19
Berries	22-23	Pecans	17
Capri Figs	6	Peaches	8-9-10
Cherries	5-6	Pears	11-12
Chestnuts	18	Persimmons	15
Crab Apples	4	Plums	12-13
Figs	6	Pomegranates	15
Grape Fruit	19	Pomelo	19
Grapes	20-21-22	Prunes	13-14
Jujubes	18	Quinces	14-15
Lemons	19	Resistant Grape Vines	22
Lime	19	Rhubarb	23
Loquat	18	Walnuts	17

### ORNAMENTAL DEPARTMENT

	Page
Beautify Your Home Grounds	24
Landscape Service	24
Home Planting Special	25
Living Christmas Tree	26
Deciduous Shade and Flowering Trees	27
Outdoor Living Room	28
Roses	29-30



## VINE HOPPER SPRAY



**Red Arrow Spray** has been thoroughly tried out for the eradication of Vine Hoppers and has proven itself to be very efficient.

It is also now being used extensively by Vegetable and Strawberry growers for practically all species of insect pests. Its great value for this purpose lies not only in the fact that it kills effectively, but it is absolutely non-poisonous.

Red Arrow has proven to be the most effective remedy we have yet discovered for thoroughly ridding gardens and parks of destructive insects.

We have found it very efficient for the eradication of thrip in orchard trees; particularly in Nectarine orchards.

We can supply Red Arrow Spray in containers from one ounce size to one gallon size.

## PROTECT YOUR TREES

### WITH YUCCA TREE PROTECTORS

Length	Width	Weight Per 100	Per 25	Per 50	Per 100	Per 1000
30 in.	7 in.	22 lb.	\$1.00	\$1.50	\$2.50	\$22.00
24 in.	7 in.	18 lb.	.90	1.25	2.00	19.00
18 in.	7 in.	13 lb.	.80	1.10	1.75	16.00
16 in.	7 in.	12 lb.	.70	1.00	1.50	14.50
14 in.	7 in.	10 lb.	.60	.85	1.40	13.00
12 in.	7 in.	9 lb.	.50	.75	1.30	12.00

Address All Orders to

## Fancher Creek & Fresno Nurseries

P. O. Box 1310

Fresno, California

