

Historic, archived document

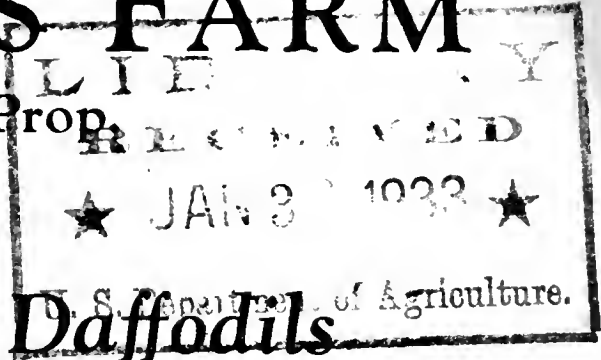
Do not assume content reflects current scientific knowledge, policies, or practices.

62.71

ECHO HEIGHTS FARM

F. O. CHAMBERLIN, Prop.

1933
Growers of



Gladiolus, Tulips and Daffodils

Bulbs and Cut Flowers in Season

Space is limited this year, therefore descriptions may seem rather meager, but those of you who have seen my fields in bloom know that I don't have any that are not worth growing, and that I have many of the very best new ones. Late originations will be marked with a star. The bulbs will be designated as follows: L. for large, M. for medium and S. for small. Large and Medium bulbs are always blooming size, and many of the small ones will bloom.

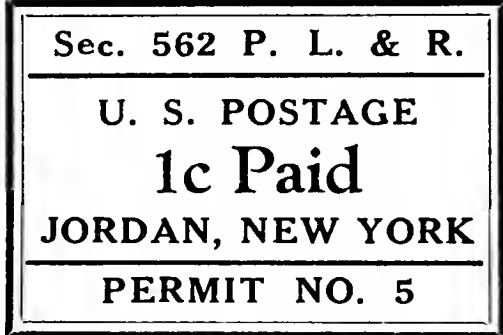
I have marked the price so low this year I presume some will jump to the conclusion that my bulbs must be inferior. However, the fact is that my bulbs are as good as you can buy regardless of price, and are guaranteed to be satisfactory. That means you can return the bulbs after you examine, and get your money back if not satisfactory. It does not mean that I am responsible for any failures due to season conditions or insects. The bulbs I send are disease free and have positively not been forced. They also meet all State requirements.

All orders of \$1.00 or over will be prepaid in U. S. A. I am giving no discounts on these prices. Just the same, I always try to give all customers a pleasant surprise in the extra bulbs I include. We, of course, can give wholesale quotations on large lots. Please send list of just what you want for estimates.

GLADIOLUS

ECHO HEIGHTS FARM

F. O. Chamberlin, Prop.
JORDAN, N. Y.



U. S. DEPARTMENT OF AGRICULTURE,

WASHINGTON, D. C.

M. R. N.

Gladiolus Bulbs ♦ Price List and Description

- AH. Pale apricot—pink and yellow. (L. 3 for 20c.)
- *ALBATROSS. Very large, snow white. (1 for 25c; 12 for \$2.00.)
- AMERICA. Lavender pink. (3 for 10c; 12 for 35c.)
- ANNIE LAURIE. Heavily ruffled, delicate pink. (3 for 15c; 12 for 50c.)
- AFLAME. Begonia rose shading to a bright orange flame. (L. 1 for 10c; 12 for \$1.00.)
- *AIDA. Deep violet blue. Large. (1 for 15c; 12 for \$1.25.)
- ANTHONY ZONKER. Salmon rose. (3 for 20c; 12 for 75c.)
- ALICE TIPLADY. Orange saffron. (L. 3 for 10c; 12 for 40c; 100 for \$1.75.)
- ANNA EBERIUS. Rhodamine purple. (D.) (L. 3 for 20c; 12 for 50c.)
- A. V. BUNCE. P. G. Large orange yellow, scarlet pencil. (L. 3 for 15c; 12 for 50c.)
- *AVA MARIA. Large near blue. (1 for 20c; 12 for \$1.50.)
- BALBOA. Orange pink. (L. 3 for 15c; 12 for 50c.)
- BEATRIZ MICHALENA. Peach red overlaid with fiery orange. Fine late variety. (L. 3 for 20c; 12 for 75c.)
- *BEN HUR. Clear royal purple. (L. 1 for 25c.) (M. 2 for 30c.)
- *BETTY COMPSON. Phlox pink. (L. 3 for 20c; 12 for 75c.)
- BETTY JOY. Creamy white flushed pink. (L. 3 for 20c; 12 for 75c.)
- *BETTY NUTHALL. Light coral pink with pale orange throat markings. Late. (L. 1 for 10c; 12 for \$1.00.) (M. 2 for 35c; 12 for \$1.50.)
- *BENGAL BEAUTY. (M. 1 for 20c; 12 for \$2.00.)
- BERTY SNOW. Lovely lavender with white throat. (L. 1 for 10c; 12 for \$1.00.) (M. 2 for 20c; 12 for \$1.00.) (S. 5 for 20c; 12 for 35c.)
- BOBBY. Deep rose, red throat, large and fine. (K.) (L. 3 for 25c; 12 for \$1.00.) (M. 12 for 60c.) (S. 5 for 20c; 12 for 35c.)
- *BLUE DANUBE. Amethyst blue. (L. \$1.25 each.)
- *BLUE TRIUMPHATOR. Largest and best of the near blues. (L. \$2.00 each; M. \$1.00; S. 50c.)
- *BLUE PEACOCK. (L. 1 for \$2.50.)
- *BILL SOWDEN. Large deep crimson. (L. 35c each.)
- BREAK O' DAY. Delicate pink. Large and early. (L. 3 for 10c; 12 for 40c.)
- *BROWN WINGS. Large prim grand. A real brown glad. (L. 1 for 25c; 12 for \$2.50.) (M. 1 for 15c; 12 for \$1.50.)
- BUBBLES. Shrimp pink striping on cream. (D.) (L. 3 for 20c; 12 for 75c.) (M. 8 for 25c.) (S. 20 for 25c.)
- BUTTERBOY. A wonderful primrose yellow prim. (L. 3 for 10c; 12 for 25c.)
- BYRON L. SMITH. Orchid colorings, very fine. (L. 3 for 20c; 12 for 70c.) (M. 5 for 20c; 25 for 80c.)
- *CANBERRE. Fine large yellow. (L. 1 for 25c.)
- CARDINAL PRINCE. (L. 1 for 10c; 12 for \$1.00.)
- CAPTAIN BOYNTON. Lavender blue on white ground with purple blotch. Tall. (L. 2 for 10c; 12 for 50c.)
- CATHERINE COLEMAN. Clear salmon rose with purplish pencilings. (L. 2 for 10c; 12 for 50c.)
- *CHAS. DICKENS. Bright radiant purple with velvety blotch. (L. 3 for 20c; 12 for 75c.)
- *CAROLINE EDWARDS. A new creamy white. (L. 1 for 15c; 12 for \$1.50.)
- *COMMANDER KOEHL. Brilliant dark scarlet. No markings. (L. 25c each; M. 15c.)
- *CORYPHEE. Beautiful light pink with white throat. (L. 1 for 20c; 12 for \$1.50.)
- CRIMSON GLOW. Best scarlet. (L. 3 for 15c; 12 for 50c.)
- DR. MOODY. Light lavender. Eight or more blooms open. (L. 3 for 20c; 12 for 75c.)
- *DR. BAILEY. Velvety old rose. (L. 1 for 50c.)
- DR. NELSON SHOOK. Deep tyrian rose. One of the best. (L. 3 for 20c; 12 for 75c.)
- *DR. EDMONDS. Fine rose. (L. 1 for 25c; M. 1 for 15c.)
- DR. BENNETT. Flame scarlet, large flowers. (L. 3 for 15c; 12 for 60c.)
- DR. ELKINS. Large white flower with a large blue throat. (L. 3 for 15c; 12 for 60c.)

- *DOROTHY DOT. (L. 1 for 15c; 12 for \$1.00.)
- DR. WM. VAN FLEET. Shading of yellow, rose pink and dark pink. Very tall. Early. (L. 3 for 15c; 12 for 60c.)
- DIENER'S AMERICAN BEAUTY. American beauty colors. (L. 3 for 15c; 12 for 60c.)
- *EDITH ROBSON. Salmon, red blotch, 10 open. (L. 1 for \$1.00.)
- ELF. (L. 1 for 15c.) (M. 2 for 20c.)
- ELIZABETH TABER. Early. Rose pink with blotch. (L. 3 for 15c; 12 for 60c.)
- *EMMA. Large rose, darker blotch. (L. 1 for 35c.)
- E. J. SHAYLOR. Deep rose pink. Ruffled. Very popular. (L. 3 for 10c; 12 for 40c; 100 for \$2.00.)
- ELIZABETH GERBERDING. Shell pink. (1 for 15c; 12 for 60c.)
- EMILE AUBRUN. Large red blotch. (L. 3 for 15c; 12 for 60c.)
- ELIZABETH SWARTLEY. Exquisite soft salmon with white throat. (L. 3 for 15c; 12 for 50c.)
- ELSIA. Deepest yellow. (L. 3 for 15c; 12 for 60c.)
- EVELYN KIRTLAND. Rose pink. (L. 3 for 15c; 12 for 60c.) (M. 5 for 15c; 25 for 75c.) (S. 25 for 25c.)
- *FANNY CROSBY. A fine cream colored glad. (L. 1 for 40c.) (M. 1 for 30c.)
- *FATA MORGANA. Peach blossom pink. (L. 1 for 75c.)
- FERN KYLE. A fine creamy white flower with small throat mark of purple. (L. 3 for 15c; 12 for 60c.)
- FAIRFAX. Solid magenta. Lower petals deep ruby. (L. 3 for 15c; 12 for 60c.)
- FAY LANPHIER. Coral with cerise blending. Beautiful large open flower. (L. 3 for 15c; 12 for 60c.)
- FONTAINE. Peaches and cream. (L. 3 for 15c; 12 for 50c.)
- *FRANK J. McCOY. Tall, large, pink. (L. 1 for 20c.)
- *GAY HUSSAR. Salmon orange. Fine. (L. 2 for 15c; 12 for 80c.)
- GERALDINE FARRAR. A beautiful lavender blue, deeper in throat. (L. 3 for 30c.)
- GIANT NYMPH. Tall. Light pink with creamy throat. (L. 3 for 15c; 12 for 60c.)
- GLORIANA. Pure salmon, golden throat. (L. 3 for 15c; 12 for 60c.)
- GOLDEN DREAM. A fine deep yellow. (L. 3 for 15c; 12 for 60c.)
- GOLD EAGLE. Clear deep yellow. Very early. (L. 3 for 15c; 12 for 40c.) (M. 12 for 25c.) (S. 25 for 25c.)
- GOLDEN FRILLS. Ruffled yellow, cerise lines in throat. (L. 3 for 15c; 12 for 60c.)
- GOLDEN MEASURE. Best of the standard yellows. (L. 3 for 15c; 12 for 60c.)
- *GOLD MINE. Fine new yellow. (1 for \$1.00; 12 for \$8.00.)
- GRETCHEN ZANG. A brilliant pink. (L. 3 for 10c; 12 for 35c.)
- HALLEY. Salmon pink. Early. (L. 6 for 20c.; 100 for \$1.50.)
- *HAMBURG PINK. (L. 3 for 20c; 12 for 75c.)
- HARRIET WHITCOMB. Large flame color. Many open at once. (L. 3 for 15c; 12 for 60c.)
- HEAVENLY BLUE. Pale, darker lines in throat. (L. 3 for 15c; 12 for 60c.)
- HERADA. Pure mauve. Deeper markings. (L. 3 for 15c; 12 for 50c.)
- HENRY FORD. Dark rhodamine purple. (L. 3 for 15c; 12 for 50c.) (M. 6 for 15c; 12 for 30c.)
- IMMENSITY. Large. Strong grower. Orange. (L. 3 for 20c; 12 for 80c.)
- IWA. Light rose, red blotch. Very fine and large. (1 for 10c; 12 for 80c.)
- *JANE ADDAMS. Beautiful light lavender with white throat. (L. 3 for 25c; 12 for \$1.00.)
- JACK LONDON. Light salmon, orange stripes. A good one. (L. 3 for 15c; 12 for 60c.)
- J. A. CARBONE. Brilliant orange salmon. Many open. Large and fine. (L. 3 for 15c; 12 for 60c.)
- JACOBA VAN BEIJEREN. Light purple, self color. Beautiful. (L. 3 for 15c; 12 for 60c.)
- JEAN DU TAILLES. Large blotched pink. One of the best of the blotched varieties. (L. 3 for 15c; 12 for 60c.)
- JENNY LIND. Clear light salmon, creamy throat. (L. 3 for 15c; 12 for 60c.)

- JONKHEER VAN TETS. Large show white. (L. 1 for 50c; 12 for \$4.00.)
- JOSEPH FIELD. Dawn pink, flecked. Large and fine. (L. 1 for 10c; 3 for 25c.)
- J. T. PIRIE. Very attractive coloring of mahogany brown, cream throat marked brown. (L. 3 for 20c; 12 for 80c.)
- *KING ARTHUR. New lavender. (1 for \$8.00.)
- KIRCHOFF'S VIOLET. Deep, dark blue. One of the best. (L. 3 for 20c; 12 for 75c.)
- LA COURONNE. Creamy white with red blotch on yellow ground. (L. 3 for 15c; 12 for 60c.)
- LILAC OLD ROSE. Name describes its color well. (L. 6 for 20c; 25 for 25c.)
- LONGFELLOW. Clear pink. Wide open flowers. (L. 3 for 15c; 12 for 60c.)
- LORICE. Salmon orange. Red flaked, cream lip. (L. 3 for 15c; 12 for 60c.)
- *LOUIS HEMON. A great novelty. (L. 1 for 10c; 12 for \$1.00.)
- *LOYALTY. Strong growing. (L. 1 for 15c.)
- LILY WHITE. Early white. Good florist's. (L. 3 for 10c; 12 for 40c.)
- LE MARECHAL FOCH. Very large pink. (L. 3 for 15c; 12 for 50c.)
- MAIDEN'S BLUSH. Flesh pink prim. Very dainty. Early. (L. 3 for 15c; 12 for 50c.)
- *MAID OF ORLEANS. New white. (1 for \$1.25.)
- MARY FREY. Large. (3 for 20c; 12 for 75c.)
- MARIETTA. Rose. Very good. (3 for 15c; 12 for 60c.)
- MARY JANE. Light lavender with creamy throat. Very dainty. (1 for 10c; 12 for \$1.00.)
- MARY PICKFORD. White creamy throat. Very dainty. (L. 3 for 15c; 12 for 50c.)
- *MAMMOTH WHITE. Six and seven inches across. (L. 1 for 20c; 12 for \$2.00.)
- MARNIA. Grenadine orange. Tall spike. Large blossoms. (L. 3 for 15c; 12 for 50c). (M. 5 for 15c; 12 for 30c.)
- MERCED. Tall strong growing plant. Large blooms. Salmon tinted orange. (2 for 15c; 12 for \$1.00.)
- MING TOY. Deep buff yellow throat, creamy petals. (L. 3 for 10c; 25 for 50c.)
- *MINUET. Considered by most experts as the best lavender. (L. 1 for 10c; 12 for \$1.00.)
- MISSION BELLS. Orange pink. Large blooms. (L. 3 for 15c; 12 for 60c.)
- M. M. SULLY. Cream white, red blotch. (1 for 10c; 12 for \$1.00.)
- MISS MAUD FAY. Light lavender. (3 for 10c; 12 for 40c.)
- MISS TEA ROSE. Creamy tea rose color. (L. 3 for 15c; 12 for 60c.)
- MONA LIZA. Pale soft rose pink. Ruffled. (L. 3 for 15c; 12 for 60c.)
- *MAROCCO. Dark maroon red, almost black. (L. 1 for 15c; 12 for \$1.50.)
- *MOTHER MACHREE. Soft smoky lavender and orange. (L. 1 for 20c; 12 for \$2.00.)
- MRS. VAN KONYNENBERG. Blue-lavender. One of the finest of blues. (L. 3 for 30c; 12 for \$1.00.)
- MRS. O. W. HALLIDAY. Pink with creamy throat. (L. 4 for 15c; 12 for 40c.)
- *MOORISH KING. Finest deep red. (L. 1 for \$2.00.)
- MRS. F. C. HORNBERGER. Best white. (L. 3 for 20c; 12 for 80c.)
- MRS. F. C. PETERS. Wonderful lavender. (3 for 20c; 12 for 80c.)
- MRS. J. K. ARMSBY. Coral pink. Large flowers. Many open. (L. 3 for 15c; 12 for 60c.)
- MRS. JOHN WALSH. Flesh pink. Lower petals flame. Tall spike. (L. 3 for 20c; 12 for 80c.)
- MRS. LEON DOUGLAS. Salmon rose pink. A giant among glads. (L. 3 for 15c; 12 for 60c.)
- MRS. RICHARD LOHRMAN. Creamy shell pink with pale yellow lip. Ruffled. (L. 3 for 15c; 12 for 50c.)
- MRS. WILLARD RICHARDSON. Deep crimson, maroon center. Early. (L. 3 for 15c; 12 for 50c.)
- MRS. M. S. BURKE. Creamy yellow tinged with rose. (L. 4 for 15c; 12 for 40c.)
- MRS. WM. KENT. Shades of rose, striped and mottled. Large flower. (L. 3 for 15c; 12 for 60c.) (M. 5 for 15c; 12 for 35c.)

- *MRS. R. P. CHASE. Large white-tinted pink. (L. 1 for \$1.00.)
- MRS. P. W. SISSON. Creamy light pink. Tall strong grower of a fine outstanding variety that will not disappoint you. Good for exhibition. (L. 3 for 15c; 12 for 60c.)
- MR. W. H. PHIPPS. Iridescent pink with from 12 to 20 blooms open at once. (L. 3 for 25c; 12 for \$1.00.) (M. 3 for 15c; 12 for 50c.) (S. 6 for 15c; 25 for 40c.)
- MURIEL. True lilac. Darker at tips of petals. Fine. Early. (L. 3 for 15c; 12 for 40c.)
- NANCY HANKS. Apricot shading to orange pink. Red markings on lip. Large blooms. Well placed on good spike. (L. 3 for 20c; 12 for \$1.00.) (M. 3 for 15c; 12 for 60c.)
- *NETHERLAND PRINCE. Very large dark salmon. (1 for 50c.)
- NIAGARA. Creamy yellow. (L. 3 for 15c; 12 for 40c.)
- NIXE. Jasper red. Good. (L. 3 for 15c; 12 for 50c.) (M. 4 for 10c; 12 for 30c.) (Bulblets 100 for 25c.)
- OPALESCENT. Pale lavender with dark lines in throat. A good grower. (L. 3 for 15c; 12 for 60c.)
- ORANGE GLORY. Orange with carmine maize blotched throat. Creamy stripes on lower petals. (3 for 15c; 12 for 50c.)
- ORANGE FLAME. Glowing vermillion orange red. Fine ruffled variety. Late. (L. 3 for 20c; 12 for 75c.)
- OLIVE GOODRICH. Large white, white and pink. (3 for 15c; 12 for 60c.)
- ORANGE QUEEN. Fine orange. (3 for 15c; 12 for 50c.)
- ORANGE WONDER. Large clear orange. (3 for 15c; 12 for 60c.)
- *OUR SELECTION. Salmon red flecked deeper. (L. 1 for 25c; 12 for \$2.00.)
- PARAMOUNT. Blending of pink and cream. (L. 3 for 15c; 12 for 60c.)
- PARADER. Begonia rose with deep scarlet blotch. A fine spike of flowers. (L. 3 for 15c; 12 for 60c.)
- *PEARL OF CALIFORNIA. Very large La France pink. (L. 1 for 10c.; 12 for \$1.00.)
- PFITZER'S TRIUMPH. Bright salmon orange. Blooms of immense size and great beauty. (L. 3 for 25c; 12 for \$1.00.)
- PHANOMEN. Pink blend. Yellow throat. Very pretty. (L. 3 for 15c; 12 for 50c.)
- PEACE. White and lilac throat. Very late. Large and fine. (L. 3 for 15c.)
- PEACH ROSE. Extra choice rose pink. (L. 3 for 15c; 12 for 60c.)
- *PICARDY. Soft shrimp pink. (1 for \$2.00.)
- PRIDE OF WANAKAH. Fine lavender rose. (3 for 15c; 12 for 60c.)
- PRINCE OF WALES. Large salmon pink. Very early. (L. 3 for 15c; 12 for 50c.) (M. 5 for 15c; 25 for 50c.) (S. 15 for 15c; 25 for 20c.)
- PROF. KEESOM. Salmon-flamed brick red. (1 for 10c; 12 for \$1.00.)
- PURPLE GLORY. Best dark red glad. Ruffled. (L. 3 for 15c; 12 for 60c.)
- QUINTON. Tyran rose. (L. 12 for 25c.)
- RADIANT QUEEN. Extra. New, glorified "Orange Queen." (L. 3 for 15c; 12 for 60c.)
- *RAMESSES. Large purple. (1 for \$2.00.)
- RED EMPEROR. Very large. Fine red bloom. (L. 3 for 20c; 12 for 75c.)
- *RED LORY. Orange red with deep red blotch. Fine. Tall. Blooms nearly all out at once. (L. 1 for 40c.) (M. 1 for 25c.)
- *RED PHIPPS. (Each \$1.00.)
- RICHARD DIENER. Pink, rose and yellow. Many open. (L. 3 for 15c; 12 for 50c.)
- RITA BECK. A large fine pink. (L. 3 for 20c; 12 for 80c.)
- ROSE MULBERRY. Similar to Rose Ash but lighter. (L. 3 for 15c; 12 for 60c.)
- ROSE PEARL. Pale pink. Opalescent shading. Large flowers. (L. 3 for 10c; 12 for 40c.)
- ROSE ASH. Corinthian red shading into ashes of roses. (L. 3 for 15c; 12 for 60c.)
- RUTH HUNTINGTON. Violet lilac with deeper markings. Ruffled. Very fine. (1 for 10c; 12 for \$1.00.)
- RESPLENDENT. Ruffled red cream yellow. (1 for 10c; 12 for \$1.00.)
- *SALBACH'S ORCHID. Similar in form to Minuet but larger and pinker. (L. 1 for \$1.25.) (M. 1 for 60c.)
- *SALBACH'S PINK. Large wide open geranium pink. (L. 1 for 20c.)

- SCHWABEN. Fine yellow. Ruby throat. (L. 3 for 10c; 13 for 40c.)
 SALMON GLOW. A rich glowing orange salmon with yellow throat.
 (L. 3 for 15c; 12 for 60c.) (M. 5 for 15c; 25 for 50c.)
 *SCHWABEN GIRL. Pure pink. (1 for \$1.25.)
 SHEILA. Early salmon pink. One of the best. (L. 3 for 15c; 12 for 50c.)
 SIDNEY PLUMMER. Soft yellow, suffused delicate pink. (L. 3 for 15c;
 12 for 50c.)
 SOUVENIR. Yellow prim. Color deep. (L. 3 for 10c; 12 for 35c.)
 SCARLANO. Scarlet ruffled. Very fine. Early. (L. 3 for 15c; 12
 for 60c.)
 SOVEREIGN. (Vaughn.) Similar to the well known Hulet but much
 better in every way. (L. 1 for 10c; 12 for \$1.00.)
 STUTTGARDIA. Large brilliant red. (1 for 25c.) (S. 5 for 25c.)
 SWEET LAVENDER. Light lavender. Very fine. Early. (L. 3 for
 10c; 12 for 40c.)
 SWEET ROSE. Deep rose pink, deeper throat. (L. 3 for 25c; 12
 for \$1.00.)
 THE ORCHID. Very dainty prim. (L. 3 for 10c; 12 for 40c.)
 *TINAMBA. Pale pink. Flaked salmon rose. (L. 1 for 35c.)
 *TRAGEDIE. Fiery orange, maroon and gold. (1 for 20c; 12 for \$2.00.)
 *TROUBADOUR. Large clear purple. (L. 1 for 25c.) (M. 1 for 15c.)
 T. T. KENT. Shell pink overlaid with strawberry. Late. (L. 3 for 20c;
 12 for 80c.)
 TYCO ZANG. Large salmon pink. White throat. (L. 3 for 10c; 12
 for 40c.)
 TWO TINT. A fine pink. (L. 3 for 15c; 12 for 60c.)
 *VEILCHENBLEAU. Large dark blue. One of the best. (L. 1 for 10c;
 12 for \$1.00.)
 VICTORIA FREDERICKS. Pink overlaid with flame orange. Very early
 and fine. (L. 3 for 20c; 12 for 80c.)
 VIOLET BEAUTY. Cerise violet. (L. 3 for 15c; 12 for 60c.)
 VIRGINIA FISHER. Deep rose pink with deep orange spots. A beauty.
 (L. 3 for 20c; 12 for 80c.)
 WANETA. Baryta yellow—yellow blotch. Prim. (L. 3 for 15c; 12
 for 50c.)
 WHITE GIANT. White. Large, lily-shaped flowers. (L. 3 for 10c; 12
 for 35c.)
 *WINGED VICTORY. Very large pink. (1 for 25c.)
 *WURTEMBERGIA. Wonderful scarlet, white throat. (1 for \$2.50.)
 *YELLOW PERFECTION. (1 for 40c.)
 YELLOW WONDER. A good, large, clear yellow. Ruffled. (L. 3 for
 15c; 12 for 60c.)
 1910 ROSE. Rose pink. (L. 3 for 10c; 12 for 35c.)
 CHOICE MIXTURE. Includes many varieties; no discarded seedlings.
 (Large bulbs 12 for 30c; 100 for \$2.00.) (Medium bulbs 12 for 20c;
 100 for \$1.00; 25 at 100 rate.)

COLLECTION NO. 100

(Late Originations)

AVA MARIA
 BETTY NUTHALL
 BLUE TRIUMPHATOR
 BROWN WINGS
 COMMANDER KOEHL
 GOLD MINE
 MAMMOTH WHITE
 MAROCCO
 MOTHER MACHREE
 NETHERLAND PRINCE
 OUR SELECTION
 SALBACH'S ORCHID

**One Large Bulb Each of the
 Above for \$5.00**

COLLECTION NO. 101

(All Prize Winners)

AFLAME
 RED EMPEROR
 DR. F. E. BENNETT
 DR. NELSON SHOOK
 GAY HUSSAR
 GLORIANA
 GOLDEN DREAM
 HAMBURG PINK
 MARY FREY
 MRS. LEON DOUGLAS
 MR. W. H. PHIPPS
 PURPLE GLORY

**Two Large Bulbs Each of the
 Above for \$1.00.**

