

Historic, Archive Document

Do not assume content reflects current scientific knowledge, policies, or practices.

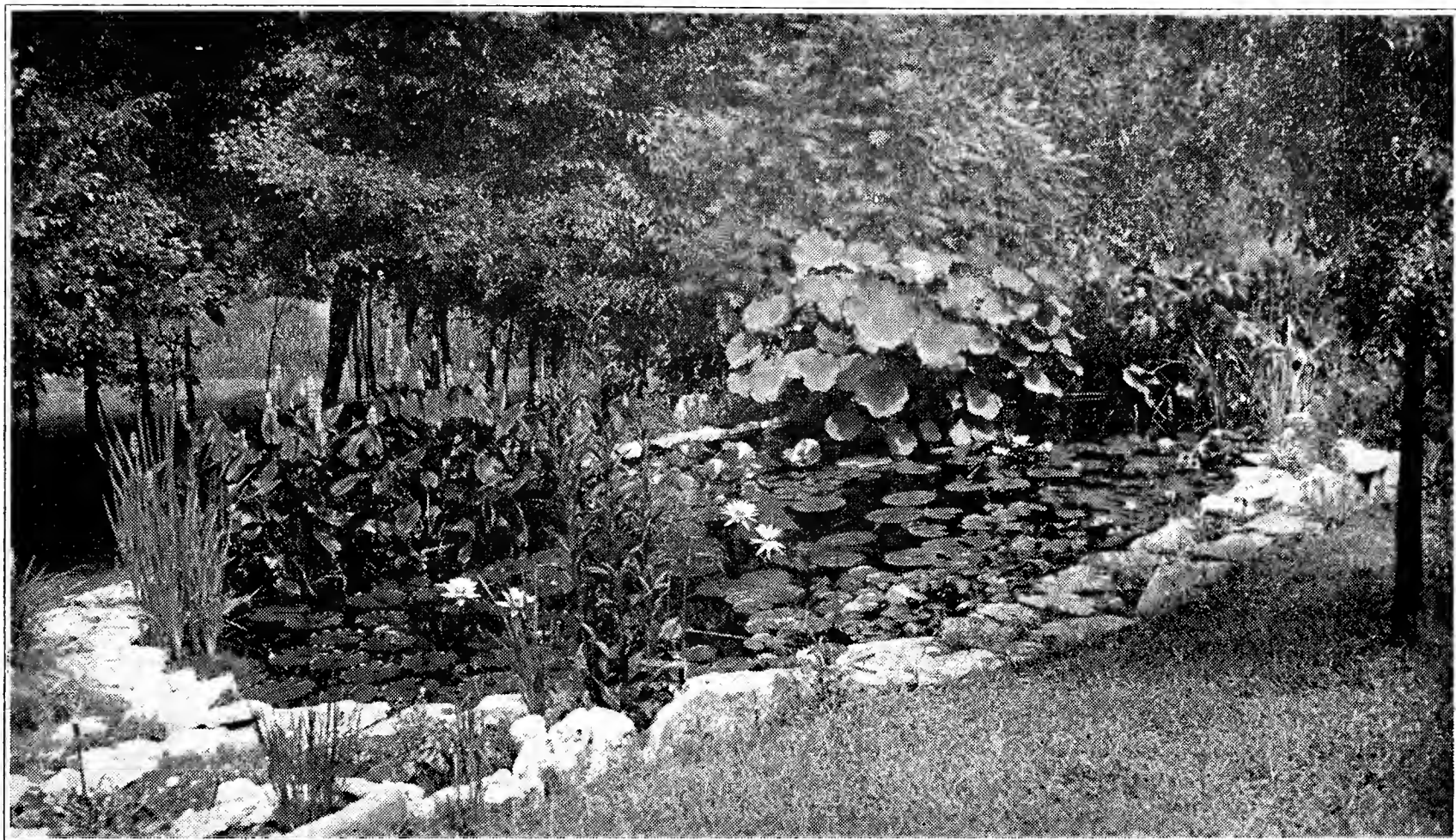
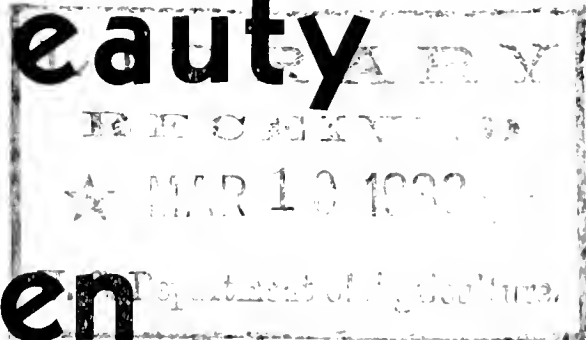
69.67

1933

Pleasure and Beauty

FROM A

Water Garden



A Complete Water Garden at Low Cost

Complete
Collection

No. 1

Catalog Price

\$8.50

Special
Price

\$6.50

This year we are offering at this greatly reduced price the Loveland Collection, all the plants for making your pool a completely planted Water Garden. Picture your own lily pool as pretty as this one. Complete description of the planting of this pool, with detailed drawing, Page 12.

FOR SHALLOW WATER

GRACEFUL CATTAIL
 PRIMROSE WILLOW
 WATER IRIS

PICKEREL PLANT
 ARROWHEAD
 VARIEGATED SWEET FLAG

WATER LILIES, LOTUS, ETC.

MARLIAC ALBIDA
 PINK OPAL
 OXYGENATING PLANTS

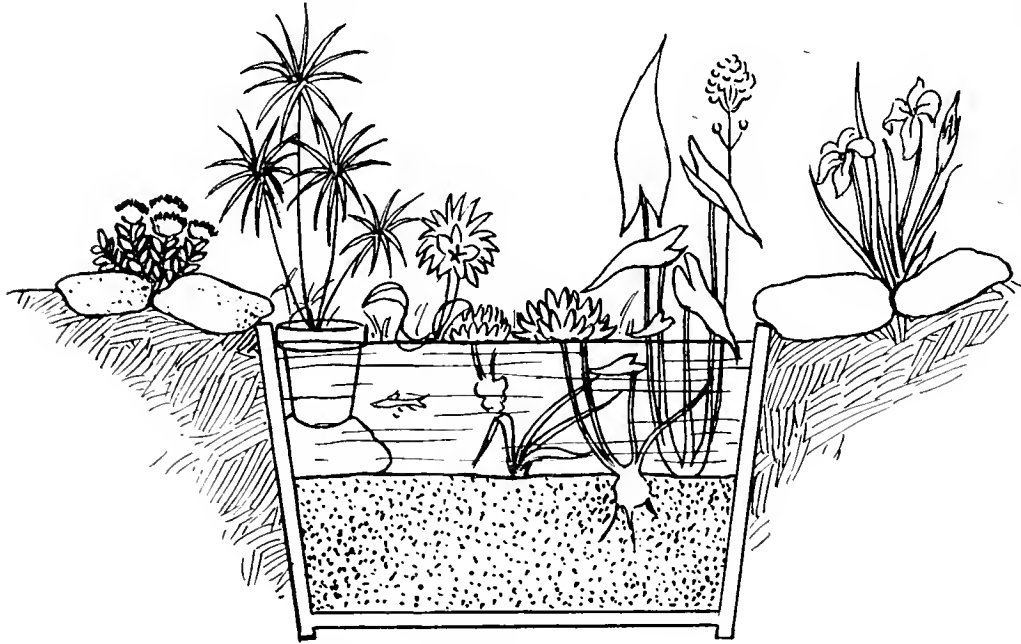
MARLIAC CHROMATELLA
 AURORA
 EGYPTIAN LOTUS

Every pool should have an assortment of the different types of Water Plants to complete its attractiveness.

LOVELAND GOLDFISH FARM
JOE JOHANNIGMAN, JR.
 LOVELAND OHIO

COLLECTIONS FOR THE SMALL GARDEN

A COMPLETE TUB GARDEN FOR \$4.50



(Collection No. 2)

- Consists of 1 Water Lily Tub, 2 ft. diameter and 1 ft. deep, made of white cedar.
 1 Water Lily, your choice Pink Opal, Chromatella, Aurora, or Dauben.
 6 Aquatic Plants, assorted floating and bog plants.
 6 Assorted Rock Plants.

COLLECTION OF PLANTS, FISH AND SCAVENGERS

Suitable for Any Small Size Pool, 3x4 or 4 ft. diameter

\$4.25

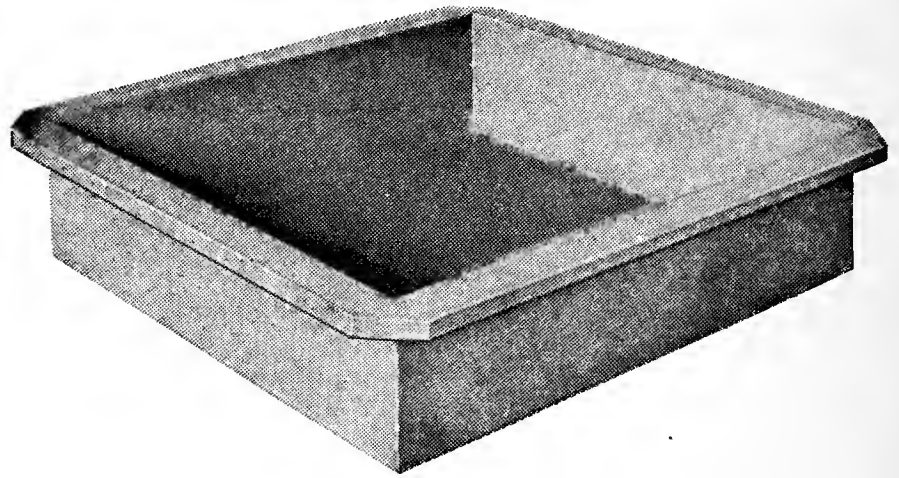
(Collection No. 3)

- 1 **WATER LILY**—Your choice of Pink Opal Chromatella, Aurora, Chrysantha, Dauben.
 6 **AQUATIC PLANTS**—To be planted in pots and submerged.
 12 **ROCK PLANTS** or Hardy Perennials or Shallow Water Plants—your choice.
 3 **PAIR FISH**—Fantails, Calico and Telescopes.
 6 **BLACK RAMSHORN SNAILS**.

You may have your choice of any of the lilies listed on Pages 5, 6 and 8 with the same plants, snails and fish offered in the above collection. Choose your lily and add \$3.00 to price listed.

THE METAL POOL

The Easy Way to Have a Beautiful and Permanent Pool at a Low Cost



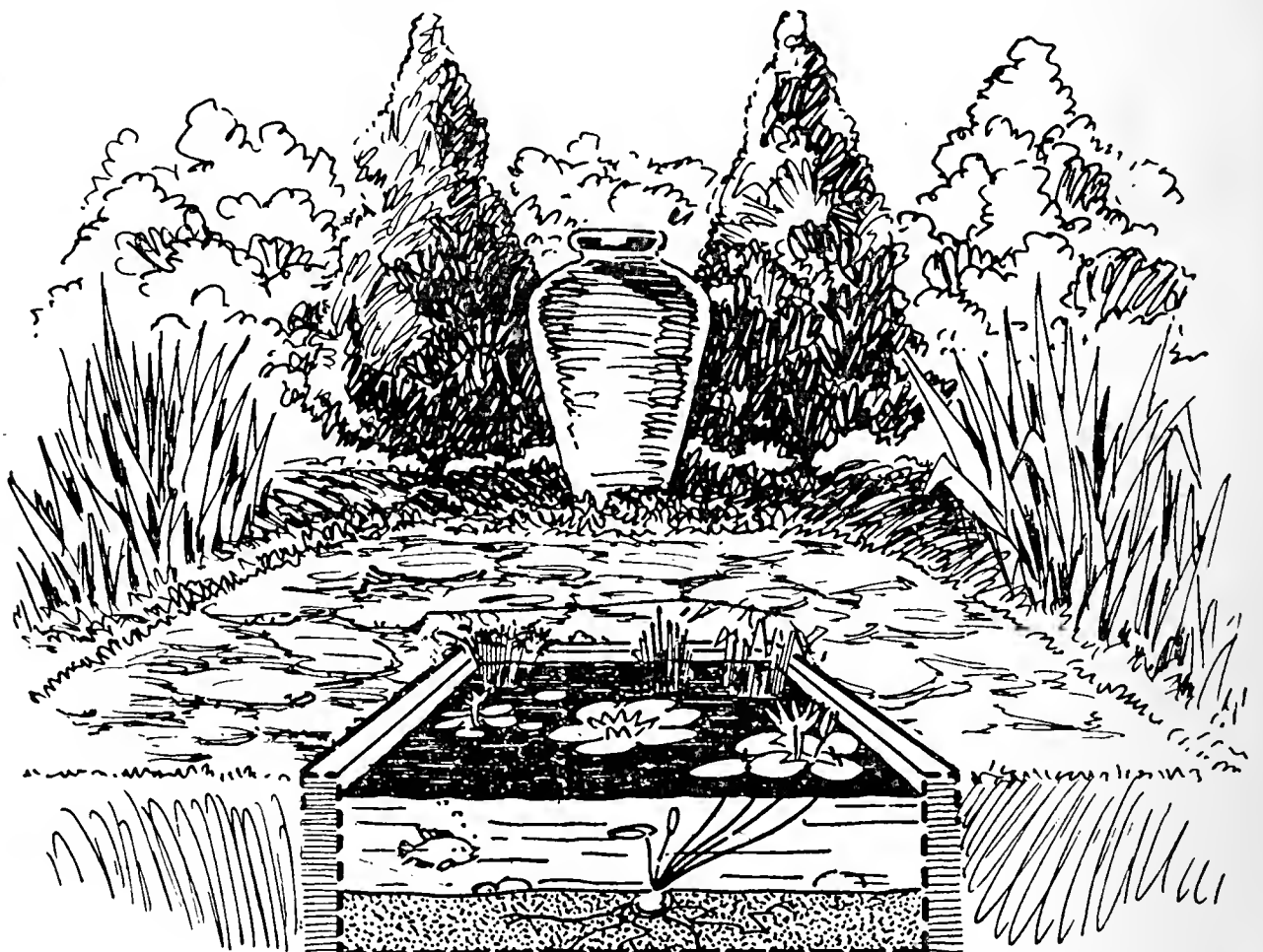
Now you can have that lily pool you've always wanted. The Metal Art Garden pool permits you to install your own pool in an hour, and with a single tool—a spade. It is a permanent pond, temperature cannot affect it, it cannot crack, it will not rust. Why be without a garden pool any longer? Pick a sunny spot in your yard for it. Around the pool, perennials, and rock plants may be planted. No matter how small the garden, you can now find room to enjoy a water garden. Made in two sizes.

Note the sturdy metal construction. Heavy twelve gauge Keystone copper steel throughout, electrically welded, with a beautiful white marble-like finish. Size is 3 ft. 4 in. long by 3 ft. wide. Fittings for overflow and inlet pipe if desired.

With ordinary care this Metal Art Garden Pool will last indefinitely. It will also prove to be the most beautiful and most interesting spot in your garden.

	Length	Width	Depth	Weight	Price
No. 1.....	40 in.	36 in.	12 in.	120 lbs.	\$15.00

All prices F. O. B. our factory at Galion, Ohio.



SEND YOUR ORDER TO US

For years we have been serving LOVERS of AQUATIC LIFE. They have steadily increased in number due to the confidence we have gained by our reputation for quality stock and fair prices. We highly value this confidence placed in us and strive to show our appreciation by constantly increasing our facilities to better serve this ever increasing clientele.

Our large modern facilities enable us to offer you high grade Water Lilies, Plants for Pools, Fish and Supplies at these low prices. The same high quality that our customers have always enjoyed in our fish and plants has not been sacrificed in a single instance in spite of lower prices this year.

PROMPT SERVICE — QUALITY PLANTS — GUARANTEE OF SATISFACTION

HOW TO ORDER

ORDER EARLY—This is most important—and use Order Sheet found in rear part of this Catalog, carefully filling in blank spaces and enclosing payment for full amount of order. Write name and address plainly. To facilitate handling do not write letters on same sheet as orders.

REMITTANCE should be made by Post Office or Express Money Order, Bank Draft, or if more convenient to you send your personal check.

ORDERS LESS THAN \$1.00—Please include 10c extra for packing charges. This does not apply to Fish Food orders.

HOW AND WHEN WE SHIP—All orders for Water Lilies and other Plants for Pools are shipped by Express Collect. This is the best method for handling these plants. We always include plenty extra to help offset these charges.

Water Lilies and all Plants for Pools are shipped as soon as weather permits, about April 15th. Tropical Lilies may be set out whenever the weather is settled. For Southern Shipments, about May 1st. Northern Shipments (Cincinnati), about May 15th.

GOLDFISH AND TROPICAL FISH must be sent by express. Shipping cans 50c extra. We ship Goldfish and Tropical Fish listed in

this Catalog all the year around. Tropical Fish are shipped in cold weather (October to May) in Thermos Jars. A \$2.00 deposit is required on Thermos Jars to insure prompt return.

GUARANTEE—We ship good stock, carefully packed. All goods are guaranteed to reach you in good condition. If package should arrive in bad order, accept shipment, examine and count on receipt and notify us at once, and IF DAMAGED notify Express Company. We do not guarantee growth, as we cannot govern conditions after planting.

CULTURAL DIRECTIONS — We have printed on small leaflets for your convenience complete cultural directions. One of these will be sent with each order.

ON THE FOLLOWING ITEMS, Page 16 to Page 23, we pay the postage:

AQUARIUM PLANTS

FISH REMEDIES

TERRARIUM PLANTS

AQUARIUM SUPPLIES

BOOKS

FISH FOODS

SCAVENGERS (except where noted)

PLANTING THE WATER GARDEN

CARE OF PLANTS ON ARRIVAL

Unpack the package carefully to prevent breaking of the plants and immediately put them in a pail or tub of water, until you are ready to plant them. Have all boxes filled with soil and everything ready before you commence to plant. All aquatic plants will wilt easily if subjected to wind or sun before being planted. Lilies and other plants will keep for several days floating in a tub of water if kept in partial shade. Tropical Lilies should be planted as soon as possible.

WATER LILIES - PLANTING - CARE

The best results are obtained by planting the lily roots in the soil so the crown will be even with the top of the soil and from 6 to 12 inches below the surface of the water. Where the pool is two feet deep or over, it is necessary that stones or bricks be used to build up the box to the proper distance under the surface. Many varieties however will grow in much deeper water. All water-lilies like full sunlight and flower best when not too much shaded. Each lily should have a minimum of one cubic foot of soil . . . a box about 14 in. x 14 in. by 10 in. deep will hold this amount. Lilies can be grown in this box for about three years before it is necessary to change the soil.

They like plenty of good garden soil, well enriched with cow manure or some good commercial fertilizer, such as blood meal used at the rate of about a pound to a bushel of soil.

When planting the lily the soil should be well firmed around them. An inch of sand or gravel put on the box after they have been planted will help keep the water clear and prevent the goldfish from rooting in the mud.

TROPICAL LILIES

Are shipped as potted plants. They should be kept from drying winds and sunshine until planted. Tropical Lilies should be planted upright, digging a hole to fit the ball of soil and firming the soil around it. They should not be set out until weather is settled and warm. They grow very rapidly and commence blooming while still quite small.

LOTUS

These beautiful plants sometimes prove a little difficult to grow, but if a small amount of attention is given them, one is well repaid for their trouble. Lotus roots look just like bananas. They are very brittle and the growing points are easily broken. Be careful in handling them. In planting press them gently in the soil until they are covered about an inch and so the growing point is just peeping through.

AQUATIC PLANTS

The different classes of aquatic plants are all easily grown and require very little attention after planting. When they grow too rampant they may be thinned out.

FLOATING PLANTS

These grow without soil. In most cases the plants will grow more rampant if the roots do touch the soil. They thrive in sun and semi-shade.

SHALLOW WATER PLANTS

All of them may be planted in water ranging from an inch or so to almost 10 inches in depth. They prefer 4 to 6 inches of water.

BOG PLANTS

These plants thrive in a wet soil or in very shallow water. They may be planted along the margin of a natural pond.

OXYGENATING PLANTS

They are shipped in bunches which soon take roots. They should be planted in the same box with the lily or in pots.

WINTERING

If the water is to be drained out of the pool place the lily tubes in damp soil in the basement, or the boxes containing the lilies may be removed to the basement and kept moist until the following spring. If you leave the water in your pool, and where ice never forms over ten to twelve inches in the winter, just forget about the lilies. Don't try to winter tropicals. It is cheaper to let them die and buy new ones.

This little outline illustrates on how to determine the proper depth to plant the various plants.

Bog Plants—

Cat-Tail
Arrowhead
Rush
Pickerel Plant
Water Iris
Sweet Flags

Umbrella Plants
Papyrus
Bull-Rush
Forget-Me-Nots
Swamp Calla
Primrose Willow

Water, 3 to 6 inches deep—

Cat-Tail
Rush
Pickerel Plant
Iris
Sweet Flags
Swamp Calla

Thalia
Primrose Creeper
Floating Heart
Poppy
Snowflake

Can be planted in same box with Lilies—

Oxygenating Plants
Poppy
Snowflake

Floating Heart
Primrose Creeper

Floating Plants—

Hyacinths
Lettuce

Fern

ORDER BY MAIL

COMPARE OUR PRICES

This is 1933 and our Catalog is keyed to the 1933 buyer. You will find our prices as low or lower than others, when plants of equal quality are compared.

In addition to these lower prices, we have prepared many special offers which are **REAL BARGAINS**—values which we know cannot be beat anywhere. There are some fine collections of Lilies, some priced as low as \$2.95. Our Lilies that grow and bloom were never cheaper. There are real bargains in Shallow Water, Bog and Floating Plants.

We are always here to give you service and stand back of our goods. The standard, "A satisfied customer," has always been sacred with us. Old customers, we know you will be with us again with an order. New customers can order with assurance that you will get **PLANTS** for **POOLS** which are the finest grown.

We appreciate the loyal support of the thousands of customers who have sent in orders year after year. We hope to hear from you again this year.

F - R - E - E

Such Low Prices—this year—considering quality you cannot buy anywhere so reasonable—and in addition to these low prices we are going to give you **FREE** extra plants with each order. Propogating as we do six months in advance of the selling season, we are never satisfied until we have taxed the limit of our capacity. We have thousands of all kinds of plants and always at the end of the season have a small surplus. This surplus we are going to pass on to you as a **FREE GIFT** with each order—maybe a few extra Hyacinths, or a Jap Iris, or a Papyrus or Primrose Willow.

Everything for the Water Garden

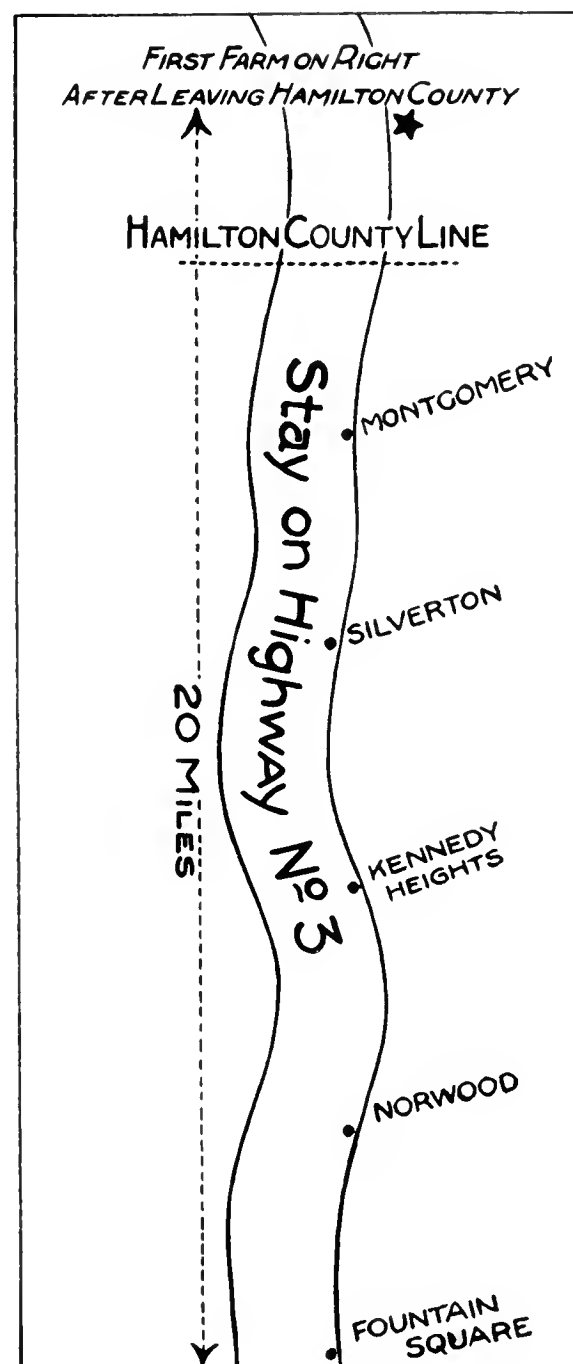
It is easy for you to order from us—everything you need for your Water Garden is listed in this Catalog. From these pages you can select everything: tropical lilies of gorgeous beauty; hardy lilies in all colors; aquatic plants for shallow water; floating and submerged plants; supplies of all kinds; goldfish and nets.

Real Values

HOW TO REACH US

... Just a Pleasant Drive

Our water gardens are easily reached from Cincinnati by following directions. From Dayton use State Route No. 48 to Mason, Ohio, then right to U. S. Highway No. 22; from Columbus use State Route No. 3.



INTERESTING BOOKS ON WATER GARDENS ON PAGE 13

ENJOY A COMPLETE GARDEN BY ADDING A LILY POOL

Thousands of garden lovers are now enjoying a complete garden through the addition of a lily pool. Many new adventures in the lore of water gardening have found how easy it is to build their own pools. We are offering a few hints which may be helpful in pool construction.

LOCATION—The pool should be placed where it will not be shaded, as water lilies grow and bloom best in plenty of sunlight.

DEPTH—The popular depth of a concrete pool is about twenty-four inches of water. This will permit placing a lily box containing twelve inches of garden soil in the pool and allow the right depth to grow your lilies. A ledge around the pool's edge about six inches below the water level is ideal for shallow water and bog plants which add so much to its natural beauty.

WALLS—The walls of a formal pool are straight sided and are made by building an inside form into which is poured a mixture of concrete consisting of one part good cement, two parts sand and three parts small gravel. The informal pool has slanting walls and is saucer shaped and no forms are necessary with a stiff mixture of concrete. The walls and bottoms which are at least six inches should be reinforced with rods or wire mesh to insure safety from cracking by frost. A drain and overflow should be provided to facilitate removal of water.

A newly constructed concrete pool should be filled and drained a few times during several weeks to remove the alkali which is injurious to both fish and plants.

I - N - D - E - X

WATER LILIES

	Page
Hardy Lilies.....	5-6
Day Blooming.....	8
Night Blooming.....	8

LOTUS

All varieties.....	6
--------------------	---

COMPLETE COLLECTIONS

Small Pool.....	2-12
Medium Size Pool.....	7-9
Large Pool.....	Front and back cover
Shallow Water Plants.....	11
Oxygenating Plants.....	11

SHALLOW WATER, BOG AND FLOATING PLANTS

Complete list.....	10
--------------------	----

JAPANESE IRIS, PERENNIALS AND ROCK PLANTS

	Page
Listed on.....	14

FISHES

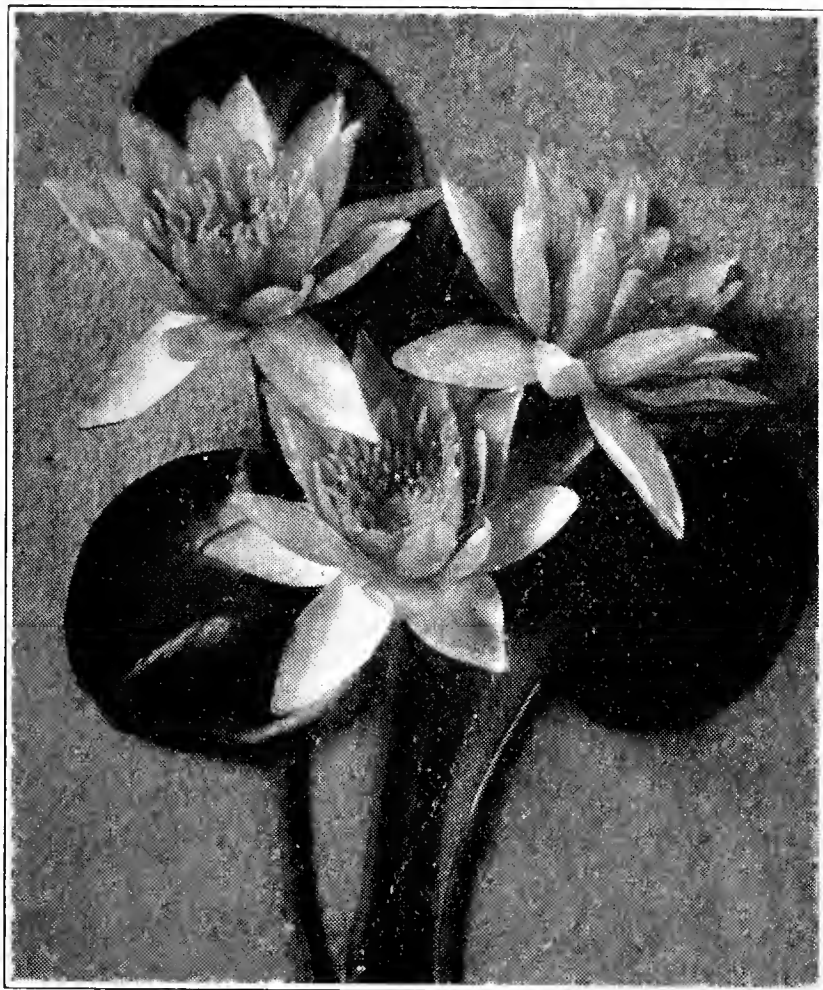
Goldfish	15
Tropicals	21

SCAVENGERS

Collections for Pools.....	13
Complete Description.....	20

SUPPLIES

Fish Food.....	18
Fish Remedies.....	20
Aquariums	17
Terrarium Supplies.....	23



HARDY WATER LILIES

You will particularly enjoy these varieties. The lilies listed below have been selected because they combine the qualities of prolific bloomers and sturdy growth as well as lovely flowers. The flowers embrace all the colors, rich reds, beautiful whites, shell pinks to deep rose, yellow and orange. Some of them have blooms eight inches across. All of them are hardy and may be depended upon to be at home in your garden pool. They are easy to grow, all you need is sunlight, water and rich soil.

GENERAL LIST OF HARDY WATER LILIES

RED VARIETIES

GLORIOSO—This lily has no equal—it blooms and blooms. Its large blossoms are six inches across, of a remarkable red. No pool is complete without this “King of the Lilies.” \$2.50 each.

JAMES BRYDON—This is a beautiful lily. Bright rosy red flowers, cup shaped and massive in appearance. It is admired by all. \$2.50.

ATTRACTION—An immense red variety. Bright red in color and free to bloom. This variety frequently produces flowers eight inches across. It is difficult to describe the splendor of this variety. The price is considerable lower this year and should be in every garden. \$3.50.

CARMINE LAYDEKER—A pleasing carmine rose lily. A first rate variety for the small pool. A steady bloomer. \$1.50.

PINK VARIETIES

EUGENIA DE LAND—Vigorous and free flowering—deep rose pink. \$1.50.

MARLIAC ROSE—This deep pink lily should be in every Water Garden. Excellent as a cut flower variety, the fragrant waxy blossoms last several days when picked. \$1.50.

MARY—Small pink. \$0.95 each.

PINK OPAL—Graceful cup shaped flowers of deepest pink and very fragrant. The buds are almost round. This variety has fine color, and does excellent in small pool. \$1.00.

ROSE AREY—Petals of this variety are pointed. The flowers a deep pink—a rapid grower. \$1.50 each.

AMABILIS—It's a beaut. Starry in form. Its spreading petals set it in a class by itself. In color it is a bright silver pink, and easily averages 7 inches in diameter. \$3.00.

PINK VARIETIES (Continued)

NEPTUNE—During the past summer, visitors to our place have agreed that it does not seem possible for a plant to flower any more freely. The most striking feature of this flower is the color—imagine a deep pink flushed with smoky red at the base, the tips of the petals becoming lighter. \$3.00 each.

EVANGELINE—A beautiful pink lily. The flowers are extra large. This is a vigorous and free growing variety. \$1.25.

HELEN FOWLER—A pink variety of the Odorata type. Very fragrant flowers. \$1.25.

TUBEROSA ROSEA (ROSE MAGNOLIA)—Pink variety, a very large grower and not suited for pool use. Excellent for naturalizing in large lakes. \$0.75.

W. B. SHAW—Flowers very large, of rose pink color and very fragrant. \$1.00.

YELLOW VARIETIES

CHROMATELLA—Rich yellow in color. Leaves beautifully marked in deep green and brown. It is by far the best of yellow varieties. \$1.25 each.

SUNRISE—It has enormous flowers attaining in size eight or nine inches. Its large glorious yellow blooms open early in the day. The leaves are large, deep green and red flecked. Unusual in form, beauty and fragrance. You will have to see this lily. \$3.00.

YELLOW PIGMY—A tiny little lily that is ideal for tub culture, or very small pool. Flowers are only one to two inches across. Of a rich golden yellow. \$0.65.

(Continued)

HARDY WATER LILIES (Continued)

WHITE VARIETIES

GLADSTONE—The boss of the white lilies, beautiful large white flowers, six inches across. A strong grower and a free bloomer. \$1.50 each.

GONNERE—The only real double white variety. Flowers are double clear to center. Visitors to our pools pronounce it the greatest lily of recent years. \$3.50 each.

MARLIAC ALBIDA—Snowy white, with yellow stamens. A most desirable variety. \$1.00.

WHITE LAYDEKER—A very pretty lily of dwarf habit. The creamy white blossoms with bright yellow centers having a strong tea fragrance. \$1.25.

ORANGE VARIETIES

AURORA—The flowers are rosy, yellow on the first day, red orange on the second and deep red on the third. One of the best for a small pool. \$1.00.

COMANCHE—A very large grower, free bloomer—blooms are very large. One of those varieties that the blooms change color—opening a rich apricot, then changing later to a deep bronze. \$2.00 each.

CHRYSANTHA—An excellent new free blooming variety. Color undergoes a change on successive days, opening a creamy yellow and darkening until it is deep orange vermillion. \$1.50 each.

INDIANA—It opens a creamy yellow and shades through orange, bronze and fire red. Suitable for small pools. \$1.50.

SIOUX—Large flowers of rich, brassy yellow, shaded red. \$2.00.

SOLFATARE—One of the best of the so-called "Sunset Lilies," broad cup shaped flowers. One of the finest bloomers yet introduced. \$2.00.

CEDAR TUBS

These Tubs are used extensively in pools as soil containers in which to plant lilies and aquatics. They last a long time. \$2.00 each.

REDWOOD BOXES

For planting water lilies. These boxes will hold about one cubic foot of earth. Will last a long time. Come either knocked down or completed. \$0.50 each.



AMERICAN LOTUS (Lutium)—Native to some of the States in the South and West. Flowers, rich yellow, large grower, requires considerable room in a pool. Each \$1.50.

EGYPTIAN LOTUS (SPECIOSUM)—The Sacred Lotus of the Nile. Rosy pink blooms. Shy bloomer in a small pool. \$1.50.

THE LOTUS

In planning your Water Garden, do not overlook making preparations somewhere for one of the Lotus. A unique and beautiful plant—there is real beauty in the leaf, the bud and the opened flower.

In planting the rhizoms settle them gently into the soil with the growing end just below the surface. They grow well in water, 2 inches to 12 inches deep and require the same general care as water lilies. A box for the Lotus should contain at least two cubic feet of good rich soil.

CHINESE RED LOTUS—The King of the Lotus—Full double flowers of bright rosy carmine carried well above the foliage. A most gorgeous variety. It grows well under almost all conditions. \$3.00.

JAPANESE LOTUS (Album Grandiflorum)—Pure white flowers, extra large foliage. Each \$1.50.

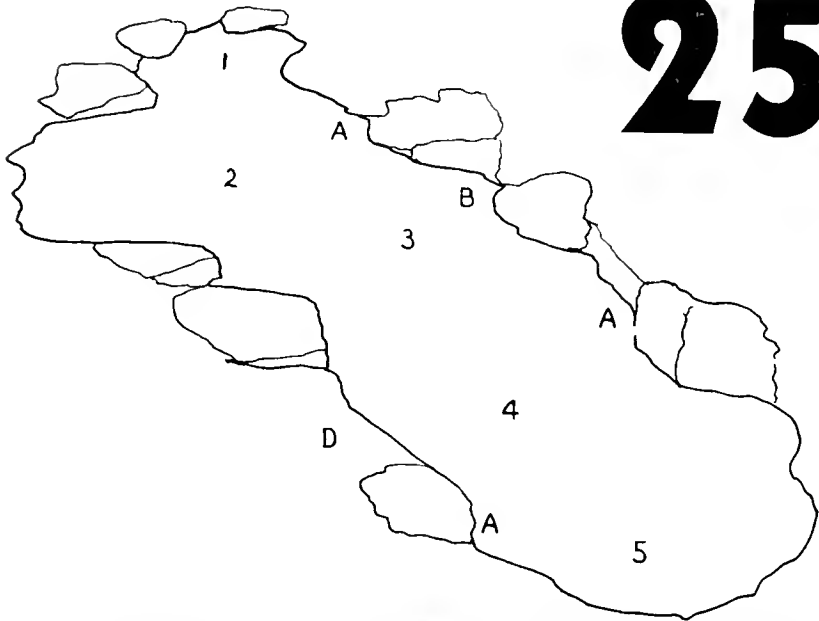
SHIROMAN—A double flowering white variety. Each \$3.00.

LOTUS ARE SHIPPED ABOUT THE FIRST OF JUNE

Bring MORE Color Into Your GARDEN POOL

COLLECTION No. 4

25 Beautiful Water Lilies and Plants, besides Scavengers **\$7.50**



Here is a remarkable collection of five gorgeous water lilies, each a different color, along with other flowering decorative and submerged plants and scavengers.

The illustration on the left indicates where the plants in this collection are placed in the pool to give a natural effect.

ROCK PLANT COLLECTION

The Rock Garden surrounding this pool contains hundreds of plants. On account of the varied types of rock gardens connected with the Rock Garden Pool—it is almost impossible to list a suitable assortment to plant in your garden. Make your own selection from plants on Page 14.

ROCK GARDEN COLLECTIONS

12 Plants \$1.75 25 Plants \$3.00 100 Plants \$10.00

LILIES

- | | |
|--------------------------|--------------------|
| 1 Marliac Rosea (No. 1) | 1 Creeping Purple |
| 1 Marliac Albida (No. 2) | Hyacinth (C) |
| 1 Chromatella (No. 5) | 3 Bunches Parrot |
| 1 Bisset (No. 4) | Feather (B) |
| 1 Aug. Koch (No. 5) | 2 Clumps Japanese |
| 9 Floating Water | Iris (D) |
| Hyacinths (A) | 5 Submerged Plants |
| | 12 Assorted Snails |



EVERYBODY LIKES TROPICAL LILIES

The Best of Lilies, Immense Blooms, Gorgeous Colors

Sooner or later you will include Tropical Water Lilies in your collection. No pool is complete without at least one. They bring to the pool something you can't have in the hardy lilies. Long erect stems bear their large flowers above the water level. Some varieties bloom at night. The size of the bloom depends upon the amount of soil and leaf spread available for each plant. Give them a chance and they will repay you.

DAY BLOOMING TROPICAL WATER LILIES

AUGUST KOCH—This lily is free flowering and of extremely easy cultivation. Its flowers are 7 to 8 inches across, very fragrant. The sepals are purplish lilac and the petals pale wistaria violet. Strong and attractive foliage. \$2.00.



BLUE BEAUTY—Deep blue flowers. Free and continuous flowering. Leaves and buds spotted with purple. \$2.00.

DAUBEN—It produces small, light blue flowers in great profusion. Fine for tub or aquarium. \$0.95.

GENERAL PERSHING—Clear, distinct pink. The flowers are of great substance, delightfully fragrant. Opens early in the morning. \$3.00.

PANAMA PACIFIC—It is an everblooming, viviparous, strong growing and free flowering. The predominant color is reddish purple and the stamens are yellow. A most excellent variety. \$2.50.

MRS. ED WHITAKER—One of the largest flowered varieties of the show type lilies. Fragrant sky blue blossoms open quite flat. Three to four open flowers at one time. An excellent plant for any pool. \$2.00.

MRS. C. W. WARD—A most charming variety with petals of rich rose-pink. Flowers are borne well out of the water. \$2.00.

MRS. GEO. H. PRING—A new and novel type that produces numbers of large, fragrant white flowers with pointed petals. Petals broader at the base and more pointed at the tip. \$1.50.

MRS. WOODROW WILSON—This variety has lavender-blue flowers of large size. It is an extremely satisfactory day blooming variety. \$2.00.

NIGHT BLOOMING TROPICAL WATER LILIES

Why not plan to have a lily in your pool that everyone can enjoy. Dad surely is entitled after he comes home in the evening, to enjoy the blooms in the Water Garden. This type of lily opens towards evening and remains open until ten the next morning.

BISSET—A night bloomer of unusually free-blooming habit. The flowers are of a beautiful rose pink color, the petals are broad and slightly concave, giving the bloom a cup-shaped form. \$1.50 each.

FRANK TRELEASE—Flowers a brilliant crimson. The most popular lily of its type because of its rich color. \$1.50.

JUNO—Very large, beautiful snow white flowers, with a center of pure yellow stamens and produced freely. \$2.00.

OMARANA—A pleasing pink lily. A vigorous grower and one of the freest flowering. \$1.50.

RUBRA ROSEA—One of the best. Brilliant rosy carmine flowers are held well above the glossy foliage. \$1.50 each.

H. C. HAARSTICK—A new night bloomer. The flowers are brilliant red in color. A wonderful variety. \$2.50.

Tropical Lilies should be planted only after weather is warm and settled.

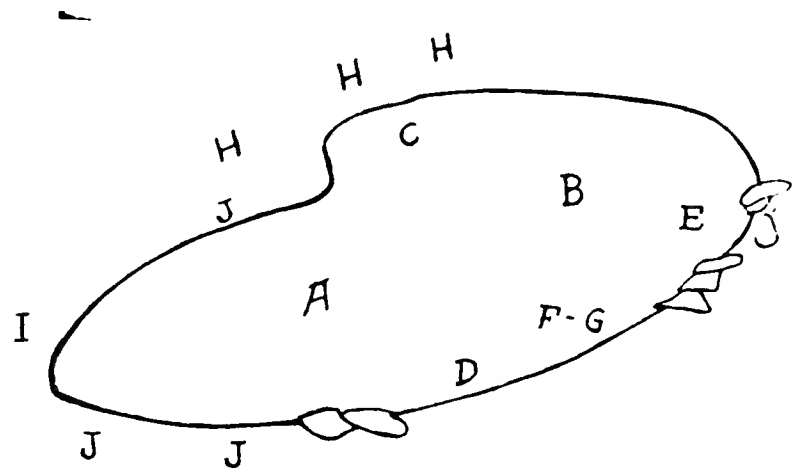
Thirty Beautiful Water Plants for \$6.25

A COMPLETE WATER GARDEN FOR THE SMALL SIZE POOL

This arrangement of plants shown in this illustration is for a small irregular shaped pool. This arrangement is also suitable for any style pool, and makes a beautiful appearance. All the tall growing Water Plants should be planted in large pots and built up with rocks to within one inch of the surface.

Two beautiful choice water lilies, nineteen assorted water plants and nine assorted plants for the border. Note the varieties may be identified in the illustration by the initial number.

This collection can be arranged in a square pool by placing C, D, E, F, and G in large box in the center or by placing them individually in the corners. Plant H, I, and J around the border according to the surroundings; K should be planted in same box with the lilies.



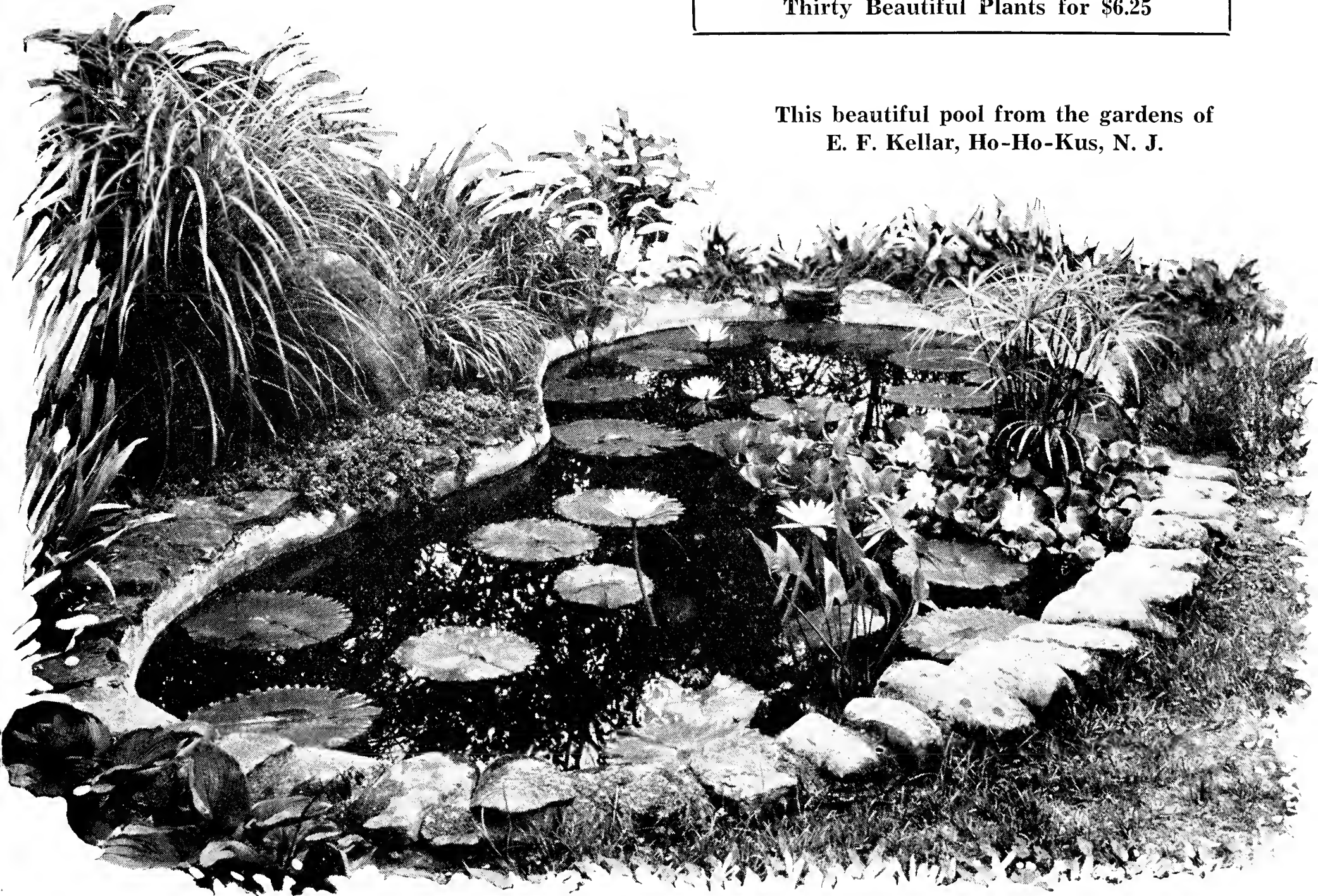
COLLECTION No. 5

- A 1 Water Lily Blue Beauty.
- B 1 Water Lily Mrs. Pring.
- C 1 Primrose Willow, yellow flowers.
- D 2 Arrowhead, white flowers.
- E 1 Umbrella Plant.
- F 1 Creeping Water Hyacinth, purple flowers.
- G 8 Floating Water Hyacinth.
- H 3 Assorted Ornamental Grasses.
- I 2 Yellow Water Iris.
- J 4 Rock Plants, assorted.
- K 6 Submerged Plants.

EXTRA THIS YEAR—3 Japanese Iris, each one different. This Iris is a wonderful variety to plant around the pool.

Thirty Beautiful Plants for \$6.25

This beautiful pool from the gardens of
E. F. Kellar, Ho-Ho-Kus, N. J.



Enjoy Natural Beauty

WITH THESE WATER PLANTS

Here are grouped those plants which grow in the water. They are varied and interesting, and give the much desired natural effect to the pool. They are easily grown. Most of them do best in shallow water and so the pots, boxes, or tubs should be raised to within 2 to 8 inches of the surface.

Varieties marked with a (*) are particularly adapted to a depth of 6 to 12 inches.

Varieties marked with a (†) are suitable to plant at about 2 to 6 inches.

Varieties marked with a (‡) are for plants that like wet feet but with crowns and stems preferring the air and sunlight.

Varieties marked with a (§) are the beautiful Tropical Plants.

You can work wonders with these Water Plants to give your pool a unique and tropical appearance. Try a collection of Taro, Umbrella Palm, Papyrus and Primrose Willow grouped together in a corner of the pool or as a centerpiece, or a collection of Primrose Willow, Parrot Feather and Forget-Me-Nots in a shallow corner. Japanese Iris are ideal when planted right on the edge of a natural pool.

- †**ARROWHEAD, GIANT**—Beautiful shaped leaves, white flowers. 3 for 50c.
- §‡**BUTTERFLY LILY**—A tall canna-like plant with large leaves. White or yellow flowers. 35c each; \$1 for 3.
- †**CAT TAIL**—Swamp plant, Hardy. 4 for 50c.
- †**GRACEFUL CAT-TAIL**—A tall variety with slender cat-tails. These plants furnish a very fine background in massed plantings. 3 for 50c.
- ***FLOATING HEART**—Small leaves resembling Water Lilies; brilliant yellow flowers. 2 for 25c.
- ‡**FORGET-ME-NOT**—The well-known spring and summer flowering plant. 25c each; 3 for 50c.
- FLOWERING RUSH**—A hardy plant with peculiar three sided leaves. Pink flowers are borne on round stems. 25c each; 3 for 50c.
- †**IRIS**—(Yellow flag) or (Blue Versicolor). Very attractive and hardy. 25c each; 3 for 50c.
- JAPANESE IRIS**—This beautiful Iris thrives in wet soil around the pool or planted in a box in the pool to a depth of one to four inches. Large clumps. 25c each; 3 for 50c.
- §**JAPANESE TARO**—
(Colocasia Multiflora)—Rich green leaves on dark purple stems. 50c each.
(Colocasia Indica)—Similar to above except it is entirely green. 25c each.
(Colocasia antiquorum Illustris)—This variety is similar to above except leaves are blotched dark brown and violet-black. 75c each.
- ‡†**PARROT FEATHER**—Extremely valuable for trailing over a fountain. 15c a bunch.
- §‡**PAPYRUS or EGYPTIAN PAPER PLANT**—A very beautiful water plant with plummy heads of foliage. 25c each.
- †***PRIMROSE CREEPER**—A rapid growing, partially submerged aquatic with yellow flowers. 2 for 25c.
- ‡**PRIMROSE WILLOW**—Erect plants 2 to 3 feet high, with attractive narrow foliage and bright yellow blossoms. Very desirable at the edge of pools or in a tub garden. 25c each.
- †**PICKEREL PLANT**—Beautiful blue flowers. Total growth about 2 ft. 25c each; 3 for 50c.
- §†**PURPLE WATER HYACINTH**—A creeping plant, with handsome blooms. 50c each.
- ‡†**THALIA**—A handsome canna-like aquatic standing 3 to 6 ft. high. 50c each; 3 for \$1.25.
- §†‡**UMBRELLA PALM**—We have an excellent strain of this popular plant; produces large fanlike leaves. 25c; 3 for 50c.
- †**VARIEGATED SWEET FLAG**—One of the best of the shallow water plants; saber-like leaves, broadly striped green and ivory. 25c each; 3 for 50c.
- §†**WATER POPPY**—Leaves float upon the water. Flowers are large and yellow. Should be in every pool. 15c; 4 for 50c.
- §**WATER HYACINTH**—A beautiful floating plant. Spikes of orchid-lavender flowers are produced freely if the roots are allowed to anchor in soil. 2 for 25c; 6 for 50c.
- §**WATER FERN**—An aquatic fern producing small ferns on upper side of the leaves. 50c for 3.
- §**WATER LETTUCE**—A pretty floating plant with green fluted leaves and long wavy roots. 3 for 50c; \$1.50 per doz.
- ***WATER SNOWFLAKE**—A lily like plant with dainty white flowers. 25c each.
- FLOATING PLANTS**—Azolla, Duck Weed and Salvinia. These three floating plants are at home in every pool. Small dainty plants, which float on top of the water. Large portion, assorted. 50c.

Aquatic Plant Collections

OUR BIGGEST 1933 VALUE

Special Centerpiece Collection

No. 6A

This group should be planted in a box or large tub, submerged about three inches below water level.

- 2 Egyptian Paper Plants
- 2 Water Taro
- 2 Umbrella Plants
- 1 Primrose Willow
- 2 Water Poppies
- 1 Creeping Hyacinth

**10 BEAUTIFUL PLANTS,
ALL FOR \$2.00**

The Taros and Paper Plants should be planted in the center and the other plants grouped around it.

Submerged Plants

... for
The Pool

These plants grow under water, and absorb the impurities or release oxygen to destroy them. Submerged plants are indispensable when fish are present as they provide a perfect balance for the animal life. They can be rooted in soil, in the lily boxes.

- Anarcharis
- Cabomba
- Money Worth
- Myriophyllum
- Ludwigia
- Sagittaria
- Southern Spatterdock
- Vallisneria

◆◆◆◆◆
**SUBMERGED
PLANT
COLLECTION**

10 Plants for \$1.00

◆◆◆◆◆
There are wonderful possibilities with Water Plants to give your pool a unique and tropical appearance. Try a collection of Taro, Umbrella Palm, Papyrus and Primrose Willow, grouped together in a corner of the pool or in the center, or a collection of Primrose Willow, Parrot Feather and Forget-Me-Nots in a shallow corner of the pool.

For a natural pool use plenty of Japanese Iris planted right at the edge or in one to three inches of water. Our sturdy, healthy plants reach you ready to grow. If you have ever planted aquatics before, you know the value of starting with good plants.

SHALLOW WATER PLANTS

In this group are the handsome foliage and flowering plants used for the corners. They thrive in from 2 to 12 inches of water.

COLLECTION (No. 3-A)—7 SHALLOW WATER PLANTS.....\$1.00

FLOATING PLANTS

Among the floating plants is found the interesting Water Hyacinth, Water Fern, and Parrot Feather.

COLLECTION (No. 4-A)—10 FLOATING PLANTS.....\$1.00

TROPICAL BOG PLANTS

In the shallow water many beautiful plants can be planted. These plants will add much to the interest and beauty of your garden.

COLLECTION (No. 5-A)—7 WONDERFUL BOG PLANTS.....\$1.50

COMBINED (No. 3A—4A—5A)—24 PLANTS, only.....\$3.00

A PAGE OF SPECIAL OFFERS

The collections on this page are composed of varieties that are of the finest. These plants are described more fully on Page 5 and Page 6. To help you in selecting the right collection a pool 4x6 in size will accommodate three water lilies and a small collection of aquatics.

OUR BEAUTIFUL TRIO OF WATER LILIES - \$2.95 (Collection No. 6)

Three free blooming hardy water lilies—Chromatella, the popular yellow; Pink Opal, deep pink color; Marliac White, large white flowers.
 All Three for Only.....\$2.95

OUR DISTINCT COLLECTION OF WATER LILIES - \$3.95 (Collection No. 7)

Three superior hardy lilies of beautiful color. Glorioso, the king of all red lilies; Marliac Rosea, deep rose color; Chromatella, the best yellow.
 All Three for.....\$3.95

OUR FAMOUS FOUR WATER LILIES - \$4.45 (Collection No. 8)

Four lilies, including the choicest water lilies grown. All standard varieties chosen from among the most popular. Carmine Laydeker, Chromatella, Pink Opal, and Mrs. Woodrow Wilson.
 All Four for.....\$4.45

LOVELAND TWO (Collection No. 9)

Two splendid lilies—Marliac Chromatella and Marliac Rosea.....\$2.25

DAY AND NIGHT COLLECTION (Collection No. 10)

Woodrow Wilson and Bisset.....\$2.25

TO COMPLETE YOUR ORDER

In ordering any of the above collection of lilies, be sure to order extra a collection of aquatic plants listed on Page 10. Also a collection of scavengers on Page 13.

~~~~~  
**MRS. F., from Iowa, writes:**

The lilies you sent me this spring have done wonderful. They bloomed earlier and had more blooms than anyone else's in town.

In fact, everything I received from you has been superior to what others have had so we are very much pleased.

I am glad to say our pool was a real success, due in great measure to the quality of **PLANTS RECEIVED FROM YOU.**

~~~~~

The LOVELAND COLLECTION

ILLUSTRATED ON FRONT PAGE

S. C., from Nashville, Tenn., writes:

"This pool is about as pretty as any naturalistic pool I have seen. The soil I used for the boxes is just regular brown dirt. I guess you would call it ordinary garden soil, and every spring I top dress it with cow manure and fork this in as well as possible. Probably there is not more than 10% manure. The real secret to grow Water Plants, if any, is that I use ENOUGH dirt. I know it is more trouble to handle a large box and a lot of dirt but it pays. I use Oxygenating plants and snails in my pool—and it stayed clear, not crystal clear, but as clear as the average creek or pond.

The ROCKWALLS for the tall plants are eighteen inches high. The boxes for the lilies are one foot high. I have about 6 inches of water over the Lotus and the shallow water plants about 4 inches—the lilies, about 10 inches."

You will agree that the picture on the front page is a pretty pool—YOU, TOO, CAN HAVE YOUR POOL LOOK JUST AS NICE.

COLLECTION (No. 1)

Consists of 6 plants, for shallow water planting, 4 hardy water lilies, 1 Egyptian Lotus and a collection of Oxygenating plants all for.....

\$6.50

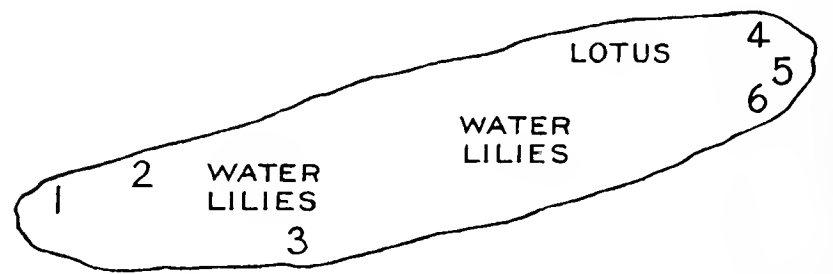


Diagram shows arrangement of Lilies, Lotus and Shallow Water Plants. Numbers are represented as follows: No. 1—Graceful Cattail; No. 2—Pickerel Plant; No. 3—Primrose Willow; No. 4—Arrowhead; No. 5—Water Iris; No. 6—Variegated Sweet Flag.

FISH PLANT COLLECTION	
(Collection No. —)	
10 Plants.....	\$1.00
SCAVENGER COLLECTION	
(Collection No. —)	
12 Assorted Snails.....	\$0.75

OTHER COMPLETE COLLECTIONS LISTED ON PAGES 2, 7, 9, 11

SCAVENGERS FOR THE POOL

AFRICAN SNAILS
JAPANESE SNAILS
BLACK RAMSHORN SNAILS
TRUMPET SNAILS
CLAMS

Natural scavengers are essential for cleanliness in the garden pool. They help prevent the excessive growth of algae and devour decaying vegetation as well as consuming excess food.

COLLECTION S2
For the Average Pool
A General Assortment
of Snails and Clams

12 for 75c

SEE PAGE 24 FOR DETAILED DESCRIPTION OF THESE SCAVENGERS

SUPPLIES FOR THE POOL

GOLDFISH DIP NETS

No. N-1—The net has 1/4-in. sq. mesh in the bottom, 3/8-in. sq. mesh in the top, with a 12-in. round ring and 6 ft. plain wooden handle. Each\$1.25

No. N-2—Same net as above except with a 12-in. D shaped ring. Nets 18 inches deep. Each.....\$1.50

FERTILIZER

FERTILIZER OR WATER GARDEN PLANT FOOD—A good fertilizer. Use 1 quart per bushel of clay soil or 1 quart for 2 bushels of good garden soil.

5-lb. Sacks.....\$0.75
Quart Carton..... .30

CONTAINERS

RED WOOD BOXES—For planting Water Lilies. These boxes hold about one cubic foot of earth. Will last a long time. Come knocked down or completed. Each.....\$0.50

WHITE CEDAR TUBS—Excellent for use in planting Lilies or the Lotus. Each.....\$2.00

INTERESTING AND HELPFUL BOOKS ON WATER GARDENING AND FISHES

"GOLDFISH VARIETIES and TROPICAL FISHES" (By W. T. Innes)—A real complete work covering care, habits, breeding diseases of all gold and tropical fishes; also, aquatic plants; complete plants for building aquariums and pools. 300 pages, many illustrations in colors. \$4.00.

"MODERN AQUARIUM" (By W. T. Innes)—New book covering breeding and general care of gold and tropical fishes. 69 pages and 30 illustrations. \$1.00.

"THE WATER GARDEN" (By Peter Bisset), is an excellent work dealing with the culture of water lilies and other aquatic plants. 210 pages. \$5.00 postpaid.

REMEDIES

SEA SALT—Salt is a preventive of disease. Should be used for all minor ills of goldfish. Use two tablespoons per gallon and leave fish in bath for several days. Per large carton.....\$0.25

OUR OWN FUNGUS REMEDY—Three to four drops will help cure most external diseases of fish. It is advisable to use as an antiseptic before introducing new fish to the pool or aquarium. Per bottle.....\$0.50

JO JO Outdoor Fish Food

An economical food for feeding Goldfish and other fish in outdoor ponds or pools. The best value on the market. Big 10-ounce package only.....

35c

JO JO—Sundried Shrimp Food, per lb.....\$0.75

JO JO—Imported Dried Daphnia, 8 oz. for 1.50

REFER TO PAGE 18 FOR COMPLETE LIST OF ALL FISH FOODS

WATER IRIS AND OTHER FLOWER PLANTS FOR EDGING THE POOL AND FOR BACKGROUND

JAPANESE IRIS

Most Gorgeous of All Iris

There is no flower you can plant at the edge of a pool which will bring you more pleasure than Japanese Iris. Assorted, pure white, lilac, mahogany red, rich purples, rose and blue in double and large single varieties.

6 Strong Plants, Choice Varieties.....\$1.00

SIBERIAN IRIS

They make a bright show in the garden and around the pool.

- SNOW QUEEN—White
- BLUE KING—Purple
- SNOW FLAKE—Pale Blue
- EMPEROR—Light Blue
- GRANDIS—Blue and White, Stately

This Wonderful Assortment of 5 Large Plants.....\$1.00

ORNAMENTAL GRASSES

To give the real Tropical appearance to your Water Garden your first thought should be a collection of the beautiful hardy ornamental grasses.

- ZEBRA GRASS
- STRIPED EULALIA
- RIBBON GRASS
- STRIPED OAT GRASS

COLLECTION OF ORNAMENTAL GRASSES

6 Plants for.....\$1.50
12 Plants for..... 2.50

HIBISCUS

HIBISCUS—New large flowering varieties; vigorous and free blooming, monstrous large flowers, mixed colors only. Special, 3 for.....\$0.50

PHLOX

Visitors to our Water Gardens have all admired JULES SANDEAU—a magnificent variety of reliable blooming habit-flowers, extremely large 1-in. broad trusses of delightful appearance. Soft, lilac-pink.

\$0.25 each

OUTSTANDING PERENNIAL FLOWER PLANTS

- Artemisia—Silver King
- Astilbes—Pink
- Aquiligias—Columbine
- Coreoposis—Yellow
- Dianthus—Scarlet Beauty
- Elder Daisy
- Delphinium—English Hybrids
- Gaillardia—Blanket Flower
- Hibicus—Giant Flowers
- Liatris—Very showy plant
- Brilliant Carmine Rose Flowers
on a magnificent spike
- Lobelia—Blue
- Lupinus—Regal
- Phlox—Jules Sandeau
- Tritoma—Red Hot Poker
- Veronica—Speedwell
Longifolia
- Yellow Day Lilies
Flava
Kwanso
Minor
Thumbergi
- Yucca Filamentosa

SINGLE VARIETIES—Each \$0.20; Doz. \$1.50

PLANTS FOR GROWING AMONG ROCKS

- Achillea—Boule de Neige
- Alyssum Rostratum
- Aster—Mauve Cushion
- Arabis Alpina
- Aubretia—Wall Cress
- Dianthus—Deltoides
- Festuca—Glauca
- Hens and Chickens
- Oenothera—Evening Primrose
- Myosotes—Alpestris
(Forget-me-not)
- Nepeta Mussini
- Phlox Subulato
- Sedum
Acre
Altenum
Brilliant
Iborium
Kamtschaticum
Spectabile
Stahlia
- Thymus Vulgaris
- Veronica in Varieties
- Violas

SINGLE VARIETIES—Each \$0.20; Doz. \$1.50

GOLDFISH

THE IDEAL POOL FISH

No pool—even if it is a miniature one—is complete without a few ornamental fishes. Fish in the pool will take care of themselves, all is needed is an occasional feeding of Dried Shrimp and Jo Jo Fish Food.

The illustrations show several different types. The illustrations are not exaggerated as is the case in other catalogues. You will be pleased with our selections.

Goldfish may be wintered outside in your pool, provided you have some soil and plants in it, and the depth is at least eighteen inches. If you drain your pool a tub or tank in the basement will answer.

SHIPPING INSTRUCTIONS

Goldfish are shipped by express. Customer to pay the charges. On small orders include 50c for shipping can, same is then your property. On large orders we loan you the can, same to be returned at once by express prepaid. The express company makes a flat charge of 20c for returning empty cans.

COMET TAILS

A variety with unusually long tails. Six to seven inches—\$1.50 per pair; \$7.50 dozen; 7 to 8 inches—\$2.00 per pair; 8 to 9 inches—\$3.00 per pair.

FAN TAILS

These are the best known of the fancy goldfish. 3 to 4 inches—\$1.00 per pair; 4 to 5 inches—\$3.00 per pair; 5 to 6 inches—\$4.00 per pair.

GIANT FANTAILS — \$3.00 to \$10.00 each.

TELESCOPES

An odd fish with large protruding eyes. These fish are highly prized. Red and velvety black. Small sizes—75c each; medium—\$1.50; large—\$3.00 each. It is very difficult to classify these fish according to inches. They are priced more according to quality.

CALICO

The wonder fish, marvelously colored, brilliantly mottled, blue, red, gold, brown, white, yellow and black. A thoroughly hardy fish. No two fish are colored alike. 2 to 3 inches—\$1.50 per doz.; 4 to 5 inches—\$1.00 per pair; \$5.00 per doz.; 5 to 6 inches—\$2.00 per pair; \$10.00 per doz.

GOLDFISH FOR THE SMALL POOL

Collection No. 25

A complete collection of small size fish, ranging from 2 to 4 inches, 25 fish. 15 Pool Fish, 6 Calico Fish, 2 Telescopes and 2 Fantails, including shipping can, \$3.00.

GOLDFISH FOR THE MEDIUM POOL

Collection No. 26

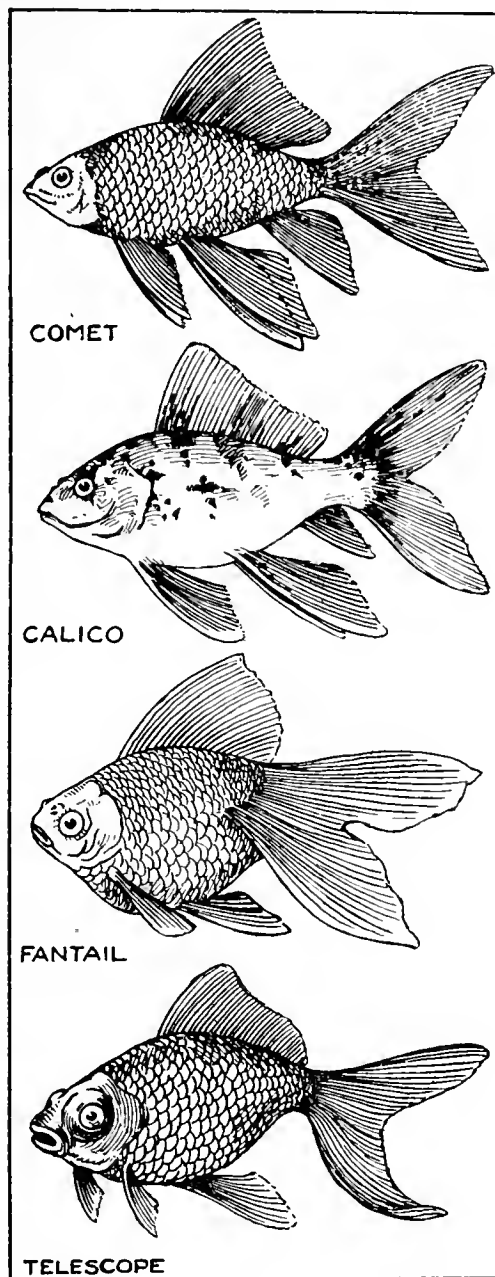
A combination of all sizes of goldfish. 20 selected goldfish, 2 to 4 inches; 10 selected goldfish, 4 to 5 inches; 10 Calico fish, 2 to 4 inches; 10 assorted Comets, Fantails and Telescopes. Fifty fish, including shipping can, \$5.00.

GOLDFISH FOR THE LARGE POOL

Collection No. 27

A collection of beautiful goldfish of medium and large sizes—50 Pool Fish, 2 to 4 inches; 10 Pool Fish, 4 to 5 inches; 3 Giant Goldfish or 6 young Giants; 25 assorted sizes Shubunkins, from small to extra large size, 12 assorted Telescopes and Fantails. 100 fish, \$15.00.

*On this collection we loan you large shipping can, same to be returned at once, express prepaid.



THE BIG ONES

GIANT GOLDFISH — 10 to 12 inches—\$4.00 per pair, \$20.00 per dozen; 8 to 10 inches—\$2.00 per pair; \$10.00 per dozen.

GIANT COMETS—The fish with that long wavy tail, 12 inches. \$4.00 per pair.

LARGE ORIOLES — An orange and black color. 4 to 6 inches. \$1.00 per pair.

GIANT PEARLS—6 to 8 inches—\$2.00 per pair; 10 to 12 inches—\$6.00 per pair.

GIANT SHUBUNKINS — The large size of the Calico Fish. 7 to 9 inches. \$3.00 per pair.

POOL GOLDFISH

A selected group of goldfish suitable for all pools. An assortment of colors, gold, gold and white, pearl, gold and black. Assorted 2 to 4 inches—\$1.00 per dozen; 25 for \$2.00; 4 to 5 inches—\$2.00 per dozen; 25 for \$4.00; 5 to 6 inches—\$4.00 per dozen; 6 to 7 inches—\$5.00 per dozen.

FISH FOOD FOR OUTDOOR FEEDING LISTED ON PAGE 18

INDOOR GARDENS

THERE IS NOTHING EQUAL TO A BALANCED AQUARIUM

There is no indoor garden that is easier to keep than a well-balanced AQUARIUM. And—with so little attention—what pleasure it brings! What beautiful adornment! What fascinating pastime such a miniature pond with its life and action brings to your home! You will love to watch the graceful movements of the pets, enjoy their nerve soothing influence; you will see the mysteries of nature before your very eyes, and show and explain them to your youngsters. And, with justifiable pride you will display your balanced aquarium to your friends.

We have never been able to offer such fine fish and modern aquaria at such amazingly low prices. This has only been made possible by our increased facilities and our modern method of breeding.

DRESS UP YOUR HOME WITH A TERRARIUM GARDEN

The word Terrarium is derived from the Latin and means "with earth." Terrarium Gardens are not a new thing as many suppose. The idea has recently been so expanded and glorified that the product is scarcely recognizable as the child of the unassuming little Friendship bowl we have known for years. The Terrarium of today may be anything from a single plant in a small bowl to a miniature garden as carefully landscaped as the famous garden in Japan. The chief purpose of having a garden completely inclosed in glass is to maintain a high degree of humidity. In their glass inclosed house the business of transpiration goes on uninterrupted. The plants take up the moisture from the moss (or whatever is used as a base). This moisture is transpired. It collects on the sides of the bowl or glass case and at night it returns again to the moss and thus the cycle is completed. The amount of moisture required, of course, depends upon the nature of the plants. Another very distinctive and interesting type is the Bog or Swamp Terrarium. In this type Chameleons, Salamanders, Newts, Turtles, and young Frogs can be placed.

SHIPPING INSTRUCTIONS FOR INDOOR GARDEN SECTION

Remittance must accompany all orders. Send Bank Draft, Express or Postal Money Order, or if more convenient for you, send your personal Check.

On the following items **WE PAY THE POSTAGE, or SHIP EXPRESS PREPAID.**

Aquarium Plants Books
Fish Remedies Dish Garden Plants
Terrarium Plants Fish Foods (except Sea Salt)
Aquarium Supplies Scavengers (except where noted)

Goldfish and Tropical Fish are shipped via Express Collect. Shipping cans are 50c extra. We ship Goldfish and Tropical Fish listed in this catalogue all the year around. Tropical Fish are shipped in cold weather (October to

May) in Thermos jars. A \$2.00 deposit is required on Thermos jars, which we refund upon receipt of empty jars, which must be returned to us Express Prepaid. During extremely cold or hot weather, shipments sometimes may be postponed temporarily to permit safe transportation.

On orders for less than \$1.00 include 10c extra for packing charges.

Aquariums and Containers for Terrarium Plants are shipped via Express or Parcel Post Prepaid to within 600 miles (fourth zone) of Loveland, Ohio. On orders beyond this zone we will allow you on the charges up to the fourth zone.

INDOOR GARDENING—A PLEASANT WINTER PASTIME

INDOOR GARDENS SELECTING YOUR AQUARIUM

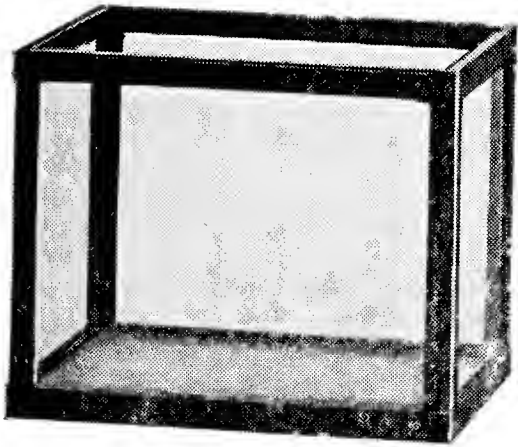
An aquarium in the living quarters of the home, carefully planted and intelligently stocked with many varieties of fish, is indeed a thing of beauty that vies with works of art. And, strange to say, it will require little more care than other ornaments. A well balanced aquarium requires no particular attention other than daily feeding. The water need NEVER be changed if the start was properly made.

A large aquarium is—generally speaking—the most economical, and has many other advantages. Briefly, these are the reasons:

A large aquarium will permit a better plant growth. Growing plants are necessary as they liberate oxygen. Oxygen is essential to fish life. In tanks that lack oxygen, the fish are constantly at the surface—in distress—gasping for air. Large tanks provide ample space for thriving plants.

A larger aquarium will not be polluted by a little unconsumed food, obviously, because it is a larger body of water. Naturally a little tank would be more seriously affected by the decomposition of an even minute quantity of food.

Large aquariums are not rapidly affected by fluctuating room temperatures, whereas smaller ones are affected by even slight draughts. It is very important to consider this, particularly for the well-being of tropical fish.



THE STANDARD

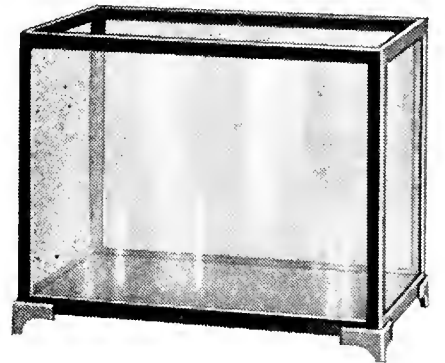
This Aquarium is an ideal Aquarium for the children or for a gift to someone who is sick or convalescing. The Aquariums are constructed of Non-corrosive and Non-rustable metal, securely welded without any foreign substance. We use nothing but clear vision glass and heavy black slate, and all aquariums are water-tested before being shipped. The finish is an attractive green color lacquer, available in five convenient sizes.

No. 950	10x 6x 8	2 Gal.	\$1.75	No. 990	16x12x12	10 Gal.	\$7.25
No. 970	12x 8x 9	3½ Gal.	4.00	No. 100	18x14x14	15 Gal.	8.25
No. 980	14x10x10	6 Gal.	5.25				

THE SPECIAL

This style is made in three sizes. The Aquariums are set on lead feet of a design as here shown. The construction is similar to the above tanks with clear glass sides and slate bottoms set in our aquarium cement. These aquariums are attractive enough to place in any room in your home.

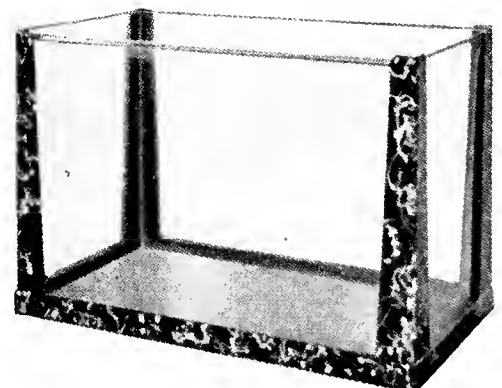
No. 760	16x 6x 9	2¾ Gal.	\$3.50
No. 770	14x 8x10	5 Gal.	4.25
No. 780	16x10x12	8¼ Gal.	6.25



BULB EDGE AQUARIUMS

Bearing in mind that it is our duty to serve our ever-increasing clientele and cater to their wants, we take pleasure in offering these new aquarium creations. The variety of sizes available makes this an aquarium that is popular to every home. Modern in design, this aquarium is equipped with bulb edged glass which gives it a rare crystalline beauty, finished in green crackle or marble. Has slate base. Available in three sizes.

No. 301	6x12x 8	2½ Gal.	\$2.50
No. 302	18x 7x 9	5 Gal.	6.00
No. 303	8x20x10	7 Gal.	8.00



**ALL PRICES ON THIS PAGE ARE POSTPAID UP TO 4TH ZONE
 (600 MILES OF LOVELAND)**



QUALITY FISH FOODS

JO JO NATURAL FISH FOOD

The finest quality food for goldfish in aquariums; contains all the necessary ingredients. We make it and use it here at the hatchery. It is easy to use. Price, 15c per can, postpaid.

JO JO TROPICAL FISH FOOD

A wonderful food. A perfect balanced food for daily feeding of all kinds of tropical fish. Contains all the ingredients that promote the growth and health of fish. 15c per can, postpaid.

JO JO SHRIMP FISH FOOD

For fancy goldfish and tropicals. Finely ground and packed in sift top cans. Shrimp Food contains necessary vitamins to keep fish in a healthy condition. Per can, 15c, postpaid.

JO JO DAPHNAE

Should be fed to all fish. This is pure dried daphnae of the highest quality. It should be used in conjunction with other foods. 20c per can, postpaid.

JO JO TURTLE FOOD

Contains all ingredients found necessary for these little pets. Also, a fine food for Newts and Salamanders. Turtles should also be fed a little raw beef occasionally. Price, 15c per can, postpaid.

JO JO AQUARIUM GRAVEL

Is necessary to give the proper bed for Aquarium Plants. Aquarium gravel also beautifies the appearance of the aquarium. 15c per 32 oz. box. Not postpaid.

FUNGUS REMEDY

A remedy for ichthyophthirius, fungus and other external ailments of gold and tropical fish. Per bottle, 50c, postpaid.

SEA SALT

Is essential for keeping fish and plants in condition and should be added to the aquarium once a week. Excellent for both tropical and goldfish in healing fungus, tail and fin rot and overcoming sluggishness. Keep a supply of Sea Salt on hand at all times. 15c per 24 oz. box, not postpaid.

FISH FOOD FOR GOLDFISH IN OUTDOOR POOLS

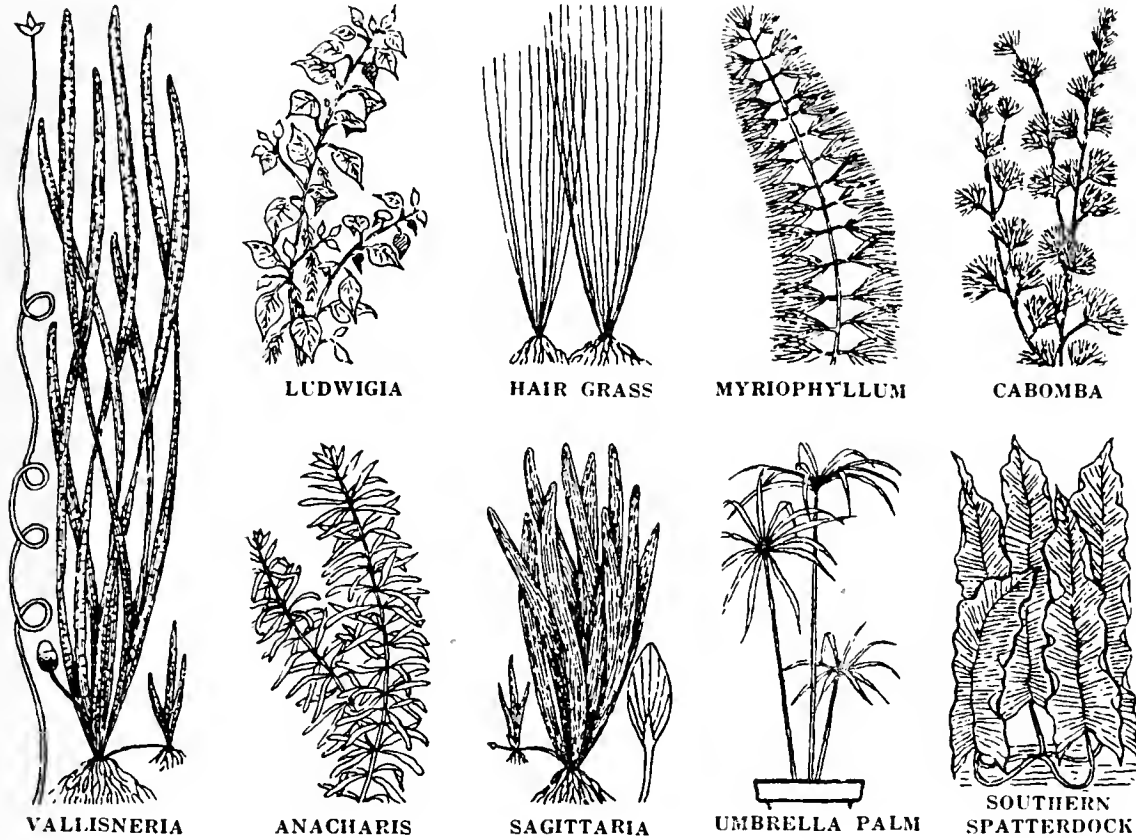
Jo Jo Outdoor Goldfish Food is a wholesome, nourishing food, especially prepared to stimulate growth, color and the general health of your fish. It is pleasant to the fishes' taste as is evidenced by the eagerness with which they look forward to their daily feeding. Jo Jo Outdoor Fish Food is a tried and proven product, sold under a satisfaction or money back guarantee.

Big 10 oz. Package.....35c, Postpaid

6 oz. Package.....25c, Postpaid

INDOOR GARDENS

AQUARIUM PLANTS



Plants are the most important part of the Aquarium equipment. They keep the water constantly in good condition, because they release oxygen and on the other hand take up the carbon dioxide given off by the fish. Plants also serve as a natural refuge from too much sunlight. Plants are the first essential of an attractive and well balanced aquarium for their utility as well as their decorative value. It is because of the plants that you do not have to change the water in an aquarium. All aquarium plants postpaid.

- ANACHARIS**—A luxuriant plant of rapid growth, 15c a bunch; two for 25c.
- CABOMBA**—Fan-like leaves, green stems, 15c a bunch; two for 25c.
- MYRIOPHYLLIUM**—An excellent plant in spawning goldfish, 15c a bunch; two for 25c.
- LUDWIGIA**—Leaves green above and scarlet beneath, 15c bunch; two for 25c.
- WATER POPPY**—15c per plant; two for 25c.
- GREEN HOUSE SPATTERDOCK**—15c each; two for 25c.
- VALLISNERIA**—75c dozen.
- SAGITTARIA (broadleaf)**—10c each; three for 25c.
- SAGITTARIA NATANS**—10c each; three for 25c.
- SAGITTARIA SUBULATA**—10c each; three for 25c.
- HAIR GRASS**—per portion 25c.
- CRYPTOCORYNE**—75c each.

A LARGE COLLECTION OF ASSORTED AQUARIUM PLANTS

A sufficient quantity of all the popular varieties, sufficient quantity to balance a 10 or 12 gallon aquarium, postpaid anywhere.....

\$1.00

Aquarium Supplies

AQUARIUM CEMENT—Our Aquarium Cement is especially prepared and developed for Aquarium use. Contains no harmful ingredients injurious to fish or plant life. The cement is packed in metal cans ready for use with simple instructions printed thereon. One pound can, 50c; five pound can, \$2.50.

AQUARIUM CLEANERS—25c each.

GLASS DIP TUBES—For removing sediment. 50c each.

FLOATING THERMOMETERS—Small size, 25c each; large size, 50c each.

GLASS FEEDING RINGS—Small, 10c; large, 25c.

NETS—Small, 10c each; large, 25c each.

PARTITION HOLDERS—For six inch, eight inch, ten inch and twelve inch tanks. 50c each.

TROPILITE HEATERS—Warms and illuminates the aquarium. Six inches high, \$1.75; nine inches, \$2.50; twelve inches, \$2.75. Not postpaid.

THERMOSTAT with three-way plug—can be used with the above heater, \$1.50.

Fish Remedies

AQUARIUM SALTS—24 oz. carton, 15c.

AQUARIUM DEODORANT—50c per bottle.

AQUARIUM HI-BALLS—Which maintain a chemical balance in the Aquarium and destroy germs. 10c each.

ICH REMEDY—Small bottle, 25c; large bottle, 50c.

VITANURA—A new Tropical Fish tonic. 25c box.

CESPPABA—Newly discovered remedy that destroys hydra and fish lice without injuring even the young fish. 20c each; seven for \$1.00.

INDOOR GARDEN SECTION

SCAVENGERS

Be sure to have some scavengers in your aquarium. Scavengers consume the excrements of the fish, in fact any and all refuse which they find in the aquarium, and thus keep the water clean and in excellent condition. Scavengers placed by themselves in an aquarium are very interesting to watch. The Japanese Snails bring forth their young alive. The Water Newts and Turtles while not as useful as Scavengers, are very entertaining.

JAPANESE SNAILS—These are the largest of the Aquarium Snails and are very hardy. Two for 25c; \$1.00 per dozen.

BLACK RAMSHORN SNAILS—These are very active algae eaters. Six for 25c.

RED RAMSHORN SNAILS—Similar to the above except body and shell are coral red. Two for 25c.

AUSTRALIAN RED SNAILS—Two for 25c.

TADPOLES—Two for 25c; 50c per dozen.

FRESH WATER CLAMS—Two for 25c; \$1.00 per dozen.

WEATHER FISH—50c each.

BABY GREEN TURTLES—2 for 35c.

AMERICAN SALAMANDERS (Water Newts)—Two for 25c.

JAPANESE SALAMANDERS—Attractive, jet black with a red belly. 25c each.

BABY ALLIGATORS—A very interesting pet. \$1.50 each.

COLLECTION OF SCAVENGERS AND PLANTS

COLLECTION No. 55

Five varieties of plants and one pair each of Japanese, Red, Black Ramshorns and Australian Snails. Postpaid.....

\$1.25

COLLECTION FOR AQUARIUM OR TERRARIUM

COLLECTION No. 56

Five varieties of plants and two each of American and Japanese Salamanders and Baby Turtles. Try this assortment out in a five gallon Aquarium and watch the fun. Postpaid

\$1.50

INSTRUCTIONS

Weather Fish and Tadpoles must be sent by Express in water. These two items can be shipped with Goldfish or Tropical Fish. Send 50c extra for shipping can if ordering these items separate. All items listed above, except Weather Fish and Tadpoles, the **PRICES QUOTED ARE POSTPAID.**

BOOKS

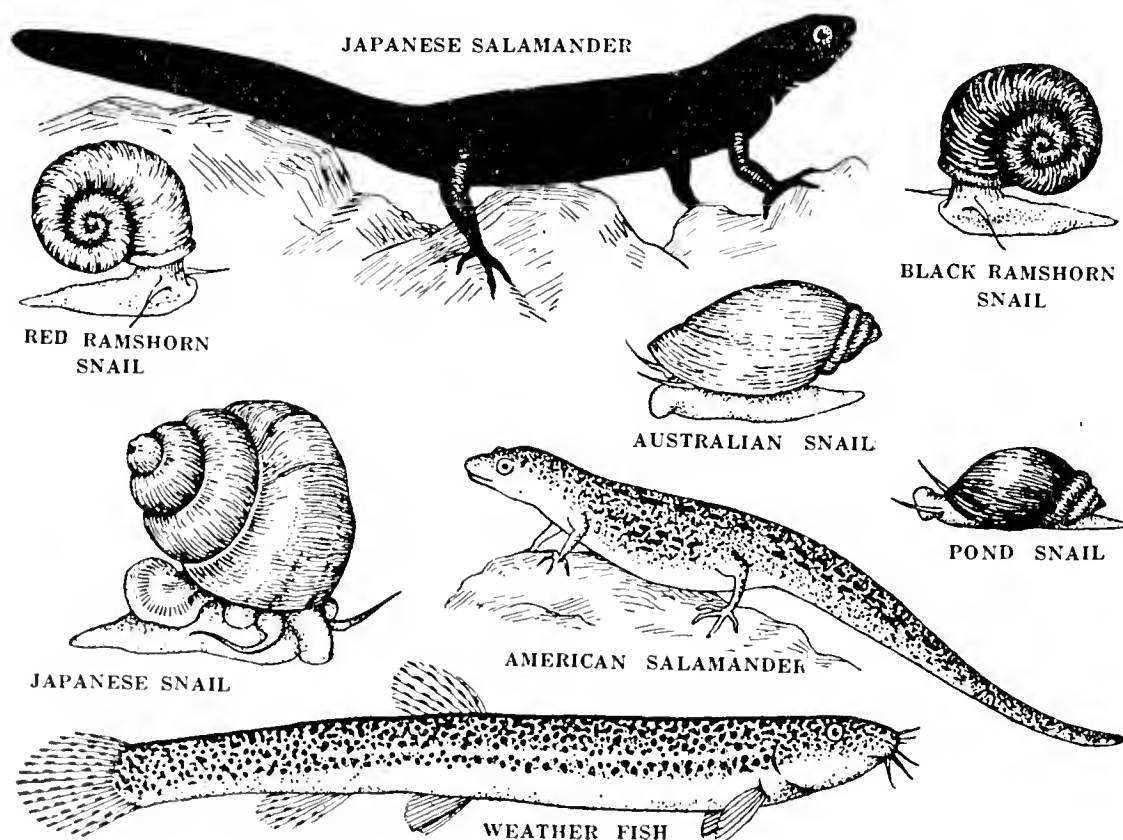
These books are interesting, instructive and helpful to maintain a balanced aquarium.

GOLDFISH VARIETIES AND TROPICAL AQUARIUM FISH—By W. T. Innes. The only modern book that covers thoroughly all aquarium fish—their care—habits—breeding—diseases; and aquatic plants; also construction of aquariums and pools. Illustrated. \$4.00.

A PRACTICAL COMPLETE BOOK ON THE BEGINNER'S PROBLEMS—Fifty illustrations of Tropical fish—plants—and scavengers. Most fish illustrations show both male and female in actual sizes. Practical illustrated articles on Balanced Aquarium—health—food—enemies—disease and helpful hints. 50c.

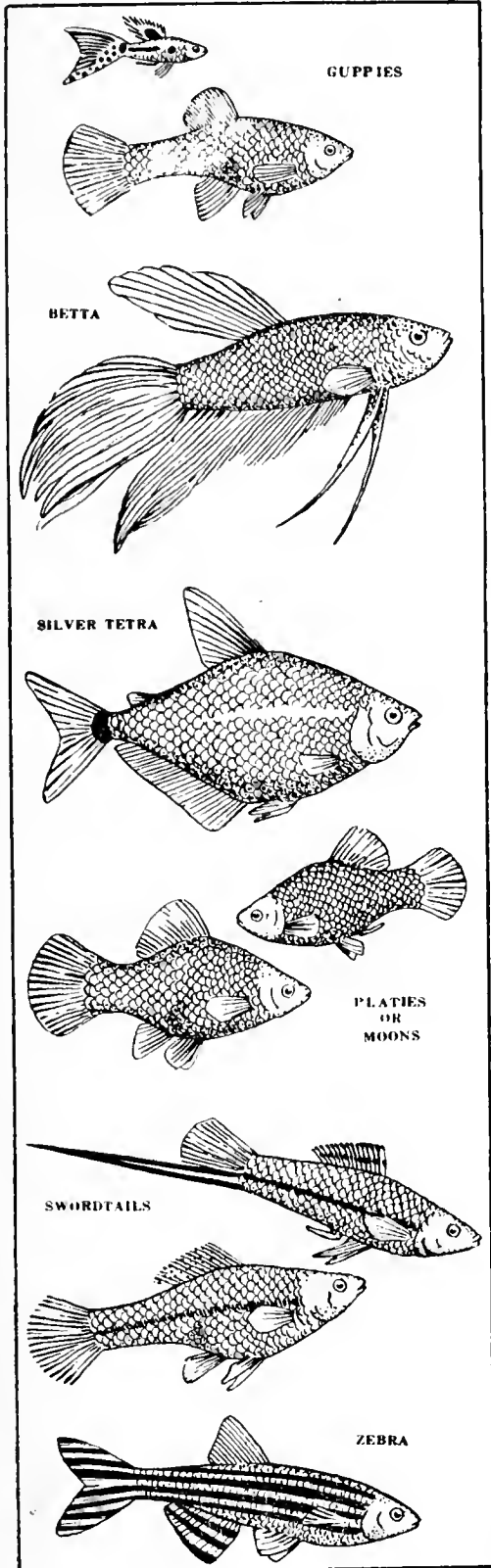
A. B. C. OF TROPICAL FISH—An excellent book for the beginner. 25c.

In comparing prices—remember, all items (except a few) in our Indoor Garden Section are postpaid.



TROPICAL FISH

We offer here a select list of the finest and most satisfactory varieties of Tropical Fish. You will be delighted with a Community Tank containing a group of fascinating types that live in perfect harmony. Space does not permit us to describe thoroughly all the remarkable activities of these fish. Many of them propagate readily in an aquarium. Some of these fish are live-bearing varieties, producing their young alive. There are also bubble nest builders. Others are egg layers. From this assortment you can select types which please you or you may take our suggestions for happy family groups.



LIVE-BEARING FISH

	Per Pair
Rainbow Fish or Guppy.....	\$0.25
Sword Tails.....	1.25
Blue Moons.....	1.25
Gold Moons.....	1.25
Black Moons.....	1.25
Gold Crescent Moons.....	1.50
Red Moons.....	2.00
Sail Fins.....	1.50
Black Mollienisia.....	4.00

EGG-LAYING FISH

Zebra Fish.....	1.00
Pearl Danio.....	1.25
Giant Danio.....	2.00

BARBS

Rosy Barb.....	1.50
Striped Barb.....	1.50
Ticto	1.50

BUBBLE-NEST BUILDERS

	Per Pair
Three Spot Gourami.....	\$2.50
Paradise Fish.....	1.50
Paradise Fish (round tail variety) ..	.50
Dwarf Gourami.....	2.50
Betta Cambodia.....	2.50
Blue Betta.....	3.50
Green Betta.....	3.00

MISCELLANEOUS

Silver Tetra.....	1.25
Pristella Riddlei.....	2.50
Tetra Von Rio.....	1.50
Angel Fish, small.....	3.00
Medaka50

LIVE-BEARING COLLECTION

One pair each of fish that bear their young alive, Sword Tails, Gold, Blue, and Black Moons, and Guppies. Five pairs. This collection may be accommodated in a ten gallon aquarum. Ten fish, including shipping can, for.....

\$4.00

SHIPPING INSTRUCTIONS

Tropical Fish are shipped via Express. Shipping cans are 50c extra. We ship Tropical Fish listed in this catalogue all the year around. During cold weather (October to May) Tropical Fish are shipped in Thermos jars. A \$2.00 deposit is required on Thermos jars which we refund upon receipt of empty jar, which must be returned to us Express Prepaid. During extremely cold or hot weather shipments sometimes may be postponed temporarily to permit safe transportation.

CARE AFTER ARRIVAL

Upon receipt of tropicals, first determine the temperature of the water. Transfer the fish and water they are shipped in to a clean container and add a quantity of fresh water, being sure to have the temperature of the fresh water exactly the same as the water the fish are in. Then place in room where the temperature is about seventy degrees. Then, if temperatures of your aquarium and shipping water are the same you can place fish in aquarium.

Then I Met a Lady Who Owned a GLASS GARDEN

Elizabeth Foster Mann

. . . New York

ONE MORNING as I stopped to look at a flower cart on the corner, I saw an English Primrose. It was the beloved *Primula* that I had grown for so many years in a garden in the country that was no longer mine. I promptly bought it and took it home, where it bloomed for three short days and then died. To comfort myself I bought a pot of pansies, but they met the same fate.

There was plenty of sunlight in my little house and I had watered both pots conscientiously and sprayed the leaves with a rubber sprinkler. I had always fancied myself as a gardener and their sudden demise hurt my pride.

"Herman," I inquired of the handy man who was tinkering with my leaking radiator, "you know just about everything. Why did my pansies die?"

"The air in here's too dry," replied Herman promptly, sitting back on his heels. "This here radiator's bad for plants. It takes all the moisture out of the air."

Of course, what he meant was that steam heat does not add moisture to the air.

FATE was on my side, for then I met a lady who owned a glass garden, or terrarium. I told her of my attempts at indoor gardening, and she exclaimed, "I know—I know just how you feel! Come with me tomorrow and I'll show you how I garden in winter!"

My curiosity was fired. What was she doing that was more miraculous than the English peppergrass or my own floral display?

She had been very vague about her experiments, so I was quite unprepared for what I found in her charming living-room. Here on a table in her window was a rock garden filled with ferns and mosses and wildflowers, blooming happily.

"What is it?" I exclaimed, looking wonderingly at the glass case filled with plants. "I've never seen one before. It must be something very new!"

She laughed and told me that our grandmothers called it a Wardian case because it had been invented by N. B. Ward, an English doctor, in 1836. Here, at last, I saw, was a real garden, a terrarium, a glass garden, or a Wardian case—not a combination of impersonal potted plants. Vistas were opened to me. "Tell me how!" I begged.



A glass garden almost maintains itself, as it seldom needs watering and almost no care (Photograph by Edwin A. Falk)

She assured me that terrarium-gardening is very simple and ideal. In the first place a terrarium does not have to be watered. The glass cover on the case preserves the moisture given out by the plants so that they water themselves, which was the principle discovered accidentally by Doctor Ward. Insects and diseases are few. Soil purchased at a department store is 10 cents a quart instead of \$6 a load. And if you grow tired of your garden you can rip it apart and begin again.

The soil in the terrarium must be light and well drained. Any glass receptacle large enough to hold a few plants comfortably will do. Glass gardens can be built in anything from a small fish globe to a splendid affair of glass, galvanized iron, and paint, specially constructed. In my enthusiasm I had one made to order: 12 inches wide, 15 inches high, and 24 inches long, with a hinged cover. First of all I put in a layer of charcoal to keep the soil sweet, and then a light soil composed of equal parts peatmoss, humus, loam, and sand.

I HAVE found that ferns and wild plants are the most satisfactory, especially if one wishes a bit of bloom, but many foliage plants, such as the *Sansevierias* and *Croton* varieties, can be used to give a tropical effect. But whatever plants are chosen they must be tough-leaved or woody or they will mildew. Tufa rock is very useful in a terrarium, as it is light and porous and retains some moisture. I put in the little rocks first and then grouped my plants among them. Then I covered what bare soil was left with mosses and lichens. The effect was that of a woodland clearing, with the delicate, fragrant twinflower trailing over a bit of rock, bunchberry lifting its starry white blossom above deep green moss, and a clump of tiny ferns in the background.

I have constructed many terrariums since then, but none has given me quite the same thrill my first one did. I have built them for friends in small fish globes purchased for a quarter, in discarded aquariums, even in tin pans covered with glass cheese-bells.

PROMPT SERVICE

Mrs. E., from New Jersey, wrote us:

I received my shipment of Aquatic Plants and Fishes and was very much pleased with them. More prompt service than you have accorded me in this deal would be **IMPOSSIBLE**, without the use of an airplane.

I received your Catalogue on Monday, mailed you an order on Tuesday and received plants on Saturday.

One hundred hours for a distance of about 750 miles each way. **I'll say this can't be beaten.**

THESE FRIENDS OF MINE WOULD LIKE A COPY OF YOUR CATALOGUE

Name.....	Name.....
Street.....	Street.....
City.....State.....	City.....State.....
Name.....	Name.....
Street.....	Street.....
City.....State.....	City.....State.....

HAVE YOU OVERLOOKED ANYTHING IN ORDERING?

WATER LILIES—That extra box you have—how about a new lily for it? That lily you have tired of—why not replace it with a new variety? Don't forget Dad, he likes to enjoy the Water Garden and include a Night Blooming Lily for his benefit. For the New Water Garden, look over our wonderful collections.

LOTUS—Have you made room somewhere in your pool for one of these stately and beautiful plants? See Page 6.

GOLDFISH—You need a number of **WATER HYACINTHS** for the fish to spawn on. Hyacinths listed on Page 10 and **DIPNET** to catch the fish when you drain your pool (see Page 13), and **FISH FOOD**—your fish deserve the best—and the best is a box of our **OUTDOOR FISH FOOD**.

PLANT PLENTY OF PLANTS—Enjoy the beauty and pleasure your pool is capable of bringing to you. A corner of **WATER POPPY**, another corner with the snowy white flowers of **SNOWFLAKE**—the **CREEPING HYACINTH** as it creeps and blooms across your pool will add much beauty to your pool. A Clump of **JAPANESE IRIS**, alongside your pool, a patch of **FORGET-ME-NOTS** in that swampy place where nothing else will grow.

TALL PLANTS take away those straight lines of your pool. You can do it with our Collection No. 6A. The biggest value ever offered. Page 11.

BEFORE SPRING COMES—Enjoy your Indoor Garden.

AQUARIUMS AND TERRARIUMS—Plants for the Aquarium and Terrarium, Scavengers and Supplies are listed on Pages 16 to 23.

Terrarium Garden Plants

BOG PLANTS

In this type terrarium it is necessary to keep the soil much wetter.

Peat bog soil is best. A semi-aquatic terrarium is the same as the bog terrarium except that one end is built up with rocks to form a sort of island and the other end may have several inches of water.

Venus Fly Trap.....	\$0.15	each
Sarracenia Flava.....	.15	"
Sarracenia Purpurea, Picture Plant.....	.15	"
Umbrella Plant, Dwarf.....	.15	"
Dwarf Acorus.....	.25	"
Philodendron Cordatum.....	\$0.15 and .25	"
Philodendron, Variegated.....	.25	"
Japanese Evergreen (Aglaonema).....	.25	"
Swamp Fern.....	.15	"

WOODLAND PLANTS

The woodland terrarium requires drainage—charcoal and small stones with some sand form an excellent drainage base. Over this should be placed about two inches of soil—Sphagnum Moss, with peat and leaf mold, is excellent.

Maiden Hair.....	\$0.25	each
Astidium25	"
Holly Fern.....	.25	"
Pteris25	"
Pellaea25	"
Selaginella emiliana.....	.15	"
Selaginella denticulata.....	.15	"
Lycopodium15	"
Partridge Berry.....	.15	"
Vinca Minor.....	.15	"

SUPPLIES

Soil Mixture for Bog Plants.....	\$0.15
Soil Mixture, Tropical Plants.....	.15
Sphagnum Moss, Base for Acid-Demanding Plants.....	.10
Green Woods Moss in Sheets.....	.15

A REAL TERRARIUM

This Terrarium is constructed of glass with an artistic metal base. It has a slanting top which makes it handy for planting. Specially designed for Terrarium Gardens. Inexpensive, they are very attractive.

No. T-301, 5 x 8½ x 8 in.....	\$3.50	each, Postpaid
No. T-302, 6½ x 10½ x 9 in.....	4.00	each, Postpaid
No. T-303, 8 x 12 x 13 in.....	8.00	each, Postpaid

FOLIAGE PLANTS

These plants are used for their color. Many of these have interesting colored and marked foliage.

Dracaena Sanderiana.....	\$0.25	each
Fittonia Argyroneura.....	.25	"
Fittonia Verchoeffette.....	.25	"
Maranta—Very Odd.....	.25	"
Peperomia Obtusifolia.....	.25	"
Pothos Aurea.....	.25	"
Coleus—Red Gem.....	.15	"
Wandering Jew—Green and White.....	.10	"

BLOOMING PLANTS

Begonia, Flowering Size.....	\$0.15
African Violet, the Best.....	.50

CREEPING PLANTS

English Ivy, Variegated.....	\$0.15
English Ivy, Small Leaved.....	.15
Heline, Irish Moss.....	.15
German Ivy.....	.15

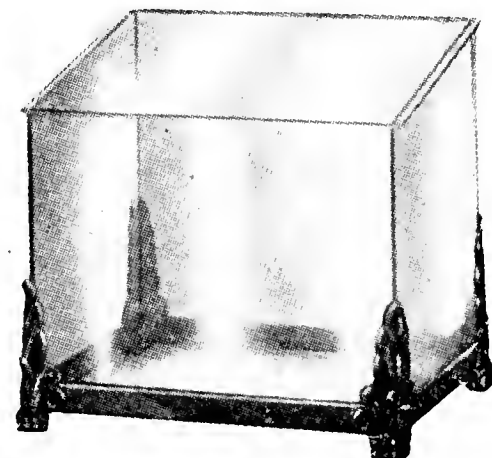
ANIMALS

Chameleons	\$0.25
Newts, Black and Red.....	.25
Newts, Brown with Red Spots, 2 for.....	2 for .25
Baby Turtles.....	25c; 2 for .35

BULB EDGE TERRARIUM

For description and dimensions of this wonderful home for Terrarium Plants see Page 17.

No. 301.....	\$2.50	Postpaid
No. 302.....	6.00	Postpaid
No. 303.....	8.00	Postpaid



ALL ITEMS ON THIS PAGE POSTPAID

Fittings for a Queen's Garden



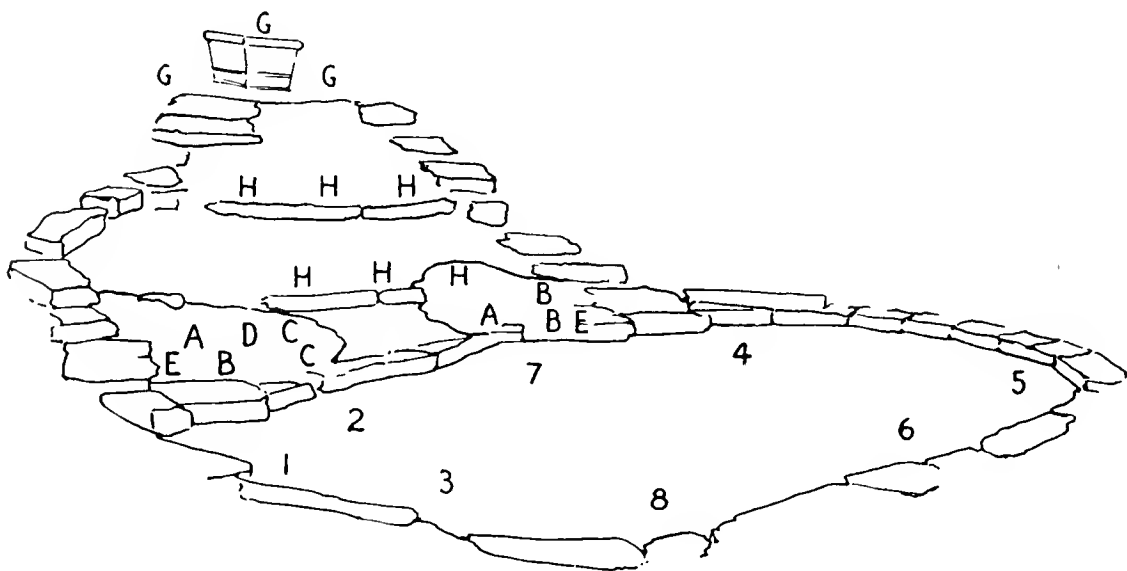
ALL THESE PLANTS AND LILIES

The arrangement of plants shown in this illustration is suitable for a large pool, and is particularly suitable for a pool that has a background of a wall or water falls. The tall growing varieties are placed at the back against this wall. You can group these plants by following the key letters and numerals.

If your pool is out in the open, a square pool or round, all the tall growing plants A, B, C, D and E, would be planted in one large container in the center, or divided into two containers and planted in opposite corners of the pool. You can arrange this beautiful collection of plants in any shaped pool. The plants G and H can be planted anywhere along the outside of the pool.

WHY THIS COLLECTION

Every season customers come to me with this request: "Joe, I want a real collection of Water Lilies. I want the different distinct shades and in each I want what you consider the best in its class. So I have brought together in this collection a very complete group of the "best" lilies. Good bloomers, every one. You can expect a hundred or more flowers each season. You can expect large size, extra large size blooms, from each plant.



For
Only **\$12.95**

COMPLETE AS ILLUSTRATED

Collection No. 9

- (A) 1 Chinese Double Lotus, the best of the Lotus; deep pink.
- (A) 1 American Lotus, large flowers of yellow color.
- (C) 2 Water Taro Plants, large elephant like leaves.
- (D) 2 Primrose Willow, yellow flowers.
- (E) 2 Umbrella Plants, to make a real tropical appearance.
- (G) 3 Ornamental grasses, a favorite for the background.
- (H) 6 Assorted Plants for moist planting.
- (No. 1) Water Lilies, James Brydon, red.
- (No. 2) Indiana, orange.
- (No. 3) Marliac Rosea, deep pink.
- (No. 4) Chromatella, beautiful yellow.
- (No. 5) Gladstone, king of the white lilies.
- (No. 6) Rose Arey, pink.
- (No. 7) Mrs. Pring, ten inch white flower.
- (No. 8) Bisset, night bloomer.

This collection of lilies and plants are suitable for any large pool. We suggest using this array of plants for anyone wishing to have a real Queen's display in their water garden.

Complete for \$12.95

ALL THESE PLANTS AND LILIES FOR ONLY \$12.95