

## **Historic, archived document**

Do not assume content reflects current scientific knowledge, policies, or practices.



62.23  
1933

# HARDY PERENNIALS, FERNS, AND SEEDS

COLLECTED BY

## MACKINAW PERENNIAL COMPANY

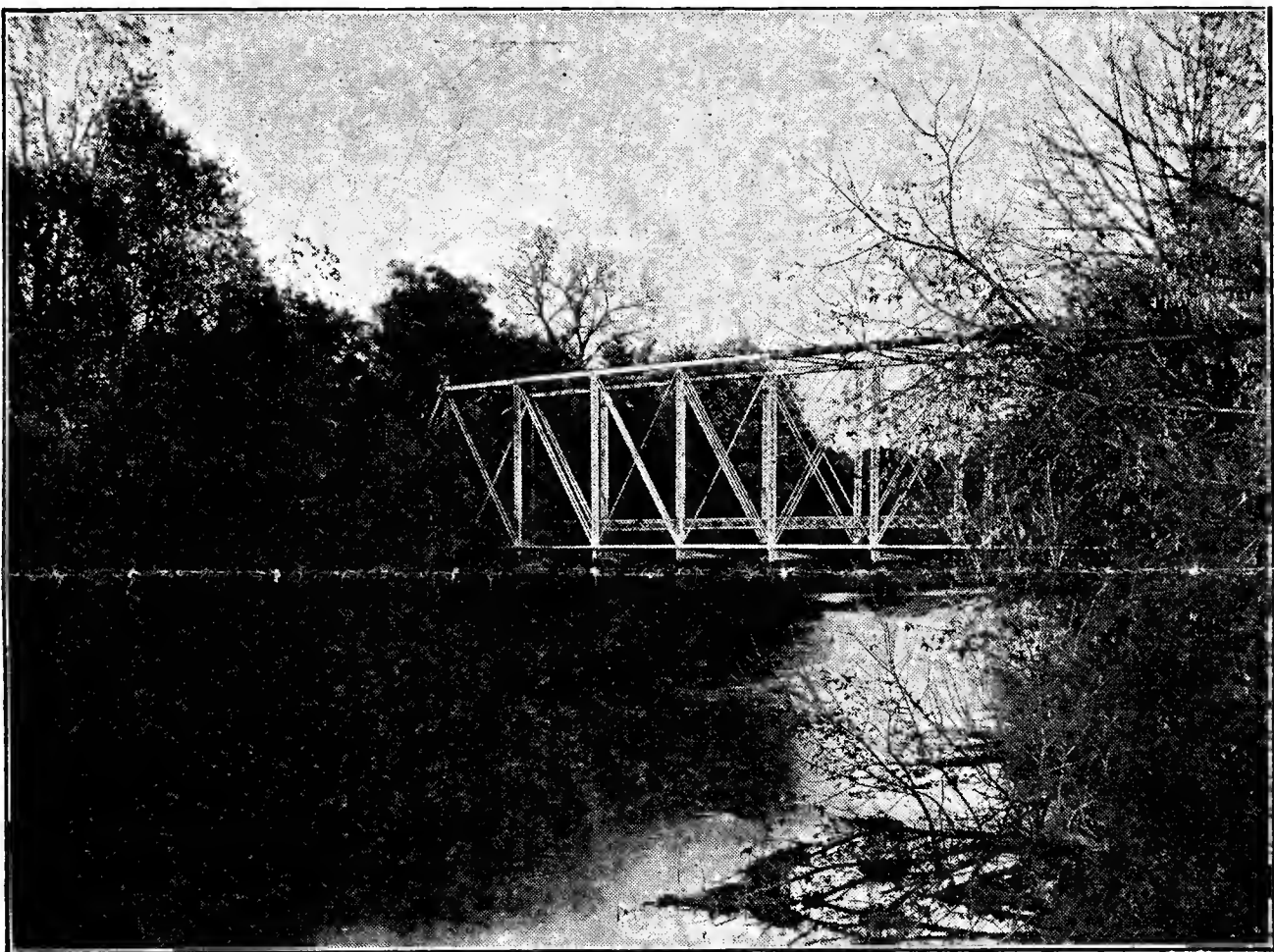
BOYD DAVIS, PROPRIETOR

MACKINAW ❖ ILLINOIS

### WHOLESALE PRICE LIST—FOR DEALERS ONLY

We guarantee all plants to be true to name. All plants graded and packed by experienced graders and packers.

Please state how items are to be sent. Most items go by express. Small lots are sometimes cheaper by parcel post. Very heavy lots are cheaper by freight. But if weather is very hot freight is not safe. In event no instructions are sent we use our best judgment, but assume no risk. Large orders are shipped C. O. D. to customers we do not know. We advise delaying shipments on plants until ripened. However, they may be shipped in the growing or blooming stage, but it is not a good time to move plants. We are ready to ship your order at any time. But if the weather is hot it is not safe to ship plants, and we advise waiting until the weather is cooler. We will do our best at any time. We will assure you good plants and cheaper than you can get elsewhere.



**TERMS—3% DISCOUNT FOR CASH— ALL PACKING FREE**

All responsible parties will be given credit for thirty (30) days from date of shipment. We do not care to sell less than 250 at these prices. Most items may be had in thousand lots, many in five and ten thousand lots. Let us know your needs and we will quote you promptly. And your orders will be shipped promptly.

CHOICE WILD PLANTS COLLECTED FROM THE WILD

Botanical Name	Common Name	Where It Grows	Color of Flower	Time of Bloom	Per 1000
<i>Acorus calamus</i>	Sweet Flag	Bogs	Yellow	June	\$12.00
<i>Actaea alba</i>	White Baneberry	Shade	White	May	15.00
<i>Actaea rubra</i>	Red Baneberry	Shade	White	May and June	30.00
<i>Amorpha canescens</i>	Lead Plant	Sun	Violet	July	15.00
<i>Anemone Cylindrica</i>	Thimble Weed	Sun or Shade	White	August	15.00
<i>Anemone Pennsylvanica</i>	White Anemone	Sun		May-July	10.00
<i>Anemone thalictroides</i>	Rue Anemone	Woods	White	April-June	25.00
<i>Aplectrum hyemale</i>	Putty Root	Shade	Yellow-Purple	June	45.00
<i>Aquilegia canadensis</i>	Wild Columbine	Anywhere	Yellow-Red	May-June	
	1 year plants				10.00
	2 year plants				15.00
	XX plants				30.00
<i>Arisaema dracontium</i>	Dragon Leaved	Indian Turnip	Shade	Green-Purple, May	15.00
<i>Arisaema triphyllum</i>	Indian Turnip	Shade	Green-Purple	May	10.00
<i>Aristolochia hastata</i>	Virginia snakeroot	Shade			30.00
<i>Artemisia serrata</i>	Dusty Miller	Sun	Greenish	August-October	14.00
<i>Asarum canadense</i>	Wild Ginger	Shade	Violet	April-May	10.00
<i>Asclepias incarnata</i>	Swamp Milkweed	Open Flats	Pink-Lilac	July-September	15.00
<i>Asclepias tubrosa</i>	Butterfly Weed	Sun	Yellow-Red	July-September	25.00
<i>Asclepias verticillata</i>	Whorled Milkweed	Sun	White	July-August	10.00
<i>Aster novae angliae</i>	New England Aster	Sun	Purple	July-September	10.00
<i>Aster sagittifolius</i>	Arrow Lvd. Aster	Sun	Blue	September-October	10.00
<i>Aster cordifolius</i>	Hart Lvd. Aster	Part Shade	Pale Blue	September-October	10.00
Asters, Mixed hardy asters					10.00
<i>Baptisia bractata</i>	Bracted False Indigo	Sun	Yellow	May	30.00
<i>Baptisia leucantha</i>	Delicate White False Indigo	Sun		July	30.00
<i>Callirhoe triangulata</i>	Clustered Poppy Mallow	Dry Land	Purple	August-September	20.00
<i>Camassia quamash</i>	Wild Hyacinth	Rich Openshade	Pink	April-May	30.00
<i>Campanula rotundifolia</i>	Hare Bells	Anywhere	Blue	July-Oct.	30.00
<i>Caulophyllum thalictroides</i>	Blue Cohosh	Shade	White	May	15.00
<i>Chelone glabra</i>	Turtle Head	Damp Place	White	August-September	25.00
<i>Chrysanthemum leucanthemum</i>	Oxeyed Daisy	Anywhere	Sun	White, August-October	15.00
<i>Cimicifuga americana</i>	American Bugbane	Hillsides	White	May-June	25.00
<i>Claytonia Virginica</i>	Spring Beauty	Open Shade	Purple	April-June	12.00
<i>Convallaria Majalis</i>	Lily of the Valley	Part Shade	White	May-June	20.00
<i>Delphinium tricornis</i>	Dwarf Larkspur	Sun and Shade	Dark Blue	May-June	15.00
<i>Dicentra canadensis</i>	Squirrel Corn	Shade	Pinkish White	April-May	10.00
<i>Dicentra Cucullaria</i>	Dutchmans Breeches	Shade	White	April-May	10.00
<i>Dodecatheon media</i>	Shooting Star	Sun	Pink	May-June	15.00
<i>Echinacea purpurea</i>	Purple Coneflower	Sun or Part Shade	Purple	June-July	15.00
<i>Echinacea Augustifolia</i>	Coneflower	Prairie	Sun	Purple, June-July	15.00
<i>Equisetum hyemale</i>	Scouring Bush	Sun	Green-Yellow	May-June	15.00
<i>Eryngium aquaticum</i>	Button Snake Root	Sun-sod	White	July	15.00
<i>Erythronium Albidum</i>	Adders Tongue	Violet	Shade	White, April-May	15.00
<i>Eupatorium coelestinum</i>	Mist-Flower	Sun or Part Shade	Purple	September-October	20.00
<i>Eupatorium Ageratoides (urticaefolium)</i>	Snake Root	Open Shade	White	September-November	10.00
<i>Eupatorium perfoliatum</i>	Boneset	Wet	Sun	White, July	20.00
<i>Eupatorium purpureum</i>	Joe Pye Weed	Part Shade	Purple	July-September	18.00
<i>Euphorbia corollata</i>	Flowering Spurge	Sun	White	July-September	20.00
<i>Euphorbia cyparissias</i>	Cyprus Spurge	Sun	Yellow	June	20.00
<i>Gentian andrewsii</i>	Closed Gentian	Damp Sun	Blue	August-October	25.00
Gentian, Prairie Gentian	Opensun	Blue	August-September		80.00

BOYD DAVIS, PROPRIETOR, MACKINAW, ILLINOIS

Botanical Name	Common Name	Where It Grows	Color of Flower	Time of Bloom	Per 1000	
<i>Geranium maculatum</i>	Cranes Bill	Anywhere	Pink	May-June	\$12.00	
<i>Helianthus mollis</i>	Hairy Sun Flower	Sun	Yellow	July-September	15.00	
<i>Helianthus giganteus</i>	Tall Sunflower	Sun	Yellow	September-October	18.00	
<i>Hepatica acutiloba</i> (Evergreen)		Damp Shade	Pink	April-May—		
	1 to 2 plant clumps				10.00	
	3 to 4 plant clumps				15.00	
	5 to 6 plant clumps				20.00	
	7 to 10 plant clumps				30.00	
<i>Hydrastis canadensis</i>	Golden Seal	Shade	White	May	30.00	
<i>Hypericum cistifolium</i>	Round Podded St. Johns Wort	Sun	Yellow	July-August	15.00	
<i>Iris versicolor</i>	Wild Iris	Sun	Blue	May-June	12.00	
<i>Isopyrum biternatum</i>	False Rue Anemone	Shade	White	April-May	15.00	
<i>Jeffersonia diphylla</i>	Twin Leaf	Deep Shade	White	May-June	25.00	
<i>Krigia virginica</i>	Cyntha	Open Woods	Yellow	June-July	20.00	
<i>Liatris scariosa</i>	Button Blazing Star	Sun	Purple	July-September	15.00	
<i>Liatris spicata</i>	Blazing Star	Sun	Purple	July-August	25.00	
<i>Lepachys pinnata</i>	Gray headed Cone Flower	Yellow	Sun	June-September	15.00	
<i>Lithospermum canescens</i>	Puccoon	Open Sun	Yellow	May-June	20.00	
<i>Lithospermum angustifolium</i>	Narrow Leaved Puccoon	Sun	Bright Yellow	April-July	20.00	
<i>Li Paris liliifolia</i>	Lily Lvd. Liparis	Shade	Purplish	June	25.00	
<i>Lobelia syphillica</i>	Great Blue Lobelia	Moist Soil	Sun	Blue	July-October	12.00
<i>Mentha piperita</i>	Mint	Moist Soil	Sun	White	May	15.00
<i>Mertensia Virginica</i>	Blue Bells	Open Shade		April-June—		
	Firsts				14.00	
	Seconds				5.00	
	XX Grade				40.00	
<i>Monarda fistulosa</i>	Horse Mint	Sun	Pink	July-September	12.00	
<i>Oenothera Biennis</i>	Common Evening Primrose	Sun	Yellow	June-September	18.00	
<i>Oenothera Speciosa</i>	Showy Evening Primrose	Sun	White-Pink	May	50.00	
<i>Oxalis violacea</i>	Violet Sheep Sorrel	Sun	Violet	May-June	15.00	
<i>Pedicularis canadensis</i>	Wood Betony	Sun	Yellow	May	20.00	
<i>Pentstemon Laevigatus</i>	Smooth Beards Tongue	Sun	White	June-July	15.00	
<i>Petalostemum candidum</i>	White Prairie Clover	Sun		July-August	20.00	
<i>Petalostemum villosum</i>	Purple Prairie Clover	Sun		July-August	20.00	
<i>Phlox bifida</i>	Cleft Phlox	Mixed Colors	Sun or Shade	April-June	20.00	
<i>Phlox divaricata</i>	Sweet William	Open Shade	Lilac or blue	May-June		
<i>Phlox glaberrima</i>	Wild Pink Phlox	Sun		June-July		
<i>Phlox pilosa</i>	Prairie Phlox	Red		May-June		
	Either of above plants of 3 to 4 stems				12.00	
	Either of above plants of 5 to 6 stems				15.00	
	Either of above plants of 7 to 8 stems				20.00	
<i>Physostegia virginiana</i>	False Dragon Head	Sun	Pink	June-August	15.00	
<i>Podophyllum peltatum</i>	May Apple	Shade		May-June	12.00	
<i>Polemonium reptens</i>	Greek Valerian	Shade	Blue	May	14.00	
<i>Polygonatum biflorum</i>	Solomon Seal	Shade	White	May	15.00	
<i>Polygonatum giganteum</i>	Giant Solomons Seal	Shade	White	May	20.00	
<i>Ranunculus acris</i>	Common buttercup	Sun or Shade	Yellow	May	15.00	
<i>Rudbeckia laciniata</i>	Wild Golden Glow	Part Shade	Yellow	July-August	15.00	
<i>Ruella pedunculata</i>	Stalked Ruella	Sun	Purple	June-August	15.00	
<i>Sanguinaria canadensis</i>	Blood Root	Shade	White	April-May	15.00	
<i>Saponaria officinalis</i>	Bouncing Bet.	Sun	Pink	June-October	12.00	
<i>Scutellaria integrifolia</i>	Skull Cap	Sun or Shade	Blue	July-August	15.00	
<i>Silene stellata</i>	Stary Campion	Shade	White	July	18.00	
<i>Silene virginica</i>	Fire Pink	Shade	Bright Red	May-June	25.00	
<i>Silphium lacinatedum</i>	Compass plant	Sun	Yellow	July-August	25.00	
<i>Silphium perfoliatum</i>	Indian Cup	Damp soil	Yellow	July-September	25.00	
<i>Sisyrinchium augustifolium</i>	Blue Eyed Grass	Sun	Blue	May-June	20.00	
<i>Smilacina stellata</i>	Star Flowered Solomons Seal	Shade	White	June-July	12.00	
<i>Smilacina racemosa</i>	False solomonseal	shade	creamy white	May-June	15.00	
<i>Solidago canadensis</i>	Canadian Golden Rod	Sun	Yellow	August-October	15.00	

**BOYD DAVIS, PROPRIETOR, MACKINAW, ILLINOIS**

Botanical Name	Common Name	Where It Grows	Color of Flower	Time of Bloom	Per 1000
Solidago, assorted,	Golden Rod,	Sun,	Yellow,	August-October	\$15.00
Spirea Filipendula rubra,	Queen of the Prairie,	Sun,	Pink,	June-July	30.00
Stylophorum diphyllum,	Celandine Poppy,	Shade,	Yellow,	May-September	20.00
Talictrum polygamum,	Tall Meadow Rue,	Sun,	White,	June-July	15.00
Tanacetum vulgare,	Tansey, Anywhere,	Yellow,	June		15.00
Tradescantia bracteata,	Dwarf Pink Spiderwort,	Shade,	May-June		35.00
Tradescantia Pilosa,	Zig Zag Spiderwort,	Part Shade,	Lilac Blue,	June-September, singles	18.00
Tradescantia virginica,	Spiderwort,	Part Shade,	Purple,	May-August, Single	10.00
				Small clumps	18.00
Tradescantia virginica,	Nina Dwarf Spiderwort,	Sun or Shade,	Blue,	May-June, Singles	15.00
Trillium Nivale,	Dwarf White Trillium,	Shade,	April		20.00
Trillium recurvatum,	Brown Trillium,	Shade,	May-June		15.00
Trillium Grandflorum,	Shade,	White,	May		10.00
Uvularia perfoliata,	Bellwort, Rich Shade,	Yellow,	May-June		15.00
Verbena hastata,	Blue Verbane,	Sun,	Purple,	July-September	12.00
Vernonia altissima,	Iron Weed,	Sun,	Violet,	August-October	15.00
Veronica Virginica,	Clovers Root,	Sun or Shade,	White,	July-August	15.00
Viola blanda,	White Violet,	Part Shade,	May-June		15.00
Viola palmata,	Palm Leaved Violet,	Sun,	Blue,	May-June	15.00
Viola Papilionacea,	Common Blue Violet,	Sun,	May-June		10.00
Viola pedata,	Birds Foot Violet,	Sun,	Blue,	May-June Single	15.00
Viola Pedata Bicola,	Two Colored Birds Foot Violets,	Part Shade			20.00
Viola pubescens,	Yellow Violet,	Sun or Shade,	Yellow,	May	15.00
Viola pallens,	Sweet White Violet,	Sun,	May		15.00

**FERNS**

Adiantum pedatum,	Maiden Hair,	Damp Shade,	Light Sods		10.00
		Medium sods			15.00
		Heavy sods			25.00
Aspidium acrostichoides,	Christmas (Evergreen),	Shade			15.00
Aspidium thelypteris,	Marsh Fern,	Rich Shade			20.00
Asplenium Thelypteroides,	Silvery Spleenwort,	Damp Shade			22.00
Asplenium augustifolium,	Narrow Leaved Spleenwort,	Shade			22.00
Bolrychium Virginianum,	Virginia Grape Fern,	Shade			15.00
Cystoperis fragilis,	Fragile Bladder Fern,	Moist Shade			10.00
Onoclea sensibilis,	Sensitive Fern,	Moist Shade			15.00
Pteris Aquilina,	Brake, Eagle Fern,	Part Shade			25.00
Phegopteris hexagonoptera,	Broad Beech Fern,	Shade			15.00

**SEEDS**

If you are in need of seeds let us know in time so we can collect the seeds at the proper time.

	1 Lb.	5 Lbs.
Cercis Canadensis, Red Bud	\$2.00	\$9.00
Cornus Paniculata, Brown Dogwood	1.00	4.00
Cornus Stolonifera, Red Dogwood	1.25	5.00
Cockspure Thorn	.75	3.00
Crataegus, Red Haw	.50	2.00
Hydrangea Aborescens, Wild Hydrangea	2.00	9.00
Rhus Canadensis, Fragrant Sumac	.50	2.00
Rhus Glabra, Smooth Sumac	.50	2.00
Sambucus Canadensis, Black Berried Elder	.60	2.50
Viburnum Prumifolium, Black Haw	.75	3.00

**NOTICE**

All packing FREE.

We will assure you plants and bulbs that will please you and your customers.

**CLAIMS**

Claims must be made at once. We all make mistakes but we are ready to correct any mistake at any time.