

Historic, archived document

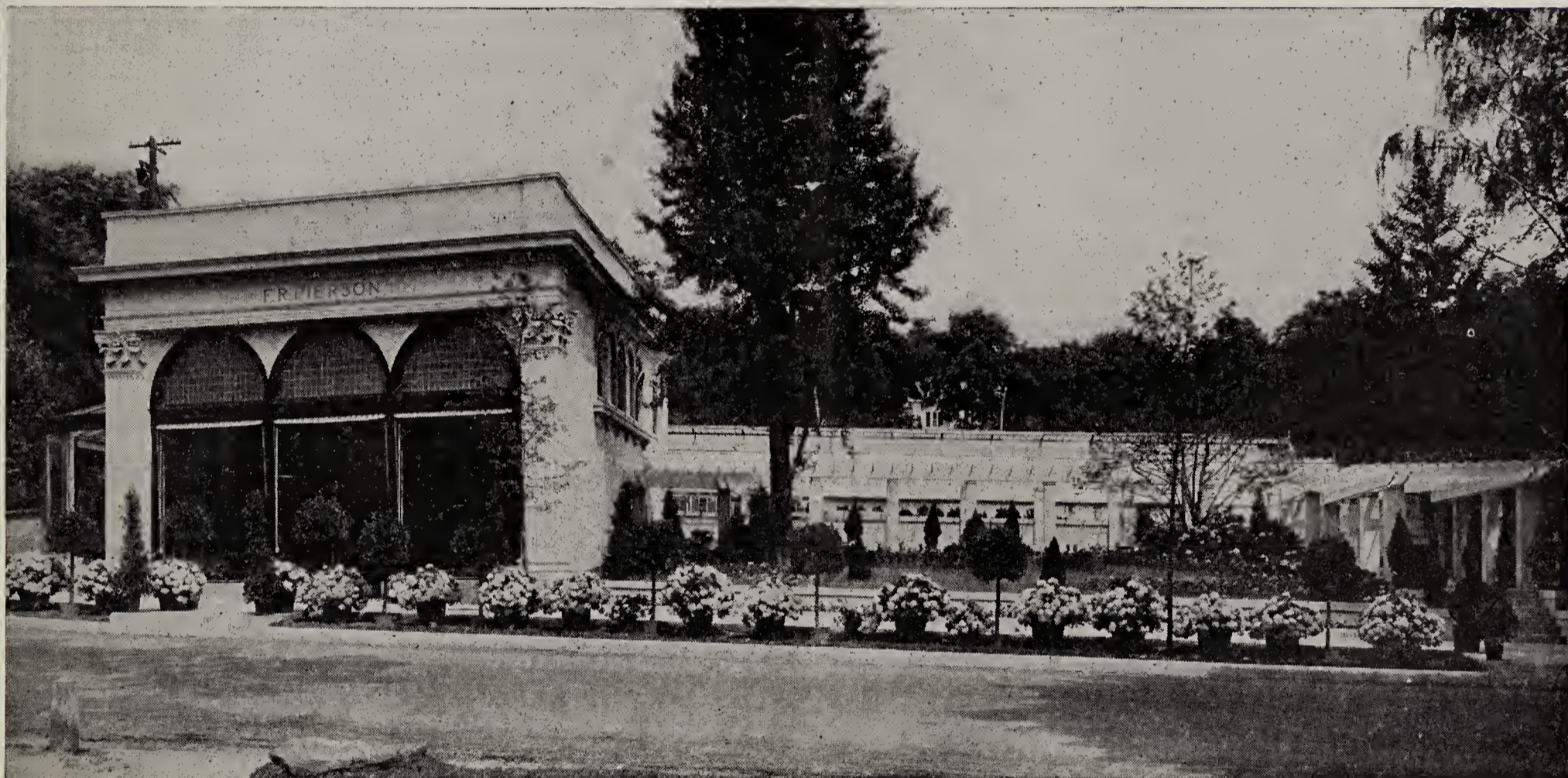
Do not assume content reflects current scientific knowledge, policies, or practices.

62.61

ROSES FOR THE GREENHOUSE and GARDEN

LIBRARY
RECEIVED
★ JUL 7 1933 ★
U. S. Department of Agriculture.

BEDDING, DECORATIVE, FLOWERING PLANTS, FERNS, Etc.



View of our Office and Flower Shop at Tarrytown, N. Y.

1933

F. R. PIERSON

TARRYTOWN NEW YORK

OFFICE AND FLOWER SHOP

Our office and flower shop are at Tarrytown, New York, which is our post office address, where all communications should be sent. We have here one of the finest flower shops in the country, erected in 1914. From this part of our establishment we distribute to our customers the choicest roses, carnations, and other flowers in season, fresh from our own greenhouses.

Our main greenhouse establishment at Scarborough, is one of the largest in the United States. The greenhouses are of immense size, each covering half an acre, and are devoted to the culture of cut flowers, with which we supply the markets of New York and other cities. Our greenhouses at Tarrytown are devoted to the growing of the finest Pierson ferns and other varieties, of which we make a specialty, also palms and other decorative plants. Our Rockwood Hall greenhouses are located midway between Tarrytown and Scarborough, and are principally devoted to the growing of flowering and bedding plants; Begonias, Cyclamen, Easter Lilies, Hydrangeas, Geraniums, Heliotrope, etc. In addition to the greenhouses at Scarborough, Tarrytown and Rockwood Hall, we have a very large rosehouse at Millwood, at the junction of the Bronx River Parkway Extension and the Saw Mill River Road, devoted to the growing of roses.

We give particular attention to floral decorations. Our staff of artists in this department are experienced in this line of work, and can arrange artistically flowers and plants for all occasions.

NURSERIES

Our main nursery, comprising fifty acres, is at Scarborough, which is on the N. Y. C. & H. R. R. R., five miles north of Tarrytown. Thus the grounds are very accessible to those who wish to reach them by the railroad and, as they extend from the railroad station at the river to Broadway, or the Albany Post Road, along which they extend two-thirds of a mile, they are also very conveniently located for those who wish to reach them by automobile.

Our nursery at Yorktown Heights, comprising one hundred and fifty acres, is located on Lafayette Avenue, just west of the Saw Mill River Road and about one-half mile east of the Bronx River Parkway. Here we have growing thousands of the finest evergreens, shrubs and trees, spaced sufficiently to insure the proper development of each tree and shrub.

Our nurseries are exceedingly interesting when the various shrubs and roses and herbaceous plants are in bloom—from early spring until late fall. Visitors are always welcome.

We make a specialty of Rock Garden Plants, and have a fine variety of them. For list of varieties, see our nursery catalogue.

Our stock of hardy shrubs and trees is very complete, and our collection of rare plants is unexcelled, comprising beautiful specimens—much larger than the usual nursery sizes—and many varieties which few nurseries carry.

We have a particularly fine stock of Boxwood for edging and also fine large specimens; evergreens in variety; also elegant specimens of Hemlocks, Flowering Crab Apples, Dogwoods, Koster's Blue Spruce, etc.

LANDSCAPE DEPARTMENT

Landscape work is a most important feature of our business, including the building of Rock Gardens. Rock Gardens with their many possibilities are among the most interesting types of gardens. These can be constructed on a comparatively small piece of ground, and can be made more effective for the outlay than any other kind of garden. We are prepared to design and carry out any plans for planting. Consult our landscape department for advice and suggestions relative to designing and planting.

TERMS

New customers, unknown to us, who desire to open accounts, must give satisfactory references as to their responsibility.

CATALOGUE OF EVERGREENS, HARDY SHRUBS, TREES, ETC., MAILED ON REQUEST

TELEPHONES:

OFFICE AND FLOWER SHOP.....Tarrytown 47, 48 and 49
ROCKWOOD HALL GREENHOUSES.....Tarrytown 216

NURSERIES AND LANDSCAPE DEPT.....Ossining 286
ROSE HOUSES, SCARBOROUGH.....Ossining 276



Photograph showing blooms of the Rose "Talisman"

ROSES FOR THE GREENHOUSE AND GARDEN

We can supply grafted greenhouse grown roses, out of 3½-in. and 4-in. pots, of the following varieties for winter flowering. These are the best varieties for winter flowering, and are grown especially for that purpose. These varieties can also be planted out in the garden in May and June and will bloom this summer and will make large flowering plants for another year.

Briarcliff—This variety is an improved Columbia, deeper in color, a pure pink. Bud is beautifully formed, long and pointed, every flower opening perfectly. Splendid grower, throwing long flowering stems.

Brilliance (Patented)—This new variety is a highly colored Briarcliff and very much darker in color.

Rapture (Improved Butterfly) — Flowers salmon pink, very much brighter and deeper in color than Mme. Butterfly.

Talisman—The flowers of this variety are cup-shaped and very highly colored. The base of the petal is yellow with shadings of scarlet and crimson toward the center and end of the petals. The flower gradually becomes an old rose pink with darker veinings as it develops. It is a very strong, vigorous grower and producer, with long, strong stems.

Templar—A very fine red variety. A good grower and producer.

Above varieties, strong grafted plants, out of 4-in. pots (ready in May), 75c. each, \$7.50 per dozen, \$50.00 per 100.

Joanna Hill—A splendid saffron yellow rose, deepening to orange yellow at the center. The flowers are produced on strong stems without pinching and it is very productive.

Killarney, Double White—Flowers pure white and similar to the White Killarney but with more petals.

Mrs. Calvin Coolidge—This variety is similar in habit to Ophelia and Mme. Butterfly, but the flowers are deep golden yellow which deepens into a rich orange as the flower develops.

Mrs. F. R. Pierson—This is a wonderful rose. A cardinal red or a very bright crimson. Buds long and pointed, of ideal shape and form. Exceedingly fragrant. Foliage dark green, with strong stems.

Premier Supreme—This variety is a sport from Premier. The color is better than Premier and the flower is more perfect in form.

Above varieties, strong grafted plants, out of 4-in. pots (ready in May), 75c. each, \$7.50 per dozen, \$50.00 per 100.

All plants offered in this list are ready for delivery, unless otherwise specified.

BABY RAMBLER ROSES

Gloria Mundi—A wonderful new Baby Rambler. The flowers are a brilliant orange-scarlet with exceptionally large flower heads which form a mass of color when the plant is in bloom. It is a compact, strong grower and is a very attractive variety for forcing or outdoor planting. Grafted plants, 5-in. pots, \$1.50 each, \$15.00 per dozen.

Cecile Brunner (Mignon or Sweetheart)—This dainty rose is particularly well adapted for corsage bouquets, also for table decorations. Flowers small, flesh-pink, produced in abundance. Fine for outdoor planting. Own Root plants, 4-in. pots (ready in May), 75c. each, \$7.50 per dozen, \$50.00 per 100.

BEDDING, DECORATIVE, FLOWERING PLANTS, ETC.

ABUTILON

Eclipse—Foliage yellow and green.

Savitzii—Variegated green and white.

Above varieties, extra sized plants, 3½-in. pots (ready in May), 25c. each, \$2.50 per dozen.

AGERATUM

Fraseri—A very fine semi-dwarf variety. Flowers bright blue. Strong plants, 2¼-in. pots, (ready in May), \$1.25 per dozen, \$8.00 per 100. Extra sized plants, 3½-in. pots, (ready in May), \$2.50 per dozen, \$15.00 per 100.

ALYSSUM

Tom Thumb—A fine dwarf white.

Double White—Very double and full.

Above varieties, strong plants, 2¼-in. pots (ready in May), \$1.00 per dozen, \$6.00 per 100.

ANTHERICUM

Mandaianum—Foliage narrow, edges of the leaves green with creamy white center. Fine for baskets or boxes. Strong plants, 2½-in. pots, 25c. each, \$2.50 per dozen.

ANTIRRHINUM MAXIMUM (Snapdragon)

Antirrhinums are among the finest of our present day bedding plants. These giant blooming varieties will add interest to this popular flower.

Apple Blossom—Rosy pink and white.

Copper King—Bronzy copper color.

Fire King—Copper-rose and orange, white throat.

Golden Queen—Yellow with lilac throat.

Rose—Pure rose color.

Ruby—Carmine.

Snowflake—Lovely pure white.

Grandiflorum Cardinal—Brilliant scarlet.

Above varieties, strong plants, 2¼-in. pots (ready in May), \$1.00 per dozen, \$6.00 per 100.

ASTERS

American Branching—Separate colors, white, pink, purple, etc.

Above colors, strong plants, 2¼-in. pots (ready in May), \$1.00 per dozen, \$6.00 per 100.

ASPARAGUS

Sprengeri—Of a drooping nature, fine for hanging baskets.

Fine plants, 5-in. pots, 60c. each, \$6.00 per dozen.

BEGONIAS, Flowering

Argenteo-Guttata—The plant is of a compact branching habit; leaves dark green, 3 to 5 inches long, heavily dotted with white spots; flowers apple blossom pink. Very desirable as a house plant or for the conservatory. Fine plants, 3½-in. pots, 50c. each; 5-in. pots \$1.00 each.

Luminosa—Flowers dark scarlet, bronze foliage. Excellent for bedding.

Strong plants, 2¼-in. pots, (ready in May), \$1.25 per dozen, \$8.00 per 100; extra sized plants, 3-in. pots (ready in May), \$2.50 per dozen, \$15.00 per 100.

BELOPERONE

Guttata (Shrimp Plant)—A very pretty plant that thrives well in a living room or conservatory, also fine for out-door bedding, blooms all summer. It flowers in long drooping heart-shaped autumn shade and yellow hop-like panicles; flowers white with purple dots.

Fine plants, 4-in. pots, 50c. each, \$5.00 per dozen; 5-in. pots, \$1.00 and \$1.50 each; 6-in. pots, \$2.00 to \$3.00 each; 8-in. pots, \$5.00 to \$7.50 each.

CALENDULA

- Ball's Gold—Dark golden yellow.
- Ball's Orange—Bright golden orange.
- Campfire or Sensation—Dark orange and scarlet.
- Orange King—Deep orange.

Above varieties, strong plants, 2½-in. pots (ready in May), \$1.00 per dozen, \$6.00 per 100.

CANNAS

- Beaute de Poitevine—Crimson, tall.
- Buttercup—Dwarf, yellow.
- Florence Vaughan—Yellow, tall.
- Hungaria—Rose-pink, foliage green.
- King Humbert—Scarlet, foliage bronze.
- New York—Foliage bronze, flowers scarlet.
- The President—Bright glistening scarlet, foliage green.
- Venus—Rose-pink. Fine.
- Wyoming—Foliage bronze-purple, immense spikes, flowers orange.
- Yellow Humbert—Flowers yellow with a red throat.

Above varieties, 3½-in. pots (ready in May), \$2.50 per dozen, \$15.00 per 100.

CASTOR OIL BEAN (Ricinus)

Cambodgensis—Quite dwarf, growing only about six feet high, leaves nearly black, very richly colored. Strong plants, 3-in. pots (ready in May), 25c. each, \$2.50 per dozen.

CHRYSANTHEMUMS

We offer the leading varieties of Chrysanthemums.

HARDY POMPON VARIETIES FOR OUT-DOOR PLANTING

- Autumn Glintz—Yellow, center of flower bronze, reverse of petals yellow and bronze.
- Diana—Pure white.
- Golden Climax—Reddish yellow.
- Pauline Wilcox—Flowers red, tips of petals yellow.
- Rowenna—Bronze yellow, button type.
- Souvenir D'Or—Yellowish bronze.

Above varieties, strong plants, 2¼-in. pots (ready in May), \$1.50 per dozen, \$10.00 per 100.

LARGE-FLOWERED VARIETIES FOR GREENHOUSE GROWING

- Charles Razer—White, mid-season.
- Dr. Enguehard—Rose-pink, late.
- Early Frost—White.

- Edwin Seidewitz—Incurved pink, late.
- Gladys Pearson—Apricot-orange, late.
- Major Bonnaffon—Incurved, yellow, late.
- Oconto—White, early.
- Tints of Gold—Bronze, early.

Above varieties, strong plants, 2¼-in. pots (ready in May), \$1.50 per dozen, \$10.00 per 100.

SINGLE VARIETIES FOR GREENHOUSE GROWING

- Ida Catherine Skiff—Brilliant bronzy amber.
- Rose Godfrey—Bright rose.
- Miss Isabelle—Bronze with silvery reverse of the petals.
- Mrs. E. D. Godfrey—Light pink.
- Mrs. W. F. Buckingham—Pink, early.
- Orient Pink—Anemone-flowered, pink.
- Sunshine—Anemone-flowered, bright yellow.

Above varieties, strong plants, 2¼-in. pots (ready in May), \$1.50 per dozen, \$10.00 per 100.

COBEA

Scandens. Blue—Annual climber, flowers purple bell-shaped. Extra sized plants, 3½-in. pots (ready in May), 25c. each, \$2.50 per dozen.

COLEUS

- Firebrand—Red.
 - Golden Bedder—Yellow.
 - Variegated—Variegated leaves.
 - Verschaffelti—Maroon colored leaves.
- Above varieties, strong plants, 2¼-in. pots (ready in May), \$1.25 per dozen, \$8.00 per 100.

COSMOS

- Lady Lenox—Separate colors, white and pink.
 - Early-flowering—Separate colors, white and pink.
- Above varieties, strong plants, 2¼-in. pots (ready in May), \$1.00 per dozen, \$6.00 per 100.

CROTONS

Assorted Varieties—Fine plants for decorating, vases, or bedding, 5-in. pots, \$1.50 to \$2.50 each.

DAISIES

English—Pink, white. Strong plants from ground, \$1.00 per dozen, \$6.00 per 100.

Paris or Marguerites—Extra strong plants, 4-in. pots (ready in May), 30c. each, \$3.00 per dozen; 6-in. pots, \$1.50 each.

DAHLIAS

We offer some of the best Dahlias of recent introduction, as well as older choice sorts worthy of cultivation.

CACTUS AND HYBRID CACTUS

Aurora—Cream center shading to amber and through tints of pink to white tips. **Roots only, 50c. each.**

Emma Marie—Flowers a lovely combination of bright pink and white; stems strong; very free flowering. **Plants only (ready in May), 50c. each.**

Frau O'Bracht—One of the finest cactus dahlias. Color clear light primrose-yellow. The flowers are large, borne on long strong stems. **Plants only (ready in May), \$1.00 each.**

Garden Glow (Hybrid Cactus)—Flowers orange-red and yellow. **Roots, 75c.; plants (ready in May), 50c. each.**

Harpagon—Flowers clear yellow. Very free bloomer. **Roots only, 50c. each.**

DECORATIVE

The varieties marked F. D. are Formal Decoratives, those marked I. D. are Informal Decoratives.

Champagne. F. D.—The flowers of this variety are very large, of good form, and of distinct color, "Golden Champagne" with chamois shadings. **Roots, 75c.; plants (ready in May), 50c. each.**

Coronne D'Or (Golden Crown). F. D.—Rich golden apricot; reverse of petals rosy-carmine. **Roots 75c.; plants (ready in May), 50c. each.**

Firebrand. F. D.—Flowers large, orange-carmine, well formed. **Roots only, 75c. each.**

Florenz Finger. F. D.—Flowers lavender-pink. Extra. **Roots only, 35c. each.**

Fordhook Emperor. I. D.—A giant flower of a most glorious autumn tint, rich salmon suffused with rose and permeated with gold. **Plants only (ready in May), 75c. each.**

Gold Finch. F. D.—A good yellow. **Roots only, 35c. each.**

Jane Cowl. I. D.—The color of the flower is a warm buff and old gold blending to bright salmon at the center of the flower. **Plants only (ready in May), 75c. each.**

Jersey Beacon. F. D.—The color of the flower is Chinese scarlet with a paler reverse. Flowers large of globular form; a vigorous grower and prolific bloomer. **Plants only (ready in May), 50c. each.**

Jersey Beauty. F. D.—This is unquestionably the finest pink dahlia. Flowers rose-pink, medium in size, borne on long stiff stems. **Roots, 50c.; plants (ready in May), 50c. each.**

Jersey Masterpiece. I. D.—The flowers of this variety are a strawberry-pink suffused with gold at the base of the florets. The stems are very strong and stiff; with foliage of a heavy texture. It is a fine exhibition variety. **Plants only (ready in May), 75c. each.**

Kentucky. F. D.—The color of the flower is a brilliant salmon-orange, shading to orange-yellow at the base of the petals, with pink reverse. **Plants only (ready in May), 75c. each.**

Lillian Baldwin. F. D.—A very beautiful variety. Flowers rose-pink; splendid keeper; with a good stem and habit. **Roots only, 75c. each.**

Millionaire. F. D.—The flowers are immense in size; lavender shading to white. **Roots only, 50c. each.**

Mrs. Carl Salbach. F. D.—A clean vigorous grower; flowers very large, solferino pink, with white suffusion. **Roots only, 50c. each.**

Mrs. I. De Ver Warner. F. D.—A very fine decorative variety, flowers deep mauve-pink or orchid pink; large and of perfect form. **Roots, 50c.; plants (ready in May), 35c. each.**

Pride of Connecticut. F. D.—The flowers are a fine bright rose-pink. **Roots, 50c.; plants (ready in May), 35c. each.**

Purity. F. D.—Flowers large pure white. **Roots only, 35c. each.**

Queen of the Garden Beautiful. F. D.—One of the largest of all dahlias. Measures 9 to 12 inches across. It is a mammoth lemon-colored, decorative dahlia, with unusually strong stems. **Plants only (ready in May), 50c. each.**

Robert Treat, F. D.—American Beauty rose color; flowers large, borne on strong stems. **Roots only, 50c. each.**

Roman Eagle. F. D.—Golden-bronze, a real autumn shade; flowers large. **Roots, 50c.; plants (ready in May), 35c. each.**

Sagamore. F. D.—Bright amber-yellow shaded salmon-rose. **Roots, 50c.; plants (ready in May), 35c. each.**

Watchung Sunrise. F. D.—Rich golden yellow suffused with amaranth pink. **Roots only, \$1.00 each.**

DRACAENA

Sanderiana—A very pretty distinct decorative variety with glaucous green foliage, edged with a broad border of creamy white. **Strong plants, 2½ in. pots, 50c. each, \$5.00 per dozen.**

EUONYMUS

Japonica Aurea Marginata—Yellow and green leaves. **Fine plants, 4 inch pots, 75c. each, \$7.50 per dozen.**

FICUS

Elastica (Rubber Plant)—**Fine plants, 5-in. pots, \$2.00 to \$3.00 each; large plants 10 to 12 in. tubs, \$10.00 to \$25.00 each.**

Retusa (F. Nitida)—A very attractive plant for the house or conservatory. The leaves are bright green 3 to 4 inches long. It is a hardy indoor plant and easily cared for. **Fine plants, 3-in. pots, 50c. each; 4-in. pots, \$1.00 each; 6-in. pots, \$2.00 to \$7.50 each.**

FUCHIAS

Black Prince—Fine for bedding, very desirable for shady places. Extra sized plants, 3½-in. pots (ready in May), 35c. each, \$3.50 per dozen.

GARDENIAS

Veitchii—This variety is the best for forcing. The flowers are white, sweetly scented, set in a background of dark green glossy foliage. Our stock is clean and healthy. Extra sized plants, 4-in. pots 50c. each, \$5.00 per dozen, \$30.00 per 100.

GERANIUMS

Alphonse Ricard—Scarlet.
Beaute de Poitevine—Salmon-pink.
Gifford—Dark pink.
Jean Viaud—Double pink.
Radio Red—Dark red.
Red Madame Barney—Deep red.
Richard Gloed—Rose pink.
Rose—Leaves sweetly scented.
Ivy-Leaved—Red and pink, fine for vases.
Mme. Salleroy—Variegated leaf.
Sensation—Salmon scarlet.

Above varieties, extra sized plants, 3½-in. pots, (ready in May), 25c. each, \$2.50 per dozen, \$15.00 per 100—In bud and bloom, 30c. each, \$3.00 per dozen, \$20.00 per 100.

GLADIOLI

Extra Choice Mixture.
Primulinus Hybrids—Mixed.
 Above mixtures, 75c. per dozen, \$4.00 per 100.

HELIOTROPE

Royal Fragrance—The finest of all Heliotropes. This new variety of Heliotrope is a wonderful bedding plant. It blooms from early June until frost. It is a very strong grower, throwing up very large trusses of dark blue flowers. Extra sized plants, 4-in. pots (ready in May), 35c. each, \$3.50 per dozen, \$25.00 per 100.

Light Blue—The original sort. Extra sized plants, 3½-in. pots (ready in May), \$2.50 per dozen, \$15.00 per 100.

IVY

English—Fine for vases, boxes, etc. Extra heavy plants 3½-in. pots, 40c. each, \$4.00 per dozen, \$30.00 per 100; larger plants 7-in. pots, made up plants, 6 to 7 ft. high, \$2.50 to \$3.50 each.

German—A tender variety, leaves light green. Strong plants 2¼-in. pots (ready in May), \$1.50 per dozen.

LANTANAS

Assorted colors—Fine for bedding. Extra sized plants, 3½-in. pots (ready in May), \$2.50 per dozen, \$15.00 per 100.

Trailing—This variety has a trailing habit, flowers lavender pink. Extra sized plants, 3½-in. pots, \$2.50 per dozen, \$15.00 per 100.

LEMON VERBENA

Aloysia Citriodora—Foliage very sweetly scented. Extra sized plants, 3½-in. pots (ready in May), 25c. each, \$2.50 per dozen.

LOBELIA

Crystal Palace Compacta—A very dwarf compact blue variety, fine for carpet-bedding or edging. Strong plants, 2¼-in. pots (ready in May), \$1.00 per dozen, \$6.00 per 100.

LONICERA

Nitida—A slow growing hardy evergreen shrub. The leaves are small shining dark green. Flowers creamy-white, fragrant; fruit blue-purple, transparent. It makes a very compact plant and is also very desirable when grown as a pot plant for decorative purposes. Fine plants, 3½-in. pots 50c. each, \$5.00 per dozen.

MARANTA

Roseo-Lineata—Rich deep green leaves, beautifully variegated with narrow lines of soft salmon-rose, running out from the mid-rib. Extra sized plants, 3½-in. pots, 75c. and \$1.00 each.

MARIGOLD

Guinea Gold—A new distinct variety. Flowers semi-double brilliant orange flushed with gold. It is of pyramidal graceful habit, growing 2 to 2½ ft. high. The usual marigold odor is less pungent than in other sorts.

Dwarf French—Mixed.

Tall African—Mixed.

Above varieties, strong plants, 2¼-in. pots (ready in May), \$1.00 per dozen, \$6.00 per 100.

NEPHTHYTIS

Liberica—This variety is a good substitute for the "Chinese Evergreen". It is a very hardy plant suitable for conservatory or house decoration. The leaves are green arrow-shaped, resembling a small Calla leaf; semi-climbing habit. Fine plants, 3½-in. pots, 50c. each.

OPHIPOGEN

Japonicus (Japanese)—A very pretty foliage plant, very compact in growth. The leaves are narrow, very dark rich green. It is considered hardy or half hardy in some localities. Very desirable for rock gardens, etc. Fine plants, 2¼-in. pots, 30c. each, \$3.00 per dozen, 3½-in. pots, 50c. each, \$5.00 per dozen.



Photograph showing the effect of growing Hydrangeas in tubs for summer flowering

HYDRANGEAS

GROWN IN TUBS FOR SUMMER BLOOMING

Otaksa. The standard pink variety. We have a fine lot of large plants grown in tubs for July and August flowering. The plants that we offer are well budded and begin to show color in June, and are in perfection during July and August, the time of the year when they are most in demand. Nothing is showier or more satisfactory for lawn or piazza decoration.

Extra fine plants in 14-inch common butter tubs, \$6.00 to \$10.00 each.

If plants are wanted in new cedar tubs, painted green, with handles, price will be \$3.00 each additional.

NEW BABY RAMBLER ROSE, GLORIA MUNDI

This variety is a wonderful new Baby Rambler. The flowers are a brilliant orange-scarlet with exceptionally large flower heads which form a mass of color when the plant is in bloom. It is a compact, strong grower and is a very attractive variety for forcing or outdoor planting. Grafted plants, 5-in. pots, \$1.50 each, \$15.00 per doz.

NASTURTIUM

Golden Gleam—A new double sweet scented Nasturtium. The flowers are large, golden-yellow, average 2½ to 3 inches across and are borne on erect stiff stems about six inches in length, and well above the foliage.

Dwarf or Tom Thumb Varieties—Mixed. Strong plants in 3-in. pots (ready in May), \$1.25 per dozen, \$8.00 per 100.

PACHYSANDRA

Terminalis—A trailing plant, growing 6 to 8 in. high, forming a mass of glossy green foliage. Invaluable as a cover plant, rock garden, border, etc. Succeeds well either in sun or shady places. Strong plants, 2¼-in. pots, \$2.00 per dozen, \$12.00 per 100.

PANSIES

Assorted Varieties—A choice strain. Strong plants from the ground, 75c. per dozen, \$6.00 per 100.

PELLIONIA

Daveauana—A charming plant of branching and spreading habit. The leaves are roundish and pointed, outer edges dark olive-green, with center of light green and veins of dark green running through the leaf. Fine for fancy dishes, miniature gardens and hanging baskets. Fine plants, 2¼-in. pots, 30c. each, \$3.00 per dozen; 3½-in. pots, 50c. each, \$5.00 per dozen.

PHILODENDRON

Cordatum—A fine indoor vine. Better than English Ivy for indoor decoration, requiring little care, leaves dark green, elongated and pointed. Fine plants, 3-in. pots, 35c. each; \$3.50 per dozen.

PETUNIAS

Grandiflora—"Queen of the Market." The flowers are deep carmine red with a scarlet hue, fine shape and slightly waved. Grows about 2 feet high, well branched.

Balcony—A beautiful type of Petunia, with large-sized flowers. Useful for planting in porch boxes, beds, terraces, vases or among rock work.

Separate Colors. Alba, white. Rosea, rose. Red, deep red. Blue, violet-purple.

Rose of Heaven—Bright pink.

Above varieties, strong plants, 2¼-in. pots (ready in May), \$1.00 per dozen, \$6.00 per 100. Extra sized plants, 3½-in. pots (ready in May), \$2.50 per dozen, \$15.00 per 100.

POINSETTIAS

Mrs. Paul Ecke—The Christmas flower, nothing imaginable brightens the Holiday Season, as this gorgeous flowering plant. Flower bracts very large vermilion-red. Strong plants, 2¼-in. pots (ready in August), \$3.50 per dozen, \$25.00 per 100.

SALVIA

Bonfire—Semi-dwarf, scarlet.

Splendens—Scarlet.

Above varieties 2¼-in. pots (ready in May), \$1.00 per dozen, \$6.00 per 100; extra sized plants 3½-in. pots (ready in May), \$2.50 per dozen, \$15.00 per 100.

SANSEVIERIA

Laurenti—This superb variety has variegated leaves. The leaves are light green with darker green markings at intervals across the leaf with a yellow band on each edge of the leaf. Will grow and thrive where few other plants will. Fine for decoration. Single plants 5-in. pots, \$1.50 to \$2.00 each; 6-in. pots, \$2.50 to \$3.00 each; made up plants 8-in. pots, \$7.50 to \$10.00 each; specimens, \$12.50 each.

Zeylanica—A fine plant of upright growth. Leaves green with darker green markings. Fine plants 3-in. pots, 30c. each; 3½-in. pots, 50c. each.

TOURENIA

Fournieri—Sky blue with three large blue spots and a yellow throat. Strong plants, 2¼-in. pots (ready in May), \$1.00 per dozen, \$6.00 per 100.

TRADESCANTIA

Multicolor—Variegated leaves, fine for hanging baskets. Extra sized plants, 3½-in. pots (ready in May), 25c. each, \$2.50 per dozen.

VERBENAS

PIERSON'S GRANDIFLORA VARIETIES

Blue—White eye.

Coccinea—Scarlet, eye small.

Luminosa—Glowing flame pink, shading to salmon.

Salmon Pink—A fine shade of salmon pink.

White—Pure white.

Above varieties, strong plants, 2¼-in. pots (ready in May), \$1.00 per dozen, \$6.00 per 100.

VINCAS

Variegated—Trailing for baskets, vases, etc. Extra sized plants, 3½-in. pots (ready in May), 30c. each, \$3.00 per dozen, \$20.00 per 100.

VITIS (Cissus)

Rhombifolia (The Grape Ivy)—A splendid indoor vine, with graceful foliage. Grows rapidly and luxuriantly. Although not hardy, can be used in localities where there is no frost the same as other Ivies. Fine plants 3½-in. pots, 75c. each, \$7.50 per dozen.

ZINNIAS

PIERSON'S GOLD MEDAL DAHLIA FLOWERED

Canary Bird—A delicate shade of primrose. Flower very large.

Crimson Monarch—The largest and best of the red shades. Flowers often 8 inches in diameter.

Exquisite—Color of flower light with a deep rose center.

Golden Dawn—A beautiful golden yellow of immense size and good form.

Luminosa—A charming shade of bright deep pink.

Old Rose—Flower old rose shade, very beautiful.

Oriole—The flower is immense, orange and gold bicolor.

Polar Bear—Very large, pure white.

Above varieties, strong plants 2¼-in. pots (ready in May), \$1.00 per dozen, \$6.00 per 100.

SUCCULENT AND OTHER PLANTS FOR FANCY DISHES AND MINIATURE GARDENS

Aloe Variegata or "Tiger-Aloe"—A very fine quick growing succulent plant, with beautifully variegated leaves. 2¼-in. pots, 25c. each, \$2.50 per dozen.

Cactus (Christmas or Lobster)—This variety of Cactus naturally comes into flower about Christmas. Nice plants 3-in. pots, 50c. and 75c. each.

Crassula Arborescens—Very ornamental. The leaves are thick and fleshy. It makes a very compact plant. Fine plants, 2¼-in. pots, 25c. each, \$2.50 per dozen; 3-in. pots, 40c. each, \$4.00 per dozen; 3½-in. pots, 50c. each, \$5.00 per dozen; 4-in. pots, 75c. each, \$7.50 per dozen; 6-in. pots, \$2.00 to \$3.00 each.

Crassula Portulacaria Afra—This variety has small roundish leaves, 2-in. pots, 25c. each, \$2.50 per dozen.

Crassula Pseudo Lycopodioides—Leaves slender roundish branches, somewhat like a fork. 2-in. pots, 25c. each, \$2.50 per dozen.

Crassula Tetragona—Forms a small plant of upright growth with small pointed dark green fleshy leaves. 2-in. pots, 25c. each, \$2.50 per dozen; 3-in. pots, 40c. each, \$4.00 per dozen.

Ivy Miniature—A small leaved ivy suitable for miniature gardens, and other plantings where space is limited. 2-in. pots, 25c. each, \$2.50 per dozen.

Myrtus Communis (Swedish Myrtle)—The classic myrtle, evergreen, leaves small, strongly scented. Makes a compact plant. Fine plants, 2-in. pots, 25c. each, \$2.50 per dozen; 3-in. pots, 40c. each, \$4.00 per dozen. Standards, 5-in. pots, \$1.00 each; 6-in. pots, \$2.00 each.

Pachysandra Terminalis—A trailing plant with glossy green foliage. Fine plants 2¼-in. pots, 20c. each, \$2.00 per dozen.

Opuntia Braziliensis—Leaves green, broad, branches from main stem, very attractive. 2¼-in. pots, 30c. each, \$3.00 per dozen; 3½-in. pots, 50c. each, \$5.00 per dozen; 6-in. pots, \$1.50 to \$2.00 each.

Opuntia Indica—One of the finest of the Opuntias. The leaves are a very dark green branching from the original leaf, forming a very unique plant. 2¼-in. pots, 30c. each, \$3.00 per dozen; 3½-in. pots, 50c. each, \$5.00 per dozen; 6-in. pots, \$1.50 to \$2.00 each.

Panax Victoriae—A finely divided graceful variegated-leaved grass, 2¼-in. pots, 25c. each, \$2.50 per dozen; 3-in. pots, 40c. each, \$4.00 per dozen; 3½-in. pots, 50c. each, \$5.00 per dozen.

Peperomia Obtusifolia—Roundish dark green shiny leaves. Fine plants, 2¼-in. pots, 30c. each, \$3.00 per dozen; 3½-in. pots, 50c. each, \$5.00 per dozen.

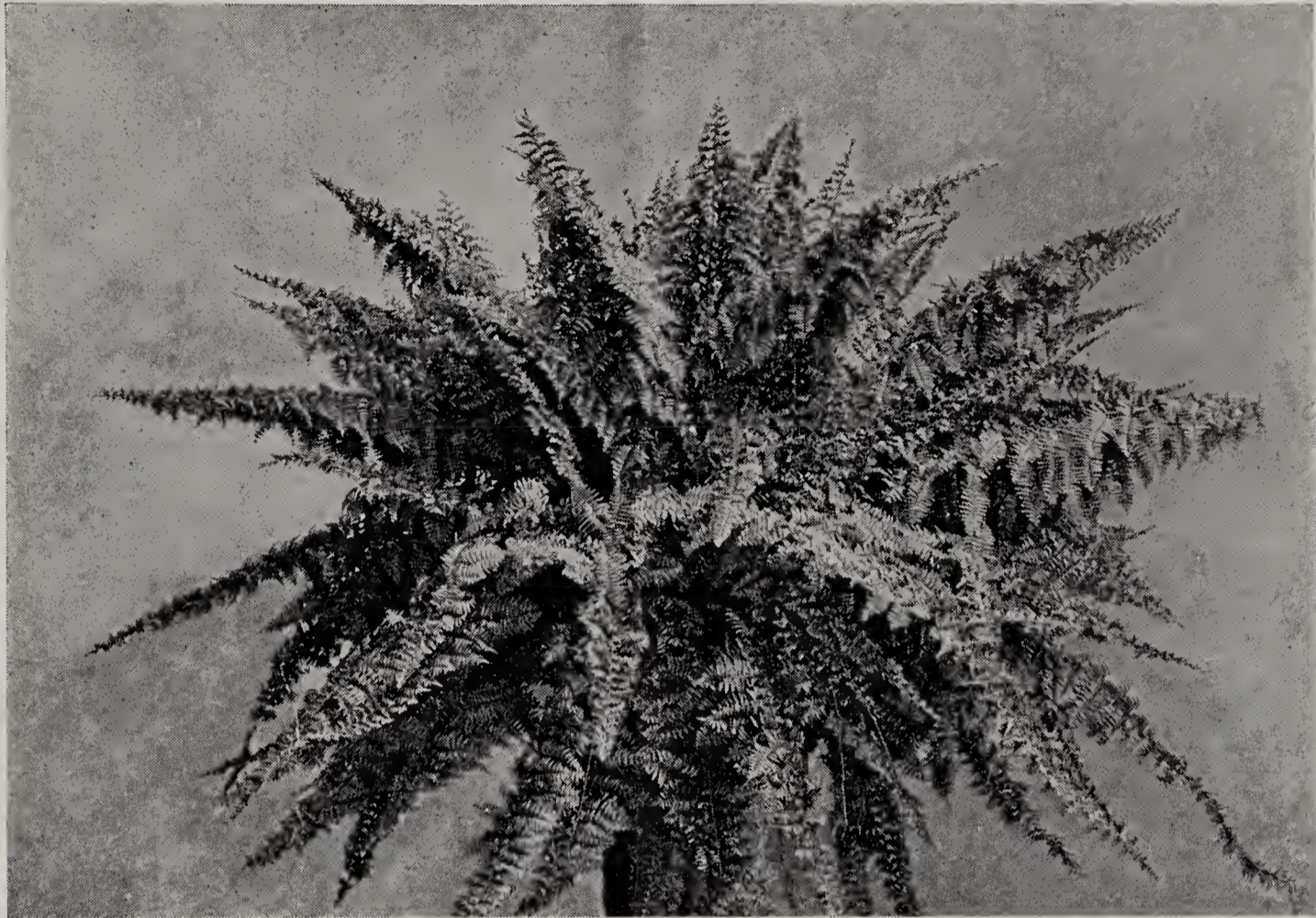
Peperomia Sandersii—Leaves roundish thick and fleshy, greenish-white with dark green heavy lines running out from the base of the leaf. Fine plants, 2¼-in. pots, 30c. each, \$3.00 per dozen; 3-in. pots, 40c. each, \$4.00 per dozen.

Saxifraga Sarmentosa—Roundish dark green leaves, with whitish veins running out through the leaf from the base, serrated edge reverse of leaf deep pink. Fine plants, 2¼-in. pots, 25c. each, \$2.50 per dozen.

Sedum Adolphi—This variety has thick light green leathery pointed leaves. 2¼-in. pots, 25c. each, \$2.50 per dozen.

Succulent Plants—Assorted varieties for fancy dishes or miniature gardens, 25c. each, \$2.50 per dozen. Made up in fancy dishes and miniature gardens, \$2.00 to \$10.00 each.

Fancy Dishes and Miniature Gardens—Filled with a variety of succulent plants, \$2.00 to \$10.00 each.



Nephrolepis Elegantissima

PIERSON'S FINE FERNS

We are known throughout the country as headquarters and growers of choice ferns. Nearly all of the finest varieties grown today originated and were introduced by us. Ferns are among the finest plants for house and conservatory decorations, that there are.

Nephrolepis Elegantissima (The Tarrytown Fern)—A superb variety with long graceful fronds. 3½-in. pots, 50c. each; 6-in. pots, \$1.50 to \$2.00 each; 8-in. pots, \$3.00 to \$5.00 each; 10 to 12-in. pots, \$6.00 to \$7.50 each.

Nephrolepis Dwarf Boston—This variety is somewhat more dwarfed than the original well-known Boston. 3½-in. pots, 35c. each; 6-in. pots, \$1.50 each; 8-in. pots, 3.00 to \$5.00 each.

Nephrolepis Verona (The Lace Fern).—This variety is similar to Smithii. The fronds are very fine and finely divided. 3½-in. pots, 75c. each; 6-in. pots, \$2.00 each.

Adiantum Croweanum (Maiden Hair Fern)—This variety of maiden hair fern produces large heavy fronds, making it particularly fine for cutting. Fine plants, 5-in. pots, \$1.50 each; 6-in. pots, \$2.00 each; 8-in. pots, \$3.00 to \$5.00 each; 10-in. pots, \$7.50 to \$10.00 each.

Cibotium Schiedeii, (Mexican Tree Fern)—One of the finest and best ferns for house decoration. Extra fine plants, 10-in. tubs, \$7.50 to \$10.00 each.

Cyrtomium Rochfordianum (The Holly Fern)—The Holly Fern is considered one of the hardiest and most satisfactory for apartment use and room decoration. Its dark green glossy fronds make it very attractive. Fine plants, 8-in. pots, \$4.00 each.

Polypodium Mandaianum—A very hardy decorative fern for conservatory or room decoration. Fine plants, 8-in. to 10-in. pots, \$5.00 to \$15.00 each.

Small ferns for Fern Pans—Assorted varieties for filling fern dishes, etc. 2¼-in. pots, 15c. each, \$1.50 per dozen, \$10.00 per 100.

HELIOTROPE ROYAL FRAGRANCE

The Finest of all the Heliotropes

This new variety of Heliotrope is a wonderful bedding plant. It is a very strong grower throwing up strong shoots, carrying very large dark blue flower heads. It is one of the finest bedding plants that there is and should be more largely grown than it is.

Extra strong plants (ready in May), 4-in. pots, 35c. each, \$3.50 per dozen, \$25.00 per 100.



Photograph showing Hybrid Delphiniums in bloom in our nursery at Scarborough, New York.

Delphinium, Pierson's Choice Hybrids

During the past few years, there has been an increasing demand for the newer and finer hybrids of Delphinium. We offer a superb strain of un-named Hybrids selected from the choicest imported strains obtainable, see illustration above. These Hybrids with their enormous flower stalks and marvelous colors, shadings and tints, make it the most popular hardy garden flower in cultivation today.

Pierson's Extra Choice Hybrids (ready in April), 75c. each, \$7.50 per dozen.

Seed of Pierson's Choice Hybrid Delphinium, \$1.00 per packet.

For other Delphiniums, see our nursery catalogue.

NEW BABY RAMBLER ROSE, GLORIA MUNDI

This variety is a wonderful new Baby Rambler. The flowers are a brilliant orange-scarlet with exceptionally large flower heads which form a mass of color when the plant is in bloom. It is a compact, strong grower and is a very attractive variety for forcing or outdoor planting. **Grafted plants, 5-in. pots, \$1.50 each, \$15.00 per dozen.**



Photograph showing one of our artistically arranged Rock Gardens.

WE SPECIALIZE IN ROCK GARDEN PLANTS

The Rock Garden is quite the vogue at the present time and in its proper setting it is very interesting and a satisfactory adjunct to the garden where the location and setting will permit. We are specializing in **Rock Garden Plants**, and have a very large variety of them. Nursery catalogue giving varieties, descriptions and prices, mailed on request.

Our Nurseries comprise an interesting collection of all kinds of Trees, Evergreens, Shrubs, Hardy Roses, etc.—large specimen Dogwood, Boxwood, Flowering Crab Apples, Cotoneaster horizontalis, a large stock of extra size shrubs for immediate effects, Pachysandra for ground cover, Viola Jersey Gem, and a large collection of hardy perennial plants.



Pierson's Perfection Lawn Seed

GRASS SEED

The different grass seed mixtures, as well as the separate varieties, here offered are of the finest quality and the highest per cent of germination.

Our special mixtures of lawn seed are noted for their adaptability to different situations and soil conditions, and are used all over the country for the making of the finest private lawns, golf courses, athletic fields, etc. Our mixtures have stood the test for over fifty years, and have given splendid satisfaction, and are composed of the finest re-cleaned grasses of the highest quality and germination. **These must not be compared with cheaper grades, often sold for less money.**

Care should be taken before new lawns are made, that the ground is well enriched and in proper condition for the sowing of the seed. It is very essential in starting new lawns to enrich the ground well with the proper fertilizers like well rotted manure, bone meal, blood and bone, loma, pulverized sheep manure, etc., to insure the best success.

New lawns should be made as early in the spring as weather conditions permit, and can be made up to the time when the hot weather sets in. Lawns should not be made in midsummer, but can again be made in the fall, say from August 15th to September 15th. Some prefer spring, while others prefer fall seeding.

Pierson's Perfection Lawn Seed—Nothing adds so much to the beauty of a country place, as a well-kept, velvety lawn. In order to secure this, it is necessary, in addition to the proper preparing and fertilizing of the soil, to sow the right kind of lawn seed. More disappointment results from the sowing of inferior seed than from any other cause. Our Perfection Mixture is composed of the finest re-cleaned grasses of high quality and as free from impurities as modern machinery can make them, of the kinds that are best adapted for our hot, dry summers, and will quickly form a close velvety turf after being sown. For new lawns, use 120 pounds per acre. One pound will sow 300 to 400 square feet. Where quick results are required, the quantity should be increased.
Lb., 55c.; 5 lbs., \$2.50; 20 lbs., \$9.00; 100 lbs., \$40.00.

For Putting Greens—This mixture will be found to be unexcelled. It contains the fine bladed, low-growing and most hardy grasses, which make a close, firm,

green, and lasting turf. Lb., 85c.; 5 lbs., \$4.00; 20 lbs., \$15.00; 100 lbs., \$70.00.

Pierson's Sleepy Hollow Lawn Seed—This mixture is a grade under our Perfection Mixture. It is composed of a good proportion of fine grasses and white clover, and will produce a fine lawn. Lb., 45c.; 5 lbs., \$2.00; bushel, 20 lbs., \$7.00; 100 lbs., \$30.00.

For Shady Lawns—It is difficult to grow grass in shady places under shrubs or trees where there is a limited amount of sunlight. Our mixture of shady lawn grass, however, is composed of the grasses that do well in shady places, under trees or close to walls where there is little sun. Where the shade is too dense, and where no grass seed will grow, we recommend the planting of *Pachysandra Terminalis*, which is the best ground cover under trees or shrubs. But under ordinary conditions, our Shady Mixture will do well. Lb., 60c.; 5 lbs., \$2.75; 20 lbs., \$10.00; 100 lbs., \$45.00.

Prices quoted on Grass and Clover Seed are for the best quality, and are subject to market changes.

GRASS SEED (Continued)

Creeping Bent Grass (South German mixed)—20 lbs. to the bushel; 2 to 3 bushels to the acre. Lb., \$1.50; 20 lbs., \$25.00; 100 lbs., \$110.00.

Crested Dog's Tail—20 lbs. to the bushel; 1½ to 2 bushels to the acre. Lb., 45c.; 20 lbs., \$8.00; 100 lbs., \$35.00.

Kentucky Blue. Fancy—Cleaned seed. 20 lbs. to the bushel; 2 to 3 bushels to the acre. Lb., 35c.; 20 lbs., \$6.00; 100 lbs., \$25.00.

Perennial Rye (Domestic)—20 lbs. to the bushel; 4 to 5 bushels to the acre. Lb., 25c.; 20 lbs., \$3.50; 100 lbs., \$12.50.

Red or Creeping Fescue—20 lbs. to the bushel; 1½ to 2 bushels to the acre. Lb., 40c.; 20 lbs., \$7.00; 100 lbs., \$30.00.

Red Top. Fancy—32 lbs. to the bushel. Lb., 30c.; 32 lbs., \$8.00; 100 lbs., \$20.00.

Rhode Island Bent (Colonial)—Lb., \$1.50; bushel, 14 lbs., \$17.50; 100 lbs., \$110.00.

Rough Stalked Meadow (*Poa Trivialis*)—Lb., 40c.; bushel, 14 lbs., \$4.90; 100 lbs., \$30.00.

CLOVER SEED

Crimson Clover—Lb., 30c.; bushel, 60 lbs., \$13.50; 100 lbs., \$20.00.

Red Clover Medium—Lb., 40c.; bushel, 60 lbs., \$19.50; 100 lbs., \$30.00.

White Clover—Lb., 70c.; bushel, 60 lbs., \$37.50; 100 lbs., \$60.00.

FERTILIZERS

We offer a select list of reliable, well balanced chemical fertilizers. These fertilizers are noted for producing the best growth of various crops. Owing to the scarcity of animal fertilizers, the chemical fertilizers are now used largely in connection with them or separately. These fertilizers produce quick results, and are readily soluble and easily assimilated, and give the plant the proper food for quick development, as well as for continued growing support.

Loma—A high-grade balanced plant food for all crops. It is immediately available, containing the proper proportion of Nitrogen, Phosphoric Acid and Potash to produce quick results. It is exceptionally fine for the top dressing of lawns and for mixing in the soil for greenhouse and garden use; also for the top dressing of Roses, Carnations and other plants grown on benches, or in pots, in the greenhouse. We have tested Loma in our greenhouses and outside, and it has given splendid results, and we would recommend it as an all-around fertilizer.

5 lbs., 50c.; 10 lbs., 85c.; 25 lbs., \$1.50; 50 lbs., \$2.50; 100 lbs., \$4.00. Price for larger quantity on application.

Pulverized Sheep Manure—Fine for top dressing or for mixing with the soil for greenhouse or garden use; also for top dressing lawns, grass plots, etc., and for making liquid manure.

10 lbs., 80c.; 25 lbs., \$1.50; bag (100 lbs.), \$4.00; ton, \$60.00.

Blood and Bone—A high-grade fertilizer of superior quality for enriching lawns and grass plots. Very desirable for quick and lasting results. Particularly valuable for all garden and farm crops, small fruits, fruit trees, etc.

10 lb., 90c.; 25 lbs., \$1.75; bag (100 lbs.), \$4.50; ton, \$60.00.

Floranid (Urea)—A highly concentrated nitrogenous fertilizer. Lb., 25c.; 5 lbs., 90c.

Bone Meal—A safe and reliable fertilizer. It is largely used for mixing in potting soil and for top dressing roses, carnations, and other plants grown under glass. It is also splendid for garden use. It is made from hard, dry bone, is perfectly pure and entirely free from acid.

10 lbs., 80c.; 25 lbs., \$1.50; bag (100 lbs.), \$4.00; ton, \$60.00.

Lawn Enricher—A very high-grade fertilizer for enriching lawns, athletic fields, putting greens, golf courses, etc.

100 lbs., \$5.00; ton, \$75.00.

Humus—This is not a chemical fertilizer but is a natural organic substance of decayed vegetable matter that has accumulated for ages. It is wonderful for the top dressing of lawns. Incorporating in the soil will render heavy soil more porous and lighter soils will be benefited by the holding of the moisture. Per bag (about 100 lbs.), \$1.00; per yard in bags, \$10.00; load of 3 to 4 yards, bulk, \$9.00 per yard; 50 yards, bulk, \$8.00 per yard; 100 yards, bulk, \$7.50 per yard. The above prices for humus, in bulk, are only for delivery within our local auto-truck delivery limits.

Stim-U-Plant—An odorless plant food in tablet form for fertilizing all kinds of growing plants in the home or garden. It is particularly desirable for use on all house plants.

Package containing 30 tablets, 25c.; 100 tablets, 75c.; 1,000 tablets, \$3.50.



Rhododendrons in bloom

HARDY RHODODENDRONS

We have an unusually fine stock of Rhododendrons of the finest named varieties grown on their own roots so that the plants are much better and hardier than ordinary grafted plants, and very much more valuable than seedlings generally offered. These are an unusually fine lot of plants and we offer them at very reasonable prices. In addition, we have some large specimens for back grounds. These specimens range anywhere from 4 to 8 feet in height.

BOXWOOD

Our stock of Boxwood is very large and particularly fine. We have a very select lot of elegant specimens of **Suffruticosa**, the slow growing compact variety. These specimens must be seen to be appreciated. Many of them are over 100 years old. We invite our customers to call at our **Scarborough Nursery** and inspect them personally. They are exceptionally fine, ranging in size from 3 to 7 ft. high and from 3½ to 10 ft. broad. A list of these specimen Boxwood, giving height, breadth and price will be sent to those interested, on application. We have, also, a wonderful lot of smaller plants for edging borders in gardens, etc., ranging in height from 4 to 7 in. high, very bushy. Also **Sempervirens**, the bush form, which is used largely also for edging borders in gardens, hedges, etc., elegant plants from 8 to 18 in. high and about 6 to 12 in. spread, very heavy and bushy, all at very reasonable prices.

EVERGREENS

We have a particularly fine lot of Evergreens which have been sheared, forming heavy compact plants.

Our stock of **Biota Orientalis** is exceptionally fine. The plants are very bushy, ranging in height from 12 to 30 in; **Hemlock**, fine plants 4 to 6 ft. high, very heavy and broad; **Pungens Glauca Kosteri** (Koster's Blue Spruce) 2 to 4½ ft. high, also very large trees 18 to 25 ft. high. We have also splendid stock of **Mughus** (Dwarf Mountain Pine) 2 to 3 ft. spread; **Resinosa** (Red or Norway Pine) 5 to 8 ft., extra heavy trees, also elegant stock of **Retinospora Filifera**, very heavy specimens 3 to 5 ft; **Plumosa Aurea** (Golden Plume-like Japanese Cypress) 2½ to 4 ft. very heavy and broad, and other varieties of **Retinospora**, of equal importance and value. Also a wonderful lot of **Thuja** (Arbor-Vitae) American, Peabody's Golden, Pyramidal, Wareana, etc. This stock must be seen to be appreciated.

FLOWERING SHRUBS AND TREES

We have a particularly fine lot of different varieties of shrubs for producing immediate effects. These shrubs have been cut back, making them broad and heavy. Our stock of the **Flowering Crab Apple** is particularly fine, also **White-flowered Dogwood**. These plants range in height from 6 to 14 ft. and are extra value. In addition to the White-flowered, we also have the **Red-flowered** from 5 to 7 ft. very fine heavy plants; **Japanese Maples** and other varieties of trees in quantity.

Catalogues of nursery stock, giving description and prices of the above stock sent on application.

F. R. PIERSON
Tarrytown + New York