

Historic, archived document

Do not assume content reflects current scientific knowledge, policies, or practices.

62,71

Shrubs ~ Bulbs ~ Alpines
and
Rare Native Plants

LIBRARY
RECEIVED
★ FEB 7 1933 ★
U. S. Department of Agriculture.

MT. HOOD—11,225 Feet



“View Our Neighbor’s Alpine Meadows”

OREGON *G*ARDENS

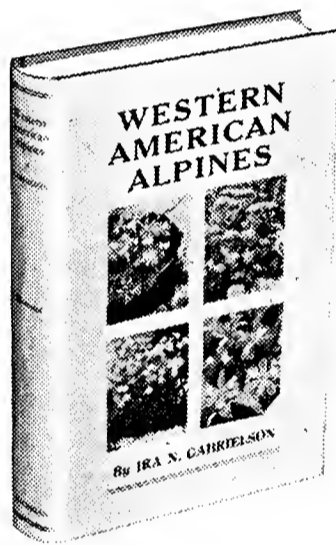
515 N. E. COLUMBIA BOULEVARD
PORTLAND, OREGON
U. S. A.

1933

WESTERN AMERICAN ALPINES

By IRA N. GABRIELSON

Here is a book recommended, not only for the botanist or expert, but written in understandable language that makes it intensely interesting for the collector, the student and even the tourist. WESTERN AMERICAN ALPINES is a volume of 270 pages, 125 beautiful pictures of western wild flowers and describes some 500 species of rare plants.



\$3.50 Postpaid

The author's knowledge of wild plant life, gained through years of experimenting with wild flowers as garden subjects, enables him to give valuable cultural instruction.

As a guide for identification of the mountain top flora it will be greatly appreciated and as a reference book, nothing yet published equals this new volume.

OREGON GARDENS - PORTLAND, OREGON

IRA N. GABRIELSON

J. I. JANSEN

515 N. E. COLUMBIA BOULEVARD
One Block East of Union Avenue

We are now located on Columbia Blvd., just off Union Ave., where the Pacific and Columbia highways meet.

Take the Vancouver car and get off at Columbia Blvd.

Pavement right to our planting and visitors welcome.

PHONE WALNUT 7515



WHAT WE GROW

We are growers on a large scale of hardy perennial, alpine and rock plants, especially those native to the Pacific Northwest. Many of the world's most beautiful rock plants are found in the mountains and deserts of Oregon. We have been collecting and growing native plants for several years and at present have some 800 species growing on our grounds. Some of these natives are now being offered for sale for the first time. Some are robust, strong growers. Others, of most dainty, slow growth, require time to reach their true beauty. Many are worth any effort required to get them established.

HARDINESS

Plants are field grown from seedling stage and practically all should be hardy in any part of the United States. Nearly all the Oregon plants offered for sale are from high altitudes and desert areas where they are exposed to as great extremes of weather and temperature as will be experienced anywhere in eastern United States. Any plant of doubtful hardiness will be so marked.

SHIPPING

Shipments will be made to all points west of the Rockies post paid. Customers wishing delivery east of the Rocky Mountains will please add 10 per cent of the order to help defray the extra cost of packing and postage. Plants that require to be mudded or balled will be sent express collect, unless otherwise requested.

SHIPPING SEASON

Many alpine plants that are regarded as fussy have secured their reputation because of being moved at the wrong time. Most of our native plants have definite dormant seasons during which they may be moved with little trouble, while movement at another season often proves fatal. Therefore, we will take the liberty of withholding shipment of such plants until the proper time unless the purchaser specifically requests otherwise. Notice will be sent advising of approximate shipping date of such back order. As our stock of many of these plants is limited we suggest that orders be placed early.

GUARANTEE

We will guarantee plants grown from cuttings and divisions to be true to name and color. Our seed is purchased from the most reliable sources but we can not guarantee seedlings. Our responsibility ceases when plants are delivered in good condition to the transportation companies and receipt is obtained for same.

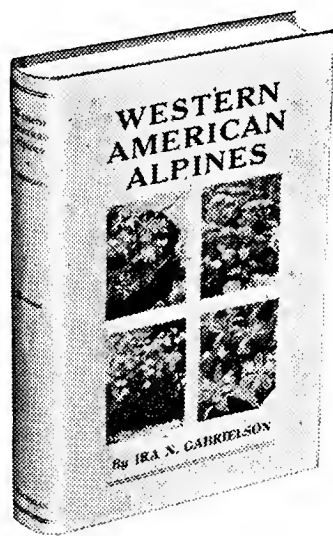
PRICES

A dozen plants of the same kind will be sold at ten times the single plant price, three plants at the dozen rate, and 100 plants at seven times the dozen price. For example, plants priced at 25c each will be \$2.50 per dozen or \$17.50 per hundred. Special prices on larger lots. Order by number if you wish.

WESTERN AMERICAN ALPINES

By IRA N. GABRIELSON

Here is a book recommended, not only for the botanist or expert, but written in understandable language that makes it intensely interesting for the collector, the student and even the tourist. WESTERN AMERICAN ALPINES is a volume of 270 pages, 125 beautiful pictures of western wild flowers and describes some 500 species of rare plants.



\$3.50 Postpaid

The author's knowledge of wild plant life, gained through years of experimenting with wild flowers as garden subjects, enables him to give valuable cultural instruction.

As a guide for identification of the mountain top flora it will be greatly appreciated and as a reference book, nothing yet published equals this new volume.

OREGON GARDENS - PORTLAND, OREGON

IRA N. GABRIELSON

J. I. JANSEN

515 N. E. COLUMBIA BOULEVARD
One Block East of Union Avenue

We are now located on Columbia Blvd., just off Union Ave., where the Pacific and Columbia highways meet.

Take the Vancouver car and get off at Columbia Blvd.

Pavement right to our planting and visitors welcome.

PHONE WALNUT 7515



WHAT WE GROW

We are growers on a large scale of hardy perennial, alpine and rock plants, especially those native to the Pacific Northwest. Many of the world's most beautiful rock plants are found in the mountains and deserts of Oregon. We have been collecting and growing native plants for several years and at present have some 800 species growing on our grounds. Some of these natives are now being offered for sale for the first time. Some are robust, strong growers. Others, of most dainty, slow growth, require time to reach their true beauty. Many are worth any effort required to get them established.

HARDINESS

Plants are field grown from seedling stage and practically all should be hardy in any part of the United States. Nearly all the Oregon plants offered for sale are from high altitudes and desert areas where they are exposed to as great extremes of weather and temperature as will be experienced anywhere in eastern United States. Any plant of doubtful hardiness will be so marked.

SHIPPING

Shipments will be made to all points west of the Rockies post paid. Customers wishing delivery east of the Rocky Mountains will please add 10 per cent of the order to help defray the extra cost of packing and postage. Plants that require to be mudded or balled will be sent express collect, unless otherwise requested.

SHIPPING SEASON

Many alpine plants that are regarded as fussy have secured their reputation because of being moved at the wrong time. Most of our native plants have definite dormant seasons during which they may be moved with little trouble, while movement at another season often proves fatal. Therefore, we will take the liberty of withholding shipment of such plants until the proper time unless the purchaser specifically requests otherwise. Notice will be sent advising of approximate shipping date of such back order. As our stock of many of these plants is limited we suggest that orders be placed early.

GUARANTEE

We will guarantee plants grown from cuttings and divisions to be true to name and color. Our seed is purchased from the most reliable sources but we can not guarantee seedlings. Our responsibility ceases when plants are delivered in good condition to the transportation companies and receipt is obtained for same.

PRICES

A dozen plants of the same kind will be sold at ten times the single plant price, three plants at the dozen rate, and 100 plants at seven times the dozen price. For example, plants priced at 25c each will be \$2.50 per dozen or \$17.50 per hundred. Special prices on larger lots. Order by number if you wish.

Rock Gardening

THE newest and, in many ways, the most delightful form of gardening is in building and maintaining rock gardens. Our business is the propagation of perennial plants and bulbs suitable for such gardens. We hope this little catalogue will fall into the hands of many persons who are just becoming interested, and we are, therefore, giving a few pointers on the proper building of rock gardens.

Contrary to the belief of many, building a rock garden is neither mysterious nor difficult. A rock garden is primarily a place in which to grow and display the dazzling color and compact habits of the alpine and rock plants. If a stone mason be employed for the work a display of masonry or rock with a few poor places for plants usually results.

It is possible to spend endless amounts of money on rockeries and many people in this country feel it to be a rich man's game. As a matter of fact, because of their dwarf growth, a surprisingly large number of rock plants can be grown in a small space. This makes it possible to work out color combinations and seasonal displays in a small space.

No matter if your rock garden be small or large, build it right. Do not put up a pile of rock and throw dirt over it. First be sure of drainage. Dig down, put in a layer of small rock and gravel, and with this as a foundation begin to build the rockery. If possible, choose rough irregular stones well weathered so that no newly broken surfaces will show. Place the rock so that it will be in a natural position, always with the largest surface down and sloped so the water will reach the roots of the plants to be planted later about them. Build from the bottom, packing the earth, which can be ordinary garden soil mixed with one-fourth sand and an equal amount of leaf mould, firmly about the rocks and in the crevices to accommodate the different types of plants. If possible, allow it to settle some time before planting. Some rocks should be completely buried as many alpinists delight in wrapping their roots about them to secure coolness and moisture.

Therefore, keep these points in mind when building a rock garden:

Rock should be half to two-thirds buried in the ground, always with the largest surface down.

Place the rock tilted back so water will penetrate to the roots of the plants.

A bank or natural slope is an advantage as it saves labor.

Provide a place for shade plants and a boggy place if bog plants are desired.

Most alpinists delight in full sun if rocks and some moisture are present to provide coolness for the roots.

Porous and absorbent rock is best and it should all be of the same kind. Alpinists need a good depth of soil.

If the soil is heavy provide drainage by using gravel or broken rock under the soil and mix some sand and gravel with the soil. Leaf mould will also be an advantage.

Earth should be packed firmly in crevices and about the rocks.

Don'ts to Be Observed in Building a Rock Garden

Don't place rocks so upper overhang the lower ones.

Don't build a garden of rocks, but a garden for alpine flowers.

Don't use more than one kind of rock in construction.

Don't build under the drip of trees or close to a building.

Don't make the soil rich with manure; it makes the plants straggly.

Don't use smooth hard surface rocks.

Don't use too many or too small rocks.

Don't display, but conceal any mason work if possible.

Planting Suggestions

Young thrifty plants quickly shape themselves to the contour of the rocks and look as if they belong there.

The best effects can be secured by keeping a balance between the various types of ground covers, dwarf shrubs, evergreen and deciduous

perennials and dainty bulb flowers. Some of each will distribute the blooming period through the season.

For ground covers and carpeters the creeping Thymes take first rank, with *Sagina* a close second. In our opinion, many of the Sedums are valuable for ground covers. Such dainty flowering bulbs as Scillas, *Galanthus*, Grape hyacinths, small species of Tulips and Narcissus and our own native *Calochorti* and *Erythroniums* planted beneath carpeting plants will increase in beauty for years, if left undisturbed. The ground cover makes a charming background for the bulb flowers and after the bulb foliage dies down, keeps the space attractive throughout the year.

Evergreen shrubs, such as Heather, shrubby Thymes, *Helianthemum*, *Santolina*, Pentstemons, *Ceanothus prostratus* and *Kalmia microphylla* are good for winter foliage effect. Many of the Sedums, encrusted and mossy Saxifrages, Veronicas and creeping Thymes are also evergreen in this country and make a fine winter display.

Dainty and slow growers should not be planted close to the rank growing types. Such plants as the dwarf Phlox, Iris, *Lewisia*s and *Viola*s are especially desirable for small pockets, while *Arabis alpine*, most *Aubretias*, *Cerastium tomentosum* and the vigorous *Campanulas* should be in large pockets and made to stay there.

Don't use Michaelmas daisies, German iris, *Delphiniums* or other tall and robust plants, however beautiful they may be, in a small rockery. They are out of proportion and, what is more to the point, will often kill out the more desirable plants of slower growth.

Alpine Plants—What Are They?

Alpines are not a group apart but rather relatives of familiar lowland plants that have adapted themselves to the short growing season and rigorous climatic conditions on the mountain heights. Thus we have alpine lupines, asters, buttercups, cinquefoils, phlox and so on, all close relatives of tall growing lowlanders of the same groups. Alpine forms almost invariably sacrifice stem and leaf growth in favor of the flower. This results in dwarf growing, small leaved species with flowers as large as their lowland cousins. Frequently the intense light of the high mountains seems to intensify the colors of the flowers, giving them purer and more dazzling colors.

Such dwarf forms have been developed in all the mountain ranges of the world so that there is an almost endless variety from which to choose. The mountains of Europe and Asia have yielded up their alpine treasures to enthusiastic plant explorers until many of the finest are more widely known in American gardens than our own choice native plants. There is no area in North America that can produce a greater variety of choice alpines than the mountains of Oregon. The Cascades, the Siskiyou, the Blue Mountains and the desert ranges of the southeastern part of the state all have their alpine flowers and it is our hope to introduce many of them to the gardens of this country.

Perhaps the finest of American alpines are the dwarf phlox of which Oregon has a goodly array in white, lavender and pink. In addition to those are many Pentstemons, Saxifragas, *Erythroniums*, *Brodiaeas*, Lilies, *Eriogonums*, Asters, *Erigerons*, *Ranunculus*, *Potentillas*, Violets, *Lewisia*s and many others that are yet entire strangers to our gardens. Some of them are listed in this catalogue for the first time. Of many others we have a limited stock from which we expect to grow enough plants to warrant putting them on our list. It will pay anyone interested in something new for their garden to get in touch with us as we can supply individual plants of many not listed as yet.

Some shrubbery is essential in a well-balanced rock garden and a shrubby background often adds greatly to its beauty. For small rockeries there are tiny shrubs and for larger ones some of the taller growers are available.

The following, which are described in the main body of this catalogue, are suitable for various uses in the rockery: *Arctostaphylos*, Azalea, *Berberis*, *Ceanothus*, *Cistus*, *Genista*, *Helianthemum*, *Kalmia*, *Phyllodoce*, *Rhododendron*, *Santolina*, *Shortia*, *Thymus citriodorus*, and the following Pentstemons: *barettae*, *cardwelli*, *fruticosa*, *menziesii*, and *rupicola*.

Plants for the Rock Garden

			Price
ACAENEAE			
50	microphylla. Mossy foliage, showy and singular rosy spines. Height 3 inches.....	\$.25
ACHILLEA			
100	argentea. Dwarf silver leaved plant with heads of white flowers. Height 6 inches.....		.25
105	tomentosa. A neat dwarf plant with downy foliage and flat flower heads of bright yellow on 6 to 8 inch stems. June-July20
AETHIONEMA			
120	grandiflorum. Twelve-inch shrub, the largest of the family, with blue gray foliage and big pink flowers in loose heads		.35
126	ovalifolium. A neat gray-leaved shrub with bright pink flowers June-July. Height 6 to 10 inches.....		.25
128	shistosum. A dainty shrub, pink flowers. Height 6 to 8 inches25
130	warleyensis. A semi-prostrate little shrub of some 6 inches with stiff little blue green leaves, and bright pink flowers in May and June. The best of all these dainty little sun-loving plants75
ALSINE			
143	bauhinorum. Dainty mats of fine green leaves from which arise on wavy stems many pure white flowers. Good plant. Creeper30
ALYSSUM			
155	amanum. A creeping mat of silvery foliage covered in spring with heads of clear yellow flowers. Good and easy, should be a standard rock plant in every garden. Creeper.....		.25
160	idaeum. A fine new prostrate silvery leaved Alyssum with heads of soft yellow flowers in May.....		.30
170	saxatile compactum. Gray foliage covered with masses of yellow flowers in early spring. Height 12 to 18 inches....		.20
ANDROSACE			
198	lactea. Little rosettes of shiny dark green linear leaves, above which, on 2-inch stems, are the dainty clear white flowers with a golden eye that has all the airy grace of the androsace.....		.35
199	laggeri. Tiny rosettes of prickly leaves above which, in May and June, appear fine umbels of soft pink. The finest and most compact Androsace yet introduced and one of the finest rock plants known. Strong field-grown plants75
200	lanuginosa. Silver foliage, pink flowers, long bloomer and a fine representative of this choice group of plants. Creeper		.35
203	primuloides. Similar to sarmentosa but with the leaves of the rosettes covered with long white hairs. Flowers flesh pink carried in heads on 4-inch stems.....		.25
210	sarmentosa. Spreading masses of silvery rosettes carrying goodly sprays of soft pink flowers. Height 4 inches.....		.25
211	sempervivoides. Neat rosettes of fleshy oval leaves fringed with hair on the edges. Rose pink flowers on 4-inch stems35
ANEMONE			
215	blanda. An early spring beauty. Soft blue flowers with a minute golden center. Height 3 inches.....		.35
220	deltoides. Native. A shade-loving anemone with lovely white flowers on foot stems.....		.25
224	fulgens. A beautiful European which blooms early with big blazing red flowers on 8 to 10-inch stems. An exceptional plant35

SEND FOR BULB LIST

ANEMONE — Continued

		Price
230	oregana. Native dainty woodland anemone varying in color from white to clear blue. Height 8 to 10 inches.....	\$.25
240	pulsatilla. Fine early bloomer, large violet to lavender half-open flowers on hairy stems. Height 8 to 12 inches.....	.25
242	St. Brigid. Early spring flowers in a variety of colors. Height 10 to 14 inches.....	.15
243	sylvestris. A fine white woodland Anemone for naturalizing. It quickly forms nice colonies and blooms in spring. 12 inches20
244	vernalis. Leave like those of a course Anemone pulsatilla and open opalescent cups, white within and violet without. Early spring50

AQUILEGIA

250	coerulea. Long-spurred blue and white flowers. Colorado state flower. The best of all columbines.....	.25
260	formosa. Native. Red and yellow flowers. Very good. Height 18 to 24 inches.....	.25
265	leptocera. Soft white long-spurred columbine from Utah mountains often described as a form of coerulea. One of the most showy plants of our garden. 18 to 24 inches...	.35
274	pyrenaica. A beautiful dwarf columbine with dainty foliage and flowers of deep violet. One of the most choice for the rock garden. Height 12 to 14 inches.....	.35

ARABIS

280	alpina. Low compact domes of evergreen rosettes, covered in spring with white flowers. Desirable for edgings, walls or large pockets. Height 6 to 10 inches.....	.15
281	alpina flora plena. Double flowering form of the above....	.15
283	Alpina rosea. Soft pink form of this popular rock cress. Height 6 to 8 inches.....	.15
288	koelheri. Native. A gray leaved woody evergreen Arabis with dark red flowers in slender sprays. A rare plant and real novelty. Height 8 inches. April to June.....	.50
290	purpurascens. Native. Compact rosettes of heavy green leaves, bright red to purple flowers. Needs poor soil. Rare. Height 8 to 10 inches.....	.30



CAMPANULA ROTUNDIFOLIA



LEWISIA HOWELLI

ARCTOSTAPHYLOS		Price
310	uva-ursi. Native. A prostrate shrub with shiny evergreen leaves and bright red berries.....	\$.35
ARENARIA—Sandwort		
315	balerica. Dainty creeping mat of bright green leaves with tiny white flowers in late summer.....	.25
325	montana. Neat growing evergreen; clear white flowers in spring; dainty appearance. Height 6 to 8 inches.....	.25
ARMERIA—Sea Thrift		
330	maritima. Compact clumps of grassy foliage and heads of pink flowers. Height 6 to 8 inches.....	.25
ASARUM—Wild Ginger		
340	hartwegi. Native. Variegated leaves, each leaf is soft green with silvery area along the midrib. A fine shade ground cover. Creeper.....	.30
ASTER		
350	alpina. Alpine Aster. Large lavender flowers with yellow centers. Forms low mat of leaves. Long bloomer. Height 10 to 12 inches.....	.25
353	Beauty of Ronsdorf. A fine 15-inch aster with delicate violet flowers, each having a golden center. Fine for rock garden or cutting.....	.25
360	subcoerulus. A magnificent aster alpina of some 15 inches and a June bloomer.....	.25
365	yunnanensis. A 12 to 18-inch Aster with large brilliant blue flowers. Very vigorous and floriferous.....	.35
ASTILBE		
370	davidi. Herbaceous spirea with good foliage and plumes of soft pink. Good for shade. Height 24 to 36 inches.....	.50
AUBRIETIA		
400	hendersoni. Beautiful compact evergreen. Covered at intervals with violet flowers. One of the best. Should be in every rock garden. Height 6 to 10 inches.....	.25
405	fire king. Red flowering form of the above choice rock plant	.25
BELLIUM		
415	coerulescens. A dwarf aster-like plant with flat rosettes of bright green leaves and pink or white flowers. A real dwarf that flowers all season.....	.20
BERBERIS		
423	gracilis. A compact growing holly-leaved barberry for shrubbery plantings and large rock gardens. Grows about 2½ feet high. Small plants 50c; large field grown..	.75
428	verruculosa. Dwarf evergreen barberry with arching branches and dark green foliage. One of the best of all barberries. Height 2 to 3 feet. Small plants only....	.50
CALAMINTHA		
435	alpina. A fine dwarf evergreen shrub which is covered in mid-summer with violet and white mint-like flowers. Height 6 to 8 inches.....	.20
CALCEOLARIA		
440	polyrrhiza. A spreading mat of dull green leaves from which arise 4-inch stems carrying odd yellow flowers spotted with brown. Something good. 4 to 6 inches....	.25
CALTHA—Marsh Marigold		
450	biflora. Native. Big round shiny leaves, white buttercup flowers. Height 10 to 14 inches.....	.25
453	palustris. The Cowslip of the mid-western states. Shining green leaves and clusters of butter yellow flowers. Good for a wet place. Height 10 to 12 inches.....	.25

SEND FOR BULB LIST

CAMPANULA

Price

- 456 **carpatica.** Fine rock plant, big open blue saucers on airy stems above a mass of green foliage. 10 to 12 inches.....\$.25
- 457 **carpatica alba.** A fine white form of the above..... .25
- 460 **garganica.** A dainty dwarf bell flower covered in summer with starry blue flowers with a white eye. One of our favorites. Height 4 to 6 inches..... .25
- 468 **lauri.** A very fine new Campanula from the Mediterranean. Ample purple saucers on slender stems. June and July. Height 6 to 10 inches..... .25
- 469 **muralis.** Dense tufts of dark green foliage with large blue bell-shaped flowers25
- 470 **persicifolia.** Peached leaved bellflower, soft blue bells. Height 30 to 36 inches..... .20
- 471 **persicifolia alba.** A pure white form of the above..... .20
- 472 **piperi.** Native. We are able to offer true stock of this rare plant. Its compact rosettes of dark green leaves and big open blue flowers sitting alomst on the foliage make it outstanding among American wild flowers..... .75
- 474 **pulla.** A fine dwarf lime loving alpine, with bright glossy green leaves and 4-inch stems, each carrying a hanging violet bell35
- 475 **pusilla.** Fairy thimble. Compact mats of green leaves. Flower stems carry dainty nodding pale blue bells. A A real beauty. Height 4 to 6 inches..... .25
- 476 **pusilla alba.** A pure white form of the above, even more to be desired25
- 485 **rotundifolia.** Native. Compact mats of dwarf leaves; wiry steams bear a profusion of bright blue bells. Height 12 to 16 inches20

CEANOTHUS

- 520 **prostratus.** Native. Oregon's best shrub for the rock garden. Imagine a mat of evergreen holly-like leaves covered in spring with round umbels of dainty lavender lilac-like flowers. Established plants become a yard across. Creeper50

CERASTIUM

- 530 **tomentosum.** Masses of silvery foliage blanketed in spring with pure white flowers. Strong grower. Good for edging and walls. Height 6 to 10 inches..... .15

CHELONE (Pentstemon)

- 540 **barbatus torreyi.** Basal masses of shining green leaves, open panicles of bright red flowers. Good for large pockets. Height 24 to 36 inches..... .25



CALTHA LEPTOSEPALA

CHRYSANTHEMUM

Price

- 545 **amelia.** A distinct novelty, growing less than 2 feet and producing fine double pink flowers from mid-summer to frost\$.20
- 550 **mawii.** A beautiful dwarf with crinkled foliage and clear pink single chrysanthemums that fade to white as they age. One of the most distinctive novelties in recent years35

CISTUS—Rock Rose

- 560 **crispus.** Fine rock shrub, thick soft gray leaves, rose-like purple flowers. Fine shrubs. 4 to 6 feet. 12-inch plants. .50

CONVOLVULUS

- 565 **mauritanicus.** A wonderful dwarf morning glory with gray leaves and big open blue flowers. Does not spread from the roots. An exceptional plant for a sunny exposure... .25

CORYDALIS

- 575 **lutea.** A fine plant with mass of deeply cut leaves and spikes of yellow flowers that bloom through a long season. Height 12 to 18 inches..... .25
- 580 **cheilanthifolius.** Beautiful fern-like foliage and spikes of soft yellow flowers. Height 10 to 12 inches..... .25

COTONEASTER

- 583 **buxifolia.** A dwarf cotoneaster with small leaves and bright creeper. Small plants 50c; large..... .75
- 590 **humifusa.** A sprawling evergreen shrub. Exceptional fine for the rock garden. Beautiful any season. Covered in fall and winter with red berries. Small plants 50c; large .75

CRUCIANELLA

- 600 **stylosa.** Creeping mats of bright green foliage, big heads of clear pink flowers. Creeper..... .15

CYANOGLOSSUM

- 610 **grande.** Native. A fine hounds tongue. Rough basal leaves and deep blue flowers with white center. A shade plant growing 12 to 18 inches high and blossoming in May and June30



ERYTHRONIUM HENDERSONI

SEND FOR BULB LIST

CYPRIPEDIUM

Price

- 618 **californicum.** Native. A white flowered species with yellow sepals. It usually has more and smaller flowers than *C. montanum*\$.50
- 620 **montanum.** Native. A plant near to *californicum* with brownish sepals and white flowers. 10 to 12 inches..... .50
- 622 **pubescens.** The yellow lady slipper. One of the most showy species. Height 10 to 12 inches..... .50
- 624 **acaule.** A rose purple lady slipper more dwarf than other species. Height 8 to 10 inches..... .50
- 628 **spectabilis.** The most showy of North American lady slippers. Rose and white flowers on 12 to 16-inch stems.. .50

CYTISUS

- 629 **radiatus.** A spidery little bush of some 10 inches for a hot dry place in the rockery. Yellow flowers. A gem..... .50

DAPHNE

- 630 **cneorum.** A choice rock shrub. Masses of evergreen leaves on flopping stems and heads of fragrant, bright, pink flowers 1.00

DELPHINIUM

- 655 **chinensis.** Dwarf feathery foliage. Intense gentian blue flowers25
- 660 **nudicaule.** Native scarlet larkspur. Branching stalks bearing scattered bright red and yellow flowers. Height 16 to 18 inches25
- 665 **ochroleucum.** Native. A tall delphinium with white petals and blue bee and green spots on the tips of the petals. Odd and attractive plant. Full sun and heavy soil30
- 667 **trollaeifolium.** Native. Shade-loving delphinium with ample spikes of large blue flowers with white center. Our most showy native delphinium..... .25

DIANTHUS

- 670 **alpina.** The best of all pinks. Making mats of green leaves on which sit huge flowers of soft clear pink. A wonderful plant25
- 671 **alpina alba.** White form of the above choice plant. Creeper .50
- 672 **alpinus carmineus.** This choice alpine in a bright red form with a darker center. One of the most showy of alpine plants imported into this country..... .50
- 675 **arvenensis.** Mass of gray leaves covered with numerous pink flowers. Very fine. Height 4 to 6 inches..... .20
- 676 **atrorubens.** A cluster headed pink with heads of red flowers. Something quite different and rare in the pink family. Height 18 inches..... .25
- 685 **deltoides.** Maiden pink. Dwarf evergreen, sprays of bright red flowers. Long bloomer and exceptional bright colored form of this popular favorite. 12 to 16 inches..... .15
- 715 **neglectus.** Another fine alpine pink making bunches of short grass-like leaves above which, on 6-inch stems, dance bright pink flowers with golden reverse to the petals30
- 718 **subacaulis.** A compact mass of blue green leaves and rosy pink flowers on short stems..... .25
- 684 **caucasicus.** A 6-inch pink with deep rose colored flowers having a yellow center. July-August..... .20

SEND FOR BULB LIST

DICENTRA

Price

- 735 *cucullaria*. Dutchman's Breeches. Well-known and well-loved native plant with white or pale pink flowers like pantaloons. Height 6 to 8 inches.....\$.25
- 738 *exima*. A beautiful finely divided leaf and bleeding hearts of soft pink. Good shade plant. Height 10 to 12 inches.. .25
- 740 *formosa*. Bleeding heart. Native. Mass of finely cut leaves, sprays of dainty pink flowers. Shade. Height 8 to 12 inches..... .25
- 741 *oregana (glauca)*. Native. Silvery leaves and spikes of cream-colored flowers with purple tips make this rock dicentra the most effective one of its family. Blooms over a long season; good drainage and sun..... .50

DODOCATHEON. Birds bill. Shooting star.

- 760 *dentatum*. A unique bird bill with clear white flowers with purple spot at the base of each petal and broad leaves sparingly toothed and notched..... .25
- 765 *jefferyi*. Native. Flowers white and pink. Beautiful and quite robust. Height 10 to 14 inches..... .25
- 770 *latifolium*. Native. Pink, brown and yellow flowers. Oval leaves. Established plants produce from 15 to 25 blooms to the stalk. A rock garden gem. Height 8 to 12 inches.. .25

DOUGLASIA

- 773 *laevigata*. Native. Rosettes of prickly little evergreen leaves with all the charm of the best of the kabschia saxifraga. Sprays of clear to dark pink phlox-like flowers in April. A royalty of the west coast mountains..... .35
- 774 *vitaliana*. The only European representative of this American group. Compact gray rosettes and small sprays of clear yellow flowers. One of the finest of rock plants.... .25

DRABA

- 775 *olympica*. A fine rock plant, making wide mats of dull green foliage, covered in early spring with sprays of yellow flowers25



DICENTRA CUCULLARIA
SEND FOR BULB LIST

DRYAS	Price
808 octopetala. Charming dwarf shrub. Flat evergreen carpets of very small oak-like leaves with medium-sized anemone-like flowers during spring and summer.....	\$.25
EDRIANTHUS	
805 dalmaticus. Rosettes of rather narrow leaves and clusters of purple bells on semi-flopping stems. June. Light loam and sunny position.....	.35
EPIGAEA. Trailing arbutus.	
810 repens. Evergreen leaves and fragrant pink flowers early in spring make it a great favorite. Half shade. Strong clumps50
ERICA	
820 Mediterranea hybrids. A fine evergreen shrub with dark green foliage. Flowers bright pink almost throughout the winter. One of the best of rock garden shrubs. Height 12 to 14 inches. Strong plants.....	.35c to .50
ERIGERON	
825 aurantiacus. A pretty dwarf species, with reddish-orange flowers. Something new and showy. Height 8 inches....	.25
826 caucasicus. A dwarf daisy of a foot with large violet flowers having a yellow center. July-August.....	.25
830 glauca. Native. Dwarf stems with blue-green leaves, each topped with big pink, white or lavender flowers. Very attractive. Height 6 to 10 inches.....	.25
832 chrysopsidis. Native. Narrow gray leaves and clear yellow aster-like flowers. All summer bloomer. 6 to 8 inches...	.30
833 linearis. Native. A desert species with tufts of linear leaves and flopping stems covered throughout the summer with lilac flowers with yellow centers. Height 6 to 8 inches.....	.30
835 mucronatus. Mat of neat foliage covered all summer with dainty white or pink asters. Height 10 to 14 inches.....	.25
836 multiradiatus rosea. A bright colored form of this hairy, big rosy pink Aster, with long narrow ray. 10-inch. July....	.30
838 salsuginosus. Native. A basal mass of long narrow leaves above which rises 10 to 14-inch stems bearing pink or blue Asters. An easy and good summer bloomer.....	.25



DICENTRA-GLAUCA

HYPOCHARIS-UNIFLORA

SEND FOR BULB LIST

ERINUS		Price
845	alpinus. Neat rosettes of evergreen leaves and reddish purple flowers. Choice. Height 4 to 6 inches.....	\$.30
ERIOGONUM		
850	nudum. Native. Low clumps of green leaves turning bronze in autumn. Divided stems make great sprays of clusters of lemon yellow flowers. Height 24 to 30 inches.....	.25
852	umbellatum. Native. Low growing woody shrub with small oval evergreen leaves and 4 to 6-inch stems each ending in fluffy balls, composed of many tiny, soft, yellow flowers. Something quite different from the ordinary rock plant. Dry, sunny position.....	.35
ERIOPHYLLUM. Oregon sunshine.		
860	lanatum. Native. Mats of gray leaves and masses of bright yellow aster-like flowers. Very showy. Height 12 to 18 inches25
ERYSIMUM		
863	pulchellum. A showy yellow flower for the rock garden. Height 10 to 12 inches, with gray foliage.....	.20
ERYTHRAEA		
865	diffusa. A glossy mass of small basal leaves almost completely hidden by a profusion of bright waxy pink stars in July and August. This dainty member of the Gentian family likes rich, cool soil in full sun. 4 inches. This is an especially fine new plant we are offering for the first time35
GENISTA. Broom.		
870	alba. One of the best brooms with showers of dainty white blossoms. Height 6 to 8 feet. 18 24-inch plants.....	.50
873	andreana. A tall growing shrub with mahogany and yellow pea flowers. Brooms are especially effective as a background or skyline for rock gardens on sunny slopes. Height 6 to 8 feet. 24 to 30-inch plants.....	.50
875	juncea (Spanish Broom). A wonderful round-twigged broom with fragrant yellow flowers. A flush of bloom in June followed by scattered flowers through the summer. Height 5 feet.....	50c to 1.00
876	lusitanica (Portuguese Broom). A fine white flowered broom for the edge of the woodland or top of a slope. A wonderful shrub that should be used more freely. Height 6 feet	50c to 1.00
880	praecox. A broom with more or less rigid branches and soft cream flowers. Height 4 to 6 feet. 12 to 18-inch plants.	.50
881	prostratus. A sprawling dwarf broom with abundant yellow flowers in May. Fine for a hot dry place.....	.50
884	dwarf seedling. A chance seedling from a planting of <i>Genista praecox</i> seed. Plant now 3 years old only one foot high with stiff upright branches and soft lemon-colored flowers. A rock garden gem; small plants only...	1.00
886	sagittalis. A dwarf prostrate broom, with yellow flowers...	.50
887	schipeanensis. A dwarf shrub from the Balkan Mountains. The pale yellow flowers are carried in close terminal heads. Dry sunny position.....	.50

SEND FOR BULB LIST

- GENTIANA**—Gentian. Most brilliant blue of the floral world. Price
- 890 *acaulis*. The famous alpine gentian of Switzerland. Very choice plant with large intense blue flowers. Height 2 to 4 inches.....\$.50
 - 900 *bisetae*. Native. A swamp gentian from the Siskiyou, resembling *calycosa*, but more dwarf and with larger flowers. Rare. Only few plants to offer this year..... .40
 - 910 *farreri*. One of the finest rock gentians the world has to offer. Flopping stems, narrow grassy foliage and huge trumpets of brilliant blue which open in September make this an especially valuable flower. Strong field-grown plants40
 - 915 *menziesii*. Native Deep blue flowers somewhat like *Gentiana sceprum*, but smaller. Height 8 to 12 inches..... .50
 - 918 *parryi*. Oregon's most beautiful gentian which is possibly a form of *calycosa*. Stems clothed in rounded leaves grow about a foot high and each bears a cluster of five big open gentian blue flowers. Established plants are one of the sights of our mountains from July to September... .50
 - 920 *septemfida*. A beautiful early fall gentian, and easy of cultivation in cool rich soil. 9-inch stems set with pointed oval leaves, ending in August and September, with large clear soft blue trumpets. A gem for any garden..... .50
 - 921 *septemfida lagodechiana*. A fine dwarf form of this beautiful species50
 - 930 *sceprum*. Native. Blue flowers of half-closed type. Very choice. Height 10 to 14 inches..... .30
 - 932 *sino ornata*. The dark turn of *Gentiana farreri* and probably the best of all Gentians. Huge velvety blue trumpets in September and October..... .50

GERANIUM

- 934 *sanguineum lancastricense*. Fine dwarf geranium with the cushions of dark leaves sprinkled with big rosy pink flowers which are veined with darker pink lines. One of the best new things we have to offer..... .30
- 940 *incisum*. Large pink to dark rose or even purple flowers. Good foliage. Height 12 to 20 inches..... .30
- 943 *pylzwianum*. A lovely little geranium from Tibet, which runs about covering the ground with dark green foliage against which are displayed the big red flowers..... .35



ERYTHRONIUM HENDERSONI



SILENE HOOKERI

—U. S. Forest Service Photo.

SEND FOR BULB LIST

GERARDIA		Price
950	hybrida. Stems clothed with narrow leaves and hung with rosy penstemon-like flowers. An exceptionally fine plant for larger pockets. Height 24 to 30 inches.....\$.25
GEUM		
945	borsii. Neat tufts of evergreen foliage with orange scarlet flowers on 10-inch branching stems.....	.35
960	montanum. The best of all the geums for the rock garden. Masses of palmate leaves and large golden flowers. Height 6 inches.....	.25
GILIA		
965	pungens. Native. A prickly little desert bush with pink or white flowers opening with us only in early morning and evening. An odd, interesting and attractive species. Height 8 to 12 inches.....	.35
GLOBULARIA		
975	cordifolia. Dark green foliage and 4-inch stems carrying June blooming balls of blue flowers.....	.25
GORMANIA		
980	watsoni. Native. Rosettes of large fleshy leaves and heads of soft cream flowers. A good novelty and rare. Creeper.	.30
GYPSOPHILA		
990	repens. Evergreen soft gray foliage with white to pink flowers. A very fine species. Creeper.....	.25
HELIANTHEMUM		
1000	vulgare. Indispensable dwarf evergreen shrub. Bright flowers opening at intervals all summer. Single yellow, single pink, salmon and burnt orange. 8 to 12 inches....	.30
1001	praecox. A new silver-leaved sun rose with big flowers of light burnt orange, shading to a deep orange in the center50
HELLEBORUS—Christmas Rose		
1005	hybrids. Winter blooming plant of exceptional interest. White to pink single rose-like flowers and curiously lobed leaves. Large plants only.....	.75
HERNIARIA		
1008	glabra. A creeping mossy ground cover plant which turns red in winter. Needs poor soil.....	.25
HEUCHERA		
1010	glabella. Native. A fine alumroot with a mass of palmate glabrous leaves and close spikes of soft yellow flowers. Height 10 to 12 inches.....	.25
1025	sanguinea. Coral bells. Good masses of palmate basal leaves; dainty spikes of bright red flowers. Height 12 to 16 inches	.25
HUTCHINSIA		
1035	alpina. A real dainty evergreen with glossy divided foliage, making compact domes covered with white flowers. Very fine. Height 3 to 4 inches.....	.35

SEND FOR BULB LIST

HYPERICUM—St. Johns wort

Price

- 1051 **coris.** A tiny bush of some 6 inches, fine blue-gray foliage and pale clear yellow golden flowers. Height 6 inches...\$.35
- 1053 **fragalis.** A flopping species, with tiny leaves and clusters of clear golden yellow flowers..... .25
- 1055 **repens.** Evergreen semi-prostrate mass of stems and big yellow flowers through the summer. Very good and desirable plant. 6 to 8 inches..... .25
- 1056 **reptans.** A beautiful creeping mat of bright green oval leaves that turn to bronze and red in fall and winter and big pure yellow flowers. A beauty that should be in every garden..... .35
- 1058 **olympicum.** Semi-erect mass of wiry stems, blue gray foliage and big yellow blossoms filled with a central mass of equally yellow stamens. June, on in July and August. 6 inches35

IBERIS

- 1061 **sempervirens.** Spreading evergreen mats and pure white flowers over a long period. Height 9 inches..... .25

INCARVILLEA

- 1062 **delavayi.** A beautiful border and rockery plant with crinkly leaves and great gloxiana-like flowers of clear rose. Height 12 to 18 inches..... .50

IRIS—We offer fine nursery grown plants of Oregon's beautiful Iris. These have compact well developed root systems and are much more sure to grow than collected plants of these wire-rooted species. This is your first chance to get such plants of these dainty Americans.

- 1063 **arenaria.** Something new. A dwarf golden treasure of 4 inches75
- 1064 **bracteata.** Native. Thick glossy almost evergreen leaves and deep yellow flowers penciled with fine brown lines characterize this fine semi-shade iris. Height 12 to 15 inches. May..... .50



IRIS TENAX

IRIS — Continued		Price
1065	chrysophylla. Native. A dainty iris with grassy leaves and white or soft yellow flowers daintily veined with blue. Height 8 to 10 inches.....	\$.35
1075	cristata. Dwarf iris with very fine blue flowers. Height 8 to 10 inches.....	.25
1080	douglasiana. The tallest of our native iris. Thick heavy dark green leaves. Flowers vary from white to blue and lavender shades. Height 14 to 18 inches.....	.30
1090	gormani. Native. Dwarf, narrow leaves and lovely soft yellow flowers. A very choice and rare plant. Height 6 to 10 inches.....	.35
1095	missouriensis. Native. A fine iris with flowers ranging from white to blue, all finely reticulated with brown. Height 12 to 16 inches.....	.30
1105	stylosa (unguicularis). A grassy leaved winter blooming iris, with showy lilac blue flowers on 12-inch stems.....	.25
1112	reticulata. Rare and beautiful bulbous iris with blue and gold flowers in early spring. Stock limited. Bulbs—fall delivery35
1115	tenax. Native. Dainty flowers in various shades of white and lavender. Many blossoms open at once, making an assortment of colors. Height 8 to 12 inches.....	.25
1120	tenuis. Native. Wide-leaved woodland iris. White flowers marked with yellow and purple. Rare and a beauty. Height 8 to 12 inches.....	.35
1125	verna. Very choice dwarf with clear blue flowers. One of the best. Height 4 to 8 inches.....	.35
 IRIS. Dwarf Bearded		
1066	atropurpurea. An 8-inch deep blue and purple.....	.15
1067	atroviolacea. The earliest of all the dainty dwarf iris, with velvety flowers in March. Height 5 inches.....	.15
1081	citrea. A variety with yellow flowers. Height 5 inches.....	.15
1083	Cyanea. Violet blue flowers. Height 6 inches.....	.15
1085	fairy. Pale blue flowers. Very dwarf.....	.15
1087.	josephine. White with a primrose beard. Height 10 inches..	.15
1088	Stewart alpine hybrids. Pure yellow flowers. 8-inch stems..	.15
 JASIONE		
1130	perennis. Dwarf clumps of linear leaves and heads of blue flowers in July. Height 6 to 10 inches.....	.25
 JUNIPERUS		
1132	communis nana. Native. High mountain creeping juniper. A beautiful alpine rock shrub. Small plants only.....	.50
 KALMIA		
1138	microphylla. Native mountain laurel. Dwarf evergreen shrub with heads of dainty pink flowers. One of Oregon's finest shrubs. Height 12 to 16 inches. Small plants	.50

SEND FOR BULB LIST

LAMIUM

Price

1140 **maculatum**. Dwarf member of the mint family. Crinkly evergreen leaves of dull green with white stripe down the center. Turns reddish tint in fall. Short spikes of purple flowers. Height 6 to 10 inches.....\$.25

LAVENDULA

1142 **nana atropurpurea**. A dwarf lavender with the fragrance, blue flowers and gray foliage of the family. Entirely suitable for rock gardens. 12 inches. July-August..... .25

LEONTOPODIUM

1552 **alpinum**. The famous Edelweiss of the Alps. Gray leaved and white stars lasting for a long period. Height 8 inches25

LEUCOCRINUM

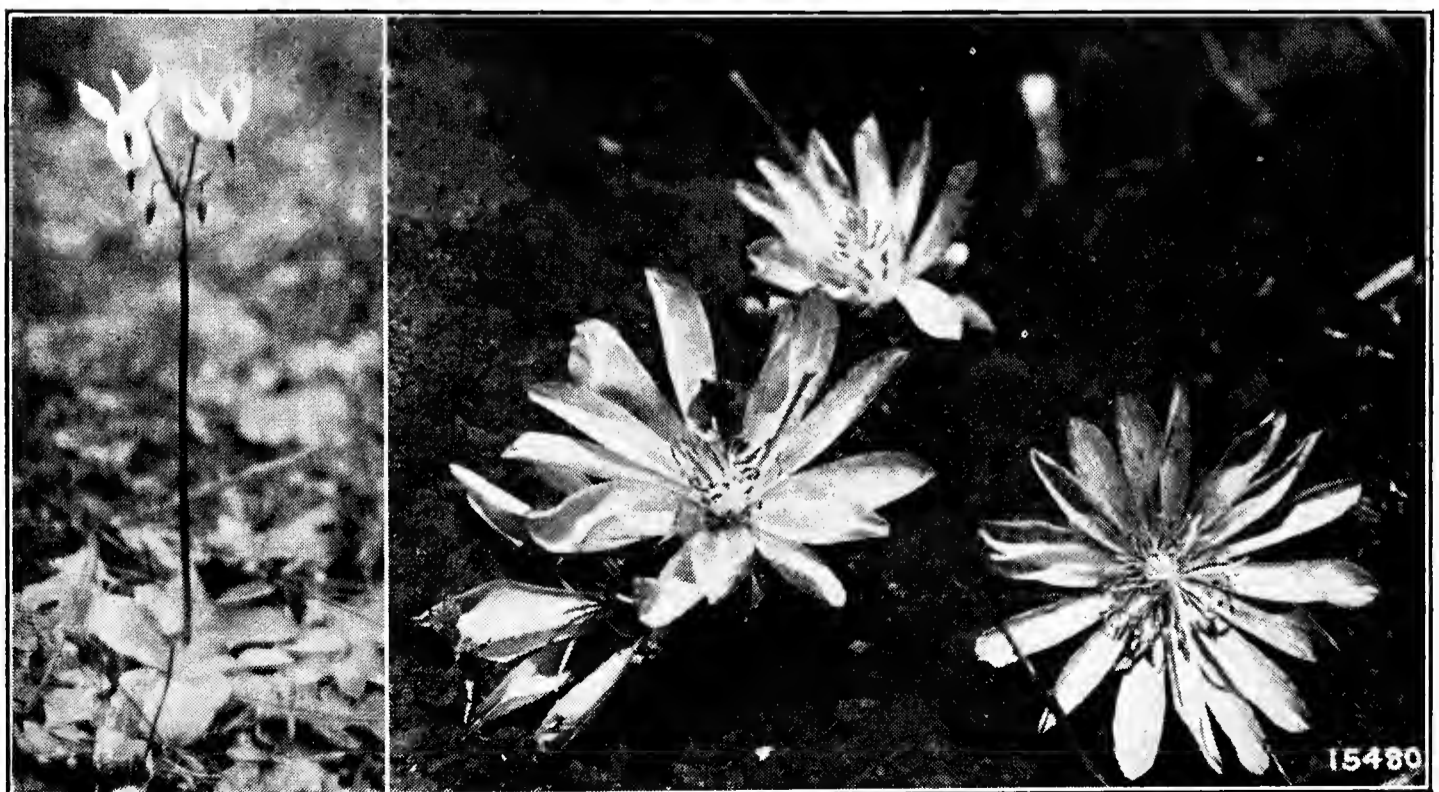
1155 **montanum**. Native. Beautiful white flowers on individual stems set in a clump of narrow grass-like foliage. A delightful plant. Height 4 to 6 inches..... .35

LEWISIA—These distinctive western American plants are exceptionally valuable rock garden species. Sharp drainage and plenty of sunshine are all they need to be happy.

1160 **columbianum**. Native. Evergreen rosettes of flat leaves with beautiful pink and white striped flowers. Height 8 to 10 inches..... .25

1161 **columbianum rosea**. Native. Flat rosettes of evergreen leaves and showers of rosy purple flowers over a long season. One of the finest of American rock plants. 8 to 10 inches. .25

1162 **finchii**. Native. Neat rosettes of big flesh leaves from which arise 6 to 10-inch stems carrying numerous white flowers with a wide red or pink stripe down the center of each petal; a wonderful rock plant..... .35



DODOCATHEON
LATIFOLIUM

LEWISIA REDIVIVA

—U. S. Forest Service Photo.

SEND FOR BULB LIST

LEWISIA — Continued		Price
1163	howelli. Native. Flat rosettes of narrow evergreen leaves more or less crinkled on the sides and 10-inch sprays of white or apricot flowers each petal streaked with wide center band of rose.....	\$.35
1164	heckneri. Native. A newly described <i>Lewisia</i> of the <i>howelli</i> type, with the leaves curiously spined along the margin and 6 to 8-inch sprays of pink to white flowers.....	.50
1165	oppositifolia. Native. Linear oblanceolate leaves in rosettes, stems bearing one to five pure white aster-like flowers. Height 8 to 12 inches.....	.25
1166	leana. Native. Rather sparing rosettes of rounded pale green leaves and sprays of pink flowers.....	.25
1170	rediviva. Native. No plants typify more fully the elusive charm of the desert. Waxy white or pink water lily-like flowers the size of a dollar, amid the clutching fingers of its rosettes of long needle leaves. 2 to 3 inches...	.20
LIATRIS		
1175	ligustylis. Dwarf gay feather, spikes of rose pink flowers difficult to describe. Height 8 to 12 inches.....	\$.25
LINDELOFIA		
1190	spectabilis. Large deep sapphire anchusa-like flowers on branching stems. Blooms all summer. Choice for border or large pockets. Height 16 to 18 inches.....	.35
LINNAEA		
1195	borealis. Native twin flower. A dainty evergreen trailer with pink fragrant flowers in pairs.....	.25
LINUM		
1198	campanulatum. A 10-inch plant clothed in dark green foliage and big golden yellow flowers for a long period during the summer.....	
1200	lewisii. Out for season.	
LITHOSPERMUM		
1202	graminifolium. Long narrow foliage shrub of a foot with hanging croisers of deep blue flowers.....	.50
1203	intermedium. As its name indicates, it is an intermedium species with the fine habits of other shrubby forms. Height 12 inches.....	.50
1205	prostratum. Creeping mats of dark green foliage liberally sprinkled with gentian blue flowers. A gem of a rock plant. Creeper50
1206	purpureo-coeruleum. A lovely member of the race for naturalizing in shady places where it quickly forms masses of arching branches carrying heads of deep blue flowers. June50
LOBELIA		
1210	cardinalis. Two-foot spires of bright red tubular flowers in August and September. Fine for wet places.....	.20
LOTUS		
1215	corniculatus. A green carpet of ground hugging tiny clover leaves, decorated with heads of long, narrow, bright yellow pea flowers.....	.25

LUTKEA

Price

- 1220 *pectinata*. Native. Attractive rosettes of bright green finely dissected leaves, making mats of considerable size. Odd little cream-colored flowers in spikes. Height 2 to 4 inches.....\$.25

LYCHNIS

- 1223 *alpina*. Neat tufts of linear foliage and 4 to 6-inch stems ending in heads of pink stars in late spring. Easy and good25
- 1224 *viscaria splendens*. A tuft of thick grassy leaves and heads of brilliant pink flowers on 12 to 15-inch stems. Very showy25

MAZUS

- 1240 *rugosus*. A rare creeper, light green leaves, attractive white and purple flowers close among the leaves. Creeper25

MENTHA

- 1444 *nummularia*. A creeping mint with opposite little leaves and showy heads of pink flowers in late summer..... .35
- 1445 *requenii*. A tiny creeper with little oval leaves, pink flowers and a wonderful mint odor. For a cool, damp spot..... .25

MENZIESIA (Irish Heather)

- 1250 *polifolia*. A fine little bush of a foot or so with narrow glossy leaves and fine big pink bells..... .35
- 1251 *polifolia alba*. A white form of the above. Equally choice... .35

MICROMERIA

- 1260 *libanotica*. A silver hoary little bush of size 6 to 8 inches and sprays of pink flowers in August and September..... .25
- 1261 *piperella*. One of the finest of tiny shrubs for a warm dry location in the rock garden. No more than 5 inches high its dainty sprays of gray hairy leaves and compact display of clear pink flowers make it an outstanding addition to the rock garden. New and fine..... .35

MIMULUS

- 1275 *langsдорffii*. Native. Big, wide-lipped, bright, yellow flowers spotted with brown and reddish in the throat. All summer bloomer. Height 18 to 24 inches..... .25
- 1276 *lewisia*. Native. An 18-inch plant with rough, sticky foliage and big, open-faced pink flowers. It blooms all summer in a moist situation..... .30
- 1285 *ringens*. Blue or lavender flowers, good companion to our native species. Height 16 to 20 inches..... .25

MUEHLENBECKIA

- 1300 *rivularis*. A creeper with a mass of twisted stems set with little rounded leaves and tiny little flowers..... .25

NEPETA

- 1310 *mussini*. Fine for any rockery. Gray leaves and spikes of delicate lavender flowers which appear several times a season if seed heads are cut back. 16 to 20 inches..... .25

SEND FOR BULB LIST

NIEREMBERGIA

Price

1315 *rivularis*. Something new and different, from South America. Closely packed masses of dark green leaves on which sit big pearly white flowers having just the faintest touch of yellow in the center. A sunny spot well drained but with plenty of water suits this wonderful summer blooming novelty. 2 inches.....\$.30

OENOTHERA

1318 *missouriensis*. Flopping leafy stems of two feet or more carrying hugh yellow primroses through July and August Easy to grow and the best of all evening primroses for the rock garden..... .25

1320 *tricocalyx*. Desert Primrose. Native, white or pink, fragrant, persistent bloomer. Blue-green foliage. Height 10 to 14 inches..... .30

OLERIA

1326 *stellulata*. Daisy bush. Two-foot gray-leaved shrub covered in spring with many white daisies. For sheltered places in rockery and border. Fine field-grown bushes 1.00

OMPHALODES

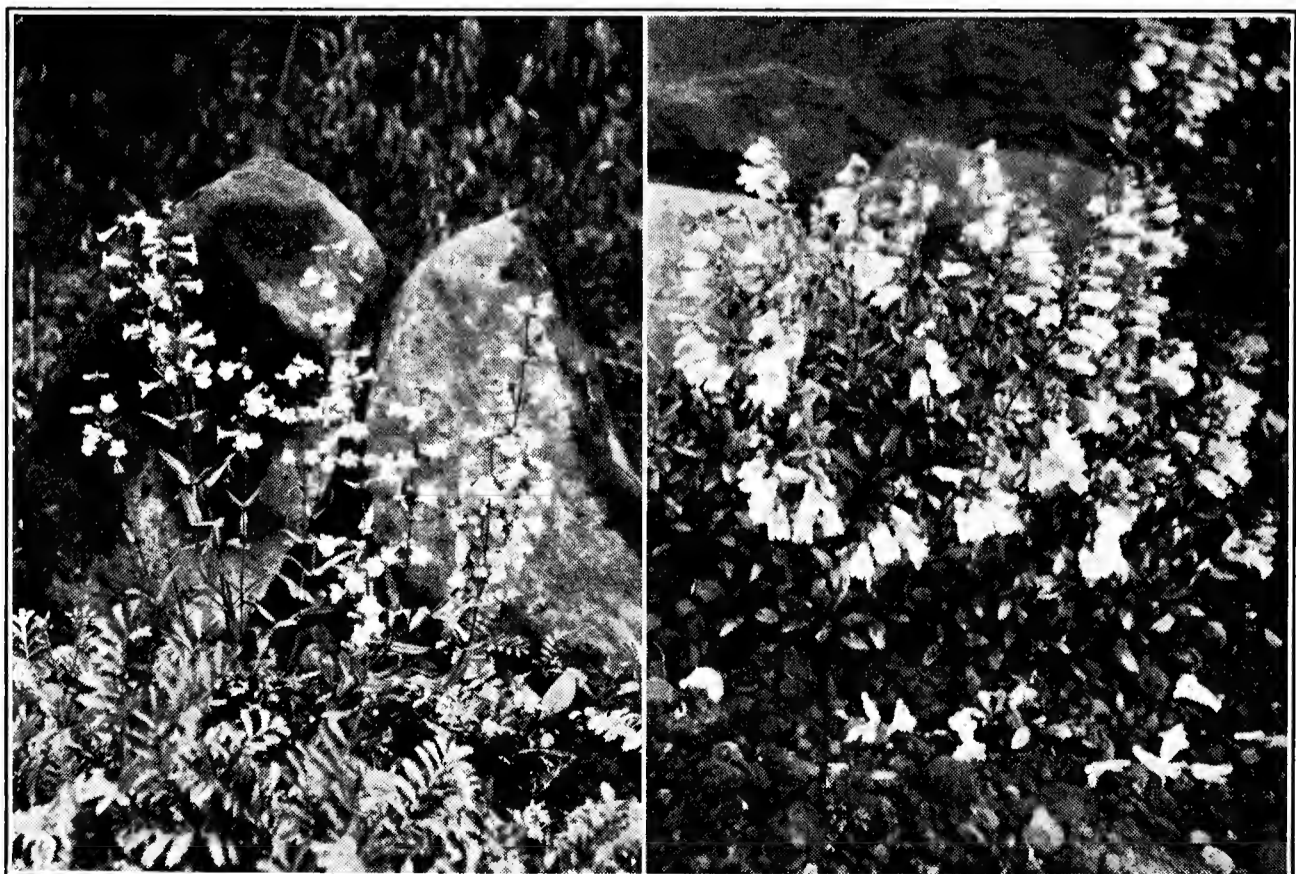
1324 *cappadocica*. Tufts of oval pointed leaves dark above and lighter beneath, from which come 6-inch sprays carrying many lovely large blue Forget-me-nots. June..... .50

ONOSMA

1328 *taurica*. Rough hairy foliage and stems of some 18 inches which are hung for weeks with clusters of soft yellow bells of wondrous fragrance. It should be high up on a wall for its true beauty to be seen..... .50

OPUNTIA—Prickly Pear Cactus

1330 *polycantha*. Native. Flat oval joints covered with spines, large showy soft yellow flowers. Always excites comment in the garden. Height 6 to 10 inches..... .25



PENSTEMON LINEOLATUS

PENSTEMON CARDWELLII

OXALIS

Price

- 1335 *violacea*. Dainty semi-bulbous Oxalis, fine leaves, rosy purple flowers. A most dainty shade or semi-shade plant. May, June. Height 3 to 6 inches.....\$.25

PAPAVER

- 1355 *rupifragum*. Big, silky, orange red poppies on 18-inch stems carried well above the foliage..... .20

PARADANTHUS

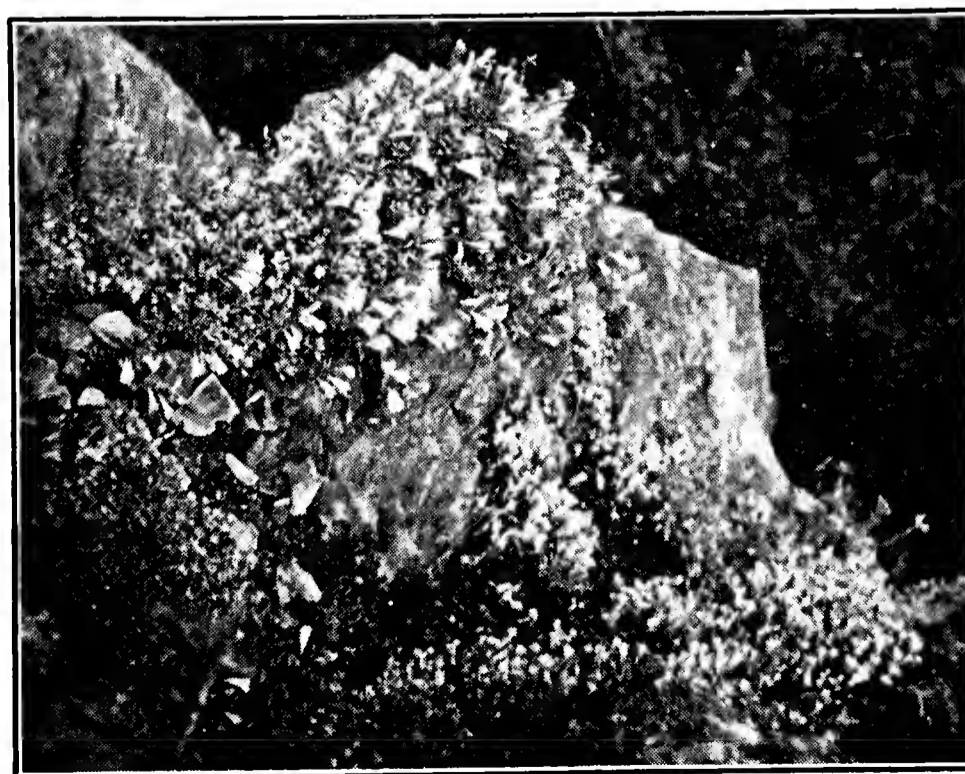
- 1360 *sinensis*. Small orange lily-like flowers followed by seed pods resembling a small blackberry. Height 12 to 18 inches.. .25

PELLAEA

- 1390 *densa*. A tiny rock fern. Hardy and fine for rockery. Height 4 inches..... .30

PENSTEMON—An American genus of an unusual variety of beauty. You can, from this list, secure a penstemon for nearly every purpose. *P. menziesii* and *P. rupicola* are dwarf woody creepers, rock hugging forms of the highest value. *P. barretae*, *cardwelli*, *deustus*, *oreganus* and *fruticosa* are evergreen woody shrubs of less than a foot. The others are herbaceous although many are more or less evergreen through the winter. Amid the almost universal confusion of names in this family it is difficult indeed to be sure of names. Our plants insofar as possible have been identified by comparison with herbarium specimens named by National Museum Botanists or by direct identification by them of specimens.

- 1417 *acuminatum*. Native. A fine penstemon with blue-gray leaves and dense racemes of clear blue flowers. One of the best and most easily grown of this type of penstemon. Height 6 to 12 inches. June..... .35
- 1403 *azureus*. Native glaucous leaves and loose spikes of clear blue flowers make this one of the very best rock garden penstemons. Height 12 to 16 inches..... .35
- 1405 *barretae*. Native. Choice evergreen with somewhat silvered leaves and short spikes of lilac purple flowers. Height 10 to 12 inches..... .35



PENSTEMON RUPICOLA

—Boscher Photo.

PENSTEMON—Continued

		Price
1410	cardwellii. Native evergreen, covered several times each season with short spikes of bright purple flowers. Height 10 to 12 inches.....	\$.35
1418	davidsoni rosea. Native. A pink beauty from the garden seedling of this well-known plant. Clear pink flowers of an unusual shade.....	.40
1422	diffusus. Native. Toothed leaves and showy heads of purple or blue flowers in June. One of the good herbaceous species. Height 12 to 16 inches.....	.35
1423	euglaucus. Native. Much like procerus but with blue-gray bloom on the leaves.....	.35
1425	fruticosa. Native shrubby plant with narrow evergreen leaves and bright blue flowers. Height 10 to 12 inches...	.35
1426	gairdneri. Native. A dwarf for the rockery, 6 to 8-inch shrubby plant with long narrow leaves and heads of bright blue flowers in June and July.....	.35
1435	glandulosa. Native. Basal clumps of big leaves from which raise two-foot leafy stalks bearing numerous big pale lavender flowers. Fine for large rockery or border.....	.30
1436	glaucum. We are not sure of this name but it stands for a beautiful dwarf with narrow blue gray leaves and a 2 or 3 inch spike of comparatively large clear blue flowers. A fine novelty50
1438	lineolatus. Native. Rosettes of lanceolate green leaves and foot high stalks bearing heads and clusters of small deep blue flowers. Rare and good. 10 to 14 inches....	.35
1440	menziesii. Native evergreen dwarf woody plant with spikes of large blue or purple bells. A choice rock plant. Height 4 to 6 inches.....	.35
1441	newberryi. Native. An evergreen bush similar to P. cardwelli but with pink to red flower.....	.35
1445	ovatus. A native variable plant with large leaved spikes of blue flowers. For large pockets or border. 24 to 30 inches	.25
1447	platyphyllus. Native. A fine 18-inch species with oval or lanceolate leaves and delicate racemes of open-faced blue flowers. A fine herbaceous beard tongue.....	.35
1450	procerus. Native. Masses of deep blue flowers in heads. Good foliage. Height 12 to 16 inches.....	.25
1452	procerus tolmiei. Native dwarf high mountain form of this species. Mats of bright green leaves with good heads of deep blue flowers. Height 6 to 8 inches.....	.25
1453	pulchellus. Native. Masses of narrow leaves on semi-woody stalks. Heads of tiny deep blue flowers. All summer bloomer. Fine for sunny location. Height 8 to 10 inches.	.35
1455	rattani. Native. Ample bright green basal leaves with large spikes of large pale blue or lavender flowers. Height 24 to 30 inches.....	.30
1460	richardsoni. Native. Good foliage of bright green serrate leaves, clear pink or red flowers of good size. A real beauty when kept in rather poor soil. 18 to 20 inches...	.35
1463	roezli. Native. Narrow slightly glaucous leaves and airy open spikes of attractive clear blue wide-mouthed flowers. One of the best of herbaceous species. Height 12 to 20 inches.....	.25

SEND FOR BULB LIST

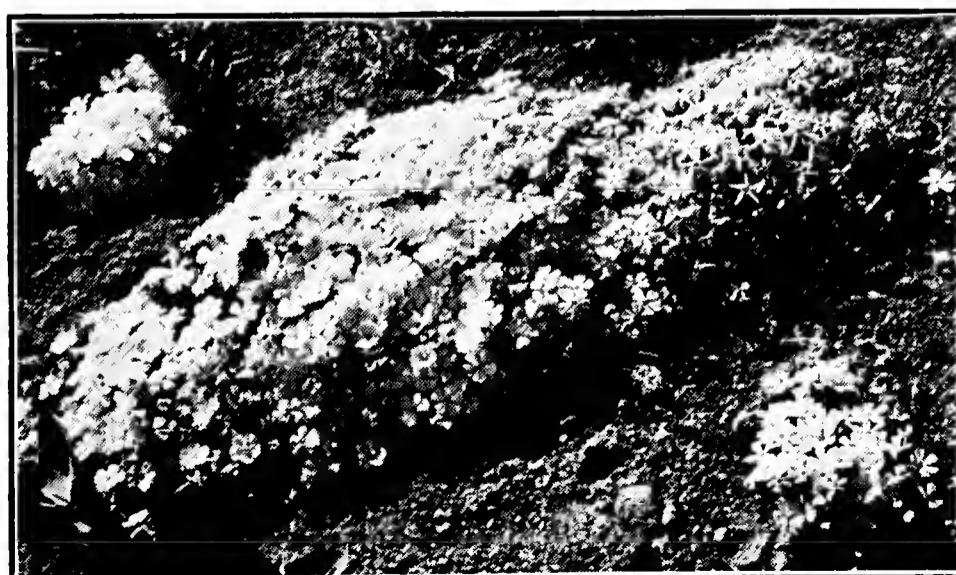
PENSTEMON—Continued

Price

- 1465 **rupicola**. Native. Dwarf mats of blue green leaves and bright red flowers. A rare and beautiful plant. Height 4 to 6 inches.....\$.35
- 1468 **venustus**. Native. Serrate leaves and good spikes of clear blue flowers; very similar to *P. richardsoni* in growth. Mid-summer bloomer. Height 12 to 16 inches..... .35

PHLOX—Western America mat forming Phlox rank with European Androsace as rock plants. Their compact dwarf habits, floriferousness and clear color tones are unbeatable. We offer sturdy nursery grown twice transplanted stock.

- 1475 **adsurgens**. Native. Dense mats of bright green evergreen leaves. Floppy stems with big clusters of white to pink flowers. A rare gem for the rock garden. 10 to 14 inches .35
- 1480 **amoena**. Dwarf green foliage and abundant beautiful pink flowers. Long bloomer. Creeper..... .25
- 1485 **diffusa**. Native. Fine mats of soft green foliage liberally sprinkled with big white, pink or lavender blossoms. Very fine creeper35
- 1486 **divaricata-canadensis**. A beautiful lavender Phlox, native of the middle western states, which thrives in half shade or full sun in the west coast states. 10 to 15 inches. .25
- 1488 **douglasi**. Native. Compact growing prickly mats and bright pink to white flowers. A choice creeper..... .50
- 1491 **procumbens coerulea**. A creeping form with rough grayish leaves and soft blue flowers. Something new and good. May-June50
- 1492 **rigida**. Native. A compact slow growing Phlox mat with stiff bristle-like foliage and usually white although an occasional plant has blue or pink flowers. The earliest to bloom and in many ways the finest mat Phlox. Creeper75
- 1495 **stolonifera**. Creeping evergreen with pink flowers. Native of eastern United States30
- 1500 **subulata**. Creeping evergreen, prickly stems with masses of flowers. Can furnish in white, pink or lavender. State color desired25
- 1501 **subulata**. G. F. Wilson. A clear electric blue form of this popular garden phlox. May-June..... .25
- 1502 **subulata vivid**. A very strong clear pink flower with darker ring in the center..... .25



PHLOX DIFFUSA

PHYLLODOCE

Price

1505 *empetriformis*. Native heather with neat branching needle-like evergreen leaves and pink bell-shaped flowers. Height 10 to 14 inches. Small plants only.....\$.50

PLATYCODON

1510 *mariesii*. The best of the balloon flowers which carries its big open saucers and curiously inflated buds on sturdy 6 to 10-inch stems..... .25

PLUMBAGO

1525 *larpentae*. Good foliage, clear blue flowers in late summer and fall. Height 4 to 8 inches..... .25

PODOPHYLLUM

1528 *peltatum*. May Apple or Mandrake of the eastern states for shaded places. Each stalk carries two big leaves between which are the clear white flowers. A fine and interesting plant25

POLEMONIUM

1530 *carneum*. Native. Good foliage and big salmon or flesh color flowers. Height 10 to 12 inches..... .25

1532 *coeruleum*. Tall growing Jacobs ladder, beautiful either for the border or large pockets. Beautiful dark blue flowers in clusters. Height 24 to 30 inches..... .25

1535 *pulchellum*. Native. Good fern-like foliage and soft blue flowers, very dainty. Height 8 to 12 inches..... .25

1538 *reptans*. Native. Leafage similar to *P. coeruleum*. Creeping rhizome, carrying pendant bell-shaped flowers of a lovely light blue tone. Height 10 inches..... .25

POLYGONUM

1539 *vaccinifolium*. A lovely little trailer where long stems are set with narrow, glossy evergreen leaves above which appear, in autumn, a profusion of tiny clear pink spikes.... .35



PHLOX-ADSURGENS

SILENE-MARTIMA

POTENTILLA

	Price
1540 alpina. A low growing evergreen plant with great numbers of yellow flowers. Very good all summer bloomer. Height 3 to 6 inches.....	.25
1446 breweri. Native. Offered for the first time. Finely divided carrot-like leaves which lie flat on the ground. Close to them sit big yellow flowers with a suggestion of orange at the center. This is the outstanding new native plant introduced this year. It has bloomed continuously from April to September for us and is as near ever-blooming as any perennial we have ever had.....	.50
1548 cinera. A tiny creeping cinquefoil not over an inch high, with clear yellow strawberry flowers, all summer bloomer. A fine plant.....	.25
1447 flabellifolia. Native. A mass of three parted leaves above which rise 8 to 10-inch stems of bright yellow flowers with deep orange marking toward the base of petals. June-July25
1451 formosa. A tall bright yellow companion to the dark red flowers of <i>Potentilla</i> Miss Willmotte. Grows 18 inches and blooms all summer.....	.50
1550 Miss Willmotte. Soft red flowered cinquefoil. Blooms over a long period. Choice. Height 8 to 12 inches.....	.25
1549 tridentata. A dainty glossy-leaved evergreen cinquefoil with clear white flowers. Height 4 to 6 inches. June-July....	.20

PRIMULA

1560 auricula. Alpine primrose. Smooth leaves and velvety various colored flowers. Height 10 to 12 inches.....	.20
1565 cortusoides. A novelty with crumpled oval leaves and tall stems bearing fine heads of varying colors, mostly pink. A very fine new thing.....	.35
1580 elatior. The English oxlip raised from seed. Various colors..	.35
1585 japonica. Robust growers in various shades of red to white. Height 12 to 16 inches. Fine showy plant for shade or moisture35
1586 juliae. A dwarf crumpled mass of heart-shaped leaves and showy flowers in varying shades of lilac through the spring and again in the fall. 3 inches. Very fine new primrose, needing rich, moist soil.....	.35
1595 veris. Plants raised from imported seeds of this favorite old primrose. Various colors. Height 4 to 6 inches.....	.20

PRUNELLA

1610 grandiflora. Really beautiful member of the mint family, clear red flowers. Rosettes of cut leaves which turn red in fall. Height 6 to 10 inches.....	.25
---	-----

PYRETHRUM

1612 atrosanguineum. Persian daisy. Red and pink shades predominate in this strain of this fine perennial. Height 18 to 24 inches.....	.20
1614 rose hybrids. A very fine strain of this popular perennial with daisy-like flowers in varying shades of pink. Height 12 to 20 inches.....	.20

SEND FOR BULB LIST

RANUNCULUS		Price
1620	glaberrimus. Mountain butter cup. Early spring bloomer, large butter yellow flowers on short stems. Dwarf. Choice and rare. Height 4 to 8 inches.....	\$.30
1631	stenolobus. A new buttercup that stays dwarf and blooms over a long period. Finely cut leaves and big flowers make this the outstanding native buttercup. Referred doubtfully to this name for want of a better one. April to September. 6 inches.....	.50
ROMANZOFFIA		
1650	sitchensis. Native. Beautiful pure white flowers on stems rising from a mass of small leaves that are almost mat forming; dainty and attractive. Height 6 to 8 inches....	.30
ROMNEYA		
1660	coulteri. A limited supply of this beautiful poppy, big silky six-inch white fragrant flowers with orange center. Height 3 to 5 feet. Strong transplanted plants.....	.70
SAGINA		
1675	subulata. Dog hair. Mat of soft green felt sprinkled more or less with tiny white flowers. One of the best ground covers for semi-shade. Creeper.....	.15
SANGUINARIA		
1685	canadensis. Bloodroot. A fine semi-shade to shade plant. Palmate leaves and pure white water lily-like flowers on 6 to 10-inch stems. April-May.....	.25
SANTOLINA		
1690	chamaecyparissus. Shrub with silvery foliage, yellow button-like flowers. Height 18 to 24 inches.....	.25
SAPONARIA		
1700	ocymoides. Almost creeping evergreen shrubby plant, myriads of clear pink flowers. Fine for rockery or wall. Height 10 to 12 inches.....	.25
SATUREIA		
1705	pygmea. A delightful, sun-loving, wiry little 8-inch shrub covered with masses of white or pink flowers. Something new and extra fine.....	.50
SAXIFRAGA		
1710	aizoon. Fine encrusted ornamental rosettes of gray stiff leaves, red flowers. Height 8 to 10 inches.....	.25
1727	apiculata alba. Choice evergreen with prickly foliage, white flowers. Height 4 to 6 inches.....	.50
1728	apiculata. Yellow flowering form of the above. Very fine. Height 4 to 6 inches.....	.50
1720	baldensis. A minute encrusted form of some two inches high, with twisted flat growing leaves and cream colored flowers50
1725	bronchialis. Native. Prickly type of foliage and dainty pink and white flowers. Height 4 to 8 inches.....	.50

SEND FOR BULB LIST

SAXIFRAGA — Continued

Price

- 1730 **caespitosa.** Native mossy evergreen, cream white flowers. Superior to many of the highly prized European species. Height 4 to 6 inches.....\$.75
- 1745 **cotyledon pyramidalis.** Large encrusted rosettes. Great pyramids of pink and white flowers. Height 18 to 20 inches.. .30
- 1755 **decipiens.** Indispensible rockery plant. Mossy type with creamy flowers. Height 4 to 6 inches..... .30
- 1770 **Gilfords seedlings.** Fine compact growing mossy type, crimson flowers. Height 12 to 18 inches..... .40
- 1775 **hypnoides.** A mossy saxifrage with much divided leaves and creamy white flowers. Later than the decipiens type. A really satisfactory plant. Height 6 to 8 inches... .30
- 1778 **lagaveana.** An encrusted form somewhat larger than *S. baldensis* belonging to the aizoon group, with stiff spikes of creamy white flowers. Height 4 inches..... .35
- 1780 **macnabiana.** This is a smaller edition of the pyramidalis with heavier flower stalks. A very fine thing even though it lacks the airy grace of the larger form. Height 10 to 12 inches..... .30
- 1785 **megasea.** Large leaved early bloomer. Heads of clear pink flowers. Height 12 to 18 inches..... .25

SEDUM

- 1845 **acre.** Bright green mossy foliage and bright yellow star-shaped flowers. Good carpeter. Creeper..... .15
- 1848 **album.** Quick growing mat forming short stems, round fat leaves, white flowers. Creeper..... .15
- 1860 **dasiphyllum.** One of the finest of all rock plants. A compact mass of pale blue pearly beads strung tightly together, white flowers in late spring. Creeper..... .15
- 1863 **divergens.** Native. Neat groups of small rosettes of shining green leaves and heads of yellow flowers. Creeper..... .15
- 1866 **douglasi.** Native. Green mossy tails with heads of yellow flowers. Height 4 to 6 inches..... .15
- 1870 **ewersii.** Similar to *sieboldii* only more robust and no pink edging to the leaves. Good umbels of red to purple flowers. Height 4 to 6 inches..... .20
- 1873 **glaucum (hispanicum).** Mat forming mossy type with beautiful blue green foliage and white flowers. Real good Creeper15
- 1876 **kamtschaticum.** Spurium type. Trailing growth, with heads of bright orange flowers. Height 4 to 6 inches..... .15
- 1925 **lydium.** Choice ground cover of mossy mats of green and red foliage. Small white flowers. Creeper..... .15
- 1880 **murale.** Flat reddish foliage with white flowers having a distinct pink center. Height 2 to 4 inches..... .20
- 1885 **oreganum.** Native. Rosettes of fat reddish green leaves on short stems. Yellow flowers. Height 2 to 4 inches..... .15
- 1890 **pruniatium fosterianum.** Stems covered with gray green needles and bright yellow flowers, choice and odd species. Height 2 to 4 inches..... .15
- 1895 **rupestris.** Stems covered with green and reddish needle-like foliage with flags of bright yellow flowers. Height 4 to 6 inches..... .15
- 1898 **sarmentosum.** Yellow green foliage. Yellow flowers on creeping stems. Fine for dry walls or hanging baskets. Creeper15

SEND FOR BULB LIST

SEDUM—Continued		Price
1900	sexangulare. Compact dwarf mossy, resembling the acre type but even better. Bright yellow flowers. Creeper...\$.15
1905	sieboldii. Sprangling stems ornamented with thick succulent blue green leaves rimmed with pink; good umbels of red to purple flowers. Height 4 to 6 inches.....	.25
1910	spathulifolium. Native. Clusters of soft gray rosettes bearing great heads of clear yellow flowers on red stems. A real rock plant. Height 2 to 4 inches.....	.15
1915	spectabile. Very choice tall growing. Large heads of reddish flowers. Height 12 to 18 inches.....	.20
1920	spurium. Mat forming evergreen bearing heads of white flowers at intervals during the summer. Good ground cover. Creeper15
1921	spurium coccienum. Dark red flowering form of the above. Leaves tinted and edged with red. Creeper.....	.15
1928	stenopetalum. Native. This is a tight growing blue green plant which probably is a form of this species. It is however a very striking sedum without considering its yellow flower. Height 6 to 10 inches.....	.15
1929	telephium. A plant similar in habit to sedum spectabile but with smaller and darker leaves and darker pink flowers. Height 10 to 16 inches.....	.20
SEMPERVIVUM		
1930	archnoides. A dainty cobweb house leek.....	.25
1935	brauni. House leek with green rosettes of sharply pointed leaves. Mat25
1945	laggeri. Cob web species, leaf tips in small dainty rosettes strung together with silvery threads. A choice plant for hot dry places. Mat.....	.25
1946	montanum. Medium-sized dull green rosettes and big dull rose flowers.....	.25
1955	tectorum. Hen and chickens. Big rosettes, fleshy leaves around which new offsets grow, hence its popular name. Pink flowers. Mat.....	.25
SHORTIA		
1970	galacifolia. Oconee bells. Shade-loving evergreen with beautiful nodding pink and white flowers. 4 to 6 inches....	.50
SIDALCEA		
1980	spicata. Native. Geranium-like leaves, clear pink or rose hollyhock-like flowers in spikes. Height 18 to 20 inches.	.40
SIEVERSIA		
1990	ciliata. Native. Pinnate hairy leaves and odd nodding reddish flowers with elongated calyx points projecting beyond the flowers. Height 10 to 14 inches.....	.25
SILENE		
2000	acaulis. Native. Grown from cuttings; better bloomer than the European form. Solid mats of bright green moss, bright pink flowers.....	.30
2005	californica. Native. Similar to <i>S. hookeri</i> , with dark red flowers30
2020	hookeri. Native. One of our most striking plants. Soft gray foliage; showy pink to red flowers; flopping stems. A gem. Height 4 to 6 inches.....	.35

SEND FOR BULB LIST

SILENE — Continued

		Price
2021	alpestris. Narrow, bright green leaves and showers of clear white flowers with deeply cut petals. A fine plant. Height 4 to 6 inches. June-July.....	\$.25
2025	maritima. A low mass of attractive blue green foliage which carries for long periods large short-stemmed white flowers. Height 3 to 6 inches.....	.25
2029	saxifraga. Bright green foliage mats above which appear all summer long dainty white flowers.....	.25
2030	shafta. A rather rapid growing leafy mass of foliage 4 to 5 inches, covered in late summer with masses of rosy flowers. A rock garden gem which gives color at a time it is most needed. Height 4 to 6 inches.....	.25

SISYRINCHIUM

2040	bellum. Native. A real grass flower, dainty and attractive. Dark blue flowers with yellow eye. Blooms nearly all summer. Height 10 to 12 inches.....	.25
2038	californica. Native. Dwarf, growing bright yellow grass flower. A long bloomer. Fine rock plant. Some shade. Height 6 to 8 inches.....	.25
2045	grandiflorum. Grass Widow. Dainty little member of the iris family, grass-like foliage, clear half-open purple flowers with orange anthers hung in a partially drooping position. A royal beauty. Height 8 to 12 inches...	.25



BRODIAEA HENDERSONI

SISYRINCHIUM GRANDIFLORUM

—U. S. Forest Service Photo.

SPHAERALCEA		Price
2060	munroana. Native. A beautiful gray leaved half shrubby plant with spikes of open salmon colored flowers. One of the best. Full sun and good drainage. 8 to 10 inches..\$.30
SPRAGUEA		
2062	multiceps. Pussy paws. Native. Flat rosettes of narrow green and red leaves and big wooly pink flowers, that give the plant its name. Needs a dry place.....	.30
STACHYS		
2070	corsica. A wee creeping mass of green foliage covered with white or soft pink flowers during summer. A wonderful ground cover30
STATICE		
2072	gmelini. Rosettes of fine blue green leaves and open sprays of airy purple flowers on 6-inch stems, in August and September25
2073	incana nana. A foot-high dwarf with flat topped heads of ruby red to purple flowers. These two dwarf Statice are new and a distinct addition to any garden for late summer bloom25
SYNTHIRIS		
2078	reniformis. Native. Small dark blue spikes of dainty flowers above a basal mass of reniform leaves. 6-inch. April and May bloomer.....	.35
2076	rotundifolia. Native shade plant, big rounded leaves, spikes of lavender or pale blue flowers. Extra good. Height 6 to 8 inches.....	.20
2077	rotundifolia sweetseri. Dark blue or violet form of above. Shade. Height 6 to 8 inches.....	.20
2075	stellulata. Native. Reniform leaves and good spikes of deep blue flowers; the most robust of all the species. Shade. Height 6 to 8 inches.....	.25
TALINUM		
2079	spinescens. Native. Curious clumps of fleshy leaves and sprays of rose purple flowers with a big central mass of yellow stamens. Height 8 inches.....	.35
THALICTRUM		
2080	dipterocarpum. A fine tall growing perennial for the large rockery or border. Finely divided foliage and loose sprays of rosy lavender flowers. Height 3 to 4 feet.....	.35
2085	purpurascens. Native. A dainty species of 18 inches with tiny purple sprays. A good plant for a shady spot in the rockery30
THYMUS		
2100	citriodorus. argentea. Silver leaved thyme. Shrub with aromatic leaves variegated white and green. Adds color to the rockery at any season. Soft rose flowers. Height 8 to 12 inches.....	.25
2101	citriodorus aurea. Golden thyme. Dwarf shrubs, fragrant variegated leaves, heads of dull rose flowers. A very desirable plant. Height 8 to 12 inches.....	.30
2105	serpyllum album. Creeping thyme with white flowers. Elegant ground cover. Creeper.....	.15
2106	serpyllum coccineum. Soft fragrant evergreen mats, heads of tiny bright red flowers. Choice ground cover. Creeper	.15
2107	serpyllum lanuginosus. Wooly thyme. Fragrant gray foliage, scattered pink flowers. Makes evergreen carpet of soft gray. Good ground cover. Creeper.....	.15
2108	serpyllum roseum. Bright evergreen mats of fragrant foliage, pink flowers. One of the best. Creeper.....	.15

SEND FOR BULB LIST

TRADESCANTIA		Price
2120	<i>virginica</i> . Spiderwort. Clear blue flowered plant from eastern states. All summer bloomer. Height 10 to 12 inches..	\$.25
TRITOMA		
2023	hybrids. A splendid variety of red hot poker, blooming early in spring and often again in the fall. 2 feet.....	.25
TUNICA		
2125	<i>saxifraga</i> . Mass of fine foliage; great number of clear pink flowers. Height 6 to 10 inches.....	.25
VANCOVERIA		
2140	<i>hexandra</i> . Inside Out Flower. Native. Good ground cover for shady places. Sprays of odd little flowers. Height 4 to 8 inches.....	.25
VERONICA		
2150	<i>amethystina</i> . A beautiful floppy mass of foliage 8 to 10 inches high, covered in spring with spikes of deep violet flowers25
2153	<i>gentianoides</i> . Flat rosettes of long glossy leaves carrying 10-inch stalks of clear blue flowers in May.....	.25
2155	<i>incana</i> . Flat masses of silvered leaves and spikes of the deepest violet flowers which contrast beautifully with the silver foliage. Very good. Height 8 to 10 inches....	.25
2160	<i>longifolia</i> . Speedwell. Tall growing species for large pockets or borders. Spikes of soft blue flowers in early summer. Height 18 to 24 inches.....	.25
2170	<i>pectinata rosea</i> . Mats of hairy velvet leaves with 5 to 6-inch spikes of clear pink flowers. A new and good ground cover25
2175	<i>repens</i> . Bright green mats along the ground, covered in spring with big white or lavender flowers nestled in the green foliage. Fine. Creeper.....	.25
2180	<i>rupestris</i> . Creeping half woody evergreen with spikes of clear azure blue in late spring. Choice. 4 to 8 inches..	.25
2185	<i>spicata rosea</i> . Mats of small leaves from which rise 6 to 8-inch spikes of soft pink flowers.....	.25



VIOLA-HALLI

DIANTHUS-NEGLECTUS

VIOLA

Price

2190	adunca.	Native. Dwarf evergreen, heart-shaped leaves. The dark blue flowers stand well above the compact of leaves and are borne in profusion in spring and fall. Height 2 to 4 inches.....	\$.30
2195	apricot.	A fine apricot colored violet. Long bloomer and a fine thing. Height 6 to 8 inches.....	.25
2198	bosniaca.	A dainty long blooming violet of an unusual rose mauve color. Height 6 to 8 inches.....	.25
2205	chrysantha (douglasii).	Native. Cut leaved, large yellow flowers with reverse side of the upper petal colored dull purple. Rare. Height 2 to 4 inches.....	.50
2210	cornuta (Gus Wermig).	Good foliage, masses of long faced deep violet flowers during the entire season. Height 4 to 6 inches.....	.25
2215	cucullata.	Native of Iowa. Big heart leaved species with big violet colored flowers on long stems. Fine for shade or half shade. Height 6 to 8 inches.....	.30
2235	glabella.	Native. Big leaved, branching. Bright yellow flowers. Persistent bloomer. Shade. 4 to 8 inches....	.25
2240	halli.	Native. Cut leaves; large flowers with upper petal rich violet, the lower cream yellow. The best of all natives. Height 4 to 6 inches.....	.40
2245	jersey gem.	Popular plant which through a long season opens its big violet pansies.....	.25



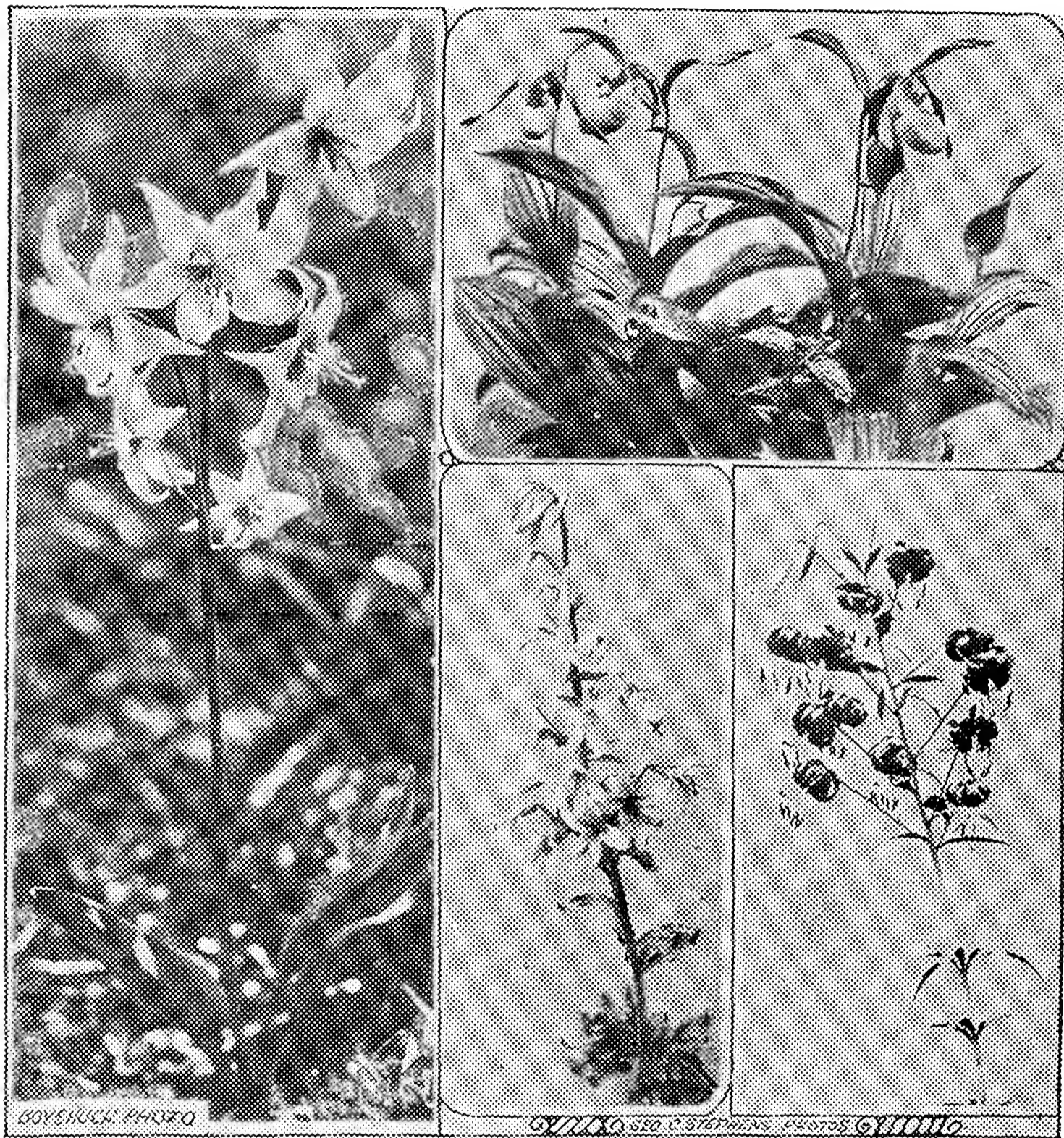
XEROPHYLLUM TENAX

VIOLA—Continued		Price
2248	maggie mott. A big pansy-like viola with a lavender tint that is hard to describe.....	\$.25
2250	oderata. Sweet English violet. Very good for shady places. Produces a profusion of long-stemmed fragrant violet flowers in early spring. Height 4 to 6 inches.....	.25
2257	pedata. The birds-foot violet of the eastern state with large pale blue violet flowers and cut leaves. A very fine plant requiring acid soil. Height 4 to 6 inches.....	.30
2258	pedata bicolor. The beautiful violet upper petals and light blue lower ones make a striking and beautiful plant of the form. Acid soil. Height 4 to 6 inches.....	.30
2259	pedatifida. Native of the middle western prairies. Up-standing cut leaved with soft blue flowers blooming over a long season. Fine showy plant. 6 to 8 inches....	.25
2260	praemorsa. Native. Basal clusters of big hairy leaves. A most attractive setting for the big open-faced pansy-like yellow flowers. Some shade. Height 4 to 8 inches..	.25
2270	sarmentosa (sempervirens). Native evergreen creeper, dainty yellow flowers with varying amount of brown stripes in throat. Shade. Creeper.....	.25
XEROPHYLLUM		
2290	tenax. Spikes of creamy white flowers from clumps of grass foliage. Height 2½ feet.....	.50
ZAUSCHNERIA		
2300	californica. Native. With gray foliage, red tubular flowers. Late bloomer. Height 4 to 6 inches.....	.40

Plants Suitable for a Hot Dry Location

Achillea argentea	Helianthemum
Aethionema grandiflora	Hypericum coris
ovalifolium	fragalis
shistosum	reptans
warleyensis	Oenothera tricalyx
Arabis alpina	Oleria stellulata
alpina rosea	Onosma taurica
alpina flora plena	Penstemon acuminatus
aubrietioides	euglaucus
koelheri	glaber
Aster alpina	oreganus
subcoeruleus	richardsoni
campanula pusilla	roezli
pusilla alba	Phlox diffusa
Dianthus deltoides	longifolia
Erigeron chrysopsides	rigida
linearis	subulata
mucronatus	Potentilla tridentata
Eriogonum nudum	Saponaria ocymoides
pyrolaeifolium	Sedums all listed
umbellatum	Sempervivum all listed
Eriophyllum lanatum	Silene hookeri
Genista andreana	alpestris
jacunda	Sphaeralcea munroana
lusitanica	Veronica amethystina
praecox	incana
prostatus	rupestris
sagittalis	spicata rosea
dwarf seedling	Zauschneria californica
Gypsophila repens	

SEND FOR BULB LIST



ERYTHRONIUM

Top: CYPRIPEDIUM MONTANUM

Below, Left:

LILIUM WASHINGTONIANUM

Right: LILIUM PARDALINUM