

Historic, archived document

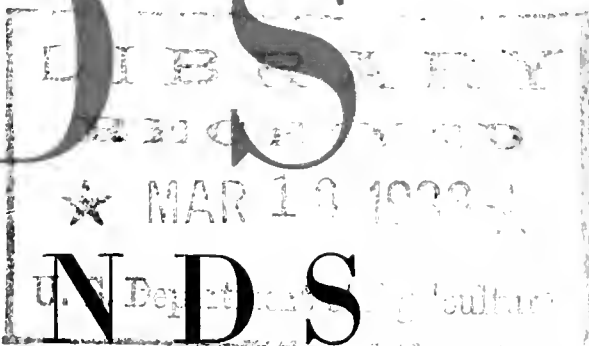
Do not assume content reflects current scientific knowledge, policies, or practices.

62,59
31st
Annual

CATALOG

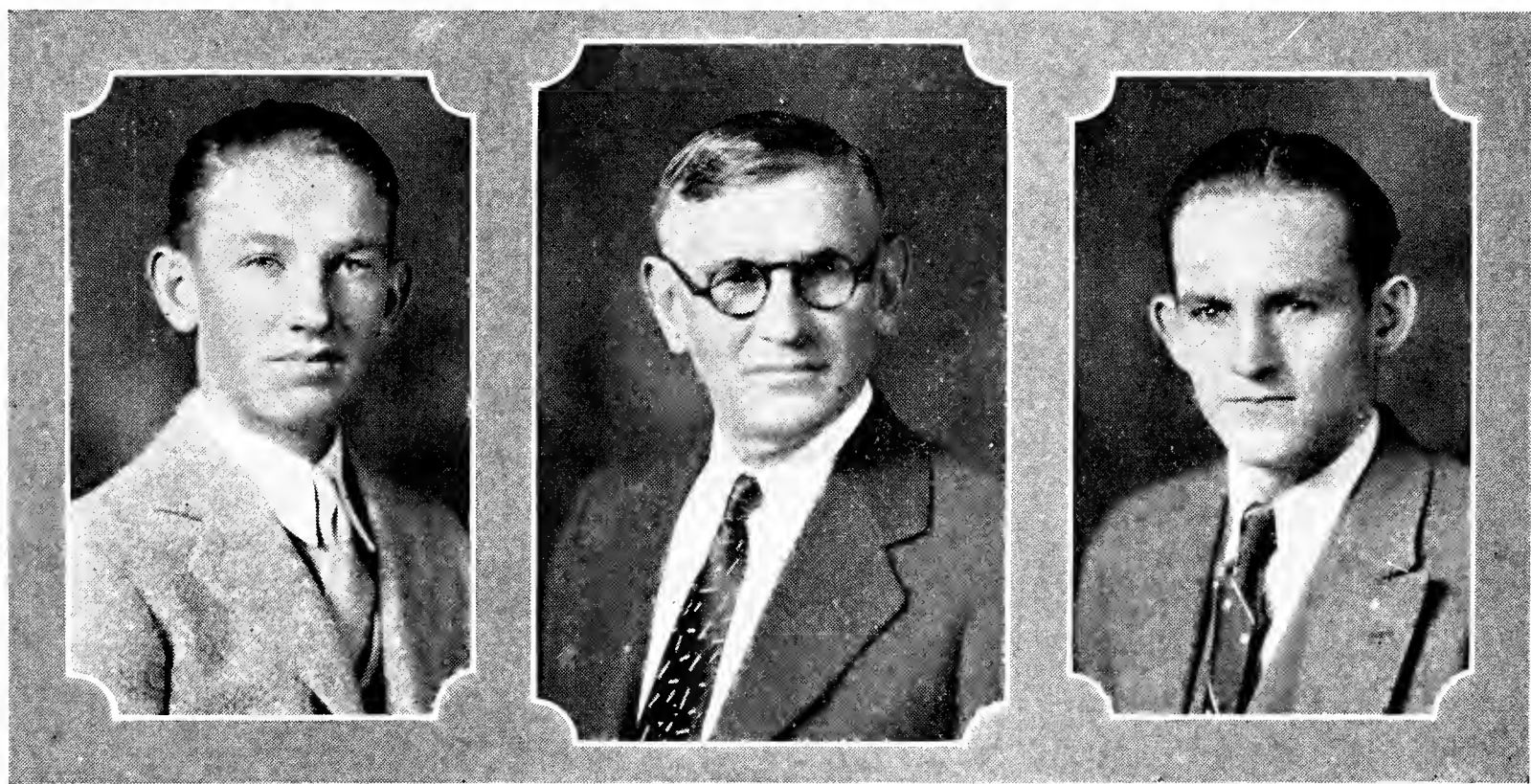
Spring
1933

SEEDS OF ALL KINDS



“MEET US FACE TO FACE”

We are the people who own and operate the business of the ROSWELL SEED CO.



IVAN J. GILL

WALTER GILL

VERDI F. GILL

VEGETABLE
SEED TRIALS
HORTICULTURE

With the Business
29 years—Sole Owner

Roswell Seed Co.

115-117
South Main

Roswell,
New Mexico

11 1933

What to Plant and When to Plant It

(AS APPLIES TO THE PECOS VALLEY OF NEW MEXICO)

JANUARY—After making out a list of all seeds you wish to plant, mail it to the Roswell Seed Co., with full shipping directions. Of course, you want the best at reasonable prices and we will be pleased to furnish you.

Prepare hot beds for early Cauliflower, cabbage, egg plant, lettuce, onions, pepper and tomatoes.

FEBRUARY—Your hot beds should be planted this month. Plant onion seed and sets, carrots, extra early peas, parsnip, parsley, pie plant, asparagus and horse radish early in the month. Early potatoes about the 15th.

MARCH—Plant oats, corn, peas, both early and second early. Bed out sweet potatoes in hotbeds. Plant early tomatoes in hotbeds early this month, also pepper and egg plant. Plant onions, lettuce, radishes, mustard, leek, parsley, spinach parsnips, salsify and stock beets.

APRIL—Plant celery, turnips, okra, peas, corn, lettuce, radishes, so as to have a succession. Plant early squash, early and second early beans, and tomato and sweet potato plants about the 10th or 15th. Begin planting cotton April 10th.

MAY—Melons, cucumbers, lima beans and pole beans, pumpkins, squash, blackeyed peas and okra should be planted. Plant cowpeas and peanuts. Set out tomato and sweet potato plants. Plant more beans, peas, lettuce, radish, mustard and corn. Sow seed of late cabbage in beds. Finish planting cotton last of the month.

JUNE—Finish putting out plants for regular summer and fall crops. Plant late cabbage seed in hills in the field. Melons, cucumbers, squash and pumpkins should be planted now, also milo, corn, cowpeas, millet, cane and kafir. Plant Mexican beans.

JULY—Plant pole and corn field beans. Make your last planting of corn, kafir, cane, milo. Set out celery and cabbage plants. Sow turnips and rutabaga for fall and winter use. Plant cucumbers for pickling.

AUGUST—Plant beans for late fall use and a few cucumbers for pickling. Finish planting celery early in the month. Sow more turnips. Plant early cabbage for fall and winter use. Plant cucumbers for pickling.

SEPTEMBER—Prepare for late fall and early winter by planting beets, corn salad, kale, lettuce, mustard and spinach. Sow onion seed for winter and spring transplanting.

OCTOBER—Finish up the planting of last month and add mustard, lettuce and spinach for early spring. Plant winter radishes and onion sets.

NOVEMBER—Finish harvesting crops and prepare for winter.

DECEMBER—Foot up profits and losses and send to us for next season's catalog.

The above is not for the professional gardener. He knows more about it than we do, but we are often asked about these matters, therefore we have done our best and hope some one will be benefited.

Few changes have been made in the above since it was written
by John B. Gill, 29 years ago.

H O T K A P S

*Special Pamphlet "Description and Use of HOTKAPS"
Mailed on Request*



Place
HOTKAP
in
SETTER

Place
SETTER
Over
Seed or
Plant



Cover
outside
edge of
HOTKAP
with soil



Tamp soil
around
edge of
SETTER



Remove
SETTER
from
HOTKAP



"And the work is done"

HOTKAPS are wax paper cones which completely protect each plant from frost, wind and insects. Easy and quick to "set." The gardener is well repaid for the time and money spent on HOTKAPS.

The best recommendation for HOTKAPS is their continued use, year after year, by the same growers of vegetables.

Illustrations to the left give a very good idea of how they are used.

Of course HOTKAPS can be "set" by hand, but the use of Setter and Tamper makes the work much faster and more satisfactory.

One of our customers, a leading melon grower, tells us that he can produce ripe melons a week to 10 days earlier by the use of Hotkaps than without them.

Protection from insects, alone, largely offsets the expense of Hotkaps.

Prices, F. O. B. Roswell

Per hundred\$ 1.25
Per thousand 10.00
Weight, 30 lbs. per thousand

STEEL SETTERS\$2.50 each
Weight 2 lbs.

Very durable, will last for years.

PAPIER-MACHE SETTERS .50 each
Weight 1 lb.

Very serviceable.

STEEL TAMPERS50 each

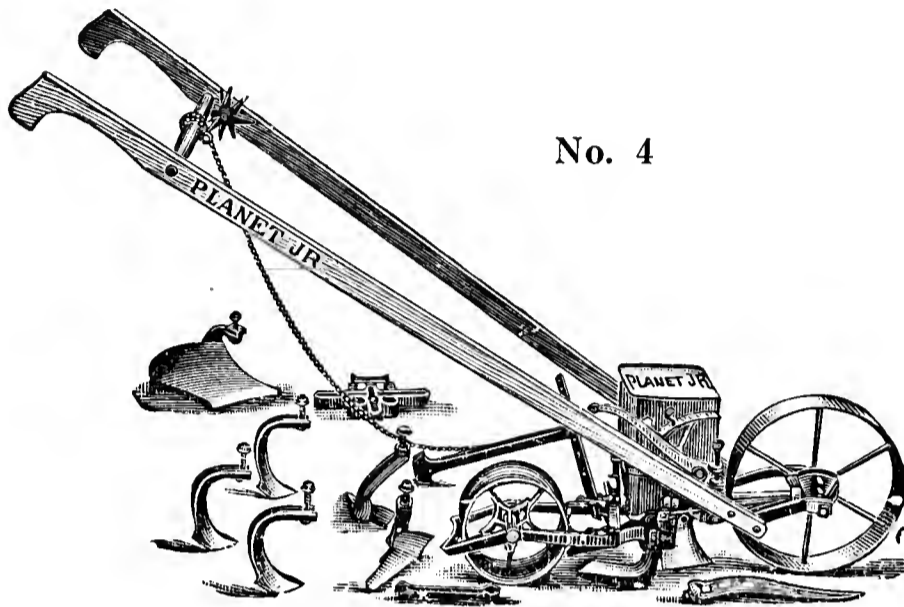
SEND FOR DESCRIPTIVE LITERATURE

PLANET JR. GARDEN TOOLS

No better tools are made than the Planet Jr. line. Horse drawn tools are not carried in stock but ordered as needed. We carry a stock of seeders and wheel hoes and repairs for same. Used tools are taken in exchange for new stock or we will buy outright.

Below we list the best sellers. Full descriptive catalog on request.

All Prices F. O. B. Roswell



No. 4

No. 4 Seeder, complete,
weight 37 lbs.\$19.00

No. 4 Seeder, only,
weight 30 lbs. 16.50

No. 3 Seeder,
weight 32 lbs. 18.00

No. 5 Seeder,
weight 34 lbs. 20.00

No. 300 Seeder,
weight 40 lbs. 21.00

This is our best seller



No. 300

No. 16 Wheel Hoe,
weight 30 lbs.\$10.00

No. 19 Wheel Hoe,
weight 22 lbs. 6.00

No. 12 Wheel Hoe,
weight 33 lbs. 11.75

No. 8 Horse Hoe,
weight 35 lbs. 17.50

SEND FOR PLANET JR. CATALOG

BEEKEEPERS SUPPLIES

We carry a stock of
Lewis-Dadant Goods

which we sell at

Catalog Prices

F. O. B. Roswell



Full Descriptive

Catalog With Prices

Mailed on Request

WE BUY BEESWAX

Buying Seeds By Mail

With few exceptions, prices in this catalog are delivered any post office, therefore no transportation charges to be considered.

Make selections from catalog, enclose check, money order, cash or stamps drop in the mail and you will receive the goods with the least possible delay. Eight mails and two rural routes leave Roswell daily. Freight, express and truck lines operate in all directions and render excellent service.

MAIL ORDERS RECEIVE PROMPT ATTENTION.

Rarely do we hold an order over night, many are on the way back to you within one hour after we receive them. Should you order an article that we do not have, you will be notified promptly.

SEND US YOUR ORDERS, WE CAN SERVE YOU WELL.

Write, wire or phone, we are always here ready to attend to business. Business phone 92, out of business hours 352.

WE ARE JUST AS CLOSE TO YOU AS YOUR NEAREST POST OFFICE.

Where articles are priced F. O. B. Roswell the weight is given so that you can figure the delivered prices. However when in doubt or when large quantities are wanted, we are always glad to quote delivered prices.

ROSWELL SEED CO.

115-117 S. Main Roswell, New Mexico

We are always glad to serve our customers at any time, day or night. Out of business hours call Walter Gill, phone 352.

VEGETABLE SEEDS

THE ROSWELL SEED CO. give no warranty, expressed or implied, as to the description, quality, productiveness, or any other matter, of any seeds, bulbs, plants or trees which they send out. If the purchaser does not accept the goods on these terms, they are to be returned at once.

Garden and Flower Seeds are priced delivered to any post office in the United States.

BEANS

Plant Beans as soon as danger of frost is past, about April 10th. One pound to fifty feet drill. For late crop plant July 1st, and again August 1st.

BUSH VARIETIES

BURPEES STRINGLESS GREEN POD. This very fine bean is just what its name indicates, round green pods, entirely stringless. Very early, our best seller. $\frac{1}{2}$ lb. 20c; 1 lb. 30c; 10 lbs. 2.50

GIANT STRINGLESS GREEN POD. Very similar to the above except larger and later. $\frac{1}{2}$ lb. 20c; 1 lb. 30c; 10 lbs. 2.50

EARLY VALENTINE. An old standard green pod variety. $\frac{1}{2}$ lb. 20c; 1 lb. 30c; 10 lbs. 2.50

BLACK WAX. Yellow, round pod, black seed, early. $\frac{1}{2}$ lb. 20c; 1 lb. 30c; 10 lbs. 2.50

GOLDEN WAX. Yellow pod, flat. $\frac{1}{2}$ lb. 20c; 1 lb. 30c; 10 lbs. 2.50

RUNNING VARIETIES

Plant in hills twelve inches apart, one pound to hundred hills.

KENTUCKY WONDER (Pole). An old well known variety, and has been our best seller for years. Always gives satisfaction. $\frac{1}{2}$ lb. 20c; 1 lb. 30c; 10 lbs. 2.50

EARLY GOLDEN CLUSTER WAX (Pole). A very fine running yellow pod bean. Bears from July until frost. $\frac{1}{2}$ lb. 20c; 1 lb. 30c; 10 lbs. 2.50

RED SPECKLED CUT SHORT. Old standard variety for planting in corn. $\frac{1}{2}$ lb. 20c; 1 lb. 30c; 10 lbs. 2.50

BURGER'S STRINGLESS GREEN POD (Pole). This is said to excel Kentucky Wonder, in that the pods have no strings. $\frac{1}{2}$ lb. 20c; 1 lb. 30c; 10 lbs. 2.50

LAZY WIFE (Pole). Green Pods, grow in clusters, very easily picked. $\frac{1}{2}$ lb. 20c; 1 lb. 30c; 10 lbs. 2.50

McCASLAN. Flat, green pods, sometimes 10 inches long. White seed. A heavy yielder. $\frac{1}{2}$ lb. 25c; 1 lb. 40c; 10 lbs. 3.00

LIMA BEANS

LARGE BUSH. $\frac{1}{2}$ lb. 25c; 1 lb. 40c; 10 lbs. 3.00

SMALL BUSH. $\frac{1}{2}$ lb. 25c; 1 lb. 40c; 10 lbs. 3.00

LARGE POLE. $\frac{1}{2}$ lb. 25c; 1 lb. 40c; 10 lbs. 3.00

SMALL POLE. $\frac{1}{2}$ lb. 25c; 1 lb. 40c; 10 lbs. 3.00

BEETS

Plant early in the Spring, as the young plants will stand light frost. Later in the season for succession. One ounce to fifty feet drill, six pounds per acre. Rows 18 inches apart.

EARLY BLOOD TURNIP. Best for early planting. Pkt. 5c; oz. 10c; $\frac{1}{4}$ lb. 30c; lb. 1.00

ECLIPSE. Good for second planting. Pkt. 5c; oz. 10c; $\frac{1}{4}$ lb. 30c; lb. 1.00

DETROIT DARK RED. Best for canning. Pkt. 5c; oz. 10c; $\frac{1}{4}$ lb. 30c; lb. 1.00

EXTRA EARLY EGYPTIAN. Early, dark red, flat. Pkt. 5c; oz. 10c; $\frac{1}{4}$ lb. 30c; lb. 1.00

LONG BLOOD RED. Slower growing than the globe varieties, more prolific. Pkt. 5c; oz. 10c; $\frac{1}{4}$ lb. 30c; lb. 1.00

SWISS CHARD. Grown chiefly for the tops. Served like spinach. Pkt. 5c; oz. 10c; $\frac{1}{4}$ lb. 30c; lb. 1.00

FOR INSECTICIDES SEE PAGE 15

STOCK BEETS

Fine for feeding cows, hogs and sheep. Will yield as high as 30 tons per acre. Single specimens weighing 20 pounds not unusual. Plant early in the Spring, rows about 30 inches apart. Plants should be thinned to 8 inches for best results. Six pounds seed required per acre.

GOLDEN TANKARD. Grows mostly above the ground, very easily harvested. lb. 50c; 10 lbs. 4.00

GIANT LONG RED. Grows about half out of the ground. A heavy yielder. lb. 50c; 10 lbs. 4.00

VILMOREN SUGAR. Good for table as well as stock feeding.

lb. 50c; 10 lbs. 4.00

CABBAGE

For early crop, sow seeds in hot beds in January, re-set in open field in March. Seed for later crop may be planted in the field where they are to grow, thinning to a stand according to variety, or may be grown in beds and re-set same as early varieties. Each method has its advantages. One ounce seed will produce about 2000 plants. From 10,000 to 15,000 plants required per acre.

EARLY JERSEY WAKEFIELD. The first on the market, small head but usually brings a high price.

Pkt 5c; ½ oz 15c; oz 25c; ¼ lb 75c; lb 2.00

EARLY WINNINGSTADT. Also a good early variety. Heads conical shaped.

Pkt 5c; ½ oz 15c; oz 25c; ¼ lb 75c; lb 2.00

RED ROCK. Large round heads of deep red color.

Pkt 5c; ½ oz 15c; oz 25c; ¼ lb 75c; lb 2.00

COPENHAGEN MARKET. The favorite with Roswell Gardeners. Almost as early as Early Jersey, much larger head.

Pkt 5c; ½ oz 20c; oz 35c; ¼ lb 1.00; lb 3.00

GOLDEN ACRE. Very much like Copenhagen Market except smaller and earlier.

Pkt 5c; ½ oz 25c; oz 50c; ¼ lb 1.50; lb 4.00

DANISH BALL HEAD (Short Stem). Medium size, round, solid. Good keeper.

Pkt 5c; ½ oz 20c; oz 35c; ¼ lb 1.00; lb 3.00

LATE FLAT DUTCH. Very large flat heads, fine for kraut.

Pkt 5c; ½ oz 15c; oz 25c; ¼ lb 75c; lb 2.00

EVERGREEN HOLLANDER. A very fine round, solid cabbage. As its name indicates, always green. A favorite in the mountain districts.

Pkt 5c; ½ oz 20c; oz 35c; ¼ lb 1.00; lb 3.00

LARGE LATE DRUMHEAD. A very fine late variety. Grows very large. Do not plant in mountain districts unless you have market for large cabbage.

Pkt 5c; ½ oz 15c; oz 25c; ¼ lb 75c; lb 2.00

CHINESE CABBAGE. Raised chiefly for green feed for poultry. Plant any time.

Pkt 5c; ½ oz 25c; oz 40c; lb 3.50

WISCONSIN HOLLANDER, No. 8 (Yellow Resistant). A very fine cabbage. Its yellow resistant qualities make it a very desirable variety.

Pkt 5c; ½ oz 25c; oz 50c; ¼ lb 1.50; lb 4.00

CAULIFLOWER

Cultivated like cabbage except outside leaves must be tied up around the heads to bleach them. One ounce of seed produces 2000 plants.

EARLY DANISH SNOWBALL. Best variety for this locality.

Pkt 10c; ½ oz 1.00; oz 1.50

CARROTS

Plant in drills early in the spring and continue to plant each month until November. Good for stock feed as well as table use. One ounce of seed to 150 feet drill.

LONG ORANGE. Grows large therefore heavy yielder.

Pkt 5c; ½ oz 10c; oz 15c; ¼ lb 35c; lb 1.00

DANVERS HALF LONG. Smaller than long orange, better for table use.

Pkt 5c; ½ oz 10c; oz 15c; ¼ lb 35c; lb 1.00

OX HEART. The best variety for early use, very tender.

Pkt 5c; ½ oz 10c; oz 15c; ¼ lb 35c; lb 1.00

CHANTENAY. Early variety, half long. Our best seller.

Pkt 5c; ½ oz 10c; oz 15c; ¼ lb 30c; lb 85c

CELERY

The Roswell district produces a superior quality of celery. Plenty of water and fertilizer will produce good celery on most any soil. No one should attempt to grow celery on a large scale until they have had experience with small planting, as celery growing is a trade of its own. Sow seed in April in beds in the open fields, reset in June, July and as late as August. Celery is bleached with boards, paper or banking with earth. This must be done with great care. Seed are slow to germinate. One ounce will produce 5,000 plants.

WHITE PLUME. Early variety, easily grown.

Pkt 5c; ½oz 15c; oz 25c; ¼lb 80c; lb 2.50

GOLDEN SELF BLANCHING. A very fine second early variety.

Pkt 5c; ½oz 25c; oz 50c; ¼lb 1.75; lb 6.00

EASY BLANCHING. The best for general crop. Extra fine quality.

Pkt 20c; oz 2.00; ¼lb 7.50; lb 24.00

GIANT PASCAL. A very late variety, hard to grow, but fine quality.

Pkt 5c; ½oz 15c; oz 25c; ¼lb 80c; lb 2.50

CUCUMBERS

Plant in hill 4 feet each way. Wait until warm weather as seed will rot in the ground if planted too early. Plant in July for late pickling. One ounce to 50 hills.

DAVIS PERFECT. A very fine early variety.

Pkt 5c; ½oz 10c; oz 15c; ¼lb 40c; lb 1.00

CHICAGO PICKLING. Small variety, good for pickling.

Pkt 5c; ½oz 10c; oz 15c; ¼lb 40c; lb 1.00

WHITE SPINE. A light colored variety, fine for slicing.

Pkt 5c; ½oz 10c; oz 15c; ¼lb 40c; lb 1.00

LONG GREEN. The very best of all for pickling or slicing. Early or late planting.

Pkt 5c; ½oz 10c; oz 15c; ¼lb 40c; lb 1.00

SWEET CORN

Plant early and follow with successions, making three plantings. Five lbs. per acre.

GOLDEN BANTAM. A very fine yellow variety, does well in this locality.

lb. 20c; 10 lbs. 1.75

STOWELL'S EVERGREEN. Our best seller, best variety for this locality.

lb 20c; 10 lbs 1.75

EXTRA EARLY ADAMS. Not a true sweet corn. Smooth grains, small ears, very early.

lb 20c; 10 lbs 1.75

COUNTRY GENTLEMAN. Early, quick growing variety.

lb 20c; 10 lbs 1.75

EARLY MINNESOTA. One of the best.

lb 20c; 10 lbs 1.75

WHITE PEARL. Not a sweet corn but an early field variety. Large ears, pure white. The favorite with our truck growers. Plant 7 lbs. per acre.

lb 20c; 10 lbs 1.75

LETTUCE

May be sown early as the plants will stand frost. Sow in fall for early spring use. One ounce to 100 feet drill.

LOS ANGELES. The best heading variety. Favorite with Roswell Gardeners. Our best seller.

Pkt 5c; ½oz 20c; oz 35c; ¼lb 80c; lb 2.50

BLACK SEEDED SIMPSON. A fine variety which does not head. Stands well without seeding.

Pkt 5c; ½oz 10c; oz 15c; ¼lb 35c; lb 1.00

EARLY CURLED SIMPSON. An early variety, medium size, does not head.

Pkt 5c; ½oz 10c; oz 15c; ¼lb 35c; lb 1.00

DENVER MARKET. A fine variety for general use.

Pkt 5c; ½oz 10c; oz 15c; ¼lb 35c; lb 1.00

HANSON. An old standard heading variety. Not so quick growing, but stands well without seeding.

Pkt 5c; ½oz 10c; oz 15c; ¼lb 35c; lb 1.00

CHICKEN LETTUCE. Cultivated for chicken and rabbit feed, not for table purposes. Produces large quantities of green feed.

Pkt 5c; ½oz 25c; oz 40c; ¼lb 1.00; lb 3.50

MUSTARD

Sow early in the spring, also again in the fall. One ounce to 50 feet drill.

SOUTHERN CURLED. Very large plants, curly leaves. Our best seller.

Pkt 5c; ½ oz 10c; oz 15c; ¼ lb 30c; lb 75c

OSTRICH PLUME. As large as Southern Curled, but much more curly, very ornamental.

Pkt 5c; ½ oz 10c; oz 15c; ¼ lb 30c; lb 75c

BLACK OR BROWN. Small straight leaves.

Pkt 5c; oz 10c; ¼ lb 20c; lb 50c

WHITE ENGLISH. Large straight leaves. Mild.

Pkt 5c; ½ oz 10c; oz 15c; ¼ lb 30c; lb 75c

MELONS—CANTALoupES

The Pecos Valley is famous for Cantaloupes. Do well on any soil. Plant after danger of frost, hills 8 x 8. One ounce to 50 hills.

ROCKY FORD. The best of all, too well known to need description. Green flesh.

Pkt 5c; ½ oz 10c; oz 15c; ¼ lb 35c; lb 1.00

HONEY BALL. Just what its name suggests. Green flesh.

Pkt 5c; ½ oz 15c; oz 25c; ¼ lb 75c; lb 2.00

BURRELL'S GEM. Like Rocky Ford except salmon fleshed. A very fine variety.

Pkt 5c; ½ oz 10c; oz 15c; ¼ lb 35c; lb 1.00

POLLOCK 10-25. Orange flesh. A very fine variety.

Pkt 5c; ½ oz 10c; oz 15c; ¼ lb 35c; lb 1.00

BANANA. A long, slender, yellow fleshed melon. Very fine.

Pkt 5c; ½ oz 10c; oz 15c; ¼ lb 35c; lb 1.00

GREELY. Very large, deep ribs, well netted, golden yellow flesh.

Pkt 5c; ½ oz 10c; oz 15c; ¼ lb 35c; lb 1.25

HONEY DEW. A fine late melon, good keeper. Green flesh.

Pkt 5c; ½ oz 10c; oz 15c; ¼ lb 35c; lb 1.00

HALE'S BEST. The first cantaloupe to appear on the Roswell market. Very fine quality. Salmon flesh.

Pkt 5c; ½ oz 10c; oz 15c; ¼ lb 60c; lb 1.50

WATERMELONS

Plant after danger of frost, hills 8 by 8 feet. One ounce 30 hills, 2 lbs. to the acre.

KLECKLEY SWEET. This is the leading variety of the Pecos Valley. Long, dark green, white seed, red meat. A very fine melon.

Pkt 5c; ½ oz 10c; oz 15c; ¼ lb 35c; lb 1.00

TOM WATSON. Larger and later than Kleckley Sweet. Long, dark green, white seed, red meat.

Pkt 5c; ½ oz 10c; oz 15c; ¼ lb 35c; lb 1.00

FLORIDA FAVORITE. Rivals Kleckley Sweet for earliness. Oblong, almost round. Mottled rind, white seed, red meat.

Pkt 5c; ½ oz 10c; oz 15c; ¼ lb 35c; lb 1.00

STONE MOUNTAIN. Very large, almost round, dark green, white seeds with black tips. A very fine melon.

Pkt 5c; ½ oz 15c; oz 25c; ¼ lb 50c; lb 1.50

GOLDEN HONEY (Yellow Meat.)

Pkt 5c; ½ oz 10c; oz 15c; ¼ lb 35c; lb 1.00

IRISH GREY. Long, almost white, red meat, thin rind, very solid.

Pkt 5c; ½ oz 10c; oz 15c; ¼ lb 35c; lb 1.00

IMPROVED KLECKLEY SWEET. Larger than the old standard variety.

Pkt 5c; ½ oz 15c; oz 25c; ¼ lb 50c; lb 1.50

RATTLESNAKE. Late variety. Long mottled rind. White seed, red meat. Very large.

Pkt 5c; ½ oz 10c; oz 15c; ¼ lb 35c; lb 1.00

IMPROVED TOM WATSON. Larger and earlier than the old variety. A very fine melon for home use or market.

Pkt 5c; ½ oz 15c; oz 25c; ¼ lb 50c; lb 1.50

HALBERT'S HONEY. A delicate melon, no shipper, but very fine for home use. Long, dark green. White seed, red meat.

Pkt 5c; ½ oz 10c; oz 15c; ¼ lb 35c; lb 1.00

EXCELL. Very much like Kleckley Sweet except larger. A very fine melon. Second early. Red meat, dark seed.

Pkt 5c; ½ oz 10c; oz 15c; ¼ lb 35c; lb 1.00

GRAYSTONE. Stone Mountain with gray skin. The same fine melon with a new coat.

Pkt 5c; ½ oz 15c; oz 25c; ¼ lb 50c; lb 1.50

MISCELLANEOUS

ENDIVE

Makes a fine salad, especially good in cold weather. Cultivated same as lettuce. **GREEN CURLED.**

Pkt 5c; ½ oz 15c; oz 25c; ¼ lb 75c; lb 2.00

COLLARDS

Of the cabbage family. Cultivated and used the same as cabbage. Does not head.

TRUE GEORGIA.

Pkt 5c; ½ oz 10c; oz 15c; ¼ lb 40c; lb 1.00

RHUBARB

Succeeds best on very rich, well drained soil. Sow seeds in Spring, plants will be ready to reset the following fall or spring. Set plants 4 feet each way. One ounce 200 plants.

LINEAUS.

Pkt 5c; ½ oz 15c; oz 25c; ¼ lb 75c; lb 2.00

VICTORIA.

Pkt 5c; ½ oz 15c; oz 25c; ¼ lb 75c; lb 2.00

Plants quoted on application.

PARSNIPS

HOLLOW CROWN.

Plant in February. Loose, deep soil is best.

½ oz 10c; oz 15c; ¼ lb 40c; lb 1.00

SALSIFY OR OYSTER PLANT

Resembles a parsnip. Made into soup is a good substitute for oysters. Grows deep in the ground, therefore must have deep soil. Plant early, will be ready in November. One ounce to 50 feet drill.

SANDWICH ISLAND.

Pkt 5c; ½ oz 15c; oz 25c; ¼ lb 75c; lb 2.00

LEEK

Belong to the onion family. Planted, cultivated and used the same as onions except does not bulb. Used green.

LONDON FLAG.

Pkt 5c; ½ oz 10c; oz 20c; ¼ lb 50c; lb 1.25

PARSLEY

Used for flavoring and garnishing. Seed germinate slowly. Does best in rich soil.

MOSS CURLED. The best variety for general use.

Pkt 5c; ½ oz 10c; oz 15c

EGG PLANT

Sow seed in hot bed early in Spring, set in open field when nights become warm. Seed slow to germinate and plants grow slowly at first. Must have very rich ground. One ounce produces 1500 plants.

NEW YORK PURPLE. Has proven best variety for this locality.

Pkt 5c; ½ oz 25c; oz 45c; ¼ lb 1.50; lb 4.00

BLACK BEAUTY. A very fine early variety.

Pkt 5c; ½ oz 30c; oz 50c; ¼ lb 1.75; lb 6.00

OKRA

Plant in open field after ground becomes warm. Seed slow to germinate and will rot in ground if planted too early. Soak seed over night before planting. Plant in hills 18 inches apart, rows 3 feet apart. One ounce will plant 30 hills.

DWARF GREEN. Short pods, very rough.

Pkt 5c; ½ oz 10c; oz 15c; ¼ lb 30c; lb 75c

DWARF VELVET. Long smooth pods.

Pkt 5c; ½ oz 10c; oz 15c; ¼ lb 30c; lb 75c

ONIONS

Onions may be planted in three ways:

Sow seed in the open in September, transplant in February and March.

Sow seed in hot beds in January, transplant in March and April.

Sow seed in field where they want to stand in February, thin to a stand when about half the size of a pencil.

All of the above methods are good, each has its own advantages.

Onions should be planted in rows 12 to 18 inches apart, 4 to 6 inches in the rows.

One pound will produce enough plants for an acre, use two pounds when drilled in the field.

VALENCIA. Grows very large. Light straw color. Mild. Always salable. Good keepers.

Pkt 5c; ½ oz 20c; oz 35c; ¼ lb 1.25; lb 3.50

CRYSTAL WHITE WAX. A large early, white, sweet variety. Always salable.

Pkt 5c; ½ oz 30c; oz 50c; ¼ lb 1.50; lb 5.00

ONIONS—(Continued)

DENIA. This is still the best variety for the Pecos Valley. Heavy yielder. Bulbs weighing 1 pound are the average, 2 pounds not unusual. Very mild. Light yellow. Always good sale for Denia Onions. See outside back cover.
Pkt 5c; ½ oz 20c; oz 35c; ¼lb 1.25; lb 4.00

YELLOW DANVERS Globe. Medium size, good keeper.
Pkt 5c; ½ oz 15c; oz 25c; ¼lb 65c; lb 2.00

BROWN AUSTRALIAN. A small, solid onion, excellent keeper.
Pkt 5c; ½ oz 15c; oz 25c; ¼lb 65c; lb 2.00

PRIZETAKER. A very fine yellow variety, grows to large size.
Pkt 5c; ½ oz 20c; oz 35c; ¼lb 1.00; lb 3.00

WHITE LISBON. Pure white. Best variety for bunching green.
Pkt 5c; ½ oz 20c; oz 35c; ¼lb 1.00; lb 3.00

GRANO. The latest variety of Spanish onion. Light yellow, very mild. Early, maturing 30 days earlier than Denia or Valencia. Oblong shape, tapering toward the bottom. Development of A & M College of New Mexico.
Pkt 5c; ½ oz 30c; oz 50c; ¼lb 1.75; lb 6.00

BARLETTA. White variety, fine for pickling. Very small.
Pkt 5c; ½ oz 15c; oz 25c; ¼lb 80c; lb 2.50

YELLOW BERMUDA. Sometimes called White. Light straw color.
Pkt 5c; ½ oz 20c; oz 35c; ¼lb 1.25; lb 4.00

ONION SETS

Delivered Any Post Office

Red and Yellow	15 per lb; 10 lbs. 1.25
White	20 per lb; 10 lbs. 1.50

Price on large quantities quoted on request.

PEAS

Plant latter part of February to April 15, in drills 12 to 18 inches apart. One pound to 50 feet drill.

ALASKA. Smooth variety, very early, only matures one crop.
lb 30c; 10 lbs 2.50

FIRST and BEST. One of the earliest varieties. About 14 inches high.
lb 30c; 10 lbs 2.50

HORSFORD'S MARKET GARDEN. A good variety for the main crop.
lb 30c; 10 lbs 2.50

LITTLE MARVEL. A very fine early, wrinkled variety. Height 18 inches.
lb 30c; 10 lbs 2.50

NOTTS EXCELSIOR. The earliest wrinkled variety. A favorite with our market gardeners. A heavy yielder.
lb 30c; 10 lbs 2.50

CHAMPION OF ENGLAND. A fine vining variety. Must have support.
lb 30c; 10 lbs 2.50

POTLATCH. A very strong grower, medium early. Good yielder. Two feet.
lb 30c; 10 lbs 2.50

THOMAS LAXTON. Second early, heavy cropper. About 2½ feet.
lb 30c; 10 lbs 2.50

FIELD PEAS

BLACK EYE. Grown for table use, snapped green or dry.
lb 20c; 10 lbs 1.50

CROWDER. Very prolific. Used green or dry.
lb 20c; 10 lbs 1.50

PEPPER

Sow seeds in hot beds and replant when the nights are warm, or plant seeds in hills in the open field after danger of frost is past. One ounce produces 2000 plants.

PIMENTO. Heart shaped, heavy thick meat, very mild, fine canner.
Pkt 5c; ½ oz 25c; oz 45c; ¼lb 1.50; lb 4.00

RUBY KING. Best sweet variety, grows very large, heavy yielder.
Pkt 5c; ½ oz 25c; oz 45c; ¼lb 1.50; lb 4.00

CHINESE GIANT. Larger than Ruby King, but not so good yielder.
Pkt 5c; ½ oz 25c; oz 45c; ¼lb 1.50; lb 4.00

CALIFORNIA WONDER. A very fine sweet pepper. Large, smooth, thick meat.
Pkt 5c; ½ oz 50c; oz 80c; ¼lb 2.75; lb 8.00

MEXICAN CHILI. A very pungent variety. Long, slender pods.
Pkt 5c; ½ oz 15c; oz 25c; lb 2.00

ANAHEIM CHILI. Larger than the Mexican Chili. Preferred by many on account of being milder. Very productive. Our best seller.
Pkt 5c; ½ oz 25c; oz 45c; ¼lb 1.50; lb 4.00

PUMPKIN

Plant in hills 8 feet each way after danger of frost. One ounce to 30 hills. One pound per acre.

KENTUCKY FIELD. Old standard yellow variety. Inclined to be flat.

Pkt 5c; oz 10c; ¼lb 20c; lb 50c

SMALL SUGAR. A very small yellow variety. Fine grained meat, best for table use.

Pkt 5c; ½oz 10c; oz 15c; ¼lb 30c; lb 80c

CASHAW. A very hard variety. Grows very large. Both straight and crooked neck, hard shell. Fine for baking.

Pkt 5c; ½oz 10c; oz 15c; ¼lb 40c; lb 1.00

KING OF MAMMOTH. Largest of all.

Pkt 5c; oz 20c; ¼lb 40c; lb 1.00

RADISHES

Plant early in the Spring followed by successions every 15 days. One ounce to 50 foot drill.

GLASS. Long white variety, mild.

Pkt 5c; ½oz 10c; oz 15c; ¼lb 40c; lb 1.00

NON PLUS ULTRA (Fire Ball). Globe shaped, bright red.

Pkt 5c; ½oz 10c; oz 15c; ¼lb 40c; lb 1.00

ROSE CHINA. Half long, light red, good for fall planting, never gets pithy.

Pkt 5c; ½oz 10c; oz 15c; ¼lb 40c; lb 1.00

ICICLE. Long white, very brittle.

Pkt 5c; ½oz 10c; oz 15c; ¼lb 40c; lb 1.00

WHITE VIENNA. Long, pure white.

Pkt 5c; ½oz 10c; oz 15c; ¼lb 40c; lb 1.00

ROSY GEM. Red, with white tip. Very early.

Pkt 5c; ½oz 10c; oz 15c; ¼lb 40c; lb 1.00

CHARTIER. Long red, shading to white at tip. An old favorite with market gardeners.

Pkt 5c; ½oz 10c; oz 15c; ¼lb 40c; lb 1.00

CINCINNATI MARKET. Long, bright red. Short tops. A very fine variety. Most popular long variety.

Pkt 5c; ½oz 10c; oz 15c; ¼lb 40c; lb 1.00

CRIMSON GIANT. Globe shaped, full red. Quick growing, stands well. Most popular round variety.

Pkt 5c; ½oz 10c; oz 15c; ¼lb 40c; lb 1.00

LONG SCARLET SHORT TOP. A long slender variety. Full red. Stands well without going pithy.

Pkt 5c; ½oz 10c; oz 15c; ¼lb 40c; lb 1.00

SQUASH

Plant when danger of frost is past, in hills 4 to 6 feet apart. One ounce plants 30 hills.

EARLY WHITE BUSH. Flat, scalloped, a very early variety, only good when young and tender.

Pkt 5c; ½oz 10c; oz 15c; ¼lb 50c; lb 1.25

GOLDEN SUMMER CROOKNECK. A small summer variety bush quick grower.

Pkt 5c; ½oz 10c; oz 15c; ¼lb 50c; lb 1.25

HUBBARD. A vining winter variety, good keeper.

Pkt 5c; ½oz 10c; oz 15c; ¼lb 50c; lb 1.25

FORDHOOK. A vining variety for either summer or winter use. Oblong, light yellow color.

Pkt 5c; ½oz 10c; oz 15c; ¼lb 50c; lb 1.25

SPINACH

Sow seed in September and October for early spring use. Sow in February and March for later. Does not do well in very hot weather. May be planted in drills or sown broadcast. One ounce to 50 feet. Ten to 15 pounds per acre broadcast.

BLOOMSDALE. A good variety for spring planting, does not stand the winter if planted in the fall.

Pkt 5c; oz 10c; ¼lb 20c; lb 45c

VIROFLAY. Best for fall planting, stands cold weather well.

Pkt 5c; oz 10c; ¼lb 20c; lb 45c

NOBEL. A very fine new variety. Resembles Viroflay, but larger and thicker leaf. Fine for home use, also market. Good shipper.

Pkt 5c; ½oz 10c; oz 15c; ¼lb 25c; lb 75c

—WE FILL MAIL ORDERS PROMPTLY—

TOMATOES

Seed may be sown in hot beds and plants reset in the field after danger of frost, but many growers prefer waiting until warmer weather and planting in the open, thinning to a stand as the plants grow. Most varieties should be set 4 feet apart each way, but the dwarf or tree varieties may be set closer, about 2 feet in the row and rows 3½ feet apart. One ounce produces 2000 plants.

STONE. If you are in doubt what variety to plant, plant Stone. A fine, large red tomato. A little late, but stands well. The very best shipper.
Pkt 5c; ½oz 20c; oz 35c; ¼lb 1.00; lb 3.00

CHALK'S EARLY JEWEL. The earliest of all. Bright red.
Pkt 5c; ½oz 20c; oz 35c; ¼lb 1.00; lb 3.00

PONDEROSA (Beef Steak). Very large, deep purple.
Pkt 5c; ½oz 20c; oz 35c; ¼lb 1.00; lb 3.00

MARGLOBE. Bright red, globe shaped. Wilt and rust resisting. A very fine variety. Used largely for canning.
Pkt 5c; ½oz 35c; oz 60c; ¼lb 1.75; lb 5.50

BREAK O'DAY. Resembles Marglobe but earlier.
Pkt 5c; ½oz 35c; oz 60c; ¼lb 1.75; lb 6.00

JUNE PINK. Early, very productive. Blight proof. Strong grower.
Pkt 5c; ½oz 20c; oz 35c; ¼lb 1.00; lb 3.00

GOLDEN QUEEN. A fine, large, yellow variety.
Pkt 5c; ½oz 25c; oz 40c; ¼lb 1.25; lb 3.50

DWARF CHAMPION. A fine early tree variety. Purple fruit.
Pkt 5c; ½oz 20c; oz 35c; ¼lb 1.00; lb 3.00

IMPERIAL. Rivals the Stone. Very large red. Earlier than the Stone but not so solid. Fine for the home garden.
Pkt 5c; ½oz 20c; oz 35c; ¼lb 1.25; lb 4.00

BONNIE BEST. Large red. A fine tomato for home or market.
Pkt 5c; ½oz 20c; oz 35c; ¼lb 1.00; lb 3.00

SMALL FRUIT VARIETIES. Plum and Pear shaped, both Red and Yellow.
Pkt 5c; ½oz 25c; oz 40c

TURNIPS

Plant in spring or fall, either in drills or sown broadcast. One ounce to 100 feet drill. Two pounds per acre broadcast.

AMBER GLOBE. The best yellow variety. Plant in fall, stands well in cold weather. Especially adapted to the mountain districts.
Pkt 5c; ½oz 10c; oz 15c; ¼lb 30c; lb 80c

PURPLE TOP STRAP LEAF. For spring or fall planting. White, with purple top. Flat. A fine variety.
Pkt 5c; ½oz 10c; oz 15c; ¼lb 30c; lb 80c

PURPLE TOP WHITE GLOBE. The best white turnip for fall planting, grows very large, rarely becomes pithy. At home in the mountains where it grows to very large size.
Pkt 5c; ½oz 10c; oz 15c; ¼lb 30c; lb 80c

COW HORN. Shaped as the name indicates. White with green crown.
Pkt 5c; ½oz 10c; oz 15c; ¼lb 30c; lb 80c

SEVEN TOP. This variety is grown chiefly for the tops which grow very rank.
Pkt 5c; ½oz 10c; oz 15c; ¼lb 30c; lb 80c

WHITE FLAT DUTCH. Pure white variety, good for either early or late planting.
Pkt 5c; ½oz 10c; oz 15c; ¼lb 40c; lb 1.00

WHITE TOP MILAN. A fine early variety, good quality, grows quickly.
Pkt 5c; ½oz 10c; oz 15c; ¼lb 40c; lb 1.00

YELLOW PURPLE TOP RUTABAGA. The very best Swedish turnip. Sow in July. Stands well in cold weather.
Pkt 5c; ½oz 10c; oz 15c; ¼lb 30c; lb 80c

WHITE EGG. Pure White quick growing, early variety.
Pkt 5c; ½oz 10c; oz 15c; ¼lb 30c; lb 80c

ASPARAGUS ROOTS

Plant in February. **MARTHA WASHINGTON, COLUMBIAN MAMMOTH WHITE, CONOVERS COLOSSAL.**

.30 per doz.\$1.50 per hundred
Delivered.

RHUBARB ROOTS

Plant in February. **LINNAEUS, Greenstalks. VICTORIA, Redstalks.**

\$1.00 per doz.\$7.00 per hundred
Delivered.

LAWN GRASS SEEDS

	lb.	10 lb.		lb.	10 lb.
KENTUCKY BLUE GRASS50	3.75	BERMUDA50	4.00
ENGLISH RYE GRASS30	2.50	WHITE DUTCH CLOVER70	6.00
SHADY NOOK70	6.00			

F. O. B. ROSWELL

FLOWER SEEDS IN BULK

POSTAGE PAID

NASTURTIUM. Tall mixed.
Oz 15c; 2 oz 25c; ¼lb 40c; lb 1.00

NASTURTIUM. Dwarf mixed.
Oz 15c; 2 oz 25c; ¼lb 40c; lb 1.00

NASTURTIUM. Golden Gleam, sweet
scented. A fine new variety.
Oz 50c; 3 oz 1.75; lb 6.00

SWEET PEAS. Choice mixed.
Oz 10c; 3 oz 25c; lb 1.00

SWEET PEAS. Spencer mixed.
Oz 25c; 3 oz 50c; lb 2.00

MORNING GLORY. Large blue.
Pkt 5c; oz 40c; 3 oz 75c; lb 3.00

MORNING GLORY. Japanese.
Oz 25c; 3 oz 50c; lb 2.00

ZINNIAS

Our Zinnia seed are bought from the leading growers in California and are the best we can buy.

EXTRA FANCY MIXTURE. A mixture of all types of flowers, in all colors.
Per ounce\$3.00

GOLD MEDAL DAHLIA FLOWERED MIXTURE. Fifteen of the finest Dahlia Flowered varieties. Per ounce\$1.50

GENERAL MIXTURE DAHLIA FLOWERED. Many colors, Dahlia Flowered, grown mixed. Per ounce75

COLOSSAL GIANT FLOWERED MIXTURE. Many colors, grown mixed. Per ounce50

FLOWER SEEDS IN PACKETS

TEN CENTS PER PACKET

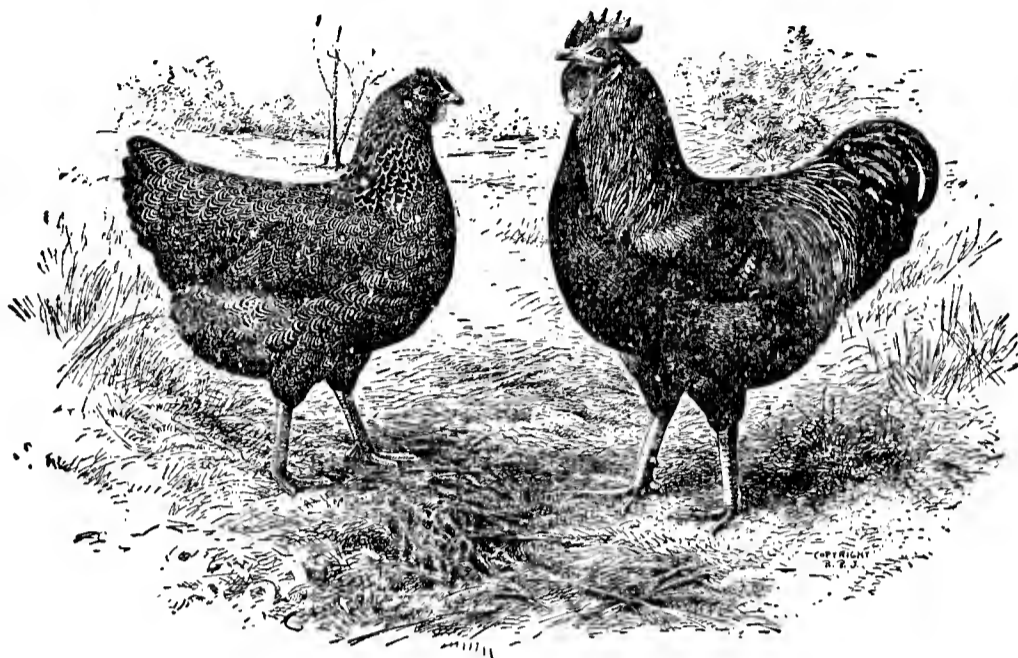
POSTAGE PAID

Alyssum, Sweet
Asters, mixed
Bachelor Button
Balsam, double mixed
Candy Tuft, mixed
Cosmos, mixed
Carnation, German mixed
Coxcomb, dwarf mixed
Chrysanthemum, annual mixed
Delphinium
Four O'clock
Gourds, mixed
Forget-Me-Not
Ice Plant
Hollyhock, double mixed
Larkspur, dwarf
Larkspur, tall
Lobelia
Lantana, mixed
Marguerite
Moonflower
Mignonette

Marigold, French
Marigold, African
Morning Glory, Japanese
Oxalis
Petunia, Blotched and Striped
Petunia, Dwarf
Pansy, mixed
Pinks, mixed
Poppy, Shirley mixed
Poppy, California
Phlox, Drummondii mixed
Portulaca, double mixed
Snap Dragon
Stocks, ten weeks
Salvia, sweet
Sweet Williams, double mixed
Smilax
Verbena, mammoth mixed
Violet
Wild Cucumber Vine
Zinnia, double mixed

POULTRY SUPPLIES

SPECIAL POULTRY SUPPLY CATALOG MAILED ON REQUEST



LEE'S GIZZARD CAPSULES FOR THE CONTROL OF WORMS IN POULTRY Made in Three Sizes

	Chick	Pullet	Adult
50 Capsule Package	\$.50	\$.75	\$ 1.00
100 Capsule Package90	1.35	1.75
250 Capsule Package	2.00	3.00	4.00
500 Capsule Package	3.50	5.00	7.00
1000 Capsule Package	6.00	9.00	12.00

Delivered Any Post Office

Sample capsules and directions for use, mailed on request.

OYSTER SHELL

10 lbs.25
100 lbs.	1.25

CHARCOAL Fine and Coarse

50 lbs.	1.75
10 lbs.40
100 lbs.	3.50

MEAT SCRAP

10 lbs.50
25 lbs.	1.00
100 lbs.	3.00

LEE'S EGG MAKER

2 lb. package50
5 lb. package	1.00

GLASS NEST EGGS

Per doz.30
---------------	-----

SODIUM FLOURIDE Louse Powder

Per lb.50
--------------	-----

LEG BANDS

(Sample on Request)
Celluloid Rings

Per doz.15
Per 100	1.00

Aluminum Bands

Per doz., numbered15
Per 100, numbered	1.00

We Pay Postage on Leg Bands

STAR PARASITE REMOVER Blue Bug Killer (Guaranteed)

Per bottle	1.00
------------------	------

Postage Paid

LEE'S GERMOZONE

Roup Cure, tablets, three size packages	.25—.75—1.50
---	--------------

WHITE DIARRHOEA REMEDY

Tablets, 2 size packages30—.60
--------------------------------	---------

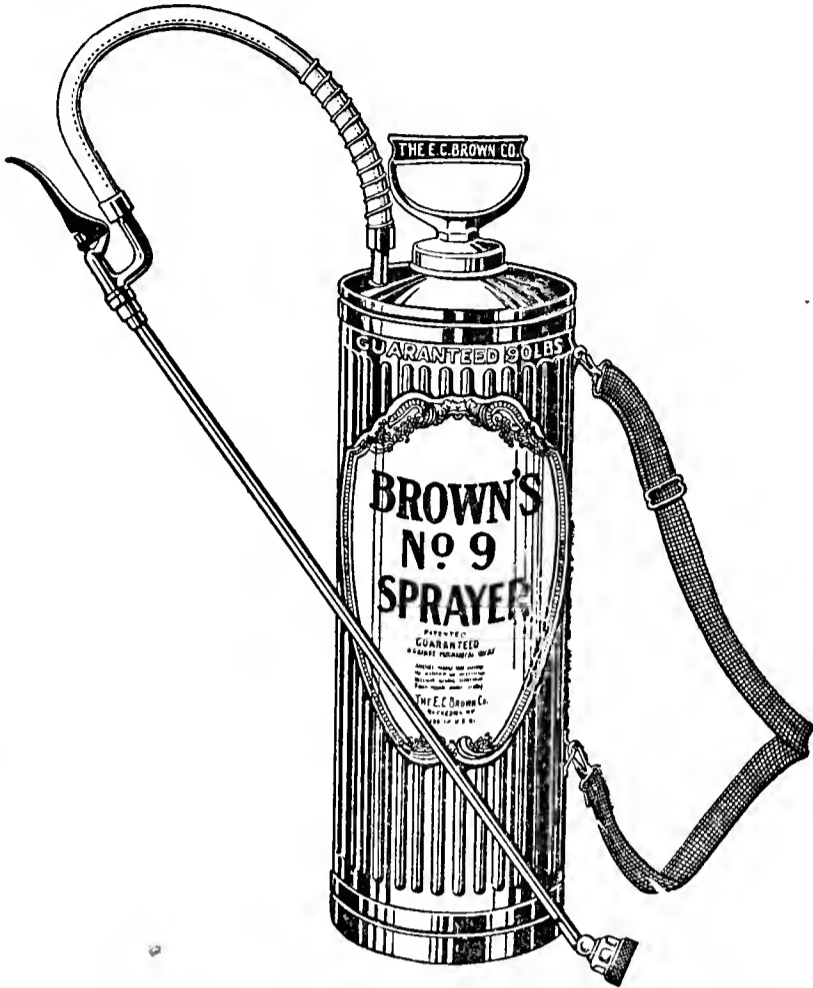
LEE'S INSECT POWDER

1 lb. package30
---------------------	-----

INCUBATORS AND BROODERS

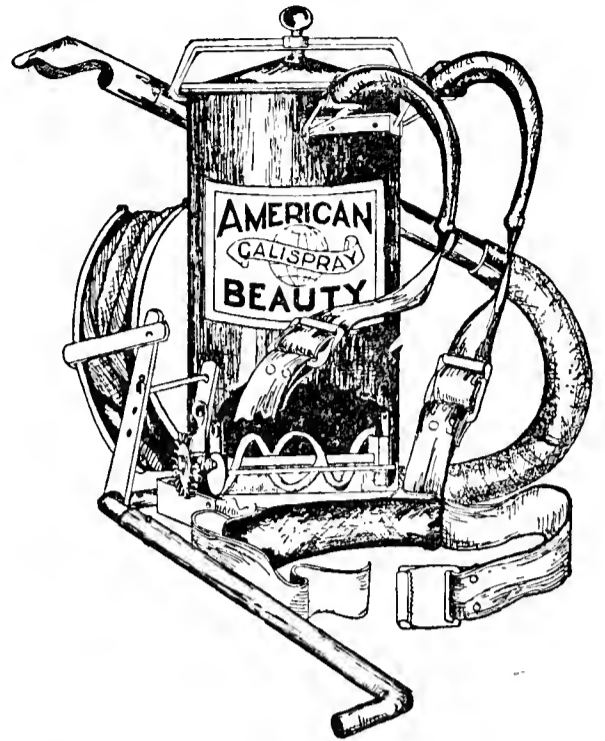
WE SELL SAFETY HATCH INCUBATORS AND MORRIS BROODERS.

CATALOG ON REQUEST.



AUTO-SPRAY No. 9
Three Gallon Tank

Galvanized, each7.50
Brass, each11.00
Complete, as shown above.

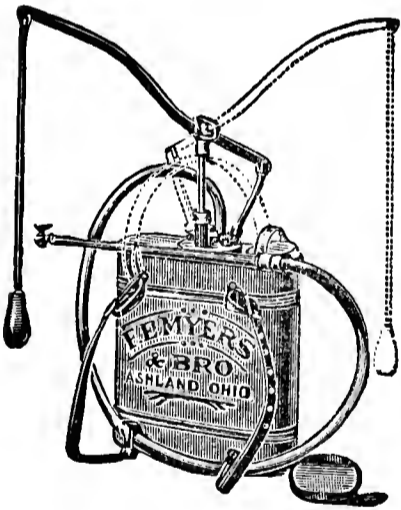


AMERICAN BEAUTY DUST SPRAYER

Price18.00
Weight 20 lbs.



Capacity 1 qt. Glass Tank. Price 1.50—Weight 3 lbs.
This is the best small duster we have ever handled.

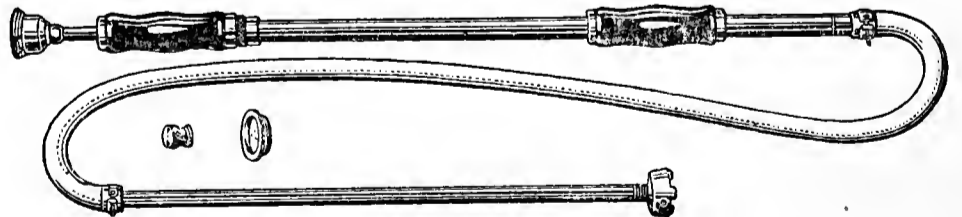


MYER'S KNAPSACK

Price15.00
Weight 20 lbs.

CONTINUOUS ATOMIZER

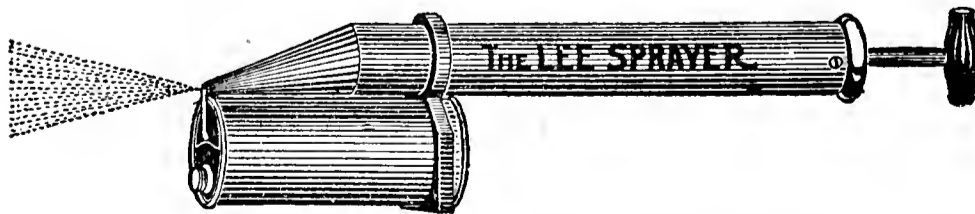
One Quart
Weight 2 lbs.
Tin 1.00
Brass 1.50



BROWN SPRAYER No. 5

Double acting pump. Suitable for use in pail or Knapsack tank.

Price5.25
Weight 4 lbs.



A good small sprayer
Tin. Weight 2 lbs.

Price75

GOODS ON THIS PAGE ARE PRICED F. O. B. ROSWELL

INSECTICIDES

Special literature on spraying mailed on request.

Tell us the kind of insects you want to kill and we will tell you how to kill them.

APHICIDE

A nicotine preparation in dry form for the control of Aphis, Leaf Hopper, Flea Beetles, Fleas, Onion Thrips, Squash Bugs, Bean Beetles, Worms and Caterpillars. Used extensively on cabbage, melons and cucumbers. May be applied with a dust gun or sprinkled on the plants. Special pamphlet describing Aphicide and its uses mailed on request.

	No. 10	No. 15	No. 21	No. 26
1 lb. can, each40	.50	.45	.25
5 lb. can, each	1.50	1.95	1.70	.75
25 lb. can, each	6.50	8.65	7.50	2.75
100 lb. drum, each	24.00	32.50	28.00	9.90

F. O. B. Roswell

Aphicide is Poison and Cannot be Mailed

ARSENATE OF LEAD (POWDERED)

Used to control Coddling Worms in apples and Leaf Worms in cotton. Packed in 5 lb. packages, 10 packages to the carton.

5 lb. package	\$1.00	100 lbs.	\$15.00
---------------------	--------	---------------	---------

F. O. B. Roswell. Poison, not Mailable

Arsenate of Lead is applied in both liquid and dust form.

CAUTION: Never put soap in Arsenical Compounds.

TOBACCO DUST

1 lb.20	10 lbs.	\$1.25
		100 lbs.	\$10.00

F. O. B. Roswell. Poison, not Mailable

BLACK LEAF "40"

A nicotine preparation in liquid form. Used to control most insects that bother flowers and vegetables. Also for dipping sheep and cattle, and control of lice on poultry. Ask for descriptive pamphlets.

1 oz. bottle25	½ lb can	\$ 1.25
2 oz. bottle45	2 lb. can	3.50
4 oz. bottle80	10 lb. can	12.50

F. O. B. Roswell. Poison, not Mailable

EVERGREEN

A non-poisonous Pyrethrum liquid insecticide. Harmless to man, animals or birds but sure death to insects. This is used to control all kinds of insects which effect vegetables and flowers. Can be used on the most tender plants without damage. Liquid form, applied with a sprayer.

1 oz bottle35	2 lb. can	3.50
6 oz. bottle	1.00	1 gal. can	13.00
16 oz. bottle	2.00	5 gal. can	50.00

Mailable, non-poisonous. These priced delivered to any post office. A special pamphlet describing Evergreen and its uses will be mailed on request.

RED ARROW

1 oz. bottle35	1 pt. can	3.25
¼ pt. can	1.00	Quart	6.00
½ pt. can	1.75	Gallon	20.00

Delivered Any Post Office

Red Arrow is a non-poisonous, pyrethrum insecticide. Used to control all kinds of insects, very effective, being non-poisonous, it can be used under all conditions and can be mailed.

FOILAGE

1 oz.25	4 oz.75
16 oz.	2.00		

Delivered Any Post Office

Foilage is a non-poisonous pyrethrum insecticide, which can be used under all conditions, very effective for controlling all sorts of insects. Mailable.

RAT POISON

"BLACK CAT"

For rats and mice. This is a non-poisonous preparation to mix with meat or cereal and will kill rats and mice but not harmful to other animals. Non-poisonous, can be mailed.

Package .50. Delivered.

MOUSE SEED

Seeds specially treated to attract mice but not attractive to pet animals or birds. Poison, not mailable.

Small package .25, 1 lb. 1.50. F. O. B. Roswell.

RAT SCENT

Poison Grain. Will kill rats, mice, gophers, squirrels and prairie dogs. Poison, not mailable.

½ lb. package .35c. F. O. B. Roswell.

CARBOLA

A disinfecting, white paint. Powder form, mixes readily with water. Helps control diseases, lice and mites.

10 lb. package makes 5 gallons. Price \$1.25. F. O. B. Roswell. Mailable.

DAIRY SUPPLIES**MILK BOTTLES**

Qts.	1.00 per doz.	10.50 per gross,	Weight 270 lbs.
Pts.65 per doz.	7.10 per gross,	Weight 160 lbs.
½ Pts.55 per doz.	6.00 per gross,	Weight 105 lbs.
¼ Pts.55 per doz.	6.00 per gross,	Weight 90 lbs.
½ Gal.	3.00 per doz.	25.00 per gross,	Weight 412 lbs.

F. O. B. Roswell

Special prices will be quoted on large quantities of bottles, also on bottles printed to order.

BOTTLE CAPS. With Pulls

F. O. B. Roswell

Packed in tubes of 500, Wt. 1½ lb. per tube

1 tube40	3 tubes	1.00
2 tubes75	10 tubes	3.00

50,000 caps printed to order, \$24.00, delivered to any freight office.

CANNING SUPPLIES

PRESSURE COOKERS

Delivered

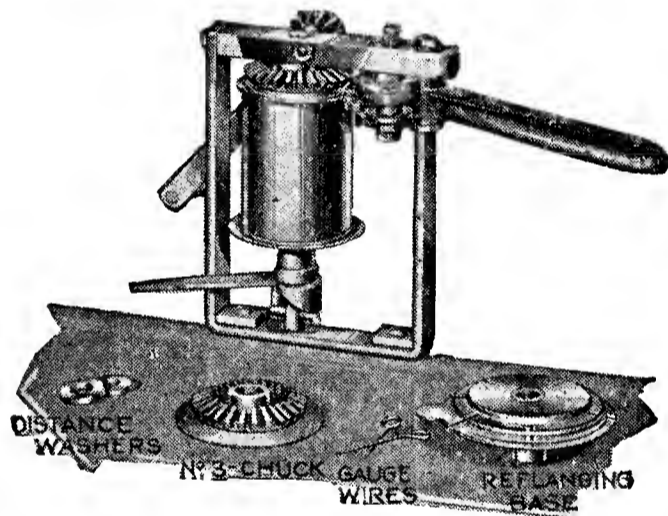
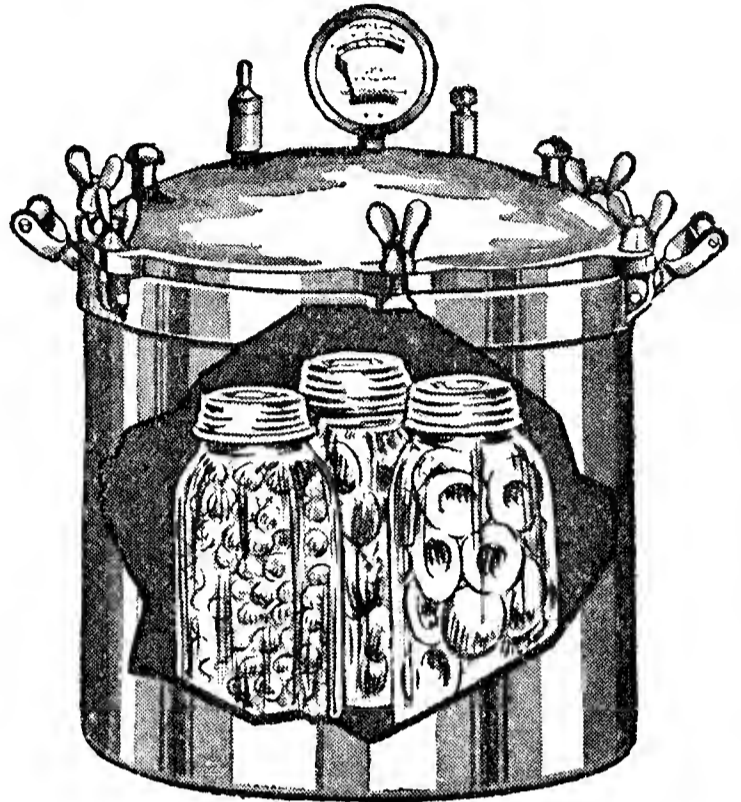
6 Qt.	\$ 7.00
10 Qt.	10.00
12 Qt.	13.00
18 Qt.	16.00
25 Qt.	18.00
40 Qt.	40.00

These are Cast Aluminum, made by the National Pressure Cooker Co.

We also have steel cookers, made by the National.

Descriptive catalog on request

30 Qt.	\$21.00
50 Qt.	
100 Qt.	



SEALERS

Catalog on Request

NO. 23 BURPEE

Seals No. 2 and No. 3 Sanitary Cans, also equipped with can saving attachment
\$15.00 Delivered

NATIONAL SEALER

Seals No. 2 and No. 3 Sanitary Cans
\$10.00

SANITARY CANS

No. 2 Plain \$3.50 per 100 Weight 30 lbs.	No. 3 Plain 4.50 per 100 Weight 37 lbs.
No. 2 Enameled 3.75 per 100 Weight 30 lbs.	No. 3 Enameled 4.75 per 100 Weight 37 lbs.

EXTRA TOPS

For No. 2 Cans \$1.00 per 100 Weight 3¾ lbs.	For No 3 Cans \$1.25 per 100 Weight 6 lbs.
---	---

F. O. B. Roswell

PARAFFINE

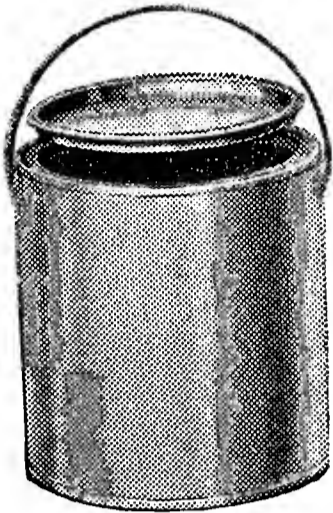
.15 per pound

SEALING WAX

7 oz. Bar .15—2 Bars .25

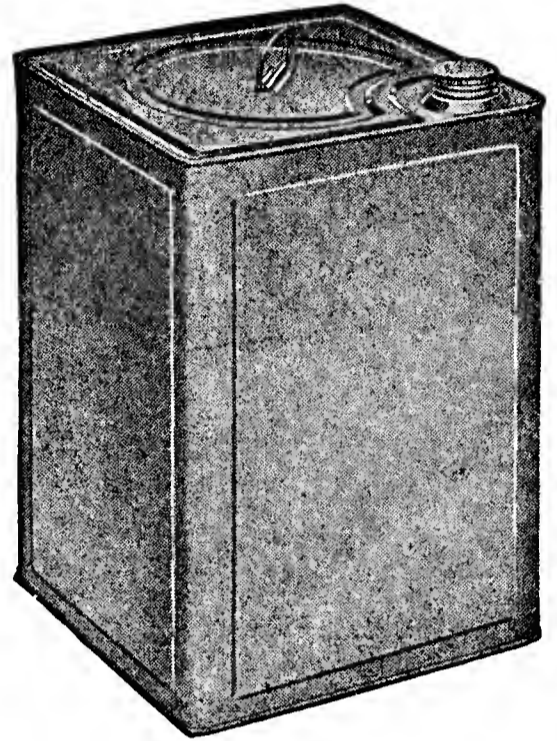
Sixty-four page Canning Book free for the asking. Be sure to send for this book if you are interested in canning.

FRICTION OR PRESS TOP CANS



No. 2½\$4.00 per 100
Weight 30 lbs.
No. 3 5.00 per 100
Weight 35 lbs.
No. 5\$ 7.00 per 100
Weight 50 lbs.
No. 10 10.50 per 100
Weight 90 lbs.

F. O. B. Roswell



60 lb. Square Can, 2¼ inch screw top,50 each
Two Cans in shipping case\$1.50 per case
Wt. 14 lbs. per case

No. 5 and No. 10 are equipped with bails. These cans are the same that we sell for syrup and honey. When used for canning, seal with sealing wax and they make a very nice canning package.

GLASS FRUIT JARS

REGULAR

WIDE MOUTH

½ Pts., Wt. 7 lbs.80 per dozen	
Pts., Wt. 9 lbs.85 per dozen	\$1.00 per dozen, Wt. 10 lbs.
Qts., Wt. 14 lbs.1.00 per dozen	1.25 per dozen, Wt. 15½ lbs.
½ Gal., Wt. 20 lbs.1.25 per dozen	1.50 per dozen, Wt. 21 lbs.

F. O. B. Roswell

EXTRA TOPS FOR GLASS JARS

Regular Kerr,30. Wt. ½ lb. Wide Mouth Kerr,40. Wt. ¾ lb.

LIDS ONLY

Regular Kerr,15. Wt. ¼ lb. Wide Mouth Kerr,20. Wt. ¼ lb.

F. O. B. Roswell

PRESTO TOPS

Regular, .50 per dozen. Wt. 2 lbs. Wide Mouth, .60 per dozen, Wt. 3 lbs.

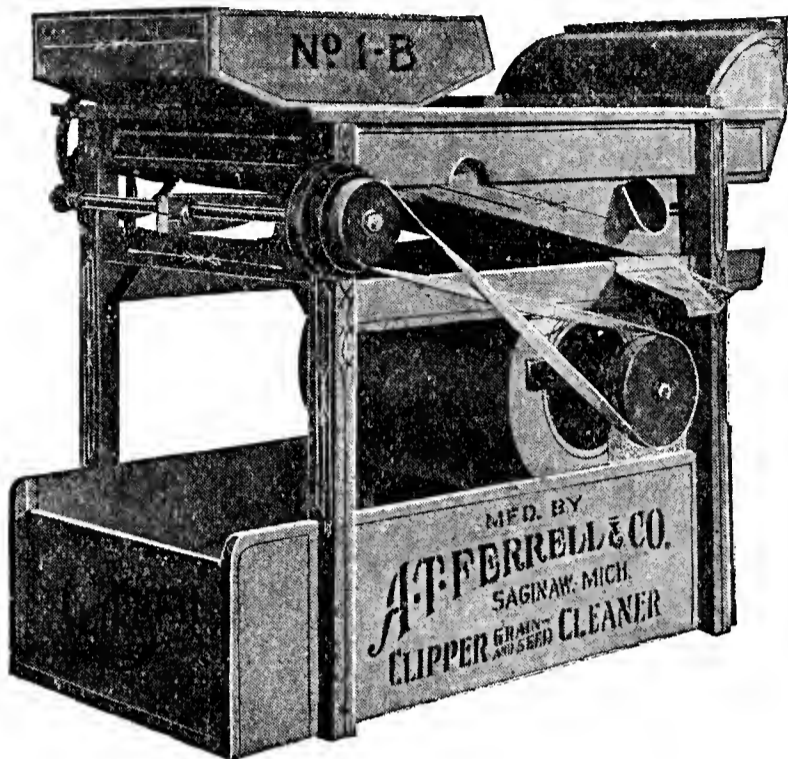
OLD STYLE MASON

.30 per dozen. Wt. 1½ lbs.

Rubbers for Old Style Mason, .05 per dozen

F. O. B. Roswell

THE CLIPPER GRAIN CLEANERS



The No. 1-B Clipper is a very convenient seed and grain cleaner for the farmer. Weighs less than 200 lbs., two men can move it with ease. While this is intended for hand power it is easily rigged to run with an engine or motor.

Full descriptive catalog mailed on request. Price \$40.00.

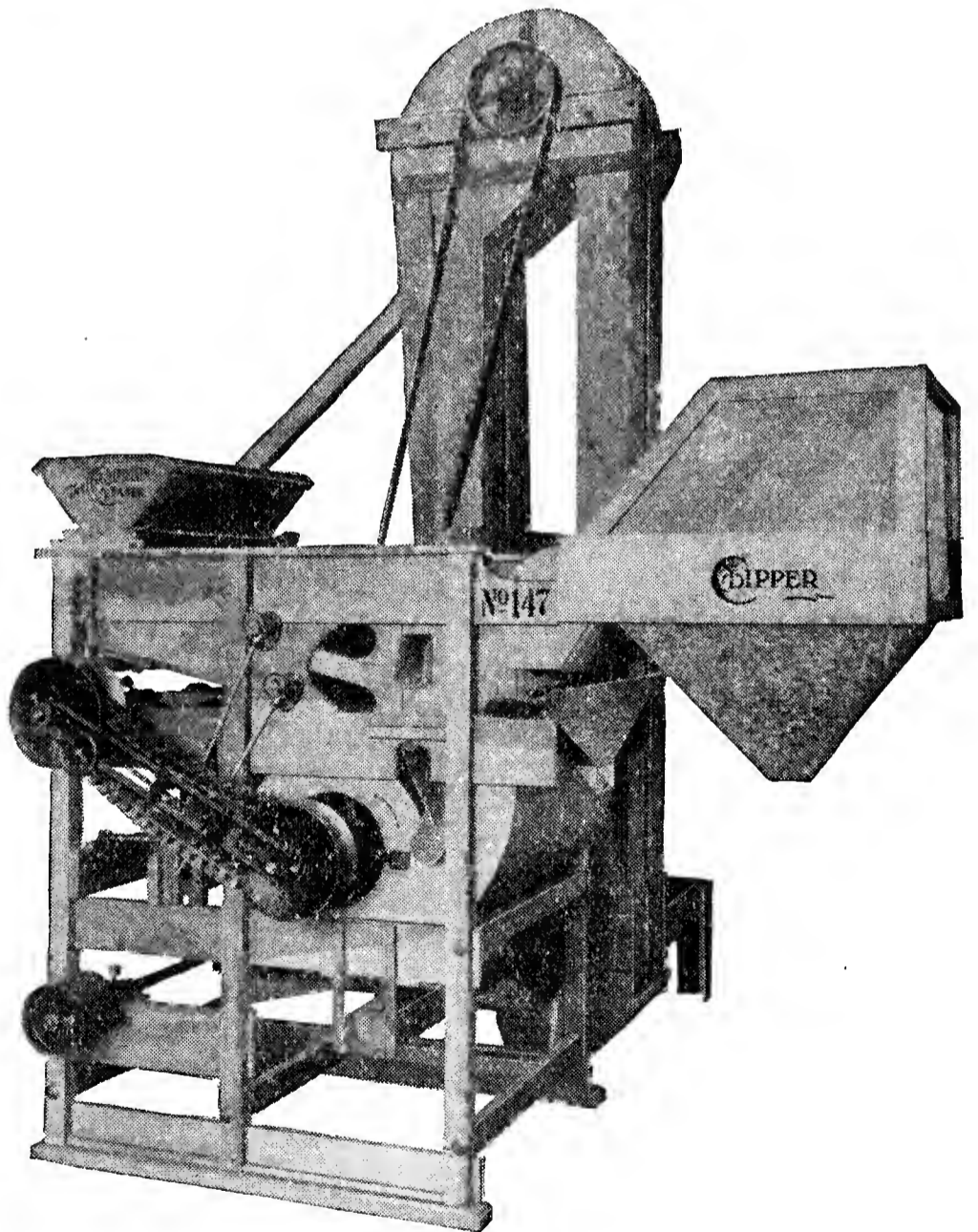
Drive pulley for power drive .50 extra.

The No. 147 Machine is the one which we use in our warehouse to clean the field seeds that we offer for sale.

If interested in a large power machine let us send you a "Clipper" catalog and quote you prices.

We have tried several cleaning machines and have yet to see one that will do the work of "Clipper".

This machine will clean alfalfa, cane, maize, oats, corn, barley, rye, beans in a satisfactory manner.



We do custom cleaning for the public. All kinds of seed, grain and beans are handled in a satisfactory manner and our charges are reasonable.

IRISH POTATOES

While Irish Potatoes are not a profitable crop to grow in the Pecos Valley, occasionally planting do very well. The varieties listed below are best adapted to this locality.

RED TRIUMPH

A nice red variety, produces two crops. Plant in February, harvest in June. Re-plant immediately for another crop in October.

Price F. O. B. Roswell

10 lbs.60
100 lbs.	4.00

IRISH COBLER

A White variety, handle same as Triumph.

Price F. O. B. Roswell

10 lbs.60
100 lbs.	4.00

SWEET POTATOES

BRADLEY YAM

A cream colored variety, the best for this Valley.

Price F. O. B. Roswell

10 lbs.50	100 lbs.	3.00
--------------	-----	---------------	------

VEGETABLE PLANTS

We can supply the following plants at the proper seasons for planting. While we use great care in the packing and shipping of all plants, we cannot guarantee safe delivery. All prices are F. O. B. Roswell. Most plants weigh about 1 lb. to the hundred when packed ready for shipment.

ONION

	100	1,000
Denia35	\$2.00
Crystal Wax35	1.50
Valencia35	2.00

SWEET POTATO

Bradley Yam50	3.00
-------------------	-----	------

CABBAGE

All leading varieties50	3.50
-----------------------------	-----	------

TOMATOES

All leading varieties50	3.50
-----------------------------	-----	------

PEPPER

Hot and Sweet varieties75	4.00
-------------------------------	-----	------

EGG PLANT	1.00	5.00
-----------------	------	------

CAULIFLOWER	1.00	5.00
-------------------	------	------

All the above plants are grown here at Roswell by our local gardeners. Onion and cabbage plants grown in South Texas, quoted on application.

FIELD SEEDS

At the time this catalog is printed, we cannot quote Field Seeds, therefore a special Field Seed Price List will be issued in February.

We carry a full stock of field seeds such as are adapted to this locality. Most of these seeds are grown locally. Everything is carefully recleaned and tested for germination.

The Field Seed List will be ready about February 15th.

Special attention is called to our Recleaning Machine, see page 19. This machine will handle all kinds of Grain and small Seeds, also Beans. Quickly adjusted to do any kind of cleaning work.

Table of Valuable Information

Vegetable	Average Germination 1 Year Old Seed—%	Average Number of Seeds per Ounce	Amount Required for 100 Feet of Drill	Amount of Seed Required per Acre	Depth of Planting Inches
Asparagus	90	1,000	1 oz.	5 lbs.	1
Beans, Dwarf	90	100	1 lb.	60 lbs.	1
Beans, Pole	90	100	½ lb.	30 lbs.	1
Beet, Garden	80	1,750	1 oz.	6 lbs.	1
Beet, Mangel	80	1,200	1 oz.	5 lbs.	1
Brussels Sprouts	85	6,500	¼ oz.	8 oz.	½
Cabbage	85	5,000	¼ oz.	8 oz.	½
Cantaloupe	85	1,200	½ oz.	1 lb.	1
Carrot	75	14,000	½ oz.	2 lbs.	½
Cauliflower	75	14,000	¼ oz.	4 oz.	½
Celery	80	100,000	¼ oz.	4 oz.	⅛
Collards	88	4,500	¼ oz.	4 oz.	½
Corn, Sweet	85	125	¼ lb.	5 lbs.	1
Cucumber	85	1,000	½ oz.	2 lbs.	1
Eggplant	75	5,000	⅛ oz.	4 oz.	½
Endive	80	13,500	1 oz.	2 lbs.	½
Kale	85	7,500	¼ oz.	1 lb.	½
Kohlrabi	85	7,000	¼ oz.	1 lb.	½
Leek	80	8,000	½ oz.	2 lbs.	½
Lettuce	90	16,000	½ oz.	1 lb.	½
Melon, Musk	85	1,200	½ oz.	1 lb.	1
Melon, Water	85	225	1 oz.	2 lbs.	1
Mustard	85	18,000	¼ oz.	1 lb.	¼
Okra	85	425	2 oz.	3 lbs.	1
Onions	80	12,500	1 oz.	3 lbs.	½
Parsley	70	17,500	¼ oz.	1 lb.	⅛
Parsnip	75	2,800	½ oz.	3 lbs.	½
Peas	90	50 to 150	1 lb.	60 lbs.	1
Pepper	75	4,000	⅛ oz.	4 oz.	½
Pumpkin	90	100	½ oz.	4 lbs.	1
Radish	90	5,000	1 oz.	10 lbs.	½
Salsify	75	4,500	1 oz.	5 lbs.	½
Spinach	80	3,000	1 oz.	8 lbs.	1
Squash, Summer	90	300	½ oz.	4 lbs.	1
Squash, Winter	90	125	½ oz.	2 lbs.	1
Tomato	85	7,500	⅛ oz.	1½ oz.	½
Turnip	90	10,000	½ oz.	1 lb.	¼

GLASS SUBSTITUTE

Used on Poultry Houses, Hot Beds, Sleeping Porches

“GLASS CLOTH”

36 in. wide, .35 per yard. 10 yds. for \$2.75, delivered

CELL-O-GLASS

36 in. wide, \$1.25 per yard. 10 yds. \$11.00, delivered

THE DENIA ONION

The Onion shown below
is actual size

Weight 2¼ lbs.

Five and one fourth inches
in diameter

Photo by Ball Studio



This Onion was grown in the city limits of Roswell, by A. L. Weaver.
For description and price of seed see Page 9

THE DENIA IS THE BEST OF THE SPANISH VARIETIES