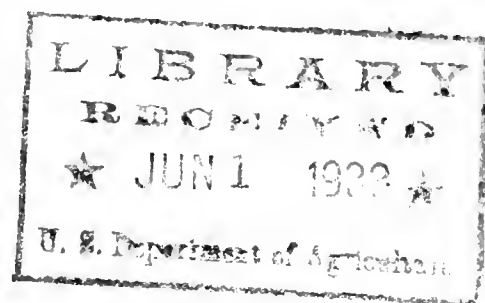


Historic, archived document

Do not assume content reflects current scientific knowledge, policies, or practices.

63.23



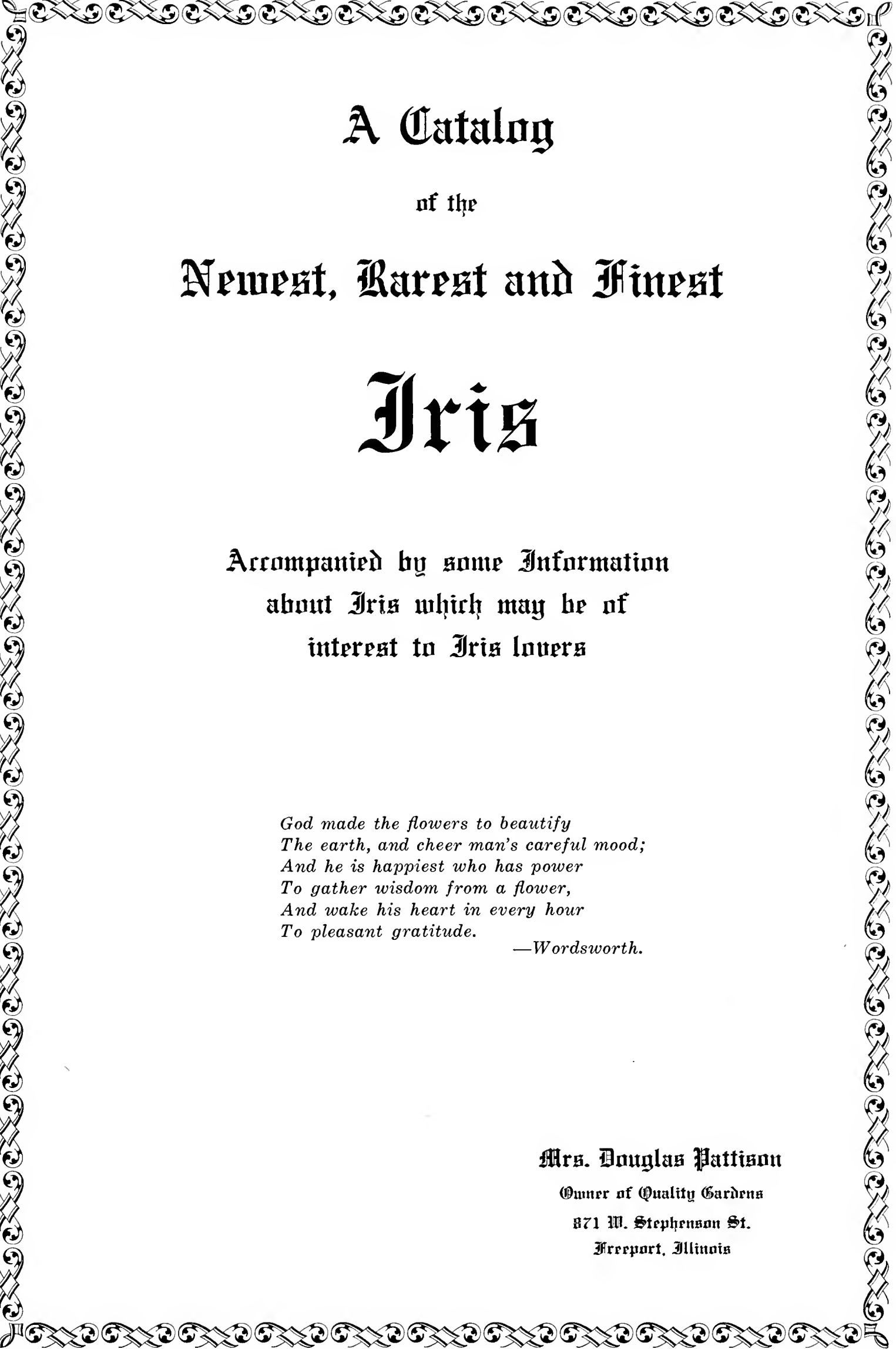
1933

Quality

Gardens

Iris

Freeport, Illinois



A Catalog
of the
Newest, Rarest and Finest
Iris

Accompanied by some Information
about Iris which may be of
interest to Iris lovers

*God made the flowers to beautify
The earth, and cheer man's careful mood;
And he is happiest who has power
To gather wisdom from a flower,
And wake his heart in every hour
To pleasant gratitude.*

—Wordsworth.

Mrs. Douglas Pattison
Owner of Quality Gardens
871 W. Stephenson St.
Freeport, Illinois

Terms of Sale---Business Policy, Etc.

Read Carefully Before Ordering

ORDER EARLY. Early orders are suggested to prevent disappointments in case the variety should be sold out. Please write your name and address *plainly*.

STOCK. All orders will be filled with good strong rhizomes that will be reasonably sure to bloom the first season. Any time a customer receives an order from us and upon opening it up he finds any rhizomes defective in any way, he has the privilege of shipping them back to us, in whole or in part, *immediately* at our expense, and his money will be refunded.

TIME OF SHIPMENT. Iris orders will be filled beginning about July 1st.

TERMS. Cash should accompany the order in all cases.

POSTAGE. Prepaid on all Iris unless otherwise stated.

We **GUARANTEE** all plants shipped, to be true to name, vigorous and healthy when received.

WHAT WE DO NOT GUARANTEE. We do not guarantee our plants to grow in your garden. Our guarantee ceases when our plants reach the purchaser in good condition, and we assume no responsibility for what may happen to them thereafter. We make no guarantee, expressed or implied, covering the successful culture of plants after they have passed beyond our control.

A 10% discount will be given on all orders received up to June 15th, except on Bargain and Clearance Lists.

PRICE OF CATALOGUE. We will furnish a catalogue free, to all who have bought within the last two years. To others, the price is 35 cents which may be deducted from an order for \$3.00 or more.



A GROUP OF LOS ANGELES IN QUALITY GARDENS



DEPUTY NOMBLOT
(Cayeux 1929)



INDIAN CHIEF
(Ayres 1929)

Foreword

A Little Gossip About Iris

IN PRESENTING its 1933 list of iris, Quality Gardens offers the pick of the finest iris in the world, old and new—the most comprehensive collection of the finest quality iris that can be assembled. We offer this year the pick of the new introductions, both foreign and American, selected after careful study and inspection.

In making this selection we rely on our personal judgment of the iris based on the experiences of living with them for more than twenty years, growing them both for pleasure and profit. This covers the period of the development of the tall bearded iris from mediocrity and comparative scarcity and a minor position in the gardens of the country, to the pre-eminently and superlatively beautiful garden material of early June and late May—the flower par excellence of its season and indispensable as the liaison between the brilliant late tulips and the wealth of June bloom with its peonies, roses, delphiniums and other garden standbys.

We make our own selections of new irises for introduction after personal inspection and study for the most part and when this is impossible rely on the judgment of those we know to be thoroughly competent to pass judgment and express a sound opinion of the value of the flower. We have been singularly fortunate in having the judgment of foreign correspondents of conservative viewpoint on the flood of European introductions so that we present only the finest of these.

We do not rely on the ratings of the American Iris Society which we found some time ago to be an unreliable guide, in the nature of a compromise of good, bad, and indifferent judging by judges whose identity is always concealed in anonymity. The experienced dealer soon learns to estimate these ratings for what they are worth, sometimes valuable, at other times not only valueless but a direct and undeserved injury to business, both of the retailer and breeder. We also often find iris of no great difference from those already in commerce and no distinct improvement upon them, more highly rated than they deserve.

The 1932 rating list was no exception in this respect and we do not print these ratings. It is, as usual, a most inconsistent affair, some judges rating high, others low, and still others apparently jack and the game. We have consistently

maintained that if a fair score card were followed accurately, reasonably competent judges must necessarily arrive at very close to the same estimate. The 1932 ratings find some of the judges so remote from each other in their estimates that the figures would not indicate they were judging the same plant.

The curious and interesting part of it is the fact that the buying public, the rank and file of people who grow irises in their gardens for their own pleasure so often disagree decidedly with official estimates. As an example, the first American award of the Dykes medal was made to San Francisco, first of the giant plicatas. Its sister seedling, Los Angeles, outsells it year in and year out by a wide margin. The selection of the 50 and 100 best irises by the accredited judges of the American Iris Society also places Los Angeles ahead of San Francisco. This should not be taken as at all discounting San Francisco, a great and wonderful iris, finest of the giant plicata type, but it shows the fallibility of official ratings.

The second Dykes medal award in America was made to Dauntless, a beautiful rose toned iris misrepresented as the "reddest" iris at the time of its introduction. But another red and rose toned iris, Indian Chief, consistently outsells Dauntless. Dauntless also did not head the list of 50 best in the pink lavender to red purple section made by the accredited judges who placed Frieda Mohr at the top. We believe the inclusion of the pinks and dark red purples in one class was an incongruous grouping as they are not comparable. This placing of Frieda Mohr ahead of Dauntless should not be taken as any discount for Dauntless, one of the most beautiful iris ever introduced. It merely illustrates the vagaries of ratings as we now have them.

As we are constantly finding definite disagreements between the selling values which is the registration of popular approval and the ratings, we have decided to ignore ratings in selecting our list.

The fact that an iris is a new introduction does not necessarily indicate that it is of better quality than older irises. Theoretically it should, as the only excuse for introducing a new iris in the great flood of irises is that it is a new color, or color combination, or an improvement of an iris of its type in commerce. In looking over our list of last year we find that we included twenty odd irises that had been in commerce for ten years

or more in our first quality list. They deserved it. The rating list would indicate a discount was made for years in commerce although the score card gives no allowance of that nature.

While very few of the irises in our last year's list fell into the discard list as prescribed by the American Iris Society in its 1932 ratings, a rating of below 70 indicating that the iris should be discarded, or, if a new one, should not have been introduced, the few that fell below the charmed 70 in our list are consistently good sellers and much admired by the iris growing public. One of these was Perry's May Sadler, the lowest figure in our list, which three accredited judges placed at 68. May Sadler is a fine, large, showy, deep red purple that sells itself in its beauty as it grows in the garden, having fine garden value, a characteristic possessed in unusual degree by all of Perry's introductions.

One very fine iris, Avalon, was not rated at all. By what manipulation of the score card a judge arrived at a rating of 75 for Asia is beyond our comprehension. We are also up a tree as to how such an exquisite iris as Mme. Durrand which has no counterpart could be reduced to 76, and so on.

Supersensitiveness to details and technicalities rather than good sense as to the general effect of the growing iris seems to have overwhelmed many judges. We are heartily in accord with the efforts of the American Iris Society to correct these abuses and make the ratings a sensible and valuable registry of iris values, particularly as to relative values. The effort has not come a minute too soon. We have always argued that ratings should be made by judges with the courage to sign their names to their figures.

We know that many of the more experienced judges are willing to do so. The fair and competent judges are well known to the iris trade and their opinions and ratings are valued accordingly. We protest most energetically against the ruin of the sale of a first-class iris by the ax of the dilettante, inexperienced, incompetent or prejudiced judge whose identity we do not know.

The dealer is as anxious to be spared the loss of buying gold brick introductions as anyone. Many new introductions held at high prices by the breeders prove to be practical duplicates or no improvement on irises already well established in commerce. It would be ridiculous in a dealer to push the sale of such irises, if they were aware of the facts, as visitors to their gardens would at once note the similarity to older irises at half or even more than that margin of the price of the novelty. One or the other is bound to become dead stock on the dealer's hands, usually the high priced novelty that has proved to be no novelty.

So far as we can discover, there seems no practical way so far devised to label a new iris as nothing really new and no improvement on existing varieties. We must rely, when we cannot personally inspect a new introduction, on the opinions of competent judges, their notes and comment being of great value. These should be signed so that proper weight can be attached as it is no reflection on the judges to say that some are far more experienced and have a far wider acquaintance with existing varieties than others.

Well meant notes of "not wanted" and "not needed" made by some of the judges have roused storms of complaint. The iris in question might not be wanted or needed by the judge but might be very much wanted by some other judge and by gardeners of the country who are the real judges of what they need and what they want to buy. We believe the breeders and dealers in iris will not consider that they are getting an altogether square deal from the American Iris Society until ratings and comments are signed by their authors when published.

We realize the practical difficulties of such publication thoroughly and the solution of it seems to us to be a limited number of judges, of known ability and fairness, whose ratings could be published with their signatures instead of averaging the ratings of from 50 to 100 judges many of whom have neither the knowledge of iris varieties nor the experience to qualify them for the work.

The decision to publish ratings only when at least five judges have turned in figures is an excellent move. While theoretically the rating of one judge should be as valuable as that of another, presupposing them all to be of equal competence, it unfortunately does not work out that way and some of the single ratings published in the 1932 ratings were rankly unfair. It is puzzling to understand how some of the figures could have been reached by any judge with the score card and the iris in front of him. Perhaps they were not. The character of many of the ratings is such as to suggest "arm chair" figures merely set down by the judge, according to his own ideas, without reference to the point scale, while comfortably seated before the grate fire.

We are this year making a new departure in our first offer and introduction of a list of autumn blooming iris. The autumn bloomers and intermediate classes seem the immediate trend of iris development. Progress in the tall bearded class seems to be limited to new colors and combinations of colors in the blends. There seems little to be expected in the prevailing blue lavender selfs and bicolors, red purples and blue purples

except perfection of detail and greater purity of color, perhaps. The field of blends is open.

The autumn bloomers are practically a new class as so far they have been merely incidental and have not been developed and assembled as a distinct class. The Sass Brothers, Jacob and Hans, have done much work in developing this class of irises, in fact have been persistent pioneers since the introduction of Autumn King. Other breeders from time to time announce fall blooming tendencies in some of their irises. We have assembled a list of the surest fire fall bloomers which have stood the test of several years of consistent performers as fall bloomers.

From a pioneering start of a few irises of rather small blooms, the fall blooming iris has now been developed into varieties of Dominion ancestry and size and quality with possibilities apparently open for still further development not only of fall bloomers but a possibility of ever bloomers as instanced by the white Autumn Queen which has made a record of blooming every month from May to December.

It must be borne in mind that fall blooming is a trait derived from pumila iris ancestry, a number of these dwarfs blooming each fall under favorable weather conditions. The fall blooming qualities depend to a great extent on culture. To make fall bloomers do their full duty, the fall bloomer must be given plenty of room, fertile soil, and should be given moisture in periods of summer drought to promote early resumption of growth. The early start of fall growth is essential to promoting the fall blooming qualities.

The fall blooming does not interfere with the usual freedom of bloom at the regular season.

Fall bloomers cover the entire field of bearded irises, the dwarfs, intermediates, and tall bearded sections. Unlike the earlier season bloom, these three classes which are spread over a period of from early April to mid June in the normal iris season, all bloom at the same time in the fall so the possibilities of a fall iris display in which dwarfs, intermediates and tall bearded may be utilized at the same time, are great.

"Iris That Bloom In The Fall" is the title of the last chapter of a small book by Clint McDade of Chattanooga, who has been testing fall blooming irises in his Tennessee garden for a number of years. In it he describes the best varieties and tells you how to grow them. The rest of the book is devoted to a description of his trip east last year and his visits to eastern iris gardens. His notes and ratings of the newer introductions are particularly good, and clearly show him to be a competent and reliable judge of the newest and best in iris.

The 1933 Annual Meeting of the American Iris Society will be held in Freeport on Saturday, June 3rd. The Freeport Garden Club will again sponsor the Iris Show which will be held in the Masonic Temple, June 3rd and 4th. Persons attending the Century of Progress in Chicago, may visit Freeport, attend the show and return the same evening, if they desire. Quality Gardens extends a most cordial invitation to those attending to visit our display garden, which is located at 871 West Stephenson Street.

MRS. DOUGLAS PATTISON.



Max Schling Medal awarded by Max Schling Co. of New York for the finest educational display of Iris at the American Iris Show, June 6, 1928, awarded to Mrs. Douglas Pattison, Freeport, Illinois.



Medal awarded by the Henry F. Michell Co. of Philadelphia for the most meritorious exhibit of Iris. Awarded June 1, 1930, to Mrs. Douglas Pattison, Freeport, Illinois.

Brilliant Color for the Fall Garden

AUTUMN KING (H. P. Sass, '24) 32" An attractive blue purple bicolor. A good variety in spring, but outstanding and a brilliant garden group in the fall. \$.15

AUTUMN KING JR. (H. P. Sass-Hill, '33) Similar to Autumn King in color, but a much more prolific bloomer, in some sections. \$15.00

AUTUMN QUEEN (H. P. Sass, '26) 18" An intermediate in the spring, but has a record of blooming every month in some sections. Rather dwarf in growth, but the flowers are pure white and well formed. \$.25

DORCAS HUTCHESON (H. P. Sass-McDade, '33) 18" A beautiful violet colored self, of medium height, but of good form. Very fragrant. \$1.00

EQUINOX (Auten '32) 26" Perhaps the most dependable fall bloomer. A red purple bicolor, of very good texture. A late spring bloomer. \$2.50

ELEANOR ROOSEVELT (H. P. Sass-McDade, '33) 26" Slightly fragrant. A deep velvety red violet. One of the very best. \$10.00

FRANKLIN ROOSEVELT (Jacob Sass-McDade, '33) 30" Intermediate in spring, but a fairly reliable fall performer. Increases slowly. A reddish purple self, but the beauty of the flower is greatly enhanced by a deep blue blotch on the falls. \$25.00

Note—The two varieties above described orna-

ment the grounds of the "Little White House" in Warm Springs, Ga.

FROST QUEEN (H. P. Sass-Hill, '33) 22" A dependable fall bloomer with flowers similar to the well known Fairy, in size and coloring. \$15.00

GOLDEN HARVEST (J. Sass, '29) The only yellow fall blooming intermediate. S. Olive yellow, tinted blue at haft. F. citron yellow. A delightful and gay note in late fall. \$2.00

LAURA HUTCHESON (H. P. Sass-Hill, '33) A smaller flowered variety, similar in coloring to Autumn King. A very desirable introduction. \$7.50

OCTOBER OPERA (H. P. Sass-Hill, '32) 24" One of the most attractive of all the fall bloomers. Similar in texture and coloring to the well known velvety red purple, tall bearded Opera. \$10.00

OLIVE WHITE (H. P. Sass-Hill) 18" A dependable fall bloomer. Of good form and a lovely deep cream color, with green old veining. \$.50

SEPTEMBER SKIES (H. P. Sass-Hill, '33) 16" A clear purple self of rich coloring and a dependable performer. Increases rapidly. \$1.00

ULTRA (H. P. Sass, '30) 14" A beautiful shade of ultramarine blue. It is a dependable early spring bloomer and equally good in fall. Most desirable. \$.25



A BIT OF QUALITY GARDENS

A General List of the Newest, Rarest and Finest Iris

Time of bloom is indicated by V. E., very early; E., early; M., medium; L., late; and V. L., very late.

Fragrance is indicated by S. F., slightly fragrant; F., medium fragrant; and V. F., very fragrant.

Height is given in inches, immediately after the name of the flower; 40" means 40 inches.

"S." means standards; "F." means falls; "A.M." is Award of Merit; "C.M." is Certificate of Merit; "H.M." is Honorable Mention; "A.I.S." is American Iris Society; "R.H.S." is Royal Horticultural Society; "S.N.H.-F." is Société Nationale D'Horticulture De France.

ALLURE (Murrell 1927) M. 40" S.F. It is impossible to convey an adequate impression of the dainty and pleasing effect this iris gives. The ground color is a rich canary yellow, and this is overlaid and flushed with pink. The beard and style arms are yellow. The flower is above medium size, beautifully formed and poised, with ruffle edged standards. The exquisitely lovely tones of this variety become more beautiful when planted in partial shade.

Silver Medal, English Iris Show 1927. \$.90

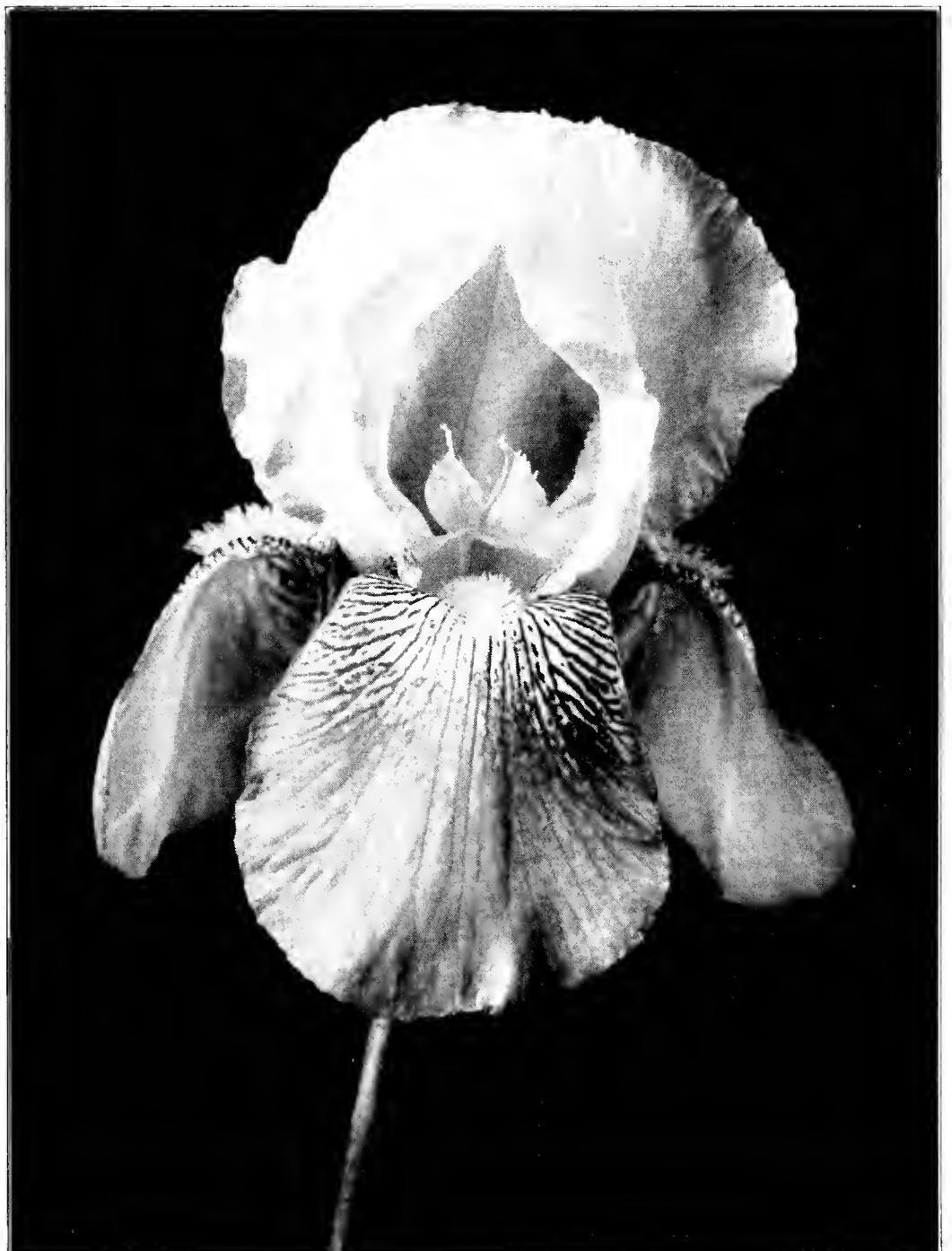
ALTA CALIFORNIA (Mitchell 1931) A splendid yellow of exceptionally smooth texture and fine coloring. S. clear yellow; F. deep golden yellow, slightly flushed bronze. The stalks are superbly branched and reach a height of 48". It has been grown over a period of two years in our garden and has proved hardy. \$15.00

AMBER WAVE (Murrell 1930) M. 38" S.F. A most subtle and unusual flower. A luminous amber yellow self, suffused and shot with pale olive bronze. The falls are faintly flushed a

soft velvety violet blue at the haft, which is heavily reticulated. The flower is perfectly proportioned and balanced, with broad standards and falls. \$7.50

Certificate of Merit English Iris Show, 1930.

ANDREW JACKSON (Kirkland 1929) E. 40" S.F. A flower of good size and form. The general effect is a rich red violet. S. Saccardo's violet. F. raisin purple shading lighter at the edge. The plant is vigorous and hardy and will dominate the early garden. \$1.00



SPRING MAID (Loomis 1933)



CLAUDE AUREAU

ANNA MARIE CAYEUX (Cayeux 1928) M. 36". S.F. Large flowers of very splendid form and heavy texture. S. lilac pink shot gray. Falls a metallic blue on gray, resembling the iridescent coloring on a pigeon's throat. A recent good description called it a dark opal. Because of its heavy texture the flower stands up for days in any kind of weather. It is unquestionably one of the finest varieties in commerce and we recommend it to our customers who want an exquisitely beautiful variety of unique coloring.

Certificate of Merit, S.N.H.F. 1928. \$5.00

ASHTORETH (Beaudry 1930) 40" S.F. A very large flower of pale, lustrous yellow. Standards domed with wide, semi-flaring falls. This variety met with much praise at the Boston show in 1930

and it is said to be the finest yellow of its shade. Stock limited.
H.M.A.I.S. 1930. \$15.00

AUBADE (Connell 1931) M. 31" S.F. A large finely formed flower with a smooth luminous finish; standards a delicate yellow; F. clear yellow flushed soft rose; style arms and beard, pale gold. A flower of great distinction and beauty. The name Aubade, meaning the Dawn Song, is most appropriate.
\$10.00

BELISAIRE (Bel-ah-zaire') (Cayeux 1924) M. 36" S.F. Very large flower on well branched stems. S. soft lustrous tan. F. a beautiful shade of rich rose red, shading into fawn. A strong grower and exquisite flower.
\$.40; 3 for \$1.00

BLACK WINGS (Kirkland 1931) M. 40" V.F. This striking new iris was one of last season's sensations in our garden. The flower is large and of heavy texture; a deep midnight blue self, with a frosty black luster, evenly laid over the widely flaring falls. The opening buds are velvety black. It is vigorous, well branched and has a delicious fragrance. A magnificent introduction that is really outstanding.

H.M.A.I.S. 1931. \$10.00

BLACKAMoor (J. Sass 1932) M. 40" S.F. The largest, darkest and richest blue purple self we have seen. When fully expanded, it lightens a trifle, but remains one of the best of dark selfs. The flower is large and the falls flare widely, and are a bit deeper in color than the standards. A brilliant blue beard contributes to its color depth.

H.M.A.I.S. 1931. \$7.50

BLUE BANNER (Kirkland 1929) L. 36". A new and exquisite color. S. medium lavender blue, beautifully frilled. F. a deeper rich velvety blue, shading to a pale blue at the edges. The general effect is a very bright electric blue. Outstanding.
\$1.00



Pluie D'or (Golden Rain, Cayeux 1928)



William R. Dykes (Dykes 1926)

BLUE HILL (H. Sass 1930) 40". A superior blue iris of distinct character, that will be very popular when known, because of its vigorous growth and free blooming habits, as well as its fine color, which is a much darker shade of blue than Sensation. The branching and placing of the flowers is one of its fine features and the striking white beard adds much to the beauty of the flower.

H.M.A.I.S. 1932.

\$2.50

BLUE VELVET (Loomis 1929) 46" S. F. An iris of superlative beauty. A large flower of heavy substance on rigid stems, finely branched. A clear, rich, heavy textured, dark blue self. The whole flower is of a hitherto unequalled velvety appearance. The standards are of the same shade as the falls and almost as velvety. It is like the richest shade of deepest darkest blue velvet. No other Dominion seedling compares with it and in our opinion, it is one of the best iris we have introduced.

\$4.00

BUECHLEY'S GIANT (Buechley 1933). A huge iris, similar to lovely Lord of June in coloring. S. clear light blue, arched and held erect. F. a deeper shade of blue, widely flared and of firm texture. The stalks are well branched and carry the large flowers gracefully. Lord of June is a sparse bloomer and the standards flop in hot weather. A variety of this coloring, without the faults, should be a real addition to a good collection.

\$25.00

CAMELLIARD (Sturt 1927) M. 50" F. A striking variegata with large but well proportioned flowers. S. amber yellow. F. yellow overlaid wine purple on the blade of the flaring falls to within half inch of the orange beard, where it breaks into veins on a yellow ground. It is second only to Claude Aureau, as a light colored variegata.

\$2.00

CANTILENE (Can-te-lén) (Cayeux 1929) M. 42". F. Huge flowers of heavy substance. F. rich violet shaded to warm gray at the tips. The extremely wide falls are a warm shade of rich purple. Hardy and free flowering. Very desirable.

\$2.00

CANDLELIGHT (Andrews 1926) L. 42". Large flowers of pinkish lavender illumined from within by a rich golden glow, difficult to describe but altogether lovely. The glow extends to the very tip of the standards and falls, with just enough contrast to give a soft color effect. A fine variety that becomes more popular each year.

\$.50

CAPTAIN COURAGEOUS (Rowell 1931) M. 44" F. Strong and sturdy this beautiful blended self of deep rose and buff has a firm rounded shape and thick substance. The stems are strong and well branched. A lusty grower and one of its best features is its fine foliage which stays green all season.

\$1.25

CARDINAL (Bliss 1922) M. 36". One of the richest of the Dominion race. S. lavender overlaid



BLUE VELVET

*O'er water-daisies and wild waifs of Spring,
There where the Iris rears its gold-crowned
sheaf
With flowering rush and sceptred arrow-
leaf,
So have I marked Queen Dian, in bright ring
Of cloud above and wave below, take wing
And chase night's gloom, as thou the spirit's
grief.*

Rossetti: Gracious Moonlight.

rich rose, erect and arching. F. rich red purple, broad, rounded and velvety. Seen in the sun it shows the glowing cardinal tint for which it was named.

A.M.R.H.S. 1927. \$.50

CAROLINE STRINGER (Sass 1925) M. 33". A lovely tone of soft, delicate pink, of fine texture. The haft has a soft golden sheen and the beard is bright yellow. The flowers are beautifully frilled. \$.40

CASSANDRE (Cas-sandr') (Cayeux 1928) M. 48" S.F. Enormous flowers of heavy substance and beautiful form. S. smoky rose violet. F. velvety, deep, rich purple garnet, with lighter border. The falls look like heavy velour in dark rich Persian colors, exquisitely blended.

C.M.N.H.F. 1928. \$1.50

CHROMYLLA (Loomis 1931) M. 40". This exquisite yellow iris is more satisfactory each year it blooms. Last season it was considered the finest yellow in the garden by many visitors. The flowers are large and most beautifully shaped and of a uniform shade of lemon chrome. While not as deep in coloring as Pluie D'or, the flower has a smoothness of texture and finish that we have not seen equalled in a yellow iris. It has the finish and substance of a magnolia petal. The blooms are well distributed on a strong stem and hold their pure color to the end. Stock very limited and we can sell but one to a customer.

H.M.A.I.S. 1931. \$13.50

Award of Merit A.I.S. 1932.

CINNABAR (Williamson 1928) M. 42". Stalk well branched, flowers large. S. violet purple; F. cottinga purple and very velvety. The effect is a rich dark red of one color, but owing to the extreme velvety quality of the falls, it looks like a bicolor. Some keen iris experts are very enthusiastic about this and we agree with them.

\$.50; 3 for \$1.00

CLARA NOYES (H. P. Sass, 1931) M. 38". In general effect this enchanting variety is a yellow, orange and apricot blend. The flowers are beautifully spaced and well carried on a tall stem; S. soft yellow flushed deep Etruscan red; F. yel-

low ground at haft deepening to the color of the standards at the tips and heavily veined a lovely Van Dyke red. An intriguing new color.

H.M.A.I.S. 1931. \$5.00

Award of Merit A.I.S. 1932.

CLAUDE AUREAU (Claude Or-o') (Cayeux 1928) M. 36" S.F. This is one of M. Cayeux's masterpieces and is the finest variegata to date. We have heard of this one or that one which was similar or better, but have yet to see one that could be compared with it. Very large and of stately habits. S. greenish golden yellow, contrasting exquisitely with the long wide falls of intense Bordeaux wine color, with a wide margin of bronzy gold. A glorious flower in full sun.

A. of M. S.N.H.F. 1929. \$7.50

COLUMBINE (Murrell 1930) M. 40". This lovely iris may be visualized as a white Aphrodite—one of the parents. The form of the flower has the same perfect finish, and the color is particularly clear and dazzling. Although there are a few faint purple reticulations at the haft, they and the beard are not conspicuous. The stems are stiff and well branched and the foliage is very fine.

Silver Medal, Iris Show, London, 1930. \$5.00

COPPERSMITH (Shull 1926) M. 42". Very distinct and large flowered and very tall stems. A. crimson purple; F. Indian lake, shading to dahlia carmine, producing a wonderfully rich, coppery red effect in the sun. Flowers of heavy substance and fine form and finish. \$.50

CORALIE (Ayres 1932) M. 38" S.F. A lovely new variety from the garden of this well known hybridizer and of as high a quality as his other introductions. The broad standards are a clear pale red, flushed lustrous mauve and the falls a beautiful shade of glowing wine red. The pure golden beard greatly enhances the beauty and adds to the dazzling effect of this fine variety. The foliage is luxuriant and the plant vigorous and hardy. Stock limited.

H.M.A.I.S. 1932. \$18.50

CORONATION (Moore 1927) M. 40". Tall on well branched stems. A deep rich golden self. Large flowers. It is strong and hardy and a profuse bloomer. A fine addition to the yellow class. \$.50

CRYSORO (Nichols 1931) 22". This lovely variety is an intermediate and the finest we have seen in that class. The ruffled blooms are very large and of attractive shape and lasting substance. The entire flower is a self, of the deepest and most brilliant yellow tone. It blooms over a long period and is a much needed addition to this class, so necessary in the early garden.

H.M.A.I.S. 1932. \$7.50

CYDALISE (Cayeux 1930) (Sēē-dā-leez) L. 38".
The first real yellow *plicata*. The flowers are large and well poised upon stiff stems 3 feet tall. S. luminous golden yellow, falls softer yellow paling at the edges and evenly etched at the edges and at the throat, with a chocolate brown. In speaking of Cydalise, Mr. G. L. Pilkington, well known English authority said, "Cydalise was in splendid form, in the Cayeux garden, and is unquestionably a good iris." \$5.00

DAUNTLESS (Connell 1929) M. 40" S.F. This beautiful variety is a lovely red self. The standards and falls are of the same glowing red, but the heavy velvety quality of the falls makes them appear darker. The plant is a vigorous grower and prolific bloomer, and is, without doubt, one of the outstanding introductions of recent years.
Dykes Medal, A.I.S. 1929. \$4.00

DEPUTE NOMBLOT (Day-pue-tay' Nōme-Blow) (Cayeux 1929) M. 52" F. A really magnificent iris of such great beauty of coloring, form and carriage that we find it difficult to do it justice. The flowers are large and well proportioned on very tall and widely branched stems. S. copper red flushed golden bronze. Falls wide and spreading and of a rich shade of claret crimson. The entire flower seems lightly dusted with a fine golden powder which sparkles and glistens in the sunlight, giving the flower a hitherto unequalled richness of appearance. English and French and American experts acclaim this as Cayeux's finest achievement.

Dykes Medal, 1930, S.N.H.F. \$9.00

DESERT GOLD (Kirkland 1930) 30" E. F. This is a fine early blooming yellow of large size, perfect form and unusual substance. The flower is a pure yellow, luminous and fragrant. The flower stalk is strong and branching and an exceptionally strong grower. Blooms with Michelline Charraire and is lovely planted with it.

H.M.A.I.S. 1931. \$5.00

Award of Merit, A.I.S. 1932.

DOG ROSE (Insole 1930) This lovely pink iris was introduced by the Orpington Nursery. The flowers are very large, oval shaped and of fine substance and are of a delicate shade of pink with a golden beard. The falls are a shade deeper than the standards, but it is scarcely discernable. A superb pink sort which grows well over four feet.

Silver Medal, Iris Show, London, 1929. \$10.00

DOLLY MADISON (Williamson 1927) M. 38".
Flowers large, 4½ inches high and 5 inches wide. S. Arching and cupped, of a soft mauve shading

*And on many a level mead
And shadowing bluff that made the banks,
We glided winding under ranks
of Iris and the golden reed.*

Tennyson: In Memoriam.

*Iris all hues, roses and jessamines,
Reared high their flourished heads between,
and wrought Mosaic.*

Milton: P. L., descrip. Paradise.

to yellow at the base. F. lilac, haft golden tinged and maroon veined. The brilliant gold beard lights up the entire flower. Each year we grow this enchanting variety we like it better. A prolific increaser. \$.50; 3 for \$1.00

DON JUAN (Dōn-uán) (Cayeux 1928) M. 40".
F. Enormous flowers of splendid shape and heavy texture. S. light rosy lilac shaded bronze (pink effect). Falls wide and extremely flaring, bright red, paler at the edges. The foliage is of the greatest size and height of any iris we have seen.
C.M.S.N.H.F. 1928. \$2.50

Special Prize offered by the Iris Commission of France, 1928.

EASTER MORN (Essig 1931) M. 42". Said to be the almost perfect white. A fine stalk, tall and graceful; a warmer tone of white than Purissima owing to the orange beard and the not conspicuous veining of the old gold at the haft. The flowers are very large and of graceful form and heavy texture. \$12.50

ELIZABETH EGELBERG M. 48". Enormous flowers. A. tall and dome shaped. A beautiful blend of pink and mauve. F. flaring, lustrous mauve strongly shaded pink. The garden effect is a medium tone of light pink, with a central glow of creamy yellow, caused by the heavy orange beard on the light ground of the throat. Plant vigorous and hardy. \$.50

ELOISE LAPHAM (Lapham 1932) 34". An exquisite variety, which gives a pale pink effect. S. milk white, flushed pink; F. white, heavily shaded pink. The heavy golden beard gives the flower an elegant finish. The flowers are large and flaring and well rounded and well carried on the extra well branched stems.

H.M.A.I.S. 1932. \$7.50

EL TOVAR (H. P. Sass 1933) 36". A brilliant and richly colored variegata; a glowing brown, with a black luster. S. dull brown lighted honey yellow at the midrib; F. long and flaring at the ends, of a velvety dark red brown, with a black flush. Most outstanding and unusually beautiful.

H.M.A.I.S. 1932. \$30.00



DAUNTLESS

ENCHANTMENT (Cayeux 1927) M. 48". A tall, vigorous, sturdy hybrid. The flowers are of exceptionally fine form and they are beautifully carried on the widely branching stems. A. soft lilac shot fawn; F. light garnet red. This is a most satisfactory variety and we recommend it to our customers. \$1.25

EREBIAN (Loomis 1931) M. 40". This iris has an exquisite finish, refinement and quality of texture seldom found in even the best of the modern iris. The flowers are large and of perfect form and the color effect is a rich, dusky Bordeaux red. Its only relief is the heavy gold beard which intensifies the glowing velvety texture of the falls. The stem is exceedingly well branched. Stock limited.

H.M.A.I.S. 1930. \$5.00

FARANDOLE (Fär-on-dol') (Cayeux 1928) M. 36" S.F. Flowers of enormous size borne on very strong, robust stems. In coloring there is nothing like it in any other iris. S. French gray with strong suffusion of rosy lilac in the center. F. purplish rose with a very broad margin of French gray. A strong, vigorous, well branched variety with exquisite combination of color. A beauty in our garden.

C.M.S.N.H.F. 1928. \$1.50

FASCINATION (Cayeux 1927) M. 48". V.F. Unquestionably one of the best rose pinks. Flowers of enormous size, of a pure clear color, satiny texture and great substance. The foliage and flower stalks are essentially strong and rampant in growth. Strongly recommended. \$1.50

ESCAMILLO (Ess-ca-mēēyō) (Morrison 1931). M. 38". One of Mr. Morrison's masterpieces. S. clear strong yellow, F. velvety dahlia carmine, flushed maroon-purple. The flowers are of large size and the stalk well branched and of good height. A richly colored variegata and a welcome addition to this class, of which there are all too few of sufficient merit to make them worth while. \$10.00

ETHEL PECKHAM (Williamson 1932) M. 34". A very large flower of a brilliant shade of red; S. arching and of circular shape of purple red with a slight blue cast; S. drooping, very long and very wide; the garden effect is that of a deep, rich red.

H.M.A.I.S. 1932. \$40.00

EVOLUTION (Cayeux 1929) 42". M. One of the most outstanding iris we list. A pale coppery bronze self. Wide, frilled, coppery bronze standards, flaring falls of a slightly deeper shade of bronze, marked in the center with a rose flushed, brilliant blue blaze. The color scheme is indescribably lovely and the plant is a strong grower, with luxuriant foliage, marked a purple brown at the base. We strongly recommend this variety. \$10.00



CHROMYLLA (Loomis 1931)

FLOREAL (Flo'-ray-al) (Dū-nēē') (Dennis 1926) M. 40" V.F. A free flowering plant with strong fine stems, carrying very large flowers, magnificently colored. S. bluish lilac shading to bronzy yellow at the base with deep yellowish maroon reticulations; F. soft violet shaded brown with a bright Indian yellow beard. A wonderfully rich combination of colors and the form and carriage is very graceful. \$.50

FORTUNIO (For-toon-ē-ō) (Cayeux 1930) L. 36". A charming new iris similar in form to the lovely Fulgore. Flowers of medium size and height and the well branched stalk carries a great many blooms. The coloring is particularly dainty; S. azure blue, faintly shaded lilac, F. slightly deeper of the same shades. Very free blooming and a fine massing variety. \$10.00

FRAGONARD (Frá-go-nár) (Cayeux 1926) M. 36" S.F. This is one of the most beautiful shades that we have seen in iris. The standards are an exquisite shade of light rose; the falls are a deeper tone of the same color. The best we can do is to describe it as a luscious shade of lustrous rose pink. Highly recommended. \$1.00

FRIEDA MOHR (Mohr 1926) L. 48" S.F. This is unquestionably one of the finest iris introductions and will be for years to come. It is an exquisite pink bicolor, with pale lilac pink standards and deep lilac rose falls. We strongly recommend it to our customers. \$.50

FRANCHEVILLE (Frawnsh-vēēl) (Cayeux 1927) M. 54" F. Another of M. Cayeux's giants, both in height and size of flower and foliage. S. fawn, tinged clear lilac. F. purplish red, lighted heliotrope at the margins. Heavy orange yellow beard. This variety must be well established before it shows its true worth. A fine variety. C.M.S.N.H.F. 1927. \$1.00

FRIVOLITE (Free-vo-letay) M. 40". An exquisite flower, aptly described by Countess Senni, of Rome, Italy, who knows fine iris and writes so well on the subject. She said, "There is only one iris which is really like the Lady Ashtown or Radiance rose, and that is Frivolite. It is not especially big, but its fresh color sets it quite apart. It was near Hernani, and when the setting sun was back of them, they were enchanting." We can add nothing to this description except to say that it is an especially free bloomer and lovely and arresting in a mass. \$5.00

FULGORE (Fool-gore) (Cayeux 1930) L. 36". An entirely new break in form and color and we

think it one of the most attractive varieties we have grown. Of medium size, on slender, well branched, graceful stalks of medium height, it is a very fine variety for massing. The color is a blazing, coppery red; the brilliant orange beard brings out the full beauty of its coloring. Highly recommended. \$15.00

GABRIEL (Bliss 1923) M. 44" S.F. The growth is exceptionally vigorous with strong well branched stems. The enormous flowers are of perfect form and erect carriage. S. bright, clear steel blue, broad, rounded and finely arched. F. bright violet blue, suffused deeper at the haft, and as broad as the standards. A very free bloomer and one of the most satisfactory kinds we grow. \$.50

GERMAINE PERTHUIS (Zher'-mann Pair-twee) (Millet 1924) M. 40". V.F. This is a descendent of Mme. Gaudichau. It has inherited all the good qualities of its parent, exceptional growth, vigor, good habits and great freedom of bloom. Enormous flowers on very long firm stems. S. a pleasing shade of purple, lighted lilac. F. velvety deep richest violet. Strongly scented. One of our most satisfactory varieties. \$.40; 3 for \$1.00

C.M.N.H.F. Special award Paris Iris Com. 1924.

GIANT KING (Sass 1931) 36". A large iris of Iris King coloring. S. soft tan suffused light red; F. velvety wine red, veined white, with bright golden beard. A strong growing variety and exceptionally heavy bloomer. \$1.00

GILEAD (Andrews 1931) M. 42". A fine golden yellow and bronze blend. The ground color is a soft buff overlaid amber, the falls somewhat deeper in tone than the standards. The flowers are very large with high arching standards, and are well poised on the widely branching stems. Its name was suggested by the crystalline amber gum coating the winter buds of the Balm of Gilead. A mass planting in Mr. Andrews garden was a lovely sight.

H.M.A.I.S. 1932. \$10.00

GLAMOUR (Bliss 1922) E. 42". F. A stout branching and free blooming Dominion seedling. The broad and perfectly arched standards are heliotrope tinged pale ochre and shot lilac. F. rich red, velvety pansy violet. \$.40

GLOWING EMBERS (Sturt. 1923) M. 48". F. S. a rich warm tan, slightly flushed violet. F. a velvety, dark glowing red. A rich flower of great size and heavy texture. \$.40; 3 for \$1.00

GOLDEN GLORY (Jackson 1927) M. 42". A yellow self, stalk stiff, well branched with 7 to 11 bloom buds. Standards broad, domed, wavy at the edges and of good substance; pinard yellow, deepening to chrome yellow at the base. Falls well rounded and of a deeper shade of yellow. The general effect is a tall strong yellow of sturdy habits. \$.75

G. P. BAKER (Perry 1930) M. 54". A new, very tall medium toned yellow, whose outstanding feature is the beautiful branching quality of its tall strong stems. The flowers are of medium size of smooth texture and pale lemon in color and the stalk carries as many as a dozen open blooms at one time. \$5.00

Dykes Medal, English Iris Society, 1930.

GRAND MONARCH (Rowell 1929) L. 40". V.E. A grand variety. A self color of velvety bronze red. Heavy golden beard, style arms and haft, which gives a marvelous illumination to the center of the flower. It is aptly named as the exceeding depth and richness of substance, velvety red color and brilliant golden beard, remind one of the velvet mantle and gold lace of Louis XIV. \$1.25

GRACE STURTEVANT (Bliss 1926) L. 36". This is an exceedingly rich dark red brown and violet carmine. The falls are so velvety they look black in certain lights. The outstanding feature is the beard which is so brilliant it may be seen across the garden. The stems are well branched and stout and the flowers large and of extra heavy texture. A handsome variety. \$2.00

HELIOS (Hay'-lēē-os) (Cayeux 1929) M. 44". Enormous flowers, the standards of which are pure lemon yellow and perfectly formed. The falls are of the same tone, smooth and finished and delicately reticulated with pale olive violet, which becomes almost invisible as the flowers open. A beauty. \$5.00

Special award Paris Iris Com. 1930.

HENRI RIVIERE (On-rēē Reev-yair') (Millet 1927) V.L. 42". Very large flowers on a plant of the greatest vigor, with rigid, many branched stems. S. pure lemon yellow; F. lilac mauve with lemon reflex, blending to canary yellow at the throat and edged canary yellow. An exquisite combination. Millet thinks this his best recent introduction. \$2.00

HERMITAGE (Kirkland 1931). A deep rose red blend with a frosty blue lustre that is difficult to describe. It is quite distinct as to color and the growth, substance and form are first class. An outstanding addition to the blend class.

H.M.A.I.S. 1930. \$7.50

HERNANI (Air-na-nēē) (Cayeux 1929) 32" M. Cayeux states that Hernani is the nearest approach to true red that he has seen, and we agree with him. S. coppery red flushed rose; F. velvety warm garnet red. Planted with Frivolite, it makes a stunning garden picture combination. \$6.00

HOCHELAGO (Morgan 1931) S. pale tan, flushed rose; F. a deep rose pink. The whole flower is suffused with a warm coppery glow which is lighted by a bright orange beard. Grown by Mr. Cleveland Morgan, the originator of the lovely Mt. Royal. \$1.00

HONEYDROP (Morrison 1929) M. 40". This variety is beginning to attract the attention it deserves. The flowers are of large size. In color an exquisite combination of henna, brown, honey and rose, absolutely unique in color. We maintain this is the best Morrison introduction we have seen. \$5.00

INDIAN CHIEF (Ayres 1929) M. 40" S.F. This is one of the outstanding iris introductions of recent years. S. beautiful pinkish red; F. deep, rich velvety red. The flower is large, well formed and of heavy substance. It is a rampant grower and prolific bloomer. The only criticism we have of the colored picture is that it does not do it justice. \$2.00

ION (Mead 1929) M. 36". S. pure violet blue; F. blackish violet edged with a paler shade. Both standards and falls are of an exceptionally heavy substance and the flower is lighted by a creamy white beard. The stalk is sturdy and well branched and carries many flowers. \$2.00

JEAN CAYEUX (Zhan Ka-yuh') (Cayeux 1931) M. 38". Without doubt the most outstanding foreign introduction of recent years. The flowers are of fine form, well distributed on a good stalk. The color is a self tone of pale Havana brown, shot with a golden glint and the little touch of pale blue at the end of the beard brings out the delicate beauty of the flaring falls. An enchanting new color. \$35.00

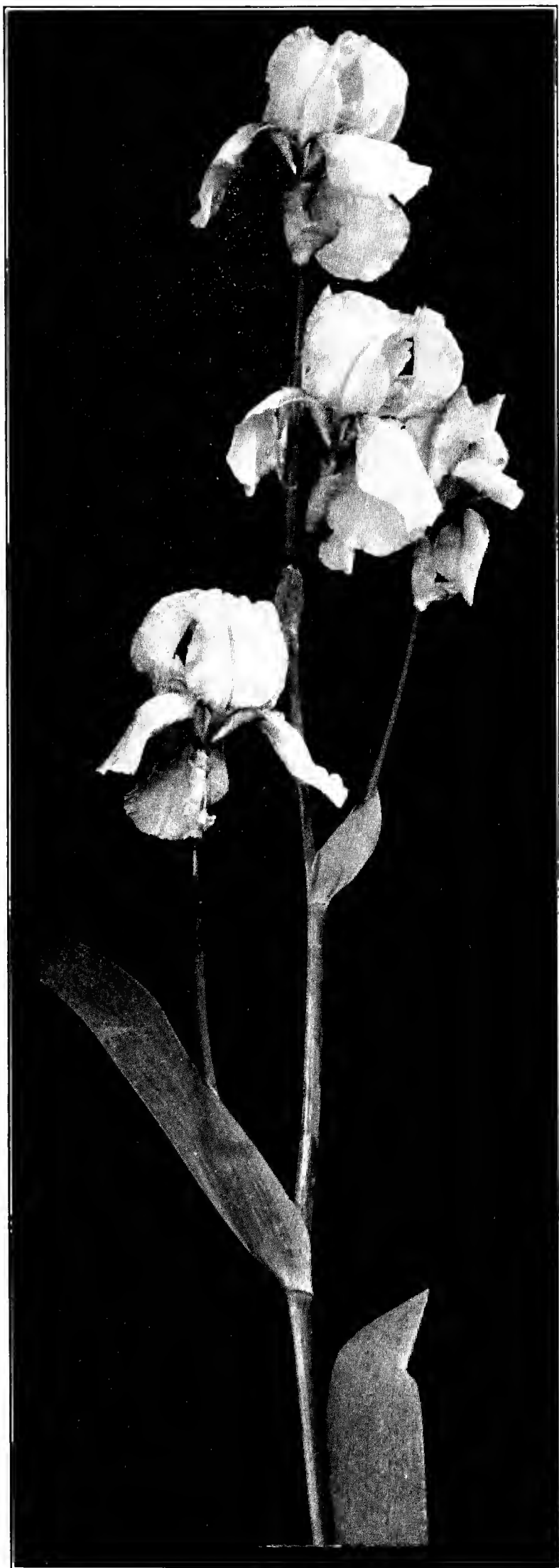
Dykes Medal, S.N.H.F., 1931.

Certificate of Merit, S.N.H.F., 1931.

JOYCETTE (J. Sass 1931) M. 42". One of the finest of the new reds. This variety is a self tone of clear red with no blue tones. The flowers are of good size, on very tall well branched stems and are fragrant.

H.M.A.I.S. 1932. \$20.00

KHALASA (Sherman 1932) M. 40". The first Freeport origination to be introduced to commerce. The name is Arabic and means quintessence. Its branching habit is its most outstanding feature and in form and arrangement on the



LOS ANGELES

stalk, it is indeed the quintessence of perfection. A large flower, S. Chinese violet shading to lavender at the edges; F. broad and flaring of hyacinth violet shading to pale violet at edges. Deliciously fragrant and carries many blooms, with as many as six open at one time. Much admired at Freeport show. \$7.50

KLAMATH (Kleinsorge 1929) M. 40". An Ambassador X Titan seedling. The standards are bronze, tinted violet and the falls a deep prune purple, paling at the edge, to the bronzy tone of the standards. Good form and substance. \$3.00

KING JUBA (Sass 1931). A fine variegata of clear sparkling colors. S. pure vivid yellow, F. velvety dark red. A fine variety for the dull corner, when combined with yellow or dark red. H.M.A.I.S. 1932. \$5.00

KING KARL (Sass 1924) M. 30". A plicata which is still outstanding as there is nothing like the color on the market. A deep colored self, heavily dotted a pinkish brown. The flower is beautifully frilled and has lots of substance. \$.40; 3 for \$1.00

KING TUT (Sass 1926) M. 34". Large flowers of a striking red brown. S. brown with a strong reddish suffusion. F. velvety glowing red. The general effect in the garden is of a bright rich red. This is rapidly becoming a popular iris and is used extensively by the Sass brothers in their hybridizing work and has produced some of the finest varieties they list. \$.75

K. V. AYRES (Ayres 1932) 44". The much talked of blend which was shown in the Ayres garden last season and was our selection for listing, is by far the finest of many thousands of seedlings. The old saying that it is safe to select the one named for a member of the family, holds good in this instance, as it was named in honor of Mrs. Ayres. Its color is the despair of the description-ist. A pale coffee and lavender blend, with a soft pink overglow. Many large and perfectly formed flowers, well placed on the branching stalks. It is a rampant grower and the foliage is unusually luxuriant.

H.M.A.I.S. 1931. \$30.00

LABOR (Lä-boar') (Cayeux 1926) M. 36" F. An unusual color. Dark violet heliotrope. The standards are suffused with a soft coppery glow. The color effect is a burnished red copper and is very beautiful. \$.40; 3 for \$1.00

LARGO (Ashley 1932) M. 40". A lovely new bi-color which received much favorable comment. S. a clear chrome yellow arched and ruffled; S. rose tinted lilac paling at the deeply ruffled edges. The flower has a heavy substance and texture quite unexpected because of its dainty coloring. \$15.00



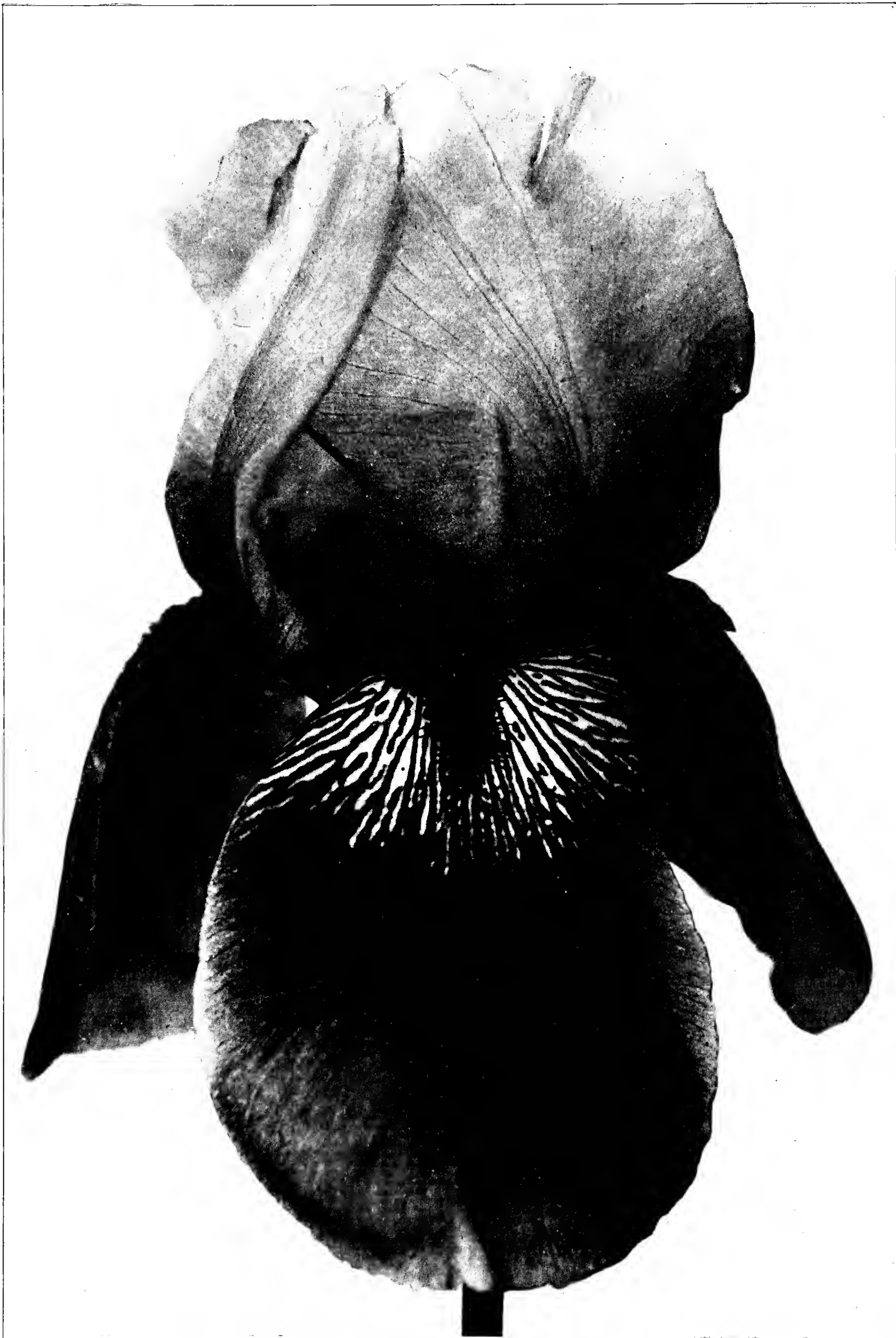
DON JUAN



JEAN CAYEUX (Cayeux 1931)

PRESIDENT PILKINGTON (Cayeux 1931)





LE CORREGE (Lū-Kōrēg') (Vilm 1927) M. 46" V.F. Very large flowers. S. smoky bronze shot with lavender and suffused with red. F. large, bright dark velvety red, with prominent gold beard. LeCorrege has none of the muddy landscape effect of Ambassadeur, but makes a brilliant color group. \$.50; 3 for \$1.00

LOS ANGELES (Mohr 1927) M. 46". F. Great white flowers of fine shape and texture; the standards faintly edged blue, falls beautifully marked red brown at the base and the blue style arms lend a note of clear color to the center. One of the most beautiful iris we list. It is perfectly hardy and has stood in our garden for years, entirely unprotected. \$1.25

LOUIS BEL (Louis Bel) (Denis 1925) E. 30". V.F. One of the darkest colored iris. The flowers are of good size. S. very dark pansy violet, F. a velvety blackish purple. Fine for the early season. \$.50

LUX (Looks) (Cayeux 1931) An unusually lovely and vivid color effect. S. bright old gold suffused apricot; F. semi-flaring, raspberry red, with a golden sheen, paling to rose at the edge. Very telling in a mass.

Certificate of Merit, S.N.H.F. \$15.00

MME CECILE BOUSCANT (Sū-seel Bōōs-kann') (Millet 1923) L. 48". Still one of the outstanding and most beautiful varieties. It is a self and a lovely even shade of orchid pink. There is a slight flush of blue in the middle of the fall, which gives it an unusually attractive finish. It is tall and perfectly hardy. Highly recommended.

\$.40; 3 for \$1.00

MME DURRAND (Due-rawn') M. 50". Irridescent buff, flushed lilac and amber 6 inch blooms on long branching blends. An exquisite flower that will always be in demand.

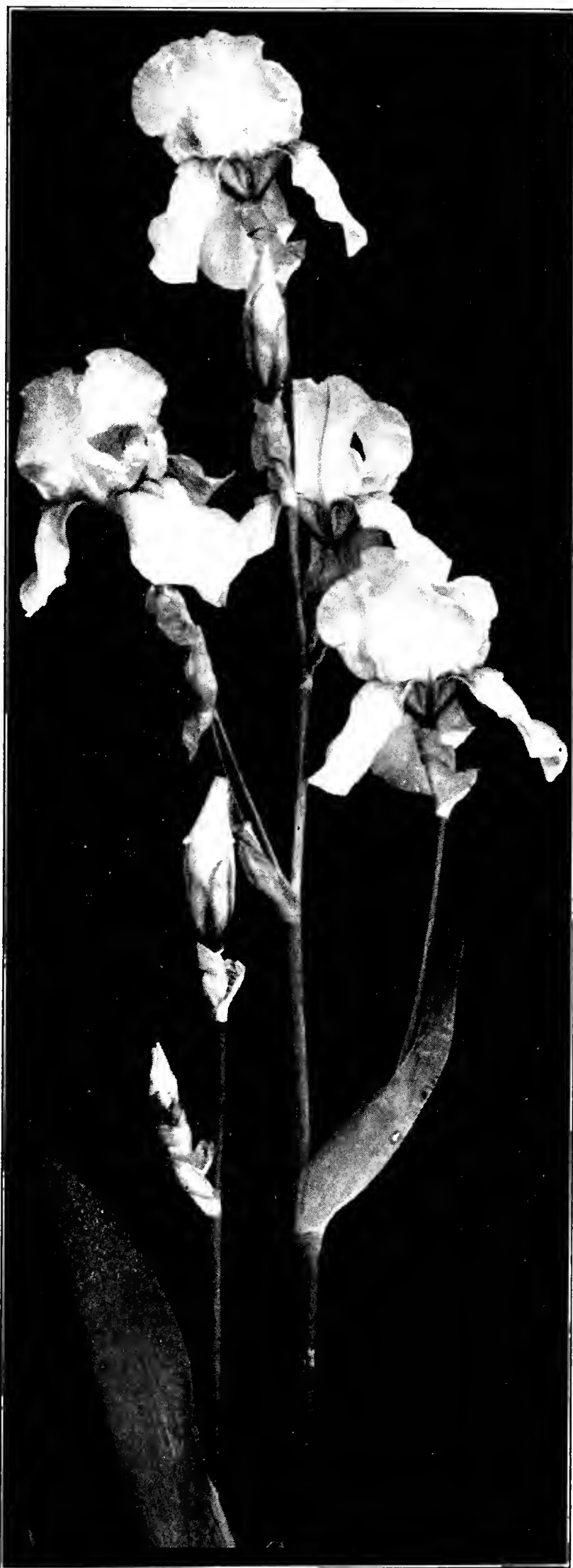
C.M.S.N.H.F. \$.40

MME HENRI CAYEUX (On-rēē Kay-yuh) (Cayeux 1924) M. 36". A handsome variety with large flowers. Very dark red purple standards and deep velvety falls. Extra free flowering and hardy and combines well with the pale pinks or buff shades.

C. of M. S.N.H.F. \$.40; 3 for \$1.00

MME SEROUGE (Madam Sū-rooj') (Cayeux 1929) M. 42". F. a very beautiful new variety; a seedling of the famous Black Knight, but with none of its failings. It is a good grower and free bloomer. The flowers are of huge size. S. violet, F. spreading and well rounded of a warm tone of intense blackish purple, with a pale Bishop's violet edge. The whole flower seems lighted with a dark silvery sheen.

C.M.S.N.H.F. \$6.00



MAGENTA (Cayeux 1927) M. 39". V.F. This is a wonderfully beautiful flower, with a coloring that is absolutely unique. It is a bright amethyst in color and appeals to everyone. The flowers are of fine rounded shape and the plant is strong and vigorous. Mr. Percy Murrell rated this 91 and declared it to be a glorious and distinct color. It combines well with pink and creamy yellows.

C. of M. S.N.H.F. \$1.75

MAROUF (Mä-roof') (Millet 1925) L. 36". An enormous flower. S. grayish rose overlaid lilac; F. a deep amaranth red shading to lavender at the edges. It may be described as a much darker and more intensely colored Asia. \$.75

MARQUINETTE (Mär-kēē-zēt) (Cayeux 1926) M. 42" S.F. An absolutely new color. Pale shrimp pink shaded salmon. A very lovely, lustrous example of the new pastel shades. Very free flowering, tall and hardy.

C. of M. S.N.H.F. \$2.00

MARY BARNETT (Cumbler 1926) M. 39". A glorified Princess Beatrice with a golden beard so brilliant that the reflection pervades the whole bloom. The exquisite, lustrous, pale blue of this variety cannot be surpassed. This should be included in every well selected collection.

\$.40; 3 for \$1.00

MARY ELIZABETH (Kirkland 1929) L. 40". S.F. This lovely iris is becoming well enough known to be properly appreciated. A brilliant, rosy red self, standards and falls of the same shade, but the heavy velvety quality of the falls give it the appearance of a bi-color. The beard is of pure golden color and the general ensemble one of rare beauty and grace. (Stock very limited.) \$5.00

MARY GEDDES (Washington 1931) M. 38". A beautiful blend of rare and unusual coloring. S. lustrous ochraceous salmon; F. of the same shade overlaid with rich Pompeian red. The stalks are tall and low and widely branched and carry many flowers. A stunning beauty and a new color note.

H.M.A.I.S. 1930. \$17.50

MARQUITA (Mar-kee-ta) (Cayeux 1931). A very attractive new variety. A Helios seedling, it resembles the parent plant in its huge size and fine form. S. clearest ivory yellow, falls almost the same shade, with ruby lines running almost evenly from base to apex, as the flower ages the center of the fall turns red, leaving a creamy rim edging the flower. A new thrill every day it blooms.

Certificate of Merit, S.N.H.F. \$30.00

MAY SADLER (Perry 1915) M. 36". A beautiful introduction. Stout branching stems bearing large well formed flowers. S. broad, incurved, a striking shade of dark violet rose, with conspicuous dark madder-crimson falls and dark bronze beard. An exquisite piece of dark crimson velvet. \$.40

MAUNA LOA (Berry 1926) L. 44". A tall up-standing bicolor of a strong reddish cast; the rich dahlia purple falls giving the dominant color note. The flowers are very large and it is one of the tallest varieties in the garden. \$.90

MEPHISTO (May-fēestō) (Cayeux 1930) L. 41". A greatly magnified Louis Bel, much larger and the colors are richer. S. intense indigo violet, F. deeper in color and very velvety. Vigorous and free flowering and blooms very late. A splendid variety to lengthen the blooming season. \$15.00

MICHELLINE CHARRAIRE (Mēē - shēl - lēēn Shār-rair') (Denis 1924) M. 54". V.F. The best low priced white. Tall firm stems, beautifully branched. A pure white with golden reticulations. The flower is very large. S. tall and domed; F. broad and flaring. It is perfectly hardy, rumors to the contrary. It is deliciously scented.

\$.40; 3 for \$1.00

MIDGARD (Sass 1926) M. 36". An exquisitely beautiful color combination. One of the best of the famous Sass blends. Yellow flushed rose pink. The color from a distance is a delightful shade of warm rose pink. One of the most popular varieties. The best iris for the price in the catalog.

\$.40; 3 for \$1.00

MINISTRE FERNAND DAVID (Mēē - nēēstr Fair-nan Dā-vēēd) (Cayeux 1930) M. 38". A massive flower of superb form and texture. S. silky red purple, F. velvety, glowing dark red purple. A much improved Germaine Perthuis, of richer coloring, much larger and more striking.

C. of M. S.N.H.F. Prize for best Iris, 1930. \$10.00

MISSOURI (Grintner 1933) M. 44". This handsome new iris has a beauty of coloring which makes it quite outstanding among the finest of blue bicolors. The large, well formed flowers are a medium tone of lavender blue; the falls are broad and flaring and of a slightly darker shade than the standards. While velvety in appearance, it has a thick substance and durable texture which is almost unequalled. The plant is hardy and a very profuse bloomer. The flowers have the delicate fragrance of the valley lily. A fine addition to the blue shades. \$10.00

MOONLIGHT (Dykes 1923) E. 36" F. The large finely formed flowers are carried on straight, well branched stems. A warm French gray, slightly shaded soft blue and touched with green and yellow lights. Quite different from any other in coloring and aptly named, as the color is moonlight. One of our favorite varieties. \$.40

MORNING GLORY (Kirkland 1929) M. 40". Large flowers of heavy substance and a most attractive combination of violet tones. Not to be confused with Morning Splendor, as it is much brighter of tone; in fact it is absolutely brilliant and its brilliancy is greatly enhanced by the glittering golden beard. A superb iris and will be for many years to come. \$5.00

MOUNT ROYAL (Morgan 1929) M. 36" V.F. A new and remarkable dark purple of fine form. S. deep, bluish violet; F. very velvety, rich, red pansy violet. The flowers have fine substance and the garden effect is amazingly lovely. \$.50

MRS. EDWARD HARDING (Perry 1925) M. 42". A very beautiful dark Pallida. We grow more fond of it every year we grow it. The flowers are large, well shaped and of fine substance, and withstand wind and rain very well. S. violet purple, F. velvety dark blue purple, overlaid black, bronze yellow beard. An exceptionally fine variety and we strongly recommend it. \$.75

MRS. HERBERT HOOVER (Home 1930) 38" M. A lovely new blend. The flowers are of good size and fine form, and a delightful salmon and buff mixture, giving it a color effect somewhere between Frivolite and Marquissette. There is a distinct brilliant blue midrib which gives it distinction. Several flowers open at one time, and we judge the variety is a prolific bloomer, as we had three bloom stalks on a one year plant. \$12.50

MRS. MARION CRAN (Perry 1923) E. 48". This is one of the finest pink iris grown. The flowers are large, of perfect shape and are gracefully borne on strong, tall stems. The color is a glorious shade of brilliant light rose. \$.35; 3 for \$.75

MRS. ROBERT EMMET (Perry 1925) E. 38" S.F. One of the best whites. Stout stems bearing large flowers of great substance and a delightful shade of milk white, with a brilliant yellow beard. This iris is remarkable for its branching quality, of the candelabrum type. It is unusually floriferous and often has 7 to 8 flowers open at once. Perfectly hardy. \$.75

MRS. VALERIE WEST (Bliss 1925) M. 42" F. A Dominion seedling generally acknowledged as the Bliss masterpiece. The flowers are large and

finely held on strong branching stems. S. broad and arching, of violet, suffused bronze. F. a rich, velvety crimson maroon. A beautiful iris for all purposes. The most floriferous variety we know. \$2.00

NANETTE (Nān-ēt') (Millet 1927) M. 36" S.F. A Dominion seedling of a new and very attractive type. S. Golden bronze green. F. velvety plum purple, slightly margined yellow. The combination of the colors of the standards and the falls make this a wonderfully beautiful iris. Flowers of good size. This has been much admired in our planting. \$.40

NENE (Nēn) (Cayeux 1928). This is the largest iris we have seen. It is gigantic in every way. The flowers are enormous, over 9 inches in length, but the shape is splendid. The flowers are borne on stems over two inches in circumference, well divided into two or four branches. S. soft clear rose lilac, F. vinous red, lighter at the margin. A very impressive variety, and in spite of its large size, it does not flop, but stands up until the end of the bloom. \$2.00

NEPENTHE (Connell 1931) M. 30". A subtle, pale blend of medium height. S. soft buff flushed lavender. F. very long and of the same shade, but flushed rosy lavender.

H.M.A.I.S. 1932. \$8.00

NUMA ROUMESTAN (Noo-ma · Roo-mes-tan) (Cayeux 1928) L. 36" V.F. This is an intensely red iris; a somber rich red; a perfect self color, with the standards and falls equally red. It has a stout and widely branched stem. Both the standards and falls are deeply frilled. The flowers are not as large as Dauntless, but the color is redder and more uniform. A beautiful and distinct variety which we strongly recommend. \$1.75

NURMAHAL (Nichols 1931) M. 38". A rich deep brown of fine substance. S. dark bronze overlaid violet, broad and arched; F. of blackish brown with violet shading, broad and velvety. Low and well branched and a good grower. \$15.00

OPHELIA (Cayeux 1925) M. 36". One of the most beautiful of the modern iris. The color is indescribably charming and subtle. A delicious medley of warm orange, cream, mauve and bronze tints, lit up by a warm orange beard. It is perfectly exquisite. This variety has achieved a growing popularity and should be in every garden. \$.90

OREGON BEAUTY (Kleinsorge) M. 38". One of the new Kleinsorge seedlings which have attracted much attention on the Pacific Coast. A very



MINISTRE FERNAND DAVID

large flower on a strong stem. S. soft aconite violet; F. bright velvety Cottinga purple; heavy gold beard. The flowers have good substance, and one of the outstanding features is the heavy mid-rib through the falls which gives them more body and adds to the substance of the flower. \$5.00

OREGON GIANT (Kleinsorge 1930) M. 42". A large bloom on a tall stalk. Really a giant for size. S. a pleasing shade of reddish purple, rise well above widely flaring falls of velvety blackish purple. The center of the flower is lighted by a rich golden beard. In our opinion the best of the Kleinsorge seedlings which we have seen. \$5.00

PEERLESS (Dykes 1924) M. 38". A fine flower of enormous size and brilliant coloring, giving the effect of a rich, glowing mahogany red. The standards are erectly held and have no tendency

to flop and are light red violet in color. F. straight hanging, 4¼ inches long by 3 inches wide, rich, deep, velvety red with bronze reticulations at the haft. Rich gold beard so deep that it lights the whole flower. A mass planting is a satisfying garden picture. This variety must be well established before bearing representative bloom. \$1.00

PEGGY (Millet 1929) M. 42". This lovely iris is most outstanding and is a large richly colored iris. S. a clear Havanna brown, tinged red and the falls are plum color, with a deeper tone in the center of the fall which pales at the edges to a faint brown. A hardy variety and of luxuriant habits of bloom and growth. \$3.50

PERSIA (Ayres 1929). A beautiful iris with an absolutely unique color. The many flowers are borne on a tall stalk, very well branched. S. smoky blue, F. rich purple blue in the center shading to a much paler blue at the margin, with dull gold markings at the haft. The flower has a glistening silky texture and is aptly named, as the coloring is that of a rich Persian rug. One of the outstanding modern iris. \$3.50

PHEBUS (Fa-buss) (Cayeux 1930) 40". A fine addition to the yellow class. A pure lemon yellow self. The flowers are of good size, well rounded and smooth of finish. It grows well over three feet and the stems are rigid and well branched. Its fresh dainty coloring makes it a desirable acquisition. \$7.50

PHOSPHOR (Shull 1931). A medium yellow self of heavy substance and wide flaring form. S. light yellow deepening at the tip; F. same shade with delicate olive shading. Beard bright yellow. \$8.00

PHRYNE (Cayeux 1925) E. 42" S.F. A cross between Mme. Durrand and Lord of June. Enormous flowers next in size to Peerless and Nene. S. lavender shading to rose; F. reddish lilac, shaded silver gray at the edge. Very distinct and beautiful. \$.50

PINK SATIN (J. Sass 1930) M. 42". This exquisite iris has caused more discussion among so called experts than any variety we have grown. The color plate is too deep in color, but because of circumstances, could not be corrected at the time. We think this is the clearest, purest pink iris we have seen. It is a pink self, with large finely shaped flowers and well poised on the stem. It has such a rich satiny sheen that we thought the name suggested by the artist who painted it, a fitting one. We have maintained, since this iris came out, that it is the best pink iris up to date, and see no reason for correcting that statement at this time. \$5.00

PLUIE D'OR (Pleu-ēē-Daur') (Cayeux 1928) M. 41". (Translated Golden Rain). This is a self color, of pure golden yellow; stems widely branched bearing many flowers of good size and substance. This was the first large flowered golden yellow to be put in commerce. We think it is the finest golden yellow that we have seen and its value as a landscape variety cannot be surpassed.

\$1.75

Certificate of Merit, S.N.H.F.
Dykes Memorial Medal, 1928.

POLICHINELLE (Pō-lēē-shēē-nel') (Cayeux 1929) M. 40". An unusual hybrid of new coloring. Large flowers on a tall stem. Very broad standards of creamy buff, suffused pale blue, which contrast most strikingly with the broad violet falls, which are suffused carmine red in the center and margined bronzy yellow. The lovely throat is white, heavily veined brown. It is difficult to describe it and do it justice. It means "Punch" in English. \$5.00

Certificate of Merit, S.N.H.F.

PRAIRIE GOLD (Sass 1927) M. 32". A good golden yellow, of deep rich color. It is not very tall, but the flower is large and the landscape value is good. \$.40

PRESIDENT PILKINGTON (Cayeux 1933) M. 46". A large flower of excellent form and glorious blend. S. pale buff with a faint blue suffusion; F. wide and flaring lavender blue

with a buff yellow suffusion paling at the margin and yellow veining at the throat. Beard bright golden yellow. A magnificent iris, vigorous, sturdy and outstanding as to color. \$25.00

Certificate of Merit, S.N.H.F.
Best Iris for 1931.

PURISSIMA (Mohr Mitchell). A pure white iris of great size and splendid form. Not hardy in all climates, but ideal for moderate or warm climates. We grow it perfectly by giving it winter protection, and it is well worth the effort. It is the only tender variety we list. \$1.00

RAMESES (H. P. Sass 1929) L. 40" F. S. light russet vinaceous with yellow glow through the center; F. tourmaline pink with apricot beard. Plant vigorous and well branched. One of the



ROYAL BEAUTY

best irises grown by these originators of beautiful iris, and one of the most outstanding in our collection.

Dykes Medal, A.I.S. 1932. \$6.00

REALM (Baker 1926) M. 42". This is a pure, intensely blue self, with a conspicuous gold beard. The flowers are of large size, fine form and unusually heavy substance. The stems are very stout and the plant is exceptionally vigorous and floriferous. \$.50

RED DOMINION (Ayres 1931) M. 42" F. This fine red self is one of the most beautiful and outstanding iris we have ever grown. The flowers are large, of perfect form and well poised on the well branched stems. Clear, lustrous, deep red standards, slightly frilled; broad, horizontal velvety red falls, flushed with a near black, velvety luster in the center. A glowing ox-blood red. One of the fascinating characteristics of this new variety is the opening bud, which resembles the bud of a deep red rose. It was rated in the 90's by every judge who saw it here.

H.M.A.I.S. 1931. \$10.00

RED RADIANCE (Grinter 1931) M. 38". An unusual shade of red, rich and glowing. It is a deeper red than Dauntless and catches the eye at a distance in the garden. The flower is of medium size, the standards pure glowing red and the falls of the same shade, but flushed velvety black. A different red than we have had before.

H.M.A.I.S. 1932. \$15.00

RED ROBE (Nicholls 1931) M. 36". A rich and glowing ruby red; its blooms are large with broad circular petals of fine substance. S. deep red violet; F. darker in shade and very rich and velvety. Red Robe is low and well branched and a good grower and free bloomer. Stock limited.

H.M.A.I.S. 1932. \$25.00

RHADI (Rhä-dii) (Mrs. W. R. Dykes, 1928) L. 36". A flower of rare coloring and entirely different from any other iris. Large flowers of good substance; S. creamy white shaded blue gray, pale bronze reticulations. F. bronze shaded blue, slightly deeper than the standards. Deep bronze reticulations on the haft. Prominent old gold beard. \$4.00

Silver Gilt Medal English Iris Show for best Iris for 1928.

RHEA (Williamson 1928) M. 44". We discontinued Isoline some years ago because it was such a sparse bloomer. We were very partial to its coloring, and in Rhea we have found a variety

which is slightly deeper in color, tall and a large well formed flower. It is very floriferous and has all the good points and none of the poor ones of Isoline. \$.40

ROMOLA (Bliss 1924) M. 48". One of the best of the Dominion seedlings. In this Mr. Bliss achieved height and branching quality. The blooms are very large. S. finely arched, pale lilac tinged pale ivory, suffused yellow at the base. F. velvety red violet. Remarkably free flowering. \$.50
A.M.R.H.S. 1929.

ROSE DOMINION (Connell 1931) M. 38". This variety has all the substance of its Dominion parent, and the other good characteristics as well. Of a clear shade of rose, the deeper flush on the falls, gives it the effect of a rose bi-color. It is of flaring form and the bright gold beard does much to bring out its soft coloring. \$8.00

ROSE MARIE (Cayeux 1928) L. 38" M.F. Another new color. S. reddish violet. F. reddish purple. The falls are almost at right angles to the standards and beautifully frilled. The color of this iris is very unusual and it is beautifully brought out by the soft creamy throat and delicate cream reticulations on the falls. We regret that we cannot adequately describe it, but we strongly recommend it. \$1.50

ROYAL BEAUTY (McKee 1932) M. 48" S. F. The former name of Velvet King seemed made for this handsome newcomer, but it had been used some years ago for a Japanese iris. One of the finest shown in our gardens last season. S. clear intense blue of a medium tone, F. slightly deeper in color, of brilliant, deep, velvety blue. This is a Dominion seedling, but the parentage is shown only in the velvety texture. The stalks are very tall and widely branched and carry many flowers, with as many as five fully open and perfect at one time. We unqualifiedly recommend this fine iris. \$12.50

H.M.A.I.S. 1931.

Award of Merit, A.I.S. 1932.

RUSTY GOLD (Andrews 1931) M. 38". This was the outstanding variety in Mr. Andrews' garden when I visited it last summer. It is an orange bronze blend, with a tarnished gold finish, flushed coppery red. Its peculiarly vivid coloring makes it invaluable for landscape purposes and the flowers are of good size and well proportioned. Hardy and a very vigorous grower. \$8.00

RUY BLAS (Rōō-ēē Blah) (Millet 1927) L. 48". A plant of greatest vigor with a much branched spike of unusual strength. It bears large flowers of perfect shape and great substance. S. velvety

smoky mauve. F. a deep shade of purplish violet, shading lighter at the edges, to a pale fawn color. with maroon reticulations. \$1.00

SACHEM (Loomis 1931) M. 40". A fine novelty. Of glowing red brown effect. The standards are a lustrous pale bronze and the wide spreading falls are a velvety dazzling red brown. Described by many as a greatly glorified King Tut, but we think it quite of a decidedly different tone of red, and it is much taller and very much larger. \$8.00

SANDRINE (Sann-drēēn') (Cayeux 1927) M. 38" S.F. A large flowered variety of fine form. S. fawn brown, shaded heliotrope; F. very large amaranth red, shading to a rosy mauve on the margin. A good variety. \$1.00

SAN FRANCISCO (Mohr 1927) M. 44" V.F. One of the finest iris in cultivation. Tall stems branching low and wide like a candelabra, carry the many large fine flowers, of which both standards and falls are distinctly edged lavender blue. In size, shape and substance there is nothing to approach it; only the color pattern tells us it should be classified among the plicatas.

Dykes Medal 1927, A.I.S. \$1.50

SANTA FE (Mohr-Mitchell 1930) An almost white Santa Barbara, with the same perfect form, flaring falls and fine substance. Faint blue when it first opens it changes to almost white. A dainty variety for the middle border.

H.M.A.I.S. 1932. \$1.00

SELENE (Connell 1913) M. 40". A tall, pure white of extra large size and thick substance. This seems to be the hardy white that we have been looking for. It has no Ricardi or Mesopotamica blood and has come through two very difficult winters in our garden without a loss. This lovely newcomer bears the name Moon Goddess, so named because of its exquisitely luminous texture. \$8.00

SENLAC (Bliss 1929) M. 40". An outstanding variety of a clear tone of claret red; the standards and falls are the same intense shade of red, and the bloom stalk is especially remarkable because of its splendid branching habits. A fine sort, highly thought of in England. \$10.00

SENSATION (Cayeux 1925) L. 48" V.F. Enormous flowers of perfect form. Tall, powerful stem and great substance. Falls stiff as a board and stand out horizontally. A self color, a wonderful corn flower blue. A glorious iris. This iris is becoming recognized as one of the finest

in the world. For great height, perfect form, graceful carriage, wonderful poise and substance, there is nothing that appreciates it. \$1.50

SERENITE (Su-ren-ee-tay) (Cayeux 1931) A massive flower of fine shape and beautiful poise on four-foot stalks. S. buff with a lavender haze overlaid, golden yellow at the base; F. wide and flaring, soft pastel blue, of the tone known as Alice blue, edged with soft yellow. A beautiful combination of colors. \$20.00

Certificate of Merit. S.N.H.F.

SHASTA (Mohr 1927) M. 40". This very fine, pure white iris is not well enough known to be appreciated. It is named for Californias' lofty, snow capped peaks. The stalks are well branched and bear the large white flowers proudly aloft. Perfectly hardy and one of the best whites in spite of its low price. \$1.00

SHIRVAN (Loomis 1932) M. 36". A strikingly handsome new Bruno seedling, with a brilliancy of coloring which makes it stand out in our large plantings, as if a light was turned on it. The standards are a pale shade of lustrous brown, with yellow tones prevailing; the falls are semi-flaring and a rich, heavy red brown. The flower is of fine form and exceptional velvety texture. The name was suggested because the coloring is the same as is found in the exquisite Shirvan rug; it has the same glowing soft brown and yellow tones found in this rare rug. \$15.00

SIR MICHAEL (Yeld 1925) M. 48" S.F. Held by many experts as the world's finest iris. It is a most striking variety, a magnificent grower with strong stems which are widely branched. The flowers are large and massive and remarkable for the fine color of the falls, a rich deep velvety purple. The standards are a clear lavender blue, slightly flushed copper and the beard a brilliant red gold. It is one of the world's best iris. \$2.00

SOLFERINO (Cayeux 1925) E. 48" F. An offspring of Aphrodite, but it is a much better flower. It has the same shape, substance and stem growth, but a rich lilac red color. Many flowers to the stem and a fast grower. \$.50

SOUVENIR D. LOETITIA MICHAUD (Sōōv-nēēr dū Lē-tēē-shia Mee-sho) (Millet 1923) M. 54" S.F. The strong stems bear flowers of huge size and fine texture. S. lobelia blue shading at the edge to a paler blue. F. the same color beautifully veined yellow at the haft. The flower has a frosty look which adds to its beauty. We call it the "Incomparable Michaud" because we have never seen a light blue iris that compared with it.

\$.40; 3 for \$1.00



SENSATION

SPRING MAID (Loomis 1932) M. 46". A tall and stately pink and yellow blend of beautiful fresh coloring. The flowers are large and well rounded, of clear rose pink, with a honey yellow flush through the center which is most entrancing. The flower stalks are almost four feet high and very strong and well branched. Its garden value is unquestionably high and seen at early twilight it is charming. One of the most outstanding introductions of recent years. \$10.00

H.M.A.I.S. 1932.

SUMMER CLOUD (Kirkland 1931) M. 32". This is an exquisitely dainty flower and appropriately named. S. pale blue which changes to a soft blue white like a cloud in the summer sky. The falls are a real sky blue. The flower is large and well proportioned; stalks 38 inches and foliage abundant. The plant is a strong grower. \$5.00

SURPRISE (Cooley 1928) M. 44". S.F. A seedling of Mme. Gaudichau but of huge size. A brilliant shade of bright blue, flushed heliotrope, with a deep orange beard. Outstanding as to color and is a consistent bloomer. \$.75

SWAZI (Bliss 1922) L. 39" S.F. One of the finest of the Dominion seedlings. Magnificent large velvety flowers. S. bluish violet; F. velvety blackish purple. The flower and foliage is sturdy of habit and the coloring is very rich, and at the same time brilliant. \$.50

TALISMAN (Murrell 1930) M. 38" A richly colored iris which gives a golden apricot effect in mass. Standards and falls are a rich yellow faintly flushed pink. There is a brilliant blue flush down the center of the falls. Fragrant. \$7.50

Certificate of Merit, Iris Show, London, 1930.

THAIS (Tä-ēēs) (Cayeux 1926) M. 42". An ideal, large perfectly formed flowers on stately, well branched stems, carrying three or four flowers open at a time. A pale lilac pink, well lighted by its clear gold beard. One of the most satisfactory iris we know, and the best clear pink for the money. \$.65

C. of M. S.N.H.F. 1926.

TRUE DELIGHT (Sturt. 1924) M. 36" V.F. A pure pink plicata. S. and F. purest white. The edges and style arms a pure rose pink. A flower of great refinement. It is free growing and most floriferous and combines beautifully with the clear pinks or blues. It has a sweet pea fragrance that is discernable for some distance. \$.30; 3 for \$.75

VALOR (Nich. '32) 50". Very large blooms of perfect shape. S. blue violet, domed and firm. F. Fluorite violet shading to raisin purple at the edge. A stately and glowing velvety royal purple, with every good quality, including a delicious fragrance. \$15.00

VERT GALANTE (Vair-gâlan) (Cayeux 1929) M. 50". An enormous flower of very heavy texture, rich coloring and fine form. S. coppery fawn, suffused lilac. V. Vivid garnet red, edged bronze, gracefully rounded. Beautiful yellow throat, reticulated brown. The flowers are well poised on very strong, well branched stems, more than four feet in height. This was awarded the Dykes medal for 1929, the highest award that can be given. \$8.00

VIOLET CROWN (Kirkland 1931) L. 40". This is a very large flower of unusual and most attractive shimmering pale violet shades; it is a self, but the falls are slightly deeper than the standards. Athens is enclosed on three sides by misty purple hills and was called the "City of the Violet



Pink Satin (Sass 1930)



Sir Michael (Yeld 1925)

Crown." The form of the flower is perfect and the heavy substance gives it a long blooming period. An outstanding variety. \$5.00

WAMBLISKA (J. Sass, 1930) M. 50". A stunning new white of huge proportions and heavy texture. The flower is well formed and gracefully poised on very widely branching stalks. S. white, with a faint blue flush at the base; F. large and pure white in color. Wambliska is Indian for White Eagle. A Sass masterpiece. \$5.00
H.M.A.I.S. 1931.

WACONDA (H. Sass 1930) M. 30". A very large flowered fuchsia red. F. rich, velvety violet carmine. The stalks are over three feet and well branched. The beard is rich yellow. A most attractive iris, entirely new as to color, which is very clear and bright. \$2.50
H.M.A.I.S. 1931.

WHITE AND GOLD (Nicholls 1928) M. 37". Aptly named. A true white and a pure gold. Pure gleaming satiny white not marred by any venation. S. broad and domed, F. flaring and of good breadth. The brilliant gold beard adds wonderfully to the flower. \$.50

WILLIAM MOHR (Mohr 1925) 32". This is probably the most remarkable hybrid ever raised. The ground color is pale lilac, standards flushed darker, the whole flower is beautifully veined Manganese violet. The flower has great substance and withstands sun and rain. Perfectly hardy. We cover with a little straw in winter. \$.75

Award of Merit, Chelsea, 1930.

WILLIAM R. DYKES (Dykes 1926) E. 40". This iris is the crowning achievement of the late W. R. Dykes and in our opinion the most beautiful light colored iris we have seen. The colored picture in this catalogue is very good, but is only five sixths of the actual size of the original, but the color plate had to fit the catalogue. It is of the most perfect shape and fine substance. The standards are tall, dome shaped and frilled. The falls are of great thickness and the surface of the flower is crinkled, giving it an effect of great richness. The falls are

lightly flecked violet, which in our opinion greatly adds to the beauty and distinction of the flower. We are pleased to report that this variety has been planted in the open garden the past season without loss. The pollen is fertile. \$7.50

YVES LASAILLY (Eēv Lās-ayēē) (Cayeux 1929) E. 48". This is a giant, both in stalk and in flower. It is a lovely combination of white and blue. The colors are the same as in Los Angeles, except that in Los Angeles the background is white and the standards are edged blue. In Yves Lasailly, the broad falls have a suffusion of soft sky blue in the center. \$1.75

C. of M. S.N.H.F. 1929.

One of three best Iris of year.



WM. R. DYKES

The above is a two-year-old plant of Wm. R. Dykes, growing in the garden of a Wilmington, Delaware, customer, who states it is perfectly hardy there.

Quality Gardens

ZAHAROON (Mrs. W. R. Dykes 1927). Flowers of good size. An extra strong and vigorous plant. We have no hesitation in pronouncing this one of the most beautiful iris in commerce today. The flower is an exquisite blend of amber, buff, yellow, fawn and pale violet, with a strong suffusion of rose. The color plate is a very good reproduction. \$10.00

Silver Gilt Medal, English Iris Show, 1927, as best Iris shown that year.

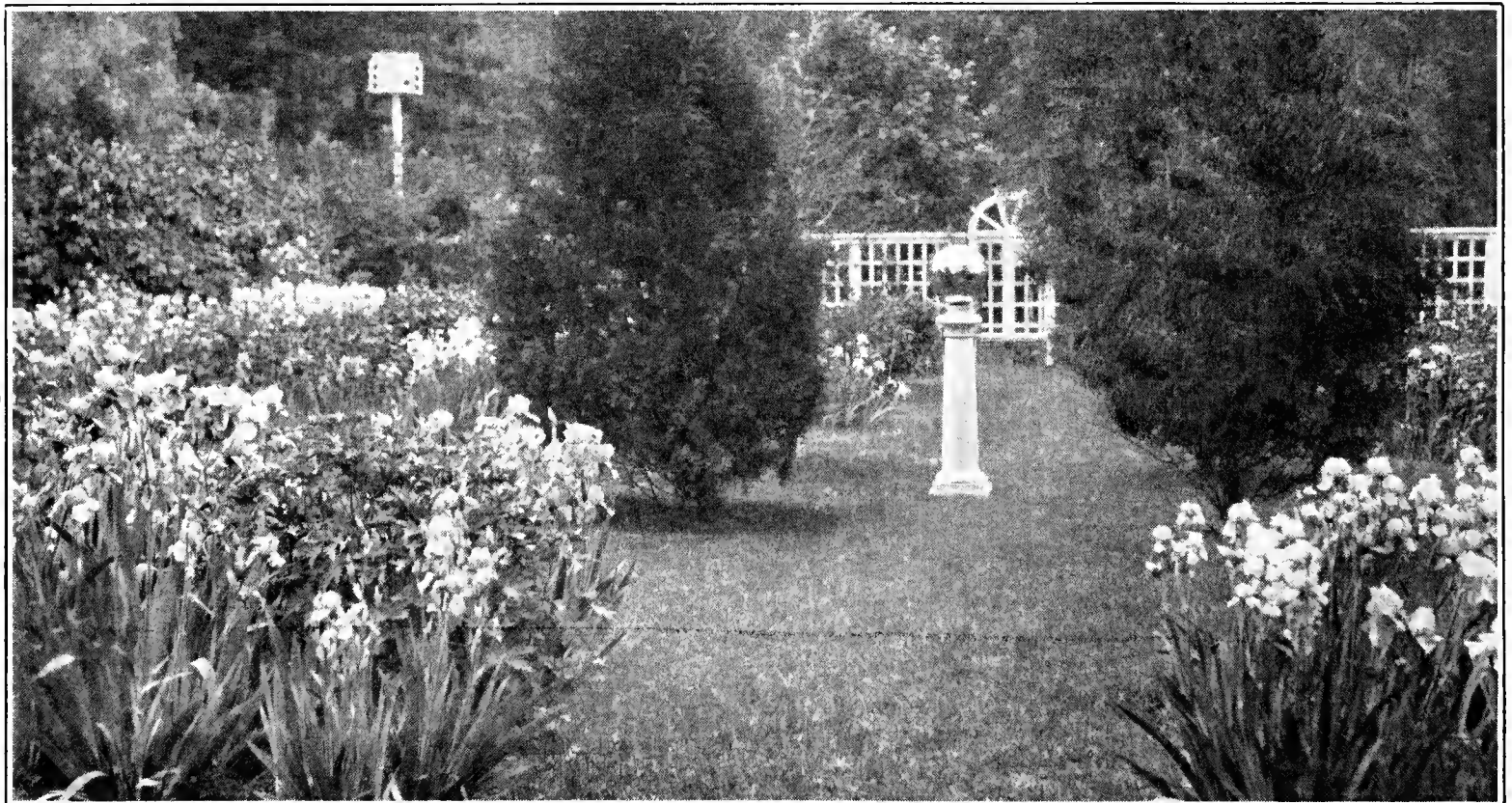
ZULU (Bliss 1925) V.L. 36". A dominion seedling. S. a rich, steely aniline blue. F. a fine dark velvety blue. It is a vigorous grower and free flowering. Blue Velvet is a greatly glorified Zulu in color and size. If you cannot afford Blue Velvet, we advise you to take Zulu. \$.75

A REMEDY FOR IRIS BORER

The tall bearded Iris is not injured by many insect pests and the only one which is in any way serious is commonly known as the Iris Borer, the larvae of a night moth. If recognized in the early stages it may be destroyed before it causes trouble. About a month before blooming time, you may notice wet looking spots toward the inner edges of the leaves; soon after the tiny worm begins to eat and if not disturbed will work its way down to the rhizome, and by midsummer will have it completely destroyed. If you are fortunate in finding it in the rhizome, at transplanting time, it will be a large pink grub about an inch and a half long. If not taken in time it crawls into the soil and hatches out in the fall and the life cycle begins all over again.

Growers who divide their iris and keep it clean do not experience much trouble, unless a moth flies in from the garden of a careless neighbor.

Until recently there was no known remedy, but some time ago a chemical preparation appeared on the market which was recommended for this purpose. It has been tested out by various firms and individuals and from all the information we have been able to obtain, we believe that it has proved satisfactory. It may be obtained through the Grasselli Chemical Company of St. Louis. The preparation is known as Dutox and a leaflet directing its use accompanies the package.



Bloom on One-Year Plants in Quality Gardens

Special Bargains in Iris

We have selected an extra fine list of Iris for this lot. Some of them are just as good as some of the more expensive ones, but not as new. Our stocks of some are not large enough to carry through the season, so we would appreciate it if you would name substitutes if ordering after August 1st.

30 cents each, 3 for 65 cents, of one variety

Antares—yellow dotted blue.
 Aphrodite—very tall pink.
 Avalon—silvery heliotrope.
 Bruno—fawn and velvety red purple.
 Citronella—lemon flushed red.
 Distinction—soft pink.
 Evening Glow—soft gray blue.
 Folkwang—white and rose, extra.
 Jac. Guillot—silvery blue, extra.

Mons. Arnal—yellow and pink.
 Orion—huge dark maroon.
 Reverie—cream and pink.
 Robt. Wallace—blackish purple.
 Skitchwaug—brilliant rose.
 Vesper Gold—lovely gold and blue.
 Wild Rose—name describes it.
 Wedgewood—pure brilliant blue.

20 cents each, 3 for 45 cents, of one variety

Ann Page—frilled lavender.
 Ballerine—big blue.
 Chalice—soft yellow.
 Crimson Glow—rose red.
 Duke of Bedford—large velvety blue.
 Gaviotta—yellow plicata.
 Leonata—large lavender.
 Leverrier—large red violet.
 Lord of June—large blue.
 Suzanne Autissier—crimson.
 Mary Gibson—apricot and rose.

Mildred Presby—pink and pansy purple.
 Morning Splendor—rich crimson.
 Perladonna—trim China blue.
 Pioneer—fine early red.
 Ruby Perry—brilliant pink.
 Santa Barbara—best medium blue, extra fine.
 Sunset—old gold and blue.
 Susan Bliss—one of best pinks.
 27th Avril—floriferous purple.
 Valencia—orange and buff blend.

Orders for above bargains will be sent postpaid in amounts of \$2.00 or over.

CULTURAL NOTES

*The crowded roots demand enlargement
 now
 And transplantation in an ampler space.*
 Cowper: The Task.

*Indulge their width, and add a roomy
 space,
 That their extremest lines may scarce
 embrace;
 Nor this alone to indulge a vain delight,
 And make a pleasing prospect for the
 sight:
 But, for the ground itself, this only way,
 Can equal vigor to the plants convey,
 Which crowded, want the room their
 branches to display.*
 Virgil: Georgic II (Dryden's Tr.)

*Adopted by the sun, in blaze of day,
 They ripen under his prolific ray.*
 Young: Paraphrase of Book of Job.

*So corn in field, and in the garden flowers
 Revive, and raise themselves with moder-
 ate showers,
 But overcharged with never ceasing rain,
 Become too moist.*
 Waller: Instructions to a Painter.

*If thy strong loam superfluous wet
 retain,
 Lead through thy fields the subterraneous
 drain.*
 Scott: Amoebaeon Eclogues.

Priced Low for Clearance

Many fine varieties are sacrificed in this group and afford an excellent opportunity to plant a fine iris garden at small cost. Many of them appear in the list of color plantings on following pages.

15 cents each, 3 for 30 cents, \$1.00 per dozen, of one variety

- | | |
|--|---|
| Afterglow—silver blend. | Mons. Cornault—copper and red. |
| Amber—fine yellow. | Mlle. Schwartz—frosty orchid. |
| Ambassadeur—fawn and maroon. | Mrs. E. T. Vissieux—purple flushed black. |
| Asia—silvery blend. | Mrs. E. H. Bowles—brick red. |
| Col. Candolet—tan and red. | Mrs. Brewster—old blue. |
| Benrimo—large frilled blue. | Phyllis Bliss—good mauve. |
| Brandywine—clear azure. | Prince Lohengrin—orchid self. |
| Dejah—big medium blue. | Prospero—deep blue. |
| Duke of York—tall and large blue. | Queen Caterina—silvery lavender, fine. |
| Dream—fine pink. | Rajput—tall, large heliotrope self. |
| Fedora—tan and maroon. | Rose Madder—crimson and pink. |
| Flammenschwert—yellow and red bicolor. | Seminole—dark red self. |
| Gladys Roberts—light red self. | Shekinah—pale yellow self. |
| Gold Imperial—fine golden yellow. | Simonne Vaissierie—two toned fine blue. |
| Harmony—dark purple self. | Souv. Mme. Gaudichau—big dark blue. |
| Harpalion—fine light blue. | Sweet Lavender—a trim frilled lavender. |
| Hermione—ruffled blue bicolor. | Taj Mahal—extra fine pure white. |
| Imperator—one of best light reds. | Troost—deep pink. |
| Jubilee—peach and brown plicata. | True Charm—white and blue plicata, extra. |
| L. A. Williamson—big red purple. | Yellow Moon—thick, glossy yellow. |
| Lady Byng—floriferous orchid. | Yeoman—very large blue, extra. |
| Lord Lambourne—buff and amaranth. | Yolande—big dark blue, early. |
| Majestic—fine velvety blue, large. | Zada—fine white. |
| Marjorie Tinley—medium blue, ruffled. | Zillia—big blue Pallida, fragrant. |
| Mary Orth—blue shot brown. | |

We pay postage on orders of \$3.00 or more, on clearance varieties. If ordering less, add postage of 2 cents a root, or we will send them express collect if you prefer.

QUALITY COLLECTIONS

We have accumulated a surplus stock of a number of fine varieties and will make them up into collections to dispose of them. We assure you that the customer who purchases them will get extra good value. Add 15 cents to the price of each collection, and they will be sent postpaid. The price of catalogue or other discounts may not be applied on the following collections.

No. 1 Collection will contain 10 first-class iris with at least three varieties worth 50 cents each, \$2.00

No. 2 Collection will contain 10 fine iris with at least two varieties worth 50 cents each.....\$1.50

No. 3 Collection will contain 10 very good iris with several very fine landscape varieties included, \$1.00

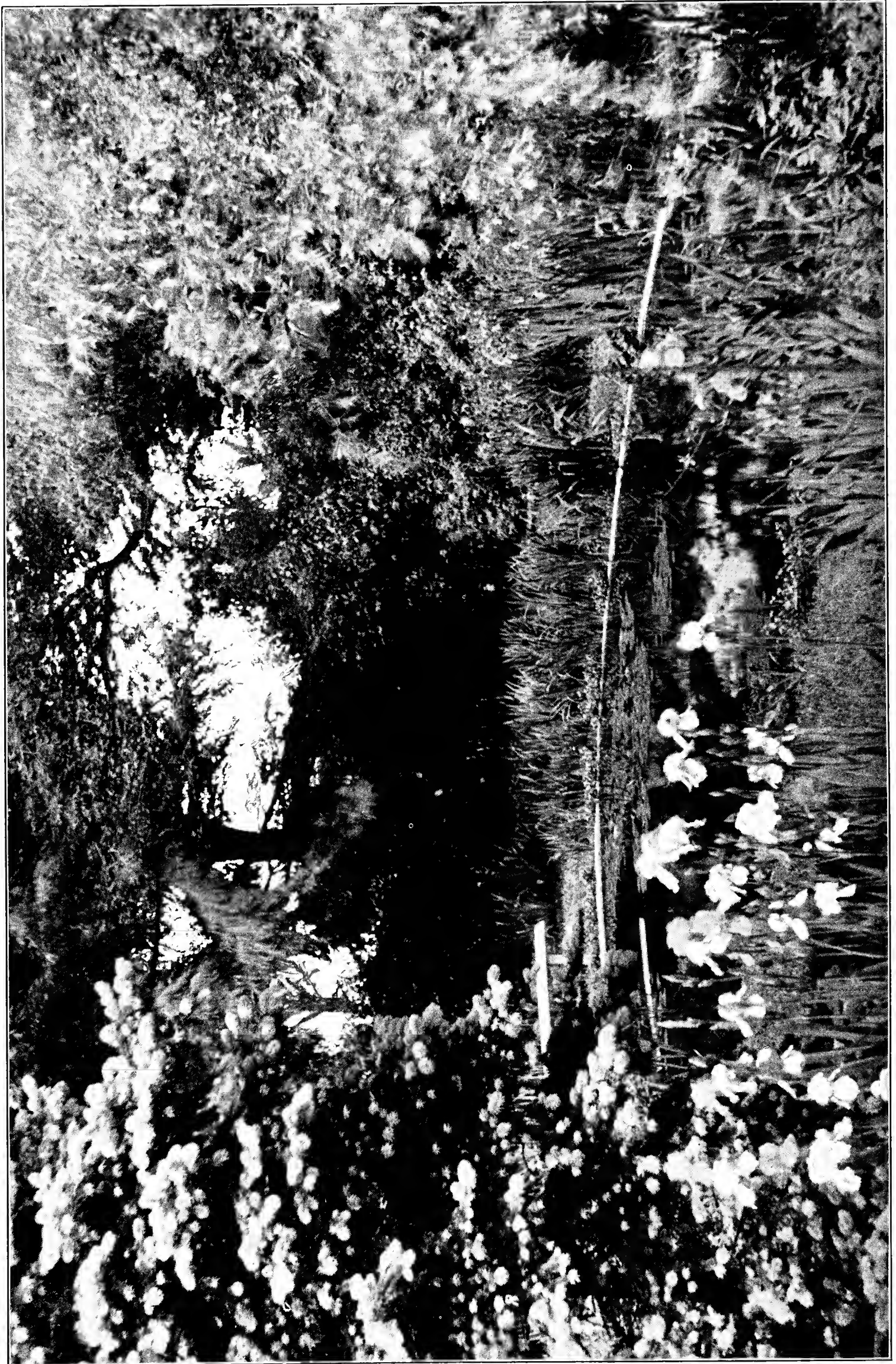
The three collections may be had for \$4.00.

Color Combinations for Group Plantings

In response to many requests, we are again printing a list of planting combinations which we have used in our own garden and which have been admired by our visitors. They have been tried for color harmony, height and season of bloom. We cannot guarantee that they will bloom, at exactly the same time, in your garden, as varieties vary in different sections of the country, but they will be close enough to make satisfactory plantings.

Wambliska, Royal Beauty, Summer Cloud.
 Midgard, Dauntless.
 King Midas, Dolly Madison.
 King Juba, Numa Roumestan.
 Gabriel, Coronation, Thais.
 Nene, W. R. Dykes, Grand Monarch.
 Coralie, Dauntless.
 Golden Glory, Midgard, Hernani.
 Desert Gold, Mich. Charraire, Yolande.
 (Early Blooming Group)
 Shasta, Realm, Thais.
 Pluie D'or, Blue Banner, Rameses.
 Pluie D'or, Sensation, Yves Lassailly.
 Sensation, Yves Lassailly, Rameses.
 Peerless, Rhea, Realm.
 Fragonard, Labor.
 Mrs. Valerie West, King Karl, Vesper Gold.
 Cameliard, Coppersmith, Coronation.
 Blackamoor, Selene, Wambliska.
 Frivolite, Hernani.
 Depute Nomblot, Mins. Fer. David.
 Evolution, Allure, Vesper Gold.
 Indian Chief, Dog Rose.
 Henri Riviere, Mount Royal.
 Los Angeles, Pluie D'or, Mount Royal.
 Wambliska, Sir Michael, Cassandre.
 Claude Aureau, Min. Fernand David.
 Grace Sturtevant.
 Sachem, G. P. Baker, Grace Sturtevant.
 Persia, Gilead.
 Nanette, Vesper Gold, Grace Sturtevant.
 Black Wings, Blue Banner, Columbine.
 Desert Gold, Royal Beauty, Summer Cloud.
 Pluie D'or, Numa Roumestan, Fascination.
 Mary Barnett, Los Angeles, Thais.
 Mrs. Valerie West, Grand Monarch.
 Surprise, San Francisco, Mrs. Marion Cran.
 Cinnabar, Thais, Duke of York.
 Cassandre, Fragonard, Vesper Gold.
 Nene, Rhea, Klamath.
 Farandole, Cassandre.
 Pioneer, Mary Barnett.
 Helios, Rameses, Honeydrop.
 Sir Michael, Golden Glory, Santa Barbara.
 Marquissette, May Sadler, Shekinah.
 Pink Satin, Venus de Milo, Gabriel.
 Magenta, Marquissette, Gaviota.

Louis Bel, Mrs. Robert Emmet.
 (Early Blooming Group)
 Mme. Serouge, Zulu, Cydalize.
 (Late Blooming Group)
 Dolly Madison, Vesper Gold, Gabriel.
 Wedgewood, C. Stringer, King Karl.
 King Tut, Gold Imperial, White and Gold.
 Frieda Mohr, True Delight.
 Midgard, Golden Glory, Germaine Perthuis.
 Mildred Presby, Seminole, Zada.
 True Delight, True Charm, S. Vaissierie.
 Reverie, Skitchwaug, Taj Mahal.
 Mary Barnett, Imperator, Yellow Moon.
 27th Avril, May Sadler, Citronella.
 Morning Splendor, Citronella.
 Citronella, King Tut, Mme. Henri Cayeux.
 Susan Bliss, Duke of York, Majestic.
 Mme. Gaudichau, Mich. Charraire, Georgia.
 (Early Blooming Group)
 King Tut, Prairie Gold, Jubilee.
 Queen Caterina, Shekina, R. W. Wallace.
 Beau Ideal, Mildred Presby, Geo. Tribolet.
 Mme. Cheri, Folkwang, Snow White.
 Majestic, Mrs. Brewster, Susan Bliss.
 True Charm, Duke of Bedford, Dejah.
 Germaine Perthuis, King Karl.
 Romola, Rajput, Mount Royal.
 Wedgewood, Snow White, Georgia.
 (Early Blooming Group)
 Skitchwaug, Amber, Jac. Guillot.
 R. Wallace, King Karl.
 Mary Gibson, Yellow Moon.
 Queen Caterina, Prince Lohengrin, Gold Imperial.
 Duke of York, True Charm, Ruby Perry.
 L. A. Williamson, Gaviotta, Citronella.
 Santa Barbara, Snow White, Aphrodite.
 Duke of Bedford, Golden Glory, Morning Splendor.
 Rose Madder, Folkwang, May Sadler.
 Lady Byng, Queen Caterina, Yellow Moon, Rajput.
 Seminole, Shekinah, Brandywine.
 True Delight, True Charm, Mestor.
 Santa Barbara, Santa Fe, Mrs. Edward Harding.
 Summer Cloud, or S. Vaissierie, Pink Satin, Shasta.
 Desert Gold, Spring Maid.
 Pluie D'or, Gabriel, Venus de Milo, or other white.
 Cardinal, Flammenschwert, Prairie Gold.
 Prince Lohengrin, Imperator, May Sadler.



A VIEW OF QUALITY GARDENS



MAGENTA
(Cayeux 1927)



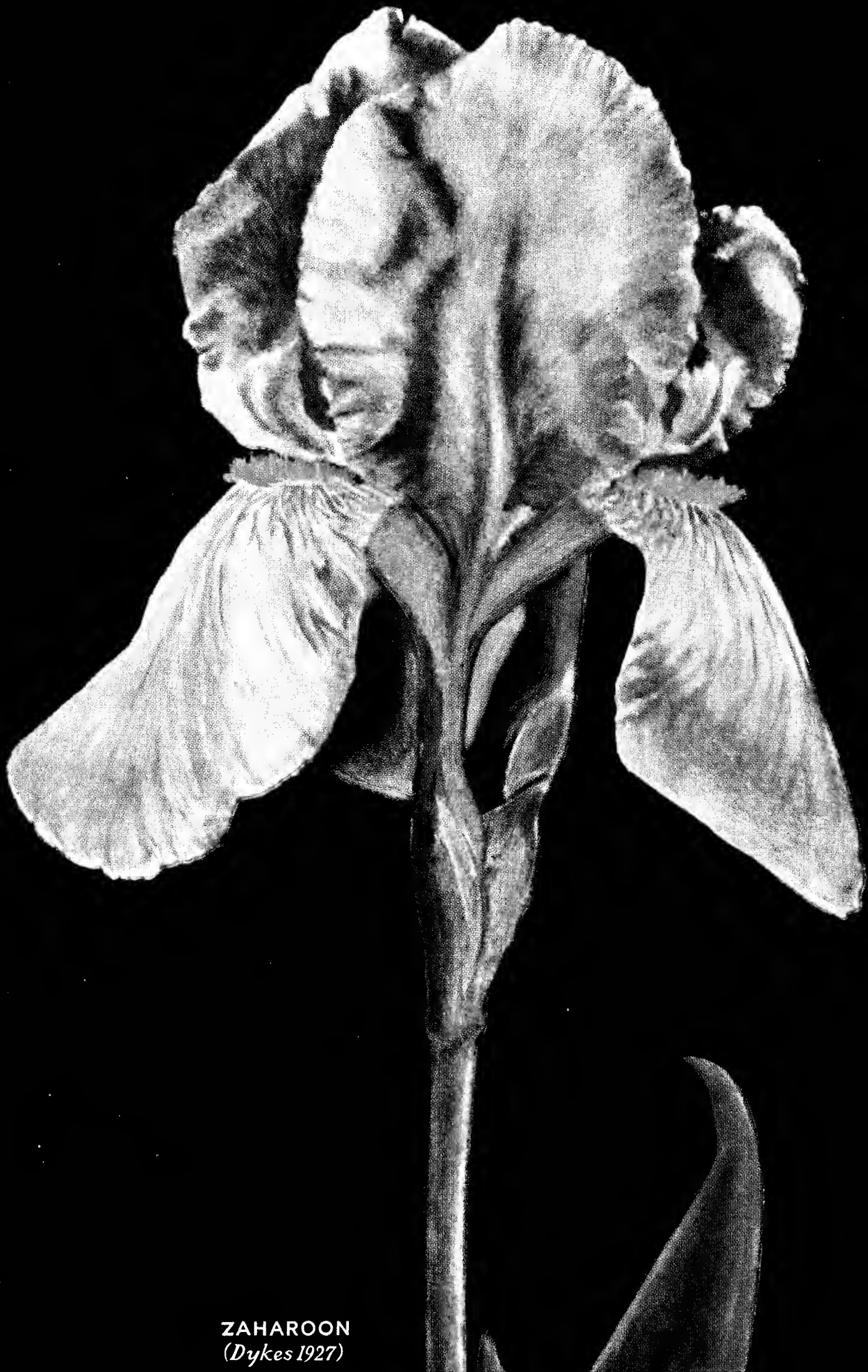
FRIVOLITE
(Cayeux 1929)



VERT-GALANT
(Cayeux 1929)



EVOLUTION
(Cayeux 1929)



ZAHARON
(Dykes 1927)

JOIN THE AMERICAN IRIS SOCIETY

\$3.00 A YEAR

Four Bulletins each year. Checks payable to
the American Iris Society should be
sent to the

**Science Press Printing Co.,
Lancaster, Pa.**

PRINTED BY
FREEPORT PRINTING COMPANY
FREEPORT, ILLINOIS

