

Historic, archived document

Do not assume content reflects current scientific knowledge, policies, or practices.

62,57

1933

LIBRARY
RECEIVED
★ JAN 25 1933 ★
U. S. Department of Agriculture.



"The New Dawn"

Everblooming Hardy Climbing Rose

Sport of DR. VAN FLEET

Our Introduction.

THIS ROSE, which gained the distinction of being granted the first patent ever issued to a plant, is the first really worthwhile Everblooming Hardy Climber. The shell pink flowers are of good size and exquisite form, with a rich Tea fragrance. They are produced on long stems suitable for cutting, and a well established plant is almost constantly in flower from June until frost. A real American Dooryard Rose. Easy to grow anywhere.

**Strong, blooming-size plants,
\$1.50 each.**

Perennials Rock Plants Roses

SOMERSET ROSE NURSERY

INCORPORATED

NEW BRUNSWICK, N. J.

Select Climbers

Blaze (Plant Patent No. 10). The introducer describes it as a cross between Gruss an Teplitz and Paul's Scarlet Climber and that it is a vigorous climber inheriting the blazing color of Paul's Scarlet Climber and the everblooming habit of Gruss an Teplitz. \$2.00 each.

Jacotte, a vigorous climber with very glossy leaves. Rich orange buds opening to salmon-orange flowers which are delightfully fragrant. 75c. each.

Mme. G. Staechelin, The Spanish Beauty, carmine tinted buds of exquisite form opening into immense flowers of soft pink. 75c. each.

Collection of one each of the above, \$3.00



Blaze

Meritorious Novelty Hybrid Teas

We grow practically all the new introductions. The following are sorts which have impressed us favorably and which have received good reports from many sources.

Portadown Ivory. An exquisitely formed bud which opens out into a large ivory white flower.

Golden Dawn. Attractive lemon-yellow, full double flowers on a vigorous healthy bush.

Gruss an Coburg. A rich yellow and red combination which blooms very freely.

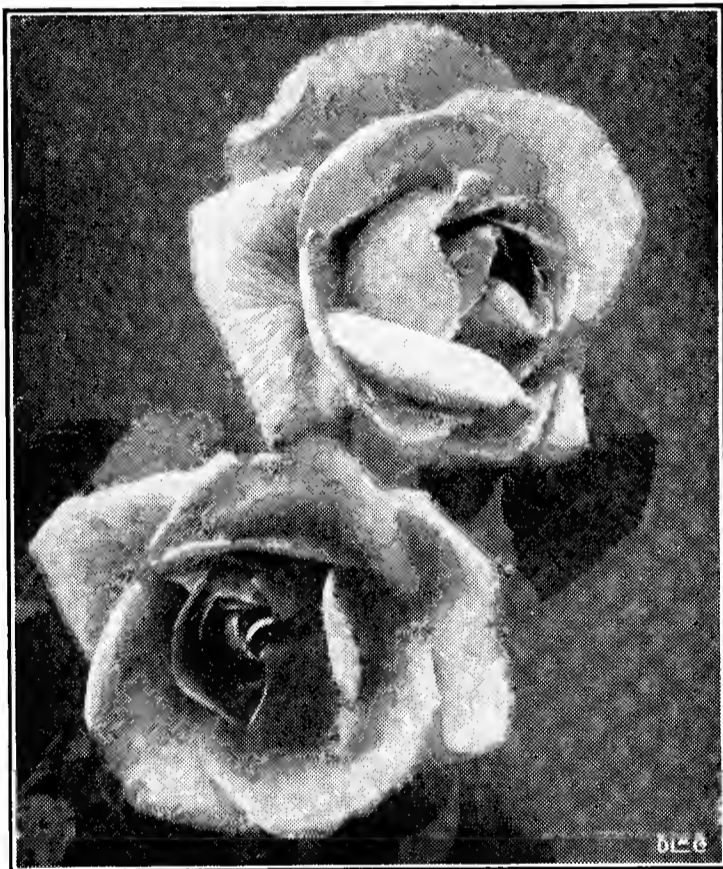
Lucie Marie. Yellow splashed with crimson. A large flower of striking form on a vigorous plant.

Pres. Jac. Smit. A rich dark velvety crimson. Somewhat single but one of the finest dark reds.

Souv. de Alex. Bernaix. Deep velvety crimson. Very free in bloom and of good color.

Price \$1.00 each

Collection 1 each above 6 varieties, \$5.00



Gruss an Coburg

Tried and Proven Hybrid Teas

The varieties below have been selected for their hardiness, freedom of bloom and popularity. All are to be highly recommended.

Betty Uprichard. Salmon pink.

Duchess of Wellington. Saffron yellow.

Etoile de Hollande. Rich, deep crimson.

Gaiety. Orange and yellow. 75c. each.

Margaret McGredy. Coral red.

Pink Pearl. Sweet-scented pink.

President H. Hoover. Flame and gold. 75c. each.

Radiance. Two-toned pink.

Radiance Red. Hardy and free.

Sir David Davis. Very free, crimson.

Souv. de Claudius Pernet. Rich buttercup yellow.

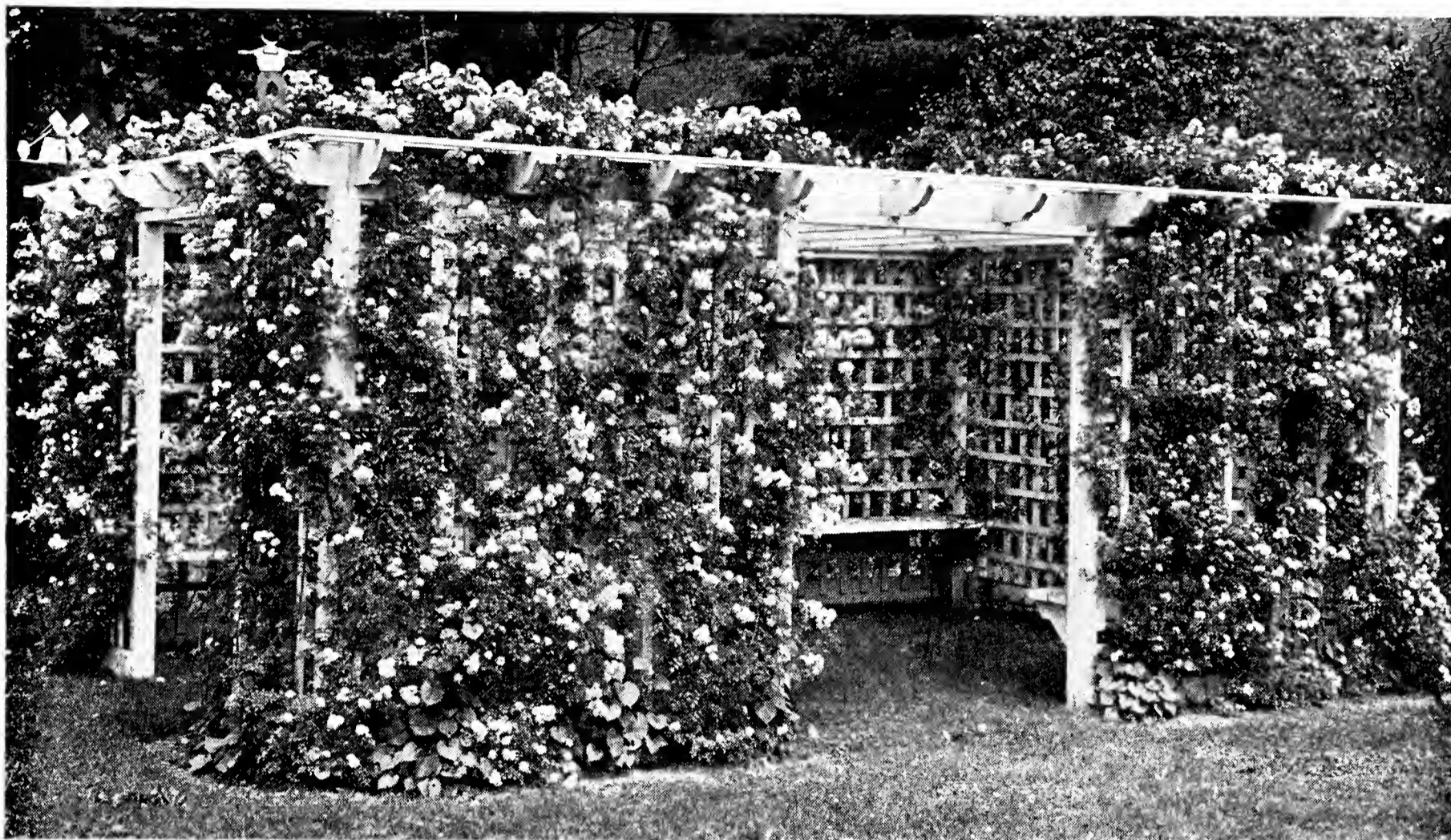
Talisman. Crimson and gold. 75c. each.

Price 60c. each, except noted

Collection, 1 each above 12 varieties, \$6.00



President Hoover



Climbing Roses in June

CLIMBING ROSES

We recommend their more extensive use. Few plants give the quantity of bloom and a judicious selection will extend the blooming period over six weeks. Splendid for covering fences, walls, outbuildings, etc.

American Beauty Climber. Deep carmine rose.

American Pillar, carmine pink. O.R.

Aviateur Bleriot. Deep yellow in clusters.

BLAZE, everblooming red climber. See page 2 of cover. \$2.00 each.

Breeze Hill. A chrome yellow, very large and double.

Chaplin's Pink Climber. A beautiful rich pink.

A bush in full flower makes a wonderful show.

Christine Wright. Lively pink, large double flowers.

Dorothy Perkins. Pink rambler, flowers in clusters. O.R.

Emily Gray. A real yellow; requires protection.

Gardenia. Creamy yellow. O.R.

Jacotte. Salmon orange, very choice. 75c. each, \$60.00 per 100.

Mary Wallace. Soft salmon pink.

Max Graf. Single pink; good ground cover, especially for terraces.

Mme. Gregoire Staechelin. Soft pink. 75c. each, \$60.00 per 100.

Paul's Scarlet Climber. Intense scarlet. One of the most popular.

Primrose. A good light yellow; hardy. The full double flowers last a long time. 75c. each, \$60.00 per 100.

Silver Moon. Pure white.

THE NEW DAWN. See front cover. \$1.50 each.

Rosiere. Cerise pink.

White Dorothy. White rambler, flowers in clusters. O.R.

60c. each, \$6.00 per doz., \$50.00 per 100 (unless noted)



➔ THIS ATTRACTIVE METAL TAG IS ATTACHED TO EACH *GENUINE* "NEW DAWN" ROSE BUSH TO PROTECT YOU AGAINST SUBSTITUTION AND PROVIDE PERMANENT IDENTIFICATION.

FRENCH LILACS

Becoming increasingly popular. The immense spikes and large flowers make a wonderful show during their blooming time. All the plants offered below have bloomed in the nursery.

Buffon. Single mauve pink. Exceptionally free flowering.

Charles X. Reddish purple; single.

Charles Joly. Double, dark purple.

Claude Bernard. Semi-double lilac.

Hugo Koster. Soft lilac; single.

Jan Van Tool. White, single, very large individual flowers and trusses.

Ludwig Spaethe. Deep purplish red.

Marie LeGraye. Pure white, single; very free.

Michael Buchner. Double blue; one of the best.

Mme. Lemoine. Double white; very large.

President Grevy. Rich blue, double. Outstanding for its color.

Waldeck Rosseau. Soft pink, semi-double. A very choice variety.

75c. each, \$7.50 per doz., \$60.00 per 100

Collection, 1 each above 12 sorts, \$7.50



Lilac, Marie LeGraye

FLOWERING CRABAPPLES

Small trees splendid for backgrounds or isolated specimens. Masses of exquisite flowers are followed by ornamental fruit which is useful for jellies and preserves. Attractive to birds. We offer strong blooming size trees.

MALUS floribunda. Ultimate height 15 ft.; pink buds with white flowers, yellow fruit.

arnoldiana. 10 ft.; semi-double pink flowers, yellow fruit.

Malus atrosanguinea, 10 ft., crimson flowers.

spectabilis. Delicate semi-double pink flowers, pale yellow fruit.

eleyi. Red leaves, flowers, fruit and stems.

scheideckeri, 8 ft. masses of white flowers followed by yellow fruit.

baccata. Single white, fragrant flowers, ornamental fruit.

Bechtels. Double pale pink flowers, sweetly scented.

75c. each, \$7.50 per doz.,
\$60.00 per 100



Malus floribunda

All the information contained in a \$2.50 book will be found in the 48-page booklet we furnish gratis with each order over \$1.00.



PERENNIAL PLANTS

are hardy plants, most of which die off to the ground in the Fall and grow the following Spring from the root. Their forms and habits of bloom are of infinite variety. We offer a collection of the choicest sorts and have endeavored to give as much information about each variety as is possible in such a small volume. Our booklet of planting instructions will be furnished gratis with each retail order amounting to \$1.00 or more. It contains much valuable information regarding planting, planning, pruning and general care of plants.

Varieties marked R suitable for rock gardens

Varieties marked C suitable for cutting

Varieties marked S will grow in the shade

Prices, unless noted:

1 to 5 of a variety, 25c. each; 6 to 24, \$2.50 per doz.; 25 or more, \$15.00 per 100

- c* **ACHILLEA, Boule de Neige** (Ball of Snow), 12 in. Useful heads of white flowers. All Summer.
- c* **millefolium roseum** (Rosy Milfoil), 18 in. Flat pink flower heads. All Summer.
- ACONITUM** (Monkshood). Spikes of oddly shaped flowers.
- cs* **fisheri**, 18 in., pale blue. Sept.-Oct.
- cs* **Spark's Variety**, 20 in., dark blue. July-Aug.
- cs* **wilsoni**, 5-6 ft. Violet blue. Late Fall.
Above three varieties at 35c. each, \$3.50 per doz.
- rs* **AJUGA genevensis**, 8 in. Masses of bright blue spikes in May.
- rs* **reptans rubra** (Bugle), 6 in. Useful as a ground cover in shady places. 15c. each, \$1.50 per doz., \$12.00 per 100.
- r* **ALYSSUM saxatile compactum** (Basket of Gold), 1 ft. Masses of yellow flowers in early Spring.
- c* **ANCHUSA italica lissadell**, 4-5 ft. Masses of light blue flowers during May and June.
- rcs* **myosotidiflora** (Forget-me-not flowered Anchusa), 12 in. Sprays of attractive light blue flowers. April and May. 35c. each, \$3.50 per doz., \$25.00 per 100.
- rcs* **ANEMONE japonica** (Windflower), 3-4 ft. Requires a sheltered position. Useful for the graceful long-stemmed flowers. Sept.-Oct.
- alba**. White.
- Queen Charlotte**. Delicate pink.
- rubra**. Rosy red.
- Whirlwind**. Semi-double, white.
- c* **ANTHEMIS tinctoria, Perry's Variety** (Golden Marguerite), 18 in. Bright large, yellow Daisy-like flowers produced all Summer.
- cs* **AQUILEGIA** (Columbine), 2-3 ft. Handsome foliage with tall stems of graceful, spurred flowers.
- Pfitzer's Hybrids**. A cross on the Rocky Mountain Columbine, combining its long spurs and airy grace with all the colors of the rainbow.
- Long Spurred**. Pink shades.

*rc***ARABIS alpina** (Rockcress), 12 in. Early April and May. Spikes of pure white fragrant flowers.

florepleno. Double form of the above, more compact and lasts longer. 35c. each, \$3.50 per doz., \$25.00 per 100.

*r***ARMERIA** (Sea Thrift). Small round heads of colored flowers produced practically all Summer.

formosa, 12 in. Pale lilac.

lauchiana, 8 in. Bright rose.

maritima alba, 8 in. White.

*c***ARTEMISIA lactiflora** (Hawthorne Scented), 5-6 ft. Tall panicles of fragrant creamy-white flowers in August and September. Valuable to use with Gladiolus.

c **Silver King** (Ghost Plant), 2 ft. Silvery-leaved foliage. Useful for drying and bouquet work.

*c***HARDY ASTERS** (Michaelmas Daisies). Few flowers give the mass of color this plant produces and they should be more planted. Bloom Sept.-Oct.

Barr's Pink, 4-5 ft. Rich pink.

Climax, 3 ft. Clear light blue.

Heather Glow, 3 ft. Soft lilac.

Little Boy Blue, 3 ft. Rich deep blue.

Maid of Athens, 3 ft. Soft lavender.

Queen Mary, 3½ ft. Large flowered lavender blue.

Royal Blue, 3 ft. Deep blue.

r **alpinus speciosus**, 10 in. Gray-green tufts of foliage with slender stems bearing large single blue flowers in Spring.

r **Mauve Cushion**, 10 in. Forms a flat mound covered with large soft mauve flowers in Oct. and Nov.



Anemone japonica (See page 3)

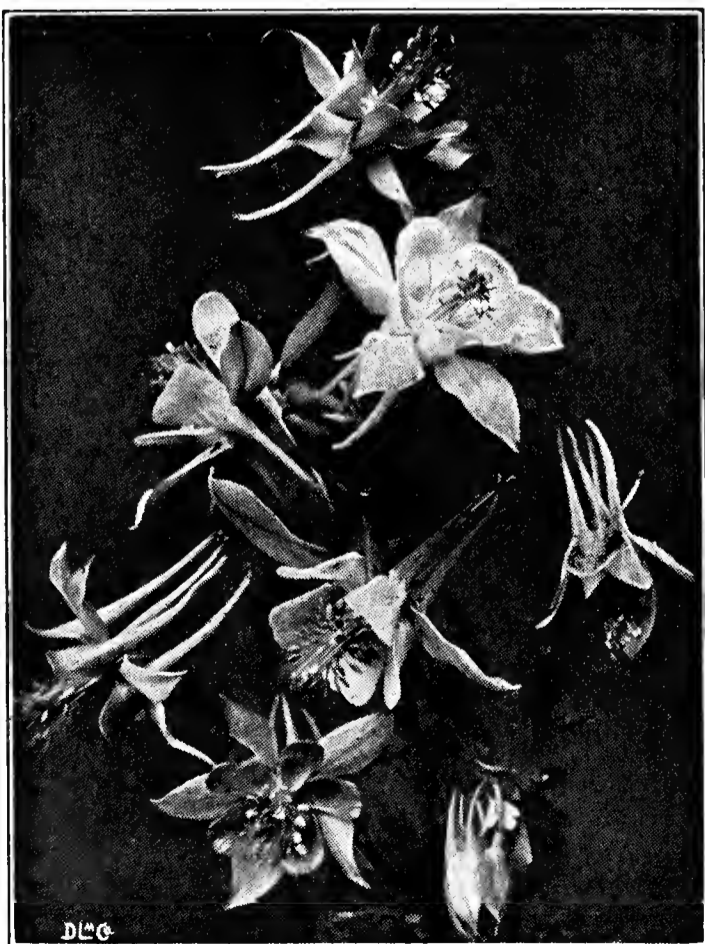
*rcs***ASTILBE** (Spirea). Mainly used for forcing as a pot plant, but are fine for moist semi-shaded places. Plumy spikes of blossoms in July. We offer strong field grown clumps at 60c. each, \$6.00 per doz., \$50.00 per 100.

America, 12 in. Early; pale lilac almost white.

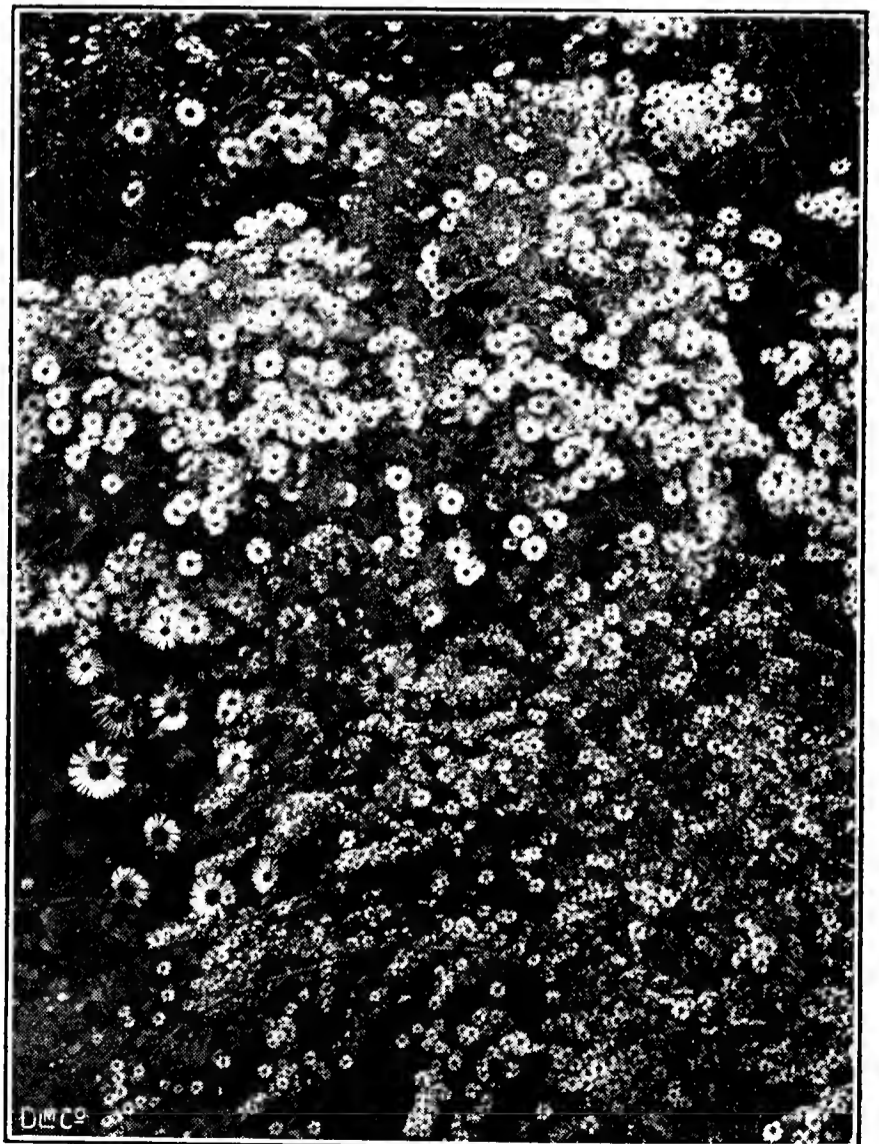
Gloria, 18 in. Midseason. Rich pink.

Peach Blossom, 24 in. Late; soft pink.

*r***AUBRIETIA deltoides** (Rainbow Rockcress), 6 in. One of the showiest rock plants; forms attractive masses of foliage covered in Spring with vari-tinted violet and pink flowers.



Aquilegia (Columbine) (See page 3)



Hardy Asters (Michaelmas Daisies)

Prices, unless noted: 1 to 5 of a variety, 25c. each; 6 to 24, \$2.50 per doz., 25 or more, \$15.00 per 100



Hardy Garden
Chrysanthemums



Campanula media (Canterbury-bells)



Coreopsis lanceolata
(Tickseed)

CAMPANULA (Bellflowers). Include some of our best garden plants.

- r* **carpatica** (Harebell), 8 in. Compact tufts with clear blue flowers on wiry stems. June to Oct.
- c* **media** (Canterbury-bells), 3 ft. Biennial, often dies after blooming. Strong plants in white, light blue, dark blue, and rose. Fine as pot plant or for gentle forcing. A valuable cut flower.
- c* **media calycanthema** (Cup-and-saucer). Similar to the above except for the formation of the flowers. Same colors.
- c* **persicifolia** (Peachbells), 2 ft. Blue flowers in June-July.
- r* **rotundifolia** (Bluebells of Scotland), 12 in. Clear blue flowers. June-Aug.

c **CARYOPTERIS mastacanthus** (Blue Spirea), 3 ft. Covered with rich lavender-blue flowers. Sept. until frost. 30c. each, \$3.00 per doz., \$25.00 per 100.

c **CHRYSANTHEMUMS, Hardy Garden.** These glorious Fall flowers are needed in every garden. We offer a list of selected varieties which we are sure will give satisfaction. Arranged in classes for your convenience. Spring is the best time to plant.

Aster-flowered:

Aladdin. Rich bronze. A new variety which produces its large flowers on long stems, starting to bloom in July and continuing until frost. \$1.50 each.

Anna L. Moran. Scarlet bronze.

Boston. Large bronze.

Connie Dick. Large bronze yellow.

Excelsior. Early bright yellow.

Lillian Doty. Incurved pink.

Miramar. Large bronze.

Mrs. Birchard. Incurved pink.

Mrs. F. H. Bergen. Large bright pink.

CHRYSANTHEMUMS—Continued

Mrs. Henry F. Vincent. Fawn and bronze.

Mrs. J. Willis Martin. Crushed strawberry.

October Gold. Early bronze.

Red Doty. Deep red.

Ruth Cumming. Large terracotta.

Ruth Hatton. Ivory white.

White Doty. Incurved white.

Button-shaped Varieties:

Ethel. Red.

Minong. White.

Varsity. Yellow.

Single Varieties:

Alice Howell. Salmony orange.

Mrs. Buckingham. Rich rose.

Mrs. Calvin Coolidge. Cardinal red.

Alaska (Shasta Daisy), 2 ft. Immense glistening white Daisies in June-July.

Articum, 18 in. Tufts of glossy foliage with white Daisies in Sept.

Koreanum, 2 ft. Iron hardy, white Daisies sometimes tinted pink in Oct.-Nov.

c **CARNATIONS, Hardy Border**, 12 in. A choice mixture with a large percentage of sweet-scented double flowers in all colors from white to purple.

c **CENTAUREA montana** (Knapweed), 2 ft. Violet-blue flowers, July-Sept.

r **CERASTIUM tomentosum** (Snow-in-summer), 6 in. Valuable rock plant, also excellent for edging. Silvery-gray foliage with white flowers in May.

cs **CONVALLARIA majalis** (Lily-of-the-valley), 8 in. Well known and well beloved flowers which do not like to be disturbed.

c **COREOPSIS lanceolata fl. pl.** (Tickseed), 3 ft. Semi-double flowers produced on good stems all Summer. 25c. each, \$2.50 per doz., \$20.00 per 100.

Prices, unless noted: 1 to 5 of a variety, 25c. each; 6 to 24, \$2.50 per doz.; 25 or more, \$15.00 per 100

*c***BOLTONIA** (False-camomile), 5-6 ft.

asteroides. Pure white; masses of single Aster-like flowers.

latisquama. Lavender. Similar to the above.

*r***COTONEASTER horizontalis** (Rockspray), 18

in. A spreading shrub useful on the larger rockery for its prostrate branches, covered with shiny tiny leaves and in Fall with scarlet berries. 50c. each, \$5.00 per doz.

*c***DELPHINIUM.** A flower we grow in large quantities. Constant selection and careful culture ensure high grade spikes and splendid plants.

Belladonna, Pfitzer's Improved, 3 ft. The famous light blue cut flower sort. Will give several crops each season.

Blue Grotto, 3 ft. An improved Bellamosum; large flowers dark blue. Growth similar to the above.

r **chinensis.** Blue, dwarf, everblooming.

Hybrids, 4-6 ft. Our own strain, selected for hardiness, free flowering and freedom from disease. A wide range of colors from white to very dark blue, with single and double flowers. 35c. each, \$3.50 doz., \$25.00 per 100.

White Hybrids, 3-5 ft. Selected whites. Extremely useful for accent and contrast. 50c. each.

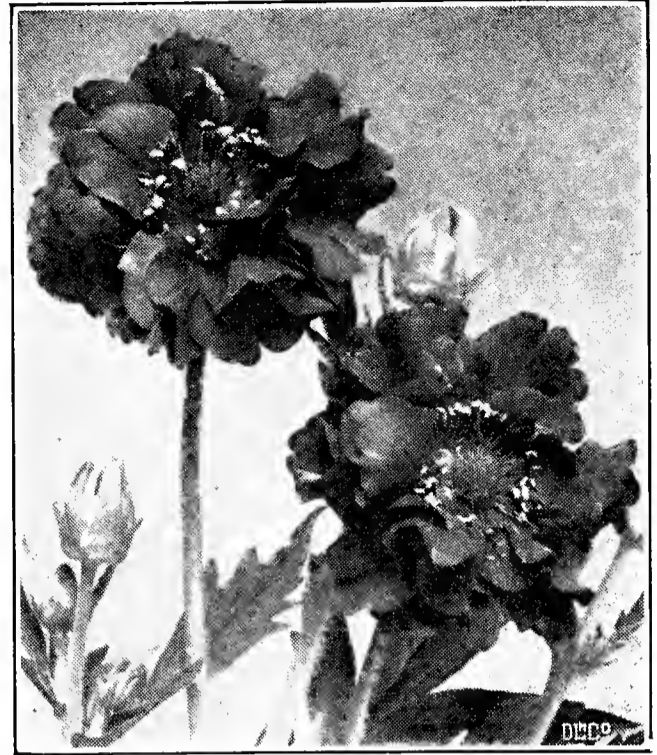
DIANTHUS (Pinks).

r **alpinus,** 6 in. Deep green rosettes with rich pink flowers in June and July. A rock garden gem.

r **caesius** (Cheddar Pink), 10 in. Single pink, sweetly scented flowers in May and June.

r **deltoides** (Maiden Pink), 6 in. A creeping variety with small rosy red flowers in June-July.

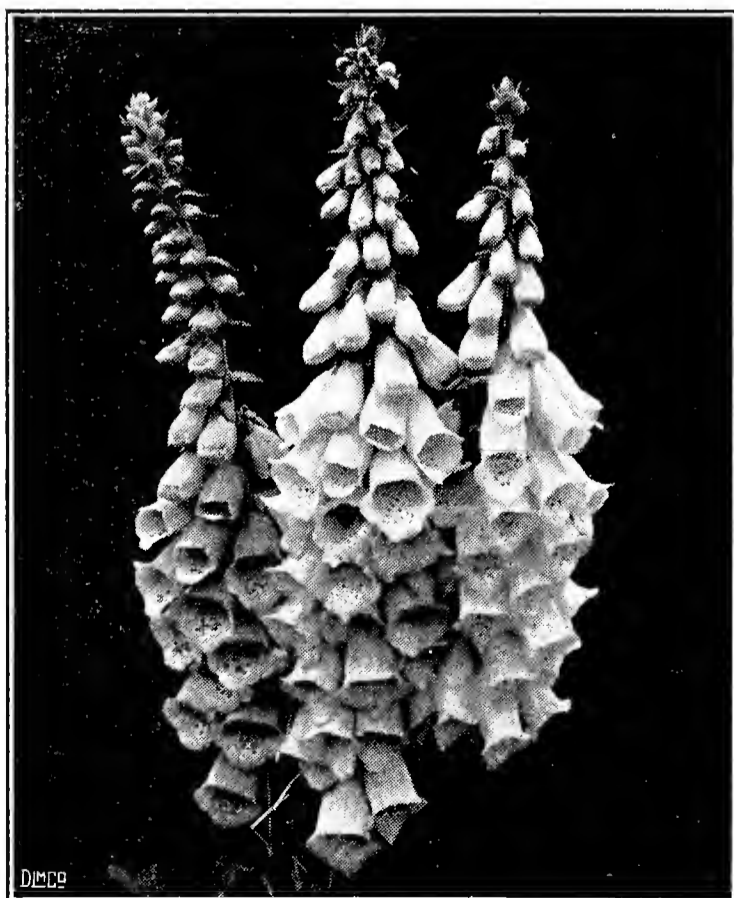
r **graniticus,** 4 in. Mats of dark green foliage, small pink flowers in May-June.



Geum, Mrs. Bradshaw (See page 7)



Dianthus caesius (Cheddar Pink)



Digitalis (Foxglove) **Giant Shirley**

*cs***DIELYTRA spectabilis** (Bleedingheart), 3 ft.

Attractive foliage with racemes of pink heart-shaped flowers. We grow large quantities of this favorite forcing plant and offer large clumps at 40c. each, \$4.00 per doz., \$35.00 per 100.

rs **formosa** (Plumy Bleedingheart), 1 ft. Attractive foliage with sprays of pink flowers all Summer.

DIGITALIS (Foxgloves).

cs **ambigua,** 2-3 ft., pale yellow flowers on tall spikes. May-June.

cs **Giant Shirley,** 4-6 ft. An improvement on the gloxinia-flowered type in a wide range of colors.

*c***DORONICUM excelsum** (Leopards-bane), 2 ft. Large, yellow Daisy-like flowers in April. 35c. each, \$3.50 per doz.

*c***ECHINOPS ritro** (Globethistle). Metallic blue heads of flowers; splendid for cutting. July.

Prices, unless noted: 1 to 5 of a variety, 25c. each; 6 to 24, \$2.50 per doz.; 25 or more, \$15.00 per 100

c **ERYNGIUM planum** (Seaholly), 3 ft. Steel-blue flowers. June-July.

cs **EUPATORIUM coelestinum** (Hardy Ageratum), 3 ft. Fluffy blue flowers from August until frost.

c **GAILLARDIA grandiflora** (Blanketflower), 3 ft. Crimson and gold Daisy-like flowers blooming all Summer.

rc **GEUM, Lady Stratheden**, 12 in. Clusters of attractive foliage with quantities of rich yellow double flowers. May-July.

Mrs. Bradshaw. Similar to the above. A brilliant scarlet.

r **GYPSOPHILA cerastoides.** Tufts of gray-green foliage studded with white blossoms in May-June.

c **paniculata** (Babysbreath). Masses of tiny single flowers in July.

c **Bristol Fairy.** Good sized double flowers in large panicles. Will bloom practically all Summer and so useful that no one should be without a good quantity. We offer strong field grown grafted plants at 40c. each, \$5.00 per doz., \$40.00 per 100.

r **repens.** A dwarf creeper with masses of white flowers in June-July.

r **HELIANTHEMUM mutabile** (Rockrose), 12 in. Evergreen plants covered in May and June with large vari-colored flowers.

c **HELIOPSIS scabra excelsa** (Double Sunflower), 3 ft. Double golden yellow flowers on good stems. June-Oct.

rs **HEUCHERA sanguinea** (Coralbells), 18 in. Tufts of attractive foliage producing slender stems in June and July covered with dainty bell-shaped flowers.

c **HEMEROCALLIS, New Hybrids** (Daylilies), 3 ft. Grass-like foliage with lily-like flowers of varying shades of yellow. June-Aug. 50c. each, \$5.00 per doz.

HIBISCUS, New Giant Marvels (Marshmallow), 4-5 ft. Vigorous plants with large red and pink flowers sometimes 10 inches across. Aug.-Sept.

HOLLYHOCKS, Chater's Double Exhibition Strain, 6 ft. White, cherry red, maroon, rose, yellow, and copper carmine. You will get a new idea about Hollyhocks when these flower.

Single. Rose, chamois and yellow.

s **HOSTA variegata** (Funkia or Plantain Lily), 8 in. Ornamental foliage of green, striped white. Excellent for edging.

s **subcordata grandiflora** (White Plantain Lily), 18 in. Handsome foliage with large Lily-like white flowers in Aug.

r **HYPERICUM olympicum**, 4 in. Grayish-green prostrate stems studded with large golden yellow single flowers with a bunch of long stamens in the center. 25c. each, \$2.50 per doz.



Hibiscus (Marshmallow) New Giant Marvel

rs **IBERIS sempervirens** (Hardy Candytuft), 10 in. Evergreen foliage hidden by dense masses of pure white flowers in early Spring.

c **IRIS germanica** (Flags), 3-4 ft. Showy well known plants indispensable in every garden. It is possible, by including some of each of the classes listed below, to have Iris in bloom from early May until late July. The varieties listed below are among the choicest sorts. 35c. each, \$3.50 per doz., \$25.00 per 100.

germanica, Alcazar. Standards soft violet, falls crimson purple.

germanica, Ambassadeur. Immense flowers. Standards deep lavender, falls purplish maroon.

germanica, Lent. A. Williamson. Standards lobelia blue, falls velvety purple.

germanica, Quaker Lady. A charming smoky lavender.

germanica, Seminole. One of the best of the so-called red shades.

germanica, Shekinah. Pale yellow with amber shadings.

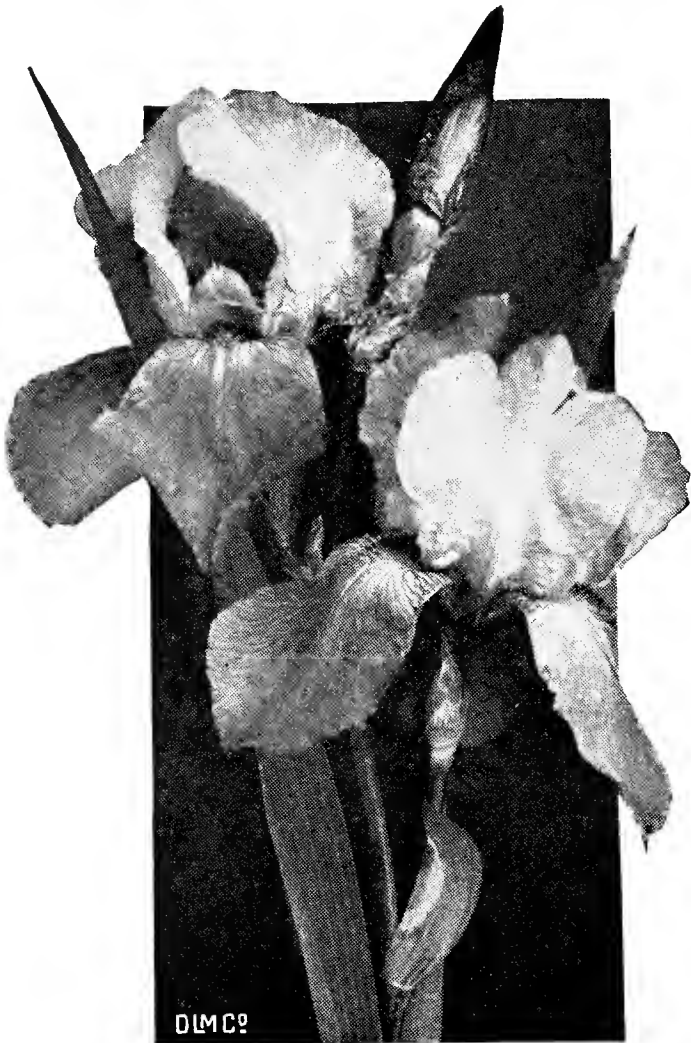
c **kaempferi** (Japanese Iris), 3 ft. Bloom in July. A selection of choice sorts. Assorted, 35c. each, \$3.50 per doz.

r **pumila**, 6-8 in. Dwarfs, blooming earlier than the German. Splendid for the rockery. Both blue and white varieties. 25c. each, \$2.50 per doz.



Lilium regale (The Regal Lily) (See page 8)

Prices, unless noted: 1 to 5 of a variety, 25c. each; 6 to 24, \$2.50 per doz.; 25 or more, \$15.00 per 100



DLMC?

Iris germanica (See page 7)



Peony, Mons. Jules Elie

*r***LAVENDULA vera** (Lavender), 18 in. Useful for its attractive foliage and sweet-scented blue flowers in July and Aug.

*c***LIATRIS pycnostachya** (Gayfeather), 5 ft. Tall spikes of rosy purple flowers in August. Splendid with Glads.

*c***LILIUM regale** (The Regal Lily). Finest and easiest Lily to grow. Large clusters of fragrant flowers in July. 35c. each, \$3.50 per doz., \$30.00 per 100.

*r***LINUM perenne** (Flax), 2 ft. Large blue flowers; all Summer.

*cs***LOBELIA, Queen Victoria.** An improved form of the cardinal flower with rosettes of dark red leaves from which spring 3 to 4 ft. spikes of brilliant red flowers in July and Aug. 35c. each, \$3.50 per doz.

*c***LYCHNIS chalconia** (Campion), 2-3 ft. Heads of orange-scarlet flowers in June-July.

r **haageana**, 12 in. Brilliant orange-scarlet flowers. May-June.

r **viscaria splendens**, 12 in. Tufts of evergreen foliage with spikes of rose and red flowers in June.

*cs***LYTHRUM roseum superbum** (Loosestrife), 3 ft. Showy spikes of rosy flowers. July-Sept.

*r***MAZUS reptans**, 2 in. A dainty creeper covered with blue Lobelia-like flowers during May-June.

*s***MERTENSIA virginica** (Bluebells), 12 in. A native plant with attractive light blue flowers in early Spring.

*c***MONARDA** (Oswego-tea), 3 ft. Brilliant heads of flowers in July and Aug.

Cambridge Scarlet. Red.

Rosea. Pink.

Violacea. Lavender.

*rs***MYOSOTIS palustris semperflorens** (Forget-me-not), 6 in. The perennial everblooming variety. Loves moisture.

*r***OENOTHERA missouriensis** (Evening Primrose), 10 in. Large yellow flowers. June until August.

*rs***PACHYSANDRA terminalis** (Japanese Spurge), 6 in. A fine evergreen ground cover for sun and shade.

PAPAVER orientale, 2-4 ft. No plant will give the glowing color furnished by the Oriental Poppies. We grow large quantities in 2¼-in. pots for *Spring planting*. This has been found to be the best way to handle these rather difficult subjects. The following are all choice sorts.

orientale, Joyce. A tall grower with ruffled flowers of American Beauty pink.

orientale, Mrs. Perry. Salmon rose.

orientale, Olympia. Early double orange scarlet.

orientale, Oriflamme. Large, deep scarlet red.

orientale, Mixed. All colors mixed.

*c***PEONIES.** Familiar and a favorite with everyone. Best planted in Fall. 50c. each, \$5.00 per doz.

Edulis Superba. Early rose pink.

Felix Crousse. A good dark red.

Festiva Maxima. Best white.

Mons. Jules Elie. Immense silvery pink.

*r***PENTSTEMON, Blue Gem**, 10 in. Covered with spikes of large rich blue flowers. June-Aug. A real gem.

c **barbatus torreyi**, 3-4 ft. Tall stems with coral-red slender bells.

Prices, unless noted: 1 to 5 of a variety, 25c. each; 6 to 24, \$2.50 per doz.; 25 or more, \$15.00 per 100

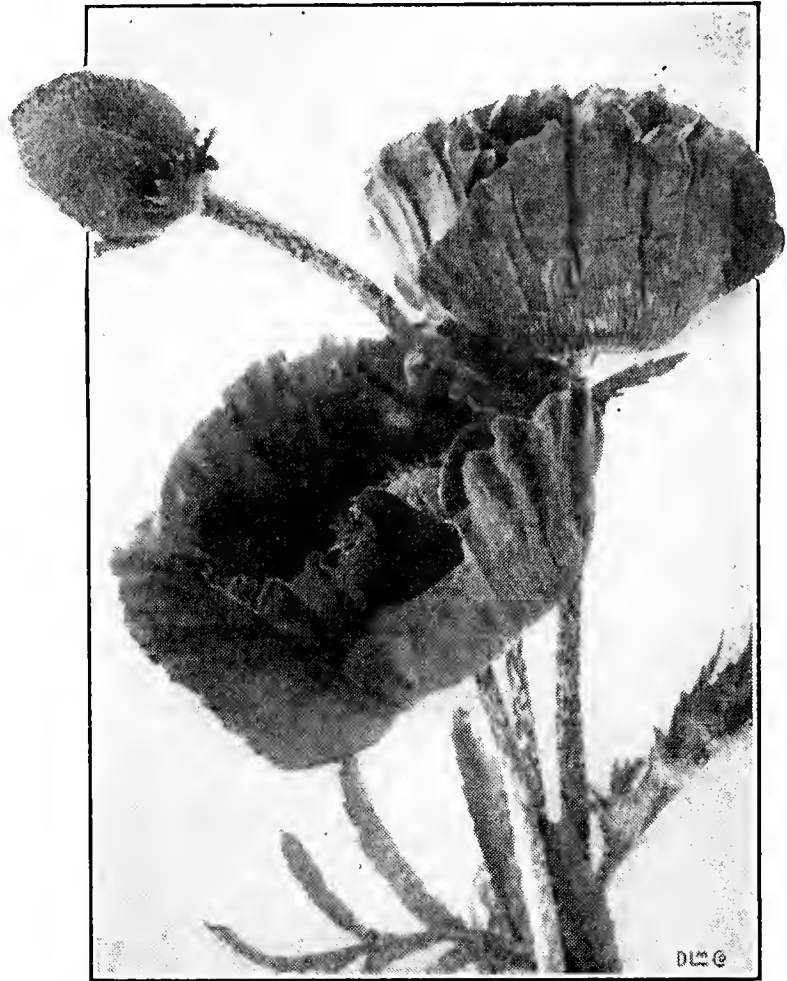
PHLOX, HARDY. We have been specializing in this flower for years. Great pains are taken to produce sturdy, true to name plants. These plants may be moved at almost any time, and a block in bloom will attract much attention because of their brilliant color at a time when other flowers are scarce. Starting in June with Miss Lingard and Verboom, the other varieties follow in quick succession. Cutting the faded flower heads will cause them to bloom until October.

(L)—low. (M)—medium. (T)—tall

Australis (L). Reddish purple.
Baron von Dedem (M). Vermilion scarlet.
Beacon (T). Brilliant cherry red.
B. Compte (T). Rich amaranth purple; late.
Carmen (M). Large deep mauve.
Cocquelicot (M). Brilliant scarlet.
Crepuscule (M). Silvery mauve.
Deutschland (Homeland) (M). Finest scarlet.
Elizabeth Campbell (L). Soft salmon pink.
Enchantress. Similar to Elizabeth Campbell, with a much stronger growth.
Europa (T). White, red eye.
Feuerbrand (T). Bright vermilion scarlet.
Fernand Cortez (L). Orange red.
Flora R. Riedy (M). Immense panicles pure white.
General Van Heutz (M). Bright salmon red, white eye.
Hindenburg (Commander) (M). Crimson red.
Jules Sandeau (L). Watermelon pink.
L'Esperance (M). Fine orchid shade.
Miss Lingard (T). Early everblooming white.
Miss Verboom. Pink form of above. Really a lavender. Splendid contrast with yellow.
Milly von Hoboken (M). Large mauve rose.
Mrs. Jenkins (T). Pure white.
Pantheon (T). Rose pink.
Rheinlander (M). Salmon pink; early.
Ruby (L). A fine rich dark red.
Thor (M). Deep salmon pink.
Wanadis (L). Gives a light blue effect.
Widar (N). Violet blue, white eye.

Mixed Phlox, all colors mixed. 15c. each, \$1.50 per doz., \$12.00 per 100.

Collection, 12 sorts, our selection, \$2.00.



Oriental Poppy (See page 8)

NEWER VARIETIES OF PHLOX

35c. each, \$3.50 per doz., \$30.00 per 100
 (Unless noted)

Baron von Heckeren (T). Brilliant scarlet.
Drama. Violet blue, with deeper eye.
Frau Milly Korte (L). Salmon pink, brighter center. 25c. each, \$2.50 per doz., \$20.00 per 100.
Painted Lady (T). Silver pink, with salmon shadings and cherry red eye. 25c. each, \$2.50 per doz., \$20.00 per 100.
Paul Hoffman (T). Deep carmine red, purple shading.
Rigoletto (T). Deep violet.
Rosencavalier (M). Extremely large flowered salmon rose.
Summer Kleid (T). White, with distinct carmine eye.



Planting of
Phlox

DLMG

Prices, unless noted: 1 to 5 of a variety, 25c. each; 6 to 24, \$2.50 per doz.; 25 or more, \$15.00 per 100

PHLOX—Continued

- r* **subulata** (Mountain Pinks), 6 in. Lavender pink. Exceedingly useful plants forming mats of evergreen foliage completely hidden by masses of flowers in April-May.
- subulata alba.** White.
- subulata, Appleblossom.** A delicate pink.
- subulata atrolilacina.** A light lavender blue. 30c. each, \$2.50 per doz.
- subulata atropurpurea,** the red Mountain Pink. A striking color which has sold readily wherever shown. 30c. each, \$2.50 per doz., \$20.00 per 100.
- subulata, Vivid.** A striking rich rose pink. 30c. each, \$3.50 per doz.
- c* **maculata, Alpha,** 18 in. Soft pinkish carmine, everblooming.
- rs* **divaricata canadensis,** 12 in. Fragrant lavender blue flowers in April and May.
- rs* **ovata,** 1 ft. Clusters of lavender-pink flowers in June-July.

cs **PHYSALIS francheti** (Chinese Lantern), 2-4 ft. Valuable for its bright scarlet fruit which may be cut and dried.

c **PHYSOSTEGIA, Vivid** (Hardy Snapdragons), 18 in. Showy spikes of bright mauve in Sept.-Oct.

PLATYCODON grandiflora (Balloonflower), 3 ft. Metallic blue saucer-like flowers in July-Aug.

r **POTENTILLA, Double Hybrids** (Cinquefoil), 18 in. Attractive plants for the border or rockery, with single and double flowers of orange and red tones. June-Aug.

rs **PRIMULA, HARDY** (Primrose). Showy and attractive Spring flowering plants. Most of them need rich, moist soil with some shade.

auricula, 6 in. Among the most attractive and unusual. Soft velvety colors of many shades in April-May. 50c. each, \$5.00 per doz.

bullesiana, 18 in. Tall stems of orange and salmon flowers in June-July. 35c. each, \$3.50 per doz.

denticulata, 12 in. Purplish-blue flowers in dense heads in early Spring. 35c. each, \$3.50 per doz.



Sweet-william (See page 11)

rs **PULMONARIA maculata** (Trout Plant), 8 in. Deep green glossy leaves prettily specked with white. Clusters of pink and blue flowers in very early Spring. 50c. each, \$5.00 per doz.

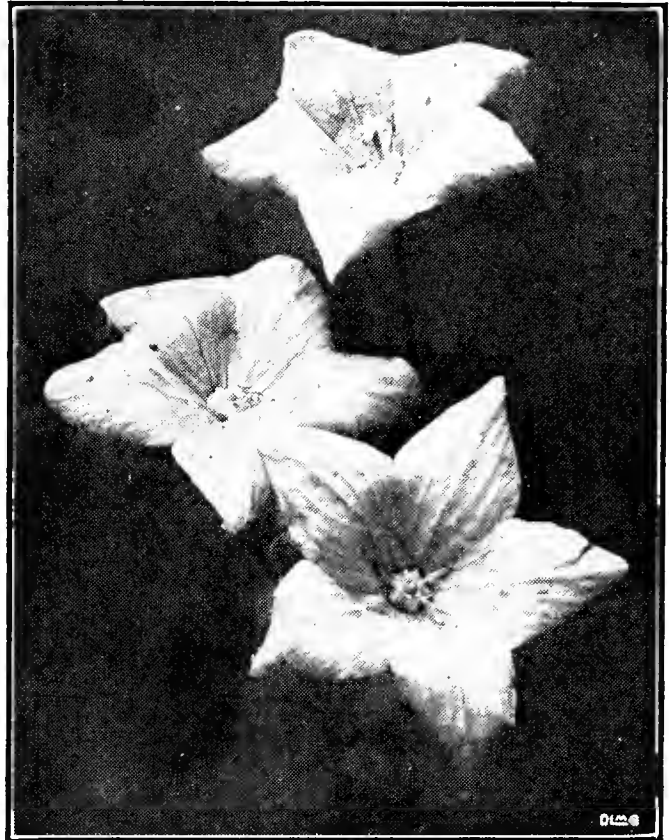
c **SALVIA azurea** (Sage), 4 ft. Tall stems covered with light blue flowers in Aug. and Sept.

pitcheri. More compact than the above, with deep blue flowers. Sept. and Oct. 30c. each, \$3.00 per doz.

c **SCABIOSA japonica,** 2 in. Lavender-blue flowers on good stems. July-Oct.

r **SEDUM or STONECROP.** Have been called the backbone of the American rock garden. Useful mainly for the vari-tinted foliage. They thrive in hot, dry situations.

acre (Golden Moss), 3 in. Well known; bright green foliage, yellow flowers.



Platycodon grandiflora (Balloonflower)

veris elatior, Large Flowered Hybrids (Polyanthus), 12 in. A mixture in a wide range of colors. The flowers are in large clusters on strong stems well above the foliage. April-May.

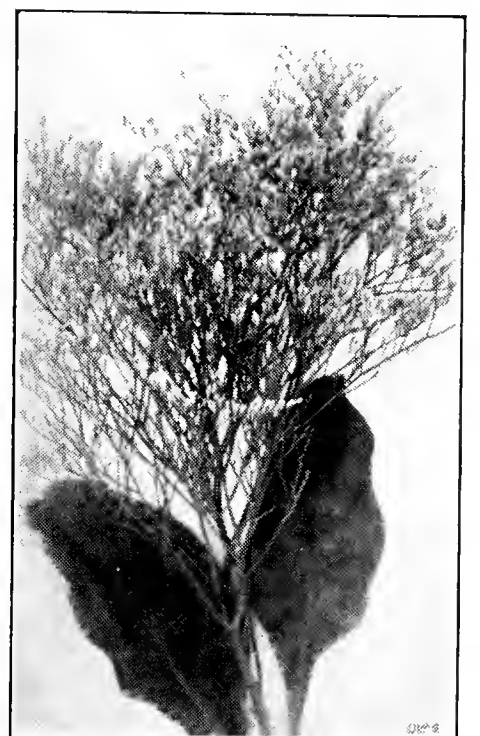
veris. Separate colors: white, yellow, rose, lilac, red. 35c. each, \$3.50 per doz., \$30.00 per 100.

Giant Munstead. Immense flowers of white and yellow. 35c. each, \$3.50 per doz., \$30.00 per 100.

vulgaris (Cowslip), 6 in. Bright yellow fragrant flowers. April-May.

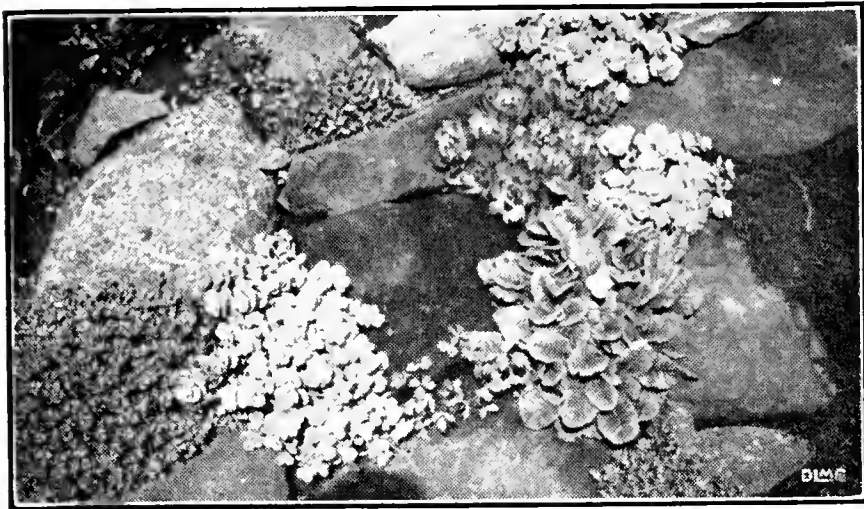
c **PYRETHRUM hybridum** (Painted Daisies), 3 ft. Splendid cut flowers. Our general mixture is grown from seed of select plants. The color range is mostly in shades of pink and red, with some percentage of doubles.

hybridum. Doubles, semi-doubles and choice singles grown from divisions. Mostly in darker shades. 35c. each, \$3.50 per doz., \$30.00 per 100.



Statice latifolia (See page 17)

Prices, unless noted: 1 to 5 of a variety, 25c. each; 6 to 24, \$2.50 per doz.; 25 or more, \$15.00 per 100



Sedums in variety in the Rockery

SEDUM—Continued

- anglicum.** Gray-green foliage, white flowers.
album, 4 in. Dark green foliage, white flowers.
dasyphyllum, 3 in. Silvery gray foliage, white flowers.
glaucum, 4 in. Blue-green foliage, white flowers.
kamtschaticum, 6 in. Bright green, with broad, flat heads of yellow bronze flowers.
lydium, 2 in. Bronzy green foliage.
nevi, 4 in. Lovely soft green toned with pink.
reflexum, 6 in. Resembles a dwarf Spruce, yellow flowers.
sarmentosum, 6 in. Bright green; good for rough spots.
sieboldi, 10 in. Round glaucous leaves, edged carmine. Pink flowers in August.
spectabile, 18 in. Erect growing large, flat heads of rose-colored flowers in late Summer.
- rSEMPERVIVUM tectorum** (Hen-and-chickens)
 Curious rosettes of cactus-like leaves.
- rcSTATICE latifolia** (Sea-lavender), 18 in. Rosettes of leathery leaves with immense heads of misty lavender flowers.
- SPEARMINT,** 3 ft. Fragrant foliage; fine for flavoring.
- SPIREA** (see *Astilbe*).
- c filipendula,** 18 in. Attractive foliage with stems of plummy white flowers in June.
- cSTOKESIA cyanea coerulea** (Stokes Aster), 18 in. July-Oct. Lavender-blue flowers about two inches across.
- SWEET-WILLIAM** (*Dianthus barbatus*). This well known plant we can offer in Newport Pink, maroon, scarlet and a Pheasant-eye mixture at 15c. each, \$1.50 per doz., \$12.00 per 100.
- rTHYMUS** (Thyme). All splendid for the rockery. The creeping sorts are especially valuable for planting in rock walks.
- citriodoros aureus,** 10 in. Golden leaved, lemon scented.
citriodoros argenteus, 10 in. Silver leaved, lemon scented.
lanuginosus, 2 in. Gray, woolly foliage with rosy flowers.
serphyllum album, 2 in. Mats of attractive green foliage covered with white flowers in June.
serphyllum coccineus, 2 in. Foliage and habit similar to the above with red flowers.

cTRITOMA pfitzeri (Red Hot Poker), 2 ft. Grass-like foliage with spikes of orange-scarlet flowers. Aug.-Oct. Requires protection. A splendid cut flower. 25c. each, \$2.50 per doz., \$20.00 per 100.

csTROLLIUS ledebouri (Globeflower), 18 in. Large orange-yellow flowers May-June. Requires a moist soil. 35c. each, \$3.50 per doz.

rTUNICA saxifraga, 8 in. Masses of misty pink flowers. June till Aug.

cVALERIANA officinalis (Hardy Heliotrope), 3 ft. Large heads of sweet-scented rose-tinted flowers. June-July.

VERONICA (Speedwell). Include some of the best garden subjects.

- rc incana,** 1 ft. Silvery foliage, dark blue flowers. June-July.
c longifolia subsessilis, 2 ft. The showiest of all. Dark green foliage with long spikes of dark blue flowers. August-September.
r pectinata, 3 in. Gray-green foliage, pink flowers in May.
r repens, 2 in. Splendid creeping variety with drifts of pale blue flowers in early May.
r rupestris, 4 in. Mats of dark green foliage covered with spikes of bright blue flowers in May-June.
c spicata, 1½ ft. Spikes of deep blue flowers. June-Aug.
rc spicata alba, 1 ft. Spikes of white flowers. June-July.
rc spicata rosea, 1 ft. Spikes of rose flowers. June-July.
r trehani, 6 in. Golden yellow foliage with dark blue spikes of flowers in May-June.

rcsVIOLA, Jersey Gem, 6 in. The best Viola for American conditions. Masses of pure violet flowers produced practically all season.

Apricot Queen, 6 in. Rich apricot. A good contrast for the above but not quite as hardy.

YUCCA filamentosa (Spanish-bayonet), 5 ft. Evergreen sword-like foliage with tall spikes of creamy white flowers in June-July. 50c. each, \$5.00 per doz.



Veronica spicata

Prices, unless noted: 1 to 5 of a variety, 25c. each; 6 to 24, \$2.50 per doz.; 25 or more, \$15.00 per 100

JEWELS

or

GLASS—often look alike . . .

but to the experienced eye there is no comparison. Plants are similar. All Delphinium or Phlox are not alike. Years of careful culture, selection and care tend to make them different.

Our plants are constantly being selected and reselected, weaklings discarded, choice types encouraged. They are better.



*Feed your plants
for better results—*

VIGORO

Complete plant food is a balanced plant food that will make your plants thrive.

- 100 lb. bags \$4.00
- 25 lb. bags 1.50
- 5 lb. bags50



How

to make a rock garden,
to plan your grounds,
to arrange a perennial border,
to care for Roses,

is all explained in the booklet we furnish gratis with each order over \$1.00.

CONTROL INSECTS AND PLANT DISEASES

• • *The Modern Way* • •

Use



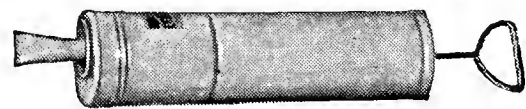
Pomo-Green

with nicotine. Easy to apply. Will not make plants unsightly.

- 1 lb. can at 75c. each
- 5 lb. can at \$3.00 each

Pomo-Green without nicotine, for chewing insects and diseases only.

- 5 lb. carton \$1.75 each



Dust Guns for applying.

- Pint size 75c. each
- 2-quart size \$2.50 each



GENERAL INSTRUCTIONS

Order Early—The best time to plant is in Fall and early Spring. Frosts will not injure hardy plants.

Delivery—We postpay dormant Roses, seeds and bulbs. Potted Roses and all other plants and articles herein offered will be sent express collect. We will send prepaid if 15c. is included for all orders under \$1.00 and 10% for orders over \$1.00.

Guarantee—You must be satisfied with your purchase. If not, write us and see if we can adjust the difficulty.

Prices are as low as consistent with quality, and are for field run plants. Specimens selected at the nursery will be charged at their value.

Hybrid Polyanthas

This class of Roses bears its clusters of brilliant flowers throughout the season. We know of no other flower that will give so much color over such a long period. Hardy as an oak and need little care. We recommend their more general use.

Chatillon. Rich, silvery pink, immense clusters.
Gruss an Aachen. Very large salmon yellow.
Gloria Mundi. Brilliant salmon scarlet. \$1.00 each.
Elsie Poulsen. Large two-toned pink.
Lafayette. Very free, large flowered crimson.
Salmon Spray. Large salmon pink.
Price 60c. each. Collection, above 6 varieties, \$3.50

◆ ◆ ◆

Many like the Hybrid Perpetual or June Roses for their immense quantities of bloom produced in June. We grow a dozen selected varieties and offer them at 60c. each or a collection of one each for \$6.00.

◆ ◆ ◆

We grow many sorts not listed, write us for wanted varieties.

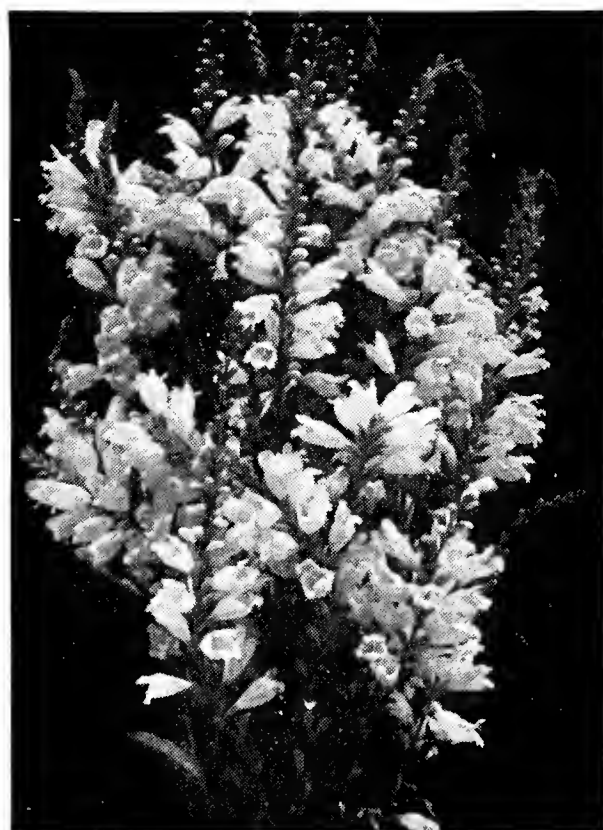


Polyantha Rose

Our booklet of planting instructions will be sent gratis with each order.



Dicentra spectabilis



Physostegia Vivid

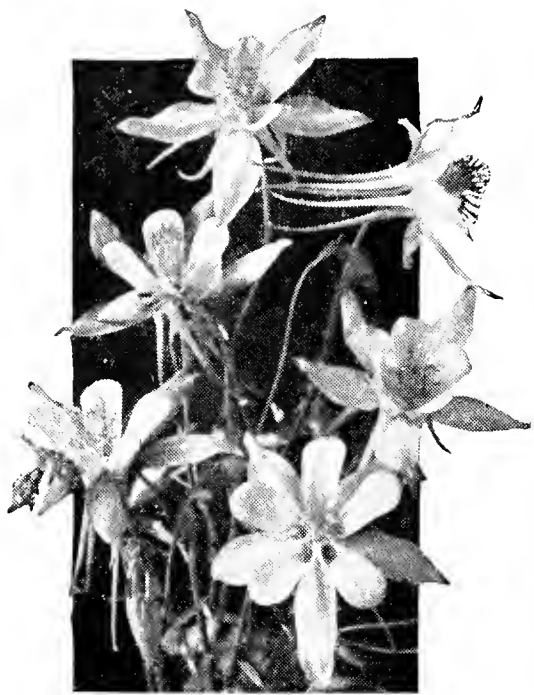
PERENNIALS

We grow many thousands of these favorite flowers. Often there is confusion in selecting from a price list because many of the plants are not known. We have prepared collections for various purposes which will prove very satisfactory under most conditions, and give bloom over the widest possible period of time.

Border Collection

100 Plants - - \$15.00
 50 Plants - - \$8.00

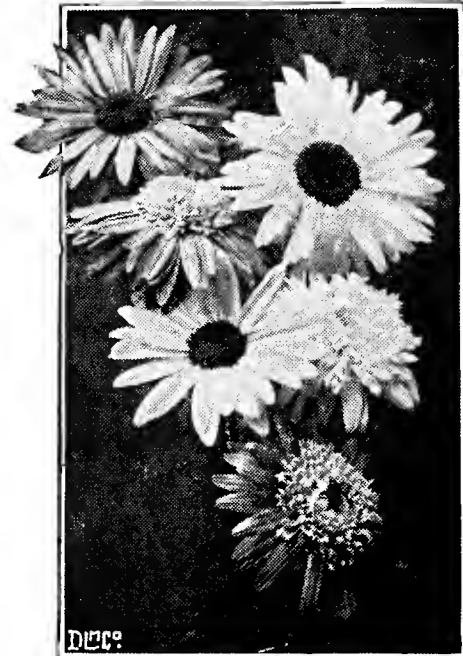
- 6 **Aquilegia** (Columbine), 2 ft., various pastel colors. May-June.
- 4 **Artemisia lactiflora**, 5-6 ft., creamy white. Aug.-Sept.
- 6 **Asters, Hardy**, assorted shades. Oct.-Nov.
- 6 **Chrysanthemums, Hardy**, 2-3 ft., assorted colors. Sept.-Oct.
- 6 **Delphinium** (Larkspur), 3-6 ft., shades of blue. May-Aug.
- 2 **Dicentra spectabilis**, Bleedingheart, 3 ft., pink. April-May.
- 4 **Eupatorium coelestinum**, Hardy Ageratum, 3 ft., lavender blue. August until frost.
- 6 **Hollyhocks, Chater's Double**, 4-6 ft., separate colors. June-July.
- 6 **Iris**, 2-4 ft., assorted. May-July.
- 4 **Lythrum roseum** (Loosestrife), 3-4 ft., rosy purple. July-Sept.
- 4 **Monarda** (Oswego-tea), 3 ft., brilliant scarlet. July-Aug.
- 6 **Oriental Poppies**, 2-3 ft., assorted red and pink shades. May-June.
- 4 **Physostegia Vivid**, 1 ft. Hardy Snapdragons, soft mauve. Sept.-Oct.
- 8 **Phlox divaricata**, 1 ft., blue. April-May.
- 4 **Peonies**, 3 ft., pink and white. May-June.
- 12 **Phlox**, assorted; large clusters bright flowers. June till Sept.
- 6 **Veronica** (Speedwell), deep blue. July-Sept.
- 6 **Shasta Daisies**, 2 ft., white. June-July.



Aquilegia



Delphinium



Pyrethrum

Cut Flower Collection

100 Plants - - \$15.00
50 Plants - - \$8.00

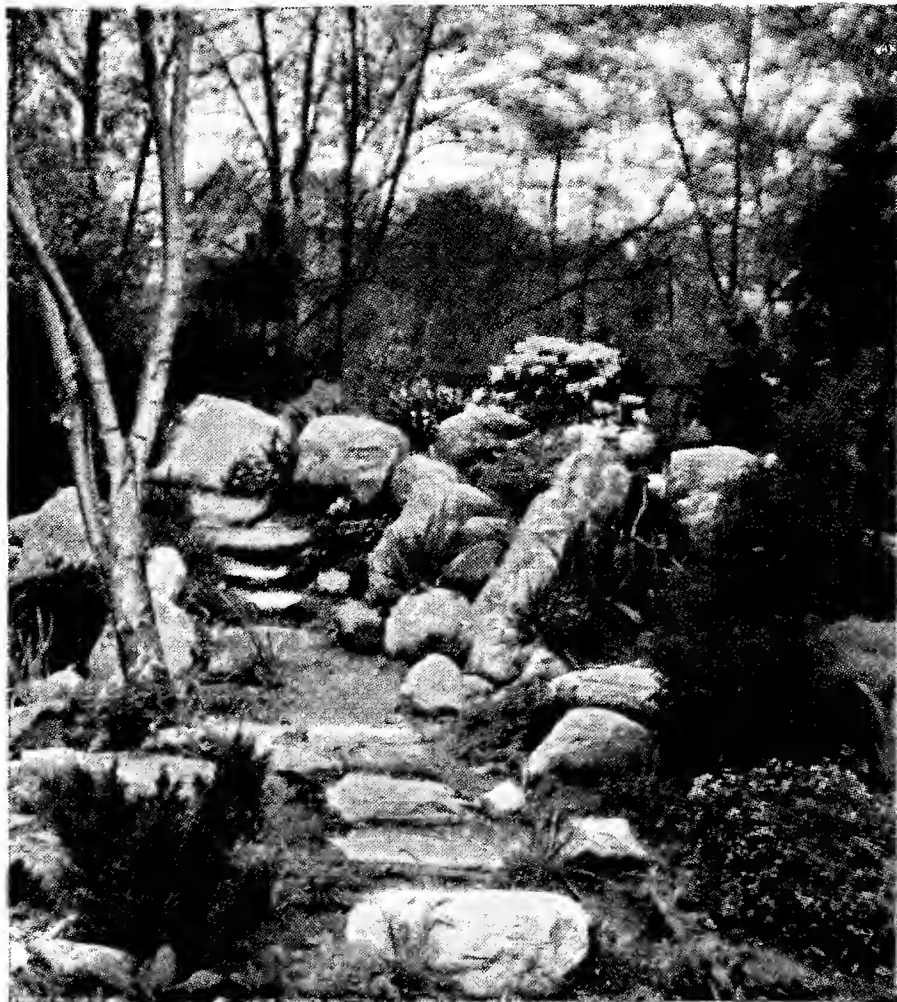
Assortment of Perennials especially good for cutting.

- 8 *Achillea Boule de Neige*, 12 in., white; all Summer.
- 8 *Aquilegia* (Columbine), 1 ft., all colors. May-June.
- 8 *Artemisia, Silver King*, 3 ft., silvery foliage.
- 8 *Coreopsis grandiflora*, double, 2-3 ft., double flowers, golden yellow all Summer.
- 12 *Delphinium belladonna*, 3 ft., light blue; all Summer.
- 4 *Echinops ritro* (Globe Thistle), 3 ft., metallic blue. July.
- 8 *Gaillardia grandiflora* (Blanketflower), 2 ft., crimson and gold; all Summer.
- 4 *Gypsophila, Bristol Fairy* (Babys-breath), 3 ft., masses of delicate double white flowers all Summer.
- 8 *Pinks, Hardy Garden*, 12 in., all shades. May-June.
- 12 *Pyrethrum hybridum* (Painted Daisies), 3 ft., daisylike flowers in shades of pink and red. May-June.
- 4 *Tritoma pfitzeri* (Red Hot Poker), 3 ft., orange-scarlet flowers. August until frost.
- 4 *Scabiosa japonica*, 3 ft., lavender blue. July-Oct.
- 8 *Stokesia cyanea* (Stokes Aster), 12 in., large pale blue flowers produced all Summer.
- 4 *Salvia pitcheri* (Sage), 3 ft. Sept.-Oct.

Rock Garden Collection

100 Plants - - \$15.00
50 Plants - - \$8.00

- Alyssum saxatile* (Basket of Gold), 12 in., yellow. April-May.
- Arabis alpina* (Rockcress), 10 in., white. April-May.
- Aubrietia deltoides* (Rainbowrock Cress), 4 in. Shades of pink and violet. March-June.
- Campanula carpatica* (Harebells), 6 in., blue. June-Oct.
- Campanula rotundifolia* (Bluebells of Scotland), 8 in., blue. May-Oct.
- Cerastium tomentosum* (Snow-in-summer), 4 in., white, silver foliage. May.
- Dianthus deltoides* (Maiden Pink), 4 in., pink. June-July.
- Dielytra eximia* (Plumy Bleedingheart), 8 in., pink; all Summer.
- Geum*, 12 in., yellow and scarlet. May-July.
- Helianthemum mutabile* (Rockrose), 12 in., all colors. May-June.
- Heuchera sanguinea* (Coralbells), 18 in., pink. May-June.
- Iberis sempervirens* (Hardy Candytuft), 12 in., white. April-May.
- Mazus reptans* (Rock Lobelia), 2 in., lavender. April-May.
- Plumbago larpentae* (Leadwort), 6 in., blue. Aug.-Sept.
- Sedums*, assorted, 4 in., attractive foliage.
- Thymus*, assorted (Thyme), 2 in., white and pink. June-July.
- Tunica saxifraga*, 8 in., lilac; all Summer.
- Viola, Jersey Gem* (Tufted Violet), 8 in., deep violet; all Summer.
- Veronica repens*, 2 in., pale blue. April-May.
- Veronica rupestris*, 4 in., deep blue. May-June.



◆ ◆ ◆

Our booklet of planting instructions will be furnished gratis with each order.