

Historic, archived document

Do not assume content reflects current scientific knowledge, policies, or practices.

Fruits, Trees and Flowers

~ Spring 1933 ~

U. S. Department of Agriculture
* FEB 23 1933
ST. LOUIS, MO.
L. I. R. R. B. I.



View at the Sarcoxie Nurseries

SARCOXIE NURSERIES PEONY FIELDS

Wild Bros. Nursery Co., Sarcoxie, Mo.

Where to Find It ~ Index



Abelia grandiflora ----- 3	Cydonia (Quince) ----- 7	Larkspur (Delphinium) ----- 22	Sambucus (Elder) ----- 5
Acer (Maple) ----- 12	Dahlias ----- 29	Lespedeza (Desmodium) ----- 4	Saponaria ----- 24
Ageratum, Hardy ----- 22	Daisies ----- 22	Liatris ----- 23	Sedum ----- 24
Agrostemma ----- 21	Delphinium ----- 22	Lilac ----- 6	Shade Trees ----- 11-12
Albizzia Julibrissin ----- 11	Desmodium ----- 4	Lily ----- 25	Shrubs ----- 3-9
Alther ----- 3	Deutzia ----- 4-5	Linum perenne ----- 22	Snowball ----- 7
Alyssum ----- 21	Dewberries ----- 30	Magnolia ----- 16	Snow-in-Summer ----- 22
Apple ----- 32	Dianthus ----- 24-25	Mahonia Aquifolium ----- 16	Spirea ----- 7-8
Arabis Alpina ----- 24	Digitalis (Foxglove) ----- 23	Mallow Marvels ----- 23	Spruce ----- 16
Aquilegia (Columbine) ----- 22	Dogwood ----- 5-11	Maple ----- 12	Stoke's Aster (Stokesia) ----- 25
Arborvitae ----- 14	Elder ----- 5	Mimosa Tree ----- 11	Stonewall (Sedum) ----- 25
Arbutus, Bush ----- 3	Elm ----- 12	Mock Orange ----- 6	Strawberries ----- 32
Artemesia ----- 21	Euonymus ----- 10	Moss Pink (Phlox subulata) ----- 24	Sumac ----- 8
Arrow-Wood ----- 4	Eupatorium ----- 22	Mountain Ash ----- 12	Sunflower ----- 25
Asparagus ----- 32	Evergreens ----- 13	Myosotis (Forget-me-not) ----- 23	Sweet William ----- 25
Barberry (Berberis) ----- 4	Flax, Perennial ----- 22	Oak, Pin ----- 12	Sycamore ----- 12
Beautyberry ----- 4	Forget-me-not ----- 23	Oregon Hollygrape ----- 16	Syringa (Lilac) ----- 6
Beautybush ----- 4	Forsythia ----- 5	Painted Daisy ----- 24	Tamarix ----- 8
Betula (Birch) ----- 11	Foxglove ----- 23	Peaches ----- 31	Thrift, Common ----- 22
Bittersweet ----- 10	Gaillardia ----- 21	Pears ----- 31	Tulip Tree ----- 12
Blackberries ----- 30	Gayfeather ----- 23	Peonies ----- 26-27	Veronica ----- 25
Blanket Flower ----- 21	Gladiolus ----- 30	Phlox ----- 23	Viburnum (Cranberry Bush) ----- 4
Bleeding Heart ----- 22	Gooseberries ----- 31	Philadelphus ----- 6	Viburnum Carlesii ----- 8
Buddleia (Butterfly Bush) ----- 4	Grapes ----- 32	Picea (Spruce) ----- 16	Viburnum dentatum ----- 4
Callicarpa (Beautyberry) ----- 4	Ground Pinks (Phlox sub.) ----- 23	Pine (Pinus) ----- 16	Viburnum (Snowball) ----- 7
Calycanthus ----- 4	Gum, Sweet ----- 12	Pinks ----- 24	Viburnum lantana ----- 9
Candytuft ----- 22	Helianthemum mutabile ----- 23	Plane, Oriental ----- 12	Vines ----- 9
Cannas ----- 29	Helianthus (Sunflower) ----- 25	Plums ----- 31	Violets ----- 25
Catalpa ----- 11	Hibiscus (Althea) ----- 3	Plum, Flowering ----- 12	Water Lilies ----- 13
Carolina Allspice ----- 4	Hollyhock ----- 23	Poplar (Populus) ----- 12	Wayfaring Tree ----- 9
Cedar (Red Cedar) ----- 14-15	Honeysuckle ----- 5-10	Privet ----- 6-9	Weigela ----- 8
Celastrus (Bittersweet) ----- 10	Horseradish ----- 32	Pyrethrum ----- 24	Willow, Weeping ----- 12
Cerastium ----- 22	Hydrangea ----- 5	Quince, Japan ----- 7	Wintercreeper (Euonymus) ----- 10
Cherry ----- 31	Hypericum ----- 6	Raspberries ----- 30	Winterberry ----- 9
Chinese Silk Tree ----- 11	Iberis ----- 22	Retinospora ----- 16	Wisteria ----- 11
Chrysanthemums ----- 22	Ilex verticillata ----- 9	Rhodotypos kerrioides ----- 7	Yucca ----- 25
Clematis ----- 10	Iris ----- 27-28	Rhubarb ----- 32	
Columbine ----- 22	Ivy ----- 10	Rhus ----- 8	
Coreopsis ----- 22	Jasmine ----- 6	Rock-Cress, Alpine ----- 24	
Cornus (Dogwood) ----- 5-11	Jetbead (Rhodotypos) ----- 7	Rock Rose (Helianthemum) ----- 23	
Crab, Ornamental ----- 11	Juniper (Juniperus) ----- 15-16	Rose of Sharon (Althea) ----- 3	
Cranberry Bush ----- 4	Kerria japonica ----- 6	Roses ----- 17-20	
Currants ----- 31-32	Kolkwitzia ----- 4	Rudbeckia Golden Glow ----- 24	
		Salix (Willow) ----- 12	

How to Order

Just make a list of what you want, giving number, name, size and price. Tell us if your express or freight office is different from your postoffice, and whether to ship by freight, express or parcel post. If you do not give a shipping date, we ship when we think best according to season and locality. While our terms are cash we will ship C. O. D. if half the amount is sent with order, but it makes the transportation charges a little higher.

Please Tell Us

Shall we send a similar variety we consider equal or better if any variety ordered is sold out? If you say "no substitution" on your order we refund for any we cannot supply. If you do not tell us, we use our judgment. When we substitute, the tree is labeled with the correct name of the variety sent. If we sent Black Ben Davis in place of Ben Davis, it would be labeled Black Ben Davis.

Freight and Express Shipments

Prices herein are not prepaid unless quoted postpaid. Manufactured articles can be of uniform size and weight. Nursery stock varies, even the season when shipped sometimes making a difference. If we prepaid the larger sizes we would have to es-

timate it plenty so we wouldn't lose on it on the average, and most of the time you would be paying too much.

Plants by Parcel Post

We have in some cases quoted an estimated additional postage for Missouri and adjoining states. It cannot always be correct. When too much is sent the balance will be refunded. For other states the postage will be a little more, depending on distance. Large trees and shrubs cannot be sent parcel post.

What to Expect

Some plants grow large, other small. Some are bushy, others not. A Phlox is not as large as a Shasta Daisy. Different varieties of Roses vary in size. An Apple is better rooted than a Cherry. These are just examples. We try to give you good value and first class stock, but it will vary according to the habit of growth.

Our Guarantee

We exercise care and diligence to have our varieties true to label and sell all our stock with the express guarantee that we will, on proper proof, replace any that may prove otherwise, or refund the amount paid for the same, which shall constitute the extent of our liability.

Bargain Prices—and Bargains

No matter from whom you purchase, prices are lower than many people can remember. But do you always get bargains? It's so easy to look only at the price tag, forgetting that price is not value. Price is what you pay. Value consists in what you get for what you pay. When you get good stock at less than the ruling market price, that's a bargain. More often you pay a fair price for quality. That's business. Don't expect too many bargains, but look for value.

Any firm can sell cheaply if it sends out cheap goods with poor service. No firm can be low man on everything and always supply quality. The principles of successful business have not changed. Quality, liberal grading, care in handling orders, good service, are just as important as ever. You buy regularly from a firm, not because you expect to get good stock now and then but because you are convinced you will get good stock all the time. To do that a man has to have a fair price in keeping with the times.

If not familiar with nursery grading and you do not know what to expect, we assure you your money's worth in well grown stock, liberally graded and properly packed, with good service. If you know what you should receive, we feel sure we can please you. Since 1875 this Nursery has built for the future with quality stock at fair prices. We consider these prices exceptional value. They will have to advance with improved conditions. Now is the time to plant.



Althea blooms late in Summer

Hardy Flowering Shrubs Beautify the Lawn

The early days of spring are brightened and made more cheerful by the great masses of golden Forsythia, the fiery Japan Quince and Spirea Thunbergi with its white flowers like a mantle of snow, before their leaves are developed. By selecting those blooming at different times, such as Lilacs, Deutzias, Spireas, Weigelas, Mock Orange, Butterfly Bush, Hydrangeas and Altheas, shrubs may be had in bloom from early spring till September, followed by hardy Chrysanthemums, the glory of autumn. Some of the berried shrubs, Barberry and Bush Honeysuckle, some shrubs with colored foliage, Golden Elder, Golden Spirea and Red Barberry, and some with colored twigs, as Siberian Dogwood, will add variety.

Shrubs make a beautiful display in a year or two, giving the lawn and dwelling an attractive, finished appearance. They appear to best advantage in groups along the boundaries or division line of properties, at the edges or corners of lawns, and near walks and drives. Individual specimens should not be too much scattered about the lawn.

Foundation Plantings. High foundations may have the taller growing shrubs about the base, dwarf varieties being used for low foundations. The outlines of foundation and mass plantings should as a rule be irregular, and usually two or more of a variety should be used. The figures in parenthesis, as (5 to 6 ft.), indicate the height at maturity in this section under ordinary conditions. The blooming dates named are the average for southern Missouri.



This illustrates an outdoor living room with its green carpet for the kiddies' feet, its sweet flowering blooms so refreshing to all and its friendly trees which throw a kindly shade.

Shrubs for Shady Situations. Success in shade is largely a matter of good drainage, fertility and sufficient humus or vegetable matter in the soil. The statement that a shrub is suitable for partial shade assumes that reasonable attention has been given to these needs. No shrubs give satisfactory results in excessively wet, excessively dry or too poor soil.

Pruning. Shrubs blooming before midsummer, hence on the old wood, should be pruned after blooming or the flowers will be reduced in number. Those blooming after midsummer, hence on new wood, should be pruned in early spring. Pruning should consist mainly in the removal of weak or old shoots to the ground, thus permitting new shoots to supply new blooming wood. Some straggly growing shrubs may need the ends of the shoots pruned to make them branch more freely.

Mail Sizes, postpaid

Those quoted as "mail size postpaid," while not as heavy as the regular grades, are sturdy, well rooted young plants and should give good results. If the larger sizes, not quoted postpaid, are desired by parcel post, postage will be additional.

Five or more of a kind at the 10 rate, less at each rate.

Abelia grandiflora; Bush Arbutus

Delicately fragrant flowers, white sometimes flushed pink, like small Weigelas, from early summer till fall; graceful habit; small glossy dark evergreen leaves; the tops often freeze back part way in Missouri; mound in winter like roses; prune in spring.

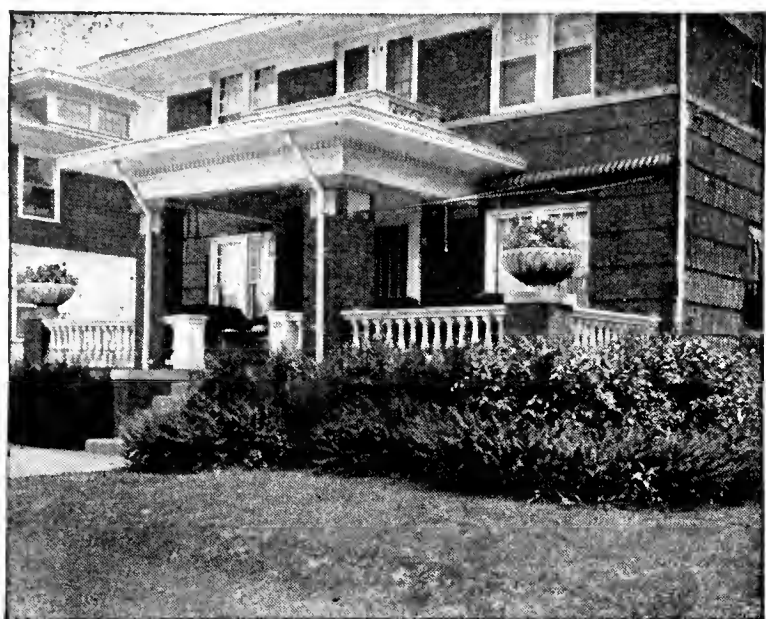
18 to 24 inches ----- \$0.50 each, \$4.50 per 10

Althea; Rose of Sharon; Hibiscus syriacus

Stately, upright shrubs with flowers resembling single and double Hollyhocks in late summer when few other shrubs are in bloom; good for specimen plants, backgrounds, tall hedges or screens; succeed in any good soil not excessively dry; prune in spring before growth starts; (6 to 12, occasionally 15 ft.) Colors: Double White, Double Pink shaded white, Double Red, Double Violet, Single White.

Mail size, postpaid -----	\$0.15 each,	\$1.25 per 10
2 to 3 feet -----	.35 each,	3.00 per 10
3 to 4 feet -----	.45 each,	4.00 per 10
4 to 5 feet -----	.60 each,	5.00 per 10
5 to 6 feet -----	.75 each,	7.00 per 10

Shrubs, continued



Foundation planting of Barberry and other shrubs

Arrow-Wood; *Viburnum dentatum*

Attractive in early summer with its snowy flowers in flat clusters 2 to 3 inches across, and in the fall with its dark, shining blue berries; leaves round or oval, purple and red in autumn; usually 5 to 8 feet tall; prune after blooming.

18 to 24 inches ----- \$0.35 each, \$3.00 per 10

Barberry, Thunberg's or Japanese

Of dwarf, dense, compact, spreading habit with graceful, spiny branches; small, beautiful bright green leaves, appearing very early in spring and coloring brilliantly in autumn, a mingling of bronze, orange, scarlet and crimson; berries scarlet $\frac{3}{8}$ to $\frac{1}{2}$ in. long, remaining well into winter. Thrives in any moderately fertile, well drained soil; endures partial shade. Excellent for foundation plantings, about doorways, walks and other nearby places, and for massing in front of taller shrubs; an excellent hedge. Grows 2 to 4 feet high but can be kept any height desired.

Mail size, postpaid -- \$0.10 each, \$0.80 per 10, \$6.00 per 100
 8 to 12 in., bushy -- .15 each, 1.00 per 10, 8.00 per 100
 12 to 18 in., bushy -- .20 each, 1.50 per 10, 12.00 per 100
 18 to 24 in., hedging
 grade ----- .15 each, 1.20 per 10, 9.00 per 100
 18 to 24 in., bushy -- .30 each, 2.50 per 10, 18.00 per 100
 24 to 30 in., bushy -- .40 each, 3.50 per 10, 30.00 per 100

Barberry, New Red-leaved Thunberg's

The foliage is a rich, lustrous metallic or bronzy red throughout summer if planted in full sun; becomes green in shade. It holds its leaves later than common Thunberg's.

Mail size, postpaid ---- \$0.20 each, 3 for \$0.57, \$1.80 per 10
 8 to 12 inches ----- .25 each, 3 for .70, 2.00 per 10
 12 to 15 inches ----- .30 each, 3 for .85, 2.50 per 10
 15 to 18 inches ----- .40 each, 3 for 1.10, 3.50 per 10
 18 to 24 inches ----- .50 each, 3 for 1.45, 4.00 per 10
 24 to 30 inches ----- .60 each, 3 for 1.75, 5.50 per 10

Beautyberry, American; *Callicarpa americana*

Graceful curving branches covered with clusters of small, violet-purple berries in fall and early winter; fruits first year; fruits better if pruned some each spring; (3 to 6 ft.)

3 to 4 feet ----- \$0.50 each, \$4.50 per 10

Beautybush; *Kolkwitzia amabilis*

A new shrub from China; in latter Spring a mass of arching sprays of weigela-like flowers, pink on the outside, mottled with orange on the lower lip and tube; (4 to 6 ft.); prune after blooming.

18 to 24 inches ----- \$0.45 each, \$4.00 per 10

Butterfly Bush; Summer Lilac; *Buddleia*

One of the most desirable summer blooming shrubs; long, dense panicles of violet-rose or lavender flowers with orange eye, resembling Lilacs, in June and continuing till frost; frag-

rant; grows 4 to 7 ft. high but may be kept any desired height; succeeds with sun half the day; blooms the first summer; prune to the ground each spring.

Mail size, postpaid ----- \$0.20 each, \$1.80 per 10
 Strong plants, tops cut back ----- .25 each, 2.20 per 10

Calycanthus floridus; Carolina Allspice

Odd, double, spicy fragrant, chocolate-red flowers in latter spring; any well drained, somewhat rich soil, in sun and shade; grows 3 to 6 feet high.

Mail size, postpaid ----- \$0.25 each, \$2.00 per 10
 18 to 24 inches ----- .40 each, 3.50 per 10
 2 to 3 feet ----- .50 each, 4.50 per 10

Cornus, see Dogwood

Crab, Flowering, see Shade Trees

Cranberry Bush; *Viburnum opulus*

Planted mainly for its bright scarlet, cranberry-like fruits, which remain well into winter when not eaten by birds. Flowers in flat-topped clusters, the center flowers which produce the berries small, with a ring of outer flowers like the individual flowers of the snowball; endures partial shade; prune after blooming; (8 to 12 ft.)

18 to 24 inches ----- \$0.35 each, \$3.00 per 10
 2 to 3 feet ----- .40 each, 3.50 per 10

Desmodium penduliflorum; *Lespedeza formosa*

Very showy in late summer or early fall with its branches somewhat arched with their load of long drooping racemes of rose-purple flowers nearly $\frac{1}{2}$ in. long like small peas; prune to ground each spring; (3 to 4 ft.)

2-year plants ----- \$0.45 each, \$4.00 per 10

Deutzia gracilis; Slender Deutzia

Forms a dense, bushy plant 3 ft. high with slender, often drooping branches, covered in early May with single, pure white, star-shaped flowers, almost as dainty as Lily of the Valley; will bloom with sun half the day; prune part of old wood out each spring directly after blooming.

15 to 18 inches ----- \$0.25 each, \$2.00 per 10

Deutzia Lemoine

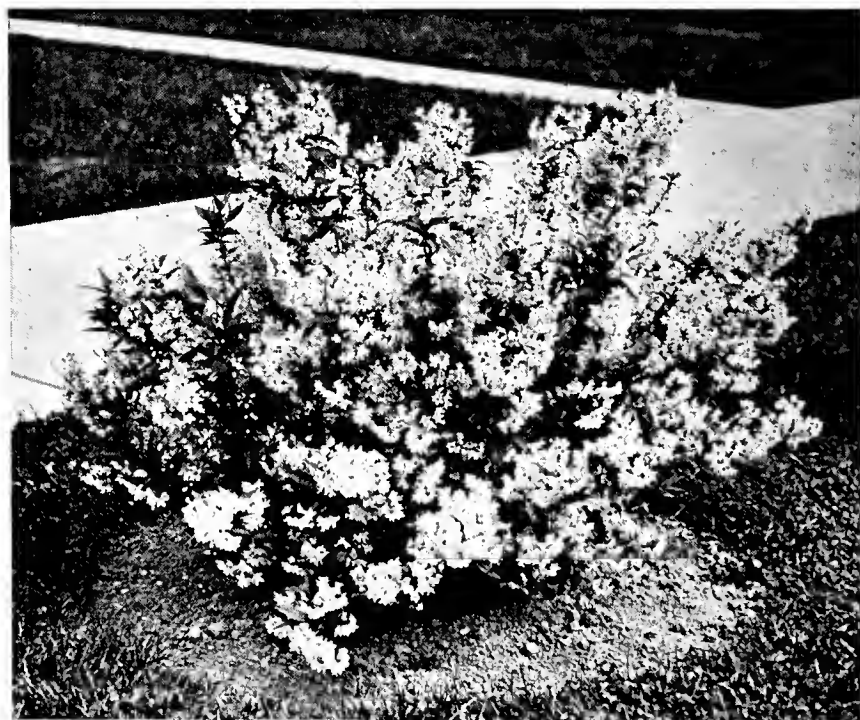
Beautiful snow-white flowers in broad or somewhat cone-shaped clusters in May. More upright and a little taller than *gracilis*, reaching about 4 ft., and flowers more tightly clustered; sun or partial shade; prune as above.

18 to 24 inches ----- \$0.35 each, \$3.00 per 10

Deutzia Magnifica

Fine double pure white, tassel-like flowers in compact, rounded, erect panicles in latter spring; excellent.

18 to 24 inches ----- \$0.35 each, \$3.00 per 10
 2 to 3 feet ----- .45 each, 3.50 per 10



Deutzia gracilis, almost as dainty as Lily of the Valley, in May



A rock garden needs a background. In this case Lombardy Poplars are used.

Deutzia Pride of Rochester

Covered in early spring with dainty double tassel-like flowers in clusters 4 to 6 in. long, white, outer petals tinted rose, deep green foliage. Any well-drained soil; of easy culture; vigorous, upright, 6 to 8 ft.; prune after blooming.

Mail size, postpaid	-----	\$0.15 each, \$1.40 per 10
18 to 24 inches	-----	.25 each, 2.00 per 10
3 to 4 feet	-----	.35 each, 3.00 per 10
4 to 5 feet	-----	.50 each, 4.50 per 10

Dogwood, Siberian or Coral; Cornus sibirica

Fuzzy, creamy-white flowers in small, flat topped clusters in spring; intense, bright coral-red branches in winter; (6 to 10 ft.); prune each spring to reduce the height and give more young branches which are the more intense color; well drained soil; sun or partial shade.

Mail size, postpaid	-----	\$0.15 each, \$1.25 per 10
18 to 24 inches	-----	.30 each, 2.50 per 10
2 to 3 feet	-----	.40 each, 3.00 per 10

Dogwood, Flowering, see Shade Trees

Elder, Golden

Small white flowers in large, flat clusters in midsummer; black berries; intense yellow leaves, the color well retained during summer if planted in full sun and kept growing freely; prune each spring; pinch the tips as needed to maintain a dense, compact growth and the height desired.

18 to 24 inches	-----	\$0.25 each, \$2.00 per 10
-----------------	-------	----------------------------

Forsythia; Golden Bell

One of the first shrubs to let us know that spring is here, with its abundance of golden, somewhat bell-shaped flowers, swinging from the leafless branches in lots of one to three, often in March; very free from insects and diseases; the leaves remain green till late fall; prune immediately after blooming to keep the bushes compact and the height desired. Suitable for partial but not dense shade.

Forsythia Fortunei. Flowers golden-yellow, often with twisted petals; upright to arching branches (8 to 10 ft.).

Forsythia intermedia; Border Forsythia. Flowers rich golden-yellow; branches slender, erect to arching; blooms freely; grows 8 to 10 ft. high.

Forsythia spectabilis. Large flowers of better color and blooms more freely than the other varieties. Mail size, 18-24 in. and 2-3 ft. only.

Forsythia suspensa; Weeping Forsythia. Golden flowers; some shoots erect, attaining a height of 8 ft., others drooping, making lengths of 10 to 15 ft.; effective on banks of retaining walls where it droops naturally. Mail size and 4-5 ft.

Forsythia viridissima; Greenstem Forsythia. Golden yellow flowers; erect habit; green bark; dark green foliage, in autumn reddish-purple.

Price of above Forsythias:

Mail size, postpaid	-----	\$0.15 each, \$1.40 per 10
18 to 24 inches	-----	.25 each, 2.00 per 10
2 to 3 feet	-----	.30 each, 2.50 per 10
3 to 4 feet	-----	.40 each, 3.00 per 10
4 to 5 feet	-----	.50 each, 4.00 per 10

Honeysuckle, Bush; Lonicera

Extensively planted for their beauty of foliage, profusion of flowers in spring, and brilliant fruit, often even more showy than the flowers; of easy culture; as a rule need plenty of space to develop naturally; suitable for partial shade; (usually 6 to 8 feet). Prune after blooming.

Fragrantissima; Winter Honeysuckle. Flowers fragrant, very early though not very showy, white to blush; scarlet berries; foliage half-evergreen but it sometimes winter injures; (6 ft.).

Pink Tatarian. Light pink to white flowers; berries borne profusely.

White Bush. White flowers, red berries. Mail size, 18-24 in. and 2-3 ft.

Price of above Honeysuckles:

Mail size, postpaid	-----	\$0.20 each, \$1.80 per 10
18 to 24 inches	-----	.25 each, 2.00 per 10
2 to 3 feet	-----	.30 each, 2.50 per 10
3 to 4 feet	-----	.40 each, 3.50 per 10
4 to 5 feet	-----	.50 each, 4.50 per 10

Hydrangea Hills of Snow; H. arborescens grandiflora

Well named for its profusion of snow-white flowers in large, somewhat globular clusters, beginning in June. If the blooms are cut off as they turn green it blooms a long period, and is a prominent feature of any planting. If given an open situation the shoots are stronger than when grown in the shade. However, it gives good results in partial shade. By pruning nearly to the ground each spring the bushes may be kept dense and rather round, with a normal height of 3 to 5 ft. As the new shoots bear the flowers, the closer they are cut back the stronger the growth and the larger the flower heads. Give it fertile soil and plenty of water during the blooming period.

Mail size, postpaid	-----	\$0.15 each, 3 for \$0.43, \$1.40 per 10
1 year size	-----	.25 each, 3 for .70, 2.00 per 10
2 year size	-----	.35 each, 3 for 1.00, 3.00 per 10
3 year size	-----	.40 each, 3 for 1.15, 3.50 per 10

Hydrangea paniculata grandiflora; Peegee

One of the most showy shrubs of late summer and early fall; large, compact, cone-shaped clusters of white flowers, becoming pale pink with age, finally bronze; the amount of pink varies with the season; begins blooming mid-August; (5 to 7 ft.) Pruning in early spring, removing the weak shoots and cutting back the stronger, will increase the size of the clusters; should have fertile soil, and plenty of water while blooming. Plant in sun in Missouri.

Mail size, postpaid	-----	\$0.20 each, 3 for \$0.50, \$1.65 per 10
12 to 18 inches	-----	.25 each, 3 for .70, 2.00 per 10
18 to 24 inches	-----	.35 each, 3 for 1.00, 3.00 per 10
2 to 3 feet	-----	.40 each, 3 for 1.15, 3.50 per 10
2½ to 3 feet, heavy	-----	.50 each, 3 for 1.45, 4.50 per 10



This Hydrangea is well named Hills of Snow

Shrubs, continued

Hypericum prolificum; St. John's Wort

An upright shrub of rapid growth, under favorable conditions growing 5 ft. high; single yellow 5-petaled flowers $\frac{1}{2}$ to 1 inch across in clusters along the branches in mid-summer and fall; suitable for partial shade 30-36 in 50c each

Jasmine, Italian; Jasmine floridum

Bright green, arching branches and bright yellow flowers in clusters during summer; grows 3 to 4 ft. high. 2-3 ft. 50c each.

Kerria japonica, double

A neat, compact bush, about 4 feet high; numerous short-branched, spreading stems, an attractive bright green in winter; abundant golden-yellow, double globe-shaped flowers, 1 to 2 inches across, in early summer and at intervals till fall; fall foliage yellow; suited to partial shade; prune in early spring. Mail size, postpaid _____ \$0.25 each, \$2.25 per 10
18 to 24 inches _____ .40 each, 3.50 per 10

Kerria japonica, single

Golden-yellow flowers 1 to 2 in. across like single roses, literally covering the neat, compact bushes in May; grows about 4 ft. high; suited to partial shade. Mail size, postpaid _____ \$0.20 each, \$1.80 per 10
2 to 3 feet _____ .35 each, 3.00 per 10

Lilacs, Syringa

The objection to the old common lilacs was that they are slow about commencing to bloom. The newer Hybrid Lilacs bloom much younger, often the year following planting if given suitable conditions, are more varied in color and more dwarf. Valuable for fragrance and freedom of bloom in early spring; well suited for distant effects, for planting in the corners or boundaries, as screens, massed in groups and for specimen plants. Will stand a little morning and evening shade but full sun with good air drainage is best. Well drained soil, not too rich, gives a short-jointed growth that produces an abundance of flower buds. Prune after blooming, a little each year resulting in well formed bushes and flowers well placed over the entire bush. We have an extensive assortment of varieties, and will send list on application. The following are the leaders:

Belle de Nancy. Double; brilliant satiny rose, white center. One of the best of the pink shades.

Charles X. Single; purplish-red to lilac-red; while not the largest it is one of the most reliable free bloomers.

Ludwig Spaeth. Single; crimson-purple, one of the darkest; large flowers; rather dwarf habit.

Madame Abel Chateray. Double; pure white; large compact trusses; somewhat dwarf habit; excellent.

Madame Casimer Perier. Double white; blooms freely; late; excellent.

Marie Legraye. A fine single white; blooms freely.

Madame Lemoine. Another fine double white.

Michel Buchner. Double; pale lilac-blue; good size trusses; rather dwarf and stocky. There are no pure blue lilacs, but this is one of the bluest, and a good one.

President Grevy. Double soft blue; good sized clusters.

Single White. An excellent single white.

William Robinson. Double; violet-pink; large trusses and good flowers; rather dwarf; excellent.

Price of above Lilacs:

Mail size, postpaid _____	\$0.25 each,	\$2.25 per 10
12 to 18 inches _____	.30 each,	2.50 per 10
18 to 24 inches _____	.50 each,	4.00 per 10
2 to 3 feet _____	.70 each,	6.00 per 10
3 to 4 feet _____	.90 each,	8.00 per 10
4 to 5 feet _____	1.50 each,	12.50 per 10

Lilac, Persian Purple

Fragrant, pale lilac flowers in trusses 3 to 4 in. long, soon after Common Purple; grows 5 ft. high.

Mail size, postpaid _____	\$0.20 each,	\$1.50 per 10
2 to 3 feet _____	.30 each,	2.50 per 10
3 to 4 feet _____	.40 each,	3.50 per 10



For fragrance in early spring nothing can displace the Lilacs.

Special Lilac Collection

We have many Lilacs not described above. We will furnish 10 Lilacs, 10 varieties our selection, 12 to 18 inches, by express for \$2.50, or mail size, postpaid, for \$2.00.

Mock Orange, Large Flowered; Philadelphus grandiflorus

This makes a larger shrub than Sweet Scented, with larger flowers.

Mail size, postpaid _____	\$0.20 each,	\$1.80 per 10
3 to 4 feet _____	.40 each,	3.50 per 10

Mock Orange, Sweet Scented; Philadelphus coronarius

The name is almost a description. It will grow in sun or where there is shade part of the day and gives a profusion of creamy white four-petaled flowers in late spring or early summer. Excellent for backgrounds or screens; (5 to 6 ft., sometimes larger); prune after blooming, removing weak and old branches to the ground; fragrant.

3 to 4 feet _____	.40 each,	3.50 per 10
4 to 5 feet _____	.50 each,	4.50 per 10

Mock Orange Virginal; Philadelphus virginalis

The fragrant white flowers are semi-double, sometimes single, large, $1\frac{1}{2}$ to $2\frac{1}{2}$ in. across; blooms early and intermittently during summer; moderately tall.

Mail size, postpaid _____	\$0.25 each,	\$2.25 per 10
18 to 24 inches _____	.35 each,	3.00 per 10
2 to 3 feet _____	.45 each,	4.00 per 10
3 to 4 feet _____	.50 each,	4.50 per 10

Plum, Flowering, see Shade Trees

Privet, Regel; Ligustrum Regelianum

Branches almost horizontal, drooping at the tips, forming a rather flat-topped shrub. Leaves dark green, purplish in autumn; white flowers, blue-black berries; a good foundation plant if pruned back every two years to prevent it becoming too large and to give better foliage.

24 to 30 inches, heavy _____	.35 each,	3.00 per 10
------------------------------	-----------	-------------

Quince, Japan; Cydonia japonica

Beautiful in early spring, just as the leaves begin to unfold, with its five-petaled flowers $1\frac{1}{2}$ in. across, a scarlet so brilliant it is also called Burning Bush; foliage shining dark green, in autumn bronzy-red; branches thorny; small plants irregular in growth, becoming better shaped with age; plant in sun; prune after blooming; (3 to 6 ft.)

18 to 24 inches _____	\$0.25 each,	\$2.00 per 10
-----------------------	--------------	---------------

Rhodotypos kerrioides; Jethead

Valuable for its pretty, corrugated, light green leaves and its four-petaled white flowers, 1½ in. across in spring, followed by four shiny black seeds or jet beads; sun or partial shade; should occasionally be pruned severely to maintain compact growth; (3 to 6 ft.)

18 to 24 inches ----- \$0.35 each, \$3.00 per 10

Roses

Roses are really shrubs and many of them are suitable for use in shrubby plantings. Ideal and Orleans are excellent dwarf shrubs for all-summer bloom; F. J. Grootendorst is good where a taller variety may be used. Hugonis makes a fountain of yellow in early spring, and Rugosa is excellent both for its flowers and seed pods. Pink and Red Radiance are sufficiently tall and vigorous to use as all-summer blooming shrubs. For descriptions and prices see pages 17 to 21.

Sambucus, see Elder

Snowball, Common; Viburnum opulus sterile

Covered in early May with clusters of white flowers forming a snowball 4 in. across; fall foliage bronzy-red; sun or partial shade; prune after blooming; (6 to 8 ft.)

18 to 24 inches ----- \$0.30 each, \$2.50 per 10
2 to 3 feet ----- .35 each, 3.00 per 10

Spirea

Their hardiness, thriftiness, profusion of bloom, graceful habit, neat foliage and general freedom from serious insects and diseases render them justly popular. The early blooming Spireas, after the bush attains good size, should have some of the old wood removed to the ground each year immediately after blooming. Prune the late blooming Spireas in early spring before growth starts. When neglected for years it may be necessary to prune almost the entire plant to the ground.

Spirea arguta; Garland Spirea

Flowers pure white, ¾ in. across, in many-flowered small clusters on numerous slender branches before the leaves expand; perhaps the earliest Spirea; very fragrant; useful for foundation plants and small groups; prune after blooming.

2 to 3 feet ----- \$0.35 each, \$3.00 per 10
3 to 4 feet ----- .45 each, 3.50 per 10



Spireas Callosa alba (white) and Anthony Waterer (rosy-crimson,) are excellent dwarf summer blooming shrubs

Spirea Anthony Waterer

Rosy-crimson flowers in dense flat clusters in late May and at intervals until fall if the flower heads are cut off as they fade; dwarf, compact, upright habit; excellent for foundation and border plantings and for massing in front of larger shrubs; succeed with sun half the day; prune part of the old wood out each spring; (3 ft.)

15 to 18 inches ----- \$0.35 each, \$3.00 per 10
18 to 24 inches ----- .45 each, 4.00 per 10
24 to 30 inches ----- .50 each, 4.50 per 10



What a Few Shrubs Will Do

These two pictures show better than words can tell, the value of attractive home surroundings and what a few trees and shrubs will do. No city is really beautiful until the homes which make up the city are made attractive.

Shrubs, continued

Spirea Billardi alba (white)

Small fuzzy white flowers in narrow, dense, upright finger-like clusters 5 to 8 in. long at the tips of the branches in early summer; upright habit; prefers moist situations; prune out some old wood in early spring; (3 to 5 ft.)

3 to 4 feet ----- \$0.30 each, \$2.50 per 10

Spirea Billardi Pink

A pink-flowered form of the above.

Mail size, postpaid ----- \$0.20 each, \$1.80 per 10
2 to 3 feet ----- .35 each, 3.00 per 10

Spirea Bumulda superba

A low spreading bush with flat-topped clusters of pink flowers in May and at intervals during summer; prune in early spring
15 to 18 inches ----- \$0.30 each, \$2.50 per 10

Spirea Callosa alba

Very similar to Anthony Waterer but white flowers and more dwarf; a fine little shrub that thrives in full sun or with sun half the day; excellent for foundation plantings and wherever a dwarf summer blooming shrub is desired.

18 to 24 inches ----- \$0.40 each, \$3.50 per 10
2 to 2½ feet ----- .45 each, 4.00 per 10

Spirea Froebeli; Froebel Spirea

Similar to Anthony Waterer but with broader, darker leaves,

and about 4 ft. tall; autumn foliage green overlaid bronzy-red.
18 to 24 inches ----- \$0.25 each, \$2.25 per 10
24 to 30 inches ----- .35 each, 3.00 per 10
30 to 36 inches ----- .50 each, 4.50 per 10

Spirea Golden; Golden Ninebark

Valuable for its changing foliage, golden yellow in early spring, bronze-yellow in early summer, green in latter summer, thus furnishing a variety of colors; white flowers in flat clusters, a little later than Van Houttei; spreading habit; plant in full sun; (5 to 7 ft.)

Mail size, postpaid ----- \$0.15 each, \$1.40 per 10
3 to 4 feet ----- .40 each, 3.50 per 10
4 to 5 feet ----- .50 each, 4.50 per 10

Spirea Korean; Spirea trichocarpa

A new Spirea with larger flowers than Van Houttei and blooms a little later. It grows 4 to 6 ft. tall forming a dome-shaped shrub; very hardy; prune after blooming.

18 to 24 inches ----- \$0.35 each, \$3.00 per 10
2 to 3 feet ----- .50 each, 4.50 per 10

Spirea Margarita

Flowers bright pink in broad, flat clusters produced freely in midsummer; branches spreading; prune in early spring; 3-5 ft.
18 to 24 inches ----- \$0.35 each, \$3.00 per 10

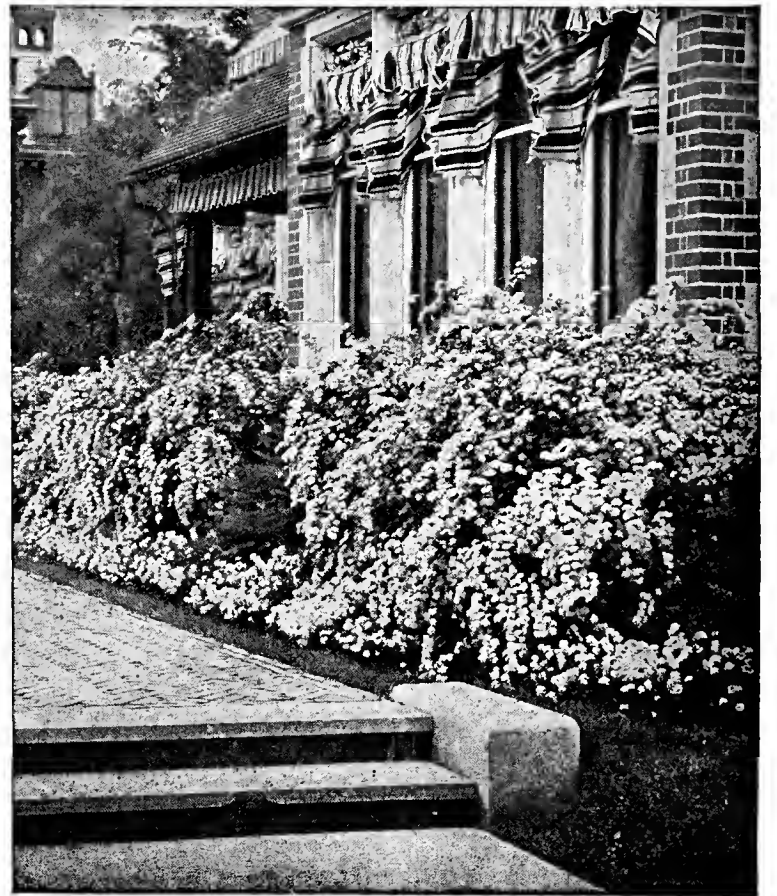
Spirea Reevesiana Double

Flowers pure white, similar in arrangement to those of Van Houttei but double, a little later, habit more upright though arching gracefully; about 4 ft. high; prune after blooming.

3 to 4 feet ----- \$0.40 each, \$3.50 per 10



A few Water Lilies would add to the attractiveness of this rock garden



Spirea Van Houttei, a fountain of white in May or June

Spirea Thunbergi; Thunberg's Spirea

Its graceful spreading and arching branches are covered with many small, pure white flowers in clusters before the leaves are developed; leaves very narrow, 1 to 1¼ in. long, light green, in autumn orange and scarlet. The light green, fine feathery foliage effect makes Thunbergi suitable for nearby plantings where shrubs of coarse texture would be out of place; prune after blooming; grows 3 to 5 ft. high.

Mail size, postpaid ----- \$0.20 each, \$1.80 per 10
24 to 30 inches ----- .35 each, 3.00 per 10
3 to 3½ feet ----- .45 each, 4.00 per 10

Spirea Van Houttei; Van Houttei's Bridal Wreath

A fountain of white in May, its arching branches covered with clusters of small flowers; the graceful drooping habit and neat, dense foliage make it attractive throughout the season; excellent for grouping, as a background for lower shrubs, a foreground for taller shrubs, a screen, or as a specimen plant; each spring after blooming prune some of the old canes to the ground; grows 6 to 7 ft. high.

Mail size, postpaid ----- \$0.15 each, \$1.25 per 10
18 to 24 inches ----- .15 each, 1.25 per 10; \$9.00 per 100
2 to 3 feet ----- .20 each, 1.60 per 10; 13.00 per 100
3 to 4 feet ----- .30 each, 2.50 per 10; 18.00 per 100
4 to 5 feet ----- .40 each, 3.50 per 10; 30.00 per 100

Sumac, Staghorn; Rhus typhina

Leaf stems 10 to 24 in. long with 11 to 31 leaflets; flowers greenish, fruit crimson, in clusters; valued chiefly for its gorgeous autumn colors, crimson, orange and scarlet.

3 to 4 feet ----- \$0.40 each, \$3.50 per 10

Syringa, see Lilac

Mock Orange is also sometimes called Syringa.

Tamarix; Tamarisk

Grown mainly for their delicate feathery foliage, in general effect somewhat resembling Asparagus; very small pink flowers; prune severely each year to maintain continuous supply of new wood; (8 to 15 ft.)

2 to 3 feet ----- \$0.35 each, \$3.00 per 10

Viburnum Carlesi; Korean Viburnum

This Korean shrub recently came into prominence; forms a round-topped bush, usually about 4 ft. tall, with small flowers in dense flattened clusters about 2 to 3 in. across in early spring; tinted orange-pink in the bud, opening rosy-white, the fragrance reminding one of Trailing Arbutus. Mail size, postpaid, 50c each.



Weigela

Shrubs, continued

Wayfaring Tree; Viburnum lantana

An upright tree-like shrub; small white flowers in clusters 2 to 3 in. across in latter spring; bright red berries changing to black.

2 to 3 feet ----- \$0.45 each, \$4.00 per 10

Weigela; Diervilla

Wide spreading bushes reaching a height of 6 to 8 ft. and covered with a profusion of trumpet shaped flowers about 1 1/4 inches long in latter May; best in groups or for filling in vacant corners where they can be given plenty of room; prefer full sun except Eva Rathke; prune after blooming.

Light-Pink; Rose; Crimson; Variegated Foliage. (leaves margined white, flowers light pink).

Prices of above Weigelas

Mail size, postpaid	\$0.15 each,	\$1.25 per 10
2 to 3 feet	.35 each,	3.00 per 10
3 to 4 feet	.50 each,	4.00 per 10
4 to 5 feet	.60 each,	5.00 per 10

Weigela Eva Rathke. Brilliant carmine-red; grows about 4 feet high; prune after blooming to make it bushier; will grow in partial shade.

Mail size, postpaid	\$0.20 each,	\$1.80 per 10
12 to 18 inches	.30 each,	2.50 per 10
18 to 24 inches	.40 each,	3.00 per 10
2 to 3 feet	.50 each,	4.00 per 10

Winterberry; Ilex verticillata

In the autumn, when the leaves have fallen, it surpasses everything of its season in the brilliancy of its thickly studded scarlet berries 1/4 inch in diameter that cling to the branches well into winter. 18 to 24 in. 50c each.

Privet for Hedging

50 or more of a variety at the 100 rate, lots of 250 or over 10% discount.

Plant 10 to 12 in. apart. Prune back to within 4 to 6 in. of the ground to make them branch low and thickly. The second spring if not sufficiently thick they may be again pruned back a little higher. After that prune to keep the hedge the height and width desired, usually about three times a year. Avoid any severe pruning after the middle of August.

Amoor River North Privet; Ligustrum amurense

A rapid growing variety of upright habit: much hardier than California.

2-yr., 12-18 in., well branched	\$0.80 per 10,	\$6.00 per 100
2-yr., 18-24 in., well branched	1.00 per 10,	8.00 per 100
2-yr., 2-3 ft., well branched	1.20 per 10,	10.00 per 100

Ibolium Privet; Ligustrum ibolium

A hybrid of Ibotia and Ovalifolium or California. Much hardier than California and valuable where that variety sometimes winter injures.

2-yr., 2-3 ft., well branched	\$1.20 per 10,	\$10.00 per 100
2-yr., 3-4 ft., well branched	1.50 per 10,	12.50 per 100

Regel Privet; Ligustrum Regelianum

More spreading in habit than any of the above; makes an excellent broad hedge. More fully described on pag 6.
24 to 30 inches, ----- 3.00 per 10, 25.00 per 100



Mock Orange
(Page 6)



Forsythia
(Page 5)



Bush Honeysuckle
(Page 5)

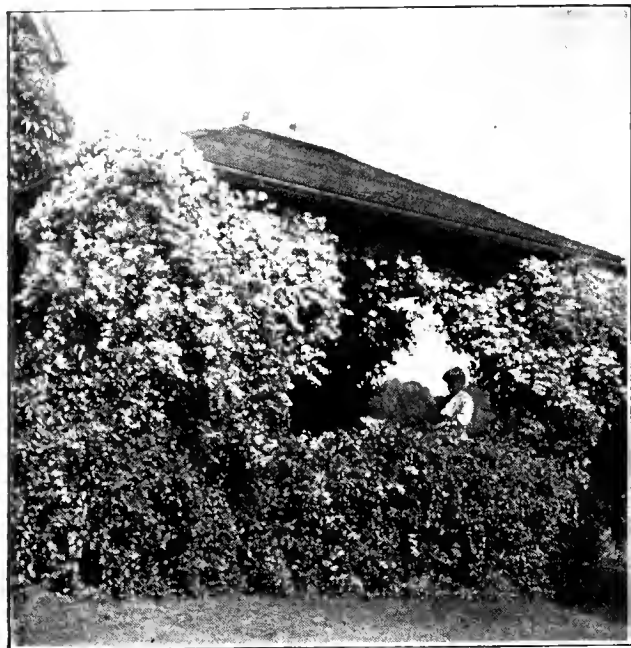


Coreopsis
(Page 22)



Butterfly Bush
(Page 4)

Hardy Vines, Nature's Drapery



The fragrance of Clematis paniculata resembles English Hawthorn

"Plant vines first of all, and plant them plentifully around new buildings. And plant them as soon as the builders are gone, quite independent of what other work may be intended and quite independent of the garden design. Whether the place is large or small, formal or informal, matters not at all so far as this detail is concerned. The vital thing is that every building must have vines upon it to impart that sense of oneness with the earth which is the first essential."—Landscape Gardening Book.

With a lavish hand nature throws a drapery of vines over the unsightly. We can well follow her example. Perhaps there are old, unsightly trees, yet to remove them would leave a gap not readily filled. Why not cover them with *Clematis paniculata*, Bittersweet or Honeysuckle. Fences may be made beautiful screens. The bare arch, pergola or summer house is neither useful nor attractive, but vine clad it brings a tone of dignity into the garden. It is then unnecessary to have it elaborate, often simple or rustic effects are best.

When planting cut the tops back severely, particularly clinging vines such as *Euonymus radicans* and Boston and English Ivy, as it is the new growth which clings. Twining vines must have a support they can twine around. If the soil near the foundation is poor, replace with good soil.

Parcel Post. Add 5c each, not less than 10c for each package, for Missouri and adjoining states, except mailsized plants.

Five or more of a kind at the 10 rate.

Bittersweet, Oriental; *Celastrus orbiculatus*

A high climbing vine; leaves 2 to 3 in. long, bright green, yellow in autumn; excellent for covering trellises, trees, rocks or low stone walls; thrives in almost any soil, in sun or partial



Boston or Japanese Ivy

shade; in autumn the orange-yellow capsules open, revealing the red coated seeds. 2 yr. 40c each; Mail size, postpaid, 25c each.

Boston Ivy; Japanese Ivy; *Ampelopsis Veitchi*

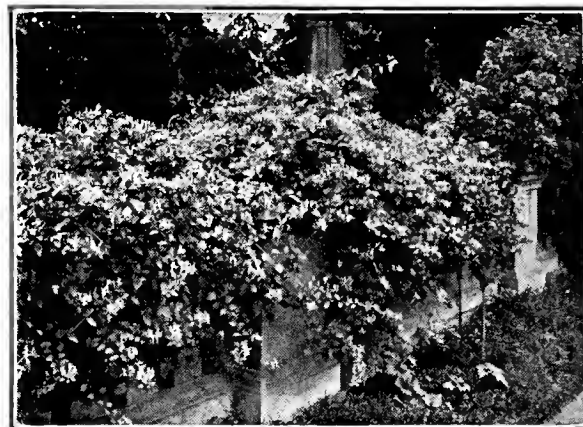
A graceful vine clinging closely to wood, brick or stone by means of disc bearing tendrils and covering the surface smoothly; leaves 3-lobed, bright green in early spring becoming dark green, in autumn red and orange; berries blue. 3 year, 50c each, \$4.50 per 10.

Clematis paniculata; Japanese Clematis

One of the most beautiful hardy vines with its thousands of deliciously fragrant pure white four-petaled starry flowers 1 to 1½ in. across, covering the upper part of the plant in latter August and September; growth rapid; quickly reaches a height of 15 to 20 ft.; excellent on porch, arbor or trellis and for covering rocks; clings by leaf-stem twining around the support; sun. or shade part of the day. 2 year, 30c each, \$2.50 per 10. Mail size, postpaid 25c each, \$2.00 per 10.

English Ivy; *Hedera helix*

A grand high climbing evergreen vine; wax-like dark green leaves of exquisite outline and beauty, 3- to 5-lobed; clings closely to brick, stone or wood by means of rootlets; growth rapid; best in the shade and for northern exposures; splendid ground cover in shade where grass will not grow, at the base of houses, and between foundation and path. 25c each, \$2.25 per 10; Mail size, postpaid 20c each.



Hall Japanese Honeysuckle, excellent for covering walls

Euonymus radicans; Wintercreeper

A very graceful clinging evergreen vine with small dark green, glossy wax-like foliage 1 to 1½ in. long; clings closely to brick, stone or wood. Mail size, postpaid, 20c each, \$1.80 per 10.

Euonymus radicans colorata

A graceful evergreen vine with small dark green, glossy, wax-like leaves, in autumn an attractive bronzy-red; may be used in partial shade and for covering steep banks. 2 yr. 30c each, \$2.50 per 10. Mail size, postpaid 25c each, \$2.00 per 10.

Euonymus radicans vegeta; Bigleaf Wintercreeper

A shrubby form with evergreen leaves 1½ to 2 in. long, excellent as a dwarf plant among or in front of evergreens, in the foreground of shrubbery, among rocks and as a foundation plant; if planted near a support will climb some; in autumn its red berries somewhat resemble those of the Bittersweet. 2 year, 35c each, \$3.00 per 10; Mail size, postpaid, 25c each, \$2.00 per 10.

Honeysuckle, Hall Japanese; *Lonicera Halliana*

Deliciously fragrant white flowers, becoming yellow, in summer and, though less profusely, at intervals till fall; a very strong growing twining vine, reaching a height of 15 ft.; excellent for the porch, as a ground cover, and for covering walls, stone fences, etc. 2 year No. 1, 35c each, \$3.00 per 10; Mail size, postpaid, 25c each, \$2.00 per 10.

Honeysuckle, Heckrotti or Everblooming

A constant blooming compact vine; flowers in clusters, deep rose outside, yellow inside; rare. 2 year, 45c each, \$3.50 per 10; Mail size, postpaid, 30c each, \$2.50 per 10.

Honeysuckle, Scarlet Trumpet; *Lonicera sempervirens*

A high climbing vine; bluish-green leaves; flowers trumpet shaped, scarlet outside, buff inside, 1½ to 2 in. long, in clusters at the ends of the branches, followed by red berries. 2 year, 25c each, \$2.00 per 10; 3 year, 30c each, \$2.50 per 10; Mail size, postpaid, 20c each, \$1.50 per 10.

Wisteria, American Purple; *Wisteria frutescens*

A tall, stout, rapid climber with numerous hanging clusters of lavender-purple pea-shaped flowers; among the best of vines for porch, arbor or trellis; grown from cuttings; prefer deep, rich soil: unless pruned when planted may be slow in starting. 2 year, 25c each, \$2.00 per 10; Mail size, postpaid, 15c each, \$1.25 per 10.

Wisteria, American White; *Wisteria frutescens alba*

A variety of the above with white flowers; grown from cuttings. 2 year old, 25c each, \$2.00 per 10; Mail size, postpaid, 15c each, \$1.25 per 10.

Wisteria, Chinese White; *Wisteria sinensis alba*

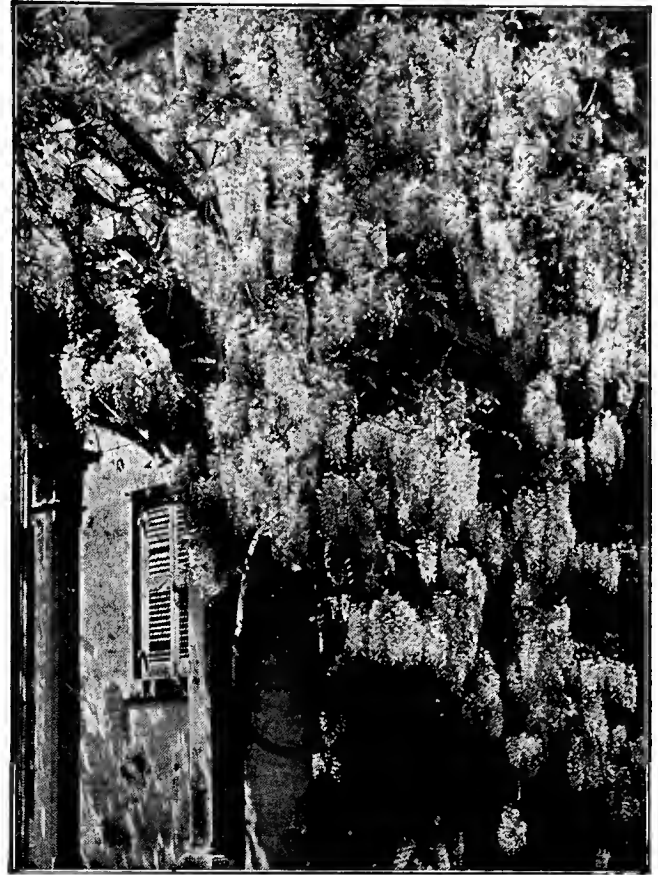
A white flowered form of the Chinese. 2 year, 50c each.

Wisteria, Chinese Blue; *Wisteria sinensis*

The clusters of violet-blue flowers are longer than those of the American and not so thick on the cluster. 2 year, 40c each.

Wisteria, Japanese; *Wisteria multijuga*

A vigorous, tall growing Wisteria with light purple pea-shaped flowers in long drooping clusters. 3 yr. 40c each, \$3.50 per 10.



Wisteria

THE FASCINATION OF ROCK GARDENING

An eight page booklet mailed free on request.

Shade Trees Beautify the Lawn

For the utmost in attractiveness there should be a broad open space of well kept lawn. It is the base against which all else is viewed. As a background for the house nothing will take the place of trees. If planted thickly or a quick growing tree alternated with a permanent tree, remove the alternate or temporary before they become crowded. If left till crowded it takes

several years for the remaining trees to again become shapely. Frame the house with trees near each end a little to the front, and groups may be used about the lawn as needed.

When planting, prune out weak limbs that are not desired and shorten some of the others. The central leader is not usually pruned unless to make the head more dense. As limbs form higher up gradually remove the lower limbs to the height desired. These trees are nursery grown.

Five or more of a kind at the 10 rate.

Albizzia Julibrissin; Mimosa Tree; Chinese Silk Tree

An unusual rapid growing tree from Asia; its spreading branches form a flat-topped crown; graceful small feathery foliage; showy pink Acacia-like flowers in clusters at the tips of the branches in summer, continuing for several weeks.

2 to 3 feet, not branched \$0.50 each; \$4.50 per 10
3 to 4 feet75 each; 6.00 per 10

Catalpa, Umbrella; *Catalpa Bungei*

A straight, upright stem, with a dense, round, umbrella-like head; large heartshaped leaves; seldom blooms so has no seed pods to litter the lawn.

5 to 6 feet, 2 year heads \$1.25 each, 2 for \$2.25

Crab, Bechtel; *Malus ioensis Bechteli*

A small tree, sometimes listed among the shrubs, with delightfully fragrant light pink double flowers, resembling small roses.

18 to 24 inches \$0.40 each, \$3.50 per 10
2 to 3 feet60 each, 5.00 per 10
3 to 4 feet75 each, 6.00 per 10

Dogwood, Red Flowering; *Cornus florida rubra*

One of the most unusual and attractive trees when in bloom in early spring, its flowers like those of White Flowering Dogwood but a decided pink, often called red; rare.

18 to 24 inches \$1.25 each, \$11.00 per 10
2 to 3 feet 2.00 each, 19.00 per 10
3 to 4 feet 3.00 each.

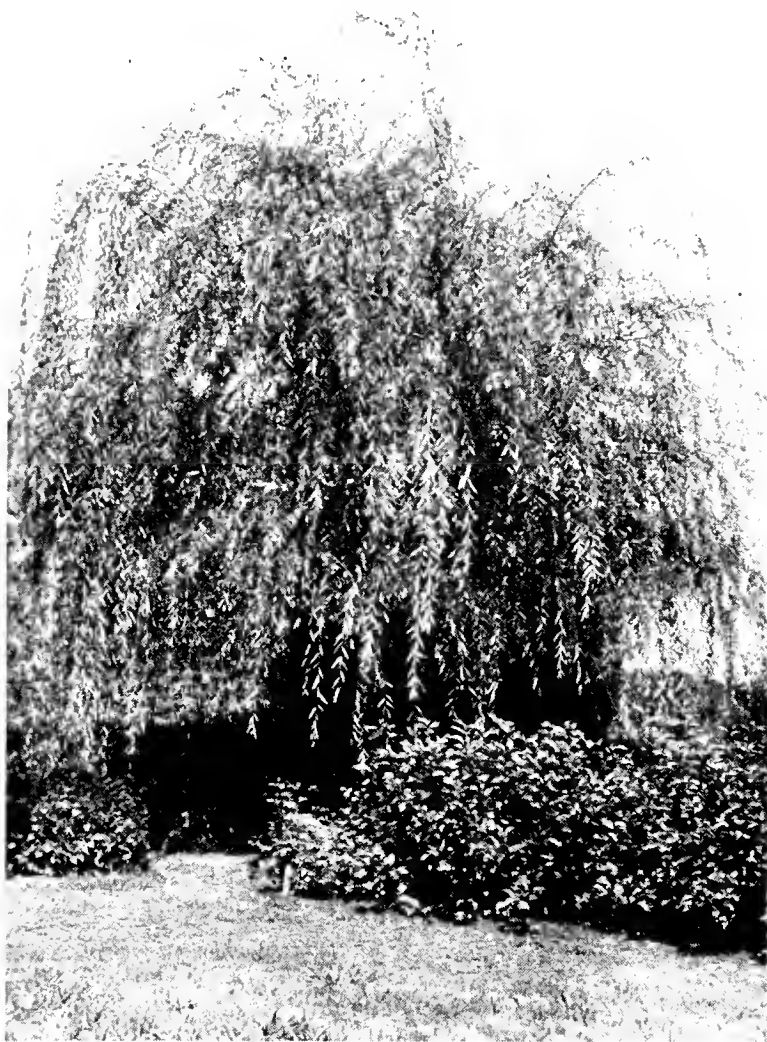
Dogwood, White Flowering; *Cornus florida*

In early spring before the leaves appear it is covered with showy 4-petaled flowers 3 to 4 in. across, white, the tips curiously blotched pink; scarlet berries; leaves bright green, in autumn scarlet to crimson; a large shrub or small tree usually attaining 10-15 ft.; succeeds in sun or partial shade. 2 to 3 ft., 75c each; 3 to 4 ft., \$1.50 each.



Lombardy Poplar, excellent as an accent tree and for screen plantings

Shade trees, Continued



Weeping Willow

Elm, American White; *Ulmus americana*

A large tree with long, graceful branches; leaves dark green, in autumn pale yellow; rapid growth; easily transplanted; the well known Elm of our American forests.

5 to 6 feet	\$0.50 each, \$4.00 per 10
6 to 8 feet70 each, 6.00 per 10
8 to 10 feet	1.00 each, 9.00 per 10

Elm, Chinese; *Ulmus pumila*

A comparatively recent introduction; a rapid grower with slender branches and leaves much smaller than those of the American Elm; especially adapted to arid regions.

Mail size, postpaid	\$0.20 each, \$1.80 per 10
3 to 4 feet30 each, 2.50 per 10
4 to 6 feet40 each, 3.00 per 10
6 to 8 feet80 each, 7.00 per 10
8 to 10 feet	1.50 each, 12.50 per 10
10 to 12 feet	2.50 each, 22.50 per 10

Elm, Moline; *Ulmus Molinei*

Of rapid growth and erect habit, producing an effect somewhat similar to Lombardy Poplar, though not so slenderly pyramidal; leaves dark green, in autumn clear yellow.

6 to 8 feet	\$1.00 each, \$8.00 per 10
8 to 10 feet	2.00 each, 17.50 per 10

Gum, Sweet; *Liquidamber styraciflua*

A picturesque, shapely tree of pyramidal habit; slender corky-ridged branches; leaves 5- to 7-lobed star shaped, bright shiny green, autumn color usually crimson. 6-7 ft., \$2.00 each.

Maple, Sugar, Rock or Hard; *Acer saccharum*

A beautiful tree; dense, symmetrical crown; leaves 3- to 5-lobed, deep green, in autumn beautiful shades of yellow, orange and scarlet; deep rooted, allowing grass to grow freely about the trunk.

6 to 8 feet	\$1.50 each, \$12.50 per 10
8 to 10 feet	2.50 each, 20.00 per 10

Mountain Ash; *Sorbus*

A handsome small ornamental tree with compound leaves; the leaflets resemble Ash; small bright red berries in fall. 6 to 8 ft. \$1.00 each.

Oak, Pin; *Quercus palustris*

One of the most beautiful and rapid growing Oaks; the limbs are spreading, decidedly horizontal, somewhat drooping with age; autumn foliage deep and brilliant scarlet; excellent for avenue and lawn.

5 to 6 feet	\$1.50 each, \$12.50 per 10
6 to 8 feet	2.00 each, 17.50 per 10

Plum, Cistina; *Prunus cistina*

Useful for its brilliant purplish-red foliage; more shrubby in habit than Newport Plum.

3 to 4 feet	\$0.50 each, \$4.50 per 10
-------------	-------	----------------------------

Plum, Newport; *Prunus Newport*

The highly colored purplish-red foliage, becoming greenish-red in latter summer, makes it a very striking large shrub or small tree; magenta-red fruit, of fair size and quality, in mid-summer; upright habit, attaining a height of 12 to 15 ft.

3 to 4 feet	\$0.50 each, \$4.50 per 10
-------------	-------	----------------------------

Poplar, Bolle's Silver; *Populus Bolleana*

Columnar habit, very similar to Lombardy but the leaves are dark, glossy green above, downy white beneath.

8 to 10 feet	\$1.00 each, \$9.00 per 10
10 to 12 feet	1.50 each, 12.50 per 10

Poplar, Lombardy; *Populus nigra italica*

A tall, slender, columnar, spire-like tree of picturesque and very formal aspect; leaves dark green, triangular, on flattened stems, moving freely in the breeze; very rapid growth; useful to screen objectionable views; landscape architects are using it freely as an accent tree.

Mail size, postpaid	\$0.15 each, \$1.20 per 10
3 to 4 feet20 each, 1.50 per 10
4 to 6 feet30 each, 2.50 per 10
6 to 8 feet50 each, 4.00 per 10
8 to 10 feet80 each, 7.00 per 10

Sycamore, Oriental; Oriental Plane; *Platanus orientalis*

More beautiful and symmetrical in growth than the American Sycamore, becoming a large and massive tree, usually with a wide round-topped head; bark whitened, leaves somewhat maple-like; an excellent city or street tree.

5 to 6 feet	\$0.60 each, \$5.00 per 10
6 to 8 feet	1.00 each, 9.00 per 10

Tulip Tree; *Liriodendron tulipifera*

A magnificent tree; very rapid growth; leaves large, 4-lobed, light bluish-green, in autumn pale yellow and orange; tulip-like flowers, greenish yellow blotched orange, in May.

6 to 8 feet	\$1.50 each, \$12.50 per 10
2 to 3 inches caliper	3.00 each, 25.00 per 10
3 to 4 inches caliper	4.00 each, 35.00 per 10

Willow, Babylon Weeping; *Salix babylonica*

A large, graceful tree with long, slender, drooping branches; leaves bright green, 2 to 6 in. long, narrow, tapering to a long point; excellent for the margin of pools or streams, but does not require such a position.

Mail size, (2 to 3 ft.) postpaid	\$0.25 each, \$2.00 per 10
4 to 6 feet35 each, 3.00 per 10
6 to 8 feet60 each, 5.00 per 10
8 to 10 feet	1.00 each, 8.00 per 10

Willow, Niobe Weeping

A graceful tree with slender, drooping, yellow-barked branches; leaves lustrous green; very hardy.

Mail size, (2 to 3 ft.) postpaid	\$0.25 each, \$2.00 per 10
6 to 8 feet75 each, 6.00 per 10
8 to 10 feet	1.00 each, 9.00 per 10

BOOK OF PERENNIALS, BY ALFRED C. HOTTES

Contents. The Perennial Garden; Planning the Perennial Border; Garden Operations, Insects and Diseases; Plants for Shady Places; Rock Gardens and Plants; Lists of Twenty-fives; Noteworthy Perennials; Hardy Ferns; Ornamental Grasses; Herbs. Postpaid, cloth bound \$1.65.

Hardy Water Lilies Bloom All Summer



Water Lilies all summer

To have hardy Water Lilies blooming from May till frost you need only a pool, 8 to 12 inches of good soil, a foot or more of water, and sun. Once established, they are the easiest flower grown—no cultivating, no weeding, no watering, except to see that the pool does not become dry. They need not be taken up during winter if the water is deep enough so it will not freeze to the soil. In some soils a concrete pool is not necessary. When needed, it costs little. Instructions for construction will be sent on request. When grown in boxes the boxes should be about 8 inches deep and 14 or 16 inches square.

These are good strong plants and will bloom a few weeks after planting. Water Lilies postpaid when ordered in quantities of \$2.00 or more. Otherwise, postage is additional.

Chromatella. Bright sulphur-yellow with broad curving petals; large; vigorous; blooms freely from early to late and remains open till well past noon sometimes all day in cool, cloudy weather. \$1.00 each.

Comanche. One of the best of the sunset colors; opens apricot shaded red, with age becoming coppery-orange, glowing red in the center, with prominent yellow stamens; remains open until well past noon. \$2.00 each.

Escarboucle. One of the brightest intense reds, with garnet stamens; of good size. \$3.00 each.

Gladstone. Of unusual size, with many snowy petals standing out in all directions; a vigorous, free bloomer. 75c each.

Gloriosa. Deep carmine-rose, becoming deep red with age; large; of good form; a free and continuous bloomer, remaining open till well past noon. \$2.50 each.

James Brydon. Large; bright carmine-red, a color that seems to glow in the sun; broad, massive petals; blooms freely; remains open till well past noon. \$2.50 each.

Masaniello. Light pink dotted carmine, giving a mottled effect; blooms freely. \$2.00 each.

Paul Hariot. Opens yellow, becoming orange-pink; a very free bloomer and good for small pools. \$1.00 each.

Peachblow. Delicate peach-blow pink, the color well retained; large, with plenty of petals; a good grower and free bloomer. \$1.00 each.

Pink Opal. Large; deep rich pink flowers, carried well above the water; blooms freely; good for small pools. \$1.00 each.

Richardsoni. Very large cup shaped flowers; good double flowers with large broad white petals. \$1.50 each.

Rose Arey. Deep rich pink; good size; blooms freely. \$1.50 each.

Sarcoxie. Deep pink; large, with plenty of petals; an early bloomer; vigorous; a good plant maker. \$2.50 each.

Sunrise. A very large glorious yellow; one of the first lilies to open in the morning; blooms freely. \$3.00 each.

Pink to Color, not named. 60c each.

White to Color, not named. 50c each.

Pink Lotus. Pink flowers 8 inches across, these and the leaves rising 1 to 3 feet above the water. \$1.00 each.

WATER LILY COLLECTIONS

Two pink and two white, unnamed, for \$2.00.

One pink and one white, unnamed, for \$1.00.

One pink, one white and one yellow for \$1.75.

WATER PLANTS

Cat Tail. Useful in the water garden, at the margin of pools or brooks for their tall spikes of plush-like seed pods. 25c each, 3 for 50c.

Giant Arrowhead. Large arrow-shaped leaves and 3-petaled white flowers in loose clusters. 25c each, 3 for 50c.

Parrot's Feather. The green feathery shoots trail over and extend above the water at the base of taller plants. 25c, 3 for 50c.

Water Weed; Elodea. A submerged plant useful for maintaining a supply of oxygen in the water. 25c each, 3 for 50c.

Hardy Evergreens

For producing an immediate, finished effect and an air of permanence and stability, nothing will take the place of Evergreens, beautiful winter and summer. No trees add greater dignity and distinction. Besides their value as specimens on the lawn, for screens and shelter from winter's winds, the taller growing varieties form ideal backgrounds for the showy flowering trees and shrubs of spring, the berries of autumn or the light green, silver and golden growth of some of the evergreens. Beautiful effects are secured by planting in masses varieties that contrast finely in color, form and foliage. For entrance and foundation plantings many of the lower growing varieties are ideal. Even some of those of medium height can be so used if removed to another part of the lawn before they become too large.

Our evergreens have been grown with plenty of room and are compact, well filled trees of their size and variety. They have been transplanted and root pruned, and are well rooted. They are liberally graded, and will be dug with a ball of earth wrapped in burlap, termed "balled and bur-lapped" or B. & B. They have not been grown rapidly and soft, but are firm and easily transplanted.

Evergreens are not difficult to plant

There is an impression that evergreens are difficult to transplant successfully. That is a mistake. Handled properly, you should not have any more loss than you do with shrubs, perhaps not as much. Planting balled evergreens is like planting potted plants.

Unpack as soon as received. Avoid exposing the roots to sun and wind, because the sap is resinous and if it hardens, will not revive. Dig a hole at least three inches wider all around than the ball of earth burlapped about the roots, and just a little deeper than the ball. Set the tree in the hole, burlap and all, and as the earth is filled in tamp it firmly around the ball, to

within a few inches of the top. Then untie the burlap and cut away what remains above the tamped soil. Water well, and finish filling the hole, but do not tamp after watering. Do not put any manure in the hole.

Pruning Evergreens

To keep certain open growing Evergreens, as Irish Juniper and Chinese Arborvitae (seedling type) compact, "shearing" is necessary. However, after a plant has left the nursery shearing is not the correct term as the individual branches or tips should be cut individually with a knife or clippers to keep the plant symmetrical, not sheared with grass shears as the term would indicate. Shearing with shears leaves some tips which do not leaf



Evergreens, foundation planting

Evergreens, Continued

out quickly and results in an unsightly appearance. This work may be done almost any time with no ill effect except in hot dry weather.

Five or more of a kind at the ten rate, less at the each rate

Mail Sizes, postpaid

Mail sizes are transplanted, sturdy little trees, not balled and burlapped as these sizes do not require it. Larger sizes cannot be sent by parcel post.

Arborvitae; Thuja

The Arborvitae is one of the most important groups of evergreens. The branchlets are flattened and clothed with small, usually scale-like leaves which look as if they have been pressed tightly together. There are two main groups. The American or occidentalis type has the branchlets in a more or less horizontal position. The Chinese or orientalis type has the branchlets in a vertical or upright position. The name Arborvitae indicates "tree of life," from the evergreen character.

Arborvitae, American; Thuja occidentalis

Bushy at the bottom and tapering to the top, forming a tree of upright, conical habit, in this section usually attaining a height of 15 to 18 ft.; foliage deep green, assuming bronze tints in winter; very hardy; fairly rapid growth; valuable for screen and group plantings; stands trimming well and can be made very dense if desired.

2 to 3 feet, B. & B.	\$1.25 each,	\$10.00 per 10
3 to 4 feet, B. & B.	1.75 each,	15.00 per 10
4 to 5 feet, B. & B.	2.25 each,	20.00 per 10
5 to 6 feet, B. & B.	3.00 each,	25.00 per 10

Arborvitae, Berckmans; Chinese Golden Dwarf; Thuja orientalis aurea nana

A perfect gem for large or small grounds; of superb shape, being somewhat ovate, and compact, dwarf habit, reaching a height of about 7 ft.; of slow growth; the new growth in spring and early summer is gold suffused with green, in winter green to bronze green; admired by all lovers of the formal in evergreens; valuable for lawn, landscape and cemetery use, and for growing in pots or tubs.

18 to 24 inches, B. & B.	\$2.00 each,	\$17.50 per 10
24 to 30 inches, B. & B.	2.50 each,	22.50 per 10
30 to 36 inches, B. & B.	3.00 each,	27.50 per 10

Arborvitae, Bonita; Thuja orientalis bonita

Sometimes called a globe, but is more properly broadly conical with rounded top; of slow growth and compact, dwarf habit, making a neat, attractive tree about 4 ft. high of rich green color. One of the best dwarf Arborvitaes.

18 to 24 inches, B. & B.	\$2.00 each,	\$17.50 per 10
--------------------------	-------	--------------	----------------



Evergreens add winter beauty to the planting



Globe Arborvitae is naturally globular in form

Arborvitae, Globe; Thuja occidentalis compacta

A low, compact form of the American type, reaching a height of 3 to 3½ ft., and naturally growing in a globular form; deep green foliage; very hardy; on account of its dwarf nature is useful for low borders, for foundation and formal plantings, and for pots or tubs.

Mail size (8 to 10 in.) postpaid	\$0.30 each,	\$2.50 per 10
8 to 12 inches, B. & B.75 each,	6.00 per 10
12 to 15 inches, B. & B.	1.00 each,	8.00 per 10
15 to 18 inches, B. & B.	1.25 each,	10.00 per 10
18 to 24 inches, B. & B.	1.50 each,	12.50 per 10
24 to 30 inches, B. & B.	2.50 each,	22.50 per 10
30 to 36 inches, B. & B.	3.50 each,	30.00 per 10
36 to 42 inches, B. & B.	4.00 each,	35.00 per 10

Arborvitae, Goldspire; Thuja orientalis aurea conspicua; Biota aurea conspicua

A beautiful Oriental Arborvitae and one of the best of the large growing golden evergreens; of compact, erect, conical, symmetrical habit; not as compact as Berckman's but if desired can be made compact by pruning; foliage intense gold, some branches of almost solid metallic tint, others suffused with green, most intense when the growth is new but well retained into winter; rapid growth, becoming 15 to 18 ft. high.

24 to 30 inches, B. & B.	\$2.00 each,	\$17.50 per 10
30 to 36 inches, B. & B.	\$2.50 each,	\$22.50 per 10

Arborvitae, Pyramidal; Thuja occidentalis pyramidalis

A compact and narrowly pyramidal tree, with short branches densely covered with deep rich green foliage; in form an almost perfect column, reaching a height of 18 to 20 ft. and usually not over 2 ft. in diameter at the base; fairly rapid growth; valuable for formal plantings, as an accent plant, for corners, in front pillars or in the center-background of group plantings. The shape is naturally pyramidal and is not artificially produced by shearing. Prune if necessary to keep from growing forked.

Mail size (10 to 15 in.) postpaid	\$0.40 each;	\$3.50 per 10
18 to 24 in., B. & B.	1.25 each;	10.00 per 10
2 to 2½ feet, B. & B.	1.50 each;	12.50 per 10
2½ to 3 feet, B. & B.	2.00 each;	17.50 per 10
3 to 3½ feet, B. & B.	2.75 each;	25.00 per 10
3½ to 4 feet, B. & B.	3.25 each;	30.00 per 10
4 to 5 feet, B. & B.	4.00 each;	35.00 per 10
5 to 6 feet, B. & B.	5.00 each;	45.00 per 10
6 to 7 feet, B. & B.	6.00 each;	55.00 per 10

Cedar, Blue or Silver; Juniperus virginiana glauca

One of the finest of the Red-Cedars. Broadly pyramidal habit; the young growth is silvery, changing to a beautiful bluish-green; growth rather rapid, with long, slender branches, producing a graceful effect; grows 15 to 20 feet high; may be kept lower and dense by pruning; of rather open habit until they attain size; one of the finest Junipers.

Mail size, postpaid	\$1.00 each;	\$8.00 per 10
2 to 3 feet, B. & B.	2.50 each;	22.50 per 10
3 to 4 feet, B. & B.	6.00 each;	50.00 per 10
4 to 5 feet, B. & B.	7.50 each;	70.00 per 10
5 to 6 feet, B. & B.	10.00 each;	90.00 per 10

Cedar, Cannart; Juniperus virginiana cannarti

This makes a broadly pyramidal medium sized tree, reaching 15 to 20 feet, with deep rich green, heavily tufted foliage; some trees bear blue or silver berries; if untrimmed the growth is more or less open but pleasing; by pruning may, if desired, be made dense and maintained at the height desired.

Mail size, postpaid	\$1.00 each;	\$8.00 per 10
3 to 4 feet, B. & B.	6.00 each;	50.00 per 10
4 to 5 feet, B. & B.	7.50 each;	70.00 per 10
5 to 6 feet, B. & B.	10.00 each;	90.00 per 10

Cedar, Goldtip; Juniperus virginiana elegantissima

In the spring the slightly drooping new growth is a rich creamy-golden color at the tips, gradually darkening to bronze and green as the season advances; of rather irregular, spreading habit when small, but has a tendency to gradually take on a broadly pyramidal habit; attains a height of 10 to 15 ft. unless kept lower by pruning.

Mail size, postpaid	\$1.00 each;	\$8.00 per 10
3 to 4 feet, B. & B.	7.50 each;	70.00 per 10

Cedar, Red; Juniperus virginiana

The well known native Red Cedar; foliage small, sharp pointed, usually dark green; berries blue, ripening in the fall; fairly rapid growth. These are sheared columnar.

3 to 4 feet, B. & B.	2.50 each;	20.00 per 10
4 to 5 feet, B. & B.	3.50 each;	30.00 per 10
5 to 6 feet, B. & B.	4.00 each;	35.00 per 10
6 to 7 feet, B. & B.	5.00 each;	45.00 per 10

Cypress, Plume, see Retinospora

Holly, American; Ilex opaca

A very handsome evergreen tree with spiny leaves along which are borne clusters of bright red berries in autumn. A few boughs from your own tree will make Christmas more cheery. 3-4 ft. B. & B., \$5.00 each; 4-5 ft., B. & B., \$10.00 each.

Juniper; Juniperus

The Junipers vary greatly in size and shape from large trees to low creeping shrubs, and in color. The leaves are two kinds, one sharp pointed and awl-shaped, the other scale-like and overlapping. Some varieties have only one kind of foliage, others both. The Red Cedar and its varieties belong to the Juniper family but are more often called for as Cedar, which see.

Juniper, Andorra; Juniperus communis depressa plumosa

One of the best dwarf, spreading Junipers, seldom raising its branches over 12 inches off the ground; in spring and summer a rich bright green, in autumn rich reddish-purple; excellent in the rockery and to the foreground of taller evergreens.

Mail size (8 to 10 in.) postpaid	\$0.50 each;	\$4.00 per 10
12 to 15 inches, B. & B.	1.50 each;	12.00 per 10
15 to 18 inches, B. & B.	1.75 each;	15.00 per 10
18 to 24 inches, B. & B.	2.50 each;	22.50 per 10

Juniper, Canadian; Juniperus canadensis

Of spreading, somewhat vase-shape form, growing about 3 ft. high; prickly needles, grayish-green, somewhat silvery beneath; suitable for sunny situations; grows rapidly, may be kept small by trimming.

18 to 24 inches, B. & B.	\$2.50 each,	\$22.50 per 10
2 to 3 feet, B. & B.	3.00 each,	25.00 per 10



Trailing Juniper in Sarcoxie Nurseries rock garden



Pfitzer Juniper thrives in almost every location

Juniper, Irish; Juniperus communis hibernica

Its finely-cut bluish-green foliage is attractive and its form in pleasing contrast with the globe and bush evergreens; a dense slender, columnar tree with numerous upright branches closely surrounding the body; becomes about 8 ft. high and can be kept to a diameter of 18 to 24 in. by pruning.

Mail size (8 to 10 in.) postpaid	\$0.25 each;	\$2.25 per 10
18 to 24 inches, B. & B.	1.50 each;	12.50 per 10
2 to 2½ feet, B. & B.	2.00 each;	15.00 per 10
2½ to 3 feet, B. & B.	2.50 each;	20.00 per 10
3 to 4 feet, B. & B.	3.00 each;	25.00 per 10
4 to 5 feet, B. & B.	4.00 each;	35.00 per 10

Juniper, Pfitzer's; Juniperus chinensis Pfitzeriana

If allowed to grow naturally it assumes an attractive, low, broad, irregular form, the branches spreading horizontally and the tips drooping; by staking up one of the leaders it may be trained to somewhat pyramidal form and about 8 to 10 ft. high; foliage light olive gray; fine; thrives in almost every location; succeeds in partial shade.

Mail size (10 to 12 in.) postpaid	\$0.30 each;	\$2.50 per 10
15 to 18 inches, B. & B.	1.50 each;	12.50 per 10
18 to 24 inches, B. & B.	2.50 each;	20.00 per 10
24 to 30 inches, B. & B.	3.00 each;	25.00 per 10
30 to 36 inches, B. & B.	4.00 each;	35.00 per 10

Juniper, Reeves; Juniperus chinensis mascula

Of upright habit, irregularly conical, forming a well-filled base with a rather slender central leader as the growth advances, the slender branches drooping slightly at the tips; dense, soft, light green foliage with silvery shadings, the color well retained in winter. One of the very best Junipers.

4 to 5 feet, B. & B.	\$4.50 each;	42.50 per 10
----------------------	--------------	--------------

Juniper, Savin; Juniperus Sabina

Thickly branched, low and spreading with very dense, dark green foliage; a favorite where a tree out of the ordinary is desired; useful in the rockery, for foundation planting, and as a border for larger evergreens; the young plants are inclined to be taller than the older ones, as the weight of the longer branches pulls them down; plant in a sunny location.

Mail size (10 to 15 in.) postpaid	\$0.40 each;	\$3.50 per 10
15 to 18 inches, B. & B.	1.25 each;	10.00 per 10
18 to 24 inches, B. & B.	1.75 each;	15.00 per 10
24 to 30 inches, B. & B.	2.50 each;	22.50 per 10
30 to 36 inches, B. & B.	3.00 each;	27.50 per 10

Juniper, Spiny Greek; Juniperus excelsa stricta

Forms a dense, narrow, conical head, tapering gradually from the ground to a sharp point; spiny, grayish-green, glaucous foliage; grows slowly, so may be used in plantings where a small tree is desired, and changed to another location when it finally becomes too large.

18 to 24 inches, B. & B.	2.50 each;	22.50 per 10
--------------------------	------------	--------------

Evergreens, Continued

Juniper, Sturgeon Bay

A low, trailing Juniper, attaining a height of about 6 to 8 inches; foliage light green, the winter color gray-green; excellent as an evergreen ground cover.

Mail size, postpaid-----\$0.40 each; \$3.50 per 10
18 to 24 inches, B. & B.----- 1.75 each; 15.00 per 10
2 to 3 feet, B. & B.----- 2.50 each; 20.00 per 10

Juniper, Waukegan; *Juniperus horizontalis* Douglasi

An interesting low, compact, trailing Juniper, becoming about 6 to 8 inches high; foliage soft bluish-green, in autumn rich purple; excellent in the rock garden.

Mail size (8 to 10 in.) postpaid-----\$0.40 each; \$3.50 per 10

Magnolia grandiflora

The well known Southern Magnolia; leathery, dark green shining leaves and fragrant white flowers 6 to 8 in. across in summer. 18-24 in., B. & B., \$1.50 each; 2-3 ft., B. & B., \$2.00 each; 3-4 ft., B. & B., \$2.75 each.

Mahonia Aquifolium; Oregon Hollygrape

An unusual broad-leaved evergreen; leaves 1½ to 3 in. long, as shiny as if stamped out of polished metal, and spiny-toothed, reminding one of Holly but with 5 to 9 leaflets on a stem; young leaves bronzy, becoming a beautiful green, in autumn purplish, bronze and red; yellow flowers in spring, followed by clusters of blue-black berries; excellent in semi-shade, for foundation planting or in the rockery where a plant 2 to 4 ft. high can be used. 15 to 18 in., B. & B., \$1.25 each; 4 to 5 ft., B. & B., \$5.00 each.

Pine, Austrian; *Pinus nigra*

The stout branches form a symmetrical crown, well furnished with dark rich green needles 4 to 5 in. long, in pairs; of vigorous growth, becoming a large tree so should have ample room.

18 to 24 inches, B. & B.-----\$1.50 each, \$12.50 per 10
2 to 3 feet, B. & B.----- 2.50 each, 22.50 per 10

Pine, Mugho; *Pinus montana mughus*

A many-stemmed, low-branched, dense, dwarf tree never growing over 4 to 5 ft. high; thickly covered with heavy dark green needles in pairs; by pruning may be kept lower; fairly tolerant of shade; a good foundation evergreen and may be used in rockeries and in front of taller trees.

12 to 15 inches, B. & B.----- 1.50 each; 12.50 per 10
15 to 18 inches, B. & B.----- 2.00 each; 17.50 per 10
18 to 24 inches, B. & B.----- 3.00 each; 27.50 per 10
24 to 30 inches, B. & B.----- 4.00 each; 37.50 per 10
30 to 36 inches, B. & B.----- 5.00 each; 45.00 per 10

Pine, White *Pinus strobus*

A tall, stately tree with regular whorls of horizontal branches forming a symmetrical crown; soft bluish-green leaves 2 to 4 in. long, in 5's; cones 3 to 5 in. long; of very rapid growth; retains its color well in winter.

18 to 24 inches, B. & B.-----\$1.50 each, \$12.50 per 10
2 to 3 feet, B. & B.----- 2.50 each, 22.50 per 10

Red Cedar, see Cedar, Red

Retinospora plumosa; Plume Cypress

Foliage grayish-green, silvery beneath, very finely cut and has a feathery or plume-like appearance at certain stages of its growth; naturally pyramidal to conical in habit, reaching a height of about 12 to 15 feet.

Mail size (8 to 10 in.) postpaid-----\$0.25 each; \$2.00 per 10
2 to 3 feet, conical, B. & B.----- 1.50 each; 12.50 per 10
3 to 4 feet, conical, B. & B.----- 2.00 each; 17.50 per 10
4 to 5 feet, conical, B. & B.----- 3.00 each; 27.50 per 10

Retinospora plumosa aurea; Golden Plume Cypress

A variety of the above, the new growth tipped golden.

Mail size (8 to 10 in.) postpaid-----\$0.25 each; \$2.00 per 10
18 to 24 inches, conical, B. & B.----- 1.00 each; 8.00 per 10
2 to 3 feet, conical, B. & B.----- 1.50 each; 12.50 per 10
3 to 4 feet, conical, B. & B.----- 2.00 each; 17.50 per 10
4 to 5 feet, conical, B. & B.----- 3.00 each; 27.50 per 10

Courtesy Better Homes
and Gardens



Trailing Junipers on steep bank

Retinospora squarrosa Veitchi

A dense growth with small, soft, feathery, very dense foliage of a light silvery blue-green in billowy masses; broadly pyramidal or conical, reaching a height of 15 to 18 feet; shows its color to advantage against a background of dark green.

Mail size (5 to 8 in.) postpaid-----\$0.30 each; \$2.50 per 10
2 to 3 feet, B. & B.----- 2.00 each; 17.50 per 10
3 to 4 feet B. & B.----- 2.50 each; 22.50 per 10

Spruce, Black Hills; *Picea canadensis albertiana*

Conical in outline, compact and bushy in habit; leaves needle-like, dark green; in Missouri it reaches a height of about 20 feet; very hardy.

18 to 24 inches, B. & B.-----\$2.25 each; \$20.00 per 10
24 to 30 inches, B. & B.----- 3.25 each; 30.00 per 10

Spruce, Norway; *Picea excelsa*

A handsome, picturesque tree with spreading branches, usually drooping with age; leaves needle-like, dark green ½ to ¾ in. long; cones cylinder-like, 4 to 7 in. long; where native it is a tall tree of rapid growth; here it is not rapid and seldom grows over 30 to 35 ft. high.

18 to 24 inches, B. & B.-----\$1.50 each; \$13.50 per 10
24 to 30 inches, B. & B.----- 2.25 each; 20.00 per 10
30 to 36 inches, B. & B.----- 2.75 each; 25.00 per 10
3 to 4 feet, B. & B.----- 3.50 each; 32.50 per 10

Spruce, White; *Picea canadensis*

Of compact, upright habit with ascending branches and usually pendent branchlets; needles slightly curved, bluish-green 1-3 to 3-4 in. long, strongly aromatic when bruised; cones light brown, 1½ to 2 in. long.

15 to 18 inches, B. & B.-----\$2.00 each; \$17.50 per 10
18 to 24 inches, B. & B.----- 2.50 each; 22.50 per 10
24 to 30 inches, B. & B.----- 3.25 each; 30.00 per 10

THE FASCINATION OF ROCK GARDENING

Your garden may be charming and beautiful from the time the first flowers of spring appear until the frosts of autumn. It may consist of a few square feet and represent only a few dollars and a little work. Or it may be large and give you an opportunity to exercise all your skill in design and indulge your fancy for variety, color and form. Size is of importance only as it affects the treatment, the kind and number of plants that may be used. It is surprising how charming a picture may be produced the first season. Rock gardening is not as complicated as it sounds.

We have issued a little booklet of instructions entitled "The Fascination of Rock Gardening." If you haven't a copy write for it.

The Rose, Queen of Flowers

Success with roses is not difficult if you *plant firmly* and *prune severely*. Anyone who has a bit of ground that will grow good garden crops, with sun half the day or more, can grow good roses. Brief planting and pruning suggestions will be sent with each order. Or ask for our little booklet, *The Rose, Queen of Flowers*. It tells how easy it is to grow roses in your garden, how to plant, prune and fertilize. It gives the characteristics of the different classes and describes the varieties. It contains a lot of information in a little space.

Budded and Own-root Roses

If budded roses had no advantage, there would be no difference of opinion. We prefer budded plants of most ever-bloomers and some of the hybrid perpetuals and climbers. They give more, better and larger flowers, and that's what we grow roses for. The only disadvantage, which we think is more than offset by their greater vigor and freedom of bloom, is that budded roses occasionally sprout from the roots. Such sprouts, which should be removed, have a different appearance with usually 7 to 9 leaflets to the stem, while most hybrid perpetuals and ever-blooming roses (except some yellow varieties) have 3 to 5, usually 5. When planted with the bud or joint just below the surface, roses as now budded seldom sprout.



Kaiserin Auguste Viktoria, one of the most perfect in form

Everblooming or Monthly Roses Bloom the First Year

These strong two year plants will give you beautiful flowers a few weeks after planting, and all summer till fall, flowers of superb form, beautiful colors and delightful fragrance. Plant 15 to 18 in. apart. T. indicates Tea, H. T., Hybrid Tea, Per., Pernetiana, Pol., Polyantha.

No. 1 2-year field grown budded plants, the best grade, postpaid in Missouri and adjoining states if your rose order amounts to \$2.00 or more. One Rose, our selection, free with an order for 12 or more.

Please notice we tell you the grade. Two year roses are graded No. 1, 1½, 2 and 3. No. 1 is the best.

Betty Uprichard

A charming two-toned rose, the outside of the petals coppery-pink, the inner surface rosy-salmon; of attractive form; vigorous; blooms freely; H. T. 50c each.

Briarcliff

Large, pointed buds; double, high-centered blooms; brilliant rose-pink; blooms freely on long, stiff stems; fragrant; the flowers keep well; vigorous; a sport of Columbia; foliage resistant to disease; H. T. 50c each.

Columbia

Large, handsome, rich rose-pink buds opening slowly into somewhat flat blooms, full to the center; very fragrant; of good substance and keeps well; good stems; vigorous; especially good as the weather becomes cooler; H. T. 50c each.



Gruss an Teplitz

Etoile de Hollande

Long pointed buds, opening into blooms of good size, brilliant rich crimson-scarlet with a velvety sheen; spicy perfume and fine color, approaching maroon; vigorous. H. T. 70c each.

Feu Joseph Looymans

Long pointed buds, orange-buff, and large flowers, vivid yellow and bright apricot; fragrant. H. T. 70c each.

F. J. Grootendorst

A Rugosa-Baby Rambler hybrid combining the Rugosa foliage, hardiness and vigor with the everblooming habit and flower clusters of the Baby Rambler; bright fiery red, the ends of the petals fringed; grows 3 to 6 ft. high; prune heavily in spring and as the flowers fade to maintain constant bloom and height desired; excellent as a shrub or hedge. 50c each.

Francis Scott Key

Large, globular, light crimson buds opening into rounded, very double flowers of good form; mild fragrance; upright habit; blooms freely with good foliage; H. T. 50c each.

Golden Emblem

Golden-yellow, sometimes striped crimson on the outer petals; buds and blooms of superb shape; vigorous, blooms freely on erect, branching plants; Per. 50c each.

Everblooming Roses continued next page

Dame Edith Helen

Shapely buds; perfectly formed, very double blooms, the petals attractively recurved; brilliant clear pink; very fragrant; an excellent exhibition variety; H. Per. 50c each.

Duchess of Wellington

Long tapering buds, golden orange marked and tinted carmine, opening coppery-yellow; especially beautiful in the bud; tea fragrance; vigorous; blooms very freely. H. T. 50c each.

E. G. Hill

Beautiful buds and immense, very double fragrant flowers of excellent form that last well; dark velvety, dazzling scarlet-crimson, shading to deeper red; one of the best of the newer red roses. H. T. 70c each.

Etoile de France

Clear velvety red-crimson, very brilliant in the sun; shapely, globular buds opening into flowers of good size with plenty of petals; decidedly fragrant; blooms freely, giving better results in warm weather than most red roses; H. T. 50c each.



Briarcliff

Everblooming or Monthly Roses, Continued

Gruss an Teplitz

Rich, brilliant fiery crimson with velvety shadings; fragrant, semi-double flowers in clusters, nodding in the breeze on slender stems. It has hardly the size or shape for a cut flower rose, but blooms so freely it is a blaze of color all summer and is one of the best for decorative effect. Vigorous, becoming 4 to 5 ft. high; plant in the background of other roses or use as a shrub; China or Bengal. 50c each.

Hadley

Large; rich crimson-red with velvety shadings; lovely form, fine color, good foliage and rich fragrance. H. T. 50c each.

Ideal

All summer long its dark scarlet blooms like ramblers are produced freely in large clusters on dwarf plants; excellent as a low growing shrub to give constant bloom in the shrubbery border, and as a hedge; very showy in large masses or beds as one would use geraniums; Pol. 50c each.

Kaiserin Auguste Viktoria

Large creamy-white buds opening slowly into very double white flowers with just a tinge of lemon at the base of the petals; delightfully fragrant; one of the most perfect in form, both in bud and full blown; of good substance and keeping qualities; good foliage; H. T. 50c each.

Lady Hillingdon

Pretty, slender, pointed buds opening into cupped flowers of good size; apricot yellow becoming lighter as they age; delightfully fragrant; deep green, disease resisting foliage; few thorns; a constant bloomer, greatly admired; T. 50c each.

Los Angeles

Lovely long, pointed buds opening into large flowers, a luminous flame-pink toned coral, the base of the petals washed with gold; fragrant; good stems; upright habit; it requires good care in some sections but is so beautiful and blooms so freely it is worth planting for one season's flowers; Per 50c each.



Everblooming Roses bloom the first summer



Radiance is very vigorous and blooms freely

Madame Edouard Herriot; Daily Mail Rose

Long, pointed buds; the nearly open flowers are distinct coral-red becoming orange-pink, finally lighter before they shatter; fairly large; semi-double but an unusual, popular color that always attracts attention; moderate height; blooms freely and very early; Per. 50c each.

Margaret McGredy

Large ovoid buds and double flowers, brilliant light scarlet tinged orange-vermillion. Mr. Hatton of the American Rose Society says: "An outstanding variety, good in every respect, beautiful color, vigorous growth, healthy foliage, delicious fragrance, and unusually free for a rose of its size"; Per. 50c each.

Mrs. Chas. Bell

A lovely shell-pink form of Radiance; buds and blooms of fine globular form with shadings of soft salmon; fragrant; plant strong and bushy; blooms freely. H. T. 50c each.

Ophelia

Salmon-flesh shaded rose developing into blush-white to creamy-white; particularly beautiful in the half open bud; fragrant; blooms freely; good stems; H. T. 50c each.

Orleans

Small, fairly double, brilliant light red flowers with a whitish center are produced freely all summer long in big compact clusters like Ramblers, on low-growing plants seldom exceeding 15 to 18 inches high; Pol. 50c each.

President Herbert Hoover

Long pointed buds; large flowers with broad, thick, heavy petals. The inner surface of the outer petals is dark pink and red, the outer surface orange streaked with red; the inner surface of the next petals is shaded salmon and apricot, the outer shaded cerise-pink, flame and scarlet over orange and yellow; tea fragrance; vigorous, upright, blooms freely; Per. 70c each.

Pink Radiance; Radiance

Large, brilliant rose-pink buds opening into globular but not too compact flowers. The inner surface of the petals light pink, the outer almost carmine-pink, producing an excellent two-tone effect; fragrant; blooms profusely; good stems; foliage very free from black spot; vigorous, upright habit, reaching 3 to 4 ft.; plant 24-30 in. apart; H. T. 50c each.

Red Radiance

A sport of Radiance and like it in form, fragrance, habit, vigor, and resistance to disease, but the color is a bright cerise-red. Should be in all collections; H. T. 50c each.

Reverend F. Page-Roberts

Long, copper-red buds; large flowers, the inside of the petals golden-yellow, the outside red and carmine; good size, shape, color and fragrance; H. T. 50c each.

Everblooming or Monthly Roses, Continued



Los Angeles

Talisman

A marvelous color effect seen in no other rose. Brilliant red and gold buds opening into cupped flowers; the inner surface of the petals is scarlet-orange, coral-pink and old rose, often coppery, with yellow at the base; the outer surface yellow and old gold; fragrant; plant tall, vigorous, upright, and blooms freely; Per. 70c each.

Hardy Bush Roses

Early in the season the Hybrid Perpetuals give a grand display, unsurpassed by any of the everbloomers, and some bloom intermittently in the summer or again in the fall. They are hardy, easily grown, and the roses to plant where protection cannot be given. H. P. indicates Hybrid Perpetual.

No. 1 2-year field grown plants, postpaid in Missouri and adjoining states if your rose order amounts to \$2.00 or more. One Rose, our selection, free with an order for 12 or more.

Frau Karl Druschki; White American Beauty

Long, pointed buds and magnificent, pure paper-white semi-double flowers often four inches across with large, firm, waxy petals; very strong and vigorous; 4 to 6, occasionally 8 feet high; prune heavily to keep it within bounds and it will bloom in the spring and intermittently during summer and fall; one of the best hardy white roses; H. P. 50c each.

Hugonis; Rosa Hugonis

Before other roses hardly realize spring is here the reddish-tipped branches are thickly covered with small, dainty leaves, a background for the very early, single flowers, 2 to 2½ inches across, making a gorgeous bush of soft yellow; vigorous, upright, spreading habit, attaining 5 to 7 ft.; hardy; prune after blooming; useful in shrubby plantings, as specimen plants or in groups. 50c each.

Paul Neyron

Perhaps the largest of roses and for over 60 years one of the most popular hardy varieties. Deep, shining rose, clear and bright; full double; blooms freely in the spring and usually again in the fall; vigorous; of moderate height, reaching about 3 feet; very few thorns; H. P. 50c each.

Rugosa red; Rosa rugosa rubra

One of the most ornamental shrub roses; large, single, purplish-red flowers 2½ to 3½ inches across; conspicuous, bright red seed pods, sometimes an inch in diameter, remaining well into fall. Very hardy; grows 4 to 6 feet high; shining, deep green, wrinkled foliage; succeeds in sun or partial shade; seldom troubled by leaf-eating insects or diseases. Desirable for mass plantings about the home, in the foreground of higher shrubs or as a background for low shrubs and makes a good flowering hedge. 40c each.

THE ROSE, QUEEN OF FLOWERS

An eight page booklet mailed free on request.

Sensation

Large; dark crimson shaded black; long pointed buds; fragrant; blooms freely; vigorous; H. T. 50c each.

Souvenir de Claudius Pernet

Beautiful buds opening into a striking sunflower-yellow without orange shadings, the edges of the recurving outer petals somewhat lighter; fragrant; foliage glossy, deep green; blooms freely, early to late; best in sunny weather; Per. 50c each.

Souvenir de Georges Pernet

Oriental-red buds opening into gigantic, well formed, good double flowers, brilliant orange-pink to cochineal-old-rose; deliciously fragrant; stocky, spreading growth and blooms very freely; Per. 50c each.

Sunburst

Orange-copper or golden-orange, the edges of the petals lighter; cup shaped flowers; delightful tea rose fragrance; reddish-bronze, disease resistant foliage; H. T. 50c each.



Souv. de Claudius Pernet

Willowmere

Excellent buds and blooms; rich pink overcast with a yellow glow; a strong grower and persistent bloomer; some growers prefer it to Los Angeles; both are beautiful; Per. 50c each.

THE FASCINATION OF ROCK GARDENING

An eight page booklet, describing the different types of rock gardens, with suggestions for construction and planting. It contains a lot of information in a little space. Write for it if you haven't a copy.



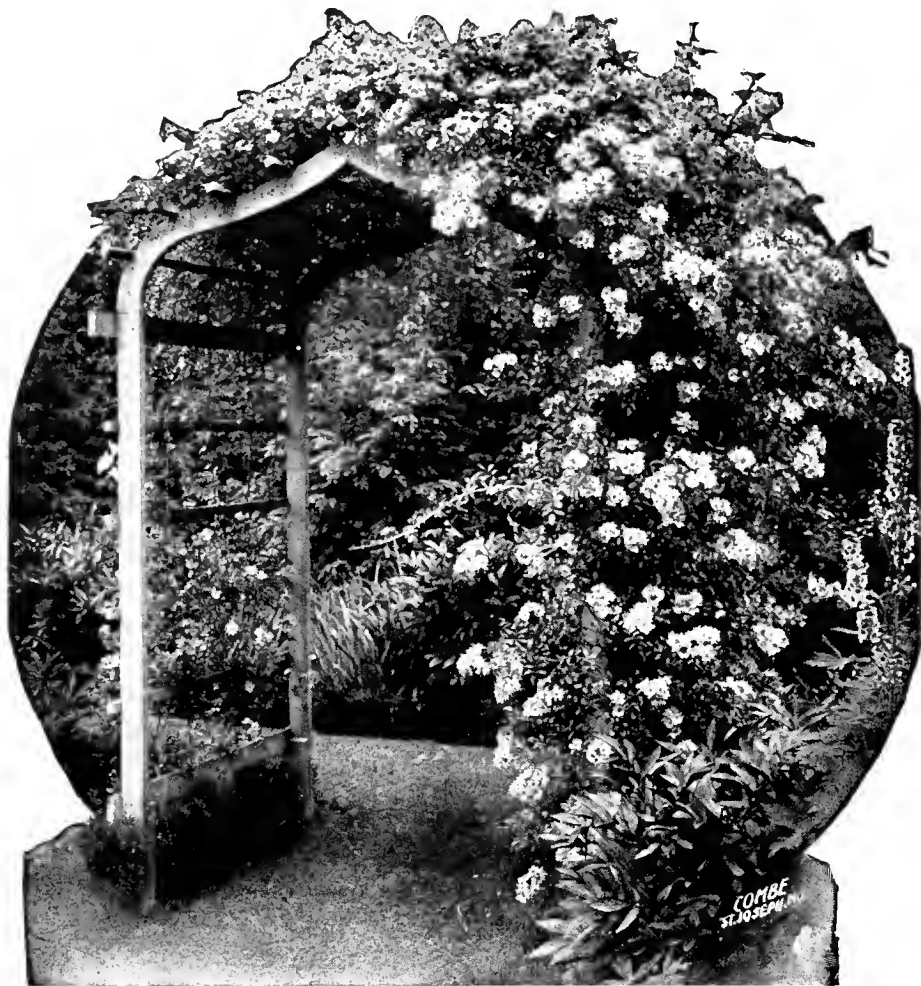
Climbing American Beauty, used as a pillar rose

For Climbing and Rambler Roses see next page

Complete Landscape Service

We have a competent landscape architect and are prepared to render a complete service, from the drawing of the plans to furnishing and planting the trees and plants. If interested in this service write us for particulars, giving the size of your property.

Hardy Climbers and Rambler Roses



For an arched entrance what can be more appropriate?

During their season these give more flowers and a greater display than any other roses grown. Is the porch sunny and bare? Climbing roses provide both shade and beauty. Is there an arbor you wish to beautify? Use roses. Have you an unsightly fence? Ramblers make the prettiest fence imaginable. Have you a view you wish to screen? A trellis with roses will make your screen a thing of beauty. Is there a rough or stony slope you wish to beautify? Cover it with ramblers. Do you want an arched entrance to the rose garden? What can be more appropriate?

In recent years this class of roses has been wonderfully improved. The large-flowered class, now termed Climbers, have been added to the old, familiar type with clusters of small flowers, termed Ramblers, of which the Perkins are examples. Pillar Roses are those suitable for training on pillars 5 to 8 feet high. Some climbers are also suitable for pillar use. Many of the newer climbers have blooms approaching the Hybrid Teas in appearance and stems of sufficient length to be suitable for cut flowers.

By selecting early, midseason and late you can have four to five weeks of flowers. The early varieties usually begin blooming here about May 20 to 25. H. W. indicates Hybrid Wichuriana; H. M., Hybrid multiflora.

No. 1 2-year field grown plants, postpaid in Missouri and adjoining states if your rose order amounts to \$2.00 or more. One Rose, our selection, free with an order for 12 or more.

Blaze

A new patented rose we have not yet bloomed. The introducers say it is a seedling of Paul's Scarlet and Gruss an Tep-litz, a hardy scarlet-red rose seldom out of bloom. \$2.00 each.

Climbing American Beauty

Beautiful buds and large flowers of excellent form on good stems; almost the same color and fragrance as the Bush American Beauty though not as large because there are so many flowers; the size may be increased by pinching off some of the buds; strong, healthy, vigorous, reaching 10 feet or more; early; H. W. Climber and Pillar. 40c each.

Dorothy Perkins, Pink

A profusion of large clusters of small, fragrant, beautiful, clear shell-pink flowers with attractively crinkled petals giving a fluffy appearance; late and lasts a long time; very vigorous, sometimes reaching 30 feet. The Perkins class may be used for fences, arbors, trained over walls, as a ground cover, or for embankments; H. W. Rambler. 40c each.

Dorothy Perkins, White

A sport of Dorothy Perkins and an excellent white Rambler; late; H. W. Rambler. 40c each.

Dr. W. Van Fleet

Delicate flesh-pink, sometimes almost white, deepening into rosy-flesh at the center; beautiful pointed buds resembling hybrid teas, opening into semi-double, cupped flowers borne singly on stems of good length so may be used for cutting; medium early to midseason and blooms over a long period. Very free from insects and diseases; good growth, attaining a height of 20 feet; prune moderately; H. W. Climber. 40c each.

Excelsa; Red Dorothy Perkins

Crimson-maroon, tinged scarlet; large clusters produced freely; late; vigorous, reaching 30 feet; glossy foliage; H. W. Rambler. 40c each.

Goldfinch

Slender, deep yellow buds in clusters, opening creamy-white with a bright yellow center; semi-double; early; blooms freely; vigorous growth, reaching 20 feet; H. M. Rambler. 40c each.

Mary Wallace

One of the best, both as a climber and a pillar rose. Pretty buds opening into charming, semi-double, cupped flowers often 4 inches across; very bright, clear rose-pink, shaded salmon and gold at the base of the petals; early; blooms very freely; moderately fragrant; resistant to mildew; vigorous, reaching 20 feet; prune moderately; H. W. 40c each.

New Dawn; Everblooming Dr. W. Van Fleet

The first rose patented. We sold our entire stock last spring and did not get to bloom it. The introducers describe it as identical with Dr. W. Van Fleet except that it blooms throughout summer and fall. \$1.50 each.

Paul's Scarlet Climber; Paul's Scarlet

Vivid scarlet shaded crimson, intensified by the yellow stamens; flowers of good size, semi-double, in clusters of 3 to 15; a brilliant color well retained; medium early to mid-season; moderate growth, reaching 10 ft.; H. W. Pillar. 40c each.

Silver Moon

Creamy buds opening into beautiful, semi-double, very large white flowers, often 3 to 4 inches across, a cluster of golden stamens in the center; midseason; foliage rich, dark green; blooms very freely, covering the bush; vigorous, reaching 20 to 30 ft.; one of the best white climbers. H. W. 40c each.

How to Grow Roses

A "How-to-do-it" book of 211 pages and 138 illustrations (45 rose varieties in natural colors.) It has three outstanding authors—Robert Pyle, J. Horace McFarland, and G. A. Stevens. Its price is only \$2.00.

Rock Gardens by F. F. Rockwell

Shows how you can build a rock garden yourself, on a small or large scale and at little expense. Describes the types of rock gardens, tells what soils, climates, and localities are best, how to construct, and what to plant for the effect you want. 31 illustrations, 86 pages. Postpaid \$1.00.

Foundation Planting, by Leonard H. Johnson

The art of beautifying, by means of plants, the immediate frontage of the house and, when opportunity offers, its sides and rear. 237 pages, illustrated. Postpaid, cloth, \$3.65.

THE ROSE, QUEEN OF FLOWERS

A little booklet mailed free on request. It describes the varieties and tells how to plant and prune. It gives the characteristics of the different classes. It contains a lot of information in a little space. If you haven't a copy, write for it.

Keep Gay Colors in Your Garden with Flowers



View at Sarcoxie Nurseries

Much of the charm of the hardy garden lies in the pleasing changes constantly taking place. Each day during the growing season brings something new to interest and delight. Before the snow is gone the Crocuses and Snowdrops are in bloom. How eagerly we watch for the Violets and Bleeding Heart, followed by a host of flowers—Peonies, Irises, Delphiniums Sweet Williams and early Daisies. Then the summer flowers, Phlox, Coreopsis, Blanket Flower, late Daisies, etc. Even after frosts the Chrysanthemums keep up the succession of beauty.

Haven't you noticed the luxuriant tangle around the doorway of an old, neglected homestead? Observation reveals nooks of elegant foliage effects and the old, neglected flower beds in luxuriant bloom. Why? Nature has had her gardener at work, crowded out the weak growers that had no place in the informal garden and placed in their stead strong growers and profuse bloomers that delight in the rich soil, sunlight or shade in which you find them.

Why can't we flower lovers take a lesson from nature and plant in the informal garden or perennial border the sturdy, hardy kinds that grow in spite of neglect yet amply repay a little care? Let's not omit the more delicate flowers but use them, as nature does, where they have opportunity to develop. Some at the front of the border, some in nooks and corners to themselves, some in the rockery, than which there is no better place to display the dainty and unusual.

How to Plan Your Planting

As a rule place the taller plants at the back, the lower to the front, but not so uniformly the planting looks artificial. An occasional tall plant toward the front avoids monotony, but plan so it does not hide lower flowers blooming at the same time. To aid in planning the blooming dates for southern Missouri and the height is given. For example (12-18 in.) means 12 to 18 inches when in bloom. Plant in masses for best effect. Three, six or a dozen in a group give a much better display than if scattered through the border. Sun or shade, indicate whether the plant succeeds best in sun or shade.

Don't Allow the Flowers to Seed

The statement that a plant blooms all summer or for a long time assumes that the flowers are cut off as they fade. It only takes a short time twice a week, and few plants can mature seed

and continue blooming. This, with good garden soil, enriched if deficient in fertility, with *well rotted* manure or bone meal, an occasional light stirring of the soil and watering during dry spells, will give excellent results. We give our residences, offices and stores daily attention. Then why expect the flowers to do their best with none?

Plants by Parcel Post

Plants vary in weight and there are 8 zones. For Missouri and adjoining states allow 10c for the first and 1½ to 3c for each additional plant. Any surplus will be refunded.

Good, strong, out door grown plants. Six or more of a kind at the dozen rate.

Agrostemma coronaria; Rose Campion

Downy silvery-gray leaves; bright cerise-crimson circular flowers 1½ in. across on many-branched stems in late May and June; (1-2½ ft.); sun; 15c each, 3 for 40c, \$1.50 per doz.

Alyssum rostratum

Golden-yellow flowers in dense heads in summer; leaves 2 in. long, hoary-gray; prostrate habit; of easy culture in sun and well drained soil; (12-18 in.) 20c each, 3 for 55c, \$2.00 per doz.

Alyssum saxatile compactum; Basket of Gold

Broad masses of bright yellow flowers in early spring; dwarf habit; makes a spreading mat of grayish-green leaves; of easy culture. 20c each, 3 for 55c, \$2.00 per doz.

Artemisia Silver King

Its leaves and network of fine stems are gray, like frosted silver; showy in the perennial border and excellent as a filler for bouquets; may be dried and used in winter bouquets; attains 2½-3 ft. 20c each, 3 for 55c, \$2.00 per doz.

Blanket Flower; Gaillardia grandiflora

Flowers 2 to 3 in. across, maroon bordered yellow, as gaudy as a Navajo blanket, on stems 18 to 30 in. high in latter May and until heavy frost; prefers full sun; blooms in spite of heat, cold, wet and drouth; very free from insects and diseases; divide and replant every 2 or 3 years. 15c each, 3 for 40c, \$1.50 per doz.

Hardy Flowers, Continued

Bleeding Heart; *Dicentra spectabilis*

Heart shaped rosy-carmine flowers with the white inner petals protruding, drooping on long racemes; needs rich, fairly light soil; full sun or shade, such as the north side of a wall or foundation: (2-3 ft.) 40c each, 3 for \$1.00, \$3.50 per doz.

Candytuft; *Iberis sempervirens*

A mass of neat evergreen foliage, covered in spring and early summer with dense racemes of small white flowers; best in full sun; dwarf; (9-12 in.) 20c each, 3 for 55c, \$2.00 per doz.

Cerastium tomentosum; Snow-in-Summer

A creeping mat of silvery foliage, covered in early summer with small snow-white flowers; for overhanging walls and dry, sunny situations; (6 in.) 20c each, 3 for 55c, \$2.00 per doz.

Chrysanthemums

In October and the dull days of November when frosts creep into the air and the garden is nearly bare of color these keep up the succession of beauty; prefer full sun; will stand shade part of the day; hardiness depends largely on good drainage; (2-4 ft.) White, mauve-pink, bronze and red, 15c each, 3 for 40c, \$1.50 per doz.

Columbine Long-spurred; *Aquilegia*

Numerous showy, dainty spurred flowers on many-branched stalks 18-24 in. tall in May; neat clumps of foliage throughout the season; attractive in the perennial border and rockery; any good, well drained soil; sun or partial shade. Mixed colors, 2 years, 15c each, 3 for 40c, \$1.50 per doz.

Columbine, Mrs. Scott Elliotts

Large flowers with very long spurs; mixed colors including pastel shades, 2 year, 20c each, 3 for 55c, \$2.00 per doz.

Coreopsis lanceolata grandiflora

One of the most popular yellow perennials, with daisy-like flowers 2 to 3 in. across in May and the greater part of summer if not allowed to seed; excellent planted where the yellow flowers will contrast with Delphinium or other blue flowers, (1 to 2 ft.); prefers sun; tolerates partial shade; divide and re-plant every 2 years. 15c each, 3 for 40c, \$1.50 per doz.

Daisy, Arctic

Flowers 2 to 2½ in. across, white with yellow center, on stems about 12 in. tall; neat clumps of foliage; excellent in the foreground of the perennial border or in the rockery for its October flowers; sun. 15c each, 3 for 30c, \$1.00 per doz.

Daisy, Early Elder

Flowers white with yellow center, 2 to 2½ in. across, on stems 20 to 30 in. high; neat clumps of foliage; very vigorous growers and blooms freely the first spring, giving a display in early May in the rockery or perennial border; divide and re-plant every other year. 15c each, 3 for 30c, \$1.00 per doz.



Rock garden on the steep bank of a pool, showing the use of distant trees for a background



Daisies give a profusion of flowers

Daisy, Korean

A profusion of white, sometimes blush, daisies 2-2½ in. across on many-branched stems 2 to 3 ft. high, beginning about October 1. 15c each, 3 for 30, \$1.00 per doz.; clumps 25c each.

Daisy Painted, see Pyrethrum

Daisy, Shasta Alaska

One of the best of the many varieties of Shasta; 3 to 3½ in. across, white, yellow center, on stems 15-24 in. high in summer. 15c each, 3 for 30c, \$1.00 per doz.

Daisy, Supreme

A mass of daisies 3½-4 in. across for a month or more, on many-branched stems 2 to 3 ft. tall, beginning in early June; very tall; fine. 15c each, 3 for 40c, \$1.50 per doz.

Delphinium; Larkspur

Spikes of dainty spurred flowers in May and at intervals if the old flowers are cut off; plant in full sun in well drained, preferably sandy loam; often the addition of ground lime helps; in wet and heavy clay soils they may winter kill. In rich soil they may be grown taller than the heights stated below.

Prices, 15c each, 3 for 40c, \$1.50 per doz. except as noted.

Delphinium Belladonna Improved. A little larger, taller and more vigorous than the common Belladonna; unrivalled for persistent blooming; the delightful blue of the skies; spikes 2 ft. tall.

Delphinium Bellamosum. A dark blue form of Belladonna.

Delphinium, English Hybrids. Tall, with large flowers. Mixed colors, light to deep blue. 25c each, 3 for 70c, \$2.50 per doz.

Delphinium formosum. Brilliant deep blue margined indigo, overlaid with a glistening frost-like sheen; white eye; one of the most permanent; spikes 2 ft. tall.

Eupatorium coelestinum; Hardy Ageratum

Covered with small, fuzzy, azure-blue flowers like Ageratums during latter summer; sun or partial shade; starts growth late; (12-24 in.) 15c each, 3 for 40c, \$1.50 per doz.

Flax, Perennial; *Linum perenne*

Pearly lavender-blue flowers 1 in. across on graceful stems 1-1½ ft. tall; late spring to fall; small foliage resembling Spruce needles; full sun. 15c each, 3 for 40c, \$1.50 per doz.



Phlox give brilliant summer effects. Strong field grown plants, \$2.00 per dozen

Forget-me-not; *Myosotis palustris semperflorens*

Dainty little deep blue flowers with yellow eye in delicate racemes 6 to 8 in. long, in latter spring and until fall; charmings in the rockery; prefers moist, cool, shady places. 15c each, 3 for 40c, \$1.50 per doz.

Foxglove; *Digitalis purpurea gloxiniaeflora*

A profusion of long tubular flowers drooping on spikes 2 to 4 ft. tall, one of the most striking flowers in the garden in May; valuable among shrubs or any place where a tall, pyramidal effect is wanted; sun, or shade part of the day; mulch with straw in winter. Mixed white, purple and purplish-rose, 20c each, 3 for 55c, \$2.00 per doz.

Gayfeather; *Liatris punctata*

Small rosy-purple flowers densely cover the upper part of the stalk in latter summer or fall; sun or partial shade; grows in poor soil; (10-30 in.) 15c each, 3 for 40c, \$1.50 per doz.

***Helianthemum mutabile*; Sun Rose; Rock Rose**

Low and creeping; covered with 5-petaled flowers 1 in. across in May, pale rose to lilac or nearly white; sun. 15c each, 3 for 40c, \$1.50 per doz.

Hollyhocks

Excellent massed against fences, buildings and at angles of walks; (5-8 ft.) Assorted colors, double, 20c each, 3 for 55c, \$2.00 per doz.



Phlox subulata at Sarcoxie Nurseries. One of the first brilliant color spots of spring.

Mallow Marvels

Flowers like single hollyhocks, the size of a pie plate or larger, for 6 to 10 weeks, beginning in early July; excellent singly or in masses, for quick results; 4-6 ft. tall; cut tops to ground each winter; starts growth late. 2 yr., white, blush, pink and red, 25c each, 3 for 60c, \$2.00 per doz.

Phlox

Showy, and indispensable for brightening the garden just after the spring flowers are gone and before summer flowers arrive in abundance. Use Miss Lingard for early, and other varieties will give Phlox through June. Cut the flowers as they fade and they give a second, sometimes a third crop. Masses, say a half dozen or dozen, of each color produce imposing effects. Or a border may begin with white and gradually work up to red. Plant 12-15 in. apart, 8-12 in. if in a single row, in rich, rather moist soil, deeply prepared. Do not allow seedlings to crowd out the original plants.

Field grown plants to bloom the first summer, 20c each, 3 for 55c, \$2.00 per doz., except as noted. If by parcel post add 10c per doz.

Commander. Excellent brilliant deep crimson-red, slightly deeper eye. 25c each, 3 for 70c, \$2.50 per doz.

Eclairer. Rich crimson-carmine, darker eye; large; a strong grower and free bloomer.

Europea. White, decided crimson eye; floret and truss large; sturdy, erect habit; medium height; fine.

Firebrand. Cerise, vermillion and orange.

Marechal French. Deep scarlet, blood-red eye; large; tall.

Miss Lingard. The earliest in this list; white, faint lilac eye; truss large and long; cutting back the old flower heads as they fade will give a second and third crop.

Miss Verboom. A new variety; similar to Miss Lingard but lavender-pink and valuable because early and gives several crops each season. 25c each, 3 for 70c, \$2.50 per doz.

Mrs. Jenkins. A good white to follow Miss Lingard; a strong grower and free bloomer.

Mrs. Millie Von Hoboken. Bright pink.

Rheinlander. Beautiful salmon pink, deeper eye; more salmon than Rheinstrom but hardly as strong in growth.

Rheinstrom. Rose-pink slightly tinted salmon; clear and bright; large; a good grower.

R. P. Struthers. Clear cherry red, darker eye; floret large, truss heavy, stem slender but strong; tall; growth strong; a bright color and one of the best.

Phlox subulata; Moss Pink; Ground Pink

Dwarf, spreading habit, forming dense mats a foot or more across, of small narrow, somewhat moss-like leaves, covered in early spring with small clusters of flowers about an inch across, standing 2 to 6 in. above the ground; useful for carpeting, edging, and in the rockery. Pink and white, 20c each, 3 for 55c, \$2.00 per doz.

Hardy Flowers, Continued

Physostegia Vivid; False Dragon-head

An attractive mid-summer perennial with spikes of purplish-rose tubular heather-like flowers $\frac{3}{4}$ to 1 in. long, on stalks 2 ft. high; useful in the perennial border and as a cut flower; suited to sun or partial shade. 20c each, 3 for 55c, \$2.00 per doz.

Pinks, Scotch or Grass; Dianthus plumarius

Low growing, 6 to 12 in. high; spreading grass-like habit; bluish-green foliage similar to Carnations; flowers very fragrant, single and double, 1 to $1\frac{1}{2}$ in. across, white to bright scarlet with fringed petals, in spring, early summer and at intervals till fall; excellent in the perennial border and rockery for their foliage as well as flowers; well drained soil; sunny situation best. Mixed colors, 15c each, 3 for 40c, \$1.50 per doz.

Pyrethrum roseum; Painted Daisy

Daisy-like flowers $1\frac{1}{2}$ -2 in. across in early summer on stems 1 to 2 ft. tall; well drained soil; full sun or half shade. Mixed colors, 20c each, 3 for 55c, \$2.00 per doz.

Rock-Cress, Alpine; Arabis alpina

A mass of small, snowy-white, 4-petaled flowers in spring, soon after the snow disappears; foliage gray, about 6 in. high; excellent in sun in the rock garden or perennial border; contrasts well with Alyssum saxatile compactum. 20c each, 3 for 55c, \$2.00 per doz.

Rudbeckia Golden Globe

Showy in latter summer with large clusters of double golden-yellow chrysanthemum-like flowers $2\frac{1}{2}$ to $3\frac{1}{2}$ in. across; 5 to 6 ft. tall; best for bold masses in the distance; divide and replant each year; blooms the first summer; prefers sun. 15c each, 3 for 40c, \$1.50 per doz.

Saponaria ocymoides; Rock Soapwort

Useful in the rockery for its small lilac-rose flowers covering the plant in late spring, following Phlox subulata; plant 6-9 in. high. 20c each, 3 for 55c, \$2.00 per doz.



Showing the foliage effect of Dwarf Sedum in the rock garden at Sarcoxie Nurseries

Sedum; Stonecrop

"Among the most 'rocky' of rock plants;" excellent between the rocks, along walks, in walls and other places where few plants thrive; a dainty edging for flower beds or borders; useful for their variety of foliage, differences in flower forms and seasons and the dwarf habit of many varieties; easily grown in almost any soil if well drained in winter.

Sedum acre; Gold Moss. A low, creeping form; attractive moss green, very small leaves, $\frac{1}{4}$ in. long; starry bright yellow flowers $\frac{1}{2}$ in. across on shoots 2 to 3 in. high in summer; sun or shade part of the day. 15c each, 3 for 40c, \$1.50 per doz.

Sedum album. Dwarf and spreading, becoming about 4 to 6 in. high; waxy, round foliage; flowers $\frac{1}{4}$ in. across, white, in flat clusters. 15c each, 3 for 40c, \$1.50 per doz.

Sedum kamtschaticum. Grows about 6 in. high; triangular, deep green leaves; starry orange-yellow flowers $\frac{3}{4}$ in. across in



Phlox and Dwarf Sedum, with trees as a distant background, at the Sarcoxie Nurseries.

Sedum, continued

clusters 1 to 3 in. across at intervals during summer; suited to partial shade. 15c each, 3 for 40c, \$1.50 per doz.

Sedum pulchellum; Texas Stonecrop. Lavender or pastel-pink flowers in 3-cornered clusters 6-7 in. high in June; narrow, light green, tufted foliage 3 in. high; likes moisture; partial shade. 15c each, 3 for 40c, \$1.50 per doz.

Sedum reflexum; Jenny Stonecrop. Greenish-yellow, starry flowers in flat-topped clusters on stems 6-7 in. high in early July; narrow, light green, tufted foliage, 3 in. high. 15c each, 3 for 40c, \$1.50 per doz.

Sedum sarmentosum. Slender creeping shoots covered in late May with bright yellow, starry flowers $\frac{1}{2}$ in. across; leaves $\frac{1}{2}$ to $\frac{3}{4}$ in. long; rapid growth; useful for edgings, rockeries, walks and walls where few plants thrive; sun or dense shade. 15c each, 3 for 40c, \$1.50 per doz.

Sedum spectabilis Brilliant; Showy Stonecrop. Rosy-red flowers $\frac{1}{2}$ in. across in large flat-topped clusters 18 in. tall in late summer or early fall; thick, broad, light bluish-green leaves 3 in. long. 20c each, 3 for 55c, \$2.00 per doz.

Sedum spurium. Sub-trailing habit, 4 to 6 in. high; more upright than *stoloniferum*; leaves $\frac{1}{2}$ to 1 in. long. 15c each, 3 for 40c, \$1.50 per doz.

Sedum stoloniferum; Running Stonecrop. Branches trailing or prostrate; leaves somewhat triangular, bronzy-red in the fall. 15c each, 3 for 40c, \$1.50 per doz.

Sedum Rock Garden Collection

We will make up a rock garden assortment, good value, 3 plants, 3 varieties 40c; 6 plants, 3 varieties 75c; 1 doz. 4 varieties \$1.50; 2 doz., 4 varieties \$2.75.



Sedum spectabilis Brilliant

Stokesia cyanea; Stoke's Aster

Lavender-blue cornflower-like blooms 3 to 4 in. across on stems 1 to 2 ft. tall from summer till fall; easily grown in any well-drained soil of average fertility; prefers full sun. 15c each, 3 for 40c, \$1.50 per doz.

Sunflower, Dahlia-flowered; Helianthus multiflorus flore-pleno

A profuse bloomer with strong stems bearing bright clear yellow, full double dahlia-like flowers 3 in. or more across, in late July or early August; 4 ft.; divide and replant every other year. 15c each, 3 for 40c, \$1.50 per doz.

Sweet William; Dianthus barbatus

Gorgeous in mid May with their flat clusters of flowers ranging from pure white through different shades of pink to red and almost black, or variegated red and white; stems 12 to 20 in. high. The clusters are sometimes 4 in. across with 20 to 30 florets which do not all bloom at once so they last a considerable time. Useful in the perennial border, rockery and for cut flowers; prefer full sun; any good well drained soil. Mixed colors only, 15c each, 3 for 40c, \$1.50 per doz.; 2 doz. for \$2.50, 4 doz. for \$4.00.

Sweet William, Newport Pink

Salmon pink, 20c each, 3 for 55c, \$2.00 per doz.

Sweet William, Scarlet Beauty

A charming distinct color, 20c each, 3 for 55c, \$2.00 per doz.



Sweet William

Lily, Regal, Lilium regale

A magnificent Chinese lily; white, center flushed yellow, sometimes tinged pink; outside of petals tinged purplish; delightful fragrance; easily grown; vigorous, reaching, when the bulbs become large, a height of 4-5 ft.; blooms freely. 4-5 in. around, 15c each, 3 for 40c, \$1.50 per doz. Postpaid, 20c each, 3 for 50c, \$1.70 per doz. Two year size, 5 for 50c, 12 for \$1.00 postpaid.



Veronica rupestris at Sarcoxie Nurseries
Bright blue flowers in late April or early May (Page 25)

Veronica rupestris

A fine rockery plant; small, deep green, thickly matted foliage covered in late April or early May with bright blue flowers stems 3 to 4 in. high. 20c each, 3 for 55c, \$2.00 per doz.

Violets, Sweet Russian

Everybody can grow this hardiest of violets as it is of easy culture, and of vigorous growth, soon making large clumps; fragrant, deep, rich blue flowers in early spring, and again, though not so profuse, in the fall when the days are cool; good in the rockery, at the front of perennial borders, along walks, or any place a low growing plant is desired; prefers partial shade. 10c each, 3 for 25c, 75c per doz., 25 for \$1.25.

Yucca filamentosa; Adam's Needle

Stiff, sharp-pointed evergreen leaves 1 in. wide in dense clumps 18 in. high; white flowers in early summer; (4-6 ft.); effective on dry banks and in the rockery. 25c each.

Yucca, Variegated

Similar to filamentosa but the edges of the leaves widely bordered with yellow. 25c each.

Complete Landscape Service

We have a competent landscape architect and are prepared to render a complete service, from the drawing of the plans to furnishing and planting the trees and plants. If interested in this service write us for particulars, giving the size of your property.



Regal Lilies at Sarcoxie Nurseries

Book of Perennials, by Alfred C. Hottes

The Perennial Garden; The Perennial Border; Garden Operations, Insects and Diseases; Plants for Shady Places; Lists of twenty-fives; Noteworthy Perennials; Hardy Ferns; Ornamental Grasses; Herbs. Postpaid, cloth bound \$1.65.

Book of Shrubs, by Alfred C. Hottes

Adapted to the needs of the amateur and professional. Gives non-technical descriptions, showing how one species differs from another; its uses; soil; pruning and propagation. 371 pages, well illustrated. Postpaid, cloth bound, \$3.15.

THE ROSE, QUEEN OF FLOWERS

A booklet of cultural suggestions, mailed free.

Peonies are Easily Grown

Hardy as the oak, Peonies are so easily grown that little need be said. Often, in neglected gardens, one sees large clumps that have flourished and bloomed for years. Yet they liberally repay all attention given them. Peonies thrive in almost any good, well drained soil. Plant 2½ to 3 feet apart. They are best in full sun but will succeed with shade part of the day. The early varieties usually begin blooming about May 5 to 8.

Peonies may be successfully planted in the spring provided they are sufficiently dormant. We have placed some of the leading varieties in cold storage to have them in good planting condition. After our storage supply is exhausted we cannot furnish them till fall. The fall list will contain our complete assortment.

How We Describe Peonies

We have endeavored to convey as accurate an impression of the colors as can be done by words. The name and date in parenthesis is the originator and the date of introduction. There are no single Peonies in this list. The guards are the wide outer petals. Crown, bomb, semi-rose and rose is the type or form of flower, classified as follows:

Crown. Wide center or crown petals with narrower, shorter petals forming a collar or ring between them and the guards. The crown petals are not always prominent.

Bomb. Central petals of uniform width but narrower than the guards and forming a globe within the guards.

Semi-rose. Flowers that would be classed as rose type but for an occasional pollen bearing stamen.

Rose. Perfectly full, all petals wide, no stamens. The central petals may not be as wide as the guards, but if quite distinct it would be a bomb. The line dividing the rose and bomb is sometimes quite an arbitrary one.

Peony Sizes and Prices

Prices quoted are for good strong divisions averaging 3 to 5 eyes, from blooming plants. We consider them fully equal to one-year plants, they cost less and average larger than those usually sent out, many of which are grown from small divisions to make more plants.

Peonies by Parcel Post

If wanted by parcel post allow 2c each if within 150 miles of Sarcoxie but not less than 10c per package; for the balance of Missouri and adjoining states allow 5c each; for more distant states figure 1½ pound each, minimum 3 pounds. Any balance will be refunded.

3 of a kind at the dozen rate; larger lots quoted by letter.

Crown of Gold (Couronne d'Or; Calot, 1873)

Famous for its beauty. Snowy white, reflecting the golden stamens and lighting up the flower; center petals beautifully flecked and bordered carmine; large semi-rose type flowers; late; growth upright, vigorous, with very strong stems; blooms freely. 35c each, \$3.50 per doz.

Duchesse de Nemours (Calot, 1856)

Superb ivory white with greenish markings toward the center, becoming pure white without a trace of crimson; one of the most beautiful in the half open bud; fragrant; medium to large; crown type; medium early to midseason; vigorous; good stems; blooms freely. 30c each, \$3.00 per doz.



Crown of Gold, famous for its beauty



The Peony rivals the rose in fragrance, beauty and variety of form

Duchesse d'Orleans (Guerin, 1846)

Large carmine pink guards, center soft pink interspersed with salmon, becoming amber-yellow; medium to large; bomb type; fragrant; midseason. A strong, vigorous grower, very tall, and gives an abundance of blooms year after year. 30c each, \$3.00 per doz.

Duke of Wellington (Calot, 1859)

An indispensable variety, ideal for all purposes. Two rows of broad white guard petals, center very full, sulphur-white becoming pure white; fragrant; bomb type; late; keep well as a cut flower. Growth vigorous with tall, strong stems and abundant, very large flowers. 25c each, \$2.50 per doz.

Edulis superba (Lemon, 1824)

Beautiful, bright, deep, rose-pink flowers with a quite extraordinary fragrance; large and of good form; one of the earliest; crown type; growth strong, vigorous; blooms profusely over a long season; extra good both for the lawn and cut flowers. 30c each, \$3.00 per doz.

Felix Crousse (Crousse, 1881)

A brilliant, rich, even dazzling ruby red; large, globular, solidly and compactly built; bomb type; fragrant; midseason; growth strong, vigorous, with long stems, and blooms freely; fine. 40c each, \$4.00 per doz.

Festiva maxima (Mieliez, 1851)

For enormous size combined with wondrous beauty this variety has stood unsurpassed for 79 years. Pure paper white, some of the center petals flecked purplish-carmine; rose type; early; very fragrant; vigorous, with very long, heavy stems; indispensable. 35c each, \$3.50 per doz.

Madame Calot (Mieliez, 1856)

Very delicate pink becoming white; fragrant; large; rose-type; early; strong stems; blooms freely. 35c each, \$3.50 per doz.

Peonies, Continued

Madame de Verneville (Crousse, 1885)

An enormous producer of extra fine, large, compact flowers literally packed with petals; broad white guards, center opens slightly blush, becoming pure white, flecked carmine; delightfully fragrant; bomb type; early; strong, vigorous growth of medium height with good stems; one of the finest for cut flowers and landscape planting. 25c each, \$2.50 per doz.

Octave Demay (Calot, 1867)

Large; delicate hydrangea-pink; fragrant; crown type; early; blooms freely; medium height; strong stems. 35c each.

Queen Emma

A very large, very full, fragrant, bright, light pink rose type flower; plant of erect habit, compact growth, strong, stems medium long, blooms freely; an excellent cut flower variety as it keeps well and ships well; midseason to late. 50c each.

Red to Color, double, 25c each.

Therese (Dessert, 1904)

Very large, rich satiny-pink, center becoming lilac-white; compact, rose type; very fragrant; midseason; medium tall. \$1.50 each.

Peony Surprise Collection

We will furnish six good named Peonies, all different, for \$1.50. At this price, the selection must be left to us but we promise you a good selection and good value. Postage extra if wanted by parcel post.

Pennant Mixed Peonies

If you want something good at a moderate price and do not care about the names or just what colors you get just so they are nice, order Pennant Mixed. This is not a cheap lot of undesirable varieties but a really good mixture of named peonies, the leading commercial varieties predominating. Do not ask for certain colors of these as they are grown mixed. 25c each. \$2.00 per doz.. 50 or more at 16c each.

Liberty Irises, Fleur de Lis

Plant lots of Irises for their grand and royal colors, shimmering in the sun, and their beauty of form and texture. Mass them at the borders of the lawn, or among shrubbery. Plant them along walks and drives, and in the herbaceous border. Naturalize them in wild and uncultivated places. Plant them for cut flowers. They will reward you with a lavish wealth of bloom.

They are perfectly hardy.

They are easy to grow.

They are easy to plant.

They usually bloom the first season.

They increase rapidly.

They grow in almost any soil.

They furnish a wealth of color in May.

Liberty Irises succeed with shade part of the day, but are best in full sun. They are not particular as to soil, will grow almost anywhere provided it is well drained, but do best in a rich loam or garden soil, even in quite dry locations. Prepare the soil well. Compost or leaf mold may be added if needed but *no manure*. Plant 15 to 18 in. apart with the rhizome or fleshy part of the roots horizontal and barely covered. Divide and re-plant as they become too thick. The inches or feet in the description is the height of the flower stems. The standards are the upright or standing petals, the falls the lower or drooping petals.

Prices: Except where otherwise noted, 15c each, 3 of a kind for 30c, 6 or more of a kind at \$1.00 per doz.

If wanted by parcel post, add 2c each, not less than 10c per package, for Missouri and adjoining states.

Albert Victor—Standards soft blue, falls lavender; large; 36 inches; broad, vigorous foliage.

Alcazar—Standards light bluish-violet, falls rich reddish-purple, bronze veined throat; large flowers in abundance; 3 ft.: fine. 20c each, 3 for 50c, \$1.50 per doz.

Peony Collection B, \$2.00

1 <i>Festiva maxima</i> . Early; white flecked carmine35
1 <i>Crown of Gold</i> . Late; white flecked carmine35
1 <i>Madame Calot</i> . Delicate pink becoming white35
1 <i>Duchesse de Nemours</i> . Superb ivory-white30
1 <i>Edulis superba</i> . Early; deep rose-pink30
1 <i>Duchesse d'Orleans</i> . Pink and salmon becoming amber30
1 <i>Francois Ortegat</i> . Deep purplish-crimson40

Regular price, not prepaid\$2.35

Special: The 7 prepaid for\$2.00



You can have beautiful Everblooming Roses the first year.
See Page 17

Ambassadeur—Standards smoky reddish-lavender, falls dark velvety purple-maroon; fragrant; large; late; tall, strong stems, 30c each, 3 for 80c, \$3.00 per doz.

Azure—Good size; standards lavender-blue, falls rich velvety violet-purple; fragrant; medium late. 25c each.

Bride—Dwarf white, excellent in the rockery and the front of the perennial border. 20c each, 3 for 50c, \$1.50 per doz.

B. Y. Morrison—Standards pale lavender-violet, falls velvety purple bordered lavender; fragrant; 30 in. tall. 25c each, 3 for 70c, \$2.50 per doz.

Canopus—Standards light purple, falls velvety prune-purple; large; 3 ft., excellent. 30c each, 3 for 80c, \$3.00 per doz.

Caprice—Standards cerise, the falls slightly deeper; early; blooms freely on widely branched stems 2 ft. high; fragrant.

Celeste—Standards sky-blue, falls slightly deeper; large flowers on high branched stalks 30 in. high.

Cluny—Standards soft bluish-violet, falls deeper; large; very fragrant; tall; early. 25c each, 3 for 70c, \$2.50 per doz.

Col. Candelot—Standards bronze overlaid reddish-lavender, falls dark velvety mahogany crimson; 30in. fragrant, 20c each, 3 for 55c, \$2.00 per doz.

Corrida—Almost sky-blue, falls slightly deeper; late; tall; blooms freely; excellent landscape variety. 25c each.

Crimson King—Rich claret-purple; 24 in.; a good dependable free blooming early variety; fragrant.

Cyanea—Deep violet flowers in early spring; very dwarf; useful in the rockery and perennial border. 20c each, \$2.00 per doz.

Liberty Iris, continued

Except where otherwise noted, 15c each, 3 of a kind for 30c; 6 or more of a kind at \$1.00 per doz.

Dr. Bernice—Standards coppery-bronze, falls velvety crimson; large; 2 ft.

Dream—Soft pink tinged lavender; of excellent form; fragrant, blooms freely; tall. 25c each, 3 for 70c, \$2.50 per doz.

Edouard Michel—Standards violet-red, falls slightly deeper; slightly ruffled; large; fragrant; 2½ to 3 ft. 25c each, 3 for 70c, \$2.50 per doz.

Fairy—A dainty white, delicately shaded soft blue; fragrant; early and blooms freely on tall stems; 2 ft.

Flavescens—Delicate sulphur-yellow; fragrant; blooms freely; 2½ ft.; good with light blue flowers.

Florida—A yellow dwarf, excellent for the rockery and front of the border. 20c each, 3 for 55c, \$2.00 per doz.

Honorabilis—Standards golden-yellow, falls crimson-brown; blooms freely over a long blooming period, from early to late; 18 in.

Ingeborg—Creamy-white; very early; vigorous; 15-18 in.

Iris King—Standards lemon-yellow; broad flaring falls, rich maroon bordered yellow; 2 ft.; late. 15c each, \$1.50 per doz.

James Boyd—Large; standards lavender-blue, falls light violet edged lighter; beard white tipped orange; fragrant; 30 in.

Juniata—Large; lavender-blue, falls slightly deeper, almost violet-blue, deeper than *Pallida Dalmatica*; fragrant; 3-3½ ft.

Khedive—Beautiful soft lavender; orange beard; 30 in.

Kochi—Rich, deep, velvety, royal purple, a color greatly admired; very early, blooming with *Florentina*; blooms freely; 24 in.

Lent A. Williamson—Standards broad, lavender-violet, falls velvety violet-purple; large; early midseason; tall; a very fine Iris. 25c each, 3 for 70c, \$2.50 per doz.

Loreley—Standards light yellow, falls blue bordered light yellow; early; blooms freely; vigorous; 30 in.

Madame Chereau—Both standards and falls white elegantly frilled violet-blue; midseason; edges of petals ruffled; blooms freely; 30 in.

Madame Chobaut—White tinged yellow and reddish-brown; 3 ft.; an odd color; midseason.

Madame Pacquette—Bright rosy claret; early; tall.

Monsignor—Standards rich satiny violet; falls velvety purple-crimson; large, vigorous; late; blooms freely; 2 ft.

Mother of Pearl—Light bluish-lavender with an iridescent pearly effect; large; fragrant; midseason; blooms freely; 3½ ft. 20c each, 3 for 55c, \$2.00 per doz.

Mrs. H. Darwin—White, falls slightly marked violet at the base; blooms freely.

Opera—A bright bronze-red variety; standards violet-red, falls velvety mahogany-red; 2½ ft. 25c each, 3 for 70c, \$2.50 per doz.

Orientalis Blue—Intense blue, almost purple; small flowers; blooms freely; excellent for naturalized plantings, in the rockery and at the border of pools; 2-2½ ft.

Pallida Dalmatica—Standards clear lavender-blue, falls slightly deeper; very large; very tall, 3½ ft.; broad, heavy foliage. 15c each, 3 for 40c, \$1.50 per doz.

Perfection—Standards light blue; falls velvety violet-black; vigorous; well branched stalks; 3 ft.

Princess Victoria Louise—Standards sulphur-yellow, falls purple, bordered cream; early; blooms freely; vigorous growth.

Prosper Laugier—Standards reddish-bronze, sometimes called fiery-bronze, falls velvety ruby purple; fragrant; vigorous; 30 in.

Prospero—Standards lavender suffused yellow at base, falls purple shaded reddish; fragrant; late midseason; 3½ ft. 25c each.

Quaker Lady—Standards smoky lavender shaded yellow, falls ageratum-blue, blooms freely; 30 in. 15c each, \$1.50 per doz.

Queen of May—Large lilac- or orchid-pink; midseason; fragrant; 30 in.; one of the best of the pink class.

Rhein Nixe—Standards white, falls violet-purple edged white; midseason; well branched 3 ft. stalks; vigorous.



Showy Japanese Irises for tall borders or at the water's edge

Roseway—Standards purplish-rose, falls deeper; a good one of the so-called red class; fragrant; vigorous; blooms freely; medium early; 36 in. 20c each, 3 for 55c, \$2.00 per doz.

Sappho—Standards violet-blue, falls royal purple; a good, free blooming early variety.

Seminole—Standards violet-red, falls velvety mahogany-red to deep crimson; one of the brightest Irises in the garden; large; medium early; 2 to 2½ ft. 20c each, 3 for 55c, \$2.00 per doz.

Shekinah—Clear soft yellow shaded deeper through the center; fragrant; vigorous; 3 ft.; fine. 20c each, \$2.00 per doz.

Sherwin Wright—An excellent bright golden yellow; early; vigorous; blooms freely; stalks well branched; 2 ft.

Sweet Lavender—Standards soft lavender-violet, ruffled, falls reddish-violet; fragrant; large; blooms freely; 3 ft. 25c each.

Violacea grandiflora—Standards blue, falls violet-blue; large; vigorous; 3 ft.

Walhalla—Standards lavender falls violet-purple; early; 2 ft.

Special Iris Collection

Liberty Irises, assorted, our selection, named: Half dozen, 3 varieties, 50c (postpaid, 60c); one dozen, 6 varieties, \$1.00 (postpaid, \$1.15); twenty-five, 8 varieties, \$1.75 (postpaid, \$2.00); one hundred, 8 varieties, \$5.00 (postpaid \$6.00).

Japanese Irises

The foliage is tall, narrow and blade-like, stems slender and graceful, with several buds to the stem. They have large, flat flowers, usually with a gold blotch. Should be planted in full sun. Naturalized along a stream or pool where their beauty is reflected in the mirror below, they are very effective. However, any good mellow loam that does not become excessively dry will give good results. Water must not stand on the roots, especially during winter. The six-petaled are termed double, the three-petaled, single.

White, early, double. 20c each, \$2.00 per doz.

Cannas Bloom from June till Frost

From latter June till frost Cannas give a profusion of large, dazzling flowers. Their stately habit, strong foliage and showy colors make them excellent for formal beds, but they produce a good effect singly or in small groups in the hardy border or among shrubbery, and are often used as a summer screen for unsightly objects.

For a circular bed take a stake and string and mark a circle 18 in. from center or 3 ft. across. Lengthen the string 18 in. for each circle. Set 1 plant in the center, 6 in the first circle, 12 in the second, 18 in the third, and so on. It requires but 37 plants for a bed 9 feet across, and at least a foot all around should be allowed for growth of foliage. Plant when you plant your garden, in a sunny situation in good, rich, mellow garden soil, 18 in. apart.

Parcel Post. Allow 15c per doz., 25c for 2 doz., for Missouri and adjoining states.

Six of a kind at the dozen rate; 50, not less than 10 of a kind, at the 100 rate.

Allemania—Large flowers, scarlet with a yellow border; green foliage; grows 4 to 5 ft. high; blooms freely. 10c each, 3 for 20c, 60c per doz., \$4.00 per 100.

Austria—Large; canary-yellow dotted crimson; green foliage; blooms freely; 4½ feet, 10c each, 3 for 20c, 60c per doz., \$4.00 per 100.

King Humbert—Large trusses of large, bright orange-scarlet flowers; bronze foliage; blooms freely; fine; 4 to 5 ft. 10c each, 3 for 25c, 75c per doz., \$5.00 per 100.

Louisiana—Large; orange-scarlet; green foliage; 5 to 6 ft. 10c each, 3 for 20c, 60c per doz., \$4.00 per 100.

Mohawk—Large; brilliant poppy-red; bronze foliage; 5 feet 15c each, 3 for 40c, \$1.50 per doz.

President—Rich, glowing scarlet; large flowers on strong stalks; green foliage; blooms freely; 4 ft. 10c each, 3 for 25c, 75c per doz., \$5.00 per 100.

Victory—General effect apricot, tinged and blotched light pink; 3 feet. 15c each, 3 for 40c, \$1.50 per doz.



Cannas

Wintzer's Colossal—Very large; vivid scarlet, its brilliancy well retained; 5 feet. 15c each, 3 for 40c, \$1.50 per doz.

Yellow King Humbert—Large; rich yellow dotted red, occasionally a scarlet or scarlet-striped flower, green foliage. 10c each, 3 for 25c, 75c per doz., \$5.00 per 100.

Dahlias for Autumn Flowers

Dahlias are easily grown and give an abundance of flowers in early autumn. The decorative type have large, broad petals in rather flat heads; the show type have numerous, short, stiff quilled petals; the cactus have long narrow usually twisted petals. The size given in inches is the diameter under ordinary field conditions. They can be grown larger with special care and disbudding.

In the central and southern states the summers are too hot for good Dahlia flowers. Plant late (about May 15 here) to have them blooming during the cooler autumn days. Lay the tuber flat, the eye or sprout upward. When three pair of leaves are formed, pinch out the top pair to make them branch low.

Parcel Post. Add 3c each for Missouri and adjoining states, not less than 10c per package.

6 or more of a kind at the dozen rate.

A. D. Livoni—A splendid clear pink, beautifully quilled, ball form; blooms freely. 20c each, \$2.00 per doz.

American Beauty—Wine-crimson; 4 to 5 in.; petals cupped and quilled; show type. 20c each, \$2.00 per doz.

Darlene—Shell pink shaded to a white center; 4 in.; decorative type. 20c each, \$2.00 per doz.

Floral Park Jewel—Crimson to scarlet-crimson, sometimes tipped white, 3 to 3½ in.; show. 15c each, \$1.50 per doz.

Frank A. Walker—Deep lavender-pink; 4½ in.; good stems; decorative. 20c each, \$2.00 per doz.

Golden Gate—Yellow, some petals twisted; 5 in. 20c each, \$2.00 per doz.

Jack Rose—Brilliant crimson-red, in color much like the General Jack rose; blooms freely, 4 in.; decorative. 15c each, \$1.50 per doz.

Minnie McCullough—The red and gold of autumn leaves; 3½ in.; decorative; excellent. 20c each, \$2.00 per doz.

Mrs. Hartong—Soft bronzy-buff; decorative; 4 to 4½ in. 20c each, \$2.00 per doz.

Mrs. I. de ver Warner—Large; its color orchid-like, a deep mauve-pink on stout stems; 6 in.; very tall. 25c each, \$2.50 per doz.



Lichen covered rocks in the rock garden

Petle de Lyon—Pure white fringed petals; 4 in.; hybrid cactus. 15c each, \$1.50 per doz.

Pride of California—Scarlet-red to bronze-scarlet; 5 to 5½ in.; decorative; tall; very showy. 15c each, \$1.50 per doz.

Red Hussar—Rich scarlet; 3 in.; show type. 15c each, \$1.50 per doz.

Sylvia—Lavender-pink shading to a white center; 3 in.; decorative; blooms freely. 15c each, \$1.50 per doz.

W. B. Childs—Very dark blackish-maroon with purplish shadings; 3½ in.; hybrid cactus. 20c each, \$2.00 per doz.

White Swan—Pure white, quilled ball type; 2½-3 in. 20c each, \$2.00 per doz.

Autumn Color—Red and gold; 3 in. 15c each, \$1.50 per doz.

Gladiolus for Summer Flowers

Gladiolus are probably the most popular of summer and fall blooming bulbs. By planting as soon as danger of frost is over and at intervals of two weeks you can have gladiolus all summer. They are easily grown, seldom troubled with insects or diseases, and increase rapidly. Plant 3 to 6 in. apart. Instructions for growing and increasing your stock will be sent with the bulbs.

Please Notice we Quote by Size

"Blooming size" doesn't mean much, because 1st, 2nd, 3rd, 4th and 5th size will bloom, though the smaller sizes give smaller flowers and smaller spikes than the larger sizes. First size is 1½ inches and over in diameter; 2nd size 1¼ inches; 3rd size 1 inch; 4th size ¾ inch; 5th size ½ inch.

These Gladiolus Prices are Postpaid

In Missouri, Arkansas, Iowa, Kansas and Oklahoma. For other states add 10%. At these low prices not less than 6 of a kind sold; 25 or more of a kind at 100 rates.

Prices, varieties marked (A)	Per doz.	Per 100
1st size, 1½ in. and over	\$0.40	\$3.00
2nd size, 1¼ in.	.30	2.50
3rd size, 1 in.	.25	2.00
Prices, varieties marked (B)		
1st size, 1½ in. and over	.60	5.00
2nd size, 1¼ in.	.50	4.50
3rd size, 1 in.	.40	3.00

Gladiolus Collections

One each, 12 varieties, not labeled, second size, 40c; two each, 12 varieties, not labeled, 75c.

Albania—Clear white with wide fringed petals. (A).

Crimson Glow—A rich glowing scarlet-crimson; large flowers on tall, strong stems. (A)

E. J. Saylor—Large, beautiful, ruffled flowers; deep bright rose-pink blending lighter; good stems. (B)

Halley—Early; large; deep pink tinged salmon; lower petals blotched creamy with a bright red stripe; tall. (A)

Lily White—Glistening white, throat tinged cream with slight magenta markings; early; good. (A)

Los Angeles—Shrimp pink, orange-carmine throat. (B)

Mrs. Dr. Norton—Creamy white shading to La France pink at the tips; tall slender, graceful spikes. (B)

Mrs. Francis King—Brilliant vermilion scarlet, sometimes called flame pink; large; very tall, straight stems. (A)

Mrs. Frank Pendleton—Rosy-flesh shading to white edges, rich maroon blotch on the lower petals; large; tall. (B)

Mrs. H. E. Bothin—Ruffled flowers, shell pink tinted salmon, scarlet throat blotch; flowers of good size well placed on strong stems. (B)

Scarlet Princes—Brilliant scarlet; beautiful large flowers on rather short but strong straight spikes. (B)

Sunbeam—Clear yellow, not blotched; very early; long, slender spikes; large flowers; Primulinus type. (A)



Gladiolus, the easiest flower grown

Raspberries

They begin bearing the second year, ripen between strawberries and blackberries and bear regularly under proper conditions; should have deep soil with plenty of humus, that retains moisture during a dry season.

Cumberland—Black, large, firm, excellent quality; early to midseason; hardy, vigorous, productive; plant 4x7 ft. 50c per 10, \$1.00 per 25, 50 or more at \$3.50 per 100, 500 at \$30.00 per 1000.

Latham—Large; brilliant red; hardy; productive. 50c per 10, \$1.00 per 25, 50 or more at \$3.50 per 100, 500 at \$30.00 per 1000.

St. Regis; Ranere—Bright red, good quality; hardy, productive; season early and long, with a fall crop if plenty of late summer and fall rains; plant 2x5 ft. 50c per 10, \$1.00 per 25, 50 or more at \$3.50 per 100, 500 at \$30.00 per 1000.

Blackberries

Blackberries begin bearing the second year and under suitable conditions may be depended upon for regular, profitable crops. A strong, deep loam that will retain moisture, tending toward clay rather than sand, is best. If properly tended they may be planted 2x6 ft., 3600 per acre.

Early Harvest—Medium size but juicy, sweet, and valuable for its extreme earliness, hardiness and productiveness; firm, ships well. 50c per 10, \$1.00 per 25, 50 or more at \$3.50 per 100, 500 or more at \$30.00 per 1000.

Dewberries

Lucretia—Large, often 1½ in. long; sweet, luscious; unexcelled in size and quality by any blackberry; ripens at the end of the strawberry season, before Early Harvest. 50c per 10, \$1.00 per 25, 50 or more at \$3.50 per 100, 500 at \$30.00 per 1000.



This cut is too small to show detail but it does show what a mass of flowers Elder Daisy and Sweet William give in May

Cherries for Quick Results

With proper soil and care Cherries give quick results, often coming into bearing the fourth year. On good, well drained soil Cherries are successful. On wet soils they are short lived. Plant 18 to 20 feet apart.

Prices of Cherry Trees

	Each	Per 10	Per 100
XXX size 2 year, 11/16 in. caliper up about 4 to 5 feet	\$0.45	\$4.00	\$35.00

Any 5 or more at the 10 rate, less at the each rate; 50 or more at the 100 rate.

Early Richmond (May Cherry)—Medium size; round; bright red, darker when fully ripe; very juicy, sprightly acid; latter May-June; hardy; very productive; profitable.

English Morello—Large, dark red, nearly black; flesh dark purplish-crimson; juicy; rich acid; prolific; latter June-July; rather dwarf.

Montmorency—Rather large; dark, rich red; juicy, pleasant acid; excellent; a week to ten days later than Early Richmond; vigorous; hardy; productive.



Plum Trees

Prices of Plum Trees

	Each	Per 10	Per 100
XX size, 11/16 in. caliper up about 4½ to 6 feet	\$0.40	\$3.50	\$30.00

Any 5 or more at the 10 rate; 50 at the 100 rate.

Abundance—Japan; large; bright red over yellow; juicy; sweet, rich; cling; mid July; very productive.

America—Large; yellow, red cheek; juicy; cling; July; hardy; productive; bears young, one of the most reliable.

Blue Damson—Esteemed for canning and preserving.

Currants for Jelly

Plant 3x4 ft.; in central states should have partial shade or a northern slope. Red and white. 2 year, 1 for 20c, 2 for 35c, 3 for 50c. 5 or more at 15c each.



Pear Trees, Standard

Prices of Pear Trees

	Each	Per 10	Per 100
X size 2 year, 9/16 to 11/16 in. caliper, about 4 to 5 feet	\$0.40	\$3.50	\$30.00

Any 5 or more at the 10 rate; 50 or more at 100 rate.

Bartlett—Large, waxy yellow with red blush; juicy, fine grained, rich, good quality; latter August; bears young.

Garber—Large, waxy yellow, red cheek; early Sept.; good for canning; hardy; vigorous; resistant to blight.

Kieffer—Large; rich yellow tinted red; juicy; develops good flavor if ripened slowly in a cool, dark room; resistant to blight; hardy; productive; Sept.-Nov.; bears about the fifth year; plant Garber to pollinize it.

Dwarf Pears

Dwarf Pears occupy little room, and while not so long lived as the Standards they begin bearing younger.

Duchesse—Large, greenish-yellow, dull red cheek; juicy; slightly granular; Sept.-Oct.; hardy; productive. X 5/8 in. caliper up, 40c each. \$3.50 per 10.

Gooseberries

Plant 3x5 or 4x5 ft. A northern slope or slight shade is best in the Central and Southern States.

Houghton—Medium size but a profuse bearer, resistant to mildew; the best for most sections; pale dull reddish-brown when ripe; usually picked green. 2 yr., 1 for 20c, 2 for 35c, 3 for 50c. 5 or more at 15c, 25 at 12c each.

Peaches Bear the Third Year

Peaches come into bearing quicker than any other tree fruit, under proper conditions giving a crop the third year. A few trees won't cost as much as you probably pay for peaches in one year. And none are so delicious as those freshly picked when fully ripened on the tree. A sandy loam or gravelly soil is best but the peach adapts itself to almost any well drained soil. Plant 25x25 ft. Sometimes they are planted 18x18 but 25x25 is better.

Prices of One-Year Peach

	Each	Per 10	Per 100
XX size, 11/16 in. caliper up, about 4 to 6 ft.	35	3.00	27.50

Any 5 or more at the 10 rate, less at the each rate; any 50 or more at the 100 rate.

This list is arranged approximately in the order of ripening; dates named are the average in southern Missouri.

Mayflower—Good size and quality for an early peach, about June 10; red all over; semi-cling; productive.

Carman—Large; creamy white, splashed red; flesh white, juicy, rich, sweet; nearly a freestone; productive.

Belle of Georgia—Very large; white, red cheek; flesh white, fine texture, firm, juicy, rich, high quality; freestone; early August; vigorous, hardy, very productive.

J. H. Hale—A little rounder and firmer than Elberta; about same season or a little earlier; flesh yellow; freestone.

Indian Blood Cling—A red-fleshed cling excellent for canning and preserving.

Elberta—Very large; yellow, crimson cheek; flesh yellow, firm, juicy, good; freestone; mid Aug.; productive.

Heath Cling—Very large; creamy white, sometimes faintly blushed; flesh white to the pit, rich, very juicy, fine quality; clingstone; latter September.

Apple Trees for Home Orchards

The ripening dates named are the approximate average for southern Missouri. Allow 5 to 7 days for each 100 miles North or South. The altitude also affects the date of ripening. Plant 30 ft. apart or more.

Prices of Two-Year Apples	Each	Per 10	Per 100
XX size, 11/16 in. caliper up, about 4½ to 6 ft.	\$0.40	\$3.50	\$30.00
Extra size, 9/16 to 11/16 in. cal- iper, about 4 to 5 ft.30	2.50	20.00

Any 5 or more at the 10 rate, less at the each rate; any 50 or more at the 100 rate.

Summer Apples

Early Harvest—Bright straw color; juicy; rich subacid; good; very early; bears rather young.

Autumn Apples

Maiden Blush—Large, clear yellow, crimson cheek; flesh fine grained, moderately crisp, very juicy, subacid; excellent for cooking; hardy; productive; bears rather young.

Winter Apples

Black Ben Davis—Large; attractive rich red to maroon, rarely striped; flesh firm, crisp, juicy, mild subacid; ships and keeps well; bears young, regularly, abundantly.

Delicious—Roundish-conic; medium large; pale yellow mostly covered with red, splashed and striped dark carmine; moderately fine grained, juicy, mild subacid.

Grimes Golden—Of best quality; beautiful yellow; medium to large; flesh yellow, firm, crisp, juicy, rich subacid, aromatic; a fine dessert apple, good for cooking even before ripe; Oct.-Dec.; blooms late; bears young; hardy.

Jonathan—Attractive lively deep red; medium size; flesh firm, moderately fine, crisp, juicy, very aromatic, sprightly subacid, excellent; Oct. and later; bears rather young.

King David—Wine-red; a Jonathan-Winesap cross; Oct.-Mar.

Stayman Winesap—Large; yellowish, striped, often nearly covered with dark red; firm, moderately fine grained, juicy, subacid; good; keeps late; bears young.

Winesap—Bright deep red; flesh yellow; very rich; crisp, very juicy, sprightly subacid, very good; Dec.-March; bears young.

Crab Apples

Transcendent—Large for a crab apple; golden yellow with a rich crimson cheek; crisp; juicy, subacid; an excellent jelly crab; hardy, productive; Aug.-Sept.

Grapes in the Home Garden

Grapes often bear some the second year and should give a good crop the third year. In garden or vineyard, cultivated and pruned regularly, they give more and larger bunches, but bear fair crops on arbor or pergola, furnishing shade, ornament and fruit; plant 8x8 or 8x10 ft.; they succeed on almost any well drained soil of average fertility.

Agawam—Bunch large, berry large, dark reddish-brown; juicy; rich; productive; ripens after Concord. 2 year, 1 for 20c, 2 for 35c, 3 for 50c, 5 or more at 15c, 25 at 12c each.

Concord—Large; the most popular black grape; juicy; sweet; hardy, productive, vigorous; mid to late Aug. 2 year., 1 for 15c, 2 for 25c, 3 for 35c, 5 or more at 12c, 25 at 8c each, 100 at 6c each.

Moore Early—Black; large; valued for size, hardiness, productiveness and season, about 2 weeks before Concord. 2 yr., 1 for 20c, 2 for 35c, 3 for 50c, 5 or more at 15c, 25 at 10c.

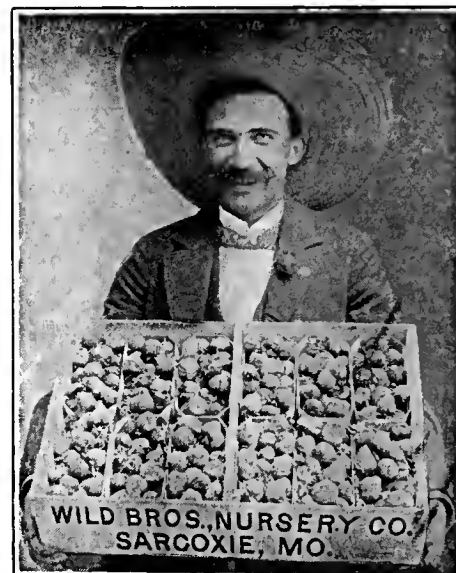
Niagara—Greenish-white to pale yellow; sweet; ripens with Concord or a little later; vigorous; productive. 2 yr., 1 for 20c, 2 for 35c, 3 for 50c, 5 at 15c, 25 at 12c each.

MANUAL OF GARDENING, BY L. H. BAILEY

Practical information on planting and landscaping your home grounds; how to drain, cultivate, and fertilize; how to transplant and prune, the different fruits, vegetables, and flowers; a list of varieties for different purposes. 350 illustrations, 539 pages. Postpaid \$3.00.

Strawberries

No other fruit gives such quick results as strawberries. Planted one spring, they give a crop the next, and with proper care a patch lasts several years. Plant 2 ft. apart in the row, the rows 3½ to 4 ft. apart. These plants are well rooted, properly cleaned and carefully packed. All varieties listed are perfect flowered and will bear alone. Not less than 25 of a kind sold. Postage extra if by parcel post, except the Home Strawberry Collection.



Aroma—A heavy bearer; very large, conical; deep glossy red; firm; ships well; begins midseason and continues late; the leading variety in this section.

Blakemore—A variety originated by the United States Department of Agriculture which has proven valuable in this section; medium size; bright light red; good quality; firm; perfect flowered.

Dunlap—Dark glossy red, its color well retained when canned; rich, juicy; one of the best quality strawberries; medium size; bears heavily; succeeds almost everywhere; a perfect-flowered Warfield.

Klondike—Medium early; dark red; good size; excellent for warm sandy soils; productive; a good shipper; perfect flowered.

St. Louis—Of good size and quality for an early berry for home use; perfect-flowered.

Texas—Early; glossy crimson; rich; juicy; productive; perfect-flowered.

PRICE OF STRAWBERRIES:

	25	50	100	250	1000
Aroma	20c	35c	60c	\$1.00	\$3.00
Blakemore	20c	35c	60c	1.00	3.00
Dunlap	20c	35c	60c	1.00	3.00
Klondike	20c	35c	60c	1.00	3.00
St. Louis	20c	35c	60c	1.00	3.00
Texas	20c	35c	60c	1.00	3.00

500 at 1000 rates.

Home Strawberry Collection

300 assorted early to late, varieties suitable for your section, \$1.35 postpaid.

Asparagus

The earliest of vegetables excepting rhubarb. Easily grown; lasts for years; plant 15 in. apart in the row.

Mary Washington—A commercial variety; large; productive; rust resistant; 2 yr., 30c per doz., 50c per 25, \$1.50 per 100.

Rhubarb

Large, tender, delicately flavored stalks; productive; easily grown; the secret of success is well-drained soil; plant 2½ x 4 ft.; cover the crown 2 in. Divisions (better than seedlings) 15c each, 3 for 40c, \$1.00 per doz.; 6 or more at the doz. rate.

Horseradish

Horseradish sets, 25c per doz., \$1.50 per 100.