

## **Historic, archived document**

Do not assume content reflects current scientific knowledge, policies, or practices.



62,71

1934

LIBRARY

FEB 26 1934

# BAUER'S AQUATIC GARDENS



## Superior Water Lilies and Aquatic Plants

WE ASK YOU TO COME AND SEE US ! !

Take West Side Highway from Portland through Newberg to Dayton. From Dayton follow the Wheatland Ferry road for nine miles. Ponds are on the East side of the road. From east side of valley cross the Wheatland Ferry and follow the Dayton road for a mile and a half to the gardens.

FRED BAUER, JR.

1805 S. E. Marion Street, Portland, Oregon  
TELEPHONE SELLWOOD 2419



# The CULTURE of WATER LILIES

## - Very Important -

If you will follow carefully the directions as indicated below, success in the culture of Water Lillies will be assured.

**Location**—The pool or water garden should be exposed to the sun at least half of the day. The depth should be from 18 inches to three feet; the best depth for all purposes is 30 inches.

**Preparation**—Any good garden soil mixed with about one-fifth of well rotted cow manure; spread over the floor of the small pools to a depth of 10 to 12 inches; cover the top with one inch of sand and level off well.

**Planting**—The lily tubers should be planted so that the crown or growing point is just out of the soil. If the growing point seems to come out to one side, plant the tuber so that the tips of the new leaves are looking up. Most shallow water plants like water from two to six inches in depth. Bog plants should be planted in wet ground.

**Planting Time**—We prefer to ship the different varieties at the proper time for planting in each locality. Hardy lilies may be shipped as early as April or May. Tender varieties should not be set out before the middle of June.

In large pools where it is desired to place the plants in boxes, the boxes should be two by two feet square and one foot deep, made of Oregon pine, allowing one box for each lily. However, the lilies will grow more vigorously and bloom more freely if placed in soil spread over the bottom of the pool. **Caution**:—Do not use Redwood lumber.

Where group planting is desired in large pools, boxes can be made any desired size, allowing about two feet each way for the number of plants to the box.

In wild planting, to fill the pool for the first time with water, it is a good plan to wet the bed first with a spray from the hose after the lilies are set and then lay the hose on a burlap sack and fill very slowly; this will not disturb the planting and will give you a nice clear pool.

All sub-aquatics for best results, should be planted in shallow water not over an inch or so in depth.

**Do not run too much fresh water in the pool; just fill up the evaporation.**

To destroy the wigglers that hatch into mosquitoes and larvae of other insects, a few gold fish will keep the water pure.

Winter care for hardy water lilies and of pools consists of draining artificial pools and covering the

plants with sufficient leaves and litter to prevent actual freezing. Pools deep enough not to freeze solidly should be left alone. Tubs may be treated the same way or remove to root cellar for the winter.

**Pool Construction**—Water lily pools may be built in several different ways. The easiest one to make is the shallow sided basin. All that is required is to excavate the center to a depth of about three feet and then slope the sides gradually to the top. This basin may then be lined without building the usual forms. The concrete used should be one part cement, three parts sand and five parts gravel, mixed together dry enough to stand in place when tamped. After foundation is set it should be broomed over with a mixture of one part cement and one part sand, with enough water to make it work easily. This will fill up all holes and cracks, thus making the pool water tight.

A straight sided pool may be made any shape desired by simply digging a narrow trench to the required depth and filling it with concrete. After it sets the inside is dug out and the bottom of concrete is poured in. Care should be taken that the inside of the trench be smooth and that it be dug to a level depth. The top of the wall can be covered with soil, and the plants allowed to grow to the water's edge or it may be brought up and finished with rocks in any manner that may please the imagination.

Inlet and drain pipes are convenient, but a hose may be used for filling and siphoning when necessary. A new pool should be filled and emptied several times to remove any alkali that might injure plants or fish.

**Tub Culture**—It is entirely practical and satisfactory to grow water lilies and aquatics in tube, half barrels or any container two feet or more across, that hold water. Many city dwellers find this method very convenient.

## MAKING UP YOUR ORDER

Print names of varieties desired and give price quoted so no mistakes can be made.

Place orders early—preferably NOW—for spring deliveries. This will prevent delay of shipment after plants are ready.

All care will be used in packing, and every precaution taken to secure safe transit, but we assume no responsibility for delay or damage in transit.

All shipments are inspected by State Horticulturists Inspector before being packed, and bear the tag of his inspection when leaving our gardens.

We ship by express—purchaser to pay all transportation charges.

When purchaser wishes stock to be shipped by Parcel Post please inclose postage. Otherwise we ship by express.

Water lily roots weigh about one pound each when packed ready for shipment.

Our prices are quoted net and cash is expected with order.

We are always glad to give any advice regarding the construction and cultivation of water gardens.

## WHITE WATER LILIES

**Marlacea Albida**—A vigorous variety. Large flowers of sparkling whiteness, stamens light yellow; produces freely and continuously throughout the season. This is easily the best of the white water lilies. **\$1.00 each.**

**Tuberosa Richardsonii**—Flowers are pure white, double and good size, generally six to eight inches across; fragrant. This water lily is a perfect cup shape. **\$1.00 each.**

**Gladstoniana**—Extra large white with a very strong growth. A very fine lily, especially good for large pools and lakes. **\$1.50 each.**

## PINK WATER LILIES

**Marlicea Rosea**—Flowers large deep rose color; young leaves are blush red changing to a deep green. A vigorous grower and bloomer. One of the very best pink hardy water lilies **\$1.50 each.**

**Marlicea Carnea**, (Flesh Pink) Beautiful light pink flowers of good form. Blossoms are large, the plant strong and free blooming. **\$1.00 each.**

**Masaniello**—A bright pink shaded to red. The plant is a strong grower giving lots of bloom. One of the best. **\$1.25 each.**

**Rose Arey**—This lily is of exceptional beauty color and fragrance. The flowers may reach eight inches in diameter and are of a deep cerise pink. This variety seems to be in bloom all the time. The plants make a strong heavy growth. **\$1.50 each.**

**Morning Glory**—A large pink lily of the Marlicea type from the Independence Gardens. The color is a light shell pink, almost white at the tips of the petals shading deeper toward the center of the flower. It is a strong grower and good bloomer and is sure to be a favorite when it is better known **\$2.00 each.**

**William Doogue**—A magnificent lily. Flower cup-shaped, 5 to 6 inches across, of beautiful shell pink; deliciously fragrant. The plant is a continuous bloomer and very desirable. **\$1.50 each.**

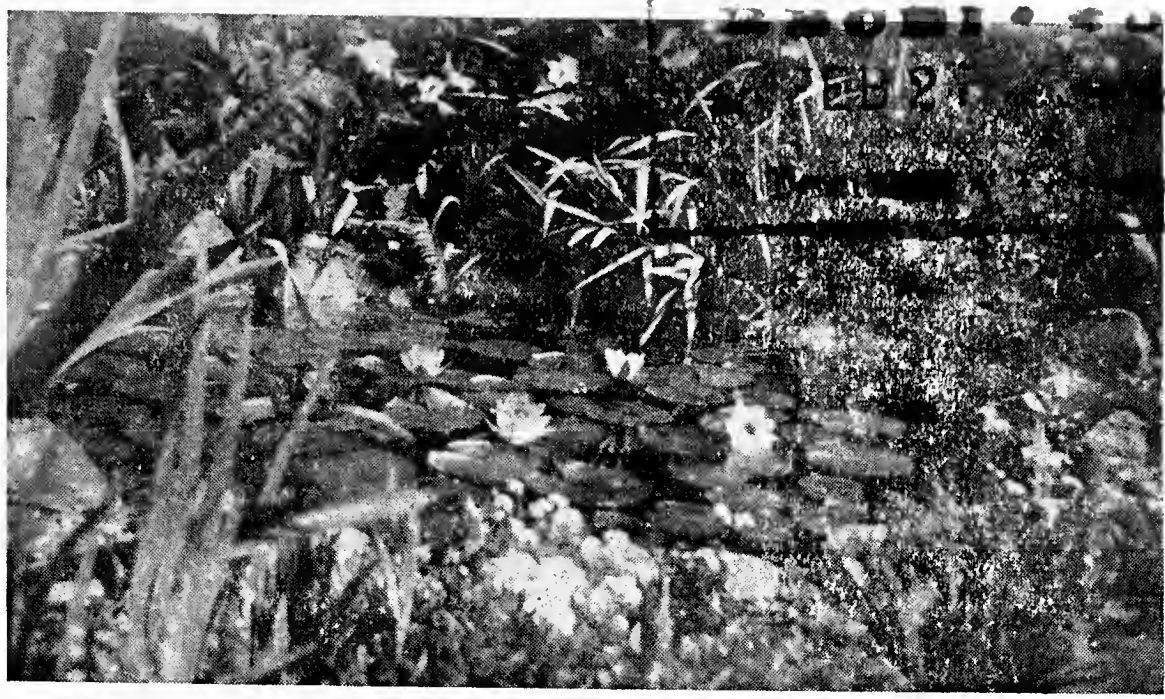
**Eugenia de Land**—Flowers of exquisite shade of deep rose pink with petals long lanceolate, yellow stamens. Very fragrant, borne on the surface of the water. Very desirable. **\$1.00 each.**

**W. B. Shaw**—This lily is of the *N. Odorata* type. The flowers open wide and are of a rich rose pink color. Very fragrant. One of the first to open in the morning and the last to close at night. **\$1.50 ea.**

**Pink Opal**—A deep rich pink with a pleasing fragrance. A short petalled flower, standing well above the water. **\$1.00 each.**

62.71

LIBRARY



# Bauer's Aquatic Gardens

SUPERIOR WATER LILIES and AQUATIC PLANTS



SPECIAL WHOLESALE PRICE LIST

for the

SPRING and SUMMER of 1934

These prices are net wholesale and are offered only to the trade who prove themselves entitled to them.

**Terms:** We accept orders only when accompanied by funds sufficient to cover costs of goods. Dealers wishing to open an account must furnish satisfactory references.

**Guarantee:** We guarantee all stock to be true to name and in the best of condition when shipped but we cannot be held responsible for the results obtained from them as we control the conditions under which the stocks are planted.

**Shipping:** All stocks F. O. B. Portland. No charge for packing. Transportation to be paid by purchaser.

**Six at the Dozen Rate, Fifty at the Hundred Rate.**

Ponds nine miles southeast of Dayton, Oregon

Fred Bauer, Jr.

Telephone SEllwood 2419

1805 S. E. Marion Street

Portland, Oregon



# HARDY WATER LILIES

COLORS:	Retail	WHOLESALE PRICES		
	Per Ea.	Each	Doz.	Per 100
<b>WHITE—</b>				
Marl. Albida	\$1.00	\$ .75	\$6.00	\$35.00
Tub. Richardsonii	1.00	.75	6.00	35.00
Gladstoniana	1.50	1.15	9.00	
<b>PINK—</b>				
Marl. Rosea	1.50	1.15	9.00	
Rose Arey	1.50	1.15	9.00	60.00
Morning Glory	2.00	1.50	12.00	
Wm. Doogue	1.50	1.15	9.00	
Eugenia de Land	1.00	.75	6.00	40.00
W. B. Shaw	1.50	1.15	9.00	
Pink Opal	1.00	.75	6.00	40.00
Marl. Flesh	1.00	.75	6.00	
Somptuosa	1.50	1.15	9.00	
Helen Fowler	1.00	.75	6.00	
<b>YELLOW—</b>				
Marl. Chromatella	1.25	.75	6.00	40.00
Pyg. Helvolva	.75	.60	6.00	
Sunrise	2.50	1.75	18.00	
<b>RED—</b>				
Gloriosa	2.25	1.75	12.00	
Robinsoni	1.50	1.15	9.00	
James Brydon	2.00	1.50	12.00	
Escarboucle	2.50	2.00	15.00	
Conqueror	2.25	1.75	12.00	
<b>SUNSET COLORS—</b>				
Comancha	2.00	1.50	12.00	
Siox	1.50	1.15	9.00	
Paul Hariot	1.25	1.00	7.50	

**All Shallow Water Plants and Bog Plants are 25% off retail list except those priced by dozen which are net wholesale.**

## Shallow Water Plants--

Arrowhead, Giant	35c each	3 for 1.00	2.00 per doz.
Cattails	15c each	4 for 50c	75c per doz.
Floating Heart	50c each		
Parrot Feather	15c each	4 for 50c	75c per doz.
Pickeral Rush	25c each		
Primrose Creeper	25c each		2.00 per doz.
Water Plantain	25c each		2.00 per doz.
Water Hawthorn	75c each		5.00 per doz.
Water Poppy	15c each	4 for 50c	
Water Shield	15c each	4 for 50c	75c per doz.

## Marsh or Bog Plants

Forget-Me-Not	15c each	4 for 50c	75c per doz.
Umbrella Palm	50c each		
Thalia Dealbata	50c each		
Western Marsh Fern	50c each		
Chinese Matri. Vine	50c each		
Japanese Iris (mixed)	35c each	3 for 1.00	
Water Iris (yellow)	35c each	3 for 1.00	

## Floating Plants

Water Hyacinth	15c each	4 for 50c	75c per doz.
Duck Weed	25c per portion		50c per qt.

## Aquarium Plants

Anacharis	15c each	4 for 50c	60c per doz.
Ludwiga	15c each	4 for 50c	60c per doz.



**Somptuosa**—A large pink flecked with white. The plant is a good strong growth and a free bloomer. **\$1.50 each.**

## YELLOW WATER LILIES

**Mariacea Chromatella**—Flowers of charming canary yellow, from four to six inches in diameter, with bright yellow stamens. The leaves are beautifully mottled with brown. The plants flower freely and are of easy growth. The best yellow water lily in cultivation for all purposes. **\$1.25 each.**

**Pygmaea Helvola**—Beautiful small yellow flowers which float on the surface of the water. They are about two inches in diameter. Leaves are small, beautifully mottled with brown spots. The plants flower freely. Suitable for tub culture. **75c each.**

## RED WATER LILIES

**Gloriosa**—This is a magnificent variety with flowers from four to six inches across, of beautiful form which float on the water. They are of a deep carmine rose color, becoming a deep red with age. The plant is very free in flower, blooming continuously throughout the season. This lily is the best of this class for all purposes. **\$2.25 each.**

**James Brydon**—A superb variety, being a free bloomer, with rose crimson flowers four to five inches in diameter. **\$2.00 each**

**Robinsoni**—Large flowers of dark orange red. An extra good bloomer and should be in every collection. **\$1.50 each.**

**Escarboucle**—Flowers are bright vermillion, striking in their brilliancy and extremely attractive. A rich, spicy odor adds to the charm of the flower. The plants make strong growth. **\$2.50 each.**

**Conqueror**—The largest bloom of the hardy varieties. The flowers are bright red, with petals shaded into white on the concave part, and streaked with deep red on the convex surface; stamens are yellow orange. Showiest water lily in cultivation. **\$2.25 ea.**

**William Falconer**—The darkest of the red lilies. A deep velvety red that is hard to find in any type of flower. **\$5.00 each.**

## MISCELLANEOUS WATER LILIES

**Comancha**—The best of all sunset colors and the hardiest of all water lilies. A steady free bloomer, one of the first to open in the spring and among the last to cease in the autumn. A vigorous plant, thriving and blooming under the most adverse conditions and perfectly at home in the tube garden or large pool. **\$2.00 each.**

**Sioux**—This is a star shaped variety. The flower is large and upon first opening is a dull rich bronze. The yellow changes to a reddish cast on succeeding

days, making is most unique in color of any of the lilies. The plant blooms continuously throughout the season. **\$1.50 each.**

**Paul Hariot**—Large flowers of clear yellow, with delicate shadings of red at base of petals. Leaves spotted with brownish red. Small growth, beautiful blooms. **\$1.25 each.**

**Aurora**—This lily derives its name from the changing colors of the blossoms. It opens yellow warmed with amber, and deepens daily to dark red, giving a wide range of color in one plant. **\$1.00 each.**

**Lucidia**—A free grower and a good bloomer. Flowers are large and star shaped; salmon pink shaded to a darker center with yellow stamens, making a wonderful coloring in a water lily. Leaves blotched with brown. **\$2.00 each.**

### TENDER WATER LILIES

**William Stone**—Purple blue flowers from 5 to 7 inches across, have purple stamens and deep yellow centers; they stand well out of the water, and open early and remain open all day. **\$1.50 each.**

**Mrs. C. W. Ward**—This is a splendid variety. It has large, deep rosy-pink, almost red flowers, with yellow stamens and center. They stand high above the water. **\$1.50 each.**

### THE SACRED LOTUS OR NELUMBIUM

**Egyptian Lotus**—This is the true flower of the Egyptians and possesses a strange haunting fragrance. Originated in India and taken to Egypt to become a sacred flower. The blossoms are an attractive pink. An excellent variety that grows very hardy and freely in the latitude of Cleveland. **Tubers \$1.50** (Tubers only in April or the first part of May.)

### SHALLOW WATER PLANTS

**Arrowhead, Giant**—Distinctive leaves, shaped as name indicates, standing one to three feet out of the water. Flowers freely in a series of white spikes. Hardy. **35c each 3 for \$1.00**

**Cat Tails**—One of the favorite native swamp plants. **15c or 4 for 50c.**

**Floating Heart**—This plant has leaves like the water lilies, with bright yellow flowers. Grows well and blooms freely. Does best in shallow water. **35c each, 3 for \$1.00.**

**Parrot Feather**—An aquatic plant having long trailing stems covered closely with whirls of most delicate foliage. For border or fountain plant. **15c bunch.**

**Pickerel Rush**—The blue flowers of this plant have many friends, particularly as they are produced freely. The total growth is about two feet. **25c each.**

**Primrose Creeper**—A fern like leaf of light green. Flowers buttercup leyyow. Grows well in shallow water or wet ground. **25c each.**

**Water Plantain**—A border plant with heart-shaped leaves standing about one foot above the water and surrounded by tall branching spikes of small white flowers. Hardy. **25c each.**

**Water Shield**—Floating, oval leaves, borne on stems coveren with transparent jelly. The flowers of purplish red, about one inch across. The leaves turn red as the season advances making them attractive in small pools. **15c each, 4 for 50c.**

**Water Hawthorn**—Snow white flowers with the fragrance of English Hawthorn. They bloom very early in the spring and late in the fall. **50c each.**

**Water Poppy**—A very pretty aquatic plant, with floating leaves and large yellow poppy-like flowers. **15c each, 4 for 50c.**

## MARSH OR BOG PLANTS

**Collection of Bog Grasses and Reeds**, for the pool margin. **6 for \$1.00.**

**Forget-Me-Nots**—Small blue flowers with golden centers; dark green foliage. Grows from edge of pool into water. **15c each, 4 for 50c**

**Umbrella Palm**—A very ornamental plant for side of water. Also grows well in the water and moist ground. **25c and 50c each.**

**Thalia Dealbata**—A fine and stately aquatic, with canna like leaves, to be grown in shallow water or wet soil. Effective for the margin of pools. **50c**

**Western Marsh Fern**—The fronds of this fern are delicate and lacy, apple green in color. Grows two to four feet in height. Does well in moist soil. Its fronds are of an annual growth. **50c each.**

**Chinese Matrimonial Vine**—This vine has dark bluish green leaves, clusters of purple blossoms, which ripen to bright red berries on purple stems. Grows well in any soil. Distinctly ornamental on lattice fences or stone walls. **50c each.**

**Japanese Iris**—This is the elite of the Iris family. The flowers begin to open about the middle of June and continue for several weeks. They grow in any good garden soil but delight in an abundant supply of water. For massing or planting along a stream or around a pool, Japanese Iris are ideal. Strong divisions of unnamed varieties, ranging in color from pure white to a rich purple. **35c ea., 3 for \$1.00.**

**Water Iris**—The Giant Yellow Flag, growing to a height of five or six feet and having large clusters of blooms. Makes a fine center or corner for your pool. **35c each, or 3 for \$1.00.**

**Lythrum, Roseum Superbum**—Very attractive hardy perennial, with long spikes of rose pink bloom, growing four to six feet tall. Does best in wet soil.  
**25c each.**

### FLOATING PLANTS

**Water Hyacinth**—Flowers a delicate lilac in trusses like a hyacinth. The plant is a floater and only requires placing in water where it will take care of itself. For the best results it should be confined to shallow water two to eight inches, where it will root into the mud and be a mass of bloom from July to October.  
**15c each, 4 for 50c.**

**Duck Weed**—Appears as a series of green polka dots on the surface. The small roots are much appreciated by goldfish.  
**25c portion.**

### AQUARIUM PLANTS

**Anachris**—One of the best aquarium plants, as it is a good oxygenator. In form it is moss-like, the leaves growing on a fragile stem, the entire plant being submerged at all periods. A very attractive plant of dark green growth and very easy to keep in an aquarium.  
**15c per bunch.**

**Ludwigia**—One of the prettiest of the submerged plants. Oval leaves tinged pink.  
**15c per bunch.**

### COLLECTION at SPECIAL PRICES

Col. No. -1-	Marl. Albida	\$1.00 each
Special Price	Marl. Carnea	\$1.00 each
\$2.50	Marl. Chromatella	\$1.25 each

Col. No. -2-	Marl. Albida	\$1.00 each
Special Price	Marl. Rosea	\$1.50 each
\$5.00	Comancha	\$2.00 each
	Gloriosa	\$2.25 each

Col. No. -3-	Gladstoniana	\$1.50 each
Special Price	Rose Arey	\$1.50 each
\$5.00	Conqueror	\$2.25 each
	Lucidia	\$2.00 each

Col. No. -4-	Marl Albida	\$1.00 each
Special Price	Pink Opal	\$1.00 each
\$2.75	Aurora	\$1.00 each
	Pygmaea Helvolva	75c each

Col. No. -5-	Marl. Albida	\$1.00 each
Special Price	Marl. Chromatella	\$1.25 each
\$9.00	Marl. Rosea	\$1.50 each
	Comancha	\$2.00 each
	Rosea Arey	\$1.50 each
	Escarboucle	\$2.50 each
	Massaniello	\$1.25 each
	Pink Opal	\$1.00 each

### BAUER'S AQUATIC GARDENS

1805 S. E. Marion Street -:- Portland, Oregon