

## **Historic, archived document**

Do not assume content reflects current scientific knowledge, policies, or practices.



Jan 1934



**BIRMINGHAM  
AQUARIUM CO.  
TROPICAL FISH  
AQUATIC PLANTS  
WATER LILIES  
AQUARIUMS**

PLANT & POOLS DISPLAY ROOM  
ROUTE 6, BOX 304 2705 - 7<sup>TH</sup> AVE. SO.  
**BIRMINGHAM, ALA.**

 A decorative border at the bottom of the advertisement featuring illustrations of fish, shells, and aquatic plants.

# BETTER HOME FISH FOOD FOR BETTER HOME RESULTS

*Always Look for Our Trade Mark and You Will Have the Genuine*



The Best Ingredients Prepared for the Health of Your Fish is what Better Home Fish Food Offers. Your Fish are Such Light Feeders that a Little will go a long way—but be sure that the little you get will be the best there is. It is up to You to Feed Your Fish the Proper Food. You can Always Depend on Better Home Fish Food as being Better Than Most, and of the Best.

## **THIS FOOD COMES CONVENIENTLY CANNED IN FIVE GRADES**

Tropical Baby Fish (Extra Fine) 15c each; 2 for 25c. Half Grown Tropical Fish (Medium) 10c each. Grown Tropical Fish (Heavy) 10c each.

We Also Have a Special Food for Goldfish and Turtles That We Equally Recommend.

- Grain Goldfish Food 75c lb.
- Flake Goldfish Food 10c box.
- Turtle & Newt Food 10c box.
- Better Home Sundried Shrimp 60c lb.

*If Your Dealer Cannot Supply You Order Direct From Us*

## I N D E X

	Page
PREFACE by Birmingham Chamber of Commerce.....	2
AQUARIUMS .....	3
AQUATIC PLANTS .....	11
DESIGNING POOLS .....	13
GOLDFISH .....	9
HARDY WATER LILIES .....	15
SCAVENGERS .....	10
SACRED LOTUS .....	21
SUPPLIES .....	22
TROPICAL FISH .....	7
TROPICAL WATER LILIES .....	18
TERMS .....	23

## *Birmingham Chamber of Commerce*

Prepared by Perkins J. Prewitt, Director of Publicity

Birmingham, \*the Industrial City Beautiful, where coal and iron and limestone lend themselves to the making of an industrial world, is now engaged in the propagation of fish and the growing of lily bulbs.

And, as with everything else, on a big scale.

It was but a short step from huge tanks—tanks that hold tons of water, oil and gas and almost every other known liquid—to aquariums.

Vats for dipping cattle came first—back when the federal government first passed the anti-tick law.

Then came—

But what has all this to do with fish—and lily bulbs? Just this: Of the 2,000 articles manufactured by the more than 800 industries in Birmingham, aluminum aquariums, cast in many sizes and designs, have become somewhat synonymous with steel rails and wire nails—not exactly, but somewhat. This is where fish come in.

The fish, in almost every shape, size and color (it being understood that we are not trolling for tarpon or casting for trout, or engaged in any strictly piscatorial pursuit), are hatched in the very shadow of the aquarium foundry. So what fun! The Isaac Waltons don't need to have it all.

Everything from the flivver fish—that is, gold fish—to the most costly tropical fish is grown. Every color of the rainbow is matched and re-matched. Stamp collectors are simply not in it. Speaking of hobbies, of course.

As for lilies (and of course other water plants), the manufacturers of the aquariums found that there was a real demand for water plants, and, also, that Birmingham could supply the market with bulbs some three to four months earlier than other sections of the country, in January as against March and April. So the growing lily bulbs became an art as well as the casting of aluminum aquariums.

All of this, of course—that is, the growing of fish and lily bulbs—is made possible by a benign Dixie sun. Extreme cold weather seldom occurs, and freezing temperature rarely continues more than 48 hours . . . The summers are long and pleasant, never excessively hot. Rainfall is ample and well distributed. The temperature is reflected by the long growing season (period between frosts), which ranges between 240 and 300 days, depending on the section, and the year around outdoor working season for industries.

Thus the lily bulbs and fish are accounted for: once they are brought into the land of the living, it is an easy matter for whoever wishes to raise them to do so—for, be it remembered, the aquariums are portable—like the potted hydrangia on your front porch—and can be moved in and out, to suit the temperature.

Which brings one to this conclusion: The fish are still suckers if they don't bite at this attractive bait, and the lilies—well, just consider . . . “They toil not, neither do they spin” . . . but they certainly grow better in Birmingham-built aquariums.

\*The only place in the world so far as is known where these three necessary ingredients for the making of iron are found in close proximity.

# AQUARIUMS

## *Select a Better Home Aquarium*

Your aquarium is the home of your aquatic life. Your species must have the proper kind of an aquarium in which to thrive.

To be successful with your undertaking, select an aquarium that has been designed correctly by skilled workmanship. The highest quality of materials is essential for long livelihood.

Our foundry is thoroughly equipped to make each one properly. Our Better Home Aquariums are made by expert designers, with knowledge derived from twenty years of experience practice. We use the best material obtainable. Each one is made from all cast aluminum, beautifully designed, highly polished, with sides of bulb edge or crystal plate glass.

We guarantee each one to be rust proof and put together with the best of aquarium cement.

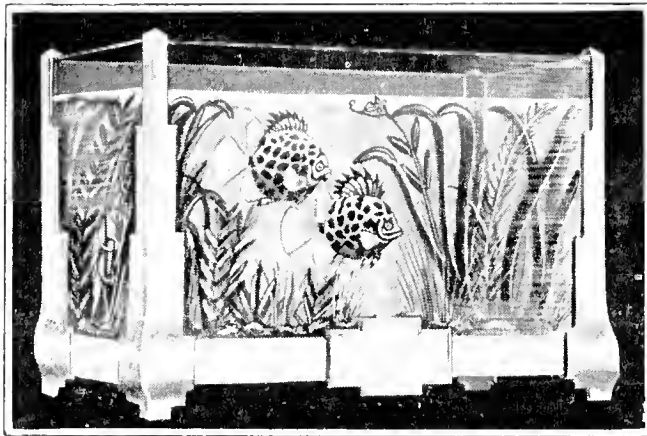
Besides being ornamental, they are known for their durability, which is a merit that has established our success.

## *Interesting Hobby*

An aquarium is a fascinating project. To really make it more so, don't over-do it at first. Your interest will last longer in moderation. You will find this hobby an everlasting stimulating pleasure.

If you are just beginning, we suggest that you choose a medium size aquarium, not too small, nor too large, because as you become more enthusiastic you will want others. In selecting your aquarium, be sure that it is made of non-poisonous material. This is why Better Home Aquariums are individually classed, for the aluminum frames are best suitable for this purpose.

**BETTER HOME AQUARIUMS STAND FOR THE HIGHEST QUALITY  
AT THE LOWEST PRICE**



## MODERNISTIC

One of our most popular designs. New modernistic frame, hand finished, trim lines, with sides of bulb edge glass. All aluminum frame that is guaranteed not to rust.

Specially suitable for your home and studio use, but equally as attractive anywhere.

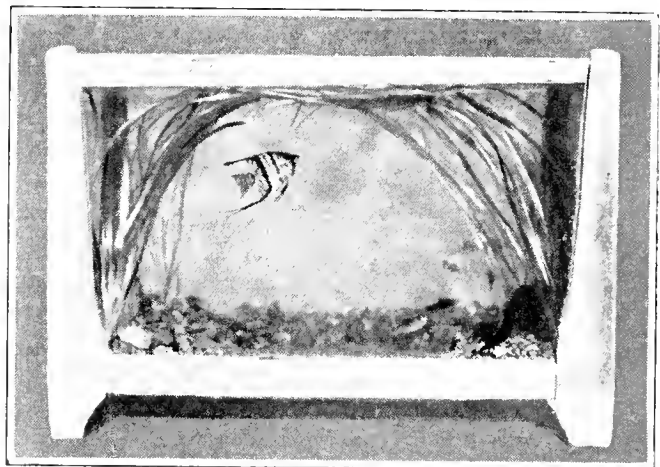
Order by style number.

Order No.	Width	Length	Height	Capacity Gallons	Price
A 100	8½	12	9¾	3	\$ 5.00
B 101	8¾	16½	9¾	4	6.00
C 102	11	16¾	11½	6	8.00
D 103	11	16½	14½	7	9.00
E 104	12½	21½	13¾	11	15.00
F 105	12½	21½	11½	10	14.00
G 106	7½	25	9¾	4	6.00
H 107	7½	25	11½	6	8.00
I 108	7½	25	14½	7	9.00

## THE DeLUXE

The outstanding corners of this model have a very impressive feature, the center edge of each corner having a deluxe effect.

Highly polished, all aluminum frame, with sides of bulb edge glass that is put together with perfect uniformity.



Order No.	Width	Length	Height	Capacity Gallons	Price
A 200	8½	12	9¾	3	\$ 4.50
B 201	8¾	16½	9¾	4	5.50
C 203	11	16¾	11½	6	7.50
D 203	11	16½	14½	7	8.50
E 204	12½	21½	13¾	11	14.00
F 205	12½	21½	11½	10	13.00
G 206	7½	25	9¾	4	5.50
H 207	7½	25	11½	6	7.50
I 208	7½	25	14½	7	8.50

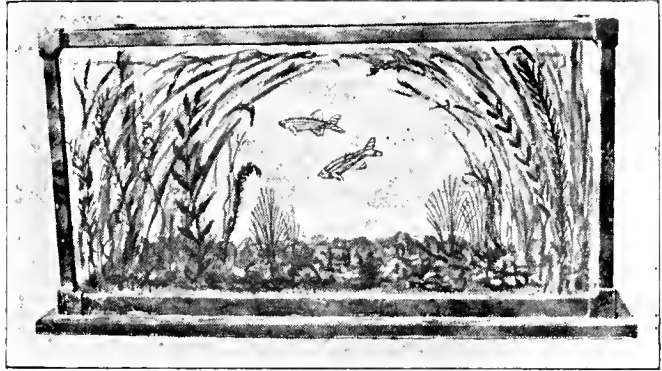
### YOUR FRAME PAINTED WILL BE ONE DOLLAR CHEAPER

The catalogue price on all designs, except the Box Frame, include the frames polished. If you desire your frame painted, the price will be one dollar less.



## BOX FRAME

Open top box frame. Ideal for commercial display. All aluminum frame with sides of clear plate glass. This design is finished in pleasing colors. Small sizes with glass bottoms and large sizes with heavy slate bottoms. The slate bottoms are one-inch thick and extend one inch from the frame.

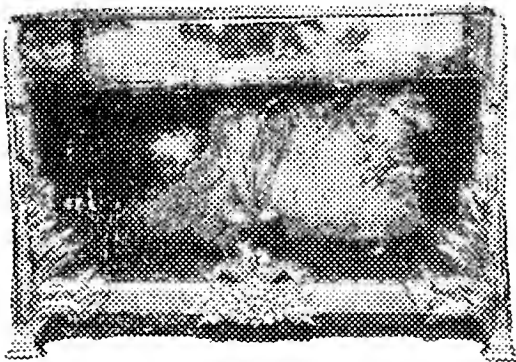


### GLASS BOTTOMS

Order No.	Width	Length	Height	Capacity Gallons	Price
A 300	10 $\frac{3}{4}$	16 $\frac{1}{2}$	10 $\frac{3}{4}$	6	\$ 5.00
B 301	12	21	13 $\frac{1}{2}$	12	10.00
C 302	12	21	17	14	12.00

### SLATE BOTTOMS

D 303	13 $\frac{1}{2}$	24 $\frac{3}{4}$	17	16	\$16.00
E 304	15	27 $\frac{1}{2}$	17	24	20.00
F 305	15 $\frac{1}{2}$	31 $\frac{1}{2}$	17	32	30.00



## THE FLORAL

All four corners with exquisite floral design. Painted your choice color. Green preferable. Rugged strength without heaviness. Sides of bulb edge glass. Two sizes in stock.

Order No.	Width	Length	Height	Capacity Gallons	Price
A 400	10 $\frac{3}{4}$	16 $\frac{1}{2}$	14 $\frac{1}{2}$	6	\$ 7.00
B 401	12 $\frac{1}{2}$	21 $\frac{1}{2}$	14 $\frac{1}{2}$	11	12.00

## WINDOW DISPLAY

This aquarium is one of our best sellers for window display. Neat and very attractive. Bulb edge glass sides, with Modernistic or DeLuxe corners.

Order No.	Width	Length	Height	Capacity Gallons	Price
A 500	8 $\frac{1}{2}$	16 $\frac{1}{2}$	9 $\frac{3}{4}$	4	\$4.00
B 505	8 $\frac{1}{2}$	16 $\frac{1}{2}$	11 $\frac{1}{2}$	5	5.00
C 506	8 $\frac{1}{2}$	16 $\frac{1}{2}$	12	6	6.00
D 507	7 $\frac{1}{2}$	24 $\frac{1}{2}$	14	7	7.00

## HEXAGON

The Hexagon is a beautiful display of workmanship. Has an alluring interest everywhere. Highly polished all aluminum frame, with sides of bulb edge glass. Black heavy slate bottom extending one inch from the frame. Two sizes. One measuring  $24\frac{1}{2}$  inches from point to point, and  $11\frac{1}{2}$  inches high. Large size measuring 36 inches from point to point, and is  $13\frac{1}{2}$  inches high.

Order No.

A 600     $24\frac{1}{2} \times 11\frac{1}{2}$  holds 25 gallons for \$30.00  
B 601    36 x  $13\frac{1}{2}$  holds 50 gallons for \$65.00

## THE BETTER HOME AQUARIUM

The Better Home Aquarium has a gorgeous Italian marble base, two inches thick, with special designed corners, and sides of heavy plate glass. All aluminum, highly polished, with base extending two inches from the frame. This is a beautifully constructed model of life-time durability. Priced exceedingly low.

Order No.	Width	Length	Height	Capacity Gallons	Price
A 700	$31\frac{1}{2}$	$15\frac{1}{2}$	$18\frac{1}{2}$	32	\$50.00

### HAVE YOUR AQUARIUM DESIGNED

#### CUSTOM MADE

Have your aquarium custom made with your own specifications. We can make any size or style to fit in any space. Just what you want. Send us your measurements.

# TROPICAL FISH

Where you have limited space and wish for a variety, you will find that the many Tropical species you have to choose, will satisfy your desire.

Most all of these fish can stand close quarters, but there are a few that have such fighting dispositions that they must be kept alone.

The question of space is not the main point in raising this kind. It is an endless habit when one starts.

The tropical fish are beautifully colored, and can be cross-bred to an amazing result.

The beginner will probably want to have some of every group, but it is best not to begin with expensive ones. Gradually increase your stock, then you will always have good luck. Tropical fish are not heavy feeders, and once daily is plenty for them.

Balance your aquarium with good oxygenating plants. Your species live by absorbing oxygen, and as they give off carbon dioxide as their waste product; oxygenating plants with the proper light will do the opposite. So what is poison to one is life to the other.

Tropical fish thrive well in temperatures 65 to 100 degrees.

## MOLLENSIA (Mollienisia) Life-Bearing

Sailfins (Gray Top Fins) .....	\$1.00 pr.
Black (Jet Velvet Black).....	4.00 pr.
Spotted (90% Black) .....	2.50 pr.

## GUPPYI Life-Bearing

Rainbow (Good For Pools) .....	\$ .35 pr.
Spear and Lyre Tail .....	1.00 pr.

These are not just ordinary Guppyi, but are beautiful in color. This is a very good fish for the beginner.

## GAMBUSIA Life-Bearing

Plain (Mosquito Fish Good For Pools) .....	75c doz.
Hoolbrookii (Black With White Dots) .....	75c pr.

## NEST BUILDERS

Paradise Fish (Semi-Tropicals can't mix) .....	\$1.00 pr.
Polycanthus (Peaceful) .....	1.00 pr.
Betta (Red, Blue, green and cream) .....	2.50 pr.
Guorami (Dwarf, Peaceful) .....	2.00 pr.
Guorami (Three Spot, Peaceful) .....	1.00 pr.

## CHARACINS Egg-Layer

Mouthbreeders (Can't Mix) .....	\$2.00 pr.
Tetra (Can't Mix With Small) .....	2.00 pr.

Barbus (Very Peaceful) .....	1.00 pr.
Cardinal (Fresh Water, Peaceful) .....	.75 pr.
Jewel (Can't Mix) .....	2.00 pr.
Pearl Danio (Peaceful) .....	1.00 pr.
Rerio Danio (Peaceful) .....	.75 pr.
Malabaricus Danio (Peaceful) .....	1.75 pr.

## PLATYS (Platypoecilus) Live-Bearing

Pure Blood, Red Moons (Red) .....	\$1.50 pr.
Blue Moon (Not Mixed) .....	1.00 pr.
Gold Moon (Real Gold Color) .....	1.00 pr.
Black Moon (Dark Black) .....	1.00 pr.
Spotted Moon (Combination) (Our New Color) .....	1.00 pr.

## HELLERI Live-Bearing

Swordtail, Green and Black .....	\$1.00 pr.
Black .....	2.00 pr.
Brick Red and Blood Red .....	2.00 pr.
Gold with Metallic Spots.....	2.00 pr.
Blue Green tinged with Red (New) .....	1.50 pr.

You can crossbreed this fish with the Platy and almost any color can be produced.

## SCALARES (Pterophyllum) Egg-Layer

Angel Fish (Small) .....	\$1.00 pr.
Angel Fish (Medium) .....	2.00 pr.
Angel Fish (Large) .....	4.00 pr.

## GROUP COLLECTIONS AT SAVING PRICES

### SELECTION NO. 1

**\$3.00**

One pair Gold Moon  
One pair Swordtail  
Three pair choice Guppyi

### SELECTION NO. 2

**12 LIVE BEARING FISH. ALL  
FOR \$4.00**

One pair Red Moon  
One pair Green Helli  
One pair Black Moon  
Three pair Guppyi

### SELECTION NO. 3

**FIVE PAIR. ALL FOR \$6.00**

One pair Mollensia  
One pair Red Moon  
One pair Blue Moon  
One pair Angel Fish  
One pair of red striped Swordtail

### SELECTION NO. 4

**6 PAIR \$8.00**

One pair Angel Fish  
One pair Red Helli  
One pair Black Moons  
One pair Blue Green Helli  
One pair Pearl Danio  
One pair Betta

### SELECTION NO. 5

**6 PAIR \$10.00**

One pair Rose Barbus  
One pair Angel Fish  
One pair Black Helli  
One pair Spotted Helli  
One pair Red Helli  
One pair Blue Betta

### SELECTION NO. 6

**12 PAIR \$3.00**

Six pair Rainbow Guppyi  
Three pair Zebra Fish  
Three pair Japanese Snails

### SELECTION NO. 7

**5 PAIR \$5.00**

One pair Rose Barbus  
One pair Guorami  
One pair Tetra  
One pair Pearl Danio  
One pair Zebra Danio

### SELECTION NO. 8

**DeLUXE SPECIAL \$10.00**

One pair Metallic Spotted Helli  
One pair Angel Fish  
One pair Large Tetra  
One pair Velvet Black Mollensia  
One pair Veiltail Betta

### SELECTION NO. 9

**9 PAIR \$15.00**

One pair Dwarf Guorami  
One pair Red Moon  
One pair Zebra Fish  
One pair Spotted Helli  
One pair Striped Barbus  
One pair Black Mollensia  
One pair Angel Fish  
Three pair Guppyi  
One pair Red Helli

### SELECTION NO. 10

**15 PAIR \$18.00**

One pair Blue Moon  
One pair Red Moon  
One pair Gold Moon  
One pair Black Moon  
One pair New Mixed Moon  
One pair Green Helli  
One pair Red Helli  
One pair Black Helli  
One pair Spotted Helli  
One pair Combination Color Helli  
One pair Mollensia (90% Black)  
One pair Latipinna Mollensia  
Three pair choice Lyre Tail Guppyi

# GOLDFISH

Your goldfish will depend largely on the care you give them. Failures are usually caused from the following: Overfeeding, overcrowding, temperature changing, and insufficient plant life.

Never overcrowd your aquarium. The usual rule for raising goldfish is one inch of fish to one gallon of water. If your fish come to the top gasping for air, this is a good sign of overcrowding. However, they will do the same if your water is polluted. Your fish will suffer if this is not remedied.

Overfeeding is the cause of more failures than any other reason. There is less danger of starving, than overfeeding them. If they do not consume all of the amount you give them within a few minutes, remove the surplus with a diptube.

Don't subject your fish to temperatures higher or lower. This will prevent later regrets.

## Japanese Fantails

Small 10c ea., 60c doz., \$2.75 hundred  
 Medium 10c ea., \$1.00 doz., \$6.00 hundred  
 Large 20c ea., \$2.00 doz., \$10.00 hundred

## Telescopes

Calico-Moors  
 Small 20c ea., \$2.00 doz., \$10.00 hundred  
 Medium 35c ea., \$3.50 doz., \$15.00 hundred  
 Large 50c ea., \$5.00 doz., \$22.00 hundred

## Shubunkin

Small 20c ea., 60c doz., \$3.00 hundred  
 Medium 35c ea., \$1.25 doz., \$7.50 hundred  
 Large 25c ea., \$2.00 doz., \$15.00 hundred

## Commons

Small 10c ea., 60c doz., \$2.75 hundred  
 Medium 10c ea., \$1.00 doz., \$6.00 hundred  
 Large 20c ea., \$2.00 doz., \$10.00 hundred

Extra large breeders of any of these collections \$1.50 each.

## Gold Fish Collections

No. 1—One dozen each. Plain gold Shubunkin-Fantails. Three dozen assorted fish, medium size.....\$2.50

No. 2—One dozen medium Fantails. One dozen medium Shubunkin. One dozen Black Moors .....\$3.00

No. 3—One pair Giant Breeders (Plain Gold). One pair Giant Breeders (White Pearl) .....\$5.00

No. 4—The above one, two, three collections. All for .....\$9.50

## ALL LARGE FISH

No. 5—Twenty-five Fantails, twenty-five Telescopes, twenty-five Commons .....\$12.50

No. 6—One pair Shubunkin. One pair Comets. One pair Moors. One pair Fantails. One pair Common fish. All for .....\$2.50

# SCAVENGERS

Scavengers should have a place in every aquarium. Snails are very useful in keeping the water and glass clear. Any food that has fallen to the bottom will be consumed by the snails.

## SNAILS

Black Ramshorn .....10c ea., 75c doz.  
 Red Ramshorn .....20c ea., \$1.75 doz.  
 Japanese .....20c ea., \$1.50 doz.  
 Pondsnails .....5c ea., 50c doz.

## NEWTS

Japanese Redbellied...15c ea., \$1.50 doz.  
 American spotted ....15c ea., \$1.50 doz.

## TURTLES

Geographel green ....10c ea., \$1.00 doz.  
 Brown snapper .....10c ea., \$1.00 doz.

## FROGS

Chick .....25c ea., \$2.50 doz.  
 Jumbo .....50c ea., \$5.00 doz.  
 Tadpoles .....5c ea., 50c doz.  
 Spotted Weather Fish .....  
 .....25c ea., \$2.00 doz.  
 Dojo Weather Fish .....  
 .....25c ea., \$2.00 doz.  
 Mussels .....10c ea., \$1.00 doz.  
 Clams .....10c ea., \$1.00 doz.  
 Salamanders .....20c ea., \$1.75 doz.

## ALLIGATORS

Small (harmless)....\$1.00 ea., \$10.00 doz.

## COLLECTIONS

### SMALL POOL

Six Japanese Snails      Six Black Ramshorn  
 Six Tadpoles              Snails  
 Two American Salaman- Two Clams  
 ders

Collection, with shipping can, \$2

### POPULAR SIZE POOL

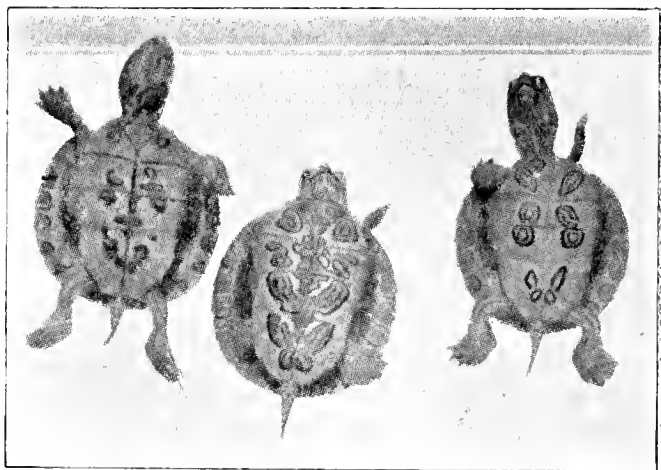
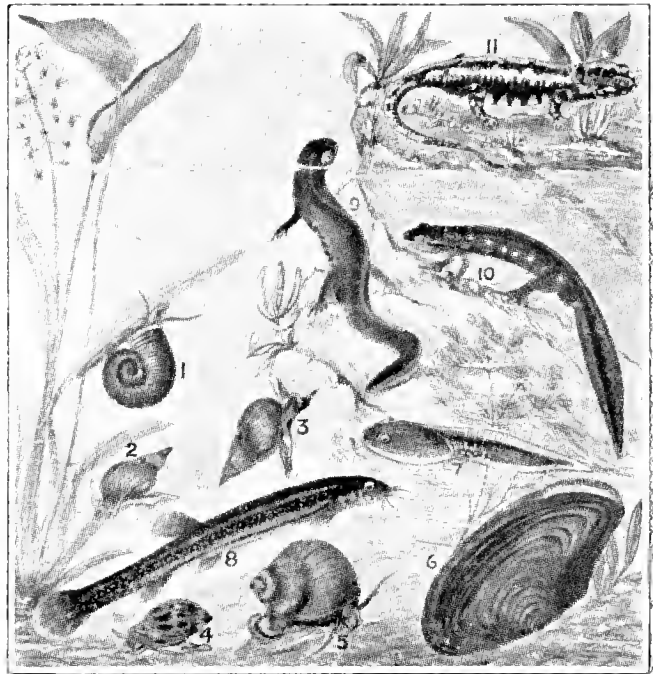
Twelve Tadpoles              Four Clams  
 Twelve Black Ramshorn Four Green Frogs  
 Snails                          Two Salamanders  
 Six Japanese Snails

Collection, with shipping can, \$3.50

### LARGE POOL

Twenty-four Tadpoles      Six Salamanders  
 Twenty-four Black      Twelve Japanese Snails  
 Ramshorn Snails      Six Green Frogs  
 Six Clams

Collection, with shipping can, \$5



### Scavenger and Fish Collection

Six Japanese Snails      Two Clams  
 Six Tadpoles              Two Salamanders  
 Six Black Ramshorn      Six Japanese Fantails  
 Snails                          Six Shubunkins

\$2.50

Large Alligators, Frogs, Swans, and Ducks. Prices on request. Guaranteed Live Delivery.

Canary Birds. Guaranteed Singers.  
 \$4.50 each







# AQUATIC PLANTS

Oxygenating plants take a very important part in your aquariums and pools. They produce the oxygen that your species must have to thrive vigorously. Select good plants that are beneficial, as well as ornamental.

## OXYGENATING PLANTS



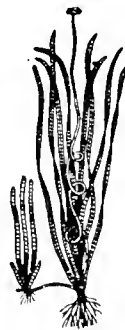
ANACHARIS



CABOMBA



SAGITTARIA



VALLISNERIA



MYRIO-  
PHYLLUM

### SAGITTARIA

White flowering plant with bright green slender leaves ....10c ea., 75c doz.

### VALLISNERIA

Grass-like plant. Very decorative with leaves the same breadth the entire length. Light green, 2 plants 5c, 40c doz.

### LUDWIGIA

Leaves with changing colors when kept in strong light ....10c bunch, \$1 doz.

### SPATTERDOCK

Arrow or spade shaped leaves makes a very characteristic appearance. Bright green .....15c ea., \$1.50 doz.

### ANACHARIS

A fast growing plant desirable for pools and aquariums ....10c bunch, \$1 doz.

### CABOMBA

Finely cut fan-like leaves. There are several varieties of this plant and our plant is much more filled out compared to the others. Bright green. 10c bunch, \$1.00 doz.

### MYRIOPHYLLUM

Hair-like leaves. Good for goldfish spawning .....10c bunch, \$1.00 doz.

### FONTINALIS

Known as willow-moss. Clings to stones and objects. Dark green. 50c portion.

### HOW TO PLANT

Put several inches of sand in the bottom of your aquarium and place your plants to suit your taste. They will take roots and grow very quickly.

## COLLECTION OF OXYGENATING PLANTS

### No. 1—\$1.00

1 bunch Anacharis  
1 bunch Cabomba  
1 bunch Myriophyllum  
1 portion Fontinalis

1 Spatterdock  
1 bunch Ludwiga  
1 Vallisneria  
1 Sagittaria

### No. 2—25c

1 bunch Anacharis  
1 bunch Cabomba  
1 bunch Myriophyllum

### No. 3—30c

1 Sagittaria  
1 bunch Myriophyllum  
1 bunch Cabomba

### No. 4—60c

1 portion Fontinalis  
1 Vallisneria  
1 Spatterdock

## BETTER HOME AQUARIUM COLLECTION

One pair Red Moons  
One pair Green Helli  
One pair Guppy  
One pair Ramshorn Snails

One bunch Anacharis  
One bunch Cabomba  
Four plants Vallisneria

**\$3.00**

## FLOATING PLANTS

Floating Plants are specially recommended for the fish to spawn. The dense roots being ideal for holding the spawn close to the surface of the water where the eggs will have plenty of warmth and sunshine.

### AZOLLA

Floating fern-like leaves. Velvety looking and range from a dull green to dark red. 25c portion.

### CRYSTALWORT

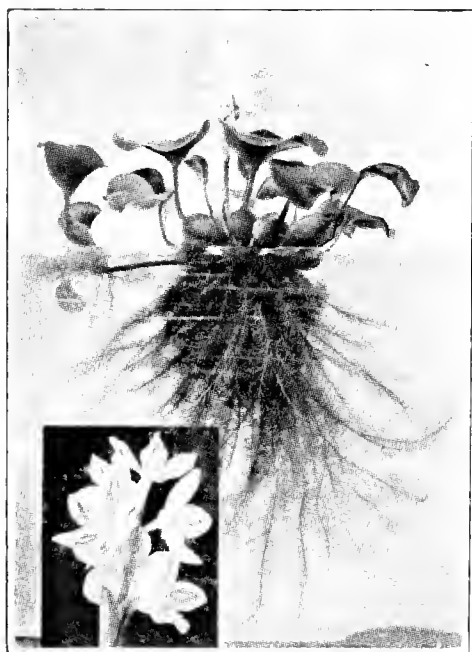
Small plant that grows in masses, angular shaped. 50c portion.

### DUCKWEED

One of the commonest of all floating plants. Good for goldfish that are large enough to eat it. Spreads over the top of the water. 25c portion.

### WATER CRESS

Specially suitable for pools. Light green. 10c each., \$1.00 doz.



WATER HYACINTH

### WATER POPPY

Three petalled yellow flower with brown center. Grows rapidly and rooting new plants, which have groups of new buds .....15c ea., \$1.00 doz.

### WATER HYACINTH

Pale lavender spike-like blossoms. Very beautiful, and will produce freely, if not allowed to drift about. Shown in insert figure .....10c ea., \$1.00 doz.

### SALVINIA

One of the best of floating plants with heart-shape leaves .....25c portion

### WATER LETTUCE

Light green leaves forming a rosette. 10c ea., \$1.00 doz.

### WATER FERN

Grows in masses, producing new plants on its leaves. This plant is about six inches in diameter. Dark green .....10c ea., \$1.00 doz.

## FLOATING PLANT COLLECTIONS

### No. 1—\$1.50

One Water Poppy    One portion Duckweed  
 One Water Hyacinth    One Azolla  
 One Water Lettuce    One Salvinia  
 One Water Fern    One Crystalwort

### No. 2—35c

One Water Poppy  
 One Water Lettuce  
 One Water Hyacinth  
 One Water Fern

### No. 3—\$1.00

One portion of Azolla  
 One portion of Crystalwort  
 One portion of Duckweed  
 One portion of Salvinia

## MARGINAL PLANTS

### FLOATING HEART

Spreading rapidly and free growing.  
Yellow flowers .....25c ea.

### PARROT FEATHER

Beautiful green foliage on trailing stems. Very attractive edging plant, the tips floating on top of the water.....  
.....25c bunch

### UMBRELLA PALM

Very decorative and ideal for bordering. Will grow in wet or dry soil. 20c ea.

### BOGBEAN

White cluster flower mixed with pink on long stems. Fragrant .....3 for 50c

### CATTAILS

Very attractive when planted very close. Has dark brown spike-like flower, well above the foliage .....\$1.00 doz.

### WEeping WILLOW

Beautiful drooping branches. Gives your pools the finishing touch.  
Two feet high.....50c ea.  
Four feet or higher .....\$1.00 ea.

### FLOWERING RUSH

Hardy plant with interesting three-sided leaves. Pink flowers on round stems .....3 for \$1.00

### PICKEREL WEED

Spikes of blue flowers producing freely. Very hardy and the total growth being about 2 feet .....2 feet 50c ea.

### ARROWHEAD

Hardy plants producing from one to three feet high with cluster flowers .....50c ea.

### AQUATIC PLANT COLLECTION

One Weeping Willow  
Six Cattails  
One Parrot Feather  
Three Flowering Rush **\$2.50**

One Floating Heart  
1 Parrot Feather  
One Umbrella Palm  
Three Flowering Rush  
One Pickerel Weed  
One Arrowhead **\$2.25**

One Cabomba  
One Water Poppy  
One Water Hyacinth  
One Floating Heart  
One Cattail  
One Weeping Willow **\$1.50**

## POOL AND HOW TO BUILD IT

Ornamental pools are a never-ending source of delight. From early spring until late fall, your garden pool is a beautiful stage for enjoyment of colorful fish and aquatic plants. The ornamental pool is the center of enjoyment in your "outdoor living room."

### DESIGNING THE POOL

The general character of your garden—whether it is formal, or informal in a natural setting—will suggest the style.

Small species of water lilies require only a small pool—three-feet or

more in diameter. Larger varieties must have a pool at least six-feet wide. Depth depends on the type of planting. For water lilies, a depth of at least 22 inches is desirable.

Garden pools may be combined with rock gardens, often with a miniature waterfall running down a rocky course into the pool.

### BUILDING THE POOL

Excavate to the required depth including the thickness of the floor. Pools with vertical sides are built with forms. If the soil is firm, no outside form is needed.

Pools with sloping sides often are built by "plastering" a stiff concrete in place. Wire mesh reinforcement is used. Natural rock may be set in the concrete. Pools having curved or irregular shaped walls are made with forms of 20 gauge galvanized iron, readily bent to the desired shape.

### REINFORCEMENT

Support the interior wall forms across the top of the excavation so that the bottom hangs six inches from the bottom of the pit. Spreaders, or braces, extending across the pool from one form to the other, prevent bulging when the forms are filled with concrete.

### PLACING THE CONCRETE

Oil the inside of the forms so that concrete will not stick to them. First place the concrete for the floors. Then deposit the concrete for the walls in 6 or 8 inch layers all around the pool, spading each layer as it is placed. A garden hoe, straightened out, makes a good spading tool.

Often pools are built partly above grade. A foundation two or three feet deep should be used.

### WATER SUPPLY

The pool may be filled with a garden hose or connected with the regular water supply. It may be emptied with pail or a built-in drain.

Make any plumbing connection before the concrete is placed.

### MAKING THE CONCRETE

Strong, durable, watertight concrete is easily made. Most important is the amount of water used per sack of cement.

Use about 4½ to 5 gallons of water per sack.

The correct mix (determined by a trial batch) should be plastic, holding its shape well but not crumbly; if too stiff, use slightly less sand and gravel; if "runny," add sand and gravel until the proper proportion is obtained.

- (1) Make a dry mixture of about one part cement, two parts clean sharp sand, two and a half to three parts clean gravel. Mix thoroughly until the color is uniform, no gray or brown streaks.
- (2) Add correct amount of water and mix until sand and pebbles are thoroughly coated with cement paste.

The concrete should be placed within thirty minutes.

### CURING

Do not permit newly placed concrete to dry out. Protect it from the sun and drying wind for a week to ten days. A covering of burlap or canvas, sprinkled often enough to keep it moist, is a satisfactory covering while curing.

# The Hardy Water Lilies



## WHEN TO PLANT

Hardy Lilies may be planted any time after growth begins in the spring; and as late in the fall as will let them become established, generally about six weeks before real cold weather sets in from February on in the Southern and Pacific States. In the Middle West and East April is early enough. In the Northern States April gives plenty of time. Planting may be continued throughout the late spring and summer with great suc-

cess. In mild climates Hardy Lilies may be planted almost the year around.

Water lilies are so easily grown, even by those who have had no previous experience. In fact, water lilies are easier to grow than the commoner garden plants. It is not necessary to drain the pool at all during the growing season, simply adding water to replace evaporation.

## HOW TO PLANT

The root of the Hardy Lilies should be pressed into the mud so that the growing tip is covered. Should the roots float after planting, weight with a stone until the new feeding roots have caught hold. If the bottom is very hard or stony, plant lily roots in light holders filled with good heavy loam to which one-fourth cow manure has been added and sink in the desired spot. For most blooms water depth should not exceed two feet in summer, but be careful to select a spot well covered by water in winter. The winter depth is unimportant; the deeper the safer. Hardy Water Lilies will bloom in 1 to 3 feet of water but not so profusely.

## WINTER CARE

Hardy Lilies grow wild in cold northern regions and need no protection other than from direct freezing of the roots. Where the water is deep enough not to freeze below the roots they will come through unharmed. Since dry rot is the worst enemy of stored roots in the winter it is best to leave them in the pool under natural conditions. Cover the pool well with boards then apply a thick covering of leaves or straw and the water will not freeze deeply or crack the cement. This is the ideal way to winter hardy aquatics and goldfish. If the pool must be drained the lilies should be removed to a cold cellar or placed in a deep trench and well covered, keeping moist at all times.

## WHITE

### **Marliacea Albida**

Pure white flower with yellow stamens, and the sepals are tinted pink. One of the best white water lilies grown being of free growth and blooms. Very fragrant. \$1.10.

### **Gladstoniana**

Large white flowers, cup-shaped, with yellow stamens. Leaves of dark green striped with brown. Fine shaped and strong growth. This plant will hold its leaves and flowers above the water. \$1.65.

### **Alba Candidissima**

Large free flowering waxy petals and of sturdy growth. Leaves are dark green. Continuous bloomer throughout the season. \$1.50.

### **Odorata Minor**

Small white flowers, about two or three inches across. Very fragrant and much used for tub pools and at the edges of ponds. \$1.00.

### **Loose**

White flowers measuring from six to seven inches across and sweetly scented. Blooms freely and is of quick, strong growth. \$1.65.

## PINK SHADE

### Marliac Rose

Fine large size, free flowering of deep rose pink. Leaves are purplish red, changing to deep green. This is one of the best of water lilies of this group. \$1.25.

### Rose Arey

Very free flowering and of strong growth. Bright cerise pink, reaching some times to eight inches in diameter; sweetly scented and petals are starry and pointed form. \$1.50.

### William Doogue

Large flowers of soft shell pink, with pink sepals that are wide and incurving giving a cup shaped bloom. Fine lily and free blooming. \$2.25.

### Eugenia de Land

Extra large flowers. Deep pink with spreading petals, the flower floats on the surface of the water. A vigorous and free flowering variety. \$1.25.

### W. B. Shaw

Delicate rose flesh color shading to a rose at the base. One of the most beautiful of the *Nymphaea odorata* group. Large petals and a strong growing plant. \$1.50.

### Pink Opal

Odorata seedling. Medium size flower of deep pink with cup-shape flower. \$1.25.

### Odorata Rosea

Cape Cod pink water lily of beautiful rose pink color on the tips of the petals and deepening to a darker pink in the center, with stamens of bright yellow. very fragrant. \$1.00.

### Marliac Flesh

Soft flesh pink with deeper pink color in the center. This flower is very similar to the Marliac Rose. Free flowering and very fragrant. \$1.25.

## YELLOW SHADE

### Sunrise

One of the best of all water lilies and most beautiful one, with long and narrow petals of sulphur yellow, large size borne a little above the water. One of the first lilies to bloom in the morning and will last from early spring until frost. Free blooming and hardy. \$3.00.

### Yellow Pygmy

A tiny lily bearing a profusion of bright yellow flowers the size of a dollar. A gem for the small water garden, and

no pool is complete without it. It is a very cheerful little flower and we are sure you will enjoy it. \$0.75.

### Chromatella

Bright canary yellow flowers from four to six inches in diameter, and bright yellow stamens. The leaves are streaked with brown. Broad curving petals. \$1.50.

### Mexicana

Canary yellow with golden yellow stamens. The leaves are small, spotted with brown. Free and constant bloomer. \$1.25.

## RED SHADE

### Gloriosa

Flowers of deep carmine rose color, becoming deep red with age. Measuring from four to six inches across. Free blooming continuously throughout the season. \$2.50.

### James Brydon

One of the freest in flower and growth. The petals are broad, and incurving, giving the flower a cup shape. The bloom measuring from five to six inches across. Rich rosy crimson color and the opposite side of the petals is a silvery glister. \$2.25.

### Conqueror

Flower of deep pink, shading to purplish-pink with age. Stamens orange-yellow. It is of robust growth and free flowering. \$3.00.

### Escarboucle

An intense vermilion shade deepening to crimson with garnet stamens. Free bloomer and sturdy in growth. \$2.65.

### Attraction

Beautiful garnet red flowers with almost white sepals and yellow stamens, touched with garnet as the blossom ages. The blossom is very large, measuring eight inches in diameter. Free bloomer and lasting. \$3.00.

### William Falconer

The darkest colored red of all lilies. The flowers measure from six to seven inches across, bright garnet color with yellow stamens. The leaves are dark red, changing to deep green with red veins as the leaf ages. \$3.00.

### Arethusa

Bright crimson pink with large flowers. The plant flowers freely. \$2.00.

## SUNSET SHADES

### Comanche

Large flowers of rich apricot color, opening become a dark coppery-orange, streaked with red as the flower ages. Will thrive equally well under all conditions. One of the best lilies of recent introduction. Vigorous and free blooming. \$2.50.

### Paul Hariot

Fine lily of unique coloring. Large blooms of lasting quality and beauty. The ground color of yellow at first; then orange-red and at last deepens to a red. Free blooming all the season. \$2.00.

### Aurora

Flowers of soft yellow when first opened, changing to deep red as the flower ages. Its stamens are orange-red and the leaves are mottled with brownish-red. One of the best for tub gardens. \$1.25.

### Sioux

A vigorous plant somewhat like Comanche. The flowers open chrome yellow tinged with light brown and later changing to a brown-red. Free blooming. \$2.00.

### Indiana

Fine copper color with yellow and rich pink tints prevailing, changing to red as it ages. Very interesting plant with constant changing of color. Free blooming. \$1.50.

## LILY SELECTIONS

### RAINBOW LILY SPECIAL

One Sunrise (yellow)  
 One Pink Opal (pink)  
 One Gloriosa (red)  
 One Sioux (copper yellow)  
 One Blue Star (blue)  
 One Panama Pacific (purple)  
 One Marliac (white)  
 One Comanche (red and orange)

**\$17.00 VALUE  
 ONLY \$15.00**

**FREE**—With ten best Hardy Lilies, we will give you **FREE** 1 Lotus, yellow or pink; 10 Water Plants.

## HARDY COLLECTION

James Brydon (rosy red)  
 Paul Hariot (pink)  
 Sioux (copper red)  
 Marliac (bright yellow)

**\$7.50**

## ECONOMY FIVE

Five hardy water lilies. No two alike.

**\$6.00**

## STAR LILIES

### THE HARDY TROPICAL WATER LILY

#### Rose Star

The starry, brilliant rose flowers are scented with the fragrance of Lily of the Valley and throughout the summer are produced in endless succession. Often 4 to 5 flowers will be open at once, each from 5 to 8 inches in diameter and borne aloft on slender stems a foot above the water. You may reasonably expect 100 flowers in a season from these free blooming plants. Planting 3 tubers together in a 2-foot box will give you a grand display. \$1.50.

#### Blue Star

All of the Star Lilies differ only in color. The blue shades are very vivid and deep seeming to have a luminous quality about them. Plant Blue and Rose Star together in the same box. The color harmony is perfect. \$1.50.

#### Red Star

A rosy red, particularly vivid in late summer when the flowers become the most brilliant objects in the pool. \$1.95.

#### Pink Star

Satiny silver pink blossoms with a yellow heart. Like all the Star Lilies the beautifully scalloped pale green leaves are most effective. \$1.50.

## LILY COLLECTION

### With Aquatic Plants, Fish & Supplies

One Pink Opal	Six Black Ramshorn
One Sunrise	Snails
One Blue Star	Six Tadpoles
Five Marginal Plants	Two Frogs
Twelve Cattails	Two Salamanders
Three Floating Plants	One Better Home Fish
Twelve Large Goldfish	Food
Two Shubunkins	Eight aquatic plants
Two Japanese Fantails	free and one dip tube or
Six Japanese Snails	fish net.

**Get your Aquatic Plants Free in this Collection, \$8.00.**



# TROPICAL WATER LILIES

Tropical Lilies may also be planted in natural ponds and lakes provided a very shallow spot is selected (8 to 10 inches deep), and the pond or lake maintains a fairly high temperature all summer (at least 65 degrees). Water Lilies of any variety, for best results, should not be planted near a cold inlet nor in swiftly moving water. In fertilizing natural ponds cow manure may be layed on the ice to a depth of one inch or more. It will become water-logged in spring and sink. Bone meal may also be used in a like manner. Apply at the rate of one pound per square foot.

Containers for planting in constructed Pools may be anything from a large flower pot, a plant tub, or a box one foot square and six inches deep, to a tub two feet in diameter and a foot deep, or a box two feet square and eight inches to a foot deep. The larger the container, the greater the amount of soil given the plant, therefore more and larger blooms will result. Allow each Water Lily 8 to 12 square feet of water surface.

The soil, whether placed directly in the Pool or in containers, should be a good, heavy, garden loam. The addition of one part well rotted cow manure to every four parts of soil will prove beneficial. A mild commercial fertilizer may be used. Tropical Lilies may be planted any time after settled weather is assured; usually after May 20th in the latitude of Chicago. Plantings farther South may be made much earlier. We ship at the proper planting time for the locality in which the planting is to be made. We also ship at any time, on request. Tropical Lilies may be grown and flowered continually for many years in a greenhouse, conservatory, or sun room pool simply by giving the proper temperatures and additions of fresh soil occasionally. Tropical Lilies planted out too early in cold water; or in water that is too deep for young plants (over 12 inches) or in a heavily shaded pool tend to go dormant. When this happens the plant is not dead; and by placing root in warm sunny water growth will recommence. It is to avoid this unnecessary delay in growth that we advise against too early planting. For greatest number of blooms throughout the season only 8 to 12 inches of water should be allowed over the crowns. When plants are received set out in shallow water; then fill up the pool as the plants commence to grow. For best results the pool should be exposed to full sunlight.

## *Day Blooming*

### WHITE

Mrs. George H. Pring

White flowered with golden yellow stamens. Petals and sepals are long and pointed. Very fragrant and measuring from eight to ten inches across. Free blooming all the season. \$2.00.

*Gracilis (Mexico)*

Star-shaped on stems above the water from twelve to fifteen inches. Pure white flower with deep yellow stamens, slightly fragrant. Blooms profusely all the season. \$1.65.

### PINK LILIES

Mrs. Robt. Sawyer

Plant sturdy, producing young plants on the leaves; flowers in abundance; gorgeous, full-petaled, and of a delightful shade of pink. \$3.00.

*Zanzibariensis Rosea.*

Light and deep rose colored flowers of good size. Produce very freely. \$1.50.

*General Pershing*

Petals are bright pink, and the sepals are light pink on the inside. This flower, on stems twelve inches above the water and very fragrant. The flowers are from eight to ten inches across and very lasting. \$3.25.

Mrs. C. W. Ward

Fine growing plant of deep rosy pink color and golden yellow stamens tipped with pink, measuring from eight to ten inches across. Petals and sepals are long and pointed. Free flowering. \$2.00.

*Gracilis Rosea*

Large size flowers of deep pink, on stems well above the water, measuring from eight to ten inches across. A seedling of *Gracilis*. \$2.00.



## PURPLE LILIES

### Panama Pacific

Beautiful flower of reddish-purple with yellow stamens. First opening the flowers are a rich red, changing to the purple as it ages. This lily is one of the best known, for its beauty and easy growth. The buds are bronzy-green, and spotted with maroon as are the leaves. This variety produces young plants on its leaves. \$2.00.

### August Koch

The sepals are lilac purple and the petals pale wisteria violet. Measuring from seven to eight inches across on stems about eight to ten inches across. Bears young plants on its leaves. Excellent bloomer. Foliage of dark green. \$2.50.

## BLUE LILIES

### Mrs. Ed Whitaker

One of the largest of the day-flowering lilies. The flowers are light lavender-blue when first opened, still lighter as it ages. This plant will often measure ten inches in diameter and will last long. The leaves are round and mottled. \$2.50.

### Pennsylvania

Large size light blue lily, measuring from eight to twelve inches across; the stamens are yellow tipped with blue and the sepals are striped and spotted. Free blooming all the season. \$2.50.

### Capensis

Flowers are light sky-blue, medium size. Produced freely. \$1.50.

### William Stone

Violet blue with stamens of purple and deep yellow centers. Strong stems from twelve to fifteen inches above the water. Produced freely. \$2.00.

### Henry Shaw

Without doubt one of the finest lilies we know. Fine campanula-blue in color, producing an astonishing number of flowers even when tiny. Its moderate leaf spread makes it popular for small pools. \$2.25.

## *Night Flowering*

## RED LILIES

### Devonshire

Flowers of bright rosy-red with stamens of cinnabar red. The flowers are from eight to twelve inches across with stems well above the water. Free blooming. \$2.00.

### George Huster

Brilliant crimson flowers with stamens of deep orange-red. This plant is one of the finest and free blooming of the night flowering class. \$2.00.

### Bisset

Rosy-red flowers, with a tinge of white in the center of the petals. Leaves of bronzy green. Similar to the Geo. Huster. \$2.00.

### Frank Trelease

Dark red flower with stamens of reddish brown. Measuring from eight to ten inches across. Leaves of dark bronze color. \$2.00.

## WHITE LILIES

### Juno

Immense, pure white flowers opening widely, the central disk being surmounted by a cone of saffron yellow stamens. The large glossy green and finely toothed leaves are very ornamental. Seen in the dusk of evening the flowers are a never to be forgotten sight. A splendid and stately flower. \$2.00.

## PINK LILIES

### Ruba Rosea

Deep rosy carmine color with stamens of reddish brown at the tips and yellow-brown at the base. Large flowers with deep green leaves. \$2.00.

### Omara

Red with faint tinge of white in the center of the petals. Stamens of orange-red. A vigorous grower with large flowers. Leaves of deep green. \$2.00.

### Jubilee

White flowers with petals and sepals of pink at the base. Eight to ten inches across. Leaves, green and brown. \$2.00.

## BETTER HOME LILY COLLECTIONS

### Star Lily Collection

Rose Star, Blue Star, Purple Star

Star-like petals of large flowers of beautiful colors. Easy growth and very free flowering. Sturdy. Fragrant. One of each color. \$4.50.

### Royal Quartette

Frank Trelease (night bloomer).

Juno (night bloomer).

Panama Pacific (day bloomer).

Sunrise (day bloomer).

Red, white, purple and yellow lilies. All select plants of beautiful color and free flowering. \$7.50.

### Marliac Trio

A very popular trio of the famous Marliac lilies. Bright pleasing colors that thrive in the smallest pool. Marliac pink, Marliac yellow, Marliac white. \$2.75.

### Day & Night

Flowers both day and night. Comanche. Sunset shade. Geo. Huster. Red night bloomer. \$2.95.

### The Trio of Long Standing

A very moderate priced collection of the best plants for those who are growing water lilies for the first time. They will all bloom well in the small pool and

should give a long season of bloom. Paul Hariot, sunset shade. Marliac Pink, shell pink. Marliac White, pure white. \$2.85.

### Hardy Four

One Aurora, one Comanche, one Chromatella, one Sunrise. \$5.00.

### Red, White, Blue Collection

A quality group at a mass production price. Mrs. Geo. H. Pring. White day bloomer. Frank Trelease. Red night bloomer. Blue Star. Spectrum blue. \$5.00.

### Tropical Duet

A day and night blooming lily for the small pool. Juno. White night bloomer. Panama Pacific. (Blue Leaf Propagator.) \$3.50.

### Birmingham Special

Sacred Lotus, pink. Gloriosa, red water lily. Comanche, Sunset water lily. Egyptian Papyrus, plummy heads. Water Hyacinth, orchid-like. Water Poppy, yellow flowers. \$4.95.

### Lily and Plant Collection

1 Water Lily. Your choice of white, pink or sunset. 5 Aquatic Plants to plant in the tub. 4 Marginal Plants. \$2.95.

# SACRED LOTUS

## American Lotus

Large flowers of beautiful yellow. Very hardy and of easy culture. This is the native American Lotus, found growing in the Eastern and Central states .....\$2.00

## Egyptian

Beautiful flowers of deep rose pink, changing as it ages to cream white with the center petals, tinted light rose on the edge. Large, deep green leaves. Free flowering.....\$1.50

## Rubrum

Bright rose carmine color flowers. Large and double blooms. This is a fine Lotus in growth and flowering. Large leaves of deep green above and light green on the reverse.....\$3.50

## Shiroman

Magnificent large blooms of cream white with golden yellow stamens and few of the petals are tinted light green. Strong, robust plant, and free flowering .....\$3.00

## SPECIAL LOTUS COLLECTION

### Rubrum Lotus, Egyptian Lotus, Shiroman Lotus, American Lotus

Four Lotus of beautiful, sweetly fragrant plants. These Lotus make a pleasing background for your pools .....\$8.00

One American Lotus, one Hindu (Sacred) Lotus, one Chinese or Shiroman Lotus (your choice). Three strong Tubers, one of each variety, \$5.00.

## ROCK GARDEN PLANTS

Water Iris.....	15c each, 8 for \$1.00
Torch Lily.....	25c each, 5 for \$1.00
Ox Tongue.....	25c each, 5 for \$1.00
Sedum (six varieties).....	\$1.00 each
Artillery Plant.....	10c each, \$1.00 dozen
Dwarf Palm.....	10c each, \$1.00 dozen
Dwarf Fern.....	\$1.00 each
Cactus Collection.....	\$1.00
Philipandrum Plant .....	15c each
Ivy (light and dark green) .....	15c each
Moneywort .....	10c each, \$1.00 dozen

## GARDEN ORNAMENTS

Concrete is an ideal material for making attractive, durable and economical home improvements such as walks, lawn furniture, bird baths and sundials, driveways, retaining walls, and countless other items for greater home enjoyment.

Only your ingenuity and the space you have available limit you in designing your garden. It can be formal or informal to harmonize with the general arrangement of your garden. Interesting effects can be obtained by setting garden ornaments made of concrete.

Birds Baths .....	\$4.50 up to \$10.00 each
Dwarfs and Elves .....	\$4.50 to \$10.00 each
Storks and Swans .....	\$6.00 to \$14.00 each
Fisher Boy .....	\$4.50 to \$10.00 each
Sundials .....	\$10.00 each
Garden Seats.....	\$4.00 to \$6.00 each

“We will make any garden ornament that you wish to have. Just give us complete descriptions and we can make it.”

## AQUARIUM SUPPLIES

Feeding Rings .....	10c each
Dip Nets .....	.25c and 50c each
Dip Tubes .....	.25c and 50c each
Floating Thermometers .....	15, 25 and 50c each
Light Reflectors .....	\$1.00 each
Sprays .....	\$1.75 each
Aquarium Heaters (guaranteed for one year) .....	\$1.00 each
Thermostats (carry up to 380 watts) .....	\$2.00 each
Pumps (Alga air pumps, one cylinder).....	\$12.50 each
Proofing (water pool proofing) .....	\$3.00 gallon
Cypress Tubs .....	(small) \$1.00 each, (large) \$2.00 each
Washed white sand .....	10c box
Pearl colored chips .....	10c box
Aquarium Ball .....	10c each
Castles and other ornaments.....	10c each
Mermaids .....	15c each

***BE SURE AND READ BEFORE ORDERING***

***We Guarantee the Safe Arrival of All Plants Shipped***

## **TERMS**

Terms are strictly cash. We do not ship C.O.D. We do not pay postage or expressage on any shipments. Do not remit any money to cover express charges as this is collected when your goods are delivered.

### **SHIPPING**

All goods are shipped via Express unless otherwise ordered. We can not guarantee the safe arrival of perishable goods if sent through the mail. If you desire goods sent Parcel Post send remittance large enough to cover postage.

### **CLAIMS**

Please make your claim within three days of the arrival of goods so we can make satisfactory adjustments to all concerned.

### **GUARANTEE**

We guarantee the live delivery of tropical fish. If bad order is received, make out a bad order report with Express Company and after it has been returned to us so we can determine the cause. Make your claim the same day of arrival or we can not make any replacements.

### **SUBSTITUTION**

In case we should be out of one or more varieties on your order, with your permission we will make substitution with equally good, or better value than your original order.

### **CAUTION**

Be sure to write your name plainly so we will not have any confusion shipping them. Give all details when you send in your order.



# **AQUARIUM CEMENT**

---



*This Cement Will Stop  
Any Kind of Leak!*



After three years of careful study and experimenting, we have at last the most looked for aquarium cement. Non-poisonous and absolutely guaranteed to stop your leaky aquariums. You won't have to worry about spoiling your beautiful furniture and floors. **“Don't forget to use Better Home Aquarium Cement For Better Home Results.”**

*We Appreciate Your Patronage*

• • •

Business is not just business.

No. It's something more—

It's confidence and trust in friends.

They serve us and we serve them;

Together we serve the world.

And there's no question but that he

Who serves the best shall profit most.

• • •

**BIRMINGHAM  
AQUARIUM  
COMPANY**

Birmingham, Ala.