

## **Historic, archived document**

Do not assume content reflects current scientific knowledge, policies, or practices.



6057

SPRING, 1934



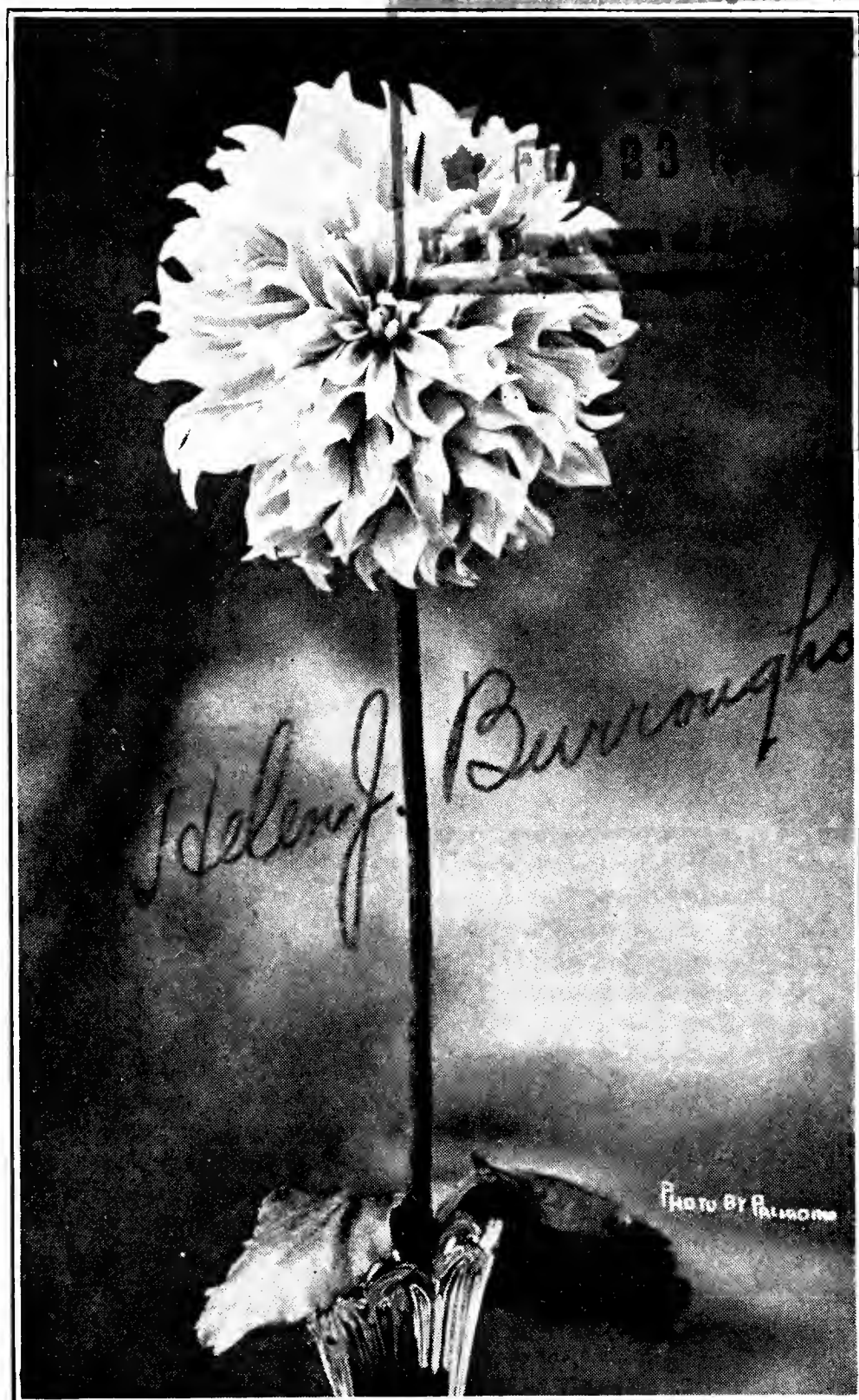
PRICE LIST

# BURROUGHS

FINEST QUALITY

# DAHLIAS

and DELPHINIUMS



A. W. BURROUGHS

262 Mansion Ave., Audubon, N. J.

**I**N THE following list I have chosen varieties from among the cream of Dahlia introduction. They should do well wherever Dahlias grow. In my opinion, these varieties are—any of them—likely first-prize winners at the best shows and very satisfactory as choice garden specimens.

These are priced in plant form, as most of my customers order plants entirely; but I will gladly quote on roots or clumps on request; also varieties not listed; **except patented varieties.**

**I would not buy a Dahlia with a lot of red tape attached to it myself, and anything you buy from me is yours to do with as you please, and I wish you the utmost in pleasure and profit.**

I ship plants successfully anywhere in the United States, except for quarantine restrictions. All plants outside of quarantine areas shipped under Government Certification, in certified soil.

Orders over \$2.00 shipped prepaid, and if you add 25c for special handling, I guarantee arrival in good condition. I will cheerfully replace any proving otherwise, on prompt return of goods, or return money if out of stock; but in no case will be responsible for more than purchase price.

Please advise as soon as possible if goods appear faulty in any respect.

Abbreviations of type are as follows: (C) Cactus; (SC) Semi-Cactus; (IC) Informal Cactus; (FD) Formal Decorative; (ID) Informal Decorative.

---

<b>ACHIEVEMENT</b> (ID) Autumn tints.....	<b>Plants \$1.00</b>
<b>AMERICAN LEGION</b> (SC) Large, bright yellow; stiff stem .....	<b>Plants \$2.00</b>
<b>AMERICAN TRIUMPH</b> (IC) Handsome red; fine stem .....	<b>Plants .50</b>
<b>CLARA BARTON</b> (ID) Silvery orchid, reverse petals lavender, giving a fine lavender effect. Very large flower on good stem. Prolific bloomer. A choice 1934 introduction.....	<b>Plants \$5.00</b>
<b>CONGRESSMAN WOLVERTON</b> (ID) Popular bright salmon pink. Large flower on good stem .....	<b>Plants .60</b>
<b>DWIGHT W. MORROW</b> (FD) Very popular red .....	<b>Plants .75</b>
<b>EAGLE ROCK FANTASY</b> (ID) Large lavender pink, on straight, stiff stem. One of the best .....	<b>Plants 1.00</b>
<b>EDITH EASTBURN SIMON</b> (Ruffled) Very beautiful pink and cream; good stem. One of the finest .....	<b>Plants \$1.25</b>
<b>ELIZA LONDON SHEPARD</b> (ID) Orange apricot; good stem .....	<b>Plants .75</b>

<b>GOLDEN DAWN</b> (ID) Rich, creamy yellow; strong stem. Good grower and several times prize winner for largest and most perfect bloom .....	<b>Plants</b>	<b>\$2.00</b>
<b>GOOD NIGHT</b> (ID) Oxblood red; good stem. Handsome type .....	<b>Plants</b>	<b>.60</b>
<b>GOOD WILL</b> (SC) Pink and cream; fine stem. Good bloomer. One of the finest.....	<b>Plants</b>	<b>\$3.75</b>
<b>GRAF ZEPPELIN</b> (FD) Fine white; good stem .....	<b>Plants</b>	<b>.75</b>
<b>GREINBERG'S ORIENTAL</b> (FD) Rich oriental red. Fine with Jane Cowl. One season I sold blooms of this at 25c each.....	<b>Plants</b>	<b>.50</b>
<b>HELEN J. BURROUGHS</b> (ID) Large, silvery pink; very free bloomer. Valuable commercial variety, as it is a fine cut flower and very beautiful under artificial light. This dahlia has won many first prizes and Certificate of Merit of Pennsylvania Horticultural Society .....	<b>3 Division Clumps, \$2.00 net Roots, \$1.00; Plants</b>	<b>.50</b>
<b>JANE COWL</b> (ID) Buff, salmon and orange. Large flower; good stem.....	<b>Plants</b>	<b>.25</b>
<b>JERSEY'S BEAUTY</b> (FD) Pink. Fine long stem .....	<b>Plants</b>	<b>.25</b>
<b>JOSEPHINE G.</b> (SC) Very fine pink, tipped yellow. A popular flower on good stem.....	<b>Plants</b>	<b>.50</b>
<b>KATHLEEN NORRIS</b> (ID) Rose pink, very fine and popular. Good stem.....	<b>Plants</b>	<b>.35</b>
<b>KEMP'S VIOLET WONDER</b> (ID) Violet purple; good stem .....	<b>Plants</b>	<b>.50</b>
<b>KEMP'S WHITE WONDER</b> (ID) Large clear white on long, stiff stem; very fine.....	<b>Plants</b>	<b>\$1.50</b>
<b>KING MIDAS</b> (ID) Golden yellow; fine stem....	<b>Plants</b>	<b>.50</b>
<b>MARYLAND GLORY</b> (FD) Popular red; good cut flower .....	<b>Plants</b>	<b>.50</b>
<b>MURPHY'S MASTERPIECE</b> (ID) Deep red; large flower on stiff stem .....	<b>Plants</b>	<b>\$2.00</b>
<b>POT O' GOLD</b> (ID) Clear yellow, long wavy petals. Beautiful free bloomer. Fine stem and cut flower .....	<b>Plants</b>	<b>\$1.50</b>
<b>PRINCE OF PERSIA</b> (ID) Rich, glowing cardinal. Large deep flower. Very fine.....	<b>Plants</b>	<b>\$1.00</b>
<b>RAY WARNER</b> (ID) Luminous pink; good stem. Popular and one of the best.....	<b>Plants</b>	<b>\$1.25</b>
<b>ROBERT E. LEE</b> (ID) Good red. Fine stem. ....	<b>Plants</b>	<b>.75</b>
<b>SATAN</b> (SC) Popular scarlet yellow on reverse of petals. Large flower on strong stem .....	<b>Plants</b>	<b>\$1.50</b>
<b>SONNY BOY</b> (ID) Fine new introduction—old rose, tinged old gold. Good bloomer on good stem. Very large and deep.....	<b>Plants</b>	<b>\$5.00</b>
<b>THOMAS A. EDISON</b> (FD) Royal purple; good stem .....	<b>Plants</b>	<b>.60</b>

On all Dahlia orders of \$3.00 or over, sent cash with order, received before March 15th, I will include extra plants to amount of 10 per cent of order, as these early orders give me the opportunity to know about how much of each variety to propagate and grow in certified soil.

Description as to type and color to the best of my ability, as different soils and weather conditions often cause variations.

In ordering, please send a deposit of 25 per cent, to guarantee good faith, and if, for any reason, I have a shortage in any variety, I will return money for same.

In bad weather, or when short of plants, I often send roots at no extra charge. If you object to roots, as some customers have, please mention when ordering.

Twenty-five per cent to accompany order, balance before shipment or sent C. O. D.

### Choice Dahlia Seeds

Packet (40 seeds) .....\$1.00

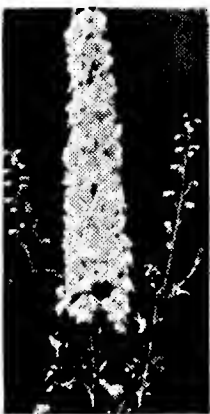
I intend to plant about one or two acres of these from the same seed, and while I don't expect them all to be prize winners, they give me fine flowers that sell well and many choice ones among them. Do not expect all prize stock from any one's seed. If I get a prize winner out of one thousand seeds, I am happy; the others give me many fine flowers and variety for beautiful bouquets. You may get the best one of all.

### Choice Pansy Seeds

Packet (100 or more) .....25c

### Dahlia Flowered Zinnia Seeds (mixed)

Packet (50 or more) .....25c




---



---

## Delphiniums

I have formerly sold seed from my finest selected Hybrid Delphiniums at 35 seeds for \$1.00. I am now selling these at 25c instead of \$1.00, or 100 seeds for 50c. These are from my choicest plants and should give you beautiful specimens.

---



---

JOIN THE AMERICAN DAHLIA SOCIETY

Dues, \$2.00 Per Year

C. Louis Alling, Secy., 251 Court St., West Haven, Conn.

---



---

VISITORS AND COMMENTS WELCOME

See my Dahlias in the field in growing season. One field is seven miles from Camden-Philadelphia Bridge, on the White Horse pike—direct route from Philadelphia to Atlantic City.