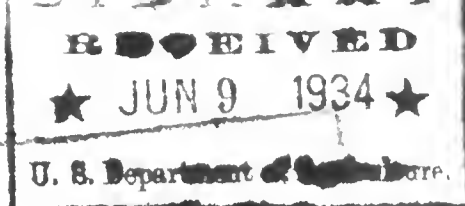


Historic, archived document

Do not assume content reflects current scientific knowledge, policies, or practices.



B. O. CASE & SONS
Flowering Tree Specialists

VANCOUVER, WASHINGTON

SMALLER PLANTS FROM THE BEDS

We have had hundreds of calls for smaller trees than those in our regular catalog. Hence we have decided to give our customers the benefit of those in our nursery beds. They grow rapidly and increase in value tremendously fast. All are PREPAID to your door unless otherwise stated.

FLOWERING CRAB APPLES

The "Fairy Apples of China". It would take several pages to describe the beauty of each and every one of these rare and much neglected "Fairy Apples", gorgeous in bloom, likewise in fruit.

Malus Aldenhamensis. A new one from Aldenham, England. Foliage deep reddish bronze bloom red, apples small red and multitudes of them. 18 inch 75¢; 36 inch \$1.00.

Malus Arborescens. White flowers followed by immense quantities of minute reddish apples. 12 to 18 inch 75¢.

Malus Arnoldiana. One of the most beautiful. It has drooping branches that form a solid 5 ft. dwarf pyramid, very large rose colored blossoms whiter inside. 18 to 24 inch 85¢

Malus Chinensis. Double pink blossoms of a beautiful shade, followed by greenish apples. 12 to 18 inch 75¢.

Malus Eleyi. Considered by many the most beautiful of crabs. Reddish foliage, a profuse bloomer of large red blossoms and fruits deep red. Both wood and fruit are red inside and out as well as the blossoms and foliage, a unique tree. 15 to 18 inch 75¢.

Malus Goi Toi. Blossoms are deep shell pink and double, hanging on long red wire-like stems, called by Chinese "Tears of the Dragon". 15 to 18 inch \$1.25.

Malus Kola. Bright pink blossoms and a good fruiter. 15 to 18 inch 75¢.

Malus Mathewi. Single flowers in clusters, rose-pink in color and very fragrant followed by goodly sized apples, edible, and good for jelly. 24 inch 75¢.

Malus Micromalis. Called "Midget". A handsome small tree with upright habit and showy pink flowers. 18 to 24 inch 85¢.

Malus Prunifolia. Large whitish flowers and red or yellow fruit 1½ inch in diameter. 15 to 18 inch 75¢.

Malus Sargentii. A crab with straggly horizontal branches, white blossoms with bright yellow anthers. The red fruits are as tiny as wild huckleberries and hang on all winter. 18 to 24 inch \$1.00.

Malus Spectabilis. A splendid crab with bright pink flowers. 18 to 24 inch 75¢.

Malus Theifera. Called "Tea Crab". Numerous clusters of flowers rose-red in bud opening to pinkish-white. 15 to 18 inch 75¢.

Malus Wah Mee. In Chinese meaning "The Modest Maiden". A small tree of symmetrical habit with bright double rose-colored flowers in great profusion followed by bright orange colored half-inch apples. 18 to 24 inch 75¢.

CONFIDENTIAL

CONFIDENTIAL

CONFIDENTIAL

CONFIDENTIAL

CONFIDENTIAL

CONFIDENTIAL

CONFIDENTIAL

CONFIDENTIAL

CONFIDENTIAL

FLOWERING APRICOT

Prunus Bliriana. Called by Japanese "Beauty of Spring". The foliage a mellow pinkish red which it holds throughout the season, the blossoms are a beautiful double pink and so prolific. It is so early that it blooms with the Daffodils.
24 inch 75¢.

FLOWERING HAWTHORNES

Paul's Double Scarlet. 15 to 18 inch 75¢
Double Cream. 15 to 18 inch 75¢.
Crataegus Panatifolia. A new one from China. 15 to 18 inch 75¢

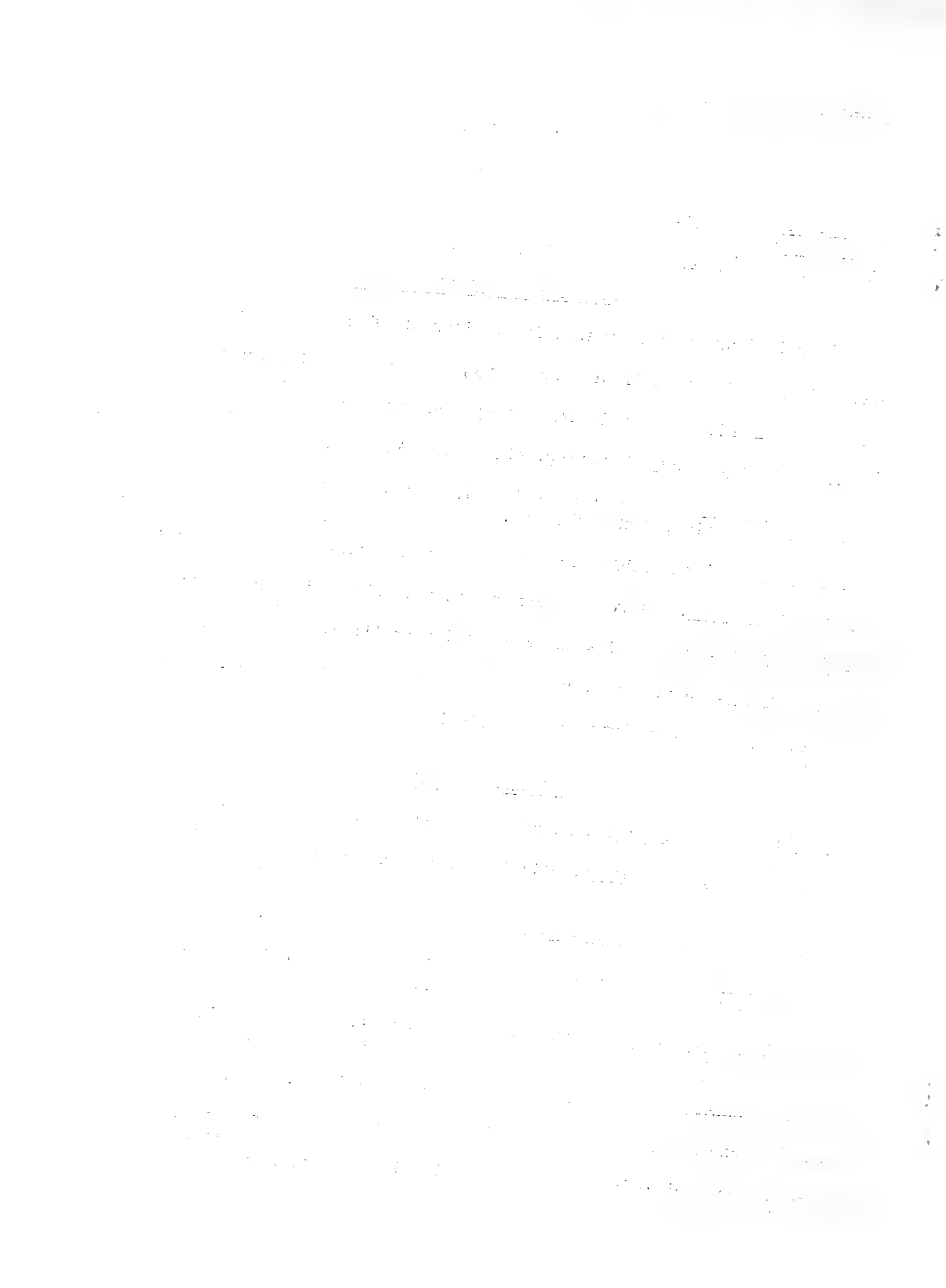
JAPANESE FLOWERING CHERRIES

Descriptions of these with illustrations are found in our regular catalog.

Amanozawa Sakura. The tall slender cherry, semi double, pink fragrant.
15 to 18 inch \$1.25.
Beni Higan Sakura. The early dense twiggy cherry, single pink, dwarf.
18 to 24 inch \$1.00.
Daybreak Sakura. Early flowering, pinker than Yoshino, very beautiful.
18 to 24 inch \$1.00.
Fairy Queen Sakura. No other known tree is capable of producing an equal amount of bloom, light pink, double flowers.
18 to 24 inch \$1.50.
Kwanzen Sakura. Rich double dark pink blossoms, almost red. 18 to 24 in. 75¢.
Taizanfugen Sakura. Flowers double and tufted, light pink, grows very erect.
18 to 24 inch \$1.00.
Prunaria Sakura. Double pink and wonderfully prolific. 18 to 24 inch \$1.00.
Senrico Sakura. A newcomer, rare, double pink, one of the best.
18 to 24 inch \$1.50.
Yoshino Sakura. A very large grower, single, light pink, "The Washington, D. C. Tree".
18 to 24 inch \$1.00.

NEW RARE SHRUBS

Flowering Almond Amygdalis. Dwarf, bushy plant with double pink flowers.
12 to 18 inch 85¢.
Flowering Almond Glandulosa. Slightly larger than above with reddish double pink flowers.
12 to 18 inch 85¢.
Althea hibiscus, Jeanne de Arc. A new one with double white flowers.
2 year plants 65¢.
Cotoneaster Henriana. The newest and hardiest of the species, of dense growth with graceful drooping branches, evergreen.
15 to 18 inch 75¢.
Chrysanthemum ruthenicum (Russian everblooming). Blooms continually from early June until late fall. Double pink, very beautiful and hardy. Clumps.
Each 35¢.
Enkianthus Campanulatus, The Bell Flower Bush of Japan. 2 year plants 60¢.
Forsythia primulinus. The new prolific F. of the Arnold Arboretum, light yellow.
24 to 36 inch 75¢.
Forsythia spectabilis. The deep orange F. with many times more bloom than any other F.
24 to 36 inch 75¢.



- Halesia. The silver-bell tree. A showy small tree with drooping bell shaped creamy flowers. 12 inch 75¢.
- Kolkwitzia amabilis. Wilson's beautiful shrub which he called "Beautybush". Our largest bush was a beautiful sight in bloom for a solid month. 30 inch 75¢.
- Laburnum vulgare. Golden Chain tree. 24 to 36 inch 75¢.
- Magnolia Kobus. The white magnolia of Japan. 15 to 18 inch \$1.00.
- Magnolia obavata discolor. Dark maroon outside, cream within. 12 inch \$1.25.
- Nandina domestica. A fernlike shrub with a wealth of red berries. 15 to 18 inch \$1.00.
- Oranges Citrus trifoliata, The hardy orange. It's hardy near Boston, bears small size oranges, fragrantest of bloom. 12 to 18 inch \$1.00.
- Pampus grass. The cream plumed heavy bladed grass, clumps 35¢
- Paulownia Princess Tree. A rare tree seldom seen, bears beautiful blue flowers. 10 to 12 inch \$1.50.
- Russian Olive. A splendid garden tree, grey-green foliage and branches. 24 to 27 inch 50¢.
- Spirea tricocarpa. The new flowering S. from China. A splendid bloomer. 24 to 30 inch 50¢.
- Symphoricarpos chenaulti. One of the handsomest of all shrubs, graceful, pink in bloom followed by pink berries. 24 to 36 inch 60¢.
- Viburnum acerfolia. Rare snowball with maple-like foliage. 18 to 24 inch 60¢.
- Viburnum Carlesi. Rarest and best pink V. 2 year plants 75¢.
- Viburnum Tomentosum. (not Plicatum) The double file V. that blooms along the branches. 18 to 24 inch 75¢.
- Weeping Subhirtella Pendula Plena. The new double blossomed deep pink weeping Jap. Cherry. Beautiful specimens on 5½ to 6 ft. standards. (not prepaid) Each \$3.75.
- Weeping Subhirtella Pendula. The pink rosebud weeper. Beautiful specimens on 5½ to 6 ft. standards. (not prepaid). Each \$2.75.

List of over 200 varieties of Lilacs on request.

For larger trees and shrubs (rare plants only) see or write us.

B. O. Case & Sons, Vancouver, Washington.

1945

...

...

...

...

...

...

...

...

...