

Historic, archived document

Do not assume content reflects current scientific knowledge, policies, or practices.

Franklin Forestry Company

89 State Street

BOSTON

FEB 3 1907
U. S. Department of Agriculture



NURSERIES AT SUDBURY, SHELBURNE FALLS AND COLRAIN, MASSACHUSETTS

A Word About Our Nurseries

We have three principal nurseries, all in Massachusetts—one at Sudbury about 25 miles west of Boston, the others at Shelburne Falls and Colrain in the western part of the State. Visitors are always welcome.

The roots of evergreens will be balled and burlapped, if of sufficient size, while small transplants will be packed in damp moss. In either case they will stand shipment to any part of the country.

Stock not listed herein we will gladly procure on short notice, and shall be pleased to advise and quote prices on large or small orders.

Many shrubs and plants can be safely moved during the summer, but April, May and first of June for spring planting, and last of August, September and October for fall planting, are the best months for this work.

Contract planting of forest nursery stock has been our specialty for many years, and many thousands of growing timber trees received their first start under the protection of our guarantee, which we will gladly explain to those interested.

Conditions

Prices on nursery stock given on the following pages are net, F. O. B. cars, except as noted, packing added at cost.

There will be no charge for packing when cash in full accompanies order.

Twenty-five at the hundred rate; 250 at the 1,000 rate, unless noted.

Lower prices on lots from 10,000 to 100,000 and up.

All stock is listed subject to prior sale.

We have larger sizes and various species other than those listed which we will gladly quote on application.

In the case of all sizes, we reserve the right to decline any order for a quantity too small to make shipment profitable.

The two white pines (strobis and flexilis) can be shipped anywhere in the New England states and New York.

Planting Instructions

On arrival the trees should be "heeled in" at once in a moist, shady place by digging a trench, putting the bunches of trees in it in a vertical position, then throwing dirt over the roots and firmly tamping down with the feet.

If dry the roots should be dipped in a puddle of mud and water before being heeled in. After heeling in, water occasionally.

The planter must set the trees slightly deeper than they originally grew, and set them straight, plenty of fine dirt being placed about the roots and very firmly tamped down with the feet. The roots must not be allowed to become dry, even for a few minutes. In planting sod ground the sod should be taken off for about a foot square around the hole and not used again.

Ornamental Stock with Ball of Earth

Evergreens. The trees should be set a trifle lower than they stood in the nursery. Dig the hole a foot larger than the diameter of the ball. Place good loamy soil in the bottom, set tree at proper height, and fill in with good soil, packing firmly by tramping, or settling by filling hole with water.

Burlap may be loosened at the top of ball and rolled back or cut off, but need not be entirely removed.

Perennials are best planted with trowel or hand spade. Remove badly injured or dried leaves. Trim long straggling roots, or bruised or damaged part. Plant so that roots spread out naturally. Plants with crowns should be set just below the surface of the ground.



Beautifying a Drive

Evergreen Trees

Arborvitae—Thuja

AMERICAN—T. occidentalis	Each	100	1000
Once transplanted, 4 to 8 in.....	\$	4.00	\$20.00
Once transplanted, 10 to 14 in.....		8.00	40.00
Transplants, 12 to 18 in.....	\$.50	45.00
Transplants, 18 to 24 in.....	.75	67.50
Transplants, 2 to 3 ft.....	1.00	90.00
Transplants, 3 to 4 ft.....	1.50	135.00
Transplants, 4 to 5 ft.....	2.00	180.00
Transplants, 6 to 7 ft.....	4.50
GLOBE—T. occidentalis globosa			
Transplants, 12 to 18 in.....	1.50
Transplants, 18 to 24 in.....	2.50
GOLDEN—T. occidentalis aurea			
Transplants, 18 to 24 in.....	2.00
HOVEY—T. occidentalis hoveyi			
Transplants, 18 to 24 in.....	3.00



Pyramidal Arborvitae

Write for Information
Concerning
GUARANTEED
Planting Results



Silver Fir

PYRAMIDAL—T. occidentalis pyramidalis	Each	
Transplants, 12 to 18 in.....	\$1.50	
Transplants, 2 to 3 ft.....	3.00	
Transplants, 3 to 4 ft.....	4.00	
Transplants, 4 to 5 ft.....	5.00	
Transplants, 5 to 6 ft.....	6.00	
TOM THUMB—T. occidentalis ellwangeriana		
Transplants, 18 in.	1.50	
WAGNER—T. occidentalis wagneri		
Transplants, 18 to 24 in.....	2.25	
WOODWARD—T. occidentalis woodwardi		
Transplants, 12 to 18 in.....	1.50	
VERVAEN—T. occidentalis vervaeneana		
Transplants, 12 to 18 in.....	1.50	

Fir—Abies

BALSAM FIR—A. balsamea			
Once transplanted: Each	100	1000	
4 to 8 in.....	\$ 4.00	\$20.00	
6 to 10 in.....	6.00	30.00	
12 to 18 in.....	10.00	50.00	
Transplants:			
2 to 3 ft.....	1.00	90.00
3 to 4 ft.....	1.50	135.00
4 to 5 ft.....	2.00	180.00
5 to 6 ft.....	3.00	270.00

DOUGLAS FIR—A. pseudotsuga douglasi			
Seedlings:			
2 to 5 in.....	1.00	5.00	
Transplants:			
18 to 24 in.....	.75	67.50
2 to 3 ft.....	1.00	90.00
3 to 4 ft.....	1.50	135.00
4 to 5 ft.....	2.00	180.00

SILVER FIR—A. concolor	Each	100
Transplants, 2 to 3 ft.....	\$2.00	\$180.00
Transplants, 3 to 4 ft.....	3.00	270.00



Balled and Burlapped—Ready to Ship

Evergreens---Continued

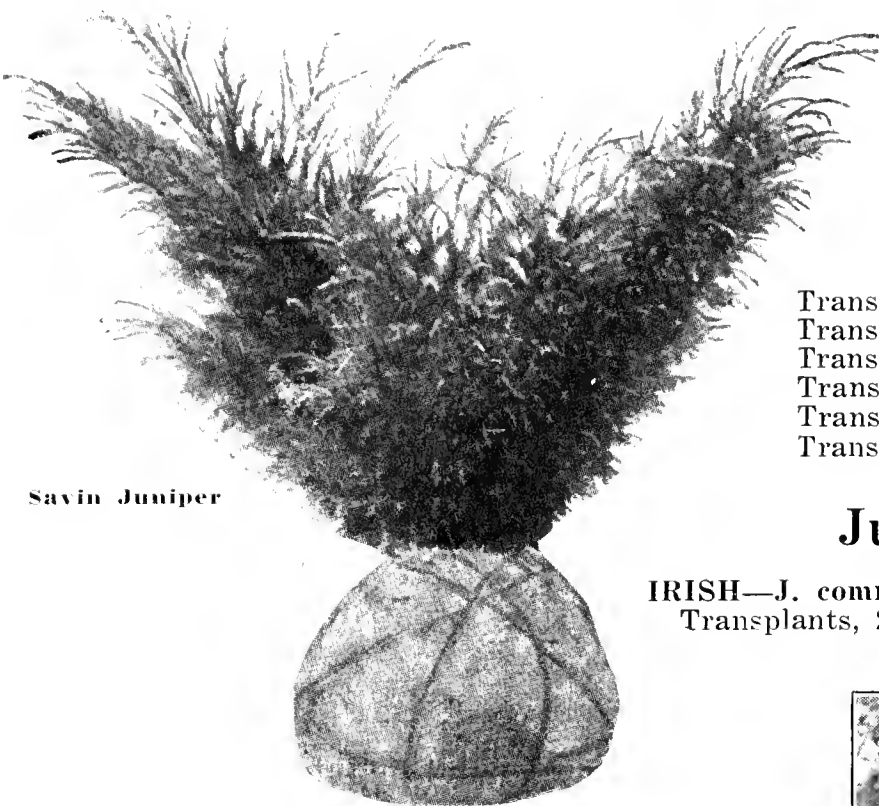
Hemlock—Tsuga

CANADIAN—*T. canadensis*.

Once transplanted: Each	100	1000
4 to 8 in.....	\$ 8.00	\$40.00
6 to 12 in.....	12.00	60.00
Transplants, 12 to 18 in.....	\$.75	67.50
Transplants, 18 to 24 in.....	1.00	90.00
Transplants, 2 to 3 ft.....	2.00	180.00
Transplants, 3 to 4 ft.....	4.00	360.00
Transplants, 4 to 5 ft.....	6.00	540.00
Transplants, 5 to 6 ft.....	8.00

Juniper—Juniperus

IRISH— <i>J. communis hibernica</i>	Each	100	1000
Transplants, 2 to 3 ft.....	\$2.00



Savin Juniper

RED CEDAR— <i>J. virginiana</i>	Each	100	1000
Once transplanted, 5 to 10 in.....	\$10.00	\$50.00
Transplants, 3 to 4 ft.....	3.00
Transplants, 4 to 5 ft.....	4.50

SILVER RED CEDAR— <i>J. virginiana glauca</i>
Transplants, 8 to 10 in.....	1.00

SAVIN— <i>J. sabina</i>
Transplants, 18 to 24 in.....	3.50

SWEDISH— <i>J. communis suecica</i>
Transplants, 2 to 3 ft.....	2.00

Pines—Pinus

AUSTRIAN— <i>P. austriaca</i>	Each	100	1000
Once transplanted, 2 to 5 in.....	\$2.00	\$10.00
Once transplanted, 4 to 8 in.....	3.00	15.00
Once transplanted, 6 to 14 in.....	4.00	20.00
Once transplanted, 12 to 18 in.....	6.00	30.00



Austrian Pine

Transplants:	Each	100	1000
18 to 24 in.....	\$.75	\$ 67.50
2 to 3 ft.....	1.50	135.00
3 to 4 ft.....	3.00	270.00
4 to 5 ft.....	4.50	405.00

DWARF MUGHO— <i>P. mughus</i>
Once transplanted: Each	100	1000
5 to 12 in.....	\$ 6.00	\$30.00

Transplants:
8 to 12 in. spread...	\$.50	45.00
12 to 15 in. spread...	.75	67.50
15 to 18 in. spread...	1.50	135.00
18 to 24 in. spread...	3.00	270.00
2 to 3 ft. spread...	4.50	405.00
3 ft. specimens.....	6.00	540.00
4 ft. specimens.....	9.00	810.00

LIMBER PINE— <i>P. flexilis</i> . Good blue color.
Transplants:
18 to 24 in.....	\$.75	\$ 67.50
2 to 3 ft.....	1.00	90.00

JAPANESE BLACK PINE— <i>P. thunbergi</i>
Transplants:
2 to 5 in.....	\$ 4.00	\$20.00
2 to 3 ft.....	\$1.50	135.00
3 to 4 ft.....	2.00	180.00

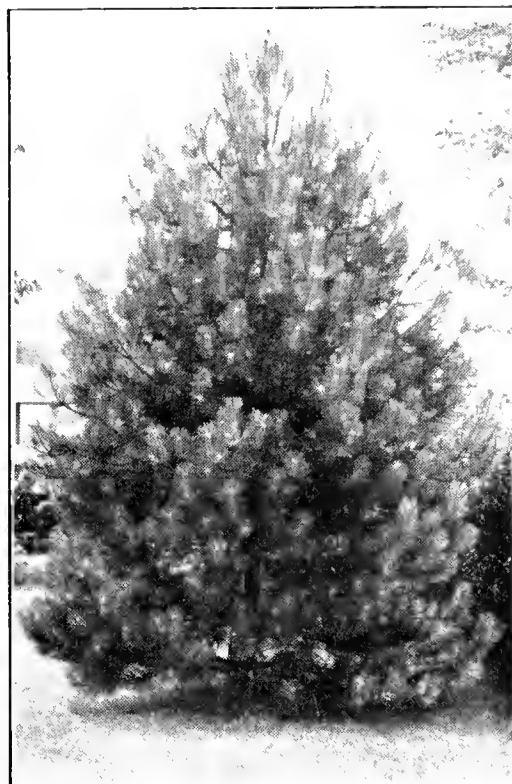


Spreading Type of Mugho Pine

RED PINE—P. resinosa	Each	100	1000
Seedlings, 2 to 4 in.....	\$	1.00	\$ 5.00
Once transplanted, 2 to 5 in.....		1.60	8.00
Once transplanted, 3 to 8 in.....		2.00	10.00
Once transplanted, 6 to 10 in.....		2.80	14.00
Transplants, 12 to 18 in.....	\$.50	45.00
Transplants, 18 to 24 in.....	.75	67.50
Transplants, 2 to 3 ft.....	1.00	90.00
Transplants, 3 to 4 ft.....	1.50	135.00
Transplants, 4 to 5 ft.....	2.00	180.00
Transplants, 5 to 6 ft.....	3.00	270.00
Transplants, 6 to 7 ft.....	4.50	405.00
Transplants, 7 to 8 ft.....	6.00	540.00
Transplants, 8 to 10 ft.....	9.00	810.00

JACK PINE—P. banksiana			
Once transplanted, 3 to 8 in.....		2.00	10.00
Once transplanted, 8 to 16 in.....		5.00	25.00
Transplants, 2 to 3 ft.....	1.50	135.00
Transplants, 6 to 8 ft.....	5.00	450.00
Transplants, 8 to 11 ft.....	10.00	900.00

JAPANESE RED PINE—P. densiflora			
Once transplanted, 4 to 10 in.....		6.00	30.00
Once transplanted, 10 to 20 in.....		8.00	40.00
Transplants, 2 to 3 ft.....	1.50	135.00
Transplants, 4 to 5 ft.....	3.00	270.00
Transplants, 6 to 7 ft.....	6.00	540.00



Scotch Pine

PITCH PINE—P. rigida			
Once transplanted: Ea.	100	1000	
6 to 12 in.....	\$ 2.80	\$14.00	

SCOTCH PINE—P. sylvestris			
Seedlings:			
2 to 4 in.....	1.00	5.00	
Once transplanted:			
3 to 8 in.....	2.00	10.00	
6 to 10 in.....	2.80	14.00	

Transplants:			
12 to 18 in.....	\$.50	45.00
18 to 24 in.....	.75	67.50
2 to 3 ft.....	1.00	90.00
3 to 4 ft.....	1.50	135.00
4 to 5 ft.....	2.00	180.00
5 to 6 ft.....	3.00	270.00
6 to 7 ft.....	4.50	405.00
7 to 8 ft.....	6.00	540.00
8 to 10 ft.....	9.00	810.00



White Pine

WHITE PINE—P. strobus	Each	100	1000
Seedlings, 2 to 4 in.....	\$	1.00	\$ 5.00
Once transplanted, 2 to 5 in.....		1.60	8.00
Once transplanted, 3 to 7 in.....		2.00	10.00
Once transplanted, 4 to 10 in.....		2.80	14.00
Transplants, 18 to 24 in.....	\$.75	67.50
Transplants, 2 to 3 ft.....	1.00	90.00
Transplants, 3 to 4 ft.....	1.50	135.00
Transplants, 4 to 5 ft.....	2.00	180.00
Transplants, 5 to 6 ft.....	3.00	270.00
Transplants, 6 to 7 ft.....	4.50	405.00
Transplants, 7 to 8 ft.....	6.00	540.00
Transplants, 8 to 10 ft.....	9.00	810.00
Transplants, 10 to 12 ft.....	12.00	1080.00

RETINOSPORA—Chamaecyparis			
Plume—C. pisifera plumosa:			
18 to 24 in.....	2.00
Golden Plume—C. pisif. plum. aurea:			
18 to 24 in.....	2.00
Thread—C. pisifera filifera:			
3 to 4 ft.....	6.00
Golden—C. pisifera aurea:			
4 to 5 ft.....	6.00
Sawara—C. pisifera:			
4 to 5 ft.....	6.00

Yew—Taxus

JAPANESE YEW—T. cuspidata	Each	100	1000
Transplants, 15 to 18 in.....	\$3.00
HICKS YEW—T. hicksi			
Transplants, 8 to 12 in.....	2.00



BLUE SPRUCE

Evergreens---Continued Spruce—Picea



Norway Spruce

Evergreen Shrubs

ADAMS NEEDLE (<i>Yucca filamentosa</i>)	Each \$.40
ANDROMEDA (<i>Pieris floribunda</i>) 15 to 18 in.....	3.00
DAPHNE (<i>D. cneorum</i>) 6 to 9 in.....	.75
9 to 12 in.....	1.00
12 to 18 in.....	2.00
MT. LAUREL (<i>Kalmia latifolia</i>) 12 to 15 in.....	1.25
18 to 24 in.....	2.50
JAPANESE SPURGE (<i>Pachysandra terminalis</i>) 2-year25
RHODODENDRON—Carolina 15 to 18 in.....	3.00
RHODODENDRON—Catawbiense 18 to 24 in.....	3.50
RHODODENDRON—Maximum 18 to 24 in.....	3.00

Collected Evergreens

MT. LAUREL (*Kalmia latifolia*)

Prices on request.

BLUE SPRUCE— <i>P. pungens</i> Seedlings, 2 to 5 in.....	Each	100	1000
Once transplanted, 6 to 12 in.....		\$ 2.00	\$10.00
Transplants, 2 to 3 ft.....		\$ 3.00	
Transplants, 3 to 4 ft.....		6.00	
Transplants, 4 to 5 ft.....		9.00	
Transplants, 5 to 6 ft.....		12.00	
Transplants, 6 to 7 ft.....		15.00	
Transplants, 7 to 8 ft.....		18.00	
} Green specimens one-half these prices			
DWARF ALBERTA SPRUCE— <i>P. glauca conica</i> : 12 in.			
	3.50		
ENGLEMAN SPRUCE— <i>P. engelmanni</i> Once transplanted, 4 to 8 in.....	Each	100	1000
Transplants, 12 to 18 in.....		\$ 8.00	\$40.00
Transplants, 18 to 24 in.....		\$.50	45.00
		.75	67.50
NORWAY SPRUCE— <i>P. excelsa</i>			
Seedlings, 2 to 5 in.....		1.00	5.00
Seedlings, 3 to 7 in.....		1.40	7.00
Once transplanted, 2 to 5 in.....		1.60	8.00
Once transplanted, 3 to 8 in.....		2.00	10.00
Once transplanted, 6 to 12 in.....		2.80	14.00
Transplants, 18 to 24 in.....		.75	67.50
Transplants, 2 to 3 ft.....		1.00	90.00
Transplants, 3 to 4 ft.....		1.50	135.00
Transplants, 4 to 5 ft.....		2.00	180.00
Transplants, 5 to 6 ft.....		3.00	270.00
RED SPRUCE— <i>P. rubra</i>			
Once transplanted, 3 to 6 in.....		2.00	10.00
SITKA SPRUCE— <i>P. sitchensis</i>			
Once transplanted, 12 to 16 in.....		8.00	40.00
WHITE SPRUCE— <i>P. alba</i>			
Once transplanted, 4 to 8 in.....		2.00	10.00
Once transplanted, 6 to 12 in.....		2.80	14.00
Transplants, 8 to 12 in.....		.25	22.50
Transplants, 12 to 18 in.....		.50	45.00
Transplants, 18 to 24 in.....		.75	67.50



Rhododendron

Deciduous Trees



Chinese Elm

	Each
BEECH (<i>Fagus sylvatica purpurea</i>)	
18 to 24 in.....	\$2.50
BIRCH (<i>Betula</i>)	
<i>Betula papyrifera</i> , 4 to 6 ft.....	1.50
CATALPA	
<i>Catalpa bungei</i> (Umbrella).....	2.00
ELM (<i>Ulmus</i>)	
<i>Ulmus americana</i> , 8 to 10 ft.....	2.25
<i>Ulmus pumila</i> (Chinese or Siberian), 6 to 8 ft.....	1.75
HAWTHORN (<i>Crataegus</i>)	
<i>Crataegus oxycantha splendens</i> (Paul's Scarlet Hawthorn), 5 to 6 ft.	2.00



Catalpa

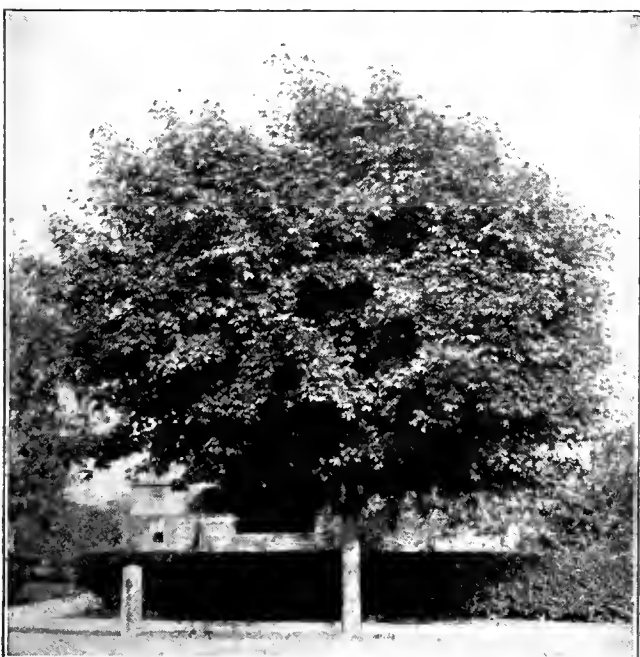
Plant Trees

They Will Add
Beauty and Value
to Your Home



Lombardy Poplars

LARCH (<i>Larix</i>)	Each
<i>Larix europea</i> (European Larch), Transplants, 5 to 6 ft.....	\$2.25
<i>Larix europea</i> (European Larch), Transplants, 6 to 7 ft.....	3.00
<i>Larix europea</i> (European Larch), Transplants, 8 to 11 ft...	5.00
<i>Larix leptolepis</i> (Japanese Larch), Transpl's, 10 to 14 ft.	5.00
<i>Larix laricina</i> (American Larch), Transpl's, 10 to 15 ft.....	5.00
MAPLE (<i>Acer</i>)	
<i>Acer platanoides</i> (Norway Maple), 8 to 10 ft.....	3.00
<i>Acer platanoides schwedleri</i> (Schwedler), 5 to 6 ft.....	2.50
<i>Acer saccharum</i> (Rock or Sugar Maple), 6 to 8 ft.....	2.25
PLUM (<i>Prunus</i>)	
<i>Prunus pissardi</i> (Purple Plum), 4 to 5 ft.....	1.50
POPLAR (<i>Populus</i>)	
<i>Populus monilifera</i> (Carolina Poplar), 8 to 10 ft.....	1.00
<i>Populus nigra italica</i> (Lombardy Poplar), 8 to 10 ft.....	1.00
SYCAMORE (<i>Platanus</i>), 8 to 10 ft.....	2.00



Norway Maple



Carolina Poplar

ORNAMENTAL D



Butterfly Bush

ALTHEA		Each
Hibiscus syriacus (Rose of Sharon).....		\$.50
AZALEA		
Azalea calendulacea (Flame Azalea).....		3.00
BARBERRY		
Berberis thunbergi (Japanese Barberry), 18 to 24 in.....		.25
Berberis thunbergi atropurpurea (Red Leaf Japanese Barberry), 12 to 15 in.....		.50
BUDDLEIA		
Buddleia davidi magnifica (Butterfly Bush), 2-yr.....		.50
DAPHNE		
Daphne mezereum, 12 to 18 in.....		1.00
EUONYMUS		
Euonymus alatus, 2 to 3 ft.....		.75
FORSYTHIA		
Forsythia intermedia (Golden Bells), 2 to 3 ft.....		.50
HYDRANGEA		
Hydrangea paniculata grandiflora (Pee Gee), 2 to 3 ft.....		.50
Hydrangea arborescens grandiflora (Hills of Snow), 2 to 3 ft...		.60

Beautify With Shrubs



Barberry (front) and Moek Orange (rear).



Azalea



Hydrangea P. G.

Deciduous SHRUBS

LIGUSTRUM

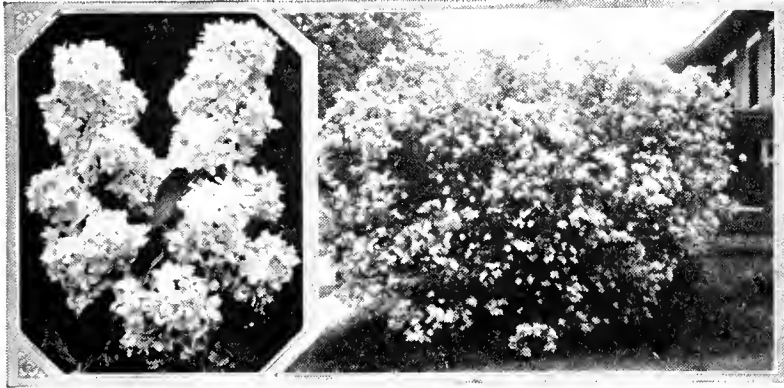
- Ligustrum ovalifolium (California Privet), 18 to 24 in...\$.15
- Ligustrum amurense (Amur Privet), 18 to 24 in..... .20
- Ligustrum ibolium, 18 to 24 in..... .20

LILAC

- Syringa vulgaris (Purple), 2 to 3 ft..... .50
- Syringa vulgaris alba (White), 2 to 3 ft..... .75



SPIREA VAN HOUTTEI



Lilacs

SNOWBERRY

- Symphoricarpos racemosus (Common Snowberry), 2 to 3 ft. \$.50

SPIREA

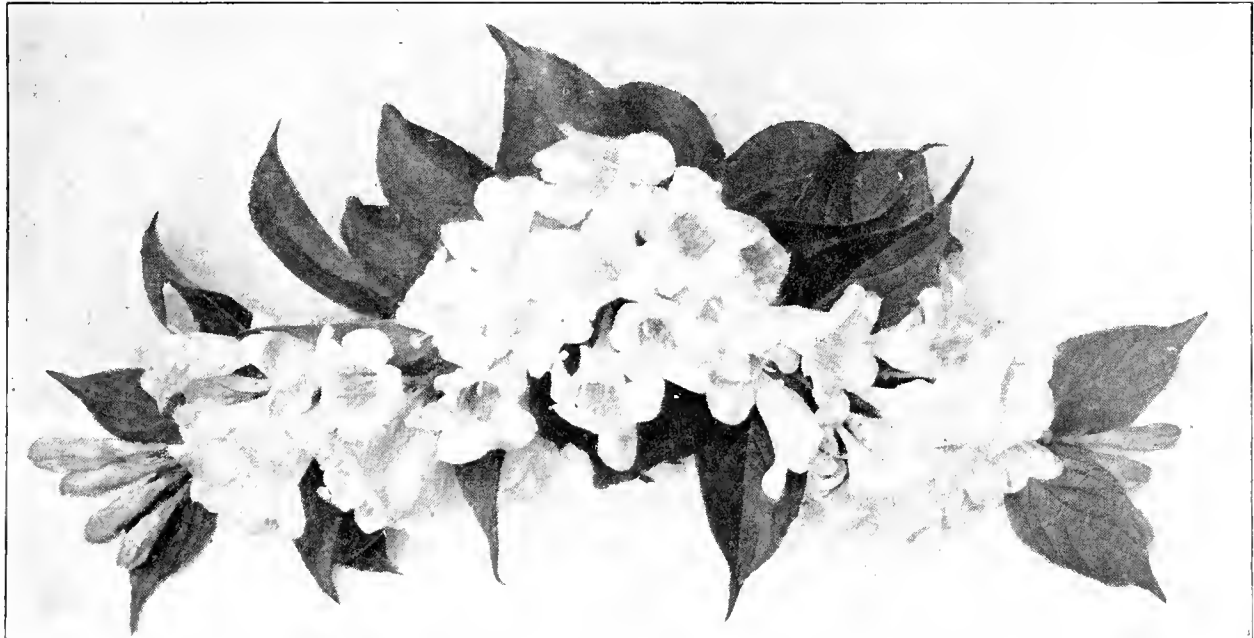
- Spirea bumalda (Anthony Waterer), 12 to 15 in..... .40
- Spirea van houttei (Van Houtte), 3 to 4 ft..... .60

SYRINGA

- Philadelphus coronarius (Mock Orange), 2 to 3 ft..... .50

WEIGELIA

- Weigelia Eva Rathke, 18 to 24 in..... .50
- Weigelia rosea, 2 to 3 ft..... .50



Weigelia

Climbing Vines

- ENGLEMANN IVY** (Ampelopsis quinquefolia englemanni) 2-yr. \$.40

- CLEMATIS** (Clematis paniculata) 2-yr.50

- WISTERIA** (Wisteria sinensis) Purple Chinese, 2-yr..... .75



Clematis



WISTERIA

**Boltonia**

ANTHEMIS—Yellow, 2 ft., June-October.

AQUILEGIA (Columbine)—Pink, 2 ft., May-June.

**Campanula Canterbury Bells**

Hardy Perennials

*Suitable for Rock Gardens
25c Each
unless otherwise listed.

ACHILLEA (Yarrow)

Ptarmica—The Pearl—Pure white flowers, 2 ft., June-September.

***Tomentosa**—Wooly Yarrow—Yellow, 1 to 2 ft., June-September.

AJUGA (Bugle)

***Genevensis**—Geneva Bugle—Blue, 6 in., May-June.

ALTHEA (Hollyhock)

Single (Hollyhock)—Assorted, 5 ft., July-August.

Double (Hollyhock)—Assorted, 5 ft., July-August.

ANEMONE (Windflower)

***Hupehensis**—Pink, 1 ft., August-October.

**Althea (Hollyhocks)**

***ARMERIA** (Sea Pink)—Pink, 1 ft., June-July.

ASTERS

***BELLIS ROTUNDIFOLIA**—Blue, 4 in., all summer.

BOLTONIA LATISQUAMA—Pink, 4 to 5 ft., August-September.

***CHEIRANTHUS ALLIONII** (Siberian Wallflower)—Orange, 1½ ft., summer.

CAMPANULA

***Carpatica** (Harebell)—Blue, 6 ft., July-August.

Medium (Canterbury Bells) — Assorted, 2 ft., June.

**Delphinium**

CAMPANULA

***Persicifolia** (Peach Leaved Bellflower)—Blue, 2 ft., May-June.

Persicifolia Alba—White, 2 ft., May-June.

***Turbinata**—Violet blue, 6 ft., May-June.

COREOPSIS—Yellow, 2 ft., July-August.

DELPHINIUM (Larkspur) — Blue, 4 to 5 ft., June-October.
Hybrids, 3 ft., June-October.

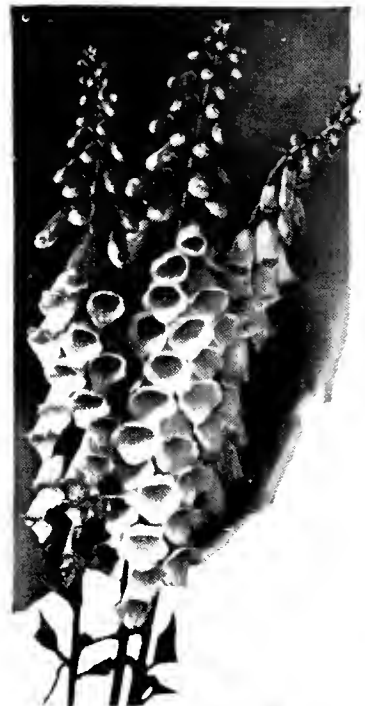
DIANTHUS

***Deltoides** (Maiden Pink) — Pink, 8 in., May-June.

***Furst Bismark**—Pink, 1 ft., May-June.

DIGITALIS (Foxglove)

Giant Shirley—Pink, white, 5 to 6 ft., June-July.

**Digitalis or Foxglove**

Supplementary Suggestions

From Our Stock

25c Each Unless Otherwise Noted

- Ajuga genevensis alba* (White Geneva Bugle)—4 in.
Alyssum argenteum (Silver Alyssum).
Alyssum montanum (Yellow Alyssum)—Very dwarf, hoary leaves, sweet scented.
Arabis alpina rosea (Alpine Rockcress)—Pink flowering.
Arabis mollis (Downy Rockcress)—Rare, dark green rosettes, white flowers. 50c.
Artemisia frigida (Fringed Wormwood)—8 to 12 in.
Calamintha alpina (Alpine Calamint; variegated mint)—6 in. Purple.
Campanula pusilla
Campanula rapunculoides—3 ft. Bright blue bells.
Dicentra eximea (Fringed Bleedingheart)—12 to 15 in. Pink.
Dicentra spectabilis (Bleedingheart)—2 to 3 ft. Pink.
Dianthus deltoides alba (White Maiden Pink).
Dianthus Furst Bismarck—Double rose flowers. 10 in.
Dianthus Her Majesty—Large white flowers. 10 in.
Echinops ritro (Steel Globethistle)—3 ft. Blue.
Geum (Avens)—Mrs. Bradshaw. 18 in. Scarlet.
Geum (Avens)—Lady Stratheden. 2 ft. Yellow.
Heuchera brizoides (Pinkbells)—18 in. Pink.
Hypericum (St. Johnswort)
 H. fragile. 6 in. Bright yellow.
 H. polyphyllum. Low-growing. Pale yellow.
Liatris scariosa (Gayfeather)—Large, showy. Purple. September.
Lychnis chalconia (Maltese Cross)—2 ft. Scarlet.
Nepeta mussini (Ground Ivy; Catmint)—Dwarf, compact. Lavender.
Pentstemon barbatus torreyi (Beard Tongue; Pink Beauty)—2 to 3 ft. Pink.
Platycodon grandiflora mariesi (Maries Balloonflower). 18 in. Violet.
Potentilla (Cinquefoil)—2 ft. Orange red.
Prunella (Selfheal)—10 in. Violet.
Rock Rose.
Salvia patens (Meadow Sage)—2 ft. Blue.
Sempervivum potsi.
Silene schafta (Schafta Catchfly)—Rosy flowers. June to October.
Thymus citriodorus (Lemon scented Thyme)—4 to 6 in. Pink.
Trollius europaeus (Common Globeflower)—12 to 18 in. Yellow.
Trollius ledebouri (Ledebour Globeflower)—Orange yellow.

Franklin Forestry Company
Shelburne Falls, Massachusetts

ECHINACEA PURPUREA (Purple Cone Flower)—Purple, 3 to 4 ft., July-August.

***ERYNGIUM AMETHYSTINUM**—Blue, 2 to 3 ft., June-July.

***EUPHORBIA MYRSINITES**—Yellow, 4 to 6 in., July.

GALLARDIA (Blanket Flower)—Scarlet, yellow, 1 to 2 ft., May-November.

GYPSOPHILA (Bristol Fairy)—White, 2 to 3 ft., summer, 50c

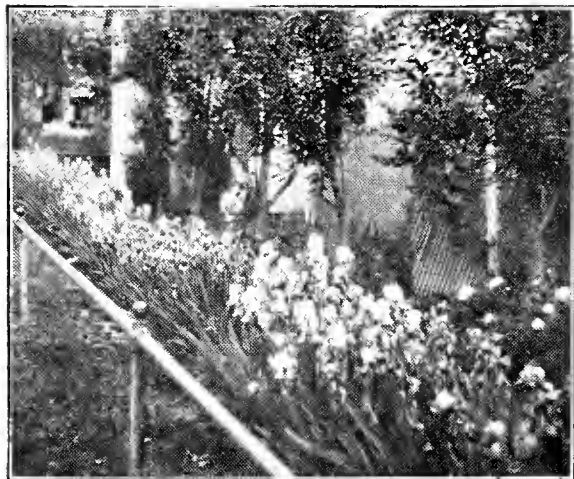
HELENIUM

Riverton Gem—Yellow, 5 ft., August-September.

Riverton Beauty—Yellow, 5 ft., August-September.



Gaillardia



Iris

HEPATICA

(Round Lobe)—Blue, 4 in., April.

***HEUCHERA SPLENDENS** (Crimsonbells)—Crimson, 1 ft., July.

HIBISCUS—Mallow Marvels, 4 to 6 ft., August-September, 50c.

IRIS (German)—Small clumps, 25c.
Large clumps, 50c.

IBERIS (Candytuft)

Sempervirens—White, 6 in., April-May.

***JASIONE PERENNIS**—Blue, 5 in., July-August.



Hibiscus

JOHNNY JUMP-UP—Small, pansy-like flower, 8 in., May-November.

***LAVANDULA MUNSTEAD**—Blue, 18 in., July-September.

LIATRIS PYCNOSTACHYA (Kansas Gay Feather)—Purple, 4 to 5 ft., July-September.

*LINUM (Flax)

Perenne—Blue, 18 in., May-August.

LYCHNIS (Campion)

***Rose Campion**—Crimson, 2 ft., May-August.

Alpina—Pink.

*LYTHRUM SALICARIA (Loosestrife)

Roseum Superbum—Pink, 3 to 4 ft., June-September.



Lychnis

MONARDA (Bee Balm)—Red, 3 ft., June-August.

OENOTHERA—Yellow, 2 ft., June-July.

**Plant
Perennials**
and Have a
Constant Supply
of Flowers
from Spring Until
Late Fall.

Our Plants
Are Selected Field-
grown Stock.



Oenothera



Hardy Phlox

Perennials---Continued

***PACHYSANDRA TERMINALIS** (Japanese Spurge)—White, 9 in., May-June.

PHLOX

Camille Schneider—Scarlet, 2 to 3 ft.
 Enchantress—Pink, 2 to 3 ft., June-October.
 Karl Forester—Red, 2 to 3 ft., June-October.
 Mrs. Jenkins—White, 2 to 3 ft., June-October.
 Pantheon—White, 2 to 3 ft., June-October.
 Rheinlander—Red, 2 to 3 ft.
 Thor—Pink, 2 to 3 ft., June-October.
 *Vivid—Red, 3 to 6 in., April-May.
 *Subulata—Pink, 3 to 6 in., April-May.

PHYSALIS FRANCHETI (Chinese Lantern Plant)—Scarlet.

PHYSOSTEGIA (False Dragonhead.)

Virginiana—Pink, 2 to 3 ft., June-July.
 *Vivid—Pink.

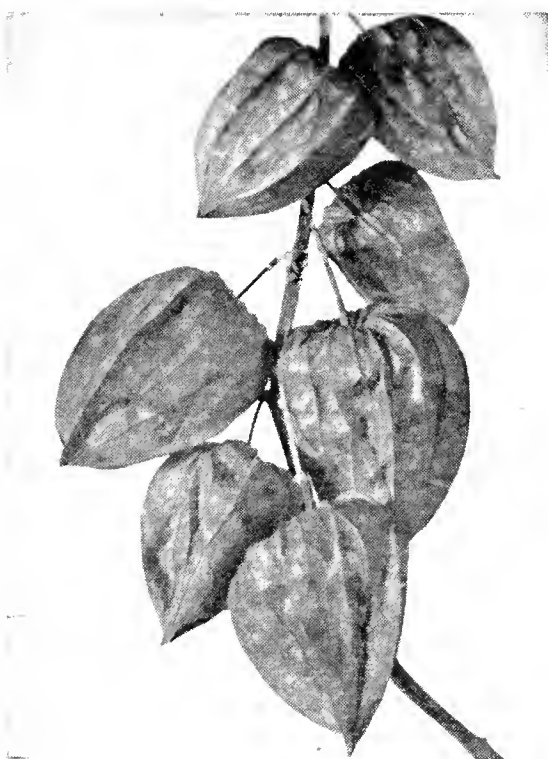
***PLATYCODON** (Balloon Flower)—

Blue, 1 to 2 ft., June-July.
 White, 1 to 2 ft., June-July.

POLEMONIUM (Jacob's Ladder)—Blue, 2 ft., June-July.

PYRETHRUM (Painted Daisy)

Single—Various, 2 ft., May-June.



Physalis Francheti

***SANGUINARIA CANADENSIS** (Bloodroot)—White, 6 in., April.

*SEDUM

*S. Acre—Golden Moss—Yellow, 2 to 3 in., May-June.
 *S. Forsterianum.
 *S. Glacicum.
 *Hispanicum—Rose, blue foliage, 2 in.
 *Kantschaticum—Yellow, 6 in., July-August.
 *Middendorffianum—Yellow.
 *Neveri—White, 3 to 5 in.
 *Reflexum—Yellow, 8 to 10 in.
 *Sarmentosum—Yellow, creeper, 2 in.
 *Sexangulare—Yellow, 2 in.
 *Sieboldi—Rose, 8 to 9 in., August-September.
 *Spurium Coccineum—Rose, 3 to 4 in., June-July.
 *Spectabile Brilliant—Pink, 18 in., August-September.



Pyrethrum

Prices of All Perennials, Unless Otherwise Stated,
 25 Cents Each

***SEMPERVIVUM (Houseleek)**

- *Arachnoideum—Cobweb Houseleek, 50c.
- *Arenarium.
- *Cornutum.
- *Fimbriatum—Fringed Houseleek.
- *Soboliferum—Hen and Chickens.
- *Tectorum—Roof Houseleek.

SWEET WILLIAM—Various colors.

***THYMUS (Thyme)**

- *Crimson—Crimson—creeper.
- *White—White, 2 in., June-July.
- *Woolly—Pink, 3 to 4 in., July-August.

***TUNICA SAXIFRAGA**—White, pink, 6 in., June-September.

TROLLIUS (Orange Globe)—Orange, 18 in., May-June. 50c.

VERONICA

*Incana (Woolly Speedwell)—Blue, 1 ft., July-August.

*Prostrata—Blue, 4 in., May-June.

*Repens — Blue, 1 in., April-May.

*Rupestris Trehani—Blue, 2 in., April-May.

Subsessilis—Blue.

Spicata—Blue, 18 in., June-July.

VIOLA

*Apricot—Orange yellow, 6 in., May-October.

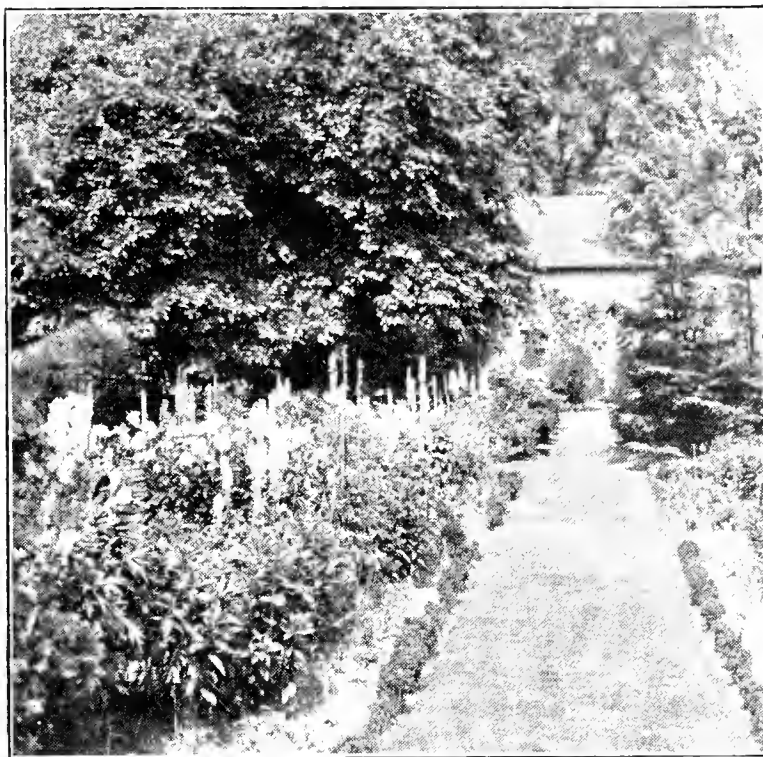
*Bosniaca—Rose pink, 4 in., May-October.

*Bowles Black—Dark, 1 ft., May-October.

*Cornuta—Yellow, 1 ft., May-October.

*Jersey Gem—Violet blue, 1 ft., May-October.

*White Perfection—White, 6 in., May-October.



Perennial Border



Sweet William

Have a Rock Garden

Every home should have a rock garden. It is the most interesting of all flower gardens. The perennials listed on pages 10, 11, 12 and 13 and marked with a star are especially suited to rock gardens.



Many Perennials Are Adapted to the Rock Garden



Paul's Scarlet Climber

ROSES

Care in Planting

Roses require thorough cultivation of the soil and are gross feeders, necessitating rich ground or heavy fertilizing for best results. Plant all grafted joints at least three inches below ground level to prevent the strong root system of the rose stock from sending up shoots which will smother the budded top variety.



Columbia

Hardy Climbing Roses

75c Each

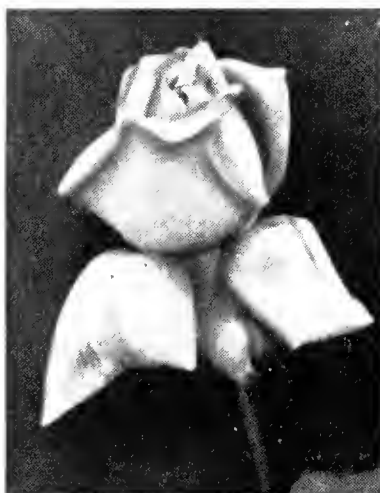
- DOROTHY PERKINS—Pink.
 EXCELSA—Scarlet crimson.
 PAUL'S SCARLET CLIMBER—Crimson.
 SILVER MOON—White.

Everblooming Roses (Hybrid Tea)

2-Year Stock

75c Each

- COLUMBIA—Bright pink.
 ETOILE DE FRANCE—Vivid crimson.
 FRAU KARL DRUSCHKI—White.
 GRUSS AN TEPLITZ—Crimson.
 J. L. MOCK—Crimson (large.)
 LOS ANGELES—Salmon pink—yellow shading.

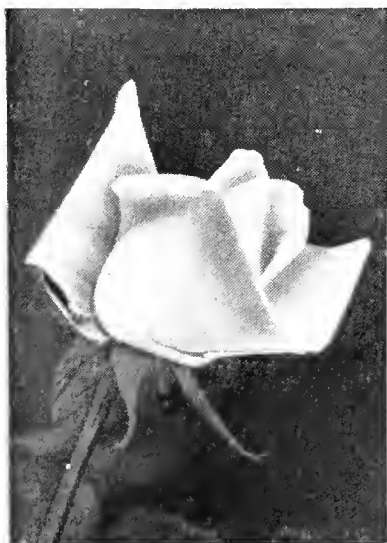


Madame Butterfly

2-Year Stock

75c Each

- MME. BUTTERFLY—Light pink.
 PINK RADIANCE—Rose pink.
 RED RADIANCE—Rose red.
 SOUVENIR DE CLAUDIUS PERNET—Yellow.
 SUNBURST—Orange yellow.
 WHITE KILLARNEY—White.

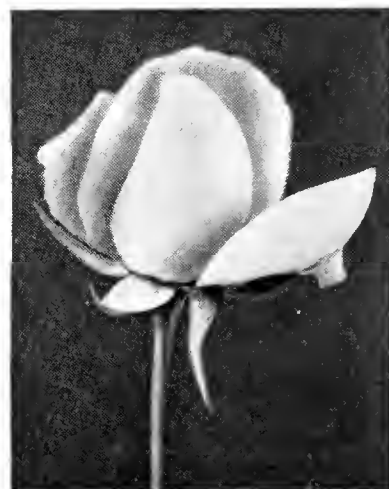


Pink Radiance

Rose Collection
 A choice selection
 of the most beautiful
 and approved
 varieties

1 each of the 12 Everblooming varieties listed above

\$5.50

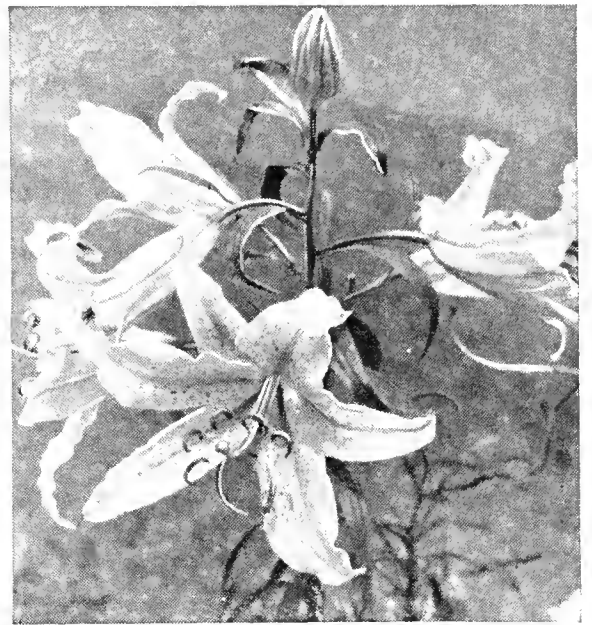


White Killarney

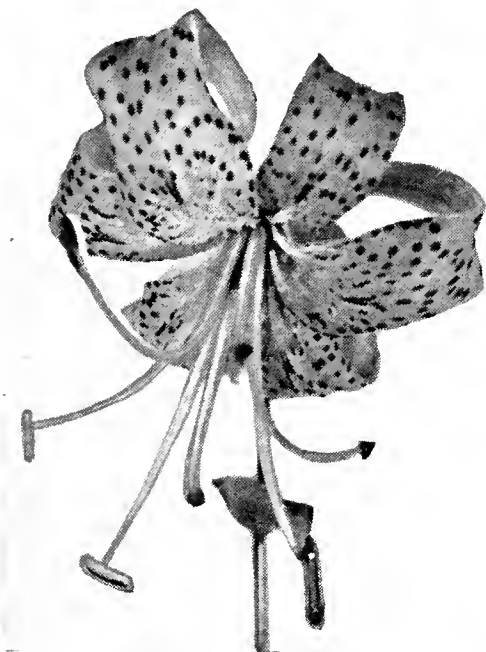
Lilies, Lilium

To grow lilies successfully they should have a well drained soil, be planted six to eight inches deep, and a little sand around each bulb to keep from rotting. They should be grown three or four years and then transplanted, preferably in September, and set at once to prevent drying out. It is well to plant them among evergreens or plants with heavy foliage, and the beds covered with leaves or like protection during the winter.

Our bulbs can be supplied in September or October, or early spring.



L. Speciosum



L. Tigrinum

	Each
L. CANDIDUM—Madonna Lily—Large fragrant, pure white flowers—early July.....	\$.25
L. HANSONI—Reddish orange, three feet high. Flowers six to ten in cluster—June-July.....	.50
L. HENRYI—Orange yellow, four to five feet high. Flowers August, September.....	.60
L. SARGENTIAE—Milk white, yellow throat. Flowers July.....	1.00
L. SPECIOSUM RUBRUM—White, shaded with rose, medium height. Flowers August and September....	.60
L. TENUIFOLIUM—Scarlet, small slender growing. Height eighteen inches. Flowers August and September.....	.25
L. TEN. GOLDEN GLEAM—Apricot shade, vigorous grower.....	.50
L. TIGRINUM—Tiger Lily—Blooms July, August.....	.15
L. UMBRELLATUM—Red orange, tall, good grower. June, July.....	.20
L. UMBRELLATUM YELLOW—Yellow.....	.50
L. WILLMOTTIAE—Orange shade, large number blooms on stem. Blooms July.....	1.00
L. DAHURICUM—Reddish yellow, good size. Three to four feet. Blooms June, July.....	.20



L. Candidum

SUPPLIES

WINDOW BOXES—Painted\$ 2.50 each

BIRD BATHS.....\$5.50 to 17.00 each

Sun Dials, Gazing Globes, Lawn Ornaments, Garden Furniture and Pottery—prices on request.

Nursery Stock » Trees » Shrubs » Plants

RUSSELL S. LANGDELL, *President*

HARRY F. GOULD, *Treasurer*

HAROLD B. BENT
Supt. Sudbury Nursery
Telephone Sudbury 77-3

JOHN P. GALVIN
Supt. Shelburne Falls Nursery
"Tree Acres"
Telephone Shelburne Falls 260

Address correspondence to Boston office: 89 State Street
Telephone Hubbard 5169

ORNAMENTAL EVERGREENS

