

## **Historic, archived document**

Do not assume content reflects current scientific knowledge, policies, or practices.



62.73

1934

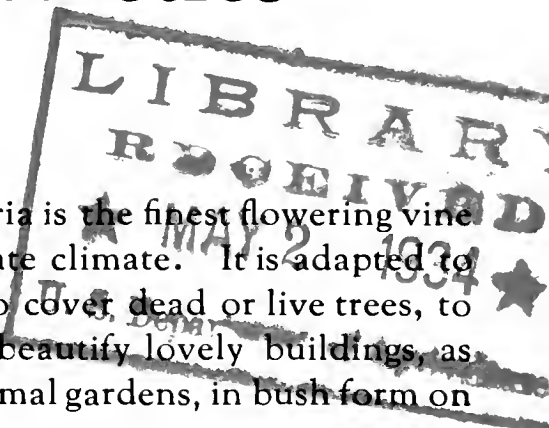
Dup

# W I S T A R I A

" "

## Rare Varieties

WITHOUT any doubt Wistaria is the finest flowering vine in cultivation for the temperate climate. It is adapted to all conditions, for pergolas, to cover dead or live trees, to cover unsightly buildings, to beautify lovely buildings, as formal tree like plants for formal gardens, in bush form on the lawn, and many other purposes.



Wistaria may be raised from seed and under certain favorable conditions may produce flowers within a reasonable time, but this is not a dependable method of production.

Many nurseries sell seedling Wistaria, as they can be produced cheaply; but the unfortunate result for the unlucky buyer is, they may not flower in his life time. For good and reasonably prompt results, it is absolutely necessary that Wistaria must be produced, grafted, from flowering wood. at least from flowering vines. This process of grafting has a distinct tendency to slow up the growth and will under all circumstances produce flowers within two or three years after transplanting from the nurseries. Under certain favorable conditions, especially with larger vines, one can be assured of flowers at once. Under no circumstances should gardeners plant seedling Wistaria. ***Our Wistaria are all grafted from scions taken from blooming vines*** or from flowering wood. Our stock should bloom at once or very soon after planting. Grafted plants cannot be sold as cheaply as seedlings. Seedlings may not bloom for ten years.



Wistaria Chinensis, grafted vines bloom.

WISTARIA CHINENSIS—Purple. This is the best known variety of all. Quite common but good.

|         | Each   | Two    |
|---------|--------|--------|
| 1 year  | \$0.60 | \$1.00 |
| 2 years | 1.50   | 2.50   |
| 3 years | 2.50   | 4.50   |

WISTARIA CHINENSIS ALBA—White. This sort is more fragrant than the purple form. No seedlings. Grafted stock only in both varieties.

|         | Each   | Two    |
|---------|--------|--------|
| 1 year  | \$0.75 | \$1.00 |
| 2 years | 1.50   | 2.50   |
| 3 years | 2.75   | 4.50   |

NOTE: We pay the postage.

# Japanese Longcluster or Weeping Wistaria

## WISTARIA FLORIBUNDA NAGA NODA

Extra long *Japanese Wistaria*. A variety of *W. multijuga* with astonishingly long clusters of purple flowers. On a well-established vine they will run three to four feet in length. The original old vine frequently has clusters four to five feet long. Three vines of this variety are known to exist in Philadelphia district where they attract a tremendous lot of attention and a great many visitors, all marveling at the freakish length of flowers. For some reason this variety had escaped cultivation but is again introduced by us. *NAGA NODA* is being offered by other nurseries at much higher prices, 2 to 3 year old vines as high as \$15.00 each. The existing demand has permitted these high prices, but our large stock has enabled us to cut that price in half.

|         | Each   | Two    |         | Each  | Two   |
|---------|--------|--------|---------|-------|-------|
| 1 year  | \$2.00 | \$4.00 | 3 years | 7.50  | 12.50 |
| 2 years | 5.00   | 9.00   | 4 years | 10.00 | 19.00 |

## WISTARIA FLORIBUNDA ROSEA

(*Rose Weeping Wistaria*). An interesting variety; a favored color in Japan is this superior variety of *Pink Weeping Wistaria*. All vines are produced from selected stock plants.

Flower clusters of medium length on young plants; 24 inches or more on established vines. This *Wistaria* with its lovely clear pink clusters is a real sensation. To meet the growing demand for pink flowers, we have introduced this desirable novelty.

|        | Each   | Two    |
|--------|--------|--------|
| 1 yr.  | \$1.50 | \$3.00 |
| 2 yrs. | 3.00   | 5.00   |
| 3 yrs. | 5.00   | 9.00   |
| 4 yrs. | 7.50   | 14.00  |

Postage Paid



Wistaria Floribunda Rosea, a pot-grown vine 6 years old.



### WISTARIA FLORIBUNDA VIOLACEA PLENA

This variety is of great decorative value, largely on account of its impressive substantial looking flower clusters. The flowers are not unlike double Russian violet, a deep violet blue, and it is rated as being the deepest color of all the double Wistaria. It is a distinct novelty of great value. Clusters of medium length.

|              |         | Each   | Two    |
|--------------|---------|--------|--------|
|              | 1 year  | \$1.50 | \$3.00 |
|              | 2 years | 3.00   | 5.00   |
| Postage Paid | 3 years | 5.50   | 10.00  |
|              | 4 years | 7.50   | 12.50  |



# WISTARIA FLORIBUNDA

(Wistaria Multijuga)

Purple. Flower clusters of medium length.

Grafted. Old plants frequently produce racemes 30 inches long.

|         | Each   | Two    |
|---------|--------|--------|
| 2 years | \$2.00 | \$3.50 |
| 3 years | 3.50   | 6.00   |
| 4 years | 5.00   | 7.50   |

## STANDARD WISTARIA

Wistaria in tree form (4 foot stems) can be had in the following varieties:

|                           | Each   | Two     |
|---------------------------|--------|---------|
| Chinensis, purple         | \$6.50 | \$12.00 |
| Floribunda Naga Noda      | 12.50  | 24.00   |
| Floribunda Rosea          | 9.00   | 17 00   |
| Floribunda Rosea, heavy   | 15.00  | 28.00   |
| Floribunda Violacea plena | 9.00   | 17.00   |

Standard Wistaria shipped by Express or Freight, charges collect.



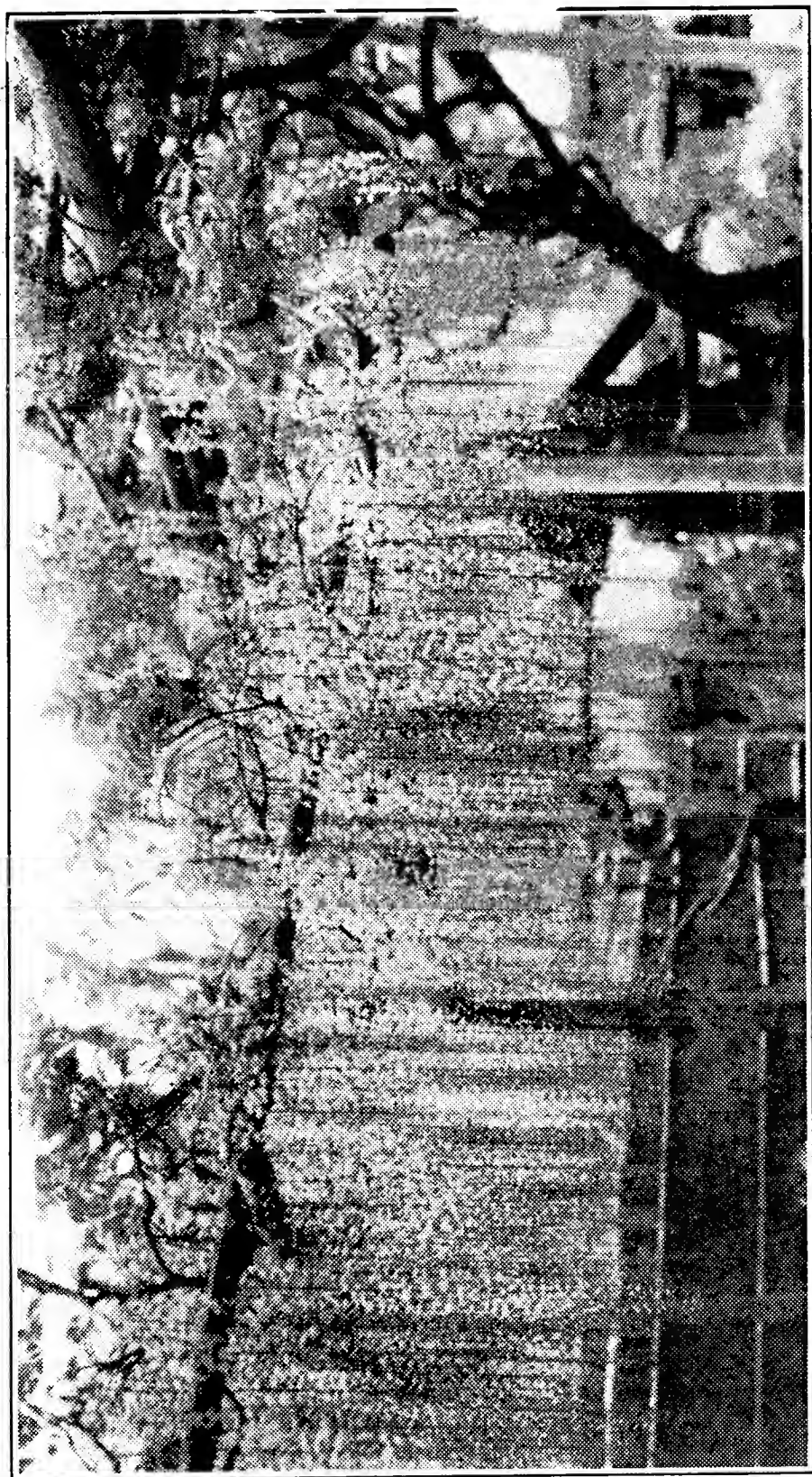
## THE GARDEN NURSERIES

A. E. WOHLERT, OWNER

MONTGOMERY AVENUE. PENN VALLEY.

NARBERTH, PENNA.





Wistaria Floribunda Naga Noda

