

## **Historic, archived document**

Do not assume content reflects current scientific knowledge, policies, or practices.



63,67



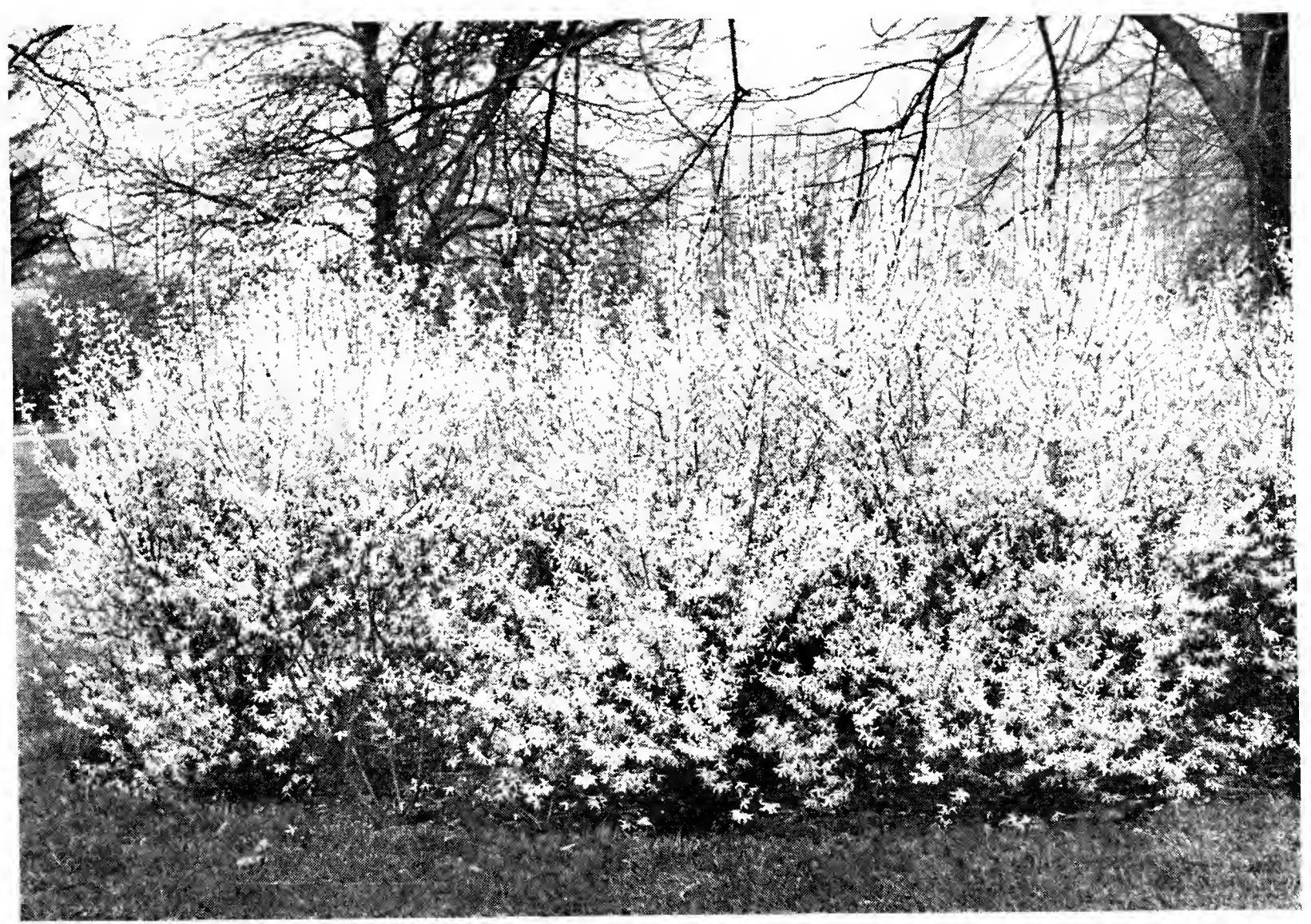
# Worthwhile FLOWERING SHRUBS

SPRING --- 1934

*Special List of Rare and Unusual Plants at  
Attractive Prices*

## A. M. LEONARD & SON

Established 1885 --- --- PIQUA, OHIO



### **Brilliant Golden-bell** (*Forsythia intermedia spectabilis*).

In the South the Forsythia is known as "Hurls of Spring", the eagerly awaited forerunner of Spring flowering shrubs. **Spectabilis** is the upright type, and the most brilliant; each branch is densely packed with the golden, 4-petaled little bells. A fast growing shrub for either sun or shade.

- 2 to 3 ft. Plants, special mailing size, Two for \$1.00 Postpaid
- 3 to 4 ft. Plants, extra heavy, \$0.50 each; 3 for \$1.35 F. O. B. Piqua
- 4 to 5 ft. Plants, extra heavy, \$0.75 each; 3 for \$2.00 F. O. B. Piqua
- 6 to 8 ft. Plants, extra heavy, \$1.50 each; 3 for \$4.00 F. O. B. Piqua



# A WINTER GARDEN

In response to many requests we have prepared this special list of hardy shrubs which bloom during January, February, March and early April, and before their leaves appear.

**Cornelian Cherry** (*Cornus mas*). Bright yellow flowers in March or early April—not injured by late frosts; glossy scarlet fruits in autumn. An upright grower, attaining a height of 10 to 15 ft.; thrives in smoky city atmosphere, shade or sun.

3 to 4 ft. Plants, \$1.00 each; 3 for \$2.50

4 to 5 ft. Plants, \$1.50 each; 3 for \$3.75

All F. O. B. Piqua.

**February Daphne** (*Daphne mezereum rubrum*). A small shrub whose stout little branches are thickly set with deep, red, fragrant flowers in February or early March. Enjoys partial shade, and a well drained soil.

6 to 9 in. Plants, with ball of earth, \$1.00 each; or 3 for \$2.75 Postpaid.

**Vernal Witch-hazel** (*Hamamelis vernalis*). On mild January days the first flowers appear, yellow petals, reddish towards the base. This unusual shrub blooms over a period of three months, emitting the delightful spicy odor of almonds.

2 to 3 ft. Plants, \$1.35 each, Postpaid.

**Winter-flowering Witch-hazel** (*Hamamelis mollis*). This rare Chinese Witch-hazel blooms in February or early March, and the flowers of no other Witch-hazel are so large and beautiful. The long leaves are strongly veined and clothed with soft wooly hairs on the underside, turning to brilliant shades of yellow and orange before falling in November. Prefers a moist soil of loam, peat and sand.

2 to 3 ft. Plants, \$2.35 each, Postpaid.

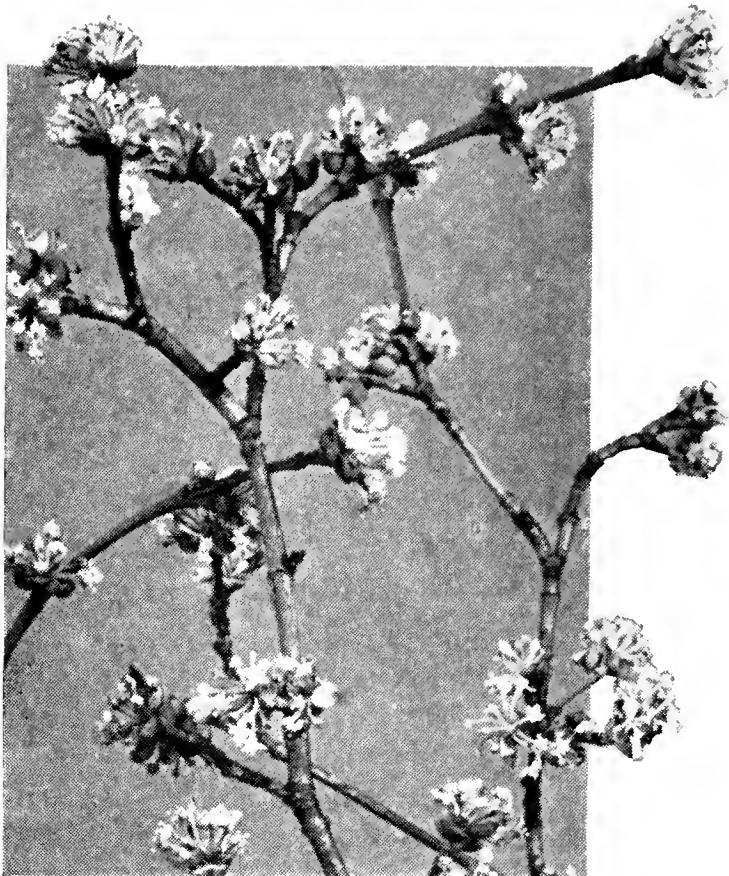
**Winter Honeysuckle** (*Lonicera fragrantissima*). The first of the Bush Honeysuckles to bloom, creamy-white flowers with the delicious Honeysuckle smell; and the dark green, leathery leaves are almost evergreen.

2 to 3 ft. Plants, 2 for \$1.00, Postpaid.

3 to 4 ft. Plants, 2 for \$1.40, Postpaid.

And add to this list the following:

Brilliant Goldenbell (page 1), Flowering Japanese Quince (page 3) and Springscent (page 4).



*Cornelian Cherry bursting out with its Winter cheer*



*The golden-yellow flowers of the Winter-flowering Witch-hazel*

## WORTHWHILE PLANTS FOR SPRING 1934

Leonard Quality at last year's low prices, but do not wait until too late; already there is a pronounced shortage of better grades and rare varieties.

Our Spring 1934 Edition of "Worthwhile Flowering Shrubs" really consists of our Spring 1933 Booklet, **together** with this folder.

**Terms of Payment.** Strictly cash with order; send Dollar Bills for amounts less than ten dollars if you wish.

**Reduction in Express Rates.** June 15, 1933 Express Rates were reduced 25% (2nd class) on Plants; this means a substantial saving on plants priced F. O. B. Piqua.





## JAPANESE FLOWERING QUINCE (*Cydonia japonica*)

The new and rare colors we are offering have promoted this old favorite to first place in the modern garden.

### Apple-blossom Pink.

One of the loveliest new colors, so different from the old red Japonica.

**Strong 3 ft. Plants, \$1.95 each,  
F. O. B. Piqua.**

### Blood-red (*Cydonia japonica rubra grandiflora*)

Deep blood-red, the largest flowers of all.

**2 to 3 ft. Plants, \$1.75 each,  
3 to 4 ft. Plants, \$2.25 each,  
All F. O. B. Piqua.**

### Coral-glow (*C. jap. corallina*).

Flowers are a sensational **salmon-apricot** or coral color, borne in astounding profusion. New for 1934.

**1 to 1½ ft. Plants, \$1.95 each,  
Postpaid.**

### Rose-pink (*C. jap. umbilicata*).

Beautiful **rose-pink** flowers; the new leaves have a reddish cast.

**2½ to 3 ft. Plants, \$1.15 each, F. O. B. Piqua.  
3½ to 4 ft. Plants, \$1.45 each, F. O. B. Piqua.**

### White-flowering (*C. jap. nivalis*). Pure white flowers. Very rare.

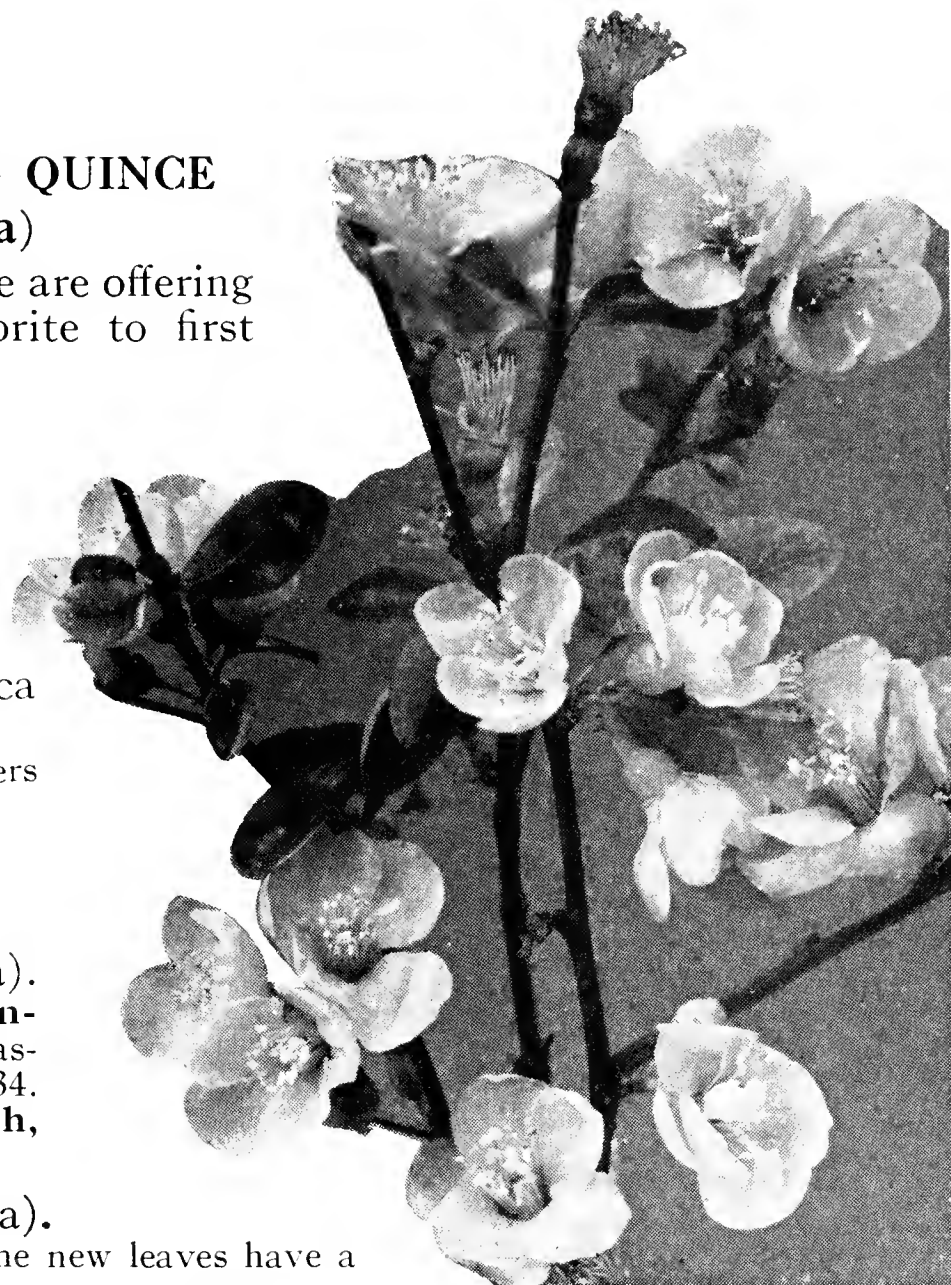
**1½ to 2 ft. Plants, \$1.75 ea., Postpaid. 2 to 2½ ft. Plants, \$1.95 ea., F.O.B. Piqua.**

## Rock Garden Varieties

**Alpine Japanese Quince (*C. alpina superba*).** Fiery, orange-red flowers; large attractive fruits. **18 in. Plants, \$0.85 each, 2 for \$1.50, Postpaid.**

**Leonard's Velvety Japanese Quince.** Deep, velvety-red flowers lasting about twice as long as the others. **Strong Plants with 2 ft. spread, \$2.25 each, F. O. B. Piqua.**

**Maule's Japanese Quince (*C. jap. maulei*).** Orange colored flowers borne abundantly from ground up. **6-year Plants, 2 ft. high, 2 ft. broad, \$1.25 each, F.O.B. Piqua.**



*The Japanese Flowering Quince sounds the first color note of Spring.*



*Silverbell has the delicate poise of the old single Snowdrop of our garden.*

## SILVERBELL (*Halesia tetraptera*)

A large growing shrub which clothes itself to the ground so as to never present a "leggy" appearance. In May the branches are loaded down with pendulous blooms; and the splendid green foliage is retained throughout the season. Does not require pruning, has no insect enemies, thrives in partial shade or sun.

**Heavy 3 to 3½ ft. Plants,  
\$1.00 each; 2 for \$1.75  
Postpaid.**

## SPRINGSCENT—(*Fothergilla major*)

In order to create a greater interest in this worthwhile hardy shrub the Arnold Arboretum prepared a special bulletin (Dec. 29, 1933) and from which we give the description.

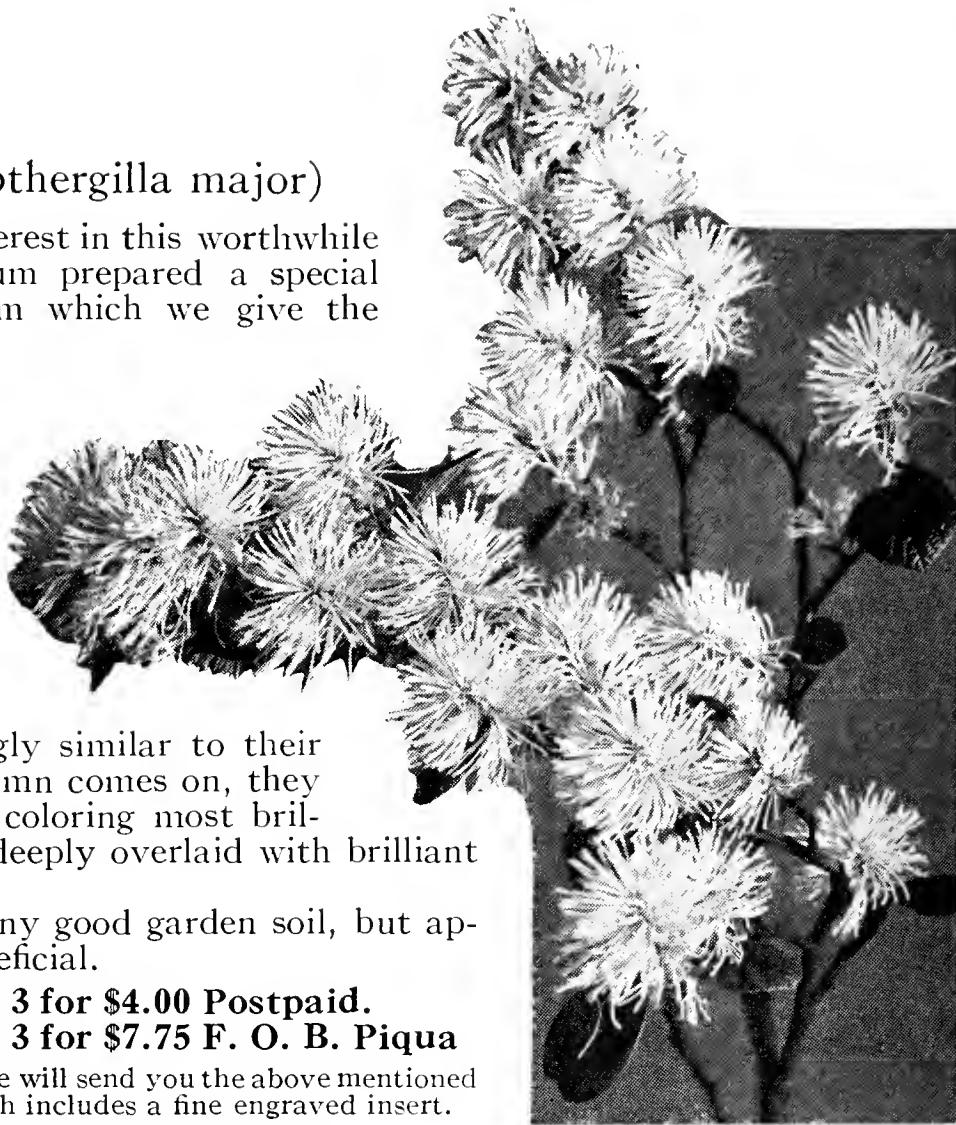
"The creamy-white flowers are borne in Spring, just as the leaves are unfolding. They are massed in tight little plumes at the ends of short, upright branches, each little plume being made up of many individual flowers, whose long, milk-white stamens are their most conspicuous feature. During the summer *Fothergillas* are surprisingly similar to their cousins, the *Witch-hazels*. As Autumn comes on, they again show their individuality by coloring most brilliantly—some pure yellow, others deeply overlaid with brilliant crimson."

Springscent can be grown in any good garden soil, but applications of peat and sand are beneficial.

**12 to 18 in. Plants, \$1.75 each; 3 for \$4.00 Postpaid.**

**18 to 24 in. Clumps, \$2.85 each; 3 for \$7.75 F. O. B. Piqua**

With each order for 3 or more plants we will send you the above mentioned Bulletin of the Arnold Arboretum and which includes a fine engraved insert.



*The inflorescence of Springscent*

## A GARDEN OF FRAGRANCE

### Sweetshrub (*Calycanthus floridus*).

The chocolate-brown flowers you picked as a child and carried to school in your handkerchief, or which you bottled for their perfume. **2 to 3 ft. Plants, \$0.50 each.**

### Sweetspire (*Itea virginica*).

An old-fashioned, Summer-flowering shrub with fragrant, white star-like flowers in terminal whorls. Foliage turns red in Autumn; grows about 4 ft.

**18-24 in. Plants, \$0.75 each.**

### Summersweet (*Clethra alnifolia*).

Delightful white spikes of spicy fragrance; blooms throughout the Summer. Grows 4 to 5 ft. and likes damp, semi-shade.

**18-24 in. Plants, \$0.65 each.**

### Sweet-scented Mockorange (*Philadelphus lemoinei erectus*).

Single creamy-white flowers; the most fragrant of all Mockoranges, and scarce. A neat, upright grower.

**Strong 3 ft. Plants, \$0.75 each.**

**Above Prices Postpaid.**

## FRAGRANT MAY-BUSH (*Viburnum carlesi*)

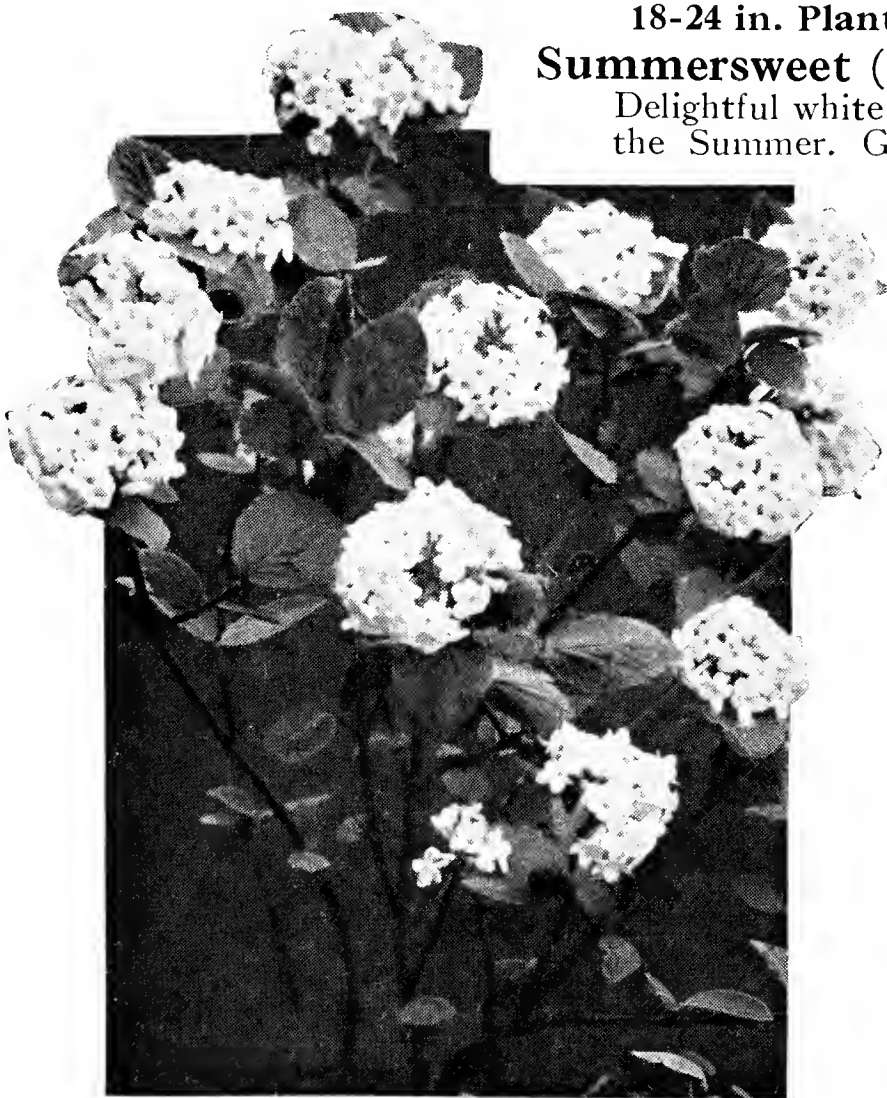
The rare and unexpected clove-like fragrance of this "Carles' Jewel" permeates the garden during late May and June. A rich pink in the bud, the flowers are pure white when fully open, and waxy in texture. This is a real aristocrat which will never be "cheap". A shrub of broad, round habit, growing slowly to 4 or 5 ft.; likes the sun and soil not too dry. Our plants carry many bloom buds and heavy, fibrous root systems (ball of earth 25c extra if desired).

**12 to 18 in. Plants, \$1.25 ea., Postpaid.**

**18 to 24 in. Plants, \$1.30 ea., F.O.B. Piqua**

**2 to 3 ft. Plants, \$1.90 ea., F.O.B. Piqua**

**3 to 4 ft. Plants, \$2.50 ea., F.O.B. Piqua**



*The orange-pink buds of the fragrant May-bush open into lovely pink flowers changing to white*



## For Summer Bloom

As nearly all of the better known shrubs bloom in the Spring, many gardens are devoid of flowers during the summer months when they can be enjoyed the most. The following worthwhile shrubs have this summer-flowering appeal.

### MOUNTAIN STEWARTIA

(*Stewartia pentagyna*).

A rare native shrub or tree-like shrub of untold beauty. Blooms the end of June or early July, the flowers measuring 3 to 4½ in. across, with orange-colored anthers. Prefers a peat and loam soil, moist, and partial shade.

**6 to 12 in. Plants, \$0.85 each;  
2 for \$1.50 Postpaid.**

**Japanese Tree Lilac** (*Syringa japonica*). Showy, fleecy-white flowers in **June**, long after the old fashioned Lilacs have finished. Handsome deep green foliage; grows 10 to 12 ft.

**5 ft. Plants, \$1.65 each,  
F. O. B. Piqua.**

**Shrubby St. John's-wort** (*Hypericum prolificum*). A delicately branched shrub thickly set with bright yellow flowers in **August**. Grows 3 to 4 ft.; thrives in sun or partial shade.

**18 to 24 in. Plants, \$0.65 each;  
3 for \$1.60 Postpaid.**



*The captivating bloom of Mountain Stewartia*

**Summer-plumes** (*Spiraea richmensis*). The feathery plumes of dark pink flowers, larger than the Douglas Spirea, lend an air of naturalistic grace to shrubbery borders during **July, August and September**.

**2 to 3 ft. Plants, \$0.65 each, Postpaid.**

**Extra Heavy 3 to 4 ft. Plants, \$0.85 each, F. O. B. Piqua.**

**Tree Spirea** (*Sorbaria arborea glabrata*). An introduction of the late Dr. E. H. Wilson from Thibet. Blooms steadily from the middle of **July until October**, bearing immense sprays of flowers resembling the herbaceous Astible. An unrivaled screen or "filler" shrub for partial shade or sun; narrow leaves on many branchlets.

**3 to 4 ft. Plant, \$0.65 each; 3 for \$1.50**

**4 to 5 ft. Plant, \$0.95 each; All F. O. B. Piqua.**

Also for Summer Bloom, **Sweetspire** and **Summersweet**, see page 4.

### OAKLEAVED HYDRANGEA (*Hydrangea quercifolia*).

This is the **Aristocrat** of the Hydrangeas, not to be confused with the common dooryard variety. Its large substantial leaves resemble the oak leaf; attractive paniced blooms appear in early summer, and the autumn coloring is almost beyond description. Not hard to grow; only its scarcity has kept it in the background. It does well in full shade, not too dry.

**12 in Plants, \$0.50 each; 3 for \$1.25**

**Postpaid**



*Oakleaved Hydrangea*

Illustration by courtesy Arnold Arboretum.

## TREE SHAPED OR STANDARD WISTERIA

These continue to be our outstanding novelty and never disappoint.

The Japanese Wisteria (*W. Multijuga*) surpass in beauty the common Chinese Wisteria (*W. sinensis*), bearing longer and more richly colored flower clusters, and blooming **before** the leaves appear. Our plants are grafted from blooming plants so that they are sure to bloom for you and come true to color. Branches start about 4 ft. from the ground and orders for 2 or more will be matched.

These Standards are well established, the only special care necessary being the support of the trunk for the first few years with a slender stake, and the pinching back of the twining ends.

**Pink Japanese Wisteria** (*Wisteria multijuga rosea*). A genuine pink in beautiful long clusters.

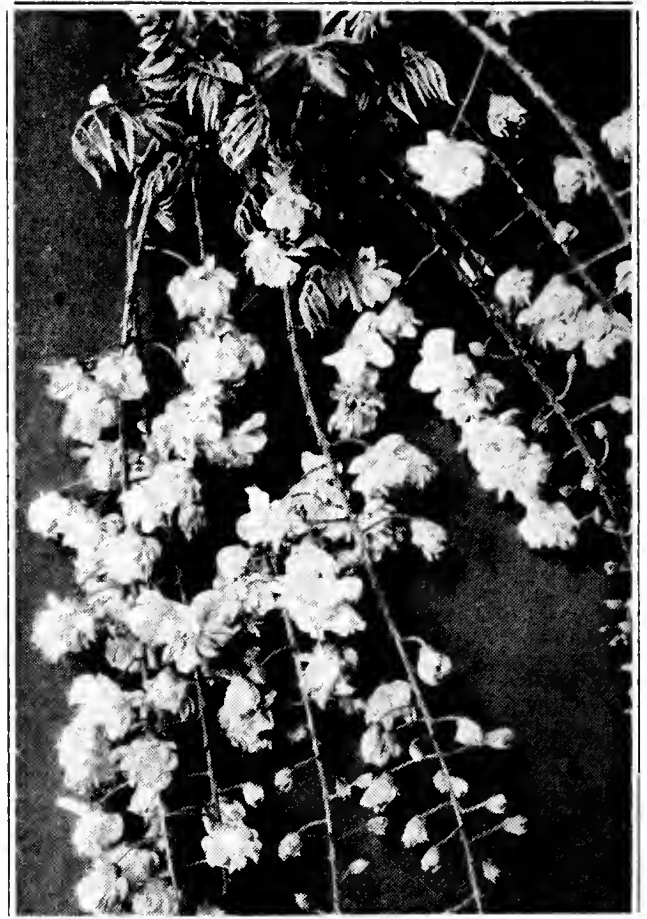
**White Japanese Wisteria** (*Wisteria multijuga alba*).

**Silky Wisteria** (*Wisteria venusta*). Glistening white flowers.

**Double Violet Japanese Wisteria** (*Wisteria floribunda violacea-plena*).

**Longcluster Wisteria** (*Wisteria multijuga longissima*). Produces astonishingly long clusters of light purple flowers; on an established Standard these flowers will measure 3 to 4 ft. in length.

Plants, \$8.75 each; 3 or more at \$7.75; 6 or more at \$7.30 each, F. O. B. Piqua.



*The Double Violet Wisteria are truly double Violets*

## Climbing Wisteria



*Standard Wisteria*

For 1934 we offer the vines or climbing forms corresponding to the Standards, and two distinctly new varieties. These are all Japanese and grafted, strong 2 year field grown.

**Pink** Bushy plants.

**\$1.75 each; 2 for \$3.00**

**Silky White** (*venusta*).

**\$2.35 each; 2 for \$4.00**

**Double Violet** (See illustration).

**\$2.85 each; 2 for \$5.00**

**Longcluster.** Light purple.

**\$2.85 each; 2 for \$5.00**

**Mrs. McCullagh.** Large purple flowers in compact clusters; bushy.

**\$2.85 each; 2 for \$5.00**

**Jako.** White, very fragrant.

**\$3.35 each; 2 for \$5.75**

**Kyushaku.** Purple 3 to 4 ft. flowers.

**\$3.35 each; 2 for \$5.75**

Extra heavy 3 year Plants, *Venusta* and *Double Violet* only.

**\$3.85 each; 2 for \$7.00.**

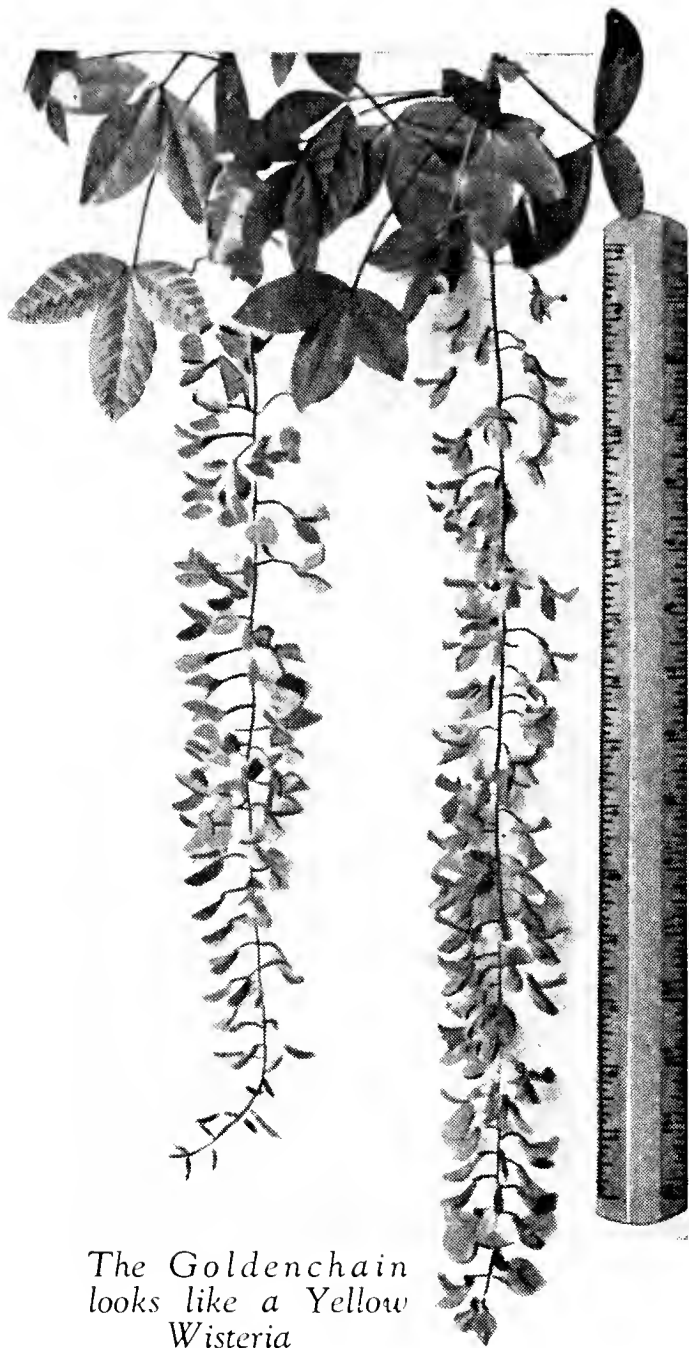
**Above Prices are Postpaid.**

**GIANT CHINESE TRUMPET VINE** (*Bignonia Mad. Galen*). The Trumpet Vine or Creeper brings back fond memories of those July Sunday afternoon rides into the country with the horse and buggy. This new variety is a glorification of those memories in its glowing salmon-red Trumpet-shaped flowers in panicles 14 to 16 inches in length. Attaches itself to walls by the little pads on its growths.

**3 Year Field Grown, Grafted Plants, \$1.50 each, Postpaid.**







The Goldenchain  
looks like a Yellow  
Wisteria

## LONG-CLUSTER GOLDENCHAIN

(*Laburnum vossi*)

No finer plant exists than this excellent hardy Laburnum, holding in store for you the thrill of thrills. Just as the Lilacs are finishing it lets down its gorgeous yellow racemes, **like flowing gold**, and out of all proportion to the size of the plant. Even the sophisticated nurseryman will "walk a mile" to see one in bloom.

Commencing as a little tree studded with heavy buds Long-cluster Goldenchain soon branches out into a vase-shaped tree and ordinarily will not reach a height of over 12 ft. Plant it in a somewhat protected place, as an accent shrub or lawn tree like the Magnolia.

This variety is hardier, the flowers larger than the common *Laburnum vulgare*. Because of being scarce and high-priced very few plants have been planted in this country,—but it is an old favorite in Europe. The branched specimens offered below are extra heavy this year, but it may be necessary to limit the number to a customer.

2 to 3 ft. Plants, \$1.85 each; 3 for \$ 5.00  
3 to 4 ft. Plants, \$2.85 each; 3 for \$ 7.75  
4 to 5 ft. Plants, \$3.85 each; 3 for \$10.50  
Branched specimens, 6 to 8 ft., \$6.85 each  
F. O. B. Piqua.

## DOUBLEFLOWERING WHITE DOGWOOD (*Cornus florida plena*).

At first we intended to hold this rare variety until next year, but find that we can spare a limited number. Semi-double flowers, larger than the common single, and closely resembling the Camellia; foliage heavier and of a lighter shade of green. Be the first to plant this in your vicinity.

2 to 3 ft. Plants, with ball of earth, \$2.85 each, F. O. B. Piqua.

## HARDY BEGONIA (*Begonia evansiana*).

A tuberous-rooted Begonia from China and Japan which has proven absolutely hardy here at Piqua. Bears typical Begonia leaves, red underneath, and throughout the Summer and Fall large flesh-colored flowers. Grows 15 to 18 in. and prefers a rich, porous soil and partial or full shade. Plant this unusual plant in the shady part of your Rock Garden, along your shrub or evergreen border, or along the north side of your porch.

8 to 10 in. Plants from 2½ in. Pots,  
\$0.40 each; 3 for \$1.00 Postpaid.

## CLIMBING HYDRANGEA (*Schizophragma hydrangeoides*).

A Japanese climbing vine, annually giving off fresh sets of roots along its branches, by means of which it clings to brick, stucco, and even wooden walls. Flowers freely on the short, non-clinging branches about July 1st. Hardy in Boston; plant in a sunny location.

Plants, out of 4 in. Pots, \$0.85 each;  
2 for \$1.50 Postpaid.



Climbing Hydrangea on a brick wall



*White Fringe*

## WHITE FRINGE

(*Chionanthus virginica*)

Make your garden distinctive by planting this easy-to-grow tree-like shrub. The white, fringe-like blossoms literally cover the whole bush at the time your Tall Bearded Iris are blooming, forming an exquisite background for their lavender and purple coloring. Blooms when only 3 ft. tall; and grows to 12 ft.; thrives under city conditions and is not affected by insects or disease; and prefers acid soil.

1½ to 2 ft. Slender Plants, \$0.75 each.

2 to 3 ft. Slender Plants, \$1.00 each.

2 to 3 ft. Bushy Plants, \$1.40 each.

3 to 4 ft. Bushy Plants, \$1.85 each.

All Sizes Postpaid.

## PAUL'S NEW DOUBLE SCARLET HAWTHORN (*Crataegus oxycantha splendens*).

Make May a gay month in your garden with a group of these friendly little trees. The double scarlet flowers borne like closely nested nosegays bring cheer for many weeks, and the quaintly curved leaves are a pretty sight all summer.

4 to 5 ft. Plants, not branched, \$1.15 each, Postpaid.

4 to 5 ft. Plants, branched, \$1.65 each, Postpaid.

## NOVELTY APPLE TREE.

The newest in fruit trees,—think of picking early, mid-season and late apples from one tree. Each tree bears 3 to 5 of the following varieties: Delicious, Jonathan, Grimes Golden, Wealthy and Duchess. The trunk is 3 years old and the branches 1 year's growth; each branch is labeled with the variety and marked where to prune after planting.

Price, \$1.85 each, F. O. B. Piqua.

## For Garden Accent---to Lift Your Garden from the Common-place.

Autum Oleaster	Cornelian Cherry
Doubleflowering White Dogwood	
Doubleflowering Purple-leaved Plum	
Fragrant Snowbell	
Flowering Crab "Queen of the May"	
Improved Variegated Weigela	
Jap. Tree Lilac	Laurel Magnolia
Long-cluster Goldenchain	
Tall-bush Bittersweet	Tree Spirea
Tree-shaped Wisteria	White Fringe

## A Special List for Southern Gardens.

Box-leaved Jap. Holly	Laland Firethorn
Climbing Hydrangea	Laurel Magnolia
Doubleflowering Plum	Goldenchain
English Rock Broom	Pink Dbl-fl. Almond
Flowering Jap. Quince	Oak-leaved Hydrangea
Fragrant Snowbell	Shrubby St. J. Wort
Fragrant Viburnum	Springscent
Japanese Wisteria	White Fringe



*An Apple Orchard in one tree*



