

## **Historic, archived document**

Do not assume content reflects current scientific knowledge, policies, or practices.



62.61

INDEXED

# KELLY'S

## Book of Bargains

*The best to be had at the  
most reasonable prices*



**Kelly Bros. Nurseries**

DANVILLE, N. Y.

**1934**

# IMPORTANT INFORMATION

---

**ORDER EARLY**—As soon as this Catalog reaches you send in your complete order with definite shipping instructions. We will then set the trees aside for you awaiting the desired shipping time. If you prefer you can leave the time of shipment to us and we will ship so as to reach you at the best time for planting in your locality.

**USE ORDER SHEET**—Please make your order out on order sheet enclosed. To avoid mistakes and delay write letters on a separate sheet of paper.

**SEND CASH WITH ORDER**—Please do not ask us for credit. It is our **cash with order—direct from nursery to planter**—method of doing business that enables us to sell trees of the highest quality at such extremely low prices. Remittances should be made by post office or express money order, bank draft or registered letter. To large buyers, when satisfactory reference is given, we will ship C. O. D. provided one-fourth the amount of order is sent in cash when order is placed.

**BOXING AND PACKING FREE**—We make no charge for boxing or packing. Prices are f. o. b. cars at Dansville.

**QUANTITY RATES**—Less than ten trees of a variety at each rates. We allow hundred rates on fifty or more trees, provided your order does not call for less than ten trees of any one variety.

**PLANTING SEASON**—Trees can be planted any time during their dormant period. We ship all Winter to Southern states, but our regular Spring shipping season opens about the first of March and continues well into June. Fall planting season begins about Oct. 15th and extends until ground freezes solid.

**SATISFACTION GUARANTEED**—We guarantee every tree or bush to be up to grade specified or better. We also guarantee arrival to customer in first class condition. If through delay or mishandling in transit, trees or bushes are not in first class condition on arrival, and customers will notify us immediately, we will make prompt and satisfactory adjustment.

**HOW TREES ARE GRADED**—Our trees are graded in accordance with the Grading Table of the Horticultural Standards of the American Association of Nurserymen. Fruit trees are graded by age and caliper. Caliper taken 2 inches above the collar or bud. When height is given it represents the average height of the grade under normal conditions.

**See illustration on opposite page.**

## KELLY BROS. NURSERIES

---

### To Our Customers

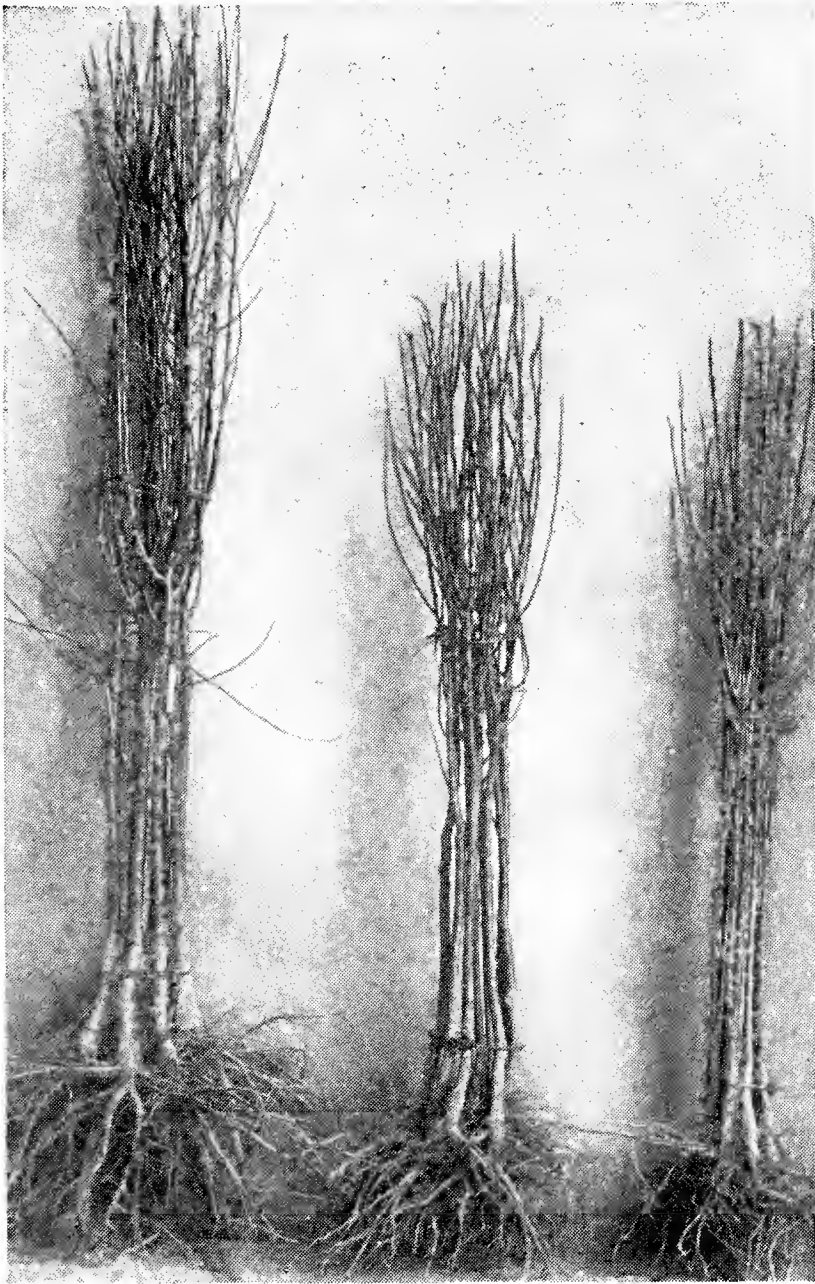
To our many good friends and customers we wish to express our appreciation for the very nice orders they have sent us in the past.

If favored with your order again this year we promise to send you only trees and bushes of the very highest quality—absolutely dependable as to variety—fully up to grade ordered or better—carefully packed to insure arrival in prime condition for successful planting.

We guarantee each and every customer complete satisfaction. This guarantee is backed by 54 years reputation for honest and fair dealing.

May we suggest that you send your order early while our assortment is complete, and let us reserve your trees and bushes for you. Shipment will be made at any time you designate, or if you leave time of shipment to us, whenever conditions are best for planting in your locality.

Thanks again. KELLY BROTHERS NURSERIES



**XXX**  
5 to 7 ft.  
 $\frac{3}{4}$  and up

**XX**  
4 to 5 ft.  
 $\frac{5}{8}$  to  $\frac{3}{4}$

**X**  
3 to 4 ft.  
 $\frac{1}{2}$  to  $\frac{5}{8}$

---

**THE BEST AT ANY PRICE**

## Kelly's Inspected Apple Trees

Dr. J. K. Shaw of the Mass. Agricultural Experiment Station, a recognized authority on fruit tree varieties, has again inspected our Apple trees for trueness to name. We have on file in our office a statement issued by him that to the best of his knowledge all the salable Apple trees in Kelly Bros. Nurseries are true to name.

### Prices of Inspected Apple Trees

			Each	Ten	Hundred
2 year	5 to 7 ft.	$\frac{3}{4}$ and up	\$.60	\$4.50	\$32.50
2 year	4 to 5 ft.	$\frac{5}{8}$ to $\frac{3}{4}$	.55	4.00	27.50
2 year	3 to 4 ft.	$\frac{1}{2}$ to $\frac{5}{8}$	.50	3.50	22.50
1 year	3 to 5 ft.	Sturdy Buds	.60	4.25	30.00

### SUMMER VARIETIES

**EARLY McINTOSH**—A handsome new early red apple of exceptionally fine flavor and high quality. Trees are vigorous, hardy, healthy, productive and bear annually. Ripens in August.

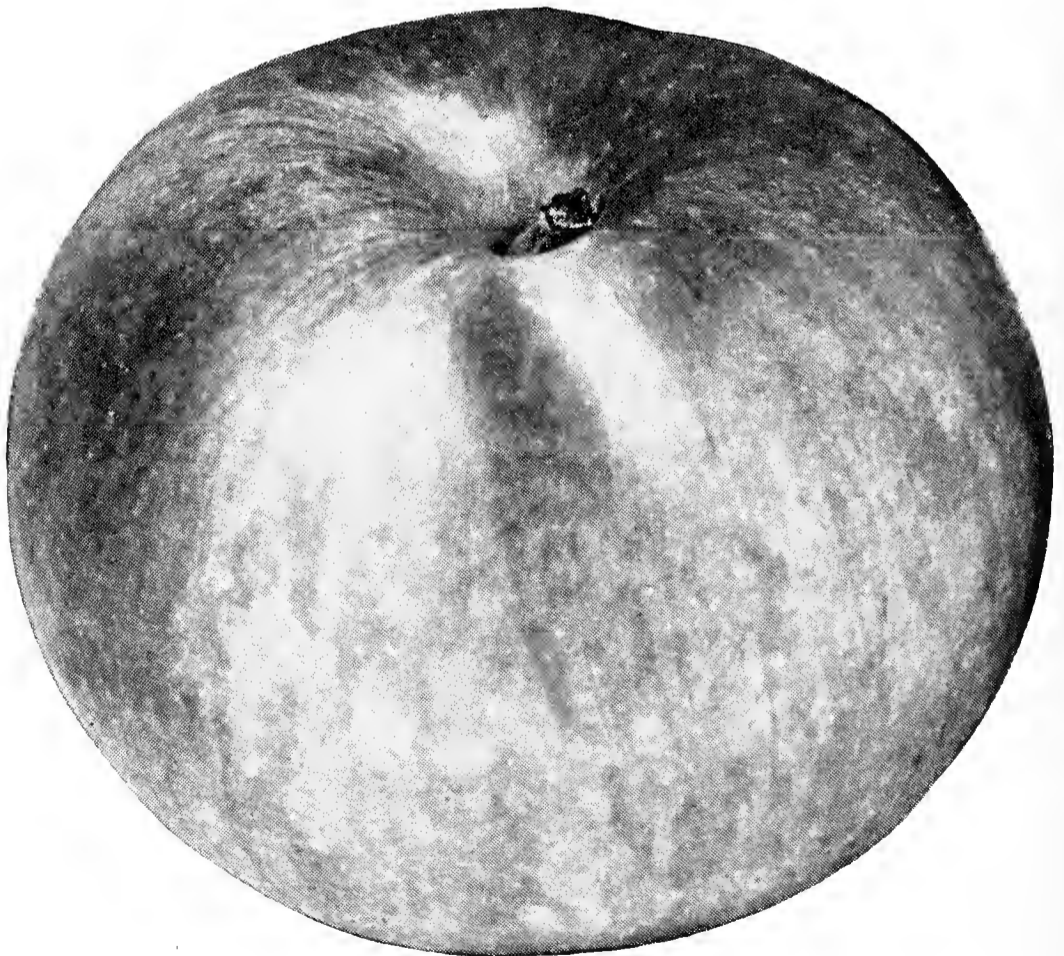
**EARLY HARVEST**—Large pale yellow apple of fine flavor. Good bearer. August.

**GOLDEN SWEET**—Large, pale yellow, very sweet. August.

**RED ASTRACHAN**—Handsome deep crimson apple, excellent for cooking. Hardy and a good bearer. August.

**SWEET BOUGH**—Large, pale yellow, sweet. August.

**YELLOW TRANSPARENT**—The best early yellow apple. Excellent flavor. Trees hardy and abundant bearers. August.



McIntosh Red Apple

---

ABSOLUTELY DEPENDABLE TREES

---



---

**AUTUMN VARIETIES**

- DUCHESS OF OLDENBURG**—Large red striped apple of good flavor. Very hardy. September.
- FALL PIPPIN**—Very large, yellow and juicy. Excellent for cooking. Hardy and productive. October to December.
- FAMEUSE (Snow Apple)**—Medium size, crimson with snow white flesh. Excellent quality. November.
- GRAVENSTEIN**—Large, handsome, red streaked apple of excellent quality. September to November.
- MAIDEN'S BLUSH**—Large attractive red blushed apple of fair quality. Heavy bearer. September.
- MAMMOTH BLACK TWIG**—Large deep red late keeping winter apple of good quality. December to May.
- MILTON**—A very handsome new apple of the McIntosh type. Fruit a beautiful pinkish red with tender, crisp, white flesh of excellent flavor. Trees hardy and vigorous. Ripens a month ahead of McIntosh.
- POUND SWEET (Pumpkin Sweet)**—Large yellow russetted apple. Very sweet. October and November.
- RED GRAVENSTEIN**—A new red sport, much more attractive than its parent. Differs from the old Gravenstein only in the solid dark red color of the fruit. Should be planted in place of Gravenstein.
- WEALTHY**—Beautiful, brilliant red apple of fine quality. Exceptionally hardy and an early bearer. Excellent filler. October to January.
- WOLF RIVER**—Very large, yellow striped with bright crimson. September to December.

**WINTER VARIETIES**

- BALDWIN**—Large, bright red. Trees vigorous and productive. A leading commercial sort in New York and New England. November to May.
- BEN DAVIS**—Large, bright red, fair quality. Excellent keeper. January to June.
- CORTLAND**—A comparatively new apple of the McIntosh type that combines the high quality and flavor of the McIntosh, the ability to stand handling of the Baldwin and ability to hang to the tree of the Ben Davis. Should be planted extensively. An excellent variety to plant with McIntosh as a cross pollinator. November to February.
- DELICIOUS**—A large dark red apple with crisp, fine grained flesh of excellent quality and flavor. Hardy, vigorous and an annual bearer. December to February.
- GANO (Black Ben Davis)**—Large, dark red. January to June.
- GALLIA BEAUTY**—A new red sport identical with Rome Beauty except that fruit is solid red in color instead of striped.
- GOLDEN RUSSET**—Attractive yellow russetted apple. Long keeper. November to April.

---

Kelly Brothers Nurseries,  
Dansville, N. Y.

R. 3, Newark, Ohio,  
Feb. 4, 1933.

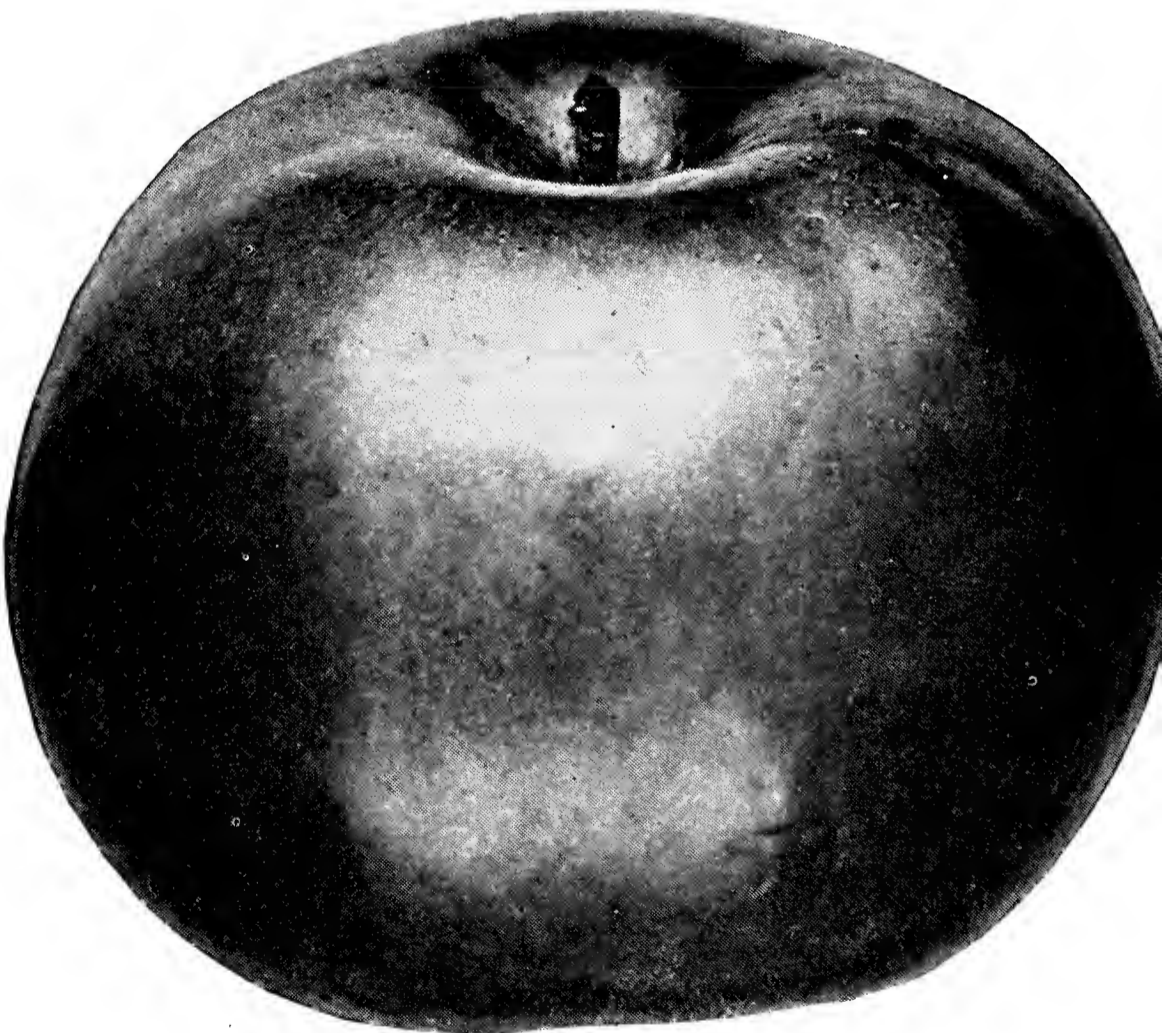
Gentlemen:

We are more than pleased with the 2300 fruit trees purchased from you last Spring. They are doing exceptionally fine. Only lost about ½ of 1 per cent which is the best record that we have ever had with trees in our entire 27 years of planting.

Yours very truly,

ROY I. MILNER

- GRIMES GOLDEN**—Large golden yellow. Good quality. December to April.
- HUBBARDSTON**—Yellow and red striped. Early bearer. November to March.
- JONATHAN**—Beautiful red apple of excellent quality. Productive and an early bearer. November to April.
- KING**—Large attractive red apple. November to March.
- McINTOSH RED**—A very attractive red apple of the highest quality. Hardy, bears young and annually. A leading, profitable, commercial sort for New York and New England. Productive. October.
- NORTHERN SPY**—Large red and yellow apple of fine quality. Leading commercial sort. November to April.
- NORTHWESTERN GREENING**—Large, yellowish-green apple. Vigorous and hardy. October to March.
- OLD WINESAP**—Medium size dark red apple of good quality. Bears early, abundantly and regularly. December.
- OPALESCENT**—Very handsome dark crimson apple. December to March.
- RHODE ISLAND GREENING**—Large yellowish-green apple of fine quality. An abundant yielder and excellent keeper. One of the leading commercial sorts. November to March.
- RED SPY**—A new red sport identical with Northern Spy except that the fruit is a solid bright red. Much handsomer than its parent. An excellent commercial sort.

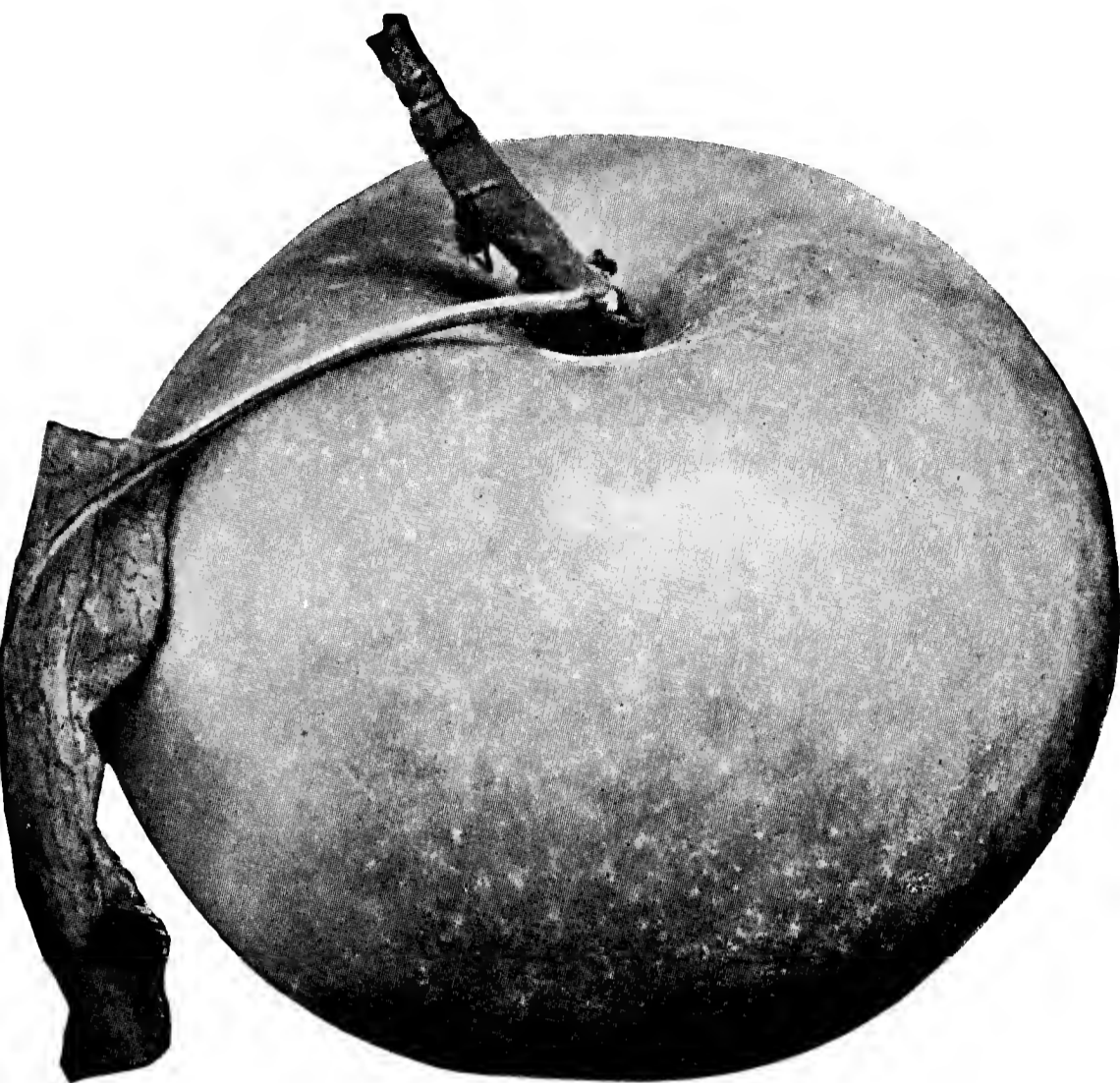


Cortland Apple

---

**COMPLETE SATISFACTION GUARANTEED**





**Rhode Island Greening**

**RAMBO**—Red and yellow. Hardy and productive. October to December.

**ROME BEAUTY**—Yellow and red striped apple of excellent quality. Prolific annual bearer. Profitable commercial sort for New York, Ohio, Pa., and W. Va. December to May.

**RED ROME**—Another new red sport of Rome Beauty and like Gallia Beauty is identical with its parent in all characteristics except fruit is a solid red in color.

**ROXBURY RUSSET**—Yellow, russeted apple of excellent quality. December to June.

**SMOKEHOUSE**—Yellow, mottled with dark red. October to March.

**SPITZENBURG**—High flavored, dark red. November to April.

**STARK**—Large, red and yellow striped. January to May.

**STAYMAN'S WINESAP**—Yellow striped with red. Excellent quality. Productive and an early bearer. December to March.

**TOLMAN SWEET**—Yellow tinged with red. Very sweet. Hardy and productive. November to April.

**TWENTY OUNCE**—Very large, red and yellow striped. October to January.

**WAGENER**—A bright light red apple of excellent quality. Very productive. October to January.

**WINTER BANANA**—Beautiful pale yellow apple with bright pinkish blush. Excellent quality. Prolific and an early bearer. November to March.

**YORK IMPERIAL**—Yellow striped with light red. Quality very good. December to February.

## Crab Apples

**HYSLOP**—Large, brilliant dark red. Hardy, reliable cropper. September and October.

**TRANSCENDENT**—Bright yellow with bright red cheek. Productive. August and September.

## Kelly's Certified Apple Trees

In addition to inspecting for trueness to name all of Kelly Brothers Apple trees, Dr. Shaw has attached to some trees of each of the leading commercial varieties the Official Certification Tag of the Mass. Fruit Growers' Association. This tag bears on its face the name of the variety of fruit the tree is certified to bear and on the reverse side the official stamp of the Mass. Fruit Growers' Association. Owing to the cost of attaching Certification Tags we are obliged to make a slight additional charge for trees with Certification Tags attached.

**WE CAN FURNISH ONLY THE FOLLOWING VARIETIES WITH OFFICIAL CERTIFICATION TAGS ATTACHED:**

Baldwin	Fameuse	Red Spy
Cortland	McIntosh	R. I. Greening
Delicious	Northern Spy	Stayman's Winesap
Early McIntosh	Red Gravenstein	Wealthy

### Prices of Certified Apple Trees

			Each	Ten	Hundred
2 year	5 to 7 ft.	$\frac{3}{4}$ and up	\$.65	\$5.00	\$37.50
2 year	4 to 5 ft.	$\frac{5}{8}$ to $\frac{3}{4}$	.60	4.50	32.50
2 year	3 to 4 ft.	$\frac{1}{2}$ to $\frac{5}{8}$	.55	4.00	27.50

## Dwarf Apple Trees

Dwarf Apple trees bear early, take up little room and the fruit is easily picked.

**We offer the following varieties:**

Duchess of Oldenburg, Golden Sweet, Red Astrachan, Rome Beauty, Wealthy, Winter Banana, Yellow Transparent.

### Prices of Dwarf Apple Trees

			Each	Ten
2 year	4 to 5 ft.	$\frac{5}{8}$ and up	\$.70	\$6.00
2 year	3 to 4 ft.	$\frac{1}{2}$ to $\frac{5}{8}$	.60	5.00

Kelly Bros. Nurseries,  
Dansville, N. Y.

R. 1, Suffield, Ohio,  
Sept. 6, 1933.

Gentlemen:

I am more than pleased with the trees received from you last Spring. In spite of the exceedingly dry Summer I only lost 1 tree out of 490 planted. 2 of the Quince trees already have fruit on them. Nobody in this locality has ever seen Quinces bear the first year.

Yours truly,  
FRED ROBENSTINE

**GROWN UNDER PERSONAL SUPERVISION**

## Dwarf Pear Trees

Ideal for home orchard. Require little room—bear early—fruit easy to pick.

We offer only the following four varieties:

Bartlett, Clapp's Favorite, Duchess, Seckel.

### Prices of Dwarf Pear Trees

			Each	Ten	Hundred
2 year	4 to 5 ft.	5/8 and up	\$.45	\$3.50	\$25.00
2 year	3 to 4 ft.	1/2 to 5/8	.40	3.00	20.00

### Planted a Little Over a Year and Bore Fruit

R. 6, Butler, Pa.

Kelly Bros., Dansville, N. Y.

Gentlemen: I enclose a photo of one of twelve **Dwarf Bartlett** Pear Trees bought from you and planted last spring. This tree has been visited by dozen and dozens of people and all said they never saw anything like it. I should have a yard stick in the picture as the height of the tree to where this year's growth began is only 34 inches.

Yours truly,  
J. C. HOCH.



## Peach Trees

We have always been large growers of extra fine Peach trees and this year we have one of the largest and finest blocks of Peaches we have ever grown. Our trees can absolutely be depended upon to produce fruit of the variety for which they are sold. All buds used in propagating originated from bearing trees and the buds were cut while the fruit was still on the trees. Careful supervision has kept our Peach blocks free from any possible mixture of varieties.

### Prices of Peach Trees

				Each	Ten	Hundred
1 year	4	to 5	ft. 9/16 and up	\$.50	\$4.00	\$27.50
1 year	3	to 4	ft. 7/16 to 9/16	.45	3.50	22.50
1 year	2½	to 3	ft. 5/16 to 7/16	.40	3.00	17.50
1 year	2	to 2½	ft. Whips	.35	2.50	12.50

**BELLE OF GEORGIA**—Large, attractive white fleshed peach. Red cheek. Hardy and productive. Freestone. Middle of September.

**CARMAN**—Large, white fleshed peach of fine quality. Very hardy and productive. Freestone. Early September.

**CHAIRS CHOICE**—Deep yellow with red cheek. Freestone. Last September.

**CHAMPION**—Large creamy white with red cheek. Excellent quality. Good shipper. Hardy and productive. Freestone. Middle September.

**CRAWFORD'S EARLY**—Large yellow peach of the finest quality and flavor. Freestone. Middle of September.

**CRAWFORD'S LATE**—One of the finest late varieties. Large, yellow, of excellent quality. Freestone. Early October.

**ELBERTA**—The greatest commercial variety on the market. Will thrive where any peach can be grown. A uniform cropper. Large, yellow with red cheek, juicy and of excellent quality. Freestone. Last of September.

**EARLY ELBERTA**—An excellent new variety resembling Elberta very closely, except a little rounder in shape and about ten days earlier in ripening. Freestone. Middle September.

**FITZGERALD**—Very hardy. Large, brilliant yellow with red cheek. Early bearer. Freestone. Middle September.

**GREENSBORO**—Large, bright red over yellow, flesh white. Good quality. Freestone. Late August.

**J. H. HALE**—An extra large peach, yellow overlaid with crimson. Flesh golden yellow, of delicious flavor. An excellent shipper. A fine commercial variety. Prolific when cross pollenized with some other variety. All of the varieties offered in this catalog are suitable for planting with Hale. Freestone. Last of September.

Kelly Brothers Nurseries,  
Dansville, N. Y.

Orwell, Vt.,  
Jan. 19, 1933.

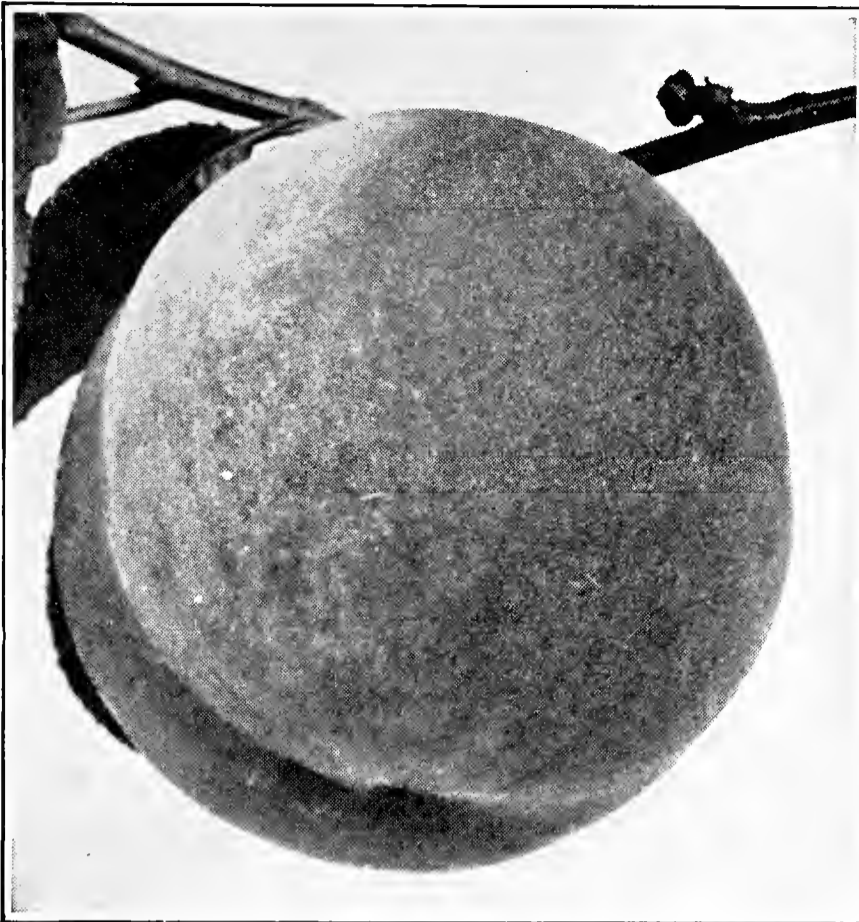
Gentlemen:

When I purchased my farm last Summer there were 500 of your Apple trees on it. I have been flooded with salesmen from other nursery houses, but I am more than satisfied with the showing your trees have made and can see no reason to change to the other fellow's trees.

Yours very truly,

ELROY B. EDSON

**CERTIFIED FREE FROM DISEASE**



**Elberta Peach**

**HILEY BELLE**—Large white peach with bright red cheek. Rich and juicy. Excellent shipper. Freestone. Middle of September.

**NIAGARA**—Large yellow peach of Early Crawford type. Juicy and tender—very good in quality. Late September.

**RAY**—An attractive white peach with red blush. Excellent quality and a good shipper. Freestone. Last of September.

**ROCHESTER**—A comparatively new extra early peach of the highest quality and most delicious flavor. Large, yellow, with attractive red blush. A very fine canner, prolific and an early bearer. Freestone. Early September.

**SALWAY**—Large, deep yellow, red cheek. Freestone. Middle October.

**SMOCK (Beer's Smock)**—An excellent late peach. Yellow. Good quality. Freestone. Middle of October.

## **We Give a Special 10 Per Cent Discount for Early Orders**

If we can persuade our customers to order early, we can get all the work preliminary to shipping done before the shipping season arrives. This saves us the big expense of costly inexperienced help during the rush season. To persuade our customers to order early we allow a **Special 10 Per Cent Discount on All Orders Received by Feb. 25th Provided Full Cash is Received With Order.**

**OUR SOIL PRODUCES THE BEST**



Yellow  
Free~  
Stone

Ripe  
in  
August

# ROCHESTER PEACH

**SOUTH HAVEN**—Another excellent new peach well worth planting. Golden yellow with red blush. Large, meaty and of delicious flavor. Prolific. Freestone. Early September.

**YELLOW ST. JOHN**—Medium size. Orange yellow with red blush. Freestone. Early September.

---

## New Peaches

We can furnish in limited quantities the following new varieties of Peaches:

**MIKADO**—Very early, yellow, semi-cling, good quality. Early August.

**MARIGOLD**—Early yellow, excellent quality, semi-cling.

**VALIANT**—Large, yellow, freestone, juicy, very good quality. Productive. Early September.

**VETERAN**—Large, round, yellow, freestone. Excellent quality. Early September.

### Prices of Above New Peaches

			Each	Ten
1 year	4 to 5 ft.	9/16 and up	\$.65	\$5.50
1 year	3 to 4 ft.	7/16 to 9/16	.60	5.00
1 year	2 to 3 ft.	5/16 to 7/16	.55	4.50

---

## Apricots

### Prices of Apricot Trees

			Each	Ten
1 year	4 to 5 ft.	9/16 and up	\$.60	\$5.00
1 year	3 to 4 ft.	7/16 to 9/16	.50	4.00

**HARRIS**—A hardy early variety of excellent quality. July.

**MOORPARK**—Large, juicy, rich flavor. Very productive. August.

---

APPLE TREES CERTIFIED BY DR. SHAW

## Cherry Trees

We are one of the largest producers of Cherry trees in the United States. Fifty-four years' experience—ideal soil and climatic conditions all combine to produce the finest to be had in Cherry trees.

### Prices of Sour Cherry Trees on Mahaleb Roots

			Each	Ten	Hundred
2 year	5 to 6 ft.	$\frac{3}{4}$ and up	\$.45	\$3.00	\$20.00
2 year	4 to 5 ft.	$\frac{5}{8}$ to $\frac{3}{4}$	.35	2.50	15.00
2 year	3 to 4 ft.	$\frac{1}{2}$ to $\frac{5}{8}$	.30	2.00	10.00
1 year	3 to 5 ft.	Sturdy Buds	.40	3.00	20.00

### Prices of Sweet Cherry Trees on Mahaleb Roots

			Each	Ten	Hundred
2 year	5 to 7 ft.	$\frac{3}{4}$ and up	\$.55	\$4.00	\$30.00
2 year	4 to 5 ft.	$\frac{5}{8}$ to $\frac{3}{4}$	.50	3.50	25.00
2 year	3 to 4 ft.	$\frac{1}{2}$ to $\frac{5}{8}$	.45	3.00	20.00
1 year	3 to 5 ft.	Sturdy Buds	.55	3.75	27.50

### Prices of Sour Cherry Trees on Mazzard Roots

			Each	Ten	Hundred
2 year	5 to 6 ft.	$\frac{3}{4}$ and up	\$.55	\$4.00	\$30.00
2 year	4 to 5 ft.	$\frac{5}{8}$ to $\frac{3}{4}$	.45	3.50	25.00
2 year	3 to 4 ft.	$\frac{1}{2}$ to $\frac{5}{8}$	.40	3.00	20.00
1 year	3 to 5 ft.	Sturdy Buds	.50	3.75	27.50

### Prices of Sweet Cherry Trees on Mazzard Roots

			Each	Ten	Hundred
2 year	5 to 7 ft.	$\frac{3}{4}$ and up	\$.65	\$5.00	\$40.00
2 year	4 to 5 ft.	$\frac{5}{8}$ to $\frac{3}{4}$	.60	4.50	35.00
2 year	3 to 4 ft.	$\frac{1}{2}$ to $\frac{5}{8}$	.55	4.00	30.00
1 year	3 to 5 ft.	Sturdy Buds	.65	4.75	37.50



Montmorency Cherries

CAREFULLY DUG AND PACKED

### Sour Varieties

- DYEHOUSE**—Ripens a week ahead of Early Richmond. The earliest good sour cherry. Early June.
- EARLY RICHMOND**—Exceedingly hardy and productive. Ripens through June.
- ENGLISH MORELLO**—Large, blackish red cherry ripening in July. Hardy and productive.
- LARGE MONTMORENCY**—By far the leading commercial variety. Good grower, very productive, and an excellent shipper. Bright, clear attractive red. Ripens 10 days after Early Richmond. Late June.
- MAY DUKE**—A very early dark red cherry of good quality. Very hardy. June.
- OLIVET**—Large, deep red. Ripens in June.
- OSTHEIM**—Large, dark red. Almost sweet. Hardy, Late July.

### Sweet Varieties

- BLACK TARTARIAN**—Very large, bright purplish black. Juicy and rich. An immense bearer. June.
- BING**—Large, dark brown, of fine quality. Hardy and vigorous. July.
- GOVERNOR WOOD**—Large, yellow marbled with light red. Sweet and rich. Productive. June.
- LAMBERT**—Very large, purplish red. Firm and rich. Very productive. Late July.
- NAPOLEON (Royal Ann)**—Large, pale yellow with bright red cheek. July.
- SCHMIDT'S BIGGAREAU**—Very large, deep mahogany color. Very juicy. July.
- WINDSOR**—Large, very dark red, firm and rich. July.
- YELLOW SPANISH**—Pale yellow with bright red cheek. Productive. June.



**Napoleon Cherries**

---

**GROWN ON BEST WHOLE-ROOT STOCK**



## Standard Pear Trees

### Prices of Standard Pear Trees

			Each	Ten	Hundred
2 year	5 to 7 ft.	3/4 and up	\$.60	\$4.50	\$30.00
2 year	4 to 5 ft.	5/8 to 3/4	.55	4.00	25.00
2 year	3 to 4 ft.	1/2 to 5/8	.50	3.50	20.00
1 year	3 to 5 ft.	Sturdy Buds	.60	4.25	27.50

**ANJOU**—Large, green to yellowish in color. Excellent quality. Hardy and productive. October to January.

**BARTLETT**—Justly the leading commercial pear. Large, golden yellow with reddish blush. Tender, melting and juicy. September.

**BEURRE BOSCH**—Very large, gourd shaped pear, brownish yellow in color. Delicious flavor. Very productive. October.

**CLAPP'S FAVORITE**—Large, pale lemon yellow with brown dots. Rich and sweet. Early August.

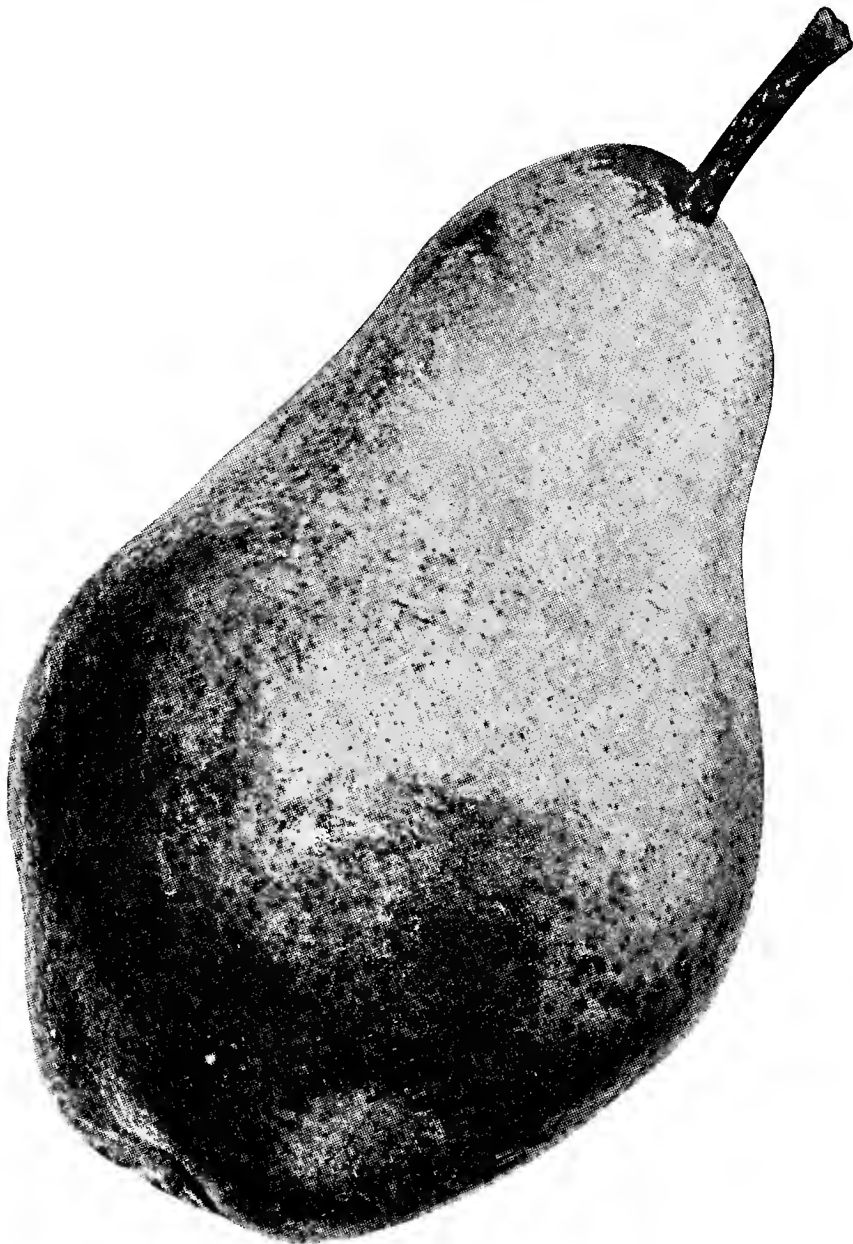
**DUCHESS D'ANGOULEME**—Very large, greenish-yellow, russeted. Early bearer and very productive. October to November.

**FLEMISH BEAUTY**—Large, russeted pale yellow. Exceptionally good quality. September and October.

**GARBER**—Large, yellow with crimson cheek. October.

**KIEFFER**—Very large, yellow with vermilion cheek. Should have Garber or Le Conte planted with it as cross pollinizer. Very vigorous and productive. October to November.

**LAWRENCE**—Large, yellow covered with brown spots. Hardy and productive. November to January.



Bartlett Pear

VIGOROUS AND HARDY

**LeCONTE**—Large, pale yellow. Vigorous and prolific. October.

**LOUISE BONNE DE JERSEY**—Large, pale yellow with brownish red. Excellent quality. Productive. September to Oct.

**SECKEL**—Very delicious and of excellent quality. Yellowish-brown with red cheek. Buttery and spicy. Very productive. August to October.

**SHELDON**—Large, round, russet and red pear. Very rich and delicious. October.

**VERMONT BEAUTY**—Medium, yellow shaded with carmine. Good cropper. October.

**WILDER**—Medium, greenish-yellow with red cheek. Good bearer. Early August.

**WORDEN SECKEL**—Larger than Seckel. Yellowish-brown with red cheek. Excellent quality. Bears early and is very productive. September to October.

5 McDonald Rd., Medford, Mass.  
April 17, 1933.

Kelly Bros. Nurseries, Dansville, N. Y.  
Gentlemen:

The New Hampshire State College man was here last Summer to look my orchard over. He said it was the finest young orchard he ever laid eyes on. Trees were all purchased from Kelly Brothers. Our place is at Mount Vernon, N. H. Every apple trees has come True to Name.

Yours very truly,

F. V. BRAUN.

### Special Introductory Garden Collection

**6 Extra Size Trees—All for \$1.50**

1 Early McIntosh Apple	1 Elberta Peach
1 Montmorency Sour Cherry	1 Cortland Apple
1 Rochester Peach	1 Napoleon Sweet Cherry

**Regular Catalog Price—\$3.20**

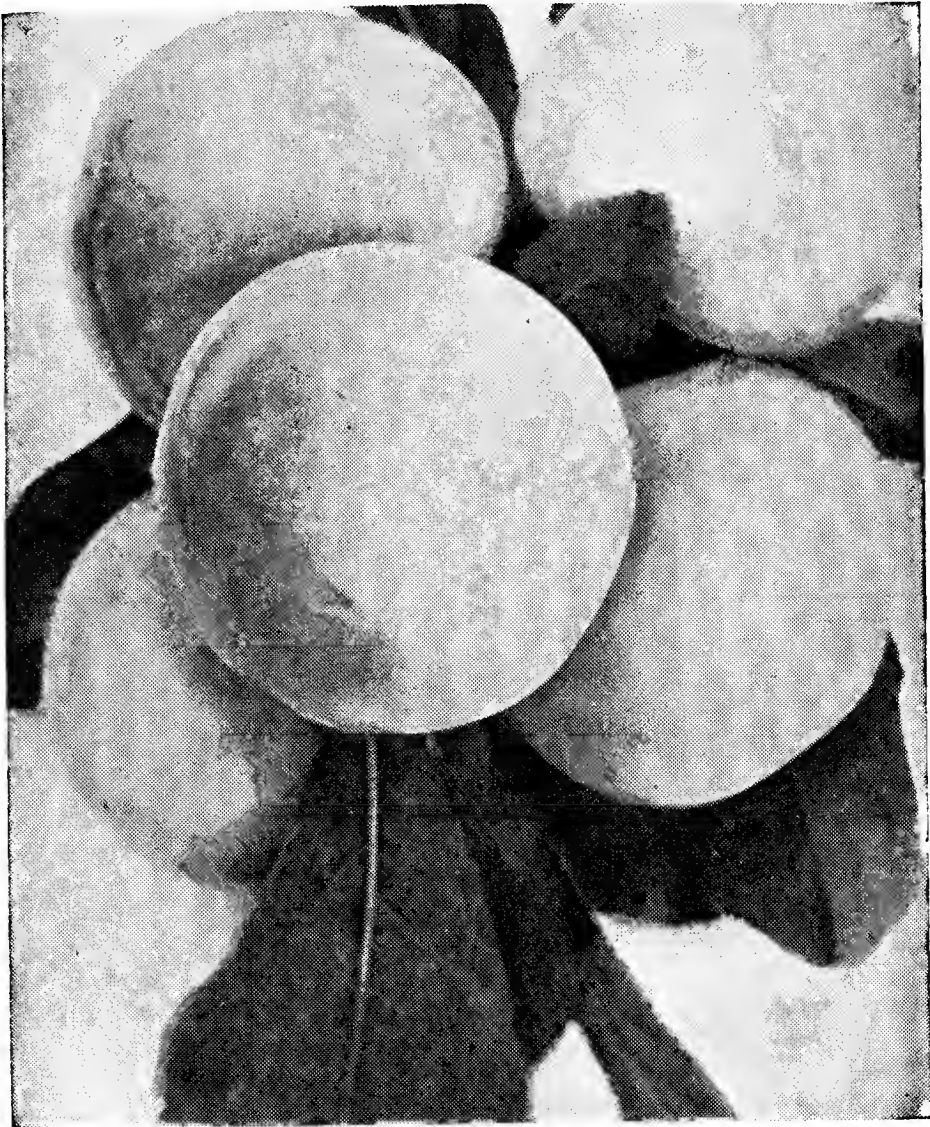
**Special Collection Price—\$1.50**

### Fruiting Age Cherry Trees

We can furnish Extra Large Bearing Age Early Richmond, English Morello and Montmorency Sour Cherry Trees—3 and 4 years old, 6 to 7 ft. high for 50c each, \$3.50 per ten. Under favorable conditions these trees will fruit abundantly the year after planting. Write us for special prices on large quantities.

**COMMERCIAL ORCHARDISTS**  
**Write us for special prices on large quantities.**

**COMPLETE FIBROUS ROOT SYSTEMS**



**Shropshire Damson Plums**

## Plum Trees

The finest Plum and Cherry trees in the world are grown here in Dansville. Our soil and climatic conditions are ideal, especially for these two classes of fruit trees.

### Prices of Plum Trees

			Each	Ten	Hundred
2 year	5 to 7 ft.	3/4 and up	\$.60	\$4.50	\$35.00
2 year	4 to 5 ft.	5/8 to 3/4	.55	4.00	30.00
2 year	3 to 4 ft.	1/2 to 5/8	.50	3.50	25.00
1 year	3 to 5 ft.	Sturdy Buds	.60	4.25	32.50

Prices of all varieties of Prunes are 5 cents per tree additional to above Plum prices.

### Japanese Varieties

- ABUNDANCE**—A large, very early, bright cherry red plum with white bloom. Juicy and delicious. August.
- BURBANK**—Very large, bright reddish purple. Enormously productive. Excellent shipper. August.
- CLIMAX**—A very early bright red plum of excellent quality.
- RED JUNE**—Large, deep vermilion red. Juicy and of good quality. Early August.
- SATSUMA**—Large, globular with sharp point. Purple and red. Flesh dark red, juicy. Late.
- SHIRO**—Medium, yellow, very sweet. Excellent quality. September.
- WICKSON**—Deep maroon red covered with white bloom. Delicious. Excellent shipper. Early September.

---

**STRAIGHT WELL BRANCHED TOPS**

### European Varieties

- BRADSHAW**—Large, dark violet red, juicy and good. Early. August.
- FELLEMBURG PRUNE**—Large, pointed and tapering. Dark purple. Juicy and delicious. Early September. Freestone.
- GERMAN PRUNE**—Fruit long, oval purple with thick bloom. Flesh firm, sweet and delicious. Excellent commercial sort. September. Freestone.
- GEUII**—Large, bluish purple, sweet. September.
- GRAND DUKE**—Large, dark violet red. Last of September.
- IMPERIAL GAGE**—Large, greenish yellow. Very productive. August.
- LOMBARD**—Medium, dark red. Hardy. August.
- MONARCH**—Very large, bluish purple. Bears young. September.
- REINE CLAUDE (Bavay's Green Gage)**—Large, pale yellow marked with red. Fine quality. Middle of September.
- SHIPPER'S PRIDE**—Large, dark purple. Excellent for canning. September.
- SHROPSHIRE DAMSON**—A delicious little plum much esteemed for canning. Dark purple. Enormously productive. October.
- YELLOW EGG**—Golden yellow covered with thick bloom. Very productive. September.
- YORK STATE PRUNE**—One of the largest and best. Dark blue, with purple bloom. Delicious. Last week in September. Freestone.

## Quince Trees

### Prices of Quince Trees

			Each	Ten	Hundred
2 year	4 to 5 ft.	5/8 and up	\$.60	\$4.50	\$35.00
2 year	3 to 4 ft.	1/2 to 5/8	.55	4.00	30.00

**ANGERS**—Ripens late and is a long keeper.

**BOURGEAT**—Fruit late, medium in size, mild subacid, good quality.

**ORANGE**—Early midseason, juicy, mild subacid, quality very good. Leading commercial quince.

**WAYNE COUNTY ORANGE**—A superior new variety introduced largely through our efforts. Extra large, golden yellow, of excellent quality. Regular cropper. Ripens early September.

R. 1, McKeesport, Pa.,  
Mar. 17, 1933.

Kelly Brothers Nurseries,  
Dansville, N. Y.

Gentlemen:

I am very well pleased with the trees received from you last year. There is not a better lot in this part of the country. One apple tree made 4 feet of growth.

Very truly yours,

LUCAS RIPPEL

**SATISFIED CUSTOMERS OUR BEST ADVERTISEMENTS**

## Nut Trees

**BLACK WALNUT**—Grows from 40 to 60 feet high. Large crops of nuts with rough hard shell containing rich, oily kernels of fine flavor. Trees 4 to 5 ft. high, **90 cents each.**

**BUTTERNUT**—Large longish nuts with sweet, oily, nutritious kernels. Trees 4 to 5 ft., **90 cents each.**

**ENGLISH WALNUT**—A fine lofty growing tree, producing large crops of thin shelled delicious nuts. Trees 3 to 4 ft. high, **\$1.10 each.**

## Grapes

Prices—Extra Size, 2 year Vines.

**Concord**—25 cents each, \$1.50 per 10, \$8.00 per 100.

All other varieties—30 cents each, \$2.00 per 10,  
\$12.00 per 100.

(Write for prices on thousand lots)

**BRIGHTON (Red)**—A large, delicious, sweet red grape. Very juicy. Midseason.

**CAMPBELL'S EARLY (Black)**—Bunches and berries large, black with purple bloom. Hardy and vigorous. Early.

**CATAWBA (Red)**—Dark red. Bunches large, berries medium. Best quality for table and wine. Late.

**CONCORD (Black)**—The leading commercial grape. Color blue-black. Bunches and berries large. Hardy, productive and an excellent shipper. Succeeds over large area. Excellent for grape juice. Midseason.

**DELAWARE (Red)**—Bunches and berries small. Light red, unusually sweet and delicious. Early.

**DIAMOND (White)**—The leading early white grape. Excellent quality.

**MOORE'S EARLY (Black)**—Berries and bunches large. Black with blue bloom. Fine quality. Early.

**NIAGARA (White)**—The most popular white grape. Bunches and berries extra large. Vigorous, productive and a good keeper. Midseason.

**WORDEN (Black)**—A large early black grape of fine quality. Berries and bunches large.

### We Guarantee Absolute Satisfaction

We guarantee every tree or bush to be fully up to the grade specified or better. We also guarantee the arrival of our trees and bushes in first class condition. If through mishandling in transit, trees or bushes are not in first class condition and customers will notify us immediately, we will make prompt and satisfactory adjustment.

ASK ANY OF KELLY'S CUSTOMERS

## Raspberries

**CUTHBERT (Red)**—Large, crimson, hardy and prolific. Fine for market or garden. Excellent quality. Midseason. **Prices**—\$1.25 per 25, \$3.50 per 100, \$25.00 per 1000.

**CUMBERLAND (Black)**—Large, glossy black, firm, of excellent quality. Hardy and productive. Early to midseason. **Prices**—\$1.25 per 25, \$3.50 per 100, \$25.00 per 1000.

**COLUMBIAN (Purple)**—A fine commercial sort. Vigorous, very productive, excellent canner. Fruit large, purple, firm. Midseason. **Prices**—\$1.50 per 25, \$4.50 per 100, \$35.00 per 1000.

**LATHAM (Red)**—Large, round, firm, brilliant red. Most profitable commercial variety. Hardy, very prolific, an excellent shipper and a perfect variety for canning. Early. Ripens evenly over a very long season. **Prices** \$1.25 per 25, \$3.50 per 100, \$25.00 per 1000.

**PLUM FARMER (Black)**—One of the best commercial sorts. Berries large, thick meated, firm. Very productive. Early midseason. **Prices**—\$1.25 per 25, \$3.50 per 100, \$25.00 per 1000.

**ST. REGIS (Everbearing)**—A bright crimson berry of excellent quality. Fruit commences to ripen with the earliest and continues to ripen on young canes until October. **Prices**—\$1.25 per 25, \$3.50 per 100, \$25.00 per 1000.



Latham Raspberries

## Kelly's Trees Are the Best to be Had at Any Price

Our nurseries are located in one of the most favorable spots to be found anywhere in the country. Our soil and climatic conditions are so ideal that we are able to produce trees of the utmost vigor and vitality. No-where can trees be grown with cleaner, straighter bodies — better balanced tops — or more abundant fibrous roots.

### Blackberries

**Prices—\$1.50 per 25, \$4.50 per 100, \$30.00 per 1000.**

**BLOWERS**—Large size, glossy jet black, firm and delicious. Very hardy and enormously productive. Long ripening season.

**ELDORADO**—Very large, jet black. Sweet and delicious with no hard core. Very hardy and vigorous.

### Asparagus

**Prices—Extra Strong, 2 year,  
85c per 25, \$2.25 per 100, \$13.00 per 1000.**

**CONOVERS COLOSSAL**—A large size standard variety of excellent quality.

**PALMETTO**—A very early, even-growing variety of good quality.

**WASHINGTON**—By far the best variety. Large size, rapid growing, very productive, rust resistant.

### Currants

**WILDER**—An unsurpassed commercial sort. Bunches and berries very large, bright attractive red. Hang on bushes well and of excellent quality. Productive.

**Prices—Extra Strong, 2 year bushes, \$2.50 per 10,  
\$15.00 per 100. Write for prices on large quantities.**

Walled Lake, Mich.,  
April 9, 1933.

Kelly Brothers Nurseries,  
Dansville, N. Y.

Gentlemen:

We have bought trees in the last thirty years from several nurseries and have never had any trees equal yours in size, quality, trueness to name and low price.

Very truly yours,  
RALPH SCHLUSLER.

**BE A KELLY SATISFIED CUSTOMER**

## Flowering Shrubs

Prices (except as noted)—Strong Two Year Bushes,  
2½ to 3 ft., 30c each.

**ALTHEAS, DOUBLE**—Bloom freely from midsummer until frost. We offer double flowering varieties in Purple, Red, White and Pink.

**BUTTERFLY BUSH**—Beautiful lilac covered flowers from June to frost.

**DEUTZIA, DOUBLE FLOWERING**—Double white flowers tinged with rose.

**DEUTZIA, GRACILIS**—Dwarf growing. White flowers in June. 18 to 24 in. 30c each.

**DEUTZIA, PRIDE OF ROCHESTER**—Double white flowers tinged with rose in May.

**FORSYTHIA (Virdissima)**—Deep yellow flowers very early in the Spring.

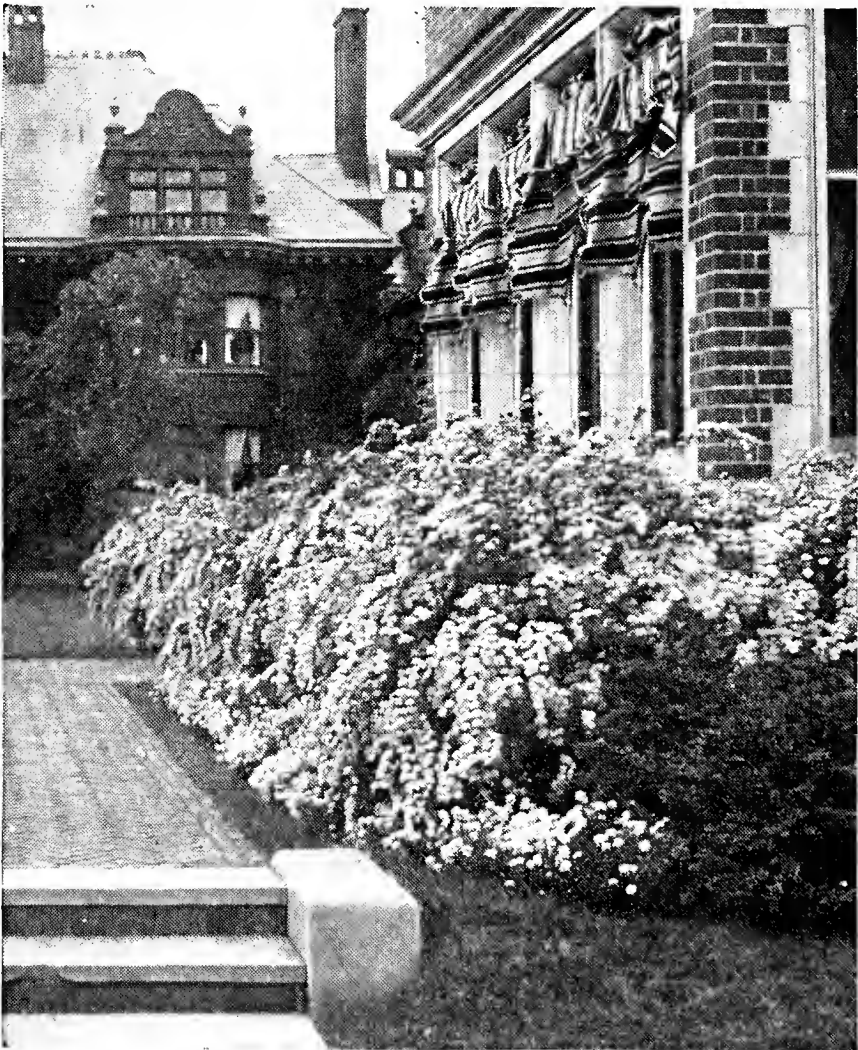
**HYDRANGEA ARBORESCENS (Everblooming Snowball Hydrangea)**—Beautiful ball shaped clusters of pure white flowers from July to Sept. 2½ to 3 ft., 30c each, \$2.50 per 10, \$20.00 per 100.

**HYDRANGEA P. G.**—Immense cone shaped clusters of pink and white flowers turning to bronze in autumn.

**HYDRANGEA, TREE FORM**—The Hydrangea P. G. grown in tree form with a single stem. 3 to 4 ft., 75c each.

**INDIAN CURRANT (Coralberry or Red Snowberry)**—Rose colored blossoms in June and July followed by dull red coral colored berries.

**JAPAN QUINCE**—Completely covered with dazzling scarlet flowers in May. 18 to 24 in., 35c each.



**Spiraea VanHouttei**

**IT PAYS TO PLANT THE BEST**





**Everblooming Hydrangea Arborescens**

- LILAC—ALPHONSE LAVALLE—Double.** Pink, 2 to 3 ft., 55c each.
- LILAC—CHARLES JOLY—Double.** Purple. 2 to 3 ft., 55c each.
- LILAC—MME. LEMOINE—Double.** White. 2 to 3 ft., 55c each.
- LILAC—PRES. CARNOT—Double.** Lilac. 2 to 3 ft., 55c each.
- LILAC—PRES. GREVY—Double.** Blue. 2 to 3 ft., 55c each.
- RED LEAVED BARBERRY—**Beautiful, warm, bronzy red foliage from Spring until Winter. Abundant scarlet berries throughout the Winter. 12 to 15 inches, 35c each.
- SNOWBERRY—**Waxy milk white berries which remain all Winter.
- SNOWBALL—**Globular clusters of white flowers in late May. 2½ to 3 ft., 35c each.
- SPIRAEA ANTHONY WATERER—**Dwarf growing. Deep pink blossoms late in June. 18 to 24 in., 35c each.
- SPIRAEA CALLOSA ROSEA—**Deep rosy blossoms nearly all Summer.
- SPIRAEA GOLDEN—**Bright yellow foliage changing to golden bronze in Fall.
- SPIRAEA PRUNIFOLIA—**Profusion of double white flowers in May.
- SPIRAEA VAN HOUTTEI—**Sometimes called Bridal Wreath. Masses of pure white blossoms in May and June. 3 to 4 ft., 20c each, \$1.50 per 10, \$10.00 per 100.
- SYRINGA LEMOINE—**Creamy white fragrant flowers in June.
- WEIGELIA CANDIDA—**Pure white flowers from June to Fall.
- WEIGELIA EVA RATHKE—**Deep scarlet blossoms in June and intermittently all Summer. 2½ to 3 ft., 35c each.
- WEIGELIA ROSEA—**Dwarf. Green leaves broadly margined with creamy white. Pink flowers.

## Evergreens

**AMERICAN ARBOR VITAE (White Cedar)**—Soft bright green foliage. Erect, broadly pyramidal habit—a rapid grower. Can be trimmed and kept to any form or height. **Price**—2 to 3 ft. **\$1.25 each.**

**GLOBE ARBOR VITAE**—A dense, low, natural globe shaped evergreen, excellent for foundation planting or planting along walks or driveways. **Price**—15 to 18 in., **\$1.25 each.**

**PYRAMIDAL ARBOR VITAE**—A densely compact pyramidal type with deep green foliage. The most popular columnar type for home beautification. **Price**—2 to 3 ft., **\$1.25 each.**

**IRISH JUNIPER**—A splendid columnar shaped evergreen with fine sage green foliage. Erect, compact, slender and formal in habit. **Price**—2 to 3 ft., **\$1.25 each.**

**PFITZERS JUNIPER**—A striking, low growing, spreading evergreen, with fine dark green foliage. Fine for foundation and general purpose planting. **Price**—18 to 24 in., **\$1.50 each.**

**MUGHO PINE**—A genuine Dwarf Pine. Very dense. Assumes a general globular form. Leaves, short, stiff and of rich green color. Fine for punctuating walls and driveways and for foundation planting. **Price**—15 to 18 in., **\$1.25 each.**

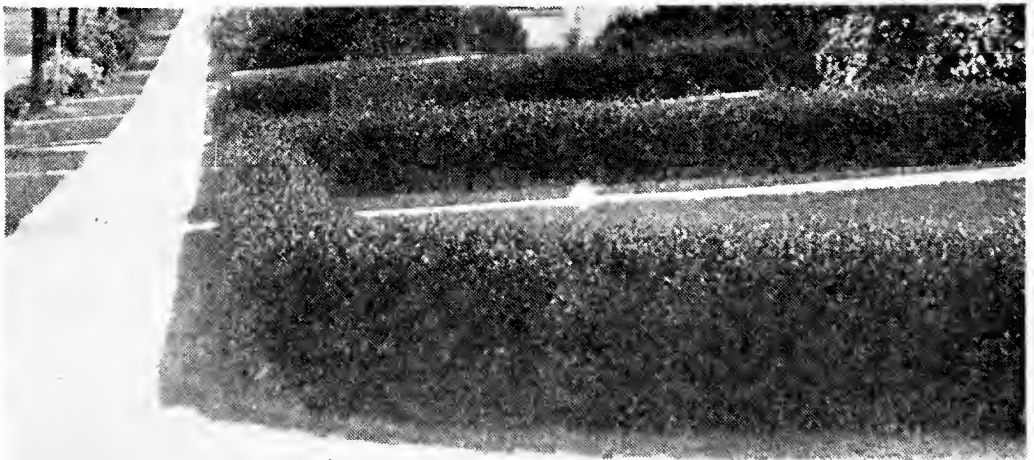
**COLORADO BLUE SPRUCE**—One of the showiest and most impressive evergreens. A broad pyramidal shaped tree with beautiful flat, lacy foliage of bright silvery blue color. **Price**—15 to 18 in., **\$2.00 each.**

**NORWAY SPRUCE**—The evergreen most commonly used for Christmas trees. Tall, open, pyramidal shaped tree with dark green foliage. Can be kept trimmed to any size or shape. **Price**—2 to 3 ft., **\$1.25 each.**

## Ornamental Hedges

**BARBERRY THUNBERGII**—Best for informal hedge 2 to 3 ft. high. Plant 2 feet apart. Extra strong bushes, 2 to 3 ft. high, **25c each, \$2.00 per 10, \$15.00 per 100.** Strong bushes, 18 to 24 inches high, **20c each, \$1.50 per 10, \$10.00 per 100.**

**CALIFORNIA PRIVET**—Best trimmed hedge 3 to 5 ft. high. Set in single row 10 inches apart. If broad hedge is desired plant in double rows—rows 1 foot apart and bushes 1 foot apart in each row, but staggered so as to come 6 inches apart in hedge. Strong bushes, 2 to 3 ft. high, **\$1.00 per 10, \$5.00 per 100, \$45.00 per 1000.** Extra strong bushes, 3 to 4 ft. high, **\$1.50 per 10, \$7.00 per 100, \$55.00 per 1000.**



California Privet

WE GUARANTEE SATISFACTION

## Shade and Ornamental Trees

**AMERICAN ELM**—Tall vase shaped. Fine for street planting. 6 to 8 ft., **\$1.00 each, \$8.00 per 10.**

**ASH-LEAVED MAPLE (Box Elder)**—Very hardy. Rapid grower. 6 to 8 ft., **\$1.00 each.**

**BECHTEL'S FLOWERING CRAB**—Lawn tree. Medium grower. Double rose shaped pink blossoms. 2 to 3 ft., **40c each, \$3.00 per 10; 3 to 4 ft., 60c each, \$5.00 per 10.**

**NORWAY MAPLE**—Excellent street and shade tree. Strong, fast grower. 6 to 8 ft., **\$1.00 each; 8 to 10 ft., \$1.50 each.**

**CAROLINA POPLAR**—Hardy, fast growing tree with large leaves. 8 to 10 ft., **50c each, \$4.50 per 10.**

**CATALPA BUNGEII (Umbrella Tree)**—Large, heart-shaped leaves making symmetrical umbrella shaped top. Two year heads. 6 to 8 ft., **\$1.00 each.**

**CHINESE ELM**—A very rapid grower with small dense foliage. Resembles Norway Maple in shape. 8 to 10 ft., **\$2.00 each.**

**CUT-LEAVED WEEPING BIRCH**—Tall, slender, weeping tree. Silvery white bark. 6 to 8 ft., **\$1.50 each.**

**LOMBARDY POPLAR**—Tall, fast growing spire-like tree. Fine for marking lanes or boundaries. 8 to 10 ft., **60c each, \$5.00 per 10.**

**MOUNTAIN ASH**—Handsome small tree with clusters of bright red berries. 5 to 6 ft., **\$1.00 each.**

**RUSSIAN MULBERRY**—Low growing, hardy lawn tree with medium size black berries. 5 to 6 ft., **65c each, \$5.50 per 10.**

**SILVER-LEAVED MAPLE**—Large spreading tree. Foliage silvery underneath. 8 to 10 ft., **75c each.**



**Bechtel's Flowering Crab**

## Choice Everblooming Monthly Roses

Their long blooming season begins in June and continues until frost. Require protection over Winter in the extreme North. This protection consists of simply mounding up each bush with a mound of earth 8 or 10 inches high. Should be planted from 1 1/2 to 2 feet apart.

The varieties marked thus (\*) were chosen by a referendum vote of the American Rose Society as the most desirable and popular kinds.

**Prices, Strong 2 Year Bushes, 40 cents each.**

\***COLUMBIA**—Glowing pink. Strong grower. Very free flowering. Almost thornless.

**ETOILE DE FRANCE**—Large, full, rich, velvety, crimson blooms.

**FRANCIS SCOTT KEY**—Large, wonderfully shaped double blooms of brilliant crimson.

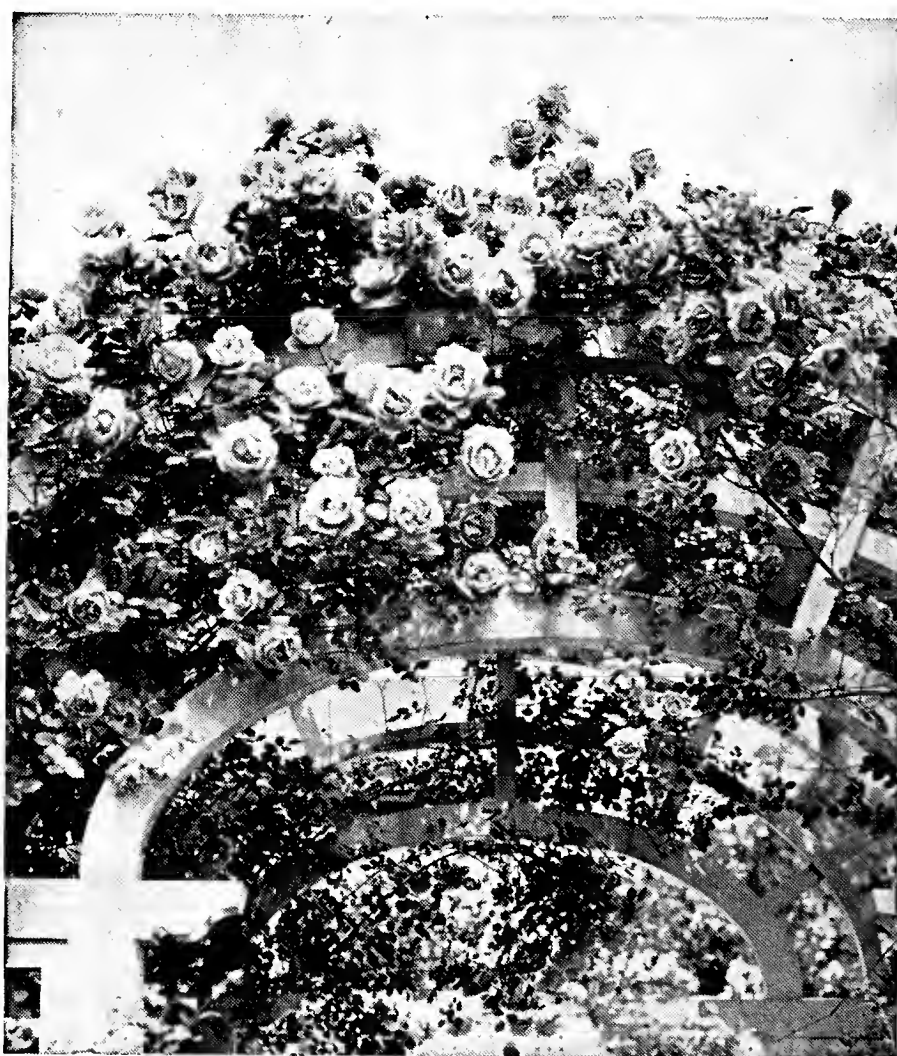
\***FRAU KARL DRUSCHKI (Snow Queen)**—Pure snow-white. A continuous bloomer.

\***GRUSS AN TEPLITZ**—Scarlet shading to crimson. Very fragrant. Profuse bloomer.

**KAISERIN AUGUSTA VICTORIA**—Large, double, pure white. One of the best.

**LA FRANCE**—Fine peach-blossom pink. Large flowers of unusual fragrance.

\***LOS ANGELES**—Flame pink shaded with gold at base of petals. Flowers large.



**Climbing American Beauty**

---

**ASK ANY OF KELLY'S CUSTOMERS**

- LUXEMBURG**—Large, fine, rich golden yellow double blooms.
- LADY HILLINGTON**—Apricot-yellow buds opening to saffron-yellow blooms.
- \***OPHELIA**—Delicate salmon pink, shaded with rose. Very free bloomer.
- PREMIER**—Rich dark pink. Beautifully formed fragrant flowers.
- \***PINK RADIANCE**—Bright carmine rose with opal and copper reflections.
- \***RED RADIANCE**—Deep red. Very fragrant. Vigorous grower. Unusually hardy.
- SUNBURST**—Light sulphur yellow. Strong, spreading grower.
- \***SOUVENIR CLAUDIUS PERNET**—Beautiful sunflower yellow. Vigorous, erect grower.
- TALISMAN**—Glowing golden yellow stained with copper-red and orange-rose on inside of petals.

---

## Hardy Climbing Roses

Prices—Strong, 2 Year Bushes, 40 cents each.

- CRIMSON RAMBLER**—Glowing crimson blossoms in large clusters. Very hardy.
- CLIMBING AMERICAN BEAUTY**—Rosy crimson flowers on single stems. Fragrant.
- DR. VAN FLEET**—Large, shapely, solitary flesh white flowers on long stems.
- PAUL'S SCARLET CLIMBER**—Large, scarlet-red blossoms. Very showy.
- PINK DOROTHY PERKINS**—Large clusters of double shell pink blossoms.
- WHITE DOROTHY**—Magnificent clusters of pure white blooms.
- YELLOW RAMBLER**—Clusters of light canary-yellow flowers.

---

## Ornamental Vines

- AMPELOPSIS VEITCHII (Boston Ivy)**—Bright green foliage. Clings tightly to smoothest surface. 40c each.
- BITTERSWEET**—Glossy foliage, creamy white flowers, large clusters orange and crimson berries retained all Winter. 50c each.
- CLEMATIS JACKMANNI**—Very large, single purple blossoms. 70c each.
- CLEMATIS PANICULATA**—Fragrant, pure white blossoms in Sept. 40c each.
- DUTCHMAN'S PIPE (Birthwort)**—Large, heart-shaped leaves and quaint pipe-shaped green flowers. 70c each.
- HALL'S JAPAN HONEYSUCKLE**—White flowers from July until Winter. 40c each.
- PURPLE WISTERIA**—Pale lilac flowers in abundance in May. 60c each.

Anything you purchase from us must be satisfactory to you in every respect before we consider the transaction completed. We guarantee this and back our guarantee by 54 years of fair and honest dealings with our customers.

**KELLY BROTHERS NURSERIES**



**KELLY BROS. NURSERIES**  
**DANVILLE, N. Y.**

**1934**