

## **Historic, archived document**

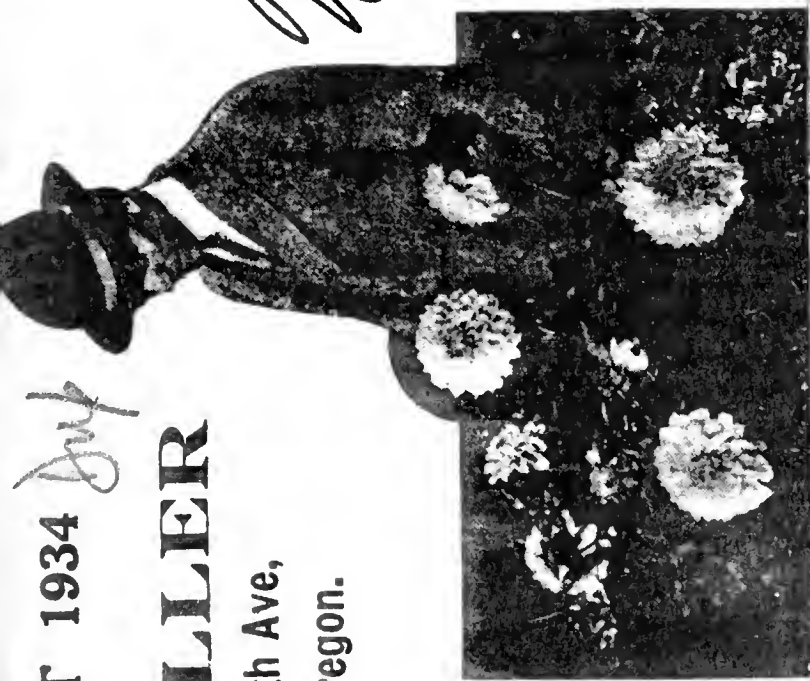
Do not assume content reflects current scientific knowledge, policies, or practices.



59.71  
PRICE LIST 1934 *July*

# N. A. MILLER

2334 S E 66th Ave,  
Portland, Oregon.



Postmaster:  
If not delivered  
Please return,  
Postage Guaranteed.

Miller's Exquisite Bouquet



Sec. 562, P. L. & R.

U. S. DEPARTMENT OF AGRICULTURE  
DIVISION OF POSTAL SERVICE

★ APR 7 1934 ★

U. S. DEPARTMENT OF AGRICULTURE

*U. S. Dept. of Agriculture  
Bureau of Plant Ind.  
Washington D.C.*

*Miller's Exquisite Bouquet*

1934

# WHOLESALE DAHLIA LIST

— of —

## CHOICE DAHLIAS

—o—

N. A. MILLER

2334 S. E. 66th Ave

Portland, Oregon

—o—

DAHLIA TUBERS offered are plump, firm, healthy single divisions, showing one or more live sprouts.

**GUARANTEED TRUE TO NAME** — If any should prove otherwise, will replace the stock or refund the purchase price.

Orders Accepted Subject to Prior Sale.

This List cancels all previous quotations,

**PREPAID**—All orders will be sent with transportation charges prepaid, by parcel post or express.

Everything will be securely packed to arrive in first class condition.

**ORDER EARLY**—As orders are received stock will be reserved and sent about April 15th, or sooner if requested.

**NOTE—THESE PRICES ARE FOR 5 OR MORE OF ONE KIND. FOR 2 TO 4 OF A KIND ADD 3c PER TUBER. FOR SINGLE TUBERS ADD 5c PER TUBER. NO EXTRA CHARGE FOR LESS THAN 5, IF ORDER AMOUNTS TO \$5.00 OR MORE.**

**ABBREVIATIONS TO TYPES**—C. Cactus; D. Decorative; P. Peony; Sh. Show; H. C. Hybrid Cactus.

**A FINE COMPLIMENT TO MY  
"FAMOUS FOR QUALITY" DAHLIA ROOTS.**

A reprint from the Souvenir Edition of The World's Fair Dahlia News, November 1933, Century of Progress Exposition, Chicago, Ill.

### SPECIAL ACKNOWLEDGMENT!

On May 28, 1933, Mr. N. A. Miller, Wholesale Dahlia Specialist of 458 East 66th Street, Portland, Oregon, sent us by Express, 500 dahlia roots, 20 choice varieties, free, for distribution among outside dahlia growers, the blooms of which to be used in connection with our Flower Show. We were very thankful for the same, but unfortunately the blooms by reason of late shipment were not available for our September indoor show. However, this large donation of roots, all of which were received in pink of condition, is responsible to a very large extent for the dahlia enthusiasm in and around Chicago.

—Managing Editor.

# NEW DAHLIAS

INTRODUCED BY N. A. MILLER

- Irene Anderson, H. C.**—Huge blooms, often 10 inches across; rosy; purplish cerise; heavily tipped white, good stems. A very attractive Garden Dahlia, and showy exhibition flower..... **.35**
- Flander's Field—Collarette**—A beautiful basket or cut flower Dahlia. Color a dazzling bright shade of pure velvety scarlet. Collar of same color, and large bright golden yellow center..... **.15**
- Geo. L. Baker—(Haynes-Miller)**—Dec. Immense big blooms, 8 to 9 inches across with slightly rolled petals, are held high above the foliage on extra stout firm stems. Color a glowing claret red. Flowers last a long time on the bush..... **.25**
- Indian Dawn—Semi. H. C.** Big showy blooms, 8 inches and more across, color a bright glistening golden yellow, illuminated by a bright glowing scarlet. Early and free bloomer, good stems, truly a showy and beautiful blending of bright colors. An exceptionally fine Dahlia that is sure to become a great favorite..... **.20**

*I have several more fine new creations, both, Dahlias and Gladiolus, that will be put on the market after they have been more thoroughly tested, and as soon as I have accumulated a sufficient stock to introduce them at a reasonable price.*

**REMEMBER**—Everything will be well packed, and sent prepaid by parcel post or express.

## GENERAL LIST.

PRICE EACH  
5 OR MORE

- Amelia Earhart—S. C.** Apricot buff-flushed coral. One of the largest Dahlias, great prize winners, On the roll of Honor 1932..... **4.50**
- Ashbury Park—D.** Coppery red shaded salmon and old gold, a great prize winner..... **.50**
- Alice Whittier—H. C.** Very large light yellow.... **.20**
- Al Koran—D** Yellow, suffused goldenrod, amber .. **.12**
- Alma Davis—P.** Rich salmon pink, shaded old rose **.12**
- Alta Wheeler—D.** Large bright scarlet shading to orange yellow base. Excellent long stems..... **.15**
- Ambassador—C.** Yellow buff, shaded salmon pink, immense blooms ..... **.20**
- American Triumph—C.** Huge Oriental red. A Roll of Honor Dahlia..... **.40**
- Amun Ra—D.** Very large coppery orange, tinted gold **.12**
- Andrea Erickson—D.** Very large pure white, exhibition Dahlia ..... **.75**
- Ann Rutledge—D.** Glowing orchid cerise, shaded rose. Artistically formed blooms with curled petals. Very long stout stems. Achievement medal winner ..... **.35**
- Bagdad—D.** Flame scarlet red of immense size. A great prize winner..... **.60**
- Ballet Girl—C.** Very large orange and white..... **.12**
- Barbara Redfern—D.** Gold, copper and old rose, very large ..... **.20**
- Bashful Giant—D.** Bronzy apricot and gold..... **.12**
- Ben Wilson—D.** Very large orange red, tipped gold **.10**
- Black Jack—D.** Very large black maroon..... **.20**
- Bob Plense—H. C.** Large maroon, tipped white..... **.12**
- Bonnie G.—C.** Large pure soft pink. .... **.12**

<b>Butterfly—D.</b> Beautiful pink, shaded primrose yellow	.10
<b>Calvin Coolidge Jr.—D.</b> Large salmon pink. Fine cut flower	.25
<b>Caprice—D.</b> Beautiful soft yellow shading to salmon, Gold Medal Winner San Francisco	.50
<b>Champagne—D.</b> Golden champagne and chamois	.12
<b>Champogeg—D.</b> The Dahlia beautiful, large waxy yellow shading to salmon pink. On the Dahlia Roll of Honor	.60
<b>Chemars Eureka—D.</b> Large white flushed pink center	.20
<b>Chemars Masterpiece—C.</b> Orchid pink, very large	.20
<b>Cigarette—H. C.</b> Large creamy white; tipped orange	.12
<b>City of Trenton—D.</b> Tangerine orange, reverse crushed strawberry, very large blooms	.20
<b>Col. Chas. A. Lindbergh—D.</b> Large rose color. Shading to pale gold	.15
<b>Color Sargent—S. C.</b> Rich deep salmon bronze, large showy blooms	.25
<b>Cora Butterworth—D.</b> Large silvery primrose yellow. Extra fine Exhibition Dahlia	.40
<b>Couronne d'Or—D.</b> Old gold; reverse old rose. fine stems	.10
<b>Dad—D.</b> Brilliant red, very large	.20
<b>Dad's Favorite—D.</b> Very large dark crimson maroon	.25
<b>Daddy Butler—H. C.</b> American Beauty rose shades	.15
<b>Derrill W. Hart—D.</b> Reddish copper, very large, perfect blooms, excellent long stems. A Roll of Honor Dahlia	.35
<b>Dorothy Stone—D.</b> Large deep pink, excell. stems	.35
<b>Donna California—D.</b> Deep rose pink; suffused lavender immense, big blooms, on stout stems. A Roll of Honor Dahlia	.35
<b>Dwight W. Morrow—D.</b> Rich deep red; very large blooms, one of the best reds	.60
<b>Eagle Rock Beauty—D.</b> Large pink, cream center	.20
<b>Eagle Rock Fantasy—D.</b> Immense big deep blooms, clear mallow pink stout stems. A Great Exhibition Dahlia. On the Roll of Honor	\$1.00
<b>Earle Williams—D.</b> Large red tipped white	.15
<b>Edna Ferber—H. C.</b> Coral shading to old gold, very large perfect blooms	.25
<b>Edw. T. Bedford—D.</b> Bright violet purple-shading to silver reverse	.25
<b>El Camino Real—D.</b> Bright Spanish crimson	.10
<b>El Dorado—D.</b> Vivid gold, shaded deeper tones, extra fine	.12
<b>Empress—C.</b> Large rosy pink	.15
<b>Faith Garibaldi—D.</b> Very large deep rose	.20
<b>Flaming Metecr—D.</b> Orange scarlet shading to burnt orange	.20
<b>Francis Lobdell—H. C.</b> Mallow pink, white center	.12
<b>Frank Miller—D.</b> Picric yellow, very large blooms, stout stems. A California prize winner	.25
<b>Frau O. Bracht—Semi-C.</b> Clear pale primrose yellow. Wonderful cut flower Dahlia and a great prize winner	.50
<b>Fordhook Sweetheart—D.</b> Delicate pink, slightly suffused salmon	.15
<b>Fordhook Marvel—D.</b> Large peach red, shaded strawberry pink	.25

Fort Monmouth—D. Rich. crimson maroon of immense size. Roll of Honor Dahlia.....	.25
Fort Washington—D. Dark mahogany red. A Roll of Honor Dahlia.....	.40
Galli Curci—D. Brilliant salmon orange, with golden sheen, very large blooms. A Prize Winner.....	.20
Giant Ruby—D. Large ruby red.....	.20
Gold Medal—Sh. Golden yellow, splashed red.....	.15
Golden Emblem—D. One of the largest pure yellow Dahlias, extra fine.....	.15
Golden Girl—C. Immense big pure golden yellow. Largest cactus variety that I have seen.....	.60
Golden West—H. C. Rich yellow, suffused orange ..	.12
Gladys Sherwood—H. C. Large pure white.....	.18
Glory of Monmouth—D. Large salmon pink, light orange base .....	.25
Good Night—D. Very large dark maroon. A Roll of Honor Dahlia.....	.60
Gov. F. D. Roosevelt—D. A beautiful jack rose, red color .....	.50
Gov. Morgan F. Larson—D. Large golden yellow, blushed apricot .....	.35
Graf Zeppelin—D. Pure white good stems.....	.25
Hathor—D. Rich flame color.....	.25
Harriett Thompson—D. Rich orange buff and bronze, very large stout stems.....	.25
Ida Perkins—D. An extra fine white. Ideal stems...	.20
Indiana Moon—I. D. Very large blooms, a beautiful blending of many colors: yellow, flesh pink, ochre, and red. A roll of Honor Dahlia.....	.85
Jack O'Lantren—D. Brilliant orange red, shading darker .....	.15
Jane Cowl—D. Very large bright bronzy buff and old gold. Roll of Honor Dahlia, extra fine.....	.15
Jean Trimbee—S. C. Rich shade of petunia-violet, very large blooms, a great prize winner.. ..	.50
Jersey Beacon—D. Chinese scarlet, lighter reverse, very large and fine.....	.10
Jersey Beauty—D. True pink, extra fine .....	.15
Jersey Emperor—D. Large purplish red.....	.20
Jersey Glory—D. Beautiful bright orange, buff blooms on fine stems.....	.20
Jersey Ideal—D. Deep lavender pink, very large ...	.15
Jersey Jewel—D. Large mallow pink .....	.15
Jersey King—D. Begonia rose, very fine.....	.12
Jersey Manmouth—H. C. Golden mahogany, very large blooms, often over 12 inches across.....	.20
Jersey Sovereign—D. Beautiful salmon orange.....	.12
Josephine G.—S. C. — Bright shade of true rose pink tipped straw yellow, 1929 Roll of Honor Dahlia. Extra large and very fine .....	.40

**REMEMBER**—Everything will be well packed, and sent prepaid by parcel post or express.

<b>Judge Marean—D.</b> Glowing salmon, red, orange and yellow .....	.20
<b>J. W. Lee—H. C.</b> Beautiful golden yellow, suffused soft scarlet .....	.12
<b>Kathleen Norris—D.</b> Very large rose pink, a great prize winner .....	.35
<b>Kemps Violet Wonder—D.</b> Large violet color. A gold medal Dahlia, 1927.....	.30
<b>King Midas—D.</b> Pure golden yellow, huge blooms...	.30
<b>Kitty Dunlap—D</b> Beautiful shade of rose.....	.18
<b>Lake Pend Oreil—S. C.</b> Delicate soft pink.....	.15
<b>Le Grand Manitou—D.</b> White variegated violet purple	.10
<b>Maid Marian—H. C.</b> Beautiful shade of pure rose pink, very large and extra fine.....	.20
<b>Margaret Woodrow Wilson—D.</b> Opalescent pink very large .....	.12
<b>Marmion—D.</b> Very large yellow, tinted bronze .....	.15
<b>Marpissa—H. C.</b> Large pink suffused violet. ....	.15
<b>Maryland Glory—D.</b> A fine shade of rich American Beauty, red, very large deep blooms on excellent stems. An outstanding prize winner at the big Eastern Shows 1931. A Roll of Honor Dahlia...	.75
<b>Maryland Jubilee—F. D.</b> A beautiful shade of rich rose red .....	.50
<b>Maryland Orange—Semi-C.</b> A brilliant orange red. A gold medal winner, also on the roll of honor...	.50
<b>Miss California—D.</b> New color, known as oriental fuschia.....	.15
<b>Miss Longview—S. C.</b> Bright canary yellow, shading to soft salmon. Immense big blooms ...	.35
<b>Mrs. Alfred B. Seal—D.</b> Rich glowing old rose, one of the largest and finest Dahlias of recent introduction .....	.30
<b>Mrs. Carl Salback—D</b> Large lavender pink .....	.18
<b>Mrs. Eleanor Martin—D.</b> Mulberry suffused old rose, very large .....	.20
<b>Mrs. Ethel F. T Smith—D.</b> Large creamy yellow ..	.12
<b>Mrs. I de var Warner—D.</b> Very large mauve pink.	.10
<b>Monmouth Champion—D.</b> Brilliant orange flame. Immense big blooms. Great prize winner. A Roll of Honor Dahlia.....	.25
<b>My Maryland—H. C.</b> Rich bright pink, each petal tipped ivory. Excellent stems, beautiful cut flower .....	.25
<b>Nathan Hale—D.</b> Rich autumn bronze,, good cut flower Dahlia .....	.25
<b>Natures Masterpiece—D.</b> Extra large old rose, metallic bronze, suffused mulberry.....	.18
<b>New Jersey State Chamber of Commerce—I. D.</b> Large deep orchid pink.....	.35
<b>New Glory—H. C.</b> Large garnet red, tipped with white .....	.30



<b>Old Hickory—D.</b> Madder red suffused apricot .....	.20
<b>Omar Khayyan—D;</b> Chinese red shading to orange, Very large.....	.60
<b>Oriental Beauty—H. C.</b> A clear brilliant rose pink, immense big perfect blooms. A real prize winner	.40
<b>Pacific Sunset—P.</b> Very large, salmon red and buff yellow .....	.15
<b>Paul Michael—D.</b> Golden orange buff, very large ..	.10
<b>Penn Charter—D,</b> Rich gold tinted reddish apricot, large massive blooms.....	.35
<b>Pride of Fort Morgan—D.</b> Intense shade of red, one of the largest Dahlias.....	.25
<b>Purple Maniton—D.</b> Large rich purple .....	.08
<b>Robt. E. Lee—D.</b> Bright rich cardinal red, that does not fade, fine stems. Ideal cut flower.. ..	.30
<b>Robert Treat—D.</b> American Beauty rose color, large blooms .....	.25
<b>Rollo Boy—H. C.</b> Amber, shading gold .....	.20
<b>Roman Eagle—D.</b> Very large, burnish copper .....	.25
<b>Rose Fallon—D.</b> Huge blooms of bronzy gold, long stout stems .....	.20
<b>Runa—D.</b> Orchid pink, huge blooms, excellent stems	.20
<b>Sagamore—D.</b> Large pure gold, shaded orange.....	.15
<b>Salbacks White—D.</b> Pure white, large and extra fine	.20
<b>Sanhicans Magnate—D.</b> Very large pale Amaranth pink .....	.25
<b>Satan—H. C.</b> Flame red with a touch of gold at the center, immense big perfect blooms, strong rigid stems. A Roll of Honor Dahlia .....	\$1.25
<b>Senorita—D.</b> Rich velvety crimson, large .....	.12
<b>Shahrazad—D.</b> Pure deep pink. Extra large and very fine, known as the pink Jane Cowl.....	.60
<b>Shadows Lavender—D.</b> Beautiful silvery lavender ..	.18
<b>Spirit of St. Louis—D.</b> Very large American Beauty rose color .....	.20
<b>Susan G. Tevis—D.</b> Very large, bluish lilac .. ....	.12
<b>T. A. Leonard—D.</b> Deep cerise, tinted carmine rose	.12
<b>The Telegram—D.</b> Orange, tipped white. Very showy Dahlia .....	.18
<b>Thos. A. Edison—D.</b> Rich royal purple, large perfect blooms, excellent stems. One of the most popular Dahlias of recent introduction .....	.35
<b>Treasure Island—D.</b> Bright apricot and gold, with rose shading, very large deep blooms on ex- cellent stems .....	.25
<b>Tryphine—D.</b> Bright shell pink, tinted yellow, large	.12
<b>Trentonian—D.</b> Large bronzy copper .....	.18
<b>Victory—D.</b> Very large white, .....	.18
<b>Virginia Rae—D.</b> Large orange buff .....	.20
<b>Waldhiem Sunshine—D.</b> Very large yellow, suffused gold, extra fine .....	.25

Yankee King—D. Coppery flame with rose reverse. Giant blooms on strong stems .....	.20
Yankee Queen—D. White, shading to soft flesh pink	.15

### MINIATURE DAHLIAS

Crimson Glow—Min. P. Bright red.....	.15
Garden Love—Min. D, Carmine rose and gold.....	.35
Good Luck—Min. D, Beautiful autumn shade.....	.20
Our Annie—Min. P. Shrimp pink, shaded amber....	.35
Picture—Min. P. Gold shaded orange bronze.....	.15
Rhoda—Min. D. Glowing orange rose, curled petals fine cut flower.....	.15
Little Jewel—Min. D. Pure peach blossom pink, one of the most popular to date.....	.15
Zip—Min. D. 1933 Roll of Honor winner. Brilliant orange flame, loads of bloom all season.....	\$1.25

### COLLARETTE DAHLIAS

Ami Nonin—Old rose, collar white .....	.10
Aria—Soft rose, white collar .....	.10
Geant de Lyon—Very large, rich velvety maroon, white collar; lasting cut flower.....	.15

### POMPOM DAHLIAS

Achilles—Fine pure pink. One of the very best of this color .....	.12
Aimee—A very tiny flower. Beautiful bronze.....	.12
Atom. Tiny orange .....	.15
Alex—Light cerise, tipped silver .....	.12
Amber Queen—Rich clear amber .....	.12
Baby—White, edged with lavender .....	.12
Clara Harsh—Yellow, heavily tipped crimson .....	.12
Darkeye—White, lavender tips .....	.12
Fairy Queen—Bright sulphur yellow, edged pink....	.12
Flame—Bright, light shade of orange scarlet.....	.12
Girlie—Fine mauve pink .....	.12
Glow—Glowing old rose .....	.15
Goldie—Beautiful pure gold .....	.15
Harry Snooks—Beautiful rose pink, white center....	.12
Helen Lambert—Pure yellow .....	.12
Ideal—Fine pure yellow .....	.15
Joe Fette—Pure white .....	.12
Leuchtstern—Orange sometimes sporting to white....	.12
Pee Wee—Soft yellow with center shading to brown. A very beautiful Pompom.....	.12
Pride—Fine dark red. Very free bloomer.....	.15
Rose Wilmoth—Light rose .....	.15
Sunset—Orange, very small .....	.15
Tom Thumb—Rich garnet red, very small .....	.12
Vived—Rich bright scarlet .....	.12

## DELPHINIUM SEEDS

Extra Selected Seeds from  
Special plants, trade  
packed.....\$1.00

**REMEMBER—Everything will be well packed,  
and sent prepaid by parcel post or express.**

**N. A. MILLER**  
FLOWER BULB SPECIALIST