

Historic, archived document

Do not assume content reflects current scientific knowledge, policies, or practices.

62.99

could check

4-5-38



Sudan Grass

Spring Catalog

1934



Cheyenne, Wyoming.

Cheyenne Horticultural Field Station,
P. O. Box 1250



NORTHERN SEED CO.

H. D. WATENPAUGH, Mgr.

SHERIDAN, WYOMING

To our Friends and Customers:



H. D. Watenpaugh

Our catalog isn't very big, but it is packed full of value for the farmer, gardener, or flower grower in this section of the country. Since 1926 we have been supplying seeds to folks around here, and we're glad to be able to continue to serve you.

We renew to both our old and our new customers our pledge to supply **Quality Seeds and Merchandise at Fair Prices**, and in addition render a personal service based on our years of experience which we hope will be of value to you.

Very sincerely,

H. D. Watenpaugh

ABOUT GUARANTEE

We have used every possible care to secure seeds that are true to name, carefully selected, and of proper germination and purity. Owing to so many conditions beyond the control of either seedsman or planter, however, we cannot guarantee the description, purity, germination, productiveness, or any other matter of seed we send out, and will not be in any way responsible for the crop. If the purchaser does not accept the goods on this basis, no sale is made and your money will be cheerfully refunded if the seed is returned promptly.

NORTHERN SEED CO.

Early Bird Offer

Orders received early in the season help us a lot, and to make it worth your while, too, we always make an **"EARLY BIRD"** offer of something extra for orders received before the rush season.

This year on orders for garden or flower seeds received during February and March amounting to \$1.50 or more, we will include **FREE** a half-ounce package of the new **GOLDEN GLEAM NASTURTIUM**. If the order is for \$3.00 or more of this class of seeds, we will also include one packet of each of the four new varieties of flowers described on page 13.

Quantity Discounts

For the benefit of those who order a variety of seeds, but in the smaller quantities of each, we offer the following discounts:

Six 5c packets for 25c.

Six 10c packets for 50c.

Mixed orders of ounce and quarter pound seeds to amount of \$2.00 or more, 10% discount; to amount of \$5.00 or more, 15% discount. **DO NOT FIGURE DISCOUNT** on items priced by the pound.

Parcel Post Rates

	First pound	for each add'l pound
Local zone07	1c for 2 lbs.
1st zone, up to 50 miles08	1.1c
2nd zone, 50 to 150 miles08	1.1c
3rd zone, 150 to 300 miles09	2.0c
4th zone, 300 to 600 miles10	3.5c
5th zone, 600 to 1,000 miles11	5.3c

In addition to postage on the portion of your order not figured at postpaid prices, please add 5c for insurance and we guarantee safe delivery of the merchandise.

Index

	Page
Garden Seed Prices	2-12
Flower Seed Prices	13-17
Fertilizers and Insecticides	12
Field Seeds	18-20
Northern Special Feeds	Back Cover
Miscellaneous	20

Prices on Field Seeds vary with Market Conditions. See current price list or ask for prices.

Farmers and Ranchers who want to save money, refer to Inside Back Cover

GARDEN SEEDS

Asparagus: **WASHINGTON RUSTPROOF.** Asparagus is something which should be in every garden. This variety is rust resistant, a heavy yielder and of excellent flavor. Seed should be sown early in spring. Postpaid prices: Pkt. 10c, oz. 20c, $\frac{1}{4}$ lb. 50c.

TABLE BEETS

EXTRA EARLY ECLIPSE—The very earliest.

EARLY WONDER—Small vermilion red, early. Globe shaped. Very popular.

CROSBY'S EGYPTIAN—A dandy all-purpose beet.

DETROIT DARK RED—Smooth dark red, especially fine for pickling. Good keeper.

SWISS CHARD—Grown for the leaves, which are prepared like spinach.

PRICES ON TABLE BEETS—Postpaid: Pkt. 5c; oz. 10c; $\frac{1}{4}$ lb. 25c; 1 lb. 80c. Not Postpaid: per lb. 75c; 5 lbs. or more @ 70c per lb.

MANGEL BEETS FOR STOCK

MAMMOTH LONG RED—Largest yielding variety. Easily harvested.

GIANT HALF SUGAR ROSE—Combines size of mangels with extra feeding value of sugar beet.

PRICES ON MANGEL BEETS—Postpaid, 1 oz. 10c; $\frac{1}{4}$ lb. 20c; 1 lb. 40c. Not Postpaid: per lb. 35c; 5 lbs. or more @ 32c per lb.

Broccoli: **ITALIAN GREEN SPROUTING**—Similar to Cauliflower, but much easier to produce. Grown in the same way. A very worth while vegetable. Postpaid prices: Pkt. 10c; oz. 50c; $\frac{1}{4}$ lb. \$1.50.

Brussels Sprouts: Postpaid prices: Pkt. 5c; oz. 20c.

BEANS--Dwarf Varieties

BURPEE'S BRITTLE WAX OR ROUND POD KIDNEY WAX—Pronounced by all who have used them the very finest of wax or yellow beans ever grown. Round, meaty pods which never get stringy. Medium early. See prices below.

IMPROVED GOLDEN WAX—An old stand-by. Heavy producer of large, rather flat pods. See prices below.

BLACK WAX PENCIL POD—True stock of this excellent variety. See prices below.

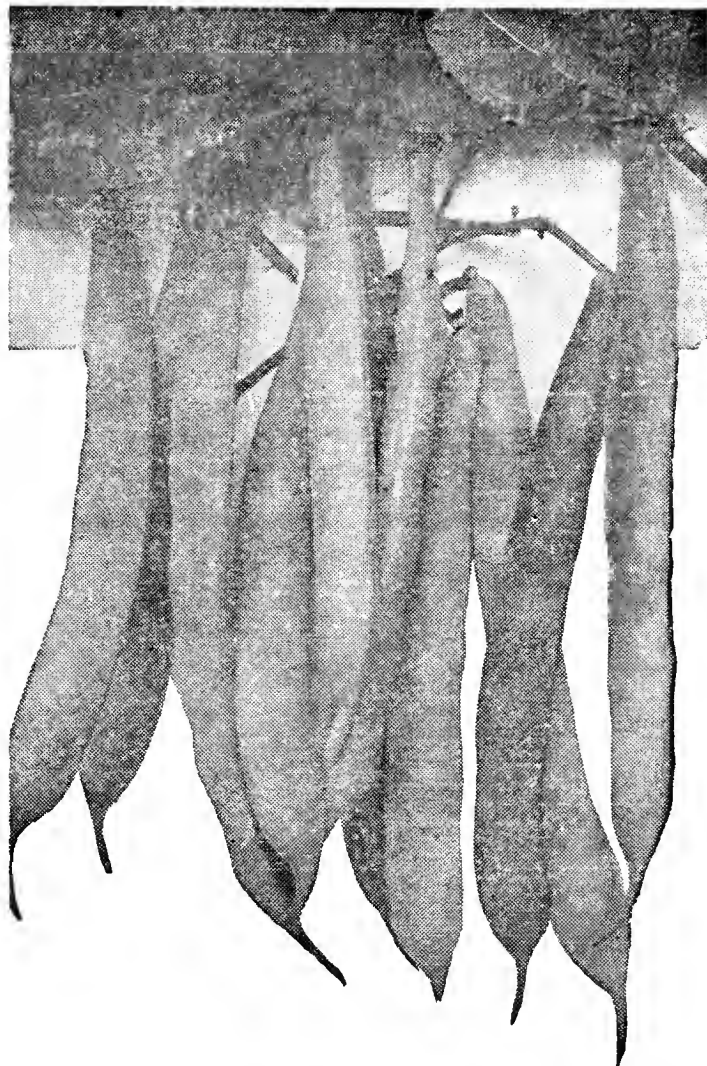
BURPEE'S STRINGLESS GREENPOD—The most widely used green podded bean. Very good. See prices below.

BOUNTIFUL—An excellent green podded bean. Very early. See prices below.

GIANT STRINGLESS — Exceedingly productive and very hardy. Round, straight pods. See prices below.

FULL MEASURE — A truly wonderful variety. Round, fleshy, dark green pods. Never get stringy. See prices below.

Prices on Above Varieties of Beans—Postpaid: $\frac{1}{2}$ lb. 20c; 1 lb. 30c. **Not Postpaid:** per lb. 25c; 5 lbs. or more @ 22c per lb.



Burpee's Stringless Green Pod

POLE BEANS

KENTUCKY WONDER — The standard greenpod pole bean. See prices below.

KENTUCKY WONDER WAX—Similar to old "Kentucky Wonder," but has yellow pods. See prices below.

TALL HORTICULTURAL—Also called "Bird Egg" or "Speckled Cranberry." Can be used from the time beans set on until maturity. A wonderful bean. See prices below.

Prices on Pole Beans.

Postpaid prices: $\frac{1}{2}$ lb. 20c; 1 lb. 30c. **Not Postpaid:** per lb. 25c; 5 lbs. or more @ 22c per lb.

SHELL BEANS

LONDON HORTICULTURAL—We first listed this as "Schneider's Beans." A very large, speckled bean of wonderful flavor. See prices below.

FRENCH HORTICULTURAL—Similar to the "London," but smaller size. See prices below.

Postpaid prices: $\frac{1}{2}$ lb. 15c; 1 lb. 25c. **Not Postpaid:** per lb. 20c; 5 lbs. or more @ 17c per lb.

CALIFORNIA CREAM BUTTER OR AZTEC—Very large, round, white bean, extra fine flavor. Early. Postpaid prices: $\frac{1}{2}$ lb. 20c; 1 lb. 30c. **Not postpaid:** per lb. 25c; 5 lbs. or more @ 22c per lb.

CABBAGE

GOLDEN ACRE—A recent valuable introduction. Very early, solid, round heads. Postpaid prices: Pkt. 5c; ½ oz. 20c; 1 oz. 30c; ¼ lb. \$1.00.

EARLY JERSEY WAKEFIELD—Pointed heads. Postpaid prices: Pkt. 5c; ½ oz. 15c; 1 oz. 25c; ¼ lb. 75c.

COPENHAGEN MARKET—An excellent variety of medium early cabbage. Heavy producer of solid, round heads. Postpaid prices: Pkt. 5c; ½ oz. 15c; 1 oz. 25c; ¼ lb. 75c.

EARLY FLAT DUTCH—Postpaid prices: Pkt. 5c; ½ oz. 15c; 1 oz. 25c; ¼ lb. 70c.

DANISH BALLHEAD OR HOLLANDER—Unexcelled for winter keeping. Much used. Postpaid prices: Pkt. 5c; ½ oz. 15c; 1 oz. 25c; ¼ lb. 75c.

DANISH ROUND HEAD—Grows larger heads than "Ballhead." Excellent flavor, and a fine cabbage for fall and early winter. Postpaid prices: Pkt. 5c; ½ oz. 15c; 1 oz. 25c; ¼ lb. 75c.

LATE FLAT DUTCH—Postpaid prices: Pkt. 5c; ½ oz. 15c; 1 oz. 25c; ¼ lb. 70c.

CARROTS

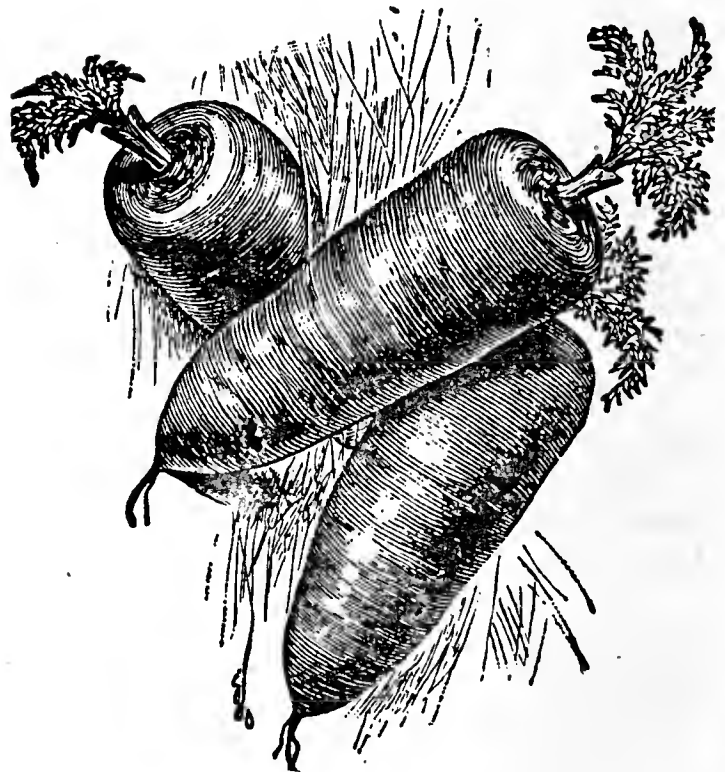
OXHEART — Medium short, good color and flavor.

CHANTENAY — Earliest large size carrot. Fine quality and shape.

DANVERS HALF LONG—Heavy cropper. Best winter keeper.

Prices on carrot seed—Postpaid: Pkt. 5c; oz. 15c; ¼ lb. 45c; 1 lb. \$1.25. Not Postpaid: per lb. \$1.20; 5 lbs. or more @ \$1.10 per lb.

WHITE BELGIAN STOCK CARROTS—Excellent feed for livestock, especially relished by horses. Postpaid prices: 1 oz. 10c; ¼ lb. 30c; 1 lb. 85c. Not Postpaid: per lb. 80c; 5 lbs. or more @ 75c per lb.



Chantenay Carrots

CAULIFLOWER

HENDERSON'S EARLY SNOWBALL—The same wonderful imported strain we have always sold. Postpaid prices: Pkt. 10c; ¼ oz. 60c; ½ oz. \$1.00; 1 oz. \$1.85.

DANISH DRY WEATHER—Later and larger than the Snowball, and withstands dryer, hotter weather. Postpaid prices: Pkt. 10c; ¼ oz. 60c; ½ oz. \$1.00; 1 oz. \$1.85.

CELERY

GOLDEN SELF-BLANCHING—Early. Very fine quality. Postpaid prices: Pkt. 10c; $\frac{1}{4}$ oz. 25c; $\frac{1}{2}$ oz. 40c; 1 oz. 75c.

GIANT PASCAL—The standard winter variety. Postpaid prices: Pkt. 5c; $\frac{1}{4}$ oz. 15c; $\frac{1}{2}$ oz. 25c; 1 oz. 45c.

SWEET CORN

EARLY JUNE—Very early. White.

GOLDEN BANTAM—Too well known to need description.

EARLY EVERGREEN—Deep, fine flavored, white kernels. Somewhat later than Bantam.

Prices on above varieties—postpaid: $\frac{1}{2}$ lb. 15c; 1 lb. 25c. **Not Postpaid:** per lb. 20c; 5 lbs. or more @ 17c per lb. Ask for prices in large quantities.

EARLY SUNSHINE—The same good flavor as Golden Bantam, ears somewhat larger, and comes into roasting ears a week or more sooner. Postpaid prices: $\frac{1}{2}$ lb. 20c; 1 lb. 30c. **Not Postpaid:** 1 lb. 25c; 5 lbs. or more @ 22c per lb.

POP CORN

WHITE RICE—Sharp-pointed kernels. Excellent popper.

JAPANESE HULLESS—Long, slender kernels, pops out very tender.

SOUTH AMERICAN OR T. N. T.—Large, yellow kernels, delicious flavor.

Prices on Popcorn—Postpaid: 1 lb. 20c. **Not Postpaid:** per lb. 15c; 5 lbs. or more @ 10c per lb.

Cress: OR PEPPER GRASS. Postpaid prices: Pkt. 5c; oz. 20c.

CUCUMBERS

EARLY CLUSTER—Very early pickling. Prolific.

CHICAGO PICKLING—Standard pickling variety.

IMPROVED LONG GREEN—Standard market variety of its type.

IMPROVED WHITE SPINE—Shorter and thicker than other slicing varieties. Early.

DAVIS PERFECT—All the name implies. Well shaped, good color, prolific bearer. Used small for pickles. or stays green a long time for slicing.

Postpaid prices on all cucumbers: Pkt. 5c; oz. 15c; $\frac{1}{4}$ lb. 40c.

EGG PLANT

NEW YORK IMPROVED—The standard variety, producing large, oval fruits.

BLACK BEAUTY—Fruits a little longer than the New York, and somewhat earlier.

Postpaid prices: Pkt. 10c; $\frac{1}{2}$ oz. 30c; 1 oz. 50c.

Endive: MOSS CURLED—Postpaid prices: Pkt. 5c; oz. 15c; $\frac{1}{4}$ lb. 40c.

Kohl Rabi: WHITE VIENNA—Postpaid prices: Pkt. 5c; oz. 25c; $\frac{1}{4}$ lb. 75c.

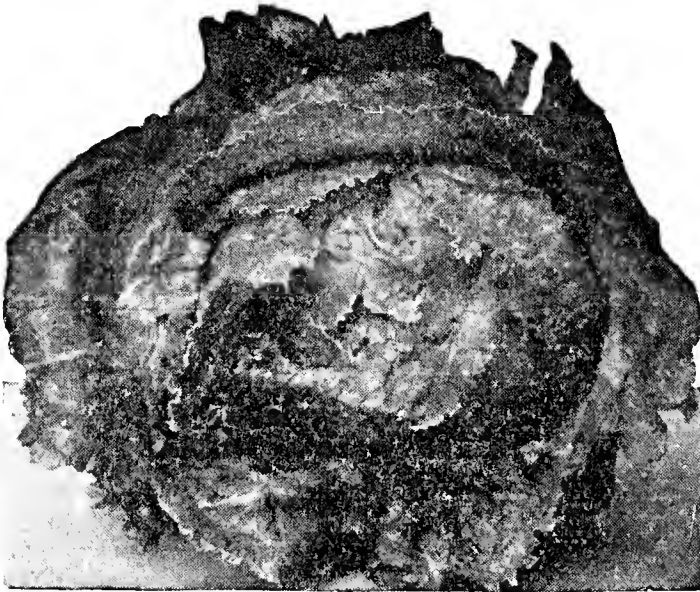
LETTUCE--Loose Leaf Varieties

BLACK SEEDED SIMPSON—Dark green leaves, crisp and tender.

GRAND RAPIDS—A beautiful lettuce. Very popular.

EARLY PRIZEHEAD—Very curly leaves, tinged with red.

Postpaid prices on above varieties: Pkt. 5c; oz. 15c; $\frac{1}{4}$ lb. 45c; 1 lb. \$1.15. **Not Postpaid:** per lb. \$1.10.



New York or Wonderful Head Lettuce

Pkt. 5c; oz. 20c; $\frac{1}{4}$ lb. 65c; 1 lb. \$1.85.

LETTUCE--Head- ing Varieties

ICEBERG — Very crisp, firm heads. Bright green with slight tinge of brown on edge. Stands drought and warm weather well without going to seed. Postpaid prices: Pkt. 5c; oz. 20c; $\frac{1}{4}$ lb. 55c; 1 lb. \$1.60.

NEW YORK OR WONDERFUL —A very popular variety. Large, firm heads with dark green outer leaves, and nicely blanched, creamy white centers. A great heat resister. Postpaid prices:

WATER MELONS

PHINNEY'S EARLY—One of the earliest. Long melon. Good quality for home garden.

PEERLESS OR ICE CREAM—A favorite with many. Medium size, bright red flesh, sweet and juicy.

COLE'S EARLY—The small, round, striped melon much grown for its earliness and fine flavor.

KLECKLEY'S SWEET—The favorite long melon for this section, combining earliness with good size and appearance and delicious taste.

HARRIS EARLY—We have wonderful reports from this melon. They are exceptionally large for so early a variety, being slightly oval, with mottled stripes. Bright red flesh, sweet and tender. A heavy producer.

ROUND LIGHT ICING—This is one we like best and we know you will find it profitable either for market or home use. Medium size, nearly round, light green skin. Prolific bearer of excellent melons.

HALBERT'S HONEY—Similar in appearance to Kleckley's Sweet. Has a very sweet flavor.

Prices on above varieties of watermelon seed—Postpaid: Pkt. 5c; oz. 10c; $\frac{1}{4}$ lb. 25c; 1 lb. 80c. Not Postpaid: per lb. 75c; 5 lbs. or more @ 70c per lb.

WINTER WATERMELON—Ripen on the vine and are good then or can be kept until late in the fall (if you don't eat them all sooner). Postpaid prices: Pkt. 5c; oz. 15c; $\frac{1}{4}$ lb. 45c; 1 lb. \$1.40.

MUSK MELONS

ROCKY FORD OR NETTED GEM—The standard cantaloupe. The flesh is green and sweet. Ripen well in this climate.

EXTRA EARLY HACKENSACK — A large melon with green flesh and exceedingly good flavor. One of the earliest of all muskmelons.

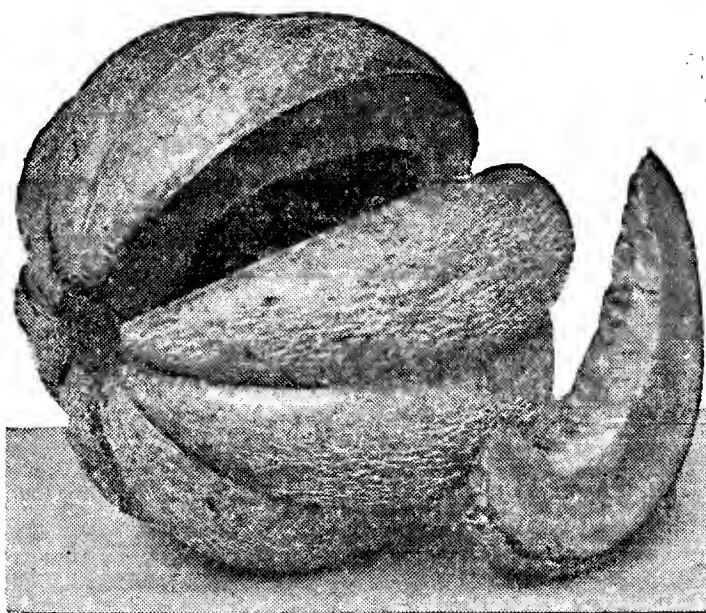
EMERALD GEM — Smooth green skin, with bright yellow flesh. Small seed cavity. Fine quality.

HEART OF GOLD — Yellow skin and yellow meat. Medium size. Simply delicious.

HALE'S BEST, EXTRA EARLY—A new addition to our list. Highly recommended as the earliest of all muskmelons. Salmon flesh, medium size.

Prices on above varieties of muskmelons—Postpaid: Pkt. 5c; oz. 15c; $\frac{1}{4}$ lb. 40c; 1 lb. \$1.10.

HONEY DEW—Differs in appearance and flavor from all other melons. Smooth skin, with sweet, sugary flesh. Ripen after harvest and can be kept until Thanksgiving time. Postpaid prices: Pkt. 5c; 1 oz. 20c; $\frac{1}{4}$ lb. 50c; 1 lb. \$1.40.



Extra Early Hackensack Muskmelon

Mustard: **GIANT SOUTHERN CURLED**—Makes excellent greens. Postpaid prices: Pkt. 5c; oz. 10c; $\frac{1}{4}$ lb. 30c.

Okra: **DWARF**—An excellent vegetable for soup and stews. Postpaid prices: Pkt. 5c; oz. 10c; $\frac{1}{4}$ lb. 35c.

ONION SEED

YELLOW GLOBE DANVERS—Standard yellow globe onion for summer use or winter keeping. Postpaid prices: Pkt. 5c; oz. 15c; $\frac{1}{4}$ lb. 50c; 1 lb. \$1.60. **Not Postpaid:** per lb. \$1.50; 5 lbs. or more @ \$1.45 per lb.

PRIZETAKER—A large, yellow onion, exceedingly mild. Postpaid prices: Pkt. 5c; oz. 20c; $\frac{1}{4}$ lb. 60c; 1 lb. \$1.85. **Not Postpaid:** per lb. \$1.75; 5 lbs. or more @ \$1.70 per lb.

MOUNTAIN DANVERS—A yellow onion, oval shape, early, extra fine keeper. Postpaid prices: Pkt. 5c; oz. 20c; $\frac{1}{4}$ lb. 60c; 1 lb. \$1.85. **Not Postpaid:** per lb. \$1.75; 5 lbs. or more @ \$1.70 per lb.

SOUTHPORT RED GLOBE—The very best red onion. Postpaid prices: Pkt. 5c; oz. 20c; $\frac{1}{4}$ lb. 60c; 1 lb. \$1.85. **Not Postpaid:** per lb. \$1.75; 5 lbs. or more @ \$1.70 per lb.

SOUTHPORT WHITE GLOBE—Mild flavor, large size, round onions that top the market. Postpaid prices: Pkt. 5c; oz. 20c; $\frac{1}{4}$ lb. 65c; 1 lb. \$2.00. **Not Postpaid:** per lb. \$1.90; 5 lbs. or more @ \$1.85 per lb.

SWEET SPANISH, WHITE—Large, oval shape, of exceedingly mild flavor. Very popular. Our stock is direct from a strictly reliable grower. Postpaid prices: Pkt. 10c; oz. 35c; $\frac{1}{4}$ lb. \$1.00; 1 lb. \$3.00.

SWEET SPANISH, YELLOW OR VALENCIA—The original Sweet Spanish onion. Postpaid prices: Pkt. 10c; oz. 30c; $\frac{1}{4}$ lb. 75c; 1 lb. \$2.25.

BARLETTA OR PICKLING ONION—White, extra early. Postpaid prices: Pkt. 5c; oz. 20c; $\frac{1}{4}$ lb. 65c; 1 lb. \$2.00.

ONION SETS AND PLANTS

RED OR YELLOW BOTTOM SETS—**Not Postpaid:** 20c per lb.; 2 lbs. for 35c; 10 lbs. for \$1.60.

WHITE BOTTOM SETS—**Not Postpaid:** 20c per lb.; 10 lbs. for \$1.75.

Crystal White Wax Onion Plants	{ per bunch, containing about 100 plants, not postpaid , 20c; 5 bunches for 90c.
Bermuda (yellow) Onion Plants	

Ask for prices on onion sets and plants in large quantities.

Parsnips: **HOLLOW CROWN**—The standard variety. Postpaid prices: Pkt. 5c; oz. 10c; $\frac{1}{4}$ lb. 25c; 1 lb. 75c.

Parsley: **MOSS CURLED**—Very attractive. Postpaid prices: Pkt. 5c; oz. 10c; $\frac{1}{4}$ lb. 30c.

PEAS

ALASKA, OR EARLIEST OF ALL—Dwarf vines, smooth. Can be planted earlier than any other variety.

WRINKLED VARIETIES

AMERICAN WONDER—Extra early dwarf, small pods but very productive.

LITTLE MARVEL—The best and one of the earliest dwarf wrinkled peas. You will not be disappointed with the Little Marvels.

GRADUS—Among the earliest of the large podded peas. Vines about 30 inches. Six to nine large, sweet, tender peas in every pod.

EVERBEARING—We sell more Everbearing peas than any other kind for main crop, canning, etc. Prolific bearer of large podded peas of excellent flavor. Vines 30 to 36 inches tall.

STRATAGEM—A main crop pea. Vines medium height, pods large and well filled. Fine flavor.

THOMAS LAXTON—An early, extra sweet, tender pea. Vines grow to 30 or 36 inches high.

HORSFORD'S MARKET—Peas are small, but heavy bearers, and are sweet, tender and delicious.

DWARF TELEPHONE—A large, early pea of good quality. Vines 18 or 20 inches.

LAXTON'S PROGRESS—A late introduction. The earliest of the large podded, early wrinkled sorts. Long, well filled pods of exceptionally fine peas.

PRICES ON ALL VARIETIES OF PEAS—Postpaid: $\frac{1}{2}$ lb. 20c; 1 lb. 30c. Not Postpaid: per lb. 25c; 5 lbs. or more @ 22c per lb.

PEPPERS

EARLY GIANT NEOPOLITAN—A large, mild pepper, producing fruit in great abundance. The largest early pepper produced. Postpaid prices: Pkt. 10c; $\frac{1}{2}$ oz. 35c; oz. 60c.

LARGE BELL OR BULLNOSE—The most widely grown sweet pepper. Postpaid prices: Pkt. 10c; oz. 30c.

LONG CAYENNE—Postpaid prices: Pkt. 10c; oz. 30c.

Easily grown and profitable for stock feeding.

PUMPKINS

CONNECTICUT FIELD—Large yellow, especially good for stock. Postpaid prices: Pkt. 5c; oz. 10c; $\frac{1}{4}$ lb. 30c; 1 lb. 90c.

SMALL SUGAR OR PIE—Smaller than the field varieties, fine texture, delicious flavor. Very productive. Postpaid prices: Pkt. 5c; oz. 10c; $\frac{1}{4}$ lb. 35c; 1 lb. \$1.00.

RADISHES

EARLY SCARLET TURNIP—The small, extra early sort.

EARLY SCARLET GLOBE—Somewhat larger than the "Turnip" radish.

SCARLET GLOBE, WHITE TIPPED.

FRENCH BREAKFAST—Oval in shape, red with white tip.

CRIMSON GIANT—Grows twice the size of the small red varieties without getting pithy. Mild and crisp.

WHITE ICICLE—A standby. The best long white radish grown.

WHITE TURNIP—Globe-shaped white. Very mild and tender.

LONG SCARLET—About 5 inches long. Bright red, crisp and brittle.

PRICES ON RADISH SEED—Postpaid: Pkt. 5c; oz. 10c; $\frac{1}{4}$ lb. 30c; 1 lb. 90c. Not Postpaid: per lb. 85c; 5 lbs. or more @ 80c per lb.

Sage: Postpaid prices: Pkt. 10c; oz. 40c.

Salsify: **OR OYSTER PLANT**—Postpaid prices: Pkt. 5c; oz. 20c; $\frac{1}{4}$ lb. 60c.

SPINACH

BLOOMSDALE SAVOY—The earliest variety. Can be sown as soon as the ground can be worked. Postpaid prices: Pkt. 5c; oz. 10c; $\frac{1}{4}$ lb. 20c; 1 lb. 45c.

KING OF DENMARK—Similar in growth to the Bloomsdale but does not seed so quickly in warmer weather. Postpaid prices: Pkt. 5c; oz. 10c; $\frac{1}{4}$ lb. 25c; 1 lb. 50c.

NEW ZEALAND—A distinct type, large, spreading plants, but leaves remain tender a long time even in hottest weather. Postpaid prices: Pkt. 5c; oz. 10c; $\frac{1}{4}$ lb. 30c; 1 lb. 80c.

SQUASH

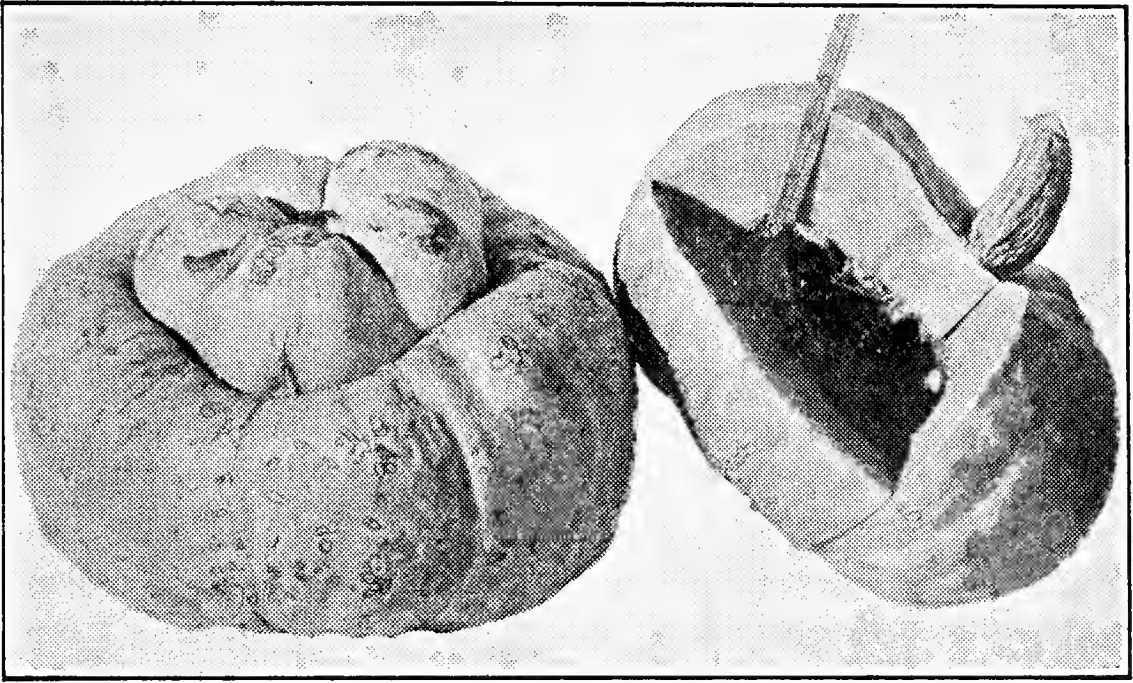
TRUE GREEN HUBBARD—The standard winter squash. Postpaid prices: Pkt. 5c; oz. 15c; $\frac{1}{4}$ lb. 40c; 1 lb. \$1.15.

GOLDEN HUBBARD—Similar to the green hubbard in shape and quality but a rich, golden bronze color. Postpaid prices: Pkt. 5c; oz. 10c; $\frac{1}{4}$ lb. 40c; 1 lb. \$1.15.

CHICAGO WARTY HUBBARD—Green with extra hard, rough skin. Keeps longer than other hubbards. Postpaid prices: Pkt. 5c; oz. 15c; $\frac{1}{4}$ lb. 40c; 1 lb. \$1.15.

DELICIOUS—A variety that is particularly well named. Somewhat smaller than the hubbards, thicker fleshed and of extra good quality. Postpaid prices: Pkt. 5c; oz. 15c; $\frac{1}{4}$ lb. 45c; 1 lb. \$1.40.

TABLE QUEEN—Here is something market gardeners tell me they can always sell. The squash are small (they are sometimes called individual squash) and good from early fall throughout the winter, if you



Cloud Peak Squash

have enough to last that long. Postpaid prices: Pkt. 5c; oz. 15c; $\frac{1}{4}$ lb. 45c; 1 lb. \$1.40.

SUMMER CROOKNECK—The favorite variety of summer squash. Postpaid prices: Pkt. 5c; oz. 15c; $\frac{1}{4}$ lb. 40c; 1 lb. \$1.25.

WHITE SCALLOP—Early maturing summer squash, of very good flavor. Postpaid prices: Pkt. 5c; oz. 15c; $\frac{1}{4}$ lb. 45c; 1 lb. \$1.40.

CLOUD PEAK—We secured the first of this odd-shaped squash from a gardener who brought the seed from Idaho. Have never found a catalog with it in, so had to find a name for it. "Cloud Peak" fits the best of anything ever suggested to us, because it is of the very highest quality. Large, yellow squash with extra thick meat of fine texture and delicious flavor. Excellent keeper. Supply of seed limited. Postpaid prices: Pkt. 10c; $\frac{1}{2}$ oz. 20c; 1 oz. 35c.

TOMATOES

All our Tomato seed is Northern Grown, insuring a maximum of hardiness and early maturity.

EARLIANA—Too widely used to need description.

JOHN BAER—Very hardy and prolific. Smooth, handsome, solid fruits of exceptional quality. Matures with the earliest.

BONNY BEST—Another excellent variety for our section of the country. Nearly as early as Earliana, and has a much smoother, better-shaped fruit.

PRICES ON ABOVE TOMATOES—Postpaid: Pkt. 5c; $\frac{1}{2}$ oz. 20c; 1 oz. 30c; $\frac{1}{4}$ lb. \$1.00.

JUNE PINK—The best of the light red tomatoes for our climate. Mature well. Postpaid prices: Pkt. 5c; $\frac{1}{2}$ oz. 25c; 1 oz. 40c.

GOLDEN QUEEN—A bright yellow tomato of good size, smooth and solid. Postpaid prices: Pkt. 5c; ½ oz. 25c; 1 oz. 40c.

Ground Cherry or Husk Yellow Pear } For preserves, nothing can beat them. Postpaid prices, either variety: Pkt. 5c; ½ oz. 25c; 1 oz. 40c.

TURNIPS

EXTRA EARLY WHITE MILAN—The very earliest turnip. Flat shape. Postpaid prices: Pkt. 5c; oz. 10c; ¼ lb. 30c; 1 lb. 90c. **Not Postpaid:** per lb. 85c; 5 lbs. or more @ 80c per lb.

PURPLE TOP WHITE GLOBE—Standard variety, combining earliness with attractive shape and good eating and keeping qualities. Postpaid prices: Pkt. 5c; oz. 10c; ¼ lb. 25c; 1 lb. 75c. **Not Postpaid:** per lb. 70c; 5 lbs. or more @ 65c per lb.

PURPLE TOP STRAP LEAF—Flat shape, good quality. Postpaid prices: Pkt. 5c; oz. 10c; ¼ lb. 25c; 1 lb. 75c. **Not Postpaid:** per lb. 70c; 5 lbs. or more @ 65c per lb.

GOLDEN BALL—Yellow meated variety of superior flavor. Medium size, round and firm. Postpaid prices: Pkt. 5c; oz. 10c; ¼ lb. 25c; 1 lb. 85c. **Not Postpaid:** per lb. 80c; 5 lbs. or more @ 75c per lb.

RUTABAGA OR SWEDISH TURNIP—Postpaid prices: Pkt. 5c; oz. 10c; ¼ lb. 25c; 1 lb. 75c. **Not Postpaid:** per lb. 70c; 5 lbs. or more @ 65c per lb.

Seed Potatoes: All varieties. Priced in line with market conditions.

Vegetable Plants: A full stock of vegetable plants of all kinds in season. Real Quality Stuff, priced right.

VIGORO

The complete fertilizer for lawns, garden, flowers, or house plants. Clean and easy to use. Prices, f.o.b. Sheridan: 5 lbs. 50c; 25-lb. bag \$1.75; 50-lb. bag \$3.00; 100-lb. bag \$5.00.

We also carry **STEAM BONE MEAL FERTILIZER** and **SULPHATE OF AMMONIA**.



EVERGREEN



**ORDER
EVER GREEN**
to protect your flowers
from insects

An insecticide that is absolutely harmless to humans, animals, and birds, but deadly to insects on vegetables and flowers. Don't let insects spoil the beauty of your flowers, or destroy your vegetable garden.

EVERGREEN, being non-poisonous, can be sent by mail. Prices:

1-oz. bottle 35c; 6-oz. bottle \$1.00; pint bottle \$2.00. Postage extra.

We handle **PARIS GREEN**, also garden sprayers in various sizes.



FLOWERS



I sure wish we could give a whole lot of space to description and illustration of the flower seed we carry. We take very particular pains in the selection of our varieties and strains, purchasing in most instances direct from a grower who has specialized in growing flower seeds since 1890. Seeds are packaged in our own colored packets with cultural directions on each packet.

FLOWER NOVELTIES

CALENDULA—Pastel Bedding Mixture—Many new shades of this charming flower, including apricot, salmon, cream, and white, as well as the better known orange and lemon. Will make a lovely bed or border. Pkt. 10c; $\frac{1}{4}$ oz. 25c.

DIMORPHOTHECA OR AFRICAN DAISY—A bright, gorgeous display of flowers coming early in the spring. Do especially well in warm, sunny locations. You are sure to like this flower. Pkt. 10c; $\frac{1}{4}$ oz. 40c.

HOLLYHOCK, TRIUMPH MIXED—A remarkable new, early flowering hollyhock, growing only 4 or 5 feet high. Branching habit, with all stems studded with fringed and wavy flowers in a great variety of colors. Pkt. 10c; $\frac{1}{4}$ oz. 65c.

DIANTHUS, SWEET WIVELSFIELD—A new annual pink, remarkably free flowering, with a wonderful range and combination of colors. Pkt. 10c; $\frac{1}{8}$ oz. 35c.

ACROLINUM—(Straw Flower)—Double mixed annual. Pkt. 10c; $\frac{1}{4}$ oz. 20c.

AGERATUM—A border flower annual. Blue Dwarf. Pkt. 10c; $\frac{1}{4}$ oz. 30c.

ALYSSUM—A dainty white flower for borders and rockwork. Common: Pkt. 10c; oz. 35c. Little Gem: Pkt. 10c; $\frac{1}{4}$ oz. 25c.

AMARANTHUS—Tricolor (Joseph's Coat) 2 $\frac{1}{2}$ feet. Brilliant foliage, good border plant. Pkt. 10c.

ASTERS—Extra Early Express. The earliest of all asters. Good size and quite double. Mixed colors. Pkt. 10c; $\frac{1}{8}$ oz. 40c.

Queen of the Market. Early profuse bloomers. Mixed colors. Pkt. 10c; $\frac{1}{4}$ oz. 40c.

Queen of the Market. Special wilt-resistant strain. Finest mixed. Pkt. 15c; $\frac{1}{8}$ oz. 40c.

Improved Crego Giant. Immense fluffy flowers, very attractive. Mixed colors. Pkt. 10c; $\frac{1}{4}$ oz. 40c.

Improved Crego Giant. Special wilt-resistant strain. Finest mixed. Pkt. 15c; $\frac{1}{8}$ oz. 40c.

BALSAM—An old favorite. Annual mixed. Pkt. 10c.

CALLIOPSIS—Very graceful for cutting. Mixed: Pkt. 10c.

CALENDULA (Pot Marigold)—Easily grown, very hardy. Orange King: Pkt. 10c; oz. 25c. Mixed: Pkt. 10c; oz. 25c.

CANARY BIRD VINE—Does well in shade. Pkt. 10c; oz. 50c.

CANDYTUFT—For massing in flower beds. Mixed Annual: Pkt. 10c; oz. 35c.

CANTERBURY BELLS—A beautiful biennial. Single mixed: Pkt. 10c; $\frac{1}{4}$ oz. 25c. Double mixed: Pkt. 10c; $\frac{1}{4}$ oz. 50c.

CASTOR OIL BEAN—For ornamental purposes. Pkt. 10c; oz. 20c.

CARNATION—For outdoor planting. Marguerite, earliest mixed: Pkt. 10c; $\frac{1}{4}$ oz. 30c. Giant Grenadine, double mixed: Pkt. 10c; $\frac{1}{4}$ oz. 40c.

CARNATION—Early flowering perpetual. Plants bloom in about five months. Scarlet: Pkt. 15c; mixed: Pkt. 15c.

CELOSIA (Coxcomb)—Easy culture annual. Dwarf mixed: Pkt. 10c.

CLARKIA—A very beautiful annual, easily grown. Mixed: Pkt. 10c; $\frac{1}{2}$ oz. 25c.

CHRYSANTHEMUM—Very attractive and keep well in water when cut. Annual, single mixed: Pkt. 10c; double mixed: Pkt. 10c.

COSMOS—Early flowering single. An annual of easy culture. Do well with very little water. Pkt. 10c; $\frac{1}{4}$ oz. 25c.

CYANUS (Bachelor Button)—Good for cutting. Pkt. 10c; $\frac{1}{2}$ oz. 25c.

DIANTHUS OR PINKS—Mixed color single. Perennial. Pkt. 10c; $\frac{1}{4}$ oz. 25c. Mixed colors, double (extra select stock). Perennial. Pkt. 15c; $\frac{1}{8}$ oz. 35c. Mixed colors, single; annual: Pkt. 10c; $\frac{1}{4}$ oz. 25c. Mixed colors, double; annual: Pkt. 10c; $\frac{1}{4}$ oz. 30c.

ESCHCOLTZIA (California Poppy)—True rich yellow. Pkt. 10c; $\frac{1}{4}$ oz. 25c. Mixed colors: Pkt. 10c; $\frac{1}{4}$ oz. 25c.

FOUR-O'CLOCKS—A good standby. Pkt. 10c; oz. 20c.

FORGET-ME-NOT—A dainty little flower for edging. Love cool, moist soils. Pkt. 10c; $\frac{1}{4}$ oz. 40c.

FOX GLOVE (Digitalis)—Tall spike flowers, perennial. Shrubbery border. Pkt. 10c; $\frac{1}{4}$ oz. 25c.

GAILLARDIA—Scarlet and Orange. Perennial. Easy culture. Pkt. 10c; $\frac{1}{2}$ oz. 35c.

GODETIA—A beautiful annual. Does well in poor soil. Pkt. 10c; $\frac{1}{4}$ oz. 25c.

GOURDS (Ornamental)—Fine for arbors and fences. Pkt. 10c; oz. 20c.

GYPSOPHILA (Baby's Breath)—White annual. Pkt. 10c; oz. 25c. Pink rosea. Annual. Pkt. 10c; $\frac{1}{2}$ oz. 25c. Perennial: Pkt. 10c; $\frac{1}{4}$ oz. 25c.

HELICHRYSUM (Giant Straw Flower)—For winter bouquets. Mixed. Pkt. 10c; $\frac{1}{4}$ oz. 25c.

HELIOTROPE (Bedding Favorite)—Sweet scented. Mixed. Pkt. 10c.

HOLLYHOCKS—Charming background. Single mixed: Pkt. 10c; oz. 30c. Double mixed: Pkt. 10c.

HYACINTH BEAN—Climber, purple and white. Pkt. 10c; oz. 25c.

KOCHIA (Burning Bush)—Light green, changing to red in the fall. Pkt. 10c; $\frac{1}{2}$ oz. 25c.

KUDZU VINE—Hardy perennial climber. Pkt. 10c; $\frac{1}{2}$ oz. 25c.

LARKSPUR—Lovely, graceful flowers. Annuals and perennials are distinct types.

Annuals—Dwarf Emperor, mixed colors. Pkt. 10c; $\frac{1}{4}$ oz. 25c.

Annuals—Stock Flowered, finest mixed. Pkt. 10c; $\frac{1}{4}$ oz. 35c.

Annuals—Giant Imperial, a late introduction highly recommended. Grow 4 to 5 feet high. Pkt. 10c; $\frac{1}{4}$ oz. 45c.

Perennials, also called **Delphinium**. Gold Medal Hybrids, choice mixed. Pkt. 10c; $\frac{1}{8}$ oz. 35c.

LOBELIA—Excellent for bedding or porch boxes. Crystal Palace, deep blue. Pkt. 10c; $\frac{1}{8}$ oz. 40c.

LUPINUS—Free flowering, prefers a little shade. Annual, mixed: Tall, Pkt. 10c; Dwarf, Pkt. 10c. Mixed perennial: Pkt. 10c.

MARIGOLD—An old-time favorite. Easy to grow. Giant African Double, mixed: Pkt. 10c; $\frac{1}{4}$ oz. 25c. Giant African Double, Orange Prince: Pkt. 10c; $\frac{1}{4}$ oz. 40c. Dwarf French, very dainty: Pkt. 10c; $\frac{1}{4}$ oz. 25c.

MIGNONETTE—Sweet scented border flowers. Pkt. 10c; $\frac{1}{2}$ oz. 20c.

MOON FLOWERS (Ipomea)—Mixed beautiful summer climber. Pkt. 10c; $\frac{1}{2}$ oz. 30c.

MOON FLOWER (Ipomea)—Early flowering. Flowers measure $3\frac{1}{2}$ to 4 inches across. Very deepest sky blue. Pkt. 10c.

MORNING GLORY—A well known climber. (Convovulvus.) A tall climber. Pkt. 10c; oz. 25c. Giant Japanese Mixed: Pkt. 10c; $\frac{1}{4}$ oz. 25c.

MOURNING BRIDE (Scabiosa)—Easily grown, very hardy. Fine for cutting. Tall Mixed: Pkt. 10c; $\frac{1}{4}$ oz. 30c. Dwarf Mixed: Pkt. 10c; $\frac{1}{4}$ oz. 25c.

NASTURTIUMS—Profuse bloomers from mid-summer till frost. Very easy to grow. Tall: Pkt. 5c; oz. 15c. Dwarf: Pkt. 5c; oz. 15c.

Golden Gleam —A wonderful introduction, producing a mass of sweet scented blossoms. You can't help but like them. Pkt. 10c; oz. 30c.

PANSY—A delightful little flower enjoyed by all. Our stock is very carefully bought.

Trimardeau—Mixed, showy colors. Pkt. 10c; $\frac{1}{8}$ oz. 30c.

Giants of California—Special mixture of giant types. Pkt. 15c; 1-16 oz. 50c.

"Improved" Swiss Giants—A wonderful blend of colors not found in ordinary pansies. Free bloomers, extra large blossoms. Pkt. 15c; 1-16 oz. 85c.

PETUNIA—Lovely for porch boxes or bedding. Bloom all summer. **Finest Hybrid** mixed: Pkt. 10c; 1-16 oz. 35c.

Balcony Blue: Pkt: 10c.

Elks Purple. Immense velvety purple flowers of outstanding beauty. Pkt. 20c.

Large Flowered Doubles: Pkt. 25c.

PHLOX-DRUMMONDII—Annual mixed, showy and easily grown. Pkt. 10c; $\frac{1}{4}$ oz. 40c. Perennial mixed: Pkt. 10c; $\frac{1}{8}$ oz. 45c.

PINKS (Dianthus)—See Dianthus.

POPPY—Oriental. Perennial, very silky. Pkt. 10c; $\frac{1}{4}$ oz. 40c.

Peony Flowered. Double mixed annual: Pkt. 10c.

Shirley. Annual: Pkt. 10c; $\frac{1}{4}$ oz. 20c.

Iceland Mixed. Perennial: Pkt. 10c; $\frac{1}{8}$ oz. 30c.

PORTULACA (Moss Rose)—A carpet of flowers. Double mixed: Pkt. 10c; $\frac{1}{8}$ oz. 50c. Single mixed: Pkt. 10c; $\frac{1}{8}$ oz. 45c.

PYRETHRUM OR PAINTED DAISY—A truly lovely flower, easier to start than many perennials.

Roseum. Mixed colors varying from pink to deep red. Pkt. 10c; $\frac{1}{4}$ oz. 45c.

REGAL LILY—Absolutely hardy. Lift bulblets in the fall and replant to greater depth. Pkt. 15c.

SALVIA (Scarlet Sage)—A good pot plant as well as a border plant. Pkt. 10c; $\frac{1}{8}$ oz. 35c.

SCABIOSA (Mourning Bride)—Shasta white, enormous size, new. Pkt. 10c.

Peachblossom. Beautiful shade peach pink, new. Pkt. 10c. Perennial Mixed: Pkt. 10c.

SCHIZANTHUS—One of the daintiest annuals. Mixed. Pkt. 10c; $\frac{1}{4}$ oz. 40c.

SCARLET RUNNER BEAN—Good climber. Pkt. 10c; $\frac{1}{4}$ lb. 25c.

SALPIGLOSSIS (Velvet Flower)—One of the most attractive annuals. Pkt. 10c; $\frac{1}{4}$ oz. 40c.

SHASTA DAISY—Perennial. Pkt. 10c; $\frac{1}{8}$ oz. 40c.

SNAP DRAGON (Antirrhinum)—Very fragrant, lovely for cut flower. Tall mixed: Pkt. 10c; $\frac{1}{4}$ oz. 30c. Dwarf mixed: Pkt. 10c; $\frac{1}{4}$ oz. 30c.

STOCKS—Double mixed dwarf, very hardy. Pkt. 10c; $\frac{1}{8}$ oz. 50c. Evening Scented: Pkt. 10c.

STATICE (Latifolia)—Dried for winter bouquets. Pkt. 10c; $\frac{1}{8}$ oz. 50c.

SWEET WILLIAM—Excellent border, fine for cutting; perennial. Mixed. Pkt. 10c; $\frac{1}{4}$ oz. 35c.

TRITOMA (Red Hot Poker)—Perennial, very handsome border plant. Pkt. 15c.

VERBENA—For borders and window boxes. Mixed. Pkt. 10c; $\frac{1}{4}$ oz. 40c.

WILD CUCUMBER—One of the earliest climbers. Pkt. 10c; oz. 25c.

ZINNIAS—If you plant but one annual, plant Zinnias.

Robusta or Giant Mixed. Pkt. 10c; $\frac{1}{4}$ oz. 30c.

The New Dahlia Flowered Zinnia, largest and very double. You will be delighted with this flower. We secure our stock direct from Bodger's, who developed and introduced this Zinnia.

Crimson Monarch, bright scarlet. Pkt. 10c; $\frac{1}{8}$ oz. 30c.

Exquisite. Most attractive rose. Pkt. 10c; $\frac{1}{8}$ oz. 30c.

Scarlet Flame. Beautiful orange scarlet. Pkt. 10c; $\frac{1}{8}$ oz. 30c.

Dream Lavender, A DREAM indeed. Pkt. 10c; $\frac{1}{8}$ oz. 30c.

Dahlia Flower Mixed—Contains all the above shades and many others. Pkt. 10c; $\frac{1}{8}$ oz. 25c.

ZINNIA—LILLIPUT—Exceptionally dainty. Bushes a foot high covered with a mass of little very double flowers. Mixed. Pkt. 10c; $\frac{1}{4}$ oz. 35c.

GLADIOLI AND DAHLIAS

GLADIOLI—"Glads" come in a wide range of colors and are justly very popular. Large size bulbs, mixed colors: per doz. 30c; 50 for \$1.10; 100 for \$2.00.

DAHLIAS—Carefully selected roots. Separate colors: red, white, yellow, purple. Each 15c.

SWEET PEAS

SPENCER SWEET PEAS—This is the largest flowering kind, bearing three and four flowers on long, straight stems. Profuse bloomers, wonderful shades.

Superb Mixed Spencer Sweet Peas—Pkt. 10c; oz. 15c; ¼ lb. 45c; lb. \$1.50.

NAMED VARIETIES OF STANDARD SPENCER SWEET PEAS

Avalanche—The best white: Pkt. 10c; oz. 20c.

Asta Ohn—A pinkish lavender, combines well with pure pink: Pkt. 10c; oz. 20c.

Countess—A very good pure pink: Pkt. 10c; oz. 20c.

Crimson King—A deep crimson: Pkt. 10c; oz. 20c.

Hawmark Lavender—Clear blue lavender: Pkt. 10c; oz. 20c.

Illuminator—Bright salmon cerise: Pkt. 10c; oz. 20c.

Royal Scot—A great favorite, in scarlet: Pkt. 10c; oz. 20c.

The Sultan—Very dark maroon: Pkt. 10c; oz. 20c.

Royal Purple—Rich reddish purple: Pkt. 10c; oz. 20c.

Idyl—Salmon pink on cream: Pkt. 10c; oz. 25c.

Pinkie—A leading variety, salmon pink: Pkt. 10c; oz. 25c.

Barbara—Orange salmon: Pkt. 10c; oz. 25c.

EARLY FLOWERING SPENCER SWEET PEAS—Large flowering, and come into bloom a month earlier than the regular Spencers. Formerly grown only in greenhouses.

Early Flowering Mixed Spencers—Full range of colors: Pkt. 10c; oz. 25c; ¼ lb. 85c; 1 lb. \$2.25.

NAMED VARIETIES OF EARLY FLOWERING SPENCERS

Zvolaneks Rose—One of the best, deep rose: Pkt. 10c; oz. 30c.

Blue Boy—The clearest blue in the Early Flowering Spencers: Pkt. 10c; oz. 30c.

Heather Bell—Lovely rosy lavender: Pkt. 10c; oz. 30c.

Early Snowstorm—Large, white: Pkt. 10c; oz. 30c.

Early Angelus—Salmon pink on cream: Pkt. 15c; oz. 35c.

Early Vulcan—Very vivid scarlet: Pkt. 15c; oz. 35c.

LATHYRUS EVERLASTING OR PERENNIAL SWEET PEAS—A hardy perennial climber. The plants start slowly but make a strong growth and bear large clusters of flowers resembling sweet peas in form but without fragrance. Colors, pink and white mixed. Pkt. 10c; ½ oz. 30c; 1 oz. 50c.

Alfalfa, Clover and Grass Seed

ALFALFA

We are large handlers of Alfalfa Seed, buying direct from the growers throughout Northeastern Wyoming and Southern Montana. This insures that purchases made from us will be extra hardy northern grown seed. Good stocks of **Common, Grimm, and Cossack**. Ask for samples and prices on identical lots.

CLOVERS

SWEET CLOVER, YELLOW BLOSSOM—Very valuable as a pasture and soil builder, and also for hay if cut properly.

SWEET CLOVER, WHITE BLOSSOM—Even more valuable as a fertilizer and soil builder than the Yellow Blossom, and equally as good for pasture and hay if not allowed to get too old.

RED CLOVER—Very valuable soil builder and forage crop. Usually planted with timothy in ratio of one pound red clover to two or three pounds timothy.

ALSIKE CLOVER—Grows best in wet places. Mix with timothy for meadow in low spots where alfalfa will kill out. Also very good in irrigated pastures, as it is highly nutritious, is relished by all kinds of livestock, and will not bloat stock when wet.

LAWN GRASS SEED

KENTUCKY BLUE GRASS—The standard lawn grass, sown either by itself or mixed with White Dutch Clover. Also used for stock pasture and fine for this purpose. Fancy 21-lb. seed, not postpaid, 1 lb. 35c; 5 lbs. or more at 32c per lb.

WHITE DUTCH CLOVER—Not usually planted alone, but makes an excellent mixture with Blue Grass. Fancy high grade seed, not postpaid, 1 lb. 55c; 5 lbs. or more at 50c per lb.

SHADY LAWN GRASS MIXTURE—We have many calls for "shady lawn" grass, and have a special mixture for this purpose. Plant it under trees or other places where the sun does not have much chance to shine on it. Prices, not postpaid: 1 lb. 35c; 5 lbs. or more at 32c per lb.

MOUNTAINEER LAWN MIXTURE—A mixture of grass seeds and White Clover that makes an excellent lawn. Prices, not postpaid: 1 lb. 35c; 5 lbs. or more at 32c per lb.

CREEPING BENT GRASS—Bent grass is light green in color and by reason of its creeping habits forms a dense turf and tends to crowd out dandelions and weeds. Prices, not postpaid: 1 lb. \$1.25; 5 lbs. or more at \$1.20 per lb.

USE OUR LAWN ROLLER AND VIGORO SPREADER

GRASSES

BROME GRASS—Fine grass crop for dry land, and also does well on irrigated land. Very good quality feed. Starts growth early in spring.

ORCHARD GRASS—Valuable in meadows or for pasture. Stands lots of dry weather, and is highly nutritious and palatable for stock. Very early starter in spring.

ENGLISH BLUE GRASS OR MEADOW FESCUE—A rapid grower and highly desirable in pasture or meadow mixtures.

TIMOTHY—A very hardy grass in general use for hay.

RED TOP—Suitable for soils too wet for other grasses.

CRESTED WHEAT GRASS—A very promising grass for dry land pasture, also makes good hay. Very drought resistant and hardy.

MOUNTAINEER IRRIGATED PASTURE MIXTURE—Our own mixture, which meets the requirements for an all-around pasture in a highly satisfactory manner. Contains Brome Grass, Orchard Grass, Meadow Fescue, Timothy, Kentucky Blue Grass, Alsike Clover, and White Dutch Clover, making a carefully balanced pasture feed.

FORAGE CROPS

SUDAN GRASS—Unquestionably the leading one-year forage crop for our country. Drought resistant on dry land, but responds to irrigation with a tremendous growth. Relished by all stock and is highly nutritious. Should not be planted till danger of frost is past, and can usually be sown as late as the first of July and still make a crop.

MILLET—Millet is valuable as a catch crop for both hay and grain.

German Millet is a small seeded variety which produces an abundance of forage and considerable seed.

Hog Millet and **Proso** (also called **Hershey**) are large seeded varieties, are heavy seed producers as well as having good hay value.

BLACK AMBER CANE—Produces an abundance of feed, much relished by stock as it is very sweet.

DWARF ESSEX RAPE—One of the finest green feeds grown. For late summer and fall pasture, sow 1½ or 2 lbs. of rape seed per acre in your grain just before you irrigate. It will grow in the stubble and make an abundance of feed for hogs, cattle, or sheep.

SEED GRAIN

Space at our disposal will not permit us to give variety descriptions of various seed grains. However, we carry a good stock of seed grains of all kinds.

WHEAT - OATS - BARLEY - SPELTS

Prices vary with market conditions, but are always in line. Ask for quotations.

GOPHER OATS

Want to call special attention to our stock of **Gopher Oats**. These are exceptionally good, raised on dry land near Sheridan from certified seed grown in the Black Hills. The North Dakota Experiment Station says that **Gopher Oats** is the most valuable variety ever found for the western portion of that state. The Sheridan Dry Land Experiment Station reports very good success with them. We have a fair sized stock of these **Gopher Oats**, but it may not last throughout the season, so would recommend early purchase. Considering quality, and market on oats, our price is reasonable.

SEED CORN

All seed corn offered by us is either Wyoming or Montana grown, and is very carefully tested for germination before we offer it for sale. Whether you buy your seed corn from us or from your neighbor, or plant your own, **Be sure it will grow before you plant it.**

All varieties—

Minnesota 23, or White Capped Yellow Dent

Yellow Dent.

Northwestern Red Dent.

Gehu.

White Dent.

Falconer Semi-Dent.

DU-BAY SEED DISINFECTANTS



Give seeds a chance to do their best by protecting them against disease and infection. We handle the disinfectants manufactured by the Bayer-Semesan Co. Their use will increase your farm profits and your gardening pleasure.

For Potatoes

THE NEW IMPROVED SEMESAN BEL is a highly effective disinfectant for treating potatoes. Easily applied and very inexpensive—4-oz. can treats 15 to 20 bushels of seed. Prices: 4-oz. can 50c; 1-lb. can \$1.75. Express extra.

For Grain

THE NEW IMPROVED CERESAN controls smut and other diseases on wheat, oats, and barley, and will increase yields and profits. Very inexpensive and easy to use— $\frac{1}{2}$ oz. treats one bushel of seed. See folder enclosed with this catalog. Prices: 1-lb. can 75c; 5-lb. can \$3.00. Express extra.

For Vegetables

SEMESAN is used for disinfecting all types of seed, and is especially valuable for treating seed planted in hot beds, where it prevents "damping off." 2-oz. can 50c.

NOTE—Du-Bay seed disinfectants are poison and can not be sent by mail. Order by express.

Revenge Louse Powder

A real quality product that does the work. Don't let lice rob you of your poultry profits—use **REVENGE**. Special price: large can 65c; small can 40c.

Space will not permit us to list many miscellaneous items carried in stock for gardeners and poultry raisers. Ask us for supplies of all kinds.

PLOW SHARES

and

Cutting Parts for Mowers and Binders

We can save you REAL MONEY on your plowshares and cutting parts for all makes of plows, mowers, and binders.

Space will not permit us to give a full price list of the cutting parts and repairs we carry, but when you go to fix your mower up for haying, come to us FIRST. We will save you TWENTY to FORTY per cent on guards, sections, etc.

We carry a large stock of repairs for the following mowers:

MASSEY HARRIS
DEERING
JOHN DEERE

M'CORMICK
M'CORMICK-DEERING
CHAMPION

ALSO BINDER CANVASES AND REPAIRS

Plow Shares

We carry in stock at Sheridan shares for the following plows:

To fit Canton or P.&O. (Mc-D.) No. 0554—14-in. Q. D. No. 462—14-in. Q. D. No. 464—14-in. Q. D. Alf.	To fit John Deere No. 217—14-in. Q. D. No. 248—14-in. Q. D. Alf.
To fit Rock Island No. 268-C—14-in. Q. D.	To fit Oliver No. 4675—14-in. Q. D. No. 5948—14-in. Q. D. Alf.

On practically all others, we can give two to four day service. Prices (on crucible steel shares) f.o.b. Sheridan:

	Regular	Alfalfa
12-inch shares, each -----	\$3.00	\$3.35
14-inch shares, each -----	3.25	3.60
16-inch shares, each -----	3.60	4.00

Soft center shares \$1.25 each above price for crucible share of same size. When less than three shares are ordered special, add 25 cents each to help cover extra cost of transportation.

MANUFACTURER'S GUARANTEE ON PLOW SHARES

"We guarantee our duplicate shares to fit the plow for which they are intended equally as well as the originals, to be as well made and to give equal service. We will replace any share that proves defective in material or workmanship."

We stand ready to back up this guarantee if occasion arises, but judging by our past experience in selling these shares, we will not be called upon to do so.

National Agricultural Library
RECEIVED

★ NOV 20 1975 ★

U.S. Department of Agriculture

Manufactured by

**NORTHERN
SPECIAL
FEEDS**

**NORTHERN
SEED
CO.**

for
Poultry and Animals

Sheridan, Wyo.

One of the recommendations for economy in feeding poultry is to use home grown feeds whenever possible. That's what you do when you use **NORTHERN SPECIAL FEEDS**. They are made right here in Sheridan, using home grown ingredients to the greatest possible extent. Fully proven formulas that produce results equal to any feed on the market, regardless of price. A trial will convince you, as it has others.

Prices quoted below are subject to change without notice.

Northern Special Feed Prices

	100 lbs.	50 lbs.	25 lbs.	8 1-3 lbs.
Buttermilk Starting Mash, regular	\$2.50	\$1.30	.70	.30
Buttermilk Starting Mash, cod liver oil	2.70	1.40	.75	.30
Buttermilk Growing Mash, regular	2.30	1.20	.65	.25
Buttermilk Growing Mash, cod liver oil	2.50	1.30	.70	.30
Buttermilk Turkey Growing Mash, regular	2.40	1.25	.70	.30
Buttermilk Turkey Growing Mash, cod liver oil	2.60	1.35	.75	.30
Baby Chick Scratch	2.20	1.15	.60	.25
Growing Chick Scratch	2.00	1.05	.55	.25
Buttermilk Laying Mash, regular	2.10	1.10	.60	.25
Buttermilk Laying Mash, cod liver oil	2.30	1.20	.65	.25
Northern Special Calf Meal			.90	

Cod Liver Oil Mash will help keep your baby chicks healthy. Fed to hens during hatching season it increases vitality of eggs. Our cod liver oil mashes are mixed often so there is no deterioration in the value of the cod liver oil content.

We carry a full line of feed grains, mill feed, ingredients for mashes, etc., at prices that are always in line.