

Historic, archived document

Do not assume content reflects current scientific knowledge, policies, or practices.

62.41

LIBRARY RECEIVED

1934 ANNUAL

Three New Golden Flowers

These new discoveries and developments in flowers are giving us fresh enjoyment in new types of flowers for our gardens. These have been thoroughly tested and found successful in our climate.



New Golden Gleam NASTURTIIUM

The flowers are very large, semi-double, fresh golden yellow, fragrant, and long stemmed. The somewhat trailing plants are ornamental in any garden. Pkt., 15c; large pkt., 25c.

See page 9 for further description of both these novelties.



Tithonia, The Golden Flower of the Incas.

TITHONIA

The Golden Flower of the Incas.

An annual, producing from the root many stout stems furnished with rather large foliage. The flowers are large and remind one of an immense single Zinnia; color, dazzling orange-scarlet. It forms a large, shrubby plant, flowers for a long period and is especially desirable for planting among shrubs or in the background of wide borders. Pkt., 25c.

P. VEGETABLE SEED TRIALS HORTICULTURE

New Guinea Gold MARIGOLD

Carnation-like flowers, 100 per cent semi-double, 2½ inches in diameter. Color a brilliant orange flushed with gold. The usual Marigold odor is less pungent. The newest Marigold of merit. Pkt., 25c.



New Guinea Gold Marigold.

Lohrman

SEED COMPANY

Detroit, Mich.
Macomb at Brush Randolph 1270

MARKET STORE 1340 NAPOLEON ST.



Roses for the Garden

NOTE: Our Roses are in two classes this year. First: Dormant, northern, field-grown, 2-year-old wrapped in burlap. Second: Fertil-Potted, packed in brick of Peat Moss.

VARIETY	Dormant	Fertil-Potted	VARIETY	Dormant	Fertil-Potted
EVERBLOOMING HYBRID TEA					
Gruss an Teplitz. Dark scarlet.	\$0.49	\$1.00	Mrs. Sam McGredy. Scarlet-copper-orange.		\$1.50
Mme. Jules Bouche. Snow-white.	.49	1.00	Souvenir (Golden Talisman). Fragrant, golden yellow.		1.50
Mrs. E. P. Thom. Solid yellow.	.49	1.00	Countess Vandal. Fragrant; salmon-pink.		2.25
Los Angeles. Coral shaded gold.	.49	1.00	Gov. Alfred E. Smith. Salmon-gold.		2.25
Dame Edith Helen. Pure pink.	.65	1.00	HARDY PERPETUAL		
Etoile de Hollande. Brilliant red.	.65	1.00	American Beauty. Cerise-red.	.49	1.00
E. G. Hill. Deep red, double	.65	1.00	Frau Karl Druschki. Pure white.	.49	1.00
Joanna Hill. Golden yellow.	.65	1.00	HARDY CLIMBERS		
Margaret McGredy. Red-gold.	.65	1.00	Blaze. (Everblooming). Scarlet.		2.25
Mev. G. A. Van Rossem. Apricot buds, copper-pink	.65	1.00	Scorcher. Scarlet.		1.50
Talisman. Gold and deep rose-pink.	.65	1.00	Allen's Fragrant Pillar. Satin pink.		2.00
Mme. Edouard Herriot. Coral-pink.	.65	1.00	New Dawn. (Everblooming). Pink; double.	1.75	2.25
President Herbert Hoover. Pink, gold and orange.	.65	1.00	American Beauty. Rose-red.	.49	1.00
Radiance. Clear pink.	.65	1.00	Dr. W. Van Fleet. Light pink.	.49	
Red Radiance. Clear red.	.65	1.00	Excelsa (Crimson Rambler). Crimson.	.49	.75
Rev. F. Page-Roberts. Golden yellow.	.65	1.00	Le Reve. Best yellow.	.49	
Souv. de Claudius Pernet. Pure yellow.	.65	1.00	Paul's Scarlet. Vivid scarlet.	.49	1.00
Roslyn. Orange-yellow.	.65	1.00	Dorothy Perkins. Bright shell-pink.	.49	1.00
Dotty. Bronze tint.		1.50	Golden Climber. Everblooming; golden yellow.		2.25
			Mme. Gregoire Staechelin. Pink.	.75	1.00

Other Fertil-Potted Varieties: (Hybrid Tea)—Etoile de France, Hadley, Briarcliff, Miss Rowena Thom, Duchess of Wellington. (Climbers)—Primrose. All at \$1.00 each.

Hardy Climbing Vines

- ARISTOLOCHIA siphio** (Dutchman's Pipe). 60c each; \$6.00 per doz.
- AMPELOPSIS** (Boston Ivy). 50c each; \$5.00 per doz.
- BITTERSWEET** (Waxwork). Strong plants, 50c each; \$5.00 per doz.
- CLEMATIS.**
Jackmani. Violet-purple. 75c each; \$7.50 per doz.
Henryi. White. 75c each; \$7.50 per doz.
Paniculata. Small star-shaped flowers. White. 50c each.
Ramona. Sky-blue. 75c each; \$7.50 per doz.
Madame Edouard Andre. Crimson. 75c each; \$7.50 per doz.
- HONEYSUCKLE.**
Halliana (Hall's Japan Honeysuckle). White flowers, changing to yellow; very fragrant. 40c each; \$4.00 per doz.
Scarlet Trumpet Honeysuckle. Strong, rapid grower; scarlet flowers. 50c each; \$5.00 per doz.
- SILVER LACE VINE.** 60c each; \$6.00 per doz.
- WISTERIA.** 60c each; \$6.00 per doz.
- WATER HYACINTHIS.** Lavender-blue flowers. 15c each.

WE CARRY A COMPLETE STOCK OF SHRUBS.

Water Lilies

- Water Lilies should be planted in soil as soon as received from us. Never allow them to become dry. Keep in water or wet sphagnum moss until planted as suggested below. All aquatic plants should have their leaves sprinkled at times, as they like moisture above water, too. NEVER ALLOW ANY AQUATIC PLANT TO DRY OUT.
- Helen Fowler.** A continuous bloomer, sweet scented, deep pink with lighter pink centers. \$1.00 each.
- Crimson Mist.** Dark carmine-red; very showy. \$1.50 each.
- Robinson.** Rich rosy crimson, reverse of petals having a silvery sheen. \$2.00 each.
- Mariacea Albida.** White petals with yellow stamens, and very fragrant. A continuous bloomer. Sepals are tinted with pink. \$1.00 each.
- Mariacea Chromatella.** Petals and stamens bright yellow, 4 to 6 inches across. A free and continuous bloomer. \$1.00 each.
- Rose Arey.** Large, bright cerise flowers, up to 8 inches in diameter, very sweetly scented. \$1.50 each.
- Tuberosa Rosea.** Shell pink. \$1.00 each.
- Odorata Gigantea.** White. 50c each.

Tropical Water Lilies

- Dauben.** Light blue. 80c each.
- Blue Beauty.** Deep blue. \$2.00 each.
- Mrs. Pring.** White. \$1.50 each.
- General Pershing.** Pink. \$2.50 each.

WE CARRY A COMPLETE STOCK OF PLANTS FOR POOLS



Lohrman's "Tested" Vegetable Seeds

LOHRMAN SEED COMPANY GIVES NO WARRANTY, EXPRESS OR IMPLIED, as to description, purity, productiveness, or any other matter of any seeds, plants or bulbs they send out, and they will not be in any way responsible for the crop. If the purchaser does not accept the goods on these terms, they are at once to be returned. Vegetable, flower and grass seeds, plants, roots or bulbs, delivered within 300-mile radius; balance at purchaser's expense. Number of days listed below are from planting to the harvest.

ALL VEGETABLE SEEDS: Pkt., 10c, except where noted. All prices subject to change without notice.

(*) Best Home Garden Variety.

	Pkt.	Oz.	¼ lb.	Lb.
ASPARAGUS Mary Washington. Rust resistant; dark green stalks. (Seed)	\$0.10	\$0.15	\$0.45	\$1.50
		Doz.	100	1000
2-year-old roots	\$0.35	\$2.00	\$12.00	

BEANS One pound will plant 100 feet of row; 60 pounds will plant an acre. Not less than 10 pounds at the 100-lb. rate. Plant 3 inches apart in rows 2 feet apart, and cover 2 inches deep.

DWARF YELLOW WAX BEANS

All Beans 10c per pkt.

	½ lb.	Lb.	5 lbs.	100 lbs.
Crackerjack. 48 days. Flat-podded, stringless, 7 inches	\$0.20	\$0.35	\$0.90	\$13.00
Golden Wax. 48 days. Oval pods, 4½ inches; stringless	.20	.35	.90	13.00
Pencil Pod Black Wax. 52 days. Early, pods round, 7 inches; stringless; black seeded	.20	.35	.90	13.00
*Sure Crop. 53 days. Pods flat; 6 inches long; black seed; stringless.	.20	.35	1.00	15.00
Unrivaled Wax. 53 days. First early; pods semi-flat; 5½ inches.	.20	.35	1.00	15.00

DWARF GREEN BEANS

*Bountiful. 48 days. Very early; pods flat; 7 inches; stringless	.20	.35	.90	13.00
Giant Stringless Green Pod. 53 days. Early; pods round, 6½ inches	.20	.35	.90	13.00
Full Measure. 52 days. Pods round; 6 inches; stringless; early	.20	.35	.95	14.00
Dwarf Horticultural. 53 days. Pods flat; 5 inches; stringless; greenish yellow splashed carmine	.20	.35	.95	14.00
Fordhook Bush Lima. 75 days. Midseason; pods 5 inches long. 1¼ inches broad	.25	.45	1.50	25.00
Kentucky Wonder (Pole). 65 days. Pods round, slender, 9 inches, tender	.20	.35	1.00	15.00
Seibert's Early Lima (Pole). 80 days. Early, flat pods, 6 inches	.25	.40	1.15	18.00
Tendergreen. 50 days. Early, pods straight, perfectly round, 7 inches long, stringless	.20	.35	1.00	15.00
Broad Windsor (Improved Horse Beans). 80 days. Bush 3 feet high. Three beans to pod	.20	.35	1.00	15.00

BEETS One ounce will sow 50 feet of row; 7 pounds will plant an acre. The rows should be 12 inches apart and the seed sown thinly and covered firmly with one inch of soil.

	Pkt.	Oz.	¼ lb.	Lb.
*Detroit Dark Red, Selected. 52-55 days. Round; skin dark blood-red; flesh bright red	\$0.05-\$0.10	\$0.15	\$0.35	\$0.90
Early Wonder, Selected. 50-55 days. Very early; roots globular, skin dark red; flesh deep blood-red	.10	.15	.35	.90
Crosby's Egyptian. 50-55 days. Early; flattened globe-shaped; skin dark red; flesh lighter	.10	.15	.20	.75

SWISS CHARD Fordhook Giant. 40 days. White ribs, 3 inches wide, dark green, heavily savoyed leaves, 2½ feet long, 10 inches wide	.05-10	.15	.35	1.00
---	--------	-----	-----	------

MANGEL WURZEL Mammoth Long Red. Roots cylindrical, light red, largest Mangel	.10	.15	.45	
Giant Feeding Sugar. Large yielder. oval-shaped; skin rose; flesh white	.10	.15	.45	

BRUSSELS SPROUTS Long Island Improved. Solid, round sprouts	.10	.20	.50	1.75
	½ oz.	Oz.	¼ lb.	Lb.

BROCCOLI Italian Green Sprouting. Light green, tender sprouts with loose flower heads like cauliflower	Pkt., 10c	\$0.40	\$0.70	\$1.80	\$6.00
---	-----------	--------	--------	--------	--------

CARROTS One ounce will sow 100 feet of row; 3 pounds will sow an acre. Sow one-half inch deep in rows 12 inches apart, thinning out to 3 inches between the plants.

	Pkt.	Oz.	¼ lb.	Lb.
*Chantenay. 70 days. Stump-rooted, 6 to 7 inches long, deep orange color, very smooth.	\$0.05-\$0.10	\$0.15	\$0.40	\$1.25
Imperator. Roots 8 to 10 inches long, and 1¾ to 2¼ inches across at shoulder. Cylindrical in shape and usually well stump-rooted. Color deep orange	.10	.20	.50	1.50

CARROTS—Continued.

	Pkt.	Oz.	¼ lb.	Lb.
Red-Cored Chantenay. 70 days. An improvement; slightly earlier; 6 inches long, smaller core, same color flesh	\$0.10	\$0.15	\$0.40	\$1.25
Coreless. 65 days. Roots cylindrical, orange-red, 6 inches long, short small tops	.10	.20	.50	1.50
Danvers Half-Long. 75 days. 7 inches; deep orange; larger than Chantenay; good cropper	.10	.15	.40	1.25
Guerrande or Oxheart. 75 days. 5 inches; stout and thick; light bright orange	.10	.15	.35	1.00

CABBAGE One ounce will produce 1500 plants; ½ pound will plant an acre. Start early crop in hotbed March 1st. Cover seed one-half inch. Late crop sow in field in May in hills 3 feet apart.

	Pkt.	Oz.	¼ lb.	Lb.
*Copenhagen Market. 66 days. Very early, round head, short stem	\$0.05-\$0.10	\$0.35	\$1.00	\$3.00
Early Jersey Wakefield. Early; pointed head	.10	.35	1.00	3.00
Golden Acre (Select) 62-64 days. Extra early, round, solid heads, very uniform	.10	.40	1.15	3.50
Lohrman's Earliest of All. 55 days. The earliest round-headed Cabbage; medium sized, solid heads. Crop failed.				
Premium Late Flat Dutch. 105 days. Heads large and solid; good keeper	.10	.25	.75	2.25
Lohrman's Selected Hollander. 120 days. Tight, round, hard heads; fine keeper, heaviest yielder	.10	.50	1.50	5.00
Mammoth Red Rock. 90 days. The large red Cabbage. Color deep red.	.10	.35	1.00	3.00
*Short-Stemmed Hollander or Danish Ballhead. 120 days. Very round, solid, winter sort; fine keeper	.05-10	.35	1.00	3.00
Ferry's Hollander. 120 days. Sold in original packages	.10	.50	1.50	5.00
Haco Red. 80 days. Earliest good red Cabbage; intense dark red throughout	.10	.50	1.50	4.50
Savoy Perfection Drumhead. 85 days. Large, solid heads heavily crimped, dark green	.10	.35	1.00	3.00
CHINESE CABBAGE, Chilili. The earliest and most sure-heading; long, solid, white, 2-ft. heads	.10	.30	.85	2.50
Wisconsin No. 8 (Yellows Resistant). 120 days. Heads large, round, solid, good keeper	.10	.50	1.50	5.00

CELERY One ounce sows 300 feet of row, produces 5000 plants. Sow in the open ground in April, barely covering the seed. Transplant to 8 inches in rows 3 feet apart. Hill up middle of August.

	Pkt.	Oz.	¼ lb.	Lb.
*Golden Self-Blanching. Dwarf, compact growth; thick, solid, heavily ribbed stalks. Early fall.	\$0.10	\$0.50	\$1.50	\$5.00
Golden Plume or Wonderful. Resembles Golden Self-Blanching, but earlier, larger and ranker growth	.10	.50	1.50	5.00
Winter Queen. Medium height, broad, light green stalks, solid and crisp; blanches well	.10	.35	1.00	3.00
Celery Seed for Flavoring		.10	.25	.75

CELERIC OR TURNIP-ROOTED CELERY

CELERIC OR TURNIP-ROOTED CELERY Witloof. (Extra Select). Seed from especially selected, fully developed forced heads	.10	.50	1.50	5.00
---	-----	-----	------	------

COLLARDS Georgia. Greens used as substitutes for cabbage

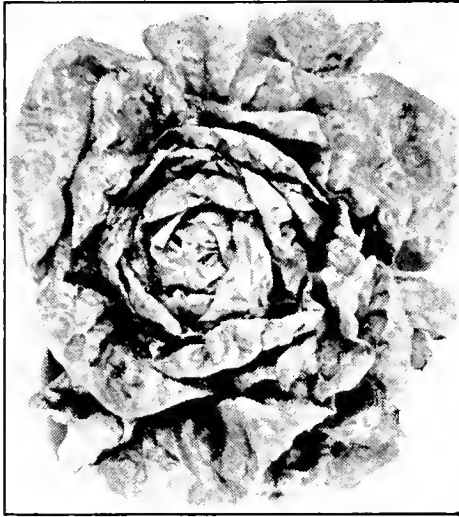
COLLARDS Georgia. Greens used as substitutes for cabbage	.05-10	.15	.20	.60
---	--------	-----	-----	-----

CAULIFLOWER One ounce of seed will produce 1500 to 2000 plants in open ground, or about 3000 in frames. One packet will produce 150 plants. Culture same as for cabbage.

	Pkt.	¼ oz.	Oz.	¼ lb.	Lb.
Lohrman's Super Snowball. 40 days. Larger, better Snowball for early crop only	\$0.10	\$0.90	\$3.00	\$10.50	\$38.00
*Early Snowball. 52 days. Main cropper; white, solid heads; finest strain	.10	.70	2.00	6.00	24.00

CORN One pound will plant 100 hills; 12 pounds will plant an acre. Use deep, rich soil. Plant in hills 3 feet apart each way. Six seeds to each hill. We supply 10 lbs. and over of Corn at 100-lb. rate.

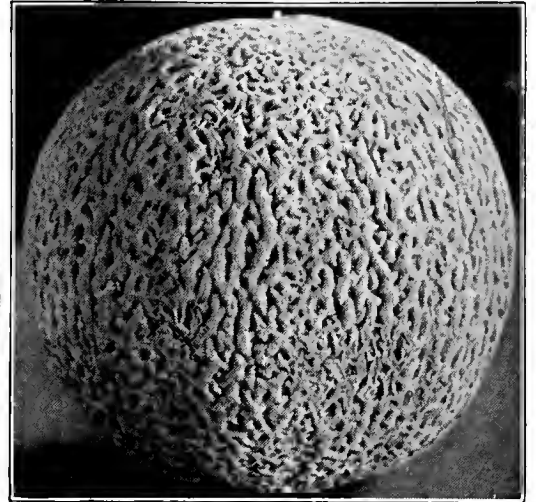
	Pkt.	½ lb.	Lb.	5 lbs.	100 lbs.
Bantam Evergreen. 93 days. Golden yellow; ears 8 inches long, 12- to 14-rowed; second early	\$0.20	\$0.30	\$0.95	\$14.00	
Black Mexican. 93 days. The grains bluish black; ears 8 in. long; 8-rowed; late	.20	.30	1.00	15.00	
Country Gentleman 110 days. White grains in irregular rows; ears 7 to 8 inches long. Late	.20	.30	.95	14.00	



New York or Wonderful Lettuce.



New York Purple Eggplant.



Honey Rock Muskmelon.

CORN—Continued.

	½lb.	Lb.	5lbs.	100lbs.
Golden Sunshine , 76 days. Yellow ears, 6½ inches, 12-rowed; the earliest of the Bantam type	\$.20	\$.30	\$1.05	\$16.00
Early Market , 76 days. The earliest large eared Sweet Corn, 6 to 7 inches, 12- to 14-rowed	.20	.30	1.05	16.00
*Stowell's Evergreen , 105 days. White ears, 8 to 9 inches, 16- to 18-rowed; late	.20	.30	.95	14.00
*Golden Bantam , 83 days. Ears 6 to 7 inches long, 8-rowed. Standard early sort	.20	.35	1.00	15.00
Whipple's Yellow , 75 days. Large ears 8 to 9 inches long, 14- to 18-rowed. Earlier than Bantam and as large as Evergreen	.20	.30	1.00	15.00
POP CORN, White Rice . For sowing	.15	.25	.85	12.00
	Pkt.	Oz.	¼lb.	Lb.

CORN SALAD OR FETTICUS. The small leaves are served like lettuce for an early spring salad. Sow in spring or during August and September

	\$.10	\$.15	\$.40	\$1.25
--	-------	-------	-------	--------

CRESS True Water .10 .40 1.15 3.50
Curled .10 .15 .25 .75

CUCUMBERS One ounce will plant 50 hills; 2 pounds will plant an acre in hills; 5 pounds in drills. Culture. Sow seed one-half inch deep in the hills. The hills should be 4 to 6 feet apart and each hill enriched with well-rotted manure.

	Pkt.	Oz.	¼lb.	Lb.
--	------	-----	------	-----

Chicago Pickling , 60 days. Short, bright green pickling sort, 7 by 3 inches	\$.10	\$.15	\$.35	\$1.00
*Davis Perfect , 68 days. Long, dark green, solid with few seeds. Mid-season, 11 by 3 inches	.05-10	.15	.35	1.00
Early Fortune , 66 days. Early, productive, dark green, good shipper, 9 by 2½ inches	.10	.15	.35	1.00
Extra Long Evergreen White Spine , 66 days. Longer than White Spine; dark green; midseason, 14 by 3½ inches	.10	.15	.35	1.00
Early White Spine , 60 days. Earliest, medium green, good pickler and slicer, 7½ by 2½ inches	.10	.15	.35	1.00
Improved Long Green , 72 days. Long, crisp; excellent for pickling. Late, 12 by 3 inches	.10	.15	.50	1.50
Klondike , 64 days. Rather thick; dark green. Medium early, 7½ by 2¾ inches	.10	.15	.35	1.00
Longfellow , 70 days. Long, slender, dark green. Good keeper. Midseason, 12 by 2 inches	.10	.15	.45	1.35
*National Pickling , 60 days. Early. The best pickling variety, 6 by 2¾ inches	.10	.15	.35	1.00

EGGPLANT One ounce will produce 1000 plants. Start seed inside in February. Transplant in rows 3 feet apart each way.

	Pkt.	Oz.	¼lb.	Lb.
--	------	-----	------	-----

Large New York Purple (Spineless), 130 days. Plants large, vigorous, and very productive. Fruits large, handsome, dark purple, and symmetrical in shape	\$.10	\$.40	\$1.25	\$4.00
Early Long Purple . Fruits are 10 to 12 inches long and 2½ inches thick. Early and prolific	.10	.40	1.25	4.00
*Black Beauty . Dark purple fruit almost black; matures early and is the best	.10	.40	1.25	4.00
ENDIVE One ounce to 100 feet of row. Sow in seed bed from early spring until August. Transplant to 1 foot apart in rows.	Pkt.	Oz.	¼lb.	Lb.
Full Heart Batavian (Escarolle). Broad leaves curled at the edges.	\$.10	\$.15	\$.50	\$1.50
Large Green Curled . Large leaves finely cut and curled	.10	.15	.40	1.25

KALE One ounce sows 500 feet of drill. Sow from early spring until the middle of August.

	Pkt.	Oz.	¼lb.	Lb.
Dwarf Blue Scotch , Hardier, dwarf-er habit than Green Curled	\$.10	\$.15	\$.40	\$1.25

KOHL-RABI One ounce will sow 200 feet of row; 4 pounds will sow an acre. Cultivate same as cabbage.

	Pkt.	Oz.	¼lb.	Lb.
Early White Vienna , 55-60 days. A turnip-rooted member of the cabbage family	\$.10	\$.25	\$.75	\$2.25
Early Purple Vienna , Similar to above, only purple	.10	.25	.75	2.25

LEEK One ounce will sow 100 feet of row; 4 pounds will sow an acre. Sow one inch deep and one foot apart. When 8 inches high, transplant 1 foot apart each way.

	Pkt.	Oz.	¼lb.	Lb.
Monstrous Carentan , A very large variety of superior quality	\$.10	\$.25	\$.65	\$2.00

LETTUCE One ounce will sow 150 feet of drill; 3 pounds will sow an acre. Sow in early spring; thin out plants as they develop.

	Pkt.	Oz.	¼lb.	Lb.
*Black-Seeded Simpson , Large, loose head; leaves light yellowish green, ruffled and blistered	\$.10	\$.15	\$.40	\$1.25
*Grand Rapids . Of upright growth; bright green curled leaves, finely crimped at edges. Also used for forcing under glass	.05-10	.15	.40	1.25

HEADING VARIETIES

*Big Boston , Heads large, compact; leaves broad, smooth, light green, tinged brown	.05-10	.15	.40	1.25
New York or Wonderful , Large, round heads. Broad leaves, blistered, dark green	.10	.25	.65	2.00
Mammoth Black-Seeded Butter , 72 days. Large, oval heads; leaves broad, crumpled, of medium green color	.10	.15	.40	1.25
Unrivalled Summer , 76 days. Like Big Boston, but without brown tinge	.10	.15	.40	1.25
White Self-Blanching Cos , 77 days. Strictly self-folding type with long, narrow, oval leaves	.10	.15	.50	1.50

MUSKMELONS One ounce will plant 50 hills; 2 to 3 lbs. will plant an acre. Plant after danger of frost is past. Sow in hills 6 feet apart each way. Put 10 to 12 seeds in each hill and when well up thin out to two or three plants.

	Pkt.	Oz.	¼lb.	Lb.
Bender's Surprise , 80 days. Very delicious, large, salmon-fleshed. Oblong shaped and rounded at the ends. Midseason	\$.10	\$.15	\$.40	\$1.25
Extra Early Osage , 84 days. Thick salmon flesh. Medium size. Early	.10	.15	.40	1.25
Hale's Best , 86 days. Early, deep salmon. Oval shape. Good shipper	.10	.15	.40	1.25
Hearts of Gold , 100 days. Splendid small, midseason variety. Fruit round, lightly ribbed, gray netting; deep salmon	.10	.15	.40	1.25
Osage , 98 days. Large, main cropper. Orange-salmon flesh. Mid-season	.10	.15	.40	1.25
Lake Champlain , 70 days. Very early salmon-fleshed. Medium size	.10	.15	.35	1.00
*Honey Rock or Sugar Rock , 80 days. (New early melon with great merit). Deep orange flesh, superior quality. Good shipper.	.05-10	.15	.40	1.25

WATERMELONS One ounce will plant about 20 hills; 3 to 4 pounds will plant an acre. Culture is the same as for muskmelons, but place the hills 8 to 10 feet apart.

	Pkt.	Oz.	¼ lb.	Lb.	
Harris' Earliest. Very early; medium size, nearly round, dark green, light stripes, deep pink flesh	\$0.05	\$0.10	\$0.15	\$0.35	\$1.00
Kleckley's Sweet. Medium large, oblong in shape, dark green; flesh very bright rich red; medium early	.10	.15	.35	1.00	
Peerless. Medium size, short oblong in form, light green, mottled flesh bright scarlet; very early	.10	.15	.35	1.00	

CITRON For preserving .10 .15 .35 1.00

MUSTARD One ounce will sow 100 feet of row; one pound will sow an acre in drills; two pounds if broadcast. Sow spring, summer and fall, in rows 12 inches apart.

	Pkt.	Oz.	¼ lb.	Lb.	
*Fordhook Fancy. Large bright green, tensely curled, fringed on edges	\$0.05	\$0.10	\$0.15	\$0.25	\$0.75
Southern Giant Curled. Desirable, quick growing, tender variety, with long, broad, very smooth leaves and white midribs	.10	.15	.20	.60	

OKRA One ounce will sow 100 hills. Sow middle of May in rows 3 feet apart. Thin out plants to 1 foot apart.

	Pkt.	Oz.	¼ lb.	Lb.
White Velvet. Very large, smooth, white pods that remain tender until nearly full size	\$0.10	\$0.15	\$0.25	\$0.75

ONIONS One ounce will sow 100 feet of row; 5 pounds will sow an acre. Sow in drills not less than a foot apart nor more than half an inch deep.

	Pkt.	Oz.	¼ lb.	Lb.
*Michigan Yellow Globe. True globe-shaped, small neck, heavy, thick skin, color deep yellow, good keeper	\$0.10	\$0.25	\$0.65	\$2.00
Prizetaker. Immense size, globe-shaped, pale yellow, mild and fair keeper	.10	.25	.65	2.00
Large Red Wethersfield. Skin purplish red; flesh white, well flattened, large, thick and solid	.10	.25	.65	2.00
Southport White Globe. Globe-shaped, small neck, flesh snowy white and mild	.10	.25	.75	2.25
*White Portugal. Large, flat white; mild	.10	.25	.65	2.00
White Queen. Rapid growing, small, flat, early white	.10	.25	.75	2.25
Yellow Globe Danvers. Globe-shaped, slightly flattened, good size, copper yellow	.05-10	.25	.60	2.00
White Bunch. Earliest and best shaped for early bunching, slow to bulb out	.10	.25	.75	2.25

PARSLEY One ounce will sow 150 feet of row; three pounds will sow an acre. Sow in spring; soak seed three hours, cover lightly. Plants appear in two to four weeks.

	Pkt.	Oz.	¼ lb.	Lb.	
Peerless. A selected triple moss curled variety	\$0.05	\$0.10	\$0.15	\$0.35	\$1.00
Hamburg or Rooted. Roots 8 inches long, parsnip-shaped, creamy white	.10	.15	.25	.75	
Plain. Fernlike leaves	.10	.15	.25	.75	

PARSNIPS One ounce will sow 150 feet of row; 4 pounds will sow an acre. Sow as early in the spring as the weather will permit, in drills 18 inches apart and 1½ inches deep.

	Pkt.	Oz.	¼ lb.	Lb.
Hollow Crown. Thick shoulder. Roots smooth, usually 15 inches long by 3 inches thick at the shoulder	\$0.10	\$0.15	\$0.25	\$0.75
Short Thick. Roots short and thick, about 2½ to 3½ inches in diameter, and only 6 or 8 inches long at thickened part. Tops about half the size of Hollow Crown. Roots full crowned and rounded on top; neck small. Fully a month earlier than Hollow Crown	.10	.15	.35	1.00

PEPPERS One ounce will produce 1000 to 1600 plants. Sow in hotbeds in March, transplant 18 inches apart in 2-foot rows.

	Pkt.	Oz.	¼ lb.	Lb.
Chinese Giant. 80 days. Very large, scarlet. Midseason. 4½ by 5 inches	\$0.10	\$0.50	\$1.50	\$5.00
*California Wonder. 72 days. Large red; thick flesh. Medium early. 3½ by 4½ inches	.10	.75	2.00	6.00
Harris Early Giant. 63 days. Earliest, large red. Mild. 3½ by 5 in.	.10	.50	1.50	5.00
Large Bell or Bull Nose. 55-60 days. (Sweet). Scarlet, early; blunt ends, 2 by 3 inches	.05-10	.40	1.25	3.75
Large Bell or Bull Nose. (Hot). Same as above only hot. 2 by 3 inches	.10	.50	1.50	5.00

PEPPERS—Continued.

	Pkt.	Oz.	¼ lb.	Lb.
*Long Slim Cayenne. 70 days. Bright red, slender, hot. Mid-season. ¾ inch by 5 inches	\$0.10	\$0.45	\$1.35	\$4.00
Yellow Hungarian. 72 days. Light yellow, becoming red. Hot. Early; slender. 1½ by 6 inches	.10	.50	1.50	5.00
Red Chili. 85 days. Small, red; very hot. ¾ inch by 2½ inches	.10	.40	1.15	4.50
Mammoth Ruby King. 68 days. Large, deep red. Mild, good cropper. 2½ by 5 inches	.10	.40	1.15	4.50
Pimento	.10	.40	1.20	3.50

PEAS Two pounds will plant 100 feet of row; 120 pounds will plant an acre. Not less than 10 pounds at the 100-lb. rate. If ordered shipped prepaid, add 8c per lb. Sow as early in spring as possible; then sow every two or three weeks apart for a succession throughout the season well into August. Plant in single rows or double, 4 feet apart and 2 inches deep.

	½ lb.	Lb.	5lbs.	100lbs.
All Peas 10c per pkt.				
Gradus. 58 days. Early, wrinkled pods 4 inches long, vines 3 to 3½ feet	\$0.20	\$0.35	\$1.25	\$20.00
Hundredfold. 62 days. Pods 4 inches, vines 18 to 20 inches. First early	.20	.35	1.15	18.00
Laxtonian. 62 days. Early, large, 4-inch pods. Dwarf vines, 22 inches	.20	.35	1.15	18.00
Laxton's Progress. 60 days. Vines dwarf; 20 inches. Prolific. Pods very large; 4 inches long	.20	.35	1.15	18.00
Thomas Laxton. 57 days. Extra early; pods 3½ inches. Vines tall, 3 feet; productive	.20	.35	1.25	20.00
World's Record. (58 days). Improved type of Gradus. Early, broad, 4-inch pods. Vines 2½ feet tall	.20	.35	1.25	20.00
Little Gem. 62 days. Early, pods light green, 3 inches. Dwarf vines, 1½ feet	.20	.35	1.25	20.00
*Alderman. 73 days. Midseason; green pods. 4¾ inches. Vines 4 feet tall	.20	.35	1.15	18.00
Onward. 73 days. Midseason. Large broad pods, 4 inches. Vines 3 feet. Heavy cropper	.20	.35	1.25	20.00
Telephone. 73 days. Same type as Alderman, only slightly later	.20	.35	1.15	18.00
*Edible Pod. 72 days. Cooked like beans. Very tender	.20	.35	1.25	20.00

PUMPKINS One ounce will plant about 25 hills; 4 pounds will plant an acre.

	Pkt.	Oz.	¼ lb.	Lb.
Large Yellow. Deep yellow; good keeper. Large	\$0.10	\$0.15	\$0.25	\$0.75
*Sweet Sugar or Pie. Fine grained. Small; yellow	.10	.15	.25	.75

RADISHES One ounce will sow 100 feet of row; 8 pounds will sow an acre in drills; 12 pounds broadcast. Sow the seed one-half inch deep in early spring, in rows one foot apart. For succession sow every ten days.

	Pkt.	Oz.	¼ lb.	Lb.
Cincinnati Market. 29 days. Roots 7 inches long, scarlet colored; flesh white, brittle and crisp	\$0.10	\$0.15	\$0.25	\$0.75
Crimson Giant. 20 days. Large, round, crimson-carmine roots	.10	.15	.25	.75
*Early Scarlet Globe. 23 days. Re-selected stock. All seed grown from carefully selected, individually hand transplanted roots. A perfect strain, surprisingly uniform, color brightest scarlet, shape perfect, well rounded bottom, with slender tap root. Tops medium size and uniform. Flesh pure white, crisp and of fine flavor. Roots stand a long time without turning pithy and hollow. A trial will convince you that this stock is right. 5 lbs. or 50 lbs. at 45c per lb. 50 lbs. or over at 40c per lb.	.05-10	.15	.20	.60
Early Scarlet Turnip White Tipped. 25 days. Round, deep scarlet, shading to a white tip on the bottom. Very early	.10	.15	.25	.75
French Breakfast. 25 days. Bright scarlet, white tipped, olive shaped	.10	.15	.25	.75
Icele. 27 days. Clear white, very crisp and mild	.05-10	.15	.25	.75
White Strasburg. 40 days. Roots 5 inches long, thick at shoulder and abruptly tapering	.10	.15	.25	.75

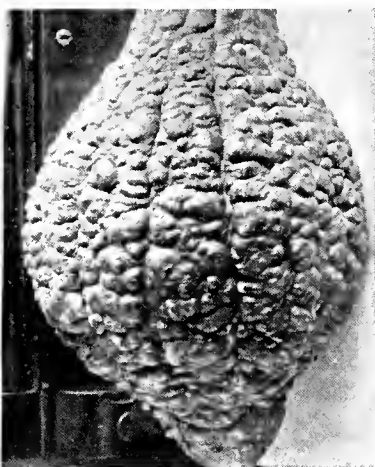
WINTER VARIETIES

	Pkt.	Oz.	¼ lb.	Lb.
Chinese Rose Winter	\$0.10	\$0.15	\$0.25	\$0.75
Chinese White Winter	.10	.15	.25	.75
Round Black Spanish	.10	.15	.25	.75

RHUBARB One ounce of seed will sow 75 feet of drill.

	Pkt.	Oz.	¼ lb.	Lb.
Victoria. Very large stalks and leaves	\$0.10	\$0.15	\$0.35	\$1.25

ROOTS. Good sized divisions. 2-year-old, 15c each; \$1.50 per dozen.



Lohrman's Hubbard Squash.



Bloomsdale Long Standing Savoy Spinach.



Globe Turnip, Purple Top White



Bonny Best Tomatoes.

SPINACH One ounce will sow 100 feet of row; 15 pounds will sow an acre in rows; 25 pounds if broadcast. Sow from spring until fall, 1 inch deep and 1 foot in rows. Not less than 10 lbs. at 100-lb. rate.

Bloomsdale Savoy, Extra Pkt. Oz. Lb. 5lbs. 100lbs.

Dark Green. 40 days. Sow only early spring or late fall. Large glossy deep green leaves, crumpled and blistered\$0.10 \$0.15 \$0.30 \$1.35 \$22.00

*Bloomsdale Long Standing. 45 days. Sow late spring, summer or early fall. Very dark green, intensely crumpled leaves. Stands 14 days longer than Bloomsdale Savoy..... .05-10 .15 .30 1.40 23.00

Juliana. 50 days. Sow late spring, summer and early fall. Thick dark green, crumpled leaves growing close to the ground. Slower growing but stands longer.. .10 .15 .30 1.25 20.00

King of Denmark. 48 days. Dark green, crumpled leaves. Slow to go to seed.. .10 .15 .35 1.50 25.00

*New Zealand. Cut-and-come-again variety. Tender leaves10 .15 .75

Virginia Blight Resistant Savoy. Used principally in sections where blight (mosaic) occurs. Similar to Savoy Leaved or Bloomsdale, but smoother in leaf and bolts to seed earlier .. .10 .15 .35 1.45 24.00

Victoria. Thick, dark green, blistered leaves. Spring variety10 .15 .30 1.35 22.00

SQUASH Early Varieties—one ounce sufficient for 50 hills. Late Varieties—one ounce for 20 hills; 4 to 6 pounds to the acre. Sow in the same manner as melons, before May 15th. Pkt. Oz. ¼lb. Lb.

*English Vegetable Marrow. (Bush). 9 inches long; oblong; flesh white. Summer use\$0.10 \$0.20 \$0.60 \$1.75

Des Moines or Table Queen. Acorn-shaped fruit. Thin, distinctly ribbed dark green shell, 6 inches long by 4½ inches thick. Flesh light yellow. Trailing variety. Winter keeper10 .20 .50 1.50

*Italian Vegetable Marrow (Cocozelle Bush). Fruits oblong, 12 to 16 inches, 5 inches thick. Color dark green, marbled with yellow and dark green stripes. Early.... .10 .15 .40 1.25

Mammoth Summer Crookneck. (Bush). Largest and earliest of Crookneck kinds. Fruits large, deep yellow and warty05-10 .15 .35 1.00

Mammoth White Bush. An early, round, flat squash; color clear white; handsomely scalloped10 .15 .35 1.00

*Summer Straightneck. A new variety, the same as Mammoth Summer Crookneck but without the curved neck of that kind10 .15 .50 1.50

Blue Hubbard. True Hubbard shape with rich blue-green skin and bright orange flesh which is mealy and dry; good keeper10 .15 .50 1.50

*Lohrman's Hubbard. Large, heavy, warty variety with a very hard bronze-green shell, thick orange flesh. Splendid keeper05-10 .15 .50 1.25

Sweet Potato, Summer. Fruit light yellow with green stripes, 6 to 8 inches long and thick flesh10 .25 .65 2.00

SALSIFY OR OYSTER PLANT. One oz. of seed will sow 60 ft. of drill. Sow in April-May in rows 18 inches apart. Cultivate same as carrots. Pkt. Oz. ¼lb. Lb. Mammoth Sandwich Island. True. Large and superior, fine flavor...\$0.10 \$0.20 \$0.60 \$1.75

SORREL One ounce of seed will sow 100 feet of drill. Sow in shallow drills 12 inches apart and thin out to 6 inches. Pkt. Oz. ¼lb. Lb.

Large Broad-Leaved French\$0.10 \$0.20 \$0.60 \$1.75

Narrow-Leaved Light Green10 .35 1.00 3.00

TOMATO One ounce will produce from 1000 to 2000 plants. Start the seed indoors during February or March and set plants out after all danger of frost has passed. Pkt. Oz. ¼lb. Lb.

Beauty. Main crop. Fruit large, smooth, solid and purplish pink in color\$0.10 \$0.50 \$1.50 \$5.00

*Bonny Best (Selected). 73 days. Early red. Smooth, solid, uniform05-10 .35 1.00 3.00

Break o' Day. (New). 73 days. Early globe-shaped scarlet fruit. .10 .45 1.35 4.00

Dwarf Champion. 78 days. Fruit purplish pink. Medium size; early .10 .45 1.35 4.00

Earliana. 64-66 days. Extra early. Bright red; smooth10 .35 1.00 3.00

Early Detroit. 78 days. Early, large, smooth and solid, globe-shaped, purple variety10 .35 1.00 3.00

John Baer. 71 days. An early, productive, solid red Tomato10 .40 1.20 3.50

Marglobe. 75-78 days. Fruits deep scarlet, large, globe-shaped, smooth, solid. Midseason10 .45 1.35 4.00

Oxheart. 90 days. Very large, heart-shaped, pink fruits. Flesh solid with few seeds10 .75 2.25 7.00

*Ponderosa. 85 days. Largest late variety. Purplish pink; meaty. .05-10 .70 2.00 6.00

Pritchard or Scarlet Topper. 90 days. Wilt resistant variety. Fruits large, smooth, globular, solid with thick walls and cross sections... .10 .45 1.35 4.00

Trucker's Favorite. 80 days. Mid-season variety. Large, smooth, purplish red fruit10 .45 1.35 4.00

Yellow Plum. 75 days. Fruits oval, 2 inches long, clear deep yellow. .10 .45 1.35 4.00

TURNIPI One ounce will sow 200 feet of row; one pound will sow an acre in drills; two pounds broadcast. Sow broadcast or in rows two feet apart. Pkt. Oz. ¼lb. Lb.

Early White Milan. 40 days. Very early, flat top. White\$0.10 \$0.15 \$0.30 \$0.60

Cowhorn. 75 days. Long white, green top10 .15 .30 .60

*Purple Top White Globe. 55 days. Round, sweet. Also a fall Turnip05-10 .15 .30 .60

Seven Top. Tops used for greens .. .10 .15 .20 .50

White Egg. 55 days. Oval, white, sweet, early10 .15 .30 .60

Golden Ball. 60 days. Yellow flesh; round10 .15 .30 .60

RUTABAGA Sow seed July 1st, giving the same culture as Turnips. Pkt. Oz. ¼lb. Lb. *American Purple Top. 90 days. Yellow, purple top. Sweet. Good keeper\$0.10 \$0.15 \$0.20 \$0.50

HERBS Every garden should have a few herbs. Sow early in spring. Cover lightly. Pkt. Oz. ¼lb. Lb.

Basil, Sweet. Used for flavoring soups and sauces. 2 feet\$0.10 \$0.20 \$0.50 \$1.50

Borage. Leaves used to give cucumber-like taste in salads10 .20 .50 1.50

Caraway. Seed is for baking purposes10 .15 .25 .75

Dill. Used for flavoring cucumber pickles10 .15 .25 .75

Florence Fennel. The roots are boiled, also used as salad10 .15 .50 1.50

Sage. Perennial. Used for dressings and seasoning10 .40 1.10 3.25

Savory, Summer. Annual. For flavoring soups and dressings10 .20 .50 1.50

Sweet Marjoram. Annual. Aromatic; used as a seasoning10 .50 1.50 4.50

Thyme. Perennial. Used for seasoning soups and sauces10 .50 1.40 4.00

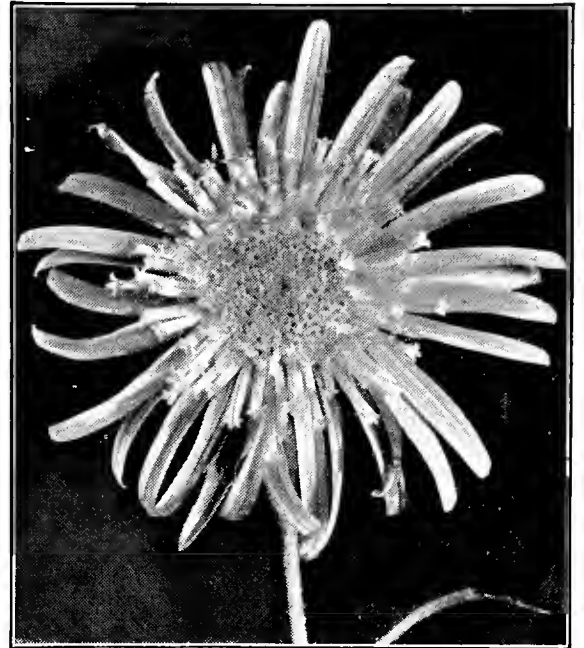
Lohrman's Annual Flower Seeds



Antirrhinum—Snapdragon.



Calendula, Sensation.



Giant California Sunshine Aster.

KEY TO SYMBOLS

- ⊙—For Cutting.
- ‡—For Shade.
- *—For Rock Gardens and Edging.

Varieties appearing in blocks are special items, we think should be grown in every garden.

- ⊙ **ACROCLINIUM** H.A. Double Mixed, 1 ft. (Everlasting). Daisy-like flowers. Pkt., 10c; ½ oz., 30c; oz., 50c.
- * **ADONIS** H.A. Flos, 1 ft. Crimson flowers, dark centered. Pkt., 10c; ½ oz., 20c; oz., 30c.
- * **AGERATUM** H.A. Bushy plants; flosslike flowers. Dwarf Blue. 9 in. Pkt., 10c; ½ oz., 45c; oz., 75c.
- Blue Cap. 4 in. Pkt., 10c; ¼ oz., 60c; ½ oz., \$1.00; ¾ oz., \$1.75; oz., \$3.00.
- * **ALYSSUM** H.A. For beds. Blooms all summer. Sweet. 6 in. Fragrant, white flowers. Pkt., 10c; ½ oz., 20c; oz., 35c.
- Little Gem. 4 in. White. Pkt., 10c; ½ oz., 35c; oz., 60c.
- Lilac Queen. 6 in. Lavender. Pkt., 10c; ½ oz., 35c; oz., 60c.
- * **AMARANTHUS** H.A. Caudatus (Love-Lies-Bleeding). 3 ft. Long, drooping, crimson spikes. Pkt., 10c; ½ oz., 35c; oz., 60c.
- Tricolor (Joseph's Coat). 2½ ft. Red, yellow, green-leaved. Pkt., 10c; ½ oz., 45c; oz., 75c.
- ⊙ **ANTIRRHINUM** H. H. B. (Snapdragon). Splendid for beds or borders; one of the choicest cut flowers.
- MAJESTIC STRAIN. 18 in. Mixed. Pkt., 25c; ¼ oz., 80c; ½ oz., \$1.45.
- LOHRMAN'S SUPER GIANTS. (Tall Maximum). 3 ft. Huge spikes with large blooms.
- Appleblossom. Rosy pink, white throat.
- Canary Bird. Canary-yellow, golden yellow lip.
- Indian Summer (Copper King). Velvety copper-scarlet.
- Ruby. Solid ruby-red.
- Salmon Rose.
- Snowflake. Snow-white.
- The Rose. Rose-pink.
- Wallflower. Brown, violet throat.
- All separate colors: Pkt., 25c; ¼ oz., 60c; ½ oz., \$1.00; ¾ oz., \$1.65; oz., \$2.75.
- Superfine Giants Mixed. Pkt., 25c; ¼ oz., 45c; ½ oz., 75c; ¾ oz., \$1.20; oz., \$2.00.
- LARGE-FLOWERED. Medium height. Bedding type. 18 in. Mixed. Pkt., 10c; ¼ oz., 35c; ½ oz., 60c; oz., \$1.00.
- ⊙ **ARCTOTIS** H.A. Grandis. 2 ft. White, daisy-like flowers, blue centers, reverse side lilac. Pkt., 10c; ½ oz., 45c; oz., 75c.
- ASPARAGUS** Plumosus Nanus. G.P. 3 ft. Pkt., 10c; 35c per 100 seeds; \$1.75 per 1000 seeds.
- Sprengeri. G.P. 3 ft. Pkt., 10c; 35c for 100 seeds; \$1.75 per 1000 seeds.
- ⊙ **ASTERS** H.A. Improved Giant California Sunshine. 2 ft. Sturdy plants with long stems. Some flowers have twisted petals while others have quilled petals; all have a cushion center of fine quills in a contrasting color. Midseason. Pkt., 25c; ¼ oz., 85c; ½ oz., \$1.45.
- Super Giants Los Angeles. Earlier and much larger than Giants of California type. Flowers large and artistic due to unusual curling and interlacing of petals, color pure shell-pink. Pkt., 25c.
- Peerless Yellow. Early large, very double, canary-yellow flowers. Pkt., 10c.

WILT-RESISTANT STRAINS. "Fusarium Wilt" causes trouble to both amateur and professional growers. Growing these strains is the only method of combating the disease.

Simple Pink (Resistant). Shell-pink.

Simple Blue (Resistant). Azure-blue.

Simple Rose (Resistant). Deep rose.

Simple Purple (Resistant). Deep purple.

Simple White (Resistant). Pure white.

Simple Crimson (Resistant). Bright crimson.

All Separate Colors and Mixed. Pkt., 15c; ¼ oz., 45c; ½ oz., 75c; ¾ oz., \$1.35; oz., \$2.25.

Heart of France (Resistant). Scarlet. Pkt., 15c; ¼ oz., 90c.

- Improved Giants of California. 3 feet. Midseason. An improved form of Crego with flowers 6 inches across, packed with broad petals. White, peach-blossom, light blue, deep rose, dark purple. Pkt., 10c; ¼ oz., \$1.00; ½ oz., \$1.75. Mixed. Pkt., 10c; ¼ oz., 85c; ½ oz., \$1.45; ¾ oz., \$2.40; oz., \$4.00.
- Ostrich Feather. 2 ft. Midseason. Large blooms, with long, shaggy, twisted petals. White, rose, shell-pink, purple, crimson, lavender and mixed. Pkt., 10c; ¼ oz., 35c; ½ oz., 60c; ¾ oz., \$1.00; oz., \$1.75.
- Royal. 2 ft. Early. Flowers medium size, petals incurved. Vigorous and sturdy grower. White, shell-pink, rose, crimson, lavender, purple and mixed. Pkt., 10c; ¼ oz., 35c; ½ oz., 60c; ¾ oz., \$1.00; oz., \$1.75.
- Simple's Branching. 2 ft. Late. Large, very double, borne on long stems. White, shell-pink, deep rose, crimson, lavender, purple and mixed. Pkt., 10c; ¼ oz., 35c; ½ oz., 60c; ¾ oz., \$1.00; oz., \$1.75.
- BALLOON VINE** H.A.C. 10 ft. White flowers, followed by balloon-like seed pods. Pkt., 10c; oz., 25c.
- BALSAM** (Lady Slipper). H.A. Double Camellia-Flowered. 18 in. Blossoms borne on short stems nestling close to stalk. Pkt., 10c; ¼ oz., 30c; ½ oz., 45c; oz., 75c.
- * **BARTONIA** H.A. Aurea, 1 ft. Large, single, golden yellow flowers, thistle-like foliage. Pkt., 10c; ½ oz., 45c; oz., 75c.
- BEGONIA** H.H.A. Semperflorens. Choice hybrids. Dwarf variety, fibrous rooted. An everblooming sort for bedding in shady spots. Pkt., 25c; ¼ oz., \$1.50.
- BLUE LACE FLOWER.** See Didiscus, page 8.
- BRACHYCOME** Iberidifolia (Swan River Daisy). H.H.A. 12 in. Mixed blue and white, daisy-like flowers. Pkt., 10c; ¼ oz., 50c; ½ oz., 80c; oz., \$1.35.
- CACALIA** Coccinea (Tassel Flower). H.A. 2 ft. Blossoms resemble showy brushes dipped in red paint. Pkt., 10c; ¼ oz., 45c; ½ oz., 75c; oz., \$1.25.
- CALCEOLARIA** G.P. Covent Garden Strain. 15 in. A profusion of pocket-like flowers. Choice mixed. Pkt., 25c.
- ⊙ **CALENDULA** H.A. 1 ft.
- Chrysantha or Sunshine. Large chrysanthemum-like flowers of bright golden yellow with long curving petals. Pkt., 25c; ¼ oz., 75c.
- Orange King. (Extra Select Florist Strain). Double rich orange-red with darker centers. Pkt., 10c; ¼ oz., 25c; ½ oz., 45c; oz., 75c.
- Lemon Queen. Large, double, lemon-yellow. Pkt., 10c; ¼ oz., 25c; ½ oz., 45c; oz., 75c.
- Ball's Orange. Double, perfect flowers; rich orange, lighter center. Pkt., 25c; oz., \$1.25.
- Mixed Varieties. Pkt., 10c; ½ oz., 20c; oz., 30c.
- H.A. Tinctoria. Tall mixed. 3 ft. Daisy-like, yellow and maroon flowers, 1½ inches across. Pkt., 10c; ½ oz., 45c; oz., 75c.
- CANYON BIRD VINE** H.A.C. 6 ft. Rapid climber, yellow flowers. Pkt., 10c; oz., 35c.



Centaurea Cyanus.



Cosmos.



Celosia Plumosa.

- ***CANDYTUFT** H.A. Umbellata. 1 ft. Showy blooms all season. Crimson, lavender, flesh-pink, purple, white and mixed. Pkt., 10c; oz., 50c; ¼ lb., \$1.50.
Giant Hyacinth-Flowered. Immense spikes of pure white flowers. Pkt., 10c; ½ oz., 45c; oz., 75c; ¼ lb., \$2.25.
CANNAS H.A. Crozy's Dwarf Mixed. 3 ft. Brilliant clusters of flowers; decorative foliage. Pkt., 10c; ½ oz., 40c; oz., 65c.

ANNUAL CANTERBURY BELLS H.A. 2½ ft. Blooms from seed in less than six months. Each plant has 6 to 8 spikes of bloom. Mixed. Pkt., 25c; ¼ oz., \$1.25; ½ oz., \$2.00.

- ⊙ **CARNATION** T.P. Chabaud's Giant Double. 18 in. Large, double, clove-scented flowers. Blooms 6 months from seed, continues all summer. Mixed. Pkt., 10c; ¼ oz., 45c; ½ oz., 75c; ¾ oz., \$1.25; oz., \$2.00.
Marguerite. 18 in. Flowers large, double, deeply fringed, fragrant. Blooms in four months. Mixed. Pkt., 10c; ¼ oz., 40c; ½ oz., 60c; oz., \$1.00.
CASTOR OIL BEAN. See Ricinus, page 10.

- ***CENTAUREA** H.A. For vases, beds.
 ***Candidissima** (Dusty Miller). 12 inches. Round, compact plants, white leaves, broadly cut. Pkt., 10c; ¼ oz., 45c; ½ oz., 75c; oz., \$1.25; oz., \$2.00.
 ***Gymnocarpa.** 18 in. Fine cut, silvery foliage. Pkt., 10c; ½ oz., 45c; oz., 75c.
 ⊙ **Cyanus** (Cornflower or Bachelor's Button). 18 in. Double Blue. Pkt., 10c; oz., 75c. Double Mixed. Pkt., 10c; oz., 75c.
 ⊙ **Imperialis** (Sweet Sultan). 2 ft. Sweet scented; long stems; mixed. Pkt., 10c; ½ oz., 45c; oz., 75c.
Suavcolens. 2 ft. Large, canary-yellow flowers, sweet scented. Pkt., 10c; ¼ oz., 35c; ½ oz., 60c; oz., \$1.00.

- ⊙ **CHRYSANTHEMUM** H.A. 2 ft. Daisy-like flowers; fine cut foliage.
Carinatum. Single. Tricolor mixed. Pkt., 10c; oz., 75c.
Coronarium. Double mixed. Pkt., 10c; oz., 75c.

- CINERARIA** G.P. Grandiflora, Semi-Dwarf Mixed. 18 in. Flowering greenhouse plant. Pkt., 25c.

- † ⊙ **CLARKIA** Elegans Double. H.A. 2 ft. Small, double flowers, like almond blossoms. Mixed. Pkt., 10c; ¼ oz., 25c; ½ oz., 45c; oz., 75c.

- ***CELOSIA** Cristata (Cockscomb). H.H.A. Tall. 3 ft. Producing cockscomb-like heads. Mixed. Pkt., 10c; ¼ oz., 35c; ½ oz., 60c; oz., \$1.00.

- Glasgow Prize.** 1 ft. Dark crimson. Comb shape. Pkt., 10c; ¼ oz., 90c; ½ oz., \$1.50; oz., \$2.50.

- Plumosa.** 3 ft. Bright yellow and red plumes. Mixed. Pkt., 10c; ¼ oz., 35c; ½ oz., 60c; oz., \$1.00.

- ***Childsi** (Chinese Woolflower). 3 ft. Ball-shaped, scarlet flowers resembling silky wool. Pkt., 10c; ¼ oz., 45c; ½ oz., 75c; oz., \$1.25.

- COBAEA** Scandens. Blue. H.H.C. 20 ft. Bell-shaped flowers. Pkt., 10c; ½ oz., 45c; oz., 75c.

- Scandens alba.** H.H.C. Pure white. Pkt., 10c; ¼ oz., 60c; ½ oz., \$1.00; oz., \$1.75.

- ***COLEUS** G.P. English Hybrids. Mixed. Colored foliage plant. Pkt., 25c; ¼ oz., \$1.00; ½ oz., \$1.75.

- ⊙ **COSMOS** H.A. Extra Early Giant Flowering. 5 feet. Flowers 4 to 5 inches across. White, pink, crimson and mixed. Pkt., 10c; ½ oz., 25c; oz., 40c.

Extra Early Double Crested. 5 feet. Full double center composed of short petals. Mixed. Pkt., 25c; ¼ oz., \$1.00; ½ oz., \$1.75; oz., \$3.00.

- CYCLAMEN** G.P. Persicum giganteum, Covent Garden Strain Mixed. House plant. Pkt., 25c.

- CYPRESS VINE** H.A.C. 10 ft. Fernlike foliage, star-shaped blossoms. Pkt., 10c; ½ oz., 30c; oz., 50c.

- CYNOGLOSSUM** (Chinese Forget-Me-Not). Amabile Blue. 18 in. Sweet scented flowers. Pkt., 10c; ½ oz., 25c; oz., 45c.

- Amabile Pink.** 18 in. Striking pink flowers. Pkt., 10c; ½ oz., 45c; ¾ oz., 75c; oz., \$1.25.

- ⊙ **DAHLIAS** H.H.P. 6 ft. Double mixed. Pkt., 10c; ½ oz., 60c; ¾ oz., \$1.00.

"Coltness Mignon Strain. 18 to 24 in. Dwarf, single variety, many colors. Pkt., 25c.

- ⊙ **DIANTHUS** H.H.A. Flowers of brilliant contrasting colors. With protection, plants winter over. **Single Annual Pink** (Chinensis). 16 in. Fine mixed. Pkt., 10c; ½ oz., 25c; oz., 40c.

- Double Annual Pink** (Chinensis fl. pl.). 16 in. Fine mixed. Pkt., 10c; ½ oz., 30c; oz., 50c.

- Sweet Wivelsfield.** H.A. 12 in. Resembles a large Sweet William. Pkt., 10c; ¼ oz., 60c; ½ oz., \$1.00.

- ⊙ ***DIDISCUS** Caeruleus (Blue Lace Flower). H.H.A. 18 in. Pale lavender flowers resembling wild carrot. Pkt., 10c; ¼ oz., 35c; ½ oz., 60c; oz., \$1.00.

- ⊙ **DIMORPHOTHECA** Aurantiaca (African Golden Daisy). H.A. 18 in.

- Orange Improved.** Beautiful bright orange. Pkt., 10c; ¼ oz., 45c; ½ oz., 75c; oz., \$1.25.

- Salmon Beauty.** Flowers double, of beautiful salmon shade, not variable. Pkt., 10c; ¼ oz., 35c; ½ oz., 60c; ¾ oz., \$1.00; oz., \$1.75.

- Hybrids Mixed.** Many colors from lemon-yellow to deep orange. Pkt., 10c; ¼ oz., 45c; ½ oz., 75c; oz., \$1.25.

- DOLICHOS** (Hyacinth Bean). H.A.C. 10 ft. Spikes of pealike flowers in purple and white. Pkt., 10c; oz., 15c; ¼ lb., 40c.

- DRACAENA** Indivisa. Long green leaves, useful for porch boxes, etc. Pkt., 10c; ½ oz., 35c; oz., 60c.

- ***ESCHSCHOLTZIA** (California Poppy). H.A. 12 inches. Dwarf erect variety. Yellow, orange, carmine-crimson and white mixed. Finely cut silvery foliage. Pkt., 10c; ¼ oz., 35c; ½ oz., 60c; oz., \$1.00.

- Aurantiaca** (True California Poppy). Spreading variety. Rich orange. Pkt., 10c; oz., 35c.

- ⊙ **EUPHORBIA** Variegata (Snow-on-the-Mountain). H.A. 2 ft. Foliage green, edged and veined with white. Pkt., 10c; ½ oz., 35c; oz., 60c.

- FORGET-ME-NOT.** See Myosotis, page 9.

- FOUR O'CLOCKS.** See Marvel of Peru, page 9.

- ⊙ **GAILLARDIA** Picta (Single Blanket Flower). H.A. 2 ft. Large flowers, charming tints. Mixed. Pkt., 10c; ½ oz., 30c; oz., 50c.

- GERANIUM** G.P. Zonale. Mixed. Pkt., 10c.

- ***GILIA** Capitata. H.A. 2 ft. Tricolor. Feathery foliage. lavender-blue flowers. Pkt., 10c; ½ oz., 15c; oz., 25c.

- GLOBE AMARANTH** (Gomphrena, Everlasting). H.A. 18 inches. Clover-like blossoms of red, pink and white. Pkt., 10c; ¼ oz., 20c; ½ oz., 35c; oz., 60c.

- † ***GODETIA** Dwarf Single Mixed. H.A. 1 ft. Satiny Azalea-like flowers. Pkt., 10c; ¼ oz., 35c; ½ oz., 60c; oz., \$1.00.

- Tall.** Double Azalea flowers. Pkt., 10c; ¼ oz., 35c; ½ oz., 60c; oz., \$1.00.

- GOURDS** H.A. 10-20 ft. Ornamental climber, rapid growth. Large mixed. Pkt., 10c; oz., 25c.

- ⊙ **GYPSOPHILA** (Baby's Breath). H.A. 1 ft. White panicles of bloom used for bouquets.

- Elegans alba.** Pure white. Pkt., 10c; oz., 25c; 2 ozs., 45c; 4 ozs., 75c.

- Carminea.** Rose. Pkt., 10c; oz., 45c; ¼ lb., \$1.25.

- ***HELIOTROPE** Lemoine. G.P. 18 in. Fragrant flowers. Dark sorts mixed. Pkt., 10c; ¼ oz., 75c; ½ oz., \$1.25; oz., \$2.00.

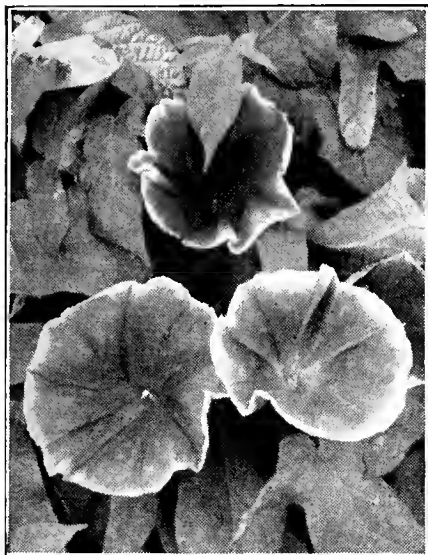
- ⊙ **HELICHRYSUM** (Strawflowers). H.A. 2 ft. Large double daisy-like flowers for winter bouquets.

- Monstrum fl. pl.** Mixed. Pkt., 10c; ¼ oz., 25c; ½ oz., 40c; oz., 75c.

- HOLLYHOCKS** (Annual). H.A. 5 ft. Seed sown outside in May blooms in August.

- Single Mixed.** Pkt., 10c; ½ oz., 35c; oz., 60c.

- Semi-Double Mixed.** Pkt., 10c; ½ oz., 35c; oz., 60c.



Morning Glory.



Marvel of Peru.



Marigold.

HYACINTH BEAN. See Dolichos, page 8.

IPOMOEA H.A.C. 12 ft. Climbers of rapid growth.
Noctiflora (Moonflower). White seed. Heart-shaped leaves; pure white, fragrant. Pkt., 10c; ½ oz., 30c; oz., 50c.
Bona Nox (Blue Moonflower). Sky-blue. Pkt., 10c; ¼ oz., 25c; ½ oz., 40c; oz., 75c.

Cardinalis (Cardinal Climber). Cardinal-red flowers with fernlike foliage. Pkt., 10c; ¼ oz., 50c; oz., \$1.50.

HUMULUS Japonicus (Japanese Hop). 20 ft. Dense green foliage. Pkt., 10c; ½ oz., 35c; oz., 60c.

***KOCHIA** *Trichophylla* (Mexican Fire Bush). 2½ ft. H.A. Bright green mosslike foliage turning red in fall. Pkt., 10c; oz., 25c.

LANTANA T.P. Verbena-like clusters of fragrant flowers. Dwarf. Hybrids mixed. Pkt., 10c; ¼ oz., 50c; ½ oz., 90c; oz., \$1.50.

⊙**LARKSPUR** H.A. 3 ft. Feathery foliage, long double flower spikes.

Double Tall Stock Flowered Branching Sorts. Dark blue, white, ageratum-blue, rose-pink, carmine and mixed. Pkt., 10c; ½ oz., 35c; oz., 60c.

UPRIGHT CLASS, PRODUCES LONG STEMS

Daintiness. Delicate lavender. Pkt., 10c; ¼ oz., 50c; ½ oz., 90c; oz., \$1.50.

Exquisite. (Improved). Soft pink. Pkt., 10c; ¼ oz., 50c; ½ oz., 90c; oz., \$1.50.

Blue Spire. Deep blue. Pkt., 10c; ¼ oz., 50c; ½ oz., 90c; oz., \$1.50.

Giant Mixed. Pkt., 10c; ¼ oz., 50c; ½ oz., 90c; oz., \$1.50.

⊙**LEPTOSYNE** (Sea Dahlia). Stillmani. 2 feet. Large yellow Daisy-like flowers, golden center. Pkt., 10c; ¼ oz., 35c; ½ oz., 75c; oz., \$1.25.

LINARIA H.A. Flower spikes like miniature Snapdragons used in borders and beds. Mixed. Pkt., 10c; ½ oz., 45c; oz., 75c.

‡***LOBELIA** H.H.A. 6 in. Compact bushes with small dainty flowers.

Crystal Palace Compacta. Best dwarf, dark blue, dark foliage. Pkt., 10c; ¼ oz., \$1.00; ½ oz., \$1.80; oz., \$3.00.
Gracilis. Light blue, trailing. Pkt., 10c; ¼ oz., 40c; ½ oz., 70c; oz., \$1.20.

⊙**LUNARIA Biennis** (Honesty). H.B. 1½ ft. Flowers followed by silvery seedpods, when dried used for winter bouquets. Pkt., 25c.

LUPINUS Hartwegi Giants or King. 3 ft. Enormous spikes of bloom rivaling in beauty and size the perennial Lupine but having the advantage of being annuals. Mixed colors. Base branching with 6 to 8 spikes to a plant. Pkt., 25c.

Hartwegi. H.A. 2 ft. Long tapering spikes of pealike flowers in shades of blue, rose and white mixed. Pkt., 10c; oz., 30c.

⊙***MARIGOLD** Hardy Annuals for easy culture.

AFRICAN VARIETIES. Tall. H.A. 3 ft.
Alldouble Orange. (New). 100 per cent double, deep orange flowers. Pkt., 10c; ¼ oz., 45c; ½ oz., 75c; ¾ oz., \$1.25; oz., \$2.00.
Alldouble Lemon. (New). 100 per cent double, lemon flowers. Pkt., 10c; ¼ oz., 45c; ½ oz., 75c; ¾ oz., \$1.25; oz., \$2.00.

Orange Ball. Extra select. Double orange. Pkt., 10c; ¼ oz., 45c; ½ oz., 75c; oz., \$1.25.

Lemon Ball. Extra select. Double lemon. Pkt., 10c; ¼ oz., 45c; ½ oz., 75c; oz., \$1.25.

Double African Mixed. Extra select. Orange and yellow mixed. Pkt., 10c; ¼ oz., 30c; ½ oz., 45c; oz., 75c.

New Guinea Gold. 2 feet. Carnation-like petals, brilliant golden color, lacks pungent Marigold odor. 100 per cent semi-double. Pkt., 25c; ¼ oz., 75c.

FRENCH VARIETIES. H.A.

Josphine. 2 ft. Tall, single, dark brown flowers edged old gold. Pkt., 10c; ½ oz., 30c; oz., 50c.

Legion of Honor (Little Brownie). 1 ft. Single, golden yellow flowers; brown centers. Pkt., 10c; ½ oz., 25c; oz., 40c.

French Mixed. Monarch strain. 1 ft. Double flowers of orange-yellow and brown. Good bloomer. Pkt., 10c; ½ oz., 45c; oz., 75c.

MARVEL OF PERU (Four O'clock). H.A. 2 ft. Bushy plants bearing small Petunia-like flowers. Pkt., 10c; oz., 20c; 2 ozs., 35c; ¼ lb., 60c.

⊙**MIGNONETTE** Sweet Scented (Odorata). H.A. 12 in. An old variety with yellowish spikes, sweetly scented. Pkt., 10c; oz., 30c.

Machet, Goliath Red. H.A. 12 in. Long, reddish spikes, fragrant. Pkt., 10c; ¼ oz., 35c; ½ oz., 60c; oz., \$1.00.

***MIMULUS Moschatus** (Musk Plant). H.H.A. 1 ft. Small yellow flowers, musk scented foliage. Pkt., 25c; ¼ oz., \$1.35; ½ oz., \$2.25.

***MIMOSA Pudica** (Sensitive Plant). H.H.A. 1 ft. Pinkish white flowers, leaves droop when touched or shaken. Pkt., 10c; ½ oz., 35c; oz., 60c.

MOONFLOWERS. See Ipomoea.

MORNING GLORY (Ipomoea). H.A.C. 10 ft.
Imperial Japanese. Flowers of gigantic size, range from snow-white to black-purple, rapid climber. Pkt., 10c; oz., 25c; ¼ lb., 75c.

Heavenly Blue (Ipomoea). 15 ft. Sky-blue flowers, lighter in center. Pkt., 10c; ¼ oz., 50c; ½ oz., 90c; oz., \$1.50.

‡***MYOSOTIS** (Forget-me-not). H.H.A. 9 inches. Favorite old-fashioned flowers bearing clusters of dainty blue 5-petaled blossoms.

Indigo Blue. Dark blue. Pkt., 10c; ¼ oz., 35c; ½ oz., 60c; oz., \$1.00.

Alpestris. Light blue. Pkt., 10c; ¼ oz., 25c; ½ oz., 45c; oz., 80c.

Alpestris rosea. Pink. Pkt., 10c; ¼ oz., \$1.00; ½ oz., \$1.80; oz., \$3.00.

CHINESE FORGET-ME-NOT. See Cynoglossum, page 8.

*⊙**NASTURTIUMS** **Golden Gleam.** 18 in. (New). Large golden yellow semi-double flowers, 2 to 3 inches across. Sweet scented. Pkt., 15c. Large pkt., 25c.

Dwarf or Bedding Mixed. 1 ft. Pkt., 10c; oz., 15c; ¼ lb., 35c; lb., \$1.00.

Tall or Climbing Mixed. 6 ft. Pkt., 10c; oz., 15c; ¼ lb., 35c; lb., \$1.00.

***NEMESIA Compacta Triumph Mixed.** Dwarf. H.A. 1 ft. Orchid-like flowers. Pkt., 10c; ½ oz., 80c.

***NEMOPHILA Insignis** (Baby's Eyes). Bushy plant, sky-blue flowers. Pkt., 10c; oz., 30c.

NICOTIANA (Tobacco Plant). H.A. Sweet scented, star-like flowers.

Crimson Bedder. (New). 15 inches. Flowers rich deep crimson, freely produced. Dwarf, of pyramidal habit, giving striking effect planted in masses. Pkt., 10c; ¼ oz., 60c; ½ oz., \$1.00.

Hybrids. Mixed colors. Pkt., 10c; ½ oz., 45c; oz., 75c.

⊙**NIGELLA Damascena.** H.A. 18 inches. Large oddly shaped, double blue flowers surrounded by a dense wreath of mossy fibers. Miss Jekyll blue. Pkt., 10c; ½ oz., 25c; oz., 45c.

⊙***PANSIES** H.H.P. Improved Swiss Giants (Roggli) or Steele's "400" Mixed. The flowers are of immense size and a thick velvety texture, and the range of colors includes many of the deep red and brown shades. The flowers are held by stiff stems well above the foliage, making them ideal for cutting. Pkt., 25c; 1/16 oz., 75c; ¼ oz., \$1.25; ½ oz., \$2.25; ¾ oz., \$4.25; oz., \$8.00.

Hardy Perennial Flowers

Old-fashioned flowers. They are all perfectly hardy, die down in the fall, appearing again in the spring with renewed vigor.

***ACHILLEA** Ptarmica, "The Pearl." H.P. 18 in. Double white flowers throughout the summer. Pkt., 25c; 1/8 oz., \$1.45. Plants, 19c each; \$2.00 per doz.

Millefolium roseum. Green foliage, dense pink heads. Pkt., 25c; 1/8 oz., \$1.00.

ACONITUM (Monkshood) Napellus. H.P. 5 ft. Long spikes of blue flowers. Pkt., 15c; 1/8 oz., 35c. Plants, 19c each; \$2.00 per doz.

***AGROSTEMMA** Coronaria (Mullein Pink). H.P. 12 in. Crimson flowers, shaped like Pinks, silvery foliage. Pkt., 15c; 1/8 oz., 35c. Plants, 19c each; \$2.00 per doz.

***ALYSSUM** Saxatile Compactum. H.P. 9 inches. Masses of yellow flowers, low spreading. Pkt., 15c; 1/8 oz., 35c; 1/4 oz., 60c. Plants, 19c each; \$2.00 per doz.

†**ANEMONE** Windflower. H.H.P. 10 inches. De Caen. Single Poppy-like flower. Mixed. Pkt., 15c; 1/8 oz., 35c.

†**ANCHUSA** Italica (Dropmore). H.P. 4 ft. Long loose sprays of bright blue flowers. Pkt., 15c; 1/8 oz., 35c. Plants, 19c each; \$2.00 per doz.

†**AQUILEGIA** (Columbine). H.P. 3 ft. Mrs. Scott Elliott's (Long Spurred). Large, long-spurred flowers, ranging in rich shades. Mixed. Pkt., 25c; 1/8 oz., 90c; 1/4 oz., \$1.50. Plants, 19c each; \$2.00 per doz.

Canadensis. 1 ft. (New). Handsome scarlet and orange flowers. Pkt., 25c; 1/8 oz., \$1.20.

Chrysantha. Yellow, long spurred. 3 to 4 ft. Plants, 19c each; \$2.00 per doz.

Coerulea (Rocky Mountain). 3 ft. Long-spurred flowers of blue and white. Pkt., 25c; 1/8 oz., \$1.10.

Rose Queen. 3 ft. Delicate pink, long spurred. Pkt., 25c; 1/8 oz., \$1.45. Plants, 19c each; \$2.00 per doz.

Double Mixed. The old-fashioned Columbine in many rich hues. Pkt., 10c; 1/8 oz., 35c.

***ARABIS** Alpina. H.P. 6 inches. Pure white flowers for edging and rockeries; early. Pkt., 15c; 1/8 oz., 35c. Plants, 19c each; \$2.00 per doz.

***ASTERS** Hardy (Michaelmas Daisy). H.P. New large flowered. 2 1/2 ft. Daisy-like flower, effective in beds or borders. Mixed. Pkt., 25c; 1/8 oz., \$1.00. Plants, 19c each; \$2.00 per doz.

***AUBRIETIA** New Large Flowering Hybrids (Rock Cross). H.P. 6 inches. Compact plants covered with closely set flowers. Pkt., 25c; 1/8 oz., \$1.20. Plants, 19c each; \$2.00 per doz.

***BELLIS** Perennis (Double English Daisy). H.P. 6 inches. Longfellow. Double pink. Pkt., 15c; 1/4 oz., 60c; 1/2 oz., \$1.00; oz., \$1.75.

Giant Red. Dark red. Pkt., 25c; 1/8 oz., \$1.20.

Snowball. Double white. Pkt., 15c; 1/4 oz., 60c; 1/2 oz., \$1.00; oz., \$1.75.

Double Mixed. Pkt., 15c; 1/8 oz., 35c; 1/4 oz., 60c; 1/2 oz., \$1.00; oz., \$1.75. Plants, 19c each; \$2.00 per doz.

†**CAMPANULA** Medium (Canterbury Bells). H.B. 3 ft. Large bell-shaped flowers; showy in mixed borders.

Calycanthemum (Cup-and-Saucer). Large semi-double flowers, resembling a cup and saucer. Pink, blue and white. Pkt., 15c.

Dean's Improved Hybrid Mixed. Pkt., 15c; 1/8 oz., 45c; 1/4 oz., 75c; 1/2 oz., \$1.20; oz., \$2.00. Plants, 19c each; \$2.00 per doz.

Medium. Single. Beautiful rich shades in rose, dark blue, light blue, white, and mixed. Pkt., 15c; 1/4 oz., 35c; 1/2 oz., 60c; oz., \$1.00. Plants, 19c each; \$2.00 per doz.

Double Mixed. Pkt., 15c; oz., 35c; 1/4 oz., 60c; 1/2 oz., \$1.00; oz., \$1.75.

Carpatica (Harebell). Mixed. H.P. 8 inches. Compact plant, dainty blue bells. Pkt., 15c; 1/4 oz., 40c; 1/2 oz., 65c. Plants, 19c each; \$2.00 per doz.

***CANDYTUFT** Gibraltarica. H.P. 18 inches. Large growing, rosy white. Pkt., 15c; 1/8 oz., 35c.

Iberis Sempervirens. H.P. 1 ft. Completely covered with white flower heads. Pkt., 15c; 1/8 oz., 35c. Plants, 19c each; \$2.00 per doz.

CENTAUREA Montana. 2 ft. Violet-blue flowers. July to September. Pkt., 15c; 1/4 oz., 35c. Plants, 19c each; \$2.00 per doz.

***CERASTIUM** Tomentosum (Snow-in-Summer). H.P. 6 inches. Silvery leaves, small white flowers; creeper. Pkt., 15c; 1/8 oz., 50c.

***CHEIRANTHUS** Allioni (Siberian Wallflower). H.H.P. 9 inches. Orange flowers, dark green foliage. Pkt., 15c; 1/4 oz., 35c; 1/2 oz., 60c.

CHINESE LANTERN PLANT. See Physalis, page 12.
***CISTUS** (Sun Rose). H.P. 12 inches. Single. For borders, various colors. Pkt., 15c; 1/8 oz., 35c.

⊙**CHRYSANTHEMUM, HARDY** H.P. 3 ft. Large Daisy-like flowers for borders and cutting.

Early Flowering Double Hybrids. Pkt., 25c. Plants, spring only, 19c each; \$2.00 per doz.

†**COREOPSIS** "Mayfield Giant." H.P. 2 1/2 ft. (New). The tallest and most showy variety. A continuous bloomer. Single, Daisy-like flowers of rich yellow. Pkt., 15c.

Lanceolata Grandiflora. H.P. 2 ft. Single, bright yellow. Pkt., 15c; 1/4 oz., 35c; 1/2 oz., 60c; oz., \$1.00. Plants, 19c each; \$2.00 per doz.

Lanceolata Grandiflora fl. pl. An improved type with large double flowers of deep yellow. Pkt., 15c; 1/4 oz., 35c; 1/2 oz., 60c.

⊙**DELPHINIUM** (Perennial Larkspur). H.P. These popular, well known perennials produce splendid spikes of flowers throughout the entire summer and fall, varying in height from 3 to 6 ft.

Delphinium. Wrexham Imported Hollyhock Strain. 5 ft. (New). One of the finest yet introduced. Strong growth with semi-double flowers of gigantic size of various colors. Pkt., 25c; 1/8 oz., \$1.50. Plants, 19c each; \$2.00 per doz.

Blackmore & Langdon's Giants (English). 5 ft. An imported strain; tall, stately spikes of flowers ranging in color from light blues to the deepest purple. Pkt., 25c; 1/8 oz., 75c; 1/4 oz., \$1.25. Plants, 19c each; \$2.00 per doz.

Belladonna. 4 ft. Clear turquoise blue with white center. Pkt., 15c; 1/8 oz., 80c; 1/4 oz., \$1.35. Plants, 19c each; \$2.00 per doz.

Bellamosa. 4 ft. Beautiful spikes of rich blue flowers. Pkt., 15c; 1/8 oz., \$1.10. Plants, 19c each; \$2.00 per doz.

⊙***DIANTHUS** H.P. 1 ft. (Chinese Pinks). Brilliant colored flowers which appear in great numbers on a plant and have a rich clove scent.

Plumarius, Single Mixed. Pkt., 15c; 1/4 oz., 35c; 1/2 oz., 60c.

Plumarius, Double Mixed (Grass Pink). Pkt., 15c; 1/8 oz., 50c. Plants, 19c each; \$2.00 per doz.

Allwoodi. A splendid strain, being half carnation and half Pink. Seventy-five per cent of flowers come double in varied colors. Pkt., 25c. Plants, 19c each; \$2.00 per doz.

Dianthus, Semperflorens Perfection. (New). Noted for spicy fragrance. Mixed shades, long cutting stems, rock plants. Pkt., 15c.

DIELYTRA (Bleeding Heart). 2 ft. Rose heart-shaped flowers. Plants, 40c each; \$4.00 per doz.

DIGITALIS (Foxglove). H.B. 5 ft. Tall spiked flowers, heavy foliage.

The Shirley. Mixed. Pkt., 15c; 1/4 oz., 35c; 1/2 oz., 60c. Plants, 19c each; \$2.00 per doz.

FEVERFEW. See Matricaria, page 12.

FUNKIA (White Day Lily). Plants, 19c each; \$2.00 per doz.

⊙**GAILLARDIA** (Blanket Flower). H.P. 2 ft. Flowers large and flat; yellow and orange, with center and rings of varying extent in shades of red and maroon.

Grandiflora. Mixed. Pkt., 15c; 1/2 oz., 45c; oz., 75c.

Gaillardia, Burgundy. Red. Pkt., 25c.

Portola Hybrids. 2 1/2 to 3 ft. Bronzy scarlet flowers tipped with golden yellow. Pkt., 15c; 1/8 oz., 65c; 1/4 oz., \$1.00. Plants, 19c each; \$2.00 per doz.

†***GEUM** Mrs. Bradshaw. H.P. Double red flowers, good bloomer. Pkt., 15c; 1/8 oz., 50c. Plants, 19c each; \$2.00 per doz.

⊙**GYPSOPHILA** (Baby's Breath). H.P. 3 ft. Graceful sprays for mixing with other cut flowers.

Paniculata. Single, white. Pkt., 15c; 1/2 oz., 45c; oz., 75c.

Paniculata fl. pl. Double, white; for winter bouquets. Pkt., 25c; 1/4 oz., 90c. Plants, 19c each; \$2.00 per doz.

HELENIUM H.P. 3 to 5 ft. Resembling small Sunflowers. Masses of blooms in late summer.

Riverton Gem. (New). Deep yellow changing to red. Long stems. Pkt., 25c; 1/4 oz., \$1.10.

***HEUCHERA** Sanguinea (Coralbells). H.P. 12 to 18 inches. Clusters of tiny bell-like flowers of bright coral-pink, borne on long stems. Pkt., 25c. Plants, 19c each; \$2.00 per doz.

⊙**HEMEROCALLIS** (Yellow Day Lily). H.P. 2 1/2 ft. Sweet scented, clear yellow. Plants, 19c each; \$2.00 per doz.

HIBISCUS Grandiflora Hybrids (Rose Mallow). H.P. 3 to 4 ft. A tall plant with immense white, pink or red Hollyhock-like flowers. Pkt., 15c; 1/4 oz., 60c. Roots, 19c each; \$2.00 per doz.

HOLLYHOCKS H. P. 6 ft. Stately, majestic plants.

Chater's Superb. Double pink, scarlet, lilac, salmon, cerise, and yellow.

All separate colors. Pkt., 15c; ¼ oz., \$1.00; ½ oz., \$1.75. Plants, 19c each; \$2.00 per doz.

Double mixed. Pkt., 15c; ¼ oz., 45c; ½ oz., 75c; ¾ oz., \$1.25.

Single mixed. Pkt., 15c; ¼ oz., 35c; ½ oz., 60c.

Hollyhock, Double Emperor. (New). 5 ft. Large fringed flowers 6 inches across, resembling a crested Begonia. Many colored combinations. Pkt., 25c; ¼ oz., \$1.25.

KUDZU VINE H.P. 20 ft. Large foliage, rosy purple, pea-shaped blossoms. Pkt., 15c; ½ oz., 35c; oz., 60c.

LATHYRUS (Everlasting Sweet Peas). H.P.C. 6 ft. Clusters of red, pink and white flowers, resembling an annual Sweet Pea. Separate colors, pkt., 15c; ¼ oz., 35c. Plants, 19c each; \$2.00 per doz. Mixed. Pkt., 10c; ¼ oz., 35c.

***LAVANDULA Vera** (Lavender). H.P. 18 in. Fragrant blue flowers. Pkt., 15c; ¼ oz., 35c; ½ oz., 60c; oz., \$1.00. Plants, 19c each; \$2.00 per doz.

LIATRIS Pycnostachya (Blazing Star or Gay Feather). H.P. 3 to 4 ft. Long narrow spikes of rich purple flowers. Pkt., 25c. Plants, 19c each; \$2.00 per doz.

***LINUM Perenne Blue**. H.P. 2 ft. Dainty sky-blue flowers on graceful, arching stems. Pkt., 15c; ½ oz., 35c; oz., 60c.

LOBELIA (Indian Paintbrush). H.P. 3 ft. (Cardinal Flower). Rich scarlet, dark foliage. Pkt., 25c.

⊙ **LUNARIA Biennis** (Honesty). H.B. 1½ ft. Flowers followed by silvery seedpods, when dried used for winter bouquets. Pkt., 25c.

‡ **LUPINUS Polyphyllus**. H.P. 3 ft. Long spikes of beautiful pea-shaped flowers in mixed colors. Pkt., 15c; ½ oz., 30c; oz., 50c. Plants, 19c each; \$2.00 per doz.

LYCHNIS Chalcedonica. H.P. 2 ft. Bright scarlet flowers in dense clusters. Pkt., 15c; ½ oz., 50c; oz., 85c. Plants, 19c each; \$2.00 per doz.

⊙ **LILIUM REGALE** H.P. 3 to 5 ft. Ivory white, shaded pink, tinged with canary-yellow at base of petals, trumpet shaped. Pkt., 15c; ¼ oz., 35c; ½ oz., 60c.

⊙ ***MATRICARIA** (Feverfew). H.H.P. 12 inches. Double pompon flowers in dense clusters, almost covering the plants with bloom.

White. Pkt., 15c; ¼ oz., 65c. Plants, 19c each; \$2.00 per doz.

Golden Ball. Pkt., 25c; ¼ oz., 65c.

***OENOTHERA Missouriensis** (Evening Primrose). H.P. 12 inches. Sweet-scented, saucer-shaped yellow flowers. Pkt., 15c; ¼ oz., 70c.

⊙ **PHLOX Decussata**. H.P. 3 ft. Hardy plants with immense panicles of bright colored flowers.

Mixed colors. Pkt., 15c; ¼ oz., 75c. Plants, 19c each; \$2.00 per doz. Separate colors.

‡ **PLATYCODON** (Japanese Bellflower). **Grandiflora Mixed**. 1 ft. Large, blue, bell-shaped flowers like the Campanulas. Pkt., 15c; ¼ oz., 50c. Plants, 19c each; \$2.00 per doz.

POLEMONIUM (Jacob's Ladder). H.P. 2 ft. Deeply cut foliage and clusters of handsome blue flowers. Pkt., 15c; ¼ oz., 35c.

POPPIES Oriental. H.P. 3 ft. Tremendous cup-shaped blooms of brightest colors with large, purplish black blotches at base of petals. Plants in fall only.

Orientele. Brightest orange-scarlet shades. Pkt., 15c; ¼ oz., 45c; ½ oz., 75c; oz., \$1.25.

Oriental Hybrids Mixed. Pkt., 15c; ¼ oz., 45c; ½ oz., 75c; oz., \$1.25.

Mrs. Perry. Orange-apricot. Pkt., 25c.

Princess Victoria Louise. Delicate salmon-pink. Pkt., 15c; ¼ oz., 75c; ½ oz., \$1.25; ¾ oz., \$2.75.

Nudicaule El Monte (Iceland). Deep tangerine orange-colored flowers blooming first year from seed if planted in May. Pkt., 25c; ¼ oz., 75c; ½ oz., \$1.00; oz., \$2.25.

***PRIMULA** (Hardy Primrose). **Veris**. H.P. 6 inches. Dainty, fragrant flowers in yellow, brown-edged yellow, etc. For rockeries. Pkt., 15c; ¼ oz., 75c. Plants, 19c; \$2.00 per doz.

***Vulgaris** (English Primrose). H.P. 8 inches. Earliest spring flower. Canary-yellow, very fragrant. Pkt., 15c; ¼ oz., \$1.00.

Polyanthus. Primrose mixed. 12 inches. This is a cross between the Primula Veris and Vulgaris. It has the large flowers of the Primrose and the flower umbel of the Cowslip. Pkt., 25c.

PINKS. See Dianthus, page 11.

***PENTSTEMON** H.P. 2 ft. Spikes of bright scarlet flowers 2 feet long from June till August. Large flowered hybrids mixed. Pkt., 15c; ¼ oz., 75c. Plants, 19c each; \$2.00 per doz.

⊙ **PHYSALIS Francheti** (Chinese Lantern Plant). H.P. 3 ft. Bright orange-scarlet, lantern-like fruits. When cut will last all winter. Pkt., 15c; ¼ oz., 35c; ½ oz., 60c; oz., \$1.00. Plants, 19c each; \$2.00 per doz.

⊙ **PYRETHRUM** H.H.P. 18 inches. Cosmos-like flowers in brightest shades of rose, crimson, etc. Bloom a long time, cut flower.

Roseum Hybrids. Single mixed. Pkt., 15c; ¼ oz., 75c. Plants, 19c each; \$2.00 per doz.

Roseum Hybrids. Double mixed. 2 ft. Pkt., 25c; ¼ oz., \$1.50. Plants, 19c each; \$2.00 per doz.

⊙ **RUDBECKIA** H.P. 3 ft. "Black-Eyed Susan." Cone-shaped flowers of various shades. **Newmanni**. Orange-yellow. Pkt., 15c; ¼ oz., 85c. Plants, 19c each; \$2.00 per doz.

Purpurea. Reddish purple. Pkt., 15c; ¼ oz., 40c. Plants, 15c each; \$2.00 per doz.

***SALVIA Azurea** (Meadow Sage). H.P. 3 to 4 ft. Sky-blue flowers blooming during August and September. Pkt., 15c; ¼ oz., 50c; ½ oz., 85c. Plants, 19c each; \$2.00 per doz.

⊙ ***SCABIOSA Caucasica**. House's Strain. A mixture of various shades of blue, 1 ft. Perennials resemble the annuals, except that the perennials have shorter florets at the center. Pkt., 25c; ¼ oz., \$1.50. Plants, 19c each; \$2.00 per doz.

⊙ **SHASTA DAISY** H.P. 1½ to 2 ft. Enormous white Daisies.

Alaska. 2 ft. The best variety for cutting; flowers 2 inches across. Pkt., 15c; ¼ oz., 35c; ½ oz., 60c. Plants, 19c each; \$2.00 per doz.

King Edward. Splendid pure white, free bloomer. Pkt., 15c; ¼ oz., 35c; ½ oz., 60c. Plants, 19c each; \$2.00 per doz.

⊙ **STATICE Latifolia** (Great Sea Lavender). H.P. 1½ ft. Immense candelabra-like heads of purplish blue, minute flowers, leathery leaves. Pkt., 15c; ¼ oz., 50c; ½ oz., 90c; ¾ oz., \$1.50; oz., \$2.50. Plants, 19c each; \$2.00 per doz.

⊙ **SWEET WILLIAM** (Dianthus Barbatus). H.B. 18 inches. Numerous, broad, compact trusses of single flowers like Phlox.

Pink Beauty, Single (Newport Pink). Salmon.

Scarlet Beauty, Single. Deep scarlet.

Separate colors. Pkt., 15c; ¼ oz., 40c; ½ oz., 70c; oz., \$1.25.

Double mixed. Pkt., 15c; ¼ oz., 50c; ½ oz., 85c; oz., \$1.35.

Single mixed. Pkt., 15c; ½ oz., 20c; oz., 35c.

STOKESIA Cyanea (Cornflower Aster). H.P. 18 inches. Blue or lavender, cornflower-like bloom. Pkt., 15c; ¼ oz., 50c; ½ oz., 90c; ¾ oz., \$1.50; oz., \$2.50.

Plants, 19c each; \$2.00 per doz.

⊙ **SWEET ROCKET** (Hesperis). H.P. 2 ft. Spikes of flowers resembling Stocks. Good for cutting. Mixed. Pkt., 15c; ¼ oz., 35c; ½ oz., 60c; oz., \$1.00.

⊙ **TRITOMA** (Red Hot Poker). H.H.P. Early Perpetual Flowering Hybrids. 3 to 4 ft. Flame-scarlet flowers. Constant bloomer. Fine for cutting. Pkt., 15c; ¼ oz., 50c. Plants, 35c each; \$3.50 per doz.

⊙ ***TROLLIUS Europaeus**. H.P. 2 ft. A pretty plant with large orange and yellow, buttercup-like flowers on long stems. Plants, 50c each.

***VALERIANA Rubra**. H.P. 2 ft. (Garden Heliotrope). Silvery green foliage, spreading feathery crimson clusters of sweet-scented florets. Pkt., 15c; ¼ oz., 35c; ½ oz., 60c; oz., \$1.00. Plants, 19c each; \$2.00 per doz.

***VERONICA Spicata**. H.P. Producing spikes of bright blue flowers. 1½ ft. Plants, 19c each; \$2.00 per doz.

‡ ***VIOLA Odorata** (Sweet-Scented Violet). H.H.P. 6 inches. It produces beautiful deep purple flowers in early spring, also in the fall. Pkt., 15c; ¼ oz., 50c.

Cornuta (Tufted or Bedding Pansy Violets). H.H.P. 6 inches. Pansy-like blossoms, one inch across, various colors. Mixed. Pkt., 15c; ¼ oz., 40c.

Viola, Orange Gem. Apricot tinged orange. Pkt., 25c. Plants, 19c each; \$2.00 per doz.

Jersey Gem. A bedding Viola. Plant compact with good stems, pure violet flowers. Pkt., 25c; 1/16 oz., \$1.75. Plants, 19c each; \$2.00 per doz.

YUCCA Filamentosa (Adam's Needle). H.P. 4 to 6 ft. Pyramidal clusters of creamy flowers. Plants, 19c each; \$2.00 per doz.

We Also Carry a Number of Other Varieties We are Unable to List on Account of Space.

Gladioli

Cut Flowers All Summer

Newer Varieties

- Betty Nuthall. Coral-pink, orange throat. 7c each; 75c per doz.; \$5.50 per 100.
 Berty Snow. Pinkish lavender, large flower, long spike. 7c each; 75c per doz.; \$5.50 per 100.
 Mrs. Van Konynenburg. True blue. 9c each; 90c per doz.; \$6.50 per 100.
 Marmora. Lavender-gray. 10c each; 95c per doz.; \$7.00 per 100.
 Pfitzer's Triumph. Salmon-orange. 10c each; 95c per doz.; \$7.00 per 100.

RED SHADES

	Each	Doz.	100
Dr. F. E. Bennett. Peach-red	\$.06	\$0.55	\$3.50
Mrs. Francis King. Scarlet	.05	.50	3.00
Purple Glory. Ruffled maroon-black	.06	.60	4.00
Flaming Sword. Fiery red	.05	.50	3.00

PINK SHADES

Los Angeles. Pink and orange	.06	.50	3.00
Mrs. Leon Douglas. Begonia-rose	.06	.55	3.50
Mrs. Frank Pendleton. Rose-pink shading	.05	.50	3.00
Rose Ash. Old rose	.07	.65	4.50
W. H. Phipps. Bright salmon	.06	.55	3.50

YELLOW SHADES

Golden Dream. Clear deep yellow	.06	.55	3.50
Golden Measure. Golden yellow	.06	.55	3.50

WHITE SHADES

Peace. White, pale violet	.05	.50	3.00
Mary Pickford. Creamy white, sulphur yellow throat	.06	.55	3.50
White Wonder. Large white	.07	.65	4.50

BLUE SHADES

Anna Eberius. Violet-purple	.06	.55	3.50
Capt. Boynton. Lavender, deeper shadings	.06	.55	3.50
Minuet. Clear lavender	.07	.65	4.50
Mrs. P. W. Sisson. Cameo-pink, carmine-black	.06	.60	4.00
Veilchenblau. Violet-blue	.10	.95	7.00

EXHIBITION MIXED. From named varieties	.05	.50	2.95
--	-----	-----	------

Flower Pots

	Each	Doz.	100	1000
2 inch	\$.03	\$0.20	\$1.25	\$10.50
2½ inch	.03	.25	1.60	13.90
3 inch	.04	.30	2.00	18.00
4 inch	.05	.50	3.25	28.00
5 inch	.08	.80	6.00	50.50
6 inch	.12	1.25	8.50	75.00
7 inch	.18	2.00	13.00	125.00
8 inch	.25	2.50	18.00	
9 inch	.35	4.00	28.50	
10 inch	.50	5.25	45.00	
12 inch	1.00	11.00	87.50	

Flower Pot Saucers

	Each	Doz.	100
4 inch	\$.04	\$0.35	\$2.50
5 inch	.05	.50	3.50
6 inch	.07	.75	5.50
7 inch	.08	.85	7.00
8 inch	.10	1.10	8.50
9 inch	.15	1.75	13.50
10 inch	.20	2.25	16.00
12 inch	.30	3.50	25.00

RAFFIA Natural, 50c; green, \$1.00, per lb.
 We carry a complete line of Plant Stakes, Plant Tubs, Lawn Sprinklers, Shears, Garden Tools, Watering Cans and Bezy Garden Gloves, etc.



Dwight W. Morrow.

Dahlias

Novelties and Recent Introductions

Abbreviations used: C.—Cactus; F.D.—Formal Decorative; I.D.—Informal Decorative.

Novelties

	Each
Satan. Flaming red, gold at center. S.C.	\$2.50
The Commodore. Large lemon-yellow. I.D.	1.50
Prince of Persia. Rich glowing crimson. I.D.	1.50
Jean Trimbee. Petunia-violet. C.	1.50
Bagdad. Flaming scarlet. F.D.	1.00
Dwight W. Morrow. Velvety dark red. I.D.	1.00
Harriett Hoctor. Mauve and magenta. I.D.	1.00
Omar Khayyam. Chinese red-orange shadings. F.D.	1.00
Watching Sunrise. Golden amber, rose-pink reverse. I.D.	1.00

DECORATIVE TYPE

	Each
Thomas A. Edison. Royal purple. F.D.	\$.75
Monmouth Champion. Orange flame. F.D.	.75
Kemp's Violet Wonder. Bluish violet. F.D.	.75
Fort Monmouth. Rich deep red. S.C.	.75
Black Jack. Almost black. I.D.	.50
Chemar's Eureka. White. F.D.	.50
Elite Glory. Rich red. F.D.	.50
Kathleen Norris. Light pink. F.D.	.50
Jersey's Beacon. Scarlet with paler reverse. F.D.	.50
Jersey's Buttercup. Rich yellow. F.D.	.50
Jersey's Beauty. Pure pink. F.D.	.35
Jane Cowl. Golden bronze. I.D.	.35
Miss California. Oriental fuchsia. F.D.	.35
Rose Fallon. Shades of amber, russet and gold. F.D.	.35
Treasure Island. Autumn shades of apricot and gold. F.D.	.35
Mrs. I. de Ver Warner. Lavender-pink. F.D.	.25
Purity. Pure white. I.D.	.25
Porthos. Deep crimson. F.D.	.25

CACTUS TYPE

Ballet Girl. Orange and white. C.	.35
Countess of Lonsdale. Apricot shaded salmon. C.	.25
Daddy Butler. Rosy carmine. C.	.35
Esther R. Holmes. Orchid-pink. C.	.35
Bride's Bouquet. Pure white. C.	.25

We carry a complete list of Pompon type at 25c each. Unnamed Dahlias—in orange, pink, purple, red, white, and yellow, at 10c each.

Labels

Pot and Garden—Wood, Painted.	100	1000
4 inch	\$0.40	\$2.75
5 inch	.50	3.35
6 inch	.55	4.00
8 inch	1.25	9.00
10 inch	1.65	11.25
12 inch	1.86	15.00
Copper Wired Labels	.50	3.35

Lohrman's Hardy Garden Lilies

- AURATUM** (Gold-Banded Japan Lily). This variety has been a great favorite. The flower heads are large, with broad petals gracefully recurved. White flowers, thickly studded crimson with wide gold band down the center of each petal. Fragrant. July-August. Dormant bulbs, jumbo size, 11 to 13 inches, 40c each; \$4.00 per doz. Bulbs already started, one to a pot, 50c each; \$5.00 per doz.
- AURATUM platyphyllum**. Similar to the Auratum, being a larger, stronger grower. Waxy white with yellow bands. Dormant bulbs, 11 to 13 inches, 50c each; \$5.00 per doz. Bulbs already started, one to a pot, 60c each; \$6.00 per doz.
- SUPERBUM**. Runs from 3 to 6 feet in height, with from 5 to 40 handsome blooms of orange-scarlet shaded yellow, with red anthers. July. 25c each; \$2.50 per doz.
- ELEGANS**. Solitary, deep blood-red flowers spotted purplish black, red anthers. 1 to 1½ feet. June-July. 25c each; \$2.50 per doz.
- REGALE**. The inside of the flower is pure white, shading to a pretty canary-yellow in the throat. The outside is white suffused with a bright rose-pink. The blooms are 5 to 6 inches in length. The perfume is exquisite. Hardy. 7 to 8 inches, 25c each; \$2.50 per doz. 8 to 9 inches, 35c each; \$3.50 per doz.
- SPECIOSUM var. rubrum**. White, shaded and spotted with rose and red. Height 2 feet. Blooms in August and September. Large flowering bulbs. Dormant bulbs, 11 to 13 inches, 40c each; \$4.00 per doz. Bulbs already started, one to a pot, 50c each; \$5.00 per doz.
- HENRYL**. One of the finest hardy Lilies, of strong, vigorous growth, with flower stalks 3 to 5 feet long; deep apricot-yellow, lightly spotted brown. August-September. 9 inches up, 50c each; \$5.00 per doz.
- TIGRINUM splendens**. The flowers are orange, spotted purple, opening in August and September on 2- and 4-foot stems. 8 inches up, 20c each; \$2.00 per doz.

Insecticides and Fungicides

- ACME ALL ROUND SPRAY**. Contains the three leading remedies: Arsenate of Lead, Nicotine Sulphate and Bordeaux Mixture. ¼ lb., 35c; lb., 80c.
- ANT-KILL, ACME**. A safe and efficient exterminator of ants, house or garden. Cups can be hung, placed or anchored about. Set of 5 cups and bottle of syrup, 60c; extra syrup, 3 ozs., 25c.
- ANTROL**. Most effective for the control of all honey-dew loving ants. (Not available). Antrol sets containing 4 containers and 1 4-oz. bottle of syrup, 75c. Extra containers, 15c each. Antrol syrup, 4-oz. bottle, 35c; pt., 85c.
- ARSENATE OF LEAD**. Can be used as dust or spray. ½ lb., 20c; lb., 30c; 4 lbs., 70c; 8 lbs., \$1.35; 24 lbs., \$3.90; 100 lbs., \$15.50.
- ACME BAIT-M**. For use against snails, slugs, cutworms. Lb., 35c; 3 lbs., 70c.
- BORDEAUX MIXTURE, DRY**. For blight, mildew, rust. Lb., 30c; 4 lbs., 65c; 24 lbs., \$3.80; 100 lbs., \$15.00.
- BLACK-LEAF 40**. Aphis and sucking insects. Oz., 35c; 5 ozs., \$1.00; lb., \$2.25; 2 lbs., \$3.25; 10 lbs., \$10.15.
- CYANOGENAS** (Calcium Cyanide, Grade A). For killing rodents. ½ lb., 45c; lb., 75c; 5 lbs., \$3.00.
- CYANOGENAS** (Calcium Cyanide, Grade G). Greenhouse fumigant. 5 lbs., \$3.00; 25 lbs., \$10.00.
- NEW EVER GREEN**. Kills most plant pests, including even cutworms. Use it freely on tender plants and flowers—it can't burn or otherwise injure them. Neither will it injure the soil. Oz., 35c; 6 ozs., \$1.00; 16 ozs., \$2.00; 32 ozs., \$3.50; gal., \$11.50. (Mailable).
- FISH OIL SOAP**. Lb., 30c; 5 lbs., \$1.25; 10 lbs., \$2.25.
- FLOWERS OF SULPHUR**. For mildew on plants. Lb., 15c; 5 lbs., 50c; 10 lbs., 85c; 25 lbs., \$2.00; 100 lbs., \$7.50.
- FUNGITROGEN**. Fungicide that conquers Mildew and controls Black Spot on roses, phlox and other plants. Mix 1 quart to 60 parts of water. ½ pt., 75c; pt., \$1.25; qt., \$2.00; ½ gal., \$3.50; gal., \$6.00.
- GRAFTING WAX**. ¼ lb., 20c; ½ lb., 35c; lb., 60c.
- GRAPE AND ROSE DUST**. Excellent for the prevention and destruction of blight, mildew and leaf-eating insects. Lb., 35c; 5 lbs., \$1.50.
- DRY LIME-SULPHUR**. For dormant spray, 14 pounds to 50 gallons of water; for summer spray, 3 pounds to 50 gallons of water. Lb., 35c; 5 lbs., \$1.45; 10 lbs., \$2.35; 25 lbs., \$4.00; 100 lbs., \$13.00.
- MOWRAH MEAL**. For eradicating earthworms. Spread material over lawn, water immediately. 10 pounds cover 400 square feet. 5 lbs., 50c; 10 lbs., 85c; 25 lbs., \$1.75; 50 lbs., \$3.00; 100 lbs., \$5.00.
- MOLOGEN**. For destroying and driving away moles. 8 ozs., 50c; 5 lbs., \$4.00.
- NAPHTHALENE FLAKES**. For thrips on gladiolus bulbs. Apply two ounces to 100 bulbs in a tight box. Lb., 25c; 5 lbs., \$1.00.

NIAGARA D-18 DUST positively prevents blight on your crops; 100 per cent effective against chewing insects such as potato bugs, cabbage and tomato worms. 5 lbs., \$1.20; 10 lbs., \$2.00; 25 lbs., \$3.60; 50 lbs., \$6.00; 100 lbs., \$10.00.

- TIGRINUM flore pleno** (Double Tiger Lily). Color and habit same as that of Tigrinum Splendens. 20c each; \$2.00 per doz.
- KRAMERI**. Lovely pale pink flowers in June. Grows 3 feet tall. 30c each; \$3.00 per doz.
- TENUIFOLIUM**. Beautifully shaded coral-red flowers. Grows 20 inches tall. 20c each; \$2.00 per doz.

Miscellaneous Spring Bulbs

- ANEMONE, De Caen**. Poppy-like flowers. \$1.00 per doz.; \$10.00 per 100.
- TUBEROUS-ROOTED BEGONIA**.
Single Pink, Red, Yellow, Orange. 25c ea.; \$2.50 per doz.
Double Pink, Red, Yellow, Orange. 25c ea.; \$2.50 per doz.
- ISMENE calathina** (Peruvian Daffodil). Flowers pure white, borne three or four on a stem; very fragrant. 20c each; \$2.00 per doz.
- CALADIUM or ELEPHANT'S EAR**. An effective foliage plant for beds or borders. 25c each; \$2.50 per doz.
- CINNAMON VINE**. Splendid climber, rapid grower, with bright, glossy green, heart-shaped leaves. White cinnamon-scented flowers. 10c each; \$1.00 per doz.
- HYACINTHIUS candicans** (Summer Hyacinth). A white, summer-flowering Hyacinth with 20 to 30 bell-shaped flowers. 15c each; \$1.50 per doz.
- MADEIRA VINE**. Flowers white and very fragrant, foliage glossy green. 10c each; \$1.00 per doz.
- MONTBRETIA**. Flowers like miniature gladioli, except that the flowers and foliage are much smaller and the stems more slender. 2 feet. Various shades of orange, red and yellow. 10c each; \$1.00 per doz.
- TUBEROSE, Double Dwarf Pearl**. Beautiful flower spikes borne on long stems; very fragrant. White. 10c each; \$1.00 per doz.
- TIGRIDIA or SHELL FLOWER**. A very showy plant with large, quaintly shaped blooms in shades of yellow, red, violet, and purple. 15c each; \$1.50 per doz.

- NICO-FUME TOBACCO PAPER**. 24 sheets, \$1.25; 144 sheets, \$4.50; 288 sheets, \$8.00.
- NICO-FUME POWDER**. 1-lb. tin, \$1.00; 5 lbs., \$3.35; 10 lbs., \$5.85.
- NICO-FUME LIQUID**. Lb., \$2.25; 4 lbs., \$5.75; 8 lbs., \$10.00.
- PARADICHLOROBENZINE** (Paradow). For peach tree borer. Directions on container. Lb., 75c.
- PARIS GREEN**. Kills bugs, worms and slugs. Solution, ½ tablespoonful to 1 gallon of water; 1 pound to 200 gallons of water. (Not available). ¼ lb., 20c; lb., 50c; 5 lbs., \$2.20; 14 lbs., \$14.75.
- POMO-GREEN**. With nicotine. The new green Fungicide for roses and other flowers and ornamentals; will control black spot, mildew, and chewing insects. 1 lb., 75c; 5 lbs., \$3.00. Without nicotine, 1 lb., 50c; 5 lbs., \$1.75.
- RED ARROW INSECT SPRAY**. A non-poisonous insecticide for use against red spider, mealy bugs, rose chafers and aphids. Oz., 35c; 3½ ozs., \$1.00. (Mailable).
- SEMESAN**. Seed disinfectant. Controls damping off. 2 ozs., 50c; lb., \$2.50; 5 lbs., \$11.75.
- SEMESAN BEL**. Potato seed and bulb disinfectant. 4 ozs., 50c; lb., \$1.75; 5 lbs., \$8.00.
- SLUG SHOT**. For chewing insects. Non-poisonous. (Mailable). Lb., 25c; 5 lbs., \$1.00; 25 lbs., \$4.00.
- SCALECIDE**. A complete dormant spray, unequalled for San Jose scale, and other orchard pests. Dilute 1 gallon to 15 gallons of water. Qt., 60c; gal., \$1.40; 5 gals., \$4.90; 15-gal. drum, \$12.00; 50-gal. drum, \$26.50.
- SULFOCIDE**. Pt., 50c; qt., 85c; gal., \$2.25; 5 gals., \$7.50.
- TOBACCO DUST, FINE**. Bulk, lb., 10c; 5 lbs., 35c; 25 lbs., \$1.50; 100 lbs., \$5.50.
- TOBACCO STEMS**. \$2.50 per bale.
- TREE TANGLEFOOT**. Small size, 25c; lb., 60c; 5 lbs., \$2.50.
- TREE SURGERY GUM**. For cementing wounds in trees. Lb., 35c; 5 lbs., \$1.50.
- TREE WOOD PAINT**. A disinfectant paint used after tree pruning. Gal., \$1.75.
- TRI-O-GEN** (Rose Garden Spray). Protection against practically all insects and fungous diseases in a rose garden. Trial size, \$1.50; standard size, \$4.00.
- VOLCK, NURSERY**. Controls scale, mealy bug, white fly, red spider, blister mite, etc. One gallon makes from 32 to 100 gallons of spray solution. ½ pt., 40c; pt., 60c; qt., 85c; gal., \$2.50.
- WEED KILLER, HAMMOND'S**. Qt., 50c; gal., \$1.50.
- LOHRMAN'S WEED KILLER**. This spray will kill dandelions, chick-weed and all wide-leaved weeds without injury to the grass. Dilute 1½ lbs. to 1 gal. of water for every 500 sq. ft. to be used twice at intervals of 3 days. Lb., 20c; 5 lbs., 75c; 10 lbs., \$1.25; 20 lbs. and over at 10c per lb.
- WILSON'S O. K. SPRAY**. Scale, sucking insects, for inside and outside use. ½ pt., 40c; qt., \$1.00; gal., \$3.00; 5 gals., \$12.00.

NIAGARA P-A NICOTINE DUST (4% actual Nicotine). Destroys lice or aphid on cabbage, cauliflower, kale and all other vegetables by its fumes. Kills cucumber beetle and squash stink bug. 5 lbs., \$1.65; 10 lbs., \$2.75; 25 lbs., \$6.00; 50 lbs., \$10.50; 100 lbs., \$18.00.

Lohrman's Evergreen Lawn Seed

The above mixture is made from our own formula, and composed of grasses specially adapted for the purpose of producing turf which retains its rich green color and velvety appearance throughout the entire summer and fall. In making up this high grade mixture we are careful to use only the very finest quality of all the most desirable dwarf, evergreen, **re-cleaned** grasses, free from chaff and weeds, which thrive well on any soil, thus ensuring a beautiful and permanent lawn. Lb., 45c; 3 lbs., \$1.35; 5 lbs., \$2.15; 10 lbs., \$4.00; 25 lbs., \$8.75; 100 lbs., \$35.00.

How to Make a Lawn with Evergreen Lawn Seed

Preparation of Soil. Dig the soil about 6 inches deep, but only when it is dry. Rake until soil is smooth and in fine condition.

Fertilizing. Use complete **Plant Food**, an odorless fertilizer, at the rate of one-half ton per acre, 50 lbs. per 1000 square feet, 5 lbs. per 100 square feet.

Sowing the Seed. Sow our **Evergreen Lawn Seed** at the minimum rate of 100 lbs. per acre or 1 lb. to each 300 square feet. Bury the seed not more than one-eighth inch deep. Roll the seeded area, but should rain fall before the work is completed, defer the rolling until the land has dried.

Grass for Shady Locations. Follow the above directions but use our **Shady Lawn** instead of our **Evergreen Lawn Seed**.

Renovating an Old Lawn. First—Rake the lawn well, removing as much dead grass as possible. Second—Apply fertilizer according to the above directions. Third—Sow our **Evergreen Lawn Seed** at the rate of 50 lbs. per acre or 1 lb. per 600 square feet. Fourth—Either rake the lawn lightly or roll it in order to cover the seed.

Lohrman's Fairway Mixture

This special mixture is made from our own formula, and composed of grasses which are adapted for the purpose of producing turf which retains its rich green color and velvety appearance throughout the entire summer and fall. Our Evergreen Lawn Seed without White Dutch Clover. Lb., 45c; 3 lbs., \$1.35; 5 lbs., \$2.15; 10 lbs., \$4.00; 25 lbs., \$8.75; 100 lbs., \$35.00.

Shady Place Mixture

This mixture is composed of grasses that are naturally adapted for growing under trees and in shaded situations. Lb., 60c; 3 lbs., \$1.75; 5 lbs., \$2.75; 25 lbs., \$11.85; 100 lbs., \$47.50.

Kentucky Blue Grass

(June Grass)

(*Poa pratensis*). One of the most valuable native grasses for lawns and pastures. Succeeds well on all good soils. Weight per bushel, 21 lbs. Lb., 40c; 3 lbs., \$1.15; 5 lbs., \$1.75; 10 lbs., \$3.00; 25 lbs., \$6.25; 100 lbs., \$25.00.

Red Top—Fancy

Red Top makes one of the best grasses for lawn use, either sown alone or in connection with White Clover, or in a mixture with other grasses. Use 14 to 16 lbs. to acre. Weight per bushel, 30 lbs. Lb., 35c; 3 lbs., \$1.00; 5 lbs., \$1.50; 10 lbs., \$2.75; 25 lbs., \$6.25; 100 lbs., \$25.00.

Rough-Stalked Meadow Grass

(*Poa trivialis*). A spreading, stoloniferous rooted grass. Adapted for shady locations. Lb., 50c; 3 lbs., \$1.45; 5 lbs., \$2.15; 10 lbs., \$4.00; 25 lbs., \$9.40; 100 lbs., \$37.50.

Lohrman's Superior Bent Grass Mixture

This mixture is composed of Bent Grass with other rapid growing grasses that act as a shelter crop. Lb., 85c; 3 lbs., \$2.50; 5 lbs., \$4.00; 10 lbs., \$7.50; 25 lbs., \$17.50; 100 lbs., \$70.00.

Bent Grass, Certified Astoria Bent (Sometimes Called Cocos Bent)

This grass has creeping roots; makes splendid lawn and golf course grass. Lb., \$1.25; 3 lbs., \$3.65; 5 lbs., \$6.00; 10 lbs., \$11.50; 25 lbs., \$25.00; 100 lbs., \$100.00.

Chewings New Zealand Fescue

Adapted to practically all conditions, making a fine, compact turf of dark green color and resistant to hard wear. Weight per bushel, 20 lbs. Lb., 40c; 3 lbs., \$1.15; 5 lbs., \$1.75; 10 lbs., \$3.25; 25 lbs., \$7.50; 100 lbs., \$30.00.

Perennial Rye Grass

It is used in lawn grass mixtures as a nurse crop to protect the finer grasses. Lb., 25c; 5 lbs., \$1.10; 10 lbs., \$2.00; 25 lbs., \$3.75; 100 lbs., \$15.00.

White Dutch Clover for Lawns

This is of particular value in lawn mixtures, and will grow on almost any kind of soil. Sow one pound to every 300 square feet. Lb., 55c; 3 lbs., \$1.60; 5 lbs., \$2.50; 10 lbs., \$4.50; 25 lbs., \$10.65; 100 lbs., \$42.50.

Timothy

A quick growing, tall, coarse grass. Lb., 25c; 5 lbs., \$1.10; 10 lbs., \$2.00; 25 lbs., \$3.75; 100 lbs., \$15.00.

Fertilizers

PULVERIZED SHEEP MANURE. (Wizard Brand). This is a pure, natural manure, and one of the most nutritious foods for use in flower beds, lawns, and vegetable gardens. 5 lbs., 30c; 10 lbs., 50c; 25 lbs., 79c; 50 lbs., \$1.49; 100 lbs., \$2.75; 500 lbs., \$13.00; 1000 lbs., \$24.00; ton, (2000 lbs.), \$45.00.

SHREDDED CATTLE MANURE. 25 lbs., \$1.00; 50 lbs., \$1.75; 100 lbs., \$3.00.

ADCO. For converting garden refuse into manure. 25 lbs. (for 12 wheelbarrow loads of waste, makes ½ ton manure), \$2.50; 150 lbs., \$11.50.

ACID PHOSPHATE. 16 per cent. 5 lbs., 30c; 10 lbs., 50c; 25 lbs., \$1.00; 125 lbs., \$3.00.

CLAY'S FERTILIZER, IMPORTED. 14 lbs., \$3.25; 28 lbs., \$5.50; 56 lbs., \$8.50; 112 lbs., \$15.00.

BONE MEAL. Best for use in top dressing lawns, for Rose beds, trees, and shrubbery, and all flowering bulbs. 5 lbs., 35c; 10 lbs., 55c; 25 lbs., \$1.10; 50 lbs., \$1.75; 100 lbs., \$3.25; 500 lbs., \$15.00; 1000 lbs., \$27.50; ton, \$50.00.

DRIED BLOOD. 5 lbs., 60c; 10 lbs., \$1.00; 25 lbs., \$1.75; 50 lbs., \$3.00; 100 lbs., \$5.00.

AGRICULTURAL HYDRATED LIME. A more finely pulverized product than the regular limestone. Directions for using the same as the limestone. 10 lbs., 40c; 50 lbs., 90c; 100 lbs. (2 sacks), \$1.50; 500 lbs., \$8.00; 1000 lbs., \$14.00; ton, \$24.00.

LIMESTONE. (Pulverized). Lohrman's Land Limestone sweetens sour soil. Not only grass but every useful plant needs lime. Spread 40 pounds to each 500 sq. ft. 80 lbs., \$1.00; 6 bags (480 lbs.), \$5.50; 12 bags (960 lbs.), \$9.50; ton, \$16.00.

MILORGANITE. A fertilizer high in nitrogen for use on lawns. Will not burn. 25 lbs., \$1.00; 50 lbs., \$1.75; 100 lbs., \$3.00; 500 lbs., \$12.50; ton, \$40.00.

MURIATE OF POTASH. Used on root crops. 5 lbs., 60c; 10 lbs., \$1.00; 25 lbs., \$1.75; 50 lbs., \$3.00; 100 lbs., \$5.00.

NITRATE OF SODA. A quick acting, nitrogenous fertilizer. Apply as a solution 1 ounce to 1 gallon of water. 5 lbs., 60c; 10 lbs., \$1.00; 25 lbs., \$1.75; 50 lbs., \$3.00; 100 lbs., \$5.00.

SACCO. Lb., 15c; 5 lbs., 40c; 10 lbs., 70c; 25 lbs., \$1.40; 50 lbs., \$2.35; 100 lbs., \$3.95; 500 lbs., \$19.50; 1000 lbs., \$38.00; ton, \$72.00.

SULPHATE OF AMMONIA. Use 1 pound to 50 square feet of ground or bench, or a tablespoonful to a bushel of soil, or 3 gallons of water. 5 lbs., 40c; 10 lbs., 65c; 25 lbs., \$1.25; 50 lbs., \$2.25; 100 lbs., \$4.00.

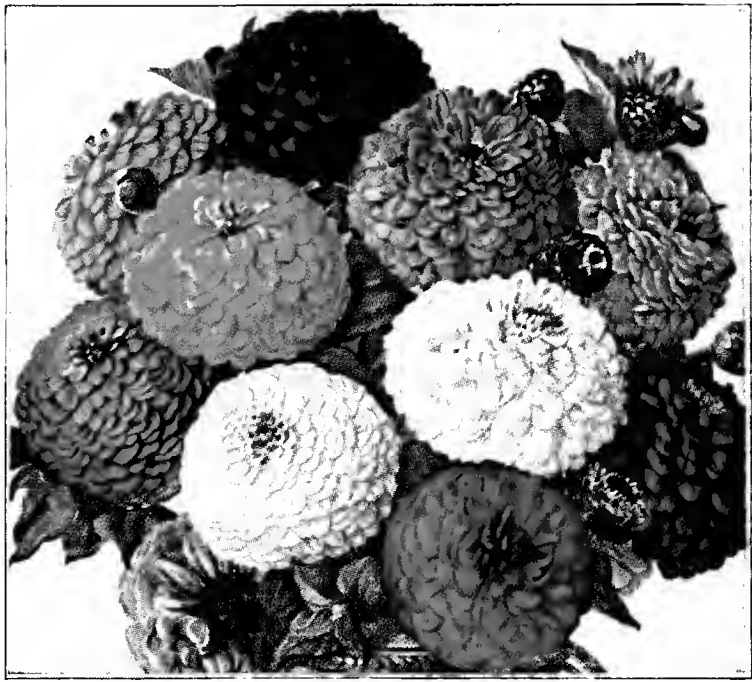
SCOTCH SOOT. (Genuine Imported). 25 lbs., \$2.50; 50 lbs., \$4.00; 100 lbs., \$7.50.

VIGORO. 5 lbs., 50c; 10 lbs., 85c; 25 lbs., \$1.50; 50 lbs., \$2.50; 100 lbs., \$4.00; 500 lbs., \$19.50; 1000 lbs., \$38.00; ton, \$72.00.

GRANULATED PEAT MOSS. One bale covers 480 square feet one-half inch thick. 22 bushels per bale. **Granulated Peat Moss,** ½ bale, \$2.50; bale, \$3.95. **Swedish Peat Moss,** \$3.50 per bale.

WEDO. A fertilizer specially for lawns. Feeds grass and fights weeds. 10 lbs., 80c; 25 lbs., \$1.65; 50 lbs., \$2.75; 100 lbs., \$4.75; 500 lbs., \$22.50; 1000 lbs., \$42.50; ton, \$80.00.

FERTILIZER SPREADERS. \$2.50 up.



Giant Dahlia-Flowered Zinnias.

Notable New and Popular Annual Flowers

Giant Dahlia-Flowered Zinnias

An annual growing 30 inches tall, producing flowers that often measure 4 inches in depth, 8 inches in diameter. In general appearance they compare with show Dahlias. For list of separate colors see page 10. Special Gold Medal Mixture. Pkt., 15c; large pkt., 25c.

New Giant Hybrid Scabiosa

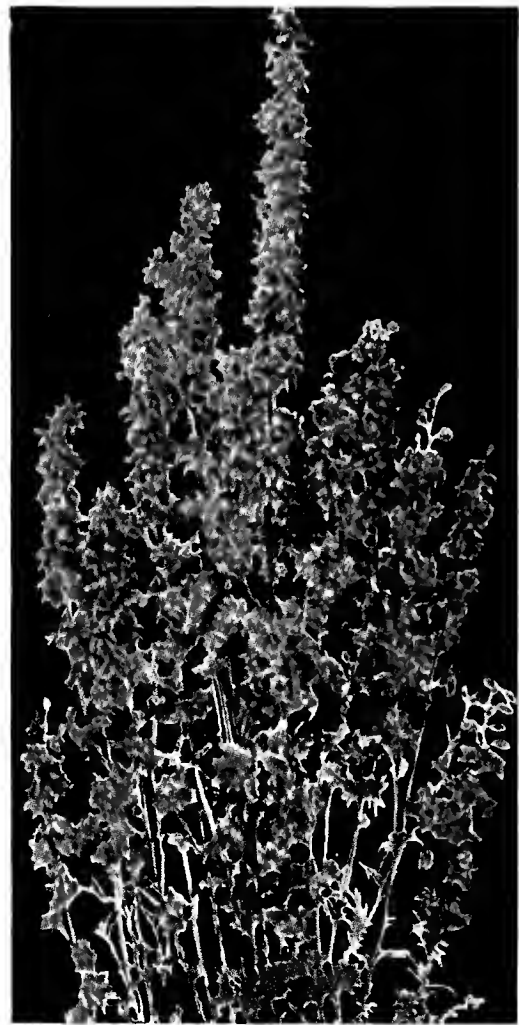
An annual producing mammoth flowers that are a great improvement in size over the ordinary Scabiosa. Mixed shades. Pkt., 25c.



New Giant Hybrid Scabiosa.



Annual Canterbury Bells.



Giant Imperial Larkspur.

Giant Imperial Larkspur

Annual Long-Stemmed Upright Class.
EXQUISITE. Pink improved, soft salmon-pink.
BLUE SPIRE. Deep blue.
DAINTINESS. Delicate lavender. } Pkt., 25c each.
GIANT MIXED.

Annual Canterbury Bells

Very ornamental annual growing 2 ft. high, producing beautiful large, bell-shaped flowers in shades of pink, blue and white continuously throughout the season. Mixed. Pkt., 25c.

Hartwegi Giants or King Lupines

An annual producing enormous spikes of bloom rivaling in beauty and size the perennial Lupine. Mixed colors. Pkt., 25c.



Hartwegi Giant Lupines.

LOHRMAN SEED CO.

Macomb at Brush St.
Phone: Rand. 1270

We Deliver DETROIT