

## **Historic, archived document**

Do not assume content reflects current scientific knowledge, policies, or practices.



62.81

U.S. Department of Agriculture

1934



CATALOG 1934

**OTTO SCHWILL & CO.**

**"SOUTH'S OLDEST SEED HOUSE" — PET SHOP**

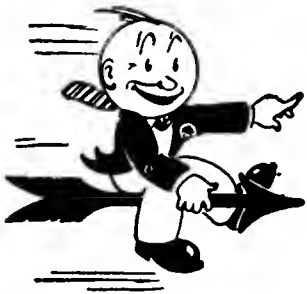
**MEMPHIS, TENNESSEE**



# ROSES

*Field Grown,  
Labeled, Dipped  
in Paraffine,*

*Individually Wrapped and Ready*



These bushes possess 2 and 3 canes, 12 inches and up in length; are properly handled and graded, according to the Nurserymen's Association; are fully acclimated and should bloom this summer. Please note that they are offered in three groups, priced as follows:

## GROUP No. 1—BUSH

By mail, parcel post prepaid, each 60c; 3 for \$1.55; 10 for \$3.35

### VARIETIES

RED—Etoile de France, Francis Scott Key, Gruss an Teplitz, Hadley, Hoosier Beauty, Madame Edouard Herriot and Red Radiance.

WHITE—K. A. Victoria and White Killarney.

PINK—Columbia, Jonkheer J. L. Mock, Lady Ashtown, La France, Los Angeles, Mrs. Chas. Bell, Ophelia, Premier, Pink Radiance, Willowmere.

YELLOW—Duchess of Luxembourg and Lady Hillingdon.

## GROUP No. 2—SPECIAL, BUSH

By mail, parcel post prepaid, each 75c; 3 for \$1.90; 10 for \$4.40

Pres. Herbert Hoover, coppery red in bud, orange yellow at base.

Rev. F. Page Roberts, coppery red buds, opening golden yellow.

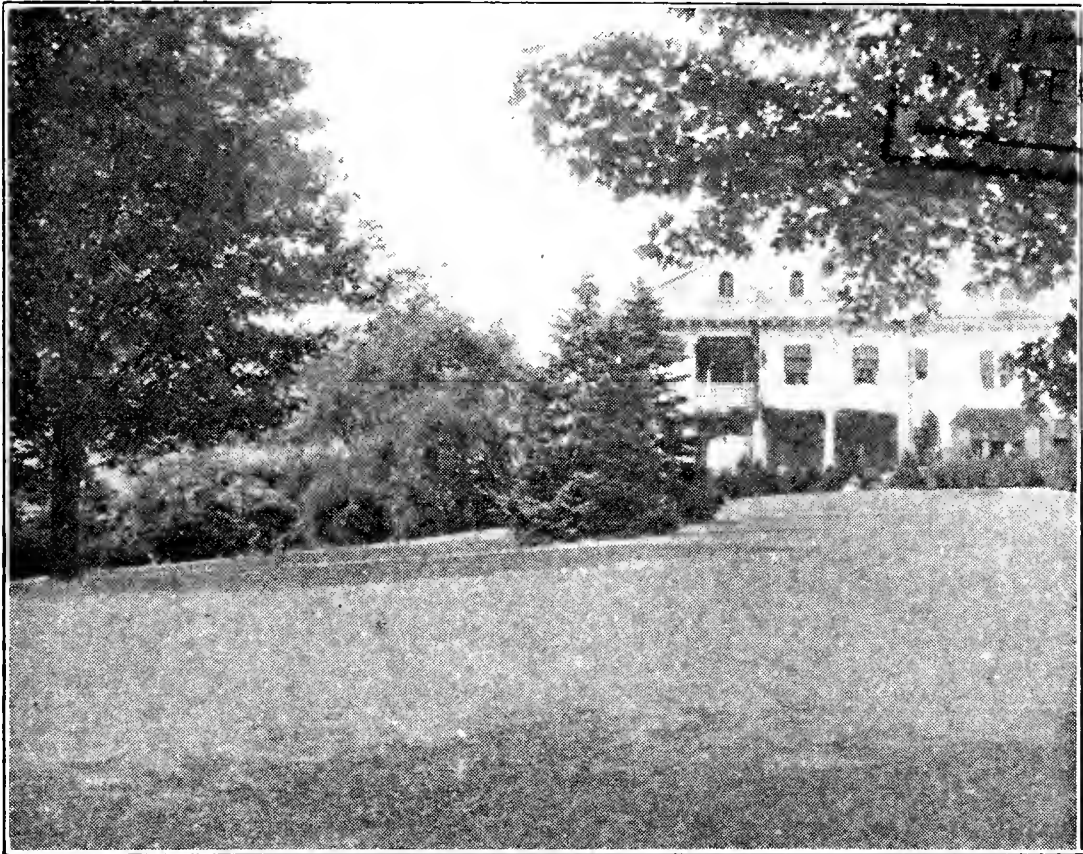
Talisman, brilliant scarlet and gold.

## GROUP No. 3—CLIMBING

By mail, parcel post prepaid, each 50c; 3 for \$1.40; 10 for \$2.60

Climbing American Beauty, reddish crimson; Dorothy Perkins, bright pink; Dr. Wm. Van Fleet, flesh pink; Paul's Scarlet Climber, vivid crimson scarlet; Silver Moon, silver white; Tausendschon, white to deep pink.

# SCHWILL'S LAWN GRASS



## EMERALD LAWN GRASS

This is by far the best mixture of grasses offered for the purpose of quickly producing a permanent lawn. It is prepared from our own formula and is a careful blending of varieties adapted to producing the thick growth and velvety appearance so much sought after. Each variety of grass in its composition is there for a special purpose—some for making strong, fibrous roots, which take hold upon the soil and keep the turf in place; others of a creeping nature quickly fill up any bare spots; varieties which are useful for their color value, and also kinds that are able to withstand the beating down of excessive rains. Use Emerald Lawn Grass Mixture at the rate of one pound for every 225 square feet. 1 lb. 40c, post paid.

## SHADY SPOT LAWN GRASS

Usually it is quite difficult to obtain a satisfactory growth of grass under trees and in shady places. For sowing such places we recommend the use of our Shady Spot Mixture. It will quickly produce an abundant and even growth of beautiful green grass. Use one pound for every 225 square feet. 1 lb. 45c, post paid.

## KENTUCKY BLUE GRASS

Intended for moist or cool, shady nooks. Although it grows almost wild in its native state of Kentucky, it is not successful in points further south. Unlike Bermuda, it can not stand the summer sun and will burn up in the first hot spell. Therefore, we do not recommend it for a permanent lawn that will be exposed to the sun. Plant it in the shade only. 1 lb. 40c, post paid.

## BERMUDA GRASS

Because it is very slow in germinating straight Bermuda should not be planted alone. Always buy Emerald Lawn, the basis of which is Bermuda. Nevertheless, we always stock the fanciest Bermuda that Arizona grows. 1 lb. 40c, post paid.

# FLOWER SEED

## ANNUALS

### AGERATUM

(Floss Flower)

Dwarf Imperial Blue.....pkt. 10c

### ALYSSUM

Carpet of Snow.....pkt. 10c

Saxatile compactum (yellow) .....pkt. 10c

### AMARANTHUS

(Love Lies Bleeding) (Princess Feather)

Caudatus (dark red).....pkt. 10c

### ANCHUSA

(Summer Forget-Me-Not)

Capensis (blue flowers).....pkt. 10c

### ANTIRRHINUM

(Snapdragon)

Brilliant rose.....pkt. 10c

Cardinal (brilliant scarlet).....pkt. 10c

Golden King.....pkt. 10c

Queen Victoria (white).....pkt. 10c

Finest mixed .....pkt. 10c

### BALSAM

(Lady Slipper) (Touch-Me-Not)

Alba Perfecto (white).....pkt. 10c

Salmon rose.....pkt. 10c

Flesh .....pkt. 10c

Scarlet .....pkt. 10c

Mixed, tall double.....pkt. 10c

### BACHELOR BUTTON

(Cornflower) (Ragged Robin)

Blue .....pkt. 10c

Rose .....pkt. 10c

Brick red.....pkt. 10c

Mixed .....pkt. 10c

### BLUE LACE FLOWER

Didiscus coerulus.....pkt. 10c

### CALENDULA

(Pot Marigold) (Scotch Marigold)

Rivera orange .....pkt. 10c

### CALLIOPSIS

Double mixed.....pkt. 10c

### CANDYTUFT

Rose cardinal.....pkt. 10c

Finest mixed .....pkt. 10c

### CARDINAL CLIMBER

A climber.....pkt. 10c

### CHINESE WOOLFLOWER

Crimson .....pkt. 10c

### CHRYSANTHEMUM

Carinatum double—

White .....pkt. 10c

Yellow .....pkt. 10c

Mixed .....pkt. 10c

### COCKSCOMB

Tall mixed .....pkt. 10c

### COLEUS

(Flame Flower)

Choice mixed.....pkt. 10c

### COSMOS

Double crested—

Pink Beauty.....pkt. 10c

White Queen .....pkt. 10c

Mixed .....pkt. 10c

### CYPRESS VINE

Mixed .....pkt. 10c

**DAHLIA**

Fine double mixed.....pkt. 10c  
 Fine single mixed.....pkt. 10c

**EUPHORBIA**

(Snow on the Mountain)

Variegata.....pkt. 10c

**FORGET-ME-NOT**

Blue.....pkt. 10c

**FOUR O'CLOCK**

(Marvel of Peru)

Tall mixed.....pkt. 10c

**GERANIUM**

Choice mixed.....pkt. 10c

**GOURDS**

Dipper .....pkt. 10c  
 Calabash Pipe .....pkt. 10c  
 Giant Bottle.....pkt. 10c  
 Malabar Melon (edible).....pkt. 10c

**HYACINTH BEAN**

(Jack Beans)

Tall mixed .....pkt. 10c

**ICE PLANT**

Mesembryanthemum.....pkt. 10c

**JOB'S TEAR**

Coix lachrymae.....pkt. 10c

**KOCHIA**

(Torch Lily) (Burning Bush)  
 (Mexican Fire Bush)

Forms a lively green plant.....pkt. 10c

**LANTANA**

Hybrida mixed .....pkt. 10c

**LARKSPUR**

Los Angeles, brilliant rose on  
 salmon .....pkt. 10c  
 Dark blue or purple.....pkt. 10c  
 Violet .....pkt. 10c  
 Ageratum blue .....pkt. 10c  
 Pink (tall hyacinth flowered).....pkt. 10c  
 Finest mixed (tall double stock)...pkt. 10c

**LOBELIA**

Compacta dwarf.....pkt. 10c

**MARIGOLD**

African dwarf, orange.....pkt. 10c  
 French dwarf, golden ball.....pkt. 10c  
 African tall double mixed.....pkt. 10c  
 French tall double mixed.....pkt. 10c  
 Guinea Gold.....pkt. 10c

**MIGNONETTE**

Special mixture.....pkt. 10c

**MOONFLOWER**

(Ipomea)

Noctiflora—Blue .....pkt. 10c  
 White .....pkt. 10c

**MORNING GLORY**

Mixed .....pkt. 10c

**NASTURTIUM**

Golden Gleam .....pkt. 10c  
 Tall mixed.....pkt. 10c  
 Dwarf mixed.....pkt. 10c

**PETUNIA**

Rosy Morn.....pkt. 10c  
 Elk's Pride (purple).....pkt. 10c  
 Single mixed, grandiflora.....pkt. 10c  
 Large flowering mixed (de luxe)....pkt. 10c  
 Balcony mixed .....pkt. 10c

**PHLOX**

Crimson .....pkt. 10c  
 Rose .....pkt. 10c  
 Violet .....pkt. 10c  
 Finest mixed .....pkt. 10c

**PINKS**

(Dianthus heddeewigi)

Eastern Queen (single rose).....pkt. 10c  
 Mourning Cloak (double white)....pkt. 10c  
 Fireball (double scarlet).....pkt. 10c  
 Double mixed.....pkt. 10c

**PANSY**

Giants of California, mixed colors..pkt. 10c  
 Orchid flowered, mixed.....pkt. 10c

## POPPY

Single varieties—

- Oriental mixed.....pkt. 10c
- Tulip Poppy.....pkt. 10c
- Iceland, single mixed.....pkt. 10c
- American Legion, orange scarlet..pkt. 10c

Double varieties—

- Carnation flowered, mixed.....pkt. 10c
- Double Queen, mixed.....pkt. 10c
- Rose Brilliant (tall double).....pkt. 10c
- California (Eschscholtzia),  
grandiflora mixed.....pkt. 10c
- Salmon Pink (double carnation  
flowered).....pkt. 10c

## PORTULACA

(Flowering Moss)

- Single mixed .....pkt. 10c
- Double mixed.....pkt. 10c

## SALVIA

(Scarlet Sage)

- Splendens (scarlet).....pkt. 10c
- Fireball .....pkt. 10c

## SCABIOSA

(Mourning Bride) (Pin Cushion Flower)

- Ageratum Blue.....pkt. 10c
- Fire King.....pkt. 10c
- Peach Blossom.....pkt. 10c
- Black Purple.....pkt. 10c
- Mixed .....pkt. 10c

## SWEET WILLIAM

- Pink Beauty.....pkt. 10c
- Scarlet Beauty.....pkt. 10c
- Double mixed.....pkt. 10c
- Single mixed .....pkt. 10c

## TEXAS BLUE BONNET

- Lupinus Texanus .....pkt. 10c

## SWEET PEAS

- Campfire (bright scarlet).....pkt. 10c
- Austin Frederick (lavender).....pkt. 10c
- Hebe (rosy pink).....pkt. 10c
- King of White (white).....pkt. 10c
- Miss California (salmon pink).....pkt. 10c
- Mrs. Tom Jones (deep blue).....pkt. 10c
- Spencer Mixed—pkt. 5c; 1 oz. 15c; 2 oz. 25c;  
¼ lb. 40c; ½ lb. 75c; 1 lb. \$1.35.
- Schwill's Mixed Sweet Peas—pkt. 5c; 1 oz.  
10c; 2 oz. 20c; ¼ lb. 35c; 1 lb. \$1.25.

## VERBENA

Large flowering—

- Scarlet Defiance .....pkt. 10c
- Pink shades.....pkt. 10c
- Purple shades .....pkt. 10c
- White .....pkt. 10c
- Mammoth mixed.....pkt. 10c

Moss Verbena—

- Fireball .....pkt. 10c

## VINCA

(Periwinkle)

- Alba (white).....pkt. 10c
- Rose .....pkt. 10c
- Mixed .....pkt. 10c

## WALLFLOWER

- Finest single mixed.....pkt. 10c

## ZINNIA

(Cut and Come Again) (Youth and Old Age)

Dahlia flowered—

- Crimson Monarch (red shades)...pkt. 10c
- Purple Prince (deep purple).....pkt. 10c
- Lemon Beauty (golden yellow  
on brown).....pkt. 10c
- Exquisite (light rose; center  
deep rose).....pkt. 10c
- Golden State (rich orange-yellow).pkt. 10c
- Oriole (orange and gold bi-color).pkt. 10c
- Luminosa (bright deep pink)....pkt. 10c
- El Dorado (rose on deep salmon)..pkt. 10c
- Golden Dawn (golden yellow)...pkt. 10c
- Canary Bird (delicate shade of  
primrose).....pkt. 10c
- Dream (deep lavender).....pkt. 10c
- Old Gold (deep and lighter  
shades of old gold).....pkt. 10c
- Mixed .....pkt. 10c

Lilliput—

- Canary Yellow.....pkt. 10c
- Golden Gem.....pkt. 10c
- Salmon Rose.....pkt. 10c
- Purple .....pkt. 10c
- Scarlet Gem.....pkt. 10c
- Mixed .....pkt. 10c



# PERENNIAL FLOWER SEED

## BABY'S BREATH

Gypsophila .....pkt. 10c

## CARNATION

Cardinal red.....pkt. 10c  
White .....pkt. 10c

## COLUMBINE

(Aquilegia)

Silver Queen.....pkt. 10c  
Double mixed .....pkt. 10c

## COREOPSIS

Double Yellow.....pkt. 10c

## DELPHINIUM

(Perennial Larkspur)

Brilliant Scarlet.....pkt. 10c  
Dark Blue.....pkt. 10c  
Choice mixed.....pkt. 10c

## EVENING PRIMROSE

(Oenothera)

Sweet scented, yellow flowers.....pkt. 10c

## FEVERFEW

Matricaria .....pkt. 10c

## FOXGLOVE

(Digitalis)

Mixed colors.....pkt. 10c

## HOLLYHOCK

Frilled and fringed.....pkt. 10c  
Crimson .....pkt. 10c  
White .....pkt. 10c  
Finest mixed .....pkt. 10c

## KUDZU VINE

(Jack and the Beanstalk)

Cerise-purple flowers.....pkt. 10c

## PHLOX

(Decussata)

Finest mixed.....pkt. 10c

## SALVIA

Blue .....pkt. 10c

## SHASTA DAISY

(Chrysanthemum maximum)

White .....pkt. 10c

## SWEET PEA

(Lathyrus latifolius)

Mixed colors .....pkt. 10c

## TRITOMA

(Red Hot Poker)

Orange-red flowers.....pkt. 10c



Hollyhock

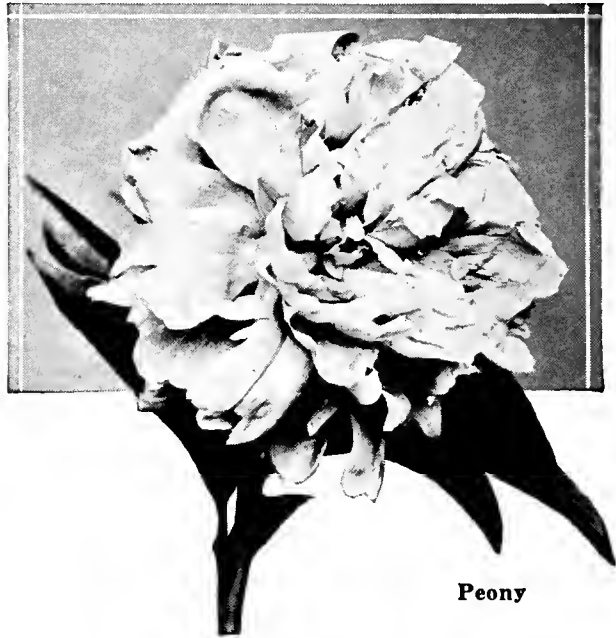
## NAMED PEONIES

Cover with 2 or 3 inches only of soil.  
 Prices—Each 40c; doz. for \$3.35, post paid.  
 Not prepaid—Each 30c; doz. for \$3.00.

LOUIS VAN HOUTTE—Red.

EDULIS SUPERBA—Daybreak pink.

FESTIVA MAXIMA—Early white with red  
 splotch.



Peony

## TUBEROSE

SINGLE MEXICAN — Doz. 45c, post paid.

Not prepaid—Doz. 35c; 25 for 75c; 100  
 for \$2.50.

## ELEPHANT'S EARS

CALADIUM ESCULENTUM—Plant 3 inches  
 deep in rich soil.

	Post Paid		Not Prepaid	
	Each	Doz.	Each	Doz.
Small bulbs.....	\$0.15	\$0.75	\$0.10	\$0.60
Large bulbs.....	.25	1.35	.15	1.20
Jumbo bulbs.....	.45	3.45	.35	3.25

## CANNAS

Plant with the "eye" just above the ground.

	Post Paid		Not Prepaid	
	Each	Doz.	Each	Doz.
KING HUMBERT—Scarlet flowers, bronze leaves	\$0.15	\$0.90	\$0.10	\$0.75
YELLOW KING HUMBERT—Yellow, spotted with red.....	.15	.90	.10	.75
THE PRESIDENT—Glowing scarlet.....	.15	.90	.10	.75
HUNGARIA—Rose pink.....	.15	1.00	.10	.85

## DOUBLE DAHLIAS

Plant 3 inches deep, 3 feet apart.

Colors—Double pink, yellow, purple, white, scarlet, striped.

Prices—Each 15c; doz. \$1.15, post paid. Not prepaid—Each 10c; doz. \$1.00.

## GLADIOLI

	Post Paid		Not Prepaid	
	Doz.	Doz.	25	100
CRIMSON GLOW—Red .....	\$0.40	\$0.30	\$0.60	\$1.95
SOUVENIR—Yellow .....	.40	.30	.60	1.95
ALICE TIPLADY—Orange .....	.40	.30	.60	1.95
LOS ANGELES—Blotched pink.....	.40	.30	.60	1.95
E. J. SHAYLOR—Pink, ruffled.....	.40	.30	.60	1.95
LE MARECHAL FOCH—Lavender pink.....	.40	.30	.60	1.95
CHICAGO WHITE—White .....	.40	.30	.60	1.95
MRS. FRANK PENDLETON—Pink.....	.40	.30	.60	1.95
SCHWABEN—Yellow, red stripe.....	.40	.30	.60	1.95
EXHIBITION MIXED—All colors.....	.40	.30	.60	1.95

# GARDEN SEED

## GREEN PODDED BUSH BEANS

½ lb. to 50 feet of row; 90 lbs. to acre.

	½ lb.	1 lb.	2 lbs.	Gal.
Burpee's Stringless Green Pod.....post paid	\$0.20	\$0.30	\$0.50	....
Not post paid	.15	.25	.40	\$0.95
Black Valentine .....post paid	.20	.30	.50	....
Not post paid	.15	.25	.40	.95
Stringless Black Valentine.....post paid	.20	.30	.50	....
Not post paid	.15	.25	.40	1.15
Bountiful .....post paid	.20	.30	.50	....
Not post paid	.15	.25	.40	1.05
Stringless Refugee .....post paid	.20	.35	.55	....
Not post paid	.15	.25	.45	1.15
Improved Red Valentine.....post paid	.20	.30	.50	....
Not post paid	.15	.25	.40	.95
Stringless Red Valentine.....post paid	.20	.30	.50	....
Not post paid	.15	.25	.40	1.15
Giant Stringless Green Pod.....post paid	.20	.30	.50	....
Not post paid	.15	.25	.40	.95
Tennessee Green Pod.....post paid	.20	.35	.55	....
Not post paid	.15	.25	.45	1.15
Michigan Navy .....post paid	.20	.30	.50	....
Not post paid	.15	.25	.40	.85

## WAX PODDED BUSH BEANS

½ lb. to 50 feet of row; 90 lbs. to acre.

	½ lb.	1 lb.	2 lbs.	Gal.
Prolific Black Wax.....post paid	\$0.20	\$0.30	\$0.60	....
Not post paid	.15	.25	.50	\$1.15
Currie's Rust Proof Wax.....post paid	.20	.30	.60	....
Not post paid	.15	.25	.50	1.15
Improved Golden Wax .....post paid	.20	.30	.60	....
Not post paid	.15	.25	.50	1.15
Black Wax (Pencil Pod).....post paid	.20	.30	.60	....
Not post paid	.15	.25	.50	1.15

## POLE BEANS

½ lb. to 50 feet of row; 15 lbs. to acre.

	½ lb.	1 lb.	2 lbs.	Gal.
Kentucky Wonders (Old Homestead)...post paid	\$0.20	\$0.30	\$0.55	....
Not post paid	.15	.25	.45	\$1.15
Scotia Cornfield (Striped Creaseback)...post paid	.20	.30	.55	....
Not post paid	.15	.25	.45	1.25
White Creaseback .....post paid	.20	.30	.55	....
Not post paid	.15	.25	.45	1.25
McCaslan .....post paid	.20	.35	.60	....
Not post paid	.15	.25	.50	1.25

**LIMA BEANS, POLE**

½ lb. to 50 feet of row; 30 lbs. to acre.

	½ lb.	1 lb.	2 lbs.	Gal.
Carolina Sieva (Small Lima).....post paid	\$0.20	\$0.30	\$0.55	....
Not post paid	.15	.25	.50	\$1.20
Schwill's Sure Crop.....post paid	.25	.40	.70	....
Not post paid	.20	.30	.55	1.45
King of the Garden.....post paid	.25	.35	.65	....
Not post paid	.20	.30	.55	1.55
Large White Lima.....post paid	.25	.35	.65	....
Not post paid	.20	.30	.55	1.55
Calico, or Irish (Florida Butter Speckled)				
post paid	.20	.30	.55	....
Not post paid	.15	.25	.50	1.25

**LIMA BEANS, BUSH**

½ lb. to 50 feet of row; 90 lbs. to acre.

	½ lb.	1 lb.	2 lbs.	Gal.
Henderson .....post paid	\$0.20	\$0.30	\$0.55	....
Not post paid	.15	.25	.45	1.15
Jackson Wonder .....post paid	.20	.35	.60	....
Not post paid	.15	.25	.50	1.25
Burpee's Improved .....post paid	.30	.45	.75	....
Not post paid	.20	.35	.65	1.90

**TABLE BEETS**

1 oz. to 50 feet of row; 4-5 lbs. to acre.

	Pkt.	1 oz.	¼ lb.	1 lb.
Detroit Dark Red.....post paid	\$0.05	\$0.10	\$0.25	\$0.65
Crosby's Egyptian .....post paid	.05	.10	.25	.65
Schwill's Market Gardener.....post paid	.05	.10	.25	.65
Early Wonder .....post paid	.05	.10	.25	.65
Early Eclipse .....post paid	.05	.10	.25	.65
Early Blood Turnip, Improved.....post paid	.05	.10	.25	.65

**STOCK BEETS OR MANGELS**

1 oz. to 50 feet of row; 6 lbs. to acre.

	Pkt.	1 oz.	¼ lb.	1 lb.
Mammoth Long Red.....post paid	\$0.05	\$0.10	\$0.20	\$0.45
Golden Tankard .....post paid	.05	.10	.20	.45
Giant Half Sugar Rose.....post paid	.05	.10	.20	.45

**BROCCOLI**

¼ oz. to 50 feet of row.

	Pkt.	1 oz.	¼ lb.	1 lb.
Green Sprouting Italian Calabrese.....post paid	\$0.05	\$0.25	\$0.75	\$2.75

**BRUSSELS SPROUTS**

¼ oz. to 50 feet of row; 6 oz. to acre.

	Pkt.	1 oz.	¼ lb.	1 lb.
Paris Half Dwarf.....post paid	\$0.05	\$0.15	\$0.50	\$1.75

**CABBAGE**

¼ oz. to 50 feet of row; ¼ lb. to acre.

	Pkt.	1 oz.	¼ lb.	1 lb.
All Seasons .....post paid	\$0.05	\$0.20	\$0.45	\$1.25
Charleston Wakefield .....post paid	.05	.20	.45	1.25
Copenhagen Market .....post paid	.05	.25	.55	1.50
Early Flat Dutch.....post paid	.05	.20	.45	1.25
Early Jersey Wakefield.....post paid	.05	.20	.45	1.25
Golden Acre .....post paid	.05	.25	.60	1.75
Perfection Late Drumhead Savoy.....post paid	.05	.25	.55	1.75
Premium Late Flat Dutch.....post paid	.05	.20	.45	1.25
Succession .....post paid	.05	.20	.45	1.25
Schwill's Ideal Winter.....post paid	.05	.20	.45	1.25
Chinese .....post paid	.05	.25	.55	1.75



**SCHWILL'S FROST PROOF CABBAGE PLANTS**

10-14 M to acre.

Varieties—Early Jersey Wakefield; Early Flat Dutch; Charleston or Large Wakefield; Succession; Copenhagen Market.

Prices, by parcel post—100 for 40c; 200 for 75c; 500 for \$1.35; 1000 for \$2.25. No order filled for less than 100 plants of a variety. By express, from growing station, not prepaid—1000 for \$1.50; 3000 for \$3.95; 5000 for \$6.25.

**CARROTS**

½ oz. to 50 feet of row; 3-4 lbs. to acre.

	Pkt.	1 oz.	¼ lb.	1 lb.
Chantenay .....post paid	\$0.05	\$0.15	\$0.30	\$0.85
Danver's Half Long.....post paid	.05	.15	.30	.85
Improved Long Orange.....post paid	.05	.15	.30	.85
Oxheart .....post paid	.05	.15	.30	.85

**CAULIFLOWER**

¼ oz. to 50 feet of row.

	Pkt.	½ oz.	1 oz.	¼ lb.
Earliest Snowball .....post paid	\$0.05	\$0.75	\$1.25	\$4.25

**CELERY**

¼ oz. to 50 feet of row.

	Pkt.	1 oz.	¼ lb.	1 lb.
White Plume .....post paid	\$0.05	\$0.25	\$0.75	\$2.50

**COLLARDS**

¼ oz. to 50 feet of row.

	Pkt.	1 oz.	¼ lb.	1 lb.
Georgia White Cabbage.....post paid	\$0.05	\$0.10	\$0.25	\$0.60
Southern or Georgia.....post paid	.05	.10	.25	.60

**CORN, GARDEN AND SWEET**

½ lb. to 50 feet of row; 4-6 qts. to acre.

	½ lb.	1 lb.	2 lbs.	Gal.
Country Gentleman .....post paid	\$0.20	\$0.35	\$0.55	....
Not post paid	.15	.25	.45	\$0.95
Adams Large Early.....post paid	.15	.30	.40	....
Not post paid	.10	.20	.40	.70
Extra Early Adams.....post paid	.15	.30	.40	....
Not post paid	.10	.20	.40	.70
Improved Large Adams.....post paid	.15	.30	.40	....
Not post paid	.10	.20	.40	.70
Golden Bantam .....post paid	.20	.35	.45	....
Not post paid	.15	.25	.35	.95
Stowell's Evergreen .....post paid	.20	.35	.45	....
Not post paid	.15	.25	.35	.95
Schwill's Early Surprise (Originated by us) .....post paid	.15	.25	.35	....
Not post paid	.10	.15	.25	.60
Snowflake .....post paid	.15	.25	.35	....
Not post paid	.10	.15	.25	.60
Trucker's Favorite .....post paid	.15	.25	.35	....
Not post paid	.10	.15	.25	.60

**POPCORN**

		½ lb.	1 lb.
Queen's Golden .....	post paid	\$0.15	\$0.25
	Not post paid	.10	.15
White Rice .....	post paid	.15	.25
	Not post paid	.10	.15

**CUCUMBERS**

½ oz. to 50 feet of row; 2 lbs. to acre.

	Pkt.	1 oz.	¼ lb.	1 lb.	
Arlington White Spine.....	post paid	\$0.05	\$0.15	\$0.25	\$0.75
Davis Perfect .....	post paid	.05	.15	.25	.75
Early Fortune .....	post paid	.05	.15	.25	.75
Improved Early White Spine.....	post paid	.05	.15	.25	.75
Stays Green .....	post paid	.05	.15	.25	.75
Woodruff's Hybrid .....	post paid	.05	.15	.25	.75
Early Green Cluster.....	post paid	.05	.15	.25	.75
Black Diamond .....	post paid	.05	.15	.25	.75
Chicago Pickling .....	post paid	.05	.15	.25	.75
Long Green Improved.....	post paid	.05	.15	.25	.75

**EGG PLANT**

¼ oz. to 50 feet of row.

	Pkt.	1 oz.	¼ lb.	1 lb.	
Black Beauty .....	post paid	\$0.05	\$0.30	\$0.85	\$2.95
New York Improved Purple.....	post paid	.05	.30	.85	2.95

**ENDIVE**

¼ oz. to 50 feet of row; 4-5 lbs. to acre.

	Pkt.	1 oz.	¼ lb.	1 lb.	5 lbs.	
Green Curled .....	post paid	\$0.05	\$0.15	\$0.40	\$1.00	....

**EVERGREEN**

	Pkt.	1 oz.	¼ lb.	1 lb.	5 lbs.	
A Tender Green.....	post paid	\$0.05	\$0.10	\$0.25	\$0.60	\$2.25

**KALE OR BORECOLE**

¼ oz. to 50 feet of row; 4 lbs. to acre.

	Pkt.	1 oz.	¼ lb.	1 lb.	
Dwarf Curled Siberian.....	post paid	\$0.05	\$0.10	\$0.25	\$0.60
Tall Green Curled Scotch.....	post paid	.05	.15	.30	.70

**KOHL RABI**

¼ oz. to 50 feet of row.

	Pkt.	1 oz.	¼ lb.	1 lb.	
Early White Vienna.....	post paid	\$0.05	\$0.20	\$0.55	\$1.75

**LEEK**

½ oz. to 50 feet of row.

	Pkt.	1 oz.	¼ lb.	1 lb.	
Large London Flag.....	post paid	\$0.05	\$0.25	\$0.60	\$1.75

## HERBS

Sow seed in shallow drill a foot apart, and when up, thin out and transplant to a few inches apart.

		Pkt.	1 oz.
Basil, Sweet—For flavoring soups.....	post paid	\$0.10	\$0.25
Dill, Mammoth—Used for flavoring pickle.....	post paid	.10	.25
Marjoram, Sweet—Used for seasoning meats.....	post paid	.10	.25
Rosemary—Aromatic leaves are used for seasoning..	post paid	.10	.40
Savory, Summer—Used as a culinary herb.....	post paid	.10	.25
Thyme, Sweet—Much used for seasoning.....	post paid	.10	.40
Sage—Used for seasoning.....	post paid	.10	.25

## LETTUCE

¼ oz. to 50 feet of row; 4 lbs. to acre.

		Pkt.	1 oz.	¼ lb.	1 lb.
Big Boston .....	post paid	\$0.05	\$0.15	\$0.35	\$1.00
Black Seeded Simpson.....	post paid	.05	.15	.30	.90
California Cream Butter.....	post paid	.05	.15	.40	1.20
Early Curled Simpson.....	post paid	.05	.15	.30	.90
Iceberg .....	post paid	.05	.20	.45	1.40
New York or Wonderful.....	post paid	.05	.20	.45	1.40
Prizehead .....	post paid	.05	.15	.30	.90
Trianon Cos .....	post paid	.05	.20	.40	1.10
Chicken .....	post paid	.05	.15	.30	.90

## MUSKMELON, OR CANTALOUPE

¼ oz. to 50 feet of row; 2 lbs. to acre.

		Pkt.	1 oz.	¼ lb.	1 lb.
Hale's Best .....	post paid	\$0.05	\$0.15	\$0.35	\$0.85
Honey Dew .....	post paid	.05	.15	.35	.95
Perfecto Gold Lined.....	post paid	.05	.15	.35	.85
Mammoth Rockyford .....	post paid	.05	.15	.35	.95
Pollock 10-25 .....	post paid	.05	.15	.35	.85

## WATERMELON

1 oz. to 50 feet of row.

		Pkt.	1 oz.	¼ lb.	1 lb.
Excel .....	post paid	\$0.05	\$0.10	\$0.25	\$0.75
Florida Favorite .....	post paid	.05	.10	.25	.75
Georgia Rattlesnake .....	post paid	.05	.10	.25	.75
Halbert's Honey .....	post paid	.05	.10	.25	.75
Irish Grey .....	post paid	.05	.10	.25	.75
Improved Kleckley Sweet.....	post paid	.05	.10	.30	.85
Kleckley Sweet .....	post paid	.05	.10	.25	.75
Stone Mountain .....	post paid	.05	.10	.30	.85
Thurmond Grey .....	post paid	.05	.10	.25	.75
Tom Watson .....	post paid	.05	.10	.25	.75
Tom Watson Special .....	post paid	.05	.10	.30	.85
New Wonder .....	post paid	.05	.10	.30	.85
Perfection .....	post paid	.05	.10	.25	.75
Harris Earliest .....	post paid	.05	.10	.25	.75
Ribault .....	post paid	.05	.10	.30	.85



### MUSTARD

1 oz. to 50 feet of row; 4-5 lbs. to acre.

	Pkt.	1 oz.	¼ lb.	1 lb.	5 lbs.
Chinese Broadleaf . . . . .post paid	\$0.05	\$0.10	\$0.15	\$0.45	\$1.65
Fordhook Fancy . . . . .post paid	.05	.10	.20	.50	1.90
Southern Giant Curled. . . . .post paid	.05	.10	.15	.45	1.65
Mustard-Spinach . . . . .post paid	.05	.10	.25	.60	2.25

### OKRA

1 oz. to 50 feet of row; 8-10 lbs. to acre.

	Pkt.	1 oz.	¼ lb.	1 lb.
Perkins Mammoth . . . . .post paid	\$0.05	\$0.10	\$0.15	\$0.45
Tall or Long Green. . . . .post paid	.05	.10	.15	.45
White Velvet . . . . .post paid	.05	.10	.15	.45

### ONIONS

½ oz. to 50 feet of row; 3-4 lbs. to acre.

	Pkt.	1 oz.	¼ lb.	1 lb.
Large Red Wethersfield. . . . .post paid	\$0.05	\$0.20	\$0.55	\$1.80
Southport White Globe. . . . .post paid	.05	.25	.70	2.50
White Silverskin . . . . .post paid	.05	.20	.65	2.30
Yellow Giant Prizetaker . . . . .post paid	.05	.20	.60	1.95
Yellow Globe Danver . . . . .post paid	.05	.20	.60	2.20
Crystal White Wax Bermuda. . . . .post paid	.05	.25	.80	2.90
Yellow Bermuda . . . . .post paid	.05	.25	.75	2.75

### BERMUDA ONION PLANTS

Plant same time you set out cabbage plants or onion sets. When planted 3 inches apart in 3-foot rows you will need 40,000 to the acre.

	100	500	1,000	
Crystal White Wax. . . . .post paid	\$0.20	\$0.70	\$1.00	
	Not prepaid	.10	.50	.80

No order filled for less than 100 plants.

### ONION SETS

1 qt. to 50 feet of row; 15-16 bu. to acre.

	1 qt.	1 gal.	1 pk.	1 bu.	
Red Wethersfield . . . . .post paid	\$0.20	\$0.65			
	Not post paid	. . . .	.55	\$1.10	\$3.95
Yellow Danver . . . . .post paid	.20	.65			
	Not post paid	. . . .	.55	1.10	3.95
White Silverskin . . . . .post paid	.25	.70			
	Not post paid	. . . .	.60	1.20	4.50

**PARSLEY**

½ oz. to 50 feet of row; 15 lbs. to acre.

	Pkt.	1 oz.	¼ lb.	1 lb.
Double Curled .....post paid	\$0.05	\$0.10	\$0.25	\$0.60
Moss Curled .....post paid	.05	.10	.25	.60
Plain or Single.....post paid	.05	.10	.25	.60

**PARSNIP**

¼ oz. to 50 feet of row; 5-7 lbs. to acre.

	Pkt.	1 oz.	¼ lb.	1 lb.
Large Hollow Crown.....post paid	\$0.05	\$0.10	\$0.25	\$0.75

**GARDEN PEAS**

1 lb. to 50 feet of row; 1½-2 bu. to acre.

	½ lb.	1 lb.	2 lbs.	Gal.
Alaska, Extra Early.....post paid	\$0.20	\$0.35	\$0.45	....
Not post paid	.15	.25	.35	\$1.10
Alderman .....post paid	.20	.35	.45	....
Not post paid	.15	.25	.35	1.25
American Wonder .....post paid	.20	.35	.60	....
Not post paid	.15	.25	.50	1.25
First & Best.....post paid	.20	.35	.45	....
Not post paid	.15	.25	.35	1.10
Gradus or Prosperity.....post paid	.20	.40	.65	....
Not post paid	.15	.30	.55	1.25
Large White Marrowfat.....post paid	.20	.35	.50	....
Not post paid	.15	.25	.40	.90
Laxtonian .....post paid	.20	.40	.65	....
Not post paid	.15	.30	.55	1.25
Tall Melting Sugar, Edible Pods.....post paid	.20	.40	.65	....
Not post paid	.15	.30	.55	1.40
Telephone .....post paid	.20	.35	.60	....
Not post paid	.15	.25	.50	1.25
Thomas Laxton .....post paid	.20	.35	.60	....
Not post paid	.15	.25	.50	1.25
World Record .....post paid	.20	.35	.60	....
Not post paid	.15	.25	.50	1.25

**TABLE PEAS**

	½ lb.	1 lb.	2 lbs.	Gal.
California White Blackeye.....post paid	\$0.15	\$0.25	\$0.35	....
Not post paid	....	.15	.25	\$0.75
White Browneye .....post paid	.20	.30	.50	....
Not post paid	....	.20	.35	.85
White Sugar Crowder.....post paid	.20	.30	.50	....
Not post paid	....	.20	.35	.85
Brown Sugar Crowder.....post paid	.20	.30	.50	....
Not post paid	....	.20	.35	.85
White Lady .....post paid	.20	.30	.50	....
Not post paid	....	.20	.35	.85

## PEPPERS

¼ oz. to 50 feet of row.

	Pkt.	1 oz.	¼ lb.	1 lb.
California Wonder .....post paid	\$0.05	\$0.40	\$1.30	\$4.75
Chinese Giant .....post paid	.05	.45	1.55	5.70
Bell or Bull Nose.....post paid	.05	.25	.80	2.70
Long Red Cayenne.....post paid	.05	.30	.85	2.95
Pimento .....post paid	.05	.25	.80	2.70
World Beater .....post paid	.05	.25	.80	2.70
Crimson Giant.....post paid	.05	.30	.90	3.10
Ruby King .....post paid	.05	.25	.80	2.70

## PUMPKIN

½ oz. to 50 feet of row; 2 lbs. to acre.

	Pkt.	1 oz.	¼ lb.	1 lb.
Kentucky Field .....post paid	\$0.05	\$0.10	\$0.15	\$0.45
King of the Mammoth.....post paid	.05	.15	.35	1.00
Striped Cushaw .....post paid	.05	.10	.30	.90
Tenn. Sweet Potato.....post paid	.05	.10	.30	.90

## RADISH

½ oz. to 50 feet of row; 8 to 10 lbs. to acre.

	Pkt.	1 oz.	¼ lb.	1 lb.
Schwill's Perfection Scarlet Turnip White Tip .....post paid	\$0.05	\$0.10	\$0.25	\$0.60
Cooper's Sparkler, White Tipped.....post paid	.05	.10	.25	.60
China Rose Winter.....post paid	.05	.10	.25	.60
Long Black Spanish.....post paid	.05	.10	.25	.60
Scarlet Globe .....post paid	.05	.10	.20	.60
White Icicle .....post paid	.05	.10	.20	.60
Crimson Giant .....post paid	.05	.10	.20	.60

## SALSIFY—OYSTER PLANT

1 oz. to 50 feet of row; 6 to 8 lbs. to acre.

	Pkt.	1 oz.	¼ lb.	1 lb.
Mammoth Sandwich Island.....post paid	\$0.05	\$0.15	\$0.50	\$1.75

## SPINACH

1 oz. to 50 feet of row; 15 to 20 lbs. to acre.

	Pkt.	1 oz.	¼ lb.	1 lb.
Bloomsdale, Savoy Leaved.....post paid	\$0.05	\$0.10	\$0.20	\$0.45
New Zealand .....post paid	.05	.10	.25	.60

## SQUASH

½ oz. to 50 feet of row; 3 lbs. to acre.

	Pkt.	1 oz.	¼ lb.	1 lb.
Early White Bush, Scalloped.....post paid	\$0.05	\$0.10	\$0.25	\$0.75
Mammoth White Bush.....post paid	.05	.10	.25	.75
Giant Yellow Summer Crookneck.....post paid	.05	.10	.25	.75

### SWISS CHARD

	Pkt.	1 oz.	¼ lb.	1 lb.
Lucullus .....post paid	\$0.05	\$0.10	\$0.20	\$0.60

### TOMATO

¼ oz. to 50 feet of row; 4 oz. to acre.

	Pkt.	1 oz.	¼ lb.	1 lb.
Bonny Best .....post paid	\$0.05	\$0.20	\$0.70	\$2.25
Gulf State Market.....post paid	.05	.35	1.10	3.90
Livingston Globe .....post paid	.05	.35	1.15	4.10
Marglobe .....post paid	.05	.35	1.00	3.65
Beefsteak .....post paid	.05	.40	1.50	4.50
Ponderosa .....post paid	.05	.40	1.55	5.50
Stone, Improved .....post paid	.05	.15	.50	1.50
Ox Heart .....post paid	.05	.55	1.75	5.95
Break O'Day .....post paid	.05	.40	1.15	4.10
Brimmer .....post paid	.05	.60	1.75	5.95
Acme .....post paid	.05	.35	1.15	4.10
Early Detroit .....post paid	.05	.40	1.35	4.90
Earliana .....post paid	.05	.20	.75	2.60
Matchless .....post paid	.05	.20	.65	2.20
Norton Wilt Resistant.....post paid	.05	.35	1.15	4.10

### TURNIP

½ oz. to 50 feet of row; 3 lbs. to acre.

	Pkt.	1 oz.	¼ lb.	1 lb.
American Red Top White Globe.....post paid	\$0.05	\$0.10	\$0.20	\$0.50
Aberdeen Yellow Purple Top.....post paid	.05	.10	.15	.45
Amber Globe .....post paid	.05	.10	.15	.45
Extra Early Purple Top Milan.....post paid	.05	.10	.20	.60
Japanese Foliage, Shogoin.....post paid	.05	.10	.15	.50
Large White Globe.....post paid	.05	.10	.15	.45
Long White Cowhorn.....post paid	.05	.10	.15	.45
Purple Top Strap Leaf.....post paid	.05	.10	.15	.45
Purple Top White Globe.....post paid	.05	.10	.15	.45
Seven Top .....post paid	.05	.10	.15	.45
Southern Prize .....post paid	.05	.10	.15	.45
Dixieland .....post paid	.05	.10	.15	.45
White Egg .....post paid	.05	.10	.15	.45
White Flat Dutch Strap Leaf.....post paid	.05	.10	.15	.45
Schwill's Superb Mixed.....post paid	.05	.10	.15	.45

### RUTABAGA

½ oz. to 50 feet of row; 1½ to 2 lbs. to acre.

	Pkt.	1 oz.	¼ lb.	1 lb.
Improved Purple Top Yellow.....post paid	\$0.05	\$0.10	\$0.15	\$0.45

# FIELD SEED

(Prices F. O. B. Memphis)

## ALFALFA

	5 lbs.	Peck (15 lbs.)	Bu. (60 lbs.)	100 lbs.
Fancy Western .....	\$0.90	\$2.40	\$ 9.10	\$14.50
Fancy Kansas .....	1.00	2.60	10.25	16.50
*Certified Kansas .....	1.10	2.95	11.20	18.00
Hardy Utah .....	1.20	3.25	12.40	20.00
Hardy North Western.....	1.20	3.25	12.40	20.00
Dakota 12 .....	1.30	3.70	13.60	22.00
Bee Hive .....	1.20	3.25	12.40	20.00

\*Certified Kansas seed has been harvested from fields certified by the Kansas Department of Agriculture to be free of disease and noxious weeds. Other bags carry the tag of the U. S. Verified Origin group.

## CLOVERS

	5 lbs.	Peck (15 lbs.)	Bu. (60 lbs.)	100 lbs.
Medium Red Clover.....	\$1.20	\$3.25	\$12.40	\$20.00
Mammoth Red Clover.....	1.30	3.70	13.60	22.00
Alsike .....	1.30	3.70	13.60	22.00
White Sweet (Melilotus).....	.65	1.60	5.50	8.50
White Dutch Clover.....	1.75	4.95	18.90	31.00
Hop Clover .....	1.50	4.25	15.90	26.00

## LESPEDEZA

	Peck (6¼ lbs.)	Bu. (25 lbs.)	100 lbs.
Japan Clover .....	\$0.50	\$1.75	\$6.50
Kobe .....	.65	2.25	7.75
Korean .....	.60	2.00	7.25
	1 lb.	5 lbs.	10 lbs.
Sericea, Perennial.....post paid	\$0.55	\$2.35	\$4.25

All Prices F. O. B. Memphis

**GRASS SEED**

	*1 lb.	10 lbs.	50 lbs.	100 lbs.
Emerald Lawn .....	\$0.30	\$2.40	\$ 9.25	\$18.00
Shady Spot .....	.35	2.75	11.25	22.00
Permanent Pasture Mixture.....	.25	2.10	9.00	17.50
Kentucky Blue .....	.30	2.25	9.75	19.00
English Rye .....	.20	1.45	6.00	11.50
Poa Trivialis .....	.35	2.95	13.50	26.50
Johnson .....	.15	1.30	5.75	10.00
Orchard .....	.20	1.80	7.75	15.00
Bermuda .....	.30	2.10	9.00	17.50
Red Top, Herds.....	.20	1.70	7.65	13.75
Dallis Grass .....	.25	1.90	8.25	16.00
Timothy .....	.15	1.40	5.75	10.90
Carpet .....	.20	1.60	6.50	12.50
Sudan .....	.10	.90	3.25	5.95

\* Postage, add 10c for 1 pound; 20c for 10 pounds.

**SOY BEANS—VELVET BEANS**

	Gal.	Peck (15 lbs.)	Bu. (60 lbs.)	2½ bu. Per bu.
Biloxi .....	\$0.60	\$1.00	\$3.60	\$3.50
Laredo .....		Write for Prices		
Mammoth Brown .....	.50	.80	2.75	2.65
Mammoth Yellow .....	.50	.80	2.75	2.65
Virginia .....	.50	.80	2.75	2.65
Black Ebony .....	.45	.75	2.60	2.50
90 Day Speckled Velvet Beans.....	.45	.75	2.50	2.45

**COW PEAS**

	Gal. (7½ lbs.)	Peck (15 lbs.)	Bu. (60 lbs.)	2½ bu. Per bu.
Black Runners .....		Write for Prices		
Clay .....		Write for Prices		
New Eras .....		Write for Prices		
Red Rippers .....		Write for Prices		
Whippoorwills .....		Write for Prices		
Mixed .....		Write for Prices		

All Prices F. O. B. Memphis

**SEED CORN—WHITE**

	Gal. (7 lbs.)	Peck (14 lbs.)	Bu. (56 lbs.)	2 bu. Per bu.
Iowa Silvermine .....	\$0.40	\$0.65	\$2.00	\$1.95
Mosby's Prolific .....	.40	.70	2.30	2.25
North Carolina Prolific.....	.40	.70	2.30	2.25
Mexican June .....	.40	.65	2.00	1.95
Paymaster .....	.40	.70	2.25	2.20
Hickory King .....	.40	.70	2.30	2.25
Schwill's Early Surprise.....	.60	.95	3.30	3.25
Schwill's Prize Medal.....	.60	.90	3.05	3.00
St. Charles White Red Cob.....	.40	.65	2.00	1.95
Tenn. Red Cob.....	.40	.65	2.00	1.95
90 Day Early White.....	.40	.65	2.00	1.95

**SEED CORN—YELLOW**

	Gal. (7 lbs.)	Peck (14 lbs.)	Bu. (56 lbs.)	2 bu. Per bu.
Iowa Goldmine .....	\$0.40	\$0.65	\$2.00	\$1.95
Reid's Yellow Dent.....	.40	.65	2.00	1.95
Jarvis Golden .....	.40	.70	2.30	2.25
90 Day Yellow Dent.....	.40	.65	2.00	1.95

**GRAINS**

	1 lb.	10 lbs.	50 lbs.	100 lbs.
White Kaffir Corn.....	\$0.10	\$0.55	\$1.55	\$2.75
Yellow Milo Maize.....	.10	.55	1.60	2.90
Feterita .....	.10	.70	1.95	3.50
Buckwheat, Japanese .....	.10	.65	1.80	3.25
Sagrain .....	.10	.70	2.10	3.75

**MISCELLANEOUS SEEDS**

	1 lb.	10 lbs.	50 lbs.	100 lbs.
Rape, Dwarf Essex.....	\$0.15	\$0.90	\$3.50	\$6.50
Sunflower, Russian .....	.15	.90	3.50	6.50

**MILLET SEED**

	1 lb.	10 lbs.	50 lbs.	100 lbs.
Tenn. Golden .....	\$0.10	\$0.95	\$2.60	\$4.75
Hog Millet .....	.10	.70	1.80	3.25

All Prices F. O. B. Memphis

### OATS

	Peck (8 lbs.)	1 bu. (32 lbs.)	5 bu. Per bu.	10 bu. Per bu.
Appler .....	\$0.30	\$0.90	\$0.80	\$0.75
Early Burt .....	.30	.90	.80	.75
Fulghum .....	.30	.90	.80	.75
Kanota .....	.30	.90	.80	.75
Red Rust Proof.....	.30	.90	.80	.75
Winter Turf .....	.35	1.00	.95	.90

### PEANUTS

	1 lb.	Peck (5½ lbs.)	Bu. (22 lbs.)	100 lbs.
Spanish White .....	\$0.15	\$0.75	\$2.25	\$8.50
Tenn. Long Red.....	.15	.75	2.25	8.50
Mammoth White Virginia.....	.15	.85	2.50	9.50

### SORGHUM

	1 lb.	10 lbs.	50 lbs.	100 lbs.
Early Amber .....	\$0.10	\$0.50	\$1.65	\$2.95
Early Orange .....	.10	.50	1.75	3.15
Red Top .....	.10	.50	1.75	3.15
*Texas Seeded Ribbon Cane.....	.15	.75	2.70	4.95
*Japanese Honey Drip.....	.15	.75	2.70	4.95

\* Despite careful selection of seed, we can not guarantee syrup crops.

### COTTON SEED

	1 bu. (30 lbs.)	100 lbs.	500 lbs.
Wilson Type Big Boll.....	\$1.35	\$3.25	\$14.95
Half & Half.....	1.35	3.25	14.95
Acala 37 .....	1.35	3.25	14.95
Missdell No. 3.....	1.35	3.25	14.95
Missdell No. 4.....	1.35	3.25	14.95
Stoneville No. 1.....	1.35	3.25	14.95
Stoneville No. 2.....	1.35	3.25	14.95
Delta Pine No. 10.....	1.35	3.25	14.95
Rowden 40 .....	1.35	3.25	14.95

### POTATOES

	Peck (15 lbs.)	Bu. (60 lbs.)	2½ bu. Per bu.
Red Triumph, Certified.....	\$0.65	\$2.20	\$2.10
Irish Cobblers .....	.60	2.00	1.90

All Prices F. O. B. Memphis





Attracts mice only and is not injurious to children or pets. Drives them out to die. Price: Box 25c; post paid 30c.

### RAT AND MOUSE EMBALMER

Does the work thoroughly and without any odor. Price: 25c and 50c per pkg., by express only, as it is a poison and can not be mailed.

### ZELIO PASTE

Squeeze about an inch of paste on fresh bread and the rats will eat it. Tube 50c, by express only, as it is a poison.

### TERRO ANT KILLER

Poured in receptacles at places where the ants may be seen. They will come in large numbers at first, but will soon disappear. Bottle 50c. Can not be mailed.



Full value guaranteed in every package of NITRAGIN—packed with billions of live, fresh and efficient legume germs.

For your protection every package of NITRAGIN bears the expiration date, germ count when packed and the price.

NITRAGIN is a granular, moist soil-like culture, packed in tins. Easy to apply. Directions on every can.

When ordering, always specify kind of seed.

Alfalfa, All Clovers  
Lespedeza

Soy Beans,  
Cow Peas

Size	Price
½ bu.....	\$0.35
1 bu.....	.65
2½ bu.....	1.40

Size	Price
1 bu.....	\$0.35
2 bu.....	.65
5 bu.....	1.40
10 bu.....	2.45

### ROACH KILLER

For such insects as roaches, water bugs, etc., and not poisonous to pets and humans. May be used in the home and pantry with freedom. Prices: 35c and 65c; post paid, 40c and 75c.

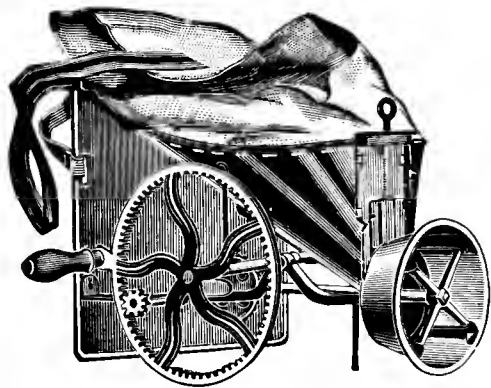


### ANT BANE

Will rid any building of house ants; effective also against outdoor ants and house centipedes. Prices: 35c and 65c; post paid, 40c and 75c.

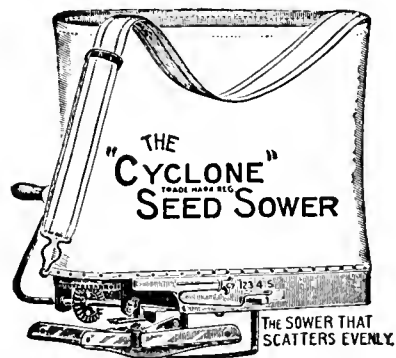
### BED BUG KILLER

Kills the bug and the egg; insures peaceful sleep. Positively will destroy bed bugs, mites, ticks, lice, fleas, weevils, beetles, etc. Price: 1 pt. pkg. 35c. Can not be mailed.



### CAHOON SEEDER

Sows all kinds of grain, clover seeds, grass, etc., rapidly and evenly. Price, each \$4.00; post paid \$4.25.



### CYCLONE SEEDER

Sows timothy, clover, oats, rye, wheat, millet, grass seeds, etc. Price, each \$2.30; post paid \$2.50.

# HUDSON SPRAY PUMPS

## COMPRESSED AIR

No. 110G—Perfection, 4 gallon tank, fills from bottom, \$6.25; post paid, \$6.70.

No. 115G—Sterling, 4 gallon tank, \$4.20; post paid, \$4.65.

No. 500G—Acme, 4 gallon tank, fills from bottom, \$4.50; post paid, \$4.95.

## BARREL PUMPS

No. 4SA—Heavy duty, fully equipped, with agitator and strainer, \$12.00; post paid, \$12.65.

## BUCKET PUMPS

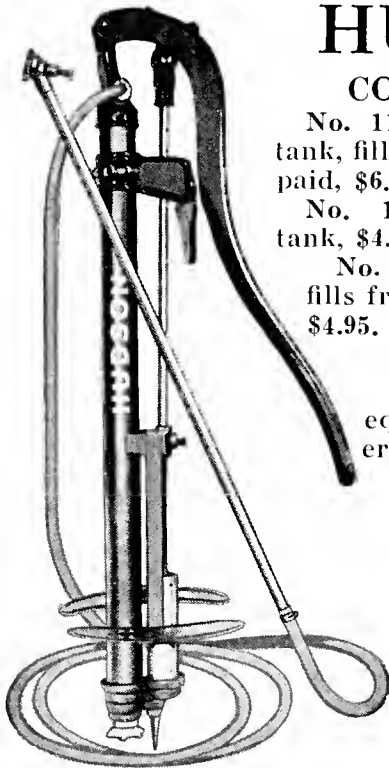
No. 128—Mohawk, for general use, \$3.50; post paid, \$3.75.

No. 126SA—Moro, for white-wash, cold water paints, etc., \$6.25; post paid, \$6.55.

## WHEELBARROW PUMPS

No. 36S—Sunshine, 12½ gallon tank and complete equipment, \$12.50, F. O. B. Memphis.

No. 35S—Ideal, 15 gallon tank, powered by No. 4SA pump, \$31.75, F. O. B. Memphis.



No. 4SA Barrel Pump



No. 36S Sunshine

## SPRAY HOSE

¾ in., 5 ply—1 ft. 15c; 25 ft. \$3.00; 50 ft. \$5.50; 100 ft. \$10.50.

½ in., 5 ply—1 ft. 20c; 25 ft. \$3.75; 50 ft. \$6.75; 100 ft. \$12.75.

Prices F. O. B. Memphis.

## BAMBOO SPRAY POLE

Brass lined, fitted with drip shield and stop cock.

No. 42—8 ft. .... \$4.50

No. 44—10 ft. .... 4.75

No. 46—12 ft. .... 5.00

F. O. B. Memphis.

## PUMP PARTS

We carry parts in stock. Send us the item to be replaced and we will either quote a price on the replacement or mail it to you C. O. D.

## SPRAY NOZZLES



No. 166  
Fog Nozzle  
75c



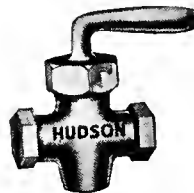
No. 168  
Fog Nozzle  
75c



No. 60  
Ideal Nozzle  
\$1.00



No. 61  
Ideal Nozzle  
\$1.00



No. 149  
Leakless Shutoff  
\$1.00



No. 71  
Bordeaux Noz.  
\$1.00

## SPRAY PUMPS

Hand action, as illustrated.

No. 222—Capacity about ¾ pint, 30c; post paid 40c.

No. 452—Capacity about 1 quart, 45c; post paid 55c.

No. 432—Continuous, capacity about 1 quart, 75c; post paid 85c.



## DUSTERS

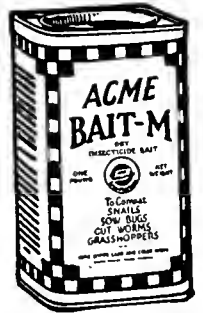
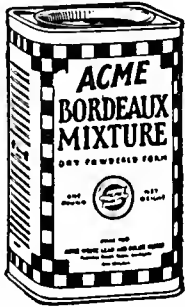
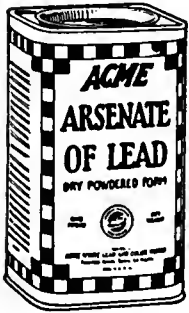


No. 660—Signal.....30c; post paid 40c

No. 663—Cadet.....50c; post paid 60c

No. 665—Major.....\$1.25; post paid \$1.40

# INSECTICIDES AND FUNGICIDES



- \***BORDEAUX MIXTURE**—Useful for control of blight, rot, mildew, scab and certain other fungus diseases. At store: 1 lb. 25c; 4 lbs. 70c.
- KAYSO**—A spreader or adhesive to be used with all spray materials. At store: 1 lb. 30c; 2 lbs. 50c. 10 lbs. \$1.80. Post paid: 1 lb. 40c; 2 lbs. 70c; 10 lbs. \$2.25.
- ALL ROUND SPRAY**—A product that will combat blight and fungus diseases and control sucking and chewing insects. At store: ¼ lb. 45c; 1 lb. 90c. Post paid: ¼ lb. 50c; 1 lb. \$1.00.
- \***DRY ARSENATE OF LEAD**—Kills all chewing insects. Used to destroy bag-worms on evergreens. At store: ½ lb. 20c; 1 lb. 35c; 4 lbs. 80c.
- ACME BAIT-M**—For use against snails, cutworms, sow bugs, grasshoppers, etc. At store: 1 lb. 30c. Postpaid: 1 lb. 40c.
- \***BLACK LEAF 40**—A nicotine solution for destroying aphid, lice and all sucking insects, on garden and flowering plants. Kills poultry lice. At store: 1 oz. 35c; 5 oz. \$1.00; 1 lb. \$2.25; 2 lbs. \$3.25.
- \***LIQUID LIME SULPHUR**—Used to control San Jose scale, blister mite and similar sucking or scale insects. Mixed 1 gallon to 8 gallons. At store: 1 qt. 35c; 1 gal. 65c; 5 gals. \$2.25; 10 gals. \$4.00.
- DRY LIME SULPHUR**—A powdered form of the above to be mixed with water. At store: 1 lb. 30c; 5 lbs. \$1.20; 12½ lbs. \$1.50. Post paid: 1 lb. 40c; 5 lbs. \$1.45; 12½ lbs. \$1.80.
- \***GRAFTING WAX**—Used for grafting on trees. At store: ½ lb. 30c; 1 lb. 50c. Post paid: ½ lb. 40c; 1 lb. 60c.
- TOBACCO DUST**—Sure death to all plant lice and aphid, etc. Apply when foliage is wet. At store: 1 lb. 20c; 10 lbs. \$1.00. Post paid: 1 lb. 30c; 10 lbs. \$1.25.
- FISH OIL SOAP**—Effective against scale, ants, aphid, etc., on trees and plants. At store: 1 lb. 35c. Post paid: 1 lb. 45c.
- \***SCALECIDE**—A non-caustic, non-corrosive and non-poisonous spray for fruit trees, shrubs, vines and trees when in the dormant stage. For control of scale, insects, eggs, larvae, disease cankers and fungus spores wintering on the plant. At store: 1 qt. 60c; 1 gal. \$1.40; 5 gals. \$4.90; 10 gals. \$8.50.
- \***LUBRICATING OIL EMULSION**—A dormant spray for control of San Jose scale and similar troubles. For scale on fruit trees, shrubs and shade trees, mix 1 gallon to 25 gallons of water. At store: 1 gal. 65c; 5 gals. \$2.25; 10 gals. \$4.00.
- \***SULFOCIDE**—A summer spray of concentrated liquid sulphur fungicide. Used on peaches, apples, fruit of all kinds, vegetables and flowers. Full instructions on can. At store: 1 pt. 50c; 1 qt. 85c; 1 gal. \$2.25.
- DRITOMIC SULPHUR**—Will prevent all diseases of apples; also insects and brown rot and scab on peaches. At store: 4 lbs. 65c. Post paid: 4 lbs. 85c.
- TREE TANGLEFOOT**—Used as a band around trunks of trees to prevent caterpillars and other crawling insects from going up into trees. At store: 1 lb. 60c. Post paid: 1 lb. 70c.
- **DUSTING SULPHUR**—For dusting roses for black spot, mildew and similar fungus diseases. At store: 3-lb. can 45c. Post paid: 60c.
- PEACH MIX**—Prevents wormy peaches, dry rot, etc. Used as soon as blossoms have fallen. Diluted 1 to 6. At store: 1 lb. 25c; 5 lbs. 80c.
- NICOTINE PYROX**—Combination of the standard Pyrox with nicotine sulphate solution. Kills sucking and chewing insects. 10-oz. bottle 50c.

\* Can not be mailed. Must be sent by express. Write for Free Spray Guide.

# CANARY BIRDS

## SINGERS

In this lot we offer Hartz Mountain birds only. We have no rollers. Remember that each bird is guaranteed to sing.

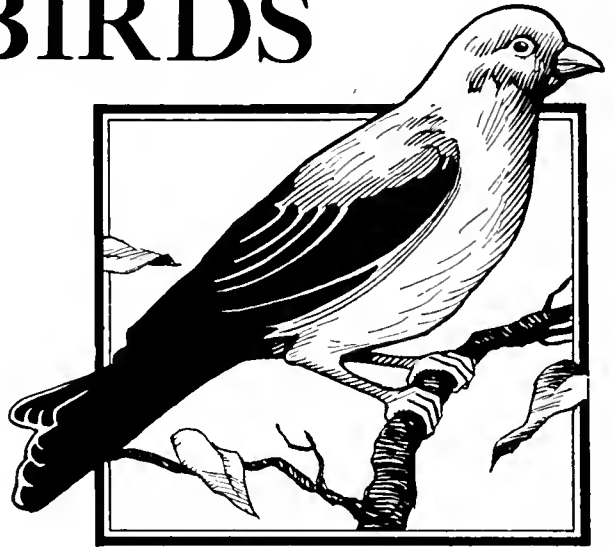
Solid yellow and guaranteed to sing.....\$3.95  
Spotted plumage, but guaranteed to sing. 3.50

## FEMALES

These are not youngsters, but hens ready to mate.

Solid yellow and ready to mate.....95c  
Spotted plumage, but ready to mate.....75c

To out-of-town customers: Please add 35c extra to the prices above to pay for the shipping cage. All shipments are by express.



## BREEDING CAGES

The price of breeding cages has come down with everything else. We are now in position to serve you better than ever before. All cages properly equipped with nests, cups and perches.

Single compartment size, 11½x8½x10½ inches....\$1.20; post paid \$1.45

Double compartment size, 18½x11x11 inches..... 3.60; post paid 3.85

## SCHWILL'S MIXED CANARY SEED

A correctly balanced blend of the cleanest seeds that we can buy. Our formula is based on years of experience and after many experiments. It's a favorite with thousands.

Prices, f.o.b. Memphis—1 lb. 15c; 2 lbs. 25c; 5 lbs. 50c; 10 lbs. 90c; 25 lbs. \$2.00. Post paid—1 lb. 25c; 2 lbs. 35c; 5 lbs. 70c.



## SCHWILL'S SONG RESTORER

This is a combination song restorer, health food and invigorator, intended to relieve the bird of most of the ills that attack it. We claim it is superior to any other product of similar nature on the market and we have tried them all. Experience taught us what was best and we made it. Prices—3 oz. bottle 25c; 1 lb. in bulk 75c. Post paid, bottle 30c; pound 85c.

## MISCELLANEOUS SUPPLIES

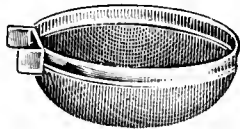
Bird Manna.....each 15c; post paid 20c  
Silver Gravel.....pt. box 15c; post paid 25c  
Red Gravel.....pt. box 15c; post paid 25c  
Bird Bitters.....bottle 25c; post paid 30c  
Mite Exterminator box 25c; post paid 30c  
Moulting Pepper.....box 25c; post paid 30c  
Nestling Food.....box 15c; post paid 20c  
Nesting Hair.....box 10c; post paid 15c  
Cuttle Fish Bone,  
with holder.....each 5c; post paid 10c  
Merican Salve,  
for sores.....box 25c; post paid 30c  
Orange Color Food...box 25c; post paid 30c

Bird Cage Seed Cups,  
opal or glass.....each 10c; post paid 15c  
Bird Cage  
Bath Dishes.....each 15c; post paid 20c  
Bird Cage Nests,  
wire.....each 10c; post paid 15c.  
Food Holder,  
for extras.....each 5c; post paid 10c  
No. 198—Swing  
for cages.....each 15c; post paid 20c  
No. 1901—Parrot Cage Cups,  
brass front.....each 50c; post paid 55c

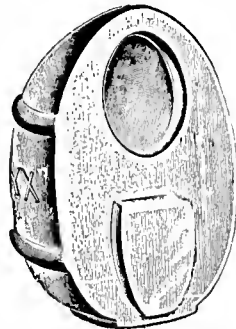
## BIRD CAGE SUPPLIES



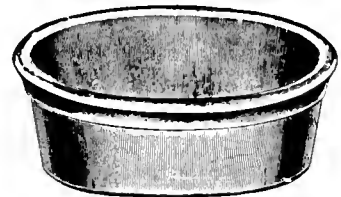
Food Holder



Bird Cage Nest



Seed Cup



Bath Dish

### LOVE BIRDS, OR PARAKEETS

They resemble small parrots and are sold in pairs only, male and female. Very active, restless, colorful pets that add much to the sun parlor or breakfast room.

Prices per pair—Blue \$6.50, yellow \$4.75, and the standard green ..... **\$4.75**

### SCHWILL'S PARAKEET SEED

As is the case with our mixed canary seed, this formula is our own. We use it exclusively in feeding the birds in our care. We, therefore, can recommend it to others.

Prices, f.o.b. Memphis—1 lb. 15c; 2 lbs. 25c; 5 lbs. 55c; 10 lbs. 90c; 25 lbs. \$2.00. Post paid—1 lb. 25c; 2 lbs. 35c; 5 lbs. 70c.

### CAGE AND STAND TO MATCH

We offer these combinations in two groups, one to suit the slim pocketbook and the other to satisfy the more discriminating. Both are well made, sturdy and finished in Duco in various colors. Fully equipped with swing, perches and cups.

- No. 1—Cage and stand to match.....\$2.50
- No. 2—Cage and stand to match..... 4.75
- No. 3—Cage and stand to match..... 6.50
- No. 4—Cage and stand to match..... 8.50

F. O. B. Memphis.



### Spratt's Supplies

- Spratt's Parrot Food. box 25c; post paid 30c
- Spratt's Mocking Bird Food.....pkg. 30c; post paid 35c
- Spratt's Cod Liver Oil Bird and Nestling Food.....pkg. 15c; post paid 20c
- Spratt's Egg Flake and Fruit Mixture .....box 25c; post paid 30c
- Spratt's Song Restorer .....pkg. 30c; post paid 35c
- Spratt's Bird Wash. bottle 25c; post paid 30c
- Spratt's Ant Eggs pkg. 15c; post paid 20c
- Spratt's Quinella, for dysentery..... 25c; post paid 30c
- Spratt's Flake Charcoal...10c; post paid 15c
- Spratt's Head Salve.....25c; post paid 30c

### Haller's Supplies

- Old Dutch Song Restorer.....each 25c; post paid 30c
- Sure Egg Maker.....each 35c; post paid 40c

### Other Supplies

- "8 in 1" Song Restorer.....each 25c; post paid 30c
- Pulvex, the best mite powder made .....25c; post paid 30c
- Shipping Cages, wood.....each 35c; post paid 40c
- Special Finch Food..pkg. 25c; post paid 30c



# DOG SUPPLIES

## WE RECOMMEND—

The following remedies have been used by us and have been found to be satisfactory. They carry our special recommendation.

Schwill's Antiseptic Dip and Disinfectant, for fleas, mange, wounds and for spraying kennels, 25c; post paid 35c.

Pulvex, odorless flea and lice powder, for dogs and cats, 50c and \$1.25; post paid 60c and \$1.35.

Delcreo, for distemper, black tongue, pneumonia, colds, etc., 75c and \$1.50; post paid 85c and \$1.60.

Carbon Tetrachloride, for hookworm and running fits, capsules. Pkg. 25c; post paid 30c.

Sixty-Minute Worm Remedy, for dogs, cats, foxes; 6 capsules 60c; post paid 65c.

Kur-Maige, effective for many parasitical skin diseases on dogs and cats. Mixed with water, 75c; post paid 85c.

Worm Tablets, for cats, 60c; post paid 65c.

Catnip Tonic and Condition Pills, for cats, 60c; post paid 70c.

Spratt's Catnip Leaves and Tops, 15c; post paid 20c.

## SERGEANT'S DOG MEDICINES

SPECIAL MEDICINE—For Distemper.	\$1.20
MANGE MEDICINE.....	.65
CONDITION PILLS.....	.60
SURE SHOT CAPSULES—For Worms	.60
SURE SHOT LIQUID—For Worms...	.60
PUPPY CAPSULES—For Worms.....	.60
TAPE WORM MEDICINE.....	.60
ARSENIC AND IRON PILLS (Comp.)..	.60
CANKER WASH.....	.60
MOUTH WASH.....	.60
PEPSIN TABLETS (Comp.).....	.60

Postage 5c extra.

### EXPECTORANT MEDICINE—

For Coughs .....	\$ .60
DIURETIC PILLS—For Rheumatism..	.60
COD LIVER OIL CAPSULES.....	.60
EYE WASH.....	.60
LAXATIVE CAPSULES.....	.60
CARBOLIC TAR SOAP.....	.25
SKIP-FLEA SOAP.....	.25
SKIP-FLEA POWDER .....	.25
INTESTINAL ASTRINGENT—	
For Diarrhoea.....	.60

## COLLARS

Measure the dog's neck before ordering. Add 10c for postage.

No. 975—Light weight, assorted colors, 20c.

No. 816—Plain strap, sizes 13 to 17, 40c.

No. 864—Large leather choker, sizes 20 to 22, \$1.95.

No. 912—Fancy studded, for terriers, sizes 13 to 17, \$1.75.

No. 1201—Fancy studded, for bull terriers sizes 13 to 17, \$1.25.

No. 867—For Pokes, sizes 10 to 12, 75c.

No. NYC—Plain chain choker, 40c.

No. 1202—Fancy studded, for bull dogs, sizes 15 to 19, \$1.25.

No. 09—Fancy plaid, for Scotties, 65c.

No. 02—Plaid lead to match No. 09 collar, 65c.

Round—For Collies, Setters, Pointers, Airedales and all long-coated breeds; 12-in. 75c; 14-in. \$1.10; 16-in. \$1.20; 18-in. \$1.50; 20-in. \$1.50.

## LEADS

Chain, light weight, 15c; post paid 25c.

Chain, medium weight, 25c; post paid 35c.

Kennel chain, heavy weight, 65c; post paid 75c.

Leather, light weight, 45c; post paid 50c.

Leather, medium weight, 65c; post paid 85c.

Leather, heavy weight, \$1.25; post paid \$1.35.

Leather, medium weight, French snap, 85c; post paid 95c.

Scottie Special, fancy plaid, heavy weight, plaited leather, small round, 65c; post paid 75c.

## HARNESS

Measure the dog's stomach, immediately behind the forelegs. Order accordingly. Add 15c postage.

No. 198—Light weight, sizes 12 to 16, 75c.

No. 2267—For Bull Terriers, studded, sizes 22 to 26, \$1.85.

No. 200—Plain leather, sizes 20 to 24, \$1.25.

No. 205—Fancy, two-colored, sizes 17 to 21, \$1.00.

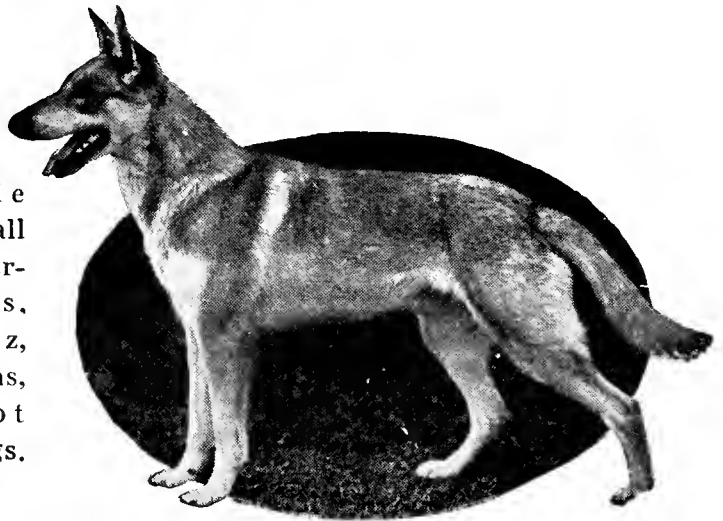
No. 205L—Combination of No. 205 collar and lead to match, \$1.75.

No. 400—Studded, medium weight, sizes 20 to 24, \$2.25.

## We Buy Pups



We buy male pups of such small breeds as Fox Terriers, Airedales, Eskimo Spitz, Black and Tans, etc. We do not buy hunting dogs. Write us.



### ACCESSORIES

Leather muzzles, 75c; post paid 80c.  
 Rubber balls, 25c; post paid 30c.  
 Rubber bones, 25c; post paid 30c.  
 Brushes, 50c; post paid 60c.  
 Flea combs, \$1.00; post paid \$1.05.

Stripping combs, \$1.50; post paid \$1.55.  
 Combs, for Pointers and short-hair breeds, 75c; post paid 80c.  
 Locks, 35c; post paid 40c.

### SCHWILL'S RATION

We consider this the best of all. Made of pure beef, instead of horse meat, this preparation is fit for even human consumption. Intended for dogs, cats, foxes, etc. May be fed alone, as a complete meal, or in combination with other things.

1 can.....\$ .15	12 cans.....\$1.40
2 cans......25	Case, 48 cans..... 5.00

Prices are f.o.b. Memphis. Postage, as follows, applies—1 to 3 cans, inclusive, 10c; 6 cans 15c. Case lots shipped by express.

### BULK DOG FOOD

	5 lbs.	25 lbs.	50 lbs.	100 lbs.
Peerless Ration.....	\$0.35	\$1.35	\$2.50	\$4.75
Kib-L-Biskit.....	.55	2.15	4.15	8.00
Rose Dog and Puppy.....	.35	1.40	2.60	4.95
Standard Cakes.....	.55	2.15	4.15	8.00
Purina Dog Chow.....	.55	2.20	4.35	8.50

Postage, 5 lbs. 15c; 25 lbs. 40c. Other amounts shipped by express.

#### SWEATERS

Knitted wool, in colors. Measure dog from base of neck to base of tail. Sizes 10 to 20, \$1.25; post paid \$1.35.

#### BLANKETS

Made with belt and of the best wool. Measure as for sweaters. Sizes 10 to 24, \$1.50; post paid \$1.65.

#### RAINCOATS

Patterned after style of the blankets. Made of regular raincoat material \$1.75; post paid \$1.90.

#### PURINA PRODUCTS

Dog Soap, jar 35c; post paid 45c.  
 Worm Capsules, pkg. 25c; post paid 30c.  
 Flea Powder, pkg. 25c; post paid 30c.

#### DOG NAME PLATES

Made of everlasting bronze, raised letters, three lines, maximum 18 letters to the line, 95c; post paid \$1.00.

#### SUPERCEDAR KENNEL BEDDING

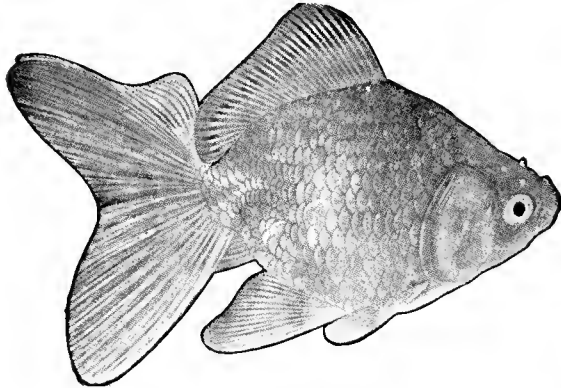
Keeps down odors, repels fleas, slickens coat: 5-lb. bag 35c; post paid 50c. 50-lb. bag \$2.00, F. O. B. Memphis.

#### PACKAGE DOG CAKES

Milk Bone Puppy Cakes.....	35c; post paid 45c
Milk Bone Dog Cakes.....	35c; post paid 45c
Sergeant's Dog Cakes.....	35c; post paid 45c

# GOLD FISH — TROPICALS

Goldfish can not be mailed. They are shipped by express. Include 15c with your order to pay for shipping bucket. Prices—



**COMMON GOLDFISH**  
Small 10c; medium 15c;  
large 25c.

**FANCY GOLDFISH**  
Comet tails .....30c  
Shubunkins (calico) 30c

**JAPANESE FANTAILS**  
Small 25c; medium 35c;  
large 50c.

**CHINESE MOORS**  
Known also as Black Telescopes, the only members of the goldfish family to develop velvety black color.  
Small 50c; large 75c.

**SCAVENGERS**  
Snails 10c; tadpoles 10c.  
**BABY GREEN TURTLES**  
Each.....15c

## AQUARIUMS

Constructed of steel and triple strength glass.

- 2-Gal. size.....\$1.50
- 2½-Gal. size..... 2.50
- 3½-Gal. size..... 3.50
- 5-Gal. size..... 5.75

F. O. B. Memphis

## ELECTRIC REFLECTORS

For lighting aquariums. Held in place by rubber vacuum cups.  
\$1.25; post paid \$1.40.

## GOLD FISH FOOD

- Natural Fish Food.....pkg. 10c
- Wafer Fish Food.....pkg. 10c
- Aquarium Moss.....bunch 10c
- Turtle Food.....pkg. 15c

## AQUARIUM ACCESSORIES

- Dip Nets...each 20c
- Colored Rocks...15c
- Colored Shells...15c
- Castles ...10c to 95c
- Health Dip.. 25c
- Fungus Remedy.25c
- Cement ....pkg. 50c

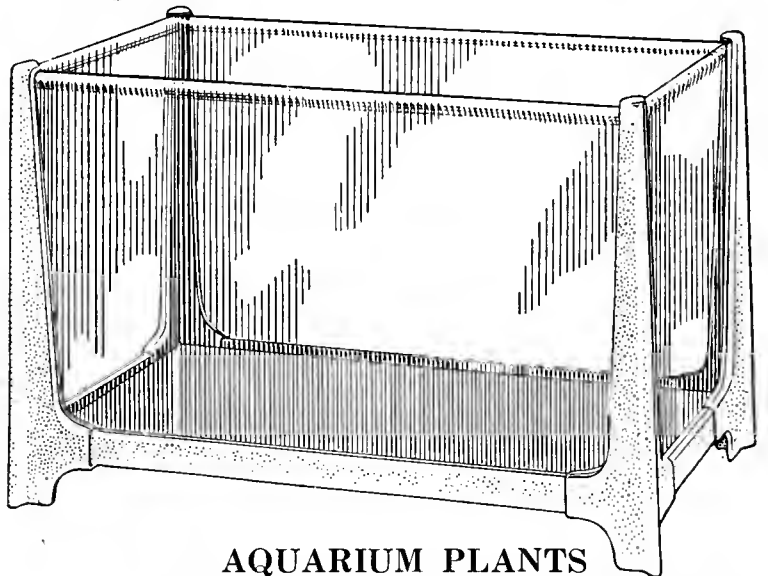
## TROPICAL FISH

- Guppies ....25c pair
- Zebra ....25c each
- Weather ..25c each
- Cardinal \$.1.00 pair
- Black Molienesia...\$2.00 pair
- Blue Moon.\$1.00 pair

These are only a few of the varieties we keep in stock. If interested in this most entertaining of novelties please write for special quotations. Prices are F. O. B. Memphis.

## TROPICAL ITEMS

- Feeding Ring.....\$0.15
- Thermometer ..... .25
- No. 10RO Electric Heater, 40 watt.... 1.50
- No. 0RO Electric Heater, 25 watt..... .65
- Master Thermostat ..... 1.90
- Metal Thermostat ..... 3.25
- Metal Heater, Major..... 1.90
- Dip Nets, Small......15
- Dip Nets, Large......75
- Tropical Fish Food......15
- Medicated Health Ball......10
- Dipping Siphon ..... .60
- Draining Siphon ..... .60



## AQUARIUM PLANTS

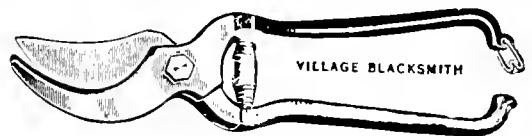
When rooted in sand they generate oxygen.  
Valisneria .....\$0.10  
Sagittaria ..... .10

(Postage 5c extra)

## GRASS SHEARS

- No. 90 Grass Shears.....25c; post paid 35c
- No. V2 Grass Shears.....55c; post paid 65c

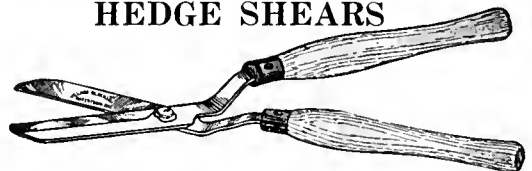
## PRUNING SHEARS



No. V179

- R10 Pruning Shears...\$0.70; post paid \$0.80
- V179 Pruning Shears.. 1.15; post paid 1.25
- V148 Pruning Shears.. 1.65; post paid 1.80
- V189 Pruning Shears.. 1.50; post paid 1.65
- V1408 Pruning Shears. 1.10; post paid 1.20
- V20 Pruning Shears... 2.15; post paid 2.30

## HEDGE SHEARS



- 6 inch.....each \$1.00
- 7 inch.....each 1.25
- 8 inch.....each 1.75

(Postage 15c extra)



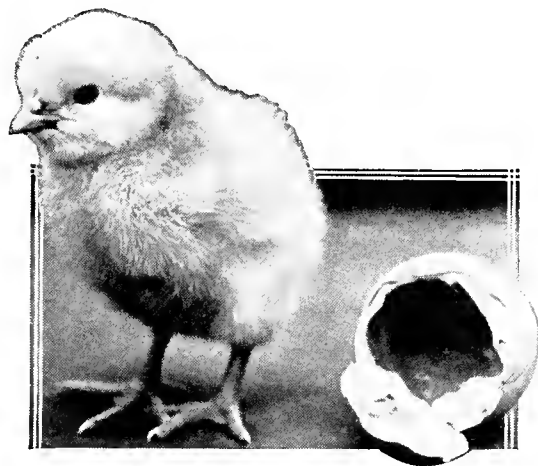
# Baby Chicks

**100% ALIVE DELIVERY  
GUARANTEED**

Baby chick prices vary from week to week. Therefore, we are not printing quotations in this book. But we want you to know that we will have them, just as we have had them every spring.

We hatch the standard breeds and can mail any quantity from 25 to as many as you can buy. We guarantee 100% alive delivery on every order.

When ready write us for prices.



## MASON JAR FOUNTS

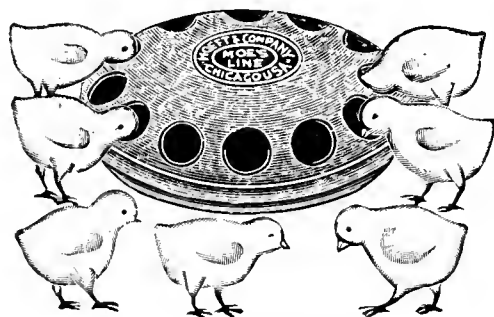


No. GF25

No. 32

No. GF25.....each 10c; post paid 15c  
No. 32.....each 10c; post paid 15c

## ROUND FEEDER



No. 11— 8 holes....each 10c; post paid 15c  
No. 12—12 holes....each 20c; post paid 25c

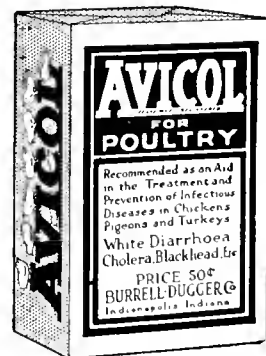
## DOUBLE FEEDING TROUGH



No. 58—18 holes....each 25c; post paid 35c  
No. 59—26 holes....each 35c; post paid 45c  
No. 60—36 holes....each 45c; post paid 55c

## AVICOL

A safe and effective remedy in tablet form for White Diarrhea, Cholera, etc., in small and large grown fowls. Price, 50c and \$1.00 per pkg., post paid.



## DON SUNG



Don Sung (Chinese for egg-laying) is given in the feed and doesn't force or burst the hen in any way; in fact, it makes her healthier. Price, 50c and \$1.00 per pkg., post paid.

## T. S. F.

Talcimized Sodium Fluoride is for dusting poultry for lice and is used also for ants and roaches. Price 35c (enough to treat 50 chickens). Post paid, 40c.

## RUSSELL'S WormR

WormR will get round, tape or pin worms. PRICES:

Powder Form, enough for 80 hens, 65c; post paid 75c.  
Tablet Form, 100 tablets, \$1.00; post paid \$1.10.

# FRUIT TREES

All prices are F. O. B. the nursery, and we will not ship C. O. D. When ordering always give your express station. In the case of small berry plants, please add 25c for postage, as they may be sent by mail.

## APPLE—Two Year, Budded

3 to 4 feet..... \$0.40 each; \$2.30 for 10  
4 to 5 feet..... .50 each; 2.90 for 10

VARIETIES—Delicious, Early Harvest, Horse, Red June, Rome Beauty, Stayman Wine-sap, Winesap, Yates, Yellow Transparent.

## PEAR—Two Year, Budded

3 to 4 feet..... \$0.40 each; \$2.25 for 10  
4 to 5 feet..... .50 each; 2.80 for 10

VARIETIES—Bartlett, Early Harvest, Koonce, LeConte, Seekel, Flemish Beauty, Keiffer.

## SWEET CHERRY—Two Year, Budded

3 to 4 feet..... \$0.40 each; \$2.25 for 10  
3½ to 5 feet..... .50 each; 3.25 for 10

VARIETIES—Black Tartarian, Governor Wood.

## SOUR CHERRY—Two Year, Budded

3 to 4 feet..... \$0.40 each; \$2.25 for 10  
3½ to 5 feet..... .50 each; 2.75 for 10

VARIETIES—Early Richmond, Large Montmoreney, May Duke.

## PEACH—One Year

3 to 4 feet..... \$0.40 each; \$2.25 for 10  
4 to 6 feet..... .50 each; \$2.80 for 10

VARIETIES—Belle of Georgia, Early Crawford, Early Elberta, Elberta, Hiley, J. H. Hale, Carmen, Greensboro, Mayflower.

## PLUMS—One Year

3 to 4 feet..... \$0.40 each; \$2.25 for 10  
4 to 5 feet..... .50 each; 2.80 for 10

VARIETIES—Abundance, Burbank, Red June, Damson, Wild Goose.

## APRICOT—One Year

3 to 4 feet..... \$0.40 each; \$2.25 for 10  
4 to 5 feet..... .50 each; 2.80 for 10

VARIETIES—Early Golden, Royal.

## QUINCE—Two Year

2 to 3 feet..... \$0.50 each; \$3.25 for 10  
3 to 4 feet..... .60 each; 4.25 for 10

VARIETIES—Orange, Meech Prolific.

## MULBERRY—One Year

3 to 4 feet..... \$0.50 each; \$2.80 for 10  
4 to 5 feet..... .60 each; 4.25 for 10

VARIETIES—Downing, Hicks.

**FIGS**

2 to 3 ft.....  
 \$0.60 each; \$4.25 for 10  
 3 to 4 ft.....  
 \$0.70 each; \$5.25 for 10  
 VARIETIES — Brown Turkey,  
 Celestial.

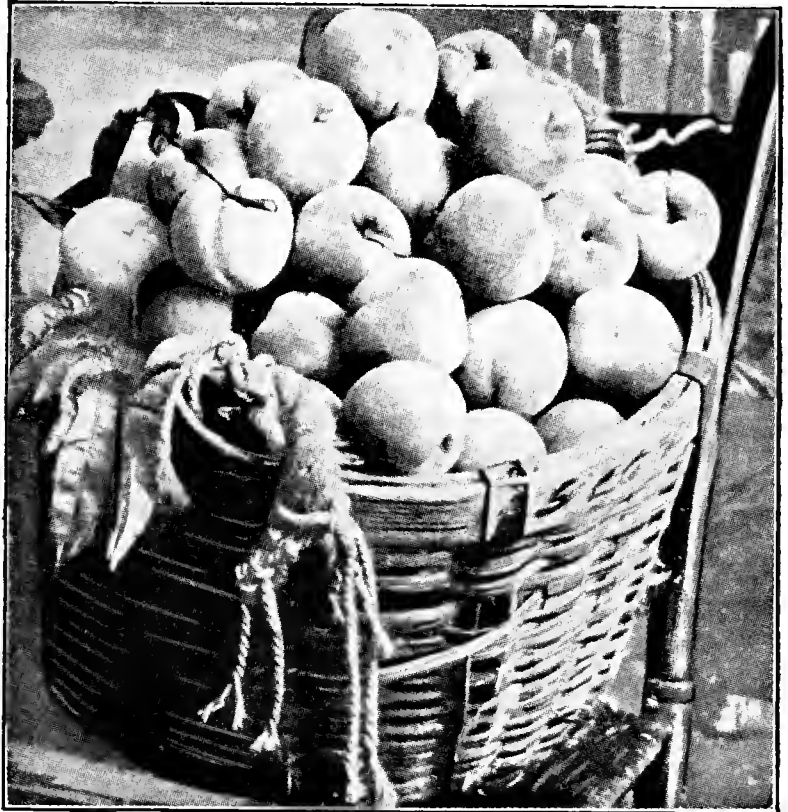
**PECANS**

**Budded and Grafted**

2 to 3 ft.....  
 \$0.70 each; \$5.30 for 10  
 3 to 4 ft.....  
 \$0.90 each; \$6.90 for 10  
 4 to 5 ft.....  
 \$1.10 each; \$9.30 for 10  
 VARIETIES — Stuart, Schley,  
 Success, Frotscher, Moneymaker.

**CHESTNUTS**

2 to 3 ft.....  
 \$0.70 each; \$5.25 for 10  
 3 to 4 ft.....  
 \$0.80 each; \$6.25 for 10  
 VARIETY—American Sweet.



**GRAPES—Two Year, No. 1**

Concord .....	\$0.30 each; \$1.30 for 10
Delaware .....	.40 each; 1.80 for 10
Lutie .....	.40 each; 2.10 for 10
Moore's Early .....	.35 each; 1.60 for 10
Niagara .....	.35 each; 1.60 for 10
Bronze Scuppernong .....	.70 each; 5.30 for 10

**BLACKBERRIES**

Early Harvest .....	\$0.75 for 10; \$5.30 for 100
Eldorado .....	.80 for 10; 6.30 for 100

**DEWBERRIES**

Austin .....	\$0.75 for 10; \$5.30 for 100
Lucretia .....	.75 for 10; 5.30 for 100

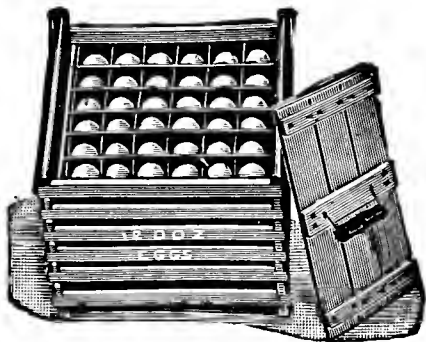
**RASPBERRIES**

Cumberland, black .....	\$0.80 for 10; \$6.30 for 100
Cuthbert, red .....	.80 for 10; 6.30 for 100
St. Regis, red .....	.80 for 10; 6.30 for 100

**STRAWBERRIES**

	100	200	500	1,000
Aroma .....	post paid \$0.85	\$1.20	\$2.10	\$3.40
	Express collect	.70 1.00	1.80	2.80
Klondyke .....	post paid .80	1.20	2.10	3.40
	Express collect	.70 1.00	1.80	2.80
Blakemore .....	post paid .85	1.20	2.10	3.40
	Express collect	.70 1.00	1.80	2.80
Missionary .....	post paid .85	1.20	2.10	3.40
	Express collect	.70 1.00	1.80	2.80
Progressive .....	post paid 1.45	2.75	6.00	8.60
	Express collect	1.30 2.50	5.50	8.00

## HUMPTY DUMPTY EGG CARRIER



3-dozen size .....	50c
Post paid .....	60c
6-dozen size .....	60c
Post paid .....	75c
12-dozen size .....	80c
Post paid .....	99c

## CARBOLA

Carbola is a white paint and powerful disinfectant combined in powder form. It is ready to use as soon as it is mixed with water. It can be easily and quickly applied to building interiors with brush or spray pump. Disinfects and dries pure white. Does not flake or peel off. One pound covers 100 sq. ft.

Price: 5 lb. pkg. 75c; 10 lb. pkg. \$1.25; 50 lb. bag \$5.00. By parcel post: 5 lb. pkg. 90c; 10 lb. pkg. \$1.55, not past 3rd zone.

## TUCK END BUTTER CARTONS

Made for one-pound square prints, suitable for parcel post shipments. Not corrugated. These cartons are of the finest grade of manila paper, paraffined both sides. Doz. 20c; 100 for 90c. Post paid, doz. 25c; 100 for \$1.00.

## BUTTER PAPER

In sheets of standard size, 9x12 inches. Prices: 100 for 35c; 500 for \$1.50, post paid.

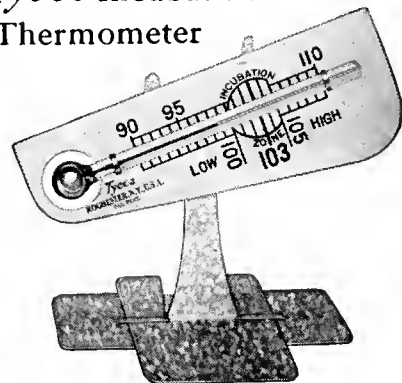
## POULTRY LITTER

Used for baby chicks and grown fowls. It is a deodorizer, disinfectant and absorbs the moisture from droppings. In this state it is valuable as a fertilizer. Price: 25 lb. bale \$1.25; post paid \$1.60.

## THERMOMETERS

No. 5776

*Tycos* Incubation-Zone  
Thermometer



When used with Stand



When used without Stand

No. 5776 — *Tycos* Incubator Thermometer, magnifying lens, white enamel scale, each 75c; post paid 85c.

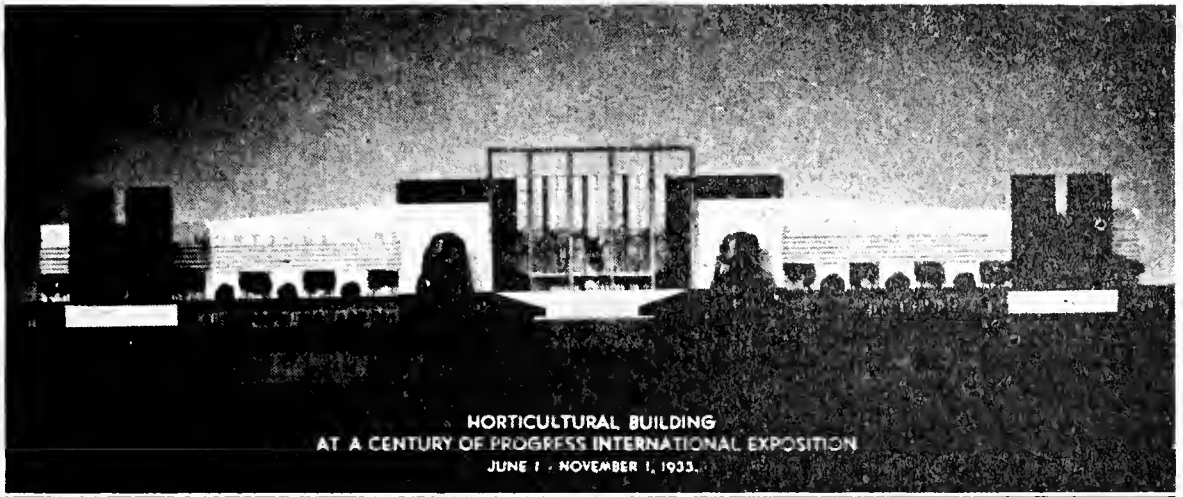
No. 5792 — *Tycos* Brooder Thermometer, each 95c; post paid \$1.05.

## NEST EGGS

**Knox Lice Medicated Nest Eggs**—These eggs are a perfect imitation of the hen's egg, containing a powerful disinfectant, which keeps all lice, mites, etc., out of nest and off the hen. Each 8c; doz. 75c. Post paid, each 15c; doz. 90c.

**Lime Nest Eggs**—Non-breakable, antiseptic. A perfect shape, making it a splendid and lasting accessory. Doz. 40c; post paid, doz. 50c.

**Porcelain**—These are made of first-class glass. They will not break easily and will last a lifetime. Doz. 40c; post paid, doz. 50c.



## Horticultural Gardens Fed with VIGORO

Thousands of visitors to inspect them daily! Garden enthusiasts from the world over! No wonder the exhibitors in the horticultural division of A Century of Progress spared neither time nor expense so that their gardens might approach perfection. It was important, too, that the beauty of these lovely gardens be maintained during the entire exhibition period. Those in charge knew the value of proper plant feeding. It was natural, therefore, that Vigoro, the complete plant food, should be selected for use on the exhibition gardens.

If you attended the Fair, you will probably remember the beautiful gardens. They were the kind you have always wanted and really tried to have. But somehow your lawn was not so nice, your flowers not so brilliant or abundant. Take new hope! You, with the help of Vigoro, can grow as fine a lawn and as fine flowers as anyone.

Your lawn and garden will respond quickly to regular feeding with Vigoro, the complete plant food. This clean, odorless product will bring professional success to your gardening efforts. It is economical to use because Vigoro is balanced—it is complete. It contains no waste material. Four pounds of Vigoro properly feeds 100 square feet of area planted to lawns, flowers, vegetables, or shrubs. Trees require one pound of Vigoro for each inch of circumference measured four feet from the ground.

### Other Fertilizers

At the time this catalog is being printed it is impossible for us to quote you fairly, honestly and legitimately on all fertilizers because the code, under the New Deal of President Roosevelt, has not been established. Of course, we could print a price with so much profit attached that we would be protected against all advances, but that wouldn't be right.

Just remember that we will have fertilizers, as in the past, for all cases, trucking, corn, cotton, etc. When ready please write us for a special quotation.

Prices—12 oz. 20c; 5 lbs. 65c; 10 lbs. \$1.05; 25 lbs. \$1.85, post paid. Not prepaid—12 oz. 10c; 5 lbs. 50c; 10 lbs. 85c; 25 lbs. \$1.50; 50 lbs. \$2.50; 100 lbs. \$4.00.

**VIGORO**  
Complete plant food



# SCHWILL'S

## Bug Killers

Equipment and Systems  
Collection  
FEB 1900

They're  
**STAINLESS**



No. 1

Kills Moths,  
Bed Bugs  
and Silver Fish



Pint 45¢, Quart 75¢  
Parcel Post Paid

## Schwill's Bug Killer No. 2

Stainless » Odorless » Tasteless

Kills Roaches, Weevils, Ants, Fleas, Mites, etc.

Pint 60¢, Quart 90¢

Parcel Post Paid