

## Historic, archived document

Do not assume content reflects current scientific knowledge, policies, or practices



Poster coll  
1.8  
EX892E  
13.1

SERIES OF  
EDUCATIONAL  
ILLUSTRATIONS

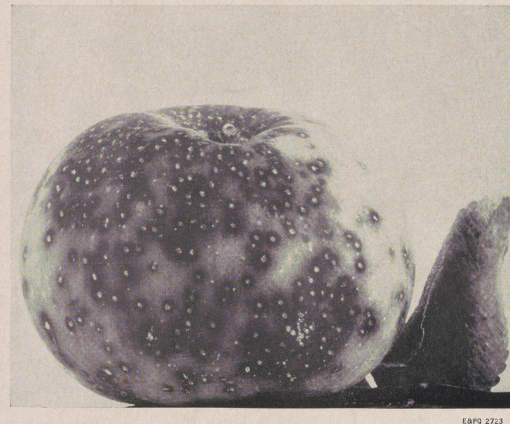
# INSECT PESTS OF FRUIT



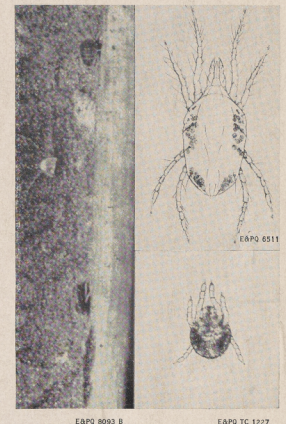
## SAN JOSE SCALE

Male (upper left).  
Enlarged scale (lower left)

Scale on branch and clean  
twig for comparison



Scale on fruit



## RED SPIDER OR MITE

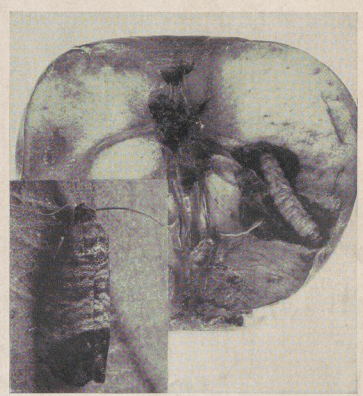
On midrib and surface of a leaf  
(Enlarged)



## APPLE MAGGOT AND EVIDENCE OF DAMAGE



## SPRAYING ORCHARD

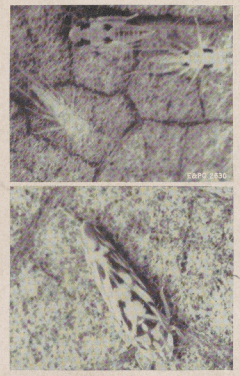


## CODLING MOTH

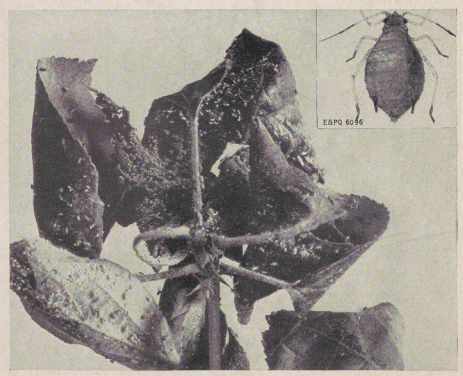
Adult and larva



## CURCULIO



## LEAFHOPPER



## APHID OR PLANT LOUSE (adult) AND DAMAGE

Prepared by Extension Service, in cooperation with the Bureau of Entomology and Plant Quarantine,  
United States Department of Agriculture, Washington, D. C.

Group No. 13.—Insects (Chart No. 13.1). Group of six charts. Price 20 cents. Issued 1941