

Historic, Archive Document

Do not assume content reflects current scientific knowledge, policies, or practices.

SALZER'S

SINCE 1868 AT LA CROSSE-WIS.



HEAR YE!
WE GNOMES TEND
THE BEST GARDENS—
OUR SLOGAN IS—
**SOW SALZER'S
SEEDS!**

**SALZER'S
ROSE OF HEAVEN
PETUNIA**

*The Official
1933 World's
Fair
Flower!*

Rose of Heaven Petunia

The official World's Fair Flower of the 1933 Century of Progress at Chicago! Exquisite, soft rose-pink flowers without any lighter shadings, throat soft rose-pink. Blooms freely. A solid window box, or bed, of these all rose flowers, is beautiful. Easily grown. 2321—Pkt., 15c; 2 pkts., 25c; 1/8 oz., 50c.

VEGETABLE
SEED TRIALS
HORTICULTURE

SEEDS

FOR **FAIRYLAND FLOWERS**

& **VITALITY VEGETABLES**

JOHN A. SALZER SEED CO.



America's Most Modern Seed Institution

Garden Lovers
Everywhere, U. S.

Gardening Time
La Crosse, Wisconsin

Dear Friends:

At the fifty-first annual convention of the American Seed Trade Association held in Chicago last June, a very instructive and interesting paper on seed catalogs was presented by Prof. A. L. Hottes, Editor of the interesting page of Better Homes and Gardens, known as "Along the Garden Path." In brief, his advice to seedsmen was that our seed catalogs are practically all alike and that they contain too little human interest. So with this thought in mind, we have prepared this catalog in hopes that it will strike a new and original note in seed merchandising.

We all remember the fanciful tales in our younger days, of gnomes, elves, and fairies that guarded the gardens of our grandparents. They were the unseen night workers, overseers of the gardens, and as the old legends go, bountiful crops and beautiful flowers were gathered when the elves and gnomes helped protect the garden from insects, drouths, etc. We therefore thought it appropriate to designate the garden gnome as an insignia of good luck to the Sowers of Salzer's Fairyland Seeds. We naturally have always been interested in famous gardens and we are presenting views of various World Famous Gardens.

For 66 years, through three generations, we have been building one of the largest seed businesses in the United States on the one theory that you must be satisfied or your money will be refunded. You want good seeds and efficient service, and these you will get at Salzer's. At a very considerable investment we have provided acres of proving grounds at our Cliffwood Farms, with mammoth greenhouses and a modern seed laboratory to PRE-prove Salzer's Seeds.

Join us in having a beautiful garden this year. Show this catalog to your gardening friends, or better still, send us the names of five of them when sending us your order, and we will send you free a packet of Mixed Fairyland Flower Seeds. If interested in Farm and Field Seeds, send us a list of your requirements for a low and attractive quotation.

Very sincerely yours,

JOHN A. SALZER SEED CO.,

Herbert E. Sawyer
President



FREE

With every order amounting to \$4.00 or more, if requested on your order, we will send you one Garden Gnome absolutely FREE! These gnomes are highly colored, and measure eleven inches high. They are very popular for placing on the lawn or edge of a flower bed. If ordered alone, \$1.00 each; 3 for \$2.75, postpaid.

Vitality Vegetables



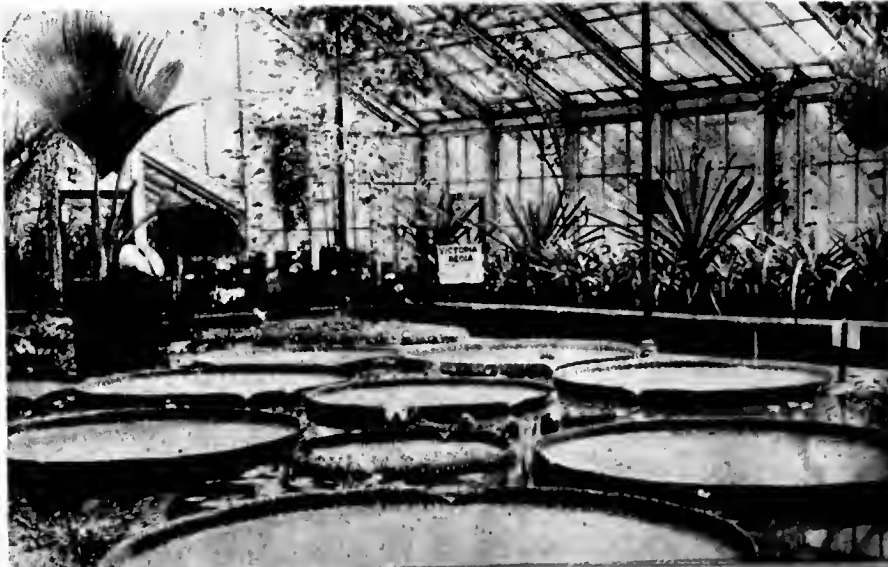
Main Office



Order Department

Our Farm won First Prize for best collection of vegetables, your seeds.—Mrs. Myrtle K. Brooks, Mescilbrooks Farm, Clinton Rd., R. D. 1, Antrim, N. H. I won Sweepstakes on individual exhibits at our State Fair for seven years in succession with your seeds.—Mr. Carl Holden, Williamsburg, Ia.

Prize-Winning Seeds



Water Lilly Leaves Large Enough to Support a Child At the Kew Gardens, London



Fairyland Flowers

Salzer's Famous Cliffwood Farms



Outdoor Tests



Greenhouse Tests

Laboratory Tests

TRIPLE-A-TESTED Sow Salzer's Seeds and be assured of every known safeguard in the quality, hardiness and germination of the seeds you plant! For your protection, Salzer's Seeds are first subjected to tests for germination in electrical germinators in the laboratory. Next, they are tested in our Greenhouses by growing in soil but with artificial heat. Finally, they receive rigorous outdoor tests on Salzer's Cliffwood Farms where we are subject to very late spring frosts and early frosts in fall! Sow Salzer's Seeds this year and have the best garden you ever had!

POSTPAID PRICES We pay the postage. Simply send us your order, no matter where you live, at catalog prices, and we will do the rest. There will be no extra postage charges. Seeds will be mailed at once. Plants, bulbs, roots and shrubs will be booked and mailed to you at proper time to plant.

Salzer's Triple-A-Tested Seed Collections

Containing Only Special Reselected Strains Certified by **THREE-WAY** Tests

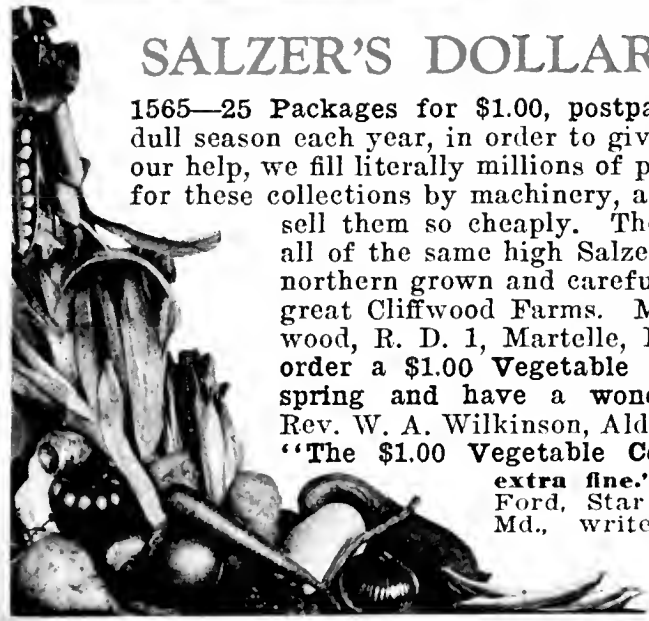
1455—1 Pkg. each of Select Golden Wax Beans, Extra Early Valentine Beans, Crosby Egyptian Beet, Early Jersey Wakefield Cabbage, Danish Ballhead Cabbage, Early Paris Cauliflower, Danver's Half Long Carrot, Early Minnesota Corn, Improved White Spine Cucumber, Black Seeded Simpson Lettuce, Big Boston Lettuce, Selected Rockyford Muskmelon, Improved Tom Watson Watermelon, Selected Red Wethersfield Onion, Little Marvel Peas, Chinese Giant Pepper, Early White Turnip Radish, Savoy Spinach, and Select Stone Tomato. Nineteen full size packets of Cliffwood Farm Triple-A-Tested Seeds, for only **\$1.50, postpaid.**

1456—1 Pkt. each of Salzer's Giant Branching Asters, Arctotis, Centaurea Imperialis, Delphinium, Helichrysum, Larkspur, Lupinus, Marigold, Mignonette, Nasturtium, Pansy, Petunia, Phlox, Oriental Poppy, Portulaca, Seabiosa, Stocks, Sweet William, Verbena, and Zinnia. It is only by assembling large quantities of packet seeds in our dull season, that we can offer them so cheaply. Collections cannot be altered. Think of it, twenty full size packets of Cliffwood Farm Triple-A-Tested Seeds, for only **\$1.75, postpaid.**

SALZER'S DOLLAR VEGETABLE COLLECTION

1565—25 Packages for \$1.00, postpaid. During the dull season each year, in order to give employment to our help, we fill literally millions of packages of seeds for these collections by machinery, and can therefore sell them so cheaply. The seeds used are all of the same high Salzer quality, all are northern grown and carefully tested at our great Cliffwood Farms. Mrs. Wm. Underwood, R. D. 1, Martelle, Iowa, writes, "I order a \$1.00 Vegetable Collection every spring and have a wonderful garden." Rev. W. A. Wilkinson, Alden, Iowa, writes, "The \$1.00 Vegetable Collection proved extra fine." Mr. F. A. De Ford, Star Route, Denton, Md., writes, "Your \$1.00 Vegetable Collection is unusually good."

- 1—Beans, Golden Wax.
- 2—Beans, Ex. Early Tender Valentine.
- 3—Beet, Crosby's Egyptian.
- 4—Cabbage, Salzer's Lightning.
- 5—Carrot, Danver's Half Long.
- 6—Cauliflower, Salzer's First Crop.
- 7—Celery—Salzer's Self Blancher.
- 8—Corn, Sweet, Early Minnesota.
- 9—Cucumber, Improved White Spine.
- 10—Kohlrabi, Early White Vienna.
- 11—Lettuce, Black Seeded Simpson.
- 12—Lettuce, Cream Butter.
- 13—Musk Melon, Selected Rockyford.
- 14—Melon, Water, Fourth of July.
- 15—Onion, Yellow Globe Danvers.
- 16—Parsnip, Crown.
- 17—Parsley Moss Curled.
- 18—Peas, Salzer's Earliest and Best.
- 19—Pepper, Pimiento.
- 20—Radish, Earliest White.
- 21—Radish, Sparkler.
- 22—Rutabaga, American Purple Top.
- 23—Spinach, Savoy.
- 24—Squash, DeHicous.
- 25—Tomato, Salzer's Earliest of All.





how does your garden grow?
MARY, MARY, Quite Contrary
FAIRYLAND PERENNIAL GARDEN.

\$100 POSTPAID \$100

Fifteen full size packets of perennial flowers that will bear enchanting blooms for years to come. These perennials need no winter protection. Contains 1 Pkt. each of Monkshood, Sweet Alyssum, Columbine, Canterbury Bell, Coreopsis, Double Daisy, Pinks, Foxglove, Forget-Me-Not, Gaillardia, Perennial Sweet Pea, Blazing Star, Jerusalem Cross, Baby Breath, and Sweet William. Retail value \$1.50. Special Price: \$1.00.

Mary, Mary, quite contrary,
 How does your garden grow?
 Silver bells and cockleshells,
 And pretty maids all in a row.



Baby Breath



Foxglove



Monkshood



Pinks

1571—Salzer's Cliffwood Collection of Annual Flowers—\$1.00

- | | |
|------------------|----------------|
| 1. Ageratum | 14. Hollyhock |
| 2. Alyssum | (Annual) |
| 3. Antirrhinum | 15. Marigold |
| 4. Asters | 16. Mignonette |
| 5. Balsam | 17. Nasturtium |
| 6. Celosia | 18. Pansy |
| 7. Calliopsis | 19. Poppy |
| 8. Candytuft | 20. Portulaca |
| 9. Centaurea | 21. Stocks |
| 10. Cosmos | 22. Sweet Pea |
| 11. Dianthus | 23. Scabiosa |
| 12. Four O'Clock | 24. Verbena |
| 13. Gaillardia | 25. Zinnia |

This collection of twenty-five separate packets is composed of the best Cliffwood strains. All varieties are free flowering and will produce a gorgeous display from early spring until frost. 25 full size packets for \$1.00.

1570—Salzer's Superb Flower Collection—50c

A collection of full sized packets of various annuals that will give you many flowers, and ordered singly, would cost much more.

- | | |
|----------------|---------------|
| 1. Asters | 7. Escholtzia |
| 2. Antirrhinum | 8. Marigold |
| 3. Balsam | 9. Mignonette |
| 4. Candytuft | 10. Pansy |
| 5. Cosmos | 11. Poppy |
| 6. Dianthus | 12. Zinnia |

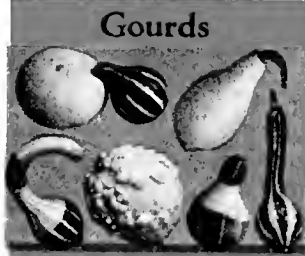
12 full size packets of select varieties for 50c.

All Flower Seeds Are Post-paid



Strawflowers

Besides giving one a wealth of summer flowers, of brilliant hues, Strawflowers or helichrysum "eure" easily and may be kept as all winter bouquets in the house. Easily grown. 2063—Mixed. Many colors. Pkt., 100 seeds, 10c.



Gourds

Rapid growing annual vines with dense foliage and bearing ornamental and odd shaped gourds. Desirable and interesting. 2032—Mixed. Many varieties mixed. Pkt., 10c.

1572—Salzer's Garden Gay Flower Collection—75c

1. Antirrhinum
2. Asters
3. Balsam
4. Carnation
5. Celosia
6. Marigold
7. Mignonette
8. Nasturtium
9. Petunia
10. Pansy
11. Phlox
12. Salvia
13. Sweet Peas
14. Verbena

Fourteen separate packets of beautiful annual flowers, full size packets, for 75c, postpaid.

SALZER'S SURPRISE GARDEN MIXTURE

Have you a corner of the yard for nothing in particular? Then sow this Surprise Mixture there. This mixture surprises everyone with its big variety of lovely annual flowers that bloom at different periods during summer. Makes fine bouquets. It is inexpensive and many people sow a bed to it. See illustration. 1552—Pkt., 8c; 1/4 oz., 12c; 1/2 oz., 18c; oz., 29c.



At Left—A Corner of the Kew Gardens, London

HARDY CLIMBERS

Very hardy, easily grown, Salzer's Hardy Climbers furnish a large amount of shade year after year, in addition to providing beautiful house decoration. Plant one this spring. Prices include postage.

BOSTON IVY. Rich deep green foliage in summer, changing to brightest shades of crimson and yellow in autumn. Each, 32c; 3 for 90c.

CINNAMON VINE. Dense, glossy, heart shaped leaves and clusters of wonderfully fragrant white flowers with a cinnamon odor. Each, 12c; 3 for 33c.

DUTCHMAN'S PIPE (*Aristolochia*). Desirable for its dense, large leaves, often ten inches across. Rapid grower, retaining its green color from spring until fall. Each, 63c; 3 for \$1.85.

KUDZU VINE. A rapid Japanese climber, with large leaves and fragrant wisteria-like flowers. One of the fastest growers. In the extreme North, protect over winter. Each, 25c; 3 for 72c.

MATRIMONY VINE. Bright purple flowers succeeded by scarlet berries that remain far into winter. Also desirable for retaining banks. Each, 24c; 3 for 69c.

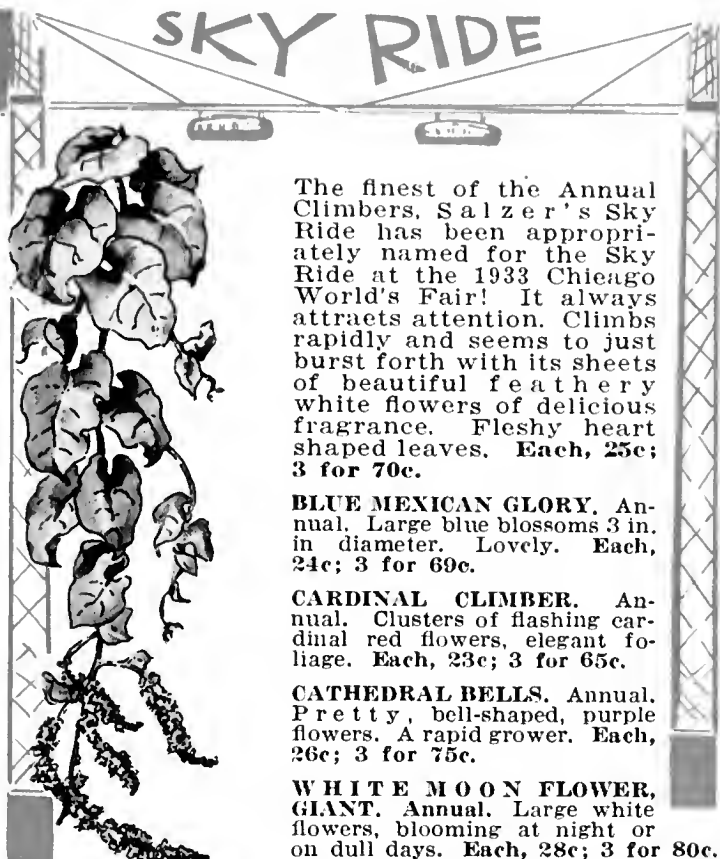
1 Each of Above 5, for \$1.45.



Dutchman's Pipe



Kudzu Vine



The finest of the Annual Climbers, Salzer's Sky Ride has been appropriately named for the Sky Ride at the 1933 Chicago World's Fair! It always attracts attention. Climbs rapidly and seems to just burst forth with its sheets of beautiful feathery white flowers of delicious fragrance. Fleshy heart shaped leaves. Each, 25c; 3 for 70c.

BLUE MEXICAN GLORY. Annual. Large blue blossoms 3 in. in diameter. Lovely. Each, 24c; 3 for 69c.

CARDINAL CLIMBER. Annual. Clusters of flashing cardinal red flowers, elegant foliage. Each, 23c; 3 for 65c.

CATHEDRAL BELLS. Annual. Pretty, bell-shaped, purple flowers. A rapid grower. Each, 26c; 3 for 75c.

WHITE MOON FLOWER, GIANT. Annual. Large white flowers, blooming at night or on dull days. Each, 28c; 3 for 80c.

1 Each of Above 5 Annual Climbers, for \$1.00.

CLEMATIS—A Lovely Climber

The Clematis is a grand climber for pillars, trellises, old trees, pegged down for bedding, running over rockwork, etc. Very hardy. They delight in rich soil and sun and a little extra attention given to them, will repay one. Prices include postage.



Clematis Baron Veillard

BARON VEILLARD. Immense blossom of charming rose and rose-lilac. Each, 78c; 3 for \$2.25.

DUCHESS OF EDINBURGH. Large, double white blooms, borne very freely. Finest of all the whites. Each, 87c; 3 for \$2.50.

JACKMANII. Rich, velvety, violet purple. Most popular of all. Each, 85c; 3 for \$2.40.

MME. ANDRE. Beautiful dark red flowers borne in the greatest profusion. Each, 89c; 3 for \$2.50.

RAMONA. Finest of the light blue Clematis. Large, light blue blossoms. Each, 77c; 3 for \$2.20.

1 Each of Above 5, for \$3.50.

CLEMATIS PANICULATA. The sweet scented Japan Clematis. The pure white, fragrant blossoms are literally borne in immense sheets in September. Glossy green foliage. Hardy. Each, 30c; 3 for 87c.



Clematis Jackmanii



Bittersweet

SILVER LACE VINE

SALZER'S SILVER LACE VINE IS THE GRANDEST CLIMBER I'VE EVER SEEN!

SALZER'S SILVER LACE VINE, that furnishes so much foliage over which elves and fairies may climb, is a new hardy climber that will grow 25 feet. It produces an extravagance of large, foamy, silvery

white flower sprays from late summer until fall. Very desirable. Hardy. Each, 65c; 3 for \$1.80.

HONEYSUCKLE HALLEANA. Because of its enchanting fragrance, it is always a favorite. Buff yellow flowers, shading to white, borne very freely. Each, 30c; 3 for 87c.

SCARLET HONEYSUCKLE. Scarlet trumpet shaped flowers, very showy and sweet scented. Lovely foliage. A hardy, high climber. Each, 29c; 3 for 84c.

TRUMPET VINE. Large trumpet shaped dark red flowers with orange throat, unusually showy and attractive. Climbs rapidly. Each, 25c; 3 for 70c.

VIRGINIA CREEPER. Deeply cut leaves that turn to flaming crimson in Fall. Perfectly hardy, dense foliage, climbs anywhere. Each, 30c; 3 for 87c.



Trumpet Vine

BITTERSWEET

Handsome glossy foliage, yellow flowers in June, and large clusters of orange-crimson berries retained on the vine all winter. The sprays of berries make colorful winter house decorations. Each, 32c; 3 for 90c.

NEW WILT-RESISTANT ASTERS

Have you had stunted, one-sided and off color aster plants, dark colored streaks in the stem, yellowing of the upper leaves and death of the lower leaves on the plants? If so, you have Aster Wilt in your soil which may persist for a lifetime and you can nevermore grow asters unless you plant Salzer's Wisconsin Wilt-Resistant Aster Seed. Aster Wilt does not affect any other flower but the Aster. On very sick soil of the worst type, the wilt-resistant seed grew splendidly, while 93% of the plants from ordinary seed, succumbed. We offer: 1742—Giant Crego, Mixed; 1743—Queen of the Market, Mixed; 1744—Salzer's Beauty Mixed; and 1737—All Types, Mixed. Price: Any of the foregoing: Pkt., 25c; 2 pkts., 45c; 4 pkts. (or 1 pkt. each of these 4), for 75c.

Queen of the Market Aster

If you have never had trouble in growing Asters, this and the following varieties in standard seed will give you beautiful flowers. Queen of the Market is an early flowering Aster, with lovely, fluffy flowers. 1670—Mixed. Pkt., 10c. 1752—Mixed, Salzer's Cliffwood Farm TRIPLE-A-TESTED: Pkt., 15c.

Salzer's Beauty Asters

A charming mid-season type, with giant flowers on stems two feet long. With its dense double flowers of beautiful shades, it is one of the finest Asters ever introduced. Ideal for cut flowers. 1715—Finest Mixed. Pkt., 75 seeds, 12c.



Salzer's Beauty Aster

Lavender Gem

Large, artistic, loosely arranged flowers on long stems, of the most charming shade of lavender imaginable. 1673—Pkt., 5c; 1732—Salzer's Cliffwood Farm TRIPLE-A-TESTED: Pkt., 10c.

Improved Giant Crego Asters

Blooms from August until killing frost. Stems two feet long, carrying flowers often 5½ in. across. Petals fluffily curled. 1725—Finest Mixed. Pkt., 10c.

SALZER'S CALIFORNIA GIANT ASTERS

A new race of Asters. It is a cross between the Beauty Type of Aster and the Giant Crego, combining the vigorous tall growth of the former with the lovely, double, large flower of the latter. Salzer's California Giant is practically non-lateral, but instead, carries its blooms at the end of its long stems, without the small side branches, producing enormous flowers of wonderful substance on strong, stiff stems 20 to 24 inches long. The flowers measure 5 to 6 inches in diameter, with long petals that fluffily curl across each other and produce an exquisite bloom that has no equal. Mrs. J. J. McHale, 5018 95th St. S. E., Portland, Ore., writes, "Friends thought that the California Giant Asters that I raised had been bought from a florist. The first blossoms measured six inches in diameter." Miss Annie Linden, 397 Washington St., New Glasgow, N. S., writes, "We had lovely Asters from your California Giant Aster Seed." 1688—Mixed. A wide variety of colors. Pkt., 14c.

Salzer's Choice Asters

1735—FIRE KING. Flaming scarlet flowers of double peony-like form. 8 inches. Pkt., 10c.

1736—SNOWBALL. 12 in. Pure white double Asters. Pkt., 10c.

1727—PEERLESS YELLOW. Something new. Deep yellow, shading to lighter yellow. Pkt., 20c.

1728—SALMON QUEEN. The best pure salmon Aster ever introduced. Pkt., 15c.

1716—BI-COLOR ASTER. Soft golden yellow centers, surrounded by outer petals of lavender. Pkt., 12c.

1755—GORGEOUS PRIZE MIXTURE. For those who want a fine mixture of almost endless types and colors. Pkt., 12c.

1754—CHOICE MIXED. A sterling mixture at a low price. Pkt., 5c.



Salzer's California Giant Aster —Massive and Beautifully Formed Flowers

California Giant Double Zinnia

The flowers are truly giant in size, frequently $6\frac{1}{2}$ to 7 inches in diameter, and are borne on long, strong stems. Has smaller centers and more loosely placed petals than the older types of Zinnias. It is the most satisfactory variety of all the Zinnias, and has strikingly brilliant coloring. 2745—**Finest Mixed.** A mixture of many lovely colors. Pkt., 14c; $\frac{1}{4}$ oz., 75c. Plants: 39c per dozen, 25 for 76c; 50 for \$1.45, postpaid.



The Lovely Gardens of the Vatican, Rome, Italy

Salzer's Dahlia- Flowered Zinnia



ZINNIAS? YOU'LL
GROW 'EM BIG
WHEN YOU
PLANT SALZER'S
SEEDS!



Dahlia-Flowered Zinnia

Another large flowering Zinnia, the large blooms nodding on stout stems. This type is distinguished by being nearly as deep in the center as wide, the petals laid over each other in Dahlia-like fashion.

- 2584—Mixed Colors. Pkt., 10c.
2598—Mixed, Salzer's Cliffwood Farm TRIPLE-A-TESTED. A special re-selected strain certified by THREE-WAY tests. Pkt., 15c.
LARGE FLOWERING DWARF ZINNIA. Bushy plants about 15 in. high, bearing immense double flowers.
2583—Mixed. Pkt., 10c.
CURLED AND CRESTED ZINNIA. Petals curled and twisted, giving the flower a soft, fluffy effect. 2571—Mixed. Pkt., 10c.
VICTORY ZINNIA. Very distinct. Large, double, densely quilled flowers. Elegant. 2576—Mixed. Pkt., 15c.

Red Riding Hood Dwarf Zinnia



Who's afraid of the big, bad wolf? Absorbed in picking these delightful flowers, Little Red Riding Hood gives him never a thought. This pretty Zinnia grows only a foot high and is simply covered with little, round, flashing scarlet, very double flowers about an inch across. Makes charming bouquets and buttonieres. You will love it. 2769—Pkt., 10c.

Lilliput Zinnias

The plants form handsome little bushes 15 in. high, that fairly bristle with their many tiny, very double flowers. Excellent for borders, or for a solid bed. They make a dainty, distinctive bouquet, that is entirely different from other Zinnias. The flowers measure about $\frac{1}{2}$ to $\frac{3}{4}$ of an inch in diameter. If you once try them, you will want some in your garden every year. 2768—Mixed Colors. Pkt., 10c.

IMPROVED GIANTS PETUNIA

Nothing but large, massive, colorful flowers from this strain, with open throats well marked and veined, five to six inches in diameter! It is the largest and finest of all Single Ruffled Petunias on the market today, and we say this after checking it with many others for size, profuseness of bloom, brilliancy and variety of flower. It outclasses every other single type. Sow right outdoors in early May. **2342—Mixed Colors.** Pkt., 30c; 2 pkts., 55c. Plants: 3 for 59c; 6 for \$1.12.

IMPROVED DOUBLE FRINGED PETUNIA. Enormous, fluffy, crinkly balls of bloom in a wonderful array of colors. Finest of all the double Petunias on the market. The weak plants produce the best double flowers and they should be coddled along and saved. The lovely flowers are spicily fragrant. **2343—Mixed Colors.** Pkt., 35c; 2 pkts., 65c. Plants: 3 for 73c; 6 for \$1.40.

ROSE OF HEAVEN PETUNIA. The Official 1933 World's Fair Flower. See front outside cover for description and price.

RUFFLED GIANTS. A distinctive type. Flowers ruffled, fluted and fringed, of good substance, in a variety of colors, all mixed. **2340—Pkt., 25c; 2 pkts., 45c.**

FLUFFY RUFFLES. Immense single flowers, extraordinarily ruffled, hence the name. Very choice. **2341—Pkt., 25c; 3 pkts., 70c.**

ROSY MORN. Soft rosy pink with a white throat. A solid box or bed of these is superb. **2327—Pkt., 10c. 2336—Rosy Morn, Salzer's Cliffwood Farm TRIPLE-A-TESTED.** Pkt., 15c.

VIOLACEA. Deep violet flowers. Lovely. **2329—Pkt., 15c.**

DWARF MIXED. Compact, bushy plants, 6 in. high, covered with showy flowers. **2323—Pkt., 7c.**

A Flower of Improved Giants



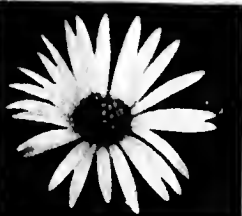
Cliffwood Balcony Petunias

Lovely, plain, single petunias, in bloom all the time, large size, splendid for beds and window boxes. **2334—Mixed.** Pkt., 10c. **2335—Cliffwood Balcony Mixed.** Our own savings from the finest flowers. Pkt., 15c.



Improved Double Fringed Petunia

SALZER'S ALICE-IN-WONDERLAND FLOWERS



African Daisy



Calendula



Calliopsis

ALL FOR
75¢
POSTPAID

AFRICAN DAISY (Aretotis). Daisies such as you never had before, elegant for bouquets. Large, daisy-like flowers, pure white. **1656—Pkt., 7c.**
AGERATUM, Blue Perfection. It is literally a sheet of bloom from early summer until frost. 4 to 5 inches, fine for borders. **1612—Pkt., 9c.**
AGERATUM, Little White Dorrit. The best white. **1611—Pkt., 5c.**
CALENDULA (Pot Marigold). Very showy and thrifty plants, fine for dry and poor soils. Lovely flowers. **1814—Finest Mixed.** Pkt., 5c.
CALIFORNIA POPPY. Finely cut foliage, and poppy-like flowers of satin-like texture. **1982—Finest Mixed.** Pkt., 5c. **1991—New Hybrid Mixed.** Seed saved from new sorts of wonderful colors. Pkt., 15c.
CALLIOPSIS or Bright Eyes. Showy flowers of the easiest culture. 18 in. **1819—Finest Mixed.** Pkt., 5c. **1817—Double, Mixed Flowers.** Pkt., 10c.
CANDYTUFT. Valuable for beds and borders, and indispensable for cutting. 1 ft. **1834—Finest Mixed.** Pkt., 5c. **1843—Finest Mixed, Salzer's Cliffwood Farm TRIPLE-A-TESTED.** Pkt., 10c.
CARNATION. Spicy, very free blooming, double flowers. **2815—Mixed.** Pkt., 15c.
CHINESE FORGET-ME-NOT (Cynoglossum). Forget-Me-Not like flowers. **1857—Pkt., 10c.**
CHRYSANTHEMUM CORONARIUM. Deep, double, large flowers. **1892—Mixed.** Pkt., 10c.
CHRYSANTHEMUM, Single. Colorful daisy-like flowers. **1895—Single Mixed.** Pkt., 10c.
One Packet Each of Above 11 Alice in Wonderland Flowers, for Only 75c.

All Flower
Needs Are
Postpaid

HERE, ALICE—LET ME SHOW
YOU SALZER'S WONDER-
LAND FLOWERS!



GARDENS IN TOKIO



FOLKS! SALZER'S SWEET PEAS ARE LARGE AND BEAUTIFUL! MRS. ARTHUR SCHERER, 104 50TH ST. MANITOWOC, WIS., SAID HER'S WERE.

SWEET PEAS

Salzer's Early Orchid Flowering!

WORLD'S FAIR MIXTURE.

A special mixture of numerous individual named varieties of Salzer's Early Orchid Flowering Sweet Peas, made up especially and named for

the 1933 Chicago World's Fair! Will give you the widest possible range of brilliant colors, enormous flowers beautifully waved, and distinctive blooms. It is our biggest bargain this year! The entire mixture is composed of the Early Orchid Flowering Type, which are of extraordinary size, beautifully waved and usually borne four to a stem. They are easily grown and the large flowers in many colors, please and delight everyone. Order early. **2649—Big Pkt., 15c; 2 pkts., 25c.**

GRANDIFLORA SWEET PEAS. The old fashioned, large flowering Sweet Peas. All colors mixed. **2507—Pkt., 5c.**

SPENCER SWEET PEAS. A little later than Salzer's Early Orchid Flowering, but a beautiful variety with brilliant coloring and immense flowers. **2616—Mixed. Pkt., 10c. 2670—Spencer Mixed, Salzer's Cliffwood Farm TRIPLE-A-TESTED.** A special reselected strain certified by THREE-WAY tests: **Pkt., 15c.**

SALZER'S NEW RUFFLED SWEET PEAS. Something new in Sweet Peas, with the edges gracefully ruffled and frilled. A bouquet of 18 of these is more showy than a large bouquet of other Sweet Peas. Deliciously fragrant. **2833—Mixed. Pkt., 10c.**



Salzer's
Early
Orchid
Flowering
Sweet
Peas—
Four to
a Stem!

15c For A Big
Packet Of This
Extra Choice
Sweet Pea, Mixed
Colors, No. 2649

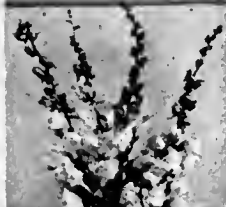
FLOWERS FOR BOUQUETS AND GARDEN DECORATION



Cornflower



Lily from Seed



Linaria



Lobelia, Blue Bird



Mignonette

All of the following bloom freely and are easily grown.

CORNFLOWER or *Centaurea*. Also called Bachelor Button. Symmetrical, perfectly shaped double flowers in many colors. **1875—Double Mixed. Pkt., 100 seeds, 10c. 1896—Cornflower or Centaurea, Double Mixed, Salzer's Cliffwood Farm TRIPLE-A-TESTED.** A special reselected strain certified by THREE-WAY tests: **Pkt., 15c.**

COXCOMB. The large flower heads are in the shape of a rooster's comb, brilliant red, very showy and make a big display. **1868—Pkt., 10c.**

DAHLIAS. From seed. The familiar Dahlia easily grown from seed! Mixed colors only. **1930—Single Giant Mixed. Pkt., 10c. 1929—DAHLIA, Double Giant Flowering Mixed. Pkt., 12c.**

DUSTY MILLER. Grown only for its finely cut, silvery gray foliage. **1884—Pkt., 100 seeds, 12c.**

EVENING PRIMROSE or *Oenothera*. Yellow flowers with brilliant red calyx, opening in the evening. **2243—Pkt., 5c.**

FEVERFEW, Golden Ball (*Matricaria*). Gorgeous masses of double yellow flowers, 12 in. high, fine for borders or beds. **2138—Pkt., 10c.**

FOUR O'CLOCKS. The flowers open at 4 P. M. and close the next morning! 30 in. **2002—Pkt., 5c.**

GLOXINIA. Superb house plants, flowers trumpet shaped, not hard to grow from seed. **2026—Giant Sorts Mixed. Pkt., 25c.**

JAPANESE HOP. A grand climber, growing 10 to 15 feet in four weeks, dense foliage, white flowers. **2090—Japonicus. Pkt., 5c.**

JOB'S TEARS. Clusters of large pointed seed which will delight in stringing into necklaces. **1906—Pkt., 10c.**

LAVATERA. Showy plants, 2 feet high, bearing large bowl-shaped, rose pink flowers. **2109—Rosea. Soft pink. Pkt., 10c.**

LILIES. Lilies from seed. A fine mixture of many different kinds of Lilies, easily grown. **2141—Pkt., 20c.**

LINARIA MAROCCANA. Charming Snapdragon-like flowers, 15 in. high, in many colors, very striking, makes fine bouquets. **2124—Pkt., 10c.**

LOBELIA. Dainty blue flowers, 6 in. high, unexcelled for edging and for window boxes. **2110—Blue Bird. Pkt., 10c. 2116—Cardinalis. 24 in. Spikes of cardinal red flowers. Pkt., 25c.**

MIGNONETTE. No garden is complete without a bed of these. **2144—Finest Mixed. Pkt., 7c.**

MOSS ROSE or *Portulaca*. The drier and hotter the weather, the better do Moss Roses grow. Thrive in poor soil under absolute neglect. **2401—Single Mixed. Pkt., 5c. 2400—Double Mixed. Pkt., 10c.**

PHLOX. These universally favorite flowers are easily grown from seed. Brilliant colors, all mixed. **2350—Finest Mixed. Pkt., 8c. 2352—Finest Mixed, Salzer's TRIPLE-A-TESTED—Pkt., 15c.**

POPPY. Well known flowers, of flaming brilliance, without an equal for showy garden display. **2384—Finest Mixed. Single and double flowers. Pkt., 5c.**

SNOW ON THE MOUNTAIN (*Euphorbia*). Contrasting foliage, white on green, 2 feet tall, almost necessary for every garden. **1985—Pkt., 10c.**

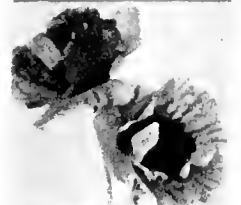
STOCKS. The old fashioned, deservedly popular flowers, highly fragrant, easily grown. **2472—Mixed colors. Pkt., 10c.**

SWEET WILLIAM. You will want this old time favorite in your garden. Sweet scented flowers on stout stems. **2523—Blooms freely. Spicily fragrant. Many colors. Pkt., 10c.**

VERBENA. Verbenas produce their fragrant clusters of flowers all summer long. Large flowers. **2544—Mixed. Pkt., 10c.**



Phlox



Poppies



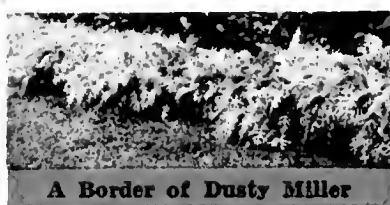
Snow on the Mountain



Stocks



Sweet William



A Border of Dusty Miller

NEW MARIGOLD

GUINEA GOLD

(GOLDENERA; CALIFORNIA GOLD.) A distinct new type, Guinea Gold Marigold produces a compact plant 2½ feet high, literally covered with semi-double, loosely ruffled flowers 2½ in. across. The color is a brilliant golden yellow-orange or California Gold. Blooms profusely. 2185—Pkt., 20c.

Guinea
Gold
Marigold

CHOICE MARIGOLDS

2132—LEMON QUEEN. Large, double yellow flowers freely borne on vigorous plants 3 feet high. Pkt., 10c.

2133—PRINCE OF ORANGE. Immense double orange-yellow flowers. Perhaps the finest of all. Pkt., 12c.

2135—METEOR. Beautiful double sulphur yellow flowers with an orange margin. Lovely. Pkt., 10c.
1 Packet Each of Above 3, for 25c.

2131—TALL DOUBLE AFRICAN, MIXED. A mixture of the large, tall, double Marigolds. Pkt., 10c.

2128—DWARF DOUBLE AFRICAN, MIXED. The dwarf, double sorts, mixed. Height, 15 in. Pkt., 5c.

2129—DWARF, DOUBLE FRENCH, MIXED. The popular dwarf double sorts with margined petals. Blooms over a long period. Pkt., 8c.

2154—STAR OF INDIA. Showy, single, crimson flowers striped yellow. Pkt., 10c.

2184—DWARF, SINGLE FRENCH, MIXED. 10 in. high. Brilliant single flowers, many colors, very showy. Grows in almost any kind of soil. Pkt., 5c.



Lemon
Queen

PIN CUSHION OR SCABIOSA



Shasta

Well known, ever popular flowers, but of improved form, with longer stems and of more brilliant coloring. Double flowers that bloom all summer long; easily grown.

2714—CHERRY RED. Rich red. Pkt., 10c.

2720—ROSE QUEEN. Soft rose. Pkt., 10c.

2717—KING OF THE BLACKS. Purple black. Pkt., 10c.

2721—YELLOW PRINCE. Lovely yellow. Pkt., 10c.

2452—TALL DOUBLE FLOWERING, MIXED. Pkt., 10c.

2454—TALL DOUBLE FLOWERING MIXED, Salzer's Cliffwood Farm TRIPLE-A-TESTED. A special reselected strain certified by THREE-WAY tests. Pkt., 15c.

SHASTA SCABIOSA

A lovely, new, pure white Pin Cushion or Scabiosa. Immense double flowers, of perfect form, full and deep-centered. 2458—Pkt., 15c.



Painted
Tongue

PAINTED TONGUE

OR SALPIGLOSSIS. Funnel shaped flowers, facing upward, of velvety texture, free flowering, with intricately wrought veinings of gold. 30 inches.

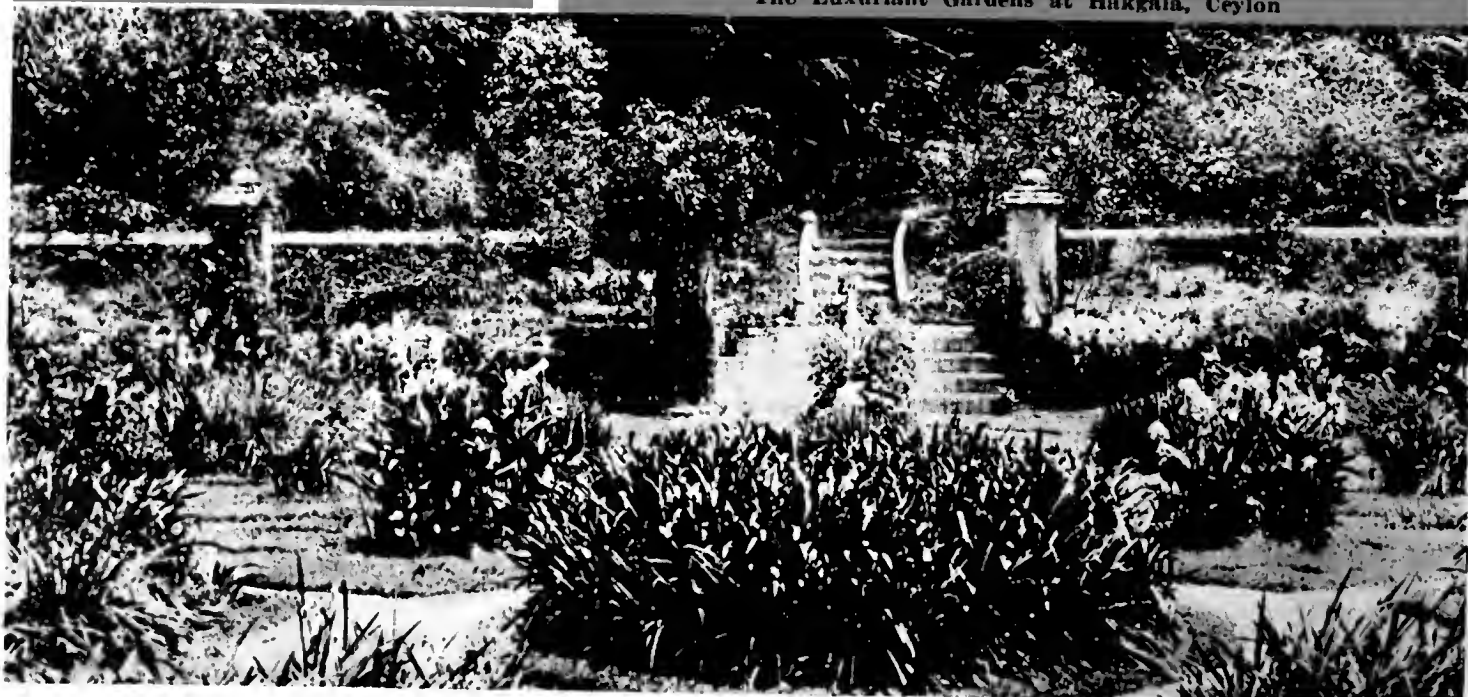
2435—Mixed Colors. Pkt., 200 seeds, 10c.

2436—MIXED, Salzer's Cliffwood Farm TRIPLE-A-TESTED. A special reselected strain. Pkt., 15c.



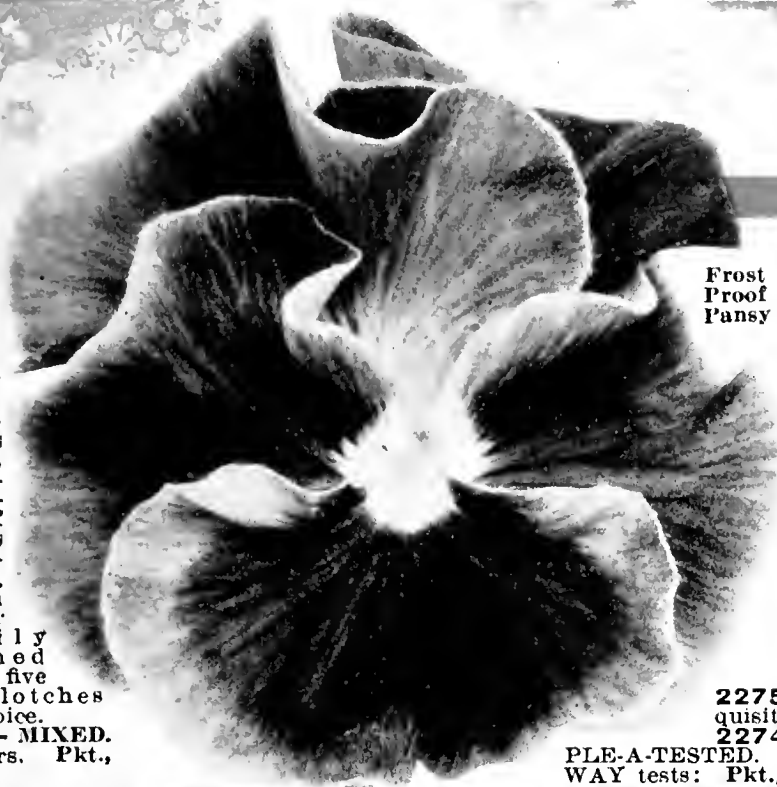
Pin Cushion or Scabiosa

The Luxuriant Gardens at Hakgala, Ceylon



Frost Proof Swiss Giant

A new race. Enormous flowers in a brilliant array of colors and shadings, each flower heavily blotched with five dark blotches. Very choice. **2277—MIXED.** All colors. Pkt., 50c.



Frost Proof Pansy

Salzer's Frost Proof Pansies

The flowers of Salzer's Frost Proof Pansies are frequently 3 inches across and bloom profusely long after frost! Their hardiness is astonishing. Customers often write us that they have picked bouquets of this type in the middle of December, the plants blooming right under the snow. For the hardiest, large pansies, plant Salzer's Frost Proof Pansies.

2312—CLIFFWOOD FROST PROOF PANSIES, MIXED. A big variety of color combinations and shades, all mixed. Per Pkt., 150 seeds, 25c; 5 pkts. for \$1.00.

Extra Choice Pansies

2280—ORCHID FLOWERING. Petals beautifully ruffled and waved. Mixed colors. Pkt., 125 seeds, 15c.

2281—CLIFFWOOD TRIUMPH. Deep orange, shading to lighter orange, with no markings. Pkt., 125 seeds, 20c.

2276—SALZER'S MASTODON. Immense flowers, many beautiful shades, mixed. Pkt., 150 seeds, 15c.

2275—GOOD MIXED. Perfect, large flowers of exquisite coloring, mixed. Pkt., 200 seeds, 5c.

2274—GOOD MIXED. Salzer's Cliffwood Farm **TRIPLE-A-TESTED.** A special reselected strain certified by **THREE-WAY** tests: Pkt., 10c.

"FROST PROOF PANSIES BLOOMING OUTDOORS ON JANUARY 18th" SAYS MRS LAURIE TAPP OF KEARNEY MO.



Delphinium—Hollyhock Strain

The individual flowers of this wonderful new Wrexham Hollyhock strain of Delphinium often measure three inches across. The large, graceful spikes of blooms are borne on long, strong, stiff stems and are from four to six feet high. The flowers are ruffled and densely set. We offer mixed seed only, containing all the blue shades known to Delphinium. **1979—Pkt., 35c; 2 pkts., 60c.** Plants, one year old: Each, 30c; 3 for \$1.10.

Choice Delphinium

1951—GOLD MEDAL HYBRIDS. Large blue flowers on spikes 3 to 5 feet high. Pkt., 15c.

1941—CARDINALE. New. Brilliant, scarlet flowers, spikes 30 in. long. Pkt., 20c.

1943—YELLOW KING. Rich sulphur-yellow flowers, long spikes. Pkt., 20c.

2000—SALZER'S ICEBERG. Striking pure white flowers, something new in Delphinium. Long spikes, massive flowers. Pkt., 45c.

One Pkt. Each of Above 4, for 85c.

1948—FINEST MIXED. Pkt., 10c.

2700—GIANT NAMED MIXED. Contains such famous varieties of Delphinium as Joan, Lady Derby, etc. Pkt., 30c.



Hollyhock Delphinium

Burning Bush or Kochia

Handsome, symmetrical bushes from seed. Dense green foliage, turning to gorgeous carmine in fall.

2098—Pkt., 5c.
2097—BURNING BUSH OR KOCHIA, Salzer's Cliffwood Farm **TRIPLE-A-TESTED:** Pkt., 10c.



Burning Bush

Salzer's Salvias

Very satisfactory bedding plants, bearing long spikes of flowers.

2438—BONFIRE. Brilliant scarlet spikes of flowers. Pkt., 10c.

2439—FIREBALL. Very early. Freest bloomer of them all. Scarlet flowers. Pkt., 15c.

2437—HARBINGER. New. Extra long spikes of flaming crimson flowers. Pkt., 18c.

2441—PATENS (Blue Sage). Rich and lovely azure blue spikes of flowers. Pkt., 20c.



Salvia, Bonfire



Double Cosmos

Salzer's Giant Cosmos

Well known popular annuals. Gigantic flowers in white, crimson, and pink, all mixed.

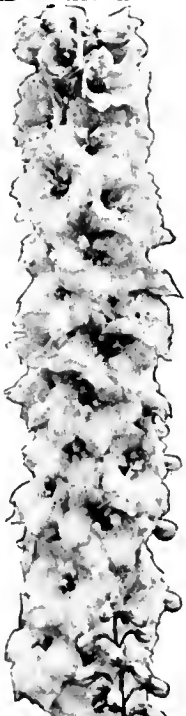
1917—Pkt., 7c.

EXTRA EARLY COSMOS.

For the latitude of La Crosse and north, sow this extra early strain. Mixed colors. **1914—Pkt., 10c.**

GIANT DOUBLE-CRESTED COSMOS.

Large, double flowers, with a crested anemone-like center. Mixed colors. **1913—Mixed. Pkt., 10c.**



Gold Medal Delphinium

Two New Hollyhocks

SALZER'S CLIFFWOOD GIANT. Large fringed flowers, six inches across, with double rosettes in the center, resembling a crested begonia. Mixed colors only, ranging from pink to salmon. **2084—Pkt., 15c.**

ORANGE PRINCE. A new color in Hollyhock—a brilliant shade of clear orange. With its large double flowers, it makes a striking display. Biennial. **2095—Pkt., 15c.**

One Pkt. Each of Above Two, for 25c.

Salzer's Double Hollyhocks

Tall spikes of flowers, heavily and densely set with massive, showy double flowers. Grow 6 to 8 feet high. Biennial. **2085—Mixed. Pkt., 10c.**

2086—DOUBLE MIXED, Salzer's Cliffwood Farm **TRIPLE-A-TESTED**—A special reselected strain certified by **THREE-WAY** tests. Pkt., 15c.

ANNUAL DOUBLE HOLLYHOCK. They are really biennials that bloom the first season from seed sown early in spring. **2079—Mixed. Pkt., 10c.**

2080—FINEST SINGLE MIXED. Lovely free blooming single flowers. Pkt., 5c.



Salzer's Double Hollyhocks



Planted with Salzer's Seeds

ELFINLAND ROCK GARDEN

One Packet Each of the 30 varieties of Perennial Rock Garden Flower Seeds listed below, for..... **\$2.95**
One Packet Each of the 9 varieties of Annual Rock Garden Flower Seeds listed below, for.... **50c**



Energetic Gnomes-Busily Engaged With A Rock Garden Planted With Salzer's Seeds

THE ROCK GARDEN

You do not need large grounds for a Rock Garden. A corner of your front yard, a portion of the rear garden, around the steps, a corner of the house—you can have a lovely rockery at small cost, and at the same time have a wide variety of these dwarf growing plants. Planting seeds is inexpensive, and while perennial seeds will not give flowers until the second year, one has verdant foliage the very first year. Plants of course, will bloom the first year set out.

Hardy Rock Garden Plants

Price: Unless Noted: 3 (or 1 each of 3 different varietles) for 60c; dozen, \$2.00, postpaid.
ALYSSUM, Saxatile. Golden yellow. 9 in.
ANTHEMIS. Yellow and white daisy like flowers.
CANDYTUFT, HARDY. Pale lilac flowers. 10 in.
CHEIRANTHUS. Fragrant, showy orange. 10 in.
COLUMBINE (Aquilegia). 1 1/2 to 2 feet. Long spurs.
DELPHINIUM, Chinese. Blue shades only. 15 in.
FORGET-ME-NOT. Blue flowers. 5 inches.
HEUCHERA. Scarlet. 24 in. Ea., 35c; 3 for \$1.00.
Linum (Perennial Flax). Blue. 18 inches.
PHLOX SUBULATA (Ground Pink). 8 in.
PINKS (Dianthus Atrococleus). Fiery red. 6 in.
POPPY, Iceland. Mixed colors only. 12 in.
SEDUM, Acre (Gold Moss). Yellow. 3 in.
SPECIAL: 12 Plants. Our Selection, for \$1.65.



Salzer's Perennial Rock Garden Seeds and Hardy Plants Persist for Years

Perennial Seeds for the Rockery

ACHILLEA, The Pearl. Double, white, 2 feet, June-Sept. 1604—Pkt., 10c.
AGROSTEMMA, Coronaria. Blood-red, silvery foliage, 2 feet, July-Sept. 1627—Pkt., 10c.
ALYSSUM, Saxatile Compactum. Golden yellow, 9 in., June. 1625—Pkt., 10c.
ANEMONE, Pulsatilla. Violet lilac, 12 inches. April-May. 1535—Pkt., 10c.
ANEMONE, Sylvestris. White, 12 in., April-June. 1536—Pkt., 15c.
AQUILEGIA, Alpina. Blue, 12 in., April-July. 1537—Pkt., 15c.
AQUILEGIA, Coerulea. Blue and white, 12 in., May-July. 1697—Pkt., 20c.
ARABIS, Alpina (Rock Cress). White, 6 in., April-May. 1538—Pkt., 10c.
ARMERIA, Formosa. Crimson, 9 in., spring to fall. 1539—Pkt., 10c.
ASPERULA, Odorata. White, 9 in., April-June. 1662—Pkt., 10c.
ASTER, Alpinus. Soft blue, 10 in., June-Sept. 1731—Pkt., 15c.
AUBRETIA, Grand. hybrida. Mixed colors, 6 in., spring. 1761—Pkt., 25c.
AURICULA. Mixed colors, 8 in., early spring. 2406—Pkt., 20c.
CAMPANULA, Carpatlea. (Harebell.) Blue, 6 in., July-Aug. 1853—Pkt., 10c.
CAMPANULA, Carpatlea Alba. White, 7 in., July-Aug. 1854—Pkt., 10c.
CANDYTUFT, Sempervirens. White, 6-8 in., June-July. 1839—Pkt., 15c.
CERASTIUM, Tomentosum. White, silvery foliage, 4 in., spring. 1867—Pkt., 10c.
COWSLIP. Mixed colors, 6 in., April-May. 1910—Pkt., 15c.
DIANTHUS, Plumarius. Mixed colors, 6 in., June-July. 1990—Pkt., 5c.
DIANTHUS, Pl. Semperflorens. Mixed, 6 in., June-July. 1958—Pkt., 10c.

ERINUS, Alpinus. Blue, 6 in., May-June. 2006—Pkt., 25c.
ERYSIMUM, Pulchellum. Yellow, 6 in., May-July. 2007—Pkt., 10c.
FORGET-ME-NOT, Alpestris. Blue, 4 in., May-June. 1992—Pkt., 8c.
FORGET-ME-NOT, Alpestris Rosea. Rose, 4 in., June. 1998—Pkt., 10c.
FORGET-ME-NOT, Ruth Flscher. Sky blue, 6 in., May-July. 1996—Pkt., 25c.
GYPSOPHILA, Repens. (Trailing.) White, 6 in., summer. 2028—Pkt., 15c.
HEUCHERA, Hybrida. Mixed. 24-in., June-July. 2031—Pkt., 15c.
LINARIA, Cymbalaria. Violet, 3 in., May. 2120—Pkt., 5c.
PLATYCODON, Mixed. Blue and white, 18 in., summer. 2372—Pkt., 15c.
POPPY, Iceland. Mixed, 12 in., May-Sept. 2394—Pkt., 10c.

ROCK GARDEN ANNUALS

All of these flower the first year and are desirable for quick results.
AGERATUM, Little Blue Star. Blue, 4 in., summer. 1610—Pkt., 15c.
ALYSSUM, Sweet. White, 10 in., trailing. July-Aug. 1622—5c.
ALYSSUM, Lilac Queen. Lilac, 5 in., July-Aug. 1629—Pkt., 10c.
ASTER, Dwarf. Lavender, 10 in., Aug-Sept. 1717—Pkt., 12c.
LOBELIA, Mixed. Mixed, 6 in., July-Sept. 2111—Pkt., 10c.
MIGNONETTE, Mixed. 2144—Pkt., 7c.
PETUNIA, Dwarf Mixed. Mixed, 6 in., Aug-Sept. 2323—Pkt., 7c.
PHLOX, Dwarf Mixed. 6 in., Aug-Sept. 2359—Pkt., 10c.
PORTULACA, Dwarf Double. Mixed, 6 in., summer. 2400—Pkt., 10c.

WATER LILIES

Water Lilies at a low price! A small pool greatly enhances the beauty of a rockery. We ship water lilies anywhere in the United States and guarantee safe delivery. Place a few of them in your pool. We offer them in colors only.

State color wanted: White, Yellow, Pink and Bronze. Price: Each, \$1.50; 3 for \$4.00, postpaid. One each of these 5, for \$6.85, postpaid.

Blue. Price: Each, \$2.50; 3 for \$6.95, postpaid.



A Pool Is Always Effective

LARKSPUR—Imperial Cathedral Spire

Imperial Cathedral Spire is a lovely new race of Larkspur with erect flower stems three to four feet long. The flowers are large and brilliantly colored. It is the most erect growing, longest stemmed and freest flowering Larkspur we have ever seen. **2105**—Mixed colors. Pkt., 25c.

TALL DOUBLE STOCK-FLOWERED LARKSPUR—2½ to 3 feet high. Splendid for cutting. **2057**—Mixed. All colors. Pkt., 100 seeds, 10c.

TALL EMPEROR LARKSPUR. The famous European strain. Beautiful light blue, free flowering. **2103**—Pkt., 100 seeds, 5c.

NASTURTIUM—The Universal Favorite

This popular flower deservedly finds a place in almost every garden in the land. For ease of culture and duration of bloom, nothing excels them.

DOUBLE GOLDEN GLEAM—See outside cover.

DWARF GIANT FLOWERING—An improved type, without a rival, brilliantly flowered, extra large blossoms. **2181**—Mixed. Pkt., 10c.

2182—**DWARF GIANT FLOWERING**, Mixed, Salzer's Cliffwood Farm **TRIPLE-A-TESTED**. A special reselected strain certified by **THREE-WAY** tests. Pkt., 15c.

TALL NASTURTIUMS—Elegant climbers, 6 to 10 feet high, large flowers. **2209**—Mixed. Pkt., 5c.

TOM THUMB—Very dwarf plants for beds and borders, blooming profusely. **2208**—Mixed. Pkt., 5c. **2214**—Cliffwood Finest Mixed. Seed saved from extra large flowers. Pkt., 10c.

BLUE LACE FLOWER

Charming, airy, lacy blue flowers, borne in clusters and spreading umbrella-like. Plants 2 feet high. Blooms freely. Make lovely bouquets. **1965**—Pkt., 10c.



Salzer's Blue Lace Flower



Salzer's Snapdragons

SALZER'S MORNING GLORIES

Wonderful improvements in size of flower and in coloring, entitle this climber to a place in every garden.

HEAVENLY BLUE. Flowers almost 4 inches across, of a lovely sky-blue, shading to white at the center, without any pink markings. **2167**—Pkt., 14c.

ROCHESTER. New. Large flowers blended pink and violet, edged white, light throat shading to azure blue. **2172**—Pkt., 12c.

TALL MIXED. Grand for trellises, trees, washpoles, fences, etc., many colors mixed, thriving in any soil. **2164**—Pkt., 5c.

JAPANESE, MIXED. Remarkable for the varied markings and shades of red, blue, wine, mauve, cerise, etc. **2163**—Pkt., 10c. 1 Pkt. Each of Above 4 Morning Glories, for 30c.



Cathedral Spire Larkspur



Heavenly Blue Morning Glory

SALZER'S SNAPDRAGONS

They bloom freely from seed the first year, although they are really biennials.

TALL, GIANT FLOWERED, Mixed. Grow about 3 feet tall, with massive flowers densely set on long spikes. **1644**—Pkt., 15c. **1601**—Tall, Giant Flowered, Mixed, Salzer's Cliffwood Farm **TRIPLE-A-TESTED**: Pkt., 20c.

LARGE FLOWERING, Semi-Dwarf, Mixed. Sturdy plants, 1½ feet high, many colors. **1643**—Pkt., 10c. **1642**—Dwarf Giant Mixed. 10 in. high. Pkt., 5c.



A View of the Sans Souci Gardens, Potsdam, Germany

SALZER'S
CLIFFWOOD GROWN
EXTRA FINE GRADE

HARDY PERENNIAL PLANTS

HARDY PLANTS
SALZER'S
BIG BARGAIN GRADE

FOR PERMANENT PLANTING IN BEDS OR BORDERS

Hardy plants which may be set out as early in the spring as the ground is workable. We offer two grades of these hardy plants to our customers. *Varieties suitable for rock gardens.

CLIFFWOOD GROWN PERENNIAL PLANTS. The temperature at La Crosse frequently reaches 30° and 35° below zero, and you can easily see that plants wintering through at these temperatures on Salzer's Cliffwood Farms will live

3 for 39c (or 1 each of 3 different varieties); 6 for 74c; doz., \$1.35; 25 for \$2.45, postpaid.

through your own winters very nicely. They have a rugged superiority. Price: Unless otherwise noted: Two year old plants: 3 for 60c (or 1 each of 3 different varieties); 6 for \$1.10; doz., \$2.00; 25 for \$3.75, postpaid.

SALZER'S HARDY PERENNIAL PLANTS. Our cheapest, but a good grade, priced very low. May be safely planted anywhere in the United States. This is a bargain price. Price: Unless otherwise noted: Two year old plants:



Hardy Aster



Aquilegia (Columbine)



Campanula



Carnation



Delphinium

***ACHILLEA**—The Pearl. Masses of pure white feverfew-like flowers about a foot high. Valuable for the cemetery.
ALYSSUM (Gold Dust), Saxatile Compactum. Showy masses of rich golden yellow flowers. 12 in. June.
***ANTHEMIS** (Hardy Marguerite). Daisy like flowers.
AQUILEGIA (Columbine). 1 1/2 to 2 feet.

—Caerulea. Blue, white spur.
—Chrysantha. Pure yellow.
—Rose. Rose, long spurs.

ASTER, HARDY. The last flower to bloom in fall. 3 ft.
—Pink. Bright rosy pink.
—Mixed. All colors mixed.

***BABY BREATH** (Gypsophila). Very desirable.
—Paniculata. Gracefully branched pretty white flowers. Aug. Prices above.
—Bristol Fairy. Double white flowers, an improved form. Each, 49c.

BLEEDING HEART. Lovely, crimson heart shaped flowers. Each, 59c; 3 for \$1.70.

BUTTERCUP (Ranunculus). Charming, double golden yellow flowers. 3 for 72c.

CAMPANULA (Bellflower). Lovely bell shaped flowers.
—Single (Canterbury Bells). Many colors mixed.
—Double (Cup and Saucer). Mixed only, many colors.

***CANDYTUFT, HARDY.** Scumpervirens. 10 in. Pure white.

CARNATION. Mixed colors only. Easily grown.

CHINESE LANTERN PLANT. Showy scarlet fruits, like Chinese lanterns.

COREOPSIS. Rich golden yellow flowers, blooming freely.

DAISY, HARDY. Double rose colored flowers.

DELPHINIUM. Easily grown.
—Belladonna. Blue flowers.
—**GOLD MEDAL.** Mixed shades of blue.
—**ICEBERG.** Pure white. Each, 50c; 3 for \$1.45. Prices of others at top.

FEVERFEW. Masses of pure white flowers all summer.

FLAX, PERENNIAL (Linum). Rich blue flowers. June-Sept.

FORGET-ME-NOT. Charming

blue flowers in May-June. 8 in.
FOXGLOVE (Digitalis). Immense spikes of flowers, mixed colors only.

GLOXINIA, HARDY. Trumpet-shaped, rose-red flowers. 18 in.

GOLDEN GLOW (Rudbeckia). Double golden yellow flowers. Blooms freely. 6 ft.

HOLLYHOCK. Double flowers. State color wanted: Rose, maroon, yellow, red, salmon and mixed.

JERUSALEM CROSS (Lychnis). Brilliant scarlet flowers.

MONKSHOOD (Aconitum). Spikes of large blue flowers. Each, 39c; 3 for \$1.12.

***PINKS** (Dianthus). Spicily fragrant, double flowers.
—***ATROCOCCINEUS.** Fiery red.

PLATYCODON (Chinese Bell Flower). Bluish white bell-shaped flowers. Desirable.

POPPY, ORIENTAL. Immense flowers of flaming scarlet.

MONARDA. Aromatic foliage, bright red flowers, 2-3 feet.

PYRETHRUM or **PAINTED DAISY.** Flowers 3-4 in. across, like daisies, mixed colors only from rose to pure white.

SCABIOSA, CAUCASICA. Lovely white and lilac flowers.
***SEDUM** (Stoncrop). Do well in dry, sunny spots.

—Acre (Gold Moss). 2-3 in. Small yellow flowers.
—***Spurium.** 6-8 in. Bright crimson.

—***Stolonifera.** 6 in. Purplish-pink.

SHASTA DAISY, ALASKA. Very large, pure white daisies. Should be in every garden.

SILVER DOLLAR PLANT. Silvery, flat, circular leaves, that dry easily for over winter.

SWEET PEA, PERENNIAL (Lathyrus). Lovely Sweet Pea-like flowers, mixed colors.

SWEET ROCKET (Hesperis). White to deep lavender flowers, very fragrant. 2 ft. June-Aug.

SWEET WILLIAM. Clusters of fragrant flowers in June. 18 in.

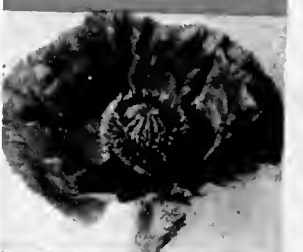
WALLFLOWER, HARDY (Cheiranthus). Ideal for moist shady locations. Fragrant orange colored blossoms all summer.



Chinese Lantern



Platycodon



Poppy, Oriental



Shasta Daisies



Hollyhock



Coreopsis



Gaillardia

14 "I was very much pleased last year with your Delphinium."—
Dora Engel, Box 151, Princeton, Idaho.



Queen of May

10 Fine IRIS

Iris are very hardy and will bloom year after year. (S) signifies standard or erect petals; (F) falls or drooping petals. Prices include postage.

KOCHI. (S) Rich claret purple; (F) blackish purple. Each, 25c; 3 for 73c.

LOHENGRIN. (S) and (F) both rosy mauve. Each, 23c; 3 for 67c.

LORELEY. (S) Pale yellow; (F) violet. Ea., 25c; 3 for 72c.

MANDRALISCAE. (S) and (F) lavender purple. Each, 19c; 3 for 55c.

MITHRAS. (S) Light yellow; (F) wine red. Each, 25c; 3 for 72c.

NIEBELUNGEN. (S) Fawn yellow; (F) violet. Each, 24c; 3 for 69c.

PARC DE NEUILLY. Entire flower is plum purple. Each, 22c; 3 for 64c.

QUEEN OF MAY. (S) and (F) soft rose pink. Each, 21c; 3 for 62c.

SHERWIN WRIGHT. (S) and (F) bright golden yellow. Each, 23c; 3 for 67c.

SHREWSBURY. (S) Rosy bronze; (F) purple. Each, 26c; 3 for 75c.

3 Japan Iris

Massive flowers, 6-8 in. across, very hardy, and bloom later, thus prolonging the Iris season.

EUMEE. Large blue. Each, 35c.

MAHOGANY. Mahogany red. Ea., 45c.

MONIJI. Rosy crimson, golden throat. Each, 49c.

1 Each of Above 3, for \$1.19

MIXED COLORS. Large showy flowers. Each, 29c;

3 for 84c.



Eumee

6 New GLADS

Easily grown, make a brilliant display, and supply a mass of cut flowers. Plant 3 inches deep. Prices are postpaid.

ORCHID GLAD. True orchid color, ruffled flowers. 3 for 65c.

COPPER SHEEN. Coppery, bronzy orange. 3 for 42c.

BETTY NUTHALL. Coral, orange throat, large flowers. 3 for 45c.

GOLDEN FRILLS. Daf-fodil yellow, frilled edges. 3 for 33c.

MINUET. Clear, pure lavender. 3 for 39c.

PFITZER'S TRIUMPH. Bright salmon orange. 3 for 50c.

1 Each of Above 6, for 95c.



Orchid Glad

8 Choice GLADS

CHALLENGER. Rich red. 6 for 45c.—**CRIMSON GEOW.** Deep crimson. 6 for 39c.—**MR. MARK.** A new blue. 6 for 54c.—**MRS. F. KING.** Scarlet. 6 for 21c.—**MRS. F. PETERS.** Rosy lavender, blotched crimson. 6 for 52c.—**MRS. WATT.** Wine color. 6 for 34c.—**SYDONIA.** Deep violet. 6 for 40c.

MIXED GLADS. Many colors. No. 1 size bulbs. 12 for 49c; 25 for 89c; 50 for \$1.62; 100 for \$2.98.

1 Each of Above 7, 57c.

Rare DAHLIAS 12

The most beautiful of all the Autumn flowers. Plant 6 inches deep. Prices include postage.

AMUN RA. Immense copper bronze flowers. Has won 3 first prizes. Each, 59c.

SALZER'S CLIFFWOOD GIANT. Brilliant orange, tipped white, massive flowers. Each, \$1.25.

JANE COWL. Enormous flowers, old gold blending to deeper shade. Awarded first prize. Each, 85c.

JERSEY BEAUTY. Rose-pink, large flowers. Each, 69c.

KEMP'S FORT MONMOUTH. Crimson-maroon, often 14 inches across. A beauty. Each, \$1.10.

LIBELLE. Bright purple. Each, 30c.

MAUDE ADAMS. Pure snowy white, overlaid clear pink. Each, 50c.

MILLIONAIRE. A giant lavender, shading to white at center. Each, 42c.

MRS. ELMER O. DREW. Rich purplish-maroon. Large, beautifully curled petals. Each, \$1.10.

SALMON SUPREME. Glistening salmon-orange. Very choice. Each, \$1.50.

SNOWDRIFT. Large, pure snow-white. The best white Dahlia. Each, 50c.

THE VILLIAN. Clear violet; elegant. Each, 80c.



Salmon Supreme



Mixed Dahlias

A fine mixture of various types of Dahlias, at a low price. Good size flowers. 5 roots for 69c; 8 roots for 98c; 15 roots for \$1.60, postpaid.

Extra Fine PEONIES 5

Peonies are very hardy and easily grown. We offer roots with 3 to 4 eyes. Prices are postpaid.

CLAIRE DUBOIS. Lacinated, incurved petals of violet rose, tipped silvery white. Each, 85c.

DR. H. VAN DER TAK. Wine red, sometimes showing crimson at center. Each, 89c.

GIGANTEA. Flowers often 10 inches across, bright pink, fragrant. Each, \$1.00.

PHILOMELE. Outer petals violet rose, narrow yellow petals at center. Each, 65c.

PRIMEVERE. Outer petals sulphur-white, center sulphur-yellow. The best yellow peony. Each, \$1.29.

1 Each of Above 5, for \$4.15.

Choice PEONIES 7

AVALANCHE. White. Ea., 65c.

EDWARD ANDRE. Elegant shade of showy red. Each, 59c.

FESTIVA MAXIMA. White, flecked crimson. Each, 48c.

FRAGRANS. Pink, fragrant. Each, 39c.

LADY BRAMWELL. Large, deep pink blossoms. Each, 67c.

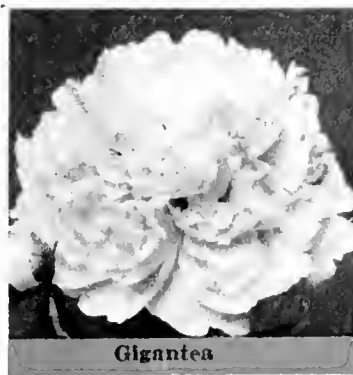
MME. DE VERNVILLE. Large white, fragrant. Each, 44c.

TALINDYKE. Purple crimson. Ea., 44c.

1 Ea. of Above 7, \$3.00.

Mixed Peonies

Many varieties. A big bargain. 3 for 98c; 6 for \$1.85.



Gigantea

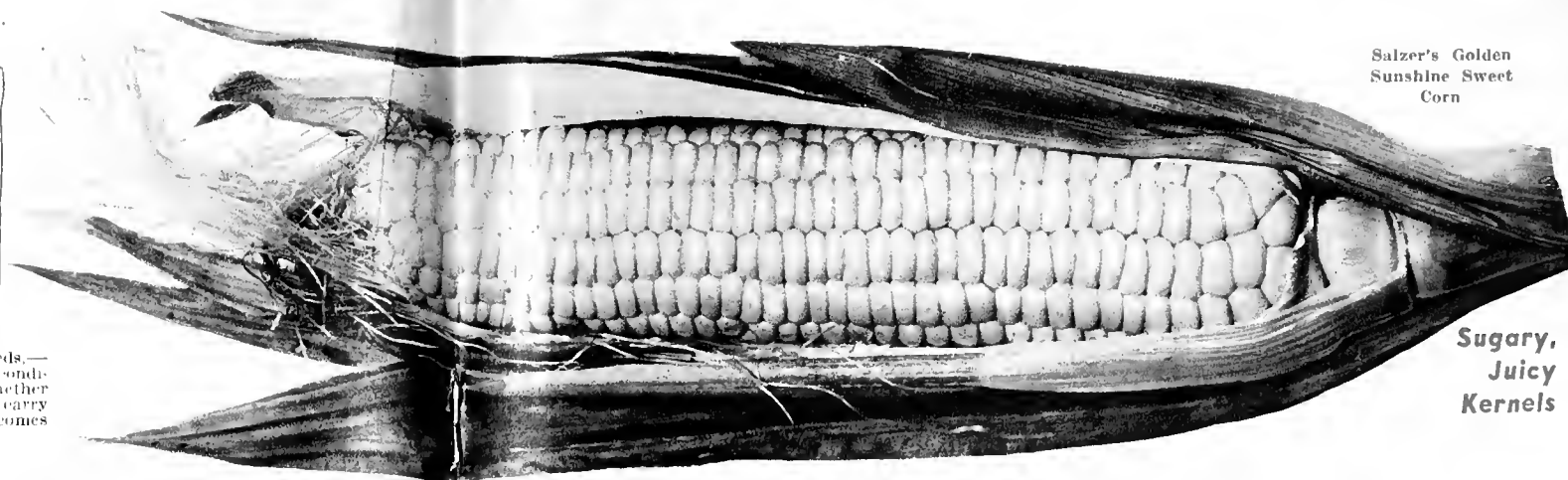
A·A·A
TRIPLE-A-TESTED

actual growing conditions where we are subject to late frosts in spring and early frosts in fall, Salzer's Triple-A-Tested seeds are sent to you with the assurance that they are the best that can be bought, regardless of price, and we believe that no better seeds can be purchased elsewhere. For 66 years we have been supplying high quality seed to the individual home gardeners of America, to the market gardeners and truckers of this country, and in purchasing your seeds, we can only say that a few cents on your seed bill saved at the outset, may give you decidedly inferior final results. You want the best. Quality is hidden in seeds as in no other commodity, and in purchasing your seeds, make sure you plant the best. Sow Salzer's Seeds.—Salzer's Triple-A-Tested Seeds,—and other things being equal, growing conditions, climatic conditions, etc., you can expect the very best results, whether you want to make your neighbor a little envious, or whether you want to carry off the highest prices at market. The best is none too good, when it comes to planting seeds. Make sure this year and Sow Salzer's Seeds.

Tested in the laboratory, in electrical germinators, in Salzer's Greenhouses, in soil but with artificial heat, and then tested outdoors on Salzer's Cliffwood Farms, under



MR GEORGE W. MYER OF CEYLON, MINN. TELLS ME THE GOLDEN SUNSHINE SWEET CORN HE BOUGHT LAST YEAR IS A SURE WINNER!



Salzer's Golden Sunshine Sweet Corn

Sugary, Juicy Kernels

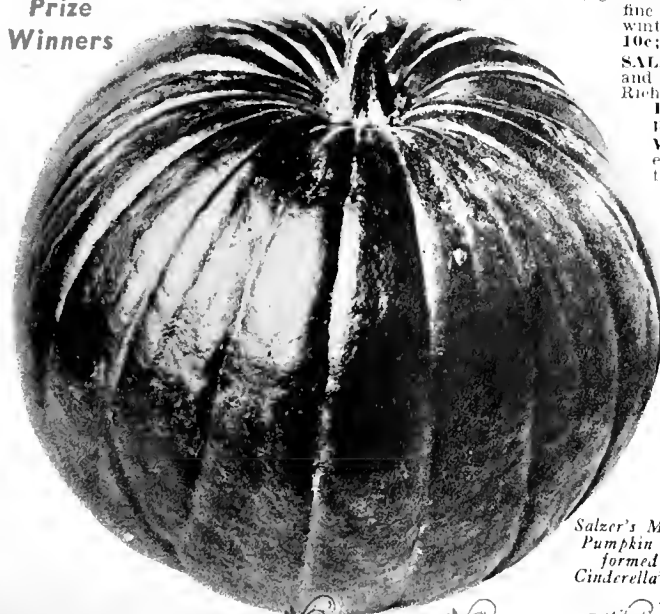
SOW SALZER'S VITALITY VEGETABLES

MOTHER EARTH is waiting, with her inexhaustible resources, to help take care of you,—to provide your family this spring, summer, and coming fall,—with fresh, delicious vegetables for your table. We do not need to tell you of the bounteous returns you will get from your garden. Only a minimum of work is necessary, work that you will enjoy, and then come the multiplied returns. Only one thing is necessary. Sow good seeds. Sow Salzer's Seeds this year!

Salzer's Seeds Are Prize Winners

SALZER'S MAMMOTH WINTER PUMPKIN

Extensively grown, keeps well. Fine for the table and also ideal for feeding stock. Nearly round, slightly flattened at top and bottom, grows to an enormous size. Flesh deep orange, fine grained and sweet. One of the best for winter storage. Yields heavily. 951—Pkg., 10c; oz., 22c; ¼ lb., 63c; lb., \$2.00, postpaid.



SALZER'S YANKEE PIE—Fine grained, dry and sweet. The best for tasty pumpkin pies. Rich yellow flesh, thick and meaty. 956—Pkg., 10c; oz., 16c; ¼ lb., 41c; lb., \$1.10, postpaid.

WINTER LUXURY—Fruits 9 in. in diameter. Nearly round, flesh light yellow, thick, firm, and sweet. Keeps very well. Good for pies. 955—Pkg., 10c; oz., 15c; ¼ lb., 38c; lb., \$1.00, postpaid.

SMALL SUGAR—Smaller than the field varieties, fine grained, thick, sugary, yellow flesh. Makes fine pies. 953—Pkg., 5c; oz., 12c; ¼ lb., 38c; lb., \$1.00, postpaid.

958—Small Sugar, Salzer's Cliffwood Farm TRIPLE-A-TESTED—A special reselected strain certified by THREE-WAY tests: Pkg., 10c; oz., 20c; ¼ lb., 60c; lb., \$1.95, postpaid.

BIG TOM OR CONNECTICUT FIELD—Fruits average 25 lbs., round, flat, with a hard rind. Keeps well. Flesh is thick, yellow, dry and fine quality. 943—Pkg., 5c; oz., 12c; ¼ lb., 28c; lb., 60c, postpaid.

Salzer's Mammoth Pumpkin Transformed into Cinderella's Coach



Often Weighs 125 Lbs.! Keeps Well—Heavy Bearer—Fine Quality

GOLDEN SUNSHINE Salzer's Great Early Billion Dollar Sweet Corn

Golden Sunshine is a most satisfactory early, yellow sweet corn! Ears 7 in. long, 12 rowed, packed with luscious, thick, meaty, yellow kernels, sugary, tender and delicious. Yields heavily and gives the best satisfaction. 406—Pkg., 11c; ½ lb., 22c; lb., 35c; 5 lbs., \$1.25, postpaid.

382—GOLDEN SUNSHINE, Salzer's Cliffwood Farm TRIPLE-A-TESTED—A special reselected strain certified by THREE-WAY tests: Pkg., 15c; ½ lb., 26c; lb., 43c; 5 lbs., \$1.59, postpaid.

SPANISH GOLD—An extra early corn, the earliest of all! Ears good size, 7 in. long, 8 to 12 rowed, of elegant quality. For extra early yellow corn, plant this. 408—Pkg., 15c; ½ lb., 28c; lb., 45c; 5 lbs., \$1.65, postpaid.

GOLDEN BANTAM. The old favorite yellow sweet corn, ears 7 in. long, 8 rowed, luscious quality. 372—Pkg., 10c; lb., 30c; 5 lbs., \$1.15, postpaid.

SALZER'S INDEPENDENCE or 4th of July. The best extra early white sweet corn. Each stalk bears 2 fine ears about 10 in. long, 10-12 rowed, with thick, meaty, tender, juicy, white kernels, of the finest quality. It is the unbeatable white sweet corn. 373—Pkg., 12c; lb., 35c; 5 lbs., \$1.25, postpaid.

HONEY BOY. Another fine early white sweet corn. Earlier than the above but slightly smaller ears. Finest quality, thick, tender kernels. 366—Pkg., 12c; lb., 31c; 5 lbs., \$1.22, postpaid.

EARLY EVERGREEN—The old standard, early, white sweet corn, ears 7 to 8 in. long, with 16 to 20 rows of deep grains of best quality. 395—Pkg., 10c; lb., 30c; 5 lbs., \$1.06, postpaid.

STOWELL'S EVERGREEN. The standard main crop white sweet corn. Heavy yielder, luscious quality. 402—Pkg., 10c; lb., 30c; 5 lbs., \$1.07, postpaid.

GOLDEN EVERGREEN. A late, yellow corn, a cross between Stowell's and Golden Bantam. Large ears, thick yellow kernels. 405—Pkg., 10c; lb., 30c; 5 lbs., \$1.06, postpaid.

COUNTRY GENTLEMAN. The best late white sweet corn for canning. Very tender and juicy. 392—Pkg., 10c; lb., 35c; 5 lbs., \$1.25, postpaid.

GOLDEN COUNTRY GENTLEMAN. New. A yellow form of above. Sweet, thick, yellow kernels, heavy yielder. 385—Pkg., 12c; lb., 40c; 5 lbs., \$1.45, postpaid.

SALZER'S EARLIEST CORELESS CARROT

The Earliest, Sweetest, Most Tender and Only Really Coreless Carrot Grown! The roots are of cylindrical form, about 6-7 inches long, blunt at the end, smooth skin, small top and very symmetrical. Flesh tender, juicy and fine quality. The color is a beautiful orangy red, but the greatest feature is the entire absence of the strange coarse heart or core. For the best carrots, you must plant Salzer's Earliest Coreless! 295—Pkg., 12c; oz., 21c; ¼ lb., 73c; lb., \$2.25, postpaid.

SALZER'S IMPERATOR. Carrots 7 to 8 in. long, deep orange colored skin and flesh, practically free from any core, fine texture and elegant quality. 312—Pkg., 10c; oz., 22c; ¼ lb., 63c; lb., \$2.00, postpaid.

CHANTENAY. Half-long, stump rooted sort, broad at the neck and narrows to a blunt base. Fine grained, tender, juicy. 292—Pkg., 5c; oz., 20c; ¼ lb., 57c; lb., \$1.75, postpaid.

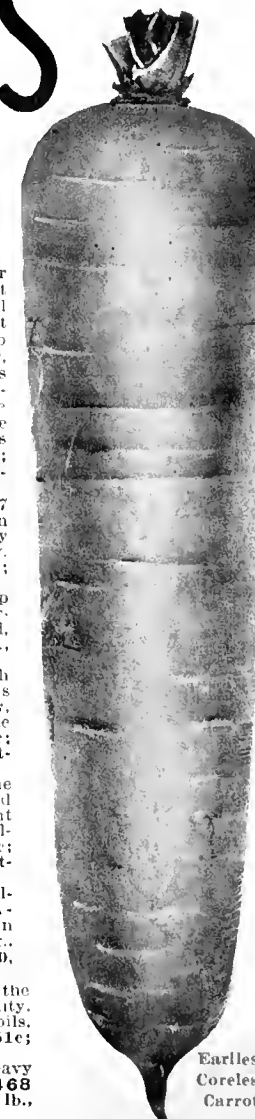
RED CORED CHANTENAY. Flesh tender, sweet and juicy. The core is a rich red, with no trace of yellow, and almost the same shade as the flesh. Very fine. 307—Pkg., 10c; oz., 22c; ¼ lb., 63c; lb., \$2.00, postpaid.

DANVER'S HALF LONG. One of the most popular. Roots 6 in. long, broad at the shoulder and tapering to blunt or stump root at the base. Best quality. Fine keeper. 293—Pkg., 5c; oz., 21c; ¼ lb., 62c; lb., \$1.95, postpaid.

290—DANVER'S HALF LONG, Salzer's Cliffwood Farm TRIPLE-A-TESTED. A special reselected strain certified by THREE-WAY tests: Pkg., 10c; oz., 26c; ¼ lb., 78c; lb., \$2.50, postpaid.

SALZER'S ONHEART. The best of the short thick carrots. Finest quality. Splendid for heavy and shallow soils. 302—Pkg., 5c; oz., 19c; ¼ lb., 51c; lb., \$1.50, postpaid.

MASTODON FIELD CARROT. Heavy yielder, best for stock feeding. 1468—Pkg., 10c; oz., 15c; ¼ lb., 37c; lb., 95c, postpaid.



Earliest Coreless Carrot

SALZER'S RED BEAUTY

Earliest of All Beets
—Fine for Canning

The Richest
and Darkest
Red of Any
Beet

Small, Tender
Beets

The Earliest, the Richest and Darkest Red of any beet, Salzer's Red Beauty stands in a class by itself. Red Beauty is remarkable for its uniform, perfect turnip shape, its smooth roots free from side rootlets and with only a small tap-root, its very sweet fine grained flesh, but above all, for its beautiful dark red color. It is free from white zonings and whether for fresh consumption or for canning whole, it cannot be equaled. Has small tops, thus permitting close planting. 166—Pkg., 15c; oz., 20c; ¼ lb., 57c, postpaid.

SALZER'S CHERRY BEET. The 1933 Prize Winning Beet! Small uniform beets, intense deep crimson color through the entire beet, fine for pickling and canning whole as well as for daily table use. A splendid new variety. 160—Pkg., 10c; oz., 22c; ¼ lb., 63c, postpaid.

DETROIT DARK RED. The standard beet by which other sorts are judged. Attractive blood-red skin, smooth, fine grained flesh, practically free from any zonings, tender and sweet. Heavy yielder. 159—Pkg., 10c; oz., 17c; ¼ lb., 45c, postpaid.



♪ SING A SONG OF
PRAISE TO SALZER'S
RED BEAUTY BEETS—
♪ ROUND, ♪
TENDER,
RED BEETS!



Salzer's
Red Beauty

Plant
Salzer's
Red Beauty
This Year

EARLY WONDER. Nearly globe shaped roots, deep red color, zoned very slightly, extremely early. 177—Pkg., 9c; oz., 17c; ¼ lb., 45c, postpaid.

CROSBY'S EGYPTIAN. Noted for its handsome form, small tops, very small tap-root, excellent quality and its quick, rapid growth. 158—Pkg., 7c; oz., 17c; ¼ lb., 45c. 178—**CROSBY'S EGYPTIAN**, Salzer's Cliffwood Farm **TRIPLE-A-TESTED**. A special reselected strain certified by **THREE-WAY** tests: Pkg., 10c; oz., 22c; ¼ lb., 53c, postpaid.

EARLY BLOOD TURNIP. Skin and flesh, dark red, tender, good keeper. Widely planted. 162—Pkg., 5c; oz., 15c; ¼ lb., 37c., postpaid.

LUCULLUS SWISS CHARD—Most widely planted of all the varieties of Chard or Spinach Beet. Stalks very large, broad and thick with heavily crumpled, tender leaves of fine flavor. 172—Pkg., 10c; oz., 15c; ¼ lb., 38c, postpaid.

Salzer's Juicy Fruit Muskmelon

SALZER'S EARLIEST RIPE MUSKMELON. Earliest of All! Oval shape, heavily netted, thick, rich salmon yellow flesh, sugary and juicy. Yields an enormous crop of first early, highest quality melons. 606—Pkg., 10c; oz., 24c; ¼ lb., 73c.

SALZER'S JUICY FRUIT. Grandest salmon yellow fleshed melon in cultivation today. Later but larger than the above, thick sugary flesh, small seed cavity, delicious quality, heavy yielder. We receive many testimonials on Juicy Fruit. 605—Pkg., 14c; oz., 21c; ¼ lb., 60c, postpaid.

SUGAR ROCK. A distinct melon, heavily criss-crossed netting, unusually thick and luscious orange flesh, very aromatic. Salzer's Sugar Rock stands in a class all by itself. 626—Pkg., 10c; oz., 19c; ¼ lb., 51c, postpaid.

SELECTED ROCKYFORD. The standard green fleshed melon, with thick, sweet and delicious flesh. A splendid variety. 604—Pkg., 5c; oz., 15c; ¼ lb., 38c. 627—Selected Rockyford, Salzer's **TRIPLE-A-TESTED**: Pkg., 10c; oz., 18c; ¼ lb., 50c, postpaid.

SALZER'S WATERMELONS

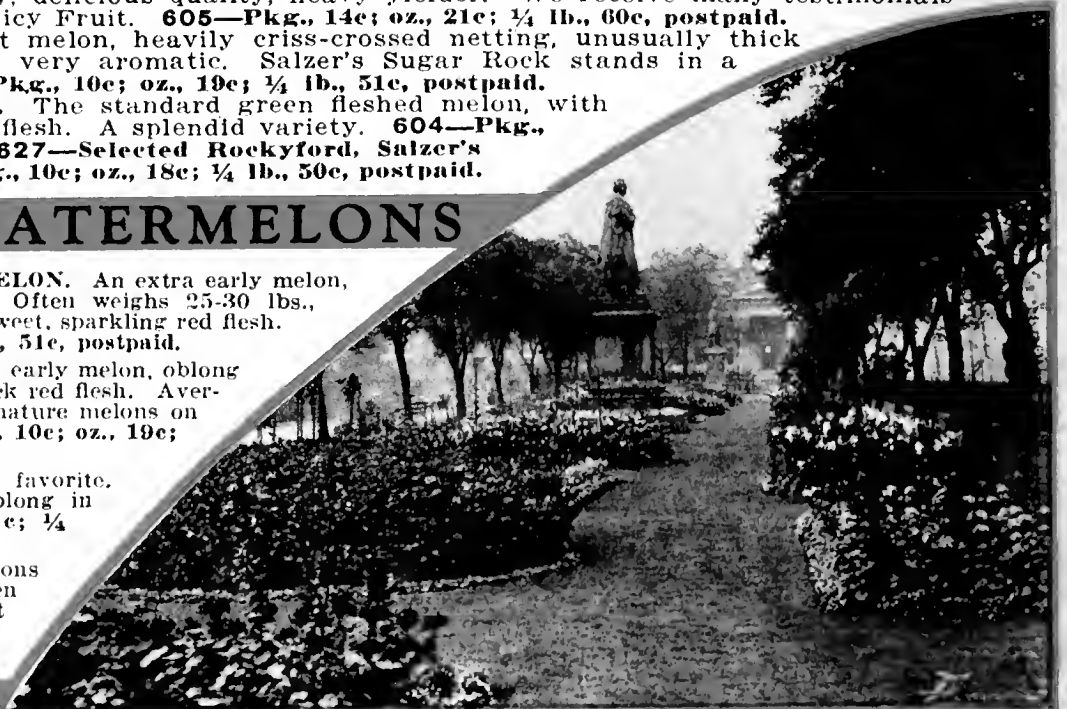
SALZER'S EARLIEST WATERMELON. An extra early melon, bred for short season sections. Often weighs 25-30 lbs., round in shape, with thick, very sweet, sparkling red flesh. 667—Pkg., 10c; oz., 19c; ¼ lb., 51c, postpaid.

EARLY KLONDIKE. A new, very early melon, oblong in shape, dark green rind and thick red flesh. Averages about 22 lbs., with 3 or 4 mature melons on the vine at one time. 679—Pkg., 10c; oz., 19c; ¼ lb., 51c, postpaid.

KLECKLEY SWEET. The old favorite. Large, sugary melons long to oblong in shape. 689—Pkg., 10c; oz., 14c; ¼ lb., 32c, postpaid.

IMPROVED TOM WATSON. Melons 30 in. long by 12 in. thick, often weigh 40 lbs., deep red, firm, sweet flesh. 693—Pkg., 5c; oz., 15c; ¼ lb., 36c.

The Lovely Princess Street
Gardens in Edinburgh, Scotland



TOMATOES

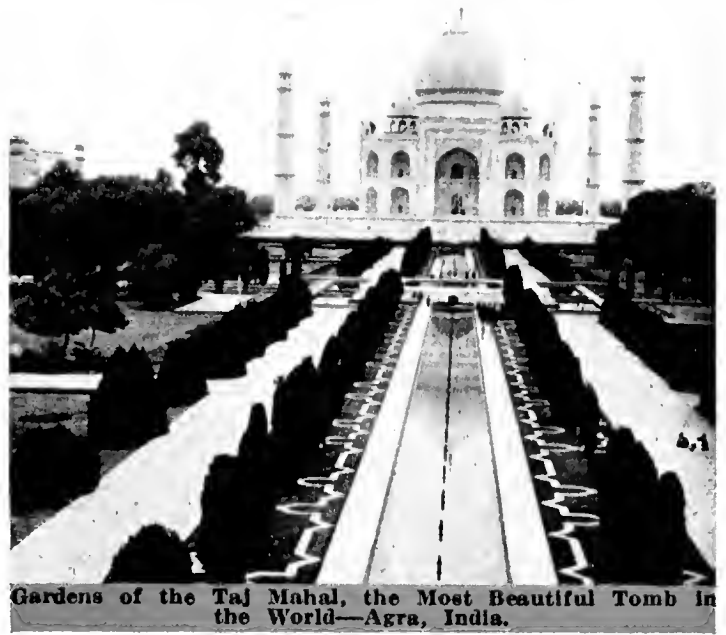
Salzer's Earliest of All

The leading Extra Early tomato and the Earliest Large-Sized Tomato! Salzer's Earliest Of All is a "short season" tomato, but in spite of its earliness, the tomatoes are of good, large size. They are brilliant scarlet color, nearly round, entirely smooth, borne in great numbers over a long period, and of delicious quality. It always gives satisfaction. 1118—Pkg., 15c; ½ oz., 35c; oz., 60c.

SELECT STONE. Large red tomatoes, solid, of elegant quality. 1122—Pkg., 5c; oz., 27c.

1132—Select Stone, Salzer's Cliffwood Farm **TRIPLE-A-TESTED:** Pkg., 10c; oz., 33c.

BREAK O'DAY. New. Extra early, good sized tomatoes, globular, scarlet, of fine quality. 1162—Pkg., 15c; ½ oz., 25c; oz., 40c.



Gardens of the Taj Mahal, the Most Beautiful Tomb in the World—Agra, India.

Salzer's Ferris Wheel Tomato



SALZER'S IMMENSE
**FERRIS WHEEL
TOMATO**

An introduction of ours in 1894, named at that time for the Ferris Wheel at the St. Louis World's Fair, and still the largest tomato grown! Fruits have thick, solid, meaty flesh, of delicious sub-acid flavor, with small seed cavity, and sometimes reach 4 lbs. in weight. Does not crack easily, runs uniform and smooth in shape. Rich dark purplish-crimson skin. We receive many testimonials on Ferris Wheel Tomatoes. If you want size combined with quality, plant Ferris Wheel. 1139—Pkg., 15c; ½ oz., 42c; oz., 75c.

NORTON, WILT-RESISTANT. Bred to resist the tomato wilt. Midseason in maturity, globular, good size, scarlet color. 1129—Pkg., 10c; oz., 30c.

OXHEART. Delicious, meaty tomatoes of large size in the shape of an ox heart, broad at the top and tapering to a small base. Smooth, pink skin, flesh thick and meaty, and almost seedless. 1177—Pkg., 15c; ¼ oz., 35c; ½ oz., 58c.

GROUND CHERRY. Unexcelled for preserves. 1189—Pkg., 10c; ½ oz., 35c.

TOMATO PLANTS—

Any of the varieties listed: **Minimum order, 12 of any one variety: Doz., 40c; 25 for 75c; 50 for \$1.25, postpaid.**



Salzer's
Ferris
Wheel
Tomato



Salzer's Cliffwood Early Wonder Wax

The sensation of recent years! Salzer's Cliffwood Early Wonder Wax Beans will give you a bountiful yield of plump, meaty, tender, flat-podded, yellow wax beans 5 to 7 inches long, entirely stringless, brittle, and of the finest quality. Bears over a long season. It is practically rust-proof, and is very early. Ready to pick in 35 days. The finest of all the wax beans. 74—Pkg., 15c; ½ lb., 27c; lb., 43c; 5 lbs., \$1.59, postpaid.

PROLIFIC BLACK WAX. An improved strain of the old favorite German Black Wax Bean. Yellow pods 5 in. long, tender and stringless. 66—Pkg., 5c; ½ lb., 21c; lb., 34c; 5 lbs., \$1.22, postpaid.

SELECT GOLDEN WAX. The standard flat, wax-podded bean. Large pods, stringless and brittle, elegant quality. 58—Pkg., 5c; ½ lb., 21c; lb., 34c; 5 lbs., \$1.22, postpaid.

SELECT GOLDEN WAX, Salzer's Cliffwood Farm TRIPLE-TESTED. A special reselected strain certified by THREE-WAY tests. 77—Pkg., 10c; ½ lb., 27c; lb., 45c; 5 lbs., \$1.65, postpaid.

SALZER'S NEW STRINGLESS KIDNEY WAX. Enormously prolific, stringless, meaty and tender! Pods fleshy, rich lemon yellow color, and remarkable for their absolute freedom from strings. 64—Pkg., 10c; ½ lb., 24c; lb., 40c; 5 lbs., \$1.45, postpaid.

GIANT STRINGLESS PENCIL POD WAX BEANS. Golden yellow pods, long, round, fine flavor, tender, meaty, stringless, heavy yielder. 57—Pkg., 10c; ½ lb., 22c; lb., 35c; 5 lbs., \$1.25, postpaid.

Salzer's Tender Bean

BOUNTIFUL STRINGLESS. The earliest green podded bean grown! Pods tender, long, flat, meaty, and stringless. Yields heavily until frost. They have a delicious, melting flavor. 18—Pkg., 10c; ½ lb., 23c; lb., 40c; 5 lbs., \$1.45, postpaid.

EXTRA EARLY TENDER VALENTINE. The old popular stand-by. Round, fleshy pods, finely flavored, with only slight strings, early, heavy yielder. A favorite for canning. 21—Pkg., 5c; ½ lb., 22c; lb., 35c; 5 lbs., \$1.25, postpaid.

SALZER'S TENDERBEAN. An entirely new and distinct green podded bean. Pods are long, slightly curved, round, dark green, absolutely free from strings and of the finest eating qualities. Yields heavily. Fine for canning. 34—Pkg., 14c; ½ lb., 25c; lb., 40c; 5 lbs., \$1.45, postpaid.

Green Pod Pole Beans

KENTUCKY WONDER. Green podded, pods 9 in. long, thick, round, meaty, tender and brittle. Yields heavily. 141—Pkg., 5c; ½ lb., 22c; lb., 35c; 5 lbs., \$1.30, postpaid.

GOLDEN CLUSTER WAX. Best of the wax pole beans. Straight, flat yellow pods, very prolific. 101—Pkg., 10c; ½ lb., 23c; lb., 38c; 5 lbs., \$1.38, postpaid.

Lima Beans

SALZER'S GIANT BUSII. Large pods, tender, large flat lima beans. 115—Pkg., 10c; ½ lb., 27c; lb., 45c; 5 lbs., \$1.65, postpaid.

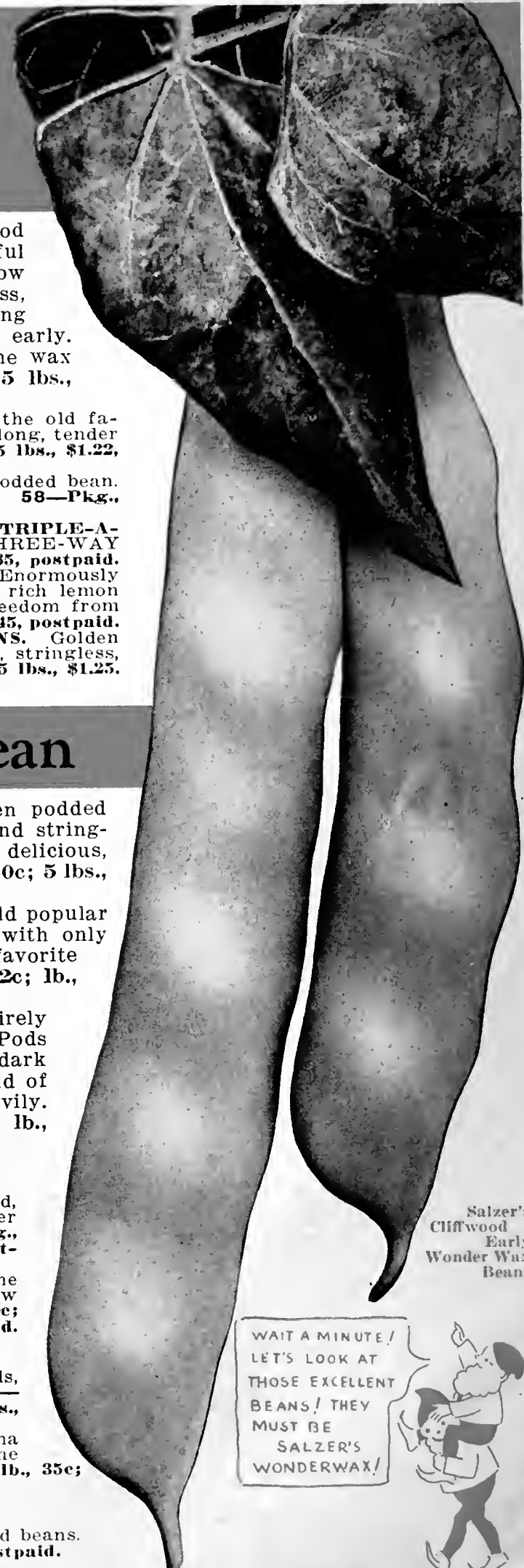
SMALL BUSH OR SIEVA. Small lima beans of fine quality, desirable for the North. 116—Pkg., 10c; ½ lb., 22c; lb., 35c; 5 lbs., \$1.30, postpaid.

White Navy Beans

Plant a lb. for making delicious baked beans. 120—Pkg., 5c; lb., 25c; 5 lbs., 95c, postpaid.



Salzer's Tenderbean



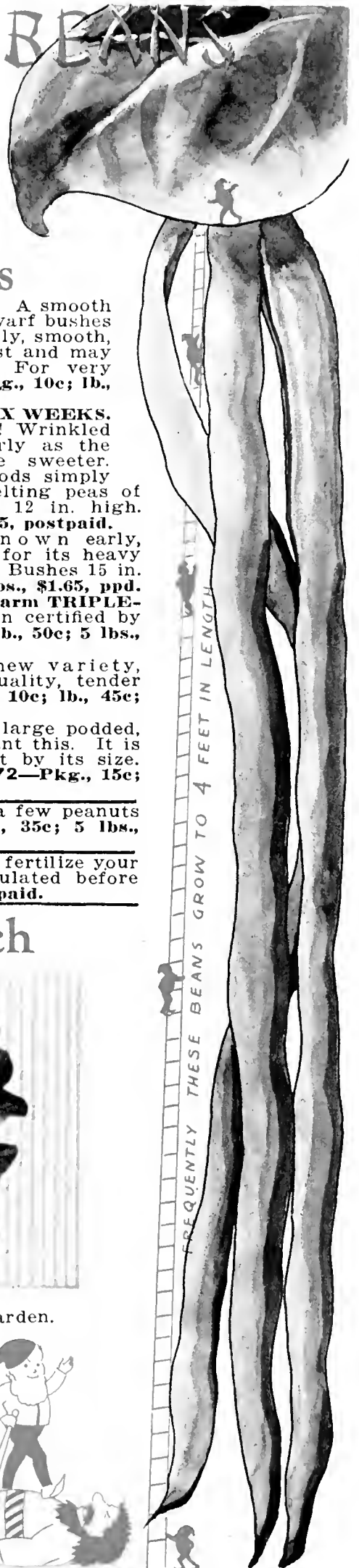
Salzer's Cliffwood Early Wonder Wax Beans

WAIT A MINUTE!
LET'S LOOK AT
THOSE EXCELLENT
BEANS! THEY
MUST BE
SALZER'S
WONDERWAX!



CHINESE YARD-LONG BEANS

Not only an excellent bean, but also an interesting curiosity. The beans are anywhere from 2 to 4 feet long, as thick as a lead pencil, stringless, crisp, tender, meaty, brittle, and of delicious melting quality. It is a pole bean and the vines are rampant growers. Plant some alongside a shed or the garage. Your children will enjoy watching Salzer's Chinese Yard Long Beans grow, and you will have a great novelty to show your friends! 80—Pkg., 10c; ¼ lb., 25c; ½ lb., 45c; lb., 75c, postpaid.



Garden Peas

SALZER'S EARLIEST AND BEST. A smooth variety, the Earliest on Earth! Dwarf bushes that yield an enormous crop of early, smooth, round delicious peas. Resists frost and may be sown very early in spring. For very earliest peas, plant this. 846—Pkg., 10c; lb., 39c; 5 lbs., \$1.42, postpaid.

SALZER'S RECORD BREAKER SIX WEEKS. Very earliest of the wrinkled peas! Wrinkled peas may not be planted as early as the smooth varieties, but they are sweeter. Record Breaker has rich green pods simply packed with luscious, sugary, melting peas of finest quality. Bushes are only 12 in. high. 849—Pkg., 15c; lb., 45c; 5 lbs., \$1.65, postpaid.

LITTLE MARVEL. The well known early, dwarf, wrinkled pea, remarkable for its heavy yield of fine quality, sugary peas. Bushes 15 in. high. 881—Pkg., 5c; lb., 45c; 5 lbs., \$1.65, ppd.

LITTLE MARVEL, Salzer's Cliffwood Farm TRIPLE-A-TESTED. A special reselected strain certified by THREE-WAY tests: 884—Pkg., 10c; lb., 50c; 5 lbs., \$1.85, postpaid.

SALZER'S LAXTON PROGRESS. A new variety, yielding a heavy crop of superior quality, tender peas, of the finest flavor. 859—Pkg., 10c; lb., 45c; 5 lbs., \$1.65, postpaid.

SALZER'S GIANT EXHIBITION. For large podded, large sized peas of elegant quality, plant this. It is a late variety, but this is fully offset by its size. Has won many premiums at Fairs. 872—Pkg., 15c; lb., 45c; 5 lbs., \$1.65, postpaid.

PEANUTS, EARLY VIRGINIA. Grow a few peanuts for your family. 841—Pkg., 10c; lb., 35c; 5 lbs., \$1.25, postpaid.

INOCULATION. Peas and peanuts will fertilize your soil and give a heavier crop, if inoculated before planting. Garden Size, 15c each, postpaid.



Above Salzer's Giant Exhibition Peas

leaves. 1071—Pkg., 5c; oz., 12c; ¼ lb., 27c; lb., 55c, postpaid.

PRINCESS JULIANA. Extra large leaves, heavily crumpled, tender. 1074—Pkg., 8c; oz., 12c; ¼ lb., 26c; lb., 50c, postpaid.

KING OF DENMARK. Holds its large, broad, crumpled leaves for weeks without going to seed. Elegant flavor. 1065—Pkg., 8c; oz., 12c; ¼ lb., 26c; lb., 50c, postpaid.

SAVOY OR BLOOMSDALE. An extra early variety, extremely hardy, glossy, tender curled and crumpled leaves. 1070—Pkg., 6c; oz., 10c; ¼ lb., 25c; lb., 45c. 1076—Salzer's TRIPLE-A-TESTED: Pkg., 10c; oz., 15c; ¼ lb., 30c; lb., 65c, postpaid.

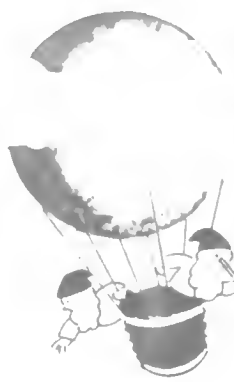
At Right—King of Denmark Spinach



Spinach deservedly finds a place in every garden.

SALZER'S TRIUMPH. Withstands hot weather longer than most sorts. Slow to go to seed. Heavily crumpled, tender





Salzer's EVERGREEN CUCUMBER!

IN OUR JOURNEYS
FAR AND NEAR,
WE'VE NEVER BEEN A
CUCUMBER AS DEEP
GREEN AS SALZER'S
EVERGREEN!



Retains Its Deep Green
Color Longer than
any Other Cuke

Salzer's
Evergreen

FINEST
CUCUMBER
GROWN TODAY

Salzer's Evergreen keeps its rich, attractive, deep green color longer than any other cucumber in cultivation today! Has lain for five weeks and looked just as green and fresh as when first picked. This remarkable ability to hold its green color is of the highest importance for the market and is equally important for the home gardener. In addition, Salzer's Evergreen is early, it has fine grained firm flesh, it yields prodigally and it is of extra fine quality. It is a great slicer and makes elegant pickles. Fruits are 7 to 10 in. long, smooth, straight and of the most handsome deep green color imaginable. Be sure to plant it this year. 474—Pkg., 15c; oz., 27c; ¼ lb., 85c, postpaid.

EARLIEST OR 40-DAY. An ideal slicer, excellent for pickles, heavy yielder, and the Earliest Cucumber grown, producing fine fruits in 40 days' time. The cukes are 7 in. long, straight, and blunt at the ends. 447—Pkg., 10c; oz., 19c; ¼ lb., 51c, postpaid.

IMPROVED WHITE SPINE. One of the most prolific of the older types, and one of the most dependable, early, flesh tender, crisp and firm, deep green color, of fine quality. One of the best for pickles. 438—Pkg., 9c; oz., 15c; ¼ lb., 38c. 473—Salzer's Cliffwood Farm **TRIPLE-A-TESTED:** Pkg., 14c; oz., 20c; ¼ lb., 51c, postpaid.

IMPROVED LONG GREEN. A popular sort. Dark green skin, 10 to 15 in. long, of somewhat slender girth, medium late in maturity, fine for slicing and pickling, of best quality, heavy yielder. 448—Pkg., 10c; oz., 19c; ¼ lb., 51c, postpaid

CLIFFWOOD LONGFELLOW. Attractive fruits 12 to 18 in. in length, deep green color, straight, smooth and handsome. Very prolific, small seed cavity. 452—Pkg., 12c; oz., 38c; ¼ lb., 63c, postpaid.

DAVIS PERFECT. A superb variety for slicing, with solid white flesh, fine for pickles. Deep green color. 441—Pkg., 5c; oz., 19c; ¼ lb., 51c, postpaid.

WHITE WONDER. The best of the pure white skin cukes. 7-8 in. long, flesh of excellent quality. 470—Pkg., 10c; oz., 22c; ¼ lb., 63c, postpaid.

CUCUMBERS FOR

Small Pickles
of the Finest
Quality

PICKLES

Heaviest
Yielder of All
Pickles



SALZER'S PROLIFIC PICKLE. Plant Salzer's Prolific Pickle and pick basketful of the best cucumbers for pickles! Simply enormous yields are had with this famous variety, from the small size pickles up to the matured size of about 5½ in. long, for dills. Bears a continuous supply of small pickle cucumbers over a very long period. Pure white, firm, crisp flesh. Plant this for the finest pickles you ever had. 469—Pkg., 10c; oz., 15c; ¼ lb., 45c. 453—**PROLIFIC PICKLE,** Salzer's Cliffwood Farm **TRIPLE-A-TESTED.** A special reselected strain certified by **THREE-WAY** tests: Pkg., 15c; oz., 20c; ¼ lb., 60c, postpaid.

CHICAGO PICKLING. The popular old stand-by for pickles. Flesh snow white, crisp and firm. 462—Pkg., 5c; oz., 27c; ¼ lb., 41c, postpaid.



The Luxuriant Gardens of Mentone, South France

SALZER'S CRISP-AS-ICE LETTUCE

SALZER'S CRISP-AS-ICE LETTUCE is a beautiful head lettuce of medium size and medium early. It is just the thing for the home gardener! The leaves have a rich, attractive deep green base with the upper portion covered with dark bronzy brown, giving the plant a deep bronze appearance. When cut open, Crisp-As-Ice has a rich creamy heart, deliciously tender, cool and brittle, of the finest quality imaginable. It never fails to give satisfaction and everybody is always pleased with it. **556—Pkg., 12c; oz., 21c; ¼ lb., 62c, postpaid.**

CALIFORNIA CREAM BUTTER. A head lettuce with thick leaves, dark green, tinged and spotted with brown. Deep golden yellow heart, unusually tender, with a fine buttery flavor. **561—Pkg., 10c; oz., 19c; ¼ lb., 51c. 546—California Cream Butter, Salzer's Cliffwood Farm TRIPLE-A-TESTED: Pkg., 15c; oz., 24c; ¼ lb., 62c, postpaid.**

BIG BOSTON. The old popular head lettuce, large size, light green leaves margined brown. Has a big heart. **553—Pkg., 5c; oz., 18c; ¼ lb., 50c, postpaid.**



Crisp-As-Ice



Salzer's Earliest

NEW YORK or WONDERFUL. Leaves dark green overall, a lovely head lettuce, large size, heart white, crisp and tender. **565—Pkg., 10c; oz., 22c; ¼ lb., 63c, postpaid.**

SALZER'S EARLIEST LETTUCE. The earliest and finest of the curled or loose leaved lettuce, deliciously crisp and tender, easy to grow. Yields an abundant crop of attractive light green leaves, heavily curled, healthful and of the finest flavor. A strong grower and thrives everywhere. **540—Pkg., 15c; oz., 21c; ¼ lb., 62c, postpaid.**

SALZER'S PRIZEHEAD. Loose leaved, tender, heavily curled, sweet, crisp and tender, early. **575—Pkg., 9c; oz., 19c; ¼ lb., 51c, postpaid.**

BLACK SEEDED SIMPSON. One of the standard non-heading varieties, crisp, curled light green leaves of excellent quality. **554—Pkg., 5c; oz., 19c; ¼ lb., 51c, postpaid.**



Salzer's Early Bird Radish

Handsome, deliciously spicy, unbelievably early,—we know of no other radish equal to Salzer's Early Bird Radish! Averages ½ to 1 in. in diameter, globe shaped, has a beautiful sparkling red color, never gets pithy, has small tops, is a heavy cropper, and is of the finest quality. It has every attribute of a perfect radish and has yet to be equaled! Be sure to plant Salzer's Early Bird Radish this spring. **975—Pkg., 12c; oz., 20c; ¼ lb., 55c, postpaid.**



ICICLE

SALZER'S EARLIEST WHITE. Pure white color, extremely early, olive shape, thin smooth skin, never gets woody, crisp, spicy flavor and of the finest quality. A fit companion to Salzer's Early Bird. **1006—Pkg., 10c; oz., 19c; ¼ lb., 51c, postpaid.**

SALZER'S ICICLE. A beautiful, almost transparent, pure white radish about four inches long, with unusually small tops, remains in good condition a long time, does not get pithy, flesh is fine grained, crisp and brittle. Earliest and finest of the long white sorts. **1021—Pkg., 8c; oz., 15c; ¼ lb., 35c. 1025—ICICLE, Salzer's Cliffwood Farm TRIPLE-A-TESTED. A special selected strain certified by THREE-WAY tests. Pkg., 15c; oz., 20c; ¼ lb., 51c, postpaid.**

SALZER'S SPARKLER or Half Red, Half White. Nearly round, deep scarlet color with the lower one-third, white. Very attractive appearance, never becomes pithy or hollow, fine grained flesh, spicy and tasty. Very desirable, both for market and for the home gardener. **986—Pkg., 9c; oz., 15c; ¼ lb., 35c, postpaid.**

CRIMSON GIANT GLOBE. A grand early, globe shaped red radish, double the size of other sorts but remains tender and crisp. The juicy, tender flesh is pure white and of mild, spicy flavor. A great favorite. **973—Pkg., 10c; oz., 15c; ¼ lb., 35c, postpaid.**



Sparkler (Half Red, Half White)

MIXED RADISHES
All kinds, colors and shapes. A great mixture. Will give you early, medium and lateradishes. **993—Pkg., 5c; oz., 13c; ¼ lb., 30c, postpaid.**

SALZER'S EARLY BIRD RADISH

How Do You Grow These Early Radishes?

BY ALWAYS PLANTING SALZER'S SEEDS

THE EARLIEST OF ALL RADISHES

SALZER'S SPARKLER or Half Red, Half White. Nearly round, deep scarlet color with the lower one-third, white. Very attractive appearance, never becomes pithy or hollow, fine grained flesh, spicy and tasty. Very desirable, both for market and for the home gardener. **986—Pkg., 9c; oz., 15c; ¼ lb., 35c, postpaid.**

CRIMSON GIANT GLOBE. A grand early, globe shaped red radish, double the size of other sorts but remains tender and crisp. The juicy, tender flesh is pure white and of mild, spicy flavor. A great favorite. **973—Pkg., 10c; oz., 15c; ¼ lb., 35c, postpaid.**



Firecracker

FIRECRACKER
A distinct new type. Long slender radishes, cylindrical in shape, of vivid scarlet color, very early, smooth skin, short tops, juicy fine grained flesh, and of a delicious spicy flavor. **998—Pkg., 12c; oz., 20c; ¼ lb., 57c, postpaid.**

SALZER'S GIANT FLAT DUTCH

**SURE
SAFE
SOLID**



Salzer's
Northern
Grown Seed
Is the Best

**The Grandest, Best Keeping, Surest
Heading, Large Late Cabbage in
the World**

For large crops of hard, heavy heads of cabbage, for the best winter keeping cabbage, for the best cabbage for sauerkraut,—friends, you must plant Salzer's Giant Flat Dutch Cabbage! The noble cabbages are 12 to 14 inches in diameter, average 18-20 lbs. in weight, and are very hard and solid, of handsome appearance, crisp, tender and sweet. Makes grand cold slaw and for sauerkraut,—well, we'll say you never ate any finer sauerkraut! It is the one grand late winter keeping heavy yielding cabbage that should be in every garden. 250—Pkg., 15c; ½ oz., 25c; oz., 45c, postpaid.

Frost-Proof Cabbage Plants

We ship cabbage plants anywhere and guarantee safe delivery! They are hardy and will withstand 20° above zero!

SALZER'S LIGHTNING, Radio and Red Rock. 100 plants for 60c; 500 for \$2.65; 1000 for \$3.75, postpaid.
EARLY JERSEY WAKE-FIELD and Copenhagen Market. 100 plants for 50c; 500 for \$2.15; 1000 for \$3.00, postpaid.

SALZER'S LIGHTNING CABBAGE



Salzer's Lightning

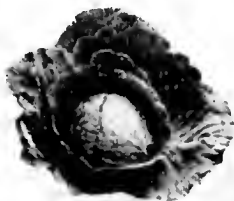
The Earliest Cabbage in the world, producing fine, solid heads in 75 days' time! The heads are conical in shape, hard and quite heavy, tender, crisp, unexcelled for table use, but above all is the extra earliness, spelling high prices for market and the earliest cabbage for your table. If you wish the earliest cabbage, plant Salzer's Lightning. 218—Pkg., 15c; ½ oz., 25c; oz., 45c, postpaid.

SALZER'S RADIO. An extra early round-head cabbage, hard, quite heavy heads, excellent quality. Plants are very compact and may be set closely together. The hard heads seldom, if ever, burst. 75 days. 221—Pkg., 15c; oz., 38c, postpaid.

EARLY JERSEY WAKE-FIELD. An early pointed cabbage, always popular and very desirable. 214—Pkg., 10c; oz., 22c. 222—Early Jersey Wakefield, **TRIPLE-A-TESTED:** Pkg., 14c; oz., 30c, postpaid.

COPENHAGEN MARKET. A grand second early sort, with unusually heavy and solid heads, always gives a big yield. 244—Pkg., 10c; oz., 29c, postpaid.

RED ROCK. A grand red cabbage, solid heads of the best quality. 276—Pkg., 10c; oz., 35c, postpaid.



Salzer's Radio

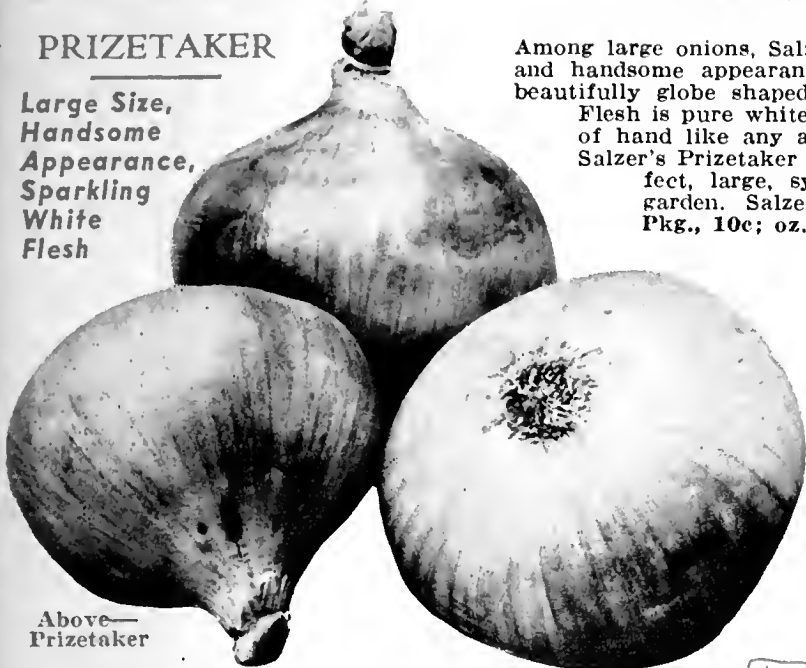
DISEASE RESISTANT CABBAGE

Bred to resist the "yellows" or "yellow rot." Will give heavy yields on cabbage sick soils.
SALZER'S LIGHTNING. A disease resistant strain of our famous Lightning cabbage. 265—Pkg., 20c; ½ oz., 35c; oz., 60c, postpaid.
SALZER'S GIANT FLAT DUTCH. A disease resistant strain. 264—Pkg., 20c; ½ oz., 30c; oz., 55c, postpaid.
WISCONSIN HOLLANDER. Disease resistant. Heavy cabbages. 259—Pkg., 15c; oz., 38c, postpaid.

ONIONS

PRIZETAKER

Large Size,
Handsome
Appearance,
Sparkling
White
Flesh



Above—
Prizetaker

Among large onions, Salzer's Prizetaker always attracts attention by its fine size and handsome appearance. It is of clear bright straw color, very productive, beautifully globe shaped, has a very small neck and ripens up fine and hard. Flesh is pure white, crisp, extremely sweet and so mild it may be eaten out of hand like any apple. It is a grand onion for the home garden. Plant Salzer's Prizetaker this year, and you'll feel proud to have grown these perfect, large, symmetrical, mildly flavored beauties in your very own garden. Salzer's Prizetaker is an exceptionally heavy yielder. **748—Pkg., 10c; oz., 26c; ¼ lb., 79c, postpaid.**

Mountain Globe Danvers

An extra early strain of the famous Yellow Globe Danvers. Fully two to three weeks earlier than its parent and so most valuable for short season sections. **766—Pkg., 9c; oz., 26c; ¼ lb., 79c, postpaid.**

YELLOW GLOBE DANVERS. Beautiful yellow onions, early, heavy yielder! The necks ripen down small and it keeps well. Globe shaped, smooth skin, creamy white, crisp, tender and mild flesh. Grows and yields a heavy crop everywhere. It is a standard variety that never fails to give satisfaction. **755—Pkg., 10c; oz., 24c; ¼ lb., 73c, postpaid.**

Yellow Sweet Spanish

A grand, brand new, yellow Spanish onion, of unusual size and keeping qualities, tender, crisp, and deliciously mild in flavor. Of handsome, large, globular shape, smooth yellow skin and sparkling clear, pure white flesh. The best new variety of recent years. **764—Pkg., 10c; oz., 29c; ¼ lb., 91c, postpaid.**

A Basket of
Yellow Sweet
Spanish Onions

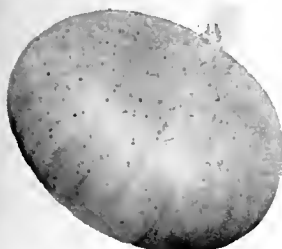


Plant
Salzer's
Onion Seed This Year!

Salzer's Giant Silver King

Largest and most popular of the silvery, white skinned onions, early and especially desirable for the North. Of elegant, mild flavor, tender, snow white flesh, we have grown specimens at Cliffwood Farms that measured 22 inches in circumference and weighed as much as 4 pounds. If you want the largest, pure white, sweet onions, plant Salzer's Giant Silver King. **742—Pkg., 10c; oz., 26c; ¼ lb., 79c, postpaid.**

LAND SAKES, DID
YOU EVER SEE SUCH
HUGE AND NICE
ONIONS AS SALZER'S
PRIZETAKER!



Giant Silver King

Other Choice Onions

SOUTHPORT RED GLOBE—A splendid keeper. 3-3½ in. in diameter, smooth, purplish-red skin, mild, tender, fine grained flesh. **750—Pkg., 5c; oz., 24c; ¼ lb., 73c, postpaid.**

SOUTHPORT WHITE GLOBE. Globe shaped onions, white skin and white flesh, that cook beautifully. A popular and most satisfactory variety. **751—Pkg., 8c; oz., 29c; ¼ lb., 91c, postpaid.**

SOUTHPORT YELLOW GLOBE. A yellow skinned globular onion, very desirable and very popular. Prodigious yielder. Crisp, juicy pure white flesh, tender and mild. **752—Pkg., 5c; oz., 26c; ¼ lb., 79c, postpaid.**

AILSA CRAIG. The old popular, standard, oval shaped, straw colored onion, very desirable, a good keeper. **736—Pkg., 10c; oz., 26c; ¼ lb., 79c, postpaid.**

AUSTRALIAN BROWN. A solid, hard variety, rich amber brown skin, pure white flesh, good keeper. In addition, it is early and a sure cropper, mild in flavor, tender and juicy. Fine for the home gardener. **737—Pkg., 5c; oz., 20c; ¼ lb., 57c, postpaid.**

SALZER'S WHITE QUEEN. Our finest pickling Onion. Small onions, about ½ in. through, with a fine neck, exceedingly early, mild in flavor. Best of all for pickling. **787—Pkg., 10c; oz., 27c; ¼ lb., 85c, postpaid.**

LONG WHITE BUNCHING ONIONS. A very hardy, perennial variety, used for early green onions; it forms no bulbs. Forms thicker and whiter stems than any other sort, and is mildly pungent. **790—Pkg., 10c; oz., 32c; ¼ lb., \$1.00, postpaid.**

GARLIC Strongly flavored but desirable for seasoning. A small patch should be in every garden. Lb., 39c; 2 lbs., 69c; 5 lbs., \$1.42, postpaid.

Salzer's Red Wethersfield

The most largely grown Red Onion, the greatest cropper and the standard red onion! Large bulbs, flattened but quite thick, with rich dark red skin and pure white sparkling, juicy flesh, crisp, tender and mild. Grows everywhere and keeps splendidly. **791—Pkg., 10c; oz., 24c; ¼ lb., 73c. 793—Red Wethersfield, Salzer's Cliffwood Farm. TRIPLE-A-TESTED. A special reselected strain: Pkg., 15c; oz., 27c; ¼ lb., 85c, postpaid.**



Red Wethersfield

SALZER'S HARDY ONION PLANTS

Will give you an earlier crop of onions. Inexpensive and very hardy. Set them out as early as the ground can be worked. Orders must be for at least 100 of any one variety.

Prizetaker, Valencía or Sweet Spanish, Crystal Wax or White Bermuda and Yellow Bermuda Plants.

Any of above: 100 plants for 47c; 500 for \$1.85; 1000 for \$2.75, postpaid.



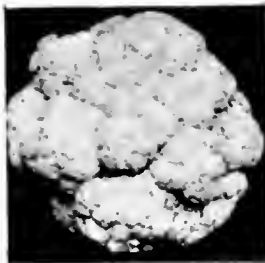
The Uniquely Beautiful Gardens of Heslington Hall, York, England

Cauliflower

SALZER'S EARLIEST SUREHEAD. One of the finest of all. Very early, a sure header, pure snowy white heads with close and compact curds, large size (often 10 in. across) and of elegant quality. 317—Pkg., 18c; ¼ oz., 80c.

EARLIEST SUREHEAD, Salzer's Cliff-wood Farm TRIPLE-A-TESTED—A special reselected strain certified by THREE-WAY tests. 328—Pkg., 25c; ¼ oz., \$1.00.

EARLY PARIS. Fine white heads, solid and compact curds, early. 318—Pkg., 5c; ¼ oz., 30c.



Cauliflower, Earliest Surehead



Kohlrabi, Early White Vienna

Celery

SALZER'S SELF BLANCHER. Thick heavy stalks, silvery white, very early, brittle, blanches exceptionally easy. 334—Pkg., 15c; oz., 42c.

SALZER'S WONDERFUL. Also called Golden Plume. Very thick, tender and brittle stalks, golden yellow, delicious nutty flavor. 345—Pkg., 10c; ½ oz., 34c; oz., 60c.

Kale

TALL SCOTCH GREEN. Plant some for healthful, tasty "greens." Narrow leaves, finely curled, tender. 514 Pkg., 5c; oz., 17c. 515—Tall Scotch Green, TRIPLE-A-TESTED: Pkg., 10c; oz., 22c.

Kohlrabi

EARLY WHITE VIENNA. Early, heavy yielder, white bulbs, tender and of an elegant flavor. 523—Pkg., 10c; oz., 22c.

EARLY PURPLE VIENNA. Purple tinged bulbs but the flesh is white tinged green. 522—Pkg., 8c; oz., 21c.

Parsnip

HOLLOW CROWN. Very productive, roots 10 to 12 in. long, white skin, sweet and tender. 832—Pkg., 10c; oz., 15c.

SALZER'S DELMONICO. A stump rooted variety and hence, more easily harvested. Smooth attractive white skin, sweet and delicious flavor. 833—Pkg., 10c; oz., 18c.

Pepper

CALIFORNIA WONDER. Unusually thick walls and flesh, of large size and blocky form. Mild flavor. 935—Pkg., 15c; oz., 60c.

OSHKOSH. The best yellow pepper. Yellow skin, thick, tender, mild flesh. 936—Pkg., 10c; oz., 70c.

CHINESE GIANT. The standard, large pepper. Very mild and delicious. Fine for salads. 922—Pkg., 10c; oz., 70c.

SMALL RED CHILI. Very "hot." 921—Pkg., 7c; oz., 40c.

PIMIENTO. Mildly flavored, unexcelled for salads. Dark green fruits turning to deep red. 927—Pkg., 10c; oz., 29c.

Rutabaga

DELICIOUS. A new type, with a delicious flavor, tender, fine grained, golden yellow, very productive. 1517—Pkg., 10c; oz., 19c.

AMERICAN PURPLE TOP. The standard Rutabaga, yellow flesh, finely flavored. 1508—Pkg., 5c; oz., 12c.

Squash

IMPROVED HUBBARD. The best winter keeper, hard shelled, thick, dry, orange yellow flesh. 1099—Pkg., 10c; oz., 19c.

GOLDEN HUBBARD. Golden yellow rind, tender orange colored, thick flesh. 1097—Pkg., 5c; oz., 19c.

TABLE QUEEN. Small acorn shaped fruits, may be served individually. 1090—Pkg., 10c; oz., 20c.

SUMMER CROOKNECK. The standard summer squash, delicate flavor. 1085—Pkg., 5c; oz., 17c.

Turnips

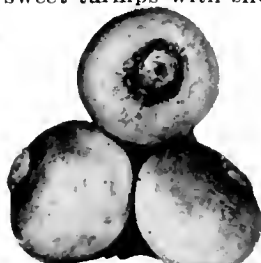
SALZER'S SNOWBALL. Early, round, white turnips, best for the table. 1204—Pkg., 10c; oz., 14c.

PURPLE TOP WHITE GLOBE. Fine keeper, heavy yielder, of splendid quality. 1212—Pkg., 5c; oz., 15c.

PURPLE TOP STRAP LEAF. Mild, sweet turnips with short tops, fine quality. 1211—Pkg., 5c; oz., 14c.



Improved Hubbard Squash



Purple Top White Globe Turnips

HERB SEEDS

Our parents always grew their own herbs in the garden. No space will give you better returns than a small corner devoted to herbs!

- ANISE.** For flavoring cookies. 1242—Pkg., 10c.
- BORAGE.** For lemonade. 1246—Pkg., 10c.
- CARAWAY.** Used very often for flavoring meats and baking. 1249—Pkt., 6c.
- CATNIP.** A fine seasoener. 1277—Pkg., 10c.
- DILL.** For the best pickles. 1254—Pkg., 5c.
- PEPPERMINT.** For flavoring. 1262—Pkg., 15c.
- SAGE.** For seasoning. 1268—Pkg., 10c.
- SPEARMINT.** For mint jellies. 1263—Pkg., 15c.
- SUMMER SAVORY.** For soups. 1269—Pkg., 9c.
- THYME.** Has medicinal properties. 1272—Pkg., 10c.
- WORMWOOD.** A fine tonic. 1273—Pkg., 10c.
- MIXED HERBS.** 1281—Pkg., 10c; oz., 27c; ¼ lb., 85c.

Hardy Vegetable Plants

Outdoor grown, very hardy! Dates indicate when we can ship. Orders must be for 100 of any one variety. Prices are postpaid. State on your order when we shall make shipment.

- BROCCOLI.** March 15. 100 for \$1.00; 500, \$3.50.
- BRUSSELS SPROUTS.** March 15. 100 for \$1.00.
- CAULIFLOWER, SNOWBALL.** March 15. 100 for \$1.00.
- CELERY, Wonderful.** April 1. 100, \$1.00; 500, \$3.50.
- SWEET POTATO PLANTS.** April 1. 100 for \$1.00; 500, \$3.50.
- TOMATO, Break O'Day, Earllana, Marglobe.** April 1. 100 for 80c; 500 for \$2.75.

Dwarf Apple Trees

Big apples on little trees! Plant one in your yard this spring. Grow 5 to 6 feet high, very productive, fruit easily picked. Just the thing for the small yard. State kind wanted: Delicious, Duchess, McIntosh, Wealthy, Winesap, Yellow Transparent. Price: 2 year, 3½ feet, ¾ caliper: Each, 85c; 3 for \$2.45; 6 for \$4.75, postpaid.



Delicious Apple



A View of the Famous Luxembourg Gardens, Paris

H
A
R
D
Y
F
L
O
W
E
R
I
N
G
S
H
R
U
B
S

BRIDAL WREATH

SPIREA VAN HOUTTEI. The true Bridal Wreath. Long sprays of large white flowers in May and June, literally borne in sheets. 5-6 feet high. One of the finest of all shrubs. Ea., 20c; 6 for \$1.00.



Bridal Wreath

CRIMSON SPIREA. (Spirea Anthony Waterer.) A dwarf variety, 3 to 5 feet high, with broad, flat heads of crimson flowers. Blooms freely and over a long period. Elegant alongside the steps. Ea., 30c; 6 for \$1.60.

GOLDEN SPIREA. (Opullifolia.) Foliage bronzed with yellow, changing with a profusion of Gracefully bending branches with a profusion of lovely double white flowers. 8-10 feet. Ea., 25c; 6 for \$1.30.



Crimson Spirea

KOREAN SPIREA. A lovely new shrub 4 to 6 feet tall, dome shaped and covered completely with many large clusters of snowy white flowers with dark eyes. Ea., 59c; 3 for \$1.73.

PLUM LEAVED SPIREA. (Prunifolia.) 3-5 feet, double white flowers, lovely plum leaved foliage changing to red in fall. Ea., 33c; 6 for \$1.78.

SPECIAL OFFER—
6 Shrubs, our selection, all different, for \$1.00.

FLOWERING ALMOND



Flowering Almond

Because of its charming tree shape and its dwarf height (3 to 5 feet) Salzer's Flowering Almond is an elegant subject for lawn planting where a few conspicuous shrubs are desired. The flowers appear before the leaves, making it unusually showy. **Double Pink.** Large double rose blossoms. Ea., 39c; 6 for \$2.17. **Double White.** Pure white double flowers. Ea., 45c; 6 for \$2.25.

ROSE ACACIA

Bears an abundance of large, loose clusters of beautiful clear pink Sweet Pea like flowers in May and June. 4 to 5 feet. Ea., 40c; 3 for \$1.10.

BEAUTY BUSH



Beauty Bush

An exceedingly handsome shrub, originally from China, 6 to 7 feet high, with long arching branches that are simply covered in spring with clusters of small, tubular pink flowers.

The bush is a veritable cloud of pink. Plant one at the corner of the house this spring. It is very pretty and will be something new for your yard. Ea., 59c; 3 for \$1.70.

BUTTERFLY BUSH

OR BUDDLEIA. Bears spikes 8 to 12 in. long, of very sweet and fragrant mauve-violet flowers. Also called Summer Lilac. As it is semi-herbaceous, it sometimes dies down in winter but shoots up quickly again. Ea., 29c; 3 for 82c.



Butterfly Bush

GOLDEN BELL

Finest of all the yellow flowered shrubs! Very early in spring, before the leaves appear, Salzer's Golden Bell is covered with masses of glinting golden yellow flowers, that continue for a long time. 6 feet. Ea., 29c; 3 for 82c.



Golden Bell

WEeping FORTSYTHIA. Similar to above, except that the long branches "weep." Yellow flowers. Ea., 35c; 3 for \$1.00.

DOUBLE SYRINGA

(PHILADELPHUS.) New. Unusually large, double and semi-double flowers, borne in clusters of 5 to 7, pure snow white, and sweetly fragrant. 8 feet. Ea., 35c; 3 for \$1.00. **SINGLE (Coronarius).** The old-fashioned fragrant Syringa, single white flowers, very pretty. Ea., 25c; 3 for 70c.



Double Syringa

PRICES
INCLUDE
POSTAGE

SNOWBALL

This showy shrub grows 8 feet tall and makes a lavish display, with its lovely, large white balls of bloom in plenty of time for Decoration Day. Plant one this year. Ea., 38c; 3 for \$1.10.

LILAC VULGARIS. The charming, old fashioned purple Lilac, as popular as ever. Ea., 29c; 3 for 83c.



Snowball

FRENCH LILACS

Larger flowers, deeper colors, improved form of bush and a more penetrating fragrance, characterize the French Lilacs. **ALPHONSE LAVALLE.** Double violet.

MME. LEMOINE. Double white.
PRES. GREVY. Large, double blue.
SOUV. DE SPAETH. Reddish purple. Any of above: Ea., 50c; 6 for \$2.65. One Ea. of Above 4, \$1.78.



SALZER'S
SHRUBS
ARE HARDY

HYDRANGEA—A LOVELY SHRUB



Hydrangea, P. G.

Hydrangea are highly desirable for their massiveness of bloom and their long flowering season. Very fine for the north side of the house.

PANICULATA GRANDIFLORA. Pointed, cream colored heads of bloom often a foot long, changing to pink and bronze, and finally to brown when frosted. 5 to 7 feet. Ea., 30c; 3 for 85c.

ARBORESCENS GRANDIFLORA. Dwarf, 3 to 5 feet high, and constantly in bloom from July until frost. Large, rounded, white balls of bloom that turn color in fall. Ea., 35c; 3 for 98c.

TREE HYDRANGEA. Of dwarf tree form (4 to 6 feet), very erect, with long pointed heads of bloom, white, later changing to pink. Ea., 95c.

SNOWBERRY

A desirable small shrub, 3 to 5 feet high, valuable for shaded locations.

RACEMOSUS. The true Snowberry. Rose flowers, followed by white berries that remain into winter. Ea., 25c; 3 for 70c.

INDIAN CURRANT (Vulgaris). Pink flowers followed by small red berries. Ea., 30c; 3 for 87c.



Hydrangea, A. G.



INDOORS OR OUT IN THE GARDEN, ON PORCH OR IN WINDOW BOXES, SALZER'S VIRILE PLANTS ARE THE BEST!

SALZER PLANTS for the House, Porch and Window Boxes, Hanging Baskets, and for Beds, are earlier, hardier, stronger, more vigorous and freer blooming. Like others, you can have the finest and sturdiest of plants, without paying a cent more for them. If wanted in original soil and paper pot, please add 10c extra for each plant. Orders will be sent at proper time to set out. Send your orders early and we will book them for shipment at planting time.



PLANTS FOR

ASTER PLANTS
Strong, transplanted seedlings that will give you earlier flowers. Wilt Resistant Asters. Mixed colors. Dozen, 99c. California Giant. Mixed colors. Doz., 95c. Giant Crego. Mixed colors. Doz., 70c.

BEGONIA
The popular Flowering Begonia, easily grown, and fine for shady places.

Angel Wing. Silver spotted leaves, pink flowers. Ea., 35c.
Beefsteak. Red and green leaves, white flowers. Ea., 30c.
Christmas Red. Cherry red flowers. Ea., 30c.
Mixed. All varieties. Ea., 22c; 3 for 63c.

CIGAR PLANT
Tubular, scarlet flowers with purple and white tips. Ea., 22c.

CINERARIA
Lovely plants, not difficult to grow, mixed colors. Ea., 35c.

COLEUS
Popular bedding plants with very showy foliage. Mixed colors only. Ea., 17c; 3 for 48c; 6 for 92c.

DAISIES
Fine for beds or window boxes. Large white flowers with yellow centers. Ea., 23c; 3 for 67c.

DRACAENA
Upright, slender, green, narrow leaves. No window box complete without one. Ea., 30c.

ELEPHANT EAR
Or Caladium. Wide, flapping leaves, elegant on the lawn or in a bed. Ea., 19c; 3 for 55c.
Fancy Leaved Caladium. Highly colored, marked, spotted and veined, large leaves. Ea., 40c.

FLOWERING MAPLE
Deeply bell shaped flowers that cover the whole plant. Maple shaped leaves. Golden Sunset. Yellow. Ea., 35c. Snowstorm. Pure white. Ea., 33c. Splendens. Deep red. Ea., 36c.

FUCHSIA
Should be in every window box. Black Prince. Dark blue to earmine-lake, single flowers. Ea., 25c.
Double Pink Beauty. Double, deep pink. Ea., 35c.
Midnight. Double, purplish blue flowers, reflexed petals bright carmine. Ea., 30c.
Storm Cloud. Pure white, double flowers, petals crimson. Ea., 30c.
Trailing Queen. A wine colored, trailing variety. Ea., 25c.

1 Ea. of Above 5, for \$1.25.

PANSY GERANIUM
Lovely, blotched, pansy-like flowers that completely cover this lovely geranium. You'll like this. Ea., 33c; 3 for 95c.

GERANIUMS
Our Geraniums are sturdy, hardy, well rooted stock.

American Beauty. Double flowers of the famous American Beauty Rose color. Ea., 25c.

Radlo Red. Intense red, double. Ea., 25c.

Salmon Ideal. Semi-double, salmon pink, an unusual color. Ea., 37c.

Bronze Bedder. Yellow foliage, scarlet flowers. Ea., 30c.

Silver Leaved. Green foliage, margined white, pink, double flowers. Ea., 38c.

Jean Oberle. Pink, shaded white. Ea., 20c.

S. A. Nutt. Double, dark crimson. Ea., 20c.

Ivy Leaved. Lovely foliage, mixed colors. Ea., 20c.

Mixed Geraniums. Ea., 17c; 3 for 47c.



Beefsteak Begonia



Rex Begonia



Coleus



Star Begonia



CALADIUM ESCOLETTIUM

Elephant Ear



Watermelon Begonia



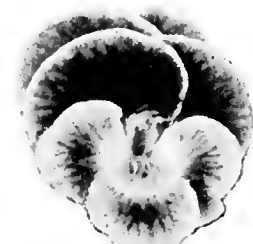
Night Cereus Cactus



Fuchsia



Aloe Cactus



Pansy Geranium



Devil's Ivy



Salmon Ideal Geranium



Gloxinia

REX BEGONIA

Thick leaves of satiny texture, varicolored, under surface softly colored. Ea., 35c.

Star Begonia. Beautiful star shaped leaves, very choice. Ea., 75c.

Violet Begonia. Violet-like flowers covering the whole plant. Ea., 87c.

Watermelon Begonia. Variegated leaves, one single leaf looking like a striped watermelon. Ea., 27c.

CACTUS
The one ideal plant for the home, thriving under absolute neglect.

Aloe. Striped leaves, ascending in V shaped ranks, very rare. Ea., 75c.

Christmas. Blooms every Xmas only, lovely green foliage, drooping flowers. Ea., 30c.

Crassula. Thick, fleshy, rounded to oblong leaves, always green, small white flowers. Ea., 39c.

Crassula Rubleunda. Similar to above, but with reddish foliage. Ea., 60c.

Night Blooming Cereus. Blooms only in the dark or in a faintly lighted room. Ea., 42c.

Phyllocactus. Flaming red flowers, lovely foliage. Ea., 39c.

Sanseveria. Stiff upright leaves, very ornamental. Ea., 34c.

Stapelia. Dwarf, buff blossoms striped maroon. Ea., 25c.

DEVIL'S IVY
Or Wonder Vine. The one grand trailing vine for the house, leaves always green, withstands hot and cold. Ea., 49c.

GLOXINIA
Large, massive, highly colored tubular flowers, very desirable for the house. State kind wanted: Scarlet; Blue; Red with white edge; Purple with earmine edge; Pure White. Ea., 49c. Mixed colors. Ea., 39c.

HIBISCUS
Glossy foliage plants, bloom freely. Aurantlaca. Double orange. Ea., 27c. Fireball. Double scarlet. Ea., 30c. Peachblow. Double pink. Ea., 35c. Violet King. Violet. Ea., 29c.

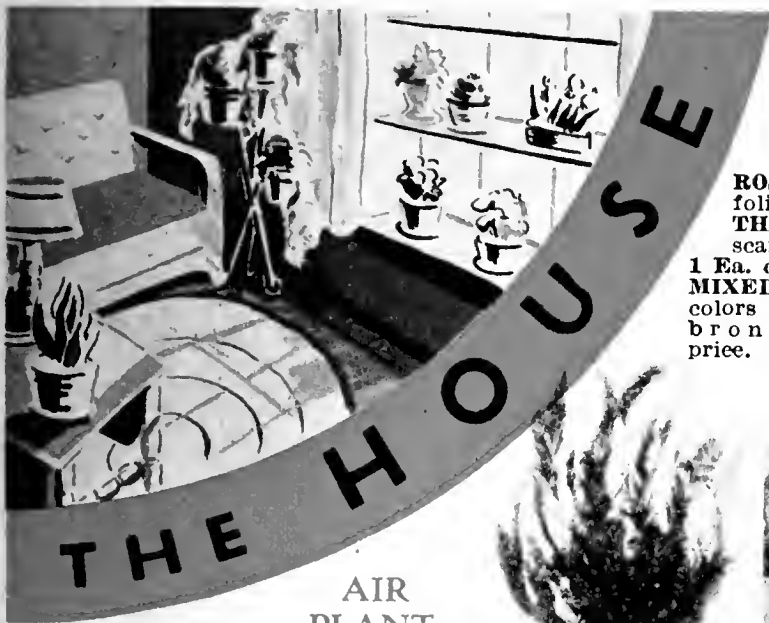
1 Ea. of Above 4, for \$1.09.

WATCH-EM-GROW

A plant food, in concentrated form, that will give you even earlier flowers. Trial Size: 10c; 8 oz. size, 50c.

SALZER'S HAPPY HOME PLANT COLLECTION

With our tremendous stocks, each year we have some plants left over at the end of the season. We offer our surplus in this collection, plants of our selection, at a low price. Shipment at this low price, however, will not be made until the end of May, at close of season. Each Plant Labeled: 8 for \$1.25. Plants Not Labeled: 8 for 75c.



AIR PLANT

Fluffy green plants that require no water. Place one on the buffet, or hang from the chandelier! Always green. Ea., 25c.

Ferns

Buy your ferns from Salzer's this year and have the finest obtainable.

ASPARAGUS PLUMOSUS. Fine, delicate, lacy foliage. Ea., 25c; Large size, ea., 35c.

BOSTON FERN. Lovely drooping fronds of rich dark green. Ea., 25c; Larger size, 60c.

CHRISTMAS TREE. Order one! Upright, evergreen-like fern foliage, resembling a Christmas tree! Ea., 59c.

FLUFFY RUFFLES. New! Unusually lacy, upright, and irregularly shaped fronds. Ea., 59c.

HOLLY FERN. The leaves resemble Holly, hence the name. Ea., 34c; Larger size, 69c.

LACE FERN or Verona. Lacy, upright, "ostrich-plume" foliage, very desirable. Ea., 20c; Larger size, 35c.

SWORD FERN. Graceful, upright, sword-like, fern foliage. Ea., 29c; Larger size, 65c.

House Hydrangea

Of French introduction, with extra large blooms.

AVALANCHE. White. Ea., 28c.

BABY BIMBENET. Silvery rose. Ea., 30c.

MADAME CHAUTARD. Deep pink. Ea., 32c.

MARECHAL FOCH. Carmine red. Ea., 47c.

1 Ea. of Above 4, for \$1.20

Weeping Lantana

Grand for window boxes. Rosy lilac shading to violet-purple. Ea., 30c.

Lobelia

Dainty, dwarf, blue flowers for borders, boxes and hanging baskets. Doz., 75c.

Oxalis

Splendid little plants, effective in masses, fine for hanging baskets.

GRAND DUCHESS. Pink. 6 for 45c.

BERMUDA. Yellow. 6 for 49c.

AMERICAN BEAUTY. 6 for 55c.

Primroses

MALACOIDES or Baby Primrose. Numerous upright stems crowned with graceful white and lilac flowers. Mixed. Ea., 25c.

ERICKSONII. A new Baby Primrose; deep pink flowers. Ea., 39c.

OBCONICA. Massive flowers, often 1 1/2 inches across. We offer two colors: Red or Pink. Ea., 35c.



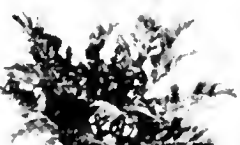
Air Plant



Boston Fern



Lace Fern



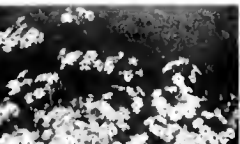
Holly Fern



House Hydrangea



Oxalis



Malacoides Primrose

FREE
With each \$1.00 order for plants, if requested, we will include one plant, our selection, worth 20c!

CANNAS

AMBASSADOR. Cherry red flowers, bronze foliage. Ea., 32c.

KING MIDAS. Clear yellow, green foliage. Ea., 35c.

ROSEA. A gigantic rose, green foliage. Ea., 30c.

THE PRESIDENT. Flaming scarlet, a beauty. Ea., 32c.

1 Ea. of Above 4, for \$1.10.

MIXED. A lovely array of colors with both green and bronzy foliage, at a low price. Ea., 19c; 6 for \$1.09.



A Bed of Cannas



Manettia Vine



Single Petunias



Water Hyacinth



Los Angeles



Crimson Rambler

WE GNOMES HAVE THE KEY TO SUCCESS WHEN FOLKS SET OUT SALZER'S HOUSE AND BEDDING PLANTS!



Manettia Vine

A grand trailer for hanging baskets and window boxes! Intense scarlet flowers tipped with golden yellow. Ea., 33c.

Pansy Plants

MASTODON. (Not in bloom.) Mixed. Doz., 49c; 25 for 95c.

CLIFFWOOD FROST PROOF. (In bloom.) Mixed. Doz., 79c; 25 for \$1.53.

Passion Vine

An elegant trailer for the house or window box. Purplish blue flowers. Ea., 35c.

Petunias

DOUBLE, MIXED. Ea., 24c; 3 for 69c; 6 for \$1.32.

BALCONY MIXED, Single. Fine for window boxes. Doz., 75c; 25 for \$1.40.

ROSE OF HEAVEN. Single, rose pink. Doz., \$1.00; 25 for \$1.80.

GIANT RUFFLED. Single ruffled and fringed flowers, mixed. Doz., \$1.25; 25 for \$2.25.

Salvia

HARBINGER. Brilliant scarlet flowers. Doz., 75c; 25 for \$1.40.

Verbena

Brilliant shades of many colors, mixed. Doz., 75c; 25 for \$1.40.

LEMON VERBENA. Scented foliage. Ea., 25c.

Aquatic Plants

For dishes, gold fish bowls and pools.

PARROT'S FEATHER. Feathery racemes of rich green foliage. Ea., 20c; 6 for \$1.12.

WATER HYACINTH. Spikes of lavender flowers with golden yellow centers. Ea., 25c; 6 for \$1.35.

UMBRELLA PLANT. Stems 2-3 feet high with slender, narrow, drooping leaves. Ea., 25c.

Roses

Leaflet "Culture of Roses" free upon request.

BRIARCLIFF. Rose pink. Ea., 58c.

CLAUDIUS PERNET. Deep yellow, long pointed buds. Ea., 59c.

GRUSS AN TEPLITZ. Rich scarlet. Ea., 59c.

KAISERIN AUGUSTA. Pure white. Ea., 48c.

LADY HILLINGDON. Deep apricot yellow. Ea., 50c.

LOS ANGELES. Flame pink, toned with coral and shaded with gold. Ea., 69c.

PAUL NEYRON. Rose red, large. Ea., 43c.

PRINCE ROHAN. Blackish crimson. Ea., 41c.

RED RADIANCE. Cherry red. Ea., 49c.

TALISMAN. New. Blended gold, pink, rose, apricot and scarlet. Ea., 78c.

Climbing Roses

CRIMSON RAMBLER. Bright crimson flowers. Ea., 45c.

PAUL'S SCARLET. Scarlet rose. Ea., 46c.

WHITE PERKINS. Pure white. Ea., 40c.

1 Ea. of Above 3, For \$1.24

GNOME GARDEN FOOD

Is your garden soil, your lawn, or your flower bed lacking in fertility? If so, start some Fairyland Gnomes and Elves working for you. They demand no wages and these little imps, with the assistance of Salzer's Gnome Garden Food will work wonders with your lawn or with your garden!

For your vegetable garden or flower bed, spade in about six pounds of Gnome Garden Food for every ten square feet when you are making the beds. Then sow your vegetable or flower seed. After the plants are up, about every two weeks, scatter about five or six pounds of Gnome Garden Food along the rows between the plants, and sprinkle, to wash off any fertilizer from the plants themselves, to prevent any danger from burning the plants.

Your lawn will welcome some of Salzer's Gnome Garden Food! Sprinkle at the rate of five pounds for every ten square feet, evenly over your lawn, and then sprinkle with the hose to wash any fertilizer from the blades of grass. Make applications in early spring (or before sowing any grass seed) and every two or three weeks thereafter throughout the season. Do not apply any during a prolonged, hot, dry spell of weather.

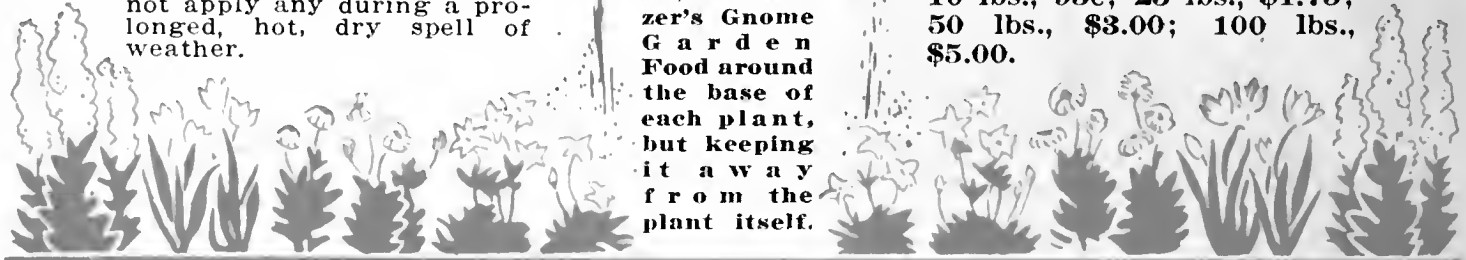


For your shrubs and roses, sprinkle a handful of Salzer's Gnome Garden Food around the base of each plant, but keeping it away from the plant itself.

Every Home Owner Can Use a Full 100 Lb. Bag During the Season!

You take pride in your garden, in your lawn, in the general appearance of your yard or of your grounds! When you grow a crop of anything, you remove fertility from the soil. To bring it back to normal, or to keep it normal, and thereby improve the appearance of your lawn or your garden, you should make applications of fertilizer throughout the season. But use Salzer's Gnome Garden Food! Put the Fairies and Gnomes to work for you! Salzer's Gnome Garden Food is high in Nitrogen, Phosphate and Potash and these elements are immediately available in this fertilizer. You will notice a difference in color and vigor of your lawn, or in your garden plants, in less than one week after applying it!

Price of Salzer's Gnome Garden Food: Lb., 29c; 2 lbs., 45c; 5 lbs., 90c, postpaid. Not prepaid: 10 lbs., 95c; 25 lbs., \$1.75; 50 lbs., \$3.00; 100 lbs., \$5.00.



SALZER'S
EVERLASTING
50¢
PER POUND

GRIDIRON GRASS

NEW

owners—have sought an ideal CROWD-PROOF turf. Many have asked our advice. As a result we have made experimental plantings under a variety of conditions and over many seasons. At last we can confidently announce it: Salzer's GRIDIRON GRASS Mixture. It is Tougher, Thicker, Quicker, Hardier.

2 Salzer's Own Tested Mixture

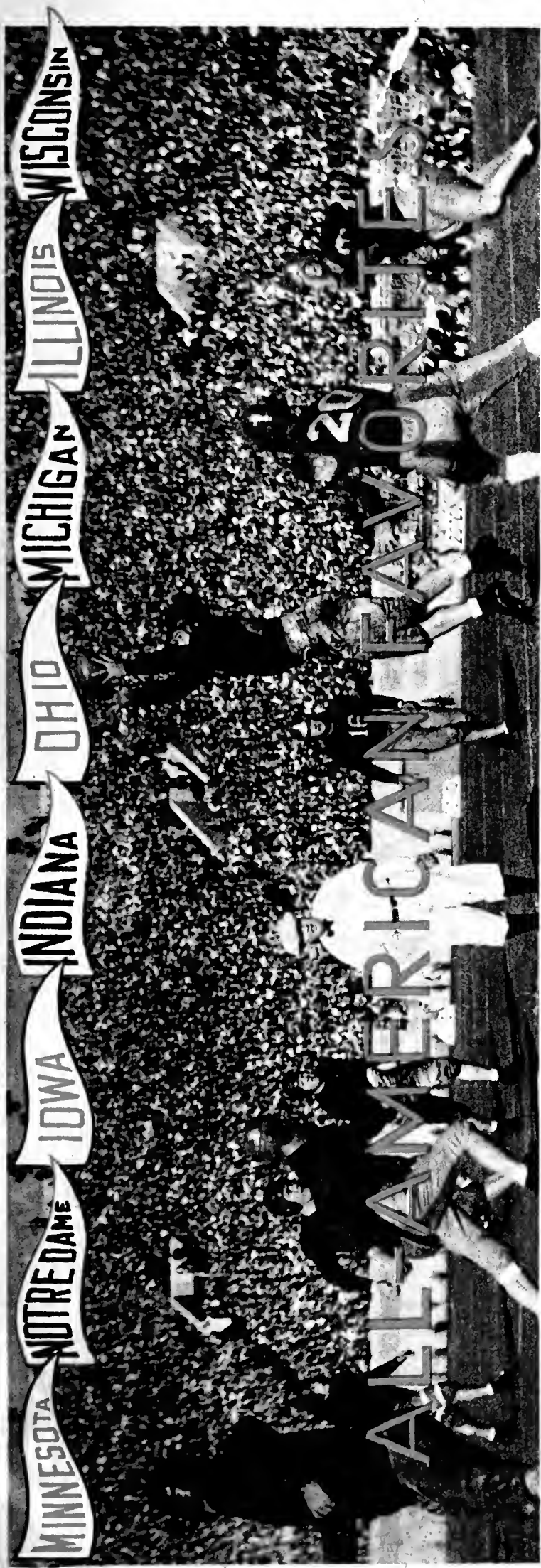
Imagine, if you can, a lawn so tough, so deep-rooted, so closely interwoven above and below ground, that it can withstand the trample of thousands of feet in a single afternoon—and yet spring back almost overnight and quickly regain all of its original freshness.

3 Salzer's GRIDIRON GRASS provides a matted turf of unmatched toughness. You may plant it early—immediately after spring frosts—and it will be ready for mowing in four to six weeks, or as soon as other standing lawns are ready.

4 Use it for curb parkways, lawn "corners," or other plots which suffer from constant and heavy foot traffic. Ideal for athletic fields, playground borders, and public parks where deep, dense interwoven root-growth is necessary.

5 Not an ounce of timothy is included in Salzer's GRIDIRON GRASS Mixture. Only our own specially balanced combination of finest, re-cleaned and re-selected lawn grasses are used. Varieties noted for their hardiness, persistent growth, adaptability to a variety of soils, and of drought-resistant character are blended into this new and amazing mixture. You will also be proud of the velvety rich even greenness of Salzer's GRIDIRON GRASS all through its extremely long season. The grasses in this mixture produce uniformly fine short leaves, and in thick abundance. Never will you regret your selection of this new-found wonder combination as the foundation for all of your lawn building. It is quickly a delight to the eye; forever, it will be a relief to the pocketbook.

6 Sow Salzer's GRIDIRON GRASS at the rate of one pound to every 150 square feet. 4533—½ lb., 30c; lb., 50c; 2 lbs., 98c; 5 lbs., \$2.40, postpaid. Not prepaid: 10 lbs., \$4.40; 50 lbs., \$21.75; 100 lbs., \$43.00.



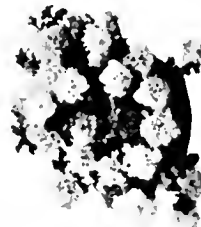
ALL-AMERICAN FAVORITES

WIN WITH THESE CHAMPIONS IN YOUR GARDEN

ALL-AMERICAN VEGETABLES

FLOWERS
 The 1934 All American Flowers were obtained by different seedsmen growing the new strains and new varieties of flowers and casting their votes at one central office for their favorites. You will like these All American selections!

- ASTER**, Los Angeles. Award of Merit. Massive pure shell pink asters, deep and full centered, early. **1729—Pkt.**, 25c; 2 pkts., 40c.
- CALENDULA**, Chrysantha or Sunshine. Gold Medal. Buttercup yellow flowers, wide petals loosely arranged, somewhat like a 'Mum'. **1804—Pkt.**, 25c; 2 pkts., 40c.
- CANTERBURY BELL**, Liberty Bell. Award of Merit. Dark violet blue annual flowers, blooming the same year from seed. **1783—Pkt.**, 25c; 2 pkts., 40c.
- HUNNEMANIA**, Sunlight. Award of Merit. A clear canary yellow "Tulip Poppy," with some semi-double flowers. **2040—Pkt.**, 25c; 2 pkts., 40c.
- LINARIA**, Fairy Bouquet. Gold Medal. Plants 8 in. tall, choice extra large flowers, mixed colors, resembling miniature snapdragons. **2113—Pkt.**, 25c.
- MARIGOLD**, Dwarf Monarch. Award of Merit. Compact double flowers, plants 1 foot high, many colors mixed. **2142—Pkt.**, 25c; 2 pkts., 40c.
- PETUNIA**, Maximum Double Fringed. Award of Merit. Large, double petunias in a striking array of colors, all mixed. Flowers often 5 inches across. **2309—Pkt.**, 50c; 2 pkts., 85c.
- VERBENA DANNEBROG**. Award of Merit. A Danish variety, hybrid flowers intensely scarlet with large white eye. **2547—Pkt.**, 35c; 2 pkts., 60c.



Petunia
 M. Dbl. Fringed

ASGROW WONDER BEET. Gold Medal. Deep red, large, semi-flat beets, dark red flesh smooth and fine grained. **185—Pkg.**, 15c; oz., 25c; ¼ lb., 75c.

PERFECTED DETROIT BEET. Award of Merit. Judges considered it the finest strain of early blood turnip beet yet created. Early, round, dark red beets. **186—Pkg.**, 15c; oz., 25c; ¼ lb., 75c.

MORSE'S BUNCHING CARROT. Gold Medal. A cylindrical, half-long, fine grained carrot, excellent for market but also fine for the home garden. **311—Pkg.**, 15c; oz., 30c; ¼ lb., 90c.

PENN STATE BALLHEAD CABBAGE. Award of Merit. Hard and heavy heads of flattened globe shape; outyields many late cabbages. **263—Pkg.**, 15c; oz., 35c; ¼ lb., \$1.00.

THE BARTELDES CUCUMBER. Award of Merit. Dark green fruits ten inches long, smooth, and retain their color well. **475—Pkg.**, 15c; oz., 25c; ¼ lb., 75c.

ENDIVE, Batavian Full Heart. Award of Merit. A new endive with a larger, more tender and better quality heart. **503—Pkg.**, 15c; oz., 25c; ¼ lb., 60c.

PERLESS PARSLEY. Award of Merit. Very dark green, finely curled leaves, holds its color well throughout winter. **821—Pkg.**, 15c; oz., 25c; ¼ lb., 79c.



Radish
 Glowing Ball

One Package Each of Above 8 Vegetables, for \$1.00; One Oz. Each for \$1.70

One Packet Each of Above 8 Flowers, for \$1.95; 2 Packets Each, for \$3.50



Rose Marie Morning Glory

SALZER'S ROSE MARIE MORNING GLORY

A lovely new Morning Glory, bearing several crops of flowers each season and so always in bloom. The vines are covered with showy double and semi-double deep rose flowers, presenting a striking effect. Elegant for trellises, fences, etc. 2169—Pkt., 15c; 2 pkts., 25c; 1/2 oz., 75c. Plants: 3 for 50c; 6 for 90c.



Double Golden Gleam Nasturtium

GOLDEN GLEAM NASTURTIUM is the lovely double and semi-double, golden yellow Nasturtium that is winning so many prizes. Flowers are very large and freely borne. Easily grown. 2227—

Pkt., 15c; 2 pkts., 25c; 1/2 oz., \$1.00.
Plants: 3 for 50c;
6 for 85c.



One Packet
Each of These
3 Flowers, for
50c, Postpaid



Scabiosa Flowered Zinnia

SCABIOSA FLOWERED ZINNIA

A charming new Zinnia that is different! The flowers consist of an outer ring of brilliantly colored petals surrounding a crested, Scabiosa-like center, creating a lovely effect. Mixed colors only. 2722—Pkt., 35c; 2 pkts., 60c; 1/2 oz., \$1.25. Plants: 3 for 50c; 6 for 90c.

Let
Salzer's Northern
Grown Seeds
Give You
a Better
Garden This
Year!

FAIRYLAND FLOWERS and VITALITY VEGETABLES for the garden

Sec. 562, P.L. & R.

U. S. Postage
Paid
LA CROSSE, WIS.
Permit No. 7

From the
JOHN A. SALZER SEED CO.
LA CROSSE, WIS.

M..... *W. N. Shoemaker (Horticulturist)*
P. O. *Washington*
STATE .. *D. C.* (*U. S. Dept. of Agriculture*)

POSTMASTER: If addressee has moved, hold this matter and use **Form 3574** to notify sender, stating forwarding postage required, which sender will promptly furnish. If unable to forward, return to sender. All postage guaranteed.