

## **Historic, Archive Document**

Do not assume content reflects current scientific knowledge, policies, or practices.



62.61

1934

U.S. DEPT. OF AGRICULTURE  
BUREAU OF PLANT INDUSTRY  
WASHINGTON, D. C.

# BEAUTY *from* BULBS



Lilium Regale in the Garden of One of Our Clients

## JOHN SCHEEPERS, INC.

*Flower Bulb Specialists*

EXECUTIVE OFFICES:

522 FIFTH AVENUE  
(GUARANTY TRUST CO. AT 44TH ST.)  
NEW YORK

EXHIBITION GARDENS AT "PARADISE," BROOKVILLE, LONG ISLAND, N. Y.  
(On the Northern Boulevard, midway between Roslyn  
and East Norwich, 23 miles from New York)

Admission cards issued to garden lovers and their friends upon request.

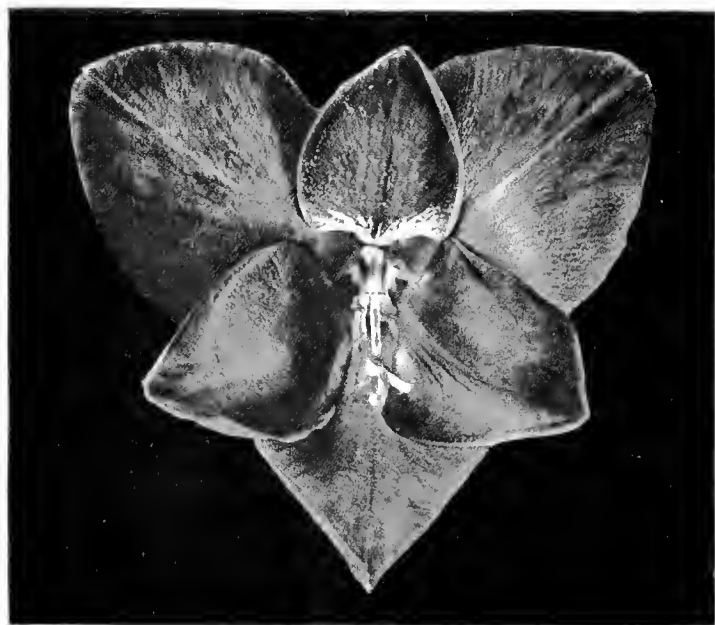
*Numerous Gold Medals and other Highest Awards  
for Excellence of Material and for Merit, including  
the President Coolidge Gold Medal for Highest Achieve-  
ment, The Gold Medal Awarded us by Her Majesty,  
Queen Wilhelmina of The Netherlands and the Gold  
Medal of the Garden Club of America*



\$0.90 for 10      Mrs. H. E. Bothin      \$6.50 per 100



\$1.05 for 10      Prince of India      \$8.50 per 100



\$0.85 for 10      Persia      \$6.00 per 100

## THE GLADIOLUS

It is with great pleasure that I present the finer varieties of Gladioli of both American and foreign origin.

During their flowering season I spent many hours in the garden as well as in the exhibition rooms selecting the varieties worthy of inclusion in this list.

I believe the collection presented here to be the best in the Gladiolus world today.

JOHN T. SCHEEPERS.



\$1.75 for 10      Commander Koehl      \$15.00 per 100



\$4.25 for 10      Red Phipps      \$40.00 per 100







\$1.15 for 10 Idamae \$9.00 per 100



\$0.80 for 10 Annie Laurie \$5.50 per 100



\$1.00 for 10 Mrs. Van Konyenburg \$7.50 per 100



\$1.00 for 10 Minuet \$7.50 per 100



\$0.70 for 10 Golden Measure \$4.50 per 100



\$1.15 for 10 Veilchenblau \$9.00 per 100



\$0.75 for 10 Mrs. F. C. Peters \$5.00 per 100



\$0.90 for 10 Longfellow \$6.50 per 100



\$1.05 for 10 Muriel \$8.00 per 100



\$0.75 for 10 Orange Queen \$5.00 per 100

**OFFER NUMBER ONE**  
*Our Exhibition Collection*

ALBATROSS	MARMORA
BAGDAD	MRS. S. A. ERREY
CANBERRA	PELEGRINA
COMMANDEUR KOCH	RED PHOENIX
JANE ADDAMS	SALBACH'S PINK
MAMMOTH WHITE	SCHWABENGIRL

These 12 very beautiful varieties, each an Exhibition Gladiolus, 10 bulbs of each, separately packed and labeled, planting instructions included. Total 120 HIGHEST QUALITY BULBS

Regular list price	\$33.65
Special price	\$30.00

**OFFER NUMBER TWO**

Same as Offer Number One, only half the quantity, varieties as listed, 5 bulbs of each—Total 60 HIGHEST QUALITY BULBS.

Regular price list	\$17.83
Special price	\$15.50



\$1.75 for 10 Albatross \$15.00 per 100

**ALBATROSS**

Unquestionably one of the finest pure white Gladioli. The flowers are large, of fine substance, and carried in perfect placement on a strong, sturdy spike.

**MAMMOTH WHITE**

As its name implies, this is one of the largest flowered Gladioli; the blossoms often measure 7 inches in diameter and are carried on tall, straight spikes. The pure white florets are well placed with many open at one time.



\$2.75 for 10 Mammoth White \$25.00 per 100

**OFFER NUMBER THREE**  
*Our Distinctive Collection*

CANBERRA	VEILCHENBLAU
PHENOMENON	LONGFELLOW
MARMORA	MURIEL
MRS. VAN KONYENBURG	PINKET DE INDIA
THE ORCHID	PERSEUS

These 10 very beautiful varieties, each very distinctive and choice, 10 bulbs of each, separately packed and labeled, planting instructions included. Total, 100 HIGHEST QUALITY BULBS.

Regular list price	\$12.45
Special price	\$9.00

**OFFER NUMBER FOUR**

Same as Offer Number Three, one-half the quantity, varieties as listed, 5 bulbs of each. Total, 50 HIGHEST QUALITY BULBS.

Regular list price	\$6.23
Special price	\$4.75

**OFFER NUMBER FIVE — Our Rainbow Collection**

ASSIE LAURIE	MURIEL	MRS. H. E. BOTTEN
IDAMAIE	PERSEUS	ORANGE QUEEN
MRS. F. C. PETERS	GOLDEN MEASURE	SUNNYMIDE
	LONGFELLOW	

These 10 beautiful varieties, 10 bulbs of each—Total 100 HIGHEST QUALITY BULBS.

Regular list price	\$8.65
Special price	\$6.00

**OFFER NUMBER SIX**

Same as Offer Number Five, one-half the quantity, varieties as listed, 5 bulbs of each. Total, 50 HIGHEST QUALITY BULBS.

Regular list price	\$4.33
Special price	\$3.25



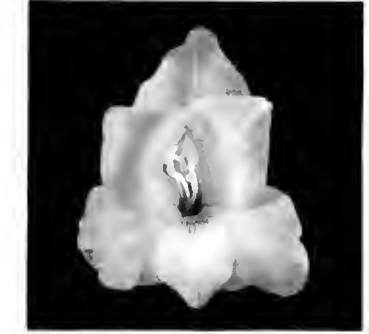
\$1.25 for 10 Jane Addams \$10.00 per 100



\$2.00 for 10 Salbach's Pink \$17.50 per 100



\$1.25 for 10 Mrs. S. A. Errey \$10.00 per 100



\$4.75 for 10 Schwabengirl \$45.00 per 100



\$7.75 for 10 Pelegrina \$75.00 per 100



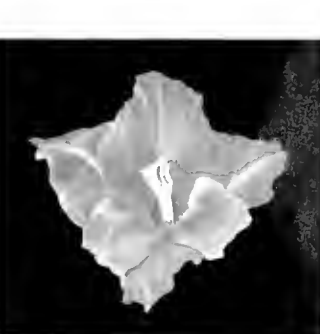
\$4.25 for 10 Bagdad \$40.00 per 100



\$2.75 for 10 Canberra \$25.00 per 100



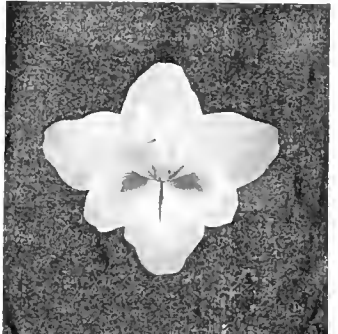
\$1.10 for 10 Marmora \$8.50 per 100



\$1.10 for 10 Phenomenon \$8.50 per 100



\$1.20 for 10 The Orchid \$9.50 per 100



\$0.80 for 10 Sunnymide \$5.50 per 100



# MONTBRETIAS



Montbretia "His Majesty"

## EARLHAM, LARGE-FLOWERED HYBRID MONTBRETIAS

**GOLDFINCH.** This variety produces a branching head of flowers of good size, bright yellow with small maroon blotches at center, edge of petals heavily shaded brilliant cherry-scarlet; very decorative. 10 corms, \$1.75; 100 corms, \$15.

**HIS MAJESTY.** Widely expanded flowers remarkable for their great size, are of a pronounced rich yellow in the center, shading to brilliant scarlet, with three segments heavily colored towards their tips with a rich crimson. The last word in Montbretias. First Class Certificate. 10 corms, \$2.25; 100 corms, \$20.

**JAMES COEY.** Flowers very large and open, of perfect form, with smooth, broad petals, rich, deep vermilion-scarlet with golden-orange luster, center yellow with crimson blotches, very handsome; height 3½ feet. 10 corms, \$2.75; 100 corms, \$25.

**JOAN OF ARC.** Flowers very large, broad-petaled and smooth, glowing deep golden color, with slight crimson markings in center, reverse of petals flushed orange. Height 3 feet. 10 corms, \$3.25; 100 corms, \$30.

**MARJORIE.** Large open flowers, orange yellow, crimson center, a beautiful flower, perfectly flat when fully open. Height 3 feet. 10 corms, \$1.50; 100 corms, \$12.50.

Montbretias are graceful, sparkling flowers of the Mid-summer and Autumn, reflecting the colors of the advancing season and lending a charming gaiety and lightness to the borders.

For the best effect the bulbs, more correctly called "corms," should be set only a few inches apart, and in groups of not less than ten, toward the front of herbaceous borders or shrubbery. Thus planted the sheaves of narrow leaves and slender, wiry arching stems strung with brilliant flowers, like miniature Gladioli, have the appearance of little fountains of bright color—rose, scarlet, yellow, orange, red, often marked with brown.

They will flower for many weeks (from August into late October) and a border where blue and white flowers predominate set at intervals with such gay patches of color, is delightful indeed.

Their long lasting qualities make Montbretias most admirable for cutting, so that it is well to have a few hundred bulbs set out in some by-place where the graceful stems may be copiously cut for house and piazza decoration.

These bulbs may with entire safety be left in the open ground over the Winter, and merely covered with a light mulch. They may be set out in the Spring as early as Gladioli, but planted more shallow; 3 inches deep will give the best results.

Montbretias should be given the same spraying treatment in the field as is recommended for Gladiolus.

For best results use "Scheepers' Bulb Food."



Montbretia "Hereward"



# MONTBRETIAS



Montbretia "Nimbus"

**NIMBUS.** One of the most distinct in its class. Flowers golden with a distinct crimson ring around the base. 10 corms, \$1.50; 100 corms, \$12.50.

**POCAHONTAS.** Rich coppery-scarlet, with golden luster. Center orange with small blood-crimson blotches; flowers large and very attractive; height 3 feet. 10 corms, \$1.75; 100 corms, \$15.

**PRINCESS.** Brilliant ruby-scarlet flowers of fair size, yellow center with small crimson blotches; very effective. Height 2½ feet. 10 corms, \$1.50; 100 corms, \$12.50.

**PRINCESS MARY.** A very beautifully shaped flower, pale yellow petals with red tips, and three of the petals bright crimson on reverse side. \$2.25 for 10, \$20 per 100.

**QUEEN ALEXANDRA.** Flowers large and beautiful, chrome-yellow with carmine blotch at base of petals; late flowering; height 3½ feet. Award of Merit. 10 corms, \$1.50; 100 corms, \$12.50.

**QUEEN ELIZABETH.** Brilliant shade of coppery-red, paler in center. A very large flower with broad, round petals. \$4.25 for 10, \$40 per 100.

**UNA.** Flowers rich apricot with carmine blotch, well shaped, of good substance. Height 2½ feet. 10 corms, \$1.50; 100 corms, \$12.50.

## MIXED MONTBRETIAS

To encourage the home gardener to use more of these beautiful garden subjects we have prepared two superfine mixtures.

**GENERAL MIXTURE.** A mixture of fine Montbretias, carefully graded. 100 corms for \$6; \$55 per 1000.

**EARLHAM HYBRIDS MIXTURE.** A general mixture of the fine Earham Hybrid Montbretias, carefully graded. 100 corms for \$10; \$95 per 1000.

## DAVISON, LARGE FLOWERED MONTBRETIAS

**GEORGE DAVISON.** Pale orange yellow, tinted with deeper orange on the outer edges. Award of Merit. Very large flowers on 3-foot stems. 10 corms, \$1; 100 corms, \$7.50.

**HEREWARD.** Pale orange-yellow, resembling the George Davison variety but blooming nearly one month later. The flowers have the shape of Martagon Lilies. 10 corms, \$1; 100 corms, \$7.50.

**KING EDMUND.** Rich golden-yellow, deeper externally and chocolate spotted at the throat. A sturdy, vigorous plant, flowers opening quite flat. 10 corms, \$1; 100 corms, \$7.50.

**LADY HAMILTON.** Yellow, shading into a richer color until it becomes apricot. The flowers are more trumpet shaped than other varieties and peculiarly graceful. 10 corms, \$1.25; 100 corms, \$10.

**LORD NELSON.** Richest in color, purple stems and crimson-scarlet flowers of fine substance, size and finish; 3 feet. 10 corms, \$1.25; 100 corms, \$10.

**STAR OF THE EAST.** First Class Certificate; Award of Merit. One of the finest Montbretias ever raised; flowers pale orange yellow, with lemon-yellow eye, expanding quite flat and held erect. The flowers are much larger than any other variety in this class, best blooms measuring 5 inches in diameter. The size, vigor, color and habit are magnificent and unequalled. 10 corms, \$4; 100 corms, \$32.50.



Montbretia "Star of the East"

# MISCELLANEOUS BULBS

## ENGLISH Tuberous Rooted BEGONIAS

Our Begonias have been carefully selected at flowering time. They can be supplied in separate colors or mixed and are well adapted for either pot culture or bedding.

**SUPERB SELECTED SINGLE BEGONIAS.** Colors, white, pink, rose, scarlet, yellow, orange and salmon. Extra selected tubers, \$3.25 for 10, \$30 per 100.

**SUPERB SELECTED DOUBLE BEGONIAS.** Colors, white, pink, rose, scarlet, yellow, orange and salmon. Extra selected tubers, \$3.50 for 10, \$32.50 per 100.

• • •

## GALTONIA CANDICANS (*Hyacinthus candicans*)

The Cape Hyacinth is a valuable Summer flowering bulb with long, slender leaves and a candelabra-like arrangement of thirty or so pure white, bell-shaped blossoms borne on a scape from 3 to 4 feet tall. Distributed about the borders in groups or massed against shrubbery they are very effective, giving lines of definition and strength to the riotous growth of summer flowers. Planted with Gladioli they form an elegant contrast. They continue to bloom a long time.

In every way they may be treated like Gladioli, but south of Philadelphia the bulbs may be left out of doors over the winter with a light covering and will increase and give better results every year. Extra selected bulbs, \$1.45 for 10, \$12 per 100.

• • •

## TIGRIDIA

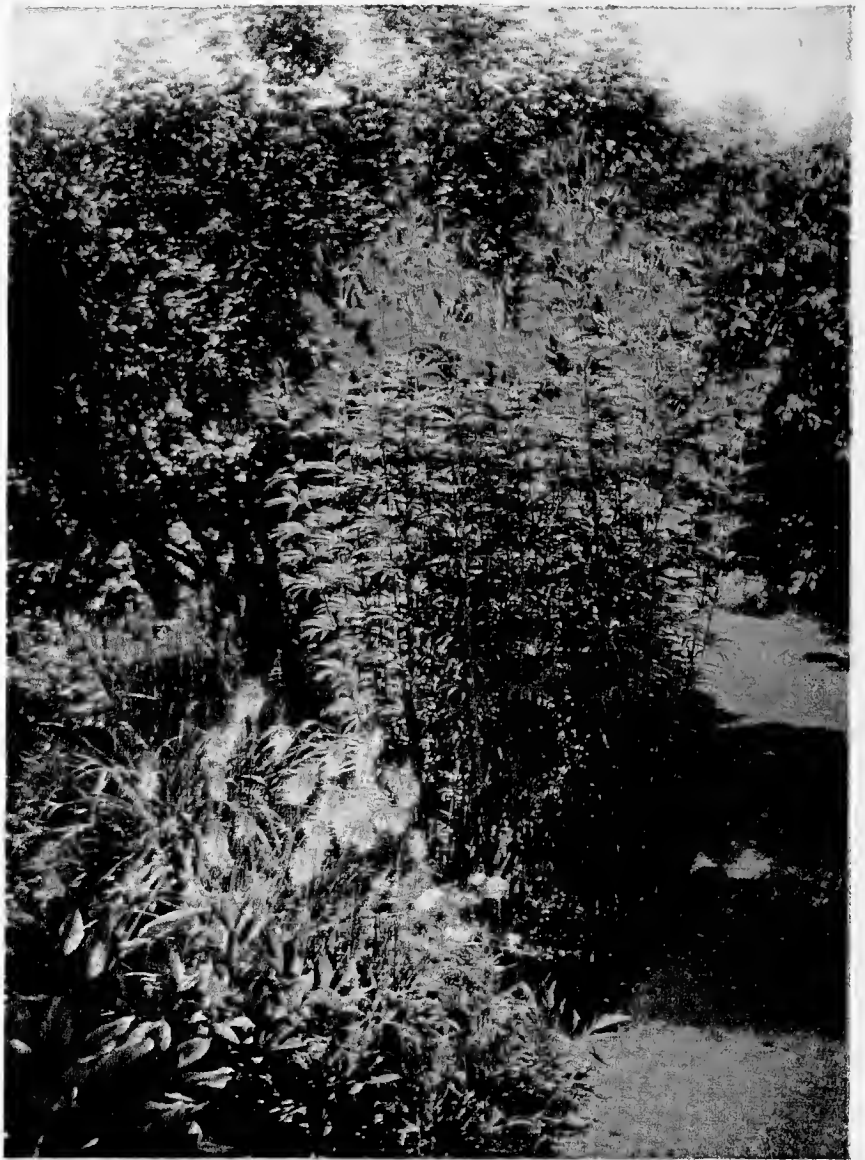
Known also as the "Tiger" or "Shellflower," few garden or conservatory plants can compare with them for brilliancy. Colors vary from yellow and white to brilliant scarlet, all being deeply blotched and speckled with crimson and maroon; height from 15 to 18 inches. Clumps of them planted in the borders are gorgeous. Bulbs should be lifted in early fall after the first frost and stored in a root cellar covered with sand.

**PAVONIA CANARIENSIS.** Light yellow with scarlet spots. \$4.50 for 10, \$42.50 per 100.

**PAVONIA ROSEA.** Rose with white spots. \$6.50 for 10, \$62.50 per 100.

**PAVONIA SPECIOSA.** Scarlet with yellow spots. \$4.50 for 10, \$42.50 per 100.

**PAVONIA HYBRIDS MIXED.** A selected mixture of all colors. \$2.75 for 10, \$25 per 100.



Tritoma Rufa with Lilium Superbum

## TRITOMA

**TRITOMA RUFA.** A very dainty yellow flower, sometimes shaded salmon. A constant bloomer from June until frost. I consider this one of the most valuable plants in the garden. It lights up the perennial border with its 3 feet high, artistically formed, airy, dainty, light yellow flowers, appearing again and again from summer until late fall. I do not see how any garden can be complete without it. Very fine for cutting. \$3.25 for 10, \$30 per 100.

**TRITOMA HYBRIDS.** A new strain of hybrids, ranging from straw white through various yellow and orange shades. They bloom continuously from early summer until frost. \$3.75 for 10, \$35 per 100.

• • •

## TUBEROSES

**DOUBLE PEARL.** Extra large bulbs, size 8 inches. \$1.75 for 10, \$15 per 100.

**MEXICAN SINGLE EVERBLOOMING.** Flowers from July until late fall. \$1.50 for 10, \$12 per 100.



## *Gladiolus Picardy*

*\$3.00 for 10*

*\$27.50 per 100*

### THE SUPREME GLADIOLUS

In the opinion of our Mr. John T. Scheepers, the finest of the recent introductions, really a masterpiece. Introduced in 1931 at \$10 each; sold last year at \$2.50 each.



THIS GLADIOLUS  
BELONGS IN EVERY  
GARDEN



---

# SCHEEPERS' BULB FOOD

WE have been asked by many friends who visited our display gardens at Brookville, Long Island, to tell them what sort of plant food we use in growing our choice bulbs. We told them we had a special formula that gave health and long life to these plants. A few prevailed upon us to make up a quantity and let them try it in their own gardens. We did.

The extraordinary success that these gardeners met with and the enthusiasm resulting from it, have encouraged us to offer all our friends and patrons a chance to use the very same plant food in their attempts at getting healthy, luxuriant flowers with strong stems and exquisite colorings.

And so we present this opportunity for you to order some of SCHEEPERS' BULB FOOD and we recommend that you try it with your next planting. It is almost entirely composed of organic matter and may be used with absolute safety in connection with the planting of bulbs at any time, in any soil or with any other plants. It is also economical—as a teaspoonful for each bulb is the average requirement.

We are sure that if you take advantage of this offer you will find it a very happy investment.



## PRICES

7½-lb. can (good for approximately 375 bulbs) \$1.25 each  
25 -lb. bag (good for approximately 1250 bulbs) 2.50 each  
100 -lb. bag (good for approximately 5000 bulbs) 8.00 each

JOHN SCHEEPERS, INC.

*Specialists in highest quality flower bulbs*

522 FIFTH AVENUE, NEW YORK, N. Y.

---





*Lilium Sulphureum* (Wallichianum, Var. Superbum)

**SULPHUREUM** (*Wallichianum var. Superbum*). A magnificent Lily from upper Burma, very amenable to cultivation. With ordinary care and attention it will flower year after year. In our northern sections it had better be grown in deep pots, where it will attain a height of 6 feet and more, plunging the pots out of doors or in frames for blooming in late Summer and Autumn. The trumpet-shaped flowers, 9 inches long, of great substance and deliciously fragrant, are creamy white with a flushed rose tinge on the outside; the interior is suffused with rich yellow. It seems difficult to convey a suggestion as to the beauty and delicacy of this rare and beautiful Lily. The latest to flower outside, often later than September. Stem roots. Extra selected bulbs, \$2.25 each, \$20 for 10. A smaller, high quality bulb, \$1.25 each, \$11 for 10, \$100 per 100.

**TIGRINUM SPLENDENS**. The finest form of Tiger Lily with the richest color. The large, shapely flowers are of a rich dark salmon-orange spotted with glossy black. This Lily is very robust in habit and of easy culture. Late Fall or early Spring planting, 10 inches deep. August-September flowering. Extra selected bulbs, \$4 for 10, \$35 per 100. A smaller, good flowering bulb, \$3 for 10, \$25 per 100. Every year we receive a limited number of exceedingly large specimen bulbs. We offer them at \$15 per case of 25, \$28 per case of 50, \$55 per case of 100.

**HENRY** (*The Yellow Speciosum Lily*). One of the best border Lilies, bearing more than 20 flowers of a rich, deep, orange-yellow. An invaluable garden plant, vigorous in its growth, failing but very seldom. Special Stock, \$8 for 10, \$75 per 100. Selected, high quality bulbs, \$4 for 10, \$35 per 100.

## DELPHINIUM BELLADONNA

(Pflizer's Improved Strain)

The flowers of this hardy Larkspur are poised like a sky blue butterfly on a slender, stiff stem away from the main stalk. They are of an exquisite, heavenly, turquoise blue.

The habit of growth of this plant is very graceful. Planted with Lilies such as the Madonna Lilies, or in front of the much taller and formal Delphinium Hybrids, they create a most lovely effect.

One of our best blue cut flowers, perfectly hardy, and established plants produce a number of spikes, giving three crops during the season. The true, unmixed variety. Extra heavy clumps, \$3 for 10, \$27.50 per 100.

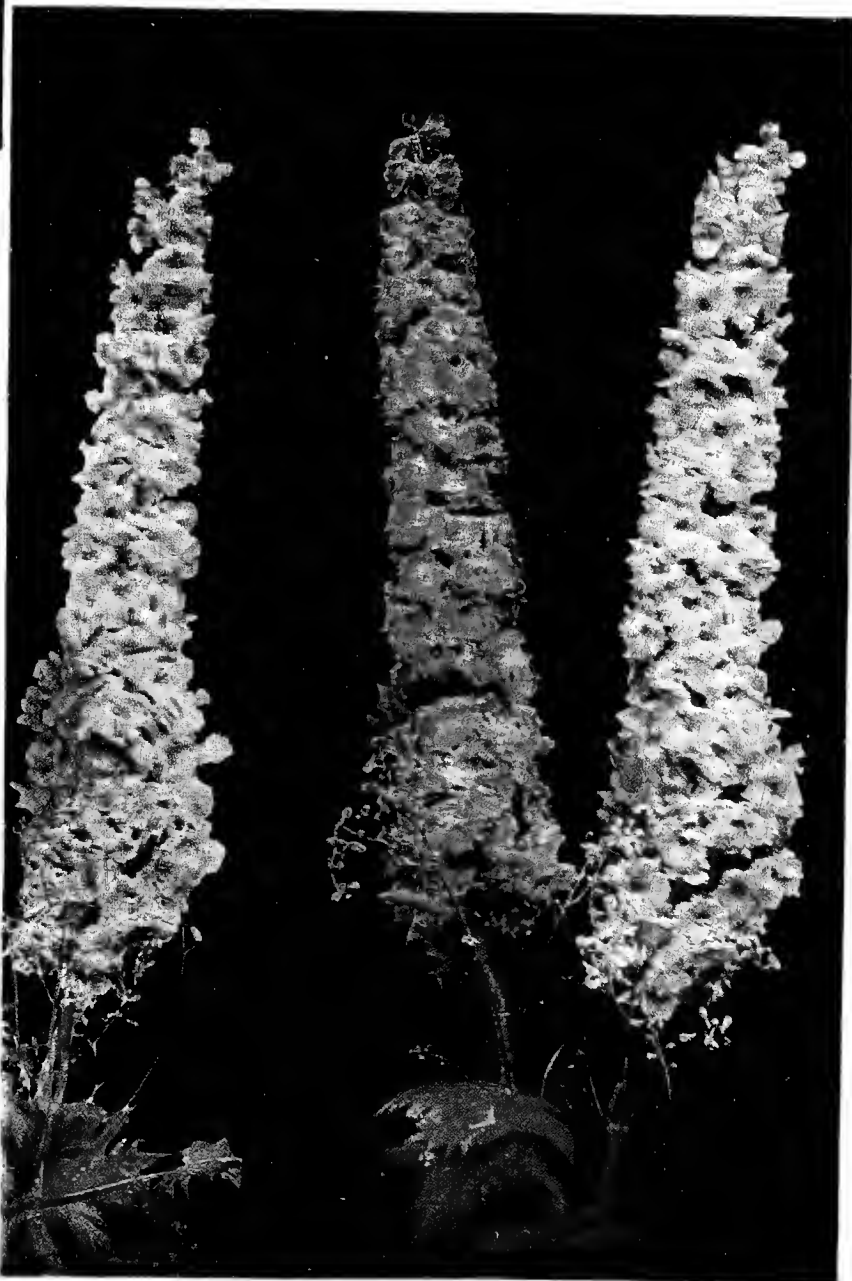
## DELPHINIUM HYBRIDS

CHOICEST SEEDLINGS FROM MR. WATKIN SAMUEL'S FAMOUS "WREXHAM" OR OFTEN CALLED "HOLLYHOCK" DELPHINIUMS

WATKIN SAMUEL SELECTED VARIETIES. Strong, field-growth clumps. \$7.50 for 10, \$72.50 per 100

During the flowering season these wonderful Watkin Samuel "Wrexham" Delphinium Hybrids may be seen in their full magnificence in our display gardens in Brookville, Long Island, where selections of individual varieties may be made.

Our Delphiniums were again recognized during the past season at two important Summer Shows where they were awarded Gold Medals.



"Wrexham" or "Hollyhock-Flowered" Delphiniums