

Historic, archived document

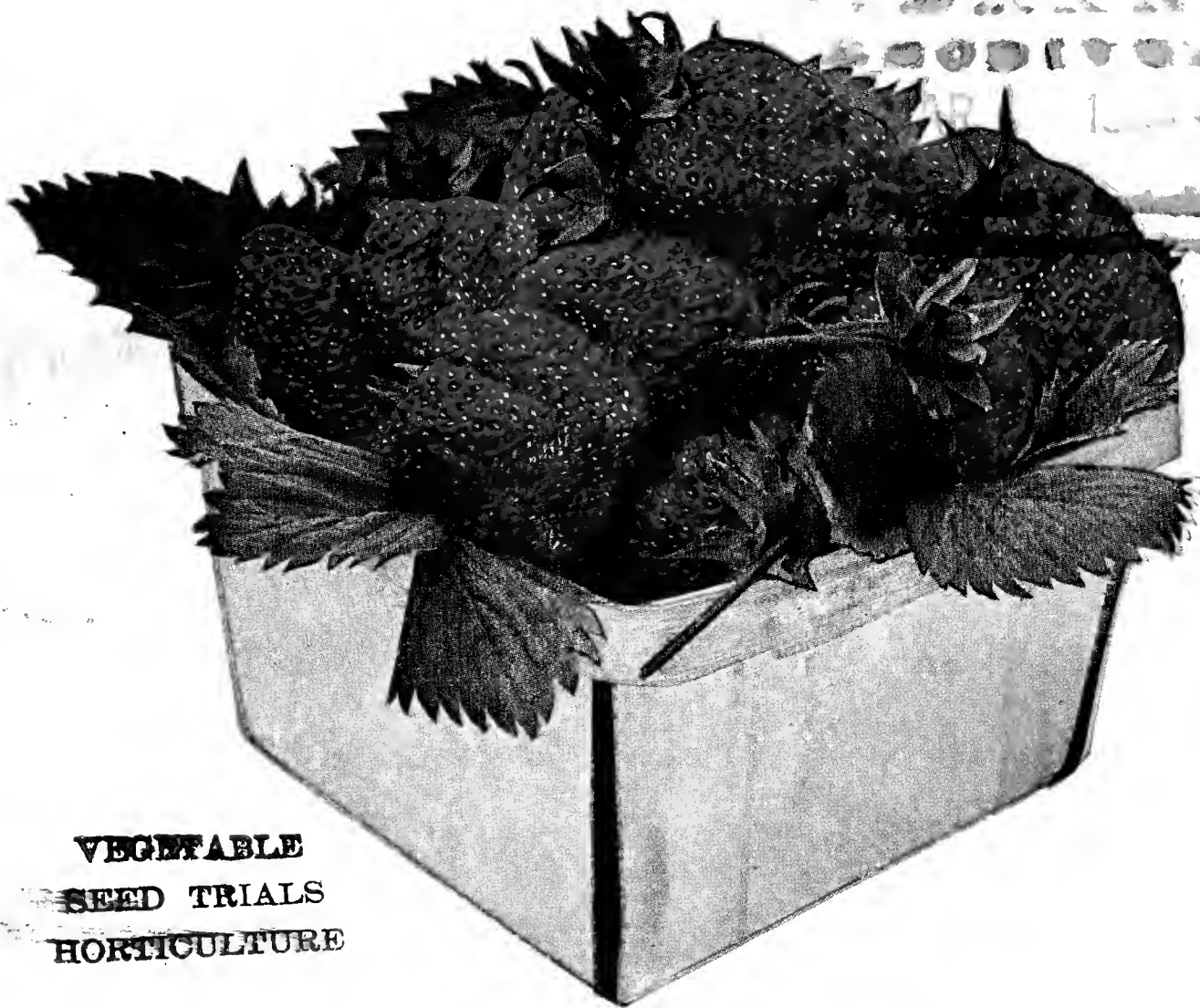
Do not assume content reflects current scientific knowledge, policies, or practices.

62, 61

Annual Catalog

STERLING

1873 - 1934



VEGETABLE
SEED TRIALS
HORTICULTURE

STERLING'S STRAWBERRY COLLECTION *for 1934*

- 100 *Dorsett*. The new quality berry.
- 100 *Fairfax*. New. Large, extra quality.
- 100 *Blakemore*. Extra early. Prolific.
- 100 *Belmar*. Heavy yielding. Earliest.

Sent anywhere on Long Island, postage paid, for \$4.00.
Half of the above quantities for \$2.15, Postpaid.

RALPH W. STERLING

CUTCHOGUE

LONG ISLAND

Suffolk County

NEW YORK

TEL. PECONIC 55

Cutchogue, L. I., N. Y.

January 31, 1934

TO MY FRIENDS AND CUSTOMERS:

Please accept this, my catalog for season of 1934, with my best wishes for the New Year and with thanks for your much appreciated patronage of last year.

We appreciate your confidence in us in the past and assure you that we will do everything possible to deserve it in the future. Wishing you and yours a Happy, Prosperous and Successful Year.

Yours sincerely,
RALPH W. STERLING.

DIRECTIONS

By carefully reading and observing the following directions, mistakes will be largely avoided.

Please use the enclosed Order Sheet and self-addressed envelope if possible. If you need more let me know and I will be glad to send more to you.

Write your name, address and shipping directions plainly.

Always send the cash with your order, unless otherwise agreed upon. Money may be sent by P. O. Money Order, Bank Draft or Registered Letter. Stamps may be sent for amounts under \$1.00, but be sure to put in three-cent stamps, wrapped in waxed paper.

We pay the postage on all seeds sold by the pkt., oz., and $\frac{1}{4}$ lb. Quantities over that are priced net, to be shipped by Parcel Post, freight or express, at purchaser's expense, unless otherwise stated.

If you desire your seed sent by Parcel Post, add 8c for the first lb. and 1c for each additional lb. of your order, allowing 2 lbs. extra for package. For amount of postage on plants see Plant Department. These rates are for anywhere on Long Island.

By pricing my seeds net, postage extra, you get your seeds delivered for less money than if I quoted a Postpaid price as the 8c per lb. extra would have to be counted in and added to each single lb. priced.

$\frac{1}{2}$ lbs. will be sold at lb. rates; $\frac{1}{2}$ bu. at bushel rates.

No charge is made for packing or packages.

NOTE:—In all orders received before April 1st we include trial packets of different kinds of seed, the number of packets depending upon the size of your order. If you find any of these of particular value we would be pleased to hear of it.

If you cannot use this catalog or receive more than one will you kindly pass it on to someone interested. Thank you.

RALPH W. STERLING

TEL. 55 PECONIC

CUTCHOGUE, L. I., N. Y.

Amt. Enclosed \$..... Date.....

Name.....

Post Office.....

Rural Route No.....

Ship by.....
(Express or Mail)

County and State.....

Ship about.....
(Date to be shipped)

Town to Ship Express to.....

Amount	Cat. Number	DESCRIPTION	Dollars	Cents

Add Postage

May I substitute if out of any kinds ordered?

Amount	Cat. Number	DESCRIPTION	Dollars	Cents
		Amount Brought Forward		
		Add Postage		
		Total Amount		

If any of your friends or neighbors want one or more catalogs let me know. I will do the rest. TRUE TO NAME. While we use every precaution to have all plants, seeds, etc., true to name and of strong vitality, we will not be responsible for any sum greater than the cost of the order should any prove otherwise than as represented.

SEED DEPARTMENT

"Burpee's Seeds grow and are the best that grow." We carry Burpee's Garden and Flower Seeds and you can purchase them from us as reasonable as you can get them elsewhere.

"STERLING STRAIN"

Follow the mark of "Sterling". We are always looking for the best strains of seed and where we find a superior one we place the sign of "Sterling" on it thus [S]. All other seeds listed are direct from Burpee unless otherwise noted.

ASPARAGUS SEED

MARY WASHINGTON. Re-selected, Pedigreed Seed from the Pedigreed Seed Farm. The only kind of asparagus to raise. Blight proof, of highest quality and heaviest yield. Prof. Norton's very finest production in Asparagus Breeding. Pkt., 10c; 1 Oz., 40c; ¼ Lb., \$1.50; ½ Lb., \$2.90; Lb., \$5.50. Postpaid.

We have 15,000 or more Mary Washington, 1 year old roots, for sale this Spring, grown from this Re-selected Seed. Also some fine 2-year-old plants.

See page 42 for prices on Asparagus Roots.

BUSH BEANS — GREEN POD

2 lbs. makes 1 qt. 1 lb. will plant 100 feet or drill.
1 bu. will plant 1 acre in hills.

No.		Pkt. of Bu. of			
		Pkt.	Lb.	15 Lbs.	60 Lbs.
	BURPEE'S STRINGLESS GREEN POD	\$.10	\$.25	\$ 2.50	\$ 8.50
	TENDERGREEN, New Stringless Green Pod (S)10	.25	2.50	8.50
	BOUNTIFUL. Best for market (S).....	.10	.25	2.25	8.00
	BLACK VALENTINE. New, stringless.. Very productive. (S)10	.25	2.50	8.50
26	DWARF HORTICULTURAL. Best for succotash. Stringless10	.25	2.50	8.50
25	NEW ROBUST PEA BEAN. Fine for baking10	.20	2.00	
29	WHITE MARROFAT. Medium sized...	.10	.20	2.25	
28	RED KIDNEY. Very rich. For baking.	.10	.20	2.25	
	WHITE KIDNEY. Long beans. For baking10	.20	2.25	

BUSH BEANS — WAX POD

No.		Pkt. of Bu. of			
		Pkt.	Lb.	15 Lbs.	60 Lbs.
	BRITTLE WAX (S). Quality. Stringless	\$.10	\$.25	\$ 2.50	\$ 8.50
41	RUST PROOF GOLDEN WAX. Flat pods, tender, stringless. Early.....	.10	.25	2.50	8.50
	SURECROP STRINGLESS WAX (S). The best for market. Extra long, straight pods10	.25	2.50	8.50

All the above prices by the lb. are net, postage extra. See page 1 as to postal rates. Pkts. are postpaid. ½ lb. at lb. rates, ½ pk. at pk. rates, ½ bu. at bu. rates.

POLE BEANS

1 Lb. will plant 100 poles.

No.		Pkt.	Lb.
72	KENTUCKY WONDER or OLD HOMESTEAD. Long green pods. Extra quality.....	\$.10	\$.25
	ITALIAN HORTICULTURAL (S). Red pods. Fine.	.10	.25
79	GOLDEN CLUSTER WAX. Sweet, tasty.....	.10	.30

Use Magnesium Arsenate for Bean Beetle. 5 lbs. to 100 gals. water.
See page 46.

POLE LIMA BEANS

1 lb. will plant 50 poles.

No.		Pkt.	Lb.	2 Lbs.
95	BURPEE'S NEW SUNNYBROOK. Early.....	\$.10	\$.35	\$.65
96	EARLY LEVIATHAN. Earliest10	.30	.55
98	GIANT PODDED. Very large.....	.10	.35	.65

BUSH LIMA BEANS

We have always delivered 100 per cent on our orders for Fordhook Bush Limas. Order early and be sure of your Fordhooks. Prices quoted are net cash. Time price, \$1.00 per bu. extra. Price liable to change without notice.

1 lb. will plant 100 ft. in hills or 50 ft. in drill.

No.		Pkt.	Lb.	Pk. of 15 Lbs.	Bu. of 60 Lbs.
	FORDHOOKS (S). Best for table and market. Large, early. Fine stock.....	\$.10	\$.30	\$3.50	\$12.00
65	FORDHOOKS from Burpee, an extra choice strain from the originator15	.40	3.75	13.00
63	BURPEE IMPROVED (S). Flat, large DREER'S BUSH LIMA. Potato lima. Good for market. Late, prolific (S)....	.10	.30	3.50	12.00
68	WOOD'S PROLIFIC. Small, early10	.30	3.00	
	ENGLISH BROAD WINDSOR BEAN. Plant early. Improved Long Pod (S)..	.10	.25	3.00	10.00

BEETS — TABLE

	Pkt.	Oz.	¼ Lb.	Lb.
111 CROSBY EGYPTIAN. Earliest.....	\$.05	\$.15	\$.40	\$.90
128 BURPEE'S IMPROVED BLOOD. Sweet.	.05	.15	.40	.90
DARK RED EGYPTIAN (S). Extra dark.	.05	.15	.40	.90
EARLY WONDER (S). Earliest, fine quality, dark red05	.15	.40	.90
DETROIT DARK RED. 10 days later than Early Wonder05	.15	.40	.90
LUPTON'S PERFECTED DETROIT DARK RED (S). New. The darkest red beet grown. Early, round10	.20	.50	1.50
OHIO CANNER (S). Late, very dark red. The best canning beet. New10	.20	.50	1.50

BEETS — STOCK

1 oz. will sow 50 feet of drill.

	Oz.	¼ Lb.	Lb.
GIANT HALF SUGAR (S). Rose skinned	\$.10	\$.20	\$.50
GOLDEN TANKARD (S). Large, solid.....	.10	.20	.50
MAMMOTH PRIZE LONG RED (S). Largest, heaviest cropping mangel of all.....	.10	.20	.50

BROCCOLI

Hot Water Treated.

No.		Pkt.	Oz.	¼ Lb.
	ITALIAN GREEN SPROUTED (S). Does well in this section. Good yielder	\$.20	\$1.00	\$3.00
	ITALIAN GREEN SPROUTING. DiCicco Strain. Early heading. Sow March 1st in hot-bed. Harvest in June, July and August.....	.25	1.75	6.00
157	CALABRESE. From Burpee10	.40	1.25

BRUSSELS SPROUT SEED

Treated with Hot Water.

2 to 3 Oz. will produce enough plants for 1 Acre.

LESLIE STRAIN. Fine, hard sprouts, good color. One of the best strains developed on Long Island. 25c per Pkt. \$2.00 per Oz., postpaid.

BLUE RIBBON STRAIN. This seed is grown from stock selected by one of the most successful Brussels Sprout growers in this section. Plants are fairly tall. The sprouts are large, good color and hard. Very heavy yielding. 30c per Pkt., \$2.75 per Oz. postpaid.

CAULIFLOWER SEED

Treated with Hot Water.

2 to 3 Oz. will produce enough plants for 1 acre.

STERLING LARGE EARLY ERFURT. Large, white heads, heading up quite freely. One of the best strains for this section. New crop seed. It tests good and strong. Gave good results last year.

Per Pkt., 25c; 1 Oz., \$1.35; ¼ Lb., \$5.00; Lb., \$20.00, postpaid.

All Cauliflower Seed will be treated with the Hot Water treatment. Will have a large bed of Cauliflower, Brussels Sprouts and Cabbage Plants. Will be pleased to book your orders at any time. Prices always reasonable and ready to adjust them if changes occur.

Spray your Cauliflower and Brussels Sprout Plants with Black Leaf 40 or dust with Nicotine Dust. They control Thrip and Lice.

CABBAGE SEED — LONG ISLAND GROWN

1 Pkt. will produce 500 plants.

1 Oz. will produce from 2-3 thousand plants.

No.		Pkt.	Oz.	¼ Lb.
175	GOLDEN ACRE. New, earliest of all.....	\$.10	\$.30	\$1.00
	EXTRA EARLY JERSEY WAKEFIELD (S)	.10	.20	.70
	EARLY CHARLESTON WAKEFIELD (S)..	.10	.20	.70
178	COPENHAGEN MARKET. From Burpee.....	.10	.25	.90
	ALL SEASON (S). Large, second early.....	.10	.20	.70
	EARLY SUMMER (S). Large, flat heads. 2nd early10	.20	.70
	PREMIUM FLAT DUTCH (S). Large, late..	.10	.20	.70
	LARGE LATE DRUMHEAD (S). Standard late10	.20	.70
205	DANISH ROUND HEAD. Short stem. Hard...	.10	.25	.90
	SAVOY (S). Long Island Special. Large, solid.	.10	.25	.90
	RED (S). Sure heading, large10	.50	
212	PE TSAI. Long head, large Chinese. Choice....	.10	.20	.70
210	NEW JOY. New Small Chinese, for salads....	.10	.25	.90

My Cabbage Seed is treated with the Semi-San treatment to control Black Leg and Black Stem.

CORN — SWEET

1 Lb. will plant from 100-200 hills.

No.		Pkt.	Lb.	Pk. of 12 Lbs.
	SPANISH GOLD. (S) Earliest yellow, prolific.	\$.10	\$.25	\$2.50
336	"BURBANK" WORLD'S WONDER. 59 days. Burpee's earliest15	.50	4.75
	COLUMBIA. (S) New, large, white corn of excellent quality. Extra early10	.20	2.00
	GOLDEN SUNSHINE. (S) Extra early. Large ears10	.25	2.00
	GILL'S GOLDEN SIXTY-DAY MAKEGOOD. (S) Earliest large-eared yellow. Very sweet	.10	.25	2.00
301	GOLDEN BANTAM. From Burpee. Sweetest.	.10	.25	2.25
	GOLDEN BANTAM. (S) Choice strain Conn. grown10	.20	2.00
306	BURPEE. A new extra early Yellow, sweet....	.10	.25	2.50
	WHIPPLE'S EARLY YELLOW. (S) Large ears. Fine quality10	.20	2.00
310	HOWLING MOB. Burpee's best second early..	.10	.25	2.00
316	BURPEE'S DELICIOUS. Very sweet, second early10	.30	
	GOLDEN GIANT. (S) Cross of Golden Bantam and Howling Mob. Large ears10	.25	2.00
340	BLACK MEXICAN. Sweetest corn grown....	.10	.25	
	BANTAM EVERGREEN. (S) Yellow, large, late10	.20	2.00
333	WHITE EVERGREEN. Fine late10	.25	2.25
	STOWELL'S EVERGREEN. (S) Standard late	.10	.20	2.00
337	COUNTRY GENTLEMAN, or SHOE PEG. Quality10	.25	2.25
	PERDUE BANTAM. A new hybrid sweet corn of exceptional yield and quality.....	.15	.50	

Look the above over carefully. Every kind listed is fine for its kind and season. We have tried to list the kinds in order of maturing.

CORN — FIELD, POP AND FODDER

1 peck of Field Corn will plant 1 acre in hills 4 ft. x 4 ft.

1 Bushel of Fodder Corn will plant 1 acre in drills.

LUCE'S FAVORITE FIELD CORN. A yellow hybrid, makes a leafy stalk and a very fine large ear.

Shelled, per Lb., 10c; 10 Lbs., 65c; per bu. of 56 Lbs., \$2.50.

353 QUEEN'S GOLDEN POPCORN. Largest and best. Buy a lb. for popping. Per Pkt., 10c; per Lb., 25c.

355 WHITE RICE POPCORN. Bears 3 to 4 ears to stalk. Sure popper. Per Pkt., 10c; Lb., 25c.

SORGHUM or EARLY ORANGE SUGAR CANE. Succulent and sweet. Per Lb., 20c; per 10 Lbs., \$1.50.

SWEET CORN FOR FODDER (Stowell's Evergreen). Per 10 Lbs. at 15c; 100 Lbs. at 12c.

January 29, 1934.

I am writing you to see if I can get 3 Oz. of your Blue Ribbon Brussels Sprout seed, the same as I had last year. The people that saw my sprouts last year said they never saw such nice sprouts before. I spoke a good word for you and enclose names of people who would like your catalog.

WM. C. VALK,
Delaware Co., N. Y.

CARROT SEED

1 Oz. will sow 200 ft. of drill.
2 Lbs. to the acre.

No.		Pkt.	Oz.	¼ Lb.	Lb.
218	AMSTERDAM FORCING. Early, small...	\$.05	\$.15	\$.50	\$1.40
232	TENDERSWEET. Burpee's newest and best. 8 inches long. Tender and sweet.....	.10	.25	.75	2.25
221	CHANTENAY. Fine quality05	.15	.45	1.10
222	TOUCHON. New. Said to be the best in quality. 6 inches long, 1½ inches thick.	.10	.20	.60	1.40
226	HALF LONG NANTES. Coreless, fine...	.05	.15	.50	1.25
	DANVERS HALF LONG. (S) Main crop	.05	.15	.40	1.00
	RED CORED CHANTENAY. (S) Market gardeners' favorite05	.15	.40	1.00

CELERY SEED

No.		Pkt.	Oz.	¼ Lb.
266	WHITE PLUME. Earliest, self blanching.....	\$.10	\$.30	\$.90
272	FORDHOOK. Burpee's Best. Dwarf, crisp.....	.20	.90	2.75
262	GOLDEN SELF BLANCHING. French grown. Early20	.90	
268	GOLDEN PLUME. Fine for Fall or Winter....	.20	.50	1.75
282	GIANT PASCAL. Tall, crisp and nutty. Late...	.10	.25	.85
275	WINTER QUEEN. Dwarf, heavy stalk.....	.05	.20	.75
293	CELERIAC. Giant smooth Prague. Turnip rooted. Fine for soup10	.25	

Will have an extra large bed of Celery Plants this year. Place your orders early. All kinds listed. See page 45.

CUCUMBER SEED

1 Oz. will plant 100 hills. 1-5 Lbs. to the Acre.

No.		Pkt.	Oz.	¼ Lb.	Lb.
	BOSTON PICKLING. (S) Medium sized..	\$.05	\$.15	\$.40	\$.90
395	BURPEE'S FORDHOOK PICKLING05	.15	.40	1.00
	LONGFELLOW. (S) 12 inches long05	.15	.40	1.25
379	EXTRA EARLY WHITE SPINE. 7 inches	.05	.15	.40	1.00
383	FORDHOOK WHITE SPINE. 10 inches..	.05	.15	.40	1.00
	DAVIS PERFECT. (S) 10 inches.....	.05	.15	.40	1.00
399	LONG GREEN. 12 inches05	.15	.40	1.20
	EARLY FORTUNE. (S) 9 inches, fine....	.05	.15	.40	1.10
385	EVERGREEN. Productive. 11 inches.....	.05	.15	.40	1.20
	WOODRUFF'S HYBRID. (S) Fine shipper	.05	.15	.40	1.15

Have a large supply of Cucumber Seed always on hand. Special prices on 5 Lb. lots. Try some Sterling Early Fortune.

EGG PLANT SEED

No.		Pkt.	Oz.
420	BURPEE'S BLACK BEAUTY. Early and best.....	\$.10	\$.40
422	NEW YORK SPINELESS IMPROVED. Late, large	.10	.40

Will have a fine lot of Egg Plants in season, well hardened.

ENDIVE

No.		Pkt.	Oz.
430	GREEN CURLED or GIANT FRINGED. Fine flav- ored salad	\$.05	\$.15

KALE

Plant in Spring or Fall.

No.		Pkt.	Oz.	¼ Lb.	Lb.
446	DWARF GREEN CURLED. One of the best greens. Cook with ham.....	\$.05	\$.15	\$.40	\$ 1.00

KOHL RABI

1 Oz. will sow 300 ft.

No.		Pkt.	Oz.	¼ Lb.
456	EARLY WHITE VIENNA. Fine quality. Cook when young. Better than turnips.....	\$.05	\$.15	\$.50

LEEK

1 Oz. will sow 200 ft. of drill.

No.		Pkt.	Oz.	¼ Lb.
461	BROAD LONDON. When creamed they surpass onions. Sweet	\$.05	\$.15	\$.50

LETTUCE

1 Oz. will plant 250 ft. of drill.

No.		Pkt.	Oz.	¼ Lb.	Lb.
475	BIG BOSTON. Burpee's select stock.....	\$.05	\$.15	\$.45	\$ 1.20
524	NEW YORK IMPROVED. Large size. Called Iceberg by California growers...	.10	.20	.60	1.80
	NEW YORK No. 12. (S) Large, quality...	.05	.15	.50	1.50
493	EARLY CURLED SIMPSON. Black seeded. Cut and comes again. Early.....	.05	.15	.40	1.00
469	BLACK SEEDED TENNIS BALL or SALAMANDA. Early or Fall05	.15	.40	1.00
497	EARLY PRIZE HEAD. Loose leaved.....	.05	.15	.40	1.10
	CREAMY HEART. (S) Fine quality.....	.05	.15	.40	1.00
484	MIGNONETTE. Fine quality. Small. Early.	.05	.15	.50	1.50
530	BURPEE'S ICEBERG. Stands hot weather.	.05	.15	.50	1.25
522	HANSON. Large and sure heading.....	.05	.15	.40	1.20
537	COS or ROMAINE. Dwarf white heart....	.05	.15	.50	1.40
	MIXED LETTUCE. All kinds mixed together. Per Oz., 10c.				

MUSK MELON

1 Oz. will plant about 50 hills.

BURPEE'S Musk Melons are the standard for quality.

No.		Pkt.	Oz.	¼ Lb.	Lb.
544	BURPEE'S NETTED GEM or ROCKY FORD. Green fleshed. Best	\$.05	\$.15	\$.40	\$ 1.00
	BENDER'S SURPRISE. (S) Large, Sweet	.05	.15	.40	1.00
574	BURPEE'S FORDHOOK. Luscious05	.15	.40	1.00
	LAKE CHAMPLAIN. (S) An improved Emerald Gem. Fine, extra early.....	.05	.15	.40	1.00
	HONEY ROCK. (S) New. Fine quality...	.10	.20	.50	1.25
553	HALE'S BEST. Earliest of all large melons. Delicious, oval shaped05	.15	.45	1.20
578	BURPEE'S SPICY. Large, thick flesh.....	.10	.20	.60	1.70
	MIXED MUSK MELON. All kinds mixed. Per Oz., 10c.				

WATER MELON

1 Oz. will plant 25 hills.

No.		Pkt.	Oz.	¼ Lb.	Lb.
	FORDHOOK. (S) Round, sweet, early....	\$.05	\$.15	\$.30	\$.75
	FLORIDA FAVORITE. (S) Finest quality	.05	.15	.30	.75
	WONDERMELON. (S) Improved Kleckley Sweet. Large sweet.....	.05	.15	.40	1.00
608	KLECKLEY SWEETS. Burpee's05	.15	.30	.80
611	HALBERT HONEY. Sweetest of all.....	.05	.15	.40	.90
	ICE CREAM. (S) Most popular for Long Island05	.15	.30	.75
613	TOM WATSON. Largest good quality....	.05	.15	.30	.80
645	COLORADO PRESERVING CITRON....	.05	.15	.40	.90
	MIXED WATER MELON. All kinds mixed. Per Oz., 10c.				

Try a few melons under Mulch Paper. Fine results have been secured by some growers.

MUSTARD

1 Oz. will sow 600 ft.

No.		Pkt.	Oz.	¼ Lb.
647	FORDHOOK FANCY. Large, good quality. Fine for salads. Sow every 2 weeks.....	\$.05	\$.15	\$.40

OKRA OR GUMBO

1 Oz. will plant 75 ft.

No.		Pkt.	Oz.	¼ Lb.
667	PERFECTED PERKINS. Long pod.....	\$.05	\$.10	\$.30
661	DWARF PROLIFIC. Rich meaty pods.....	.05	.10	.30

ONION SEED

1 Oz. will plant 200 ft.

No.		Pkt.	Oz.	¼ Lb.	Lb.
	EARLY MEDIUM YELLOW. (S) Early yellow globe. Heavy yielder.....	\$.10	\$.20	\$.60	\$1.75
	JAPANESE YELLOW. (S)10	.20	.60	1.75
681	PRIZETAKER. Large yellow10	.20	.70	1.90
	RED WETHERSFIELD. (S) Largest red..	.05	.15	.50	1.40
	WHITE PORTUGAL or WHITE SILVER- SKIN. (S) Flat, large.....	.10	.20	.60	1.75

ONION SETS

Small, hard, fancy sets. 1 Lb. makes a quart. 32 Lbs. to the bushel.
Bu. of

No.		Pkt.	Lb.	⁵ Lbs.	³² Lbs.
	WHITE SILVER SKIN. (S) Fancy.....	\$.10	\$.25	\$1.00	\$4.50
	JAPANESE YELLOW. (S) Grows better and keeps longer than any other sort. Does not shoot to seed.....	.10	.25	1.00	4.25
	RED. (S) Best stock procurable.....	.10	.25	1.00	4.25

Spray your onions with Black Leaf 40% or dust with Nicotine Dust, and insure your crop. It is the Thrip that turns the onion tops brown.

PARSLEY

1 Oz. will sow 200 ft.

No.		Pkt.	Oz.	¼ Lb.	Lb.
717	EXTRA CURLED DWARF or EMERALD....	\$.05	\$.15	\$.40	
600	DREER'S DWARF PERFECTION. Fine curled	.10	.20	.70	
714	PLAIN or SINGLE. Fine for soup.....	.05	.15	.40	
723	TURNIP ROOTED. For flavoring.....	.05	.15	.40	

PARSNIP

1 Oz. will sow 150 ft.

No.		Pkt.	Oz.	¼ Lb.	Lb.
725	GUERNSEY. Broad, tapering to a point.....	\$.05	\$.15	\$.30	
	IDEAL. (S) Improved Hollow Crown, Long....	.05	.15	.30	

PEPPERS

No.		Pkt.	Oz.	Lb.
818	NEAPOLITAN. Early, large, mild	\$.10	\$.35	
	CHINESE GIANT. (S) Largest of all, mild.....	.10	.50	
	HARRIS EARLY GIANT. (S) Large early.....	.10	.45	
823	LARGE BELL or BULL NOSE. Hot, large.....	.05	.30	
826	RUBY GIANT. Large, sweet thickfleshed.....	.10	.35	
837	LONG CAYENNE. Hot, small.....	.10	.35	
833	BURPEE'S NEW SUNNYBROOK. Sweet.....	.10	.35	
	CALIFORNIA WONDER. (S) New, large, sweet..	.10	.50	

Will have a fine lot of Pepper Plants in season. All kinds.

PUMPKIN

1 Oz. will plant 25 hills.

No.		Pkt.	Oz.	¼ Lb.	Lb.
	EARLY SUGAR. (S) Fine for pies.....	\$.05	\$.15	\$.30	\$.80
872	STRIPED CUSHAW. Long-necked05	.15	.45	1.20
1048	WINTER LUXURY or PIE SQUASH... ..	.05	.15	.40	1.00
865	LARGE CHEESE. Flattened, skin creamy	.05	.10	.30	.60
	CONN. FIELD. (S) Large05	.10	.25	.60

PEAS

GRADUS and THOMAS LAXTON grow tall vines and very large pods. The LAXTONIAN and LAXTON'S PROGRESS are dwarf in vine and have large pods and lots of them. These are the four best sorts for market.

The RADIO, BLUE BANTAM, LITTLE MARVEL, KELVIDON WONDER, CARTER'S DAISY and TELEPHONE are the gardener's favorites for table use and for canning. Sow these five kinds together and they will follow each other through the season.

I have over 100 bushels of choice new crop pea seed, of high germination, this season. The prices quoted below for bushel lots are cash prices. Add \$1.00 per bushel for time. Even though Peas do not pay as a market crop, the vines make fine green manure for Cauliflower or Brussels Sprouts. Due to a shortage in the crop, prices are liable to change without notice.

1 Lb. of Peas will plant 100 ft. of row.
1 to 2 Bu. to the acre.

739 ALASKA or EARLIEST OF ALL. Pick when small and they are fine. Pkt., 10c; Lb., 25c; Pk., \$2.50; Bu., \$9.00.

PEAS—Continued

No.		Pkt.	Lb.	Pk. of 14 lbs.	Bu. of 56 lbs.
	EASY MONEY. An improved Gradus.....	\$.10	\$.25	\$3.00	\$10.00
732	RADIO. Dwarf, extra early and fine quality. Good for planting in August for Fall crop. 1 ft.	\$.10	\$.30	\$3.00	\$11.00
	LAXTON'S PROGRESS. (S) Large pods. Extra early. 18 in.....	.10	.25	2.50	8.50
	GRADUS. (S) Fine stock. World Record Strain. One of the best for market. Extra early. Large pods. 2 ft.....	.10	.25	2.50	8.50
	THOMAS LAXTON. (S) Fine stock. Ear- ly. Large pods. 2½ ft.....	.10	.25	2.50	8.50
	LAXTONIAN. (S) Prolific, sweet, 15-18 in.	.10	.25	2.50	8.50
754	BLUE BANTAM. Highest quality 15 in...	.10	.30	3.00	11.50
792	DISCOVERY. One of the best for home use, second early10	.30	3.00	11.50
	LITTLE MARVEL. Sweet, prolific, 15 in. second early10	.30	3.00	11.50
780	FORDHOOK. Burpee's new, large, midsea- son quality. 26 in.15	.40		
755	NOTT'S EXCELSIOR. Second early pro- lific, 15 inches10	.25	2.75	
793	CARTER'S DAISY or DWARF TELE- PHONE. 18 in. Best dwarf medium..	.10	.30	2.75	
	STRATAGEM IMPROVED. (S) Sweet, large. 2 ft.10	.25	2.50	
774	KELVIDON WONDER. New English sort. Dwarf, fine quality. Midseason..	.10	.30	3.25	
	TELEPHONE. (S) Fine quality. 4 ft....	.10	.25	2.50	
784	QUITE CONTENT. Largest pods. 6 ft...	.10	.30	3.00	
812	MAULE'S GIANT SUGAR-POD. New early. 2½ ft.10	.50		

RADISH

1 Oz. will sow 50 ft. of drill.

No.		Pkt.	Oz.	¼ Lb.	Lb.
	SAXA. (S) Crisp. Extra early. RED....	\$.05	\$.15	\$.40	\$.90
893	SPARKLER or SCARLET TURNIP WHITE TIPPED. Fine for bunching.	.05	.15	.30	.75
907	FRENCH BREAKFAST. Olive shaped. Early.05	.15	.30	.75
886	CRIMSON GIANT GLOBE. Large, does not get pithy. Very mild and crisp.....	.05	.15	.30	.80
	WHITE ICICLE. (S) Very crisp, sweet and tender. Best long. Long season.....	.05	.15	.30	.80
	SCARLET GLOBE. (S) Early, crisp05	.15	.40	.90
971	LONG BLACK SPANISH. Winter.....	.05	.15	.40	.90
	MIXED RADISH. All kinds mixed. Per oz. 10c.				

SALSIFY OR VEGETABLE OYSTER

No.		Pkt.	Oz.	¼ Lb.
983	MAMMOTH SANDWICH ISLAND	\$.10	\$.25	\$.75

SORREL

No.		Pkt.	Oz.
839	LARGE LEAVED GARDEN. Sour grass for greens	\$.10	\$.20

SQUASH

1 Oz. will plant from 25 to 50 hills.

No.		Pkt.	Oz.	¼ Lb.	Lb.
1010	EARLY WHITE BUSH. Scalloped.....	\$.05	\$.15	\$.40	\$.90
	EARLY GOLDEN CROOKNECK. (S) Bush. Extra early. Tender, sweet.....	.05	.15	.40	.90
1020	GIANT GOLDEN CROOKNECK. Large. Use when the squashes are young and tender.05	.15	.40	1.20
	DELICATA. (S) Fine quality.....	.05	.15	.45	1.20
	STRAIGHT NECK SUMMER. (S) Fine quality, large. No crooks05	.15	.45	1.20
1031	LONG WHITE MARROW or VEGETABLE MALLOW. Very productive..	.05	.15	.45	1.20
1030	COCOZELLE BUSH. Long green. Fine..	.05	.15	.45	1.20
1032	BURPEE'S FORDHOOK. Quality05	.15	.45	1.20
1011	ACORN or TABLE QUEEN. Fine quality. Burpee's true stock05	.15	.50	1.40
1036	BOSTON MARROW. Golden skin. Qual- ity05	.15	.40	.85
1038	TRUE HUBBARD. Green skin. Quality.	.05	.15	.50	1.25
1040	WARTED HUBBARD. Larger and more heavily warted than No. 1038.....	.05	.15	.50	1.25
1042	RED or GOLDEN HUBBARD. One of the best for pies. Golden flesh. Early.....	.05	.15	.50	1.20

The Squash has been found to be one of the vegetables that contain a quantity of valuable vitamins. Plant squash for your children and serve it like potatoes. Try some under Mulch Paper.

SWISS CHARD OR SILVER BEET

Swiss Chard is one of the best greens there is. Cut outside leaves and it will grow out again and again. One Oz. will sow 50 ft. of drill.

No.		Pkt.	Oz.	¼ Lb.	Lb.
136	LARGE RIBBED WHITE. Smooth leaves that wash easily. Serve stems like as- paragus	\$.05	\$.15	\$.40	\$.90
	FORDHOOK GIANT. (S) Largest of all..	.05	.15	.40	.90
137	LUCULLUS. Heavily crumpled leaves.....	.05	.15	.40	.90

SPINACH

1 Oz. will sow 50 ft. of drill.

No.		Pkt.	Oz.	¼ Lb.	Lb.
	KING OF DENMARK. (S) Stands a long time before going to seed.....	\$.05	\$.10	\$.25	\$.45
	SAVOY LONG STANDING. (S) Best for fall sowing05	.10	.25	.50
	NEW ZEALAND. (S) Hot weather Spin- ach. Spreading. Use the tips or new shoots. Good till Fall. Takes time to germinate05	.10	.30	.75
992	PRINCESS JULIANA. Dark, crumpled...	.05	.10	.20	.40

SPINACH—Continued

	Pkt.	Oz.	¼ Lb.	Lb.
OLD DOMINION, BLIGHT RESISTANT. (S). Large crumpled leaves.....	.05	.10	.25	.50
NOBLE GIANT. (S) Thick leaf. Largest..	.05	.10	.25	.50
VIRGINIA YELLOWS RESISTANT. (S) Dark green crumpled leaves.....	.05	.10	.25	.45
5 Lbs. or more at 10c per Lb. less than above prices.				

HERBS

No.		Pkt.	Oz.
1315	CATNIP. Perennial. For seasoning.....	\$.10	\$.50
1319	DILL. Annual. For pickles, soup and sauce.....	.05	.15
1326	TRUE LAVENDER. Perennial. For perfume.....	.10	.50
1327	Marjoram, SWEET. Annual. Seasoning.....	.10	.25
1333	SAGE. Perennial. Seasoning10	.30
1335	SAVORY, SUMMER. Annual. Flavoring.....	.10	.20
1341	THYME. Perennial. For soups, stews. gravies, etc...	.10	.40

TOMATO SEED

1 Oz. will produce 2000 plants or more.

No.		Pkt.	Oz.	¼ Lb.	Lb.
1097	SUNNYBROOK EARLIANA. Earliest ..	\$.10	\$.35	\$ 1.15	\$ 3.75
	RED HEAD. Early. Livingston's stock..	.10	.30	1.00	3.40
1125	BREAK O' DAY. Early. New. Wilt resist- ant10	.40	1.25	
1120	BONNY BEST. Early. Productive.....	.10	.35	1.00	3.00
1087	JOHN BAER. Early. Very prolific.....	.10	.30	.90	2.90
	PONDEROSA. Livingston. Large, smooth.	.10	.50	1.50	5.00
	MARGLOBE. Wilt resistant. One of the best for main crop. Livingston's10	.40	1.20	3.75
	PRITCHARD. New, early, wilt resistant..	.10	.50	1.65	
	CLARKE SPECIAL B. (S) Selected strain.	.10	.35	1.25	3.50
	STONE. Livingston's selected seed. Choice.	.10	.30	1.00	3.50
1108	BURPEE'S MATCHLESS. Large, smooth.	.10	.35	1.00	3.40

Will have a fine lot of plants from the above strains of seed and several other kinds in season. Would appreciate your early orders if you want plants by the thousand.

TURNIP AND RUTA BAGA SEED

No.		Pkt.	Oz.	¼ Lb.	Lb.
1159	EXTRA EARLY WHITE MILAN.....	\$.05	\$.10	\$.30	\$.70
1163	PURPLE TOP WHITE GLOBE.....	.05	.10	.30	.70
1169	WHITE EGG. Early, globe-shaped05	.10	.30	.70
1183	GOLDEN BALL or ORANGE JELLY....	.05	.10	.30	.70
1191	BURPEE'S PURPLE TOP YELLOW RUTA BAGA. Standard for winter....	.05	.10	.30	.70
	NEYLON'S PURPLE TOP RUTA BAGA. Special strain. Fine quality.....	.10	.20	.60	1.50
	LUPTON'S EARLY NECKLACE. Finest quality. 3 weeks earlier than other kinds.	.05	.10	.30	.80

GRASS, CLOVER AND ALFALFA SEED

Prices liable to change without notice. Some items are in short supply this year.

Terms strictly cash.

I make my prices just as reasonable as is possible consistent with the quality. It is the very last fraction of 1% in purity that costs money. I believe that it pays big returns, too, as it is truer in seeds than in anything else that "the best is none too good."

In sowing Timothy alone without Clover use 15 to 20 Lbs. to the acre. If your land is sour and Grass and Clover does not do well as a rule, a little lime sown on top of the ground and harrowed in before sowing the seed would be a great help.

All our Clover and Alfalfa Seed is grown in the North West.

Special prices on bag lots. Ask us about them.

	5 Lbs. and Over Per Lb.	1 Lb. to 4 Lbs.
TIMOTHY. The brightest and purest seed on the market 99.80% pure. \$12.00 per 100 Lbs.....	\$.13	\$.15
RED CLOVER. Domestic. Mammoth. Northern grown. Selected large seeded strain.....	.20	.22
ALSIKE CLOVER. Does well where Red Clover sometimes fails. Best grade. Domestic. Pure.....	.20	.22
ALFALFA. Finest. Northwestern grown. Pure.....	.23	.25
ALFALFA GRIMM. Genuine. Stands the winter better than most. Best grade. Pure. Northern grown. Cer- tified.30	.32
SWEET CLOVER. White blooming, hulled.....	.10	.12
CRIMSON CLOVER. Sow in July and August. Price on application.		
WHITE CLOVER. Fine for lawn or pasture. Purity 98%.	.40	.45
NEW ZEALAND CHEWING FESCUE or RED FES- CUE. Fine for pasture or lawn.....	.20	.25
RED TOP. Fancy re-cleaned. Fine for lawns, stump ground or pasture. Best grade. Purity 98%.....	.20	.22
KENTUCKY BLUE GRASS. Does best on sweet soil. Best grade. Fine for lawns, pasture and orchard....	.23	.25
SOUTH GERMAN CREEPING BENT. Very best grade. Best for lawn or putting greens.....	.90	.95
COLONIAL BENT. Best Native Bent for this section. Finest quality80	.85
ORCHARD GRASS. Earliest pasture20	.25
GOLDEN MILLET. Sow in June for pasture and hay.	.07	.10
HUNGARIAN GRASS. Easier to cure than the Golden.	.07	.10
JAPANESE MILLET. Considered the best kind of all.	.08	.10
SUDAN GRASS. Grows something like Sorghum. 50 Lbs. for \$5.0011	.14
STERLING PASTURE MIXTURE. The best kind of Grass and Clover Seed, suitable for pasture. Contains some White Clover. Use 20 to 40 Lbs. to the acre. 50 Lbs. or more at 22c per Lb.....	.23	.25
STIMUGERM for inoculating Alfalfa. 1/2 Bu. size, per bottle, 35c 1 Bu. size, per bottle, 65c		
STIMUGERM for Soy Beans, Vetches etc.		
	1 Bu. size, per bottle, 35c	

LAWN MAKING

Our Lawn Grass Seed is exactly what we represent, recleaned and free from weeds, and we sell many hundred pounds all over Long Island.

Loosen the soil in which a new lawn is to be made to a depth of at least five inches, and lighten it with humus or several inches of sand, compost or manure if it is heavy and inclined to bake. Apply fertilizer liberally, either Sheep Manure, Bone Meal, V. C. Fairway or a commercial fertilizer.

Sow in the early spring when cool weather and ample rainfall will insure complete germination and a good start for the seedlings before hot dry weather comes. If seeding must be delayed, special precautions must be taken to prevent the ground drying out. Early fall is a very desirable time to seed.

See that the seed is well covered. Rake it into a new seed bed and roll so that the soil is firmed over the seed. Where seed is sown on an old lawn always cover it with a top dressing of sand or soil and fertilizer. Seed thrown on the top of hard ground has no chance to grow and will merely wash off.

We will do your grading and seeding for you at a very reasonable cost. We would appreciate a chance to figure on your job.

LAWN GRASS SEED

	5 Lbs. and Over Per Lb.	1 Lb. to 4 Lbs.
STERLING MIXTURE. We prepare this mixture ourselves at Sterling Farm, from the highest grade Colonial Bent, Kentucky Blue Grass, Fancy Red Top and White Clover. This mixture has given the very best satisfaction throughout Long Island. Quick growing and permanent. 25 Lb. lots at 29c per Lb. 50-100 Lb. lots at 28c per Lb.....	\$.30	\$.32
PARKWAY MIXTURE. This is my own mixture. It contains no White Clover, but equal amounts of Colonial Bent and Kentucky Blue Grass with some Fancy Red Top. 25 Lb. lots at 42c per Lb.; 50-100 Lbs. at 40c per Lb.43	.45
SANDY SOIL MIXTURE. A special mixture doing well on light soil and in very dry places. Sow 1 Pk. Seed Oats with every 25 Lbs. seed. 25 Lbs. at 30c pr Lb..	.32	.35
STERLING SHADY NOOK. Where there is only partial shade, the other Lawn Grasses are all right, but where it is quite shady, use this special mixture. We use only the best grade of seed in our mixtures.....	.33	.35
CREEPING BENT GRASS. South German. True, this is the very finest of the Bents90	.95
COLONIAL BENT. A native Bent of finest quality. Most suitable for this section. Per 25 Lbs. at 78c per Lb.80	.85
WHITE CLOVER. Very best grade.....	.40	.45
CHEWING'S FESCUE. New Zealand grown.....	.20	.25
ROUGH STALK MEADOW GRASS. Fine for shade.	.22	.25
KENTUCKY BLUE GRASS. Fine for lawns.....	.23	.25
FANCY RED TOP. Quick growing. 98% pure.....	.20	.22
FORDHOOK FINEST LAWN GRASS. 6145. Burpee's best. A mixture of many fine grasses. 25 Lbs. or more at 30c per Lb.32	.35

For a good, permanent lawn, use 1 Lb. lawn seed to 400 sq. ft. 80 to 100 lbs. to the acre. For reseeding an old or poor catch, use half that amount. For quick results use a heavier seeding.

FARM AND FIELD SEED

SEED POTATOES

Use 4 to 5 sacks to the acre.

We have a nice lot of Seed for Spring demand, both Cobblers and Green Mountains. All certified seed. Handsome stock.

	Pk.	Bu.	Sack of 150 lbs.
IRISH COBBLERS. Maine grown.....	\$.75	\$2.20	\$4.50
GREEN MOUNTAIN. Maine grown.....	.75	2.20	4.50

The above prices are net cash when you get the goods. Time prices are a matter of adjustment. Prices are liable to change.

FIELD SEED

Prices liable to change without notice.

SEED OATS. *Scottish Chief*. Use 2 to 4 Bu. to the acre. The best for this section. Pk. of 8 Lbs., 50c; Bu. of 32 Lbs., \$1.75.

White Wonder. New. Heavy. Very prolific. Pk., 45c; Bu., \$1.50.

By the Bag. A very heavy Seed Oat packed in 80-Lb. bags, \$2.25. 5 bags at \$2.10 per bag.

SEED WHEAT. *Marquis*, the best Spring Wheat. Very prolific, early. Pk. of 15 lbs., 75c. Bu. of 60 lbs., \$2.40.

SEED RYE. *Spring Rye*. Fine seed. Bu. of 60 Lbs., \$2.50. Pk. of 14 lbs., 80c.

SPRING VETCH. For a cover crop. Mix with oats. 10 Lb., 75c. Bu. of 60 Lbs., \$4.00. Inoculate your Vetch Seed with Stimugerm.

CANADA FIELD PEAS. For cover crop. Use 1 Bu. Peas and 1 Bu. Oats to the acre. 10 Lbs., 75c; Bu. of 60 Lbs., \$3.90. 5 Bu. at \$3.75 per Bu.

SOY BEANS. Early Yellow. Quick maturing. Very productive. 10 Lbs., 70c; Bu. of 60 Lbs., \$2.50.

SUDAN GRASS. We find this the best Grass for Pasture that we have ever tried. Use 20 to 40 Lbs. with 1 Bu. of Oats, on one acre of ground. Sow after ground warms up on good soil and this acre will keep one cow in good condition all Summer. Two acres will keep two cows, and so on.

For Hay use 20 to 35 Lbs. to the acre, broadcast, or 10 Lbs. in drills and cultivate. Crops of 5 tons to the acre have been grown. Northern seed. Per Lb., 14c; 10 Lbs. or more, 11c per Lb.; 100 Lbs., \$10.00.

WARNING — Do not sow your Soy Beans, Sudan Grass or Spring Vetch until your ground is warmed up a little. If sown too early they will fail to germinate, or if they do sprout, they will not thrive.

BUCKWHEAT. Japanese. Does well on sour soil. Best for this section. Very large grain. 10 Lbs., 60c; Bu. of 48 Lbs., \$2.50; 5 Bu. at \$2.40 per Bu.

RAPE SEED. Dwarf Essex. Fine for Ducks. Per Lb., 12c; 10 Lbs. or more, at 10c per lb.

BARLEY. Fancy Six Row. Makes good pasture. Does not rust like Oats. 10 Lbs., 60c; Bu. of 50 Lbs., \$2.25.

HUMUS

This is one of the best Lawn Makers, especially for poor soils.

Mix 100 Lbs. of this Dry Humus to a plot 20 by 20 and see the wonderful way the grass will grow where it is used. Also fine for spading in your flower beds, only use it in a larger proportion than above.

Per bag, about 100 Lbs.....	\$ 2.00
Per ton of 2,000 Lbs. (20 bags).....	30.00
Home cured Humus, per bag	1.00

SHEEP MANURE

Fine for Lawns, Gardens and Flower Beds. Also the best thing to top-dress seed beds to insure a good crop of Cauliflower and Brussels Sprout plants. This is pure Sheep Manure. Best grade.

10 Lb. bag	\$.40
25 Lb. bag..I90
100 Lb. bag	2.75
500 Lb. (5 bags)	12.00
2000 Lb. (20 bags)	Price on Application

All the above prices are net cash.

FINE GROUND POULTRY MANURE

This is Poultry Manure mixed with Peat Moss, thoroughly dried and finely ground. It is a very quick manure and excellent for lawns, gardens and flower beds. It will help build up light soils.

Analysis not guaranteed, but it runs about — Ammonia 3.50 per cent, Phosphoric Acid 3.00 per cent, Potash 1.00 per cent.

25 Lb. bag	\$ 1.00
100 Lb. bag	2.50
Five 100 Lb. bags	10.00

Be sure and wet it in well when used on growing plants.

BONE MEAL

One of the best fertilizers for Lawns, Roses, Trees and Flowers. Best grade. Very fine.

10 Lb. bag	\$.50
25 Lb. bag	1.00
100 Lb. bag	3.25
500 Lb. (5 bags)	15.00
2000 Lb. (20 bags)	Price on Application

The above prices are net cash.

GERMAN PEAT MOSS

A fine ground Peat Moss, fine for mulching trees, shrubs, perennials or mixing with soil to make it of good texture. Holds moisture well. Best thing for Rhododendrons and Azaleas.

25 Lb. bag	\$ 1.00
Large Bale of about 175 Lbs. Very fine.....	3.00

NITRATE OF SODA

Use 1 to 2 bags to the acre on your hay ground, in May, and for your Cauliflower and Sprouts in September. Makes a quick-growing lawn.

10 Lb. bag	\$.50
100 Lb. bag	3.00
500 Lbs. (5 bags)	12.00
2000 Lbs. (20 bags)	Price on Application

The above prices are net cash.

LIME

Hydrated Lime is the most easily assimilated Lime there is. This is very fine for Lawns and Gardens. Also for seeding down grass, preparing a seed bed, or your Cauliflower field.

10 Lb. bag	\$.20
50 Lb. bag60
500 Lbs. (10 bags)	5.00
2000 Lbs. (40 bags)	Price on Application

The above prices are net cash and liable to change without notice.

GARDEN FERTILIZER

Rasin's Fish and Potash Fertilizer, analyzing 5 per cent Nitrogen, 8 per cent Phos. Acid and 5 per cent Potash, suitable for any growing crop and most especially your Garden. Have other analysis if you desire.

10 Lb. bag, 5-8-5	\$.40
50 Lb. bag, 5-8-5	1.75
125 Lb. bag, 5-8-5	2.45
500 Lb. (4 bags), 5-8-5.....	9.00
2000 Lbs. (16 bags) 5-8-5.....	Price on Application

The above prices are net cash.

GATOR HYDE MULCH PAPER

GARDEN SIZE ROLL, 45 ft. Type B..... .65

Have other types and sizes at prevailing prices. Send for booklet, "The Miracle of Mulch Paper".

HOTKAPS

A hothouse for every plant. Wonderful results with early crops. Try a row with and a row without and see for yourself. Send for pamphlet showing results.

1000 Hotkaps packed in carton.....	\$10.00
250 Hotkaps. Trial Garden Package with Setter and Tamper....	3.65
100 Hotkaps. Home Garden Package with Setter and Tamper...	2.40
100 Hotkaps. Loose, per Doz., 25c	1.50

V-C FAIRWAY FERTILIZER

For Lawns and Grass.

10 Lb. bag (enough for 500 sq. ft.).....	\$.75
25 Lb. bag (enough for 1,250 sq. ft.).....	1.50
50 Lb. bag (enough for 2,500 sq. ft.).....	2.50
100 Lb. bag (enough for 5,000 sq. ft.).....	4.00

Convenient, easy to handle. Complete directions on every bag.

BLOOMAID

For Flowers, Shrubs, Vegetables.

If you want your flowers to bloom earlier and longer, your shrubs and hedges to be greener, thriftier, we recommend that you use Bloomaid. Brings blooms ten days to two weeks earlier — makes plants double the size of those not treated.

Tablet Form (125 Tablets)\$.25
Pulverized Form.

1 Lb. can25
5 Lb. container50
10 Lb. bag75
100 Lb. bag	4.00

FLOWER SEEDS

Very Best Annuals, Sterling Strain and Burpee's.

Pkt. Golden Gleam Nasturtium given with every dollar's worth of Flower Seeds ordered.

Three 10c pkts. for 25c. Three 15c pkts. for 40c.

No.		Pkt.	¼ Oz.	Oz.
	AGERATUM. (S) Blue Ball. 6 inches. Finest for border. Blooms all Summer.....	\$.10	\$.25	\$.80
1508	AGERATUM. Imperial Dwarf Blue.....	.10	.30	
1689	ASTER. Queen of the Market. Earliest. Mixture of 9 colors. 15 inches.....	.10	.40	1.25
1614.	ASTER. Crego Giant Mixture. Very large flowers. Petals curled. 8 colors. 2 ft.....	.10	.45	1.45
1735	ASTER. Fordhook Favorite Mixture. Mixed colors and types.....	.10	.45	1.35
1674	ASTER. California Giants. Newest kind. Very large flowers. Mixed15	.75	
1697	ASTER. California Sunshine or Improved Anemone-Flowered. Something different15	.60	1.90
7502	ASTER. Burpee's Giant Crego Collection. Large, beautiful. 1 Pkt. of each of six colors. The collection, 50c. Separate colors per pkt.....	.10		
1520	ALYSSUM. Sweet. White. Free blooming. One of the best for beds and borders. 9 inches....	.10	.15	.30
1523	ALYSSUM. Lilac Queen. 6 inches.....	.10	.25	
1524	ALYSSUM. Little Gem. 4-5 inches. Compact. Blooms all summer10	.25	.75
1549	ANTIRRHINUM or SNAPDRAGON. Half dwarf. A mixture of 29 beautiful shades....	.10	.50	
1719	ANTIRRHINUM. Giant mixed. Burpee's 12 new Giants in mixture. 3 ft. Very beautiful.....	.15	1.00	
1560	ANTIRRHINUM. Dwarf. For Rock Gardens	.25		
1731	ANTIRRHINUM. Majestic. Semi-Tall. New, giant flowering. Fine for cutting.....	.25		
1566	ARCTOTIS. Blue-eyed African Daisy. Silvery flowers, sky-blue eye. Beautiful. 2 ft.....	.10	.30	
1759	BALSAM. Old fashioned Lady Slipper. Defiance Mixture. All shades and colors. 2 ft.....	.10	.25	
2774	BLUE LACE FLOWER. Queen Anne's Lace. Fine for cutting. 1½ ft. Blooms from June to September15		
	CALENDULA. Choice Mixed. (S) Fine for cutting10	.15	.35
	CALENDULA. (S) Orange King. Double, rich orange. Large blooms, long stems.....	.10	.15	.40
	CALENDULA. (S) Orange Ball. Long stemmed, deep orange, extra large15	.25	.75
1809	CALLIOPSIS. Golden Wave. Bright Yellow with a dark brown center. Annual. 20 inches..	.10	.25	
1816	CANDYTUFT. Giant Hyacinth Flowered. Finest white. Needs sun. 12 inches.....	.10	.25	
1830	CANDYTUFT. Mixed, 6 colors. 12 inches....	.10	.15	.40
1848	CARNATION. Marguerites, Giant mixed. Early flowering. Large, 14 inches. Fragrant.....	.10		
1864	CELOSIA. Magnificent plumed Celosia. Burpee's best Mixed colors.....	.10		

ANNUAL FLOWER SEED—*Continued*

No.		Pkt.	¼ Oz.	Oz.
1912	COCKSCOMB. EMPRESS. Rich purple red flowers. Large combs, purple leaves.....	.10		
1885	CENTAUREA. Double Cornflower. Mixed. 2 ft.10		
1876	CENTAUREA. Imperialis. Giant Sweet Sultan. Mixed colors. Finest of all.....	.10		
	COSMOS. (S) Early Large Flowering. Mixed.	.10	.15	.50
	COSMOS. (S) Early Double Crested. White, pink and crimson, mixed. Will throw a good proportion of double flowers10	.60	
1947	COSMOS. Late flowering, 6 ft. tall. Mixed....	.10	.20	.50
	COSMOS. Miniature Yellow. New. Try a few..	.10		
1896	CHRYSANTHEMUM, or Painted Daisy. Single mixed. Fine for cutting.....	.10		
1900	CYNOGLOSSUM. Chinese Forget - Me - Not. Likes hot, dry location. Rich blue.....	.10		
2033	DAISY, AFRICAN. Hybrids. All colors mixed.	.10		
1994	DIANTHUS. Heddewegii. Double mixed old-fashioned Pinks. Large flowers.....	.10		
2039	DIASCIA. Twinspur. Rose pink annual. Long blooming20		
2055	ESCHSCHOLTZIA or CALIFORNIA POPPY. Sunset mixture. All of the best kinds.....	.10	.20	
2049	ESCHSCHOLTZIA. Golden West. Deep orange base, large. The most beautiful of all.....	.10	.20	
2846	EVERLASTING STRAWFLOWER. Mixed colors. Makes a beautiful Winter bouquet. Cut before fully opened. Hang in cool place....	.10	.25	
2854	EVERLASTING. Mixed. All kinds. Fine for Winter10		
2058	EUPHORBIA. Snow on the Mountain. Makes a fine show in the Fall. 2 ft.....	.10		
2200	FOUR O'CLOCK. Tom Thumb. Mixed colors. Variegated golden leaves. 2 ft.10	.15	.30
2086	GAILLARDIA. Double mixed. Fine for cutting. 15 inches10		
2093	GYPSOPHILA. Annual. Baby's Breath. Rose	.10		
2091	GYPSOPHILA. Annual. White. Fine for cutting. Larger flowers than Perennial.....	.10		
2119	KOCHIA or BURNING BUSH. Giant Christmas. Green bushes turning red in the Fall...	.10	.20	
2124	LARKSPUR. Tall branching, double, stock-flowered. 3 ft. Mixed colors.....	.10	.20	
	LARKSPUR. (S) Giant Imperial. Blue Spire. Double flowered. 3 ft.....	.10	.40	
	LARKSPUR. (S) Giant Imperial. Empress Rose New, Delphinium flowered10	.40	
7750	LARKSPUR. Collection. Double. Tall, beautiful spikes. Collection of 1 Pkt. each of the six finest colors, 50c. Separate colors.....	.10		
2128	LEPTOSIPHON. Star Dust. Hybrids, 5 inches. Fine for rock gardens. Blooms in 8 weeks....	.10		
2145	LOBELIA. Crystal Palace. Compact border plant. Deep blue flowers. Blooms until frost..	.10		

ANNUAL FLOWER SEED—*Continued*

No.		Pkt.	¼ Oz.	Oz.
2146	LOBELIA GRACILIS. Deep blue. Fine for hanging baskets and window boxes.....	.10		
2162	LUPINE. Annual. Fine, free blooming. July and August. Does well in shade. Mixed colors....	.10	.15	.30
	MARIGOLD. ORANGE ALL DOUBLE. (S) Deep orange. Large, African. A better strain. 30 inches15	.50	
	MARIGOLD. (S) Primrose Queen. All Double. Immense double flower of lighter color.....	.15	.50	
	MARIGOLD. GUINEA GOLD. (S) New carnation flowered. Rich orange. Great bloomer....	.15	.50	
	MARIGOLD, DWARF. (S) GOLDEN BALL. Double French Marigold. Rich orange. 1 ft... ..	.10	.20	
	MARIGOLD GOLD STRIPE. (S) Golden yellow, striped with mahogany red. 1 ft. French..	.10	.25	
2226	MIGNONETTE. White Pearl. The very best white. Large sweet scented trusses10		
2217	MIGNONETTE. Golden Sunset. Sweet.....	.10		
2232.	MIGNONETTE. FORDHOOK FINEST MIXED. A mixture of the very best kinds..	.10	.25	.70
	NASTURTIUM. (S) Tom Thumb. Fancy Mixed. All colors. ¼ Lb., 50c; per Lb., \$1.50; postpaid05	.05	.15
	NASTURTIUM. (S) California Giants. Special mixed. All colors. ¼ Lb., 45c; per Lb., \$1.35; postpaid05	.05	.15
	NASTURTIUM. (S) GOLDEN GLEAM Double Sweet scented. New, fine. Tall.....	.10	.15	.40
2513	PANSY. Burpee's Blend of Giant and Fancy types. Unsurpassed, waved petals35	2.50	
	PANSY. (S) Swiss Giants. New. Large, ruffled and crinkled blooms. Mixed.....	.30		
	PETUNIA. (S) Balcony Mixed. Dwarf, all colors. One of the best mixtures for window boxes.	.15		
2569	PETUNIA. Giant FLUFFY RUFFLES. Large, fringed and ruffled. Beautiful mixed colors..	.35		
2539	PETUNIA. Elk's Purple. This is the finest single, deep purple. Extra large.....	.25		
2574	DOUBLE PETUNIA. Fordhook Fancy Fringed. One of the most beautiful mixtures50		
2538	PETUNIA. Rose of Heaven. Rich rose colored. Continuous bloomer. 12 in.15		
2558	PETUNIA. Howard's Star, improved. Large, purple with white star15		
2567	PETUNIA. Burpee's Defiance. Mixed giant ruffled, an extra large strain.....	.25		
	PETUNIA. (S) Rosy Morn. The most popular kind for Window Boxes, Hanging Baskets, or Bedding. Pink, white throat.....	.15		
	PETUNIA. (S) Mixed, bedding. Continuous blooming. All colors15		
2581	PHLOX DRUMMONDI. Fordhook Finest Mixed. All of Burpee's finest in mixture.....	.10	.40	
2575	PHLOX. Dwarf Mixed. Large flower heads. Fine for Rock Gardens 5-6 inches.....	.15		

ANNUAL FLOWER SEED—*Continued*

No.		Pkt.	¼ Oz.	Oz.
2636	POPPY. Fordhook Fairy. Beautiful, 18 in.....	.10		
2644	POPPY. Peony Flowered. Beautiful, mixed....	.10		
2631	POPPY. Fordhook Hybrids. Finest, mixed.....	.10		
2659	PORTULACA. Double mixed. Brilliant mixture. Best for Rock Gardens10		
2652	PORTULACA. Single mixed. Burpee's finest...	.10		
2670	RICINUS or CASTOR OIL BEAN. Red Spire. Most Ornamental. Plant a few in your lawn and garden, and the Ground Moles will dis- appear10	.10	.35
2707	SCABIOSA. Pin Cushion Flower. Large Flow- ered double mixed. Fine for cutting.....	.10		
2677	SALPIGLOSSIS. Velvet Flowers. Mixed colors.	.10		
2691	SALVIA. America. Early flowering, very pro- fuse blooming, and about 1½ ft. high.....	.20	1.25	
2684	SALVIA. Bonfire. Brilliant scarlet spikes, stand clear from the dark green foliage. 2 ft. high.	.15	.70	
	● Will have a fine lot of plants from both these kinds of seeds.			
	STOCKS. (S) Perpetual branched. Exquisite mixed. Fine for bedding10	.70	
2765	SUNFLOWER. Double Chrysanthemum flow- ered. Fine for border or hedge.....	.10	.15	.40
6075	SUNFLOWER. Large Russian. The largest of all. Per ¼ Lb., 20c; per Lb., 35c.....	.05	.05	.10

BURPEE'S SWEET PEAS

None Better.

No.		Pkt.	¼ Oz.	Oz.
3599	SWEET PEAS. Burpee Blend. This is Burpee's mixture of all varieties offered by them. All Colors and Shades. ¼ Lb., 75c; Lb., \$2.25 post- paid	\$.10	\$.10	\$.20
3598	SWEET PEAS. Mixture of Ruffled Beauties. Frisled and ruffled. Beautiful, large blooms. ¼ Lb., \$2.0025	.30	.70
3601	SWEET PEAS. Burpee Novelty Mixture. Con- tains all the newest large flowering sorts. All shades and colors. ¼ Lb., \$1.00.....	.10	.10	.35
7325	SWEET PEA COLLECTION. Eight Ruffled Beauties. All there are in existence. Some- thing different. 1 Pkt. of each kind, \$1.00, post- paid			
7319	SWEET PEA COLLECTION. Eight of the best Sweet Peas. Illustrated in color in Burpee's 1933 catalog. Will make 35 ft. row. 1 pkt. of each, \$1.00, postpaid			
7335	SWEET PEA COLLECTION. Seven new giant Flowering Sweet Peas. 1 Pkt. of each. Will plant a 20 ft. row. 75c, postpaid.....			
7310	SWEET PEA COLLECTION. Sixteen Popular Sweet Peas. 1 Pkt. of each kind. Will plant a 55 ft. row. \$1.00, postpaid.....			
2770	TORENIA FOURNIERI. Dark Blue with yellow throat. Fine for Window Boxes.....	.15		

ANNUAL FLOWER SEED—*Continued*

No.		Pkt.	¼ Oz.	Oz.
2780	VERBENA. New Giant Mixed. Fine for Borders, Boxes, and Beds. Everblooming.....	.15		
	WILD FLOWER GARDEN. A mixture of showy Annuals, both tall and dwarf. Sow thickly where you want them to bloom.....	.10	.10	.25
2813	ZINNIA. Burpee's Giant Mammoth Mixture. Includes ten of the newest and best kinds.....	.10	.25	.80
2812	ZINNIA. Burpee's Cactus Flowered. Like a Cactus flowered Dahlia. All colors. 3 ft.....	.15	.60	
	ZINNIA. (S) Dahlia Flowered. Exquisite Mixed10	.35	1.00
7585	ZINNIA COLLECTION. EIGHT GIANTS of CALIFORNIA. A wonderful collection. Flowers 5 in. across. 1 Pkt. of each, 95c. Separate colors. Per pkt.....	.15		

All the above Flower Seeds are priced postpaid. Burpee puts out many other kinds and varieties that I have not listed. Also many collections of flower seeds. If in need of any kind that I have not listed let me know and I will get it for you and may be able to save you time and money. See following pages for Perennial and Vine Seeds and Plants.

PERENNIAL FLOWERS

Perennial Flower Seeds may be sown in February or March indoors and transplanted. If sown where you want them later and thinned out they will bloom the following year. If you want them to surely bloom this year buy our Perennial Plants listed on pages 26-30.

	Pkt.
3706 ALYSSUM. Gold Dust or Basket of Gold. Early.....	\$.10
3716 AQUILEGIA or COLUMBINE. Long Spurred Hybrids. Beautiful. Many colors, mixed15
3710 ANCHUSA. Italica Dropmore. 4 ft. Deep blue.....	.15
3726 BELLIS or ENGLISH DAISY. Early, double mixed.....	.15
3741 CAMPANULA. Cup and Saucer Canterbury Bells. Mixed.	.10
3733 CAMPANULA. Bellflowers. Single mixed.....	.10
3734 CAMPANULA. Burpee's Best Double Mixed.....	.10
3756 CARNATION. Chabaud Giant Improved, mixed. One of the most beautiful of all Hardy Pinks.....	.15
3763 CENTAUREA MONTANA. Hardy Cornflower. Blue. Blooms in June, July and August10
3768 COREOPSIS. Grandiflora. Pure yellow. 2 ft.....	.10
3770 DAISY. Shasta. Alaska. Large blooms. 2-3 ft.....	.15
3771 DAISY. Burpee's Floradale. Curved, loose petals.....	.15
3728 DELPHINIUM. Floradale Hybrids. Large spikes covered with double and semi-double blooms of exquisite color..	.40
3780 DELPHINIUM BELLAMOSUM. Rich, deep blue.....	.20
3774 DELPHINIUM BELLADONNA. Light blue.....	.20
3967 DIANTHUS PLUMARIUS NANUS. Dwarf mixed, sweet scented. A gem for the Rock Garden.....	.15
3948 DIANTHUS. Plumarius. Double Mixed. Spicy fragrance.	.10
3794 FOXGLOVE or DIGITALIS. Giant Shirley. Beautiful, tall spikes: mixed colors15

PERENNIAL FLOWER SEED—*Continued*

No.		Pkt.
3914	GAILLARDIA. Dazzler, bright golden, red center, 2 ft....	.20
3807	GYPSOPHILA. Single. Fine for bouquets.....	.10
3799	GYPSOPHILA. Double. Beautiful; best for cutting.....	.25
3812	HIBISCUS. Mallow Marvels. Burpee's Giant Mixed.....	.10
3822	HOLLYHOCKS. Double mixed. Very beautiful.....	.10
3828	HOLLYHOCKS. Single, mixed. Very free blooming.....	.10
3826	HOLLYHOCK. Allegheny. Single and semi-double with fringed edges. Mixed colors10
3803	HELENIUM. Riverton Beauty. Yellow flowers. 6 ft.....	.10
3829	IBERIS. Sempervirens. Hardy candytuft15
3842.	LUPINES. Mixed, white, blue, pink and rose.....	.10
3950	LUPINES. Improved Hybrids. Mixed20
2070	MYOSOTIS or FORGET-ME-NOT. Alpestres Royal Blue. The finest dark blue, 9 in. Biennial10
2074	MYOSOTIS. Palustris Semperflorens. Sky Blue. Blooms all Summer15
3851	ORIENTAL POPPY. Large scarlet flowers. The most showy of all. 2 to 3 ft.10
3847	ORIENTAL POPPY. Oriental mixed. All colors, new shades10
3870	PYRETHRUM. Roesum. One of the most graceful flow- ers. Rose, pink, and white. Early.....	.10
3873	RUDBECKIA PURPUREA. Blooms all summer. Purplish daisy like flowers. Fine for cutting.....	.15
3876	SCABIOSA. Caucasica. 2 ft. Soft, lavender blue.....	.15
3892	SWEET WILLIAM. Giant Double Mixed. All colors....	.10
3884	SWEET WILLIAM. Single Mixed. Perfection.....	.10
3879	STATICE. Latifolia. Purplish blue flowers.....	.10
3882	STOKESIA. Cyanea. Hardy aster. Fine10
4027	TRITOMA. New Hybrids. Various colored spikes.....	.25
3894	WALLFLOWER. Fine, double mixed. Sweet scented....	.15

Can get any other Perennial seed that you might want at very short notice. Also can get larger quantities if you so desire.

CLIMBING FLOWERS AND VINES

No.		Pkt.	¼ Oz.	Oz.
2906	BALLOON VINE. Makes Balloon-like seed pods	\$.10		
2923	CYPRESS VINE. Mixed. Fern-like foliage....	.10		
2912	CARDINAL CLIMBER. Brilliant. 15 ft.....	.15		
2975	CLIMBING FOXGLOVE. Beautiful. Purple... .	.20		
2987	MOONFLOWER. Early Heavenly Blue.....	.20		
3021	MORNING GLORIES. Burpee's Best Mixture. A quick growing vine. Free blooming.....	.10	.10	.25
3028	MORNING GLORIES. Mixed Japanese. Largest and finest of all. All colors10	.15	.35
	MIXED VINE SEEDS. Will make a quick cover for that unsightly spot10		

GOLD FISH

We carry a good supply of all kinds.

	Each
TROPICAL FISH. Guppy or Rainbow Fish. 6 for \$1.00.	\$.20
COMMON GOLD FISH. Small to medium large.....	.05 to .15
COMMON GOLD FISH. Extra large for pools.....	.25 to 1.00
JAPANESE FANTAILS. Medium to large.....	.25 to .50
JAPANESE TELESCOPES. Medium25 to .50
JAPANESE COMETS. Medium to large.....	.15 to .25
SHUBUNKINS. Many colors15 to .35
BLACK MOORISH TELESCOPES. Medium25 to .50
JAPANESE SNAILS. Large15
RED SNAILS40
CABOMBA. The green under-water plant, 3 for 5c; per Doz., 15c.	
PUTNAM'S BUG FOOD. Best. Per Box 22c; 5 Boxes for \$1.00.	
FISH BOWLS and AQUARIUMS on hand, or can get what you want on order. Prices very reasonable.	
SPECIAL SALE of one 2 Gal. Bowl and four Common Gold Fish, 95c.	
PRICES subject to change without notice.	

WATER LILIES AND AQUATICS

Suitable for Ponds, Pools and Aquariums.

	Each
CABOMBA. Viridifolia. For aquariums. 3 for 5c; per bunch..	\$.15
LUDWEIGIA MULERTTI. Reddish green leaves, per bunch....	.15
PARROT'S FEATHER. Very graceful, bright green, per bunch.	.15
THALIA DEALBATA. Tall Canna-like plant	1.00
UMBRELLA PLANT. Very artistic25
VARIEGATED SWEET FLAG. Green and White.....	.25
WATER HYACINTH. Large plants. Lilac rose flowers.....	.20
WATER POPPY. Yellow flowers25
WATER LILY. Gloriosa. The most popular deep red.....	2.00
WATER LILY. Rose Arey. Deep pink, fragrant. Almost Red.	1.25
WATER LILY. William Faulkner. The best Red.....	2.50
WATER LILY. Odorata. Native white, fragrant50
WATER LILY. Marliacea Chromatella. Best yellow.....	1.50
Can get you any other kind you may want at short notice.	

GERANIUMS

We have the finest assortment of Potted Geraniums we ever had. Large, strong plants in bud and blossom. Potted in 3 and 4-inch pots.

These seven best kinds at 25c Each; \$2.50 per Doz. Smaller plants at 15c Each; \$1.50 per Doz.

- ALPHONSE RICCARD. Bright vermilion scarlet.
- BEAUTE POITEVINE. Fine, salmon pink.
- IRVINGTON BEAUTY. New. Free blooming. Fine clear Pink.
- MARTHA WASHINGTON. Largest and very handsome.
- RADIO RED. A very bright red. Very free.
- S. A. NUTT. Rich dark crimson. Most popular of all.

Will have other kinds, also Lemon Verbena, Heliotrope and other seasonable plants. See page 33 for other bedding plants.

CUT FLOWERS

We strive to have a good assortment of Cut Flowers always on hand or can get them at short notice. Carnations, Roses, Snapdragons, Gladioli, etc., in season.

FUNERAL SPRAYS, WREATHS, PILLARS, etc. We are prepared to arrange any kind of wreath, pillow, casket spray or whatever you might desire. Our prices are very reasonable and we deliver if you wish. We guarantee satisfaction.

WEDDING BOUQUETS. We have furnished several weddings with their Bridesmaids, Maid of Honor, and Bridal Bouquets, Shower Bouquets, and all extras.

Flowers from STERLING is a mark of Satisfaction Assured.

FLOWERING PLANTS — ANNUAL

Grown from the Best Seed obtainable. See Flower Seeds for further descriptions. Nice transplanted plants.

	Doz.	3 Doz.	100
ASTER. Queen of the Market	\$.40	\$1.00	\$2.50
Crego Giants40	1.00	2.50
California Giants40	1.00	2.50
Fordhook Favorites40	1.00	2.50
California Sunshine40	1.00	2.50
Dreer's Superb Late Branching. Mixed colors.	.40	1.00	2.50
AGERATUM. Dwarf. Blue, and Blue Ball.....	.40	1.00	2.50
BLUE EYED AFRICAN DAISY.....	.40	1.00	2.50
BLUE LACE FLOWER40	1.00	2.50
CALENDULA. Mixed, Orange King and Orange Ball	.40	1.00	2.50
COSMOS. Early. Double Flowered or Crested.			
Crimson, pink, and white50	1.25	3.00
Late flowering, single mixed.....	.30	.75	2.00
Large Early Flowering, single mixed.....	.30	.75	2.00
CENTAUREA. Double Cornflower. Blue or mixed..	.40	1.00	2.50
CARNATION and DIANTHUS. Best Mixtures....	.40	1.00	2.50
GAILLARDIA. Double and Giant Imperial.....	.40	1.00	2.50
LARKSPUR. Rose, Blue and Mixed40	1.00	2.50
LOBELIA. Crystal Palace and Gracilis, 5c Each.....	.50		
MARIGOLD. Tall African. Orange All Double.....	.40	1.00	2.50
Primrose Queen. All Double.....	.40	1.00	2.50
Guinea Gold. New. Fine.....	.40	1.00	2.50
Dwarf French. Orange Ball.....	.40	1.00	2.50
Dwarf French. Gold stripe. Fine.....	.40	1.00	2.50
PANSY. Mixed Giants. Best strains.....	.50	1.20	3.00
PETUNIA. Fine for Window Boxes, Hanging Bas-			
kets, or Bedding. Separate or mixed colors. Rosy			
Morn, Rose of Heaven, Elks Purple, and Howard			
Star40	1.00	2.50
BURPEE'S DOUBLE, GIANT FLUFFY RUFFLES			
and others. Wonderful new ruffled and doubles			
beautiful. All colors, 10c Each80		
PHLOX DRUMMONDI. Best mixed colors.....	.40	1.00	2.50
SALPIGLOSSIS or VELVET FLOWER. Mixed....	.50	1.40	
SCABIOSA. Pin Cushion Flower. Mixed40	1.20	

ANNUAL FLOWER PLANTS—Continued

	Doz.	3 Doz.	100
SNAPDRAGONS. Burpee's Majestic. Semi-tall. Half Dwarf and Super Giants50	1.40	
STRAWFLOWERS or EVERLASTINGS. Finest mixed. Pick before fully opened for Winter.....	.40	1.00	2.50
SALVIA. America. Free blooming. Fine for border.	.50	1.40	3.75
Bonfire. Compact bush, 2 ft. x 2 ft. Scarlet.	.50	1.40	3.75
All Kinds. Potted extra large. Each, 10c..	1.00		
STOCKS. Perpetual branched. Mixed colors.....	.40	1.00	
TORENIA. Fournieri. Blue flowers50		
VERBENA. Burpee's New Giant Mixed.....	.50	1.30	
ZINNIA. Best Dahlia, Cactus and Giant Flowered sorts. Separate colors or mixed40	1.00	2.50

Will have a full supply of all the above and many more Annual Flower Plants. Come look our supply over.
 Flower Plants by Parcel Post: Add 8 cents per Doz.; 15 cents per 3 Doz., to above prices, if you want your plants sent by Parcel Post.

PERENNIAL PLANTS

One of our specialties.

Our plants are grown from the best seed procurable and the most popular sorts. Take care of them and they will bloom for many years. Dig the bed deep, enrich with well-rotted manure, keep clean and give protection in the Winter. Nice plants, transplanted, well rooted. Top dress with Bone Meal and Bloomaid.

	Each	Doz.
ACHILLEA. Small double white flowers all summer.....	\$.15	\$1.50
ANCHUSA. Italica Dropmore, 3 to 5 ft. Blue flowering..	.20	2.00
AGROSTEMMA. Coronaria. Mullein Pink. June and July.	.10	1.00
AQUILEGIA. Columbine. Dreer's Long Spurred Hybrids. All colors. Fine20	2.00
AQUILEGIA. Mrs. Scott Elliot's Hybrids.....	.15	1.50
ALYSSUM. Saxatile. Basket of Gold. Does well in sunny positions. Large plants, ready to bloom.....	.20	2.00
ALYSSUM. Saxatile. Extra large plants40	4.00
ASTER. Blue, Red and White. August and Sept.....	.25	2.50
ASTER. Mauve cushion. One of the best for fall.....	.30	
BELLIS. Perennis. English Daisy. Pretty little flower in shades of rose, pink, and white.....	.05	.40
BOLTANIA. Latisquama. 5-6 ft. pink, July to Sept....	.25	
CARNATION. Double Mixed, Hardy Fragrant.....	.20	
CAMPANULA. Single, Double, and Cup and Saucer. Pink, blue, and white. Large plants.....	.20	2.00
CENTAUREA. Montana. Perennial cornflower. 2 ft. Blue flowers from June to July.....	.20	2.00
COREOPSIS. Grandiflora. Single yellow flowers. Blooms all summer. Fine for cutting.....	.15	1.50
CENTAUREA. Extra large plants40	4.00
DAISY. Anthemis Kelwayi. Fragrant yellow flowers.....	.10	1.00
DAISY. Shasta, Alaska. Large, pure white. Long season. Extra large plants25	2.50
DICENTRA. Spectabilis. Bleeding Heart. Old fashioned Favorite. Large 4-year-old clumps.....	.50	5.00

PERENNIAL PLANTS—*Continued*

	Each	Doz.
DELPHINIUM. Belladonna. Light blue.....	.10	1.00
DELPHINIUM. Dreams of Beauty. Choicest.....	.25	2.50
DELPHINIUM. Bellamosa. Dark Blue.....	.10	1.00
DELPHINIUM. Exquisite mixed. Fine shades.....	.20	2.00
EUPATORIUM. Purpureum. July to Sept. Purple flowers.	.15	1.50
DORONICUM. Caucasicum. Yellow flowers. 1 ft.....	.30	
FOXGLOVE or DIGITALIS. Giant Shirley. Large plants ready to bloom20	2.00
GAILLARDIA. Blanket Flower. Beautiful large flowers with yellow tips and crimson centers.....	.10	1.00
GAILLARDIA. Large plants25	2.50
GYPSOPHILA. Baby's Breath. Single and Double. Large Plants20	2.00
GYPSOPHILA. Bristol Fairy. Finest double. Grafted Plants50	
GEUM. Mrs. Bradshaw. Rich orange-red blossoms.....	.15	
HELENIUM. Autumnal Superbum. 5-6 ft. Late Summer. Golden25	
HELENIUM. Riverton Gem. Wallflower colors. 3-4 ft. Late Summer. Beautiful25	
HIBISCUS or MALLOW. Extra large clumps. Separate colors50	
HIBISCUS. Large flowers. Red, pink and white. Mixed.	.10	1.00
HOLLYHOCK. Double. Crimson, white, maroon, pink, yel- low. Large plants. Separate colors.....	.25	2.50
HOLLYHOCK. Single, Double and Allegany. Mixed.....	.15	1.50
LAVENDULA. Vera (English Lavender). 18 in. Fragrant blue flowers. July and August.....	.25	2.50
LOBELIA. Cardinalis. Flaming Scarlet. July to Sept....	.10	1.00
LIATRIS. Pycnostachya. Kansas Gay Feather. Tall spikes, rich purple. Mid-summer. Large plants.....	.25	2.50
LIATRIS. Spicata. Earlier than above.....	.25	2.50
LINUM. Beautiful foliage. Graceful blue flower.....	.20	2.00
LUPINES. Mixed colors. White, rose and blue.....	.10	1.00
LUPINES. Hybrids. Above colors and many new ones..	.15	1.50
LYCHNIS. Hybrids. Pink, Rose and scarlet. 1½ ft.....	.15	1.50
PANSY. All colors. With protection will keep 2 or 3 years.	.05	.50
PAPAVER. Oriental. Oriental Poppy. The most showy of all perennials. Large, deep red flowers.....	.10	1.00
PAPAVER. Oriental. Extra large roots. Set early in Spring or in August20	2.00
PAPAVER. Nudicaule. Iceland Poppy. Prettiest of all for Rock Gardens or Border. Mixed colors.....	.10	1.00
PHYSALIS. Hybrids. Chinese Lantern Plant. 2 ft.....	.10	1.00
PHYSOSTEGIA. Virginica. July to Oct. Semi-shade....	.10	1.00
PLATYCODON. Chinese Bellflower. Grandiflora. Blooms all summer. Blue 1½ ft.25	
PENTSTEMON. Ovatus. Bearded Tongue.....	.10	1.00
RUDBECKIA. Newmanni. Black-eyed Susan. Blooms all Summer. Large clumps25	2.50
RUDBECKIA. Purpurea. Purple Daisies. One of the best of Summer flowers. Large plants.....	.25	2.50

PERENNIAL PLANTS—*Continued*

	Each	Doz.
SALVIA. Azurea. 3 ft. Blue flowers in August and September. Large clumps25	2.50
SCABIOSA. Caucasica. Blue flowers from June to Sept.	.25	2.50
STOKESIA. Cornflower Aster. June to October.....	.20	2.00
SWEET WILLIAM. Mixed colors. Large plants.....	.20	2.00
SWEET WILLIAM. Mixed. Smaller plants10	1.00
THALICTRUM. Aquilegiaefolium. Very graceful, rosy purple flowers in June and July.....	.30	
TRITOMA. Pfitzeri. Hardy. Red-hot Poker plant. Large..	.40	
TRITOMA. Pfitzeri. Small plants of above.....	.10	1.00
TROLLIUS. Orange Globe. Large globe flowers.....	.30	
VALERIANA. Rubra. Mauve rose, June to October.....	.15	
VALERIANA. Officinalis. Garden Heliotrope. Sweet....	.25	
VIOLA. Jersey Gem. Rich violet. Blooms all Summer.....	.25	2.50
VIOLA. Royal Gem. New. Deep Blue. Large flowers.....	.50	
WALLFLOWER. German. Mixed. Fragrant10	1.00
WALLFLOWER. Cheiranthus. Siberian. Orange.....	.10	1.00

Have other kinds of Perennials growing in my beds. Come and look them over.

Postage of Perennials, 12c per dozen extra.

ROCK GARDEN PLANTS — PERENNIALS

	Each	Doz.
ALYSSUM. Argentium. Yellow flowers. Silvery bushes. Blooms all Summer. 1 ft. 1 yr.....	\$.15	\$1.50
ALYSSUM. Saxatile. Masses of yellow flowers. Large plants20	2.00
ALYSSUM. Saxatile. Smaller plants10	1.00
ANCHUSA. Myosotidiflora. Good in shady places. Blue Forget-Me-Not flowers in May. 12 in.	.30	3.50
ANEMONE. Hupehensis. Dainty mauve-rose flowers. 12 in. August to November.....	.25	2.50
ANEMONE. Pulsatilla. Pasque Flower. Blue.....	.25	
ASTER. Alpinus rubra. Rose-purple flowers. 6-10 in. May and June. Plant in full sun.....	.20	
ASTER. Mauve Cushion. Mauve-pink flowers in October and November. 9 in. One of the best.....	.30	
ARMERIA. Formosa. Sea Thrift. Rosy pink heads. 9 in.	.15	
CAMPANULA. Carpatica. Pale blue flowers June-October. 9-12 in. 1 yr.....	.15	1.50
CERASTIUM. Tomentosum. Snow in Summer. May....	.15	1.50
DIANTHUS. Dwarf mixed double20	2.00
DICENTRA. Exima. Dwarf Bleeding Heart. Pink. All summer. Very effective35	
GYPSOPHILA. Repens. Trailing form of Baby's Breath July and August20	2.00
IBERIS. Simpervirens. Hardy Candytuft. White flowers in June10	1.00
IRIS. Pumila. Dwarf Iris. 3 colors. April and June....	.25	2.50
LINUM. Perenne. Perennial Flax. Dainty blue flowers. All summer. 12 in. Large plants.....	.20	2.00



A beautiful pool with appropriate setting.

ROCK GARDEN PLANTS—PERENNIALS

	Each	Doz.
MYOSOTIS. Alpestris. Deep blue Forget-Me-Not.....	.10	.75
MYOSOTIS. Palustris, semperflorens. Everblooming. Light blue. Nice plants.....	.10	.75
PAPAVER. Nudicaule. Iceland Poppy. Mixed, early....	.10	1.00
PHLOX. Subulata Alba. Trailing, white. April and May.	.20	2.00
PHLOX. Subulata Lilacina. Light blue.....	.20	2.00
PHLOX. Subulata Rosea. Pink blossoms20	2.00
POLYMONIUM. Coeruleum. Jacobs Ladder. Blue. 30 in.	.15	1.50
POTENTILLA. Five Finger. July to Sept.....	.10	1.00
PRIMULA. Cortusoides. Deep rose. Early summer. Needs sun. 10 in.30	3.00
PRIMULA. Polyanthus, Munstead strain. Mixed. Early. Needs moist, shady position15	1.50
SAXIFRAGA. Decipens Grandiflora. White. Fine 18 in.	.10	1.00
SEDUM. Mixed varieties. Excellent for sunny positions. Low growing10	1.00
SEDUM. Spectabile. Tall, pink, large leaves.....	.20	2.00
SEDUM. Acre. Low spreading, yellow blossoms.....	.20	2.00
THYMUS. Citriodorous. Lemon yellow Thyme. Makes fragrant carpet on sunny banks. June and July.....	.30	3.00
TUNICA. Saxifraga. Grass-like foliage. Pink star-like flowers10	1.00
VERONICA. Rupestris. Blue flowers in May. Sun or shade. 3-4 in.25	2.50
VIOLA. Admiration Deep Violet. Blooms profusely all summer20	2.00
VIOLA. Jersey Gem. Rich Violet.....	.25	2.50
VIOLA. Rosina. New. Very sweet pink flowers.....	.35	
VIOLA. Golden yellow20	2.00
VIOLET. Russian. Sweet, hardy, Double.....	.25	
VIOLET. Single. Sweet. Large clumps15	1.25

CANNA BULBS

KING HUMBERT. The most popular Canna. Large orange Scarlet flowers with heavy bronze foliage. 4 ft. tall. Each, 10c; per doz., \$1.00.

YELLOW KING HUMBERT. Bright yellow flowers spotted with orange, bronze foliage. A few will revert to the red blossoms. 4½ ft. Each, 10c; per Doz., \$1.00, Postpaid.

THE PRESIDENT: Large, bright red flowers, with green foliage. One of the best. 4 ft. tall. Each, 10c; per Doz., \$1.00 Postpaid.

POTTED PLANTS at double the above prices.

HARDY CHRYSANTHEMUMS

Sterling's Set of the Ten Best Hardy Mums.

BARBARA CUMMING. Clear yellow shading to bronze.

DAYBREAK, Single, shell-pink. Sweet.

FRANCES WHITTLESEY. Dwarf, rich bronze and garnet. Beautiful.

GYPSY GIRL. Single, chestnut-crimson. Frost resistant.

JEAN CUMMING. Pure white, large flowers. Very good.

OCTOBER DAWN. Late, light pink. Good for cutting.

OCTOBER GIRL. Early, lavender-pink. Semi-double.

R. MARION HATTON. New yellow Pompon. Very bright.

RUTH HATTON. Pompon. Ivory-white shading to yellow.

VIVID. Rosy crimson. Striking, good.

Price 20c Each; \$2.00 per Doz.

Collection of one each of the above 10 kinds, \$1.80.

GLADIOLI BULBS

One of our specialties.

Large No. 1 Bulbs.

Our Bulbs are all treated with Naphaline to prevent attack from thrip.

ALICE TIPLADY. Primulinus. Orange saffron. Best seller for cut flowers.

CRIMSON GLOW. Massive spikes. Glowing crimson.

DR. BENNETT. Beautiful, scarlet-red.

E. J. SHAYLER. Ruffled, deep pink. Free bloomer. Fine.

EVERLYN KIRTLAND. Coral pink, scarlet blotch. Beautiful.

FLAMING SWORD. Soft red. Extra early. 2c Each in any quantity.

HALLEY. Salmon pink, cream throat. Early.

HERADA. Light purple. Beautiful. Half dwarf.

LOS ANGELES. Shrimp pink, orange throat.

MRS. FRANK PENDLETON. Deep pink, dark blotch. Tall, fine.

ORANGE QUEEN. Apricot-orange. Large open flowers.

SALMON BEAUTY. Primulinus. Deep orange. Fine.

LENA GREATZ. Extra large. New, best white.

VIRGINA. Dark crimson. Half dwarf. Very beautiful.

WILLBRINK, Deep pink, Early.

All the above kinds at 50c per Doz., \$3.50 per 100, Postpaid.

STERLING MIXTURE. A mixture of all the best kinds of large flowering Glads. Beautiful. Per Doz., 40c; per 100, \$3.00 Postpaid.

GLADIOLI BULBS—*Continued*

STANDARD MIXTURE. A good mixture of all colors in second size bulbs. Use them in any quantity. They will bloom and satisfy. Per Doz., 25c; per 100, \$2.00, Postpaid.

COLLECTION No. 1. Three each of any 12 kinds. Each kind separate and named, \$1.50, Postpaid.

COLLECTION No. 2. One doz. each of any 5 kinds you might want, assorted and named, \$2.00, Postpaid. We reserve the right to substitute as near as possible if out of any kind named.

We have other kinds we are trying out. You are invited to come look our fields over. Cut Flowers sold very reasonable, wholesale or retail.

Naphaline Flakes for dusting bulbs in storage, per Lb., 20c.

DAHLIA BULBS

STERLING MIXTURE. Containing a mixture of some of the best kinds. Per Bulb, Strong eyes, 20c; per Doz., \$2.00.

IRIS — GERMAN, DWARF, and JAPANESE

Iris can be set in early Spring right after blooming and in September and October. We have 30 kinds of Iris in our collection for you to choose from. If you want large clumps, we can furnish them at 50c and \$1.00, according to size. Look them over when in bloom, and make your selection. Per Clump of 3 to 5 Rhizomes, 15c; Per Doz., \$1.50.

DWARF IRIS. See Rock Gardens. Plant.

JAPANESE. Blooms after German Iris are through. Purple, tall. Large clumps, 75c; Per Clump of 3 to 5 Rhizomes, 15c; per Doz., \$1.50.

SIBERIAN. White. Late. Each 25c.

Collection of one each of twelve different German Iris, \$1.50, Postpaid.

NARCISSUS or DAFFODILS

ONE OF OUR SPECIALTIES



EMPEROR. Large, clear yellow.

EMPRESS. Yellow trumpet, cream perianth.

GLORY OF SASSENHEIM. Very long yellow trumpet.

KING ALFRED. Deep yellow, large, long stem. Finest of all.

SPRING GLORY. Long yellow trumpet. Very beautiful.

VANILLA. Smaller flower. Very good for Rock Gardens.

BARRI CONSPICUOUS. Large flat yellow blossom with red eye.

LAURENS KOSTER. Cream color, clusters. Sweet.

NARCISSUS OR DAFFODILS—*Continued*

Double nosed bulbs of all kinds above will surely flower next Spring. 10c Each, \$1.00 per Doz., \$5.00 per 100. Ready in Fall.

Single nose bulbs at ½ above prices.

Place your orders in the Spring.

Look our field over in May. You are always welcome.

Cut Flowers from field, 25c per Doz., \$1.50 per 100.

HYACINTHS, CROCUS and TULIP BULBS

Will have a good supply of Spring flowering bulbs in the Fall and will be pleased to book your orders for Fall delivery. Prices will be right for No. 1 sure blooming bulbs. Send for catalog in the Fall.

CLIMBING ROSES

All my Roses are 2 to 5 years old.

	Each
AMERICAN BEAUTY. Rich rosy crimson.....	\$.60
AMERICAN PILLAR. Extra large plants.....	1.50
BLAZE. The new Patented everblooming Paul Scarlet Climber.	2.00
CHAPLAIN'S PINK CLIMBER. An improved Dorothy Perkins. Fine three-year plants.....	.75
CRIMSON RAMBLER. The most popular of all.....	.50
DOROTHY PERKINS. Large clusters of beautiful pink flowers.	.50
DR. VAN FLEET. Long pointed buds. Flesh pink, 3-year.....	.75
EMILY GRAY. Pointed buds. Beautiful yellow.....	.75
GOLDEN CLIMBER. New. Finest yellow climber. Patented..	2.00
NEW DAWN. An everblooming Dr. Van Fleet. Patent No. 1.	
Strong 2-year plants	1.50
MARY WALLACE. Large, rose-pink flowers60
PAUL'S SCARLET CLIMBER. One of the best. 3-year.....	.75
SILVER MOON. Pure white, large flowers.....	.75
TAUSENSCHON. Soft pink, no thorns, extra large plants....	1.50

HYBRID TEA ROSES

Two-year-old plants, potted and kept in our frames, all ready to grow and bloom. These Roses bloom in June, and every month throughout the Summer and Fall. Do not confuse these fine plants with the cheap bench plants sold for little or nothing. Use our Rose Dust for Dry Dusting, and "Fungtrogen" and "Black Leaf 40%" for Liquid Spraying.

COUNTESS VANDALL. New. Best rose at World's Fair. Patented.

 Coppery Gold. Long pointed buds. Each \$2.00.

DAME EDITH HELEN. Rose pink, long buds. Fragrant.

DUCHESS OF WELLINGTON. Pale buff yellow.

ETOILE DE HOLLANDE. The finest dark red. Great vigor.

JULIEN POTIN. A rich golden yellow that opens well. Sweet.

LOS ANGELES. Flame pink shaded with coral and gold. A favorite.

MME. EDOUARD HERRIOT. Large, deep salmon, orange.

MRS. PIERRE S. du PONT. Reddish gold.

PRES. HOOVER. Scarlet, orange to gold.

KAISERIN AUGUSTA VICTORIA. Best white.

RADIANCE. Brilliant carmine-pink. Blooms throughout the entire Summer, no matter how dry or hot.

ROSES—*Continued*

RED RADIANCE. Cerise red. Same characteristics as above.

TALISMAN. A combination of gold, apricot, yellow, and dark pink.

Any of the above can be had for 70c Each. Assortment of 1 Each of 10 of the above, \$6.50. Countess Vandall excepted.

Have some kinds with bare roots, not potted, at 50c Each. Come look them over.

Spray your Roses with Tri-ogen. Used successfully on 6,000 Roses at Century of Progress Exposition.

PEONIES

We have a nice assortment of Peonies, three and four-year old clumps. Select your color when in bloom. They can be dug and transplanted at any time if you take a whole clump. Per clump from 50c to \$1.50 according to size. Three eye divisions in the Fall, 35c Each, 3 for \$1.00.

HARDY PHLOX

One of the Best Summer-Blooming Perennials.

We have a fine assortment of Hardy Phlox 2 and 3-year-old plants.

ANTONIN MERCIE. Beautiful Lavender. Tall.

B. COMTE. Rich French purple.

BEACON. Cherry red. Fine.

BRIDESMAID. White, carmine eye. Very beautiful.

COMMANDER. Brilliant dark red, darker eye.

DAY BREAK. Beautiful delicate pink.

DEBS. Bright fiery crimson.

ENCHANTRESS. Clear pink. Fine.

FIRE BRAND. Bright scarlet. Large trusses.

LA VAGUE. Pure mauve, red eye.

MISS LINGARD. Best white. Early, long blooming.

MRS. JENKINS. Dwarf white.

NEW BIRD. Deep crimson red. Brilliant.

PAINTED LADY. Delicate silver pink. Red eye.

THOR. Soft, ruddy salmon, mottled center. Very fine.

All the above large clumps 25c Each; \$2.50 per Doz.

CLIMBING PLANTS and VINES

	Each
AMPELOPSIS VEICHH, or Boston Ivy. Best for chimneys and walls. Large 2-year-old plants	\$.30
ARISTLOCHIA SIPHO. Dutchman's Pipe. Large plants.....	1.00
BIGNONIA RADICANS. Trumpet Vine. Large 2-year plants.	.50
BITTER SWEET. Orange berries. Fall and Winter.....	.50
BITTER SWEET. Very large plants.....	1.00
CLEMATIS PANICULATA. Blooms freely in August and September. Pure white flowers. Strong plants.....	.50
CLEMATIS PANICULATA. Large plants.....	1.00
CLEMATIS JACKMANI. Beautiful purple blossoms.....	.90
ENGLISH IVY. Greenish purple leaves. Hardy. Per Doz., \$2.50.	25
ENGLISH IVY. Extra large50

CLIMBING PLANTS AND VINES—*Continued*

HONEYSUCKLE. Hall's Japanese. Very fragrant..50
HONEYSUCKLE. Fragrantissima. Bush form.....		.60
WISTERIA. Purple. Large grafted plants. 2 years and over..		.90
WISTERIA. White. Beautiful. Grafted90

POTTED VINES FOR WINDOW BOXES

	Each	Per Doz.
GERMAN IVY. Bright green leaves. Quick growing....	\$.25	\$2.50
GERMAN IVY. Smaller plants.....	.15	1.50
VARIEGATED VINCA. Green and white leaves. One of the best for Window Boxes. Smaller plants 15c.....	.25	2.50
ICE PINK. Trailing vine, pink flowers.....	.25	2.50
WANDERING JEW. Very rapid growing.....	.15	1.50
VARIEGATED ENGLISH IVY. Beautiful30	
JAPANESE GRAPE IVY. New30	

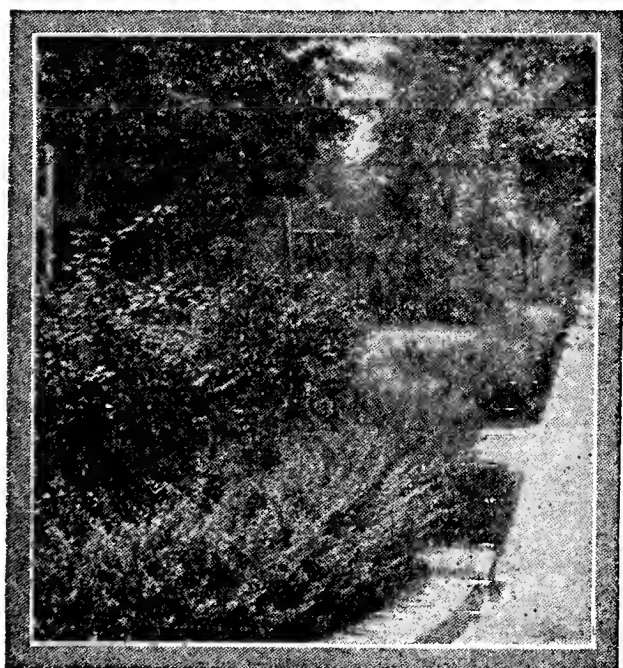
BEDDING PLANTS

We will have a larger supply than ever of Bedding Plants, such as below. Best kinds, most suitable for this section.

- AGERATUM. Dwarf, blue. Each, 5c; per Doz., 50c.
- COLEUS. Assorted colors. Each, 15c; per Doz., \$1.50.
- FUCHSIAS. A fine assortment. Each, 25c; per Doz., \$2.50.
- LANTANAS. Four of the best and showiest kinds. 3 in. pots, 15c Each; \$1.50 per Doz.; 4 in. pot, 25c Each; \$2.50 per Doz.
- LOBELIA. Crystal Palace. Dark blue. 5c and 10c Each.
- GERANIUMS. Six of the best kinds and colors. 10c to 25c Each

NURSERY DEPARTMENT

HEDGE and ORNAMENTAL SHRUBS and BUSHES



Japanese Barberry

JAPANESE BARBERRY makes a beautiful hedge or single specimen plants. Red berries in Fall and Winter.

Strong two-year-old plants, 8-10 inches; Each, 10c; per Doz., \$1.00; per 100, \$8.00.

Strong two-year-old plants, 12-18 inches; Each, 15c; per Doz., \$1.50; per 100, \$12.00.

Strong three-year-old plants, 2-3 ft.; Each 25c; per Doz., \$2.50; per 100, \$20.00.

Extra large plants, 30c to 50c Each.

BARBERRY. New Red Leaved Japanese. Rich, lustrous, bronzy-red all Summer, changing to vivid orange, scarlet and red shades in the Fall. Must be set in full exposure to the sun.

HEDGE PLANTS—*Continued*

Strong two-year-old plants, 15-18 inches; Each 30c; per Doz., \$3.00.
Strong three-year-old plants, Each 60c; per Doz., \$6.00.

PRIVET, AUREAM. Yellow leaved. Very pretty for a hedge or for specimen plants. Nice well branched plant, 2-3 ft. Each 50c; per Doz., \$5.00.

PRIVET, CALIFORNIA. The standard for hedges. Can be trimmed to any desired height, or shape.

One-year-old plants, 10-15 inches, Each, 5c; per Doz., 50c; per 100, \$4.00.

Two-year-old plants, 2-3 ft. Each 10c; per Doz., \$1.00; per 100, \$7.50.

Three-year-old plants, 3-4 ft., very bushy, Each, 15c; per Doz., \$1.50; per 100, \$10.00. Extra large plants, 25c to \$1.00 Each, according to size.

BOXWOOD EDGING. Fine husky plants. 8-12 inches, 80c Each; \$7.50 per Doz.; Larger plants, 12-18 in., \$1.50 Each.

JAPANESE SPURGE. Best ground cover. Per root, 10c; per clump of about one square foot, \$1.00.

FLOWERING and EVERGREEN SHRUBS

These are large, well-developed clumps, grown in our nursery from 2 to 3 years. Small shrubs just stocked in at much reduced prices.

	Each
ABELIA GRANDIFLORA. Low growing, nearly evergreen. Pink blossoms, late. 2 to 3 ft.....	\$1.00 to \$1.50
ACER PALMATUM ATROPURPUREA. Japanese Red Maple. Grafted stock. Good color all summer. 18 to 24 in.....	4.25
ALMOND. Double Pink Flowering, early flowering. 2 to 3 ft.	.75
ALTHEA. Tree or Bush Form. Red, purple, pink, or white. Blooms late	60c - 1.00
ALTHEA. Pink and white, variegated, double.....	.75
AZALEA AMOENA. Bright purple flowers. Evergreen. 8-15 in.	\$1.25 - 2.50
AZALEA HINODIGIRI. Bright red flowers. Most popular of all. 8-15 in. Nice plants in bloom for Easter.....	\$1.50 - 2.75
AZALEA MOLLIS. Yellow flowers before the leaves. 12-24 in.	.75 - 2.50
BEAUTYBUSH (KOLKWITZA AMABILIS). New, pink, bell- like flowers. 1½-2 ft.75
BOXWOOD. Nice bushy plants. 15-18 in.....	1.50
BUDDLEIA MAGNIFICA. Butterfly bush. Blooms all Sum- mer. Cut back every Spring. Different sizes.....	50c - 1.00
BUDDLEIA ALTERNIFOLIA. A new kind of Butterfly Bush. Better than common. 3-4 ft.	1.00
BUDDLEIA ILE DE FRANCE. New. Deep purple. Fine....	\$.75
BUDDLEIA FARQUHAR. Large flowers, rose with yellow center75
CERCIS CANADENSIS. American Red Bud or Judas Tree. Large	1.00
CORNUS FLORIDA. White-flowering Dogwood. 3-4 ft.....	1.25
CORNUS FLORIDA RUBRA. Red-flowering. 3-4 ft.....	3.00
CORNUS SIBIRICA. Very ornamental. 3-4 ft.....	.60
CORNUS SIBIRICA. Coral Dogwood. Extra large.....	1.50

SHRUBS—*Continued*

COTONEASTER HORIZONTALIS. Dwarf, box-like green leaves, bright red berries in the Fall.....	.90
CRAB APPLE. Betchel's flowering. Double pink.....	1.25
CRAB APPLE. Falkner Farm. Deep pink.....	1.25
CYDONIA JAPONICA. Red-flowering Quince. 2-3 ft.....	.60
DAPHNE CNEORUM. Fragrant, pink flowering. Flowers in Spring, Summer and Fall. 9-12 in.....	.75
DAPHNE CNEORUM. Fine for Rock Gardens. 15-18 in....	1.50
DAPHNE MEZEREUM. Upright. Flowers in early Spring. Red berries in August. 10-12 in.....	1.20
DEUTZIA CRENATA. Pride of Rochester. Small plants....	.60
DEUTZIA CRENATA. Pride of Rochester. Large. 5-6 ft....	1.00
DEUTZIA GRACILLIS. Low-growing, white. Beautiful.....	.75
DEUTZIA GRACILLIS ROSEA. Low-growing. Pink.....	.60
EUONYMOUS ALATUS. Winged Euonymous. Fine. 2-3 ft.	.75
ELDER. Golden. Very ornamental60
FORSYTHIA FORTUNEI. Extra large plants.....	1.00
FORSYTHIA INTERMEDIA. Earliest Golden Bell.....	.60 - .75
FORSYTHIA SUSPENSА. Weeping Golden Bell.....	.60 - .75
HYDRANGEA PANICULATA GRANDIFLORA. Large white, pointed blossoms, turning pink. Nice plants.....	.60
HYDRANGEA ABORESCENS GRANDIFLORA. (Hills of Snow). Pure white60
HYDRANGEA. Extra large plants in both kinds.....	1.00
HYPERICUM or ST. JOHNSWORT. Yellow blooming, low-growing. Late Summer90
ILEX (Japanese Holly). Nice plants.....	2.50
KALMIA LATIFOLIA (Mountain Laurel). Beautiful evergreen shrub. Nursery grown. 15-18 in.....	2.00
LABURNUM or GOLDEN CHAIN. Tree-like shrub. Long yellow blooms. Large. 6-8 ft.....	1.00
LESPEDEZA FORMOSA. Rosy purple clusters of flowers in September. A beautiful new shrub. 4-year old.....	.95
LILAC. Common purple. Nice plants.....	.60
LILAC. White, sweet scented. Double.....	.75
LILAC. French. Named and mixed varieties.....	1.00
LONICERA FRAGRANTISSIMA. Bush Honeysuckle.....	.75
MAHONIA AQUIFOLIUM. Hollygrape. A dwarf evergreen shrub, with holly-like leaves. Beautiful. 12-15 in.....	1.25
PHILADELPHUS AUREA. Yellow leaves, very ornamental..	.80
PHILADELPHUS CORONARIUS. (Mock Orange). The common sweet Syringa60
PHILADELPHUS CORONARIUS. Extra large plants.....	1.00
PHILADELPHUS VIRGINALIS. Pure white. Large, sweet flowers. Small bushes 60c. Large.....	1.00
PRUNUS PERSICA. Flowering Peach. Double pink blossoms.	1.25
PRUNUS PISSARDI. Purple leaf Plum. Very ornamental....	1.00
PRUNUS SERRULATA. Japanese Cherries. Beautiful. Double.	5.00
JAPANESE WEEPING CHERRY. Beautiful when in bloom.	2.75

SHRUBS—*Continued*

PUSSY WILLOW. Earliest sign of Spring. 3-4 ft.....	.75
RED LEAVED BARBERRY. (See Hedge Plants). Large plants80
SPIREA ANTHONY WATERER. Rose-pink flowers. Late...	.60
SPIREA PRUNIFOLIA. Bridal Wreath. Large plants.....	1.00
SPIREA TRICHOCARPA. Korean or late Van Houttei. 2-3 ft.	.75
SPIREA VAN HOUTTEI. Graceful, arching sprays. Like a pure white fountain. 3-4 ft. Bushy. 10 for \$5.00.....	.60
SNOWBERRY, WHITE. Large white berries that hang all winter. Fragrant foliage. 3-4 ft.....	.60
SNOWBERRY, RED. Coral berry. Clusters of red berries. 2-4 ft.60c and 1.00
RHODODENDRON CATAWBIENSE. Purple blossoms. Blooming after the Maximum. 15-18 in. \$2.50; 3-4 ft., \$4.50; 4-5 ft.	7.50
RHODODENDRON MAXIMUM. Pink blossoms. Nice, bushy plants. 15-18 in., \$1.75; 2½-3 ft., \$3.50; 3-4 ft.....	4.50
RHODODENDRON HYBRIDS. Deep red blossoms. 15-18 in.	5.00
RHODODENDRON HYBRIDS. 18-24 in. Bushy. Various colors	2.25
VIBURNUM CARLESI. Pink, sweet, 15-18 in.....	1.00
VIBURNUM PLICATUM. Japanese Snowball. Nice plants...	1.00
VIBURNUM RHYTIDOPHYLUM. New evergreen shrub. 2 to 3 ft.	2.25
VIBURNUM STERILE. Common snowball. Nice plants.....	.75
WEIGELA EVA RATHKE. Dark red, late blooming.....	.85
WEIGELA NANA VARIEGATED. Very ornamental.....	.75
WEIGELA ROSEA. Rose colored flowers. One of the finest shrubs. Large plants75
WEIGELA ROSEA. Smaller plants50

You are invited to come and look our shrubs over, as we are trying out new kinds every year. The above are large clumps, balled and burlaped. Do not confuse these with the small whips advertised for a song. We have smaller shrubs as low as 20c each.

ORNAMENTAL and SHADE TREES

	Each
ASH. European Mountain. Scarlet berries. 6-8 ft.....	\$2.50
BIRCH. White. Nicely branched. Very ornamental. 8-10 ft...	2.00
BIRCH. White. Very large trees. 10-12 ft.....	4.00
BIRCH. Cutleaf Weeping. 6-8 ft.....	2.00
CATALPA BUNGEII or Umbrella Trees. Have a nice lot of these very ornamental trees. 2-yr. Special price.....	.90
3-year	2.00
ELM. Chinese. Very quick growing, ornamental, drought-resistant. 6-8 ft.	1.75
LINDEN. American. Large foliage. Very good for lawn or street. 8-10 ft.	3.00
MAGNOLIA. Soulangeana. True pink and white flowered Magnolia. 3-4 ft., \$3.25; Large Trees.....	7.00
MAGNOLIA. Soul. Nigra. Purple Magnolia. Beautiful. 3-4 ft.	7.50

SHADE TREES—*Continued*

	Each
MAPLE. Japanese. Beautiful red leaves. Spring, Summer and Fall. Very ornamental. Grafted trees. 18-24 in.....	4.25
MAPLE. Norway. The best shade tree there is. 6-7 ft.....	1.50
7-8 ft. Nice spread of branches. Fine trees.	2.50
Larger trees. Prices on application.	
MAPLE. Sycamore. Large trees with heads cut back.....	\$3.00 - 5.00
MULBERRY. Weeping. Very ornamental. 3-yr. heads.....	3.50
Large 4-yr. heads	5.00
POPLAR. Lombardy. Quick growing. Upright. 8-10 ft.....	1.50
OAK. Pin. Desirable for lawns. Does not rob adjoining ground. 8-10 ft.	4.00
ORIENTAL PLANE. One of the best shade trees for street, salt water exposure, or lawn. 6-8 ft.....	2.50
THORN. Paul's Scarlet. Beautiful trees for specimen. Double scarlet flowers. 5-6 ft.	2.50
WILLOW BABYLONICA. Weeping. Large well-spread trees. Makes fine setting for a pool. 8-10 ft.....	2.00
Extra large trees	4.00

EVERGREENS

What adds to a place more than an Evergreen Setting? We have the Evergreens and would be glad to do your setting. Let us figure on your setting.

- ABIES CONCOLOR, White Fir. One of the best. Nearly blue in color. 18-36 in., \$1.50 - \$3.50 Each.
- ABIES, Balsam Fir. Good shape. Fine for Christmas trees. 2-5 ft. Each, \$1.50 - \$3.50.
- ARBORVITAE. American. Common White Cedar. Fine for specimen, hedge or windbreak. 18-24 in., Each 75c; 2-2½ ft., Each, \$1.25; 2½-3½ ft., Each, \$3.00.
- ARBORVITAE. Globe shaped. Dark green. These can be kept trimmed to a perfect ball. Very ornamental. Large 2½x2½ ft., Each \$4.00. Smaller trees, 50c-\$2.50.
- ARBORVITAE. Pyramidal. Tall, narrow good color. The most popular upright tree for foundation settings. 3-4 ft., B. & B. Each, \$3.00; 4-5 ft., Each \$4.00; 1-2 ft., Each, 75c-\$1.50.
- BIOTA AUREA NANA. Dwarf Golden Arborvitae. Good tree for Rock Gardens. 12-15 in., \$1.25; 9-12 in., 75c.
- BIOTA ORIENTALES PYRAMIDALIS. Chinese Arborvitae. A cheaper form of Arborvitae. Dense and good shape. 4-5 ft., Each, \$3.00; 2-4 ft., 75c-\$1.50.
- CEDRUS DEODAR. Blue Cedar. A blue fine-leaved evergreen of wonderful beauty. 3-4 ft. Balled and burlapped. Each \$6.00.
- CHRYPTOMERIA JAPONICA LOBBI. Very graceful and effective. 5-6 ft. Each \$7.50; 3-4 ft. Each \$2.50.
- JUNIPERUS EXCELSA STRICTA. Spiny Greek Juniper. Slow growing. 9-15 in. Each 75c.
- JUNIPERUS HIBERNICA. Irish Juniper. Tall spire-like, good green. 3-3½ ft., \$3.50; 18-24 in., 75c.
- JUNIPERUS PFITZERIANA. Pfitzer Juniper. Broad bushy habit. Fine for Rock Gardens. Gray-green color. 3-4 ft., Each, \$3.50; smaller trees, Each 75c-\$1.50.

EVERGREENS—*Continued*

- PICEA EXCELSA. Norway Spruce. Fine for Specimen work or hedge. 12-18 in., Each, 75c; 1½-2½ ft., \$1.50-\$2.50, according to size. These make fine Christmas trees. Larger trees, \$3.00-\$5.00.
- PICEA PUNGENS GLAUCA. Colorado Blue Spruce. The finest tree of all. 12-18 in., Each, \$1.50; 18-36 in., \$2.50-\$5.50; 4-5 ft., \$7.50 to \$12.50 Each. We have some nice specimens. Come look them over.
- PINUS MUGHO COMPACTE. Mugho Pine. True Dwarf Pine. Dense, compact growth. Unexcelled for porch or foundation cover. 12-24 in., B. & B., Each, \$1.25-\$2.50.
- PINUS RESINOSA. Red Pine. Rich green color. Vigorous growth. 3-4 ft., Each, \$2.50; 1-2 ft., \$1.00.
- PINUS THUNBERGII. Black Pine. Vigorous. The best Evergreen for sandy, exposed places, or seaside. 4-5 ft., Each, \$3.50.
- PSEUDOTSUGA DOUGLASI. Douglas Fir. Hardy bluish color. From \$1.00-\$4.50, according to size. Have a quantity of these trees, healthy, disease-free, from 3-6 ft.
- RETINISPORA FILIFERA. Thread cypress. Fine-leaved. Good color. 3-5 ft., Each, \$4.00.
- RETINISPORA PISIFERA AUREA. Golden Sawara Cypress. Fine yellow effect. Grows quickly. 3-5 ft., Each, \$2.50-\$3.50.
- RETINISPORA PLUMOSA. Plumed Cypress. A beautiful, fine-leaved pointed tree that can be kept trimmed to any shape or size. Bright green. 4-5 ft., B. & B., Each, \$5.00; 3-4 ft., Each, \$2.75.
- RETINISPORA SQUARROSA VEITCHII. Moss Cypress. Very graceful. Blue-grey. Feathery and dense. 3-4 ft., \$3.00.
- TAXUS CUSPIDATA. Japanese Yew. Grows medium high, spreading and of a beautiful dark green color. Can be planted in partial shade. B. & B., 1-1½ ft., Each, \$1.50; 1½-2 ft., \$3.00; 2-2½ ft., \$4.00. Smaller trees, 75c-\$1.25.
- TAXUS CUSPIDATA BREVIFOLIA. Dwarf Yew. Darker, closer growing than above. Fine for Rock Garden. 9-12 in., Each, \$1.50; 12-18 in., Each, \$2.50.
- TSUGA CANADENSIS. Canada Hemlock. Likes shady places. One of the best for seashore. 3-5 ft., Each, \$3.50-\$5.50; 1½-2 ft., \$1.25.
- We are adding to our Evergreens all the time and advise anyone in the market for good Evergreens to look our stock over and get our prices. We have many Evergreens not quoted above at reasonable prices. All our Evergreens are Balled and Burlapped.

FRUIT TREES

APPLE TREES. Standard size.

Nice large trees, 2 and 3 years old.

- BALDWINS. Standard red. Very heavy yielding. Fine quality.
- CORTLAND. The new late McIntosh. Fine quality. Good keeper.
- DELICIOUS. Early Winter, sweet, red. Best for eating out of hand.
- DWARF McINTOSH. Red, very good, \$1.00.
- FALL PIPPIN. Large green. Fine quality.
- KING Large red Winter apple.
- McINTOSH. Highest quality red. Late Fall.
- RED ASTRACHAN. Earliest red. Tart. Best for cooking.
- ROXBURY RUSSET. Dull green, rough skin. Late.
- STAYMAN'S WINESAP. Fine quality red Winter apple.
- YELLOW TRANSPARENT. Earliest green.

Per single tree, 75c; per 5 trees, assorted if you wish, \$3.50 at the farm. Larger trees of some of the above kinds from \$1.00 to \$2.50 Each.

CHERRY TREES

Large 2 and 3-year-old trees. No. 1 grade 4 to 6 feet high.

BLACK TARTATIAN. Large black. Fine quality. Early.

BING. Late, dark red.

EARLY RICHMOND. The best sour cherry.

GOVERNOR WOOD. Large, early yellow.

NAPOLEON. Large, sweet, yellow, red cheek.

WINDSOR. Best sweet, dark red. Late.

Large trees, Each, 90c.

PEAR TREES

BARTLETT. Standard. Fine quality.

BUERRE BOSCH. One of the best. Late Winter.

CLAPP'S FAVORITE. Early, juicy. Large size.

SECKEL. Small, very sweet.

KIEFFER. Vigorous and prolific. Late.

All good No. 1 sized trees. Each, 75c; 5 for \$3.50.

PEACH TREES

No. 1 grade, large, healthy trees.

BELLE OF GEORGIA. White with red cheek. Prolific. Early.

CHAMPION. Best white. Extra quality. Early.

CRAWFORD LATE. Late. Large yellow.

EARLY CRAWFORD. Large yellow. Early.

ELBERTA. Standard. Yellow. Very large. Fine.

ROCHESTER. Large yellow. Early. Fine quality.

Fine stock, Each, 60c; per 5 trees assorted, \$2.75; Larger trees at 90c Each.

PLUM TREES

ABUNDANCE. Large, fine fruit. Early.

BURBANK. Medium red. Early. Very prolific.

GERMAN PRUNE. Large black.

WICKSON. Late red.

LOMBARD. Sweet. Dark red. Early.

Large trees, Each, 75c; per 5 trees, \$3.50.

ASSORTED TREES

APRICOT. Fine. Each, \$1.00.

QUINCE. Orange. XXX grade. Each, 90c.

CRAB APPLE. Hyslop, dark red, Each, 80c.

WALNUT, ENGLISH, 3 to 4 ft., Each, \$1.75.

WALNUT, JAPANESE. 6-7 ft., Each, \$1.75.

Can get you any kind of fruit tree that you might want, not listed above. Prices are all net at the Farm. Packing 10c per tree extra.

GRAPE VINES

The best kinds. Good two and three-year-old vines.

	Each
FREDONIA. New early black. One of the best.....	\$.90
CONCORD. Most popular purple. Extra large plants, 50c.....	.25
NIAGARA. Best white30
CATAWBA. Late, pink, sweet.....	.30
WORDEN. Early. Extra large plants. Purple.....	.50
BRIGHTON. Reddish purple. Early.....	.45
AGAWAM. Red, large sweet.....	.35
PORTLAND. New white. Sweet. Earliest of all.....	.50

Add 10 cents extra for one vine sent by P. P.; 15c for three.

CURRANTS

- PERFECTION. A beautiful bright red. Price, 20c Each; \$2.00 per Doz.
- RED LAKE. New, large red. Finest of all. 25c Each; \$2.50 per Doz.

GOOSEBERRIES

- POORMAN. Largest red gooseberry grown. Fine quality. 25c Each; \$2.50 per Doz.
- CHAUTAQUA. New. Extra large. Fine quality. 35c Each.

PLANT DEPARTMENT

STRAWBERRY PLANTS — Sterling Quality

My Strawberry Plants are raised on fresh ground, well fertilized and mulched. They are well rooted, healthy and true to name. We are trying out four new kinds for this section this year, the Dorsett, Fairfax, Blakemore and Belmar. These are all kinds that have been developed by Allen in co-operation with the Dept. of Agriculture.

The Dorsett and Fairfax are unexcelled for quality and the Blakemore and Belmar for yield.

All plants are from a new bed. No old plants are ever sold by me.

	25	100	300	1000
PREMIER or HOWARD, No. 17. The best kind I have ever tried for table use or for market. Begins to ripen early; large, long red berries, and keeps right on through a long season and keeps its size and color well, right up to the end of the season.....	\$.25	\$.80	\$2.00	\$ 6.00
BELMAR. An early sort developed by the U. S. Dept. of Agriculture. In heavy, moist soil will give a good yield of beautiful berries. Worth trying out25	.80	2.00	5.00
BLAKEMORE. A wonderful plant maker. How it will yield and satisfy as far north as this we do not know, but one of its parents is Premier so it should be good. Try a few....	.25	.80	2.00	5.00
DORSETT. Bred by the U. S. Dept. of Agriculture in their efforts to get extra quality in a good shipping berry. This is a fine, heavy-yielding kind, comes same season as Premier. Disease free, and a good plant maker. Berries light color50	1.50	3.60	11.00

STRAWBERRY PLANTS—*Continued*

	25	100	300	1000
FAIRFAX. Bred by the U. S. Dept. of Agriculture for quality, productiveness and size. Does not make as many plants as Dorsett but yields almost as heavy. Berries very firm, dark colored, and unexcelled for home garden or for market50	1.50	3.60	11.00
CORSICAN. One of the sweetest berries grown. Large plants, leaves and berries. Fruit stems long and stiff. Very productive.....	.25	.80	2.20	6.50
CHESAPEAKE. New stock grown on from Allen's special strain last year. Wonderful quality. Late30	.90	2.25	7.00
GANDY. Standard for extra late. Try a few and lengthen your fruiting season.....	.30	.80	2.10	6.00

Have tried to list the 8 kinds named above about in their order of ripening.


All kinds have perfect blossoms and can be set alone if desired.

EVERBEARING STRAWBERRY PLANTS

MASTODON. The largest and best Fall bearing berry we have tried yet. Very sweet berries. Heavy yielding.

Set the plants this Spring, keep all blossoms pinched off until July and then thin the blossoms out 40% right through the rest of the season. You will then have good-sized berries of fine flavor right up to freezing weather and another crop the following Spring. Per Doz., 25c; per 100, \$1.50.

All prices quoted above are net at the farm. If you want your Strawberry Plants sent by Parcel Post add 8c per 25; 15c per 100; 25c per 200; 30c per 300; quantities over that should be sent Postage C. O. D. or by Express collect.

 See Special Strawberry Plant Collection on front cover.

Strawberry Plants in August, September and October.

We will have about all the kinds listed and some new kinds as well for Summer and Fall setting, from our new bed. New plants, well rooted and true to name. Write or ask for Fall Prices.

We are growing some of the new Catskill this year. Supposed to be the best mid-season kind there is. Try a few this Fall.

RED RASPBERRY PLANTS

We are trying new kinds every year in our endeavor to get kinds that will not get Mosaic and die out in a few years. We list some that are well worth trying.

NEWBURGH. A new red raspberry of superior merit. Has so far proven immune to Mosaic. It is of fine quality, early, productive, and holds its size through a long season. Each 20c; per Doz. \$2.00.


CHIEF. A new early variety of fine quality and size. Disease free so far. Large 2 yr. old plants. Per Doz. 80c; per 2 Doz. \$1.50; per 100, \$6.00.

VIKING. Midseason, new. Large and hardy. Originated in Canada. Large 2 yr. old plants. Per Doz. 80c; per 2 Doz. \$1.50; per 100, \$6.00.

RASPBERRY PLANTS—*Continued*

LATHAM. Large, late and disease resisting. Per Doz. 75c; per 2 Doz. \$1.25; per 100, \$4.00.

CUTHBERT. An old standard variety. Fine flavor. Per Doz. 60c; per 2 Doz, \$1.00; per 100, \$3.50.

 See Special Raspberry Plant offer on back cover.

BLACK CAP RASPBERRY PLANTS

NEW LOGAN BLACK CAP. Early, resistant to Mosaic and other diseases. Heavy yielding, large berries. Per Doz. 75c; per 2 Doz. \$1.25.

BLACK BEAUTY. Mid season. Disease resistant. New, hardy, rank growing and prolific. Per Doz. 75c; per 2 Doz. \$1.25.

QUILLEN. Late. Resistant to Anthracnose, the worst foe of Black Caps. Medium to large berries of good quality. Worth trying. Per Doz. 75c; per 2 Doz. \$1.25.

BLACKBERRY PLANTS

ALFRED. New, long, sweet berry. Early. Each 10c; per Doz. \$1.00.

MERSEREAU. The best Blackberry for this section. Large, fine flavor and quite free from rust and disease. Large plants. Per Doz. 80c; per 3 Doz. \$2.00; per 100, \$4.00.

ASPARAGUS ROOTS

These roots are large, healthy, and ready to grow.

Doz. 100 1000

MARY WASHINGTON. One-year-old roots. From re-selected Pedigreed Seed. Prof. Norton claims this kind is the largest, most productive and finest flavored Asparagus yet developed. Very high branching, which makes it the best for cutting green. Rust-resistant\$.20 \$1.00 \$ 8.00

MARY WASHINGTON. Two-year-old roots. These will make large shoots, ready to cut next year.... .30 2.00 16.00

Set out Sterling Grown Roots this year, about six inches below the surface of the ground, cover with two inches of soil. As the plants grow up, fill trench with well-rotted manure and more soil, and some good garden fertilizer on top of that. Do not put fertilizer next to any kind of root or plant if you want them to live.

If properly taken care of you can cut your bed the following Spring until June 1st, letting it grow up after that and giving it more manure, feeding it well after letting it grow up.

HORSE RADISH

MALINER KREN. Best Kind. Per Doz. 25c; per 100, \$1.90.

RHUBARD ROOTS

OLD FASHIONED PIE PLANT. Large stalks with reddish tinge. Per root 10c; per Doz, 75c; per 3 Doz, \$2.00.

QUEEN. New. Strong, vigorous grower. Decided pink in color.

Finest quality Each 15c; per Doz. \$1.50.

If you want Raspberry and Blackberry Plants, Horse Radish and Rhubarb Roots sent by Parcel Post add 15c to above prices for 1 Doz., 20c for 2 Doz. and 25c for 3 Doz. on Long Island.

COLD FRAME PLANTS

CABBAGE PLANTS

Hardy, Well-Rooted Plants re-rooted from Southern Plants.

	Doz.	100	1000
EXTRA EARLY JERSEY WAKEFIELD. Earliest pointed heads	\$.10	\$.60	\$4.50
EARLY CHARLESTON WAKEFIELD. Very large pointed heads10	.60	4.50
EARLY SUMMER. Large flat heads. These three make a fine succession.....	.10	.60	4.50

MAGGOT CONTROL

You can raise fine Cabbage without damage from Maggots if you will follow the directions given below:

Add 1 Oz. Corrosive Sublimate to 8 gallons water. Put ½ cupful to each plant once a week. Begin to do this in May or as soon as you see the Maggot fly.

LETTUCE PLANTS

Transplanted, Well-Rooted Plants

	Doz.	100
MIGNONETTE. Quick heading, good quality.....	\$.10	\$.70
NEW YORK or WONDERFUL. Large heads of finest quality10	.70
BIG BOSTON. Sure heading. Fine.....	.10	.70
HANSON. Large solid heads10	.70

HOT BED PLANTS

Ready in May and June.

TOMATO PLANTS

Transplanted, well-hardened, stocky plants. Grown from the best strains of seed.

BREAK O' DAY. The best extra early.

PRITCHARD or SCARLET TOPPER. New, extra early. Heavy cropper. Fine.

SUNNYBROOK EARLIANA. Burpee's best strain.

RED HEAD. Bright scarlet fruit. Early; firm, large.

JOHN BAER. The most popular early sort. Large.

BONNY BEST. Very productive. Early.

PONDEROSA. Livingston's Improved Strain. Very large. Fine flavored.

MARGLOBE. Livingston's Strain. Disease resistant. Large.

LIVINGSTON'S STONE. One of the best for table, canning or market. Very solid, smooth and fine.

CLARK SPECIAL. Type B. An improved Stone.

BURPEE'S MATCHLESS. Large, smooth. Bright red.

GOLDEN PONDEROSA. Large yellow. Sweet.

YELLOW PEAR SHAPED. Small fruit for preserves.

All kinds at one price. 25c per Doz.; 5 Doz. assorted kinds for \$1.00; \$1.50 per 100; \$10.00 per 1000.

Potted Plants in the early sorts. Large stocky plants. Chalk's Early Jewel, John Baer and Red Head, 5c Each; 55c per Doz.

Add 9c per Doz.; 12c per 2 Doz., and 25c per 100 to your order if you want them by Parcel Post.

PEPPER PLANTS

Well Hardened. Strong Plants.

	Doz.	100
CALIFORNIA WONDER. New, thick. Sweet.....	\$.20	\$1.50
HARRIS' EARLY GIANT. Very large, productive, sweet and early. Earlier and larger than Ruby King.....	.20	1.50
NEAPOLITAN. Early, large and sweet. Prolific.....	.20	1.50
BURPEE'S RUBY KING. One of the sweetest, large....	.20	1.50
SWEETMEAT GLORY. Pointed, sweet. Thick-fleshed..	.20	1.50
CHINESE GIANT. Largest of all, most popular.....	.20	1.50
BURPEE'S NEW SUNNYBROOK. Sweet, small, thick- fleshed. An improved Cheese Pepper.....	.20	1.50
LARGE BELL or BULL NOSE. Rather warm.....	.20	1.50
LONG RED CAYENNE. Hot. Very prolific.....	.20	1.50
CORAL GEM BOUQUET. Small, hot. Very ornamental.	.20	

Add 8 cents per dozen, 15 cents per 100 to the above prices if you want them sent by Parcel Post.

EGG PLANTS

Transplanted, Well Rooted and Hardened.

	Doz.	3 Doz.
IMPROVED NEW YORK SPINELESS. Large purple..	\$.30	\$.80
BURPEE'S BLACK BEAUTY. Large, early, prolific...	.30	.80

Add 9c per Doz., 15c per 3 Doz., if you want these plants sent by Parcel Post.

POTTED EGG PLANTS at 6 Each; 60c per Doz. Large plants.

SWEET POTATO PLANTS

Ready in May and June.

	Doz.	100	1000
YELLOW JERSEY. Productive, early.....	\$.10	\$.70	\$6.00
RED JERSEY. Extra quality10	.70	6.00
PORTO RICO YAM. Large, fine for baking.....	.10	.70	6.00

Add 8 cents per Doz., 12 cents per 100, 20 cents per 300, 40 cents per 1,000 if you want these sent by Parcel Post.

Try setting your Sweet Potatoes under Mulch Paper. Tomatoes, Egg Plants and Peppers also do well under Mulch Paper.

FIELD GROWN PLANTS

Ready from June 20th to August 20th approximately.

All my plants are raised on fresh ground and the very best strains of seed are always used.

BRUSSELS SPROUT PLANTS

The seed is treated with hot water for Black Stem and Blackleg and you are thus assured of strong, healthy plants free from disease. Plants are raised on fresh ground.

	Doz.	100	1000
LESLIE STRAIN. Fine hard, shiny Sprouts. Plants fairly tall	\$.10	\$.60	\$4.00
BLUE RIBBON STRAIN. A very choice strain....	.10	.60	4.00

Price by the thousand liable to change, depending on the season.

July 31, 1933.

From 1/2 Bu. Sure Crop Wax Beans I planted early I made 5 pickings. I shipped 213 bags, and they sold from \$1.00 to \$2.00 per bag.

JOHN STANKEWICZ.

CAULIFLOWER PLANTS

My seed is treated with the hot-water treatment, insuring against Black Stem, Blackleg and Blight. Plants raised on fresh, disease-free ground.

	Doz.	100	1000
STERLING LARGE EARLY ERFURT. Large, snow-white heads. One of the best for main crop. Sure heading	\$.15	\$.60	\$4.00

Price by the thousand liable to change without notice.

Use Corrosive Sublimate treatment for Maggots in your seed bed.

Pour along the row as soon as you see signs of Maggot.



Use our Nicotine Dust for Aphis and Thrip.

CABBAGE PLANTS

This seed is treated with Semi San for Black Stem.

Plants are all grown from choice Long Island grown seed excepting the Danish Ball Head.

	Doz.	100	1000
ALL SEASON. Sure heading. Large, flat heads.....	\$.10	\$.50	\$3.00
EARLY FLAT DUTCH. Best for late setting.....	.10	.50	3.00
SAVOY. Long Island Special. Curled or crumpled leaves. Best quality10	.50	3.00
LARGE LATE DRUMHEAD. Largest heads.....	.10	.50	3.00
LATE FLAT DUTCH. Solid, large heads.....	.10	.50	3.00
DANISH ROUNDHEAD. Short stemmed Ball Head	.10	.50	3.00
MAMMOTH ROCK RED. Sure heading.....	.10	.50	3.00

If you want any of the Brussels Sprout, Cauliflower or Cabbage Plants listed above sent by Parcel Post, add 8 cents per Doz., 15 cents per 100, and 8 cents for each additional 100, to above prices.

CELERY PLANTS

Ready in July and August. Grown on fresh ground from the best seed.

	Doz.	100	1000
FORDHOOK or EMPEROR. Burpee's Seed. Dwarf.	\$.10	\$.60	\$5.00
GOLDEN PLUME. Fine for second early or late....	.10	.60	5.00
WHITE PLUME. Self blanching. Extra early.....	.10	.60	5.00
GIANT PASCAL. Tall Winter. Fine nutty flavor..	.10	.60	5.00
WINTER QUEEN. Stocky, very large, crisp.....	.10	.60	5.00

Add 8c per Doz., 12c per 100, and 8c for each additional 100 if you want these sent by Parcel Post.

Have early transplanted plants in above kinds at 15c per Doz.; 80c per 100.

INSECTICIDES, SPRAY MATERIAL and SUPPLIES ARSENATE OF LEAD

"Corona Dry" Arsenate of Lead. This is one of the best kinds, very fine, sticks well on the foliage and kills the bugs clean and quick.

	Per Lb.
1 to 3 Lb.	\$.18
4 Lb. Pkg.....	.15
Case of twelve 4-Lb. Pkgs.....	.14½
500 Lbs. or over.....	.12½

The above prices are net cash. Time price, 1c per Lb. extra. Price liable to change without notice.

CALCIUM ARSENATE

Corona Calsenate

A light, fluffy powder, stronger and keeps in solution better than Arsenate of Lead but does not stick as well in rainy weather.

	Per Lb.
1 to 3 Lbs.....	\$.15
4 Lb. Pkg.12
Case of eight 4-Lb. Pkgs.....	.11¼
500 Lb. or over.....	.09¼

Prices net cash. Time price, 1c per Lb. extra.

BORDEAUX MIXTURE

Corona Dry Bordeaux contains not less than 13% Copper. The best control for Blights and Fungi. Full directions for its use on the box.

	Per Lb.
1 to 3 Lb.....	\$.18
4 Lb. Pkg.....	.15
Case of eight 4-Lb. Pkgs.....	.12½

All prices net cash. Time price, 1c per Lb. extra.

MAGNESIUM ARSENATE

The best poison for Mexican Bean Beetle. Use 5 Lbs. to 100 Gals. water and spray underside the leaves. Per Lb., 30c; per 5 Lbs., \$1.35; 50 Lb. drum, price on request. Use 2 Lbs. Kayso and 5 Lbs. lime to 100 Gallons water.

LIME SULPHUR DRY

One of the best remedies for Leaf Curl and most all of the Fungus disorders. Mix from 15 to 25 Lbs. to 45 Gals. water for dormant spray. 5 to 8 Lbs. for a good Summer spray.

	Per Lb.
1 to 4 Lbs.....	\$.20
5 to 10 Lbs.....	.15
12½ Lb. Bags.....	.13
100 Lb. Drums 8-12½ Lb. Bags.....	.12½

All prices net cash. Time price, 1c per Lb. extra.

MONOHYDRATED COPPER DUST

A dry powdered Blue Vitriol. Use as a Dust for control of Bean Beetle, mixing 5 Lbs. Copper Dust, 5 Lbs. Lime and 1 Lb. Magnesium Arsenate, or Fluo, if you prefer. Per Lb., 15c; per 10 Lbs. or more, 11c per Lb.

FLUO

A non-arsenical control of Bean Beetle and Cabbage Worm. Can be used on your Cauliflower with no danger of their being condemned. Per Lb. Pkg. \$.40

LIQUID LIME SULPHUR

This is sometimes used in preference to the dry form. The very best, Grasselli Brand.

	Per Gal.
Per Gal. at the Farm, bring your own container.....	\$.40
Per 10 Gal. at the Farm, bring your own container.....	.35
Per 50 Gal. drum, F.O.B. N. J.....	.20

SPRAYING LIME

A fine quality lime. Packed in 50 Lb. bags, 60c per bag; \$5.50 per 10 bags.

SPRAY PUMPS

Have a stock of these handy Sprayers listed below on hand and can get you any kind or size you might want on very short notice. Send for catalog.

CARBOLA SPRAYERS

Galvanized Condensed Air Sprayers. Nicely made. Long hose, good nozzle. Holds 3 Gals. Each, \$6.00.

BRASS SPRAYER

One of the best on the market. Easily filled. Full brass. Long hose, extension rod, good nozzle. Holds 3 Gals. Each, \$9.00.

CARBOLA DUSTERS

The handiest duster for Garden or Flower-bed. Each, \$1.



Best for Mites, Lice and Germs

Carbola is a white paint and powerful disinfectant combined in powder form. Just mix with water and you have a smooth-flowing disinfecting paint. No waiting or straining. Does not flake or peel off. One pound covers 100 square feet.

Apply Carbola to the interiors of your poultry houses, dairy barns, hog pens and outbuildings. Apply it to every surface that might harbor lice, mites and disease germs. It is live stock insurance against tuberculosis, foot and mouth, hog flue and other destructive diseases. Try it. Satisfaction guaranteed.

5 Lbs. ..	\$.50	25 Lbs. ..	\$ 1.90
10 Lbs. ..	.90	50 Lbs. ..	3.50

2% NICOTINE DUST

The dry powdered Nicotine Sulphate. Dust it on in the heat of the day and it forms a gas and will kill all insects, if thoroughly applied. Per Lb., 20c; 5 Lbs. or more at 18c per Lb.; 50 Lb. drums at 16c per Lb.

TOBACCO DUST

Fine ground. Used for dusting plants for Aphis, Thrip and Fleas, Hen's Nests, etc. Per Lb., 10c; per 10 Lbs., 70c; per 100 Lb. bag, \$6.00.

SULFOCID

A Better Summer Spray

1 5-Gal. can in case.....	\$7.50
1 Gal. can in case.....	2.25
1 Qt. can85
1 Pt. can50

Freight paid to any R. R. station on Long Island on orders of 5 gallons or over.

Sulfocide is a powerful summer fungicide—at low cost—for fruits, vegetables and flowers. When sprayed, it quickly decomposes, leaving a film of sulfur so fine as to be almost invisible except where drops accumulate.

1 Qt. makes 50 Gals. of spray.
1 Gal. makes 200 Gals. of spray.

Add 1/2 Lb. Kayso to each 50 Gals. of spray, putting it in the tank first.

December 5, 1932.

Please quote price on four oz. same cauliflower seed as that from which my plants were grown this year. Every plant headed, and Mr. Woodhull told me they were the largest frames he ever saw.

C. J. McCARTHY.



SCALECID

THE COMPLETE DORMANT SPRAY

"Makes a Tree Outgrow Its Troubles"

Fall spraying with Scalecide controls psylla and peach leaf curl. Spring application controls aphid, pear thrips, leaf miner, case bearer and leaf roller. Either fall or spring spraying with Scalecide controls scale, bud moth, European red mite, fungus or blight cankers from which are spread fire blight, collar rot and root rot. And in addition, year after year use of Scalecide invigorates the trees.

Ask for Booklet

- 50-Gal. BBl. (freight paid to any R. R. station on Long Island) \$23.50
- 15-Gal. Drums, freight paid to any R. R. station on Long Island 10.00
- Drums \$3.00 extra, but returnable at same price. F.O.B. Hackensack, N. J.
- 1 10-Gal. can in case, freight paid to any R. R. station on Long Island 8.50
- 1 5-Gal. can in case, freight paid to any R. R. station on Long Island 4.90
- 1 Gal. can, at the Farm..... 1.40
- 1 Qt. can, at the Farm..... .60
- Per Gal. at the Farm; bring your own containers..... .75

KAYSO

Use KAYSO in All Your Sprays for All Spraying.

KAYSO makes the spray spread in an even, unbroken coat over every surface, thereby giving better control of pests and diseases. Price: Per Lb., 25c; per 2 Lb. Pkg., 45c; 24 2-Lb. Pkgs., packed in box, 40c per Pkg.

TRI-OGEN. An Insecticide and Fungicide for Roses, Hollyhocks, Hardy Phlox, Delphinium, Chrysanthemum, etc. A, Small Kit makes 16 qts., \$1.50; B, Medium Kit makes 64 qts., \$4.00; C, Large Kit makes 32 gals., \$6.00.

BLACK LEAF 40. 40% NICOTINE

The Liquid Spray that controls Plant Lice or Aphid. Put 1/2 Lb. to 50 Gals. water, add 6 to 8 Ozs. of Kayso, and you have one of the best controls there is for sucking insects.

- Per 1 Oz. Bottle, for garden use.....\$.35
- Per 5 Oz. Bottle 1.00
- Per 1 Lb. Bottle 2.25
- Per 2 Lb. Tin 3.25
- Per 5 Lb. Tin 5.85
- Per 10 Lb. Tin 9.85

Special price on larger quantities.

Black Leaf 40 is the greatest louse killer for poultry on the market. Pour it on the perches just before roosting time.

INSECTICIDES

C.C.C. RAT AND MOUSE KILLER. They die outside. Per can, 50c.

DOG SKAT. Keeps dogs, cats and animals away from trees, evergreens, roses, shrubbery, etc. Tube releases vapor offensive to animals but not noticeable to humans. One tube lasts a year. Fasten one tube at base of each shrub or tree. Tube, 50c.

C.C.C. LOUSE POWDER for dusting all kinds of animals. Per can, 50c.



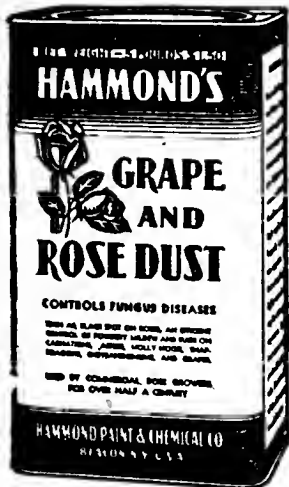
FUNGTROGEN. Best spray for Black Spot and Mildew on Roses. Pt. \$1.25; Qt. \$2.00.

GRAPE and ROSE DUST. Prevents Mildew and Black Spot. This ideal dusting fungicide is easy and safe to use. Green in color, not unsightly. Colloidal sulphur base, combined with other fungicides. 1 Lb. can 40c.

MOLOGEN. One of the best remedies for moles and mice. Per can, 50c; large can, \$1.25.

NO CROW. Drives birds away from your corn. 1/2 Pt. can, 50c; 1 Pt. can, 85c. 1/2 Pt. will treat 1 Bu. of corn.

PASTOXINE RAT POISON. Does not injure animals, poultry nor birds, but cleans out Rats and Mice if directions are followed. Per can, enough to give your outbuildings a good application, \$1.00.



SEMESAN. For disinfecting seeds, bulbs, soil, etc. Kill disease spores. 2 Oz. 50c; 1 Lb. \$2.75; 5 Lbs. \$13.00.

We have other Insecticides, Weed Killer, Fly Spray, etc. Look our stock over.

FINE GROUND SULPHUR

For dusting Potatoes, spraying and spreading on the land for Potato Scab, dusting Evergreens for Red Spider, etc.

Excelsior Brand Sublimed Velvet Flowers of Sulphur 100% pure. 1 to 4 Lbs. 10c per Lb.; 5 to 99 Lbs. 7c per Lb.; 100 Lb. Bags \$6.00.

Superfine Commercial Dusting Sulphur 99% pure. 100 Lb. Bags \$4.50.

HYLITE

A fine Inside Paint at 75c per Gal.

A new cold water paint for inside work. Does not rub off. Can be painted, sprayed or stippled. Comes white and can be colored any desired color. 5 Lbs. makes 1 Gal. of paint. 5 Lbs. any color desired for 75c; 50 Lbs. at 10c per Lb. Colors to suit with each 5 Lbs.

INCREASES ORDER 40%

Please send 4 Oz. Sterling Early Heading Broccoli like the 1 Oz. that I got from you last year.

January 20, 1934.

PHILLIP GHOSSIO.

Please quote price on four oz. Sterling Erfurt Cauliflower Seed. I tried out four kinds of Cauliflower this year, and the Sterling Erfurt was the best. In fact it was better than anything I saw at our County Fair.

December 28, 1932.

M. L. RANSON,
Carbondale, Pa.

CUBOR DUST

The new non-poisonous dust for dusting Cauliflower, Brussels Sprouts and Lima Beans when near to maturity, leaving no illegal residue.

	Per Lb.
4 Lb. Bags	\$.15
Case of 12 4-Lb. Bags.....	.14
Cubor Powder for Spraying. Kubortox and other material for liquid spray. Price on application.	

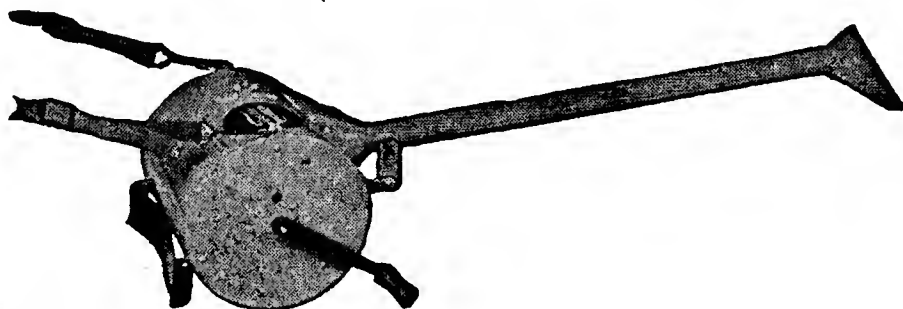
WOODEN LABELS (Painted)

	100	1000
4-inch Pot Label	\$.35	\$2.25
3½-inch Copper Wired50	3.25
12-inch Garden Label, per Doz., 20c.....	1.50	

EARTHEN FLOWER POTS

	Each
3-inch	\$.04
4-inch06
5-inch08
8-inch20
9-inch28
10-inch38
Hanging Baskets, with chain.....	.35

THE FEENY HAND DUSTER



The most comfortable to carry and the easiest to operate. The feed is accurate and may be set for any dosage from less than a pound to 15 Lbs. or more to the acre. Price with Bean Beetle nozzles and flexible connection, \$15.80 Each.

THE FEENY MODEL D 2-QUART DUSTER

This hand duster is 50 inches long, has a flared nozzle for general use and a special nozzle for the Mexican Bean Beetle control. \$2.50 Each.

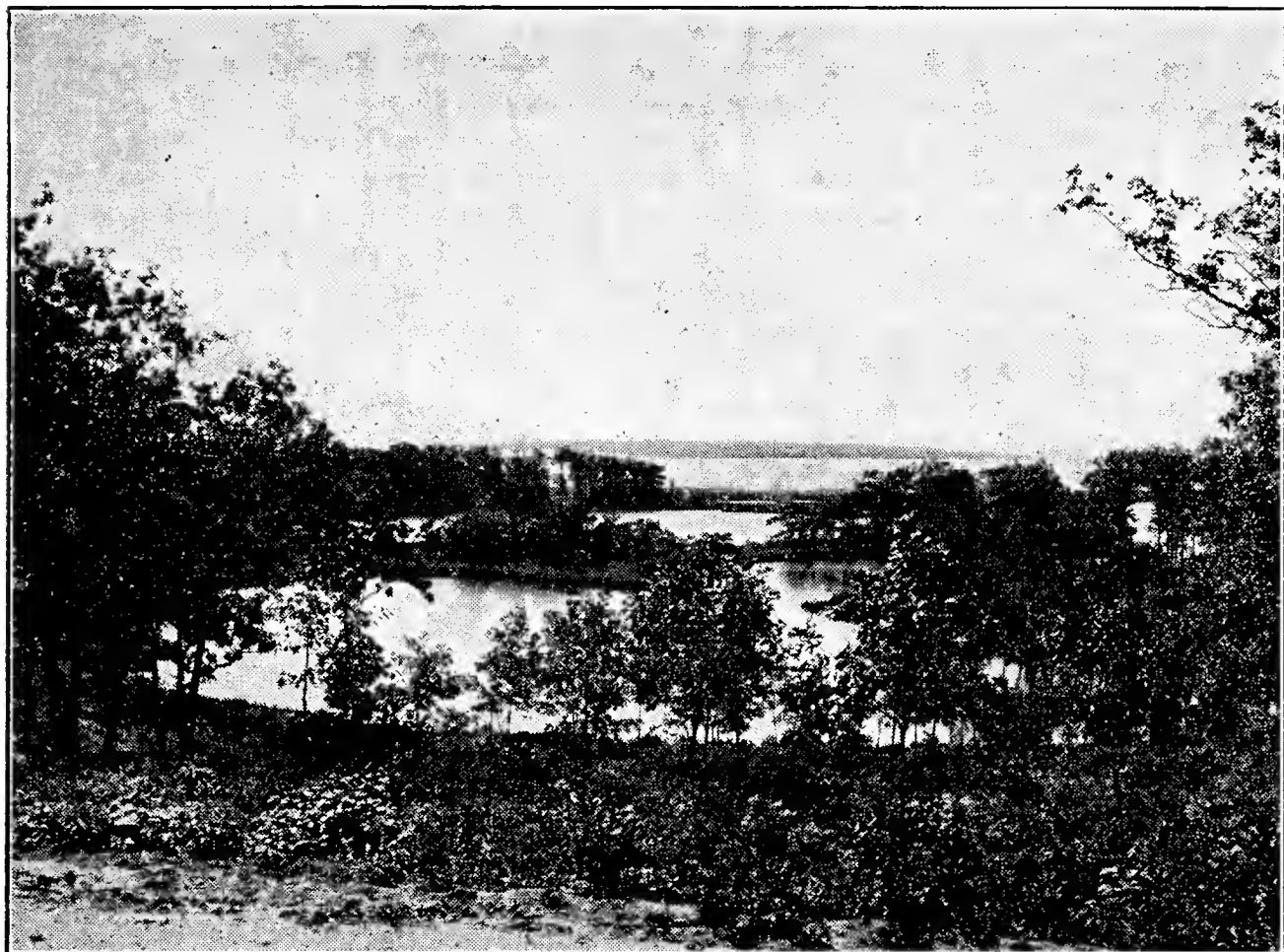
PRICES—We have kept our prices down to last year's levels on all lines where it could be done, along with our policy of high quality. Remember, when comparing our prices with others that we always strive to put out the highest quality in all our products.

Cutchogue, L. I., N. Y.,
January 31, 1934.

October 25, 1933.

From 2 acres Sterling Erfurt Cauliflower I raised 'flowers which only took 8-9 heads to fill a crate.
They sold for \$2.00 per crate yesterday. Agents all tell me they are the best 'flowers on the market.

GEO. BERKOSKI



*One of the Many Beautiful Water Front Lots
at Nassau Point*

REAL ESTATE

I own several fine building lots at Nassau Point, The Briar Patch and Tuthill Woods and I am a licensed Real Estate Broker as well.

My listings contain many fine properties and also many real bargains. To give you an idea of what I have I am giving a brief description of a few that I have for sale.

STERLING INLET

Two large water front lots, well wooded, fine view. Good Harbor. Will sell one of these lots for \$1500 and the other for \$2500 or the two for \$3500.

SUNSET BLUFF

750 feet of improved water front. Good depth of water direct to Peconic Bay, and the Bathing Beach is only 500 feet from this property. Wonderful view, good elevation, and covered with Oak trees. Price as low as \$12.50 per foot on East Side and on up to \$20.00 per foot for the West point. The whole 5-acre piece would be ideal for a hotel. It would be priced right.

FISHERMAN'S BEACH

Two lots, No. 11 and No. 14, each having 75 feet frontage on Peconic Bay. \$20.00 per foot.

REAL ESTATE—*Continued***CARRINGTON PARK**

4 large lots on Nassau Point only 300 feet from beautiful improved Wunneweta Pond, a direct water way to Peconic Bay.

Heavily wooded. Will sell one of these lots for only \$750.00. Others a little higher.

5 rooms and bath Bungalow. Never been occupied; at a bargain. Only \$1,000 cash needed.

5 rooms and bath Bungalow, and garage. Just completed. 120 feet water front. Fine view. Nicely planned house. You are invited to look it over. Will sell or rent very cheap.

3 large lots at Nassau Point. \$1,000 for the three.

5 large lots at Nassau Point. \$2,500 for the five.

2 large lots at Nassau Point overlooking Peconic Bay. Fine view. All advantages of a bay front lot and none of the disadvantages. \$2,000.

6 lots at Briar Patch, 60x60 feet, for only \$240 Each.

2 road front lots at Briar Patch, 61x125 feet, for only \$400 Each.

1 water front lot at the Briar Patch, 61 feet on the water, 150 feet deep, for only \$1,000.

4 room and bath 2-story House at Fleets Neck. 100 feet water front. Bargain.

5 room and bath 2-story House at Founders Landing, priced very reasonable.

Large House and 3 acres land at Laurel, on Main Road.

35 acre Farm at Oregon. Good potato farm. About 400 feet Sound front.

45 acre farm at West Mattituck. A good potato farm.

50-acre farm in Laurel. Near store, Post Office, wide frontage on Main Road.

25 acre farm in Cutchogue. Good land and buildings. Cheap.

20 acre farm in Cutchogue. Could be subdivided and choice building lots sold cheap. Nine houses have been built right in this section in the past 10 years. Two this past winter.

SOUTHAMPTON BUILDING LOTS

Many choice lots in a fine development within the village limits laying from Main or Hill St. down nearly to the Ocean. A wonderful opportunity to get a lot for a little in that thriving and progressive town. Write for location, prices, terms, etc. A few choice lots as cheap as \$18.00 per front foot. Corner lots on Hill Street from \$75.00 to \$125.00 per front foot.

Write or call up and I will be pleased to make an appointment with you to show you any of the above bargains or whatever you might be interested in, and without obligation on your part.

RALPH W. STERLING

TEL. 55 PECONIC

CUTCHOGUE, L. I., N. Y.

Amt. Enclosed \$..... Date.....

Name.....

Post Office..... Rural Route No.....

County and State..... Ship by.....
(Express or Mail)

Town to Ship Express to..... Ship about.....
(Date to be shipped)

Amount	Cat. Number	DESCRIPTION	Dollars	Cents

Add Postage
May I substitute if out of any kinds. ordered?

Amount	Cat. Number	DESCRIPTION	Dollars	Cents
		Amount Brought Forward		
		Add Postage		
		Total Amount		

If any of your friends or neighbors want one or more catalogs let me know. I will do the rest. TRUE TO NAME. While we use every precaution to have all plants, seeds, etc., true to name and of strong vitality, we will not be responsible for any sum greater than the cost of the order should any prove otherwise than as represented.

NOTICE—I do not warrant in any way, express or implied, the description, quality, productiveness, or any other matter pertaining to any seeds, bulbs, plants, shrubs or trees sold by me, and I will not be in any way responsible for the crop.

However, all complaints are carefully looked into and I try to adjust them satisfactorily to all.

NO BUSINESS DONE ON SUNDAY

Address all communications and make all Money Orders and Checks payable to

RALPH W. STERLING

CUTCHOGUE

LONG ISLAND

NEW YORK

TEL. PECONIC 55

Mrs. Ritchie's Garden Birds



Decorative -
Desirable - Practical

Beautiful, natural appearing Garden Birds. Finished in weather-resisting enamel in life-like colors. Swivel-mounted on 22-inch green enameled steel stake. Attractive in outdoor gardens — in ferneries and flower pots, in solarium or flower nook. Made of heavy steel — life-size — 5 varieties shown at left.

LOW PRICE

Each (any variety)15¢
(Order at least a full set —
5 varieties).

“They Swing in the Breeze”



RASPBERRY PLANT COLLECTION FOR 1934

- 1 Doz. *Chief*. Early large red. 2-yr.-old plants.
- 1 Doz. *Viking*. Midseason red. 2-yr.-old plants.
- 1 Doz. *Latham*. Late, large red. 2-yr.-old plants.
- 1 Doz. *Quillen*. Black Cap. Late large.

These four disease resistant, New Raspberries delivered anywhere on Long Island for \$2.50, Postpaid.

Half of the above quantities for \$1.50, postpaid

Address all Communications and make all Checks and Money Orders payable to

RALPH W. STERLING
CUTCHOGUE -- L. I., N. Y.
TEL. PECONIC 55