

Historic, archived document

Do not assume content reflects current scientific knowledge, policies, or practices.

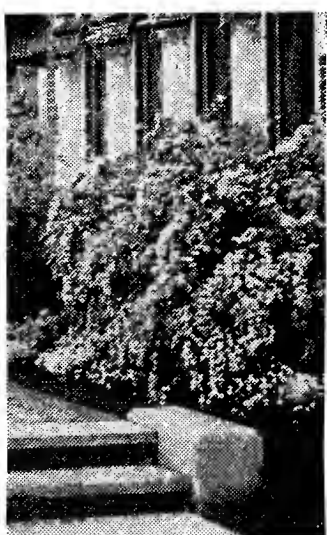


75
Fine
Choice
RAINBOW
MIXED
GLAD-
IOLUS,
Bulbs.
\$1.00
Prepaid
Anywhere

EVERY BULB GUARANTEED TO
BLOOM THIS YEAR.

Many new and very best varieties.

10
Big, 2-Year,
18 to 24 in.
Spirea
Van
Houttei
(Bridal Wreath)
For Only
\$1.00
Prepaid
Anywhere
in U. S. A.
See
Page 26.



Remember

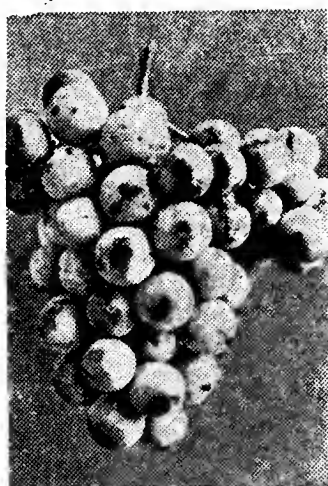
Our Prices
are
PREPAID
except where noted
Prices on page 23

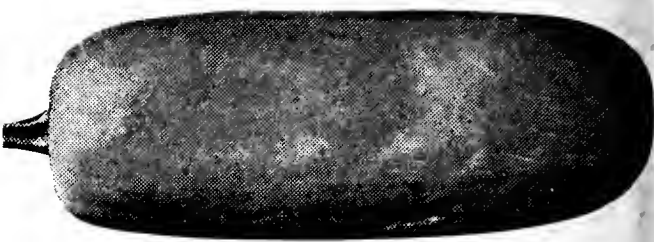


5 Nice
Healthy
Peach
Trees
Postpaid
Anywhere
in U. S. A.
For Only
\$1.00
See
Page 19.

8
Big, 2-Year,
Concord
Grape
Vines
For Only
49c
Postpaid
Anywhere
in U. S. A.

Enough for
home use and a
keg of wine in
a year or two.





GOLDEN OBLONG PUMPKIN

Bright golden yellow, and smooth. They resemble an overgrown ripe cucumber. The seed chamber is very small, with few seeds. The flesh is exceptionally fine grained. This one volunteer plant bore 36 ripe Pumpkins and 6 green ones that failed to get ripe. Everyone that has tried these wonderful Pumpkins say they are the best they have ever tried. We do not know its name, but we will call it GOLDEN OBLONG. Fruits never get over 14 inches long. One Pumpkin will make two large pies. Pkt., 10c; 3 pkts., 25c, postpaid.

BOHEMIAN HORSERADISH

Horseradish thrives everywhere and should have a place in every garden. Very valuable for appetizers, relishes, etc. Easy to grow, to can, and to sell. Bohemian roots are white, tender, and free from stringiness. Plant roots with tops one inch below surface of ground.

Prepaid prices: 6 for 50c; 12 for 75c; 25 for \$1.00; 50 for \$1.75; 100 for \$3.00.



Tree Hydrangea P. G. 75c each, prepaid

10 Big, 2-Yr., Field-Grown,
Hardy Phlox
Only \$1.00, Prepaid.

A mixture will be made up of the following varieties:

B. Comte	Von Hochberg
Rijnstroom	Enchantress
Beacon	Jules Sandeau

10 for Only \$1.00, Postpaid.

Don't Overlook Our SENSATIONAL

Baby
Apple
Tree

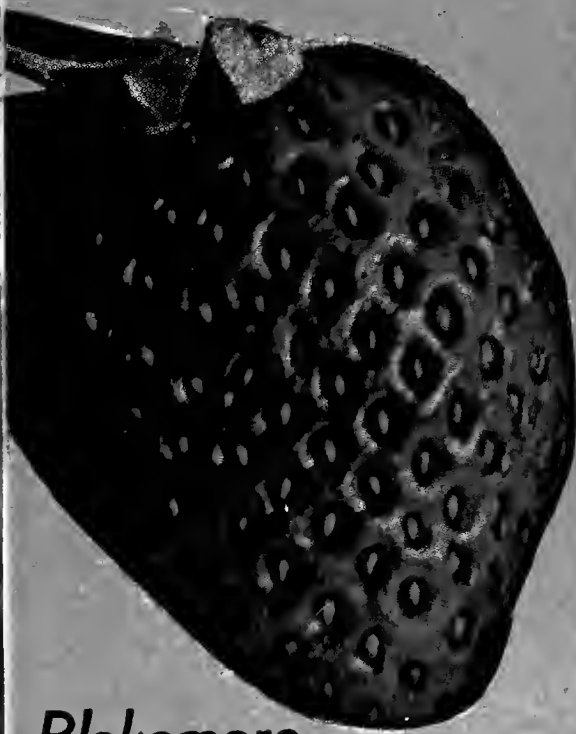
Collection
Page
20.





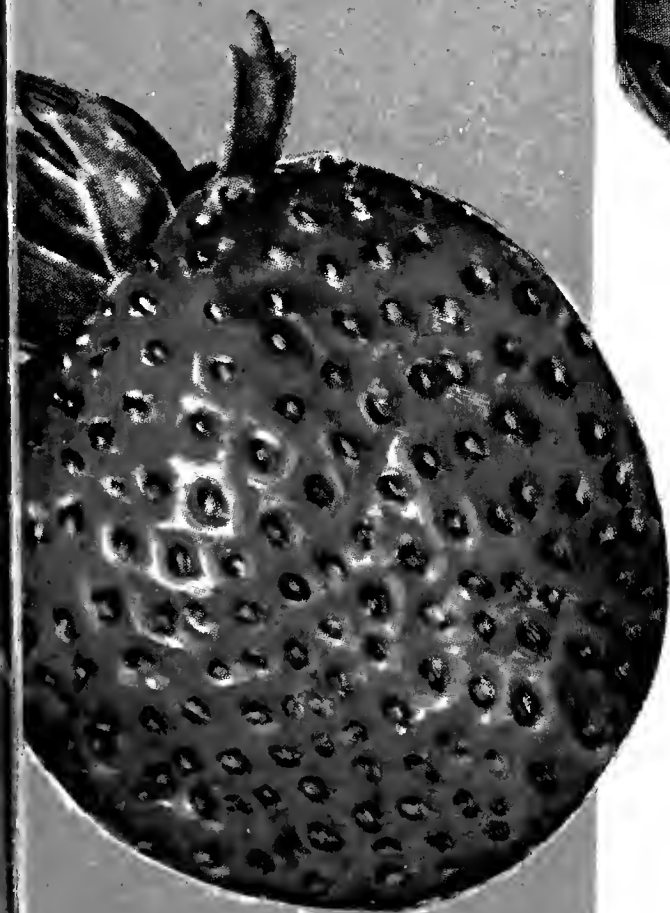
Dorsett (New)

Originated by U. S. Dept. of Agriculture. Premier's rival. Very productive and profitable. See page 12.



Blakemore

Originated by U. S. Dept. of Agriculture. The firmest and best shipping berry you can grow. See page 9.



Fairfax (New)

Originated by U. S. Dept. of Agriculture. The quality berry. See page 13.

SOUTH MICHIGAN NURSERY

George Stromer

Spring 1934

New Buffalo Michigan



Mastodon

World's largest and best Everbearing Strawberry. Will start to bear large paying crops in 90 days—same year they are set. It takes a heavy frost in the fall to stop them.

See pages 16 and 17.

NRA



President Roosevelt Will Not Fail, Stand Behind Him



HE IS determined to see higher prices paid to farmers. Prices are some higher now than they were a year ago. They are bound to go higher. Right now is the time to buy and set all the plants that you can afford, at our low prices. These plants will be right in line to bear you fruit that will be much higher in price than it was this season. In another year you will surely have to pay more for all kinds of plants and trees.

We are not going to waste four or five pages telling you that our plants are the only plants for you to buy. You know better. There are a good many good nurseries in the country. They have to be good to still be in the business. Just like all automobiles are good today. They also have to be, or the company would be bankrupt long ago. We are going to tell you, however, that we will not take a back seat from any one, when it comes to growing high QUALITY nursery stock. We again offer you Hardy Northern Grown plants, shrubs and trees, at the lowest possible price. This stock did not just happen. It is scientifically grown on specially prepared soil that is best fitted for each variety, to get those long fibrous roots, and the heavy crowns, that are full of pep and vitality, just "raring to go" the minute you set them in your garden.



Buy from an OLD ESTABLISHED CONCERN.

You have been WARNED several times by some very reliable nurseries to beware of "CHEAP JOHN." Of course that "shoe" does not fit us, so we will not wear it. It is however some very good advice, for we have seen several SO-CALLED NURSERIES spring up over night, and last a year or so and they are never heard of again. They will offer their patch of strawberry plants for sale to the public after they have finished picking berries from it all summer. We say to you again. "Buy from an old established concern." If you will do this

you can feel safe to order and enclose your hard earned money, and be sure that we will be here when the time comes to ship your plants to you in the Spring.

We doubt it very much if there is a nursery in the country that is not short of strawberry plants this year due to the very hot and dry June and July. With us it is just the other way. We have nearly twice as many strawberry plants as last year. This is due to our secret scientific method of growing strawberry plants. If you are interested in knowing how we do it, we will gladly tell you if you will simply write on the order sheet at the time you send in your order.

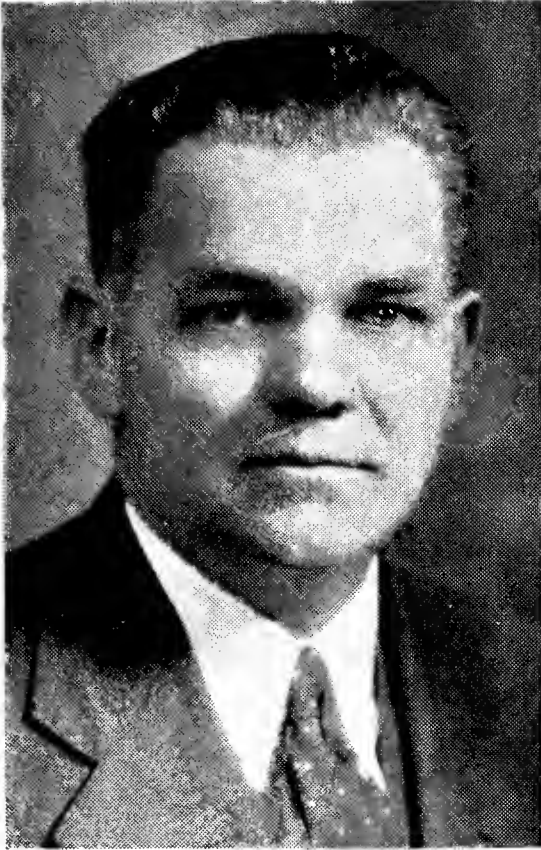
We do not have an irrigation system. We think that overhead irrigation has a tendency to cause plants to become short rooted. We make our plants go down after moisture, and thereby causing them to have long strong fibrous roots.

PLANTS REQUIRED TO SET AN ACRE Plants

Strawberries (commercial use)3 ft. 8 in. x 1½ ft.	7,920
Strawberries (garden use)2½ ft. x 1½ ft.	11,600
Strawberries, Everbearing2½ ft. x 1½ ft.	11,600
Black Raspberries7 ft. x 3½ ft.	1,777
Red Raspberries6 ft. x 3 ft.	2,420
Blackberries7 ft. x 3½ ft.	1,777
Dewberries6 ft. x 3 ft.	2,400
Currants and Gooseberries5 ft. x 4 ft.	2,200
Grapes8 ft. x 10 ft.	540
Grapes8 ft. x 12 ft.	440

Our Guarantee

We guarantee every plant sold by us to be first class in every respect, free from any injurious diseases or insect, and true to name, and hold ourselves ready, upon proper proof, to refund or replace any that prove otherwise. It is mutually agreed between ourselves and the customers that we shall not be liable for a greater sum than the amount paid us for the plants. Not responsible for crop damaged by weather, fire or floods. We reserve the right to return money in case of shortage.



GEORGE STROMER

THIS year, for the first time, we are quoting you prepaid prices on most items listed in our catalog. The exceptions are evergreens, balled and burlapped, shade trees, fruit trees, and shrubs, except on a few special offers, where noted.

We are headquarters for the genuine Mastodon Everbearing Strawberry. We grow perhaps more Mastodon than any other one nursery in the state. Our plants this year are not drought stricken or stunted in any way. We estimate there are 1,500,000 plants on one field of 6½ acres. Be sure and get our special price in quantities of 5000 to 50,000. We suggest that you club together with your friends and neighbors in order to make your order large enough to come within our special price.

We have plenty of tractors, trucks, and other machinery, modern in every way, to grow and handle our vast nursery stocks in the most economical manner. Our office and packing house are modern and up to date.

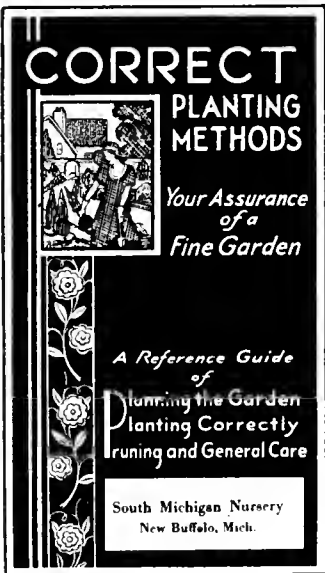
Your order will be handled in a most business-like way. It will be acknowledged with a first-class letter, enclosing a bill of goods, so that you will know if we have it booked properly. Please look over our acknowledgment carefully and advise at once if there are any errors.

In the busy spring season, when days are valuable, we try to ship your order with the least possible delay. Many times we are able to send order out the same day received. All orders are shipped according to the shipping date you have on your order sheet. Do not overlook giving us this date. **IF YOU ARE IN A HURRY** telephone your order. Call **NEW BUFFALO 27-F-2**, or wire it Western Union or Postal Telegraph, and we will ship to you promptly C.O.D.

HERE IS A CONTEST YOU WILL WANT TO ENTER

From any plants that you have bought or will buy from us, we are asking you to keep an accurate record, of the number of quarts sold, and the amount of money received for this fruit. Send this data in to us not later than Dec. 1, 1934. The winner will be entitled to \$20.00 worth of Nursery stock absolutely **FREE** from our 1935 catalog. Snap shots of the patch or field must also be sent.

South Michigan Nursery, New Buffalo, Mich.



Correct Planting Booklet

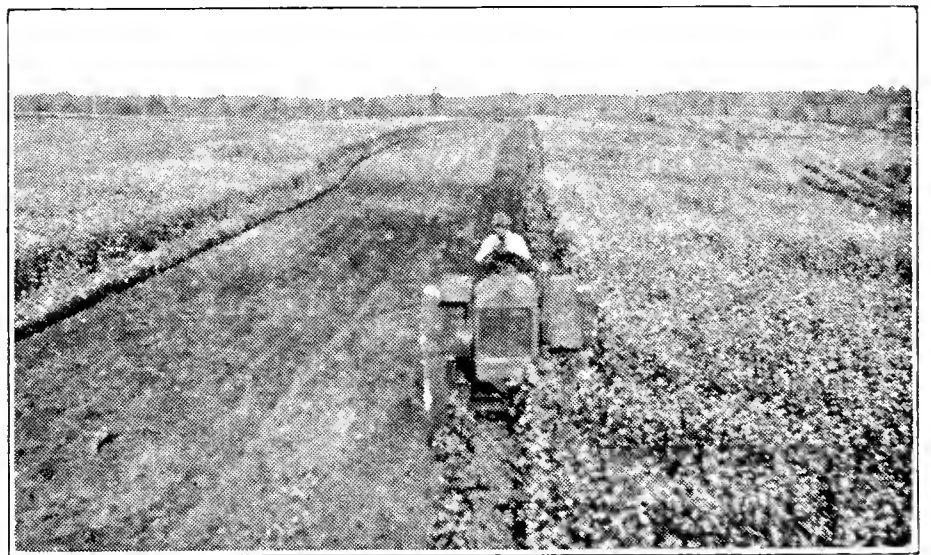
Forty-eight pages of valuable information on planting, pruning, and general care of plants, shrubs, trees, etc. Everyone interested in plants should have this book.

25¢ each; With order **15c**

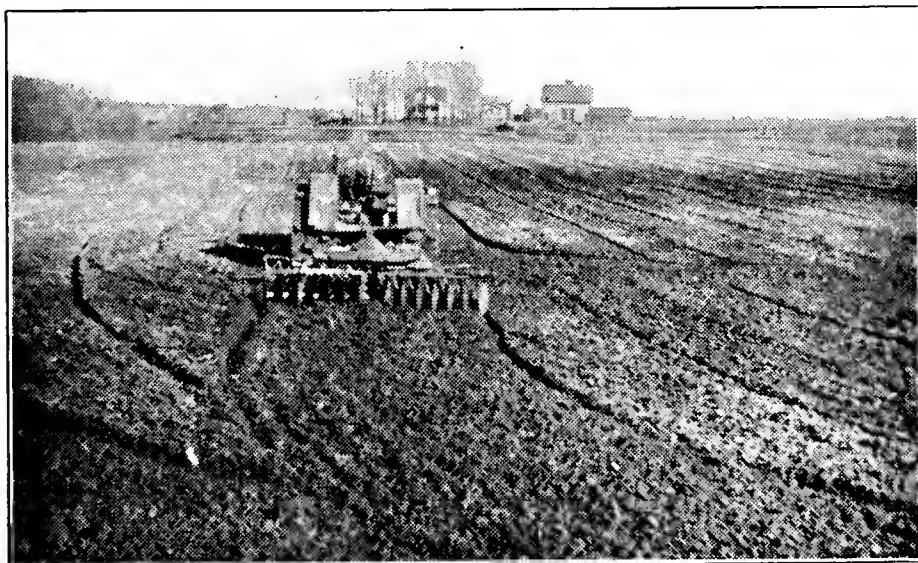
20% DISCOUNT FOR EARLY ORDERS. All orders received before February 8, 1934, we will allow 20% discount; 10% up to March 1st; 5% the balance of the season.

DO NOT MISS SPECIAL BARGAINS ON ORDER BLANK

FREE Gift with orders for \$5.00 or more, see back of order blank.



Plowing under buckwheat to put humus into the soil.



Soil is worked two years in advance for our nursery stock, that's how we get such fine roots.



Fertilizing nursery stock with a side dressing cultivator. This puts pep into our plants.

STROMER'S

RASPBERRY PLANTS ARE GROWN FOR

PLANTS ONLY

ALL OUR RASPBERRY PLANTS ARE TWICE STATE INSPECTED EACH YEAR

To grow real good raspberry plants you cannot "Burn the candle on both ends." That is, you cannot grow raspberries for fruit, and dig plants off the sides of the rows. Plants like that will be weakened by fruiting. Our red raspberry plants are grown two years, and then dug. They are not allowed to fruit during this time. We start them in this way. We set out a field of a certain variety, and care for them and fertilize them through the growing season. The following Spring, they are all cut way back even to the ground, and allowed to come up again. This cutting off prevents them from bearing, and makes better, stronger plants with much better root system. These rows are dug that Fall after a good hard frost, with a digging machine, and taken

A New Way to Grow Red Raspberries
 —is to set them in 4 foot squares, that is, 4 feet each way. Put 2 plants in each hole instead of one. This system makes cultivation and hoeing an easy job. You cultivate each way. The 2 plants set in each hole will give you a full crop of berries the first year instead of only a half crop if you set only one in a hole.

in the Fall are not stored. They are taken outside and heeled in all Winter. We do not like storage plants. All our Raspberry plants are perfectly hardy.

direct into cellars, where they are graded. The largest, and strongest, and best rooted plants are graded out, and these are what we call the 1 year bearing size. They really are 2 years old, but we call them 1 year bearing. Our transplants, 2 years old, are gotten by setting out nice thrifty 1 year plants in the nursery row, and grow until Fall and dug. These are set far enough apart to make heavy transplants that will bear a good many berries for you the same year you set them out in your own field. Raspberry plants that we dig and grade

in the Fall are not stored. They are taken outside and heeled in all Winter. We do not like storage plants. All our Raspberry plants are perfectly hardy.

Latham, The Big Famous Red Raspberry

70 Berries Known to Fill a Pint Box

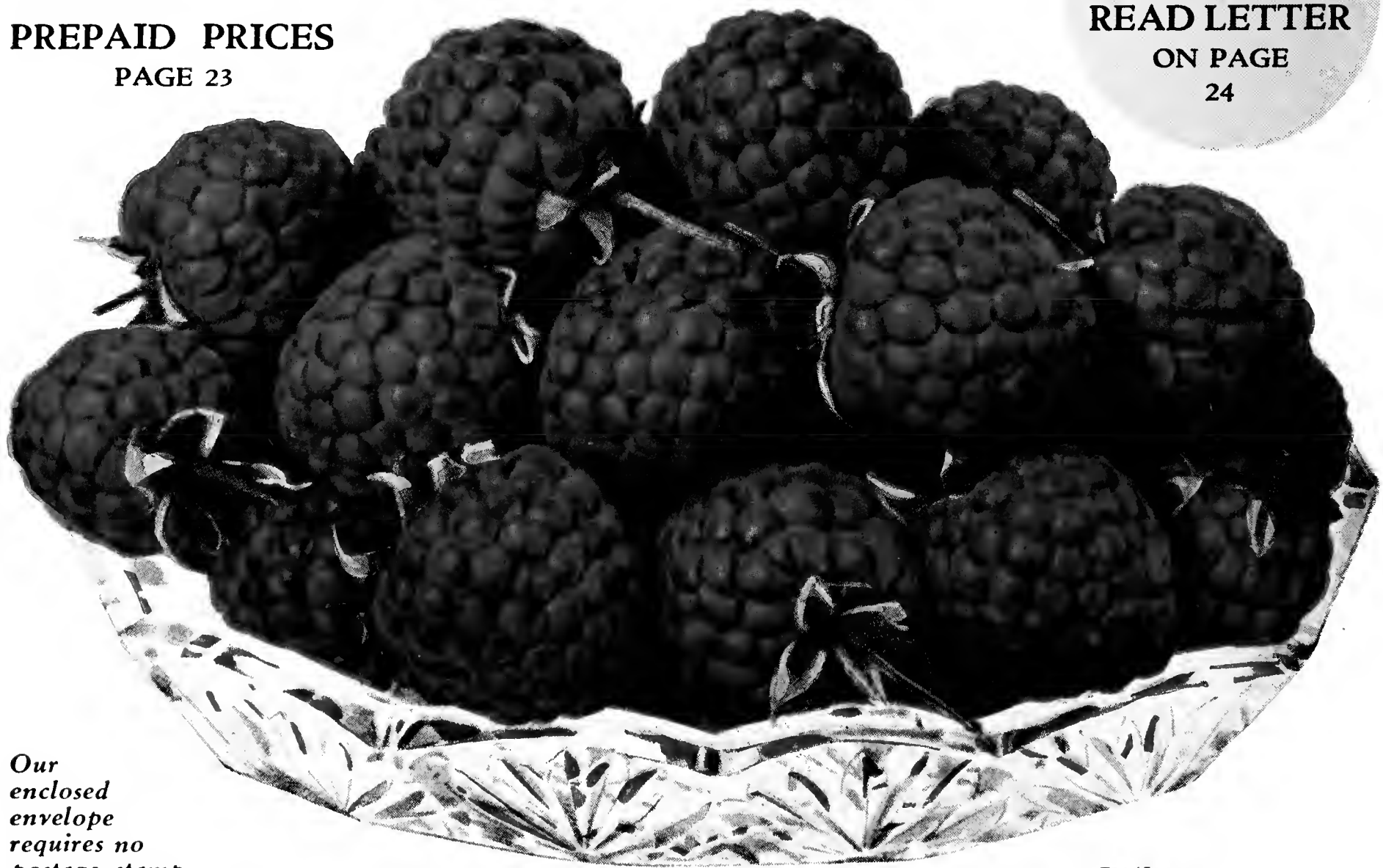
Although this is a comparatively new variety it is entirely past the experimental stage, and we unhesitatingly recommend Latham as one of the very best Red Raspberries ever grown. This variety originated at the Minnesota State Fruit Breeding Farm and is being grown extensively in Minnesota, the Dakotas, and Canada, and has never been known to winter-kill even though exposed to 45 degrees below zero. Latham is a tall, vigorous grower, canes extra heavy, foliage dark green, entirely free from disease. Ripens with Cuthbert and is enormously productive. Berries much larger than any other Red Raspberry, many of them one inch in diameter. Color good, quality of the best, full Raspberry flavor. Excellent for shipping or home use.

Bearing Age Latham Plants—Page 23.

PREPAID PRICES

PAGE 23

**LATHAM
 STANDS 35°
 BELOW ZERO
 READ LETTER
 ON PAGE
 24**



Our enclosed envelope requires no postage stamp.

Latham

NEWBURGH, *The New Red Raspberry* of Superior Merits

NEWBURGH was introduced by the New York Experiment Station a year or so ago, and all indications are that NEWBURGH will become the leading commercial Red Raspberry.

Because—

1. It has so far proven immune from mosaic.
2. Fruit very large, firm and holds its size.
3. Very productive.
4. Ripening season a few days earlier than Latham.
5. Extremely hardy.

They are still high in price, but try a few and get started with them.



Newburgh

PREPAID PRICES
PAGE 23

**TWO MONEY SAVING
COLLECTIONS**

250 Chief, 1 yr. bearing size
250 Latham, 1 yr. bearing
size
FOR ONLY **\$750**

250 Logan, 1 yr. fancy
250 Cumberland, 1 yr.
fancy
FOR ONLY **\$650**

NOT PREPAID

NO
DISCOUNT

CHIEF, *Red Raspberry*

Offspring of the Famous Latham

**Just
Out**

Extra Early—Absolutely Hardy
Easy to Grow—Healthy Bushes
Heavy Yield—Excellent Quality
Disease Resistant

The foliage of a plant is its workshop. Good foliage is essential to good crops, poor foliage means a poor crop. The clean, healthy foliage of "Chief" is one more reason why "Chief" is a leader.

When strawberries are about gone and common Raspberries still ten days off, in comes our new friend "Chief" and bridges the gap. These first berries of the season are mighty welcome—on the market they bring extra money. Bearing age "Chief" plants page 23.

OFFICIAL YIELD OF "CHIEF"

Reported by
The Minnesota State Fruit Breeding Farm

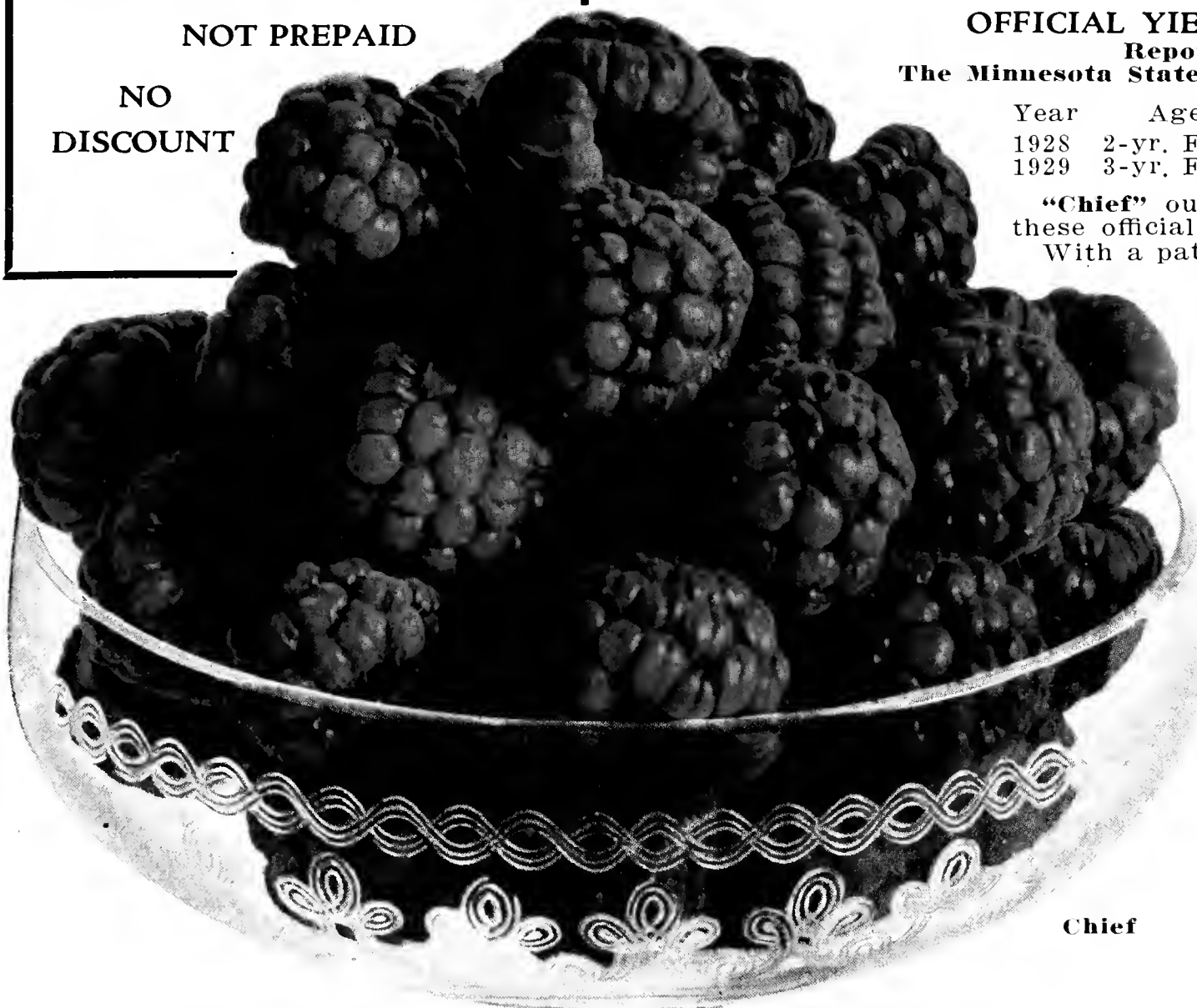
Year	Age	Yield
1928	2-yr. Field	180 Crates per Acre
1929	3-yr. Field	294 Crates per Acre

"Chief" outyielded even Latham in these official tests.

With a patch of "Chief" in the garden, you'll have plenty of delicious canned Raspberries all winter long.

"Chief" is blessed with superior flavor. On the table fresh, with sugar and cream, or for canning, "Chief" sets a high standard. It is rich, bright red, high quality.

"Chief" has been tested over a wide area in the past ten years and its behavior has been carefully watched. It has proven hardy, a heavy cropper, excellent quality, a good shipper, resistant to disease, and in addition it is 10 days early.



Chief

PREPAID
PRICES, Page 23

CUMBERLAND Black Raspberry

The
Business
Blackcap

This is without question one of the most profitable and popular Black Raspberries every grown. It is the one safe and reliable commercial variety because you can depend on a big crop regularly. We call it the "Business Blackcap" because it succeeds on all soils and produces its big crop year after year.

We have never known Cumberland to fail, and the best proof that it is a profitable variety is the fact that the demand for plants is greater every year and more Cumberlands are planted than all other varieties combined.

Cumberland is perfectly hardy and tremendously productive. The berries are extra large, glossy black, and not equaled by any other variety in quality, flavor or appearance, except Logan. Whether wanted for market or home use, we can recommend Cumberland to our most exacting customers. Disease free. Twice inspected plants.

Bearing Age Cumberland—Page 23

PREPAID PRICES—Page 23

HOME COLLECTION	1/2-ACRE COLLECTION	1-ACRE COLLECTION
100 Cumberland 100 Quillen 100 Logan	500 Cumberland 250 Logan 250 Quillen	1000 Cumberland 500 Logan 500 Quillen
For Only \$4.00	For Only \$14.00	For Only \$25.00
<i>Not Prepaid</i>	<i>Not Prepaid</i>	<i>Not Prepaid</i>

Our Raspberry Plants are twice State Inspected. Northern Grown and Hardy. Grown for plants only.

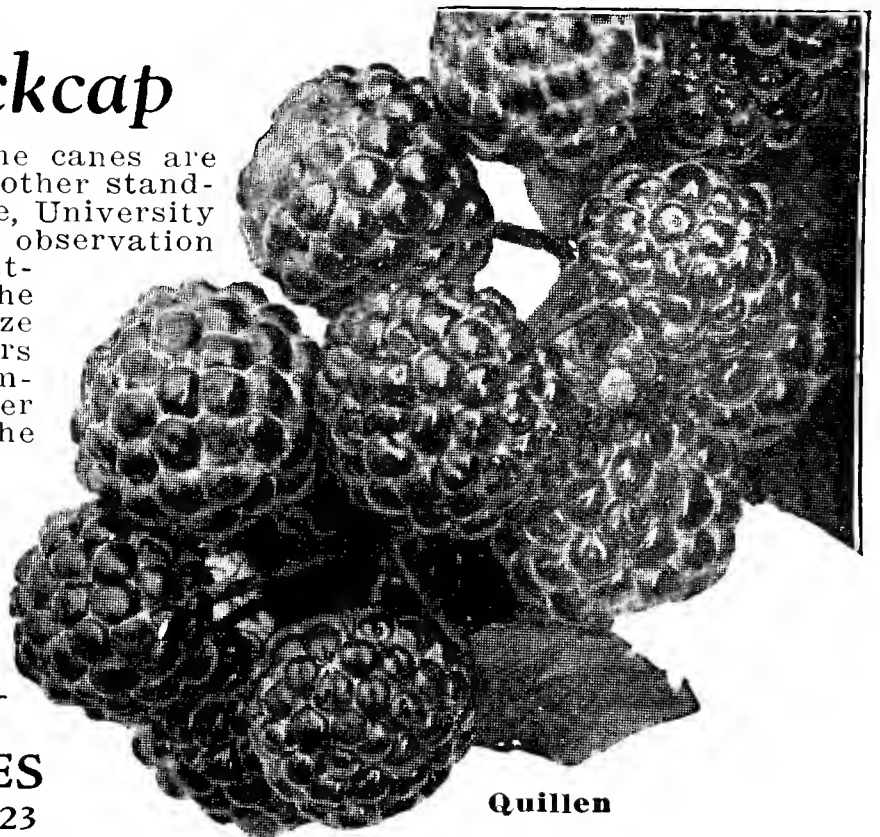


Cumberland Blackcap

QUILLEN, A New Blackcap

This variety has become quite prominent because the canes are much less subject to Anthracnose than Cumberland and other standard kinds. Prof. A. S. Colby, Chief in small Fruit Culture, University of Illinois, found it in Bridgeport, Ind., and has made close observation since that time. He states, "The plant is much more resistant to Anthracnose under our conditions than any of the other varieties we have. The fruit is of medium to large size and at least as good if not better in quality than the others we are growing. The plant itself is about as large as Cumberland and we secure a much better crop from the fruiting laterals, since the leaves of the Quillen hang on better."

Quillen can now be considered the standard late variety of Black Cap to follow Cumberland and can be especially recommended to any grower having difficulty particularly with Anthracnose.



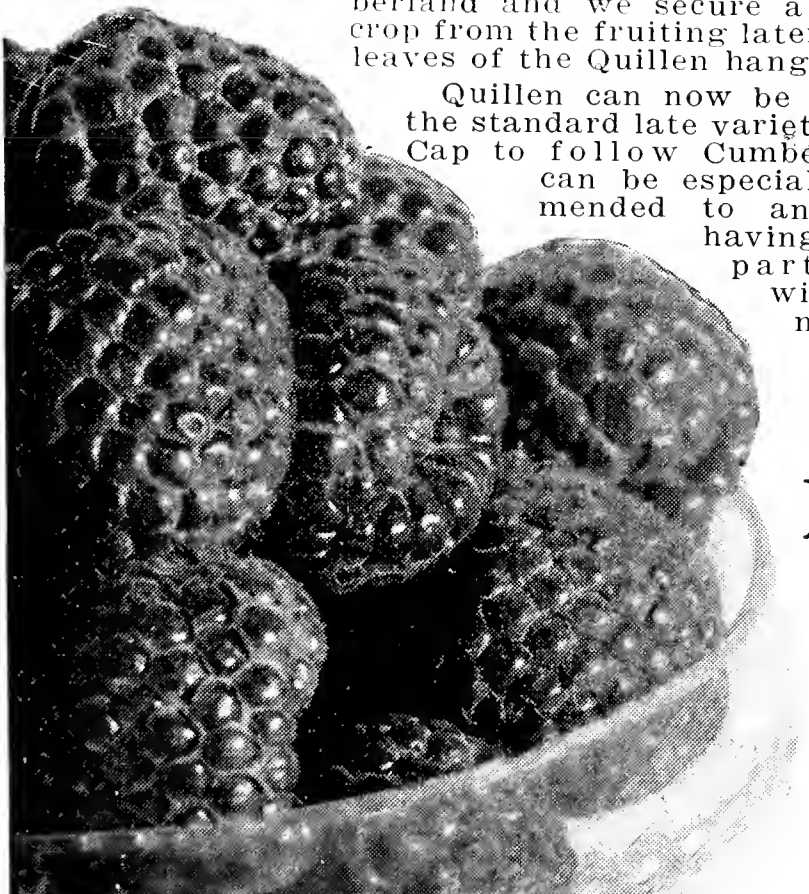
Quillen

**PRICES
PAGE 23**

New Logan Black Raspberry

New Logan is the best and most disease resistant and most profitable black Raspberry ever grown in this state or any other where it has been tried. Our Michigan Experiment Station claims it to be the most promising variety ever tried there. Ripens 10 days earlier than Cumberland. Berries larger, heavier yields and even though it bears heavier than Cumberland, you will harvest all the berries in shorter time. On account of it being 10 days earlier it will be a money maker for you. Try a few at least and get started.

Bearing Age Logan Plants, Page 23—Prepaid Prices, Page 23



ST. REGIS, *Everbearing* Red Raspberry

One of the most valuable of all the late introductions in the line of red Raspberries. The habit of growth is a bushy nature; will produce berries the first year in the fall, and a full crop the following spring and again in the fall.

St. Regis resembles Chief; its fruit is similar to that variety in quality, flavor and appearance. In September, long after Raspberries are out of season, St. Regis will bear a full crop of fruit, which commonly sells for seven to eight dollars for a 24-pint crate. If you have a market at hand where you can dispose of the fruit, you will find St. Regis a very profitable investment when grown on a commercial scale. If you have not the time or the ground to grow St. Regis for market, be sure to plant at least a few bushes in the garden and keep your table supplied with all you can use.

PREPAID PRICES—Page 23



St. Regis

CRYSTAL WHITE, *Blackberry*

Strange as it may seem, this is a real creamy white Blackberry. Mixed with the jet black ones for dessert it makes a most wonderful dish. The fruit is about the size of Snyder, with few seeds and quite sweet when fully ripe. The bushes are good, strong growers and very productive. This is not a worthless novelty, but a fruit of real value, and should be in every garden. **Postpaid, Year Old Plants—Prices: 3 for 20c; 12 for 75c; 25 for \$1.35.**

POTOMAC, *Brand New*

POTOMAC. The brand new variety of raspberry. Introduced by the U. S. Department of Agriculture. It is a cross between a Black raspberry and a Red raspberry, making it a purple Raspberry. Compared side by side with Cumberland, showed about twice as many berries on the Potomac as the Cumberland. Less berries were required to fill a quart of Potomac than a quart of Cumberland, so that will give you an idea as to the size of the berries. It is very free from diseases. Makes fine jellies, and preserves. It is the very best of all the Purple varieties. We still have a very limited supply of plants of this variety to offer. **Price—25c each; 6 for \$1.00. Postpaid.**

<p>ONE-ACRE COLLECTION</p> <p>3000 Premier. Early. 2000 Blakemore. Extra early. 2000 Gibson. Midseason. 1000 Aroma or Chesapeake. Very late. These 8000 No. 1 Plants</p> <p>FOR ONLY \$28⁰⁰ <i>Not Prepaid</i></p>	<p>ONE-ACRE EVERBEARING COLLECTION</p> <p>5000 Genuine Mastodon 3000 Genuine Champion</p> <p>FOR ONLY \$41⁰⁰ <i>Not Prepaid</i></p> <p>One-half of this collection for only....\$21.00 One-fourth of this collection for only \$11.00</p>
---	--

All our prices are based on cost of production, and not by guess.

We can often ship in January and February. Our season opens March 1st.

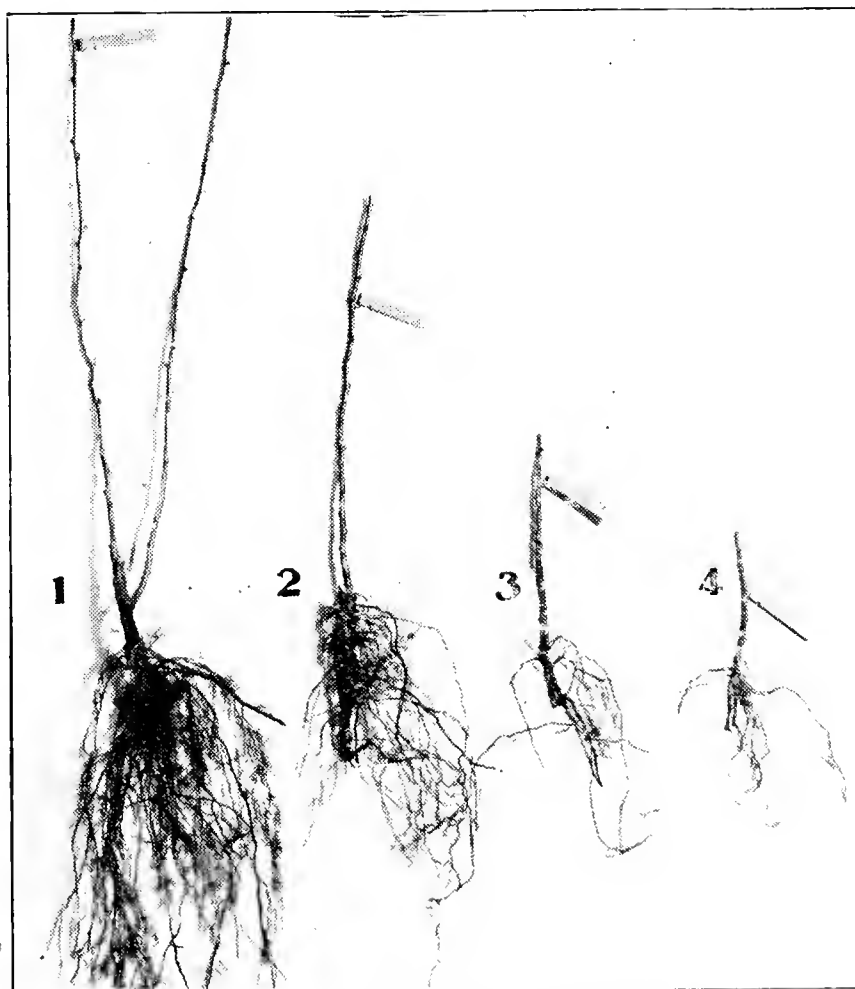
Surplus Strawberry Plants

at \$2.50 per 1000. Not prepaid.

During our digging season every spring, when we are getting out 50,000 to 90,000 plants every day, naturally, at the end of each day, there are a few plants of all varieties left. We never carry plants over from one day to another, so that these plants are classed as surplus plants. We offer them to you who do not care to have named varieties, at \$2.50 per 1000. We will not label these plants as to variety, simply calling them surplus plants. They are first class plants, fresh dug and will bear you a fine crop.

The plant crop is short and we reserve the right to withdraw this offer at any time, so order this bargain early.

No Discounts



GRADES OF RASPBERRY PLANTS
1. Giant 2-yr. bearing age transplants. 2. Heavy 1-yr. bearing size. 3. 1-yr. No. 1. 4. 1-yr. medium.

The New YOUNGBERRY

This new berry is so much different from any berry that is grown in most parts of the country. It is a cross between the Loganberry and dewberry. Color of fruit is a rich wine color. Size 1 to 1½ inches. Flavor is pleasant, sweet, with the tartness of the blackberry. Excellent for table use, canning, jellies, pies, and for wine. The plant is a rank grower. Withstands cold and heat. Adapted to a wide range of soils. A great producer. Try them in your locality. They will be the talk of your neighborhood. Plants are still scarce, and a little high in price.

Youngberry Bearing Age Plants
Page 23

PREPAID PRICES—Page 23



Youngberry

LUCRETIA, *The Big Hardy Dewberry*

The only real good Dewberry on the market which is good for all purposes, being very productive, of extra large size, earlier than any of the rest, will grow and thrive on very light soil and live for many years. If you live in a locality where your thermometer registers seven degrees below zero, you can easily prevent the vines from winter-killing by laying down on the ground and covering them with straw, which can be held in place with just a few shovelfuls of earth. Then in the spring they can be taken up and tied to wires which are fastened just like a grape trellis, but not as high, something like three feet high is about right. Dewberries make a good addition to your blackberry list, you will like them as well or better for all uses than the common run of blackberries, and, ripening early, you get the advantage of higher prices; as the berry is much larger, you can pick a crate quicker. They grow practically free from all diseases. Our plants are fine and Michigan grown. **Add to your income by planting Dewberries.**



Lucretia

PREPAID
PRICES

Page 23

FREE OFFER
On Order Blank

Lloyd
George

LLOYD GEORGE, *Red Raspberry*

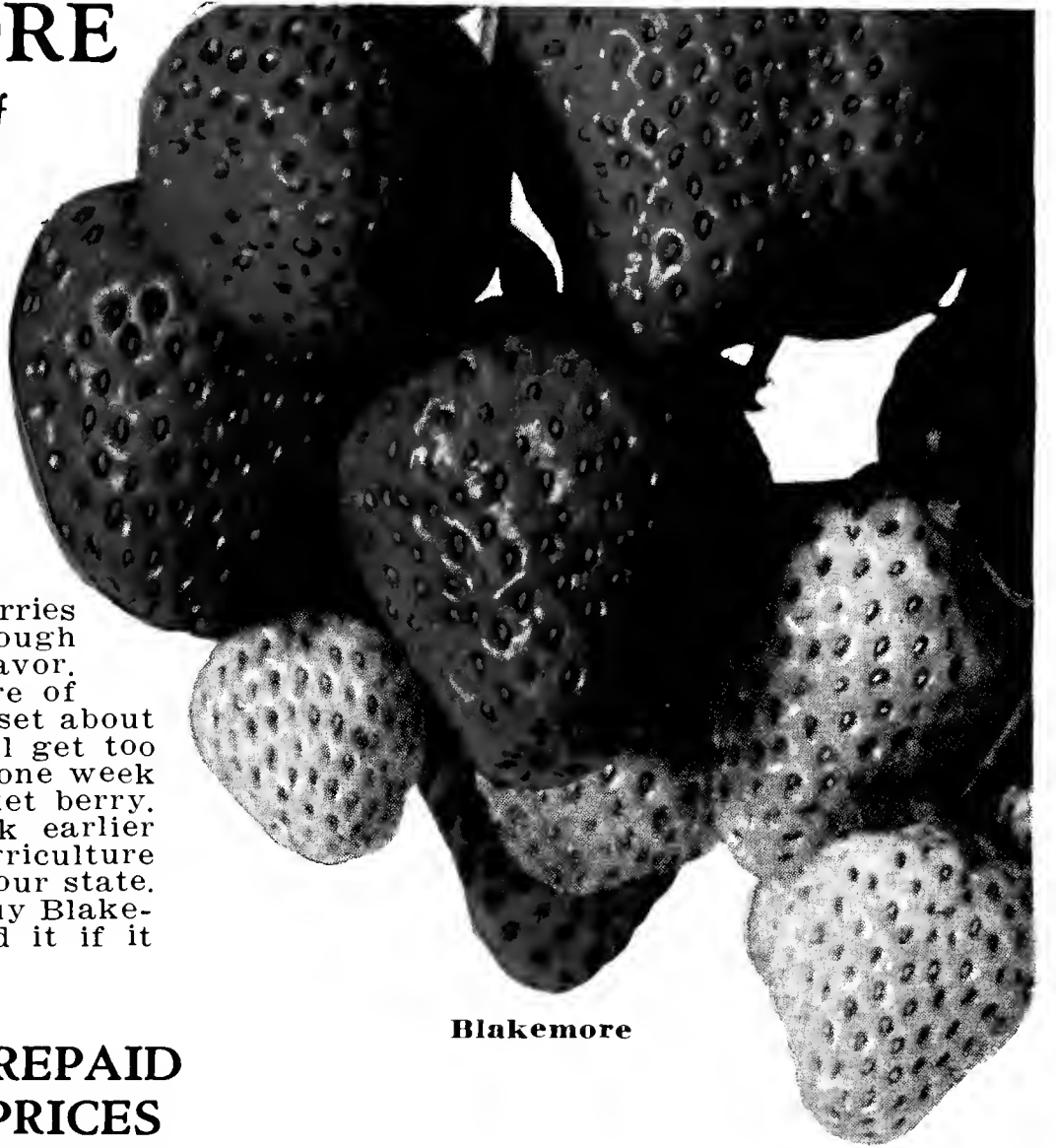
The largest Red Raspberry grown. An English variety introduced into the United States by the New York Fruit Testing Association. A very heavy yielding variety, producing tremendous clusters of the highest quality fruit.

Lloyd George is a variety pre-eminent for home use and local sales. Canes are thrifty, low growing, hardy and very resistant to Mosaic. If you are interested in Red Raspberries in any way you should have at least a trial planting of Lloyd George.

The New BLAKEMORE

The United States Department of
Agriculture Recommends It

This wonderful new creation called the BLAKEMORE (U.S.D.A. No. 659), was originated from a cross of the Missionary and the Premier in the year 1923 by the United States Department of Agriculture. It was named in honor of Marcus Blakemore, President of the National Preservers Association. The berries are much firmer than the Premier, Missionary or the Klondike. The BLAKEMORE are slightly blunted conic with broad shoulders and slim neck. The shape of the Blakemore might vary some in different localities. Easy picking and hulling qualities. The berries are a beautiful bright glossy red color, with tough skin, firm flesh, with a wonderful mild flavor. Plants make runners freely, and you are sure of getting a good fruiting row. They should be set about 24 in. apart. If set closer than that they will get too thick. It has been tried out and found to be one week earlier than Premier. It is a wonderful market berry. Why wouldn't it be? Think of it—one week earlier than Premier. The U. S. Department of Agriculture recommends it, and you should try it out in your state. There is a fortune to be made for those that buy Blakemore now. Uncle Sam would not recommend it if it was not good.



Blakemore

PREPAID
PRICES
Page 23

CHAMPION, Everbearer

Champion, without doubt, is one of the best everbearing Strawberries grown. It is the most prolific of all. When you plant Champion you are certain of success because three months after planting every plant will commence bearing, and continue all through the summer and late in the fall. The runners will commence to bear, even before they have taken root.

We grow several acres every year for fruit, and we know what we are talking about. Make sure that you get the genuine Champion. Order from us. We obtained our stock direct from the originator. You do not have to cultivate and care for them a whole year for nothing. You begin to harvest the crop three months after you get the plants from us. For instance, if you set them out the middle of April they will begin to bear by the middle of July.

The originator claims U. S. record of 5,623 quarts that sold for \$2,059.20 per acre first year set.

Free!

Rose and Evergreen
Offer on Order Blank

DON'T MISS IT

**BIG ALL-YEAR
GARDEN**

ENOUGH FOR TABLE AND
CANNING

250 Champion everbearing
750 Mastodon everbearing

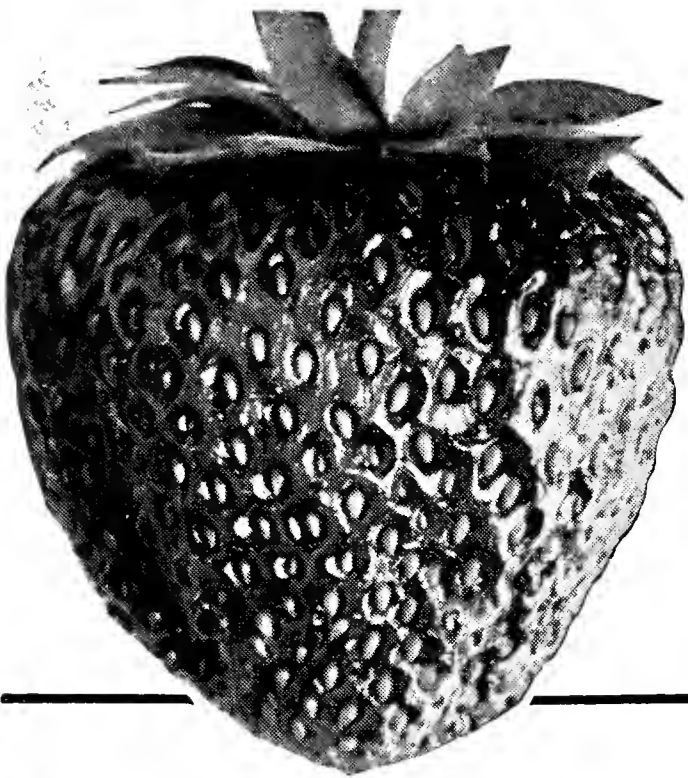
ONLY \$515

NOT PREPAID

No Discount

Champion
Everbearer





KENTUCKY AROMA

(VERY LATE)

This late Strawberry has long been a favorite market variety in Kentucky, Tennessee, Missouri and Arkansas, but is grown with equal success in every other part of the country. Usually commanding premium prices on all markets, it is one of the greatest of long distance shippers, owing to the supreme quality of the berries. It is also highly desirable and suitable for home use as there is something indescribably rich and pleasant about the flavor that commands the admiration of all.

PREPAID PRICES
PAGE 23

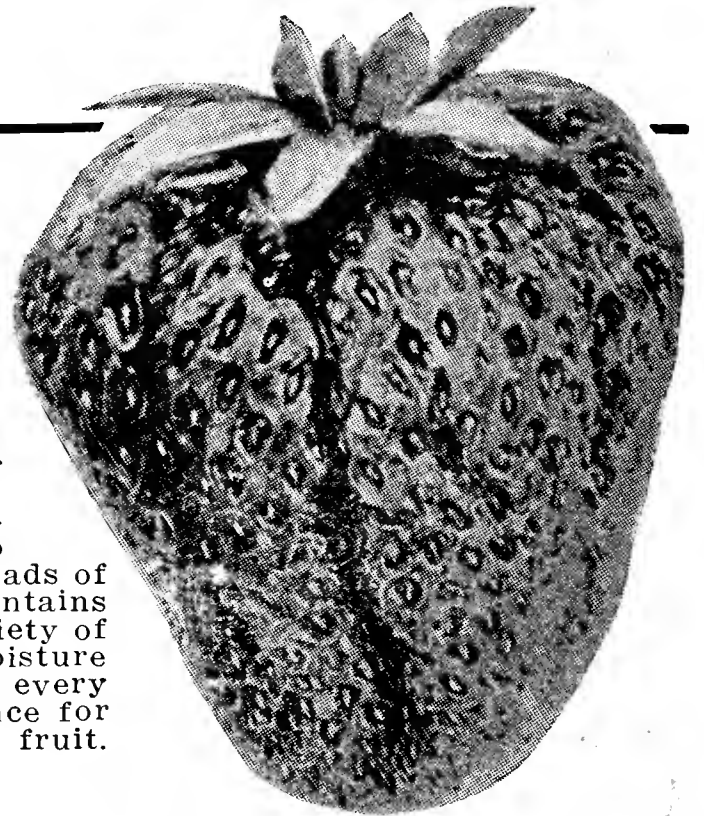
Grow COOPER

for Big Berries and Fine Flavor

MORE POPULAR THAN EVER THIS SEASON

Strawberry growers for many years have been clamoring for a Strawberry that would combine large size and productiveness. We have it at last—that is just what we offer in the Cooper, the wonderful new variety that has created such a sensation in the horticultural world. Growers everywhere are discarding all other varieties in favor of Cooper.

Cooper is not only productive—it is the thriftiest growing Strawberry ever introduced. It is not unusual for the big, wide leaves to grow more than a foot high. This affords shade to the enormous loads of fruit and also is protection from frosts. The root system (which contains the energy of any plant), is the greatest ever developed by any variety of Strawberry. Long, strong, healthy roots that get down to the moisture and enable the plants to carry every berry to maturity; a perfect balance for the heavy foliage, and loads of fruit. They are real drought resisters.

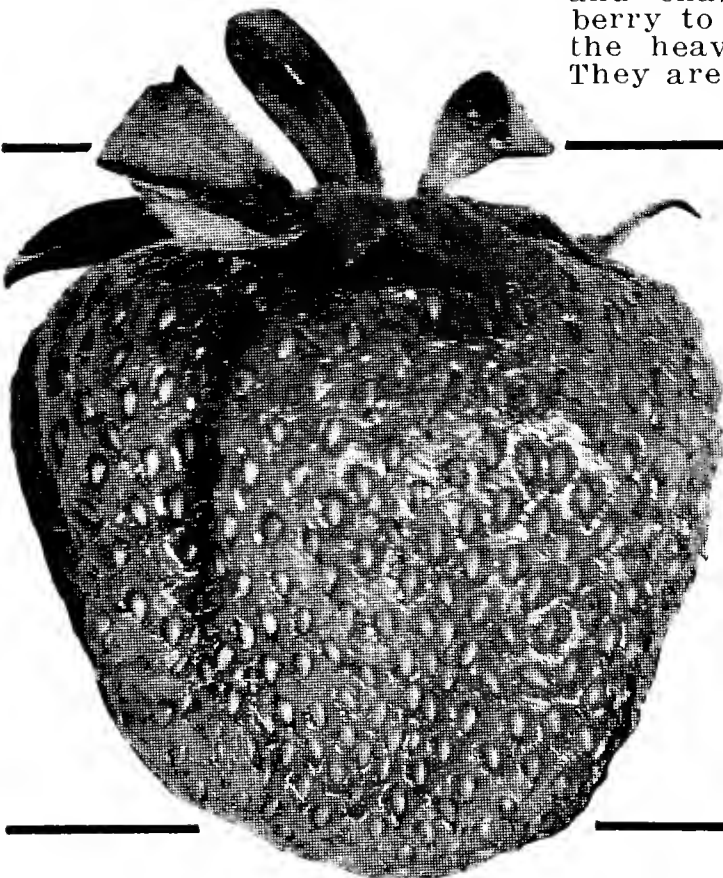


GIBSON

(MEDIUM LATE)

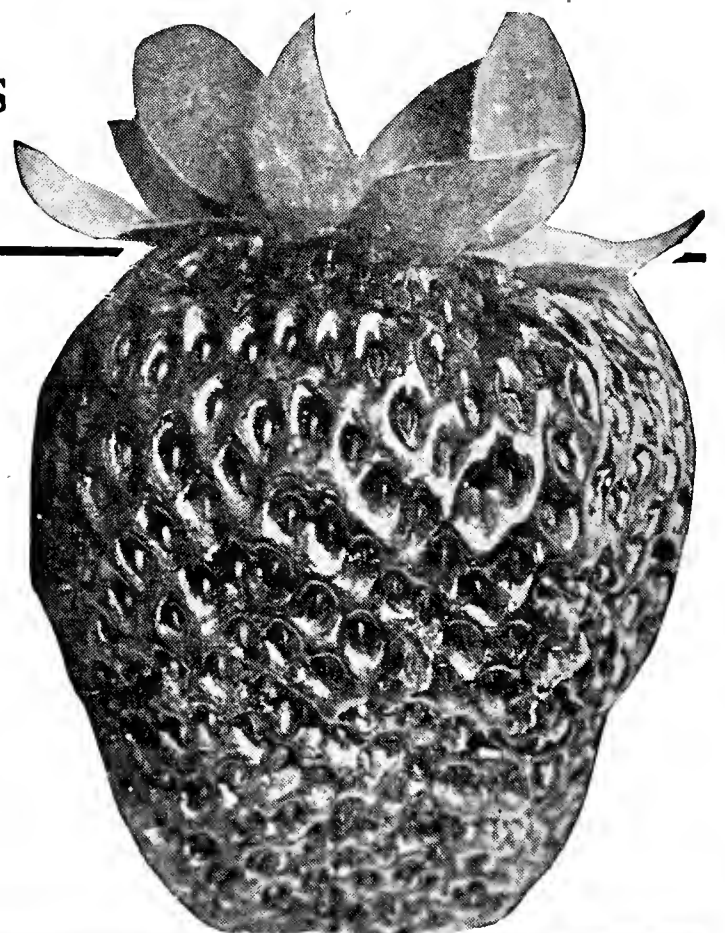
Gibson has long been a favorite with commercial growers everywhere. It is not only a heavy cropper but a sure cropper—in fact, during our many years' acquaintance with Gibson we have never known it to fail to produce a profitable crop. The plants are large and healthy; foliage strong, upright and abundant. Fruit is of the very finest color, quality, flavor and appearance, selling well on any market and mighty fine for home use.

PREPAID PRICES
PAGE 23



SENATOR DUNLAP

SENATOR DUNLAP IS AN OLD STANDARD VARIETY grown for a good many years. This variety has made more crates and more dollars for berry growers than any other one variety. Requires very little attention, and beds last for years if you keep the grass out. It's the toughest variety known. Plants are healthy, fast growers, and make plants freely. Should be set 24 inches by 36 inches apart in rows. Berries very dark red. Wonderful canning berry; great for preserves. Senator Dunlap is sometimes sold under the name of Dr. Burrill. We can see no difference between these two varieties, except the cost of the plants. We are listing Senator Dunlap plants at a very reasonable price, and have some fine plants to offer. Will not do so well in southern states.

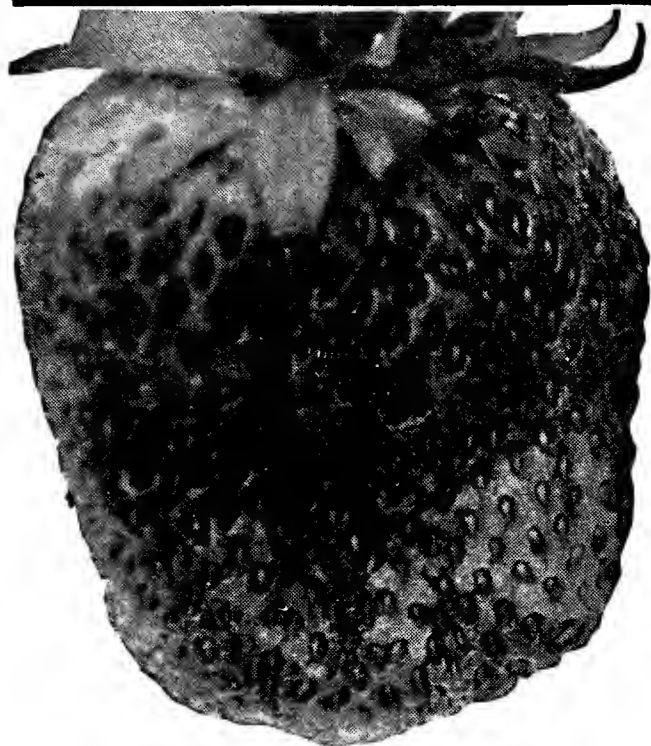
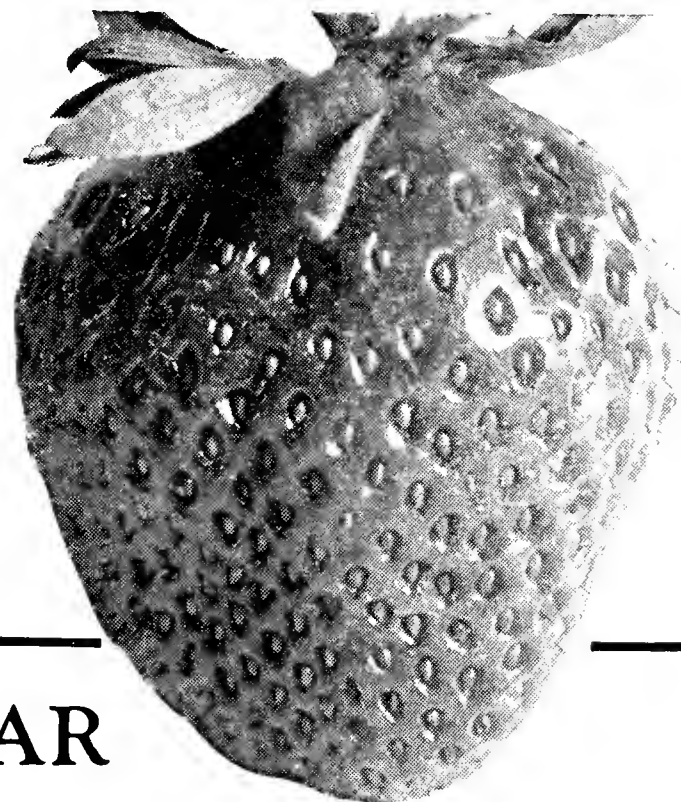


Gardner's RED GOLD

THE WONDERFUL NEW VARIETY

The berries are simply enormous in size. Color is shining red and they are full of delicious sweetness with that wild Strawberry flavor. Does not contain the acid found in the common kinds. Meaty, tender flesh, not pithy. Requires less sugar to make preserves. Stems are very strong and stout, holding the berries out of the dirt. Stems are loaded with these mammoth berries. Red Gold plants make runners very freely. Root system goes down 12 to 15 inches. Fruiting season 30 days. Yields are very heavy.

We have a fine supply of healthy STATE INSPECTED plants in spite of the drought. Our method of moisture holding cultivation accounts for this. We had just enough rain to produce fine plants with long, fibrous roots. Prices page 23.



BELLMAR

This variety, like Blakemore, is a scientific cross between the Premier and Missionary, made in 1922, by the United States Department of Agriculture. This variety has not been tried out in all parts of the United States yet, but in the places that it has been tried, it has proven to be a wonderful berry. Bellmar is a good plant maker. Is a heavy producer, but not as heavy as Premier. Berries rank high in dessert quality, less acid than Blakemore. It is not as good a canning variety as Blakemore. Bellmar is very firm, and is a good shipping variety. Berries are a beautiful bright red when not left on the vines too long. They will turn dark red, but will not easily decay. Like Blakemore, the hull parts very easily from the berry, making it easy to prepare for table. Bellmar berries are fully as large as Blakemore, and hold their size well through the picking season. Order 50 to 100 plants at the prices we have, which is not high for a new variety. Remember the United States Department of Agriculture originated and introduced both Bellmar and Blakemore.

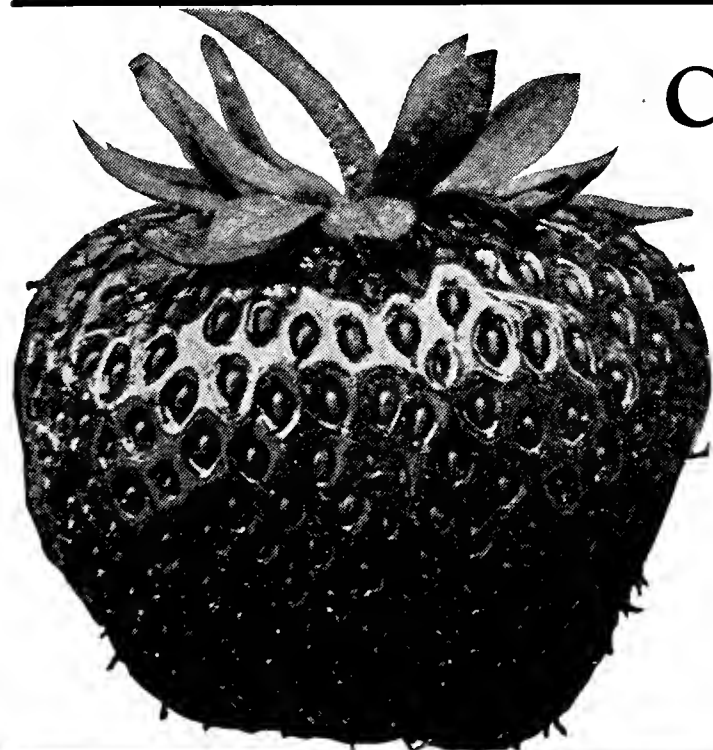
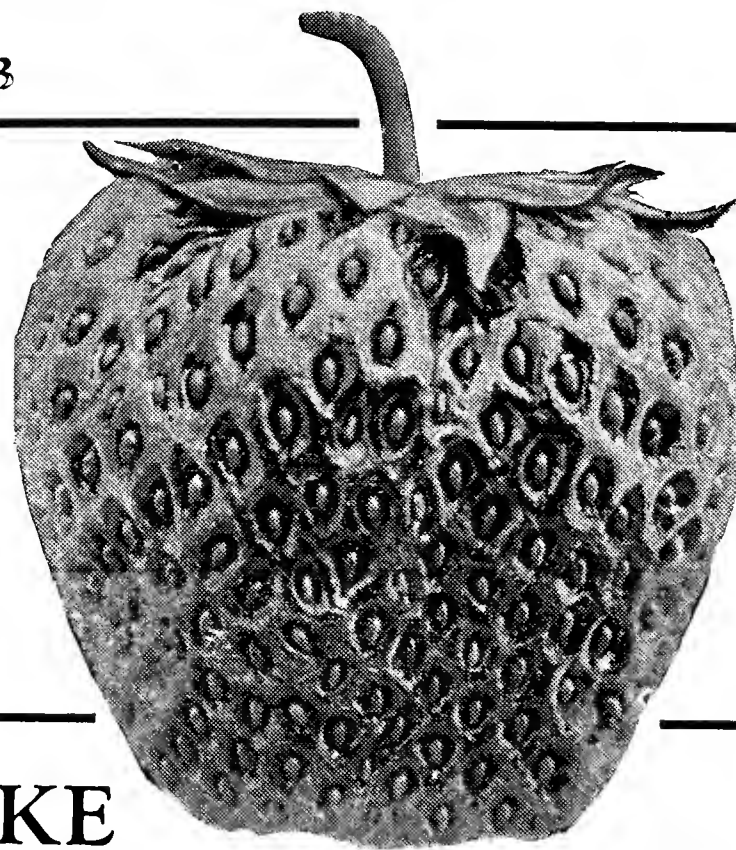
PREPAID PRICES — Page 23

BRANDYWINE

The Brandywine is a valuable late Strawberry especially adapted to home use and canning, owing to its very dark red color and fine flavor. Brandywine is late, good shape, good quality, good size, firm, productive. Many commercial growers prefer this variety as a late berry. Always profitable—doing exceptionally well in central and southwestern sections.

AN OLD VARIETY OF EXCEPTIONAL VALUE

PREPAID PRICES—Page 23



CHESAPEAKE

The best and most perfect late June-bearing variety of Strawberry grown. Like Premier it is a profitable berry. Because it is late and when the Chesapeake comes into bearing all other Strawberries are either gone or are so small that buyers will not look at them. Then is when Chesapeake comes along and brings the fancy prices. The Chesapeake is the last Strawberry to blossom, and by that time all danger of frost has passed, and you are almost certain of a full crop of Strawberries every year. Berries are as dark red as the Senator Dunlap. All berries are well above the average in size. Wonderful, mild, sweet flavor. Chesapeake is a wonderful keeper. Berries are firm, and will keep better than any other variety at this hot time of the year. Plant some Chesapeake this Spring, and be convinced. Our prices are reasonable for this variety. They should be set about 3 feet by 18 inches. Plants are large.

Big Discounts and Prepaid Prices—page 23.

New DORSETT

6640 QUARTS
TO THE ACRE

This new variety was originated by the United States Department of Agriculture. It is a scientific cross between the PREMIER and the Royal Sovereign, an English variety.

Dorsett is one of the firmest berries known, and one of the heaviest producers. Having produced at the rate of 6640 quarts per acre in the East. The foliage is a very dark green and holds this fine color way through the fruiting season. Dorsett berries average very large in size, even a little larger than Premier. Color is of light red, and will hold this light

**PREPAID
PRICES**
Page 23


red color long after picking. This probably will be a big factor when you market them on the wholesale markets, as that is what the wholesale fruit buyers are looking for in the last few years. Light red berries always appear to be in better shape than do dark red ones. Be sure to try a few of the plants this year. We are sure it will be one of the leaders in a very short time.

For complete PREPAID price list see page 23.

INTRODUCTORY GARDEN

Dorsett & Fairfax

25 Dorsett	} Only \$1.00 Prepaid
25 Fairfax	
100 Dorsett	} Only \$2.60 Prepaid
100 Fairfax	



PREPAID
PRICES
on
PAGE
23

STRAWBERRY FAIRFAX

Fairfax the **QUALITY** berry. It is considered by most everyone who have tasted them to be by far a better flavored berry than Premier, and other good flavored berries. FAIRFAX like DORSETT was introduced by the United States Department of Agriculture, and is supposed to be a cross between the Premier and the Royal Sovereign.

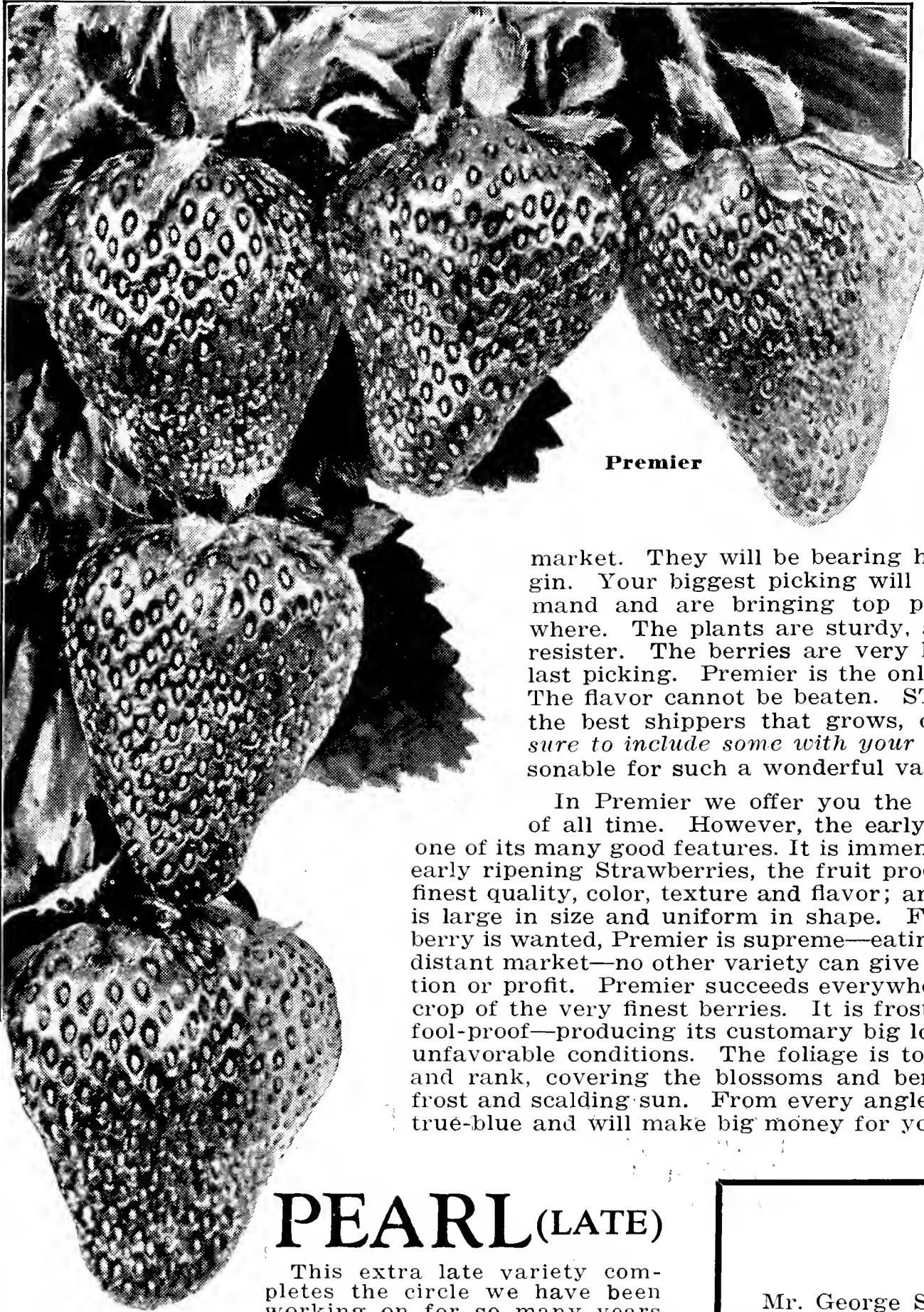
The foliage like Dorsett is of a very good quality. Good foliage means a good fruiting berry.

Fairfax is also a very productive berry. Having produced at the rate of 5120 quarts per acre. The size of the berries average large. They will average with the CHESAPEAKE, and that is going some. Fairfax is a little more firm than Dorsett, and is fully as firm as Blakemore. This makes it a wonderful shipping berry. The color of the Fairfax is light red, with yellow seeds, and a nice green hull, making a beautiful combination. You should by all means try some Fairfax this Spring. PREPAID prices are on page 23.

See DORSETT and FAIRFAX Collections on page 12.



STRAWBERRIES ARE YOUR EARLY SPRING CASH CROP



Premier

PREMIER

The Most
Popular
Berry ever
Introduced

We picked 96, 16-quart cases from a patch of Premiers, 20 square rods, in June, 1925, and frost killed one-third of them in blossom.

The very best of all berries for early fancy trade. For big, early money, PLANT STROMER'S PREMIER. If you plant STROMER'S PREMIER you will get the first berries on the

market. They will be bearing heavily before other varieties begin. Your biggest picking will be when berries are in good demand and are bringing top prices. Premier will grow anywhere. The plants are sturdy, and long rooted, a good drought resister. The berries are very large, and hold their size to the last picking. Premier is the only early variety that will do this. The flavor cannot be beaten. STROMER'S PREMIER is one of the best shippers that grows, on account of its firmness. *Be sure to include some with your order.* Our prices are very reasonable for such a wonderful variety.

In Premier we offer you the greatest extra early Strawberry of all time. However, the early ripening of this variety is only one of its many good features. It is immensely productive and unlike other early ripening Strawberries, the fruit produced by Premier is of the very finest quality, color, texture and flavor; and last but not least, every berry is large in size and uniform in shape. For every purpose that a Strawberry is wanted, Premier is supreme—eating, canning, preserving, local and distant market—no other variety can give you any more pleasure, satisfaction or profit. Premier succeeds everywhere and never fails to give a big crop of the very finest berries. It is frost-proof, drought-proof, and even fool-proof—producing its customary big load of fruit even under the most unfavorable conditions. The foliage is tough and healthy and grows tall and rank, covering the blossoms and berries and protecting them from frost and scalding sun. From every angle, Premier is solid gold, 18 karat, true-blue and will make big money for you.

Prices Page 23

PEARL (LATE)

This extra late variety completes the circle we have been working on for so many years — a late Strawberry that could be depended upon to produce quality and quantity — a big paying crop regularly, under all conditions. Whether you are growing Strawberries for home use or for market a long fruiting season is desired and when you plant Premier, Cooper and Pearl you are planting the most profitable and longest-fruiting combination it is possible to obtain. Because of its late blooming season Pearl is the ideal variety for frosty locations. The immense foliage gives ample protection to both the bud and fruit. During our tests with this variety it has proven equally desirable for light or heavy soil; prolific in plant as well as fruit, it makes an ideal fruiting row under all conditions. The berries are large, uniform, solid and red clear through, and very attractive, with excellent flavor. Pearl prolongs your season and increases your profits; extra late berries always bring fancy prices. **Prices Page 23**

BEAUTY

A new variety. This is a new variety of great promise. Has an exceptionally heavy foliage with lots of fine, long roots, making it very adaptable to dry sections. Has good keeping qualities. Berries very large, solid clear through. Very juicy and flavor of the finest. This fine color, high flavor and bright green calyx make it most attractive and command the best prices on the market.

Originated in Three Rivers, Michigan, by a prominent nurseryman there. Beauty, the strawberry that keeps well. Named "Beauty" because more beautiful than any other strawberry. **Prepaid Prices Page 23.**

April 22, 1933

Mr. George Stroman,
New Buffalo, Michigan

Dear Sir:

I received the first shipment of my plants from you yesterday and will say that I am more than pleased with them. They came through in fine shape and were by far the best plants I have ever seen sent out by any nursery and I see no reason why every one of them should not grow. We have them all set out and am now awaiting the rest of them. I showed the plants to several of my neighbors here and they all thought they were fine. So if I can do anything to boost your nursery stock in this locality I shall certainly do it. Hoping this finds you well, I remain

Yours truly,

H. W. CHRISTIANSON,
Lewiston, Idaho.

Gem, Everbearer

Something New in

Everbearing Strawberries

GEM—A direct offspring of the old Progressive everbearing strawberry.

GEM was discovered four years ago by a Frank Kipplinger of Central Michigan. Mr. Kipplinger found a single plant growing in his Progressive field. This plant was so much better that it was guarded, and planted by itself. The Gem berries are above the average in size.

GEM has a flavor like the Progressive or Champion. Not much sugar needed when you eat **Gem**.

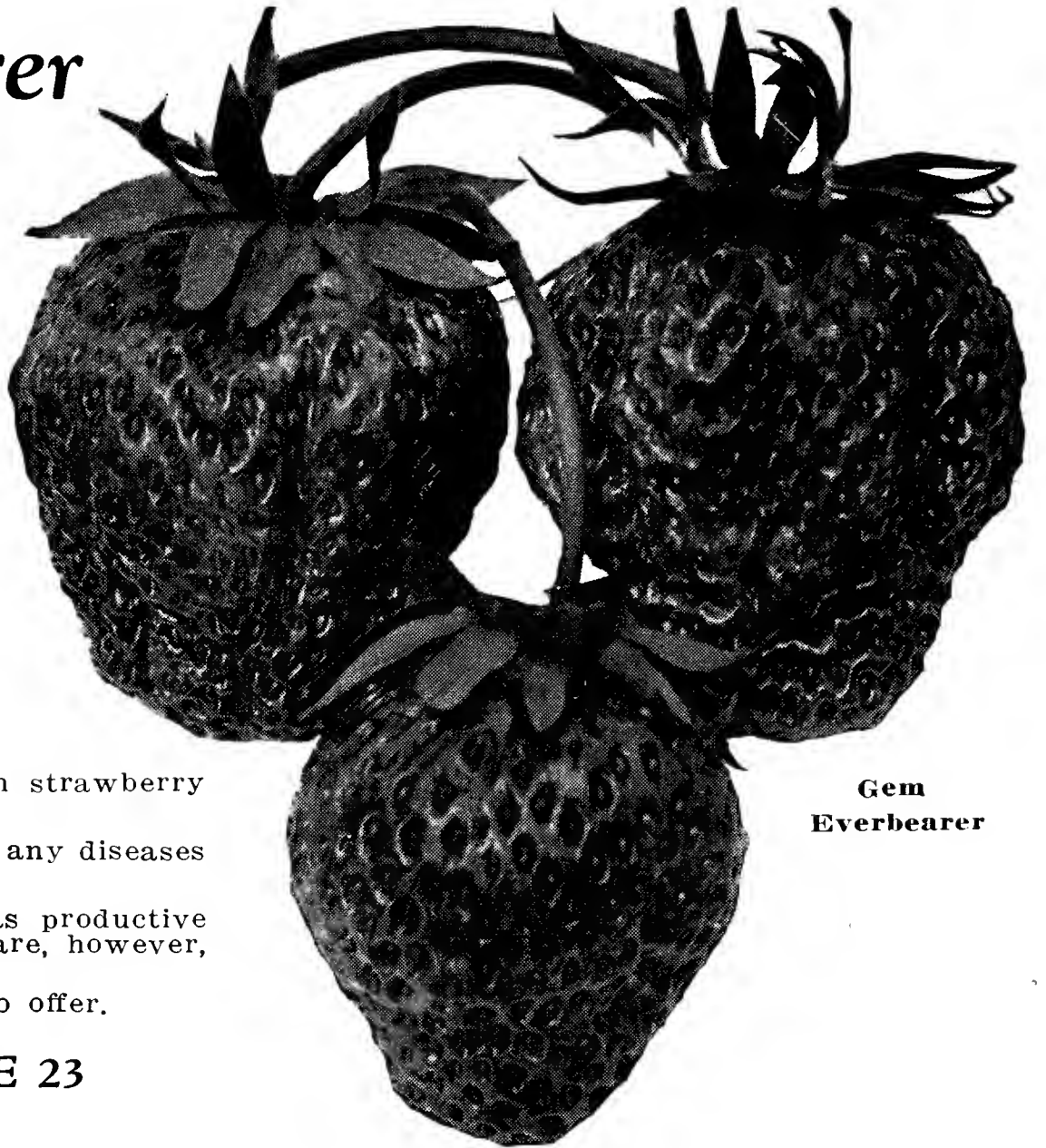
FIRMNESS—Firmness is what is needed in strawberries if they are to stand shipping. Gem has this firmness. Next to **Rockhill** they are the most firm strawberry we have ever grown.

DISEASE RESISTANT—We fail to find any diseases on **Gem**.

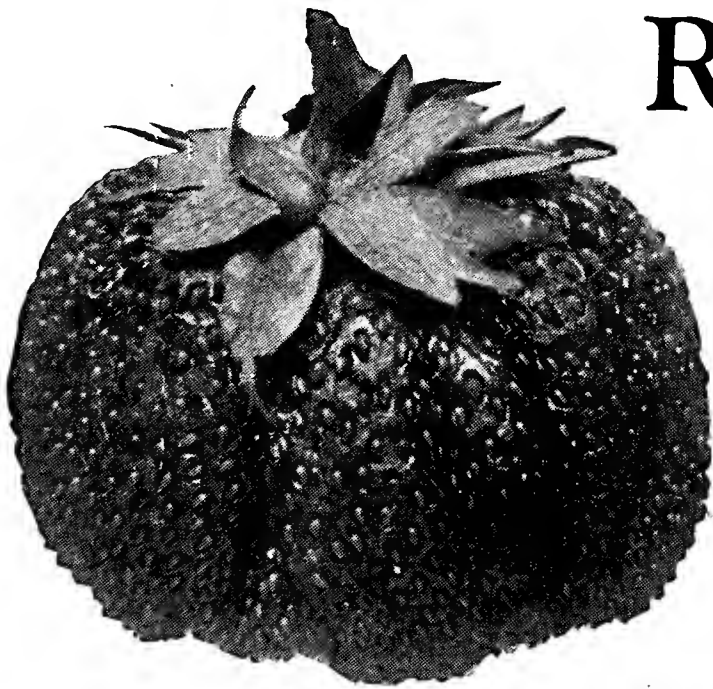
PRODUCTIVE—We find them to be as productive as the Progressive or Champion. They are, however, much larger in size.

Have only a limited supply of plants to offer.

PREPAID PRICES—PAGE 23



**Gem
Everbearer**



Rockhill Everbearer

Rockhill, Everbearer

This variety was called to our attention by Mr. Fish of Oregon. It was originated some few years ago by Mr. Rockhill of Iowa. It is the best flavored and most productive everbearing strawberry grown. Its size ranks with Mastodon, and it will produce over twice as many berries row for row.

Rockhill challenges the world in size, quality, productiveness and flavor, and that is saying a mouthful. As good a berry as the Mastodon is, we have picked nearly three times as many berries from a Rockhill row as we did from a Mastodon row side by side. The average size was larger than Mastodon. The Rockhill will ripen up even. So you folks who have tried Mastodon will have some idea what Rockhill will actually do. The Rockhill has only one **FAULT**. **AND IT IS THIS**—It does not make many plants, so it will be years before there will be enough plants to ever supply the demand. Prices are still high, but we advise you to get started early. **Prices postpaid anywhere. 6 for \$1.00; 12 for \$1.75; 25 for \$3.00; 50 for \$5.00; 100 for \$10.00.**

KANNER KING

KANNER KING—The king of the canners. Berries dark red, sweet, juicy, medium in size and stay solid after they are in the can. **Prices are on page 23.**

FOUR NEW GRAPES

SHERIDAN, Black. A new grape of recent development. Will ripen one week earlier than Concord. Bunches and berries large. One of the most valuable characteristics is its excellent keeping qualities. The skin is a little thicker than Concord, which makes it a fine shipper. **1 yr. No. 1 plants, fancy—30c each, prepaid.**

PORTLAND. A new white grape of recent development in Fredonia, N. Y. It is absolutely the earliest grape to ripen. Berries are large, and are about the same color as the Niagara. Excellent quality. It contains much sugar, and can be eaten even before it is quite ripe. The vines are hardy and productive. **1 yr. No. plants, fancy—30c each, prepaid.**

ONTARIO, White. Another origination of the New York State Experiment Station. Very early. Produces large, compact clusters of good size and wonderful flavor. A very promising variety. A strong grower and hardy. **1 yr. No. 1 plants, fancy, 30c each, prepaid.**

FREDONIA, Black. A new, very early Grape, originated and thoroughly tested by the New York Experiment Station. Ripens with Portland. The bunch and berry are large with excellent flavor. Ripens fully 10 days before Moore's Early and is an excellent shipper, as it does not crack. This Grape fills a long-felt need—a juicy, delicious black Grape that ripens early. Vine vigorous and productive. One of the best new varieties. **1 yr. No. 1 plants, fancy, 30c each, prepaid.**

One of Each for Only \$1.00—Postpaid

Our MASTODON are from ORIGINAL Strain

NONE BETTER NO
MATTER WHAT YOU PAY

3 Full Crops in 18 Months—3 Big Profits

HERE'S HOW MASTODON DOES IT

- 1—Plant this spring—1934.
 - 2—Pick first crop—July to winter—1934.
 - 3—Pick second crop—June—1935.
 - 4—Pick third crop—August to winter—1935.
- 3 BIG CROPS—3 BIG PROFITS

A REAL WONDER

It is the largest everbearing berry grown, Mastodon is the most prolific, the firmest, the most beautiful berry with the real Strawberry flavor. It is a berry that bears early and late, one that can be picked all spring and summer. Many of the berries grow as large as a silver dollar, and are just as perfect. Mastodon is the real marvel in Strawberries; nothing like it has ever been known. Plants that were set in May this year, have produced as high as three quarts per plant. A field of this Mastodon in bearing is a sight never to be forgotten.

Roadside stand owners make big money with Mastodon. The berries sell like hot cakes to the travelling public. Try it.

MASTODON
Sells for 20 to 35¢ per
Quart in These Depres-
sion Days.

Amsterdam
New York
1-23-33

South Michigan Nursery
Dear Sirs:

The 500 Mastodons I bought from you last season were the finest I ever saw and they made a wonderful crop. I made more money off them than any thing else I had. The greater part of them went from 20 to 35¢ a quart. As fine a flavor as any I ever tasted, and the aroma would sell them anywhere.

Please send me your 1933 catalog.

Sincerely,

Geo. T. Spaulding

Keep all buds and blossoms picked off Mastodon after you set them until about July 1st, then let them bear.

A Stromer Mastodon plant, grown on water sand bottom land, machine dug to get all the fine roots for you.

Its Origin

MASTODON was originated several years ago by one George Voer, of Northern Indiana, who claims it a cross between Superb and Prize. Out of many seedlings produced from this cross only one plant was worth saving, this one being the original Mastodon from which all others of its name have sprung, and from which source our original planting stock we secured. At the right is one of the many letters received.

Plant Mastodon and Be Convinced

When we tell you that Mastodon does produce three full crops in 18 months; it is the largest berry grown; bears in 90 days after planting; is an excellent shipper; brings more per quart; and is a delicious home use berry—you probably won't believe it unless you have grown them yourself—and we don't blame you, but read what other folks have to say.

Mastodon does not require special soil, care or petting. Sell for 30¢ to 50¢ per quart. Mastodon sells like "hot cakes" on roadside stands. Commences to bear in 90 days after you set them. We picked 181 quarts of berries from 1½ acres on November 1st, and on November 2nd the ground was frozen solid. This frost is what stopped the Mastodon. Light frosts will not injure them at all.

We often have folks ask us "How many quarts will 100 Mastodon give us in a week?" We have watched our Mastodon fields this summer, and find that they will bear three quarts two times a week. If it is cool, they will not do quite so well. It takes about 8000 plants to set an acre, so that makes 480 quarts per week per acre, and sell for 25¢ per quart, making \$120.00 per acre per week.



Mastodon, 90 days after planting, first crop about ready to pick.



Same field, Nov. 1st, last berry has just been harvested.

Free!

250 GENUINE
MASTODON PLANTS
Absolutely FREE with
every order for \$25.00
or over.

500 GENUINE
MASTODON PLANTS
FREE on a \$50.00 order or over and
PREPAID TO YOU.

MAMMOTH SIZE HOME GARDEN PLANTS

This group of plants were grown on specially prepared ground to secure extra large stock for the particular use of the Home Gardener. These plants will bear larger crops the first year and have extra vitality to withstand adverse city conditions. Price 25 for \$1.25; 50 for \$2.00; 100 for \$3.00. Prepaid anywhere.

EVERBEARING COLLECTIONS

1/4 ACRE	1500 Genuine Mastodon 500 Champion Everb'r	ONLY \$12.00 Not Prepaid
1/2 ACRE	3000 Genuine Mastodon 1000 Champion Everb'r	ONLY \$22.00 Not Prepaid
1 ACRE	6000 Genuine Mastodon 2000 Champion Everb'r	ONLY \$41.00 Not Prepaid

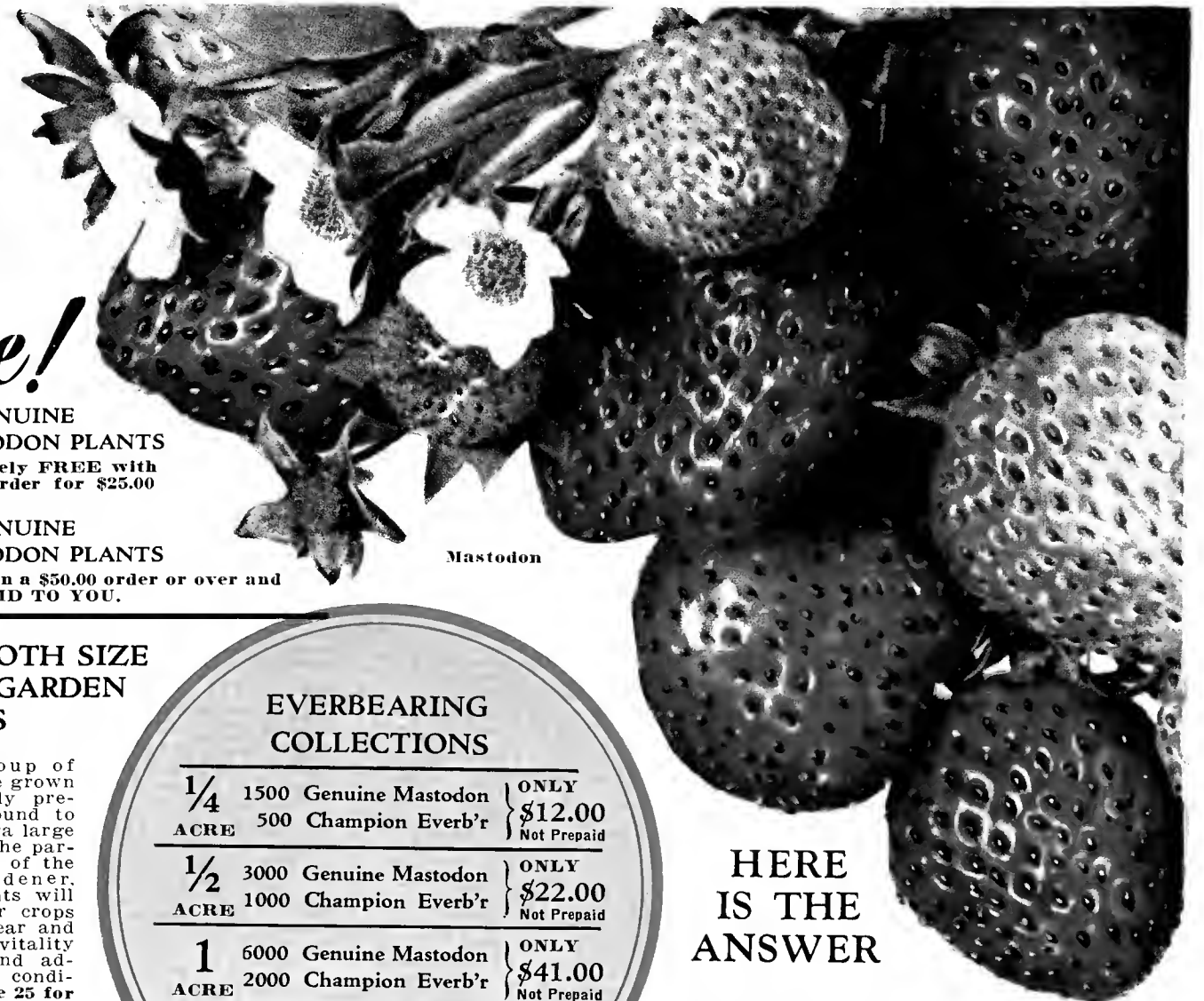
PREPAID PRICES
PAGE 23

Enough for
Family of Five
First Year Set
125 Mastodon
Everbearing
125 Champion
Everbearing
FOR
ONLY \$2.00
NO DISCOUNT
PREPAID

REMEMBER
We Are Headquarters for
"True-to-Name"
MASTODON

Genuine, Everbearing Strawberry
Plants, from original strain. We grow
perhaps more plants of this variety
than any other nursery in this state.

SOUTH MICHIGAN NURSERY
Geo. Stromer
NEW BUFFALO MICHIGAN



HERE
IS THE
ANSWER

Each year we have a number of folks write us and ask if our Mastodon everbearing strawberry plants are as good as "So & So's" Mastodon, on account of our price being so much lower. We do not blame them for questioning this, so here is the answer.—We can as a rule grow twice as many Mastodon plants on the same amount of ground as most nurseries. This is due to our water sand bottom land. We have plenty of moisture all summer long. This land is tilled, and in real hot and dry weather this moisture comes up, and we get plants right through the hot dry weather, when on most types of land they are sizzling for want of rain. We have over 1,500,000 Mastodon plants on 6 acres. Why can't we sell them cheaper? IF YOU ARE IN DOUBT ABOUT THIS STATEMENT, WE INVITE YOU TO WRITE TO OUR STATE DEPARTMENT OF AGRICULTURE, LANSING, MICH., AND ASK THEM ABOUT STROMER'S MASTODON CROP THIS YEAR. Please enclose postage in writing them. Our Mastodon are from the ORIGINAL STRAIN. WHY PAY MORE. Read Mary Harden's letter.

Dear Sir:

March 10, 1933

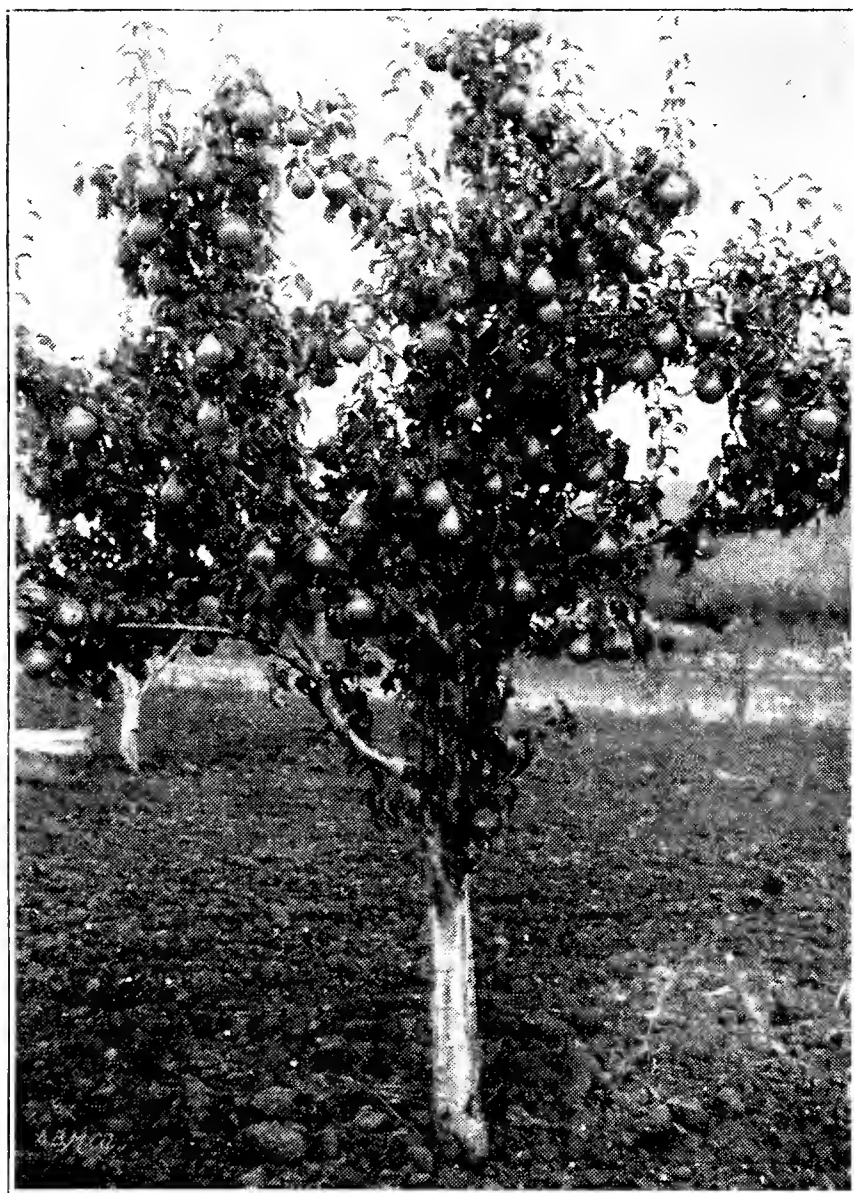
This is to thank you for the shipment of 250 Mastodon strawberries—and 25 Chief Raspberries which arrived by parcel post C.O.D., Friday evening, and were carefully planted next morning in rich garden soil. The plants were all A-1 in size and condition,—and I followed the Govt. bulletin in planting, so am expecting wonderful results. I also received your catalogue and note that your prices are lower than in other catalogues so, now that I see quality does not suffer on that account,—you will probably get future orders from my friends in this district.

Mary Harden



STROMER'S Northern Grown HARDY FRUIT TREES, Grow and Bear

Whether you want only a few trees for a home fruit yard or several hundred for a commercial orchard, we can supply you with well grown, strong, sturdy trees. Our prices are less than half the usual prices asked by agents, because we sell direct from Nursery to you.



A 4-Year Old Douglas Pear Tree

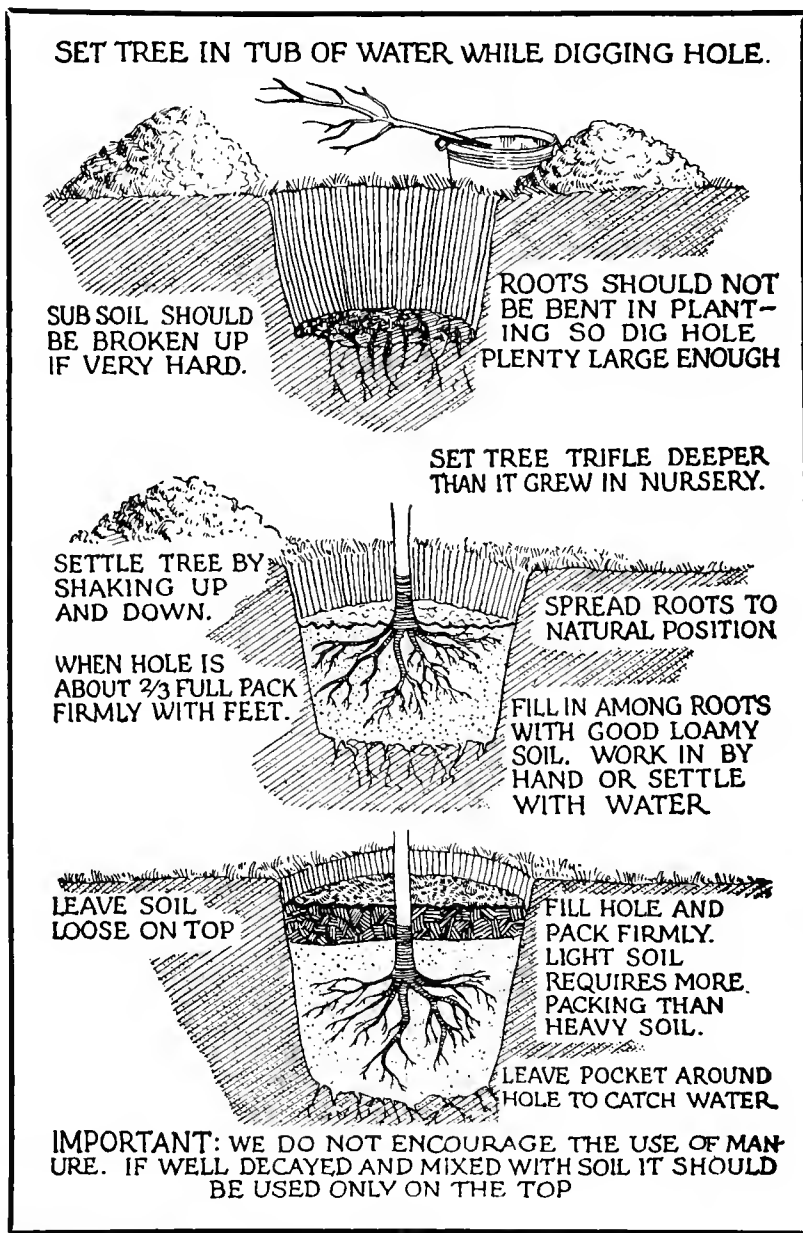
PEARS

THE NEW DOUGLAS. Claimed to be blight proof and cold resistant. Bears early, often same season planted and produces a heavy crop. A regular cropper in all soils and localities. Fruit large, smooth; beautiful golden yellow color, flecked with red and russet. Flavor delicious, very sweet, melting and juicy. Something new and better.

BARTLETT. The most popular Pear for home use and market, a leader among canning Pears. Should be in every garden and orchard. Large, golden yellow with reddish blush on the sunny side. Flesh tender, melting and juicy, with a delicious, musky flavor. Tree vigorous, erect, bears abundantly.

SECKEL OR SUGAR PEAR. The best pickling Pear. Fruit small, fine flavor and firm. Heavy cropper.

PRICES ON FRUIT TREES ON PAGE 19.
 These Prices are **NOT PREPAID** except on certain collections.



German Prune

GERMAN PRUNE

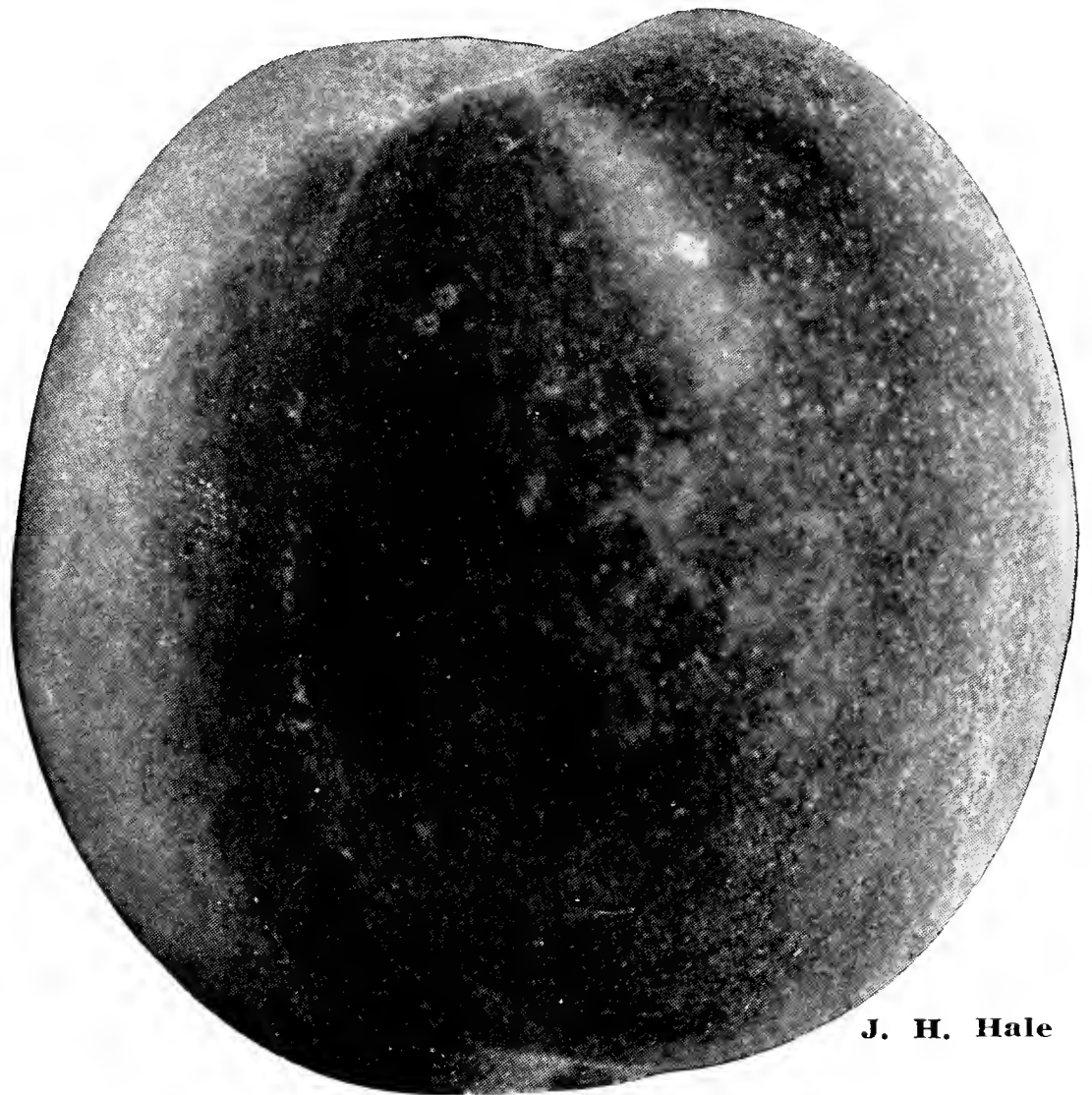
GERMAN PRUNE. The most delicious of all Plums. Extra large size, often two inches in diameter. Early and abundant bearer. Combines hardiness, immense size, delicious quality, long keeping, beautiful color, small pit; an early and prolific bearer, often producing a good crop in two years after planting.

PEACHES

J. H. HALE. (Midseason Yellow Freestone). Ripens a few days earlier than Elberta. Fruit extra large, golden yellow with deep carmine blush. Excellent quality and flavor. Tree is large, hardy, and bears young. Does best when grown with Elberta.

ELBERTA. (Midseason Yellow Freestone). The leading commercial variety. Fruit is large, firm, juicy, making it ideal for canning, storage and shipping. Beautiful golden yellow color with bright red cheeks. Very hardy, vigorous, a heavy cropper.

NEW SOUTH HAVEN PEACH. The very best home use Peach. Best canner of them all except the Gold Drop. Ripens about 20 days earlier than Elberta. Fruit large, juicy, sweet. Freestone.



J. H. Hale

Fruit trees cannot be shipped into the following states:
Oregon, California, Arizona, Idaho or Washington.

PARCEL POST SIZE PEACH COLLECTION

- 1 ELBERTA (Mid - Season, Yellow)
- 1 J. H. HALE (Mid-Season, Yellow)
- 1 SOUTH HAVEN (Early Yellow)
- 1 CHAMPION (Early, White)
- 1 EARLY CRAWFORD (Ea. Yellow)

A Real Home Orchard

**5 Fine Trees, Prepaid East of \$1
Rocky Mountains, for only \$1**

ORANGE QUINCE

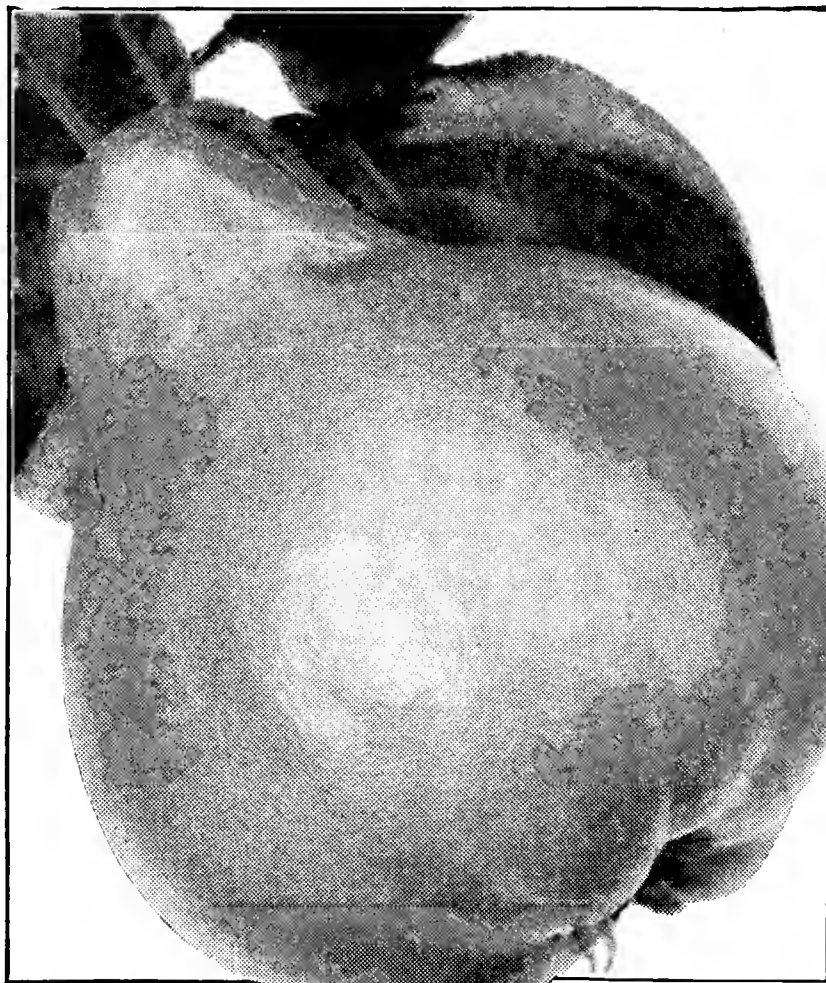
ORANGE QUINCE — Fruit large, round, with a short neck. Bright yellow color. Flesh very firm, and juicy. Excellent flavor. Trees bear young. Fruit always brings a good price on the market. Requires little care. The best all around Quince you can buy.

APRICOT

SUPERB—A hardy tree and a sure cropper. The best flavored, most productive hardy Russian Apricot yet produced. Medium size, light salmon color.

HYSLOP CRAB

HYSLOP CRAB — The best crab apple grown. Fruit large round and red. Fruit is firm, yellow in color and just the one for real good jelly.



Orange Quince

**Don't Overlook the
FREE PLANT
OFFER**

*on the back of our
ORDER BLANK*

*Notice the
LARGE DISCOUNTS
on the
PRICE PAGE*

We will gladly quote you **PREPAID** prices on your entire order. Please send your list of varieties, for

**SPECIAL PREPAID
PRICE.**



Hyslop Crab

FRUIT TREE PRICES—NOT PREPAID

7/16 to 9/16—2 Years Old

	Each	3	10	25	50	100
APPLE (except Anoka)	\$0.35	\$0.95	\$2.75	\$5.85	\$11.25	\$22.50
ANOKA APPLE45	1.25	3.65	7.75	15.00	30.00
PEACH30	.85	2.45	5.20	10.00	20.00
PEAR45	1.25	3.65	7.75		
PLUM45	1.25	3.65	7.75	15.00	30.00
SWEET CHERRY45	1.25	3.65	7.75	15.00	30.00
SOUR CHERRY30	.85	2.45	5.20	10.00	20.00
APRICOT45	1.25	3.65	7.75	15.00	30.00
QUINCE45	1.25	3.65	7.75	15.00	30.00

CHERRIES

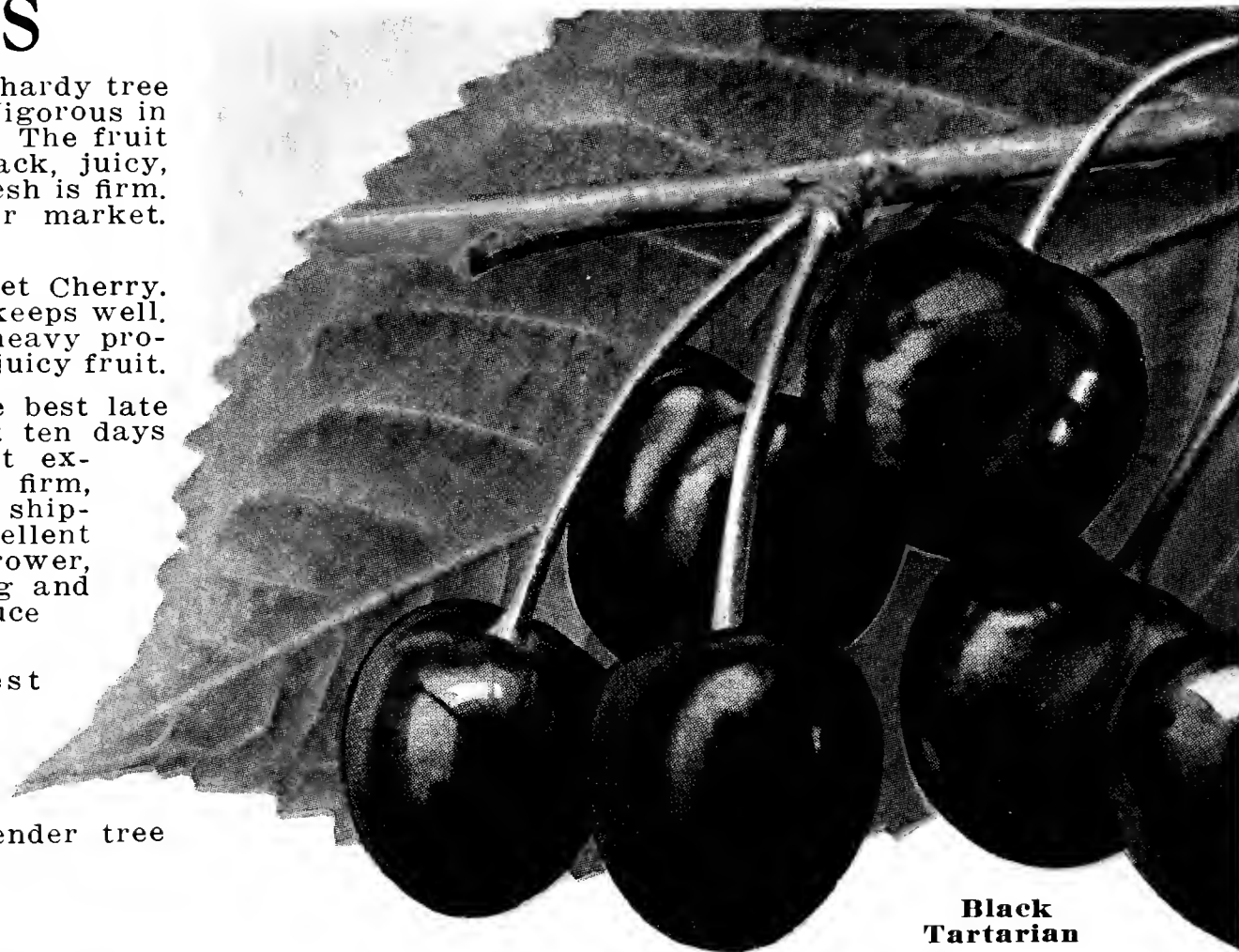
BLACK TARTARIAN. A very hardy tree which thrives everywhere. Vigorous in growth and very productive. The fruit is large, bright purplish black, juicy, sweet, and of rich flavor. Flesh is firm. Fine for eating, canning or market. Ripens late June.

SCHMIDT. An excellent market Cherry. Fruit is very attractive and keeps well. Deep crimson-red color. A heavy producer of extra large, tender, juicy fruit.

LARGE MONTMORENCY. The best late Sour Cherry, ripening about ten days later than Richmond. Fruit extra large, bright, shiny red, firm, juicy; fine for market and shipping. Keeps well and is excellent for canning. Tree strong grower, perfectly hardy, bears young and can be depended on to produce a full crop.

EARLY RICHMOND. Earliest Sour Cherry. A very popular and valuable acid variety. Fruit is medium large, bright red and juicy. Fine for pies and canning. Bears a heavy crop yearly. A slender tree which is very hardy.

Prices page 19.



Black
Tartarian

HARDY APPLES

DELICIOUS. Our stock is guaranteed to be the genuine True Delicious. Fruit is large, somewhat conical in shape, beautiful crimson color, mottled with dark red. Flesh fine grained, crisp, tender and juicy. Quality superb, and excellent shipper and keeper. Tree very hardy, vigorous grower, heavy bearer every year. See illustration below.

JONATHAN. A beautiful, bright red Apple. Of excellent keeping quality. Fruit is highly flavored and brings a high price on the market. Flesh is tender, juicy and rich. Tree bears early and produces heavy crops for a long period of years.

THE NEW CORTLAND. The young bearing habit of this fine new fall Apple has astonished growers everywhere. It has proven to be one of the greatest eating, shipping and market Apples ever introduced. The trees are large, healthy and immensely productive. Fruit large and handsome, a beautiful dark red splashed and striped with carmine and yellow. Flesh fine grained, crisp and juicy, white and firm. A fine dessert Apple. Clings to tree long after fully ripe and does not bruise easily.

STAYMAN'S WINESAP. An Apple that succeeds everywhere. Fruit is dark red, tinged yellow, of rich, enticing flavor. A fine eating Apple and sells readily on the market.

1 Year Baby Apple Tree Collection

Not just grafts, but real little baby apple trees. We will let you be the nursery. You get the joy of seeing your apple trees grow from their infancy.

- 1 Delicious (winter)
- 1 Jonathan (winter)
- 1 Cortland (winter)
- 1 Winesap (winter)
- 1 Yellow Transparent
Early

All 5 for only

49^c

postpaid

YELLOW TRANSPARENT. The very finest extra-early Apple. It ripens late in July and continues in season until September. Fruit of good size, waxy yellow color. Flesh white, mild, juicy and sweet. The tree grows vigorously and produces an abundance of fruit.

ANOKA. Ripens in September. The size, color and flavor of the Anoka make it a favorite. Also a good keeper. The remarkable feature of this excellent Apple is that it comes into bearing very young, is also dwarf in stature, so that it is well adapted to back yard planting or closer in the orchard.

We Have a Few
3 Year
DELICIOUS
at

\$100 each

Not Prepaid



Delicious Apple

SEE PAGE 23
for Liberal Discount
on Early Orders

**FREE
PREMIUM**

for
orders amounting to
\$5.00
or more, see back of
ORDER BLANK

*Except Where
Noted
Fruit Trees Are
Not Prepaid*

CACO, New Red Grape

*Superior Quality
Heavy Bearer
Early Ripening*

The Sensational New Red Grape

This is the new, quick growing, young bearing, early ripening, deliciously sweet, big red Grape that has created sensations in nearly all of the large Grape growing centers of the country.

As a variety for home use, leading Horticulturists and Experimental Stations claim it has no equal, and we will vouch for this statement.

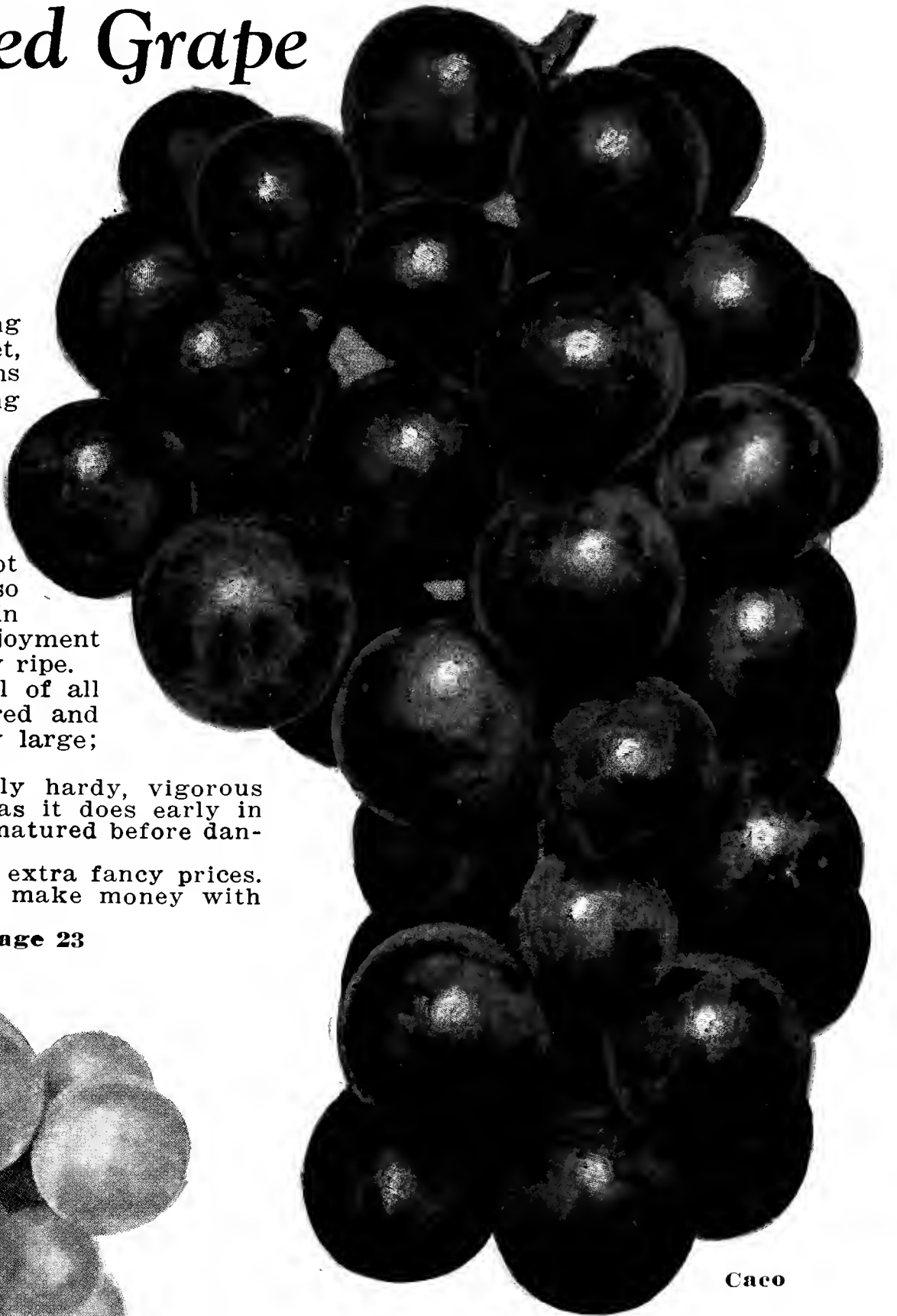
Caco has a peculiar characteristic not found in any other variety, in that it is so rich, melting, sugary and excellent in flavor that it can be eaten with rare enjoyment fully two weeks in advance of being fully ripe.

In appearance it is the most beautiful of all hardy Grapes, possessing a rich wine-red and amber coloring. The berries are usually large; bunch large and compact.

The vines are very strong, perfectly hardy, vigorous growers, healthy and prolific, ripening as it does early in September, the big crop of fruit is fully matured before danger of frost.

Always in demand at all markets at extra fancy prices. If you have a roadside stand, you will make money with Caco. They will be back for more.

Have 3 year bearing size, Page 23



Caco

Niagara, The White Grape

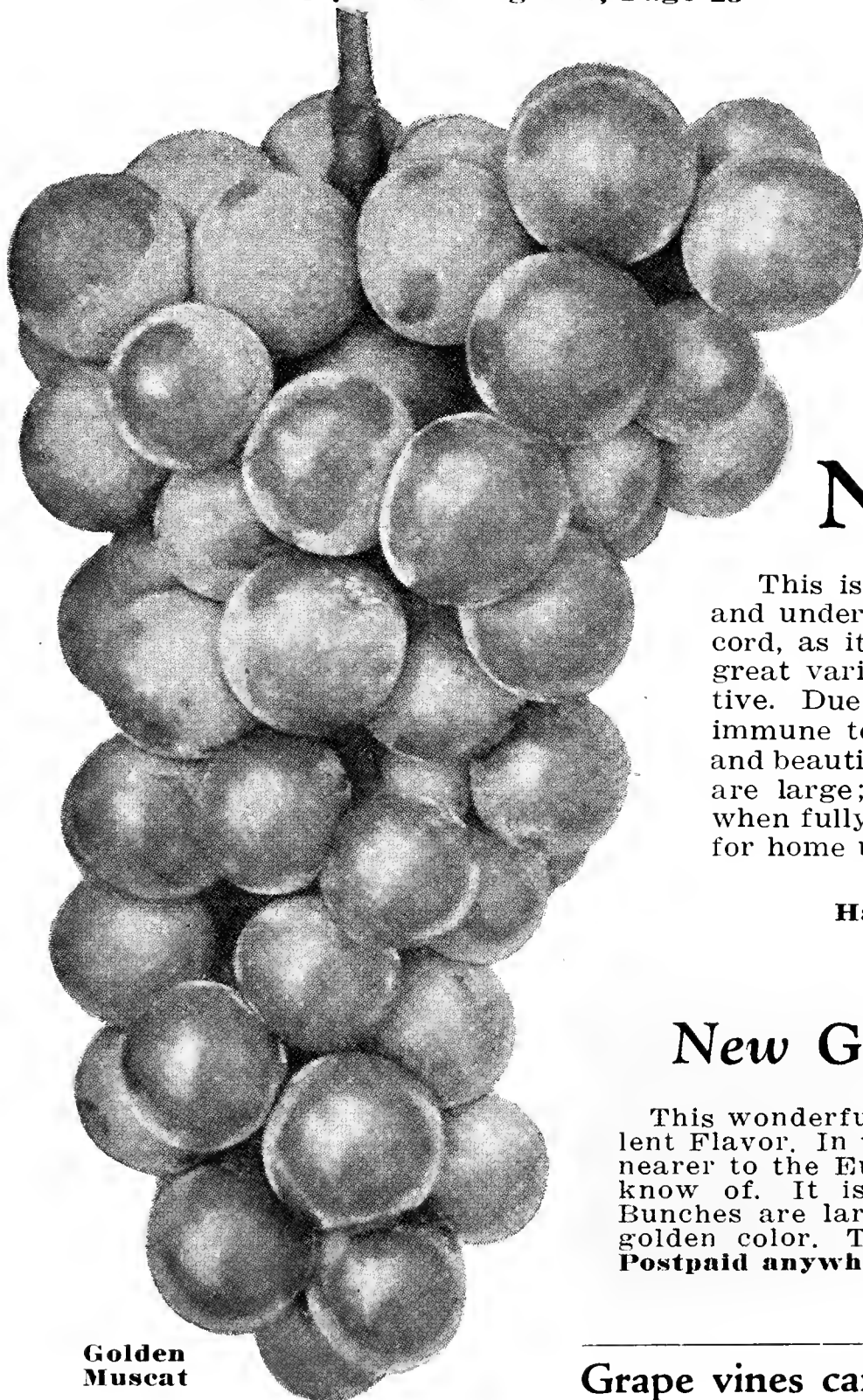
This is the Great White Grape that succeeds everywhere and under all conditions. In fact, it is really the White Concord, as it seems to have all the good characteristics of that great variety, being equally as vigorous, hardy, and productive. Due to the tough, leathery foliage, Niagara is practically immune to fungous diseases. It is one of the most delicious and beautiful of hardy Grapes and sells at fancy prices. Berries are large; bunch large and compact; color greenish yellow when fully ripe; juicy, sweet, and delicious. Whether planting for home use or market include Niagara in your order.

Prices Page 23

Have some 3 year bearing size—see Page 23

New GOLDEN MUSCAT Grape

This wonderful new grape is of a golden yellow color. Excellent Flavor. In taste and appearance this new grape is probably nearer to the European grape than any other hardy variety we know of. It is valuable for home use and roadside trade. Bunches are large shouldered and tapering. Berries large and golden color. The plant is productive and perfectly HARDY. **Postpaid anywhere. Each \$2.50; 3 for \$7.00. 1-yr. No. 1.**



Golden
Muscat

Grape vines cannot be shipped to the State of Oregon.



STROMER'S GRAPE VINES, *Priced Less Than Wholesale*

NOW THAT PROHIBITION IS A THING OF THE PAST

The Increasing Demand for Grape Juice Makes This a Big Money Crop for Farmers and a Source of Pleasure and Real Economy to Home Owners.

Grapes will thrive everywhere and are the easiest of all fruits to grow. No matter what the condition of the soil may be, light or heavy, rich or poor, our hardy plants will grow and bear tremendous crops for many years. Plant a vineyard and make big money—or a few for home use and make your own grape juice, jams, and jellies. Growers everywhere are making tremendous profits from Grapes, and you can do the same.

Every STROMER Grape plant is guaranteed 100 per cent healthy, true-to-name and productive. They are well rooted, full of pep and will grow and produce big crops and big profits year after year, with only ordinary care. The cuttings for our Grape plants are taken from bearing vineyards, which are thoroughly sprayed and given thorough cultivation throughout the growing season. This gives us a big supply of strong, healthy wood, and as the cuttings are taken from bearing plants only, we know absolutely that every plant we send you will be true to name, healthy, and strictly first class in every respect.

CONCORD (Blue)

Concord is without doubt the most productive, the most popular and profitable variety yet introduced. It is the standard of excellence, quality and comparison on all markets, and buyers everywhere pay a premium for this superior quality Grape. Concord is perfectly hardy, having withstood a temperature of 30 degrees below zero without injury, it will produce more fruit per acre than any other variety and does well on light or heavy soil. The bunches are large and compact, berries large, bluish black color; sweet and juicy; fine quality and flavor. In fact, this variety is the one all-purpose Grape.

SPECIAL

We have a surplus on a medium grade 2-yr. Concord Grape Plants. These are healthy and guaranteed. You will be surprised at the quality.

WHILE THEY LAST
 8 Concord Plants Postpaid for 49c

PRICES PAGE 23

DELAWARE (Red)

A rich and delicately flavored little red Grape that is generally recognized as the standard of quality to judge other Grapes by. An exceptionally desirable variety for home gardens on account of its compact habit of growth. Commands a premium in all the markets, often selling for twice the price of Concord. Very hardy. Ripens here about the middle of September.

You will find 4 new varieties of grapes listed on page 15.

Have 3-Yr. Bearing Size Concord and Delaware—Page 23.



A Well Cared-For Grape Vineyard

RED, WHITE and BLUE

GRAPE COLLECTION

4 Concord (Blue)	\$ 1 <u>00</u>	Pre-Paid anywhere
2 Niagara (White)		
2 Delaware (Red)		
2 "Caco" (Red)		
10 Large 2-Yr. Vines Worth \$1.40		

2 Prepaid Price List for Spring and Fall, 1934

South Michigan Nursery gives you liberal cash discounts for early orders. Do not overlook the free rose or evergreen offer on back of order sheet. Let us quote you Special Prices on large orders. Our prepaid prices are plainly indicated in the price list below. We reserve the right to ship by parcel post or express.

Strawberries

	Prepaid						Not Prepaid		
	25	50	75	100	200	250	500	1000	5000
Mastodon Everbearing	\$0.65	\$0.95	\$1.15	\$1.40	\$2.30	\$2.75	\$3.25	\$ 6.50	\$30.00
Champion Everbearing	.65	.95	1.15	1.40	2.30	2.75	3.25	6.50	
Gem Everbearing	1.15	1.70	2.30	2.90	5.10	5.95	10.00	21.00	
"Dorsett" (New)	.65	1.10	1.55	1.85	3.00	3.80	5.50	11.00	
"Fairfax" (New)	.65	1.10	1.55	1.85	3.00	3.80	5.50	11.00	
Blakemore	.40	.60	.90	1.00	1.35	1.70	1.50	3.50	
Chesapeake	.50	.70	1.10	1.30	2.25	2.60	3.35	6.00	
Premier	.45	.70	.95	1.10	1.85	2.10	2.15	4.25	
Gibson	.40	.60	.90	1.00	1.70	2.05	1.90	3.75	17.50
Beauty	.45	.70	.95	1.40	2.25	2.75	3.00	6.00	
Red Gold	.40	.60	.90	1.00	1.70	2.10	2.25	4.45	
Bellmar	.55	.80	1.00	1.35	1.80	2.00	2.75	5.50	
Aroma	.45	.70	.95	1.00	1.80	2.00	2.25	4.50	
Pearl	.45	.70	.95	1.00	1.80	2.00	2.25	4.50	
Senator Dunlap	.35	.55	.70	.80	1.25	1.50	1.75	3.00	13.75
Brandywine	.50	.75	.95	1.40	2.25	2.75	3.00	5.85	
Cooper	.45	.70	.95	1.15	1.75	2.20	2.25	4.50	
Kanner King	.90	1.45	1.90	2.25	3.55	3.95	4.85	8.85	
							Surplus, 2.50		

Discount for Early Orders

20% for orders received up to February 8, 1934.

10% for orders received up to March 1, 1934.

5% for orders after March 1, 1934.

To secure discount full cash must accompany order, up to \$10.00.

Raspberries

	Prepaid								Not Prepaid			
	Each	6	12	25	50	75	100	200	250	500	1000	
Latham, (2-yr.) Bearing Age Giant	\$0.15	\$0.75	\$1.25	\$2.25	\$ 4.00	\$ 4.85	\$ 5.50	\$6.85	\$8.85	\$16.00	\$32.00	
Latham, (2-yr.) Transplants No. 1	.10	.65	1.00	2.00	3.75	4.10	5.00	5.00	6.00	10.00	20.00	
Latham, (1-yr.) Bearing Size				1.15	1.60	2.25	2.90	3.95	4.50	7.50	14.85	
Latham, (1-yr.) No. 1 Fancy				1.05	1.40	2.00	2.50	3.50	4.00	6.00	11.00	
Latham, (1-yr.) Medium				.65	.85	1.05	1.30	1.80	2.25	4.25	8.00	
Chief, (2-yr.) Bearing Age				2.25	4.00	4.85	5.50	7.00	9.00	17.00	33.00	
Chief, (1-yr.) Bearing Age				1.20	1.75	2.40	3.00	4.00	4.75	8.00	16.00	
Chief, (1-yr.) No. 1 Fancy				1.05	1.40	2.00	2.50	3.50	4.00	6.50	12.50	
Chief, (1-yr.) Medium				.65	.85	1.05	1.30	1.80	2.25	4.25	8.00	
St. Regis, (2-yr.) Bearing Age				2.25	4.00	4.85	5.50	7.50				
St. Regis, (1-yr.) No. 1				1.10	1.60	2.25	2.90	4.25	4.75	7.75	15.50	
Newburgh, (1-yr.) No. 1 Fancy	.25	2.00	3.50	6.00	10.00	12.50	15.00	Limit				
Lloyd George (1-yr.) No. 1 Fancy	.20	1.50	2.50	4.75	7.75	9.50	11.00					
Cumberland, (2-yr.) Bearing Age	.15	.90	1.60	3.00	5.00	6.00	7.50	8.50	10.00			
Cumberland, (1-yr.) No. 1 Fancy				.85	1.50	2.10	2.55	2.75	3.45	5.75	11.50	
Cumberland, (1-yr.) No. 1				.70	1.25	1.85	2.10	2.35	2.85	4.75	9.50	
Logan, (2-yr.) Bearing Age	.20	1.20	2.10	3.40	6.00	8.00	10.00					
Logan, (1-yr.) No. 1				1.15	1.70	2.65	3.40	4.00	4.50	8.00	16.00	
Quillen, (1-yr.) No. 1				1.00	2.00	3.00	4.00	6.00	7.00	12.00	23.00	

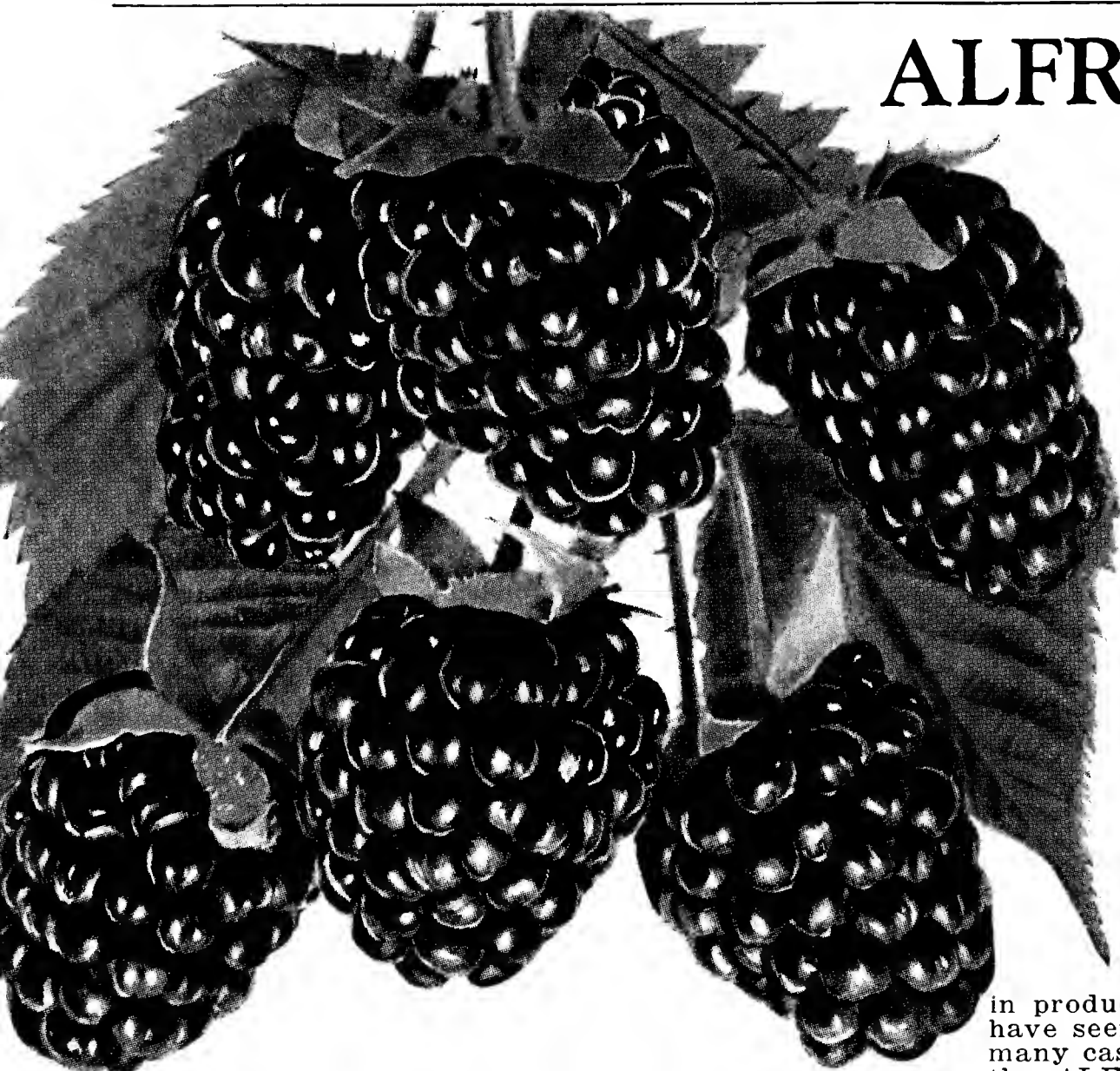
Blackberries

	Prepaid								Not Prepaid			
	Each	6	12	25	50	75	100	200	250	500	1000	
Alfred, (2-yr.) Bearing Age	\$0.20	\$1.00	\$1.80	\$3.00	\$5.00							
Alfred, (1-yr.) No. 1 Fancy R. C.				1.15	2.05	2.65	3.50	\$ 5.50	\$ 6.50	\$12.00	\$22.50	
Lucretia Dewberry, (1-yr.) No. 1				.65	.85	1.40	2.20	3.00	3.75	6.50	12.95	
Youngberry, (2-yr.) Bearing Age	.25	1.10	1.90	2.75								
Youngberry, (2-yr.) Transplants	.15	.90	1.30	2.30	4.40	5.75	9.00	17.00	19.00	29.00	50.00	
Youngberry, (1-yr.)		.55	1.00	1.80	2.95	4.75	5.95	8.25	9.00	15.00	30.00	

Grapes

	Prepaid				Not Prepaid							
	Each	6	12	25	50	75	100	200	250	500	1000	
Concord, (3-yr.) Bearing Age	\$0.35	\$1.40	\$2.55	\$5.00	\$8.00							
Concord, (2-yr.) No. 1 Extra Heavy	.20	.95	1.50	2.10	2.95	\$ 4.00	\$ 5.00	\$ 9.00	\$11.00	\$21.00	\$41.00	
Concord, (2-yr.) Medium		.45	.80	1.25	1.75	2.25	2.95	4.50	5.50	10.00	17.00	
Concord, (1-yr.) No. 1		.35	.70	1.10	1.65	2.00	2.75	4.40	5.30	9.00	16.00	
Niagara, (3-yr.) Bearing Age	.35	1.40	2.55	5.00	8.00							
Niagara, (2-yr.) No. 1 Extra Heavy	.20	.95	1.50	2.10	2.95	4.00	5.00	9.00	11.00	21.00	41.00	
Delaware, (3-yr.) Bearing Age	.35	1.40	2.55									
Delaware, (2-yr.) No. 1 Extra Heavy	.25	1.20	2.10	4.00								
"Caco" (3-yr.) Bearing Age	.35	2.00	3.60	6.00								
"Caco" (2-yr.) No. 1 Extra Heavy	.25	1.50	3.00	5.85	9.25	13.00	17.60	34.20				

Buy From an Old, Established Concern and Play Safe.



ALFRED, Blackberry

STANDS 35° BELOW ZERO

See letter below.

Lack of space forbids describing in detail the many good points of this variety; however, I wish to call your attention to the outstanding reasons why the ALFRED is superior to all other varieties.

Bears Second Season — ALFRED is such a healthy, vigorous grower that it produces a good crop of berries the year following planting. It is not unusual to pick 10 to 40 berries from the bush the same year planted.

Immense Size — The berries are twice as large as ordinary blackberries, many of them 1½ inches long, and the finest flavored of all Blackberries. It is an ideal table berry because it is practically CORELESS, sweet and delicious. It is very small seeded.

Extremely Hardy—ALFRED can be grown anywhere without winter protection, having withstood 30 degrees below zero, and not a single tip of a branch injured, while other varieties were frozen to the ground.

Early Season—This is one big feature of this variety. It ripens a week to ten days earlier than Eldorado and in productiveness it is in a class by itself. We have seen them bear a second crop. We picked many cases this year in September. As I watch the ALFRED year after year, I am more and more thoroughly convinced that the ALFRED BLACKBERRY WILL HAVE A PROMINENT PLACE IN THE VALUABLE FRUIT HALLS OF FAME.

BLACKBERRY plants are difficult to propagate, and it will be years before there will be a supply of ALFRED plants. Plants will be pruned and ready to set out. Buy your ALFRED Blackberry plants from the "ORIGINATOR" and be sure to get the GENUINE.

How and Where I Found the Alfred Blackberry

BY GEORGE STROMER—Originator

Fourteen years ago last August, while I was walking along an old abandoned right-of-way, I noticed an unusually large Blackberry bush growing near a former station called ALFRED. (This station was merely a junction.) The ripe berries with which it was loaded were extraordinarily large. The following spring I dug it up from its native soil, and cut the roots so as to make three plants. These were planted in a rich soil where they grew vigorously all summer. That following winter was very severe in Michigan, but they withstood the heavy frosts, and fourteen degrees below zero. Many young plants sprang up from the roots, the next spring I transplanted these, and cultivated them carefully. Year after year, with diligent care, I have propagated these plants to such an extent that the fruit is now being supplied to the local markets at a fancy price, and is always in good demand. Last year I measured a good many berries that were over one and one-half inches long, and three inches around. Nurserymen claim that the ALFRED is the largest berry they have ever seen. Buy from the originator and get GENUINE ALFRED.

We have 2 year husky bearing size Alfred plants that will bear this year. Postpaid. See page 23 for prices.

Brownsville, Wis., April 28, 1933

South Michigan Nursery,
New Buffalo, Mich.

Since last fall I have wanted to write and tell you how well satisfied we are with the 5,000 Latham and 1,000 Alfred plants I bought from you last spring.

First of all I finished cultivating them this morning and I don't think I lost one plant from winter kill. And if they lived through the 35 degrees below zero weather we had last winter I'm sure they'll stand anything. And the way they are starting out is encouraging. I'm sure we'll have a fine crop this coming season. Also we were surprised at the number of berries we got last fall. From July on we had plenty of berries to eat. I even sold a few cases. I think in all we picked 10 cases and there were still a few berries on when it froze last fall.

Sincerely, W. B. DINS.

PINK SNOWBALL (Viburnum Carlesii)

This wonderful new medium sized shrub was brought here from Korea. Its fragrance greatly resembles that of the Trailing Arbutus. This shrub will start to bloom early in the spring like the Trailing Arbutus, thrives best in a partial shade, in cool moist soil. Truly, the greatest new shrub introduced for some time. Nice two year field grown plants for only 75c, Postpaid.



Pink Snowball



SPIREA BILLIARDI. Hardy, tall shrub with pink spike shaped flowers in June and July. This is just the shrub to buy for shield planting, to shut off neighbors' unsightly back yards. Strong 2 to 3 ft., 3-yr.-old heavy plants, 25c each; 5 for \$1.00.



ALTHEA (Rose of Sharon). Upright shrub, blooms August and September. Flowers large. Beautiful leaves. Good for hedges. Comes in red, white or purple varieties. State color. 2 to 3 ft. trees. Each 35c; 3 for \$1.00.

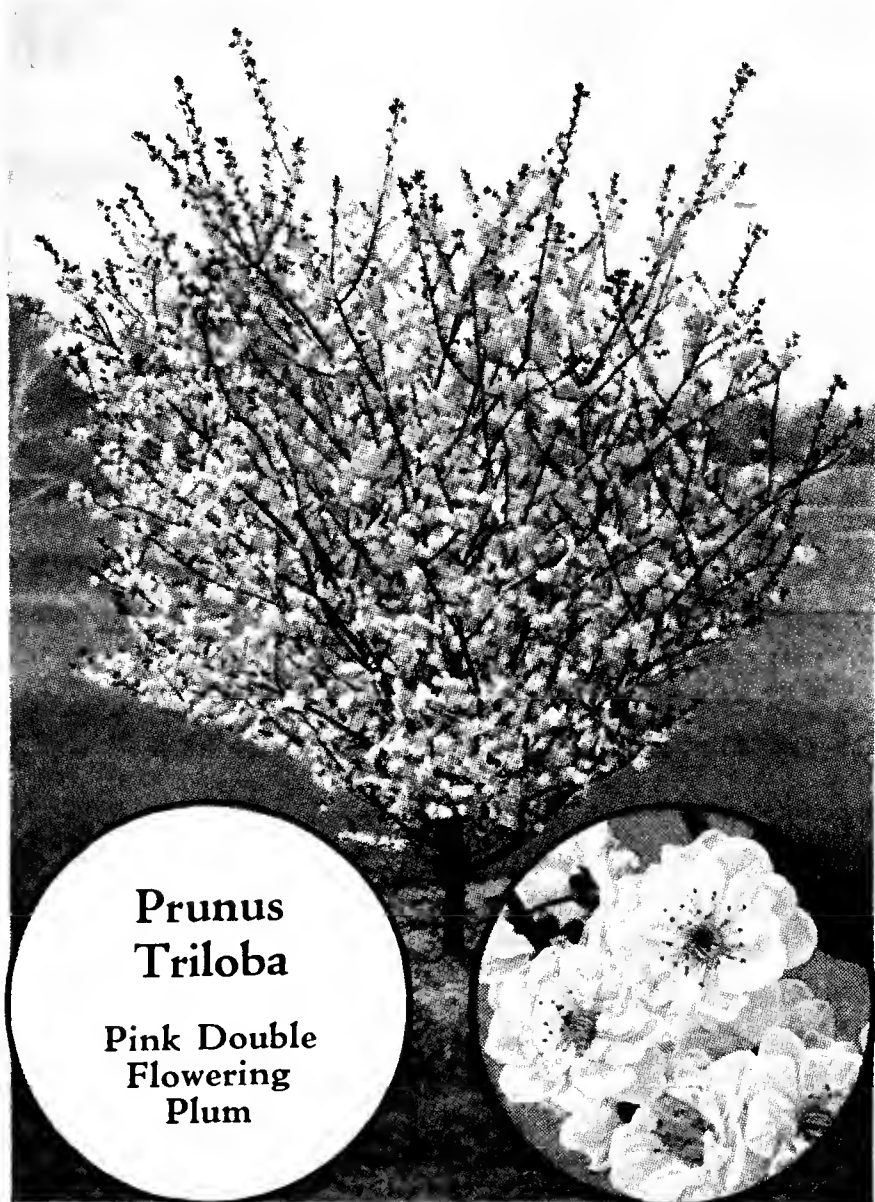


MOCK ORANGE (Philadelphus, Virginal). The most beautiful white flowering shrub. Large double white flowers in June. Rich perfume rivaled only by that of the orange blossoms. Somewhat everblooming. Compact grower. 18 to 24 in., strong 3-yr. shrubs. Each 35c; 3 for \$1.00.

1 of each of these fine trees and shrubs for

Only \$1.35 Not Prepaid

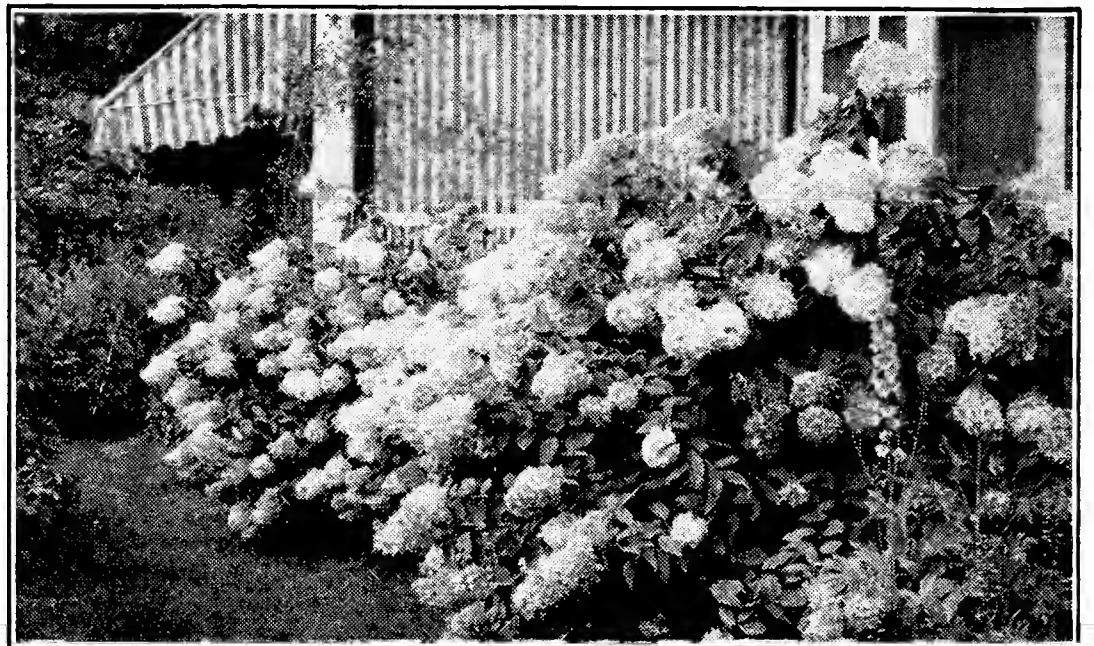
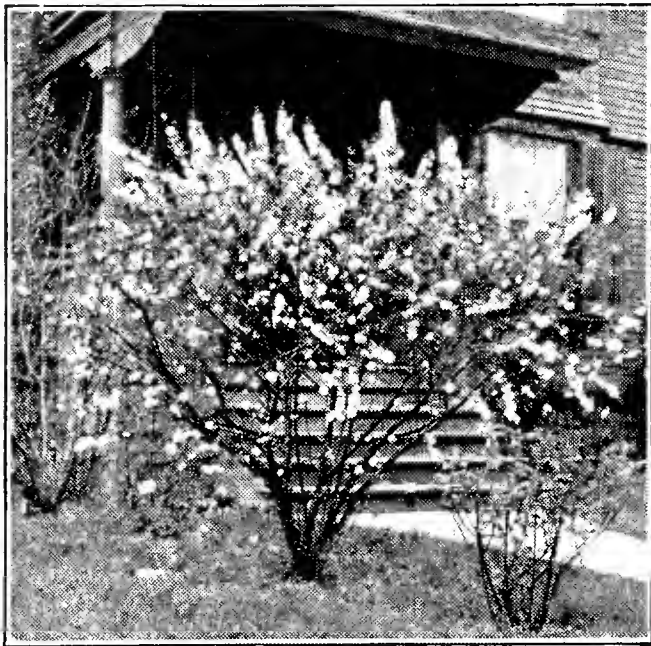
No Discount



ROSE TREE OF CHINA (Prunus triloba). Double pink flowers all along the stems before leaves appear in spring. Foliage bright colors in autumn. Fine 2 to 3 ft. trees. Each 40c; 3 for \$1.05.



JAPANESE RED-FLOWERING QUINCE. Large, flaming scarlet flowers, all along the stems. Blooms in May. Can be used for hedges. Fine foliage. 18 to 24 in., 3-yr. heavy. Each 35c; 3 for \$1.



FLOWERING ALMOND, Pink. Small shrub, with upright branches completely covered with double pink flowers in early May. Blooms before leaves come. 18 to 24 in., 3 yr. Each 50c; 3 for \$1.45.

HYDRANGEA P. G. One of the most popular flowering shrubs. Flowers extra large, white turning to pinkish purple. Makes fine winter bouquets. Blooms July to October. Very hardy. 18 to 24 in., 2 yr. Each 25c; 3 for 65c; 10 for \$2.00.



WEIGELA ROSEA. Beautiful pink trumpet-shaped flowers. June to August. Medium height, 18 to 24 in., 3 yr. Each 35c; 3 for \$1.00.

ALL SUMMER COLLECTION

One of each of these 6 fine 2 and 3-yr.-old shrubs for **\$240** only....

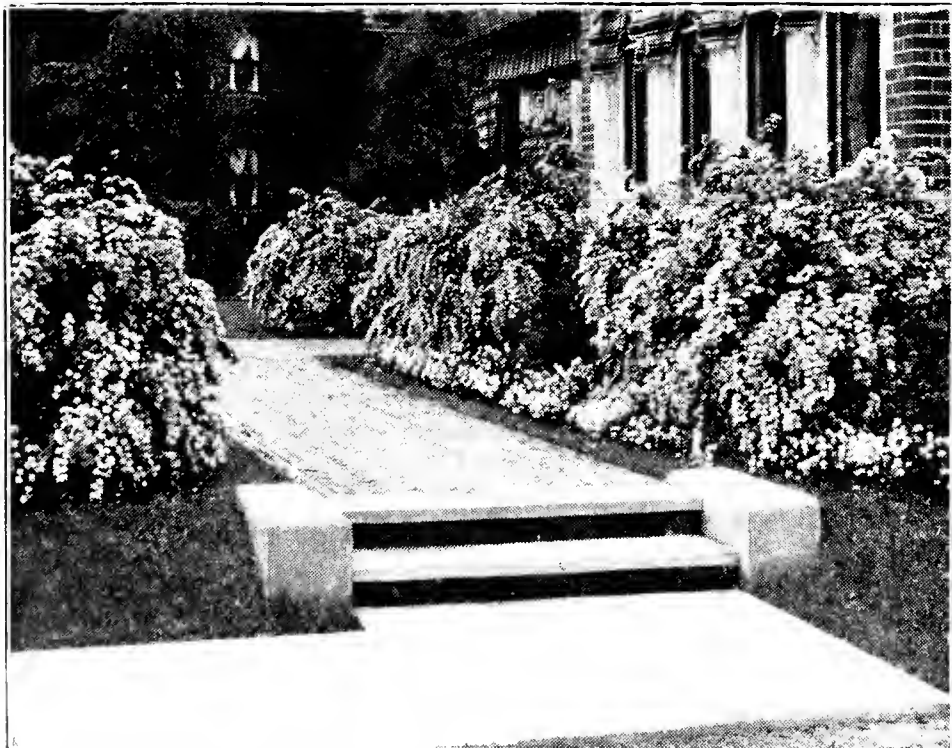
Not Prepaid No Discount

3-YEAR-OLD GIANT

PHLOX SUBULATA (Ground Pinks). Forms a dense, low growing mass of evergreen foliage bearing dainty little flowers in Spring. Suitable for planting on tops of graves, around bases of trees, etc. Have only a limited amount. **3 for 39c. Postpaid.**



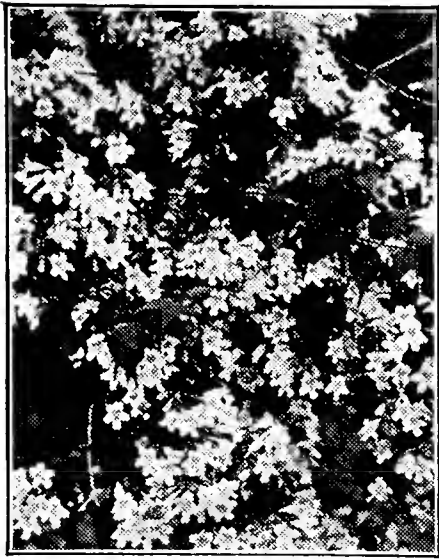
HIGH BUSH CRANBERRY. Beautiful foliage that turns to beautiful color in fall. Large white flowers, resemble snowballs, except that they are flat. Clusters of red berries in fall that last all winter. Attracts birds. 18 to 24 in., 3 yr. Each 25c; 5 for \$1.00.



SPIREA VAN HOUTTEI. Sometimes called Bridal Wreath. Branches droop to the ground with small white flowers early in the spring. Foliage makes it beautiful all summer. 18 to 24 in., 2 yr. Each 10c; 3 for 25c; 10 for 80c; 25 for \$1.75.



SPIREA ANTHONY WATERER. Dwarf. Crimson flowers in large, flat clusters. Blooms early and continues till fall. 12 to 15 in., 3 yr. Each 20c; 3 for 50c; 8 for \$1.00.



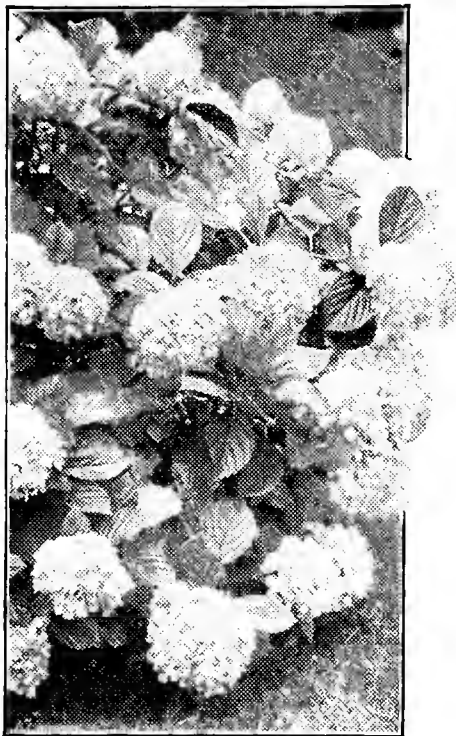
BEAUTY BUSH (Kolkwitzia). This is a new Chinese shrub. Soft green leaves tinted with bronze. Clear pink, bell-shaped flowers, with brown markings. Very hardy, and medium size bush. **18 to 24 in., 2 yr. Each 35c; 3 for \$1.00.**



FORSYTHIA (Golden Bell). Bright yellow, bell-shaped flowers early in the spring before the leaves appear. Clusters are all along the branches. **2 to 3 ft., 3 yr. Each 20c; 6 for \$1.00.**

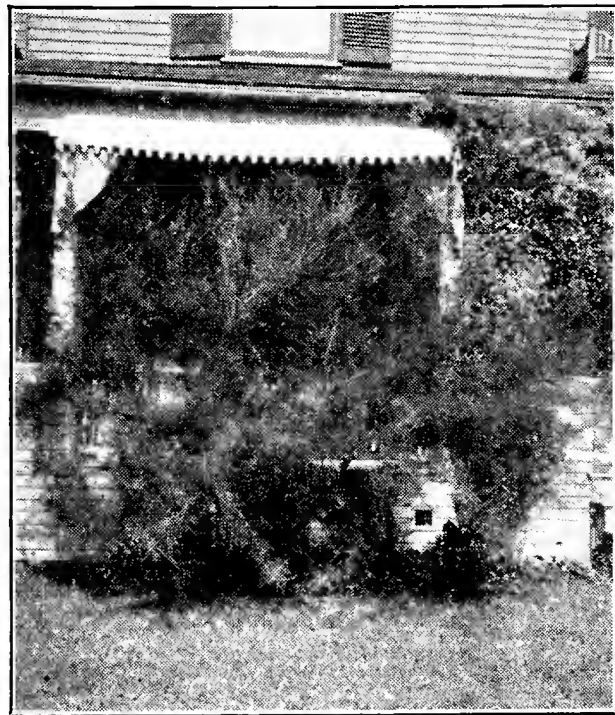


GOLDEN ELDER. Yellow leaves; large flat clusters of white flowers, and later clusters of purple berries. Must be planted in full sunlight. **3 to 4 ft., 3 yr. Each 25c; 5 for \$1.00.**



HYDRANGEA A. G. (Hills of Snow). Greatly resembles the old-fashioned snowball bush. Large, flat blooms that open in June and last all summer. Does well in shade or sun. **18 to 24 in., 3 yr. Each 30c; 4 for \$1.05.**

1 each of these fine 2 and 3-yr.-old Shrubs (9 in all) **\$1.75** for only.....
Not Prepaid—No Discounts



TAMARIX. Strong growing, hardy shrub with purple branches, silvery foliage, and pink flowers in large panicles. **2 to 3 ft., 3 yr. Each 30c; 4 for \$1.00.**



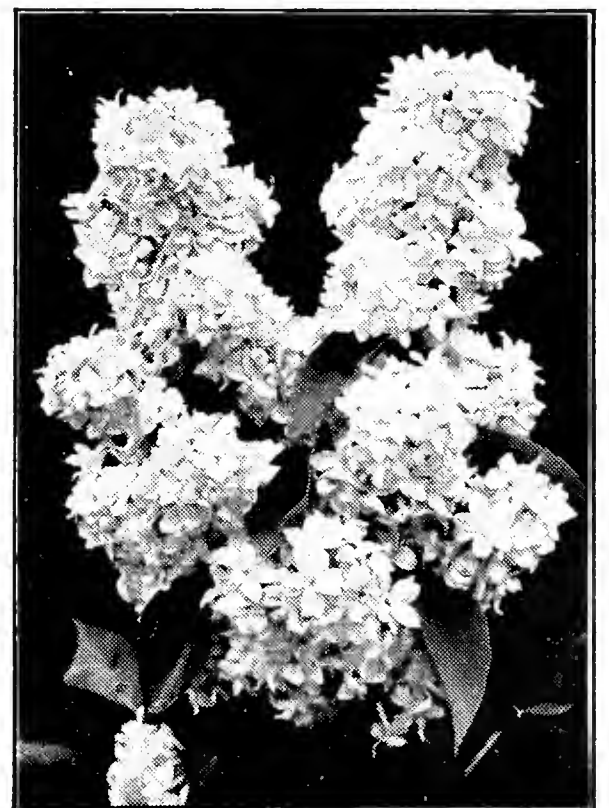
DEUTZIA, Pride of Rochester. Strong growing shrub, free bloomer, double, white flowers tinged pink. Fine for cut flowers. **18 to 24 in., 3 yr. Each 35c; 3 for \$1.00.**



INDIAN CURRANT. Medium size shrub, with small pink flowers in spring and followed by red berries all along the stems, that remain all winter. **18 to 24 in., 3 yr. Each 30c; 4 for \$1.00.**



RED BARBERRY. Makes a beautiful specimen bush. Foliage purple to a bright red. Produces a brilliant appearance in any landscape. **15 to 18 in., 2 yr. Each 20c; 6 for \$1.00.**



PERSIAN LILAC. A decided improvement over the common Lilac. Does not sprout so much from the roots. Height 5 to 10 ft. Flowers bright purple. Blooms in May and June. **18 to 24 in., 2 yr. Each 20c; 6 for \$1.00.**



See Gladiolus descriptions below, reading left to right.

GLADIOLUS, Century of Progress Specials

LE MARECHAL FOCH. Beautiful shade of Lavender-pink.

GOLDEN MEASURE. Pure golden yellow with no other markings.

HENRY FORD. Very dark rhodamine purple, shading into deeper shades near the center.

NANCY HANKS. The most beautiful orange saffron. New.

VIRGINIA. Brightest scarlet. Six or more blooms open at once.

Beautiful Rainbow
Mixture of

75 Blooming
Size Bulbs

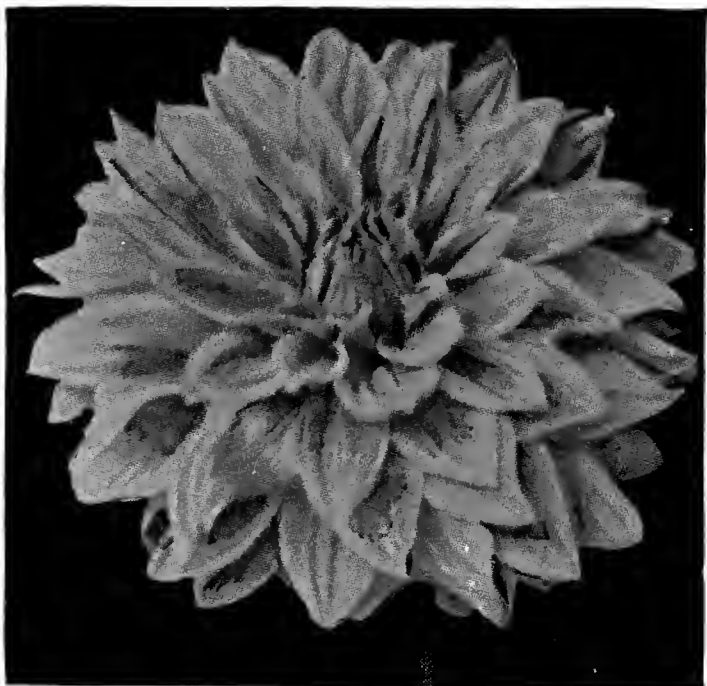
for **\$1.50**
only *postpaid*

MRS. FRANK PENDLETON. Deep rose pink with carmine blotch.

DR. F. E. BENNETT. Very large red. Throat shaded with orange, ruffled.

W. H. PHIPPS, LaFrance pink overlaid with light rose salmon.

Prices: 5c each; 3 for 20c; 10 for 50c; 25 for \$1.00. 1 of each of the above varieties, 45c; 3 of each of the above varieties, \$1.00; 10 of each of the above varieties, \$3.00. **ALL PRICES PREPAID.** Large blooming size bulbs.



JERSEY'S BEAUTY. A lovely pink shade. Strong grower; covered with blooms—measures 7 to 10 inches across. A PRIZE WINNER.

STROMER'S Gold Medal DAHLIAS

We offer you four prize winners. Order a few of these wonderful GIANT blooming varieties, and see the difference. Dahlias are easy to grow, and they multiply fast.

Each 25¢
3 For
65¢
Postpaid



PRIDE OF CALIFORNIA. Beautiful large, red blooms. Blooms measure 5 to 6 inches across. One of the best.



MRS. I. DE VER WARNER A beautiful shade of mauve-lavender. Something different. Blooms 7 to 8 inches.

One of Each
for only
75¢
Postpaid

**PRIZE
MIXTURE**
10 for **\$1.50**
postpaid



U. S. A. Orange and gold. Can you imagine the thrill you will get, when this Dahlia blooms?



Norway Spruce Windbreak.

NORWAY SPRUCE

The ideal spruce for windbreaks, and for ornamental decorations. One of the best for Xmas trees. Big money in planting small Norway spruce now and growing them into Xmas trees in a few years. Very popular for single specimens or with evergreen groups. Pyramidal in habit. Lofty and beautiful. We have them priced to sell.

100
for only
\$3.00
postpaid

6 to 10 in. Seedlings. Each 10c; 3 for 25c; 10 for 50c; 25 for \$1.00; 100 for \$3.00. Prepaid.

12 to 18 in., 4 yrs., Bushy, transplanted specimens. Not B & B. Each 30c; 3 for 80c; 10 for \$2.50; 25 for \$5.00. NOT Prepaid.

18 to 24 in., 5 yrs., Trans. bushy specimens. Not B & B. Each 50c; 3 for \$1.25; 10 for \$3.50. NOT Prepaid.

24 to 36 in., 6 yrs., Trans. bushy specimens, B & B. Each 65c; 3 for \$1.60; 10 for \$1.70. NOT Prepaid.

36 to 48 in., 6 yrs., Wonderful specimens. Trans. B & B. Each \$1.25. NOT Prepaid.



COLORADO BLUE SPRUCE

A very hardy and popular evergreen. One of the most beautiful for landscape work. Foliage is greenish blue to silvery blue. The blue color is the most beautiful early in the Spring when the new growth starts. Colorado blue should be set in the full open sunlight, not too near other trees and buildings for best color. We have them priced to sell.

6 to 10 in. seedlings. Each 15c; 3 for 35c; 10 for \$1.00; 25 for \$2.00; 100 for \$6.50. Prepaid.

8 to 12 in. Bushy Trans. Not B & B specimens. Each 65c; 3 for \$1.65. Prepaid.

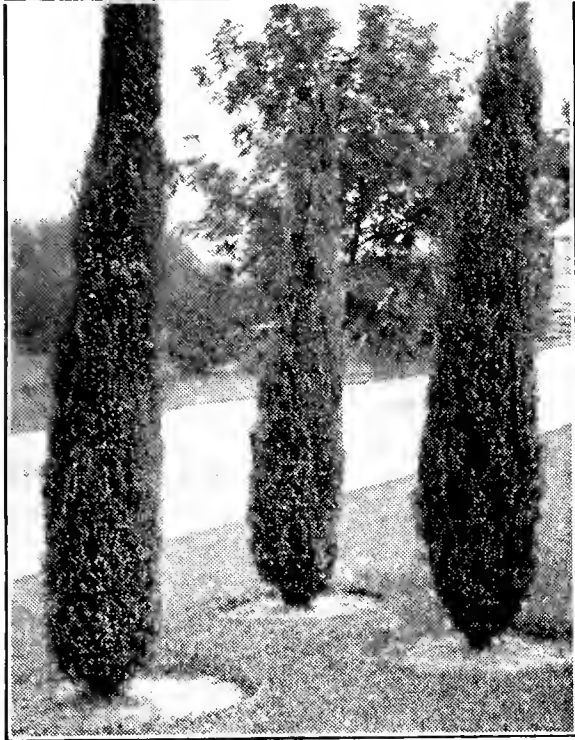
12 to 18 in. Trans., 5 yr., B & B specimens. Each \$1.25; 3 for \$3.00. NOT Prepaid.

18 to 24 in. Bushy specimens, 6 yrs., B & B. Each \$2.00; 3 for \$5.00. NOT Prepaid.

YUCCA — The evergreen plant. Has tall spikes of creamy white flowers, and will grow on the poorest soil as well as on rich soil. Fine to plant in a cemetery, as it will live for years without care. Extra strong plants 3 yrs. old 50c each. Not Prepaid.



Colorado Blue Spruce



Swedish Juniper



Mugho Pine



Austrian Pine

EVERGREENS, *For Beauty and Profit*

You can afford to plant evergreens this year at our new low prices. Never before have such fine large, healthy specimens been sold at such low prices.

AMERICAN PYRAMIDAL ARBOR-VITAE—A tall, slender column of dark green. Retains its fine green during the long winter months. May be sheared. Also fine for entrances, one on each side. **2-3 ft. trees, balled and burlapped, \$1.00 each; 2 for \$1.95. Not prepaid.**

WOODWARD GLOBE ARBOR-VITAE—A distinct globe-shaped, hardy specimen. Fine for entrance and in front of windows. Dwarf habit, and grows like a ball. Foliage deep sea-green. **15 to 18 in. diameter, balled and burlapped, \$1.10 each; 3 for \$2.95. Not prepaid.**

SWEDISH JUNIPER—Slender and erect, forming a column. Its thick foliage is deep green. Never grows over 10 feet tall, or over 2 feet in diameter. Fine for cemetery planting or landscaping. **2-3 ft., balled and burlapped, \$1.25 each; 3 for \$3.00. Not prepaid.**

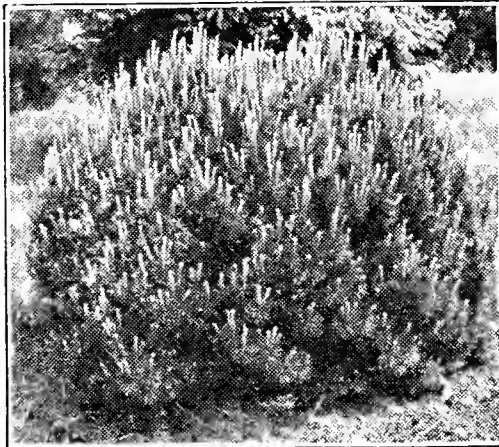
MUGHO PINE—Genuine dwarf type. Seldom grows over 4 feet tall, but will spread to 6 to 8 feet in diameter. By annual shearing it can be kept as small as desired. Color deep green in summer and winter. One of the best dwarf evergreens for small space, and for general landscaping. Have two sizes. **4 to 6 in. spread, not balled and burlapped, 20c each; 6 for 95c; 15 to 18 in. spread, balled and burlapped, transplanted trees, \$1.60 each; 2 for \$3.00. Not prepaid.**

AUSTRIAN PINE (Black Pine)—The dark, somber Pine of the mountains, of which poets write. It is very closely related to the Ponderosa Pine and almost identical in appearance, having the extra long needles, the great spreading branches and handsome form. Its foliage is very deep green, with branches a trifle more upright-reaching than you will find in the Ponderosa Pine. A splendid tree for ornamental planting, either in the background or as a choice specimen on the lawn, and because it is so hardy and dense in growth, and such a quick grower, it develops a remarkably fine windbreak. We have some extra strong, thrifty trees in this good variety, but our stock is limited, so order early, **2-3 ft., balled and burlapped, \$1.25 each. Not prepaid.**

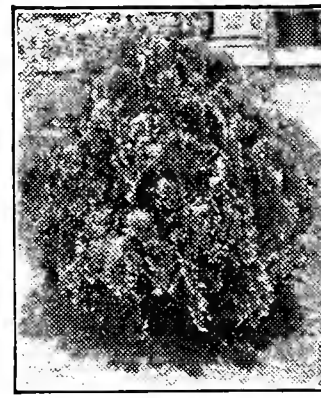
PFITZER'S JUNIPER—One of the most striking of evergreen trees, because of its semi-upright growing habits. It is an excellent plant to use as a "filler" in between taller growing evergreens, thus making it indispensable for landscape work.

Its great popularity is due to its ability to thrive in all parts of the country under almost any condition of soil and exposure. **18-24 in. spread, balled and burlapped. Each \$1.25. Not prepaid.**

**ONE OF EACH
EVERGREEN B & B
6 in all \$6⁰⁰ No
for only 6⁰⁰ Disc.
Not Prepaid**



Pfitzer's Juniper



Globe Arbor-Vitae

**EVERGREENS
ARE NOT
PREPAID**



Barberry, Thunberg's Green

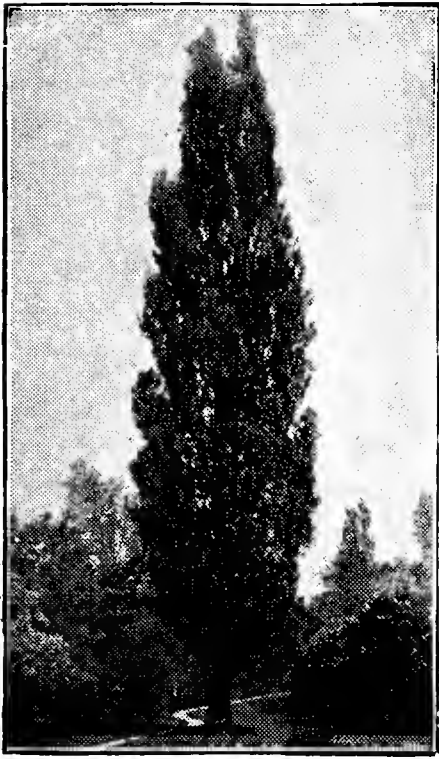
Hardy Hedges

100 ft. of Hardy Hedge for \$5.25; 18-24 in. Tall

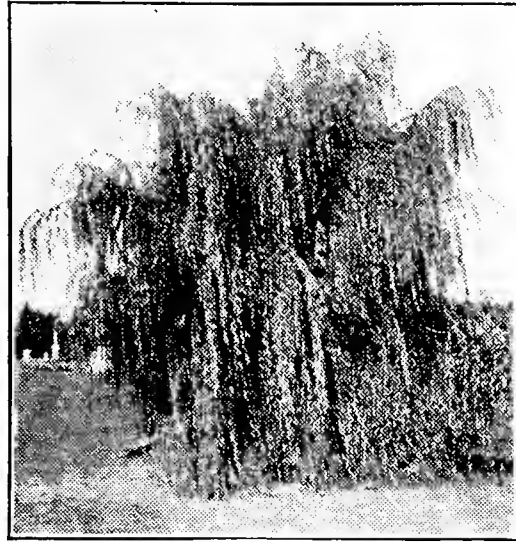
AMOR RIVER NORTH PRIVET. This is the hardest of all hedges, and one of the most beautiful. Foliage dark glossy green. Leaves stay on long into the winter. Fine white flowers with berries later on. Set one foot apart. **Husky, 3 yr., 18-24 in. plants, with plenty of roots, 10 for 75c; 50 for \$3.00; 100 for \$5.25; 250 for \$10.00; 500 for \$19.00. Not prepaid.**

BARBERRY, THUNBERG'S GREEN. Perfectly hardy. Rust-proof. Bright green foliage turning to a dazzling red in autumn, followed by red berries. Very beautiful. Grows in all soils. May be pruned, or makes a beautiful hedge not trimmed. Also fine for specimen bushes or borders. **Strong, 3 yr. bushes, 12c each; 10 for \$1.00; 100 for \$5.95; 250 for \$11.00; 500 for \$21.00. Not prepaid.**

Ornamental SHADE TREES



Lombardy Poplar



Wisconsin Weeping Willow

CHINESE ELM. One of the most rapid growing trees. Very durable and hardy. Slender, tough branches. Compact habit of growth with small attractive leaves. Highly recommended for street planting. Grows anywhere, and is one of the best for dry climates.

CHINESE ELM PRICES

Prices Not Prepaid Except on Seedlings

12 to 18 in. seedlings	10 for 45c, postpaid
18 to 24 in.Each 10c	3 for \$0.25 10 for \$0.70
2 to 3 ft.Each 20c	3 for .50 10 for 1.40
4 to 5 ft.Each 25c	3 for .70 10 for 2.00
5 to 8 ft.Each 50c	3 for 1.40
8 to 10 ft.Each 80c	3 for 2.25

SILVER OR SOFT MAPLE. This rapid growing tree is being largely planted in many places. A clean tree. Beautiful and hardy. Fine for streets, parks and lawns. **10-12 ft., \$1.00.**

CAROLINA POPLAR. A vigorous, healthy tree of rapid growth. Large, glossy leaves. Grows well in all localities. Fine for street and park planting. **10-12 ft., \$1.00.**

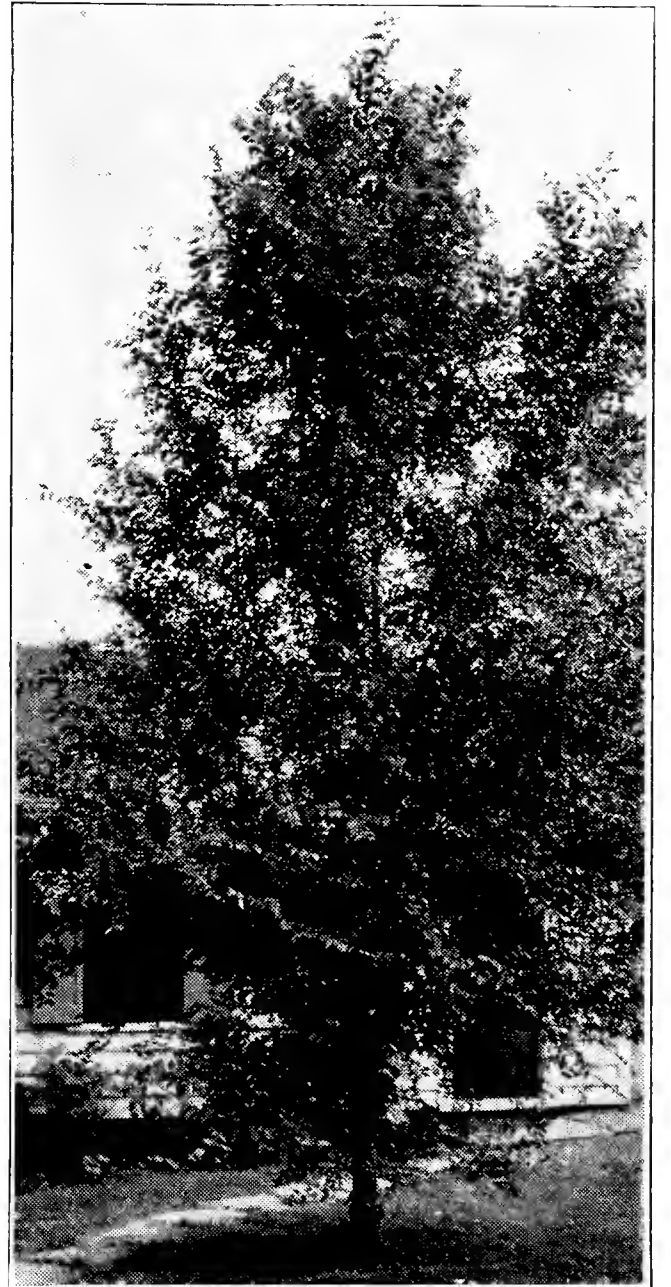
LOMBARDY POPLAR. A tall, shaftlike column of a tree that grows quickly, like all Poplars. The Lombardy Poplar is not for shade, but for ornament, making a fine effect when planted along driveways and when planted close together the trees make a thick, very high screen. **5-6 ft. trees, each 30c; 2 for 55c. 12 to 14 ft., each \$2.00; 2 for \$3.00.**

WISCONSIN WEEPING WILLOW. A large tree with long, drooping branches. Very hardy. Fine for parks and near rock gardens, or along streams. **4-5 ft., 50c each; 2 for 90c.**

MOUNTAIN ASH, EUROPEAN. A fine, hardy shade and ornamental tree; head dense and regular. Covered from July till midwinter with large clusters of bright red berries. **6-8 ft., 75c each.**

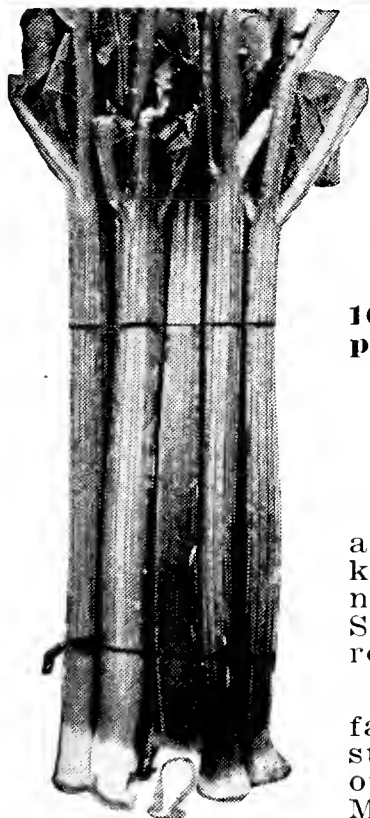
CUT-LEAF WEEPING BIRCH. A graceful white-barked tree with drooping limbs, and cut-leaf foliage. Highly recommended for lawn and park planting. Also the thing for rock garden backgrounds. **4-5 ft., \$1.25 each.**

PRUNUS PISSARDI. (Purple-Leaf Plum). Foliage is a beautiful reddish purple and has a pink blossom in May. Grows to about 10 to 12 feet. Fine for making a contrast on a green lawn or when planted among other flowering shrubs. **3-4 ft., 50c each.**



Chinese Elm

SHADE TREES ARE NOT PREPAID



Myatt's Linnaeus Rhubarb

Myatt's Linnaeus Rhubarb

This variety is an early, tender, fast growing kind, with a mild, sub-acid flavor, and is not tough and stringy like most sorts. Plant some of this Rhubarb this spring, and make some early money. We are offering select, No. 1 roots at a very low price.

Prices: 10c each; 6 for 40c; 10 for 60c, prepaid. 25 for \$1.00; 100 for \$3.00; 250 for \$6.85; 500 for \$10.50; 1000 for \$19.75, NOT prepaid.

Washington Asparagus

There is no variety of Asparagus as good as Washington, and whether you are growing for home use only or for market, you cannot afford to grow any other. This wonderful new Asparagus was developed and introduced by the United States Department of Agriculture, and although it is just a recent introduction, it has become famous the country over.

Growers everywhere are disregarding all other varieties in favor of the famous Washington, because it is earlier, the stalks are larger, more tender, more productive than any other variety, and last but not least, WASHINGTON IS IMMUNE TO RUST, which means that one planting will produce profitable crops for many years. **Fine large roots, 2 yr. old. Prices: 25 for \$1.00; 50 for \$1.75; 100 for \$2.75, prepaid. 500 for \$8.00, NOT prepaid.**



Washington Asparagus.



Mrs. E. P. Thom. 50c each, postpaid.



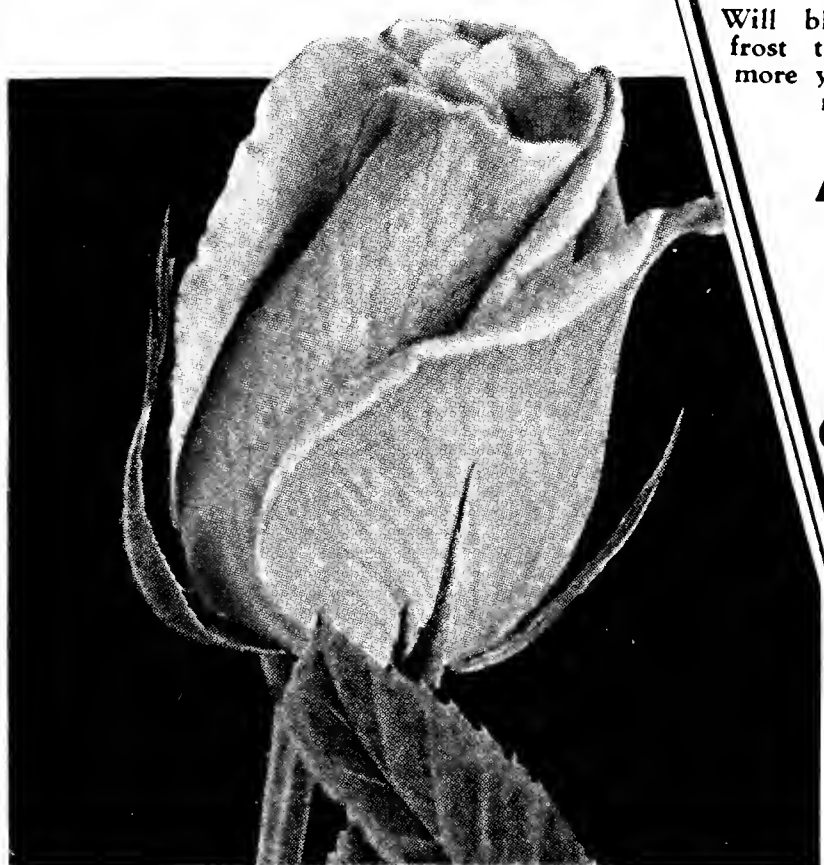
E. G. Hill. 50c each, postpaid.

OUR COURT of SIX BEAUTIES

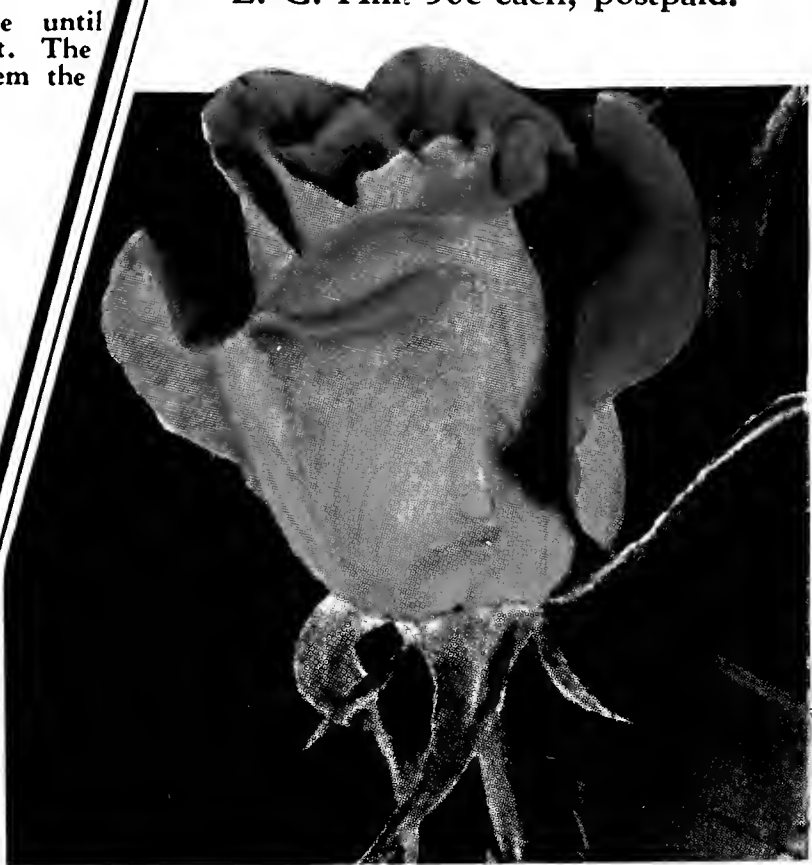
Will blossom from June until
frost the same year set. The
more you pick them the more
they bloom.

All 6 For
\$2.00
Postpaid

TWO
Collections
for
\$3.75
Post-
paid.



Willowmere. 50c each, postpaid.



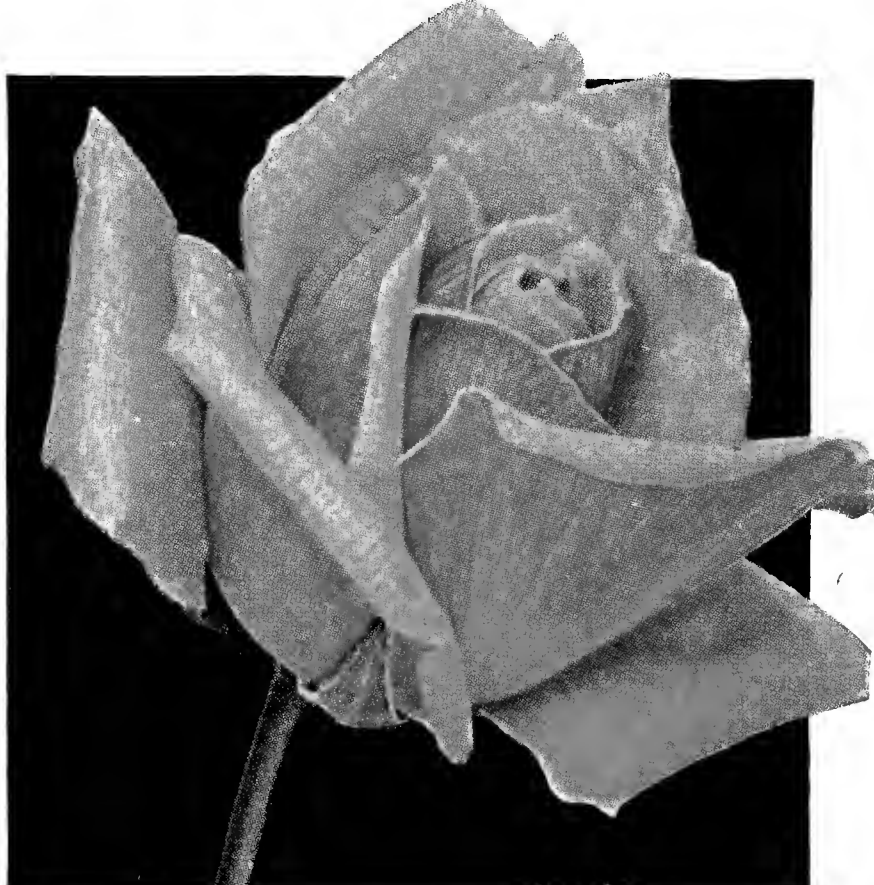
Talisman. 50c each, postpaid.



George Ahrends. 50c each, postpaid.

2-Year,
Field
Grown.

Prices
Postpaid
To
Any
Part
of the
United
States.

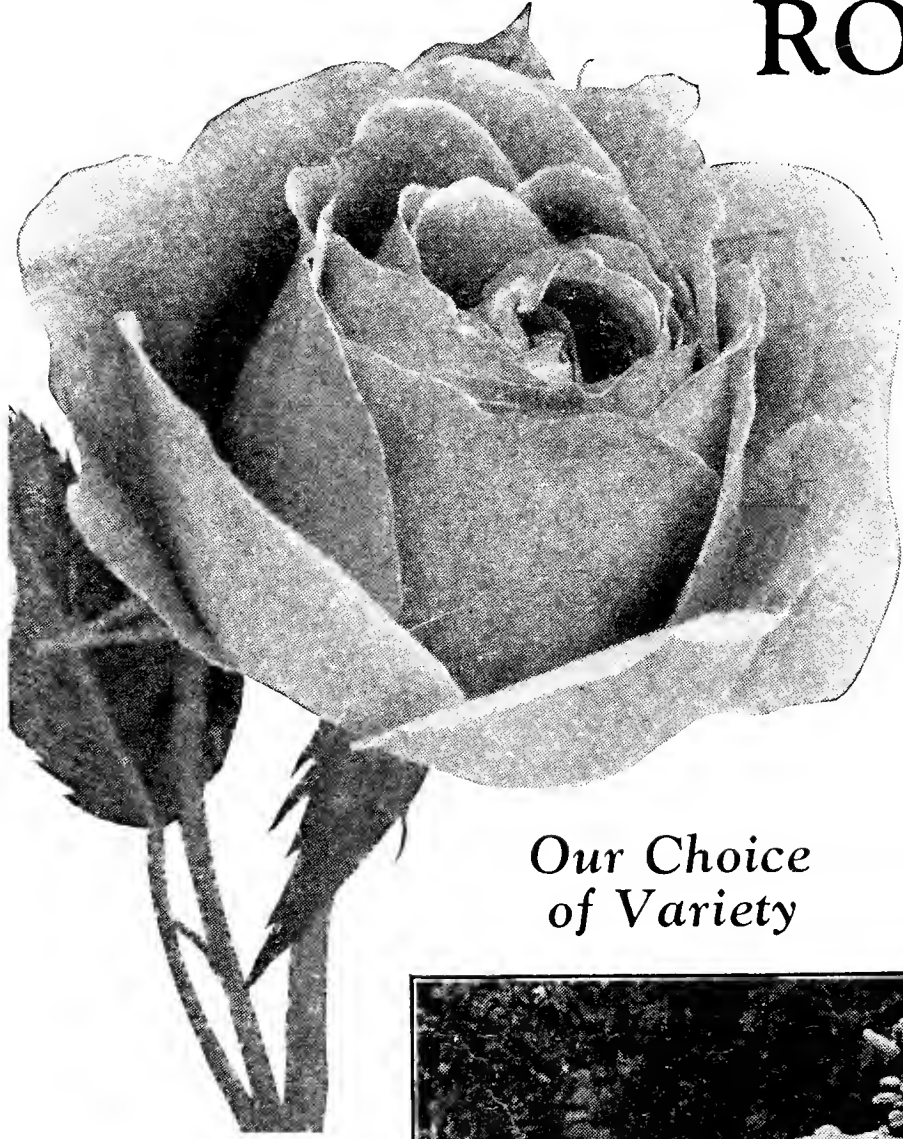


Rev. F. Page-Roberts. 50c, postpaid.

SOUTH MICHIGAN NURSERY NEW BUFFALO MICHIGAN

Free!

Your Choice of either
A COLORADO BLUE SPRUCE
or a Two-Year-Old Field-Grown
EVERBLOOMING ROSE *prepaid*



Our Choice of Variety

With Every Order for \$5.00 or More

Everblooming Rose will bloom 6 weeks after you set it out

2-Year Field-Grown worth 50c

Free and Postpaid with an Order for \$5.00

or more

Either a choice Everblooming Rose, or a Beautiful Blue Spruce

Colorado Blue Spruce a real tree worth 50c



Golden Salmon Rambler

New. Large clusters of striking reddish orange blooms. Compact bushes; blooms continuously. Fine for mass planting.



Strong 2-yr. field-grown plants, 35c each; 3 for \$1.00, prepaid.

Golden Rose of China

(Hugonis)

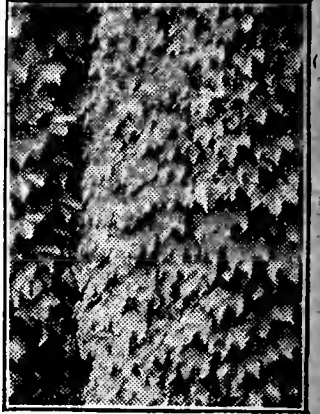


The Rose shrub; of medium height. All season this bush is covered with beautiful dark green foliage, with its maroon-red stems. May

turns this beautiful Rose bush into a glimmering mound of gold. Flowers are 2 inches across, single, flat, cup-shaped, and set snugly on last year's branches. Fine for cut flowers. Strong 3-yr. old, each, 50c, prepaid.

Boston Ivy

Beautiful foliage in spring and summer, changing to crimson-scarlet in autumn. Clings tight to brick, stone and concrete. Succeeds best in this latitude on north or east side. 2-yr. plants, 30c; 4 for \$1.00, prepaid.



Wisteria Vine

A tall, vigorous climber. Lilac-purple blooms in June and July. Fine for pillars, arbors or trellises. 2-yr. plants, 35c each; 3 for \$1.00, prepaid.



American Bittersweet



Hardy vine producing bunches of red berries retaining their color a long time and very popular for cutting and hanging in the home for winter bouquets. 2-yr.

plants, field-grown, each 30c; 3 for 80c, prepaid.