

Historic, archived document

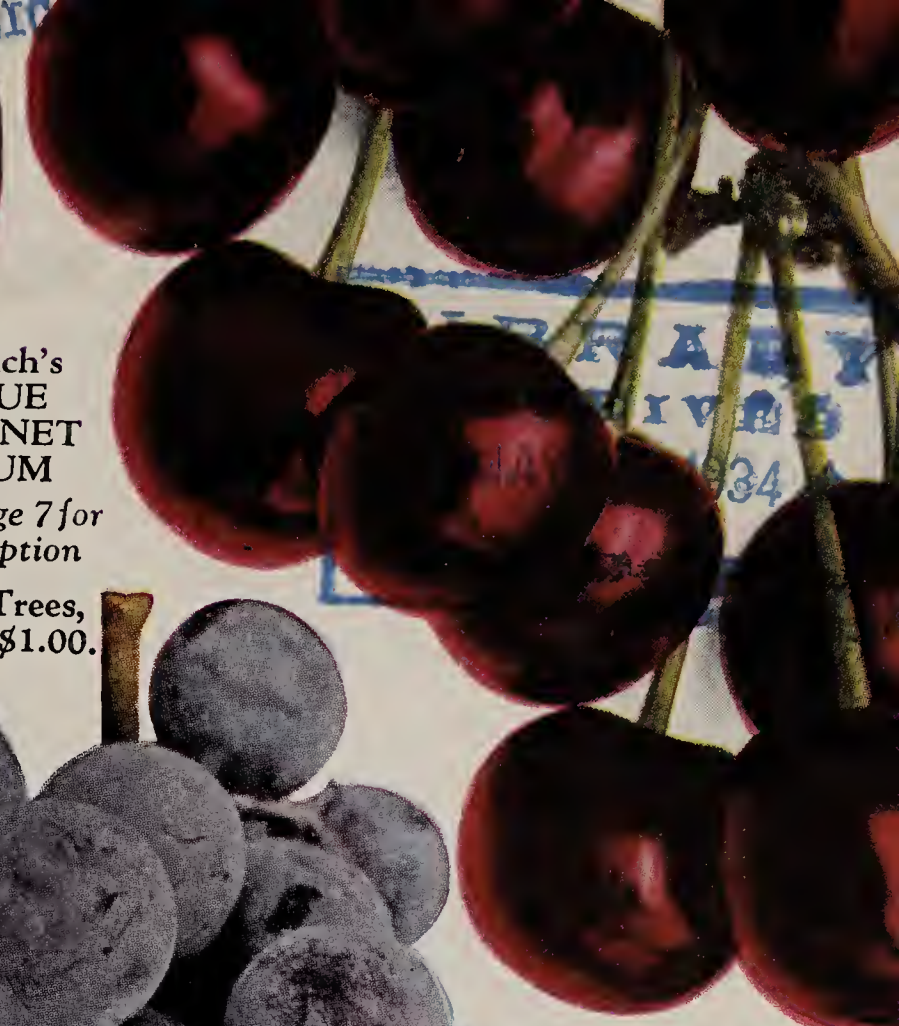
Do not assume content reflects current scientific knowledge, policies, or practices.



Welch's
BLUE
BONNET
PLUM

See page 7 for
description

4-ft. Trees,
3 for \$1.00.



Montmorency
Cherry

4-ft. Trees,
10 for \$2.00.

Double Red
Delicious Apple



Welch's
CONCORD
GRAPES.

2-year vines,
12 for 75c.

MASTODON
Everbearing
Strawberry
100 for \$1.00.



1934

The

1882
1934

Welch
Nursery

SHENANDOAH, IOWA

Fruit for Health



TRUTHS Well Told

FRIENDS: These have been trying times, the past few years. We have all made many mistakes, but as the old saying goes: "Experience is the best teacher." You all know that fruit brings good money because you have been buying it in the past. Wouldn't this be a good time to start raising your own fruit and also to beautify your home by planting of flowers and shrubs?

What kind of nursery stock do you want to plant? Well, that's the easiest problem of all to solve. Time and the past experience of thousands of nursery stock planters have made this decision for you. Your father and your grandfather before you knew the wonderful quality of Shenandoah grown nursery stock, and the past years have proven them right. Nowhere else in the middle west will you find soil better adapted for the growing of all kinds of nursery stock, than right here at Shenandoah.

Our business grows. We came from a home where honesty was not a policy but a principle and where deceit could find no hiding. Out of our labor, out of our striving for the highest degree of perfection in tree culture, out of our fair and kind treatment of every customer that placed an order with us, has grown a business surpassed by few retail nurseries. With our splendid organization of trained nurserymen and frost-proof nursery cellars, we find that this service meets with great approval among our customers, and also gives you valuable results. High-powered salesmanship and bargain counter nursery stock have proven to be worthless. More than fifty years experience in the production of nursery stock in this locality, in which we have had to prove our honesty in the delivery of stock true-to-name and to make good our guarantee in order to build up a successful business justifies our claim to you for your patronage.

We want to say this, with all of the emphasis that we can put into printed words—whether you live in the country, small town or city, you can readily understand that this catalog is our only salesman. Dollar for dollar, your money will go farther buying nursery stock here than any other place that we know of. This book is really a ready reference of practically all of the worth-while trees and stock used in planting projects, large or small. Every item is amply described. Descriptions that you can absolutely depend upon. We have tried to make this catalog simple, sincere and genuine so that any one can understand it. However, we have many other varieties of nursery stock that are not listed here, and we will be very glad to quote prices upon request.

Come and see us when you can. A trip to Shenandoah any time from May to October will be well worth your time, as you will have the privilege of seeing thousands of acres of fruits and flowers growing. We are located in North Shenandoah, one block northwest of the Wabash depot. Phone 112.

J. C. WELCH & SON
Shenandoah, Iowa

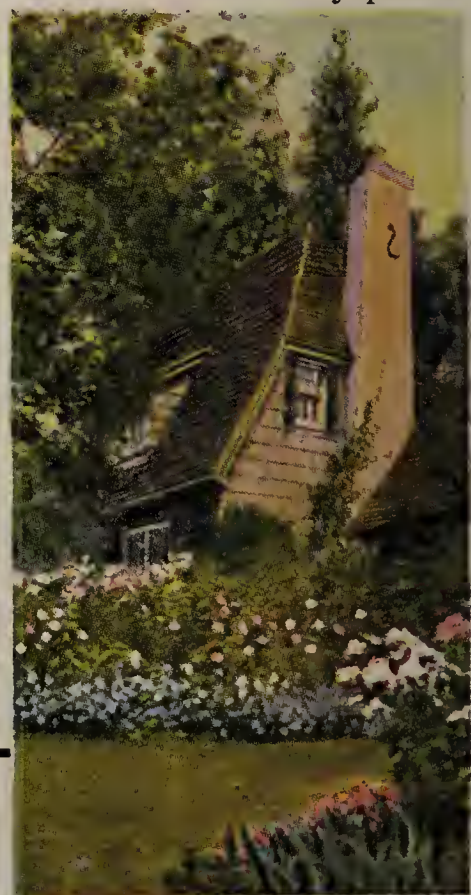
They do me wrong,
Who say I come
No more,

When once I knock
And fail to find
You in.

For every year I
Stand outside
Your door,

And bid you wake
And send an
Order in.

Some of you, of course, will not read all of this catalog, but you should certainly read parts of it. My first thought is "How to turn the planting of nursery stock into money". Many one-acre tracts of land in the Missouri River fruit district, which extends from Sioux City, Iowa to St. Louis, Mo., brought five hundred to one thousand dollars this season. Isn't this a good time to stop and plan a new program? Plant fruit trees and small fruits. This is one way of making yourself independent of the other fellow. It takes more than two acres of crops to produce food for an American, but it takes only one acre for a German, one-half acre for a Chinese, and only one-fourth acre to feed a Japanese.



Flowers for Contentment

Apple Trees

It is an established fact that of all the fruits the Apple is the most important. It has been rightly called the "King of Fruits". Unlike other fruits its period of ripening extends nearly throughout the year, and by judicious selection of varieties, an almost constant succession may be obtained. It is not a luxury, but a staple article of food, and the demand for good apples is increasing faster than the supply. Experienced and successful farmers and orchardists agree that there is more money growing apples than in any other fruit, and that the orchard is the farm's greatest asset. If there is any kind of trees that we specialize in growing, it is the apple. We use the very best quality of imported French Apple Seedlings on which to propagate our apples. We believe this to be of utmost importance in order that the trees may have a good foundation, be free from all disease and insure a healthy and permanent growth. We have discarded all varieties not profitable to the planter, and recommend the following varieties, giving a brief description of each.

5 to 7 ft., 30c each; \$25.00 per 100. 4 to 6 ft., 25c each; \$20.00 per 100. 3 to 5 ft., (prepaid) 20c each.

SUMMER VARIETIES

DUCHESS. July. Handsome, large fruit, greenish yellow, almost wholly covered with stripes and splashes of bright crimson. Flesh is white, slightly acid, tender, juicy and pleasant.

EARLY HARVEST. Season, July. A medium to large pale yellow apple of very fine flavor. Tree a moderately erect grower and a good bearer. A splendid Apple.

RED JUNE. A little later than Early Harvest. Medium size, yellow and red stripes, very good quality, good bearer. The best early Apple. July to August.



Yellow Transparent.

YELLOW TRANSPARENT. Season, August. Another splendid early eating Apple. Hardy, does well in far north as well as all over the country. Good size, almost a clear white in color, turning to the palest yellow. Flavor sub-acid and very pleasant.

FALL VARIETIES

ANOKA. Ripens in September. The size, color and flavor of the Anoka make it a favorite. Also a good keeper. The remarkable feature of this excellent Apple is that it comes into bearing very young, is also dwarf in stature, so that it is well adapted to back yard planting or closer in the orchard.

FAMEUSE (Snow). September; fine dessert Apple; deep crimson skin, snowy white flesh.

MAIDEN BLUSH. Good size, fine flavor, beautifully blushed, good bearer, a fine Apple for home and market. September.

WEALTHY. Season, October to January. Fruit above medium to large, smooth, light yellow, almost wholly covered with bright red splashes and stripes. Flesh white, often stained with red, tender, very juicy, slightly sub-acid.

WINTER VARIETIES

BALDWIN. This good old standby is one of the leading commercial apples in the cool climate of the North. It is a very large, bright red Apple of excellent flavor and a very good keeper in cellar or cold storage.

BEN DAVIS. Season, November. Fruit is medium to large, of bright deep red color. The flesh is whitish, firm, juicy and sub-acid. It is one of the best keeping Apples on the market today.

BLACK BEN DAVIS. Very large, deep solid blood red with snow white flesh—best baking and pie Apple—will stand hard handling and long distance shipping. Best pollenizer of all Apples and should be in every orchard. Can be depended upon when other sorts fail.

DOUBLE RED DELICIOUS. Season, December to April. Tree bears young and annually, seldom blights. The fruit is large, distinctive in shape, conical, beautiful in color, brilliant dark red, blending to yellow at blossom end. Flavor is sweet, slightly acid, with a delightful fragrant aroma. Tree reported perfectly hardy in Iowa, Wisconsin, South Dakota.

GANO. Season, November. The tree is vigorous and hardy; is a rapid grower. Color, bright red without stripes or blotches, and large and even in size.



Wealthy.

WINTER VARIETIES—Continued.

GRIMES GOLDEN. Vigorous grower; large; golden yellow; juicy, good. Keeps until April. One of the very best.

HARALSON. An early bearing variety; tree of medium size, vigorous, upright, hardy. Fruit medium to large in size, roundish, slightly flattened, well colored with solid red over the entire surface. Flesh fine grained, tender, juicy; excellent quality. Keeps in common storage until early spring.

IMPROVED JENITON. This is the Apple which our grandfathers used to grow, except we have the improved variety, which is much larger than the small Jeniton. Will keep until the first of May. Especially fine for cider and eating.

JONATHAN. Season, November to January. One of the very best varieties. Brilliant red, of medium size, flesh white, fine flavored. We cannot recommend this variety too highly. Season October.



Grimes Golden.

MCINTOSH, RED. Large red all over, flesh white, tender, sub-acid. Tree very hardy, abundant bearer.

MAMMOTH BLACK TWIG. The tree is a strong grower, a regular and abundant bearer. A good winter Apple. Deep red; sub-acid, very high flavored. Keeps until late spring.

NORTHWESTERN GREENING. Tree a splendid, vigorous grower, quite hardy. Fruit large to very large; green, becoming yellowish green when ripe, flesh yellow, fine grained and firm; flavor a good sub-acid; very smooth and attractive; should be given plenty of room in the orchard to secure large, even fruit. Keeps until March.

RAMSDELL SWEET. Like the Rambo, this is one of the older varieties, and the best of all sweet Apples. The fruit ranges from medium to large; dark red, covered with a blue bloom. Flesh yellow, firm, fine grained, juicy, sweet, good.

ROME BEAUTY. Season, November. Large, roundish, oblong, handsomely colored, striped with red. Keeps until May.

STAYMAN'S WINESAP. Season, November. Fruit large. Yellowish striped, splashed with dull red. Firm, crisp, yellow flesh. Mild, sub-acid in flavor. Good quality.

TURLEY. (Turley Winesap). This Apple originated in Indiana and is much esteemed by the growers of that state as a commercial Apple. The tree is vigorous and bears fruit early—in 5 or 6 years from date of planting. The fruit is very red and inclined to be large. Season just before Stayman's.



Jonathan.

WINESAP. Fruit medium large; skin thick, very tough, color very attractive dark red. Flesh yellow, fine grained, firm, rich, crisp, sprightly, sub-acid. Quality excellent.

YORK IMPERIAL. Fine, hardy, large, red, winter Apple. Comes into bearing four years after planting, bears regularly and heavily. Foliage and tree free from scab. Fruit is medium size, skin yellow, almost wholly covered with two shades of red. Good shipper, bringing highest prices.

CRAB, WHITNEY. Season, August. Smooth, glossy skin, green striped, splashed with carmine. Flesh firm, juicy and rich.

SPECIAL APPLE COLLECTION

10 First Class Trees, 5-7 ft.

Two summer and eight winter varieties which should bear enough apples for a whole family—all for \$2.75—shipped express collect.

2 Wealthy	2 Jonathan
2 Delicious	2 Grimes' Golden
2 Stayman's Winesap	

SPECIAL APPLE COLLECTION

20 Two-year Apple Trees, 3- to 5-ft.

5 Delicious	2 Duchess
5 Grimes' Golden	3 Wealthy
5 Jonathan	

\$3.50 Pre-paid

Pears

5 to 7 ft., 30c each; 4 to 6 ft., 25c each; 3 to 4 ft., (prepaid) 20c each.

ANJOU. The standard market Pear for late fall and early winter. Fruit large, skin yellow dotted with russet, has faint blush. Flesh is yellowish white, firm but tender. Very juicy, sweet and spicy with a vinous flavor. One of the very best. Season, October to December.

BARTLETT. August. One of the most popular Pears. Fruit is large, buttery, and melting, with a rich musky flavor, white flesh. Probably the very best early Pear.

BOSC. Finest quality; extra large, long and tapering; russet; good shipper, brings highest market price. A vigorous grower. October to November.

CLAPP FAVORITE. August. Tree a vigorous, upright, spreading grower, very hardy and productive. Fruit large, pale yellow flesh, fine grained, juicy, melting and sweet.

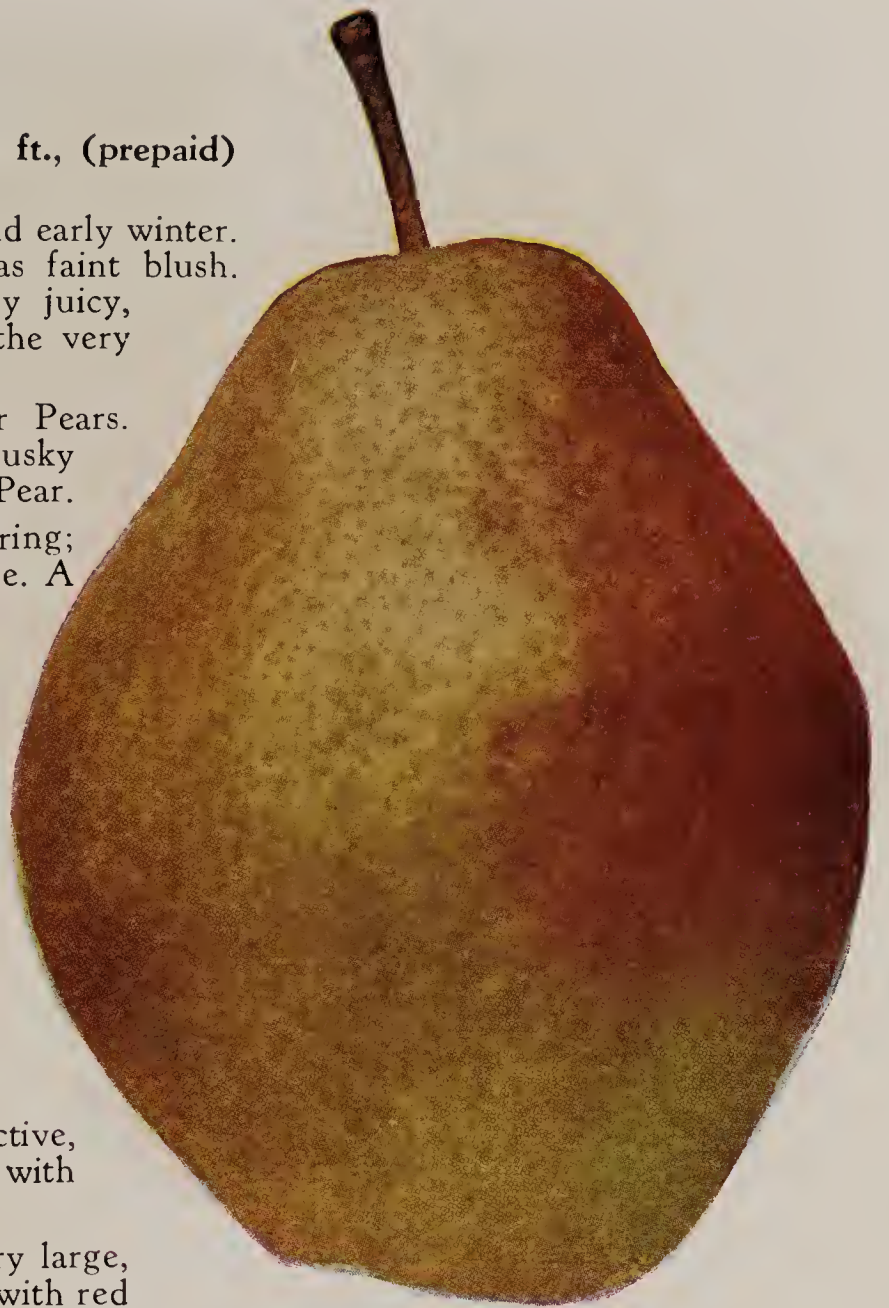
DUCHESS. October. Very large, fine quality and juicy, and keeps well into winter.

FLEMISH BEAUTY. When well grown, the fruit of this Pear is as handsome as any Pear, and is almost unapproachable in quality. The trees are heavily productive, and because of their great hardiness, they bear even in climates where winters are severe.

GARBER. September. Larger than Kieffer. Productive, early bearer. Excellent for canning. Yellow, with pink cheek.

KIEFFER. October. Profitable market variety. Very large, fine appearance. Good for canning. Skin yellow, with red cheek. Flesh brittle; very juicy.

SHELDON. An excellent fruit, being very sweet, juicy and of the most pleasing flavor. The fruit is quite roundish for a Pear; russeted and sometimes blushed with red. A good variety for the home orchard.



Kieffer.

SECKEL (Sugar Pear). August to September. Small, rich, yellowish brown with bright red cheeks; juicy, buttery and melting.



Seckel Pears.

Apricots

5 to 6 ft., 35c each; 3 to 4 ft., (prepaid) 30c each.

ALEXANDER. Good size, oblong, yellow with red, sweet and delicate. Tree very hardy. Ripens middle of July.

MOORPARK. Very large, yellowish green with red on sunny side. Flesh bright orange and freestone. Ripens in August.

SUPERB. The best flavored, most productive Apricot yet produced. Medium size, light salmon color, excellent quality. Ripens last of July.



Compass Cherry-Plums.

Cherries

There are few more desirable fruit trees than the Cherry. Notably hardy, quite adaptable to different soils and climates. Can be planted along the street, on the lawn, along fences, avenues, in corners and in many places where other fruits would not be profitable.

SWEET VARIETIES

5 to 7 ft., 35c each; 4 to 5 ft., 30c each; 3 to 4 ft. (prepaid), 25c each.

BING. One of the best known and most popular dark Cherries; ripening in June.

BLACK TARTARIAN. Very large; bright purplish black; half tender; juicy, very rich. One of the most popular varieties in all parts of the country. June.

NAPOLEON or ROYAL ANN. A beautiful cherry, large size; pale yellow, bright red cheeks; flesh firm, juicy and sweet; one of the best for market and canning. July.

SCHMIDT. Immense size, deep black, flesh dark, tender, very juicy, fine flavor; productive. July.

WINDSOR. Fruit large, liver-colored, distinct; flesh remarkably firm and of fine quality. Tree hardy and prolific. A valuable late variety. July.

YELLOW GLASS. Large, yellow with red blush. June.

SOUR VARIETIES

5 to 7 ft., 25c each; \$22.50 per 100. 4 to 5 ft., 22½c each; 3 to 4 ft. (prepaid), 20c each.

EARLY RICHMOND (English Pie Cherry).

A well-known and old standard variety. Tree is hardy, healthy, a free grower, very productive and regular in bearing. Fruit clear, bright red, of medium size, acid, rich, and one of the best for canning and for pies. The most popular of the true Kentish Cherries. Ripens in June.

ENGLISH MORELLO. Fruit large, almost blackish red when fully ripe; very rich. Tree small. July.

MONTMORENCY. A beautiful, large red cherry, larger and finer than Early Richmond and 10 days later. Being extraordinarily prolific and very hardy it can be highly recommended.

COMPASS CHERRY-PLUM. It is larger than the Richmond Cherry, and is about the same bright red color. In quality it is good, with a different flavor from any Cherry or plum. It is fine for canning and preserving. July.

SPECIAL CHERRY BARGAIN

3 Early Richmond

2 Montmorency

3- to 4-ft. Trees

\$1.00
Prepaid



Early Richmond Cherries.



Waneta Plum.

TERRY (Native). August. Best of the Natives. Fruit very large, of bright red color and fine quality. One of the largest and most handsome hardy Plums yet produced and which deserves extensive planting. Fruit ripens evenly and is a good keeper.

WANETA (Hansen). July. The fruit is of immense size, deep bright red; skin very thin, and the flavor is delicious. Prof. Hansen's best Plum, and in fact, one of the greatest of all Plums.

GOLDENROD. Tree is tall, vigorous, upright in form, hardy, productive; fruit medium to large in size, round, clear yellow. Flesh firm, moderately juicy, moderately sweet; fair to good in quality, stone medium in size, cling. Season last of August. The most beautiful of all yellow Plums.

MONITOR. An unusually strong growing tree that naturally develops into a shapely tree without pruning. Very best quality fruit, firm flesh, large, averaging 1½ to 1¾ inches. Splendid shipper.

UNDERWOOD. This is the earliest of the large new Plums. Ripens from about August 1st to 15th, and attains a size of 1¾ inches. The tree is one of the strongest growers of all these new Plums and gets to be very large, furnishing a large bearing surface to produce wonderful crops of beautiful fruit. Fruit is very attractive; red, firm, juicy flesh, very small pit, freestone. Splendid quality.

WELCH'S BLUE BONNET. This Plum was originated by us here at Shenandoah. We have been breeding this Plum up for a good many years and now have enough stock of it to offer to the trade. This tree is a vigorous, upright grower and is not subject to breakage from wind. The fruit is bluish purple, round in shape and resembles the California Prune; also excellent to eat from the tree or for canning, because of its high content of sugar. Tree is a prolific bearer. 4 ft. trees, 40c each; 3 for \$1.00.

Hardy Plums

Why not plant some Plums which bear large crops the second year after planting? But don't stop with one tree, for the laws of nature make them bear better in groups. There are plums for every palate and for every purpose. From the sugary fruit of the prunes to the most sharply acid, and from the small trees for dooryard shade to the kinds adapted for large orchards, the Plum affords ample room for selection and adaptability. As a fruit for the home orchard, the Plum is ideal, while for the commercial grower, the opportunities are almost unlimited.

No other fruit, unless it is the cherry, will produce more abundantly than the Plum.

5 to 7 ft., 30c each; 3 to 4 ft., (prepaid) 25c each.

The list that we offer are the choicest varieties for the home and commercial planting.

APRICOT PLUM (Hanska Type). This variety has all the good qualities that a Plum should have, with an apricot flavor. The fruit is excellent for eating from the tree, canning, preserving or making jelly. The luscious fruit is reddish blue. Tree strong grower, a six-year-old tree measuring thirty feet high and twenty feet across, making a stronger growth than any other Plum. A good shipper. Freestone. Season August.

LORING PRIZE. August. Fruit very large, nearly round and bright cherry-red, meaty and quite firm, keeping and shipping finely.

SAPA (Hansen). July. An extremely early, vigorous bearer. Fruit medium size, glossy black; flesh deep reddish purple, excellent flavor; skin very tender.



Apricot Plum.

Peaches

The most universally planted fruit for home use. Peach trees are being planted profitably as fillers in apple orchards, for they make ground space that is practically idle, pay well until the apples come into bearing. Peach trees will thrive wherever corn or potatoes can be raised. Next to apples, peaches are more relished and used for a greater variety of purposes than most of the other fruits. In the dooryard, the Peach tree is decorative at all seasons, and especially when laden with its bower of lovely pink blossoms in the spring. And what is more enjoyable in the summer than to eat your fill of luscious Peaches from your own trees. For the commercial grower, Peaches produce fortunes, and a well-cared-for Peach orchard is a veritable mint for coining money. We list the best and hardiest varieties.

CHAMPION (Freestone). Fruit large, beautiful in appearance, flavor delicious, sweet, rich and juicy; skin creamy white with red cheeks; freestone. The peculiarity of this acquisition is its hardiness. It stood temperatures of 18 degrees below zero and produced an abundant crop the following season, and again in 1890 produced a full crop when the Peach crop was a universal failure. August.

CRAWFORD'S EARLY (Freestone). Highly esteemed for market. Fruit large, oblong, yellow, showy red cheeks. Flesh yellow, juicy, sweet; good bearer. August.

CRAWFORD'S LATE (Freestone). Fruit of large size, skin yellow, with a dull red cheek, flesh yellow; tree vigorous. September.

ELBERTA (Freestone). Fruit large, yellow with red cheeks; flesh yellow, juicy, fine quality. Tree hardy and exceedingly productive. Ripens with the Crawford's Early. Exceptionally large and fine. August.

J. H. HALE (Freestone). The fruit is larger than the Elberta, a perfect freestone, somewhat roundish, rich golden yellow, covered with carmine. Skin thick and entirely without fuzz. The flesh is dark yellow, fine grained and firm, parting as easily from the pit as any Elberta. The flavor is excellent, absolutely of the best. The tree is hardy, bears young and profusely, probably the best bearer known. One of the best for family use and especially for the market. August.

EARLY ELBERTA (Free). Larger than Elberta, though identical in form; bright yellow with red blush; flesh yellow, finer grained and sweeter than Elberta; ripens a week to ten days before Elberta, good shipper. Tree strong grower, hardy, good bearer. Last of August.

Prices

5 to 7 ft. . . . \$0.30

4 to 6 ft.25

3 to 4 ft. (prepaid):

Each \$ 0.20

ROCHESTER (Free). Early midseason. Color lemon-yellow changing to orange-yellow, blushed with deep, dark red. Skin thick, tough. Flesh yellow stained with red near the pit. Very juicy, tender and melting. Sweet. Highly flavored. Very good in quality.

SOUTH HAVEN The great hardy Peach for cold regions, stands 10 degrees colder weather than any other Peach grown. Large, yellow freestone. Large as Elberta and a week earlier on the market. Of all Peaches

for Indiana markets, this rules supreme. Plant for commercial purposes: South Haven, Elberta, J. H. Hale. All yellow, all freestone, all money-makers.

MAYFLOWER. The earliest ripening Peach. Medium in size, dark red in color with a juicy, tender white flesh. Quality fair. Tree productive. Ripens last week in June or first of July.

SALWAY (Freestone). Large, roundish, deep yellow with rich red cheek; flesh yellow, firm and juicy; sugary; a valuable late market sort. First of October.

RED BIRD CLING. Here is the best of all early Peaches. The tree is hardy, vigorous and very productive. The fruit is of good size and of very showy appearance, being an attractive creamy white, splashed or blushed with red. Flesh white, firm, meaty and of good flavor. A fruit that will stand shipping. One of the best home fruits and a leading early market Peach.

BELLE OF GEORGIA. Very large, skin white with red cheek, flesh white, firm, and of excellent flavor. Tree a rapid grower, very prolific. Ripens with Early Crawford.

HEATH CLING (Clingstone). Large, round, white, juicy and fine quality. Best for pickling. October.



Hale Peaches.

Currants

CHERRY. (Red). Fruit very large, tart. 2-year, prepaid, 12c each; not prepaid, \$10.00 per 100. 1-year, prepaid, 10c each; not prepaid, \$8.00 per 100.

FAY'S PROLIFIC. (Red). Large size, fine flavor, and claimed to be twice as prolific as the Cherry. 2-year, prepaid, 12c each; not prepaid, \$10.00 per 100. 1-year, prepaid, 10c each; not prepaid, \$8.00 per 100.

LONDON MARKET. Large, red, fine. It is one of the most productive Currants known, and quality superior to anything on the market. The flavor is rich, mild, sub-acid. 2-year, prepaid, 12c each; not prepaid, \$10.00 per 100. 1-year, prepaid, 10c each; not prepaid, \$8.00 per 100.

RED CROSS. A strong growing variety. Clusters long; berry medium to large, bright red; quality good. 2-year, prepaid, 12c each; not prepaid, \$10.00 per 100. 1-year, prepaid, 10c each; not prepaid, \$8.00 per 100.

WHITE GRAPE. Berries large to very large, very attractive color, mild flavor and good quality. 2-year, prepaid, 12c each; not prepaid, \$10.00 per 100. 1-year, prepaid, 10c each; not prepaid, \$8.00 per 100.



London Market Currants.

Fruit Tree Combination Offer

10 First Quality Trees, 5 to 7 ft.

- | | |
|---------------------------|--------------------|
| 1 J. H. Hale Peach | 2 Delicious Apples |
| 1 Elberta Peach | 2 Apricot Plums |
| 2 Early Richmond Cherries | 2 Bartlett Pears |

All for **\$2.75**

Shipped
By Express
Collect

Gooseberries

DOWNING. A well known American sort, which has given the best results everywhere. Large and handsome, pale green berry; of splendid quality for dessert and cooking. Bush vigorous, a strong and upright grower and exceedingly productive. 2-year, prepaid, 12c each; \$10.00 per 100. 1-year, 10c each; \$8.00 per 100.

HOUGHTON. An enormously productive and always reliable old variety. Of vigorous growth, slender and spreading, not subject to mildew. Fruit rather small, smooth, pale red, tender and of good quality. 2-year, prepaid, 12c each; \$10.00 per 100. 1-year, 10c each; \$8.00 per 100.



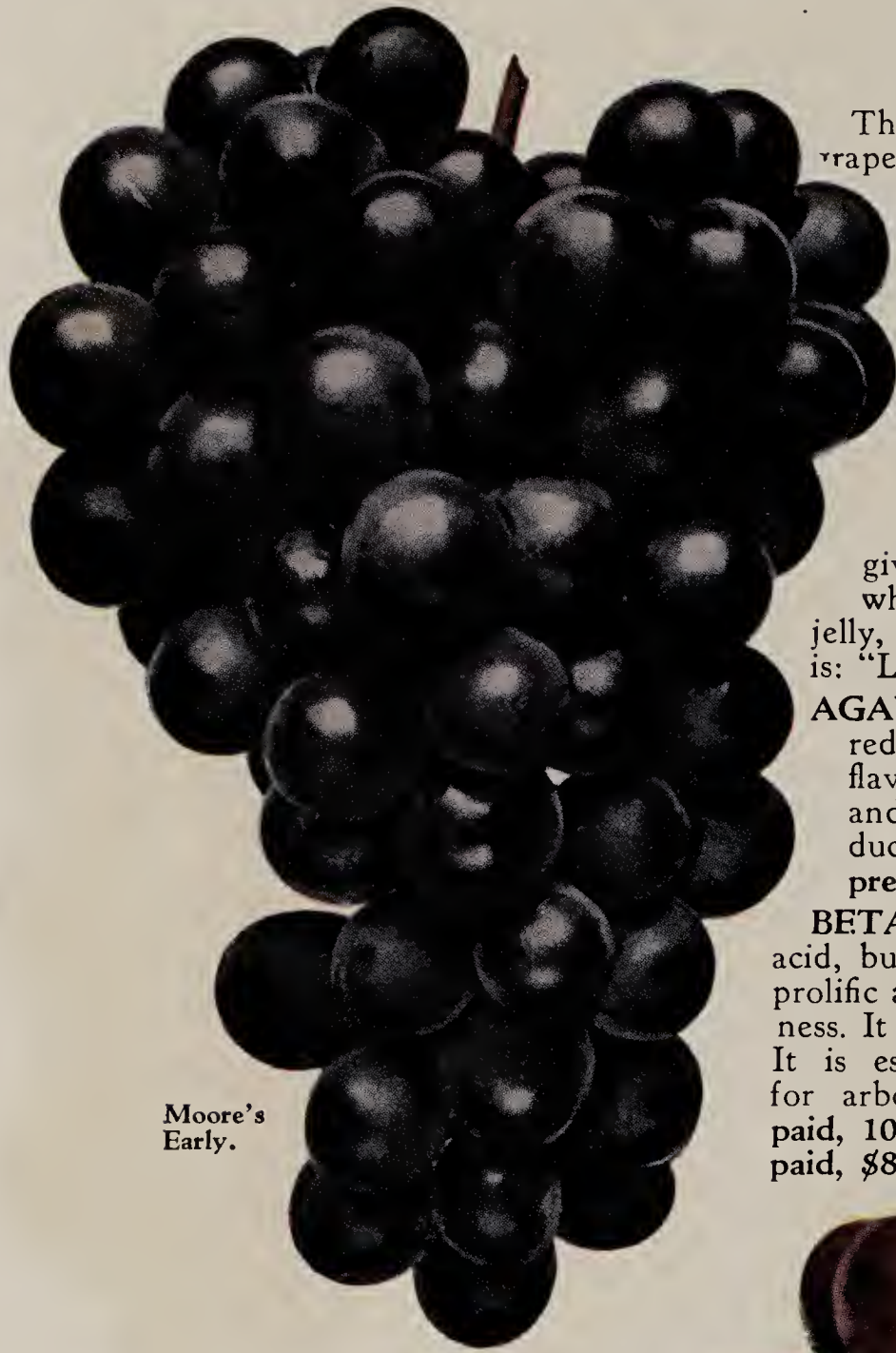
Downing Gooseberries.

10
Gooseberries
or
Currants,
2 yr.
\$1.00
Prepaid

10 FINE GRAPES

- | | |
|--------------------------------|-----------------|
| 2 Caco | 3 Concord |
| 2 Niagara | 3 Moore's Early |
| 2-year, Postpaid \$1.00 | |

Grapes



Moore's
Early.

There is no more healthful drink than good sweet grape juice. Everyone in the family can drink it and be the better for it. A drink for the gods and for the humblest laborer toiling in the hot sun; it has found its way in administering to the sick and to the merrymakers; it has become an element of the sacrament and of the celebration. Knowing what real values there are in Grape culture, I like to think that I am building up the health of my customers, when I recommend heavy planting of Grapes. Grape culture pays. Never hesitate to put faith in a Grape vine, for it will justify that faith if you give it half a chance. There was never a time when Grapes would not sell for the making of jelly, for juice or to eat fresh. My motto for Grapes is: "Live with the Grape and Postpone the Crepe."

AGAWAM. Bunch large, shouldered; berry large reddish brown, tender, vinous and of excellent flavor. Very vigorous and productive. Vine hardy and one of the best of its class. The most productive of all reds. 2-year, prepaid, 10c each. Not prepaid, \$8.00 per 100.

BETA. A small to medium sized black Grape, quite acid, but of good quality and fine flavor. Very early, prolific and healthy. It is valuable chiefly for its hardiness. It is hardy without protection far into Minnesota. It is especially valuable for arbors. 2-year, prepaid, 10c each. Not prepaid, \$8.00 per 100.



Caco.

CACO. The vines are strong and vigorous, as yet untouched by disease of any kind. The fruit is very large, in handsome, complete bunches; in color a rich wine red or amber. Exceptionally early bearing, usually showing several good sized bunches the second year. Its flavor is luscious, sweet, delightful, distinctive. Good strong vines, 20c each; \$2.00 per doz.

CONCORD. The old standby in the leading market vineyards, and in home garden variety. No matter how few the Grapes planted in the yard, Concord should be included. "The Grape for the Millions." Excellent for grape juice, wine, table use, canning and market. Black. 2-year, prepaid, 10c each; not prepaid, \$6.00 per 100. 1-year, prepaid, 5c each; not prepaid, \$4.00 per 100.

MOORE'S EARLY. A seedling of Concord. Bunch medium, berries very large. Desirable for an early market, and particularly adapted to the northern portions of the United States. Black. 2-year, prepaid, 10c each. Not prepaid, \$8.00 per 100.

NIAGARA. The leading white Grape. 2-year, prepaid, 10c each. Not prepaid, \$8.00 per 100.

WORDEN. Said to be a seedling of the Concord, and is a slight improvement on that variety. Black. 2-year, prepaid, 10c each. Not prepaid, \$8.00 per 100.



Eldorado Blackberries.

Blackberries

EARLY HARVEST. Good quality; firm; extremely productive; attractive on the market; an early sort. **\$2.00 per 100, prepaid.**

ELDORADO. A valuable Blackberry for our northern climate. Berries large, jet black, ripen well together and borne in large clusters; they are sweet and delicious, have no hard core and keep well after picking. **\$2.25 per 100.**

MERSEREAU. Berries exceptionally large, sweet and very luscious, being without core. Foliage large, abundant, free from rust and blight. Two weeks earlier than Snyder. **\$2.25 per 100.**

SNYDER. The old standard. Very hardy, consequently much raised in cold climates. Berries medium size, juicy, rich; strong, stout cane, thrifty growth, very broad leaf. **\$2.25 per 100.**

LUCRETIA DEWBERRIES. **\$2.00 per 100.**

Raspberries

CHIEF. The new hardy red Raspberry. A heavy cropper and disease free; extra good shipper. The outstanding red Raspberry. **\$2.50 per 100.**

EARLY KING. The most satisfactory red Raspberry for you to grow for market purposes; large in size, very productive, firm and hardy, holds up for days after

being picked without losing its bright, fresh color; always sells for a fancy price; a vigorous grower and free from

disease. You will like the King. **\$2.00 per 100.**

LATHAM. (Red). Fruit of fair size and quality. Worthy of trial where Raspberries winter kill, as it has endured 41 degrees below zero without protection. Succeeds wherever red sorts do well and promises to become the leading variety. A most delicious table berry. **\$2.25 per 100.**

QUILLEN. Extra late Raspberry. Plant Quillen and you will have a longer Raspberry fruiting season. A remarkable, fine grower and very productive of big first quality, glossy black Raspberries, having a tempting, rich flavor. Our plants are hardy, vigorous and healthy and impartial to soil or climatic conditions. **\$2.50 per 100.**



Latham Raspberries.



Cumberland Raspberries.

ST. REGIS EVERBEARING. The new everbearing variety. It gives a crop of fruit all summer and autumn, fruiting on the old canes in generous quantities until late in August. By this date berries begin to ripen on the younger canes and continue until late in autumn. Berries are a bright crimson, of large size and of surprising quality, sugary, with full Raspberry flavor. **\$2.00 per 100.**

CUMBERLAND. (Early Black). This splendid blackcap Raspberry is by far the most widely planted, most successful and most profitable variety. Is extremely hardy, upright, vigorous grower, extraordinarily productive, disease resistant. Fruit very large, firm, excellent quality, ships well. The standard black Raspberry. **Tips, \$2.00 per 100; 2-year transplants, \$3.00 per 100.**

Mastodon Strawberries

The Mastodon Everbearing Strawberry is the most popular new variety ever introduced, and I believe it is the biggest and best Strawberry I have ever seen. It would be a prize if it were only a spring bearer, but when you know that it is a true everbearer, it's surely a world beater. It is a big, dark red, solid, high flavored berry and carries to market perfectly. The plants are big and husky and produce lots of berries all summer, from spring until snow flies. The long roots grow down and down after moisture. Every plant bears. There are no drones.

Mastodons succeed everywhere, and never fail to give a big crop of the finest berries. They are frost-proof, drought-proof, and even fool-proof, producing the customary big load of fruit even under the most unfavorable conditions. The foliage is tough and healthy, and grows tall and rank, covering the blossoms and berries and protecting them from frost and scalding sun.

No plants are more faithful than the Mastodon. They work day and night, never tire and never strike. It is hard work, bearing berries out of season and making plants, too, and getting ready for a crop next spring, if they have to fight hard soil, thin soil, weeds or drought. Plant them on low land, if possible, along the creek bottom or at the foot of a hill, on ground that is fall plowed, or that has been worked five or six weeks before planting. This kind of land will hold moisture. Give them the best soil that you have, the kind of soil that would grow a big crop of potatoes, corn or onions. Keep the ground stirred and loose all the time. Never let a crust form or a weed start. If it gets dry, irrigate if you possibly can. I like the overhead sprinkling system, but the ditch system is all right. Any way, so that you can get the water on and down to the roots. Stir the soil as soon as it begins to dry after you water the plants. This will stop evaporation. I don't believe in clipping the runners or blooms ordinarily. Let them do as they please.

BEAVER. Extra early berry, with the heavy yielding qualities of the Premier. Fruit is solid, mild in flavor and dark red to the center. This heavy fruiting variety is recommended for northern, frosty localities, for poor soils and drought areas. **60c per 100; \$4.50 per 1000, prepaid.**

BELLMAR. This variety originated by the United States Department of Agriculture. As early as Premier but a better plant maker and a better yielder. A very vigorous grower, berries are large, firm in texture, a rich red color and extra good shipping variety. **60c per 100; \$4.50 per 1000, prepaid.**

WELCH'S LATE. A wonderful new Strawberry originated by us here in Iowa, and the only good late berry we have found for the middle west states. It is two weeks later than Senator Dunlap. A good plant maker with a strong, vigorous growing root system. It withstands more weather conditions than any other Strawberry we have ever grown. These features are hard to find in any one Strawberry which makes it especially valuable for home planting. The berries are large, holding their size to the end of the season, and are all that could be asked for in color, flavor, firmness, and productiveness. Welch's Late is an ideal market berry, as it is in season when other berries are gone, it is also a good canning berry. Plants limited. **\$1.00 per 100, postpaid.**



MASTODON PRICES

100 for\$1.00
200 for 1.85
Not prepaid:
1000 for\$7.50

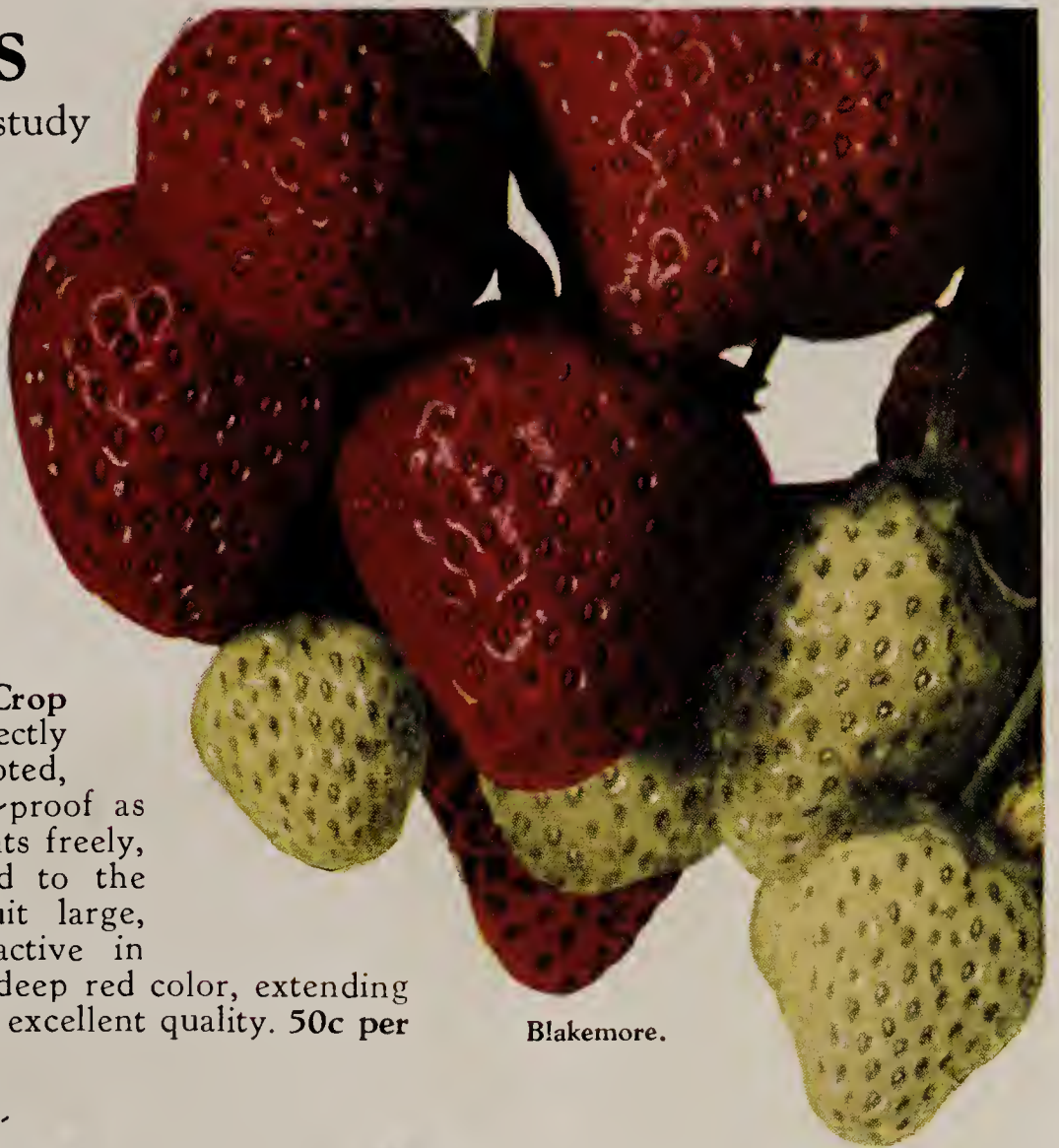
Strawberries

We have made an extensive study of Strawberry plants, and offer you only the ones that have proven profitable—the healthy, vigorous sorts that yield big crops.

EARLY OZARK. This is a most remarkable berry—one of the best all around Strawberries ever produced. It has few equals, and no superiors. It is ten days earlier than Senator Dunlap. 50c per 100; \$3.50 per 1000, prepaid.

SENATOR DUNLAP. The Main Crop Berry. Plants medium size, perfectly healthy and very prolific. Long rooted, and comes as near being drought-proof as any variety in our list. Makes plants freely, and will do best when restricted to the hedge or half matted row. Fruit large, smooth, regular, and very attractive in form. Very firm and of beautiful deep red color, extending well to the center of the berry. Of excellent quality. 50c per 100; \$3.50 per 1000, prepaid.

PREMIER. Extra large plants, vigorous growers and heavy producers of big, bright red berries, ripening very early when Strawberries are selling at a high price. Although the earliest of all Strawberries, it also has a long fruiting season. A wonderful keeper and a splendid shipping variety. First choice of all successful Strawberry growers. 60c per 100; \$4.50 per 1000, prepaid.



Blakemore.

Strawberries cannot be shipped with other nursery stock. They will come by themselves, in open-end packages. This insures the plants reaching you in good condition.

BLAKEMORE. A recent introduction of the June-bearing Strawberry originated by Prof. Beatty of the U. S. Department of Agriculture at Washington, D. C. A large, solid, finely flavored berry, a good keeper and a wonderful plant maker. Considered superior to Dunlap for commercial purposes. 50c per 100; \$3.50 per 1000, prepaid.

NOT PREPAID PRICES

Dunlap—Ozark—Blakemore, \$2.50 per 1000, not prepaid.

Our Guarantee

All goods are guaranteed to reach you in good live growing condition. Mistakes, if made, will be promptly adjusted. Accept the shipment and notify us at once, should there be any errors, and the carrier as well—should there be any damaged stock. This guarantee is not good, unless above requirements are complied with. Nursery stock is just the same as human beings—it breathes, drinks and feeds, and is subject to disease. With proper planting and proper care, we know that our stock will grow and do well for you.



Dunlap.

WELCH'S CHOICE

Home Strawberry

Collection

100 Everbearing Mastodon

100 Blakemore

100 Senator Dunlap

\$2.00

Postpaid anywhere in United States

PERENNIALS, Old and New ~



3 Shasta Daisies, 40c.



3 Coreopsis, 40c.



3 Chrysanthemums, 40c.

Perennials have never been so popular as they are at the present time. They are planted once and they are always there, living through the winter with little or no protection, the flowers become better as the plant grows older. The old familiar flowers that made grandmother's garden a favorite place are still dear to the hearts of modern home-makers of today.

Rock gardens, so popular with flower-lovers, are no longer found only in parks or large estates, but can be had in the small city garden as well. They work in particularly with a pool, either formal or informal. Because of the growing interest of this type of perennial, we are including a few of those best suited for rock garden culture, and are marking them (*).

ASTILBE. A hardy perennial spirea of striking beauty. It makes a low spreading plant with attractive foliage. It throws up long, plummy blooms during June and July. Good for winter bouquets. Gloria, brilliant red. Peach Blossom, beautiful pink. 35c each.



3 Columbines, 40c.

COLUMBINE. An old garden favorite and one of the most desirable hardy garden plants. The peculiar shaped flowers, with their long, slender spurs, are produced in great abundance. Beautiful colors in red and yellow, blue and pink. 15c each; 3 for 40c.

***COREOPSIS.** Rich golden yellow flowers of graceful form. Fine for cutting. 15c each; 3 for 40c.

DAISY, Shasta. Flowers large, white with yellow center. Born on long, stiff stems. Has long blossom season. 15c each; 3 for 40c.

DELPHINIUM (Larkspur). Tall spikes of dark blue flowers, producing an abundance of bloom. Make a good background for low growing flowers. 15c each; 3 for 40c.

DELPHINIUM, English Hybrids, Wrexham Strain. Magnificent long-stemmed massive type developed in England. Very tall, stocky growth with flower spikes like hollyhocks. 20c each.

OSTRICH FERN. Erect, dark green, feathery foliage, making a most effective background for smaller Ferns. Grows to a height of 3 feet, width of fronds 6 to 10 inches. Thrives in shaded nooks or open sun. Manure well. 15c each; 3 for 40c.

MAIDENHAIR FERN. This well known Fern is indispensable in the making of floral pieces and winter bouquets; a showy, useful type of fern, with fine, wiry stems and delicate, finely cut, green fronds. 15c each; 3 for 40c.

***BLEEDING HEART.** An old favorite. Flower light red, heart-shaped. Blooms early in spring. 20c each.

BUTTERFLY BUSH. It produces long, graceful stems of beautiful lilac colored flowers, that are borne by the hundreds on a flower head. It blossoms from early summer till frost. 25c each.

***CERASTIUM (Snow-in-Summer).** A desirable low growing plant, with silvery foliage and white flowers in June. Does best in dry, sunny location. 15c each; 3 for 40c.

CHRYSANTHEMUMS. A very popular flower in all shades of red, pink, white, and yellow, growing in large clusters. Blooms from early summer till late fall. 15c each; 3 for 40c.

CLOVE PINKS. Few other plants produce more flowers or cover a longer blooming period. Very fragrant, with grass-like foliage and variegated blooms. 15c each; 3 for 40c.



3 Pyrethrums, 40c.

for Permanent Gardens

Hardy Garden Phlox

Effective, hardy plants which bloom all summer in tall spikes of many different colors.

Champs Elysee. Large, fine rich purplish crimson. 15c each.

Bridesmaid. White, red eye. 15c each.

Flora T. Ready. Large heads of pure white. Long blooming season. Best of all whites. 15c each.

Special French. Hydrangea-pink color, with red eye. 15c each.

Miss Lingard. Has immense heads of beautiful white flowers in June and blooms again in September. Splendid grower. 15c each.

R. P. Struthers. Brilliant rosy red, crimson eye. One of the very best Phlox. 15c each.

Rijnstroom. Extra large, rose-pink. Very fine. 15c each.

Phlox, unnamed. Pink, red, and white. 10c each; 6 for 50c. 6 named sorts, 75c.



Rijnstroom.

***FORGET-ME-NOT.** A variety that is hardly ever out of flower; useful in shady spots. Makes a good ground cover. 15c each; 3 for 35c.

***FUNKIA (Plantain Lily).** Large, pure white, lily-shaped, fragrant flowers in August and September. Excellent around a pool. 25c each.

GAILLARDIA (Blanket Flower). The gorgeous flowers are dark red in the center with bands of crimson-orange. A mass of bloom from June till autumn. 15c each; 3 for 35c.

GOLDEN GLOW. A large showy plant, resembling yellow chrysanthemums. 10c each; 6 for 50c.

GYPSOPHILA (Baby's Breath). A beautiful old-fashioned plant that has a mass of pure white, tiny flowers, making a mist-like appearance. Exquisite in combination with other flowers. 15c each; 3 for 35c.

HOLLYHOCKS. Among the very finest of the old hardy plants, the Hollyhock still holds a proud place and may be termed one of the great flowers of July. It has the widest range of colors among tall garden plants. Flowers are very showy, produced in great abun-

dance on long, towering spikes. Height 6 to 8 feet. Blooms June to August. 20 for 75c.

LILY, Regal. A beautiful new Lily which recently came from China. Flowers are white, slightly suffused with pink, with a beautiful glow of canary yellow part way up the trumpet. Its perfume is exquisite. Very hardy. Blooming size, 10 for \$1.00.

PYRETHRUM. (Persian Daisy) Finely cut foliage and daisy-like flowers of rose shades. A splendid garden flower. 15c each; 3 for 40c.

***RIBBON GRASS.** The striped green of this foliage plant is an addition to any border or rock garden. It gives color to a large space. About 18 inches high. 15c each; 3 for 40c.

***SEDUM.** We list three varieties of old-fashioned "Live-Forever", so popular with our grandmothers.

S. acre (Goldmoss Stonecrop). Good in sunny or shady spots. Low growing ground cover. A mass of yellow flowers in July. 15c each.

S. sexangulare. Low growing in habit, giving a dark green cover for rocks or bare space. 15c each.

S. spectabile. One of the prettiest erect growing species, attaining a height of about 18 inches, with broad, light green foliage and immense heads of handsome, showy rose colored flowers in August and September. 15c each.

SUNDROP (Evening Primrose). Fresh foliated plants blooming all summer. Fine for growing in the rockery or exposed sunny positions. The flowers are bright lemon-yellow color about one to two inches in size and borne in clusters. 15c each; 3 for 40c.

***STATICE (Great Sea Lavender).** A mass of dainty, purplish blue flowers in July and August. Much used for winter bouquets, as well as best adapted for Rock Gardens. 15c each.

***SWEET WILLIAM.** The old-time favorite, bearing during May and June a profusion of round topped clusters of flowers of all shades of red, pink, and white. Mixed colors. 15c 3 for 40c.

RED SWEET WILLIAM. Perfectly hardy, bright red and bloom all summer. 15c each; 3 for 40c.

TRITOMA (Red Hot Poker). Tall spikes three to four feet high, with beautiful flower heads of rich orange-scarlet. 20c each; 5 for 75c.

VIOLA, Jersey Gem. Hardy tufted pansies. Handsome dwarf dainty plants, a cross between the pansy and the violet. Slightly perfumed and bloom continuously all summer. Pure rich violet color. 20c each.

YUCCA. Broad, sword-like, evergreen foliage, immense spikes of creamy white flowers. 10c each; 6 for 50c.



3 Delphiniums, 40c.



10 Regal Lilies, \$1.00.

Flowering Shrubs

A HOUSE IS NOT A HOME UNTIL IT'S PLANTED

Any 20c Shrubs, 3 for 50c.

A well planted home sends out a perpetual smile, winter and summer alike, to your family and every passing stranger.

Plan your planting as far as possible. Anyone who tries to outline certain plans to fit every lawn or doorstep takes the individuality from such a planting. Let your lawn reflect your own ideas. You, remember, are the one to be pleased. We take more pleasure and interest in the things we create ourselves. However, if you want our assistance, we have a landscape architect who will be glad to draw you a suggested planting plan. Simply send us a rough sketch of your grounds, stating about what you wish to plant, and we will be glad to help you.

Nothing adds to the beauty of your home like a planting of shrubs and flowers. At a small cost you can have a very attractive place, with a succession of bloom the season through. **Prepaid prices.**

ALMOND, Pink. A beautiful flowering shrub. The branches are covered, just as the leaves come, with small, very double, rose-like flowers that are deep pink. Should be planted in a sunny place. 2 to 3 feet, 40c each.

ALTHEA. Large, showy shrub, with bright colored flowers in rose, red, pink, white and purple. Blooms when few other shrubs are in bloom. 18 to 24 inch, 25c each.

CORNUS sibirica (Dogwood). A tall, spreading shrub, extremely hardy; white flowers in June, followed by red berries. Its chief beauty is in its bark, which turns bright crimson in the fall. 18 to 24 in., 20c each.



Mock Orange.

DOGWOOD, Yellow. 18 to 24 in., 20c each.

DOGWOOD, Silver leaf. Beautiful because of the pure white markings on the dark green leaves, very showy. Bark bright red in the winter. 25c each.

COTONEASTER. Tall, upright, and densely branched shrub with dark waxy foliage turning red late in the season. Glossy black fruit usually remaining throughout the winter. 18 to 24 inches. 25c each.

DEUTZIA, Pride of Rochester. Large flowering. Very ornamental and graceful shrub, producing many double white flowers along full length of branches in June. 18 to 24 in., 20c each.

ELDER, aurea (Golden Elder). Its golden yellow leaves contrast beautifully with the other shrubs. Flowers white, in flat topped cymes. Grows naturally 10 to 15 feet, but can be pruned into a neat, compact little bush. 18 to 24 in., 20c each.

FORSYTHIA Fortunei (Golden Bell). Few, if any of the spring-flowering hardy shrubs can surpass the splendor and brilliancy of the Forsythias. Of upright, vigorous growth, foliage rich, dark green and lustrous. Flowers brilliant golden yellow, borne in great profusion early in April before leaves appear. 18 to 24 in., 25c each.

F. suspensa (Weeping). Splendidly drooping branches strung with bright rosettes of yellow bloom and shiny leaves. These are airily graceful, swaying loose from trellis top or garden wall; or mingle pleasantly with the trailing growth of honeysuckle, and other ground-covering vines. 18 to 24 in., 20c each.



6 Red-Leaved Barberry, 12 in., \$1.00.

Make Your House a Home!

HIGH BUSH CRANBERRY. Handsome, showy shrub similar to the snowball, but with flat shaped blooms, followed by clusters of berries similar to the cranberry. 18 to 24 in., 20c each.

HONEYSUCKLE, Tartarian. This is one of our favorite shrubs. Absolutely hardy, does splendidly, even in the drier portions of the Dakotas and Montana. A nice, trim, clean looking shrub that grows to a height of from 6 to 10 feet. It is covered in May and June with small, star-shaped flowers either white, light pink, and deep pink or red, when it is very fragrant. The flowers are followed by showy, currant-like, red berries, which clings for many weeks. Red and pink, 18 to 24 in., 20c each.

HYDRANGEA arborescens (A. G.). This is the early blooming outdoor Hydrangea. The snow white bloom is immense, round, very full. 18 to 24 in., 20c each.

H. paniculata (P. G.). Fall blooming. The most beautiful and striking of all flowering shrubs. Bears immense clusters of creamy white flowers in August, turning to bright pink and rose, and finally to bronze in September. Grows 3 to 4 feet high, does well in sunny locations. The flowers dry like everlastings, and can be kept indoors all winter. Very hardy. 18 to 24 in., 20c each.



6 Hydrangea P. G., 18 in., \$1.00.

HYPERICUM aureum (Golden St. John's Wort). A hardy shrub attaining a height of about 3 feet. Flowers in small clusters; golden yellow petals surrounding a tuft of downlike stamens. Very attractive when in bloom. 18 to 24 in., 25c each.

JETBEAD (White Kerria). An attractive rounded shrub 3 to 6 feet high, with beautiful yellowish green, corrugated foliage and large, single white flowers late in May, black seeds following. Particularly valuable because it will endure partial shade. 18 to 24 in., 20c each.

LILAC, Common Purple. The old-fashioned lilac, that grows into a very high bush, getting 8 to 10 feet tall, with bright green heart-shaped leaves. In May the plant is crowned with its wondrous wealth of light purple flowers. It is, without a doubt, the best known and most popular shrub grown, and notwithstanding the introduction of so many new flowering shrubs of late years, the Lilac holds its own. Hardy everywhere. 18 to 24 in., 20c each.

PRIVET, Regel's Dwarf. One of the very best dwarf growing shrubs. Is exceptionally good for individual plantings or hedging. Has beautiful dark green drooping foliage with small white flowers. Plan to plant some of these in your corner plantings. 12 to 18 in., 15c each; or 10 for \$1.00.



6 Hydrangea, Hills of Snow, 18 in., \$1.00.

SHRUBS—Continued.

FRENCH LILACS. Hardy improved varieties that bloom second year after planting. These hybrid types give a most delightful variety in color. 18 to 24 in., 35c each. Following are the best varieties:

L., Charles X. A strong growing bush producing large heads of reddish purple bloom. One of the best.

L., Madame Lemoine. Large pure white double flowers.

L., President Grevy. Clusters of large, double blue flowers.

LILAC, Persian Purple. Blooms a good deal more than the common, and has smaller leaves. Does not sprout from the roots. Beautiful purple flowers. The bush makes a fine hedge where height is wanted. 18 to 24 in., 20c each.

NEW RED-LEAVED BARBERRY. A boon for all types of landscaping, this variety starts its very first foliage a warm bronzy red, becoming more brilliant with the summer heat. Abundance of scarlet berries throughout winter. 12 to 15 in., 20c each; 15 to 20 in., 25c each.

PRUNUS, Newport (Purple-Leaved Plum). Often called the most beautiful of all small trees or large shrubs. Showy foliage opens up red color, turning to dark purple. Retains these striking colors throughout the summer. Delicate white flowers almost cover the shrub in the spring. Very hardy. In our judgment the best of all red foliage shrubs. 2 to 3 ft., 35c each.



Weigela, Eva Rathke.

P. triloba (Rose of China). A double flowering Plum and a very hardy and vigorous grower. Very early in the spring, before the leaves appear, it is completely covered with double pink blossoms. Foliage is delicate and makes the shrub attractive, even after the flowers have disappeared. 2 to 3 ft., 35c each.

QUINCE, JAPANESE. Very showy and one of the earliest shrubs to bloom, the flowers appearing before the leaves are fully developed, the brilliant scarlet flowers giving the bush a most attractive appearance. Very hardy and easily transplanted. Grows 5 to 6 feet tall. 18 to 24 in., 20c each.

REDBUD. This is the little native woodland beauty that gives such cheerfulness in early spring with its lovely pink, pea-shaped blossoms before the leaves unfold. Grows 15 to 20 feet high. 2 to 3 ft., 50c each.

SNOWBALL. Grows into a magnificent high bush, with upright branches and handsome foliage. It forms one of the most impressive sights of early summer, when its pure white, four-petaled flowers, borne in showy balls, are in bloom. Hardy. 18 to 24 in., 25c each.



10 Spirea Anthony Waterer, 15 in., \$1.00.



10 Red Tartarian Honeysuckle, 18 in., \$1.00.

S. Van Houttei. It is sometimes called Bridal Wreath. The flowers are pure white and borne in dense clusters along the whole length of the branches. Excellent as a single lawn planting or with other shrubs for groups; fine hedge plant. 2 to 3 ft., 15c each. 18 to 24 in., 10c each.

SYRINGA, coronarius (Mock Orange). One of the very best of the old, well-known shrubs. It seldom or never fails to bloom. The beautiful, waxy white flowers appear in June. In shape and fragrance they resemble the orange blossoms, therefore the name. Grows to a height of 10 feet. Can be kept lower by pruning. 18 to 24 in., 20c each.

SUMAC, Fragrant. Grows 2 to 4 feet tall; flowers yellow, in clusters along the stems, followed by red berries in June. Leaves color to brilliant scarlet. 18 to 24 in., 35c each.

S., Fern-Leaved (Staghorn Sumac). It is of rapid, robust growth, producing cones of bright red fruit. Leaves beautifully formed. Thrives on the poorest of soils. In the fall the leaves turn to a beautiful crimson-red. The best of the Sumacs. 18 to 24 in., 25c each.

SHRUBS—Continued.

SNOWBERRY, White. A beautiful low-growing shrub. Slender, drooping branches covered with small white berries in thick clusters along the stems. 18 to 24 in., 15c each.

S., Red. Same price as White Snowberry.

SPIREA, Anthony Waterer. One of the finest flowering shrubs of low, dwarf growth. In constant bloom from June to September. Flowers of bright rose are borne in broad, flat clusters, completely covering the bush. The best shrub for low borders and hedges. 18 to 24 in., 20c each.

S. Billiardi. Rose colored flowers in large spikes, blooms nearly all summer. Very pretty and showy, and splendid for cut flowers. Grows 4 feet high. 18 to 24 in., 20c each.

S. callosa alba. White flowering variety, of dwarf, bushy, symmetrical form. Keeps in flower all summer. A valuable small shrub. 18 to 24 in., 20c each.

S. Thunbergi. Small shrub, fine fernlike foliage and small white flowers. Branches slender and drooping. First Spirea to bloom. 18 to 24 in., 20c each.

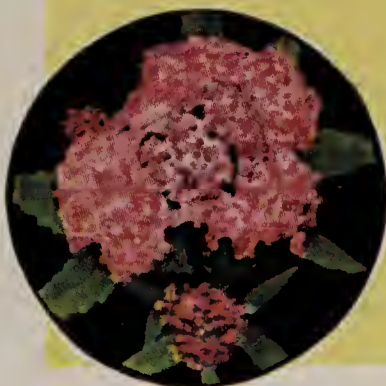


These Four Beautiful Shrubs

- ① Red Tartarian Honeysuckle.
- ② Golden Bell.
- ③ Spirea Anthony Waterer.
- ④ Spirea Van Houttei.

2-year, 18-inch size

70c
Postpaid





Tamarix Hispida.

TAMARIX hispida. A strong and slender, tall growing shrub with graceful bending branches. Bright silver foliage and bright coral-pink flowers in large panicles. 18 to 24 in., 25c each.

WEIGELA, Eva Rathke. Flowers are of brilliant crimson color, a beautiful and distinct shade. Blooms nearly all summer. Flowers bell-shaped, borne on graceful, drooping branches. 18 to 24 in., 25c each.

W. rosea. An elegant shrub, with beautiful rose colored flowers. Blooms very profusely in June. It is erect in habit, with dark green leaves. 18 to 24 in., 20c each.

WITCH HAZEL. Tall shrub, native to our woodlands. Yellow flowers in December or January. Unusual and delightful in the shrub border. 18 to 24 in., 30c each.

Special

Red Tartarian Honeysuckle—one of the fastest growing shrubs for hedges. 2-yr., 18 in., 10 for \$1.00.

Anthony Waterer Spirea—unsurpassed for foundation planting. 2-yr., 15 in., 10 for \$1.00.



White Snowberry.



High Bush Cranberry.

Hedges

AMUR RIVER PRIVET. Hardy. Foliage glossy green and holds its color well till late fall. Stands shearing to any extent. Very hardy; a beautiful hedge. 12 to 18 inches, \$4.00 per 100, prepaid. Large size, 2 ft., 10c each.

BARBERRY THUNBERGI (Japanese Barberry). Will grow anywhere; has nothing to do with Black Rust. Foliage bright green, oval leaves, turning to most brilliant shades of orange and red in the fall. Slender, graceful branches protected by thorns, scarlet berries in fall and winter. Grows to about 2½ feet. Prepaid, 12 to 18 in., \$3.75 per 100; 25 for \$1.00. Large size, 18 to 24 in., 7½c each.

CARAGANA or SIBERIAN PEA TREE. A large shrub or small tree with beautiful leaves of bright green; small yellow flowers in May. Can be pruned. Extensively used in the northern states. Extremely hardy. 12 to 18 in., \$3.00 per 100.

RED TARTARIAN HONEYSUCKLE. An upright shrub attaining a height of from 6 to 10 feet. Crimson flowers in early summer followed by showy berries that last through the fall. Valuable because it thrives in partial shade. 12 to 18 in., \$7.00 per 100, prepaid.

RUSSIAN MULBERRY. For hedges and screens. Must be pruned often. Stands hot, dry weather. Dark green foliage. Rapid grower. 18 to 24 in., \$2.00 per 100, prepaid. 12 to 18 in., \$1.50 per 100, prepaid.



100. Barberry Hedge, 12 to 18 in., \$3.75.



100 Amur River Privet Hedge, 12 to 18 in., \$4.00.

RUSSIAN OLIVE. One of the most adaptable of all hedge plants. It may be trimmed as closely as Privet into formal shapes, or when untrimmed, it makes a very effective shelter or windbreak. Has silvery white leaves and almost black shining bark. Fragrant yellow flowers. Is very hardy. 12 to 18 in., \$3.50 per 100. Ten 3-ft. trees, \$1.00.

SPIREA ANTHONY WATERER. Very hardy. Makes a beautiful low growing hedge becoming about 2 feet high, constantly in bloom all summer. 12 to 18 in., 10c each; \$8.00 per 100, prepaid.

SPIREA VAN HOUTTEI. This shrub makes a beautiful, graceful hedge, even after is through blooming. 12 to 18 in., \$4.25 per 100, prepaid; 20 for \$1.00.

How to Select Shrubs for Your Home

Tall Growing Shrubs for Corners and Heavy Planting

- 8 ft. and up
 Golden Elder
 Lilacs
 Bush Honeysuckle
 Dogwood
 Snowball
 Syringa
 Highbush Cranberry
 Witchhazel

Medium Height for Foundation Plantings

- Japan Quince
 Hydrangeas
 Spirea Billiardi
 Privet
 Spirea Van Houttei
 Deutzia

Dwarf Growing for Front Line Planting

- 2 to 5 ft.
 Fragrant Sumac
 Spirea Thunbergi
 Spirea Anthony Waterer
 Snowberry
 St. Johnswort
 Spirea Callosa Alba

Shrubs for Shady Locations

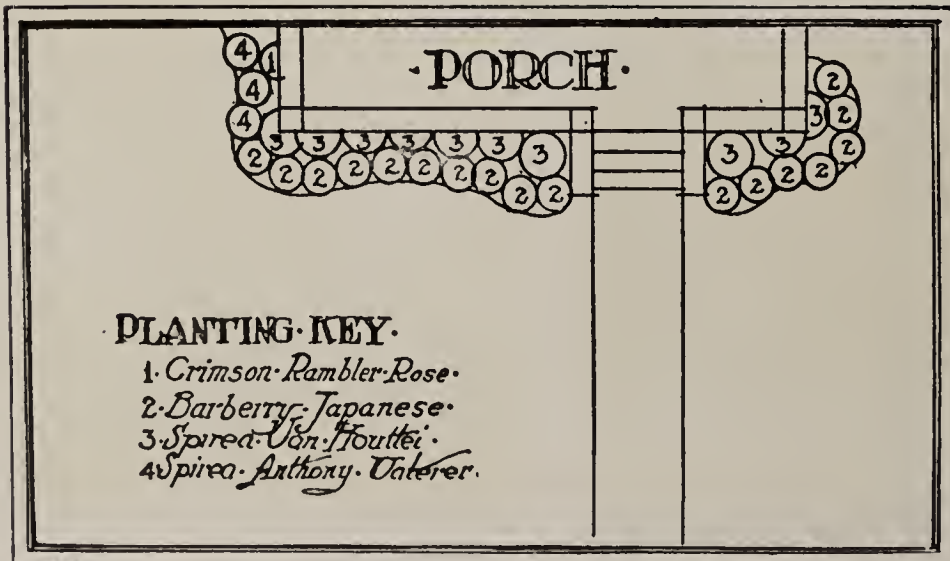
- Spirea Van Houttei
 Japanese Barberry
 Dogwood
 Hydrangeas
 Snowberry
 Honeysuckle
 Golden Bell
 Privet
 Deutzia
 Mock Orange

Shrubs with Attractive Berries

- Barberry
 Honeysuckle
 Elder
 Dogwood
 Snowberry
 Highbush Cranberry
 Jetbead

Special

- 10 Chinese Elm. 4-ft.
 \$1.00, prepaid.
 5 Chinese Elm. 6-ft.
 \$1.00, express collect.



Planting Plan No. 1

1. 1 *Crimson Rambler Rose.*
2. 17 *Barberry, Japanese.*
3. 10 *Spirea Van Houttei.*
4. 3 *Spirea Anthony Waterer.*

Thirty-one 2-year, well-rooted flowering shrubs that will increase the beauty of your home a thousand fold—and think of it, the entire collection will be sent anywhere in the United States, parcel post, prepaid, for **\$2.50**

Vines

Hardy climbing vines are particularly desirable as they tend to serve many useful purposes. Not only are they a source of beauty in themselves, but they make charming decorations and provide much needed shade. They also change the appearance of an unbroken wall and liven up the unsightly spots of your lawn. In spring and summer their foliage is a mat of green leaves, which turn to rich yellow, red and bronze in autumn.

BOSTON IVY. One of the finest climbers for covering walls, as it clings firmly to the smoothest surface, covering it evenly with overlapping leaves. The color is fresh, deep green in summer, changing to bright shades of crimson and yellow in autumn. Needs no support to cling to walls. 25c each.

BIGNONIA RADICANS (Trumpet Vine). A robust climber, with great leathery, trumpet-shaped flowers of scarlet. A beautiful, showy vine, useful for fences and screens. 20c each.

2 Bittersweet
2 Hardy White Clematis

Post-paid **75c**



Bittersweet.

BITTERSWEET (*Celastrus scandens*). Perfectly hardy and of rapid growth. Handsome, glossy foliage. Large clusters of beautiful orange-crimson berries that are retained all winter. The berries are in great demand for inside winter decoration. We do not know of any vine that is more satisfactory. It is exceptionally fine for trellises or porches. If you wish something to give a little color to your trees, plant one at the base of the shade trees. This vine seems to do better than other vines. 25c each.

CLEMATIS PANICULATA. The small flowering, sweet scented Japan Clematis. One of the most vigorous and beautiful of all climbers. In late summer it produces dense sheets of medium sized, pure white flowers of the most pleasing fragrance. 20c each.



Clematis Paniculata.

CINNAMON VINE. A strong, hardy climber from China. 10 to 30 feet, leaves heart-shaped; flowers small, white, cinnamon scented. Very fragrant and free from insects. 10c each; 3 for 25c.

HONEYSUCKLE, HALL'S EVERGREEN JAPAN. One of the best of the climbing Honeysuckles. Has oval, semi-evergreen foliage and fragrant, yellow and cream colored flowers. 20c each.

H., SCARLET TRUMPET. Same price as Hall's Evergreen Japan.

SILVER LACE VINE. Very quick growing; produces more bloom than any other vine, blooming from late summer into the fall. Small, fresh, shining foliage and large, foamy sprays of silvery white bloom. 35c each.

VIRGINIA CREEPER (Woodbine). A strong, rapid grower; foliage large, dark green, in autumn bronze and crimson. This is an old favorite and valuable for covering back porches and arbors. Perfectly hardy everywhere and will grow in any soil and situation, but must be tied, as it will not adhere to a wall. 15c each; 2 for 25c.

WISTERIA, PURPLE. Large, drooping clusters of purple, pea-shaped flowers, rapid grower. Blooms in May and June. 20c each.



Wisteria Blossoms.



Virginia Creeper.

Trees

All Shade Trees Shipped by Express.

The groves were God's first temples. Long before cathedrals were fashioned by human hands, man worshipped his Creator under the protecting canopy of stalwart and majestic trees. Trees give to man inspirations that help to mould the lives of those who live among them.

The lands of the Bible, once considered the finest in the East, flowing with milk and honey, now are mostly a barren wilderness, with the trees cut off. However, the Jews are now planting thousands of trees, the mountains and the hills are being terraced and vines adorn their sides. This planting has increased the average rainfall of Palestine fifty per cent. Take China, for instance this year, where thousands are dying for lack of food. Their ancestors generations ago, cut off all of the trees and the people are suffering for it.



10 New Chinese Elm, 4 ft., \$1.00.



Cut-Leaved Weeping Birch.

Trees, with their hundreds and thousands of moist green leaves to help the rainfall, and especially the ash, which makes wonderful firewood in case of strikes or traffic holdups, would come in mighty handy. By planting trees, we make our homes beautiful, monuments for ourselves and help to save our country from drought for our children. As a country grows older, it turns more and more to trees and fruits. Why not improve that seemingly waste stretch of ground? Who knows its possibilities?

ASH. A tall, rapid grower, smooth gray bark, glossy leaves. Stands more tramping and freer of insects than any other tree in existence. 5 to 6 ft., 30c each; 6 to 8 ft., 50c each.

BECHTEL'S DOUBLE FLOWERING CRAB. Probably the best of the many varieties of Flowering Crabs. Very hardy, thriving in most any soil; covered in spring with large, beautiful, double, fragrant flowers of delicate pink color. The tree then looks as if crowned with small, very fragrant Roses. The only sweet-scented Double Flowering Crab. 3 to 4 ft., 75c each.

BIRCH, CUT-LEAVED WEEPING. Not only the most popular of the weeping trees, but is indeed a picture of delicacy and grace. Its tall, slender yet vigorous growth, graceful branches, silvery white bark and delicately cut foliage present a combination of attractive characteristics rarely met with in a single tree. Excellent for lawn and cemetery planting. 5 to 6 ft., \$1.25 each.



European Mountain Ash.

TREES—Continued.

CATALPA BUNGEI (Umbrella Tree). Grafted on stems 4 to 7 feet high, makes an umbrella shaped top without pruning; perfectly hardy. Leaves large, glossy, deep green, heart shaped. Very desirable tree. 2-yr., 6 ft., 90c each; 2 for \$1.70.

ELM, WASHINGTON. Large native tree; wide, spreading head, graceful drooping branches. Easy to transplant, hardy. One of the best. 8 to 10 ft., 75c each; 6 to 8 ft., 50c each.

MAPLE, SOFT or SILVER. The most rapid growing shade tree that you can plant. Leaves are finely cut, bright green on upper side and whitish on lower side. They are not a silvery white, though, as those of the Silver Poplar. For quick results, Soft Maple is one of the best trees. 6 to 8 ft., 50c each; 5 to 6 ft., 35c each.

CHINESE ELM. Will give luxuriant shade in 5 years. Stands more drought than any other tree known. It is the first shade tree to put out leaves in the spring and the last to drop them in the fall, adding 3 to 5 weeks to its usefulness. No other tree approaches this. It is a tree of rare beauty. It has dense, dark green foliage, with delicate, graceful sprays similar to the Cutleaf Birch. 5 to 6 ft., 45c each; 6 to 8 ft., 65c each. Seedlings, per 100, 12 to 18 in., \$2.00; 18 to 24 in., \$3.00.

MAPLE, NORWAY. One of the most beautiful and desirable trees known. Of large size, perfect outline, with deep green foliage, which turns to a pale, beautiful yellow in autumn. They are a faster grower than Hard or Sugar Maple. 6 to 8 ft., \$1.50 each.

MOUNTAIN ASH, EUROPEAN. A fine, hardy tree, the head is dense and regular, covered in June with a mass of white flowers, later with yellow berries, which turn into bright scarlet and last long into winter. very beautiful. 6 to 8 ft., \$1.25 each.

LOMBARDY POPLAR (*Populus nigra italica*). In shape this is the exclamation mark among trees. Its towering spire has an individuality all its own. For tall screens and backgrounds, this tree is admirable. 6 to 8 ft., 40c each.

POPLAR, CAROLINA. One of the most rapid growing trees, with large, handsome, glossy, deep green leaves. Succeeds everywhere. Pyramidal in form, making a spreading head and dense shade when properly trimmed. Grasshoppers will not eat the leaves. 8 ft., 40c each, not prepaid. 4 ft., 10 for \$1.00, prepaid.

NIOBE WEEPING WILLOW. Much appreciated in landscape planting because of its golden bark. No other tree affords so brilliant a color. Rapid grower. 6 to 8 ft., \$1.00 each.

SUGAR or HARD MAPLE. Chieftain of its clan, straight and spreading, of grand proportions, roots deeply, grows well. Leaves have rich autumn tints of clear yellow and scarlet. 6 to 8 ft., \$1.25 each.



2 Catalpa Bungei, \$1.70.



Los Angeles.



Frau Karl Druschki.



Gen. MacArthur.

Hardy Roses

The Rose, the queen of all flowers, is also one of the most popular. Roses should be planted in well drained, deep, rich, loamy soil, and in a place where they will receive plenty of sunlight.

Everblooming Hybrid Tea Roses

These Roses are noted chiefly for their free and everblooming characteristics, and are commonly called "Monthly Roses." They bloom early and continue to bloom throughout the summer.

Betty Uprichard. One of the finest new Roses, with brilliant copper-red buds. A profuse bloomer, one of the outstanding varieties. 30c each.

Dame Edith Helen. One of the largest and most perfectly shaped pink Roses known. Blooms abundantly with long strong stems. Most perfumed of all pink Roses. 30c each.

Gen. MacArthur. A very sweet scented garden Rose. Brilliant glowing crimson, scarlet buds, opening into full blooms of good keeping qualities. Very free bloomer. 2-yr., 30c each.

Gruss an Teplitz. Dark rich crimson, changing to velvety fiery red. An exceptionally free bloomer, always in bloom and one of the brightest red Roses grown. One of the very best of the bedding Roses. 2-yr., 25c each; per doz., \$2.50.

K. A. Victoria. A great favorite. Flowers are large, exceedingly well formed. Color pure waxy white, very double. One of the most beautiful Roses grown. Very free bloomer. 2-yr., 30c each.

Lady Hillingdon. The wonderful color of this beautiful Rose is equalled by none. It has long, slender, pointed buds of brilliant golden yellow, improving in color as flower matures. 2-yr., 30c each.

Lady Margaret Stewart. A Rose of unique color—deep yellow splashed with orange and scarlet. Flowers are borne singly on long straight stems. A vigorous grower and blooms continuously. 30c each.

Los Angeles. One of the grandest all around Roses of American origin ever put on the market. Flowers large and continuous, in color a flame pink, toned with coral and shaded with translucent gold at base of petals. 30c each.

Mme. Caroline Testout. Bright satiny pink, largest of all everbloomers. One of the very best Roses. 2-yr., 30c each.

Ophelia. This is one of the finest of the newer Roses. The beautifully formed flowers are delicately colored salmon flesh, deepening to rose-pink in center. A Rose that is much admired by everyone. 2-yr., 30c each.

Pink Radiance. Vigorous, upright, bushy plants, bearing a continuous supply of very large, bright rosy pink flowers. One of the most dependable pinks. 2-yr., 30c each.

Red Radiance. A lovely deep red Rose, with large, globular flowers borne on heavy stems. Similar in growth to Radiance, except in color. 2-yr., 30c each.



Pink Radiance.



Lady Hillingdon.



Gen. Jacqueminot.



Lady Margaret Stewart.



Betty Uprichard.



Rev. F. Page-Roberts.

Rev. F. Page-Roberts. Marvelously colored flowers of golden yellow stained with copper and reddish buff on the outside. Buds extra long. One of the most popular of the new Roses. 30c each.

Souv. de Claudius Pernet. Deep sunflower yellow, very hardy and a vigorous grower; brilliant foliage and almost thornless stems, the most satisfactory yellow Rose ever produced. 2-yr., 30c each.

Sunburst. Bright, glowing orange-yellow, paling slightly at edge of petals, extremely brilliant in effect. It is the deepest of all Roses in the everblooming class. 30c each.

Talisman. One of the most beautiful of the new Roses. Remarkable coloring, a combination of gold, apricot, deep pink and old rose. The buds are long, well formed and develop into full double flowers. The plant is a strong grower, very hardy and free flowering. 35c each.



George Ahrends.

Hybrid Perpetual Roses

This class of Roses, while it blooms profusely during its season, is not a continual bloomer like the Tea Roses, but will come through more severe winters. These hardy Roses combine hardiness, vigor, growth and size of flower with great variety.

American Beauty. Flowers very large, of beautiful form and very double. Color a deep rich rose. Fragrance delightful. May be classed as a light red or deep pink. 2-yr., 30c each.

Captain Hayward. Scarlet-crimson, perfect form, sweetly scented large full blooms. 2-yr., 30c each.

F. K. Druschki (Snow Queen). The finest snow white, hardy perpetual Rose. Pure white, large, long pointed buds. Open flowers very large, perfectly double petals, well shaped. Continuous free bloomer. 2-yr., 30c each.

George Ahrends. Beautiful clear pink large and fragrant, plant very vigorous and blooms abundantly. 2-yr., 30c each.

Gen. Jacqueminot (Gen. Jack). A rich, velvety crimson, changing to a scarlet-crimson. The best known of all hybrid perpetuals, and is without rival in fragrance and richness of color. Does well anywhere and blooms freely. 2-yr., 30c each.

Marshall P. Wilder. Large, deep rich crimson, very fragrant and one of the most desirable Roses. 2-yr., 30c each.

Mrs. J. H. Laing. A favorite sort; satiny flowers of soft, clear pink. Free and continuous. Is generally accepted as one of the best of the light pinks. 2-yr., 30c each.

Paul Neyron. The largest Rose in cultivation, sometimes called the Peony Rose. Color, bright, fresh cerise-pink. Flowers are very double and full, delightfully fragrant. 2-yr., 30c each.

Prince Camille de Rohan. Deep, velvety crimson-maroon, moderately full; one of the darkest in cultivation. Good bloomer; very hardy. At a distance the flowers appear black. Blooms very freely. 2-yr., 30c each.

Ulrich Brunner. Extra large, bold flowers, full and globular. Rich, glowing cherry red, lighted with scarlet. Plant healthy and vigorous. 2-yr., 30c each.



Souv. de Claudius Pernet.



Mme. Caroline Testout.

Climbing Roses

Can be Trained for Hedges, Trellises and Porch Coverings.

CLIMBING AMERICAN BEAUTY. The fragrant, rich, deep rosy red flowers are produced in great abundance. Vigorous growth. 2-yr., 30c each.

CRIMSON RAMBLER. Vigorous, making an immense growth. Flowers glowing crimson, produced in great clusters. 2-yr., 20c each.

DOROTHY PERKINS. One of the most notable climbing Roses. Clear shell-pink, slightly fragrant. 2-yr., 20c each.

DR. W. VAN FLEET. Probably the best climbing Rose in cultivation. Long, pointed, deep pink buds that open to a light shade of pink. 2-yr., 25c each.

EXCELSA. An intense crimson, with edges of petals a little lighter, producing immense clusters. 2-yr., 20c each.



Paul's Scarlet Climber.



Dr. W. Van Fleet.

GARDENIA (Yellow Rambler). Bright yellow, opening cream, blooms early, and is very fragrant. 2-yr., 25c each.

PAUL'S SCARLET CLIMBER. The brightest and purest

red of all the climbing Roses. Flowers are large and distinct and retain their color all fall. Have prominent yellow stamens. 2-yr., 30c ea.

WHITE DOROTHY PERKINS. Closely resembles the Dorothy Perkins, except for its immense clusters of pure white flowers. Most valuable white climber of its class. 2-yr., 20c each.



Gardenia.

Special 1 Climbing American Beauty 1 Gardenia
 1 Dr. W. Van Fleet 1 Paul's Scarlet Climber
 These 4 Climbing Roses, 2-year plants, for only.....\$1.00

RED, PINK OR WHITE BABY RAMBLER. A dwarf form of the popular climbing rambler. Very hardy, vigorous and a perpetual bloomer. The flowers are large and borne in clusters. 30c each. These 3 Baby Ramblers, 75c, postpaid.



Baby Ramblers.

Rugosa Roses for Hedging

A Valuable Type of Roses and Will Survive the Most Severe Winters.

F. J. GROOTENDORST. Beautiful red flowers in clusters. The plant is a strong grower and bushy, with leathery, wrinkled, disease-resistant foliage, and blooms continuously till frost. A new type of Rose that has been described as a Rugosa plant, with the blooms of a red carnation. The canes are frequently 4 to 5 feet in height, and make a wonderful hedge. 2-yr., 30c each; \$2.75 per doz.

HANSA. Large, double, reddish violet flowers. Strong growth. 2-yr., 20c each; \$2.25 per doz.

SIR THOMAS LIPTON. The best double, leading white Rugosa. Large, pure white, blooms throughout the summer. 2-yr., 20c each; \$2.25 per doz.



F. J. Grootendorst.

Peonies

Peonies Once Planted Will Last for 50 Years or More—Fine Flowers, Almost Rivaling the Rose in Brilliancy and Bloom.

Special: 12 for \$1.50.

Double Red, Pink or White.

The Peony is as hardy as a Burr Oak and absolutely free from insect enemies and disease. This is saying a good deal. In addition to this, the flowers are of immense proportions, sometimes reaching nine inches in diameter, perfectly double and have a great range of color, from the purest white to the deepest crimson. Our Peonies are strong, 3- to 5-eye divisions taken from 3-year clumps. This age and size have proven most satisfactory for the general trade.

EDULIS SUPERBA. One of our earliest varieties of color, always open by Decoration Day. Color is a bright, clear mauve-pink, with silvery reflex. Flowers are of large size and very fragrant. 20c each; 6 for \$1.00.

FESTIVA MAXIMA. About the largest and undoubtedly the most popular Peony of all. High-built flowers, borne on long, stiff stems; the purest white, the inner petals slightly tipped with red. Double flowers, very broad petals. Always in bloom by Decoration Day. 20c each; 6 for \$1.00.

FELIX CROUSSE. Large, compact, globular bomb. Large guard petals. Brilliant ruby-red, without any shades of violet or purple. Fragrant. Strong grower. The most dependable cut flower. Midseason. 30c each; 4 for \$1.00.



Edulis Superba Peony.

FRANCOIS ORTEGAT. An old favorite. Rich, purplish crimson, with very pretty golden center. Good bloomer. Midseason. 20c each; 6 for \$1.00.

KARL ROSENFELD. The best of all red Peonies. Pure rich deep crimson. A splendid full, half rose type. Fine for cut flowers. 35c each.

MONS. JULES ELIE. Immense globular flowers, very full and a beautiful glossy lilac-pink, entire flower overlaid with a silvery sheen that makes it really beautiful. 50c each.

OFFICINALIS RUBRA. Large, beautiful blooms of crimson. Earliest of all good Peonies. Leaves are of a cut-leaf nature. 50c each.

2 Felix Crousse
2 Edulis Superba
2 Festiva Maxima

Post-Paid \$1.00

Iris

IRIS. The old-fashioned "Flag," which produces strong spikes of bloom that have a wide range of delicate color. Assorted colors, purple, yellow, white, pink and red. 30 for \$1.00.

***PUMILA IRIS.** The dwarf sort that gives the low-to-the-ground color in May. Blue, purple or white. 10c each; 6 for 50c.

NAMED VARIETIES: 8c each; 75c per dozen.

CANARY BIRD. Bright yellow.

CAPRICE. Rosy red standards with falls of a different shade.

AFTERGLOW. Tall, soft pink or buff gray shading to rich yellow through center; very large flowers.

ELDORADO. Yellowish bronze, shaded with heliotrope; a pleasing combination of colors.

JUNIATA. Clear blue.

LOHENGRIN. Pink-silver-mauve, shading to nearly white.

MME. PACQUITTE. Deep rose-red, very fragrant and a strong grower.

MARY GARDEN. Pale yellow, flushed with lavender.

PURPLE KING. Deep purple.

ROSE UNIQUE. Delicate blush rose.

QUAKER LADY. Smoky lavender with yellow shadings, odd and attractive.

SHERWIN-WRIGHT. Rich golden yellow.



German Iris.



Redbird.



Yellow Wonder.



1910 Rose.



Break o' Day.

Your choice of these fine named Glads — 10 each

60 bulbs for

\$1.00

Postpaid



America.



Baron J. Hulot.

Spring Bulbs

- DAHLIAS. Mixed colors. \$1.00 per doz.; postpaid, 10c each.
- GLADIOLI. Mixed colors. Large size. \$1.00 for 75.
- CANNAS. Red and yellow. 8c each; 75c per doz.

Garden Root Special • 50 Asparagus • 10 Rhubarb • 6 Horseradish Crowns • **\$1.00** All For **PREPAID**

FOLKS, IF YOU KEEP PLANTING, PLANTING WILL KEEP YOU.

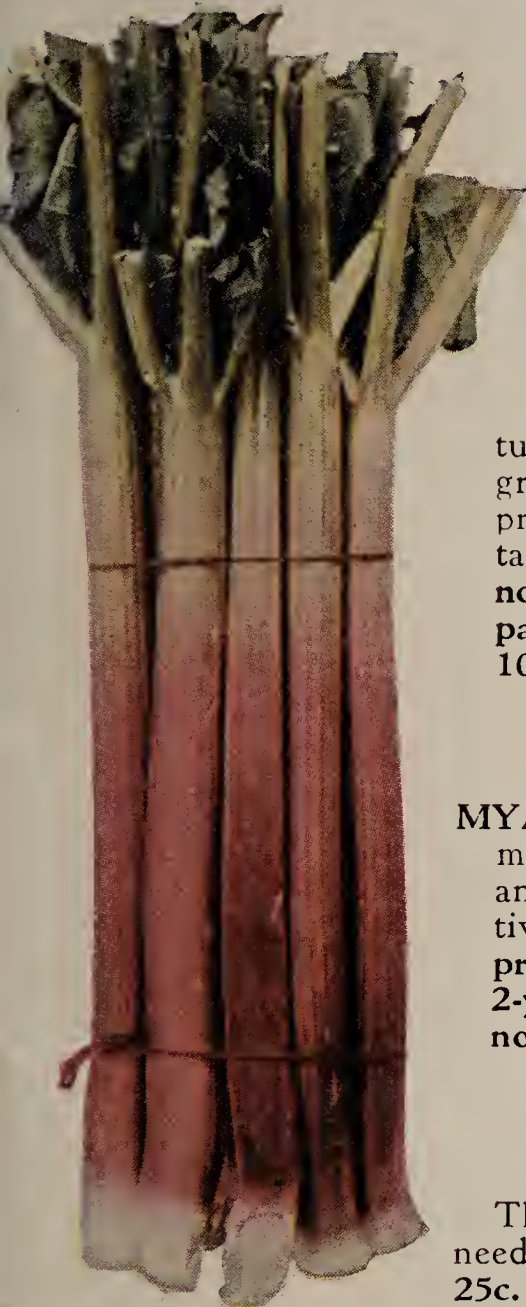
Special Quotations

BY PARCEL POST—(PREPAID)

Check here

<input type="checkbox"/>	12 Welch's Concord Grape Vines, 2 year	\$.75
<input type="checkbox"/>	50 Welch's Concord Grape Vines, 1 year	2.00
<input type="checkbox"/>	2 Caco, 2 Niagara, 3 Concord, and 3 Moore's Early Grapes,, 2 year	1.00
<input type="checkbox"/>	200 Mastodon Everbearing Strawberry Plants	1.85
<input type="checkbox"/>	100 Mastodon and 200 Dunlap Strawberry Plants	2.00
<input type="checkbox"/>	100 Blakemore and 100 Premier Strawberry Plants	1.00
<input type="checkbox"/>	100 Rust-Proof Asparagus, Mary Washington, 2 year	1.00
<input type="checkbox"/>	25 Rhubarb, the old reliable pie kind	1.00
<input type="checkbox"/>	50 Asparagus, 10 Rhubarb and 6 Horseradish	1.00
<input type="checkbox"/>	10 Downing Gooseberries or 10 Cherry Currants, 2 year	1.00
<input type="checkbox"/>	50 Cumberland Black Cap Raspberries	1.00
<input type="checkbox"/>	25 Chief and 25 Latham Raspberries	1.00
<input type="checkbox"/>	20 Two year old Apple Trees, 3 to 5 ft., 5 Delicious, 5 Grimes Golden, 5 Jonathan, 2 Duchess and 3 Wealthy	3.50
<input type="checkbox"/>	10 Early Richmond or Montmorency Cherry Trees, branched, 4 ft.	2.00
<input type="checkbox"/>	10 Plums; 3 Waneta, 2 Sapa, 2 Terry, 3 Apricot Plums, 4 ft.	2.50
<input type="checkbox"/>	10 Elberta Peaches or J. H. Hale, or any sort, 3 to 4 ft.	1.75
<input type="checkbox"/>	5 Kieffer or Bartlett Pears, 4 ft.	1.00
<input type="checkbox"/>	4 Climbing Roses, 2 yr.; 1 Paul's Scarlet, 1 American Beauty, 1 Crimson Rambler, 1 Dr. Van Fleet	1.00
<input type="checkbox"/>	5 Gruss An Teplitz Roses, 2 year, field grown	1.00
<input type="checkbox"/>	6 Everblooming Roses; 1 each Sunburst, Talisman, Radiance, Druschki, Hillingdon and Testout, two year field grown	1.50
<input type="checkbox"/>	20 Yucca or Spanish Daggers—grows in the dessert	1.00
<input type="checkbox"/>	6 Hydrangeas, P. G. or Hills of Snow, 18 inch, nice plants	1.00
<input type="checkbox"/>	20 Spirea Van Houttei, 18 inches	1.00
<input type="checkbox"/>	25 Barberry Thunbergi, 18 inches, 2 year	1.00
<input type="checkbox"/>	6 Red Leaf Barberry, nice 12 inch plants	1.00
<input type="checkbox"/>	10 Red Tartarian Honeysuckle, 18 inch	1.00
<input type="checkbox"/>	2 Hardy White Clematis Vines, 2 Bittersweet (for winter bouquets)	.75
<input type="checkbox"/>	6 Peonies; 2 each, F. Ortegat, F. Maxima and Superba	1.00
<input type="checkbox"/>	10 Regal Lilies, blooming size bulbs	1.00
<input type="checkbox"/>	75 Gladiolus, Rainbow colors, large bulbs, assorted 6 best sorts	1.00
<input type="checkbox"/>	30 Hardy German Iris, six best colors	1.00
<input type="checkbox"/>	20 Hollyhocks, assorted colors	.75
<input type="checkbox"/>	12 Hardy Phlox; 4 red, 4 pink, 4 white	1.00
<input type="checkbox"/>	10 Red Dwarf Spirea, Anthony Waterer, 15 inch	1.00
<input type="checkbox"/>	100 Amoor River Privet, 18 inch, best of all hedgings	4.00
<input type="checkbox"/>	100 Spirea Van Houttei, 18 inch, hardiest of all shrubs	4.25
<input type="checkbox"/>	100 Japanese Barberry hedging, 15 inches	3.75
<input type="checkbox"/>	10 Regels Privet, 15 inch	1.00
<input type="checkbox"/>	4 Two Year Shrubs; 1 each Red Tartarian Honeysuckle, Golden Bell, Anthony Waterer and Van Houttei; on catalog page 19	.70
<input type="checkbox"/>	31 Two Year Shrubs—Landscape planting on Catalog Page 22	2.50
<input type="checkbox"/>	10 Chinese Elms, 3 to 4 ft.	1.00
<input type="checkbox"/>	10 American Elm, 4 ft., 2 years, good roots, well branched, or Ash	1.00
<input type="checkbox"/>	2 Catalpa Bungei, 6 foot stems, not prepaid	1.70
<input type="checkbox"/>	5 Chinese Elms, 6 ft., not prepaid	1.00
<input type="checkbox"/>	10 Montmorency or Early Richmond, 5 to 6 ft., No. 1, not prepaid	2.25

REMARKS:



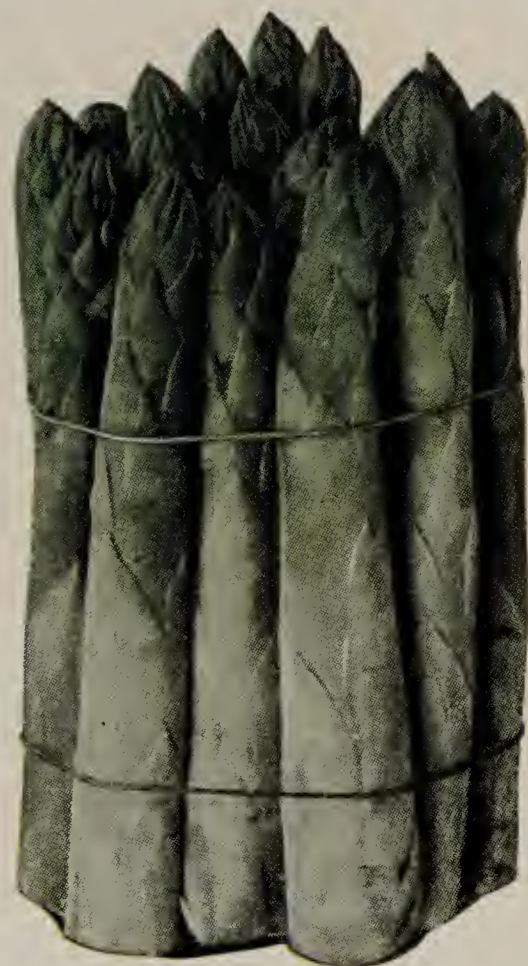
Asparagus

We have been successful growers of Asparagus for many years, and have always tried to give our customers the best varieties on the market.

MARY WASHINGTON (Rust-Proof). This new variety, offered to the public but a short time, has been approved by the best of horticulturists as the most rust-resistant Asparagus grown. This variety grows rapidly, and produces tall, slender stalks unexcelled for table use. 2-yr., prepaid, \$1.00 per 100; not prepaid, \$5.00 per 1000. 1-yr., prepaid, 75c per 100; not prepaid, \$3.50 per 1000.

Rhubarb

MYATT'S LINNAEUS. The sweetest and most tender variety, delicious for sauce and pies. Easily grown and very productive. Plant several roots this spring. 1-yr., prepaid, 25 for \$1.00; 100 for \$3.00. 2-yr., at same prices as 1-yr. grade but not prepaid.



Horseradish

The good old kind that doesn't need a description. Crowns, 4 for 25c.

Sage

One of the best herbs for seasoning. Good strong roots, 15c each.

Plants and Trees by Parcel Post

We strongly urge the advantage of our Parcel Post system for handling small quantities and the smaller size plants and trees.

We can send by Parcel Post all strawberry plants in quantities of 1000 and less. Grape vines, raspberry and blackberry plants in lots of 100 and less. Currants and gooseberries, both one and two-year-old, in lots of 25 or less. One-year-old fruits and ornamental trees and shrubs, roses, also

Holland bulbs, peonies, iris, and perennial plants.

The two larger grades of trees cannot be sent by Parcel Post. However, we call attention to the fact that express rates on nursery stock have been reduced about 25 per cent, which will be quite a saving to you on the larger size trees.

We prepay postage on all Parcel Post shipments, and your plants are laid right down at your door.

Guarantee of Genuineness

If any nursery stock, etc., proves untrue to description under which it is sold, we hold ourselves in readiness, on proper proof, to replace all such nursery stock, etc., that proves otherwise or refund the amount paid, but we shall in no case be liable for any sum greater than the amount originally received for said nursery stock.

State Certified Stock

Certificate of Nursery Inspection, No. 153, furnished with every shipment.

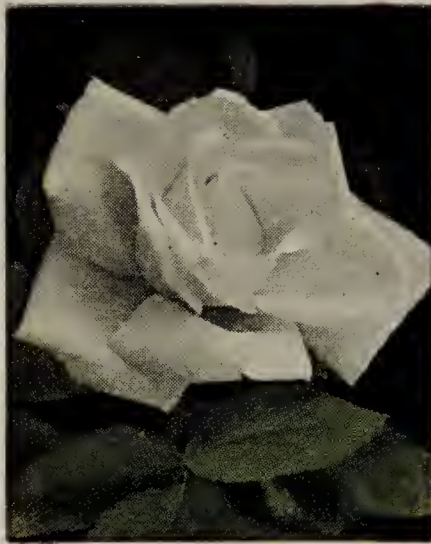
Help Your Friends

After you have read this book from cover to cover, please pass it along to someone you know that is interested. You will be doing them a favor as you will learn after you plant Welch's Trees. Thank you.

PERSONAL CHECKS ACCEPTED



Sunburst.



Kaiserin Augusta Victoria.



Gruss an Teplitz.

These Six Fine, Hardy Everblooming 2-year Roses for Only \$1.50

Sunburst
Frau Karl Druschki
Gruss an Teplitz

Dame Edith Helen
Talisman
Red Radiance

All Six Prepaid
For Only **\$1.50**



Dame Edith Helen.



Talisman.



Red Radiance.



Spiraea Van Houtte Special Offer

The most popular shrub ever introduced. For sheer magnificence a hedge of this graceful shrub in full bloom cannot be equaled, and its attractive foliage makes it a thing of beauty even after the flowers have gone. At this new low price many a fence will be replaced by a beautiful living screen of this marvelously graceful shrub.

18 inch bushes, 100, \$4.25; 20 for \$1.00

12 Hardy Phlox Red, Pink, White
Prepaid for **\$1.00**

The WELCH NURSERY

Shenandoah, Iowa