

Historic, archived document

Do not assume content reflects current scientific knowledge, policies, or practices.



Copyright 1932


Drawn with Eldorado Pencils

FRUITS, TREES & FLOWERS

SARCOXIE NURSERIES PEONY FIELDS
WILD BROS. NURSERY CO., SARCOXIE, MO.

Spring
1934

Where to Find It ~ Index

Abelia grandiflora	3	Cydonia (Quince)	7	Larkspur (Delphinium)	22		
Acer (Maple)	12	Dahlias	29	Lespedeza (Desmondium)	4		
Ageratum, Hardy	22	Daisies	22	Lilac	6		
Agrostemma	21	Delphinium	22	Lily	25		
Albizzia Julibrissin	11	Desmodium	4	Linum perenne	22		
Althea	4	Deutzia	5	Liquodamber	12		
Alyssum	21	Dewberries	30	Magnolia	12-16		
Ampelopsis	10	Dianthus	24-25	Mahonia Aquifolium	15		
Apple	32	Digitalis (Foxglove)	23	Mallow Marvels	23	Rudbeckia	24
Arabis Alpina	24	Dogwood	5-12	Maple	12	Russian Olive	7
Aquilegia (Columbine)	22	Elaeagnus	7	Mimosa Tree	11	Salix (Willow)	13
Arborvitae	14	Elm	12	Mock Orange	7	Sedum	24
Arbutus, Bush	3	Euonymus	10	Moss Pink ² (Phlox subulata)	23	Shade Trees	11-12
Arrow-Wood	4	Eupatorium	22	Mountain Ash	12	Shrubs	3-9
Asparagus	32	Evergreens	13	Myosotis (Forget-me-not)	22	Snowball	7
Baby's Breath	21	Flax, Perennial	22	Oak, Pin	13	Snow-in-Summer	22
Blad Cypress	11	Forget-me-not	22	Oregon Hollygrape	15	Spirea	7-8
Barberry (Berberis)	4	Forsythia	5	Painted Daisy	24	Spruce	16
Beautybush	4	Foxglove	23	Peaches	31	Stoke's Aster (Stokesia)	24
Betula (Birch)	11	Gaillardia	21	Pears	31	Stonecrop (Sedum)	24
Bittersweet	10	Gladiolus	30	Peonies	26-27	Strawberries	32
Blackberries	30	Gooseberries	31	Phlox	23	Sumac	8
Blanket Flower	21	Grapes	32	Philadelphus	7	Sweet William	25
Bleeding Heart	22	Ground Pinks (Phlox sub.)	23	Physostegia	24	Sycamore	13
Buddleia (Butterfly Bush)	4	Gum, Sweet	12	Picea (Spruce)	16	Syringa (Lilac)	6
Calycanthus	4	Gypsophila	21	Pine (Pinus)	15	Tamarix	8
Candytuft	22	Hedera	10	Pings	24	Tulip Tree	13
Cannas	29	Helianthemum mutabile	23	Plane, Oriental	13	Veronica	25
Catalpa	11	Hibiscus (Althea)	4	Plums	31	Viburnum (Cranberry Bush)	4
Caroline Allspice	4	Holly	15	Plum, Flowering	13	Viburnum Carlesi	9
Cedar (Red Cedar)	14-15	Hollyhock	23	Poplar (Populus)	13	Viburnum dentatum	4
Celastrus (Bittersweet)	10	Honeysuckle	5-10	Privet	7-9	Viburnum (Snowball)	7
Cerastium	22	Hydrangea	5	Pyrethrum	24	Viburnum lantana	4
Cherry	31	Hypericum	6	Quince, Japan	7	Vines	10
Chinese Silk Tree	11	Iberis	22	Raspberries	30	Violets	25
Chrysanthemums	22	Ilex	9-14	Retinospora	16	Water Lilies	16
Clematis	10	Iris	27-28	Rhodotypos kerrioides	7	Wayfaring Tree	9
Coreopsis	22	Ivy	10	Rhubarb	32	Weigela	9
Cornus (Dogwood)	5, 12	Jasmine	6	Rhus	8	Willow, Weeping	13
Cotoneaster	4	Jetbead (Rhodotypos)	7	Rock-Cress, Alpine	24	Wintercreeper (Euonymus)	10
Crab, Ornamental	12	Juniper (Juniperus)	15-16	Rock Rose (Helianthemum)	23	Winterberry	9
Cranberry Bush	4	Kerria japonica	6	Rose of Sharon (Althea)	4	Wisteria	10-11
Currants	31	Kolkwitzia	4	Roses	17-20	Yucca	25

How to Order

Just make a list of what you want, giving number, name, size and price. Tell us if your express or freight office is different from your postoffice, and whether to ship by freight, express or parcel post. If you do not give a shipping date, we ship when we think best according to season and locality. While our terms are cash we will ship C. O. D. if half the amount is sent with order, but it makes the transportation charges a little higher.

Please Tell Us

Shall we send a similar variety we consider equal or better if any variety ordered is sold out? If you say "no substitution" on your order we refund for any we cannot supply. If you do not tell us, we use our judgment. When we substitute, the tree is labeled with the correct name of the variety sent. If we sent Black Ben Davis in place of Ben Davis, it would be labeled Black Ben Davis.

Freight and Express Shipments

Prices herein are not prepaid unless quoted postpaid. Manufactured articles can be of uniform size and weight. Nursery stock varies, even the season when shipped sometimes making a difference. If we prepaid the larger sizes we would have to estimate it plenty so we wouldn't lost on it on the average, and most of the time you would be paying too much.

Plants by Parcel Post

We have in some cases quoted an estimated additional postage for Missouri and adjoining states. It cannot always be correct. When too much is sent the balance will be refunded. For other states the postage will be a little more, depending on distance. Large trees and shrubs cannot be sent parcel post.

What to Expect

Some plants grow large, others small. Some are bushy, others not. A Phlox is not as large as a Shasta Daisy. Different varieties of Roses vary in size. An Apple is better rooted than a Cherry. These are just examples. We try to give you good value and first class stock, but it will vary according to the habit of growth.

Our Guarantee

We exercise care and diligence to have our varieties true to label and sell all our stock with the express guarantee that we will, on proper proof, replace any that may prove otherwise, or refund the amount paid for the same, which shall constitute the extent of our ability.

Safe Arrival Guaranteed

Call for shipment upon arrival and care for it as directed on the card that will be mailed you. Should anything be damaged by delay, which very rarely happens, we will refund or duplicate it if you report at once. If by freight, express or truck we must have receipt for charges promptly, with agents notation of damage or we cannot enter claim for damages.

Freight and Express Rate Reduced

Freight and express rates on nursery stock have been reduced. Express is often less than parcel post, except for light packages and short distances. Unless otherwise instructed we ship the way we think best, considering cost, safety and service. When quoted postpaid we pay the postage.

Size, Quality and Price

There are some things, such as hardy perennials, the size of which can hardly be described. We tell you the size of most items. Yet every nurseryman knows that one grower's 3 to 4 ft. Shrubs, for example, may be larger and better branched than another's. You have to depend upon the reputation of the grower for that. One's reputation, after all, is more guarantee than anything he may say. A nurseryman supplies quality stock for two reasons—pride in his reputation and a desire to give the customer his money's worth. This Nursery takes pride in its reputation since 1875 for quality stock at fair prices. It's impossible for any nursery to furnish all varieties equally rooted or as heavily branched—they don't all grow that way. An Apple will be better rooted than a Cherry, a Spirea better branched than a Sumac, a Daisy larger than a Phlox. Some Roses will be larger than others. But we do promise you first class stock of



This illustrates an outdoor living room with its green carpet for the kiddies' feet, its sweet flowering blooms so refreshing to all and its friendly trees which throw a kindly shade.

its size and variety, stock well grown, liberally graded and properly packed. If we make a mistake, tell us—good natured if you can, but tell us.

The principles of successful business have not changed. It still takes good products to build a successful business. Even under existing conditions there is a price below which nursery stock cannot be sold without sacrificing quality and service. You buy trees and shrubs, not for a few months use, but to grow into beauty. We feel our prices are as low as we can make and supply you the quality you should expect. With improved conditions they will have to advance. Now is the time to plant.

Hardy Flowering Shrubs Beautify the Lawn

The early days of spring are brightened and made more cheerful by the great masses of golden Forsythia, the fiery Japan Quince and Spirea Thunbergi with its white flowers like a mantle of snow, before their leaves are developed. By selecting those blooming at different times, such as Lilacs, Deutzias, Spireas, Weigelas, Mock Orange, Butterfly Bush, Hydrangeas and Altheas, shrubs may be had in bloom from early spring till September, followed by hardy Chrysanthemums, the glory of autumn. Some of the berried shrubs, Barberry and Bush Honeysuckle, some shrubs with colored foliage, Golden Elder, Golden Spirea and Red Barberry, and some with colored twigs, as Siberian Dogwood, will add variety.

Shrubs make a beautiful display in a year or two, giving the lawn and dwelling an attractive, finished appearance. They appear to best advantage in groups along the boundaries or division line of properties, at the edges or corners of lawns, and near



Foundation planting of Barberry and other shrubs

walks and drives. Individual specimens should not be too much scattered about the lawn.

Foundation Plantings. High foundations may have the taller growing shrubs about the base, dwarf varieties being used for low foundations. The outlines of foundation and mass plantings should as a rule be irregular, and usually two or more of a variety should be used. The figures in parenthesis, as (5 to 6 ft.), indicate the height at maturity in this section under ordinary conditions. The blooming dates named are the average for southern Missouri.

Shrubs for Shady Situations. Success in shade is largely a matter of good drainage, fertility and sufficient humus or vegetable matter in the soil. The statement that a shrub is suitable for partial shade assumes that reasonable attention has been given to these needs. No shrubs give satisfactory results in excessively wet, excessively dry or too poor soil.

Pruning. Shrubs blooming before midsummer, hence on the old wood, should be pruned after blooming or the flowers will be reduced in number. Those blooming after midsummer, hence on new wood, should be pruned in early spring. Pruning should consist mainly in the removal of weak or old shoots to the ground, thus permitting new shoots to supply new blooming wood. Some straggly growing shrubs may need the ends of the shoots pruned to make them branch more freely.

Mail Sizes, postpaid

Those quoted as "mail size postpaid," while not as heavy as the regular grades, are sturdy, well rooted young plants and should give good results. If the larger sizes, not quoted postpaid, are desired by parcel post, postage will be additional.

Five or more of a kind at the 10 rate, less at each rate.

Abelia grandiflora; Bush Arbutus

Delicately fragrant flowers, white sometimes flushed pink, like small Weigelas, from early summer till fall; graceful habit; small glossy dark evergreen leaves; the tops often freeze back part way in Missouri; mound in winter like roses; prune in spring.

18 to 24 inches ----- \$0.50 each, \$4.50 per 10

Shrubs, continued



Althea blooms late in Summer

Althea; Rose of Sharon; Hibiscus syriacus

Stately, upright shrubs with flowers resembling single and double Hollyhocks in late summer when few other shrubs are in bloom; good for specimen plants, backgrounds, tall hedges or screens; succeed in any good soil not excessively dry; prune in spring before growth starts: (6 to 12, occasionally 15 ft.) Colors: Double White, Double Pink shaded white, Double Red, Double Violet.

Mail size, postpaid	-----	\$0.15 each,	\$1.25 per 10
2 to 3 feet	-----	.35 each,	3.00 per 10
3 to 4 feet	-----	.45 each,	4.00 per 10
4 to 5 feet	-----	.60 each,	5.00 per 10
5 to 6 feet	-----	.75 each,	7.00 per 10

Arrow-Wood; Viburnum dentatum

Attractive in late spring with its snowy flowers in flat clusters 2 to 3 in. across, and in the fall with its shining dark blue berries; leaves round to oval, purple and red in autumn; upright habit, usually 5 to 8 feet tall; prune after blooming.

2 to 3 feet	-----	\$0.35 each,	\$3.00 per 10
3 to 4 feet	-----	.45 each;	4.00 per 10

Barberry, Thunberg's or Japanese

Dwarf, dense, compact, spreading habit with graceful spiny branches; its small, beautiful bright green leaves appear very early in spring and color brilliantly in autumn, a mingling of bronze, orange, scarlet and crimson; berries scarlet $\frac{3}{8}$ to $\frac{1}{2}$ in. long, remaining into late winter. Thrives in moderately fertile, well drained soil; endures partial shade. Excellent for foundation plantings, about doorways, walks, etc., and for massing in front of taller shrubs; a good hedge. Grows 2 to 4 ft. high; may be kept any height desired by pruning in spring.

Mail size, postpaid	-----	\$0.10 each,	\$0.80 per 10,	\$6.00 per 100
8 to 12 in., bushy	-----	.15 each,	1.00 per 10,	8.00 per 100
12 to 18 in., bushy	-----	.20 each,	1.50 per 10,	12.00 per 100
18 to 24 in., bushy	-----	.30 each,	2.50 per 10,	18.00 per 100

Barberry, New Red-leaved Thunberg's

A very showy shrub for lending all-summer color to the shrubbery border with its rich, lustrous metallic or bronzy red foliage if planted in full sun; becomes green in shade; scarlet berries in fall and winter.

Mail size, postpaid	-----	\$0.15 each,	3 for \$0.43,	\$1.40 per 10
8 to 12 inches	-----	.20 each,	3 for .57,	1.80 per 10
12 to 15 inches	-----	.25 each,	3 for .70,	2.00 per 10
18 to 24 inches	-----	.45 each,	3 for 1.30,	4.00 per 10
24 to 30 inches	-----	.60 each,	3 for 1.75,	5.50 per 10

Beautybush; Kolkwitzia amabilis

In latter spring a mass of arching sprays of weigela-like flowers, but more dainty, pink on the outside, mottled with orange on the lower lip; of graceful habit, attaining a height of 4 to 6 ft.; prune after blooming.

2 to 3 feet	-----	\$0.50 each,	\$4.50 per 10
-------------	-------	--------------	---------------

Butterfly Bush; Summer Lilac; Buddleia

One of the most desirable summer-blooming shrubs; long, dense panicles of fragrant lavender flowers with orange eye, resembling Lilacs, from early July till frost the first summer; grows 4 to 7 ft. high; may be kept any desired height; succeeds with sun half the day; prune to the ground each spring.

Mail size, postpaid	-----	\$0.15 each,	\$1.20 per 10
1 yr., strong plants, tops cut back	-----	.20 each,	1.80 per 10
2 yr., strong plants, tops cut back	-----	.25 each,	2.20 per 10

Calycanthus floridus; Carolina Allspice

Odd, double, spicily fragrant, chocolate-red flowers about 2 in. across in latter spring; any well drained, somewhat rich soil, in sun or shade; grows 3 to 6 feet high; prune after blooming.

Mail size, postpaid	-----	\$0.25 each,	\$2.00 per 10
18 to 24 inches	-----	.40 each,	3.50 per 10
2 to 3 feet	-----	.50 each,	4.50 per 10

Cornus, see Dogwood

Cotoneaster acutifolia; Peking Cotoneaster

An upright, spreading shrub from Northern China, usually growing about 6 ft. high; small whitish-pink flowers in early summer, followed by black ovoid fruits about $\frac{1}{2}$ in. long; dense acute leaves, in fall purplish-red.

Mail size, postpaid	-----	\$0.15 each,	\$1.25 per 10
18 to 24 inches	-----	.30 each,	2.50 per 10
2 to 3 feet	-----	.35 each,	3.00 per 10

Crab, Flowering, see Shade Trees

Cranberry Bush; Viburnum opulus

Planted mainly for its bright scarlet, cranberry-like fruits in late July, remaining well into winter when not eaten by birds. Flowers in flat clusters, the center flowers which produce the berries small, with a ring of showy outer flowers like the individual flowers of the snowball; endures partial shade; prune, if necessary, after blooming; (8 to 12 ft.)

18 to 24 inches	-----	\$0.35 each,	\$3.00 per 10
2 to 3 feet	-----	.40 each,	3.50 per 10

Desmodium penduliflorum; Lespedeza formosa

Very showy in late Aug. or Sept., when few other shrubs are blooming, with its branches somewhat arched with their load of drooping clusters of rose-purple flowers nearly $\frac{1}{2}$ in. long like small peas; prune to ground each spring; (3 to 4 ft.)

Mail size, postpaid	-----	\$0.25 each,	\$2.50 per 10
2-year plants	-----	.40 each,	3.50 per 10



Deutzia gracilis, almost as dainty as Lily of the Valley, in May



Forsythia
(Page 5)



Bush Honeysuckle
(Page 5)

Deutzia gracilis; Slender Deutzia

Forms a dense, bushy plant 3 ft. high with slender, often arching branches, covered in early May with graceful single, pure white, starry flowers, almost as dainty as Lily of the Valley; will bloom with sun half the day; prune part of old wood out each spring directly after blooming.

15 to 18 inches ----- \$0.30 each, \$2.50 per 10

Deutzia Lemoine

Beautiful snow-white starry flowers in broad or somewhat cone-shaped clusters in May. Upright, compact habit and a little taller than gracilis, reaching about 4 ft., and flowers more tightly clustered; sun or partial shade; prune as above.

18 to 24 inches ----- \$0.35 each, \$3.00 per 10

Deutzia Magnifica

Fine double pure white, tassel-like flowers in compact, rounded, erect panicles in latter spring; excellent.

Mail size, postpaid ----- \$0.20 each, \$1.50 per 10
18 to 24 inches ----- .30 each, 2.50 per 10
2 to 3 feet ----- .35 each, 3.00 per 10

Deutzia Pride of Rochester

Covered in early spring with dainty double tassel-like flowers in clusters 4 to 6 in. long, white, outer petals tinted rose; deep green foliage. Any well-drained soil; of easy culture; vigorous, upright, growing 6 to 8 ft.; prune after blooming.

Mail size, postpaid ----- \$0.15 each, \$1.40 per 10
18 to 24 inches ----- .25 each, 2.00 per 10
2 to 3 feet ----- .30 each, 2.50 per 10
4 to 5 feet ----- .50 each, 4.50 per 10

Dogwood, Siberian or Coral; Cornus sibirica

Fuzzy, creamy-white flowers in small, flat clusters in spring; grown mainly for its intense, bright coral-red branches in winter; (6 to 10 ft.); prune to the ground early each spring to reduce the height and give more young branches which are the more intense color; well drained soil; sun or partial shade.

Mail size, postpaid ----- \$0.15 each, \$1.25 per 10
18 to 24 inches ----- .30 each, 2.50 per 10

Dogwood, Bailey's; Cornus Baileyi

A little taller in growth and more slender branches than Siberian, and less subject to blight; neither will give much trouble from blight if pruned as directed above.

Mail size, postpaid ----- \$0.15 each, \$1.25 per 10
18 to 24 inches ----- .30 each, 2.50 per 10
2 to 3 feet ----- .40 each, 3.00 per 10

Dogwood, Flowering, see Shade Trees

Forsythia; Golden Bell

One of the first shrubs to welcome spring, with its abundance of golden, four-petaled bell-shaped flowers, swinging in small clusters all along the leafless branches, often in March; very free from insects and diseases; the leaves remain green till late fall;

Forsythia, continued

prune immediately after blooming to keep the bushes compact and the height desired. Suitable for partial but not dense shade.

Forsythia Fortunei. Flowers golden-yellow, often with twisted petals; upright to arching branches (8 to 10 ft.)

Forsythia spectabilis. Large flowers of better color and blooms more freely than the other varieties.

Forsythia suspensa; Weeping Forsythia. Golden flowers; some shoots erect, attaining a height of 8 ft., others drooping, making lengths of 10 to 15 ft.; effective on banks or retaining walls where it droops naturally. Mail size and 18-24 in. only.

Price of above Forsythias:

Mail size, postpaid ----- \$0.15 each, \$1.40 per 10
18 to 24 inches ----- .25 each, 2.00 per 10
2 to 3 feet ----- .30 each, 2.50 per 10
3 to 4 feet ----- .40 each, 3.00 per 10

Honeysuckle, Bush; Lonicera

Extensively planted for their beauty of foliage, profusion of flowers in spring, and brilliant fruit, often even more showy than the flowers; of easy culture; as a rule need plenty of space to develop naturally; suitable for partial shade; (usually 6 to 8 feet). Prune after blooming.

Fragrantissima; Winter Honeysuckle. Flowers fragrant, very early though not very showy, white to blush; scarlet berries; foliage half-evergreen but it sometimes winter injures; (6 ft.). Mail size, 18 to 24 in. and 3 to 4 ft. only.

Pink Tatarian. Light pink to white flowers; berries borne profusely.

White Bush. White flowers, red berries.

Price of above Honeysuckles:

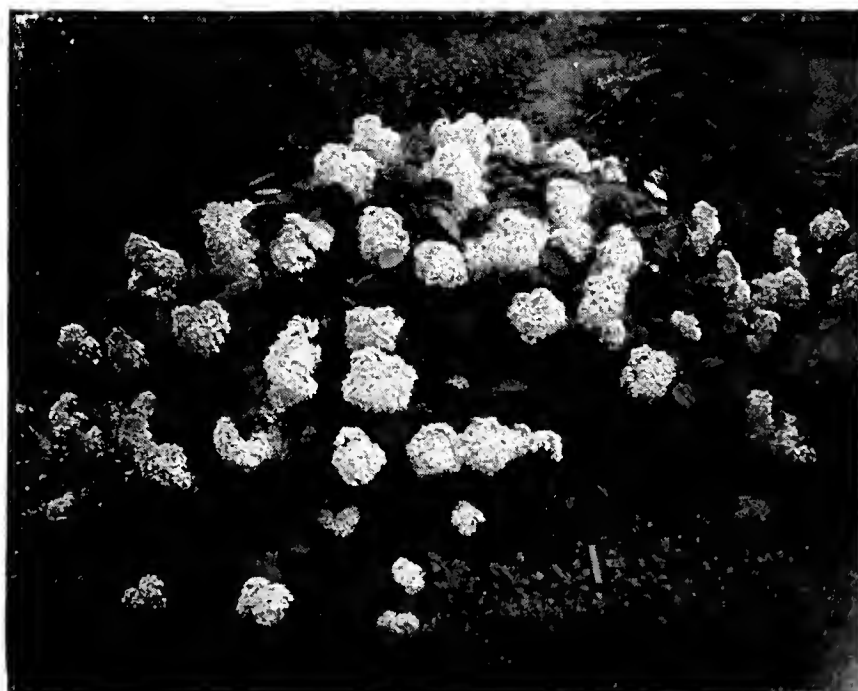
Mail size, postpaid ----- \$0.20 each, \$1.80 per 10
18 to 24 inches ----- .25 each, 2.00 per 10
2 to 3 feet ----- .30 each, 2.50 per 10
3 to 4 feet ----- .40 each, 3.50 per 10
4 to 5 feet ----- .50 each, 4.50 per 10

Hydrangea Hills of Snow: H. arborescens grandiflora

Well named for its profusion of snow-white flowers like large Snowballs, beginning in early June. If the blooms are cut off as they turn green it blooms a long time and is a prominent feature of any planting. In sunny situations the shoots are stronger, though it gives good results in partial shade. Pruning nearly to the ground each spring will keep the bushes dense and rather round, with a height of 3 to 5 ft. As the new shoots bear the flowers, the closer they are cut back the stronger the growth and the larger the flower heads. Give it fertile soil, and plenty of water during the blooming period.

Mail size, postpaid ----- \$0.15 each, 3 for \$0.43, \$1.40 per 10
1 year size ----- .25 each, 3 for .70, 2.00 per 10
2 year size ----- .30 each, 3 for .85, 2.50 per 10
3 year size ----- .40 each, 3 for 1.15, 3.50 per 10

Hydrangea paniculata grandiflora next page



This Hydrangea is well named Hills of Snow

Shrubs, continued

Hydrangea paniculata grandiflora; Peegee

One of the most showy shrubs of late summer, beginning to bloom in August; large, compact, cone-shaped clusters of white flowers, pale pink with age, the pink varying with the season, finally bronze; grows 5 to 7 ft. high. Pruning in early spring, removing the weak shoots and cutting back the stronger, increases the size of the clusters; should have fertile soil, and plenty of water while blooming. Plant in sun in Missouri.

Mail size, postpaid _____ \$0.20 each, 3 for \$0.50, \$1.65 per 10
 18 to 24 inches _____ .30 each, 3 for .80, 2.50 per 10
 2 to 3 feet _____ .40 each, 3 for 1.15, 3.50 per 10
 2½ to 3 feet, heavy _____ .50 each, 3 for 1.45, 4.50 per 10

Hypericum prolificum; St. John's Wort

An upright shrub of rapid growth, under favorable conditions growing 5 ft. high; single yellow 5-petaled flowers ½ to 1 inch across in clusters along the branches in mid-summer and fall; suitable for partial shade 30-36 in 50c each

Jasmine, Italian; Jasmine floridum

Bright green, arching branches and bright yellow flowers in clusters during summer; grows 3 to 4 ft. high. 2-3 ft. 50c each.

Kerria japonica, double

A neat, compact bush, about 4 feet high; numerous short-branched, spreading stems, an attractive bright green in winter; abundant golden-yellow, double globe-shaped flowers, 1 to 2 inches across, in early summer and at intervals till fall; fall foliage yellow; suited to partial shade; prune in early spring.

Mail size, postpaid _____ \$0.25 each, \$2.25 per 10
 18 to 24 inches _____ .40 each, 3.50 per 10
 2 to 3 feet _____ .50 each, 4.00 per 10

Kerria japonica, single

Golden-yellow flowers 1 to 2 in. across like single roses, literally covering the neat, compact bushes in May; grows about 4 ft. high; suited to partial shade.

Mail size, postpaid _____ \$0.20 each, \$1.80 per 10
 18 to 24 inches _____ .30 each, 2.50 per 10

Lilacs, Syringa

The objection to the old common lilacs was that they are slow about commencing to bloom. The newer Hybrid Lilacs bloom much younger, often the year following planting if given suitable conditions, are more varied in color and more dwarf. Valuable for fragrance and freedom of bloom in early spring; well suited for distant effects, for planting in the corners or boundaries, as screens, massed in groups and for specimen plants. Will stand a little morning and evening shade but full sun with good air drainage is best. Well drained soil, not too rich, gives a short-jointed growth that produces an abundance of flower buds. Prune after blooming, a little each year resulting in well formed bushes and flowers well placed over the entire bush. We have an extensive assortment of varieties, and will send list on application. The following are the leaders:

Belle de Nancy. Double; brilliant satiny rose, white center. One of the best of the pink shades.

Charles Joly. Semi-double; dark purplish red to wine-red.

Charles X. Single; purplish-red to lilac-red; while not the largest it is one of the most reliable free bloomers.

Ludwig Spaeth. Single; crimson-purple, one of the darkest; large flowers; rather dwarf habit.

Madame Abel Chatenay. Double; pure white; large compact trusses; somewhat dwarf habit; excellent.

Madame Casimer Perier. Double white; blooms freely; late; excellent.

Marie Legraye. A fine single white; blooms freely.

Madame Lemoine. Another fine double white.

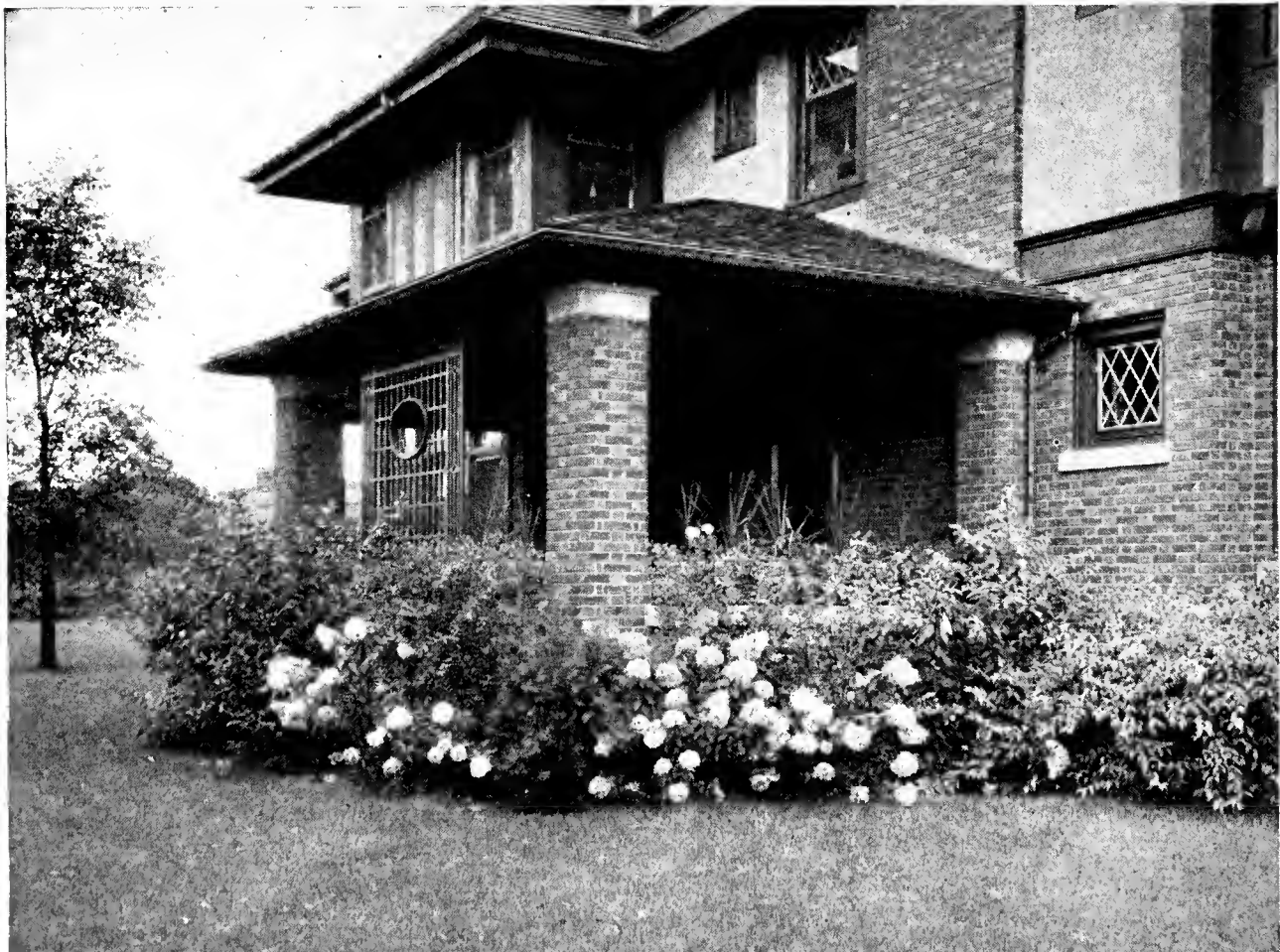
Michel Buchner. Double; pale lilac-blue; good size trusses; rather dwarf and stocky. There are no pure blue lilacs, but this is one of the bluest, and a good one.

President Grevy. Double soft blue; good sized clusters.

William Robinson. Double; violet-pink; large trusses and good flowers; rather dwarf; excellent.

Price of above Lilacs:

Mail size, postpaid _____	\$0.20 each,	\$1.75 per 10
12 to 18 inches _____	.25 each,	2.00 per 10
18 to 24 inches _____	.40 each,	3.00 per 10
2 to 3 feet _____	.60 each,	5.00 per 10
3 to 4 feet _____	.80 each,	7.50 per 10
4 to 5 feet _____	1.50 each,	12.50 per 10



Hydrangea paniculata grandiflora and other shrubs used as a foundation planting



For fragrance in early spring nothing can displace the Lilacs

Lilac, Persian Purple

Fragrant, pale lilac flowers in trusses 3 to 4 in. long, soon after Common Purple; grows 5 ft. high.

Mail size, postpaid-----\$0.20 each, \$1.50 per 10
 2 to 3 feet----- .30 each, 2.50 per 10
 3 to 4 feet----- .40 each, 3.50 per 10

Special Lilac Collection

We have many Lilacs not described above. We will furnish 11 Lilacs, 10 varieties our selection, 12 to 18 inches, by express collect for \$2.00, or mail size, postpaid, for \$1.75.

Mock Orange, Large Flowered; Philadelphus grandiflorus

This makes a larger shrub than Sweet Scented, with larger flowers.

Mail size, postpaid-----\$0.20 each, \$1.80 per 10
 3 to 4 feet----- .40 each, 3.50 per 10

Mock Orange, Sweet Scented; Philadelphus coronarius

The name is almost a description. It will grow in sun or where there is shade part of the day and gives a profusion of creamy white four-petaled flowers in late spring or early summer. Excellent for backgrounds or screens; (5 to 6 ft., sometimes larger); prune after blooming, removing weak and old branches to the ground; fragrant.

Mail size, postpaid-----\$0.15 each, \$1.25 per 10
 2 to 3 feet----- .30 each, 2.50 per 10
 18 to 24 inches----- .25 each, 2.00 per 10

Mock Orange Virginal; Philadelphus virginialis

The fragrant white flowers are semi-double, sometimes single, large, 1½ to 2½ in. across; blooms early and intermittently during summer; moderately tall.

Mail size, postpaid-----\$0.25 each, \$2.25 per 10
 18 to 24 inches----- .35 each, 3.00 per 10
 2 to 3 feet----- .40 each, 3.50 per 10
 3 to 4 feet----- .45 each, 4.00 per 10

Plum, Flowering, see Shade Trees

Privet, Regel; Ligustrum Regelianum

Branches almost horizontal, drooping at the tips, forming a rather flat-topped shrub. Leaves dark green, purplish in autumn; white flowers, blue-black berries; a good foundation plant if pruned back every two years to prevent it becoming too large and to give better foliage.

12 to 18 inches-----\$0.15 each, \$1.00 per 10
 24 to 30 inches, heavy----- .35 each, 3.00 per 10

Quince, Japan; Cydonia japonica

Beautiful in early spring, just as the leaves begin to unfold, with its five-petaled flowers 1½ in. across, a scarlet so brilliant it is also called Burning Bush; foliage shining dark green, in autumn bronzy-red; branches thorny; small plants irregular in growth, becoming better shaped with age; plant in sun; prune after blooming; (3 to 6 ft.)

18 to 24 inches-----\$0.25 each, \$2.00 per 10

Rhodotypos kerrioides; Jetbead

Valuable for its pretty, corrugated, light green leaves and its four-petaled white flowers, 1½ in. across in spring, followed by four shiny black seeds or jet beads; sun or partial shade; should occasionally be pruned severely to maintain compact growth; (3 to 6 ft.)

18 to 24 inches-----\$0.30 each, \$2.50 per 10
 2 to 3 feet----- .35 each, 3.00 per 10

Roses

Roses are really shrubs and many of them are suitable for use in shrubbery plantings. Ideal and Orleans are excellent dwarf shrubs for all-summer bloom: F. J. Grootendorst is good where a taller variety may be used. Hugonis makes a fountain of yellow in early spring, and Rugosa is excellent both for its flowers and seed pods. Pink and Red Radiance are sufficiently tall and vigorous to use as all-summer blooming shrubs. For descriptions and prices see pages 17 to 21.

Russian Olive; Elaeagnus angustifolia

As commonly seen, a large shrub attaining a height of 8 to 12 ft., occasionally becoming a small tree; young branches silvery-white; foliage narrow, grass-green above, silvery-white beneath; flowers small, yellowish within, silvery without, followed in summer by somewhat olive-shaped fruits 3/8 to 1/2 in. long, yellow coated with silvery scales.

2 to 3 feet-----\$0.25 each, \$2.00 per 10

Snowball, Common; Viburnum opulus sterile

Covered in early May with clusters of white flowers forming a snowball 4 in. across; fall foliage bronzy-red; sun or partial shade; prune after blooming; (6 to 8 ft.)

18 to 24 inches-----\$0.30 each, \$2.50 per 10
 2 to 3 feet----- .35 each, 3.00 per 10

Spirea

Their hardiness, thriftiness, profusion of bloom, graceful habit, neat foliage and general freedom from serious insects and diseases render them justly popular. The early blooming Spireas, after the bush attains good size, should have some of the old wood removed to the ground each year immediately after blooming. Prune the late blooming Spireas in early spring before growth starts. When neglected for years it may be necessary to prune almost the entire plant to the ground.

Spirea, continued next page

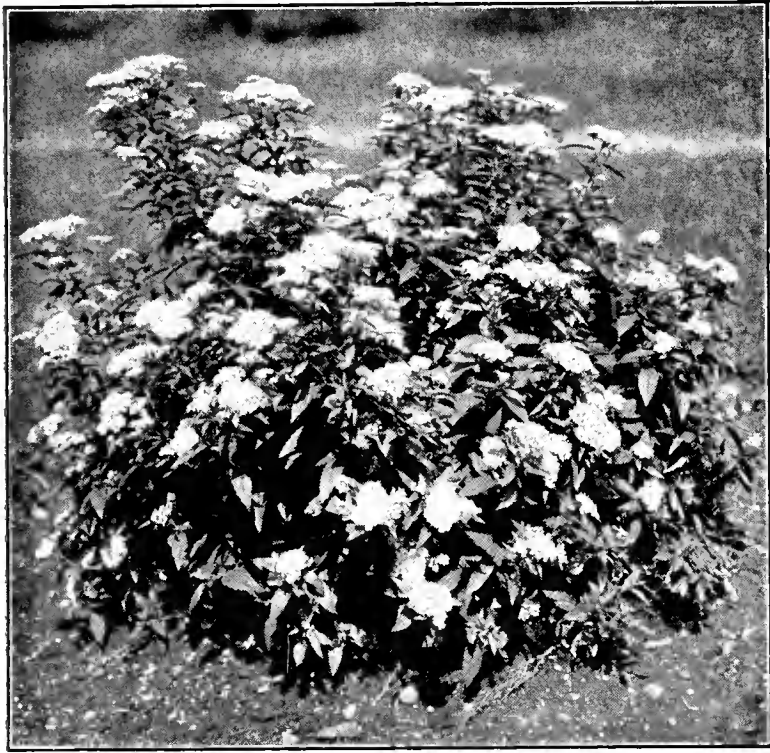


Butterfly Bush
(Page 4)



Mock Orange
(Page 6)

Shrubs, continued



Spireas Anthony Waterer is an excellent dwarf summer blooming shrub

Spirea Anthony Waterer

Rosy-crimson flowers in dense flat clusters in late May and at intervals until fall if the flower heads are cut off as they fade; dwarf, compact, upright habit; excellent for foundation and border plantings and for massing in front of larger shrubs; succeed with sun half the day; prune part of the old wood out each spring; (3 ft.)

Mail size, postpaid	-----	\$0.15 each,	\$1.25 per 10
15 to 18 inches	-----	.30 each,	2.50 per 10
18 to 24 inches	-----	.35 each,	3.00 per 10
24 to 30 inches	-----	.45 each,	4.00 per 10

Spirea Billardi Pink

Small fuzzy pink flowers in narrow, dense, upright finger-like clusters 5 to 8 in. long at the tips of the branches in early summer; upright habit; prefers moist situations; prune out some old wood in early spring; (3 to 5 ft.)

Mail size, postpaid	-----	\$0.20 each,	\$1.80 per 10
18 to 24 inches	-----	.25 each,	2.00 per 10
2 to 3 feet	-----	.35 each,	3.00 per 10

Spirea Bumulda superba

A low spreading bush with flat-topped clusters of pink flowers in May and at intervals during summer; prune in early spring

18 to 24 inches	-----	\$0.30 each,	\$2.50 per 10
-----------------	-------	--------------	---------------

Spirea Froebeli; Froebel Spirea

Similar to Anthony Waterer but with broader, darker leaves, and about 4 ft. tall; autumn foliage green overlaid bronzy-red.

18 to 24 inches	-----	\$0.25 each,	\$2.25 per 10
24 to 30 inches	-----	.35 each,	3.00 per 10
30 to 36 inches	-----	.50 each,	4.50 per 10

Spirea Golden; Golden Ninebark

Valuable for its changing foliage, golden yellow in early spring, bronze-yellow in early summer, green in latter summer, thus furnishing a variety of colors; white flowers in flat clusters, a little later than Van Houttei; spreading habit; plant in full sun; (5 to 7 ft.)

Mail size, postpaid	-----	\$0.15 each,	\$1.40 per 10
18 to 24 inches	-----	.25 each,	2.00 per 10

Spirea Korean; Spirea trichocarpa

A new Spirea with larger flowers than Van Houttei and blooms a little later. It grows 4 to 6 ft. tall forming a dome-shaped shrub; very hardy; prune after blooming.

18 to 24 inches	-----	\$0.25 each,	\$2.00 per 10
2 to 3 feet	-----	.35 each,	3.00 per 10

Spirea Margarita

Flowers bright pink in broad, flat clusters produced freely in midsummer; branches spreading; prune in early spring; 3-5 ft. 18 to 24 inches-----\$0.35 each, \$3.00 per 10

Spirea Thunbergi; Thunberg's Spirea

Its graceful spreading and arching branches are covered with many small, pure white flowers in clusters before the leaves are developed; leaves very narrow, 1 to 1¼ in. long, light green, in autumn orange and scarlet. The light green, fine feathery foliage effect makes Thunbergi suitable for nearby plantings where shrubs of coarse texture would be out of place; prune after blooming; grows 3 to 5 ft. high.

Mail size, postpaid	-----	\$0.15 each,	\$1.40 per 10
3 to 3½ feet	-----	.45 each,	4.00 per 10

Spirea Van Houttei; Van Houtte's Bridal Wreath

A fountain of white in May, its arching branches covered with clusters of small flowers; the graceful drooping habit and neat, dense foliage make it attractive throughout the season; excellent for grouping, as a background for lower shrubs, a foreground for taller shrubs, a screen, or as a specimen plant; each spring after blooming prune some of the old canes to the ground; grows 6 to 7 ft. high.

Mail size, postpaid	-----	\$0.15 each,	\$1.25 per 10
18 to 24 inches	-----	.15 each,	1.25 per 10; \$9.00 per 100
2 to 3 feet	-----	.20 each,	1.60 per 10; 13.00 per 100
3 to 4 feet	-----	.30 each,	2.50 per 10; 18.00 per 100
4 to 5 feet	-----	.40 each,	3.50 per 10; 30.00 per 100

Sumac, Staghorn; Rhus typhina

Leaf stems 10 to 24 in. long with 11 to 31 leaflets; flowers greenish, fruit crimson, in clusters; valued chiefly for its gorgeous autumn colors, crimson, orange and scarlet.

2 to 3 feet	-----	\$0.30 each,	\$2.50 per 10
3 to 4 feet	-----	.40 each,	3.50 per 10

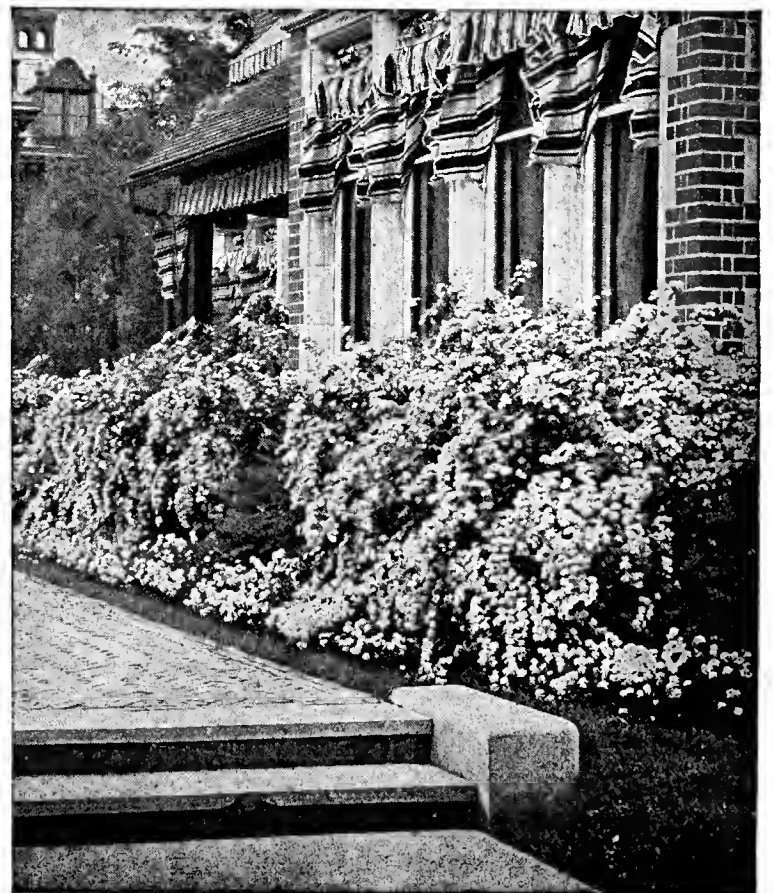
Syringa, see Lilac

Mock Orange is also sometimes called Syringa.

Tamarix; Tamarisk

Grown mainly for their delicate feathery foliage, in general effect somewhat resembling Asparagus; very small pink flowers; prune severely each year to maintain continuous supply of new wood; (8 to 15 ft.)

3 to 4 feet	-----	\$0.35 each,	\$3.00 per 10
-------------	-------	--------------	---------------



Spirea Van Houttei, a fountain of white in May or June



Weigela

Shrubs, continued

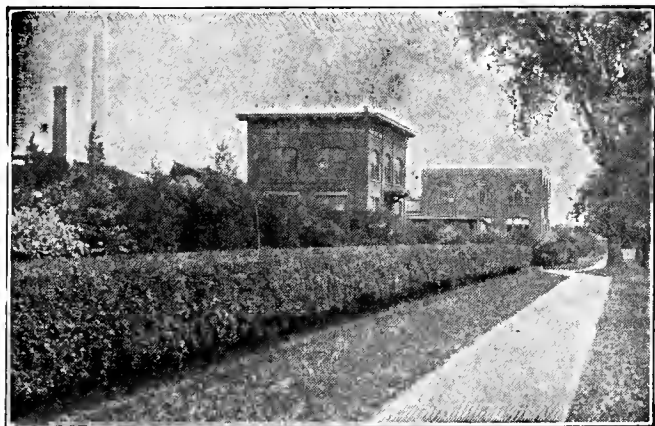
Viburnum Carlesi; Korean Viburnum

This Korean shrub recently came into prominence; forms a round-topped bush, usually about 4 ft. tall, with small flowers in dense flattened clusters about 2 to 3 in. across in early spring; tinted orange-pink in the bud, opening rosy-white, the fragrance reminding one of Trailing Arbutus. Mail size, postpaid. 50c each. 12 to 18 in., \$1.00 each. 18 to 24 in., \$1.25 each. 2 to 3 ft., \$1.50 each.

Wayfaring Tree; Viburnum lantana

An upright tree-like shrub; small white flowers in clusters 2 to 3 in. across in latter spring; bright red berries changing to black.

2 to 3 feet.....\$0.40 each, \$3.50 per 10
3 to 4 feet......50 each, 4.00 per 10



Privet Hedge

Weigela; Diervilla

Wide spreading bushes, most kinds reaching a height of 6 to 8 ft., and covered with a profusion of trumpet shaped flowers about 1 1/4 inches long in mid May; best in groups or for corners where they can be given plenty of room; prefer full sun except Eva Rathke; prune after blooming.

Weigela Eva Rathke. Brilliant carmine-red; grows about 4 feet high; prune after blooming to make it bushier; will grow in partial shade.

Colors, Light Pink, Rose, Carmine-red.

Prices of above Weigelas

Mail size, postpaid.....\$0.15 each, \$1.25 per 10
2 to 3 feet......35 each, 3.00 per 10
3 to 4 feet......45 each, 4.00 per 10

Winterberry; Ilex verticillata

In the autumn, when the leaves have fallen, it surpasses everything of its season in the brilliancy of its thickly studded scarlet berries 1/4 inch in diameter that cling to the branches well into winter. 18 to 24 in. 35c each. 2 to 3 ft. 50c each.

Privet for Hedging

Plant 10 to 12 in. apart. Prune back to within 4 to 6 in. of the ground to make them branch low and thickly. The second spring if not sufficiently thick they may be again pruned back a little higher. After that prune to keep the hedge the height and width desired, usually about three times a year. Avoid any severe pruning after the middle of August.

50 or more at 100 rate.

Amoor River North Privet; Ligustrum amurense

A rapid growing Privet of upright habit, rapidly taking the place of California as it is reliably hardy here.

Prices each in lots of	100	250	500
1 yr., 12-18 in., 2 and 3 canes	.05	.04 1/2	.04
1 yr., 18-24 in., 2 and 3 canes	.06	.05 1/2	.05
1 yr., 2-3 ft., 2 and 3 canes	.07	.06 1/2	.06
2 yr., 18-24 in., 4 canes up	.08	.07	.06
2 yr., 2-3 ft., 4 canes up	.10	.09	.08
2 yr., 3-4 ft., 4 canes up	.12 1/2	.11	.10

California Privet, Ligustrum ovalifolium

Upright habit; glossy dark green leaves, part of which remain on until Christmas; sometimes winter injures and requires cutting back.

Prices each in lots of	100	250	500
1 yr., 2-3 ft., 2 and 3 canes	.05	.04 1/2	.04

Regel Privet; Ligustrum Regelianum

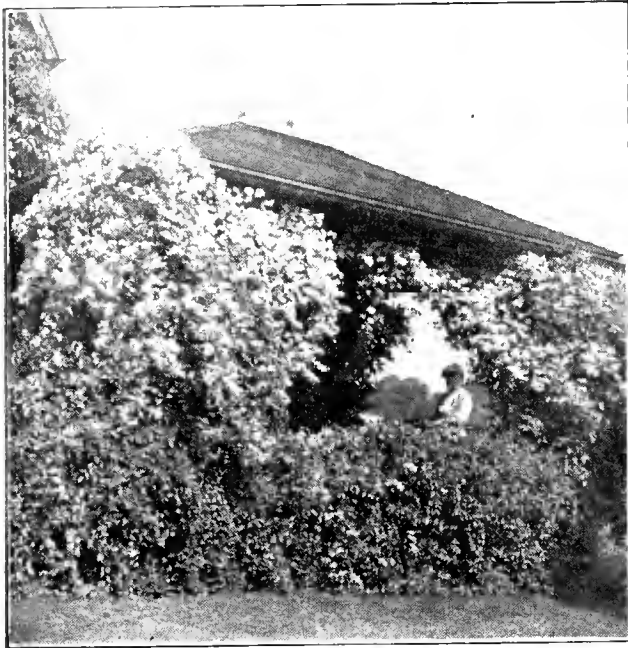
More spreading in habit than any of the above; makes an excellent broad hedge. More fully described on page 7.

6 to 12 inches, branched	\$5.00 per 100
12 to 18 inches, branched	7.00 per 100



Rock garden on the steep bank of a pool, showing the use of distant trees for a background

Hardy Vines, Nature's Drapery



The fragrance of Clematis paniculata resembles English Hawthorn

With a lavish hand nature throws a drapery of vines over the unsightly. An old tree, which cannot be removed, may be made a thing of beauty. Fences become beautiful screens. The bare arch, pergola or summer house is neither useful nor attractive, but vine-clad it bring a tone of dignity to the garden. It is then unnecessary to have it elaborate, often simple or rustic effects are best.

When planting cut the tops back severely, particularly clinging vines such as Euonymus and Ivy, as it is the new growth which clings. Twining vines must have a support around which to twine. Soil near a foundation is often poor; replace it with good soil. Plant firmly and water well, especially the first season.

Five or more of a kind at the 10 rate.

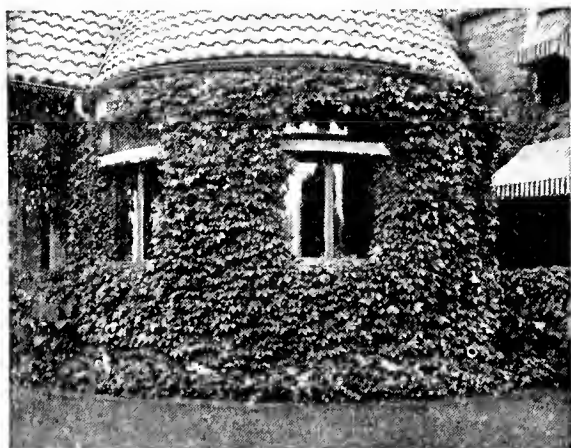
If by parcel post add 5c each, not less than 10c per package, for Missouri and adjoining states, except mail sizes.

Bittersweet, Oriental; Celastrus orbiculatus

A high climbing vine; leaves 2 to 4 in. long, bright green, yellow in autumn; excellent for covering trellises, trees, rocks or low stone walls; thrives in almost any soil, in sun or partial shade; in autumn the orange-yellow capsules open, revealing the red coated seeds. 2 yr. 40c each; Mail size, postpaid, 25c each.

Boston Ivy; Japanese Ivy; Ampelopsis Veitchi

A graceful vine clinging closely to wood, brick or stone by means of disc bearing tendrils and covering the surface smoothly; leaves 3-lobed, bright green in early spring becoming dark green, in autumn red and orange; berries blue. 3 year, 50c each, \$4.50 per 10. Mail size, postpaid 20c each.



Boston or Japanese Ivy

Clematis paniculata; Japanese Clematis

One of the most beautiful hardy vines with its thousands of deliciously fragrant pure white four-petaled starry flowers 1 to 1½ in. across, covering the upper part of the plant in latter August and September; growth rapid; quickly reaches a height of 15 to 20 ft.; excellent on porch, arbor or trellis and for covering rocks; clings by leaf-stem twining around the support; sun, or shade part of the day. 2 year, 30c each, \$2.50 per 10. Mail size, postpaid 25c each, \$2.00 per 10.

English Ivy; Hedera helix

A grand high climbing evergreen vine; wax-like dark green leaves of exquisite outline and beauty, 3- to 5-lobed; clings closely to brick, stone or wood by means of rootlets; growth rapid; best in the shade and for northern exposures; splendid ground cover in shade where grass will not grow, at the base of houses, and between foundation and path. 2 year, 35c each, \$3.00 per 10; Mail size, postpaid 25c each.

Euonymus radicans colorata

A graceful evergreen vine with small dark green, glossy, wax-like leaves, in autumn an attractive bronzy-red; may be used in partial shade and for covering steep banks. 2 yr. 30c each, \$2.50 per 10. Mail size, postpaid 25c each, \$2.00 per 10.

Euonymus radicans vegeta; Bigleaf Wintercreeper

A shrubby form with evergreen leaves 1½ to 2 in. long, excellent as a dwarf plant among or in front of evergreens, in the foreground of shrubbery, among rocks and as a foundation plant; if planted near a support will climb some; in autumn its red berries somewhat resemble those of the Bittersweet. 2 year, 35c each, \$3.00 per 10; Mail size, postpaid, 25c each. \$2.00 per 10.



Hall Japanese Honeysuckle, excellent for covering walls

Honeysuckle, Hall Japanese; Lonicera Halliana

Deliciously fragrant white flowers, becoming yellow, in June and, though less profusely, at intervals till fall; a very strong, rapid growing twining vine, reaching a height of 15 ft.; excellent for the porch, as a ground cover, and for covering walls, stone fences, etc., in sun or partial shade. 2 year No. 1, 35c each, \$3.00 per 10; Mail size, postpaid, 20c each, \$1.50 per 10.

Honeysuckle, Heckrotti or Everblooming

A constant blooming compact vine; flowers in clusters, deep rose outside, yellow inside; rare. 2 year, 30c each, \$2.50 per 10; Mail size, postpaid, 20c each, \$2.00 per 10.

Honeysuckle, Scarlet Trumpet; Lonicera sempervirens

A high climbing vine; bluish-green leaves; flowers trumpet shaped, scarlet outside, buff inside, 1½ to 2 in. long, in clusters at the ends of the branches, followed by red berries. 2 year, 25c each, \$2.00 per 10; Mail size, postpaid, 20c each, \$1.50 per 10.

Wisteria, American Purple; Wisteria frutescens

A tall, stout, rapid climber with numerous hanging clusters of lavender-purple pea-shaped flowers; among the best of vines for porch, arbor or trellis; grown from cuttings; prefer deep, rich soil; unless pruned when planted may be slow in starting. 2 year, 25c each, \$2.00 per 10; Mail size, postpaid, 15c each, \$1.25 per 10.

Hardy Vines, continued

Wisteria, American White; *Wisteria frutescens alba*

A variety of the above with white flowers; grown from cuttings. 2 year old, 25c each, \$2.00 per 10; Mail size, post-paid, 15c each, \$1.25 per 10.

Wisteria, Chinese White; *Wisteria sinensis alba*

A white flowered form of the Chinese. 2 year, 40c each.

Wisteria, Chinese Blue; *Wisteria sinensis*

The clusters of violet-blue flowers are longer than those of the American and not so thick on the cluster. 2 year, 40c each.

Wisteria, Japanese; *Wisteria multijuga*

A vigorous, tall growing Wisteria with light purple pea-shaped flowers in long drooping clusters. 3 yr. 40c each, \$3.50 per 10.

THE FASCINATION OF ROCK GARDENING

An eight page booklet mailed free on request.

Complete Landscape Service

We have a competent landscape architect and are prepared to render a complete service, from the drawing of the plans to furnishing and planting the trees and plants. If interested in this service write us for particulars, giving the size of your property.

TUNE IN W. M. B. H. FOR THREE MINUTE GARDEN TALKS

Those within range of the Joplin, Mo., radio station, W. M. B. H., 1420 kilocycles, are invited to tune in each Sunday at 1:45 P. M. for a three minute gardening talk.



Wisteria

Shade Trees Beautify the Lawn

A broad open space of well kept lawn is the first essential of good landscape design, the base against which all else is viewed. Yet it is incomplete without shade trees, both for protection and ornament. Trees are needed to shield the house from

the direct heat of the sun during the hottest part of the day. For beauty they provide a background and a frame for the house. For the latter purpose they are usually planted near the ends and a little to the front so one can view the house between and beyond the trees. Once established nothing will increase in value and give such results with so little attention as shade trees.

When planting remove any unnecessary weak limbs and shorten some of the others. The central leader is not usually pruned unless necessary to make the head more dense. As higher limbs form gradually remove the lower ones to the height desired. If planted thickly or a rapid growing tree is alternated with a permanent one for quick results, remove the temporary trees before they become crowded. Otherwise, it requires several years for those remaining to become shapely. Plant firmly and see that they do not suffer for lack of water the first year.

Five or more of a kind at the 10 rate.

Albizia Julibrissin; Mimosa Tree; Chinese Silk Tree

An unusual rapid growing tree from Asia; its spreading branches form a flat-topped crown; graceful small feathery foliage; showy pink Acacia-like flowers in clusters at the tips of the branches in summer, continuing for several weeks.

3 to 4 feet.....\$0.75 each, \$6.00 per 10
4 to 5 feet..... 1.00 each, 9.00 per 10

Bald Cypress; *Taxodium distichum*

A tall, graceful tree with narrow evergreen-like foliage 1/2 to 3/4 in. long, light and airy, becoming yellow and orange before falling; fruit a cone 1 in. across; excellent for a summer evergreen effect with plenty of light in winter. 4 to 5 ft., .60 each; 5 to 6 ft., .75 each; 6 to 8 ft., \$1.00 each.

Birch, European White; *Betula alba*

A beautiful, graceful tree of peculiar charm with white bark and slender branches, the ends drooping with age; leaves rather small, bright green, in autumn yellow; growth rapid. The bark becomes white when about 8 to 10 ft. high.

3 to 4 feet.....\$.50 each, \$4.50 per 10

Catalpa, Umbrella; *Catalpa Bungei*

A straight, upright stem, with a dense, round, umbrella-like head; large heartshaped leaves; seldom blooms so has no seed pods to litter the lawn.

5 to 6 feet, 2 year heads.....\$1.25 each, 2 for \$2.25



Lombardy Poplar, excellent as an accent tree and for screen plantings

Shade Trees, continued

Crab, Flowering; Malus

Double Flowering Pink. A variety of upright habit, attaining a height of about 8 feet, and literally covered in spring with semi-double flowers, deep pink on a white ground, followed by tiny crabs; very showy. 2 to 3 ft., 50c each.

Aldenham; Malus Aldenhamensis. A late flowering crab with semi-double purplish-red flowers 1 to 1 1/4 in. across, followed by deep purplish-red fruit. 2 to 3 ft., .50 each; 3 to 4 ft., .75 each.

Red-vein; Malus Niedwetzkyana. Early; large pink flowers, delicately scented; the fruit, bark and new foliage tinted reddish to purplish. 2 to 3 ft., .50 each; 3 to 4 ft., .75 each.

Dogwood, Red Flowering; Cornus florida rubra

One of the most unusual and attractive trees when in bloom in early spring, its flowers like those of White Flowering Dogwood but a decided pink, often called red; rare.

18 to 24 inches ----- \$1.25 each, \$11.00 per 10
 2 to 3 feet ----- 2.00 each, 19.00 per 10
 3 to 4 feet ----- 3.00 each,

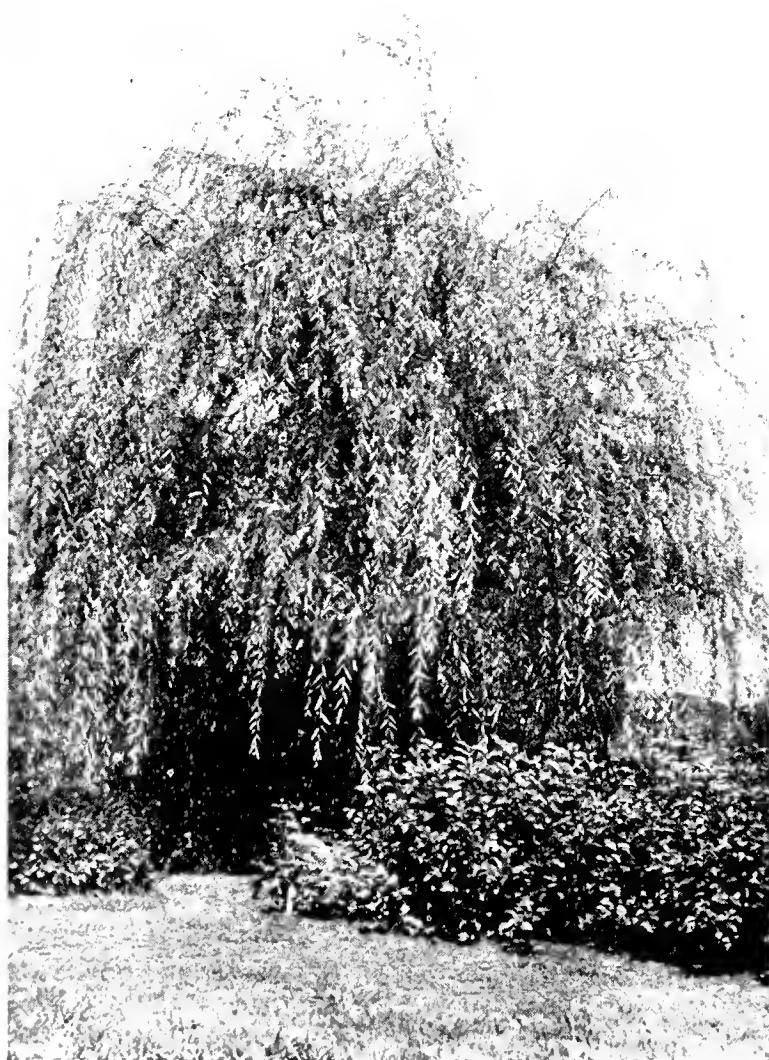
Dogwood, White Flowering; Cornus florida

In early spring before the leaves appear it is covered with showy 4-petaled flowers 3 to 4 in. across, white, the tips curiously blotched pink; scarlet berries, leaves bright green, in autumn scarlet to crimson; a large shrub or small tree usually attaining 10-15 ft.; succeeds in sun or partial shade. 3 to 4 ft., \$1.50 each.

Elm, American White; Ulmus americana

A large tree with long, graceful branches: leaves dark green, in autumn pale yellow; rapid growth; easily transplanted: the well known Elm of our American forests.

6 to 8 feet ----- \$0.70 each, \$6.00 per 10
 8 to 10 feet ----- 1.00 each, 9.00 per 10
 10 to 12 feet ----- 1.50 each, 12.50 per 10



Weeping Willow



Flowering Dogwood

The Flowering Dogwood seems to typify the coming of spring. It is one of the most brilliant trees of autumn and the scarlet berries are attractive in October.

Elm, Chinese; Ulmus pumila

A comparatively recent introduction; a rapid grower with slender branches and leaves much smaller than those of the American Elm; especially adapted to arid regions.

Mail size, postpaid ----- \$0.20 each, \$1.80 per 10
 3 to 4 feet ----- .30 each, 2.50 per 10
 6 to 8 feet ----- .80 each, 7.00 per 10
 8 to 10 feet ----- 1.50 each, 12.50 per 10
 10 to 12 feet ----- 2.50 each, 22.50 per 10
 12 to 15 feet ----- 3.50 each 30.00 per 10

Elm, Moline; Ulmus Molinei

Of rapid growth and erect habit, producing an effect somewhat similar to Lombardy Poplar, though not so slenderly pyramidal; leaves dark green, in autumn clear yellow.

6 to 8 feet ----- \$1.00 each, \$8.00 per 10
 8 to 10 feet ----- 2.00 each, 17.50 per 10

Gum, Sweet; Liquidamber Styraciflua

A picturesque, shapely tree of pyramidal habit; slender corky-ridged branches; leaves 5-to 7-lobed star shaped, bright shiny green, autumn color usually blazing orange and crimson.

6 to 8 ft., B. & B. \$3.00 each; 8 to 10 ft., B. & B. \$5.00 each

Magnolia Soulangeana

Large, somewhat bell-shaped flowers 4 to 5 in. across, white, more or less suffused with rose or pink on the outside, in April before the leaves are developed; a large shrub or shrubby small tree. 24 to 30 in., bushy, \$5.00 each; 30 to 36 in., bushy, \$6.00 each.

Maple, Sugar, Rock or Hard; Acer saccharum

A beautiful tree; dense, symmetrical crown; leaves 3- to 5-lobed, deep green, in autumn beautiful yellow, orange and scarlet; deep rooted, allowing grass to grow freely about the trunk.

6 to 8 feet ----- \$1.50 each, \$12.50 per 10
 8 to 10 feet ----- 2.50 each, 20.00 per 10

Mountain Ash; Sorbus

A handsome small ornamental tree with compound leaves; the leaflets resemble Ash; small bright red berries in fall. 6 to 8 ft. \$1.00 each.

10 to 12 ft. \$12.50 per 10
 EACH PER 10
 \$1.50 \$19.00 \$11.00

Shade Trees, continued

Oak, Pin; *Quercus palustris*

One of the most beautiful and rapid growing Oaks; the limbs are spreading, decidedly horizontal, somewhat drooping with age; autumn foliage deep and brilliant scarlet; excellent for avenue and lawn.

6 to 8 feet, B & B.-----\$3.00 each, \$27.50 per 10
8 to 10 feet, B. & B.----- 5.00 each, 45.00 per 10

Plum, Cistina; *Prunus cistina*

Useful for its brilliant purplish-red foliage; more shrubby in habit than Newport Plum.

3 to 4 feet-----\$0.50 each, \$4.50 per 10

Plum, Newport; *Prunus Newport*

The highly colored purplish-red foliage, becoming greenish-red in latter summer, makes it a very striking large shrub or small tree; magenta-red fruit, of fair size and quality, in mid-summer; upright habit, attaining a height of 12 to 15 ft.

3 to 4 feet-----\$0.50 each, \$4.50 per 10

Poplar, Bolle's Silver; *Populus Bolleana*

Columnar habit, very similar to Lombardy but the leaves are dark, glossy green above, downy white beneath.

8 to 10 feet-----\$1.00 each, \$9.00 per 10
10 to 12 feet----- 1.50 each, 12.50 per 10

Poplar, Lombardy; *Populus nigra italica*

A tall, slender, columnar, spire-like tree of picturesque and very formal aspect; leaves dark green, triangular, on flattened stems, moving freely in the breeze; very rapid growth; useful to screen objectionable views; landscape architects are using it freely as an accent tree.

Mail size, postpaid-----\$0.15 each, \$1.20 per 10
4 to 6 feet----- .30 each, 2.50 per 10
6 to 8 feet----- .50 each, 4.00 per 10
8 to 10 feet----- .80 each, 7.00 per 10
10 to 12 feet----- 1.00 each, 8.00 per 10

Sycamore, Oriental; Oriental Plane; *Platanus orientalis*

More beautiful and symmetrical in growth than the American Sycamore, becoming a large and massive tree, usually with a wide round-topped head; bark whitened, leaves somewhat maple-like; an excellent city or street tree.

6 to 8 feet-----\$0.75 each, \$6.00 per 10
8 to 10 feet----- 1.00 each, 9.00 per 10

Tulip Tree; *Liriodendron tulipifera*

A magnificent tree; very rapid growth; leaves large, 4-lobed light bluish-green, in autumn pale yellow and orange; tulip-like flowers, greenish yellow blotched orange, in May.

6 to 8 feet-----\$1.25 each, \$11.50 per 10
8 to 10 feet----- 2.00 each, 18.00 per 10

Willow, Babylon Weeping; *Salix babylonica*

A large, graceful tree with long, slender, drooping branches; leaves bright green, 2 to 6 in. long, narrow, tapering to a long point; excellent for the margin of pools or streams, but does not require such a position.

Mail size, (2 to 3 ft.) postpaid-----\$0.25 each, \$2.00 per 10
4 to 6 feet----- .35 each, 3.00 per 10
6 to 8 feet----- .60 each, 5.00 per 10

Willow, Niobe Weeping

A graceful tree with slender, drooping, yellow-barked branches; leaves lustrous green; very hardy.

Mail size, (2 to 3 ft.) postpaid-----\$0.25 each, \$2.00 per 10
4 to 6 feet----- .40 each, 3.50 per 10

Willow, Pussy; *Salix*

Who does not remember the Pussy Willow, with its conspicuous silky catkins responding to the first call of spring? Excellent for use alone or with other flowers. Prune freely after blooming to encourage new growth, and give it plenty of room as it will make a bushy small tree. 1 yr., 3 to 4 ft. 25c each.

Hardy Evergreens

For producing an immediate, finished effect and an air of permanence and stability, nothing will take the place of Evergreens. They blend delightfully with the gay summer flowers, and when the wind-swept winter garden is brown and bare, their foliage masses afford a sense of coziness and cheer. The taller growing varieties are excellent for screens and shelter from winter's winds and provide an ideal background for the showy flowering trees and shrubs of spring, the berries of autumn and the colored twigs of winter. Beautiful effects are secured by planting in masses varieties that contrast finely in form, foliage and color, such as light and dark green, silver and gold. For entrance and foundation planting the lower growing varieties provide year around beauty.

Our evergreens, grown with plenty of room, are compact, well filled trees of their size and variety. They have been transplanted and root pruned and are well rooted. They are liberally graded and, except mail sizes, will be dug with a ball of earth wrapped in burlap, termed "balled and burlapped" or B. & B. They are not grown rapidly and soft but are firm and easily transplanted.

Evergreens are Easy to Plant

Planting balled evergreens is like planting potted plants. Properly handled, they transplant as easily and successfully as shrubs. Unpack as soon as received. Protect the roots from sun and wind. Dig a hole just a little deeper than the ball of earth and at least 6 inches wider all around. Set the tree in the hole, burlap and all. As the earth is filled in tamp it *firmly*, to within a few inches of the top. Untie and cut away the remaining burlap. Water *well* and finish filling the hole, but do not tamp after watering. About 1/10 of THOROUGHLY ROTTED manure may be mixed in the soil, and some cow manure applied on top as a mulch. Trees cannot do their best without plenty of plant food, and water as needed, particularly during the first year.



A real Japanese garden showing use of dwarf, creeping and informal evergreens

Pruning Evergreens

If it is desired to make Arborvitae, Junipers and Retinosporas more compact, they may be "sheared." However, after a plant has left the nursery shearing is hardly the correct term as the individual branches or tips should be cut out individually with a knife or clippers to keep the plant symmetrical, not sheared with grass shears as the term would imply. This work may be done almost any time with no ill effect except in hot dry weather.

Evergreens, continued

Mail Sizes, postpaid

These are transplanted, sturdy little trees, not balled and bur-lapped as they do not require it. Plant them *firmly*, water them well, give them time and they will make nice trees. B. & B. trees cannot be sent by parcel post.

Five or more of a kind at the ten rate, less at the each rate

Arborvitae; Thuja

The Arborvitae is one of the most important groups of evergreens. The branchlets are flattened and clothed with small, usually scale-like leaves which look as if they have been pressed tightly together. There are two main groups. The American or occidentalis type has the branchlets in a more or less horizontal position. The Chinese or orientalis type has the branchlets in a vertical or upright position. The name Arborvitae indicates "tree of life," from the evergreen character.

Arborvitae, Berckmans; Chinese Golden Dwarf; Thuja orientalis aurea nana

A perfect gem for large or small grounds; of superb shape, being somewhat ovate, and compact, dwarf habit, reaching a height of about 7 ft.; of slow growth; the new growth in spring and early summer is gold suffused with green, in winter green to bronze green; admired by all lovers of the formal in evergreens; valuable for lawn, landscape and cemetery use, and for growing in pots or tubs.

12 to 15 inches, B. & B.	\$1.00 each,	\$8.00 per 10
15 to 18 inches, B. & B.	1.25 each,	10.00 per 10
18 to 24 inches, B. & B.	1.50 each,	15.00 per 10
24 to 30 inches, B. & B.	2.25 each,	20.00 per 10
30 to 36 inches, B. & B.	3.00 each,	25.00 per 10

Arborvitae, Globe; Thuja occidentalis Woodward

A low, compact form of the American type, reaching a height of 3 to 3½ ft., and naturally growing in a globular form; deep green foliage; very hardy; on account of its dwarf nature is useful for low borders, for foundation and formal plantings, and for pots or tubs.

Mail size (8 to 10 in.) postpaid	\$0.30 each,	\$2.50 per 10
12 to 15 inches, B. & B.	.80 each,	7.00 per 10
15 to 18 inches, B. & B.	1.00 each,	9.00 per 10
18 to 24 inches, B. & B.	1.50 each,	12.50 per 10
24 to 30 inches, B. & B.	2.50 each,	22.50 per 10
30 to 36 inches, B. & B.	3.50 each,	30.00 per 10

Arborvitae, Goldspire; Thuja orientalis aurea conspicua; Biota aurea conspicua

A beautiful Oriental Arborvitae and one of the best of the large growing golden evergreens; of compact, erect, conical, symmetrical habit; not as compact as Berckman's but if desired can be made compact by pruning; foliage intense gold, some branches of almost solid metallic tint, others suffused with green, most intense when the growth is new but well retained into winter; rapid growth, becoming 15 to 18 ft. high.

18 to 24 inches, B. & B.	\$1.75 each,	\$15.00 per 10
2 to 3 feet, B. & B.	2.00 each,	17.50 per 10
3 to 4 feet, B. & B.	2.50 each,	22.50 per 10



Trailing Juniper in Sarcoxie Nurseries rock garden



Globe Arborvitae is naturally globular in form

Arborvitae, Pyramidal; Thuja occidentalis pyramidalis

A compact and narrowly pyramidal tree, with short branches densely covered with deep rich green foliage; in form an almost perfect column, reaching a height of 18 to 20 ft. and usually not over 2 ft. in diameter at the base; fairly rapid growth; valuable for formal plantings, as an accent plant, for corners, in front pillars or in the center-background of group plantings. The shape is naturally pyramidal and is not artificially produced by shearing. Prune if necessary to keep from growing forked.

Mail size (10 to 15 in.) postpaid	\$0.40 each;	\$3.50 per 10
18 to 24 in., B. & B.	1.00 each;	8.00 per 10
2 to 2½ feet, B. & B.	1.25 each;	11.50 per 10
2½ to 3 feet, B. & B.	2.00 each;	17.50 per 10
3 to 4 feet, B. & B.	2.50 each;	20.00 per 10
4 to 5 feet, B. & B.	4.00 each;	35.00 per 10
5 to 6 feet, B. & B.	5.00 each;	45.00 per 10
6 to 7 feet, B. & B.	6.00 each;	55.00 per 10

Cedar, Blue or Silver; Juniperus virginiana glauca

One of the finest of the Red-Cedars. Broadly pyramidal habit; the young growth is silvery, changing to a beautiful bluish-green; growth rather rapid, with long, slender branches, producing a graceful effect; grows 15 to 20 feet high; may be kept lower and dense by pruning; of rather open habit until they attain size; one of the finest Junipers.

2 to 3 feet, B. & B.	\$2.50 each;	\$22.50 per 10
3 to 4 feet, B. & B.	4.00 each;	37.50 per 10
4 to 5 feet, B. & B.	5.00 each;	47.50 per 10
5 to 6 feet, B. & B.	8.00 each;	75.00 per 10

Cedar, Cannart; Juniperus virginiana cannarti

This makes a broadly pyramidal medium sized tree, reaching 15 to 20 feet, with deep rich green, heavily tufted foliage; some trees bear blue or silver berries; if untrimmed the growth is more or less open but pleasing; by pruning may, if desired, be made dense and maintained at the height desired.

3 to 4 feet, B. & B.	\$4.00 each;	\$37.50 per 10
4 to 5 feet, B. & B.	5.00 each;	47.50 per 10
5 to 6 feet, B. & B.	8.00 each;	75.00 per 10

Cedar, Goldtip; Juniperus virginiana elegantissima

In the spring the slightly drooping new growth is a rich creamy-golden color at the tips, gradually darkening to bronze and green as the season advances; of rather irregular, spreading habit when small, but has a tendency to gradually take on a broadly pyramidal habit; attains a height of 10 to 15 ft. unless kept lower by pruning.

4 to 5 feet, B. & B.	\$7.50 each;	\$70.00 per 10
----------------------	--------------	----------------

Cedar, Red; Juniperus virginiana

The well known native Red Cedar; foliage small, sharp pointed, usually dark green; berries blue, ripening in the fall; fairly rapid growth. These are sheared columnar.

3 to 4 feet, B. & B.	2.50 each;	20.00 per 10
4 to 5 feet, B. & B.	3.50 each;	30.00 per 10
5 to 6 feet, B. & B.	4.00 each;	35.00 per 10
6 to 7 feet, B. & B.	5.00 each;	45.00 per 10

Cypress, Plume, see Retinospora

Holly, American; Ilex opaca

A very handsome evergreen tree with spiny leaves along which are borne clusters of bright red berries in autumn. A few boughs from your own tree will make Christmas more cheery. 15 to 18 in. grafts, \$2.00 each; 4 to 5 ft. B. & B. \$8.00 each.

Juniper; Juniperus

The Junipers vary greatly in size and shape from large trees to low creeping shrubs, and in color. The leaves are two kinds, one sharp pointed and awl-shaped, the other scale-like and overlapping. Some varieties have only one kind of foliage, others both. The Red Cedar and its varieties belong to the Juniper family but are more often called for as Cedar, which see.

Juniper, Andorra; Juniperus communis depressa plumosa

One of the best dwarf, spreading Junipers, seldom raising its branches over 12 inches off the ground; in spring and summer a rich bright green, in autumn rich reddish-purple; excellent in the rockery and to the foreground of taller evergreens.

Mail size (8 to 10 in.) postpaid	_____	\$0.50 each; \$4.00 per 10
12 to 15 inches, B. & B.	_____	1.25 each; 10.00 per 10
15 to 18 inches, B. & B.	_____	1.50 each; 12.00 per 10
18 to 24 inches, B. & B.	_____	2.00 each; 17.50 per 10
24 to 30 inches, B. & B.	_____	2.50 each; 22.50 per 10

Juniper, Canadian; Juniperus canadensis

Of spreading, somewhat vase-shape form, growing about 3 ft. high; prickly needles, grayish-green, somewhat silvery beneath; suitable for sunny situations; grows rapidly, may be kept small by trimming.

18 to 24 inches, B. & B.	_____	\$2.50 each, \$22.50 per 10
2 to 3 feet, B. & B.	_____	3.00 each, 25.00 per 10

Juniper, Irish; Juniperus communis hibernica

Its finely-cut bluish-green foliage is attractive and its form in pleasing contrast with the globe and bush evergreens; a dense slender, columnar tree with numerous upright branches closely surrounding the body; becomes about 8 ft. high and can be kept to a diameter of 18 to 24 in. by pruning.

Mail size (8 to 10 in.) postpaid	_____	\$0.25 each; \$2.25 per 10
18 to 24 inches, B. & B.	_____	1.25 each; 10.00 per 10
2 to 2½ feet, B. & B.	_____	1.50 each; 12.50 per 10
2½ to 3 feet, B. & B.	_____	2.00 each; 17.50 per 10
3 to 4 feet, B. & B.	_____	2.50 each; 22.50 per 10
4 to 5 feet, B. & B.	_____	4.00 each; 35.00 per 10

Juniper, Pfitzer's; Juniperus chinensis Pfitzeriana

If allowed to grow naturally it assumes an attractive, low broad, irregular form, the branches spreading horizontally and the tips drooping; by staking up one of the leaders it may be trained to somewhat pyramidal form and about 8 to 10 ft. high; foliage light olive gray; fine; thrives in almost every location; succeeds in partial shade; excellent for border and foundation planting.

Mail size (10 to 12 in.) postpaid	_____	\$0.30 each; \$2.50 per 10
15 to 18 inches, B. & B.	_____	1.25 each; 10.00 per 10
18 to 24 inches, B. & B.	_____	2.00 each; 17.50 per 10
2 to 2½ feet, B. & B.	_____	2.50 each; 22.50 per 10
2½ to 3 feet, B. & B.	_____	3.50 each; 32.50 per 10
3 to 4 feet, B. & B.	_____	5.00 each;



Evergreens add winter beauty to the planting



Pfitzer Juniper thrives in almost every location

Juniper, Savin; Juniperus Sabina

Thickly branched, low and spreading with very dense, dark green foliage; a favorite where a tree out of the ordinary is desired; useful in the rockery, for foundation planting, and as a border for larger evergreens; the young plants are inclined to be taller than the older ones, as the weight of the longer branches pulls them down; plant in a sunny location.

Mail size (10 to 15 in.) postpaid	_____	\$0.40 each; \$3.50 per 10
15 to 18 inches, B. & B.	_____	1.00 each; 8.00 per 10
18 to 24 inches, B. & B.	_____	1.50 each; 12.50 per 10
2 to 2½ feet, B. & B.	_____	2.00 each; 17.50 per 10
2½ to 3 feet, B. & B.	_____	2.50 each; 22.50 per 10

Juniper, Waukegan; Juniperus horizontalis Douglassii

An interesting low, compact, trailing Juniper, becoming about 6 to 8 inches high; foliage soft bluish-green, in autumn rich purple; excellent in the rock garden.

Mail size (8 to 10 in.) postpaid	_____	\$0.40 each; \$3.50 per 10
----------------------------------	-------	----------------------------

Magnolia grandiflora

The well known Southern Magnolia; leathery, dark green shining leaves and fragrant white flowers 6 to 8 in. across in summer. 18-24 in., B. & B., \$1.50 each; 2-3 ft., B. & B., \$2.00 each.

Mahonia Aquifolium; Oregon Hollygrape

An unusual broad-leaved evergreen; leaves 1½ to 3 in. long, as shiny as if stamped out of polished metal, and spiny-toothed, reminding one of Holly but with 5 to 9 leaflets on a stem; young leaves bronzy, becoming a beautiful deep green, in autumn purplish, bronze and red; yellow flowers in April, followed by clusters of blue-black berries; excellent in semi-shade, for foundation planting or in the rockery where a plant 3 to 6 ft. high can be used, may be kept lower by pruning. 15 to 18 in., B. & B., \$1.00 each; 18 to 24 in., B. & B., \$1.50 each; 24 to 30 in., B. & B., \$2.50 each.

Pine, Austrian; Pinus nigra

The stout branches form a symmetrical crown, well furnished with dark rich green needles 4 to 5 in. long, in pairs; of vigorous growth, becoming a large tree so should have ample room.

2 to 3 feet, B. & B.	_____	\$2.50 each; \$22.50 per 10
3 to 4 feet, B. & B.	_____	3.00 each; 25.00 per 10

Pine, Mugho; Pinus montana mughus

A many-stemmed, low-branched, dense, dwarf tree usually not over 4 to 5 ft. high; may be kept lower by pruning; thickly covered with heavy dark green needles in pairs; the new growth somewhat resembles candles ornamenting the plant; a good foundation evergreen and may be used in rockeries and in front of taller trees.

12 to 15 inches, B. & B.	_____	1.50 each; 12.50 per 10
15 to 18 inches, B. & B.	_____	2.00 each; 17.50 per 10
18 to 24 inches, B. & B.	_____	3.00 each; 27.50 per 10
24 to 30 inches, B. & B.	_____	4.00 each; 37.50 per 10
30 to 36 inches, B. & B.	_____	5.00 each; 45.00 per 10

Evergreens, continued

Pine, White *Pinus strobus*

A tall, stately tree with regular whorls of horizontal branches forming a symmetrical crown; soft bluish-green leaves 2 to 4 in. long, in 5's; cones 3 to 5 in. long; of very rapid growth; retains its color well in winter.

2 to 3 feet, B. & B.-----\$2.00 each; \$17.50 per 10
3 to 4 feet, B. & B.----- 2.50 each; 22.50 per 10

Red Cedar, see Cedar, Red

Retinospora plumosa aurea; Golden Plume Cypress

Foliage grayish-green, silvery beneath, the new growth tipped golden, very finely cut and has a feathery or plume-like appearance at certain stages of its growth; naturally pyramidal to conical in habit, reaching a height of about 12 to 15 feet.

Mail size (8 to 10 in.) postpaid-----\$0.25 each; \$2.00 per 10
18 to 24 inches, conical, B. & B.----- 1.00 each; 8.00 per 10
2 to 3 feet, conical, B. & B.----- 1.50 each; 12.50 per 10
3 to 4 feet, conical, B. & B.----- 2.00 each; 17.50 per 10
4 to 5 feet, conical, B. & B.----- 3.00 each; 27.50 per 10
5 to 6 feet, conical, B. & B.----- 4.00 each; 30.00 per 10

Spruce, Blue

We have some exceptionally fine Blue Spruce, symmetrical in outline and a beautiful silvery-blue. Sizes 5 to 6½ feet. Write for prices.

Spruce, Black Hills; *Picea canadensis albertiana*

Broadly conical in outline, compact; leaves needlelike, dark green; in Missouri it reaches a height of about 20 feet; very hardy; excellent for specimens, groups and masses.

18 to 24 inches, B. & B.-----\$2.25 each; \$20.00 per 10
24 to 30 inches, B. & B.----- 3.25 each; 30.00 per 10

Spruce, Norway; *Picea excelsa*

A handsome, picturesque tree of symmetrical, conical habit with spreading branches, usually drooping with age; leaves needle-like, dark green ½ to ¾ in. long; cones cylinder-like, 4 to 7 in. long; where native it is a tall tree of rapid growth; here it is not rapid and seldom grows over 30 to 35 ft. high.

18 to 24 inches, B. & B.-----\$1.25 each; \$10.00 per 10
2 to 3 feet, B. & B.----- 2.00 each; 17.50 per 10
3 to 4 feet, B. & B.----- 2.50 each; 22.50 per 10
4 to 5 feet, B. & B.----- 3.50 each; 32.50 per 10

Spruce, White; *Picea canadensis*

Of compact, upright, broadly conical habit with ascending branches and usually pendent branchlets; needles slightly curved, bluish-green 1-3 to 3-4 in. long, strongly aromatic when bruised; cones light brown, 1½ to 2 in. long.

18 to 24 inches, B. & B.-----\$1.50 each; \$12.50 per 10
2 to 3 feet, B. & B.----- 2.50 each; 22.50 per 10
3 to 4 feet, B. & B.----- 3.00 each; 27.50 per 10
4 to 5 feet, B. & B.----- 4.50 each; 40.00 per 10

Hardy Water Lilies Bloom All Summer



Water Lilies all summer

To have hardy Water Lilies blooming from May till frost you need only a pool, 8 to 12 inches of good soil, a foot or more of water, and sun. Once established, they are the easiest flower grown—no cultivating, no weeding, no watering, except to see that the pool does not become dry. They need not be taken up during winter if the water is deep enough so it will not freeze to the soil. In some soils a concrete pool is not necessary. When needed, it costs little. Instructions for construction will be sent on request. When grown in boxes the boxes should be about 8 inches deep and 14 or 16 inches square.

Concrete Lily Pools. An illustrated folder telling how to construct them, sent free on request.

These are good strong plants and will bloom a few weeks after planting. Water Lilies postpaid when ordered in quantities of \$2.00 or more. Otherwise, postage is additional.

Chromatella. Bright sulphur-yellow with broad curving petals; large; vigorous; blooms freely from early to late and remains open till well past noon sometimes all day in cool, cloudy weather. \$1.00 each.

Comanche. One of the best of the sunset colors; opens apricot shaded red, with age becoming coppery-orange, glowing red in the center, with prominent yellow stamens; remains open until well past noon. \$2.00 each.

Escarboucle. One of the brightest intense reds, with garnet stamens; of good size. \$3.00 each.

Gladstone. Of unusual size, with many snowy petals standing out in all directions; a vigorous, free bloomer. 75c each.

Gloriosa. Deep carmine-rose, becoming deep red with age; large; of good form; a free and continuous bloomer, remaining open till well past noon. \$2.50 each.

James Brydon. Large; bright carmine-red, a color that seems to glow in the sun; broad, massive petals; blooms freely; remains open till well past noon. \$2.50 each.

Masaniello. Light pink dotted carmine, giving a mottled effect; blooms freely. \$1.00 each.

Paul Hariot. Opens yellow, becoming orange-pink; a very free bloomer and good for small pools. \$1.00 each.

Peachblow. Delicate peach-blow pink, the color well retained; large, with plenty of petals; a good grower and free bloomer. \$1.00 each.

Pink Opal. Large; deep rich pink flowers, carried well above the water; blooms freely; good for small pools. \$1.00 each.

Richardsoni. Very large cup shaped flowers; good double flowers with large broad white petals. \$1.50 each.

Rose Arey. Deep rich pink; good size; blooms freely. \$1.25 each.

Sarcoxie. Deep pink; large, with plenty of petals; an early bloomer; vigorous; a good plant maker. \$1.50 each.

Sunrise. A very large glorious yellow; one of the first lilies to open in the morning; blooms freely. \$3.00 each.

Pink to Color, not named. 60c each.

White to Color, not named. 50c each.

Pink Lotus. Pink flowers 8 inches across, these and the leaves rising 1 to 3 feet above the water. \$1.00 each.

WATER LILY COLLECTIONS

Two pink and two white, unnamed, for \$2.00.

One pink and one white, unnamed, for \$1.00.

One pink, one white and one yellow for \$1.75.

WATER PLANTS

Cat Tail. Useful in the water garden, at the margin of pools or brooks for their tall spikes of plush-like seed pods. 25c each, 3 for 50c.

Giant Arrowhead. Large arrow-shaped leaves and 3-petaled white flowers in loose clusters. 25c each, 3 for 50c.

Water Weed; Elodea. A submerged plant useful for maintaining a supply of oxygen in the water. 25c each, 3 for 50c.

"In fact, there's nothing that keeps its youth, so far as I know, but a tree, and truth."

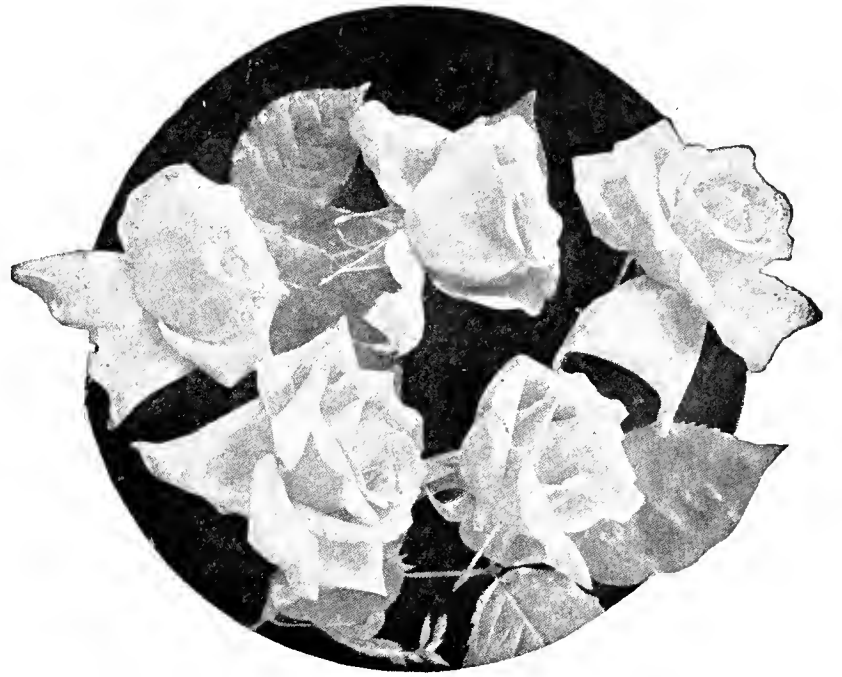
—Oliver Wendell Holmes

The Rose, Queen of Flowers

Success with roses is not difficult if you *plant firmly* and *prune severely*. Anyone who has a bit of ground that will grow good garden crops, with sun half the day or more, can grow good roses. Brief planting and pruning suggestions will be sent with each order. Or ask for our little booklet, *The Rose, Queen of Flowers*. It tells how easy it is to grow roses in your garden, how to plant, prune and fertilize. It gives the characteristics of the different classes and describes the varieties. It contains a lot of information in a little space.

Budded and Own-root Roses

If budded roses had no advantage, there would be no difference of opinion. We prefer budded plants of most ever-bloomers and some of the hybrid perpetuals and climbers. They give more, better and larger flowers, and that's what we grow roses for. The only disadvantage, which we think is more than offset by their greater vigor and freedom of bloom, is that budded roses occasionally sprout from the roots. Such sprouts, which should be removed, have a different appearance with usually 7 to 9 leaflets to the stem, while most hybrid perpetuals and ever-blooming roses (except some yellow varieties) have 3 to 5, usually 5. When planted with the bud or joint just below the surface, roses as now budded seldom sprout.



Kaiserin Auguste Viktoria, one of the most perfect in form

Everblooming or Monthly Roses Bloom the First Year

These strong two year plants will give you beautiful flowers a few weeks after planting, and all summer till fall, flowers of superb form, beautiful colors and delightful fragrance. Plant 15 to 18 in. apart. T. indicates Tea, H. T., Hybrid Tea, Per., Pernetiana, Pol., Polyantha.

Please notice we tell you the grade. Two year roses are graded No. 1, 1½, 2 and 3. No. 1 is the best.

No. 1 2-year field grown budded plants, the best grade, postpaid in Missouri and adjoining states if your rose order amounts to \$2.00 or more.

Five or more: 50c varieties at 48c each, 60c varieties at 57c each. Ten or more: 50c varieties at 45c each, 60c varieties at 55c each, postpaid.

Betty Uprihard

A charming two-toned rose, the outside of the petals coppery-pink, the inner surface rosy-salmon; of attractive form; vigorous; blooms freely; H. T. 50c each.

Briarcliff

Large, pointed buds; double, high-centered blooms; brilliant rose-pink; blooms freely on long, stiff stems; fragrant; the flowers keep well; vigorous; a sport of Columbia; foliage resistant to disease; H. T. 50c each.



Gruss an Teplitz

Charles P. Kilham

Large; brilliant red-orange tinged scarlet-yellow at base; Madame Edouard Herriot type, fuller, more brilliant; blooms freely; large, deep green foliage; rather spreading habit. H. T. 60c each.

Columbia

Large, handsome, rich rose-pink buds opening slowly into somewhat flat blooms, full to the center; very fragrant; of good substance and keeps well; good stems; vigorous; especially good as the weather becomes cooler; H. T. 50c each.

Dame Edith Helen

Shapely buds; perfectly formed, very double blooms, the petals attractively recurved; brilliant clear pink; very fragrant; an excellent exhibition variety; H. Per. 50c each.

Duchess of Wellington

Long tapering buds, golden orange marked and tinted carmine, opening coppery-yellow; especially beautiful in the bud; tea fragrance; vigorous; blooms very freely. H. T. 50c each.

Edel

Large, well built ivory-white flowers of somewhat globular form; erect habit. H. T. 50c each.

E. G. Hill

Beautiful buds and immense, very double fragrant flowers of excellent form that last well; dark velvety, dazzling scarlet-crimson, shading to deeper red; one of the best of the newer red roses. H. T. 60c each.

Etoile de France

Clear velvety red-crimson, very brilliant in the sun; shapely, globular buds opening into flowers of good size with plenty of petals; decidedly fragrant; blooms freely, giving better results in warm weather than most red roses; H. T. 50c each.

Etoile de Hollande

Long pointed buds, opening into blooms of good size, brilliant rich crimson-scarlet with a velvety sheen; spicy perfume and fine color, approaching maroon; vigorous. H. T. 60c each.

F. J. Grootendorst

A Rugosa-Baby Rambler hybrid combining the Rugosa foliage, hardiness and vigor with the everblooming habit and flower clusters of the Baby Rambler; bright fiery red, the ends of the petals fringed; grows 3 to 6 ft. high; prune heavily in spring and as the flowers fade to maintain constant bloom and height desired; excellent as a shrub or hedge. 50c each.

Everblooming Roses continued next page



Briarcliff

Everblooming or Monthly Roses, continued

Gruss an Aachen

Covered throughout summer with clusters of very double flowers 2½ to 3 in. across, resembling hybrid teas, making a splendid, showy bed; buds orange-pink to light yellow, opening into light flesh to salmon-pink flowers; Pol. 60c each.

Gruss an Teplitz

Rich, brilliant fiery crimson with velvety shadings; fragrant, semi-double flowers in clusters, nodding in the breeze on slender stems. It has hardly the size or shape for a cut flower rose, but blooms so freely it is a blaze of color all summer and is one of the best for decorative effect. Vigorous, becoming 4 to 5 ft. high; plant in the background of other roses or use as a shrub; China or Bengal. 50c each.

Ideal

All summer long its dark scarlet blooms like ramblers are produced freely in large clusters on dwarf plants; excellent as a low growing shrub to give constant bloom in the shrubbery border, and as a hedge; very showy in large masses or beds as one would use geraniums; Pol. 50c each.

Joanna Hill

Large, long buds; flowers creamy-yellow tinged orange at the base; long stems. H. T. 50c each.

Kaiserin Auguste Viktoria

Large creamy-white buds opening slowly into very double white flowers with just a tinge of lemon at the base of the petals; delightfully fragrant; one of the most perfect in form, both in bud and full blown; of good substance and keeping qualities; good foliage; H. T. 50c each.

Lady Hillingdon

Pretty, slender, pointed buds opening into cupped flowers of good size; apricot yellow becoming lighter as they age; delightfully fragrant; deep green, disease resisting foliage; few thorns; a constant bloomer, greatly admired; T. 50c each.



Everblooming Roses bloom the first summer



Radiance is very vigorous and blooms freely

Los Angeles

Lovely long, pointed buds opening into large flowers, a luminous flame-pink toned coral, the base of the petals washed with gold; fragrant; good stems; upright habit; it requires good care in some sections but is so beautiful and blooms so freely it is worth planting for one season's flowers; Per 50c each.

Madame Edouard Herriot; Daily Mail Rose

Long, pointed buds; the nearly open flowers are distinct coral-red becoming orange-pink, finally lighter before they shatter; fairly large; semi-double but an unusual, popular color that always attracts attention; moderate height; blooms freely and very early; Per. 50c each.

Margaret McGredy

Large ovoid buds and double flowers, brilliant light scarlet tinged orange-vermillion. Mr. Hatton of the American Rose Society says: "An outstanding variety, good in every respect, beautiful color, vigorous growth, healthy foliage, delicious fragrance, and unusually free for a rose of its size"; Per. 50c each.

Mrs. Chas. Bell

A lovely shell-pink form of Radiance; buds and blooms of fine globular form with shadings of soft salmon; fragrant; plant strong and bushy; blooms freely. H. T. 50c each.

Mrs. E. P. Thom

Deep rich yellow flowers of good size, freely produced; growth strong, with dark bronzy-green foliage. H. T. 50c each.

Ophelia

Salmon-flesh shaded rose developing into blush-white to creamy-white; particularly beautiful in the half open bud; fragrant; blooms freely; good stems; H. T. 50c each.

Orleans

Small, fairly double, brilliant light red flowers with a whitish center are produced freely all summer long in big compact clusters like Ramblers, on low-growing plants seldom exceeding 15 to 18 inches high; Pol. 50c each.

President Herbert Hoover

Long pointed buds; large flowers with broad, thick, heavy petals. The inner surface of the outer petals is dark pink and red, the outer surface orange streaked with red; the inner surface of the next petals is shaded salmon and apricot, the outer shaded cerise-pink, flame and scarlet over orange and yellow; tea fragrance; vigorous, upright, blooms freely; Per. 60c each.

Pink Radiance; Radiance

Large, brilliant rose-pink buds opening into globular but not too compact flowers, the inner surface of the petals light pink, the outer almost carmine-pink, producing an excellent two-tone effect; fragrant; blooms profusely; good stems; foliage very free from black spot; vigorous, upright habit, reaching 3 to 4 ft.; plant 24-30 in. apart; H. T. 50c each.

Everblooming or Monthly Roses, continued



Los Angeles

Red Radiance

A sport of Radiance and like it in form, fragrance, habit, vigor, and resistance to disease, but the color is a bright cerise-red. Should be in all collections; H. T. 50c each.

Reverend F. Page-Roberts

Long, copper-red buds; large flowers, the inside of the petals golden-yellow, the outside red and carmine; good size, shape, color and fragrance; H. T. 50c each.

Sensation

Large; dark crimson shaded black; long pointed buds; fragrant; blooms freely; vigorous; H. T. 60c each.

Souvenir de Claudius Pernet

Beautiful buds opening into a striking sunflower-yellow without orange shadings, the edges of the recurving outer petals somewhat lighter; fragrant; foliage glossy, deep green; blooms freely, early to late; best in sunny weather; Per. 50c each.



Souv. de Claudius Pernet

Souvenir de Georges Pernet

Oriental-red buds opening into gigantic, well formed, good double flowers, brilliant orange-pink to cochineal-old-rose; deliciously fragrant; stocky, spreading growth and blooms very freely; Per. 50c each.

Talisman

A marvelous color effect seen in no other rose. Brilliant red and gold buds opening into cupped flowers; the inner surface

of the petals is scarlet-orange, coral-pink and old rose, often coppery, with yellow at the base; the outer surface yellow and old gold; fragrant; plant tall, vigorous, upright, and blooms freely; Per. 60c each.

Willowmere

Excellent buds and blooms; rich pink overcast with a yellow glow; a strong grower and persistent bloomer; some growers prefer it to Los Angeles; both are beautiful; Per. 50c each.

Hardy Bush Roses

No. 1 2-year field grown plants, postpaid in Missouri and adjoining states if your rose order amounts to \$2.00 or more.

Frau Karl Druschki; White American Beauty

Long, pointed buds and magnificent, pure paper-white semi-double flowers often four inches across with large, firm, waxy petals; very strong and vigorous; 4 to 6, occasionally 8 feet high; prune heavily to keep it within bounds and it will bloom in the spring and intermittently during summer and fall; one of the best hardy white roses; H. P. 50c each.

Hugonis; Rosa Hugonis

Before other roses hardly realize spring is here the reddish-tipped branches are thickly covered with small, dainty leaves, a background for the very early, single flowers, 2 to 2½ inches across, making a gorgeous bush of soft yellow; vigorous, upright, spreading habit, attaining 5 to 7 ft.; hardy; prune after blooming; useful in shrubbery plantings, as specimen plants or in groups. 50c each.

Rugosa red; Rosa rugosa rubra

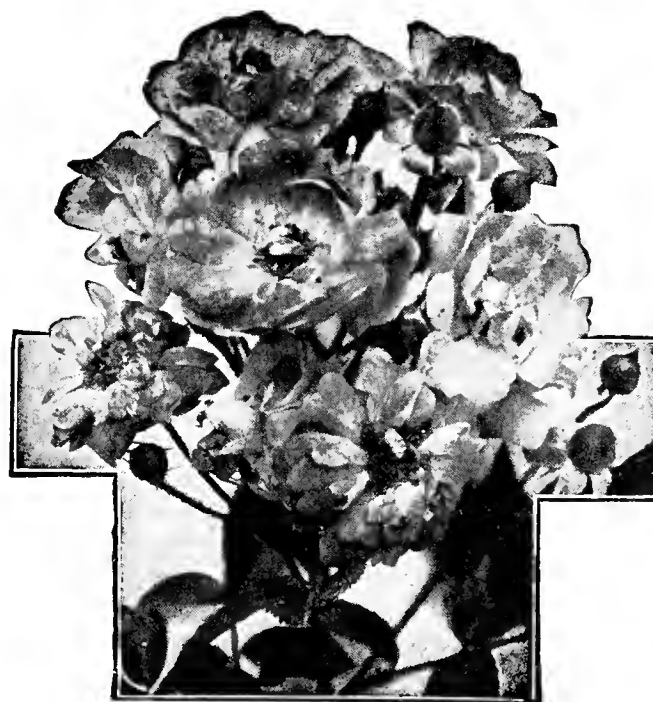
One of the most ornamental shrub roses; large, single, purplish-red flowers 2½ to 3½ inches across; conspicuous, bright red seed pods, sometimes an inch in diameter, remaining well into fall. Very hardy; grows 4 to 6 feet high; shining, deep green, wrinkled foliage; succeeds in sun or partial shade; seldom troubled by leaf-eating insects or diseases. Desirable for mass plantings about the home, in the foreground of higher shrubs or as a background for low shrubs and makes a good flowering hedge. 40c each.

Complete Landscape Service

We have a competent landscape architect and are prepared to render a complete service, from the drawing of the plans to furnishing and planting the trees and plants. If interested in this service write us for particulars, giving the size of your property.

TUNE IN W. M. B. H. FOR THREE MINUTE GARDEN TALKS

Those within range of the Joplin, Mo., radio station, W. M. B. H., 1420 kilocycles, are invited to tune in each Sunday at 1:45 P. M. for a three minute gardening talk.



This shows the type of Roses of Ideal and Orleans, page 18, and the Dorothy Perkins class, page 20

THE FASCINATION OF ROCK GARDENING

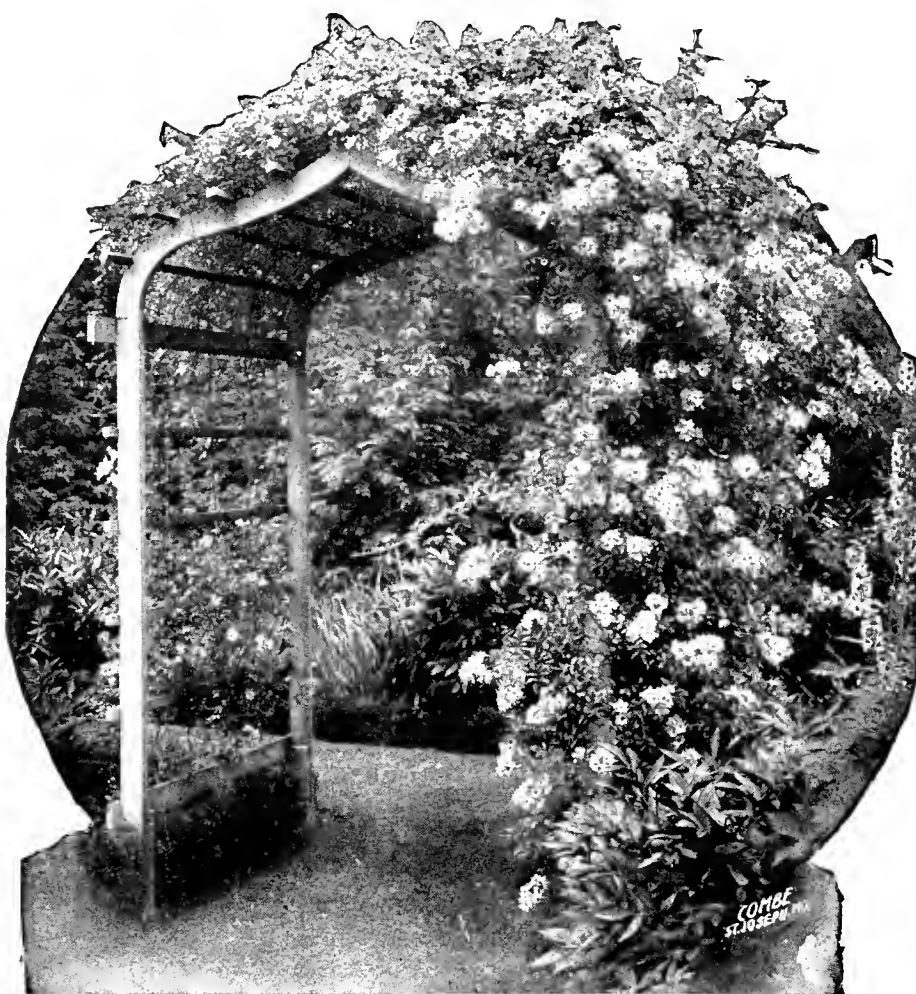
Your garden may be charming and beautiful from the time the first flowers of spring appear until the frosts of autumn. It may consist of a few square feet and represent only a few dollars and a little work. Or it may be large and give you an opportunity to exercise all your skill in design and indulge your fancy for variety, color and form. Size is of importance only as it affects the treatment, the kind and number of plants that may be used. It is surprising how charming a picture may be produced the first season. Rock gardening is not as complicated as it sounds.

We have issued a little booklet of instructions entitled "The Fascination of Rock Gardening." If you haven't a copy write for it.

THE ROSE, QUEEN OF FLOWERS

An eight page booklet mailed free on request.

Hardy Climbers and Rambler Roses



For an arched entrance what can be more appropriate?

During their season these give more flowers and a greater display than any other roses grown. Is the porch sunny and bare? Climbing roses provide both shade and beauty. Is there an arbor you wish to beautify? Use roses. Have you an unsightly fence? Ramblers make the prettiest fence imaginable. Have you a view you wish to screen? A trellis with roses will make your screen a thing of beauty. Is there a rough or stony slope you wish to beautify? Cover it with ramblers. Do you want an arched entrance to the rose garden? What can be more appropriate?

In recent years this class of roses has been wonderfully improved. The large-flowered class, now termed Climbers, have been added to the old, familiar type with clusters of small flowers, termed Ramblers, of which the Perkins are examples. Pillar Roses are those suitable for training on pillars 5 to 8 feet high. Some climbers are also suitable for pillar use. Many of the newer climbers have blooms approaching the Hybrid Teas in appearance and stems of sufficient length to be suitable for cut flowers.

By selecting early, midseason and late you can have four to five weeks of flowers. The early varieties usually begin blooming here about May 20 to 25. H. W. indicates Hybrid Wichuriana; H. M., Hybrid multiflora.

No. 1 2-year field grown plants, postpaid in Missouri and adjoining states if your rose order amounts to \$2.00 or more. Five or more 40c varieties 38c each. Ten or more 40c varieties at 36c each.

Blaze

A new patented rose. The introducers say it is a seedling of Paul's Scarlet and Gruss an Teplitz, a hardy scarlet-red rose seldom out of bloom. \$2.00 each.

Climbing American Beauty

Beautiful buds and large flowers of excellent form on good stems; almost the same color and fragrance as the Bush American Beauty though not as large because there are so many flowers; the size may be increased by pinching off some of the buds; strong, healthy, vigorous, reaching 10 feet or more; early; H. W. Climber and Pillar. 40c each.

Climbing Gruss an Teplitz

An everblooming rose; brilliant fiery crimson; should have some winter protection. 40c each.

Dorothy Perkins, Pink

A profusion of large clusters of small, fragrant, beautiful, clear shell-pink flowers with attractively crinkled petals giving a fluffy appearance; late and lasts a long time; very vigorous, sometimes reaching 30 feet. The Perkins class may be used for fences, arbors, trained over walls, as a ground cover, or for embankments; H. W. Rambler. 40c each.

Dorothy Perkins, White

A sport of Dorothy Perkins and an excellent white Rambler; late; H. W. Rambler. 40c each.

Dr. W. Van Fleet

Delicate flesh-pink, sometimes almost white, deepening into osy-flesh at the center; beautiful pointed buds resembling hybrid teas, opening into semi-double, cupped flowers borne singly on stems of good length so may be used for cutting; medium early to midseason and blooms over a long period. Very free from insects and diseases; good growth, attaining a height of 20 feet; prune moderately; H. W. Climber. 40c each.

Excelsa; Red Dorothy Perkins

Crimson-maroon, tinged scarlet; large clusters produced freely; late; vigorous, reaching 30 feet; glossy foliage; H. W. Rambler. 40c each.

Goldfinch

Slender, deep yellow buds in clusters, opening creamy-white with a bright yellow center; semi-double; early; blooms freely; vigorous growth, reaching 20 feet; H. M. Rambler. 40c each.

Mary Wallace

One of the best, both as a climber and a pillar rose. Pretty buds opening into charming, semi-double, cupped flowers often 4 inches across; very bright, clear rose-pink, shaded salmon and gold at the base of the petals; early; blooms very freely; moderately fragrant; resistant to mildew; vigorous, reaching 20 feet; prune moderately; H. W. 40c each.

New Dawn; Everblooming Dr. W. Van Fleet

The first rose patented. Identical with Dr. W. Van Fleet except that it blooms throughout summer and fall. \$1.50 each.

Paul's Scarlet Climber; Paul's Scarlet

Vivid scarlet shaded crimson, intensified by the yellow stamens; flowers of good size, semi-double, in clusters of 3 to 15; a brilliant color well retained; medium early to midseason; moderate growth, reaching 10 ft.; H. W. Pillar. 40c each.

Silver Moon

Creamy buds opening into beautiful, semi-double, very large white flowers, often 3 to 4 inches across, a cluster of golden stamens in the center; midseason; foliage rich, dark green; blooms very freely, covering the bush; vigorous, reaching 20 to 30 ft.; one of the best white climbers. H. W. 40c each.

How to Grow Roses

A "How-to-do-it" book of 211 pages and 138 illustrations (45 rose varieties in natural colors.) It has three outstanding authors—Robert Pyle, J. Horace McFarland, and G. A. Stevens. Its price is only \$2.00.

Rock Gardens by F. F. Rockwell

Shows how you can build a rock garden yourself, on a small or large scale and at little expense. Describes the types of rock gardens, tells what soils, climates, and localities are best, how to construct, and what to plant for the effect you want. 31 illustrations, 86 pages. Postpaid \$1.00.

TUNE IN W. M. B. H. FOR THREE MINUTE GARDEN TALKS

Those within range of the Joplin, Mo., radio station, W. M. B. H., 1420 kilocycles, are invited to tune in each Sunday at 1:45 P. M. for a three minute gardening talk.

Keep Gay Colors in Your Garden with Hardy Flowers



View at Sarcoxie Nurseries

Much of the charm of the hardy garden lies in the pleasing changes constantly taking place. Each day during the growing season brings something new to interest and delight. Before the snow is gone the Crocuses and Snowdrops are in bloom. How eagerly we watch for the Violets and Bleeding Heart, followed by a host of flowers—Peonies, Irises, Delphiniums Sweet Williams and early Daisies. Then the summer flowers, Phlox, Coreopsis, Blanket Flower, late Daisies, etc. Even after frosts the Chrysanthemums keep up the succession of beauty.

Haven't you noticed the luxuriant tangle around the doorway of an old, neglected homestead? Observation reveals nooks of elegant foliage effects and the old, neglected flower beds in luxuriant bloom. Why? Nature has had her gardener at work, crowded out the weak growers that had no place in the informal garden and placed in their stead strong growers and profuse bloomers that delight in the rich soil, sunlight or shade in which you find them.

Why can't we flower lovers take a lesson from nature and plant in the informal garden or perennial border the sturdy, hardy kinds that grow in spite of neglect yet amply repay a little care? Let's not omit the more delicate flowers but use them, as nature does, where they have opportunity to develop. Some at the front of the border, some in nooks and corners to themselves, some in the rockery, than which there is no better place to display the dainty and unusual.

How to Plan Your Planting

As a rule place the taller plants at the back, the lower to the front, but not so uniformly the planting looks artificial. An occasional tall plant toward the front avoids monotony, but plan so it does not hide lower flowers blooming at the same time. To aid in planning the blooming dates for southern Missouri and the height is given. For example (12-18 in.) means 12 to 18 inches when in bloom. Plant in masses for best effect. Three, six or a dozen in a group give a much better display than if scattered through the border. Sun or shade, indicate whether the plant succeeds best in sun or shade.

Don't Allow the Flowers to Seed

The statement that a plant blooms all summer or for a long time assumes that the flowers are cut off as they fade. It only takes a short time twice a week, and few plants can mature seed

and continue blooming. This, with good garden soil, enriched if deficient in fertility, with well rotted manure or bone meal, an occasional light stirring of the soil and watering during dry spells, will give excellent results. We give our residences, offices and stores daily attention. Then why expect the flowers to do their best with none?

Plants by Parcel Post

Plants vary in weight and there are 8 zones. For Missouri and adjoining states allow 10c for the first and 1½ to 3c for each additional plant. Any surplus will be refunded.

Good, strong, out door grown plants. Six or more of a kind at the dozen rate.

Agrostemma coronaria; Rose Campion

Downy silvery-gray leaves; bright cerise-crimson circular flowers 1½ in. across on many-branched stems in late May and June; (1-2½ ft.); sun; 15c each, 3 for 40c, \$1.50 per doz.

Alyssum rostratum

Golden-yellow flowers in dense heads in summer; leaves 2 in. long, hoary-gray; prostrate habit; of easy culture in sun and well drained soil; (12-18 in.) 20c each, 3 for 55c, \$2.00 per doz.

Alyssum saxatile compactum; Basket of Gold

Broad masses of bright yellow flowers in early spring; dwarf habit; makes a spreading mat of grayish-green leaves; of easy culture. 20c each, 3 for 55c, \$2.00 per doz.

Baby's Breath, Bristol Fairy; Gypsophila Bristol Fairy

One of the best forms of Baby's Breath, with dainty double white flowers ¼ in. across in large, loosely arranged clusters on stems 2 to 3 ft. high, producing an airy, graceful effect in early summer; thrives in sunny situations; may be dried for winter bouquets. 30c each.

Blanket Flower; Gaillardia grandiflora

Flowers 2 to 3 in. across, maroon bordered yellow, as gaudy as a Navajo blanket, on stems 18 to 30 in. high in latter May and until heavy frost; prefers full sun; blooms in spite of heat, cold, wet and drouth; very free from insects and diseases; divide and replant every 2 or 3 years. 15c each, 3 for 40c, \$1.50 per doz.

Hardy Flowers, continued

Bleeding Heart; *Dicentra spectabilis*

Heart shaped rosy-carmine flowers with the white inner petals protruding, drooping on long racemes; needs rich, fairly light soil; full sun or shade, such as the north side of a wall or foundation: (2-3 ft.) 40c each, 3 for \$1.00, \$3.50 per doz.

Candytuft; *Iberis sempervirens*

A mass of neat evergreen foliage, covered in spring and early summer with dense racemes of small white flowers; best in full sun; dwarf; (9-12 in.) 20c each, 3 for 55c, \$2.00 per doz.

Cerastium tomentosum; Snow-in-Summer

A creeping mat of silvery foliage, covered in early summer with small snow-white flowers; for overhanging walls and dry, sunny situations; (6 in.) 20c each, 3 for 55c, \$2.00 per doz.

Chrysanthemums

In October and the dull days of November when frosts creep into the air and the garden is nearly bare of color these keep up the succession of beauty; prefer full sun; will stand shade part of the day; hardiness depends largely on good drainage; (2-4 ft.) Pink, red, white, yellow and bronze. 15c each, 3 for 40c, \$1.50 per doz.

Columbine Long-spurred; *Aquilegia*

Numerous showy, dainty spurred flowers on many-branched stalks 18-24 in. tall in May; neat clumps of foliage throughout the season; attractive in the perennial border and rockery; any good, well drained soil; sun or partial shade. Mixed colors, 2 years, 15c each, 3 for 40c, \$1.50 per doz.

Columbine, Mrs. Scott Elliotts

Large flowers with very long spurs; mixed colors including pastel shades, 2 year, 20c each, 3 for 55c, \$2.00 per doz.

Coreopsis lanceolata grandiflora

One of the most popular yellow perennials, with daisy-like flowers 2 to 3 in. across in May and the greater part of summer if not allowed to seed; excellent planted where the yellow flowers will contrast with Delphinium or other blue flowers, (1 to 2 ft.); prefers sun; tolerates partial shade; divide and replant every 2 years. 15c each, 3 for 40c, \$1.50 per doz.

Daisy, Arctic

Flowers 2 to 2½ in. across, white with yellow center, on stems about 12 in. tall; neat clumps of foliage; excellent in the foreground of the perennial border or in the rockery for its October flowers; sun. 15c each, 3 for 30c, \$1.00 per doz.

Daisy, Early Elder

Flowers white with yellow center, 2 to 2½ in. across, on stems 20 to 30 in. high; neat clumps of foliage; very vigorous growers and blooms freely the first spring, giving a display in early May in the rockery or perennial border; divide and replant every other year. 15c each, 3 for 30c, \$1.00 per doz.

Delphinium; Larkspur

Spikes of dainty spurred flowers in May and at intervals if the old flowers are cut off; plant in full sun in well drained, preferably sandy loam; often the addition of ground lime helps; in wet and heavy clay soils they may winter kill. In rich soil they may be grown taller than the heights stated below.

Prices, 15c each, 3 for 40c, \$1.50 per doz. except as noted.

Delphinium Belladonna Improved. A little larger, taller and more vigorous than the common Belladonna; unrivalled for persistent blooming; the delightful blue of the skies; spikes 2 ft. tall.

Delphinium Bellamosum. A dark blue form of Belladonna.

Delphinium, English Hybrids. Tall, with large flowers. Mixed colors, light to deep blue. 25c each, 3 for 70c, \$2.50 per doz.

Delphinium formosum. Brilliant deep blue margined indigo, overlaid with a glistening frost-like sheen; white eye; one of the most permanent; spikes 2 ft. tall.

Eupatorium coelestinum; Hardy Ageratum

Covered with small, fuzzy, azure-blue flowers like Ageratums during latter summer; sun or partial shade; starts growth late; (12-24 in.) 15c each, 3 for 40c, \$1.50 per doz.



Daisies give a profusion of flowers

Daisy, Korean

A profusion of white, sometimes blush, daisies 2-2½ in. across on many-branched stems 2 to 3 ft. high, beginning about October 1. 15c each, 3 for 30, \$1.00 per doz.; clumps 25c each.

Daisy Painted, see Pyrethrum

Daisy, Shasta Alaska

One of the best of the many varieties of Shasta; 3 to 3½ in. across, white, yellow center, on stems 15-24 in. high in summer. 15c each, 3 for 30c, \$1.00 per doz.

Daisy, Supreme

A mass of daisies 3½-4 in. across for a month or more, on many-branched stems 2 to 3 ft. tall, beginning in early June; very tall; fine. 15c each, 3 for 40c, \$1.50 per doz.

Flax, Perennial; *Linum perenne*

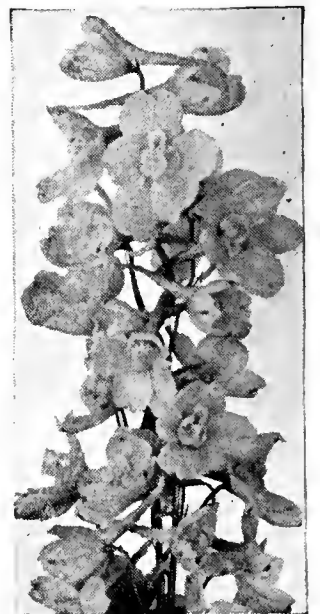
Pearly lavender-blue flowers 1 in. across on graceful stems 1-1½ ft. tall; late spring to fall; small foliage resembling Spruce needles; full sun. 15c each, 3 for 40c, \$1.50 per doz.

Forget-me-not; *Myosotis palustris semperflorens*

Dainty little deep blue flowers with yellow eye in delicate racemes 6 to 8 in. long, in latter spring and until fall; charming in the rockery; prefers moist, cool, shady places. 15c each, 3 for 40c, \$1.50 per doz.



Columbine



Delphinium



Phlox give brilliant summer effects. Strong field grown plants, \$2.00 per dozen

Foxglove; *Digitalis purpurea gloxiniaeflora*

A profusion of long tubular flowers drooping on spikes 2 to 4 ft. tall, one of the most striking flowers in the garden in May; valuable among shrubs or any place where a tall, pyramidal effect is wanted; sun, or shade part of the day; mulch with straw in winter. Mixed white, purple and purplish-rose, 20c each, 3 for 55c, \$2.00 per doz.

Helianthemum mutabile; Sun Rose; Rock Rose

Low and creeping; covered with 5-petaled flowers 1 in. across in May, pale rose to lilac or nearly white; sun. 15c each, 3 for 40c, \$1.50 per doz.

Hollyhocks

Excellent massed against fences, buildings and at angles of walks; (5-8 ft.) Assorted colors, double, pink, red, white, 20c each, 3 for 55c, \$2.00 per doz.

Mallow Marvels

Flowers like single hollyhocks, the size of a pie plate or larger, for 6 to 10 weeks, beginning in early July; excellent singly or in masses, for quick results; 4-6 ft. tall; cut tops to ground each winter; starts growth late. 2 yr., blush, pink and red, 25c each, 3 for 60c, \$2.00 per doz. Mail size, postpaid, mixed colors, 15c each, 3 for 40c, \$1.50 per doz.

Meadow Rue; *Thalictrum Adiantifolium*

Spreading heads of small feathery white flowers in summer,



Phlox subulata at Sarcoxie Nurseries. One of the first brilliant color spots of spring.

and foliage resembling the Maiden Hair Fern. 15c each, 3 for 40c, \$1.50 per doz.

Phlox

Showy, and indispensable for brightening the garden just after the spring flowers are gone and before summer flowers arrive in abundance. Use Miss Lingard for early, and other varieties will give Phlox through June. Cut the flowers as they fade and they give a second, sometimes a third crop. Masses, say a half dozen or dozen, of each color produce imposing effects. Or a border may begin with white and gradually work up to red. Plant 12-15 in. apart, 8-12 in. if in a single row, in rich, rather moist soil, deeply prepared. Do not allow seedlings to crowd out the original plants.

Field grown plants to bloom the first summer, 20c each, 3 for 55c, \$2.00 per doz., except as noted. If by parcel post add 10c per doz.

Commander. Excellent brilliant deep crimson-red, slightly deeper eye. 25c each, 3 for 70c, \$2.50 per doz.

Eclairer. Rich crimson-carmine, darker eye; large; a strong grower and free bloomer.

Europea. White, decided crimson eye; floret and truss large; sturdy, erect habit; medium height; fine.

Firebrand. Cerise, vermillion and orange.

Marechal French. Deep scarlet, blood-red eye; large; tall.

Miss Lingard. The earliest in this list; white, faint lilac eye; truss large and long; cutting back the old flower heads as they fade will give a second and third crop.

Miss Verboom. A new variety; similar to Miss Lingard but lavender-pink and valuable because early and gives several crops each season. 25c each, 3 for 70c, \$2.50 per doz.

Mrs. Jenkins. A good white to follow Miss Lingard; a strong grower and free bloomer.

Mrs. Millie Von Hoboken. Bright pink.

Rheinlander. Beautiful salmon pink, deeper eye; more salmon than Rheinstrom but hardly as strong in growth.

Rheinstrom. Rose-pink slightly tinted salmon; clear and bright; large; a good grower.

R. P. Struthers Clear cherry red, darker eye; floret large, truss heavy, stem slender but strong; tall; growth strong; a bright color and one of the best.

Phlox subulata; Moss Pink; Ground Pink

Dwarf, spreading habit, forming dense mats a foot or more across, of small narrow, somewhat moss-like leaves, covered in early spring with small clusters of flowers about an inch across, standing 2 to 6 in. above the ground; useful for carpeting, edging, and in the rockery. Pink and white, 15c each, 3 for 40c, \$1.50 per doz.

Hardy Flowers, continued

Physostegia Vivid; False Dragon-head

An attractive mid-summer perennial with spikes of purplish-rose tubular heather-like flowers $\frac{3}{4}$ to 1 in. long, on stalks 2 ft. high; useful in the perennial border and as a cut flower; suited to sun or partial shade. 15c each, 3 for 40c, \$1.50 per doz.

Pinks, Scotch or Grass; Dianthus plumarius

Low growing, 6 to 12 in. high; spreading grass-like habit; bluish-green foliage similar to Carnations; flowers very fragrant, single and double, 1 to $1\frac{1}{2}$ in. across, white to bright scarlet with fringed petals, in spring, early summer and at intervals till fall; excellent in the perennial border and rockery for their foliage as well as flowers; well drained soil; sunny situation best. Mixed colors, 15c each, 3 for 40c, \$1.50 per doz.

Pyrethrum roseum; Painted Daisy

Daisy-like flowers $1\frac{1}{2}$ -2 in. across in early summer on stems 1 to 2 ft. tall; well drained soil; full sun or half shade. Red, 20c each, 3 for 55c, \$2.00 per doz.

Rock-Cress, Alpine; Arabis alpina

A mass of small, snowy-white, 4-petaled flowers in spring, soon after the snow disappears; foliage gray, about 6 in. high; excellent in sun in the rock garden or perennial border; contrasts well with Alyssum saxatile compactum. 20c each, 3 for 55c, \$2.00 per doz.

Rudbeckia Newmani

Showy in summer when few perennials are in bloom, with its single golden-yellow daisy-like flowers, the center a purple cone, on stiff, wiry stems up to 3 ft. high; a perennial form of Black-eyed Susan. 15c each, 3 for 40c, \$1.50 per doz.



Sedum spectabilis Brilliant

Sedum; Stonecrop

"Among the most 'rocky' of rock plants;" excellent between the rocks, along walks, in walls and other places where few plants thrive; a dainty edging for flower beds or borders; useful for their variety of foliage, differences in flower forms and seasons and the dwarf habit of many varieties; easily grown in almost any soil if well drained in winter.

Sedum acre; Gold Moss. A low, creeping form; attractive moss green, very small leaves, $\frac{1}{4}$ in. long; starry bright yellow flowers $\frac{1}{2}$ in. across on shoots 2 to 3 in. high in summer; sun or shade part of the day. 15c each, 3 for 40c, \$1.50 per doz.

Sedum album. Dwarf and spreading, becoming about 4 to 6 in. high; waxy, round foliage; flowers $\frac{1}{4}$ in. across, white, in flat clusters. 15c each, 3 for 40c, \$1.50 per doz.

Sedum kamtschaticum. Grows about 6 in. high; triangular, deep green leaves; starry orange-yellow flowers $\frac{3}{4}$ in. across in clusters 1 to 3 in. across at intervals during summer; suited to partial shade. 15c each, 3 for 40c, \$1.50 per doz.



Phlox and Dwarf Sedum, with trees as a distant background, at the Sarcoxie Nurseries

Sedum, continued

Sedum reflexum; Jenny Stonecrop. Greenish-yellow, starry flowers in flat-topped clusters on stems 6-7 in. high in early July; narrow, light green, tufted foliage, 3 in. high. 15c each, 3 for 40c, \$1.50 per doz.

Sedum sarmentosum. Slender creeping shoots covered in late May with bright yellow, starry flowers $\frac{1}{2}$ in. across; leaves $\frac{1}{2}$ to $\frac{3}{4}$ in. long; rapid growth; useful for edgings, rockeries, walks and walls where few plants thrive; sun or dense shade. 15c each, 3 for 40c, \$1.50 per doz.

Sedum spectabilis Brilliant; Showy Stonecrop. Rosy-red flowers $\frac{1}{2}$ in. across in large flat-topped clusters 18 in. tall in late summer or early fall; thick, broad, light bluish-green leaves 3 in. long. 20c each, 3 for 55c, \$2.00 per doz.

Sedum spurium. Sub-trailing habit, 4 to 6 in. high; more upright than stoloniferum; leaves $\frac{1}{2}$ to 1 in. long. 15c each, 3 for 40c, \$1.50 per doz.

Sedum Rock Garden Collection

We will make up a rock garden assortment, good value, 3 plants, 3 varieties 40c; 6 plants, 3 varieties 75c; 1 doz. 4 varieties \$1.50; 2 doz., 4 varieties \$2.75.

Stokesia cyanea; Stoke's Aster

Lavender-blue cornflower-like blooms 3 to 4 in. across on stems 1 to 2 ft. tall from summer till fall; easily grown in any well-drained soil of average fertility; prefers full sun. 15c each, 3 for 40c, \$1.50 per doz.

THE ROSE, QUEEN OF FLOWERS

A little booklet mailed free on request. It describes the varieties and tells how to plant and prune. It gives the characteristics of the different classes. It contains a lot of information in a little space. If you haven't a copy, write for it.



Blanket Flower
(Page 21)



Coreopsis
(Page 22)

Sweet William; *Dianthus barbatus*

Gorgeous in mid May with their flat clusters of flowers ranging from pure white through different shades of pink to red and almost black, or variegated red and white; stems 12 to 20 in. high. The clusters are sometimes 4 in. across with 20 to 30 florets which do not all bloom at once so they last a considerable time. Useful in the perennial border, rockery and for cut flowers; prefer full sun; any good well drained soil. Mixed colors only, 15c each, 3 for 40c, \$1.50 per doz.; 2 doz. for \$2.50, 4 doz. for \$4.00.

Veronica rupestris

A fine rockery plant; small, deep green, thickly matted foliage covered in late April or early May with bright blue flowers stems 3 to 4 in. high. 15c each, 3 for 40c, \$1.50 per doz.

Violets, Sweet Russian

Everybody can grow this hardiest of violets as it is of easy culture, and of vigorous growth, soon making large clumps; fragrant, deep, rich blue flowers in early spring, and again, though not so profuse, in the fall when the days are cool; good in the rockery, at the front of perennial borders, along walks, or any place a low growing plant is desired; prefers partial shade. 10c each, 3 for 25c, 75c per doz., 25 for \$1.25.

***Yucca filamentosa*; Adam's Needle**

Stiff, sharp-pointed evergreen leaves 1 in. wide in dense clumps 18 in. high; white flowers in early summer; (4-6 ft.); effective on dry banks and in the rockery. 25c each.

***Yucca*, Variegated**

Similar to *filamentosa* but the edges of the leaves widely bordered with yellow. 25c each.



Veronica rupestris at Sarcoxie Nurseries
Bright blue flowers in late April or early May (Page 25)

The Kiddies' Outdoor Play Room

Youngsters love the outdoors and should be given the opportunity to spend as much time as possible in the fresh air, playing their wholesome games and enjoying the beauty and interest of living and growing things. There is no surer way of inspiring a love of home than by providing beautiful surroundings outside as well as within.

The front belongs more or less to the public, the back is our opportunity to develop an outdoor living room for recreation and enjoyment. In most cases one corner may be made a children's outdoor play room with just a little fixing up. Perhaps a tree or two, a few shrubs to partially screen it from the rest of the yard, and some flowers for color and interesting detail. Give the kiddies a sand pile, a swing, perhaps a teeter board. Here, away from the dangers of the street, they may amuse themselves for hours, and develop naturally without too much restraint. As they become older, give them a little hardy garden. Haven't you observed how eagerly they watch for the first flowers of spring, how they enjoy picking the flowers in the woods, free to all who come? Teach them to care for flowers and they will love them all the more. In their own little garden, where all summer long they feel free to gather flowers for themselves and their childhood friends, they will early learn the joy of giving, and will unconsciously carry into later life the lessons they have learned.



Sweet William

Lily, Regal, Liliun regale

A magnificent Chinese lily; white, center flushed yellow, sometimes tinged pink; outside of petals tinged purplish; delightful fragrance; easily grown; vigorous, reaching, when the bulbs become large, a height of 4-5 ft.; blooms freely. 4-5 in. around, 15c each, 3 for 35c, \$1.25 per doz. Postpaid, 20c each, 3 for 45c, \$1.45 per doz. Two year size, 5 for 50c, 12 for \$1.00 postpaid.



Regal Lilies at Sarcoxie Nurseries

"For trees, you know, are friends indeed,
They satisfy such human need;
In summer shade, in winter fire,
With flower and fruit meet all desire,
And if a friend to man you'd be,
You must befriend him like a tree."

Chas. A. Heath

BOOK OF PERENNIALS, BY ALFRED C. HOTTES

Contents. The Perennial Garden; Planning the Perennial Border; Garden Operations. Insects and Diseases; Plants for Shady Places; Rock Gardens and Plants; Lists of Twenty-fives; Noteworthy Perennials; Hardy Ferns; Ornamental Grasses; Herbs. Postpaid, cloth bound \$2.15.

Peonies are Easily Grown

Hardy as the oak, Peonies are so easily grown that little need be said. Often, in neglected gardens, one sees large clumps that have flourished and bloomed for years. Yet they liberally repay all attention given them. Peonies thrive in almost any good, well drained soil. Plant $2\frac{1}{2}$ to 3 feet apart. They are best in full sun but will succeed with shade part of the day. The early varieties usually begin blooming about May 5 to 8.

Peonies may be successfully planted in the spring provided they are sufficiently dormant. We have placed some of the leading varieties in cold storage to have them in good planting condition. After our storage supply is exhausted we cannot furnish them till fall. The fall list will contain our complete assortment.

How We Describe Peonies

We have endeavored to convey as accurate an impression of the colors as can be done by words. The name and date in parenthesis is the originator and the date of introduction. There are no single Peonies in this list. The guards are the wide outer petals. Crown, bomb, semi-rose and rose is the type or form of flower, classified as follows:

Crown. Wide center or crown petals with narrower, shorter petals forming a collar or ring between them and the guards. The crown petals are not always prominent.

Bomb. Central petals of uniform width but narrower than the guards and forming a globe within the guards.

Semi-rose. Flowers that would be classed as rose type but for an occasional pollen bearing stamen.

Rose. Perfectly full, all petals wide, no stamens. The central petals may not be as wide as the guards, but if quite distinct it would be a bomb. The line dividing the rose and bomb is sometimes quite an arbitrary one.

Peony Sizes and Prices

Prices quoted are for good strong divisions averaging 3 to 5 eyes, from blooming plants. We consider them fully equal to one-year plants, they cost less and average larger than those usually sent out, many of which are grown from small divisions to make more plants.

Peonies by Parcel Post

If wanted by parcel post allow 2c each if within 150 miles of Sarcoxie but not less than 10c per package; for the balance of Missouri and adjoining states allow 5c each; for more distant states figure $1\frac{1}{2}$ pound each, minimum 3 pounds. Any balance will be refunded.

3 of a kind at the dozen rate; larger lots quoted by letter.

Augustin d'Hour (Calot, 1867)

Deep rich, brilliant solferino-red, slight silvery reflex; large; bomb type; midseason; vigorous, medium tall; fine. 60c each, \$6.00 per doz.

Baroness Schroeder (Kelway, 1889)

Large, delicate flesh, becoming white; globular, compact rose type flowers; fragrant; midseason; blooms freely. 50c each \$5.00 per doz.

Crown of Gold (Couronne d'Or; Calot, 1873)

Famous for its beauty. Snowy white, reflecting the golden stamens and lighting up the flower; center petals beautifully flecked and bordered carmine; large semi-rose type flowers; late; growth upright, vigorous, with very strong stems; blooms freely. 35c each, \$3.50 per doz.



Duchesse de Nemours



The Peony rivals the rose in fragrance, beauty and variety of form

Duchesse de Nemours (Calot, 1856)

Superb ivory white with greenish markings toward the center, becoming pure white without a trace of crimson; one of the most beautiful in the half open bud; fragrant; medium to large; crown type; medium early to midseason; vigorous; good stems; blooms freely. 30c each, \$3.00 per doz.

Duchesse d'Orleans (Guerin, 1846)

Large carmine pink guards, center soft pink interspersed with salmon, becoming amber-yellow; medium to large; bomb type; fragrant; midseason. A strong, vigorous grower, very tall, and gives an abundance of blooms year after year. 30c each, \$3.00 per doz.

Duke of Wellington (Calot, 1859)

An indispensable variety, ideal for all purposes. Two rows of broad white guard petals, center very full, sulphur-white becoming pure white; fragrant; bomb type; late; keep well as a cut flower. Growth vigorous with tall, strong stems and abundant, very large flowers. 25c each, \$2.50 per doz.

Edulis superba (Lemon, 1824)

Beautiful, bright, deep, rose-pink flowers with a quite extraordinary fragrance; large and of good form; one of the earliest; crown type; growth strong, vigorous; blooms profusely over a long season; extra good both for the lawn and cut flowers. 30c each, \$3.00 per doz.

Felix Crousse (Crousse, 1881)

A brilliant, rich, even dazzling ruby red; large, globular, solidly and compactly built; bomb type; fragrant; midseason; growth strong, vigorous, with long stems, and blooms freely; fine. 40c each, \$4.00 per doz.

Festiva maxima (Mieliez, 1851)

For enormous size combined with wondrous beauty this variety has stood unsurpassed for 79 years. Pure paper white, some of the center petals flecked purplish-carmine; rose type; early; very fragrant; vigorous, with very long, heavy stems; indispensable. 35c each, \$3.50 per doz.

Peonies, continued

Francois Ortegat (Parmentier, 1850)

Deep purplish-crimson; golden stamens; semi-rose type; mid-season to late; medium size; blooms freely. 50c each, \$5.00 per doz.

Lillian Wild (Wild, 1933)

Very large; delicate flesh becoming pure white; compact rose type flowers; midseason; blooms freely. In common with other very large varieties, it takes three years for it to reach its maximum size. \$3.00 each.

Madame Calot (Miellez, 1856)

Very delicate pink becoming white; fragrant; large; rose-type; early; strong stems; blooms freely. 35c each, \$3.50 per doz.

Madame Auguste Dessert (Dessert, 1899)

Very large; glossy flesh-pink; semi-rose type; early to mid-season; blooms freely. 50c each.

Madame de Verneville (Crousse, 1885)

An enormous producer of extra fine, large, compact flowers literally packed with petals; broad white guards, center opens slightly blush, becoming pure white, flecked carmine; delightfully fragrant; bomb type; early; strong, vigorous growth of medium height with good stems; one of the finest for cut flowers and landscape planting. 25c each, \$2.50 per doz.

Masterpiece (Kelway 1895)

Large; intense, brilliant cerise; semi-rose type; fragrant; mid-season. 50c each, \$5.00 per doz.

Octave Demay (Calot, 1867)

Large; delicate hydrangea-pink; fragrant; crown type; early; blooms freely; medium height; strong stems. 35c each.

Queen Emma

A very large, very full, fragrant, bright, light pink rose type flower; plant of erect habit, compact growth, strong, stems medium long, blooms freely; an excellent cut flower variety as it keeps well and ships well; midseason to late. 50c each.

Red to Color, double, 25c each.

Therese (Dessert, 1904)

Very large, rich satiny-pink, center becoming lilac-white; compact, rose type; very fragrant; midseason; medium tall. 75c each.

Venus

Very large; hydrangea-pink; fragrant; crown type; midseason; tall; blooms freely. 50c each.

Pennant Mixed Peonies

If you want something good at a moderate price and do not care about the names or just what colors you get just so they are nice, order Pennant Mixed. This is not a cheap lot of undesirable varieties but a really good mixture of named peonies, the leading commercial varieties predominating. Do not ask for certain colors of these as they are grown mixed. 25c each, \$2.00 per doz., 50 or more at 16c each.

Peony Collection B, \$2.00

1 <i>Festiva maxima</i> . Early; white flecked carmine35
1 <i>Crown of Gold</i> . Late; white flecked carmine35
1 <i>Madame Calot</i> . Delicate pink becoming white35
1 <i>Duchesse de Nemours</i> . Superb ivory-white30
1 <i>Edulis superba</i> . Early; deep rose-pink30
1 <i>Duchesse d'Orleans</i> . Pink and salmon becoming amber	..	.30
1 <i>Francois Ortegat</i> . Deep purplish-crimson40
Regular price, not prepaid	\$2.35
Special: The 7 prepaid for	\$2.00

Picture in your mind how much a few trees, shrubs and flowers will add to the charm of your home! Start with good strong plants and enjoy them this spring and summer.

Peony Surprise Collection

We will furnish six good named Peonies, all different, for \$1.50. At this price, the selection must be left to us but we promise you a good selection and good value. Postage extra if wanted by parcel post.

Liberty Irises, Fleur de Lis

Plant lots of Irises for their grand and royal colors, shimmering in the sun, and their beauty of form and texture. Mass them at the borders of the lawn, or among shrubbery. Plant them along walks and drives, and in the herbaceous border. Naturalize them in wild and uncultivated places. Plant them for cut flowers. They will reward you with a lavish wealth of bloom.

They are perfectly hardy.

They are easy to grow.

They are easy to plant.

They usually bloom the first season.

They increase rapidly.

They grow in almost any soil.

They furnish a wealth of color in May.

Liberty Irises succeed with shade part of the day, but are best in full sun. They are not particular as to soil, will grow almost anywhere provided it is well drained, but do best in a rich loam or garden soil, even in quite dry locations. Prepare the soil well. Compost or leaf mold may be added if needed but *no manure*. Plant 15 to 18 in. apart with the rhizome or fleshy part of the roots horizontal and barely covered. Divide and re-plant as they become too thick. The inches or feet in the description is the height of the flower stems. The standards are the upright or standing petals, the falls the lower or drooping petals.

Prices: Except where otherwise noted, 15c each, 3 of a kind for 30c, 6 or more of a kind at \$1.00 per doz.

If wanted by parcel post, add 2c each, not less than 10c per package, for Missouri and adjoining states.

Albert Victor—Standards soft blue, falls lavender; large; 36 inches; broad, vigorous foliage.

Alcazar—Standards light bluish-violet, falls rich reddish-purple, bronze veined throat; large flowers in abundance; 3 ft.; fine.

Ambassadeur—Standards smoky reddish-lavender, falls dark velvety purple-maroon; fragrant; large; late; tall, strong stems, 20c each, 3 for 55c, \$2.00 per doz.

Autumn King—Large; standards violet-blue, falls reddish-purple; blooms in May and a lighter crop in the fall. 25c each.

Azure—Good size; standards lavender-blue, falls rich velvety violet-purple; fragrant; medium late. 25c each.

B. Y. Morrison—Standards pale lavender-violet, falls velvety purple bordered lavender; fragrant; 30 in. tall, 15c each, 3 for 40c, \$1.50 per doz.

Canopus—Standards light purple, falls velvety prune-purple; large; 3 ft., excellent. 20c each, 3 for 55c, \$2.00 per doz.

Caprice—Standards cerise, the falls slightly deeper; early; blooms freely on widely branched stems 2 ft. high; fragrant.

Celeste—Standards sky-blue, falls slightly deeper; large flowers on high branched stalks 30 in. high.

Cluny—Standards soft bluish-violet, falls deeper; large; very fragrant; tall; early. 25c each, 3 for 70c, \$2.50 per doz.

Col. Candelot—Standards bronze overlaid reddish-lavender, falls dark velvety mahogany crimson; 30 in, fragrant, 15c each, 3 for 40c, \$1.50 per doz.

Corrida—Almost sky-blue, falls slightly deeper; late; tall; blooms freely; excellent landscape variety. 25c each, 3 for 70c.

Crimson King—Rich claret-purple; 24 in.; a good dependable free blooming early variety; fragrant.

Cyanea—Deep violet flowers in early spring; very dwarf; useful in the rockery and perennial border. 20c each, 3 for 55c, \$2.00 per doz.

Dr. Bernice—Standards coppery-bronze, falls ruby-purple.

Dr. C. H. Mayo—Very large, lavender-pink veined deep lavender; fragrant; early; tall; vigorous; fine. 35c each.

Liberty Iris, continued

Except where otherwise noted, 15c each, 3 of a kind for 30c; 6 or more of a kind at \$1.00 per doz.

Dream—Large; soft pink tinged lavender; fragrant; midseason; vigorous; blooms freely; tall.

Edouard Michel—Large; reddish-violet, falls slightly deeper, ruffled; fragrant; 2½-3 ft. 20c each, 3 for 55c, \$2.00 per doz.

Fairy—White delicately shaded soft blue; fragrant; early; 2 ft.

Florida—Yellow; dwarf; excellent for the rockery and border.

Frieda Mohr—Very large; standards ruffled, light lilac, falls rose tinged purple; fragrant; tall; blooms freely; fine. \$1.25 each.

Honorabilis—Standards golden-yellow, falls crimson-brown; medium size but blooms freely from early to late; 18 in.

Ingeborg—Creamy-white; very early; vigorous; 15-18 in.

Iris King—Standards old gold, falls garnet-brown bordered yellow; 2 ft.; medium late. 15c each, 3 for 40c, \$1.50 per doz.

James Boyd—Large; standards lavender-blue, falls light violet edged lighter; beard tipped orange; fragrant; late; 30 in.

Juniata—Large; lavender-blue, falls slightly deeper, almost violet-blue, deeper than *Pallida Dalmatica*; fragrant; 3-3½ ft.

Kochi—Rich, deep velvety royal reddish-purple; good size; blooms freely; very early, blooming with *Florentina*; 2 ft.

Lent A. Williamson—Very large; standards broad, lavender-violet, falls drooping, violet-purple; fragrant; early midseason; tall; vigorous; very fine. 20c each, 3 for 55c, \$2.00 per doz.

Lord Lambourne—Large; standards lavender slightly smoky, tinged pink, falls reddish-crimson; tall; blooms freely. 35c each.

Loreley—Standards light yellow, falls dark purple margined light yellow; fragrant; early; blooms freely; vigorous; 30 in.

Madame Chereau—Standards and falls white elegantly frilled violet-blue, ruffled; midseason; blooms freely; 3 ft.

Madame Pacquette—Standards violet-red, falls slightly deeper; early; fragrant; 2½ ft.; a good medium priced one of the red class.

Mary Williamson—Standards ruffled, white, falls reddish-violet border white; midseason; tall.

Midwest—Large; standards ruffled, reddish-violet, lighter center, falls deeper; 30 in.; medium early. 20c each, 3 for 55c, \$2.00 per doz.

Monsignor—Bluish-violet, falls deeply veined reddish-purple; fragrant; late; blooms freely; 2-2½ ft.

Morning Splendor—Very large; standards deep lavender-violet, falls rich velvety reddish-purple; delightful fragrance; midseason; tall; fine. 30c each, 3 for 80c, \$3.00 per doz.

Mother of Pearl—Large; iridescent light pearly bluish-lavender; fragrant; midseason; blooms freely; 3½ ft.

Mrs. H. Darwin—White, falls slightly netted violet at base.

Opera—Standards bright violet-red slightly bronzed, falls velvety mahogany; fragrant; 2½ ft. 20c each, 3 for 55c, \$2.00 per doz.

Orientalis Blue—Intense blue, almost purple; blooms freely; 2-2½ ft.; a small-flowered variety, excellent for naturalized plantings in the rock garden and at the borders of pools.

Pallida Dalmatica—Very large; lavender-blue, falls slightly deeper; blooms freely; 3½ ft. 15c each, 3 for 40c, \$1.50 per doz.

Prairie Gold—Rich deep golden yellow; fragrant; medium height; medium early. 25c each, 3 for 70c, \$2.50 per doz.

Prosper Laugier—Standards reddish-bronze, falls velvety ruby-purple; fragrant; good size; midseason; 2½ ft.

Prospero—Very large; standards lavender suffused yellow at base, falls purple slightly reddish; fragrant; late; midseason; fine; 3½ ft. 25c each, 3 for 70c, \$2.50 per doz.



Showy Japanese Irises for tall borders or at the water's edge

Quaker Lady—Standards smoky lavender, falls ageratum-blue.

Queen of May—Large; lilac-pink to orchid-pink, falls deeper; fragrant; early-midseason; blooms freely; vigorous; 2½ ft.

Rhein Nixe—Standards white, falls pansy-violet edged white; fragrant; midseason to late; vigorous; blooms freely; 2½ ft.

Rosalba—Standards ruffled, wine-red, falls mahogany-red to ruby-violet; fragrant; good size; 3 ft. 25c each.

Roseway—Standards purplish-rose, falls deeper; fragrant; vigorous; blooms freely; 2½ ft. 20c each, 3 for 55c, \$2.00 per doz.

Seminole—Large; standards violet-red; falls velvety mahogany-red to deep crimson; blooms freely; 2-2½ ft. 20c each, 3 for 55c, \$2.00 per doz.

Shekinah—Clear soft yellow, base shaded deeper; fragrant; mid-season; vigorous; 2½-3 ft. 20c each, 3 for 55c, \$2.00 per doz.

Sherwin Wright—Golden-yellow; fragrant; blooms freely; 1½-2ft.

Sweet Lavender—Standards ruffled, soft lavender, falls reddish-violet; fragrant; midseason; blooms freely; 2½-3 ft.

Violacea grandiflora—Large; standards lavender-blue, falls almost violet-blue; late; vigorous; blooms freely; 3 ft.

Special Iris Collection

Liberty Irises, assorted, our selection, named: Half dozen, 3 varieties, 50c (postpaid, 60c); one dozen, 6 varieties, \$1.00 (postpaid, \$1.15); twenty-five, 8 varieties, \$1.75 (postpaid, \$2.00); one hundred, 8 varieties, \$5.00 (postpaid, \$6.00),

Japanese Irises

Foliage tall, narrow and blade-like; stems slender and graceful, with several buds to the stem; large flat flowers, usually with a gold blotch. Plant in full sun. Any good mellow loam that does not become excessively dry will give good results. Naturalized along a stream or pool where their beauty is reflected in the mirror below they are very effective. Water must not stand on their roots, especially during winter. The six-petaled are termed double, the three-petaled, single.

White blotched gold. Early, double. 20c each, \$2.00 per doz.

Cannas Bloom from June till Frost

From latter June till frost Cannas give a profusion of large, dazzling flowers. Their stately habit, strong foliage and showy colors make them excellent for formal beds and as a summer screen for unsightly objects; they produce a good effect singly or in small groups in the hardy border or among shrubbery.

For a circular bed take a stake and string and mark a circle 18 in. from center or 3 ft. across. Lengthen the string 18 in. for each circle. Set 1 plant in the center, 6 in the first circle, 12 in the second, 18 in the third, and so on. It requires but 37 plants for a bed 9 feet across, and at least a foot all around should be allowed for growth of foliage. Plant when you plant your garden, in a sunny situation in good, rich, mellow garden soil, 18 in. apart.

Parcel Post. Allow 15c per doz., 25c for 2 doz., for Missouri and adjoining states.

Six of a kind at the dozen rate; 50, not less than 10 of a kind, at the 100 rate.

Allemania—Large flowers, scarlet with a yellow border; green foliage; grows 4 to 5 ft. high; blooms freely. 10c each, 3 for 20c, 60c per doz., \$4.00 per 100.

Austria—Large; canary-yellow dotted crimson; green foliage; blooms freely; 4½ feet, 10c each., 3 for 20c, 60c per doz., \$4.00 per 100.

King Humbert—Large trusses of large, bright orange-scarlet flowers; bronze foliage; blooms freely; fine; 4 to 5 ft. 10c each, 3 for 25c, 75c per doz., \$5.00 per 100.

King Midas—Large; glistening yellow, well formed flowers; green foliage; 5 ft. 15c each, 3 for 40c, \$1.50 per doz.

Louisiana—Large; orange-scarlet; green foliage; 5 to 6 ft. 10c each, 3 for 20c, 60c per doz., \$4.00 per 100.

Mohawk—Large; brilliant poppy-red; bronze foliage; 5 feet 15c each, 3 for 40c, \$1.50 per doz.

President—Rich, glowing scarlet; large flowers on strong stalks; green foliage; blooms freely; 4 ft. 10c each, 3 for 25c, 75c per doz., \$5.00 per 100.



Cannas

Victory—General effect apricot, tinged and blotched light pink; 3 feet. 15c each, 3 for 40c, \$1.50 per doz.

Wintzer's Colossal—Very large; vivid scarlet, its brilliancy well retained; 5 feet. 15c each, 3 for 40c, \$1.50 per doz.

Yellow King Humbert—Large; rich yellow dotted red, occasionally a scarlet or scarlet-striped flower., green foliage. 10c each, 3 for 25c, 75c per doz., \$5.00 per 100.

Dahlias for Autumn Flowers

Dahlias are easily grown and give an abundance of flowers in early autumn. The decorative type have large, broad petals in rather flat heads; the show type have numerous, short, stiff quilled petals; the cactus have long narrow usually twisted petals. The size given in inches is the diameter under ordinary field conditions. They can be grown larger with special care and disbudding.

In the central and southern states the summers are too hot for good Dahlia flowers. Plant late (about May 15 here) to have them blooming during the cooler autumn days. Lay the tuber flat, the eye or sprout upward. When three pair of leaves are formed, pinch out the top pair to make them branch low.

Parcel Post. Add 3c each for Missouri and adjoining states, not less than 10c per package.

Prices: 15c each, 3 for 40c, \$1.50 per doz., except as noted. 6 or more at the dozen rate.

Alpha Miller—A dainty flower of the Jersey's Beauty type and color. 20c each, \$2.00 per doz.

Darlene—Shell pink shaded to a white center; 4 in.; decorative type.

Floral Park Jewel—Crimson to scarlet-crimson, sometimes tipped white, 3 to 3½ in.; show.

Frank A. Walker—Deep lavender-pink; 4½ in.; good stems; decorative.

Golden Gate—Yellow, some petals twisted; 5 in.

Jack Rose—Brilliant crimson-red, in color much like the General Jack rose; blooms freely, 4 in.; decorative.

Jersey's Beauty. Large; luminous coral-pink; decorative. 25c each, \$2.50 per doz.

Minnie McCullough—The red and gold of autumn leaves; 3½ in.; decorative; excellent.

Mrs. C. H. Dresselhuis. Light rose-pink barely tinged lavender, tip suffused white; 4 in.; decorative. 20c each, \$2.00 per doz.

Mrs. Carl Salbach—Silvery to purplish-pink suffused white; 9 in.; decorative. 20c each, \$2.00 per doz.

Mrs. Hartong—Soft bronzy-buff; decorative; 4 to 4½ in.

Mrs. I. de Ver Warner—Deep orchid-like mauve-pink; 6 in.; stout stems; very tall; decorative. 20c each, \$2.00 per doz.

Perle de Lyon—Pure white fringed petals; 4 in.; hybrid cactus.

Pride of California—Scarlet-red to bronze-scarlet; 5 to 5½ in.; decorative; tall; very showy.

Sylvia—Lavender-pink shading to a white center; 3 in.; decorative; blooms freely.

W. B. Childs—Very dark blackish-maroon with purplish shadings; 3½ in.; hybrid cactus.

White Swan—Pure white, quilled ball type; 2½-3 in.

Autumn Color—Red and gold; 3 in.

"There should be a pool in every garden," said Mr. Edgar Rice Burroughs, famous author of the Tarzan stories. "I have always had as many as space permitted. Children learn so much from pools. The birds come for drinks, and the children learn to know them. Pollywogs hatch and turn into frogs. Water-lilies bloom generously. And the ground around a pool lends itself to such interesting plant growing."—Better Homes & Gardens, August, 1931.

THE ROSE, QUEEN OF FLOWERS
A booklet of cultural suggestions, mailed free.

Gladiolus for Summer Flowers

Gladiolus are probably the most popular of summer and fall blooming bulbs. By planting as soon as danger of frost is over and at intervals of two weeks you can have gladiolus all summer. They are easily grown, seldom troubled with insects or diseases, and increase rapidly. Plant 3 to 6 in. apart. Instructions for growing and increasing your stock will be sent with the bulbs.

Please Notice we Quote by Size

"Blooming size" doesn't mean much, because 1st, 2nd, 3rd, 4th and 5th size will bloom, though the smaller sizes give smaller flowers and smaller spikes than the larger sizes. First size is 1½ inches and over in diameter; 2nd size 1¼ inches; 3rd size 1 inch; 4th size ¾ inch; 5th size ½ inch.

These Gladiolus Prices are Postpaid

In Missouri, Arkansas, Iowa, Kansas and Oklahoma. For other states add 10%. At these low prices not less than 6 of a kind sold; 25 or more of a kind at 100 rates.

Prices, Named Varieties	Per doz.	Per 100
1st size, 1½ in. and over	\$0.40	\$3.00
2nd size, 1¼ in.	.30	2.25
3rd size, 1 in.	.25	1.75

Gladiolus Collections

One each, 12 varieties, not labeled, second size, 40c; two each, 12 varieties, not labeled, 75c.

Albania—Clear white with wide fringed petals.

Alice Tiplady—Rich orange with salmon tinge; primulinus.

Carmen Sylva—Large; pure white; tall, stout stems.

Chicago White—A good early white of medium height.

Crimson Glow—Rich glowing scarlet-crimson; large; tall.

Dr. W. Van Fleet—Large; creamy-white shading to bright pink.

E. J. Shaylor—Large; bright rose-pink blending lighter; ruffled.

Fern Kyle—Large; creamy-white, throat primrose-yellow.

Gold Drop—Light yellow, lower petals deeper, with red lines.

Herada—Light purplish-rose, edges deeper.

Joe Colman—Bright red, carmine blotch; large; ruffled.

Le Marechal Foch—Large early delicate pink; straight stems.

Lily White—Glistening white, cream throat; early; good.

Los Angeles—Bright pink shaded geranium-pink, carmine throat.

Ming Toy—Pale orange-yellow, edges suffused red; primulinus.

Mrs. Francis King—Large; brilliant vermilion-scarlet.

Mrs. Frank Pendleton—Rosy-flesh shading to white edges, rich maroon blotch on the lower petals; large; tall.

Mrs. R. Lohrman—Creamy shell-pink; large; ruffled.

Peace—Large; white, lower petals feathered carmine; late.

Sheila—Light coral-red, shading lighter in throat; large.

Sunbeam—Very early; deep clear yellow; large; tall.

Book of Perennials, by Alfred C. Hottes

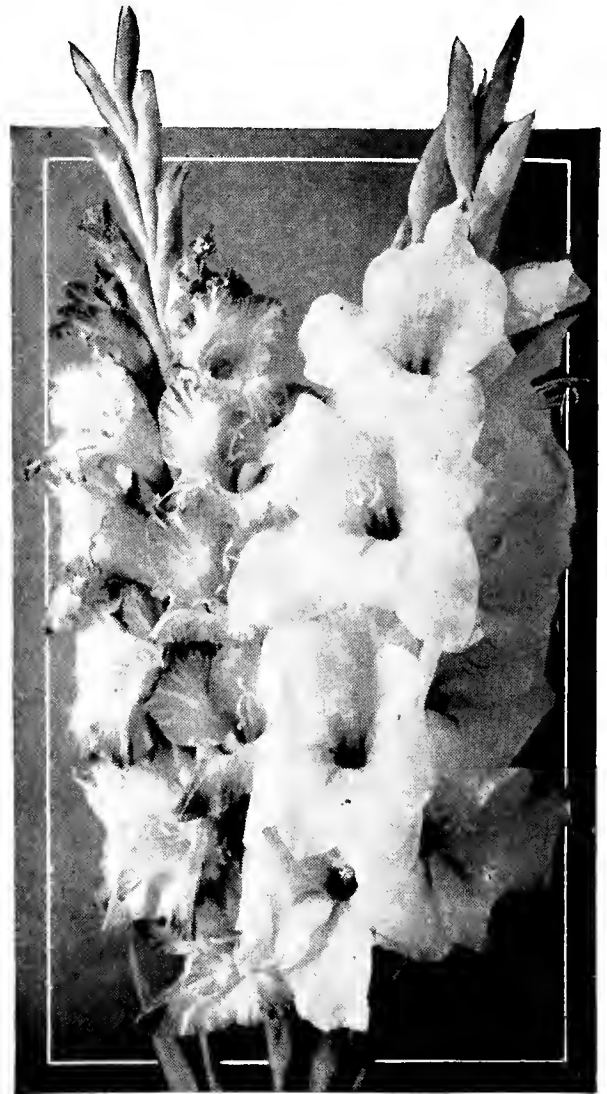
The Perennial Garden; The Perennial Border; Garden Operations, Insects and Diseases; Plants for Shady Places; Lists of twenty-fives; Noteworthy Perennials; Hardy Ferns; Ornamental Grasses; Herbs. Postpaid, cloth bound \$2.15.

Book of Shrubs, by Alfred C. Hottes

Adapted to the needs of the amateur and professional. Gives non-technical descriptions, showing how one species differs from another; its uses; soil; pruning and propagation. 371 pages, well illustrated. Postpaid, cloth bound, \$3.15.

Dewberries

Lucretia—Large, often 1½ in. long; sweet, luscious; unexcelled in size and quality by any blackberry; ripens at the end of the strawberry season, before Early Harvest. 50c per 10, \$1.00 per 25, 50 or more at \$3.50 per 100, 500 at \$30.00 per 1000.



Gladiolus, the easiest flower grown

Raspberries

They begin bearing the second year, ripen between strawberries and blackberries and bear regularly under proper conditions; should have deep soil with plenty of humus, that retains moisture during a dry season.

Chief—An excellent red variety about 10 days earlier than Latham. 50c per 10, \$1.00 per 25, 50 or more at \$3.50 per 100, 500 at \$30.00 per 1000.

Cumberland—Black, large, firm, excellent quality; early to midseason; hardy, vigorous, productive; plant 4x7 ft. 50c per 10, \$1.00 per 25, 50 or more at \$3.50 per 100, 500 at \$30.00 per 1000.

Latham—Large; brilliant red; hardy; productive. 50c per 10, \$1.00 per 25, 50 or more at \$3.50 per 100, 500 at \$30.00 per 1000.

St. Regis; Ranere—Bright red, good quality; hardy, productive; season early and long, with a fall crop if plenty of late summer and fall rains; plant 2x5 ft. 50c per 10, \$1.00 per 25, 50 or more at \$3.50 per 100, 500 at \$30.00 per 1000.

Blackberries

Blackberries begin bearing the second year and under suitable conditions may be depended upon for regular, profitable crops. A strong, deep loam that will retain moisture, tending toward clay rather than sand, is best. If properly tended they may be planted 2x6 ft., 3600 per acre.

Early Harvest—Medium size but juicy, sweet, and valuable for its extreme earliness, hardiness and productiveness; firm, ships well. 50c per 10, \$1.00 per 25, 50 or more at \$3.50 per 100, 500 or more at \$30.00 per 1000.

A home is not complete until the grounds are made as livable as the house itself. Planted early, trees and shrubs will have more time to develop their beauty and charm.

Cherries for Quick Results

With proper soil and care Cherries give quick results, often coming into bearing the fourth year. On good, well drained soil Cherries are successful. On wet soils they are short lived. Plant 18 to 20 feet apart.

Prices of Cherry Trees	Each	Per 10	Per 100
XXX size 2 year, 11/16 in. caliper up about 4 to 5 feet	\$0.45	\$4.00	\$35.00

Any 5 or more at the 10 rate, less at the each rate; 50 or more at the 100 rate.

Early Richmond (May Cherry)—Medium size: round; bright red, darker when fully ripe; very juicy, sprightly acid; latter May-June; hardy; very productive; profitable.

English Morello—Large, dark red, nearly black; flesh dark purplish-crimson; juicy; rich acid; prolific; latter June-July; rather dwarf.

Montmorency—Rather large; dark, rich red; juicy, pleasant acid; excellent; a week to ten days later than *Early Richmond*; vigorous; hardy; productive.

Plum Trees

Prices of Plum Trees	Each	Per 10	Per 100
XX size, 11/16 in. caliper up about 4½ to 6 ft.	\$0.50	\$4.50	40.00

Any 5 or more at the 10 rate; 50 at the 100 rate.

Abundance—Japan; large; bright red over yellow; juicy; sweet, rich; cling; mid July; very productive.

America—Large; yellow, red cheek; juicy; cling; July; hardy; productive; bears young, one of the most reliable.

Blue Damson—Esteemed for canning and preserving.

Currants for Jelly

Plant 3x4 ft.; in central states should have partial shade or a northern slope. Red and white, 2 year, 1 for 20c, 2 for 35c, 3 for 50c. 5 or more at 15c each.



Pear Trees, Standard

Prices of Pear Trees	Each	Per 10	Per 100
X size 2 year, 9/16 to 11/16 in. caliper, about 4 to 5 feet	\$0.40	\$3.50	\$30.00

Any 5 or more at the 10 rate; 50 or more at 100 rate.

Bartlett—Large, waxy yellow with red blush; juicy, fine grained, rich, good quality; latter August; bears young.

Garber—Large, waxy yellow, red cheek; early Sept.; good for canning; hardy; vigorous; resistant to blight.

Kieffer—Large; rich yellow tinted red; juicy; develops good flavor if ripened slowly in a cool, dark room; resistant to blight; hardy; productive: Sept.-Nov.; bears about the fifth year; plant *Garber* to pollinize it.

Dwarf Pears

Dwarf Pears occupy little room, and while not so long lived as the Standards they begin bearing younger.

Duchesse—Large, greenish-yellow, dull red cheek; juicy; slightly granular; Sept.-Oct.; hardy; productive. X 5/8 in. caliper up, 50c each, \$4.50 per 10.

Gooseberries

Plant 3x5 or 4x5 ft. A northern slope or slight shade is best in the Central and Southern States.

Houghton—Medium size but a profuse bearer, resistant to mildew; the best for most sections; pale dull reddish-brown when ripe; usually picked green. 2 yr., 1 for 20c, 2 for 35c. 3 for 50c. 5 or more at 15c, 25 at 12c each.

Peaches Bear the Third Year

Peaches come into bearing quicker than any other tree fruit, under proper conditions giving a crop the third year. A few trees won't cost as much as you probably pay, for peaches in one year. And none are so delicious as those freshly picked when fully ripened on the tree. A sandy loam or gravelly soil is best but the peach adapts itself to almost any well drained soil. Plant 25x25 ft. Sometimes they are planted 18x18 but 25x25 is better.

Prices of One-Year Peach	Each	Per 10	Per 100
X size, 9/16 to 11/16 in. caliper, about 4 to 5 ft	.45	4.00	35.00

Any 5 or more at the 10 rate, less at the each rate; any 50 or more at the 100 rate.

This list is arranged approximately in the order of ripening; dates named are the average in southern Missouri.

Mayflower—Good size and quality for an early peach, about June 10; red all over; semi-cling; productive.

Carman—Large; creamy white, splashed red; flesh white, juicy, rich, sweet; nearly a freestone; productive.

Belle of Georgia—Very large; white, red cheek; flesh white, fine texture, firm, juicy, rich, high quality; freestone; early August; vigorous, hardy, very productive.

J. H. Hale—A little rounder and firmer than *Elberta*; about same season or a little earlier; flesh yellow; freestone.

Elberta—Very large; yellow, crimson cheek; flesh yellow, firm, juicy, good; freestone; mid Aug.; productive.

Heath Cling—Very large; creamy white, sometimes faintly blushed; flesh white to the pit, rich, very juicy, fine quality; clingstone; latter September.

Apple Trees for Home Orchards

The ripening dates named are the approximate average for southern Missouri. Allow 5 to 7 days for each 100 miles North or South. The altitude also affects the date of ripening. Plant 30 ft. apart or more.

Prices of Two-Year Apples
XX size, 1 1/16 in. caliper up,
about 4 1/2 to 6 ft.-----\$0.50 \$4.50 \$42.50

Any 5 or more at the 10 rate, less at the each rate; any 50 or more at the 100 rate.

Summer Apples

Early Harvest—Bright straw color; juicy; rich subacid; good; very early; bears rather young.

Autumn Apples

Maiden Blush—Large, clear yellow, crimson cheek; flesh fine grained, moderately crisp, very juicy, subacid; excellent for cooking; hardy; productive; bears rather young.

Winter Apples

Black Ben Davis—Large; attractive rich red to maroon, rarely striped; flesh firm, crisp, juicy, mild subacid; ships and keeps well; bears young, regularly, abundantly.

Delicious—Roundish-conic; medium large; pale yellow mostly covered with red, splashed and striped dark carmine; moderately fine grained, juicy, mild subacid.

Grimes Golden—Of best quality; beautiful yellow; medium to large; flesh yellow, firm, crisp, juicy, rich subacid, aromatic; a fine dessert apple, good for cooking even before ripe; Oct.-Dec.; blooms late; bears young; hardy.

Jonathan—Attractive lively deep red; medium size; flesh firm, moderately fine, crisp, juicy, very aromatic, sprightly subacid, excellent; Oct. and later; bears rather young.

Stayman Winesap—Large; yellowish, striped, often nearly covered with dark red; firm, moderately fine grained, juicy, subacid; good; keeps late; bears young.

Winesap—Bright deep red; flesh yellow; very rich; crisp, very juicy, sprightly subacid, very good; Dec.-March; bears young.

Crab Apples

Transcendent—Large for a crab apple; golden yellow with a rich crimson cheek; crisp; juicy, subacid; an excellent jelly crab; hardy, productive; Aug.-Sept.

Grapes in the Home Garden

Grapes often bear some the second year and should give a good crop the third year. In garden or vineyard, cultivated and pruned regularly, they give more and larger bunches, but bear fair crops on arbor or pergola, furnishing shade, ornament and fruit; plant 8x8 or 8x10 ft.; they succeed on almost any well drained soil of average fertility.

Agawam—Bunch large, berry large, dark reddish-brown; juicy; rich; productive; ripens after Concord. 2 year, 1 for 20c, 2 for 35c, 3 for 50c, 5 or more at 15c, 25 at 12c each.

Concord—Large; the most popular black grape; juicy; sweet; hardy, productive, vigorous; mid to late Aug. 2 year., 1 for 15c, 2 for 25c, 3 for 35c, 5 or more at 12c, 25 at 9c each, 100 at 7c each.

Moore Early—Black; large; valued for size, hardiness, productiveness and season, about 2 weeks before Concord. 2 yr., 1 for 17c, 2 for 32c, 3 for 45c, 5 or more at 14c, 25 at 11c.

Niagara—Greenish-white to pale yellow; sweet; ripens with Concord or a little later; vigorous; productive. 2 yr., 1 for 20c, 2 for 35c, 3 for 50c, 5 at 15c, 25 at 12c each.

Rhubarb

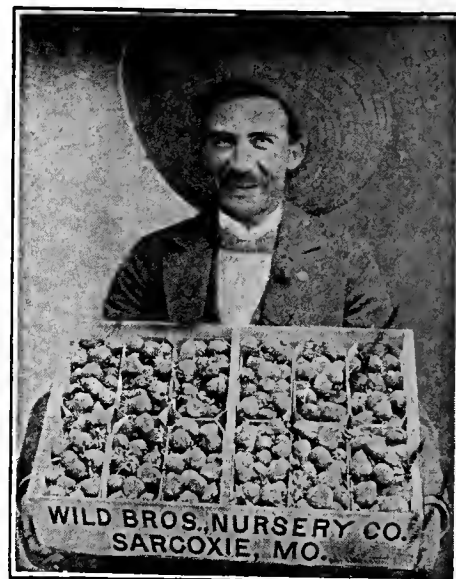
Large, tender, delicately flavored stalks; productive; easily grown; the secret of success is well-drained soil; plant 2 1/2 x 4 ft.; cover the crown 2 in. Divisions (better than seedlings) 15c each, 3 for 40c, \$1.00 per doz.; 6 or more at the doz. rate.

Horseradish sets, 25c per doz., \$1.50 per 100.

For the foundations, remember always—height in the corners, immediately in front of pillars, and at the bare wall spaces. Under the windows, low or medium plants only. Evergreens are beautiful winter and summer.

Strawberries

No other fruit gives such quick results as strawberries. Planted one spring, they give a crop the next, and with proper care a patch lasts several years. Plant 2 ft. apart in the row, the rows 3 1/2 to 4 ft. apart. These plants are well rooted, properly cleaned and carefully packed. All varieties listed are perfect flowered and will bear alone. Not less than 25 of a kind sold. Postage extra if by parcel post, except the Home Strawberry Collection.



Aroma—A heavy bearer; very large, conical; deep glossy red; firm; ships well; begins midseason and continues late; the leading variety in this section.

Blakemore—A variety originated by the United States Department of Agriculture which has proven valuable in this section; medium size; bright light red; good quality; firm; perfect flowered.

Dunlap—Dark glossy red, its color well retained when canned; rich, juicy; one of the best quality strawberries; medium size; bears heavily; succeeds almost everywhere; a perfect-flowered Warfield.

St. Louis—Of good size and quality for an early berry for home use; perfect-flowered.

Texas—Early; glossy crimson; rich; juicy; productive; perfect-flowered.

PRICE OF STRAWBERRIES:

	25	50	100	250	1000
Aroma	20c	35c	60c	\$1.00	\$3.00
Blakemore	20c	35c	60c	1.00	3.00
Dunlap	20c	35c	60c	1.00	3.00
St. Louis	20c	35c	60c	1.00	3.00
Texas	20c	35c	60c	1.00	3.00

5000 assorted at \$2.75 per 1000, 10,000 at \$2.50 per 1000.

Not less than 25 of a kind sold. 500 or over assorted, if you wish, at the 1000 rate. If by parcel post, add 10c for 50, 15c for 100, 20c for 250, for Missouri and adjoining states.

Home Strawberry Collection

300 assorted early to late, varieties suitable for your section, \$1.35 postpaid.

Everbearing Strawberries

Mastodon—The largest of the Everbearers. Bears the first summer. Plant where it may be watered if you can. 60c per 25, \$2.00 per 100. Postage additional.

Asparagus

The earliest of vegetables excepting rhubarb. Easily grown; lasts for years; plant 15 in. apart in the row.

Mary Washington—A commercial variety; large; productive; rust resistant; 1 yr., 25c per doz., 40c per 25, \$1.25 per 100.

MANUAL OF GARDENING, BY L. H. BAILEY

Practical information on planting and landscaping your home grounds; how to drain, cultivate, and fertilize; how to transplant and prune, the different fruits, vegetables, and flowers; a list of varieties for different purposes. 350 illustrations, 539 pages. Postpaid \$3.00.