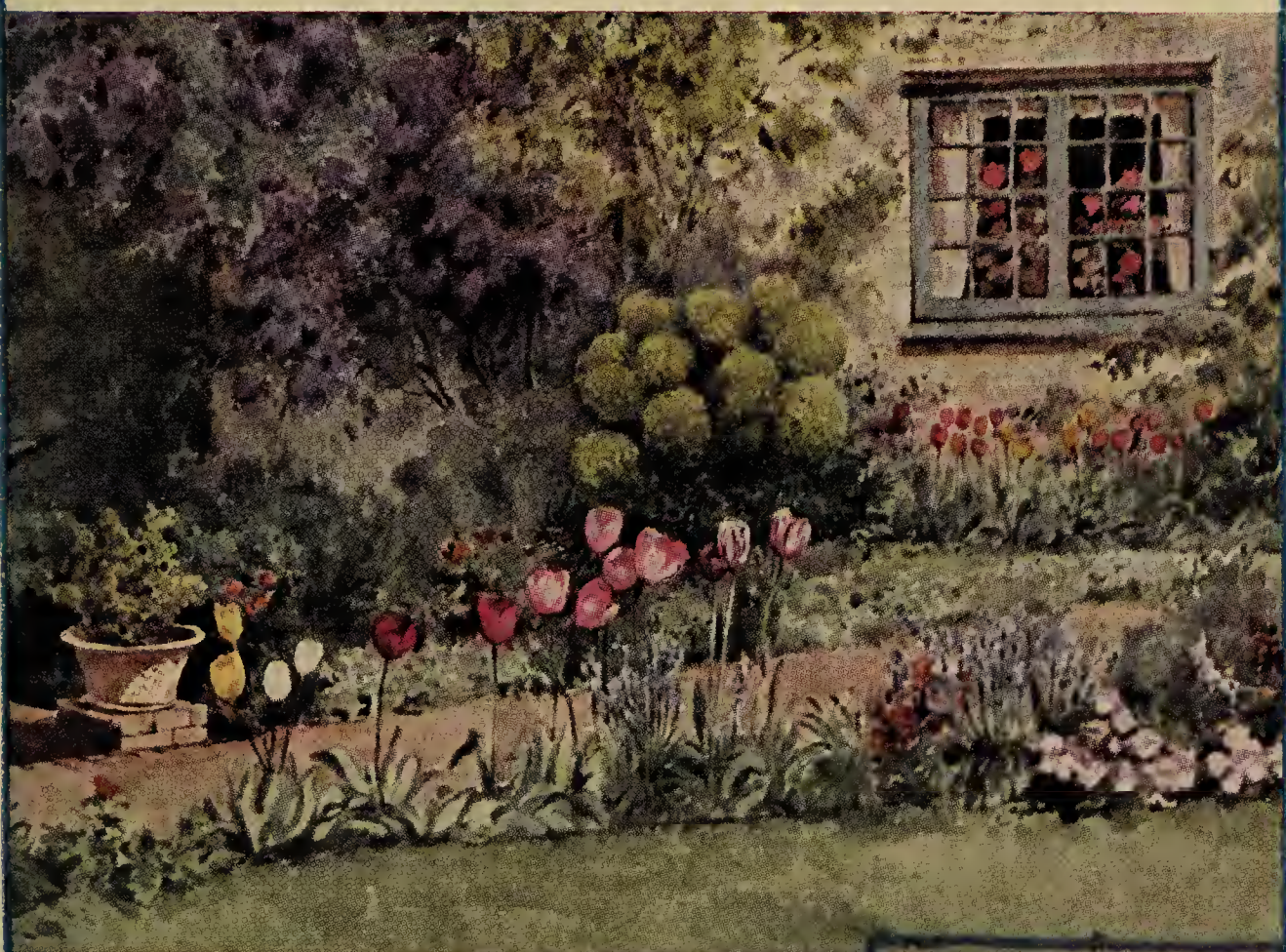


Historic, archived document

Do not assume content reflects current scientific knowledge, policies, or practices.

62.61

GREETINGS FROM "TULIPDOM"



LIBRARY
RECEIVED
★ MAY 31 1934 ★
U. S. Department of Agriculture



Zandbergen Bros

Oyster Bay - Long Island, N.Y.

1934

Rijnlandt Bulb Nurseries
Valkenburg near Leiden - Holland

WE GUARANTEE

We guarantee our stock to be true to name. No better bulbs can be bought at any price. If any customer should receive stock which, when it comes to bloom, proves not true to name, it is the result of an accident and in such a case we will send the customer stock of the variety ordered in the grade of stock sent out in the first instance. He may keep the bulbs first received.

Promptly upon receipt of the bulbs the package and each individual bag within it should be opened so as to give the air access to the bulbs. A disregard of this may impair their blooming power.

All bulbs we send out will grow and bloom under any ordinary conditions. But we have no control over conditions surrounding the bulbs and the care they receive after they pass out of our hands. We therefore cannot assume responsibility for customer's failure to succeed with them, either on account of unfavorable weather or soil conditions, improper planting, neglect, moles or mice.

When We Keep "Open House" at "Tulipdom"

Between May first and Memorial Day, you will always find the latch string out at "Tulipdom." Come, and bring your friends. Those who have bought from us in previous years will automatically receive an invitation advising just when is the best time to come. Those who have not visited us previously, will oblige by so advising us and an invitation will be mailed in due time. While you are welcome to visit Tulipdom and make notes on Sundays, no business will be transacted on that day which is set aside as a day of rest for and with the family.

TERMS OF SALE

At prices quoted all bulbs will be delivered f.o.b. New York or Oyster Bay. They will be packed with special care and arrival in perfect condition is guaranteed. If there are any delays in delivery or the shipment does not seem intact, we shall appreciate prompt advice. All prices are based upon present import duties. Should these be raised, an increase equivalent to added duties will be necessary and customers will be so advised.

**25 bulbs of one variety will be charged for
at the 100 rate, 6 at the per dozen rate.**

No order for less than six bulbs of one variety will be entered after Aug. 10, except where prices are quoted per single bulb or where the price is quoted above \$20 per 100.

We offer the same terms to any number of amateurs who get up a club-order, and we will pack and label the different lots separately, without extra charge. The order will be forwarded to the secretary of the club, who assumes payment for the total amount of the bill.

TERMS OF PAYMENT

Customers of record will be billed at shipping time and the customary courtesies will be extended to all. New customers will oblige by giving satisfactory references. Please do not ask us to open an account for **less than \$10**. Smaller orders should be accompanied by cash. Personal checks always acceptable.

**ADDRESS All Orders and Communications to
ZANDBERGEN BROS., "Tulipdom," OYSTER BAY, N. Y.**

“Starting from Scratch”

FIFTEEN years ago we landed upon this Continent with the ambition to serve America with a finer quality of Dutch bulbs than American gardens had ever known. Back of us we had several generations of bulb growers (our own family) who were sufficiently skilled in the fine art of producing the choicest in bulbs—a product that inspired sufficient confidence to make us come out with the strongest of claims, and to adopt the slogan:

“Bulbs in a Class All Their Own”

The intervening years have seen us make many friends among the discriminating bulb buyers of this country. From a very small beginning we have succeeded in inspiring thousands of faithful customers with confidence in what we say about our bulbs.

Year after year our business has grown in satisfactory proportions, and it may interest our customers to learn that the same acres and the same skill that were back of us at the start are still serving us faithfully over in Holland.

With the arrival of the Narcissus Bulb embargo, we were obliged to transfer our activities in that line to the fertile acres of Long Island. Our Daffodil plantation at Babylon is conducted with the same scrupulous care as our farms in Holland and the results obtained by gardeners everywhere, in connection with our Daffodil bulbs, are as gratifying as those which we claim for our Tulips, Hyacinths, etc.

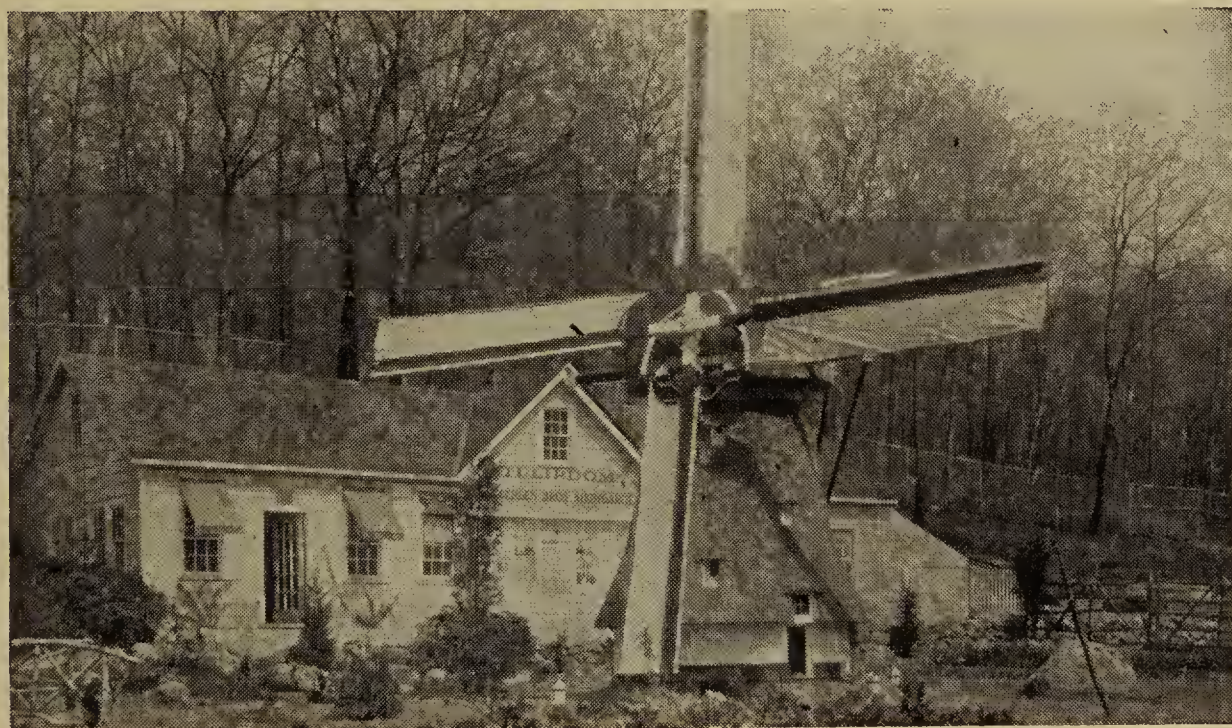
Looking forward to again enjoying your liberal patronage, we want to assure you of our unceasing care in supplying the type of bulbs that will bloom for you freely and beautifully.

ZANDBERGEN BROS.

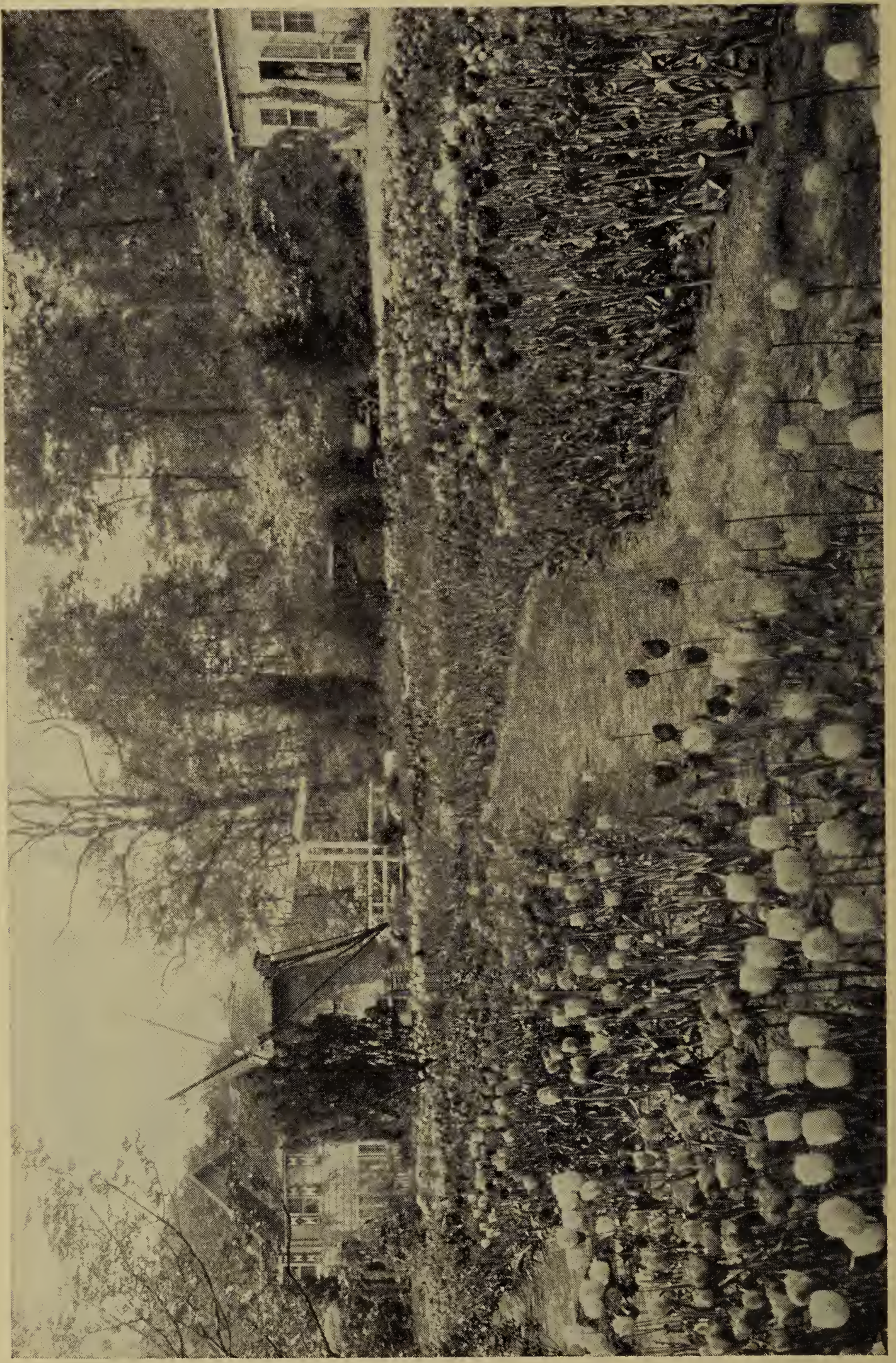
Oyster Bay, N. Y.

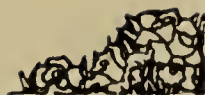
May 1, 1934

Telephone: Oyster Bay 573



Copyright, 1933, by Zandbergen Bros. All rights reserved.





Daffodils at "Tulipdom"

NARCISSI or DAFFODILS

The term Narcissus and Daffodil is interchangeable, although there exists a tendency to apply the term Narcissi to the small-flowering groups like Poeticus, Leedsii, Barrii and Incomparabilis; while the larger-flowered Trumpet varieties are most frequently referred to as Daffodils.

The name "Narcissi" is derived from the story of the youth Narcissus, in Greek mythology, and in the language of flowers the Narcissus is the

symbol of self-love and egotism. This youth lay down to drink from a stream and when he saw his own image reflected in the placid water he fell so madly in love with it that he pined away and died. Even after his death, while passing over the river Styx, he leaned over to get a look at himself in the water beneath. The nymphs implored the dryads to raise a funeral pyre for the purpose of burning his body, but the body was nowhere to be found. In its place rose a pale and melancholy flower which even now likes to see its image in the water, just as Narcissus did in the placid stream. Sophocles tells us that the goddesses on Olympus were crowned with Narcissi which bloomed constantly by being kept moist with the dews which fell from heaven.

Soil and its Treatment. Narcissi will thrive in any ordinary garden soil, but prefer a deep, rather moist, sandy loam. When the soil is of a dry and sandy nature, it should be deeply dug, if possible at least a season before planting the bulbs, composted leaves or well-rotted horse manure being added and a vegetable or annual crop grown on the ground. Before the bulbs are planted a sprinkling of lime should be spread on the surface and then raked in. It is also beneficial to add bone meal at the rate of $1\frac{1}{2}$ oz. to the square yard while digging the soil. **Never** use fresh manure of any kind at planting time—it burns the roots! On very poor and dry sandy soils we recommend the addition of about 1 oz. per square yard of sulphate of potash to be sprinkled over the surface of the ground, after planting.



Zandbergen Bros. "Tulipdom"



Position and Grouping for Effect. All Narcissi will grow equally well in the open or in partial shade. In the flower-border, to obtain the best effect, they should be planted in large groups of irregular outline, each group or clump to contain one variety only; avoid straight lines, circles, and symmetrical designs. Masses of Narcissi should always appear in the hardy flower border, where they can be planted between the clumps of herbaceous plants, which hide as well as shelter the foliage later in the season.

Naturalizing in Grass, etc. All Narcissi may be planted in grass with perfect success. To produce the best effect, alternate trumpet kinds with small-cupped sorts and let colors vary from the whites through bicolors to the all yellow tones. In planting, make the breaks large and bold, scattering the bulbs over the ground broadcast with the hand and planting them where they fall. In planting under trees, avoid places where the drip from the branches is greatest.

Cutting for Decorations. To obtain the very choicest flowers of the *Barrii* and *Incomparabilis* varieties with colored cups or crowns, they should be cut as soon as the buds begin to open. This will prevent fading. They should then be placed in water and the cooler the atmosphere, the better they will keep. Handled in this fashion the blooms are larger, finer in texture and purer in color than flowers of the same variety that are permitted to open in the natural course of events in the garden.

Time of Potting. Pot as early in Autumn as possible, to obtain the finest results and earliest blooms. The best compost to pot Narcissi in is a mixture of two thirds good fibrous loam and one third old decayed leaf-soil, adding $1\frac{1}{2}$ lbs. of bone meal to every bushel of soil; mix well before using. In all cases the soil used should be fresh and sweet and crumble easily through your fingers.

The pots should be carefully washed or wiped clean before using; never pot in new pots for exhibition purpose. Good drainage should be secured by placing three or more pieces of broken crocks in the bottom of the pots, placing round sides uppermost; then cover crocks with a little rough fibre from the loam. When boxes are used, the slit at bottom of box should be covered with crocks, with a good layer of rough fibrous loam placed at bottom of box, or a layer of leaf-soil, to ensure perfect drainage. In potting, the larger bulbs need not be quite covered with soil, the level of which should be half an inch below the rim of the pot, so as to allow watering when in growth. The small bulbs of the miniature species should be covered with half an inch of soil.

After potting, put the pots or boxes outside in the open, on a firm bottom such as a bed of ashes or gravel. Plunge pots into peat-moss, old decayed leaf-soil, or very old ashes, and cover so that tops of pots rest 3 inches below the surface. This will secure a moist condition to the bulbs and encourage root action. So long as pots remain outdoors they require no watering.

The pots or boxes should remain plunged for a period of about ten weeks; after that they may be transferred to a greenhouse or into any room where the night temperature does not exceed 60° . A higher temperature should not be given if you want well-developed blooms. If the pots are taken into a living room they should be kept in a sunny window during the day and at all times should be protected from draughts and too much heat. Later flowering varieties should be brought in later and in succession. After the bulbs are out of the plunging bed, give the plants as much light and air as possible. Once a week give a little weak liquid manure until they come into bloom.

Note: Adhering to the method in which we now arrange Tulips, we also present the Daffodils in the logical order of their respective merits. Thus the variety which in our opinion is the choicest in its respective class, leads that class, the second best coming second, etc. The number given after each variety name indicates the relative time of flowering both indoors and in the garden.



King Alfred—actual size

OUR BULBS PROVE THEIR QUALITIES

We offer **only** finest quality Double Nosed Extra Selected bulbs true to name and nothing else! With the exception of a few varieties we guarantee that every one hundred bulbs will produce from 250 to 275 flowers. Please consider this factor when comparing prices.

TRUMPET NARCISSI

Trumpet or crown as long as or longer than the perianth segments.

CLASS A. YELLOW

Varieties with lemon-yellow or sulphur colored trumpet and perianth of same shade or lighter, but not white.

Lord Wellington. (3). Without question the largest and most beautiful daffodil ever introduced. Both trumpet and perianth are rich golden yellow in color. The flowers are enormous in size, extraordinarily well formed and of good substance. The tall stems and broad foliage compare well with the exceptionally large flowers. An exquisite and a distinct novelty. **\$2 each, \$22 per dozen.**



Yellow Trumpet Narcissi, Concluded.

King Alfred. (1). A remarkably handsome Daffodil which we strongly recommend. Its rich golden color is outstandingly clear; large trumpet with deeply frilled edge. Flower of distinctly refined shape and great substance, hence of marvelous lasting quality both outdoors and for cutting. The most suitable and one of the earliest for forcing and for the garden and therefore destined to remain at the head of this class for some time to come. Long strong stems.

\$2 per dozen, \$15 per 100.

Specially prepared for early forcing. **\$2.75 per dozen, \$20 per 100.**

Babylon's Glory. (2). Twisted perianth of golden yellow; huge, straight trumpet slightly deeper in color, and frilled at brim. Enormous well shaped flower of great substance. Splendid for pot culture and for the garden.

\$3.50 per dozen, \$25 per 100.

Robert Sydenham. (2). Here is a variety bound to occupy an outstanding position in every collection. The trumpet is a beautiful golden yellow, heavily frilled and glittering as though sprinkled with gold dust. The perianth is a soft, sulphur-yellow of exceptional symmetry. Both length of stem and quality of foliage cause this variety to be of outstanding beauty.

\$3.50 per dozen, \$25 per 100.

Tresserve. (3). A huge flower with a slightly campanulate canary-yellow perianth and a very bold rich yellow trumpet, with large open mouth deeply flanked at brim. A very robust and free-flowering variety, producing flowers of enormous size; splendid exhibition variety. Fine for forcing and outdoor planting.

\$2.00 per dozen, \$15 per 100.

The First. (1). A sulphur-yellow trumpet with perianth of the same color. We predict that ultimately it will replace the old, popular Emperor. It blooms much earlier, is a very robust grower and bears its large beautiful flowers on very tall, strong stems. One of the first to bloom inside or when planted in the garden.

\$2.00 per dozen, \$15 per 100.

Olympia. (3). Handsomely waved or twisted perianth of a pure primrose-yellow in artistic contrast with a huge straight trumpet of a slightly deeper shade. Rim of trumpet frilled. Really a huge flower, easily forced and most showy in the garden.

\$2.00 per dozen, \$15 per 100.

Emperor. (3). Perianth deep primrose, trumpet full yellow, large flower. One of the most popular for the garden and forcing. Splendid grower and one of the best yellow trumpets for naturalizing.

\$1.50 per dozen, \$10 per 100.

CLASS B. WHITE OR ALMOST WHITE

Varieties with white or pale primrose trumpet and white perianth.

Mrs. Ernst H. Krelage. (3). Has been described by connoisseurs as "the finest among the best ivory white Daffodils." The flowers are of distinctive shape with elegantly disposed petals and creamy white trumpet. Height, 18 inches.

\$2.00 per dozen, \$15 per 100.

Thetis. (3). Charming in its elegant form. White perianth combined with prettily frilled creamy white trumpet make this a picture of outstanding loveliness. Easy forcer.

\$1.50 per dozen, \$10 per 100.

W. P. Milner. (2). Splendid for the rockery. Free-flowering variety with very distinct pale sulphur flowers. Dwarf.

\$2.75 per dozen, \$20 per 100.



Oyster Bay, L.I., New York



Trumpet Narcissi

CLASS C. BICOLOR

Varieties with white or whitish perianth and a yellow or primrose trumpet.

Van Waveren's Giant. (2). Though one of the oldest among giant bicolors, it still leads the rest. Primrose perianth, bright yellow trumpet of immense size and substance. Edge of trumpet slightly frilled and artistically recurved. A prize at any price. **\$2.75 per dozen, \$20 per 100.**

Oliver Cromwell. (2). Large yellow trumpet with sulphur-yellow perianth; blooms when forced around January 20th, most free flowering of all Trumpet varieties. **\$1.70 per dozen, \$12 per 100.**

Specially prepared for early forcing. **\$2.30 per dozen, \$17 per 100.**

Glory of Sassenheim. (3). Large showy flowers, broad, well overlapping creamy white perianth and bright canary-yellow trumpet, well-expanded at the mouth. Good forcer and fine for the border. **\$1.70 per dozen, \$12 per 100.**

Spring Glory. (2). Three characteristics cause this variety to be a remarkable acquisition:—It is of refined shape, great size and is delightfully fragrant. It blooms early and lasts well, both outdoors and after cutting. Pure white perianth, deep golden yellow trumpet with an artistically recurved edge. **\$2 per dozen, \$15 per 100.**

Empress. (3). Perianth white, trumpet rich yellow. One of the oldest and best-known Bicolors. **\$1.50 per dozen, \$10 per 100.**

Victoria. (3). Bold erect flower, with creamy white perianth and rich yellow trumpet. Not recommended for outdoor planting, but especially fine for forcing. **\$1.70 per dozen, \$12 per 100.**



Naturalized Narcissi. Does your garden look like this?



Lady Moore

BARRII NARCISSI

SHORT-CUPPED DAFFODILS

Cup or crown measuring less than one third the length of the perianth segments

Sparkler. (4). Its strong, robust constitution causes it to be one of the finest in its class. Large glistening flowers, 3 inches in diameter, are supported by strong, tall stems. The color combination is exquisite—rich yellow perianth, fiery orange-scarlet crown, shaded gold. One of the best for late forcing and cutting. **\$1 each, \$10 per dozen.**

Red Guard. (2). Sulphur orange perianth with glowing orange scarlet cup. The orange hue extends through the petals, making this the fore-runner of a new artistic coloring of Narcissi. It is one of the most dainty and often produces two flowers on a single stem. **\$4 each.**

Lady Moore. (3). A showy variety, easily grown, easily forced, yet very substantial and hence of lasting quality. Perianth delicate creamy white, bright orange edged, citron-yellow cup of wide expansion. Altogether a strikingly beautiful variety. **\$3.50 per dozen, \$25 per 100.**

Bath Flame. (2). Deep yellow perianth with deeply edged orange-red cup. Extra long petals give the flower a distinct beauty and outstanding character. Because the flowers are apt to fade quickly, this variety should be planted in partially shaded situations. **\$2.00 per dozen, \$15 per 100.**



Barrii Narcissi, Concluded.

Brilliancy. (3). A huge flower for a Barrii, the deep golden-yellow perianth measuring 5 inches across when well grown. Yellow cup edged deep scarlet. Easily forced. **\$2.35 per dozen, \$17.50 per 100.**

Expectation. (3). An exquisite variety equally decorative grown in pots or in the garden. The large spreading, pure white perianth is of great substance. The cup is pure yellow with orange-red margin artistically fluted and frilled. A grand exhibition variety measuring nearly 4 inches across. **\$3.50 per dozen, \$25 per 100.**

Lady Diana Manners. (3). The tall stems support large flowers of artistic shape and remarkable lasting qualities. Reflexed broad white perianth, flaming orange-scarlet cup. **\$1.50 each, \$15 per dozen.**

Red Beacon. (3). Ivory-white perianth combines with an intense fiery orange cup to make this one of the most showy varieties in its class. Cup has beautifully frilled edge. A striking beauty in the border, an outstanding attraction in vases in the house. **\$1.50 per dozen, \$10 per 100.**

Red Chief. (3). An admiration commanding flower with pure white perianth and somewhat flattened yellow crown having a fiery orange margin with handsomely frilled edge. Truly a leader! **\$1.50 per dozen, \$10 per 100.**

Fire-Brand. (3). Perianth creamy white, shaded lemon at the base, cup intense fiery red. Especially recommended for shady places. **\$1.50 per dozen, \$10 per 100.**

Conspicuous. (3). Soft yellow perianth; short cup conspicuously edged bright orange-scarlet. Very free-flowering and a wonderfully strong grower. One of the best for naturalizing. **\$1.50 per dozen, \$10 per 100.**

INCOMPARABILIS NARCISSI

LARGE CHALICE-CUPPED DAFFODILS

Cup or crown measuring from one-third to nearly equal the length of the perianth segments.

Dorine. (3). Notes made in our trial-grounds last season call this variety "a real aristocrat among the red-cupped novelties." It surely is one of the finest and most refined, with its slightly overlapping creamy yellow perianth that has as its crowning glory a large, dark orange cup. Free flowering, substantial, altogether unique! **\$5.00 each.**

John Evelyn. (3). A truly great novelty destined to become more popular as stocks increase. The creamy white overlapping perianth holds an exceedingly artistic apricot-orange cup prettily fluted at base and frilled at margin or edge. Flowers of great substance and of the highest standard for exhibition. Will remain an acquisition for years to come. **\$1 each, \$10 per dozen.**

Orange Glow. (4). One of the largest of the Incomparabilis Narcissi, measuring normally 4 inches in diameter. It will grow larger under exceptional conditions. A golden yellow with a deep orange cup beautifully frilled, which does not fade so readily in full sun. **\$4 each.**

Red Cross. (4). A sensational novelty acclaimed a wonder by all who visited "Tulipdom" at Daffodil time. Broad, overlapping, creamy yellow perianth; large wide cup of orange-red color—so striking that it shines across the spaces like a beacon in a dark night. Great in the garden, greater as a cut flower. **\$2 each, \$20 per dozen.**



Will Scarlet. See page 11

Incomparabilis Narcissi, Continued.

Croesus. (3). In our opinion the leader among medium-priced varieties in this class. A beautiful combination of a thick petaled primrose perianth and a handsome deep orange-red cup. Magnificent flower of great substance, whether forced or grown outdoors. **\$2.00 per dozen, \$15 per 100.**

Helios. (1). A bright new star in the Daffodil firmament—and we are tempted to think of it as the Morning Star because it blooms so early. Creamy yellow, star shaped perianth, within which twinkles a lovely, slightly frilled, pale orange cup, which fades to a lovely deep yellow after flowers are open for a few days. Valuable for both the border and for forcing, and will ultimately replace Sir Watkin. **\$3.50 per dozen, \$25 per 100.**

Lucinius. (3). Here is a flower of perfect shape and very lasting qualities, which combination makes it a great exhibition variety. Clear, deep yellow perianth of star shape, broad, well-shaped cup of orange-yellow. You'll be proud to own it! **\$2.75 per dozen, \$20 per 100.**

Bernardino. (3). Looking for a delightful color surprise in your border? Then plant this! A symphony of creamy white perianth, pale yellow, heavily frilled cup and the "frills" in this case bring orange-apricot shades—a combination to delight the heart of color-sensitive flower lovers. **\$1.70 per dozen, \$12 per 100.**

Whitewell. (2). A real good variety in this class. The very substantial flowers are carried on stems 18 inches tall. The flowers are of excellent size and substance. The petals are pure creamy white while the crown is a strong yellow with a distinct orange shade. Equally fine for forcing or for outdoor planting. **\$1.50 per dozen, \$10 per 100.**



Incomparabilis Narcissi, Concluded.

- Will Scarlet.** (4). One of the most striking of all Daffodils, with a broad, wide open, fiery scarlet cup and elegantly frilled, creamy white perianth of a decidedly reflexing character. It prefers partly shaded spots and looks particularly lovely in clumps. **\$1.70 per dozen, \$12 per 100.**
- Sir Watkin.** (1). Whether you want a flower for garden show, naturalizing or to grow in pots indoors, here is the dean of the diplomatic corps of Daffodils. It just pleases everybody, every time. Broad, primrose-yellow perianth, large yellow, orange tinted cup. **\$1.70 per dozen, \$12 per 100.**
- Autocrat.** (3). Soft yellow cup, widely expanded at the mouth, with broad perianth of primrose-yellow. **\$1.50 per dozen, \$10 per 100.**
- Torch.** (3). Striking bright orange-scarlet cup, long yellow twisted perianth. Excellent for cutting. **\$1.50 per dozen, \$10 per 100.**
- Lucifer.** (2). Large handsome white perianth; cup intense glowing orange-red, which stands the sun very well. **\$1.50 per dozen, \$10 per 100.**
- Gloria Mundi.** (3). Clear yellow perianth with a broad well-expanded orange-scarlet cup. A grand flower. **\$1.50 per dozen, \$10 per 100.**

LEEDSII NARCISSI

Perianth white and cup or crown white, cream or pale citron, sometimes tinged with pale pink or apricot.

- Hera.** (3). Considered by many to be one of the most beautiful in this class. Perianth snowy white, crown creamy white, handsomely frilled and fluted at the edges. The margin of crown carries a faint apricot tinge. **\$2 per dozen, \$15 per 100.**
- Arion.** (3). A real beauty of great grace and bringing a wonderful color combination. Pure white perianth of perfect shape, measuring 3 inches across. The large, open crown is of ivory-primrose, faintly shaded with apricot, and has beautifully fringed edges. **\$2.00 per dozen, \$15 per 100.**
- Lord Kitchener.** (3). Large pure-white perianth, broad and flat, of great substance; crown very large of a delicate pale primrose, well open at the mouth and elegantly crimped at the brim. **\$1.50 per dozen, \$10 per 100.**
- Laughing Water.** (3). Snow-white perianth of beautiful form and large open cup of pale primrose, edged deep primrose and beautifully frilled. A flower of great substance. **\$2 per dozen, \$15 per 100.**
- Queen of the North.** (3). We are tempted to call this the best of the Leedsii. Broad glistening white perianth and a soft primrose-yellow cup with finely crinkled edge make it altogether lovely. Its strong stems make it particularly desirable for naturalizing. Once established it blooms, blooms and blooms some more. **\$1.50 per dozen, \$10 per 100.**
- Mrs. Langtry.** (3). Broad white perianth and large white cup, edged bright yellow. Fine for naturalizing. **\$1.15 per dozen, \$8 per 100.**
- White Lady.** (2). An exquisite flower, with a broad white perianth of perfect form; dainty cup, prettily crinkled and of a beautiful pale canary shade, delicately scented. Extra fine for naturalizing. **\$1 per dozen, \$7 per 100.**

POETAZ NARCISSI

A fine race of Narcissi resulting from a cross between Poeticus Ornatus and the finest varieties of Polyanthus or Bunch-flowered Narcissi. They are tall and vigorous growers, bearing heads of large well-formed fragrant flowers.

- Yolande.** (3). A really meritorious acquisition. The perianth is silvery white, standing in handsome contrast with the bright yellow cup. Exceptionally large flowers of fine form and blooming freely. **\$2 per dozen, \$15 per 100.**



Orange Cup

Poetaz Narcissi, Continued.

Admiration. (3). Sulphur-yellow perianth; sulphur-yellow eye with scarlet-red border. \$2.75 per dozen, \$20 per 100.

Orange Cup. (3). Bearing clusters of large showy flowers. Perianth primrose-yellow, with a brilliant fiery orange cup shading down to gold, prettily frilled. One of the finest in this section. \$1.70 per dozen, \$12 per 100.

Grandeur. (3). Exceedingly free-flowering, carrying 4-5 large, substantial flowers on each stem. Perianth silvery white, with a broadly fluted, golden cup. \$1.70 per dozen, \$12 per 100.



Poetaz Narcissi, Concluded.

Orange Globe. (3). Light sulphur-yellow petals, with deep orange eye. Very distinct variety. **\$1.70 per dozen, \$12 per 100.**

Elvira. (4). Bearing on long graceful stems, heads of 3 to 4 large flowers with broad white petals of great substance and a golden yellow cup, edged orange, delicately fragrant. **\$1.50 per dozen, \$10 per 100.**

POETICUS NARCISSI

These "Poets'" Narcissi all have snowy white perianth segments or petals, and a flattened eye or crown, yellow or lemon, edged more or less deeply with scarlet or crimson, and sometimes mostly all scarlet. All are more or less sweetly scented. Having very highly colored crowns they should be cut young.

Horace. (4). Broad snow-white perianth; large cup, almost entirely blood-scarlet. Very beautiful; one of the best. Free-flowering and fine for forcing. **\$1.50 per dozen, \$10 per 100.**

Cassandra. (4). A noble and gigantic Poeticus, with broad white perianth; cup deeply, rimmed dark red. **\$1.50 per dozen, \$10 per 100.**

Homer. (4). One of the strongest in this class, bearing beautiful large flowers with snow-white perianth. The golden yellow eye is beautifully margined with deep crimson. **\$1.70 per dozen, \$12 per 100.**

Dante. (3). Pure white perianth, cup rimmed red. Earliest of all. **\$1.15 per dozen, \$8 per 100.**

Recurvus. (5). Narcissi may come and may go, but old "Pheasants Eye" will go on forever. In the days of Rome, 2000 years ago, it was revered for its beauty and the (supposed) medicinal qualities of the roots. It is the parent of many fine hybrids, yet none compare with it in hardiness, staying qualities and adaptability to many soils and climates. **\$1.05 per dozen, \$7.50 per 100.**

Glory of Lisse. (4). Pure white, orange center. Similar to Ornatus, but much larger and earlier. **\$1.50 per dozen, \$10 per 100.**

DOUBLE NARCISSI

Double Sir Watkin. (1). A double form of Sir Watkin having all the qualities of that well-known variety and is similar in color. One of the finest introductions among the double varieties. **\$3.50 per dozen, \$25 per 100.**

Holland's Glory. (3). A most unusual novelty of great charm and beauty. The segments of the perianth grow in a double row, out of which extends a trumpet reminding one of a Tea Rose. The peculiar pale lemon tints in this flower cause it to be unusually attractive. And, what is best, they are long lasting, surpassing in beauty every other double variety. **\$10 per dozen, \$75 per 100.**

Cheerfulness. (4). Imagine 2 or 3 small Gardenias on elegantly erect stems 17 inches high and you have a fair picture of this remarkable novelty. The creamy white perianth has broad, round, well-shaped petals, while the center consists of creamy yellow petals. The flowers are exquisitely scented—and this variety blooms freely! **\$1.70 per dozen, \$12 per 100.**

Argent. (3). This bears star-shaped, semi-double flowers that are borne erectly on strong stems. The combinations of creamy white petals and yellow center cause it to be most decorative. **\$1.50 per dozen, \$10 per 100.**



JONQUIL NARCISSI

Very much prized for their delightfully scented flowers, perfectly hardy in gardens or naturalized, also well adapted to indoor culture in pots. The Jonquils are a distinctive type of the Narcissus family.

Giganteus. (2). Unquestionably the outstanding leader in this class. It has no equal when it comes to size, perfume or vigor of foliage. It is an exceedingly fine, fragrant flower for cutting, with clusters of impressive size. A dozen make quite an impressive showing, and for this reason it should ultimately become a great favorite for cut flower purposes. Easily and readily forced. **\$1.70 per dozen, \$12 per 100.**

Golden Sceptre. (2). A wonder! Excellent for both outdoor and indoor culture. Of deep orange-yellow color and unquestionably the largest flowering in this class. **\$1.70 per dozen, \$12 per 100.**

Campernel Odorus Rugulosus. (2). Rich yellow. The single sweet-scented Jonquil. Beautiful star-shaped flowers borne in clusters of three to four on a stem. **\$1.50 per dozen, \$10 per 100.**

Campernel Rugulosus Flora Plena. (2). The double sweet-scented Jonquil. Clusters of rich yellow double flowers, very fragrant, and prized for cutting. **\$1.50 per dozen, \$10 per 100.**

TRIANDUS NARCISSI

Athalia. (3). A very beautiful and most effective pure white flower which produces from three to four flowers on a single stem. The best of its class and fine for the rockery. **\$6.50 per dozen, \$50 per 100.**

Josephine. (4). One of the comparatively few Triandus to grow easily and force readily under all conditions. The pure white flowers are carried 2 and 3 to the stem, are of distinct shape and charming in every way. Height, 12 inches. **\$3.50 per dozen, \$25 per 100.**

POLYANTHUS NARCISSI (BUNCH FLOWERING)

We are offering only two varieties of this type of Narcissi, for growing indoors in pots, as well as in pebbles and water. Suitable for house culture only!

Grand Soleil d'Or. Yellow, bright orange cup. **\$1.70 per dozen, \$12 per 100.**
Paperwhite Grandiflora. The most popular of all Narcissi for indoor growing. **85 cts. per dozen, \$5.50 per 100.**

MIXED NARCISSI

A really grand mixture. These mixed Narcissi are all well-selected bulbs; consisting of many varieties. Splendid for naturalizing in woods. **\$1 per dozen, \$7 per 100, \$65 per 1000.**

Trade assortment. A good mixture but consisting of fewer varieties than the above. **65 cts. per dozen, \$4.25 per 100, \$40 per 1000.**



TULIPS

We are tempted to pronounce Tulips the most spectacular of all spring flowers for a great variety of reasons. In the first place they bring us a blaze of colors when the heart is just about starved through the drab and dreary winter months.

Their range of colors is perfectly amazing, from clear white to deepest purple and maroon, including many superb vari-colored combinations. By a judicious selection of early, midseason and late varieties, Tulips may be enjoyed for the best part of six weeks outdoors, with an additional two months added when the gardener goes in for "forcing" suitable sorts indoors.

Culture. Tulips should not be grown in soil in which they have been growing for two years previously. They do best in fresh soil or in beds in which the soil has been changed. Growing them in the same soil for more than 2 years will at last lead to failure.

Do not use fresh stable manure at planting time, as it is injurious to the roots. Well-rotted manure will prove beneficial. Bone meal or dried sheep manure also can be used, about three handfuls to the square yard. This must be thrown on top of the soil before planting.

When buying bulbs for your garden, order always a few more than you need, as sometimes the flower-beds are spoiled by dogs, mice, etc. Plant the surplus bulbs in small pots in a corner of your garden so that they can be replanted when something of that kind happens to your flower-beds. Old pots are preferable to new ones, but if such are used they should be soaked in water a few days before they are used for planting bulbs.

Nearly all Tulips should be planted outside about 5 inches deep, and 6 inches apart according to the size of the bulb. They should be planted four weeks before severe frost sets in. For pots, six or seven in a 7-inch pot or pan can be used. For best results, do not mulch them until after the soil has become frozen, to keep out mice, etc. Do not mulch them too heavily, half an inch will prove quite enough. Old cow manure, peat moss, salt hay or leaves may be used for this purpose.

How Many Bulbs to Order for Beds of a Specific Size

Below we give the number of bulbs needed to plant a circular bed of dimensions as stated. Plant outside rows first, and place three inches from edge of bed. It is advisable to plant the outer rows more closely than those toward the center.

| Diameter of bed | 6 in. apart | 8 in. apart | 12 in. apart | Diameter of bed | 6 in. apart | 8 in. apart | 12 in. apart |
|-----------------|-------------|-------------|--------------|-----------------|-------------|-------------|--------------|
| 3 feet | 28 | 16 | 7 | 12 feet | 452 | 255 | 113 |
| 4 feet | 48 | 27 | 12 | 13 feet | 528 | 299 | 132 |
| 5 feet | 80 | 44 | 20 | 14 feet | 612 | 347 | 153 |
| 6 feet | 112 | 64 | 28 | 15 feet | 704 | 398 | 176 |
| 7 feet | 152 | 87 | 38 | 16 feet | 804 | 453 | 201 |
| 8 feet | 200 | 113 | 50 | 17 feet | 904 | 511 | 226 |
| 9 feet | 256 | 143 | 64 | 18 feet | 1016 | 573 | 254 |
| 10 feet | 320 | 177 | 80 | 19 feet | 1132 | 638 | 283 |
| 11 feet | 380 | 214 | 95 | 20 feet | 1256 | 707 | 314 |

To arrive at the number of bulbs required for an oval bed, add the length and breadth and divide by two using the result as the diameter in above table. A bed 6 feet wide by 8 feet long will require the same number of bulbs as a round bed 7 feet in diameter. (6 + 8 = 14; divided by 2 gives 7.)



Tulips, Continued.

The Growing of Bulbs Indoors

The Soil should be good, clean garden soil in which no bulbs of the kind you wish to raise have been grown before. If the gardener has to prepare it he should use a compost of $\frac{2}{3}$ soil and $\frac{1}{3}$ leaf mould, adding about a pound of bone meal to every bushel of mixture.

The Pots should preferably be of the semi-flat azalea or pan type, these being somewhat shallower than the regulation type of flower pot. But any kind or size of pots may be used if you have them on hand. Broken pieces of flower pots or crocks should be placed in the bottom to insure good drainage.

The Bulbs should be especially selected and be of varieties that lend themselves to "forcing." No expert on earth can force a variety not adapted to producing flowers out of season. Size of the bulb counts, but it is also important that they be firm and in healthy, plump appearance otherwise.

Spacing. After placing some soil on top of drainage material, the bulbs should be set between $\frac{3}{4}$ and 1 inch apart each way, the former distance for the early, the latter for the later Darwin, Cottage and Breeder Tulips. The top of the bulbs may come within $\frac{1}{2}$ inch of the rim of the pot. A 6-inch diameter pot will hold about 6, an 8-inch pot about 8 bulbs of normal size.

After Planting the pans or pots should be watered and then be placed in a cold frame or plunged into the garden, in a spot readily accessible to the gardener. They should be placed so that at least five inches of soil covers the rim of the pot. After frost slightly hardens surface of the soil the spot should be mulched and more covering added, as the temperature goes down, to prevent the pot from freezing.

Bringing to Daylight. Tulip pots or pans trenched outdoors are ready to be brought in after about ten weeks. Before bringing them to heat or light, however, take the precaution of investigating how much root-growth the bulbs have made. Place your left hand over the pot. Turn it up-side-down with your right, and with the pot between your hands, tap the rim gently against a frame or ledge. If the earth ball shows a nice network of roots, the pot may be brought to light and living room atmosphere. Bring in those marked (1) after variety name first—they are the easiest to "force." Unless roots show, leave pots in a dark corner of a cool cellar or frame. A disregard of this rule is responsible for most of the failures with flowers from bulbs indoors.

PERSONAL OPINIONS.

Were we permitted to have it our way we would no longer offer a good many so-called "old fashioned" favorites. They are obsolete! Many quite reasonably priced newer varieties are far ahead of them in every respect. We do not offer novelties of questionable merit. Once you see a variety offered in our catalogue you can be sure that it deserves your consideration and trial.



DARWIN TULIPS

Raised from seeds of the best Bybloemen by an unknown amateur in the north of France, they drew the attention of a prominent bulb-grower of Haarlem, who bought the collection about 35 years ago. Because of the unusual clearness of colors, the thick substance of the petals and their vigorous growth, he immediately realized that he had to do with a superior strain of Late Tulips, and called them after the great naturalist Darwin. This collection is the origin of hundreds of acres in cultivation at present in Holland.

The chief characteristics of the Darwins are the perfect cup-shape of the flowers, fleshy substantial petals, tall stems and bright colors, ranging through all the shades of pink and red to purple. There are certain slaty blues and blue-violets which might almost be called a blue, while the black Tulip is nearly realized in some of the dark maroon varieties. There are comparatively few white or pure yellow varieties.

Most Darwins can be forced by middle of February, many of them even earlier, provided that they are potted as soon as received.

The bulbs must be set farther apart than is the case with the early Tulips, and plenty of room on the benches must be given when vigorous growth begins. They should be grown slowly under a moderate temperature. Too high a temperature should constantly be avoided, or poor flowers result.

Nearly all varieties but especially the mauve-colored ones, lose their true color, becoming much paler when forced.

After testing, year after year, several hundred varieties in our trial garden at Oyster Bay, we have listed only such varieties as are the best. We confidently believe that our list will prove to be a reliable guide through the labyrinth of varieties.

An asterisk(*) preceding the name indicates that it may be successfully forced. The figure following indicates the relative time of flowering.

Please Note Particularly:

Giving the right varieties "the right of way" over others with less pronounced characteristics constitutes, perhaps, the most noteworthy feature of this catalogue. We have felt for some time that an alphabetical arrangement of varieties is merely a survival of a conventional form of presentation. All varieties we offer in all classes have certain merits or we would not offer them. *But some have greater merits than others, often regardless of price, and these varieties we feature at the head of their respective classes.*

RED AND CHERRY-ROSE SHADES

***Eclipse.** (2). Among the finest of all red Darwins, a glowing blood-red of deep, rich shade. Particularly impressive alongside either a yellow or a very deeply colored variety such as Faust. The huge, magnificent flowers are supported by strong, tall stems. Second to none for lasting qualities, either in the border or for forcing. Height 30 inches. **\$2.60 per dozen, \$20 per 100.**

***King George V.** (2). Unquestionably the finest among cherry-red Darwins and a gem in every way. Equally superb in the border or when grown indoors. A brilliant cherry-red, shaded bright salmon-pink, blue star at base. The flowers are enormous and of great substance, carried on sturdy stems. The reasonable price of this magnificent sort should win it many more admirers. Height 28 inches. **\$1.25 per dozen, \$9 per 100.**



Eclipse—a well-named, stunning variety. (See page 17.)

Darwin Tulips, Continued.

RED AND CHERRY-ROSE SHADES, Continued

- ***Louise de la Valliere.** (3). A clear tone of cherry-pink without the slightest hint of mauve, this is one of the outstanding beauties in its class. Splendid for border and equally adapted for forcing. Strong stems, large flowers. Height, 25 inches. **90 cts. per dozen, \$6 per 100.**
- ***Prince of Wales.** (2). Bright rosy crimson, flushed glowing scarlet, blue base. Flower of enormous size carried on a tall stem. Height 30 inches. **\$1 per dozen, \$7 per 100.**
- ***City of Haarlem.** (3). One of the largest scarlet-colored Darwins; intense dark scarlet with darker bloom, large steel-blue base and white halo. The finest red Darwin in existence, but prefers well-sheltered situations since the stem, being brittle, breaks off easily. Especially recommended for forcing. Height, 31 inches. **\$1 per dozen, \$7 per 100.**
- President Taft.** (3). Deep ox-blood-red, with dusky bloom, blue base, very large flower on an exceptionally strong stem. An outstanding variety for the garden. Height, 26 inches. **90 cts. per dozen, \$6 per 100.**
- Scarlet Beauty.** (3). Vermilion-scarlet. Large flower on a tall strong stem. One of the best in this color and of special merit for borders and massing. Height, 26 inches. **90 cts. per dozen, \$6 per 100.**



Darwin Tulips, Continued.

RED AND CHERRY-ROSE SHADES, Continued

- ***Professor Rauwenhoff.** (2). Bright cherry-red; inside glowing scarlet, with a brilliant blue center. Large flower of great substance on a very strong stem. Fine forcer. Height, 28 inches. **70 cts. per dozen, \$5.00 per 100.**
- ***William Pitt.** (2). Very dark crimson, with purplish shade on outer petals, with white base, starred dull blue. Belongs to the best forcing varieties. Height, 24 inches. **70 cts. per dozen, \$5 per 100.**
- ***Prince of the Netherlands.** (3). Glowing cerise-scarlet, edged rose, with blue base. Large flower of vigorous growth. Good forcer. Plant in partial shade as it does not stand the hot sun. Height, 32 inches. **70 cts. per dozen, \$5 per 100.**
- ***Mrs. Farncombe Sanders.** (2). Brilliant rosy red with a clear white base. Very large flower of perfect shape. One of the best among the cheaper varieties for forcing or bedding. Height, 30 inches. **70 cts. per dozen, \$5 per 100.**
- Pride of Haarlem.** (1). Brilliant rose-carmine, with blue base. Large flower of stately habit. Superb for outdoor planting in the border and among shrubbery. Height, 28 inches. **70 cts. per dozen, \$5.00 per 100.**
- King Harold.** (3). Deep ox-blood-red, with purple-black base. Similar in color to Eclipse, but has smaller flower. A strong growing variety. Height, 24 inches. **70 cts. per dozen, \$5 per 100.**
- ***Bartigon.** (2). Carmine-crimson with pure white base, broadly ringed deep blue. Especially recommended for forcing but hardly suitable for outdoor culture. Height, 28 inches. **70 cts. per dozen, \$5 per 100.**
- Sundew.** (4). A new form of Darwin—medium-sized flower, with a crystal-like fringe at the edges. Color, cardinal-red with a blue base. Height, 18 inches. **\$1.15 per dozen, \$8 per 100.**

VIOLET-ROSE

- Dresden China.** (2). A beautiful Darwin with elegantly shaped flower and clear coloring. Soft lilac-rose, resembling the color of the well-known Dresden China. A unique flower that draws immediate attention. Height, 28 inches. **\$6 per dozen, \$45 per 100.**
- ***La Fiancee.** (2). Deep rose, shading to old-rose, delicate pink at edges, blue base. Huge handsome flower on a tall stem. Plant in sheltered position as the flower breaks easily in rainy weather. One of the finest for forcing. Height, 32 inches. **90 cts. per dozen, \$6 per 100.**
- ***Centenaire.** (1). Rich violet-rose, with large blue base. Very large flower of perfect form. Early in the garden and a very fine forcer. Height, 32 inches. **90 cts. per dozen, \$6 per 100.**

DISCARDED VARIETIES

Again we have gone carefully over our catalog discarding those Tulips which are superseded by excellent and more beautiful varieties now listed at reasonable prices. For the convenience of our customers, however, we still carry a small stock of each discarded variety and can fill your order on any at reasonable prices.



Darwin Tulips, Continued.

VIOLET-ROSE, Continued

***Matchless.** (3). Beautiful violet-rose, with a narrow margin of pale rose. Good-sized flower on a strong, stiff stem. A beautiful Tulip for pots or pans as it is not tall-growing. Height 20 inches. **90 cts. per dozen, \$6 per 100.**

ROSE, WITH PALER MARGINS

***Princess Mary.** (3). A bright carmine-rose with blush-rose margin at edges; white base with a blue halo. Inside, the huge well-formed cup is almost a one-toned color, giving the top of the flower a very glowing, rich rose appearance. The most beautiful pink Darwin in existence and a magnificent variety for any purpose, attracting attention anywhere. Height, 32 inches. **\$2.60 per dozen, \$20 per 100.**

Kathleen Parlow. (3). A lovely warm shade of true pink, with clearly defined silver margin, shading almost to white at tips of cup. Inside of cup is true pastel pink, with creamy white base. Large, substantial, yet beautifully shaped flowers carried on strong tall stems. Slightly fragrant. Height 30 inches. **\$1.95 per dozen, \$15 per 100.**

Mr. Van Zyl. (3). Soft rose-pink with broad pink margin. A very lovely variety with strong stems. Lasts a long time in bloom. Regarded as a great improvement in color on Cottage Rosabella. Height 24 inches. **\$25 per dozen.**



Princess Mary—The greatest in its class.

Aviator Hawkes. (3). A bright, deep rose of an exquisite shade. The large well-shaped flowers are supported by strong graceful stems. Height, 32 inches. **\$1 per dozen, \$7 per 100.**

Mrs. Harold Irving Pratt. (3). Very large flower of a most beautiful and harmonious color combination. Blending shades of rose and amber flushed with fuchsia-red, margined saffron-yellow at the extreme edge of the petal. Base yellow, anthers black. Height, 28 inches. **\$6 per dozen, \$45 per 100.**

***Salmonea.** (2). Clear rosy pink with clear yellow center. Large flower on a strong stem. Good forcer and fine for cutting. Height, 32 inches. **\$1.00 per dozen, \$7 per 100.**

***Suzon.** (2). Soft buff-rose, shading to blush at margin of petals, with white center, marked blue. Equally useful for forcing and bedding. Height, 28 inches. **90 cts. per dozen, \$6 per 100.**



Oyster Bay, L.I., New York



Darwin Tulips, Continued.

PALE ROSE, WITH PALER MARGINS, Continued

Baronne de la Tonnaye. (3). Bright rose, margined blush rose. Medium-size flower of great substance, stands the weather well. Fine for the border. Height, 30 inches. **80 cts. per dozen, \$5.50 per 100.**

***Edmee.** (3). Vivid cherry-rose, edged soft old rose. Equally good for the border or for forcing. Height, 30 inches. **90 cts. per dozen, \$6 per 100.**

ROSE, WITHOUT PALER MARGINS

***Venus.** (3). This has been compared to the loveliest of pink June Roses. The color is really a charming deep pink, flushed with a slightly lighter shade toward edge of inner petals. The exceptionally large flowers are of exquisite cup shape, held firmly erect by sturdy stems. Height 30 inches. **\$1.15 per dozen, \$3 per 100.**

***Mrs. Samuel H. Taft.** (2). (Syn. Queen of Hearts). As fine as anything in the Darwin class, is this beautiful rose sport of the old Farncombe Sanders—equally useful for either forcing or garden. Appleblossom-pink, edged with ivory stripes, veined with peach blossom pink and white. Inside of cup is a deep pink, almost a rose shade. A really huge flower of perfect shape. Height, 30 inches. **\$1.35 per dozen, \$10 per 100.**

***La France.** (1). Delicate self-colored pink resembling La France Rose. Large, beautifully formed flower with a white base and carried on a tall strong stem. Height, 28 inches. **\$2.60 per dozen, \$20 per 100.**

***Aphrodite.** (3). Clear silvery rose-pink; inside deeper pink with blue base. Large flower on tall strong stem. Similar to Venus, and while flowers are slightly smaller they are clearer in texture. Height, 30 inches. **\$1 per dozen, \$7 per 100.**

***Princess Elizabeth.** (2). Clear deep pink, changing with age into rose-pink, with white base. A showy bedder and good forcer. Perhaps the best pink at a price within the reach of all. Height, 28 inches. **80 cts. per dozen, \$5.50 per 100.**

Flamingo. (3). Delicate flesh-tinted rose. Medium-sized, refined flower. Height, 25 inches. **90 cts. per dozen, \$6 per 100.**

Psyche. (2). Silvery rose, edged soft rose, with pale blue base. Plant in sheltered place as the stem is not so very strong. Height, 26 inches. **80 cts. per dozen, \$5.50 per 100.**

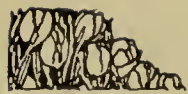
SALMON AND ORANGE SHADES

Afterglow. (4). A well-named Tulip; the marvelous color combination brings us deep rosy orange with salmon high lights at the edge of the petals. Medium-sized flowers of lasting quality, borne on tall stems; special skill and favorable conditions are required to force this variety successfully. Height, 30 inches. **\$1 per dozen, \$7 per 100.**

Orange Perfection. (3). Bright salmon-red, shading to scarlet when in full bloom, with bright blue base. Large flower on a graceful stem; beautiful for the border. Height 26 inches. **\$1.35 per dozen, \$10 per 100.**

Yolande. (2). Soft rose; inside brilliant rose-salmon with yellowish base. A clear color, similar to Clara Butt, but with slightly larger flower and stronger stem. Very beautiful. Height, 27 inches. **90 cts. per dozen, \$6 per 100.**

Clara Butt. (3). Popular throughout entire world because of its color—a clear pink, flushed salmon-rose, with blue base and white halo. Medium-sized flower of good form; splendid for outdoor planting. Height, 22 inches. **70 cts. per dozen, \$5 per 100.**



Darwin Tulips, Continued.

WHITE

Mrs. Grullemans. (1). Large pure white flower of great substance with a pure white base and sulphur yellow anthers carried on a tall stiff stem. The best white Darwin yet introduced. Height 28 inches. **\$2 each, \$20 per dozen.**

Helen Eaken. (2). A truly pure white Darwin. The flowers are cup-shaped, are of great substance and large size, hence long lasting. Height 30 inches. **\$6 per dozen, \$45 per 100.**

Silverwing. (1). This magnificent white Darwin always creates a sensation in our show grounds. Strong, stiff stems carry magnificent cup-shaped flowers of great substance and huge size. Blooms ten days earlier than other Darwins. Height, 32 inches. **\$2.60 per dozen, \$20 per 100.**

Zwanenburg. (3). Pure white when in full bloom. A good white Darwin, and one of the few available at a reasonably low price. Medium-sized flower; suitable for forcing. Vesta among the Cottage Tulips is a better white variety for the garden. Height, 23 inches. **\$1.25 per dozen, \$9 per 100.**

YELLOW

Yellow Giant. (3). Pure golden yellow, faintly tipped dark bronze at tip of petals. Broad well-formed flower of imposing appearance on a very strong stem, lasting a very long time in bloom. One of the best of recent introductions. Height, 30 inches. **\$1.60 per dozen, \$12 per 100.**

PURPLE SHADES

***The Bishop.** (3). The outstanding variety in its color class. Soft violet-purple, with small dull blue base and white halo. A truly impressive, enormous flower on a tall strong stem, without any real rival in sight as yet. This must be seen in order to be appreciated. Height, 29 inches. **\$1.60 per dozen, \$12 per 100.**

Storm King. (3). We are glad to be able to offer this again after withdrawing it from sale in order to build up our depleted stock. Of exceptionally rich, dark wine color—a shade that goes particularly well with such favorites as Dido among the Cottage. The flowers are of enormous size and great substance, which is responsible for their great lasting quality. Height, 28 inches. **\$1.35 per dozen, \$10 per 100.**

Burgomaster Sandberg. (3). A shade between maroon and violet, with maroon predominating; might be called a plum-violet color, with a blue base and white halo. Beautifully shaped, large flowers on tall strong stems. Exceptionally fine when seen in full sun. Height, 28 inches. **\$1 per dozen, \$7 per 100.**

***Giant.** (2). Deep reddish purple, shaded dark violet, with white base, starred blue. A real giant on a tall sturdy stem. Height, 29 inches. **90 cts. per dozen, \$6 per 100.**

***Frans Hals.** (3). Deep reddish purple. Enormous flower on a strong stem. Has to be planted in partial shade, as it does not stand the hot sun. Height, 29 inches. **90 cts. per dozen, \$6 per 100.**



Darwin Tulips, Continued.

PURPLE SHADES, Continued

***Sir Trevor Lawrence.** (2). Reddish violet, flushed purple, with white base. Very large cup-shaped flower on a strong stem. One of the tallest Darwins in cultivation. Height 34 inches. **90 cts. per dozen, \$6 per 100.**

***Jubilee.** (3). A fine color and good variety; bright blue-purple with white base, marked blue. Not as large as the Bishop but of clearer color. Height, 31 inches. **\$1.15 per dozen, \$8 per 100.**

PURPLE-MAROON SHADES

***Faust.** (3). First choice among all dark-colored varieties and if you admire this shade, this is the variety to grow. Dark satiny purple with white base. Enormous flower of fine form. Excels for exhibition purposes among the dark varieties and never fails to win the prizes in its class. Height 30 inches. **90 cts. per dozen, \$6 per 100.**

Mystery. (3). One of the finest dark Tulips—almost a bright maroon-black. Large flower on a tall, strong stem. Height, 28 inches. **\$1.35 per dozen, \$10 per 100.**

Zulu. (2). Rich velvety purple-black egg-shaped flower of good size with pointed petals. Height, 27 inches. **90 cts. per dozen, \$6 per 100.**



"The Bishop," truly a dignified personality in the Tulip world. (See page 22)



Darwin Tulips, Continued.

PURPLE-MAROON SHADES, Continued

La Tulipe Noire. (3). Very dark maroon-black. The blackest of all Tulips, with large flower of fine form, on a strong stem. Sometimes bears two flowers to one stem. Height, 26 inches. **90 cts. per dozen, \$6 per 100.**

LILAC SHADES

***President Harding.** (3). Blue violet, shading lighter at margin. A magnificent, well-formed flower of good substance, carried on a strong tall stem. One of the finest and largest in this color. Unsurpassed for forcing or the border. Height, 30 inches. **\$1.15 per dozen, \$8 per 100.**

***Zev.** (3). A silvery lavender, shading to purple tones near the base of the flower, with flushes of pink, gray, and silver to complete a most pleasing, bright coloring. The inside of the cup is white with royal purple stamens. Height, 28 inches. **\$3.80 per dozen, \$30 per 100.**

Maya. (3). Pastel lavender with a silver base. The outside of the cup is the same shade as the inside, which is unusual in Tulips. Color is clear and clean. A splendid variety, with very large flowers on straight upright stems. Height, 28 inches. **\$1.60 per dozen, \$12 per 100.**

***Anton Mauve.** (2). Rich violet-purple flowers, shaded with a dull garnet which is slightly paler at the edges. Inside is dark heliotrope, to which a white base with faint blue markings adds greater glory. Well-shaped flowers of good substance and one of the largest among lavender Tulips. For most pleasing effects this should be planted with a bright-colored variety. Height, 30 inches. **\$1 per dozen, \$7 per 100.**

***King Mauve** (3). Of rather unusual color—a soft mauve or lavender with silvery sheen, which heightens the beauty of darker varieties through sheer contrast. Large, full flowers of refined form. Height 28 inches. **\$5.25 per dozen, \$40 per 100.**

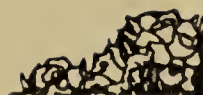
***Oliphant.** (1). Smoky lavender, flushed blue on outer petals; pure white base. Good early forcer. Huge flower on a graceful stem. Scarce. Height 32 inches. **\$2.60 per dozen, \$20 per 100.**

Laura. (2). A variety of such outstanding loveliness as to cause us to mention first that it should be planted in a proper setting to find full appreciation. Myosotis, yellow Primroses or even some other Tulips of related color, will display this light violet beauty at its best. Each flower is broadly edged white. Height, 28 inches. **\$1 per dozen, \$7 per 100.**

Lilac Wonder. (2). Clear porcelain-blue, shaded lilac, with white center. A large well-shaped flower of unusual coloring, lasting a long time in bloom. Height, 28 inches. **\$2 per dozen, \$15 per 100.**

***Duchess of Hohenberg.** (2). Pale slaty lilac-mauve, with stripe of rosy heliotrope, inside pale lilac with white base. One of the best in this color for forcing. Large flower on tall strong stem. Height, 29 inches. **\$2.25 per dozen, \$17 per 100.**

Bleu Aimable. (3). Pale lavender, shaded steel-blue, with white base, starred blue. Good-sized flower of a very distinct shape. Height, 26 inches. **90 cts. per dozen, \$6 per 100.**



A pleasing border of Darwin and Breeder Tulips as grown from Zandbergen Bulbs.

Darwin Tulips, Concluded.

LILAC SHADES, Continued

***Valentin.** (1). Soft heliotrope, shaded light violet. Large vigorous flower on a tall graceful stem. Fine for outdoor planting and early forcing. Height, 32 inches. **90 cts. per dozen, \$6 per 100.**

Ronald Gunn. (2). Large bluish violet, paler at edges, with white center, marked blue. Height, 28 inches. **90 cts. per dozen, \$6 per 100.**

La Tristesse. (3). Dull slaty violet; inside dark lilac-blue, with yellow tinged base, slaty at the margin. Medium-sized flower of a distinct color. Height, 26 inches. **90 cts. per dozen, \$6 per 100.**

Dream. (2). Pale heliotrope; inside deep violet with blue base. Medium size flower on a rather weak stem. Now superseded by foregoing varieties. Height, 26 inches. **70 cts. per dozen, \$5 per 100.**

***William Copeland.** (1). Not recommended for outdoors, but of excellent early forcing qualities, when its color becomes a soft lavender. Height, 25 inches. **70 cts. per dozen, \$5 per 100.**

Reverend Ewbank. (2). Soft lavender-violet, with lighter tint at edges; small flower. Height, 23 inches. **70 cts. per dozen, \$5 per 100.**

DARWIN TULIPS IN CHOICEST MIXTURE

Selected bulbs, all colors, representing many varieties. **65 cts. per dozen, \$4.50 per 100.**



Where Your Dollar Investments in Bulbs Will Yield Big Dividends

In keeping with the times, we are trying to stimulate the love of beautiful flowers, even though it costs greater efforts, and our appeal has to be broadened. Realizing that incomes are not what they used to be in the boom days of America, we thought long and hard, and last year for the first time we offered what are known as "trade size" bulbs.

These "trade size" bulbs are slightly smaller than the top size which we call our "cream quality" and have advertised for years as "Bulbs in a Class All Their Own." Needless to say that for such quality we have to maintain prices that will enable us to make a reasonable and living profit.

But for the first time last year we offered "trade size" bulbs of Narcissi and Tulips at a cost of 20% less than the prices asked for our top size bulbs. This is the size handled by seed stores. In comparison with last year, our prices of Tulips are slightly higher. There are two reasons for this: One is that the Dutch Government has practically taken over the control of the entire Dutch Bulb industry, and is strictly enforcing the limits on quantities which may be produced by any grower. The second reason you know as well as we do: that the dollar buys less today than it did years ago.

Nevertheless, these "trade size" bulbs are good bulbs, sure to bloom, although, frankly, the flowers will be somewhat smaller than those you would get from our top size bulbs. But they are produced in our own nurseries over in Holland, harvested, cured and shipped with the same meticulous care that is employed in getting the higher priced bulbs to our customers. You may rest assured that your money's worth is there, even in these "trade size" bulbs.

The above offer holds good until *August 10th* only. After that we can accept orders for "cream quality" only.

ZANDBERGEN BROS.

Oyster Bay, N. Y.



BREEDER TULIPS

Breeders, formerly listed among the Cottage Tulips, form a distinct class by themselves, being "unbroken" forms of the old time "Florist" Tulips.

Discarded by their originators, the old Dutch gardeners, because they had no stripes nor feathers, they were more or less neglected and grown only in some obscure corners, until a taste for the so-called "art colors" awakened, and with the revival for the taste for bronze, brown and buff tones, the attention was drawn to these Tulips, which have now become the most popular late Tulips.

And they deserve their popularity. Not only for their peculiar and odd colors, but also for their great lasting qualities, which make them unusually suited for garden decoration. In size and height they frequently surpass even the finest Darwins.

Out-of-doors or when used for forcing, Breeders require the same cultural treatment as the Darwin Tulips.

SHADES OF BRONZE AND BUFF

- ***James A. MacDonald.** (3). Orange-flame inside the cup, shading to light orange at petal edge. Outside, the orange is blushed with salmon and mauve. Yellow base. Long-stemmed variety, particularly good for forcing, when it shows a new color in Breeder Tulips. Height, 26 inches, **\$2.60 per dozen, \$20 per 100.**
- Garibaldi.** (2). Pale lilac-bronze, broadly edged soft primrose-yellow. Long shaped flower on a very tall strong stem. One of the finest in this list, and we guarantee our strain to be as large as it ever was. Height, 31 inches. **\$1.95 per dozen, \$15 per 100.**
- ***Cherbourg.** (3). Deep golden yellow growing deeper to the edge of petals with a charming flush of deep terra-cotta along the outside center of each petal. Beautiful cup-shaped flower of enormous size, with smoothly overlapping petals. Especially recommended for forcing and fine for the border. Height 27 inches. **\$2.60 per dozen, \$20 per 100.**
- Dillenburg.** (2). Self-colored warm glowing orange with yellow base and showy black anthers. Large flower of perfect shape and distinct coloring. One of the best of the latest introductions. Height 28 inches. **\$2.60 per dozen, \$20 per 100.**
- Brocade.** (3). Large beautifully formed flower on a tall strong stem. A superb golden yellow, flushed deep bronze on the outer petals. Height, 30 inches. **\$2.60 per dozen, \$20 per 100.**
- ***Prince Albert.** (2). Glowing mahogany-brown, shaded dull bronze with a green base. Similar to Goldfinch and one of the best among the medium-priced varieties. Large loosely formed flower. Height, 30 inches. **90 cts. per dozen, \$6 per 100.**
- Goldfinch.** (2). A symphony of golden brown with mahogany-brown inside. The effect is heightened by a suffusion of olive tints through center of petals, which are edged light golden brown. Height 30 inches. **90 cts. per dozen, \$6 per 100.**
- Coridion.** (2). Unusually beautiful clear bronze-yellow color, with a distinct lilac stripe through center. A fine border variety. Height, 24 inches, **\$1.15 per dozen, \$8 per 100.**
- ***Bronze Queen.** (3). (Biscuit, Clio). Color, like a biscuit, soft buff, tinged inside with golden bronze; yellow base. Medium tall, large flower, fine for outdoor planting and for forcing. Height, 28 inches. **90 cts. per dozen, \$6 per 100.**
- ***Abd-El-Kader.** (3). Dull bronze-yellow, bordered light bronze, inside bronze-brown, with olive-green base. Medium-sized flower. Height, 26 inches. **\$1.15 per dozen, \$8 per 100.**
- ***Plutarchus.** (3). Bronze, shaded dull lilac, inside terra cotta with olive-green base. Fine among evergreens and for the border. Height, 26 inches. **\$1 per dozen, \$7 per 100.**



Breeder Tulips, Continued.

SHADES OF BRONZE AND BUFF, Continued

Yellow Perfection. (2). Light bronze-yellow, edged golden yellow, inside bronzy brown, yellow base starred green. Height, 30 inches. \$1.15 per dozen, \$8 per 100.

Apricot. (3). Ruddy apricot, edged bronzy buff with yellow base and olive halo. A large flower, tending to have an extra number of petals. Height, 26 inches. 90 cts. per dozen, \$6 per 100.

***Jaune d'Oeuf.** (3). Lively apricot with broad stripe of lilac; inside golden bronze with dark green base. Good size flower of distinct shape on a tall strong stem. Height 26 inches. 90 cts. per dozen, \$6 per 100.

SCARLET, BRONZE AND BROWN COMBINATIONS

***Louis XIV.** (4). Dark purple flushed bronze with broad margin of golden brown. The base is green-black starred yellow. One of the most artistic Tulips in existence and simply glorious in its magnificence. Height 32 inches. 80 cts. per dozen, \$5.50 per 100.

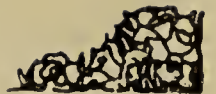
***Indian Chief.** (3). Reddish mahogany, flushed purple; edged warm brown when in full bloom, Yellow base. A tall variety of artistic color and striking beauty and one of the largest Tulips in cultivation. Price of this remarkable Tulip is much lower than ever before and is now within the reach of all tuliplovers. \$1.95 per dozen, \$15 per 100.

***Prince of Wales.** (2). Maroon-brown, edged coffee-brown, with black base, starred yellow. A very beautiful flower of flat, open form on a tall strong stem. Fine when planted with paler bronze Breeders. Height 31 inches. \$2.60 per dozen, \$20 per 100.

***Lucifer.** (4). A large, bold, gorgeous, late-blooming flower on a tall strong stem. Dark orange, flushed rose, edged scarlet-orange, with yellow base and olive halo. Height, 28 inches. \$1 per dozen, \$7 per 100.



Indian Chief.



Breeder Tulips, Continued.

SCARLET, BRONZE AND BROWN COMBINATIONS, Continued

- Feu Ardent.** (3). A brilliant deep crimson, shaded mahogany. A flower of great size and substance and a good Tulip for the border. Height 26 inches. **90 cts. per dozen, \$6 per 100.**
- Turenne.** (2). Purplish brown with broad margin of soft yellow; yellow base. Very large flower and especially handsome in the border. Height, 30 inches. **90 cts. per dozen, \$6 per 100.**
- ***Roi Soleil.** (3). Like Louis XIV, of which it is a sport, this is a large flower of dark purple, flushed bronze. Violet striped and flamed with mahogany. Height, 30 inches. **90 cts. per dozen, \$6 per 100.**
- ***Dom Pedro.** (3). Coffee-brown, with a very narrow edge of golden brown; inside rich mahogany, olive base. Large fragrant flower. Height, 24 inches. **90 cts. per dozen, \$6 per 100.**
- ***Panorama.** (3). Beautiful deep orange, shaded mahogany. Very large globular flower; being one of the best Tulips for forcing. This Tulip is very much in evidence at all spring flower shows. Height, 22 inches. **70 cts. per dozen, \$5 per 100.**
- ***Copernicus.** (3). Dark coppery bronze, flushed old-rose; inside warm brown, with yellow base. Large flower on a strong stem. Height, 27 inches. **\$1 per dozen, \$7 per 100.**
- ***Prince of Orange.** (3). Brilliant orange-scarlet, flushed purple on outer petals. Long well-formed flower of great beauty with greenish yellow base. Fine for beds or borders. Height, 20 inches. **90 cts. per dozen, \$6 per 100.**
- James Watt.** (3). A medium-size globular flower of most unusual and rather unique color. Black-purple, edged dark brown; inside purple, shaded to brown at edges; beautiful green base, starred white. Height, 24 inches. **\$1.35 per dozen, \$10 per 100.**

SHADES OF PURPLE TO VIOLET

- Louis Sixteen.** (3). Enormous violet-blue, large, handsome flower. One of the most beautiful in this color. A prize at any price. Height, 26 inches. **\$5.25 per dozen, \$40 per 100.**
- ***De Zwijger.** (3). (Syn. William the Silent). Large cup-shaped flower of the most striking color, of wonderful substance on a stout stem. Very dark purple, with white base and blue halo. Height, 28 inches. **\$2.60 per dozen, \$20 per 100.**
- ***Bacchus.** (3). Dark plum-violet; inside violet-blue with white star at base. Immense large egg-shaped flower, with slightly frilled edged petals. Lasts very long and stands the weather very well. Height, 30 inches. **\$1 per dozen, \$7 per 100.**
- ***Robinson.** (2). Bright blue-purple, changing into ashy blue-purple when in full bloom. Huge loosely formed flower of graceful habit. Regarded as one of the best Breeder Tulips among the medium-priced varieties. Height, 32 inches. **\$1 per dozen, \$7 per 100.**
- ***Velvet King.** (3). (Dreadnaught). Large, dark glossy maroon-purple flower, with yellowish base, marked blue, and having an extra number of petals. Magnificent for the border, especially in the company of such a fine yellow as Mrs. Moon. Height, 26 inches. **90 cts. per dozen, \$6 per 100.**



Zandbergen Bros. "Tulipdom"



Breeder Tulips, Concluded.

SHADES OF PURPLE TO VIOLET, Continued

***Mrs. Beecher Stowe.** (3). One of the most beautiful violet-blue Tulips. White base. Extremely scarce variety. Height, 26 inches. **\$1.35 per dozen, \$10 per 100.**

Godet Parfait. (3). Dark blue-purple with white base and blue halo. The flower lasts a long time in bloom and is held upright by a very strong stem. Height, 30 inches. **90 cts. per dozen, \$6 per 100.**

LAVENDER SHADES

Ilias. (3). A cross between a Darwin and a Breeder. An almost pure lavender, with white base and purple stamens. Inside of cup is tipped reddish violet. Large flower on a strong stem. Fine garden variety, and easily the best Breeder in its color class. Height, 26 inches. **\$1.15 per dozen, \$8 per 100.**

***Salomon.** (3). Silvery lilac with large white base. Long, loosely formed flower carried on a graceful stem. One of the best in this color. Height, 30 inches. **90 cts. per dozen, \$6 per 100.**

Perle Royale. (3). Opening white, with narrow edge of bright carmine, becoming rosy lilac; edged carmine-rose with age. Large open flower on a tall stem. Height, 27 inches. **\$1 per dozen, \$7 per 100.**

PINK TO RED

***Pink Pearl.** (3). A large flower, lilac-pink with rose bloom, and snow-white base. When forced the color becomes softer. Height, 30 inches. **\$1 per dozen, \$7 per 100.**

***Heloise.** (1). Purplish red, shaded old-rose; inside Van Dyke brown, edged plum, with yellow base, marked olive-green. Large reflexing flower. Plant in cool, partly shaded situation as it blooms about five days before other Breeder Tulips and is apt to pass its blooming season before the others are at their best. Height, 26 inches. **\$1.15 per dozen, \$8 per 100.**

Cardinal Manning. (4). Large, late bloomer. Dull wine-red, flushed rosy bronze, changing into rosy violet, shaded bronze when in full bloom. Height, 28 inches. **90 cts. per dozen, \$6 per 100.**

MIXTURE OF BREEDER TULIPS

Selected bulbs, all colors. Consisting of a great many varieties. 70 cts. per dozen, \$4.75 per 100.

WHEN SHOWING TULIPS

Care must be taken that a Tulip is entered in its own class, for instance a Breeder or Cottage Tulip listed in the Darwin class will cause it to be disqualified at the Show. For correct classification consult our catalog. It can be depended upon.



COTTAGE TULIPS

We venture to say that this type is of great antiquity, having probably originated in Persia where some species resembling them in shape are found growing wild today—*Tulipa Clusiana* among them. As far back as 1554 the Austrian Ambassador to the court of the Calif brought with him some of their seeds and Tulips became a fascinating hobby with many wealthy Viennese gardeners—for the seeds, as well as bulbs, were expensive.

The term "Cottage" Tulips is of quite recent origin. The fact that they are probably the longest lived and most lasting of all Tulips caused many of them to be planted around the country houses and cottages of England and France.

All colors imaginable can be found among them, and most of them have long stems, some of them gracefully drooping. They form an excellent cut-flower material and are unsurpassed for garden decoration. Flower lovers who happen to be in the neighborhood of Oyster Bay in May and call on us, will see one of the largest collections of May-flowering Tulips in the world.

WHITE

White Duchess. (3). Large, pure white flowers of the lily-flowering type, with exceptionally strong stems for this class. Absolutely the most artistic yet evolved; the snow-white flowers and creamy white anthers creating an exceedingly artistic effect. Height, 28 inches. **\$6 per dozen, \$45 per 100.**

Vesta. (3). Pale primrose when opening, turning to pure white when in full bloom. As already mentioned, this fits in with the Darwins, for outside, as there is not a satisfactory white Darwin at a reasonable price. One of the truly great pure white May-flowering Tulips. It is equally well adapted for bedding and cutting. The large, well-shaped flowers are carried by strong upright stems. Height, 28 inches. **\$1 per dozen, \$7 per 100.**

***Carrara.** (3). Another snow-white glistening beauty which is greatly enhanced by prominent yellow stamens. The flowers are large, with broad, round petals of pronounced substance, hence the flowers last a long time. The best white for forcing. Height, 20 inches. **\$1.35 per dozen, \$10 per 100.**

***Miss Blanche.** (2). Not a new variety, but one that through sheer merit has won a high place in the hearts of lovers of pure white Tulips. The large, well-formed flowers are carried on strong upright stems. It is a splendid bedder. Height, 20 inches. **95 cts. per dozen, \$6.50 per 100.**

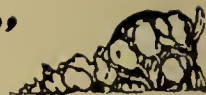
WHITE, EDGED PINK

***Pride of Inglescombe.** (3). White, edged carmine-rose, which color suffuses the whole flower as it ages. Of the same type as Picotee, but slightly darker and much more impressive. Height 23 inches. **90 cts. per dozen, \$6 per 100.**

Carnation. (3). Snow-white with carmine-rose edges on a graceful stem. Height, 22 inches. **90 cts. per dozen, \$6 per 100.**

Innovation. (3). Yellowish white, tipped and feathered soft carmine, with a very fine blue base. Large flower of beautiful shape. Height, 20 inches. **90 cts. per dozen, \$6 per 100.**

Picotee. (3). White, margined deep rose, the color suffusing the whole flower as it ages; recurving petals. Equally popular for the border and for cutting. Height, 24 inches. **80 cts. per dozen, \$5.50 per 100.**



Cottage Tulips, Continued.

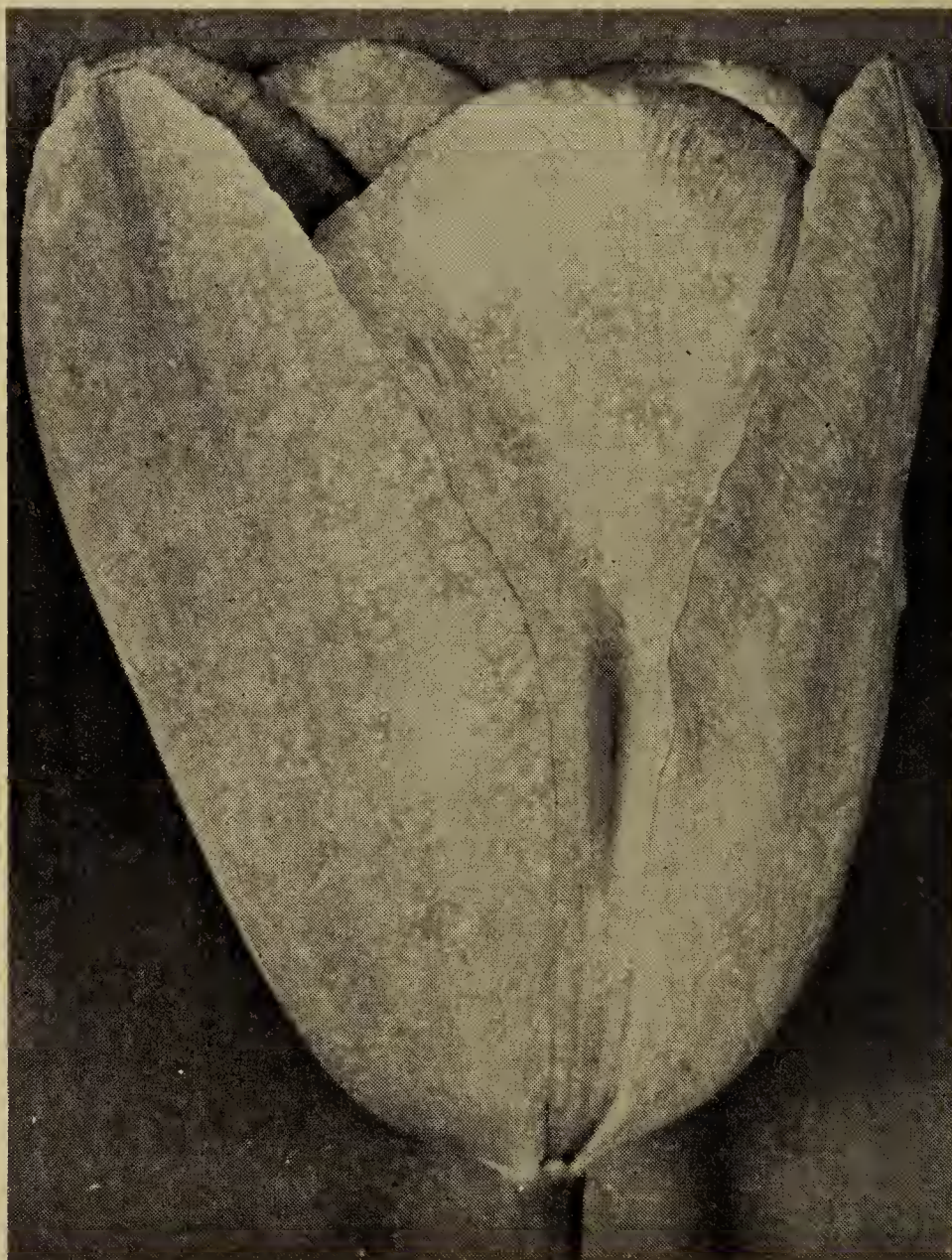
PINK AND ROSE SHADES

Wampum. (4). About as large a sort as comes in the Cottage type, and a flower of regal appearance in the garden where it gives the effect of a bright glowing rose, slightly tinted with fawn. The base of the cup is primrose with a blue halo, and the inside coloring is at least two shades deeper than the outside, which produces a very rich bright effect. Amber stripes inside at center. This very large Tulip blooms late and is long lasting. Height, 27 inches. **\$3.80 per dozen, \$30 per 100.**

***Dido.** (3). One of the outstanding Tulips in all classes. The deep, rich pink flowers are of glorious shape and color. Each petal is brightened by salmon-yellow shades, suffused with soft orange. And they are fragrant! Truly a marvel. Height, 30 inches. **\$1 per dozen, \$7 per 100.**

Ambrosia. (3). Luminous shades of terra cotta, amber and rose blend in a flower of great size and substance. Either as a cut flower or in the garden it will reign supreme as one of the loveliest among flowers. Height, 28 inches. **\$1 per dozen, \$7 per 100.**

Roxy. (3). A magnificently glorified John Ruskin. It has all the vivid orange shades of the favorite Breeder, Prince of Orange, but softened and enhanced by blushes of gold and fawn on the outside of the long cups with the inside of the cups a bright orange. At the outside tip of each petal is a blush of water-melon-pink. One of the finest colors in all the Tulip world. Height, 26 inches. **\$1 per dozen, \$7 per 100.**



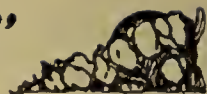
Roxy—a color symphony without equal—see above



Cottage Tulips, Continued.

PINK AND ROSE SHADES, Continued

- Betsy Ross.** (3). Of most unusual color. The outside of the cup is a fawn and dark wine, while the inside resembles a pretty piece of wine colored velvet. Long, sturdy stems. A very fine Tulip, worthy of a place in every garden which shelters the unusual. Height, 28 inches. **\$5.25 per dozen, \$40 per 100.**
- Marjorie Bowen.** (3). As scarce as it is beautiful. The large though gracefully shaped flowers are supported by strong, tall stems. The color is extraordinary—a combination of buff and salmon, passing into deep rose shades with salmon sheen. Height 26 inches. **\$1.60 per dozen, \$12 per 100.**
- *Rosabella.** (3). A gem of beauty for garden or house decoration. The predominant color is a bright rose, almost watermelon-pink shading to a pastel pink at edge of petals and ivory-white at the base. It reminds one of a magnolia blossom but is of even greater beauty. Strong grower with pointed petals. Height, 26 inches. **90 cts. per dozen, \$6 per 100.**
- *Leda.** (3). A hybrid, representing the best of blood from choice Darwin and Cottage Tulips. One of the most luminous rose colored Tulips in existence, each petal being bordered with a lighter rose, a combination as rare as it is beautiful. The flowers are of exceptional size and substance. Height, 24 inches. **\$1.15 per dozen, \$3 per 100.**
- Rose-bud.** (3). Vivid rose. Very large flower on a tall graceful stem. When in bud, it exactly suggests a rosebud; hence the name. Height, 28 inches. **\$1.85 per dozen, \$14 per 100.**
- Vanity.** (3). Very pointed petals of clean cut beauty and delicate grace. As pretty a blossom as the Tulip world holds. Color is bright rose-pink and the layman's idea of a real pink color. Inside of cup is flushed with salmon. Height, 24 inches. **\$2.60 per dozen, \$20 per 100.**
- Annie Laurie.** (4). Luscious, rich pink shading to white base and to cap the climax, bright yellow stamens. Open the cup and behold colorful beauty such as is found in comparatively few other Tulips. Medium tall grower. Height, 22 inches. **\$1.95 per dozen, \$15 per 100.**
- Orient.** (4). Light rosy carmine, with a narrow edge of amber at margin, inside salmon with bright rosy carmine reflection. A huge flower of remarkable color, on a very strong stem. Height, 28 inches. **\$1.15 per dozen, \$8 per 100.**
- Nectar.** (3). An immense Tulip, and of a peculiar color. It is carmine-red, of beautiful shape, lasts a long time, and has all qualities of superlative character. Height, 22 inches. **\$1.15 per dozen, \$8 per 100.**
- Marvel.** (2). A very distinct, sweet-scented variety. Inside old gold; outside salmon-rose, edged yellow, a fine and lovely Tulip. Height, 20 inches. **\$1 per dozen, \$7 per 100.**
- *John Ruskin.** (3). Glittering salmon-rose, edged soft lemon-yellow with yellow base. Large flower of fine shape, carried on a graceful stem. Height, 18 inches. **90 cts. per dozen, \$6 per 100.**
- *Sir Harry.** (4). Pale lavender-pink with yellow base and blue halo. Large pointed flower. Fine when planted with creamy yellow varieties. Height, 22 inches. **90 cts. per dozen, \$6 per 100.**
- Mrs. Kerrell.** (4). Rose, edged soft salmon, white base with a blue ring, beautifully pointed flower. Height, 18 inches. **90 cts. per dozen, \$6 per 100.**



Cottage Tulips, Continued.

PINK AND ROSE SHADES, Continued

Inglescombe Pink. (2). (Salmon Queen). Soft rosy pink, flushed salmon, changing into rose when in full bloom. Large globular flower. Height, 25 inches. 90 cts. per dozen, \$6 per 100.

***The Fawn.** (3). Pale rosy fawn, changing into blush-rose with age. Large egg-shaped flower. Height, 24 inches. 90 cts. per dozen, \$6 per 100.

Alcmene. (3). Soft cherry-red, outside of petals having a glossy sheen. Height, 25 inches. 90 cts. per dozen, \$6 per 100.

SCARLET AND CRIMSON SHADES

***Mayflower.** (3). A hybrid of *Gesneriana Spathulata* and the Botanical Tulip *Greigi*. The largest of all Tulips, and extraordinary in color. Fiery scarlet with purple bloom on outer petals and brilliant blue base. Because it is such a wonderful Tulip, it will be exceedingly scarce for some time to come. Height, 28 inches. \$7 per dozen. \$55 per 100.

***Advance.** (1). A huge flower of fiery red. It is bright but pleasing because the bluish sheen of the center tones down the brilliancy. Strong stem, vigorous, upright habit. Similar in color to *Mayflower* but blooms about one week earlier. Height 28 inches. \$12 per dozen, \$90 per 100.

***G. W. Leak.** (2). Brilliant red all over with a clear yellow base; unusually elegant flower of refined appearance. Very effective when seen from a distance against a background of evergreens. A new Tulip which is yet very scarce. Height, 28 inches. \$3.20 per dozen, \$25 per 100.

Scarlet Glory. (2). Beautiful in its brilliancy—as bright a scarlet as any lover of color may desire. Very large flowers, strong stems. Height, 24 inches. \$1.60 per dozen, \$12 per 100.



A comprehensive trial of Cottage Tulips, Tulipdom.

***Scarlet Emperor.** (3). Bright scarlet with a clear yellow base. The flowers are of enormous size, held upright by strong stems. Height, 23 inches. \$2.35 per dozen, \$18 per 100.



Cottage Tulips, Continued.

SCARLET AND CRIMSON SHADES, Continued

Gesneriana Spathulata. (3). Rich crimson-scarlet with brilliant blue base. Its large flower of dazzling brilliancy makes it look like a poppy. One of the most popular red Cottage Tulips. Height, 26 inches. **\$1.15 per dozen, \$8 per 100.**

ORANGE SHADES

Refulgens. (3). Warm orange, resembling Breeder Lucifer in color but larger. Stem is tall and strong, bearing a very large egg-shaped flower of enormous substance. An outstanding, beautiful and distinct variety. Height 30 inches. **\$7.50 per dozen, \$60 per 100.**

***Grenadier.** (2). A most beautiful bright orange color with rich yellow base. Very large, well-shaped flower on a sturdy stem. A fine companion to Velvet King, and one of the best for late forcing. Height, 21 inches. **90 cts. per dozen, \$6 per 100.**

***Argo.** (3). Opening golden yellow, mottled red. Suffused orange when in full bloom. Large distinct flower on a tall strong stem. Equally fine for indoor or outdoor culture. Height, 28 inches. **90 cts. per dozen, \$6 per 100.**

Amun Ra. (3). (Sun God). An unbelievably beautiful combination of colors. Almost like a luscious peach, but in addition it has apricot and chamois shades not usually associated with the peach. The edge of each flower, about half way down, is tinted first with salmon-pink, then apricot, gradually shading to chamois and the almost olive-green base. Inside of cup shows decided orange tints. The flower is medium size. Height, 24 inches. **\$1.35 per dozen, \$10 per 100.**

***Orange King.** (4). Glistening deep orange, shaded rose; inside deep orange-scarlet, with yellow base. Sweet scented. Large globular flower, very attractive for the border. Height, 20 inches. **90 cts. per dozen, \$6 per 100.**

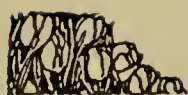
La Merveille. (4). Orange-scarlet, flushed rose, with yellow center. Long flower of beautiful shape. Deliciously scented. Height, 20 inches. **70 cts. per dozen, \$5 per 100.**

YELLOW

Mrs. John T. Scheepers. (3). Enormous oval shaped golden yellow flower of majestic beauty, carried on a tall strong stem. A magnificent Tulip and a great improvement on the older varieties. Height 26 inches. **\$25 per dozen.**

Mongolia. (3). Very large egg-shaped flower of attractive deep golden yellow color; of great substance and carried on a strong stem. One of the best among the newer introductions. Height, 28 inches. **\$2 each.**

Avis Kennicott. (3). One of the finest, if not the brightest, yellow Cottage Tulips. Massed in gardens it creates truly magnificent effects. As illustrated on page 36, its flowers are of decidedly elongated shape and grow to immense size, well developed specimen flowers being about five inches long. Color a rich chrome-yellow with black base and anthers. Height, 26 inches. **90 cts. per dozen, \$6 per 100.**



Cottage Tulips, Continued.

YELLOW, Continued

***Mrs. Moon.** (4). Well formed vase-shaped flowers of rich golden yellow with slightly recurving petals. Very large flower of great beauty and substance, carried on a tall strong stem. One of the most beautiful of all late Tulips. Fine for forcing and for outdoor planting. Height, 25 inches. **90 cts. per dozen, \$6 per 100.**

Walter T. Ware. (4). The richest deep golden yellow in cultivation. Well-shaped globular flower, reflexing at the tip. Not as large as some others, but of unusual substance. Height, 22 inches. **\$1.15 per dozen, \$8 per 100.**

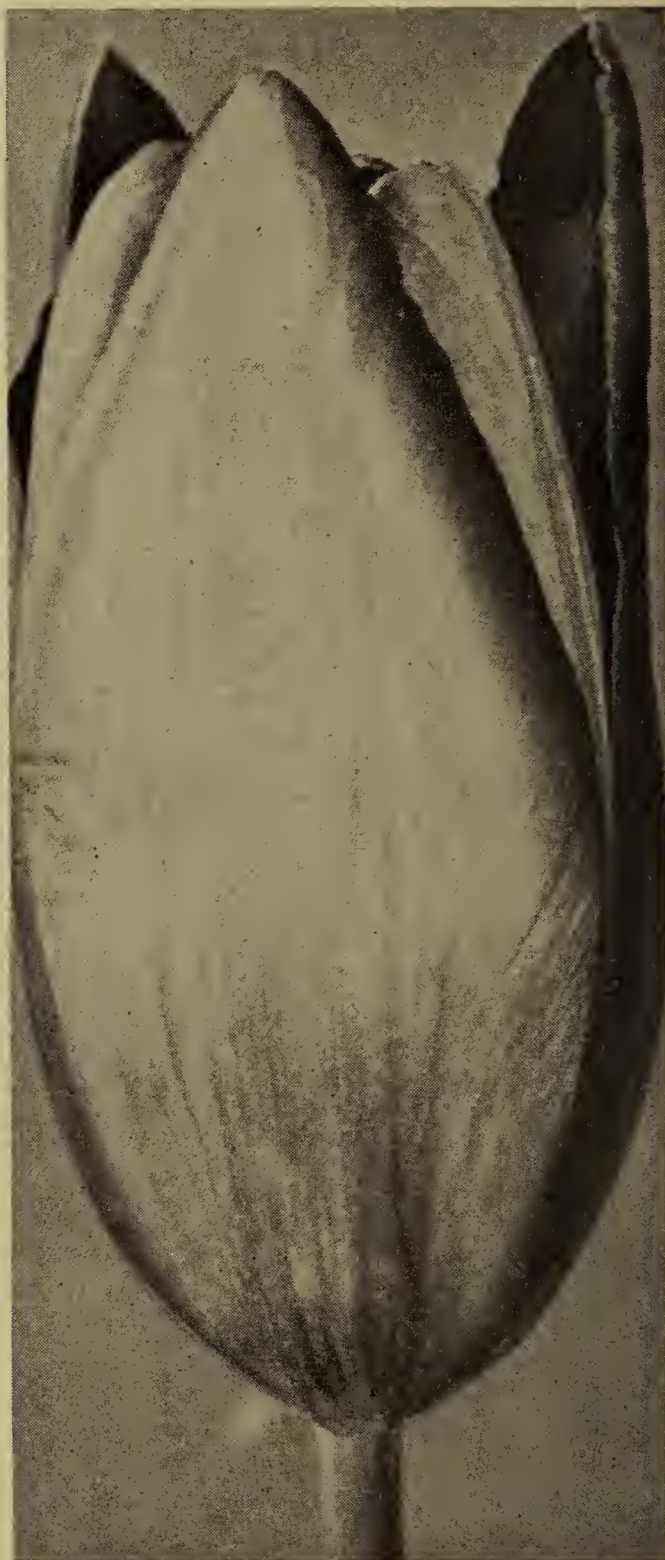
Gesneriana Lutea. (3). Deep yellow. Tall and handsome flower on a strong stem. Fine for growing among shrubbery. Height, 26 inches. **90 cts. per dozen, \$6 per 100.**

Mr. Dames. (3). Large, robust flower of immense size, clear yellow, on a strong stem. Height, 22 inches. **90 cts. per dozen, \$6 per 100.**

***Inglescombe Yellow.** (4). Glossy canary-yellow. Large globular flower of perfect form on a strong stem. It is one of the best Cottages to use as a yellow Darwin. Height, 23 inches. **80 cts. per dozen, \$5.50 per 100.**

Elegans Lutea Maxima. (4). Soft canary-yellow, slightly flushed orange-red when fully open. Large pointed reflexing petals. Fine for the border. Height 16 inches. **\$1.15 per dozen, \$8 per 100.**

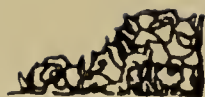
***Bouton d'Or.** (2). Deep golden yellow, with black anthers. Small cup-shaped flower. Height, 20 inches. **90 cts. per dozen, \$6 per 100.**



Avis Kennicott. See p. 35

PRIMROSE

***Alaska.** (3). Very elegant and graceful with slightly reflexed petals frequently 5 inches long. One of the most intriguing of all canary-yellow varieties, because of its beautiful shape. Height, 25 inches. **\$1.15 per dozen, \$8 per 100.**



Cottage Tulips, Continued.

PRIMROSE, Continued

Madam Buysens. (3). Clear sulphur-yellow. A very large egg-shaped flower, carried on a strong stem. A handsome Tulip of outstanding merit. Height, 28 inches. **\$1.35 per dozen, \$10 per 100.**

***Moonlight.** (2). Soft luminous canary-yellow. Very large oval-shaped flower, with outer petals reflexing at the tip. One of the finest in this color. Good forcer. Height, 24 inches. **\$1 per dozen, \$7 per 100.**

Golden Rider. (3). Shaped oval, like a true Cottage, but almost like a Darwin in width of cup. Color is half way between canary-yellow and ivory and almost a one toned flower, as the color extends all the way to the base of the flower. Slightly fragrant. Height, 24 inches. **\$1.60 per dozen, \$12 per 100.**

Arethusa. (3). One of the most impressive in this class. Big cupped yet extremely graceful flowers of a bright, very pale primrose tone, shading almost to ivory in the center and base of the flower, each petal of which is edged bright lemon-yellow. Truly a bold, upright flower of queenly beauty. Height, 24 inches. **\$1.35 per dozen, \$10 per 100.**

Lemon Queen. (3). A splendid variety of elegant form and one of the best in this color class. Supported by strong stems, makes a splendid showing in masses. Color pure soft yellow. Height, 26 inches. **\$1.25 per dozen, \$9 per 100.**

***Gesneriana Lutea Pallida.** (3). Pale yellow. Large, beautiful flower. Sweet scented. Height, 24 inches. **90 cts. per dozen, \$6 per 100.**

YELLOW, EDGED RED

Jeanne Desor. (4). A strikingly beautiful hybrid. The daintily elongated shape proclaims its Cottage Tulip parentage. The strong, tall stem and bold flower show the Darwin blood. The color is a unique combination of deep orange-yellow, each petal being edged with a broad scarlet border. Enlivens the border as much late in the season as Keizerskroon does earlier. Height 28 inches. **\$1.85 per dozen, \$14 per 100.**

Illuminator. (3). A flower of deep yellow, flushed with scarlet. Height, 24 inches. **\$1.15 per dozen, \$8 per 100.**

Columbus. (4). (Gala Beauty). A flower of rich golden yellow, feathered and splashed with glowing scarlet. Pointed petals. Sweet scented. Height, 18 inches. **\$1.05 per dozen, \$7.50 per 100.**

VARIOUS COLORS

***Zomerschoon.** (4). Elegantly formed flower, handsomely open when fully developed. The color is a delicate salmon-pink streaked with orange and flame-colored stripes on an old ivory ground, warmed by a golden glow emanating from the heart of the flower. Displays its beauty best in full sunshine. One of the oldest Tulips in cultivation and still rare. Height, 18 inches. **\$5.25 per dozen, \$40 per 100.**

***Striped Beauty.** (3). Rose, flaked deep crimson and white. Large showy flower on a graceful stem. Height, 18 inches. **\$1.60 per dozen, \$12 per 100.**



Cottage Tulips, Continued.

VARIOUS COLORS, Continued

Hammer Hales. (3). Golden brown, flushed old rose, inside bright apricot. edged bronze-yellow with a yellow base. Beautiful flower. Height, 24 inches. 90 cts. per dozen, \$6 per 100.

***Quaintness.** (4). Golden brown, flushed dull old rose on center of petals; inside shaded mahogany, with yellow base. Long large flower of pointed shape. Height, 20 inches. \$1 per dozen, \$7 per 100.

Chameleon. (3). Pale heliotrope, flaked maroon; canary-yellow base. One of the most striking Tulips in existence. Not recommended for forcing. Height, 18 inches. \$1.25 per dozen, \$9 per 100.

Twilight. (2). Violet-mauve, edged brown; striped and flamed dark violet, white base with striking white midrib. Medium-sized flower. Very scarce. Height, 23 inches. \$1.15 per dozen, \$8 per 100.

COTTAGE TULIPS IN MIXTURE

Selected bulbs, all colors, consisting of a great many varieties. 65 cts. per dozen, \$4.50 per 100.

LILY FLOWERING TULIPS

An exceedingly beautiful new class, the result of crossing the pointed petalled Cottage Retroflexa with a pink Darwin. At a distance they really resemble Lilies, hence the name.

***Sirene.** (3). Rich cerise-pink, with pale pink at the margin of the segments and a white base. A handsome and distinct Tulip and one of the first that has been christened "Lily Flowering." 90 cts. per dozen, \$6 per 100.

Sally. (3). Intense rouge-red with white base and white stripe through the center of each petal. It is a remarkably effective combination with well defined colors of brilliant appearance in the garden. The cups are on good stems and it is one of the most refined, graceful flowers in the entire Tulip realm. Height, 24 inches. \$1.95 per dozen, \$15 per 100.

***Adonis.** (3). Vivid rosy red. Long-shaped flower with reflexed petals. 90 cts. per dozen, \$6 per 100.

CLASSIFICATION

Although listed separately the Lily Flowering Tulips belong to the Cottage Class and may be listed as such for exhibition purposes.



PARROT TULIPS

When still in bud the flower looks somewhat like the head of a parrot; hence the name. They can be forced slowly by the middle or end of February, but for that purpose only strong bulbs must be used. They are shy bloomers.

Gadelan. (3). Not since the introduction of Fantasy has a Parrot Tulip created such a sensation as Gadelan. We like to compare it to that rare orchid known as Cattleya. Measuring 6 to 7 inches across when fully developed, it presents a blending of blues and violets with emerald-

green blotches and white edges. Inside of flowers holds bright violet-purple with white center and contrasting black anthers. Grown alongside of Fantasy it presents a sight never to be forgotten. Unlike other Parrot Tulips the huge flowers are supported by sturdy stems, holding them erect and well above the foliage. Height, 20 inches. **\$3 each, \$30 per dozen.**



***Fantasy.** (3). The best of all pink Parrot Tulips. A sport from the well-known Darwin Tulip Clara Butt, with a strong erect stem and flowers simultaneously with Clara Butt. The petals are heavily lacinated. Its size is simply enormous, but the stem carries the bloom erect. Inside, the cup is of velvety rose color, showing well through the open flower. Apple-green markings on outside make this one of the most unique among Tulips. Height, 20 inches. **\$1.60 per dozen, \$12 per 100.**

***Gemma.** White, edged rose. Very early. **90 cts. per dozen, \$6 per 100.**

Markgraaf Van Baden. Brownish red, feathered orange and purple. **90 cts. per dozen, \$6 per 100.**

Perfecta (Gloriosa). Golden yellow, blotched deep scarlet. **90 cts. per dozen, \$6 per 100.**

Lutea Major. Golden yellow with a few crimson and green stripes. **90 cts. per dozen, \$6 per 100.**

Admiral de Constantinople. Red, shaded orange. **90 cts. per dozen, \$6 per 100.**

Rubra Major. Blood-red. **90 cts. per dozen, \$6 per 100.**

Splendid Mixture. **70 cts. per dozen, \$4.75 per 100.**



DOUBLE LATE TULIPS

These bloom at the same time as the Darwins. They are a most vigorous race of Tulips on tall, strong stems.

Pensee Rose. Violet-pink, extra fine for outdoor planting. Height, 18 inches. \$2.60 per dozen, \$20 per 100.

Blue Flag (Bleu Celeste). Soft violet-purple. A magnificent flower of great beauty and size. Height, 16 inches. \$1.15 per dozen, \$8 per 100.

Mariage de ma Fille. Crimson; white and cerise feathered. The true variety is very scarce. Height, 15 inches. \$1.60 per dozen, \$12 per 100.

VARIOUS WILD TULIPS (TULIPA)

The wild or botanical species of Tulips are of particular usefulness for rockeries. They bring bright colors very early in the season and most have graceful recurving petals. Most of them are natives of Asia Minor and other parts of Asia.

Greigi. One of the most beautiful of the wild Tulips. Enormously large flower of vivid orange-scarlet hue, with distinctly showing black center. Differs from all other Tulips in having fleshy leaves which are flushed purple and spotted chocolate-brown. Height, 9 inches. \$3.80 per dozen, \$30 per 100.

Kaufmanniana. The earliest of all Tulips to come in flower, very beautiful. Large, creamy flower, brilliantly marked with carmine. If left undisturbed, will last for years. Height, 12 inches. \$1 per dozen, \$7 per 100.

***Clusiana.** Sometimes called Candystick or Little Lady Tulip. A charming little flower; glistening white, with a carmine flame on each petal. Grows about eight inches high, flowers as large as a Crocus. Should be planted in light soils, and sheltered corners. \$1 per dozen, \$7 per 100.

Praestans. Brilliant orange-red often bearing two or more flowers on a stem. Late April. Height, 11 inches. \$2.60 per dozen, \$20 per 100.

BIZARRE AND BYBLOEMEN TULIPS

OLD DUTCH TULIPS

An old race that has been grown in Holland and in France since the beginning of the seventeenth century and which caused the famous Tulip craze in 1635.

They are all queerly striped and feathered on long stems. Bizarres have dark stripes on a yellow ground. Bybloemen have rose stripes on a white ground (Rose Bybloemen) or violet stripes on the same ground (Violet Bybloemen) and are brighter in color than the Bizarres. They show off to best advantage by themselves or with the Rembrandt Tulips.

BIZARRES

***Fancy.** Golden brown and old gold. Enormous flower. Good forcer. \$1.35 per dozen, \$10 per 100.

Named Varieties. \$1 per dozen, \$7 per 100.

Splendid Mixture. 90 cts. per dozen, \$6 per 100.

ROSE BYBLOEMEN

Named Varieties. \$1 per dozen, \$7 per 100.

Splendid Mixture. 90 cts. per dozen, \$6 per 100.

VIOLET BYBLOEMEN

Named Varieties. \$1 per dozen, \$7 per 100.

Splendid Mixture. 90 cts. per dozen, \$6 per 100.



Rembrandt Tulips



REMBRANDT TULIPS

The Rembrandt Tulips comprise a strain of variegated or "Broken" Darwin Tulips, but the flowers are not so large as those of the Darwin Tulips.

Varieties, in different colors. \$1 per dozen, \$7 per 100.

Splendid Mixture. 90 cts. per dozen, \$6 per 100.

TRIUMPH TULIPS

We have been reproached for not featuring these Tulips more strongly and telling more about their outstanding characteristics and merit. Triumph Tulips are a new race, hybrids of Early Single and Late Darwin Tulips.

From the Early Single parents they inherit earliness and from the Darwins stateliness. Result:—Here we have something entirely novel and worth while. Tulips that bridge the gap between the early and late kinds. They bloom a week later than the early varieties, have strong, taller stems and some of the most beautiful colors are found in this class. All force readily.

Algiba. Purplish mauve, edged paler mauve. **\$1 per dozen, \$7 per 100.**

Aviator. Glossy carmine-red with edge of silvery white and white base. An outstanding Tulip on account of its glossy texture. Good forcer. Height, 22 inches. **\$1.60 per dozen, \$12 per 100.**

Azelles. Reddish violet with a white base. Large flower on a strong stem. Height, 22 inches. **\$2.60 per dozen, \$20 per 100.**

Cecilia. Opens primrose yellow edged orange, which color suffuses the bloom as it ages. An elegant oblong-shaped flower with yellow base and a graceful stem. Height, 16 inches. **\$1.15 per dozen, \$8 per 100.**

Denbola. Dark amaranth-red with a broad edge of creamy white and a bluish white base. A good-sized flower of open form. **\$1.95 per dozen, \$15 per 100.**

Elizabeth Evers. Fuchsia-rose faintly feathered silvery white from the tip of petals to the base. Enormous flower of beautiful shape carried on a strong stem. One of the best Triumphs in this color, offered for the first time in our catalog. Height, 22 inches. **\$3.20 per dozen, \$25 per 100.**

Korniforus. The King of the Triumph Tulips which captured such high honors a few years ago in Holland and which is regarded as the best Triumph in existence. A beautiful clear red with white base. Very large flower carried on a very strong, tall stem. One of the earliest forcers. Height, 24 inches. **\$6.50 per dozen, \$50 per 100.**

Lord Carnavon. Each of the magnificently pointed petals is beautifully marked with a stripe or band of clear, bright pink. A flower of exquisite vase-shape, equally attractive indoors or outside. **90 cts. a dozen, \$6 per 100.**

Pres. Von Hindenburg. Garnet-red, flushed purple with a yellow edge. A very large flower. **\$1.95 per dozen, \$15 per 100.**

Snowdrift. A large snow-white flower, loosely formed and carried on a strong stem. **\$1.35 per dozen, \$10 per 100.**

Syrius. Garnet-red, flushed purple at the edge of petals. Very large flower on a strong stem. Extra. Height, 28 inches. **\$1.25 per dozen, \$9 per 100.**



Triumph Tulip Tarazed

Triumph Tulips, Concluded.

Tarazed. Carmine-purple, edged snow-white, with a white base. A round shaped flower of medium size. **\$1 per dozen, \$7 per 100.**

Telescopium. Reddish violet. An elegantly shaped Tulip of large size carried on a very strong stem. Height, 24 inches. **\$1.15 per dozen, \$8 per 100.**

Tucana. Bright orange on a strong stem, large flower. **\$1.00 per dozen, \$7 per 100.**

Ursa Minor. Golden yellow, long elegantly shaped flower on a strong stem. **\$1.95 per dozen, \$15 per 100.**

SINGLE EARLY TULIPS

Just as the Daffodils pass out of the garden picture, these early Tulips enter, to help prolong Spring joys. This group holds, perhaps, some of the gayest colored of all Tulips—note Keizerskroon as illustrated on page 46, of which more are planted every year than of any other variety. De Wet, too, as described on page 45, is a glorious variety of absolutely unique color—so striking that it has no equal in any other class.

Most early Tulips grow readily in pots or pans indoors. As usual we have marked those most suitable for forcing, with an asterisk (*). All furnish excellent material for beds, being particularly effective in masses of several colors.

WHITE

***White Beauty.** (4). The finest in this class, but also the latest to bloom. Try a bed of them, using yellow Pansies as a ground cover. The flowers are of great size and substance and do well in window boxes. This is a sport of that fine variety "Pink Beauty" and a worthy companion to it in the border. Height 12 inches. **\$1 per dozen, \$7 per 100.**



Oyster Bay, L.I., New York



Single Early Tulips, Continued.

WHITE, Continued

***White Hawk.** (2). A superb bedding variety and one of the finest for growing in pots or pans—forcing. The flowers are pure white, of great substance and unusual grace and beauty, due to the crinkled edges of the petals. Well grown flowers are of globular shape and unusual size for an early Tulip. Grow with Phlox subulata lilacine as ground cover. Height 13 inches. **90 cts. per dozen, \$6 per 100.**

White Swan. (4). Pure white, large egg-shaped flower on a graceful stem. Fine for cutting late in the early Tulip season. Height, 15 inches. **70 cts. per dozen, \$5 per 100.**

WHITE, FLUSHED PINK

***Fortuna.** (2). A delightful newcomer bringing us particularly harmonious color blending. A large, oval-shaped flower of satin rose suffused with fawn. Turns to soft rose with advancing age. Sturdy stems. Height 14 inches. **\$1.35 per dozen, \$10 per 100.**

***Cullinan.** (2). A beautiful sport of Flamingo of which it inherits many desirable characteristics. It is of creamy white color, each petal being edged delicate rose. Equally useful in bedding or for forcing. Height 13 inches. **90 cts. per dozen, \$6 per 100.**

***Princess Juliana.** (2). Immense flower of delicate pink, lasting a very long time. Height, 13 inches. **90 cts. per dozen, \$6 per 100.**

***La Reine Maxima.** (2). White, slightly shaded rose. Large fine flower. Height, 13 inches. **70 cts. per dozen, \$5 per 100.**

DEEP ROSE AND WHITE

***Pink Beauty.** (4). When it first opens it is white with a narrow pink edge. As it develops, the whole flower turns to a lively cherry-rose, with white base and a yellow star. Among the handsomest of the dark pinks and equally useful for bedding and forcing. Large flowers of great substance, causing it to be one of the longest lasting among early Tulips. Height, 12 inches. **90 cts. per dozen, \$6 per 100.**

***Ibis.** (2). This "sport" of Flamingo surpasses that old favorite in many ways. The flowers are a brilliant carmine-rose with white stripe through center, larger than those of the parent variety and very substantial. Extra fine for forcing and a luminous bedder outdoors. Height 14 inches. **90 cts. per dozen, \$6 per 100.**



White Beauty—see p. 41.



Single Early Tulips, Continued.

DEEP ROSE AND WHITE, Continued

- ***Flamingo.** (2). A large, graceful flower of a pleasing shade of carmine-rose. Each crinkled petal has a white stripe running through the center. Forces well and is fine for bedding, especially if planted with a ground cover like Alyssum Little Gem. Height, 13 inches. **70 cts. per dozen, \$5 per 100.**
- ***Rose Luisante.** (4). Deservedly popular because of its many fine characteristics. Of brilliant deep rose color, each petal flushed white at edge. Goblet shaped flowers, carried on straight, sturdy stems. Equally showy in the garden or in pots or pans. When grown indoors, it should be forced slowly. Height, 14 inches. **90 cts. per dozen, \$6 per 100.**
- Le Matelas.** (1). Glistening rosy pink, flushed creamy white, large flower of beautiful shape. Height, 12 inches. **90 cts. per dozen, \$6 per 100.**

CARMINE-ROSE

- ***Cramoisi-Royal.** (2). Bright carmine-rose. Large flower on a tall strong stem, undoubtedly the most beautiful in this color. Unsurpassed for forcing, of unusual substance and especially recommended. The bulbs should not be covered as deeply for forcing as others of this class, otherwise the stems show a tendency to be weak. Height, 15 inches. **90 cts. per dozen, \$6 per 100.**
- ***Proserpine.** (1). Though one of the oldest varieties, it retains its hold on the Tulip loving public because of its utter dependability. A silky, carmine-rose, of large size, handsome globe shape and pleasing fragrance, it is a fine indoor as well as a splendid bedding variety. Inside of flower has white base with slaty blue marks. Height, 14 inches. **90 cts. per dozen, \$6 per 100.**

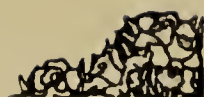
SHADES OF SCARLET

We advise to force all scarlet varieties slowly at the start, otherwise they are apt to be green-tipped.

- ***Vermillon Brillant.** (2). Brilliant vermilion, with yellow base. Among the most brilliant of red Tulips. Is a very good early forcer and a splendid bedder besides. Height, 13 inches. **90 cts. per dozen, \$6 per 100.**
- ***Brilliant Star.** (1). Vermilion-scarlet with a bluish black star at base, when forced very early, often a yellow base. Without doubt one of the best among the earliest red forcing Tulips. Height, 12 inches. **90 cts. per dozen, \$6 per 100.**
- ***Couleur Cardinal.** (4). Brilliant crimson-scarlet. An unusually substantial flower, with a tall strong stem. Fine bedder and late forcer. Height, 13 inches. **90 cts. per dozen, \$6 per 100.**
- ***Duc Van Thol Scarlet.** (1). The earliest to bloom and especially useful for rock gardens, dwarf. Height, 8 inches. **70 cts. per dozen, \$5 per 100.**

Why Order Early? We generally have some bulbs on hand here at Oyster Bay at planting time, but both number of varieties and quantity of bulbs will be limited. The fancier whose heart is "set" on specific varieties, should order at once, surely not later than August 10th. This will insure getting just the kinds wanted, in a bulb product second to none in the world!

We are Tulip Specialists. In our own nurseries in Holland we grow acres of the choicest, both old reliable standards as well as rare novelties. Whether your fancy calls for early, midseason or late varieties, in most any shade of the rainbow, we have them—and at prices within the reach of all.



Single Early Tulips, Continued.

ORANGE SHADES

- ***De Wet.** (3). Named after the famous Boer leader, this Tulip may be likened to him because as yet the rest of the tribe have not caught up with it, and it will probably not be superseded for some time to come. It is one of the outstanding varieties for bedding. A golden yellow, flushed and stippled deep orange softened by a golden sheen. One of the outstanding early varieties for forcing. The flowers are large and delicately scented. Height, 16 inches. **\$1 per dozen, \$7 per 100.**
- ***Hobbema (Le Reve).** (4). Old rose, flushed buff. An extremely handsome globe-shaped flower of unusual substance and very attractive color. Extra for late forcing and bedding. This is really a marvelous variety, blooming late and "bridging the gap" between the early and May-flowering sorts. Height, 13 inches. **90 cts. per dozen, \$6 per 100.**
- ***Prince of Austria.** (3). Large sweet-scented flower on a tall strong stem, blooming over a long period. Color—a rich orange-scarlet, shading to deep brick-red as it gets old. One of the easiest to force and a fine bedding variety as well. Height, 16 inches. **90 cts. per dozen, \$6 per 100.**
- ***Fred Moore.** (2). A deservedly popular variety for both indoor culture and outdoor bedding. Color a soft, rosy terra-cotta with edge of petals shaded orange-yellow, base of cup marked olive-green. Flowers of medium size but sweet scented. One of the finest for window culture. Height, 15 inches. **70 cts. per dozen, \$5 per 100.**

YELLOW

- ***Rising Sun.** (2). Deep golden yellow. It is a real giant on a tall and strong stem which excels all yellow Tulips for bedding or forcing. Height, 16 inches. **90 cts. per dozen, \$6 per 100.**
- ***Gold-Finch.** (2). Deep yellow; sweet-scented; a sport of Yellow Prince, without the brownish red streaks, retaining the color until the petals drop. One of the best for bedding and forcing. Height, 13 inches. **90 cts. per dozen, \$6 per 100.**
- ***Mon Tresor.** (1). Intense golden yellow of large size. One of the earliest and easiest forcers. Height, 12 inches. **\$1.15 per dozen, \$8 per 100.**
- ***Yellow Prince,** (2). Clear yellow; sweet-scented. The most popular of the yellow Tulips for forcing, but not recommended for bedding. Height, 13 inches. **90 cts. per dozen, \$6 per 100.**
- ***Calypso.** (2). Light sulphur-yellow. Fine when planted beside purple-violet varieties. Height, 12 inches. **90 cts. per dozen, \$6 per 100.**

PURPLE SHADES

- ***Van der Neer.** (2). Brilliant, violet-purple, a shade different from that found in any other Tulip. It seems particularly well adapted to northern sections, because it enjoys tremendous popularity in the Scandinavian countries in Europe. The flowers are large, of elegant form and supported by strong stems. Height, 12 inches. **90 cts. per dozen, \$6 per 100.**
- ***Cerise Gris-de-lin.** (4). Dark carmine-violet, shaded fawn and margined creamy white. An exquisite variety, equally suitable for beds, and late forcing. Height, 13 inches. **90 cts. per dozen, \$6 per 100.**



Keizerskroon—one of the showiest.

Single Early Tulips, Continued.

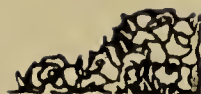
RED AND YELLOW

***Keizerskroon.** (2). One of the oldest Tulips in cultivation and still one of the most popular. As a bedding variety it stands alone, with its bright, crimson-scarlet flowers, each of which is edged with a deep, rich yellow border. Of tremendous size for an early variety and withal, of long lasting qualities, either outdoors or grown in pots. Height, 16 inches. See illustration above. \$1 per dozen, \$7 per 100.

MIXTURE

Single Early Tulips, selected Bulbs, all Colors. 65 cts. per dozen, \$4.50 per 100.

We Love Them All, But—There is a vast difference in varieties, even in one and the same class and color. Therefore, we present the varieties in most classes in order of their merit, regardless of cost. Those who desire the best should select from among the first few offered in each class. An asterisk (*) stands for extra forcing qualities.



DOUBLE EARLY TULIPS

Although not so elegant in form as the single varieties, they are an exceedingly useful and beautiful class of Tulips, producing a brilliant and striking effect, when planted in beds. The flowers are more substantial and last over a long period. Nearly all of them are admirably adapted for forcing and make a fine display when grown in pots or pans; but they should be forced slowly.

For cultural directions see Single Early Tulips.

WHITE

- ***Schoonoord.** (2). A beautiful white sport of Murillo, large and very full flower. Splendid forcer and magnificent bedder as shown on opposite page. Height, 12 inches. **\$1.25 per dozen, \$9 per 100.**
- ***Boule de Neige.** (2). Pure white. An elegant peony-like flower on a strong stem. Height, 12 inches. **90 cts. per dozen, \$6 per 100.**

ROSE

- ***Triumphator.** (2). A lovely rose-pink shade overlaid with white. One of the finest for beds and borders since the very double flowers are supported by strong stems. Height, 14 inches. **\$1.15 per dozen, \$8 per 100.**
- ***Peach Blossom.** (2) A sport of that old favorite Murillo which it will, no doubt, replace in due time, especially for forcing. A bright rose-pink deepening to carmine-rose as it grows older. Well shaped, large flowers of splendid lasting qualities. **\$1.15 per dozen, \$8 per 100.**
- ***Murillo.** (2). Delicate rose-pink, flushed white. Perhaps the most popular double pink Tulip in existence. Height, 12 inches. **80 cts. per dozen, \$5.50 per 100.**

SCARLET

- ***Vuurbaak.** (2). Fiery scarlet, tinged orange when open. Large flower on a strong stem. Height, 12 inches. **90 cts. per dozen, \$6 per 100.**
- ***Le Matador.** (3). Rich glowing scarlet flushed purple. Height, 12 inches. **90 cts. per dozen, \$6 per 100.**

YELLOW AND ORANGE

- Marechal Niel.** (2). A truly magnificent variety of superb form and color. A pleasing canary-yellow with soft orange tints—a combination as rare as it is beautiful. Height, 11 inches. **\$1.35 per dozen, \$10 per 100.**
- ***Couronne d'Or.** (1). Golden yellow, flushed orange-red. One of the very best for growing in pots. A magnificent flower as shown in illustration on following page. Height, 13 inches. **\$1.15 per dozen, \$8 per 100.**
- ***Tea-Rose** (Saffrano). (2). Soft pale yellow, tinged light rose. The color is exactly that of the old tea rose, hence the name. Height, 12 inches. **90 cts. per dozen, \$6 per 100.**
- ***El Toreador.** (2). Bright orange-scarlet, with a broad border of buff-yellow. One of the most beautiful double Tulips. It is a grand Tulip for pots or pans. Height, 13 inches. **\$1.15 per dozen, \$8 per 100.**

An asterisk (*) preceding the name indicates that it may be successfully forced. The figure following indicates the relative time of flowering.



A magnificent, peony-like flower, truly a "crown of gold," the English term for Couronne d'Or.

Double Early Tulips, Concluded

YELLOW

- ***Golden Giant.** (3). Clear yellow. Enormously large and beautiful flower. Superb for exhibition purposes. **\$1.35 per dozen, \$10 per 100.**
- ***Mr. Van der Hoef.** (2). Pure yellow; a sport of Murillo, and has all the good qualities of that variety. Height, 12 inches. **\$1 per dozen, \$7 per 100.**
- ***Golden King.** (1). Soft canary-yellow, shaded deeper yellow, with black anthers. Height, 13 inches. **90 cts. per dozen, \$6 per 100.**

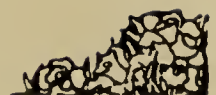
VIOLET

- ***Electra.** (2). A beautiful violet sport of the well-known Murillo, of very fine color. Height, 12 inches. **\$1 per dozen, \$7 per 100.**
- ***Lac van Haarlem.** (2). Brilliant rosy violet; a quite unique color. Height, 12 inches. **90 cts. per dozen, \$6 per 100.**

MIXTURE

Double Early Tulips, in all colors. 65 cts. per dozen, \$4.50 per 100.

An asterisk (*) preceding the name indicates that it may be successfully forced. The figure following indicates the relative time of flowering.



Hyacinths are among the most gorgeous flowers for bedding.

HYACINTHS

In Beds or Borders

Hyacinths should be planted 4 inches deep from the crown of the bulb to the surface of the soil or less, according to size, and about 6 inches apart or more, according to the number of bulbs available for a given space.

The soil should be made moderately firm. If the situation is somewhat damp, a little sand placed beneath the base of each bulb will prevent decay. After planting, the beds must be mulched over with litter, as a protection against severe weather. All varieties listed are suitable for forcing and outside planting.

For outdoor beds or borders first-size bulbs produce flowers less top-heavy than those from Exhibition bulbs.

CULTURE IN POTS

The pots for all Bulbs should be well drained, the soil made moderately firm, and a little sharp sand dusted under the base of each bulb; then add more soil until one third of the bulb appears above the surface.

After potting the bulbs, the pans may be plunged into a coldframe or in a sheltered spot in the garden. They should be covered with several inches of soil and, before severe frost sets in, they should be mulched heavily with leaves or straw. If potted up early, they will have developed a fine root system by the end of December, when they should be brought indoors.

Keep the pans in a dark cool spot until the buds extend sufficiently above the bulb. After the flowers are plainly visible they should be kept in a slightly cooler temperature to promote sturdy growth of the plants. The flowers should not be exposed to strong sunlight at any time, or else they are apt to fade. The most popular way to have Hyacinths is to plant 3 bulbs in a 7-inch pan. For indoor culture plant exhibition size bulbs of named varieties only.



Hyacinths are among the most fragrant flowers that grow.

EXHIBITION HYACINTHS

Selected bulbs of the highest quality, bound to produce the best results for Exhibition. Also recommended where extra large spikes are wanted in the garden.

ROSE SHADES

Queen of the Pinks. (4). Very lively pink, large spike. A sport of King of the Blues, but should not be forced early. Regarded as the best pink in existence.

Lady Derby. (1). Clear rose-pink. One of the leading pot Hyacinths, owing to its perfect spike on a strong stem and its splendid forcing qualities.

La Victoire. (1). Bright carmine-rose; when forced fine dark pink. This Hyacinth is the very best in this color, and unsurpassed for both purposes.

Garibaldi. (1). Deep crimson-red. One of the most popular for early forcing.

Marconi. (2). Bright deep rose, flushed white. Large compact spike. Recommended for collection.

**UNIFORM PRICES for all Hyacinths offered on this page,
\$2.10 per dozen, \$16 per 100.**



Exhibition Hyacinths, Continued.

ROSE SHADES, Continued

Gigantea. (2). Blush-pink. Largely used in miniature size for cutting, very small bulbs even producing large flowers.

Gertrude. (2). Dark pink. Most popular for pots and bedding.

WHITE

Arentine Arendse. (1). Snow-white. Especially recommended for early forcing.

La Grandesse. (3). Snow-white. Should not be forced after the middle of March, because the stem grows too tall after that time. Largely used in miniature size.

L'Innocence. (1). Pure white with large bells of great substance. One of the best for both purposes.

Queen of the Whites. (4). Pure white sport of King of the Blues. Large well-shaped truss.

BLUE SHADES

Schotel. (2). Soft light blue, long perfect truss. Easy forcer and splendid bedder. Fine for exhibition purposes.

King of the Blues. (4). Rich dark blue. One of the largest flowers existing. Excellent for late forcing and bedding.

Myosotis. (2). Gigantic flower of forget-me-not-blue.

Perle Brillant. (2). Light blue, tinged lavender. One of the best of the late blue varieties.

Bismarck. (1). One of the finest light blue Hyacinths. Enormous truss. One of the earliest.

Grand Maitre. (2). Deep lavender-blue, shaded dark blue. The most popular blue.

VIOLET AND MAUVE

Lord Balfour. (1). Lilac-rose, tinged dark violet, enormous truss, very early, the best in this color.

Queen of the Violets. (3). Purplish violet. A sport of King of the Blues.

UNIFORM PRICES for above varieties of Hyacinths

\$2.10 per dozen, \$16 per 100.

YELLOW

(All yellow varieties produce small bulbs.)

City of Haarlem. (2). Clear Naples yellow, the grandest flower among the yellows. The truss is large and well-formed. **\$2.35 per dozen, \$18 per 100.**

Yellow Hammer. (1). Golden yellow. Has the shape of a hammer; hence the name. Splendid early forcer. **\$2.35 per dozen, \$18 per 100.**

First Size Hyacinths

First size bulbs of above yellow varieties at the uniform prices of **\$1.85 per dozen, \$14 per 100.**

All other varieties of Single Hyacinths at the uniform prices of **\$1.60 per dozen, \$12 per 100.**



Hyacinths, Concluded

Second Size Hyacinths

These are much superior to the bedding Hyacinths offered below, and produce larger spikes.

Second size Hyacinths will be furnished in any variety of the preceding list at the uniform price of **\$1.35 per dozen, \$10 per 100.**

Second size yellow Hyacinths, **\$1.60 per dozen, \$12 per 100.**

Bedding Hyacinths

These bulbs, somewhat smaller in circumference than the second size offered above can be furnished at the uniform price of **\$1.15 per dozen, \$8 per 100.**

Yellow varieties at **\$1.35 per dozen, \$10 per 100.**

Miniature Hyacinths

The fifth size, commonly known as Miniature Hyacinths, are unusually handsome for growing in pots. They are a little later than the Romans, but the flowers are much stronger and the bells are much larger.

Miniature Hyacinths will be furnished in any variety of the preceding list at **90 cts. per dozen, \$6 per 100.**

Miniature Yellow Varieties **\$1.15 per dozen, \$8 per 100.**

PREPARED DUTCH HYACINTHS

EARLY FLOWERING

Prepared Hyacinths are not only fitted for early flowering, but are also excellent for use later in the season. The bulbs are smaller in circumference and bring somewhat larger flowers than unprepared Hyacinths.

They can be furnished in any size of the leading varieties and colors "our choice" at 20 per cent higher than the prices quoted for unprepared Hyacinths.

French Roman Hyacinths

Exceedingly popular and invaluable for winter flowering in the house, and also extensively used for Christmas forcing for cut flowers. Not suitable for outdoor planting as these bulbs are not hardy, except in the South and on the Pacific coast.

White Romans. Extra selected bulbs. **\$1.95 per dozen, \$15 per 100.**



Our extra-selected bulbs of French Roman Hyacinths bloom readily for everybody.



CROCUSES (SPRING FLOWERING)

The crocus has its home on the shores of the Mediterranean Sea and eastward into Asia. The name crocus is of Greek origin and means saffron. Saffron in turn is the English spelling of the Arabic word "Zafaran."

In early times the orange-yellow stigmas were dried and used in medicine and are still used to-day for cooking by the Persians and Spaniards who mix them with their rice. In Greece and Rome, saffron was used as a perfume and as a yellow dye and is still employed extensively for that purpose in certain sections of the old world. Commercial plantings of crocus for the manufacture of saffron are still to be found in Persia, Spain, France and Sicily.

Crocus is one of the loveliest of all spring-flowering plants. Soon after the snow-drops have put in their appearance come the crocuses with their large showy blooms in yellow, white, purple and stripes of lilac on a white ground. They must be grown in a more or less sunny place, otherwise the blooms do not open up fully.

They are easily forced in a temperature of about 50 degrees, especially the top-sized quality bulbs which we offer.

Please bear in mind that many so-called "first quality" Crocus bulbs do not belong in the top-size. Extra quality is never in abundance.

We guarantee all Crocus bulbs offered to be strictly top size unless mentioned otherwise.

BLUE, PURPLE AND LILAC SHADES

Paulus Potter. Violet-purple. 70 cts. per dozen, \$5 per 100.

Purpurea Grandiflora. Purple, the largest of all Crocuses. 60 cts. per dozen, \$4 per 100.

The Bishop. Dark blue. 90 cts. per dozen, \$6 per 100.

Maximilian. Clear lilac-blue. 60 cts. per dozen, \$4 per 100.

Antigone. Blue, light bordered. 60 cts. per dozen, \$4 per 100.

Remembrance. Sky-blue, free flowering. 70 cts. per dozen, \$5 per 100.

King of the Blues. Dark blue. 60 cts. per dozen, \$4 per 100.

STRIPED

King of the Striped. Blue striped. 60 cts. per dozen, \$4 per 100.

La Majestueuse. Lilac striped. 60 cts. per dozen, \$4 per 100.



Spring Flowering Crocuses, Concluded.

WHITE

Snowstorm. Pure white, very free flowering. The most beautiful white in existence. 70 cts. per dozen, \$5 per 100.

Queen of the Whites. 60 cts. per dozen, \$4 per 100.

YELLOW

Large Yellow. Top size. 60 cts. per dozen, \$4 per 100.

Large Yellow. First size. 55 cts. per dozen, \$3.50 per 100.

MIXTURES. First Size. Especially recommended for naturalizing.

We make a specialty of sending out a mixture that cannot be beaten in the size of bulbs and number of varieties. We therefore cannot sell our mixture as cheaply as other firms sometimes do, but we guarantee ours to be far superior.

Mixture of Blue Kinds. 55 cts. per dozen, \$3.25 per 100, \$30 per 1000.

Mixture of Striped Sorts. 55 cts. per dozen, \$3.25 per 100, \$30 per 1000.

Mixture of White Varieties. 55 cts. per dozen, \$3.25 per 100, \$30 per 1000.

Mixture of All Varieties, yellow included. 55 cts. per dozen, \$3.25 per 100, \$30 per 1000.

SPECIES OF CROCUS

Cloth of Gold (Susianus). Inside yellow with gold outside. 60 cts. per dozen, \$4 per 100.

Cloth of Silver (Versicolor). Inside white with lilac outside. 55 cts. per dozen, \$3.50 per 100.

CROCUS, AUTUMN-FLOWERING

The following species, while smaller flowering than the regular Crocuses, are extremely hardy, vigorous, and naturalize readily in the lawn, border or rock garden. Some of the color combinations found among them are exquisite. Frequently, contrasting stamens add to their loveliness.

Longiflorus. Charming soft lilac flowers, with orange stigmata delicately scented. \$3.80 per dozen, \$30 per 100.

Salzmanni. Lilac with dark feathering; delights in moisture. \$1.25 per dozen, \$9 per 100.

Sativus. Large flowers, purplish lilac, feathered violet and with showy orange stigmata. 70 cts. per dozen, \$5 per 100.

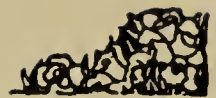
Speciosus. Bright violet-blue, prettily veined; anthers orange-red, throat yellow. Large, handsome and showy and one of the most beautiful Autumn Crocuses for planting in grass and borders. 70 cts. per dozen, \$5 per 100.

Speciosus Aitchisonii. Long handsome flowers, with sharp tapering petals. Lavender, dark shaded and with pretty silver flush. Very late. \$1.15 per dozen, \$8 per 100.

Speciosus Globosus. Dark blue, late flowering. \$1.15 per dozen, \$8 per 100.

Speciosus Pollux. Silver-gray, very large. \$1.35 per dozen, \$10 per 100.

Zonatus. Rosy lilac flowers, with yellow centre and orange zone. Very beautiful. 70 cts. per dozen, \$5 per 100.



EREMURUS

A noble group of hardy plants which is just finding its way into the American gardens from the Himalayas. The enormous, stately flower stalks, often six to ten feet tall, rise majestically from a tuft of long narrow leaves and are crowned by flower spikes two to three feet long. These spikes are composed of hundreds of closely set star-like flowers of beautiful shades of rose, yellow, bronze and white.

Eremurus should be planted in the early Fall, four inches deep. They enjoy a well-drained rich soil and a sunny location, and may be left undisturbed for years.

Although perfectly hardy they should have a heavy mulch of salt hay or leaves the first year after planting. When fully established a mulch of old cow manure is sufficient.

When flowering time is over, the plant disappears entirely, but reappears very early in the Spring, when it is advisable to place a paper bag or flower pot over the young crown to protect it from late frost.

Bungei. Golden yellow flowers borne on spikes 5 to 6 feet high. Very beautiful.
\$3.50 each. \$35 per dozen.

Elwesianus. Pink flowers thickly set in enormous spikes. Very vigorous. Blooms the beginning of June. Height, 10 to 12 feet. **\$3.50 each. \$35 per dozen.**

Elwesianus Albus. Pure white flowers on superb spikes. Same habits as Elwesianus, but blooms one week earlier. **\$3.50 each, \$35 per dozen.**

Olgae. Flowers of deep pink, sweet scented and densely set. A pretty and distinct species from Turkestan, with narrow leaves. Height, 8 feet. **\$3.50 each, \$35 per dozen.**

Robustus. Tall, strong plant and one of the finest. Flowers of rosy pink, a darker tone than that of Elwesianus. Will grow to a height of 10 feet when fully established. **\$3.50 each, \$35 per dozen.**

Shelford. The exterior of the coppery yellow flowers is tinted ruddy bronze. The flower spikes are three feet in length and closely set as in Bungei. A beautiful hybrid of noble and rich coloring. Blooms just after Warei. Height, 6 to 7 feet. **\$5 each, \$50 per dozen.**

Warei. Myriads of fine coppery pink flowers shot with bronze cover the three-foot flower spikes. A grand, rare hybrid of rich coloring and tall stature, Flowers just before the Bungei. Height, 6 to 8 feet. **\$5 each, \$50 per dozen.**

Seedlings. We offer a wide selection of Robustus, Bungei and Elwesianus seedlings, which are certain to produce a wide range of fine form and novel coloring. **\$3 each, \$30 per dozen.**

Above prices are based on extra heavy roots which are guaranteed to bloom the first year after planting.

Strong good flowering roots of any of the above mentioned varieties or seedlings will be furnished at a discount of 25% from prices quoted above.

Bulbs are extremely sensitive merchandise, easily bruised and mishandled. Our men are trained to exercise extra care. As a result the bulbs we offer hold promise of extra-fine results in your garden.



DUTCH IRIS

Their exquisite shades, ease of culture, and great dependability cause these to become increasingly popular from year to year. They are thoroughly at home in sandy soil, although they will do well in any soil that is not too heavy.

In color they range from the purest white to golden yellow and bronze, from heliotrope to light blue and to the darkest blues. To properly describe the many hues taxes one's imagination. Because of dainty form and having strong, wiry stems, they lend themselves particularly for artistic and decorative arrangements. Whether grown in the garden or displayed as a cut flower, they are always attractive. In the garden they should be massed, grouping the different colors by themselves.

They readily force in moderate temperature. Outdoors they should not be planted in the same place for several years in succession, new ground each year producing by far the best flowers. When planted indoors, new soil that has not been used for Iris ought to be used exclusively.

David Bless. One of the earliest varieties, and readily forced as early as March. Most unusual flower, bound to attract attention. Standards of a pale pearly blue, with blue or heliotrope falls. **\$1.35 per dozen, \$10 per 100.**

Hart Nibrig. A lovely variety blooming early and yet bearing flowers of excellent size. The falls are brilliant clear blue, while the standards are of a somewhat deeper shade. **\$1.35 per dozen, \$10 per 100.**

J. W. De Wilde. Resembles Yellow Queen in many ways, but is superior because of greater size. Falls golden yellow, standards of a lighter shade. **\$1.35 per dozen, \$10 per 100.**

Imperator. Of truly impressive size and purity of color. An intense, clear blue, a shade not found in any other variety. Truly a leader among Dutch Iris, and one exceptionally suitable for late March forcing. **\$1.35 per dozen, \$10 per 100.**

The First. We cannot speak too highly of this variety which, besides being the earliest blooming of all, is an exceptionally strong grower, of a shade somewhere between lavender and light blue. It is a dependable grower both outdoors and under forcing conditions. If you are fond of Dutch Iris, by all means have this in your collection. **\$1.95 per dozen, \$15 per 100.**



Dutch Iris, Concluded.

Wedgewood. This particular hybrid is one of the best of all for forcing. It blooms readily and very early. The large flowers are borne on strong tall stems. Standards are blue, while the falls are of a paler shade, each having a yellow blotch. **\$1.95 per dozen, \$15 per 100.**

White Excelsior. Also a splendid forcing variety which may be had in bloom as early as the end of February. It is an exceedingly strong grower bearing pure white flowers of elegant shade and enormous size. **\$1.35 per dozen, \$10 per 100.**

Yellow Queen. Recognized by connoisseurs as one of the most striking of all yellow varieties. The wiry stems carry large flowers of great substance. Standards are a pale yellow, while the somewhat smaller and rounded falls are of a golden yellow. Lasts a long time after cutting. **\$1.25 per dozen, \$9 per 100.**

DIELYTRA

Spectabilis. Better known as Bleeding Heart. This delightful old favorite is assuming a new degree of popularity. Because of its forcing qualities, it makes a splendid potted plant for the window, blooming in either greenhouse or conservatory, but it is also an excellent plant for the hardy border, and especially valuable for shady situations. It bears long racemes of heart-shaped pink flowers and blooms as persistently as any hardy perennial flower we know. In addition it has extremely graceful foliage. Whether you intend to plant it indoors or use it in your hardy border, here is one plant that we can conscientiously recommend. Not very particular as to soil. Strong clumps. **\$6 per dozen, \$45 per 100.**



Bleeding Heart—a graceful border plant.



HARDY LILIES

Many of the late flowering Lily bulbs are not ready before the middle of November. Where the ground is liable to freeze, we advise the preparation of the Lily beds or borders early in autumn, covering them with four to six inches of leaves or other litter to prevent the ground freezing until the bulbs arrive.

See that they have a well-drained position, and without exception they prefer a half shady, moist position, protected against the hot sun.

The ground must be thoroughly spaded to a depth of 18 inches before planting Lilies and must be enriched by adding equal portions of leafmould, peat and rotten manure.

Plant the bulbs 6-8 inches deep, varieties like Speciosum require at least 8 inches, putting some sand under and around the bulbs to insure proper drainage.

Cover the beds with six or eight inches of leaves or other litter which must be removed in late Spring.

LILIUM AURATUM

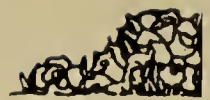
The Gold-banded Lily of Japan. One of the finest and most popular of the hardy garden Lilies. Flowers white, with a wide band of gold running through the center of each petal, and thickly studded with crimson spots. Bulbs 11 to 13 inches in circumference. 65 cts. each, \$6.50 per dozen, \$50 per 100.

LILIUM CANDIDUM (Madonna Lily)

One of the oldest, loveliest and best-known Lilies. Can be planted only in the Fall. Our bulbs of this splendid Lily are grown in northern France, and are of the thick petaled type. Mammoth bulbs, 45 cts. each, \$4.40 per dozen, \$35 per 100.



Lilium auratum—a gorgeous visitor from Japan.



Hardy Lilies, Concluded.

LILIUM HENRYI

A charming species of the Speciosum type having orange flowers with brown spots. It is not very particular as to soil and should be planted six to eight inches deep. Season of blooming, July and August, Strong bulbs, 65 cts. each, \$6.50 per dozen, \$50 per 100.



Lilium regale—a true Queen.

LILIUM TESTACEUM

One of the very finest Lilies. When well established it rears its lovely dull apricot flowers six to seven feet above the ground. In habit of growth and the arrangement of its foliage around the stem it resembles *L. candidum* or the Madonna Lily in connection with which it creates lovely pictures. The drooping flowers have reflexed petals, and, being horizontally poised, cause the entire plant to be most graceful. It prefers the same soils and situations as the Madonna Lily and should be treated the same.

Season of flowering June-July. Fall planting only. Mammoth bulbs, \$1.35 each, \$13.50 per dozen, \$100 per 100.

LILIUM REGALE

A most beautiful pure white bloom, with bright, golden throat, outside white, tinted pink. Very wiry stem, growing from eighteen

inches to three feet tall, with many blooms to each stem. Perfectly hardy and will thrive and do well in any well-drained soil. Extra selected bulbs. 35 cts. each, \$3.50 per dozen, \$25 per 100.

LILIUM SPECIOSUM MAGNIFICUM

Rich ruby-carmine, margined white, massive flowers, measuring fully 8 inches across the petals and carried on a strong stout stem with dark green leaves. Bulbs 11-13 in. in circ. 55 cts. each, \$5.25 per dozen, \$40 per 100.

LILIUM TIGRINUM

Showy spotted red-orange flowers throughout August and into September. Prefers a sunny situation. Bulbs should not be set deeper than three to four inches. 25 cts. each, \$2.15 per dozen, \$16 per 100.



MISCELLANEOUS BULBS

CHIONODOXA (Glory of the Snow)

The most beautiful of dwarf blue spring flowers, resembling those of *Scilla Siberica*, but larger, slightly taller and more handsome. They are very hardy, thriving in any ordinary garden soil, and in almost any situation.

The bulbs continue to flower from year to year. It is most excellent for borders or rockeries. For the best effect, bulbs should be planted close together.

Gigantea. Resembling *Luciliae*, but with much larger blooms of soft gray-blue, 65 cts. per dozen, \$4.50 per 100.

Sardensis. True gentian-blue, with white center. 60 cts. per dozen, \$4 per 100.

Luciliae Alba. Beautiful white form of the above. \$1.05 per dozen, \$7.50 per 100.

ERANTHIS (Winter Aconite)

Hyemalis. Along with Snowdrops and *Scillas*, *Eranthis* is one of the harbingers of Spring. Moreover, it is particularly suitable for growing under trees and in shaded situations where relatively few flowers thrive. Golden yellow, buttercup-like blossoms are deeply set within emerald-green whorls of leaves which remain long after the flowers are gone. 55 cts. per dozen, \$3.50 per 100.

Note: No order for less than one dozen of either *Chionodoxa* or *Eranthis* of any variety is acceptable at low rates quoted.

FRITILLARIA IMPERIALIS (Crown Imperial)

Hardy border plants of stately growth, producing clusters of pendent bell-shaped flowers, surmounted by a tuft of green leaves. They should be planted in Autumn as early as possible. They do well in any rich garden soil. Never give them fresh manure. They are very effective and, if left undisturbed, will flower abundantly for years. Plant in October, about 6 inches deep and 8 inches apart.

In Choice Named Varieties. \$3.80 per dozen, \$30 per 100.

In Mixture. \$3.80 per dozen, \$30 per 100.



Miscellaneous Bulbs, Continued.

FRITILLARIA MELEAGRIS

Fritillaria Meleagris. A cousin to "Crown Imperial," bearing variously colored bell-shaped flowers on gracefully pendent, dwarf stems. Very early flowering and particularly attractive in groups in the border or in the rockery. Plant about 6 inches deep. They last for years.

In Varieties. 70 cts. per dozen, \$5 per 100.

In Mixture. 70 cts. per dozen, \$5 per 100.

IXIAS

Charming bulbs for winter blooming, of easy culture, with long, slender, graceful spikes of bloom and producing very brilliant flowers. The colors include many shades of yellow, pink, scarlet and crimson. The center of the flower is always distinct in color from the outer parts, the effect of which is very striking. Six to eight bulbs can be planted in a six-inch bulb pan. Cover them one inch.

Recommended for indoor planting only as they are not hardy enough to withstand severe weather.

No order for less than one dozen is acceptable.

We have available about a dozen choice named varieties, but find the demand for these so limited that space devoted to them is not profitable. For general use we offer:

Choice Named Varieties. 70 cts. per dozen, \$5 per 100.

LEUCOJUM

Vernum. We like to compare this to the Snowdrops, but the flowers are much larger, borne on taller, stronger stems and are of more upright habit. Under favorable conditions it grows about eight inches high and bears large white flowers, the petals of which are tipped with green, during late April. Because of the height of the stem, it makes an excellent flower for cutting. Once established, they take care of themselves and for that reason deserve a place in every hardy border. Also easily grown in pots in the house. **\$1.05 per dozen, \$7.50 per 100.**

MUSCARI (GRAPE HYACINTH)

Very beautiful flowers for planting in masses, either in shady places or where exposed to the full sun. Where they can be left undisturbed, they do exceedingly well. Plant in bold groups about 3 inches deep and 1½ inches apart. They are also fine for pot culture. They bloom outdoors during May.

No order for less than **one dozen** of each variety can be entered.

Amethystinum Album. Pure white, large truss. **\$1.15 per dozen, \$8 per 100.**

Botryoides (Blue Grape Hyacinth). One of the best of the Grape Hyacinths. A charming companion flower to Daffodils, the golden beauty of which is greatly enhanced by these fair blue-eyed beauties. **60 cts. per dozen, \$4 per 100.**



Muscari Heavenly Blue, the finest of the Botryoides family.

Miscellaneous Bulbs, Continued.

MUSCARI, Continued

Botryoides Album (White Grape Hyacinth). White. 60 cts. per dozen, \$4 per 100.

Botryoides Carneum. Light rose. 90 cts. per dozen, \$6 per 100.

Commutatum Coeruleum. Dark blue, almost black. 60 cts. per dozen, \$4 per 100.

Heavenly Blue. Bright sky-blue. This variety is the best and largest of the Grape Hyacinths. The bells are large and form a most impressive truss. 60 cts. per dozen, \$4 per 100.

Plumosum (Feather Hyacinth). Violet-blue. The spike has a perfect pyramidal shape and a real violet-blue color. The petals of the flowers are so narrow, that they look like feathers; hence the name "Feather Hyacinth." 90 cts. per dozen, \$6 per 100.

Bulb Planting Don'ts. It is just as important to know what not to do as it is to know how to do it. For instance, do not plant bulbs while the soil is too wet. If after digging you pick up a handful of soil and it crumbles easily through your fingers, well and good. If the soil forms a ball when being squeezed, it is too wet. Soil dug when too wet bakes and becomes hard, forming anything but a congenial bed for bulbs. Most planters set bulbs too deep. Read the cultural directions under the various chapter headings. Where planting 4 inches deep is suggested, bear in mind that that means 4 inches of soil measuring from the bottom of the trench. Too shallow planting is just as dangerous as planting too deep.



Miscellaneous Bulbs, Continued.



Scilla campanulata or "Wood Hyacinths."

SCILLAS

All the varieties of the *Scilla Campanulata* and *Nutans* family are splendid for naturalizing, because they will flower in shady places, where almost any other flower will die. As they are not expensive, they are among the most useful articles for naturalizing. Both have bells like small Hyacinths, and long and graceful spikes.

The flowers of the *Campanulata* family are superior to those of the *Nutans* family, being of a larger size and brighter colors. Height 15 inches. Our list contains all the good varieties. Plant bulbs from 2 to 3 inches deep (deeper in light soils) and about 2 inches apart.

No order for less than **one dozen** of any variety can be entered.

SCILLA CAMPANULATA
(Wood Hyacinths)

Alba Maxima. Large pure white. 60 cts. per dozen, \$4 per 100.

Blue Queen. Large bright blue. One of the best. 60 cts. per dozen, \$4 per 100.

Excelsior. Very large bright blue. Late. 60 cts. per dozen, \$4 per 100.

Rose Queen. Soft lilac-rose. Very free-flowering. 70 cts. per dozen, \$5 per 100.

Sky Blue. Large bright blue. Late. 60 cts. per dozen, \$4 per 100.



Scilla siberica or "Squills."



Miscellaneous Bulbs, Continued.

SCILLA NUTANS

The flowers are of the same bell shape as those of *S. Campanulata*, but are not as tall, and the arching stems cause the flowers to be more pendulous. In connection with Daffodils it produces most charming effects, especially when it becomes naturalized, which it does readily.

Alba Major. White. 60 cts. per dozen, \$4 per 100.

Blush Queen. Delicate lilac-rose. 70 cts. per dozen, \$5 per 100.

Coerulea. The true English Blue Bell. Violet-blue. 60 cts. per dozen, \$4 per 100.

Delicata. Beautiful light lavender. One of the latest introductions. 90 cts. per dozen, \$6.00 per 100.

Rosea. Delicate rose. 90 cts. per dozen, \$6 per 100.

SCILLA SIBERICA

The Siberian "Squill" bears small, drooping, bell-like flowers on short stems, 3 to 4 inches high. Most attractive for rockery or massing in borders. Should be planted about 3 inches deep.

Siberica. One of the most popular sky blue. 60 cts. per dozen, \$4 per 100.

Siberica Alba. White. 60 cts. per dozen, \$4 per 100.

SNOWDROPS

These elegant little flowers, among the first to open in the Spring, should be found in every garden, not only because they are the earliest, but also the loveliest. They will thrive in almost any situation or soil, and should be planted as soon as possible in early Fall. No order for less than **one dozen** of any variety can be entered.

Nivalis. Single snowdrop. 60 cts. per dozen, \$4 per 100.

Nivalis Flore Pleno. Double snowdrop. 65 cts. per dozen, \$4.50 per 100.



The dainty Snowdrops that "usher out" grim winter.



TRITOMA

Equally distinctive as a cut flower or in the garden, the old-fashioned Red Hot Poker, or Flame Flower, is enjoying renewed popularity. The plants are very showy, while the sturdy upright flowers, borne on thick stems, never fail to attract attention. Blooming season, late July and August, just about the time that color is relatively scarce in the garden.

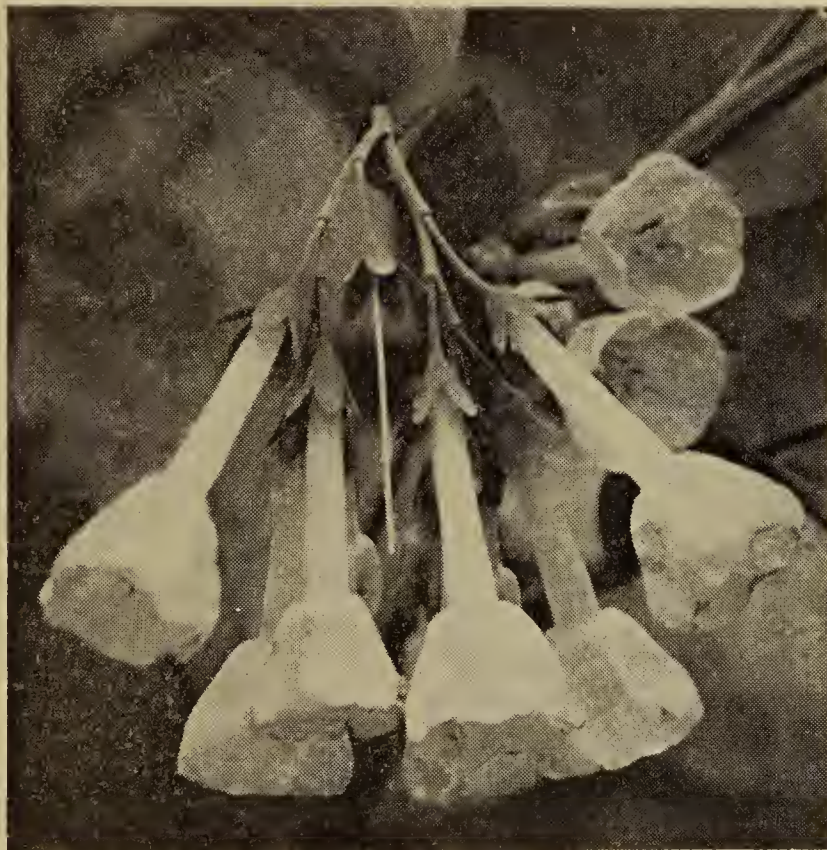
Pfitzeri—though an old variety, it is still one of the best. Profuse bloomer. Flowers flame red. \$3.25 per dozen, \$25 per 100.

Pfitzeri Hybrids. Color, white, various shades of yellow and coral-pinks. \$2.60 per dozen, \$20 per 100.

Rufa. Tall orange-yellow flowers. \$2.60 per dozen, \$20 per 100.

MERTENSIA VIRGINICA (VIRGINIA BLUE BELLS)

An early Spring-flowering plant. Indispensable for the garden and for color effect among naturalized Narcissi. The plants grow from one to two feet in height, with drooping panicles of handsome porcelain-blue flowers, turning pink with age. One of the most interesting of the American Native Spring flowers. Extra heavy clumps. \$2.30 per dozen, \$17.50 per 100.



Mertensia virginica or *Virginia Blue Bells*.

BULBS FOR YOUR ROCK GARDEN

Rock gardens are here to stay! Originally the fad of a few, they are now the hobby for all garden enthusiasts looking for new experiences—and excitements, may we add. For in all the realm of gardening nothing holds or may hold the element of hidden surprises in a greater degree than the Rockery.

There is one group of materials, however, that, except in rare cases, is as yet not looked upon as representing possible citizens of the rockery. Those are the early Spring flowers from bulbs. And yet what more ideal conditions can one imagine than the cozy nooks created by the rocks and plants, sheltering, for instance, Snowdrops, Grape Hyacinths, Blue Bells, etc., etc.

Here are favorites that quickly make themselves at home in the rock garden and do a great deal toward making it more fascinating than ever:

Chionodoxa—Glory of the Snow
Scillas of various classes
Muscari or Grape Hyacinths
Crocus
Daffodils and Tulip—Species

Eranthis or Winter Aconite
Fritillarias
Leucojum vernum or Spring Snowflake
Galanthus or Snowdrops

A Few Specialties for Experts and Connoisseurs.

CYCLAMEN PERSICUM GIGANTEUM— ZANDBERGEN PRIZE STRAIN

In our travels on the other side we are always on the lookout for finer strains than those offered ordinarily. A couple of years ago we ran across a truly mammoth type of new hybrid Cyclamen and we at once felt that here indeed was a giant among giants. We are now delighted to be able to offer choicest, hand-pollinized seeds from extra selected plants in the following colors:



| | | |
|--------------|--------|-----------------|
| White | Lilac | Variegated Rose |
| Frilled Red | Rose | Mixture of |
| Frilled Rose | Salmon | above shades |

We guarantee this seed to germinate 90% or better. Price per packet of 100 seeds \$5.



THE ZANDBERGEN SILVER DOLLAR STRAIN OF GLORIOUS DELPHINIUMS

varies in color from light blue to deep ultramarine-blue and pinkish to lavender shades. Some are single, others semi-double and double, while many of them have centers or "bees" of contrasting colors. The habit of growth is most vigorous. Well developed plants rear flower spikes two to three feet long, on stems 4 to 5 feet tall. The individual florets closely encircle the spikes and are of extraordinary size—generally two inches and larger in diameter.

We only have a very limited amount for sale and until we obtain a better title shall offer it as The Silver Dollar Strain because individual flowers on spikes frequently measure as large as a silver dollar across and we have had them measure more than 2½ inches in diameter.

Price per package, postpaid, \$2.

Should you fail to secure a reasonable number of thrifty seedlings we will replace the seeds another season Free of Charge!

One-year-old plants, from the above mentioned seed, 50 cts each, \$4.50 per dozen, \$35 per 100.

A typical spike of our "private" strain of Delphiniums.



GENERAL INDEX

Table with three columns listing various bulb types and their corresponding page numbers. Includes entries like Bulb Planting Don'ts, Lilies, Scilla Siberica, etc.

DETAILED INDEX

On this and following page we list the different varieties of the principal classes of NARCISSI and TULIPS, together with page numbers where varieties may be found.

NARCISSI

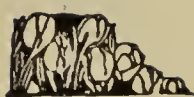
Table listing various Narcissus varieties and their page numbers. Includes entries like Admiration, Golden Sceptre, Orange Glow, etc.

MAY FLOWERING TULIPS

This includes the types: BREEDER, COTTAGE, DARWIN, TRIUMPH, AND LILY FLOWERING TULIPS

(The letters following the names indicate class to which variety belongs: Thus: "B" stands for Breeder; "C" for Cottage; "D" for Darwin; "T" for Triumph, etc.)

Table listing May Flowering Tulip varieties and their page numbers. Includes entries like Abd-el-Kader, Alcmena, Anton Mauve, etc.



Zandbergen Bros. "Tulipdom"

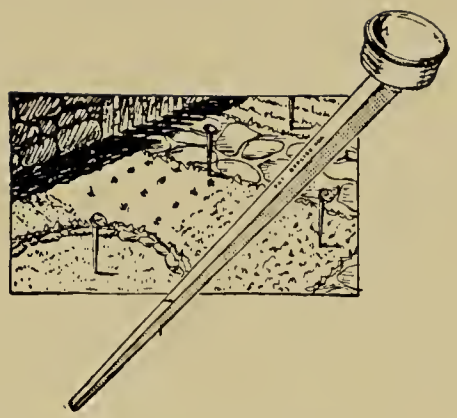


May Flowering Tulips, Concluded.

| | PAGE | | PAGE | | PAGE |
|----------------------------|------|---------------------------------|------|------------------------------|-------|
| Aviator | T 41 | Innovation | C 31 | Pride of Haarlem | D 19 |
| Aviator Hawkes | D 20 | James A. Mac- | | Pride of Ingle- | |
| Avis Kennicott | C 35 | Donald | B 27 | scombe | C 31 |
| Azelles | T 41 | James Watt | B 29 | Prince Albert | B 27 |
| Bacchus | B 29 | Jaune d'Oeuf | B 28 | Prince of Orange | B 29 |
| Baronne de la Ton- | | Jeanne Desor | C 37 | Prince of the | |
| naye | D 21 | John Ruskin | C 33 | Netherlands | D 19 |
| Bartigon | D 19 | Jubilee | D 23 | Prince of Wales | B 28 |
| Betsy Ross | C 33 | Kathleen Parlow | D 20 | Prince of Wales | D 18 |
| Bleu Aimable | D 24 | King George V | D 17 | Princess Elizabeth | D 21 |
| Bouton d'Or | C 36 | King Harold | D 19 | Princess Mary | D 20 |
| Brocade | B 27 | King Mauve | D 24 | Professor Rauwen- | |
| Bronze Queen | B 27 | Korniforus | T 41 | hoff | D 19 |
| Burgomaster Sand- | | La Fiancée | D 19 | Psyche | D 21 |
| berg | D 22 | La France | D 21 | Quaintness | C 38 |
| Cardinal Manning | B 30 | La Merveille | C 35 | Refulgens | C 35 |
| Carnation | C 31 | La Tristesse | D 25 | Reverend Ewbank | D 25 |
| Carrara | C 31 | La Tulipe Noire | D 24 | Robinson | B 29 |
| Cecilia | T 41 | Laura | D 24 | Roi Soleil | B 29 |
| Centenaire | D 19 | Leda | C 33 | Ronald Gunn | D 25 |
| Chameleon | C 38 | Lemon Queen | C 37 | Rosabella | C 33 |
| Cherbourg | B 27 | Lilac Wonder | D 24 | Rose Bud | C 33 |
| City of Haarlem | D 18 | Lord Carnavon | T 41 | Roxy | C 32 |
| Clara Butt | D 21 | Louise de la Vallière | D 18 | Sally | LF 38 |
| Columbus | C 37 | Louis XIV | B 28 | Salmonia | D 20 |
| Copernicus | B 29 | Louis Sixteen | B 29 | Salomon | B 30 |
| Coridion | B 27 | Lucifer | B 28 | Scarlet Beauty | D 18 |
| De Zwijger | B 29 | Madam Buysens | C 37 | Scarlet Emperor | C 34 |
| Denbola | T 41 | Marjorie Bowen | C 33 | Scarlet Glory | C 34 |
| Dido | C 32 | Marvel | C 33 | Silverwing | D 22 |
| Dillenberg | B 27 | Matchless | D 20 | Sirene | LF 38 |
| Dom Pedro | B 29 | Maya | D 24 | Sir Harry | C 33 |
| Dream | D 25 | Mayflower | C 34 | Sir Trevor Law- | |
| Dresden China | D 19 | Miss Blanche | C 31 | rence | D 23 |
| Duchess of Hohen- | | Mixture | B 30 | Storm King | D 22 |
| berg | D 24 | Mixture | C 38 | Snowdrift | T 41 |
| Eclipse | D 17 | Mixture | D 25 | Striped Beauty | C 37 |
| Edmee | D 21 | Mongolia | C 35 | Sundew | D 19 |
| Elegans Lutea Max- | | Moonlight | C 37 | Suzon | D 20 |
| ima | C 36 | Mr. Dames | C 36 | Syrius | T 41 |
| Elizabeth Evers | T 41 | Mr. Van Zyl | D 20 | Tarazad | T 42 |
| Faust | D 23 | Mrs. Beecher Stowe | B 30 | Telescopium | T 42 |
| Feu Ardent | B 29 | Mrs. Farncombe | | The Bishop | D 22 |
| Flamingo | D 21 | Sanders | D 19 | The Fawn | C 34 |
| Frans Hals | D 22 | Mrs. Gruellemans | D 22 | Tucana | T 42 |
| G. W. Leak | C 34 | Mrs. H. I. Pratt | D 20 | Turenne | B 29 |
| Garibaldi | B 27 | Mrs. John Scheepers | C 35 | Twilight | C 38 |
| Gesneriana Lutea | C 36 | Mrs. Kerrell | C 33 | Ursa Minor | T 42 |
| Gesneriana Lutea | | Mrs. Moon | C 36 | Valentin | D 25 |
| Pallida | C 37 | Mrs. Samuel H. | | Vanity | C 33 |
| Gesneriana Spathu- | | Taft | D 21 | Velvet King | B 29 |
| lata | C 35 | Mystery | D 23 | Venus | D 21 |
| Giant | D 22 | Nectar | C 33 | Vesta | C 31 |
| Godet Parfait | B 30 | Oliphant | D 24 | Walter T. Ware | C 36 |
| Golden Rider | C 37 | Orange King | C 35 | Wampum | C 32 |
| Goldfinch | B 27 | Orange Perfection | D 21 | White Duchess | C 31 |
| Grenadier | C 35 | Orient | C 33 | William Copeland | D 25 |
| Hammer Hales | C 38 | Panorama | B 29 | William Pitt | D 19 |
| Helen Eakin | D 22 | Perle Royale | B 30 | Yellow Giant | D 22 |
| Heloise | B 30 | Picotée | C 31 | Yellow Perfection | B 28 |
| Ilias | B 30 | Pink Pearl | B 30 | Yolande | D 21 |
| Illuminator | C 37 | Plutarchus | B 27 | Zev | D 24 |
| Indian Chief | B 28 | President Harding | D 24 | Zomerschoon | C 37 |
| Inglescombe Pink | C 34 | President Taft | D 18 | Zulu | D 23 |
| Inglescombe Yellow | C 36 | President Von Hin- | | Zwanenburg | D 22 |
| | | denburg | T 41 | | |

The Practical Magno Garden Marker

*Easy to read at a distance, rustproof,
waterproof, sturdy, practical, durable*



This new garden marker derives its name from the fact that its glass top enlarges the lettering on the name card more than twice its actual size. This makes it "easy to read" at a distance. No more stooping when the Magno Marker is used in your flower or vegetable garden.

The Magno Garden Marker was designed by a real garden enthusiast and it is considered by authorities as the best marker on the market. There is no other like it. It is 12½" long, rustproof, sturdy and durable. The head is in green enamel.

Price: \$3.25 per dozen, \$25 per 100.

Is Your Bulb Garden The Moles' Happy Hunting Ground?

Every year scores of our customers write to us wondering what they can do to rid their grounds of moles. It is a case of getting rid of them or being deprived of one of the greatest pleasures on earth—that of having a fine Tulip garden.

The same problem has bothered us in our Nurseries in Holland, and was not solved satisfactorily until a preparation was compounded that did the work. We call it "Mole-kill" for short. It is a powder which is very effective, so effective in fact that if it does not do its work your money will be refunded.

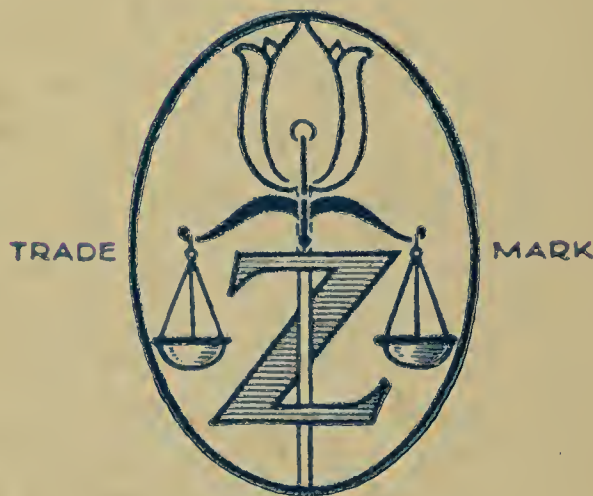
"Mole-kill" is not dangerous to animals (dogs or cats) which may happen to eat a poisoned mole. Keep the product in a safe spot and out of the reach of children. The handling and manipulation are free from danger. "Mole-kill" has caused thousands of congratulatory letters to be received by its inventor, both from experiment stations and from private gardeners. One bottle is sufficient for destroying at least a hundred moles, and is fit for use for six months after opening the bottle.

Directions for Using Mole-kill

Choose by preference where the runs branch off. Carefully uncover the run and free it of earth. Take a worm of average length, shorten it at both ends by about a quarter of an inch, wipe away the first drop of blood, touch each end of the worm with the powder, a small quantity of which has been carefully poured on some paper so as not to dirty the contents of the bottle, slip the worm thus prepared into the run and close the hole with earth. When your garden has thus been baited, tamp all runs down with the foot or rake. If on the following day, there are fresh molehills, the bait must be applied a second time; moles rarely travel alone. Keep at it, planting the bait until molehills cease to appear. **Price, postpaid, \$3.**

**“Bulbs in a Class
All Their Own”**

are sold only
under this



and they are
obtainable only from

Zandbergen Bros.

Oyster Bay, Long Island, N. Y.

Rhynlandt Bulb Nurseries
Valkenburg, near Leiden, Holland