

## **Historic, archived document**

Do not assume content reflects current scientific knowledge, policies, or practices.



# WOOD'S CROP SPECIAL

Giving Timely Information and Prices of Seasonable Seeds

PUBLISHED BY T. W. WOOD & SONS SEEDSMEN RICHMOND VA.

VOL. XXIX.

EARLY FALL EDITION

1934

## WORLD SHORTAGE OF GRAIN

Unfavorable seasons have reduced world supplies of grain. Famine is threatened in some countries. Grain prices are highest for several years. Only the most productive seed should be sown. Wood's Seed grains are grown from the most productive pedigreed strains, triple cleaned to eliminate all noxious weed seed, and tested to insure high germination, and will generally yield  $\frac{1}{4}$  to  $\frac{1}{2}$  more than ordinary seed. Proper seed treatment, to prevent disease, increased yields 20%. We treat all our seed grains with New Improved Ceresan at no extra cost.

### Buy Your Seed Requirements Early

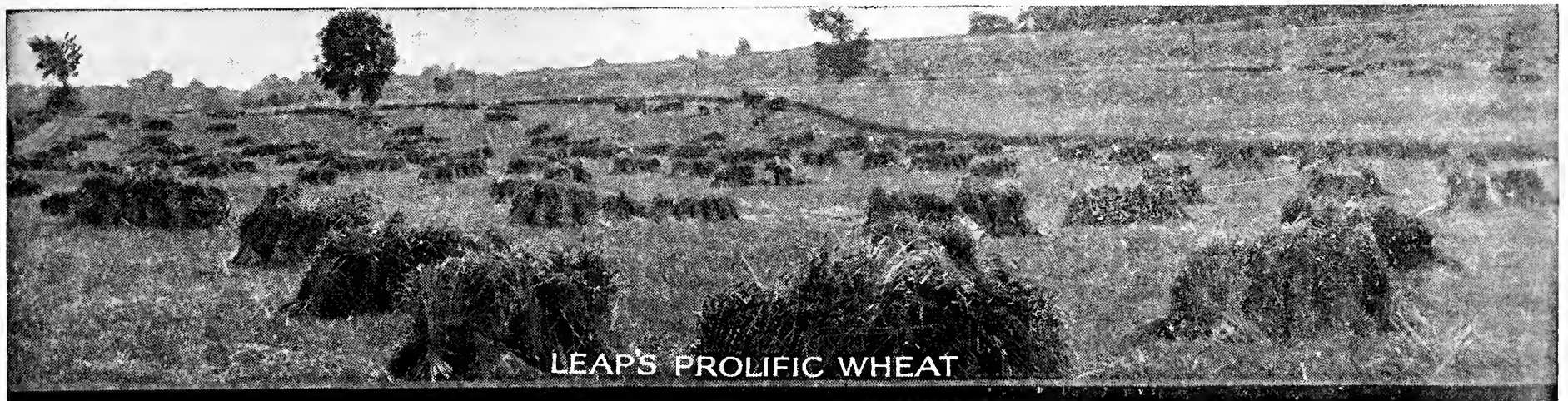
Drought in the West has caused a very acute shortage of practically all grasses and clovers, causing advancing prices with shortages in many items. Owing to scarcity of seed stocks we do not see any possibility of lower prices this fall or next spring, and consequently we strongly urge our customers to buy their seed requirements as early as possible.

Legumes, such as Hairy Vetch, Austrian Winter Peas and Crimson Clover are averaging from 33  $\frac{1}{3}$ % to 60% of normal in the United States, with importation almost nil. We anticipate exhaustion of stocks and higher prices this fall

### Your Fall and Winter Garden

Plant now beans and peas, kale, kohlrabi, lettuce, parsley, radish and spinach for a fall crop; onions seeds to make plants to set out late, beets and carrots for use next winter; of course you must have collards, turnips and rutabaga. All these seeds should be planted now.

NEXT MONTH plant endive, leek, mustard and all the seeds above mentioned except beans, peas, beets and carrot.



LEAP'S PROLIFIC WHEAT

# WOOD'S CROP SPECIAL

## CERTIFIED WOOD'S FORWARD WHEAT BEARDLESS, SMUT AND RUST RESISTANT, EARLY, MOST WINTER HARDY

For seven years it has consistently proved the heaviest yielding wheat for the Piedmont and mountain sections of the South and for northern climates. Mills prefer it for its high milling percentage and excellent flour. Generally weighs over sixty pounds per bushel. In a test of fifteen varieties at our Experiment Station last winter it was the most winter hardy, best stouter, most smut and rust resistant; its strong straw was six inches taller than any other smooth wheat, its long, large heads were better filled out with three big, plump grains to the mesh; matured several days earlier than Leap's Prolific and the bearded wheats, and was the cleanest, being free of bearded heads, rye noxious weeds, etc. Our Certified Wood's Forward Wheat has been grown for us every year on the same fertile farm in northern Virginia by our most careful wheat grower who rogues out all mixtures, and no other wheat is grown on the same farm or is thrashed through the same machine. He gets from 30 to 40 bushels per acre.

Wood's Forward Wheat yielded 40 bushels per acre, while my neighbors made 8 to 14 bushels on similar land and conditions with other varieties. Every one of them is convinced Wood's Forward is the finest wheat in every way for our section.—J. H. KENNEDY, Louisa County, Va.

Nine and one-half bushels of Wood's Forward yielded 412 bushels of re-cleaned wheat. This was the most perfect field of wheat I have ever seen, and it attracted more attention than any wheat in my county.—J. A. TROLINGER, Alamance Co., N. C.



Showing the large, heavy heads of Wood's Forward Wheat.

## PEDIGREE REDHART WHEAT, Beardless EARLY MATURING, RUST ESCAPING, HEAVY YIELDING

Recommended for the Coastal Plains; extremely early, maturing before rust damage; good stouter, broad leaves, tall, stiff, upright straw, storm resistant, heads held erect; large, heavy, compact square heads; three rows of grain to the mesh; does not shatter badly when ripe; grain plump, horny, with high gluten content and excellent milling value, frequently weighs 62 to 63 pounds per bushel. Reports from eastern South Carolina this year indicate it yielded one-fourth more than other varieties. Our Pedigree Redhart Wheat was grown from certified seed treated for smut on some of the finest wheat land in Virginia, under supervision of the Crop Improv. Asso.

## PEDIGREE IMPROVED V. P. I. No. 131

Improved V. P. I. No. 131 is a new variety developed on the Virginia State Experiment Station at Blacksburg. Prof. T. B. Hutcheson, who originated both strains, says: "I think this wheat is a real improvement over the old V. P. I. No. 131, and would like to get it distributed to as many good farmers as possible."

Last year we bought the entire crop from the Experiment Station, treated it for smut, and planted it on a 100 acre field on one of the richest farms in northern Virginia. It yielded 40 bushels per acre—one-fourth more than the old V. P. I. No. 131. It is the tallest of all wheats.

ALL OUR SEED WHEATS ARE TREATED WITH NEW IMPROVED CERESAN TO PREVENT SMUT

## WOOD'S FINEST LAWN GRASS MIXTURES FOR BEST LAWNS, SOW IN THE FALL

1 lb. sows 250 square feet; 90 to 100 lbs. sows an acre.

### Wood's Dixie Lawn Grass

For Eastern Virginia, North Carolina and Southern States. By mail postpaid, 1 lb. 45c.; 5 lbs. \$1.75; 10 lbs. \$3.35; 25 lbs. \$7.65; 50 lbs. \$15.15. Not postpaid, 1 lb. 35c.; 5 to 24 lbs. 30c. lb.; 25 to 99 lbs. 28c. lb.; 100 lbs. and over, 27c. lb.

### Wood's Shady Park Lawn Grass

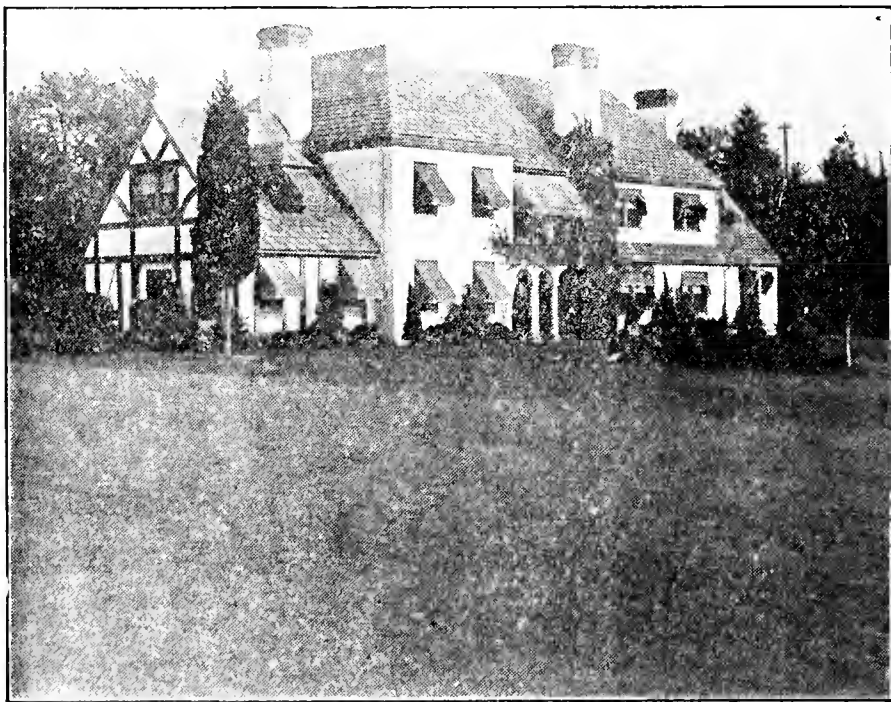
For same localities as Wood's Evergreen. Adapted for shady places and under trees. By mail postpaid, 1 lb. 50c.; 5 lbs. \$2.15; 10 lbs. \$4.15; 25 lbs. \$9.65; 50 lbs. \$19.15. Not postpaid, 1 lb. 45c.; 5 to 24 lbs. 38c. lb.; 25 to 99 lbs. 36c. lb.; 100 lbs. and over, 35c. lb.

### Wood's Emerald Park Lawn Grass

A good all-round general purpose mixture for the Middle and South Atlantic States. By mail postpaid, 1 lb. 40c.; 5 lbs. \$1.50; 10 lbs. \$2.85; 25 lbs. \$6.40; 50 lbs. \$12.65. Not postpaid, 1 lb. 30c.; 5 to 24 lbs. 25c. lb.; 25 to 99 lbs. 23c. lb.; 100 lbs. and over, 22c. lb.

### Wood's Winter-Green Lawn Grass

Quick growing mixture for fall, winter and spring season. Makes a decidedly better lawn than sowing Rye Grass alone. By mail postpaid, 1 lb. 35c.; 5 lbs. \$1.25; 10 lbs. \$2.35; 25 lbs. \$5.15; 50 lbs. \$10.15. Not postpaid, 1 lb. 25c.; 5 to 24 lbs. 20c. lb.; 25 to 99 lbs. 18c. lb.; 100 lbs. and over, 17c. lb.



Lawn Grown from Wood's Evergreen Lawn Grass

### Wood's Evergreen Lawn Grass

Contains the finer quality grasses. Recommended for Virginia, western North Carolina, and States West and North. By mail postpaid, 1 lb. 50c.; 5 lbs. \$2.00; 10 lbs. \$3.85; 25 lbs. \$8.90; 50 lbs. \$17.65. Not postpaid, 1 lb. 40c.; 5 to 24 lbs. 35c. lb.; 25 to 99 lbs. 33c. lb.; 100 lbs. and over, 32c. lb.





## Crops of Outstanding Value for Fall Planting

### New Crop Crimson Clover

The best soil improver and hay crop for planting during August and September. There is no better crop that can be put in following grain as a soil improver and at a reasonable price. Our seed is fancy quality, heavily re-cleaned, strictly new crop, and high purity and germination. We can supply both imported and domestic seed for immediate shipment.

### Wood's Seed Barley

The drought has caused a shortage of corn in many sections, and if this is the case we strongly recommend the planting of barley this fall. Barley is about equal in feeding value to corn, being often called the winter corn crop. We can supply high yielding strains, both bearded and beardless, at very attractive prices.

**WOOD'S SEEDS**

THE SIGN OF QUALITY

### Wood's Special Grass and Clover Mixtures

September is the best time for putting in permanent pasture and hay crops. Our Special Mixtures, adapted for various soils, will give the largest yielding and most dependable crops. There is no better time than now to put in permanent crops, as the seeding costs per acre of our Special Mixtures are low.

### Wood's Verified Origin Alfalfa

A constant dividend payer, and a crop that should be included on every farm. Three to five cuttings per season of nutritious hay, besides greatly enriching the soil. We are offering three strains of U. S. Verified Origin Seed, all of which are adaptable to the Eastern States. A good seed bed, lime, inoculation, and adaptable seed, assures success with Alfalfa.

### Wood's Pedigree Abruzzi Rye

Genuine Abruzzi makes a vigorous winter growth, furnishes excellent grazing during the fall, winter and summer months and still makes a good grain yield. It does better than any other grain on poor or light soil. **Wood's Pedigree Abruzzi Rye** is the genuine strain, which often yields 30 to 35 bushels per acre, nearly double the yield of ordinary rye.

### Wood's Certified Beardless Barley

Yields 45 to 65 bushels per acre—twice as much as wheat on the same land. Can be harvested 2 weeks before wheat and oats and a week earlier than Abruzzi Rye. Most nutritious and palatable grain for feed, having the highest protein content. Ideal early winter hay crop. Should be included in every winter pasture mixture. Some strains of Beardless Barley are not winter resistant. Our strain is very hardy and was not damaged last winter. Our fields were rogued and passed the rigid field and bin inspection of the Crop Improvement Association.

### Wood's Pedigree Winter Turf Oats

Proved the most winter resistant of all oats last winter in a test of 14 leading varieties from all over the country. Less than 10% was frozen out by the severe winter which killed 30% of the ordinary winter turf oats and completely killed all non-hardy varieties like Red Rust Proof. **Wood's Pedigree Winter Turf** is heavier yielding and has a heavier, plumper grain than ordinary winter turf oats, and is cheat free and has never been known to "turn to cheat."

### Wood's Pedigree Beardless Barley

Common Beardless Barley contains a mixture of 10% to 50% bearded heads and 10% to 35% smutted heads. **Wood's Pedigree Beardless Barley**, grown from Certified Treated Seed, contains only a trace of bearded heads. No barley should be planted without treating the seed to prevent smut.

### Wood's Pedigree Fulghum Oats

The first oat to mature in the test. It winter killed less than 25% in severe winter, while a local strain of Fulghums beside it winter killed 60%. **Pedigree Fulghums** were smut free, while a strain of ordinary Fulghums showed 40% smutted heads.

### Wood's Bearded Winter Barley

The heaviest yielding of all winter grains. 10 days earlier and yields 2 to 3 times as much as wheat. Grain more palatable and contains more protein. Ideal to grind for dairy feed. For ten years F. F. Moose, Glasgow, Va., has fed his horses and 100 to 135 cattle Bearded Barley straw with excellent results. B. G. Locher, Glasgow, Va., says: "Wood's Bearded Winter Barley yields 60 bushels per acre, while Bearded Barley from N. C. and Tenn. yielded only 20 bushels per acre." In the 1931 S. C. State Expt. Sta. test, Wood's Bearded Barley made over ¼ more than any other barley.



Alfalfa  
Red and Sapling  
Clover Seed  
Guaranteed Origin



# WOOD'S SEEDS



Virginia Crop  
Improvement  
Association

T. W. WOOD & SONS, Seedsmen, Richmond, Va.

Long Distance Phone—Dial 3-2138

Mention Crop Special No. 2094

PRICES F.O.B. RICHMOND, VA.  
UNLESS SPECIFIED POSTPAID

AUGUST 22, 1934

T. W. Wood & Sons give no warranty, express or implied, as to description, quality, productiveness or any other matter of any Seeds, Bulbs or Plants they send out, and will not be in any way responsible for the crop. If the purchaser does not accept the goods on these terms, they are at once to be returned and amount paid for them will be refunded.

## Wood's Verified-Origin Clover Seeds

Trade Mark Brand Quality.

Heavily Recleaned.

No Charge for Bags.

Prices Quoted Below Are  
f. o. b. Richmond.  
100-lb. lots 25 to 99- 5 to 24-  
and over, lb. lots, lb. lots,  
per lb. per lb. per lb.

Prices Quoted Below  
are Postpaid to Va.,  
N. C., W. Va., Md.,  
Penn., N. J. and Del.  
25 lbs. 10 lbs. 5 lbs.

### CRIMSON CLOVER—T. M. B.

Imported Hungarian.....	.15 1/2	.16	.18	\$4.65	\$2.15	\$1.15
Tennessee grown.....	.15 1/2	.16	.18	4.65	2.15	1.15

### ALFALFA—T. M. B.

Kansas grown—U.S. Ver. Origin..	.18 1/2	.19	.21	5.40	2.45	1.30
Kansas-Okla. grown, Ver Origin..	.17 1/2	.18	.20	5.15	2.35	1.25
Garthofner Ranch Grimm Alfalfa, Minnesota grown, ver. origin....	.30	.32	.35	8.65	3.85	2.00

### RED CLOVER—T. M. B.

Michigan grown, U. S. Ver. Origin.	.25	.26	.28	7.15	3.15	1.65
------------------------------------	-----	-----	-----	------	------	------

### SAPLING CLOVER—T. M. B.

Michigan grown, U. S. Ver. Origin.	.25	.26	.28	7.15	3.15	1.65
------------------------------------	-----	-----	-----	------	------	------

### ALSIKE CLOVER—T.M.B.

White Sweet Clover.....	.09	.09 1/2	.11	3.00	1.45	.80
White (Dutch) Clover, lb. 40c.....	.30	.32	.35	8.65	3.85	2.10
Wood's Dixie White Clover.....	.32	.34	.37	9.15	4.05	2.10

### HAIRY VETCH Original bale lots, 220 lbs.

each, 14 3/4 c. lb.....	.15	.16	.18	4.65	2.15	1.15
Woodlief Smooth Vetch.....	.15	.16	.18	4.65	2.15	1.15
Austrian Winter Peas.....	.06	.06 1/2	.08	2.30	1.15	.65
Dwarf Essex Rape.....	.05	.06	.08	2.15	1.15	.65

## ONION SETS

Prompt Shipment:	Per peck.	Per bu. 32 lbs.
White Pearl .....	\$1.10	\$3.50
White Multiplier.....	1.10	3.50
Yellow Potato—small....	1.10	3.50
Yellow Potato—medium..	1.00	3.25
Silver Skin .....	1.10	3.50
Last Sept. Shipment		
Yellow Danvers.....	1.00	3.25
Red Wethersfield.....	1.00	3.25
Japanese or Ebenezer....	1.00	3.35

## WOOD'S FERTILIZERS

(Analysis: Nitrogen—A. P. A.—Potash)

“Standard” Vegetable Fertilizer—8-4-4. 50 lbs. 90c.; 100 lbs. \$1.55; 200-lb. bag, \$2.90; ton, \$28.00.

Market Garden Fertilizer—8-5-5. 100 lbs. \$1.75; 200 lbs. \$3.20; ton, \$31.00.

“Super-Standard” Fertilizer—16-4-4. 100 lbs. \$1.75; 200 lbs. \$3.40; ton, \$33.00.

“Standard” Bone Meal—3-22. In paper-lined bags. 50-lb. bag, \$1.25; 100-lb. bag, \$2.20; ton, \$41.00.

“Standard” Super-Phosphate—16%. 200 lbs. \$2.00; ton, \$18.50.

Nitrate Soda—In paper-lined waterproof burlap bags. Drills easily. 100-lb. bag, \$2.00; ton, \$38.00.

Sulphate of Ammonia—50 lbs. \$1.25; 100 lbs. \$2.25; 200 lbs. \$4.20.

Wood's High-Grade Sheep Manure—25 lbs. 75c.; 50 lbs. \$1.20; 100-lb. bag, \$2.00; ton, \$38.00.

**STIMUGERM** It adds to the nitrogen supply in your soil—nitrogen is the most expensive ingredient in the fertilizers you buy.

**INOCULATION** ORDER BY NUMBER

No. 1. For Red, Mammoth, Alsike, Crimson and White Clovers.

No. 2. For Alfalfa, Sweet and Burr Clovers. Price Nos. 1 and 2: 1/2-bus. size, 40c.; 1-bus. size, 65c.; 1-bus. size, \$1.00; 2 1/2-bus. size, \$2.25; 10-bus. size, \$8.00.

No. 3. For Vetch, Austrian Winter Peas, Canada Field Peas and Garden Peas. Price No. 3: 1/2-bus. size, 40c.; 1-bus. size, 65c.; 5-bus. size, \$2.25.

**COPPER CARBONATE**—For treating Seed Wheat, use 2 ozs. per bus. 2-lb. carton 50c.; 1-lb. carton, 30c. Cannot be mailed.

## Wood's Fine Quality Grass Seeds

New Crop—T. M. B.

No Charge for Bags.

Prices f. o. b. Richmond.  
100-lb. lots 25 to 99- 5 to 24-  
and over, lb. lots, lb. lots,  
per lb. per lb. per lb.

Prices Postpaid to Va.,  
N. C., W. Va., Md.,  
Penn., N. J. and Del.  
25 lbs. 10 lbs. 5 lbs.

Orchard Grass.....	.15	.16	.18	\$4.65	\$2.15	\$1.15
Timothy.....	.25	.26	.28	7.15	3.15	1.65
Kentucky Blue Grass.....	.27	.28	.30	7.65	3.35	1.75
Red Top or Herds Grass.....	.17	.18	.20	5.15	2.35	1.25
Tall Meadow Oat Grass.....	.16	.17	.19	4.90	2.25	1.20
Bermuda Grass.....	.25	.26	.28	7.15	3.15	1.65
Italian Rye Grass.....	.06 1/2	.07	.09	2.40	1.15	.65
Meadow Fescue.....	.20	.21	.23	5.90	2.65	1.40
Carpet Grass—American grown....	.18 1/2	.19	.21	5.40	2.45	1.30
Carpet Grass—Australian grown...	.23	.24	.26	6.65	2.95	1.55
Dallas Grass—Australian grown....	.35	.36	.38	9.65	4.15	2.20
Chewing's Fescue, New Zealand grown ...	.48	.50	1.00	12.65	5.35	2.75
Colonial Bent Grass .....	.95	.97	1.00	24.90	10.35	5.25

## Note About Postpaid Prices

Prices quoted postpaid on this page cover all charges delivered to you in States designated.

POSTAGE TO OTHER STATES: To S. C., Ga., Ky., Tenn., Ohio, Ind., N. Y., New England and Mich., add 2c. per pound to postpaid prices.

To other States express or freight cheaper.

**From** \_\_\_\_\_

\_\_\_\_\_

*Always register letters containing money*

# **T. W. WOOD & SONS**

**SEED GROWERS AND MERCHANTS**

**P. O. BOX 6--0**

**RICHMOND, VA.**

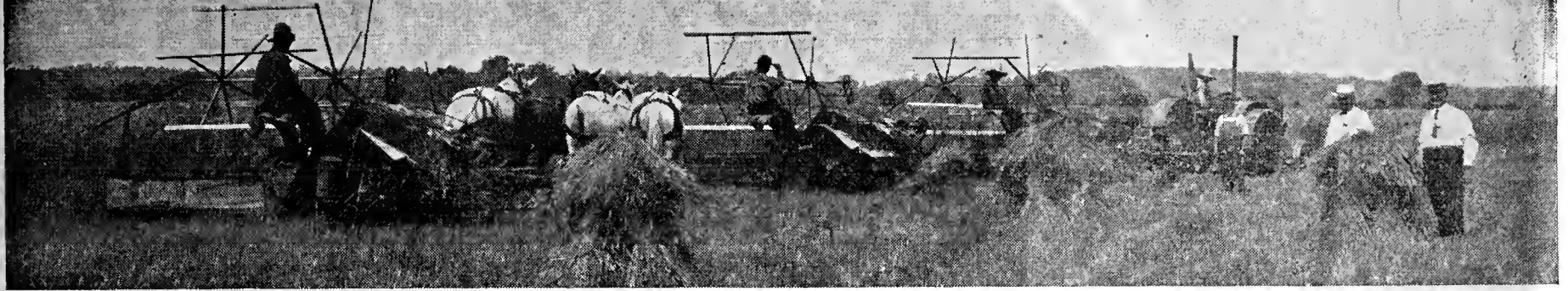
**BEFORE SEALING THIS ENVELOPE**

Be sure you have written your name,  
postoffice and shipping point plainly on  
your order.









# Wood's Triple Recleaned and Treated Seed Grains

99% Pure, Over 90% Germination. No Charge for Sacks. Prices f. o. b. Richmond.

## WOOD'S

### TRIPLE CLEANED SEED WHEAT

#### CERTIFIED, PEDIGREE AND SELECTED STRAINS

We offer three strains of Seed Wheat, all grown in Virginia from highest yielding crops. The Certified strain passed field and bin inspection of the Va. Crop Improvement Association and carries official tags. Our Pedigree strain is grown from certified seed. We recommend both for seed and grain production. Selected strains contain a slight mixture of bearded and beardless heads, but yield as well as Certified or Pedigree strains. Use for grain production, but do not plant to sell for seed.

Prices Include Treating With New Improved Ceresan.

In Ordering Please Specify Strain Desired.

2-Bus. Sacks Included.	10-bus. lots, per bus.	Per bu. 60 lbs.
<b>BEARDLESS VARIETIES:</b>		
Wood's Forward Wheat—Selected.....	\$1.55	\$1.60
Pedigree.....	1.65	1.70
Certified.....	1.75	1.80
Leap's Prolific Wheat—Selected.....	1.55	1.60
Pedigree.....	1.65	1.70
Certified.....	1.75	1.80
Redhart Wheat—Pedigree .....	1.80	1.85
Grown from Certified.		
Purple Straw Wheat—Certified .....	2.00	2.05
Dixie Purple Straw Wheat—Certified....	....	2.95
Heaviest yielding; 10 days earlier than other wheats. Rust resistant.		
Red May Wheat—Selected.....	1.55	1.60
<b>BEARDED VARIETIES:</b>		
V. P. I. No. 131 Wheat—Selected.....	1.55	1.60
Pedigree, improved strain from V. P. I.	1.65	1.70
Certified.....	1.75	1.80
Red Wonder Wheat—Pedigree.....	1.65	1.70
Fulcaster Wheat—Selected.....	1.55	1.60
Stoner Wheat—Selected.....	1.55	1.60

Prices for Sept. shipment. Oct. shipment 10c. bus. higher.

### WINTER BARLEY Yields double as much as wheat, with a higher feeding value.

Price Includes Treating With Ceresan

New 2-Bus. Sacks Included.	10-bus. lots, per bus.	Per bu. 48 lbs.
Bearded Winter Barley .....	\$1.15	\$1.20
Beardless Winter Barley		
Selected—Contains small quantity beard- ed heads .....	1.30	1.35
Pedigree—Grown from Certified Seed....	1.45	1.50
Certified—Field rogued, passed official in- spection .....	1.70	1.75

### ABRUZZI RYE An excellent winter pasture, still making a full grain crop.

New 2-Bus. Sacks Included.

New 2-Bus. Sacks Included.	10-bus. lots, per bus.	Per bu. 56 lbs.
Wood's Pedigree Abruzzi Rye.....	\$1.40	\$1.45
Wood's Certified Abruzzi Rye .....	1.50	1.55
Piedmont Winter Rye .....	1.28	1.30
Rosen Winter Rye .....	1.30	1.32

### SEED OATS Prices Include Treating 10-bu. lots Per bu. 3 or 5 Bushel Bags. per bus. 32 lbs.

Red Rust Proof Oats .....	\$ .90	\$ .92
Pedigree Fulghum Oats .....	1.00	1.05
Far superior to ordinary Fulghums.		
Kanota Oats .....	1.00	1.05
As early as Fulghum, but much heavier yield.		
Virginia Gray Winter Oats .....	.95	1.00
Wood's Pedigree Winter Turf Oats.....	1.00	1.05
Heavier grain and yield than ordinary winter turf oats. Most winter hardy.		
Norton Cold Proof Oats .....	1.10	1.15
Lee Cold Proof Oats .....	1.30	1.35
Lee Cold Proof Oats—Certified .....	....	1.50

### No Charge for Treating Seed Grain

All orders for Seed Oats, Wheat and Barley will be shipped already treated with New Improved Ceresan without additional cost. If untreated seed is desired, be sure to specify when ordering.

TREATING OATS, WHEAT AND BARLEY WITH NEW IMPROVED CERESAN INCREASED THE YIELD 20%, made a more uniform, vigorous growth, taller straw, larger heads, and eliminated practically all smut and other diseases in actual field tests on our Experimental Farm. New Improved Ceresan is ten times as effective as Copper Carbonate, does not reduce the germination like formaldehyde, but actually increases germination.

## Wood's Special Grass and Clover Seed Mixtures

Contains Virginia Northern Neck Grown, Disease Resistant Red Clover.

#### PERMANENT PASTURE MIXTURES

- No. 1. For light gravelly or sandy soil.
- No. 2. For good loam soil.
- No. 3. For heavy loam or clay soil.
- No. 4. For moist bottom land.
- No. 5. For wet bottom land.

#### HAY MIXTURES

- No. 6. For light gravelly or sandy soil.
- No. 7. For good loam soil.
- No. 8. For heavy loam or clay soil.
- No. 9. For moist bottom land.
- No. 10. Meadow Mixture.

500-lbs. and over, 18½c. lb.; 100-lb. lots, 19c. lb.; less than 100 lbs. 20c. lb. sacked.

Postpaid prices: 5 lbs. \$1.35; 10 lbs. \$2.45; 25 lbs. \$5.65.

## WOOD'S GRAIN PASTURE AND HAY MIXTURES

Contains the ideal proportions of Hairy Vetch, Austrian Winter Peas, Crimson Clover, Rape, Abruzzi Rye, Beardless Barley, Winter Oats and Beardless Wheat for fall, winter and spring grazing or hay. Drill two bushels per acre. Per bushel 50 pounds, \$1.50.

DESIGNATE WHETHER YOU WISH MIXTURE FOR PASTURE OR HAY.

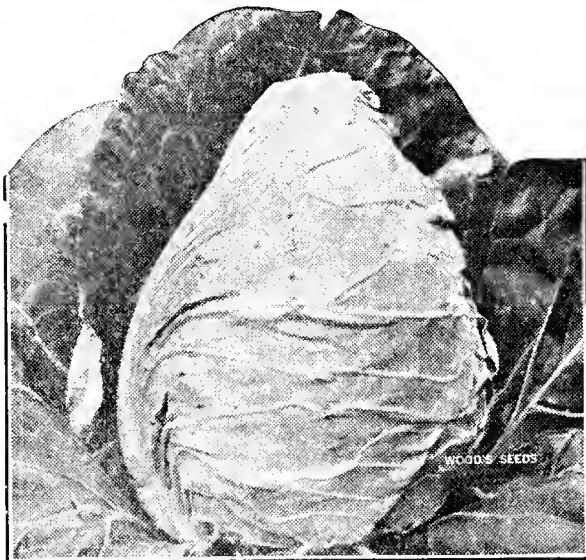


## Wood's Cabbage Seeds for Fall Planting

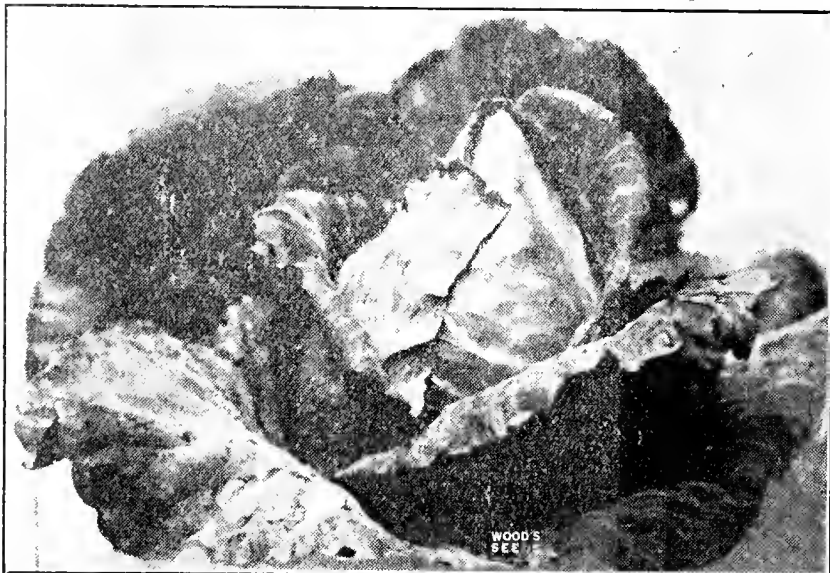
**CULTURE.**—For fall and early spring setting, plant from the end of September till the first of January. November and December plantings should be made in cold frames or hot beds. Plants from early fall plantings can be set out the end of October or during November to head up early in the spring. Set 2 feet apart in rows 2½ to 3 feet apart, running the rows east and west and setting the plants on the north side of the ridge to prevent the frequent freezing and thawing so injurious to cabbage. Requires a rich soil, plenty of moisture and a highly ammoniated fertilizer, also frequent deep working. One ounce plants 100 feet; 6 to 8 ozs. will make enough plants for an acre.

### No. 90. Wood's Extra Early **THE EARLIEST OF ALL CABBAGES**

—Whether you grow for home use or for market, you should have Wood's Extra Early, for it is the earliest cabbage in cultivation and in every way one of the most desirable extra early varieties. Although preeminently an early cabbage, it has size, for it is larger than the Jersey Wakefield though not quite so solid, but fully a week earlier. The quality is good, and nearly every plant forms a head; very hardy. Pkt. 10c.; oz 20c.; 2 ozs. 35c.; ¼ lb. 60c.; 1 lb. \$2.00; 2 lbs. \$3.65; 5 lbs. \$8.25 postpaid.



Wood's Extra Early Cabbage



### No. 93. Wood's Selected Early Jersey Wakefield

The Finest Strain of American Grown Wakefield

Ours is an extra fine strain, and in hardiness, solidity, uniformity and quality has been developed to a degree unsurpassed by any other. We believe our Wakefield is as finely bred as can be had at any price. Hardy, the heads uniformly pointed with few outside leaves and the quality is excellent. Pkt. 5c.; oz. 15c.; ¼ lb. 50c.; 1 lb. \$1.75; 2 lbs. \$3.00; 5 lbs. \$6.75; 10 lbs. \$12.50 postpaid.

### WELL-KNOWN STANDARD VARIETIES

- |                                  |   |
|----------------------------------|---|
| No. 95. Early Flat Dutch         | } Each<br>Pkt. 5c.; oz. 15c.;<br>¼ lb. 50c.; 1 lb. \$1.75;<br>2 lbs. \$3.00; 5 lbs.<br>\$6.75 postpaid. |
| No. 97. All Seasons              |   |
| No. 98. Henderson's Early Summer |   |
| No. 99. Early Drumhead           |   |
| No. 100. Henderson's Succession  |   |



### No. 94. Wood's Charleston Wakefield **Long Island Wakefield.**

Fine Size, Fine Quality, Uniform.

Ours is as pure a strain as careful selection can make it. It is a week or ten days later than Jersey Wakefield, equally as solid, but considerably larger; has a less pointed and thicker head. Its earliness, hardiness, size and solidity have contributed to make it one of the most universally grown early cabbages. Pkt. 5c.; oz. 15c.; ¼ lb. 50c.; 1 lb. \$1.75; 2 lbs. \$3.00; 5 lbs. \$6.75; 10 lbs. \$12.50 postpaid.

### No. 91. Copenhagen Market **The Earliest Round Headed Cabbage.**

It makes a hard, solid head 7 to 8 inches in diameter, with few outside leaves, allowing close planting, and has small core. Just the right size to be profitable for shipping and splendid for the home garden. Pkt. 10c.; oz. 20c.; ¼ lb. 70c.; 1 lb. \$2.50; 2 lbs. \$4.50; 5 lbs. \$10.75 postpaid.

### No. 96. All Head

**Early** A thoroughbred cabbage that adapts itself to a wide range of soils and climate. Makes a deep, flat head, solid and uniform in color, shape and size. In tenderness it is unsurpassed. Pkt. 5c.; oz. 15c.; ¼ lb. 50c.; 1 lb. \$1.75; 2 lbs. \$3.00; 5 lbs. \$6.75 postpaid.



All Head Early Cabbage

**CABBAGE PLANTS.**—Late varieties can be had up to September 15th. Early varieties during October and November. 35c. per 100; 500 for \$1.35 postpaid. Not postpaid, 25c. per 100; \$2.00 per 1000.

**CRESS** —No. 183. **CURLED OR PEPPER GRASS.**—Grows quickly and makes a fine, pungent salad, 1 foot high. Pkt. 5c.; oz. 10c.; ¼ lb. 20c.; 1 lb. 60c. postpaid.

No. 186. **UPLAND CRESS.**—Lasts for years; flavor like water cress; grows on any soil. Pkt. 5c.; oz. 15c.; ¼ lb. 40c.; 1 lb. \$1.25 postpaid.

### ASPARAGUS ROOTS

BOOK YOUR ORDER FOR NOVEMBER DELIVERY

**Washington Rust Resistant** —The rust resistant variety bred by the U. S. Department of Agriculture. By mail postpaid, 25 for 60c.; 50 for 90c.; \$1.50 per 100. Not postpaid, 50 for 75c.; \$1.25 per 100; \$8.00 per 1000.

**Palmetto** —By mail postpaid, 25 for 50c. 50 for 75c.; \$1.25 per 100. Not postpaid, 50 for 60c.; \$1.00 per 100; \$7.25 per 1000.

# WOOD'S CROP SPECIAL



Calabrese Broccoli

## BROCCOLI

**No. 85. WHITE CAPE.** If you have not been successful with cauliflower, try broccoli; it is easier to grow. Similar to cauliflower, but taller, the heads more divided, and will stand greater extremes of temperature. Cultivate like cabbage. One ounce produces about 2,000 plants. **Pkt. 10c.; ½ oz. 25c.; oz. 40c.; ¼ lb. \$1.40; lb. \$5.00 postpaid.**

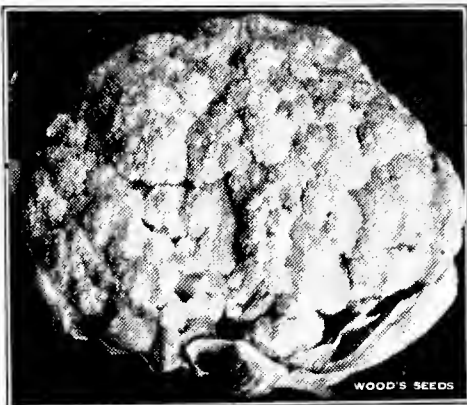
**No. 86. CALABRESE GREEN SPROUTING**—Clusters of sprouts are produced which should be cut when fully developed. It will then continue to produce sprouts which should be cut regularly. Easy to grow and will yield an abundance of greens for a long time. **Pkt. 10c.; oz. 25c.; ¼ lb. 85c.; lb. \$3.00 postpaid.**

**No. 84. ITALIAN SALAD BROCCOLI.**—This is the type generally grown in North Carolina, the Eastern Shore of Virginia and Maryland. Yields an abundance of excellent salad. **Pkt. 5c.; oz. 10c.; ¼ lb. 25c.; lb. 75c.; 2 lbs. \$1.25; 5 lbs. \$2.90 postpaid.**

**CAULIFLOWER**—Cauliflower requires the same treatment and cultivation as cabbage. Not quite as hardy, either in resistance to dry, hot weather or to cold weather, but where they can be watered during dry spells or protected during the winter they make a very satisfactory crop. Plant in the fall, transplant to cold frames and set out early in the spring.

## No. 128 Wood's Earliest Snowball

—There is no better cauliflower for Southern growers, and our strain is as fine as can be had at any price. Not only early to head, but a remarkably sure header, making large, solid, perfect, pure white heads of the finest quality. As well adapted for forcing as for growing out of doors. **Pkt. 15c.; ¼ oz. 50c.; ½ oz. 90c.; oz. \$1.40; ¼ lb. \$4.75; lb. \$16.00 postpaid.**



Wood's Earliest Snowball Cauliflower

**No. 129. Extra Early Dwarf Erfurt**—A first-class cauliflower, ranking next to our Snowball. Produces large, white, close, firm heads of fine quality. It is extra early and a sure header. **Pkt. 10c.; ¼ oz. 45c.; ½ oz. 80c.; oz. \$1.25; ¼ lb. \$4.50; lb. \$15.50 postpaid.**

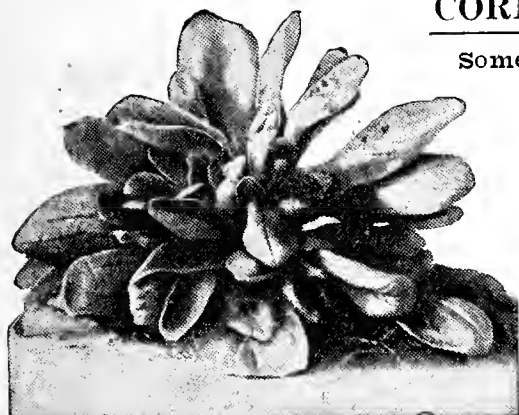
**No. 130. Autumn Giant**—A valuable late variety. The heads are large and white and remain long fit for use. **Pkt. 10c.; ½ oz. 25c.; oz. 40c.; 2 ozs. 75c.; ¼ lb. \$1.40; lb. \$5.00 postpaid.**

## CORN SALAD

Sometimes called Lambs Lettuce.

A very delightful salad that can be served like lettuce or cooked like spinach. Plant in September to produce salad during the fall. Make the drills a foot apart, cover half an inch, press the soil firmly and cultivate like spinach.

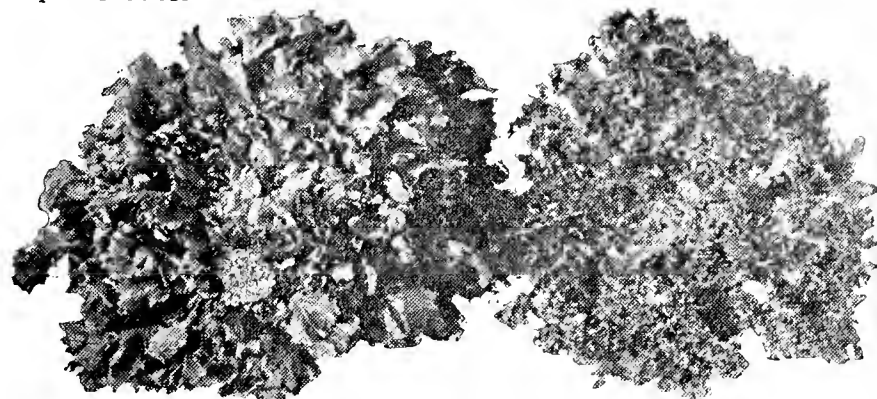
**No. 185. LARGE SEEDED**—By mail postpaid, **pkt. 5c.; oz. 15c.; ¼ lb. 35c.; lb. \$1.15.**



Corn Salad

**HORSE RADISH ROOTS** Place your order now for delivery in November. **40c. per doz.; 50 for 85c.; \$1.50 per 100 postpaid. Not postpaid, 35c. per doz.; 50 for 75c.; \$1.40 per 100; 500 for \$6.50; \$12.00 per 1,000.**

**ENDIVE**—A delicious salad for fall and winter. Plant in August and September in 18-inch drills and thin to one foot apart. Two to three weeks before it is to be used, tie up the outer leaves to blanch the heart; give plenty of water.



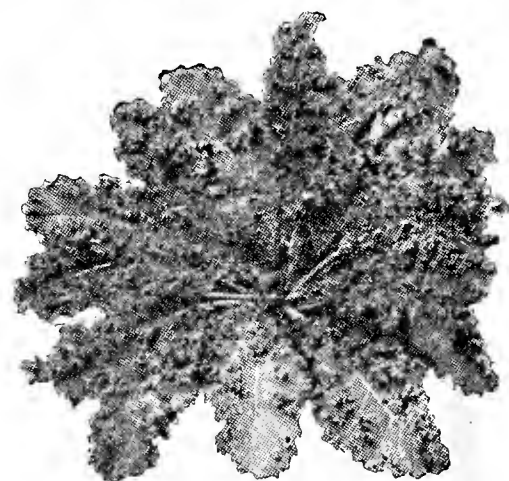
Broad-Leaved Batavian

Green Curled

**No. 210. GREEN CURLED**—Pkt. 5c.; oz. 15c.; ¼ lb. 30c.; lb. \$1.00; 2 lbs. \$1.75 postpaid.

**No. 211. BROAD-LEAVED BATAVIAN OR ESCAROLLE**—Crisp and tender; blanches creamy white. **Pkt. 5c.; oz. 15c.; ¼ lb. 30c.; lb. \$1.00; 2 lbs. \$1.75 postpaid.**

**KALE**—Siberian and Scotch are the popular sorts for fall sowing. Plant till October 15th, either broadcast or in drills eighteen inches apart; give some cultivation, and they will yield greens throughout the winter. Spring or Smooth Kale makes greens earlier than the winter sorts. Plant 8 pounds per acre broadcast; 4 to 5 pounds in drills.



Scotch Kale

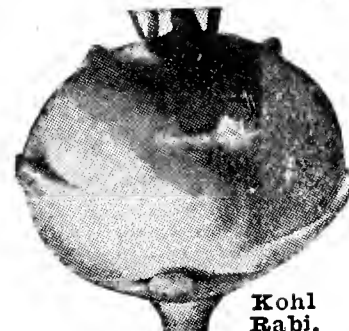
**No. 220. Slow Seeding Kale**—Not as hardy as Siberian and Scotch, but will stand without seeding long after other kinds have bolted to seed. The best seller on the Richmond market. **Pkt. 5c.; oz. 10c.; ¼ lb. 20c.; lb. 65c.; 2 lbs. \$1.10; 5 lbs. \$2.75; 10 lbs. \$4.85 postpaid.**

**No. 219. Early Curled Siberian BLUE KALE or DWARF GERMAN GREENS**—A hardy, vigorous, spreading green kale, with a distinctive bluish tinge. Stands the winter without protection and makes rapid growth in the spring. The leaves are beautifully curled and retain their crisp, fresh appearance long after cutting. Slow to run to seed. **Pkt. 5c.; oz. 10c.; 2 ozs. 15c.; ¼ lb. 20c.; lb. 65c.; 2 lbs. \$1.10; 5 lbs. \$2.75; 10 lbs. \$4.85 postpaid.**

**No. 220. Blue Curled Scotch**—Very hardy, beautifully curled and keeps long after cutting. Very dwarf, grows close to the ground, giving it protection against extreme cold; we have never known it to winter kill; color dark bluish green. **Pkt. 5c.; oz. 10c.; ¼ lb. 30c.; lb. \$1.00; 2 lbs. \$1.75; 5 lbs. \$3.75; 10 lbs. \$6.35 postpaid.**

**No. 221. Dwarf Curled Scotch or Norfolk**—The most beautiful variety. Makes a quick and large growth; leaves of a bright, deep green color, exquisitely curled and crimped; very hardy. **Pkt. 5c.; oz. 10c.; 2 ozs. 15c.; ¼ lb. 25c.; lb. 75c.; 2 lbs. \$1.45; 5 lbs. \$3.00; 10 lbs. \$5.75 postpaid.**

**No. 222. Spring or Smooth Kale—SPRING SPROUTS OR HANOVER SALAD.** Largely sown in the fall for cutting during the winter and spring before the winter kinds are ready. Cut it while young and tender; ready in three to four weeks after planting. Plant every two weeks for a supply of tender sprouts. **Pkt. 5c.; ¼ lb. 10c.; lb. 30c.; 2 lbs. 50c.; 5 lbs. \$1.00; 10 lbs. \$1.85 postpaid.**



Kohl Rabi.

**KOHL RABI**—Combines the flavors of the cabbage and turnip and makes a splendid dish if used when two to three inches thick; thin to six inches apart. **No. 225. EARLY WHITE VIENNA**—Pkt. 5c. oz. 15c.; ¼ lb. 50c.; lb. \$1.75; 2 lbs. \$3.10; 5 lbs. \$7.25 postpaid.

**LEEK**—Plant in September and transplant in the fall or early spring 4 to 6 inches apart in rows 18 inches apart. **No. 227. LARGE FLAG**—Pkt. 5c.; oz. 15c.; ¼ lb. 50c.; lb. \$1.50; 2 lbs. \$2.65; 5 lbs. \$6.35 postpaid.



LETTUCE FOR FALL PLANTING

Lettuce requires rich, moist soil, clean and thorough cultivation and plenty of water. Plant till October, about 1/4-inch deep, and transplant to the open ground in November, setting the plants 8 to 12 inches apart in 18-inch rows. They should be protected with straw or litter. To have them head during the winter, transplant to cold frames or hot beds. One ounce will produce about 1500 plants.

No. 230. Wood's Cabbage Lettuce

HARDEST AND BEST LETTUCE FOR OUT-DOOR GROWING.

No lettuce will stand cold weather better and none will make a finer, tightly folded solid head that is large, firm, well blanched and of such really splendid buttery quality. We introduced Wood's Cabbage Lettuce more than forty years ago, and we have not found its equal for wintering outdoors in the South. Pkt. 10c.; oz. 20c.; 1/4 lb. 45c.; lb. \$1.50; 2 lbs. \$2.65; 5 lbs. \$6.35 postpaid.



Wood's Cabbage Lettuce

No. 239. Crisp-as-Ice

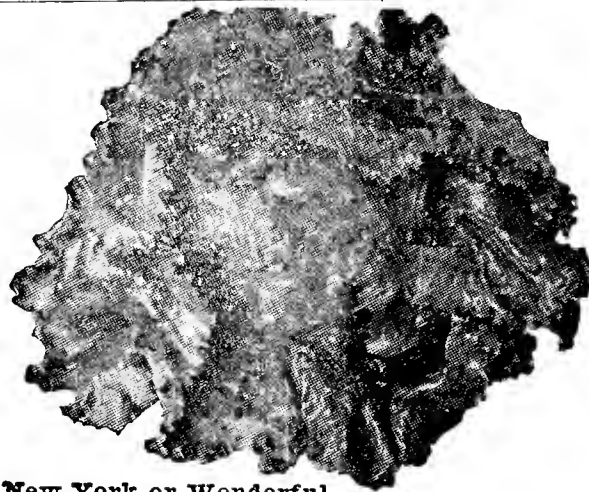
Neither extra early nor extra large, but a fine lettuce for the private garden. In delicate flavor and tenderness no other is superior. It is so crisp and brittle as to fully justify the name. The heads are hard with rich, creamy yellow hearts that are exceedingly tender and sweet, delicate flavor. Slow to start to seed. Pkt. 10c.; oz. 20c.; 1/4 lb. 45c.; lb. \$1.50 postpaid.



Crisp-as-Ice Lettuce

No. 232. New York No. 12 or Wonderful A big head lettuce as

solid, compact, tight headed and crisp as a cabbage. The heart is creamy white, sweet and tender with no trace of bitterness. The outer leaves are deep green and frilled at the edges; very slow in running to seed. This is the lettuce so largely shipped to Eastern markets under the name of Iceberg. Pkt. 10c.; oz. 20c.; 1/4 lb. 45c.; lb. \$1.50; 2 lbs. \$2.65; 5 lbs. \$6.35; 10 lbs. \$11.70 postpaid.

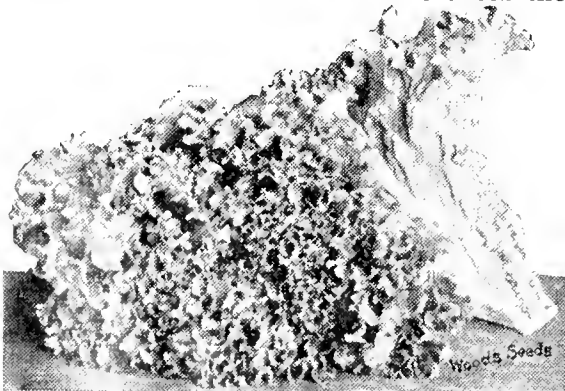


New York or Wonderful

No. 236. Improved Hanson A sure and reliable header, and keeps well. Makes a large, solid, compact head; crisp, tender and sweet, and blanches well; slow to shoot to seed. Very much like Iceberg, but larger and the green color is slightly lighter. Pkt. 5c.; oz. 15c.; 1/4 lb. 35c.; lb. \$1.00; 2 lbs. \$1.75; 5 lbs. \$4.00 postpaid.

No. 238. Grand Rapids Among the curled or loose leaved lettuces there is nothing handsomer

than Grand Rapids. It makes a quick growth, is hardy and holds its crispness for days after being cut. Forms large, compact clusters finely crimped around the edges. Crisp and tender, sweet and delicious. It will stand more neglect than any other lettuce. Pkt. 5c.; oz. 15c.; 1/4 lb. 35c.; lb. \$1.00; 2 lbs. \$1.75; 5 lbs. \$4.00 postpaid.



Grand Rapids

No. 231. Wood's Improved Big Boston

THE LETTUCE FOR COLD FRAMES

Our selected strain of Big Boston is as near perfect as can be had. The type is uniform, the heads extra large, firm and solid, the hearts have that crisp tenderness every one enjoys in lettuce. It may be planted in the open ground in the fall, in frames for early spring, and forced under glass for winter. Pkt. 5c.; oz. 15c.; 1/4 lb. 35c.; lb. \$1.00; 2 lbs. \$1.75; 5 lbs. \$4.00; 10 lbs. \$7.50; postpaid.

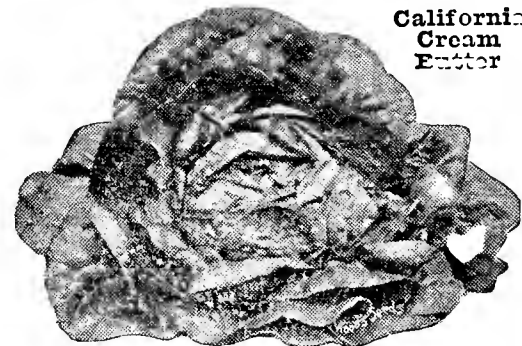


Wood's Improved Big Boston

No. 234. Black Seeded Simpson —One of the easiest varieties to grow and a very reliable one. Decidedly crisp with a tender, semi-solid crisp head. The leaves are ruffled and even the outside ones are tender; a very slow seeder. Pkt. 5c.; oz. 15c.; 1/4 lb. 35c.; lb. \$1.00; 2 lbs. \$1.75; 5 lbs. \$4.00 postpaid.

No. 237. Summer Allheart An all seasons lettuce; although a summer variety it does well in all seasons and stands the winter outdoors splendidly. It makes a large, firm, compact head with well blanched heart; the quality is excellent; the flavor is sweet and buttery. A satisfactory lettuce under all conditions. Pkt. 10c.; oz. 20c.; 1/4 lb. 45c.; lb. \$1.50; 2 lbs. \$2.65 postpaid.

No. 233. California Cream Butter Does well everywhere and in all



California Cream Butter

seasons. Very hardy and especially recommended for outdoor growing; very cold resistant. One of the most buttery flavored. Pkt. 5c.; oz. 15c.; 1/4 lb. 35c.; lb. \$1.00; 2 lbs. \$1.75 postpaid.

No. 240. Dark Green Cos or Romaine Makes a fine, well folded head of extra superior quality, firm and compact; the heart and mid-ribs blanch nearly white. Our dark green strain is fast supplanting all others. Pkt. 5c.; oz. 15c.; 1/4 lb. 45c.; lb. \$1.50; 2 lbs. \$2.65; 5 lbs. \$6.35 postpaid.

No. 242. Iceberg No lettuce is more crisp; the large ribs are like celery stalks. A sure and reliable header. Makes a large, compact head, very white inside; sweet, crisp and delicious. Pkt. 5c.; oz. 15c.; 1/4 lb. 40c.; lb. \$1.25; 2 lbs. \$2.20; 5 lbs. \$5.00 postpaid.

No. 235. Early Curled Simpson A sure cropper even under adverse conditions. Makes a well blanched, curly, loose head; early, crisp and tender. Especially adapted for sowing thickly in rows and cutting when young. Should be grown in every garden. Pkt. 5c.; oz. 15c.; 1/4 lb. 35c.; lb. \$1.00; 2 lbs. \$1.75; 5 lbs. \$4.00 postpaid.



Early Curled Simpson Lettuce

No. 241. Chicken Lettuce 3 to 4 feet high, loaded with leaves that may be cut like kale and keeps growing. Hardy; grow it for chicken and rabbit feed. Pkt. 5c.; oz. 15c.; 1/4 lb. 35c.; lb. \$1.00; 2 lbs. \$1.75; 5 lbs. \$4.00 postpaid.

Lettuce Plants Wood's Cabbage, Big Boston and Iceberg. Ready September and October. 40c. per 100 postpaid. Not postpaid, 30c. per 100; \$2.50 per 1000.

**MUSTARD** Plant during September or October either broadcast or in rows 12 to 18 inches apart. Plant one ounce to 100 feet of row, or broadcast 5 to 6 pounds per acre.

## No. 291. Tendergreen or

### Mustard Spinach

A mild mustard with a spinach flavor that can be grown in three to four weeks, and in almost any season, even during hot summer weather, and make an abundance of greens. Make a planting every two weeks to have a continuous supply of the tenderest greens. Pkt. 5c.; oz. 10c.; 1 lb. 20c.; lb. 65c.; 2 lbs. \$1.10; 5 lbs. \$2.40; 10 lbs. \$4.35 postpaid.



Southern Giant Curled Mustard

**No. 290. Southern Giant Curled** —The most popular mustard with Southern growers. It forms a great mass of leaves beautifully ruffled and finely curled and crimped around the edges, succulent, pungent and of sweet flavor. Pkt. 5c.; oz. 10c.; 1 lb. 20c.; lb. 60c.; 2 lbs. \$1.00; 5 lbs. \$2.25; 10 lbs. \$4.00 postpaid.

**No. 292. Chinese Broad Leaved** —When prepared like spinach makes fine greens. Ready in six weeks from sowing; tender and free from bitter flavor. Pkt. 5c.; oz. 10c.; 1 lb. 20c.; lb. 65c.; 2 lbs. \$1.10; 5 lbs. \$2.40; 10 lbs. \$4.35 postpaid.

## Onion Sets for Fall Planting

Plant 4 inches apart in rows 1 foot apart and about 1/2-inch deep, but do not cover the sets entirely, except Potato Onions, which plant 10 inches apart in 2-foot rows and cover 1 inch.

**EXTRA EARLY WHITE PEARL.**—Extra early, pure white, mild and delicate flavor. Earlier than any other variety. Qt. (1 lb.) 35c.; 1/2 peck 75c.; peck (8 lbs.) \$1.40 postpaid. Not postpaid, qt. 25c.; 1/2 peck 65c.; peck \$1.10

**SILVER SKIN**—Qt. (1 lb.) 35c.; 1/2 peck 85c.; peck (8 lbs.) \$1.40 postpaid. Not postpaid, qt. 25c.; 1/2 peck 65c.; peck \$1.10

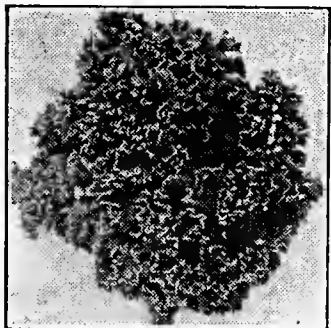
**YELLOW DANVERS**—Qt. (1 lb.) 35c.; 1/2 peck 80c.; peck (8 lbs.) \$1.30 postpaid. Not postpaid, qt. 25c.; 1/2 peck 60c.; peck \$1.00

**RED WETHERSFIELD**—Qt. (1 lb.) 35c.; 1/2 peck 80c.; peck (8 lbs.) \$1.30 postpaid. Not postpaid, qt. 25c.; 1/2 peck 60c.; peck \$1.00

**JAPANESE OR EBENEZER**—Qt. 35c.; 1/2 peck 80c.; peck (8 lbs.) \$1.30 postpaid. Not postpaid, qt. 25c.; 1/2 peck 60c.; peck \$1.00

**WHITE MULTIPLIER**—Qt. (1 lb.) 35c.; 1/2 peck 85c.; peck (8 lbs.) \$1.40 postpaid. Not postpaid, qt. 25c.; 1/2 peck 65c.; peck \$1.10

**YELLOW POTATO**—Small Sets—Qt. (1 lb.) 35c.; 1/2 peck 85c.; peck (8 lbs.) \$1.40 postpaid. Not postpaid, qt. 25c.; 1/2 peck 65c.; peck \$1.40



**PARSLEY** Plant half inch deep in September or October and give slight protection, or plant in cold-frame or hot-bed for winter use. Germinates slowly. Soak for twenty-four hours before planting.

## No. 314. Champion Moss

**Curled** —the most improved strain; beautifully curled and crimped. If cut when about three inches high, it starts a new growth that will be better curled and a brighter color. Pkt. 5c.; oz. 10c.; 1 lb. 25c.; lb. 75c.; 2 lbs. \$1.25; 5 lbs. \$3.00 postpaid.

**No. 315. Plain or Single** —Hardier than the curled, stronger flavored; color very dark green. Pkt. 5c.; oz. 10c.; 1 lb. 25c.; lb. 75c.; 2 lbs. \$1.25; 5 lbs. \$3.00 postpaid.

**RHUBARD ROOTS** —In November set out 4 feet apart in rich soil in a shaded place, using plenty of stable manure. Protect with manure during winter. By mail postpaid, 20c. each; 3 for 50c.; \$1.50 per dozen. Not postpaid, 15c. each; 3 for 40c.; 6 for 75c.; \$1.25 per dozen.

## Onion Seeds for Fall Planting

Plant in a well-prepared bed in August or September, and when the size of a goose quill transplant 4 inches apart in 18-inch rows, trimming the tops and roots; it is not unusual to double the yield by transplanting. For fall planting we recommend Copper King, Prize Taker and Mammoth Silver King. One ounce plants 100 feet of drill; 5 to 6 pounds will transplant an acre.

## No. 308. Prize Taker or Spanish King

—The outside is a rich straw color, the flesh pure white, sweet and mild. Pkt. 5c.; oz. 15c.; 1 lb. 50c.; lb. \$1.75; 2 lbs. \$3.10; 5 lbs. \$7.00 postpaid.

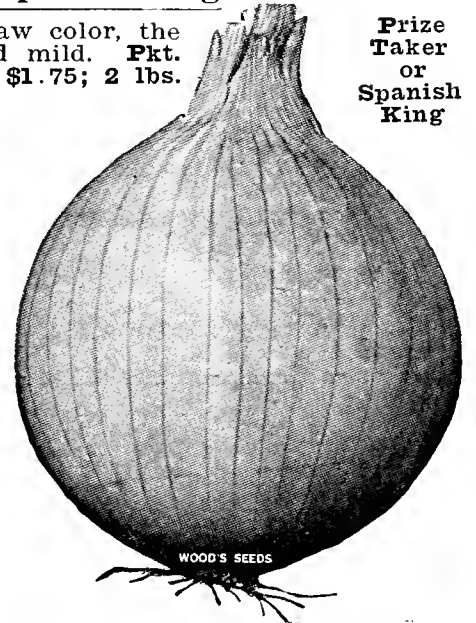
Prize  
Taker  
or  
Spanish  
King

## No. 307. Copper King

—Attains an enormous size; flesh white; sweet, mild and tender. Pkt. 10c.; oz. 25c.; 1 lb. 70c.; lb. \$2.50; 2 lbs.; \$4.50 postpaid.

## No. 310. Mammoth Silver King

—One of the largest Italian onions, often 5 inches in diameter. Skin and flesh white, very tender and mild flavored. Pkt. 10c.; oz. 20c.; 1 lb. 70c.; lb. \$2.50; 2 lbs. \$4.50; 5 lbs. \$10.75 postpaid.



## No. 301. Large Red

**Wethersfield** —Skin purplish red; flesh purplish white; hard and solid. Pkt. 5c.; oz. 25c.; 1 lb. 70c.; lb. \$2.50; 2 lbs. \$4.50 postpaid

**No. 302. Yellow Globe Danvers** —Uniformly globe shaped, have small necks and ripen evenly. Pkt. 5c.; oz. 25c.; 1 lb. 70c.; lb. \$2.50; 2 lbs. \$4.50; 5 lbs. \$10.75 postpaid;

**No. 303. Silver Skin or White Portugal** —For growing matured onions, for sets, for pickling, for bunching in the spring and as a salad when young. Pkt. 10c.; oz. 25c.; 1 lb. 70c.; lb. \$2.50; 2 lbs. \$4.50; 5 lbs. \$10.75 postpaid.

**No. 309. Extra Early White Pearl** —The quickest of white sorts. Makes pearly white onions, tender, mild and of excellent flavor. Plant in the fall to make early spring onions. Pkt. 5c.; oz. 15c.; 1 lb. 50c.; lb. \$1.75; 2 lbs. \$3.10; 5 lbs. \$7.40 postpaid.

## WINTER RADISHES

Winter Radishes are slower in growth than other radishes, but the flesh is firmer and they are better keepers. The quality is not so dependent on quick growth as with other sorts, but they should have a good, light, mellow soil for best results. Plant during August, September or early October half an inch deep in rows 18 to 24 inches apart and thin out. When freezing weather comes on take them up and pack in sand in a cool cellar or bury them outside, and they will keep all winter. One ounce plant 50 feet of drill; 8 to 10 pounds plant an acre.



Rose China Winter  
Radish

## No. 393. Rose China Winter

—Cylindrical in shape; of medium size; bright deep rose-colored skin. The flesh is white, very solid and of the very finest quality. The most popular of all winter radishes; a fine keeper. Pkt. 5c.; oz. 10c.; 1 lb. 20c.; lb. 65c.; 2 lbs. \$1.10; 5 lbs. \$2.40 postpaid.

## No. 392. Chinese or Celestial

Always crisp, mild and juicy, and undoubtedly the finest of all extra large, pure white radishes. Grows from 6 to 8 inches long and 2 1/2 to 3 inches thick. Pkt. 5c.; oz. 10c.; 1 lb. 25c.; lb. 75c.; 2 lbs. \$1.25; 5 lbs. \$3.00 postpaid.

## No. 394. Long Black Spanish

—One of the latest and hardiest varieties. Has dark brown skin; oblong in shape, holding its thickness throughout. Pkt. 5c.; oz. 10c.; 1 lb. 25c.; lb. 75c.; 2 lbs. \$1.25; 5 lbs. \$3.00 postpaid.



# WOOD'S CROP SPECIAL

## SPINACH

—For fall use plant in August or September; for winter or spring plant from the end of September till December—one inch deep in drills

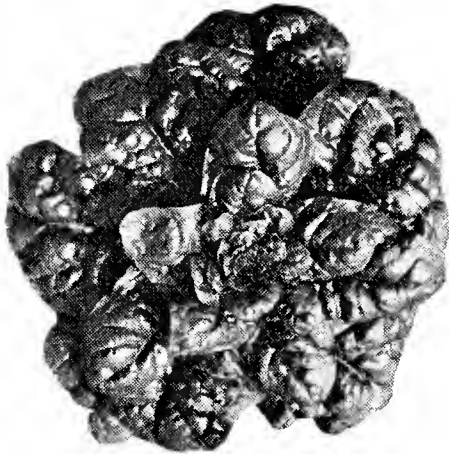
18 to 24 inches apart. Requires little cultivation. Two ounces will plant 100 feet of drill; 12 to 15 pounds, one acre.

**No. 402. NORFOLK SAVOY OR BLOOMSDALE.**—Grows upright with thick, dark green leaves, curled like a savoy cabbage. Very hardy and grows rapidly. Pkt. 5c.; oz. 10c.; 1 lb. 15c.; 1 lb. 35c.; 2 lbs. 60c.; 5 lbs. \$1.35; 10 lbs. \$2.45 postpaid.

Not postpaid, 1b. 25c.; 2 lbs. 45c.; 5 lbs. \$1.10; 10 lbs. \$2.10; 25 lbs. \$5.00; 50 lbs. \$9.50; 100 lbs. \$18.00.

**No. 405. LONG STANDING BLOOMSDALE.**—Shoots to seed more slowly than ordinary Bloomsdale. Pkt. 5c.; oz. 10c.; 1 lb. 15c.; 1 lb. 40c.; 2 lbs. 65c.; 5 lbs. \$1.45; 10 lbs. \$2.55 postpaid.

Not postpaid, 1b. 30c.; 2 lbs. 50c.; 5 lbs. \$1.20; 10 lbs. \$2.20; 25 lbs. \$5.25; 50 lbs. \$10.00; 100 lbs. \$19.00.



## SPINACH—Continued.

**No. 406. VIRGINIA BLIGHT RESISTANT.**—This should be planted wherever blight or yellows is prevalent. The leaves are dark green and curled like Bloomsdale. Pkt. 5c.; oz. 10c.; 1 lb. 15c.; 1 lb. 40c.; 2 lbs. 70c.; 5 lbs. \$1.60; 10 lbs. \$2.85 postpaid. Not postpaid, 1b. 30c.; 2 lbs. 55c.; 5 lbs. \$1.35; 10 lbs. \$2.50; 25 lbs. \$6.00; 50 lbs. \$11.00; 100 lbs. \$20.00.

## VEGETABLE PLANTS

—We supply all kinds in their proper seasons. Late cabbage up to September

15th; lettuce and early cabbage during October and November. Whenever we cannot supply the varieties ordered, we will send a variety as closely resembling it as possible.

Orders received late in the week will be forwarded early the following week to avoid lying over Sunday en route.

**LATE CABBAGE**—By mail 35c. per 100; 500 for \$1.35 postpaid. Not postpaid, 25c. per 100; \$2.00 per 1000.

**EARLY CABBAGE**—By mail 35c. per 100; 500 for \$1.35 postpaid. Not postpaid, 25c. per 100; \$2.00 per 1000.

**CAULIFLOWER** (Ready in October)—50 for 75c.; \$1.25 per 100 postpaid.

**LETTUCE**—By mail 40c. per 100; 500 for \$1.60 postpaid. Not postpaid, 30c. per 100; \$2.50 per 1000.

## TURNIP AND RUTABAGA

Plant in July or August either broadcast or in rows 2 feet apart and thin out to 4 inches apart. Plant salad varieties in August or September. An ounce plants 100 feet of drill; 1½ pounds one acre in drills; 2 pounds one acre broadcast; plant salad varieties 3 pounds to the acre.

**PRICES INCLUDING POSTAGE**—All varieties, unless otherwise quoted, pkt. 5c.; oz. 10c.; 1 lb. 20c.; 1 lb. 50c.; 2 lbs. 90c.; 5 lbs. \$1.75; 10 lbs. \$3.10.  
**PRICES NOT POSTPAID**—Lb. 40c.; 2 lbs. 75c.; 5 lbs. \$1.50; 10 lbs. \$2.75.

**MILAN TURNIPS** At least a week earlier than any other. They are without an equal for the table.

**No. 445. EXTRA EARLY WHITE MILAN.**—Pkt. 5c.; oz. 10c.; 1 lb. 20c.; 1 lb. 65c.; 2 lbs. \$1.10; 5 lbs. \$2.40 postpaid.

**No. 446. EXTRA EARLY PURPLE TOP MILAN.**—Pkt. 5c.; oz. 10c.; 1 lb. 20c.; 1 lb. 65c.; 2 lbs. \$1.10; 5 lbs. \$2.40 postpaid.

**No. 450. Wood's Improved Purple Top White Globe**

—Handsome appearance and extra fine quality easily account for the universal popularity of our splendidly bred strain. Globe-shaped, of good size; the upper part purple, the lower part pure white, with fine-grained, tender, pure white flesh. For table use, it is at its best when about three inches across, but for stock feeding it should be grown to full size. For the private garden and for market it has no superior; a heavy cropper, early and of extra good quality. Pkt. 5c.; oz. 10c.; 1 lb. 20c.; 1 lb. 60c.; 2 lbs. \$1.05; 5 lbs. \$2.40; 10 lbs. \$4.35 postpaid. Not postpaid, 1b. 50c.; 2 lbs. 90c.; 5 lbs. \$2.15; 10 lbs. \$4.00.



Wood's Improved Purple Top Globe

**No. 449. MAMMOTH PURPLE TOP WHITE GLOBE.**—White with purple tops. A big yielder; fine for the table and stock feeding. Pkt. 5c.; oz. 10c.; 1 lb. 20c.; 1 lb. 55c.; 2 lbs. 95c.; 5 lbs. \$2.15; 10 lbs. \$3.85 postpaid. Not postpaid, 1b. 45c.; 2 lbs. 80c.; 5 lbs. \$1.90; 10 lbs. \$3.50.

**No. 447. EARLY RED OR PURPLE TOP.**—Flat; white with purple top; fine grained and tender; one of the best early turnips.

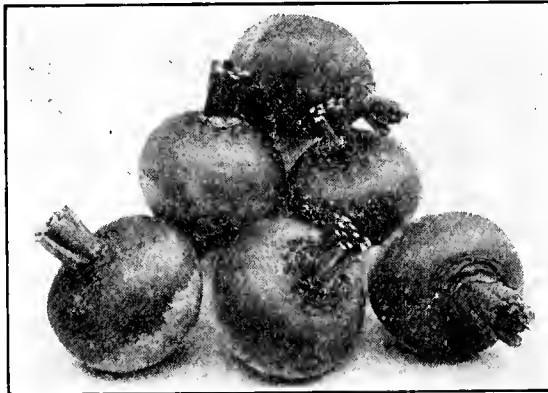
**No. 448. EARLY WHITE FLAT DUTCH.**—One of the best early turnips for the family garden; sweet and tender.

**No. 451. LONG WHITE COWHORN.**—A productive, quick growing turnip of excellent quality, fine grained and sweet. Often twelve to fifteen inches long.

**No. 452. WHITE EGG.**—An early, egg-shaped, smooth, pure white variety with small tops. Flesh sweet, firm and mild.

**No. 453. LARGE WHITE NORFOLK GLOBE.**—Makes large round white roots, excellent for table or stock; also quite largely used for winter salad.

**No. 461. MIXED TURNIP SEEDS.**—A fine home garden mixture of all varieties.



Purple Top Yellow Aberdeen

**No. 454. POMERANIAN WHITE GLOBE.**—Extra large, round, white; fine for table and stock; a big yielder.

**No. 457. LARGE AMBER OR YELLOW GLOBE.**—Globe shaped, solid yellow flesh. Fine for table and stock; keeps well.

**No. 456. PURPLE TOP YELLOW ABERDEEN.**—A splendid keeper. Flesh is yellow, very solid, tender and sweet. Hardy and a good yielder; fine stock turnip.

**No. 458. GOLDEN BALL OR ORANGE JELLY.**—One of the sweetest and best yellow turnips; hardy; flesh is firm and of most excellent flavor.

**SALAD TURNIPS** **No. 462. SHOGIN OR JAPANESE.**—Resists insects and can be grown in hot weather; makes a turnip 2 to 3 inches in diameter.

**No. 459. SOUTHERN PRIZE OR DIXIE.**—Hardy and needs no protection; the most popular turnip for winter and spring salad.

**No. 460. SEVEN TOP.**—A very hardy variety, grown exclusively for salad. Pkt. 5c.; oz. 10c.; 1 lb. 15c.; 1 lb. 40c.; 2 lbs. 70c.; 5 lbs. \$1.50 postpaid.

## RUTABAGA or SWEDE

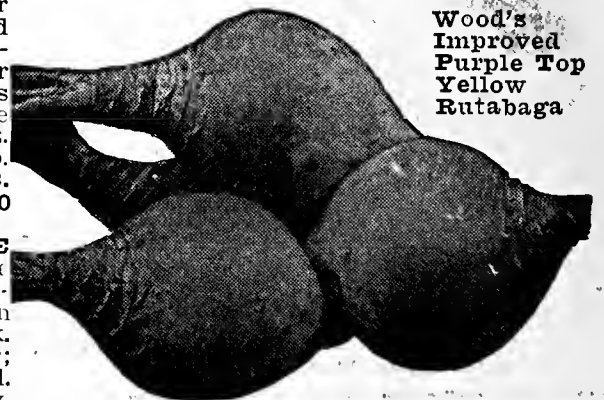
**No. 465. Wood's Improved Purple Top Yellow**

An improved strain of the finest yellow-fleshed rutabaga grown from roots selected for large size, uniformity in shape and fine quality. Hardy, sweet a good keeper and the best shaped and most productive. Excellent for the table, and has high feeding value as stock feed. Pkt. 5c.; oz. 10c.; 1 lb. 20c.; 1 lb. 60c.; 2 lbs. \$1.05; 5 lbs. \$2.40 postpaid.

**No. 466. PURPLE TOP YELLOW.**—The old standard variety; largely grown for table and stock. A large yielder; sweet and solid. good keeper; hardy,

**No. 455. WHITE SWEET GERMAN.**—Fine for table and stock; flesh hard, firm and sweet; a good keeper.

**No. 467. LARGE WHITE OR RUSSIAN.**—The flesh is white, firm, sweet; grows large; fine for table and stock.



Wood's Improved Purple Top Yellow Rutabaga

## Wood's Flower Seeds for Fall Planting

FOR FULL DESCRIPTIONS SEE OUR ANNUAL CATALOG.

In the South perennials; biennials and hardy annuals may be sown outside in the fall. These sowings make finer plants, earlier, larger and more brilliant blooms. Annuals should have a slight covering in extreme weather; tender perennials should be carried through the winter in the house.

Prepare the ground as fine, smooth and level as a rake will make it; plant in rows so the young plants may be easily seen; cover lightly—a good rule is to cover four to six times the diameter of the seeds; very fine seeds should be pressed into the soil.

Half hardy varieties (marked H H) need protection; varieties marked (T) tender, should be wintered in the house.

### PERENNIALS AND BIENNIALS

- No. 553. **ABUTILON** (Bell Flower) (T)—Pkt. 20c.
- No. 556. **ACHILLEA**—Pkt. 10c.
- No. 562. **ADLUMIA** (Allegheny Vine)—Pkt. 10c.
- No. 571. **ALYSSUM**, Saxatile Compactum—Pkt. 10c.;  $\frac{1}{4}$  oz. 25c.
- No. 579. **AMPELOPSIS**, Veitchii—Pkt. 10c.;  $\frac{1}{2}$  oz. 20c.
- No. 582. **ANCHUSA**, Italica Dropmore—Pkt. 10c.;  $\frac{1}{2}$  oz. 20c.
- No. 598. **ARABIS ALPINA** (Rock Cross)—Pkt. 10c.;  $\frac{1}{4}$  oz. 20c.

#### ANTIRRHINUM

##### OR SNAPDRAGON

- No. 589. Tall Large Flowering, Mixed Colors, pkt. 5c.;  $\frac{1}{4}$  oz. 20c.;  $\frac{1}{2}$  oz. 35c.
- No. 590. Wood's Brilliant Mixture, pkt. 15c.;  $\frac{1}{4}$  oz. 50c.

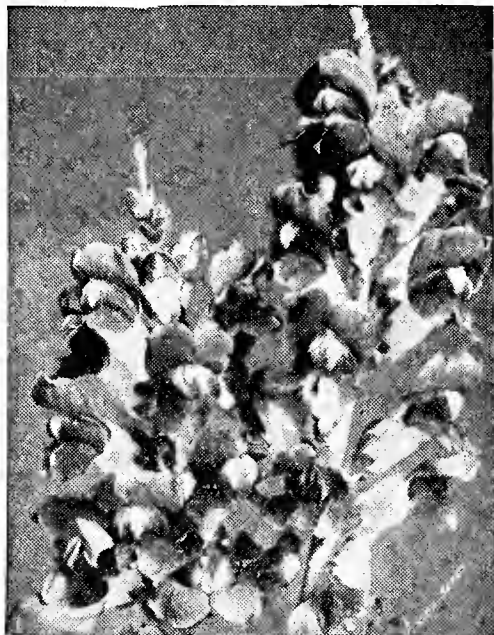
##### GIANT FLOWERED SNAPDRAGONS

- No. 585. Snow White, pkt. 10c.;  $\frac{1}{2}$  oz. 25c.
- No. 586. Deep Pink, pkt. 10c.;  $\frac{1}{2}$  oz. 25c.
- No. 587. Canary Yellow, pkt. 10c.;  $\frac{1}{2}$  oz. 25c.
- No. 588. Defiance Scarlet, pkt. 10c.;  $\frac{1}{2}$  oz. 25c.

#### AQUILEGIA

##### OR COLUMBINE

- No. 594. Long Spurred Hybrids, pkt. 10c.;  $\frac{1}{2}$  oz. 40c.
- No. 593. Mrs. Elliott's Long Spurred, pkt. 20c.
- No. 595. Rocky Mountain Columbine, Blue, pkt. 10c.;  $\frac{1}{2}$  oz. 35c.
- No. 596. Mixed Colors, pkt. 10c.;  $\frac{1}{4}$  oz. 25c.



Antirrhinum or Snapdragon.

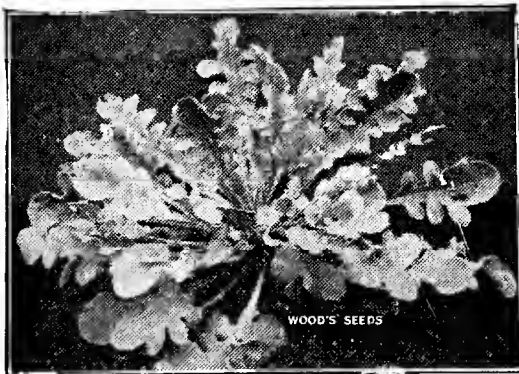
- PERENNIAL ASTER**—No. 606. Mixed Colors, pkt. 10c.;  $\frac{1}{2}$  oz. 25c.
- No. 650. **BEGONIA**, Vernon (T)—Pkt. 10c.;  $\frac{1}{16}$  oz. 50c.
- No. 682. **CANDYTUFT**, White Perennial—Pkt. 10c.;  $\frac{1}{2}$  oz. 40c.
- CANTERBURY BELLS**—No. 688. Single, Mixed Colors, pkt. 5c.;  $\frac{1}{4}$  oz. 20c.

- No. 689. Double Mixed Colors, pkt. 10c.;  $\frac{1}{2}$  oz. 20c.

- CARNATION** No. 696. Marguerite, Mixed Colors, pkt. 10c.;  $\frac{1}{4}$  oz. 30c.

- No. 697. Chabaud's Perpetual, Mixed Colors, pkt. 15c.;  $\frac{1}{2}$  oz. 30c.
- No. 698. Finest German Double Mixed, pkt. 20c.;  $\frac{1}{2}$  oz. 50c.
- No. 699. Double Carnations, Mixed Colors, pkt. 10c.;  $\frac{1}{4}$  oz. 40c.

- CENTAUREA OR DUSTY MILLER** (H H)—No. 706. Gymnocarpa, pkt. 5c.;  $\frac{1}{4}$  oz. 15c.;  $\frac{1}{2}$  oz. 25c.



Dusty Miller Centaureas

- DAHLIA** (H H)—No. 780. Peony Flowered, pkt. 10c.;  $\frac{1}{2}$  oz. 35c.

- No. 781. Cactus Flowered, pkt. 10c.;  $\frac{1}{2}$  oz. 50c.
- No. 782. Double Mixed Colors, pkt. 10c.;  $\frac{1}{2}$  oz. 30c.
- No. 783. Single Mixed Colors, pkt. 5c.;  $\frac{1}{4}$  oz. 25c.

- DAISY** (Bellis or English Daisy)—No. 787. Double Pure White, pkt. 10c.;  $\frac{1}{2}$  oz. 40c.

- No. 786. Double Pink, pkt. 10c.;  $\frac{1}{2}$  oz. 40c.
- No. 788. Double Mixed Colors, pkt. 10c.;  $\frac{1}{2}$  oz. 35c.

- No. 793. **SHASTA DAISY**—Pkt. 10c.;  $\frac{1}{2}$  oz. 25c.

- No. 707. **Candidissima**, pkt. 10c.;  $\frac{1}{4}$  oz. 40c.

- No. 714. **CHINESE LANTERN** or **Phyllis**, pkt. 10c.

- CHRYSANTHEMUM** No. 716. Japanese, pkt. 15c.

- No. 726. **CLEMATIS**, *Paniculata*, pkt. 10c.;  $\frac{1}{4}$  oz. 30c.

- No. 668. **COREOPSIS**, *Lanceolata* — Pkt. 10c.;  $\frac{1}{4}$  oz. 25c.

- No. 768. **COWSLIP**—Pkt. 10c.;  $\frac{1}{2}$  oz. 50c.

#### DELPHINIUM

- No. 793. **Belladonna**, pkt. 20c.;  $\frac{1}{2}$  oz. 65c.
- No. 799. **Bellomosa**, pkt. 20c.;  $\frac{1}{2}$  oz. 65c.

- No. 800. **Gold Medal Hybrids**, pkt. 10c.;  $\frac{1}{4}$  oz. 50c.

- No. 812. **DIANTHUS** (Clove Pink)—Pkt. 10c.;  $\frac{1}{4}$  oz. 40c.

- DIGITALIS**—No. 824. **Rose Pink**, pkt. 10c.;  $\frac{1}{4}$  oz. 30c.

- No. 828. **White**, pkt. 10c.;  $\frac{1}{4}$  oz. 30c.

- No. 826. **Purple**, pkt. 10c.;  $\frac{1}{4}$  oz. 30c.

- No. 827. **Mixed Colors**, pkt. 10c.;  $\frac{1}{4}$  oz. 25c.

- FORGET - ME - NOT** No. 852. **Rose Pink** pkt. 10c.;  $\frac{1}{4}$  oz. 20c.

- No. 853. **Blue**, pkt. 10c.;  $\frac{1}{4}$  oz. 20c.

- No. 855. **Mixed Colors**, pkt. 5c.;  $\frac{1}{4}$  oz. 25c.

- No. 860. **GAILLARDIA**, *Grandiflora*, pkt. 10c.;  $\frac{1}{4}$  oz. 25c.



Delphinium

- No. 866. **GEUM**—Mrs. Bradshaw, pkt. 15c.;  $\frac{1}{2}$  oz. 40c.

- No. 878. **GYPSOPHILA**—Perennial, pkt. 10c.;  $\frac{1}{4}$  oz. 20c.

- HELIOTROPE** (H H)—No. 891. **Blue**, pkt. 10c.;  $\frac{1}{2}$  oz. 25c.

- No. 892. **White**, pkt. 10c.;  $\frac{1}{2}$  oz. 25c.

- No. 893. **Mixed Colors**, pkt. 10c.;  $\frac{1}{2}$  oz. 25c.

- No. 897. **HIBISCUS** (Mallow Marvel), pkt. 10c.;  $\frac{1}{4}$  oz. 25c.

- HOLLYHOCK** No. 902. **Double White**, pkt. 10c.;  $\frac{1}{2}$  oz. 20c.;  $\frac{1}{4}$  oz. 35c.

- No. 903. **Double Pink**, pkt. 10c.;  $\frac{1}{2}$  oz. 20c.;  $\frac{1}{4}$  oz. 35c.

- No. 904. **Double Yellow**, pkt. 10c.;  $\frac{1}{2}$  oz. 20c.;  $\frac{1}{4}$  oz. 35c.

- No. 905. **Double Scarlet**, pkt. 10c.;  $\frac{1}{2}$  oz. 20c.;  $\frac{1}{4}$  oz. 35c.

- No. 908. **Double Mixed Colors**, pkt. 10c.;  $\frac{1}{4}$  oz. 30c.

- No. 909. **Allegheny**, pkt. 10c.;  $\frac{1}{4}$  oz. 25c.

- No. 910. **Double Everblooming**, pkt. 10c.;  $\frac{1}{2}$  oz. 25c.;  $\frac{1}{4}$  oz. 40c.

- No. 911. **Single Everblooming**, pkt. 5c.;  $\frac{1}{4}$  oz. 20c.;  $\frac{1}{2}$  oz. 30c.

- No. 926. **KENILWORTH IVY**, pkt. 10c.;  $\frac{1}{2}$  oz. 25c.

- No. 945. **LINUM**—Perennial Blue, pkt. 10c.;  $\frac{1}{4}$  oz. 20c.

- LUPINS**—No. 956. **Blue**, pkt. 10c.;  $\frac{1}{4}$  oz. 20c.

- No. 957. **Mixed Colors**, pkt. 10c.;  $\frac{1}{2}$  oz. 20c.

- No. 985. **MIMULUS** (Musk Plant), pkt. 15c.

- No. 1061. **OXALIS** (H H), pkt. 10c.;  $\frac{1}{2}$  oz. 40c.



Wood's Royal Pansy

#### WOOD'S

#### ROYAL PANSIES

- No. 1075. **Wood's Royal Mixture**, pkt. 10c.;  $\frac{1}{2}$  oz. 50c.;  $\frac{1}{4}$  oz. 85c.;  $\frac{1}{2}$  oz. \$1.50; oz. \$2.50.

- No. 1076. **Wood's Exhibition Mixture**, pkt. 25c.; 3 pkts. for 65c.;  $\frac{1}{2}$  oz. \$1.00.

- No. 1077. **Wood's Superb Frilled**, pkt. 20c.; 3 pkts. for 50c.;  $\frac{1}{2}$  oz. 85c.

- No. 1078. **Giant Trimardeau Mixture**, pkt. 10c.;  $\frac{1}{2}$  oz. 30c.;  $\frac{1}{4}$  oz. 50c.;  $\frac{1}{2}$  oz. 90c.

- No. 1079. **Large Flowering, Mixed Colors**, pkt. 5c.;  $\frac{1}{4}$  oz. 20c.;  $\frac{1}{2}$  oz. 35c.;  $\frac{1}{2}$  oz. 60c.; oz. \$1.00.

- No. 1080. **Tufted Pansy** (*Viola Cornuta*), pkt. 10c.;  $\frac{1}{4}$  oz. 65c.



# WOOD'S CROP SPECIAL

## PERENNIAL

### POPPIES

No. 1150. **Oriental Scarlet**, pkt. 10c.;  $\frac{1}{8}$  oz. 20c.;  $\frac{1}{4}$  oz. 35c.

No. 1152. **Oriental Pink** pkt. 15c.;  $\frac{1}{4}$  oz. 35c.

No. 1151. **Iceland Mixed Colors**, pkt. 10c.;  $\frac{1}{8}$  oz. 20c.;  $\frac{1}{4}$  oz. 35c.

No. 1161. **PRIMROSE—Chinese (T)**, pkt. 20c.; 3 pkts. for 50c.

No. 1165. **PYRETHRUM (Golden Feather)**, pkt. 5c.;  $\frac{1}{4}$  oz. 20c.

No. 1166. **Roseum**, pkt. 10c.;  $\frac{1}{8}$  oz. 30c.



Perennial Poppy

**SALVIA (T)**—No. 1179. **Fireball or Bonfire**, pkt. 15c.;  $\frac{1}{8}$  oz. 35c.;  $\frac{1}{4}$  oz. 60c.

No. 1180. **Splendens**, pkt. 10c.;  $\frac{1}{8}$  oz. 25c.;  $\frac{1}{4}$  oz. 40c.;  $\frac{1}{2}$  oz. 75c.

No. 1181. **Fatens**, pkt. 15c.;  $\frac{1}{8}$  oz. 50c.

No. 1186. **SCABIOSA—Perennial Blue**, pkt. 15c.;  $\frac{1}{8}$  oz. 50c.

No. 1204. **STOKESIA (Cornflower) Aster**, pkt. 10c.;  $\frac{1}{4}$  oz. 40c.

No. 1216. **SWEET ROCKET**, pkt. 5c.;  $\frac{1}{4}$  oz. 20c.

## SWEET WILLIAM

No. 1222. **Single White**, pkt. 10c.;  $\frac{1}{4}$  oz. 25c.

No. 1223. **Newport Pink**, pkt. 10c.;  $\frac{1}{4}$  oz. 30c.

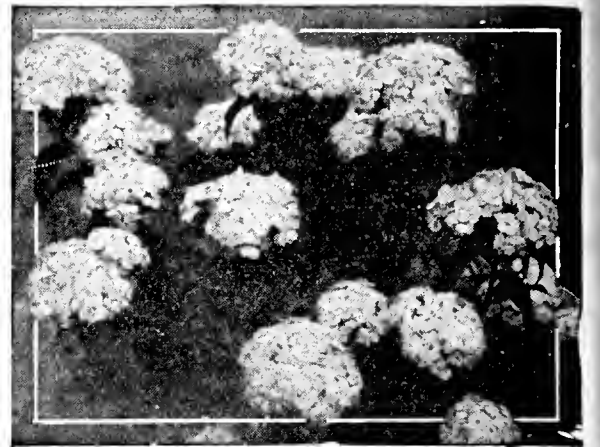
No. 1224. **Scarlet Beauty**, pkt. 10c.;  $\frac{1}{4}$  oz. 30c.

No. 1227. **Single Mixed Colors**, pkt. 5c.;  $\frac{1}{4}$  oz. 20c.;  $\frac{1}{2}$  oz. 30c.

No. 1233. **Double Mixed Colors**, pkt. 10c.;  $\frac{1}{4}$  oz. 25c.;  $\frac{1}{2}$  oz. 40c.

No. 1253. **VERBENA VENOSA**, pkt. 10c.;  $\frac{1}{8}$  oz. 25c.

No. 1260. **VERONICA Spicata (Speedwell)**, pkt. 10c.;  $\frac{1}{8}$  oz. 40c.



Sweet William

**VINCA (Periwinkle) (T)**—No. 1264. **Rosea**, pkt. 10c.;  $\frac{1}{4}$  oz. 25c.;  $\frac{1}{2}$  oz. 40c.

No. 1265. **Alba**, pkt. 10c.;  $\frac{1}{4}$  oz. 25c.;  $\frac{1}{2}$  oz. 40c.

No. 1267. **Mixed Colors**, pkt. 10c.;  $\frac{1}{4}$  oz. 25c.;  $\frac{1}{2}$  oz. 40c.

**WALLFLOWER (H H)**—No. 1276. **Single Mixed Colors**, pkt. 5c.;  $\frac{1}{4}$  oz. 15c.

No. 1277. **Double Mixed Colors**, pkt. 10c.;  $\frac{1}{8}$  oz. 60c.

No. 1278. **Allioni**, pkt. 10c.;  $\frac{1}{4}$  oz. 30c.

No. 1279. **Linifolius**, pkt. 15c.;  $\frac{1}{4}$  oz. 50c.

# HARDY ANNUALS

No. 550. **ABRONIA (Sand Verbena)**—Pkt. 10c.;  $\frac{1}{4}$  oz. 20c.

No. 559. **ACROCLINIUM (Everlasting)**—Pkt. 5c.;  $\frac{1}{4}$  oz. 15c.

**AGERATUM**—No. 565. **Dwarf Blue**, pkt. 10c.;  $\frac{1}{4}$  oz. 25c.

No. 564. **Dwarf Mixed Colors**, pkt. 5c.;  $\frac{1}{4}$  oz. 20c.

**ALYSSUM**—No. 569. **Little Dorrit**, pkt. 10c.;  $\frac{1}{4}$  oz. 25c.

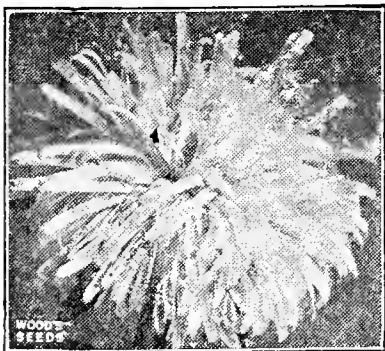
No. 568. **Lilac Queen**, pkt. 10c.;  $\frac{1}{4}$  oz. 25c.

No. 570. **Little Gem**, pkt. 5c.;  $\frac{1}{4}$  oz. 20c.

No. 572. **Sweet**, pkt. 5c.;  $\frac{1}{2}$  oz. 20c.; oz. 30c.

No. 600. **ARCTOTIS GRANDIS—Blue Eyed African Daisy**, pkt. 10c.;  $\frac{1}{4}$  oz. 25c.

**ASTERS GIANT BRANCHING**—No. 616. **White**, pkt. 10c.;  $\frac{1}{8}$  oz. 25c.



Giant Crego or Comet

No. 617. **Pink**, pkt. 10c.;  $\frac{1}{8}$  oz. 25c.

No. 618. **Dark Blue**, pkt. 10c.;  $\frac{1}{8}$  oz. 25c.

No. 619. **Scarlet**, pkt. 10c.;  $\frac{1}{8}$  oz. 25c.

No. 620. **Mixed Colors**, pkt. 10c.;  $\frac{1}{8}$  oz. 25c.

No. 603. **PEONY FLOWERED PERFECTION—Mixed Colors**, pkt. 10c.;  $\frac{1}{8}$  oz. 25c.

No. 604. **CHINA OR QUILLED—Mixed Colors**, pkt. 5c.;  $\frac{1}{4}$  oz. 25c.

No. 605. **OSTRICH FEATHER—Mixed Colors**, pkt. 10c.;  $\frac{1}{8}$  oz. 25c.

**AMERICAN BEAUTY**—No. 608. **Peach Blossom**, pkt. 10c.;  $\frac{1}{8}$  oz. 35c.

No. 609. **White**, pkt. 10c.;  $\frac{1}{8}$  oz. 35c.

No. 610. **Crimson**, pkt. 10c.;  $\frac{1}{8}$  oz. 35c.

No. 611. **Lavender**, pkt. 10c.;  $\frac{1}{8}$  oz. 35c.

No. 613. **Purple**, pkt. 10c.;  $\frac{1}{8}$  oz. 35c.

No. 612. **Mixed Colors**, pkt. 10c.;  $\frac{1}{8}$  oz. 35c.

**QUEEN OF THE MARKET**—No. 623. **Pink**, pkt. 10c.;  $\frac{1}{8}$  oz. 20c.

No. 624. **White**, pkt. 10c.;  $\frac{1}{8}$  oz. 20c.

No. 625. **Scarlet**, pkt. 10c.;  $\frac{1}{8}$  oz. 20c.

No. 626. **Dark Blue**, pkt. 10c.;  $\frac{1}{8}$  oz. 20c.

No. 627. **Mixed Colors**, pkt. 10c.;  $\frac{1}{8}$  oz. 20c.

**GIANT CREGO OR COMET**—No. 632. **Dark Blue**, pkt. 10c.;  $\frac{1}{8}$  oz. 25c.

No. 630. **Crimson**, pkt. 10c.;  $\frac{1}{8}$  oz. 25c.

No. 631. **Pink**, pkt. 10c.;  $\frac{1}{8}$  oz. 25c.

No. 633. **Pure White**, pkt. 10c.;  $\frac{1}{8}$  oz. 25c.

No. 634. **Mixed Colors**, pkt. 10c.;  $\frac{1}{8}$  oz. 25c.

No. 607. **WOOD'S SUPERB ASTER MIXTURE**—Pkt. 10c.;  $\frac{1}{8}$  oz. 25c.;  $\frac{1}{4}$  oz. 45c.;  $\frac{1}{2}$  oz. 80c.; oz. \$1.50.

No. 615. **VICTORIA—Mixed Colors**, pkt. 10c.;  $\frac{1}{8}$  oz. 25c.

**CALENDULA**—No. 658. **Campfire or Sensation**, pkt. 10c.;  $\frac{1}{4}$  oz. 25c.

No. 659. **Eall's Orange King**, pkt. 10c.;  $\frac{1}{4}$  oz. 25c.

No. 661. **Double Lemon Queen**, pkt. 10c.;  $\frac{1}{4}$  oz. 15c.;  $\frac{1}{2}$  oz. 25c.

No. 660. **Mixed Varieties**, pkt. 5c.;  $\frac{1}{8}$  oz. 15c.; oz. 25c.

**CALLIOPSIS**—No. 665. **Crimson**, pkt. 10c.;  $\frac{1}{4}$  oz. 20c.

No. 666. **Golden Ray**, pkt. 10c.;  $\frac{1}{4}$  oz. 20c.

No. 667. **Mixed Colors**, pkt. 5c.;  $\frac{1}{2}$  oz. 15c.; oz. 25c.

No. 673. **CANARY FLOWER**, pkt. 10c.;  $\frac{1}{8}$  oz. 20c.

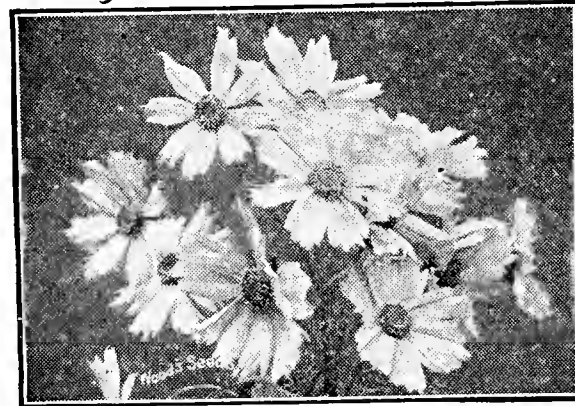
**CANDYTUFT**—No. 675. **White**, pkt. 10c.;  $\frac{1}{2}$  oz. 20c.

No. 676. **Rose Pink**, pkt. 10c.;  $\frac{1}{8}$  oz. 20c.

No. 677. **Lilac**, pkt. 10c.;  $\frac{1}{8}$  oz. 20c.

No. 679. **Giant Empress Hyacinth Flowered**, pkt. 5c.;  $\frac{1}{4}$  oz. 15c.;  $\frac{1}{2}$  oz. 25c.

No. 678. **Mixed Colors**, pkt. 5c.;  $\frac{1}{2}$  oz. 20c.; oz. 30c.



Calliopsis or Coreopsis

**CENTAUREA OR CORN FLOWER**—No. 711. **Double Blue**, pkt. 10c.;  $\frac{1}{4}$  oz. 20c.;  $\frac{1}{2}$  oz. 30c.

No. 710. **Double Rose Pink**, pkt. 10c.;  $\frac{1}{4}$  oz. 20c.;  $\frac{1}{2}$  oz. 30c.

No. 712. **Double Mixed Colors**, pkt. 5c.;  $\frac{1}{8}$  oz. 25c.; oz. 40c.

**CHRYSANTHEMUM**—No. 717. **Eastern Star**, pkt. 10c.;  $\frac{1}{4}$  oz. 20c.

No. 718. **Morning Star**, pkt. 10c.;  $\frac{1}{4}$  oz. 20c.

No. 719. **Mixed Varieties**, pkt. 5c.;  $\frac{1}{4}$  oz. 15c.

No. 723. **CLARKIA**—pkt. 5c.;  $\frac{1}{4}$  oz. 20c. Clarkia

**COCKSCOMB OR CELOSIA**—No. 735. **Plumed**, pkt. 5c.;  $\frac{1}{4}$  oz. 20c.

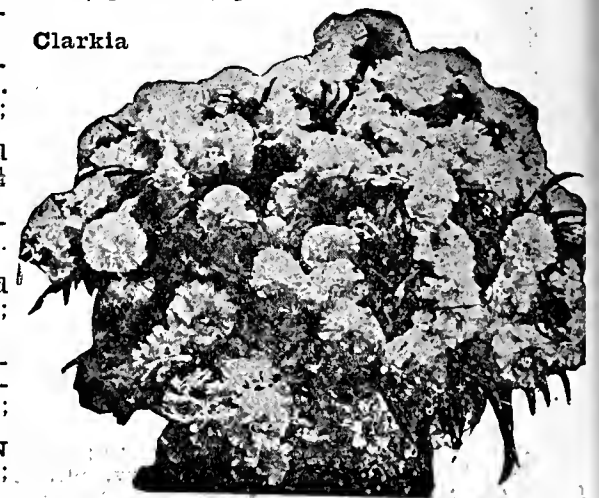
No. 736. **Tall, Mixed Colors**, pkt. 5c.;  $\frac{1}{4}$  oz. 20c.

No. 737. **Dwarf Scarlet**, pkt. 10c.;  $\frac{1}{8}$  oz. 25c.

No. 738. **Dwarf, Mixed Colors**, pkt. 10c.;  $\frac{1}{8}$  oz. 20c.

No. 771. **CYNOGLOSSUM—Chinese Forget-Me-Not** pkt. 5c.;  $\frac{1}{4}$  oz. 20c.

No. 790. **AFRICAN DAISY**, pkt. 10c.;  $\frac{1}{8}$  oz. 20c.









# WOOD'S CROP SPECIAL

- DIANTHUS OR PINK**—No. 806. Wood's Superb Mixture, pkt. 10c.;  $\frac{1}{4}$  oz. 30c.;  $\frac{1}{2}$  oz. 50c.  
 No. 807. Double China, pkt. 5c.;  $\frac{1}{4}$  oz. 20c.;  $\frac{1}{2}$  oz. 35c.  
 No. 808. Double Japan, pkt. 5c.;  $\frac{1}{4}$  oz. 20c.;  $\frac{1}{2}$  oz. 35c.  
 No. 810. Wood's Mixture of Single Pinks, pkt. 5c.;  $\frac{1}{4}$  oz. 20c.;  $\frac{1}{2}$  oz. 35c.  
 No. 809. Wood's Mixture of Double Pinks, pkt. 5c.;  $\frac{1}{4}$  oz. 25c.;  $\frac{1}{2}$  oz. 40c.  
 No. 811. Double Fringed Pink, pkt. 10c.;  $\frac{1}{4}$  oz. 30c.  
 No. 813. Fireball, pkt. 10c.;  $\frac{1}{2}$  oz. 25c.

No. 820. **DIDISCUS** (Blue Lace Flower), pkt. 10c.;  $\frac{1}{2}$  oz. 20c.

- ESCHOLTZIA**—No. 834. Sunset, pkt. 10c.;  $\frac{1}{4}$  oz. 25c.  
 No. 835. Scarlet Beauty, pkt. 10c.;  $\frac{1}{4}$  oz. 25c.  
 No. 836. Golden West, pkt. 10c.;  $\frac{1}{4}$  oz. 20c.  
 No. 837. Mixed Colors, pkt. 5c.;  $\frac{1}{2}$  oz. 20c.; oz. 30c.  
 No. 840. Bush Escholtzia (Santa Barbara Poppy), pkt. 5c.;  $\frac{1}{4}$  oz. 15c.



Gaillardia

- No. 849. **FEVERFEW**, pkt. 5c.;  $\frac{1}{4}$  oz. 20c.  
 No. 861. **GAILLARDIA**—Mixed Colors, pkt. 5c.;  $\frac{1}{4}$  oz. 20c.  
 No. 868. **GILIA**—Mixed Colors, pkt. 5c.;  $\frac{1}{4}$  oz. 20c.  
 No. 872. **GLOBE AMARANTH**—Mixed Colors, pkt. 5c.;  $\frac{1}{4}$  oz. 15c.  
 No. 875. **GODETIA**—Mixed Colors, pkt. 5c.;  $\frac{1}{4}$  oz. 15c.  
 No. 879. **GYPSOPHILA** (Baby's Breath), pkt. 5c.;  $\frac{1}{2}$  oz. 15c.; oz. 25c.  
**HELICHRYSUM** (Straw Flower)—No. 884. Fireball, pkt. 10c.;  $\frac{1}{4}$  oz. 25c.  
 No. 885. Golden Ball, pkt. 10c.;  $\frac{1}{4}$  oz. 25c.  
 No. 886. Mixed Colors, pkt. 5c.;  $\frac{1}{4}$  oz. 20c.

- LUPINS**—No. 952. Blue, pkt. 5c.;  $\frac{1}{2}$  oz. 15c.  
 No. 955. Mixed Colors, pkt. 5c.;  $\frac{1}{2}$  oz. 15c.

- LARKSPUR**—No. 936. Double Dark Blue, pkt. 10c.;  $\frac{1}{4}$  oz. 20c.;  $\frac{1}{2}$  oz. 35c.  
 No. 938. Double Light Blue, pkt. 10c.;  $\frac{1}{4}$  oz. 20c.;  $\frac{1}{2}$  oz. 35c.  
 No. 937. Double Pink, pkt. 10c.;  $\frac{1}{4}$  oz. 20c.;  $\frac{1}{2}$  oz. 35c.  
 No. 939. Double Mixed Colors, pkt. 5c.;  $\frac{1}{4}$  oz. 15c.;  $\frac{1}{2}$  oz. 25c.

- GIANT IMPERIAL LARKSPURS**—No. 934. Dark Blue Spire, pkt. 10c.;  $\frac{1}{4}$  oz. 30c.;  $\frac{1}{2}$  oz. 50c.  
 No. 935. Exquisite Rose, pkt. 10c.;  $\frac{1}{4}$  oz. 30c.;  $\frac{1}{2}$  oz. 50c.  
 No. 940. Peach Blossom, pkt. 10c.;  $\frac{1}{4}$  oz. 30c.;  $\frac{1}{2}$  oz. 50c.  
 No. 941. Lilac or Lavender Spire, pkt. 10c.;  $\frac{1}{4}$  oz. 30c.;  $\frac{1}{2}$  oz. 50c.  
 No. 942. Mixed Colors, pkt. 10c.;  $\frac{1}{4}$  oz. 25c.;  $\frac{1}{2}$  oz. 40c.

- MARIGOLD**—No. 965. Guinea Gold, pkt. 10c.;  $\frac{1}{2}$  oz. 35c.;  $\frac{1}{4}$  oz. 60c.  
 No. 968. French Double Mixed, pkt. 5c.;  $\frac{1}{4}$  oz. 20c.  
 No. 964. African Double Mixed, pkt. 5c.;  $\frac{1}{4}$  oz. 20c.  
 No. 967. Legion of Honor, pkt. 5c.;  $\frac{1}{4}$  oz. 20c.  
 No. 960. African Double Orange, pkt. 10c.;  $\frac{1}{4}$  oz. 25c.  
 No. 961. African Double Lemon Queen, pkt. 10c.;  $\frac{1}{4}$  oz. 25c.  
 No. 966. French Golden Ball, pkt. 10c.;  $\frac{1}{4}$  oz. 25c.  
 No. 969. Miniature, pkt. 10c.;  $\frac{1}{4}$  oz. 25c.

- No. 973. **MARVEL OF PERU** (Four o'Clock), pkt. 5c.; oz. 15c.

- MIGNONETTE**—No. 976. Wood's Superb Mixture, pkt. 10c.;  $\frac{1}{4}$  oz. 15c.;  $\frac{1}{2}$  oz. 25c.  
 No. 977. Defiance, pkt. 10c.;  $\frac{1}{4}$  oz. 15c.;  $\frac{1}{2}$  oz. 25c.  
 No. 978. Machet, pkt. 10c.;  $\frac{1}{4}$  oz. 15c.;  $\frac{1}{2}$  oz. 25c.  
 No. 982. Sweet, pkt. 5c.;  $\frac{1}{2}$  oz. 15c.; oz. 25c.

No. 1050. **NEMOPHILA**—Pkt. 5c.;  $\frac{1}{4}$  oz. 20c.

No. 1058. **NIGELLA**—Pkt. 5c.;  $\frac{1}{2}$  oz. 15c.

- PHLOX**—No. 1115. Large Flowering Dwarf, pkt. 10c.;  $\frac{1}{2}$  oz. 25c.  
 No. 1116. Star Phlox, pkt. 10c.;  $\frac{1}{2}$  oz. 25c.  
 No. 1119. Mixed Phlox, pkt. 5c.;  $\frac{1}{4}$  oz. 20c.;  $\frac{1}{2}$  oz. 40c.; oz. 75c.

- GRANDIFLORA LARGE FLOWERING PHLOX**—No. 1123. Pure White, pkt. 10c.;  $\frac{1}{4}$  oz. 30c.;  $\frac{1}{2}$  oz. 55c.; oz. \$1.00.  
 No. 1124. Rose Pink, pkt. 10c.;  $\frac{1}{4}$  oz. 30c.;  $\frac{1}{2}$  oz. 55c.; oz. \$1.00.  
 No. 1125. Scarlet, pkt. 10c.;  $\frac{1}{4}$  oz. 30c.;  $\frac{1}{2}$  oz. 55c.; oz. \$1.00.  
 No. 1126. Yellow, pkt. 10c.;  $\frac{1}{4}$  oz. 30c.;  $\frac{1}{2}$  oz. 55c.; oz. \$1.00.  
 No. 1127. Dark Blue, pkt. 10c.;  $\frac{1}{4}$  oz. 30c.;  $\frac{1}{2}$  oz. 55c.; oz. \$1.00.  
 No. 1129. Grandiflora Mixed Colors, pkt. 10c.;  $\frac{1}{4}$  oz. 25c.;  $\frac{1}{2}$  oz. 45c.; oz. 85c.

- POPPY**—No. 1140. Wood's Superb Mixture, pkt. 10c.;  $\frac{1}{2}$  oz. 25c.  
 No. 1141. Special Mixed Single Poppies, pkt. 5c.;  $\frac{1}{2}$  oz. 15c.; oz. 25c.  
 No. 1142. Special Mixed Double Poppies, pkt. 5c.;  $\frac{1}{2}$  oz. 15c.; oz. 25c.

- No. 1148. King Edward, pkt. 10c.;  $\frac{1}{4}$  oz. 25c.  
 No. 1144. Tulp Poppy, pkt. 10c.;  $\frac{1}{4}$  oz. 20c.  
 No. 1143. Flanders, pkt. 10c.;  $\frac{1}{4}$  oz. 20c.  
 No. 1146. Double Carnation Flowered, pkt. 5c.;  $\frac{1}{2}$  oz. 15c.  
 No. 1147. Double Peony Flowered, pkt. 5c.;  $\frac{1}{2}$  oz. 15c.

- SHIRLEY POPPIES**—No. 1137. Rose Pink, pkt. 10c.;  $\frac{1}{4}$  oz. 20c.

- No. 1138. Blue, pkt. 10c.;  $\frac{1}{4}$  oz. 20c.  
 No. 1139. Scarlet, pkt. 10c.;  $\frac{1}{4}$  oz. 20c.  
 No. 1045. Mixed Shirley, pkt. 5c.;  $\frac{1}{4}$  oz. 15c.  
 No. 1162. **EVENING PRIMROSE**—Pkt. 10c.;  $\frac{1}{4}$  oz. 20c.  
 No. 1171. **RUBECKIA** (Coneflower)—Pkt. 10c.;  $\frac{1}{4}$  oz. 25c.

- No. 1185. **SCABIOSA**—Mixed Colors, pkt. 5c.;  $\frac{1}{4}$  oz. 20c.;  $\frac{1}{2}$  oz. 30c.

- No. 1196. **SNOW ON THE MOUNTAIN**, pkt. 10c.;  $\frac{1}{4}$  oz. 20c.

- SUNFLOWER**—No. 1207. Red, pkt. 5c.;  $\frac{1}{2}$  oz. 20c.

- No. 1208. Miniature, pkt. 5c.;  $\frac{1}{2}$  oz. 20c.

- No. 1209. Double Chrysanthemum Flowered, pkt. 5c.;  $\frac{1}{2}$  oz. 20c.

- No. 1210. California, pkt. 5c.; oz. 20c.

- No. 1218. **SWEET SULTAN**, Mixed Colors, pkt. 5c.;  $\frac{1}{4}$  oz. 15c.

- VERBENA**—No. 1245. Defiance Scarlet, pkt. 10c.;  $\frac{1}{2}$  oz. 25c.;  $\frac{1}{4}$  oz. 40c.

- No. 1246. Mammoth White, pkt. 10c.;  $\frac{1}{2}$  oz. 25c.;  $\frac{1}{4}$  oz. 40c.  
 No. 1247. Mammoth Pink, pkt. 10c.;  $\frac{1}{2}$  oz. 25c.;  $\frac{1}{4}$  oz. 40c.  
 No. 1248. Mammoth Purple, pkt. 10c.;  $\frac{1}{2}$  oz. 25c.;  $\frac{1}{4}$  oz. 40c.  
 No. 1252. Mammoth Mixed Colors, pkt. 10c.;  $\frac{1}{2}$  oz. 20c.;  $\frac{1}{4}$  oz. 35c.  
 No. 1255. Mixed Verbenas, pkt. 5c.;  $\frac{1}{4}$  oz. 25c.

No. 1272. **VIRGINIAN STOCK**—Pkt. 5c.;  $\frac{1}{2}$  oz. 15c.; oz. 25c.

No. 1275. **ANNUAL WALLFLOWER**—Pkt. 10c.;  $\frac{1}{4}$  oz. 25c.

No. 1282. **CHINESE WOOLFLOWER**—Pkt. 10c.;  $\frac{1}{2}$  oz. 20c.

- ZINNIAS**—Dahlia Flowered—No. 1288. Exquisite, pkt. 15c.;  $\frac{1}{4}$  oz. 45c.

- No. 1289. Golden State, pkt. 15c.;  $\frac{1}{4}$  oz. 45c.  
 No. 1290. Polar Bear, pkt. 15c.;  $\frac{1}{4}$  oz. 45c.  
 No. 1291. Crimson Monarch, pkt. 15c.;  $\frac{1}{4}$  oz. 45c.  
 No. 1392. Scarlet Flame, pkt. 15c.;  $\frac{1}{4}$  oz. 45c.  
 No. 1393. Dream, pkt. 15c.;  $\frac{1}{4}$  oz. 45c.  
 No. 1298. Dahlia Flowered, Mixed Colors, pkt. 10c.;  $\frac{1}{4}$  oz. 35c.;  $\frac{1}{2}$  oz. 60.; oz. \$1.00.

- GRANDIFLORA GIANT ZINNIAS**—No. 1309. White, pkt. 10c.;  $\frac{1}{4}$  oz. 25c.;  $\frac{1}{2}$  oz. 45c.; oz. 75c.

- No. 1310. Scarlet, pkt. 10c.;  $\frac{1}{4}$  oz. 25c.;  $\frac{1}{2}$  oz. 45c.; oz. 75c.  
 No. 1311. Pink, pkt. 10c.;  $\frac{1}{4}$  oz. 25c.;  $\frac{1}{2}$  oz. 45c.; oz. 75c.  
 No. 1312. Yellow, pkt. 10c.;  $\frac{1}{4}$  oz. 25c.;  $\frac{1}{2}$  oz. 45c.; oz. 75c.  
 No. 1313. Purple, pkt. 10c.;  $\frac{1}{4}$  oz. 25c.;  $\frac{1}{2}$  oz. 45c.; oz. 75c.  
 No. 1318. Grandiflora Mixed Colors, pkt. 10c.;  $\frac{1}{4}$  oz. 25c.;  $\frac{1}{2}$  oz. 45c.; oz. 75c.

- POMPON OR LILLIPUT ZINNIAS**—No. 1321. Pure White, pkt. 10c.;  $\frac{1}{4}$  oz. 30c.

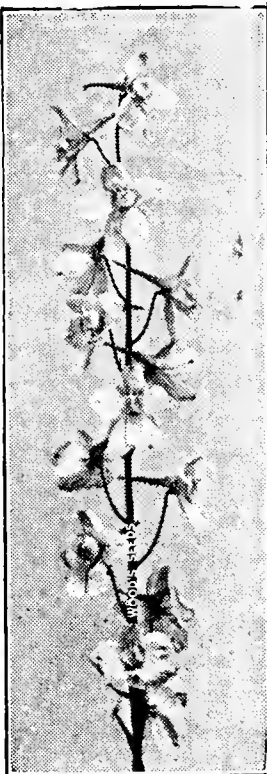
- No. 1322. Yellow, pkt. 10c.;  $\frac{1}{4}$  oz. 30c.  
 No. 1323. Pink, pkt. 10c.;  $\frac{1}{4}$  oz. 30c.  
 No. 1324. Scarlet, pkt. 10c.;  $\frac{1}{4}$  oz. 30c.  
 No. 1327. Mixed Colors, pkt. 10c.;  $\frac{1}{4}$  oz. 25c.

- OTHER ELEGANT ZINNIAS**  
 No. 1306. Double Picotee, pkt. 10c.;  $\frac{1}{2}$  oz. 25c.;  $\frac{1}{4}$  oz. 40c.  
 No. 1303. Scabiosa Flowered, pkt. 20c.;  $\frac{1}{4}$  oz. 45c.  
 No. 1300. Curled and Crested, pkt. 10c.;  $\frac{1}{4}$  oz. 25c.;  $\frac{1}{2}$  oz. 40c.  
 No. 1304. Crisp and Curly, pkt. 10c.;  $\frac{1}{4}$  oz. 30c.;  $\frac{1}{2}$  oz. 50c.  
 No. 1305. Tom Thumb, pkt. 10c.;  $\frac{1}{4}$  oz. 30c.;  $\frac{1}{2}$  oz. 50c.  
 No. 1299. Savoy, pkt. 10c.;  $\frac{1}{4}$  oz. 30c.;  $\frac{1}{2}$  oz. 50c.  
 No. 1302. Double Striped, pkt. 10c.;  $\frac{1}{4}$  oz. 25c.;  $\frac{1}{2}$  oz. 40c.  
 No. 1301. Double Zinnias, Mixed Colors, pkt. 5c.;  $\frac{1}{2}$  oz. 20c.

- No. 1322. **MIXED FLOWER SEEDS**—Pkt. 5c.; oz. 15c.;  $\frac{1}{4}$  lb. 50c.; lb. \$1.75.



Scabiosa



Larkspur

## SWEET PEAS

Plant in November to have more brilliant blooms and for a longer season than from spring plantings.

## SPRING FLOWERING BULBS

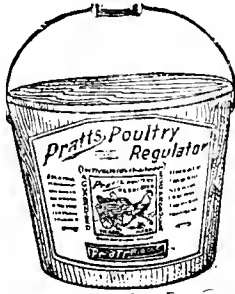
We will publish shortly a special price-list of Hyacinths, Tulips, Jonquils, Narcissus, etc. If interested write for a copy.

# WOOD'S CROP SPECIAL

## Pratts POULTRY REMEDIES

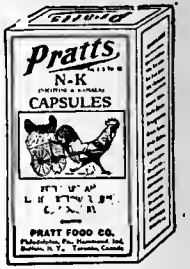
### Pratts Poultry Regulator

—Pratts is the original Poultry Regulator of America, and is in use by the most successful poultry raisers everywhere. It builds up vitality, promotes sound digestion, sharpens appetite, wards off disease and puts the birds in good condition for heavy laying. Given to breeding stock, it increases the fertility of eggs, strong in vitality, that will hatch healthy chicks that will develop into husky pullets and cockerels. **By mail postpaid, 1½-lb. package 35c; 4-lb. package 65c. Not prepaid, 1½-lb. package 25c; 4-lb. package 50c.; 12-lb. package \$1.50; 25-lb. bag \$2.50; 100-lb. bag \$9.25 each.**



### Pratts N-K Worm Capsules

—For worms in poultry—a special air-tight coated capsule of nicotine and kamala for individual treatment for tape and round worms. Contents of capsule will keep fresh indefinitely. N-K's are recommended by leading poultry authorities; they are certain in action, safe, economical, and easy to use. Made in two sizes, for adults and chicks. **By mail postpaid, adult size, 50-tablet package 85c. 100-tablet package \$1.50; 500-tablet package \$5.50. Chick size, 50-tablet package 55c.; 100-tablet package \$1.00; 500-tablet package \$3.75.**



### Pratts Powdered Lice Killer

—An effective and economical lice killer that quickly rids your fowls of these profit-eating pests. Use it for dusting poultry, in the nests and dust boxes. Also used to free horses, cows, sheep, dogs and cats from lice, fleas and other vermin. **By mail postpaid, 14-oz. package 35c; 2-lb. package 60c. Not prepaid, 14-oz. package 25c; 2-lb. package 50c each**



### Pratts Roost Paint

—A new, improved, nicotine sulphate solution combined with other active insecticides, that will positively kill lice. Easily applied by either spraying or painting the roosts, saves the labor of handling each bird. One pint will paint about 100 running feet of roost. **½ pint 75c; 1 pint \$1.25; 1 quart \$2.00; 1 gallon \$6.00. Cannot be mailed.**



### Pratts Chick Tablets

—Formerly called white diarrhoea tablets. Use Pratts Chick Tablets in chicks' drinking water for the first ten days and you will avoid losses from white diarrhoea and other bowel troubles. This remedy has saved many dollars worth of chicks to poultry raisers. You can depend on it. **By mail postpaid, small size (approximately 30 tablets) 30c; large size (approximately 75 tablets) 55c. Not prepaid, small size 25c; large size 50c each.**

### Pratts Special Compound

—Formerly called Cholera Preparation. For all kinds of digestive troubles commonly known as "cholera," such as indigestion, diarrhoea, sour crop, dysentery, etc. Can be used as a preventive as well as a remedy. **By mail postpaid, 60c; not prepaid, 50c per package.**

### Pratts R. P. Tablets

—Formerly called Roup Tablets. These tablets are intended for individual treatment of fowls. An easy powerful remedy with a long record of success in the treatment of colds, roup, diphtheria, catarrh, etc. Many poultry men use this remedy the year round as an effective preventive. **By mail postpaid, small size (approximately 75 tablets) 30c; large size (approximately 175 tablets) 55c. Not prepaid, small size 25c; large size 50c each.**



### Pratts Poultry Worm Powder

—Worms in poultry are one of the greatest menaces to the poultry raiser. This powder is very effective and practical for flock treatment. Rids poultry of large, round and tape worms as well as many other kinds. Safe, easy and economical to use. Does not require handling or individual dosing of fowls or effect egg production or growth during treatment. **By mail postpaid, 2-lb. package 70c. Not prepaid, 60c. each.**

### Pratts Sorehead Chicken Pox Preparation

—A safe, sure and powerful remedy that will prevent as well as cure this disease. Tones up the system, heals the sores and prevents spread of the disease. **By mail postpaid, 65c; not prepaid, 60c per package.**

### Black Leaf Worm Powder

—A splendid flock treatment for round worm. Saves time and labor. No handling of the birds. No setback in egg production. Just feed in the mash ¼ lb. of "Black Leaf" Worm Powder to a gallon of mash to 100 birds. Full directions for feeding on each package. **Price postpaid, 1-lb. package \$1.05; 1½-lb. package \$4.10; 3-lb. package \$7.65 each. Not prepaid, 1-lb. package \$1.00; 1½-lb. package \$4.00; 3-lb. package \$7.50 each.**

### "Black Leaf 40"

—A new control for poultry lice and mites. Painted on the top side of the roosts will control body lice. Saves the labor of handling each bird. Equally effective for mites when applied as a spray. Dilute at the rate of about one tablespoonful to one gallon of water plus ½ ounce of ordinary laundry soap. **1-ounce bottle (treats 12 to 15 running feet of roost) 35c; 5 oz. (treats 65 to 100 feet of roost) \$1.00; 1-lb. bottle (treats 195 to 240 feet) \$2.10; 2-lb. tin (treats 385 to 480 feet) \$3.10; 5-lb. tin (treats 1,000 to 1,200 feet) \$5.85; 10-lb. tin (treats 1,900 to 2,400 feet) \$10.15. Cannot be mailed.**

### CA Worm Capsules CA

—A combination of scientifically recognized drugs that have proven to be highly effective, removing both tapeworms and roundworms at a single treatment and without producing any appreciable ill effects on the birds or interfering with egg production. Put up in two sizes: No. 195 for chickens 2 to 3 months old, and No. 196 for chickens over 3 months old. Order by number. **Price: No. 195 Capsules for young birds 35c. per doz., 50 for 80c. postpaid. No. 196 Capsules for adult birds 45c. per doz., 50 for \$1.00 postpaid.**

### Hackett's Gape Cure

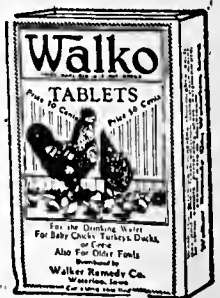
—An excellent remedy for this deadly disease. It is not given internally, but simply dusted over the chicks, and they inhale the dust, which kills the worms and germs. **Price postpaid, 50c each. Not prepaid, 40c each.**

### NOPCO Cod Liver Oil

—For Poultry and Animal Feeding. Cod Liver Oil is one of the most profitable aids for poultry feeding. It increases egg production, eliminates soft-shelled eggs, improves hatchability, produces stronger chicks, builds rugged bone structure, promotes growth, reduces mortality, gives a better molt, conditions and protects poultry against disease. Full directions for feeding on each can. **Price, postpaid, 1-qt. can 70c. each. Not prepaid, 1-qt. can 60c.; 2-qt. can \$1.15; 1-gal. can \$2.25; 5-gal. can \$9.50 per can.**

### Walko Tablets

—Especially valuable for diarrhoea and loose bowel trouble among incubator chicks. They tend to prevent digestive disturbances and should be given in all drinking water from the time the chicks are out of the shell. Also recommended for swellings of roup in the head and simple catarrh among older birds. **Price postpaid, small size 50c; larger size \$1.00.**



### Macnair's Barnyard Protector

—Save your chickens, turkeys, guineas and pigeons by feeding them small doses of this powder, according to direction, and the barnyard enemies that kill and eat the entire fowl will surely die. **By mail postpaid, 7-oz. pkg. 55c.; 16-oz. pkg. 85c. Not prepaid, 7-oz. pkg. 50c.; 16-oz. pkg. 75c.**

### Germozone

—Regularly three times a week in the drinking water has given remarkable results in preventing and correcting bowel disorders and in keeping the chicks in a healthy condition. Especially valuable in case of sour crop, limberneck mould poisoning, most diarrhoea and bowel disorders. A 75-tablet package makes 12 ounces of liquid Germozone. **Price postpaid, 20-tablet box 25c.; 75-tablet box 75c.**



## POULTRY HELPS AND APPLIANCES



**Kwik-On Leg Bands** —Made of aluminum. These bands are light in weight, dependable and will not break in using. They are easy to put on and they can't lose off. Kwik-On Bands are accurately made in fast colors, weather proof and will not fade. Made in three colors.. Red, Blue and Greens. Five sizes. Order by number: No. 9, Leghorn size; No. 10, Plymouth Rocks and Rhode Island Reds size; No. 11, Large Plymouth Rocks and Red; No. 12, Asiatics; No. 13, for Turkeys.

	Prices	Postpaid			
	No. 9	No. 10	No. 11	No. 12	No. 13
12 Kwik-On Bands.....	10c	10c	10c	15c	15c
25 Kwik-On Bands.....	15c	20c	20c	25c	25c
50 Kwik-On Bands.....	25c	30c	30c	35c	35c
100 Kwik-On Bands.....	45c	50c	55c	60c	65c

**Bandetts** —Colored celluloid leg bands, spring clip pattern, with big visible numbers. They are easily applied single handed. Made in four colors—blue, red, yellow and green. Two sizes—No. 9, for Leghorns; No. 11, for Plymouth Rock and Rhode Island Reds. Bandetts sold only in unbroken sets of 25 in one color. By mail postpaid, 25 for 60c; 50 for \$1.00; 100 for \$1.75.



**Perfect Poultry Punch** —Simple in construction. Makes a good, clear, clean cut, and does not mutilate the web. **BY MAIL, POSTPAID, 60c. each. NOT POSTPAID, 55c. each.**

**Glass Nest Eggs** —Made of white opal glass, uniform in size and will not break easily. Will last a lifetime. Keep one in every nest, they will induce the hen to lay where she should—in the nests provided for her. Made in two sizes.

For Poultry—By mail postpaid, 6 for 20c; 35c per dozen. Not prepaid, 6 for 15c; dozen 25c.

For Quail—By mail postpaid, dozen 45c; \$3.00 per 100. Not prepaid, 35c per dozen; \$2.75 per 100.

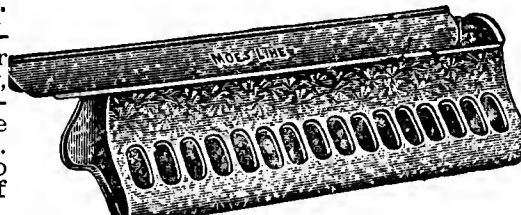
**Lime Nest Eggs** —They look like real hen's eggs. Made from pure sterilized sulphate of lime, a product well known among poultry raisers for its value in keeping nests in a clean healthful condition. By mail postpaid, 6 for 25c; 40c. per dozen. Not postpaid, 6 for 20c.; 30c. per dozen.



**Five-Quart Chick Fountain** —Here is a fountain value really out of the ordinary. Made of heavy, galvanized iron. Easy to fill and clean. Top snaps into bottom pan on glove fastener principle. Has drop handle for carrying, sloping top prevents roosting. Trough specially designed for baby chicks, they cannot get wet or drown. Height 9 inches; diameter, 9½ inches. No. 01—By mail postpaid, 60c. each. Not prepaid, 50c. each; \$5.75 per dozen.

### Large Capacity Feeder

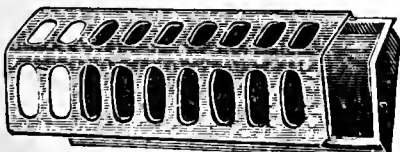
—A wonderful feeder for young, growing poultry, and a great time and labor saver when chicks are raised in large numbers. Sliding top cover; easy to fill and clean; made of heavy galvanized iron.



No. 140—10-qt. capacity. By mail postpaid ..... \$ .95  
Not prepaid, 75c. each.  
No. 141—17-qt. capacity. By mail postpaid ..... 1.50  
Not prepaid, \$1.25 each.

### Double Chick Feeders

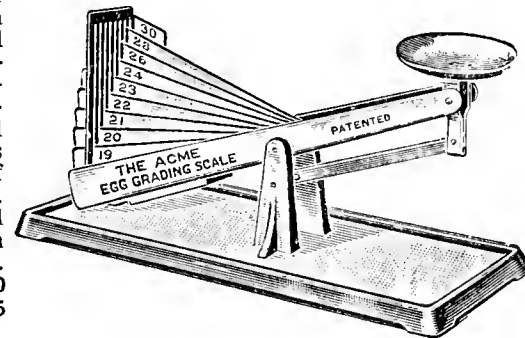
(For Chicks and Growing Stock).—Made of best quality galvanized iron, accurately stamped with dies. No sharp or rough edges to injure the chicks. Sliding top. Easy to fill and clean. Made in two sizes.  
No. G-10—Length 10 ins. By mail postpaid, 25c. Not prepaid, 15c. each; \$1.75 per dozen.  
No. 6-20—Length 20 ins. By mail postpaid, 35c. Not prepaid, 25c. each; \$2.25 per dozen.



postpaid, 35c. Not prepaid, 25c. each; \$2.25 per dozen.

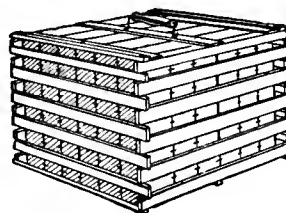
### Acme Egg Grading Scales

—Made entirely of aluminum, which makes it rustproof and practically indestructible. Every part is accurately made and carefully tested and will meet the requirements of any State bureau of weights and measures. Simple in operation and will grade all eggs from 19 to 30 ounces per doz. Price, postpaid, \$3.00 each. Not prepaid, \$2.75 each.



**3 x 4 Folding Egg Cartons** —This is the regulation Folding Egg Carton, used for delivering eggs direct to customers. It is not a parcel post box. 1 dozen size. By mail postpaid, 30c per dozen. Not prepaid, 15c per dozen; \$1.25 per 100; \$2.50 per bundle of 250 boxes.

### Humpty Dumpty Folding Egg Crates



—A safe and convenient folding shipping egg crate. Made of hard wood with wire rod through corners, cardboard fillers and cup-shaped cushion flats.

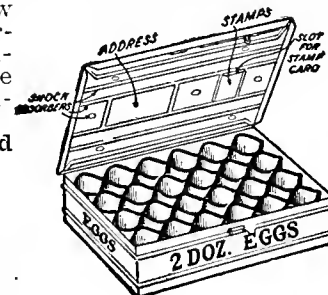
	Postpaid Each	Not Postpaid Each	Doz.
6-doz. egg size....	60c	50c	\$5.50
12-doz. egg size....	70c	55c	6.25
15-doz. egg size....	80c	60c	7.00

Extra cardboard fillers, per set, consisting of 12 fillers and 12 cup-shaped cushion flats, 50c. per set, postpaid.

### Metal Egg Crates For Shipping Eggs by Parcel Post.

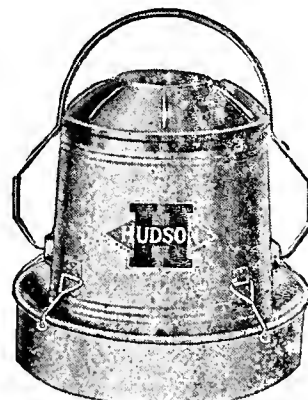
—Made for continued use, being very strongly constructed, but light in weight. The new patented filer made of cardboard, circular in shape (like an egg) and reinforced with metal edges to insure strength, yet light in weight, is a wonder for safety and durability.

Capacity	Postpaid Each	Not Postpaid Each
1-doz. size .....	\$1.10	\$1.00
1½-doz. size .....	1.25	1.15
2-doz. size .....	1.35	1.20
3-doz. size .....	1.65	1.50
4-doz. size .....	1.90	1.75
6-doz. size .....	2.20	2.00



### Handy Fill Poultry Fountain

—A very popular and practical fountain for chicks or grown fowls. Constructed throughout of heavy galvanized iron. Made strong and rugged to give extra years of service. The bail is reversible and the top part of fountain forms a pail, which may be easily cleaned and filled. To restore to drinking position, replace drinking pan, snap hooks over pan edge, which attaches it securely to pail and reverse fountain. No danger of overflow or splashing when turning. Fitted with circular metal stand two inches high, raising trough edge up to proper drinking height, an entirely new feature. Two sizes. By mail postpaid, No. C2, two-gallon size, \$1.35; No. C3, three gallon size, \$1.60 each. Not prepaid, No. C2, \$1.10; No. C3, \$1.35 each.



### Double Wall Fountain

—This Double Wall Fountain is top filled. Double wall keeps water cool in summer and retards freezing in winter. Operates on vacuum principal. Feeds automatically. Small automatic valve prevents pan from overflowing while being filled. New pivot mounted disc on the cover wobbles from side to side and prevents roosting on cover. An excellent fountain for growing chicks and full grown fowls. Two sizes. By mail postpaid, No. C5, five-gallon size, \$2.90; No. C3, eight-gallon size, \$3.60 each. Not prepaid, No. C5, \$2.60; No. C3, \$3.25 each.







**T. W. WOOD & SONS**  
 Seedsmen  
 Richmond, - Virginia

Sec. 562 P. L. & R.  
 U. S. POSTAGE  
 PAID  
 Richmond, Va.  
 Permit No. 142

U. S. DEPT. OF AGRICULTURE  
 BUREAU OF DAIRYING,  
 WASHINGTON, D. C.



## WOOD'S FAMOUS POULTRY-DAIRY-PIGEON FEEDS

### MASH FEEDS

	50-lb. bag.	100-lb. bag.
PAMUNKEY LAYING MASH 19% protein, with buttermilk .....	\$1.25	\$2.30
HOLLYBROOK LAYING MASH 20% protein, with buttermilk .....	1.25	2.35
HOLLYBROOK GROWING MASH, 16% with buttermilk and cod liver oil.....	1.40	2.60
HOLLYBROOK STARTING MASH with cod liver oil and buttermilk.....	1.45	2.70
25-pound bag, 75c.		
HOLLYBROOK BROILER OR BAT- TERY RATION with cod liver oil and buttermilk .....	1.45	2.75

### SCRATCH GRAINS

PAMUNKEY SCRATCH FOOD, yellow corn	1.10	2.10
"WOOD'S" SCRATCH FOOD, yellow corn	1.15	2.15
HOLLYBROOK SCRATCH FOOD With yellow corn .....	1.20	2.20
PAMUNKEY CHICK GRAINS .....	1.25	2.25
HOLLYBROOK CHICK GRAINS.....	1.30	2.45
HOLLYBROOK DEVELOPING FOOD.....	1.30	2.40

### PIGEON FEEDS

HOLLYBROOK PIGEON, with corn.....	1.55	2.90
HOLLYBROOK PIGEON, without corn....	1.60	3.00
PAMUNKEY PIGEON, with corn.....	1.45	2.65
FAUST PIGEON HEALTH GRIT.....	.....	2.10

### POULTRY GRAINS

MILO MAIZE .....	1.40	2.60
KAFFIR CORN .....	1.40	2.60
Per bus.		
POULTRY WHEAT (bus. 60 lbs.) .....	.....	\$1.20
HEAVY WHITE OATS (for sprouting) .....	.....	.73
POULTRY BARLEY (bus. 48 lbs.) .....	.....	95

CORN (bus. 56 lbs.)—Yellow, \$1.00 bushel.  
 CRACKED CORN (white and yellow), 100-lb. bag, \$1.90.

### MISCELLANEOUS FEEDS

	10-lb. bag.	50-lb. bag.	100-lb. bag.
Sunflower (for feeding) .....	\$ .60	\$2.20	\$4.20
Buckwheat .....	.30	1.15	2.15
Oyster Shells (coarse—fine) .....	.20	.35	.65
Poultry Grit .....	.15	.55	.85
Alfalfa Meal (choice fine) dehydrated	.25	1.20	2.15
Bran (Dunlop).....	.....	.....	1.80
Ship Stuff (Dunlop) .....	.....	.....	1.90
Linseed Meal, 60% .....	.35	1.40	2.60
Corn Meal .....	.....	.....	1.90
Powdered Sulphur .....	.70	2.85	5.25
Canada Field Peas .....	.....	.....	4.40
Epsom Salts .....	.60	2.30	4.35
Cotton Seed Meal, 41% .....	.....	.....	1.85

Charcoal, 2-lb. pkg. 20c.; 50-lb. bag, \$1.05; 100 lbs., \$1.90.  
 Dried Buttermilk, \$5.25 per 100 lbs.  
 Fish Meal, 60% protein, \$2.75 per 100 lbs.

MEAT SCRAPS—Wood's Premier, 55% protein, 10 lbs., 30c.;  
 50-lb. bag, \$1.20; 100-lb. bag, \$2.25.

POULTRY LITTER (O.K. Brand), \$2.50 per bale.

"BLACK LEAF 40" (for poultry lice), 1-oz. bottle, 35c.; 5-oz.  
 bottle, \$1.00; 1 lb. \$2.25. (Cannot be mailed.)

### WOOD'S DAIRY FEEDS

WOOD'S 17% DAIRY FEED, 100 lbs. \$1.70; 5-bag lots,  
 \$1.65 per 100 lbs.; per ton, \$32.00.

WOOD'S 20% DAIRY FEED, 100 lbs. \$1.90; 5-bag lots,  
 \$1.85 per 100 lbs.; per ton, \$36.00.

WOOD'S 24% DAIRY FEED, 100 lbs. \$1.95; 5-bag lots,  
 \$1.90 per 100 lbs.; per ton, \$37.00.

WOOD'S RABBIT FOOD, 50-lb. bag, \$1.40; 100-lb. bag,  
 \$2.65.

WOOD'S DOG FOOD, 25 lbs., 90c.; 50-lb. bag, \$1.60;  
 100-lb. bag, \$3.00.

WOOD'S HOG FOOD, 100-lb. bag, \$1.90; 5-bag lots, per  
 100 lbs., \$1.80.