

Historic, archived document

Do not assume content reflects current scientific knowledge, policies, or practices.

Andrews

FRUIT PLANTS and TREES



FAIRFAX
Page 3.

CHIEF
Page 5.



*Grown for the
Northwest*

1935

CUMBERLAND
Page 7.



DORSETT
Page 3.

Andrews
Certified
**STRAWBERRY
PLANTS —**
*Grow Better
and Bear Better*



Chinese Hedgewood

(Dwarf *Ulmus Pumila*)

Remarkable New Hedge Plant Wins Favor!

Extremely Hardy and Drought Resistant

Chinese Hedgewood has proven itself sturdy and dependable even under most trying conditions. It withstands the 40 degrees below zero of northern winters as well as the sweltering temperatures of the southwestern prairie states. It will grow and thrive where other hedges fail.

Beautiful Foliage

The small, fine leaves are rich bright green, appear early in spring and remain in the fall long after most hedges have dropped their foliage.

Well Adapted to Trimming

On account of the close branching habit of Chinese Hedgewood, it is admirably adapted to trimming. It forms a dense, compact wall of any size or shape desired.

Suitable for Tall Hedges and Screens

Chinese Hedgewood is finding great favor as a tall hedge or screen to "plant out" unpleasant views or to secure privacy in the outdoor living room. Plant 1 foot apart and follow directions as to pruning and you can have a solid wall of green 6 feet high in three years from planting.

Ideal for Low Clipped Boundary Hedge

The low clipped boundary hedge between properties for appearance or for protection is becoming more and more popular. Chinese Hedgewood is ideal for such use. It is easy to care for—stands close clipping and makes a clean, trim, dense hedge. Plant 6 inches to 1 foot apart.

These Prices Within Reach of All

	10	50	100
Chinese Hedgewood, 12-18 inch	\$1.25	\$2.85	\$4.85
Chinese Hedgewood, 18-24 inch	1.45	3.65	6.65

Andrews

NURSERY
COMPANY



FOUNDED 1872

Your success with trees and plants is our most earnest desire. To that end we have listed on the following pages the most choice and proven varieties for the Northwest.

We appreciate the splendid patronage we have received in past years and extend to old customers and new, exceptionally good selections and values for the new year.

Thrift, Prosperity and Happiness Begin at Home

You can enjoy the pleasure and the profit of well planted home grounds—luscious berry fruits and tree fruits picked in your own garden—the pride and satisfaction of beautiful grounds planted with flowers, evergreens and shade trees. A very small expenditure will bring you these good things, and you can feel confident of success with our "Certified" stock because:

- ① These selections are adapted to our northern conditions.
- ② It is "Certified" stock—free from disease.
- ③ These plants are acclimated, that is, grown here in the Northwest.
- ④ Simple instructions for planting and care accompany every purchase.

Certified Plants

Regardless of the variety of plants you choose, it is vitally important to plant "CERTIFIED" plants. By that we mean true-to-name plants that have received special attention to keep them clean and free from disease, and which carry the special certificate from the State Nursery Inspection Department, signifying they have had a rigid inspection and are certified free from dangerous insects, pests and diseases. Choose only "CERTIFIED" plants.

Choosing Varieties

There is wide difference of opinion as to the **best varieties to plant**. This is not strange when you consider there are several hundred varieties to choose from.

Here in the Northwest we have different conditions from those five hundred or a thousand miles away. Varieties that might be the best in the South or East, may not do well here.

We have endeavored to give you a true picture of the varieties which are producing best here now, and also a description of very promising new varieties which are available in limited quantities this year and which you should try out.

Acclimated Plants

The advantage of securing plants close at hand instead of from some distant state is two-fold. You get fresher plants, full of vitality and vigor. You get acclimated plants that are already adapted to your climatic conditions. These two features alone often determine your success with fruit plantings.

How to Plant

There is no mystery about growing fruit. If you can raise a garden, you can raise fruit. Select good soil, prepare well, plant carefully, and cultivate regularly. Complete specific instructions will accompany each shipment of plants.



"Certified"
PLANTS

Read This Letter

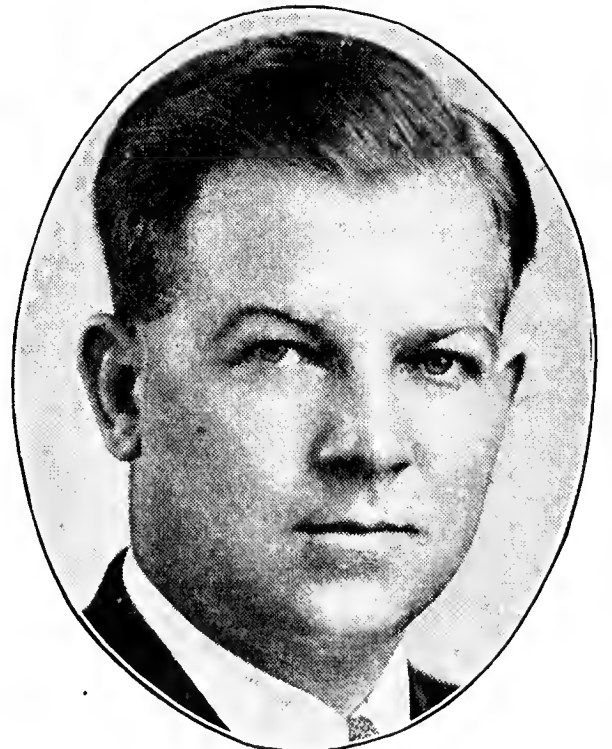
St. Paul, Minn.
Sept. 1, 1934.

Andrews Nursery,
Fairbault.

Gentlemen:

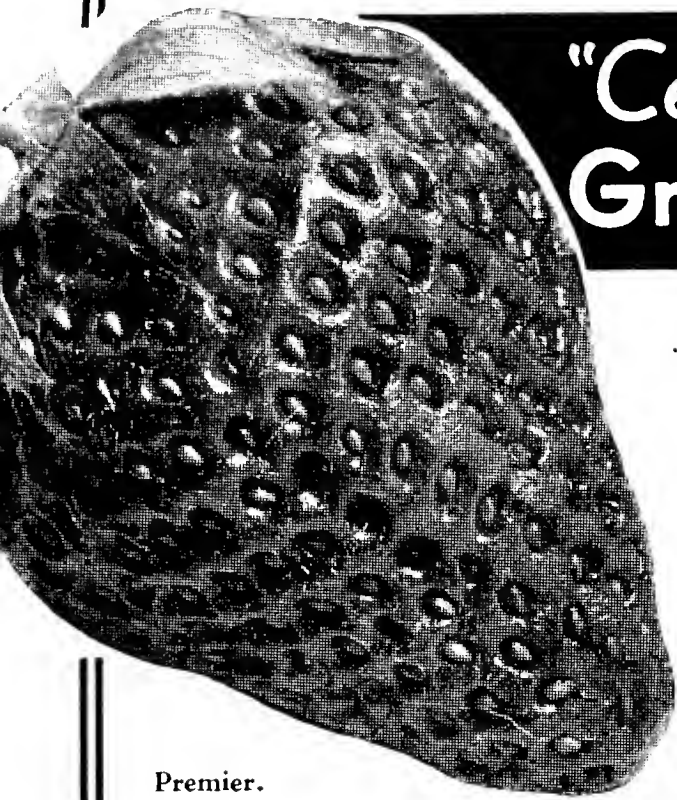
The inspection staff made thorough inspections of your strawberry plantings while at the nursery and gave some excellent reports concerning them. Your nursery will be included as one of the few certified strawberry growers in this state, on the list which is to be issued this fall. We are being particularly careful in certification as to freedom from virus diseases and nematodes.

Very truly yours,
(Signed) T. L. AAMODT,
Assistant State Entomologist.



T. L. AAMODT,
Assistant State Entomologist of
Minnesota.

"Certified" Strawberry Plants Grow Better and Bear Better

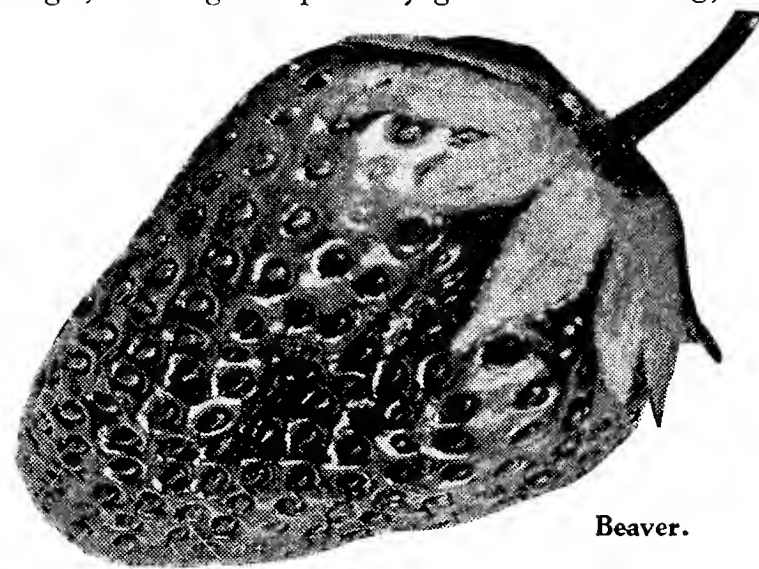


Premier.

Premier A fine early berry, without doubt the most popular standard Strawberry in the Northwest today. It does well over a wide range of territory and on almost any soil, although it pays well to fertilize liberally for heavy yields. A very heavy producer, bearing over a long season. The berries are good average size, a medium red color and show up well in the package. It is firm enough to ship moderate distances and the quality is better than most other varieties now generally grown. One outstanding quality of Premier is its ability to withstand frost injury at blossoming time. Very seldom is the crop injured by frost. We have a moderate amount of "CERTIFIED" Premier available this spring. Order early.

Byron, Minn.
"We got 759 16-quart crates, or 12,000 quarts, from our planting of Premier this year. I measured the bed and found it was 150 square rods, which is less than one acre."
(Signed) SHELLEY AABY.

Beaver Is rapidly becoming popular on account of heavy yield, early season, good color and excellent shipping quality. The fruit is firm, and red clear through, making it especially good for canning, as it retains its color in the can. The flavor is not as high as Premier but the heavy yield and other good qualities make it a desirable Strawberry to plant. Beaver is recommended especially for sandy soil as it appears to do better on sandy soils than on heavy clay. Plant "CERTIFIED" Beaver.



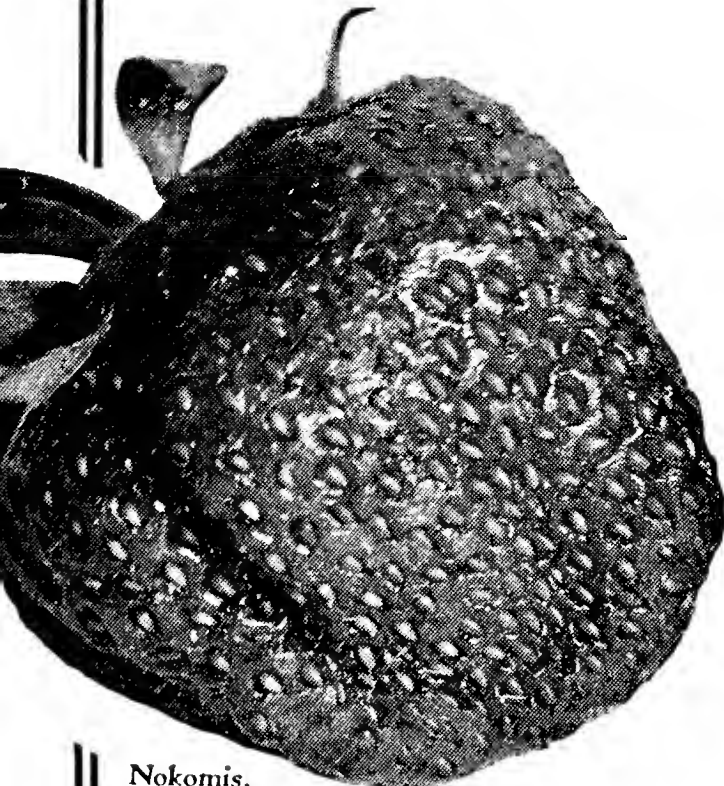
Beaver.

Dunlap A very substantial and dependable medium-season sort that has had in the past, wide popularity. Berries are medium size, bright red clear through and of fair quality. It still has many friends, although it is being largely superseded by such varieties as Premier and Beaver.

Nokomis Medium to late in season. Originated by the Minnesota State Fruit Breeding Farm and described as follows: "A good plant-maker, hardy, very productive, especially valuable for home use and local markets. Fruit

very large, medium red; flesh light red, fine texture, flavor sweet; quality good." Nokomis has not come into general planting because it is too soft for shipping and the flesh is rather light red. However, we have found Nokomis to be without question the sturdiest, ruggedest, best drought resister of any variety now generally grown in the Northwest. It is late enough blooming so it escapes early frost. It is deep enough rooted so that in a dry season it holds up better than Dunlap, Premier or Beaver. In other words it bears fruit and plenty of it, even when others haven't any. It is a money-maker for those selling on the vine or to the local stores. We do not recommend it for shipping nor as the most fancy quality fruit, but it is recommended as a sure cropper and a real money-maker for selling berries on the vine or to a local market. Our recommendation is to include "CERTIFIED" Nokomis for your late berry. Even under unfavorable conditions you can be quite sure of Nokomis.

Eveleth, Minn.
"From 350 Nokomis we picked 294 quarts besides some we used ourselves. The berries are very large, sweet, and juicy. Even the last of the berries ripened perfectly. We consider Nokomis an ideal berry for our location."
Yours very truly,
(Signed) H. JANTZEN.



Nokomis.

EVERBEARING VARIETIES

Progressive Is still the most dependable of the old tried Everbearers. Fruit is a rich, dark red and good quality. Berries not as large as Mastodon but the plants seem more dependable.

Mastodon is the largest of the old everbearing strawberries. The berries are bright red, good quality, and the plants prolific if the soil and conditions are good.

PRICES OF CERTIFIED STRAWBERRY PLANTS

	50	100	200	300	400	500	1000
Beaver	\$0.50	\$0.85	\$1.45	\$1.95	\$2.45	\$2.95	\$ 4.85
Senator Dunlap50	.85	1.45	1.95	2.45	2.95	4.85
Blakemore75	1.25	2.00	2.75	3.45	4.20	7.50
Premier75	1.25	2.00	2.75	3.45	4.20	7.50
Nokomis75	1.25	2.00	2.75	3.45	4.20	7.50
Fairfax75	1.25	2.00	2.75	3.45	4.20	7.50
Dorsett75	1.25	2.00	2.75	3.45	4.20	7.50
Progressive	1.25	2.00	3.50	4.00	5.50	6.75	12.00
Mastodon	1.25	2.00	3.50	4.00	5.50	6.75	12.00

If desired by parcel post, include for packing and postage: 13c for 50, 15c for 100, 23c for 200, 31c for 300.

United States Department of Agriculture Develops Outstanding *New Varieties*

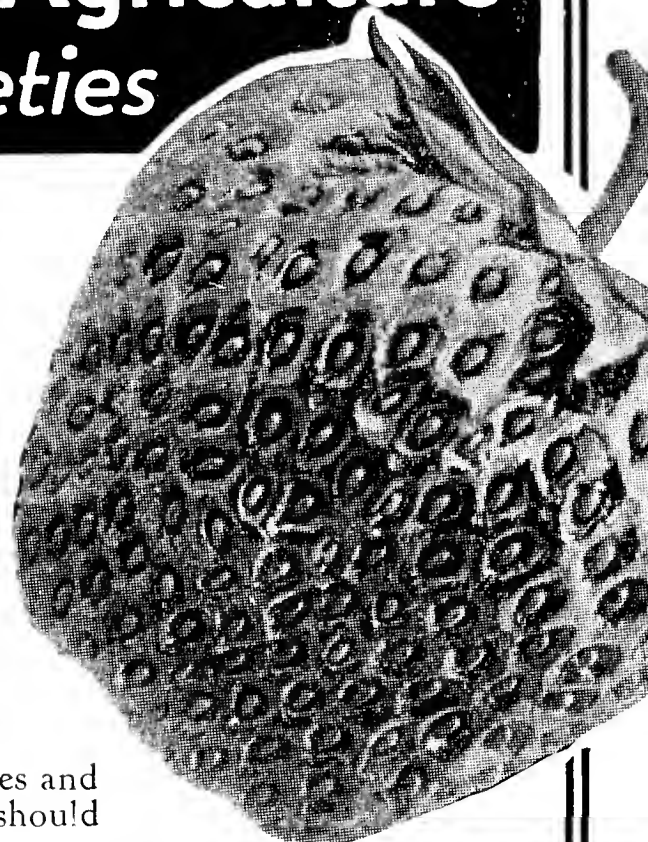
Combining Greater Vigor—Yields—Improved Quality

Close observers predict these new varieties, especially Fairfax and Dorsett, will supersede all other early strawberries.

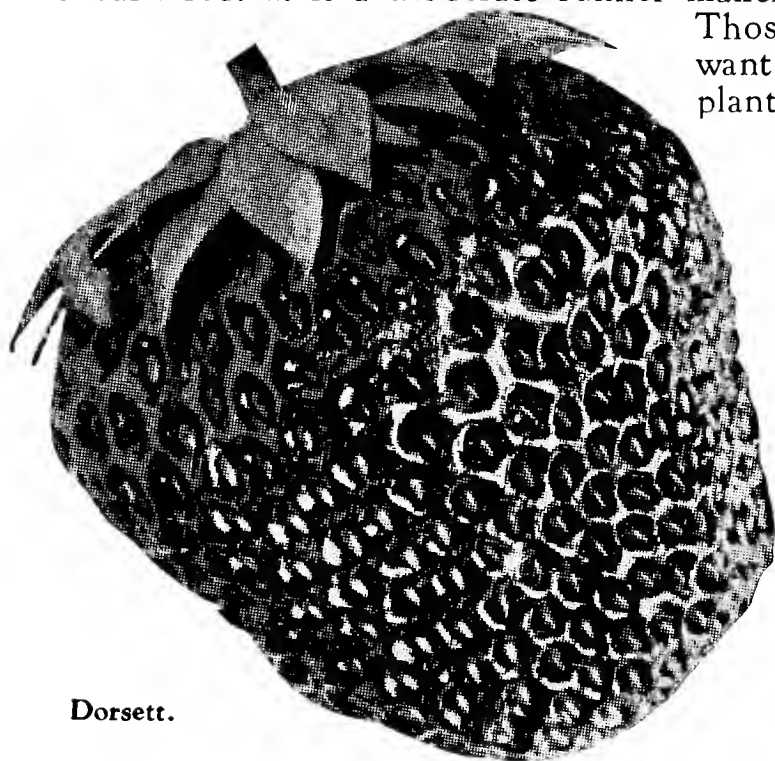
Since Premier is one of the parents of these 4 new varieties and is well known to most Strawberry growers, the best way to give you a clear picture of the qualities and worth of these new varieties is to compare them with Premier.

Fairfax is more vigorous than Premier and holds up better through the fruiting season. It is fully as healthy and free from disease. Considered just as productive as Premier under normal weather conditions, and more productive in dry seasons. The berries are larger and firmer and the quality much superior to Premier. Fairfax is a very attractive dark red. It is a moderate runner maker but better than Premier.

Those who appreciate quality berries and want to get started with the best should plant Fairfax and Dorsett.



Fairfax.



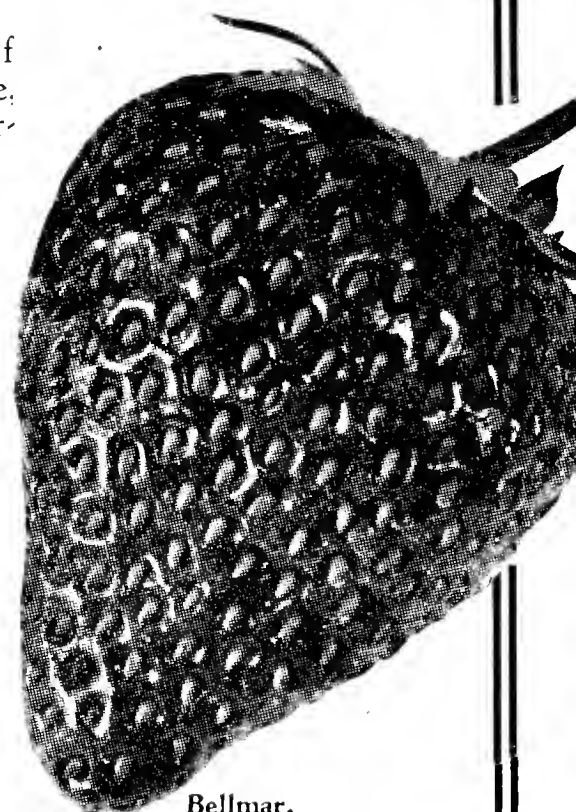
Dorsett.

Dorsett compared to Premier is just as free from disease, and is a better plant maker. It is more vigorous than Premier and able to hold up the size of the fruit better through the season. It is a little heavier fruiter under normal moisture conditions and bears considerably better than Premier under dry conditions. The berries are bright red, larger and firmer and more attractive than Premier and command \$1.00 to \$1.50 per case more than Premier on the market. One of the exceptional features of Dorsett as well as Fairfax is the exceptional quality of the fruit. They are quality berries and command top price on the market. It is freely predicted that when plants are more plentiful, Dorsett and Fairfax will be our leading commercial as well as home berries. Supply very limited this spring; order early.

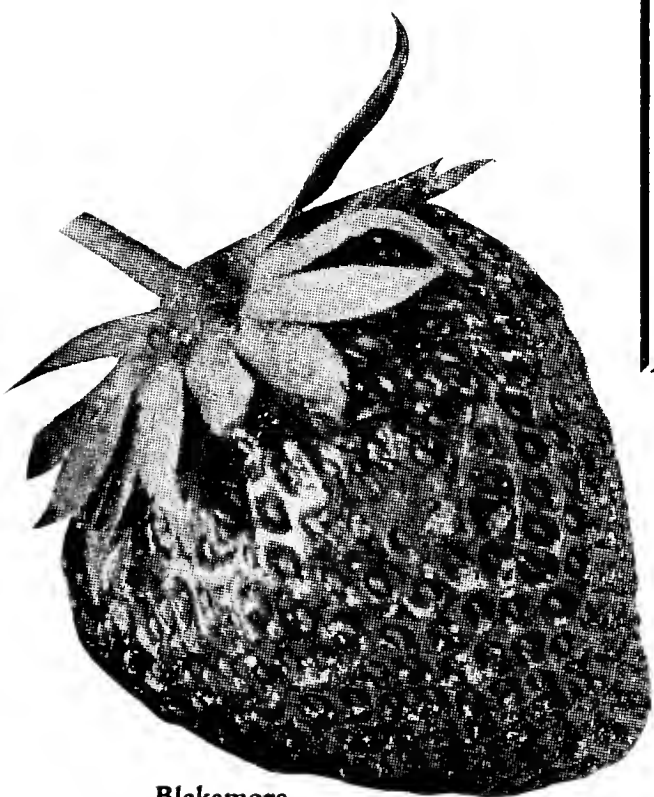
Bellmar—another new Strawberry originated by the U. S. Department of Agriculture; more vigorous than Premier. Not quite as productive, but better in quality and firmness of berry. The fruit is very attractive in appearance and in a moist year has produced as high as 10,000 quarts per acre. Bellmar brings a good price on the market and will prove to be a money-maker.

HANDSOME PROFITS from Strawberries

A common yield on Strawberries is 200 cases per acre. Heavy yields have given over 600 cases per acre. A common price is \$1.50 per case. They often sell at \$2.00 and \$3.00 per case. Figure it out—how many will you plant this year? Recommended distance apart is 2 feet in row and 4 feet between rows, 5400 plants per acre. Order your plants today.

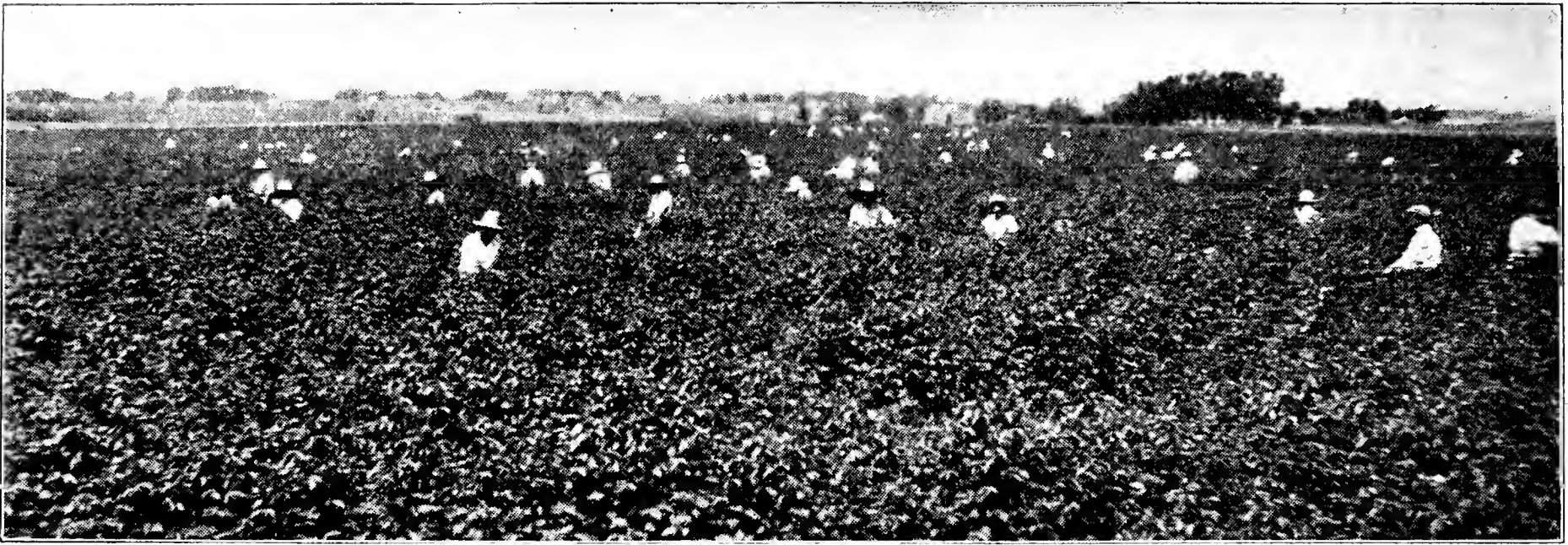


Bellmar.



Blakemore.

Blakemore is an exceedingly vigorous grower and good plant maker, in fact, sometimes it sets too many plants. It holds up well through the season and is remarkably free from disease. Not as high in quality as Premier but more firm and more attractive in the box. It ships well, sells well and cans well. There have been some unfavorable reports on Blakemore in the North but it is believed these adverse reports may have come from fields where the plants were allowed to grow too thick. On account of the splendid fruit, firm, dark red way through, and excellent canning qualities, we recommend Blakemore for liberal trial.



823 crates of Red Raspberries picked in one day from this 40-acre field of "Certified" Latham.

Big Yields and Sure Profits From - - "Certified" Raspberries for Home or Market

Fruit growers are making money with our "CERTIFIED" Red Raspberry plants. You can do the same. There is no secret about it and no difficulty if you start with clean healthy true-to-name plants and then follow our simple directions that go with every package. Red Raspberries are one of the very easiest fruits to grow in the home garden and one of the most profitable to grow for market.

Read What Planters Say

R. T. SIMMONS, Wynne, Ark., reports that his Raspberries from a little over two acres of Latham set partly in poor soil on steep land, brought him over \$600.00 the first season, and prospects are for better than \$1,000.00 next year when in full fruiting. He says: "None of my other crops (apples, pears, peaches, grapes, cotton, corn, hay, potatoes), will pay like Raspberries, and I am using raspberry money now to mature and develop the other crops."

J. P. McMAHON, Route 1, Mankato, Minn., reports: "I have 1200 of your Latham set 12 years ago. Last year I got \$700.00 net profit in fruit from them. I am 69 years old. I have 8 acres of land, and if I was a young man I would plant the 8 acres in Latham. In three years' time I could buy the best farm around Mankato."

Victoria, Minn.

"I picked 285 24-pint crates of Latham for market besides what we used ourselves and small lots we sold. I figure this about 15 crates, making about 300 crates from my Latham planting, which is three-quarters of an acre in size and was 9 years old when this crop was picked."
(Signed) OTTO SCHEUNEMAN.

\$500 From One Acre!

An average yield from "CERTIFIED" RED RASPBERRIES is 150 24-pint crates per acre. Many fields yield 200 crates per acre, and exceptionally good fields in good seasons go as high as 400 crates per acre. Prices vary with the locality and the season. From \$2.00 to \$3.00 a crate is considered a fair price. At only 200 crates per acre and at only \$2.50 per crate, you would have an income of \$500.00 from just one acre of "CERTIFIED" Raspberries.

Sit down now with your pencil and paper. You know what income you would like to have during raspberry time. From that you can figure how many plants you should set. Planting 5x5 feet apart (Northern States) requires 1742 plants per acre. Planting 6x6 feet apart (Central and Southern States) requires 1210 plants per acre.

Free folder on "Growing Raspberries" accompanies each order.

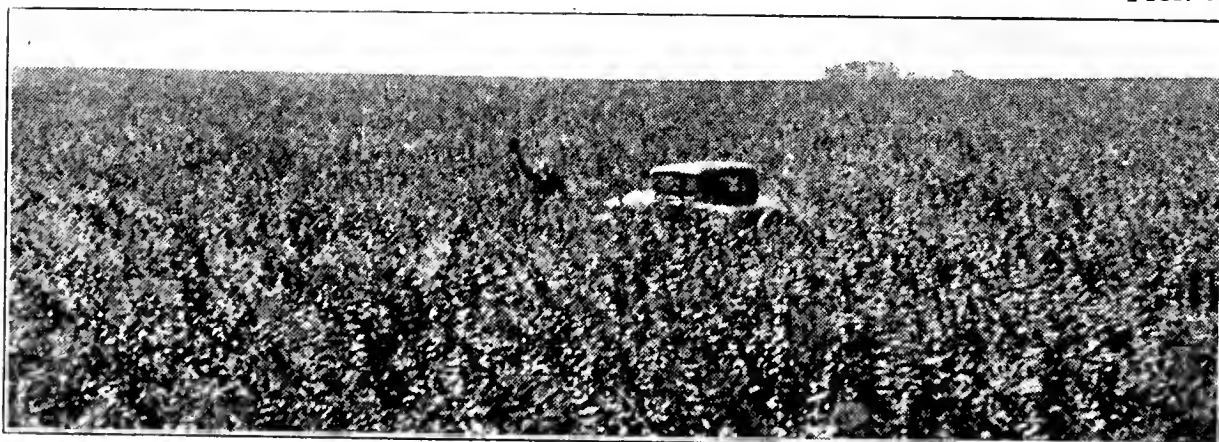
Starting Right Saves You Money and Avoids Loss

You can save money and avoid failure by getting your plants from **RASPBERRY HEADQUARTERS**. Success with Raspberries, as with anything else, depends on getting started on a sure foundation—that is, with clean, strong, vigorous, disease-free plants.

PROF. A. G. RUGGLES, Minnesota State Entomologist and Head of the Division of Nursery Inspection, speaking of raspberry planting stock says, "Clean foundation stock is vitally necessary to success in raspberry growing. If planters secure their plants from fields grown exclusively for plants, they can avoid much of the trouble and disappointment that generally follows the use of plants dug from the side of fruiting rows. Our advice to anyone planting Raspberries is by all means to secure plants from state inspected fields grown exclusively for plants. In this way you avoid loss and disappointment and are assured of clean healthy stock as the foundation for a successful raspberry field."



Prof. A. G. Ruggles.



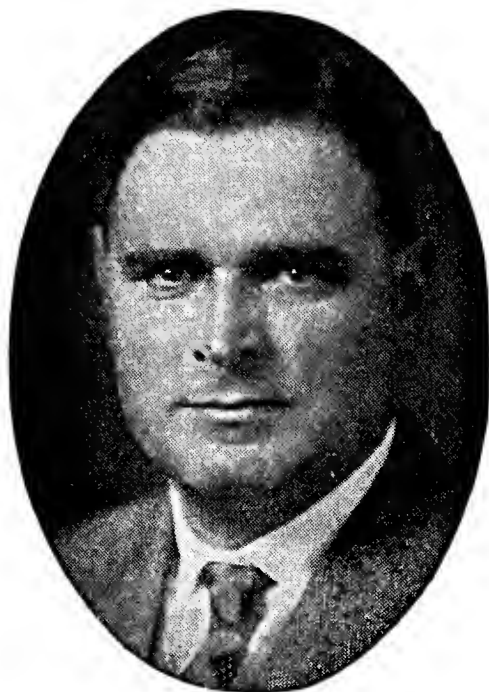
220 Acres—The World's Largest Field of Certified Latham and Chief Red Raspberries. No fruiting canes are allowed to grow, thereby developing the greatest amount of health and vigor in the plants we send to you.

OUR PLANTS HAVE A NATIONAL REPUTATION

They are inspected several times each season by the State Nursery Inspector and have been pronounced "mosaic-free" and in excellent condition. No effort has been spared to produce No. 1 plants. Our climate and soil are ideal for developing vigor and good roots. Contrary to the common policy of digging small plants and leaving the best canes for fruiting, we dig the entire field, giving you the best, strongest, and most vigorous plants. The special machine used in digging these plants makes possible the excellent root system of our Red Raspberries.

"Certified" LATHAM Red Raspberries

Genuine Redpath Strain



Prof. W. H. Alderman.

By sheer pre-eminent merit Latham has become in a few short years the most popular Red Raspberry in the United States today.

Popular in the home garden because it is easy to grow and sure to bear, and because it gives plenty of luscious red berries to eat and to can.

Popular with berry growers because it makes them money, it is a sure cropper, a heavy cropper, and the fruit carries well to market and commands a premium.

Prof. W. H. Alderman, Chief of the Division of Horticulture, University of Minnesota,

very conservatively says: "The Latham variety of Red Raspberry not only is resistant to our winter conditions but it is also one of the most productive Raspberries with which we are familiar.

"Its attractive coloring and firmness give it such favorable appearance on the market that it ordinarily commands a premium of fifty cents a case over and above the prices of the ordinary Raspberry.

"I would say that our test plots of Red Raspberries at the Minnesota State Fruit Breeding Farm have given conclusive proof that raspberry growing is profitable in this state. It is highly important to start with disease-free plants and follow up with suitable culture. Our test plots under such conditions yielded from 254 to 294 24-pint crates per acre the third season after planting."

Plant Latham and get on the Raspberry pay roll. Prices, page 7.

Latham.



Easton, Minnesota.

"The Latham Raspberries we got from you are doing fine. We keep records of all expenses on our berries and on our poultry, and find the berries give us more profit than poultry. We will be driving over soon and place another order for this spring."

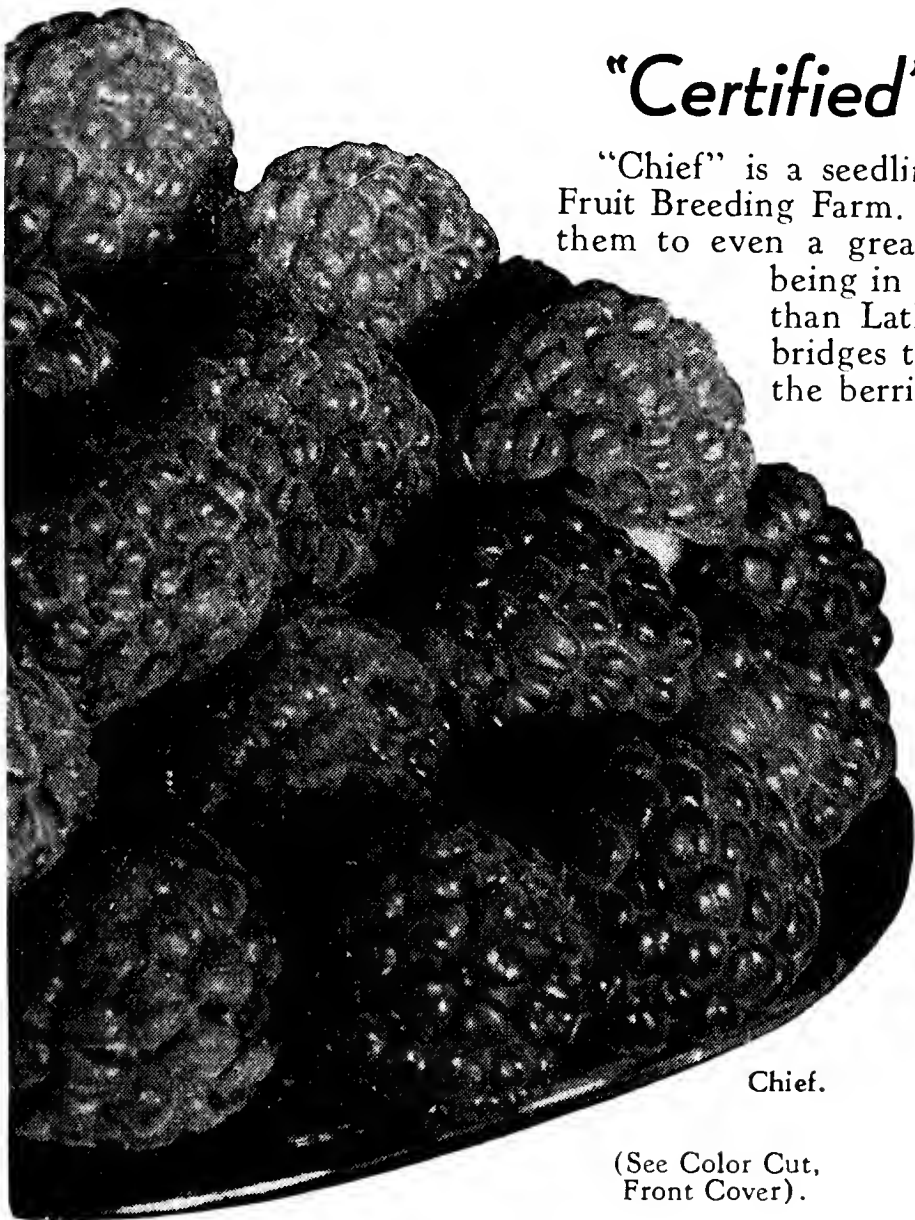
Yours truly,
(Signed) Ed. Stevermer.

"Certified" CHIEF Red Raspberry

"Chief" is a seedling of Latham and was originated by the Minnesota State Fruit Breeding Farm. It possesses many of the good qualities of Latham, some of them to even a greater degree than the parent, the main point of difference being in season of ripening. "Chief" is 10 to 12 days earlier to ripen than Latham, thus giving us a profitable berry for early market. It bridges the gap between strawberries and ordinary raspberries—and the berries bring a good price on the market.

Prof. Alderman says: "The plants are very hardy, vigorous, productive, and excellent plant makers; canes are distinctly reddish, not quite so tall but stockier than Latham; foliage is luxuriant, leaves large, of the Sunbeam type; very resistant if not immune to mildew, and very little affected by mosaic thus far. The fruit is medium in size, roundish to slightly conic, bright attractive red; drupelets medium to below in size, adhering well so that berries do not crumble; flesh firm, juicy, medium sweet; quality high; season early."

Chief is excellent for eating with sugar and cream, for jams and for canning. Fruit growers are planting Chief for the early market where it brings \$1.00 to \$1.50 per case more than the main raspberry crop 10 days later. We recommend at least a quarter of your raspberry planting be of Chief. Prices, page 7.



Chief.

(See Color Cut, Front Cover).

Special Home Garden Offer!

- 25 Chief. Early Red.
- 25 Latham. Medium Red.
- 25 Cumberland. Black.
- 25 Newburgh. Big new Red.

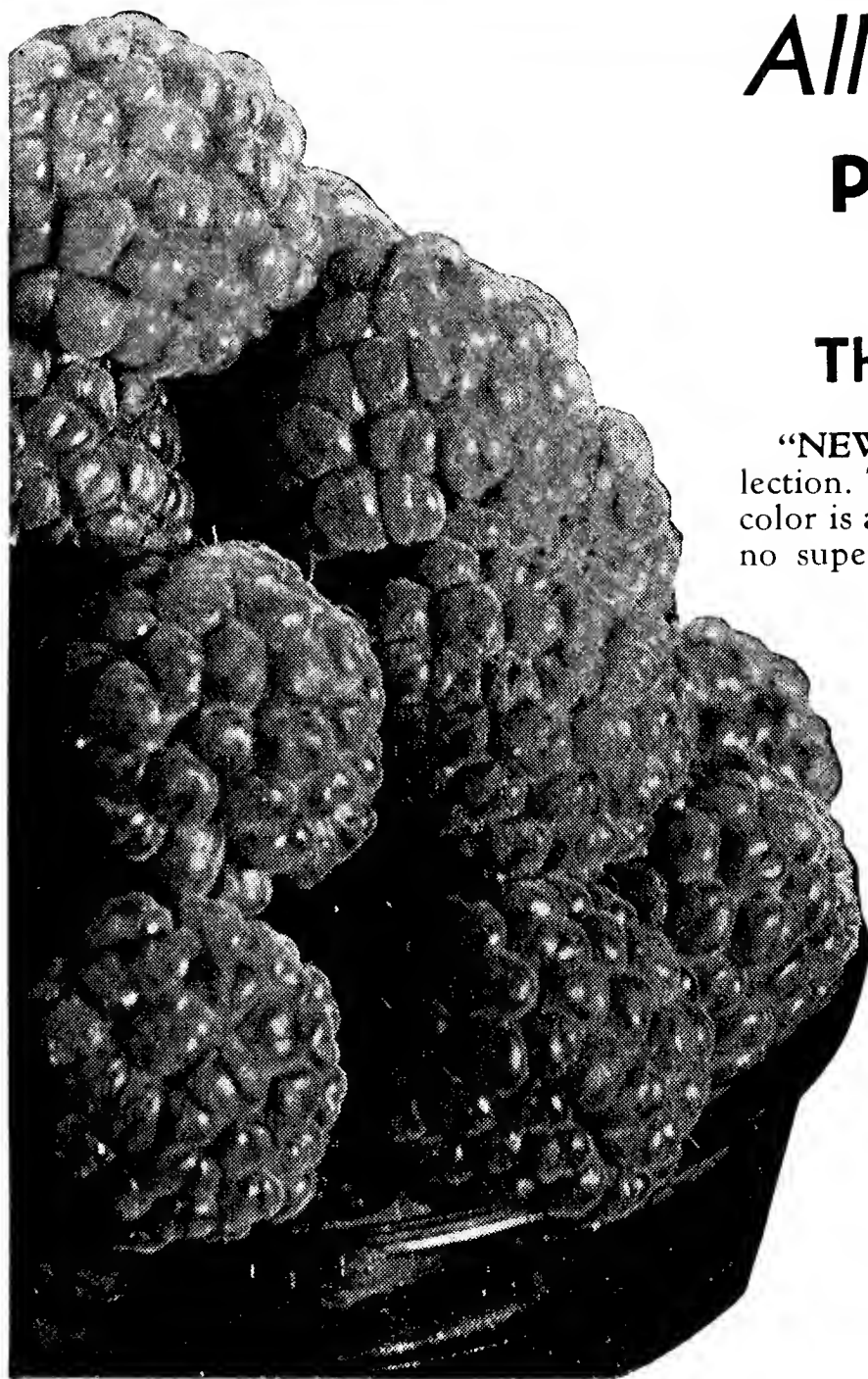
Special! ONLY

\$4.58

Packing and Postage 20c.

NEWBURGH—*The Sensation in Red Raspberries*

BIG - - BRIGHT RED - - HEAVY CROPPER - - EXCELLENT SHIPPER



Newburgh.

All Eyes are on Newburgh!

Preliminary Trials and Tests are Proving Its Worth The Fruit Testing Association Says:

“NEWBURGH is the most promising variety in the station collection. The fruit is very large, very firm, and does not crumble. The color is a bright, attractive red; in keeping and shipping quality it has no superior. The plants are vigorous, hardy, and very productive.

The weight of the fruit is so great that the canes are often bent to the ground. The fruit is borne out in the open where it may be readily picked. Mosaic has not appeared in the stock of Newburgh. In season it is three or four days earlier than Cuthbert. In bush and fruit, this is the best Red Raspberry under cultivation.”

Read This Letter

Prof. Geo. L. Slate and Dr. W. H. Rankin, of the New York Experiment Station, on Jan. 17, 1934, write:

“The NEWBURGH RASPBERRY has proved itself an outstanding variety for central and western New York. Excellent reports regarding its behavior have also been received from Ontario and as far north as Montreal, Quebec. The indications are that it may not be satisfactory in the southern portions of the Raspberry growing regions of the country. The berries are very large, in fact, larger than those of any other sort. The size holds up very well throughout a long picking season. The very firm, rather dry texture and freedom from crumbling makes Newburgh an excellent shipping and general market variety. The berries are lighter than Latham in color, slightly coarse in appearance, and a little better than Latham in quality. At Geneva its season is with Chief, or about five days earlier than Latham. The plants are vigorous, increase rapidly, do not grow as tall as other sorts, but bear very heavily in spite of the shorter cane growth. The fruit is borne on the outside of the plant, thus facilitating picking. Because of the heavy weight of the crop, and not because of weak canes, Newburgh will probably need support. The canes branch more freely than those of other sorts, especially when the plants are young.

“During the ten years that this variety has been grown and multiplied at Geneva, no mosaic has appeared in the plants. Also in a block of over 100 seedlings held for five years with both mosaics abundantly present, no infection occurred in Newburgh. Two growers who have had this variety for five years alongside diseased berries have had no spread of mosaic into Newburgh. The prospects are that this variety will escape mosaic infection to a much greater degree than other existing commercial varieties.”

Yours very truly,
GEORGE L. SLATE.
W. H. RANKIN.

Other Endorsements Pour In

MASSACHUSETTS EXPERIMENT STATION BULLETIN 293, p. 52, March, 1933, states: “Newburgh has shown no mosaic as yet, though other varieties located nearby have suffered more or less severely. It is vigorous, a good plant maker, and a heavy producer in midseason of large berries of good quality. It is very promising.”

CANADIAN HORTICULTURIST, Fruit and Truck Edition, p. 84, April, 1933, says: “Of the several very recent introductions, only one has struck us as of real value, namely, Newburgh. This variety comes from New York and has all the earmarks of a winner. The cane is vigorous and productive, and the size of fruit is very large, being among the largest of any variety we have seen.”

BULLETIN 528, OHIO AGRICULTURAL EXPERIMENT STATION, September, 1933, states about Newburgh, “Limited test seems to indicate a good deal of promise for more extensive planting. Fruit large and less crumbly than Latham. The firmness of berry is a prime feature for commercial purposes. Ripens about with Latham or a few days earlier. Plants thrifty; comparatively free from disease.”

CHAS. L. TODD, a veteran fruit grower, Otsego County, New York, writes us: “I have had the Newburgh Red Raspberry now three seasons, two in bearing. It is a heavy yielder of better color and quality than Latham and I think larger berry and better keeper.”

“I picked over about 2 acres of it this year from canes of only 1 year's growth, and it ran a hundred crates per acre—never had anything like it before on a new one-year field.”

RICHARD V. LOTT, formerly ASSOCIATE HORTICULTURIST, COLORADO AGRICULTURAL COLLEGE and Experiment Station, Fort Collins, Colorado, wrote, “The Newburgh appears to be one of the very best sorts which I have growing here.”

Supply Limited—Order Early

You can get Newburgh this year if you order early. You will surely be delighted with this big new beautiful Raspberry.

Better make your reservation today. See opposite page for prices.

"Certified" Black Raspberry Plants

New Logan The LOGAN ranks now as a most desirable Black Raspberry. In some sections it is practically replacing other varieties.

The berries are glossy black, ripen a week earlier and are larger than Cumberland. It is a heavy cropper, and the berries hold up well through the season. Logan is considered very resistant to ordinary raspberry diseases. This is one reason a good many growers are planting Logan. The habit of growth is rather sprawly, but this feature is offset by its other good qualities. It is good practice to cover black raspberry canes in the winter in the North to avoid winter injury. While it is not always necessary, you will find it pays well for the little time or trouble required and insures you a bumper crop of choice fruit for the home or for market.

Both Red and Black Raspberries Easy to Grow

You will have no difficulty if you start your planting with certified disease-free stock and follow the simple directions which accompany each order. Once established and given reasonable care a raspberry patch will give you an abundance of fruit for many years.

Easy to Eat

A heaping bowl of ripe raspberries, served with sugar and cream, will make anyone sit up and take nourishment! They are excellent for shortcake and easy to prepare. You get added satisfaction when you can have this luscious fruit from your own bushes—fresh for every meal.

Easy to Can

No fruit is easier to can than raspberries. They require no hulling or other preparation. They need little sugar, and you will have almost no shrinkage in canning. You get practically a full quart of canned fruit from every quart of berries. They are conceded to be one of the easiest fruits to can, and when you grow your own, they are one of the very cheapest.

Easy on Grocery Bills

You will find it easy to cut down the grocery bills when your raspberry patch furnishes the table every day for three or four weeks with delicious fresh raspberries besides a plentiful supply for canning.

New Canning Recipes

Wash raspberries, pack in sterilized jars, fill jars with boiling syrup, three parts sugar and two parts water, cover and place in boiler or other container in which is



Cumberland.

boiling water. Water must cover the jars. Cover boiler and leave until water is cold. This is the latest approved method of canning raspberries. They are delicious.

RASPBERRY JUICE—A REFRESHING DRINK

Extract the juice by mashing the fruit in sugar. Drain through a cloth and preserve the clear juice in jars. It makes a refreshing summer drink when diluted with water, and is wonderful in lemonade.

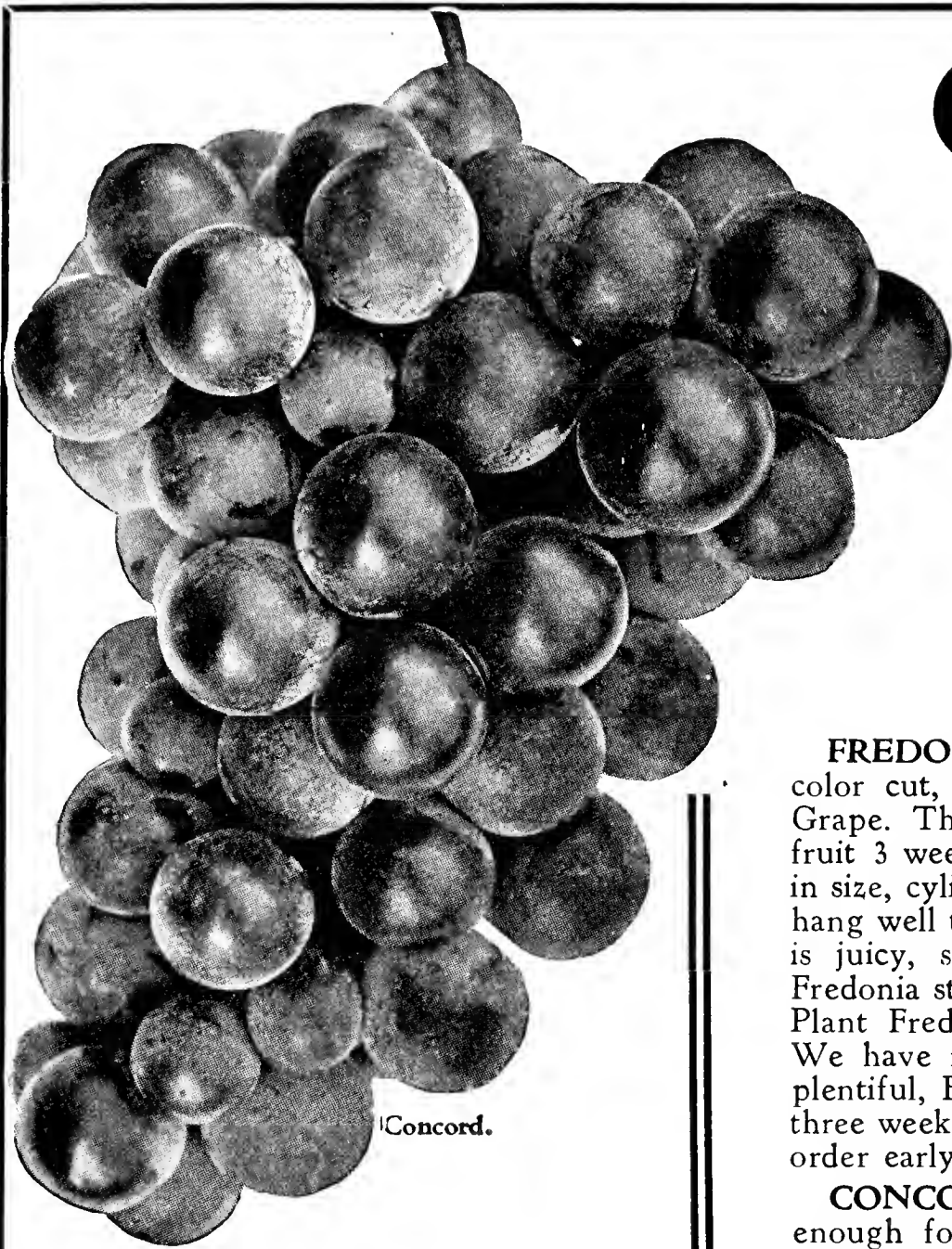
Cumberland is an old standard variety. The fruit is medium in size and of fine flavor. It is a heavy cropper, and very dependable, especially when the canes are laid down and covered with earth during the winter. Cumberland is good for home use or for market where the fruit brings a premium over common red raspberries. Prices below.

Alfred Blackberry —called the coreless Blackberry. Alfred is a vigorous grower with strong, well-branched canes, capable of carrying heavy crops of fruit. It is considered quite hardy and has stood low temperatures, but in northern districts we recommend covering in winter. Alfred ripens early, beginning a week in advance of other varieties, and continues over a long season. The berries are very large, sweet, and delicious. Alfred is recommended for trial.

PLANT A GENEROUS SUPPLY THIS YEAR!

	25	50	100	200	300	500	1000
Chief Red Raspberry, No. 2						\$ 7.00	\$12.50
Chief Red Raspberry, Standard Grade	.90	1.55	2.75	4.95	6.95	9.95	18.85
Chief Red Raspberry, Heavy Select	1.75	2.25	4.15	7.85	10.85	15.35	29.50
Latham Red Raspberry, No. 2						7.00	12.50
Latham Red Raspberry, Standard Grade	.90	1.55	2.75	4.95	6.95	9.95	18.85
Latham Red Raspberry, Heavy Select	1.75	2.25	4.15	7.85	10.85	15.35	29.50
Newburgh Red Raspberry, Heavy Select	2.75	4.75	7.00				
Cumberland Black Raspberry, Standard Grade	.75	1.35	2.50	4.00	5.50	7.85	14.85
Cumberland Black Raspberry, Heavy Select	1.75	2.25	4.15	7.85	10.85	15.35	29.50
New Logan Black Raspberry, Standard Grade	1.00	1.75	3.45	6.85	8.85	12.85	19.85
New Logan Black Raspberry, Heavy Select	1.75	2.25	4.15	7.85	10.85	15.35	29.50
Alfred Blackberry	3.25	5.85					
If desired by parcel post, include for packing and postage:							
Standard Grade	.13	.15	.20	.29			
Heavy Select	.15	.18	.29	.50			

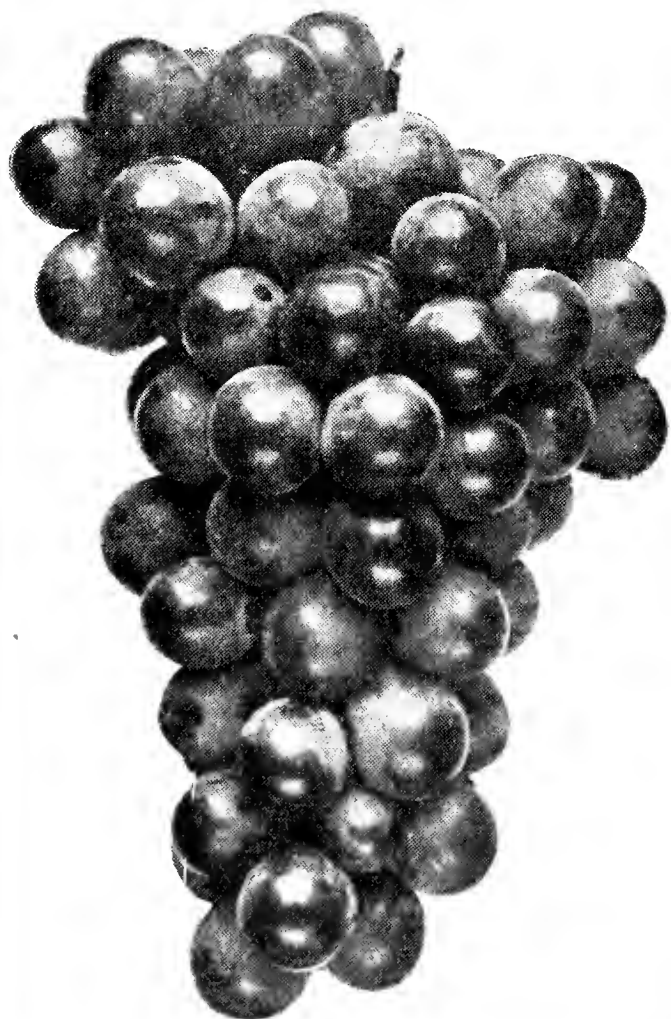
Grapes That Grow and Bear



Concord.

Splendid Recipe for Grape Juice!

Put 3 cups of Grapes in a 2-quart jar. Add 2 cups sugar, then fill jar with boiling water, and seal at once. This makes a splendid refreshing drink.



Beta.

Home grown sun ripened Grapes are possible for you if you plant the varieties listed below. Easy to grow, delightful to eat, refreshing to drink.

FREDONIA, the new, outstanding early black Grape (See color cut, back cover). Fredonia is the earliest good black Grape. The vine is vigorous and productive and ripens its fruit 3 weeks earlier than Concord. The clusters are medium in size, cylindrical and very compact; berries large, round, and hang well to the bunch; the skin is thick and tough; the flesh is juicy, solid, but tender, and the quality is very good. Fredonia stands alone as an early heavy fruiting black Grape. Plant Fredonia this year and grow your own table grapes. We have never seen its equal. As soon as plants are more plentiful, Fredonia will be widely planted for market as it has three weeks the lead in ripening. Supply limited this season—order early.

CONCORD. A popular Grape where the season is long enough for it to ripen. When fully ripe, the flesh is juicy, sweet, pulpy, and tender. Adapted only to the southeastern part of Minnesota and similar climate.

BETA. The most widely grown and probably the most profitable Grape grown in the Northwest. A heavy, annual bearer, hardy as the wild Grape and produces enormous crops of medium size black fruit of extra good quality for juice and jelly, and ripens so early that it can be grown far North. An essential part of any home garden and wonderfully profitable as a commercial Grape. The demand is greater than the supply, and increasing every year. Financially Beta is a permanent investment that will prove lasting and highly profitable. The Beta withstands our severe northern winters without protection. They may be grown on fences, over a building, or in a windmill tower and should bear heavily every year. For real heavy production they should be trained on trellises and cultivated. Their chief use is for jelly and grape juice. At the extremely low prices you can afford to have a good planting of Beta.

Directions for care and pruning will accompany plants. Beta needs no winter protection. Fredonia, Worden and Concord should be laid to the ground and covered with earth through the winter.

PRICES

	5	10	25	50	100
CONCORD GRAPE					
Standard size		\$1.15	\$2.50	\$ 4.40	\$ 8.35
Heavy size		1.85	4.10	7.60	14.85
FREDONIA GRAPE					
Heavy size	1.40	2.70	6.20	11.10	19.85
BETA GRAPE					
Standard size		1.40	3.50	6.40	12.35
Heavy size		1.85	4.10	7.60	14.65
Pack. and post. for grapes.....	.13	.17	.35	.59	
RED LAKE CURRANT.....	2.25	4.35			
LONDON MARKET CURRANT					
Standard size95	1.75	3.85	7.25	12.35
COMO GOOSEBERRY					
Standard size	1.85	3.45			
Pack. and post. for Currants and Gooseberries13	.15	.21		
MARY WASHINGTON					
ASPARAGUS75	1.40	2.50
Pack. and post. for Asparagus....			.15	.23	.31
COMMON RHUBARB50	.85	2.25	4.00	7.50
MCDONALD RHUBARB85	each		
Pack. and post. for Rhubarb15	.21			

Red Lake

New Big Red CURRANT

RED LAKE. The introduction of Red Lake by the State Fruit Farm marks a big step forward in Currant culture. It stands head and shoulders above any variety formerly grown in the Northwest. The berries are big and the bunches long and well filled to the tip. The exceptionally long stems make them easy to pick. The bushes are thrifty and extremely productive. Little old Currants can now be discarded to make room for Red Lake. It's easy to grow and you will enjoy picking the big long bunches. Ripens early midseason, but holds on over a long period so it can be used or marketed as desired. It brings top prices on the market and is a splendid money-maker. We suggest you order early as the supply is limited.

LONDON MARKET, Red Currant. The most productive of the older varieties. Berries and bunches much smaller than Red Lake.

COMO GOOSEBERRY. Named and introduced by the Minnesota State Fruit Farm. Como has many good features to recommend it to planters. The State Farm says: "Como is a vigorous plant, with exceptionally healthy foliage, relatively free from thorns, very productive; fruit medium in size, roundish, green when ripe, holds to bushes well, resists scalding better than most varieties. Promising as a commercial berry." Como is excellent for preserves and jam. Without question the best Gooseberry for the Northwest.

MARY WASHINGTON ASPARAGUS. Asparagus is a delicacy that comes early from the vegetable garden. Like all very early vegetables, it costs quite a good deal when bought at the store; and yet a bed of Asparagus in your own garden will keep your table supplied and will last for years. It is very easy to grow; it is not like buying vegetable seeds every spring and fussing with the planting and trying to keep the neighbor's chickens out. The Washington type of Asparagus was developed primarily for its extreme resistance to Asparagus rust and in addition, it possesses many other desirable characteristics such as the following: The shoots are large in size, early, prolific, and do not branch near the ground, thus making it possible to cut unbranched shoots with tight buds often 2 feet long. There are a number of different strains of the Washington type on the market, some known as Washington, others as Martha Washington, Giant Washington, and Mary Washington. Experiments carried on at Cornell University indicate that the Mary Washington strain is very much superior to Martha Washington, or any of the plain Washington strains. We supply the **Mary Washington**.

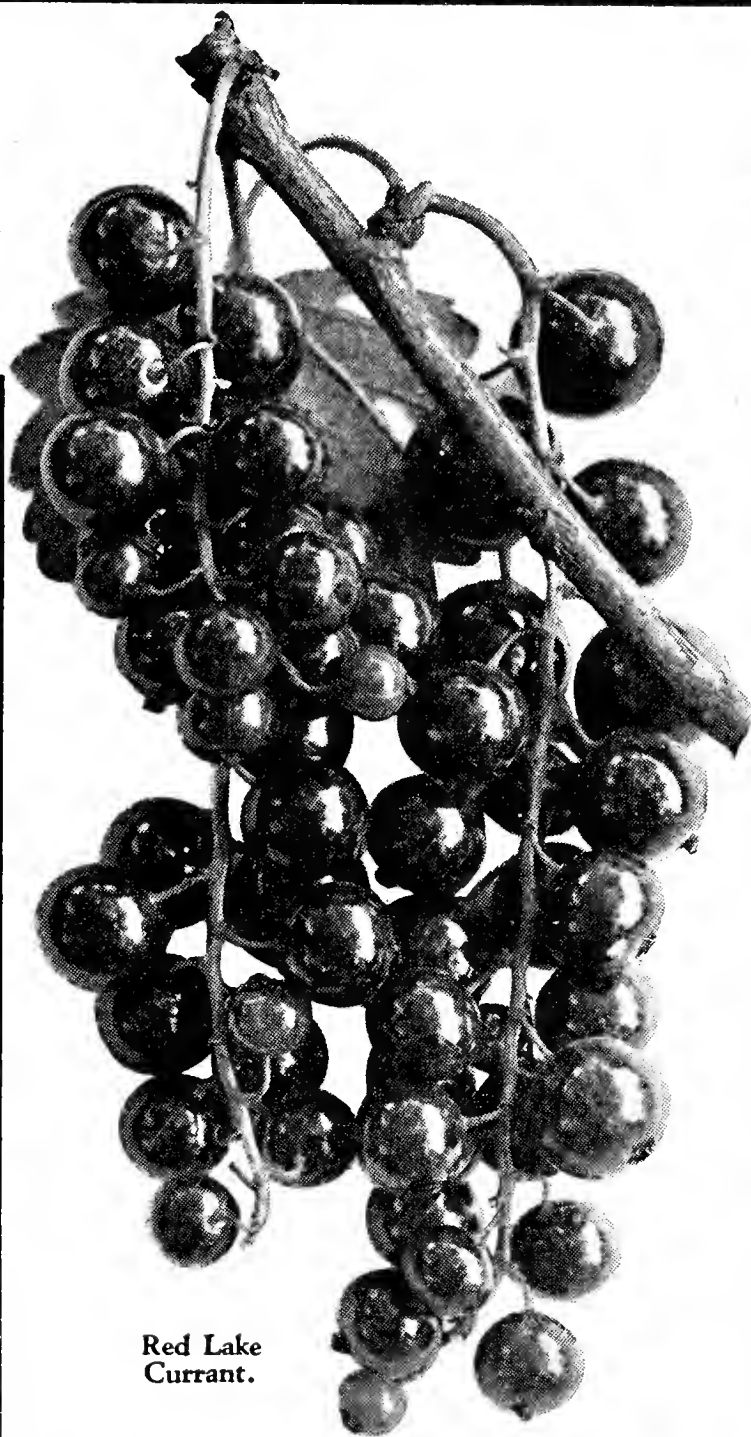
RHUBARB. A most satisfactory all-around vegetable. Year after year, from early spring until late fall, fresh stems may be pulled, and in the winter time the roots may be forced in the cellar. Pie plant, or wineplant as it is sometimes called is used for pies, sauces, and satisfying beverages. As a commercial crop it may be forced for early spring trade at good prices.

New Crimson McDonald Rhubarb

At last a real high color, bright crimson stalked Rhubarb has been produced. In describing this variety Prof. L. G. Bunting, of McDonald College, in Quebec, Canada, where this variety was originated, writes:

"It is a very highly colored, attractive red stalk, of large size, productive, very tender and succulent, and of excellent quality, and particularly valuable for pies and desserts. Its color when cooked without peeling is as attractive as that of raspberries."

Plant a few hills of this splendid Rhubarb in your garden this year. It yields heavily and lasts a life-time. When once you try McDonald, you will grow no other.



Red Lake Currant.



Como Gooseberry.



Mary Washington Asparagus.

HARALSON

OPENS A MILLION DOLLAR MARKET



Haralson.

See color cut, back cover.

HARALSON

Big — Red — Long Keeping

The Million Dollar Apple for a Million Dollar Market

Originated and introduced by the Minnesota State Fruit Breeding Farm.

Prof. W. H. Alderman, Chief, Division of Horticulture, University of Minnesota says of Haralson:—"Its size, shape, and color are just right for an ideal commercial apple. The tree is extremely vigorous, productive and hardy. The branches spring at wide angles from the central trunk and are very strong in the crotches. The fruit will keep in an ordinary cellar throughout the winter without artificial refrigeration."

Haralson Makes Money for These Men

D. C. Webster, LaCrescent, Minnesota, a veteran fruit grower and prize winner at Fruit Shows, got 1300 bushels of Haralson from 175 trees. Figure that out at a conservative price of \$1.50 per bushel!

Jos. Hahn, Excelsior, Minnesota, says—"I set out some Haralson trees in the spring of 1925. They produced some fruit the third year and the crop has increased every year since then. The sixth year (1931) I measured the crop from one tree and found it was 5½ bushels. This tree was 10 feet high at the time."

E. W. Gruenzner, Orchard Lake, Minn, writes: "As I have had wonderful success in planting your trees (100% growing), I am going to make up an order of about 50 more trees for this spring. I intend to plant nothing but Haralson for I believe this apple solves the problem of raising winter apples in Minnesota. We are using the apples every day and they are in as perfect condition today, January 17th, as when picked. I think an orchard of Haralson apples on every farm is a paying investment."

Because the New Haralson is a good looking, long keeping, big red apple and because it thrives in the upper Mississippi Valley, wide awake planters have a million dollar market thrown open to them.

Minnesota alone has been shipping in annually from distant states a million bushels of winter apples. Wisconsin, Northern Iowa, and the Dakotas also ship in great quantities. Haralson makes this trade available to local growers.

HARALSON SATISFIES THE TRADE

The market demands a good sized, red, long keeping apple. Haralson fully satisfies these requirements. It was the most attractive, outstanding apple at the annual Minnesota State Horticultural Fruit Exhibit this year. Big and Red, uniform in size and shape and a long keeper. It stands handling and shipping well and easily keeps through till spring.

As this catalog goes to press Haralson is selling at 6c a pound; \$2.00 a basket, with no deduction for long freight haul.

HARALSON THRIVES IN COLD CLIMATE

Haralson is rugged and hardy. It is the answer to years of search and effort to secure a suitable long-keeping apple that could thrive in our northern climate. From actual performance it has satisfied growers on this point. Freedom from fire blight is another of the sterling qualities of Haralson.

BEARS EARLY AND HEAVILY

Haralson orchard trees come into bearing quickly, producing a paying crop before most other varieties begin. We have records this year of 10-year-old trees producing 10 bushels to the tree. The trees are strongly branched and carry heavy loads without splitting down.

YOUR OPPORTUNITY

Haralson is a profitable tree to grow either in the home orchard or in a larger way for market. As a home apple, it can keep you supplied with an abundance of fine fruit from October throughout the winter and spring.

As a market apple, it is without equal in this northern territory. It satisfies every requirement of a profitable commercial apple.

PRICES ARE LOW

We have a splendid block of true-to-name Haralson for distribution. Prices are low, they will be higher next year. Save money and gain time by planting this spring. Prices, page 11.

Doctors Say: "Eat More Fruit"
Grocers Say: "6c a Pound"

—Common Sense Says: "Plant Haralson and Grow Your Own"

Apples for Home or Market

NORTHERN GROWN

Select from the list below and you can enjoy delicious tree-ripened fruit fresh from your own trees. These varieties are considered most desirable for this northern territory. Select some for each season. Our trees are northern grown on northern roots and will thrive and bear for you. A good home orchard will save on the grocery bills, and a commercial orchard of these selected varieties is a proven money-maker.

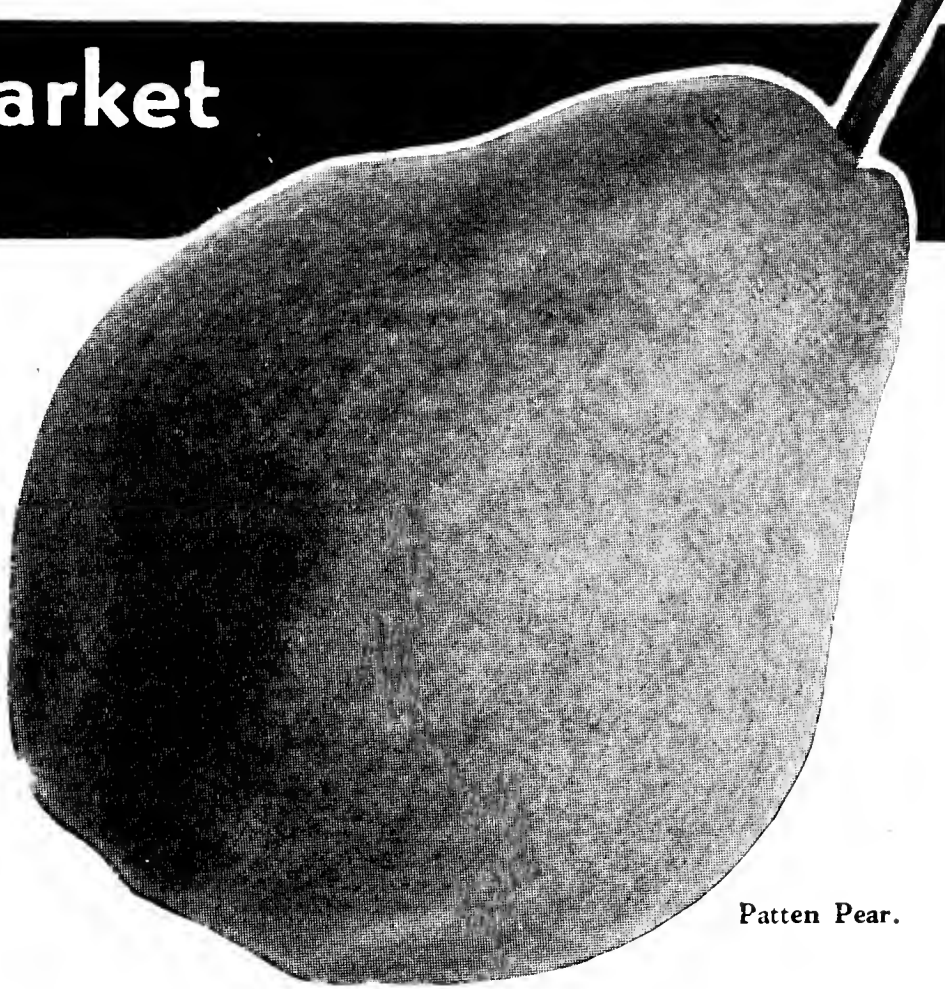
RED DUCHESS. This is a bud sport of Duchess. It has all the good qualities of the old Duchess and in addition has this attractive bright red color. Red Duchess picked before fully ripe and canned makes a delicious sauce with a flavor all its own. Red Duchess commands a good price on the early market.

McINTOSH RED. A red apple of very high quality. Adapted to planting on suitable soils in vicinity of St. Paul and southeast. Not recommended for prairie districts in western Minnesota. Keeps till January.

NORTHWESTERN GREENING. Fruit very large, smooth and handsome; green turning yellow as it matures; flesh firm and sub-acid. This apple is in good demand as a cooking apple in late winter and spring. A good commercial variety in the southeast third of Minnesota, south of St. Paul, and similar territory, but it should be planted very sparingly north of that latitude. Season, December to March.

WEALTHY. Few apples that we can grow excel the Wealthy in quality and appearance, being bright red over most of the surface, of large size with juicy, sprightly flavor. This has been the leading commercial apple in the south half of Minnesota and is quite generally planted somewhat north of the latitude of Duluth. It is safe to say that the Wealthy has in the past made more money for Minnesota apple growers than any other variety grown. Season, September to January.

DOLGO. The perfect Crab. Hardy everywhere; usually begins bearing the year after setting. Dolgo is a heavy bearer. The fruit is strikingly attractive. It jells perfectly—even when dead ripe. Dolgo is free from blight and it is rapidly displacing the old varieties like Transcendent and Hyslop. Dolgo makes a very beautiful lawn tree and can be used on the grounds instead of the Mountain Ash. It is a more beautiful tree besides being useful.



Patten Pear.

WHITNEY. A large red mild-flavored Crab, excellent for eating and canning and pickles. Perfectly hardy, never blights, and is a heavy cropper.

NEW HARDY PEARS

This delicious fruit is a welcome addition to the gardens of the North. These new Pears listed below are the result of years of persistent effort to develop Pears for this northern territory. The striking exhibit at the Minnesota State Fair of these fine Pears grown in Minnesota was a surprise and delight to many people. Many trees will be planted this spring—the supply is limited. Send your order in early.

PATTEN PEAR. Stands at the head of the list. A strong, vigorous grower apparently free from blight. Recommended for climate where Wealthy apples can be grown. The fruit is good size, resembling Bartlett in form, very tender, juicy, and of good quality. Ripens in September.

PARKER PEAR (Minn. No. 1). This splendid pear, originated by the Minnesota Fruit Breeding Farm, is considered the finest quality of all. It is large size, golden yellow, with faint blush, ripens in August. Trees bear young and heavily. Stock of Minnesota No. 1 Pear is very limited this year. Make your reservation early.

TAIT PEAR. Originated in Canada. Father John B. Katzner, of St. John's University, near St. Cloud, Minnesota, wrote: "Tait No. 2 is resistant to blight, hardy here, fruit medium size, yellow, good bearer and quality of fruit very good. The tree is a fine upright grower."

Prices of Apples and Pears

	Each	3	10
Red Duchess3-4 ft. Medium size	\$0.45	\$1.20	\$ 3.85
Red Duchess4-6 ft. Standard size	.50	1.35	4.35
Red Duchess5-7 ft. Extra size	.95	2.65	8.45
Haralson3-4 ft. Medium size	.50	1.35	4.35
Haralson4-6 ft. Standard size	.60	1.65	5.25
Haralson6-7 ft. Extra size	1.50	4.25	13.50
McIntosh3-4 ft. Medium size	.50	1.35	4.35
McIntosh4-6 ft. Standard size	.60	1.65	5.25
N. W. Greening3-4 ft. Medium size	.50	1.35	4.35
N. W. Greening4-6 ft. Standard size	.60	1.65	5.25
Wealthy3-4 ft. Medium size	.50	1.35	4.35
Wealthy4-6 ft. Standard size	.60	1.65	5.25
Wealthy5-7 ft. Extra size	.95	2.65	8.45
Dolgo Crab3-4 ft. Medium size	.50	1.35	4.35
Dolgo Crab4-6 ft. Standard size	.65	1.80	5.45
Whitney Crab3-4 ft. Medium size	.40	1.05	3.35
Whitney Crab4-5 ft. Standard size	.50	1.35	4.35
Whitney Crab5-7 ft. Extra size	.95	2.65	8.45
Patten Pear2-3 ft. Medium size	.60	1.65	5.25
Patten Pear3-4 ft. Standard size	.70	1.95	6.25
Parker Pear2-3 ft. Medium size	.85	2.35	7.65
Parker Pear3-4 ft. Standard size	.95	2.65	8.45
Tait Pear2-3 ft. Medium size	.50	1.35	4.35
Tait Pear3-4 ft. Standard size	.60	1.65	5.25
Douglas Pear2-3 ft. Medium size	.50	1.35	4.35
Douglas Pear3-4 ft. Standard size	.60	1.65	5.25

Douglas Pear

A new fall pear that is proving hardy in Minnesota. The fruit is large, a beautiful golden yellow, blushed scarlet, flesh is white, tender, and juicy. The tree bears very young, very heavily, and regularly.

A Few Letters of Appreciation

"Gentlemen: Thanks for the fine stock sent me. I am sure it will grow and I appreciate the fair prices charged me."

(Signed) W. B. B.,
Eagle Bend, Minn.

"Dear Sirs: Am sending you a sample of plums by mail. I want one half dozen trees like it. I don't know the name of them or the price, but you sold a tree to C. H. H. two years ago. I want the trees in the spring."

(Signed) G. E. S.,
Clear Lake, Wis.



Fiebing.

New Jumbo Plums

Big as California Plums

Taste Better

The choice list of Jumbo Plums described below are considered the cream. Our recommendation is to plant an assortment including some for each season, early, medium, and late. Pollinator Plums should be included in every planting to insure a good crop.

SUPERIOR. (See color cut back cover). This sensational new Plum was originated at the Minnesota Fruit Breeding Farm and is considered the most perfect Plum of all fine Plums introduced by the station. Fruit very large, firm flesh, beautiful red color, and delicious quality. You can peel them as you would a Peach. We secured our propagating wood direct from the State Fruit Breeding Farm and can supply you with genuine **SUPERIOR**. Order early as the supply is limited.

UNDERWOOD. The Underwood is valuable because of its large, early fruit and annual bearing. It is the earliest of the large Plums, attaining a size of $1\frac{3}{4}$ inches in diameter. The tree is a vigorous grower, the limbs being strong and well distributed and are able to carry great loads of fruit. Fruit, attractive red with splendid quality, small pit, hangs well to the tree, ripening over a long period, August 1st to 15th, enabling three pickings to be made. The Underwood is an annual bearer. These features appeal alike to the commercial grower and to the home orchardist.

MONITOR. Monitor is one of the market Plums we have been looking for here in the Northwest. It has high quality, firm flesh and a large size—some being more than $1\frac{3}{4}$ inches in diameter. It is very productive and a regular bearer. Season, late August.

LA CRESCENT. Fruit of an orange-gold color; medium size and of **exceedingly sweet and delicious flavor**—a real "sugar" Plum of unusual quality. For home use only. Ripens early.

FIEBING. A new Plum named from the special \$100.00 Fiebing Prize which was awarded this Plum after being exhibited for the first time at the State Fair. Very large, firm flesh, red all over, excellent quality. It is hardy, having stood a test of 40 degrees below zero. This Plum bears heavily; gets red a week before ripening; is very firm, making an excellent Plum for market on account of its handsome color, large size, and ability to stand up well. A prize of \$100.00 was offered for a number of years through the Minnesota Horticultural Society by Mr. Fiebing, of Milwaukee. This Plum, after a thorough test as to hardiness of tree, size, color, firmness, and quality, was awarded this prize. Every planting should have a good portion of Fiebing. Being a new variety, the supply of trees is limited. Order early.

Plum Secrets!

The Minnesota State Fruit Farm has issued a bulletin setting forth the necessity of having pollinator Plums in each group of Jumbo Plum trees in order to insure perfect pollination and a setting of fruit. Their experiments show that without these pollinator trees even the best of varieties will carry little fruit, but after the pollinator Plum is added to the planting, the same trees will bear abundantly. One pollinator Plum to 10 Jumbo Plums is recommended. The following varieties have proven to be good pollinators.

Pollinator plums

If you have plum trees in your yard now which do not bear, planting near them some of the pollinator plums mentioned below will very likely bring them into bearing.

SURPRISE. This delicious plum is not only a splendid fruit in itself, sweet and juicy, a regular sugar plum, but it has also proven to be one of the very best varieties for pollinizing the Jumbo plums listed above.

KAGA. An excellent plum and an excellent pollinator. The Kaga is not a large plum, but is one of the very finest quality plums for canning or for plum jam. Kaga is not only a very heavy and regular fruiter itself, but is valuable as a pollinator to induce other plums to bear. Stock very limited—order early.



One-half Bushel of Monitor Plums, Picked from One Small Tree 28 Months After Planting.

SPECIAL NOTICE READING!

The following is a list of the names of the members of the Board of Directors of the company for the year ending 1900. The names are listed in alphabetical order.

The following is a list of the names of the members of the Board of Directors of the company for the year ending 1901. The names are listed in alphabetical order.

1900

1901

100	100	100	100
100	100	100	100
100	100	100	100
100	100	100	100

1902

ORDER EARLY!

ORDER EARLY!

The National

MINNESOTA

MINNESOTA

SPECIAL NOTICE! READ!

The Minnesota State Fruit Farm has issued a bulletin setting forth the necessity of having Pollinizer Plums in each group of common or Jumbo Plum trees in order to insure perfect Pollination and a setting of fruit.

Their experiments show that without these Pollinizer trees even the best of varieties will carry little fruit, but after the Pollinizer Plums are added to the planting, the same trees will bear abundantly. One Pollinizer Plum in every group or, in large plantings, one Pollinizer to every 6 to 10 trees is recommended. The following varieties have proven to be good Pollinizers:

	EACH	3	10
SELECTED POLLINIZER PLUMS (Seedling Trees)	2-3 ft. \$.25	\$.65	\$ 2.00
SURPRISE PLUM TREES(<i>grafted trees</i>) KAGA PLUM TREES (<i>grafted trees</i>)	2-3 ft. .65	1.80	5.40
	3-4 ft. .75	2.10	6.40
	4-5 ft. .85	2.35	7.65
	5-6 ft. 1.20	3.35	10.95

SUPPLY LIMITED.

ORDER EARLY!

Andrews Nursery Company

FARIBAULT,

MINNESOTA

Hardy Cherries

The Cherries listed below are hardy—they will grow for you and bear for you because they are thriving even up in North Dakota and in Canada.

The trees bear the second year and the fruit is excellent for eating fresh, for pies, or for canning. They are becoming popular as money-makers as the fruit sells readily "on the tree" at 5c to 10c a quart.

These Cherries produce fruit buds on the one-year-old wood, hence the best practice is to grow them somewhat as a large bush and keep them pruned more severely than other fruit trees. Cut out the older growth and encourage growth of new shoots in order to keep up their vigor and obtain strong fruit buds that will set fruit regularly and heavily. Plant the full assortment, all are heavy croppers, and each one is different flavor. Include the Compass Cherry pollinizer in each group—1 pollinizer to 10 trees. 8 to 10 feet apart is recommended as best distance to set.

SAPA. Earliest to ripen. Fruit dark purple-red outside and blood-red inside. Rich flavor, unequalled for sauce or jell or eating out of hand, an exceptionally heavy cropper—the branches often bending to the ground with fruit. Generally fruits the second year after planting in orchard.

ZUMBRA. Originated by the Minnesota Fruit Breeding Farm. Early to fruit, and a heavy cropper, often beginning the second year after planting. The fruit is large, purple-skinned, with firm, crisp flesh. Zumbra is splendid for canning, for pies, and for eating out of hand.

POLLINATOR CHERRY

COMPASS. The old standby that has been grown in the Northwest for the past forty years. An excellent fruit to can. Compass is an early and heavy cropper and indispensable as a pollinator for the Oka, Sapa and Zumbra Cherries.



Oka Cherries.

Oka Cherry

Immensely productive, bearing next year after setting into orchard. Heavy, annual bearer of large, deliciously flavored fruit, having rich purple-red skin, flesh and juice. Tree is very hardy; is of dwarf habit, making it easy to gather the fruit. Generally fruit second year after planting.

These Delicious Plums and Cherries Cut Grocery Bills and Promote Health!

A family size assortment can provide you with an abundance of fresh fruit over quite a long season. The different varieties will be ripening from the fore part of August to the middle of September. You can have all you wish to eat fresh, to can, and for jelly and jam. Plenty of canned fruits and jellies cut grocery bills.

EASY TO GROW. Any reasonably good garden

ENJOY PLEASURE OF RIPE CHERRIES AND PLUMS. Make your selections early while our stocks are complete.

soil is suitable. Cherries and plums often thrive on soil where apples fail. Follow directions which will be sent with the stock and you can be sure of success.

QUICK TO BEAR. You don't have to wait a long time for these trees to bear. Under ordinary conditions, you get some fruit the second season, with increasing quantities thereafter.

Prices Plums

		Each	3	10
Fiebing	3-4 ft. Medium size	\$0.50	\$1.35	\$ 4.35
Fiebing	4-6 ft. Standard size	.55	1.50	4.85
Fiebing	5-7 ft. Extra size	.95	2.65	8.45
LaCrescent	4-6 ft. Standard size	.55	1.50	4.85
LaCrescent	5-7 ft. Extra size	.95	2.65	8.45
Underwood	3-4 ft. Medium size	.45	1.20	3.85
Underwood	4-6 ft. Standard size	.55	1.50	4.85
Underwood	5-7 ft. Extra size	.95	2.65	8.45
Kaga	3-4 ft. Medium size	.75	2.10	6.45
Superior	4-6 ft. Standard size	.85	2.35	7.65
Surprise	5-7 ft. Extra size	1.20	3.35	10.95

Cherries

		Each	3	10
Sapa	2-3 ft. Medium size	\$0.40	\$1.05	\$3.35
Zumbra	3-4 ft. Standard size	.45	1.20	3.85
Oka	4-6 ft. Extra size	.55	1.50	4.85
Compass	3-4 ft. Medium size	.45	1.20	3.85
Compass	4-6 ft. Standard size	.55	1.50	4.85
Compass	5-7 ft. Extra size	.95	2.65	8.45

"Gentlemen: The other day I saw Mr. B. and his orchard and among other things he had some fine plum trees bearing. They surely are fine and I am going to get some next spring. Please send me catalog describing same." (Signed) R. L., St. Peter, Minn.

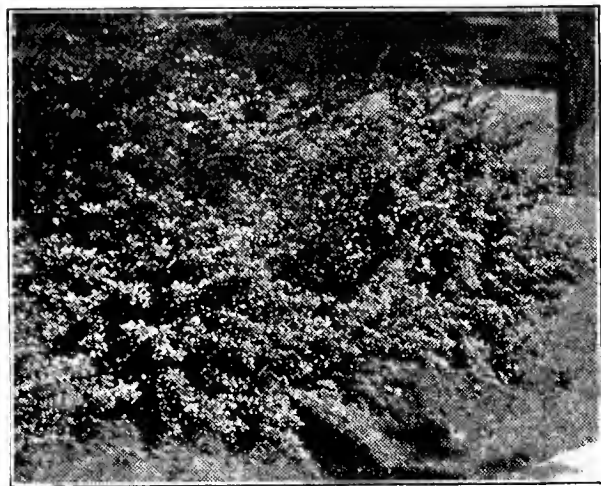
Complete names can be sent on application.

TRY THIS! Plum Jam Recipe

Cover plums with water, add 1/2 teaspoon soda, boil till skins break, drain through colander, remove pits. Add sugar pound for pound. To a moderate sized kettleful, add one tablespoonful of vinegar, boil until thick. Put in jars and seal.

Beautify Your

WITH CHOICE SHRUBS



Barberry, Japanese.

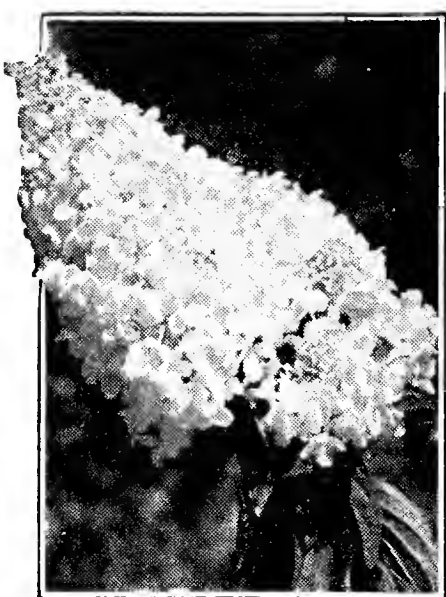
CRANBERRY, High Bush. 6-7 feet. An upright, handsome shrub. The bright red berries hang on throughout the winter.

DOGWOOD, Golden Barked. 6-7 feet. Golden bark, good for contrast in screen plantings. White flowers and berries.

DOGWOOD, Red Twig. 6-7 feet. Spreading habit, bright red bark, excellent for winter color.

DOGWOOD, Variegated Leaved. 4-5 feet. An excellent shrub with red twigs and variegated green and white foliage. Contrast beautifully in shrub plantings.

ELDER, Golden Leaf. 6-7 ft. Bright golden yellow foliage throughout the summer. The large white flower heads appear in July, followed by black berries on which birds like to feed.



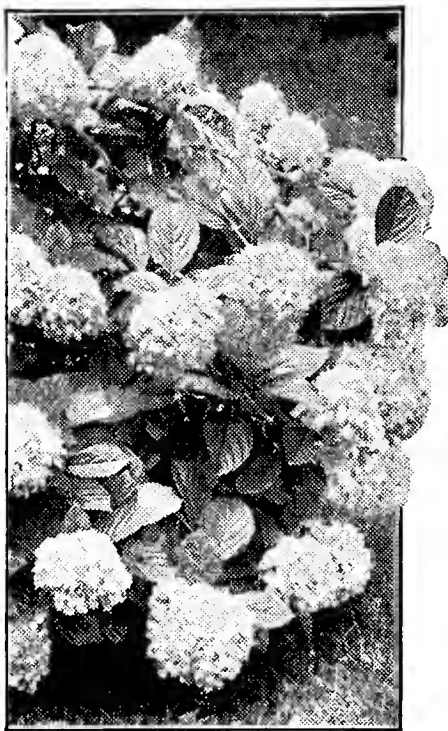
Hydrangea P. G.

BUCKTHORN. 15-18 feet. A vigorous shrub with dark green foliage and black berries in the fall, good for heavy grouping and background planting.

CARAGANA (Siberian Pea Tree). 10-12 feet. Early flowers, bright yellow. Gray-green foliage. Extremely hardy.

CHERRY, PURPLE LEAF. 4-5 feet. The dark red leaves show up in pleasing contrast to other foliage.

COTONEASTER. 5-6 feet. Dark green, glossy foliage turning to bronze shades in autumn. Useful in shrub border or as a formal hedge. Does well in shade.



Hydrangea A. G.

Where to

Along the foundation of the house, in the corners of the walk, along the borders of the lot, and enclose the "back lawn" to make an Outdoor Living Room. Plant in groups so they will appear natural.

The shrubs described are dependable in this

Prices of Shrubs

If desired by parcel post, include for postage and packing on Medium Grade, 15c for 1, 25c for 3, 30c for 5. Standard and Extra Size Shrubs and more than 5 Medium Grade should go by express.

	Medium Grade	Standard Grade	Extra Grade
BARBERRY, Japanese	\$.20	\$.30	\$.45
BARBERRY, Red Leaf	.25	.35	.75
BECHTEL'S FLOWERING CRAB		.65	1.00
BUCKTHORN		.35	.50
CARAGANA		.40	.60
CHERRY, Purple Leaf	.35	.45	.80
COTONEASTER	.25	.35	.60
CRANBERRY, High Bush	.40	.50	1.00
DOGWOOD, Golden Twig		.45	.60
DOGWOOD, Red Twig	.35	.45	.60
DOGWOOD, Variegated Leaf		.60	1.00
ELDER, Golden Leaf	.35	.45	.60
FORSYTHIA	.35	.45	.75
HONEYSUCKLE, Morrow		.40	.60
HONEYSUCKLE, Red	.35	.40	.60
HYDRANGEA, A. G.	.30	.40	.65
HYDRANGEA, P. G.	.35	.45	.65
LILAC, Persian		.45	.65
LILAC, Villosa		.40	.60
LILAC, French	.45	.60	1.40
MOCK ORANGE	.30	.40	.60
MOCK ORANGE, Virginal		.50	.80
RUSSIAN OLIVE		.45	.80
ROSE TREE OF CHINA	.35	.55	1.20
SPIREA, Anthony Waterer	.30	.40	.50
SPIREA, Snow Garland	.35	.45	.80
SPIREA, Froebeli		.45	.80
SPIREA, Van Houttei	.25	.35	.50
SNOWBERRY	.25	.35	.60
SUMAC		.40	.65
TAMARIX	.30	.40	.65
WEIGELA, Eva Rathke	.45	.60	1.00

FORSYTHIA, Golden Bell. 5-6 feet. A beautiful early yellow flowering shrub. Excellent in masses.

HONEYSUCKLE, Morrow's. 5-6 feet. Semi-spreading, light foliage, red fruit, white flowers.

HONEYSUCKLE, Red. 8-10 feet. The red flowers appear in May, followed by red berries ripening in mid-summer, and clinging to the bush for weeks. Attractive to birds.

HYDRANGEA, A. G. 3-4 feet. Snowhill Hydrangea, large showy blooms in July and August. Will do well in a shady location.

HYDRANGEA, P. G. 3-4 feet. The old-fashioned large flowered Hydrangea blooming in September; turns pink later. The blossom heads may be dried for winter bouquets.



Forsythia.

Home Grounds

AT THESE LOW PRICES

LILAC, Persian. 6-7 feet. Fine leaved, fine twigged variety. Does not sucker like common lilacs. Great masses of delicate purple blooms.

LILAC, Villosa. 8-10 feet. Delicate pink blooms when other lilacs have gone by.

LILAC, French. 6-8 feet. The most gorgeous flowers of all large blooming shrubs. Do not sucker profusely like common lilac.

Alphonse Lavallee. Double flowers of a lovely blue shade.

Chas. Joly. Double dark purplish red flowers.

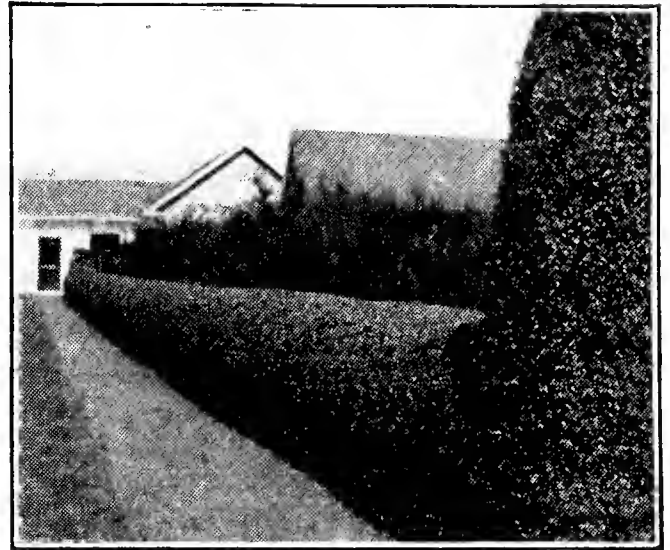
Ludwig Spaeth. Single. Long heads of very dark purple flowers.

Mme. Lemoine. Double, pure white, makes a beautiful contrast with the darker colors.

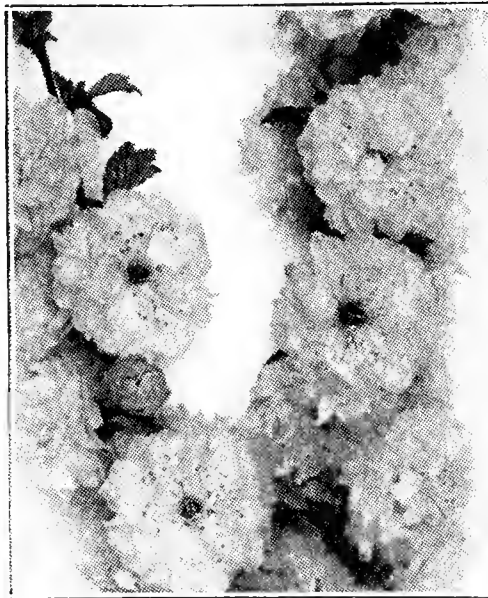
MOCK ORANGE. 8-10 feet. Semi-spreading large shrub. The profuse bloom is very fragrant.

MOCK ORANGE, Virginal. 6-7 feet. Double Mock Orange. Blooms from June throughout the season. Beautiful, double flowers of orange blossom fragrance. Fine for the border or as single specimens. One of the newest shrubs; supply limited.

RUSSIAN OLIVE. 10-12 feet. A gray-green foliage plant. Splendid in background screen plantings.



Chinese Hedgewood on Experiment Station Grounds near Washington, D. C.



Rose Tree of China.

SPIREA, Anthony Waterer. 18-24 in. Excellent for border and low foundation planting. Blooms freely in July and with plentiful rainfall the crimson flowers on the new growth give color to the shrub over a long period.

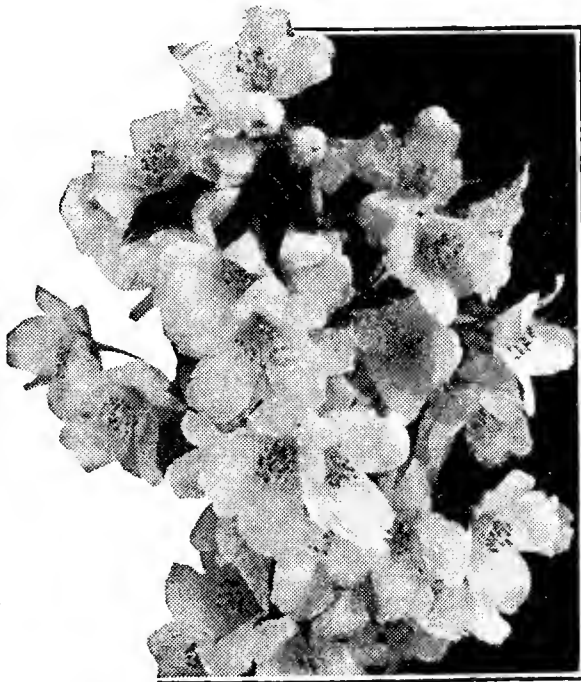
SPIREA, Snow Garland (Arguta). 4-5 feet. The habit of covering the branches with pure white flowers gives this shrub its popular name. The branches look like gar-

lands of snow. The earliest blooming Spirea, dwarf shrub.

SPIREA, Van Houttei (Bridal Wreath). 5-6 feet. The most popular shrub, useful in foundation and border plantings.

TAMARIX. 6-7 feet. A beautiful shrub with lace-like foliage. Bluish-gray with large clusters of pink flowers. An excellent shrub that is becoming very popular.

WEIGELA, Eva Rathke. 4-5 ft. A beautiful pink-flowered shrub, good in borders. Flowers profusely.



Mock Orange.

ROSE TREE OF CHINA. 6-7 feet. The earliest flowering hardy shrub of deep pink color. The double blossoms appear in great profusion before the leaves develop, completely covering the branches with what appear like small pink roses. One or two should be in every planting.

SNOWBERRY. 3-4 feet. Produces great masses of white berries in the fall.

SUMAC, Staghorn Cut Leaf. Splendid cut leaf variety. Produces a beautiful effect in planting. The colors are vivid crimson in the fall.



Weigela.

HEDGES

PLANT THIS
SPRING AT
THESE LOW
PRICES

BARBERRY, Japanese. Informal hedge to 3 feet high. (See description on page 14).

BUCKTHORN. Hardy, dependable in the North. As a formal sheared hedge, this heads the list. Foliage dark green.

CARAGANA. For extremely dry and cold locations, Caragana is well adapted. May be sheared to any desired height. Bright yellow flowers in May.

CHINESE HEDGEWOOD. An ideal hedge. See full description on inside front cover.

Prices of Hedging

		10	50	100
BARBERRY, Japanese	12-18 in.	\$0.75	\$3.35	\$ 6.50
BARBERRY, Japanese	18-24 in.	1.35	6.35	12.00
BUCKTHORN	12-18 in.	.75	3.65	5.85
BUCKTHORN	18-24 in.	1.25	5.35	9.85
BUCKTHORN	2-3 ft.	1.50	5.95	11.35
CARAGANA	3-4 ft.	1.25	4.95	9.00
CHINESE HEDGEWOOD	12-18 in.	1.25	2.85	4.85
CHINESE HEDGEWOOD	18-24 in.	1.45	3.65	6.65



Harrison's Yellow.



Ulrich Brunner



Gen. Jacqueminot.



Frau Karl Druschki.

ROSES

A selected list of the most desirable Roses for this northern district. All 2-year, field-grown.

If desired by parcel post, include for packing and postage—11c for 1 plant, 13c for 2 plants, 19c for 5 plants.

Hardy Rugosa Roses—Eskimo Beauties

This class of Roses is most dependable of all, thriving even in Dakota without winter protection. They bloom throughout the season.

AMELIE GRAVEREAUX. Handsome, carmine-red; excellent type of bud. Standard size, 45c; extra size, \$1.00, each.

F. J. GROOTENDORST. Clusters of bright red Roses borne from June until November. Standard size, 45c; extra size, \$1.00, each.

HANSA. Extra hardy crimson-red, double Rose; fine for border or hedge. Standard size, 40c; extra size, 75c, each.

SARAH VAN FLEET. Pointed, delicate pink buds. Standard size, 50c; extra size, \$1.00 each.

SIR THOS. LIPTON. Pure white. Standard size, 40c; extra size, 75c, each.

Special These 5 Roses—one of each kind—for only **\$1.70**

(Plus postage and packing, 19c).

Hybrid Tea, Hybrid Perpetual and Special Roses

HARRISON'S YELLOW. Old-fashioned hardy June Rose. Standard size, 45c; extra size, \$1.00, each.

FRAU KARL DRUSCHKI. White. Standard size, 45c; extra size, \$1.00, each.

GEN. JACQUEMINOT. Deep red. Extra size, \$1.00, each.

ULRICH BRUNNER. Cherry-red. Standard size, 50c; extra size, \$1.00, each.

PINK RADIANCE. Soft pink. Standard size, 50c; extra size, \$1.00, each.

Climbing Roses

DOROTHY PERKINS. Beautiful shell-pink, fragrant. Standard size, 35c; extra size, 60c, each.

EXCELSA. Gives a profusion of rich glowing crimson bloom. Standard size, 35c; extra size, 60c, each.

GARDENIA. Sprays of creamy flowers with rich yellow centers. Standard size, 40c; extra size, 75c, each.

PAUL'S SCARLET. Brilliant scarlet flowers, profuse bloomers. Standard size, 45c; extra size, \$1.00, each.

PRIMROSE. Large double flowers of soft rich primrose-yellow. New. Standard size, 50c; extra size, \$1.00, each.

CLIMBING VINES

Add charm and beauty to your plantings with these attractive vines.

BITTERSWEET. Hardy native vine of rapid growth. Orange-colored berries remain on all winter. Prized for winter decoration indoors. Standard size, 45c; extra size, 75c, each.

CLEMATIS, JACKMANI. Large purple blooms, 4 to 6 inches across; begins to bloom in July. Standard size, 80c; extra size, \$1.25, each.

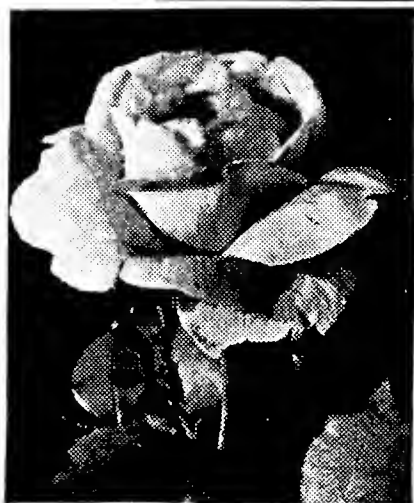
CLEMATIS, PANICULATA. Gives a profusion of creamy white fragrant blooms in September. Standard size, 45c; extra size, 70c, each.

ENGELMANN IVY. Excellent for covering stone or brick walls to which it clings without support. Costs less than stucco to cover a concrete wall and looks better. Hardy. Standard size, 25c; extra size, 50c, each.

SCARLET TRUMPET HONEYSUCKLE. This popular vine is an old favorite. The clusters of trumpet shaped bright red flowers give a wealth of bloom. Standard size, 30c; extra size, 60c, each.

SILVER LACE VINE. Grows rapidly. A well grown specimen is a cloud of lacy misty white shot with tints of cream and pale rose, of most exquisite effect. Blooms from late summer well into autumn. Excellent for trellis, porch, or arbor. Extra size, 75c, each.

BOSTON IVY. A clean, fine leaved, clinging vine, preferred by many to the coarser growing Engelmann. Extra size, 75c, each.



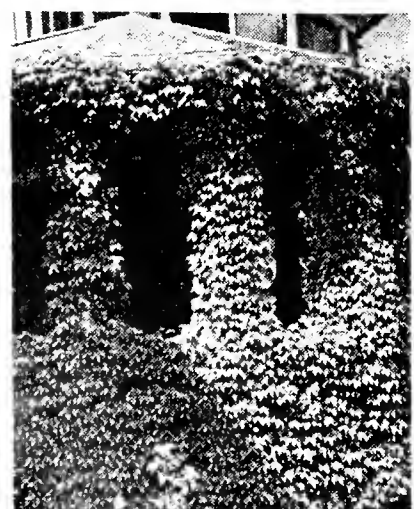
Pink Radiance.



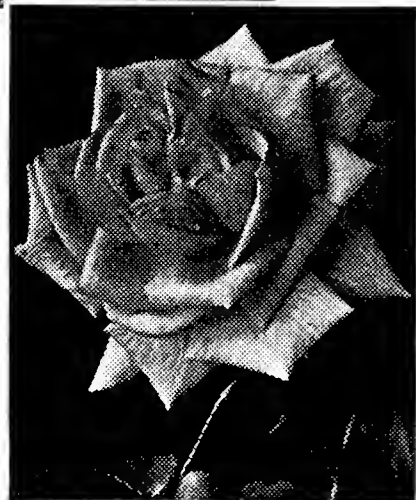
F. J. Grootendorst.



Bittersweet.



Engelmann Ivy.



Primrose.



Sir Thomas Lipton.



Silver Lace Vine.



Clematis Jackmani.

Perennial Flowers

For Beauty - Permanence - Pleasure

Our plants are all field grown and freshly dug. You can succeed with flowers if you choose from this list.

BABY'S BREATH. A spray or two of "misty" white Baby's Breath worked into a bouquet with other flowers blends them together in a delicate effect that can be obtained in no other way.

BALLOON FLOWER. So called from resemblance of the unopened flower to a balloon. Two varieties, blue and the white.

BLEEDING HEARTS. Everyone loves the old-fashioned Bleeding Heart that was always found in our grandmothers' gardens. Comes up in early spring and flowers immediately in long racemes of heart-shaped pink flowers. 50c each.

COLUMBINES. Thrive in any garden soil, blooming in May and June. Their graceful long spurred flowers rise two feet above the beautifully divided foliage.

CORALBELLS (*Heuchera rosea*). The mass of crinkly leaves persist through the winter. Delicate racemes of tiny drooping bells of rich coral hue are borne aloft on slender stems rising to a height of 18 to 30 inches. Fine for the border and rock gardens.

DAISY, SHASTA. Alaska, largest of the Shasta daisy type.

DAISY, PAINTED. In mixed colors—white, pink and red. Begins blooming in June and continues for a long time; very hardy.

HOLLYHOCKS. Choice new double flowers in mixed colors. The tall spikes nicely work into the background in perennial borders.

IRIS.

Mrs. Horace Darwin. Large, white, tinged with pink, very fragrant.

Mme. Chereau. Pure white with clear frilled lavender edge.

Perfection. Lavender and purple.

Prosper Laugier. Standards, fiery bronze; falls, reddish purple.

Sherwin-Wright. The best pure yellow iris.

Zanardelle. A true blue iris.

Pumila. Dwarf early blooming iris, deep violet.

LARKSPUR. These are among our most beautiful flowers. They begin flowering in June, and if flower stalks are cut off near the ground as soon as they begin to fade, a second and third crop of blooms will be produced before the end of the season.

Belladonna. Light sky-blue.

Bellamosa. A dark blue type of Belladonna.

Wrexham Hybrids. A strain having the handsomest spikes imaginable. Mixed colors.

LILIES.

Coral Lily. The bright scarlet flowers are borne in great profusion; leaves are fern-like. Fine for mass plantings or for rock gardens.

Elegans. Mixed tints of orange and red. Blooms in June and July.

Regal Lily. One of the most handsome of the hardy lilies. Flowers white shading to yellow in center, with pink tinge on outer edges; deliciously sweet scented.

Tiger Lily. Double Tiger Lily, 4 to 6 feet high, bears immense numbers of bright orange flowers.

PEONIES: One of the most dependable flowers. Beautiful as a rose. Absolutely hardy.

Grandiflora. Large blooms of soft pink borne on long stems. Large roots, \$1.00 each.

Karl Rosenfield. Dark red; flowers very large, slightly fragrant, long stems, good for cut flowers. Early midseason. Strong divisions, \$1.00 each.

Mme. de Verneville. Large, white, fragrant. Midseason. Large divisions. \$1.00 each.

Peonies in Assorted Colors. Red, pink, white—not named. 50c each; 5 for \$2.00.

PHLOX: This delightful flower gives us striking, brilliant color effects in July and August. They show up very effectively when several plants of one variety are massed to give a single color in one group, or they may be used as single plants. Phlox have been wonderfully improved during recent years; the flowers are larger and colors more beautiful. We recommend the following as being the best:

Dr. Chas. H. Mayo. White with crimson eye.

Frederick Passy. Mauve, delicate purple.

Jules Sandeau. Large flowers, deep salmon-pink.

Miss Lingard. The only phlox which blooms from June till October; white.

R. P. Struthers. Rosy carmine with claret eye.

Rijnstroom. Large heads of rosy pink.

Von Hochberg. Deep brilliant red.

Von Lassburg. Large flowers of pure white.

Price of all Phlox 30c each; 4 for \$1.00.

SEDUM. In variety. Just the thing for rock gardens or for dry slopes where other things fail to grow.

YUCCA. Evergreen foliage; flower stalks 3 to 4 feet high, bear branching spikes of bell-shaped flowers.

YUCCA, Variegated Leaved. A novel form of above, new and striking. 75c each; 2 for \$1.25.

Prices of all Perennials, except as noted:

Not Prepaid—25c each, 3 for 60c, 12 for \$1.75.

Packing and Postage additional, 10c each, 12c for 3; 25c for 12.



Elegans Lily.



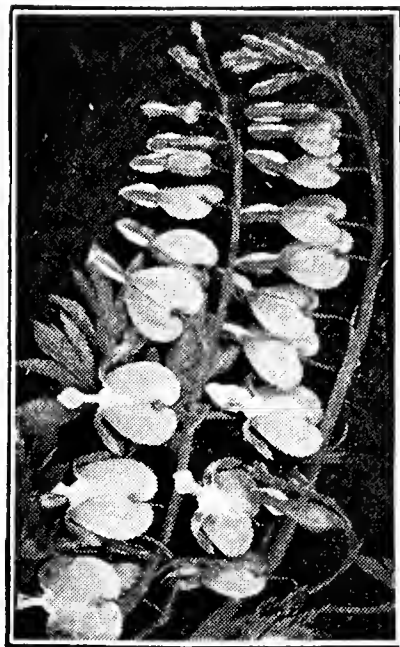
Phlox.



Iris.



Columbine.



Bleeding Heart.



Coralbells.



Hollyhock.



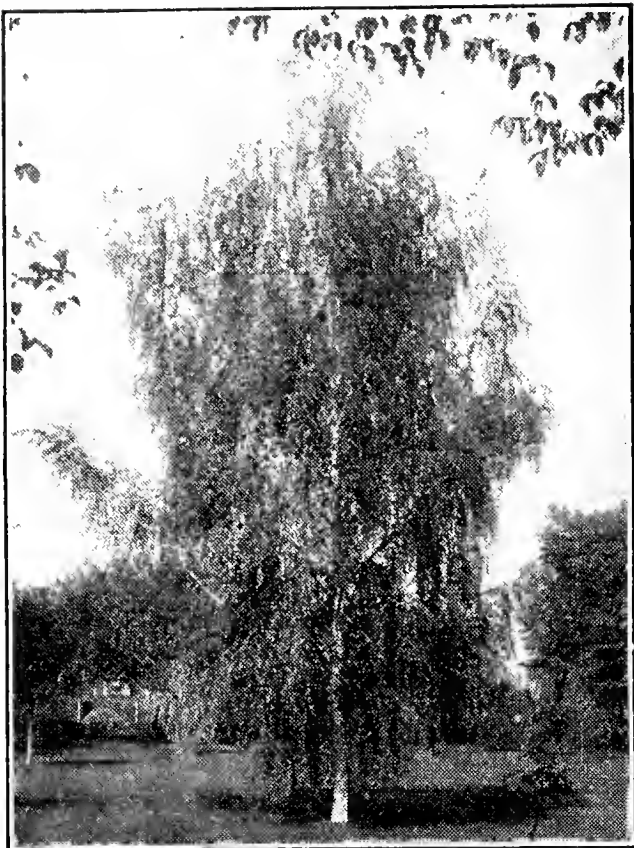
Larkspur.

Shade and Ornamental Trees Are a Sound Investment

Start this year at these low prices. The varieties listed here are dependable, they have good tops and good roots.

BASSWOOD (American Linden). A well known, stately tree with large, heart-shaped leaves of a pleasing green color. A vigorous grower, forming a large, round-headed tree.

BIRCH, WHITE. A beautiful graceful upright tree with white or cream-colored bark which makes pleasing contrast with the dark trunks and limbs of other trees. Very effective among evergreens in clumps of 3 or 5 trees.



White Birch.

CRAB, RED SILVER. Is a beautiful ornamental tree. It is red all over the tree, in leaf, bark, and wood. The under sides of the leaves are of a silvery color, the blending of which with the rich maroon-red of the upper surface, makes a beautiful combination. The leaves hold their rich red color throughout the summer to a much better degree than any other similar plant. The somewhat cut-leaf character of the foliage, the very dark red blossoms followed by the abundant dark red fruits, makes a most strikingly beautiful combination that puts the Red Silver Crab in a class by itself. We paid \$10.00 for a small one-year-old tree less than 3 feet high.

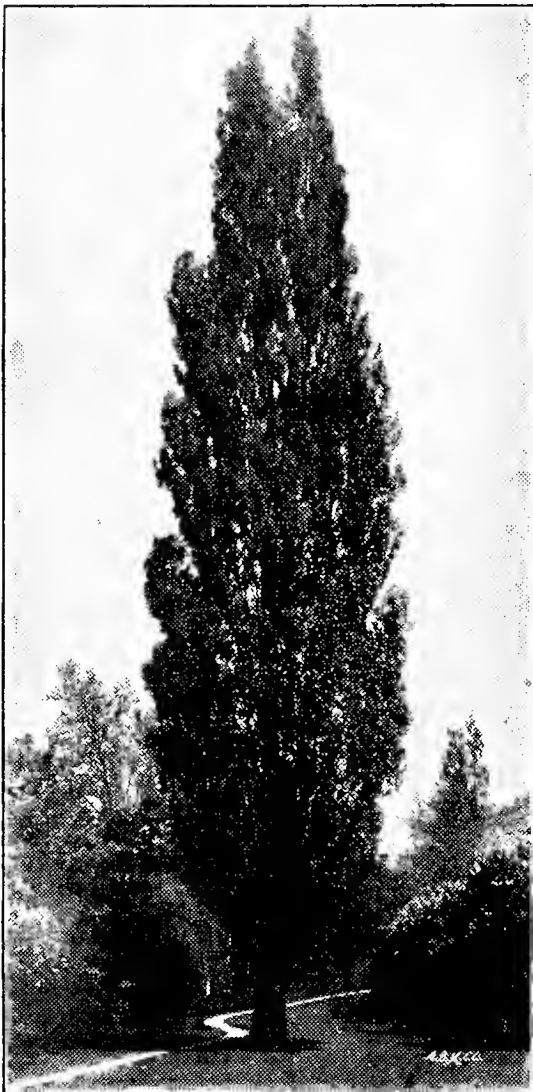
MAPLE, HARD. One of the most symmetrical and well rounded trees native to America. A straight grower, vigorous, stately, inclined to form a spreading head when given plenty of room. A regal tree for the avenue, a life-long friend on the home grounds, and a specimen for the parks. Deeply lobed dark green foliage, changing to orange and red tints in autumn.

MOUNTAIN ASH, EUROPEAN. Very beautiful, with straight, smooth trunk. Foliage deep green, turning yellow in autumn. Erect growth, 20 to 30 feet high. White flowers in May, followed by bright orange-red berries which cling all winter. Interesting for lawn or park.

POPLAR, BOLLEANA. Smooth gray bark; leaves dark green above and snowy white beneath. Useful to break the sky line of plantings.

POPLAR, LOMBARDY. General effect a darker green than Bolleana. It may be used as a tall background screen, or in small clumps or singly to break the sky line.

WILLOW, NIOBE GOLDEN WEEPING. Golden bark and graceful habit make this a very useful and attractive tree especially for background and screen planting.



Lombardy Poplar.

BIRCH, WEEPING CUT-LEAF. One of the most beautiful trees for the lawn, with delicately cut foliage. The bark is silvery white, forming a beautiful contrast with the foliage. It makes a rapid growth.

CRAB, BECHTEL'S DOUBLE FLOWERING. Is very showy in May when covered with the double pink blooms. The foliage resembles that of the wild Crab.

CRAB, DOLGO. A most beautiful and useful lawn tree, has a profusion of white flowers in spring and loads of fiery red crab apples in fall. Unexcelled for jelly.

CRAB, HOPA. The deep pink blossoms are followed by bright red fruits that hang to the tree for weeks, making a very showy appearance. The leaves on tips of twigs have a reddish color.

ELM, AMERICAN. Our noblest shade tree, large and spreading, combining strength and grace. There is no better street tree and nothing finer for large lawns. The charm of the old New England village is proverbial, but it is something always identified with its Elms. They grow anywhere and are very long lived. We grow our Elms by budding and grafting. This insures uniform habit of growth. There is just as much difference between our budded Elms and the common seedling Elms, which are ordinarily sold, as there is between the tame Plums and the wild ones. For street planting, it is especially desirable to have all the trees of uniform size and shape. This can only be obtained by using the budded or grafted Elm. We offer the Minneapolis Park Board Elm, selected by Supt. Theodore Wirth, as being the best for form and hardiness.

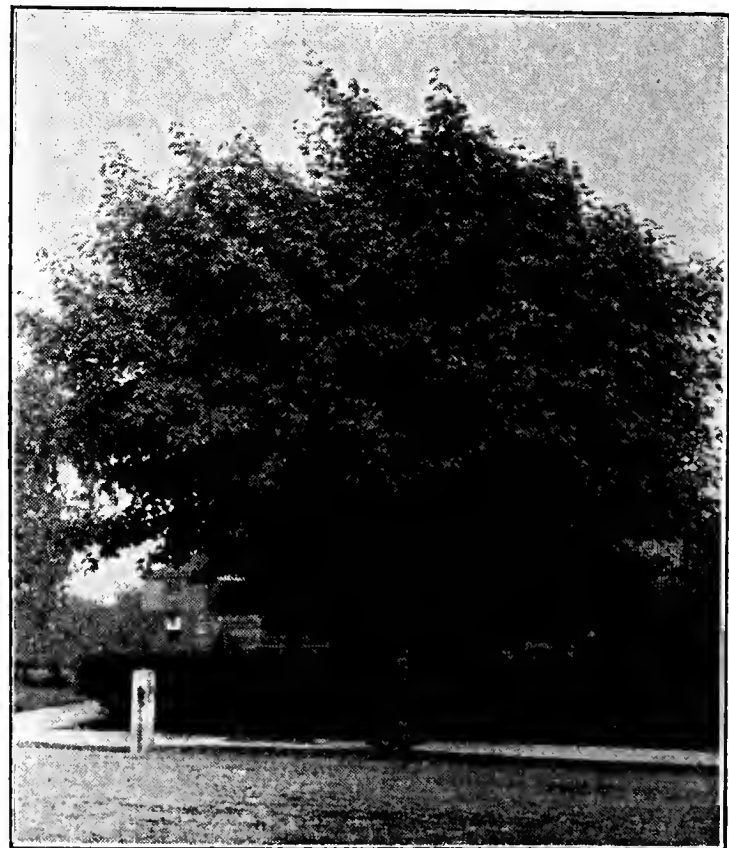
ELM, CHINESE. (See page 19).

HAWTHORN. The hardy native Hawthorn with characteristic thick set tops is beautiful in spring when white with fragrant blossoms and again in autumn when full of bright red fruit which clings for weeks to the trees.

Shade Trees

5 trees of one variety at 10% discount from each price.

		5-6	6-8	8-10	10-12
Basswood	Standard		\$0.95		
	Select		1.25	2.00	3.50
Birch, Weeping Cut-Leaf	Standard	2.45			
	Select		3.20	5.40	
Birch, White	Standard	.70	.95		
	Select	1.50	2.00	3.40	
Crab, Bechtel's Double Flg.					
Select, 2-3 ft., \$1.00; 3-4 ft., \$1.50.					
Crab, Dolgo	Select	1.00			
Crab, Hopa	Select	1.50	2.00		
Crab, Red Silver	Standard	1.00	2.00		
	Select	1.50	2.50		
Elm, American	Standard	.35	.50	.75	
	Select		1.00	1.50	2.90
Elm, Chinese (See page 19)					
Hawthorn	Select	2.00			
Maple, Hard	Standard	.95	1.45		
	Select	2.00	2.50		
Mt. Ash, European	Standard	.95	1.20		
	Select	1.75	2.50		
Poplar, Bolleana	Select	1.25	1.60	2.40	
Poplar, Lombardy	Standard	.45	.60		
	Select	.75	1.00	1.50	
Willow, Niobe Golden Weeping	Standard	1.00			
	Select	1.50	2.50		



Hard Maple.

CHINESE ELM

Northern Strain

1. The Chinese Elm is a tree of rare beauty. It has heavy, dark green foliage of the Elm type with delicate fine twigs. It combines the beauty of the best Elms with the gracefulness of the Cut Leaf Birch.
2. It resists drought and cold, thrives on poor soil and makes a fine showing in spite of neglect.
3. It is a tree of rapid growth—growing as rapidly as the Soft Maple or Cottonwood.
4. It holds its foliage until late in the fall—adding 3 or 4 weeks to the year's growing season.

The U. S. Department of Agriculture Bulletin says: "It is a rapid grower with slender, almost wiry branches; is one of the first trees to leaf out in the spring and the last to shed its leaves in the fall. Remarkably free from the usual plant diseases and insect injury so common to the Elm. It is very hardy and has proven valuable under greater varieties of climatic and soil conditions than any tree yet introduced. Its resistance to drought, alkali and extremes of temperature render it especially valuable. The Chinese Elm is adapted to any part of the United States. For windbreak or screen, its natural habit of branching from the ground if left untrimmed, makes it especially desirable. It will thrive where other trees could never exist and will grow to a height of 60 feet, attaining a girth of 12 feet, though can be easily controlled by pruning. Luxurious shade may be enjoyed in just a few short years and some specimens have reached a height of 23 to 25 feet in 4 years, with a spread of 18 feet."

CHINESE ELM—For Windbreak and Screen Plantings. Easy to grow—quick to grow—cheap! Plant in double rows 12 to 15 feet apart and 4 to 5 feet apart in the row. After the first year it will take care of itself. Unless trimmed up for a shade tree, the value of Chinese Elm is to grow low to the ground—ideal for a windbreak. Many old farm windbreaks are "up in the air," letting the wind howl through underneath. Plant out Northern Chinese Elm and stop that ground sweep of wind. Keep the snow from piling up around the buildings. A small investment will work wonders. Take advantage of these low prices to plant this year.

Screen Unsightly Views. Chinese Elm is unequalled for quick growing, efficient screen for unsightly objects and views. They are cheap and can be used freely. Plant this spring.

PRICES OF CHINESE ELM—Windbreak Trees

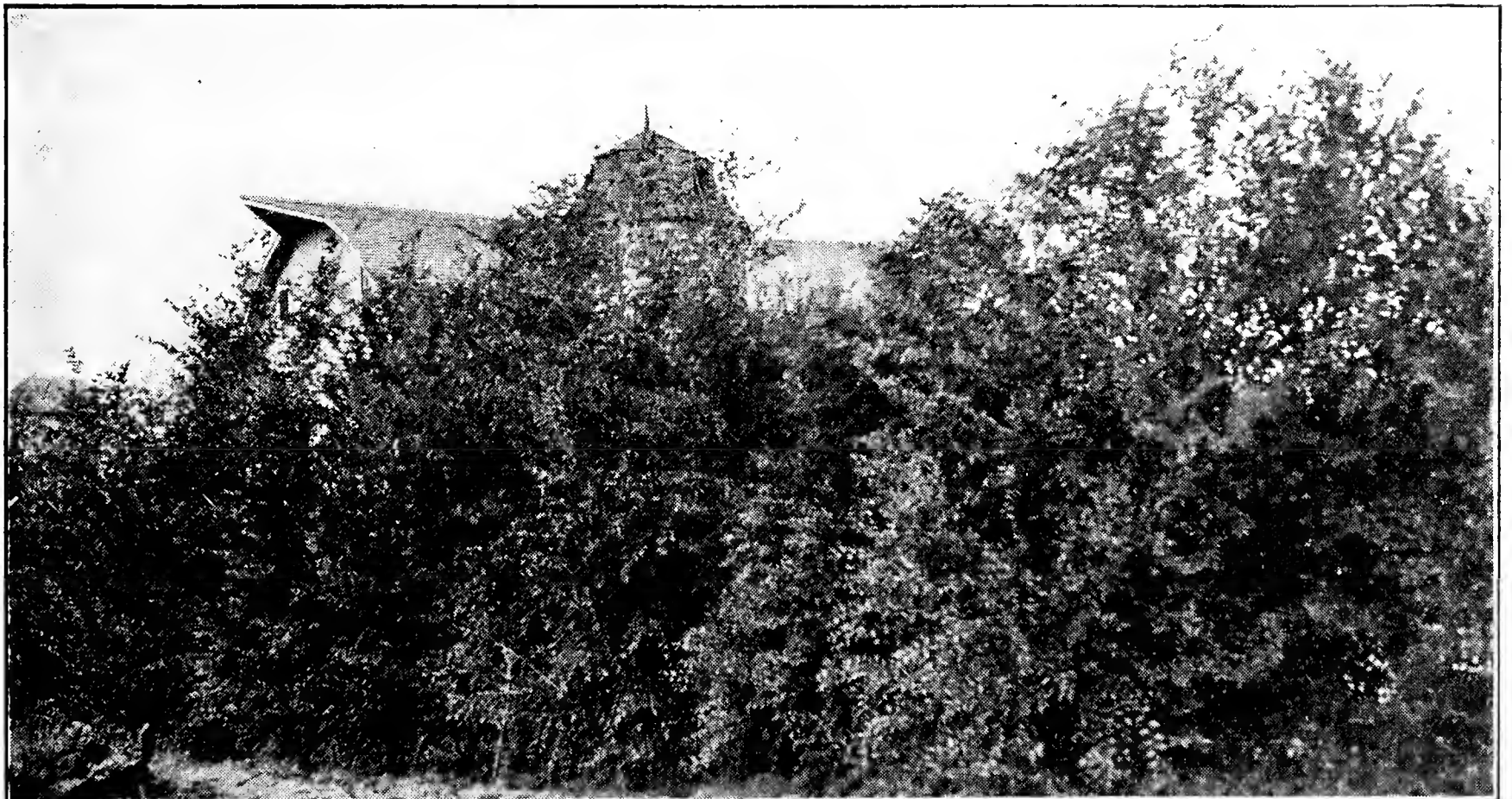
	10	50	100	500	1000
Standard Grade. 6-12 in.			\$1.45	\$6.45	\$11.00
Extra Heavy, Branched. 6-12 in..			1.90	8.45	15.85
Standard Grade. 12-18 in.			2.00	8.95	16.00
Extra Heavy, Branched. 12-18 in..			2.60	11.85	21.65
Standard Grade. 18-24 in.60	1.95	2.70	12.45	22.50
Extra Heavy, Branched. 18-24 in..	.75	2.45	3.60	15.85	29.35



Chinese Elm Tree.

PRICES OF CHINESE ELM—Shade Trees

	Each	2	10
3- 4 ft. Transplanted—Standard	\$0.35	\$0.65	\$ 3.20
4- 5 ft. Transplanted—Standard45	.80	3.95
Se'ect75		
5- 6 ft. Transplanted—Standard60	1.10	5.35
Select	1.00		
6- 8 ft. Transplanted—Standard75	1.35	6.45
Se'ect	1.40		
8-10 ft. Transplanted—Standard	1.25	2.35	11.35
Select	2.40		



Chinese Elm Windbreak.

Plant Evergreens for



Red Cedar.

Modern plantings use evergreens about the house and on the lawns. Evergreens add color and attractiveness winter and summer.

Our evergreens are dug with a ball of earth—the soil they actually grew in. This ball of earth is securely wrapped with burlap to hold it in place. You can succeed with these trees. The varieties below are hardy and well suited for home plantings. The trees have been carefully grown, transplanted, and root pruned 2 to 4 times in the nursery to develop a full strong fibrous root system. B&B signifies dug with a ball of earth and the earth burlapped on.

ARBOR-VITAE, AMERICAN. Suited to a moist or very retentive soil. Without question the best evergreen for a hedge, or may be grown as a tall screen.

ARBOR-VITAE, PYRAMIDAL. This is strikingly attractive, retaining the columnar shape without shearing. The color is rich green and, like all Arbor-Vitae, it is easy to transplant. The most popular tree for corners, in front of pillars, center or background of group plantings, and a pair, one each side of the entrance is very attractive.



Pfitzer's Juniper.

ARBOR-VITAE, SIBERIAN. This is a small globe variety and its unusually dark green color makes it very useful. It is the darkest green of all the Arbor-Vitae. It can be sheared to a perfect globe, though if left to develop naturally it is oblong.

JUNIPER, CHINESE. Upright grower. Better than Red Cedar for planting in vicinity of apple orchard as it does not harbor Cedar rust.

Evergreen Prices

"B&B" indicates dug with ball of earth.

	12-18"	18-24"	24-30"	30-36"	3-4'
Arbor-Vitae, Amer., Standard Grade . .	\$0.50	\$0.75	\$1.00	\$1.50	(\$2.25 B&B)
Arbor-Vitae, Amer., Select Trees, B&B .		1.00	2.00	2.50	4.00
Arbor-Vitae, Pyr., Standard Grade			1.50	3.00	(3.50 B&B)
Arbor-Vitae, Pyr., Select Trees, B&B . .			2.50	4.00	5.00
Arbor-Vitae, Siber., Select Trees, B&B .		2.50	4.00	6.00	
Juniper, Chinese, Select Trees, B&B . .			3.50	4.00	5.00
Juniper, Pfitzer, Standard Grade, B&B .	2.00				
Juniper, Pfitzer, Select Trees, B&B		3.00	4.00	5.75	
Juniper, Virginiana, Standard Grade . . .		1.50	2.00	2.50	(3.50 B&B)
Juniper, Virginiana, Select Trees, B&B .		2.50	3.00	4.00	5.00
Spruce, Black Hills, Standard Grade . . .	1.00	1.50	1.75	2.00	(3.50 B&B)
Spruce, Black Hills, Select Trees, B&B .	1.50	2.00	2.50	3.00	4.50
Spruce, Colo. Blue (Shiner), Select Trees, B&B		5.00	7.00	9.00	12.00
Spruce, Colo. Medium Blue or Green—					
“ “ Standard Grade	1.25	1.75	2.00	2.50	(3.50 B&B)
“ “ Select Trees, B&B	2.00	2.50	3.50	4.50	6.00
Pine, Austrian, Standard Grade50	1.00	1.50	2.00	
Pine, Austrian, Select Trees, B&B	1.50	2.50	3.00	3.50	5.00
Pine, Dwarf Mugho, Standard Grade . .	.75	(2.00 B&B)		(10-12", \$0.50)	
Pine, Dwarf Mugho, Select Trees, B&B .	1.75	3.00		(10-12", \$1.25)	



American Arbor-Vitae.

Beauty and Permanence

JUNIPER, PFITZERIANA. A beautiful informal evergreen shrub. Very useful in foundation planting and for groups by corners of walks.

JUNIPER, VIRGINIANA (Red Cedar). Very attractive in winter when the foliage changes to a beautiful golden bronze. This is one of the most hardy and dependable varieties. May be trimmed or clipped into any shape desired.

PINE, DWARF MUGHO. The hardiest dwarf evergreen. Can be kept low as may be desired; very compact; dark green color. Can be used near entrance or at foundation or grouped in corners of grounds.

PINE, AUSTRIAN. One of the most beautiful Pines—erect growth—long needles. Splendid for lawn planting or mass planting in backgrounds.

SPRUCE, BLACK HILLS. Is rapidly becoming the most popular Spruce in the Northwest. Its absolute hardiness, the ease with which it transplants, its symmetrical dense growth and dark green color, place it in a class by itself. As an individual ornamental tree, it is as distinguished as the Colorado Blue and as a windbreak it cannot be excelled by any other evergreen offered. The best evergreen to plant near the house for a "Living Christmas Tree."

The Minnesota Forestry Board writes: "This variety is strong and especially hardy under conditions of drought and exposure. It is adaptable to light soils and especially recommended for the North and West." (Bulletin No. 1).

R. W. Peterson, before Minn. Hort. Society, 1913: "Among the Spruces, the Black Hills Spruce is giving the best satisfaction. It has all the good characteristics of the White Spruce and is also exceedingly hardy. The Minnesota and North Dakota Trial Stations predict that it will supersede all other Spruce plantings."

Prof. C. B. Waldron, North Dakota Experiment Station: "The Black Hills Spruce does not seem to notice the drought at all."

Our plants are from seed collected in the Black Hills, and are absolutely true to type.



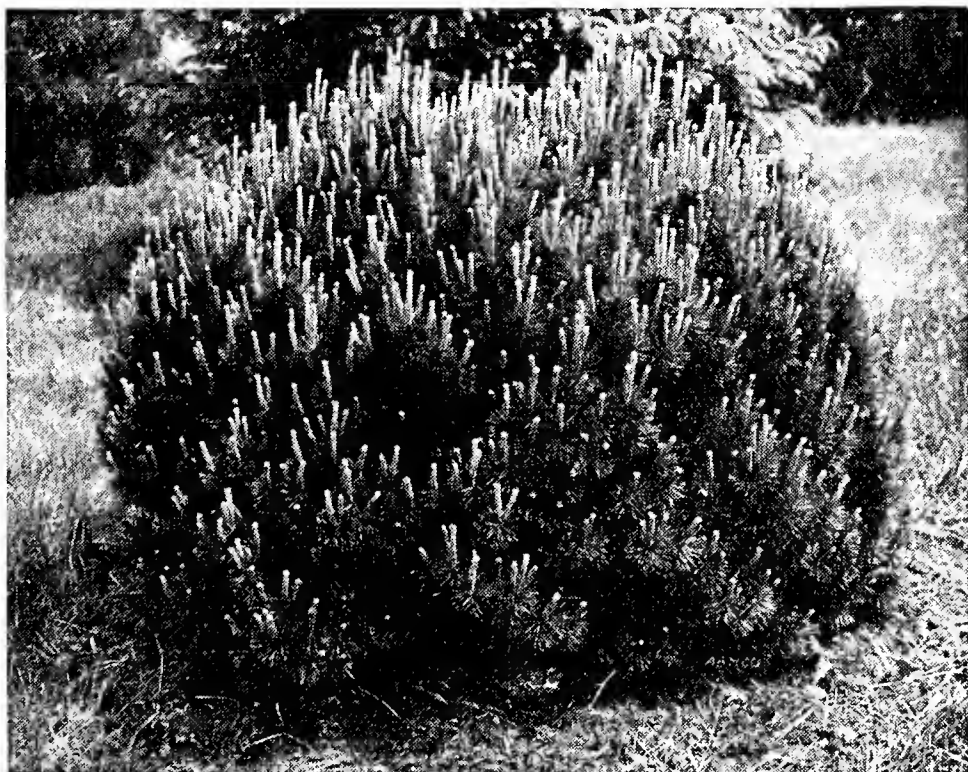
Colorado Blue Spruce.

SPRUCE, COLORADO BLUE (Shiners). The outstanding Spruce for striking appearance with its silver-blue color and symmetrical form. Our stock is the hardy strain from the Rocky Mountains. Three or more times transplanted.

SPRUCE, COLORADO. This is the Green or Blue-green form of the Colorado Blue Spruce. These are very well formed and beautiful trees. They belong to the same species as the Colorado Shiners, but are simply not as intense a color. These are exceptional values at the prices on page 20.



Black Hills Spruce.



Mugho Pine.

Evergreen Windbreaks and Hedges

At Special Low Prices.

A good solid evergreen windbreak about a farm home is one of the best investments you can make. It stops the cold and the snow, and makes the farmstead comfortable and attractive and pleasant to live and work in. Plant this year at these low prices.

Plant windbreaks in a double row 12 to 15 ft. between the rows, and 4 to 5 ft. apart in the row. Plant Arbor-Vitae hedging 18 inches apart.

EVERGREEN WINDBREAKS AND HEDGES

All Transplanted trees:		10	50	100
Arbor-vitae	12-18" Standard	.. \$2.00	\$ 8.00	\$15.00
Arbor-vitae	12-18" Select 4.50	17.00	30.00
Arbor-vitae	18-24" Standard	.. 2.50	10.50	20.00
Arbor-vitae	18-24" Select 5.50	20.00	36.00
Arbor-vitae	2-3' Standard	.. 3.50	15.65	30.00
Arbor-vitae	2-3' Select 6.50	25.00	40.00
Spruce, Black Hills	12-18" Standard	.. 2.50	10.50	20.00
Spruce, Black Hills	12-18" Select 4.50	17.00	30.00
Spruce, Norway	12-18" Standard	.. 2.00	8.00	15.00
Spruce, Norway	12-18" Select 3.50	14.00	25.00
Pine, Austrian	12-18" Standard	... 2.00	8.00	15.00

Dollar Bargains

All Post-Paid

- No. 34—30 Chinese Elm, 6-12 inch
5 Chinese Elm, 12-18 inch
postpaid, \$1.00
The popular fast-growing windbreak tree.
- No. 35—10 Bridal Wreath Spirea, 1-yr. field
grown\$1.00
Most popular of all flowering shrubs.
- No. 36— 4 Red Berried Mountain Ash, 1-yr. ...\$1.00
A most choice lawn tree.
- No. 37— 4 Lily Elegans, only\$1.00
Absolutely the best hardy red lily.
- No. 38— 5 Coral Lily, for only\$1.00
The delicate leaves and dainty bright flowers make this lily ideal for rock gardens.
- No. 39— 5 Double Tiger Lily, for only\$1.00
The sturdy character of this beautiful lily adapts it to planting in any border.
- No. 40— 2 Dwarf Mountain Pine, 1 ft. diameter \$1.00
Ideal for low foundation planting and for each side of entrance walk. Roots carefully packed in moss.

These collections give a lot of good nursery stock for little money. A wide range of stock is offered covering many uses.

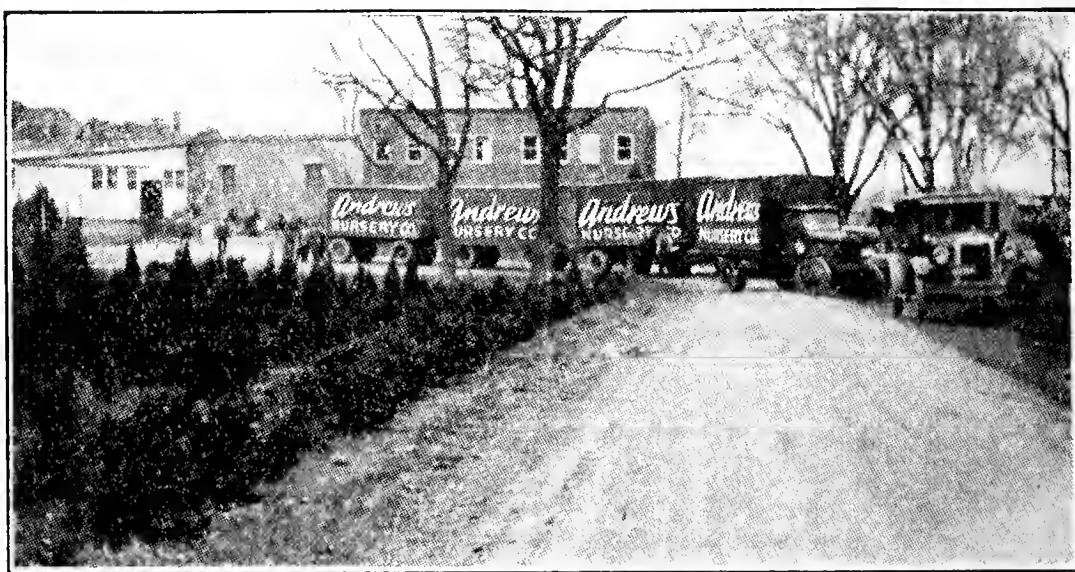
- No. 41—15 Douglas Fir Seedlings, 6-8 inch\$1.00
Fast growing and hardy—beautiful dark green foliage.
- No. 42—20 Norway Spruce Seedlings, 6-8 inch \$1.00
Most popular evergreen for windbreaks.
- No. 43—10 Colorado Blue Spruce Seedlings, 4-6
inch\$1.00
Most popular of all ornamental evergreens.
- No. 44—15 Black Hills Spruce Seedlings, 4-6 in. \$1.00
Compact and symmetrical—ideal for windbreaks and for ornamental planting.
- No. 45— 5 Black Hills Spruce, transplants, 12-14
inch\$1.00
- No. 46—15 Alaska Shasta Daisy\$1.00
An improved Shasta.
- No. 47—12 Delphinium\$1.00
The most beautiful of all blue perennials.
- No. 48—12 Aquilegia (Columbine), only\$1.00
Ideal for the rock garden and perennial border.
- No. 49—10 Baby's Breath, only\$1.00
Beautiful in the garden and in bouquets.
- No. 50—12 Coreopsis, only\$1.00
The bright golden perennial that brightens the whole garden.
- No. 51—10 Hibiscus, Mallow Marvels, only ..\$1.00
Bright, attractive and dependable.

GUARANTEE

We guarantee that all our nursery stock will reach the purchaser alive and in growing condition, and will replace, free of charge, any that does not, upon receiving your express or freight receipt with statement from the agent showing loss or damage.

Any tree or plant that dies the first growing season, we will replace at a cost of one-half the regular catalog price, customer to make report and have his order for replacement in our hands before October 10th, following date of purchase.

We guarantee to all our customers stock that is true to name and absolutely as represented. Any of our stock proven not to be, will be replaced free of charge or the purchase price refunded. It is mutually agreed by the purchaser and ourselves that we are not to be held liable for any damage other than herein named.



How to Order

Order early while assortment is still complete. Stock will be reserved and shipped at planting time.

Money can be sent safely by P. O., Express Money Order, or Bank Draft. If necessary to send currency or silver, be sure to register. Add 10c exchange to personal checks. Full payment should be sent with orders of less than \$5.00. Stock for larger orders will be reserved if 1/3 the amount is sent with order; balance before shipment, or if desired, we will ship C. O. D. for balance.

Parcel Post Shipment

Parcel Post shipment is recommended on small packages. Be sure to include enough to cover postage on packing material as well as the plants. Any excess will be refunded.

POSTAGE ON FRUIT TREES. Allow 25 to 35 cents for 4 or 5 trees, 3-4 ft. high. A greater number of trees or larger sizes should go express or freight. If absolutely necessary to use parcel post for 4-6 ft. trees, they must be severely pruned, for which and postage add 10c per tree.

POSTAGE ON SHRUBS. See schedule on page 14.

Express Rates Have Been Reduced

Express rates have been reduced on nursery stock. It now takes 2nd class rate, which is about 25% cheaper than formerly. Beyond the 4th zone, a package of 10 lbs. goes more cheaply by Express than Parcel Post.

TIME OF SHIPMENT. We ship all stock at proper time for planting. Early planting is best. Get your order in early so we can ship early. Planting instructions sent free with each order.

CORRESPONDENCE. Always sign your name the same way.

USE ORDER BLANK FOR ORDER.

While we expect prices in our 1935 catalog to remain in force until July 1st of current year, for reasons with which no doubt you are familiar, we cannot guarantee them, and it may become necessary to change them before that time.

Andrews Nursery Co.

Faribault, Minn.

Date of Order _____

Mr. _____
Mrs. _____
Name Miss _____

(Please use name of head of family and write plainly)

Street and Number _____ R. F. D. _____ Box _____

Post Office _____ State _____

Express Office _____
(If different from Post Office)

Ship On or About _____
(Leave this space blank if you desire us to ship on date we judge is best)

Quantity	NAME OF TREE, SHRUB, OR PLANT	Dollars Cents	

CUT OR FOLD AND TEAR OFF HERE.

Our stock of everything listed in this catalog is complete early in the season; later on we may run short of some varieties, hence when placing late orders, please state whether, if sold out of a specified variety, you wish to have us fill your order with one equally as good or as nearly like it as possible, or whether you desire us to refund your money. Please state your wishes.

NOW — everyone — can have Beautiful Home Grounds

DESIRE for beauty in the grounds about one's home is part of the home-loving instinct in human hearts. The soft greenery and color of growing plants and shrubs against the walls, softening the straight lines of lot and house—seem a sign of nature's own approval of the sentiment that builds a home.

You, no doubt have seen and enjoyed the loveliness of a home nestled in the beauty of well planted grounds—and thought and dreamed how you would like to give your home such a setting.



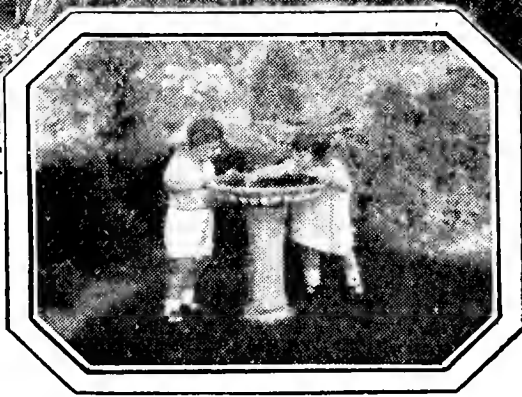
Create an Outdoor Living Room

You can add to the joy of living in your home, with an outdoor living room—a garden spot amid the greenery and shade and colorful bloom of flowers—in which to entertain guests, or rest in evening hours. It is the vogue in modern home planning to add this feature of enjoyment.

**Planting Adds Value as Well
as Beauty to Your Property**

5% of the building cost of a home, invested in Shrubbery, Vines, Ornamental Trees and other ornamental stock for exterior yard and lawn decorations, it is conceded, increases the property value at least..... **20%**

The home that is attractive is not long upon the market, for rental or investment. So you see, planting not only adds to the joy of living but adds to the value of your property as well.



Landscape Plans

If a detailed landscape planting plan is desired drawn to scale and designating the location of each shrub or tree, we offer our customers the aid of our landscape draftsman. A charge of \$2.00 is made for a plan for ordinary sized grounds, larger grounds in proportion. Send complete measurements—location of buildings, drives, etc. This \$2.00 for landscape plan may be deducted if an order for nursery stock is placed with us amounting to \$15.00 or over, the same season. No detailed plans can be prepared after April 1st on account of time.

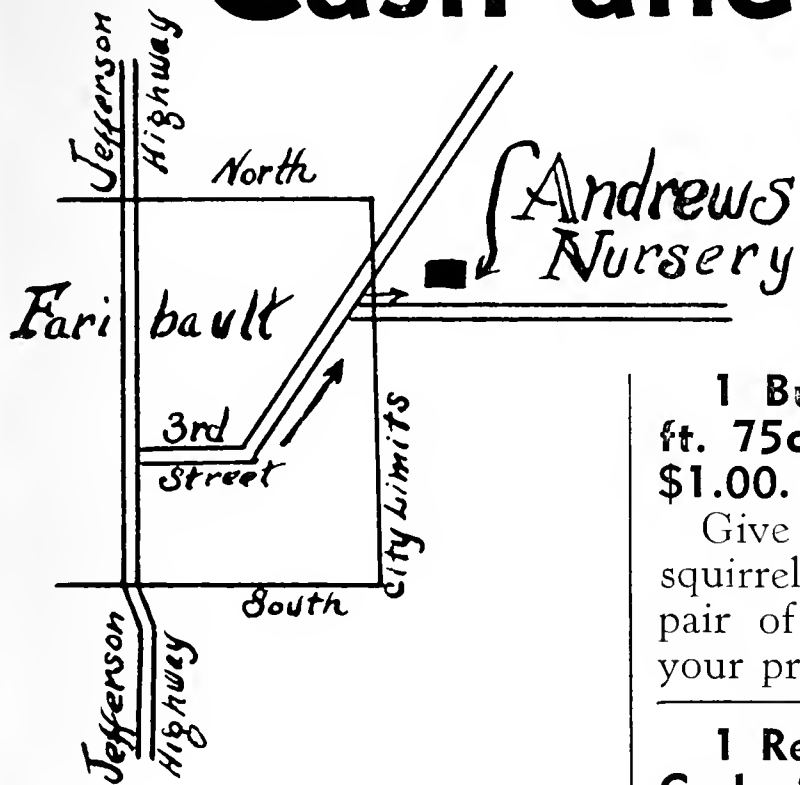
If You Need Help in Planning

You may have hesitated for fear you did not know what and where to plant. Thought of expense may have kept you from employing professional landscape skill to help you plan. If uncertain what to plant we will be glad to help you. Send us a rough pencil sketch of your yard, indicating the size of yard, location of buildings, and present plantings. Tell us about what amount you feel you can invest, and we will be glad to help you select the most appropriate varieties. We make no charge for suggestions as to what to plant if you send us a rough sketch.

Complete Landscape Service

Designing planting plans and the planting of public buildings, parks, cemetery and home grounds is part of our Service. Estimates are given free. Write us if you need help on such projects.

Cash and Carry Specials



Drive to the nursery and get these bargains. Available only to those who call at the nursery, and the offer is good only while our supply lasts. We can offer these exceptional bargains because we must clear certain pieces of land where they are now growing.

1 White Ash, 8-10 ft. 95c; 2 trees for only \$1.15.

A sturdy, long lived, symmetrical shade tree that will grow and thrive where other trees fail.

1 Basswood Tree, 8-10 ft. \$1.35; 2 trees for only \$1.50.

The symmetrical shape, clean foliage, and dense shade of the Linden make it an ideal lawn tree. Quick growing, good looking, and long-lived.

1 White Birch Tree, 8-10 ft. \$1.40; 2 trees for only \$2.25.

A few Birch trees add life and beauty to any home planting. Take advantage of this low price.

10 Purple Lilac, 3-4 ft. \$2.35; 20 bushes for only \$3.00.

Excellent for a tall screen or background planting. Beautiful in bloom. Once established is practically indestructible. This is your opportunity to get a full grown flowering hedge at a very low price.

1 Butternut Tree, 6-8 ft. 75c; 2 trees for only \$1.00.

Give the boys and the squirrels a break. Plant a pair of butternut trees on your premises this year.

1 Red Silver Flowering Crab, \$1.00; 2 trees for only \$1.25.

This new striking beautiful lawn tree was first offered to the public 6 years ago. We secured trees at that time at \$10.00 per tree. We have built up a stock and are offering it at a price within the reach of all. Plant a pair this spring.

5 Nanking Cherry, 3-4 ft. \$1.35; 10 shrubs for only \$1.50.

A very fine screen shrub with clean, attractive foliage and good sized edible fruits, excellent for jellies and jams.

2 Medium Flowered Hydrangea, extra size, 75c; 4 shrubs for only \$1.00.

One of the very best flowering shrubs for shady places—prefers a fairly moist soil. Take advantage of this offer.

5 Pink Flowering Villosa Summer Lilacs, \$1.45; 10 shrubs for only \$2.00.

Splendid for tall screen or background planting. The delicate pink blooms appear after common lilacs have all gone by.

1 White Cedar Lawn Tree, 3-4 ft., B&B, \$2.25; 2 trees for only \$3.65.

A very splendid tree for foundation planting about the house. Plant at the corners or each side of the entrance. Here is an opportunity to get two trees for only \$3.65.

25 Norway Spruce Wind-break Trees, 18-24 in. \$6.25; 50 trees for only \$10.00.

These are heavy transplanted trees with a good root system. While they last, we are selling at below cost of production in order to clear a field.

1 Living Christmas Tree, 3-4 ft., B&B, \$3.35; 2 trees for only \$5.35.

This is your chance to get 2 splendid Black Hills Spruce to plant on the lawn for living Christmas trees. See these fine trees and you will surely want them.

10 Perennial Flowering Plants, \$1.45; 20 plants for only \$2.00.

Including Larkspur, Coreopsis, Carpathian Harebell, Shasta Daisy, Golden Day Lily, Gailardia, Gertrude Iris, Blue Flax, Mallow Marvel—all hardy and dependable. Plant a perennial border this spring.

1 Dwarf Mugho Pine, 10-12 inch, B&B, for 90c; 2 for only \$1.10.

Mugho Pine is one of the very best dwarf evergreens for foundation planting about the house where a low growing evergreen is desired. Also excellent for planting at the front corners of the lot or on each side of the entrance walk. These are a real bargain at only \$1.10 for 2 trees.

ANDREWS NURSERY CO.

Faribault, Minn.



SUPERIOR PLUM

New — Delicious — Productive.
Page 12.



NEWBURGH

Sensational new Red Raspberry.
Developed by the New York State
Experiment Station. Page 6.
10 plants, \$1.65. Other prices, page 6.

HARALSON

Outstanding new long-keeping Apple.
Money saver in the home. Money maker
on the market. Page 10.



FREDONIA

Earliest good black Grape
—vigorous, hardy, produc-
tive. Three weeks earlier
than Concord. A new intro-
duction. Page 8.

