

Historic, Archive Document

Do not assume content reflects current scientific knowledge, policies, or practices.

6.9.45

BASS PECAN CO.

LUMBERTON
MISS.



*Largest Growers of
Pecan Trees in the World*

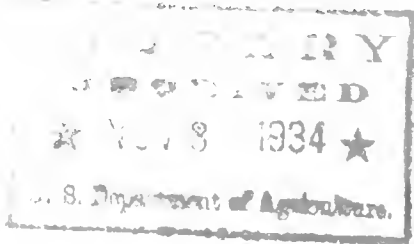
Sec. 435 1/2 P.L.&R.

U. S. POSTAGE

1c Paid

Lumberton, Miss.

Permit No. 1



Fruit & Vegetable Crops & Diseases

Bureau of Plant Industry.

U.S. Department of Agri.

Washington, D.C.



BASS TREES

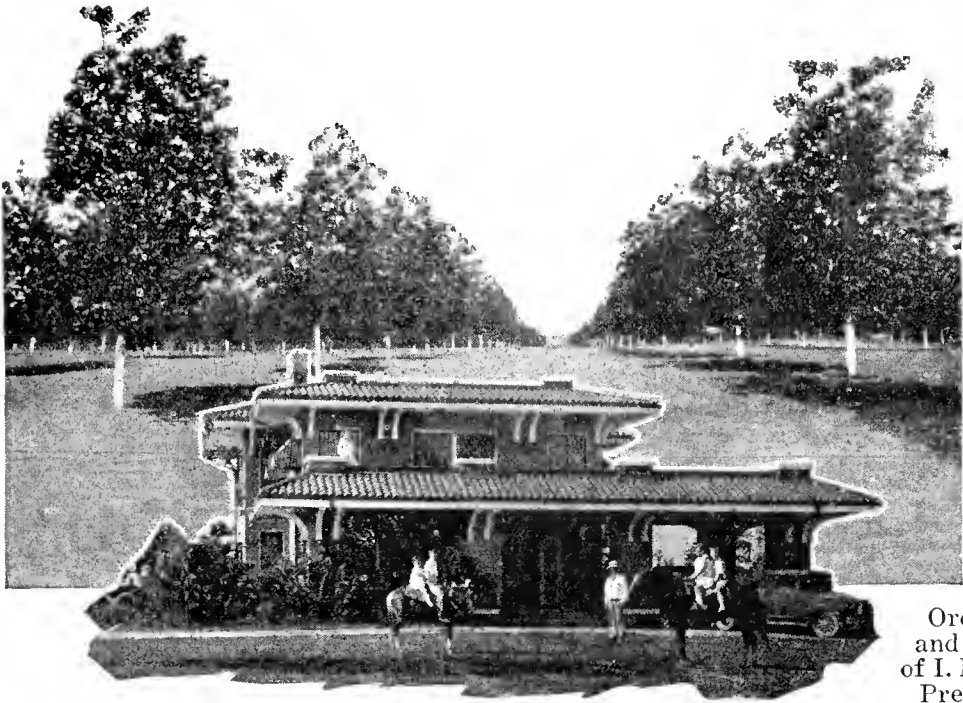
Hold World Record!

This is the remarkable bearing record of nine of our Extra Special pecan trees set out the last of February, 1923, by Dr. D. B. Stevenson, of Lumberton, Miss. Most all of these trees bore pecans the first year set out. They were our largest size trees and have been given the very best of attention by Dr. Stevenson. He has fertilized the trees very heavily with barnyard manure and worked around them often, so that weeds and grass would not get the fertilizer. Results have been remarkable.

The record that follows was carefully kept by Dr. Stevenson, who is one of the best known physicians as well as loved and respected citizens of South Mississippi, and is absolutely authentic as he gathered and weighed the pecans himself. The trees bearing the heaviest crops were the ones most favorably located. Trees with smallest yields were greatly handicapped by being near big oaks, sidewalks, etc. The nuts were gathered in October and November of 1925—*actually before the trees had been set in the ground three years.*

Trees No.	Age	Yield
1 Bass Papershell	2 years 8 mos.	25½ lbs.
2 “ “	2 years 8 mos.	15 “
3 “ “	2 years 8 mos.	16 “
4 Success	2 years 8 mos.	17½ “
5 “	2 years 8 mos.	28¼ “
6 Nelson	2 years 8 mos.	12 “
7 “	2 years 8 mos.	10 “
8 Success	2 years 8 mos.	4½ “
9 “	2 years 8 mos.	4 “

Plant our Extra Special Sizes for Earlier and Heavier Bearing!



Orchard
and Home
of I. H. Bass
President

Pecans Built My Home! They Can Build Yours!!

Here is a picture of my home and family. This house was built where my children can get the fresh air and is right in the midst of my pecan orchards, where the trees are our neighbors and friends. Pecans made my home possible, and you, too, may profit by them—happiness, a home, a regular source of income, and independence is all possible through PECANS! When I am old I won't have to work, nor be supported by my children. When I pass on, I shall leave behind an inheritance that will live on and increase in value for many generations to come.

I. H. BASS.

You, too, May Profit as Well, with Pecans!

You may be a school teacher, merely eeking out a livelihood as long as you are able to work; you may be a professional man, making a living as long as you are able to give service; you may be a business man "getting by", but what has the future in store for you—and especially when old age creeps on? There are thousands of old people who wish they had done something like planting pecans when they were younger, and they would have been rich today. There are thousands of young people who have this same opportunity now.

You could be letting Nature work for you, bringing in a regular and constantly growing revenue, and when you are older, you would have something to fall back on, and be dependent upon—that annual crop of golden nuggets—PECANS. An income for life! Why be content with a mere existence? Will future generations praise or blame you?



Pecans will send
Mary Jo to college.

"My order of trees arrived today. Talk about nice trees—well, yours take the cake; yes, the whole bakeryshop."—Cold Springs, Okla.

When You Are Old, Pecan Trees Will Earn Your Livelihood.



Mother and
Father Bass
Happy and
Contented in
Their Old Age.

You May Be Independent in *Your* Old Age

Here is a picture of Father and Mother Bass taken in their declining years. I. E. Bass was the founder of this business, but he was 58 years old when he planted his first papershell pecans. Father Bass, like thousands of other men, had worked hard all his life, made sacrifices, and saved practically nothing. He was past middle age, facing old age, financial embarrassment, and possibly would have been dependent on his family.

But in spite of the fact that friends and neighbors predicted he would never live to see his trees support him, he succeeded, through pecans, was able to carry on this business, *send eight children to college*, and retire with absolute independence. The tree shown on Page 7 producing at the rate of \$960 per acre explains why this success was possible.



The home of Mother and Father Bass, amid pecan trees—a place of sole contentment.

"The trees were received in fine condition, and they are far better than anything we have received at twice the price."—Houston, Texas.

A Living Memorial

To Perpetuate your Name Through the *Centuries*

Edward Bok wrote of his grandmother's creed—"Make the world a bit more beautiful, and better, because you have been in it." His ancestors had taken a barren lonely isle and transformed it into a place of vegetation, birds and beauty.

What a fitting nameplate for a memorial pecan grove—what a beautiful thought to live up to, and leave behind.

Pecan tree experts have assured us pecans will bear not only for generations but for centuries. It is estimated that they may live for 1,200 years, and still bear profitably.

How much better it would be to leave a grove bearing your name—a place of beauty, shade and breeze, and birds that these trees would attract—an oasis in a cold and hurrying world—a veritable garden spot for generations to come. A monument that would live and carry on your name much longer than a cold drab stone which would soon be passed by unnoticed, unhonored and unsung.

May we suggest that you plant a pecan grove in memory of your parents, or even for yourself, so your good work on earth will last, and continue to grow down through the ages?



A Rare Inheritance To Leave Behind

In addition to the sentiment of a pecan grove as a memorial, there is a definite and tangible investment, a worthwhile and practical inheritance for your children, your children's children, and their children's children.

On the next pages you will learn of actual investments, how trees have produced more and more each year—a perpetual source of income and of constantly increasing value—frequently on land that would otherwise be idle or hardly profitable as being productive. Nature will enrich you, and coming generations, with pecans.

Beautiful Shade Trees

Pecan trees are known not only for their nuts but also for their abundance of shade, and unexcelled beauty. Plant them on the highways, the byways, the city streets—in front of your school buildings (pass this idea on to your School Board). These trees will provide lots of shade, attract the birds, and produce nuts. They will prove to be excellent windbreaks for a house, as they are in themselves able to withstand hard winds. Property values are immediately and constantly increased when pecan trees are planted, even though one or two.

A memorial pecan grove that will perpetuate a name for centuries to come.

"I wouldn't take less than \$30,000 for my pecan grove,"—Plantersville, Miss.

If They're Bass Trees—They'll Produce.



One of our orchards with nursery stock growing in between. Note the size of the growing trees as compared to Mr. Bass.

An Income for Life From Pecans

"Plant a pecan grove and later on in life it will support you. It will do as much for your children, and your children's children," said J. B. Wight, before the American Pomological Society. Thus a permanent investment, and a steady and constantly growing source of income. *The first cost is the last cost*, and when one plants once, he plants for always.

That idle land may be producing instead of costing money for taxes. It might be growing trees right now—and pecans work for you while you sleep—or pecan trees may be planted along with growing crops, and some day will replace the hard labor, and the uncertainty of the annual planted crops. It would even pay you to buy idle land, and plant pecans, and thereby have a steady source of income. Make pecans your hobby! Become interested in Nature and profit by it at the same time.

Creates a College Fund for Your Children

Pecans sent the eight Bass children through college. Pecans will send the four Bass children of this generation through college. It is sending hundreds of other Southern boys and girls.

If properly cared for, Bass bred-up Pecan Trees begin to bear in three years, and the extra special size often in two, and when the children are grown the trees will be bearing heavily. \$50.00 worth of nuts a year from each single budded or grafted pecan tree is not unusual. Twenty trees at this rate would provide a yearly revenue of \$1,000, which is far better than a few dollars saved each month, usually with a struggle, and earning but 4%.

Then, after the children have been graduated, there will still be income to pay their way—and yours, too, through life

See Page 30 for Bargain Club Offers.



It doesn't take many branches laden with nuts like these to create a college fund.

"Five of the first Stuart trees have nuts on them already."—Paces, Va.

A Few Typical Investments in Pecans

It's easy to talk about the incomes from pecans—any city slicker or smooth-tongued stock salesman can talk about the profits from wild-eyed ventures or stock schemes. It takes the actual experiences under ordinary conditions to prove certain investments. We could cite many such instances of easy, steady and profitable incomes from pecans such as those below. Space prevents complete details, or more of the actual experiences of others.

Notice the picture of the tree below. This was one of our \$1.00 trees, planted 18 years before. The owner did not have to wait 18 years, remember, as the tree started bearing the third year, and continued to do so, and in its eighteenth year produced 160 pounds of nuts worth \$80.00. That is at the rate of \$960 per acre (12 trees to the acre), not considering the increasing value of the tree each year. How many investments have you ever made that produced more than 400% per year, continued to produce, and was positively safe? The tree is now producing over 240 pounds of nuts per year, and constantly increasing.

Another instance of a pecan investment that came to us: Twenty years ago a person of our acquaintance bought five acres of land at \$20.00 per acre. A few years later he planted the land in Bass trees, and was offered \$1,000 per acre, which price was refused. He realized that by planting pecan trees he had increased the value of his land by \$950 per acre, for he could have got only \$50 an acre for the land as he bought it. His land, taxes and trees were readily paid for in the actual increased value, and it was worth a big difference besides.



This \$1.00 Bass tree now produces over 240 pounds of nuts annually, with a steadily increasing yield. Father Bass beneath the tree.

Yes, heavy yields are not uncommon. ¶ Here's a man in our own State who produced 200 pounds of nuts on an 18-year-old tree, and yet another man produced 273 pounds one year on an 18-year-old tree, and two years later 330 pounds off the same tree. ¶ Five dollars invested in 5 trees produced in 18 years \$6,336.41. ¶ One of our customers bought two trees for shade, and eight years later got 100 pounds of nuts off the two trees, selling half of them for \$25. And so on—we could name hundreds of instances, including one of our women customers, who wrote she would not take less than \$30,000 for her pecan grove of Bass bred-up trees.

Also, please refer to page 27, and read of Mr. Casey's trees, and what he has to say about his profits from pecans.

“The trees are bending over with pecans.”—Columbia, S. C.



Another clean, healthy and productive Pecan Orchard of Bass Trees!

Bass Bred-Up Trees are Vigorous Growers

Early and Heavy Bearers

All Bass trees are bred-up, as explained on the opposite page, all are early bearers, and all are heavy bearers. You might buy cheaper trees, but have the trees been proved, as are Bass? We have been in business for twenty years, long enough to prove that our trees bear satisfactorily. *Will the cheaper-tree-fellow be in business when you have learned that those "cheaper" trees are not bearing?* Your money, labor and time will have been wasted, when during that time the Bass trees could have been growing and producing.

We Develop Good Root Systems But don't charge for the roots!

We insist upon a well-developed root system, for unless a tree is well rooted and the root system is properly developed, the tree will have a bad start. We, therefore, pay particular care to the roots in growing, in digging up the trees, in inspection, and in packing. Those, other than with first-class root systems, are cast aside as culls and sold as seconds along with other trees of imperfections, or burned as you can see by the picture on Page 27.

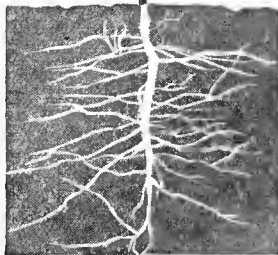
You are assured of a fine spread of root growth, good strong straight trunks and pedigreed stock. We especially call to your attention our largest trees. Their future is virtually assured, and they will bear much sooner (many bearing already).

Study This Illustration

Thousands of our pecan trees bear even in our Nursery before they are three feet high. This typical Bass bred-up tree growing vigorously in our Nursery has a heavy foliage, a healthy look, and is even bearing nuts. Note the root system—a good hardy tap root with a fine spread of lateral roots. *Furthermore, we do not charge you for the roots, as some do.* Our trees are all measured from the ground up instead of from the tip of the tap root to the top of the tree. Our three to four foot trees, therefore, are often as large as others' "five to six-foot trees." You pay us for a smaller sized tree, you see!



We measure our trees from ground up.
You pay only for this!



You do not pay for the roots.

A Bass bred-up tree, less than three feet high, already bearing pecans.

"All 50 of the pecan trees purchased from you are growing and doing fine."—
Folsom, La.



A view of our Nursery. Note the size and uniformity of our straight and healthy stock.

Bass Pecan Trees are Bred-Up From *Bearing* Parents

Bass Pecan Trees are the result of much care in planting and growing. They are produced from stock that is bearing. All our trees are budded or grafted. When you buy these trees you know their pedigree for our buds or grafts are selected from early and heavy bearing parent trees themselves *raised in our own orchards.*

We know the type of nuts that the parent trees bear, and the history of each tree. Thus we can sell these trees with an assurance of their early and heavy bearing qualities. By actual comparative tests throughout the South our trees are making records in quantity, quality, early bearing and heavy yields. Our nursery is ideally located. South Mississippi is the mother section of the finest varieties of pecans. More fine varieties of pecans, now being planted, originated within 150 miles of Lumberton, than all the world put together. Lumberton, therefore, is in the **HEART** of this district, and virtually the heart of the entire Pecan area.

Compare the Income from Pecans to the Income from Any Other Crop!

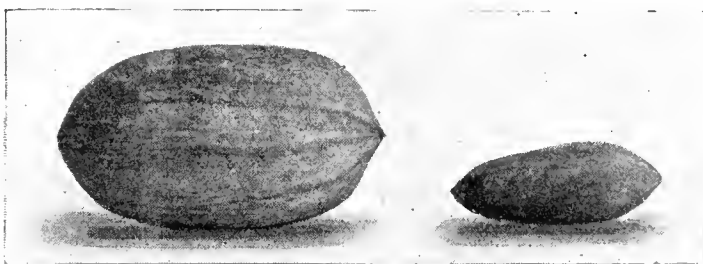
One acre of pecans will equal twelve acres in cotton—based on cotton at 10c, with a bale to the acre—both of which price and yield are high. At only 30c a pound for nuts, an acre of 20-year trees, each producing only 200 pounds of nuts, and figuring on only ten trees instead of the usual twelve, would equal \$600 per acre. Taking several year averages of crop prices, it would require 35 acres of corn to equal that \$600 acre value of nuts, or 46 acres of oats, 13 acres of rice and the value of 24 average cows, or as many calves as from 40 head of cows. A young pecan tree often produces more income than a bale of cotton. These figures are based on averages—not on the abnormal prices of 1931!

Plant Fruit Trees between the Rows
See Pages 22, 23, 24, 25.



One of our three year old trees heavily loaded with blooms!

“The trees are doing fine and are full of nuts.”—Hickox, Ga.



Plant the big nut and you will get the small nut. Read below!

All Bass Trees are Budded or Grafted A Pecan Tree Must Be, to Bear Properly

Pecans have that natural tendency to breed back to the way they were produced ages ago. You may plant a large pecan, but it's almost sure to bear a tiny nut. To have absolute assurance in getting large and profitable pecans, trees must be budded or grafted. All Bass trees are either budded or grafted (we do both), for each method is equally as valuable and productive, and since our buds or grafts are taken from heavy bearing parents in our own orchards we know their early and heavy bearing ability.

Care in Packing is Essential

Before, we mentioned our care in developing the roots. It is as necessary that the roots and trees be well packed, for what good are they if they are bruised or damaged, dried out or killed in shipment? No other nursery, anywhere, packs trees as we do! We dig deeper to get all the roots and then we pack them carefully with damp moss. The upper parts of the trees are packed with oat straw to protect them from being skinned or bruised. The entire trees are then wrapped in waterproof and airproof paper to keep the moisture in and the air out, and are then securely covered with burlap to keep out the sun, wind and air. Such packing requires experts. Thus the trees are well protected to reach you in excellent condition.

We have even shipped trees to China three times; every shipment reached there in perfect condition, and all trees are growing. The result of good trees, plus good packing and shipping.

WARNING!

For your sake, beware of the nurseryman who calls at your door with a truckload of pecan trees for sale and offers to plant them for you. Sun and wind quickly dry out roots, and trees in trucks, unprotected, also previously half dug and poorly packed, are often dead before they are set in the ground. Don't lose that money and the time in waiting for them to grow. Use your own judgment about this. Promises, claims, and "guarantees" by utter strangers are easily made—be sure the maker has the means and money to carry them out, if need be.

Ask that traveling agent if he will make the same guarantee that we do (see Page 28)—then ask yourself if there is a firm back of him that will make the guarantee good.



Just one shipment of Bass trees. Note how well they are packed and how protected from the sun.

"Of the 250 pecan trees bought of you, all except four are living and growing nicely."

—Birmingham, Ala.



Is There a Ready Market? YES! ALWAYS!!

Some people ask if the market for pecans is "overdone". Why, *it has hardly been scratched!*

Pecans are the most popular of nuts, and the public is ever ready to pay a good price for them. They have always been sold by popular demand, and certainly not through any particular sales effort. In addition to home consumption, note these facts:

Chain Stores and Grocery Stores sell them, and particularly those stores catering to the fancy trade. Bakeries use hundreds of thousands of pounds annually. Likewise, Confectioneries. Pecan Pralines, for example, are big sellers, and other pecan candies are being consumed more and more each year. Each Fall, fruit cakes are made in quantities of tons, and special businesses are devoted solely to their manufacture. They use thousands of pounds of pecans.

A new kind of business has recently been established—cracking companies. This business is often carried on in the home as a side line and additional source of revenue, or a concern with cracking done by machinery, and scores of employes. Have such a business of your own.

Many sell pecans direct from their orchards, or purchase them for resale, selling by mail by various forms of advertising.

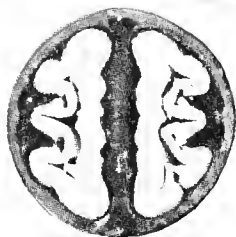
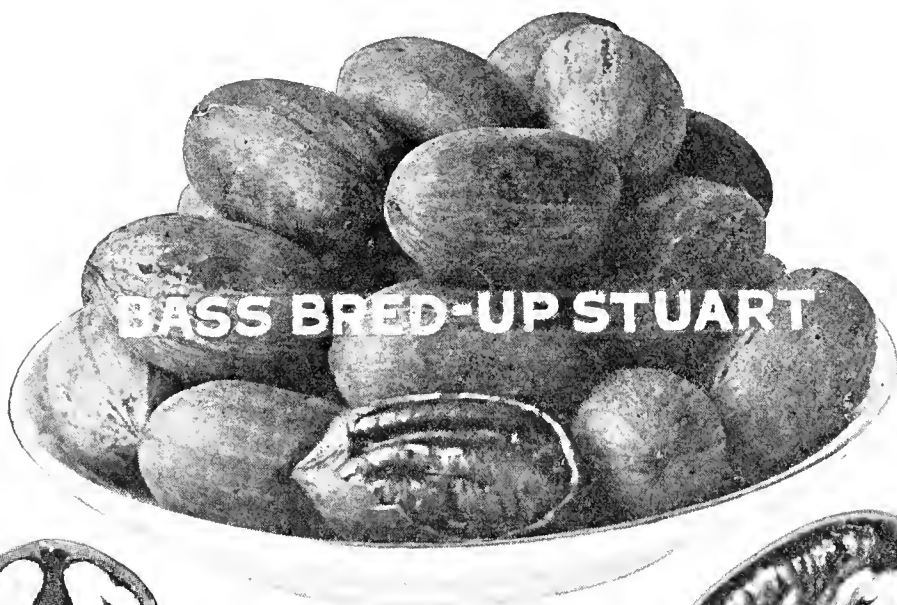
No, folks, the pecan market is still in its infancy. You need not worry about disposing of your surplus!

Pecans for Sale

Our own pecan groves produce thousands of pounds of papershell pecans each season which we offer for sale. Prices are as follows: 5 pound box of fine Stuart, Success, Schley or Bass Papershell nuts delivered by Parcel post for \$2.50, 10 pound box as above, \$4.50, and 100 pounds delivered by express for \$40.00, prepaid.

"The trees were received in good order. When I opened them up my eyes got as big as apples to see such grand trees and big roots."—Louisville, Ky.

Bass Pecan Trees Are Early Bearing!



Bass Bred-Up STUARTS Are Big Producers



See
Page 30
for Bargain
Club Offers.

The STUART is our first choice, and incidentally it is the most popular of the improved variety of pecans. This nut has been planted more extensively than any other. The trees are vigorous, bear regularly, and resist scab. They are early and heavy bearers. The nuts are large and well filled, the kernels being plump, with a meat content of 49%, and a good flavor. Note the actual photographs of the inside of the STUART pecan.

These nuts are the easiest to grow, sell well on the market, and bring a higher market price. We recommend the Bass Bred-Up Stuarts, as the most profitable and satisfactory of the pecan trees. We have an unusually fine stock of our large trees in this variety—it would pay you to plant them in preference to others.

Prices on Top Grade (No. 1) Trees--All Varieties

	Each	Six	Twelve	Sixty	100	1000
2-3 Feet	\$.80	\$ 4.20	\$ 7.80	\$ 36.00	\$ 60.00	\$ 500.00
3-4 Feet	.90	5.10	9.60	45.00	70.00	600.00
4-5 Feet	1.00	5.70	10.80	51.00	80.00	700.00
5-6 Feet	1.20	6.90	13.20	60.00	100.00	900.00
6-7 Feet	1.35	7.80	15.00	72.00	120.00	960.00
7 Feet to Large	2.00	10.80	19.80	90.00	150.00	1200.00
Large	2.50	14.40	27.00	120.00	200.00	1600.00
Extra Large	3.50	20.40	36.00	165.00	275.00	2200.00
Extra Special	4.00	22.80	42.00	195.00	325.00	2600.00

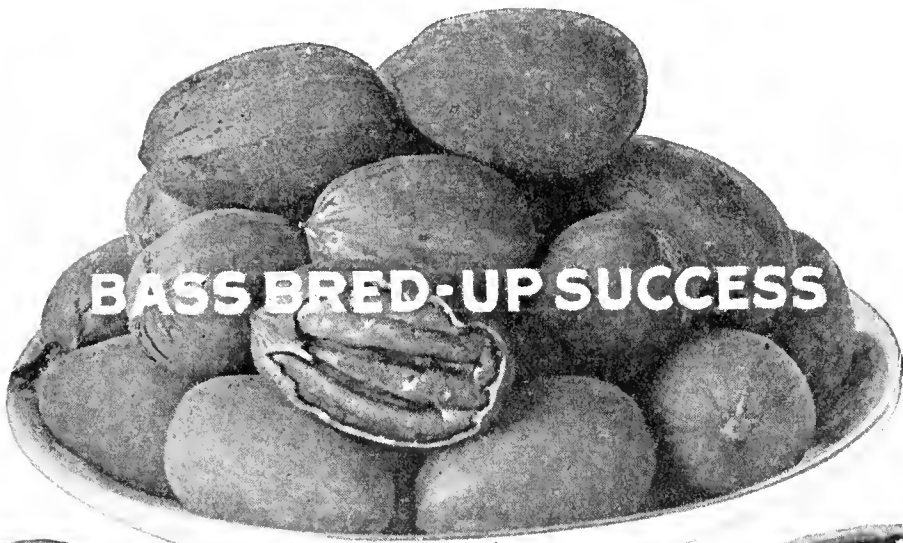
We recommend the planting of our large trees. They bear earlier.

Special Price on Large Orders

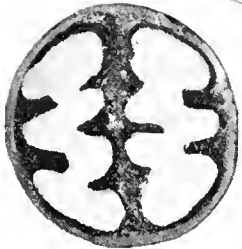
One to five trees take the each rate price; six to eleven trees take the six rate price; twelve to forty-nine take the twelve rate price; fifty and up take the one hundred rate price; 500 and up take the 1,000 rate price. Special prices cheerfully quoted on larger lots.

☞ All prices F. O. B. Lumberton, Miss. ☜

No orders for less than \$5.00—Please!



BASS BRED-UP SUCCESS



Another Successful
Variety



Bass Bred-Up SUCCESS

See
Page 30
for Bargain
Club Offers

Our second choice is the SUCCESS Pecan, and a mighty popular variety, 40 to 45 to the pound. This tree is also an excellent grower, and a heavy bearer in fertile soil. It bears early, too. The nuts, as you can see, are large, though are not the largest, but the kernel has proved to be the heaviest in a test of 14 varieties made recently. The meat is plump, and of excellent flavor. The nut itself is ovate in form, has a thin shell, and cracks easily. This variety does well in most sections, and the nuts bring a high market price. The Bass Bred-Up SUCCESS Trees are among our biggest sellers of our fine Papershell Pecan Trees. Plant our larger size trees and save that initial growing period.

Plant Fruit Trees Between the Rows

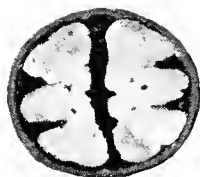
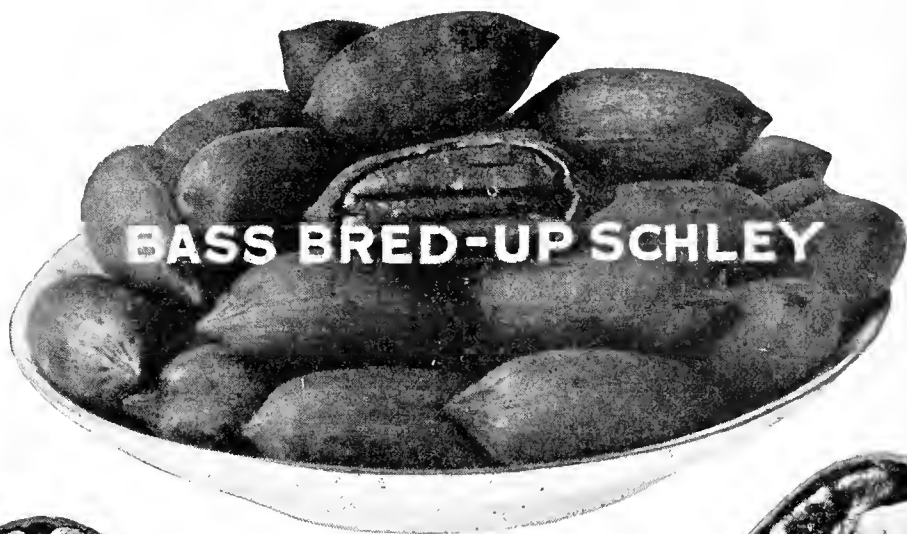
See Pages 22, 23, 24, 25.

For Sale---Some of Our Culls or "Seconds"

No, indeed, we do not sell all the trees that we grow—that is to our own customers. We either sell our cull pecan trees to other nurseries or burn them. (See page 27.) We frequently throw out around 22% of our trees as being "seconds". If too poor, we destroy them, regardless. When trees are not straight, or scarred, when the root systems are not so well developed, or the trees do not come up to our own high standard, we will not sell them as our top grade trees. Many of these trees are good and MAY do as well as the others, but we play SAFE for our customers. We sell those No. 2 Pecan Trees at half price of No. 1 trees (see opposite page), but with the understanding that they are our culls, and without our usual guarantee. (Prices F.O.B. Lumberton). Many nurserymen and dealers buy these trees and sell them as their own No. 1 trees.

"Your No. 2 trees are better than most nurseries send out for the first-class stock."—Kaw City, Okla.

Let Your Land Do Double Duty! Plant Fruits Between the Rows!



Bass Bred-Up
SCHLEY
Pay Big Dividends



For prices
See Page 12.

Our third choice is the SCHLEY. This is also a popular nut on account of its thin shell, excellent cracking qualities, beautiful color, and unusual flavor, and the market price is very satisfactory. The fact that we grow and sell this nut shows our confidence and our recommendation.

In some localities, however, the SCHLEY has a tendency to scab a little, so before purchasing this variety be sure that they grow in your section without this disease. If so, you will find these to be profitable nuts; excellent and full nuts with 61% meat, and a kernel that can be easily removed without breaking. The tree itself while an early bearer is a slender grower—smaller than STUART or SUCCESS, and not quite as hardy.

◆◆ REPLACEMENTS ◆◆

Of course, we cannot say that every tree will grow, for all trees don't grow, just as all baby chicks you buy don't grow; and, in fact, all babies don't grow (most do!) But should any of our pecan trees fail to grow, we are willing to share the loss, and will replace within one year, at half price, any pecan trees that die, *where properly planted and cared for*. The average nursery doesn't replace any at all, but this shows our confidence, and our willingness to aid even after the sale has been made.

No orders for less than \$5.00—Please!

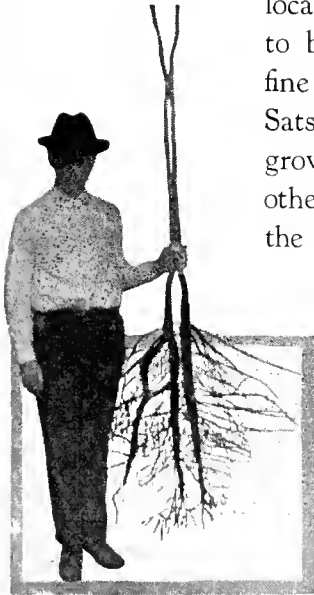
Pecans

The Safest, Surest and Most Profitable of Investments

The depression has brought home to thousands of men and women the fact that no safer investment can be made than putting their money into cheap land and fine pecan trees. Every day the land will get more and more valuable and require less and less attention while doing it, if planted in our fine BRED-UP early and heavy bearing trees. Don't plant poor and inferior trees if you want an orchard that will be both a pleasure and a profit to you. Remember that it takes just as much of your land to put out a sorry tree on as the finest one—that the bred-up trees we offer have actually proved to live better, grow faster, bear earlier and bigger and finer nuts in thousands of tests made over many years. Our guarantee is the broadest and most satisfactory of any ever put out with pecan trees—no other nursery has ever dared duplicate it. Buy fewer trees if you have to, but buy our finest trees by all means. You will never regret it, for they will pay you several times as much extra as they cost.

15,000 Acres of Fine Land For Sale

Here at Lumberton where pecan growing conditions are so ideal we have for sale 15,000 acres of fine land. This land is well located—lots of it right along fine gravel highways that are soon to be concreted at no extra cost to the landowner. It is extra fine land for Papershell pecans, peaches, pears, plums, grapes, figs, Satsuma oranges, all kinds of early and late vegetables and truck growing and also excellent land for cotton, corn, peas, beans and other farm crops. This is a wonderful climate, being warmed in the winter by a breeze from the warm Gulf stream and cooled in the summer by light winds most all the time. No finer section can be found for cattle, sheep and horse grazing—ample rainfall to make grasses grow fast and stay tender. Green feed for stock can be had every day in the year. Health conditions are unusually fine—Lamar County ranking right among the healthiest counties in the United States. Fine schools, churches, good gravel roads, good citizens and as fine water as you can find in the country—water is pure, odorless, tasteless and clear and soft—most ideal. This land



is cheap—priced at from \$5.00 to \$15.00 per acre for uncleared land. This land is easy to clear—usually costing from \$5.00 to \$10.00 per acre. Easy terms are offered by us. Orchards can be set out and cared for by our own experts on very reasonable terms.

"Even your culls, or No. 2, were better than any first grade trees I have seen bought from other nurseries."—Raleigh, N. C.

Plant Once / Put That Idle Land to Work For Always. with Pecans

You may have land that is idle, or poorly productive, and making you poor on account of the taxes. Pecans will work day and night and produce a tremendous profit. These trees do not interfere with growing crops. The trees may be planted in between the rows, and even after developed crops may still be planted in between the trees, if you still want to bother with risky one-time crops.

Figure up the cost of that idle land, the low cost of our pecan trees, and compare it to the investments, on Page 7. Then let us aid you in putting that idle land to work.

Large Orchard Planting

We are now in position to not only sell you our choice bred-up trees, but to supervise the actual planting of large orchards. Thus a positive assurance of not only good trees, but a good start that they need. Write us for terms and conditions.

A Pecan Orchard May Mean that You Can Retire!

That idle land put in pecans, or land especially purchased for pecan planting, may mean that you can soon retire. Every farmer, business and professional man, teacher—man or woman, wants to retire sooner or later.

Take a look at the pecans on the back cover of this catalog. Each sack costs 10c, holds \$50 worth of nuts. There was the cost of the original tree, which was practically nothing in comparison, and, of course, the care. Nuts are not perishable, and take the lowest freight or express rates, as well as the lowest cost per package. Compare this to apples, peaches, eggs, etc.



Let Your Land Do Double Duty!

Your land may produce double, by either planting pecan trees between the rows of your cotton, corn, etc., or by planting crops between the rows of your pecan orchards. At Lumberton we utilize much of our land between our own trees in our groves, and we have found that the finest crops to grow with pecans are peas, beans, clover and other leguminous crops, for these enrich the soil and build it up. But we also grow cotton, corn, sweet potatoes, watermelons and all kinds of truck, as well as strawberries, and other kinds of fruits. Refer to pages 22, 23, 24, 25, for fruits that may be planted between the trees.

It Would Pay You To Buy Up Land and Plant Pecans

*First Cost
is Last Cost!*

No doubt you are looking for a good investment! Why not buy up land that is inactive and cheap, and plant in pecans? Many business and professional men, school teachers, etc., are doing so—more and more each year. Make it your hobby, too. As soon as the pecan trees are planted, the land increases in value. Read the instance on Page 7.

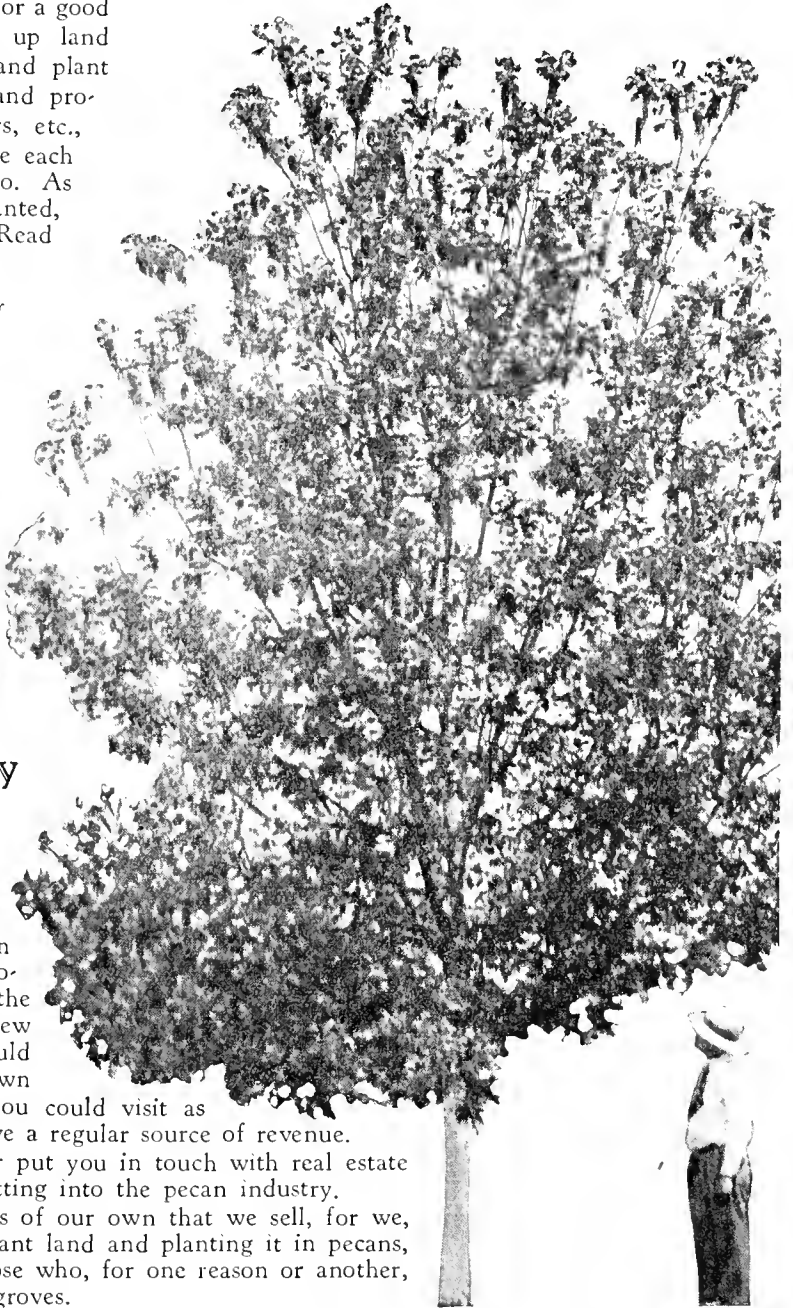
Even if you have land for sale, it would pay you to plant it in trees, and you would soon realize how much more quickly you could sell that land, and at a greater price. If you shouldn't sell the land, you would have made much more by the increased value, and the income to be accrued.

Profitable Pecan Land FOR SALE Near our Nursery

We have considerable land for sale that may be put into pecans, and being near us, we could supervise the planting and take care of it for you. This is the finest pecan land in the South, and is located only 60 miles from the Gulf, and 90 miles from New Orleans. How nice it would be to have a pecan grove down in "ole Mississippi" where you could visit as often as you please, and derive a regular source of revenue.

We can also buy farms, or put you in touch with real estate men, and thus aid you in getting into the pecan industry.

We also have pecan groves of our own that we sell, for we, too, believe in buying up vacant land and planting it in pecans, and we are in touch with those who, for one reason or another, want to sell their producing groves.



A Big Demand for Bass Pecan Orchards!

We have a number of customers who are desirous of purchasing orchards planted in Bass trees. They know of their value. *If you have any for sale, name your price.*

This proves that property becomes worth more when Bass trees are planted. We have letters that specify that the orchards, people want to buy, must be of Bass trees. The name means much. It's like buying a car with a Fisher body, or a dress of Skinner's Satin—there is a known and recognized value in the name.

A Fitting Memorial—A Bass Pecan Grove.



Another Crew Coming from Work



Our Office Building, amid Pecan Trees

"Bass Papershell pecan trees are loaded again this year."

E. C. HUMBLE,
Lindale, Texas

"I got one hundred and eighteen pounds off the tree."

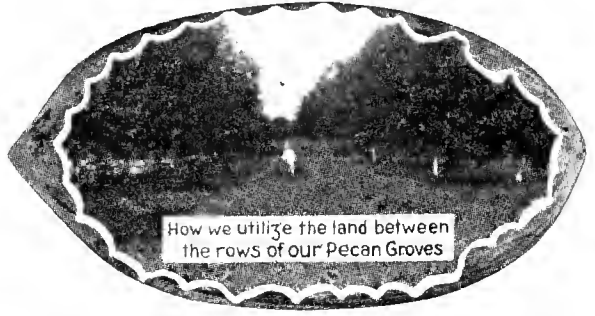
W. J. WILSON,
Curve Tennessee

"I have never bought anything from your nursery that wasn't all it should be."

W. G. McCARGO,
Olive Branch, Miss.



A View of Our Nurseries



How we utilize the land between the rows of our Pecan Groves

"I can't praise your trees too highly"

R. A. BONEY,
Toxey Alabama

"I am well pleased with my pecan trees."

W. W. DENHAM,
Goliad, Texas

"They are true to name and I am well pleased with them."

J. H. ANDING,
Grayson, La.



One of Our Crews at Work



Our President on Daily Inspection Tour

"Five of the first Stuart trees have nuts on them already."

W. E. TUNE,
Paces, Virginia

"I would not take \$100.00 apiece for the trees for the nice shade they produce, as well as large quantity of nuts produced for the market."

L. E. CHAMBERS,
West Helena, Ark.

"The Trees are doing fine and are full of nuts."

R. A. GRIFFIN,
Hickox, Georgia

"Of the first 1,200 trees planted, every one grew, not a single one dying from transplanting."—Dallas, Texas.

To Answer Your Questions:--- How to Plant Pecan Trees (How Many Trees To the Acre, Etc.)

Two usual questions asked us are how many trees to plant to the acre, and what kind of soil in which to plant them.

On lands of only fair fertility, plant trees every 50 feet, but we generally recommend 60x60. If the ground is very rich, plant farther apart, such as 70x70, but for the average, figure on every 60 feet—12 trees to the acre. Please refer just below. You can get more trees to the acre by the triangle method of planting (14 as against 12).

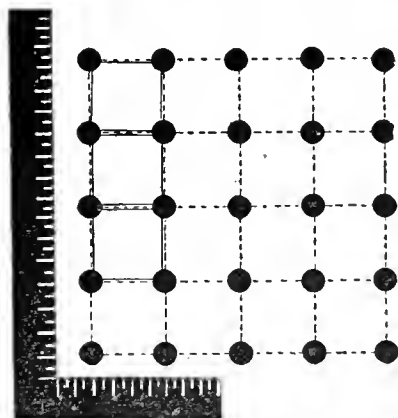
As to soils—land that will grow hickory or oak trees will grow fine pecans. It has been well said that any land that will grow cotton will grow pecans. Well drained land is needed for best results. Practically any average land in the South will grow fine pecans.

The sooner you set out your pecan trees the better will be your prospects for them living, the more vigorous will they grow up, and the earlier they will begin to bear. Set out pecan trees as soon as possible after the leaves shed in the Fall, in November, December, January, February or March. Even if you cannot set your trees early, *book your order now so we may reserve some of our finest trees for you.*



USE A PLANTING BOARD in setting your trees. This is easily made by taking any board or plank about six feet long and cutting a V-shaped groove in the center of it. This groove in the planting board is made to fit down over the stake you have

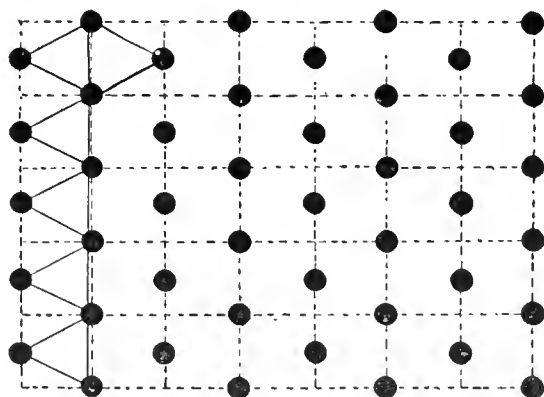
driven down in the ground where the tree is to be planted. Then at each end of the planting board place a small peg. When you dig the hole for the tree, all you will have to do is to lay this planting board across the hole dug so that each end will be against the pegs and your tree will come right in the groove and be exactly in line. If you do not use a planting board it is hard to get trees in line again after holes are dug, even if lined up exactly right to start with.



The Square Method

To plant the square method, take an ordinary L-square and place on ground in order to get your lines true. Sight and place a stake sixty (preferably) feet away on each line until you reach the ends of the field. Then stake off on parallel lines at every sixty feet and plant trees at each stake. Planting sixty feet apart, you have 12 trees to the acre.

other wire of same length and attach to next stake. Let one man make an arc with his wire, and another man an arc with his. When the two wires meet, properly taut, drive stake for tree. Work from that stake and so on until field is covered.



The Triangle Method

By planting the triangle method you get more trees to the acres, and besides all trees are exactly sixty feet apart in ALL directions. To get a true equilateral triangle easily, drive a stake in the corner of the field. Then with aid of an L-square find stakes along the outside lines. In order to get proper and exact distance inward toward the field, get a wire sixty feet long. Attach to stake. Get another

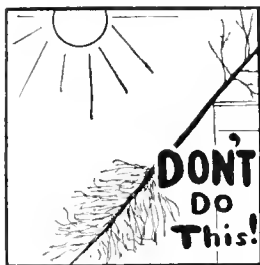
Rules for Setting Pecan and Fruit Trees Right.

Protect the Roots!

Never allow the roots of the trees to become dry or exposed to the atmosphere for any length of time from the time they reach you until they are set in the ground.

Wet the bundle just as soon as you can and if not ready to set out at once, dig a hole and put roots in and cover up well. Place in a shady place if possible.

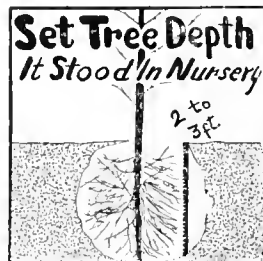
Set your trees at once upon arrival or heel-in promptly as above.



Plant as Deep as in the Nursery

Set the tree about the same depth it stood in the nursery.

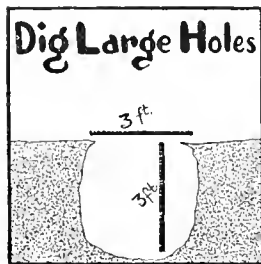
Fill in the hole with the best top soil, packing the dirt well around the roots, especially the tap root. Keep the roots of the trees out straight in their natural position and do not bend them down by the tree.



Dig Large Holes---Protect the Roots

Have a large hole for your tree. Three feet wide and three feet deep will not be too large for pecans. Holes about 12 inches wide and one to two feet deep will do for fruit trees.

Mix thoroughly with the soil to be used to fill in the hole a peck or half bushel of well-rotted manure or compost or some good guano, being very careful not to allow it to come into contact with the roots in ANY QUANTITY, for if it does it will scald them and do more harm than good.



Fertilize Properly

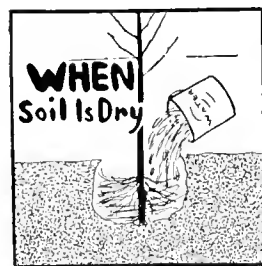
If you desire to plant on land rather poor in fertility, thoroughly mix with the soil two or three shovelful of well-rotted compost when you plant the tree, or one or two pounds of bone meal. The best fertilizer after the tree is planted is to scatter manure around the trees. The more the better—one-half to one bushel to the tree, if possible. Do not bank it up around the tree, but scatter it around for two or three feet. When it rains the substance will be taken down to the roots. Put this around your trees in the late winter, if possible, so that the trees will be able to get a fine growth in the spring. When the trees are old enough to bear, use potash in some form—wood ashes will do.



If Soil is Dry

If the soil is dry when the trees are set, it is a good idea to pour a bucketful of water to each tree when the hole is nearly filled, and then fill the hole completely up.

Pour one bucketful of water to each tree once a week during very dry spells in Summer. Make a basin-like hole at the base of the tree. Pour water and as soon as it is soaked in good, fill completely up with dry dirt. This holds in the moisture and also keeps the ground from baking. If you cannot pull soil back, covering the wet earth well, DO NOT water at all. Water poured on top of



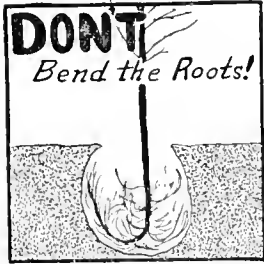
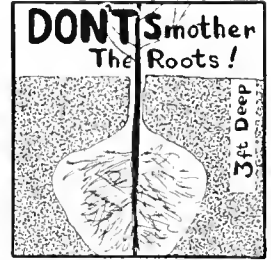
the ground and left this way does more harm than good, as it causes the earth about to bake and the tree to scald.

Cultivate for four to six feet around each tree thoroughly all during the Summer. Never let grass or weeds grow up around your trees. Keep the ground dug up and soft at all times.

"My orchard of your five-year-old Stuart trees is doing fine. Some trees I bought from an agent, supposed to be the best grown, haven't done anything."
—Aliceville, Ala.

Cultivate the Ground

Cultivate for four to six feet around each tree thoroughly all during the Summer. Pecan trees do best where the land is cultivated well. Our own experience has taught us that no tree responds to care and cultivation better than the papershell pecan. Frequent shallow cultivation is best. Keep weeds and grass down, for they take the moisture and nourishment needed badly by the young growing pecan trees.



Special Notice About Fertilizer

Recent experiments in our own orchards have shown us that one pound of Nitrate of Soda or Sulphate of Ammonia for each year the tree has been planted will be of great benefit and cause the trees to grow very fast. Merely spread it around the trees for two or three feet and hoe or dig in well. This can be done at any time from April 1st to last of June, usually the earlier the better.

Care of Young Trees

No pruning is necessary after you once get the trees branching high enough. The larger trees we sell will branch high enough anyway, but the smaller trees have to have sprouts cut off occasionally that come out on the body of the tree until the branches get high enough. This may be done at any time required, either summer or winter. We do not let our own pecan trees start branching lower than shoulder high. They look better and you can work around them better where they are not allowed to head too low.



Bass Trees Come Pruned, Ready to Plant





We endeavor to send our properly pruned trees, just as if we were going to plant them ourselves, leaving the planter nothing to do but to set them out. The taller grades of trees should be top-trimmed, as it balances the top against unavoidable loss of some roots when the tree is transplanted. Proper pruning insures the tree living and a good growth. Where trees are properly pruned, handled and planted, there is no reason why any of them should die. Our prices are made on the height of the trees when dug. When properly top-trimmed, the height is often materially reduced. Therefore, if the height of a trimmed tree, when received, is less than the catalog height, this is the explanation. We measure our trees from the ground up and not from the tip of the tap root as many nurserymen do. Our 3 to 4 feet trees are often as large as their "5 to 6 feet" trees—we don't charge for the roots. You pay us for a smaller size tree. See Page 8.

Advice on Pecan Culture

Ask us all the questions you wish to in regard to pecan growing. We will gladly give you our opinion. And as experts, let us advise you not to put off setting out your pecans. Remember the loss of a year's time in getting started means the loss of a year's splendid income later on, at a time when you may appreciate it most. And speaking of the time element, it would pay you to buy and plant our larger trees, for you would save that initial growing period. Let Bass solve your pecan problems.

For further information or definite instructions on Pecan growing, write the U. S. Dept. of Agriculture, Washington, D. C., for free Farmers' Bulletin Number 700, on "Pecan Culture," and Number 1501, on "Nut-Tree Propagation," and other available bulletins on Pecans.

 It will pay you to plant our Extra Special or large sizes for earlier and heavier bearing. A better start. See prices on Page 30. 

"I received the pecan trees and they are simply wonderful. I never ordered any trees that reached me in as good condition."—Forest, Miss

Plant Bass *Blight-Proof* Pineapple Sand Pears



Note these fine "Soldiers" in a row.

Have you ever seen an orchard of pears in bloom? Was there anything more beautiful than these graceful trees in their mantle of white? Even when the blooms and fruit are gone, the trees are ornamental as well as useful and will beautify any home or land along a roadside. They take up but little room and require no cultivation. These Sand Pears are positively blight-proof!

We recommend Pineapple Sand Pears strongly because we know by experience just what they will do. We grow them for home use, and find a ready market and a splendid profit. 40 to 75 bushels per year from many of the older trees in our section is nothing unusual, and some orchards yield over 1,000 bushels to the acre.

We now produce these pear trees for our customers, and have thousands of young, thrifty growing trees ready for shipment. These trees, when mature, will be better than our own, since they have been propagated from our producing trees; thus fine parent stock, and a better start than our own trees had.

The Bass Pineapple Sand Pears grow rapidly—they are extremely hardy. All trees have a well developed root system.

We suggest that you plant our extra special size, so beautifully headed.



One of our trees with branches loaded down with fruit.

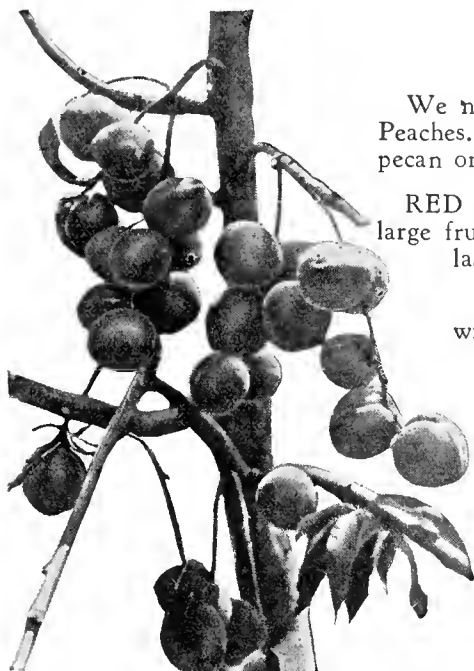
GUARANTEE

The Bass Pineapple Sand Pears are guaranteed not to blight in any section or your money back.

PINEAPPLE SAND PEARS

	Each	10	100
3 to 4 feet.....	\$.45	\$ 4.00	\$ 30.00
4 to 5 feet.....	.55	5.00	40.00
5 to 6 feet.....	.70	6.00	50.00
6 to 7 feet.....	.90	7.00	60.00
Large size.....	1.15	10.00	75.00
Extra Special size.....	1.50	12.50	100.00

"The trees came in fine shape, roots being very damp when they reached me; also, were well packed."—Memphis, Tenn.



Peaches

We need not elaborate on the eatability and marketability of Peaches. Plant this profitable fruit between the rows of your pecan orchard, or in your garden.

RED BIRD. Very early, hardy grower, good bearer; has large fruit of bright glowing color and splendid quality. Ripens last of May or early June. Cling.

HILEY BELLE. Very rapid grower, prolific bearer, with a fresh, firm, excellent creamy white flesh and real peach flavor. Ripens in June. Freestone.

ELBERTA. Large, yellow, with red cheeks; juicy and of good flavor; flesh yellow. Ripens middle of July. This is an excellent shipping variety. Freestone.

PRICES—ALL VARIETIES

	Each	10	100
June buds 1 to 2 feet.....	\$.20	\$1.50	\$12.50
3 to 4 ft.....	.30	2.50	20.00
4 to 5 ft.....	.60	5.00	35.00

BIG FRUIT TREE SHORTAGE THIS YEAR

May have to substitute in peaches and apples.

Please! Because of our care in inspecting, packing and shipping, and the huge expense to which we are put, it hurts to fill orders that amount to less than \$5.00. So please order enough, even for friends, to make at least that much of an order. However, we will fill your order amounting to less than \$5.00 if you cannot increase it, rather than disappoint you.

BASS GUARANTEE ON FRUITS

Our fruit trees and berry plants (other than Figs, Plums and Pineapple Sand Pears) are supplied by reputable nurseries. We guarantee them to be true to name, high in quality, good healthy stock, free from disease. Stock damaged in transit, if notified immediately, will be replaced, if express or freight receipt indicates damage. Should any stock prove not true to name, we will return money or replace it with other stock, but are not liable for any damages beyond this.

NOTICE. If your order calls for a variety we do not have on hand, we shall, unless advised to the contrary, substitute another which should prove as satisfactory. Thus we save you disappointment and loss of time. Ask for our special prices on large orders.



Plums

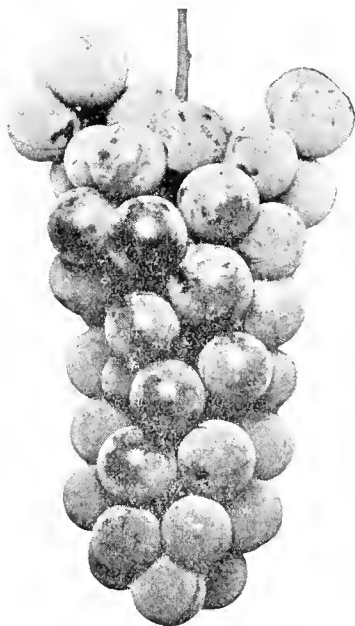
RED JUNE. Early market plum, large size, deep vermilion red color. Good variety, very firm. Flesh light yellow. Free from rot. Very heavy bearer and easy to grow. A wonderful plum, in our estimation.

	Each	10	100
3 to 4 feet.....	\$.50	\$4.50	\$30.00
4 to 5 feet.....	.65	6.00	40.00

Let your land do double duty—Plant Pecan Trees between the rows.

"One hundred pounds of pecans from two trees netted me \$50.00 last year. Trees are loaded this year."—Arkadelphia, Ark.

Bass Grapes



Grow your own Grapes for the table or your own grape juice or jelly.

CONCORD. The most widely grown, most popular of all grapes, for vineyards. Black. Healthy, hardy, vigorous vine, large bunch and berry, and a good yielder. Grows quickly. Our Concord this year are extra fine.

NIAGARA. Leading white grape. Widely planted. Bunch large; handsome, juicy and fine flavor.

2 Year	Each	10	100	1000
No. 1	\$.25	\$2.00	\$15.00	\$100.00

Why We Sell Fruit Trees, Too---

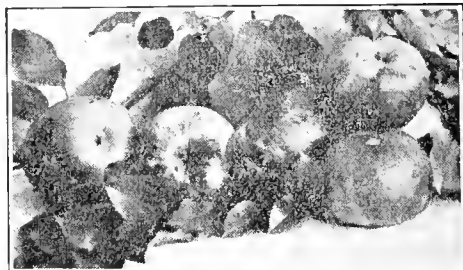
Because we were asked so often to recommend or buy fruit trees for our customers who wanted to plant them along with pecans—or otherwise—we decided for their accommodation to handle a few fruits. This is good, strong, hardy stock, with well-developed root systems. We can relieve you of much trouble and extra expense if you order fruit trees along with pecans. The selection may be left to our judgment. Write for **SPECIAL PRICES ON LARGE QUANTITIES.**

Apples

RED JUNE. A choice fruit of a well-known variety—medium conical; deep red; juicy. Very productive.

DELICIOUS. No new variety gained popularity in so many different sections so quickly. Fruit large, nearly covered with brilliant dark red; flesh fine grained; crisp, melting, juicy, with delightful aroma; highest quality. Splendid keeper and shipper. Tree one of hardiest, vigorous grower, with good foliage. Regular annual bearer.

	Each	10	100
3 to 4 ft.....	\$.30	\$2.50	\$20.00
4 to 5 ft.....	.60	5.00	35.00



Bass Figs

The fig-canning industry is gradually extending throughout the South. Since several tons of figs can be produced on an acre of ground, it is profitable to give them intensive culture. The fresh fig is quickly finding its way into markets, and meeting with ready sale.

Figs require little or no cultivation. Our favorite is the **CELESTE**, one of the hardiest varieties. Very desirable for canning and preserving. Small to medium, pear-shaped, ribbed. Flesh firm, juicy, sweet, excellent quality.

	Each	10	100
3 to 4 ft.....	\$.35	\$3.00	\$20.00
4 to 5 ft.....	.50	4.50	35.00

Japanese Persimmons

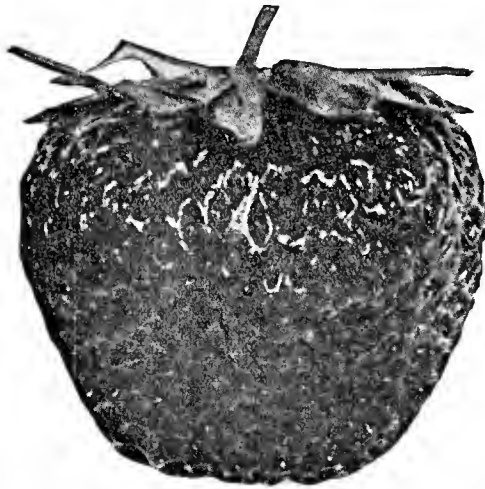
The Japanese Persimmon can be grown on as wide a range of soil as the native Persimmons, and will succeed with the minimum of care and attention. The trees are vigorous, prolific, and have few enemies. As the fruit keeps and ships well, it can be placed on the market in good condition. It meets with ready sale.

We recommend the **TANE-NASHI** variety. In high favor. Large fruit, flesh yellow and seedless. Vigorous, prolific; uniform size—most desirable to market.

	Each	10
3 to 4 ft.....	\$.50	\$4.50
4 to 5 ft.....	.60	5.00



No orders for less than \$5.00—Please!



Strawberries Spell Profits, Too!

In Arkansas a man secured a Government loan for seed, feed and fertilizer, but quickly paid off his loan from his profits on strawberries. From 17 acres of berries, one farmer made more than \$5,000 net. In Mississippi in one county \$80,000 worth of berries were sold from 140 acres, netting the farmers an average of \$571 per acre. Hundreds of other instances could be cited of worthwhile profits from strawberries.

Some plant berries with other crops; others grow them exclusively. You could plant those idle rows between your pecan or fruit trees, or even your other crops. Grow berries for your own use or for market. Set out about 16 to 18 inches apart in 3½ foot rows. It will require about 7,500 plants per acre—and will pay you to follow these planting instructions. All are healthy plants with a good established root system. We ship these plants from October 15th to April 1st.

The New Blakemore

This is a new berry that has been recommended highly by the Department of Agriculture at Washington, D. C. It is claimed that ninety per cent of the fruit will run as No. 1's. The Blakemore is firm, well colored, deliciously flavored—very productive and marketable fruit.

Mastodon

Everbearing. This is the finest everbearing strawberry. New large fall-bearing berry. Mammoth berries. Eighteen of the larger ones fill a quart. Big, strong plants. Firm berries, highly flavored, very sweet. Most productive and profitable of all everbearers. We recommend them above all everbearing.

Improved Klondike

This variety is planted more in the southwest than any one variety grown today. Season is second early, and the Improved Klondike are bred up and are more productive than the old original Klondike.

STRAWBERRIES

	POST PAID			EXPRESS COLLECT				
	25	50	100	250	500	1000	5000	10,000
Imp. Klondike	\$.60	\$.75	\$1.25	\$1.50	\$2.50	\$3.50	\$13.50	\$25.00
Blakemore	.75	1.00	2.00	3.00	5.00	9.00	40.00	75.00
Mastodon	1.00	1.75	3.00	4.00	7.50	15.00	65.00	125.00

YOUNGBERRIES

Here's a unique berry that is becoming most popular. It is a cross between a Loganberry and a Dewberry. This berry is remarkable for its dessert, beverage, preserving and cooking qualities. Fruit is large, deep wine-color, sweet, juicy. The plants are vigorous, propagate freely and resist disease. The U. S. Department of Agriculture recommends this variety. Keep up with the times and plant Youngberries for the increasing market. We grow our own Youngberries for our customers.

YOUNGBERRIES

Single lots	-----25c each		50 plants	-----15c each
10 plants	-----20c each		100 plants	-----10c each

"Your trees are twice as tall and much better root system than the one I paid \$3.00 for. Experience is good but expensive teacher."—Mount Calm, Tex.

Pecan Buds and Grafts For Sale

Thousands of grafts and buds are cut and sold by us each year from our early and heavy bearing pecan trees. Do not top-work your trees with poor scions—insure success in your work with our buds, grafts, and prepared wax. Grafts furnished during December, January, February and March not kept on cold storage are \$2.00 per 100, or \$15.00 per 1,000. In lots of 5,000 and up at \$10.00 per 1,000. Cold storage grafts keep for late top-working in April, May and June are \$3.00 per 100, or \$25.00 per 1,000. Buds furnished during July, August and September are \$1.50 per 100 or \$10.00 per 1,000. Varieties are Stuart, Success, Schley, Bass Papershell, Nelson, Hale, Frotscher's Eggshell, Pabst, Dependable, Moneymaker. No less than 100 of a kind sold.

Prepared wax, ready to use, 50 cents per pound.

Tree Topping

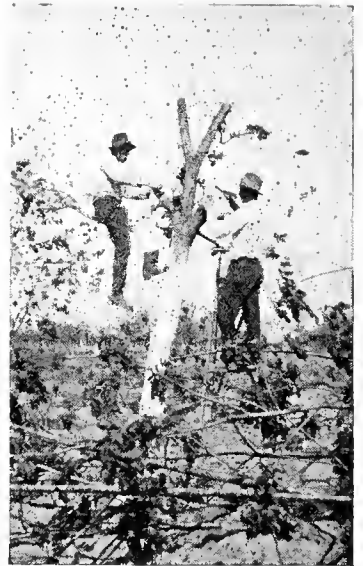
Poor trees are high at any price. Many have bought these elsewhere that won't bear a nut, and we've had to come in to save the wreck by tree-topping and budding with our bred-up stock.

Tree-topping and budding is a special craft and we are prepared to perform this service, going anywhere to rejuvenate non-bearing orchards, provided there is a large number of trees to top work.

If you want information on top working, we refer you to the Government Bulletin No. 1501, on Nut-Tree Propagation. Write U. S. Department of Agriculture, Washington, D. C.

Compare the need of tree-topping to this record, told by one of our pleased customers:

"I just want to tell you how beautiful my pecan trees are. I have about 35 about 13 years old and they are loaded down with nuts; about 60 others about 10 years old that have fine crops. I have 240 in all and all were bought from you but 40. The four I got from you last winter are growing fine. One has made more growth than any pecan tree I ever saw."—Hon. Geo. S. Hamilton, Jackson, Miss.



"From Soup to Nuts" EAT PECANS AND LIVE LONGER

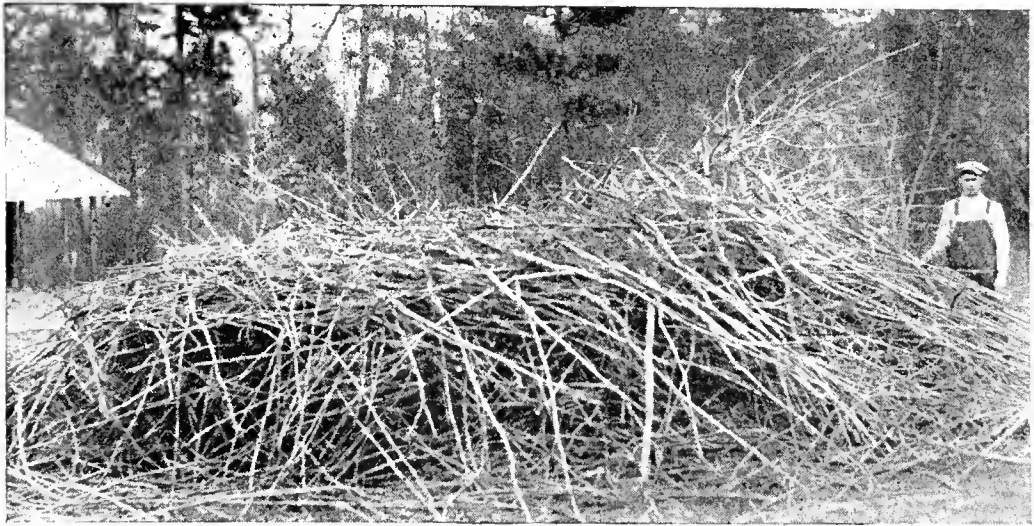
Great doctors have said that we can prolong our lives at least ten years by changing from meat eaters to nut eaters. Raw or cooked meat—the flesh of some dead animal—creates foul odors and poisons when taken into the stomach. Your system has to absorb these—often causing Bright's Disease, or some form of kidney or liver troubles. Pecans do not give off these odors or poisons, but act as mild laxative and lubricant, and keep your system in wonderful condition.

Dr. Kellogg, of Battle Creek, Michigan, recommends pecans instead of meats. As evidence of the comparative value of nuts and meat, the U. S. Department of Agriculture says that a pound of round-steak contains only 950 calories, while a pound of pecans has 3,300 calories. The steak is 13.6 per cent fat, while the pecans are 70.7 per cent fat.

There are so many different ways of serving these nutritious nuts in desserts and other dishes although the nuts themselves are most appetizing without any preparation. Try eating and serving a few pecans every day and see the wonderful improvement in your and your family's health.

It will pay you to plant our Extra Special or larger sizes of pecan trees for earlier and heavier bearing.

The trees arrived in good condition, and I am well pleased with same.—Laurens, S. C.



Ready for the Match. (To be a Huge Bonfire).

Protecting Our Customers

Though a usual scene to us, this is an unusual sight to visitors who cannot understand why we burn many trees. We do it to protect our customers, even though every bonfire is so much money going up in smoke.

These stacks consist of Bass Pecan Trees that we do not consider fit for OUR customers. They consist of numerous culls—trees that have imperfect root systems, are badly scarred or dwarfed. Now some of the culls are trees that we consider as seconds, and may be planted, and are sold by us as No. 2 trees at half the price of our No. 1 trees (see pages 12 and 13), but these trees that we still consider unfit are burned, and we would not sell them at any price.

Some nurseries would sell these trees as “number ones,” whereby we burn them. A big loss to us, but a great satisfaction in protecting our customers.

Additional Proof of the Investment in Planting Pecans

Here is a picture of a 36-year-old tree that beat the world record for the three largest crops in three years, bearing 75 bushels, or 3,000 pounds, which sold for \$1.050 net. Property of R. L. Casey, of Hollandale, Miss. Mr. and Mrs. R. L. Casey shown on the right—rich and FAT, from pecans!

Mr. Casey claims this as the most prolific pecan tree in America. It produced last year 1,200 pounds of nuts, that sold for \$480. He owns many trees that are 36 years old and producing. Wasn't that foresight? Hasn't it been a good investment for the planter of these trees? This is exactly what we want YOU to do NOW!



“The trees arrived promptly on the specified date and were very satisfactory—in fact, they were beyond all expectations.”—New Orleans, La.



Terms and Conditions of Sale

Terms Are Cash With Order. We pay spot cash for everything and sell the same way. It saves us a lot of bookkeeping and annoyance and enables us to sell our high-grade bred-up trees cheaper. Some prefer to have goods sent C. O. D., but why pay that extra collection fee? Why not send money with order?

Prices are F. O. B. Lumberton, unless otherwise stated.

How to Send Money. Send money any way that is most convenient for you. Why not send the money and save the C. O. D. fee? We prefer money order.

We cannot ship trees by mail except smallest pecans and fruits.

Our Shipping Facilities are exceptionally good. We are near the depots of two railroads and have open stations both day and night. Also have long distance telephone and telegraph service. You can get us over the telephone any time.

Our Trees Always Freshly Dug. We can dig and ship your trees any day.

Order Early. The demand for our high-grade bred-up trees far exceeds the supply, and it is very imperative that you send in your order early. Those who order early naturally receive the choicest stock.

Time of Shipment. Unless otherwise instructed, orders received during the shipping season, November 1st to April 1st, will be forwarded as soon as possible after receipt of order.

Substitution. If out of the varieties ordered, we will send the ones we think to be the equal or superior unless instructed not to substitute.

No Charge for Packing. We carefully pack and tag all trees free of charge.

Our Trees Free of Disease. A certificate of inspection of the Mississippi State Entomologist certifying our trees to be free of disease accompanies each bundle of trees. All inspection laws of other States are complied with.

No orders for less than \$5.00—Please!

PLEASE MAKE YOUR ORDER FOR \$5.00 OR MORE IF POSSIBLE

ORDER BLANK
TO
BASS PECAN COMPANY
Largest Pecan Nursery in the World.
LUMBERTON, MISSISSIPPI

For prices see back of this blank (Page 30), and for complete descriptions, please refer to the following pages:

Pecans	Page 12	Japanese Persimmons.....	Page 24
Pears	Page 22	Grapes	Page 24
Plums	Page 23	Figs	Page 24
Peaches	Page 23	Strawberries	Page 25
Apples	Page 24	Youngberries	Page 25

SEE BIG BARGAIN OFFERS ON PAGE 30

Kind	Number	Size	Price
PECANS			
Stuart.....			
Success.....			
Schley.....			
PEARS			
Pineapple Sand Pear.....			
PLUMS			
Red June.....			
JAPANESE PERSIMMONS			
Tane-Nashi.....			
PEACHES			
Red Bird			
Hiley Belle			
Elberta.....			
FIGS			
Celeste.....			
APPLES			
Red June.....			
Delicious.....			
GRAPES			
Concord.....			
Niagara.....			
STRAWBERRIES			
Blakemore.....			
Improved Klondike.....			
Mastodon			
Everbearing.....			
YOUNGBERRIES			
		VARIETY	
Pecan Buds.....			
Pecan Grafts.....			
Prepared Wax.....			

See next page for prices!

\$10.00 Special Offer \$5.00 Special Offer.

Total Amount of Bill.....

I Guarantee to Take This Order and Pay For It.

Signed.....

Post Office.....

Express Office.....

Date to Ship.....

"The pecan trees were received in good shape. They look good, vigorous, and are the best that I have received from you."—Ninety-Six, S. C.

Bass Pecan Trees Are Heavy Bearers.

PRICES

Prices on Top Grade (No. 1) Trees---All Varieties

	Each	Six	Twelve	Sixty	100	1000
2-3 Feet	\$.80	\$ 4.20	\$ 7.80	\$ 36.00	\$ 60.00	\$ 500.00
3-4 Feet	.90	5.10	9.60	45.00	70.00	600.00
4-5 Feet	1.00	5.70	10.80	51.00	80.00	700.00
5-6 Feet	1.20	6.90	13.20	60.00	100.00	900.00
6-7 Feet	1.35	7.80	15.00	72.00	120.00	960.00
7 Feet to Large	2.00	10.80	19.80	90.00	150.00	1200.00
Large	2.50	14.40	27.00	120.00	200.00	1600.00
Extra Large	3.50	20.40	36.00	165.00	275.00	2200.00
Extra Special	4.00	22.80	42.00	195.00	325.00	2600.00

We recommend the planting of our large trees. They bear earlier.

Special Price on Large Orders

One to five trees take the each rate price; six to eleven trees take the six rate price, twelve to forty-nine take the twelve rate price; fifty and up take the one hundred rate price; 500 and up take the 1,000 rate price. Special prices cheerfully quoted on larger lots.

☞ All prices F. O. B. Lumberton, Miss. ☜

Culls For information as to our culls, please see bottom of Page 13. These No. 2 pecan trees sold at 1/2 the price of our No. 1 trees (Bass' First Class). See above. Prices f. o. b. Lumberton. For prices on Bass Pecan buds, grafts and prepared wax, see Page 26.

EXTRA SPECIAL: Two Club Offers, Big Bass Bargains

TEN-DOLLAR SPECIAL

4 1-2 ft. Stuart Pecans	\$3.00
4 2 year Concord Grapes	1.00
4 3-4 ft. Celeste Figs	1.40
2 3-4 ft. Tan-Nashi Persimmons	1.00
4 3-4 ft. Delicious Apples	1.00
4 3-4 ft. Pineapple Pears	1.80
4 3-4 ft. Red June Plums	2.00
6 3-4 ft. Assorted Peaches	1.50
All for \$10.00		\$12.70

FIVE-DOLLAR SPECIAL

2 1-2 ft. Stuart Pecans	\$1.50
2 2 year Concord Grapes50
2 2 year Niagara Grapes50
2 3-4 ft. Elberta Peaches50
2 3-4 ft. Red June Plums	1.00
2 3-4 ft. Blight-Proof Pears90
2 3-4 ft. Celeste Figs70
2 Choice Youngberry Plants50
All for \$5.00		\$6.10

Add 10% and we will PREPAY charges on either order. Other trees of same size and equal value may be substituted.

PLUMS—Red June

	Each	10	100
3 to 4 feet	\$.50	\$4.50	\$30.00
4 to 5 feet	.65	6.00	40.00

PEACHES

All Varieties

	Each	10	100
June buds 1 to 2 feet	\$.20	\$1.50	\$12.50
3 to 4 feet	.30	2.50	20.00
4 to 5 feet	.60	5.00	35.00

PINEAPPLE SAND PEARS

	Each	10	100
3 to 4 feet	\$.45	\$ 4.00	\$ 30.00
4 to 5 feet	.55	5.00	40.00
5 to 6 feet	.70	6.00	50.00
6 to 7 feet	.90	7.00	60.00
Large size	1.15	10.00	75.00
Extra Special size	1.50	12.50	100.00

FIGS

	Each	10	100
3 to 4 feet	\$.35	\$3.00	\$20.00
4 to 5 feet	.50	4.50	35.00

GRAPES

Both Varieties

	Each	10	100	1000
2 Year No. 1	\$.25	\$2.00	\$15.00	\$100.00

JAPANESE PERSIMMONS

	Each	10
3 to 4 feet	\$.50	\$4.50
4 to 5 feet	.60	5.00

APPLES

All Varieties

	Each	10	100
3 to 4 feet	\$.30	\$2.50	\$20.00
4 to 5 feet	.60	5.00	35.00

STRAWBERRIES

☞ POST PAID ☜

	25	50	100
Imp. Klondike	\$.60	\$.75	\$1.25
Blakemore	.75	1.00	2.00
Mastodon	1.00	1.75	3.00

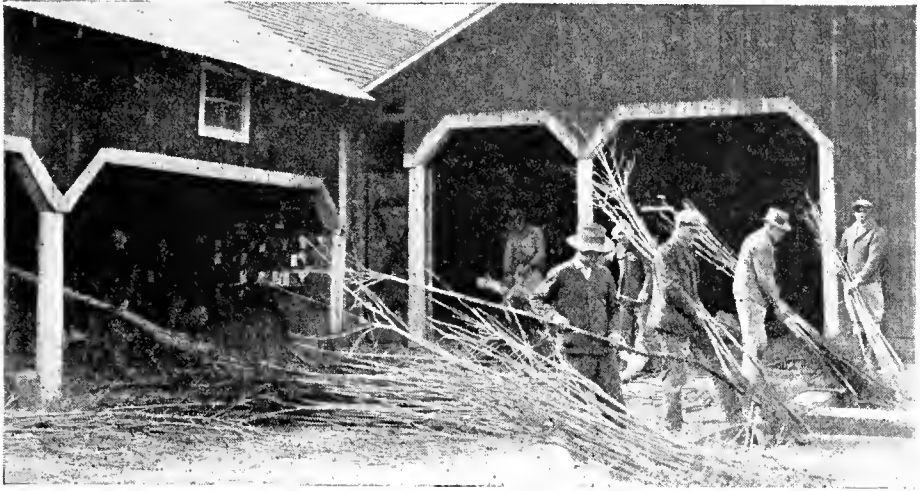
☞ EXPRESS COLLECT ☜

	250	500	1000	5000	10,000
	\$1.50	\$2.50	\$ 3.50	\$13.50	\$ 25.00
	3.00	5.00	9.00	40.00	75.00
	4.00	7.50	15.00	65.00	125.00

YOUNGBERRIES

Single lots	25c each	50 plants	15c each
10 plants	20c each	100 plants	10c each

"Your trees are twice as tall and much better root system than one I paid \$3.00 for. Experience is good but expensive teacher."—Mount Calm, Texas.



This is a familiar scene around the Bass Nurseries. The man in the foreground does nothing but inspect trees. This official inspector is a trained nurseryman, and it is his job not to let a single tree pass that is in any way inferior, defective in root system or trunk, or have any scars. The trees are first placed in the vat of water to wash the dirt off the roots, so they may be inspected and properly packed for shipment. The other men gather and tie the trees carefully, packing as described on page 10. As the trees are growing the entire nursery is inspected every week. The inspection is daily, but it requires a week to walk through all the rows of all the fields. Trees are carefully watched to keep free of any pests and diseases, and to see that trees are in a fine growing condition.

The Bass Nursery---An Institution!

This concern is not a back-lot nursery, nor a one-man, one-truck outfit, but in reality an institution. There are 15,000 acres, of which 1,000 are planted in orchards and nurseries. The remainder is held for continued development and enlargement. Over 2,000,000 trees grow in our nursery at all times.

From 50 to 100 men are employed. Many of our employees have been with us since we started. A number of them live in their own homes, furnished by us, and are happy and contented. Therefore, they are interested in seeing that the trees are properly cared for, packed and shipped. There are 30 mule teams, and all kinds of farm and power machinery on our place.

Welcome, Visitors, Welcome

Visitors are always welcome, and we have hundreds of them each year. We'll gladly take you over our place, show every operation, and the many details of precaution in growing, grafting, budding, caring, packing and shipping our trees.

If you will visit us, in order to be sure about the trees you buy, and you do not find our nursery to have more and better pecan trees, we shall pay all expenses and liberally for your time. You might thus care to visit around to make comparisons.

If we were not positive about our own trees, would we dare make such an offer?

⚡ WARNING ⚡

Call for trees as soon as they arrive, as we pack them to reach you in excellent condition if taken out immediately upon arrival. Inspect trees at the station, and refuse if in bad order, so we may make claim against railroad. If any damage has been done in shipping, have agent write on express receipt that they were damaged. Send us Damage Receipt and we'll promptly replace trees.

PRINTED IN U. S. A. BY DITTLER BROS., ATLANTA, GA.

"We had a good crop of pecans this year and it will not be long before our trees will begin to give some service to the community."—Cannon Mills Co., Kannapolis, N. C.

A FULL TREATISE ON PECAN CULTURE---How to Buy It, How to Plant It,
How to Grow It, Where to Grow It, The Profit in It.



Prepare FOR THE
Now! FUTURE

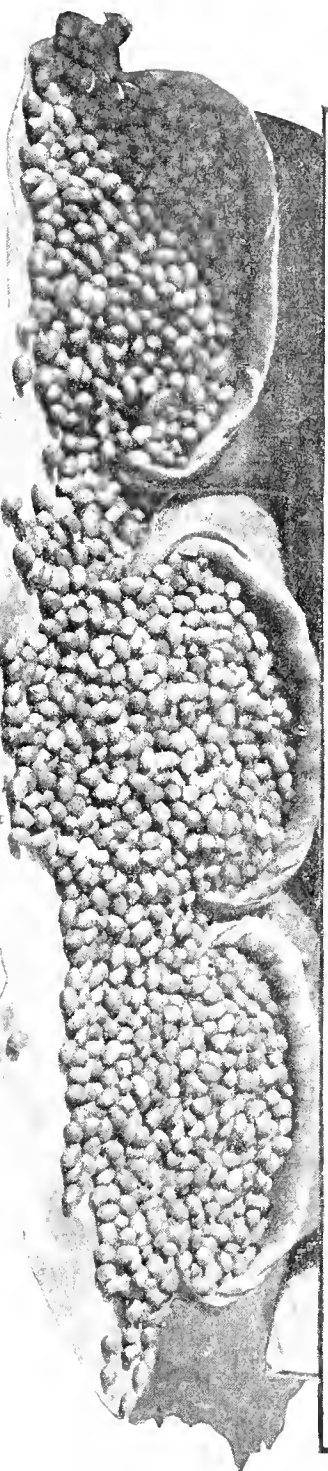
Do not depend
~ on charity or
relatives in old age.

BASS PECAN NURSERIES LUMBERTON, MISS.

Our trees are a sure -
safe, profitable and
permanent investment

The older the trees
the more profitable,
and the less attention required

INSURE AN EASY LIVING WITH PAPER SHELL PECAN TREES ~ GET OUR FREE CATALOG
THE LARGEST PECAN NURSERY IN THE WORLD — VISITORS WELCOME



Our Pecans Make a Safe and Profitable Income for Life