

Historic, archived document

Do not assume content reflects current scientific knowledge, policies, or practices.

CHAMPLAIN VIEW GARDENS

ELMER E. GOVE, BURLINGTON, VERMONT

62.17

Lindesta

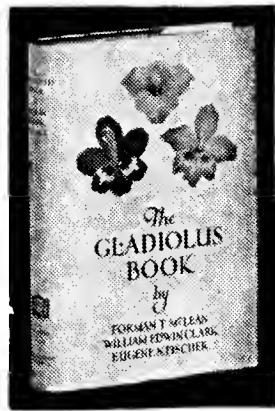


1935
DESCRIPTIVE
LIST OF
GLADIOLUS

BOOKS YOU SHOULD HAVE

THE GLADIOLUS BOOK

is about the most complete treatise published on the gladiolus. Is written by Forman T. McLean, William Edwin Clark and Eugene H. Fischer; 224 pages finely bound and worthy of a place in any library. Price, \$3 plus 15 cents for postage. If you are a real "glad bug" you want this book.



All About Flowering Bulbs, by T. A. Weston. Written especially for the amateur. This book gives all the information a home gardener requires on the culture of flowering bulbs of all seasons planted outdoors as well as those that do well in the house. This is a very fine book and gives a wonderful amount of information on the subject. **Postpaid, \$2.15**

Modern Dahlia Culture, by W. H. Waite. Brief, clear, complete. Based on the actual operations and results of a practical experienced grower, propagator and exhibitor written to meet the needs of the novice and to interest and inform the expert. Mr. Waite's little volume is the biggest value for Dahlia lovers present and to come. 132 pages, 24 half-tone pictures and 6 in color. **Postpaid, \$1.65**

1001 Garden Questions and Answers, by Alfred C. Hottes. A wonderfully fine book with a wealth of information covering flower, vegetable and fruit garden. Arranged in the form of questions and answers. This is not to be read for literary effect but to secure a quick answer to any definite question. If there is anything you want to know about the garden, what plants do well in certain places and what do not, construction of walks, garden seats, spraying information, judging scales, etc. be sure to get this book. I don't know of a better book for the amateur. 320 pages, fully illustrated. **Postpaid, \$2.15**

The Book of Perennials, by Alfred C. Hottes. This book is a veritable storehouse of information about perennials, the flowers which come up year after year and is indexed and cross indexed in such a way that the amateur cannot fail to have a marvelous perennial garden or bed. Over 125 different species are discussed with their culture and requirements. Many pictures. **Postpaid, \$2.00**

Gladiolus Breeding, by J. A. Kemp. A trustworthy guide of 12 pages for the experimenter in the successful breeding of gladiolus. The various operations are described in plain, everyday garden language. **Postpaid, \$.55**

GARDEN GUIDE

Garden Guide has wonderful chapters devoted to the Vegetable, Flower and Fruit Gardens, with practical layouts and planting plans.

Covers every step from spading the ground to preserving the harvest.

388 pages and over 275 teaching illustrations, with beautiful cover in four colors. Price, Cloth \$2.50.

WAYSIDE MARKETING

The author of "Wayside Marketing," Schuyler Arnold, after several years of observation and much study on the subject, has written a book that is packed with worthwhile suggestions enabling the wayside stand owner to better marshal his opportunities, abilities and equipment.

Every angle of the situation is covered—location, the building of the stand, with details of measurement, the stock to be offered (flowers, fruits and vegetables) and how to grow it, etc.

132 pages, bound in cloth and encased in an attractive jacket. Price, \$1.50; postpaid, \$1.65.

GREETING

Another year brings a world rather upset and uncertain as to the future. In foreign countries there is much talk of war. The nations can't seem to realize at this time a great war would be suicide and would be the greatest calamity that has ever happened to any nation that was drawn into the war and nearly the whole world I think would be. In this country I believe conditions in general are improving. Whether this is due to the New Deal in politics or in spite of it is a personal opinion. Things are bound to come out all right in the end and I believe are already headed in the right direction. At least I find it so in my business. Last season my gladiolus business was very much better than the year before and from the orders I have had this past fall and inquiries I am getting I believe this year will be still better.

Due to the extreme dry weather over a good share of the country this past summer No. 1 bulbs are going to be rather scarce but there will no doubt be plenty of smaller sizes in most varieties which will give very creditable bloom.

The thrip situation is improving. More people have disinfected their bulbs and sprayed and consequently have produced fine flowers. Though thrip are still a menace, especially in the warmer climates, I really believe that they can be controlled without too much trouble. It seems to be a community proposition. It is of no use to plant clean bulbs if your next door neighbor is planting infested ones just over the fence. More about this on page 19 of Price List.

Though flowers are considered a luxury, to the real glad "fan" or "fiend" they are a necessity. People will sometimes go without some of the so-called necessities of life to buy gladiolus bulbs. They realize that the soul should be fed as well as the body. Of what use is a well fed body to the real glad fan if he cannot have the glads that he cherishes?

As usual many new varieties are being introduced by hybridizers all over the world and though these will not all be world beaters in spite of the fact that the originators probably think they are, many of them will be good and you should try out as many as you can. Some of them certainly will be outstanding.

Yours for more and better grown glads.

Who Should Grow Glads?

Everyone who loves flowers and has any land at all available. Even two or three square feet of space is enough for 15-25 or more bulbs. Even this small amount of space devoted to glads will give you a great deal of pleasure.

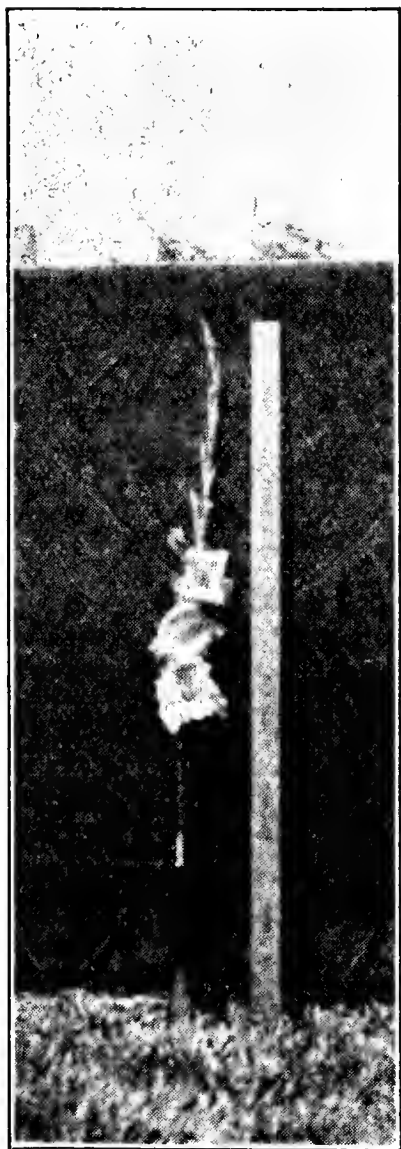
Some people say they do not like glads. In a case of this kind it seems as if it is because they have not seen good ones. I can't conceive of anyone who likes flowers at all not liking the newer and better varieties. Many people judge all glads by the old fashioned prim type but these are not very much grown now. Many thousands of people prefer glads above all other kinds of flowers.

Purposes of Glads

There are a number of different purposes for which glads are grown and different varieties are suited for different purposes. The main uses of glads are:

1. For the wholesale commercial cut flower market.

These are grown by the large growers and shipped comparatively long distances. Sometimes several hundred or even thousands of miles. For this purpose there are comparatively very few varieties suited. They have to ship well without bruising, stand rough treatment at the wholesalers, open up well in water and be of suitable colors.



*Debonair from bulblet
July 17th*

2. For local or nearby commercial cut flower use.

These colors have to be similar to the first class but the varieties don't have to be quite so sturdy. Of course they have to open well in water but can be of little softer texture.

3. Exhibition.

There are many people who grow glads as a sporting proposition. The same as they gamble in anything. They get a great kick out of growing the very best blooms they can and in winning prizes at the shows. For this purpose you want the exhibition type which means having many blooms open at a time, good size blooms and good placement. Color is not so important in the strictly exhibition type provided there are plenty of blooms open. Now that many glad shows are using the decorative and small decorative classes many other varieties can be grown for exhibition and stand a chance of winning that would not have a show in the exhibition class. In the decorative and small decorative classes color is very important. Number open less so.

4. For the home garden.

For this purpose any varieties can be grown that you like and really the only way to tell whether you like them or not is to try them out. If possible it is a good plan to visit gladiolus gardens in the summer time and pick out the ones that you like. If you can't do this read the descriptions in the catalog and pick out what you think you would like and try them. No one else can pick them out for you. I tell in my descriptions which I think are the best but many of the varieties that are not really the best are good and are liked by many people.

5. For the roadside stand.

Another purpose for which glads can be grown is for sale at roadside stands. Here many varieties can be sold that would not be suitable to ship to market to the florists. Florists are rather prone to stick to the old line varieties and colors while at a roadside stand where the general public comes many varieties will sell even better than the commercial type. Many people buying flowers in a place like this like the odd and bizarre colors which you could not possibly sell to a florist.

What Varieties to Grow

Often people ask me to make out a list of glads for them. This is extremely hard to do as it is impossible for anyone to pick out varieties for someone else and satisfy the person 50% of the time. Not only do tastes differ immensely but when a person asks me to pick out a list of varieties they don't say for which one of the many purposes glads are grown that they want them for. A variety that is the best for one purpose might be entirely unsatisfactory for another. Many varieties are wonderfully fine for the home garden but for exhibition or commercial purposes they would not be at all suited.

I write all my descriptions myself and try to make them as accurate as I can in a short space. If I say a variety is the best in its class of course that is my personal opinion. And I don't say it simply because I have a large stock of bulbs that I want to get rid of. You may rely upon these descriptions as telling the truth according to my opinion. Someone else possibly would have a different opinion. Then a variety may do well in one part of the country and not in another. The only way to find out if you like a variety or if it does well with you is to try it out. It is well to read other people's opinions of various varieties but take them with a grain of salt. I have seen some articles written this summer that give very wrong impressions of some varieties.

I am often asked what is the tallest glad, largest, etc. To help out these people who ask these questions I am giving a list here of varieties that I consider the best in their particular way.

My Personal Nomination For---

Largest Glad

Aflame, Bagdad, Mammoth White, Mrs. Douglas, Miss New Zealand, Netherland Prince, Picardy, Winged Victory. Several others may be grown 6 inches across and a 6 inch flower is considered very large.

Tallest Glad

Bagdad, Mrs. Douglas, Ramasses.

Most Beautiful

Mrs. Langford, Picardy, Wasaga.

Most Florets Open

W. H. Phipps. I know of no other variety that can compete in number open with a well grown Phipps.

Most Gorgeous

Lucifer, Picardy, Red Lory.

Most Dazzling

Wurtembergia.

Best Landscape Variety

Antione, Janet, Rose Wings, Senorita, Spray of Gold.

Most Bizarre

Hillbilly.

Most Heavily Ruffled

Premier Henry, Thomas Edison.

Longest Flower Head

Debonair.

Clearest Color

Bonny Scotland, Jonquil, Spray of Gold, Wasaga.

Most Garish

Cassandra, Senorita.

Stands the Sun Best

Golden Flame, Sahara.

Finest Blending of Color

Lindesta, Mrs. Langford, Premier Henry, Reverie, Coronation.

Best Cut Flower Varieties for Commercial Purposes

This does not include some of the older commercials that I no longer grow. Some of these are still too high in price for commercial purposes but are comers. *White*—Escort, for early; Maid of Orleans, best of all; Mammoth White, for local use.

Light Pink—Carolus Clusius, Debonair, Duna, Mrs. Langford, Schwaben Girl, Yvonne.
Rose Pink—Dr. Shook, Littlejohn, Sultan.
Salmon—Betty Nuthall, Edith Robson, Giant Nymph, Margaret Fulton, Picardy, Rapture.
Lavender—Dr. Moody, Minuet.
Light Blue—Bella Donna, Champlain.
Medium Blue—Ave Maria.
Dark Blue—Pelegrina.
Purple—Chas. Dickens, Troubadour.
Yellow—Golden Dream, Loyalty, Miss Bloomington, for early; Tobersun.
 We are still looking for the ideal commercial yellow.
Orange—Gay Hussar, La Paloma.
Bright Red—Dr. Bennett, Wurtembergia.
Medium Red—Com. Koehl.
Dark Red—Pirate.
Smoky—Bagdad, Marmora, Roi Albert, Mother Machree.
Blotched—Bleeding Heart.
Earliest—Al Smith, Champlain, Clarion, Dominus, Early Dawn, Escort, Excellence, Mibloom, Miss Bloomington, Orange Lily, Sunshine Susie.

Exhibition Varieties

Bleeding Heart, Dr. Bennett, Edith Robson, Mammoth White, Mother Machree, Picardy, Red Lory, Rosex, W. H. Phipps or most any other variety that opens 8-10 or more large blooms at a time.

Best for Home Garden

This is a matter of taste. All the varieties I list are good for the home garden but neither I nor anyone else can know what you will like. The only way to do is to read my descriptions and try them out for yourself. Even the poorest variety grown is liked by some people and the best is not liked by everyone. You can safely rely upon my descriptions to give you a good idea of what the best ones are.

A. G. S. Classification

This past season a number of gladiolus shows have used the new classification discarding the Prim and Prim. Grand classes and substituting the *Decorative* and *Small Decorative*. I think this is a big step in advance.

At some of the shows a variety could be shown in either the exhibition or decorative class. The idea being that if a variety was good enough to win in both classes so much the better for the variety. After seeing how this worked out this past year I am fully convinced now that this idea is wrong. At the Boston show some varieties that were poorly grown won in the decorative class whereas if they had been shown in the exhibition class where they belonged they would have lost. This is putting a premium on poor culture which is entirely wrong. Hereafter I believe that the A. G. S. or some other constituted authority should designate under which class a variety should be shown and the variety should be limited to that one class. Then poorly grown specimens would not have a chance of winning prizes.

Beauty Consciousness

Last year in my catalog I said something about *color consciousness*. I should have gone farther and said *beauty consciousness*. There is a beauty of form as well as of color. Prof. Mervyn J. Bailey of Boston spoke to the New England Gladiolus Society last year on this subject. It is as Elbert Hubbard used to say, "something we always knew but didn't know that we knew it until someone told us."

People who are just beginning to grow flowers usually prefer the odd and bizarre colors. But as they learn more about real beauty they appreciate the finer and more delicate colorings and forms.

I think the reason that people do not appreciate beauty more is that they haven't been educated to it. They really don't understand what constitutes beauty. I cannot appreciate the beauty of most paintings nor of grand opera and many people are the same. But I believe that most anyone can learn beauty in flowers if they will study them a little. Not only gladiolus but other flowers as well. In the case of gladiolus many times the appearance and real beauty of a variety are enhanced by the variety having a clear throat. Too many of the

older varieties have magenta lines in the throat. If these lines were out and the throat had a perfectly clear color the variety would be very much more beautiful. Also if the flower has more than one color these colors should harmonize and blend well together and not fight as the colors do in many varieties. This is one characteristic of Palmer's varieties, that they mostly have clear throats without these objectionable lines and the colors are either perfectly clear or harmonize and blend well.

Then again some varieties have raised midribs often of a whitish or lighter shade which makes the flower more beautiful. If you would secure a set of the Palmer varieties and would study them in comparison with the ordinary run of glads you would get an idea of what real beauty is. I don't mean to say that there aren't lots of beautiful varieties on the market besides the Palmer strain but most of his do have a few points about them in the line of beauty of both form and color that distinguishes them from other kinds. **STUDY YOUR FLOWERS AND GET BEAUTY CONSCIOUS.**

Flowers for Identification

In spite of the fact that last year I mentioned in my catalog something about sending flowers for identification and that they should always be sent in the bud



*Picardy, 5 ft. 6 in. tall
from No. 2 bulbs grown by
C. G. Young, Wisconsin*

I received many blooms this past summer that were shipped when fully open. In practically every case of this kind the color is out of the flowers when I receive them and it is absolutely impossible to identify them. Always when sending flowers for me to identify send them when the buds are showing color but not nearly opened out. They will arrive then in good shape and I may be able to tell what they are. But when they are shipped in full bloom they are either faded out, dried up or decayed on arrival.

Donations to Shows

We are always glad to help out local shows by donating bulbs for prizes. However we wish that some of the show committees would cooperate with us a little more. We usually offer definite varieties as prizes but sometimes the show committees list them on their schedules as just so many bulbs without naming the varieties or sometimes not the values so that it often makes us trouble in satisfying the winner of the prize and makes a lot of extra work in our office.

The winner of the prize should send postage for the bulbs. An innovation that one or two shows started last year helps out the grower a good deal. This is in asking the winners of the prizes to send in an order for at least the same value of the prize they won. We don't ask that but too many times in the past a person wins a prize, gets his bulbs and never buys a thing of us or even thanks us. Can't understand it.

What Makes Price?

The gladiolus business is one thing in which price is usually determined by supply and demand. When a new variety is put on the market the price is usually made according to the supply available and the value that the introducer puts upon it. Usually the supply of a new variety is small. In the case of the Palmer varieties the supply is extremely small when they are introduced. Occasionally an introducer works up a larger supply and puts the variety out at a lower price.

As the stock of a variety increases the price comes down. If a variety is a very good propagator the price may drop fast or if it is rather slow and the demand is good the price may hold up well for several years. Or in some cases has been known to go up two or three years after introduction.

Thus it will be seen that a cheap variety may be just as good as a high priced one though I think no hybridizer intentionally puts out a new variety unless he considers it an improvement over older varieties of its color or class.

A Classic

The following paragraph describing the various stages of gladiolus growing has attracted so much attention and been quoted so many times that I am repeating it again.

There is a fascination about growing glads that becomes a hobby, then a craze. There are five stages of interest in growing "glads." First you just grow them as an amateur, same as you would any other flower. Then as your interest in them increases you become a "fan," then a "bug," then a "nut," then finally a "fiend." When you reach this final stage you are hopeless. You think of "glads" all day, dream of them at night, spend every available minute of your time in the garden, talk of them, visit the shows, read all the catalogs and spend all your money on them. You will look lovingly at the last flower in the fall, will handle over your bulbs in the winter time and will hardly be able to wait till you can lovingly plant the bulbs in the spring. From then till the first bloom appears is a period of happy anticipation. When finally the spikes of bloom begin to appear you are in heaven.

Culture of Glads

With every order I send out, a four page circular goes with the bulbs which gives all the essential points in raising them. If you want to go into it deeper would suggest that you get a book on gladiolus. A good one is "The Gladiolus" by Rockwell which I can furnish for \$1.35. Or on a \$12. order accompanied by cash I will give a copy of this book free if you ask for it.

Glads are like anything else. The better culture you give them the better they will be. There is an immense amount of difference between glads that are just stuck in the ground and left to shift for themselves through wet weather and dry and those that are planted on carefully prepared ground and given plenty of fertilizer and water and staked up if necessary. A few varieties do need staking.

I want to especially mention preparing the ground deeply. A foot deep is none too deep and even deeper will be better especially if you aren't able to water them during the growing season. Water is very important. Though the glads will not stand poor drainage, or wet feet as we call it, they will take a large amount of water from the time the bloom spikes begin to shoot up provided the drainage is good so the ground does not become stagnant.

Though glads like plenty of fertilizer they don't want too much. A good coating of rotted cow manure in the fall, or if not possible then in the spring, is ideal but spade it in deeply. Then you can put Acid Phosphate in the trench when you plant them and put on two or three applications of a mixed commercial fertilizer during the growing season. Some people have written me that they put on a very heavy coating of manure in the fall and then again in the spring and mixed a lot of fertilizer with it too. This is too much. Too much animal manure is liable to cause disease on the bulbs.

Storing Glads

Gladiolus bulbs should be stored at a temperature under forty degrees if possible. Stored at a temperature of forty or less there will be no thrip on them in the spring no matter how badly infested they are in the fall. Then again they will keep better and there will be no shriveling and shrinkage if kept cool.

I have just learned of a new wrinkle for storing bulbs that will be valuable for those who do not have cool cellars and cannot possibly keep them below fifty or sixty degrees. In a recent bulletin, put out by the Ohio Experiment Station at Wooster, Ohio, it states that the bulbs can be kept successfully in a box buried in the ground. Of course the box would have to be either water tight or so arranged that there would be good drainage under the box and tarred paper or something put over it so that the water wouldn't leak into it. They can be kept cool in this way. Of course in a cold climate it would have to be covered up enough so that it wouldn't freeze. Think there are distinct possibilities in this way of storage for people who have hot cellars and no other place to store their bulbs.

Change of Ground

It is generally recommended to grow gladiolus on different soil each year. Most of the growers try to do this. But I know it is impossible for many amateurs to change soil as their garden plot is limited and it is necessary for them to grow on the same place every year. This need not prevent anyone from growing good gladiolus. I know of people who have grown glads on the same place for many years and they are still perfectly healthy and free from disease and produce good blooms every year.

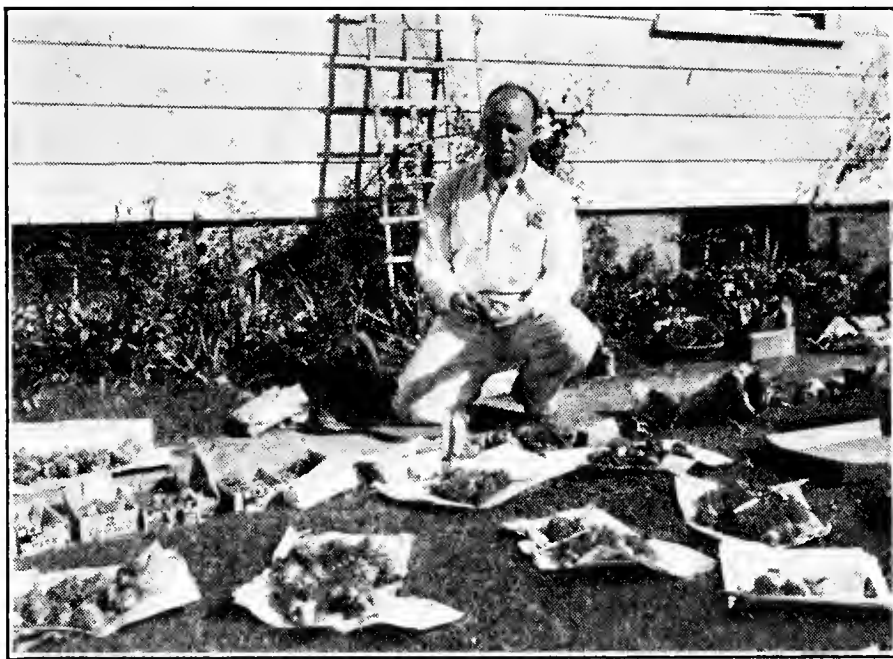
If it is necessary to grow in the same place every year I would suggest the following procedure: Plant your bulbs from four to six inches deep and after placing them in the hole or trench cover them with an inch or two of soil then using a water can drench the ground thoroughly over the bulbs with Bichloride of Mercury solution using a somewhat weaker solution than you would use in disinfecting the bulbs. For disinfecting we recommend a 1-1000 solution or one ounce to seven or eight gallons of water. For soaking the ground would recommend about one ounce to twelve or fifteen gallons of water. I know of one grower who some years ago had some disease in his garden but this past season there wasn't a diseased plant on his place and the growth was unusually strong.

After soaking the soil, finish covering.

Guarantee

My guarantee is that I do my utmost to make my customers satisfied. If a variety should prove untrue to name I will replace them or if they are not satisfactory on arrival I will replace them or refund the money. However I cannot guarantee the quality of the bulbs that will be harvested. Sometimes due to local conditions bulbs will get diseased during the growing season. I cannot be responsible for that.

And we do not guarantee bulblets to grow. In some varieties bulblets are very hard to germinate and even in the very best kinds they will not germinate 100%. Though buying bulblets is in most cases a cheap way of getting good stock you do have to take your own risk about making them grow. Some people are more successful than others in germinating bulblets and the varieties vary a great deal among themselves in their ease of germination. So when you buy bulblets and they do not



J. H. O'Dell, Mass., as he says:

"Gloating over bulbs grown from your No. 3."

grow don't expect me to replace them the following year with bulbs. I have bought many thousands of dollars worth of bulblets that did not grow but that is all in the game. You needn't hesitate to buy bulblets however as in most cases a large percentage of them will grow if given plenty of moisture.

Complaints

Do we ever get complaints about our stock? We surely do. Is any business free from complaints? Occasionally, due to possibly a mistake on our part or due to weather or other conditions, glads don't do well and we get a kick for which of course we are very sorry. We always try to adjust these complaints as I guarantee to satisfy my customers and in all the years I have done business have never found more than two or three customers whom I could not satisfy.

However the complimentary letters we get in regard to the quality of our bulbs, generous count, the flowers they produced, etc. are a good many times as numerous as the other kind. Always when we get a complaint that makes us feel downhearted, in the same mail or within a day or so we get plenty of compliments that buoy us up again. One of the great pleasures of my business is in reading the letters from people who have had so much pleasure in growing my bulbs.

Gladiolus bulb growers will not become millionaires growing Glads. Aside from a fair and reasonable competence their chief reward will be in knowing that they have done their share toward adding to the Beauty of the World and have made it a better place to live in.

Making Out Orders

It seems to me that making out an order would be a very simple matter but some people seem to have a lot of trouble in doing it. Just write the various items down on the order blank as they are listed in the catalog. Take the regular discount either in cash or in extra bulbs and then mention a list of varieties that you would like us to select extras from and mention the sizes that you would like in these extras. We can't always give the full list that people select but if you will name several varieties for us to select from it will make it a lot easier for us and you will be more likely to get what you want than if you left it to our discretion to select extras.

Order Early

Nothing is gained by waiting to order bulbs. And you are liable to lose out on just the kinds that you want. Already this year I am sold out of certain sizes in a number of kinds and often new and rare varieties are sold out early in the season. If a variety drops in price after the price list is out I give extra count to make up for it. Varieties don't usually drop though they do once in a while and occasionally the price of a variety rises.

Then again early in the season we have more time to get out our orders. Though I pride myself on prompt shipment sometimes late in the season orders come in so fast that we are just about swamped and then you can't get them as quickly as you would like. Last spring many people waited till late in the season and then wanted their stock immediately. But the orders came in so fast that we were several days behind in getting them out.

Acknowledgement of Orders

We always acknowledge our orders by sending an invoice. If you do not receive this invoice in a reasonable length of time let us know as occasionally letters are lost. We mean to acknowledge all these orders within a day or two. Sometimes late in the season it is three or four days before we can get them written up.

After you have received an invoice if you write about this order again please mention the order number which will help us to look it up quickly.

Size of Orders

We do not like to fill orders for less than one dollar as we lose money on them. However as an accommodation we will accept smaller ones as we know that sometimes people want only just a few.

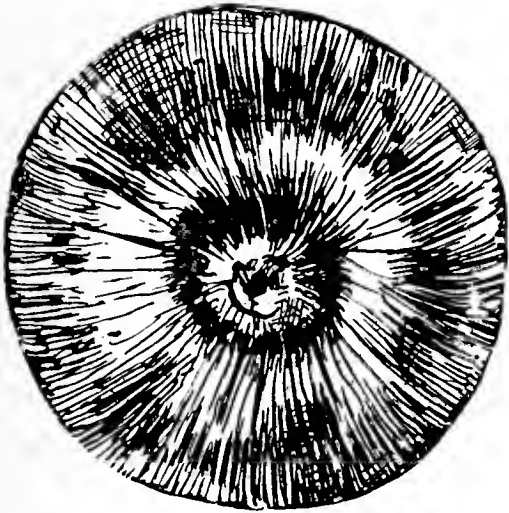
However we wish people would not send us orders for very small amounts. Sometimes we get orders for from \$.10 to \$.25. We always fill these orders even though it costs us at least \$.25 to handle any order no matter how small. Sometimes our regular customers want just a small order of this sort and we fill them just to help them out but wish if possible people would try to make their orders at least one dollar.

Foreign Customers

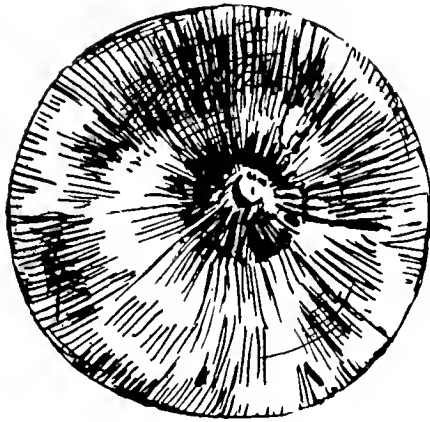
Foreign customers aside from Canada please do not send currency. The only way we can use foreign currency is to send it to New York to be sold and when we do this we don't usually get more than half the face value of it. So either send a money order or draft on a U. S. bank.

"I was more than pleased with the bulbs I received from you last year. They were the best bulbs I ever bought and gave me some wonderful blooms.
 —RAYMOND A. LEWIS, Mass.

SIZES OF BULBS



No. 1



No. 2

LARGE

These pictures show the average size of bulbs. No. 1 will often run larger than this. For the very best bloom the large sizes should be chosen.

Sometimes there is not a great deal of difference between the blooms from No. 1 and

No. 2. Some varieties do not naturally make a large bulb.

Medium bulbs will give you very fine bloom and this year as I am short of No. 4 most of my mediums will be No. 3.



No. 3



No. 4

MEDIUM

Small bulbs will most all bloom and will give very creditable flowers and make fine large bulbs for another year.

My packages of bulblets and in bulk will be mostly medium size. In small quantities especially of the newer

varieties I send out extra large or jumbos as far as possible though some varieties never make anything larger than medium bulblets though they germinate well.

Personally I like No. 3 size. I would very much prefer a young No. 3 bulb to a large old one, such as are often sold in cheap collections and in chain stores, tho to the novice the very large bulbs look the best.



No. 5



No. 6

SMALL



Extra Large Bt.



Large Bt.



Medium Bt.



Small Bt.

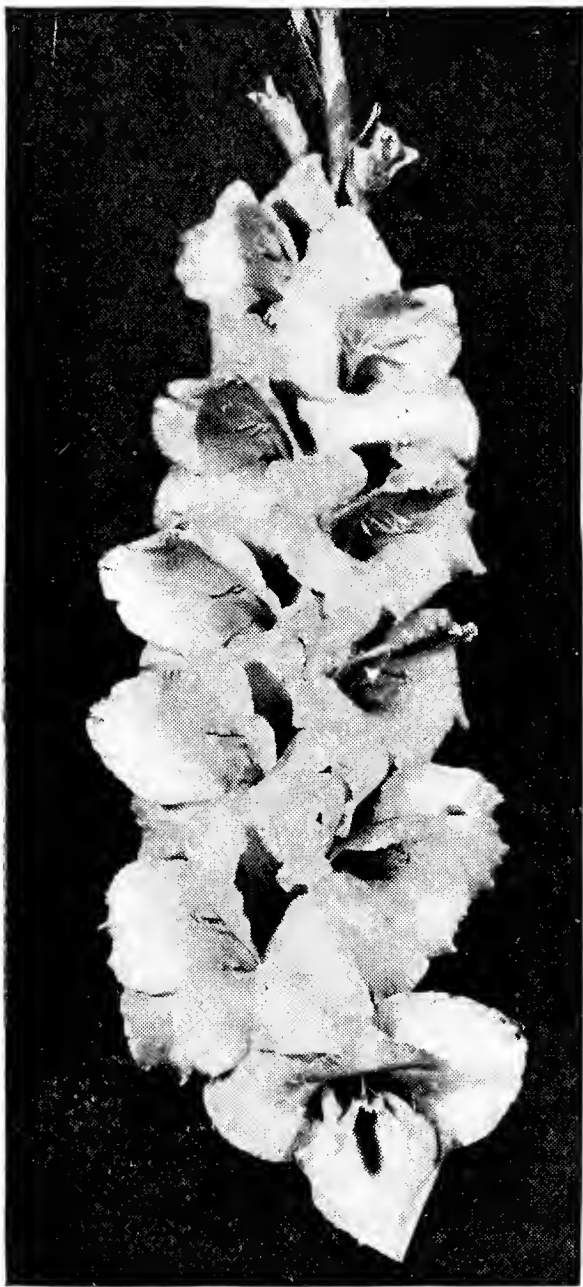
"The medium size bulb of Pelegrina you sent had nine blooms open and several buds showing color. It certainly is a wonderful blue.

"If I were to tell you the height and size of bloom of the Netherland Prince you sent it might sound fishy. It certainly is a vigorous glad. The first to come up and very early bloomer."

—CLARE C. FULLER, Canada

Origin and Characteristics of the Modern Gladiolus

Many of the modern gladiolus are being produced in America but some of the finest varieties are coming from Australia and New Zealand. In those countries glads are not used extensively for cut flowers in a commercial way. They grow them mostly for exhibition purposes. Hence their varieties are mostly of the exhibition type.



Picardy

The flowers are from medium to medium large in size well placed and closely set on the stem with many open at a time. Color is not nearly so important as it is in this country. Hence many of the varieties are not really beautiful though of course some of them are. Their chief desire is to get new varieties with at least ten or twelve blooms open at a time all having good placement. One fault of their varieties is that many of them have a rather stubby spike. They will open up ten or twelve at a time but do not have the long tapering spike with several more buds on it above the open flowers such as we like. Of course they aren't all like this and good culture will usually make a longer spike but a good many of their varieties under ordinary culture do have that stubby effect. Some of the best of their varieties up to the last year or two have been Marmora, Nerissa, Cassandra, Nyora, Mrs. Errey and Edith Robson.

Quite recently a grower in New Zealand has secured a real break and produced some varieties that are so enormously large that they are really in a separate classification. Some of his blooms are 8-9 inches across on enormous spikes. Others have produced some extremely large ones also all of which are the forerunners of almost a new race of glads. The colors of these varieties are not of the very best yet, though they are good. No doubt some wonderfully fine things will come from these varieties in the near future. The best known

of these varieties at present are Miss New Zealand and Takina.

Germany has been producing some of the very best varieties of glads for many years. Mr. Pfitzer of that country is the leading hybridizer there. He has produced exceptionally fine things in a number of different colors but he is especially strong in blue, white and red. Some of these are of the exhibition type but more of them are of the decorative and commercial classification. His colors are especially good. Flowers are mostly large and all in all his varieties are among the very best on the market today. Typical of his are Blue Danube, Ave Maria, Wurtembergia, Maid of Orleans, Mammoth White and Gate of Heaven.

In Scotland, Mair has been producing some wonderfully fine exhibition varieties for many years. The colors of many of his are weird and grotesque though

some of them are beautiful. But they practically all have many open at a time and have good placement.

Other hybridizers in Holland have also produced some nice varieties but not so many of these have reached this country as from other places.

Not very much is coming from France now though in previous years they have sent over a few good things. Emile Aubrun (Lemoine) is not only a fine variety in itself but has had and will continue to have for sometime a great influence on new varieties. In Australia it has been used as the parent for many of their finest varieties. It is one of the parents of Picardy, Bagdad and other Palmer varieties and so it is the forerunner of almost a new race of glads noted especially for their beauty. Most every hybridizer has used Picardy in his crosses and it is producing some surprisingly beautiful seedlings.

In England there are a number of good hybridizers but many of them there

seem to be specializing in the primulinus type, a class that is not very popular in America.

In America glads have been developed in a greater variety of form and color than anywhere else in the world. About twenty years ago Diener secured a real break and produced a number of varieties like W. H. Phipps, Dr. Bennett and Mrs. Douglas that were very far in advance of anything introduced previous to that time. Some of these varieties are still going strong after fifteen or twenty years. Very few varieties last that long. The ruffled gladiolus and the lacinated type were produced by Kunderd and he also developed greatly the primulinus. Many other hybridizers have produced quantities of new varieties of all shapes and colors, most of them however being of the commercial or decorative type. No one has specialized so much in the exhibition type as they have in some other countries.

With the creation of Picardy Mr. Palmer produced

the forerunner of another race or strain of glads. For the first time a variety was produced which combined large size, vigor and beauty of form and color such as were never seen in glads before. Picardy has proven itself a good parent and so in the next few years we may look for many more new varieties that will have much more real beauty than most of the varieties today.

"Received shipment of bulbs in perfect condition. Thanks for prompt work. Many thanks for extras."

—FRANK W. SCHORK, N. J.



Bagdad

BLOOMING DATES

I have read a thousand booklets, I have been to many a show
And I'm really quite elated with the many things I know
About growing gladiolus. From the time I break the ground
'Till I pack away the bulblets, I've a working knowledge sound.
I need not consult a chemist for my soils' biennial test.
I can score an unknown seedling: I can judge it with the best.
But there's one thing has me beaten, there's one thing I can't get straight
About any gladiolus. That's its pesky blooming date.

This spring I went down to Benny's with my watch and coat and vest
And came back with forty dollars with which I bought ten "Mae West."
"Mae," I said, "is truly show type; She's a winner in all ways
And the blooming date's specific. Eighty three and two thirds days."
Then, by using reams of paper and a calibrated rule,
And collaborating nightly with a girl who teaches school,
We decided that the planting of that scintillating gem
Would fall on a certain Tuesday, June the third at 2:00 A. M.

So behold me on that morning as, with palpitating breast,
I strolled through the moonlit garden with one arm about Mae West.
And I marveled at her beauty and I pondered on her worth
And I breathed a prayer to Ceres as I covered her with earth.
Then I swore "By Sweet Alyssum and by the Nine Gods of War,
Now I'll give those stupid judges something they've been looking for."
Then, in sure and sweet contentment, while the stars paled overhead,
I replaced my hoe and shovel and went calmly back to bed.

Then, with all the tried devices every flower fan should know,
I began their daily grooming. One could almost see them grow.
True to name, they loved the night life. Oh, the fast life that they led!
Ere the exhibition started they had spiked—had bloomed—were dead.
Other blooms were mediocre, some were bad and some were worse;
How could I be blamed for using language both concise and terse
When a girl of sixty summers with "a glad she didn't know,"
(Which, of course, was time worn Halley) won for "best spike in the show."

Oh, I know my fertilizers. Cultivation is a joke.
I'm a nut on hybridizing; (If I'm not I hope to choke.)
Of the giant grandiflorus I know all its many whims.
I know how to grow it larger. I know how to dwarf the primis.
But the knowledge brings no pleasure, I can no more summon mirth,
There's a blue moon in the heavens, there's no sunshine on the earth.
Oh, my hat band's not expanded and my chest no more inflates:
There is one thing I can't master; It's those blooming blooming dates.

BURTON L. SPILLER

"The Picardy collection was wonderful and I grew some that would certainly take a prize. In fact all the Palmer varieties I bought from you were all good."

—H. L. MONTCALM, Mass.

New Introductions of 1935

Escort (TOWER) (Com) Very early. Ruffled white with cream throat. 8 medium size well placed blooms on a long bloom spike. Won as best white in professional class at the Washington Show at Seattle 1933.

Have grown only a few bulbs of this myself but judging from those few bulbs it looks as if this should become a valuable commercial variety on account of its earliness. This past season was as early as any variety on my place. Introduced at a low price it is very well worth a trial. Early whites are not plentiful.

\$.50 each any size.

Hillbilly (TOWER) (Dec) Rose doree overlaid and heavily ruffled and striped amaranth purple. Large yellow blotch thickly striped and penciled scarlet red. 4-6 very large wide open well placed blooms.

I have not grown this myself but have heard very good reports on it. Dr. Maple of Indiana who knows glads tried it out last year and said it did remarkably well for him. Said it was a most gorgeous variety. It is a variety that you either think is terrible or wonderfully fine. I believe it will take very well with most people.

\$.50 each any size

Rose Standish (KINYON) (Com) (Dec) Beautiful clear shade of light rose pink. Five or six wide open ruffled blooms of good size well placed on straight slender spike of eighteen or more blooms. The buds of this variety are very beautiful with their delicately ruffled edges. An outstanding variety.

Has been exhibited twice and won both times.

I have not grown this variety myself but have seen it and heard very good reports on it. Have bought a half interest in this variety and am introducing it in conjunction with Wentworth Gardens of Battle Creek, Michigan. From what I have heard I believe it will become very popular. The color is exquisite.

\$1.00 each, any size.

Rose Wings (CROW) (Dec) (Landscape) (75-80) Rosy carmine deepening toward the edges and with a deeper velvety lip. A fine gold line edges the petals. Blooms are medium size, wide open and slightly ruffled. Straight, slender stems of medium height with 4-6 blooms open.

One feature of this variety is the dark green foliage and stems tinged with dark rose, something I have never seen in any other variety. This is a very beautiful decorative variety and should become immensely popular where people want this color. Makes a beautiful basket or vase.

Large \$.50 each; medium \$.25 each.

"I am writing to say that I have received a great deal of pleasure from my gladiolus bulbs purchased from you this spring, especially Picardy. It is a beautiful thing. My spike had 20 florets with lower one 6 7/8 inches across. Think that was fine from second size bulb. Also the extras you gave me were lovely, King of Reds and Wurtembergia. That is a fine one and do appreciate the extra ones put in so much.

"There are many more of the Palmer varieties I would like as they come down in price. I saw Duna this summer and am in love with it. Want it next year.

"I received a blue ribbon on a basket of glads this fall most of them grown from your bulbs."

—MRS. CHAS. HAYES, N. Y.

"I now have about 10,000 bulbs, most of the original stock I purchased from you and have always been fine. In fact the ones I received from you last spring were fine and we had most wonderful blossoms from them."
—B. J. BUSSEY, N. Y.

REGULAR LIST

In the following descriptions though I do not go into all the minute details of coloring according to a color chart, which not many people would understand anyway, I do give the prevailing coloring and try to make these descriptions as accurate as possible in the space at my disposal. The opinions expressed on the various varieties are my own but I think would be considered accurate by the average expert.

The letters following each variety is the abbreviation for the originator. (K) KUNDERD; (PF) PFITZER; (HORN) HORNBERGER; (D) DIENER; (SAL) SALBACH. I am marking the various varieties (Com) Commercial; (Ex) Exhibition; (Dec) Decorative. As all varieties are decorative I am making those just decorative which I do not consider especially good either for commercial or exhibition purposes. The figures are the approximate blooming dates.

If blooming dates are not given it is because I haven't them. If blooming date is not mentioned in the description it is midseason, probably around 80-90 days.

Varieties in boxes are especially recommended.

Acadia Palmer strain. See page 20.

Aflame (HORN) (Ex) (Dec) (Prim. Grand) (80-85) Begonia rose shading to bright orange flame near the edge. Back of petals brighter shade than the front. 6-6½ inches across. 6-8 open at a time. Very popular garden variety but not a good commercial as it does not ship well.

A. H. Woodful (ERREY) (Ex) (Dec) (80-85) Pale mauve with violet red blotch. Sometimes flaked same color. 8-10 well placed blooms at a time. Fine for exhibition. Not a fast propagator.

Aida (PF) (Dec) (Com) (70) Very deep blue with small reddish lilac blotch. Large flowers, five open, very early. Easy propagator. The earliest and one of the finest varieties of this color. One of the nearest to blue.

Albatross (PF) (Ex) (Dec) (Com) (80-85) Large pure white with 6-8 large blooms open. Blooms have a tendency to face up in the so-called lily form. An enormously strong grower. Good propagator. Some consider this the best white.

Al Smith (K) (Com) (66) Very early tall salmon rose. Medium large flowers. Color is good. Should prove a good commercial.

Amador (K) (Dec) (Com) Glowing red that does not burn in the sun. 5-8 large beautiful blooms open at a time. Tall, straight spike. Becoming very popular.

Ambrosia (K) (Dec) (72) An entirely new and distinct shade of old rose tinged with dark salmon. Nothing else like it.

Amethyst (ERREY) (Ex) (Dec) A distinctive shade of deep lavender with darker throat blotch. 8-10 well placed ruffled blooms open at a time. A very distinctive and beautiful variety. Slow propagator.

Antione (K) (Dec) (67) Clear deep yellow, slightly ruffled. Not large flowers but very early.

"The No. 4 Picardy bulbs that you sent me had tall spikes and blooms six and one-half inches across.

"Some of the new ones were very fine but it is hard to equal Picardy,"

—M. D. LEONARD, Mass.

"Received my package of bulbs and want to thank you so much for the extras. When you give an extra you surely do it right. Will be anxious now to see if I can get back in the glad class."

—R. L. FOLL, N. Y.

Apricot Glow (PALMER) (Com) (Dec) (Prim. Grand) (70-80) Clear warm apricot shade. Sometimes flecks. Blooms medium size, wide open and well placed. 4-5 open. Tall, strong grower. A good commercial where large size blooms are not demanded. This type of flower should be used by florists much more than it is. Very fine for baskets and decorations where something dainty is wanted.

This variety has been used extensively in hybridizing and has produced some fine seedlings.

Ave Maria (PF) (Ex) (Com) (Dec) (75-80) Medium blue with small purplish blotches. Sometimes flaked. 7-8 large usually well placed blooms open. Good propagator and very popular. Best medium blue.

Bagdad Palmer strain. See page 20.

Beacon Palmer strain. See page 24.

Bella Donna (PF) (Dec) Large light blue with darker blotch. 6-8 open at a time. Tall, good grower. Should become popular.

Benedict (CROW) (Dec) (85) Very deep soft rose with six or more large round slightly ruffled flowers of heavy substance open at a time. Nothing quite like it in this color. Withdrawn to increase stock.

Berty Snow (MAIR) (Ex) (Com) (75-80) Pinkish lavender often flecked darker. 7-10 large well placed flowers on a long spike. Good propagator. Quite popular.

Betty Nuthall (SAL) (Ex) (Com) (100) Warm coral pink with pale yellow throat markings with a slight tinge of orange. Some call it orange but it is really more of a salmon. 6-8 medium large well placed blooms open.

Though this variety is not the most beautiful in the world the color is very pretty and as a commercial cut flower I know of nothing better. Enormously strong grower. Always stands straight with a long spike of bloom. If you grow cut flowers for sale you surely want this variety and it is just as good for the home garden.

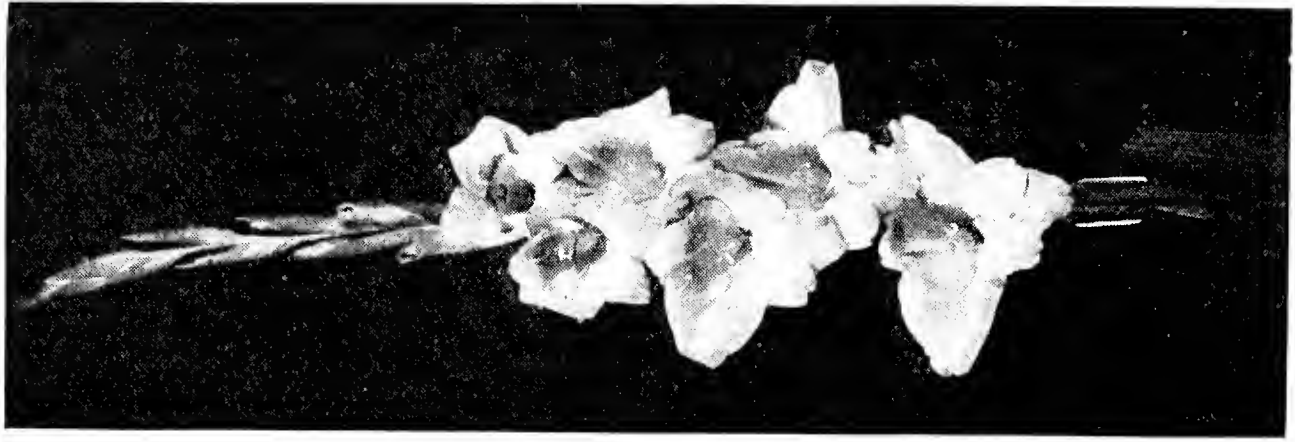
Bill Sowden (FALLU) (Dec) Immense massive deep blood red often flaked darker. 5-6 open. I don't know of a more beautiful red in this shade. May not be a commercial as the stems are not so tall and stiff as Commander Koehl but it is a very beautiful and rich color and becoming increasingly popular. Very fine.

Bleeding Heart (BROWN) (Ex) (Com) (82) White tinted light pink with large red blotch. Tall, straight spike with 8-10 medium large perfectly placed blooms open. Strong grower. Good propagator. One of the very finest blotched varieties. Expect this to become very popular as a commercial. It is very showy and a good shipper.

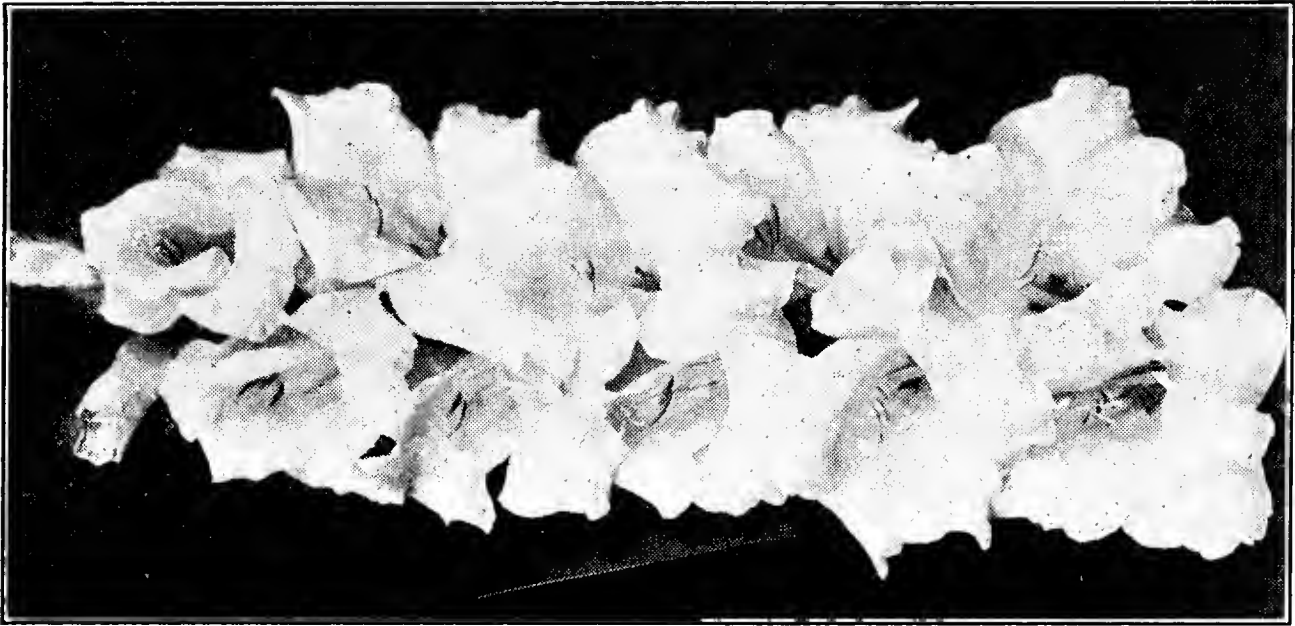
Blue Admiral (CHRIST) (Com) (Dec) Tall straight growing dark blue. Some claim it is better than Pelegrina. It does stand up straighter but does not open so many blooms at a time and is a little lighter shade. Should become a good commercial where dark blues are wanted. Have had many fine reports on it.

"Princess Yaada gave me one blossom and it was a dream, beyond expectations."

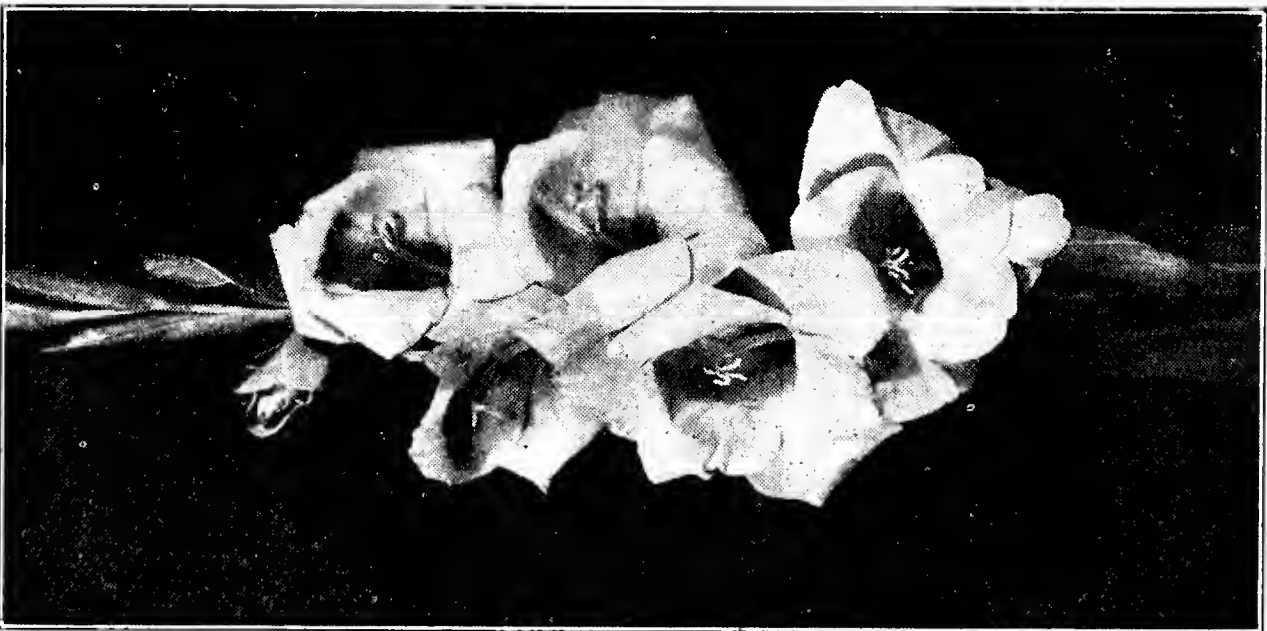
—ALTON M. MARTIN, N. Y.



Acadia



Mrs. Langford



Golden Cup

"I received the bulbs on the 4th of May. They are O. K. Thank you for sending me the extra variety. I expect to set them out this week. All the bulbs that I purchased from you have done very well." —GLADYS ELVIDGE, Mass.

Blue Danube (PF) (EX) (Com) (80-85) Beautiful medium light blue. Long spike with 6-8 large flowers open. A strong grower but does not propagate quite so fast as some. With me stems are inclined to fall over slightly. Considered one of the best blues.

Blue Triumphator (PF) (EX) (Dec) Immense very light blue with small dark blotch. Pale color but pretty.

Blushes of Cream (K) (Com) (Dec) (88) Light creamy pink, canary yellow throat. 5-6 open. Fine color but not a fast propagator.

Bonny Scotland (STEPHEN) (Com) (Dec) An entrancing shade of pure light yellow. Medium large florets that are semi-hooded. Long straight willowy spikes. Very graceful, dainty and charming.

Caesar (DEGROOT) (Com) (Dec) Salmon to brick red. Large slightly ruffled flowers on tall stem. Think this will become very popular.

Camelot (ERREY) (EX) (Dec) Deep salmon pink with crimson blotch. 8-10 well placed medium size blooms open. Good exhibition sort. Better color than most of the Australians.

Carolus Clusius (VELTHUYS) (Com) (Dec) (75-80) Early light pink of "different" shade. A light rose or deep shrimp pink. 6-8 large well placed blooms open. Good grower and propagator. One of the very best commercials for early bloom. In hot weather stems sometimes kink a little but even then not enough to do much harm. Comes in at the same time as Mary Frey and other second early varieties. Growers who have tried it nearly always want more.

Cassandra (ERREY) (EX) (Dec) Bright pink with large crimson blotches with nearly the whole spike open at once. Not beautiful but extremely showy. One of Errey's best.

Champlain Palmer strain. See page 20.

Chas. Dickens (PF) (EX) (Com) (Dec) Early. Purple violet. Very tall, strong grower with long spike of open bloom. The best in this shade.

Cherokee Palmer strain. See page 20.

Clarion (CROW) (Com) (Dec) (70-80) Tall medium early clear deep yellow Prim. Grand. 5 well placed and spaced blooms open. One of the best early yellows.

Commander Koehl (PF) (EX) (Com) (80-85) Beautiful, large, clear light blood red. Tall and straight. Massive spike. This is considered about the best red in its shade. Makes very high crowned bulbs.

Constancy (ARENIUS) (Com) (Dec) Large clear lavender rose with small darker throat blotch. 5-6 open. A very nice variety and tremendous propagator.

Coronation Palmer strain. See page 20.

"I have just received my bulbs from you. Have bought bulbs from you for several years and have had fine success with them all. I want to thank you very much for the extras." —MRS. B. O. DEXTER, R. I.

"The Maid of Orleans which you sent me was very lovely. 6 ft. spikes and straight. I am more than pleased with all the bulbs I got from you."

—GEO. W. OWENS, N. Y.

Coryphee (PF) (Dec) Soft light pink with white throat. Many medium large blooms open. For color this is one of the most popular varieties grown. However in most localities the stems are inclined to crook, sometimes very badly.

Crimson Glow (BETSCHER) (Com) (Dec) (85-90) Large crimson. One of the best of the old time reds.

Debonair Palmer strain. See page 21.

Desdemone (VILMORIN) (Dec) (95-100) Smoky purple with cream throat. 6-7 large blooms open. Very popular smoky.

Dominus (K) (Ex) (Dec) (69) Early deep purplish red with darker throat blotches. 7 or more medium size blooms open. Good.

Dorcas Aldrich (DUSINBERRE) (Com) (Dec) Early rose pink overlaid with ashes of roses. Five or six good size blooms open. A good seller as a cut flower and vigorous grower.

Dr. Durr (PF) (Dec) Somewhat ruffled cream white. 6-8 open. Is inclined to have rather short bloom spike and blooms too far apart though the individual flowers are very beautiful.

Dr. F. E. Bennett (D) (Ex) (Com) (90-95) Fiery scarlet with fine white lines in the throat. 7-8 large well placed blooms open. One of the very best for exhibition or commercial purposes. Still considered best cut flower red.

Dr. L. H. Bailey (K) (Dec) (72) Deep tyrian rose with deeper velvety blotches. Several medium size blooms open. A beautiful variety.

Dr. Moody (KINYON) (Ex) (Com) (75-80) Light lavender with very fine penciling of a darker shade. Early. Long spike of blooms with many open. Strong grower. Whether this is better than Minuet or Berty Snow is a matter of taste. Color is somewhat different. I am told that in warm climates Dr. Moody does better than Minuet though by most people Minuet is considered the better variety.

Dr. Nelson Shook (K) (Ex) (Com) (78) Deep tyrian rose of a dark shade. Strong grower. Large, strong spikes with 6-8 blooms open.

Duna Palmer strain. See page 21.

Early Dawn (BRIGGS) (Com) (Dec) (65-70) A new early geranium pink. Large blooms, tall grower, good propagator. Will probably prove valuable as an early commercial. Many growers are looking for something new in early varieties and this should suit them.

Early Melody (ARENIUS) (Com) Early pinkish lavender. Usually clear but sometimes flecks. 6-8 good size blooms open.

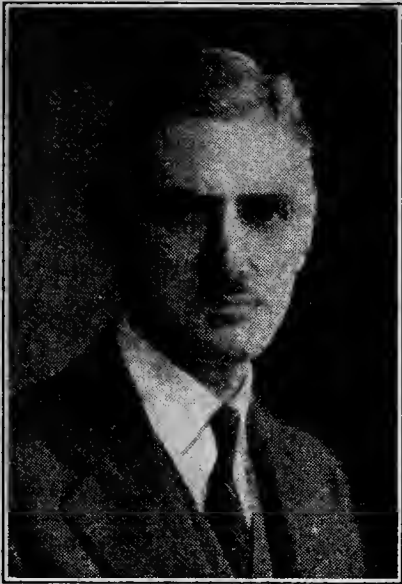
Ecstasy (K) (Dec) (85) Dark cherry red with blotches on all six petals. Very odd and distinct.

"My small order of bulbs arrived in good condition. I was very much surprised and needless to say delighted at your generous count. I have been buying bulbs for a number of years but have never received such liberal treatment before. Thanks a lot."

—CHARLES H. REED, Mass.

The Palmer Strain of Gladiolus

Every once in a long time, usually several years, hybridizers of plants secure what is called a "break." That is a seedling that is a great improvement over existing varieties. Of course hybridizers quite often secure minor improvements but it is only once in a long time that this improvement is really outstanding, enough to be called a "break."



E. F. Palmer

In gladiolus Richard Diener secured such a "break" fifteen or twenty years ago when he produced Mr. W. H. Phipps, Mrs. Leon Douglas, Dr. F. E. Bennett and others. Again Mr. Kunderd secured a "break" when he produced the ruffled gladiolus.

Just as truly Mr. Palmer secured such a "break" when he produced the variety PICARDY. For the first time there was combined in one variety the ultimate of beauty of both color and form, extreme size, many open at a time, long tapering spike, vigor and good propagating qualities.

All of these "breaks" in gladiolus have had a great influence on future varieties. Crosses of these varieties with others have greatly raised the standard of glads. Picardy I think in this respect is the most valuable of all as it has been found to be an extremely good parent in crossing with other varieties.

In the next few years an immense improvement in gladiolus will take place largely due to the influence of Picardy and other Palmer varieties. Mr. Palmer already has some wonderful seedlings of Picardy coming along and a number of other hybridizers have also.

The advent of Picardy has had one drawback however. Many people, especially the newer fans, already want to get varieties just as good as Picardy in other colors. These better varieties will come in time but many people don't realize that a variety as outstanding as Picardy is produced only once in several years. Mr. Diener said once that he had to raise one hundred thousand seedlings to get one worthy of introduction. Mr. Palmer is now getting a much larger percentage than that but he still does have to raise thousands to get one really good one and from the time two varieties are crossed it takes at least four or five years before the one or two good seedlings if any from that cross are ready to introduce. If those who want other varieties as good as Picardy in different colors will just be patient they will get them in time but these things can't be hurried. Hybridizers have to get them as they can.

Though Picardy so far has been really the most outstanding variety of Mr. Palmer's he has been very fortunate in securing fine seedlings from other crosses. So many in fact and these having certain qualities in common that they really constitute a new STRAIN. The main feature of this STRAIN is BEAUTY both of color and of form and that indefinable something which constitutes IT in a flower. Nearly all of the Palmer seedlings so far introduced have refinement of coloring, absolutely clear throats or with inconspicuous throat blotches that harmonize well with the other colors. Also the forms are different and beautiful. The ruffling is a little different from what has been seen before and there is something about them that sets them apart from the ordinary run of glads.

Though a number of very beautiful varieties of this strain have already been introduced there are still better ones to come. Every year Mr. Palmer is securing better seedlings and is more particular about saving only the very best. You may safely buy any varieties from this strain and know that you are getting something good. I visited Mr. Palmer three times this past season and have a number of his seedlings on trial and I can assure you that the next few years will see more beauty brought out in gladiolus than was even dreamed of a few years ago.

"Those wonderful originations of Mr. Palmer, Picardy, Acadia, Bagdad, Pirate, Debonair, Duna, Inspiration, Wasaga and others are in a class by themselves."
—W. A. WILDER, Miss.

"The new Palmer varieties have been fine, without exception this year."
GRANT MITSCH, Oregon.

Varieties Introduced Previous to 1935

Acadia (Com) (Dec) (80) Geranium pink shading lighter at base and with moderate blotch of Baryta yellow and geranium pink. 5-6 medium large well arranged blooms open on moderately tall, strong, always straight spikes. The color is somewhat similar to Sunshine Girl but stems do not crook as they often do with the latter variety. This blooms fairly early and should make a good commercial.

Bagdad (Ex) (Dec) (Com) (90-100) Smoky old rose, deeper to edge of petals and lighter in throat. Smooth unflecked color. Lip petals have faint creamy blotch, marked with penciling of begonia rose. 5-7 immense blooms open at a time on very tall strong spikes. Blooms often six inches or more across. Fine propagator. Though this is called a smoky rose there is really not much smoky in it until the blooms stand a couple of days. I believe this will become a good commercial among florists who appreciate something fine and new.

“Bagdad went the limit for size and beauty.” —FRANK B. REID, Md.

“I would like to start in on Bagdad as this was a most outstanding flower at the few shows I got to this year including Toronto Exhibition.”

—M. H. WESTBROOK, Michigan.

“One stalk of Bagdad had blooms seven inches across which considering the dry summer and that all the feeding I gave was one application of sheep dressing at planting time was doing pretty well on its own which only goes to show that your bulbs have the vitality and pep to go places.”

—CARVILLE L. DOUGLAS, Maine.

Champlain (Com) (Dec) (65-70) The color is self pale violet with inconspicuous darker throat marking. A HEALTHY, VIGOROUS blue and a good propagator. Spikes tall and straight with 6-7 large well placed blooms out at once. This seedling received most favorable comment in 1932 at the Boston and Toronto Shows being a distinct acquisition in its color class. Occasionally blooms are not well placed but have had only one complaint in that regard and this past year mine were good almost without exception.

It is an early variety starting to bloom this past season in 62 days. I predict that it will become the leading light blue both for the home garden and as a florist flower. This variety is much healthier than most of the blues making a fair number of bulblets which grow readily and produce fine clean bulbs that keep well.

“As to Champlain I think it is better than Blue Danube in all ways except placement. It is bigger and more beautiful and stands the heat better.”

—C. G. YOUNG, Wis.

Cherokee (Com) (Dec) (65-70) Color is rose doree shading to light pink in upper throat. Pronounced blotch of Amaranth purple blending well with general color effect. Tall, straight spikes with 5-6 large well placed ruffled blooms open at once. Blooms wide open, flaring form. To date the only blotched Palmer variety but the colors harmonize fully.

The flower spike is tall but the foliage is rather short so that long spikes can be cut without sacrificing the leaves. Coming so early in the season I consider it a distinct addition to the early flowering section.

Coronation (Ex) (Com) (80-85) Soft light salmon shading to cream and creamy yellow deep in throat. 7-8 large well placed blooms open on a moderately tall, strong spike. Beautiful variety either for exhibition or as a cut flower. Won in its class at the Pittsburgh Show in 1932. Award of Merit at National Show 1931 ranking second in total points in the Exhibition Seedling Class. I believe this variety will become very popular. It is one of Palmer's best.

“Many of the other Palmer varieties are beginning to open now and are certainly deserving of more praise, especially Wasaga, Rapture and Coronation.”

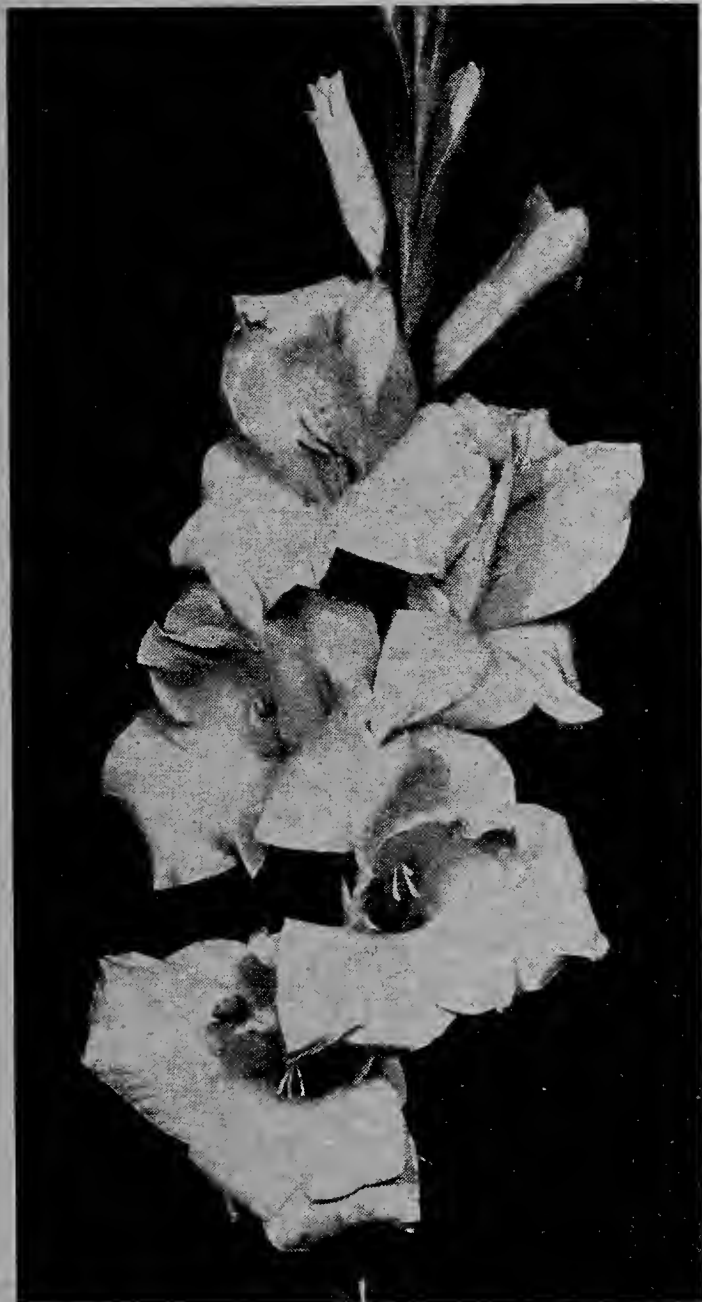
—C. G. YOUNG, Wis.

“Coronation produced a magnificent spike carrying 8 fully open flowers and was one of the best spikes that we have seen this season”—R. H. BATH Co., England

Debonair (Ex) (Com) (Dec) (90) LaFrance pink to shrimp pink in throat with creamy throat mark lightly peppered crimson. Sometimes flaked darker pink. Very tall, strong always straight spike with 6-8 moderately large blooms open. Extremely long bloom spike. Blooms well spaced and placed. Grows 5-6 feet tall. Makes a very fine commercial as you can easily cut long spikes which the florists like.

"I also want to state in this part of the country at least Debonair will surpass Picardy in popularity when it gets better known. Every visitor to my garden last summer rated it far above Picardy. Myself I refuse to judge on one years growth but it was a sure winner this year." —R. B. STUBBLEFIELD, Illinois.

Duna (Dec) (Com) (85-90) Soft light pinky buff fading to naphthaline yellow at base of lip petals. Backs of petals are a shade darker. General color effect is distinctively new and pretty. 5-6 good size blooms out on a straight spike of better than medium height. Blooms are not always well placed but this past year have been very good. Color that attracts a great deal of attention. Very fine for florist use. Should make a fine commercial.



Duna

The picture of Duna shown here cannot give the beautiful delicate coloring.

"I never saw anything finer than Duna, Wasaga and Rosex." —HARRY J. MULL, Ill.

"I saw Duna this summer and am in love with it. Want it next year." —MRS. CHAS. HAYES, N.Y.

Golden Cup (Com) (Dec) (80-85) Clear, deep yellow, deeper than Golden Dream. Blooms large and wide open but with somewhat of a cup shape. No throat marking. 5-6 heavily textured well arranged blooms on spike of good height. Makes large bulblets which grow readily.

Inspiration (Dec) (85-90) Deep shrimp pink. Throat lightly marked with diffused mauve feathering on creamy pink ground. Blooms waved, fluted and semi-lacinated giving a very unusual and distinctive effect. Under good conditions 6-8 out but sometimes only 4-5. Strong grower and fair propagator.

This variety sometimes has bare stems where buds should be. That is there will be a bud or two missing on the stem. Have had some very fine reports on the variety but I want to

mention about this particular fault which developed after the variety was introduced. When it comes right it is very beautiful but I can't guarantee that this fault will not occur. Two years ago I had very little trouble with it but this last year have found more spikes coming in this way. Possibly it is something due to the culture. It is well worth trying anyway.

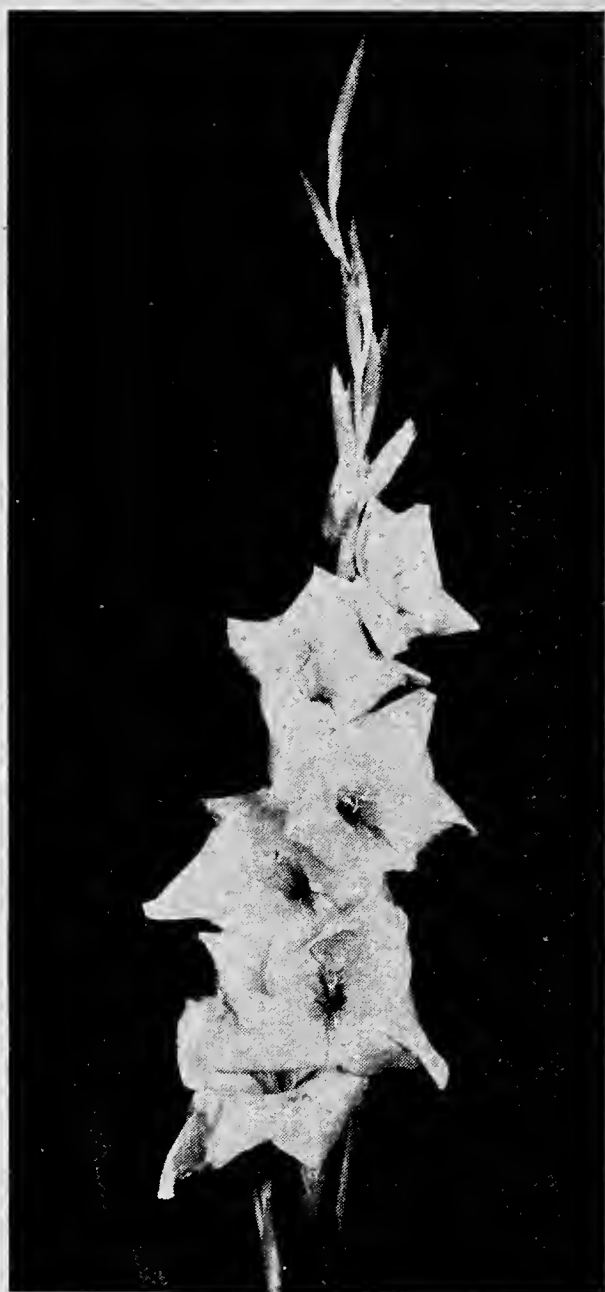
Jonquil (Prim. Grand.) (Com) (Dec) (65-70) Clear deep yellow without markings. Deepest yellow at the A. G. S. Show in Pittsburgh 1932. Blooms of medium size on wiry unusually straight spikes. 8 well placed blooms out at once. A fine variety in its own right and also should be very useful in breeding because of depth and fineness of color and number open. It is the deepest clear yellow I know of. Don't see how color can be improved upon.

Due to scarcity of stock this variety has not been shown much this past year but when stock is available a basket of this will be worth going a long way to see. I have never seen anything in yellow that could touch it for color.

“Several of the best of the new yellows were grown this year but Jonquil exceeds the others considerably in depth of color without the evidence of orange tones.”

—GRANT E. MITSCH, Oregon.

Lady Eaton (Dec) (80-85) Pale vinaceous to venetian pink and almost white in the throat which has a violet marking. Purple penciling and peppering on cream ground. Very tall, strong, vigorous plant averaging five feet in height. Opens 6-7 large wide open blooms with rolled petals, sometimes being of the needle-point type. Effect is very fine though informal. Winner of Award at the Canadian National Show, Toronto 1932 for seedling of outstanding merit in pastel shades. Can be very fine.



Lady Eaton

Will open up to the last bud in fine shape. Heavy propagator, bulblets often blooming.

Picardy is a real “break” in gladiolus. It has been a sensation everywhere since its introduction. It has about everything that it takes to make a glad. Though a wonderful propagator large bulbs are very scarce this year. Have had to turn down orders for a great many thousands. Picardy will be a big seller for years to come. Experienced market growers are stocking up with it and for the home garden it is the one variety that you must have.

A famous hybridizer from Australia who has produced many fine varieties himself wrote to a friend of his in Canada that he considered Picardy and Betty Nuthall the two finest glads in existence.

Every order should contain Picardy.

“Picardy had 13 open.”

Lindesta (Com) (Dec) (90) Soft salmony rose with cream throat. 7-9 medium to large always well placed blooms open. Very tall strong grower. Sometimes flecked but usually clear and a very pretty thing. This has been called an improved Jenny Lind but I consider it better than that.

Have had a large number of very fine reports on this variety and I am sure that it will become very popular.

“Lindesta is a very beautiful glad. You call it a very pretty thing. That is just modesty on your part. Lindesta is the most beautiful glad I have ever seen—and I have seen a lot of them. It is much more beautiful than Picardy, at least it was for me. It opened seven at once for me, and the coloring is wonderful. I wonder if the glad raisers who rave about this kind, and enthuse over that kind, have ever seen Lindesta.”

—DR. W. E. GRANT, Penn.

Picardy (Ex) (Com) (Dec) (90) Soft shrimp pink without flecking. Blotch of light flesh pink shading to shrimp pink at edges. Inconspicuous feathering of begonia rose. 7-10 open. Blooms up to six inches or more across. Well placed on tall, strong spike. Fine shipper.

—A. L. TROLLEY, Michigan.

GLADIOLUS

PRICE LIST

Winter 1935

THIS LIST SUPERSEDES
ALL PREVIOUS LISTS

CHAMPLAIN VIEW GARDENS

ELMER E. GOVE

BURLINGTON, VERMONT

PLEASE READ CAREFULLY

Do not change collections or special sets. The collections are made up as they are for definite reasons and we cannot change them. Any of these collections or specials are very good value.

Do not split quantities as listed. Where a variety is listed at 2 for 15 cents or 4 for 15 cents do not order 1 or 2 at a lower price. There is no profit in any items of less than ten cents and very little at that price. **No single item accepted for less than ten cents.**

To make out your order put everything down on the order blank just as listed in the price list. Add it up, then figure out any special discounts or add on the extra bulbs of your choosing. It is all very simple but some people seem to have a lot of trouble in making out an order.

Extras on Cash Orders. On cash orders of \$2.00 to \$5.00 you can select 10% extra in bulbs of your own choosing. From \$5.00 to \$25.00 select 15%; \$25.00 to \$50.00 select 20% and above \$50.00 select 25%. **These Discounts do not apply to Collections, Special Offers or Wholesale Prices.**

Also on all orders of \$15.00 or more I will put in a bulb of **Mywag** FREE. (See below.)

The above discounts and extras are all for cash orders. The earlier the orders are received and the larger they are the more generous we will be with our extras. If you cannot spare all the cash now send 25% and the balance later and we will see that you are satisfied. **But the above Extras are Only for Cash Before Shipment.**

On cash orders of \$10.00 or more, except collections, I will give a copy of the "Gladiolus Book" by Rockwell if you ask for it.

Packages of bulblets run from twenty-five to fifty or more. We give very good value.

You can have 3 bulbs at the 10 rate; 25 at the 100 rate. But no single item for less than 10 cents.

I Guarantee Satisfaction and I mean just that. If at any time, either after receiving the bulbs or after blooming, you have cause for complaint just write me about it and I will do my utmost to make things right. This is the only basis on which anyone can hope to conduct a business that will be permanently successful.

At these prices all bulbs, except the wholesale offers, are prepaid anywhere in the United States and Canada and all countries in the Postal Union.

Special Quotations. Do not ask for special quotations unless you have a large order. We will not consider quoting any special prices on small orders. I publish this price list to give people the prices and do not consider it honest to give one person a lower price than another. **However on a very large order we may be able to make lower prices on certain items especially to Growers, Dealers or Jobbers.**

Remember in buying bulbs price is not everything. In fact sometimes price is a minor item. Consider the quality, count, the reliability of the grower, etc. I always mean to put in enough extra count or over size to make up for any lower price that other good reliable growers might make. **Just leave it to me.**

If you want to pay transportation and get extra count on your order just mention it and I will send your order collect and will see that you are more than satisfied. Just mention whether you want extra count on your order or extras in other kinds and what kinds. If you want bulbs sent by mail it is better to have them go C.O.D. then we know the postage is correct and I will give you more than enough bulbs to make it up.

On Fair Sized Orders, Express is safest and best especially in the winter time. I advise express if you are situated so as to get free delivery by the express company.

Extras. It is the practice of most growers to give extras on orders. I always put in some myself. So it would help me if you will mention whether you want extras of the same varieties that you order or in other kinds. And if you have a preference it will help me still more if you can name the varieties in which you want your extras and if you want large, medium or small bulbs or bulblets. Just give us a list of varieties from which to select your extras. We will put in what we think the order rates.

A NEW PALMER VARIETY FREE MYWAG

(Abbreviation for "My What A Glad")

Mywag is a light tho vivid light salmon shading to white throat with a large very brilliant scarlet blotch. Immense six inch round florets and a good strong grower. This has drawn a lot of attention at some of the shows the past two or three years. Everyone who has seen it in my garden has enthused at its beauty and showiness. They always spot it among other varieties and exclaim, "**My, What a Glad.**" Hence its name. I have never seen but one person who did not like it. One man did not like blotched varieties at all so did not enthuse over **Mywag**. It opens only four or five at a time but that is enough for such immense blooms.

MYWAG NOT FOR SALE

The only way to secure a bulb of this is to send in a retail order with at least \$15 cash. No bulblets will be sold or given away to anyone. And only one bulb to a customer. The stock is limited and probably will not last thru the season. So to be sure of getting a bulb of **Mywag** send in your orders early. I consider the value of **Mywag** to be \$10 and next season I shall not list it at less than \$4 each.

	Per	Large	Medium	Small	BULBLETS	
					Per	
ACADIA	1	.20	.15	.10	20	.25
Geranium pink. Choice color.	10	1.60	1.20	.80	100	1.00
AFLAME		2-.12	4-.15	10-.15	Pa.	.10
Huge begonia rose.	10	.50	.30	.15
A. H. WOODFULL	1	.35	.25	.15	10	.15
Exhibition gray, purple blotch.	10	2.00	1.20
AIDA		2-.12	4-.15	10-.15	Pa.	.10
Early deep blue.	10	.50	.30	.15	100	.20
ALBATROSS	1	.10	2-.10	10-.25	Pa.	.15
Large pure white.	10	.70	10-.40	.25	100	.30
AL SMITH		2-.12	4-.15	10-.15	Pa.	.10
Very early pink.	10	.50	.30	.15	100	.20
AMADOR	1	.25	.15	.10	10	.25
Large glowing red.	10	2.00	1.20	.80	100	2.00
AMBROSIA	1	.10	2-.10	5-.15	Pa.	.10
Distinctive old rose shade.	10	.70	.40	10-.25	100	.30
AMETHYST	115	.10	10	.25
Distinctive lavender pink. Many open.	1080
ANTIONE		2-.12	4-.15	10-.15	Pa.	.10
Early deep yellow.	10	.50	.30	.15	100	.20
APRICOT GLOW		2-.12	4-.15	10-.15	Pa.	.10
Early apricot.	10	.50	.30	.15	100	.20
AVE MARIA		2-.15	4-.15	10-.15	Pa.	.10
Tall medium blue, fine.	10	.50	.30	.15	100	.20
BAGDAD	1	.15	2-.15	4-.15	20	.10
Huge smoky old rose.	10	1.20	.60	.30	100	.40
BELLA DONNA	1	.80	.50	.35	3	.20
New early light blue.	10	6.00	4.00	2.50	10	.50
BERTY SNOW		2-.12	4-.15	10-.15	Pa.	.10
Exhibition and commercial lavender.	10	.50	.30	.15	100	.20
BETTY NUTHALL		2-.15	4-.15	10-.15	Pa.	.10
Salmon, orange throat. Fine commercial.	10	.50	.30	.15	100	.20
BILL SOWDEN	1	.15	.10	2-.15	10	.15
Large deep blood red.	10	1.20	.80	.50	100	1.00
BLEEDING HEART	1	.15	.10	2-.15	Pa.	.10
White tinted pink, big red blotch.	10	1.20	.80	.50	100	.40
BLUE ADMIRAL		2.50	1.75	1.00	3	.50
Tall dark blue. New.	10	7.50	100	12.00
BLUE DANUBE	1	.12	2-.15	3-.15	25	.15
Strong growing light blue.	10	1.00	.60	.40	100	.50
BLUE TRIUMPHATOR	1	.15	.10	2-.15	25	.20
Very large pale blue.	10	1.20	.80	.60	100	.60
BLUSHES OF CREAM	1	.15	.10	2-.15	Pa.	.15
Cream, Pink	10	1.20	.80	.50	100	.60
BONNY SCOTLAND	1	.50	.30	5	.25
Beautiful light yellow P. G.
CAESAR	1	.5020
Salmon red.
CAMELOT	1	.50	.40	.30	5	.10
Coral pink, scarlet blotch. Several open.	10	4.00	3.20	2.40	25	.35
CAROLUS CLUSIUS		2-.12	4-.15	10-.15	Pa.	.10
Early deep shrimp pink.	10	.50	.30	.15	100	.20
CASSANDRA	1	.15	.10	2-.15	10	.15
Pink, large red blotch. Exhibition type.	10	1.20	.80	.50	100	1.00
CHAMPLAIN	1	1.75	1.25	.80	1	.40
Very early light blue. Healthy. A coming commercial.	10	14.00	10.00	6.40	10	3.00
CHAS. DICKENS		2-.12	4-.15	10-.15	Pa.	.10
Best low priced clear purple.	10	.50	.30	.15	100	.20
CHEROKEE	1	4.00	3.00	2.00	1	.50
Very early large blotched pink.	10	32.00	24.00	16.00	10	3.50

	Per	Large	Medium	Small	BULBLETS	
					Per	
CLARION	1	.20	.15	.10	25	.10
Very early yellow. Good.	10	1.60	1.20	.80	100	.30
COMMANDER KOEHL	1	.10	2-.10	5-.15	40	.15
Very large deep blood red.	10	.80	.50	10-.25	100	.30
CONSTANCY	1	.15	.10	2-.15	10	.15
Lavender Rose	10	1.20	.80	.50	100	1.00
CORONATION	1	.40	.25	.15	5	.15
Beautiful salmon, cream throat.	10	3.20	2.00	1.20	10	.25
CORYPHEE	1	.15	.10	Pa.	.10
Pink, white throat	10	1.20	.80
CRIMSON GLOW		2-.12	4-.15	10-.15	Pa.	.10
Good medium red.	10	.50	.30	.15
DEBONAIR	1	.40	.25	.15	5	.15
LaFrance pink, cream throat. Very tall and straight.	10	3.20	2.00	1.20	10	.25
DESDEMONE		2-.12	4-.15	10-.15	Pa.	.10
Smoky purple, cream throat.	10	.50	.30	.15	100	.20
DOMINUS		2-.12	4-.15	10-.15	Pa.	.10
Purplish red.	10	.50	.30	.15	100	.20
DORCAS ALDRICH		2-.12	4-.15	10-.15	Pa.	.10
Smoky rose. strong. Popular.	10	.50	.30	.15	100	.20
DR. BENNETT		2-.15	4-.15	10-.15	Pa.	.10
Most popular light scarlet.	10	.50	.30	.15	100	.20
DR. DURR	1	.30	.20	.15	15	.20
Large white, cream throat.	10	2.40	1.60	1.00	100	1.00
DR. L. H. BAILEY	1	.20	.15	.10	20	.15
Velvety rose. Beautiful.	10	1.60	1.20	.80	100	.60
DR. MOODY		2-.12	4-.15	10-.15	Pa.	.10
Early large lavender.	10	.50	.30	.15	100	.20
DR. NELSON SHOOK		2-.12	4-.15	10-.15	Pa.	.10
Large deep rose.	10	.50	.30	.15	100	.20
DUNA	1	.40	.25	.15	5	.15
Beautiful soft light pinky buff.	10	3.20	2.00	1.20	10	.25
EARLY DAWN	1	.40	.25	.15	8	.25
New tall early rose.	10	3.20	2.00	1.20	100	2.50
EARLY MELODY	1	.20	.15	.10	10	.15
Light lavender pink. Strong grower.	10	1.60	1.20	.80	100	1.00
ECSTASY		2-.12	4-.15	10-.15	Pa.	.10
Deep red, large blotches.	10	.50	.30	.15	100	.20
E. C. VICK	1	.15	.10	2-.15	10	.15
Large deep rose red.	10	1.20	.80	.50	100	1.00
EDITH MASON		2-.12	4-.15	10-.15	Pa.	.10
Large light pink. Good.	10	.50	.30	.15
EDITH ROBSON	1	.25	.20	.15	10	.25
Salmon, red blotch. Very tall and strong.	10	2.00	1.60	1.20	100	2.00
EMBLEM		2-.12	4-.15	10-.15	Pa.	.10
Deep rose, large darker blotches.	10	.50	.30	.15	100	.20
EMILE AUBRUN		2-.12	4-.15	10-.15	Pa.	.10
Smoky bronze, large red blotch.	10	.50	.30	.15	100	.20
EMMA		2-.12	4-.15	10-.15	Pa.	.10
Exhibition rose, large darker blotch.	10	.50	.30	.15	100	.20
ERICA MORINI	1	.50	.30
Large ruffled light red.						
ESCORT		Any size \$.50		
Earliest white.						
ESME DESAILLY	1	.30	.20	.15	10	.20
Exhibition salmon pink.	10	2.40	1.60	1.20
EUGENE LEFEBVRE		2-.12	4-.15	10-.15	Pa.	.10
Rose pink, dark blotch.	10	.50	.30	.15	100	.20
EXCELLENCE		2-.12	4-.15	10-.15	Pa.	.10
Large very early scarlet.	10	.50	.30	.15	100	.20

	Per	Large	Medium	Small	BULBLETS Per	
FATA MORGANA	1	.10	2-.10	10-.25	25	.10
Early Peach Blossom.	10	.80	.40	.25	100	.30
GATE OF HEAVEN	1	.50	.35	.20	5	.25
Fine ruffled rich yellow.	10	4.00	2.80	1.60	100	4.00
GAY HUSSAR		2-.12	4-.15	10-.15	Pa.	.10
Salmon Orange.	10	.50	.30	.15	100	.20
GIANT NYMPH		2-.12	4-.15	10-.15	Pa.	.10
Good commercial pink.	10	.50	.30	.15	100	.20
G. J. MC KAY	1	.25	.20	.15	15	.10
Large ruffled orange red.						
GLORIANA		2-.12	4-.15	10-.15	Pa.	.10
Golden Salmon, yellow throat.	10	.50	.30	.15	100	.20
GOLDEN ANNIVERSARY	1	.15	.10	2-.15	15	.10
Cream yellow and pink.	10	1.20	.80	.50	100	.50
GOLDEN BROWN	1	.15	.10	2-.15	Pa.	.10
The name describes it. Very distinct.	10	1.20	.80	.50	100	.50
GOLDEN CUP	1	.35	.25	.15	4	.25
Large clear deep yellow.	10	2.80	2.00	1.20	100	5.00
GOLDEN DREAM		2-.12	4-.15	10-.15	Pa.	.10
Late standard yellow.	10	.50	.30	.15	100	.20
GOLDEN FLAME	1	.80	.50	.20	5	.50
Salmon red, yellow throat.						
GORGEOUS		2-.12	4-.15	10-.15	Pa.	.10
Rose, red blotch.	10	.50	.30	.15	100	.30
GRAND SLAM	1	.20	.15	.10	25	.10
Orange sport of Pfitzer's Triumph.	10	1.25	.80	.60	100	.30
H. C. GOEHL		2-.12	4-.15	Pa.	.10
White, crimson blotch.	10	.50	.30
HELEN JACOBS		2-.12	4-.15	10-.15	Pa.	.10
Light rose, cream throat.	10	.50	.30	.15	100	.20
HELEN WILLS	4-.15	10-.15	Pa.	.10
Cream white.	1030	.15
HERCULES	1	1.00	.70	.40	3	.25
Large buff.						
HILLBILLY		Any size \$.50		
Rose-doree, purple, yellow, red.						
HINEMOA	1	.15	.10	2-.15	Pa.	.10
Deep rose flaked chocolate. Large cream throat.	10	1.20	.80	.50	100	.40
IMPERIAL CHIMES	1	.15	.10	2-.15	Pa.	.10
Early very dark red.	10	1.20	.80	.50	100	.50
INSPIRATION	1	.25	.15	.10	10	.25
Ruffled rose salmon.	10	2.00	1.20	.80	100	2.00
JANET	1	.10	2-.10	4-.10	25	.10
Smoky old rose, shaded peach rose.	10	.80	.40	.25	100	.25
JOERGS WHITE		2-.12	4-.15
Large cream white. Short stem.	10	.50	.30
JOH. S. BACH	1	1.50	1.00	.75
Exhibition salmon rose. Very fine.						
JONKHEER VAN TETS	1	.15	.10	2-.15
Large pure white.	10	1.20	.80	.60
JONQUIL	1	4.00	3.00	2.00	1	.50
New deepest yellow known.	10	32.00	24.00	16.00	10	3.50
JUBILEE	1	.10	2-.12	4-.10	Pa.	.10
Immense pale lavender.	10	.80	.50	.25
KING ARTHUR35	.25	.15	10	.25
Very large rosy lavender.	10	3.00	2.00	1.20	100	2.00
KING GEORGE		2-.12	4-.15	10-.15	Pa.	.10
Exhibition red, white blotch.	10	.50	.30	.15	100	.20
KING OF ORANGES		2-.12	4-.15	10-.15	Pa.	.10
Early orange.	10	.50	.30	.15	100	.20

	Per	Large	Medium	Small	BULBLETS	
					Per	
KING OF REDS	1	.15	.10	2-.15	Pa.	.10
Nice bright red.	10	1.20	.80	.50	100	.40
LADY EATON	1	1.75	1.25	.75	1	.40
Large light pink, white throat.		10	3.00
LADY WINSOME50	.40	.30
Very large rosy salmon.	
LA PALOMA		2-.12	4-.15	10-.15	Pa.	.10
Early orange.	10	.50	.30	.15	100	.20
LAUGHING WATER		2-.12	4-.15	10-.15	Pa.	.10
Fine dark salmon.	10	.50	.30	.15	100	.20
LAVENDER BRIDE		2-.12	4-.15	10-.15	Pa.	.10
Smoky lavender rose.	10	.50	.30	.15
LINDESTA	1	.50	.40	.30	10	.25
Tall salmony rose. Fine.	10	4.00	3.20	2.40	100	2.00
LITTLEJOHN		2-.12	4-.15	10-.15	Pa.	.10
Rose pink, lighter throat.	10	.50	.30	.15	100	.20
LOYALTY	1	.10	2-.10	4-.10	Pa.	.10
Fine deep yellow.	10	.60	.30	.20	100	.20
LUCIFER	125	.15	10	.20
Exhibition orange, dark blotch.						
MAGNA BLANCA	1	.15	.10	2-.15	Pa.	.15
Very tall white, cream throat.	10	1.20	.80	.50	100	.50
MAID OF ORLEANS	1	.15	.10	2-.15	10	.15
The coming commercial white.	10	1.20	.80	.60	100	1.00
MAMMOTH WHITE	1	.10	2-.10	4-.10	25	.10
Huge white. Very popular.	10	.70	.40	.20	100	.35
MARGARET FULTON	1	.20	.15	.10	20	.10
Beautiful clear rose salmon	10	1.60	1.20	.80	100	.40
MARGARET PETER	1	.50	.35	.25	4	.15
Early white, red blotch.	10	4.00	2.80	2.00	10	.30
MARJORIE MORRILL20	.15
Light pink sport of Jenny Lind.						
MARMORA		2-.12	4-.15	10-.15	Pa.	.10
Large gray, purple blotch.	10	.50	.30	.15	100	.20
MARY ELIZABETH	1	.35	.25	.15	10	.20
Ruffled white, cream throat.	10	2.50	2.00	1.20	100	1.50
MARY FREY		2-.12	4-.15	Pa.	.10
Nice early lavender.	10	.50	.30
MAUVE MAGIC	1	.40	.20	.10	5	.15
Nice mauve shade.	1080	.50	100	2.00
MAY DAVIDSON	160	.35	10	.80
Soft rose, crimson blotch.						
MIBLOOM	1	.15	.10	2-.15	Pa.	.15
Very early white, scarlet blotch.	10	1.20	.80	.50	100	.50
MILDRED LOUISE	1	.35	.25	.15	2	.10
Strawberry pink.	10	2.80	2.00	1.20	10	.50
MINUET		2-.12	4-.15
Very fine lavender.	10	.50	.30
MISS BLOOMINGTON		2-.15	4-.15	7-.15	Pa.	.10
Earliest good yellow.	10	.50	.30	.20	100	.20
MISS GREELEY	1	.12	2-.15
Very like W. H. Phipps but three weeks earlier.	10	1.00	.60
MISS NEW ZEALAND	1	7.00	1	1.00
Immense pink.						
MOONDARA	1	.50	.40	.30
Deep salmon, darker blotch.						
MOON MAIDEN	1	.45	.35	.25	15	.50
Pale lavender pink shading to cream throat.						
MOROCCO		2-.12	4-.15	10-.15	Pa.	.10
Deep red, fine.	10	.50	.30	.15	100	.20

	Per	Large	Medium	Small	BULBLETS Per	
MOTHER MACHREE	1	.10	2-.10	3-.10	40	.10
Smoky lavender tinged salmon.	10	.70	.40	.25	100	.20
MRS. ANNA PFITZER	115	.10	15	.10
Tall cream. Many open.	10	1.20	.80
MRS. CHARLES A. STEVENS	1	.20	.15	.10	15	.10
Mallow purple flaked darker.	10	1.60	1.20	.80
MRS. E. J. HEATON	1	4.00	2.00	1.00	1	.40
Deep strawberry pink.						
MRS. F. C. HORNBERGER		2-.12	4-.15	10-.15	Pa.	.10
Late white.	10	.50	.30	.15
MRS. F. E. BENNETT		2-.12	4-.15	10-.15	Pa.	.10
White, purple feather. Good.	10	.50	.30	.15	100	.20
MRS. GERTRUDE PFITZER		2-.12	4-.15	10-.15	Pa.	.10
Medium blue. Strong grower.	10	.50	.30	.15
MRS. LEON DOUGLAS		2-.12	4-.15	10-.15	Pa.	.10
Very large salmon.	10	.50	.30	.15	100	.20
MRS. P. W. SISSON		2-.12	4-.15	10-.15	Pa.	.10
Fine light pink.	10	.50	.30	.15	100	.20
MRS. S. A. ERREY	1	.15	.10	2-.15	Pa.	.15
Exhibition salmon orange.	10	1.20	.80	.50	100	.60
MRS. T. E. LANGFORD	1	.20	.15	.10	25	.15
Peaches and cream.	10	1.60	1.20	.80	100	.50
MRS. VAN KONYNENBURG		2-.12	4-.15	10-.15	Pa.	.10
Light blue.	10	.50	.30	.15
NERISSA	1	.35	.25	.15	15	.10
Large salmon pink, scarlet blotch.						
NETHERLAND PRINCE	1	.20	.10	2-.15	15	.20
Giant salmon pink. Good.	10	1.60	.80	.60	100	1.00
NYORA	1	.15	.10	2-.15	Pa.	.20
Exhibition salmon, dark blotch.	10	1.20	.80	.50	100	1.00
OCTOBER		2-.12	4-.15	10-.15	Pa.	.10
Deep rose flaked darker.	10	.50	.30	.15
ODALISQUE	1	.30	.20	.15	10	.15
White, scarlet blotch. Fine.						
OLIVE GOODRICH		2-.12	4-.15	10-.15	Pa.	.10
White edged pink.	10	.50	.30	.15	100	.20
ONETA		2-.12	4-.15	Pa.	.10
Fine deep orange.	10	.50	.30	100	.30
ORANGE BUTTERFLY		2-.12	4-.15	10-.15	Pa.	.10
Orange prim.	10	.50	.30	.15	100	.20
ORANGE LADY	1	.45	.35	.25	15	.50
Light orange suffused pink.						
ORANGE LILY	1	.15	.10	2-.15	Pa.	.10
Very early orange Prim. Grand.	10	1.20	.80	.50	100	.40
ORANGE PRINCESS	1	.50	.35	.25	10	.25
Salmon orange.						
ORANGE QUEEN		2-.12	4-.15	10-.15	Pa.	.10
Good cut flower orange.	10	.50	.30	.15	100	.20
ORANGE SOVEREIGN	1	.75	.60	.40	15	1.00
Ruffled orange buff.						
ORANGE WONDER		2-.12	4-.15	10-.15	Pa.	.10
Late, deep orange.	10	.50	.30	.15
ORLANDO	1	.5025
Rosy salmon, many open.						
OUR SELECTION		2-.12	4-.15	10-.15	Pa.	.10
Exhibition salmon, flaked darker.	10	.50	.30	.15	100	.20
PALLAS	1	.25	.20	.10	15	.10
Light grayish lavender.						
PATRICIA CARTER		2-.12	4-.15	Pa.	.10
Clear shell pink prim.	10	.50	.30

	Per	Large	Medium	Small	BULBLETS Per	
PAUL PFITZER		2-.12	4-.15	10-.15	Pa.	.10
Early deep reddish purple.	10	.50	.30	.15	100	.20
PEARL OF CALIFORNIA		2-.12	4-.15	Pa.	.10
LaFrance pink, white throat.	10	.50	.30
PEERLESS PINK	1	.50
Deep salmon.						
PELEGRINA	1	.20	.15	.10	10	.15
Best deep blue.	10	1.60	1.20	.80	100	1.00
PERSIA		2-.12	4-.15	Pa.	.10
Very dark red.	10	.50	.30
PFITZERS TRIUMPH		2-.12	4-.15	Pa.	.10
Giant reddish salmon orange.	10	.50	.30	100	.20
PHILOMELA	1	.35	.25	.15	15	.40
Salmon, flaked orange scarlet. Cream blotch.						
PICARDY	1	.10	2-.10	3-.10	25	.10
Sensational new salmon.	10	.80	.40	.25	100	.25
PINNACLE	1	.50	.25	.15	10	.30
Tall exhibition rose pink.	10	3.00	2.00	1.20	100	2.50
PIRATE	1	.20	.10	2-.15	15	.25
Fine deep purplish rose red.	10	1.60	.80	.50	100	1.50
POLAR ICE	1	.25	.15		10	.25
Tall straight white, several open.	10	2.00	1.20		100	2.00
POND LILY	1	.15	.10	2-.15	Pa.	.10
Deep rose self color.	10	1.20	.80	.50	100	.40
PREMIER HENRY	1	1.75	1.25	.80	1	.40
Immense ruffled geranium pink.						
PRESIDENT LINCOLN	1	.25	.15	.10	15	.10
Light lavender flaked darker.	10	1.60	1.20	.80	100	.50
PRIDE OF WANAKAH		2-.12	4-.15	10-.15	Pa.	.10
Deep lavender rose.	10	.50	.30	.15	100	.20
PRIMROSE PRINCESS		2-.12	4-.15	10-.15	Pa.	.10
Large light yellow.	10	.50	.30	.15	100	.20
PRINCESS YAADA	1	.45	.35	.25	15	.50
Apricot tinted pink.						
PROF. VAN SLOGTEREN	1	.15	.10	15	.10
Beautiful soft pink	10	1.50	.80
PURPLE QUEEN		2-.12	4-.15	Pa.	.10
Nice clear purple.	10	.50	.30	100	.20
QUEEN HELEN II	1	.50	.25	.15	35	.50
Bright pink, yellow blotch.	10	3.50	1.60	1.00
RAMASSES	1	.20	.10	2-.15	25	.25
Large tall ruffled purple.	10	1.60	.80	.60	100	.80
RAPTURE	1	.20	.10	2-.15	15	.20
Tall late salmon, creamy blotch.	10	1.60	.80	.60	100	1.00
RAVENNA		2-.12	4-.15	10-.15	Pa.	.10
Fine purplish red.	10	.50	.30	.15	100	.20
REAH		2-.12	4-.15	10-.15	Pa.	.10
Light purple, dark blotch.	10	.50	.30	.15	100	.20
RED LORY	1	.20	.10	2-.15	15	.20
Exhibition red, purplish blotch.	10	1.60	.80	.60	100	1.00
RED PHIPPS	1	.12	2-.15	2-.10
Light red. Similar to Phipps in growth.	10	1.00	.60	.40
RED RUFFLES	1	1.60
Beautiful ruffled red.						
RED SPLENDOR		2-.15	4-.15	Pa.	.10
Light red.	10	.50	.30
REVERIE	1	4.00	3.00	2.00	1	.50
Light pink and cream.	10	32.00	24.00	16.00	10	3.50
RIDEAU	1	.20	.10	2-.15	20	.25
Smoky salmon. Several open.	10	1.60	.80	.60	100	1.00

	Per	Large	Medium	Small	BULBLETS Per	
RODERICK DHU Immense ruffled pink.	1 10	.15 1.20	.10 .80	2-.15 .50	10 100	.15 1.00
ROI ALBERT Beautiful smoky rose.	10	2-.12 .50	4-.15 .30	10-.15 .15	Pa. 100	.10 .20
ROI SOLEIL Early large yellow.	1 10	.15 1.20	.10 .80	2-.15 .50	Pa. 100	.15 .50
ROSE ASH Popular smoky.	10	2-.12 .50	4-.15 .30	10-.15 .15	Pa. 100	.10 .20
ROSE MARIE PFITZER Exhibition peaches and cream.	150	.35	3	.25
ROSE MIST Old rose bordered buff.	10	2-.12 .50	4-.15 .30	10-.15 .15	Pa. 100	.10 .20
ROSE STANDISH New light rose pink.		Any size \$1.00		
ROSEX Salmon scarlet shading to rose. 8-10 open.	1	4.00	3.00	2.00	1	.25
SALBACH'S ORCHID Pink orchid shade.	1 10	.12 1.00	2-.12 .50
SALBACH'S PINK Geranium pink.	1 10	.10 .80	2-.12 .50	3-.10 .25	Pa. 100	.10 .20
SALMON EMPEROR Ruffled salmon orange.	1	.30	.20	10	.20
SARABAND Deep mulberry, cream blotch.	10	2-.12 .50	4-.15 .30	10-.15 .15	Pa. 100	.10 .20
SCARLET BEDDER Fiery scarlet.	10	2-.12 .50	4-.15 .30	10-.15 .15	Pa.10
SCHUBERT Cream, yellow blotches.	1 10	.25 2.00	.20 1.60	.15 1.20	15 100	.10 .50
SCHWABEN GIRL Pure pink.	1 10	.15 1.20	.10 .80	2-.15 .60	25 100	.10 .40
SEESTERN Light pink, scarlet blotches.	1 10	.503525 2.00	1025
SENIORITA Large showy red and yellow.	10	2-.12 .50	4-.15 .30	10-.15 .15	Pa. 100	.10 .20
SMILING MAESTRO Deep salmon rose, flaked brown.	1 3	1.75 5.00	.85 2.25	.45 1.25	5 50	.40 2.50
SOLVEIG Ruffled white, small pink blotch.	1 10	6.00	4.00	2.00 15.00	1 5	.25 1.00
SONATINE Light pink, small red blotches.	1	1.50	1.25	1.00	2	.25
SPIRIT OF ST. LOUIS Orange buff.	10	2-.12 .50	4-.15 .30	10-.15 .15	Pa. 100	.10 .20
SPRAY OF GOLD Early deep clear yellow.	1 10	.10 .80	2-.12 .50	3-.10 .30	25 100	.15 .50
STAR OF BETHLEHEM Immense show white.	1 10	1.00 8.00	.75 6.00	.40 3.60	2 10	.25 1.00
STATELY LAVENDER Light lavender. Many open.	1 10	.15 1.20	.10 .80	10 100	.15 .80
STUTTGARDIA Large fiery orange red.	1 10	.10 .80	2-.10 .40	3-.10 .30	Pa.10
SULTAN Large velvety rose red.	1 10	.20 1.60	.15 1.20	.10 .80	15 100	.10 .50
SUNSET CLOUD White shaded pink.	1	.45	.35	.25	15	.50
SUNSHINE GIRL Early clear geranium pink.	10	2-.12 .50	4-.15 .30	10-.15 .15	Pa. 100	.10 .20
SUNSHINE SUSIE Very early orange, tinted pink.	1	.45	.35	.25	15	.50
SWORD OF MAHOMET Large smoky brown.	1	.10	2-.15	Pa.	.10

	Per	Large	Medium	Small	BULBLETS	
	1	1.50	1.00	.50	Per	2 .25
THE MOOR	1	1.50	1.00	.50	2	.25
Deep rose red. Opens 8 at a time.						
THE ORCHID		2-.12	4-.15	10-.15	Pa.	.10
Orchid colored prim.	10	.50	.30	.15		
THOS. EDISON	1	.15	.10	2-.15	10	.15
Ruffled deep red. Fine.	10	1.20	.80	.40	100	1.00
TIGER	1	.15	.10	2-.15	10	.15
Smoky red flaked blue.	10	1.20	.80	.40	100	1.00
TINTALDRA	1	.5020
Pink, dark blotch, many open.	10	1.60
TOBERSUN	110	2-.15	Pa.	.15
Fine late yellow.	1080	.50	100	.50
TROUBADOUR	1	.15	.10	2-.15	Pa.	.10
Best clear purple.	10	1.20	.80	.50	100	.40
VEILCHENBLAU		2-.12	4-.15	Pa.	.10
Dark blue.	10	.50	.30
WASAGA	1	.30	.20	2-.25	10	.25
Very beautiful buff.	10	2.40	1.60	.80	100	2.00
W. H. PHIPPS		2-.12	4-.15	10-.15	Pa.	.10
Late show salmon.	10	.50	.30	.15	100	.20
WINGED VICTORY	1	.10	2-.10	3-.10	Pa.	.10
Immense pink.	10	.80	.40	.30	100	.20
WINIFRED	1	.15	.10	Pa.	.15
Unusual plum colored prim. Many open	10	1.20	.80	100	.50
WONDER GLORY	1	.15	.10	2-.15	Pa.	.15
Cream blushed pink.	10	1.20	.80	.50	100	.60
WURTEMBERGIA	1	.15	.10	2-.15	35	.25
Dazzling large light red with cream throat.	10	1.20	.80	.50	100	.60
YVONNE		2-.12	4-.15	10-.15	Pa.	.10
Flesh color, pink blotch. Fine.	10	.50	.30	.15	100	.20

Choice Bulbs and Bulblets at Prepaid Prices

In selecting from this list you may have 3 bulbs at the 10 rate. Also 25 of one kind and size for twice the price of 10. 25 bulblets at 100 rate.

If you want to pay express or parcel post just mention it and I will send them C.O.D. for carrying charges and will put in enough extra bulbs to much more than make it up.

	Per	No. 1	No. 2	No. 3	No. 4	No. 5	No. 6	BULBLETS	
ACADIA	1	.25	.20	.15	.12	.10	2-.15	20	.25
	10	2.00	1.60	1.20	.80	.60	.50	100	1.00
AMADOR	1	.30	.25	.20	.15	.12	.10	10	.25
	10	2.40	2.00	1.60	1.20	.96	.80	100	2.00
BAGDAD	1	.15	.12	.10	2-.15	2-.10	3-.10	20	.10
	10	1.20	1.00	.80	.60	.40	.30	100	.40
BELLA DONNA	1	1.00	.80	.60	.50	.40	.35	3	.20
	10	7.00	6.00	5.00	4.00	3.20	2.50	10	.50
CHAMPLAIN	1	2.00	1.75	1.50	1.25	1.00	.80	1	.40
	10	16.00	14.00	12.00	10.00	8.00	6.40	10	3.00
CHEROKEE	1	5.00	4.00	3.50	3.00	2.50	2.00	1	.50
	10	24.00	20.00	16.00	10	3.00
CORONATION	1	.50	.40	.30	.25	.20	.15	8	.25
	10	4.00	3.20	2.40	2.00	1.50	1.20	100	2.50
DEBONAIR	1	.50	.40	.30	.25	.20	.15	8	.25
	10	4.00	3.20	2.40	2.00	1.50	1.20	100	2.50
DR. DURR	1	.35	.30	.25	.20	.15	.12	15	.20
	10	2.80	2.40	2.00	1.60	1.20	1.00	100	1.00
DUNA	1	.50	.40	.30	.25	.20	.15	8	.25
	10	4.00	3.20	2.40	2.00	1.50	1.20	100	2.50
EARLY DAWN	1	.50	.40	.30	.25	.20	.15	8	.25
	10	4.00	3.20	2.40	2.00	1.60	1.20	100	2.50

	Per	No. 1	No. 2	No. 3	No. 4	No. 5	No. 6	BULBETS	
GATE OF HEAVEN	1	.60	.50	.40	.35	.25	.20	5	.25
	10	...	4.00	3.20	2.80	2.00	1.60	100	4.00
GOLDEN CUP	1	.40	.35	.30	.25	.20	.15	4	.25
	10	3.20	2.80	2.40	2.00	1.60	1.20	100	5.00
GOLDEN FLAME	1	1.00	.80	.60	.50	.35	.20	10	1.00
	10	8.00	6.40	4.80	4.00	2.80	1.60	100	5.00
HERCULES	1	1.00	.80	.70	.60	.50	.40	3	.25
	10	4.00	3.00	8	.50
INSPIRATION	1	.30	.25	.20	.15	.12	.10	10	.25
	10	2.40	2.00	1.60	1.20	1.00	.80	100	2.00
JONQUIL	1	5.00	4.00	3.50	3.00	2.50	2.00	1	.50
	10	40.00	32.00	28.00	24.00	20.00	16.00	100	30.00
KING ARTHUR	1	.30	.25	.20	.15	.12	.10	10	.25
	10	2.40	2.00	1.60	1.20	1.00	.80	100	2.00
LADY EATON	1	2.00	1.75	1.50	1.25	1.00	.80	1	.40
	10	16.00	14.00	12.00	10.00	8.00	6.40	10	3.00
LINDESTA	1	.60	.50	.45	.40	.35	.30	10	.25
	10	4.50	4.00	3.60	3.20	2.80	2.40	100	2.00
MAID OF ORLEANS	1	.18	.15	.12	.10	2-.15	...	10	.15
	10	1.50	1.20	1.00	.80	.60	...	100	1.00
MARGARET PETER	1	.60	.50	.40	.35	.30	.25	5	.15
	10	...	4.00	3.50	2.80	2.40	2.00	100	2.50
MRS. T. E. LANGFORD	1	.25	.20	.18	.15	2-.25	.10	25	.15
	10	2.00	1.60	1.40	1.20	1.00	.80	100	.60
NERISSA	1	.40	.35	.3020	.15	15	.10
	10	...	2.80	2.40	...	1.60	1.20	100	.60
NETHERLAND PRINCE	1	.20	.15	.12	.10	2-.15	3-.15	20	.10
	10	1.60	1.20	1.00	.80	.60	.40	100	.50
ODALISQUE	130	.25	.20	.18	.15	10	.15
	10	...	2.40	2.00	1.60	1.40	1.20	100	1.20
PELEGRINA	1	.25	.20	.15	.12	.10	2-.15	10	.15
	10	2.00	1.60	1.20	1.00	.80	.60	100	1.00
PINNACLE	1	.50	.40	.30	.25	.20	.15	10	.30
	10	4.00	3.00	2.40	2.00	1.50	1.00	100	2.50
PIRATE	1	.20	.15	.10	2-.15	2-.12	3-.15	15	.25
	10	1.60	1.20	.80	.60	.50	.40	100	1.50
RAMASSES	120	.15	.10	2-.15	3-.15	25	.25
	10	...	1.60	1.20	.80	.60	.50	100	.80
RAPTURE	1	.25	.20	.15	.10	2-.15	2-.10	20	.25
	10	2.00	1.60	1.20	.80	.60	.40	100	1.00
REVERIE	1	5.00	4.00	3.50	3.00	2.50	2.00	1	.50
	10	40.00	32.00	28.00	24.00	20.00	16.00	100	30.00
RIDEAU	1	.25	.20	.15	.10	2-.15	2-.10	20	.25
	10	2.00	1.60	1.20	.80	.60	.40	100	1.00
SCHUBERT	1	.30	.25	.20	.18	.15	.10	15	.10
	10	2.40	2.00	1.60	1.40	1.20	.60	100	.50
SEESTERN	1	.60	.50	.40	.35	.30	.25	10	.25
	10	...	4.00	3.20	2.80	2.40	1.60	100	2.00
SOLVEIG	1	7.00	6.00	5.00	4.00	3.00	2.00	1	.25
	10	50.00	40.00	35.00	30.00	25.00	16.00	10	2.00
SONATINE	1	1.75	1.50	1.35	1.25	1.00	.75	2	.25
	10	...	12.00	10.00	9.00	8.00	6.00	100	10.00
STAR OF BETHLEHEM	1	1.25	1.00	.75	.60	.50	.45	2	.25
	10	...	8.00	6.00	5.00	4.00	3.60	10	1.00
SULTAN	1	.25	.20	.18	.15	.12	.10	10	.15
	10	2.00	1.60	1.40	1.20	1.00	.80	100	1.00
THE MOOR	1	1.75	1.50	1.00	.75	.50	.40	3	.25
	10	15.00	12.00	8.00	6.00	4.00	3.20	100	7.00
WASAGA	1	.40	.30	.25	.20	.15	.10	10	.25
	10	3.20	2.40	2.00	1.60	1.20	.80	100	2.00
WURTEMBERGIA	1	.18	.15	.12	.10	2-.15	2-.10	35	.25
	10	1.50	1.20	1.00	.80	.60	.50	100	.60

Wholesale Prices, Not Prepaid

25 bulbs at the 100 rate. 500 bulblets at 1,000 rate or one pint at quart rate. 1,000 bulbs for 8 times the 100 price with not less than 250 at the 1,000 rate.

If sold out of size ordered, MAY we give size smaller with enough extra count to make up the difference? No. 1 bulbs are scarce this year due to the dry weather. No. 3 bulbs will give wonderful fine bloom. Prices per hundred.

	No. 1	No. 2	No. 3	No. 4	No. 5	No. 6	BULBLETS	
							1,000	Quart
AIDA.....	2.00	1.60	1.2080	.60	1.50	3.00
AL SMITH.....	...	1.60	1.20	1.00	.80	.60	1.20	3.00
AFLAME.....	1.20	1.0060	1.20	3.00
ALBATROSS.....	1.60	1.20
AMADOR.....	12.00	10.00	8.00	6.00	4.80	3.20	15.00	30.00
APRICOT GLOW.....	1.60	1.20	1.0060	.40	.60	1.20
AVE MARIA.....	...	1.60	1.20	1.00	.80	.70	1.20	2.40
BAGDAD.....	...	7.00	5.00	4.00	3.00	2.40	3.00	9.00
BERTY SNOW.....	2.00	1.60	1.20	1.00	.80	.60	.80	2.40
BETTY NUTHALL.....	2.00	1.60	1.2040	.60	1.80
BILL SOWDEN.....	9.00	7.00	6.00	5.00	4.00	3.00	8.00	20.00
BLEEDING HEART.....	5.00	4.00	3.00	2.50	2.00	1.50	4.00	12.00
BLUE DANUBE.....	7.00	5.00	4.00	3.20	2.40	2.00	4.00	8.00
CAROLUS CLUSIUS.....	2.00	1.60	1.2080	.60	1.20	3.00
CASSANDRA.....	9.00	7.00	6.00	5.00	4.00	3.00	8.00	20.00
CHAS. DICKENS.....	2.00	1.60	1.2060	.80	2.50
COM. KOEHL.....	4.00	3.20	2.50	2.40	7.00
CONSTANCY.....	10.00	8.50	7.00	6.00	4.50	3.00	3.00	9.00
DESDEMONE.....	...	2.40	1.60	1.20	.80	.60	.80	2.00
DR. BENNETT.....	2.00	1.60	1.2080	.60	.80	2.00
EDITH ROBSON.....	20.00	16.00	12.00	9.00	7.00	5.00	8.00	20.00
EMILE AUBRUN.....	3.00	2.4060	2.00
EMMA.....	3.00	2.50	2.00	1.60	1.20	.80	1.50	4.00
EXCELLENCE.....	2.00	1.6080	.60	.80	2.00
GAY HUSSAR.....	1.20	1.00	.60	.50	.60	1.50
GIANT NYMPH.....	2.00	1.50	1.20	1.00	.80	.60	.60	2.00
GLORIANA.....	1.80	1.4060	.40	.60	1.50
GOLDEN DREAM.....	2.00	1.6060	.40	.60	1.80
HELEN JACOBS.....	2.00	1.60	1.2080	.60	.80	2.00
JANET.....	4.00	3.00	2.40	2.00	1.60	1.00	2.00	5.00
KING ARTHUR.....	10.00	8.00	6.00	4.00	16.00	40.00
KING GEORGE.....	2.00	1.60	1.2060	.80	2.00
KING OF ORANGES.....	...	1.60	1.20	1.00	.60	.50	.80	1.50
LA PALOMA.....	4.00	3.00	2.40	1.80	1.20	.80	1.00	2.00
LAUGHING WATER.....	...	1.60	1.20	1.00	.80	.60	1.00	2.00
LITTLEJOHN.....	...	3.00	2.40	1.60	1.20	.80	1.50	3.50
LOYALTY.....	3.60	2.60	1.20	.80	1.00	3.00
MAID OF ORLEANS.....	9.60	7.20	6.00	4.80	4.00
MAMMOTH WHITE.....	4.00	3.20	2.40	2.00	...	1.00	3.00	10.00
MARMORA.....	2.40	1.80	1.20	1.00	.80	.60	.80	2.00
MARY ELIZABETH.....	16.00	12.00	10.00	8.00	10.00	...
MARY FREY.....	1.20	.8080	2.00
MIBLOOM.....	4.00	2.00	1.6080	.60	1.00	2.50
MINUET.....	3.00	2.00	1.40
MISS BLOOMINGTON.....	4.00	3.0080	1.00	2.50
MOROCCO.....	...	1.60	1.20	1.00	.80	.50	.60	2.00
MOTHER MACHREE.....	4.00	3.00	1.80	1.2080	1.60	3.50
MRS. P. W. SISSON.....	...	1.60	1.20	1.0050	.60	1.50
MRS. T. E. LANGFORD.....	...	12.00	10.00	8.00	6.00	4.00	4.00	15.00

	No. 1	No. 2	No. 3	No. 4	No. 5	No. 6	BULBLETS	
							1,000	Quart
NETHERLAND PRINCE.....	12.00	10.00	8.00	6.00	5.00	4.00	4.00	15.00
NYORA.....	9.00	7.00	6.00	5.00	4.00	3.00	8.00	20.00
OLIVE GOODRICH.....	2.00	1.60	1.20	1.00	.60	.50	.80	1.50
ORANGE QUEEN.....	2.00	1.6060	.50	.60	1.50
OUR SELECTION.....	...	1.60	1.20	1.00	.80	.70	1.00	3.00
PAUL PFITZER.....	2.00	1.60	1.2080	.60	.80	2.00
PELEGRINA.....	12.00	10.00	8.00	6.00	5.00	4.00	8.00	20.00
PFITZER'S TRIUMPH.....	2.00	1.60	1.20	1.00	...
PICARDY.....	6.00	4.00	3.00	2.00	1.40	1.00	2.00	6.00
PIRATE.....	...	8.00	6.00	5.00	4.00	2.00	8.00	20.00
POND LILY.....	9.00	7.00	6.00	3.00	8.00	20.00
PRIDE OF WANAKAH.....	2.00	1.60	1.20	1.0050	.60	1.50
PRIMROSE PRINCESS.....	2.00	1.60	1.2050	.60	1.50
RAPTURE.....	12.00	10.00	7.00	5.00	4.00	3.00	8.00	20.00
RED LORY.....	12.00	10.00	7.00	5.00	4.00	3.00	8.00	20.00
RIDEAU.....	12.00	10.00	7.00	5.00	4.00	3.00	8.00	20.00
ROI ALBERT.....	...	3.00	2.00	1.60	1.20	.80	1.50	4.00
ROSE ASH.....	...	1.60	1.20	1.0060	.60	1.50
ROSE MIST.....80	.60	.60	1.50
SALBACH'S PINK.....	...	4.00	3.20	2.40	...	1.00	1.50	3.00
SCHWABEN GIRL.....	8.00	6.00	3.00
SEÑORITA.....	2.00	1.60	1.20	1.0060	.60	1.50
SPRAY OF GOLD.....	...	5.00	4.00	3.00	2.00	1.00	4.00	10.00
SULTAN.....	12.00	10.00	...	6.00	4.00	2.50	6.00	15.00
SUNSHINE GIRL.....	3.00	2.40	2.0080	2.00	5.00
TOBERSUN.....	...	4.00	3.20	2.40	2.00	5.00
TROUBADOUR.....	...	7.00	6.00	5.00	4.00	2.00	8.00	20.00
VEILCHENBLAU.....	2.00	1.60	1.20	1.0080	2.50
WASAGA.....	20.00	16.00	12.00	10.00	7.00	5.00	15.00	40.00
W. H. PHIPPS.....	2.00	1.6050	.60	1.80
WURTEMBERGIA.....	10.00	8.00	6.00	5.00	4.00	3.50	5.00	15.00
YVONNE.....	2.00	1.60	1.20	1.0060	.80	1.50

Special Collections and Sets

I WILL DUPLICATE THE SPECIAL OFFERS OF ANY OTHER RELIABLE GROWER IF I HAVE THE STOCK

NO. 1. UNLABELED COLLECTION. 100 assorted large bulbs (1 inch up) in at least 40 varieties in about every shade found in gladiolus. I have sold this collection for years and have thousands of very well pleased customers. A woman was in my office recently who said this collection had been the joy of her life this summer. **I positively guarantee there is not a better collection sold by any grower in the country for anywhere near the price.** I get many repeat orders every year from well pleased customers. 100 for \$3.00; 50 for \$1.75; 25 for \$1.00 all prepaid. With 100 bulbs 1 large Picardy and 1 bulb of another variety of my choice, worth \$1.00 free. With 50 bulbs 1 large Picardy free.

NO. 1a. Same collection in Medium size bulbs. 100 bulbs for \$2.00. 50 for \$1.25. These will give you wonderfully fine bloom. Don't hesitate to buy this collection because bulbs are medium size.

NO. 2. UNLABELED COLLECTION. 100 assorted as above containing 45 varieties or more including many of the newer and higher priced ones. A wonderful collection at a moderate price. 100 for \$5.00; 25 and 50 at the same rate.

NO. 3. UNLABELED COLLECTION DE LUXE. 50 or more varieties many of them being exhibition sorts and worth several times the price asked. Real aristocrats in gladiolus. Nothing better to be had in an unlabeled collection. 100 for \$10.00; 25 and 50 at the same rate.

None of the above collections are labeled as to varieties. Don't ask us to give you the names of the varieties in the collections as we positively do not do it at these prices. If you want them labeled buy them under name. I guarantee the collections to be the best you can buy for the price

No. 4 RECOVERY COLLECTION. \$3.00 Large Bulbs. Not a money maker for me, too good value, but it gives you a very fine assortment of colors and types. Ruffled and plain petalled and running the whole gamut of color from dark blue thru various shades of pink, red, orange, salmon, smoke and lavender to light pink and white. You can't get a start in first class named varieties in a better way than to get this collection.

2 AIDA	2 HELEN JACOBS	2 PAUL PFITZER
4 APRICOT GLOW	4 JANET	4 RED SPLENDOR
3 BETTY NUTHALL	3 LA PALOMA	2 RAVENNA
3 BLEEDING HEART	2 LAUGHING WATER	2 RIDEAU
2 ECSTASY	2 MRS. GALBRAITH	2 SENORITA
2 EMMA	2 MAMMOTH WHITE	4 SUNSHINE GIRL
4 EXCELLENCE	2 MARMORA	2 LOYALTY
4 SPRAY OF GOLD	2 MARY FREY	3 SARABAND
	2 OUR SELECTION	

NO. 5. Same as above in **Medium Size Bulbs** for **\$2.10.** Wonderful Value.

NO. 6. \$3.00 LABELED COLLECTION. Another fine assortment of varieties and colors. **Large Bulbs.**

4 ACADIA	2 CALIFORNIA	3 OLIVE GOODRICH
2 AFLAME	2 CONSTANCY	2 PFITZER'S TRIUMPH
2 ALBATROSS	2 EMBLEM	3 POND LILY
2 AMBROSIA	3 E. C. VICK	2 ROSE ASH
4 BAGDAD	2 GOLDEN ANNIVERSARY	2 SALBACH'S PINK
3 BILL SOWDEN	2 GORGEOUS	2 WONDER GLORY
2 CASSANDRA	3 LITTLEJOHN	2 BLUE TORCH
3 DOMINUS	4 MISS BLOOMINGTON	5 YVONNE
	2 MRS. KONYNENBURG	

NO. 7. \$2.10 LABELED COLLECTION. Same as above in **Medium** size.

NO. 8. \$3.00 LABELED COLLECTION. Large bulbs. Another lot all different from the two previous sets.

3 AL SMITH	4 PRIMROSE PRINCESS	4 MRS. SISSON
3 BERTY SNOW	2 CHARLES DICKENS	3 OCTOBER
2 CAROLUS CLUSIUS	3 CRIMSON GLOW	4 ORANGE QUEEN
2 BEAUTY FLOWER	3 DR. BENNETT	4 PRIDE OF WANAKAH
2 CATTLEYA ROSE	4 EMILE AUBRUN	3 GAY HUSSAR
2 CATHERINE COLEMAN	3 GLORIANA	2 RIPPLING WATERS
2 SWORD OF MAHOMET	2 H. C. GOEHL	2 TROUBADOUR
2 PERSIA	4 MIBLOOM	2 TOBERSUN
	2 MOTHER MACHREE	

NO.9. LABELED COLLECTION. \$2.10. Same as above in **Medium** size.

The above collections, No. 4, No. 6, and No. 8 are all different. Also of course the corresponding collections No. 5, No. 7, and No. 9. The whole three sets either of the large or medium ones will make a really wonderful collection and will make your garden the envy of your neighborhood.

Will sell the three sets, No. 4, No. 6, and No. 8, for **\$8.00.** Or sets No. 5, No. 7, and No. 9 for **\$5.25.**

With any one set No. 4 to No. 9 ordered and paid for before March 1, I will put in **5 Medium Picardy extra.** Of if you order three sets will put in a **medium Rosex or The Moor Free** in addition to the 5 medium Picardy.

NO. 10. LABELED COLLECTION. \$2.50. One large bulb each of the following. A collection of the best of the medium price class. Real aristocrats. Fine assortment of colors. **2 Bulbs each for \$4.50.**

CAMELOT	MRS. LANGFORD	RODERICK DHU
EDITH ROBSON	NETHERLAND PRINCE	ROI ALBERT
KING ARTHUR	NYORA	SCHUBERT
MAID OF ORLEANS	PALLAS	SULTAN
27122, Blue	PELEGRINA	WURTEMBERGIA
	RED LORY	

NO. 11. LABELED COLLECTION. \$1.75. One medium bulb each of the varieties in No. 10. 2 each for **\$3.00.**

NO. 12. LABELED COLLECTION. \$1.50. 2 small bulbs each of the varieties in No. 10. Some swell glads for a low price.

NO. 13. LABELED PALMER COLLECTION. \$4.00. One large bulb each.

**CHAMPLAIN
LADY EATON
PREMIER HENRY**

NO. 14. LABELED PALMER COLLECTION. \$3.00. One medium bulb each of varieties in No. 13.

NO. 15. LABELED PALMER BULBLET COLLECTION. \$2.00. 3 selected bulblets each of varieties in No. 13.

NO. 16. LABELED PALMER COLLECTION. \$2.50. One large bulb each of the following varieties.

2 Bulbs each for \$4.50.

**ACADIA
BAGDAD
CORONATION
DEBONAIR**

**DUNA
GOLDEN CUP
INSPIRATION
PICARDY
PIRATE**

**RAPTURE
RIDEAU
SPRAY OF GOLD
WASAGA**

NO. 17. LABELED PALMER COLLECTION. \$1.50. One medium bulb of the varieties in No. 16. 2 bulbs each for \$2.50.

NO. 18. LABELED PALMER COLLECTION \$1.15 One small bulb each in the varieties in No. 16. 2 bulbs each for \$2.00.

NO. 19. LABELED PALMER COLLECTION. \$9.00. One large bulb each of:

**CHEROKEE
JONQUIL
REVERIE**

NO. 20. LABELED PALMER COLLECTION. \$7.50. One medium bulb each of:

**CHEROKEE
JONQUIL
REVERIE**

NO. 21. LABELED PALMER COLLECTION. \$5.00. One small bulb each of:

**CHEROKEE
JONQUIL
REVERIE**

NO. 22. LABELED PALMER COLLECTION. \$2.00. Two selected bulblets each of:

**CHEROKEE
JONQUIL
REVERIE**

NO. 23. PICARDY SPECIAL. \$1.00. 1 large, 25 medium, 10 small. This will give you more pleasure for the money than anything else you can buy.

NO. 24. PICARDY SPECIAL. \$2.00. 2 large, 40 medium, 40 small.

NO. 25. PICARDY SPECIAL. \$5.00. 10 No. 2, 50 No. 3, 40 No. 4, 50 No. 5, 100 No. 6, and 500 bts. for \$5.00.

NO. 26. PICARDY SPECIAL \$10.00. 50 No. 2, 150 No. 3, 125 No. 4, 150 No. 5, 200 No. 6, and 1,000 bts. all for \$10.00. Wonderful value. You can't spend \$10.00 in the glad business to better advantage.

NO. 27. I will duplicate any of the last four offers in **BAGDAD.**

NO. 28. PIRATE SPECIAL. \$1.00. 1 large, 10 medium, 10 small. You will like this variety.

NO. 28a. RAPTURE SPECIAL. \$1.00. 2 large, 10 medium, 15 small. A very fine future commercial.

NO. 28b. SPRAY OF GOLD SPECIAL. \$1.00. 3 large, 15 medium, 25 small. A fine early yellow.

NO. 29. ARISTOCRAT COLLECTION. \$5.00. One small bulb of each of the following. One blooming size **SOLVEIG** extra on all orders for this collection received up to March 1.

BELLA DONNA	MARGARET PETER	ODALISQUE
BLUE ADMIRAL	MARION LOUISE	PINNACLE
GATE OF HEAVEN	MAY DAVIDSON	SCHUBERT
HERCULES	MOONDARA	SEESTERN
J. S. BACH	MRS. CHAS. A. STEVENS	SMILING MAESTRO
LUCIFER	NERISSA	STAR OF BETHLEHEM

NO. 30. ARISTOCRAT BULBLET COLLECTION. \$3.00.

3 BELLA DONNA	4 MARGARET PETER	10 ODALISQUE
3 BLUE ADMIRAL	5 MARION LOUISE	2 PINNACLE
5 GATE OF HEAVEN	3 MAY DAVIDSON	15 SCHUBERT
3 HERCULES	5 MOONDARA	10 SEESTERN
3 J. S. BACH	5 MRS. CHAS. A. STEVENS	3 SMILING MAESTRO
5 LUCIFER	15 NERISSA	2 STAR OF BETHLEHEM

NO. 31. 50 CENT SPECIALS

If you like a variety why be content with planting only a bulb or two of it and enjoy it and have it bloom only a short time? Why not buy a number of bulbs of various sizes and plant them all at once and have them bloom over a long period? This is the way to get the most enjoyment out of your glads. Don't think that you have to have all large bulbs to get good bloom. You will be surprised with the fine flowers you can get from the medium and small size bulbs. By planting them all at one time you have less work and bother than you would by planting one size at different times. Just plant them and your troubles are over. They should bloom over a period of five or six weeks at least.

Last year I had specials similar to this and stated the number of bulbs of each size that were in each lot but I always put in some extra ones. This year I am going to ask you to leave it to me to fix up the number and size of bulbs in each lot. Those who have bought of me before know they will get their moneys worth and then some. And I want to say to those who have not done business with me that I guarantee you will be satisfied. Just plant them and after they bloom if you are not entirely satisfied write me about it and I will adjust the matter. But I am sure that you will be extremely well pleased.

You can have an assortment of sizes in any one of these varieties for \$.50. You will get good value for 50 cents but you really should have two assortments of each kind to have a lot of bloom. Remember that the 50 cents is not to be divided among several varieties. It is just 50 cents for any one variety. But you can have as many varieties as you want. Any five lots for \$2.25 or any ten lots for \$4.00 or any fifteen for \$5.75. In addition to this I always put in something good for you to try out.

ACADIA	GOLDEN ANNIVERSARY	PHILIP BREITMEYER
AFLAME	GOLDEN BROWN	PICARDY
AIDA	GOLDEN DREAM	PIRATE
ALBATROSS	HELEN JACOBS	POND LILY
AL SMITH	INSPIRATION	PRIDE OF WANAKAH
APRICOT GLOW	JANET	PRIMROSE PRINCESS
AVE MARIA	LA PALOMA	RAMASSES
BAGDAD	KING GEORGE	RAPTURE
BERTY SNOW	KING OF ORANGES	RAVENNA
BETTY NUTHALL	LITTLEJOHN	RED LORY
BILL SOWDEN	MAGNA BLANCA	RIDEAU
BLEEDING HEART	MAID OF ORLEANS	RODERICK DHU
BLUE DANUBE	MAMMOTH WHITE	ROI ALBERT
CAROLUS CLUSIUS	MARMORA	ROSE MIST
CASSANDRA	MARY ELIZABETH	SALBACH'S PINK
CHAS. DICKENS	MARY FREY	SCHWABEN GIRL
COM. KOEHL	MIBLOOM	SEÑORITA
CONSTANCY	MOROCCO	SPRAY OF GOLD
DOMINUS	MOTHER MACHREE	SULTAN
DR. BENNETT	MRS. F. E. BENNETT	SUNSHINE GIRL
DR. DURR	MRS. P. W. SISSON	THOS. EDISON
DR. MOODY	MRS. S. A. ERREY	TOBERSUN
EARLY MELODY	NETHERLAND PRINCE	TROUBADOUR
ECSTASY	NYORA	W. H. PHIPPS
E. C. VICK	OCTOBER	WINGED VICTORY
EDITH MASON	OLIVE GOODRICH	WONDER GLORY

EMILE AUBRUN
EMMA
EXCELLENCE
GAY HUSSAR
GIANT NYMPH

ORANGE BUTTERFLY
ORANGE LILY
ORANGE QUEEN
OUR SELECTION
PAUL PFITZER

WURTEMBERGIA
YVONNE
SARABAND
TIGER
KING OF REDS

NO. 32.

DOLLAR ASSORTMENTS

Here is another lot similar to the previous one but each set of assorted bulbs of a kind is **\$1.00**. Any five for **\$4.60**, any ten for **\$8.50** or any fifteen for **\$12.00**.

Just leave it to me to satisfy you on any of these lots of assorted size bulbs in the last two offers. If you want **some** bulblets and less bulbs just say so and I can fix them up that way.

CAMELOT
CORONATION
DEBONAIR
DUNA
EDITH ROBSON
GATE OF HEAVEN

GOLDEN CUP
KING ARTHUR
LINDESTA
MARGARET PETER
MRS. CHAS. A STEVENS
MRS. T. E. LANGFORD

PELEGRINA
PINNACLE
SCHUBERT
SEESTERN
WASAGA

Collections by Color

NO. 33. MEDIUM AND DARK BLUE. Five each medium Aida, Ave Maria, Wedgewood, three Pelegrina for **sixty cents**.

NO. 34. LIGHT BLUE. Five each medium Blue Torch, Mrs. Gertrude Pfitzer, Mrs. Van Konynenburg, four Blue Danube for **sixty cents**.

NO. 35. DARK RED. Five each medium Ecstasy, Imperial Chimes, Morocco, Persia, Ravenna, three Thomas Edison for **sixty cents**.

NO. 36. MEDIUM RED. Three each medium Bill Sowden, Com. Koehl, King George, King of Reds, Red Lory for **sixty cents**.

NO. 37. SCARLET. Five each medium Dr. Bennett, Excellence, Red Splendor, Scarlet Bedder, four Wurtembergia for **sixty cents**.

NO. 38. ORANGE. Five each medium Gay Hussar, King of Oranges, Oneta, Orange Queen, Spirit of St. Louis for **fifty cents**.

NO. 39. ORANGE. Five each medium California, La Paloma, Orange Butterfly, Orange Wonder, Senorita for **fifty cents**.

NO. 40. YELLOW. Five each medium Antione, Golden Dream, Loyalty, Miss Bloomington, Spray of Gold for **sixty cents**.

NO. 41. PURPLE. Five each medium Chas. Dickens, Dominus, Paul Pfitzer, Purple Queen, Troubadour for **sixty-five cents**.

NO. 42. LAVENDER. Five each medium Bertie Snow, Constancy, Dr. Moody, Mary Frey, Minuet for **sixty cents**.

NO. 43. ROSE PINK. Three each medium Bagdad, Pond Lily, five each Aflame, Janet, Pride of Wanakah for **fifty-five cents**.

NO. 44. SALMON PINK. Five each medium Betty Nuthall, Gloriana, Laughing Water, Mrs. Galbraith, Rapture, for **sixty-five cents**.

NO. 45. LIGHT PINK. Five each medium Annie Laurie, Louvain, Mrs. Sisson, Olive Goodrich, Yvonne for **sixty cents**.

NO. 46. WHITE. Five each medium Albatross, Mammoth White, three Maid of Orleans, two Mary Elizabeth for **sixty-five cents**.

NO. 47. SMOKIES. Five each medium Emile Aubrun, Marmora, Our Selection, Rose Ash, Saraband, for **fifty cents**.

NO. 48. SMOKIES. Five each medium Desdemone, Mother Machree, Rideau, Roi Albert for **sixty cents**.

NO. 49. BLOTCHED VARIETIES. Five each medium Cassandra, Emma, Helen Jacobs, H. C. Goehl, Nyora for **sixty cents**.

NO. 50. EARLY VARIETIES. Five each medium Al Smith, Excellence, Mibloom, Miss Bloomington, Orange Lily for **sixty-five cents**.

NO. 51. EXHIBITION. One each large Edith Robson, Mrs. Langford, Pelegrina, Pinnacle, Red Lory, Wurtembergia for **\$1.00.**

NO. 52. EXHIBITION. Same as above medium size for **sixty-five cents.**

NO. 53. EXHIBITION. Two each large Bleeding Heart, Mammoth White, Mother Machree, Picardy, W. H. Phipps for **seventy cents.**

NO. 54. EXHIBITION. Three each medium of varieties in No. 53 for **sixty cents.**

NO. 55. GROWERS COLLECTION. NOT PREPAID. 100 each of any 10 of the following varieties in No. 3 size for **\$9.00.** Not less than 100 nor more than 300 of a kind. 500 at 1,000 rate. I strongly recommend this size for growing for commercial cut flowers. You will get blooms very nearly as good as the best at a low price.

AFLAME	HELEN JACOBS	ORANGE BUTTERFLY
ANNIE LAURIE (light pink)	JANET	OSALIN (Nice salmon rose)
APRICOT GLOW	JEAN DU TAILLES	OUR SELECTION
AVE MARIA	(Fine blotched pink)	PANSY (Early rose)
BERTY SNOW	KING GEORGE	PAUL PFITZER
BETTY NUTHALL	KING OF ORANGES	PRIDE OF WANAKAH
BLUE TORCH	LAUGHING WATER	PRIMROSE PRINCESS
CAROLUS CLUSIUS	MARMORA	PURPLE QUEEN
DESDEMONE	MARY FREY	RAVENNA
DR. BENNETT	MOROCCO	ROSE ASH
GAY HUSSAR	MRS. GALBRAITH (Pink)	SEÑORITA
GIANT NYMPH	MRS. SISSON	VEILCHENBLAU
H. C. GOEHL	OLIVE GOODRICH	YVONNE

NO. 56. GROWERS COLLECTION. Same varieties as in No. 55. 500 bulbs in 10 varieties for **\$4.50.**

NO. 57. GROWERS COLLECTION. Same as above. 250 bulbs in 10 varieties for **\$3.00**

NO. 58. GROWERS COLLECTION. Same varieties as No. 55 in No. 2 size. **\$12.00** per 1,000. In this collection cannot furnish Aflame, Gay Hussar, Rose Ash. Conditions same as in No. 55.

NO. 59. GROWERS COLLECTION. Same varieties as in No. 58. 500 bulbs in 10 varieties for **\$6.50.**

NO. 60. GROWERS COLLECTION. Same as above. 250 bulbs in 10 varieties for **\$7.00**

Some items in the above GROWERS COLLECTIONS are in rather short supply so it would be well to order early and name at least 2 or 3 extra varieties for possible substitutions.

The Thrip Question

As my friend J. D. would say "in a coupla nutshells."

WHAT IS THRIP? A thrip is a small black insect about the size of a fine pencil mark and 1/16 inch long. Young ones are smaller and yellowish.

WHAT DOES THRIP DO? He scarifies the surface of the leaves but the chief damage he does is to suck the juices from the buds and so cause them to dry up and not open into a flower. It has ruined millions of blooms.

WHERE DO YOU FIND THRIP? Down in the axils of the leaves and under the sheaths of the buds.

IS THRIP WIDELY DISTRIBUTED? Yes, over nearly the whole country. Some sections claim they haven't got it and possibly it has not reached there but it will in time. And it may be present in a locality and not have become prevalent enough to cause noticeable damage.

WHAT CAN BE DONE ABOUT IT? Have bulbs clean before storing away for the winter. To be sure of this you can use naphthalene flakes. After bulbs are cleaned up keep them warm, 60 to 70 for about three weeks and scatter naphthalene flakes over them using about one ounce to 1,000 bulbs. Cover with paper or cloth to confine the fumes. After three weeks shake off the naphthalene and store bulbs away in a cool place.

If bulbs can be stored in a temperature of 40° or less they will have no thrip on them at planting time as thrip or thrip eggs cannot survive a 40° temperature for several weeks. **Hence they do not live over outdoors where the temperature is down to 40° or thereabouts most of the winter.**

Disinfect **ALL** bulbs planted. Soak them in Bichloride of Mercury in a 1-1,000 solution for seven to eight hours. I use powdered Bichloride one ounce to seven gallons of water. Dissolve

it first in a small quantity of warm water then pour into the larger lot. Use earthen, glass or wooden dishes or you can use cheap metal containers but Bichloride corrodes metal.

It is not necessary to peel bulbs but if they are large and the skins cling closely to the bulbs it will be better to peel them. Longer soaking will do no harm. It is not **necessary** to peel bulbs at any time whether disinfected or not.

In addition to killing any thrip or thrip eggs Bichloride is supposed to kill disease germs too.

Disinfecting will delay blooming somewhat so plan on a week or ten days longer to blooming.

Bulbs can be disinfected at any time previous to planting or can be planted when still wet. They can also be disinfected after they have started growth.

I always disinfect mine for disease just on general principles, tho whether it does affect disease or not I am not sure. **Semesan** can be used but costs more. It is a very efficient disinfectant.

Tho you may plant perfectly clean bulbs you may have thrip if your near neighbors plant thrippy bulbs. So try to get your neighbors to disinfect their bulbs too. It might be a good plan to get together with your neighbors and disinfect all the bulbs of a neighborhood at one place.

Tho you and your neighbors plant clean bulbs it is possible that you may still get thrip as this insect can be carried a long way by wind or birds. They can fly 1000 ft. or so themselves.

So to be sure you will have no thrip it is safest to spray the plants about once a week or oftener from the time they are five or six inches high. For spraying, the molasses or brown sugar, Paris Green formula is as effective as anything.

- 2 lbs. brown sugar
- 1 ½ pints dark molasses
- 2 tablespoons Paris Green **or**
Arsenate of Lead
- 3 gallons of water.

If you use Paris Green better put in a handful of Hydrated Lime to prevent burning. Some people put in some tobacco extract like Black Leaf 40. Keep it well stirred. Put on in a fine mist and not too heavy applications.

If you are so situated that you have running water near your glads and if your soil is porous so that water runs thru it readily I believe you can keep thrip down by spraying with water every night or possibly night and morning. Just spray the tops thoroughly. Thrips do not like water but propagate fast in hot dry weather. I have broken up a bad infestation a couple of times just by spraying with water and have known of others doing the same.

I feel positive that good glads can be grown even in a badly infested region if clean bulbs are planted and spraying is done every few days during the growing season. But do not delay spraying till you find thrip in the buds. You cannot entirely rid your glads of them at that stage.

A New Spray---Rototox

Tho molasses or brown sugar and Paris Green is probably as effective a spray as any it does make a nasty mess on the plants and is not so convenient to use as a commercial spray. Also as sometimes thrip do not bother till late in the season when some varieties are in bloom and others just in bud and you don't want to spray with a sticky mess I want to recommend **ROTOTOX**. This is an insecticide that is perfectly clean, leaves no sediment on the plants, is harmless to humans and animals but is death to most all insects. I have not used this myself but it has been successfully used by many people I know and in whom I have explicit faith.

ROTOTOX contains **ROTONONE** that acts as a stomach poison and **PYRETHRUM** that is a contact insecticide. Dr. Roark of the Dept. of Agriculture considers Rotonone 15 times as effective as Nicotine and 30 times as effective as Arsenate of Lead. **PENETROL** (oxidized petroleum carbon, sulfonated) acts as a spreader and carrier for the other ingredients.

Whether you want an insecticide for your glads or for any other insects in your garden I would recommend **ROTOTOX**. It is about the most up to date insecticide formula on the market.

Prices are as follows: Postpaid. Terms cash or C. O. D.

Trial oz.	\$.35	1 Quart	\$ 3.00
8 oz.	1.00	1 Gallon.....	10.00
1 Pint	1.75	5 Gallons.....	45.00

ROTOTOX is not sold in stores. Write direct to the manufacturers.

ROTOTOX

813 Yale Street

East Williston, N. Y.

DOES THRIP HURT THE BULBS? No. Do not throw away your bulbs if you have thrip. It is the easiest thing in the world to clean your bulbs of thrip. In fact I think bulbs are sometimes better when the plants are infested with thrip as they act the same as if the spikes were cut off and the strength of the plant allowed to go into the bulbs.

LABELS. In soaking bulbs one of my customers recently put me wise to a label to use on the bags. Take pieces of cardboard cut the proper size, write the names on them, then dip in hot paraffine. He said Bichloride or other disinfectants do not affect the paraffine at all. This makes cheap labels.

BAGS FOR DISINFECTING. For your convenience I am offering bags to disinfect your bulbs in. These will last for several soakings and can be kept two years or more.

Prices postpaid.

Size A to hold up to about 5 large bulbs, 2 cents each.

Size B to hold up to about 25 large bulbs, 3 cents each.

Size C to hold up to about 1 peck of bulbs, 5 cents each.

Size D to hold up to about 1 bushel of bulbs 10 cents each.



Euphorbia Corollata

(FLOWERING SPURGE)

This is a hardy perennial somewhat similar to double Baby's Breath but blossoms later. Blooms through August and September. Just the thing to go with glads or any other kind of flower. Will grow on most any kind of soil, even on dry sand, but good garden soil will make it very much better.

This is a plant that should be grown in every garden and commercial growers should plant it by the hundred. Absolutely hardy and I am sure you will like it.

Order early as the roots should be planted as soon as frost is out of the ground. I have some in storage now for southern growers. Can ship any time before April 15th, but not much later.

Prices are 4 roots for 60 cents or one dozen for \$1.25 prepaid. **We do not sell less than four as they cannot be shipped with the gladiolus bulbs. We have to make a separate shipment.**

100 roots \$6.00 f.o.b. with 50 at the 100 rate.

"And I want to mention Picardy. This was my first year and no words of mine can describe the beauty of it. I have been growing glads for pleasure for about 22 years and thought I had some nice kinds but last summer when I saw it for the first time was actually astonished at the sheer beauty and all around fine qualities it had. It is beyond comparison." —R. MAXFIELD, N. Y.

"I am getting wonderful spikes with six blooms and eight buds from Picardy bulblets. It's great and the admiration of all who see it." —F. R. CATES, N. C.

"It is a beautiful thing. My spike had 20 florets with the lower one 6 7/8 inches across. Think that was fine from second size bulbs." —MRS. CHAS. HAYES, N. Y.

Pirate (Dec) (85-90) A beautiful dark rose red. Lighter in upper throat. Particularly beautiful under artificial light. 5-6 immense wide open blooms out at a time on well arranged strong, straight spikes. Produces quantities of bulblets that germinate well though they do not make so large growth the first year as some other kinds. Makes nice clean high crowned bulbs. Distinctive and one that you should have.

"I feel that Pirate hasn't had the notice it deserves. My friends who prefer the darker ones were very much in love with it." —P. S. GRUBBS, Texas.

Premier Henry (Dec) (80-85) Geranium pink shading to LaFrance pink deep in throat. Moderate diffused blotch of scarlet with carmine center. 5-7 very large round blooms well arranged on straight spike of moderate height. Blooms often six inches across any way you measure them. Florets are flat open, moderately waved and ruffled and have very heavy substance. An exceedingly beautiful variety.

Though this variety sometimes opens from 5-7 blooms at a time occasionally it doesn't open more than four but four is enough of the immense size and wonderful beauty that it has. This variety also is valuable in hybridizing.

Rapture (Dec) (Com) (Prim. Grand.) (95-100) Fine medium light salmon with diffused creamy yellow blotch. Very tall, strong, upright grower and fine propagator. 5-7 good size blooms open at a time. This variety comes in late when flowers are worth money. It stands the fall weather better than most kinds. Should become a good commercial.

People are just beginning to find out that Rapture is a real glad. It was introduced at a lower price so people thought it was just another glad. This year have had some very fine reports on it. I am sure it will become extremely popular.

"If ever a gladiolus ran true to its name it is the Palmer introduction Rapture. Tall, stately, chaste with its upper petals daintily ruffled, glorious blending of color, it is the very quintessence of beauty. A worthy sister of the wondrous Picardy." —W. W. WYMAN, Mass.

"Rapture was exceedingly fine." —FRANK B. REID, Md.

"From 15 bulblets of Rapture I got 14 No. 1 bulbs and one pint of bulblets and ten of them bloomed." —R. B. STUBBLEFIELD, Illinois.

Reverie (Ex) (Com) (Dec) (90) Light safrano pink shading to cream in throat giving a general color effect of clear, clean, light pink and cream. Very fine color with instant appeal. Vigorous healthy plant with tall, strong, straight, regular spikes. 6-8 moderately large well opened lightly frilled blooms out at once. Received the Award of Merit at the 1933 C. G. S. Show, Toronto.

"Reverie has just bloomed with 8 fine blooms and 6 showing color. This is certainly a beauty. Far surpasses Mrs. T. E. Langford. Of the eighteen varieties of Palmer's this one, Reverie, is my favorite." —F. R. CATES, N. C.

Rideau (Dec) (85-90) Unusual and attractive smoky salmon shade. 6-8 blooms out on a moderately tall straight spike. Good propagator.

Though this variety has received less praise than any other Palmer variety I still think it is a good thing. The stem below the flower head is not so long as I would like but when it opens up eight well placed blooms of a pleasing color it is really good.

Rosex (Seedling 26937) (Com) (Dec) (Ex) Light rose sometimes approaching a salmon scarlet. Has an inconspicuous blotch. Really a self color but varies somewhat from light to dark. Under artificial light it becomes nearly a scarlet. Has a very long flower head with usually 8-10 well placed good sized blooms open.

A leading cut flower grower and a well known commission man said they thought Rosex would make a good commercial. I am sure of it. Have had a number of good reports on it this year and know of several shows where it has won in its class though I think no one had more than one bulb of it last year as it was given out as a premium bulb.

I have learned that there were a very few bulbs of a light pink Palmer seedling mixed with my Rosex last season. If anyone got a light pink instead of a rose shade and will drop me a line I will be glad to replace it.

"It is a lovely thing as you say and distinctive." —P.S. GRUBBS, Texas.

"The special premium bulb Rosex was wonderful. Had 11 open and 22 buds. Never saw but one to equal it, a W. H. Phipps." —A. L. TROLLEY, Michigan.

"Rosex won a first ribbon in our show and I am very much pleased with the bloom." —W. C. WRIGHT, Minn.

Spray of Gold (Com) (Dec) (Prim. Grand.) (60-65) Deep clear, fine yellow, darker than Golden Dream and much more beautiful. 4-5 good size blooms open. Somewhat ruffled. Very fine color and early. Beautiful decorative variety.

Spray of Gold is one of the best landscape varieties I ever saw. If you want a corner or clump of yellow in your garden get one or more of my dollar specials of this variety and you will have a beautiful showing of yellow for a long time.

Have had a number of fine reports on this one.

"Since seeing Spray of Gold the neighbors fell in love with yellow all over again." —MRS. GEO. VAWTER, Ohio.

Wasaga (Dec) (Prim. Grand.) (90-95) A glowing capucine buff with wide open somewhat ruffled blooms. Color is clear, without throat markings or flecking. Wonderfully beautiful. 4-5 open though occasionally opens as many as 6 or 7. First class certificate A. G. S. Cleveland 1931.

Wasaga does not make so large a spike or have so many blooms open at a time as Picardy but the color is better. In fact I can't conceive of a more beautiful flower than Wasaga. Many people this past season have just tumbled to the fact that Wasaga is about the most exquisitely beautiful gladiolus in existence. It does better in cool weather than in extreme warm weather. It doesn't burn but in extreme hot weather it is better when opened inside. Have had many fine reports on it this year.

"Of the varieties I had I think Wasaga was the most beautiful. It was a real artist's flower. Its color is quite different from anything else in the glad line." —PERCY S. TODD, England.

New Introductions for 1935

Beacon (Sdlg. 30094) Very tall, straight spikes with 8-10 well placed blooms open at once. Blooms medium size, well open, waved and moderately ruffled. Striking color effect. Clear bright rose doree-scarlet with pronounced cream blotch. 75-80 days to bloom. Winning seedling in the Decorative Class at the 1934 C. G. S. Exhibition, Hamilton.

I am sure that Beacon will become a very popular exhibition and decorative variety. Opens a large number at a time and the color is just what everyone wants.

Sahara (Sdlg. 30283) Tall, always straight spikes with formal bloom arrangement and 8-10 out at once. Blooms medium size, well open. Color unusual light russet-vinaceous, lightly flecked purplish vinaceous, mild blotch of cream lightly peppered russet-vinaceous and with scarlet pencilling. 90 days to bloom.

This variety stands the heat better than anything I have ever seen. On the hottest days of an extremely hot summer which we had this past season it stood up perfectly straight and never even wilted. Should become one of the best varieties for hot climates.

Vagabond Prince (Sdlg. 30111) Color unusual iridescent garnet-brown, lighter in upper throat, and with small blotch of glowing scarlet-red on lip petal. 8-10 well placed blooms out at once on strong, straight spike.

To me this is one of the prettiest and most unusual varieties I have seen. I am very sure you will like it. It is a variety that stands out in any company.

Prices of the above three varieties are \$10.00 each for any size. \$10.00 each or one bulb each of the three for \$25.00. No bulblets this year.

No discount to anyone on the above three varieties and no exchanges.

I feel that these introductions of this year are among the very best Mr. Palmer has ever introduced.

Two More Introductions

chosen from a seedling collection of the past two years. Have had so many good reports on these that I am introducing them this year under the names that were originally given them.

Evensong (Sdlg. H6033) Large ruffled smoky with creamy blotch. Several open. A beautiful variety. Evensong was shown at the New York State Show at Geneva several years ago and created a sensation. Was considered by everyone as an improved Mother Machree. Have had many fine reports on this variety.

Symphony (Sdlg. H6142) Light rosy pink with clear cream white blotch. This is about the color of Coryphee but never crooks. Medium size flowers. 6-8 or more open at a time. Should make a fine commercial and should be very popular with people who like Coryphee. Have also had many good reports on this one.

The price of above two varieties is \$.50 each for large bulbs or 10 for \$4.00. Medium size \$.25 each or 10 for \$2.00.

Palmer Seedling Collection

Out of the thousands of seedlings that Mr. Palmer grows there are many very choice ones that can't possibly be introduced. Wishing to introduce only three or four named varieties a year and not in wholesale quantities as some growers do it was a problem what to do with these choice seedlings. Sometimes it is difficult to decide which ones to introduce under name and which not to. Many of these seedlings were so beautiful that it seemed a crime to destroy them and deprive the people of their beauty. So two years ago we selected out twenty-five of the best and introduced them as a collection labeling them only by number. Some of these seedlings had been named originally with the intention of introducing them but as better ones came along we used some of these named ones in the collection but just gave them the seedling number. We have had many complimentary letters in regard to these seedlings. Many people considering some of these seedlings as even better than those we have put out under name. Two of these have been selected out this year and are being introduced under the names that were originally given them.

I no longer sell the collection as a collection but am listing certain numbers as follows. The other numbers that are not listed here cannot be obtained. The price of these is the same as for the past two years. Large bulbs, \$.20 each or 10 for \$1.50. Medium size, \$.10 or 10 for \$.80.

BC25084. Tall orange. Some consider it the best orange on the market.

26121. Large salmon P. G. with cream throat. Very beautiful.

26895. Immense smoky. Everyone likes this.

26892. Tall straight salmon rose. Several open.

H6141. Large early light pink with cream throat. Fine cut flower.

27657. Light buff pink. A man in California said that in his hot locality that this did better than Picardy. Have been working up a stock for myself for cut flowers.

1935 Seedling Collection

For this year we are introducing an entirely new set consisting of twenty seedlings for \$5.00. Some of these have also been named with the intention of introducing them but have put them into this collection under number instead. One of these formerly known as Royal York won a prize at the Canadian National Exhibition. Think this set as a whole is an improvement over the previous set and of course is entirely different. There are some fine seedlings in this lot. In the previous collection, as I said before, two varieties have been taken out and introduced under name. Possibly some in this collection will also be selected out later. The time to get in on this set is now. I am sure you will like it.

Price \$5.00 for the set of twenty seedlings. None sold separately this year.

A NEW PALMER VARIETY FREE MYWAG

(Abbreviation for "My What A Glad")

Mywag is a light tho vivid light salmon shading to white throat with a large very brilliant scarlet blotch. Immense six inch round florets and a good strong grower. This has drawn a lot of attention at some of the shows the past two or three years. Everyone who has seen it in my garden has enthused at its beauty and showiness. They always spot it among other varieties and exclaim, "**My What a Glad.**" Hence its name. I have never seen but one person who did not like it. One man did not like blotched varieties at all so did not enthuse over **Mywag**. It opens only four or five at a time but that is enough for such immense blooms.

MYWAG NOT FOR SALE

The only way to secure a bulb of this is to send in a retail order with at least \$15 cash. No bulblets will be sold or given away to anyone. And only one bulb to a customer. The stock is limited and probably will not last thru the season. So to be sure of getting a bulb of **Mywag** send in your orders early. I consider the value of **Mywag** to be \$10 and next season I shall not list it at less than \$4 each.



Mr. and Mrs. Palmer in their Garden

"It is very seldom that I take the time at this time of year to thank a fellow for what he sold me. But you sure did put in a few varieties in that 1,000 mixed bulbs I got from you this spring that hit us in the eye." —ROBERT GUSA, Wis.

E. C. Vick (K) (Dec) (75) Large ruffled deep tyrian rose red. Darker red feather on lower petals. 6-8 open. Strong healthy grower. Very nice.

Edith Mason (VAUGHAN) (Ex) (Com) (90-100) Large light pink with white throat and white mid-ribs. Strong grower. A really beautiful variety.

Edith Robson (BROWN) (Ex) (Com) Light salmon rose with reddish blotch. Very tall, strong growing plant with huge spike of bloom. One of the very best varieties originated in Australia. 10-12 well placed blooms open.

In comparison with Betty Nuthall, which blooms at about the same time, the color of Edith Robson is entirely different but as good. The stems are just as tall and stiff but more slender. Flowers are larger. Opens many more at a time.

I believe this variety is a real comer both for exhibition and commercial purposes. As it is late it would have to be started early for the shows but as a commercial it blooms just at the time there is a demand for flowers. I look to see it become one of the most popular varieties.

Emblem (K) (Dec) (77) Cherry rose with dark red markings on all six petals. The large red blotch on the lower petals is bordered by a deeper red and this in turn by a soft yellow. Very distinctive and pretty.

Emile Aubrun (LEMOINE) (Ex) (Dec) (85-90) Coppery bronze often overlaid with slate. Large cherry red blotch. 8-12 blooms open. Under good culture this is magnificent but like many of the Australian varieties needs good culture to get long spikes. Has been used extensively in hybridizing both in Australia and America.

Emma (VELTHUYS) (Ex) (Dec) Salmon with reddish blotch. Long spike with 8 or more large well placed blooms open. Very showy. I am sure you will like it.

Erica Morini (PF) (Dec) Orange red. Six or more large slightly ruffled blooms open. Inclined to have stubby spikes.

Escort See page 12.

Esme Desailly (ERREY) (Ex) (Dec) Salmon pink with reddish lines on cream tinted lower petals. Eight or more well placed medium size blooms open. A good exhibition variety.

Eugene Lefebvre (LEMOINE) (Dec) Bright rose pink with amaranth purple blotch bordered cream. Several blooms open. Very popular.

Excellence (K) (Com) (Dec) (69) Very large light red, and early. The earliest large red and the largest early red that I know of. A glowing color. About the only fault of this variety is that it opens only three or four blooms at a time but they are so large, such a bright color and so early that it should make a good early commercial. I know of no other good red blooming so early.

Fata Morgana (PF) (Ex) (Dec) (75-80) Early peach blossom shading to amber in the throat. Strong grower and a nice color but inclined to have poor placement.

"Your collection of bulbs have always been a source of great pleasure to me. The colors exquisite and the bulbs so sturdy." —NETTIE K. HALL, Conn.

"I have had very good success with the stock purchased from you during the last three years. Everything has been just as represented."

—O. E. HAWLEY, Michigan.

Gate of Heaven (PF) (Ex) (Com) (Dec) Wonderful ruffled clear deep yellow. Entirely different from any other yellow on the market and very beautiful. A real step in advance in the yellow section. Several beautiful good size blooms open. Medium height. Though this variety is not so tall as some it is not really short and I consider it one of the very best yellows.

Gay Hussar (SAL) (Com) (Dec) (80-90) Salmon orange shading to yellow throat and scarlet throat markings. Six or more blooms open. Moderate height. A nice cut flower.

Giant Nymph (COLEMAN) (Com) (Ex) (80-85) Large light salmon rose. Good color but often flakes. Considered one of the very best commercial and exhibition pinks.

G. J. McKay (WHITELEY) (Dec) Large ruffled salmon red with darker blotches. A very beautiful flower but only four or five open.

Gloriana (BETSCHER) (Ex) (Com) (85-90) Golden salmon, clear yellow throat. Blooms do not open up wide and not always well placed but beautiful color and can be grown wonderfully well. One of the best commercials.

Golden Anniversary (K) (Dec) (101) Fawn yellow suffused with blush pink. Large red blotch. Finely ruffled. 4-5 open. A very distinct and beautiful variety. Strong grower.

Golden Brown (K) (Dec) (72) Mahogany red shading to brown in the center. The nearest to a brown color in gladiolus. Medium size. Novel coloring.

Golden Cup Palmer strain. See page 21.

Golden Dream (GROFF) (Ex) (Com) (90-95) Beautiful clear deep medium size yellow with 7-10 open. Tall strong grower. Fine for exhibition or nearby commercial use. Is used largely as a commercial cut flower but does not open up well after long distance shipping.

Golden Flame (KINGSLEY) (Com) (Dec) Dark orange salmon with yellowish lip and mid-ribs. Orange feather. Tall, straight spike. 6-8 blooms of heavy substance open at a time. Does not wilt in the hottest sun. Sometimes placement is none too good.

Gorgeous (K) (Dec) (80) Beautiful rose red with darker velvety red throat blotch. Showy and beautiful.

Grand Slam (SAL) (Dec) Orange salmon. Sport of Pfitzer's Triumph. Not so large as Triumph. Stems much taller but often crook. Strong grower.

H. C. Goehl (FISCHER) (Com) (Dec) Large white flushed pink with a large dark crimson blotch. Very pretty.

Helen Jacobs (SAL) (Dec) Salmon pink and lower petals cream colored with crimson stiplings. 6-8 medium size flowers open. Very strong and vigorous.

Helen Wills (SAL) (Com) (85-90) Tall, large, creamy white with pale yellow throat. 6-8 open. A nice thing but a rather slow propagator.

* "Just a note to tell you Picardy from No. 7 bulbs was wonderful. 5 inch blooms and 6 open in Texas."

—J. E. ODOM, Texas.

"Box of bulbs received tonight well packed and in perfect condition. They checked out with your usual generosity in extras for which I thank you. Bulbs were all of nice uniform size and I am very much pleased with them." —F. P. SMALL, N. J.

Hercules (CROW) (Dec) Orange buds opening up into a distinctive shade of bronzy orange or deep buff. Very tall, strong, massive grower with long flower heads. 4-5 open at a time though has been known to open as high as ten. Extremely popular with garden visitors. Fair propagator. Always in big demand.

Hillbilly See page 12.

Hinemoa (DONEY) (Ex) (Dec) (100-105) Large deep rose pink flaked chocolate brown. Very odd and bizarre but attractive.

Imperial Chimes (K) (Dec) (66) Very dark velvety crimson black. Several medium size blooms open. Very early and one of the best very dark varieties.

Inspiration Palmer strain. See page 21.

Janet (CROW) (Prim. Grand) (80-85) Smoky gray shaded deep peach pink. 4-5 large velvety blooms open at a time. A very beautiful variety.

Joerg's White (JOERG) (Ex) (Com) Immense creamy white. Several open. Rather short stem and slow propagator but when well grown a beautiful variety.

Joh. S. Bach (PF) (Ex) (Dec) Orange salmon, lighter in throat, with white mid-ribs. Medium height plant but long bloom spike with 8-12 large blooms open. One of Pfitzer's best. Withdrawn for increase.

Jonkheer Van Tets (PF) (Ex) (Com) (90-95) Very large pure white with seven or eight blooms open at a time. Strong grower and considered by some to be the best white. Not a fast propagator.

Jonquil Palmer strain. See page 21.

Jubilee (KEMP) (Dec) Immense rosy lavender. Inclined to be soft but it makes such a nice large spike it is always popular.

King Arthur (ARENIUS) (Dec) Immense ruffled lavender of a distinctive shape and color. When well grown is a very beautiful thing. Only four or five blooms open but they are very large. There is nothing else like this. Becoming increasingly popular. I am sure you will like it.

King George (Mair) (Ex) (Com) (85-90) Large red with white throat. Tall plant with long spike of bloom. Very showy.

King of Oranges (K) (Prim. Grand) (Landscape) (Dec) (79) Large orange saffron. Stems rather short and blooms not always well arranged but very showy.

King of Reds (K) (Dec) (92) Large red with darker markings.

Lady Eaton Palmer strain. See page 22.

"The Betty Nuthall are blooming now and they are the finest I have ever grown or seen. The bulbs I received from you were O. K. in every respect."

—L. E. JOYNER, Penn.

"I'm very grateful to you for the fine order of glad bulbs received from you last spring and the splendid lot of extras you included. I've enjoyed good results in spite of the dry season."
—J. E. BATTRAM, N. Y.

Lady Winsome (R. M. PALMER) (Dec) (90-95) An exquisite new decorative variety of large size and very strong growth. Luminous rosy-salmon with small carmine throat marking. Buds are a lovely salmon-buff and open with rolled petals. Never streaks. Fine in every way except that in hot weather it may need staking as it has a large heavy flower head and grows very tall. Good propagator. Popular with garden visitors.

La Paloma (DUSINBERRE) (Com) (Dec) (75-80) Large bright vivid orange of heavy texture. A new and distinctive shade and one of the best orange varieties. 4-6 open. Second early.

Laughing Water (FISCHER) (Com) Salmon pink. Long spike with 6-8 or more open. It is said to be a fine forcing variety. A nice commercial.

Lavender Bride (BRIDE) (Dec) (70-80) Very large smoky lavender. Very well liked but stems inclined to be weak.

Leander (ERREY) (Ex) Bright orange salmon with purplish magneta blotch. Long spike with 8-10 or more open at once. Wonderfully showy and "different." Fades some in sun. Withdrawn to increase stock.

Lindesta Palmer strain. See page 22.

Littlejohn (STEVENS) (Dec) (Com) Deep rose pink with a soft feather of rosolane purple on lower petals. Six or more open. A good one in this color. About the best one of its color to use in place of E. J. Shaylor which most growers have discarded now.

Loyalty (AUSTIN) (Com) (Dec) Large clear deep yellow. Several open. Very strong, husky plant. Some people consider this the best commercial yellow. I think it is as good as any.

Lucifer (ERREY) (Ex) (Dec) Bright orange with amaranth crimson blotch. Long spike with nine or ten open at once. This is a very showy variety and I believe will become very popular. Stem is a little weak but for exhibition or the home garden it is a fine thing. One of Errey's best.

Magna Blanca (SAL) (Dec) Large ivory white with creamy yellow throat. Very tall and makes a beautiful spike of bloom but stems are inclined to be weak.

Maid of Orleans (PF) (Ex) (Com) (90-95) Beautiful milky white with cream throat. Very tall grower with eight or more perfectly placed flowers open at a time. Though this variety doesn't make so large flowers as Mammoth White or some of the newer whites I consider it the best all around white for commercial purposes. I am not selling bulblets this year as I sincerely believe that when the growers get wise to this variety that the demand will be tremendous. A good propagator.

Mammoth White (PF) (Ex) (Dec) Immense pure white with sometimes just a hint of cream. 5-6 or more immense flowers open. Often over six inches across. Wonderful exhibition variety and becoming increasingly popular as a commercial for nearby use. Does not stand long distance shipping but for local use is one of the very best commercials. Very outstanding.

"The bulbs I received last fall and spring were fine. They produced wonderful spikes and the No. 7 Picardy bulbs all blossomed."
—L. E. ROUSSEAU, Vt.

"I wish to tell you that our gladiolus we purchased from you last season were most successful. I have never raised flowers that I enjoyed so much which is saying a great deal."

—MRS. OLIVER H. BELL, Minn.

Margaret Fulton (OGRODNICHEK) (Com) (Dec) Clear rich soft dark salmon. Entirely different color from any other variety I know. 6-8 perfectly placed medium size cup shape blooms open. Think it will become immensely popular.

Margaret Peter (ERREY) (Ex) (Dec) Early mid-season. White flushed pink with large crimson blotch. 6-8 open. One of the very best in its color.

Marjorie Morrill (KINYON) Light pink sport of Jenny Lind. Very pretty. Won at the Boston show.

Marmora (ERREY) (Ex) (Com) Seedling of Emile Aubrun. Practically the same in habit and growth and in every way except in color tho' a somewhat stronger grower. Color is a wonderful gray with pale purplish blotch. This is sometimes called a smoky but is more of a gray. 8-10 perfectly placed blooms open. This is one of the finest varieties on the market. Will be in immense demand. Very fine used with yellow or white. Should be used much more by florists.

Mary Elizabeth (DR. STEVENS) (Com) (Dec) (90-95) Medium size ruffled white with yellow throat. 6-9 open on a long spike. Beautifully ruffled. Not so large as some but one of the most beautiful. Made a killing at the last Boston Show. Sure to be popular.

Mary Frey (GELSER) (Com) (Dec) (75-80) Lavender pink somewhat similar in color to Mrs. Peters but a softer shade and early. A fine commercial for early bloom. Opens 8 or more at a time.

Mauve Magic (ARENIUS) (Ex) (Dec) New very tall mauve lavender P. G. Opens 8 large blooms at a time.

May Davidson (J. J. BROWN) (Ex) (Dec) Soft rose with deeper shadings and crimson blotch. Petals edged steel blue. 8-10 open. A grower in Canada who has all the newest and best varieties considers this one of the best things he has.

Mibloom (STEVENS) (Com) (Prim. Grand) One of the very earliest. Large white with scarlet blotch. Upper petals slightly tinted red like a reflection from the blotch. 5-6 open. Some claim this variety has an odor but I have never been able to detect it. I like it. Valuable as an early cut flower.

Mildred Louise (WENTWORTH) (Ex) (Dec) (Com) (76) Originators description: "Prevailing color a pure strawberry pink self on upper petals with lower petals tipped strawberry pink, blending to pinard yellow in the throat with faint spectrum red pencilings on midrib quite deep in the throat. Anthers delphinium blue." (Ridgeway color chart.)

This variety looks like a comer. Distinctive unusual shade. Nice grower and should become a good commercial.

Minuet (COLEMAN) (Ex) (Com) (Dec) (80-85) Wonderfully beautiful clear light pinkish lavender. 5-6 and sometimes 7-9 heavily textured blooms open at once. Heavy foliage and fine grower though the bulblets need plenty of moisture to germinate them. This is the lavender by which all other lavenders are judged. Personally I consider this the finest light lavender in existence and probably as good an all round variety as there is of any color.

"Have had such wonderful luck with your glads that my better judgment told me to take no chances with other growers."

—JOS. E. PAULY, N. J.

"I have found you generous with extra and your selection the best. I want to thank you for the wonderful bulbs you have sent me in the past and have had great success with them. Have never seen their equal."

—E. H. HATCH, Mass.

Miss Bloomington (K) (Com) (Dec) (67) Very early tall light yellow. Six or more good size well placed blooms open at a time. Growers who are looking for something for the early cut flower market should try this. It looks to me like one of the very best yellows for commercial purposes and is extremely early.

Miss Greeley (BRIGGS) (Com) (Dec) Somewhat similar to W. H. Phipps. Though a darker shade of pink and though it probably will not make so long spikes as Phipps at its best it will average fully as good. Its main feature is that it blooms three weeks earlier than Phipps. Will be valuable on that account.

Miss New Zealand (JULYAN) (Ex) (Dec) Apricot salmon suffused with rose. Distinctive peach colored blotch in throat. This variety is the first of a new giant strain. Opens eight or more immense well placed blooms on a long spike. Has been grown with eight inch flowers. Have seen it with six inch blooms under ordinary culture. This variety is a real break in growth and size. Will no doubt become immensely popular as soon as stock is available.

Moondara (ERREY) (Ex) Deep salmon with orange crimson blotch bordered with yellow. Long spike with eight or more blooms open.

Moon Maiden (STEVES) (Dec) Pale blush lavender pink shading to creamy yellow in throat. Does not flake. 6-8 large blooms open at a time on a tall spike.

Won first prize as basket of glads at Vancouver Exhibition in 1932 in stiff competition.

Morocco (PF) (Ex) Glistening deep red. About the color of Persia tho a bit lighter but larger and better in every way. 6-8 good size blooms open.

Mother Machree (STEVENS) (Ex) (Dec) (95-100) Vinaceous lavender overlaid toward the edges of the petals with salmon pink. Difficult to describe. When opened outdoors has a rather dull appearance but when cut in the bud and opened in the house the lavender fades out somewhat and flower is much more beautiful. One of the most popular smokies. Makes a tall plant with 8-12 blooms open. Fine for exhibition.

Mrs. Anna Pfitzer (PF) (Ex) (Dec) (85-90) Tall creamy white with long spike of well placed flowers which are greenish in the bud. 8-12 open at a time. A very nice thing but slow propagator.

Mrs. Chas. A. Stevens (K) (Dec) (72) Mallow purple flaked with deep rhodamine purple. An odd but beautiful and distinctive color that is liked by those who favor the purplish shades. Makes a nice spike.

Mrs. E. J. Heaton (HEATON) (Ex) (Com) Deep strawberry pink with a light yellow throat blotch. 8-10 medium size well placed blooms open. Stands the heat and weather unusually well. A good propagator and I think will become a very valuable variety.

Mrs. F. C. Hornberger (HORN) (Ex) (Com) Very late Large clear white with 6-8 open.

"The bulbs of glads which I bought of you gave such a fine display of blossoms that friends asked where I got them. Some had bought bulbs whose blossoms were such a failure that they threw away the bulbs. I want them to try your bulbs."

—T. E. WEEKS, Ohio.

"Your shipment of bulbs came to me last Saturday. They are very fine looking and your count is really too generous: I am greatly pleased with them."

—HARRY H. BROWN, Md.

Mrs. F. E. Bennett (BOYNTON) (Dec) White with small purple blotch. Seems to be popular. Good.

Mrs. Gertrude Pfitzer (PF) (Dec) (70-75) Early light grayish blue with violet center. Nice large spike and a good grower.

Mrs. Leon Douglas (D) (Ex) (Com) (Dec) (95-100) Salmon rose striped with flame and scarlet. One of the tallest, largest and showiest glads in existence with six or more immense flowers open at a time. According to present day standards I wouldn't consider this beautiful but it is very showy and still liked by many people. Can be grown six feet or more tall.

Mrs. P. W. Sisson (COLEMAN) (Ex) (Com) (90-95) Beautiful creamy light pink. Six or more large blooms open at a time. Has been used extensively as a commercial though some of the wholesalers say that it is a little inclined to be soft. Certainly makes a nice cut flower for nearby use.

Mrs. S. A. Errey (ERREY) (Ex) (Dec) (85-90) Very large orange salmon with orange red blotch. Eight or ten immense blooms open at a time. It should be cut in the bud and opened in the house as it fades somewhat in the sun.

Mrs. T. E. Langford (CROW) (Ex) (Com) (90-95) Exquisite apple blossom pink with touch of canary in throat. Color somewhat like Mrs. Dr. Norton. Tall, always straight with 8-10 good size flowers open.

This variety is very fine both as an exhibition sort and as a commercial. In the bud it is a very beautiful thing and when shipped carries in beautiful shape and opens up well to the tip. When stock is available this will be one of the most popular cut flower varieties on the market. I consider Mrs. Langford as one of the really valuable coming commercials. All growers who want to grow the best of the new varieties should stock up with Mrs. Langford.

It is also a very valuable variety in hybridizing.

Mrs. Van Konynenburg (PF) (Com) (Dec) (75-80) Tall, clear medium light blue. 5-6 open. Very popular.

Nerissa (ERREY) (Ex) Salmon shaded lavender. Orange salmon markings on lower petals. 8-10 open. Good exhibition variety. Very pretty.

Netherland Prince (STEVENS) (Ex) (Dec) Bright salmon. Very tall, strong grower with 6-8 very large blooms open at a time. Blooms often from six to seven inches across. Very showy.

Nyora (ERREY) (Ex) (Dec) Rosy salmon with crimson blotch. 6-8 open. Very showy variety.

"In all of my dealings with gladiolus growers in the past six years you have been the fairest and most generous and the stock that I received from you did better with me than that which I purchased from any other grower."

—S. L. STOLBA, IOWA

"I have been growing your bulbs for three years and I find them the best on the market. They are just as you claim them to be. I have some of the best."

—WM. CORTER, R. I.

October (K) (Dec) (85) Very large beautiful deep old rose flaked darker. A fine variety that is liked by everyone who sees it.

Odalisque (ERREY) (Ex) Large creamy white with scarlet blotches. Tall, strong grower with 7-10 blooms open. One of the very finest blotched varieties. Has lots of class.

Olive Goodrich (GOODRICH) (Com) White tinted light pink shading darker at the edges. Pale yellow throat. Six or more open. Very tall, strong growing plant. One of the best commercial varieties.

Oneta (KEMP) (Dec) Fine, large orange Prim. Grand. Tall, straight grower. One of the best orange varieties.

Orange Butterfly (SAL) (Prim.) (Ex) (Dec) (75-80) Bright orange of fine substance. 10 or 12 well arranged medium size flowers open at a time. A spike of bloom looks like a flock of butterflies in flight. One of my favorites. Crooks sometimes.

Orange Lady (STEVES) (Dec) Clear light orange suffused pink. Deep yellow on lower petals. 8-10 large blooms open at a time. Very early. *Award of Merit* at Southport Gladiolus Show in England, 1932. Only one bulb was sent over.

Orange Lily (K) (Dec) (65) Large somewhat ruffled orange chrome yellow P. G. Very early and should be valuable as a cut flower variety on that account. Blooms about as early as anything on my place.

Orange Princess (DEGROOT) (Dec) Beautiful salmon orange with small crimson feather. Somewhat ruffled. Very good propagator.

Orange Queen (PF) (Ex) (Com) (Dec) (Prim. Grand) (75-80) Beautiful light orange, deeper at edge of petals, orange red lines in the throat. Tall, slender stems. One of the best commercial orange varieties.

Orange Sovereign (STEVES) (Dec) Early light orange buff suffused salmon toward tip of petals. Clear yellow throat. 8-10 large slightly ruffled blooms open on tall, straight spike. Received an Award of Merit in England. One of Steves best.

Orange Wonder (KEMP) (Com) (Dec) Late. Large dark orange on tall, strong, always straight spike. One of the best oranges.

Orlando (ERREY) (Ex) Rosy salmon. Many blooms open.

Our Selection (AUSTRALIA) (Ex) Salmon red flaked with deeper shade and usually marked on the outer part of the flower with slate flakings. Lower petals have a blotch of cerise bordered with cream. 8-10 well placed medium large blooms open. Good exhibition variety and when opened inside so that the slate flaking fades out it makes a nice cut flower.

Pallas (ERREY) (Dec) Early. Very pretty light lavender self color. Six or more open.

"Of the extras sent I believe I liked Rapture the best for coloring. All made immense spikes."

—JOS. E. DELATUSH, N. J.

"The bulbs arrived in good condition and I thank you for the extras. You must be one of the Lord's favorites, as He 'loveth a cheerful giver'."

—MRS. S. B. KNOX, Mass.

Patricia Carter (K) (Prim. Grand) (71) Clear light shrimp pink. One of the most popular primis.

Paul Pfitzer (PF) (Com) (Dec) (75-80) Beautiful medium early reddish purple with velvety texture. Nice easy grower.

Pearl of California (KINGSLEY) (Ex) (Dec) (85-90) Large LaFrance pink. 6-8 blooms open.

Peerless Pink (DEGROOT) (Dec) Deep salmon self color. 5-6 very large blooms open. Has been grown eight inches across.

Pelegrina (PF) (Ex) (Dec) Early. Large deep blue. Six or more well placed blooms open with all the rest of the buds on the spike showing color which gives the appearance of a very large spike of bloom. To my mind this is the most beautiful dark blue glad I have ever seen. The stem is a little inclined to be weak and so often doesn't hold the flowers up as it should. But in spite of this I believe it will become very popular.

Persia (NAT. BULB Co.) (Dec) (85-90) Very deep red. Five or six open. Not so large as Morocco and to my mind not so good though some people prefer it.

Pfitzer's Triumph (PF) (Com) (Dec) (85-90) Giant reddish salmon orange with bright reddish blotch. One of the most popular salmon pinks.

Philomela (STEVES) (Dec) Salmon flaked orange scarlet. Large yellow blotch on lower petals. 9-10 large blooms open. Sunproof.

Picardy Palmer strain. See page 22.

Pinnacle (ARENIUS) (Ex) A new rose pink opening 10-12 medium size blooms at a time on a tall, straight spike. Very good grower and propagator. Think you will like this.

Pirate Palmer strain. See page 23.

Polar Ice (PF) (Com) (Dec) Medium to large size white with several open on a long flower head. The stem below the flower head is rather short. Have heard fine reports on this variety. Early.

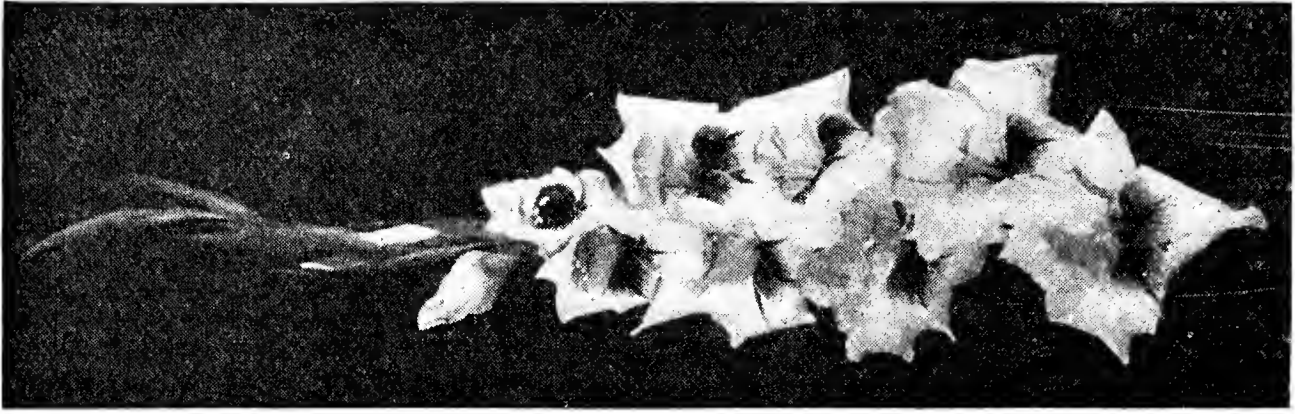
Pond Lily (K) (Dec) (80) Large deep rose pink. Deeper in throat. Six or more open. Beautiful and distinctive rose variety. Does not crook but in warm weather may need staking.

Premier Henry Palmer strain. See page 23.

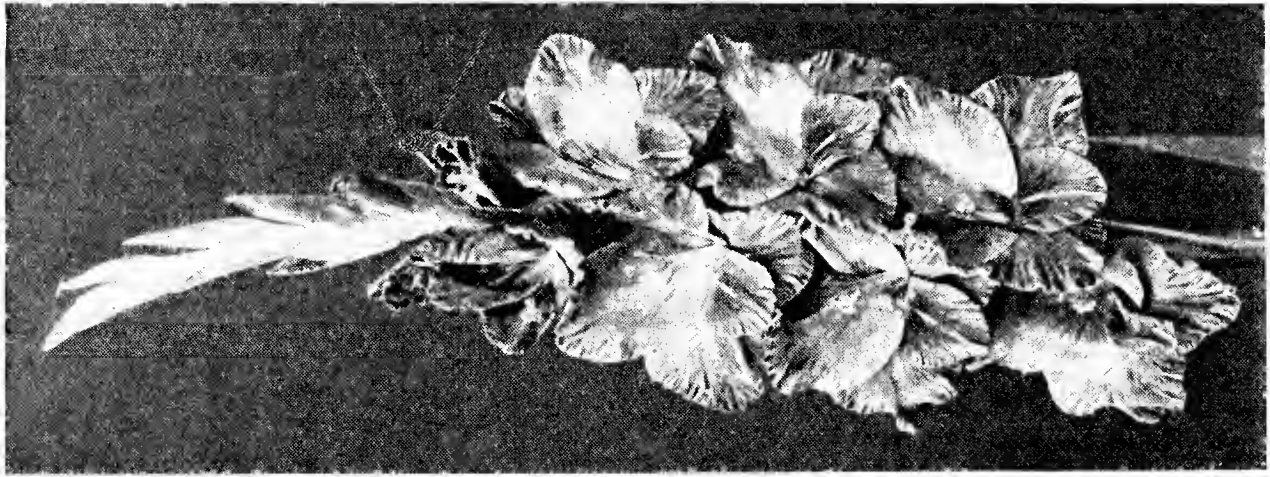
Pres. Lincoln (K) (Dec) (83) Pale lavender blue flaked darker. Purplish blotch on lower petals. Rather odd and distinct. Medium size.

"Two or three years ago as you know I bought a set of glads of you which I saw advertised in one of the papers. The bulbs did so well for me that the next year I sent for quite a collection of mostly No. 6 bulbs which all without one exception gave me splendid spikes of bloom. The increase was unbelievable. I was more than pleased. Your bulbs seem to be full of pep and power."

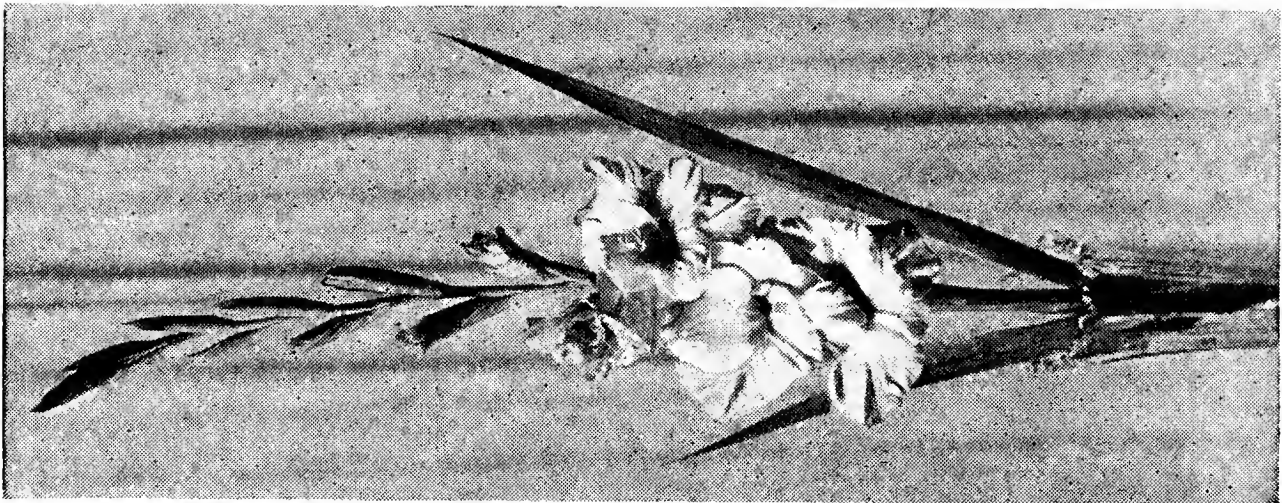
—REV. R. L. SMITH, N. Y.



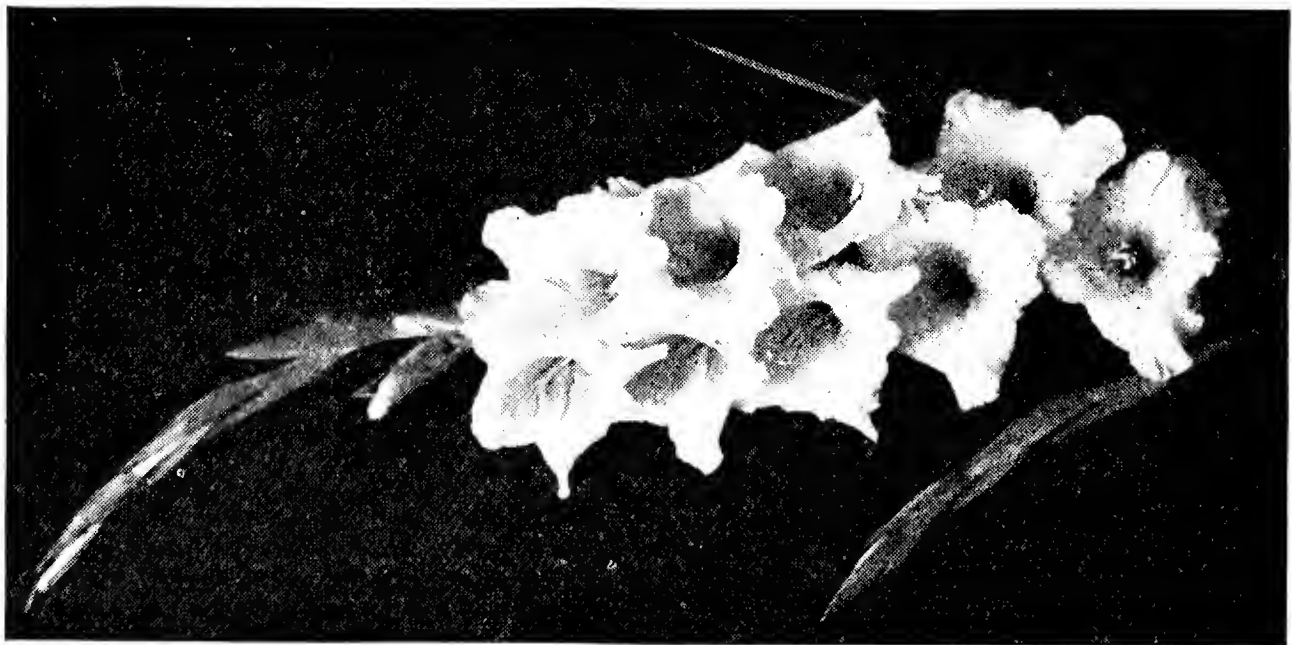
Bleeding Heart



Sultan



Premier Henry



Mary Elizabeth

"That Mammoth White was of tremendous size both in height and size of florets. And was it white! It has been gone for a week and I can still see it."

—DR. W. E. GRANT, Pa.

Pride of Wanakah (CRISWELL) (Ex) (Com) (90-95) Large beautiful deep lavender rose. When well grown is magnificent but may need good culture. A good commercial.

Primrose Princess (SAL) (Ex) (Dec) (95-100) Tall clear primrose yellow, lower petals darker. Long spike of well placed blooms. One of the best light yellows.

Princess Yaada (STEVES) (Dec) Apricot tinted pink shading to light yellow in throat. 8-9 blooms 4½-5 inches across open at a time. Looks like a Gloriana seedling, blooms being shaped somewhat like it tho larger. Color is really fine, delicate and sometimes almost translucent.

Prof. Van Slogteren (ALKEMADE) (Dec) A very beautiful soft rose color. Nothing else just like it. You should try this one.

Purple Queen (K) (Dec) (75) Ruffled deep violet purple. Good.

Queen Helen II (SAL) Grenadine pink with light yellow blotch, carmine feathering deep in throat. A new pink that looks like a real comer as a commercial. One of the best new things introduced this past season.

Ramasses (STEVENS) (Ex) (Dec) (79) Extremely tall plant with immense heavily ruffled purple flowers. Several open at a time. Is somewhat hooded and for that reason some people don't like it. I consider it a very nice variety.

Rapture Palmer strain. See page 23.

Ravenna (K) (Dec) (73) Deep ruby red with somewhat darker throat. Six or more open on a tall plant. Good size. Early. One of the best dark varieties.

Reah (SAL) (Dec) (99) An unusual shade called mallow purple shading to mallow pink. Almost black blotch in the throat. Velvety, fine and distinct. Entirely different from other colors. A good dark variety.

Red Lory (ERREY) (Ex) (95-100) Carmine rose with large purplish red blotches. Large flowers and nearly the whole spike open at once. Needs good culture to get long spikes. One of the most gorgeously magnificent varieties grown.

Red Phipps (BRIGGS) (Ex) (Dec) (Com) Late midseason light red. Similar in habit to W. H. Phipps but spikes average longer. This looks like a good coming commercial.

"Regardless of their neglect I grew the finest glads ever seen in this community. Picardy, Lindesta, Rosex, Rapture, Bagdad, Wurtembergia, Stuttgardia, Maid of Orleans, Mother Machree, Marmora, Betty Nuthall, Janet and numerous others were the prettiest and finest seen in Meridian this year. While I bought and grew some few bulbs from other gladiolus dealers they could not compare with your bulbs any more than a candle light could shine beside a 75 watt electric bulb. I am convinced without a doubt that you have the finest selection of varieties of gladiolus of any dealer in the United States and from now on I can be counted on as one of your regular customers."

—WILLIAM A. WILDER, Miss.

"I received the bulbs in fine shape and was more than pleased with your selection of extras. You are more generous than any firm I have ever dealt with."

—MRS. I. S. MURPHY, N. Y.

Red Ruffles (ARENIUS) (Dec) Medium dark red with eight wide open heavily ruffled flowers open at a time on a long spike. Mid-season. Looks like a fine thing.

Red Splendor (K) (Com) (Dec) (77) Brilliant light red. Somewhat ruffled. Lower petals rich velvety darker shade.

Reverie Palmer strain. See page 23.

Rideau Palmer strain. See page 23.

Roderick Dhu (STEPHEN) (Ex) (Dec) Immense rose pink. Something like Mrs. Pendleton but a much softer shade and more beautiful. You can easily get six inch flowers on this variety.

Roi Albert (LEMOINE) (Dec) (91) Smoky coppery salmon. 5-6 good size blooms open. Soft and very pleasing color. One of the very best smokies and should be grown much more extensively than it has been. Price is down now to where you can afford to buy it.

Roi Soleil (VELTHUYS) (Dec) Very early. Very large light yellow with red lines in throat. Well worth while.

Rose Ash (D) (Ex) (Dec) (95-100) Pastel shade, ashes of roses. One of the most popular of the older smokies.

Rose Marie Pfitzer (PF) (Ex) (Dec) Ruffled white tinted pink. Peach and cream color which varies somewhat. Sometimes is rather pale. Eight or more immense closely set blooms open at a time. Makes a wonderful spike. Rather slow propagator.

Rose Mist (FISCHER) (Prim. Grand) (Ex) (Dec) (80-90) Large non-hooded prim. Old rose with buff showing through. 5-8 well spaced blooms open on a very tall straight spike. A fine decorative variety.

Rose Standish See page 12.

Rose Wings See page 12.

Rosex Palmer strain. See page 24.

Sahara Palmer strain. See page 24.

Salbach's Orchid (SAL) (Dec) (Com) Somewhat similar to Minuet but more pink in it. Several very beautiful well placed somewhat ruffled blooms open at a time. A beautiful variety.

Salbach's Pink (SAL) (Com) Late. Good size wide open geranium pink with soft carmine lines in throat. Long spike with six or more blooms open. With me sometimes blooms are not well placed. A very heavy stem.

Salmon Emperor (ROOZEN) (Dec) Ruffled salmon orange with dark feather. Looks like a seedling of Pfitzer's Triumph. Very pretty but inclined to have short spikes.

"Received the shipment of bulbs in first class shape. I would like to say that in the past we have bought bulbs from many growers but can honestly say that your shipment was as fine as we ever received. We are very much pleased with the gratis."

—GEO. H. COLLINS, Mass.

"Please pardon my delay in acknowledging receipt of my glad order. I received them a few days after you despatched same and not a bulb turned down by the inspectors on this side."
—REG. AMBROSE, Canada.

Saraband (SAL) (Dec) (100) Rich velvety bordeaux or deep mulberry, straw yellow blotch. An unusual and beautiful color. Good size. Very desirable.

Scarlet Bedder (SAL) (Prim. Grand) (Ex) (Com) (78) Beautiful soft yet glowing scarlet. Distinctive and beautiful shade.

Schubert (PF) (Dec) Creamy yellow with vivid scarlet blotches. Very showy and looks like one that may become very popular.

Schwaben Girl (PF) (Dec) (Com) Early. Pure pink self color. 7-8 large beautiful blooms open. All garden visitors noticed this one even at a distance. It may supersede Mrs. Sisson as a commercial.

Seestern (PF) (Com) (Dec) Light salmon pink with showy orange scarlet blotches. 6-8 large well placed blooms on a good spike. A very nice variety. Husky plants.

Senorita (SAL) (Ex) (Dec) (Landscape) (90) Large wide open orange shading to salmon. Red pencilings on bright orange lower petals. A short grower but makes a big spike of blooms which often come all around the stem. Exceedingly showy. A glad with bad faults and yet a good one and very decorative.

Smiling Maestro (CHRIST) (Ex) (Dec) Large deep salmon rose flaked brown. Several open. This is considered as one of the very best Christ varieties. Better try this one.

Solveig (DECORAH) (Dec) Immense ruffled white with small cerise blotch. 5-7 open. Can be grown wonderfully well but needs first class culture to get it good. Rather slow propagator.

Sonatine (PF) (Com) (Dec) (90-95) Tall growing light pink often flaked, with small red blotches. Good size blooms. The introducer claims this is the best of his introductions of that year.

Spirit of St. Louis (MUELLER) (Com) (80-85) Good early orange saffron. 6-8 medium size blooms open on a long spike. A good orange.

Spray of Gold Palmer strain. See page 2.

Star of Bethlehem (PF) (Dec) Midseason. Immense white with touch of cream on lower petals. 6-8 blooms open. This is considered about the best exhibition white.

Stately Lavender (KINYON) (Ex) (Dec) Very pale pinkish lavender. Long spike with ten or more well placed blooms open.

Stuttgardia (PF) (Dec) (75-80) Bright orange red. Sometimes fades in bright sun. Very strong and sturdy grower.

"I am very well pleased with the glad blooms from bulbs received from you for they all came out perfect.

"I got some wonderful spikes from Sultan, almost 4½ feet high. I had to put stakes to hold them up they were so heavy.

"King Arthur is one sweet lavender.

"They were admired by all people who came by the home."

—JOS. L. LAVIMONIERE, Mass.

"This seems rather early to inquire about bulbs for another season but we have been having such remarkable success with our *Mary Frey* which we bought from you last year that we should like to get more."
—ALMER DEAN, Canada.

Sultan (CROW) (EX) (Dec) (80-85) Deep rose or according to Ridge-way pomegranate purple. 6-8 very large ruffled blooms open with several buds showing color. Tall, strong grower. Good propagator. Can be grown very fine. Should become extremely popular.

Sunset Cloud (STEVES) (Dec) (Com) Early midseason. White shaded pink toward the edges. Several large well placed blooms open. One of the very best Steves varieties.

Sunshine Girl (STEVES) (Prim. Grand) (Com) (82) Clear geranium pink with a yellow throat. 7-8 well placed blooms open. A fine variety except that the stems sometimes crook.

Sunshine Susie (STEVES) (Com) (Dec) Extremely early orange slightly tinted pink. Deep orange yellow in throat. Several good size ruffled blooms open. Very tall, straight stems. Should become valuable as an early commercial.

Sword of Mahomet (ELLIS) (Dec) (92) Large massive smoky brown. 6-8 blooms open. Always very popular.

The Moor (CROW) (EX) (Dec) (80) 8 good size well placed deep rose red blooms open. Somewhat ruffled. A beautiful variety but needs good culture to get long spikes. Can be grown wonderfully well.

I occasionally find a rogue in this variety, a dark red. One customer who got one last year said it was the best dark red he had ever seen.

The Orchid (SPRAGUE) (Prim. Grand) (Dec) Shape and color something like a lavender orchid. Badly hooded. Nice for its kind.

Thomas A. Edison (K) (Dec) (90) Very heavily ruffled deep red of velvety texture. Several blooms open. One of the finest dark reds I know of. There are other varieties on the market of this same name but are different colors.

Tiger (K) (Dec) (78) Smoky blue flaked salmon red. Five or more open. One of the best in its color class.

Tintaldra (ERREY) (EX) (Dec) Flesh pink shaded bright rose pink toward the edge. Small red blotches on cream ground. 8-10 medium size blooms open. A very pretty thing. Good exhibition variety.

Tobersun (AUSTIN) (EX) (Com) (108) A late yellow somewhat larger than Golden Dream but with me doesn't grow so tall. Beautiful color. 7-8 blooms open. One of the best.

Troubadour (PF) (EX) (Dec) (85) Beautiful clear purple. Tall grower with long spike of bloom with six or more open. I consider this the best clear purple variety.

Vagabond Prince Palmer strain. See page 25.

Veilchenblau (PF) (EX) (Com) (91) Large dark blue. Medium height.

Wasaga Palmer strain. See page 2.

"The Picardy gladiolus bulbs that you sent me as a prize in the 1933 flower show produced the most beautiful gladiolus that I have ever had in my garden and as beautiful as ones I have seen anywhere."
—MRS. C. J. ROWLAND, Penn.

"I bought glads from six states to find out which would do the best in this terrible climate. With the possible exception of one variety your bulbs gave me much better results than any others."

—A. J. AMSLER, Iowa

W. H. Phipps (D) (Ex) (Com) (Dec) (112) Light rose salmon. Long spike with 15-20 blooms open at a time. Needs good culture to get these long spikes otherwise it often produces short stubby spikes. Until the arrival of Picardy this variety has been the most popular glad in existence.

Winged Victory (BRIGGS) (Dec) Immense light pink. Have had it eight inches across one way but it is much wider than high.

Winifred (STEVENS) (Ex) (Dec) (Prim.) Very unusual plum colored variety. 10-12 open. Distinct novelty.

Wonder Glory (K) (Dec) (80) Beautiful golden cream blushed pink. Five open. Large massive flower. Very pretty.

Wurtembergia (PF) (Ex) (Com) (Dec) Fiery scarlet with cream white throat. Immense blooms on a very tall always straight spike. The most dazzling red you can imagine. One of the "must haves" for your garden and should become a good commercial. A variety that stops everyone.

Yvonne (KRELAGE) (Ex) (Com) (78) Blush white or very pale pink with cerise spot in throat. 6-8 very large blooms on a tall, strong growing plant. A wonderfully fine variety.

"The 1,000 bulbs for \$8.00 have just been unpacked and I am surprised and more than pleased. I had no idea that any extras would come with so many bulbs for so little money but the extras are wonderful. So many and some such choice ones."

—MRS. CHARLES C. JACOBS, Ill.

"I certainly wish to thank you for the fine lot of good new bulbs you have sent gratis for an opportunity to see how they do with us."

—ELMER J. WEAVER, Md.

"I want to thank you for the extra bulbs which you sent me. I have been buying plants and bulbs for a few years but never before have I had such a nice gift. Thanks so much also for sending them so soon."

—MRS. T. C. MARTIN, N. Y.

"That No. 1 Collection was very satisfactory. We have been cutting some nice spikes and good varieties."

—P. E. HICKS, N. J.

"Crow's Clarion which I obtained from you gave me a wonderful tall spike with good sized flowers. It looks to me like the best prim grand in this color."

—F. W. CASSEBEER, N. Y.

Varieties by Color

It is very hard to separate varieties of gladiolus into definite color classifications. In the pinks especially it is difficult to separate the salmons, light pinks, etc. Some varieties could go into any one of three or four classes. There are a number of different shades of pink that don't have a class by themselves. It is hard to say in just which one of the classes I have here they should go. However I have classified the varieties in my list to the best of my ability.

DARK RED

Ecstasy
Imperial Chimes
Morocco
Ravenna
Thomas Edison
MEDIUM RED
Amador

Bill Sowden
Com. Koehl
Crimson Glow
Heathfield
King George
King of Reds
Red Lory
Red Ruffles

SCARLET

Caesar
Dr. Bennett
Excellence
Erica Morini
G. J. McKay
Red Phipps
Red Splendor

Scarlet Bedder
Stuttgardia
Wurtembergia

ORANGE

Gay Hussar
Grand Slam
King of Oranges
La Paloma
Leander
Lucifer
Mrs. S. A. Errey
Oneta
Orange Butterfly
Orange Lady
Orange Lily
Orange Princess
Orange Queen
Orange Sovereign
Senorita
Spirit of St. Louis
Sunshine Susie

YELLOW

Antione
Bonny Scotland
Clarion
Gate of Heaven
Golden Cup
Golden Dream
Jonquil
Loyalty
Miss Bloomington
Roi Soleil
Spray of Gold
Tobersun

CREAM, BUFF, FLESH

Apricot Glow
Duna
Golden Anniversary
Hercules
Reverie
Rose Marie Pfitzer
Sahara
Schubert
Wasaga
Wonder Glory
Yvonne

WHITE

Albatross
J. Van Tets
Maid of Orleans
Mammoth White
Mary Elizabeth
Mrs. F. C. Hornberger
Polar Ice
Star of Bethlehem

CREAM WHITE

Dr. Durr
Escort
Joerg's White
Helen Wills
Magna Blanca
Mrs. Anna Pfitzer

WHITE

(With Blotch)
H. C. Goehl
Margaret Peter
Mibloom
Mrs. F. E. Bennett
Odalisque
Solveig

SALMON PINK

Acadia
Al Smith
Betty Nuthall
Coronation
Esme Desailly

Gloriana
Golden Flame
Inspiration
Joh. S. Bach
Lady Winsome
Laughing Water
Mildred Louise
Miss New Zealand
Mrs. Leon Douglas
Mrs. E. J. Heaton
Netherland Prince
Orlando
Pfitzer's Triumph
Picardy
Salmon Emperor
W. H. Phipps

LIGHT PINK

Blushes of Cream
Carolus Clusius
Debonair
Edith Mason
Lady Eaton
Marjorie Morrill
Mrs. P. W. Sisson
Mrs. T. E. Langford
Olive Goodrich
Patricia Carter
Pearl of California
Princess Yaada
Rose Standish
Salbach's Orchid
Sonatine
Sunset Cloud

PINK

Coryphee
Early Dawn
Fata Morgana
Giant Nymph
Helen Jacobs
Lindesta
Margaret Fulton
May Davidson
Miss Greeley
Peerless Pink
Prof. Van Slogteren
Salbach's Pink
Schwaben Girl
Sunshine Girl
Symphony
Winged Victory

PINK AND SALMON PINK (With Decided Blotch)

Beacon
Camelot
Cassandra
Edith Robson
Emma
Eugene Lefebvre
Moondara
Mywag
Nerissa
Nyora
Philomela
Premier Henry
Queen Helen II
Rapture
Roderich Dhu
Seestern
Tintaldra

ROSE PINK

Aflame
Bagdad
Benedict
Cherokee
Dorcas Aldrich
Dr. Shook
Janet
Littlejohn
October
Pinnacle
Pond Lily
Pride of Wanakah

Rose Mist
Rosex
Smiling Maestro

ROSE RED

Dr. L. H. Bailey
E. C. Vick
Emblem
Gorgeous
Pirate
Rose Wings
Sultan
The Moor

PINKISH LAVENDER

Amethyst
Berty Snow
Constancy
Dr. Moody
Early Melody
Jubilee
King Arthur
Lavender Bride
Mary Frey
Mauve Magic
Minuet
Moon Maiden
Philip Britmeyer
Stately Lavender
The Orchid

BLUISH LAVENDER

Capt. Boynton
Pres. Lincoln

LIGHT BLUE

Ave Maria
Bella Donna
Blue Danube
Blue Triumphator
Champlain
Mrs. Gertrude Pfitzer
Mrs. Van Konynenburg

DARK BLUE

Aida
Blue Admiral
Pelegrina
Veilchenblau

PURPLE

Chas. Dickens
Desdemone
Dominus
Mrs. Chas. A. Stevens
Paul Pfitzer
Purple Queen
Ramasses
Reah
Troubadour

GRAY

A. H. Woodfull
Marmora
Pallas

SMOKY

Emile Aubrun
Evensong
Mother Machree
Our Selection
Rideau
Roi Albert
Rose Ash
Saraband
Sword of Mahomet
Tiger

ODD SHADES

Ambrosia
Golden Brown
Hill Billy
Hinemoa
Vagabond Prince
Winifred



Coronation

"Wonderful success with our Mrs. T. E. Langford and Picardy this season."
—W. I. FEED'S SON, Penn.

"Picardy is one of the very finest things that was ever put out. Our gladiolus were glorious this year."
—C. L. PACK, N. J.

"I much prefer ordering from you as your bulbs have done far better for me than those from other growers."
—CHESTER HARRISON, Wis.

"Your shipment of gladiolus bulbs was received in excellent condition. Thanks for the extra Lindesta."
—E. L. BYERS, R. I.

"This is my third order this year. The bulbs were supreme and I never received a finer lot when ordering from other growers."
—ORAL A. SMITH, Nebraska

"I once heard a story (stop me if you've heard it) about an Irishman, passing a Gulf coast fish house, saw a Red Snapper (fish) about 7 ft. long, the said Irishman, being T'd up, stopped and looked the fish over and remarked: 'Whoever caught that fish is a d—— liar.'

"Well, I once read about a glad that developed florets that would measure 6-8 inches across. It reminded me of the above story.

"But—we now have Picardy open that measures 6½ inches by measurement, nine florets open at one time. From earth to height of spike, 5 ft. 9¾ inches."

—J. H. SINGLETON, Ala.

Join A Gladiolus Society

If possible be sure to join some gladiolus society even if it is only a local one. By getting acquainted with different growers and hence through an interchange of ideas and experiences you will learn a great deal about growing glads and about new varieties and will thus get a great deal more pleasure out of your flowers.

Here are two national societies that you should join if at all possible.

American Gladiolus Society which publishes a magazine every month from which you will get much greater value than the cost of the annual dues.

I hereby apply for membership in the American Gladiolus Society, and inclose \$2.00 as annual membership dues, \$1.00 of which is for a year's subscription to the Gladiolus Review.

Mail this application and \$2.00 to
ROSCOE HUFF, Secretary
Goshen, Indiana

Name.....

Street and No.....

City or Town.....State.....

Amateur or professional.....

Recommended by Elmer E. Gove

With each bona fide new membership sent in either to me direct or to the secretary I will give free a bulb of any one of the following varieties. **Lindesta, Coronation, Debonair, Duna, two Sultan** or the new variety **Hillbilly**.

The New England Gladiolus Society publishes a Year Book. This year it is the finest Year Book ever published by any gladiolus society. Contains about 272 pages and sells in book stores for \$1.75. This book free with a membership at \$1.00.

Please enroll me as a member of the
NEW ENGLAND GLADIOLUS SOCIETY

Mail this coupon and \$1.00 to

C. W. BROWN, Secretary
Ashland, Mass.

Name.....

Street.....

P. O.....State.....

Recommended by Elmer E. Gove

Below are some books that everyone having a garden should own. I can take your order and have them sent direct from the Publisher.

I can secure for you any book on any garden subject. **SEND FOR COMPLETE CATALOG.** Add 10 cents per book for postage.

Gladiolus, by F. F. Rockwell. Recommended as "the best brief guide on gladiolus growing." It tells how to plant, fertilize, and cultivate; how to grow from seed or bulb-lets; how to harvest and cure; how to handle for cut flowers; and every other detail needed for success with this popular flower. 45 illustrations, 79 pages. **\$1.25**

The Book of Bulbs, by F. F. Roekwell. With this complete and practical book you can get the utmost in beauty from every kind of bulbous plant. Clearly written by one who knows; illustrated with 187 beautiful photographs and instructive drawings. Includes tulips, daffodils, hyacinths, lilies, crocuses, glads, dahlias, peonies, irises, begonias, and scores of other beautiful but not-so-well-known bulbs. We recommend it as the best and most complete bulb book. 187 illus., 264 pages. **\$2.00**

Garden Pools: Large and Small, by Ramsey and Lawrence. Nothing else can add so much to your garden as a pool, even if it is only a transformed wash tub in the tiniest garden space. How to have one is fully explained in this new book. Its text is so complete and its illustrations are so numerous and practical that you can easily find the type of pool that fits in your garden and learn all about designing, planting and caring for it. 41 illus., 122 pages. **\$2.50**

The Home Garden Handbooks, by F. F. Roekwell. A series of pocket-size books, now nine in number, that it is a pleasure for us to recommend because each volume covers its ground so well and concisely. Use them when your seeds or plants arrive; they will show you how to prepare the soil, plant the seed, or transplant. Carry them out to the garden when you cultivate, prune and fertilize, they will save you many steps and help you avoid disappointments. Each volume has from 30 to 70 illustrations and contains about 90 pages. Strong cloth binding, four-color jackets. Price, \$1.25 per volume. The titles now published are:

Rock Gardens
Dahlias
Irises

Gladiolus
Roses
Peonies

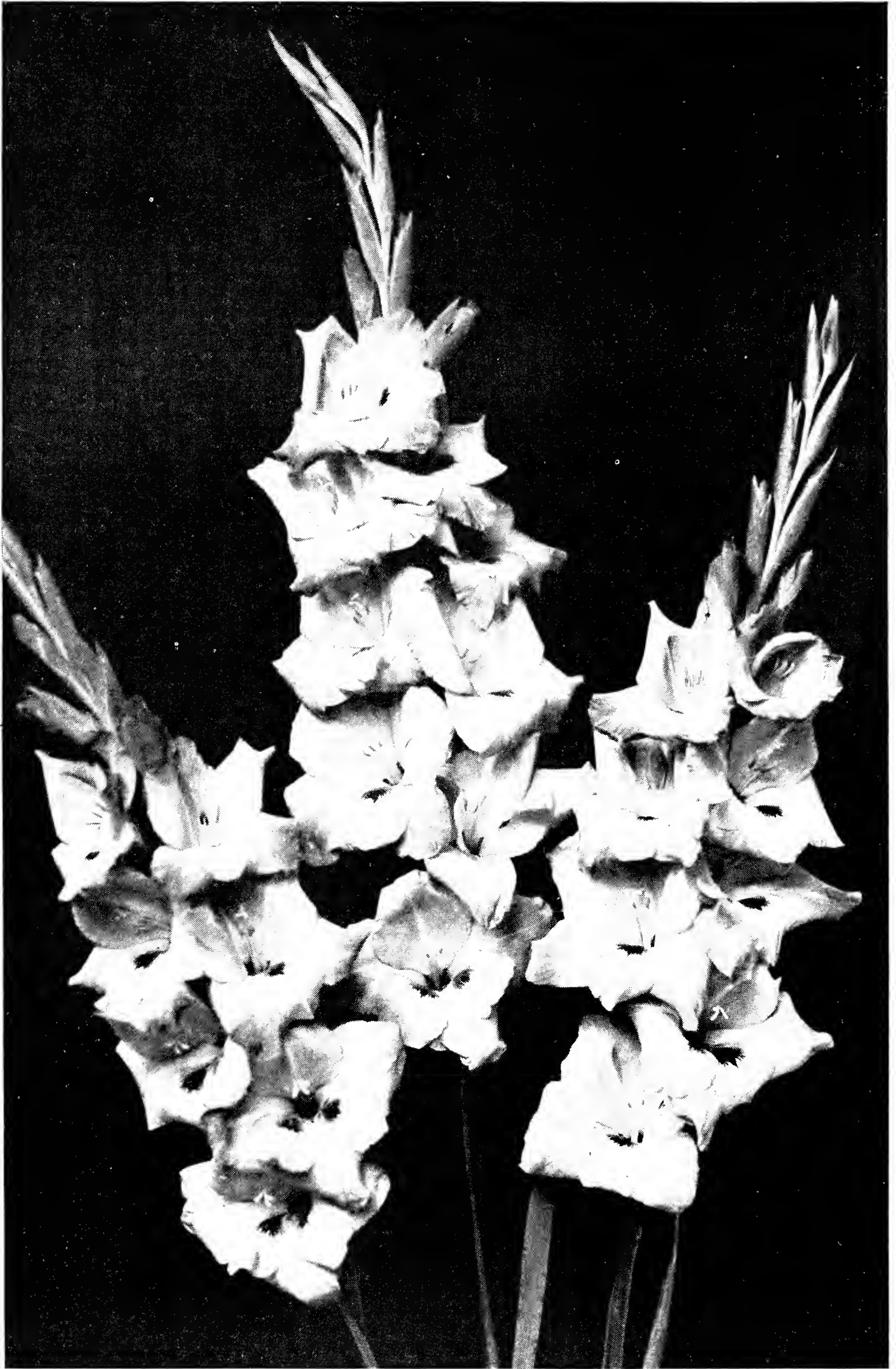
Evergreens
Shrubs
Lawns

Manual of Gardening, by L. H. Bailey. You can depend on this book to supply you with complete and practical information on planting and landscaping your home grounds. Tells how to make the most of natural features; how to drain, cultivate, and fertilize the soil; how to sow, propagate, transplant, prune, and graft the different classes of fruits, vegetables and flowers. Gives lists of varieties suited for different purposes. 350 illustrations, 539 pages. **\$3.00**

Around the Year in the Garden, by F. F. Rockwell. If you are busy and must use every minute of your time in the garden to the best advantage, this book will help you be more efficient. It is arranged in 52 chapters, each telling what to do in the garden every week of the year. It covers the vegetable garden, flower garden, roses, shrubs, berries, fruit trees, insects and diseases, vegetables for winter, pruning, and all other garden operations. 88 illustrations, 350 pages. **\$2.50**

The Rose in America, by J. Horace McFarland. A complete guide to successful growing, based on Mr. McFarland's own experience and the exchange of ideas with other enthusiasts while acting as editor for the American Rose Society. Contains the newest information on cultivation, pest control, and varieties. 66 illustrations, 233 pages. **\$3.00**

The Garden Club Manual, by Edith R. Fisher. Practical, tested information on every detail of the organization and management of garden clubs, including model constitutions, program suggestions, complete directions for staging flower shows, civic improvement projects, and junior garden clubs. **\$2.00**



Edith Robson