

Historic, archived document

Do not assume content reflects current scientific knowledge, policies, or practices.

APR 1 1935

1934

CLIMBING MRS. THOM
See page 3

Catalog No. 27



CLIMBING
PRESIDENT
HOOVER
See page 3

CLIMBING
PINK PEARL
See page 3

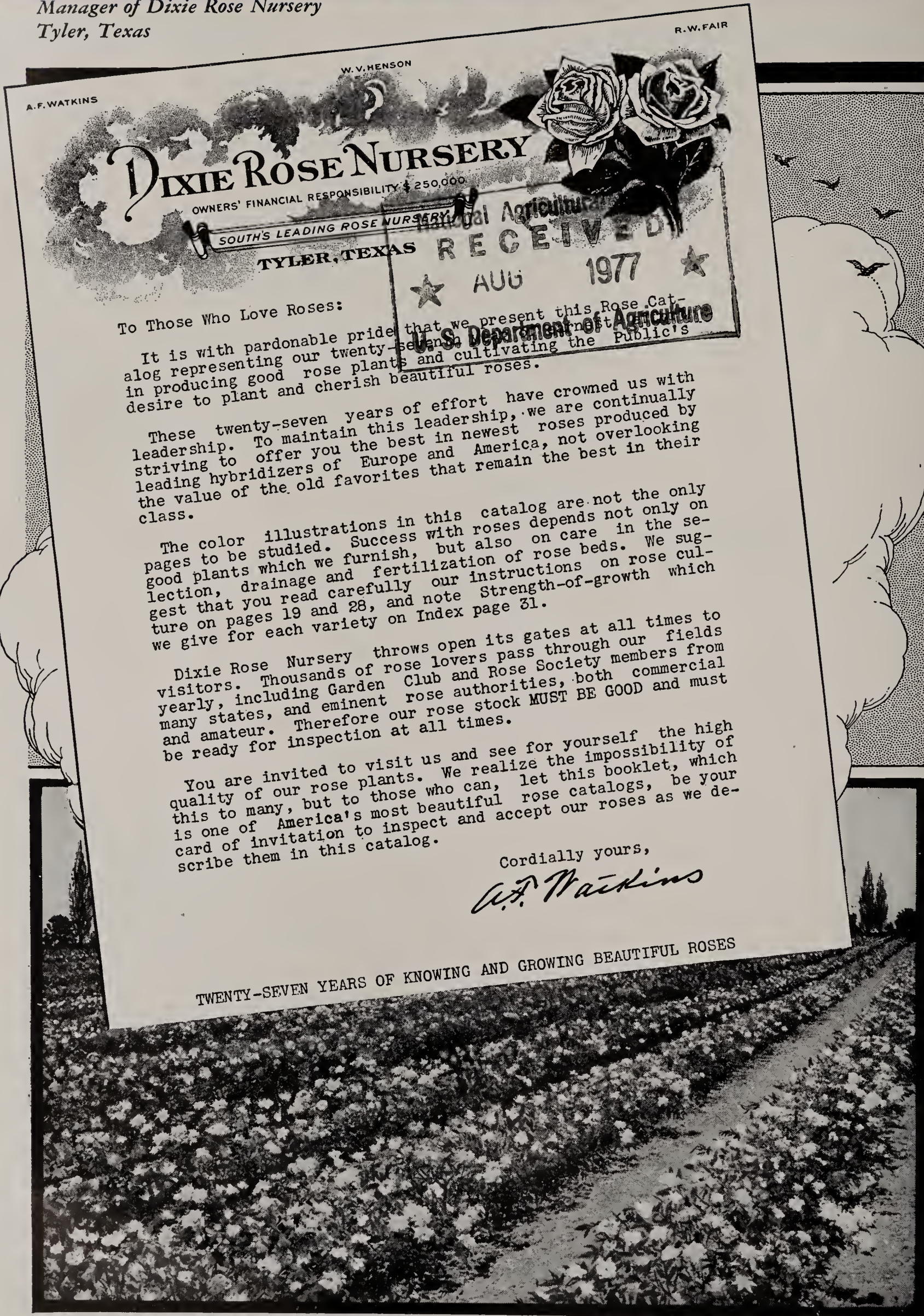
DIXIE ROSE NURSERY

The South's Leading Rose Nursery

TYLER ♦ ~ ♦ TEXAS

A Personal Message from A. F. Watkins

Manager of Dixie Rose Nursery
Tyler, Texas



A. F. WATKINS

W. V. HENSON

R. W. FAIR

DIXIE ROSE NURSERY

OWNERS' FINANCIAL RESPONSIBILITY \$ 250,000

SOUTH'S LEADING ROSE NURSERY

TYLER, TEXAS

RECEIVED

★ AUG 1977 ★

U.S. Department of Agriculture

To Those Who Love Roses:

It is with pardonable pride that we present this Rose Catalog representing our twenty-seven years of experience in producing good rose plants and cultivating the Public's desire to plant and cherish beautiful roses.

These twenty-seven years of effort have crowned us with leadership. To maintain this leadership, we are continually striving to offer you the best in newest roses produced by leading hybridizers of Europe and America, not overlooking the value of the old favorites that remain the best in their class.

The color illustrations in this catalog are not the only pages to be studied. Success with roses depends not only on good plants which we furnish, but also on care in the selection, drainage and fertilization of rose beds. We suggest that you read carefully our instructions on rose culture on pages 19 and 28, and note Strength-of-growth which we give for each variety on Index page 31.

Dixie Rose Nursery throws open its gates at all times to visitors. Thousands of rose lovers pass through our fields yearly, including Garden Club and Rose Society members from many states, and eminent rose authorities, both commercial and amateur. Therefore our rose stock MUST BE GOOD and must be ready for inspection at all times.

You are invited to visit us and see for yourself the high quality of our rose plants. We realize the impossibility of this to many, but to those who can, let this booklet, which is one of America's most beautiful rose catalogs, be your card of invitation to inspect and accept our roses as we describe them in this catalog.

Cordially yours,

A. F. Watkins

TWENTY-SEVEN YEARS OF KNOWING AND GROWING BEAUTIFUL ROSES

A block of Everblooming Roses in one of our six Nurseries at Tyler, Texas.
Photo June 1, 1934

Six New Everblooming Climbing Roses

Originated by Dixie Rose Nursery and Registered with American Rose Society. We have tested these climbers for two years or more, and recommend them as healthy, free-branching, and free-blooming. Some of them, notably Climbing Talisman and Climbing President Hoover, have already proved excellent climbers in a number of states. They need winter protection in the North during midwinter, as do all Hybrid Tea or Everblooming Roses.

Five are illustrated on the covers—Climbing Rapture is illustrated below

CLIMBING MRS. THOM

Cl. HT. New. (*Dixie Rose Nursery, 1933*)

Rose-lovers throughout the Nation agree that the most satisfactory yellow everblooming garden Rose is Mrs. Erskine Pembroke Thom. This new climbing form carries the same profusion of lovely, medium-toned, unfading yellow flowers on an erect and thrifty plant. 75 cts. each, \$7.50 per doz.

CLIMBING PINK PEARL

Cl. HT. New. (*Dixie Rose Nursery, 1933*)

Climbing sport of the well-known bush Rose, Pink Pearl. Strong, stocky, healthy grower. Large buds; double, fragrant blooms of deep rose-pink. Free bloomer. Similar to Columbia, its ancestor, in growth and bloom, but has more sturdy growth and better foliage. 75 cts. each, \$7.50 per doz.

CLIMBING PRES. HOOVER

Cl. HT. (*Dixie Rose Nursery, 1931*)

Sport of President Herbert Hoover, described on page 20. The plants we sell were originated by us and are adapted to the South. Strong plants and long, straight canes. 75 cts. each, \$7.50 per doz.

CLIMBING TALISMAN

Cl. HT. (*Dixie Rose Nursery, 1930*)

Sport of Talisman, described on page 21. We originated and tested this climber and recommend it for the South. The most wonderful new climber. Vigorous plants with an abundance of foliage and blooms. 65 cts. each, \$6.50 per doz.

CLIMBING RAPTURE

Cl. HT. New. (*Dixie Rose Nursery, 1933*)

Richest pink and gold of good old Ophelia's descendants is Rapture, fragrant and always in bloom. Our new sport has the same exquisite flowers but is a rampant climber. 75 cts. each, \$7.50 per doz.

COUNTESS MARY

Cl. HT. (*Dixie Rose Nursery, 1933*)

Climbing sport of the popular Rose, Mary, Countess of Ilchester. Large, double, fragrant, full cupped blooms of deep pink, in clusters. Strong, healthy growth; long, rigid canes. Our choice of a pink climber. 75 cts. each, \$7.50 per doz.



Climbing Rapture

OUR GUARANTEE

All Roses sold through our retail Catalog are guaranteed, Number 1, two-year plants, true to name and first class in every respect. They are guaranteed to reach you in good condition.

TERMS: READ CAREFULLY. Terms are cash with order, as we have no credit department. Orders of \$2.00 or more are sent prepaid anywhere in the United States. On orders of less than \$2.00, please add 15 cts., regardless of number of plants, to cover extra packing and transportation costs. No order accepted for less than \$1.15, including packing and postage.

IMPORTANT NOTICE. We exercise care to keep all varieties true to name, and we are ready at all times to replace, on proper proof, all that may prove otherwise; but it is mutually agreed between the purchaser and ourselves that we shall not at any time be liable for any amount greater than the original price of stock. All sales made subject to stock being unsold when order is received, or loss by any and all unavoidable causes. Each year we offer the very best of the newest Roses. The descriptions are those given by the introducers, which are, of course, based upon the behavior of the varieties in the particular locality where they were observed. To save disappointment, please refer to the chart on the index, page 31, which shows how varieties behave in this section, which represents the general South.

New Novelty and Patented Roses

TOKEN HT.

(Montgomery & Co., 1933)

Plant Patent No. 95

Many Roses are described as orange, but none has the pure, unadulterated hue of the orange-peel except this fine new garden Rose whose color on opening is exactly like that of a fully ripe California navel orange. As it ages, a shade of pink creeps into the petals, giving it the tints of a newly opened Los Angeles. The plant is upright, strong, and a dependable bloomer. \$1.50 each, \$15.00 per doz.

"Please send me your Rose Catalog this fall. The Roses I bought from you this spring are beautiful. Every one lived, and they have grown wonderfully."—Miss Ina Perkins, San Antonio, Texas, August 7, 1934.

Token



MRS. PIERRE S. DU PONT

HT. (C. Mallerin, 1929)

Here is a splendid golden yellow Rose which is the finest of its color for garden use. The well-shaped, golden yellow flowers resemble those of the lovely old Mme. Butterfly in form. Plant is compact and leafy, growing about 2½ feet high, and blooms with unceasing abundance throughout entire season. We regard it very highly. 60 cts. each, \$6.00 per doz.

AUTUMN HT.

(L. B. Coddington, 1931)

Gorgeous dark crimson and yellow. A descendant of Sensation and Souv. de Claudius Pernet. Buds have burnt-orange tinge and open to very double flowers of deep pink and orange-yellow. In warm weather, flowers have a striped appearance which disappears in cool weather, leaving deep crimson and gold. Moderately vigorous. 60 cts. each, \$6.00 per doz.



Mrs. Pierre S. du Pont

"You may remember that last fall I sent for some Roses from you and told you at the same time that I did not believe that southern-grown Roses were able to grow and stand the New England winters. My apologies. Your Roses were put into the ground the day before Christmas, and that is very late here, and immediately there started the most severe winter there has been for over seventy years, with the thermometer going 20 and 30 degrees below zero. I thought that I would lose all my established Roses and never gave the southern Roses a chance, but to my surprise they all lived and are doing as well as the others. Again my apologies and congratulations. Be sure to send me your Catalog this year."—Edward W. Burt, M.D., New Bedford, Mass., June 2, 1934.

New Novelty and Patented Roses

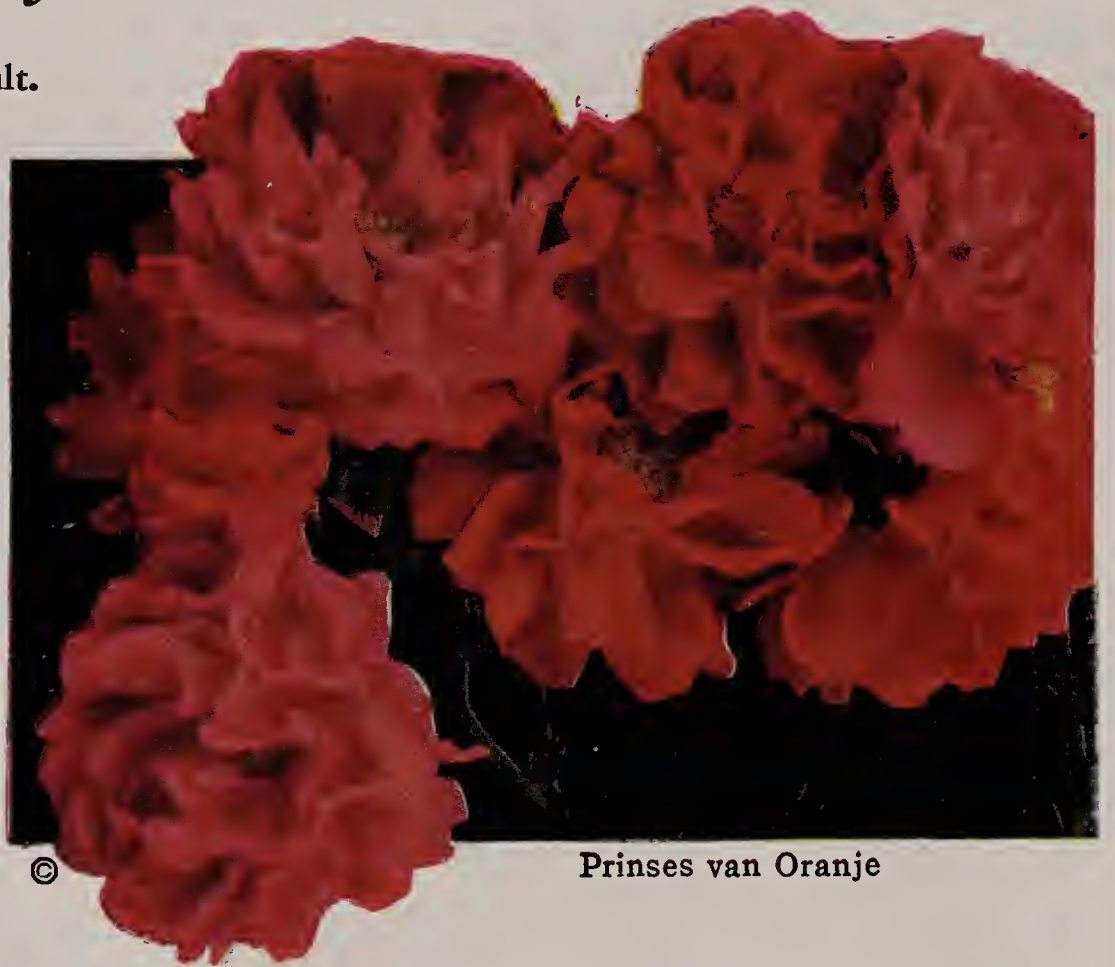
Prinses van Oranje Mult.

A NEW CLIMBING POLYANTHA

(*G. de Ruiter*, 1933)

Plant Patent No. 106

An everblooming Rambler which sported from *Gloria Mundi*, the brightest and most unfading of the orange-scarlet sports of the pompon *Orleans*. This is a stunning Rose of a soft, bright color which will make a sensation wherever it is grown. It is practically always in flower, producing big sprays of dazzling orange-scarlet flowers all the season. \$2.00 each, \$20.00 per doz.



Prinses van Oranje

All Roses sold to our Retail Trade are mature, 2-year plants which have bloomed throughout the year.

GOLDEN CLIMBER HW.

Mrs. Arthur Curtiss James

Plant Patent No. 28

Originated by Mr. and Mrs. Walter D. Brownell, Rhode Island, who have been improving the size, color, hardiness, and blooming qualities of climbing Roses, this magnificent new golden yellow climber has met sensational approval. Virtually a yellow *Mary Wallace*, though foliage is glossier and healthier, and the long-stemmed yellow flowers are borne singly. Blooms immense, with glorious, long-pointed buds, won the acclaim of members of American Rose Society assembled in Boston. Finest hardy yellow climber introduced to date. \$2.00 each, \$20.00 per doz.

Golden Climber



NEW DAWN HW.

Everblooming Dr. W. Van Fleet

(*Somerset Rose Nursery*, 1930)

Plant Patent No. 1

Most popular hardy climber. The lovely flesh-pink *Dr. W. Van Fleet* has produced a sport which is a true everblooming climber, hardy enough to withstand severe frost. Flowers have same exquisite shell-pink tint, and while plants are not so vigorous as original, they are strong enough to make splendid, glossy-leaved pillars. \$1.50 each, \$15.00 per doz.

"My shipment of Roses arrived in excellent condition and was planted at once. I never saw finer plants. I hope to have some very fine Roses. If I don't it will be the fault of the planting and not the plants, as I never saw finer plants."—Louisville, Kentucky, January 7, 1934.

New Novelty and Patented Roses

Aroma



AROMA HT.

(B. R. Cant & Sons, 1931)

The name indicates the outstanding characteristic of this delightful Rose which reached us from England two years ago. The sparkling crimson flowers are deliciously sweet, with a deep and satisfying perfume reminiscent of the Moss Rose and the Hundred-Leaf of yesteryear. The clear color is held well in hot sun and shade, and the vigorous plants produce a steady succession of clustered buds throughout the season. 60 cts. each, \$6.00 per doz.

"I have found your plants excellent, really the best I have ever had."—
Lynchburg, Va., January 8, 1934.

MME. NICOLAS AUSSEL HT.

(Pernet-Ducher, 1930)

This stunning new Rose won a Gold Medal at the Exposition of Lyons, France, in 1930. It is a remarkable blend of deep glowing orange and salmon-pink, fragrant, beautifully formed, and lasting when cut. Bud is very large, shapely, heavily tinged with salmon and carmine. The open flower is glowing salmon suffused with gold and orange. Plant is vigorous and produces a fine crop of flowers several times each season. One of best new Roses. 60 cts. each, \$6.00 per doz.



Mme. Nicolas Aussel

Why We Offer You America's Finest Field-Grown Roses

The prices in this Catalog demonstrate more clearly than words that it is possible to have a beautiful Rose-garden at small cost. Cheaper Roses may be bought elsewhere, but plants of Dixie Quality cannot be produced and shipped to you at prices lower than we quote here. All our Roses are field-grown and field-budded on Rosa Multiflora Japonica understock. They have proved to be hardy and free-blooming. We are budding nearly a million Rose plants annually, and our prices are the lowest for which our large and experienced organization can produce finest quality Roses.

The plants which we send out are all two-year-old, Number 1, budded bushes. They are guaranteed to reach you in good condition.

New Novelty and Patented Roses

MARY HART HT.

Red Talisman

(G. B. Hart, 1932)

Plant Patent No. 8

A stunning, glorious red sport of the well-known Talisman which it resembles in almost all respects except color, having the same erect habit, with foliage of somewhat darker green. It is an unceasing bloomer, producing warm brownish crimson flowers both early and late, with the unusual merit for a red Rose that the color does not turn bluish as blooms fade. \$1.00 each, \$10.00 per doz.



Mary Hart

"Your shipment of Roses was received in splendid condition. Do not believe anyone ever shipped any finer stock. I certainly congratulate you."—Macon, Georgia, December 9, 1933.

Countess Vandal



COUNTESS VANDAL

HT. (M. Leenders & Co., 1932)

Plant Patent No. 38

At Rose shows in Europe and America, during the seasons of 1931-33, this Rose took many first prizes, medals, and awards of commendation, making a veritable sensation in the Rose-world. Its long, pointed buds are coppery salmon and golden yellow, opening to large, bronzy pink flowers frequently over 5 inches wide. Long, deep petals reflex in a graceful manner, giving it exquisite delicacy of form unapproached by Roses of similar size. Bronzy foliage. Upright, vigorous; prolific flowering habit. \$1.00 each, \$10.00 per doz.

Roses Are Scarce This Season. If Not Ready to Plant, Order Yours Now and Tell Us When to Ship Them.

The "Key to Classification" on page 31 gives the growing strength of each variety. If your growing conditions are not good it will be best for you to order only strong-growing varieties. Special quantity prices will be found on page 23. Our prices are lower than those of other Rose-growers of established reputation, because our large production, our methods and climatic conditions reduce our production costs. Remember, all prices shown in this Catalog are PREPAID TO YOU, except as noted under "TERMS" on page 3.

New Novelty and Patented Roses

JULIEN POTIN HT.

(Pernet-Ducher, 1927)

A fine clear golden yellow Rose of vigorous, erect habit, with very shapely, medium to large blooms of long-pointed form, which hold their color well. Excellent exhibition Rose. Free flowering and fragrant. 60 cts. each, \$6.00 per doz.



Julien Potin



Margaret McGredy

MARGARET MCGREDY

HT. (S. McGredy & Son, 1927)

It is difficult to describe the extraordinary vividness of this scarlet-orange or brick-red flower. The color stands out in the garden like a torch. Its symmetrical blooms are cup-shaped and double, with an excellent circular arrangement of petals, and they are produced with astonishing freedom throughout the season. This wonderful Rose never fails to draw favorable comment from visitors who see it growing in our nursery. Its sturdy growth, delightful perfume, and remarkable blend of colors is everything that could be desired. We recommend it for mass planting. 60 cts. each, \$6.00 per doz.

SOUVENIR HT.

Golden Talisman. (A. N. Pierson, 1932)
Plant Patent No. 25

Pure golden yellow sport of the remarkable Talisman, which it equals in vigor and resembles in upright growth, healthy light green foliage, and free blooming. Flowers slightly larger than Talisman and a little more loosely built, correcting a minor fault of Talisman. Blooms are fadeless yellow and last a long time, on the bush or when cut. A free-flowering, non-fading yellow Rose. Its Talisman parentage assures vigor and excellent blooming. \$1.00 each, \$10.00 per doz.



Souvenir

Classification and Strength of Growth of All Roses Shown on Page 31

New Novelty and Patented Roses



Golden Dawn

GOLDEN DAWN HT.

(Patrick Grant, 1929)

One of the finest garden Roses grown in America. Flowers are fully double, deep yellow in bud, occasionally tinged with bronze, opening to fine, richly fragrant, pale lemon-yellow flowers of great size and lasting quality. Plants are dwarf and spreading, with dark, glossy green foliage which seems impervious to black-spot. We believe it has a great future. 60 cts. each, \$6.00 per doz.



Blaze

BLAZE (Everblooming Paul's Scarlet)

H.Cl. (Jackson & Perkins Co., 1932) Plant Patent No.10

This marvelous, hardy, everblooming scarlet-red Rose combines the bloom and habit of Paul's Scarlet with the everblooming character of Teplitz. It is generally covered with flowers from earliest season to late autumn. Can be pruned low to make massing or bedding plants, trained as a shrub, or tied up as a climber or pillar. Blaze was awarded the Special Certificate reserved for Climbing Roses at the Bagatelle Contest of New Roses in Paris, 1933. \$1.50 each, \$15.00 per doz.

Joanna Hill



JOANNA HILL HT.

(J. H. Hill Co., 1928)

Bright yellow and cream-colored flowers, like an improved Sunburst. Bud very large and long-pointed, semi-double, full, very lasting, moderately fragrant. Stems long and stiff, making the blooms excellent for cutting. A steady, continuous bloomer. 60 cts. each, \$6.00 per doz.

A Rose-Garden Enhances the Value and Salability of Any Home

All Roses Sold Through Our Retail Catalog Are Mature, Two-Year Plants

Novelty and Patented Roses

NIGRETTE HT.

"The Black Rose of Sangerhausen"

(M. Krause, 1934)

Plant Patent No. 87

In Germany, last year, this Rose aroused so much excitement that the newspapers of America carried accounts of the famous "Black Rose" discovered there. Actually it isn't black, but it's pretty near it; and it is a jolly little toy Rose worth having for the fun you can get out of it. It is a lovely shade of dark velvety maroon with a coal-black sheen like that of some very dark pansies. \$2.00 each, \$20.00 per doz.



Nigrette

©

AMELIA EARHART HT.

President Charles Hain

(L. Raymond, 1929)

Plant Patent No. 63

A huge yellow Rose full of numerous petals, developing slowly from an enormous golden yellow bud. It looks like a greatly magnified and improved *Souvenir de Claudius Pernet*, without that old variety's weaknesses and faults. The plant is very vigorous, producing its numerous stiff-stemmed flowers throughout the season. This Rose has attracted a great deal of favorable comment abroad, where it is used both for garden and exhibition purposes. At its best, it is a handsome and sensational flower, probably the largest and doublest of the modern race of *Pernetiana* type of Hybrid Teas. \$1.50 each, \$15.00 per doz.



Amelia Earhart

©

GOV. ALFRED E. SMITH HT.

(*Veuve Denoyel*, 1933)

Plant Patent No. 62

A very handsome, globular Rose reminiscent of the older *Miss Lolita Armour*. The brownish buds open to very double flowers of buff, terracotta, and golden salmon. \$1.50 each, \$15.00 per doz.

DOUBLOONS H. Set.

(M. H. Horvath, 1934)

Plant Patent applied for

A stunning new hybrid of the wild *Prairie Rose*, *Rosa setigera*, with fine deep golden yellow flowers of excellent shape, both in bud and open bloom. Plant is a ruggedly hardy climber. \$1.50 each, \$15.00 per doz.

"Received my shipment of Roses in fine shape; have them all set and they are a fine bunch of bushes. I am sure if people wanting to plant Roses could see what a fine lot of bushes I received, it would make you some business in this city."—Oklahoma City, Okla., November 13, 1933.

Lord
Charlemont



New Novelty and Patented Roses

LORD CHARLEMONT HT.

(S. McGredy & Son, 1922)

This magnificent Rose has steadily won popularity year after year because of its brilliant color and delicious fragrance. Blooms are globular, full-petaled, symmetrical, held upright on strong, wiry stems. Their vivid scarlet-crimson color stands out above all other reds. A good garden Rose, growing with vigor, not so thorny as most. Foliage is deep green, leathery, highly resistant to black-spot. Unsurpassed as a cut-flower. Blooms last for days without fading. 60 cts. each, \$6.00 per doz.

Max Krause

MAX KRAUSE HT.

(Max Krause, 1930)

Fat, globular buds of deep, buttery orange which open to huge, double, golden yellow flowers with petals paling lighter at the edges and deepening into soft bronzy or coppery tones in the center of the bloom. The plant does well in the garden and blooms freely, producing a fair number of its large, opulent blooms throughout the season. It is a deeper yellow than Louise Krause. \$1.50 each, \$15.00 per doz.



©

EDITH KRAUSE HT.

(Max Krause, 1930)

A Rose with elegantly shaped buds which open to large, beautifully formed flowers of dazzling white, faintly tinted with golden fawn in the depths of its petals. The plant is notably vigorous, producing its handsome blooms singly at the tips of long, stiff stems clothed with ample, beautiful foliage. We consider it a noble achievement among white Roses, and one of the finest available in the Hybrid Tea class. \$1 each, \$10.00 per doz.

LOUISE KRAUSE HT.

(Max Krause, 1930)

This handsome Rose is almost a twin sister to Max Krause, which it resembles in its generous proportions and tone of color. In general, the flower is a light shade of orange throughout, paling to ecru or cream at the edges of the petals, lighter by several shades than Max Krause and achieving at times a distinct similarity to the lovely old Rose, W. E. Wallace. Vigorous and free-flowering plants. \$1.25 each, \$12.50 per doz.

Special 60-cent Novelty-Rose Offer No. 1

Any fifteen 60-cent Roses Listed in Dixie Rose Catalog No. 27, Ordered for One Shipment Will Be Prepaid Anywhere in the U. S. A. for ONLY \$6.95.

New Novelty and Patented Roses



Better Times

BETTER TIMES HT.

(J. H. Hill Co., 1934)

Plant Patent No. 23

Brilliant crimson-cerise sport of the florists' Rose, Briarcliff. The well-shaped flowers are borne erect on stiff stems freely throughout the season. \$1.50 each, \$15.00 per doz.

Independence Day



INDEPENDENCE DAY HT.

(Bees, Ltd., 1919)

A showy bedding variety with pointed, brilliant yellow buds strongly tinged with orange and copper, opening to broad, semi-double, orange-yellow flowers which are produced in great profusion throughout the entire season. A fine bedder. 60 cts. each, \$6.00 per doz.



Director Rubio

DIRECTOR RUBIO HT.

(P. Dot, 1929)

In our climate, this sterling variety is one of the handsomest of Roses. Its huge, vivid pink buds are borne on relatively short, stiff, and erect stems and open out like peonies into broad, somewhat flat flowers of shining crimson-pink with a broad collar of huge petals surrounding a group of incurved smaller ones in the center. The giant size and brilliant color of this stunning Rose attract admiring attention from everyone. 60 cts. each, \$6.00 per doz.

New Novelty and Patented Roses

EDITH NELLIE PERKINS HT.

(A. Dickson & Sons, 1928)

The open bloom is a delightfully shaped flower of two contrasting tints, the outside of petals gleaming with bright orange-cerise and the inside overspread with pale salmon-pink, flushed with orange-gold. Buds are firm and handsome, richly dyed with copper tones before they open. Plant stands up vigorously and is well clothed with glossy, disease-resistant foliage. More than ordinarily vigorous, it makes a splendid bush for formal bedding use. Provides abundance of exquisite blooms for cut-flowers. 60 cts. each, \$6.00 per doz.



Edith Nellie Perkins



Mevrouw G. A. van Rossem

MEVROUW G. A. VAN ROSSEM

HT. (G. A. van Rossem, 1926)

Stunning bright yellow and orange Rose of erect habit, with rather small foliage and thick, thorny canes. The medium-sized, gorgeous, globular blooms are golden yellow, flamed with orange and scarlet; exquisite clean-cut veins of deeper tones, deepening at times to bronze and brown. A most unusual and striking bloom. Best grower of its color class for southern gardens but fades in hot weather. 60 cts. each, \$6.00 per doz.



Editor McFarland

EDITOR McFARLAND HT.

(C. H. Mallerin, 1931)

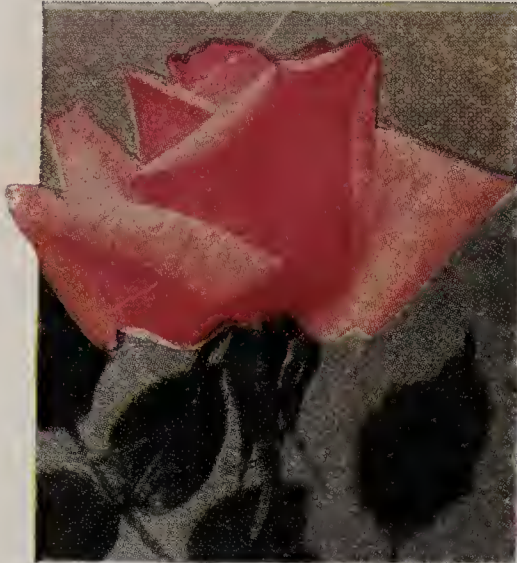
A deep, sparkling pink Rose of the Lady Ashtown type, borne with the utmost liberality by vigorous, upright bushes which hold the flowers stiffly erect and make them particularly suitable for cutting. The clear, unfading color is especially pure, and the general vigor and reliability of the plants have made friends for it in all parts of the country, both as a bedding Rose and as a cut-flower. 60 cts. each, \$6.00 per doz.

We Grow Principally Hybrid Teas or Everblooming Roses

Hybrid Tea Roses (indicated by HT.) do not bloom all the time, but if kept healthy and growing, they bloom successively throughout the growing season. Our plants are adapted to all sections, with winter protection where necessary.

Special or Newer Everblooming Bush Roses

All Roses listed below are 60 cts. each, \$6.00 per doz., unless priced otherwise



BETTY UPRICHARD

(A. Dickson & Sons, 1922)

HT. Brilliant copper-red buds, opening to brilliant orange-carmine flowers, showing light salmon reflexes.

BETTY SUTOR

(S. McGredy & Son, 1929)

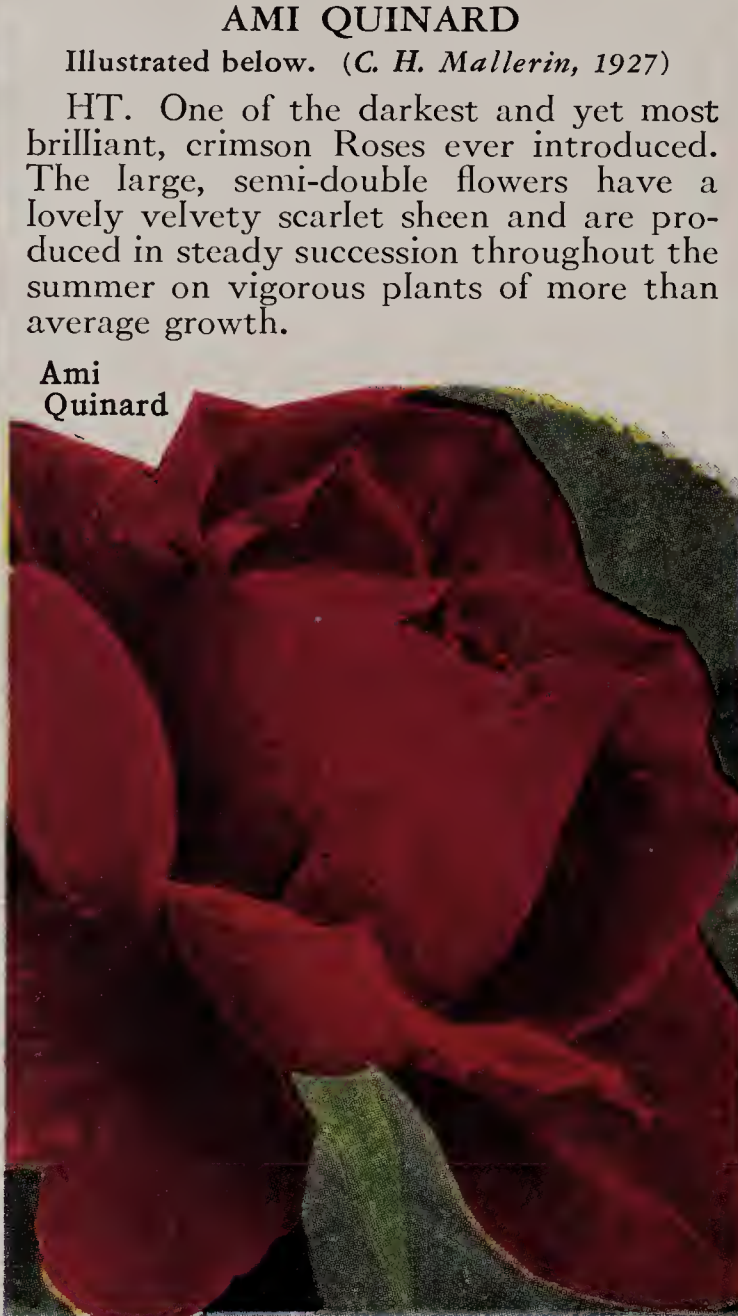
HT. A lovely soft pink flower resembling the popular Mme. Abel Chatenay of years ago. We consider it an outstanding new variety for its exquisite form and color.



CUBA

(Pernet-Ducher, 1926)

HT. Vivid, orange-scarlet buds, opening to immense, cup-like flowers of iridescent copper-red and brilliant orange-vermilion. Free-flowering and exceptionally vigorous.



AMI QUINARD

Illustrated below. (C. H. Mallerin, 1927)

HT. One of the darkest and yet most brilliant, crimson Roses ever introduced. The large, semi-double flowers have a lovely velvety scarlet sheen and are produced in steady succession throughout the summer on vigorous plants of more than average growth.

Ami
Quinard



BRIARCLIFF

(Briarcliff Greenhouses, 1926)

HT. A brilliantly colored sport of the famous Columbia, with huge, rich pink flowers on long, strong stems.

CHATEAU DE CLOS VOUGEOT

(Pernet-Ducher, 1908)

HT. Most beautiful of all the deep black-crimson Roses, fragrant and handsome. A favorite of all who treasure Roses for their sheer beauty.



ETOILE DE HOLLANDE

(H. A. Verschuren & Sons, 1919)

HT. Brilliant red blooms of magnificent size, perfect in half-open state; attractive centers when full blown; enormous petals; fragrant. Healthy. Free-flowering.



ANGELUS

(F. H. Lemon & Co., 1921)

HT. A strong, upright-growing bush with huge, pure white flowers somewhat similar to those of Kaiserin Auguste Viktoria, but doubler and richly fragrant.

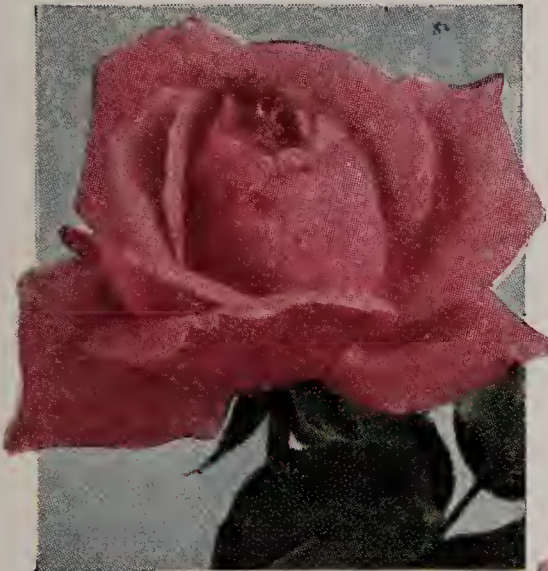
Special or Newer Everblooming Bush Roses, continued

All Roses listed below are 60 cts. each, \$6.00 per doz., unless priced otherwise

DAINTY BESS

(W. E. B. Archer & Daughter, 1928)

HT. The charming single flowers in large clusters are soft mauve-pink, with petals of kid-like texture, emphasized by a sparkling garnet-crimson center. A tall-growing plant.



DUCHESS OF WELLINGTON

(A. Dickson & Sons, 1909)

HT. Handsome, long, saffron-yellow buds opening to very large, semi-double, pale creamy yellow flowers. Strong plants.

EDEL

(S. McGredy & Son, 1919)

HT. Huge, very double, snow-white flowers with many exquisitely curled petals. The tall plants are vigorous and exceptionally free-flowering, especially late in the season.



DAME EDITH HELEN

Illustrated below. (A. Dickson & Sons, 1926)

HT. A superb Rose of the exhibition type, producing huge, shapely buds and very large, high-centered blooms of clear dazzling pink, composed of many concentric petals full to the center and sweetly fragrant. Stems are erect and very stiff. Probably the handsomest and showiest fully double pink Rose for exhibition.



Dame Edith Helen

CHARLES P. KILHAM

(G. Beckwith & Son, 1926)

HT. Huge, double flowers of brilliant oriental red suffused with gay orange and scarlet. A greatly improved Mme. Edouard Herriot both in substance of flower and in vigor.



MRS. HENRY BOWLES

(Chaplin Bros., 1921)

HT. Ovoid buds and globular flowers of clear, piercing pink, with lighter shades. A fine firm center, well held, and fairly fragrant. Vigorous, free-blooming plants with good foliage.



IRISH CHARM

(S. McGredy & Son, 1927)

HT. Medium-sized, double flowers of bright golden apricot passing to blush-pink. Fragrant and very lovely.



MRS. LOVELL SWISHER

(Howard & Smith, 1926)

HT. Large, pointed buds and huge, gorgeous flowers of salmon-pink and gold, passing to flesh-pink at edges. Strong grower and free bloomer. One of the largest Roses.

IRISH ELEGANCE

(A. Dickson & Sons, 1905)

HT. Large, single flowers of orange-scarlet, tinged with bronze and apricot. A very decorative single-clustered flower.

CALEDONIA

(Dobbie & Co., 1928)

HT. Extremely long, delicate, pure white buds, opening to double, high-centered blooms of creamy texture. A superb, snowy white Rose when fully developed.

RAPTURE

(Traendly & Schenck, 1926)

HT. Much like Mme. Butterfly in growth and shape of bloom, but the color is deeper and more brilliant. Considered the best of the Ophelia race.

IMPERIAL POTENTATE

(Clarke Bros., 1923)

HT. Firm-petaled; dark, shining rose-pink, shaded lighter on reverse of petals; fragrant. Erect, branching plant. Healthy, hardy.

Special or Newer Everblooming Bush Roses, continued

All Roses listed below are 60 cts. each, \$6.00 per doz., unless priced otherwise

LULU

(W. Easlea, 1919)

HT. Remarkable for its long, slender, deep orange-red buds, and bright, single flowers.



JOHN RUSSELL

(Dobbie & Co., 1924)

HT. Large, ovoid buds and immense, crimson flowers of old-time globular type, with the famous high exhibition centers. Very vigorous. 35 petals. A red Rose you will enjoy.

MAMAN COCHET

(S. Cochet, 1893)

T. Huge, long-pointed flowers, double to the center and deliciously fragrant, pale pink throughout. One of the best old Tea Roses, especially adapted to southern gardens.

MME. EDOUARD HERRIOT

(Pernet-Ducher, 1913)

HT. One of the most famous Roses in the world. Gorgeous coral-red and orange tinged with yellow and gold. Free-flowering and exceedingly brilliant in the garden.

MISS LOLITA ARMOUR

(Howard & Smith, 1919)

HT. Extremely double, deliciously scented, coppery orange and pink flower of striking appearance. Bush is strong.

See Classifications and Strength of Growth on page 31.

LADY MARGARET STEWART

(A. Dickson & Sons, 1926)

HT. Large exhibition bloom with enormous petals, perfect form, high-pointed center, golden yellow, shaded and streaked with orange and red. Handsome, healthy foliage.

MME. JULES BOUCHE

Illustrated below. (J. Croibier Sons, 1911)

HT. Superb white flower, shaded light blush or primrose at center; double, full, lasting, fragrant. Plant extra-strong, healthy, very free-blooming. Rated as the finest white or light-colored decorative Rose for garden use.



Mme. Jules Bouche



NUNTIUS PACELLI

Illustrated above. (Leenders Bros., 1927)

HT. A beautiful, pure white Rose, more vigorous and larger than the old Kaiserin Auguste Viktoria. Fragrant, and unstained by other tints.

See Classifications and Strength of Growth on page 31.

McGREDY'S SCARLET

(S. McGredy & Son, 1930)

HT. Huge, loosely formed flower of bright crimson shaded with dazzling orange-scarlet. Extremely fine.



PATIENCE

(S. McGredy & Son, 1927)

HT. Bright carmine-red buds with deep orange shading at the base of the petals, the flowers opening in mingled shades of carmine and orange.

MISS ROWENA THOM

(Howard & Smith, 1928)

HT. Enormous buds and blooms of fiery rose and mauve, shaded with old-gold at center, borne on long, strong stems. Profuse, continuous bloomer. Very prolific.

MRS. A. R. BARRACLOUGH

(S. McGredy & Son, 1926)

HT. Huge, pointed buds and extremely double, high-centered flowers of glowing light salmon-pink.

MRS. E. P. THOM

(Howard & Smith, 1926)

HT. Probably the best clear medium yellow garden Rose for the North. Slender, shapely, golden yellow buds; large, symmetrical blooms of light canary-yellow. Plants are erect, vigorous, blooming freely.

See Instructions for the Planting and Care of Roses on page 28.

Special or Newer Everblooming Bush Roses, continued

All Roses listed below are 60 cts. each, \$6.00 per doz., unless priced otherwise



IMPRESS

(A. Dickson & Sons, 1929)

HT. Very large, double flowers of beautifully incurved shape, with petals of bright salmon-pink, suffused with luminous orange.

MRS. MacKELLAR

(A. Dickson & Sons, 1915)

HT. Large, exquisitely formed blooms of deep citron-yellow, paling to canary and cream tints. An extremely beautiful flower. Rated as one of the most beautiful Roses in existence.



OLYMPIAD

(Jean Gaujard, 1931)

HT. (Mme. Raymond Gaujard.) This handsome French Rose won the 1930 Gold Medal at Bagatelle. A very long bud; fully double, long-lasting flower of deep blood-red, shaded with copper and yellow. Plants vigorous, free-flowering.

E. G. HILL

Illustrated below. (E. G. Hill Co., 1929)

HT. Very beautiful dark red buds which open to immense, long-lasting, dazzling scarlet flowers, with the rich fragrance of the old-time Roses. Blooms are full to the center, compact, have many petals, last a long time on the bush or cut. For a Rose so full, the plant is unusually prolific and makes better than average garden growth. The leader of all reds in our nursery in 1933-34 for consistent color and fine flowers.



E. G. Hill



REV. F. PAGE-ROBERTS

(B. R. Cant & Son, 1921)

HT. Copper-red buds opening to large, double, golden yellow blooms, stained outside with red; fragrant. 50 petals. Healthy foliage.

NORMAN LAMBERT

(S. McGredy & Son, 1926)

HT. Large, handsome, copper-orange buds and very large, semi-double flowers, rich golden yellow at first, splashed and edged with coppery crimson.



ROSLYN

(Edwin Towill, 1929)

HT. Charming, pointed buds of golden yellow and frilled, open flowers of buttercup hue strengthened with orange. A remarkably free-blooming garden plant of moderate vigor. An interesting new variety.

MRS. PERCY V. PENNYBACKER

(Jos. Vestal & Sons, 1929)

HT. A charming Rose of Mme. Butterfly type, with double flowers of soft peach-pink and silver. The fragrance is sweet. Plant strong and free-flowering.

PINK PEARL

(M. Leenders & Co., 1924)

HT. This is the best of all Roses of the Columbia type. Its erect stems bear its solid, deep pink flowers rigidly erect. Very double and deliciously fragrant.

SPECIAL OFFER No. 2. Any ten 60-ct. Roses and Any ten 45-ct. Roses (a Total of 20 2-Year, No. 1 Roses) **PREPAID** in U. S. A. for only \$8.50

Special or Newer Everblooming Bush Roses, continued



PREMIER SUPREME

(Zieger & Sons, 1927)

HT. Finest type of the florists' or cut-flower Rose. Tall, vigorous growth, producing handsome, deep rose-pink flowers at the tip of each shoot. Unexcelled for cutting because of its beautiful form and fragrance. 60 cts. each, \$6.00 per doz.

STANDARD OFFER No. 3

Any 25 Standard or 45-ct. Roses Ordered for One Shipment—All Two-Year, No. 1 Plants—PREPAID Anywhere in U. S. A., ONLY \$8.75.

SOUVENIR DE MME. C. CHAMBARD

Illustrated below. (C. Chambard, 1931)

HT. Sturdy plants of Hybrid Perpetual habit, producing immense, upstanding flowers of gorgeous rosy red and salmon, with a deep orange-yellow glow underlying the whole flower. Blooms all season. \$1.00 each, \$10.00 per doz.



SYRACUSE

(C. Mallerin, 1930)

HT. Bright crimson flowers full of wavy petals, outer petals recurving. Open bloom is very double. Borne singly on good stems by tall, vigorous, bushy plants of healthy foliage. 60 cts. each, \$6.00 per doz.



SCHWABENLAND

(V. Berger, 1928)

HT. Extremely large, globular buds which open slowly into blooms of stately size and magnificent petalage; amaranth-pink; fragrant. Sturdy and free-flowering. 60 cts. each, \$6.00 per doz.

Standard or Well-Known Hybrid Perpetuals

35 cts. each, \$3.50 per doz. These Roses bloom in late spring and in the autumn

FRAU KARL DRUSCHKI

(P. Lambert, 1901)

HP. White American Beauty. Pinkish buds and magnificent, snow-white blooms with deep, firm petals. A flower of unsurpassed shape. Best white Rose of any class. Very strong; 4 to 6 feet high. Prune often. Foliage normal. Blooms freely and continuously throughout the summer and fall.

MME. ALBERT BARBIER

(Barbier & Co., 1925)

HP. Full, cupped flowers of soft fawn-yellow, paling to white; pinkish shades in the center. Growth moderate; blooms steadily through the season. Remarkable combination of yellow shades.

GENERAL JACQUEMINOT

(Roussel, 1852)

HP. Scarlet-crimson buds and clear red blooms of moderate size and excellent shape; very fragrant. Plant strong; 3 to 6 feet high. Normal foliage. Often blooms a second time. An old favorite.

PAUL NEYRON

(A. Levet, 1869)

HP. Dark lilac-rose blooms of immense size, fair form, very double; remarkably fragrant. Vigorous. Strong, smooth canes. Tough, leathery foliage. It is more profuse in bloom than other roses of its color, and one of the largest of all Roses.

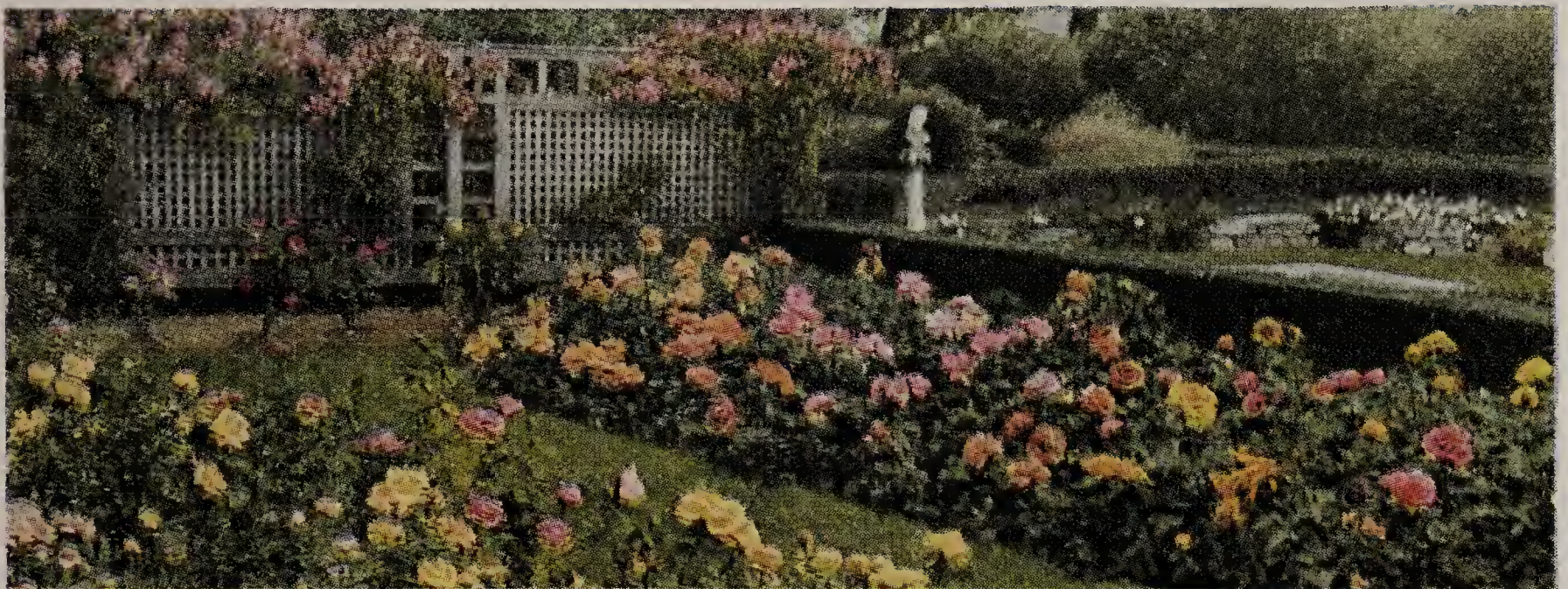
"I received my Rose bushes at noon yesterday and must confess to being surprised at the wonderful root-systems and tops on bushes that are only two years old. I would recommend your plants to anyone."—Reading, Pa., November 7, 1933.

Special Group Prices to Garden Clubs

Because it is easier to handle large orders than small ones, we can afford to make special reductions in prices to Garden Clubs whose members group their orders, or to any number of Rose-lovers who group together for the purpose of securing favorable prices on Roses. If one hundred or more Roses are ordered to be shipped at one time, you are entitled to the 100-lot prices quoted at bottom of page 23.

Dixie Rose Nursery is a member of the American Rose Society. Because it endorses the work of that organization, it will give one annual membership in the American Rose Society to every Rose group or individual which orders 100 or more Dixie Rose bushes this season, to be shipped at one time. Membership in the American Rose Society is an honor and a privilege. Among other advantages, each member receives a practical book on Rose-growing called "What Every Rose-Grower Should Know."

A Rose-Garden Completes the Ideal Home



Every home should have at least fifty to a hundred Roses in the garden. Roses are fast becoming the most popular flower in America, as they have long been the best loved. The popularity of Roses is growing by leaps and bounds, and Garden Clubs and Rose Societies devoted to the culture of this lovely flower are being formed everywhere. Many of these Garden Clubs and Rose Societies have planted Municipal Rose-Gardens for the benefit of every citizen in the community. The American Rose Society will help in all undertakings of this kind by giving advice and suggestions. Plans and reports of municipal Rose-garden activities are available. We shall be glad to give further information on request.

Early Winter Planting in the South

Late fall is the best planting-time in the South because growth ceases for only a few weeks in midwinter. Bushes planted before winter comes make good root-growth and are ready to begin growing vigorously when spring opens. In the southern states, Roses may be planted at any time in winter when the ground is not frozen, but particularly from November 15 to February 15. If possible, prepare the ground several weeks in advance before planting, to allow plenty of time to settle before the Roses are planted. It is also well to protect newly planted Roses by hilling the earth up around them the first winter.

"I purchased from you in March, 1932, one of your Climbing Talisman and I believe that I have the finest plant of that variety in this state. Last spring we had from 30 to 50 blooms at one time—all large fine buds with stems from 10 to 18 inches in length."—Mrs. Felix P. Clay, Montgomery, Ala., February 6, 1934.

See Key to Classification and Strength of Growth on page 31

Standard or Well-Known Everblooming Roses

All Roses listed below are 45 cts. each, \$4.50 per doz.

There are thousands of standard or well-known Roses. However, we are now offering you only the bush and climbing varieties which we consider are worthy and adaptable to most soils and conditions.



PRES. HERBERT HOOVER

(L. B. Coddington, 1930)

HT. Cross of Sensation X Souv. de Claudius Pernet. Large, cerise-pink, flame, scarlet, and yellow bloom; thick, broad petals; fragrant. This variety has proved itself through several years' test as one of the best of the newer garden Roses for the South, for it grows with exceptional vigor and produces an unbroken succession of handsome flowers.



President
Herbert
Hoover

AMERICAN BEAUTY

(Ledebaux, 1886)

HP. Large, globular buds and deep vinous crimson flowers, intensely fragrant, borne freely on strong stems over a long season. Very popular; always wins great admiration for its delicious perfume.



CHAS. K. DOUGLAS

(H. Dickson, 1919)

HT. Fine, long-pointed buds, opening to large, loosely formed flowers of striking crimson-scarlet; slightly fragrant. The strong, branching plants are of ideal bedding habit. Abundant, healthy foliage.

FRANK W. DUNLOP

(J. H. Dunlop, 1919)

HT. Very large buds and flowers of deep, brilliant rose-pink, extremely double and highly perfumed. Tall, with sparse foliage; blooms freely.

GRUSS AN TEPLITZ

(Geschwind, 1897)

China or Bengal in character. Clusters of medium-sized, bright crimson flowers, with velvety shadings; intense fragrance. Ideal for massing or edging. Blooms freely. Vigorous, hardy.



COLUMBIA

(E. G. Hill Co., 1916)

HT. Lively, bright pink, sweetly scented flowers of exquisite shape and strong, stiff petals, deepening in color as they expand. Free-flowering; good growth. Healthy foliage.



ANTOINE RIVOIRE

(Pernet-Ducher, 1896)

HT. Pale silvery pink, often shaded lilac, with a touch of yellow at base; opens flat; double to center; medium size; fragrant. Erect, moderate growth. Foliage small, dark. Free-blooming spring and fall.



LADY ASHTOWN

(A. Dickson & Sons, 1906)

HT. Satiny buds and double, high-centered blooms of deep shining pink, with yellow glow at base of petals; quite fragrant. Strong; free-blooming. Hardy; healthy. 50 petals.

Standard or Well-Known Everblooming Roses, continued

All Roses listed below are 45 cts. each, \$4.50 per doz.

JONKHEER J. L. MOCK
(M. Leenders & Co., 1910)

HT. Carmine buds of gigantic size, opening slowly to enormous deep carmine-pink blooms with inner surface silvery rose. Stems are strong; bush is vigorous and unusually healthy.



KILLARNEY, DOUBLE WHITE

(Waban Rose Conservatories, 1909)
HT. Pure white sport of original Killarney, and identical in shape of bud, petalage, and blooming qualities. Dwarf, upright grower, but very sturdy.

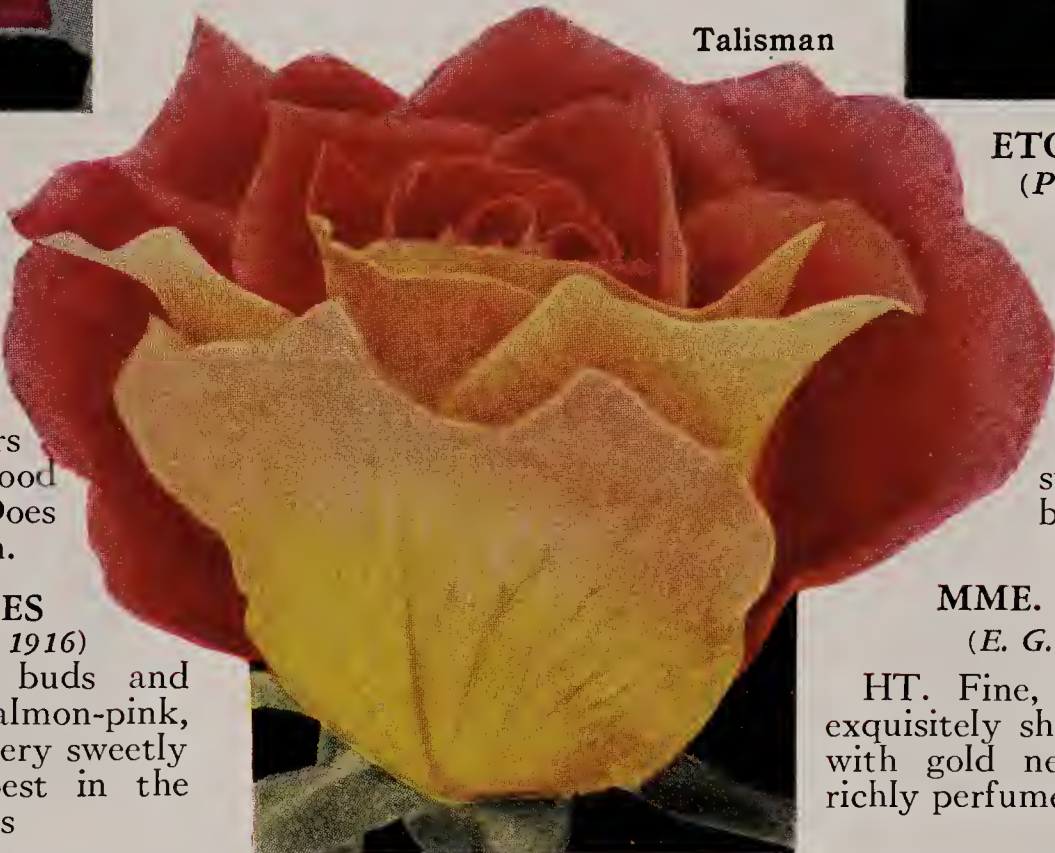
LADY ALICE STANLEY
(S. McGredy & Son, 1909)

HT. Massive buds and fully double blooms of pale flesh-pink; outside of petals coral-rose; very sweet-scented. A strong-growing, free-blooming plant, unusually free from disease.



TALISMAN

(Montgomery Co., 1929)
HT. Brilliant red and golden buds that open to beautifully shaped blooms of scarlet-orange and golden yellow. Vigorous; tall; blooms constantly. Thrives almost everywhere. The 1933 American Rose Annual places Talisman in the No. 1 list of Roses—that is, varieties that have received the most widespread praise with the least criticism, from those who have thoroughly tested this wonderful Rose.



Talisman

FRANCIS SCOTT KEY
(J. Cook, 1913)

HT. Very large, light crimson buds and massive, very double (95 petals) blooms of noblest form; slightly fragrant. Erect. Flowers in great abundance. Good foliage. Quite hardy. Does extra well in the South.

ETOILE DE FRANCE
(Pernet-Ducher, 1904)

HT. One of the really fine old-fashioned, clear crimson Hybrid Teas, with large, double, star-shaped flowers borne singly on long stems. A good, bushy, bedding variety.

LOS ANGELES
(Howard & Smith, 1916)

HT. Very lovely buds and exquisite flowers of salmon-pink, with yellow shading; very sweetly perfumed. Thrives best in the West. For dry climates

MME. BUTTERFLY
(E. G. Hill Co., 1918)

HT. Fine, light pink buds and exquisitely shaped flowers, tinted with gold near base of petals; richly perfumed.



LADY HILLINGDON
(Lowe & Sawyer, 1910)

T. Slender, pointed buds and elegantly cupped flowers of deep saffron-yellow, paling lighter toward edges of petals; fragrant. Erect. Perfect foliage. Requires some shade in hot weather. Free-flowering.



KAISERIN AUGUSTE VIKTORIA
(P. Lambert, 1891)

HT. Well-formed, creamy buds which develop slowly to snowy white blooms of perfect form, with lemon tint at center; fragrant. Moderately vigorous. Hardy.



LUXEMBOURG
Marie Adelaide, Grande Duchesse de Luxembourg
(Souper & Notting, 1912)

HT. Yellow, shading to copper at center. Stiff, upright stems, producing large flowers especially valuable for cutting.

Standard or Well-Known Everblooming Roses, continued

All Roses listed below are 45 cts. each, \$4.50 per doz.



**MARY, COUNTESS OF
ILCHESTER**

(A. Dickson & Sons, 1909)

HT. Large, double, full, cupped blooms of deep rose-pink; fragrant. Plant bushy; blooms freely. Very hardy. 52 petals. One of the best Roses for the South.



HADLEY

(Montgomery Co., Inc., 1914)

HT. A rich crimson-red flower with velvety texture, lovely form, and perfume unsurpassed in cut-flower value. Moderate in bloom and growth. The flowers show their best color in the fall.



**SOUVENIR DE GEORGES
PERNET**

(Pernet-Ducher, 1921)

HT. Gigantic flowers of glowing orange-pink, tinged with yellow. Buds almost scarlet. A dwarf, stocky plant which holds its huge blooms erect, making a fine bedding or massing variety.



**SOUVENIR DE CLAUDIUS
PERNET**

(Pernet-Ducher, 1920)

HT. Fadeless yellow, paling somewhat toward the edges; most beautiful when half open. Parent of most two-toned Roses. Poor grower except in the West.



SENSATION

(J. H. Hill Co., 1922)

HT. Enormous, double, scarlet-crimson blooms of fine, deep form; sweetly scented. Plant strong and very active. 45 large petals.



SUNBURST

(Pernet-Ducher, 1912)

HT. Fine, well-shaped yellow flowers, suffused with orange at center. A well-known, fragrant garden Rose. Has proved its value in all southern gardens. Holds foliage better than most yellows.

MME. CAROLINE TESTOUT

(Pernet-Ducher, 1890)

HT. Large, globular flowers of satiny rose, shaded lighter toward outer edges of enormous petals; fragrant. Plant extra strong, healthy, very free-blooming.



Willowmere

WILLOWMERE

(Pernet-Ducher, 1913)

HT. Superb buds and blooms of richest pink, shining with yellow glow from heart of the flower. Strong grower; persistent bloomer. Its beauty is worth care. 54 petals.

*See Our Special
Standard Offer No. 3
on page 18*

*See Our Special
Color Offer No. 4
on page 23*

Standard or Well-Known Everblooming Roses, continued

All Roses listed below are 45 cts. each, \$4.50 per doz.



RADIANCE
(J. Cook, 1908)

HT. Brilliant rose-pink buds, opening to well-formed, shining, globular flowers with lighter tints on reverse of petals; very fragrant. Plant of splendid growth; wonder bloomer.



RED RADIANCE
(Gude Bros., 1916)

HT. Big, globular blooms of deep rose-red on strong canes. The plant blooms freely until frost and in every respect is fully equal to Radiance. Foliage excellent.



MRS. CHARLES BELL
(Mrs. Charles Bell, 1913)

HT. Lovely shell-pink buds and blooms of fine globular form, with shadings of soft salmon; sweetly perfumed. Plant is strong, bushy. Good, healthy foliage.

OPHELIA
(W. Paul & Son, 1912)

HT. A creamy white and pale pink bloom with a glint of golden yellow in folds of petals; very fragrant. Plant strong; spare habit; blooms liberally. One of the first florist Roses to have a perfectly formed bud.

COLOR OFFER NO. 4

15 Standard 45-cent, Two-Year Roses, any 5 each of Red, Pink, and Yellow, Your Selection (our selection if you prefer), Guaranteed First Quality, PREPAID in U. S. A., for \$5.25.

Special Prices on Quantity Orders

These Prices Apply to Individuals or Garden Clubs

	12 or more	50 or more	100 or more
45-ct. Standard Roses.....	37½c each	35c each	30c each
60-ct. Special or Newer Roses.....	50c each	47½c each	45c each
65-ct. Climbing Talisman, page 3	54c each	52c each	50c each
75-ct. Special or Newer Roses.....	62½c each	60c each	55c each
\$1.00 Rose, Souv. de Mme. C. Chambard, page 18.....	83½c each	80c each	75c each

PATENTED ROSES described on pages 4 to 12 do not take quantity prices except as shown under each description

Orders of 12 or more Roses in one shipment take quantity rates, regardless of the number of varieties in shipment.

All prices in this Catalog are PREPAID in the United States, provided the total order is \$2.00 or more; otherwise add 15 cts. for extra packing and transportation costs. No orders accepted for less than \$1.15, including packing and postage.

Roses Are Scarce This Season

Because of Extremely Cold Weather the Past Two Winters, and the Drought During the Summer of 1934, Roses Are in Demand and Prices May Advance. Order Yours Now and Tell Us When to Ship Them.

"We are highly pleased with the Roses we purchased from you last December. Every one lived and has bloomed profusely all summer. Edith Nellie Perkins is especially beautiful. Please send us your latest Catalog as soon as it is off the press."—C. E. Denton, Nashville, Tenn.

Hardy Climbers

These climbers withstand winter temperatures in most states, but have only one blooming period. They bloom profusely in their blooming season



**MME. GREGOIRE
STAECHELIN**

(P. Dot, 1927)

CLHT. (New.) Buds long-pointed; very large flowers of delicate pink with curled petals stained crimson outside. A Rose that everybody admires for its great size and exquisite delicacy of color. 60 cts. each, \$6.00 per doz.

JACOTTE

(Barbier & Co., 1929)

HW. Clusters of large, semi-double, orange-yellow flowers 3 inches across, tinted copper-red. Strong, profuse bloomer. 60 cts. each, \$6.00 per doz.

GOLDEN CLIMBER

Mrs. Arthur Curtiss James

Described and priced on page 5.

ALBERTINE

(Barbier & Co., 1921)

HW. Very large, soft peach-pink, semi-double flowers, borne freely on an extremely vigorous, thoroughly hardy plant. 60 cts. each, \$6.00 per doz.

CHAPLIN'S PINK CLIMBER

(Chaplin Bros., 1928)

HW. Broad trusses of wide, flat flowers in brilliant pure pink. Vigorous; very free-flowering, covering itself with sheets of bloom. 60 cts. each, \$6.00 per doz.

CLIMBING

AMERICAN BEAUTY

(Hoopes, Bro. & Thomas Co., 1909)

HW. Light crimson flowers, most beautifully shaped. Early bloomer. 45 cts. each, \$4.50 per doz.

DR. W. VAN FLEET

(Dr. W. Van Fleet, 1910)

HW. Pale pink buds; wonderful flowers in shape and size, on long stems. Produces thousands of blooms in midseason. 45 cts. each, \$4.50 per doz.

PAUL'S SCARLET CLIMBER

(W. Paul & Son, 1916)

HW. Bright scarlet blooms of excellent shape and moderate size, in small trusses. 45 cts. each, \$4.50 per doz.



PRIMROSE

(Barbier & Co., 1920)

HW. Large, double flowers of soft primrose-yellow, in clusters, on vigorous plants. 60 cts. each, \$6.00 per doz.

MARY WALLACE

(Dr. W. Van Fleet, 1910)

HW. Large, semi-double, warm rose-pink flowers. Vigorous, glossy foliage. 60 cts. each, \$6.00 per doz.

SILVER MOON

(Dr. W. Van Fleet, 1924)

HW. Long, creamy buds; immense, nearly single, saucer-shaped, creamy white flowers with golden anthers. 45 cts. each, \$4.50 per doz.

HUGONIS (Shrub Rose)

A handsome big shrub with long, arching canes growing 6 to 7 feet high and as much through. In early spring the plant is covered with myriads of fairly large, bright yellow, single flowers of great charm. Throughout the rest of the season, its small acacia-like foliage and bright crimson fruits make it an interesting and attractive specimen bush. 50 cts. each, \$5.00 per doz.

"First, I want to congratulate you on your recent shipment of Roses to the city of Gulfport, Miss. I have charge of the city's shrubbery and made up the order for over 500 Roses and set out every one of them with my own hands. I have had over 50 years' experience with Roses, and I never saw better stock, and up to the correct grade, too."

—George B. McVay, Sr., Gulfport, Miss., January 7, 1934.

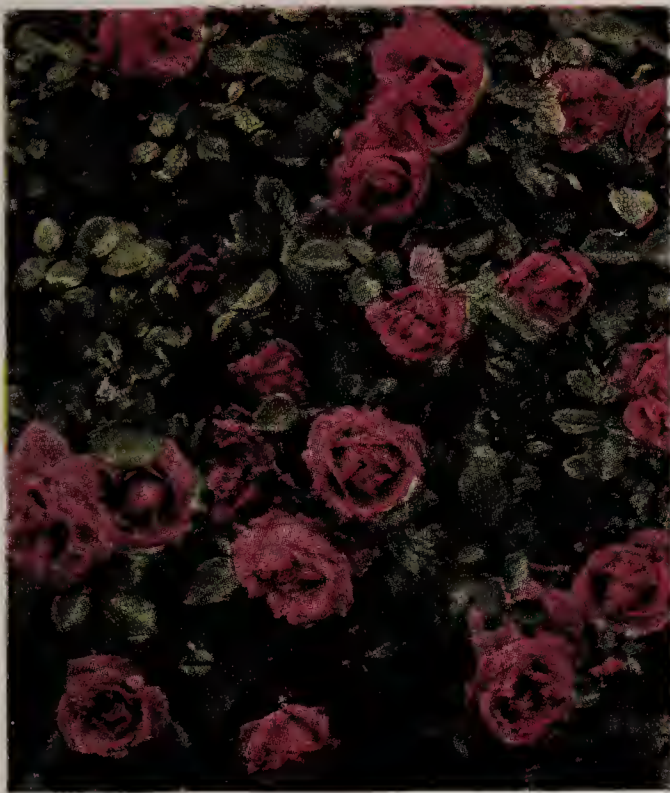
Everblooming Climbing Roses

These plants bloom throughout blooming season. They require winter protection in the North

COUNTESS MARY

(Dixie Rose Nursery, 1933)

Cl.HT. Climbing sport of the popular rose, Mary, Countess of Ilchester. Illustrated on back cover. Described on page 3. 75 cts. each, \$7.50 per doz.



KITTY KININMONTH

(A. Clark, 1922)

HG. Superb, vigorous climber with huge, glowing pink flowers of vivid color. One of the finest climbing Roses. 60 cts. each, \$6.00 per doz.

CLIMBING METEOR

(Dingee & Conard, 1901)

Cl.HT. One of the best old favorite dark red Roses. Blooms all season when established. 45 cts. each, \$4.50 per doz.

MERMAID

(W. Paul, 1918)

H.Brac. Huge, single, pale yellow flowers all season. 60 cts. each, \$6.00 per doz.

MARECHAL NIEL

(Pradel, 1864)

Nois. Most glorious yellow climber for southern gardens. Deliciously fragrant, golden yellow flowers borne on drooping stems. Vigorous, climbing plant. Tender to frost. 60 cts. each, \$6.00 per doz.

CLIMBING RAPTURE

(Dixie Rose Nursery, 1933)

HT. Climbing sport of Rapture. Described and illustrated on page 3. 75 cts. each, \$7.50 per doz.

BLAZE

Everblooming seedling of Paul's Scarlet Climber and Gruss an Teplitz. Described and illustrated on page 9. \$1.50 each, \$15.00 per doz.

CLIMBING MRS. THOM

A new sport of Mrs. E. P. Thom. Golden yellow. Originated by us. Illustrated on the front cover. Described on page 3. 75 cts. each, \$7.50 per doz.

CLIMBING PINK PEARL

A new sport of Pink Pearl we originated and tested. It is described on page 3. 75 cts. each, \$7.50 per doz.

CLIMBING PRESIDENT HOOVER

Another climber we originated. Illustrated on front cover and described on page 3. A beautiful climber. 75c. each, \$7.50 per doz.

CLIMBING RED RADIANCE

Cl.HT. A strong climber, in bud and bloom like bush Red Radiance described on page 23. 60 cts. each, \$6.00 per doz.

CLIMBING TALISMAN

We originated this climber and tested it 3 years. It's one of the most vigorous bloomers. Illustrated on back cover. Described on page 3. 65 cts. each, \$6.50 per doz.

CLIMBING POLYANTHAS

Described and priced on pages 5 and 27.

CLIMBING CECILE BRUNNER

This well-known Sweetheart Rose is described on page 27. You should have at least two in your garden. 60 cts. each, \$6.00 per doz.

PRINSES VAN ORANJE

New Patented Climbing Polyantha. Illustrated and described on page 5. No garden complete without one or two. \$2.00 each, \$20.00 per doz.

CLIMBING KAISERIN AUGUSTE VIKTORIA

Mrs. Robert Peary
(A. Dickson, 1897)

Cl.HT. Pure white, lemon center. Vigorous climbing sport of K. A. Viktoria described on page 21. 45 cts. each, \$4.50 per doz.

CLIMBING RADIANCE

(W. D. Griffing, 1926)

Cl.HT. Climbing form of the well-known pink Radiance described and illustrated on page 23. 60 cts. each, \$6.00 per doz.



CLIMBING ROSE MARIE

(Pacific Rose Co., 1927)

Cl.HT. Sport of Rose Marie. Fragrant, rose-pink flowers of large size, borne freely on plants of notable vigor and health. Our choice of a pink climber. 60 cts. each, \$6.00 per doz.

SCORCHER

(A. Clark, 1922)

Cl.HT. An astonishing new climber from Australia, with huge, semi-double flowers whose ruffled petals are blazing rose-red, entirely different in effect from any other climber of its class. One of the most spectacular varieties. Several blooming periods. 60 cts. each, \$6.00 per doz.

CLIMBING SUNBURST

(Stuart Low & Co., 1915)

Cl.HT. A vigorous climbing form of the well-known Sunburst. Beautifully shaped, golden orange flowers borne profusely without interruption all season. 60 cts. each, \$6.00 per doz.

RED EXPLORER

A new Climbing Polyantha. Described and illustrated on page 27. The best bright red Climbing Polyantha. 60 cts. each, \$6.00 per doz.

Everblooming Polyantha Bush Roses

Bush Polyanthas are low-growing, but not weak. Polyanthas bloom in clusters and are ideal for mass color, borders, and low, colorful hedges

CECILE BRUNNER

Sweetheart Rose

(Mme. Ducher, 1880)

Small, exquisitely formed buds and flowers of light pink with yellow base, borne in graceful clusters. 60 cts. each, \$6.00 per doz



ELLEN POULSEN

(Poulsen, 1912)

Large, fairly full flowers of bright rose-pink, darker toward edges, borne profusely in large clusters; fragrant. Plant 15 to 18 inches high. 45 cts. each, \$4.50 per doz.



GOLDEN SALMON

(W. Cutbush & Son, 1926)

Bright orange-salmon flowers in huge clusters. Growth vigorous and bushy. First really orange Polyantha. Splendid display in masses. 45 cts. each, \$4.50 per doz.

KATHARINA ZEIMET

(P. Lambert, 1901)

Small, very double, pure white flowers in large clusters; fragrant. Vigorous, faithfully blooming plants. One of the best white Ramblers. 45 cts. each, \$4.50 per doz.



EBLOUSSANT

(E. Turbat & Co., 1908)

Velvety scarlet flowers in large clusters. Each bloom resembles a miniature cactus dahlia. Unfading and always attractive color. 60 cts. each, \$6.00 per doz.



KIRSTEN POULSEN

(Poulsen, 1924)

Big, bushy plant bearing huge sprays of single crimson-scarlet flowers nearly 2 inches across. Fine for low hedges or massing. Companion for Else Poulsen. 60 cts. each, \$6.00 per doz.

GEORGE ELGER

(E. Turbat, 1912)

Dainty golden buds and pale cream flowers. 45 cts. each, \$4.50 per doz.

PRINSES VAN ORANJE

Climbing Polyantha

Described and priced on page 5.

ERNA TESCHENDORFF

(Victor Teschendorff, 1911)

Fairly small, bright red, semi-double flowers in large clusters on plants 10 to 15 inches high. Continuous blooming. Hardy. 45 cts. each, \$4.50 per doz.



ELSE POULSEN

(Poulsen, 1924)

Tall variety with huge, loose sprays of 5-petaled, brilliant salmon-pink flowers borne unceasingly all season. 60 cts. each, \$6.00 per doz.



GLORIA MUNDI

(G. de Ruiter, 1929)

Huge clusters of small, orange-scarlet flowers of a deeper tone than Golden Salmon. A very startling and unexpected color in the Rose-garden. 50 cts. each, \$5.00 per doz.

LAFAYETTE

(Nonin, 1924)

Compact plant bearing huge sprays of semi-double, brilliant light crimson flowers about 2 inches wide. Very showy bedding variety which is highly esteemed for hedging or massing. 60 cts. each, \$6.00 per doz.

Everblooming Polyanthas, continued



IDEAL
(J. Spek, 1921)

Dense, compact bunches of small, dark scarlet blooms, shaded with black, borne in tremendous profusion. Plant vigorous, long-branching, continually in bloom. Makes a splendid mass of velvety color all season. 45 cts. each, \$4.50 per doz.

CL. CECILE BRUNNER
(F. P. Hosp, 1894)

Cl.Poly. A charming, ever-blooming climber, with delicate salmon-pink and paler colored flowers in clusters. A very strong grower. 60 cts. each, \$6.00 per doz.



RED EXPLORER
(A. Penny, 1928)

HM. A vigorous, everblooming sport of the Polyantha, Miss Edith Cavell, with the same brilliant crimson flowers borne in huge clusters. It is one of the best of the so-called hardy everblooming climbers. 60 cts. each, \$6.00 per doz.



MISS EDITH CAVELL
(Meiderwyk, 1917)

Small, semi-double, brilliant scarlet-red flowers, produced in big, cone-shaped clusters. Sturdy, well-branched plants. One of the best. 45 cts. each, \$4.50 per doz.

GRUSS AN AACHEN
(P. Geduldig, 1909)

Large blooms of Hybrid Tea type borne on dwarf, bushy plants. Color varies from orange-red and salmon-pink to cream and yellow. 50 cts. each, \$5.00 per doz.

Hybrid Rugosas

These plants bloom in small clusters like Polyanthas, but they grow much higher, making beautiful mass-color hedges.

F. J. GROOTENDORST (J. B. de Goey, 1918)

Small, bright red, fringed flowers, in large clusters throughout season. Vigorous, 6 feet or more. Large foliage of superb quality. A fine everblooming hedge when kept cut to 4 feet. 45 cts. each, \$4.50 per doz.

PINK GROOTENDORST (Grootendorst & Son, 1923)

Clusters of small, fringed, clear shell-pink blooms. Vigorous, bushy; very hardy; constantly in flower. Excellent for borders or masses; 4 to 5 feet high when pruned. 45 cts. each, \$4.50 per doz.

Special Offer No. 5

12 No. 1 ROSES, including 7 of the most practical and most beautiful varieties of 60-ct. and 65-ct. Roses.

	Described on page	Value
4 Red Roses—2 E. G. Hill.....	17..	\$1.20
and 2 Lord Charlemont.....	11..	1.20
4 Pink Roses—2 Dame E. Helen.....	15..	1.20
and 2 Margaret McGredy....	8..	1.20
3 Yellow—1 Golden Dawn.....	9..	.60
and 2 Mrs. P. S. du Pont....	4..	1.20
1 Multicolor— Climbing Talisman.....	3..	.65

12 Two-Year Roses .. VALUE \$7.25

PREPAID Anywhere in the United States for only \$5.95

Standard Offer No. 6

12 No. 1 ROSES, including 6 of the best Everblooming 45-ct. varieties—all guaranteed in good condition on arrival.

	Described on page	Value
4 Red Roses—2 Red Radiance..	23..	\$0.90
and 2 Chas. K. Douglas.....	20..	.90
4 Pink Roses—2 Radiance.....	23..	.90
and 2 Mary, Countess of Ilchester.....	22..	.90
4 Yellow Roses— 2 Lady Hillingdon.....	21..	.90
and 2 Luxembourg.....	21..	.90

12 Two-Year Roses .. VALUE \$5.40

PREPAID Anywhere in the United States for only \$4.25

Planting, Pruning, and Care of Dixie Roses

Location and Soil. Select a place for Roses where water does not stand after rains, and where the sun shines at least part of the day. Be careful not to plant them too close to trees, hedges, or other large plants, whose competition for food and moisture may be too keen for the best growth of the Roses. The best soil is rich clay loam, but Roses do well in almost any soil.

Preparation and Fertilizers. Dig the Rose bed 18 inches deep, replacing at least $\frac{1}{3}$ of the soil with well-rotted cow-manure. This may be supplemented with commercial fertilizers in early spring and at such intervals during growing season as indicated by lack of vigor in plants. If cow-manure cannot be obtained, use any other natural manure, but make sure that it is well rotted, and take particular pains to see that it is mixed evenly and finely through the soil. Do not leave it in layers or chunks in the bed. Use water liberally. Don't sprinkle, but wet the ground thoroughly by allowing water to run slowly as long as necessary to soak down to the roots.

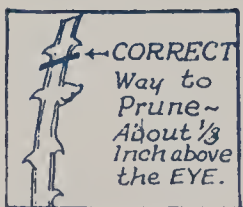
Planting and Pruning. Plant Roses as quickly as possible after they arrive. If it is impossible to plant them at once, bury the plants completely in well-drained soil to prevent drying out. Cut off broken or bruised roots and branches and prune away all but 3 or 4 of the best stems, shortening them to about 6 inches. Prune branches about $\frac{1}{4}$ inch to $\frac{1}{3}$ inch above eye, as shown in cuts No. 3 and No. 4, at left. Make holes in prepared bed wider than the roots spread. The point at which the plant was budded should be just under ground when leveled off. When hole is half filled, tamp soil firmly about roots, then fill it with water. When this has soaked in, complete filling hole with loose soil to prevent drying out. Plant 18 to 30 inches apart according to class of Roses. Plant climbers 4 to 6 feet apart.



Cut No. 1
Proper Depth



Cut No. 2
Too Deep

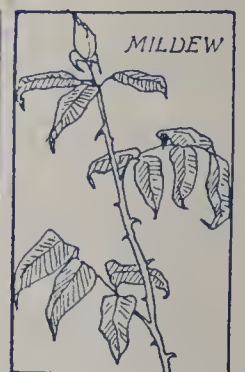


Cut No. 3

Diseases and Pests. Dust Roses every week with a combination of 9 parts Superfine Sulphur and 1 part Arsenate of Lead. Do this whether or not any disease is apparent. It will prevent mildew and black-spot, either of which are hard to eradicate after they have started. Spraying with a solution of "Black Leaf 40" will destroy green plant-lice when they appear.



Cut No. 5



Cut No. 6

Join the American Rose Society and read its annual publications. The address of the Secretary is Harrisburg, Pennsylvania. Every lover of Roses should belong to this organization.



Cut No. 4

Winter Protection. Where there is a possibility of the temperature dropping near to zero, it will be best to hill the dirt up about the bushes some three or four inches high during the winter months. When the plants begin to grow in the spring, remove this dirt down to the natural ground-level. It is always good practice to mulch the beds with dairy fertilizer; this gives additional winter protection. If dairy fertilizer is used, it should be applied after the Roses are hilled up or the dirt is banked around them.

If the Roses are planted in late spring, draw the ground up around the plants for two weeks or more, or until they can take root, to protect them from the drying effects of the sun and wind.

Dixie Roses Are Growing and Blooming in Practically Every State

DIXIE ROSE NURSERY, Tyler, Texas

South's Leading Rose Nursery

You Are Invited to Attend

The Annual East Texas Rose Festival on October 11 and 12 Each Year

at Tyler, Texas—the geographic and business center of America's greatest field-budded Rose area, producing 6,000,000 field Roses annually



The photographs above were taken in October, 1933. In upper right group is Dr. J. Horace McFarland, Editor of American Rose Annual, and President Emeritus of the American Rose Society. Visitors at this Festival came from 75 cities in 15 different states.



A Corner of the De Shong Garden

Home of Mr. and Mrs. J. C. De Shong, Paris, Texas, who have many Dixie Roses in their garden. Some of our customers have several thousand Dixie Roses in their home-grounds.

FINANCIAL RESPONSIBILITY of Dixie Rose Nursery is \$250,000.00. The owners of Dixie Rose Nursery are A. F. Watkins, Manager; W. V. Henson, Vice-President and Manager of Texas Pecan Nursery, an experienced nurseryman; and R. W. Fair, President of Texas Pecan Nursery. **REFERENCES:** Dun & Bradstreet, Tyler Chamber of Commerce, any Tyler bank or banker. Our methods and our guarantee are dependable.

INDEX and KEY TO CLASSIFICATION

All Roses described in this Catalog are listed below alphabetically by classes or groups

Pernetiana—where Austrian Briar blood is dominant, producing short-lived foliage—P.
 Pernetiana Hybrid—Austrian Briar in mixture, resistance of foliage, according to care given—PH.
 Hybrid Tea—the pure breed, with long-lived, healthy foliage, particularly recommended for regions of long seasons—HT.
 Figures 1, 1½, 2, and 3 indicate our judgment of the Rose in descending ratio from the standard of Radiance, 1.

White or nearly white.....W	Salmon and buff-pink.....SP	Dark red.....DR
Pink.....P	Copper and apricot shades.....CA	Light red.....LR
Light pink and light rose.....LP	Shades of cream and golden yellow.....Y	Red.....R
Dark pink and dark rose.....DP		

SPECIAL or NEWER EVERBLOOMING BUSH ROSES

Variety Name	Page No.	Type	Color	Growth Strength	Price Each	Per Doz.
Ami Quinard.....	14	HT	DR	1½	\$0.60	\$6.00
Angelus.....	14	HT	W	1½	.60	6.00
Aroma.....	6	HT	R	1½	.60	6.00
Autumn.....	4	HT	CA	2	.60	6.00
Betty Sutor.....	14	HT	DP	2	.60	6.00
Betty Uprichard.....	14	PH	DP	1	.60	6.00
Briarcliff.....	14	HT	LP	1½	.60	6.00
Caledonia.....	15	HT	W	2	.60	6.00
Charles P. Kilham.....	15	HT	CA	2	.60	6.00
Chateau de Clos Vougeot.....	14	HT	DR	2	.60	6.00
Cuba.....	14	P	CA	1½	.60	6.00
Dainty Bess.....	15	HT	LP	1½	.60	6.00
Dame Edith Helen.....	15	PH	LP	1	.60	6.00
Director Rubio.....	12	HT	LR	1½	.60	6.00
Duchess of Wellington.....	15	HT	Y	1½	.60	6.00
Edel.....	15	PH	W	1½	.60	6.00
Edith Nellie Perkins.....	13	PH	SP	1½	.60	6.00
Editor McFarland.....	13	HT	P	1	.60	6.00
E. G. Hill.....	17	HT	DR	1½	.60	6.00
Etoile de Hollande.....	14	HT	DR	1½	.60	6.00
Golden Dawn.....	9	HT	Y	1	.60	6.00
Imperial Potentate.....	15	HT	P	1½	.60	6.00
Impress.....	17	HT	SP	1½	.60	6.00
Independence Day.....	12	HT	CA	1½	.60	6.00
Irish Charm.....	15	HT	LP	2	.60	6.00
Irish Elegance.....	15	HT	LP	2	.60	6.00
Joanna Hill.....	9	HT	Y	1½	.60	6.00
John Russell.....	16	HT	DR	1½	.60	6.00
Julien Potin.....	8	HT	Y	2	.60	6.00
Lady Margaret Stewart.....	16	HT	Y	2	.60	6.00
Lord Charlemont.....	11	HT	R	1½	.60	6.00
Lulu.....	16	HT	SP	2	.60	6.00
Maman Cochet.....	16	T	P	1½	.60	6.00
Margaret McGredy.....	8	PH	CA	1½	.60	6.00
McGredy's Scarlet.....	16	HT	R	1	.60	6.00
Mev. G. A. van Rossem.....	13	P	CA	1½	.60	6.00
Miss Lolita Armour.....	16	P	CA	1½	.60	6.00
Miss Rowena Thom.....	16	PH	P	1½	.60	6.00
Mme. Edouard Herriot.....	16	P	CA	2	.60	6.00
Mme. Jules Bouché.....	16	HT	W	1½	.60	6.00
Mme. Nicolas Aussel.....	6	HT	CA	1	.60	6.00
Mrs. A. R. Barraclough.....	16	HT	SP	1	.60	6.00
Mrs. E. P. Thom.....	16	HT	Y	2	.60	6.00
Mrs. Henry Bowles.....	15	PH	P	1½	.60	6.00
Mrs. Lovell Swisher.....	15	HT	LP	2	.60	6.00
Mrs. MacKellar.....	17	HT	Y	1½	.60	6.00
Mrs. P. V. Pennybacker.....	17	HT	P	1½	.60	6.00
Mrs. Pierre S. du Pont.....	4	PH	Y	2	.60	6.00
Norman Lambert.....	17	P	CA	2	.60	6.00
Nuntius Pacelli.....	16	HT	W	1½	.60	6.00
Olympiad.....	17	PH	CA	2	.60	6.00
Patience.....	16	HT	R	1½	.60	6.00
Pink Pearl.....	17	HT	LP	1½	.60	6.00
Premier Supreme.....	18	HT	DP	1½	.60	6.00
Rapture.....	15	HT	LP	2	.60	6.00
Rev. F. Page-Roberts.....	17	PH	CA	3	.60	6.00
Roslyn.....	17	HT	Y	2	.60	6.00
Schwabenland.....	18	HT	P	1½	.60	6.00
Souv. de Mme. C. Chamberland.....	18	HT	SP	1½	1.00	10.00
Syracuse.....	18	HT	DR	1½	.60	6.00

NEW NOVELTY and PATENTED ROSES

Amelia Earhart. Pat. 63.....	10	HT	Y	1½	1.50	15.00
Better Times. Pat. 23.....	12	HT	DP	1½	1.50	15.00
Blaze (Climber). Pat. 10.....	9	Cl.HT	R	1	1.50	15.00
Countess Vandal. Pat. 38.....	7	HT	SP	1½	1.00	10.00
Doublons. Pat. Pending.....	10	HT	Y	1½	1.50	15.00
Edith Krause.....	11	HT	W	1½	1.00	10.00
Golden Climber. Pat. 28.....	5	HW	Y	1	2.00	20.00
Gov. A. E. Smith. Pat. 62.....	10	HT	CA	1½	1.50	15.00
Louise Krause.....	11	HT	Y	1½	1.25	12.50
Mary Hart. Pat. 8.....	7	HT	R	1½	1.00	10.00
Max Krause.....	11	HT	Y	1½	1.50	15.00
New Dawn. Pat. 1.....	5	HW	LP	1½	1.50	15.00
Nigrette. Pat. 87.....	10	HT	DR	2	2.00	20.00
Prinses v. Oranje. Pat. 106.....	5	Cl.Poly	LR	2	2.00	20.00
Souvenir. Pat. 25.....	8	HT	Y	1½	1.00	10.00
Token. Pat. 95.....	4	HT	CA	2	1.50	15.00

STANDARD or WELL-KNOWN HYBRID PERPETUALS

Frau Karl Druschki.....	18	HP	W	1	.35	3.50
General Jacqueminot.....	18	HP	R	1	.35	3.50
Mme. Albert Barbier.....	18	HP	SP	1½	.35	3.50
Paul Neyron.....	18	HP	LP	1	.35	3.50

STANDARD or WELL-KNOWN BUSH ROSES

Variety Name	Page No.	Type	Color	Growth Strength	Price Each	Per Doz.
American Beauty.....	20	HP	R	2	\$0.45	\$4.50
Antoine Rivoire.....	20	HT	W	1½	.45	4.50
Charles K. Douglas.....	20	HT	DR	1	.45	4.50
Columbia.....	20	HT	LP	2	.45	4.50
Etoile de France.....	21	HT	DR	1½	.45	4.50
Francis Scott Key.....	21	HT	DR	1	.45	4.50
Frank W. Dunlop.....	20	HT	P	1½	.45	4.50
Gross an Teplitz.....	20	Ben	DR	1	.45	4.50
Hadley.....	22	HT	DR	2	.45	4.50
Jonkheer J. L. Mock.....	21	HT	DP	1	.45	4.50
Kaiserin A. Viktoria.....	21	HT	W	1½	.45	4.50
Killarney, Double White.....	21	HT	W	2	.45	4.50
Lady Alice Stanley.....	21	HT	P	1½	.45	4.50
Lady Ashtown.....	20	HT	P	1½	.45	4.50
Lady Hillingdon.....	21	T	Y	1	.45	4.50
Los Angeles.....	21	P	SP	2	.45	4.50
Luxembourg.....	21	HT	Y	1	.45	4.50
Mary, Countess of Ilchester.....	22	HT	P	1	.45	4.50
Mme. Butterfly.....	21	HT	LP	2	.45	4.50
Mme. Caroline Testout.....	22	HT	LP	1½	.45	4.50
Mrs. Charles Bell.....	23	HT	LP	1	.45	4.50
Ophelia.....	23	HT	W	2	.45	4.50
Pres. Herbert Hoover.....	20	HT	CA	1½	.45	4.50
Radiance.....	23	HT	P	1	.45	4.50
Red Radiance.....	23	HT	R	1	.45	4.50
Sensation.....	22	HT	DR	2	.45	4.50
Souv. de Claudius Pernet.....	22	P	Y	3	.45	4.50
Souv. de Georges Pernet.....	22	P	P	3	.45	4.50
Sunburst.....	22	HT	Y	2	.45	4.50
Talisman.....	21	HT	CA	2	.45	4.50
Willowmere.....	22	P	SP	1½	.45	4.50

EVERBLOOMING POLYANTHAS

Cecile Brunner.....	26	Poly	LP	3	.60	6.00
Cl. Cecile Brunner.....	27	Cl.Poly	LP	1	.60	6.00
Eblouissant.....	26	Poly	DR	3	.60	6.00
Ellen Poulsen.....	26	Poly	P	3	.45	4.50
Else Poulsen.....	26	Poly	LP	3	.60	6.00
Erna Teschendorff.....	26	Poly	LR	3	.45	4.50
F. J. Grootendorst.....	27	H.Rug	DR	1	.45	4.50
George Elger.....	26	Poly	Y	3	.45	4.50
Gloria Mundi.....	26	Poly	SP	3	.50	5.00
Golden Salmon.....	26	Poly	SP	3	.45	4.50
Gross an Aachen.....	27	Poly	SP	3	.50	5.00
Ideal.....	27	Poly	DR	3	.45	4.50
Katharina Zeimet.....	26	Poly	W	3	.45	4.50
Kirsten Poulsen.....	26	Poly	R	3	.60	6.00
Lafayette.....	26	Poly	R	3	.60	6.00
Miss Edith Cavell.....	27	Poly	R	3	.45	4.50
Pink Grootendorst.....	27	H.Rug	P	1½	.45	4.50
Prinses v. Oranje. Pat. 106.....	5	Cl.Poly	LR	2	2.00	20.00
Red Explorer.....	27	Cl.Poly	DR	1	.60	6.00
SHRUB ROSE—Hugonis.....	24	Shrub	Y	1	.50	5.00

EVERBLOOMING CLIMBERS

Blaze. Pat. 10.....	9	HT	Ben.R	1	1.50	15.00
Cl. Kaiserin A. Viktoria.....	25	HT	W	1½	.45	4.50
Cl. Meteor.....	25	HT	DR	1	.45	4.50
Cl. Mrs. Thom.....	3	HT	Y	2	.75	7.50
Cl. Pink Pearl.....	3	HT	P	1	.75	7.50
Cl. President Hoover.....	3	HT	CA	1½	.75	7.50
Cl. Radiance.....	25	HT	P	1	.60	6.00
Cl. Rapture.....	3	HT	LP	2	.75	7.50
Cl. Red Radiance.....	25	HT	R	1	.60	6.00
Cl. Rose Marie.....	25	HT	P	1	.60	6.00
Cl. Sunburst.....	25	HT	Y	2	.60	6.00
Cl. Talisman.....	3	HT	CA	1	.65	6.50
Countess Mary.....	3	HT	P	1	.75	7.50
Kitty Kininmonth.....	25	HG	DP	1	.60	6.00
Marechal Niel.....	25	Nois	Y	1	.60	6.00
Mermaid.....	25	H.Brac	Y	1	.60	6.00
Scorcher.....	25	HT	R	1	.60	6.00

HARDY CLIMBERS

Albertine.....	24	HW	CA	1	.60	6.00
Chaplin's Pink Climber.....	24	HW	LP	1½	.60	6.00
Cl. American Beauty.....	24	HW	R	1	.45	4.50
Dr. W. Van Fleet.....	24	HW	LP	1	.45	4.50
Golden Climber. Pat. 28.....	5	HW	Y	1	2.00	20.00
Jacotte.....	24	HW	CA	1½	.60	6.00
Mary Wallace.....	24	HW	P	1	.60	6.00
Mme. Greg. Staechelin.....	24	Cl.HT	LP	1½	.60	6.00
Paul's Scarlet Climber.....	24	HW	LR	2	.45	4.50
Primrose.....	24	HW	Y	1	.60	6.00
Silver Moon.....	24	HW	W	1	.45	4.50

DIXIE ROSE NURSERY
South's Leading Rose Nursery
CATALOG No. 27



**COUNTESS
MARY**
(CLIMBER)
See page 3



**CLIMBING
TALISMAN**
See page 3



The New Climbers illustrated on front and back covers were originated
by us and tested in our Nurseries over two years

DIXIE ROSE NURSERY ~ Tyler, Texas

We recommend them as five of the most beautiful and most satisfactory
Everblooming Climbers we have known in our 27 years of Rose-growing