

Historic, Archive Document

Do not assume content reflects current scientific knowledge, policies, or practices.



**Delphiniums
Hardy Plants and Roses**

1935

WILLIAM C. DUCKHAM CO.

MADISON • NEW JERSEY



Our exhibit at the 1934 International Flower Show which won the Gold Medal for display of Delphiniums

A Word Among Ourselves

ONE rule—like the law of the Medes and Persians—has been enforced since the very beginning of our business. The rule reads “*Only the finest stock shall go out of our nursery and packing-house.*” With this assurance on our part, you may look forward to a perfect garden, if the simple cultural instructions (sent with each order) are followed. So you may select from this Catalogue, or ask us to suggest groups and color schemes, which we will gladly do if you will give us a hint of the style and size of the proposed garden. We are happy to place at your service the experience gained in many years of planning and planting. In this Catalogue we present a list of tested plants, reliable in every respect, and offered at reasonable prices. Let us suggest that you place your order early so that you may have the seeds and plants on hand when planting time arrives.

[[Visit Our Permanent Display at “Gardens of the Nations,”
R. C. A. Building . . Rockefeller Center . . New York City]]

EXPRESS RATES REDUCED TWENTY-FIVE PER CENT

THE roof-gardens at Radio City and the other buildings of the group which comprise Rockefeller Center in the heart of Manhattan are the modern version of the famed hanging-gardens of Babylon—unquestionably the greatest horticultural venture of recent years.

On the three-quarter-acre roof of the eleventh floor of the R. C. A. Building has been built an exquisite collection of gardens representing various nations. Each garden is a gem, each is authentic, and in their respective classes they range from the most precise formal garden to the opposite extreme of naturalistic simplicity. Specimen plant material will be found in all of them, and, in some, trees up to thirty feet high are growing luxuriantly.

Here all of the finest flowers will be displayed throughout the seasons, beginning with the earliest spring flowers, which will be followed with annuals and perennials through the summer and up to late fall. *Duckham's Delphiniums* are used exclusively in the English gardens, and our other hardy perennials will be shown throughout the season.

The entrance to the gardens is through a large exhibition hall in which William C. Duckham Company will maintain a booth throughout the year.



NEW TYPES

OF AMAZING SIZE AND INFINITELY MORE BEAUTIFUL
COLORS ARE PRESENTED IN

Duckham's Delphiniums

*Superb forms and colors that have awakened
a new interest in these most charming old-
fashioned flowers*



Gold Medal. Special award New York Hort. Soc. International Show and numerous awards elsewhere.

FOR YEARS and years the Delphinium or old-fashioned Larkspur has been a favorite among gems of loveliness for the hardy border.

However beautiful the old varieties were, they are not to be compared with the modern types, the choicest of which are still in the hands of a few specialists who devote their whole time to bringing them to a still higher state of perfection.

My Delphiniums are now well known in every state from Maine to California. At every flower show where they have been exhibited they have invariably outlasted every competing group. For three years my exhibits have carried off the highest honors with three special Gold Medals at the great New York show, where the world's finest Delphiniums have been shown.

Single, semi-double, and double flowers, glorious color shading from indigo-blue to pale mauve, lavender, soft pink, and white, cover one-half to two-thirds of the giant 5- and 6-foot spikes. Every dozen plants include practically the entire color-range of this magnificent strain.

No hardy flower border is complete without them. A few of these beautiful spikes are reproduced in natural colors on pages 4 and 5, accompanied by the story of Duckham's Delphiniums.

Since the last issue of my Catalogue, I have once more won the highest awards for my Delphiniums at the leading shows in America. Some of the new colors and unique forms are truly amazing in their beauty. I keep in continuous touch with the English sources of the hybrids I originally imported and distributed in America, and have been fortunate in securing special favors from them by receiving consignments of their very choicest creations. Adding these to my already famous strain has made it unique and outstanding in superiority.

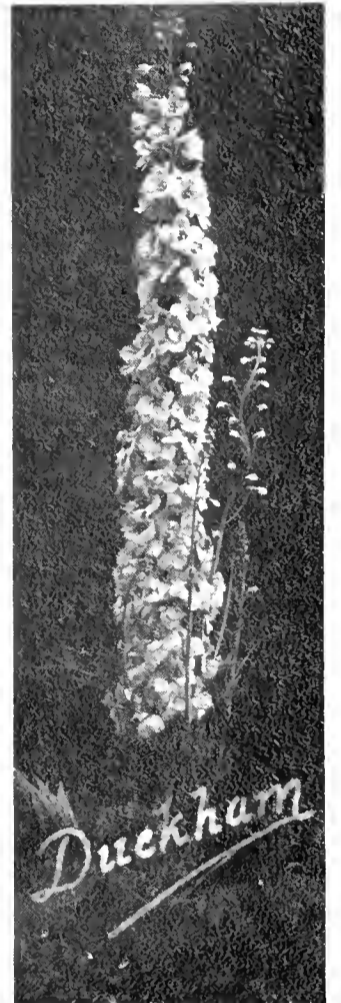
Young plants which produced their first flowers last fall (1934), and which are offered for spring planting, will bring many delightful surprises to those who order now.

I have many letters from customers in all parts of the country expressing the pleasure and satisfaction they have enjoyed from my plants—particularly those who purchased my newest strains of the last few years.

A momentary thought occurred to me of reducing the price of my Delphiniums this year. I understand growers of a general line of hardy plants are doing so. But when I considered the magnificent and very expensive types I have added to them, I felt that having so considerably increased the quality of my plants I shall be really giving much greater value by charging the same price as in former years.

In every state of the Union, my Delphiniums now form conspicuous colonies in the gardens of estates famed for their beauty. The spikes are of huge proportions, standing 5 to 6 feet high, on "walking-eane" stems. Some of these are broad at the base, tapering to a fine point; others are columnar, like five or six hyacinth spikes joined end to end. Again, some spikes are compact, with the individual florets touching and overlapping, while others have the more open formation, so graceful in the estimation of connoisseurs.

The flowers are quite double in some spikes, showing distinctly two rows of petals; others are semi-double; and there are quite a number of the single-flowered sorts also, exhibiting special individual charm.



Huge spike of the typical Wrexham strain



One of my Gold Medal Exhibits—New York International Show

Join the Delphinium Society of America
WE WILL FORWARD YOUR APPLICATION

WILLIAM C. DUCKHAM CO., MADISON, N. J.



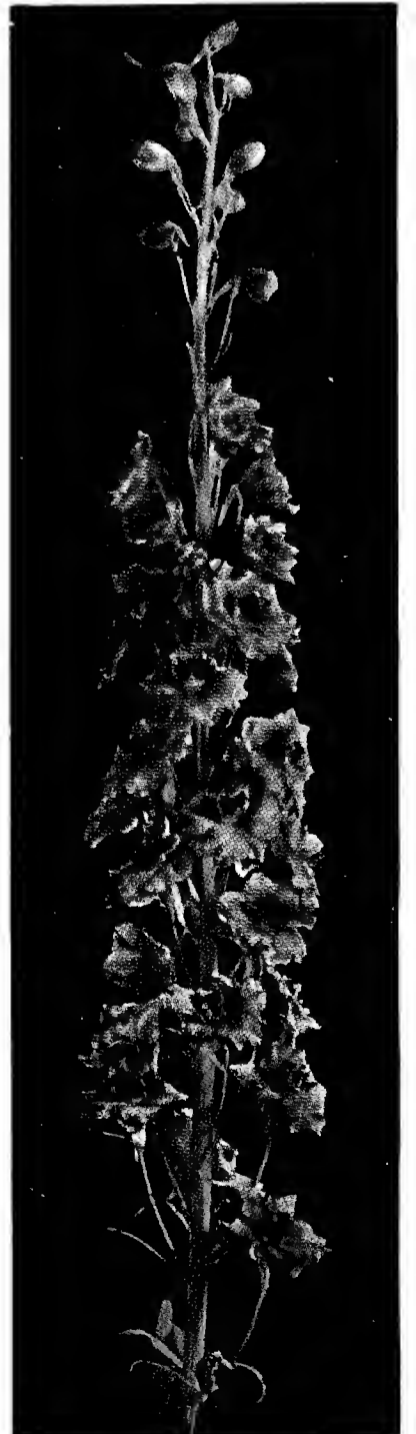
Selected Types and Colors

Where personal selection is made by a customer in my fields during the summer, I charge according to the merit of each plant selected. For those who cannot visit my grounds, but who desire some of these extra-choice types, I have already put aside some of these and offer them as

Super-Hybrids

**\$1.50, \$3.00, and \$5.00
each and up**

All of them are field-grown clumps, thoroughly acclimated, hardy, and will bloom profusely this year.



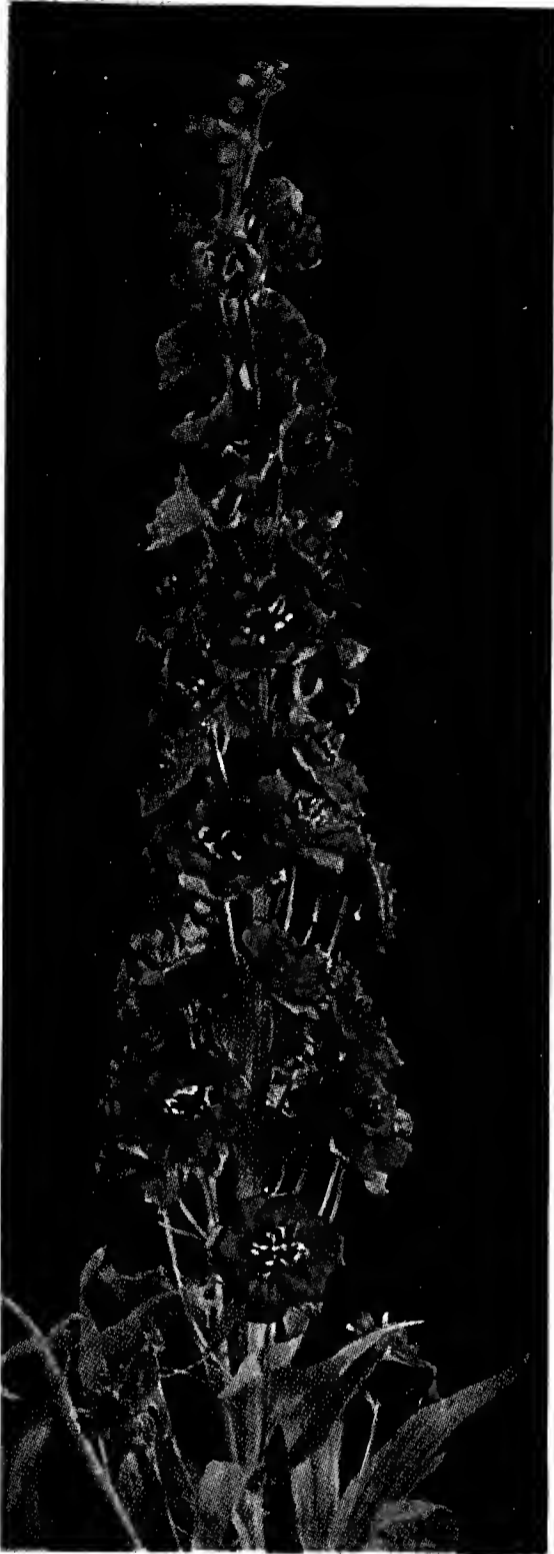
The colors cover the complete range from deepest indigo-blue and violet to the faintest lavender, mauve and peach-check hues, almost bordering on true pink. And the flowers are not confined to one or two shades. We find deep blue with white and a brown "bee" (center of flower); violet-purple, purple, and light blue with a black "bee"; lavender, pink, light blue, with a yellow "bee," and a host of other four-tone effects, all in the one flower.

Such combinations are unusual and it is these that have made my Delphiniums famous—unusually famous. It is such combinations that have caused them to be termed "Wonders of the Wily Ways of Wizards" in plant-hybridization.

My Delphiniums adorn the flower borders of some of the finest estates in America

Although these hybrids comprise many new types of delicate colors, all are extremely hardy, and well-established clumps in the border provide, year after year, wonderful spikes of majestic size and great beauty. They are also very desirable for cutting for indoor decoration, lending a delightful tone to mixed flower arrangements, harmonizing extremely well with yellow and orange flowers, particularly the deeper blue, violet, and purple shades.

Prevent Delphinium Blight. The following mixture is very effective: One teaspoonful of Black-Leaf 40 and one tablespoonful of Bordeaux mixture to one gallon of soap-water. Spray frequently.



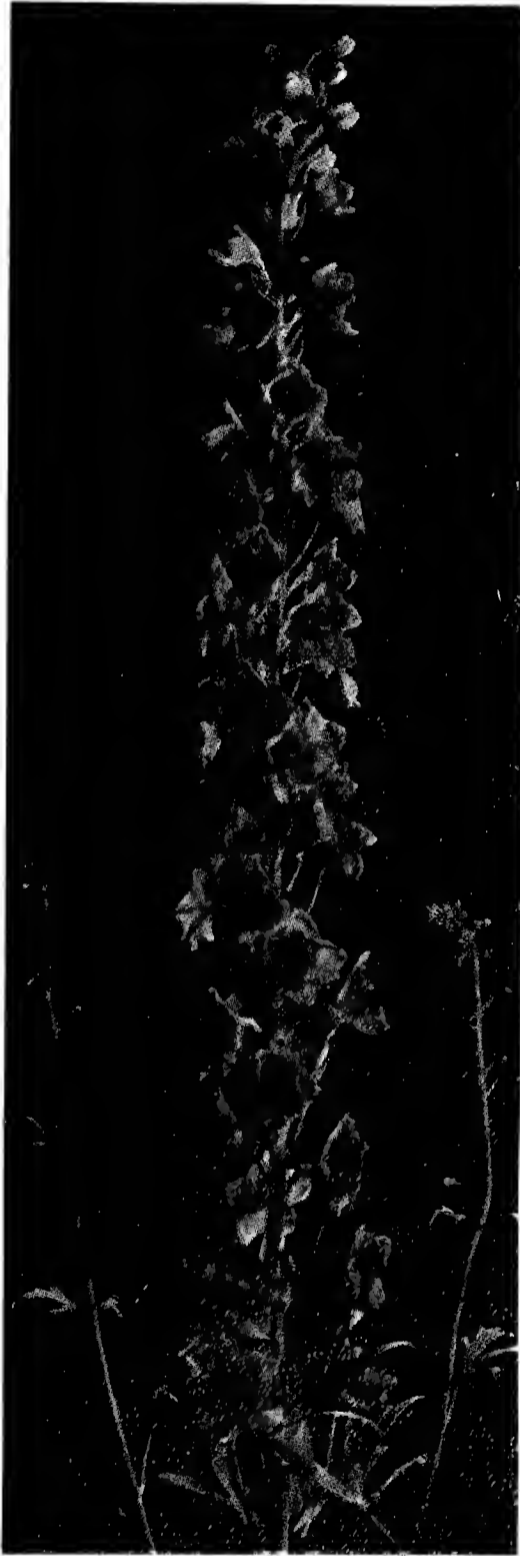
Helpful Hints on Growing Delphiniums

In choosing a site for your border, select one with a southern aspect, sheltered from the north by wall, hedge fence, or shrubbery. Don't plant them in low-lying, damp ground. Delphiniums like well-drained, clayey soil, deeply dug, and heavily fertilized with rotten manure.

Prepare the soil several weeks before planting. Leave it in the rough after spading in the manure to give it time to settle and permit the manure to mix with it thoroughly. Spade second time before planting.

Choose a clear, dry day for the work. Unpack the plants immediately on arrival. Keep them away from cellar or boiler heat. Plant temporarily or cover with mats outside until ready to plant.

Plant at least 3 feet away from other plants in the border, preferably in the back row. Make holes wide enough to accommodate the roots spread out. Hold crown of plant level with surface of bed, spread out roots, pack earth between and over them.



Place a stout 5-foot stake in hole to tie and protect the growing shoots later.

Plant in the spring as early as possible—when soil is in a workable, friable form. Plant in the fall from September 15 to November 15. Either season is good if proper attention is given to planting details.

Apply any good artificial fertilizer at intervals of a few weeks in summer. Water regularly and often. Cut away old (first) flower-spikes after blooming to induce a second crop.

Spray regularly with Black-Leaf 40 (1 teaspoonful to 1 gallon of soap-water) to prevent or check attacks of black-spot and insects.

New Reduced Prices

Duckham's Inimitable Mixed DELPHINIUM SEED

Saved Only from Choicest Varieties
Cultural directions enclosed with each order. **Pkt. \$2.**

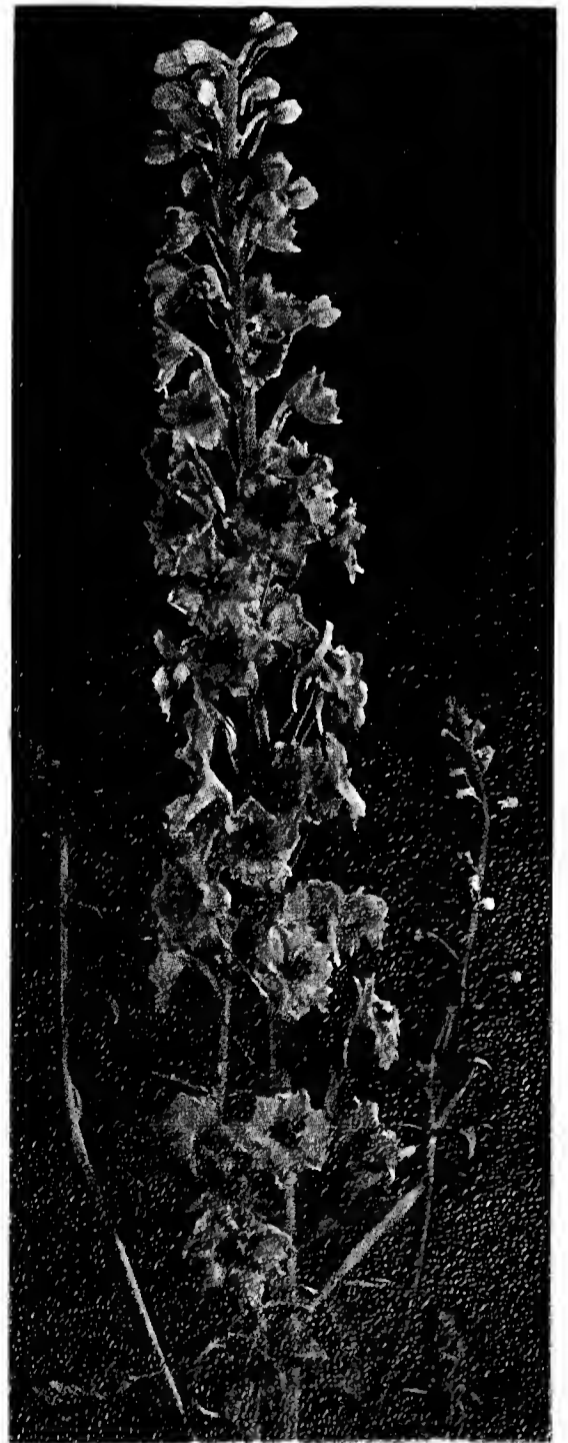
When Sowing Delphinium Seed
Use STERILOAM. See page 18

Duckham's Unnamed MIXED DELPHINIUMS

Regular Grade: This covers the entire color-range from mauve and lavender to deep blue and violet. Each 95 cts.; 6 for \$5.25; 12 for \$9.75; 100 for \$75.

SPECIALLY SELECTED DELPHINIUMS

PRICES ON APPLICATION



TENDER BEDDING AND GREENHOUSE PLANTS

Ageratum

FRASERI. Splendid, compact summer bedding plants; about 10 inches high. Flowers clear, bright blue.

	Doz.	100
2-inch plants.....	\$1 50	\$10 00
3-inch plants.....	2 00	15 00

Begonias

LADY MAC. Pink. 2¼-inch pot-plants, \$50 per 100.

MELIOR. Pink. 2¼-inch pot-plants, \$47.50 per 100.

Buddleia

ASIATICA. Excellent greenhouse plant, producing long blooms of intensely fragrant white flowers in late December and early January. \$20 per 100.

Carnations

The latest and finest forcing varieties.

Joan Marie. Plant Patent No. 3.

Chief Kokomo. Plant Patent No. 35.

Wanda.

Giant Laddie.

All above Carnations, \$35 per 100

STANDARD VARIETIES

Chintz	Matchless
Coral Glow	Maine Sunshine
Happiness	Patrician
Ivanhoe	Princess Dagmar
Laddie	Red Laddie
Lady Hendlip	Zorro

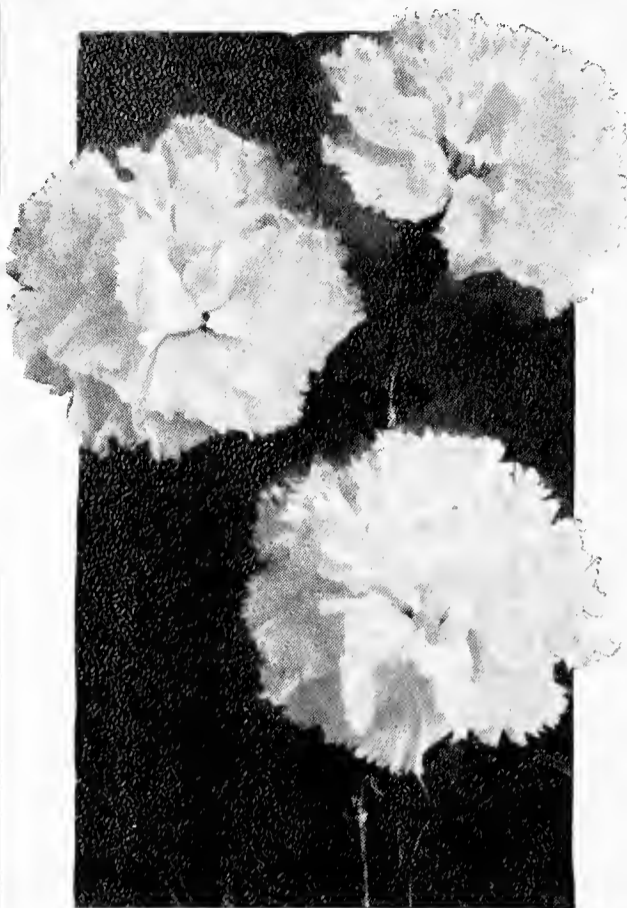
All Standard Varieties, \$20 per 100

Calceolaria

Hybrids. 2¼-inch pot-plants, \$30 per 100.

Euphorbia

JACQUINÆFLORA (*E. fulgens*). Extremely decorative greenhouse plant with drooping sprays of bright scarlet flowers. \$35 per 100.



Carnations

Hardy English Ivy (Hedera)

This well-known, popular evergreen vine is invaluable for covering walls, etc., and makes an excellent ground-cover in shady places where grass will not grow. Very desirable for cemetery work and for edgings of window-boxes. Nice bushy plants with long runners.

	100
3-inch pots, dwarf.....	\$30 00
4-inch pots.....	35 00
4-inch pots, staked.....	50 00

Poinsettias

Stunning Christmas plant with showy scarlet bracts. \$35 per 100.

Gardenia

VEITCHI. Best forcing variety for market. Strong plants, \$1 each; \$75 per 100.

CALIFORNIA. Very large-flowering variety. \$1 each; \$75 per 100.

Standard Heliotropes

We have a fine stock of specimen plants 4½ to 5 feet high. Flowers lilac and purple; fragrant. \$5 each; \$50 per doz.

CENTEFLEUR. Deep blue, with conspicuous white eye.

ROYAL FRAGRANCE. Deep, rich violet-blue.

	Each	Doz.	100
2½-inch pots.....	\$0 35	\$2 50	\$18 00
3-inch pots.....	40	3 50	25 00
4-inch pots.....	50	5 00	35 00

Lantana

A splendid, aromatic bedding plant with clusters of vivid yellow and scarlet flowers all summer. \$15 per 100.

Lemon Verbena

Fine garden herb with scented foliage. 2¼-inch pot-plants, \$10 per 100.

FERNS

Adiantum Cuneatum Croweanum

The hardiest of the Maidenhair Ferns, and very suitable for pot-culture or for growing in the bench for cut-fronds. Ready June 1.

	Each	100
3-inch pots.....	\$0 25	\$20 00
4-inch pots.....	50	35 00
5-inch pots.....	75	60 00

DUCKHAM'S FORCING ROSES

Of the many hundreds of Roses that have been recommended for growing under glass, the number that force well, under all conditions, are comparatively few—and the following are about the best of them. I offer strong, well-rooted plants, grafted or budded on Manetti, the most satisfactory understock for producing abundant bloom.

ORDER YOUR ROSES NOW. Have them the size you want them when you are ready for them. All our Forcing Roses are delivered by truck within a radius of 60 miles of Madison, insuring delivery in perfect condition

Novelties

BETTER TIMES. Plant Patent No. 23. A brilliant cerise sport of the ever-popular Briarcliff, which it resembles in other respects.

TOKEN. Plant Patent No. 95. Startling shade of orange, unlike any other Rose of similar quality. Beautifully formed and lasting.

2½-in., \$50 per 100; 3-in., \$60 per 100; 4-in., \$70 per 100

Standard Varieties

AUTUMN. Stunning deep crimson and gorgeous yellow buds opening to full-petaled, long-stemmed blooms. Splendid bloomer.

BRIARCLIFF. Rich, unshaded rose-pink flowers of beautifully modeled form. A popular, vigorous, and prolific variety.

HOLLYWOOD. An intensely fragrant, dark rose-pink sport of Premier, and superior to it in growth and blooming qualities.

JOANNA HILL. Clear yellow buds and blooms with orange tones in the center. Growth and blooming qualities unusually good.

LADY MARGARET STEWART. Striking red and gold flowers shaded copper in the bud. Strong, vigorous growth.

LUM'S DOUBLE WHITE. Splendid, long, ivory-white buds and dazzling white, semi-double flowers of extreme beauty. Free grower.

MME. BUTTERFLY. A well-known favorite and always dependable. Large, light pink flowers shaded apricot and gold.

MARY HART. Plant Patent No. 8. Sensational sport of Talisman, with vivid red flowers of an ox-blood shade, completely free from any tendency to blue.

MRS. F. R. PIERSON. Well-known, popular sport of Premier, with huge buds and bright, full-petaled flowers of glowing ruby-crimson.

PREMIER SUPREME. A glorified Premier, with very full buds opening to high flowers of richest rose-pink. Healthy and vigorous.

PRESIDENT HERBERT HOOVER. Superb buds of mammoth size, rose, crimson, yellow, and golden buff. Splendid, vigorous plant.

RAPTURE. A deeper-toned variation of the famous Mme. Butterfly, with luscious pink and shining golden tints in its perfect flowers.

SOUVENIR. Plant Patent No. 25. Stunning, pure golden yellow sport of Talisman with all the good qualities of its parent. Free flowering, profitable yellow.

SOUVENIR DE CLAUDIUS PERNET. The dean of all our modern yellow Hybrid Teas and a most excellent deep golden yellow flower, especially in hot weather.

SUNKIST. Flowers of brownish orange, shading to buff and deep gold. A darker, more richly colored form of Joanna Hill.

TALISMAN. Most popular and best-known highly colored Rose in commerce. Red and yellow, pink and gold. Blooms all the time.

TEMPLAR. Clear rich red flowers brightened with scarlet, richly fragrant. Extremely free flowering. The most profitable red.

2½-in., \$40 per 100; 3-in., \$50 per 100; 4-in., \$60 per 100

WILLIAM C. DUCKHAM CO., MADISON, N. J.

Hardy Perennial Plants

EVERY garden must depend to a large extent upon Hardy Perennial Plants for its continued beauty and charm. Beginning with the first crack of spring, these good old standbys continue in bewildering succession to display ever-changing aspects of floral beauty. Best of all, these plants are *permanent*, and, when once properly planted, remain year after year, increasing in size and vigor. Thus they confer upon the garden an atmosphere of permanence and tranquility which is necessary to the fulfillment of its purpose.

We recommend all of the Hardy Perennial Plants offered in this section for embellishing your garden beds and borders. We have selected these varieties from a much longer list as the best representatives of their respective classes.

Among them will be found an extended group of dwarf and creeping plants particularly adapted to rock-garden use, representing the result of long-continued special study and selection. Such plants are indicated in this list by the letter **R**.

The generous, big field-clumps which I send out should furnish abundant blooms the first year, fulfilling their purpose in realizing the color schemes already planned and anxiously awaited.

Arranging and Planting Hardy Flower Borders

Preparing the Ground. The ground for a Perennial bed should be spaded at least 8 to 10 inches deep, and twice that if the ground is at all poor. The best practice is to remove the top 8 inches of the ground entirely and spade into the bottom of the bed a liberal quantity of well-rotted manure or fertilizer, returning the top-soil after breaking it up very fine and mixing with a small amount of some effective artificial fertilizer. This work should be done several weeks in advance of planting the bed.

Planting. A gardener's trowel is the most practical tool for setting out plants of ordinary size. Before beginning it is well to lay the plants on the ground in the bed as they are indicated in the sketch or diagram, and then plant them as quickly as possible to prevent the roots from drying out. Always set plants just a little deeper than the old soil-line, and make the roots very firm in the ground. Loose planting is the cause of a great deal of loss.

Arrangement. In planting such borders, always give careful consideration to the height of the plants as indicated all through this Catalogue. Tall plants should be kept to the back of the border, those of medium height in the middle, while dwarf or smaller plants should be kept in the front. This should be varied a little, so that in some places tall plants come in the front of the border, partially concealing some lower plants beyond them. This device is especially effective in straight borders, adding a little air of mystery and surprise, such as is accomplished naturally in curved borders. The color of the flower is important, and the time of year in which they bloom is even more so. An effort should be made to have a few flowers in bloom throughout the border all season.

Winter Care. A light cover of dry litter, such as grass-clippings, leaves, or strawy manure is very beneficial after the first frost has nipped things down in late autumn. If manure is used, it may be raked in the ground in the spring, adding a very desirable element of fertility.

VARIETIES MARKED **R** ARE SUITABLE FOR THE ROCK-GARDEN

- ACHILLEA (Milfoil) Ptarmica, The Pearl.** Indispensable in every border, both for grace and usefulness for indoor decoration. The small, clustered flowers are pure white and literally smother the foliage by their profusion. 2 feet. June to September. 35 cts. each; \$3.50 per doz.
- A., Perry's White.** A choice variety for cutting and an excellent filler. The flowers are the whitest of all Achilleas, and an outstanding favorite with florists for summer flowers. 1 to 2 feet. June to August. 25 cts. each; \$2.50 per doz.
- ACONITUM (Monkshood) Fischeri.** A very attractive, erect, hardy plant, with odd blue and white flowers in autumn. Not unlike the delphiniums in general effect, but not nearly so large or so tall. Particularly good in shady borders. 40 cts. each; \$4 per doz.
- A. napellus bicolor.** This is one of the tallest and finest of the Aconites, and a fine subject to group among the rear plants in the border. Grows 4 feet high with huge spikes of blue and white flowers from June to August. 40 cts. each; \$4 per doz.
- A. napellus, Sparks' Variety.** A tall variety with branching spikes of blue flowers. The darkest Aconitum, and has a long flowering period. 5 to 6 feet. July, August. 40 cts. each; \$4 per doz.
- ALLWOODI.** *Everblooming Hardy Pinks.* This new race of the Dianthus family flowers perpetually during spring, summer, and autumn. No plant is hardier or of easier cultivation, and its free-flowering qualities have rendered it exceedingly popular. The flowers range through many shades of light, medium and dark pink and crimson, and all are deliciously fragrant. Mixed, 35 cts. each; \$3.50 per doz.
- R ALYSSUM saxatile compactum.** Splendid tufted plant a foot or more high, covered with a mass of golden yellow flowers. 30 cts. each; \$3 per doz.
- R A. spinulosum roseum.** A rare plant with handsome silvery gray foliage. This neat, small-leaved species remains longer in beauty than any of the others. 50 cts. each; \$5 per doz.
- ANCHUSA italica, Dropmore Variety.** A large, spreading, bushy plant, requiring plenty of room to develop its great beauty. This variety is a great improvement on the old type and extremely vigorous. Its flowers are deepest blue, borne in immense sprays. 4 to 5 feet. May to July. 30 cts. each; 65 cts. for 3.
- A. myosotidiflora.** Surpassingly fine ground-cover plant with large, broad leaves topped by graceful panicles of bright blue flowers resembling forget-me-nots. Excellent in shady places. April, May. 50 cts. each; \$5 per doz.
- ANTHEMIS tinctoria.** *Hardy Marguerite.* Deep golden yellow, daisy-like flowers, ideal for decorative purposes. 1½ to 2 feet. June to September. 35 cts. each; \$3 per doz.
- ANEMONE hupehensis.** *Early Anemone.* Sturdy, dwarf Anemone, 1½ to 2 feet high, and resembling the Japanese Anemone in many respects, but blooms earlier, is not so tall, and much more richly colored. It is a fine plant for very large rock-gardens and comes into bloom in early August, continuing until frost. It will succeed in half-shady places. We recommend it especially for perennial borders and for cut-flowers. 50 cts. each; \$5 per doz.
- A. japonica alba.** Single, pure white flowers, showing yellow anthers, from late September on.
- A. japonica, Queen Charlotte.** Large, semi-double, bright pink flowers, broad and perfectly formed, abundantly produced in September. Fine for cutting.
- A. japonica rosea superba.** Large, single, light silvery pink flowers in late September.
- A. japonica, Whirlwind.** Semi-double, large, snowy white flowers profusely produced from late September on.
- A., September Charm.** Delicate silvery pink flowers shaded with rose and mauve, coming into full bloom by September 20. 50 cts. each; \$5 per doz.
- All Anemones, 35 cts. each; \$3.50 per doz., except where noted**



Hybrid Korean Chrysanthemums

●

Easily grown
Entirely hardy
Free flowering
Most attractive
Branching habit

Single Plants of the
following six varieties:
50 cts. each; \$5 per doz.

APOLLO. (No. 1.) Bronze, red, and gold suffused salmon. Flowers single—fully 2 inches across—in very large sprays. The plants begin to bloom in early October and continue to supply quantities of flowers for three or four weeks.

DAPHNE. (No. 6.) A blending of daphne-pink with an undertone of lilac-rose, a combination made beautiful by the golden yellow stamens. The flowers, which are about 3½ inches across, and carried in graceful sprays, open about the middle of October. Height, 2 to 2½ feet.

MERCURY. (No. 5.) Plant Patent No. 58. The first of this new race, introduced in 1933. The flowers are single, about 3 inches across, opening in late September. The color is bronze-red, changing to coppery bronze—a combination effective in the garden and for cutting. Height, 2 feet.

CERES. (No. 3.) Soft coppery bronze, combined with old-gold and chamois-yellow. The petals of mature flowers appear as if dusted with gold. Beginning to flower about October 10, it gives a lovely tone to the fall garden. Height, 2 to 2½ feet.

MARS. (No. 4.) Possibly the most brilliant of this remarkable group. The color is amaranth-red, changing to wine-red, overlaid with a velvety sheen. The plants, which grow from 2 to 2½ feet high, begin to bloom in mid-October and continue until heavy frosts.

DIANA. (No. 2.) An unusual and charming color—Chatenay-rose-pink, mingled with lilac-rose and soft salmon. The color tones vary with the degree of light. The three rows of petals make the flowers still more attractive. Begins to bloom about October 10. Height, 2 feet.

WILLIAM C. DUCKHAM CO., MADISON, N. J.

A Trio of New Korean Chrysanthemums

SINCE their introduction in 1933, the Korean Chrysanthemums have become immensely popular. First came Mercury, followed last year by five others, thus giving a desirable range of color and type of flower. The six are pictured on the opposite page.

Now, this year of 1935 brings three new varieties. In beauty of color, in form of flower, and in habit of plant, these equal their older sisters, and will, unquestionably, become their companions in every well-ordered American garden.

One distinct advantage is the early flowering habit, which lengthens to a marked degree the blooming season of the Korean Hybrids. This, coupled with the size of the individual flower and the great number of blooms carried by all of the varieties, seems to place these newcomers in the very front line of hardy plant novelties.

If you would secure the best effect from plants of this character, it is always well to have not less than three of a variety in one group. You then get an abundance of bloom, and full value from the gorgeous display of color.

HEBE

This variety has a most distinct color—luminous pink, changing to lavender-pink as the blooms mature.



HEBE

Single plants, 75 cts. each;
\$7.50 per doz.

The center is golden yellow, with a slight silvery halo at the base of the petals. Flowers are single, 3 inches or more across, and produced in late September and through October. The plants grow about 2½ feet high, and bloom very freely.

ORION

A distinct and brilliant canary-yellow fairly glistening in the autumn sunlight. It differs from the ordinary yellow Chrysanthemums in that it has the peculiar lustrous quality of the Korean Hybrids, and thus is quickly seen when in company with the older sorts. The single flowers are about 3 inches across, have ray-like petals, and appear about October 1. Height, 2½ feet.

VULCAN

A color rather difficult to describe. It seems to come between Mars and Mercury, yet is distinct from either. The flower opens carmine-red, brilliant and glittering; it soon changes to garnet-crimson, then to bronze-crimson. The golden center is surrounded by a double row of ray-like petals. The flowers are fragrant and carried on erect plants about 2½ feet high.



ORION



VULCAN

Hardy Perennial Plants

- AQUILEGIA** (Columbine), *New English Improved Long-spurred*. With their odd shapes and delightful color shadings Columbines rank high among the best hardy garden plants. They thrive almost anywhere but prefer a partially shady and moist position. This strain is, perhaps, the best and most beautiful in existence, having flowers with very long spurs and most charming colors, including Pink, Blue, Lavender, Red, Cream, and White—all decidedly new and interesting. 40 cts. each; \$1.10 for 3; \$3.75 per doz.
- R A. cærulea**. The most beautiful of all Columbines, having flowers of the clearest, purest ceruleum blue, with long, slender, blue-tinted spurs. 30 cts. each; \$3 per doz.
- A. canadensis**. *Wild Columbine*. Very pretty bright red and yellow flowers. Excellent in sun or shade. 30 cts. each; \$3 per doz.
- R ARABIS alpina**. Mats of gray-green foliage buried in a snowy cloud of pure white flowers. 30 cts. each; \$3 per doz.
- R ARMERIA Lauchena**. A striking rock-garden plant with red flowers in clustered heads on 6- to 10-inch stems. 30 cts. each; \$3 per doz.
- R ARTEMISIA Abrotanum**. Decorative border plant with aromatic green foliage and spires of tiny yellowish white flowers. 30 cts. each; \$3 per doz.
- A., Silver King**. Unquestionably one of the best all-round decorative plants. Its bright silvery stems and foliage are of great value as a filler for bouquets, sprays, baskets, and all sorts of floral combinations. By cutting and drying the stems it is very valuable in the winter. A very showy border plant 30 inches high. 35 cts. each; \$3.50 per doz.
- ASTERS, Hardy. Michaelmas Daisies**. The many species, widely distinct from each other in habit and form, are, with a few exceptions, all native of North America. It is in Europe, however, that our Asters have been most highly appreciated. Many improvements have been made by European growers, and many hybrid forms have been produced by crossing the different species.
- A., Duckham's Celestial Queen**. A vigorous, well-branched Michaelmas Daisy of medium growth that simply covers itself with a cloak of thickly massed, lavender-blue flowers. The individual flowers average 1½ to 2 inches in diameter and form very large flower-heads. A splendid and most desirable color for the fall garden or for cutting. 75 cts. each; \$6 per doz.
- A., Barr's Pink**. A lovely light mallow-pink with stiff petals and a brilliant golden center, growing from 3 to 4 feet high.
- A., Blue Gem**. Clear blue flowers with large yellow center, borne in large trusses.
- A., British Queen**. A soft lavender-blue, semi-double, unusually large open flower with pale yellow center. Vigorous-growing, well-branched plant that comes into bloom early in September. Height about 4 feet. Excellent for cutting and decorations.
- A., Climax**. Plants branching, covered in fall with lovely lavender-blue flowers 1 to 2 inches in diameter. 4 to 5 feet. August to October.
- A. Frikarti (Wonder of Staefa)**. Dwarf, summer-blooming Aster, 2 to 3 feet high, with flowers, 2 to 2½ inches across, of vivid lavender-blue, with striking orange centers. Delightful for cutting. 35 cts. each; \$3.50 per doz.
- A. hybridus luteus**. *New Hybrid Yellow Aster*. Quite a new departure in color—a clear yellow shade. Rather small flowers gracefully arranged in large, long-stemmed trusses.
- R A., Mauve Cushion**. Handsome, very dwarf, compact plant covered in autumn with starry pinkish white flowers. 30 cts. each; \$3 per doz.
- A., New Pink**. Large, bright rosy pink flowers. Plant of free-branching habit. A charming new color in hardy Asters.
- A., Skylands Queen**. (New.) Extremely large heads of rich blue flowers. Very bushy and compact. Dwarfier than Celestial Queen.
- ASTER, White Climax**. (New.) Like Climax, but pure white. 4 to 5 feet. August to October.
- All Asters, 35 cts. each; \$3 per doz., except where noted**
- AUBRIETIA HYBRIDS**. Extremely showy, trailing plants covered with a mass of brilliant pink, purple, blue, and lavender flowers. 35 cts. each; \$3.50 per doz.
- BAPTISIA australis**. Vigorous perennial plant of the Pea family, with vivid green foliage and drooping spires of lupine-like flowers in early summer. A very brilliant border plant. 35 cts. each; \$3.50 per doz.
- BOLTONIA latisquama**. Flowers resemble large white daisies or single asters and are borne in great profusion. 4 to 6 feet. July to October. 45 cts. each; \$1 for 3; \$3.50 per doz.
- BUDDLEIA (Butterfly Bush) Davidi Veitchiana**. In mild climates this is really a hardy shrub, but it may also be classed as herbaceous. Each spring it throws out vigorous growths that terminate in fall in tapering spikes of a beautiful lavender-mauve shade. Give it plenty of room. Strong roots, 50 cts. each; \$1.25 for 3.
- B., Ile de France**. (New.) Richest and darkest of its race. The flowers are glowing claret-purple, packed into thick spikes a foot long. Very vigorous bushes and extremely free flowering. See illustration in color on page 17. 75 cts. each; \$7.50 per doz.
- CAMPANULA (Bellflower)**. A very important class of plants varying in height, all beautiful and easy to cultivate.
- R C. carpatica. Harebell**. Makes excellent tufts of beautiful foliage and sends up slender stems bearing erect, cup-like, bright blue flowers throughout most of the summer. 30 cts. each; \$3 per doz.
- C. Medium. Canterbury Bells**. Old-fashioned, well-known, biennial plants of inexpressible loveliness, indispensable in every hardy plant border. 2 feet. June, July. **Double Rose, Single Blue, Lilac, or Double Blue**. 65 cts. for 3; \$2.50 per doz.
- C. persicifolia. Peach-Bell**. Broad, single, purple, bell-shaped flowers arranged along a tall and very graceful spike. 2 to 3 feet. June, July. \$1 for 3; \$3 per doz.
- C. persicifolia alba**. White flowers of even greater charm than the type. 35 cts. each; \$3 per doz.
- C. persicifolia, Lavender Queen**. Flowers are exquisite lavender-blue. 35 cts. each; \$3.50 per doz.
- CARNATION, Chabaud's**. Very fine, double, fragrant flowers of mixed colors. Fine for cutting. Hardy. 35 cts. each; \$3.50 per doz.
- CARYOPTERIS mastacanthus. Blue Spirea**. A handsome dwarf shrub about 3 feet high bearing foamy lavender-blue flowers in great profusion from early in September until cut by frost. 50 cts. each; \$5 per doz.
- CENTAUREA montana. Perennial Cornflower**. Grows 2 feet high, bearing large, violet-blue flowers from July to September. 35 cts. each; \$3.50 per doz.

Korean Chrysanthemums

Hebe. See description and colored illustration on page 9.

Orion. See description and colored illustration on page 9.

Vulcan. See description and colored illustration on page 9.

Any of above, 75 cts. each; \$7.50 per doz.

Apollo. See description and colored illustration on page 8.

Ceres. See description and colored illustration on page 8.

Mercury. Plant Patent No. 58. See description and colored illustration on page 8.

Diana. See description and colored illustration on page 8.

Mars. See description and colored illustration on page 8.

Daphne. See description and colored illustration on page 8.

Any of above, 50 cts. each; \$5 per doz.

WILLIAM C. DUCKHAM CO., MADISON, N. J.

Hardy Perennial Plants

Other Hardy Garden Chrysanthemums

A proper selection of Hardy Chrysanthemums prolongs the flowering season in the garden many weeks beyond its usual close. The borders will glow with color in October and November if a collection of well-chosen Hardy Chrysanthemums has been planted. Great strides have been made in the past few years in the development of brightly colored, early-flowering types which escape the severe frosts by blooming earlier than the varieties of several years ago. We offer a choice collection. The pot-plants which we send out, although not very large, will positively bloom the first season if planted in a reasonably rich, light, well-drained soil and given reasonable cultivation throughout the summer.

Barbara Cumming. Attractive, large, full flowers of shining yellow, shaded to orange-bronze. Blooms from August until late October. 25 cts. each; \$2.50 per doz.; \$15 per 100.

Cavalier. A dazzling, single, rich vermilion-red variety which does not fade. Free flowering, of fine, robust, branching habit, and makes a gorgeous display from October 15 on. \$3 per doz.; \$20 per 100.

Dazzler. An informal, single variety, with whirling, ragged petals of dazzling scarlet. Unbeatable for late display. Blooms from middle of October on. 25 cts. each; \$2.50 per doz.

Donald Wells. A superb, large-flowering, single white variety. Begins blooming in early October and continues beyond the first frost. 25 cts. each; \$2.50 per doz.

Early Bronze. Charming dwarf variety with huge sprays of medium-sized, bright coppery bronze flowers which pale to buff-yellow as they develop. 25 cts. each; \$2.50 per doz.

Granny Scovill. Lovely flowers, 4½ inches across, of nice, fluffy form. Color is warm coral-bronze. Dwarf, branching grower 2 feet high, with healthy foliage. In full bloom October 10. \$3 per doz.; \$20 per 100.

Gypsy Girl. Charming single type with a wide frill of brilliant crimson petals shading to chestnut. Very prolific, blooming from early October until mid-November. 25 cts. each; \$2.50 per doz.; \$15 per 100.

October Dawn. Large, full-petaled flowers of soft daybreak-pink, free from blends or contrasting tints. Begins blooming in early October and continues until frost. 35 cts. each; \$3.50 per doz.

October Girl. Charming variety with large, single or double flowers of sparkling rose-pink, shaded with cream and lavender. One of the most prolific varieties we have ever seen. Begins blooming in early October, continuing until freezing weather. 25 cts. each; \$2.50 per doz.

R. Marion Hatton. A superb variety for massed planting, providing a most profuse display of rather small, double, clear light yellow flowers of great beauty from late September until freezing weather. 35 cts. each; \$3.50 per doz.

September Queen. An extra-early pure white variety with large, single, aster-like flowers. 25 cts. each; \$2.50 per doz.

Yellow Normandy. An early-flowering, pure soft yellow Pompon type which is deservedly popular. 25 cts. each; \$2.50 per doz.; \$18 per 100.

CHRYSANTHEMUM coreanum. A relatively new, extremely hardy, pure white daisy from eastern Asia. It has interesting, compact foliage from which arise 2-foot, branching stems bearing huge sprays of dazzling white flowers in early autumn. One of the finest decorative border plants that we know for sunny places. 35 cts. each; \$3.50 per doz.

C. leucanthemum. This is the original form of the Shasta Daisy. A graceful, long-stemmed, snow-white flower borne in profusion in midsummer. 30 cts. each; \$3 per doz.

C. maximum (Shasta Daisy), King Edward VII. Pure white flowers of fine form with luminous golden centers. It thrives almost anywhere, and provides quantities of blooms for indoor decoration. 2 to 3 feet. June to August. 35 cts. each; \$3.50 per doz.

CHRYSANTHEMUM maximum (Shasta Daisy), Alaska. A very greatly improved form of the old-time Shasta Daisy, providing long-stemmed, dazzling white flowers with brilliant, golden centers. Blooms in late summer. 40 cts. each; \$4.50 per doz.

CIMICIFUGA racemosa simplex. *Bugbane.* This handsome plant should not be overlooked as it is, without doubt, one of the most beautiful perennials. The dense spikes of feathery white flowers are borne on tall, graceful stems 3 to 4 feet high, making them excellent for cutting and ideal for vases. Grows best in half-shade. 75 cts. each; \$65 per 100.

CLEMATIS, Anemone-flowering (C. montana undulata). This new Clematis is a gem among climbing plants. It is a strong, vigorous grower, perfectly hardy, disease- and insect-proof, and will succeed and flourish under the most adverse conditions. The anemone-like, white blooms, flushed mauve-pink, 1½ to 2 inches in diameter, expand the last week in April, about the time when wisterias have finished, continuing through May in great profusion. The best spring-flowering climber, of which there are few. Strong, 1-year, field-grown plants, 75 cts. each; \$7.50 per doz.

COREOPSIS grandiflora. Large, orange-yellow flowers on long, graceful stems. One of the best yellow cut-flowers; blooms incessantly. 2 feet. 25 cts. each; 65 cts. for 3; \$2.50 per doz.

DAPHNE Cneorum. *Garland Flower.* Most attractive, dwarf, bushy evergreen shrub, producing richly perfumed, rose-pink blossoms, May and August. See illustration in color on page 16. 75 cts. each; \$8 per doz. and up, according to size.

DELPHINIUM. See pages 3 to 5; also Larkspur on page 14.

DIANTHUS (Hardy Pink), Beatrix. A new and beautiful hybrid, having double, soft pink flowers. Blooms from June until October. 50 cts. each; \$5 per doz.

R D. deltoides. Matted, creeping plants which spread rapidly and send up 12-inch stems bearing clusters of vivid pink flowers. 30 cts. each; \$3 per doz.

D. laciniatus, Lucifer. Double; orange-scarlet. 50 cts. each; \$5 per doz.

D., Mrs. Sinkins. The genuine, old-fashioned, double, white, English border Pink. 35 cts. each; \$3.50 per doz.

D., Plumarius Hybrids. The old-fashioned clove-scented Pinks. Colors from white to deep rose, with beautiful fringed petals; very fragrant. 25 cts. each; \$2.50 per doz.

DICENTRA SPECTABILIS. *Bleeding-Heart.* A very popular old-fashioned border plant with beautiful foliage and long, drooping sprays of pretty pink, heart-shaped blooms. 1½ feet. May, June. 50 cts. each; \$5 per doz.

DIGITALIS. *Foxglove.* The tall flower-spikes of the Foxglove are particularly handsome when grown among shrubbery or naturalized in odd places in bold masses. 3 to 4 feet. July, August. **White, Yellow, Alba (White), Gloxiniaeflora,** and **The Shirley.** 35 cts. each; \$3.50 per doz.

DORONICUM excelsum. An extremely showy spring-blooming flower of the chrysanthemum family, producing immense, brilliant yellow daisies on long stems ideal for cutting. A rare and choice perennial. 35 cts. each; \$3.50 per doz.

D. magnificum. *Leopard's-Bane.* Very attractive early yellow daisy with large flowers on stiff stems. Useful for cutting. 1½ to 2 feet. May, June. 35 cts. each; \$3.50 per doz.

ENGLISH IVY. Pot-grown plants, \$25 per 100.

ERIGERON, Blue. A summer-blooming Aster, somewhat like a Michaelmas Daisy, with sprays of delicate lavender-blue flowers. 35 cts. each; \$3.50 per doz.

EUPATORIUM caelestinum. *Mist Flower.* One of the finest hardy plants with heads of light purple flowers similar to ageratum; in flower from August until frost. Good cut-flower. 1 to 2 feet. 40 cts. each; \$4 per doz.



Anchusa myosotidiflora. 50 cts. each. See page 7



Anemone, September Charm. 50 cts. each. See page 7

The Hardy Aster shown at the right is one of the newest varieties, and is important because of the yellow color, which is almost unheard of in Hardy Asters. It is particularly brilliant when some of its blue or lavender sisters are used in the group. The flowers are carried in large trusses on long stems. Plants 35 cts. each; \$3 per doz.



Hardy Aster, Skylands Queen. 35 cts. each.
See page 10



Pyrethrum. 40 cts. each. See page 15



Japan



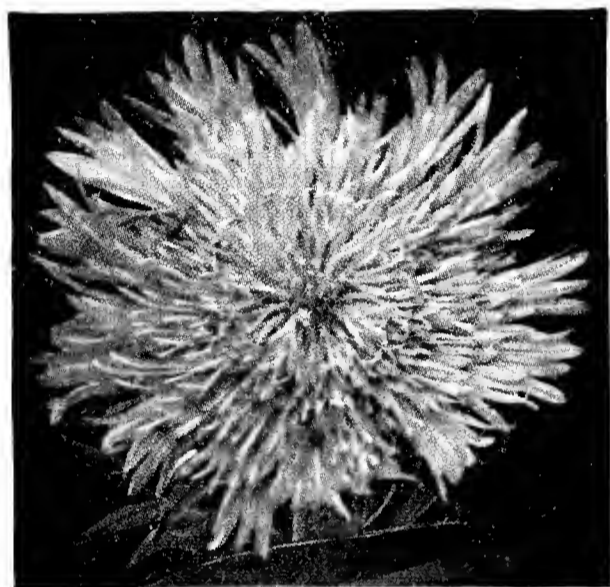
Aster hybridus luteus. 35 cts. each.
See page 10

Granny Scovill Chrysanthemum (pictured at the right) is a new type. The flowers are extra large, often over 4 inches across, and come early enough to make them valuable in the garden. Its color is so brilliant that it at once attracts attention to the plants, which are a mass of bloom about October 10. \$3 per doz.; \$20 per 100.



Chrysanthemum, Granny Scovill. \$3 per doz. See page 11

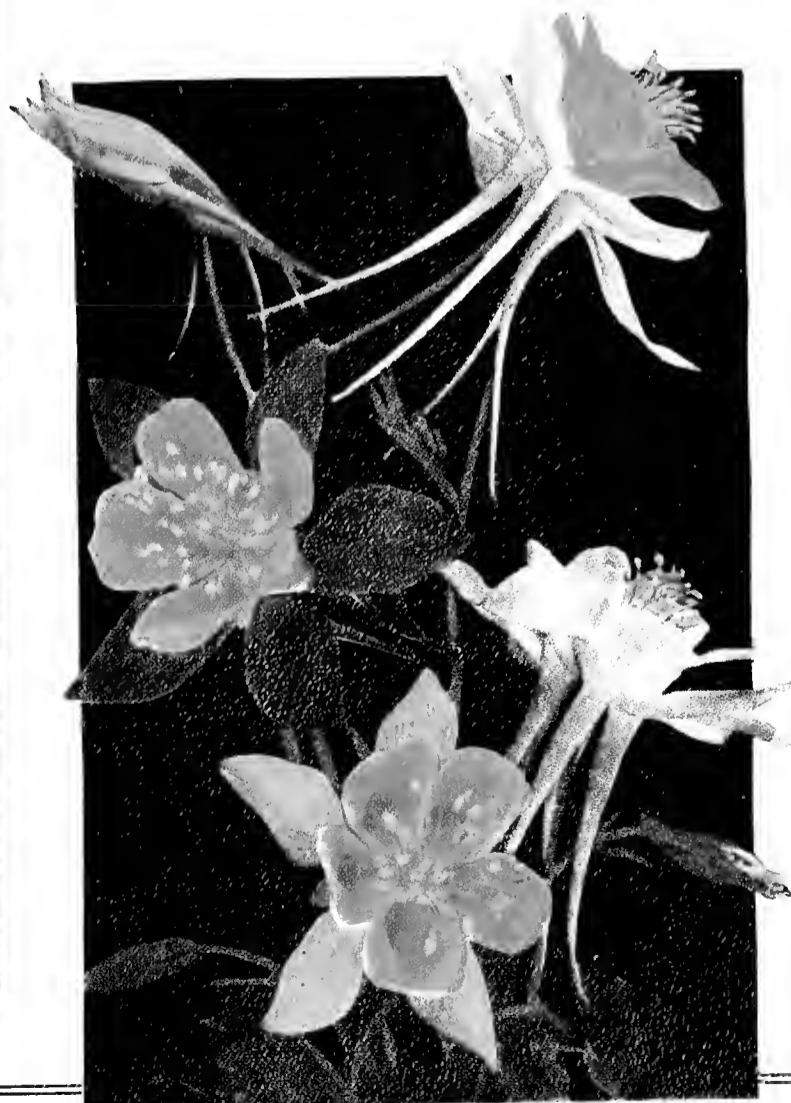
Another new-comer in the family of flowers is a Cornflower Aster that botanists call *Stokesia laevis lilacina grandiflora*. That's a long name for a fine flower, so let's call it a silvery blue Aster that blooms in the fall. You'll like it. 35 cts. each; \$3.50 per doz.



Stokesia laevis lilacina grandiflora. 35 cts. each.
See page 15



Is. \$1 each. See page 14



Mixed Long-spurred Hybrid Aquilegia. 40 cts. each.
See page 10



Viola, Jersey Gem. 35 cts. each. See page 17

Your attention is invited to the Aquilegias, the Pyrethrums, the Japanese Iris, Anemone, and Viola pictured here, but described and priced on the pages mentioned. Every page in this Catalogue contains points of vital interest and importance to all who would have successful gardens in 1935 and succeeding years.

Hardy Perennial Plants

GAILLARDIA, Duckham's New Hybrids. Blanket Flower. The Gaillardias, among the most successful of hardy perennials, give a most striking effect when planted in bold groups or in a bed by themselves, and are equally effective in mixed borders. They seem to thrive in extreme drought and the greater the scarcity of other flowers, the more their utility is demonstrated. They bloom perpetually from June to November. 50 cts. each; \$1.25 for 3; \$4.50 per doz.

G., Dazzler. Large, bright golden yellow flowers with rich maroon-red centers. 40 cts. each; \$3.75 per doz.

GEUM. Avens. Desirable for borders or rock-gardens. The flower-stems stand boldly over the prostrate, deep green foliage. 1 to 1½ feet. June to September.

G., Deep Crimson. An excellent garden form with strawberry-like flowers of deep dark red. Pretty in the border. 35 cts. each; \$3.50 per doz.

G., Mrs. Bradshaw. Double, brilliant orange-scarlet flowers throughout the summer. 35 cts. each; \$3.50 per doz.

G., Lady Stratheden. (New.) Fine, double, yellow blooms of same type as Mrs. Bradshaw. 35 cts. each; \$3.50 per doz.

GYPSOPHILA paniculata. Baby's Breath. A very valuable perennial because of its light, graceful form and the charm it adds to mixed bouquets of other flowers. The small blooms are borne in great quantities. 2 to 3 feet. July, August. 35 cts. each; \$3.75 per doz.

G. paniculata, Bristol Fairy. A very greatly improved Baby's Breath having flowers almost three times as large as the old Paniculata, and which remains pure snow-white under all conditions. One of the finest cut-flowers ever introduced to gardens. Strong, field-grown plants, 75 cts. each; \$7 per doz.

HELENIUM. Sneezewort. Showy autumn Daisies of great value for garden display in bold masses, and effective when cut. 3 to 4 feet. August, September.

H. autumnale rubrum. Splendid flowers of deep bronze-red, changing to terra-cotta. 5 to 6 feet. September. 40 cts. each; \$4 per doz.

H., Riverton Beauty. Long-stemmed, brownish crimson flowers. Very popular. 40 cts. each; \$1 for 3.

H., Riverton Gem. Produces a great profusion of bronzy orange flowers. 40 cts. each; \$1 for 3.

R HEPATICA triloba. A charming native plant, excellent for shady places, with broad, leathery evergreen foliage and bright lavender-blue flowers early in spring. 30 cts. each; \$3 per doz.

HEUCHERA. Coral Bells. Charming plants for the border, or a half-shady place. The red variety is a good rock-plant.

R H. sanguinea. Graceful spikes of dazzling crimson flowers in greatest profusion. 1½ feet. 50 cts. each; \$5 per doz.

HOLLYHOCK, Duckham's Improved Strain. My strain is indeed very wonderful, with extremely large, double flowers in unusual colors. 6 to 8 feet. July to September. **Rich Crimson, Bright Rose, White, Scarlet, and Salmon-Rose.** 35 cts. each; \$3.50 per doz.

R IBERIS sempervirens. Stunning half-shrubs a foot or more high, densely covered in spring with a mass of snow-white flowers. 30 cts. each; \$3 per doz.

IRIS, GERMAN. Fleur de Lis. These popular flowers like well-drained soil and plenty of sunlight. Massed on the edge of the border or near the brinks of ponds or streams, the effect is remarkably fine. I offer them in five separate shades selected from the better named varieties.

Light Blue and Lavender	Deep Blue and Violet
Bronze Shades	Yellow Shades
White and Light Shades	

65 cts. for 3; \$2.50 per doz.; \$15 per 100

Dauntless. Superb new Bearded Iris with crimson falls and standards shaded with rich wine-red. One of the finest red Irises. \$10 each.

IRIS, JAPANESE (I. Kaempferi). The varieties of this handsome species enjoy almost unlimited quantities of fertilizer and will develop sturdy growth and amazing blooms if they are given plenty of water. They are at their best in July.

Betty F. Holmes. (New.) Pure white; double. When well grown, flowers are often 1 foot in diameter and 3 feet in circumference. The world's finest white Iris.

Deep Purple. Purple.

Fanny Hamlet Childs. Double; violet-purple, mottled and splashed with white.

Fascination. Double; light blue, with faint white veins and pink tinge.

Lilla Cox. Double; light blue, with white veins radiating from a yellow center.

Marjorie Parry. Double; delicate light mauve, tufted center. An extra-fine variety.

Repsime. Double; blue, veined white.

Rose H. Scheepers. Double; mauve-gray, overlaid with blue.

Schenley. Double; rose-red, center overlaid with blue.

Shadow. Reddish purple, velvety sheen; three petals.

Violet Giant. Semi-double; rose-violet. The largest Japanese Iris we have seen—blooms sometimes 3 feet in circumference.

All Japanese Irises, \$1 each; \$9.75 per doz.

LARKSPUR (Delphinium) Belladonna. The most continuous blooming and most useful Delphinium for cutting. The clear turquoise-blue of its flowers is not equaled for delicacy and beauty by any other flower. 35 cts. each; \$3.50 per doz.

D. Bellamosum. A dark blue form of the popular Belladonna. 35 cts. each; \$3.50 per doz.

D. chinense. Stunning border plant with spikes of vivid blue flowers of almost dazzling brilliance. Good for cutting. 35 cts. each; \$3.50 per doz.

See also pages 3 to 5

LAVANDULA vera. This, the true Sweet Lavender, grows about 1½ feet high and has delightfully fragrant blue flowers in July and August. 25 cts. each; \$2.50 per doz.

LIATRIS scariosa. Blazing Star. Brilliant purple flowers in long showy spikes in September, much later than the others. A very imposing plant. 4 to 5 feet. 30 cts. each; 90 cts. for 3; \$3 per doz.

L. scariosa alba. A dainty, feathery, pure white form of the above. 50 cts. each; \$5 per doz.

L. pycnostachya. Kansas Gayfeather. Tall, rocket-like plants, bearing club-like spikes of intense lavender-purple flowers which begin to bloom at the top of the stem and proceed downward. 30 cts. each; \$3 per doz.

LILIUM candidum. Madonna or Annunciation Lily. This is the old-fashioned garden Lily, and one of the most beautiful. Ready in July and August. Fine companion to my hybrid delphiniums. 50 cts. each; \$5 per doz.; \$50 per 100.

LILY-OF-THE-VALLEY (Convallaria majalis). This popular and fragrant ground-cover plant repays good treatment. Grand for massing near shrubs or along shaded borders. Strong field-clumps, 35 cts. each; \$3.50 per doz.

LINUM perenne. A gray-leaved, smooth-stemmed plant, 2 to 3 feet high, covered in early summer with brilliant blue flowers which are open only in sunlight. If cut back will bloom again abundantly in autumn. 30 cts. each; \$3 per doz.

LUPINUS, New Polyphyllus Hybrids, Mixed. Lupine. Both in the garden and as a cut-flower, the Lupine has always been a favorite. English plant hybridists, always busy with new things, have recently introduced a magnificent strain of new colors which includes many shades and delicate tints heretofore unknown in Lupines, including bronze, yellow, orange, pink, dark brown, and lavender. 50 cts. each; \$5 per doz.

WILLIAM C. DUCKHAM CO., MADISON, N. J.

Hardy Perennial Plants

LYCHNIS Viscaria splendens. Mat-like perennial which throws up woody blooming stalks in midsummer, crowned with heads of vivid magenta-pink flowers. A very striking and showy garden subject. 35 cts. each; \$3.50 per doz.

MYOSOTIS (Forget-me-not) alpestris, Royal Blue. The dainty Forget-me-not loves a cool, moist soil, and, like the pansy, blooms most freely in spring. It quickly establishes itself by self-seeding. Royal Blue is a rich deep blue of remarkable free-flowering habit. 6 to 12 inches. May. 25 cts. each; 65 cts. for 3; \$2.50 per doz.

NEPETA nervosa. An improved Nepeta. Trailing, aromatic plant with heads of clear light blue flowers. 30 cts. each; \$3 per doz.

N. Mussini. A trailing, aromatic plant with velvety, gray-green foliage and heads of tall lavender-blue flowers. 30 cts. each; \$3 per doz.

PÆONIA. Peony. We have a fine collection of both single and double Chinese Peonies in many varieties and colors. Please write for list and prices.

PANSY. Heartsease. My strain of Pansies is well known, for I have taken no end of pains to develop it by careful "roguing" each year. Visitors at my trial-grounds proclaim it the best they have seen. 6 inches. April to October. Specify color desired.

All Pansies, \$1 per doz.; \$8 per 100

PAPAVER (Poppy) nudicaule, Sunbeam Mixed. Iceland Poppy. A beautiful class of hardy Poppies, bearing cup-shaped flowers, ranging in color from pure white to yellow and orange-scarlet, on long stems. 1 foot. May to August. 30 cts. each; \$3 per doz.

P. orientale. Oriental Poppy. The old Oriental Poppy is a well-known favorite and has no equal for brilliancy of color. 30 cts. each; \$3 per doz.

P. thibetica. A vivid scarlet-orange form of *P. nudicaule*, remarkable for its brilliance. 50 cts. each; \$5 per doz.

PHLOX decussata. Hardy border Phloxes succeed in almost any soil enriched with manure in spring, and given an occasional soaking of water in hot weather.

P. decussata, Diplomat. (New.) Purest white.

P. decussata, Leo Schlageter. (New.) Vivid crimson-scarlet.

P. decussata, Salmon Glow. (New.) Deep glowing salmon.

P. decussata, Enchantress. (New.) Salmon-red.

P. decussata, Firebrand. Fiery red.

P. decussata, Milly van Hoboken. Bright pink.

P. decussata, Mrs. Jenkins. White; blooms early.

P. decussata, Thor. Deep salmon-pink.

P. decussata, Wala. Lovely white.

P. divaricata (P. canadensis). Fragrant, lavender flowers in clusters on stems 10 inches high. April and May. 30 cts. each; \$3 per doz.; \$20 per 100.

P. divaricata Laphami. A deep lavender-violet form of *P. divaricata*. The richest and darkest variety. About 1 foot high. April, May.

P. divaricata, Lavender. Lavender. 30 cts. each; \$3 per doz.

R P. subulata alba. A lovely, early-flowering, creeping plant with mossy foliage and dazzling white flowers. 30 cts. each; \$3 per doz.

R P. subulata, Vivid. Gorgeous, bright rose-colored flowers. 30 cts. each; \$3 per doz.

P. suffruticosa, Miss Lingard. A splendid border plant differing from the other Phloxes in its sturdy, rather dwarf stature. The erect stems grow about 2½ feet high and bear greatly elongated heads of many salver-shaped flowers in great profusion over a long period of time. It is at its best in the height of the delphinium season and combines beautifully with them.

All Phloxes, 35 cts. each; \$3.50 per doz., unless otherwise noted

PHYSOSTEGIA virginiana. Flowers about an inch long, on 4-foot spikes, varying in color from pale lilac-pink to white. 35 cts. each; \$3.50 per doz.

P., Vivid. Sturdy, dwarf plant, 18 to 24 inches high, with dense spikes of striking magenta-pink flowers in late summer and autumn. 35 cts. each; \$3.50 per doz.

PLATYCODON (Balloon Flower) grandiflorum. Large, showy, deep blue flowers somewhat like *Campanula persicifolia*. 1½ feet. June, July. 25 cts. each; \$2.50 per doz.

P. grandiflorum album. White-flowered form of the above. Very beautiful. 25 cts. each; \$2.50 per doz.

PRIMULA polyanthus. Gold-laced Primula. Forms a beautiful rosette of large, rough leaves and bears clusters of ruffled flowers of fine form and rich colors, all laced handsomely with gold. 6 to 8 inches. May, June. 25 cts. each; \$2.50 per doz.

PYRETHRUM, Duckham's New Hybrids. Persian Daisy. For profusion of flowers in season, nothing can surpass the charming variety of the Pyrethrums. The mixed varieties I offer are especially rich in the charming pink shades. 2 to 3 feet. May to September. 40 cts. each; \$3.75 per doz.

RUDBECKIA Newmani. Black-eyed Susan. Useful border plant for sunny places. Brilliant yellow daisies with striking blackish brown centers. 35 cts. each; \$3.50 per doz.

R. purpurea. Coneflower. Peculiar reddish purple flowers like huge daisies. Thrives in ordinary soil. 3 feet. July to October. 35 cts. each; 90 cts. for 3; \$3.50 per doz.

SALVIA (Sage) azurea. The graceful flowers are a delightful shade of pale blue and come in graceful spikes. 3 feet. July to October. 40 cts. each; \$4 per doz.

SCABIOSA, Constancy. Flowers of powder-blue. 50 cts. each; \$5 per doz.

S., Isaac House Hybrids. Large, gracefully fringed and ruffled flowers in shades of violet-blue. Blooms well during the hot months of June and July and excellent for cut-flower use. 50 cts. each; \$5 per doz.

SCABIOSA, Duckham's New Hybrids. An improvement on the old Scabiosa, both in form and color. Flowers are lavender and blue, like the shade of that extremely popular annual, Blue Lace Flower. Those who are familiar with the latter will surely want my new Scabiosas. The assortment also contains a liberal proportion of rich blue and white shades. 3 feet. June to September. 50 cts. each; \$5 per doz.

R SEDUM spectabile. Bold, fleshy-leaved plants, with broad heads of dull rose-colored flowers. Excellent for strong effects. 30 cts. each; \$3 per doz.

SIDALCEA, Rose. A very interesting plant of the Mallow family, with the habit of a dwarf hollyhock, blooming profusely in shades of pink, rose, and light crimson throughout the greater part of the summer. Useful for cutting. 30 cts. each; \$3 per doz.

STOKESIA. Cornflower Aster. A most charming hardy perennial which, for many seasons, has been the most-admired flower on my grounds. The plants grow 1½ to 2 feet high, bearing freely, from early June until late in October, handsome lavender-blue centaurea-like blossoms, which measure from 4 to 5 inches across. It is of the easiest culture.

S. lævis lilacina grandiflora. A new Stokesia resembling *Scabiosa caucasica*, a silvery blue shade with flowers produced on 18 to 20-inch stems. 35 cts. each; \$3.50 per doz.

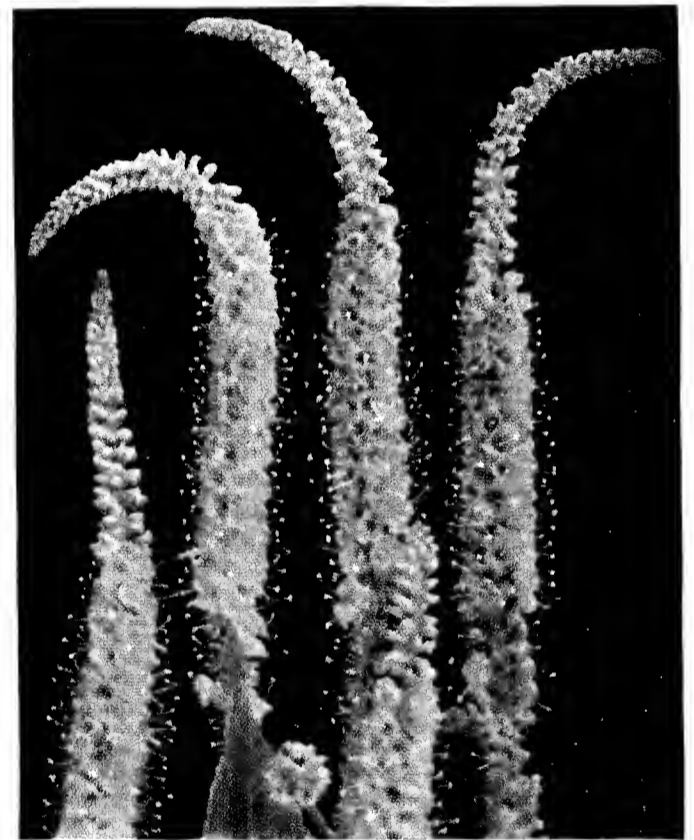
THERMOPSIS caroliniana. A fine plant, with clover-like foliage and long spikes of bright yellow, pea-shaped, lupine-like flowers. 4 feet. June, July. 50 cts. each; \$5 per doz.



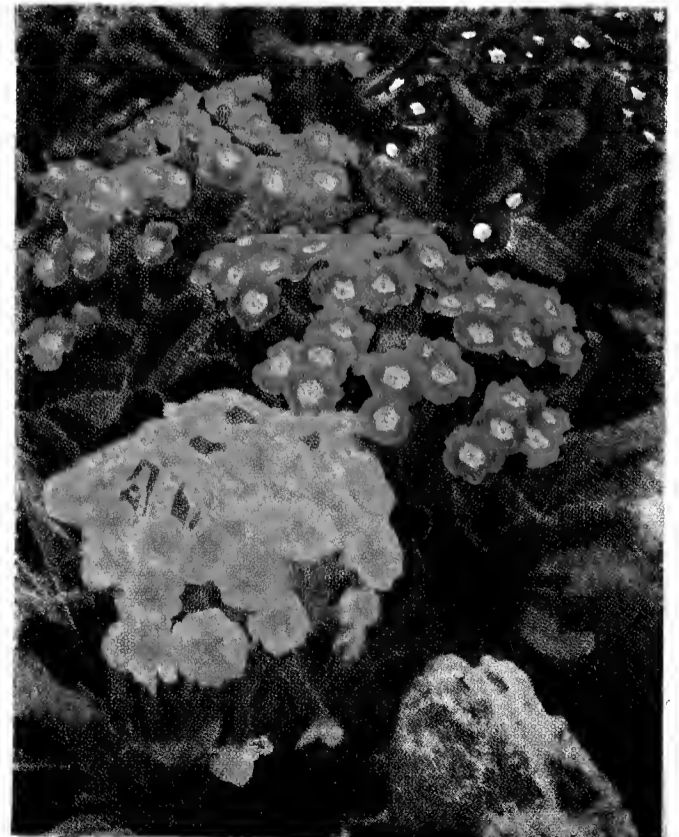
Perennial Phlox



Daphne Cneorum. 75 cts. each



Veronica spicata. 30 cts. each



Primula polyanthus. 25 cts. each

Hardy Perennial Plants

THALICTRUM (Meadow-Rue) *adiantifolium*. Leaves resemble maidenhair fern. Small yellow flowers. 1 foot. June, July. 30 cts. each; \$3 per doz.

T. diptercarpum. Beautiful blue-gray leaves. Purplish yellow flowers with yellow stamens. July–October. 35 cts. each; \$3.50 per doz.

T. glaucum. Blue-gray leaves rather finely cut, with heads of Chinese yellow, fragrant flowers. 3 to 4 feet. July. 40 cts. each; \$4 per doz.

TRITOMA, Duckham's New Hybrids, Mixed. *Flame Flower*. A wonderful range of vivid as well as delicate pastel shades. Not the stiff, top-heavy form of the old Red-Hot Poker, but a long-stemmed, graceful, light flower-spike that adapts itself to all decorative schemes. Colors are yellow, orange, buff, scarlet, and crimson-salmon. Blooms from June to August. \$4.50 per doz.; \$30 per 100.

TROLLIUS. *Globe Flower*. Beautiful, hardy border plants, with handsome, dark green foliage and showy yellow flowers from May to July. They are well adapted for half-shady or sunny positions and are fine for moist places and edges of water-gardens.

T., *Earliest of All*. (New.) Early, free-flowering, light orange-yellow Globe Flower that blooms before other varieties. 1½ feet. April, May. 50 cts. each; \$5 per doz.

T. europæus, *Orange Princess*. (New.) Extra-deep orange flowers in profusion. 2 feet. May, June. 50 cts. each; \$5 per doz.

VERONICA. *Speedwell*. A family containing some of the most beautiful subjects for the hardy garden and rockery. Given a rich, well-drained soil in an open situation in full sun, they will thrive in an amazing manner.

V. spicata. Very useful border plant of medium height with deep blue flowers in slender spikes a foot or more long. Grows best in full sun. 30 cts. each; 75 cts. for 3; \$3 per doz.

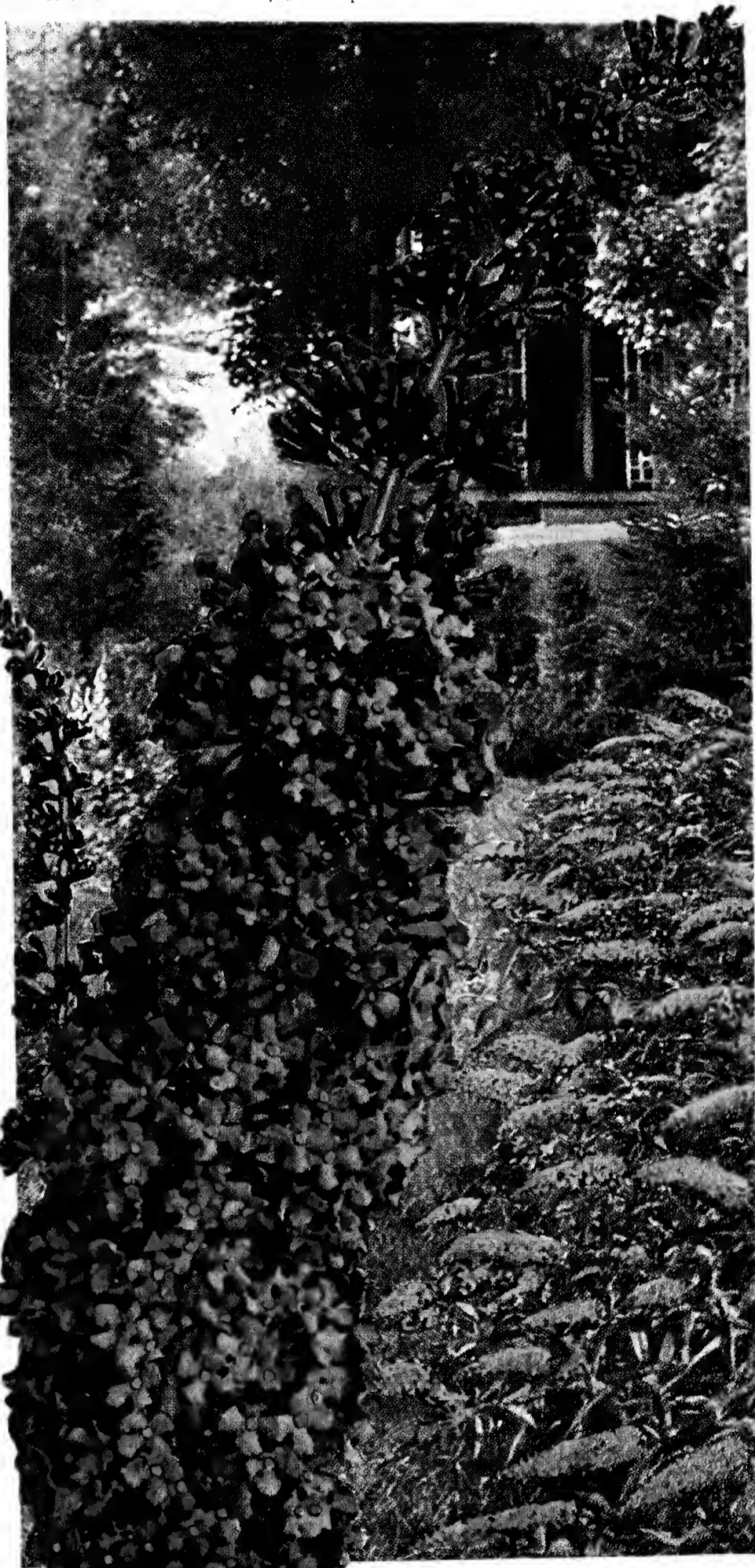
Hardy Perennial Plants

VIOLA. These splendid small hardy plants are much prized for their quaint little flowers, each self-color having a delightful charm of its own.

V., Apricot Queen. Here we have a true Cornuta type in the beloved Viola, with a most unusual color. Continuous bloomer with a real credit mark for complete dependability. 35 cts. each; \$3.75 per doz.

V., Jersey Gem. A specially selected beautiful violet-blue variety which blooms unceasingly all season. A rare and choice sort. 35 cts. each; 75 cts. for 3; \$3 per doz.

V., Royal Gem. Deep blue flowers 1½ to 2 inches across, on long stems well above the foliage, borne continuously from spring until freezing weather. 35 cts. each; \$3.50 per doz.

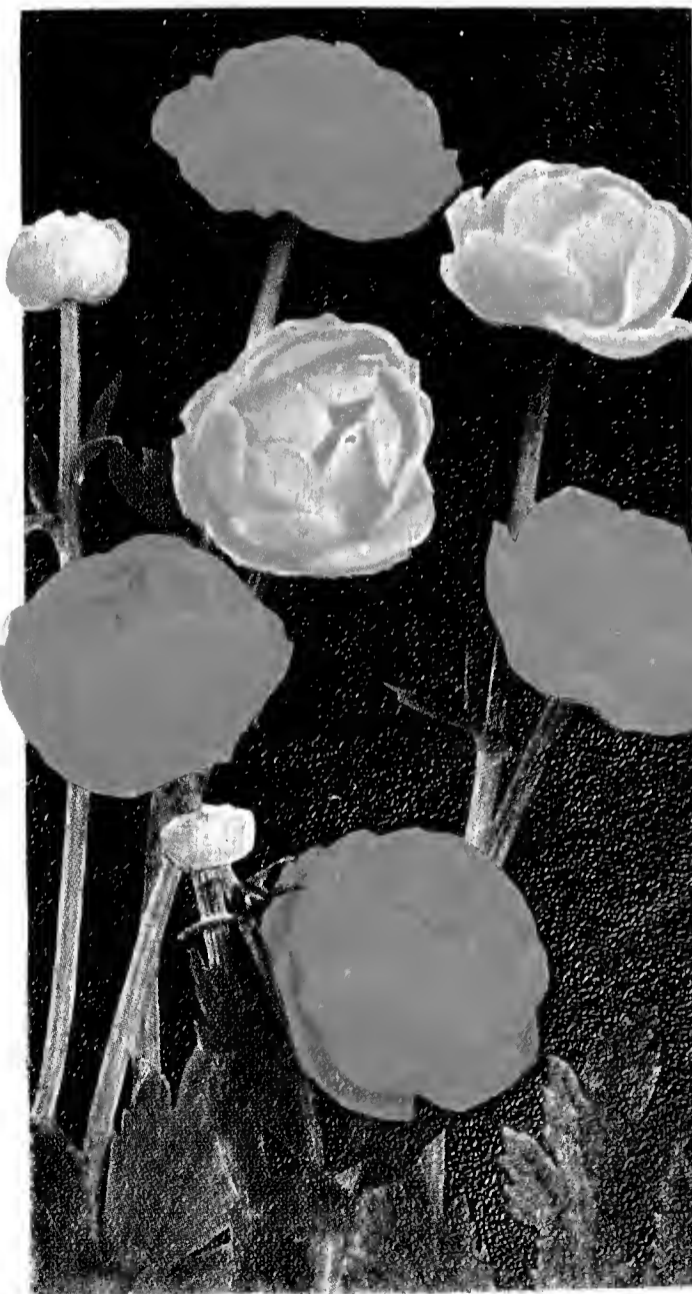


COPYRIGHT 1932

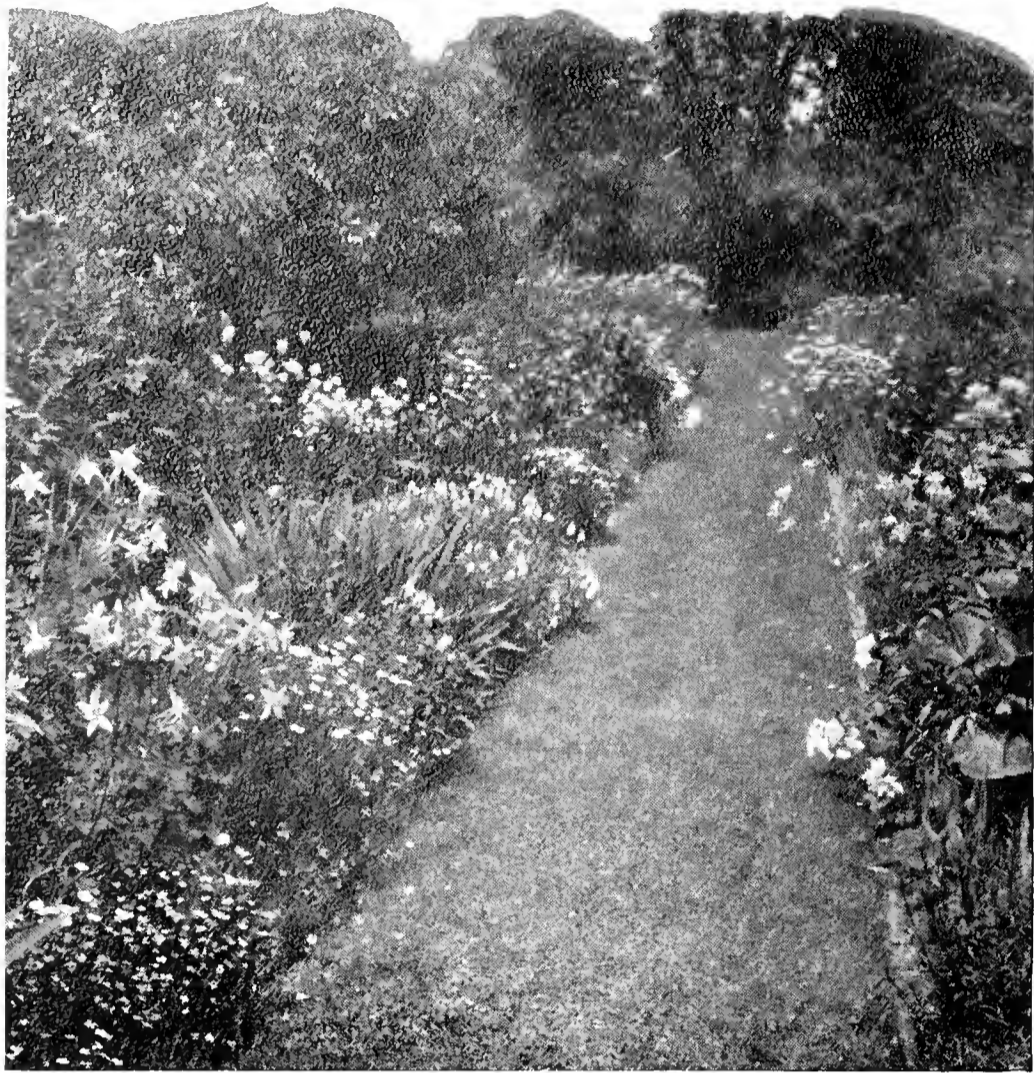
New Butterfly Bush, Ile de France.
75 cts. each



Larkspur (Delphinium) Bellamosum and Belladonna.
35 cts. each; \$3.50 per doz.



Troilium europæus, Orange Princess 50 cts. each



Special Offers of Hardy Plants

To enable such people to obtain the very best garden efforts, and to make the task of selection as easy as possible for those who have very little time to give to gardening, I shall be glad to select a group of 50 Hardy Perennials of the finest types, in lots of 5 of each kind, to make an adequate representation of each variety. Such a Collection will make a charming little garden from which an abundance of splendid flowers can be cut for house and table decoration from June until late autumn.

OFFER No. 1

50 Perennial Plants, carefully labeled and packed, our selection, for . . . **\$10.00**

OFFER No. 2

75 Perennial Plants, carefully labeled and packed, our selection, for . . . **\$14.50**

OFFER No. 3

100 Perennial Plants, carefully labeled and packed, our selection, for . . . **\$18.50**

Duckham's
STERILOAM
 TRADE MARK

MAKES EVERY GOOD SEED GROW

Gardeners everywhere have realized that the use of sterilized soil is the only way to get 100 per cent results in the germination of seeds. With the use of STERILOAM (the balanced seedling soil) results are guaranteed.

STERILOAM is free from weed seeds. Seedlings will not damp off.

If you want to prevent seed-losses—if you want your seeds to develop into healthy, hardy plants—strong, virile and true to type—use Duckham's STERILOAM. And you will find it just as good for house-plants of every description; in flower-pots for

prize plants; in growing plants of all kinds for display or competitive shows; and in the greenhouse.

STERILOAM is put up in 10-pound cans, 25-, 50-, and 100-pound bags. A trial will convince you that your seed-germination will be a revelation to you.

Send orders direct to William C. Duckham Company or ask your favorite seed-store for it.

Prices

10-lb. cans \$1.25	50-lb. bags \$3.50
25-lb. bags 2.00	100-lb. bags 6.00

The only sure way to get 100% Seed Germination

Duckham's Special Rose Offer

EVERY year the list of new Roses grows larger and more confusing. Superb new varieties come into being and are jostled aside by dozens of other contestants for favor. But as the seasons pass, certain varieties take firm hold and stand out like rocks above a stream. To these established varieties, firmly fixed in public favor, the gardener must turn if he is to save himself from complete confusion. Realizing this, we have selected 12 outstanding Roses which are so good that the flood of new varieties has been unable to dislodge them from favor. We have made special arrangements to have these 12 selected Roses propagated in quantity, so that we can offer them to our customers at a reduced price for the whole collection. The beginning Rose-grower could not do better than to plant these as his first dozen, and those who wish an abundant all-season display would be wise to plant a half-dozen or so of these collections, thus insuring a steady supply of the most beautiful and perfect blooms.

BRIARCLIFF. Splendid, rich rose-pink without shading; fine long-pointed bud, opening to a beautifully modeled, shell-like flower. Vigorous and prolific.

CHARLES K. DOUGLAS. Strong-growing bush with an abundance of striking light scarlet-crimson flowers. One of the most dependable garden varieties.

ETOILE DE HOLLANDE. The finest everblooming red Hybrid Tea Rose. Flowers vivid and fragrant. Bush strong.

KAISERIN AUGUSTE VIKTORIA. Well-formed, creamy buds which develop slowly to blooms of absolutely perfect form, snowy white with a slight tint of lemon at center; fragrant. Plant moderately vigorous, free blooming, and hardy. A standard old variety, indispensable among white garden Roses.

MISS ROWENA THOM. Big, globular flowers of glowing pink with a golden suffusion at the base of the petals. Remarkable for vigorous growth.

MRS. AARON WARD. Everybody likes this little flower, which nestles on such a vigorous little bush. The buds are golden buff and fawn, opening to very double flowers of palest pink and white, suffused with yellow and cream. The foliage is like holly.

MME. EDOUARD HERRIOT. Few flowers of any kind can equal the gorgeous color of this Rose. The buds are burning red and copper and the open flowers brilliant orange-pink.

MRS. CHARLES BELL. One of the famous Radianee Trio. In growth and form of flower it resembles the uncatchable Radianee, but the color is a mild, even tone of delicate flesh-pink.

MRS. ERSKINE PEMBROKE THOM. Throughout the United States this is generally considered the best of all yellow garden Roses. Plants are thrifty, erect in habit, and produce in unbroken succession handsome golden yellow buds which open cleanly into well-shaped, clear yellow flowers that are fragrant and long lasting.

PRESIDENT HERBERT HOOVER. One of the most popular Roses of the day. The long, coppery buds open to huge, flamboyant flowers of vivid rose-pink and golden cream, striking and very lovely. The plants are extraordinarily vigorous and bloom unceasingly throughout the season.

RADIANCE. This is probably the best-known and the most widely grown Rose on this continent. The big, globular flowers are bright glowing rose-pink on the outside, and a softer, silvery shade on the inside. Vigorous, persistent bloomer.

RED RADIANCE. Like Radianee in all respects save color—clear even rose-red. Very popular.

One strong plant of all 12 of these Roses for \$7.50

Everblooming Garden Roses

Our field-grown Rose-plants have been raised in America. They are all well-ripened, two-year-old bushes, budded on Multiflora understock which is renowned for hardiness and vigorous growth. They are the best of the crop.

All Roses in the following list, unless otherwise noted, are 75 cts. each; \$7.50 per doz.; \$65 per 100

Abbreviation HT., Hybrid Tea

AUTUMN. HT. One of the most striking Roses ever introduced. The tight, tapering buds are deep burning bronze with fiery tones, and the inner surface of the petals rich old-gold. As they open to immense double flowers, the colors lighten and blend into an extraordinary mixture of rose, yellow, and coppery tones. Plants are very vigorous.

AMELIA EARHART (President Charles Hain). HT. Plant Patent No. 63. A stunning new Rose from Belgium with immense, golden yellow buds and huge, exquisitely formed flowers, fragrant and full, of symmetrically arranged, delicate curled petals. Plants are thrifty and bloom with unusual freedom for so large a flower throughout the entire season. \$1.50 each.

BETTER TIMES. HT. Plant Patent No. 23. Striking new Rose of the cut-flower type and related to Premier, which it resembles in form, its long, straight stem, and upright habit. The long buds are brilliant cerise-crimson, and open to very striking double flowers of vivid cerise-red which are delicately fragrant. This variety has won awards at shows and is fast making a name for itself in the florists' shops. So far it has proved equally at home and attractive in the garden, and promises to become one of the most popular varieties. \$1.50 each; \$15 per doz.

BETTY. HT. I think this Rose has the loveliest buds of any variety I have ever seen. They are long, tapering, with exquisitely curled petals, tinted with soft shades of pinkish buff and copper. The open flower is very large and fluffy, almost creamy white, with a sheen of pale gold.

BRIARCLIFF. Described above in Special Offer.

CHARLES K. DOUGLAS. Described above in Special Offer.

COMTESSE VANDAL. HT. Plant Patent No. 38. This sensational Rose has created a great deal of excitement in the gardens of the country. Its exquisitely formed, long, bronze buds open to soft, silvery pink flowers, richly shaded with coral, salmon, and golden yellow tones. The plants are erect and vigorous, the stems long and strong. \$1 each.

DUCHESS OF WELLINGTON. HT. For a long time I regarded this as the best yellow Rose in the world, and the old Duchess still has prettier buds and larger flowers than many newer varieties. It grows well, too, after it is once established.

EDEL. HT. Very large, well-built, stately blooms of pure ivory-white color and lovely globular form; fragrance slight. Plant very vigorous, bearing its bold blooms on erect stems. A superb sort which is making itself necessary in all collections.

ETOILE DE HOLLANDE. Described above in Special Offer.

GOLDEN DAWN. HT. Finest of all pale yellow Roses, bar none. Flowers fully double, deliciously fragrant, and borne freely by dwarf, healthy plants, of unrivaled bedding habit. Highly recommended. \$1 each; \$10 per doz.

JOANNA HILL. HT. A new, long-stemmed, daintily shaped flower of golden yellow, shaded with apricot.

KAISERIN AUGUSTE VIKTORIA. Described above in Special Offer.

LADY ALICE STANLEY. HT. Massive buds and fully double, very sweet blooms; outside of petals coral-rose, inside pale flesh-pink. A strong, free-blooming plant. One of the very best and most dependable Roses for both bedding and cutting.

Other varieties of Everblooming Garden Roses on page 22

WILLIAM C. DUCKHAM CO., MADISON, N. J.

DUCKHAM'S Glorious ROSES



© Nigrette. HT. \$2 each.
Plant Patent No. 87.
See opposite



Better Times.
HT.
\$1.50 each.
Plant Patent
No. 23.
See opposite

FOR centuries the Rose has been acknowledged as the Queen of Flowers. This is attested anew every year by the vast numbers of novelties in new colors and forms which are brought into the world by hopeful originators. From these we have selected seven of the outstanding originations of the past few years to offer on these two pages. Both Climbers and everblooming Bush Roses are included, each representing the climax of its particular type.



© Comtesse Vandal. HT. \$1 each.
Plant Patent No. 38. See opposite



© 1933 Mrs. Arthur Curtiss James (Golden Climber). HW.
\$2 each. Plant Patent No. 28. See opposite

NIGRETTE. HT. Plant Patent No. 87. This is the outstanding introduction of 1934-35. Heralded several years ago as the famous "Black Rose of Sangerhausen," we find in this country that the summer blooms are vivid dark red, but in the cool weather of autumn deep velvety violet shades approaching ebony-black appear, and some of the flowers are so dark that they can scarcely be called any other color than black. The bushes are vigorous but wiry, and they are always in bloom. \$2 each; \$20 per doz.

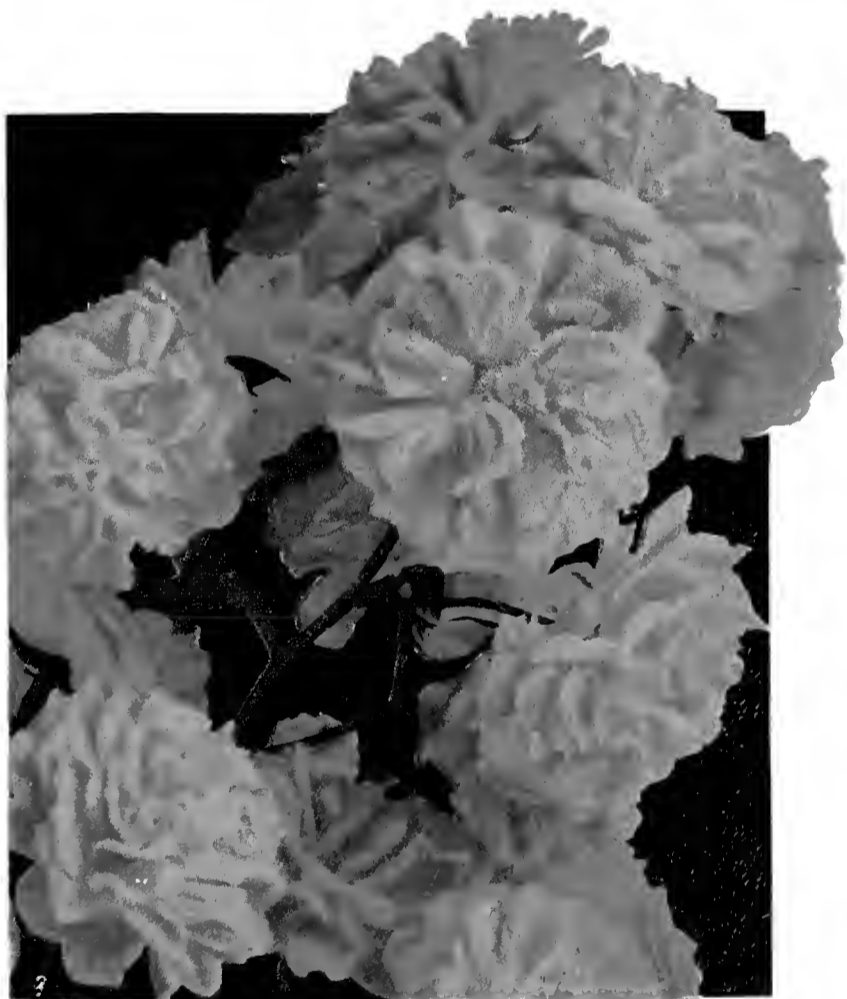
BETTER TIMES. Plant Patent No. 23. A strong-growing, upright Hybrid Tea with vivid dark rose-red flowers of classic form, resembling in general effect the famous older Rose, Premier. A superb variety for cutting and seems destined to great popularity for garden use. \$1.50 each; \$15 per doz.



Easlea's Golden Rambler. HW. \$2 each; \$20 per doz. Plant Patent No. 114. See page 23

EASLEA'S GOLDEN RAMBLER. Plant Patent No. 114. A new golden yellow Climbing Rose just being introduced from England, where it has won many prizes and awards of honor. Foliage is remarkably beautiful. Flowers are soft, golden cream, double, and very lovely. \$2 each; \$20 per doz.

THE NEW DAWN. HW. Plant Patent No. 1. This Rose has won continued popularity since its introduction several years ago. It is an everblooming form of the always-popular Climbing Rose, Dr. W. Van Fleet, and can be counted on to provide lovely flowers in the autumn as well as in early summer. \$1.50 each; \$15 per doz.



© Princess van Orange. Mult. \$2 each; \$20 per doz. Plant Patent No. 106

PRINCESS VAN ORANGE. Plant Patent No. 106. Moderately vigorous Climber which originated as a sport from the vividly colored orange-scarlet Polyantha, Gloria Mundi, retaining the full brillianee of its extraordinary color, unlike anything else in the world. \$2 each; \$20 per doz.

COMTESSE VANDAL. HT. Plant Patent No. 38. Still regarded as one of the most striking novelties of recent years, and popular for its lovely long buds and soft salmon-pink and coppery toned flowers. \$1 each; \$10 per doz.

MRS. ARTHUR CURTISS JAMES (Golden Climber). Plant Patent No. 28. A vigorous Climber with holly-like foliage and huge, beautifully shaped golden yellow flowers borne in profusion in early summer. \$2 each; \$20 per doz.



© The New Dawn. HW. The Everblooming Dr. W. Van Fleet. \$1.50 each. Plant Patent No. 1. See page 23

Everblooming Garden Roses

LADY MARGARET STEWART. HT. Rose of deep sunflower-yellow, heavily veined and slashed with orange-scarlet; reverse of petals deeply suffused with carmine.

MAX KRAUSE. HT. A vigorous, disease-resistant, golden yellow Rose with apricot tones in the depths of the petals. The blooms are huge and massive, held upright on rigid stems. A striking and most promising novelty. \$1.50 each.

McGREDY'S SCARLET. HT. Interesting new light crimson Rose, not scarlet, but very striking and showy for all that. Plants are most vigorous and produce handsome blooms over the entire season. 55 cts. each.

MISS ROWENA THOM. Described in Special Offer on page 19.

MME. BUTTERFLY. HT. Beautiful buds and flowers of light soft pink, tinted yellow at base of petals; very free and highly scented. One of the most dependable garden Roses.

MME. CAROLINE TESTOUT. HT. Clear, glistening, satiny rose flowers, lighter toward the edges. Strong, bushy and healthy, with good stems and a most unusual color. An old favorite.

MME. EDOUARD HERRIOT. Described in Special Offer on page 19.

MME. JULES BOUCHE. HT. One of the best white Roses. Erect, bushy plants with abundance of snow-white flowers having just a suspicion of pink in the center. You will like this Rose.

MRS. AARON WARD. Described in Special Offer on page 19.

MRS. CHARLES BELL. Described in Special Offer on page 19.

MRS. ERSKINE PEMBROKE THOM. Described in Special Offer on page 19.

MRS. J. D. EISELE. HT. Plant Patent No. 67. This superb, new crimson Rose is one of the most richly fragrant flowers we have ever known. The blooms are double, circular in form, with slightly undulated petals, each edged with a silver line. Plants are tall, floriferous, and healthier than most. It has won favor wherever it has been grown in this country, and we believe it is going to be one of the most successful light crimson garden Roses. \$1.50 each.

MRS. HENRY BOWLES. HT. One of the best bedding varieties grown, always in flower and perfect in every stage of development. In color it is of an intense brilliant pink, with lighter salmon-pink.

NIGRETTE. HT. Plant Patent No. 87. The most interesting novelty of the year. Buds and half-open flowers velvety purple-black when the weather is just right. At other times the small, fragrant blooms are rich velvety crimson. This is the famous "Black Rose of Sangerhausen." \$2 each; \$20 per doz.

OPHELIA. HT. Classed with the very best for it is a Rose that is admired by everyone. Its flowers, held erect on long, stiff stems, are of perfect form, good size, and of a most pleasing delicate tint of salmon-flesh, shaded with rose-pink.

PRESIDENT HERBERT HOOVER. Described in Special Offer on page 19.

RADIANCE. Described in Special Offer on page 19.

RED RADIANCE. HT. Described in Special Offer on page 19.

REV. F. PAGE-ROBERTS. HT. The flowers are gigantic, glowing golden yellow, with a coppery red sheen spread over the outside of the petals, giving them a rich and sumptuous effect.

SOUVENIR. HT. Plant Patent No. 25. A splendid new yellow Rose which originated as a sport from the famous multicolored Talisman. It has been a consistent winner in the great flower shows and is notable for its splendid, long-stemmed, golden yellow flowers steadily produced throughout the season. \$1 each.

SOUVENIR DE CLAUDIUS PERNET. HT. A splendid variety, with exquisite golden yellow buds and fine open flowers.

TOKEN. Plant Patent No. 95. Described and illustrated in color on back cover.

Rosa Hugonis

This wild Rose from China is unlike any other Rose. It is a big shrub and naturally forms symmetrical bushes about 6 feet high. Invaluable in connection with other shrubs or as single specimens in the garden. Its delicate yellow, single flowers are produced on long, arching sprays early in May. Every branch of the previous season's growth becomes lined on both sides to the very tip with these attractive flowers, and after it has finished blooming it remains an attractive decorative bush for the remainder of the season. Perfectly hardy. **Strong, 2-yr. plants, \$1 each; \$10 per doz.**

Standards or Tree Roses

The beautiful Tree Roses are made by budding on tall stems 3 feet or more above the ground and developing round, bushy heads at the level of the eyes where their flowers are most effectively displayed.

Tree Roses are seldom seen in America and require considerable care. They should be planted in carefully prepared ground and be copiously fed with liquid manure throughout the summer and most carefully protected in the winter. At the time of planting, a strong stake should be set to each plant and the stem tied firmly to it, especially at the top, to prevent it from swaying and loosening itself in the ground. It is best to set the stake on the south side of the plant. Plant them at salient points in the garden, in the centers of wide beds, in a circle about a pool, along walks, or stand them, sentinel-like, at the entrance to the garden.

This season I can offer the following varieties at \$3 each; \$30 per doz.

BRIARCLIFF. The most recent and the best sport of Columbia. Fine, handsome flowers of an even shade of silvery rose-pink.

DUCHESS OF WELLINGTON. Saffron-yellow; large and delightfully fragrant.

RADIANCE. Bright pink. Very prolific. One of the best.

RED RADIANCE. Similar to Radiance but light red.

SOUVENIR DE CLAUDIUS PERNET. A definite and lovely sunflower-yellow, deeper in the center.

All the Gems of the Hardy Climbing Roses

They are so various, these Climbing Roses, both in their unparalleled beauty and their easy adaptability to many situations and uses. Use them for covering or screening objectionable objects. Use them for decorative arches, or to cover summer-houses or garden-seats. Use them on a trellis at the porch or trained about an entry or a window. Let them clamber along a fence or twine about a pergola, or even make a hedge of them by tying in and clipping back the branches. Anyone with a square yard of ground at his disposal can have one splendid Climbing Rose upon it, and it is doubtful if he could put the ground to any better use.

Best of all, perhaps, is to grow them as pillars, which takes the least space; and anyone who likes Roses will want to crowd as many of them as he can into his garden. To make a pillar, plant a stout, straight post with the Rose, and train the plant straight up to the top, or wind it about the support, keeping it cut off at the top, and the stray shoots tied in or cut off.

BLAZE. HW. Plant Patent No. 10. A marvelous, everblooming seedling of Paul's Scarlet Climber and Gruss an Teplitz. This is probably the most famous Climbing Rose ever produced, and has aroused unparalleled attention from coast to coast. It makes vigorous growth, producing huge clusters of moderately large, blazing red flowers in the early summer, and continues to bloom with unusual freedom throughout the season until freezing weather. \$1.50 each; \$15 per doz.

MRS. ARTHUR CURTISS JAMES (Golden Climber). HW. Plant Patent No. 28. Here is the finest, hardiest, and most reliable golden yellow Climbing Rose ever introduced into this country. Plants have all the enormous vigor of the famous Mary Wallace and are apparently as hardy as any of the popular Climbing Roses. The flowers are large and shaped identically like the finest Hybrid Teas. They open rich golden yellow and remain without serious fading for several days. \$2 each.

PRINCESS VAN ORANGE. Mult. Plant Patent No. 106. Originating in Holland as a climbing sport from Gloria Mundi, the most striking of the vividly colored orange-scarlet Polyanthas, this new Climbing Rose is an amazing sight when in full bloom. The flowers are borne in huge sprays like the old Crimson Rambler, but the color is a sparkling shade of blazing orange-vermilion so bright that it seems illumined by intense sunlight. \$2 each; \$20 per doz.

ORDER TO
WILLIAM C. DUCKHAM
MADISON, NEW JERSEY

Date.....

Your Name.....
Very Plain

Post Office..... P. O. Box.....

County..... State.....

Street No..... Forwarded by.....
Mail, Express, or Freight

Please do not write here

Amount Enclosed Cash, \$..... Money Order, \$.....

Supt.'s Name..... Draft or Check, \$.....
State how much money you enclose

QUANTITY	NAME OF ARTICLE	Dollars	Cents
	Delphinium, Mixed. \$5.25 for 6; \$9.75 per doz.		
	Special Offer of 12 Roses. \$7.50 for the 12		
	Phlox, Our Selection. \$1.50 for 6		
	Japanese Iris, Our Selection. \$3.50 for 6		
	Scabiosa, Duckham's New Hybrids. \$2.50 for 6		
	Viola, Jersey Gem. \$1.25 for 6		
	Steriloam. \$1.25 for 10 lbs.		
	<small>See page 18 for prices on larger quantities</small>		

In making your order, please give the price, to avoid delays and errors.

CHOICE HARDY CLIMBING ROSES

75 cts. each; \$7.50 per doz.; \$65 per 100, unless otherwise noted

THE NEW DAWN Everblooming Dr. W. Van Fleet

Plant Patent No. 1

A sport from Dr. W. Van Fleet which is universally acknowledged as the best and most popular American Climbing Rose. This new variety is identical in every way with its parent in size and formation of its flowers, color, etc., but blooms continuously through the summer and fall months. The first good Everblooming Climber introduced. **\$1.50 each.**

DOROTHY PERKINS. Famous and beautiful, old Dorothy is still among the best. Very vigorous, with lovely waxy foliage and great clusters of frilly, shell-pink flowers, tiny but exquisitely shaped, it has a place in the affections of every flower-lover that nothing else can fill. Unequaled for covering arches, trellises, and summer-houses, and useful wherever a rapid-growing screen or cover is needed.

DR. W. VAN FLEET. The flowers are of the palest possible shade of flesh-pink, with a slightly darker center, and they are likely to acquire deeper color late in the season, as it blooms over a long period and frequently throws a few flowers in late summer and fall. Unquestionably it is the most popular Climbing Rose in the country today.

EMILY GRAY. This is a lovely golden yellow Climbing Rose, with large, beautifully formed flowers and handsome, shining foliage. It is a wonderful and almost unbelievable sight when in full bloom, and people invariably go into ecstasies over it. Unfortunately, it requires winter protection in cold climates, but if it is grown as a pillar it can be easily wrapped with burlap or covered with a few boughs to shelter it through coldest seasons.

GARDENIA. Soft, dainty yellow in bud and early opened flower, fading white. Plant is very, very vigorous and its foliage is particularly fine.

GLOIRE DE DIJON. C.T. One of the most famous Climbing Roses in the world. A hardy, everblooming Tea with enormous, globular buds and very double, sweetly scented, soft chamois-yellow flowers touched with gold and delicate rose.

JACOTTE. Large, semi-double flowers of orange-yellow, tinted copper-red, borne in clusters. Strong, profusely blooming plant. The blooms measure 3 inches and over in diameter. Early to midseason. One of the sensational new Roses carrying the brilliant orange color into the hardy Climbers.

MARY WALLACE. Queen of the large-flowered, pink clusters and regarded as the best of its class. The blooms are large and cup-like, glowing pink, with a golden undertone, and are borne in clusters at the ends of long stems.

PAUL'S SCARLET CLIMBER. Not so vigorous as other Climbers, this striking Rose is ideal for growing as a pillar, over which it will hang its clusters of large, well-formed, shining scarlet flowers in greatest profusion. One of the most spectacular of Roses, it is becoming widely known and tremendously popular.

PRIMROSE. A strong, vigorous grower and as hardy as Dr. W. Van Fleet and similar varieties. The light primrose-yellow flowers, about 2½ inches in diameter, are borne in trusses of from 2 to 5, on long stems. The plant is of vigorous, climbing habit, and is a noteworthy addition to the yellow Climbing Roses.

SILVER MOON. Tremendous vigor and splendid, polished foliage characterize this Rose, even without the splendor of its tapering golden white buds and its magnificent, semi-double, saucer-like flowers of purest white, illumined at the center with a giant frill of golden stamens.

EASLEA'S GOLDEN RAMBLER

Plant Patent No. 114

A brand-new hardy Climbing Rose from England, with large golden cream flowers of fine double form produced in great profusion. It has not been thoroughly tried out in this country, but good hardy yellow Climbing Roses are very scarce, and a variety which comes so well recommended as this deserves a trial. Very promising. **\$2 each; \$20 per doz.**

POLYANTHA ROSES

These most charming little Roses are much used for massing in beds or for edging borders where a brilliant effect is desired. They bloom right through the season, simply covering themselves with their large trusses of flowers.

Selected plants, 75 cts. each; \$7.50 per doz.

CECILE BRUNNER. Rose-pink with yellowish center; fragrant.

ELLEN POULSEN. A deep rose-pink with large flower-heads.

GRUSS AN AACHEN. Delicate flesh-pink, overlaid with yellow.

IDEAL. Very dark crimson-red. Free flowering and disease-proof.

The New Polyantha Rose, Gloria Mundi

This new variety is probably the best and most generally satisfactory of all the orange-scarlet Polyantas recently introduced. Its color certainly is emphatic, clear and uniform, and comparatively unfading. The petalage is fully double, with many good-sized florets in each cluster. As a bedding Rose, it will undoubtedly be accepted as the most brilliant addition to this class in many years, its lasting brightness being quite pronounced.

ROSA ROULETTI

A miniature Rose growing only a few inches high, bearing flowers no larger than your thumb-nail. The tiny plants are particularly adapted to pot-culture, and will yield a continuous succession of delightful little pink flowers all the year. It may be grown in a snug pocket in the rock-garden, or if you want lots of them they make a very dainty edging. **75 cts. each.**

Business Terms and Shipping Instructions

To insure early deliveries of Roses and Hardy Plants, and to avoid disappointments, it is necessary to order early.

Payments. Cash or satisfactory references required from all correspondents unknown to me.

Plants by Parcel Post. If to be sent by parcel post, add postage as follows: Single plants, 5 cts.; 3 plants, 10 cts.; 6 plants, 15 cts.; 12 plants, 25 cts. I accept no responsibility for delays or conditions that may prove injurious to the contents.

Plants by Express. I recommend this mode of transit for more than 18 to 24 plants. All orders are carefully packed by expert hands, but I accept no responsibility for delays over which I have no control that may cause injury to the contents. I can make no adjustments unless complaints are made within five days after receipt of goods. Always state how you wish your order shipped, express or parcel post. Express rates reduced 25 per cent.

Responsibility. Although exercising the utmost care in packing and routing orders, I cannot be responsible for damage due to the negligence or rough handling of common carriers. If the container appears damaged on arrival, sign for it as **damaged** and make claim on the express company. If considerable delay in transit would indicate fatal damage to contents, refuse delivery.

I guarantee my stock to be extra strong, but assume no responsibility after shipment has been made. I also wish to emphasize the fact that all roses and plants I send out are vigorous, healthy, and true to name.

All shipments should be opened and unpacked immediately on arrival; if dry, the plants should be watered and planted as soon as possible.

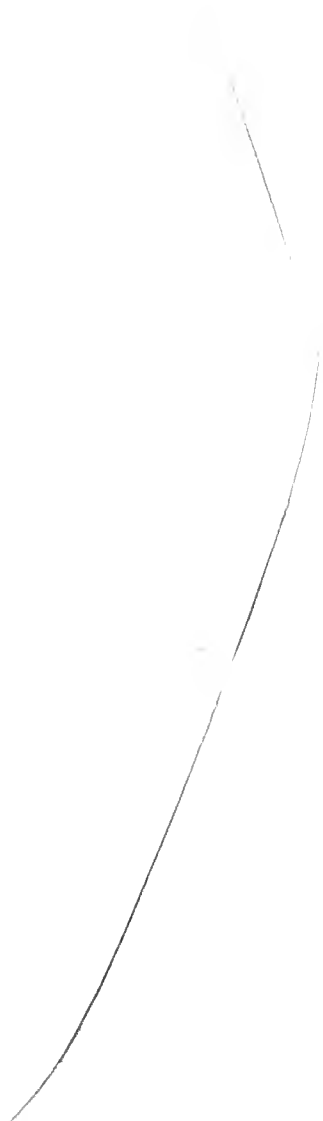
Substitution. In ordering, kindly give a second choice, if possible, as many varieties are sold out as the planting season progresses.

In the event that I should be sold out of any variety ordered, I will substitute the nearest variety of equally good stock and similar color, unless the order is marked "No Substitution."

WM. C. DUCKHAM COMPANY

MADISON,

NEW JERSEY





©
TOKEN. H.T. (Plant Patent No. 95.) A vivid orange Rose with the exquisite shape, texture, and carriage of a typical cut-flower variety like Mme. Butterfly. Its unrivaled, shining orange tones blend into the luminous flame-pink hues of Los Angeles as they age, retaining a lovely, fresh appearance until they fall. The plant is all the most exacting gardener could ask in vigor, healthiness, and profusion of bloom. We think it is a great Rose. Price \$1.50.

WILLIAM C. DUCKHAM Co.
MADISON • NEW JERSEY