

Historic, archived document

Do not assume content reflects current scientific knowledge, policies, or practices.

6373 11 1935

ENTERPRISE NURSERIES

●

GEO. E. STEIN & SON
Wrightsville, R. D. 1
YORK COUNTY, PENNA.



Growers of Quality
Fruit, Shade and Ornamental Trees,
Flowering Shrubs, Evergreens, Etc.

A Personal Message

ONCE more we are greeting you at the beginning of a new season. We sincerely thank you for the business you have given us in the past. Each year we are privileged to add many new customers to our list and make many new friends. Due to this fact our business has been steadily increasing.

We have not made many changes in this catalog, only discontinuing old varieties that have gone out of date and adding new varieties which have proven satisfactory. Due to existing conditions, prices have been advanced in certain kinds of fruit trees but on most of our Ornamentals, we have reduced the prices. We suggest that you take advantage of the present low price of evergreens and beautify your property, as it is almost certain that prices will go back again to their former level.

We will be pleased to assist you in making planting plans. We make no charge for making plans and can take care of your planting at a nominal charge, if desired.

May we have the pleasure of supplying your requirements this season? All your orders, large or small, will receive our prompt and careful attention at all times.

GEO. E. STEIN & SON.

Visit, Telephone or Write Us

Location: Near East Prospect, Pa.
Telephone: Wrightsville Exchange
Post Office: Wrightsville, Pa.

Contents

	Pages
Instructions to Purchasers.....	2
Fruit Trees.....	3 to 9
Bearing Age Fruit Trees.....	7
Nut Trees.....	9
Small Fruits.....	10
Shade and Ornamental Trees.....	11 to 15
Ornamental Shrubs.....	16 to 21
Hedge Plants.....	22
Evergreens.....	23 to 30
Broad-Leaved Evergreens.....	30 to 32
Ornamental Climbing Vines.....	33
Ornamental Hardy Grasses.....	33
Hardy Phlox.....	33
Roses.....	34 to 35
Garden Supplies.....	36
Planting, Pruning and Care of Stock.....	36 to 37
Memorandum.....	38
Planting Information.....	Cover Page 3

Complete index in back of catalog.

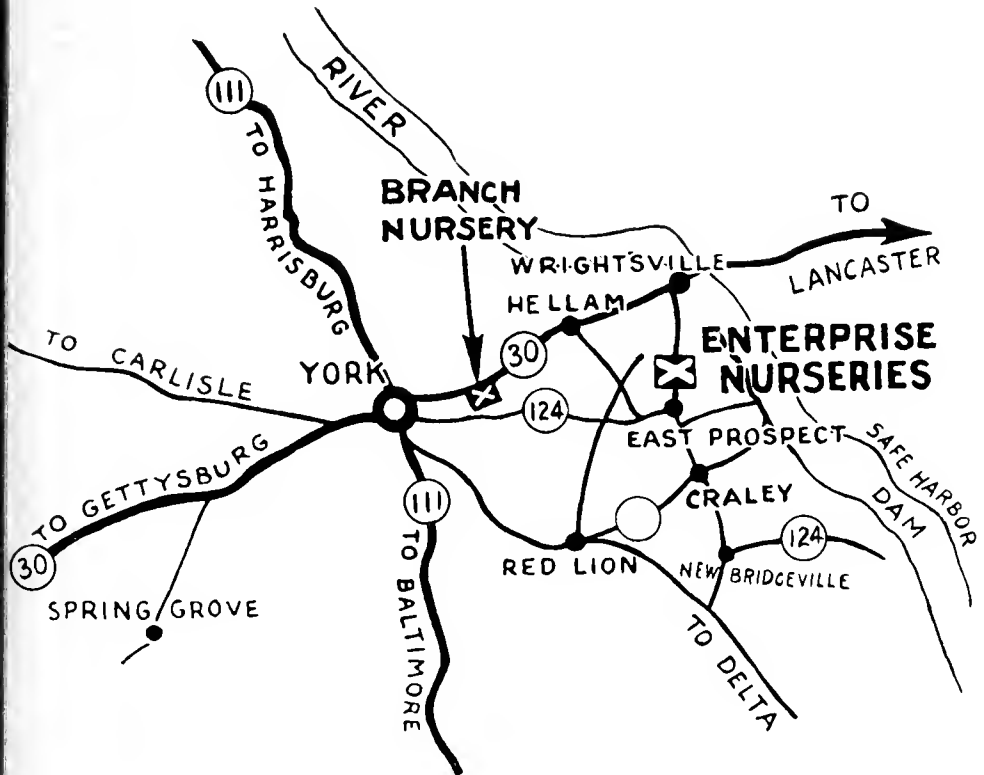


Planting Adds Beauty to Our Home

WE INVITE YOU TO VISIT OUR NURSERIES

Our Nursery and office are located one-half mile north-west of East Prospect on the road leading from East Prospect to Wrightsville.

Our Branch Nursery is located along the Lincoln Highway three miles east of York.



To reach our Nursery from York take Route 124 to East Prospect, and turn left at square.

From Red Lion Route 624 to Craley, and 124 to East Prospect, and straight through at square.

From Wrightsville take first macadam road leading south, at west end of borough on Lincoln Highway.

No Business Transacted on Sundays

INSTRUCTIONS TO PURCHASERS

Orders. Orders should be sent in just as soon as possible after receiving catalog. By placing orders early you are more certain of getting the varieties wanted, as late in the season we are often sold out of some varieties. If ordered early we can reserve the stock until proper time for planting.

Shipping. We have adequate shipping facilities and can ship in any direction with the probability of prompt arrival at destination. All shipments travel at the cost and risk of the purchaser.

Truck Deliveries. Truck load orders will be delivered free, reasonable distances; long hauls and smaller orders delivered by special arrangement. We are well equipped to make prompt delivery.

Guarantee and Claim. All stock is guaranteed to be true-to-name, dug properly, and in good condition when shipped. Any tree or plant which is untrue to name will be promptly replaced. In case of any error on our part, it is mutually agreed between the purchaser and ourselves that we shall not at any time be held responsible for a greater amount than the original price of the nursery products.—As we have no control over its care and usage after it leaves our hands, we cannot guarantee it to live and grow or to give specific results.—We insist that all claims for damaged or unsatisfactory stock be made promptly.

Our nurseries are inspected every year and every shipment will be accompanied by a Certificate of the State Examiner.

Planting. Proper planting is important and to this end we have developed an organization that is competent to handle planting for you at a nominal charge.

Terms Cash, except when expressly agreed otherwise.


Substitution. We reserve the right in case we are out of a variety, to substitute another of equal merit when it can be done—unless the order is plainly marked NO SUBSTITUTION. In this case we will fill the order as completely as possible and refund the balance of remittance, if paid in advance.

Prices. The prices quoted in this catalog are F. O. B. our Nurseries except where otherwise noted. They are as low as was consistent at the time of printing, considering wages and other costs. However, they are subject to change without notice.

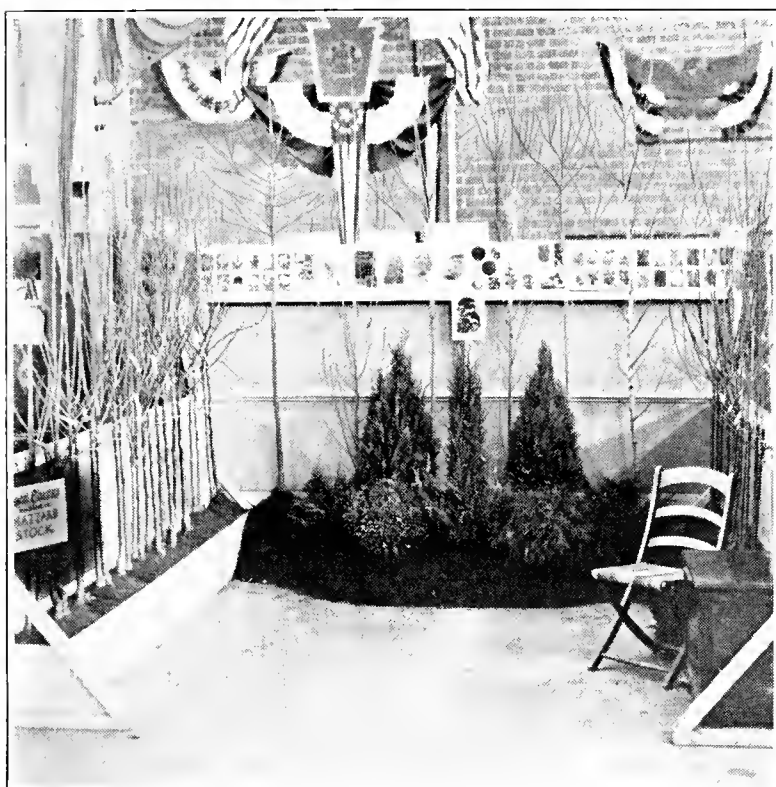
How to Figure Your Order. One to four trees or plants sold at the each rate; 5 to 30 at the ten rate; 30 to 300 at the 100 rate.

B. & B. indicates that a tree will be Balled & Burlapped at price listed. Should any other tree or shrub be desired B. & B. there will be the following scale of charges: 2 to 3 ft. \$.15, 3 to 4 ft. \$.20, 4 to 5 ft. \$.30, 5 to 6 ft. \$.40, 6 to 8 ft. \$.60, 8 to 10 ft. \$.75. Larger sizes will be charged in proportion.

Member

 American Association of Nurserymen 

Pennsylvania Nurserymen's Association



The above is a photograph of our exhibit at the Penna. Farm Show, which is held at Harrisburg each January. This is one of the greatest Agricultural shows in the world. We have exhibited at this show for several years and have attracted much attention with the quality of our Nursery Stock. Attend the show next year and come to see us while there.

APPLES

Our list of varieties is confined to the best ones only. Most varieties of Apples on our list do well in all sections of the country where Apples are grown. For spraying instructions consult your County Agent or Experiment Station in your state.

PRICE OF APPLES. 2 Year.

	Each	Per 10	Per 100
3 to 4 ft.....	\$.40	\$3.00	\$25.00
4 to 5 ft.....	.50	4.00	30.00
5 to 6 ft.....	.60	5.00	35.00

PRICE OF APPLES. 1 Year.

	Each	Per 10	Per 100
3 to 4 ft.....	\$.40	\$3.00	\$25.00
4 to 6 ft.....	.50	4.00	30.00

SUMMER VARIETIES

YELLOW TRANSPARENT. Earliest and best; white, tender, juicy, sprightly sub-acid; grows upright; bears when young, making good filler.

EARLY HARVEST. Medium; pale yellow; tender, juicy, good quality.

SUMMER RAMBO. Very large; greenish red, striped; tender, juicy; tree strong grower.

RED ASTRACHAN. Large, nearly covered with deep crimson, juicy, rich, acid, beautiful.

EARLY STRAWBERRY. Tender, juicy, productive.

WATERMELON. Large, pale yellow; sweet, tender and juicy.

FALL VARIETIES

- GRAVENSTEIN.** Large striped, fine quality, one of the best fall sorts.
- MAIDEN BLUSH.** One of the most beautiful; pale lemon with crimson cheek; flesh white, tender and crisp.
- WEALTHY.** Almost solid red. Flesh white, tender, crisp, juicy, fine grained.
- McINTOSH.** Medium size, nearly covered with red, flesh yellowish, tender, juicy, sub-acid.
- SMOKEHOUSE.** Fruit medium to large. Color yellow or greenish mottled with red.

WINTER VARIETIES

- GRIMES GOLDEN.** Large, skin golden yellow; flesh tender and crisp. A very good apple. September to January. Grown in all sections of the country.
- STAYMAN WINESAP.** A profitable sort to grow for market, and for home use. Large in size, fine appearance, good quality, juicy and crisp, color red.
- ROME BEAUTY.** Large; roundish, with bright red on a pale yellow ground. A profitable variety.
- DELICIOUS.** Red, fine grained; juicy, quality very good. A good apple for either home use or market.
- GALLIA BEAUTY.** A solid red Rome Beauty sport. It is typical of Rome Beauty in every way except that the fruit averages smaller.
- CORTLAND.** A cross between McIntosh and Ben Davis, inheriting the good qualities of both parents. It is a beautiful red, larger than McIntosh, and matures a month later; hangs well to the tree. It keeps late in winter.
- PARAGON.** An apple of large size; yellowish, covered with deep red, the general effect being dark red; flesh tender, tinged with yellow, crisp, sub-acid aromatic.
- WINTER BANANA.** Large, golden yellow and beautifully shaped with bright crimson red. Flesh lemon yellow, fine grained, sub-acid, rich, aromatic flavor.
- PARADISE WINTER SWEET.** Large; creamy white, rosy cheeked. One of the best sweet winter varieties.
- RHODE ISLAND GREENING.** Large, greenish yellow, tender, juicy, rich, acid. The old reliable Winter cooking apple, and also good for dessert.
- FALLAWATER** (sometimes called Pound Apple). Large; yellowish green.
- HUBBARDSTON.** Large, red, striped, tender, juicy.
- STARK.** Large, striped, mild, sub-acid, good. Valuable as a keeper.
- BALDWIN.** Large, bright red, crisp, juicy, rich.
- RAMBO.** Medium, red and yellow. Mild flavor. Excellent old variety.
- YORK IMPERIAL.** A medium to large winter apple with yellow skin shaded red; firm, juicy, sub-acid. An excellent canning and shipping apple.
- JONATHAN.** Most beautiful of all apples. Fruit medium to large, roundish, yellow nearly covered with red.

CRAB APPLES

- HYSLOP.** Large; deep crimson; one of the most beautiful; very popular.
- TRANSCENDENT.** For many years the most popular crab apple. Fruit about an inch in diameter, yellow, with red cheek.

PEACHES

We are offering only a limited number of varieties, ones that you can depend on giving you a good crop of fruit.

PRICE OF PEACHES	Each	Per 10	Per 100
2 to 3 ft.....	\$.25	\$2.00	\$15.00
3 to 4 ft.....	.30	2.50	18.00
4 to 5 ft.....	.40	3.00	20.00
5 to 6 ft.....	.50	4.00	25.00

Varieties listed according to season of ripening as near as possible.

SNEED (Cling). Bright red cheeks. Earliest market Peach.

GREENSBORO (Semi-Cling). Hardy and productive, fruit large and tree healthy. Color white with crimson cheek.

GOLDEN JUBILEE. Yellow, freestone, ripening four or five days ahead of Carman. Very attractive peach of good size and fair quality. It withstands shipment better than most early varieties.

CUMBERLAND. A seedling crossed with Greensboro. The fruit is larger than Belle, attractively colored with red, oval in shape. The flesh is white, almost free.

CARMAN (Semi-Cling). Large, creamy white skin, mostly covered red; tender, juicy.

HILEY (early Belle). It resembles Belle of Georgia. White-fleshed pretty red cheek and good quality.

ROCHESTER. Has the habits and characteristics of the Crawford. Yellow, freestone, very sweet and fine flavor.

SOUTH HAVEN. Yellow, freestone, deep yellow with a red cheek, delicious flavor. Ripens about fifteen days ahead of Elberta. Tree very hardy.

CHAMPION. A large, handsome, early variety. Creamy white with red cheek; sweet, rich and juicy; hardy and productive.

BELLE OF GEORGIA. Very large Peach with red cheek, flesh white and firm, of excellent flavor.

OLD MIXON. A showy, white-fleshed peach with a bright red cheek. Large, juicy, sweet and good.

EARLY ELBERTA. This is one of the finest of all the Elberta family. Ripens from one week to ten days earlier than the Elberta.

ELBERTA. Mid-season. A valuable large peach, of good quality; fruit large, yellow with red cheek; flesh yellow; freestone. The leading market variety.

J. H. HALE. One of the best sorts for market or garden. Fruit is very large, round, quality excellent. Skin yellow finely colored, flesh yellow. A very good one.

SHIPPER'S LATE RED. A large highly colored Peach. Very hardy, yellow fleshed and freestone, of good quality. Ripens just after Hale and Elberta.

CRAWFORD'S LATE. Large, yellow Peach, fine for canning and market.

GOLD DROP. Medium size, hardy, very productive, good quality, early bearer.

STEPHEN'S R. R. White, partly covered with red. A Peach of good size and a splendid market variety.

SMOCK. One of the best of the late varieties, ripening about three weeks after Elberta. Large size, yellow flesh.

SALWAY. A late yellow variety. Latter part of September to October 15.

IRON MOUNTAIN. Freestone. Fruit is of large size; color, white.

BILYEU'S LATE. Flesh white and firm. The latest variety known. Keeps long after picking.

SWEET CHERRIES

(Budded on Mazzard Root)

We specialize on growing Sweet Cherries. We gather the ripe Mazzard cherries from outstanding vigorous trees and grow our own seedlings, which are transplanted when one year old and budded to improved varieties, which gives a much longer lived tree of known hardiness and vigor and are much more sure to grow when transplanted, than trees grown on Mahaleb stock.

	Each	Per 10
One year, 3 to 4 ft.....	\$.40	\$3.50
One year, 4 to 5 ft.....	.50	4.50
One year, 5 to 6 ft.....	.60	5.00
Two year, 4 to 5 ft.....	.60	5.00
Two year, 5 to 6 ft.....	.75	6.00
Extra Selected.....	1.00	8.50



The above picture shows a group of Nurserymen from various parts of Penna. in one of our cherry tree blocks, studying methods of identifying varieties by their foliage. The work was in charge of Dr. W. H. Upshall, Ontario, Canada, and Prof. F. N. Fagan, State College, Penna.

BLACK TARTARIAN. Large, bright purplish black; juicy, rich. Tree a remarkably vigorous and erect grower, and an immense bearer. One of the most popular old varieties.

SCHMIDT'S BIGGAREAU. The fruit is of very large size, of deep mahogany color. Flesh dark, very firm and juicy, with a fine rich flavor. Fruit grows in clusters. Is an excellent shipper.

WINDSOR. Fruit large, liver-colored, distinct, flesh remarkably firm and of fine quality. Tree hardy and prolific. A valuable late variety.

YELLOW SPANISH. A pale yellow cherry with bright red cheek. It is one of the most popular light-colored cherries; vigorous and productive.

NAPOLEON BIGGAREAU (Royal Ann). A beautiful cherry of large size; pale yellow with bright red cheeks; flesh firm, juicy and sweet; one of best for market and canning.

BING. Takes high rank in the west. Fruit very large, dark red, almost black; good quality; flesh very solid and delicious.

LAMBERT. A large purple red, meaty, juicy; good quality. Tree a strong grower and enormous bearer.

JAPANESE flowering cherry listed on page 15

SENECA. Large purplish black, with juicy melting flesh and a rich sweet flavor. Resembles Black Tartarian but is more than two weeks earlier. A splendid early variety.

IDA. A very good rather early, light colored cherry, sweet and juicy; with a bright red cheek; a good bearer.

GOVERNOR WOOD. Large, heart-shaped; light yellow, mottled light red, juicy, sweet and rich. Tree vigorous, productive. An old variety still a favorite in many regions.

OXHEART. Large, heart shaped, solid. Yellow with red cheek. Tree healthy and productive.

SOUR CHERRIES

	Each	Per 10
Light first-class.....	\$.40	\$3.50
First-class, 4 to 5 ft.....	.50	4.00
Extra size, 5 to 6 ft.....	.75	6.00

EARLY RICHMOND. A dependable variety which seldom misses a crop. Medium size, red, melting, juicy.

LARGE MONTMORENCY. Large, deep cherry-red, very tender and juicy. It is the best variety for home and market.

ENGLISH MORELLO. Easily grown, generally producing a heavy crop. Fruit dark red, quality good; late.

PEARS

	Each	Per 10
Light first-class.....	\$.40	\$3.50
First-class, 4 to 5 ft.....	.50	4.00
Extra size, 5 to 6 ft.....	.75	6.00

BARTLETT. Season last of August to September 15th. Good strong grower, flesh is white, fine grained, luscious, large and buttery, has a rich melting flavor and very sweet. Excellent for canning.

CLAPP'S FAVORITE. Summer. Fruit large, yellow lemon color, spotted with brown dots; flesh fine, rich and sweet. A very good one.

DUCHESS. Strong grower, productive, not subject to blight. Fruit large, light green patched with russet, melting, juicy, sweet and good.

KIEFFER. One of the most prolific pears. It is an abundant and regular bearer. Good shipper. Fruit large, color yellow with red cheek. Begins fruiting successfully when three years old. Season October.

SHELDON. A large, round, russet pear of very fine quality; melting, rich, and delicious. Tree vigorous, erect, and handsome; bears well and should be more largely planted.

LAWRENCE. Medium greenish yellow with brown dots, melting, pleasant, aromatic. Very productive.

SECKEL. Medium size, skin rich, yellowish brown with deep brownish red cheek when fully ripe; flesh very fine grained, sweet, exceedingly juicy, melting, buttery. One of the richest and highest flavored pears known.

WORDEN SECKEL. Seedling of Seckel. Much larger, very fine quality, sweet; yellow with beautiful red cheek.

BEARING AGE FRUIT TREES

To the planter who wants quick results, we can offer some extra large trees, three and four years old, some of which bore in the Nursery row last summer.

We can supply **APPLE, PEAR, PLUM, QUINCE** and **SOUR CHERRY** in assorted varieties.

PRICES. \$1.00 each, \$8.00 per 10, B. & B. \$1.50 each.

PLUMS

(Budded on Plum Root)

	Each	Per 10
Light first-class.....	\$.40	\$3.50
First-class, 4 to 5 ft.....	.50	4.00
Extra size, 5 to 6 ft.....	.75	6.00
ABUNDANCE. One of the oldest and best varieties; hardy, productive. Fruit large, good quality. August.		
BURBANK. Most profitable among growers for market; ripens ten days after Abundance. Very productive.		
RED JUNE. Productive; fair size, vermilion red; pleasant quality. Ripens a week before Abundance.		
GOLD (Shiro). Large, oval, bright yellow; rich, juicy, fine quality. A good grower. Early.		
HALL. This is one of the best new plums. The fruit is pinkish with yellow flesh and so handsome and well flavored that it will sell in any market.		
SATSUMA. Large, globular, with sharp point. Flesh dark red or blood color, firm and juicy, fine quality; pit very small. Hardy and vigorous grower.		
BRADSHAW. A very large and fine early plum, dark violet red, juicy and good. Very productive; valuable for market.		
LINCOLN. Fruit almost the color of Bradshaw, large, good quality; excellent for all purposes.		
GERMAN PRUNE. Large, dark purple, sweet, good. One of the most popular for canning, because of its sweetness.		
ITALIAN PRUNE. Good size, purple, juicy, delicious, fine for drying. September.		

APRICOTS

(Budded on Plum Root)

	Each	Per 10
Light first-class.....	\$.40	\$3.50
First-class, 4 to 5 ft.....	.50	4.00
Extra size, 5 to 6 ft.....	.75	6.00
DALLAS. Fruit large, round, early, deep yellow with a fine blush; flesh yellow, firm, juicy and excellent.		
ROYAL. Large, yellow, juicy, rich and delicious; a very fine variety.		

NECTARINES

	Each	Per 10
3 to 4 ft.....	\$.40	\$3.00
4 to 5 ft.....	.50	4.00
HUNTER. A very delicious, smooth skinned fruit, which thrives wherever peaches will grow.		
FLAMING GOLD. Golden orange flesh, stone small and free; quality rich and sweet; tree hardy and prolific.		

QUINCES

	Each	Per 10
Light first-class.....	\$.40	\$3.50
First-class, 4 to 5 ft.....	.50	4.00
Extra size, 5 to 6 ft.....	.75	6.00
ORANGE. Fruit large, bright yellow, of excellent quality.		
CHAMPION. A prolific and constant bearer of oval fruit, averaging larger than Orange and ripening later. A long keeper.		

PERSIMMONS

LAMBERT. This is a native persimmon of large size and good quality.		
	Each	
2 to 3 ft. grafts.....		\$2.00
3 to 4 ft. grafts.....		2.25

NUT TREES

Nut trees are valuable, useful and ornamental. No home should be without them. They are valuable as shade and ornamental trees, as well as for the nuts they produce.

ENGLISH WALNUT. A fine, lofty-growing tree, with handsome, spreading head. It produces large crops of delicious nuts, which are always in demand. Most popular walnut grown.

	Each
3 to 4 ft. seedlings.....	\$.75
4 to 5 ft. seedlings.....	1.00
5 to 6 ft. seedlings.....	1.50
6 to 8 ft. seedlings.....	2.50
3 to 4 ft. Mayette grafts.....	1.75

GRAFTED BLACK WALNUTS.

	Each
3 to 4 ft.....	\$1.50
4 to 5 ft.....	2.00
5 to 6 ft.....	2.50

THOMAS. Nut very large, kernels large, light colored and of very good quality. Tree bears when very young and a strong grower.

STABLER. Of very good cracking quality; the kernels can easily be removed in halves and often in one piece. Also a very good variety.

JAPAN CHESTNUT. This is a blight resistant variety, very hardy, makes quick growth, bears abundantly when young, produces large nuts of good quality.

	Each
3 to 4 ft. seedlings.....	\$1.00
4 to 5 ft. seedlings.....	1.50
5 to 6 ft. seedlings.....	2.00
3 to 4 ft. grafts.....	1.50
4 to 5 ft. grafts.....	2.00

ALMOND. Very hardy, makes quick growth, bears abundantly when young.

4 to 5 ft.....	Each \$.50
----------------	----------------

MULBERRIES

“Plant a tree or two to feed your feathered friends—the Birds.”

DOWNING. Very large, black, handsome, sweet, rich, and of excellent quality.

	Each
4 to 5 ft.....	\$.75
5 to 6 ft.....	1.00

RUSSIAN. Very hardy vigorous grower. Fruit small, varies in color from white to black.

5 to 6 ft.....	Each \$.50
----------------	----------------

EVERBEARING RUSSIAN. Large black berries, sweet and juicy. Very productive, bears from June to August.

5 to 6 ft.....	Each \$1.00
----------------	----------------

Our nut trees can be Balled & Burlapped if desired.
Extra charge for B. & B. 3 to 4 ft. \$.25, 4 to 5 ft. \$.35,
5 to 6 ft. \$.50.

SMALL FRUITS

GRAPES (2 Year)

\$.20 each, \$1.50 per 10, \$12.00 per 100

- BRIGHTON (Red).** High quality, large.
CATAWBA (Red). Medium size, late.
NIAGARA (White). Standard white variety.
CONCORD (Blue). An old variety, very productive.
WORDEN (Blue). Earlier than Concord.

THREE NEW GRAPES OF MERIT

\$.40 each, \$3.50 per 10

- CACO (Red).** Large, earlier than Concord. Bunches are compact and of good size.
PORTLAND (White). The earliest of all grapes. Large bunch and berry; juicy and good quality.
FREDONIA (Blue). Very early, a strong grower; excellent flavor.

CURRANTS (2 Year)

\$.20 each, \$1.50 per 10

- CHERRY.** Large berries, short bunch.
FAY'S PROLIFIC. Old leading market variety.
WHITE GRAPE. Large yellowish white.

GOOSEBERRIES (2 Year)

\$.25 each, \$2.00 per 10

- DOWNING.** Large, pale green, very good.
HOUGHTON. Medium size, pale red, sweet.

STRAWBERRIES

At prices below, strawberry plants will be shipped to your address via Prepaid Parcel Post.

EARLY VARIETIES	Per 100	Per 500	Per 1000
Blakemore	\$1.00	\$2.75	\$4.50
Fairfax	1.25	4.00	7.50
Premier	1.00	3.00	5.00
MIDSEASON VARIETIES			
Big Joe	1.00	3.00	5.00
Aberdeen	1.00	2.75	4.50
LATE VARIETIES			
Chesapeake	1.00	3.50	6.00
Wm. Belt	1.00	3.00	5.00
EVERBEARING VARIETIES			
Mastodon	1.50	4.50	8.00
Champion	1.50	4.50	8.00

RASPBERRIES

	Per 25	Per 100
LATHAM. Popular red variety	\$1.25	\$3.25
CUMBERLAND. Most profitable, black	1.00	2.75

BLACKBERRIES

	Per 25	Per 100
ELDORADO. Hardy, vigorous, productive	\$1.25	\$3.50
BLOWERS. Splendid new variety	1.25	3.50

ASPARAGUS

WASHINGTON. The most popular variety.

	Per 25	Per 100	Per 1000
Two year, No. 1	\$.50	\$1.25	\$8.00
One year, No. 1	.35	1.00	6.50

RHUBARB

MYATT'S LINNAEUS. Old reliable variety.

	Each	Per 10	Per 100
Two year	\$.15	\$1.00	\$8.00



A Well Balanced Foundation Planting

SHADE AND ORNAMENTAL TREES MAPLES

NORWAY MAPLE (Acer platanoides)

Most popular and best known shade tree. Green foliage remains until late fall and turns to rich yellow.

	Each	Per 10
6 to 8 ft.....	\$1.25	\$10.00
8 to 10 ft., 1¼ to 1½ in. cal.....	1.75	15.00
10 to 12 ft., 1½ to 2 in. cal.....	3.00	27.50
12 to 14 ft., 2 to 2½ in. cal.....	4.50	

SILVER MAPLE (Acer dasycarpum)

Tall, stately tree, rapid grower, graceful, leaves silvery underneath.

6 to 8 ft.....	\$.75	\$6.00
8 to 10 ft.....	1.00	8.50
10 to 12 ft.....	1.50	13.50
12 to 14 ft., 2 to 2½ in. cal.....	2.50	22.50
14 to 16 ft., 2½ to 3 in. cal.....	3.75	
14 to 16 ft., 3 to 3½ in. cal.....	4.50	

WIER'S CUT-LEAVED MAPLE

(Acer dasycarpum wieri)

Graceful, drooping form; very desirable.

8 to 10 ft.....	\$1.25	\$10.00
10 to 12 ft.....	2.00	17.50

SCHWEDLER'S RED-LEAVED MAPLE

(Acer platanoides schwedleri)

Probably the best large growing purple leaf tree. Useful as lawn specimen.

6 to 8 ft.....	\$2.00	
8 to 10 ft., 1¼ to 1½ in. cal.....	3.00	
10 to 12 ft., 1½ to 2 in. cal.....	4.00	

In some varieties we can supply larger specimens than listed. Prices on application.

SUGAR MAPLE (Acer saccharum)
Very beautiful; compact growth. A favorite for street or lawn planting.

	Each	Per 10
8 to 10 ft.....	\$1.50	\$12.50
10 to 12 ft., 1½ to 1¾ in. cal.....	2.50	22.50
12 to 14 ft., 1¾ to 2 in. cal.....	3.50	

JAPANESE BLOODLEAF MAPLE (Acer palmatum atropurpureum)

A good dwarf tree with rich purple-red leaves all summer. Best in sun.

12 to 15 in., B. & B.....	\$1.00
15 to 18 in., B. & B.....	1.50
18 to 24 in., B. & B.....	1.90
2 to 2½ ft., B. & B.....	2.50

BIRCH

EUROPEAN WHITE BIRCH (Betula alba)
Known by its white bark.

10 to 12 ft., 1½ to 2 in. cal.....	\$2.50
12 to 14 ft., 2 to 2½ in. cal.....	3.50

CUTLEAF WEEPING BIRCH (B. alba laciniata)
Excellent tree for lawn planting. Very graceful. Beautiful white bark.

5 to 6 ft., B. & B.....	\$1.50
6 to 8 ft., B. & B.....	2.00
8 to 10 ft., B. & B.....	2.50
10 to 12 ft., B. & B.....	3.50
12 to 14 ft., B. & B.....	5.00

PYRAMIDAL WHITE BIRCH (Betula fastigiata)
Columnar form of the European Birch. Excellent where heavy formal effects are desired.

6 to 8 ft., B. & B.....	\$2.50
-------------------------	--------

POPLAR TREES

LOMBARDY POPLAR (Populus nigra italica)
Tall spire-like character; valued for landscape work and screens.

6 to 8 ft.....	\$.50	\$ 4.00
8 to 10 ft.....	.75	6.00
10 to 12 ft.....	1.00	7.50
12 to 14 ft.....	1.50	12.50

CHINESE LOMBARDY POPLAR (Populus simoni)
Hardy tree with good foliage. Upright in growth.

6 to 8 ft.....	\$.60	\$ 5.00
8 to 10 ft.....	.85	6.50
10 to 12 ft.....	1.25	10.00

WILLOWS

Rapid growing trees desirable for quick effects. Of distinctive form, making pleasing contrast with other trees. Must not necessarily be planted near water.

BABYLON WEEPING WILLOW (Salix Babylonica)
Pretty as single specimen to contrast with upright trees and particularly attractive near water; branches olive-green, slender and drooping.

5 to 6 ft.....	\$.75	\$ 6.00
6 to 8 ft.....	1.00	7.50
8 to 10 ft.....	1.75	15.00
10 to 12 ft.....	3.00	

PUSSY WILLOW (Salix discolor)
Shrub-like tree with furry catkins in early spring.

3 to 4 ft.....	\$.50
4 to 5 ft.....	.75

ELM

AMERICAN ELM (Ulmus americana)

Statelyness and dignity are here exemplified. Fairly rapid in growth, this typical American tree soon assumes regal proportions and commands respect of all who look upon it.

	Each	Per 10
6 to 8 ft.	\$.75	
8 to 10 ft.	1.25	
10 to 12 ft., 1½ to 2 in. cal.	2.25	
12 to 14 ft., 2 to 2½ in. cal.	4.00	

MOLINE ELM (Ulmus Moline)

A new variety of extremely strong growth with large handsome deep green foliage. Very desirable.

6 to 8 ft.	\$1.00	
8 to 10 ft.	1.50	
10 to 12 ft.	2.50	

CHINESE ELM (Ulmus pumila)

Beautiful, fast grower, very hardy.

6 to 8 ft.	\$1.25	\$10.00
8 to 10 ft.	1.50	12.50
10 to 12 ft., 1½ to 2 in. cal.	2.50	

PLANE TREES

ORIENTAL PLANE (Platanus orientalis)

A good tree for park and street use; grows rather quickly; withstands smoky city conditions.

6 to 8 ft.	\$1.00	\$ 7.50
8 to 10 ft.	1.50	12.50
10 to 12 ft., 1½ to 2 in. cal.	2.50	20.00
12 to 14 ft., 2 to 2½ in. cal.	4.00	37.50

AMERICAN PLANE (Platanus occidentalis)

Common Sycamore. Fast growing, tall tree.

6 to 8 ft.	\$1.00	\$ 7.50
8 to 10 ft.	1.75	15.00
10 to 12 ft., 1½ to 2 in. cal.	2.50	20.00
12 to 14 ft., 2 to 2½ in. cal.	3.50	
12 to 14 ft., 2½ to 3 in. cal.	4.50	

MAGNOLIA

SAUCER MAGNOLIA (Magnolia soulangeana)

Producing the large cup-shaped, white and rosy violet flowers 3 to 5 inches across, in the spring before the leaves unfurl. This variety is the hardiest and most adapted to northern conditions.

18 to 24 in., B. & B.	\$1.75	
2 to 3 ft., B. & B.	2.50	
3 to 4 ft., B. & B.	3.75	

DOGWOOD

WHITE FLOWERING DOGWOOD (Cornus florida)

Among the best of the spring flowering small trees.

3 to 4 ft., B. & B.	\$1.00	
4 to 5 ft., B. & B.	1.50	

RED FLOWERING DOGWOOD (C. florida rubra)

Slower growing and more formally shaped, with handsome red flowers. An attractive lawn specimen or group subject.

2 to 3 ft., B. & B.	\$1.50	
3 to 4 ft., B. & B.	2.25	
4 to 5 ft., B. & B.	3.50	

MULBERRY**TEA'S WEEPING MULBERRY** (*Morus alba pendula*)

The most graceful hardy weeping tree in existence. Forms a perfect shaped head, with long, slender, willowy branches, drooping to the ground.

Grafted on stems 4 to 5 ft. high.

	Each	Per 10
Light heads.....	\$1.00	
Medium heads.....	1.25	
Large heads.....	2.25	

CATALPA**UMBRELLA CATALPA** (*Catalpa Bungei*)

Useful in formal planting.

Light Heads 5 to 6 ft.....	\$.75	\$ 6.00
Medium Heads 5 to 6 ft.....	1.25	15.00
Large Heads 5 to 6 ft.....	2.25	20.00

WESTERN CATALPA (*Catalpa Speciosa*)

6 to 8 ft.....	\$.60	\$5.00
8 to 10 ft.....	.75	6.00

FLOWERING CRABS

The Flowering Crab Apples, with their fragrant flowers in a great array of colors, followed by attractively colored fruits, are coming more and more into general favor for ornamental planting.

SARGENT CRAB (*Malus sargentii*)

A dwarf spreading Japanese type with pure white flowers and small showy scarlet fruits which hang till Spring, unless eaten by the birds.

	Each
3 to 4 ft.....	\$1.00
4 to 5 ft.....	1.75

CARMINE CRAB (*Malus atrosanguinea*)

Very showy; rich rose-red blossoms.

4 to 5 ft.....	\$1.25
5 to 6 ft.....	1.75

PURPLE CRAB (*Malus purpurea*)

Reddish-purple foliage; carmine flowers in profusion.

4 to 5 ft.....	\$1.25
5 to 6 ft.....	1.75

BECHTELS CRAB (*Malus ioensis plena*)

Large, double, fragrant flowers, delicate shell-pink, resembling small roses.

3 to 4 ft.....	\$.75
4 to 5 ft.....	1.00
5 to 6 ft.....	1.50

New Oxford, Pa.

The trees received here and are very much pleased with them. All are very fine looking stock.

C. E. EICHOLTZ

Shepherdstown, W. Va.

Trees were received in good condition on Nov. 30th. Very well pleased with stock. Well rooted and showed special care in the digging.

A. S. LUCAS

**We invite you to come to the nursery
and select your stock before it is dug.**

JAPANESE FLOWERING CHERRY

The Japanese Cherry trees vary greatly in form. Their beauty and charm is indeed individual. The varieties we offer are the best obtainable.

BENI-HIGAN CHERRY

Great clouds of pale pink single flowers begin to expand in March and gradually envelop the tree.

4 to 5 ft., B. & B..... Each
\$2.00

AMANOGAWA CHERRY

A distinct form with a Lombardy Poplar style of growth. Semi-double pink flowers, gracefully hang in dense clusters.

4 to 5 ft., B. & B..... \$2.25

KOFUGEN (James H. Veitch)

One of the latest to bloom; the large double pink flowers expand with the coppery young foliage; a nice contrast. This is the most popular and reliable variety.

3 to 4 ft., B. & B..... \$1.50
4 to 5 ft., B. & B..... 1.75
5 to 6 ft., B. & B..... 2.50

MT. FUJI CHERRY

Undoubtedly the finest double white. Large and pure in color, the flowers blanket the well formed tree as would snow.

4 to 5 ft., B. & B..... \$2.25

KWANZAN CHERRY

Large double pink flowers, almost red in bud. Well formed tree, vigorous grower.

4 to 5 ft., B. & B..... \$2.00
5 to 6 ft., B. & B..... 2.75

SIEBOLD CHERRY (Naden)

Small tree, very showy, pale pink semi-double blossoms.

4 to 5 ft., B. & B..... \$1.75

WEeping JAPANESE CHERRY

A most beautiful and graceful tree, covered with single pink blossoms in early Spring.

2 yr. head, B. & B..... \$3.00

DOUBLE FLOWERING WEeping JAP. CHERRY

Imagine, if you can, a glorified weeping cherry with the same graceful fountain-like sweep of branches, each thickly studded with double pink flowers; it is truly magnificent.

2 yr. head, B. & B..... \$2.25
3 yr. head, B. & B..... 3.50

FLOWERING PEACH AND PLUM

DOUBLE RED FLOWERING PEACH

Habit of growth similar to that of a peach tree. The double red flowers are very attractive in the early Spring.

3 to 4 ft..... \$.75
4 to 5 ft..... 1.00
5 to 6 ft..... 1.50

DOUBLE FLOWERING PLUM (Prunus triloba)

Upright in growth; slender branches completely covered with double pink flowers before leaves appear.

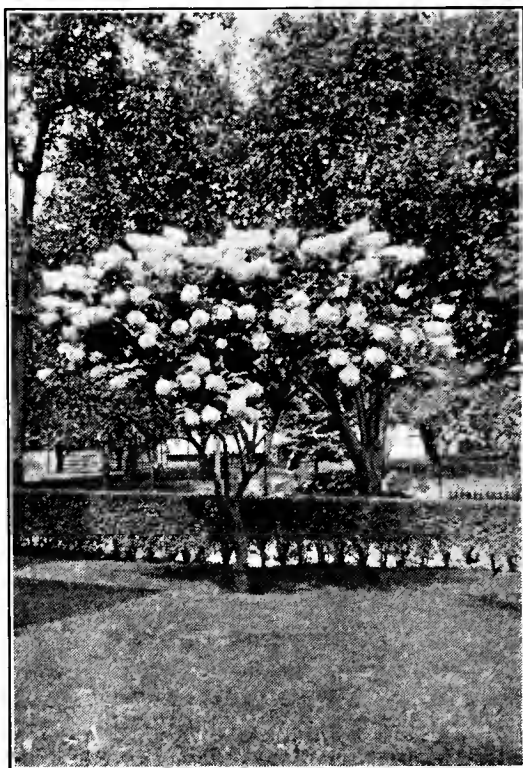
2 to 3 ft..... \$.60
3 to 4 ft..... .75

PURPLELEAF PLUM (Prunus pissardi)

Valued chiefly for its purplish foliage; should be pruned every year for best color effect.

3 to 4 ft..... \$.50
4 to 5 ft..... .75
5 to 6 ft..... 1.25

ORNAMENTAL SHRUBS



Tree Hydrangea and California Privet Hedge

HYDRANGEAS

Among the best and most popular shrubs, valuable for their wealth of late summer blooms.

PEEGEE HYDRANGEA (Paniculata Grandiflora)

Large flowers, first snowy white, then pink, then reddish bronze and green. Blooms from middle summer until fall. Best selling variety of Hydrangeas grown.

	Each
18 to 24 in.....	\$.25
2 to 3 ft.....	.30
3 to 4 ft.....	.40
4 to 5 ft.....	.60

TREE HYDRANGEA (Paniculata grandiflora standard)

Flowers similar to bush form.

2 to 3 ft.....	\$.50
3 to 4 ft.....	.75

HILLS OF SNOW HYDRANGEA

(Arborescens grandiflora)

Conspicuous white flowers in great clusters during mid-summer. Suitable for shady places.

18 to 24 in.....	\$.25
2 to 3 ft.....	.30
3 to 4 ft.....	.45

ALTHEA—ROSE OF SHARON

ALTHEA (Hibiscus syriacus)

A large shrub, sometimes trimmed into tree form, that blooms freely in August or September, when almost every tree is out of bloom. Vigorous grower and succeeds everywhere. Also called Rose of Sharon. We can furnish double varieties in these colors: Purple, Red, Pink and White.

18 to 24 in.....	\$.25
2 to 3 ft.....	.35
3 to 4 ft.....	.50

SPIREAS

VAN HOUTTE SPIREA (*Spirea vanhouttei*)
Grandest of all Spireas; very desirable shrub. Abundance of pure white blooms, graceful habit.

	Each
18 to 24 in.....	\$.15
2 to 3 ft.....	.25
3 to 4 ft.....	.35
4 to 5 ft.....	.50

BILLARDI SPIREA (*Spirea billardi*)
Bright pink fluffy flower spikes, July-October. Valuable for dry places.

2 to 3 ft.....	\$.25
3 to 4 ft.....	.35
4 to 5 ft.....	.50

ANTHONY WATERER SPIREA

Deep rose pink; very free flowering all summer.

12 to 15 in.....	\$.20
15 to 18 in.....	.25
18 to 24 in.....	.35
2 to 3 ft.....	.50

BLUE SPIREA (*Caryopteris incana*)

Lavender-blue flowers, Sept.-Oct. Splendid for massing. Requires protection.

15 to 18 in.....	\$.30
18 to 24 in.....	.40

THUNBERG'S SPIREA (*Spirea thunbergi*)

White flowers with feathery, yellowish green foliage.

2 to 3 ft.....	\$.30
3 to 4 ft.....	.40

DEUTZIAS

SLENDER DEUTZIA (*Deutzia gracilis*)

White, bell-shaped flowers. Dwarf grower, fine for edging other shrubbery.

15 to 18 in.....	\$.25
18 to 24 in.....	.35
2 to 3 ft.....	.50

SLENDER PINK DEUTZIA (*Deutzia gracilis rosea*)

Closely resembles Slender Deutzia. Light rose colored flowers. A pleasing variety.

15 to 18 in.....	\$.40
18 to 24 in.....	.50

SNOWFLAKE DEUTZIA (*Deutzia candidissima*)

Vigorous, graceful grower; double white flowers. One of the best.

2 to 3 ft.....	\$.25
3 to 4 ft.....	.30
4 to 5 ft.....	.40
5 to 6 ft.....	.50

DEUTZIA PRIDE OF ROCHESTER

(*Deutzia scabra*)

Vigorous, large flower tinged pink, June.

3 to 4 ft.....	\$.35
4 to 5 ft.....	.45

DOUBLE PINK DEUTZIA (*Deutzia crenata*)

Pink, slightly fragrant, June.

2 to 3 ft.....	\$.30
3 to 4 ft.....	.40

Most Flowering Shrubs can be moved when in bloom, if they are B. & B.

FORSYTHIA—(GOLDEN BELL)

FORTUNE FORSYTHIA (*Forsythia suspensa fortunei*)
 Good habit, arching branches, vigorous grower.

	Each
2 to 3 ft.....	\$.25
3 to 4 ft.....	.35
4 to 5 ft.....	.40

SHOWY BORDER FORSYTHIA

(*Forsythia intermedia spectabilis*)

Most profuse of all, with rich golden yellow flowers.

2 to 3 ft.....	\$.30
3 to 4 ft.....	.40
4 to 5 ft.....	.50



Virginal Mock-Orange

MOCK-ORANGES

SWEET MOCK-ORANGE (*Philadelphus coronarius*)
 White fragrant flowers profusely borne in May-June.

2 to 3 ft.....	\$.25
3 to 4 ft.....	.35
4 to 5 ft.....	.50

GOLDEN LEAF MOCK-ORANGE (*P. coronarius aureus*)
 Brilliant yellow foliage in spring, holding color fairly well throughout the summer. White flowers, May and June.

15 to 18 in.....	\$.30
18 to 24 in.....	.40

VIRGINAL MOCK-ORANGE (*P. virginalis*)

Here is the most beautiful variety of its class. It produces large double-crested flowers of pure white, deliciously fragrant. Blooms two and one-half inches across and in May and early June completely cover the branches. Bloom all summer.

18 to 24 in.....	\$.25
2 to 3 ft.....	.30
3 to 4 ft.....	.40
4 to 5 ft.....	.60

BUSH HONEYSUCKLE**MORROW HONEYSUCKLE** (*Lonicera morrowii*)

White flowers in May and June, followed in July and August with bright red fruit.

Each	
2 to 3 ft.....	\$.30
3 to 4 ft.....	.40

TATARIAN HONEYSUCKLE (*L. tatarica*)

Pink, red and white flowers and fruit freely produced. A most adaptable shrub. Please state color wanted.

2 to 3 ft.....	\$.35
3 to 4 ft.....	.50

WINTER HONEYSUCKLE (*Lonicera fragrantissima*)

Half Evergreen. So called because of persistent foliage and the early appearance of the fragrant flowers in March. Red berries in summer.

18 to 24 in.....	\$.25
2 to 3 ft.....	.35

PINK HONEYSUCKLE

The slender spreading branches are covered with small pink flowers in Spring and followed with bright red berries in the summer, which make this shrub very attractive.

18 to 24 in.....	\$.25
2 to 3 ft.....	.35

SNOWBERRY

Valued for planting in partially-shaded places and for the showy, attractive berries of autumn. Small, pink flowers in clusters all summer.

SNOWBERRY (*Symphoricarpos racemosus*)

Waxy, showy snow-white berries in autumn, as large as cranberries. Effective in masses.

18 to 24 in.....	\$.20
2 to 3 ft.....	.30
3 to 4 ft.....	.40
4 to 5 ft.....	.50

CORALBERRY (*S. vulgaris*)

In autumn and winter its long, slender branches, covered with racemes of coral-red berries, bend gracefully to the ground. Very attractive.

18 to 24 in.....	\$.25
2 to 3 ft.....	.35
3 to 4 ft.....	.45

SNOWBALL—VIBURNUM**JAPANESE SNOWBALL** (*Viburnum plicatum*)

Upright, somewhat spreading habit; covered in June with dense heads of snowy-white flower-clusters, which have a beautiful setting in the deep green foliage.

18 to 24 in.....	\$.35
2 to 3 ft.....	.50
3 to 4 ft.....	.60
4 to 5 ft.....	.75

EUROPEAN CRANBERRY-BUSH (*V. opulus*)

Flat heads of showy, white flowers, three to four inches across, May and June, followed by clusters of bright scarlet fruit, remaining over winter.

18 to 24 in.....	\$.30
2 to 3 ft.....	.40

WEIGELA

Popular and showy shrubs whose branches bend beneath the weight of their abundance of pretty flowers, resembling in form the honeysuckle. Needed in all shrub borders, large or small.

RED-FLOWERED WEIGELA (Weigela Eva Rathke)

The Everblooming Weigela. Dark red flowers, marked white, and splendid foliage produce an effect not to be had in any other shrub; flowers continuously.

	Each
2 to 3 ft.	\$.40
3 to 4 ft.50

PINK WEIGELA (Weigela rosea)

Showy, pink flowers freely produced. June. Vigorous grower.

2 to 3 ft.	\$.30
3 to 4 ft.40

VARIEGATED-LEAVED WEIGELA

(Weigela nana variegata)

Very pretty, dense shrub; leaves variegated with white and yellow. Flowers clear rose in June.

2 to 3 ft.	\$.35
3 to 4 ft.50

LILACS

COMMON LILAC (Syringa vulgaris)

Will never lose its popularity. Purple flowers in May.

2 to 3 ft.	\$.30
3 to 4 ft.40

WHITE LILAC (S. vulgaris alba)

The familiar white flowering variety blooming in May.

18 to 24 in. \$.40

PERSIAN LILAC (S. persica)

Attractive, small-leaved variety with rather small, loose panicles of pale-lilac flowers, in May and June.

2 to 3 ft.	\$.60
-----------------	--------

FRENCH LILACS—NAMED VARIETIES

Improved form of Lilac with larger, more fragrant and earlier clusters of flowers.

Charles the Tenth, reddish purple, single

Marie LeGraye, single white

Michel Buchner, double lilac

Mme. Lemoine, double white

President Grevy, double blue

2 to 3 ft.	\$.75
3 to 4 ft.	1.00

ILEX—HOLLY

FINE-TOOTH HOLLY (Ilex sieboldi)

Medium height shrub, twigs densely covered with holly-like berries, very suitable to use with broadleaf evergreens.

2 to 3 ft.	\$.85
3 to 4 ft.	1.10

WINTERBERRY (Ilex verticillata)

Bright red berries persisting to mid-winter; very attractive.

2 to 3 ft.	\$.60
3 to 4 ft.75

AMERICAN HOLLY refer to page 31.

OTHER POPULAR SHRUBS

BUTTERFLY BUSH (Buddleia farqhari)

So named because blooms attract large numbers of butterflies. This fact makes the plant very interesting, especially to children. Matures first year. Blooms profusely, lilac colored tapering panicles, 6 to 10 inches long.

2 to 3 ft.....	Each
3 to 4 ft.....	
	\$.30
	.40

CHINESE BEAUTYBERRY (Callicarpa purpurea)

Graceful branches, pink flowers in summer—violet red berries in fall.

18 to 24 in.....	\$.25
2 to 3 ft.....	.35
3 to 4 ft.....	.50

BEAUTY BUSH (Kolkwitzia amabilis)

A beautiful shrub similar to the Weigela. Mass of pink flowers, early May.

2 to 3 ft.....	\$.50
3 to 4 ft.....	.60

DOUBLE KERRIA (Kerria japonica fl. pl.)

Desirable, strong grower bearing golden yellow, double flowers.

2 to 3 ft.....	\$.40
3 to 4 ft.....	.50

FLOWERING QUINCE (Cydonia Japonica)

Large, scarlet flowers in masses in May, make this one of the most attractive of the spring-flowering shrubs. Foliage, dark glossy green.

18 to 24 in.....	\$.40
2 to 3 ft.....	.50

FLOWERING ALMOND (Amygdalus nana)

Flowers double, May; very showy; there are Pink and White varieties.

18 to 24 in.....	\$.50
2 to 3 ft.....	.75

SWEETSHRUB (Calycanthus floridus)

Much planted for its fragrant, strawberry-scented, chocolate-colored blossoms, spring and summer.

18 to 24 in.....	\$.35
2 to 3 ft.....	.50



Partial view of planting at the home of Mr. J. Frank Thompson, York, Pa.

THE POPULAR HEDGE PLANTS

BARBERRY AND PRIVET

JAPANESE BARBERRY (Berberis thunbergi)

The best low, dense, hedge plant grown. Leaves very green and attractive during summer months, turning a rich crimson in autumn, branches drooping with loads of bright red berries which hang on until late winter.

	Each	Per 10	Per 100
9 to 12 in.....	\$0.12	\$1.00	\$ 8.00
12 to 15 in.....	.15	1.25	10.00
15 to 18 in.....	.20	1.50	12.50
18 to 24 in.....	.25	2.00	15.00
2 to 2½ ft.....	.30	2.50	20.00

NEW RED-LEAVED JAPANESE BARBERRY

(Berberis thunbergi atropurpurea)

A brilliant red-leaved Japanese barberry for mixing in the shrubbery border, as single specimens, or clumps on the lawn, foundation plantings and for hedges. The foliage is a rich, lustrous, bronzy red, similar to the richest red-leaved Japanese maples. To develop its brilliant coloring at all seasons it must be planted in full sunlight.

	Each	Per 10
12 to 15 in.....	\$.25	\$2.00
15 to 18 in.....	.30	2.50
18 to 24 in.....	.40	3.50
2 to 3 ft.....	.60	5.00

CALIFORNIA PRIVET. The most popular hedge plant on account of its beauty, adaptability, and low cost. Did you ever realize what an admirable and luxuriant privet hedge you could secure at a very small cost, and how much it would add to the value of your property? To find the exact number wanted, measure the space where it is to be planted and multiply the number of feet by two.

They should be planted 3 inches deeper than they stood in the nursery row. Set the plants 6 inches apart in the row. Dip the roots in water before planting. After plants are set, cut them down to 4 inches from the surface of the ground. This will cause a thick new growth to start and is very essential for a beautiful hedge.

	Per 100	Per 1000
6 to 12 in., 1 year.....	\$2.00	\$15.00
12 to 18 in., 1 year.....	3.00	25.00
18 to 24 in., 1 year.....	3.50	30.00
Two-year cut back last spring, this has made a bushy, well branched plant, the one to use for immediate effect.		
18 to 24 in., 2 year.....	\$3.50	\$30.00
2 to 3 ft., 2 year.....	4.00	35.00
3 to 4 ft., 2 year.....	5.00	45.00

GOLDEN VARIEGATED PRIVET

Brilliant yellow foliage; dwarf, good in clumps among, or in front of, low evergreens or shrubs.

	Each
12 to 15 in.....	\$.25
15 to 18 in.....	.35
18 to 24 in.....	.50
2 to 3 ft.....	.75

Many of our Ornamental Shrubs and Evergreens make splendid Hedges, Screens and Windbreaks. Ask for our special prices.

EVERGREENS

Our Evergreens are compact, nicely shaped specimen plants. They will be balled and burlapped, that is, carefully dug with the proper amount of soil about the roots and wrapped in burlap.

All prices on Evergreens include B. & B.



One of Our Evergreen Blocks

ARBORVITAE

AMERICAN ARBORVITAE (Thuja occidentalis)

Slender pyramid with broad base. Bronzy winter coloring. Good accent plant or for a hedge.

	Each
18 to 24 in.....	\$.60
2 to 3 ft.....	.90
3 to 4 ft.....	1.50
4 to 5 ft.....	2.25
5 to 6 ft.....	3.75
6 to 7 ft.....	5.00

PYRAMIDAL ARBORVITAE

(Thuja occidentalis pyramidalis)

Retains bright green coloring throughout winter. Narrow columnar shape; splendid for accents or formal planting.

18 to 24 in.....	\$.65
2 to 2½ ft.....	1.10
2½ to 3 ft.....	1.50
3 to 4 ft.....	2.00
4 to 5 ft.....	3.00
5 to 6 ft.....	4.00
6 to 7 ft.....	5.25

MOSS ARBORVITAE (Thuja occidentalis plicata)

Rich, deep blue-green foliage. Short, stiff branchlets give pleasing effect in light and shade. Formal pyramid.

3 to 4 ft.....	\$2.00
4 to 5 ft.....	3.00
5 to 6 ft.....	4.00

ROSENTHAL'S ARBORVITAE

(Thuja occidentalis rosenthalii)

Dense, rugged, columnar form. Slow grower.

18 to 24 in.....	\$1.10
2 to 2½ ft.....	1.50
2½ to 3 ft.....	2.00
3 to 4 ft.....	3.00

SIBERIAN ARBORVITAE

(Thuja occidentalis sibirica)

Light green, fleshy foliage. Broadly pyramidal, rugged in appearance.

	Each
18 to 24 in.....	\$.80
2 to 2½ ft.....	1.10
2½ to 3 ft.....	1.65
3 to 4 ft.....	2.25
4 to 5 ft.....	3.50

GOLDEN-TIPPED ARBORVITAE

(Thuja occidentalis elegantissima)

Rich, lustrous green foliage; branches tipped with yellow.

3 to 4 ft.....	\$2.50
4 to 5 ft.....	3.50

GEORGE PEABODY ARBORVITAE

(Thuja occidentalis lutea)

Conspicuous golden yellow form. Columnar outline.

3 to 4 ft.....	\$3.00
4 to 5 ft.....	3.50
5 to 6 ft.....	4.50

COMPACT ARBORVITAE

(Thuja occidentalis compacta)

Almost globe-shaped. Bright green. Useful in formal or foundation planting.

2 to 2½ ft.....	\$1.65
2½ to 3 ft.....	2.25

GLOBE ARBORVITAE

(Thuja occidentalis globosa)

Useful in formal work. Naturally globe-shaped.

12 to 15 in.....	\$.65
15 to 18 in.....	1.00
18 to 24 in.....	1.35
2 to 2½ ft.....	1.65
2½ to 3 ft.....	2.00

BERKMAN'S GOLDEN ARBORVITAE

(Thuja orientalis aurea nana)

A gem for dwarf planting; compact, roundish shape; warm golden yellow foliage. Especially good for formal work and edging.

9 to 12 in.....	\$.75
12 to 15 in.....	1.10
15 to 18 in.....	1.50
18 to 24 in.....	2.00
2 to 2½ ft.....	3.00
2½ to 3 ft.....	3.50

GOLDSPIRE ARBORVITAE

(Thuja orientalis aurea conspicua)

Golden yellow in Spring, bronze-yellow in winter. Distinctive.

3 to 4 ft.....	\$2.50
4 to 5 ft.....	3.75

CRYPTOMERIA**LOBBI CRYPTOMERIA**

(Cryptomeria Japonica Lobbi)

Forms narrow, irregular column, compact and picturesque, rich bronze winter color. Prefers moist but well drained location.

3 to 4 ft.....	\$3.50
4 to 5 ft.....	4.50
5 to 6 ft.....	6.00

CYPRESS

LAWSON'S CYPRESS

(*Chamaecyparis lawsoniana alumi*)

A tall pyramidal, extremely formal type, having very distinctive silvery blue foliage, giving a useful color variation to a group planting.

	Each
18 to 24 in.....	\$1.25
2 to 2½ ft.....	2.00
2½ to 3 ft.....	2.50
3 to 4 ft.....	3.00
4 to 5 ft.....	4.25

TRIOMPHE DE BOSKOOP

Handsome evergreen, narrow pyramidal, steel-blue leaves. Bark reddish brown.

2 to 2½ ft.....	\$1.25
2½ to 3 ft.....	1.75
3 to 4 ft.....	2.50

SLENDER HINOKI CYPRESS

(*Chamaecyparis gracilis*)

Narrow, irregular pyramid, rich dark green foliage. Slow grower, picturesque.

15 to 18 in.....	\$1.75
18 to 24 in.....	2.50

FIR

WHITE FIR

(*Abies concolor*)

Grows quickly and forms symmetrical, beautiful specimen. Large, gray-green needles.

18 to 24 in.....	\$1.50
2 to 3 ft.....	2.50
3 to 4 ft.....	3.50
4 to 5 ft.....	5.00

FRASER FIR

(*Abies fraseri*)

A compact pyramidal tree from the North Carolina mountains. Foliage, dark green on the surface and blue underneath. Essentially a specimen tree.

18 to 24 in.....	\$1.00
2 to 3 ft.....	2.00
3 to 4 ft.....	3.50

DOUGLAS FIR

(*Pseudotsuga douglassi*)

Very hardy; dark bluish-green coloring. Prefers well-drained situation.

18 to 24 in.....	\$1.10
2 to 3 ft.....	1.75
3 to 4 ft.....	2.75
4 to 5 ft.....	3.75
5 to 6 ft.....	4.50
6 to 7 ft.....	6.00

HEMLOCK

CANADIAN HEMLOCK

(*Tsuga canadensis*)

An elegant pyramidal tree with drooping branches and delicate dark green foliage. Excellent for lawn purposes, also suited for hedges. Does well in shady or sunny locations.

18 to 24 in.....	\$1.10
2 to 2½ ft.....	1.50
2½ to 3 ft.....	2.25
3 to 4 ft.....	3.50
4 to 5 ft.....	4.00
5 to 6 ft.....	5.00
6 to 7 ft.....	6.50

In some varieties we can supply larger specimens than listed. Prices on application.



Pfitzer's Juniper

JUNIPERS

PFITZER'S JUNIPER (*Juniperus chinensis pfitzeriana*)
Broad, bushy habit. Gray-green foliage, giving feathery appearance. A most adaptable hardy evergreen; highly recommended.

	Each
15 to 18 in.....	\$1.00
18 to 24 in.....	1.50
2 to 3 ft.....	2.25
3 to 4 ft.....	3.00
4 to 5 ft.....	4.00
5 to 6 ft.....	5.00

CHINESE JUNIPER (*Juniperus chinensis*)

Formal columnar outline, gray green foliage. A splendid hardy evergreen.

2½ to 3 ft.....	\$2.50
3 to 4 ft.....	3.25
4 to 5 ft.....	4.50

COLUMN CHINESE JUNIPER

(*Juniperus chinensis pyramidalis*)

Grows rapidly, forming tall narrow column of gray-green foliage. Spire-like effect. Very useful in evergreen planting.

3 to 4 ft.....	\$3.25
4 to 5 ft.....	4.00

WHITELEAF CHINESE JUNIPER

(*Juniperus chinensis albo variegata*)

Light bluish foliage intermingled with cream colored branches making a very distinctive plant of formal pyramidal shape.

2½ to 3 ft.....	\$2.50
-----------------	--------

GOLDEN JUNIPER (*Juniperus communis aurea*)

Low spreading habit. Golden foliage, particularly bright in spring.

18 to 24 in.....	\$1.50
2 to 3 ft.....	2.25
3 to 4 ft.....	3.25

IRISH JUNIPER (*Juniperus communis hibernica*)

Slender, columnar form, compact bluish-green foliage. Formal type.

18 to 24 in.....	\$.80
2 to 2½ ft.....	1.10
2½ to 3 ft.....	1.65
3 to 4 ft.....	3.00
4 to 5 ft.....	4.00

ANDORRA SPREADING JUNIPER

(Juniperus depressa plumosa)

New, exceedingly hardy, assumes a very attractive purple color in winter. Transplants readily.

Each	
15 to 18 in.....	\$1.00
18 to 24 in.....	1.50
2 to 3 ft.....	2.25

WAUKEGAN JUNIPER

(Juniperus horizontalis douglasi)

Long branches trailing along ground. Steely-blue foliage. A splendid ground cover; also effective among rock. Distinct purple hue in winter.

15 to 18 in.....	\$1.00
18 to 24 in.....	1.75
2 to 3 ft.....	2.50

SPINY GREEK JUNIPER (Juniperus excelsa stricta)

Compact, well-shaped pyramid. Foliage gray-green. Most useful for formal effects.

10 to 12 in.....	\$.75
12 to 15 in.....	1.00
15 to 18 in.....	1.35
18 to 24 in.....	1.65
2 to 2½ ft.....	2.25
2½ to 3 ft.....	3.25
3 to 3½ ft.....	4.00

SAVIN JUNIPER (Juniperus sabina)

Dense, dark green foliage. Spreading branches, forming irregular vase-shaped bush.

15 to 18 in.....	\$1.00
18 to 24 in.....	1.65
2 to 2½ ft.....	2.00
2½ to 3 ft.....	3.00

MEYER JUNIPER (Juniperus squamata meyeri)

Upright, close, irregular grower, with a beautiful bluish foliage; well branched and wide at the bottom.

15 to 18 in.....	\$1.50
18 to 24 in.....	2.50

COLORADO JUNIPER (Juniperus scopulorum)

Narrow, compact and very symmetrical. Color ranges from green to light blue.

4 to 5 ft.....	\$3.00
5 to 6 ft.....	4.00

GOLDTIP REDCEDAR

(Juniperus virginiana elegantissima)

This tree will give variation to the green and blue colors of other evergreens. Broad and bushy with slightly drooping foliage.

3 to 4 ft.....	\$3.75
4 to 5 ft.....	4.50

SILVER REDCEDAR (Juniperus virginiana glauca)

Broadly conical form and beautiful glaucous blue foliage makes it one of the choicest Junipers.

2½ to 3 ft.....	\$2.50
3 to 4 ft.....	3.25
4 to 5 ft.....	4.00
5 to 6 ft.....	5.00

SCHOTT REDCEDAR (Juniperus virginiana schottii)

Has fresh green foliage. Compact formal columnar habit. Good winter color, quite hardy. Quite amenable to trimming.

2½ to 3 ft.....	\$3.25
3 to 4 ft.....	4.50

PINES

AUSTRIAN PINE		(Pinus nigra)
Rich, dark green. Vigorous, dense grower. Good for background.		
	Each	
2 to 3 ft.	\$1.50
3 to 4 ft.	2.50
4 to 5 ft.	4.00
5 to 6 ft.	5.00
SCOTCH PINE		(Pinus sylvestris)
A rapid-growing, handsome tree, especially when young. Good for windbreaks.		
2 to 3 ft.	\$1.00
3 to 4 ft.	1.75
4 to 5 ft.	2.75
5 to 6 ft.	4.50
6 to 8 ft.	6.00
WHITE PINE		(Pinus Strobus)
Probably our most adaptable and useful pine. Very picturesque when old.		
2 to 3 ft.	\$1.25
3 to 4 ft.	2.25
4 to 5 ft.	3.75
5 to 6 ft.	5.00
MUGHO DWARF PINE		(Pinus montana mughus)
Forms a round-topped clump. Useful for rock planting and foundation work.		
10 to 12 in.	\$.75
12 to 15 in.	1.00
15 to 18 in.	1.50
18 to 24 in.	2.25
2 to 2½ ft.	3.00
2½ to 3 ft.	4.50

RETINOSPORA

GOLDEN SAWARA RETINOSPORA		(Retinospora pisifera aurea)
Bright golden form, holding its color.		
3 to 4 ft.	\$2.50
4 to 5 ft.	3.50
THREAD RETINOSPORA		(Retinospora filifera)
Has long, stringy, drooping branches and bright green foliage. Graceful and decorative.		
18 to 24 in.	\$1.25
2 to 2½ ft.	1.50
2½ to 3 ft.	2.25
GOLDEN THREAD RETINOSPORA		(Retinospora filifera aurea)
Very bright, conspicuous, golden yellow. Grows more slowly than preceding.		
15 to 18 in.	\$1.50
18 to 24 in.	2.50
PLUME RETINOSPORA		(Retinospora plumosa)
Forms a dense cone of fine texture. Useful for shearing into formal shapes.		
15 to 18 in.	\$.60
18 to 24 in.	1.00
2 to 2½ ft.	1.25
2½ to 3 ft.	1.75
3 to 4 ft.	2.50
4 to 5 ft.	3.00
5 to 6 ft.	4.50

GOLDEN PLUME RETINOSPORA

(Retinospora plumosa aurea)

Golden form of preceding, and grows more slowly.

	Each
15 to 18 in.....	\$.75
18 to 24 in.....	1.10
2 to 2½ ft.....	1.50
2½ to 3 ft.....	2.25
3 to 4 ft.....	2.75
4 to 5 ft.....	4.00

VEITCH'S RETINOSPORA

(Retinospora squarrosa veitchi)

Foliage blue-gray, feathery and dense, giving soft woolly appearance. Broad pyramidal outline when young.

15 to 18 in.....	\$1.00
18 to 24 in.....	1.50
2 to 2½ ft.....	2.25
2½ to 3 ft.....	2.75
3 to 4 ft.....	4.00

SPRUCE**NORWAY SPRUCE**

(Picea excelsa)

A lofty noble tree of pyramidal habit. Very popular and effective in evergreen groups. Useful as a Christmas Tree or tub Specimen.

12 to 18 in.....	\$.75
18 to 24 in.....	1.00
2 to 3 ft.....	1.25
3 to 4 ft.....	1.75
4 to 5 ft.....	2.50
5 to 6 ft.....	3.50

BLACK HILLS SPRUCE (Picea canadensis albertiana)

Hardy, compact and bushy growth. Foliage green to bluish tint, bright color.

12 to 18 in.....	\$1.00
18 to 24 in.....	1.25
2 to 2½ ft.....	1.75

COLORADO SPRUCE

(Picea pungens)

A noble tree from the Rocky Mountains, hardy in any exposure; a good grower; branches stiff and close; foliage dark green.

18 to 24 in.....	\$1.25
2 to 2½ ft.....	2.00
2½ to 3 ft.....	2.75

BLUE COLORADO SPRUCE (Picea pungens glauca)

Selected blue shade from foregoing. This is one of the showiest and most impressive evergreens, surpassed only by the grafted Koster's Blue Spruce.

18 to 24 in.....	\$2.25
2 to 2½ ft.....	3.50
2½ to 3 ft.....	4.50

KOSTER'S BLUE SPRUCE (Picea pungens kosteri)

The aristocrat of the evergreen family. It is the most persistent blue in color of any known tree.

12 to 15 in.....	\$2.50
15 to 18 in.....	3.50
18 to 24 in.....	5.00
2 to 2½ ft.....	7.50

Large specimens, price on application.

YEWS

SPREADING ENGLISH YEW

(*Taxus baccata repandens*)

Spreading, horizontal branches, dark blue-green leaves. Valuable for low planting.

	Each
15 to 18 in.....	\$1.50
18 to 24 in.....	2.25

SPREADING JAPANESE YEW

(*Taxus cuspidata*)

Rich, deep green leaves. Spreading, bushy habit. Valuable in foundation plantings. Exceptionally hardy.

12 to 15 in.....	\$1.00
15 to 18 in.....	1.25
18 to 24 in.....	1.75
2 to 2½ ft.....	2.50

UPRIGHT JAPANESE YEW

(*Taxus cuspidata capitata*)

The upright type of Japanese Yew.

15 to 18 in.....	\$1.50
18 to 24 in.....	2.00
2 to 2½ ft.....	3.00
2½ to 3 ft.....	4.00

DWARF JAPANESE YEW

(*Taxus brevifolia*)

Broad, thick leaves, blackish green. Slow growing and irregular, spreading habit. Exceptionally hardy.

15 to 18 in.....	\$2.25
18 to 24 in.....	3.00

HICKS YEW

(*Taxus media hicksi*)

A beautiful columnar form. Dark green foliage.

15 to 18 in.....	\$1.50
18 to 24 in.....	2.00

BROAD-LEAVED EVERGREENS

Because they hold their rich green foliage all the year round and in many varieties make a magnificent showing of bloom, the Broad-Leaved Evergreens will always be popular. Some of the most gorgeous flowering plants are to be found in this class. Shaded situations are preferred by most of the varieties.

All Prices on Broadleaf Evergreens include B. & B.

ABELIA

BUSH ARBUTUS

(*Abelia grandiflora*)

Choice small shrub, with white tinted lilac flowers, produced throughout the entire summer months.

15 to 18 in.....	\$.50
18 to 24 in.....	.75

AZALEAS

AZALEA AMOENA

Conspicuous rosy-purple flowers, April-May. Leaves turn a rich, bronze-green in winter.

10 to 12 in.....	\$1.00
12 to 15 in.....	1.50
15 to 18 in.....	2.25

AZALEA HINODEGIRI

This is undoubtedly the most popular of the evergreen Azaleas. The carmine-pink blossoms are produced in such profusion in the early spring that they nearly hide the foliage.

8 to 10 in.....	\$1.00
10 to 12 in.....	1.50
12 to 15 in.....	2.00

BOXWOODS

BOXWOOD (*Buxus sempervirens*)
Useful for formal hedges. Specially desired for planting as individual specimens on lawns or in tubs.

	Each
10 to 12 in.....	\$.50
12 to 15 in.....	.75
15 to 18 in.....	1.25
18 to 24 in.....	1.75
2 to 2½ ft.....	2.50

DWARF ENGLISH BOXWOOD (*Buxus suffruticosa*)
A very low growing variety, used for window boxes and edgings around beds of shrubbery or along walks, etc.

	Each	Per 10
3 to 4 in.....	\$.20	\$1.50
4 to 6 in.....	.25	2.00
6 to 8 in.....	.50	4.00
8 to 10 in.....	.75	6.00

COTONEASTER

ROCK COTONEASTER (*Cotoneaster horizontalis*)
Small box-like leaves; bright red berries, effective among rocks.

	Each
6 to 9 in.....	\$.75
9 to 12 in.....	1.25

DAPHNE

ROSE DAPHNE (*Daphne cneorum*)
Gray-green foliage, low spreading. Pretty pink flowers in April-May. Delightful fragrance.

6 to 9 in.....	\$.75
----------------	--------

PYRACANTHA

LALAND FIRETHORN (*Pyracantha coccinea lalandi*)
Rich, glossy foliage. White flowers in large clusters, followed by orange to scarlet berries.

18 to 24 in.....	\$1.50
2 to 3 ft.....	2.50

HOLLY

The transplanting of Hollies is not difficult if handled properly. Our Hollies are several times transplanted and can be dug with a good ball of earth, and are almost sure to grow.

AMERICAN HOLLY (*Ilex opaca*)

The bright, red berries of our own American Holly lend a cheerful note to the landscape during the winter months. It may be used in the border planting or as a specimen, and succeeds in any loamy, well-drained soil.

15 to 18 in.....	\$1.50
18 to 24 in.....	2.25
2 to 2½ ft.....	3.00
2½ to 3 ft.....	3.75
3 to 3½ ft.....	4.50
3½ to 4 ft.....	5.25
4 to 5 ft.....	6.00

JAPANESE HOLLY (*Ilex crenata*)

Shrub with glossy, dark green leaves and black berries.

12 to 15 in.....	\$1.75
------------------	--------

Delta, Penna.

The shrubbery was very nice.

W. M. CARICO

LAUREL**MOUNTAIN-LAUREL** (Kalmia latifolia)

Most effective in June when the clusters of pink flowers open. This stock is nursery grown. Good foliage; likes shade.

	Each
15 to 18 in.....	\$1.50
18 to 24 in.....	2.00

MAHONIA**MAHONIA AQUIFOLIUM** (Oregon Holly Grape)

Shining green leaves, turn rich scarlet in Autumn; striking in May when yellow flowers appear; blue-black fruits. Best in half shade.

15 to 18 in.....	\$1.00
18 to 24 in.....	1.50

LEUCOTHOE**LEUCOTHOE CATESBAEI** (Drooping Leucothoe)

Attractive white flowers, May. Handsome lustrous leaves, rich autumn coloring. Splendid for under planting in shade.

12 to 18 in.....	\$1.00
18 to 24 in.....	1.50
2 to 2½ ft.....	2.25

PACHYSANDRA**JAPANESE SPURGE** (Pachysandra terminalis)

One of the best bedding plants for green effect in shady places.

	Per 10	Per 100
4 to 6 in.....	\$1.25	\$10.00

RHODODENDRON**ROSEBAY RHODODENDRON**

(Rhododendron maximum)

Beautiful light pink flowers freely produced in May-June. Large handsome foliage, most effective in masses.

12 to 18 in.....	\$.75
18 to 24 in.....	1.00
2 to 2½ ft.....	1.50
2½ to 3 ft.....	2.50
3 to 4 ft.....	3.00

CATAWBA RHODODENDRON

(Rhododendron catawbiense)

Late Spring blooms of rose-lavender. Thrives satisfactorily in half-shade.

2 to 2½ ft.....	\$3.75
2½ to 3 ft.....	4.50

CAROLINA RHODODENDRON

(Rhododendron carolinianum)

Light rose flowers appearing in early May. Low, compact plant. Will tolerate a position in sunshine.

2 to 2½ ft.....	\$2.75
2½ to 3 ft.....	4.00

RHODODENDRON HYBRIDS

Hardy named varieties, Pink, Red and Lavender.

15 to 18 in.....	\$3.00
18 to 24 in.....	4.00

Enola, Pa.

The peach trees ordered at the Farm Show received and find them very good.

H. M. HARTER

ORNAMENTAL CLIMBING VINES

- BOSTON IVY** (Ampelopsis veitchi)
Brilliant autumn coloring, blue berries, turning black;
closely self-clinging. Also called Japanese Creeper.
- 18 to 24 in. Each
\$.50
- ENGLISH IVY** (Hedera helix)
Good ground cover in shady locations. An ideal wall
cover. Evergreen.
- 3 in. pots. \$.25
- CLEMATIS PANICULATA**
The flowers are of medium size, fragrant, pure white,
borne in immense sheets in September.
- 2-year, first-class. \$.35
- EUONYMUS VARIEGATUS** (Variegated Leaf Wintercreeper)
Leaves veined and marked yellowish white and pink.
Clinging vine.
- 2-year. \$.35
- WISTERIA SINENSIS** (Chinese Wisteria)
Good for pergolas, porches and trellises; dense drooping
clusters of pea-shaped purple-blue flowers.
- 2 to 3 ft. \$.75

ORNAMENTAL HARDY GRASSES

- EULALIA JAPONICA.** Long, narrow, graceful green
foliage, and when in flower the silvery grey plumes are
very attractive.
- EULALIA JAPONICA VARIEGATA.** Very ornamental;
long, narrow leaves, striped green and white.
- EULALIA JAPONICA ZEBRINA.** The long blades of
this variety are marked with broad, yellow bands across
the leaf. Sometimes called Zebra Grass.
- Strong clumps. \$.25
Extra heavy clumps.50

HARDY PHLOX

Perennial Phloxes succeed in almost any soil enriched
with manure in Spring, and in hot weather an occasional
soaking of water. If the first spikes of bloom are removed
as soon as over, they will produce a second supply of
flowers, continuing the display until late in autumn.

- CHAMPS ELYSEE.** Rosy purple; very effective.
- RIJNSTROOM.** Beautiful rose pink.
- THOR.** Salmon-rose, with scarlet glow.
- W. C. EGAN.** Lilac, with bright solferino eye.
- BRIDESMAID.** White, with large crimson center.
- VON LASSBURG.** Pure white; immense panicle.
- LA VAGUE.** Lavender-pink.
- MRS. CHARLES DORR.** A beautiful shade of lavender.
- R. P. STRUTHERS.** Cherry-red, suffused salmon.
- RHEINLANDER.** Salmon-pink.
- MRS. JENKINS.** Flowers large, pure white. Early.
Free bloomer.
- MISS LINGARD.** Earliest white; pale pink eye. Long,
graceful panicles.
- Strong, 2-year field-grown. \$.20

ROSES

Our roses, field grown for two years, come to you potted in six-inch pots, ready to set out in your garden in the Spring and produce an abundance of bloom the same season.

EVERBLOOMING AND HYBRID TEA ROSES

\$.75 each, \$3.50 for 5, \$6.50 for 10

Strong 2-yr. field-grown plants, potted in 6 inch pots.

EDITH NELLIE PERKINS. A Rose of outstanding merit, vigorous in growth and free flowering. Long, pointed bud; flower of good size, long lasting and fragrant, double; outside of petals orient-red shaded cerise-orange; inside salmon-pink.

SOUV. DE CLAUDIUS PERNET. Color a decided and unstained sunflower yellow, even deeper toned at center. Will not fade. Flower form is large and full, the buds long and pointed. Vigorous grower.

GOLDEN DAWN. The ideal yellow garden Rose. The ovoid lemon yellow bud is heavily splashed with crimson before opening and develops into a well-formed, sweetly-scented, large, double, sunflower yellow flower that reminds of the old favorite Marechal Niel. Vigorous and free flowering.

MRS. PIERRE S. DU PONT. Medium sized long-pointed bud of a reddish gold opening to a semi-double, cupped, very lasting fragrant flower of a deep golden yellow. The plant is of strong vigorous compact growth. A profuse and continuous bloomer.

KAISERIN AUGUSTA VICTORIA. A favorite old white with shapely, long-pointed bud and good sized, double, fragrant flower.

BETTY UPRICHARD. Brilliant copper-red buds and semi-double salmon-pink flowers stained with copper-pink on the outside.

RADIANCE. Large, fragrant, long-stemmed, brilliant rose-pink flowers; most popular pink rose in America.

RED RADIANCE. Identical with Radiance, except flowers are of a deep red color.

E. G. HILL. Beautiful long bud of perfect form and full double, high-centered flower of dazzling scarlet, shading to a deeper red as it develops.

DAME EDITH HELEN. The most striking pink rose of recent years. Enormous, very double, pure pink blooms, continually produced. Strong growth.

PRESIDENT HOOVER. Very fragrant with broad thick, heavy petals. The color is a combination of deep pink, flame, scarlet and yellow.

MRS. E. P. THOM. Large well shaped blooms of bright canary yellow, deepest in center.

ROSLYN. Orange-colored buds open to a full golden yellow bloom, deeper in center with orange splashing on back of petals, free flowering.

MISS ROWENA THOM. Bud large, long pointed. Brilliant rose-pink with golden suffusion. Growth vigorous and a free and constant bloomer.

MME. BUTTERFLY. Beautiful buds and flowers, light soft pink tinted yellow at base of petals, very free and highly scented.

REV. F. PAGE-ROBERTS. Golden yellow and cream in the inside of the flower, stained copper and dull red on the outside.

MRS. G. A. VAN ROSSEM. A marvelously beautiful Rose with a unique color combination, a most striking blending of vivid orange and apricot on a golden-yellow ground with frequently touches of bronze on the reverse of the petals.

MARGARET McGREDY. Bud very large and long pointed; flower large, shapely, long lasting, very double, fragrant, brilliantly colored, a rich shade of Oriental-red passing as it ages to carmine-rose. Vigorous and free flowering.

MRS. HENRY MORSE. One of the best light pink colors, two contrasting tones of pink with an underlying yellow glow; bud long pointed, flower very large, double and high-centered, fragrant and very free flowering.

TALISMAN. Brilliant orange-red buds, opening to a large fragrant high pointed bloom of glowing golden yellow, stained with copper red and orange-rose on inside of petals.

VILLE DE PARIS. Round buds of clear yellow. The bloom is much like Radiance.

HARDY CLIMBING ROSES

Except where noted, \$.75 each, \$3.50 for 5.
Strong field-grown plants, potted in 6 inch pots.

MME. GREGOIRE STAECHELIN. "The Spanish Beauty." Today's wonder rose. Buds long-pointed, flowers large, semi-double. Buds maroon changing from carmine to pearly pink as petals unfold.

DR. W. VAN FLEET. Rich shell pink.

CLIMBING AMERICAN BEAUTY. Large buds and flowers of bright purplish crimson.

PAUL'S SCARLET CLIMBER. Vivid scarlet.

SILVER MOON. Favorite white climber; flowers semi-double, large, with brilliant yellow stamens.

GOLDEN CLIMBER (Mrs. Arthur Curtiss James). Plant Patent No. 28. Early. Perfect buds, fragrant, beautiful when open, fine for cutting. \$2.00 each.

NEW EVERBLOOMING CLIMBING ROSES

BLAZE. Plant Patent No. 10. An important introduction; bringing the unusual charm of plenteous clustered bloom, many weeks beyond the accustomed time for climbing roses. Fiery scarlet. \$1.50 each.

NEW DAWN. Plant Patent No. 1. The gracious double form and delicate flesh-pink color of Dr. W. Van Fleet; blooms almost continuously from June to October. \$1.50 each.

We invite you to come to the nursery
and select your stock before it is dug.

GARDEN SUPPLIES

- BLOOMAID.** Fertilizer for Flowers, Shrubs, etc. 25-lb. bag, \$1.50; 100-lb. bag, \$4.00.
- FAIRWAY GRASS FOOD.** 25-lb. bag, \$1.50; 100-lb. bag, \$4.00.
- WHITE ROSE PLANT FOOD.** 5-lb. pkg., 50c.; 10-lb. pkg., 85c.; 25-lb. bag, \$1.50; 50-lb. bag, \$2.50; 100-lb. bag, \$4.00.
- ALUMINUM SULPHATE.** To create acid soil for Rhododendrons and Azaleas. Apply $\frac{1}{2}$ to 1 lb. per sq. yd. scattered over the surface. Repeat every six months. 5 lbs., 50c.; 10 lbs., 85c.; 25 lbs., \$1.75.
- CUT TOBACCO STEMS.** Fine for mulching trees, shrubs, lawn, roses, etc. Helps to keep insects away. 100 lbs., \$1.50. Ask for price on larger quantities.
- PEAT MOSS.** Valuable for mulching and mixing with the soil in ornamental plantings. $\frac{1}{4}$ bale, \$1.50; $\frac{1}{2}$ bale, \$2.00; 1 bale, \$3.00.
- SOIL.** Carefully selected top-soil, rich in plant food. 100 lbs., 50c.; 500 lbs., \$2.00; 1000 lbs., \$3.50.
- FEENY HAND DUSTER.** The best duster made. Model B, \$1.00; Model BX, \$1.25.
- DUSTING SULPHUR.** Very useful to control Red Spider on Evergreens. 1 lb., 15c.; 5 lbs., 60c.; 10 lbs. \$1.00.
- ROSE-AID with rotenone.** The most efficient dusting compound ever developed for control of Black Spot, Mildew, Aphis and chewing insects. 1 lb. 50c.
- MARVEL DUST SPRAY.** A dog repellent. Keeps dogs and cats away from evergreens and shrubbery, 15c. per package; 35c. per lb.

SUCCESSFUL PLANTING, PRUNING AND CARE OF STOCK

The bundles should be opened immediately, the roots dipped in water, then heeled in moist ground so that the mellow earth will come in contact with the roots and thoroughly protect them from the air, having the earth tramped solid about them.

When ready to plant, take up only a few at a time, puddle the roots and do not allow them to lie exposed to the sun or air.

The ground should be carefully prepared by deep plowing and firming down with a disc and harrow.

PLANTING

The holes for planting must be large enough to receive the roots freely, without cramping or bending them from their natural position. All broken or mutilated portions of the roots must be cut off so as to leave the ends smooth and sound. All trees should be planted two or three inches deeper than they stood in the nursery row; **pack the soil very firmly about the roots by tamping with the feet or post tamper**, being careful not to bark or break the roots. Leave three inches of the surface soil loose to serve as a mulch. If the ground is very dry apply one to two pails of water before this soil mulch is in place, and after the water has soaked away it can then be placed over the moist soil.

PRUNING

Many failures of newly transplanted stock are due to the lack of proper pruning. When the trees are dug in the nursery, some of the feeding roots are left in the ground, therefore, when transplanting it is necessary to restore the balance between the roots and the top by removing part of the tops.

In pruning, make a clean, sharp cut. Do not leave stub ends in removing branches. Pruning shears, knives and hand saws are the best tools to use. All tools should be sharp.

FRUIT TREES. One of the most important items in the care of fruit trees is to see that they are trained right from the start. Our two-year-old and larger sizes have the heads already formed, with three to five scaffold limbs well arranged along the trunk to support the head. These trees should be cut back, leaving just the scaffold limbs shortened to the point where it is desired to have the head of the tree.

One-year trees, or whips, should be trimmed to smooth, straight stems, cutting them squarely off at the distance from the ground at which it is desired to have them branch. Usually, apples, plums, pears, and cherries are headed a little higher than peaches, which ought to be encouraged to branch as low as possible.

SHADE TREES. With shade trees having a heavy top at least one-third of the top should be removed. Prune to avoid crowding branches. Cut out some of the small branches, shorten back the side branches, but do not cut off the leader or main stem. Try to get well developed head, strong leader and branches at wide, not close, angles. Cut off all broken roots.

SHRUBS. It is easiest to prune shrubs before they are planted. This is likewise the only time the roots can be pruned. Cut off damaged or frayed roots just above the point affected. Thin out tops of many branched shrubs, removing the old wood. Cut tops back from one-third to one-half.

EVERGREENS. At planting time evergreens seldom need pruning. If well grown like ours they are shapely and when handled with balls of soil they should grow off without trouble. However in a year or so some varieties are inclined to grow "open." Then shearing may be done with hedge tools, clipping the young growth, preferably not further than that made the previous season. This causes the inner branches to advance making a very close and compact plant, thus hiding the unsightly interior of open trees. Topping, too, may be done but please try and cut to a small branch that will again develop into a leader. Chopping the tops off flat often makes good trees resemble a sawed-off board or log. **Important**—Prune evergreens when they are growing—better just as the spring growth comes on and at least before it becomes hard in July.

WINTER PROTECTION FOR EVERGREENS. Evergreens during the first Winter after planting should have some form of protection. Wind and sun may cause damage on account of excessive evaporation of moisture from the foliage at a time when no moisture is being taken in through the roots. When subject to alternate freezing and thawing protect also against heaving of the soil.

Moisture evaporation may be prevented by the erection of a burlap shield as a windbreak to ward off strong drying winds. Avoid wrapping too tightly or injury to the plant will result from heating of foliage.

To prevent heaving of the soil provide a ground mulch of strawy manure, cut tobacco stems or any material (other than fresh manure) which will form a light, loose covering.

Be sure, too, that the ground is thoroughly saturated with moisture before it finally freezes up, and leave no holes near the plants for the water to collect and freeze.

MEMORANDUM

INDEX FOR CATALOG

	Page
A	
Abelia	30
Abies	25
Acer	11, 12
Almond	9
Almond, Flowering	21
Althea	16
Ampelopsis	33
Amygdalus	21
Apples	3, 4
Apricots	8
Arborvitae	23, 24
Asparagus	10
Azalea	30
B	
Barberry	22
Beautyberry	21
Beautybush	21
Berberis	22
Betula	12
Birch	12
Blackberries	10
Boxwood	31
Buddleia	21
Butterfly Bush	21
Buxus	31
C	
Callicarpa	21
Calycanthus	21
Caryopteris	17
Catalpa	14
Chamaecyparis	25
Cherries	6, 7
Cherry, Japanese Flowering	15
Chestnuts	9
Clematis	33
Coralberry	19
Cornus	13
Cotoneaster	31
Crab Apples	4
Crab, Flowering	14
Cranberrybush	19
Cryptomeria	24
Currants	10
Cydonia	21
Cypress	25
D	
Daphne	31
Deutzia	17
Dogwood	13
E	
Elm	13
Eulalia	33
Euonymus	33
F	
Fertilizer	36
Fir	25
Forsythia	18
G	
Golden Bell	18
Gooseberries	10
Grapes	10

INDEX (Cont'd)

Page

H

Hedera.....	33
Hemlock.....	25
Hibiscus.....	16
Holly.....	20, 31
Hollygrape.....	32
Honeysuckle, Bush.....	19
Hydrangea.....	16

I

Ilex.....	20, 31
Ivy.....	33

J

Juniper.....	26, 27
Juniperus.....	26, 27

K

Kalmia.....	32
Kerria.....	21
Kolkwitzia.....	21

L

Laurcl, Mountain.....	32
Leucothoe.....	32
Ligustrum.....	22
Lilac.....	20
Lonicera.....	19

M

Magnolia.....	13
Mahonia.....	32
Malus.....	14
Maple.....	11, 12
Mock-orange.....	18
Morus.....	14
Mulberries.....	9
Mulberry, Weeping.....	14

N

Nectarines.....	8
Nut Trees.....	9

O

Ornamental Grass.....	33
-----------------------	----

P

Pachysandra.....	32
Peach.....	5
Peach, Flowering.....	15
Pears.....	7
Persimmons.....	8
Philadelphus.....	18
Phlox.....	33
Picea.....	29
Pine.....	28
Pinus.....	28
Plane Trees.....	13
Platanus.....	13
Plums.....	8
Plum, Flowering.....	15
Plum, Purpleleaf.....	15
Poplar.....	12
Populus.....	12
Privet.....	22
Prunus.....	15
Pseudotsuga.....	25
Pyracantha.....	31

Q

Quinces.....	8
Quince, Flowering.....	21

R

Raspberries.....	10
Redcedar.....	27
Retinospora.....	28, 29
Rhododendron.....	32
Rhubarb.....	10
Rose of Sharon.....	16
Roses.....	34, 35

INDEX (Cont'd)

	Page
S	
Salix.....	12
Snowball.....	19
Snowberry.....	19
Spirea.....	17
Spray Materials.....	36
Spruce.....	29
Spurge.....	32
Strawberries.....	10
Sweetshrub.....	21
Symphoricarpos.....	19
Syringa.....	20
T	
Taxus.....	30
Thuja.....	23, 24
Tsuga.....	25
U	
Ulmus.....	13
Umbrella Tree.....	14
V	
Viburnum.....	19
W	
Walnuts.....	9
Weigela.....	20
Willow.....	12
Wintercreeper.....	33
Wisteria.....	33
Y	
Yew.....	30

SUITABLE DISTANCE FOR PLANTING

- Apples—30 to 40 feet apart each way.
- Standard Pears and Cherries—20 feet apart each way.
- Plums, Peaches and Apricots—16 to 18 feet apart each way.
- Dwarf Pears and Quinces—10 to 12 feet apart each way.
- Grapes—rows of 10 to 16 feet apart; 7 to 10 feet in rows.
- Currants and Gooseberries—4 feet apart.
- Raspberries and Blackberries—3 to 4 by 5 to 7 feet.
- Strawberries, for field culture—1 by 3 to 3½ feet.
- Strawberries, for garden culture—1 to 2 feet apart.
- Asparagus, for field culture—18 to 24 inches by 3½ to 4 feet.
- Asparagus, for garden culture—18 to 24 inches apart each way.

NUMBER OF TREES OR PLANTS TO THE ACRE

40 feet apart each way.....	28
30 feet apart each way.....	48
20 feet apart each way.....	110
18 feet apart each way.....	135
15 feet apart each way.....	205
12 feet apart each way.....	300
10 feet apart each way.....	435
8 feet apart each way.....	680
6 feet apart each way.....	1,210
5 feet apart each way.....	1,745
4 feet apart each way.....	2,725
3 feet apart each way.....	4,840

RULE—Multiply the distance in feet between the rows by the distance the plants are apart in the rows, and the product will be the number of square feet for each plant, which, divided into the number of square feet in an acre (43,560), will give the number of plants or trees to the acre.



IT'S NOT A HOME UNTIL IT'S PLACED