

## **Historic, archived document**

Do not assume content reflects current scientific knowledge, policies, or practices.



## A Continuous-Color Rock Garden

**Alyssum saxatile compactum.** (Basket of Gold) Masses of bright yellow flowers in April and May. 12 inches high. 20c.  
**Cerastium tomentosum.** (Snow-in-Summer) Prostrate mats of silvery foliage. White flowers. May. Rampant spreader. 25c.  
**Dianthus deltoides.** (Maiden Pink) Prostrate masses of dark green foliage. Rose colored flowers. May and June. 25c each.  
**Phlox subulata rosea.** (Moss Phlox) Creeping evergreen mats. Sheets of rosy flowers. May. Sun lover. 20c each, 3 for 50c.  
**Primula veris.** (Primrose) White, yellow, orange, or rich red mixed. Plant in a bit of shade or on north of a stone. 25c.  
**Saponaria ocymoides.** (Soapwort) Trailing masses of rosy-pink in May and June. 6 inches. 20c each, 3 for 50c.  
**Sedum Middendorffianum.** Neat little plants of bronzy green hue. Yellow flowers. 4 inches. 25c each.  
**Sieboldi.** Prettiest of dwarf Sedums. Pink margined leaves. Large heads of beautiful pink flowers in September. 25c each.  
**Sempervivum tectorum.** (Hens and Chickens) The popular old favorite. 20c each, 3 for 50c.  
**Silene schaffa.** (Autumn Catchfly) Rosy phlox-like flowers in August, when the rock garden needs color. 4-6 inches. 25c each.  
**Thymus citriodorus.** The well known Lemon Thyme with the lemon scented foliage. Spreading mats. 25c each, 3 for 60c.  
**Tunica saffragata.** (Coat flower) Tiny light pink flowers all summer on slender stems. 6 inches high. 20c each, 3 for 50c.

The above collection of plants alone would make a rock garden for you that others would envy—a very desirable collection. One of each of the above twelve varieties will be sent to you for \$2.50, or three plants of each of the above varieties for \$5.00.

## A Majestic Perennial Border

**Aquilegia Dobbies Imperial Hybrids.** Long-spurred Columbines. Ranges of colors as of the rainbow. May and June. 25c.  
**Artemisia Silver King.** Foliage sprays give the effect of bright frosted silver. Fine in winter bouquets. 2 feet. 25c each.  
**Chrysanthemum L'Argentillois.** For September and October color plant this bronze 'Mum. 2½ feet high. 25c each.  
**Coreopsis auricula superba.** New. Large yellow blooms all summer, center circled with brownish red. 2 feet. 25c.  
**Delphinium belladonna.** An old favorite with their light blue spikes in June and September. 3-4 feet. 20c each.  
**Gaillardia Burgundy.** Large daisy-like, rich deep red flowers; some flowers faintly tipped with gold. 25c each.  
**Liatris pycnostachya.** (Blazing Star) Long narrow spikes of lavender-purple, in August. 3-4 feet. 25c each, 3 for 60c.  
**Phlox Africa.** One of the most effective border plants in August. The best dark red Phlox. 2-3 feet high. 25c each.  
**Platycodon Grandiflorum.** (Balloon Flower) Large, showy deep blue bells on 2-3 feet stems. July and August. 25c each.  
**Shasta Daisy Mrs. C. Lothian Bell.** Large snow-white flowers on 15 inch stem. June to August. 25c each.

This collection of border plants will give you color in your garden from early spring to late fall; also provide you with lots of cut flowers. One each of the above 10 varieties will be sent to you for \$2.50 or 3 plants of each of the above varieties for \$5.00.



U. S. DEPARTMENT OF AGRICULTURE,

WASHINGTON, D. C.

BUREAU OF PLANT INDUSTRY  
Horticultural Crops and Diseases

8-3591

## Flor-Acre Gardens

H. A. VALERIUS, PROP.

ON U. S. 12 HIGHWAY AT

SAWYER - - MICHIGAN

RETURN POSTAGE GUARANTEED

## Choice Perennials and Unusual Rock Plants

# NEW AND NOTEWORTHY PLANTS

Look This Group Over Carefully

**Anemone pulsatilla rubra.** (Pasque Flower) During April and May come reddish purple cups, which are followed by showy, fluffy seed pods. 8 inches. 25c each.

**Aquilegia Dobbies Imperial Hybrids.** See "Majestic Perennial Border Collection" for description and prices.

**Arenaria verna aurea** (Golden Sandwort) Dense, creeping, cushiony, golden moss-like plants, flecked with tiny white flowers in mid-summer. 2 inches high. 25c.

**Aster Climax.** One of the best and the showiest of the Michaelmas Daisies. Beautiful lavender-blue. September. 4-5 feet. 25c.

**Cyclamen europaeum.** A dainty Hardy Cyclamen that you will like in your rock garden. Heart-shaped leaves and unusual flowers of pink to rose in July to October. Plant on north side of a stone or in a cool spot and give lime and leaf moldy soil. 3 inches. 75c.

**Dianthus Highland Queen.** A garden delight Large brilliant crimson flowers with deep markings of maroon in June. 8 inches high. Good rock plant. 25c each.

**Monsperulanus carmineus.** A cushion pink that is a true perennial. Rosy flowers in June. 6 inches. 25c.

**Dicentra spectabilis.** The old favorite Bleeding

Heart. Long racemes of pink heart-shaped flowers in May and June. 25c.

**Geranium sanguineum lancastricense.** One of the 12 best rock garden plants. Soft pink, delicately veined red, flowers all summer. Procumbent. 35c each.

**Helianthemum Apricot.** (Sun Rose) Evergreen shrubs, 6 inches high. Saucer-shaped apricot flowers. May to July. 25c.

**Helianthemum Fireball.** Double bright red flowers. Showy. May to July. 25c each.

**Papaver orientale Lula A. Neeley.** The finest Poppy of its color—a brilliant ox-blood red. May and June. 35c.

**Phlox Saladin.** Perhaps the showiest of the Garden Phlox—a brilliant orange-scarlet. July and August. 35c each.

**Phlox subulata.** Below is listed three of the finest and newest of this type—those low spreading plants that give sheets of color during May.

**subulata atropurpurea.** Deep red. 25c.  
**subulata Blue Hill.** Blue flowers tinged lavender. 35c each.

**subulata Vivid.** The choicest dwarf Phlox. Clear pink, with a darker eye. 25c.

**Scabiosa fischeri.** A pin-cushion flower, that to my knowledge is not offered for sale by any other nursery in the U. S. Its dark blue flow-

ers—the size of a half dollar—which are freely produced from July to October are unexcelled for cutting for table bouquets. 3 feet. 25c each.

**Sedum nicaense.** Unusual. Fleshy, glaucous leaves arranged on the stem, as short, thick pine-needles on a twig. Procumbent. Needs a bit of winter protection. 25c.

**Sedum Sieboldi.** See "The Continuous-Color Rock Garden" for description and prices.

**Spectabile Brilliant.** Broad succulent leaves on 15 inch stems with large umbels of rich crimson. Very effective in August and September. 25c each.

**Sempervivum atro-violaceum.** A distinctive plant among the Hens and Chix. Beautiful rosettes. 4 inches in diameter when full grown, with deep purplish red leaves. Single rosettes 35c each.

**Tradescantia virginica rosea.** (Pink Spiderwort) Pink flowers on grass-like stems. Good for naturalizing and for shade. 18 inches. All summer. 25c each.

**Trollius Ledebouri Golden Queen.** (Globeflower) Large cup-shaped flowers of golden orange. Showy stamens. June. 35c each.

**Veronica longifolia subsessilis.** The best blue flowering perennial for August bloom. Heavy spikes of deep blue. 35c



# PERENNIAL PLANTS FOR YOUR HARDY BORDER

## Blue Garden

- Anchusa italica* Dropmore. Tall clusters of blue flowers in June. 4-5 feet.
- Amsonia tuberosa* montana. Light blue panicles in late May and June. 2-3 feet Beautiful golden foliage in September and October.
- Aster Chimax.** (Michaelmas Daisy) See "New and Noteworthy Plants" for description.
- Little Boy Blue.** Compact fine rich blue Aster. 2-3 feet. August and September.
- Baptisia australis.* (False Indigo) Massive plants, 3 feet across, with dark blue pea-shaped flowers in June 3 feet.
- Campanula persicifolia.* (Peachleaf Harebell) Blue bell-shaped flowers on 2 feet stems in June and July. 20c each.
- medium.** (Canterbury Bells) 2½ feet plants covered with blue bells. June and July. One of our best bi-ennials. 15c each, 4 for 50c.
- Centauria montana.* (Perennial Cornflower) Large violet-blue thistle-like flowers in June. 2 feet. 20c each.
- Clematis Davidiana.* Hyacinth-like flowers of deep lavender-blue. August and September. 2½ feet. Not a climber. 35c each.
- Delphinium belladonna.* See "Majestic Perennial Border" for description and prices.
- belladonna.* A dark blue larkspur that is always popular. 20c each.
- Eryngium amethystinum.* (Sea Holly) Metallic blue flower bracts in July and August. Useful in winter bouquets. 2 feet. 20c each.
- Eupatorium corlestianum.* (Hardy Ageratum) Showy lavender-blue umbels in August and September. 2 feet. 20c each.
- Hosta lancifolia.* (Plantain Lily) Huge tufts of broad green leaves with blue pendant flowers in July and August. 18 inches.
- Iris.** (Common) The familiar blue garden iris. 15c each, \$1.20 per dozen.
- Lavandula vera.* (Sweet Lavender) Its lavender spikes from June to August are known to all.
- Linum austriacum.* (Flax) Slender, graceful 12 inch stem terminated with pretty dark blue flowers. 20c each.
- Mertensia virginica.* (Virginia Bluebells) Beautiful for naturalizing in partial shade. Late April and May. Drooping panicles of pink bells changing to blue. Best bloomer in fall or early April. 20c each.
- Platycodon grandiflorum.* For description, see "Majestic Perennial Border."
- Plumbago Karpentac.** Desirable spreading clumps 8 inches high, with bronzy green foliage. Beautiful deep blue flowers in August and September.
- Salvia azurea grandiflora.* Sky-blue racemes in August and September. 2-4 feet. 20c each.
- Scabiosa caucasica* **Floures Hybrids.** Lovely blue and lavender-blue pin-cushions on slender stem 15-18 inches. Long-lasting cutflower. June and July.
- fisheri.** For description and prices of this new and very useful perennial, see "New and Noteworthy Plants."
- Statice latifolia.* (Sea Lavender) Broad panicles of minute purplish-blue flowers. July and August. Good cut flower.
- Stokesia laevis.* (Stokes Aster) Blue aster-like flowers in July and August. 18 inches Every-one likes it. 20c each.
- Tradescantia virginica.* (Spiderwort) Blue flowers on grass-like stems. Good for naturalizing and for shade. 2 feet. 20c each.
- Veronica longifolia subcaerulea.* For description of this beautiful perennial, see "New and Noteworthy Plants."
- spirata.** Spikes of blue in July. 2 feet. 20c each.

## Yellow to Orange

- Alyssum saxatile compactum.* (Basket of Gold) Broad masses of bright yellow in April and early May. 12 inches high.
- Anthemis tinctoria Kelwayi.* (Hardy Marguerite) Grows in driest of soils. Daisy-like golden yellow flowers all summer. 18 inches. 20c each.
- Asclepias tuberosa.* (Butterfly Weed) Umbels of brilliant orange flowers in July and August. Good for hot, dry, sandy places. 18 inches.
- Cassia marylandica.* (Indian Senna) Shrubby plant with locust-like foliage. Racemes of yellow flowers in July. 5 feet.
- Centauria macrocephala.* Best of the corn-flowers. Large, thistle-like yellow flowers. July. 2½ feet. 20c each.



Chrysanthemum

- Chrysanthemum Carrie.* Showy yellow Mums in late August and September. 2 feet.
- L'Argentillois.** See "Majestic Perennial Border" for description and prices.
- Coreopsis auricula superba.* See "Majestic Perennial Border" for description and price.
- Imneolata grandiflora.* These all-summer blooming yellow daisies should be in every garden. Good for cutting. 2 feet. 20c each.
- Delopsis pithersiana.* (Orange Sunflower) Deep golden yellow daisies, with dark center, on 3 feet stems in July and August.
- Hemerocallis thumbergi.* (Day Lily) Orange lily-like flowers in July on 3 feet stems.
- Lilium tigrinum.* (Tiger Lily) Orange-red lily with black spots. Old and common yet very handsome. August and September. 3-4 feet.
- Willmottiae.** A graceful Lily of the Tiger Lily type that blooms in late June and July. 3 feet.
- Oenothera missouriensis.* (Evening Primrose) Prostrate stems, 8-12 inches high, with large solitary yellow flowers, often 4 inches across, from July to August.
- Papaver orientale.* The orange Oriental Poppy with May bloom.
- Rudbeckia Gahlen Glow.* A popular plant for the background. Masses of large, double, golden yellow dahlia-like flowers in August. 6 feet. 20c each.
- Thermopsis caroliniana.* Racemes of yellow pea-like flowers in June and July. 2 feet.
- Tritoma pitzeri.* (Red Hot Poker) Rich orange spikes, with a shade of scarlet, in August and September. 2 feet. Use in border or formal beds.
- Trollius ledebouri Golden Queen.* See "New and Noteworthy Plants" for description and prices.

This year again, we thank you for the business you have given us during the past year. We hope this folder will be of aid to you in planning your garden for the coming year, and that you will entrust us with your order. You may send your order by mail or you may call at our nursery and make your selections from the finest perennial and rock plant nursery in the Chicago territory. Early planting and beautiful gardens go hand in hand, so plant as soon as the soil in your garden is in a workable condition.

Visitors are welcome at any time. Remember our efforts are always toward truthfulness, honesty, and growth of the best plants at a fair price. Our plants have superior root systems which in turn means superior plants.

## Pink to Rose Flowers

- Achillea millefolium roseum.* Rosy-pink umbels in July. 2 feet. 20c each.
- Aster Abundantia.* (Michaelmas Daisy) Shower of lavender-pink daisies on 3 feet stems in August and September.
- Barr's Pink.** The finest bright pink.
- Campanula medium.* (Canterbury Bells) 2½ feet plants completely covered with pink bells. June and July. One of our best biennials. 15c each, 4 for 50c.
- Chrysanthemum Marillo.* Attractive September and October bloomer with large pink Mums.
- Chelone lyonii.* (Turtlehead) Heads of purplish-rose in late July and August. 2 feet. Always attractive.
- Dianthus albaodi Select.* A good Pink that blooms all summer.
- Dicentra eximia.* (Plumy Bleeding Heart) Beautiful, finely cut foliage with racemes of small pink hearts all summer. 12 inches.
- spectabilis.** The old favorite Bleeding Heart. Long drooping racemes of large pink heart-shaped flowers in May and June. 18 inches. 35c each.
- Erblanera purpurea.* (Purple Coneflowers) Attractive purplish-pink daisies with a large, brown, conical center. July and October. 2-3 feet.
- Lathyrus latifolius.* (Perennial Pea) Large trailing and climbing plants. Racemes of pleasing pink pea flowers. June and July.
- Lychnis Floss-Jovis.* Silvery flannel leaves. Clusters of bright pink flowers on 12 inch stems. June and July.
- Papaver orientale Mrs. Perry.* The best pink Oriental Poppy. A charming shade. May and June. 18 inches. Plant before May 1st, or after August 1st.
- Penstemon barbatus torreyi.* Spikes of tubular pendant, coral flowers. June and July. 3 feet. Effective in mass.
- Pyrethrum roseum.* The ever-popular Painted Daisy in pink to rose. May and June. 20c each.
- Sedum spectabile.* Broad succulent leaves on 15 inch stems with large pink umbels in August and September. 20c each.
- Spigelia marilandica.* (Indian Pink) A rare plant 18 inches high, with willow-like leaves. Star-mouthed pink upright bells, with yellow center. July and August. 35c
- Sweet William Pink Beauty.* A mass of salmon-pink 18 inches. May to July. Biennial. 20c each.

## White Blossoms

- Achillea ptarmica.* The Pearl. Pure white double flowers. June and July. 18 inches. 20c each.
- Aquilegia nigra grandiflora.* A fine robust white Columbine.
- Artemisia Silver King.** See "Majestic Perennial Border" for description and prices.
- Boltonia asteroides.* Masses of small, single aster-like flowers in August and September. 6 feet. 20c each.
- Chrysanthemum arcticum.* (Arctic Daisy) Attracts lots of attention. 12 inch clumps with multitudes of pure white single daisies. 2 inches in diameter. September and October.
- Harrie and Elder.** (Hartje and Elder Daisy) White daisy for Memorial Day. 12 inches. 20c each.
- maximum Mrs. C. Lathian Bell.** A very large continuous blooming Shasta Daisy. June to August.
- Lyada.** A double white for September and October bloom 2 feet.
- Gypsophila Bristol Fairy.* (Baby's Breath) Choice, large panicles of double, white flowers throughout the summer. 50c each.
- paniculata.** Old fashioned single Baby's Breath. Good filler for cut flowers. 20c each.
- Hidcote's.** White Mallow with its huge single Hollyhock-like flowers in July and August. 5 feet.
- Hosta subcordata grandiflora.* (Plantain Lily) Huge clumps of ground light green leaves. Waxy white lilies in August. 18 inches. 35c each.
- Lilium candidum.* (Madonna or June Lily) Those massive pure white lilies that bloom in June. 5 feet.
- regale.** (Regal Lily) One of the finest easiest and most popular. Pure white, with a delicate pink suffusion. Late June and July. 3-4 feet.
- Pyrethrum album.* A pure white Painted Daisy. Late May and June. 15 inches. 20c each.
- Stokesia laevis alba.* (White Stokes Aster) Aster-like flowers in July and August. 1-1 inches. 20c each.
- Yucca filamentosa.* (Adam's Needle) Large bold tufts of evergreen, sword-like leaves. Immense spikes of creamy white flowers. June. 5-6 feet. White plants lends tropical appearance.

## Unclassified Border Colors



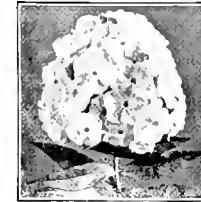
Delphinium

- Dianthus plumarius* fl. pl. The old familiar Clove Pink with double or single flowers from white to red. Mixture only. 20c each
- Digitalis The Shirley.** (Foxglove) Biennial. Tall graceful spikes of bell-shaped flowers. Rise to white. June to July 3 feet. 20c each.
- Gaillardia Parola Hybrids.* Always popular. Profusion of lightly colored — rich crimson rays that are tipped yellow. Blooms all summer. 12-18 inches.
- Illeum Riverton Gem.** Masses of gold suffused with terra cotta, changing to a wallflower red. 2-4 feet. August and September.
- Italy's best Impatiens.** New. Flowers are composed of a very broad collar of frilled and fringed petals with a very large double center rosette. Many colors mixed.
- Physalis franchetii* (Chinese Lantern) Bright orange lanterns which when cut, last all winter. 2 feet.

## PRICES

Prices of plants in this folder, unless otherwise noted, are 25c each, three of one variety for 60c, twelve of one variety \$2.00, 20c plants are three of a kind for 50c (twelve of a kind for \$1.00); 35c plants are three of a kind for \$1.00, or twelve of one variety for \$2.50, six plants of one kind take dozen rates, and if as many as 25 plants of a kind are wanted, the hundred rate will apply, which is 60 times the each rate. Order amounting to \$2.00 or more will be sent postpaid, except Roses (Add 10c each for postage).

## For That Red Border



## Garden Phlox

The most effective and useful border plants during late summer and early fall. Our collection has been carefully selected to give you the best from early June until September.

**Africa.** Best dark red variety. 2 feet.

**Beacon.** A tall deep pink. 24-30 inches.

**Edairon.** A rosy-magenta. 24-30 inches.

**Europa.** Large heads of white with red eye, changing to a pale bluish white with age. August and September.

**Kylyn.** New and very good. A rich salmon-pink. 2 feet. 25c each.

**Gen. Petain.** Deep wine-red. 35c each.

**Miss Lincoln.** Best early white. June.

**Mrs. Jenkins.** Perhaps the most floriferous of the late whites. August to September.

**Saturn.** New. Brilliant orange-scarlet. 35c each.

**Van. Kesselring.** Violet with a white eye. August. 18 inches.

## Garden Roses

Every garden has its roses—no matter how meager it may be. Perhaps it is the most popular garden flower because of the individuality of its flowers. We are listing an especially selected group of three kinds that are the most useful and freest bloomers. You can sure to be pleased with them.

**Grass on Teplitz.** Brilliant crimson with velvety shadings and intense fragrance. In bloom all the time. 50c each.

**Mrs. Pierre S. Du Pont.** Best yellow rose at the World's Fair. Lasting fragrant flower of a deep golden yellow. Continuous bloomer. 60c each.

**Bodiance.** Brilliant rose-pink. Constant bloomer and excellent cut-flower. 50c each.



## Clematis Jackmanni

One of the most beautiful of all flowering vines. Large open flowers of the richest purple-blue from June to August. Plant in a rich, deep, limy soil with perfect drainage, with the crown of plant 3 inches below the surface of the ground. 75c each.

## Hardy Climbing Roses

- Blaze.** (New Ever-blooming Climber) Plant Patent No. 10. A marvelous deep scarlet climber that blooms all summer. \$1.50 each.
- Chaplain's Pink Climber.** A rich lively pink rose in clusters of 8 to 12 large and shapely flowers. 60c each.
- Paul's Scarlet Climber.** None can compare with it for brilliancy of color in its vivid scarlet. 60c each.

## Pansies and English Daisies

Customers who call at our nursery, may secure their pansy plant needs—not the ordinary kinds sold at the grocery stores—but those mammoth, many-colored Improved Swiss Giants, Super-Swiss Giants and Maple Leaf Giants. And, remember, they are freshly dug.

Our English Daisies are those popular rose-red and white mixtures.

## Annual Flowering Plants

Each succeeding year, we are called upon by our increasing number of perennial plant customers to furnish annual flowering plants. We shall grow the following kinds for our nursery callers. Available late May and June.

*Ageratum, Aster, Callendula, Cosmos, Globe Amaranth, Heavenly Blue Morning Glories, Marigolds, Petunias, Portulacas (Double), Salicis, Scabiosa, Snapdragon, Statice, Straw-flowers, Sweet Alyssum, Verbenas, and Zinnias.*

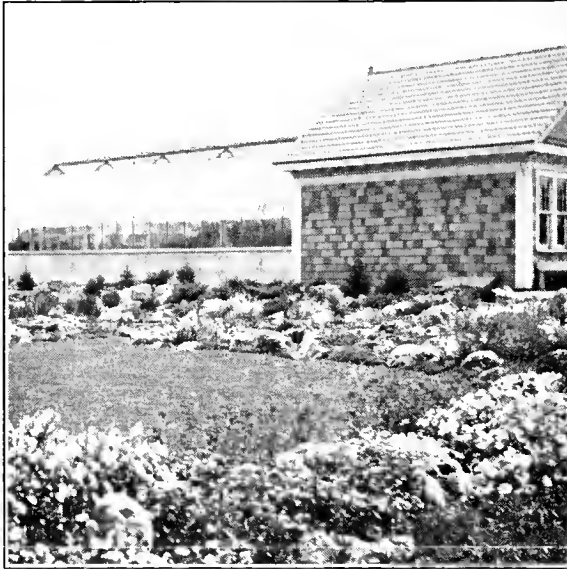
## Border Plants for Shade

See Classifications for Descriptions and Prices

- AQUILEGIA DOBBIENSIS IMP. HYBRIDS*  
*AQUILEGIA NIGRA GRANDIFLORA*  
*CAMPANULA PERSICIFOLIA*  
*DICENTRA EXIMIA*  
*DICENTRA SPECTABILIS*  
*HEMEROCALLIS THUNBERGI*  
*HOSTA LANCIFOLIA*  
*HOSTA SUBCORDATA GRANDIFLORA*  
*LOBELIA CARDINALIS*  
*MERTENSIA VIRGINICA*  
*SEDUM SPECTABILE & BRILLIANT*  
*SPIGELIA MARILANDICA*  
*TRADESCANTIA VIRGINICA & ROSEA*  
*TROLLIUS LEDEBOURI*

# Hardy Plants for Your Rock Garden

Most of these plants may be used in the front of your flower borders as well as in the rock garden.



## PRICES

Prices of Plants on this page, unless otherwise noted, are 25c each, 3 of one variety for 60c, 12 of one variety \$2.00. 3 or more plants of a kind in a group makes the best garden effect.

## "Little Gems" for the Rock Garden

- Aethionema coridifolium.** (Persian Candytuft) Blue-grey evergreen bushlets with rosy-pink spikes in May and June. 35c.
- Alyssum spinosum.** Silvery-grey spiny shrublet. White flowers in June. 4 inches.
- Anemone vernalis.** (Lady of the Snow) Large white flowers; bluish reverse. 50c.
- Arabis Kellneri.** Tufts of somewhat silvery rosettes. 2 inches. White.
- Arenaria caespitosa.** (Sandwort) Dense, creeping cushions of moss flecked with tiny white flowers. Mid-summer. 2 inches.
- Dianthus neglectus.** Most beautiful of Alpine Pinks. Salmon-pink, with buff reverse.
- litifolius.** Neat. Green tufts. Rose. 2 inches.
- Genista sagittalis.** (Broom) Winged stems. Yellow pea-like flowers in clustered heads in June. 6 inches. 35c.
- Linaria alpina.** (Poadflax) A jewel. Brilliant orange and purple flowers all summer. Short-lived, but reseeds itself.
- aequitriloba.** Creeping evergreen mat with pale mauve flowers. 1 inch.
- Phytoloma scheuzeri.** Rounded heads of violet-blue on slender stems, 6 inches high. May-July. Rare. 35c.
- Sedum dasyphyllum.** Bluish-grey beads form compact mats.
- Sempervivum globiferum.** Flattened tight green rosettes, tipped brown. 20c

## Rock Plants for SHADE or Sun

- Ajuga reptans rubra.** (Bugle) Carpet of richly bronzed purple leaves. 6 inch spikes of deep purplish blue flowers in June. 20c each, 3 for 50c.
- Anemone pulsatilla rubra.** (Pasque Flower) For description and prices, see "New and Noteworthy Plants."
- Arenaria caespitosa.** See "Little Gems for the Rock Garden."
- areola aurea.** For description and prices, see "New and Noteworthy Plants."
- Campanula carpatica.** (Carpathian Harebell) Large open bells of blue or white (State color) on wiry 6 inch stems.
- rotundifolia.** (Blue Bells of Scotland) 8 inch paniced spikes of dainty blue drooping bells all summer.
- Cyclamen europaeum.** For description and prices, see "New and Noteworthy Plants."
- Dicentra eximia.** (Plumy Bleeding Heart) Beautiful finely cut foliage with racemes of small pink hearts all summer. 12 inches.
- Lysimachia nummularia.** (Moneywort) A rampant creeping viny ground cover with yellow flowers. 20c each, 3 for 50c.
- Myosotis palustris semperflorens.** (Forget-me-not) A charming plant for moist places. Blue or pink (Your choice).
- Plumbago Larpentae.** Desirable. Spreading clumps, with bronzy green foliage. Deep blue flowers in August and September.
- Primula veris.** For description and prices, see "Continuous-Color Rock Garden."
- Saxifraga cordifolia.** Large glossy leaves, like a cabbage. Pink flowers spikes in May. 8 inches high. 35c each.
- Sedum Nevi.** Loves a moist shady place. Rosettes of greyish spatulate leaves. 35c.
- Sieboldi.** For description and prices, see "Continuous-Color Rock Garden."
- ternatum.** Best Sedum for ground cover in shade. White flowers. 4 inches.
- Viola minor.** (Periwinkle or Myrtle) Effective ground cover—best for shade. Blue or magenta-pink flowers (Your choice) in early spring. 3 for 50c \$1.25 per dozen.
- Viola.** The following varieties are of the corunta type; free flowering and showy.
- Admiration.** Deep violet. 15c, 4 for 50c.
- Apricot.** Shades of apricot yellow. 15c, 4 for 50c.
- Arkwright Ruby.** New. Ruby red, marked with maroon in center.

- Achillea nana.** A tiny Yarrow with lacinated leaves and white flowers.
- Tomentosa.** (Woolly Yarrow) Mat-forming with yellow umbels on 6 inch stems. July. 20c 3 for 50c.
- Alyssum serpyllifolium.** Very dwarf and prostrate. Yellow. Hoary leaves. May and June.
- Arabis albida.** (Rock Cress) One of the earliest spring bloomers—April. White masses. 6 inches.
- albida variegata.** Green foliage, intermingled with yellow. 35c each.
- Arenaria grandiflora.** Choice. Pretty white flowers from May to September. 4 inches.
- montana.** (Sandwort) Mounds 4-6 inches high, covered with large white flowers in May and June.
- America Lauchea.** (Thrift) Tufted growths. Bright rosy-red globular flowers on 6 inch stems all summer.
- Artemisia frigida.** A selected form. Beautiful silvery feathery foliage.
- Aster alpinus.** (Rock Aster) Blue, white, or pink daisies (Your choice) on 6 inch stems. May and June.
- Mauve Cushion.** Round cushion-like plants completely covered with mauve-colored asters in October. 6-8 inches.
- Carnation Crimson King.** The best hardy, large-flowering carnation, ever introduced. Blooms all summer.
- Caryopteris mongoliensis.** Grey leaved shrubs, 12 inches high, with unusual delicate blue fringed flowers in August. 50c each.
- Dianthus Allwoodi.** Selected. Lovely, strongly scented pink flowers all summer. 8 inches.
- arvensis fimbriatus.** A broad cushion as much as 18 inches across, with glaucous leaves and pink flowers.
- Beatrix.** A hardy fragrant Pink with very delicate bright, baby-pink, double flowers all summer. 10 inches.
- caesius.** (Cheddar Pink) Blue-grey foliage. Pink flowers. 6 inches. 20c each.
- caesius Our Own.** Pretty green cushion. Pink flowers. 6 inches.
- deltoides Major Stearnes.** A gem. Bronzy-green foliage and sheets of crimson flowers. 6 inches. May and June.
- knappi.** A yellow-flowered Pink. 20c.
- plumarius fl. pl.** The old familiar Clove Pink with double or single flowers from white to crimson. Mixture. 20c.
- subcaudis.** A little glaucous-leaved, tufted mit with small pink flowers.
- Euphorbia cyparissias.** (Cypress Spurge) Like a miniature cypress. Needle-like leaves. 20c each, 3 for 50c.
- myrsinites.** Prostrate bluish foliate branches. Very ornamental.
- polychroma.** Neat specimens. Mounds of yellow flower bracts in May. 12 inches. 35c.
- Festuca glauca.** Dense blue tufts of 6 inch grass. Also good for edgings. 20c 3 for 50c.
- Gypsophila repens.** Broad trailing plants with small white flowers in July.
- Helianthemum Butlerian.** (Sun Rose) Dwarf evergreen shrubs with golden yellow saucer-shaped flowers.
- Heuchera brizoides.** (Coral Bells) Clumps of attractive green leaves from which arise slender 12 inch stems, with myriads of little pink bells. June to September.
- sanguinea.** Bright crimson bells.
- Iberis gibraltarica.** (Candytuft) Compact 6 inch shrubs covered with mottled lavender and lilac blooms all summer.
- sempervirens.** Completely covered with white in May. 20c each, 3 for 50c.
- Jasione humilis.** Tufts of dainty little blue scabiosas. 3 inches. In June.
- perennis.** A 6 inch version of J. humilis. June to September.
- Lavandula vera.** (Sweet Lavender) It's lavender spikes from June to August are known to all.
- Linum austriacum.** (Flax) Slender graceful 12 inch stems headed with pretty dark blue flowers. 20c each, 3 for 50c.
- Lychnis Flos-Jovis.** Silvery flannel leaves. Clusters of bright pink flowers on 12 inch stems. June and July.
- Haageana.** Large orange-red to crimson flowers from June to August. 12 inches.

- Sepeta Mussini.** (Catmint) Grey foliage with 8 inch spikes of lavender-blue flowers from May to September.
- Souvenir Andre Chaudron.** Distinct. 12 inches. Large dark blue flowers from June to August. 35c each.
- Oenothera missouriensis.** (Evening Primrose) Prostrate stems, 8 inches high, with large solitary yellow flowers, often 4 inches across, from July to August.
- Opuntia humifusa.** (Prickly Pear) A hardy Cactus with large very lovely waxen apricot-yellow flowers in mid-summer.
- Phlox bifida.** Rare. Strap-like leaves. Showy lavender-blue flowers. May and June.
- subulata alba.** White flowered form of the well-known Moss Phlox described on another page. 20c each, 3 for 50c.
- Sedums listed below are 20c each or 3 of a kind for 50c.**
- acre** (Golden Moss) Yellow evergreen carpeter. 3 inches.
- albo-roseum.** A tall plant, 12 inches high, with broad, fleshy, green, and yellow intermingled, leaves.
- album purpureum.** Thick waxen linear purple foliage. Spreading. 4 inches.
- ellacombianum.** Similar to S. kantschaticum except that the foliage takes on glorious colors of orange and red in autumn. 6 inches.
- kantschaticum.** Prostrate green foliage. Orange-yellow flowers. 6 inches
- reflexum.** Bronzy leaves and stems like a spruce twig. 4 inches.
- sarmentosum.** Yellow green leaves. 4 inches. rampant.
- spurium.** Bronzy leaves in terminal rosettes, which turn red in winter. Pink.
- spurium coccineum.** A red flowered form of above.
- Stachys lanata.** (Lamb's Ear) Soft silvery foliage like a lamb's ear. 6 inches
- Teucrium chamaedrys** Glossy green foliage plant resembling dwarf boxwood. 6 inches. Can be trimmed like a hedge.
- Thymus serpyllum coccineum.** (Crimson Thyme) Prostrate creeping mat covered with small crimson flowers. July and August.
- Gold Variegated.** Dwarf sub-scrubby type. 8 inches high.
- Silver Variegated.** Nearly the same as preceding except foliage color.
- Herba-baronna.** (Caraway-scented Thyme) Prostrate creeping mat with caraway scent. Good.
- lanuginosus.** (Woolly Thyme) Woolly leaved, quick spreading, prostrate plant.
- Veronica armena.** Delicate ferny foliage. Beautiful blue flowers in June and September. 4 inches high.
- lucana.** (Woolly Speedwell) White woolly plant with blue 6 inch spikes in June.
- rupestris.** Prostrate creeping plants with dainty spikes of bright blue flowers in June.

*Our Plants Satisfy the Most Critical*