

## **Historic, archived document**

Do not assume content reflects current scientific knowledge, policies, or practices.



62.61

1934

# PRICE LIST

(Revised)

NURSERY STOCK OF EVERY DESCRIPTION

Evergreens

Roses

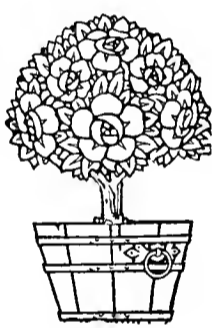
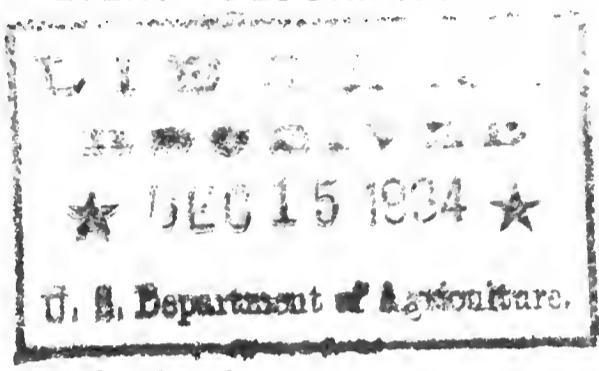
Shrubs

Bulbs

Fruit and Shade Trees

Potted Plants

Perennials



## THE GLENDALE DISTRIBUTING CO.

(ESTABLISHED 1921)

7015 COOPER AVENUE (At Myrtle Avenue)

BROOKLYN, N. Y.



BE SAFE—"Always Demand Glenco  
Guaranteed Roses."

## A MESSAGE TO OUR FRIENDS

-----

We hope this new price list will meet with your approval. It should be considered as a supplement to our regular colored catalogue, a copy of which you have, or may have on request. In addition to our rose records we have taken special care to check all descriptions with "Modern Roses" and other sources of reliable information, thus insuring the accuracy of descriptive statements.

Our business was established more than 15 years ago. During that time we have shipped plants to every State in the Union, to Canada, and across the seas to China and other foreign lands. To-day these plants are growing and giving entire satisfaction to thousands of customers, many of whom have been with us from the first year of our venture.

Please note also that our prices have been made as low as possible, yet we still maintain the quality of the plants we send you. Good plants are worth the prices asked; poor plants are worth nothing. So we put quality first, and then furnish this high quality at the lowest possible rate.

This price list cancels all previous price lists and the prices herein named are for Fall of 1934 and Spring of 1935, and purchasers should be governed by the prices in this edition.

In this price list we have listed a great many of the new varieties of roses, being introduced for fall planting at greatly reduced prices. We have not reduced or curtailed the quality in the least. Every item offered is positively guaranteed as represented. Our Roses are guaranteed to grow true to name and color or they will be replaced free of charge. **We prepay all charges on all items in this price list** unless otherwise noted. Our roses are all Field Grown No. 1 budded stock. Our bulbs are of the finest quality obtainable and come to us direct from Holland.

Roses planted during the fall of the year give 100% better results during the coming spring than roses planted next April. The fall is the proper time for planting roses. Rose lovers who make a specialty of a pretty garden always plant their roses during the fall of the year.

For your own protection, "Demand GLENCO GUARANTEED ROSES."

NOTE.—We have sold a great many Blaze Roses and some of our customers have requested us to enlighten them on why Blaze Rose did not give a continuous bloom this spring, and we pass the following information along to each of our customers. Blaze Rose is an Everblooming Climber. It takes from two to three years to become acclimated before its Everblooming qualities show. Blaze Roses planted during the fall of 1932 bloom this year, those planted during 1933 will bloom continuously during 1935. We never offer any of our trade any roses unless we know all about them. What we tell you about a rose is true. A satisfied customer is our best advertisement.

## NEW ROSES

---

### **BETTER TIMES (Plant Patent No. 23)**

The brilliant cerise flowers are large, double and delicately fragrant. Produced on long, strong stems; excellent for cutting; free bloomer.

**Price Each, \$1.50**

**Per Dozen, \$15.00**

### **COUNTESS VANDAL (Plant Patent No. 38)**

The long, tapered bud reminds one of the modern feminine fashions. Bronze and gold emerge from a sheath of green sepals. Slowly the bud unfurls, the reverse petals being copper, gradually turning to orange-carmine on gold base. The inside is a blend of cream-salmon and blush-pink overlaid with a cast of gold and amber. Later on the petals quill back, giving the effect of a cactus dahlia. Delicately perfumed.

**Price Each, \$1.00**

**Per Dozen, \$10.00**

### **SOUVENIR (Plant Patent No. 25)**

A Golden Talisman, and the best of the many yellow variations of that now famous rose. The bud is yellow, showing deep gold in the center, and the open bloom is glistening buttercup-yellow. Not affected by the sun or rain. Delicately perfumed. Disease resisting.

**Price Each, \$1.00**

**Per Dozen, \$10.00**

### **AMELIA EARHART (Plant Patent No. 63)**

Truly a wonderful yellow rose. A greatly improved Souv. de Claudius Pernet. A new yellow rose destined to great popularity. Very large, handsome flowers may be expected from this new and wonderful creation. A beauty unsurpassed in Rosedom.

**Price Each, \$1.50**

**Per Dozen, \$15.00**

### **TOKEN (Plant Patent No. 95)**

Large Ophelia shaped bud. The full double flowers are a single toned glowing orange, a most unique color. It is a free bloomer and has an upright growth in the garden. The flowers are very lasting and pleasing at all stages.

**Price Each, \$1.50**

**Per Dozen, \$15.00**

### **ALAZANE (Plant Patent Applied For)**

**Pahissa 1934**

Bud urn shaped, large reddish-brown; flowers cupped, opening to sorrel; unfurling from sorrel to rich apricot and reverse of petals, sorrel striped with yellow veins. Petals not affected by hot or wet weather. An extremely interesting and striking novelty which has drawn great attention wherever shown.

**Price Each, \$2.00**

**Per Dozen, \$20.00**

### **AMBASSADOR—H.T. (Plant Patent No. 11)**

Talisman type. Bud large, long pointed; flower large, very double; bronze-salmon; fragrant. A profuse bloomer.

**Price Each, \$1.00**

**Per Dozen, \$10.00**

### **AMI F. MAYERY—H.T. (Mme. Denoyel 1933)**

Long pointed vermillion red buds; flowers extra large, double cupped; slightly fragrant; pure brilliant poppy-red on stiff stems; free bloomer.

**Price Each, \$2.00**

**Per Dozen, \$20.00**

### **CAMEO—POLY (DeRuiter 1932)**

A new and distinct color fully described by the name, shell-pink and salmon, with a glow of gold. Large sprays in continuous succession.

**Price Each, \$1.25**

**Per Dozen, \$12.50**

### **CARMELITA—H.T. (Plant Patent No. 91) F. Spanbauer 1933**

Large ovid bud of E. G. Hill color; flowers vivid red, color same on both sides of petals without variations. A very vigorous grower. A new American rose of great promise. We recommend it highly.

**Price Each, \$2.00**

**Per Dozen, \$20.00**

### **EDITH KRAUSE—H. T. (Max Krause 1931)**

Some nurserymen describe this rose as "probably" the most beautiful white, but we are safe in saying this rose is without a doubt the most beautiful white rose that has ever been introduced. Very large white bud with a greenish tint, opening to a majestic perfumed bloom of pure white. Long, strong stems for cutting. A beauty unsurpassed in white roses.

**Price Each, \$1.50**

**Per Dozen, \$15.00**

### **LOUISE KRAUSE (Max Krause 1931)**

Glistening yellow rose with orange tint; large, full, fragrant. We consider it one of the finest yellow roses of recent years. Long stems for cutting.

**Price Each, \$1.50**

**Per Dozen, \$15.00**

### **ESSENCE—H.T. (R. Cantwell 1931)**

The biggest selling red rose we ever had. During the spring of 1934 we were completely sold out in this variety as early as the end of March. "Double Etoile de Holland" would perfectly describe this master rose. Perfectly formed, velvety crimson buds, large blooms cover the bush in continuous succession. The name bespeaks the delightful perfume of "Attar of Roses."

**Price Each, \$1.50**

**Per Dozen, \$15.00**

### **MAX KRAUSE—H.T. (Max Krause 1931)**

Probably the best yellow rose of the year for outdoor use. A gold that stays gold. Long bud and cup formed bloom of great substance freely born on a long, strong stem. Very hardy. Profuse bloomer.

**Price Each, \$2.00**

**Per Dozen, \$20.00**

### **MRS. SAM McGREDY—H., PERN (McGredy 1930)**

Large, fairly double blooms of orange-salmon with a suffusion of gold. Vigorous, healthy plants. One of the best of the tribe.

**Price Each, \$1.00**

**Per Dozen, \$10.00**

### **OTTO KRAUSS—H.P.—(C. Wiegand 1931)**

A brand new rose. Buds are rich copper, opening to a large double bloom of orange-copper lightened with salmon and gold at the base. An everblooming hybrid perpetual with desirable hybrid tea habit. It has a definite place in every garden.

**Price Each, \$1.50**

**Per Dozen, \$15.00**

### **RHEINGOLD (M. Leenders & Co. 1934)**

Lasting, fragrant, double golden yellow. The flower is about the size of a Souv. de Claudius Pernet. Free blooming; the yellow flowers form a pleasing contrast with the large leathery light green foliage.

**Price Each, \$1.50**

**Per Dozen, \$15.00**

## **ROCHESTER HYD. POLY. (J. H. Nicholas 1934)**

Seeding of the Rev. F. Page Roberts and Echo. A lovely constant flowering bedder of the Roberts type of growth and form of bud and flower with the Echo freedom of bloom. The color of the bud is like Rev. F. Page Roberts with more pronounced carmine markings on the reverse of the petals, with more blush in the open flower. Always in bloom.

**Price Each, \$1.50**

**Per Dozen, \$15.00**

## **GOVERNOR ALFRED E. SMITH—H.T.**

**(Plant Patent No. 62)**

A rose that should be in every garden. Large salmon and gold blooms, rounded like a "Bomb" Peonie. A free and profuse bloomer all season. This rose has a great future, according to the comments we have heard from people who have visited our test gardens.

**Price Each, \$1.50**

**Per Dozen, \$15.00**

NOTE.—Where dozen price is given roses may be purchased in half-dozen lots at the dozen price.

## **THE SENSATION OF 1934**

### **"NIGRETTE"**

#### **"THE BLACK ROSE OF SANGERHOUSEN"**

**(Plant Patent No. 87)**

This new sensation of the European Rose World is now available for the **FIRST TIME** in this country. For many years the rose world has awaited patiently for this new creation and at last we are able to offer same to our many thousands of satisfied customers throughout the entire World at a moderate price. The cupped shaped flowers are intensely deep maroon with **BLACKISH VELVET** sheen and are deliciously fragrant. It is the darkest of roses—appearing almost **BLACK** from a little distance. The petals do not burn in the sun. The plant is continuously in bloom, spending most of its energy in forming blossoms. (Late fall delivery.)

**Price Each, \$2.00**

**Per Dozen, \$20.00**

## **RAMBLERS, CLIMBING ROSES**

### **GOLDEN CLIMBER (Plant Patent No. 28)**

**Mrs. Arthur Curtiss James**

No color picture can do justice to this superb climbing rose. While it is a newcomer, it has all the promises of becoming the foremost climbing hardy yellow rose. In fact, it holds this position to-day. In many respects the plant resembles Mary Wallace and has all the good qualities of that favorite variety. Good yellow climbers are very, very rare; therefore, **GOLDEN CLIMBER** has been heartily welcomed everywhere.

**Price Each, \$2.00**

**Per Dozen, \$20.00**

### **BLAZE (Plant Patent No. 10)**

**Paul's Scarlet Everblooming Climber**

Acclaimed by the Nation—the only hardy everblooming scarlet climber. It has every element to insure its success, for Blaze combines the vigor, beauty, hardiness of Paul's Scarlet Climber with the everblooming qualities of a favorite everblooming rose. In our test garden Blaze bloomed three times during June and July of this year. The test plants were planted during the fall of 1932.

**Price Each, \$1.50**

**Per Dozen, \$15.00**

(See notation on page 2)

## NEW DAWN (Plant Patent No. 1)

### Everblooming Climber—Sport of Dr. VanFleet

Bud and flower of medium size, double, lasting, slightly fragrant, blush-pink, borne singly and several together on long stems. Foliage sufficient, medium size, climbs from 15 to 20 feet high. Free bloomer all season.

Price Each, \$1.50

Per Dozen, \$15.00

## ALLEN'S FRAGRANT PILLAR

### Everblooming Climber

An everblooming climber of great merit, with large, full, satiny pink blooms carried over a long season. We consider it an improved Staechelina. The plants are hardy and do not mildew.

Price Each, \$1.50

Per Dozen, \$15.00

## MERCEDES GALLART

### Hardy Everblooming Climber

Introduced in 1931 by Munne and has been one of the creations that the creator could be proud of. It is an addition to the group of hardy Everblooming Climbers. Large, full bloom of splendid form on long stems for cutting. Very fragrant. Cerise red, turning to a pleasing magenta pink. Blooms steadily.

Price Each, \$1.50

Per Dozen, \$15.00

We also offer the following climbers for your selection at 50c each. These bushes are all of the hardy type, No. 1 grade only, and fully guaranteed.

Mary Wallace—Pink

Dorothy Perkins—Shell Pink

Emily Gray—Yellow

Pauls Scarlet—Red

Glendale—Lemon-White

American Beauty—Rose-Pink

Gardenia—Yellow

Silver Moon—White

Dr. Huey—Crimson

Veilchenblau (Blue Rambler)

Primrose—Yellow

Scorcher—Vermillion

## BUTTERFLY BUSH

### “Ile de France”—Reddish-Purple

The latest novelty; introduced lately and out-selling all other shrubs. A rich Rosolane purple (Ridgeway) Butterfly bush. Far more striking in color than the older variety.

Price Each, \$1.00

Per Dozen, \$10.00

## CLIMBING HYDRANGEA

No vine that we know of has quite the same beauty of foliage or abundance of fragrant, lacy flowers as this charming, refined member of the great and useful Hydrangea family. Its stem is woody and picturesque in winter, clinging tightly to stone and brick work by innumerable aerial roots, hugging a wall like ivy and requiring no tying or trellis.

Price Each, \$1.50

Per Dozen, \$15.00

**Everblooming Roses.** Guaranteed No. 1 stock. Field-grown; offered in the following selection at 50c each. (Roses marked \* bloom in June only.)

Francis Scott Key—Crimson

Joanna Hill—Indian Yellow

Lady Alice Stanley—Pink

Los Angeles—Deep Rose and Gold

Margaret McGredy—Red and Gold

Miss Rowena Thom—Pink

Mme. Butterfly—Light Pink

Mme. Ed. Herriott—Orange-Pink



Mme. Jules Bouche—Tinted White  
 Mrs. E. P. Thom—Lemon-Yellow  
 President Hoover—Maroon, Orange and Gold  
 Red Radiance—Red  
 Pink Radiance—Pink  
 Schwabenland—Cerise-Pink  
 Sensation—Dark Red  
 \*American Beauty—Red  
 Souv. de C. Pernet—The best of the yellows  
 \*Frau Karl Druschki—White  
 White Killarney—White  
 K. A. Viktoria—White  
 Gruss an Teplitz—Red  
 Padre—Coppery Scarlet  
 Angeles Pernet—Chrome-Yellow  
 Dame Edith Helen—Pink  
 Duchess of Wellington—Pale Buff-Yellow  
 Chas. K. Douglas—Red  
 Betty Uprichard—Salmon-Pink  
 Duchess of York—Pink and Gold  
 Talisman—Golden Yellow and Orange

In offering the above selection we have listed only a few of the many varieties we handle. We do not attempt to give a complete list of the many different varieties and if there are any roses you would care to have we would be pleased to quote you same upon request. We have all the old and new varieties, but list only a small list of the best sellers. Our supply of roses is comprised of many different varieties and it would take a great deal of space to list the entire selection.

### OTHER ROSES FOR FALL OR SPRING PLANTING

	Each
Mary Hart—H.T. (Red Talisman) Plant Pat. No. 28. A garnet red Talisman with yellow markings .....	\$1.50
Dotty—Color of bud reminds of Rev. F. Page Roberts, while the bronze tint remains in open bloom .....	1.00
Autumn—Crown orange passing to chestnut.....	1.00
Barbara Richards — H.T. — Corn-yellow and buff, flushed pink. Unique in Rosedom.....	2.00
Sunkist—The name was suggested by the ripe "Sunkist" oranges which are the color of bud and bloom .....	2.00
Roslyn—Still one of the favorite yellow roses	1.00
Olympiad—Bud firey red with gold base.....	1.00
Chas. P. Kilham—Oriental orange-red.....	.75
Syracuse—Crimson scarlet. A free bloomer.....	1.00
Villa de Paris—Lemon-yellow. Gold medal winner .....	.75
Rev. F. Page Roberts—Two-tone.....	.75
Hadley—Velvety crimson. Gold medal winner	.75
Golden Dawn—Lemon-yellow .....	1.00
Hollywood—Dark red rose, veined darker.....	.75
Mrs. G. A. VanRossem—Brownish-yellow, copper-pink .....	.75
Mrs. Pierre S. du Pont—Reddish gold buds and yellow .....	.75
Vaterland—Blood red with coppery reflexes.....	.75

## PEONIES

We have the finest line of Peonie roots that can be offered to anyone. Not little bits of clumps cut up to make a number of clumps, but real large clumps that give results. These clumps should be planted during the fall six inches below ground surface. We can supply same in red, pink, white, yellow.

**Each Clump, 30c**

## AMARYLLIS HYBRID BULBS

We pride ourselves in the class of Amaryllis bulbs we sell. During the past season we sold a great many thousands Amaryllis bulbs and we have just as many letters of praise in our files as to the performance of our bulbs that we shipped. **Every bulb that we sent out bloomed.** We examine each bulb before shipping same and make sure that it is budded and will bloom. At the Brooklyn Show last spring we sold hundreds of these bulbs and a great many customers came back to our plant and told us how wonderfully the bulbs flowered. Many came back for more bulbs. **Not one complaint was received.** The Amaryllis bulb is the most popular of house plants, giving from four to sixteen large lily-like flowers. Most beautiful colors are available. Each bulb from four to five inches in diameter. **Guaranteed to bloom during this coming winter in a pot in your home.** Shipment November to March.

**Price Each, 50c**

**Per Dozen, \$5.50**

## HOLLAND BULBS

One of the genuine delights of life is the appearance of early flowers that herald spring. What flowers in your garden give as much satisfaction and joy as the fragrant Hyacinths, colorful Tulips, cheerful Narcissus or gay Crocuses? Prepare your garden and make your selection of bulbs now from this list to enjoy a colorful garden next spring. The following bulbs are imported direct from a leading Holland Bulb Grower. Therefore we guarantee Genuine Holland Bulbs of Prime Quality, true to name and color.

### Hyacinths

General de Wet—Light Pink	Gertrude—Rosy Pink
Grande Blanche—Blush White	Grand Maitre—Sky Blue
La Victorie—Carmine Red	Lady Derby—Delicate Pink
L'Innocence—Bells Pure White	Lord Balfour—Purplish-Violet
Marconi—Dark Pink, Shaded Red	Marie—Deep Dark Blue
Myosotis—Blue	Yellow Hammer—Creamy White

Any of the above varieties. Exhibition size.

**\$2.00 per Dozen**

**\$14.00 per 100**

Special collection of Hyacinths, Exhibition size, 6 White, 6 Pink, 6 Red, 6 Yellow, 6 Light Blue, 6 Dark Blue. **\$5.25**

### Bedding Hyacinths

Should be planted 6 inches deep and 6-8 inches apart. Snow White, Delicate Pink, Bright Red, Light Blue, Dark Blue, Yellow. Any of the above colors.

**\$1.00 per Dozen**

**\$7.00 per 100**

Special collection Bedding Hyacinths, 10 bulbs each—White, Pink, Red, Yellow, Blue.

**50 for \$3.60**

**Narcissus for Naturalizing**

**25 for \$1.00**

**100 for \$3.00**

**Narcissus - Daffodils**

	Dozen	100
Emperor (Trumpet) Deep Yellow.....	\$1.00	\$7.00
King Alfred (Trumpet) Golden Yellow.....	1.25	8.00
Spring Glory (Bicolor Trumpet) White.....	1.00	7.00
Lucifer (Incomparabilis) Orange Red.....	.65	4.00
Sir Watkins (Incomparabilis) Deep Yellow.....	.85	6.00
Conspicuous (Barri) Pale Yellow-Orange.....	.65	4.00
Seagull (Barri) White, Yellow, Apricot Edge....	.75	5.00
White Lady (Leeds) White, Crinkled.....	.65	4.00
Ornatus (Poeticus) White, Saffron, Scarlet.....	.65	4.00
Laurens Koster (Poetaz) White, Yellow Eye....	.65	4.00
Orange Cup. (Poetaz) Yellow, Orange Eye.....	.65	4.00
Albo Pieno Odorata (Double) White, Scented....	.70	4.50
Von Sion (Double) Pure Golden Yellow.....	1.00	7.00
Jonquils (Single) Golden Yellow.....	.65	4.00

Popular collection of Narcissus, 10 bulbs each of the following: Yellow Trumpet, Bicolor Trumpet, Incomparabilis, Leeds, Poetaz. **50 bulbs for \$3.00**

**Breeder Tulips**

This class of Tulip is known for its gigantic flowers borne on tall, robust stems and the exquisitely blended bronze shades. They come to bloom at the same time as the Darwin Tulips.

	Dozen	100
Panorama—Reddish Mahogany .....	\$ .55	\$3.50
Prince of Orange—Deep Orange.....	.65	4.00
Louis XIV—Dark Purple .....	.55	3.50
Velvet King—Deepest Glossy Purple.....	.60	3.75
Yellow Perfection—Bronze Yellow.....	.55	3.50

Special Breeder Tulip Selection, 10 bulbs each of each of the above varieties. Each packed separately.

**50 Bulbs, \$2.00**

**Double Early Tulips**

Tulips resembling Peonies. They are very heavy and sturdy.

	Dozen	100
Electra—Deep Rose, Feathered Violet.....	\$ .65	\$4.00
Mrs. Van der Hoeft—Bright Yellow.....	.60	3.75
Murillo—Delicate Pink .....	.55	3.50
Vuurbaak—Scarlet .....	.60	3.75

**SPECIAL**—Rainbow mixture of Double Early Tulips. A solid bed with many colors and shades.

**25 bulbs, \$1.00**

**\$3.50 per 100**

**Darwin Tulips (Long Stemmed)**

There is hardly any other class of Tulips so useful for various purposes as the Darwin Tulips. They bloom during May. Plant during October, November and December, 5 inches deep and 5 inches apart.

	Dozen	100
Bartigon—Clear Crimson Red.....	\$ .50	\$3.25
Clara Butt—Clear Salmon Pink.....	.50	3.25
Dream—Soft Uniform Lilac.....	.55	3.50
Farncombe Sanders—Fiery Rose Scarlet.....	.50	3.25
Inglescombe—Yellow .....	.55	3.50
La Tulipe Noire (The Black Tulip).....	.55	3.50
Pride of Haarlem—Cerise Red.....	.50	3.25
Princess Elizabeth—Clear Deep Pink.....	.50	3.25
Rev. H. Ewbank—Lilac.....	.50	3.25
Roi d'Islande—Old Rose, Blue Base.....	.50	3.25

**Special Collection, No. 1 Darwin Tulips**

Ten bulbs each of the above named Darwin varieties, each marked separately.

**100 Bulbs, \$3.25**

**Special Collection No. 2**

Rainbow Mixture of Darwin Tulips. A wealth of colors and shades.

**100 Bulbs for \$2.75**

**Lily-Flowering Tulips—"Sirene"**

Beautiful deep rose with pale margins. Opens first like a rose with glowing warmth in its color, then takes on the forms of a graceful lily, while the color grows more delicate; late in mid-day sun it changes to a perfect six-pointed star of silvery rose.

**Per Dozen, 65c**

**\$4.25 per 100**

**Rembrandt Tulips**

They comprise a strain of variegated Darwin Tulips, so-called Broken Darwin Tulips. They possess splendid decorative value. Every flower has fantastic stripes, veins, rims and other peculiar marks which makes the flower very picturesque. A splendid mixture in all shades.

**Per Dozen, 65c**

**\$4.00 per 100**

**Parrot Tulips**

They are the most fantastic of all Tulips with their fringed, scalloped petals. In the Rock Garden or in front of evergreens or shrubs they are very effective.

**Per Dozen, 65c**

**\$4.00 per 100**

**Cottage Tulips**

Cottage Tulips come to bloom a little later than the Darwin and Breeder Tulips. They differ from these in that the blossoms are more slender and their shape is more graceful. Many of the Cottage Tulips are very fragrant.

	<b>Dozen</b>	<b>100</b>
Gesneriana Lutea—Pure Yellow.....	\$ .55	\$3.50
John Ruskin—Apricot-Orange .....	.55	3.50
Orange King—Deep Orange, Shaded Rose.....	.55	3.50
Picotee—Border Tulip, White.....	.50	3.25
Triton—Bright Pink .....	.60	3.75

**SPECIAL COLLECTION—10 each of the above-named varieties, each packed separately.**

**50 Bulbs, \$1.90**

Other collections of assorted colors, **25 for 85c.**

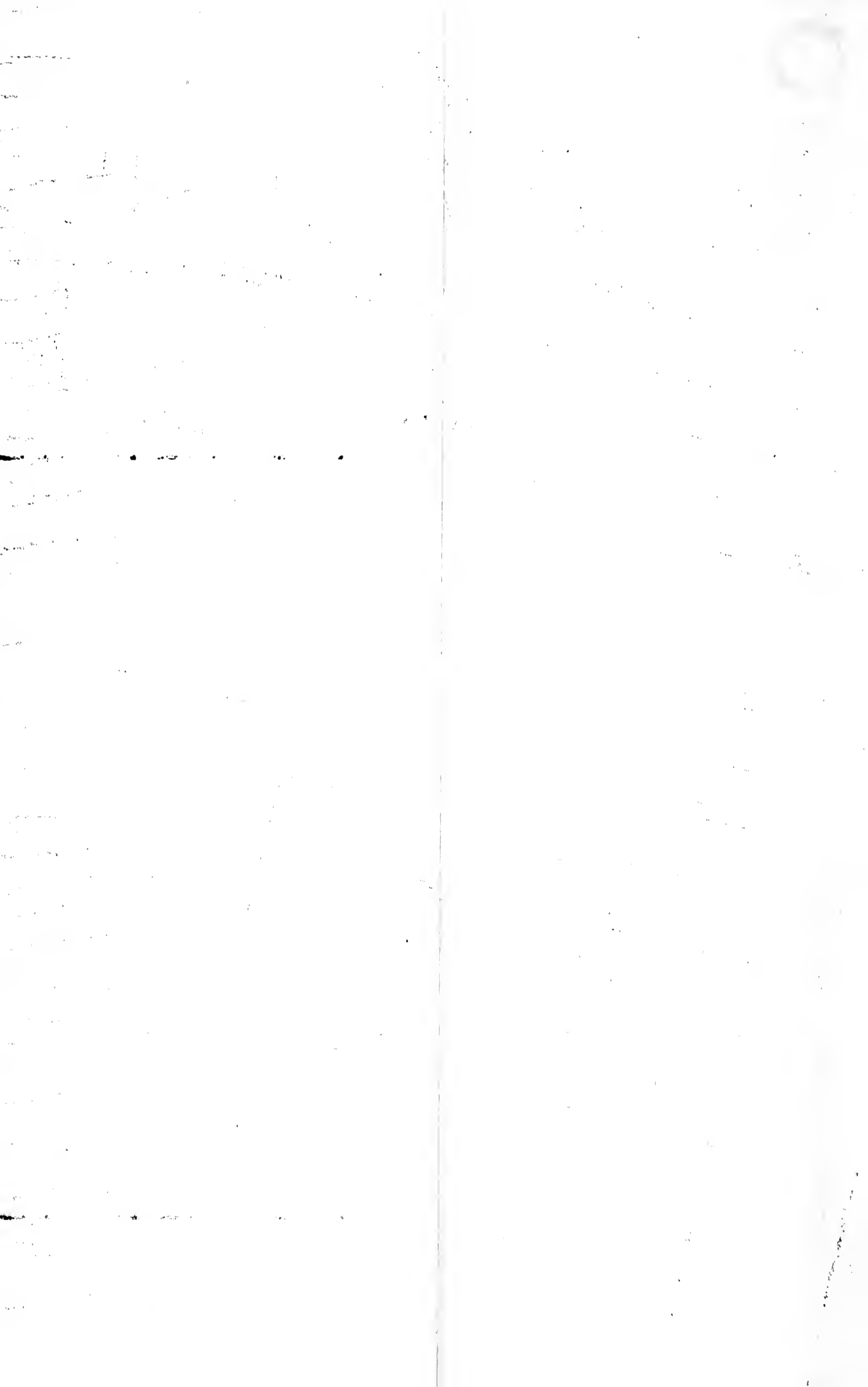
**Single Early Tulips**

Come in bloom during April, several weeks before the Darwin Tulips. Blooms very lasting, assorted colors.

	<b>Dozen</b>	<b>100</b>
Keizerskroon—Crimson Scarlet .....	\$ .65	\$4.00
Pink Beauty—Cherry-Rose .....	.65	4.00
Prince of Austria—Scarlet and Yellow.....	.55	3.50
DeWet—Golden Yellow, Flushed Orange.....	.65	4.00
Rising Sun—Deep Yellow.....	.60	3.75

**Special Rainbow Mixture of Single Early Tulips.**  
**25 for 85c** **100 for \$2.75**





## SPRING'S HERALDS

### *Scilla Sibirica* (Blue Squill)

Bell-like flowers of bright blue. Bloom during April. Plant 3 to 4 inches deep. Fine for naturalizing.

Per Dozen, 30c

Per 100, \$1.75

### *Scilla Campanulata* (Wood Hyacinth)

Spikes 14 inches high. Clear blue bell-like flowers.

Per Dozen, 35c

100 for \$2.00

### *Chionodoxa* (Glory-of-the-Snow)

The hardiest, most easily cultivated and most beautiful of all the early spring flowering bulbs. Bear a number of flowers on spikes 5 inches high. Clear sky blue with white centers.

Per Dozen, 30c

Per 100, \$1.75

### Grape-Hyacinths (*Muscari* Blue)

Planted in masses in either shade or sun, these little flowers are attractive in every location. Thickly set flowers, pearl-like blooms in heavenly blue color. Do not dig up after blooming; they will increase year after year.

Per Dozen, 30c

Per 100, \$1.75

### Snowdrops (*Galanthus Nivalis*)

Are the first to open in spring and are very lovely. They dislike being moved, so do not dig them after they bloom. Plant 2 inches deep.

Per Dozen, 35c

Per 100, \$2.25

## SPECIAL COLLECTIONS

### Rock Garden Collection

12 bulbs each, Jonquils (yellow), Tulips (dwarf), Crocuses, *Chionodoxa*, *Scilla*, Grape-Hyacinths, Snowdrops.

84 Bulbs, Separately Marked, \$2.50

Naturalizing Collection—50 Bulbs Each

Narcissus, Crocus, *Chionodoxa*, Snowdrops, Grape-Hyacinths, *Scilla*.  
300 bulbs for \$5.50

## CROCUSES

Crocuses are most effective planted in masses on the lawn, between shrubs, along hedges. In the rock garden they make a wonderful display. May be left in the ground for 3 years. Bloom during March and April. Plant 1 inch deep. Bright blue, purple, pure white, variegated striped, golden yellow. Any of the above colors.

Per Dozen, 30c

Per 100, \$2.00

A special mixture of all colors, 100 for \$1.75.

## BULBOUS IRISES

Hardy Dutch Iris come to bloom shortly after German Iris are gone. Height 20-27 inches. Fine for cutting. We carry the finest of bulbs in all varieties—

Huchtenburg—Lilac Shaded White; Falls, Orange-Yellow

Imperator—Deep Blue, Large Flower

Theo de Bock—Almost Bronze Colored Flower

White Excelsior—Pure White, Very Distinct

Yellow Queen—An Even Tone of Golden Yellow

Any of the above, 50c per Doz.; \$3.00 per 100.

Special mixture of Dutch Iris, 25, 75c; 100, \$2.00.

## SHRUBS

We are offering for FALL PLANTING ONLY the following hardy shrubs at reduced prices. These prices will not be maintained for spring of 1935, but simply apply for the fall of 1934. Take advantage of these low prices. Shrubs planted during this fall will bloom profusely next spring. Each of these shrubs are more than five foot high, No. 1 stock, and are shipped express collect.

Althaea—Pink Rose of Sharon  
Butterfly Bush—Summer Lilac  
Deutzia—Pride of Rochester  
Red Dogwood—Cornus—This is Red Branch  
Dogwood. (Not Red Flowering Dogwood.)  
Forsythea—Golden Bell.  
Hydrangea—P. G. Panicula.  
Hydrangea—Snowball—“Hills of Snow”  
Mock Orange  
Weigelia—Pink  
Spiraea—Vanhouttel—Bridal Wreath  
Red Barberry  
Wisteria Vines  
Japanese Quince  
Tamarax—Red

Price Each, 25c

Per Dozen, \$2.50

## HYDRANGEA TREES

Very beautiful, bloom during late August and September. Our trees are about five or six feet high. Shipped by express collect.

Price Each, \$2.00

Per Dozen, \$20.00

-----

Peat Moss - Humus - Bonemeal - Cow Manure

Sheep Manure - Garden Tools

Prices on Application.

-----

Nursery Stock of Every Description

-----

We ship and deliver all over the World

-----

Roses and Bulbs may be shipped to your friends or relatives in foreign lands. We guarantee safe delivery.