

Historic, archived document

Do not assume content reflects current scientific knowledge, policies, or practices.

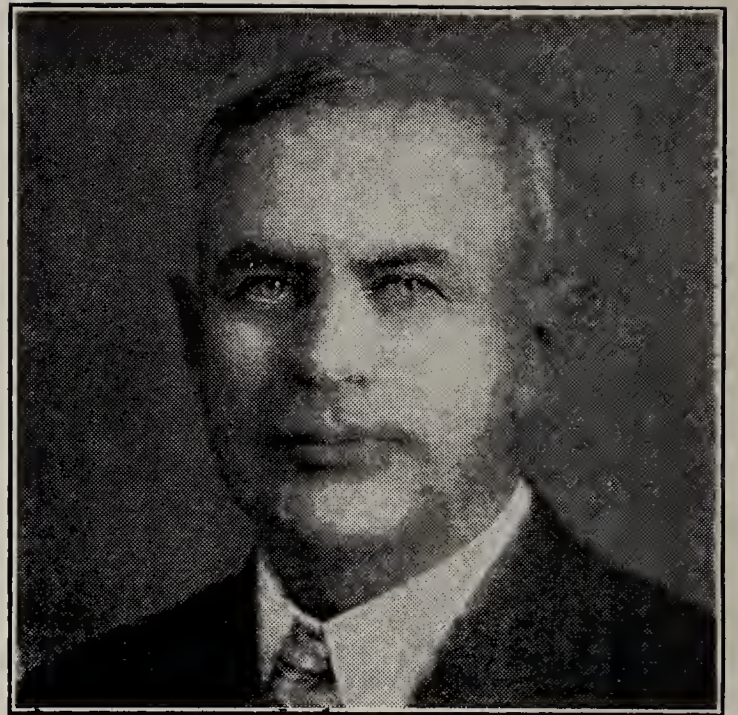


Monmouth
Champion Dahlia

Gill Bros. SEED CO.
1935



RAY W. GILL

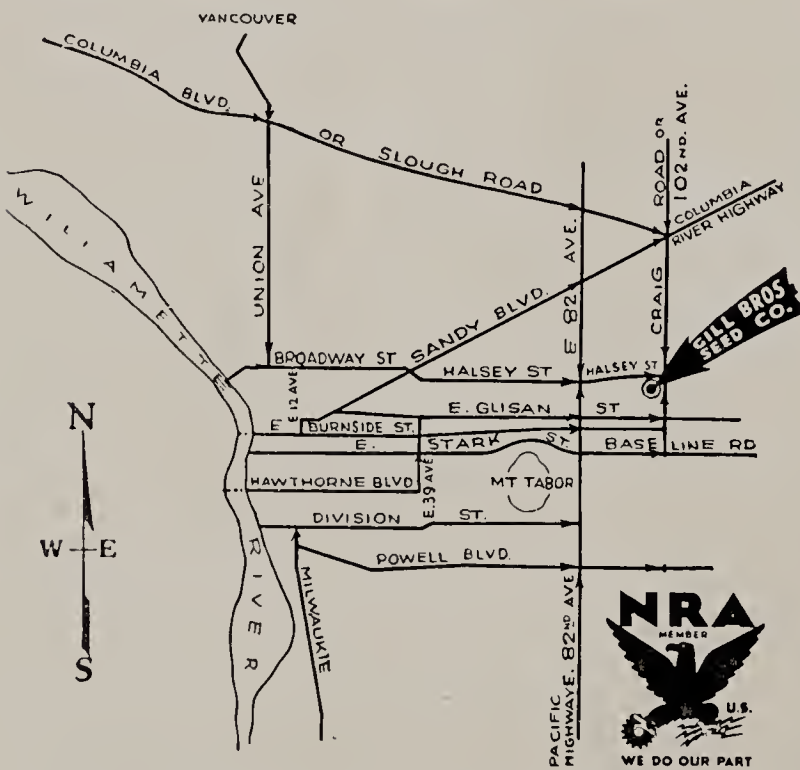


EDW. E. GILL

HOW TO REACH THE FARM

Take 90th Street car on Montavilla line to 90th Avenue, thence four blocks east and four north to farm. Autos take East Glisan to 102nd Avenue, thence north to Halsey Street and west two blocks to office.

Retail salesrooms at warehouse and office.



Visitors are always welcome at our farm. Dahlia gardens are at their best in September and October.

GILL'S VEGETABLE COLLECTION

We offer 12 packets of Gill's Special Vegetables worth \$1.00 for 70c postpaid. These are special strains and represent our best selections.

BEET—Detroit Dark Red Special.....	.05
CABBAGE—Gill's Oregon Ballhead.....	.10
CARROT—Gill's Oregon Chantenay.....	.10
CARROT—Gill's Special Nantes10
SWEET CORN—Golden Early Market.....	.10
SWEET CORN—Improved Golden Bantam.....	.10
LETTUCE—New York "B".....	.10
PARSNIP—Gill's Success05
PUMPKIN—Orange Winter Luxury.....	.05
RADISH—Early Scarlet Turnip White Tipped	.05
SQUASH—Gill's Golden Delicious.....	.10
TOMATO—Gill's Selected Earliana.....	.10

\$1.00

GILL'S "FLOWER GARDEN" COLLECTION

Do not overlook these 12 pkts. of popular flower seeds worth \$1.35 for 75c postpaid. Planted reasonably early, these will bloom the first year.

Aster, Crego Mixed10
Brachycome or Swan River Daisy.....	.10
Calendula, Double Mixed10
Candytuft, Mixed10
Chrysanthemum, Annual Mixed10
Linaria, Mixed10
Marigold, Tall French Mixed10
Nemesia, Mixed10
Pansy, Swiss Giants25
Phlox, Annual Mixed.....	.10
Snapdragon, Maximum Mixed10
Zinnia, Dahlia Flowered Mixed10

\$1.35

CHRYSANTHEMUM PLANTS

Rooted cuttings, well established in dirt.

BALANCED GARDEN COLLECTION

Sixteen chrysanthemum plants \$1.50 postpaid

2 Japanese Exhibition	2 Button
3 Exhibition	3 Anemone
3 Pompon	3 Single

A well balanced selection as to color, blooming October 15 to November 15.

YOUR CHOICE COLLECTION

Twelve chrysanthemum plants \$1.00 postpaid.

Your choice of twelve in any of the following classes, our choice of variety.

Exhibition	Single
Commercial	Button
Pompon	Anemone

Plants will be mailed from gardens at Salem, Oregon. Ready after March 15th. Write for list of named varieties.

HOME BEAUTIFUL SWEET PEAS

Twelve regular sized packets of Spencer Sweet Peas, our selection of varieties, all different, worth \$1.20, sent postpaid for 60c. These will be chosen so as to give a good range of color.

FREE BULLETINS

We offer free on request the following bulletins written by Ray W. Gill: Lawn Culture, Dahlia Culture, Fall Gardens, Fertilizers and How to Use Them.

Twenty-fifth Annual Catalog

Gill Bros. Seed Company

MONTAVILLA STATION, PORTLAND, ORE.
Main Office, Farm and Retail Store
N. E. 98th Ave. and Halsey St. TAbor 2683.

BRANCH RETAIL STORE
FARMERS CO-OPERATIVE MARKET
4th Avenue, near Yamhill Street
Portland, Oregon

Dear Customers and Readers:

This is not a large, pretentious catalog, yet it brings you an honest message about seeds, bulbs, etc. The high quality of our goods is favorably known throughout the Northwest, besides which we have many customers throughout the nation. For years we have been introducing special strains of seed here on our own farms and many new varieties of our own origin are recognized as leaders by market gardeners.

We specialize in Northwest grown seeds and where these are not obtainable we procure the best without regard to cost from the world's best growers. Seeds grown in moderate summer and winter conditions of the Northwest have great vitality and vigor. Northwest grown seeds are indicated in this catalog with a star. If you have not tried our seeds, please give us a trial order. Many of the largest growers and associations in the Northwest depend on our goods. Order early, as some varieties are short.

Our catalog has been prepared with the desire to have it sensible and free from exaggeration. The cuts used are practically all made from photographs taken from samples grown by ourselves and are reasonable illustrations of the results obtained from our seeds. We are opposed to filling our catalog with a long list of worthless novelties and are confining our list to the fewest possible varieties, and introducing only those new sorts which have some added value over other introductions. Those who receive more than one copy of our catalog will confer a favor by handing it to someone interested.

Our files show us the names of all who have ever sent us an order. To these we mail our catalog each year, and we also mail our catalog again to all who have received our catalog the first time last season, regardless whether they sent us an order or not. However, we will send catalogs free upon request. All members of a family should order under one name.

OUR GUARANTEE

We believe our seeds, plants and bulbs to be healthy and true to name; however, should they prove otherwise, we will replace the goods or refund the purchase price; but under no condition do we obligate ourselves for the crop or in any other manner whatsoever.

Germination being so dependent upon weather conditions and the time and manner of planting, all of which are beyond our control, we do not guarantee germination—except in a fair and proper test. In case the seed should be of poor germination, we will replace them or refund the purchase price; but under no condition do we obligate ourselves for the crop or in any other manner whatsoever.

If the seeds, plants or bulbs are not accepted on these conditions, they should be returned at once.

MISTAKES

Like all human beings, we are apt to make mistakes, and if an error occurs we will consider it a favor to be notified at once so that we can rectify the oversight.

If you have a complaint, tell us first. In the rush of spring business, mistakes may happen; if so, tell us pleasantly about it and be assured of courteous treatment.

SUBSTITUTION

In view of the fact that some kinds of seed are short this year, we would suggest that customers give as much as possible their permission for us to substitute the nearest variety to the one ordered in case we should be sold out. On items of small importance, or during the planting season, when time is precious, we may occasionally send other sorts if out of the ones ordered, but such substitutions may be returned for credit if unsatisfactory to the purchaser.

VEGETABLE SEED SUBJECT TO CHANGE IN EXTREME CASES

We expect to be able to maintain the prices quoted in this catalog, but owing to constantly changing conditions, disturbing replacement values, we must reserve the right to make advances on such items as might otherwise be sold at a loss.

HELPFUL SUGGESTIONS

We are always willing to offer any assistance in our power regarding culture, best varieties for your soil and market, etc. We will also be glad to consider any suggestions you may wish to make to us.

HOW TO ORDER

Order early, as there is a heavy demand on some stocks and they may be exhausted.

Remittance must accompany your order. Stamps are accepted up to \$1.00. Money Orders, Express Orders, Bank Drafts and Certified Checks are preferred, although other checks are accepted for collection. Prices in this catalog by Express or Freight do not cover shipping expenses. E. or F., indicates express or freight.

Unless mentioned, all prices are postpaid, except those by Express or Freight, indicated by E. or F. All prices up to and including one pound include shipping expenses and for more only when indicated. Give shipping instructions and write your name and address plainly on your order.

Write your correspondence on a separate sheet from your order. The seed season is a rush season.

SAVE MONEY BY PARCEL POST. PLEASE READ

In ordering seeds in quantity you can save money by using our express or freight prices, marked E. or F., in this catalog. Simply add postage to these prices at the zone rates. In case you do not know the zone to Portland, simply include extra and mark order "postage allowance." Any overrun will be refunded to you.

PRACTICAL EXPERIENCE

As market gardeners and the many tests we have made for years, has given us a thorough knowledge of the varieties best suited for our climate, and aside from those varieties which we grow, has enabled us to secure our seed from the best sources. In that respect we differ from the average seed store, where the experience is more from a selling standpoint.

WE SPECIALIZE IN MARKET GARDENER TRADE

Thousands of market gardeners all over the United States look to us for high-grade seeds. If you buy in quantities, write us a list giving variety and quantity and we will be glad to quote our gardener rates.

PRESS OF RYDER PRINTING CO., 1031 S. W. Fifth Ave., Portland, Oregon. Union Label Applied For.

VEGETABLES

ARTICHOKE

LARGE GREEN GLOBE—The green buds are used. Start in hotbeds. They can be grown successfully in the Northwest. Pkt. 10c; oz. 60c.

PLANTS—25c each; 3 for 50c; doz., \$1.50, postpaid.

JERUSALEM—The tubers are used for stock feed. 3 lbs. 30c, postpaid. E. or F., 100 lbs @ \$2.00.

ASPARAGUS

CULTURE—The seed is of slow germination and should be planted early in the season. Plant roots in well drained soil about 2 feet apart in the row and five to six feet between rows.

GIANT WASHINGTON—The genuine rust resistant strain. The result of plant research and breeding by U. S. Department of Agriculture. This variety is a much stronger plant and more productive. Owing to its great vigor it can be cut sooner from time of planting. Color much like Palmetto but the stalks are larger and more uniform. Pkt. 5c; oz. 20c; ¼ lb. 35c; lb. \$1.00.

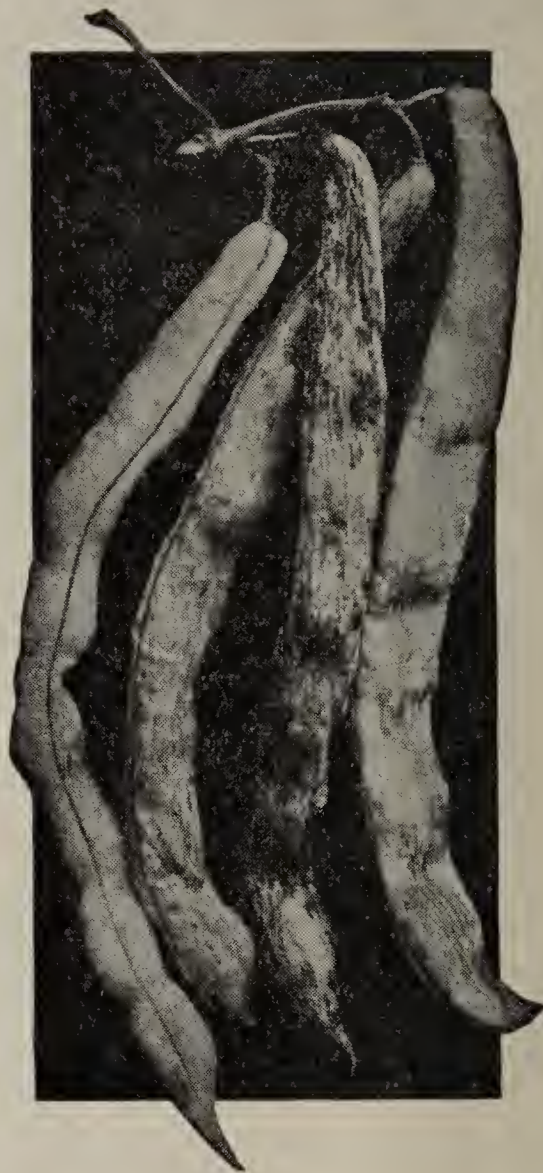
MARY WASHINGTON—A special selection from Giant Washington, being earlier and larger, but equally rust resistant. We carry a special, selected strain. Pkt. 5c; oz. 20c; ¼ lb. 35c; lb. \$1.00.

ASPARAGUS ROOTS

One year and 2 year roots simply means a grade for size only. Both are one year growth.

MARY WASHINGTON and **GIANT WASHINGTON**—1 year roots (No. 2 size) doz., 40c; 50 @ 75c; 100 @ \$1.25, postpaid. E. or F., 1000 @ \$5.00. 2 year roots (No. 1 size) doz. 50c; 50 @ \$1.00; 100 @ \$1.50, postpaid. E. or F., 1000 @ \$6.00.

Quality will be remembered long after the price is forgotten. Quality, not price, is the first consideration in buying seed. Considering quality, our prices are reasonable.



Beans, Gill's Oregon Giant

DWARF BEANS

CULTURE—Plant about May 1st for early beans, or as soon as the ground becomes warm, in light loamy soil. Large seeded beans require warmer weather to germinate than small beans. Cover from 1½ to 3 inches deep, according to weather conditions. Never cultivate or hoe beans when the foliage is damp from dew or rains, as it will produce rust.

PRICES ON BEAN SEED—Unless otherwise stated, prices are uniformly as follows: Pkt. 10c; ½ lb. 20c; lb. 30c; postpaid. E. or F., lb. 25c; 5 lbs. @ 18c. Write for prices on larger quantities.

***SURE CROP WAX**—Very productive, stringless sort with pods six inches long, nearly round and of fine quality. The pods are long and straight, making a fine bean for market gardeners.

***GIANT STRINGLESS**—Long, stringless, green pods. A few days later than Burpee's Stringless but more productive and with longer, straighter pods. The pods are large and nearly round.

***PENCIL POD BLACK WAX**—Hardy and prolific and of finest quality. The pods are bright waxy yellow, long and round and entirely free from strings. Desirable for home or market and very valuable for canning.

***IMPROVED BURPEE'S STRINGLESS GREEN POD**—Considered the best early bush bean. The pods are green, of good length, entirely stringless, tender and brittle and remain so until ripe. This brown-seeded bean is both early and hardy and one of the richest flavored beans of all. A popular market or garden bean and desirable for canning.

***FULL MEASURE**—A splendid stringless bush bean with round, tender, green pods. Very high quality and producing heavy yields of pods about 6 inches long. It matures early. Splendid for home or market.

***TENDERGREEN (New Stringless Green Pod)**—Similar to Full Measure but hardier and a more dependable cropper. Plants medium large, erect, heavily productive. Pods nearly straight, dark green, round, meaty, absolutely stringless and of outstanding quality.

***ROUND POD KIDNEY WAX**—Extra early; very vigorous and productive. Long, straight, round pods that are entirely stringless. One of the finest.

***GILL'S RELIABLE**—A pioneer bean found under various names throughout the Northwest. We have grown it in our family for forty years. It is very popular as a home garden bean. It is remarkably prolific and hardy, having few superiors, either as a string or dry bean. The pods are green and the seed pure white. Unless picked very young, the pods need stringing. Fine for canning and a good all around bean. Pkt. 10c; ½ lb. 20c; lb. 35c.

***STRINGLESS BLACK VALENTINE**—Very hardy; extremely early, withstanding cold, damp weather better than most sorts. Pods dark green, long, straight, stringless, nearly round. Excellent quality.

***DWARF HORTICULTURAL or CRANBERRY**—A rich flavored early bush bean generally used as a green shell bean; vigorous and prolific. Bean and pod striped and blotched red.

STRINGLESS REFUGEE—Very popular for canning where one wishes the small baby beans. Entirely stringless and very productive.

Inoculate all legumes with NITRAGIN. See page 16.

POLE BEANS

See bean prices on preceding page.

***GILL'S DELICIOUS GIANT**—When we introduced the Oregon Giant bean we felt it could not be surpassed for size and quality, but in this cross between Oregon Giant and Kentucky Wonder we have originated a variety twice as productive, equal in size and quality—and we believe the easiest bean of all to pick. The beans are produced in clusters of 4 to 6, the stems of which protrude outside the foliage. We tested seven bean pods that weighed one-half pound. It is therefore easily possible to pick a pound of beans from three clusters. The flavor is unsurpassed and the pods are so meaty that they shrink very little when cooked. The pods are green, faintly striped with red lines which disappear when cooked. The vines are very vigorous and the pods are more rounded than the Oregon Giant but fully as long. If you like green beans fresh for the table or for canning, do not fail to order this. Pkt. 10c; ½ lb. 20c; lb. 35c.

***OREGON GIANT**—Giant pods a foot long; light green striped carmine. This wonderful bean is now sold by market gardeners at high prices. The quality is good even in the largest beans. Pkt. 10c; ½ lb. 20c; lb. 35c.

***KENTUCKY WONDER WAX**—This is a wax podded Kentucky Wonder and many think it is of better flavor. It is a more vigorous grower and will yield fully as heavy as the Kentucky Wonder. The pods are a light yellow, extra large, broad and long and cook very tender. Matures quite early.

***WHITE SEEDED KENTUCKY WONDER**—Similar to Kentucky Wonder with white seed. Many gardeners prefer this to Kentucky Wonder. It produces heavier and is freer from strings. Being white seeded, it is valuable for winter use.

***KENTUCKY WONDER**—A standard variety often called Asparagus Bean. It produces exceptional yields of long, green pods of fine quality. We carry a true strain from careful selection.

***LONDON HORTICULTURAL. (Cranberry)**—Pods green streaked with red. Excellent used green, shelled or dry.

SHELL BEANS

***OREGON LIMA**—A large, pole lima, extra early and suited for Northwest culture. It is acclimated and matures ripe pods 75 days from planting. Excellent used as a butter bean or stored dry for winter use. Large, pure white seed of Oregon growth. Pkt. 10c; ½ lb. 20c; lb. 35c.

***BOSTON PEA BEAN**—The plants do not run to vine; they ripen early, producing a heavy yield of pure white beans slightly smaller than Lady Washington, but much earlier. The best small white bean for commercial growing in the Northwest.

FORDHOOK LIMA—A large bush lima. Pkt. 10c; ½ lb. 25c; lb. 40c.

BURPEE'S BUSH LIMA—Dwarf large seeded bush lima, an immense yielder. Pkt. 10c; ½ lb. 25c; lb. 40c.

BRUSSELS SPROUTS

LONG ISLAND—Plants of medium height, producing a good yield of close, compact heads. Recommended for market gardeners. Pkt. 5c; oz. 30c; ¼ lb. 85c; lb. \$2.50.

***OREGON SPECIAL**—A special selection from an Oregon grower. Hard heads of dark green color. We recommend this highly. Pkt. 10c; oz. 50c; ¼ lb. \$1.50; lb. \$5.00.

HALF MOON BAY—An excellent variety originated at Half Moon Bay, California. Especially recommended for market gardeners. Medium green color. Pkt. 15c; oz. 85c; ¼ lb. \$2.50; lb. \$8.00.



Celery Cabbage or Wong Bok Paoting

CELERY CABBAGE

WONG BOK, PAOTING—A delicious salad vegetable from China, excellent for salads and cold slaw, and is sometimes used like Swiss Chard. The stems can be used like celery. This vegetable is making good, both for market and home gardens. For best results, plant seed August 1st and thin to 18 inches apart. It can also be planted in early spring. Those who appreciate a delightful and refreshing salad should grow some of this in their garden. Use plenty of our Garden Grow fertilizer to secure a quick, strong growth. It is easy to grow. Pkt. 10c; oz. 30c; ¼ lb. 85c; lb. \$2.50.

WONG BOK, PEKIN—Grows long, slender heads, solid and tender. This is a very fine variety. Pkt. 10c; oz. 40c; ¼ lb. \$1.00; lb. \$3.50.

SWISS CHARD

LUCULLUS—Grows about two and a half feet high. The heavy stalks are over an inch thick and bare for more than a foot of their length. Should be served as you would asparagus. The leaves make the finest "greens." Swiss Chard is hardy, easily grown, and should be in every garden. Pkt. 5c; oz. 15c; ¼ lb. 40c; lb. \$1.00.

LARGE WHITE RIBBED—Large white ribs which are used like asparagus. Pkt. 5c; oz. 15c; ¼ lb. 40c; lb. \$1.00.

CHICORY

LARGE ROOTED—Chicory does well in this climate and is an excellent substitute for coffee. Plant like carrots. Pkt. 5c; oz. 20c; ¼ lb. 75c.

WITLOOF or FRENCH ENDIVE—The roots are transplanted and the shoots are bleached for winter use as a salad. They are also used like Endive. Pkt. 10c; oz. 40c.

POULTRY GREENS—Very popular at Petaluma, California, for poultry feed. It produces a heavy crop of green feed, maintaining its production for a long season. Pkt. 5c; oz. 20c; ¼ lb. 50c; lb. \$1.60.

TABLE BEETS

CULTURE—Plant in rows 3 feet wide, with drill. April 1st to July 15th. Thin to 3 or 4 inches apart for table beets and 8 to 12 inches for mangels. For winter beets the latest sowing is best.

PRICES ON BEET SEED unless noted are uniformly: Pkt. 5c; oz. 15c; ¼ lb. 35c; lb. \$1.00.

EARLY MODEL—The best all around table beet for home or market. It is extremely early, of smooth, uniform shape. The flesh is dark red, entirely free from strings or core and unusually sweet. We offer a selected strain.

***EARLY WONDER**—A deep blood red beet, nearly globe shaped, with small clean tap roots and small erect tops. One of the earliest and most uniform bunching beets that can be grown and also very fine for late planting. They mature very even and will stand closer planting than most sorts.

***EXTRA EARLY EGYPTIAN SPECIAL**—This strain has had our personal selection and produces extra early beets with small leaves and small tap roots. The roots are of rather flattened shape and the flesh is dark blood red and of finest quality.

***DETROIT DARK RED SPECIAL**—Splendid for market or home garden and popular with canneries. Roots nearly round, very uniform and of medium size; flesh tender and blood red. We carry an extra select strain. The best canning beet. The outstanding beet for high quality.

STRAWBERRY CROSBY—Extremely early with roots more globe shaped than the old Egyptian. Flesh very tender and sweet and rich vermilion red. The exterior color is strawberry red.

GOOD FOR ALL—An excellent new canning variety developed from Detroit Dark Red. Roots small, globular, smooth and deep crimson color.

MANGEL BEETS

PRICES ON MANGELS UNIFORMLY: Pkt. 5c; oz. 10c; ¼ lb. 20c; lb. 60c; postpaid.

GOLDEN TANKARD—A smooth, yellow-fleshed mangel of large size, growing largely above ground, making it easy to harvest.

GIANT HALF SUGAR—Cross between a mangel and sugar beet. Flesh white and exceedingly rich.

SUTTON'S YELLOW GLOBE—Giant, yellow roots of high quality. Easy to harvest. Produces heavy tonnage per acre.

DANISH SLUDSTRUP — Long, reddish-yellow; grows well above the ground and is easy to pull. Awarded first-class certificate by Denmark.

GIANT YELLOW ECKENDORF—Giant, smooth, long roots of cylindrical shape, weighing up to 20 pounds each and growing two-thirds above ground. Solid white flesh with high food value.

MAMMOTH LONG RED—Selected strain of this old favorite. Heavy cropper.

MONEY MAKER—Most resistant to frost of any. White exterior skin; white flesh. Long roots partly out of ground.

SUGAR BEETS

KLEIN WANZLEBEN — The best for making sugar. Write your agricultural college for instructions on making sugar. It is also valuable for feeding purposes. Pkt. 5c; oz. 15c; ¼ lb. 30c; lb. 90c.

CORN SALAD

LARGE SEEDED—Sow in spring, in drills one foot apart; it will mature in 6 or 8 weeks. For winter and early spring use, sow in drills in August and September. Pkt. 5c; oz. 20c; ¼ lb. 65c.

CRESS

FINE CURLED (PEPPER GRASS) — Grows quickly from seed. Sow thinly in drills. Should be planted at intervals as it runs to seed quickly. Pkt. 5c; oz. 15c; ¼ lb. 45c.

— — — — —
 We are organized to give quick service.
 Except for heavy rush periods, we mail out orders the same day as received.
 — — — — —



Beet, Detroit Dark Red Special

CELERY

FLORIDA GOLDEN—A larger, taller, more vigorous type of Golden Plume. Pkt. 10c; oz. 70c; ¼ lb. \$2.00.

GOLDEN PHENOMENAL—A giant golden celery with larger and taller stems than Golden Plume. A strong, vigorous grower with more than usual resistance to disease. Recommended for early planting. Pkt. 10c; oz. 70c; ¼ lb. \$2.00.

GOLDEN SELF BLANCHING TALL STRAIN—The plants grow very tall and weigh very heavy. The stalks are wide and rather flat, while the quality is extra fine, being more free of strings than the old strain. It is valuable for local markets and also in dry climates where the old strain grows too short. This strain is very early and is largely adapted for early crops. There is a big demand for this strain. Pkt. 10c; oz. \$1.00; ¼ lb. \$3.50.

UTAH WINTER—This remarkable late celery is the finest quality of any we have ever tried. It has been largely grown around Salt Lake and wherever shipped it commanded high prices on account of its splendid quality. Plants sturdy, compact and solid. Very free from strings. Soil bleaching seems to give the best quality and when properly bleached the stalks are pure white, nutty and crisp. Pkt. 10c; ¼ oz. 35c; oz. \$1.00; ¼ lb. \$3.50.

GOLDEN PLUME SPECIAL—A cross between Easy Blanching and Golden Self Blanching that is very hardy and unusually free from blight. We carry a fine strain and popular with gardeners. Pkt. 10c; ½ oz. 40c; oz. 70c; ¼ lb. \$2.00.

CELERIAC or **TURNIP ROOTED CELERY, EUREKA**—The roots are turnip shaped and are used for soups and stews. They are very hardy and will stand in the open all winter in the Coast regions. Pkt. 5c; oz. 25c; ¼ lb. 90c.

ENDIVE

Culture similar to lettuce. The outer leaves should be tied over the head to bleach.

LARGE GREEN CURLED—One of the best sorts. Pkt. 5c; oz. 20c; ¼ lb. 50c.

EGG PLANT

Start in hot beds like tomatoes. Set 2½ feet in the rows and 3 feet between.

BLACK BEAUTY—The earliest and best of the large fruited varieties. Color rich, lustrous purplish black. Pkt. 10c; ½ oz. 35c; oz. 65c; ¼ lb. \$2.00.

CABBAGE

CULTURE—Early varieties should be started in cold frame in January and February, or sowed the fall previous. They can be grown in a hot bed, but this is not so good, as the plants become tender. The earliest cabbage can be grown by sowing the seed in August or early September, then transplant to the field in October. For late, plant in open ground May 1st, transplant June 15 for fall, and July 1st to 20th for winter cabbage, in rows 3½ feet apart, from 25 to 42 inches in the row, according to the richness of the soil, size and variety. Do not crowd them. They do best in rich, loamy soil, fertilized with barnyard manure of any kind and applying our Garden Grow fertilizer as directed. Early Jersey Wakefield, Large Wakefield, Early Express, Danish Roundhead, All Head Early and Oregon Ballhead can be sown in the fall for spring and summer cutting. They seldom run to seed.

PRICES ON CABBAGE SEED are uniformly as follows, unless otherwise noted: Pkt. 5c; oz. 30c; ¼ lb. \$1.00; lb. \$3.00; postpaid.

***GILL'S OREGON BALLHEAD**—The acknowledged leader among Northwest growers for a main crop winter cabbage. We have developed this strain until it excels all others for solidity, resistance to aphid or freeze injury. It is unquestionably the best cabbage for crating or general market purposes. The outer leaves are deep green and will hold their color weeks after cutting. It is the best keeper of all, and every plant will head solid if given half a show. It will stand later planting than any winter sort, and still produce solid heads. More of our seed, of this variety, is planted in the Northwest than any other kind for winter cabbage. Pkt. 10c; oz. 50c; ¼ lb. \$1.50; lb. \$5.00.

SOLID SUMMER—A new second early main crop cabbage for market or kraut. In season it matures between Copenhagen Market and Glory of Enkhuisen. Extra solid, round deep heads that stand long without cracking. The originator claims it out-yields Glory of Enkhuisen. Pkt. 10c; ½ oz. 50c; oz. 90c; ¼ lb. \$3.00; lb. \$10.00.

DANISH BALLHEAD—Imported seed of the short stem type. It matures earlier than Oregon Ballhead. Medium sized, solid heads.

GOLDEN ACRE—It is claimed to be the earliest round headed cabbage and that it matures before Early Jersey Wakefield. The heads are firm with few outer leaves and average about four pounds. Pkt. 10c; oz. 50c; ¼ lb. \$1.35; lb. \$4.50.

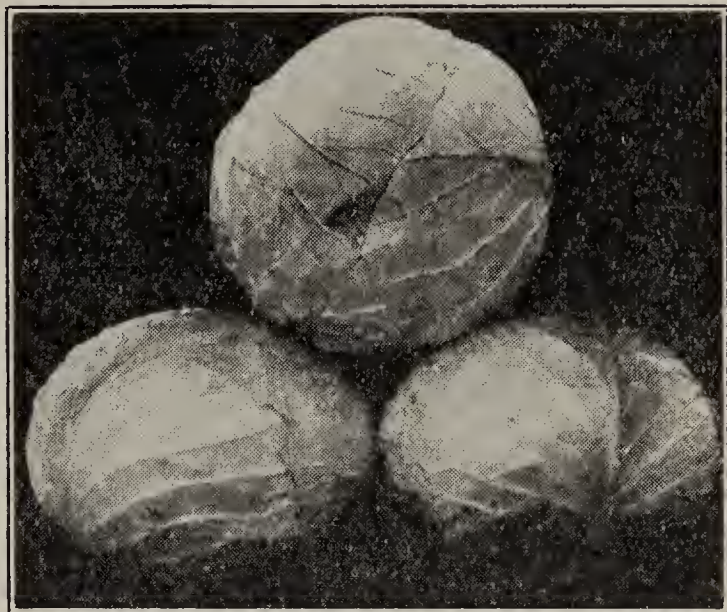
DANISH ROUNDHEAD—About two weeks earlier than Oregon Ballhead. The heads are larger and in demand for kraut purposes. It does not withstand aphid or freezing like Oregon Ballhead. Seed from carefully selected heads.

GLORY OF ENKHUISEN—The best variety for summer or fall crops, for its tendency is to produce large heads even in dry weather. It can also be used for early spring crop. It is not satisfactory as a winter cabbage. Very brittle and sweet.

EXTRA EARLY COPENHAGEN MARKET—A strain of Copenhagen Market selected for extreme earliness and maturing a week to ten days ahead of the regular strain.

COPENHAGEN MARKET—Good sized, round heads, maturing with Large Wakefield, usually weighing 5 to 8 pounds.

AMERICAN SAVOY—The best main crop Savoy cabbage; quite firm, large heads with curly foliage.



Gill's Oregon Ballhead

ALL HEAD EARLY—A second early, flat headed sort, very sure heading and little subject to bursting. Extra fine for kraut. Very desirable for fall.

BIG STRAIN WAKEFIELD—Larger than Early Jersey Wakefield and one week later. Valuable crop to precede Charleston Wakefield. Pkt. 10c; oz. 40c; ¼ lb. \$1.20; lb. \$4.00.

***EARLY JERSEY WAKEFIELD SPECIAL**—This old favorite is still the most valuable for the main crop of early cabbage. We have secured a special strain with solid heads and few outside leaves. It also matured the earliest of some twenty strains we tested. Pkt. 5c; oz. 40c; ¼ lb. \$1.20; lb. \$4.00.

EXTRA EARLY EXPRESS—Five to seven days earlier than Early Jersey Wakefield, producing pointed, firm heads of fair size.

LARGE WAKEFIELD or CHARLESTON—Similar to Jersey Wakefield, but half again as large and ten days later.

STONEHEAD RED—Deep red, solid heads, resembling Oregon Ballhead in shape. Exceptionally solid and of good size.

CAULIFLOWER

CULTURE—For early cauliflower, the same culture as for early cabbage may be used. For late cauliflower, in the description of the varieties offered, the time of planting seed and plants is given. Cauliflower does best in a rich, loamy soil, not a cold, wet location. Plant 2½ to 3½ feet in rows, and 3½ feet between rows. As soon as the heads are large enough to soon be exposed to the light, tie or break the leaves carefully over the head to keep the light away from them. Great care should be used in growing plants of any of the early sorts, that they receive no severe check in their growth, as this will cause them to produce premature heads. Success can be had with early varieties by planting the seed in the field where they are to grow, even as late as July 10. However, the soil should be thoroughly prepared and several seeds put in a hill, thinning down to one plant when they have reached transplanting size.

HENDERSON SNOWBALL—A very popular Snowball type extensively grown for shipping in the Portland territory. Reselected to produce exceptionally white, solid heads well protected with foliage. We recommend this strain for shipping. Pkt. 15c; ¼ oz. 65c; oz. \$2.00; ¼ lb. \$6.00; lb. \$22.00.

CATSKILL SNOWBALL—A selected strain of Snowball Cauliflower that is popular with shippers. The flower is solid, white and uniform, and of even surface. This is one of the best commercial strains and is very popular in the Portland shipping district. Pkt. 15c; ¼ oz. 65c; oz. \$2.00; ¼ lb. \$6.00; lb. \$22.00.

(Cauliflower—Continued)

SUPER SNOWBALL—An outstanding new early variety producing heads of uniform size, shape and type. The heads are almost round with pure white, smooth curd. Tall foliage protects the heads. One of the best for early spring plantings. Pkt., 15c; ¼ oz. 75c; oz. \$2.50; ¼ lb. \$7.50; lb. \$28.00.

GIANT EASY BLANCHING—The large, solid, pure white heads are produced near the ground on short stems but the leaves are extra long, while the inner leaves fold closely about the head, making them almost self protecting. This self protecting habit insures a greater number of first grade heads and the long leaves protect the heads in hauling or crating. The plants have strong vitality and are unusually free from disease. Practically every plant makes a fine head. For fall cutting sow the same as Gilt Edge. Tests for three years prove this sort also valuable for early spring cutting. Pkt., 10c; ¼ oz. 75c; oz. \$2.50; ¼ lb. \$8.00; lb. \$30.00.

GILT EDGE or MT. HOOD SNOWBALL—Very large, heavy heads of finest quality. The flower is quite smooth and regular and pure white when bleached. For fall use (October cutting) plant the seed June 1st to 10th and transplant July 15th to 25th. This variety is popular with many large growers. Pkt. 10c; ¼ oz. 65c; oz. \$2.00; ¼ lb. \$6.00; lb. \$20.00.

DANISH GIANT DRY WEATHER—The best sort for September markets. Extremely hardy and will withstand dry weather better than other sorts. The large, pure white heads are heavy and compact. For early fall use, plant the seed about April 15th and transplant about July 1st to 10th. The seed can also be planted June 1st to 10th and transplanted July 20th to 25th. Pkt. 10c; ¼ oz. 70c; oz. \$2.00; ¼ lb. \$6.00; lb. \$20.00.

ALL SEASONS—Probably a cross between Algiers and Early Snowball. The only Snowball type that is free from foolheads which result from standing in the plant bed too long. It is also more free from root maggot injury than other Snowball sorts and is the best sort for growing in the summer as it withstands heat exceptionally well. Ideal for plant growers on account of its unusual vitality. Pkt. 10c; ¼ oz. 45c; oz. \$1.25; ¼ lb. \$4.00.

VEITCH'S AUTUMN GIANT SPECIAL (Italian Type)—A hardy, tall-growing cauliflower, making extra large white heads. The leaves are dark green and being extra long can easily be broken over the heads to protect them. Remarkably vigorous and thrifty. For late cauliflower, season of November and December, sow seed in open bed May 1st, transplant July 1st to 15th. Pkt. 10c; ½ oz. 55c; oz. \$1.00; ¼ lb. \$3.00; lb. \$10.00.

BROCCOLI

***ST. VALENTINE OREGON SPECIAL**—The best sort for spring shipment, the solid, handsome, white heads being of immense size and ready in February. It is extensively grown around Roseburg, Oregon, for Eastern shipment.

This special stock was grown by ourselves and is well typed. It is much earlier than the imported strain and very hardy. Much Oregon grown broccoli seed is inferior, but you will find this strain well developed for commercial crops. Pkt. 10c; ¼ oz. 35c; oz. \$1.00; ¼ lb. \$3.00; lb. \$10.00.

ST. VALENTINE IMPORTED—This strain makes splendid commercial heads, maturing about 2 to 3 weeks later than our special stock above. The seed is imported from the originator in England. In most localities it is desirable for growers to plant with both the early and late strain so as to avoid over-production at any one time. Pkt. 10c; ¼ oz. 35c; oz. \$1.00; ¼ lb. \$3.00; lb. \$10.00.

MAMMOTH WHITE—Season December to February. Long, tapering, heavy ribbed leaves; inner leaves curling about the solid white head. Pkt. 10c; ¼ oz. 35c; oz. \$1.00; ¼ lb. \$3.00.

REDUCED PRICES

You may order any three 10-cent packets for 25c or any three 15-cent packets for 40c postpaid. This offer applies to packets only.



Green Broccoli, Improved Early Calabrese

GREEN BROCCOLI

IMPROVED EARLY CALABRESE—A valuable Italian vegetable forming heads of deep green, just about the same color as the foliage. After the main head is cut smaller heads branch out below. It is very tender, nutritious and delicious, and can be raised as easily as cabbage. Plant the seed May 15th and transplant July 25th to August 15th, in the same manner as other cauliflower or broccoli. It is very hardy and is not injured by light, so needs no protection. Light frosts will not injure it. Very easy for the amateur to grow and it will soon command a large market. Pkt. 10c; ¼ oz. 25c; oz. 60c; ¼ lb. \$1.75; lb. \$6.00.

NEW LATE CALABRESE—A late maturing sort. Valuable to lengthen the season. Pkt. 10c; ¼ oz. 50c; oz. \$1.50; ¼ lb. \$5.00.

PURPLE ITALIAN—This variety heads like cauliflower, stems green, flower purple on top, but this color disappears when cooked. Best flavored of the green broccoli. Same season as Autumn Giant Cauliflower. Pkt. 10c; ¼ oz. 50c; oz. \$1.50.

HERB SEEDS—FOR PLANTING

ANISE—Used as a cordial and for garnishing and flavoring. Seeds have an agreeable aromatic taste. Pkt. 10c.

BASIL (Sweet)—The leaves are used for flavoring soups, stews and highly seasoned dishes. Pkt. 10c.

CARAWAY—Grown for the seeds, which are used extensively for flavoring of bread, pastry, etc. Pkt. 10c.

CATNIP or CATMINT—The leaves are used for seasoning. It also makes an excellent bee pasture. Pkt. 10c.

CORIANDER—The seeds are used in the manufacture of liquors and confectionery. Pkt. 10c.

DILL—Dill is very popular upon the markets and will give the grower splendid returns. We carry the large variety. Pkt. 5c; oz. 15c; ¼ lb. 30c; lb. 85c.

FLORENCE FENNEL—An Italian vegetable with thick leaf stem. It is served boiled or sliced; also cooked in soups. It is easily grown. Pkt. 5c; oz. 25c; ¼ lb. 90c.

HOREHOUND—Leaves used for seasoning. Pkt. 10c.

MARJORAM (Sweet)—The leaves and the ends of the shoots are esteemed for seasoning in summer and are also dried for winter use. Pkt. 10c.

ROSEMARY—The aromatic leaves are used for seasoning. Pkt. 10c.

SAGE—Hardy perennial, extensively used for seasoning. Pkt. 10c.

SUMMER SAVORY—A hardy annual. The dried stems, leaves and flowers are extensively used for flavoring, particularly in dressings and soups. Pkt. 10c.

THYME—Used for seasoning. Pkt. 10c.

CARROT

CULTURE—Carrots may be planted from March to June. We prefer to plant from May 10 to 25; they will then miss many of the spring weeds and will stand through the dry season better, making a better quality of roots. Those who plant any quantity should use a good drill, as it lessens the work and gives a more even stand. As soon as they are up, use a wheel hoe, following this with a harrow tooth cultivator. Plant one-half to one inch, according to weather conditions.

PRICES—Unless otherwise stated, prices are uniformly as follows: Pkt. 5c; oz. 20c; $\frac{1}{4}$ lb. 40c; lb. \$1.00

TABLE GEM—We believe this to be the finest of all table carrots. The roots are 5 to 6 inches long, of even diameter with blunt points. It is nearly coreless, exceptionally tender and sweet and is delicious eaten raw. It is very early and the tops are small. It is suited for forcing or outside culture. The high quality makes it ideal for home gardens, public market and roadside stands. Pkt. 10c; oz. 25c; $\frac{1}{4}$ lb. 50c; lb. \$1.50.

IMPERATOR—A new market carrot. Roots long, stump rooted; smooth and of rich red color with small core.

DANVER'S HALF LONG—The standard stock carrot, but we do not recommend it for table use as compared to the Chantenay. It is a heavy cropper. Our strain is extra good.

CHANTENAY—A good, all around carrot. The roots are very smooth, stump rooted and of good quality.

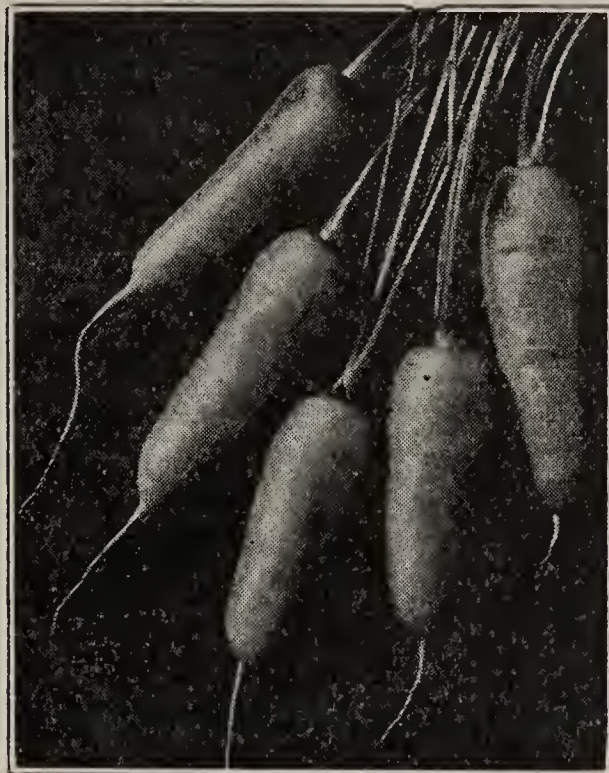
GILL'S SPECIAL NANTES—The roots are bright orange, 5 to 6 inches long and very uniform. They have a very small core and are exceptionally tender and sweet. The roots are rather slender, of even diameter and of early maturity. Very desirable for market, especially for bunching, and also splendid for the home garden. We offer a fine, re-selected strain grown from our stock seed. Pkt. 10c; oz. 20c; $\frac{1}{4}$ lb. 40c; lb. \$1.00.

EARLY SCARLET HORN—Very early with small tops. Bright orange red; three inches long and top shaped. A valuable first early sort.

LARGE WHITE BELGIAN—Long-rooted white stock carrot; very heavy yielder.

WHITE MASTODON—Very heavy, short, tapering, smooth roots.

MORSE'S BUNCHING—Long, slender roots of good color and quality. Pkt. 10c; oz. 25c; $\frac{1}{4}$ lb. 50c; lb. \$1.50.



Carrot, Oregon Chantenay

OREGON CHANTENAY—A special strain of our own selection, producing very smooth roots about one inch longer than the regular strain and of more even diameter the whole length of the carrot. It is very popular with gardeners. The best carrot for bunching and is rapidly taking the lead wherever tried. The tops are of medium size, tough and wiry, hence the carrots seldom break from the bunches. The roots are deep red color with small core. Very high quality. Pkt. 10c; oz. 25c; $\frac{1}{4}$ lb. 40c; lb. \$1.10.

SWEET CORN

The first requisite for success with corn is acclimated seed—Note those with star.

CULTURE—Prices paid for first early corn will pay the grower to take chances on early planting. For this planting use 4 to 5 seeds per hill and cover one inch deep. Space hills 28 to 36 inches, and rows $3\frac{1}{2}$ feet, allowing two stalks to the hill, or as some prefer, and we think this gives the best results, plant 15 inches between hills, and thin to one stalk; this gives all the stalks an even show. April 1 to May 1 is a good season for early corn, of course, depending on the weather. May 15th to 25th is good for the later sorts, as they do not resist damp, cold weather so well as the early sorts.

Corn will not fill well unless the patch planted is blocked out; those planting small quantities should make the patch square, or nearly so. This will permit the pollen to blow down on the silk, fertilizing the ears. Early corn may be planted in succession up to June 25. Use Garden Grow fertilizer.

***GOLDEN GEM**—A first early variety with outstanding quality. Eight to ten rows of rich golden grains. Medium sized ears on small stalks. A few days earlier than Golden Early Market. The quality is equal to Golden Bantam. Requires rich soil for best results. Pkt. 10c; $\frac{1}{2}$ lb. 20c; lb. 35c. E. or F., lb. 25c; 10 lbs. @ 20c.

***GILL'S EARLY GOLDEN SWEET**—Earliest of the golden varieties with medium large ears of highest quality. Averages 12 rows of kernels to the ear. Ears average about the same size as Improved Bantam with stalks three and one-half feet tall. We recommend this for market and home gardens. The sweetest first early variety we have tested. Pkt. 10c; $\frac{1}{2}$ lb. 25c; lb. 40c. E. or F., lb. 30c; 10 lbs. @ 25c.

***GILL'S GOLDEN EARLY MARKET**—The earliest large, true sweet corn of golden color. It is a cross between our Improved Golden Bantam and Early White Market. Just as early as Early White Market and of better quality. According to our own trials and reports from all over the country, it is earlier and larger than Golden Sunshine. It is the outstanding early corn and is a money-maker for gardeners. The stalks grow taller and more vigorous than Early Market, while the ears are larger. For home use or market, be sure to plant this variety. It matures two weeks earlier than Improved Golden Bantam. Large, golden ears, tightly filled with large sweet grains of high quality. Pkt. 10c; $\frac{1}{2}$ lb. 20c; lb. 35c. E. or F., lb. 25c; 10 lbs. @ 17c; 25 lbs. @ 16c; 100 lbs. @ 15c.

Customers paying by Post Office Money Order or Express Money Order, may select 10c extra in seeds.

(Sweet Corn—Continued)

***GILL'S EARLY WHITE MARKET**—For years this has been recognized as the earliest true sweet corn and we have splendid reports from all over the United States. It is 10 to 14 days earlier than the Portland Market, which we have discontinued in favor of Gill's Early Market. The immense ears are well filled with large, sweet, plump, white grains set 12 to 14 rows to the cob. On account of its extreme earliness and large size market gardeners get very profitable prices. For earliest results use plenty of fresh horse manure and Garden Grow fertilizer. Pkt. 10c; ½ lb. 20c; lb. 35c. E. or F., lb. 25c; 10 lbs. @ 18c; 25 lbs. @ 16c.

***GILL'S IMPROVED GOLDEN BANTAM**—Superior to the original Golden Bantam in quality and nearly twice the size. Nearly all ears carry 12 rows of deep, rich, golden yellow kernels set close upon the cob. Do not compare this with the original strain, as it is far superior in every respect, and any gardener who places this corn on the market will command better sales and prices.

It has no superior for market, table, canning or drying. We carry the exclusive seed of this improved strain. Remember, we are improving this variety every year, and if you wish the up-to-date selection buy direct from us. We have received many letters of praise for this corn and its good qualities represent 20 years of earnest work on our part. Many of our customers will have nothing else. Pkt. 10c; ½ lb. 20c; lb. 35c; E. or F. lb. 25c; 10 lbs. @ 18c; 25 lbs. @ 17c; 100 lbs. @ 16c.

***GOLDEN CROSS BANTAM**—A new hybrid sweet corn especially valuable where Stewart's disease (wilt) makes it impossible to grow ordinary varieties. Excellent for market gardeners and canners. Ears 10 to 14 rowed, slightly lighter yellow than Improved Golden Bantam. Matures very uniformly. Pkt. 15c; ½ lb. 40c; lb. 75c.

***GOLDEN GIANT**—Large, golden yellow ears of high quality. A cross between Howling Mob and Golden Bantam. The stalks grow nearly as tall as Howling Mob with ears almost as large. Matures about ten days after Improved Golden Bantam. Popular yellow corn for late markets. Can be planted for late use with fine success. Pkt. 10c; ½ lb. 20c; lb. 30c. E. or F., lb. 25c; 10 lbs. @ 17c.

***OREGON EVERGREEN**—While this is not a first early corn, this strain is considerably earlier than Stowell's Evergreen, which in general character it resembles. Pkt. 10c; ½ lb. 20c; lb. 30c. E. or F., lb. 25c; 10 lbs. @ 17c; 100 lbs. @ 15c.

STOWELL'S EVERGREEN—Standard white variety later than Oregon Evergreen. Used for market and ensilage. Prices same as Oregon Evergreen.

YELLOW SWEET CORN COLLECTION

We offer one packet each of Improved Golden Bantam, Golden Giant and Golden Early Market for 20c; ½ lb. each for 50c; 1 lb. each for 75c, postpaid. This makes a splendid succession if planted at the same time.

FIELD CORN

The growing of field corn has now reached a stage where it is past being an experiment, and with acclimated seed there is no difficulty to obtain success. We do not and will not handle any but local grown seed of Dent corn and our customers may feel sure of getting acclimated seed.

***ALBANY HYBRID**—A cross between Minn. No. 13 and Pride of The North. It has the earliness of the No. 13, and the deep grain and small cob of the Pride of The North. It has been given careful selection and is, we believe, one of the finest sorts for grain or ensilage. It is very early and produces large, heavy ears on tall stalks. Large pkt. 10c; lb. 25c. E. or F., lb. 20c; 10 lbs. @ 10c; 100 lbs. @ \$6.50.

MINN. No. 13—An early variety well suited to the Northwest. Grains golden yellow, deep and heavily dented. Price same as Albany Hybrid.

HORSE RADISH

Plant in the spring 18 to 24 inches apart. Set the roots small end down. Doz., 50c; 100 for \$2.00; postpaid. Write for prices on quantities.

CUCUMBERS

Plant 4 feet each way in rich, loamy soil, from April 15 to May 15, 8 to 10 seeds to hill; thin to two good vines. Cover seeds one inch deep and press.

THE VAUGHAN OR LONGFELLOW—The best slicing cucumber to date for market purposes. The cucumbers are long, straight and of even diameter. When ready for slicing they will average a foot long and about one and one-half inches in diameter. They are a deeper green than Davis Perfect and the quality is extra fine. Pkt. 10c; oz. 35c; ¼ lb. \$1.00; lb. \$3.50.

IMPROVED TELEGRAPH—The finest hothouse or forcing cucumber; handsome fruits of dark green color that attain a length of about twenty inches. Very prolific, crisp and of superior quality. Pkt. 35c.

DAVIS PERFECT—A strong, vigorous grower, producing heavy crops of uniform, long, dark green cucumbers. When placed on the market they hold their color and do not turn yellow like most other varieties. Pkt. 5c; oz. 25c; ¼ lb. 75c; lb. \$2.50.

IMPROVED EARLIEST OF ALL—Claimed to be the earliest variety. An exceptionally vigorous grower that produces immense crops of handsome cucumbers of medium length, dark green in color, desirable for slicing and pickling. Pkt. 5c; oz. 25c; ¼ lb. 75c; lb. \$2.50.

ARLINGTON WHITE SPINE—There are many strains of White Spine, but we consider this the best. Pkt. 5c; oz. 20c; ¼ lb. 60c; lb. \$2.00.

SPECIAL LONG GREEN—Extra long and large; handsome dark green; fine for slicing or pickling; does not turn yellow at blossom end. Pkt. 5c; oz. 30c; ¼ lb. 90c; lb. \$3.00.

BOSTON PICKLING—The most popular pickling sort, medium sized and vigorous. Pkt. 5c; oz. 20c; ¼ lb. 60c; lb. \$2.00.

SMALL GHERKIN—A small, round, prickly variety used only for pickles. Pkt. 5c; oz. 20c; ¼ lb. 60c; lb. \$2.00.

LEMON CUCUMBER—Resembles a lemon, both in color and form. A splendid sort, either for pickling or slicing. Pkt. 5c; oz. 25c; ¼ lb. 75c.

POP CORN

***SPANISH PEARL**—Large, round, smooth, white grains. Best commercial sort. Pkt. 10c; ½ lb. 20c; lb. 30c. E. or F., 10 lbs. @ 20c.

***BLACK BEAUTY**—Large, blunt, black grains on ears 6 to 8 inches long. The grains pop white; fine quality. Pkt. 10c; ½ lb. 20c; lb. 30c.

AUSTRALIAN HULLESS (Improved White Rice)—Small, sharp pointed, white grains with very thin skin. Extra fine quality. Pkt. 10c; ½ lb. 20c; lb. 30c.

KALE EDIBLE

Culture. same as that of cabbage.

TALL GREEN SCOTCH CURLED—Tall and finely curled leaves. Pkt. 5c; oz. 20c; ¼ lb. 45c; lb. \$1.50, postpaid.

DWARF GERMAN—Finely curled, low growing. Pkt. 5c; oz. 20c; ¼ lb. 45c; lb. \$1.50.

GEORGIA COLLARDS—Valuable greens for table use and stock feeding. They grow 2 or 3 feet tall and form loose, open cabbage-like heads. They withstand our winters and can be used all winter long. Pkt. 5c; oz. 20c; ¼ lb. 45c; lb. \$1.50.

KALE FOR FEEDING

***JERSEY KALE**—Large, heavy, massive plants with giant, broad leaves. It gives enormous production and is becoming very popular for feeding. This variety produces by far the largest crop. We offer seed of our own growing. Pkt. 5c; oz. 10c; ¼ lb. 25c; lb. 75c; 3 lbs. or more @ 70c; postpaid.

***GIANT MARROW**—Enormous plants on tall, heavy stalks. The leaves are very broad and heavy and combined with large stalks, often 3 inches in diameter, make a heavy yield of feed. Pkt. 10c; oz. 20c; ¼ lb. 50c; lb. \$1.75.

***SELECTED THOUSAND HEADED**—A fine strain and very popular for feeding. Pkt. 5c; oz. 10c; ¼ lb. 20c; lb. 60c.

***WINTER PROOF**—About the same type as Thousand Headed, but much more resistant to frost. It came through the winter when other varieties killed out entirely. Pkt. 5c; oz. 15c; ¼ lb. 35c; lb. \$1.00.

LETTUCE

Can be planted almost any time of the year. Give head varieties plenty of room, at least 15 inches apart each way. Cover one-half inch deep. Referring to head lettuce, it is generally agreed among large growers that aging of the seed produces earlier and firmer heads, besides making them more sure heading.

PRICES ON LETTUCE SEED, unless otherwise noted, are as follows, postpaid: Pkt. 5c; oz. 15c; ¼ lb. 35c; lb. \$1.25.

NEW YORK (See strains listed below)—This variety is the most popular lettuce in America. It makes large, solid heads and bleaches very white and brittle. During the summer months this lettuce is shipped East from Oregon and Washington, and, in the winter, it is shipped to our Northern markets from California. We have a very large trade with market gardeners and sell New York seed to plant thousands of acres each year. Do not gamble with your crop by buying cheap lettuce seed. Intensive selection has resulted in several strains of New York, five of which we list below.

IMPERIAL D—A new strain of New York which reports indicate to be a good all-season type. Seed supply limited. Pkt. 10c; oz. 45c; ¼ lb. \$1.35; lb. \$4.00.

NEW YORK "B"—Larger than No. 12; more burn resistant and of excellent quality. Recommended for summer heading. Pkt. 10c; oz. 35c; ¼ lb. \$1.00; lb. \$3.50.

NEW YORK NO. 12—A large, early type with round, flat heads. Sure heading and the best strain for early planting, also valuable for summer cutting, as it is resistant to slime or sun scalding. Very popular with growers.

NEW YORK, ROUND FLAT—This strain grows to medium large size, matures quite early, is very sure heading and is round flat in shape. The foliage is medium dark green. This is a great favorite with shippers, the shape and size being ideal for crating. It has proven very valuable for fall cutting.

IMPERIAL F—A strain of New York, resistant to brown blight and mildew. Firm, deep green heads of uniform size; larger than No. 12. Reports indicate it is successful for spring, summer and fall.

PRICES ON NEW YORK TYPES—Three above types 1 YEAR SEED. Pkt. 5c; oz. 20c; ¼ lb. 50c; lb. \$1.50. 2 YEAR SEED. Pkt. 5c; oz. 25c; ¼ lb. 65c; lb. \$2.00.

CREAMY HEART—An excellent butterhead type. Hardy for early planting. Medium size. Pkt. 5c; oz. 25c; ¼ lb. 85c.

ICEBERG—Produces large, firm heads, very tender and brittle. Withstands hot weather better than most sorts.

HANSON—Large, firm heads; medium green.

LOOSE LEAF LETTUCE

TOMHANNOCK—A beautiful, quick growing lettuce. Leaves large, bordered reddish brown; very tender and sweet.

GRAND RAPIDS—The standard hothouse lettuce for forcing; also does fine in the open ground. Loose leaves with light fringed edges.

COS LETTUCE

EARLY WHITE SELF-FOLDING—Leaves yellowish white, crisp and tender; forms sugar loaf heads; bleaches better if tied. See prices above.

CHICKEN LETTUCE

A rough, tall, loose plant for feed only. Grows 4 feet high and supplies abundant green feed. Fine tonic for laying hens. See prices above.

LEEK

MONSTROUS CARENTAN—Culture same as onions. Large size. The best. Pkt. 5c; oz. 30c; ¼ lb. 75c; lb. \$2.35.

KOHL RABI

EARLY WHITE VIENNA—The best for table use. Kohl Rabi should be grown more, as it is a delicious vegetable, cooked like turnips. Transplant like cabbage in July; rows 3 feet wide and 1 foot in rows. Pkt. 5c; oz. 25c; ¼ lb. 85c; lb. \$2.50.

PARSLEY

TRIPLE MOSS CURLED—Dark green moss-like leaves. Pkt. 5c; oz. 20c; ¼ lb. 35c; lb. \$1.00.

HAMBURG or TURNIP ROOTED—For flavoring soups and stews. Pkt., 5c; oz., 20c.



Lettuce, New York, Round Flat

PARSNIPS

Culture same as carrots, except time of planting, which should be about May 1st.

***GILL'S TENDER HEART**—On account of the superior quality of this parsnip, our family has retained this seed annually for over thirty years. Unlike other parsnips, the heart is tender, never tough; roots are smooth, hollow crown, thick and heavy at top, tapering abruptly, making it easy to dig. We have the exclusive seed. Try this unexcelled parsnip. Pkt. 5c; oz. 20c; ¼ lb. 35c; lb. 85c.

***GILL'S SUCCESS**—Longer roots than the Tender Heart variety and better adapted to market purposes, as it is not so thick at the crown and will bunch better. The smooth, white roots cook tender and sweet. Pkt. 5c; oz. 15c; ¼ lb. 30c; lb. 80c.

SHORT THICK—A small parsnip with small tops; full crown; very early; of excellent quality and easy to pull. Pkt. 5c; oz. 20c; ¼ lb. 45c; lb. \$1.00.

PEPPERS

Start plants in a hot bed or in pots in a warm room in March. Transplant in open ground May 10th to 20th, rows 3½ feet wide, 2 feet in rows.

HARRIS EARLY GIANT—The earliest of the large peppers and exceedingly mild and sweet. It will mature ripe peppers two weeks ahead of Chinese Giant. It is ideal for those localities having short season and also valuable for market where ripe, red peppers are in demand. It averages about 3½ inches long and 2½ inches thick. Pkt. 10c; ½ oz. 40c; oz. 65c; ¼ lb. \$2.00.

CALIFORNIA WONDER—This fine pepper has the heaviest meat of all. Large, blocky fruit, exceptionally mild and sweet. Fruit upright, crimson, measuring 4½ inches long by 4 inches in diameter. Season medium. Pkt. 10c; ½ oz. 45c; oz. 75c; ¼ lb. \$2.25.

WORLD BEATER—One of the best large peppers, being earlier than Chinese Giant. Thick flesh, mild and sweet, 5 inches long by 3½ inches thick. Pkt. 5c; ½ oz. 30c; oz. 50c; ¼ lb. \$1.50.

RUBY KING—Large, attractive fruit about 4 inches long. Bright red when ripe. Thick meat. Pkt. 5c; ½ oz. 30c; oz. 50c; ¼ lb. \$1.50.

CHINESE GIANT SPECIAL—The largest of the mild red peppers and a favorite with gardeners on account of its giant size, thick meat and mild flavor. Pkt. 10c; ½ oz. 45c; oz. 75c; ¼ lb. \$2.50.

LONG RED CAYENNE—Long red peppers; extremely hot. Pkt. 5c; oz. 50c.

MUSKMELON

CULTURE—Loam soil is best, fertilized with rotted manure and Garden Grow Fertilizer. Plant 4 by 6 feet, giving more room for larger varieties. Use 8 to 10 seeds to the hill; cover 1 to 1½ inches deep. When the first leaves appear, thin to two plants. Turn the vines with the row to permit cultivation.

PRICES—Unless noted, prices are uniformly as follows: Pkt. 5c; oz. 15c; ¼ lb. 40c; lb. \$1.25.

***OREGON DELICIOUS**—We introduced this exceptional melon for quality, size and earliness. We predict it will come into general use for a home or market melon. The melons ripen early and produce a heavy crop. They usually weigh 6 to 8 pounds. The shape is round oblong, slightly ribbed and with a creamy green color when ripe. The flesh is salmon, very thick and of wonderful quality. The melons are quite heavily netted and of attractive appearance. The quality is the best of any large melon we ever tried. It is a selection from the Spear melon. Pkt. 10c; oz. 40c; ¼ lb. \$1.00; lb. \$3.00.

THE BENDER—A large, highly flavored, round melon, averaging 5 to 8 inches in diameter and weighing as high as 8 pounds. The flesh is deep orange and delicious. This will make an excellent large melon for the Pacific Northwest. Very early, maturing in 90 to 100 days.

***GOLDEN CREAM**—This giant first early melon is popular with gardeners on account of its earliness, size and attractive appearance. These large melons require more room to grow but are profitable. The meat is a rich orange and very thick, while the exterior is a rich golden cream, well netted. The melons are not ribbed and often weigh 8 to 10 pounds. It is a shy seeder. Oregon grown seed. Pkt. 10c; oz. 35c; ¼ lb. \$1.00.

HALE'S BEST EARLY—On account of its earliness, size and fine shipping and keeping qualities this melon has become very popular. It is larger than the Rocky Ford types; is thoroughly netted and with attractive, thick, orange flesh.

HONEY DEW—(Green Flesh)—A distinct new melon, claimed to be a cross between a casaba and muskmelon. Shape round oblong and color nearly white; flesh thick and extra sweet.

GOLDEN HONEY DEW—Same as Honey Dew in shape, but the flesh is a rich golden salmon.

HEARTS OF GOLD—An orange fleshed melon of uniform medium size and ideal for shipping. The rind is firm and densely netted. The flesh is thick, high colored and delicious.

EXTRA EARLY KNIGHT—An extremely early melon of very high quality and a good shipper. Deep green skin turning to golden at maturity with close grey netting and distinctly ribbed. Flesh thick and very sweet; green blending to light pink.

BURRELL GEM SPECIAL—We supply many of the largest growers in the Northwest. It is a splendid shipper; 4 to 6 inches in diameter; seed cavity small, flesh firm and reddish orange. Largely planted for market in Oregon and Washington. Very high quality.

PERFECTED PERFECTO—Superior shipping melon. Fruits 5½ inches long, almost round; heavily netted; very uniform. Extra thick meat of deep salmon orange; highest quality.

EMERALD GEM—The finest for home garden on account of its high quality and extra earliness. The dark green fruit is of medium size, flattened at both ends. The flesh is thick, sweet and melting with a rich spicy flavor. It will ripen where others fail and nearly every melon is good.

CASABAS

GOLDEN BEAUTY—Bright yellow, about globular in shape and the first to ripen. They will mature in most localities where melons can be grown. Pkt. 5c; oz. 20c; ¼ lb. 45c; lb. \$1.35.

PRESERVING CITRON

Red seeded oval fruits, used for preserving. Pkt., 5c; oz. 20c; ¼ lb. 50c.

VEGETABLE ORANGE

Grows similar to muskmelons; small-sized, round-shaped, orange-colored fruit; fine for sweet pickles and preserves; yields heavy. Pkt. 10c; oz. 40c.



Watermelon, Klondike

WATERMELON

Plant 8 to 10 seeds in hills 6x6. Thin to 2 best vines. Turn vines with the row. Plant May 10th.

BLACK SEEDED ICE CREAM—Round shaped melons with thin, ivory colored skin. Pink meated and is of fine quality. It will keep late into the winter. Very prolific. Matures very early. Pkt. 5c; oz. 15c; ¼ lb. 35c; lb. \$1.00.

KLECKLEY SWEETS SPECIAL—This special strain is the result of careful selection. We supplied seed to many of the largest watermelon growers in the Northwest last season and they are well pleased with the results. This is an early sort, producing good crops of melons 18 to 20 inches long and 8 to 10 inches thick. The skin is dark green without markings, and the flesh is exceptionally sweet. Pkt. 5c; oz. 15c; ¼ lb. 35c; lb. \$1.00.

HUNGARIAN HONEY—A small, round melon with thin rind and rich, red flesh. Extra early and sure to ripen even in the coolest season. Seed very small and flesh exceptionally sweet. The best family melon for the Northwest. Pkt. 5c; oz. 20c; ¼ lb. 50c; lb. \$1.60.

KLONDIKE—A melon of the best quality, being exceptionally sweet and fine. The flesh is very brittle and the fruit oblong. It is a shy seeder, hence the seed is expensive. We carry a selected strain. Pkt. 5c; oz. 20c; ¼ lb. 50c; lb. \$1.50.

STRIPED KLONDIKE—A recent introduction placed on the markets of California. Wherever the melon has been offered on the markets it has replaced other varieties and brought a higher price. It often carries three and four mature melons at one time that easily attain a size of twenty-five to thirty pounds. The seed offered is from the originator. Pkt. 10c; oz. 25c; ¼ lb. 65c; lb. \$2.00.

MUSHROOM

Pure culture Mushroom Spawn. Per brick, 40c; postpaid. E. or F., 35c brick.

MUSTARD

GIANT SOUTHERN CURLED—Large variety with fine curled leaves. Pkt. 5c; oz. 15c; ¼ lb. 25c; lb. 75c.

FORDHOOK FANCY—A handsome, vigorous growing, mild variety, standing a long time before going to seed; leaves bright green, intensely curled and fringed at the edges. Pkt. 5c; oz. 15c; ¼ lb. 25c; lb. 80c.

ONIONS

CULTURE—A rich loam is best fertilized with well rotted manure and Garden Grow fertilizer. Sow seed in February or March if the condition of the ground and the weather will permit. Sow with drill in rows 14 to 16 inches apart; cover half-inch deep. Hoe with wheel hoe as soon as they are up, but do not more than scrape the surface as onions do not stand deep cultivation. Thin them to about 8 plants to the foot. It requires 3 to 4 lbs. of seed to the acre. Onions do well year after year on the same ground.

Seed of the white onions can be planted in the spring, summer or fall for green onions. Those planted in the fall, about September 1st, will produce green onions to winter over for early spring use.

PRICES ON ONION SEED — Unless otherwise stated, prices are uniformly as follows: Pkt. 5c; oz., 25c; ¼ lb. 75c; lb. \$2.50.

***SELECT OREGON YELLOW DANVERS**—This variety is largely planted throughout the Northwest. The onions are large, nearly globe-shaped with small necks; early and heavy yielders. The main variety planted in Oregon and a splendid keeper. The color is a rich coppery yellow.

RIVERSIDE SWEET SPANISH—A giant globe-shaped, yellow onion with small top. Mild, sweet flesh.

GIANT GIBRALTAR — A giant, globe-shaped onion of light straw color. A mild, sweet onion. Fine keeper.

LARGE RED WETHERSFIELD—Large, flattened onions; purplish red.

PRIZETAKER—Extra large onions of mild flavor globe-shaped with small necks; color bright straw.

EBENEZER—Bulbs deep-flat, medium size; dark yellow, very firm, with thick skin. An excellent variety for producing sets.

AUSTRALIAN BROWN—An extra early, sure cropping variety, with long-keeping qualities. Bright reddish-brown skin. Largely used for growing sets. Pkt. 5c; oz. 20c; ¼ lb. 70c; lb. \$2.25.

***WALLA WALLA FRENCH**—Large, early yellow onion of mild flavor. Used by growers in Walla Walla territory for fall planting. Pkt. 5c; oz. 35c; ¼ lb. \$1.00; lb. \$3.50.

WHITE ONIONS

WHITE SWEET SPANISH—Similar in size and shape to Riverside Sweet Spanish but pure white in color.

SOUTHPORT WHITE GLOBE—Handsome globe-shaped white onions noted for keeping qualities and heavy production. Highly recommended as a green bunching onion for spring and summer use. Pkt. 5c; oz. 35c; ¼ lb. \$1.00; lb. \$3.50.

WHITE PORTUGAL or SILVERSKIN—A medium early sort with flattened shape and clear white skin. Extensively planted by gardeners for green onions and is hardier than most sorts to resist frosts. Pkt. 5c; oz. 30c; ¼ lb. 90c; lb. \$3.00.

WHITE BUNCHING—A white variety especially adapted for green onions. The stems are strong, the tops quite tall, while the white meat has good length. Very hardy and slow to run to seed.

GIANT WHITE ITALIAN TRIPOLI—Immense size; white and flat; of quick growth and mild flavor. Often grows 3 to 4 inches in diameter. This variety is good for green bunch onions. Imported seed.

WHITE QUEEN—A small, early, pickling onion with round flat shape. Also used for growing white sets and green bunch onions.

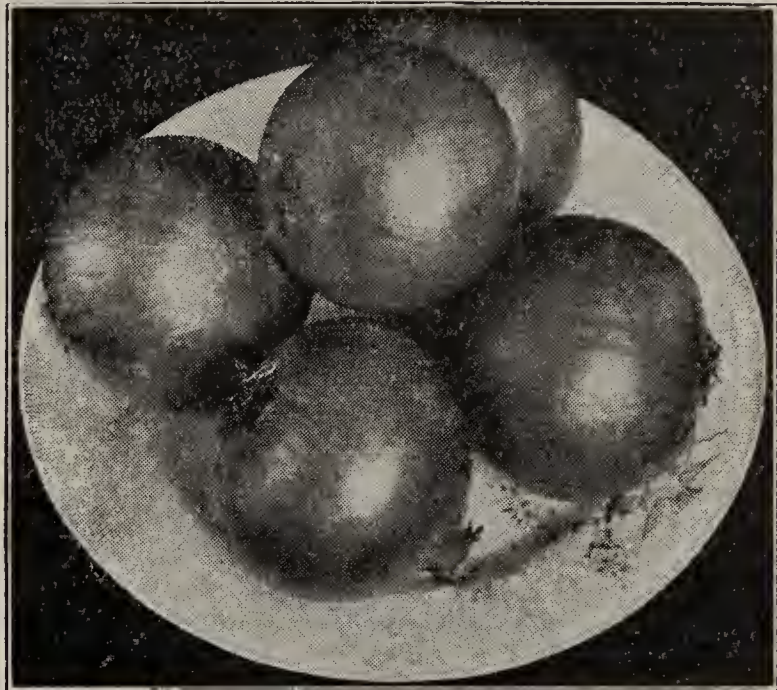
CRYSTAL WAX BERMUDA—A pure white onion, very flat, mild and sweet. Extra early.

EARLY WHITE BARLETTA—The earliest and smallest of the white pickling onions.

JAPANESE GREEN ONION—This onion is grown by Japanese for winter use. They plant early in the spring and cultivate all summer, hilling it up with earth in the fall. The bleached stalk is often a foot long and one inch thick. It is harvested all winter. Pkt. 10c; ½ oz. 30c; oz. 50c; ¼ lb. \$1.50.

ONION PLANTS

BERMUDA and SWEET SPANISH—These plants will grow early onions of very mild flavor. Plant in the spring as soon as weather permits. Price, 1 bundle, about 100 plants, 30c; 2 bundles, 50c; 5 bundles, \$1.00; 10 bundles, \$1.75, postpaid. Write for larger quantities.



Onion, Select Oregon Yellow Danvers

ONION SETS

***BOTTOM SETS**—Small onions grown from seed planted too thickly to reach mature size. They produce green onions in a short time, or if left to grow they will produce nice, large, dry onions earlier than those grown from seed. ½ lb. 15c; lb. 25c; postpaid. E. or F., lb. 20c; 10 lbs. @ 15c.

***SHALLOTS**—Desirable for bunching and early crop. The smallest sets make large bulbs, but the larger ones produce a cluster of medium sized bulbs. Flesh white and mild. ½ lb. 20c; lb. 35c; postpaid.

POTATO ONION SETS—Popular perennial that multiplies each year. ½ lb. 25c; lb. 40c; postpaid.

GARLIC

***LARGE FRENCH**—This giant variety will yield nearly double the common kind. Plant the sets very early in the spring. ½ lb. 25c; lb. 35c.

OKRA

EARLY DWARF GREEN—Very productive, of short, deep green pods; extra early. Pkt. 5c; oz. 15c; ¼ lb. 35c; lb. \$1.00.

POTATOES

Potatoes are not a specialty with us, but we can supply all the leading sorts, such as Earliest of All, Early Rose, American Wonder, Netted Gem, British Queen, Burbank, and others. Write for quotations. **PRICES ON SMALL LOTS**—By mail, postpaid: Lb. 20c; 3 lbs. 50c.

SWEET POTATOES

CULTURE—Set out in rows four feet apart and 15 inches apart in the row, about May 5th to June 1st. Use sandy loam soil in a warm location. Acclimated fresh dug plants are very essential.

PRICES ON PLANTS—Strong, healthy plants of local growth. Doz. 50c; 3 doz. \$1.00; 100 @ \$1.75, postpaid. Write for prices on quantities.

NANCY HALL—Produces good sized tubers of medium length and quite thick in diameter. The flesh is of a rich orange color and very sweet. They produced a nice crop here on our farm last season. It is more like a yam than a sweet potato.

PORTO RICO—A large, reddish skinned sort. Strong, vigorous grower, producing heavy crops.

GARDEN PEAS

CULTURE—Plant as early as the ground can be worked in the spring. Peas will not reach perfection if planted after May 1st, although they will make a fair crop. They should be well rooted before warm weather begins. If planted during February and March, they will mature before the aphid get started. Our Northwest grown seed is acclimated and will give better results. Pea seed planted in winter months should be treated with Semesan. Inoculate all legumes with Nitragin. See page 16.

PRICES ON PEA SEED—Unless otherwise noted: Pkt. 10c; 1/2 lb. 20c; lb. 35c; postpaid. E. or F., lb. 25c; 5 lbs. @ 20c; 50 lbs. @ 19c; 100 lbs. @ 18c.

EARLY VARIETIES

***WORLD RECORD**—An improved Gradus, being earlier and more dwarf; pods slightly larger, containing 7 to 9 peas of high quality. Darker green pods. Height 3 feet. One of the best sorts.

***GRADUS**—A large, deep green podded sort, popular with gardeners. It matures extra early and is quite productive.

***SURPRISE**—The earliest wrinkled pea; fully as early as Alaska and sweeter. Vines 2 feet, pods about the size of American Wonder and fully as sweet flavored as that variety. 7 to 10 days earlier than Gradus and better than Alaska.

***LITTLE MARVEL**—Superior to American Wonder with larger pods and only a few days later. Flavor fully as good. One of the finest dwarf peas.

***HUNDREDFOLD**—Similar to Laxtonian, with darker vines and pods. Popular with market gardeners. One of the best dwarf first early sorts.

***LAXTON PROGRESS**—Dwarf type with pods larger than Laxtonian and a few days earlier. Very large, sweet peas. The heaviest cropper in the dwarf sorts. Splendid for gardeners. This variety is very popular for home and market.

***LAXTONIAN**—Also called Blue Bantam. Enormous pods, well filled on dwarf vines. We recommend this very highly. It is the ideal pea for those who wish large pods on dwarf vines. Peas extra sweet and dark green. This sort has become very popular with market gardeners.

SECOND EARLY PEAS

PACIFIC MARKET—Resembles a darker green Dwarf Telephone but much more productive. Vines two feet tall. The best new variety we have seen. High quality. Bound to become popular with shippers.

***IMPROVED TELEPHONE** (Dark Green or Alderman strain)—This strain is more productive and the pods are deeper green. The pods are larger and the vines are more vigorous, producing enormous crops of large pods containing 9 to 11 peas. The vines grow 4 to 6 feet tall. The peas are large and remarkably sweet. The best Telephone type.

***DWARF TELEPHONE**—We recommend Pacific Market as superior.

***GIANT STRIDE**—A new, heavy-yielding dwarf sort with dark green peas of high quality; pods same shape and season as Alderman; not quite as large; vine grows about 2 feet. This variety recommended for market and home gardens.

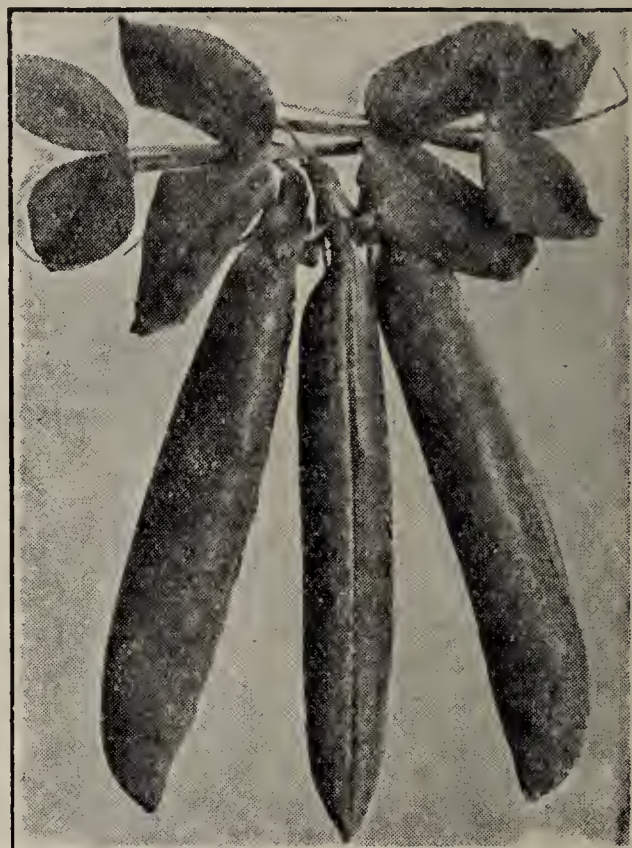
PEAS, LATE VARIETIES

***IMPROVED STRATAGEM**—Medium vines, producing immense pods well filled with large, dark green peas of finest quality. Strong, stocky vines 2 1/2 feet high. The best dwarf late variety.

***GIANT SUGAR** (Edible pods)—The large, broad pods are 5 to 6 inches long and are cooked like snap beans. Vines grow 5 to 6 feet tall. Pkt. 10c; 1/2 lb. 20c; lb. 35c. E. or F., lb. 30c; 10 lbs. @ 25c.

SUCCESSION PEA COLLECTION

We offer the following, suited for home gardeners who wish a variety of peas running from early to late. 1 pkt. Surprise, World Record, Hundredfold, Improved Telephone and Stratagem, worth 50c for 35c; 1/2 lb. each for 75c; or 1 lb. each for \$1.35, postpaid.



Peas, Improved Telephone

PUMPKIN

Plant May 10th to 20th in rows 10 feet wide and 8 feet in the row; about 8 or 10 seeds to hill, thinning to two good plants. Turn vines with the row to permit cultivation. Use 200 lbs. Utah land plaster to the acre, plowing it in; also 750 to 1000 pounds Garden Grow fertilizer.

***ORANGE WINTER LUXURY**—This improved strain of our own introduction is far better than the original. The skin, a rich golden orange, is covered with a fine netting, while the meat is very thick, fine grained and of rich golden yellow. It is by far the best pumpkin. Simply cook it done and it is ready for use in making pies. It requires less sugar and eggs than other varieties. Extra early and of medium flattened shape. A splendid keeper that has no equal in quality or appearance. Pkt. 5c; oz. 20c; 1/4 lb. 40c; lb. \$1.25.

CONNECTICUT FIELD or **JACK O'LANTERN**—The common field pumpkin grown for stock feeding and Jack o'Lanterns. Rich orange colored skin. Pkt. 5c; oz. 15c; 1/4 lb. 35c; lb. 90c.

SMALL SUGAR—Rather round fruit of small size, 5 to 7 inches in diameter. Smooth skin of bright orange color. Fine quality for pies. Early maturity. Pkt. 5c; oz. 15c; 1/4 lb. 35c; lb. 90c.

KING OF MAMMOTH—A giant, often weighing 200 pounds; suited for feeding and exhibition. Pkt. 10c; oz. 20c; 1/4 lb. 40c; lb. \$1.25.

SEMESAN

A highly valuable seed disinfectant, also aiding germination. 2 oz. can 50c; postpaid. Write for further description and uses.

RADISH

CULTURE—Radishes can be planted almost the year around, except during cold weather months. They can be planted in the fall as late as October 15th. They are then available during winter months.

PRICES ON RADISH SEED—Unless noted, prices are uniformly: Pkt. 5c; oz. 15c; ¼ lb. 30c; lb. 75c; postpaid.

***HALF AND HALF**—A very attractive, early turnip, radish. Half red and half white. A splendid variety for market and fast becoming popular.

WHITE PEARL—The best of the white radishes; roots five to seven inches long of a beautiful pearly white color. Stands fine without going woody. Similar in shape to White Icicle, but superior in quality. Flesh tender, crisp and sweet. It is the earliest of the long white radishes.

SAXA—A beautiful forcing radish that has created a sensation wherever sold. It is good under glass or in the open ground. The roots are round and bright scarlet, resembling a bright red cherry. It averages one week earlier than Early Scarlet Turnip White Tipped and will stand in good condition just as long.

***EARLY SCARLET TURNIP WHITE TIPPED**—We offer a very fine selection of our own growing. This is the most popular variety with gardeners and we sell tons of this seed. It matures very early and the beautiful roots of bright scarlet, tipped with white, are very attractive. The roots are of high quality, being mild and nutty in flavor.

***LONG BRIGHT SCARLET WHITE TIPPED**—We also grew seed of this variety last season from a selected strain. The roots are 4 to 5 inches long and of bright scarlet, tipped white. They are very attractive and mature about 7 to 10 days after Early Scarlet Turnip White Tipped.

***SPARKLER WHITE TIPPED**—The lower third is white with bright red on upper portion. High quality seed of our own growing.

WHITE ICICLE—A splendid white radish of long shape and with mild flavor. Very popular.

CINCINNATI MARKET—Crisp and brittle; deep scarlet color; five to seven inches long.

***EARLY SCARLET GLOBE**—Beautiful scarlet globe-shaped radish, of quick maturity and exceptionally fine flavor. Very fine market sort.

CRIMSON GIANT—A crimson, turnip-shaped radish that combines large size with extreme earliness. Popular for later spring and summer use.

RADISH COLLECTION

We will mail one packet of each of the above 10 varieties of radish, worth 50c, for 35c, postpaid.

WINTER RADISHES

SCARLET CHINA—Roots of bright scarlet color. Fine quality. Sow in late August for winter use.

WHITE CHINESE—Long white, stump rooted radish, always solid, crisp and mild. Pkt. 5c; oz. 15c; ¼ lb. 35c; lb. \$1.00.

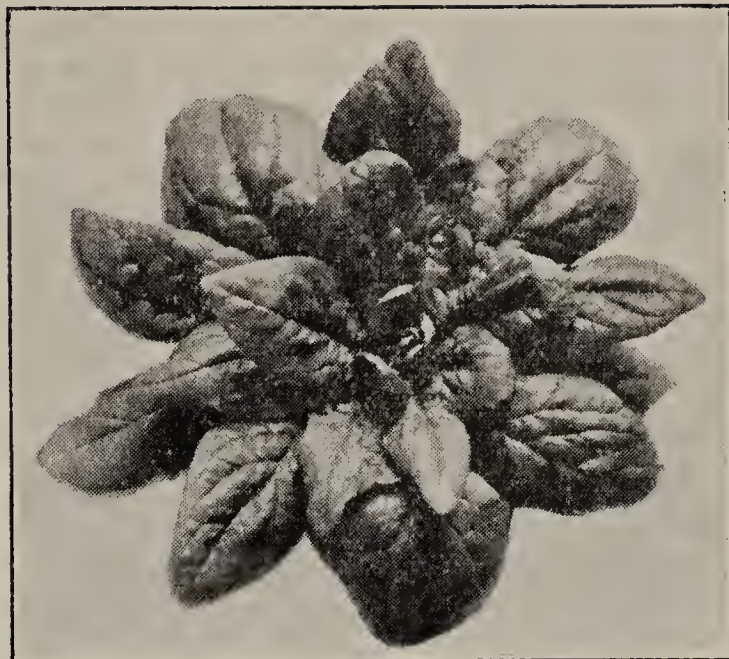
JAPANESE NERIMA—This remarkable radish will grow over three feet long and weigh 10 to 15 lbs. each. If properly stored, they will keep through the winter like rutabagas. Plant about August 1st to 15th. Pkt. 5c; oz. 20c; ¼ lb. 40c; lb. \$1.35.

RHUBARB SEED

WAGNER'S GIANT—Large crimson stalks often one and a half feet long and weighing very heavy. One of the best. Rhubarb does not come uniformly true from seed. Pkt. 15c; oz. \$1.50; ¼ lb. \$5.50.

RHUBARB ROOTS

RIVERSIDE GIANT—Extra large stalks of rich color and fine flavor. Four cuttings can usually be made in a season. Strong 1-year crowns with side roots. These will establish themselves quickly and practically all will grow. Each 20c; doz. \$1.50; 100 @ \$7.50; prepaid. Write for quantity prices.



New Giant Leaf Spinach

SPINACH

CULTURE—Sow in drills 16 to 20 inches apart, thin to 3 inches. For early spring use, sow in the fall, or sow in early spring for later use. Fine fall spinach can be grown by planting seed August 20th to September 1st, and winter spinach can be planted until October 15th.

PRICES ON SPINACH SEED—Unless noted, prices are: Pkt. 5c; oz. 10c; ¼ lb. 20c; lb. 50c; postpaid. By E. or F., lb. 35c; 10 lbs. @ 30c.

NEW GIANT LEAF—The largest and the most productive of any sort we have tried. Plants 20 inches across are not uncommon on good soil. The leaves are simply immense, of deep green, very heavy, brittle and tender. It is very slow to run to seed and is especially valuable for spring, summer and fall cutting.

HOLLANDIA—This giant leaved prickly seeded sort has become very popular with gardeners for spring, summer and fall cutting. Dark green, broad, thick leaves. Very quick grower; excellent for canning.

IMPROVED THICK LEAF or VIROFLAY—This variety is very popular and we have a fine strain of seed. The leaves are broad and smooth and of medium deep green. It will stand more cold weather than any other sort and is very popular for late fall plantings which remain over winter for early spring cutting.

LONG STANDING SAVOY—Very early with upright, crumpled leaves. Stands a long time without bolting to seed.

NEW ZEALAND SPINACH

A good summer vegetable which resists the heat and can be cut throughout the season. It differs in appearance from the regular spinach but is prepared in the same manner. Pkt. 5c; oz. 15c; ¼ lb. 35c; lb. 95c.

SALSIFY OR VEGETABLE OYSTER

***MAMMOTH SANDWICH ISLAND**—A good sort and most generally planted. Cultivate same as carrots. Pkt. 5c; oz. 25c; ¼ lb. 60c; lb. \$2.00.

REDUCED PRICES

You may order any three 10-cent packets for 25c or any three 15-cent packets for 40c postpaid. This offer applies to packets only.

SQUASH

CULTURE—Plant from May 10th to 20th in hills 10 feet apart, 8 to 10 seeds to the hill. Thin to two strong vines. Sow 200 pounds of land plaster to the acre and plow in. Write us for fertilizer hints.

***GILL'S GOLDEN DELICIOUS**—We take much pride in offering this remarkable squash of our own origin, and we believe it is destined to become very popular for canneries, market gardeners and home gardens. We have never grown a squash with such high quality as this and it has a very attractive appearance. It is the result of a cross between Boston Marrow and Delicious and retains the high quality of the Delicious and the beautiful color of Boston Marrow. The skin is a bright reddish-orange and the flesh is rich golden orange. The flesh is 2 to 3 inches thick and there is no green zone near the rind. It cooks extra dry, fine grained and sweet. Many of our friends say "it is better than a sweet potato." The skin is thin without a hard shell but it is a fine keeper for winter use. On account of its high quality and attractive color it has created a sensation with canners and those who tested it claim it has the highest starch content of any variety they have tried. Besides all its other fine qualities, it is the finest squash for pies. It grows very vigorous and produces heavy crops. Pkt. 10c; oz. 25c; ¼ lb. 50c; lb. \$1.50.

***BABY HUBBARD or KITCHENETTE HUBBARD**—A small type of Hubbard of very uniform size and shape which sets more fruit than the old Hubbards. They average about 6 to 8 pounds each. On account of their small size and heavy weight they are especially suited for crating. Their size is also better adapted to the average retail sale. Pkt. 5c; oz. 25c; ¼ lb. 50c; lb. \$1.50.

DELICIOUS—An extra sweet, fine-grained, dry cooking squash. Medium size, top shaped with greenish-black skin; flesh very thick, orange colored with small seed cavity. Try this fine squash. Pkt. 5c; oz. 20c; ¼ lb. 40c; lb. \$1.35.

***BANANA**—This valuable squash is in great demand and we have secured a very fine strain which has been re-selected up to the highest quality. The squash usually measure, under good culture, from 3 to 4 feet long and are so even in diameter that they can be piled up like cordwood. The exterior of the skin is buff-orange color, while the meat is a rich orange. The meat is extra thick and of fine flavor. Pkt. 5c; oz. 20c; ¼ lb. 50c; lb. \$1.50.

***TRUE HUBBARD**—Selected strain, and while we do not consider it equal to Delicious in flavor, it is a heavier yielder and better known in the market. We have a true stock of seed carefully selected for color, shape and quality. Pkt. 5c; oz. 15c; ¼ lb. 40c; lb. \$1.35.

BLUE HUBBARD—A quality Hubbard with gray-blue skin of extra choice flavor. Pkt. 5c; oz. 20c; ¼ lb. 50c; lb. \$1.50.

***YAKIMA MARBLEHEAD**—Large slate colored variety of fine quality. It produces heavy yields of heavy, thick meated squash. Popular shipping variety. Pkt. 5c; oz. 15c; ¼ lb. 40c; lb. \$1.25.

***TABLE QUEEN or ACORN**—A miniature squash growing about 7 inches long and 4 to 5 inches thick. The color is deep green contrasted with orange red where it rests on the ground. Very sweet and fine grained and suited for home or market. Very easy to grow. It is a splendid keeper for winter use. True seed of our growing. Pkt. 5c; oz. 15c; ¼ lb. 40c; lb. \$1.35.

***BOHEMIAN**—A small individual type claimed by some to be better quality than Table Queen, and is very popular on the local market. Color cream, mottled and striped with green. Pkt. 10c; oz. 25c; ¼ lb. 65c; lb. \$2.00.

BOSTON MARROW—Skin and flesh reddish yellow. Pkt. 5c; oz. 15c; ¼ lb. 35c; lb. \$1.00.

SUNFLOWER

MAMMOTH RUSSIAN—This is one of the heaviest yielders and produces extra large heads, well filled with large, plump seed. Oz. 5c; lb. 35c. E. or F., lb. 25c; 10 lbs. @ 17c lb.



Squash, Gill's Golden Delicious

SUMMER SQUASH

MAMMOTH SUMMER CROOKNECK—Grows larger than the common sort. Fine for summer use. Pkt. 5c; oz. 15c; ¼ lb. 35c; lb. \$1.00.

COCOZELLE or ITALIAN MARROW—Dark green when young, changing to lighter green as it matures. One of the earliest kinds and of high quality. Pkt. 5c; oz. 15c; ¼ lb. 45c; lb. \$1.25.

MAMMOTH WHITE BUSH SCALLOP—Early; large, pure waxy white skin; somewhat flattened in shape. Pkt. 5c; oz. 15c; ¼ lb. 35c; lb. \$1.00.

ZUCCHINI (Italian Squash)—It should be eaten quite young, when 3 to 6 inches long. The color is mottled deep green. The variety is popular in California markets and is easy to grow. Pkt. 5c; oz. 20c; ¼ lb. 50c; lb. \$1.50.

RAPA

An Italian vegetable of the turnip family. Sow the seed broadcast about the middle of September. They make quite a growth during the fall and in the spring will start a new growth and form a small head composed of little green buds. These small heads with the surrounding foliage make one of the finest greens we have seen. Pkt. 10c; oz. 20c; ¼ lb. 50c.

RUTABAGAS

CULTURE—Sow in drills, 3 feet wide; thin to 6 inches apart. May be planted from June 15th to July 15th. The later sowings produce the best quality.

GOLDEN HEART—Rich yellow skin, clean and smooth like a turnip. Splendid quality for table use. Flesh light yellow. It matures extra early. A splendid market sort, and its smooth, attractive appearance helps its sale. Very popular especially for late use. Pkt. 5c; oz. 10c; ¼ lb. 30c; lb. 85c.

***IMPROVED PURPLE-TOP YELLOW**—The best all-around rutabaga. Produces nice, smooth, globe-shaped roots. The best for table use and very rich and productive for stock feeding. It is early and will mature good roots planted late in the season. Selected seed. Pkt. 5c; oz. 10c; ¼ lb. 30c; lb. 80c.

TENDER GREENS

Sometimes called mustard spinach. A rapid growing Oriental greens, producing immense yields. It is suited for early spring or fall sowing. Giant, smooth leaves that cook tender with mild mustard flavor. Easy culture. Pkt. 10c; oz. 15c; ¼ lb. 35c; lb. \$1.00.

TOBACCO

CONNECTICUT SEED LEAF—The earliest maturing sort for the Northwest. Pkt. 5c; oz. 75c.

TOMATOES

CULTURE—Plant seed in box inside or in hot-bed from February 15 to March 1. Transplant May 10 to 20; rows 6 feet wide and 5 to 6 feet in rows; use light, loamy soil, well cultivated and fertilized.

***GILL'S SELECTED EARLIANA**—For over 28 years we have given personal selection to this strain and believe we now have the largest and smoothest first early tomato yet offered. The fruit is of bright deep red color, rather thick from stem to blossom and unusually solid. Our selections are making rapid and decided improvements in this variety and nearly all the fruit will pack number one grade. Owing to the fact that it is a shy seeder we must ask more for the seed than other sorts. Do not confuse this with the ordinary strains of Earliana. Reports from large growers claim this is the best strain of Earliana they have tried. Pkt. 10c; ¼ oz. 25c; oz. 75c; ¼ lb. \$2.50.

***HILL SELECTED EARLIANA**—Saved from special plants marked in the field. Pkt. 25c; ¼ oz. \$1.25; ½ oz. \$2.25; oz. \$4.00.

THE PRITCHARD (Scarlet Topper)—In earliness similar to Break o' Day. Exterior and interior color intense scarlet. Fruit globe shaped and very solid. A tremendous cropper. Pkt. 10c; ½ oz. 30c; oz. 50c; ¼ lb. \$1.50.

BREAK O' DAY (Certified Seed)—Color, shape and size like Marglobe but 10 to 12 days earlier. Solid fruit of bright scarlet; very few seeds. Disease resistant. The best for home canning. Pkt. 10c; ½ oz. 35c; oz. 60c; ¼ lb. \$2.00.

JOHN BAER—Extra early, large, bright scarlet fruit, smooth and firm. Pkt. 10c; oz. 45c.

***PEPPER TOMATO**—We have selected this for several seasons and now have large, smooth fruit ideal for market. It is very resistant to rain cracks. We claim it is one of the finest tomatoes we have ever tasted. Practically every fruit is smooth, running from globe to oblong shape, and they are exceptionally solid, containing very little seed. The fruit is red with a purplish tone and the sweetest of any we have tried, being unusually free of acid. It produces heavy yields. Pkt. 15c.

MARGLOBE — This tomato is almost the same season as Bonny's Best, but the fruit is larger. It is very resistant to disease and is a very heavy cropper. Marglobe is also a fine greenhouse variety. Pkt. 5c; oz. 45c; ¼ lb. \$1.25; lb. \$3.75.

BONNY'S BEST EARLY (Certified Seed)—Owing to its great uniformity this makes a popular tomato for packing. It yields heavy crops of bright scarlet tomatoes, which ripen about two weeks after the Selected Earliana. We carry an extra fine strain of this popular market gardeners' tomato. It is also popular for greenhouse growing. Pkt. 5c; oz. 45c; ¼ lb. \$1.25; lb. \$3.75.

OXHEART — New and popular variety. Fruits very large, heart-shaped, pink; very solid, meaty and of mild flavor. Very desirable for home and market gardener. Pkt. 10c; ¼ oz. 40c; oz. \$1.00.

DWARF STONE — Tree type plants, producing large, smooth, meaty fruit of bright red color. Pkt. 5c; oz. 45c.

GOLDEN QUEEN—Large, bright yellow fruit. Pkt. 5c; oz. 45c.

PEAR TOMATOES—Popular for preserves and mature heavy yields quite early. We can supply both red and yellow. Pkt. 5c; oz. 50c.

GROUND CHERRY or HUSK TOMATO—Prized for preserves, pie or sauce. Will keep into the winter. Fruit yellow. Pkt. 5c; oz. 50c.



Pepper Tomato

TURNIPS

Sow broadcast from August 1 to September 1 for late turnips. Milan varieties can be sown as late as October 1.

PRICES ON TURNIP SEED—Unless otherwise noted, prices are uniformly as follows, postpaid: Pkt. 5c; oz. 10c; ¼ lb. 30c; lb. 75c.

EXTRA EARLY WHITE MILAN—Among the earliest; roots clear white, smooth, flat and good quality. The best for early planting and late fall sowing. Pkt. 5c; oz. 15c; ¼ lb. 35c; lb. \$1.00.

EXTRA EARLY PURPLE TOP MILAN—Similar to Extra Early White Milan except the roots are flatter and are attractive purple red on the upper portion. Pkt. 5c; oz. 15c; ¼ lb. 35c; lb. \$1.00.

EARLY SNOWBALL—An extra early, round turnip, snow white, crisp and solid.

PURPLE TOP WHITE GLOBE—The best all-around turnip for fall and winter use. Its beautiful color, pure white with purple top, combined with its smooth globe shape, fine sweet flavor and its wonderful productiveness put this turnip in the top class for market or home use.

POMERANEAN WHITE GLOBE—A large globe-shaped, smooth, white turnip. Good either for stock or table and resists the worms the best. One of the best keepers.

WHITE EGG—Pure white, egg shaped; early.

COW HORN—A large, long-rooted, white turnip.

SHOGAIN (Foliage Turnip)—A Japanese variety, very popular for greens. The leaves grow upright about 2 feet high. Roots semi-globe, pure white, tender, sweet. Pkt. 5c; oz. 15c; ¼ lb. 40c; lb. \$1.25.

YELLOW FLESHED TURNIPS

***YELLOW BORTFELDER**—A heavy cropping, long-keeping variety, in favor with dairymen.

ORANGE JELLY or GOLDEN BALL—The best yellow sort for market or family use. Roots medium sized, round and smooth, with yellow skin and flesh. One of the best for winter keeping.

PURPLE TOP YELLOW ABERDEEN—Largely grown for stock feeding. Roots yellow with purple top; flesh yellow; good keeper.

PETROWSKI—The sweetest and earliest. Rather flat roots with smooth, deep orange yellow skin. Flesh light orange. Pkt. 5c; oz. 15c; ¼ lb. 35c; lb. 90c.

HOTKAPS

Grow early flowers and vegetables by using Hotkaps. Price F.O.B. Portland, 100 for \$2.50; 250 for \$3.75 (these two small packages include Garden Setter with Tamper); 1000 @ \$10.25. Write for prices on quantities.

<p>INOCULATE ALL LEGUMES WITH</p> <p>NITRAGIN</p> <p>The Original Legume Inoculator</p>		<p>Expiration Date and High Germ Count on Every Package</p> <p>INOCULATOR PRICES</p>
<p>When ordering, always specify kind of seed.</p>		
<p>Alfalfa, all Clovers and Lespedeza</p>		<p>Soy Beans, Cow Peas Lima Beans</p>
<p>Size Retail</p> <p>½ bu.....\$.35</p> <p>1 bu..... .65</p> <p>2½ bu..... 1.40</p>	<p>Size Retail</p> <p>1 bu..... \$.35</p> <p>2 bu..... .65</p> <p>5 bu..... 1.40</p> <p>10 bu..... \$2.45</p>	
<p>Peas, Vetch, Austrian Winter Peas and Beans</p>		<p>Garden Size NITRAGIN</p>
<p>Size Retail</p> <p>½ bu..... \$.35</p> <p>1 bu..... .50</p> <p>*1½ bu..... .80</p> <p>5 bu..... \$2.25</p> <p>*"100 lb. size." Packed only for Vetch and Peas.</p>	<p>Inoculates from 1 oz. to 8 lbs. seed, Price 25c</p> <p>Retail Price...25c each</p>	



PLANT PROTECTORS

Protect the Cabbage and Cauliflower Plants

The maggot Fly is the greatest pest to these plants and "Keepway Plant Protectors" will give the plants 90 to 100% protection. The size of the Protector is 3 in. by 3 in., and will cost as follows, postpaid to the fourth zone, beyond which send additional: Package of 24, 10c; 72 for 25c; 144 for 45c; 500 for \$1.25; 1000 for \$1.95. Write for prices on larger quantities.

Our system for growing cabbage, broccoli and cauliflower plants enables us to ship long distances.

VEGETABLE PLANTS

500 PLANTS WILL BE SUPPLIED AT THE 1000 RATE

EARLY CABBAGE—Grown in the open ground and wintered over. Good, strong, healthy plants ready November 1st to April 15th. Can be shipped anytime weather permits. **EARLY JERSEY WAKEFIELD, LARGE WAKEFIELD, ALL HEAD EARLY, DANISH BALLHEAD, DANISH ROUNDHEAD, OREGON BALLHEAD.**

—Doz. 25c; 3 doz. 50c; 100 @ \$1.25; postpaid. E. or F., 100 @ \$1.00; 1000 @ \$4.00.

EARLY CAULIFLOWER—Greenhouse grown, ready March 15th to April 15th.

EARLY SNOWBALL—Doz. 40c; 3 doz. 80c; 100 @ \$2.00; postpaid.

LATE CABBAGE—Well hardened plants grown in the open. Ready June 10th to September 15th.

GILL'S OREGON BALLHEAD, DANISH ROUNDHEAD, GLORY OF ENKHUISEN, DANISH BALLHEAD, ALL HEAD EARLY, COPENHAGEN MARKET, RED CABBAGE, SAVOY—Doz. 20c; 3 doz. 50c; 100 @ \$1.00; postpaid. E. or F., 100 @ 75c; 1000 @ \$3.25; 5000 @ \$3.00 per 1000.

LATE CAULIFLOWER—Grown in the open. Ready June 20th to August 15th.

VEITCH'S AUTUMN GIANT, ALL SEASONS, GREEN BROCCOLI, ST. VALENTINE BROCCOLI—Doz. 25c; 3 doz. 60c; 100 @ \$1.50; postpaid. E. or F., 100 @ \$1.25; 1000 @ \$4.50.

BRUSSELS SPROUTS—Ready June 20th to August 15th. Prices same as late cabbage.

KALE PLANTS—Grown in open. Ready June 20th to August 15th.

TALL SCOTCH CURLED, DWARF GERMAN, JERSEY KALE, GEORGIA COLLARDS, SELECT 1000 HEADED KALE—Same price as late cabbage plants. Ready same season.

PEPPER PLANTS—Ready May 1st to June 15th.—**CALIFORNIA WONDER, CHINESE GIANT, HARRIS EARLY GIANT**—Doz. 40c; 3 doz. 80c; 100 @ \$2.00; postpaid.

TOMATO PLANTS—Frame or greenhouse grown. Ready April 25th to June 15th.

GILL'S SELECTED EARLIANA, BONNY'S BEST, MARGLOBE, BREAK O' DAY, PEPPER TOMATO—Doz. 50c; 3 doz. \$1.00; 100 @ 2.50; postpaid. For quantity, please write.

CELERY—Healthy growth, commercial size.

GOLDEN SELF BLANCHING—Transplanted. Prices same as pepper. Ready March 15th.

GOLDEN SELF BLANCHING—Field grown. Doz. 25c; 3 doz. 60c; 100 @ \$1.50. E. or F., \$6.00 per 1000. Ready June 1st to August 1st.

GRASS, CLOVER, ALFALFA and GRAIN SEEDS FOR FIELD and PASTURE

We can supply various grasses, such as **KENTUCKY BLUE GRASS, CRESTED WHEAT GRASS, ENGLISH RYE GRASS, ITALIAN RYE GRASS, TIMOTHY, ORCHARD GRASS, RED TOP, TALL MEADOW OAT GRASS, MEADOW FESCUE, MESQUITE.** We can also supply mixtures. State nature of your soil and requirements.

We can supply **RED CLOVER, ALSIKE CLOVER, WHITE CLOVER, LADINO CLOVER, MAMMOTH RED CLOVER, SWEET CLOVER** (both yellow and white); **ALFALFA, COMMON, DRYLAND and GRIMM.**

Write us for prices on standard varieties of **OATS, VETCH, BARLEY, RYE, EMMER, SUDAN GRASS, MILLET, FIELD PEAS, BUCKWHEAT, CHEAT GRASS, FETERITA, FLAX, KAFFIR CORN, DWARF ESSEX RAPE, COW PEAS, SOY BEANS, SUGAR CANE** and other field seeds.

Prices are usually changing throughout the season, so we do not quote them here, but will be glad to quote prices, or you may remit what you desire and we will fill the amount according to market prices. We will also mail samples. We handle only high-grade seeds.

We realize quality is our best means of advertising. We are better equipped than ever to supply quality.

FREE BULLETINS

We offer free on request the following bulletins written by Ray W. Gill: **Lawn Culture, Dahlia Culture, Fall Gardens, Fertilizers and How to Use Them.**

HIGH GRADE LAWN GRASS

WRITE FOR PRICES ON QUANTITIES

We supply grasses for golf courses. Let us figure with you.

Prices quoted are subject to market change without notice.

Prices marked postpaid apply up to and including fourth zone, beyond which send additional. We specialize in high-grade lawn grass seed. During the past few years we have supplied lawn seed for some of the largest institutions in the state. Whether it is a small lawn or a large one, we can supply the seed and we will be glad to quote you either on mixtures or separate grasses. Many of the lawn grass mixtures on the market contain rye grass seeds. We consider rye grass too coarse and too rapid of growth to be included in mixtures and therefore do not use them in our mixtures. In estimating the ground to be planted figure on one pound to 300 square feet of surface.

GILBRO SPECIAL—This super mixture is composed of the finest bladed grasses and are selected on account of their great endurance. It will make a soft velvety lawn of uniform texture and appearance. All varieties in this mixture are acid-loving grasses, thus they respond rapidly with acid fertilizers which in turn reduces the weed menace. We have many reports from our customers, who are highly pleased with this mixture. It is adapted to shade or sun. We offer it either with or without white clover. Please specify when ordering. This mixture contains 40% creeping bent, making it necessary to ask the following prices: Lb. \$1.00; postpaid. E. or F., 5 lbs. @ 95c; 10 lbs. @ 90c.

OREGON LAWN MIXTURE—A very good mixture made from pure grasses. It does not contain any rye grasses. We have sold this for years with fine results. It makes a hardy, fine-bladed turf well suited to the average soils. We offer it with white clover or without. Please specify when ordering. Lb. 75c. E. or F., 5 lbs. @ 70c.

***ASTORIA BENT**—A native acclimated sort grown in Clatsop County, Oregon. Besides creeping on the surface of the soil it has jointed roots which creep under ground. It is the best bent grass for high, well-drained soils and is very resistant to drought. It is often found growing in almost pure sand. It makes a thick, close turf, with fine leaf blades. We recommend it highly. Purity about 98 and germination 90% or better. Lb. \$1.35. E. or F., 5 lbs. or more @ \$1.25.

KENTUCKY BLUE GRASS—A splendid general purpose grass for lawns, with hardy growth and fine, close turf. 21 lbs. per bushel grade. Lb. 60c. E. or F., 5 lbs. @ 55c.

ROUGH STALKED MEADOW GRASS — (Poa-Trivialis)—Very hardy; makes a fine, close turf. Valuable in shade. Lb. 70c. E. or F., 5 lbs. @ 65c.

CHEWING'S FESCUE—Extensively used for lawns and golf courses. It makes a fine, close turf, very resistant to tramping. One of our finest grasses. Lb. 90c. E. or F., 5 lbs. @ 85c.

CREEPING FESCUE—Rich, fine-bladed foliage, making a splendid turf for shade or sun. Especially suited to sandy soils, banks and terraces. Lb. 95c. E. or F., 5 lbs. @ 90c.

WHITE CLOVER—Often used for lawns. We offer a fancy grade of seed for this purpose. Lb. 65c. E. or F., 5 lbs. @ 60c.

ENGLISH RYE GRASS—Rather coarse for lawns, but is often used for large parks. It should be sown very thickly for such purposes. Lb. 30c. E. or F., 5 lbs. @ 20c.

RED TOP—Valuable for shade and low, wet ground. Lb. 55c. E. or F., 5 lbs. @ 50c.

BLUE GRASS AND WHITE CLOVER—Well-proportioned mixture. Lb. 65c. E. or F., 5 lbs. @ 60c.

***SEASIDE BENT**—A native, acclimated variety, largely grown in Coos County. It is especially suited to low, damp soils. A healthy, vigorous grower making a fine turf. It creeps on the surface of the ground. The seed runs about 98% purity and has a very high germination. Lb. \$1.45. E. or F., 5 lbs. @ \$1.35.

COMMERCIAL FERTILIZERS

WRITE FOR PRICES, STATING QUANTITY; SAMPLES SUBMITTED FREE

Send for our free bulletin telling how to use fertilizers. We will gladly write you on any special fertilizer problem. Just tell us about your soil and what crop you intend to fertilize.

All prices quoted are f. o. b. Portland and subject to market change without notice. Write for quantity prices.

PEAT MOSS

An excellent mulch or humus. Especially valuable for lawns. We carry a very fine grade. Bale \$2.50.

ORGANIC FERTILIZERS

BLOOD MEAL—12 to 15 ammonia. An organic form of nitrogen. Quick acting. Write for price.

FISH MEAL—Organic fertilizer high in nitrogen. Write for price.

SHEEP GUANO—Usually runs 2-1-2. Dry ground sheep manure taken from covered sheds. It is ground and sacked. On account of its high humus content it is a valuable fertilizer. Our stock is exceptionally good. 100 lbs. \$1.35.

TANKAGE—A slaughter house by-product containing blood, meat and bone. Write for price.

3-10-10 — Suitable for all root crops, cabbage, cauliflower and berries. 100 lbs. \$2.50.

5-10-7—Good all-purpose fertilizer. 100 lbs. \$2.50.

OTHER FERTILIZERS

If you are interested in any special mixtures or brands which we do not list, please write us, as we can probably supply them. State the kind and quantity and we will quote you.

MINERAL FERTILIZERS

LAND PLASTER or GYPSUM—This contains sulphur in soluble form and is valuable for all legumes, potatoes and general garden use. 100 lbs. \$1.00.

LIME, HYDRATED—Especially suited for using on acid soils. 100 lbs. \$1.50.

MURIATE OF POTASH—Usually 50 to 57% soluble. 100 lbs. \$2.50.

NITRATE OF SODA—14 to 16 ammonia. Being soluble in water, it is a valuable fertilizer for the winter months applied on such crops as spinach, mustard greens, early spring cabbage, turnips, radishes, etc. 100 lbs. \$2.75.

SULPHATE OF AMMONIA—Runs high in nitrogen. 100 lbs. \$2.75.

SUPERPHOSPHATE—16 to 21 phosphoric acid. It produces earlier maturity. 100 lbs. \$1.50.

VIGORO

Vigoro is the ideal plant food for lawns, flowers, gardens, shrubbery and trees. It is easy to apply; results are quick and certain.

Clean, dustless, weedless, and odorless! Vigoro is not to be compared with any other plant food you have ever known. It isn't at all costly. Prices F. O. B. Portland—100-lb. bag, \$4.00; 50-lb. bag, \$2.25; 25-lb. bag, \$1.50; 5-lb. pkg., 50c.

FLOWER SEEDS

ASTERS

GILL'S HIGH-GRADE ASTERS

† Marked are asters of the wilt-resistant strains.

We aim to supply the very best Asters that can be grown or purchased, and the most up-to-date varieties and types will be found in our list. Asters are one of the best cut flowers that can be grown.

Sow seeds in boxes inside or in frames, about February 25th to March 15th, and transplant during May. In ordering, simply say Crego White, Beauty Pink, etc. Splendid blooms can be obtained by planting the seed in the open about May 1.

NOVELTY ASTER COLLECTION

We offer any 10 packets, your choice of those priced at 10c; sent postpaid for 65c.

†AURORA GOLDEN SHEAF — New. Deepest yellow aster yet offered. Crest-like center fully double; popular with florists. Pkt. 25c.

SUPER GIANT LOS ANGELES—This new giant aster is pure shell pink, fully double, and on good stems. Wonderful cut flower. Pkt. 20c.

LILLIPUT FLOWERED—New. These baby flowered asters are small and button-like in form, making a colorful border. Mixed colors. Pkt. 10c.

CALIFORNIA GIANT SUNSHINE — A cross between California Giant and Sunshine type. Flowers 6 inches across on plants 3 feet tall. Long, wiry stems. WHITE, LAVENDER, ROSE, SHELL PINK, MIXED. Pkt. 15c.

AURORA—The outer row of large petals is azure blue. The full double center of quilled petals is yellow. Pkt. 10c.

*OREGON LOVELINESS—This marvelous aster originated in Oregon and is the most distinct color we have ever seen. It is a large flower of the Crego type, fully double and carried on fine stems. The color opens a distinct rosy salmon with silvery reflection but as the flowers fully develop the color deepens to a rich coppery salmon. Pkt. 15c; 1/8 oz. 60c.

EARLY BEAUTY—Earlier than the late Beauty Asters and flowering along with Crego type. Characteristics same as Late Beauty. †CRIMSON, †LAVENDER, †ROSE, PEACH BLOSSOM, †BLACK PRINCE, †WHITE, †MIXED. Pkt. 10c; 1/8 oz. 35c.

LATE BEAUTY—Giant flowers produced on plants 2 to 3 feet high and on stems 18 to 24 inches long. They start blooming in September and last till frost. Their late maturity, large size and long, strong stems make this type a grand acquisition for florists and home gardens. WHITE, PEACH BLOSSOM, ROSE, LAVENDER, †PURPLE, †CRIMSON, †MIXED. Pkt. 10c; 1/8 oz. 35c.

CALIFORNIA GIANTS—This giant has the strong, vigorous habit and long stems of the Beauty type but has Crego type of bloom. The immense flowers, often 5 to 6 inches in diameter produced on long stems make them exceptional cut flowers. PEACH BLOSSOM, LIGHT BLUE, DEEP ROSE, †PURPLE, WHITE, MIXED. Pkt. 10c; 1/8 oz. 40c.

CALIFORNIA GIANT SINGLE—Flowers 3 to 4 inches across on stems 18 to 24 inches long. WHITE, ROSE, LIGHT BLUE, PURPLE, MIXED. Pkt. 10c; 1/8 oz. 40c.

GIANT CREGO ASTERS

Immense fluffy flowers averaging 4 to 6 inches in diameter. Vigorous plants producing abundance of these large flowers on good stems. Offered in †SHELL PINK, †ORCHID, †WHITE, †CRIMSON, †AZURE BLUE, †LAVENDER, †PINK, †DEEP ROSE, †PURPLE, †MIXED. Pkt. 10c; 1/8 oz. 30c.

GILL'S FANCY MIXED—A mixture of all colors in popular types. Pkt. 10c; 1/4 oz. 35c.

†HEART OF FRANCE — A beautiful new rich dark red; two feet high; branching habit. Pkt. 10c.

ASTER, HARDY PERENNIAL

Single, fall flowering hardy perennials. New shades of pink, blue and white in mixture. Pkt. 10c.



New Aster, Aurora Golden Sheaf

SUNSHINE OR ANEMONE FLOWERED

Sturdy plants with long stems. Some flowers have twisted petals, while others have quilled petals; all have a cushion center of fine quills in a contrasting color. PINK, WHITE, LAVENDER, VIOLET, MIXED. Pkt. 10c; 1/8 oz. 40c.

EVERLASTING ASTER—Resembles large straw flowers, and when cut and dried retain their color and shape like an everlasting flower. Offered in †FLESH PINK, †ROSE and †MIXED. Pkt. 10c.

ACANTHUS (Bear's Breach)

Hardy perennial; giant decorative leaves 2 feet long and 1 foot wide. Pkt. 10c.

ACHILLEA

Hardy perennial of easy culture. Large clusters of small, double, pure white flowers. A fine everlasting flower for winter bouquets. Pkt. 10c.

ACONITUM (Monkshood)

NAPELLUS—Hardy perennial, growing spikes of curious shaped blue and white flowers. Pkt. 15c.

ADONIS

FLOS—Rare, small flowers of brilliant scarlet, suited for cutting. Pkt. 10c.

AFRICAN DAISY

Sow seed same as asters and plant in sunny position. They bloom all summer.

AURANTICA—Flowers 2 1/2 to 3 inches across of glossy orange, with dark disc and halo. Pkt. 10c.

NEW HYBRIDS—Shades of white, yellow, orange and salmon zoned with a black disc. Pkt. 10c.

AGERATUM

Annuals, suited for boxes, pots and borders.

BLUE PERFECTION—Dwarf, deep blue. Pkt. 10c.

DWARF WHITE—8 inches high. Pkt. 10c.

MIXED—All colors. Pkt. 10c.

REDUCED PRICES

We offer any three 10c packets for 25c or any three 15c packets for 40c postpaid.

ALYSSUM

- LITTLE DORRIT**—Miniature white. Pkt. 10c.
CARPET OF SNOW—Grows 2 inches high and is heavily massed with white blossoms. Pkt. 10c.
COMPACTUM YELLOW—Annual. Dwarf yellow. Pkt. 10c.
LITTLE GEM—Dwarf compact habit; four inches high with white blossoms. Pkt. 10c; ½ oz. 30c.
LILAC QUEEN—Dwarf compact habit; flowers deep lavender. Pkt. 10c.
PERENNIAL, SAXATILE COMPACTUM—Grows 1 foot high and makes a mass of small yellow flowers in May. Easy to grow. Pkt. 10c.

ANCHUSA

- DROP MORE VARIETY**—Splendid hardy perennials, easily started from seed. Grows 3 to 5 feet high, covered with rich gentian blue flowers during June and July. Pkt. 10c.

ANEMONE

- ST. BRIGID**—Pacific Northwest grown seed of this wonderful perennial. Wonderful range of colors in single, semi-double and double. Pkt. 15c.

AMARANTHUS

- Brilliant foliage annuals growing 3 to 5 feet high.
CAUDATUS—Blood red, drooping. Pkt. 10c.
TRICOLOR—Red, yellow, green. Pkt. 10c.

AQUILEGIA (Columbine)

- Hardy perennials. Start inside or in the open and transplant to permanent place.

- SCOTT ELLIOTT LONG SPURRED**—Extra long spurs. Shades and combinations of blue, white, pink, yellow, orange and scarlet. Pkt. 10c.

- LONG SPURRED**—Separate shades, blue, pink. Pkt. 15c.

ARABIS (Rock Cress)

- Hardy perennials producing a mass of white flowers very early in the spring. Pkt. 10c.

ARCTOTIS (African Daisy)

- Splendid cut flowers, growing about 2 feet high. Daisy-like flowers of white on upper portion of petal; reverse, pale lilac blue. Pkt. 10c.

ASPARAGUS

- PLUMOSUS**—Flat fern-like foliage. Grow in pots. Pkt. 15c.

- SPRENGERI**—Useful for baskets, window boxes, etc. Both of these asparagus are fine greens to mix in bouquets. Pkt. 15c.

BALSAM

- Hardy annuals growing 2 feet high. Plant inside or in hot bed in March. Plant out after danger of frost is over. Offered in mixture. Pkt. 10c.

BEANS, SCARLET RUNNER

- A fine climber. Pkt. 10c; ½ lb. 30c; lb. 50c.

BELLIS OR ENGLISH DAISY

- MONSTROSA DOUBLE**—This giant type far excels the old type, being much larger. Mixed. Pkt. 10c.

BOCCONIA (Plume Poppy)

- Hardy perennial of great beauty. Height 5 feet; foliage glaucous green; flower spikes cream colored and 3 feet long. Pkt. 10c.

BOLTONIA

- Hardy perennial; 4 to 6 feet; immense clusters of daisy-like flowers July to September. Offered in white and lilac pink. Pkt. 10c.

BRACHYCOME

- SWAN RIVER DAISY**—9 inches high, covered in summer with small white or blue flowers. Pkt. 10c.

BROWALLIA

- FANCY MIXED**—Annual blue and white flowers; petunia shaped. Pkt. 10c.

CACTUS SEED

- All varieties mixed. Pkt. 25c.

CANNA SEED

- Soak seed in warm water until they show signs of swelling and plant in hot bed. Transplant after danger of frost. They are interesting to grow, as new sorts come from seedlings. Mixed. Pkt. 10c.



Arctotis

CALENDULA, POT MARIGOLD

- The hardy old-fashioned marigold.

- ORANGE SHAGGY**—New rich orange, petals long and deeply fringed. Pkt. 15c.

- CHRYSANTHA**—New. Clear buttercup yellow with long, stiff stems. Pkt. 15c.

- RADIO**—Rich orange; large quilled flowers. Pkt. 10c; ⅓ oz. 25c.

- CAMPFIRE**—Dark orange with scarlet sheen. Pkt. 10c; ⅓ oz. 30c.

- ORANGE KING, FLORIST STRAIN**—Large double flowers of orange red, with darker centers. Pkt. 10c; ¼ oz. 20c; oz. 50c.

- DOUBLE MIXED**—All colors. Pkt. 10c.

CALIFORNIA POPPY

- Popular annuals which can be planted any time during spring, summer or fall. Fall plantings will bloom in the spring. They bloom a few weeks from planting. We offer several new rare colors.

- RAMONA**—New. Golden bronze coppery rose outside. Pkt. 10c.

- PINK RAMONA**—Soft pink. Pkt. 10c.

- SCARLET BEAUTY**—Deep scarlet. Pkt. 10c.

- BALLET GIRL**—Carmine and cream. Pkt. 10c.

- GRANDIFLORA GIANTS**—A mixture of large types in new rare shades. Pkt. 10c.

- DOUBLE MIXED**—Yellow, white, mixed. Pkt. 10c.

CALLIOPSIS

- Showy annuals of easy culture, blooming all summer. Sow in April in open.

- GOLDEN WAVE**—Gold centered brown. Pkt. 10c.

- NIGRA SPECIOSA**—2 feet, maroon red. Pkt. 10c.

- CHOICE MIXED**—All single colors. Pkt. 10c.

- DOUBLE MIXED**—Pkt. 10c.

CANDYTUFT

- Sown in the fall will flower in early spring; sown in April will bloom in June.

- GIANT HYACINTH**—A selected strain, producing 6 to 7 large, erect, white spikes. Pkt. 10c.

- FLESH PINK**—A new shade. Pkt. 10c.

- LAVENDER**—Soft rose lavender. Pkt. 10c.

- CRIMSON**—Rich deep shade. Pkt. 10c.

- MIXED**—All colors. Pkt. 10c.

CASTOR BEANS

- Highly ornamental plants valuable for tropical effects. Useful for large beds or borders along paths and drives. Pkt. 10c; oz. 25c; ¼ lb. 60c.

CANTERBURY BELLS

Plant seed in box or frame in early spring, or they can be planted in the open ground about June 1. Cover the seed very lightly and spread a paper over the surface until the seeds germinate.

LIBERTY BELL—New. Annual, single violet-blue. Pkt. 15c.

ANGELUS BELL—New. Annual, single beautiful deep rose color. Pkt. 15c.

NEW ANNUAL MIXED—These bloom in 6 months from seed, and grow about 2½ feet tall; offered in mixture. Pkt. 15c.

CUP AND SAUCER BELLS—The largest type, with cup and saucer-shaped flowers. Separate colors: **WHITE, LIGHT BLUE, DARK BLUE, PINK, MIXED.** Pkt. 10c.

MEDIUM—(Single Canterbury Bells)—The old-fashioned type with bell-shaped blooms. **BLUE, ROSE, WHITE and MIXED.** Pkt. 10c.

PYRAMIDALIS—Stately perennial; 4 to 5 feet; offered in **WHITE, BLUE or MIXED.** Pkt. 10c.

PEACH BELLS—Perennial; saucer-shaped flowers on tall spikes. **BLUE or WHITE.** Pkt. 10c.

CARNATION

Perennials, blooming the first season.

GIANT FLOWERING—Scarlet, yellow, pink, near black, rose, white, mixed. Pkt. 10c.

MARGUERITE MIXED—Large flowers. Pkt. 10c.

EVERBLOOMING—Almost continually in bloom from June to frost. Mixed colors. Pkt. 10c.

FLORIST'S MIXTURE—A special mixture from florist sorts. Can be used inside or out. Pkt. 15c.

GIANT GOLD MEDAL—A new, wonderful strain that is exceptionally hardy. Produces about 80% doubles in splendid colors; mixed. Pkt. 25c.

CELOSIA CHILDSII

CHILDSII or CHINESE WOOL FLOWER—Produces large heads of rich colors, resembling certain silky wool materials. Plants strong and hardy, growing about two feet. Useful for beds; also for cutting and drying. Offered in **CRIMSON, PINK, YELLOW, and MIXED.** Pkt. 10c.

CELOSIA CRISTATA (Cockscomb)

Sow inside in March and set out in May, or sow outside in May. Very free flowering.

EMPRESS—Very wide combs, crimson. Pkt. 10c.

CENTAUREA

ROYAL SWEET SULTANS—Beautiful, sweet-scented flowers on long stems. Fine cut flowers. Sow early in spring. Finest mixed. Pkt. 10c.

WHITE LEAVED CENTAUREA—(Dusty Miller). Fine for bedding, vases, hanging baskets, pots, etc. Foliage silvery white. Hardy perennial. Pkt. 10c.

MONTANA—Hardy perennials. Two feet; large violet blue flowers July to September. Pkt. 10c.

CEPHALARIA

ALPINA (Giant Scabiosa)—5 ft. Sulphur yellow flowers, formation like Scabiosa. Pkt. 10c.

CERASTIUM (Snow in Summer)

Hardy, dwarf perennial with silvery foliage and small white flowers. Pkt. 10c.

CHRYSANTHEMUM, ANNUAL

SINGLE MIXED—Grows about 2 feet high and blooms in mid-summer. Single, white and yellow flowers, zoned with yellow to red. Pkt. 10c.

DOUBLE MIXED—Yellow, white, etc. Pkt. 10c.

CHRYSANTHEMUM, PERENNIAL

GIANT MIXED—A fine mixture saved from hardy, large flowering plants. Seed started early in the spring will bloom the first season. Pkt. 25c.

CINERARIA

Beautiful greenhouse, or indoor flower, easily grown from seed. High-grade mixture. Pkt. 25c.

COBEA

Rapid annual climber. Start indoors in March or plant outside in May. Large, bell-shaped blossoms. Offered in blue, white or mixed. Pkt. 10c.

COLEUS

Novel and attractive foliage. Easily raised from seed. Start indoors in March. Mixed colors. Pkt. 15c.

CLARKIA

Easily grown annual; double flowers; fine for cutting. 2 feet. One of the finest annuals.

ALBATROSS—New. White. Pkt. 10c.

ORANGE KING—Rich orange. Pkt. 10c.

SCARLET QUEEN—Orange scarlet. Pkt. 10c.

APPLE BLOSSOM—Pink and white. Pkt. 10c.

PURPLE PRINCE—Fine rich purple. Pkt. 10c.

DOUBLE MIXED—All shades. Pkt. 10c.

COREOPSIS

LANCEOLATA GRANDIFLORA—Hardy perennial. Large, showy, bright yellow. Pkt. 10c.

DOUBLE YELLOW—Large, nearly double flowers. New and distinct. Pkt. 15c.

CORNFLOWER (Bachelor's Button)

LAVENDER—New double. Pkt. 10c.

DOUBLE BLUE—Fine for cutting. Pkt. 10c.

DOUBLE PINK—Large pink. Pkt. 10c.

DOUBLE MIXED—Various colors. Pkt. 10c.



New Cosmos, Early Klondyke
Orange Flare

COSMOS

Hardy annuals which, planted after danger of frost in the open, will bloom in the late fall.

EARLY KLONDYKE ORANGE FLARE—New. Early flowering, bright orange. Pkt. 25c.

EARLY DOUBLE CRESTED—A distinct type with a single outer row of large petals, while shorter petals compose a full double center, giving it the appearance of an Anemone flowered dahlia. **SOFT PINK, DARK CRIMSON, PURE WHITE, MIXED.** Pkt. 10c.

MAMMOTH EARLY FLOWERING—The flowers average 4 to 5 inches across, surpassing late varieties in size. Planted in the open ground, they blossom in 60 to 90 days. **WHITE, PINK, CRIMSON, MIXED.** Pkt. 10c.

CUCUMBER, WILD VINE

Quick growing annual. Foliage green with sprays of white flowers. Pkt. 10c.

CYCLAMEN

GIANT MIXED—A splendid mixture of brilliant and soft shades from a highly selected strain. Pkt. 25c.

CYNOGLOSSUM

(Chinese Forget-me-not)

Annual sweet-scented blue. 2 ft. Pkt. 10c.

DAHLIA SEED

Growing dahlias from seed is very interesting. Start like asters and transplant about May 1st.

POMPON MIXED—Saved from pompon type. Pkt. 20c.

CHOICE MIXED—This mixture embraces many colors in different types. Pkt. 10c.

COLTNESS MIGNON MIXED—Dwarf single flowers, suited for bedding. Good cut flowers. Pkt. 20c.

DATURA

Large trumpet flowers 8 inches long and 5 inches across. Flowers white inside and purple outside. Two to three feet high. Pkt. 10c.

DELPHINIUM (Perennial Larkspur)

IMPROVED BELLADONNA—The best for cutting and quite ever-blooming. Usually grows 4 to 6 feet, the flowers being loosely set on the stems. If started inside and transplanted they will often bloom the first season. LIGHT BLUE and DARK BLUE. Pkt. 20c.

GIANT PRIZE MIXED—Selected from Wrexham type. Giant flowers of the Hollyhock strain in mixed colors of single and double. Pkt. 25c.

PASTEL SHADES—Specially selected from large type. Very popular shades. Pkt. 25c.

DIDISCUS, LACE FLOWER

A rare flower with branched plants 18 inches high. Clusters of tiny flowers giving the effect of dainty lace. Color exquisite light blue. Pkt. 10c.

DIANTHUS, PINKS

FINEST MIXED—Biennials, 1 foot high. Pkt. 10c.

HARDY PINKS

DOUBLE DWARF CLOVE PINK—Compact growth, early flowering. Possesses a spicy clove fragrance. Perennial. MIXED COLORS. Pkt. 10c.

DIGITALIS, FOXGLOVE

Popular hardy perennials of easy culture. Mammoth giant saucer-shaped flower tops each spike. Offered in purple, rose, white, mixed. Pkt. 10c.

SHIRLEY MIXED—New giant strain. Pkt. 10c.

ECHINOPS (Globe Thistle)

Hardy perennials with silvery foliage and round close blue flower heads. Three to 5 feet. Pkt. 10c.

ERYNGIUM (Sea Holly)

Hardy perennials, often called Blue Thistle. Finely-cut, shiny foliage; 2 to 3 feet. Pkt. 10c.

EUPHORBIA

Annuals, suitable for beds and borders.

VARIEGATA (Snow on the Mountain)—Attractive green foliage, veined white; 2 feet. Pkt. 10c.

HETEROPHYLLA (Annual Poinsettia)—Glossy green leaves turning to orange scarlet. Pkt. 10c.

FOUR O'CLOCK

Free flowering favorite that does well anywhere. Mixed colors. Very easy culture. Pkt. 10c; oz. 25c.

FREESIA

SPLENDID MIXED. Extra fine mixture. Pkt. 20c.

FUCHSIA

Double and single varieties in mixture. Fine selection. Pkt. 25c.

GAILLARDIA

INDIAN CHIEF—New annual. Dark mahogany red flowers. Pkt. 15c.

PERENNIAL

BURGUNDY—New. Coppery scarlet. Pkt. 15c.

DAZZLER—Giant gold and maroon red. Pkt. 10c.

GIANT HYBRIDS, MIXED—New shades of bronzy red, gold tipped; very robust. Pkt. 10c.

GERBERA (Transvaal Daisy)

A valuable African acquisition. Large, daisy-like blooms on long stems in shades of yellow and red. Sow seed singly, point up, cover lightly in greenhouse or hotbed. Water sparingly. Place in sunny location and protect from summer rains. Jamesoni Hybrids Mixed. Pkt. 20c.

GEUM

MRS. BRADSHAW—A popular perennial with semi-double flowers over 2 inches in diameter. Color brilliant scarlet; fine cut flower and easily started from seed. Blooms in June and July. Pkt. 10c.

LADY STRATHEDEN—The same type as Mrs. Bradshaw but a large double yellow. Pkt. 15c.

ORANGE QUEEN—Large, rich orange. Pkt. 15c.

GERANIUM

LADY WASHINGTON MIXED—Pkt. 10 seeds 40c.
ZONALE MIXED—A superb strain of the largest and finest. Start indoors. Pkt. 15c.

GOURDS, ORNAMENTAL

Culture similar to cucumbers

LARGE MIXED—Main large sorts in fine mixture. Pkt. 10c; oz. 50c.

SMALL MIXED—Main small sorts in mixture. Gourds are easy to grow. Pkt. 10c; oz. 50c.

GODETIA

Free flowering annuals doing best in rather poor soil. They are of easy growth and fine for cutting.

Dwarf Varieties

WHITE SWAN—Pure white. Pkt. 10c.

THUNDERBOLT—Deep crimson. Pkt. 10c.

MANDARIN—New single yellow. Pkt. 10c.

ROSAMOND—Large rose pink. Pkt. 10c.

DWARF MIXED—All shades. Pkt. 10c.

Tall Varieties

DOUBLE CHERRY RED—New. Pkt. 10c.

DOUBLE CRIMSON—Tall plants. Pkt. 10c.

DOUBLE ROSE—Beautiful sort. Pkt. 10c.

DOUBLE MIXED—Various shades. Pkt. 10c.

GRASS, ORNAMENTAL

PURPLE FOUNTAIN GRASS—Graceful, purple plumes and green foliage. Annual. Pkt. 10c.

PAMPAS—Hardy perennial. Pkt. 15c.

HARDY FOUNTAIN—Perennial, 4 feet. Pkt. 10c.

GYPSOPHILA, BABY'S BREATH

PACIFICA—These rose-colored flowers bloom first season from seed. Pkt. 15c.

ELEGANS ALBA—Annual. Small white clusters for mixing with bouquets. Pkt. 10c; oz. 30c.

PANICULATA—Perennial. Single. Pkt. 10c.

PANICULATA DOUBLE—A large per cent come with double white flowers. Pkt. 15c.

HELIOTROPE

Start indoors, plant out in May.

LEMOINES GIANT—Extra large Pkt. 10c.

HELICHRYSUM

STRAW FLOWER—Double flowers on plants two feet high. Fine everlasting flowers to put away for winter. These bright-colored flowers are valuable for decorating and can be kept indefinitely.

Offered in SCARLET, YELLOW, SALMON, VIOLET, ROSE CARMINE, and MIXED. Pkt. 10c.

HEUCHERA (Coral Bells)

SANGUINEA—2 feet. Perennial. Large crimson flowers, blooming in July and August. Pkt. 25c.

HIBISCUS, MARSHMALLOW

New giant types in mixture. Easily grown perennial with flowers 3 to 5 inches in diameter. Blooms in September. Pkt. 10c.

HOLLYHOCK

Hardy, old-fashioned perennial. Easily grown.

SEPARATE COLORS—Double maroon, red, pink, rose, white, yellow, scarlet. Mixed. Pkt. 10c.

IBERIS (Hardy Candytuft)

MIXED—Splendid bedding plant forming masses of bloom one foot in height and diameter. Pkt. 10c.

INCARVILLEA (Hardy Gloxinia)

DELAVAYI—Hardy perennial on Western coast. Rose colored Gloxinia type flowers on stems 15 inches long. Blooms in June and July. Pkt. 10c.

IRIS

JAPANESE MIXED—Hardy perennial, blooming the second year. Pkt. 15c.

KOCHIA, STANDING CYPRESS

Easily grown annual, which sown thinly in the spring forms a cypress-like hedge of the most lively green, of perfect symmetry; by mid-summer attains a height of 3 feet. In the autumn the whole plant becomes deep red. Pkt. 10c; oz. 25c.

KUDZU VINE

Fragrant wisteria-like flowers, with large green leaves, furnishing a dense shade. Easy to grow. Pkt. 10c.

LANTANA

Half hardy perennial greenhouse or bedding plant. Verbena-like heads of orange, white, rose, etc. Mixed colors. Pkt. 10c.

LARKSPUR, ANNUAL

Hardy annuals growing two or three feet high; splendid for beds or cutting.

ROSAMOND—New, deep, pure pink. Pkt. 15c.

BLUE BELL—New, giant imperial blue. Pkt. 10c.

EXQUISITE—Beautiful soft pink. Pkt. 10c.

LA FRANCE—Salmon pink. Pkt. 10c.

BLUE SPIRE—Large deep blue. Pkt. 10c.

WHITE SPIRE—Pure white. Pkt. 10c.

MISS CALIFORNIA—Upright type. Large, very rich, deep pink on salmon ground. Pkt. 10c.

LOS ANGELES—Rose on salmon. Pkt. 10c.

DWARF DOUBLE—Mixed. Pkt. 10c.

LATHYRUS

(Perennial Sweet Peas)

Strong growing hardy climber; easily started from seed. Fine for cutting. Offered in WHITE, ROSE, DARK RED, MIXED. Pkt. 10c.

LAVENDER

Well known hardy perennial, growing about 3 feet high. Very fragrant. Pkt. 10c.

LILY

REGALE—Beautiful hardy lily with large trumpet-shaped, sweet-scented flowers. Ivory white, shaded pink, tinged yellow at base of petals. Pkt. 10c; oz. 50c.

LINARIA

ANNUAL MIXED—This annual grows like a miniature snapdragon. Brilliant colors in yellow, crimson, pink, purple, etc. Pkt. 10c; ¼ oz. 35c.

LINUM (Blue Flax)

Showy hardy perennials of easy culture from seed, 2 feet; a very attractive flower. Pkt. 10c.

LOBELIA

Used for pots, edges or hanging baskets.

CRYSTAL PALACE COMPACTA—Best dark blue. Dwarf compact plants. Pkt. 10c.

SPECIOSA—Dark blue flower and dark foliage. Trailing. Pkt. 10c.

WHITE GEM—Snow white. Pkt. 10c.

DWARF MIXED—All colors. Pkt. 10c.

LUNARIA

(Honesty or Money Plant)

Silvery oval seed pods, prized for winter bouquets. It is a biennial, but it may be treated as an annual, if seed is sown early. Pkt. 10c.

LUPINE

ANNUAL MIXED—Easily grown; spikes of pea-shaped blooms 2 feet high. Pkt. 10c.

PERENNIAL LUPINE—Hardy plants with spikes 3 feet in height, blooming May and June. White, Purple, Rose, Yellow, and Mixed. Pkt. 10c.

LYCHNIS (Jerusalem Cross)

Easily grown from seed and will bloom the first year. Beautiful heads of scarlet flowers on stems two feet high. Hardy perennial. Pkt. 10c.

MESEMBRYANTHEMUM

TRICOLOR—Brilliant, dwarf annual for the rockery or banks. Daisy-like flowers of crimson, pink and white in mixture. Pkt. 10c; ⅛ oz. 30c.



New Marigold, Guinea Gold

MARIGOLD

(African Varieties)

YELLOW SUPREME—New. Large, fluffy blooms of rich creamy lemon-yellow color, practically free from the marigold odor. Pkt. 25c.

GUINEA GOLD—New. Brilliant orange, double and ruffled. Pkt. 10c.

ALL DOUBLE—Nearly 100 per cent double. Giant golden orange; tall plants. Pkt. 15c.

ORANGE PRINCE—Large, double, rich deep golden orange on tall plants. Pkt. 10c.

LEMON QUEEN—Double; tall. Pkt. 10c.

LARGE AFRICAN MIXED—Double. Pkt. 10c.

DWARF AFRICAN MIXED—Double. Pkt. 10c.

(French Varieties)

Hardy annuals of easiest culture.

ROYAL SCOT—New. Gold striped maroon. Pkt. 15c.

GOLDEN GEM—New. This border marigold is covered with dozens of small single orange flowers. Pkt. 15c.

LEGION OF HONOR—Dwarf single yellow spotted with velvet crimson. Pkt. 10c.

TALL DARK BROWN—Very double. Pkt. 10c.

TALL FRENCH MIXED—Double. Pkt. 10c.

DWARF MIXED—Double sorts. Pkt. 10c.

MIGNONETTE

Keep a succession by sowing in April and July.

DEFIANCE MIXED—Extra large spikes, 15 to 18 inches long, deliciously fragrant. Pkt. 10c.

MORNING GLORY

BLUE—Climbing. Pkt. 10c.

CLIMBING MIXED—15 feet. Pkt. 10c.

DWARF MIXED—1 foot. Pkt. 10c.

IMPERIAL JAPANESE—Large fringed flowers in various colors. Pkt. 10c.

MYOSOTIS, FORGET-ME-NOTS

Hardy perennials, easily grown.

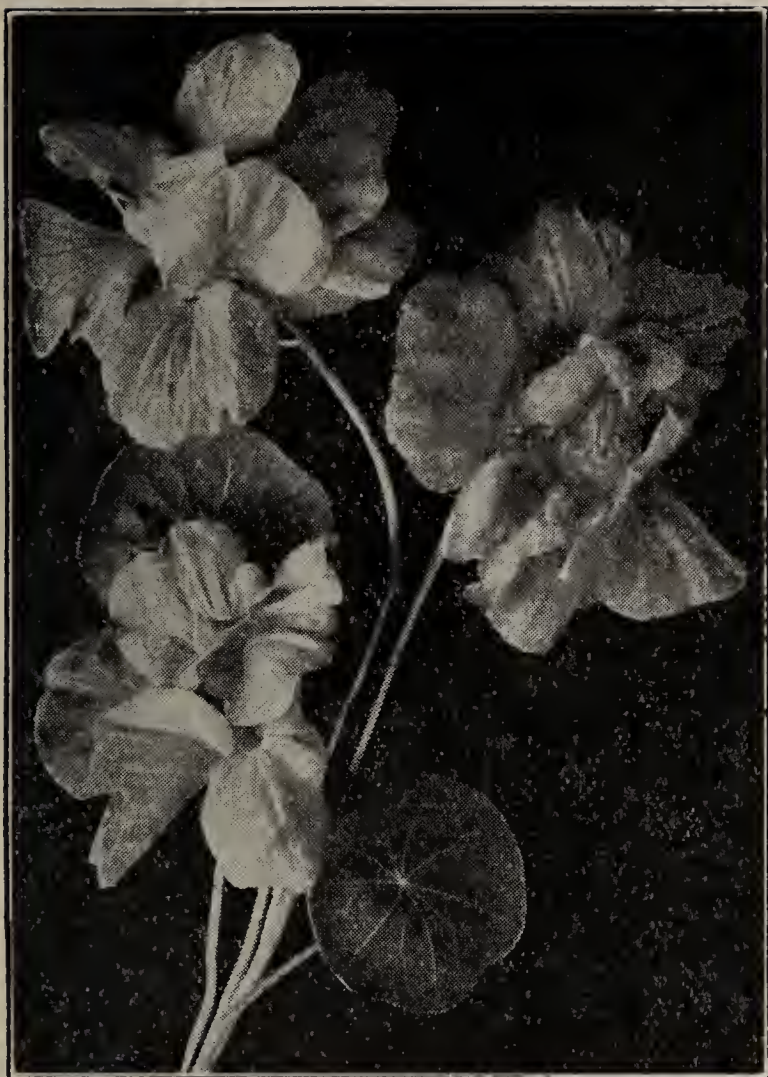
ROBUSTA GRANDIFLORA—Blue. Pkt. 10c.

EVERBLOOMING MYOSOTIS—Clear blue flowers, blooming May to Autumn. Pkt. 10c.

MIXED—Blue, rose, white, mixed. Pkt. 10c.

NEMESIA

LARGE FLOWERING MIXED—Pretty annual suited to cool positions. One foot high with orchid-like flowers in rose, yellow, blue, orange, etc. Pkt. 10c.



Double Nasturtium, Golden Gleam

NASTURTIUM

Sow in April, thin to 2 or 3 inches.

PRICES—Unless otherwise noted, prices for dwarf and tall varieties are uniformly: Pkt. 10c; oz. 20c.

Tall Varieties

DOUBLE SCARLET GLEAM—New. Dazzling scarlet double sweet-scented flowers of immense size. Type similar to Golden Gleam. Pkt. 20 seeds 25c.

DOUBLE GLEAM HYBRIDS—New. The Hybrids are a collection of gorgeously colored sweet-scented double blooms. Pkt. 25 seeds 25c.

DOUBLE GOLDEN GLEAM—New double sweet-scented Nasturtium. Runners 18 inches long; large flowers of golden yellow. Pkt. 10c; oz. 25c; $\frac{1}{4}$ lb. 75c.

KING THEODORE—Dark maroon.

SPITFIRE—Fiery scarlet.

CALIFORNIA GIANTS MIXED—All colors. Pkt. 5c; oz. 15c; $\frac{1}{4}$ lb. 40c.

IVY LEAVED TALL MIXED—Pkt. 10c; oz. 20c.

Dwarf Varieties

KING OF TOM THUMBS—Scarlet, dark leaves.

FINEST MIXED—All colors. Pkt. 5c; oz. 15c; $\frac{1}{4}$ lb. 40c.

NICOTIANA, FLOWERING TOBACCO

FINEST MIXED—All shades. Pkt. 10c.

NIGELLA

MISS JEKYLL—Splendid cut variety; cornflower-blue flowers. Free flowering annual. Pkt. 10c.

OENOTHERA (Evening Primrose)

Large golden flowers, easily grown from seed. Does best in sunny position. Pkt. 10c.

PENTSTEMON

SENSATION—Ranks with petunias; embraces a wide range of color, including rose, carmine, cherry, pink, lilac and purple. Two feet high. Not quite hardy and should be covered in winter. Pkt. 10c.

BARBATUS TORREYII—Hardy perennial; 3 feet, spikes of coral red flowers. Pkt. 10c.

PANSIES

Sow early inside or plant in the open in April. Sow in August for spring plants.

BRONZE GIANTS—Burnished brass to gold, wonderfully tinged with various shades. Pkt. 25c.

MADAM STEELE—Giant velvety purple. Pkt. 25c.

IMPROVED VOLCANO—A rich, velvety burgundy red of immense size. Pkt. 25c.

PANAMA PACIFIC—Huge deep yellow. Pkt. 25c.

GILL'S MASTER MIXED—This new mixture includes Swiss Giant, Jumbo Mixed and Miracle Giants. Pkt. 25c.

SWISS GIANTS—New wonderful shades. Massive flowers on strong stems. Pkt. 25c.

MIRACLE GIANTS—A super mixture from the latest colors and novelties. Selected for giant size, long stems and great range of colors. Pkt. 25c.

GILL'S OREGON GIANTS—A splendid mixture of giant flowers in a wonderful range of colors. Pkt. 15c.

TUFTED PANSIES—See Viola Cornuta.

PETUNIAS

DEFIANCE, LARGEST FLOWERING—Flowers often five inches in diameter, fringed, with open throats. Colors varied and indescribable. For size and beauty this is the best strain. Pkt. 25c.

DOUBLE GIANTS—Only a portion of these come double, but these are well worth while. Those plants which show the weakest vitality in starting make the best flowers. Pkt. 35c.

PRIDE OF PORTLAND—Giant single; deep rose, very dainty flowers of uniform color. Pkt. 20c.

ELK'S PRIDE—Immense single; black purple, strong, vigorous grower; very popular. Pkt. 20c.

NANA COMPACTA—This miniature petunia, growing about five to six inches high, is recommended for borders and rock gardens. Pink Gem. Pkt. 25c. Mixed Pkt. 15c.

Single Bedding Petunias

STAR PETUNIA—Compact plants; cherry-red flower with white center. Pkt. 10c.

ROSY MORN—Rose, white throats, dwarf, extra select. Pkt. 10c.

BLOOD RED—Pkt. 10c.

MIXED—Pkt. 10c.

PHLOX DRUMMONDI, ETC.

A beautiful annual that may be used for massing, beds, borders or pots. Sow in the open.

NANA COMPACTA—Dwarf 6 in. Mixed all colors. An ideal border flower. Pkt. 10c.

MAMMOTH FLOWERING—Offered in white, deep rose, bright scarlet, primrose, mixed. Pkt. 10c.

HARDY PERENNIAL PHLOX—The seed can best be planted in the fall in open ground. It germinates very slowly. Very fine varieties often come from seed. Easy to grow. Mixed. Pkt. 15c.

PHYSALIS (Chinese Lantern)

Hardy, ornamental perennial with plants 2 feet high, producing orange-scarlet, lantern-shaped fruits which can be cut for winter bouquets. Pkt. 10c.

PHYSOSTEGIA

Hardy perennials. Delicate pink, tubular flowers on plants 3 feet tall. Pkt. 10c.

PLATYCODON (Balloon Flower)

Hardy perennials of easy culture; one foot high. Blue and white mixed. Pkt. 10c.

PORTULACA SUN PLANT

A hardy annual, doing best in a rich loam. Fine for massing in beds, edgings or rock work.

SINGLE MIXED—Containing rose, scarlet, white, yellow, etc. Pkt. 10c.

DOUBLE MIXED—Mostly double. Pkt. 10c.

PYRETHRUM

HYBRIDUM—Large flowering, single mixed. Hardy perennials bearing daisy-like flowers in pink, red and white. A fine flower. Pkt. 15c.

DOUBLE MIXED—Densely double. Pkt. 20c.

POPPIES—SINGLE SORTS

May be sown in the fall or early spring.

FLANDERS—The poppy of Flanders Field. Crinkled satiny flowers of bright scarlet. Pkt. 10c.

AMERICAN LEGION—Giant dazzling orange scarlet on stout stems. Pkt. 10c.

BLUE SHIRLEY—New grey blue. Pkt. 10c.

PICOTEE SHIRLEY—White edged red. Pkt. 10c.

GILL'S MIXED SHIRLEY—All colors. Pkt. 10c.

Double Sorts

DOUBLE BEGONIA FLOWERED—Double begonia-like flowers of deep pink. Pkt. 10c.

DOUBLE PINK SHIRLEY—Beautiful pink shades and very large. Pkt. 10c.

TULIP POPPY—15 to 20 inches high with a blaze of bright scarlet tulip-shaped flowers. Pkt. 10c.

DOUBLE SHIRLEY MIXTURE—All the latest new shades and a wonderful mixture. Pkt. 10c.

CARNATION FLOWERED—Double fringed, mixed colors. Large flowers on tall plants. Pkt. 10c.

GIANT YELLOW TULIP POPPY—Fine for cutting; large, buttercup yellow. Pkt. 10c.

ORIENTAL POPPIES

Hardy perennials, producing splendid cut flowers.

ORIENTAL—Large, deep crimson flowers, with black blotch on each petal. Pkt. 10c.

PRINCESS VICTORIA LOUISE—Large, soft-salmon rose. Pkt. 15c.

ICELAND POPPIES

Very dainty perennial. They form neat fern-like tufts from which the slender flower stems protrude to a height of one foot. Single flowers of orange, white and yellow in mixture. Pkt. 10c.

EL MONTE—Giant, deep tangerine orange. Splendid cut flowers blooming in 6 months. Pkt. 15c.

EXTRA SELECT DOUBLE—Resemble double Ranunculus. A fine range of colors. Pkt. 15c.

PRIMROSE, HARDY

POLYANTHUS—Small, thick, round cluster of orange, purple and crimson flowers. Veris Mixed. Pkt. 15c.

JAPONICA (JAPANESE PRIMROSE)—Bright clusters on stems 6 to 9 inches. Mixed. Pkt. 15c.

VULGARIS (ENGLISH PRIMROSE)—Canary yellow, fragrant. Pkt. 15c.

AURICULA MIXED—A favorite variety; 6 inches tall. Yellow, brown, red in mixture. Pkt. 15c.

RUDBECKIA

NEWMANI—Hardy perennial of easy culture. Orange petals and black cone center. Pkt. 10c.

SALPIGLOSSIS

Annual. Plant in open in May.

DARK SCARLET—Very beautiful. Pkt. 10c.

FAUST—Deep black. Pkt. 10c.

SCARLET AND GOLD—A beauty. Pkt. 10c.

LARGE FLOWERING MIXED—Pkt. 10c.

SALVIA (Scarlet Sage)

Sow indoors in March, plant out in May.

DWARF SALMON BEAUTY—Charming flower of rich salmon color. Pkt. 15c.

SPLENDENS—Bright scarlet, 3 feet. Pkt. 10c.

PATENS—Perennial; intense blue. Pkt. 15c.

FIREBALL—Neatly rounded plants, 12 inches; bright scarlet flowers. Pkt. 10c.

AZUREA—Hardy perennial; skyblue. Pkt. 15c.

SCABIOSA OR MOURNING BRIDE

Sow outside after danger of frost is past.

LOVELINESS—Soft salmon rose. Pkt. 10c.

PEACH BLOSSOM—Large, soft pink. Pkt. 10c.

SHASTA—Giant, pure white. Pkt. 10c.

AZURE FAIRY—Double pale blue. Pkt. 10c.

LARGE FLOWERING—Offered in scarlet, black, rose, yellow and mixed. Pkt. 10c.

CAUCASIA—Hardy perennial; 3 feet. Large flowers in lilac, white, mixed. Pkt. 15c.

GIANT HYBRIDS—Perennial. Giants on erect stems; lavender to dark blue. Pkt. 15c.

SOUTH AFRICAN—Perennials of distinct form. Pink and lavender mixed. Pkt. 15c.

SCHIZANTHUS

(Butterfly or Fringe Flower)

NEW GIANT HYBRIDS—An easy, quick growing annual. Fancy mixed. Pkt. 10c.

SENSITIVE PLANT, MIMOSA

A curious annual, its leaves close when touched. If the stem is touched the leaf will fall. Pkt. 10c.

SIBERIAN WALLFLOWER

A hardy biennial which can be used as an annual. Grows about 12 inches high with bright orange flowers. Pkt. 10c.

SHASTA DAISY

ALASKA—The popular evergreen perennial with single flowers, often 5 inches across, of purest glistening white. Pkt. 10c.

SNAPDRAGON

For early flowering, sow seed in the fall and then set out in the spring, or the plants may be started in the spring, in a box or hot bed.

SEPARATE COLORS as follows: **GIANT WHITE**, **GIANT SCARLET**, **GIANT YELLOW**, **GIANT GARNET**, **GIANT PINK**. Pkt. 10c.

SALMON ROSE—Giant maximum type. Pkt. 10c.

GILL'S SUPERIOR MIXED—This mixture contains a great variety of colors. Pkt. 10c.

RUST PROOF VARIETIES

75% of the plants are absolutely Rust Proof.

RUST PROOF BRONZE SHADES—Deep yellow, bronze and orange colors mixed. Pkt. 25c.

RUST PROOF CRIMSON—Rich crimson. Pkt. 25c.

RUST PROOF PINK SHADES—All shades of pink mixed. Pkt. 25c.

RUST PROOF SHASTA—Large, pure white flowers. Pkt. 25c.

RUST PROOF YELLOW—Giant golden yellow. Pkt. 25c.

RUST PROOF MAXIMUM MIXED—Giant flowers, closely set on tall spikes. Pkt. 15c.

RUST PROOF UNIVERSITY OF CALIFORNIA—A complete range of colors mixed. Pkt. 15c.

STATICE

ANNUAL MIXED—Everlasting flowers of easy culture. Splendid for cutting and drying for winter. Blue, pink and yellow in mixture. Pkt. 10c.

PERENNIAL MIXED—Purple and deep blue. Very hardy. Pkt. 10c.

STOKESIA

CYANEA—Valuable cut flowers; perennial, easily grown from seed. Grows 2 feet high, producing lavender-blue flowers. Pkt. 10c.

STOCKS

Easily grown from seed and flowers the first year. Half hardy perennial.

ELK'S PURPLE—Intense royal purple. Vigorous, often growing 30 inches tall; very double. Pkt. 15c.

GIANT OLD ROSE—Double old rose. Pkt. 15c.

MAMMOTH BEAUTY OF NICE—Branched plants 2 feet. Large, double flowers, mixed. Pkt. 10c.

GIANT PERPETUAL MIXED—Started in April they begin blooming in July and continue until winter. Large double flowers. Pkt. 15c.

IMPROVED LARGE FLOWERING TEN WEEK—A superior strain which runs 80 to 90 per cent double. **BLOOD RED**, **BRIGHT PINK**, **ROSE**, **PURPLE**, **WHITE**, **MIXED**. Pkt. 10c.

SWEET ROCKET

Hardy perennial of easiest culture; 3 feet tall; fragrant spikes of blooms in May; valuable for cutting. **WHITE**, **CARMINE** and **MIXED**. Pkt. 10c.

SUNFLOWER

CHRYSANTHEMUM—Double, rich golden yellow; immense blooms on strong, tall stalks. Pkt. 10c.

RED SUNFLOWER—The color varies greatly, some being chestnut red throughout, while others are red tipped with yellow, still others are yellow washed red; some come pure yellow. Pkt. 10c.

PERENNIAL MIXED—Large, single. Pkt. 10c.

SPENCER SWEET PEAS

WE OFFER THE LARGEST SELECTION OF SWEET PEAS IN THE NORTHWEST

Their easy culture, freedom of bloom, delightful fragrance and artistic appearance, combined with their splendid cut-flower qualities make them one of the most desirable flowers for the public.

Spring sowings should be made as early in the spring as the soil conditions permit. Here in the Coast regions they can often be planted in February. They can also be planted in November and with this method they will bloom very early in the spring; in fact, are usually in bloom Decoration Day.

NOVELTIES FOR 1935

LADY MACBETH—New. Dazzling spinel red with golden shadings. Pkt. 25c.

RAPTURE — New. Deep rose pink on cream ground. Pkt. 30 seeds, 25c.

VANITY—A new geranium pink on long stems Pkt. 30 seeds, 25c.

NOVELTIES FOR 1934

BONNY BRIAR—Silver medal award. A sparkling rose pink of immense size. Pkt. 20c.

ECSTASY—Blush pink, good stems. Pkt. 20c.

MASTERCREAM—New, black seeded cream; the blooms are duplexed and beautifully frilled. Pkt. 20c.

RECENT NOVELTIES

PRICES ON RECENT NOVELTIES—Unless otherwise listed. Pkt. 10c; ½ oz. 25c; oz. 40c; ¼ lb. \$1.10. Any 12 pkts. in this list for 90c.

ALLBRIGHT—Giant scarlet cerise.

AVALANCHE—Giant pure white.

BLUE FLAME—The largest dark blue.

CARMELITA—Light rose on cream ground.

CELEBRITY—Giant, rich orange.

CHIEFTAIN—Large, pure, satiny rose.

CONQUEROR—Vivid, brilliant scarlet red.

DEBUTANTE—Giant, salmon coral.

DEL MONTE—Giant, rich salmon cerise pink.

EOSINE—Giant in fours. Eosine pink.

FLAMINGO—Orange, scarlet, cerise. Extra fine.

GLENEAGLES—Immense pale blue lavender.

GOOD CHEER—Lovely begonia rose.

HERO—Giant, bright clear cerise, suffused salmon.

IDYL—Giant flowers in fours; salmon pink.

MISS DELIGHT—Large, light salmon pink.

PINKIE—Giant in fours; deep rose pink.

RED BOY—Giant crimson; long stems.

REFLECTION—Giant in fours; clear blue.

RIPPLES—Flushed rose on deep cream ground.

SERENADE—Bright cerise on cream salmon.

SMILES—Salmon, shrimp pink.

SUNKIST—Giant cream; picotee edge of rose.

SUPREME—Giant, blush pink. Long stems.

SYBIL HENSHAW—Giant deep crimson.

TRANQUILITY—Rosy mauve.

WELCOME—Brilliant scarlet. Extra fine.

WHAT JOY—Large, primrose shading to cream.

GENERAL LIST SPENCERS

PRICES ON ALL SORTS IN THIS GENERAL LIST ARE UNIFORMLY: Pkt. 10c; oz. 30c; ¼ lb. 90c; lb. \$3.00. Any 12 packets in this list 75c.

AUSTIN FREDERICK IMPROVED—Lavender.

ASTA OHN—Large, pinkish lavender.

BARBARA—Large, beautiful salmon.

BLANCHE FERRY—Standards rose, wings white.

BRILLIANT ROSE—Bright tyrian rose.

CAMPFIRE—Bright sunproof scarlet.

CHARMING—Brilliant deep rose.

COMMANDER GODSALL—Giant dark blue

CRIMSON KING—Giant, rich crimson.

HAWLMARK PINK—Giant rose, flushed salmon.

HEAVENLY BLUE—Immense delphinium blue.

KING EDWARD—Deep, rich carmine scarlet.

KING WHITE—Giant, glistening white.

MARY PICKFORD—Cream pink suffused salmon.

MATCHLESS—Giant, clear rich cream.

MISS CALIFORNIA—Giant salmon pink.

OLYMPIA—Giant, rich purple.

PICTURE—Large cream pink, suffused apricot.

POWERSCOURT—Mammoth, pure lavender.

ROYAL PURPLE—Giant, rich royal purple.

ROYAL SCOT—Giant, brilliant cerise scarlet.

THE SULTAN—Large, black, velvety maroon.

YOUTH—Giant, white with picotee edge of pink



Spencer, Smiles

EARLY FLOWERING SPENCERS

These bloom two weeks ahead of the regular Spencers. Valuable for greenhouse forcing, also fall and spring planting outdoors.

PRICES—Unless noted are uniformly as follows: Pkt. 10c; ½ oz. 25c; oz. 45c. Any 12 pkts. for 90c.

EARLY EILEEN—New. Rich begonia rose shading to salmon cerise. Pkt. 25c.

EARLY LAVANDA — 1934 — Clear lavender, on good stems. Pkt. 25c.

EARLY ATTRACTION — Clear salmon begonia pink.

EARLY CREAM—Large rich cream.

EARLY ELEANOR BLUE—New shade of blue, on long stems.

EARLY FASCINATION—Salmon rose pink.

EARLY GIANT ROSE—Largest rose pink.

EARLY HARMONY—A fine lavender.

EARLY MARINE—Enormous, clear blue.

EARLY MISS ANNIE LAURIE—Giant, rose pink on good stems.

EARLY QUEEN CRIMSON—Best deep crimson.

EARLY SATIN ROSE—Rose and amber shade.

EARLY SUPERIOR PINK—Giant, rose salmon.

EARLY WHITE HARMONY—Giant, pure white.

EARLY SUPER MIXED—Fine mixture of new and standard named sorts. Pkt. 10c; ½ oz. 20c; oz. 30c; ¼ lb. 90c; lb. \$3.25.

MIXED SWEET PEAS

***SHOW GROUND MIXTURE**—A remarkable mixture saved from trial grounds, being made up from a long list of new and standard named varieties. Pkt. 10c; oz. 35c; ¼ lb. \$1.00; lb. \$3.50.

GILL'S PROGRESSIVE MIXTURE—This Spencer mixture contains a splendid assortment of colors both light and heavy shades, and gives fine satisfaction. Pkt. 10c; oz. 20c; ¼ lb. 65c; lb. \$2.00.

SWEET PEAS—Continued

SOFT BLEND SPENCERS—This blend of soft colors has become very popular. It contains cream, white, lavender and soft pink in mixture. Pkt. 10c; oz. 35c; ¼ lb \$1.00; lb. \$3.50.

CONTRAST BLEND—Orange scarlet and cream blended. Try growing these together and use them mixed for bouquets. Pkt. 10c; oz. 35c; ¼ lb. \$1.00.

SWEET WILLIAM

Hardy biennial, easily grown from seed.

SEPARATE COLORS—Single sorts. WHITE, CRIMSON, MAROON, SCARLET, MIXED. Pkt. 10c.

NEWPORT PINK—A distinct color, being salmon rose or watermelon pink. Giant clusters. Pkt. 10c.

SCARLET BEAUTY—Large clusters of deep scarlet. Very popular. Pkt. 10c.

JOHNSON'S DIADEM—Giant blooms in immense clusters; deep crimson and white eye. Pkt. 10c.

NEW MAMMOTH MIXED—Gigantic strain. Single flowers in a great range of color. Pkt. 10c.

DOUBLE MIXED—Extra select strain. Pkt. 15c.

THALICTRUM (Meadow Rue)

Perennial with pretty foliage; 4 feet; clusters of bright yellow mauve. Fine cut flowers. Pkt. 10c.

THUNBERGIA, BLACK EYED SUSAN

Rapid growing annual climber, preferring a warm situation; useful for hanging baskets, vases, along fences, etc. Buff, white, orange, etc., with dark eyes; 4 feet. Mixed colors. Pkt. 10c; ¼ oz. 50c.

TITHONIA (Mexican Sunflower)

Orange vermillion flowers, resembling single African marigold with foliage and growth much like a dahlia. Pkt. 10c.

TRITOMA (Red Hot Poker)

A strong growing hardy perennial easily grown from seed. Height 4 to 5 feet. Beautiful shades of coral, crimson and scarlet. Pkt. 15c.

VERBENAS

LUCIFER—Giant, deep cardinal scarlet. Pkt. 10c.

LAVENDER GLORY—Magnificent lavender colored verbena of mammoth size. Medium white eye. Pkt. 15c.

MAMMOTH STRAIN, in PINK, PURPLE, SCARLET, WHITE, BLUE, MIXED. Pkt. 10c.

NANA ERECTA

This new type of verbena is excellent for borders or bedding. Grows more upright than the old type.

VIOLET BOUQUET—New. Deep violet blue flowers tinged with garnet; cream eye. Pkt. 25c.

CARMINE BALL—New. Bright carmine. Pkt. 25c.

VINCA

Ornamental free flowering plants; fine for bedding. Sow outdoors in May. Mixed. Pkt 10c.

VIOLA CORNUTA (Tufted Pansies)

JERSEY GEM—The best deep violet blue .Pkt. 25c.

LUTEA SPLENDENS—Chrome-yellow. Pkt. 10c.

G. WERMIG—Violet-blue. Pkt. 25c.

TUFTED PANSIES MIXED—Pkt. 10c.

VIOLET

The hardy perennial sweet scented violets. Easily grown from seed; offered in mixtures. Pkt. 15c.

VISCARIA

Very showy and effective garden annual, producing freely throughout the summer large single flowers in red, white and blue shades. Pkt. 10c.

WALL FLOWER

Half hardy perennials, blooming early in the spring. Easily grown from seed.

DARK BLOOD RED—Giant single. Pkt. 10c.

CLOTH OF GOLD—Immense clear gold. Pkt. 10c.

MAMMOTH DOUBLE MIXED—Giant flowers. A large percentage come double. Pkt. 15c.

DOUBLE ANNUAL MIXED—Extra fine. Pkt. 15c.

SINGLE ANNUAL MIXED—Will flower the first season from seed. Pkt. 10c.



New Zinnia, Fantasy Mixed

ZINNIAS

These old-fashioned flowers have been highly improved and the new giant sorts are deservedly very popular. Blooms 5 to 6 inches in diameter are very common. The best results can be obtained by planting the seed where you wish them to grow. This is far better than transplanting, except for early blooms. Plant in open ground May 1 to June 15.

FANTASY MIXED—New. Bright, colorful mixture of shaggy petaled medium size double flowers; excellent for cutting. Pkt. 25c.

SCABIOSA FLOWERED MIXED—Plants 2 to 2½ feet, bearing numerous medium-sized flowers, resembling the annual Scabiosa. Pkt. 15c.

MAMMOTH DAHLIA FLOWERED

Greatly improved double Zinnias of gigantic size and remarkable colorings.

PRICES DAHLIA FLOWERED ZINNIAS, unless mentioned, uniformly: Pkt. 10c; ⅛ oz. 40c.

CANARY BIRD—Rich canary yellow.

CRIMSON MONARCH—Largest and best red shade; often 8 inches across.

DREAM—Deep lavender turning to mellow purple.

EXQUISITE—Light rose with deep rose center.

LEMON BEAUTY—Golden yellow on brown.

METEOR—Rich, glowing, deep red. Very dark.

OLD GOLD—Mammoth old gold.

OLD ROSE—Real old rose shade.

ORIOLE—Beautiful orange and gold bicolor.

SCARLET FLAME—Large, bright scarlet with blending of orange throughout the petals.

MAMMOTH DAHLIA MIXED—A fine blending of colors. Pkt. 10c; ⅛ oz. 30c; ½ oz. \$1.00.

MONSTER TYPE ZINNIAS

This type offers some very rare and striking colors. Prices each: Pkt. 10c; ⅛ oz. 40c.

CERISE QUEEN—Beautiful cerise rose.

DAFFODIL—Canary yellow.

LEMON QUEEN—Golden yellow.

MISS WILMOT—Giant, soft pink.

ORANGE KING—Color of Orange King Calendula.

PURITY—Giant pure white.

ROSE QUEEN—Opens bright rose with deeper center but develops into a warm, deep rose.

MONSTER MIXED—All shades mixed.

BEDDING ZINNIAS

LILLIPUT TOM THUMB—This new mixture is the most dwarf zinnia known. Fine for borders. Pkt. 15c.

LILLIPUT DOUBLE—Miniature flowers about the size of a common daisy. Very fine for dwarf borders. These are wonderful little cut flowers. Offered in CRIMSON, SALMON ROSE, GOLD and MIXED. Pkt. 10c; ¼ oz. 35c; oz. \$1.00.

GIANT ZINNIAS

These are immense but not so large as the Dahlia Flowered sorts. Flowers 5 inches in diameter are common.

GIANT MIXED—Pkt. 10c; ¼ oz. 30c; oz. 90c.

GIANT PICOTEE MIXED—Petal edges and tips are distinctly marked. Pkt. 10c; ¼ oz. 30c.

QUILLED TYPE MIXED—Also called cactus type. This is a giant type with long rolled or quilled petals. Very distinct. Pkt. 10c; ¼ oz. 30c.

WILD FLOWER GARDEN

This is a mixture of many kinds of annual flower seeds and will give splendid results on banks and along roadsides, etc. Large pkt. 10c; oz. 35c; ¼ lb. \$1.00.

FLOWER SEEDS FOR FLORISTS

We supply hundreds of florists with bulk weights in flower seeds. Please write.

SUNSET MAGAZINE



This splendid publication is printed monthly, on the Pacific Coast and covers the field of flower culture, landscape work, traveling and home-making. Plain English the amateur can understand. It is printed in up-to-date style and is interesting from cover to cover. The articles published cover all phases of garden work. Be sure to include this with your order. Subscription price 50c per year; 2 years for \$1.00. With

each two-year subscription, a copy of Sunset's All-Western Garden Guide will be sent absolutely free.

GILL BROS. BLUE RIBBON DAHLIAS

At our farms, we grew, last season, fourteen acres in Dahlias, representing about six hundred varieties. Our selections have not been limited to Oregon or the Northwest. We have disregarded geographical lines and have assembled the best from all the dahlia growing sections in the world. We ship dahlias all over the United States and Canada and have won a reputation for good dahlia bulbs that are true to name. Our soil produces solid, vigorous bulbs, that give splendid results in any section of the country. Practically all bulbs we send out are our own growing. It will pay you, in the purchase of dahlias, to buy direct from a grower who can supply his own stock as this lessens the chance of mistakes.

DAHLIAS INTRODUCED BY GILL BROS., 1934

GOLD BAND—Peony. Brilliant scarlet and gold flowers, many of the blooms have a gold stripe in center of petal; others are all scarlet. Each	1.00
IMPROVED CLOWN—Decorative. Similar in color to The Clown, creamy yellow ground splashed and striped with crimson. Strong erect stems. Each	1.00
INDIAN SUMMER—Decorative. New and very distinct in formation and color. Soft salmon with gold suffusion and silvery sheen. Long, erect stems and upright growth. Each.....	2.50

DAHLIA ORDERS

Will be filled during April and May, but may be sent to us any time for booking, and will be filled in the rotation received. No dahlia orders will be filled after June 1, except collections, which will be sent up June 15 if stock is unsold. Orders for dahlias of \$10.00 or more (collections not included) may select 10 per cent of the amount, extra, in dahlias as a premium.

DAHLIA GUARANTEE

We guarantee all bulbs we send out to grow and be true to name, but we will not be responsible for any more than the purchase price represented by replacement of bulbs. In case of dahlias not growing, they must be returned to us by July 1, of the season when purchased, with our labels attached. Sometimes bulbs are slow to sprout, but if at the end of 20 days they have not done so, remove the earth carefully from the bulb and, if still dormant, return it to us. We can send you another at once. However, if it reaches us too late for planting that season, we will book the order for filling the season following. Flowers considered untrue to name should be sent to us by parcel post for verification. Any extras we may include free in orders are not subject to this guarantee.

PRICES POSTPAID

The prices on all dahlias offered include postage or express, which we prepay.

DAHLIA CULTURE

We publish a bulletin telling how to care for dahlias. This is sent free to all if requested and a copy is included with each order of bulbs.



Top, Champagne; right, Cigarette; bottom, City of Portland; left, Crown Point.

CACTUS AND HYBRID CACTUS DAHLIAS

EXPLANATION—H. C. indicates Hybrid Cactus; these have broader and more massive petals. Varieties indicated with a star are Pacific Northwest introductions. We can supply many other sorts. If interested, please write.

Those marked (Gill) were introduced by Gill Bros.

ALICE WHITTIER, H. C.—Giant flowers on stiff, erect stems; heavy primrose sulphur yellow.....	.50
ALPHONSINE—A splendid white cactus. Erect stems. Perfect incurved flower.....	.50
AMBASSADOR, H. C.—Giant, soft bright yellow, deepening to orange center; strong, erect stems	.60
AMERICAN TRIUMPH—Large red true cactus.....	.50
ANDREAS HOFER—Beautiful pink, on good stems.....	.50
AURANTIACA, H. C.—Tan and apricot with good stems.....	.50
BALLET GIRL—Immense, incurved flowers on good stems. Orange petals edged white.....	.35
BEAR CLAWS—Large incurving ruby red cactus with good stems.....	.50
BERENGARIA, H. C.—Giant orange, shading to gold at tips.....	.50
BOB PLEUSE, H. C.—Giant wine maroon, tipped and marked white; fine stems.....	.35
BRITISHER—A fine, large, bright crimson with incurved petals.....	.35
*BRONZE KING, H. C. (Gill)—Giant, erect blooms. Petals long, irregular. Bronzy red toned yellow	.50
*CAMPFIRE GLOW (Gill)—Large blooms, fully double on erect stems. Bright crimson self.....	.50
CHEMAR'S MASTERPIECE, H. C.—Giant flowers on good stems; rich orchid pink.....	.50
CIGARETTE, H. C.—Giants on strong stems; cream ground edged with pomegranate red.....	.50
*COLUMBINE (Gill)—Soft columbine shades of lavender, rose and yellow. Long, erect stems.....	.50
CONQUISTADOR, H. C.—Giant, massive flower. Creamy yellow shading to pink at base.....	.75
*CROWN POINT (Gill)—Giant lavender blooms, often 10 inches across. Tall vigorous plants.....	.50
DADDY BUTLER, H. C.—Giant on long stems. American Beauty shades with lighter reverse.....	.35
*DELIGHTFUL, H. C. (Gill)—Rich buff rose toned deep yellow at base. Long, erect stems....	.50
ELITE GEM, H. C.—Lemon on chrome, suffused and shaded tyrian rose, with rose reverse.....	.50
ELSIE OLIVER, H. C.—Creamy pink shading to cream center. Extra large, fine stems.....	.50
*ENCHANTING, H. C. (Gill)—Giant flowers of rich rosy salmon with large golden centers.....	.75
ETHEL BURNHAM, H. C.—Giant flowers on erect stems; rose salmon shade.....	.35
EXQUISITE—Beautiful salmon pink with yellow center; perfect stems.....	.50
*FASCINATION, H. C. (Gill)—Giant flowers on long stems; deep purple regularly tipped white.....	.75
FIERTE ANVERSOISE—Light pink shading to white in center. Erect stems.....	.50
FRANCES LOBDELL, H. C.—Mallow pink, shading to white center. Stiff, erect stems.....	.50
GLADYS BATES—Immense blooms on long, erect stems; soft tan, tinted rose.....	.35
GOLDEN WEST, H. C.—Large flower on erect stems; deep rich yellow overlaid with orange.....	.35
*HUGH DUTTON, H. C.—Giant flowers of brilliant deep crimson with darker center. Good stems....	.35
IRENE SATIS—Lemon shaded golden bronze. Large blooms on erect stems.....	.35
JEAN CHAZOT, H. C.—Giant flowers on long stems; golden bronze lightly suffused with soft red...	.35
*JENNIE R. NICHOLS, H. C.—Extra tall plant; long, erect stems; soft plum with deeper shadings	.35
*LAKE PEND OREILLE, H. C.—Giant blooms on long, erect stems; delicate soft pink.....	.50
LAURINE—Giant flowers of deep pink; long, erect stems.....	.50
*LILLIAN SHERIDAN, H. C.—Orange shaped aurora yellow; petals tipped with gold. Erect stems	.50
MARATHON—Large incurved flowers on strong stems; color deep rich purple.....	.25
MARY DORR—Bright tyrian pink blending to white at center and tips. Erect stems.....	.35
MARY E. COVEY, H. C.—Clear violet rose, shading to lighter at tips, with white center.....	.75
MARY MUIR, H. C.—Extra fine cut flower. Large ivory white blooms, erect stems.....	.35
MAUDE HASTINGS—Very soft yellow; full flowers on good stems; prolific bloomer.....	.35
MISS MARGARET STREDWICK—Large, incurved flowers of soft rose pink. Fine, erect stems.....	.35
MRS. DOUGLAS FLEMING—Large, pure white flowers on fair stems. Incurved petals.....	.35
MRS. EDNA SPENCER—Splendid soft lavender pink. Long, straight stems.....	.35
MRS. ETHEL SMITH, H. C.—Giant creamy white shading to lemon. Long, erect stems.....	.35
*MULTNOMAH (Gill)—Perfect, large centers of rich scarlet, heavily tipped with white.....	.35
*NELLIE RAY—Beautiful soft lavender. Good stems and valuable cut flower.....	.60
NEW MODEL—Large incurved flowers; soft yellow deepening to pink at tips.....	.35
*OREGON (Gill)—Large and distinct color. Brilliant rose carmine cerise. Fine cut flowers.....	.35
ORIENTAL BEAUTY—Blooms are large, clear, bright rose pink. Perfect stems.....	.75
PINK DADDY BUTLER, H. C.—Rose pink, counterpart of Daddy Butler.....	.35
REGENT—Giant, incurved flowers of clear mauve pink on long, erect stems; extra long.....	.50
ROMANY—Large flowers of bright geranium scarlet; long rolled petals.....	.50
ROSA BONHEUR, H. C.—Ivory white center shading to shell pink; splendid stems.....	.50
ROYALIST—Large incurved flowers of soft coral red color.....	.35
RUTH JACQUELINE, H. C.—Large, perfect flowers on long, erect stems; clear yellow.....	.35
*SALMON GLOW (Gill)—Free flowering cactus of medium size. Rich salmon on good stems.....	.35
SILVERADO, H. C.—Giant flowers on strong stems. White shading to center of silvery lavender	.75
SISKIYOU, H. C.—Large blooms on strong, erect stems; pink tinged mauve.....	.50
*STRIKING (Gill)—Rich maroon with nearly half of petals tipped white.....	.50
SURPRISE—Rich orange amber with yellow center; erect stems.....	.35
TALISMAN, H. C.—Large brownish red with reverse of petals gold.....	.35
TOM LUNDY, H. C.—Extra large flowers of rich red.....	.35
*T. P. CRAMER (Gill)—Rich coral rose with a touch of yellow at base of petals.....	1.00
VELVET, H. C.—Darkest velvet red, large and highly recommended.....	.50
VULCAN—Large incurved flowers of dark maroon with small petals intermixed at base.....	.50
WALTER DEEGAN—Intense, rich fiery scarlet, suffused with orange; strong stems.....	.25
*WHITE DADDY BUTLER, H. C.—A sport we discovered in Daddy Butler. White, toned soft pink	.50

SPECIAL DAHLIA OFFER

You may select any 10 dahlias priced at
35c for \$2.35 postpaid.

SPECIAL DAHLIA OFFER

You may select any 10 dahlias priced at
50c for \$3.50 postpaid.

See back cover page for more dahlia bargains.

GILL'S POMPON DAHLIAS

ACE OF DIAMONDS—Small, bright red flowers. Very perfect with good stems.....	.25
AIMEE—Tiny bronze flowers on long, erect stems. One of the best.....	.25
*ALL BRIGHT (Gill)—Deep gold heavily tipped and toned red. Ideal cut flower.....	.25
AMBER QUEEN—Amber, suffused with apricot. Good stems.....	.25
ATOM—Small, perfect, orange flowers. Good stems.....	.25
BANTAM—Bright scarlet; fine cut flower.....	.25
BELLE OF SPRINGFIELD—Soft rosy red. Perfect flower on long, erect stems.....	.25
BERNICE—Pretty shade of soft salmon. Somewhat large but perfect.....	.25
BOBBY—Deep plum color; very perfect; good stems.....	.25
DARKNESS—Deep velvety black, very perfect flowers on long, erect stems.....	.25
DEE DEE—Small lilac lavender. Good stems.....	.25
EUREKA—Rich bronze, shading to yellow. Long, erect stems.....	.25
FAIRY QUEEN—Beautiful sulphur yellow, edged pink. Long, erect stems.....	.25
*FLORIST GEM (Gill)—Deep golden yellow, tipped and suffused with orange red. 1¼ inches.....	.25
GANYMEDE—Beautiful fawn suffused pink. Splendid cut flower.....	.25
GARDEN LOVE—Miniature decorative. Rose with gold base.....	.50
GEO. IRELAND—Perfect little flowers on fine stems. Pretty mauve shade.....	.25
GIRLIE—Neat small flowers, on long, erect stems; pretty rosy lavender.....	.25
GLOW—Light old rose or coral. Beautiful neat flowers on perfect stems.....	.25
*GOLD DROP (Gill)—Pure gold color; 1¼ inches; long, erect stems. Ideal cut sort.....	.25
GRUS AM WEIN—Crushed strawberry color. Perfect, small flowers on long, erect stems.....	.25
HARRY SNOOKS—Rose pink with white center. Small, neat flowers on ideal stems.....	.25
IDEAL—Pure canary yellow. Perfect flowers on fine stems.....	.25
JESSICA—Of perfect form on long stems; rich golden yellow, tipped red.....	.25
JOE FETTE—The outstanding pure white pompon. Small, perfect blooms on long, erect stems.....	.25
LASSIE—Neat little flower on fine stems. Yellow base tipped with rose.....	.25
LITTLE DAVID—Small, perfect blooms of deepest orange. Ideal cut flower.....	.25
LITTLE DONALD—Neat little flowers of rich garnet. Full, double flowers on erect stems.....	.25
LITTLE JEWEL—Decorative pompon of small size on perfect stems. Pretty peach blossom pink.....	.25
LITTLE JIM—A neat flower of deep garnet. Long, erect stems. One of the best.....	.25
LLOYD HICKMAN—A neat, small flower of old rose. Long, erect stems.....	.25
MADELINE—Beautiful neat flowers of pale yellow, edged purple.....	.25
MARY MUNN—Dark orchid. Ideal cut flower.....	.25
MIKE—Small perfect flowers of scarlet orange. Long, erect stems.....	.25
NELLY FRAZER—Bluish ground, tipped rose. Perfect neat flowers on ideal stems.....	.25
NORA REYNOLDS—Neat little flowers on long, erect stems. Pretty Indian red.....	.25
PAULINE—Dainty lavender blue. Quilled type petals. Neat, close flower on fine stems.....	.25
PHOEBE—Ideal flowers on long stems; yellow, shaded orange.....	.25
PRINCE CHARMING—Cream, heavily tipped purple. A fine neat flower on ideal stems.....	.25
RHODA—Decorative pompon. Long, wiry stems; free flowering; glowing orange rose.....	.25
ROSA WILMOTH—A fine rose pink on ideal stems; free flowering.....	.25
ROSEA—Deep lilac. Small, neat flowers on good stems.....	.25
SAN TOY—White, very heavily tipped carmine. Splendid little flower on long, erect stems.....	.25
TOMMY KEITH—Small flowers of crimson tipped white. Very attractive.....	.25
TOM THUMB—The smallest pompon we have ever seen. Rich garnet red on perfect stems.....	.25
VIVID—Rich, bright scarlet. A perfect flower well suited for cutting.....	.25
WINIFRED—White, tipped lavender. Very dainty.....	.25

GILL'S SHOW or BALL TYPE DAHLIAS

A. D. LIVONI—This old favorite is still one of the best; color, clear, rich pink; fine stems.....	.25
AMERICAN BEAUTY—Large blooms of gorgeous wine crimson; a splendid sort.....	.25
ANNA REHORST—Deep purple or maroon shade; good stems.....	.35
BIG BEN—One of the largest and best show dahlias. Rich raspberry red.....	.35
BLACK DIAMOND—Very dark maroon, almost black; large flowers on long stems.....	.35
GEN. MILES—Large show dahlia; light violet pink; striped purplish magenta; strong stems.....	.50
GOLDEN OPPORTUNITY—Giant flowers on strong, erect stems; deep golden yellow.....	.35
GRAND DUCHESS MARIE—Large soft buff, overlaid with orange; reverse shaded pink.....	.25
MAUDE ADAMS—Perfect flowers; white overlaid clear delicate pink. Long, erect stems.....	.25
*MOLALLA (Gill)—Fine yellow, tipped white. Long, erect stems; extra fine.....	.25
*NETARTS (Gill)—White variegated with crimson; long, erect stems. One of the best variegated.....	.35
NORMA—Large flowers on good stems; bright orange buff; fine cut flowers.....	.25
*PURPLE KING (Gill)—Giant flowers of deep, rich purple maroon. Long, erect stems.....	.35
*PURPLE NETARTS—Compact flower of rich purple; long, erect stems.....	.25
RED GOLD MEDAL—Brilliant orange scarlet; a sport from Gold Medal. Long, erect stems.....	.35
ROSEBUD—White, effectively edged with rose pink; long, erect stems; extra good.....	.25
SUPT. AMRKIN—Large, bright rose pink; splendid stems and a fine cut flower.....	.25
*WHITE LIVONI (Gill)—Pure white counterpart of A. D. Livoni. Long, erect stems.....	.25
W. W. RAWSON—Large, quilled flower; white overlaid with lavender blush; long erect stems.....	.35

DAHLIA KNIVES

Many of our dahlia customers have trouble dividing up their dahlia clumps, their main trouble being the lack of the proper knife for this work. We offer a knife made of surgical steel for \$1.50 each, Postpaid.

NURSERY LABELS

We offer copper wired labels, painted white on one side. Just right for tagging bulbs, shrubs, etc., at 50c per 100; \$3.25 per 1000, postpaid.

RADIO GARDEN TALKS BY RAY W. GILL

Will be given over Station KOIN, Portland, Ore., on Sunday afternoons from 2:30 to 2:45 o'clock, beginning February 3rd and lasting for 13 weeks. Watch the Radio programs for further information.

GILL'S DECORATIVE DAHLIAS

AL KORAN—A giant, on long, erect stems; color goldenrod yellow suffused amber on older petals	.35
ALTAMONT—American beauty shade, on good strong stems	.50
AMUN RA—Gigantic flowers on long stems; copper and orange with gold and reddish bronze	.35
ANDREA ERICKSON—Pure white of immense size, and beautiful formation	.75
ANNA MAIER—Pinkish red like old velvet blending to yellow; red center. Fine stems	.50
ANNIE ROONEY—Base of petals crimson with white tips; good stems	.50
BAGDAD—Flaming scarlet red blooms on long erect stems	.75
BLACK JACK—Giant blooms on long, erect stems; deep blackish maroon	.60
BOB BARKER—Bright rose pink, with gold base. Long, erect stems	.50
*BRILLIANT (Gill)—Hybrid show. Intense fiery scarlet on long, erect stems. A fine cut flower	.25
BUTTERFLY—Pinkish salmon blended to a cream at center. Fine stems	.35
CARMENCITA—Giant yellow, striped red; good stems; free flowering. Extra fine	.35
*CHALLENGE (Gill)—Ideal for cutting; color, gold suffused and tipped bright garnet crimson	.35
CHAMPAGNE—Soft golden champagne varying to chamois. Rigid upright stems. Immense blooms	.35
CHAMPOEG—Waxy canary yellow at the center shading to bright peach red towards the outer edges of the petals. Stems are very stiff	1.00
CHARLES SCHNEIDER—Large flower on long, upright stems. Deep watermelon red. Fine cut flower	.50
CITY OF TRENTON—Giant tangerine orange, while the reverse is a crushed strawberry red	.75
CLAUDE HARLAN—Giant, full double blooms of soft blush lavender. Very free flowering	.35
CONGRESSMAN WOLVERTON—Bright salmon pink, fine stems	.75
COQUETTE—Giant flowers on long stems; bright red blending with gold	.75
DAD—Large, brilliant red flowers, with good stems	.50
DERRILL W. HART—Large, deep orange flowers shading to henna brown	.50
DOROTHY STONE—Giant flowers of a deep rose pink. Good stems	.75
DWIGHT W. MORROW—Large deep red; one of the best	.75
EAGLE ROCK BEAUTY—Pink with cream center. A very good flower and very popular	.50
EAGLE ROCK FANTASY—Beautiful pink of immense size with good stems. A prize winner everywhere and highly recommended	1.00
EARL WILLIAMS—Immense scarlet, tipped white. Strong, erect stems	.50
EDNA FERBER—Coral shading to gold, glistens with golden sheen	.60
EL CAMINO REAL—Giant flowers on erect stems; deep velvety crimson. Extra fine red	.35
ELDORADO—Giant flower on long, erect stems; vivid gold shading deeper. Ideal cut flower	.35
ELITE GLORY—Monster flowers on strong, erect stems; bright, radiant red	.50
ELLINOR VANDERVEER—Giant blooms of glowing satiny pink. Very long, erect stems	.35
ELIZA LONDON SHEPARD—Golden apricot, free blooming	.50
ELSIE DANIELS—Pale orchid pink with white center	.35
FAITH GARIBALDI—Giant blooms on long, erect stems; very double; deep rose	.50
FIRE CHIEF—Beautiful bright cerise scarlet on erect stems	.75
FORDHOOK BRIDESMAID—Lovely amaranth-pink, shaded white, with perfect stems	.50
FORDHOOK SWEETHEART—Shades of salmon pink with a tinge of pale yellow, on white ground	.50
FORT MONMOUTH—Large, rich crimson maroon shaded to bluish violet at tips of petals	1.00
FRANCES M. IRWIN—Large ivory flower on good stems	.75
FRANK MILLER—Picric yellow growing to a large size on long, straight stems	.75
*GLENDENNING—Giant bloom of bright glowing crimson; extra long, erect stems	.35
GLORY OF MONMOUTH—A large, beautiful flower of eosine pink, shading to strawberry pink	.75
*GOLDEN EMBLEM—Giant golden yellow on long, erect stems. A wonderful flower	.75
*GOLDEN PACIFIC (Gill)—Giant blooms on strong, upright stems. The flowers face straight to the front. Lustrous gold enlivened with soft copper tones and golden sheen	2.00
GOLD RUSH—Bright golden yellow with fine stems	.35
HALVELLA—A giant on long, erect stems; old rose with a golden sheen	.35
HATHOR—Giant flowers on strong stems; a rich glowing flame color	.75
H. C. DRESSELHUYS—Soft pink with lighter shading. Good cut flower	.35
IDA PERKINS—A beautiful, large, white bloom carried on good, strong stems	.50
JANE COWL—Giant, massive blooms of bronzy buff and old gold, blending deeper to a perfect center	.50
JERSEY BEACON—Gigantic blooms on strong stems; chinese scarlet with lighter reverse	.35
JERSEY BEAUTY—A giant on long, erect stem; beautiful shade called eosine pink	.35
JERSEY IDEAL—Large flower on good stem. Beautiful lavender pink	.50
JERSEY MAMMOTH—Simply gigantic in size. Rich golden mahogany color	.35
JERSEY SOVEREIGN—Large flowers of rich salmon orange. Long, erect stems	.50
JOVE—Giant flowers of rich bronze pink. Strong stems	.50
JUDGE MAREAN—Strong, erect stems; rich saturnine-red with orange suffusion	.50
JULLINAR—Soft lavender shaded with pink	.50
KARMA—Large blooms on erect stems; lovely soft pink; medium height	.35
KATHLEEN NORRIS—Giant rose pink, good stems	.75
KEMP'S VIOLET WONDER—Dark rich violet flowers on long stems	.50
LA DOSKA DOWD—Large blooms on good stems; clear yellow	.35
LA ESTRELLA—Deep burnt orange. Long, erect stems	.50
LAVENDER BRIDE—Large lavender with bluish sheen. One of the best lavender	.75
LE GRANDE MANITOU—Immense; white, striped and spotted with purple; strong stems	.25
*MARCELLA GILL (Gill)—Extra early, unusually productive and the best cut flower dahlia we have seen. Long, wiry, erect stems with delightful soft sea-shell flowers with lighter tones; doz. \$2.00	.25
MARGARET W. WILSON—Giants on erect stems. Face of petals creamy white, phlox pink reverse	.35
MARGORIE BEEVOR—Beautiful orchid flower, with excellent stems	.50
*MARMION—Gigantic full flowers on good stems; golden yellow tinted bronze	.50
META SCAMMELL—Center pale amaranth pink shading to deeper pink at tips; long, slender stems	.60
MISS CALIFORNIA—Giant bright rose flowers with mauve tint, good stems	.50
MISSION BELLE—Immense blooms of old rose and pale lavender. Long, erect stems	.50
MONMOUTH CHAMPION—Bright orange scarlet blooms. Flowers very freely on strong vigorous plants. One of the best of the new varieties	.50
MONMOUTH GIANT—Clear, sparkling orchid, up to 12 inches in size	.75
*MOONLIGHT BAY (Gill)—Gigantic flower. Canary yellow often tipped white. Very striking	.50

MR. CROWLEY—Exquisite salmon pink. Distinct colored flowers on good stems.....	.35
MRS. ALFRED B. SEAL—Very large, pure, glowing old rose. Good stems.....	.75
MRS. CARL SALBACH—Extra long, strong stems carry giant flowers of mauve pink.....	.35
MRS. ELEANOR MARTIN—A giant flower of rich mulberry shade. Long, erect stems.....	.75
MRS. ELMER O. DREW—Large flowers of rich purplish-maroon.....	.50
MRS. H. J. CLOUGH—Large, clear pink on excellent stems.....	.50
MRS. I. DE VER WARNER—A monster flower on long, stiff stems; deep mauve pink or orchid color.....	.35
MRS. WARREN DEE MILLAR—Giant white flower, shading to flesh pink, on good stems.....	.50
*MT. HOOD (Gill)—Exceptional pure white blooms on good stems; very free flowering.....	.35
*NATURE'S MASTERPIECE—Long, erect stems; blending of old rose, mulberry and bronze.....	.50
NEW JERSEY STATE CHAMBER OF COMMERCE—Large deep orchid.....	.50
NEW PINK DELICE—Deep rose pink, suffused with lemon yellow at base. Excellent cut flower.....	.50
NOPAL—Large, beautiful, rich, velvety red with perfect stems.....	.75
OMAR KHAYYAM—Large blooms of Chinese red, shading to bright orange at tips of petals.....	.50
*OREGON AMETHYST—Fawn color shading to amethyst, with perfect stems.....	.75
*OREGON SUNSHINE—A giant; double flowers of a richer shade of golden yellow than the City of Portland; long, erect stems; one of the best yellow decorative.....	.50
PARAMOUNT—Light yellow, free flowering, with erect stems.....	.50
*PEACH GLOW (Gill)—Large flowers on long, erect stems. Beautiful watermelon pink.....	.50
PRIDE OF CALIFORNIA—Giant on long, strong stems; color, deep rich crimson.....	.35
PRIDE OF SAN FRANCISCO—Giant blooms on stout stems; brilliant, golden salmon pink.....	.50
PRIMULA REX—Color is light cream or primrose yellow. Stems are strong and erect.....	.50
QUEEN OF THE GARDEN BEAUTIFUL—Immense light yellow on stiff stems.....	.50
REDWING—Bright scarlet red flowers of good size, on strong, erect stems.....	.35
RODMAN WANAMAKER—Pink and yellow, wonderful cut flower.....	.50
ROMAN EAGLE—Large flower of bright copper color.....	.35
RORY O'MOORE—Deep maroon with petals tipped white. Stiff stems.....	.35
ROSA NELL—Clear, bright cerise rose. Gigantic blooms on extra long, erect stems.....	.35
ROYAL VELVET—Large deep red, good stems.....	.75
SAGAMORE—Rich golden yellow, free blooming.....	.35
SALBACH'S WHITE—Pure white. Good cut flower.....	.35
SANHICAN'S QUEEN—Large flower of apricot color on good stems.....	.35
SEAL'S CALIFORNIAN—Bright golden yellow at center, shading lighter toward outer petals.....	.50
SENIORITA—A large, showy flower of velvety crimson. Long petals and strong stems.....	.35
SEQUOIA GIGANTEA—Gigantic blooms on good stems; deep yellow.....	.35
SIDNEY B. MITCHELL—Deep velvety red with center almost black shading to tyrian rose at tips.....	.50
ST. FRANCIS—Soft cream with pinkish glow on the outer petals. Long, erect stems.....	.35
SUNNYSIDE—Very large blooms of grenadine red, long stems.....	.75
SUSAN G. TEVIS—Immense flowers on long, erect stems; deep lilac with bluish sheen.....	.35
*SYNCOPATION—Giant flowers on long, erect stems; deep yellow heavily overlaid cherry red.....	.50
THE CLANSMAN—Beautiful apricot orange, good stems.....	.75
THE GRIZZLY—A giant flower on strong, erect stems; rich crimson maroon with reflexed petals.....	.35
THE WORLD—Rosy magenta tipped silver. Extra long stems.....	.50
THOS. EDISON—Royal purple. Flowers are carried on excellent stems.....	.75
TOMMY ATKINS—A giant flower of lustrous flaming scarlet on long, erect stems.....	.50
T. P. QUIMBY—A large, close built flower on long, erect stems; pure white.....	.35
TREASURE ISLAND—Color is bright apricot with gold and rose suffusion; good stems.....	.50
UNCLE TOM—Giant flower of dark velvety garnet heavily toned black. Good, erect stems.....	.50
VALENTINO—Beautiful salmon pink shading to cream at center. One of the best.....	.50
WALDHEIM SUNSHINE—Giant blooms with long, wavy petals; strong, erect stems; deep yellow.....	.50
YANKEE KING—Large blooms of coppery rose and gold; stems are long and erect.....	.35
YANKEE QUEEN—Large flowers, almost white in center, shading to beautiful pink toward edges.....	.35

PEONY FLOWERED DAHLIAS

BLOSSOM—Ivory white on long, erect stems. Fine cut flower.....	.35
*BRILLIANT FLAME (Gill)—Brilliant, glistening scarlet, toned and marked with deep gold.....	.50
*CITY OF PORTLAND (Gill)—Giant canary yellow on long, erect stems. One of the finest.....	.35
*DR. GEORGE SKINNER—Large flowers on fine stems; deep red heavily tipped white.....	.35
*GILL'S RADIO—Large yellow centers with the petals heavily tipped plum purple.....	.35
GLADYS CHAMPION—Giant golden yellow shading to red on the reverse. Strong stems.....	.35
*MRS. IRENE TAFF (Gill)—Giant peony-cactus. Petals broad, long and pointed; also incurved. Rich wine red, toned yellow deepening to golden zone at center.....	.35
*MRS. JULIUS MEIER (Gill)—Giant, artistic flowers of true peony type on long, stiff stems. Centers deep yellow with major part of petals rich deep salmon.....	.50
*OREGON SUNSET—Gigantic blooms; golden yellow, suffused bronzy crimson; strong stems.....	.35
SUNBURST—Giant flowers on long, erect stems. Deep gold toned with red.....	.50
*SUPREME (Gill)—Giant blooms on long, erect stems. Clear lavender pink.....	.50
SWEETHEARTS BOUQUET—Salmon rose shaded fawn. Perfect type on long, erect stems.....	.35
THE ORIOLE—A giant; a striking combination of burnt orange, red and yellow, often tipped white.....	.35

GILL'S SINGLE DAHLIAS

AMI BARILLET—Purplish black foliage; small, rich, garnet flowers on good stems.....	.25
*ANDY (Gill)—Deep, dark garnet toning lighter. Brilliant and striking cut flower.....	.25
BETTY—Rose pink, dark crimson disc.....	.35
*BRIGHTNESS (Gill)—Giant golden yellow tipped and toned with crimson; long, erect stems.....	.25
CANDY STICK—Maroon tipped white.....	.25
CLIFTON—Medium flowers of rich purple with red halo around the golden pollen center.....	.25
*FIERY GEM (Gill)—A mass of brilliant fiery scarlet blooms of medium size. Splendid for bedding.....	.35
*GAILLARDIA (Gill)—Resembles a gaillardia, being golden yellow with large, red halo.....	.50
*GLENDO (Gill)—Small single dahlia two inches in diameter; bright velvety red, long erect stems.....	.35
QUEEN OF SINGLES—Beautiful pure white with rounded petals. Fine cut flowers.....	.25
*ROSE BEAUTY (Gill)—Large rounded petals of deep rose; long, erect stems.....	.25
SINGLE GIANT—Largest bright scarlet.....	.25
*TANCO (Gill)—Tan color or golden buff toned scarlet. Good stems; free flowering.....	.25

COLLARETTE DAHLIAS

ARIA—Soft rose, zoned white in center; white collar.....	.25
DIADEM—Beautiful rosy pink; white collar.....	.35
GEANTE DE LYON—Large flowers; deep garnet crimson with golden collar. Ex.ra fine.....	.35
MT. LASSEN—Fiery red with yellow collar; free flowering; long, erect stems.....	.35
SONATE—Starry flowers on good stems; light orange red; yellow collar.....	.35
SWALLOW—Beautiful pure white collarette; long, erect stems; fine for cutting.....	.25

STAR DAHLIAS

*AUTUMN STAR—Bright autumn shades of gold and bronze; petals shading lighter at tips.....	.35
*CRIMSON STAR (Gill)—Deep crimson. Long, erect stems.....	.35
*GARNET STAR (Gill)—Deep garnet red. A splendid cut flower.....	.35
*GILL'S CERISE STAR (Gill)—Long, slender, erect stems. Ideal for cutting.....	.35
*MAGENTA STAR (Gill)—Perfect star type on long, erect stems. Deep magenta rose.....	.35
*SCARLET STAR (Gill)—Bright scarlet, freely produced on medium plants. Fine for cutting.....	.35
*SYLVIA STAR (Gill)—Soft silvery pink. Cactus petals. Long, erect stems.....	.35
WHITE STAR—White with orange pollen center. Long, erect stems. Ideal for cutting.....	.35

GILL'S SELECT GLADIOLI

We grow many of the bulbs we offer and you will find them fully acclimated to Northwest conditions. They should be planted 3½ inches deep in good rich soil well prepared. Planting time will depend upon your choice; March 1 to June 1 will usually permit full bloom.

PRICES GIVEN ARE POSTPAID—6 at dozen rate. Only one variety may be used to secure the dozen rate. We supply good healthy bulbs of large size that will give strong spikes of bloom.

	Doz.
ALBATROSS—Large pure white lily shaped flowers. Tall spikes. Each 10c.....	.75
APRICOT GLOW—Clear warm apricot. Extra tall spikes. Each 5c.....	.50
AVE MARIA—Medium violet blue. Opens several large flowers at a time. Each 10c.....	.75
BERTY SNOW—Beautiful lavender pink. Fine well placed flowers. Each 10c.....	.75
BETTY NUTHALL—Giant blooms; glowing orange pink with light yellow throat. 2 for 15c.....	.60
BILL SOWDEN—Very large, massive, deep blood red blooms. Each 20c.....	2.00
BLEEDING HEART—Pale pink with striking red blotch. Each 20c.....	2.00
CARDINAL PRINCE—Pure cardinal red. Fine form; strong grower. Each 5c.....	.50
COMMANDER KOHL—New dark scarlet of great size. Each 15c.....	1.50
CORYPHEE—Clear waxlike rose pink, similar to Ophelia rose. Each 10c.....	.80
DR. F. E. BENNETT—Fine scarlet red. Large flowers, tall spikes. 2 for 15c.....	.60
DR. L. H. BAILEY—Velvety, deep rose red with darker throat blotch. 2 for 15c.....	.60
ETENDARD—Creamy white with immense red blotch. Very showy. 2 for 15c.....	.60
GATE OF HEAVEN—New. Very beautiful deep, rich yellow. Each 40c.....	4.00
GIANT NYMPH—Large, light rose pink. Each 5c.....	.50
GOLD EAGLE—Early flowering vigorous yellow. Each 5c.....	.50
HEAVENLY BLUE—Large clear, delicate lavender blue. Long spikes. Each 10c.....	.85
HINEMOA—Large, deep rose flaked with chocolate; yellow throat. Very striking. Each 20c.....	2.00
LA PALOMA—Vivid orange flowers of heavy texture. Tall spikes. 2 for 15c.....	.60
MARIETTA—Large salmon pink with red blotch. Each 5c.....	.50
MARMORA—Smoky gray lavender with purplish blotch. 2 for 15c.....	.60
MARY O'MINE—Giant pure white, like a big white lily. 2 for 15c.....	.60
MINUET—Fine large lavender on tall, erect spike. 2 for 15c.....	.60
MOORISH KING—Very dark mahogany maroon. Substance of flowers like leather. Tall spikes. each 30c.....	3.00
MOTHER MACHREE—Smoky salmon blended with lavender and gold. Each 15c.....	1.50
MRS. ANNA PFITZER—New. Tall creamy white. Very fine. Each 20c.....	2.00
MRS. JOHN R. WALSH—Large ruffled pink with scarlet blotch. 2 for 15c.....	.60
MRS. P. W. SISSON—Clear pink. One of the best in this color. Each 5c.....	.50
MRS. VAN KONYNENBURG—Large, beautiful lilac blue. 2 for 15c.....	.60
OLIVE GOODRICH—Extra tall white with edging of pink. Pale yellow throat. Each 5c.....	.50
PELEGRINA—Large deep blue. The best dark blue to date. Each 20c.....	2.00
PFITZER'S TRIUMPH—Immense blooms of salmon orange with deep salmon red blotch. 2 for 15c.....	.60
PICARDY—Immense blooms of delicate apricot pink. A sensational flower. Each 15c.....	1.50
PURPLE GLORY—Deep velvety maroon purple. Large and ruffled. Each 5c.....	.50
QUEEN OF BREMEN—Very dainty lavender pink. Vigorous grower. Each 5c.....	.50
RITA BECK—Large shell pink; very heavy texture. 2 for 15c.....	.60
ROSE MARIE PFITZER—New. Light cream tinted pink. A peaches and cream color. Large spikes. Each 75c.....	7.50
SCARLET BEDDER—A splendid primulinus of soft glowing scarlet. Each 5c.....	.50
SWEET ROSE—Rose pink with darker blotch. Each 5c.....	.50
STUTTGARDIA—Brilliant orange scarlet without markings. Massive spikes. Each 15c.....	1.50
TROUBADOR—Large clear purple. The best large purple. Each 10c.....	.75
W. H. PHIPPS—Beautiful salmon pink. Lower petals slightly flecked. 2 for 15c.....	.60
WUERTEMBURGIA—Fiery scarlet with large cream blotch. Immense blooms. Each 20c.....	2.00
YELLOW PERFECTION—Tall pure yellow. Won special recognition at Chicago Century of Progress. Each 20c.....	2.00

GLADIOLI IN MIXTURE

	Doz.	100
GILL'S FANCY MIXTURE—A very high grade mixture, mixed from named sorts.....	\$.50	\$ 3.50
OREGON MIXTURE—A very good mixture of various colors, well worth the price.....	.25	1.75
PRIMULINUS MIXTURE—Rare shades of rich yellow, rose, salmon, scarlet, etc.....	.40	2.50

GLORIOUS GLADIOLI OFFER

90 medium size bulbs, 1 to 1¼ inches in diameter, in splendid mixture. \$1.00 postpaid. These will make fine blooms the first season. You will be surprised at the value you receive. This offer enables everyone to have a fine Gladioli garden. Wonderful value.

FLORIST GLADIOLI OFFER

55 large size bulbs, 1¼ inches up, in a fine mixture, for \$1.00 postpaid. This mixture is made from named standard sorts and newer introductions unlabeled and comprises large flowering varieties with good cut flower qualities, chosen so as to make a good range of colors. Our selection of varieties.

We offer this page of real bargains with the idea of encouraging a trial of our various lines, and we assure all that these are not makeshift bargains to unload worthless stock, but are genuine offers of the same standard of goods with which we supply our regular trade. All of the goods offered are for prompt delivery, weather conditions being favorable. Dahlias will be sent in April. All prices are postpaid.

FREE PREMIUM ON EARLY ORDERS BEFORE FEBRUARY 20, 1935

On all orders, amounting to \$1.00 or more, received by us before February 20, 1935 (no later), we will include free, your choice of either 10 gladioli bulbs or our selection of 3 packets of flower seed. The selection of varieties for this offer must be left to us. Order today, don't put it off or you may be too late. Besides getting the early premium we can give you better service if your order comes before the spring rush.

GILL'S DAHLIA COLLECTIONS

Since it is impossible for us to gauge the amount of sales upon any variety in advance, we often have a surplus of dahlias left in very good sorts. This enables us to make the remarkably low rates on collections given below. These bulbs will be labeled with their correct name and no two alike, chosen with regard to color; however, they must be entirely our own selection. Prices are postpaid.

- No. 1—12 CACTUS DAHLIAS, good standard sorts, \$1.60; six for 95c.
- No. 2—12 PEONY DAHLIAS, \$1.50; six for 90c.
- No. 3—12 DECORATIVE, \$1.50; six for 90c.
- No. 4—12 SHOW DAHLIAS, \$1.50; six for 90c.
- No. 5— 6 SINGLE DAHLIAS for 90c.
- No. 6— 6 COLLARETTE DAHLIAS for 90c
- No. 7— 8 POMPON DAHLIAS for \$1.00.
- No. 8—STANDARD DAHLIAS, in main classes, including Cactus, Decorative, Peony and Show, 12 for \$1.65; six for \$1.00.

CHEERFUL GARDEN COLLECTION

8 BULBS WORTH \$2.50 FOR \$1.00 POSTPAID

We offer 8 Dahlia Bulbs, our selection of varieties, all labeled with their correct name and worth \$2.50 at regular prices. This collection made a big hit last season, our customers being surprised at the great value we gave. The collections will be made up mainly from cactus, peony and decorative types.

CUT FLOWER DAHLIA COLLECTION

Twelve special cut flower sorts, worth \$4.45, postpaid for \$2.25. All have fine stems, bloom freely and last well when cut. We use these for our own cut flower trade. (Save \$2.20.)

- Al Koran, D. Goldenrod yellow, suffused amber .35
- All Bright, Pom. Deep gold heavily tipped red .25
- Champagne, D. Soft golden champagne35
- Elinor Vanderveer, D. Glowing satiny pink .35
- Fordhook Sweetheart, D. Salmon pink and yellow on white50
- Jean Chazot, H. C. Golden bronze suffused red .35
- Margaret W. Wilson, D. Large creamy white .50
- Mr. Crowley, D. Exquisite salmon pink..... .35
- Norma, S. Bright orange buff..... .25
- Oregon, C. Brilliant rosy carmine cerise..... .35
- Pride of California, D. Deep rich crimson..... .35
- Romany, C. Bright scarlet, long rolled petals.... .50

\$4.45

"BIG FOUR" DAHLIA COLLECTION

Four outstanding dahlias, all fine varieties that may be used for cut flowers, worth \$2.25 at regular prices, postpaid for \$1.25 (Save \$1.00).

- The World, D. Magenta tipped silver..... .50
- Treasure Island, D. Bright apricot with gold and rose suffusion50
- Mrs. Alfred B. Seal, D. Pure glowing old rose .75
- Waldheim Sunshine, D. Deep yellow..... .50

\$2.25

BEAUTIFUL YARD COLLECTION

Twelve dahlias, all fine varieties, worth \$5.25, postpaid for \$2.00. (Save \$3.25).

- Anna Maier, D. Pinkish red blending to yellow .50
- Ballet Girl, C. Orange petals edged white.... .35
- Dad, D. Large, brilliant red..... .50
- Faith Garibaldi, D. Deep rose..... .50
- Jersey Beacon, D. Chinese scarlet, lighter reverse35
- Jersey Mammoth, D. Rich golden mahogany .50
- Mission Belle, D. Large lavender old rose... .50
- Mrs. I. De ver Warner, D. Deep mauve pink.. .35
- Pink Daddy Butler, H. C. Rose pink50
- Rosa Nell, D. Bright cerise rose..... .35
- Sequoia Gigantea, D. Deep yellow..... .35
- Yankee Queen, D. White shading to pink... .50

\$5.25

GIANT ZINNIA COLLECTION

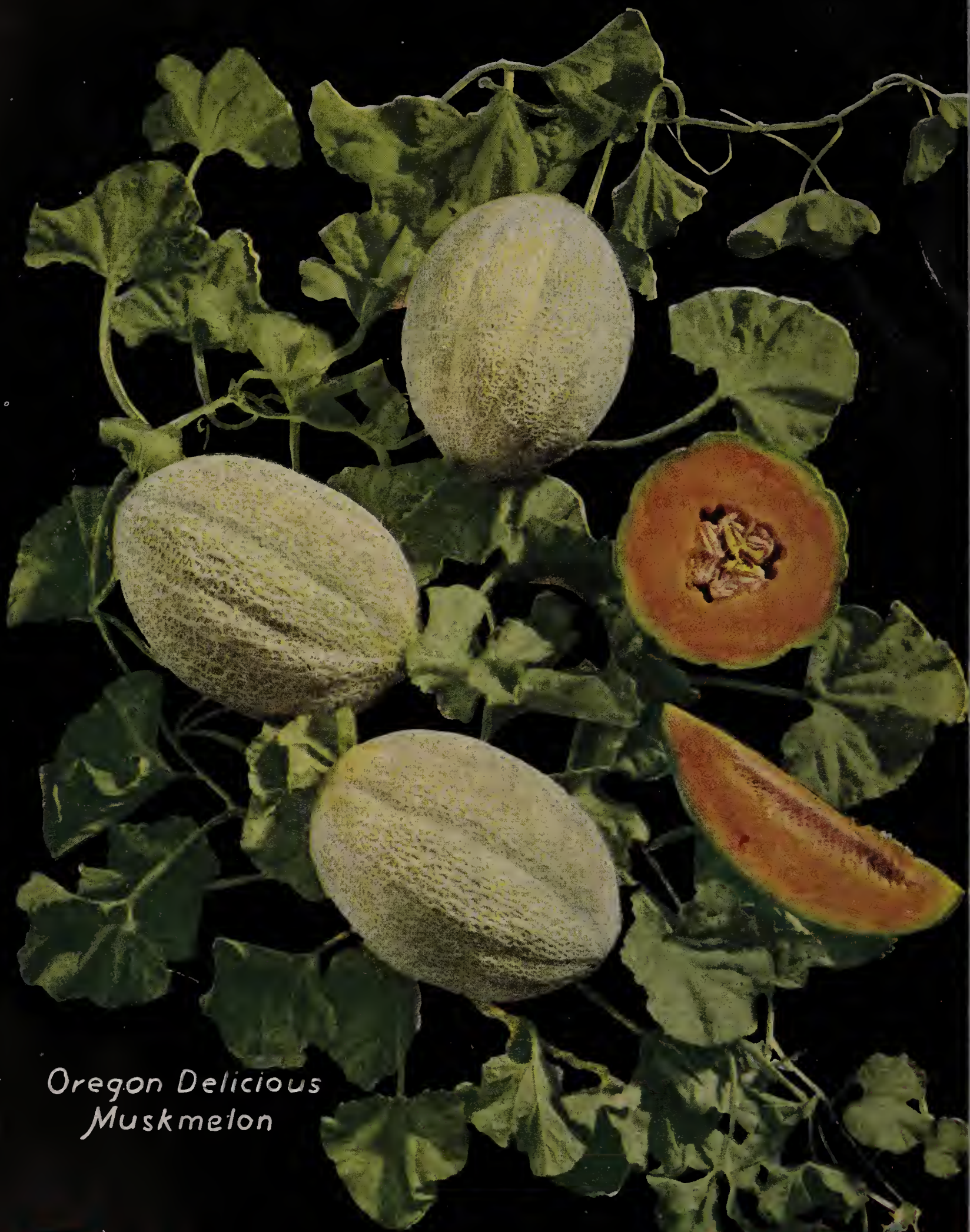
We offer ten packets named Dahlia Flowered and Monster type Zinnias, our selection, each a different variety and worth \$1.00 for 60c postpaid.

HOME VEGETABLE COLLECTION

Thirty-six regular sized packets, worth \$2.50 sent postpaid for \$1.75. Positively no changes permitted. (Save 75c)

- | | Regular price |
|---|---------------|
| BEANS, Pencil Pod Wax (Bush)..... | .10 |
| BEANS, Kentucky Wonder (Pole)..... | .10 |
| BEANS, Burpee's Stringless Green Pod (Bush) | .10 |
| BEET, Detroit Dark Red Special..... | .05 |
| BROCCOLI, Green Sprouting..... | .10 |
| BRUSSEL SPROUTS, Long Island..... | .05 |
| CABBAGE, Golden Acre (Early)..... | .10 |
| CABBAGE, Oregon Ballhead (Late)..... | .10 |
| CARROT, Nantes Special (Early)..... | .10 |
| CARROT, Oregon Chantenay (Later)..... | .10 |
| CELERY CABBAGE, Paoting | .10 |
| SWEET CORN, Golden Early Market..... | .10 |
| SWEET CORN, Improved Golden Bantam..... | .10 |
| CUCUMBER, Davis Perfect (for slicing)..... | .05 |
| CUCUMBER, Boston Pickling (for pickling) | .05 |
| DILL, Mammoth' | .05 |
| KALE, Tall Green Scotch Curled..... | .05 |
| LETTUCE, New York No. 12 (2 year)..... | .05 |
| MUSKMELON, Extra Early Knight..... | .05 |
| MUSKMELON, Hales Best Early..... | .05 |
| ONION, White Globe (use green or dry)..... | .05 |
| ONION, Oregon Yellow Danvers (dry onions) | .05 |
| PARSNIP, Success | .05 |
| PEAS, Laxton Progress (Dwarf early)..... | .10 |
| PEAS, Stratagem (Dwarf late)..... | .10 |
| PUMPKIN, Orange Winter Luxury | .05 |
| RADISH, Early Scarlet Turnip White Tipped | .05 |
| RADISH, White Icicle..... | .05 |
| RADISH, China Rose (Winter)..... | .05 |
| RUTABAGA, Golden Heart | .05 |
| SQUASH, Golden Delicious..... | .10 |
| SQUASH, Zucchini (Summer)..... | .05 |
| SPINACH, New Giant Leaf..... | .05 |
| TURNIP, Extra Early White Milan..... | .05 |
| TURNIP, Purple Top White Globe..... | .05 |
| WATERMELON, Black Seeded Ice Cream | .05 |

\$2.50



*Oregon Delicious
Muskmelon*

Gill Bros. SEED CO. 1935