

Historic, archived document

Do not assume content reflects current scientific knowledge, policies, or practices.

1935



"MIDGARD"

"EUPHONY"

"CLARA NOYES"

NATIONAL IRIS GARDENS

HOWARD WEED
THURLOW WEED

BEAVERTON, OREGON



MELDORIC

See page 11

VERT GALANT

See page 14

RED DOMINION

See page 13

Iris . . .

may be planted any month
in the year but do best when
planted during **MAY, JUNE,**
and **JULY**



● *ORDER NOW. . .!*

1. We prepay all postage. Our list price is final cost to you.
2. Roots may be shipped as satisfactorily 3,000 miles as 100. We have customers in every state who order from us yearly. 75 per cent of our business comes from east of the Mississippi river.
3. Our plants are unusually large and bloom the first year after moving.
4. Our prices are the lowest to be found; varieties offered are the best; inferior varieties have been discarded from our gardens.
5. Our plants are state inspected and free from disease.
6. We do not irrigate; our roots are unusually hardy; they are immune to root rot.
7. All testimonials printed herein came unsolicited. We have hundreds of others on file. Most of our customers re-order yearly.
8. Please send us a trial order so that we may prove to you the superiority of our roots.

NO ORDER ACCEPTED FOR LESS THAN \$1.00.



WE HAVE more than one hundred varieties of Iris growing in our gardens which we cannot list in this catalog because of limited space. They are fine sorts, many of them having been awarded medals and other honors by the American Iris Society and the Horticultural Societies of France and England. We are able to offer these truly worthwhile varieties with each plant correctly labeled in collections at the following special prices:

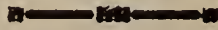
TEN MIXED COLORS	\$1.00
TEN LAVENDER	\$1.00
TEN VIOLET	\$1.00
NINE RED & RED-PURPLE	\$1.00
NINE PURPLE & BLACK	\$1.00
EIGHT YELLOW & YELLOW BI-COLORS	\$1.00
EIGHT FINE BLUES	\$1.00
SEVEN BROWN & BRONZE BLENDS	\$1.00
SEVEN WHITE, WHITE PPLICATAS, & WHITE BI-COLORS	\$1.00
SIX PINK, ROSE, & MAUVE VARIETIES	\$1.00

All ten above collections for \$9.00.

Three of any one collection for \$2.50.

100 different varieties (not tagged) for \$10.00.

(These same varieties would have cost \$100.00
a few years ago.)



Special "MIDGARD" COLLECTION

(See colored picture on front cover.)

Any 10, your choice, for \$2.00. All 28 for \$5.00.

Midgard, Allure, Asphodel, Cooley Surprise, Cinnabar, Fismes, Herodiate, Hyacinthus, Hypnos, Loetitia Michaud, Lindberg, Mme. H. Cayeux, Moonlight, Messaline, Nicholas Poussin, Oread, Petrushio, Realm, Rialgar, Santa Barbara, Centurian, George J. Tribolet, Mt. Royal, Mme. Gaudichau, Delight, Gold Imperial, Wild Rose, Lent Williamson, or Odenvogel.

Special "EUPHONY" COLLECTION

(See colored picture on front cover.)

Any 10, your choice, for \$3.00.

Euphony, Melchoir, Dolly Madison, Yves Lassailly, Tuscarora, Cockatoo, Camilla Dubuar, Coronation, Dreadnought, Erin, Griselda, Sikh, Liberty Bell, Sunlight, or J. F. Riedy.

"VERY LATE BLOOMING" COLLECTION

All 12, valued at \$7.35, for \$4.95

Mary Dynes, Oregon Giant, Francheville, Loetitia Michaud, Mme. Cayeux, Dakota, Graziella, Indolence, J.F. Riedy, Iriscrest, Melchoir and Messaline.

Special "CONNOISSEUR'S" COLLECTION

Any 10, your choice, for \$4.00.

Rayo de Sol, Tokay, High Tide, Indolence, Iriscrest, Monterey, Classic, Captain Courageous, Crucible, Francheville, Gleam, Magenta, Athanael, Amber Wave, Cassiopee, Cydalise, Grand Monarch, Ion, J. M. Kennedy, Midwest Pride, Monterey, Nusku, Rose Marie, Prophete, Peaches, Red Wing, Rheingauperl, Senlac, Shogun, Waconda, W. C. Kennedy, or Thuratus.

Special "PRIZE-WINNING" COLLECTION

Any 7, your choice, for \$5.00. Any 15, your choice, for \$10.00.

Eloise Lapham (see colored picture on back cover), Blue Velvet (similar to Meldoric on back of front cover), Blue Torch, Day Dream, Dakota, Erebian, Hollywood, Largo, Mary Elizabeth, Morning Glory, My Maryland, Ruy Blas, Sandra, Sachel, Picador, Abora, Dresden, Druid, Alchemy, Attitash, Golden Crown, Kenwood, Moon Magic, Mt. Mist, Marilyn Richards, Oriana, Puget, Louis David, Numa Roumestan, or Samoa.

Special "CLARA NOYES" COLLECTION

(See colored picture on front cover.)

Any 4, your choice, for \$5.00. All 10 varieties for \$10.00.

Clara Noyes, M. A. Porter, Depute Nomblot, Black Wings, Buechley's Giant, Grace Sturtevant, Helios, Desert Gold, Ministre F. David, or Theodolinda.

Special "NOVELTIES" COLLECTION

Any 6, your choice, for \$10.00. Any 12, your choice, for \$19.00.

Vert Galant (see colored picture inside of front cover), Arabian Prince, Nurmahal, Colossus, Ethelwyn Dubuar, Flush of Dawn, Mary Senni, Noweta, Evolution, Blue Monarch, Desert Dawn, Mary Dynes, Pink Satin, Alta California, or Gilead.

Special "RARE VARIETIES" COLLECTION

Any 5, your choice, for \$12.50

Red Dominion (see colored picture inside of front cover), Dog Rose (see colored picture on back cover), Imperial Blush, Mary Geddes, Ningal, Aurex, Spring Maid, Valor, Nurmahal, or Crown Prince.

"WIDE COLOR RANGE" COLLECTION

All 12, valued at \$6.05, for \$3.95.

Eloise Lapham (see colored picture on back cover), pink, or Hollywood may be substituted, if you prefer; Dreadnought, red; Cooley Surprise, blue; Nicholas Poussin, yellow plicata; Dolly Madison, blend; Bronze Glory, bronze; Fismes, cream plicata; Selene, white; King Midas, golden bronze blend; Dorothy Dietz, white plicata; Crucible, lavender; and Rayo de Sol, yellow.

(Note: One substitution may be made of any variety listed in this catalog at same price.)

"LONG BLOOMING SEASON" COLLECTION

All 12, valued at \$6.25, for \$3.95.

Allure, Asphodel, Blue Torch, Autumn King, Autumn Queen, Challenger, Florida, Mons. Steichen, Primavera, Black Wings, Purissima, and Day Dream.



MELCHIOR

A rare and beautiful foreign importation.

See page 11

COLOR CLASSES

MANY Iris, the colors of which border on two or three classes, make an accurate classification impossible. We have, however, placed each variety of tall-bearded Iris in a definite color group, and hope that this will aid our customers to make their selections.

PINK TO ROSE

Airy Dream
Ambrosia
Camilla Dubuar
Day Dream
Dog Rose
Dr. C. H. Mayo
Dresden
Elizabeth Egelberg
Eloise Lapham
Esterel
Ethelyn Dubuar
Frieda Mohr
Imperial Blush
Kansas
Marilyn Richards
Noweta
Nusku
Pink Satin
Rheingauperl
Rose Marie
Sass Pink
Spring Maid
Wild Rose

LILAC TO VIOLET

Athanael
Baldwin
Belle Porter
Cupavo
Farandole
Herodiate
Indolence
Lindbergh
Magenta
M. A. Porter
Mary Senni
Mountain Mist
Oread
Ruy Blas
Sandrine
William Mohr

WHITES AND CREAMS

Columbine
Dorothy Dietz
Easter Morn
Fismes
Los Angeles
Moonlight
Moon Magic
Oriana
Purissima
Selene
Venus de Milo

WINE OR VIOLET REDS

Abora
Allies
Andrew Jackson
Arabian Prince
Cardinal
Cinnabar
Conchobar
Dauntless
Don Juan
Dreadnought
Druid
Egypt
Erebian
Ethel Peckham
Flamingo
Graziella
Indian Chief
Jacquard
J. F. Riedy
Joycette
Morning Glory
Nurmahal
Omaha
Red Dominion
Shogun
Waconda

BRONZE AND RED-BROWNS

Ambassadeur
Amber Wave
Bronze Glory
Depute Nomblot
Fire God
Francheville
Grace Sturtevant
Grand Monarch
Griselda
Hyacinthus
Jeanette M. Kennedy
Le Correge
Mary Dynes
Mary Elizabeth
Mauna Loa
Melchoir
Ministre F. David
Mme. Henri Cayeux
Monterey
Mrs. Valerie West
My Maryland
Numa Roumestan
Prophete
Sachem
Samoa
Senlac
Sikh
Tuscarora
Vert Galant

YELLOW AND WHITE PLICATAS

Cydalise
Delight
Liberty Bell
Nicholas Poussin
Sacramento
San Francisco
Seneca
Theodolinda
Yves Lassailly

LIGHT BLUES

Asphodel
Blue Monarch
Blue Torch
Buechley's Giant
Cooley Surprise
Crucible
Gleam
Iriscrest
Loetitia Michaud
Pacific
Realm
Santa Barbara
Western Skies

YELLOWS

Alchemy
Alta California
California Gold
Chromylla
Cockatoo
Coronation
Cryso
Desert Gold
Gold Imperial
Helios
Lady Paramount
Phebus
Pluie d'Or
W. R. Dykes

YELLOW VARIEGATAS

Al-lu-we
Aurex
Cameliard
Crown Prince
Golden Crown
Kenwood
King Juba
Odenvogel
Picador
Rialgar
W. C. Kennedy

DEEP VELVETY BLUES AND PURPLES

Andante
Black Wings
Blue Velvet
Casiopee
Centurion
Colossus
Dakota
Erin
George J. Tribolet
Ion
Irma Pollock
Legend
Midwest Pride
Mme. Gaudichau
Mt. Royal
Oregon Giant
Petruccio
San Diego
Thuratus
Valor
Winneshiek

BLENDS

Allure
Anne Marie Cayeux
Asia
Attitash
Captain Courageous
Clara Noyes
Classic
Dolly Madison
Euphony
Evolution
Flush of Dawn
Gilead
Graymist
High Tide
Hollywood
Hypnos
King Midas
Largo
Louis David
Mary Geddes
Messaline
Midgard
Mrs. Herbert Hoover
Ningal
Peaches
President Pilkington
Puget
Quivera
Rameses
Sea Dawn
Talisman
Tokay

TALL BEARDED IRISES

THESE are the Iris most generally known and by far the most popular. During May and June, they form a riot of color in the garden.

Abbreviations: (Hill) is name of originator; 36" means the flower stalk grows approximately 36 inches in height; H. M. denotes Honorable Mention; A. I. S. denotes American Iris Society; A. M. denotes Award of Merit; S. M. denotes Silver Medal; C. M. denotes Certificate of Merit; S. denotes standards or the three top petals; F. denotes falls or the three down-falling petals; \$1.00 is the price per root. The Dykes Medal is the highest award an Iris variety can receive.

ABORA (Hill) 36". H.M., A.I.S. A rich red violet self with heavy textured petals of great smoothness. F. are horizontal. This variety is so good we use it greatly as a parent in our hybridization work. \$1.00.

AIRY DREAM (Sturtevant) 38". A fine, large light pink, the sales of which have been phenomenal. \$1.00.

ALLIES (Vilmorin of France) 24". Good-sized flowers of red-brown and copper-fawn. Plants sometimes bloom a second time in summer or early fall. 25c.

ALLURE (Murrell of Eng.) 40". Eng. S.M. A beautiful blend of rich canary yellow, flushed and overlaid violet pink. 25c.

AL-LU-WE (Sass) 40". S. fine clear yellow; F. red. This is one of the three best yellow variegatas. Flowers are large on well branched stalks. \$2.00.

ALCHEMY (Wareham) 37". An Iris of solid, deep yellow, with petals of heavy texture. This is one of the top-notch yellow Irises. \$1.00.

ALTA CALIFORNIA (Mitchell) 48". S. clear yellow; F. deep yellow, faintly bronzed. This is unquestionably one of the five best yellow varieties, being unusually tall and large flowered. The slight touch of bronze on the F. adds, rather than detracts, from the beauty of the flower. \$2.00.

AMBASSADEUR (Vilmorin of France) 40". French and Eng. A.M. Almost black red-violet. 25c.

AMBER WAVE (Murrell of Eng.) 38". Eng. C.M. If you wish something different, this is the variety for you. An unusual shade of amber, suffused and blended with pale olive bronze. 50c.

AMBROSIA (Sturtevant) 36". An iridescent white Iris evenly tinted throughout with pale rose, with warmth heightened by a rich orange beard. The large flowers of satiny texture bloom freely. 50c.

ANDANTE (Williamson) 36". Enormous flowers of rich velvety raisin purple. It is an outstanding Iris, combining size and color in an unusual degree as well as being fragrant. 35c.

ANDREW JACKSON (Kirkland) 40". The general effect is a rich red violet. Flowers are of great size, heavy substance, and perfect form. 35c.

ANNE MARIE CAYEUX (Cayeux of France) 37". A delicate blending of the sky's colors at sunset and those of a pigeon's throat. The whole effect is wonderfully beautiful—soft rosy heliotrope blended with greyish amber. \$1.00.

ARABIAN PRINCE (Simpson) 21". H.M., A.I. S. Bright garnet red with F. rich and velvety. Blooms of perfect shape and amply large for its height. Competent A.I.S. judges have placed this variety among the best of its color class. \$2.00.

ASIA (Yeld of Eng.) 46". Eng. A.M. One of the most famous Irises ever offered and still one of the best and most distinct. S. silvery-lavender, shading to yellow; F. pale red-purple. 25c.

ASPHODEL (Morrison) 42". A very large, tall, fragrant light lavender. If you wish an Iris of this color, this is the one for you as it is among the very best, regardless of price. It deserves a place in every garden. 25c.

ATHANAEL (Millet of France) 35". S. petunia violet, shaded red-brown; F. violet, shaded vinous purple and margined creamy white. This is a large flower, vigorous and free flowering. It is among those few we can recommend unhesitatingly, as the flower looks better than the description sounds. 50c.

ATTITASH (Dennett) 42". An indescribable blend of blue, buff, and yellow which makes it among the most popular varieties to visitors in our gardens. \$1.00.

AUREX (Nicholls) 38". S. bright clear yellow; F. velvety blackish crimson. Next to Crown Prince, this is the finest variegata. \$3.00.

BALDWIN (Sass) 40". One of the largest varieties, of a peculiar shade of manganese violet with an electric sheen in the F. 50c.

BELLE PORTER (Lapham) 36". S. livid brown, suffused with violet; F. violet carmine, edged lighter. A very attractive flower. 25c.

"My Iris roots were unusually fine and are doing splendidly. I am enclosing a list of flower lovers who desire your catalog."

—Mrs. Eugene H. Price, Hannibal, Mo.

"The Iris arrived in good condition and were promptly planted. They certainly bear out your claims for 'Oregon-Grown' stock, as they were fine looking roots."

—Eugene Beaudry, Whitinsville, Mass.

BLACK WINGS (Kirkland) 40". A.M. and H.M., A.I.S. A deep midnight blue with a frosty black luster—the nearest approach to black in Iris. Vigorous, well-branched, and fragrant. One of our ten best sellers. \$1.50.

BLUE MONARCH (Sass) 42". A magnificent gigantic soft blue with a frosty taffeta sheen, bearing 8 to 15 blossoms to a stalk. It is the most outstanding of the new blue varieties. \$2.00.

BLUE TORCH (Sheets) 35". S. light lavender blue; F. phlox purple, with rich yellow beard. Fragrant. Huge, free-flowering, and vigorous. Experts concede that this is one of the five best blue varieties. \$1.00.

BLUE VELVET (Loomis) 42". Very similar to Meldoric, so see colored picture inside front cover. It is like the richest shade of deepest darkest blue velvet. \$1.00.

BRONZE GLORY (Simpson) 32". Rich velvety bronze-red, tinged brown, with a strong suffusion of yellow underlying the dominant red coloring. The distinctive bronze color makes it a favorite. \$1.00.

BUECHLEY'S GIANT (Buechley) 48". We consider this the very finest blue variety. We have never seen any larger tall-bearded Iris flower than those produced on the cane-like stalks of this giant. \$1.50.

CALIFORNIA GOLD (Mohr-Mitchell) 42". Very deep yellow which does not fade. Flowers are unusually large, and stalks are well branched. Late. This is the finest yellow we list. \$10.00.

CAMELIARD (Sturtevant) 46". S. golden yellow; F. yellow, overlaid red-purple at center. One of the best variegatas. 50c.

CAMILLA DUBUAR (Lapham) 32". Pale pink self. The flowers are delightful and the plants are vigorous and floriferous. 35c.

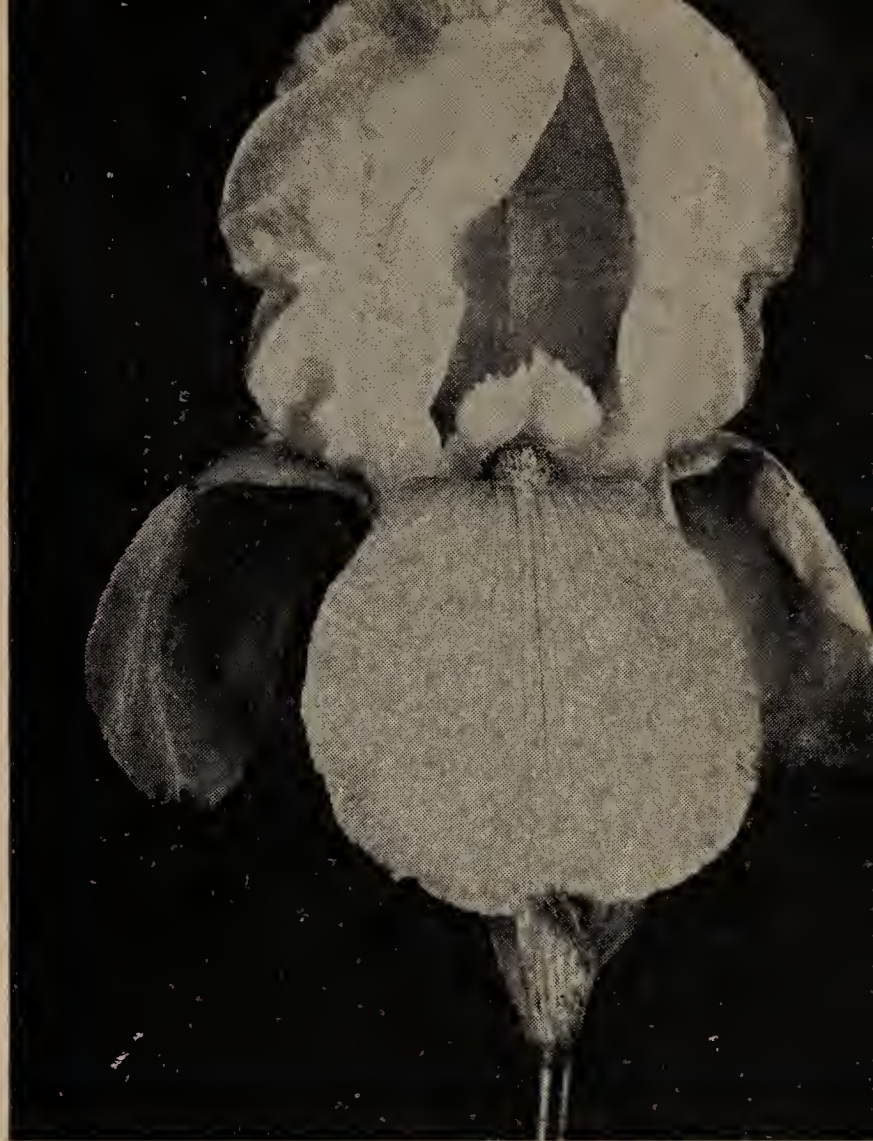
CAPTAIN COURAGEOUS (Rowell) 42". This is really one of our finest varieties and deserves a place in every garden. F. strong and sturdy, a blend of deep rose and buff. Flowers are perfectly shaped and petals are thick in substance. 50c.

CARDINAL (Bliss of Eng.) 36". Eng. A.M. S. lavender, shot rose; F. dark red of wonderful velvety texture. Fragrant. 25c.

CASIOPEE (Vilmorin of France) 40". Fine large flowers with ageratum blue S. and Dauphin's blue F. 50c.

CENTURIAN (Bliss of Eng.) 32". Eng. A.M. Deep violet and purple. 25c.

CHROMYLLA (Loomis) 36". H.M., A.I.S. One of the five best yellows. Lemon chrome self with deep yellow beard. Surpasses Coronation and Pluie d'Or in height, size, form, and substance. \$1.00.



RAYO DE SOL

See page 13

CINNABAR (Williamson) 42". S.M., A.I.S. For years this has been one of our most popular sellers. A rich dark red of but one tone, but the F. appear darker because of their velvety texture. Stands up through wind and rain. 25c.

CLARA NOYES (Sass) 34". A.M., A.I.S. Gorgeous blend of orange, yellow, and red of Talisman rose coloring. Very distinct. See colored picture on front cover. \$1.50.

CLASSIC (Grinter) 40". You have heard of the dull old classics. This is a bright new one you can read like a book. A really remarkable Iris with heavy textured petals, wide flaring F. and a stiff cane-like stem. It is an unusually large flower. The huge S. appear to be fashioned out of gold leaf, gradually shading to reddish-lavender at top. The beard and center of flower glows so vividly that it seems alive. We heartily recommend it. 50c.

COCKATOO (Morrison) 32". A rich Empire yellow. The beauty and distinctiveness of this flower is in its delightfully ruffled petals. 35c.

COLOSSUS (Sass) 40". As Jimmy Durante would say, this Iris is "colossal". Blooms are sometimes 10 inches tall and are purple in color. \$2.00.

COLUMBINE (Murrell of Eng.) 40". Eng. S.M. As clean and clear as a crystal, with lovely form and slender branching stems. This white variety is distinctly different from all other whites. 50c.

"Received 16 Iris roots from you last August and planted them at Lake Minnetonka, where I have a small cottage. When I went out for the first time this year. I expected to find some of them winter-killed. I was pleasantly disappointed as all were alive, sturdy, and in fine condition.

—J. E. Munson, Minneapolis, Minnesota.



PETRUCHIO

See page 13

COOLEY SURPRISE (Cooley) 44". And a surprise it is when you see it come into bloom in your garden. Next to Buechley's Giant and Blue Monarch, we consider it our best blue. It is slightly flushed heliotrope and has a deep orange beard. Try it and see if you don't agree with us. 25c.

CONCHOBAR (Bliss of Eng.) 38". Rich red with a purplish tinge. Visitors admire our grouping of this variety greatly. 25c.

CORONATION (Moore) 34". The best of the cheaper yellows. Clear, deep golden yellow and very floriferous. 35c.

CROWN PRINCE (Kleinsorge) 40". The most unusual and best variegata. S. deep orange yellow; F. dark velvety red brown, solid to the edge. \$3.00.

CRUCIBLE (Berry) 36". A light lavender-blue which presents a blue-grey effect. Throat is golden yellow; prominent yellow beard. This is a great favorite of Mr. Berry, the originator, and will be a favorite of yours also when you plant it in your own garden. 50c.

CRYSORO (Nicholls) 26". H.M., A.I.S. Unusual clear, deep, luminous yellow. Blooms are large and ruffled, of good shape and substance. \$4.50.

CUPAVO (Dykes of Eng.) 42". Eng. Challenge Cup and Medal winner. Enormous flowers (really huge) of reddish-lilac. To tell you the truth, we would just as soon not sell any roots as we are using it extensively for breeding purposes. 50c.

CYDALISE (Cayeux of France) 36". French C.M. The finest yellow plicata. S. bright golden yellow; F. straw yellow, etched and veined golden brown. A very unusual combination of colors. 50c.

DAKOTA (Hardee) 44". We consider this one of the most superior deep blue purples which we list. It has all the attributes of a perfect flower: height, vigor, size, and floriferousness. \$1.00.

DAUNTLESS (Connell) 42". Dykes Medal winner. Long considered the best red. F. slightly darker color because of heavy texture. \$1.00.

DAY DREAM (Sturtevant) 40". One of the most charming garden Iris, tall and vigorous, of pleasing soft pink tones. It is the finest of the pink bi-colors. \$1.00.

DELIGHT (Sturtevant) 34". A.M., A.I.S. Most unusual plicata. S. lightest rose; F. pure white with orange beard. 25c.

DEPUTE NOMBLOT (Cayeux of France) 50". Dykes Medal winner. Copper, bronze, and crimson, dusted with powdered gold. \$1.50.

DESERT DAWN (Andrews) 42". A glorious yellow blend tipped with lavender. We have never seen a desert dawn, but if it is as beautiful as the flower, it is worth going miles to view. \$2.00.

DESERT GOLD (Kirkland) 35". H.M. and A.M., A.I.S. The finest early yellow, blooming a week before the others. We thought this deserved the Dykes Medal several years ago, and were disappointed when the medal was awarded another variety. \$1.50.

DOG ROSE (Insole of Eng.) 46". Eng. S.M. We consider this the very finest pink variety in commerce. Stalks are tall and well-branched, with flowers larger than other pinks. See the colored reproduction on back of our catalog. \$2.00.

DOLLY MADISON (Williamson) 36". H.M., A.I.S. One of the finest Iris ever introduced, with large flowers of perfect form. S. soft mauve shading to yellow; F. lilac, haft golden tinged and maroon veined. 25c.

DON JUAN (Cayeux of France) 40". French C.M. Unusually large. S. rosy lilac, shaded bronze; F. bright red. 50c.

DOROTHY DIETZ (Williamson) 38". The very finest white bi-color. S. white; F. pansy violet, fading to paler at extreme edge. Large flowered. 50c.

DR. C. H. MAYO (Fryer) 31". One of the finest pink-toned Iris. It has a white throat and is sweetly scented. 25c.

DREADNOUGHT (Bralliar) 44". A. beautiful pinkish red; F. very dark red. This flower shows up as a fine, tall red in the garden planting. Blooms are more than average size. 35c.

"You may be interested to know that several dozen Iris plants bought from you last year very late in season, despite days of freezing weather after the middle of March, were in blossom early in May. Your rhizomes are the largest and best that I have had from any place."

—Mrs. J. B. Hamilton, Knoxville, Tenn.

DRESDEN (Richer) 18". S. pink flushed; F. pink veined and feathered on a pale pink ground. \$1.00.

DRUID (Sturtevant) 32". A brown and maroon combination that is distinctly unusual. \$1.00.

EASTER MORN (Essig) 42". A.M., A.I.S. The finest white we have seen. Flowers are huge, of warm white tone made warmer by the bright, luxuriant gold beard. Petals of extra heavy texture, and flowers last a long time. Very hardy. \$3.50.

EGYPT (Wallace of Eng.) 44". S. bronze-violet; F. deep velvety purple-maroon-crimson. Excellent size and shape. \$1.00.

ELIZABETH EGELBERG (Egelberg) 45". We consider this the finest mauve pink. F. are slightly darker than S. By all means try it. Similar to Frieda Mohr in color, but very different in shape. 35c.

ELOISE LAPHAM (Lapham) 35". H.M., A.I.S. An exquisite variety, which gives a pale pink effect. S. milk white, flushed pink; F. white, heavily shaded pink. Flowers are large and numerous. We highly recommend this variety as do all expert judges. See the accurate colored reproduction on back cover. \$1.00.

EREBIAN (Loomis) 40". H.M., A.I.S. Color effect is a rich, dusky Bordeaux red, intensified by the heavy gold beard and glowing velvety texture of the F. Always rated among the best reds. \$1.00.

ERIN (Morrison) 42". We consider this our finest blue bi-color. It certainly is very popular among our garden visitors. 35c.

ESTEREL (Edlmann) 36". Deep rose pink self, shaded yellow at base of petals. 25c.

ETHEL PECKHAM (Williamson) 35". H.M., A.I.S. The finest red. Garden effect is that of a deep, rich red. Flowers very large. \$6.75.

ETHELWYN DUBUAR (Lapham) 37". Deep pink in general effect, with lemon beard. This is one of the superior pinks which have been recently originated. You will like it very much. \$2.00.

EUPHONY (Sass) 34". S. ruffled, of mustard yellow; F. same color, but overlaid vinaceous. Flowers of medium size. A most odd and popular variety. See the accurate colored reproduction on front cover. 35c.

EVOLUTION (Cayeux) 37". French C.M. Rather difficult to describe. It is a coppery bronze, rose, and blue blend which is very distinctive and beautiful, placing it among the world's finest fifty varieties. \$2.00.

FARANDOLE (Cayeux of France) 37". French C.M. S. light rosy-lilac; F. purplish rose. Large flowers, very attractive. 35c.

FIRE GOD (Nicholls) 40". S. reddish bronze, shading to yellow at base; F. deep brown garnet. Best brown toned variety. 50c.

FISMES (Millet of France) 34". S. cream, deepening to yellow; F. soft reddish-lavender, with orange beard. A great favorite. 25c.



KING MIDAS

See page 11

FLAMINGO (Williamson) 36". A light, warm, rosy red with brilliant yellow beard. 25c.

FLUSH OF DAWN (Berry) 38". A blending of light lobelia-violet and olive buff which shows up as a soft pink blend. We are pleased to be one of the few allowed to offer this fine variety this season. \$2.00.

FRANCHEVILLE (Cayeux) 42". French C.M. S. chamois-fawn, shaded clear lilac; F. purplish red. Enormous stout textured flowers, on well-branched stalks. 50c.

FRIEDA MOHR (Mohr) 38". Next to Elizabeth Egelberg, the finest lilac pink. F. flaring. Always among the best sellers. 35c.

GEORGE J. TRIBOLET (Williamson) 36". S.M., A.I.S. Violet and velvety black-red-purple. 25c.

GILEAD (Andrews) 42". H.M., A.I.S. Golden toned, of deep buff, overlaid with amber. A beautiful golden blend, tinged with bronze. These golden brown tones are found in no other variety listed herein. Gilead is undoubtedly one of the finest American originations, and possesses a unique color distinction. \$2.00.

GLEAM (Nicholls) 43". A beautiful sky blue self, lighted up by a brilliant orange beard. Large blooms of perfect shape and lasting substance. 50c.

GOLDEN CROWN (Wayman) 24". A perfect gem for the front of the border. S. pure amber; F. solid rich velvety violet-crimson. \$1.00.

"I received the Iris in fine condition. You surely grow extraordinarily fine plants—the best I ever saw. Any of my friends inquiring about Iris will certainly be referred to you, hereafter."

—Frank Emory, McClellandtown, Pa.



HYPNOS

GOLD IMPERIAL (Sturtevant) 30". A.M. and H.M., A.I.S. Very popular golden yellow. Flowers of medium size but many of them. 25c.

GRACE STURTEVANT (Bliss of Eng.) 32". Long one of the most popular varieties. S. brownish-purple; F. deep crimson black, brightened by brilliant chrome yellow beard. Effect in mass is glistening dark red-brown. Large flowers. \$1.00.

GRAND MONARCH (Rowell) 36". Velvety bronze red, with golden center. We class this among the five best dark red varieties. 50c.

GRAYMIST (Grinter) 36". If we had to choose to have but ten Irises, we would select this variety as one. It is a lovely new soft grey blend, with orange center, quite distinct from all others. We have never seen any better shaped flowers, and the color is novel. 50c.

GRAZIELLA (Cayeux of France) 42". French C.M. A light magenta red self with which everyone falls in love upon sight. A new red not previously available in this country. 50c.

GRISELDA (Williamson) 38". A beautiful large flowered blend. S. vinaceous grey, with old gold base; F. raisin purple, shading out to grey; orange beard. Really much more beautiful than this dull technical description. 35c.

HELIOS (Cayeux of France) 38". French medal winner. Enormous (one of the largest, if not the largest yellow) wide-petalled flowers. S. are pure lemon yellow and could not be more

perfect in shape or color; F. are of same yellow shade, but delicately penciled rose-purple. We place this among the best three yellow Irises. \$1.50.

HERODIATE (Millet of France) 36". S. bright rosy lilac; F. glistening reddish mauve. Deep rose effect in mass. 25c.

HIGH TIDE (Barber) 36". S. lavender-blue; F. a shade darker, edged yellow at base. Bright yellow beard. We think this is the finest Asia-like blend, reaching a high tide of perfection. 50c.

HOLLYWOOD (Essig) 40". Charming bright pink, yellow, and old gold blend of the most bewitching colors. A very popular introduction. \$1.00.

HYACINTHUS (Williamson) 36". A large, distinct, rich reddish brown bi-color with orange beard. Very conspicuous and much admired. 25c.

HYPNOS (Connell) 40". A lovely new blend, in soft shades of blue, rose, grey, and yellow. 25c.

IMPERIAL BLUSH (Sass) 40". A beautiful large blush pink, well branched. We consider this the finest light pink, better than the much publicized Pink Satin. \$3.00.

INDIAN CHIEF (Ayres) 42". One of the five best red varieties. F. deep blood red with S. considerably lighter in tone. Large. 75c.

INDOLENCE (Hardee) 41". Fine large wisteria violet, finished with gold. Highly recommended. 50c.

ION (Mead) 36". Huge violet-blue and black with creamy white beard. Something unusual. 50c.

IRISCREST (Mead) 38". Large, broad, finely rounded petals of clear medium blue. This is one of the better blue varieties. 50c.

IRMA POLLOCK (Sass) 37". Richly colored flower of velvety carmine. No other variety gives such an impression of richness. \$1.00.

JACQUARD (Ayres) 34". A fiery-red toned variety with a contrasting deep orange beard. Very floriferous. 50c.

JEANETTE M. KENNEDY (Keller) 37". Unusually large flower of an attractive and odd color combination. S. pink; F. nearly black. You will like this distinctive flower. 50c.

J. F. RIEDY (Wassenberg) 42". Large and tall dark red, tinged with purple. We are glad to be able to offer this fine variety at such a reasonable price. 35c.

JOYCETTE (Sass) 40". H.M., A.I.S. Clear red with no blue tones. Flowers of good size on well-branched stems. Fragrant. \$6.75.

KANSAS (Timmerman) 38". Effect of this flower is that of ruffled pink. S. violet, shaded lilac; F. light purple, shaded violet with orange beard. 50c.

"I am very glad to recommend your rhizomes as the best that I have gotten from anywhere."

—Mrs. Raymond Edwards, San Antonio, Texas.

"The Iris you sent me have bloomed. I must mention one especially which produced 13 increases and six bloom stalks ten months from time of planting."

—Joseph Stijskal, Chicago, Ill.

KENWOOD (Ayres) 40". S. golden buff; F. rosy purple, edged buff. Large blooms of perfect shape. An excellent variety. \$1.00.

KING JUBA (Sass) 38". Next to Crown Prince and Aurex, this is the best yellow variegata. S. bright yellow; F. solid deep velvety red. \$1.00.

KING MIDAS (Mead) 30". An entirely new color break and in a class by itself. Very early. Golden buff, suffused garnet brown. Heavy beard of deepest orange. One of our own favorites. 75c.

LADY PARAMOUNT (White) 44". H.M., A.I.S. Brilliant primrose yellow of huge size and fine proportions. This variety has received more favorable comment by judges during the last two years than any other. \$15.00.

LARGO (Ashley) 40". The softest and finest yellow blend. A harmony of wax, mustard, and citron yellows, the F. delicately overlaid mauve. We have always maintained that this was among the very best Irises. \$1.00.

LE CORREGE (Vilmorin of France) 37". Very deep red-brown, with glowing orange beard. S. overlaid bronze. 35c.

LEGEND (Wareham) 40". The finest of this originator's productions. Huge perfectly shaped flowers of lovely dark crimson-claret. \$1.00.

LENT WILLIAMSON (Williamson) 36" Eng. and French awards. A large lavender-violet and pansy-violet bi-color with gold beard. A few years ago, this was considered the finest variety in existence and was used extensively for hybridizing, being the parent of many of the finest new varieties. 25c.

LIBERTY BELL (Donahue) 38". Awarded first prize at Boston Show. An unusual blue and white plicata. 35c.

LINDBERGH (Arbuckle) 38". This is perhaps the finest of its color. S. Bradley's violet; F. rich pansy violet, shaded lighter at edge. 25c.

LOETITIA MICHAUD (Millet of France) 44" One of the three best light blue varieties. Unusually tall and well-branched. We recommend it. 25c.

LOS ANGELES (Mohr) 46". Great white flowers faintly edged blue. One of the most beautiful Irises. 50c.

LOUIS DAVID (Cayeux of France) 34". S. dark yellow, shaded copper; F. rich old rose, edged brown. \$1.00.

MAGENTA (Cayeux of France) 37". French C.M. A deep clear toned amethyst violet with orange beard. Color not found in any other. 50c.

M. A. PORTER (Lapham) 37". Very deep violet with brilliant orange beard. Foliage is very rampant. An excellent large flower. \$1.50.

MARILYN RICHARDS (Richer) 36". Deep rose pink, free flowering and has delightful fragrance. Flower is of medium size. \$1.00.



MESSALINE

MARY DYNES (Horton) 38". One of the five latest varieties to bloom. Splendid dark red bi-color and one which should be in every Iris lover's garden because of its lateness. Well-branched and floriferous with blooms above average size. \$2.00.

MARY ELIZABETH (Kirkland) 38". Brilliant rosy red self, with F. darker because of heavy velvety quality. Golden beard. \$1.00.

MARY GEDDES (Washington) 38". Eng. A.M. This was our nomination for the Dykes Medal as being the best Iris of the year of its introduction. The flowers are of unusual coloring, being a blend of lovely soft pink tones, overlaid Pomeranian red. \$3.00.

MARY SENNI (Millet of France) 42". Enormous red-bronzy claret with bright orange beard and ruffled F. \$2.00.

MAUNA LOA (Berry) 50". A.M., A.I.S. One of the tallest. S. violet; F. rich dahlia, purple red. A very fine flower. \$1.00.

MELCHOIR (Wallace of Eng.) 37". Flowers sometimes measure 6 in. across. S. deep bronzy violet; F. rich velvety crimson-purple. One of the best importations. 35c.

MELDORIC (Ayres) 38". Similar to Blue Velvet. See colored illustration inside front cover. \$2.00.

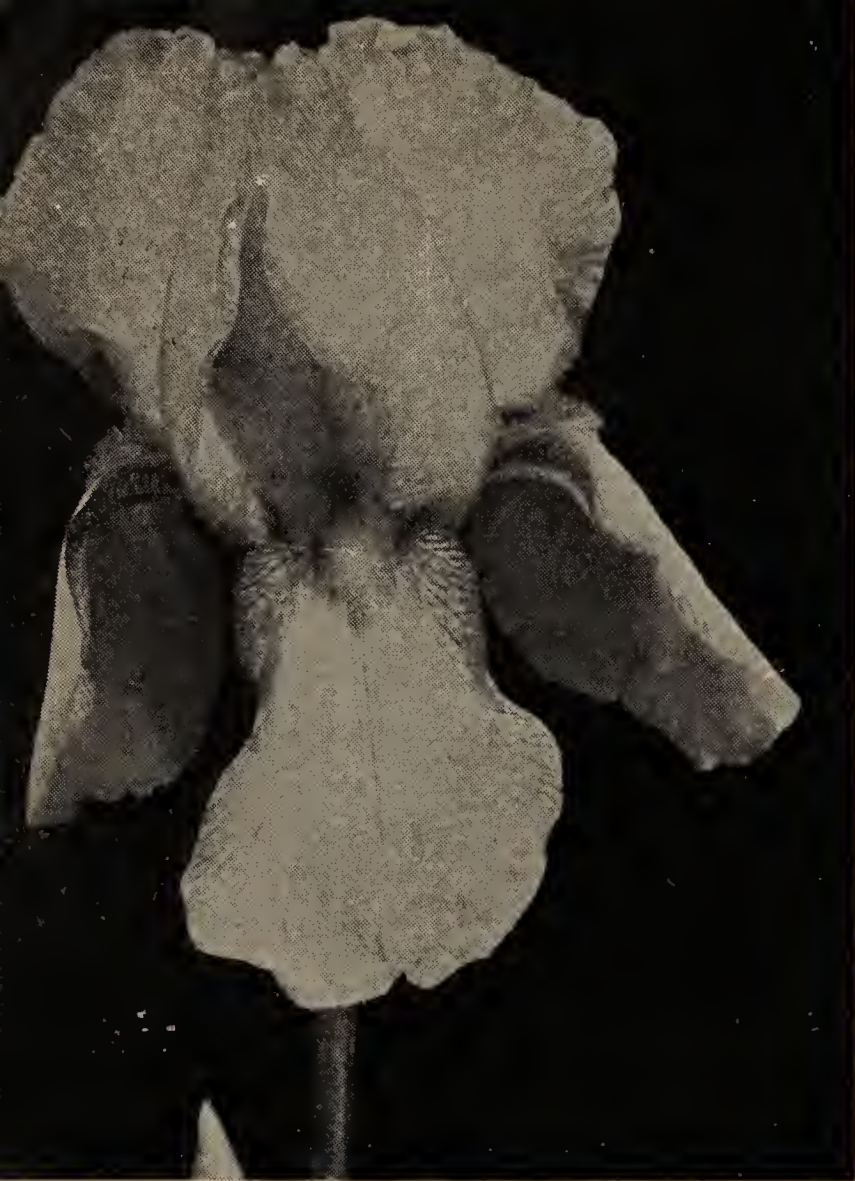
MESSALINE (Millet of France) 38". S. are of pale gold, flushed with pink; F. are red, shading to gold. The blend of colors makes this a very attractive flower. Blossoms are above average size. 25c.

"Your Iris arrived and in the seven years that I have been buying Iris, I have never seen large rhizomes. If these roots are a sample, you have a customer for life."

—Mrs. S. W. Holden, Petersburg, Va.

"I have recently received two orders of Iris from your concern and feel it only fitting and proper to inform you that the divisions received were the finest, healthiest, and most substantial I have ever received from any grower."

—E. J. Swanson, Des Moines, Ia.



SAN FRANCISCO

MIDGARD (Sass) 33". The best known and most popular pink and yellow blend. A flower of exquisite coloring. See the accurate colored reproduction on the front cover. **25c.**

MIDWEST PRIDE (Sass) 38". Richest red-purple. This variety has the most perfectly shaped flowers we have ever seen. The color is rich and beautiful. **50c.**

MINISTRE F. DAVID (Cayeux of France) 38". French C.M. S. luminous bright reddish-purple; F. intensely warm velvety dark red-purple. Very rich appearing. **\$1.50.**

MME. GAUDICHAU (Millet of France) 34". French and Eng. A.M. One of the very best deep purple-blacks. **25c.**

MME. HENRI CAYEUX (Cayeux of France) 38". French C.M. S. smoky red-violet; F. velvety dark-crimson. **25c.**

MONTEREY (Mohr-Mitchell) 42". Deep bronzed red-violet, with velvety F. margined the lighter shade of the S. Extra fine. **50c.**

MOONLIGHT (Dykes of Eng.) 35". Early, fragrant, and large silvery white, with beautifully veined old-gold throat. Very popular. **25c.**

MOON MAGIC (Shull) 38". H.M., A.I.S. A general buff-yellow tone, smooth and creamy in texture and of wonderful form. An Iris of rare merit. **\$1.00.**

MORNING GLORY (Kirkland) 40". A large, vigorous reddish-purple. **\$1.00.**

MOUNTAIN MIST (Andrews) 40". A very pale mauve-grey which holds its delicate coloring because of splendid substance. We recommend this as a very distinctive and unusual flower. **\$1.00.**

MRS. HERBERT HOOVER (Home) 38". An Iris every good Republican will wish to have. A delightful salmon and buff mixture and a prolific bloomer. Something new in the way of color blending. **\$1.50.**

MRS. VALERIE WEST (Bliss of Eng.) 40". Lavender, bronze and crimson generally acclaimed to be the best origination of the most famous English hybridizer. **\$1.00.**

MT. ROYAL (Morgan) 36". Gigantic, velvety deep purple. Best variety offered at this low price. **25c.**

MY MARYLAND (Sheets) 38". H.M., A.I.S. A very fine bronzy violet and crimson, undoubtedly one of the best of its type. **\$1.00.**

NICHOLAS POUSSIN (Cayeux of France). S. golden yellow; F. ivory white with brown reticulations. Quite distinctive. If you wish something different, this is it. **25c.**

NINGAL (Ayres) 36". S. pale bronzy buff; F. smooth, flaring, of a warm buff, overlaid with iridescent pale blue. Our best buff variety. **\$3.00.**

NOWETA (Sass) 33". Delicate shade of rose flushed yellow at center. Entire flower is softly frilled, making it unusual. **\$2.00.**

NUMA ROUMESTAN (Caleux of France) 37". General effect is a most attractive rich amaranth-red. Both S. and F. are deeply frilled. **\$1.00.**

NURMAHAL (Nicholls) 36". An intense deep red self. **\$2.50.**

NUSKU (Nesmith) 38". Old rose, blended with gold. Fine substance. **50c.**

ODENVOGEL (G. & K. of Germany) 34". S. light lemon; F. purple-violet. One of the older but still good yellow bi-colors. **25c.**

OMAHA (Sass) 30". Almost a deep red self. Large blooms on sturdy stems. Bright orange beard lends a luminous golden rose tone to the flower. **50c.**

OREAD (Morrison) 32". Brilliant red-violet bi-color. **25c.**

OREGON BEAUTY (Kleinsorge) 36". Aconite violet and velvety cotinga purple. **\$1.00.**

OREGON GIANT (Kleinsorge) 36". Very late to bloom, which is its most valuable characteristic. Almost a black Iris, being as black as the variety Black Wings, but larger. Huge flowers. **\$1.00.**

ORIANA (Sass) 33". Pure white of fine substance. One of the four best white varieties. Very hardy everywhere. **\$1.00.**

PACIFIC (Essig) 38". A very large and fine glistening blue. **50c.**

PEACHES (Sass) 32". Warm bright blend of peach, apricot, and orange. Creamy markings on the falls. **50c.**

"I received my Iris in fine condition and was a little surprised to find them so, as I had thought the distance too great. But they were just as fresh as if they had been sent in this state."

—Edna J. Riebock, Elgin, Ill.

PETRUCHIO (Morrison) 36". Lobelia violet and dahlia carmine. One of the most outstanding dark varieties. We unhesitatingly recommend it. 25c.

PHEBUS (Cayeux of France) 35". French C.M. Uniform light lemon. One of our best pure yellow varieties. \$1.00.

PICADOR (Morrison) 40". S. honey yellow, mustard at throat; F. mineral red. This undoubtedly is one of the three best yellow variegatas. We rank Crown Prince first and this variety second in this particular class, though the two are entirely different, Picador being of lighter tones. It cannot be recommended too highly, and we assure you that you will like this variety when it blooms in your garden. \$1.00.

PINK SATIN (Sass) 42". H.M., A.I.S. The most publicized pink variety. Does best in cold climates. \$2.00.

PLUIE D'OR (Cayeux of France) 36". A good yellow, but surpassed by California Gold, Phebus, and Chromylla. 75c.

PRESIDENT PILKINGTON (Cayeux of France) 48". French C.M. S. pale buff with faint bluish suffusion; F. wide and flaring lavender with buffy yellow suffusion. One of the best 25 varieties in existence. \$3.00.

PROPHETE (Cayeux of France) 38". Rosy lavender and bronzy amaranth red. We are one of the few growers able to offer this importation this season. 50c.

PUGET (Cayeux of France) 30". S. waved, golden brown, flushed rose; F. golden yellow, veined and etched brown. \$1.00.

PURISSIMA (Mohr) 42". Very early. Next to Easter Morn, the best white variety. Needs winter protection in north. Perfectly branched and floriferous. 75c.

QUIVERA (Sass) 32". Blend of buff, pink, orange and brown. This is one of the oddest varieties we have ever seen. 75c.

RAMESES (Sass) 38". Dykes Medal. A symphony in rose, pink, and buff, shading to yellow near edges. Apricot beard. Very attractive. \$1.00.

RAYO DE SOL (Mohr-Mitchell) 38". Unusually large very deep yellow veined with gold. We consider this one of our three finest yellows, and sell more of it to visitors during the blooming season than any other. 50c.

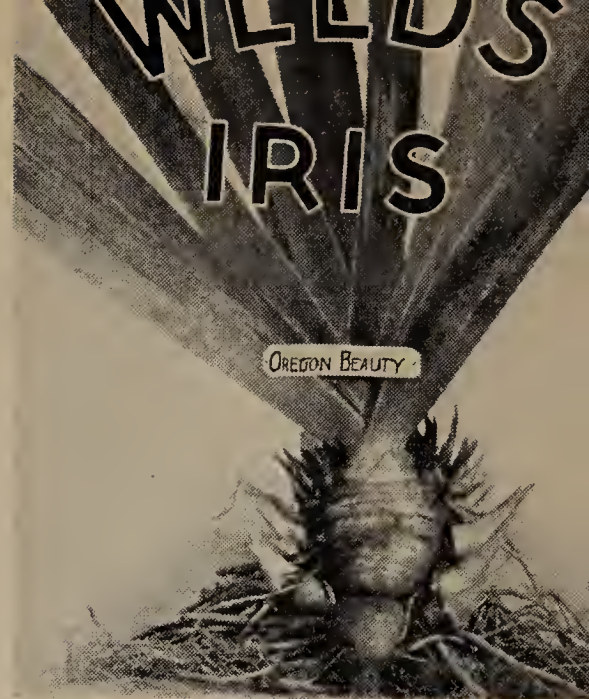
REALM (Baker of Eng.) 36". Eng. Medal. Intense, pure rich blue. One of the very best of its class. 25c.

RED DOMINION (Ayres) 42". H.M., A.I.S. Deep red, slightly frilled. With Ethel Peckham, this is one of the two best red varieties. See colored picture inside front cover. \$3.00.

RED WING (Sass) 34". S. brown; F. carmine. A truly fine flower. 50c.

RHEINGAUPERLE (G. & K. of Germany) 36". Delicate rose pink. 50c.

Typical National Root



RIALGAR (Sturtevant) 27". Eng. A.M. S. deep yellow; F. veined and flushed red-brown. Unusual combination. 25c.

ROSE MARIE (Cayeux) 34" S. light violet, suffused lighter; F. rose-violet with rich yellow beard. A very attractive flower. 50c.

ROSE MARIE (Cayeux of France) 36". Unusual shade of violet rose. 50c.

RUY BLAS (Millet of France) 37". Huge smoky mauve and purplish violet. Stock scarce. \$1.00.

SACHEM (Loomis) 40". A striking velvety red brown. S. lustrous pale bronze; F. spreading, and of velvety dazzling red brown. \$1.00.

SACRAMENTO (Mohr-Mitchell) 42". H.M., A.I.S., White, edged, dotted and reticulated aster-purple. Very unusual combination for there is no other variety like it. \$1.00.

SAMOA (Hardee) 40". Large, blended brick red tones. Good. \$1.00.

SAN DIEGO (Mohr-Mitchell) 38". H.M., A.I.S. Remarkably large deep purple self. 50c.

SANDRA (Millet of France) 36". Early, large, beautifully ruffled yellow. \$1.00.

SANDRINE (Cayeux of France) 35". S. fawn, washed heliotrope; F. red, margined mauve. \$1.00.

SAN FRANCISCO (Mohr-Mitchell) 42". Dykes Medal. Best white plicata. \$1.00.

SANTA BARBARA (Mohr) 38". Eng. A.M. One of the three best lavender-blues and best for the money. This is a variety that will not disappoint you. Prolific bloomer. 25c.

SASS PINK (Sass) 37". A delightful rose pink which we recommend to all desiring a nice pink for their garden. 25c.

SEA DAWN (Nicholls) 35". Very, very unusual coloring. Ruffled blend of coppery old rose. \$1.00.

SELENE (Connell) 40". H.M., A.I.S. Large glistening white with luminous heavy textured petals. Excellent in every way. 50c.

"The Iris arrived yesterday and I can very truthfully say that the rhizomes are the finest I have ever received. More surprising than the quality was the excellent condition of the root system—there was not the slightest sign of drying. From all appearances these roots might have been sent to me from nearby Virginia rather than from all the way across the continent."

—Charles W. Ayars, Tacoma Park, D. C.



ELEANOR ROOSEVELT

See page 15

- SENECA** (Ashley) 28". Late. Unusual white plicata with the white petals heavily sanded and dotted violet-carmine. \$1.00.
- SENLAC** (Bliss of Eng.) 37". Unique shade of mulberry red. Large. 50c.
- SHOGUN** (Nicholls) 38". New and very attractive color—deep coppery maroon, with brilliant orange beard. 50c.
- SIKH** (Baker of Eng.) 38". Rich, brilliant, copper-bronze-purple blend. One of the very best, if not the best, of its color type. Unhesitatingly recommended by all Iris judges. 35c.
- SPRING MAID** (Loomis) 40". H.M., A.I.S. Large and well rounded flowers of rose pink, with honey yellow flush through the center which is most entrancing. \$2.50.
- SUNLIGHT** (Sturtevant) 34" H. M., A. I. S. Large clear creamy yellow flower with deep orange beard. Well-branched and free-flowing. 35c.
- TALISMAN** (Murrell of Eng.) 33". Eng. C.M. Golden apricot effect in mass. A recent importation. \$1.00.
- THEODOLINDA** (Ayres) 42". Giant white plicata, slightly larger than San Francisco and a more recent introduction. \$1.50.
- THURATUS** (Sass) 35". One of the darkest varieties—a very deep black-purple. A real beauty and one much admired in our garden. 50c.

- TOKAY** (Nicholls) 36". Beautiful blend of soft pink tones, with clear yellow at heart of bloom. Very unusual appearing flower. 50c.
- TUSCARORA** (Williamson) 42". A red-toned variety which always attracts favorable attention. Fine as a cut flower. 35c.
- VALOR** (Nicholls) 50". H.M., A.I.S. Deep violet and raisin-purple. The best variety on this shade in existence. Much taller than most. \$2.50.
- VENUS DE MILO** (Ayres) 44". H.M. One of the three best whites. \$1.00.
- VERT GALANT** (Cayeux of France) 48". Dykes Medal. S. coppery-fawn, suffused lilac; F. round vivid garnet red, edged bronze. See colored reproduction back of front cover. \$3.00.
- WACONDA** (Sass) 35". Fuchsia red and velvety violet-carmine. 50c.
- W. C. KENNEDY** (Keller) 34". Huge variegata with yellow S. and maroon F. This is one of the best variegatas, being larger flowered and shorter stalked than the others. 50c.
- WESTERN SKIES** (Essig) 54". One of the tallest varieties. Pale silky blue. 50c.
- WILD ROSE** (Sturtevant) 26". Rose pink. Very floriferous. 25c.
- WILLIAM MOHR** (Mohr) 35". World's best Oncocyclus-pogoniris hybrid. Giant blossoms of pale lilac, netted and veined violet. Most unique iris we offer, and one of the most beautiful. 75c.
- WINNESHIEK** (Egelberg) 40". The new "Black Iris". Very fine deep blue-violet. Many flowers to a stalk and many stalks to a clump. \$1.00.
- W. R. DYKES** (Dykes of Eng.) 33". Heavy crepey texture, and of a rich golden yellow color. Very highly publicized and used widely as a parent for newly originated yellows such as Happy Days and Lady Paramount. \$2.00.
- YVES LASSAILLY** (Cayeux of France) 40". French C.M. Very large white, with F. suffused beautiful soft blue. 35c.
- ZUNI** (Ayres) 40". A glorious, glowing red-brown, overlaid with a coppery suffusion. Very early. S. seem sprinkled with gold dust when seen in sun. \$1.00.

**Entire Collection, valued at \$214.75,
for \$149.50**

Limited space prevents us from describing the following varieties. \$1.00 each; 8 for \$5.00. Alencon, Blue Bonnet, Charis, Coesse, Delty, Ermine, Goldilocks, Grandiosa, Highlight, Kilsoquah, Montour, Massena, Ortrud, Purple Night, Royal Ruth, Sandalphon, Theodore, Thorobred, Torchlight, Tuscarora, Van Cleve, Virgin Gold, Vista Blue, Wanaleska, Wawawsee, Zulu.

"Thanks for the fine Iris sent. I noticed when I received your catalog that your prices were very reasonable as compared with our California growers."
—Mrs. Louise Tecklenburg, Lodi, California.

"I sent you a trial order last year and your plants were fine — much larger than those of other growers."
—W. H. Kiessig, Davenport, Iowa.

THE NEW FALL BLOOMING IRISES

THIS new type of Iris which not only bloom in the early spring, but flower a second time in late summer or autumn is a new development in the horticultural world. We are proud to be able to offer the largest assortment of this unique type in the entire country. These re-bloomers flower best in the southern half of the United States and on the Pacific Coast, but will bloom at least once a year in any state. Even in the colder states, they often produce a second flowering.

These plants grow and increase so fast that they make a years growth in five or six months and so are ready to bloom in the fall. To encourage this second blooming, it is advisable to plant in rich non-acid soil, in full sunlight, in as protected a location as possible, and water frequently during the summer months so that the plants will not fall into a dormant stage, but will continue to grow and develop offshoots.

All the varieties we offer in this section are perfectly hardy with the exception of the winter-blooming *Stylosa* which is not a bearded variety and which will grow only in milder climates. Once the fall-bloomers are established in your garden, they will surprise you continually in late summer and fall by producing beautiful blossoms. Some of these varieties are as beautiful as any which bloom in the early spring, and are well worth a place in the garden regardless of their twice-blooming characteristics. Some of the varieties offered were originated in Minnesota, Iowa, and Illinois, so one can see that the fall-blooming habit is not confined to the warm south.

Do not plant roots in July or August and expect bloom the same autumn. They will, however, give a good bloom the following spring and fall.

AUTUMN DAWN (Nies of Calif.) 28". Clear bright blend of old gold and pink. \$3.50.

AUTUMN FROST (Schreiner of Minn.) 38". Exquisite white of extra fine substance and well-branched. \$15.00.

AUTUMN GLEAM (Sass of Nebr.) 25". Medium size citron yellow flowers of fine shape and heavy substance. Rather high branching. \$7.50.

AUTUMN HAZE (Sass of Nebr.) 31". Large vinaceous purple flowers on low branching stems. \$15.00.

AUTUMN KING (Sass of Nebr.) 30". Vigorous, free flowering lavender-violet. Dependable. This was one of the first originated having re-blooming characteristics. 25c.

AUTUMN QUEEN (Sass of Nebr.) 22". Beautiful white with small flowers. A seedling of Autumn King. 25c.

AUTUMN SURPRISE (Baker of Ark.) 28". A fine medium blue, which blooms in mid-summer with us. 50c.

CONSTANCE SCHREINER (Mikle of Minn.) 30". Lavender-violet with S. lighter than F. \$15.00.

DIOGENES (Auten of Ill.) 10". New blue-purple. Quite odd dwarf. 50c.

DORCUS HITCHESON (Sass of Nebr.) 20". Deep violet self. Fragrant. 50c.

EQUINOX (Auten of Ill.) 26". Reddish-purple with darker falls. 35c.

ELEANOR ROOSEVELT (Sass of Nebr.) 27". The best fall bloomer for the money, and one we cannot recommend too highly. Very deep fluorite purple. Blossoms are huge and cluster so thickly on stalk, one cannot see the stem. Fast multiplier. \$1.00.

FRANKLIN ROOSEVELT (Sass of Nebr.) 30". This is perhaps the best fall-bloomer, but the roots increase extremely slow. It is a beautiful tall red-purple. \$15.00.

FROST QUEEN (Sass of Nebr.) 20". A very dependable large frosty white. \$2.00.

GOLDEN HARVEST (Sass of Nebr.) 19". A large yellow, veined with red-gold on F. Even if this did not bloom a second time, it is well worth having in the spring garden. 50c.

JANE KREY (Mind of Md.) 28". Rich dark purple. \$1.00.

JEAN SIRET (Andre of France) 12". Clear yellow with F. striated. 25c.

KING JUNIOR (Sass of Nebr.) 28". Vigorous, free flowering lavender-violet. Hitherto this has been too high in price (selling around \$5) because of scarcity. We are glad to offer it so reasonably this season. 50c.

LAURA HUTCHESON (Sass of Nebr.) 26". Lavender blue bi-color. \$3.50.

"Last fall I spent about \$5 with you for Iris; and I want to tell you I've already had \$25 worth of pleasure from them. I am more than pleased with the quality of the roots and from your generous treatment."
—S. G. Smith, Cedar Rapids, Iowa.

LIEUT. DE CHAVAGNAC (Andre of France) 12". A mixture of violet, bronze, and cream. 25c.

MARTIE EVEREST (Kirkland of Tenn.) 35". A fine tall blue. \$10.00.

NEOLA (Sass of Nebr.) 18". Very beautiful blending of brown tones. 50c.

OCTOBER BLAZE (McDade of Tenn.) 40". Fine red-purple, somewhat like Indian Chief. Fine flower but blooms a little late for northern climates. \$15.00.

OCTOBER OPERA (Sass of Nebr.) 24". Velvety rich red and purple-violet. One of the best of this twice-blooming type. \$3.50.

OLIVE WHITE (Hill of Kans.) 24". Cream, with green gold veining. Very free flowering during summer months with us. 35c.

PALTEC (Dennis of France) 15". A rare cross between beardless Tectorum species and bearded species, thus making it a botanical curiosity. Medium blue with darker mottling. Reliable summer bloomer with us. 35c.

PEGGY BABBINGTON (Mind of Md.) 28". Rich smooth canary yellow. Occasionally, but by no means always, blooms in early fall. 35c.

SEPTEMBER MORN (Auten of Ill.) 17". A new light mauve pink which we think is very delightful. Flowers not very large. 75c.

SOUTHLAND (Sass of Nebr.) 28". Very clear lemon-chrome yellow which excels all other early blooming yellows, as well as being fine re-bloomer. \$15.00.

ULTRA (Sass of Nebr.) 18". Ultramarine blue, with number of flowers to a stalk. Quite popular and dependable. 25c.

STYLOSA SPECIOSA (Unguicularis species) 18". Our fine light blue winter bloomer, starting to flower in October and continuing during mild weather until April. As cut flowers the blooms of this variety cannot be excelled. Every Iris lover living in the south and on the Pacific coast should grow this unique and beautiful flower. It can be grown in the colder states if given protection. Were we to be limited to ten varieties of Iris, we would choose this as one of them.

Clumps \$1.00; plants 50c.

17 Fall Bloomers for \$4.95

Collection of all 17 varieties (Stylosa excepted) priced at \$1 or less and valued at \$7.40, for \$4.95. With a \$2 Frost Queen added, \$5.95.

EARLY BLOOMERS

THESE are dwarfs, intermediates, pogocyclus hybrids, and miscellaneous species which bloom from two to five weeks before the regular tall-bearded Iris season. The pogocyclus hybrids result from crossing the bearded species with the Oncocyclus species of Asia Minor. The resulting hybrids are entirely different from the ordinary bearded sorts and are very beautiful and odd. These hybrids are extremely hardy.

ALICE HORSEFALL 30". Very dark red; heavy, bronze-yellow beard. 50c.

AMBERA 30". H.M., A.I.S. Very vigorous, light yellow. 35c.

APRIL GOLD 15". Real gold in tone and very floriferous. 35c.

ARAMIS 6". Delightful yellow. 20c.

BETSY PRESBY 5". Fine bright yellow. 20c.

BOSNIAMAC 18". Fine flower, mingling yellow and buff. 15c.

BUCHARICA (Juno species) 24". Glossy bright green foliage, like a miniature corn-stalk, with soft small satiny yellow flowers at the tip and at the axil of each leaf. A novelty. 50c.

BUTTERFLY 6". Delightful yellow. 20c.

CARMELO (pogo-regelia) 24". Long, narrow flowers of an unusual shade of blue. This is one of the rarest of hybrids—resulting from crossing the bearded species with the regelia species of Asia Minor. 25c.

CARTHUSIAN 20". Clear lavender blue. If you wish an early one, this is it. 15c.

CHALLENGER 28". Very best early blooming variety. Huge rich red-purple. 35c.

CHEROKEE MAID (pogocyclus) 22". Blackish maroon, veined darker. 50c.

CHIEF 22". Fine big blue purple. 25c.

COMTESSE D'HAUTEVILLE 6". Bright violet-purple-garnet. 25c.

CORULEA 5". Fine little light blue. 20c.

CRETAN 24". Almost black. 20c.

CYMBELINE 30". Clear soft, but rather brilliant blue coloring. 35c.

CYRUS 32". H.M., A.I.S. Tall empire yellow with gold. 25c.

DILKASH (pogocyclus) 24". Violet and reddish-purple with richly netted veining. Large black blotch on F. 25c.

DIXMUDE 6". Rich mulberry-purple. 25c.

DOLPHIN 26". Lavender and purple. 20c.

DORAK (pogocyclus) 30". Ruffled and beautifully marked purple-violet. 50c.

DOXA 20". H.M., A.I.S. Interesting blend of olive and blue. 35c.

ELIZABETH HUNTINGTON 18". Very crinkled petals of crisp blue. 20c.

FELDSPAR 28". Pearly yellow. Fine appearance. 25c.

"I received the Iris you sent and wish to state that they were in perfect condition and were wonderful roots."

—F. B. Rogers, Fairmont, W. Va.

FLECTA (pogocyclus) 24". Slightly lighter color than Hamadan. 50c.

FLORIDA 6". Large flowered, strong growing, pale yellow. 20c.

GAYNELLE 18". Clear yellow bi-color. 35c.

GENTIUS 24". S. bluish violet; F. royal purple. 25c.

GERDA 18". Creamy yellow. 35c.

GIRAN (pogocyclus) 24". Wine-colored, beautifully marked. 35c.

GLEE 10". Graceful soft yellow. 25c.

GOLDEN FLEECE 20". Bright yellow. 20c.

GORGEOUS 16". Fragrant deep violet-purple bi-color. One of the best. 20c.

GRAMINEA 6". Rich red-violet. 35c.

HAMADAN (pogocyclus) 24". Ruffled rich violet S. and flaring F. Plush-like deep black beard. Very odd. 25c.

HARBOR LIGHTS 8". The best yellow dwarf. 35c.

HEBE (regelia-cyclus) 14". Suffused lavender and veined and dotted violet on a gray ground. \$1.00.

Special Intermediate Collections

Collection of all 36 bearded Intermediates (13 inches and higher), valued at \$9.30, for \$5.95.

All ten 35c varieties for \$2.50.

All ten 25c varieties for \$1.50.

Ten 20c varieties for \$1.25.

All six 15c varieties for 60c.

Five varieties, our choice—a 15c, 20c, 25c, 35c and 50c variety—valued at \$1.45, for \$1.00.

HOOGIANA (regelia) 30". An Iris noted for a wonderful smoothness of texture. No other variety has the same uniform shade of clear bright blue. \$1.00.

IB-PALL (pogocyclus) 18". Ruffled reddish-lilac S. and dark violet F. over a white ground. Very odd. 50c.

INGEBORG 15". Very early, large white of waxy texture, with golden veining. 15c.

ISTRIA 30". Pure white, shaded palest green. 25c.

JOSEPHINE 4". Pleasing soft cream. 25c.

JUDY 9". Rich uniform ruby red. 25c.

LADDIE BOY 5". Fine blue-purple bi-color. 20c.

LADY LILFORD (pogocyclus) 30". Intense blackish-purple with black beard. One of the darkest of all Irises. Late. 25c.

LADY LUCK 28". Very early, floriferous, uniform dark purple. One of the very best for the early garden. 15c.

LEOPOLD 4". Blue-purple, with white beard. 35c.

LURIDA 15". Attractive tawny bronze red. 35c.

MAID OF THE MIST 23". Unusual colored variety of great charm. 25c.

MAX 5". S. light yellow; F. darker. 20c.

Special Dwarf Collections

Collection of all 29 dwarf bearded varieties (12 inches and less) including Mons. Steichen, the dwarf pogocyclus, valued at \$7.10, for \$4.95.

All twelve 20c varieties for \$1.50.

All twelve 25c varieties for \$2.00.

Six varieties in different colors, our choice—2 at 20c, 2 at 25c and 2 at 35c—valued at \$1.60, for \$1.00.

MME. SAVOILLAN (pogocyclus) 30". Ochre gold, veined turquoise blue. 50c.

MOGADOR 15". New French introduction. S. milk white; F. soft yellow. 20c.

MONS. STEICHEN (pogocyclus) 12". Blend of pearly white, shaded blue in S., striped brown and spotted wine red in F. Very odd. 20c.

MOONBEAM 24". Large flower of soft, but deep yellow throughout. 20c.

NYMPH 28". Floriferous empire yellow. One of the best early varieties. 20c.

OKOBOJI 28". Dark bronzy-red with bronze beard. 25c.

ORANGE QUEEN 5". Clear, deep orange yellow. 20c.

PIXY 8". Yellow, dotted with purple and brown. Late. 25c.

PRIMAVERA 28". Huge soft primrose yellow. This and Nymph are the best early blooming yellows. 25c.

PUMILLA BLANC 6". White. 35c.

QUEEN FLAVIA 20". Light yellow. 20c.

RAGUSA 28". Pansy and black-purple. 35c.

ROSE MIST 10". Rosy lavender. 25c.

ROYAL 6". Deep purple. 20c.

SHIRAZ (pogocyclus) 36". Oddly veined bright violet. 35c.

SHIRIN (pogocyclus) 24". Violet with purple veining. 35c.

SILVER ELF 10". Silvery white; petals of waxy texture. 25c.

SIR TREVOR LAWRENCE (pogocyclus) 32". Deep rosy mauve, heavily netted darker. 50c.

SOLIEL LEVANT 10". New French variety. Exquisitely frilled yellow. 35c.

SPARK 28". Brightest early red—a brick red. 35c.

STATELLAE 12". White, flushed yellow. 20c.

Special Hybrid Collections

Collection of eight varieties including Carmelo, Dilkash, Hamadan, Hoogiana, Ib-Pall, Lady Lilford, Mons. Steichen, and Zwannenburg, valued at \$3.00, for \$2.00.

Collection of all nineteen pogocyclus, Juno, pogo-regelia, and regelia varieties listed above, valued at \$9.00, for \$4.95.

"I am certainly proud of the fine large Iris rhizomes you sent me this season. They are the largest and finest I have ever seen."

—William E. Morse, Sturgis, Michigan.

STEWART 6". Bright yellow. 25c.

STEWART ALPINA 7". Fine little yellow. 25c.

STOLINIFERA (regelia) 28". Elongated in form, with an indescribable blending of fawn and brown with clear electric blue. \$1.00.

STORM 24". S. bluish-lilac, shot bronze; F. velvety violet-purple. 20c.

SUNBEAM 7". Fine golden yellow imported from England. One of our finest dwarfs. 20c.

TITANIA 6". Largest pure beautiful yellow. 25c.

TOM TIT 18". Deep violet purple. 20c.

TONY 8". Blackish red violet, with orange beard. 25c.

WALHALLA 20". Very early, large lavender-blue-purple. 15c.

YELLOW HAMMER 20". Eng. A.M. Early, bright amber yellow. 15c.

ZWANNENBURG (pogocyclus) 22". Imported from France. Very early and odd in color. S. cream colored, flushed violet; F. rich old gold, splashed maroon. Every garden should have this one. 25c.



SIBERIAN IRIS

Emperor

Snow Queen

Butterfly

IRIS SIBERICA

SIBERIAN IRIS have long stems and grass-like foliage, growing into large, round compact clumps bearing 25 to 50 bloom stalks. Although they will grow in any soil, they do best in a damp soil or if watered occasionally. May be grown in either sun or partial shade. They are excellent beside streams. Height of the blooms averages 38 inches.

The varieties **BLUE FLAME, BLUE HERON, BLUE OWL, BLUE STAR, BUTTERFLY, MRS. SANDERS, NATIONAL BLUE, PERRY'S BLUE, SANGUINEA, SUPERBA, SUNNYBROOK,** and **TRUE BLUE** vary slightly in size and height, but all are different shades of blue, lined deeper, and slightly marked with white. **35c each; any 4 for \$1.00.**

DRAGONFLY. Blue with white background. **50c.**

EMPEROR. Very dark purple. **50c.**

GREY PRINCE. Beautiful blue and grey. A new improved variety. **50c.**

PERIWINKLE. Fine large brilliant blue. **50c.**

SNOW QUEEN. Handsome short snowy-white with yellow markings. **25c.**

SNOWCREST (Gage 1932) 38". This is the finest white Siberian and perhaps is the most outstanding variety of this species. **\$3.50.**

Collection of all 18 varieties, valued at \$10.00, for \$6.95.

SPURIA IRISES

SPURIAS are tall beardless Irises that make fine border plants. They prefer heavy rich damp soil which makes them do especially well near pools, but they will grow in any soil regardless of moisture. The flowers resemble the Dutch Iris, but are far larger, and the roots are not bulbous. Stalks are 40 to 60 inches and are strong and cane-like. No garden is complete without a planting of this valuable species.

AUREA. A fine uniform rich golden yellow. **50c.**

MONNIERI. A beautiful, large yellow, similar to, but lighter than Aurea. **50c.**

MRS. TAIT. A soft porcelain blue of varying shades. **50c.**

NOTHA. Rich violet and blue, spotted yellow. **50c.**

OCHROLEUCA. White, with orange blotch on falls. Very strong, tall stalks with large flowers. **50c.**

Collection of all five, valued at \$2.50, for \$1.95.

SUNNY DAY (Sass 1932) 40". H.M., A.I.S. A splendid, tall, gleaming yellow of great beauty and form. The best yellow Spuria. **\$1.00.**

DR. ANNIE BESANT (Stanley 1933) 50". The largest, tallest, and finest of all Spurias. Standards are milk white and falls are creamy yellow. Edges of the petals are beautifully crimped. **\$1.50.**

MISCELLANEOUS IRIS

DOROTHEA WILLIAMSON. An American hybrid of royal purple. Entirely different from others and fine for table bouquets. By all means try one of these, as it is one of the oddest and most beautiful. **35c.**

FULVALA. Similar to D. Williamson but more copper in tone. **50c.**

PSEUDACORUS GIGANTEA. An improved form and much larger than the common Pseudacorus, known as the "Yellow Water Iris". The flowers are of pure yellow, the plants growing in marsh or swampy land, in water, or in dry soil. Try this in your pool or along its edges. It will grow and bloom well anywhere. **25c.**

FLOWER ARTICLES

For those of our readers who wish additional information upon the growing of Iris and Oriental Poppies, we recommend the following magazine articles written by Howard and Thurlow Weed, members of our firm, and recognized horticultural authorities. Back numbers may be read at your city library.

"Famous Iris Hybridizers—Part 3," Flower Grower, May, 1935.

"The Oriental Poppy Becomes Naturalized," House & Garden, June or July, 1935.

"Twice Blooming Irises" (in collaboration with S. B. Mitchell), Sunset, June, 1935.

"Irises for Your Garden," Horticulture, June 1 or 15, 1935.

"Outstanding Irises of 1934," House & Garden, July, 1934.

"I must comment on your plants. They are the largest and finest I have ever seen."

—W. J. Coddington, Martinsville, N. J.

"Practically every plant bloomed despite late planting."

—Mary E. Thomas, Wichita, Kans.

"My order for beardless Iris just arrived. I have never received such fine roots from any other grower."

—E. V. D. Ferguson, Hempstead, N. Y.

"I feel that I must write and tell you how delighted I was to get the Iris rhizomes as they were the most enormous roots I have ever seen."

—Mrs. George A. Tower, Richmond, Va.

ORIENTAL POPPIES

FEW flower lovers realize the great variation of color and form and the long length of the blooming season afforded by the poppy family. No other flower can compare with it in the ease of culture and the number of blooms produced from the little effort expended. Of the many poppy species, *P. orientale* is the long-lived perennial type which is becoming so popular because of its hardiness, its freedom from disease, and its ease of culture. The gigantic flowers reach a diameter of six inches and more and vary in color from salmon to pink, red to orange, and mulberry to white.

The Oriental Poppy has a blooming season of from six to seven weeks, producing occasional intermittent flowers throughout the summer and early fall. The plants are prodigious bloomers, even a young clump bearing as many as six or more flowers, while an older established plant will bear a dozen or more. These flowers combine in happy association with others of their season, especially with the iris, and add a desired bit of striking color to the garden picture.

Explanation: Australia is the variety name; 40" means the flower stalk grows approximately 40 inches in height; diameter 5½ means that the diameter across top of flower is 5½ inches; very deep red is the color of the flower; 5x4 means the individual petals measure 5 inches wide by 4 inches high; blotch is the maroon or black spot found at the base of most petals. Unless otherwise stated, each flower has six petals. Price per plant unless otherwise stated is 50 cents.

**PLANT IN SUMMER AND EARLY FALL
ORDER NOW; WE WILL SHIP
AT PROPER TIME**

AUSTRALIA. 40", diameter 5½; very dark red petals 5x4, with long narrow blotch. Extra fine. \$1.00.

BLOOD RED. 45", diameter 5; bright blood red petals 4x3, with small black blotch. The petals remain upright in a cup-shape and never spread down like in other varieties.

BRACTEATUM. 28", diameter 4; orange petals 4½x3, with medium blotch. This is a distinct species from the others listed here. The flowers have bracts which are modified leaves growing from the flower stem, partially enveloping the flower.

BRIGHTNESS. 35", diameter 5; glowing salmon petals 4x3, with medium blotch.

CAVALIER. 35", diameter 5; deep red petals 5½x4¾, with narrow blotch. The flower has a very large center. \$1.00.

DUKE OF TECK. 33", diameter 4½; light orange crimson petals 4x3. Flowers are borne on unusually strong stems.

ECHO. A new delightful silvery pink, with frosty sheen. \$5.00.

EDNA PERRY. 30", diameter 4; medium pink petals 4½x4, with medium blotch.

ENCHANTRESS. 34", diameter 5½; ashes of roses colored petals 4x4, with large blotch. Flower is five petaled. Fades lighter in hot sun. Entire appearance is very unusual. \$1.00.

ENFIELD BEAUTY. 30", diameter 4; bright rich salmon petals 4x4, with maroon blotch. Late blooming.

EXCELLENT PINK. 28", diameter 3½; darker pink petals 6x4, with large blotch. A good flower with big center, blooming early.

FLANDERS. 30", diameter 3½; orange-red petals 3½x3, with small blotch.

GERALD PERRY. 33", diameter 5; dark pink petals 5x3½, with small blotch.

GOLD OF OPHIR. A magnificent new hybrid of distinct golden tone—the first of its color and very attractive. \$5.00.

GOLDSCHMIDT. 26", diameter 3; orange-red petals 3½x3, with very small blotch.

GOLIATH. 27", diameter 6; light orange petals 5x3½, with medium blotch.

GRAND MOGUL. 26", diameter 3; orange petals 3½x2¾. Very good.

GROSSFURST. 34", diameter 4½; orange-red petals 3½x3, with small blotch.

HENRI CAYEUX. 28", diameter 3; peculiar dark purple-pink petals 3x2½, with no blotch at all. Very odd color. 75c.

HERCULES. 36", diameter 6; orange petals 6x5, with medium blotch.

JEANNIE MAWSON. 24", diameter 5; deep coral rose pink petals 4x3, with small blotch.

JULIA BUCK. A beautiful, clear, distinctive pink hybrid. \$5.00.

JUNE DELIGHT. A magnificent flower of bright silvery pink which improves with age. Very new and rare. \$5.00.

LORD LAMBOURNE. 35", diameter 4½; orange-crimson petals 5½x4 are deeply fringed, as though cut by scissors. They have a large black blotch. This flower is deeply fringed parrot tulip like, although occasionally the petals are smooth.

LULU NEELEY. 48", diameter 6; deep red petals 5½x4½, with narrow black blotch. This is a prolific, wonderfully free bloomer with large flowers growing on unusually tall stalks, and is acknowledged by all as the world's finest poppy. \$1.00.

"Iris came this afternoon—such fine plants and fine value. It is a pleasure to occasionally get more and better things than you expect."

—Mrs. V. P. Brown, San Antonio, Texas.

"The Iris rhizomes reached me in perfect condition and were beautiful looking plants."

—Mrs. Robert Campbell, Cave Spring, Ga.

OUR WHITE. 30", diameter 5; white, with very slight rose suffusion; petals 4x3, with black-maroon blotch. Center of flower is red-maroon. Three layers of petals of three each makes a very compact and lasting flower. Petals are of unusual substance. \$1.00.

PERFECTION. 37", diameter 4½; dark pink petals 5x3½. Very late.

PERRY'S BLUSH. Stout stems, bearing lovely large open flowers of a pretty shade of blush white. 75c.

PERRY'S WHITE. 26", diameter 3; white petals, with slight touch of pink at base, 3x3. 75c.

PINK BEAUTY. 26", diameter 4; light pink petals 4x3.

PINK DELIGHT. 37", diameter 4; light pink petals 4½x3½.

PRINCESS ENA. 35", diameter 4; salmon-pink petals 3½x2½.

PRINCESS OF WALES. 40", diameter 5; orange petals 4½x3½, with small blotch.

PRINCESS VICTORIA LOUISE. 24", diameter 3½; medium pink petals 3½x2½, with maroon blotch. Late blooming.

MAHOGANY. 30", diameter 3; deep red-mahogany-maroon petals 3x3. Blossom is tulip shaped. 75c.

MANDARIN. 30", diameter 4; real Chinese red petals 4x3½, with medium blotch.

MAY SADLER. 35", diameter 5; a different pink-toned variety with petals 5½x4, having large blotch.

MASTERPIECE. 33", diameter 4½; ashes of roses petals 4x3, with large maroon blotch. (Ashes of roses is a light purple-pink.)

MENELIK. 25", diameter 4½; dark orange petals 4½x3½.

MRS. PERRY. 24", diameter 4; pure pink petals 3½x2½, with small blotch. Early blooming.

NEELEY'S LAVENDER. Rosy lavender of a very distinct shade. \$5.00.

NEGRILLON. 30", diameter 3; purple-maroon petals 3½x2½. Very odd and fine. 75c.

OLYMPIA. 29", diameter 5; bright orange-chrome petals 3x2½, with no blotch whatsoever. This is the double poppy and has from 20 to 50 petals. It is very early, blooming three to four weeks before the others. It should be in every garden, and multiplies like a weed.

ORANGE GIANT. 35", diameter 5; large rich orange petals 4x3 with medium blotch. A group or row of these in front of a blue background is unsurpassed. 25c; dozen \$2.00.



ORIENTAL POPPY

PROSERPINE. 45", diameter 4½; light red petals 5x4, with large built-up center. Blooms occasionally throughout summer.

PYGMAEA. 29", diameter 3; pure orange petals 3x2, with small blotch. Late. Odd flower.

QUEEN ALEXANDRA. 24", diameter 3½; pure pink petals 4x3, with medium maroon blotch.

ROYAL SCARLET. 30", diameter 4½; scarlet-red petals 4x3½.

SALMON KING. 32", diameter 3; peculiar shade of salmon-orange, with petals 5x3. Flower has but four petals.

TRILBY. 30", diameter 6; very beautiful rose-petal petals 5½x4½, with large black blotch. Large center. Unusual color. 75c.

WELCOME. 28", diameter 4; scarlet red petals 4½x3½, with small maroon blotch.

WURTEMBERGIA. 37", diameter 6; bright red petals like pieces of silk, 4½x4½, with medium blotch. Big built-up center. One of our finest varieties and largest.

POPPY COLLECTIONS

All fifty-two varieties listed above, valued at \$52.25, for \$29.95.

All thirty-five 50c varieties plus Lulu Neeley, valued at \$18.50, for \$11.95.

Three of any one 50c variety for \$1.00.

Collection of any eight 50c varieties, your choice, for \$2.95. (Note: Lulu Neeley may be included in this collection as a 50c variety.)

FLOWER ARTICLES

"Iris Progress," Nature, August, 1934.

"New Tints and Shades in the Iris," Horticulture, June 15, 1934.

"Famous Iris Hybridizers—Part 3," Flower Grower, May, 1935.

"Choosing Irises According to Color," Horticulture, June 1, 1933.

"Favorite Iris—and Why," Flower Grower, June, 1933.

"Famous Iris Hybridizers—Part 1," Flower Grower, May, 1933.

"You Can Have Iris the Year Round in Sunset Land," Sunset, May, 1933.

"Herewith is my second order for Iris from your garden. I think so highly of your plants that this year I am purchasing from no other grower."
—Glenn Hopper, Fort Wayne, Ind.

"I want to thank you for the fine plants you sent on my order. They certainly arrived in A-1 condition."
—E. H. Sibley, Wethersfield, Conn.



DELPHINIUM

HOODACRES DELPHINIUMS

HOODACRES DELPHINIUMS have been developed over a period of more than 25 years by extensive and scientific hybridization. Remarkable as they are for great range of rarest coloring, variety of floret forms and towering spikes of luxuriant bloom, these features rest on the great constitutional vigor of the strain.

HOODACRES DELPHINIUM SEED, though developed and harvested in Oregon, is the most popular strain selling in England. It also is the best-selling strain throughout the United States. Make a trial planting of this seed—you will be pleased with the results obtained.

TRUE STOCK seeds in the original packets as harvested and packed at Hoodacres, the most famous delphinium gardens in America and originators of the first pure white. We are glad to be able to make this special offer of recently harvested seed to our customers.

ORDER SEEDS NOW. Detailed planting instructions will be included with shipment. Seedlings easily grown by all.

ALL-TYPES SELECTION. From selected Hoodacres Hybrids, lightest to darkest shades and mostly double. 50c per generous packet.

COMPLETE RANGE of shades and forms. A carefully apportioned collection from finest individual plants. Not an ordinary mixture. Liberal packets \$1.

HOODACRES WHITE. Double varieties mixed, including all main types. Very rare. \$3 per packet.

"Your fine plants came just as fresh as Iris I have purchased within fifty miles of home."

—Mrs. Frank Wheeler, Greenville, Illinois.

"The Iris I ordered from you arrived yesterday in excellent condition."

—Miss M. L. Salisbury, Nyack, N. Y.

"This is to let you know that the Iris came through in fine shape and I am glad to say that the roots were very good. It certainly is plenty of value for the money."

—Albert T. Anderson, St. Paul, Minn.

JAPANESE IRISES

FOR fifteen years we have been growing Japanese Iris, always having one of the largest, if not the largest, collection of this type in the country. We procured most of the collection of T. H. Chivers, pioneer Japanese Iris grower of Amesbury, Mass. In recent years we have acquired the best varieties on the commercial market and a number of varieties from the Brooklyn Botanical Garden, where the American Iris Society is conducting a test garden of this species. This year we offer three of the finest new varieties we have ever seen—Emaline Blue, Perfect Peace, and Prince Charles. Perfect Peace is so superior to all other Japanese whites in form, substance, size, and color that we predict that the older white varieties will be discarded to make room for this new monster.

Japanese varieties are increasing in popularity each season as their merits are becoming better known. Contrary to general belief, this species is easily grown in nearly all parts of the United States. They thrive best in an acid soil which may be obtained by mixing a handful of sulphate of ammonia procured from a seedstore into the ground around each plant. Watering before and during the blooming season will promote growth and flowers, and watering during the summer months will promote a more vigorous foliage. Roots may be planted from September to April. Order these plants with your order for bearded varieties, and we shall send them separately in the early fall.

The blooming season is several weeks later than the tall bearded varieties and they are thus valuable to use in extending the flowering season. The flowers are large and beautiful, borne on tall stalks, and make excellent cut flowers. Three petaled flowers are called "Singles" while the six petaled varieties are "Doubles". By all means, add a few of these to your garden. You will find them among the most beautiful and satisfactory of blooming perennials.

Unless otherwise stated, price per large plant (practically a clump) is 50c.

AIOGATA. (Dbl.) Very large reddish-lavender petals, edged light orange. 75c.

ANGEL'S DEN. (Dbl.) Vinous purple-red, speckled grey with deep purple lines radiating from gold bar.

ASPASIE. (Sgl.) Light blue-pink-lavender.

ASTARTE. (Dbl.) Unusually tall deep blue with large orange bar.

AYASI. (Sgl.) Crinkled crimson petals veined white and with large white center surrounding gold bar. We consider this variety one of our most unusual and best. Style arms are crimson.

CLOUD DRESS. (Dbl.) Grey-white ground with prominent purple lines radiating from central gold bar. This is one of our most prolific bloomers and is much more beautiful than the description sounds. Stalks are tall.

DORIS CHILDS. (Sgl.) Grey, heavily veined with wide violet lines.

EMALINE BLUE. (Sgl.) Large, bright violet blue—one of the very largest flowers. 75c.

EUMEE. (Sgl.) Blue-lavender with small yellow bar.

FRANCES CLEVELAND. (Sgl.) Blue lavender, shaded to mauve at edge, with white halo. One of the most beautiful varieties. 75c.

GOLD BOUND (Dbl.) Large, snow white which has been the best until Perfect Peace was introduced.

HANAGESHO. (Dbl.) Dark red, like Mahogany. Bright gold bar.

HATSAKA. (Sgl.) Pure dark blue with small yellow bar.

HEBE. (Dbl.) White, slightly suffused blue.

HERCULE. (Dbl.) Large, somewhat variable in color with various tones of blue-lavender.

HOREN. (Sgl.) White-grey, suffused blue with prominent violet-blue radiating lines.

IMPROVED MORNING MIST. (Sgl.) Huge white with slightest tinge of blue. Light yellow blotch.

IPHIGENIE. (Dbl.) Violet, suffused grey. Gold bar.

ISABELLE. (Sgl.) Light reddish purple with long, drooping petals.

ISSUIGIN. (Dbl.) Lavender, overlaid blue, with orange bar within white blotch at base, white lines radiating. Style arms white.

JOSEPHINE HEYWOOD. (Sgl.) Blue, with a distinct purple sheen.

KAGARABI. (Sgl.) A fine light lavender, heavily veined with red. Orange bar at base. Style arms maroon.

KASUGANO. (Dbl.) Blue-lavender with small yellow blotch.

KOMACHI. (Sgl.) Deep dark velvety blue, with very small deep orange bars covered by blue style arms.

KOKO NO IRO. (Dbl.) Large and tall dark red. Large gold bar.

"I wish to state I was more than pleased with the Iris you sent me. They were wonderfully large and healthy plants."
—Mrs. J. E. Mack, San Bernardino, Calif.

KOYKA. (Dbl.) Large flower speckled and mottled crimson on grey ground. Orange bars with white halos. Style arms grey. 75c.

KUMO ISHO. (Dbl.) Red-maroon petals, lightly veined darker.

KURO KUMO. (Dbl.) Blue with slight reddish tinge. Small yellow bar.

LILLA COX. (Dbl.) Petunia-violet, with bright orange blotch, surrounded by white halo, with white veins radiating. 75c.

LUCIE MARSHALL. (Dbl.) Large flower. Long orange bar, surrounded by large white halo covering half of petal, running into violet-blue with white lines radiating to edge of petal.

MAHOGANY. (Dbl.) A very dark rich mahogany-red color. One of the finest Japanese.

MARGARET KAHN. (Sgl.) Dark red. Long yellow blotch extends down petal.

MRS. GEORGE STUMP. (Sgl.) White, flushed with palest blue. Style arms violet.

MRS. J. A. HAYDEN. (Dbl.) White ground, edged and shaded pale violet.

NEPTUNE. (Sgl.) Maroon-red with yellow blotch.

NISHIKA. (Sgl.) Red or crimson-purple, mottled and penciled white.

OLYMPIA. (Sgl.) Blended rose-pink and lavender. \$1.00.

OTOMENE. (Sgl.) One of the largest and most beautiful. Much red veining on lavender-grey ground. Maroon style arms. \$1.50.

PARAGON. (Sgl.) Beautiful large flower of deep wine red. 75c.

PATROCLE. (Sgl.) Large petals of deep blue, shading to red-violet at edge. Small gold bar.

PERFECT PEACE. (Dbl.) A marvelous new production, with petals of purest white. These petals are unusually huge and of a hitherto unheard of stiffness in texture. There is a tall frilled crest of petaloids rising from the center of the flower. \$1.50.

PRINCE CHARLES. (Sgl.) Very large petals of mulberry purple-violet with a fine sheen. Flower is veined darker, with yellow bar. This is another superior origination offered for the first time this year. \$1.50.

RISHONO (Dbl.) Red-purple with blue halo around yellow blotch.

ROSE SHEEPERS. (Dbl.) Mauve-grey, overlaid with blue.

SALAMMO (Dbl.) Much blue lining on grey-white ground; yellow blotch.

SHADOW. (Sgl.) A fine velvety-red purple.

SHIGA. (Dbl.) Reddish-blue, with very large petals veined white.

SHIGURE. (Dbl.) Red-lavender with white center surrounding orange blotch, white lines radiating.



KASUGANO

PERFECT PEACE

MAHOGANY

SHIMOYO. (Sgl.) Large petals of grey, veined broadly with radiating dark blue lines.

SHORYUI. (Sgl.) White ground, shaded and overlaid purple-blue. This is a particularly fine variety and one we recommend to our customers.

TRIUMPH. (Dbl.) Grey, mottled and suffused red-violet.

WAKAMU. (Dbl.) Short stalked rose red, veined deeper red. Orange bar inside blue-white halo.

JAPANESE IRIS COLLECTIONS

Six varieties, our choice, for \$1.95.

Twelve varieties, our choice, for \$3.45.

Any six 50c varieties, your choice, for \$2.45.

Any twelve 50c varieties, your choice, for \$3.95.

Our three superior introductions — Peace, Prince Charles, and Emaline Blue—valued at \$3.75, for \$2.95.

All forty-two 50c varieties, valued at \$21.00, for \$12.95.

All fifty-two varieties, valued at \$31.00, for \$19.95.

FLOWER ARTICLES

"The Poppy as a Garden Flower," House Beautiful, June, 1932.

"The Iris—Past, Present and Future," Flower Grower, May, 1932.

"Interesting and Rare Iris Types," Flower Grower, May, 1932.

The above article was condensed and re-printed in Garden Digest, July, 1932.

"Outstanding Iris," House & Garden, July, 1931.

"Superior Iris of Today," House Beautiful, July, 1931.

An article describing a visit to our famous Gardens appeared in Better Homes & Gardens, May, 1932, written by Lillie L. Madsen.



JAPANESE IRIS

Collection of six different named varieties

\$195

SWEENEY, STRAUB & DIMM
HORTICULTURAL PRINTERS
PORTLAND, OREGON



ELOISE LAPHAM
See page 9

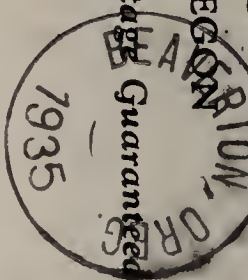


DOGROSE
See page 8

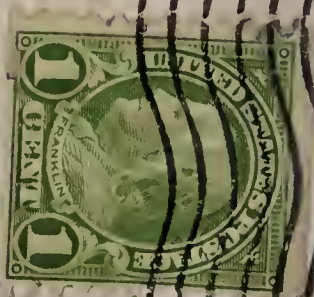
NATIONAL IRIS GARDENS

BEAVERTON, OREGON

POSTMASTER: Return Postage Guaranteed



Sec. 562, P. L. & R.



U.S. Dept. of Agr.
Bureau of Plant
Industry
Forticulture I.O.O.F.
Beaverton, O.C.