

Historic, Archive Document

Do not assume content reflects current scientific knowledge, policies, or practices.

INDEXED

Munson's

**CATALOG OF
Grapes, Fruits
Shrubs and
Evergreens**

CATALOG NO. 59

LIBRARY
RECEIVED
★ NOV 21 1934 ★
U. S. Department of Agriculture

**THE
MUNSON
NURSERIES
DENISON, TEXAS**

An Ideal That Protects You



Reproduced above is the decoration presented to the late T. V. Munson, founder of the Munson Nurseries, by the Republic of France in recognition of his services in saving the Grape Industry of France.

The late T. V. Munson, who founded the Munson Nurseries more than fifty-six years ago, was a great scientist and one of the world's greatest authorities on grape culture and growth.

But he was more than that. He was a great business man. He understood that business is not a one-sided thing. Both the seller and the buyer had to profit in every transaction. The product had to be not only of the highest quality, but also at the right price.

That ideal has dominated every transaction we have made from that day to the present time. In order to make clear to our customers and to keep it always before our minds, we have put that ideal into a sort of business philosophy such as this:

before our minds, we have put that ideal into a sort of business philosophy such as this:

- (1) Every plant shipped from the Munson Nurseries must be grown under the most favorable conditions.
- (2) Each plant must be true in name and color.
- (3) Each plant must grade number one quality and be priced as such.
- (4) Each plant must, to the best of our ability and knowledge to make it so, be free from disease.

If an ever growing list of customers and friends is any indication, then the Munson Nurseries have never deviated in any manner from any one of those commands.

Today as in the past we say that any plant you buy from us must measure up to those promises. If it does not, we will make it good.

Such a pledge is worth money to you, much more money than the cost of any single item. For if the plants you buy are not of the best grade and stock, the success you have in growing them is limited or eliminated altogether.

THE MUNSON NURSERIES :: DENISON, TEXAS

When you buy plants, for garden, orchard, vineyard or lawn, you want to be sure that, aside from conditions beyond human control and with intelligent planting and careful tending, those plants will grow and produce. If they do not, you have lost your time and money.

We at the Munson Nurseries today look upon our customers with the same attitude that the founder did. We know that no business transaction can be one-sided if the business is to continue a going concern and prosper.

So to you who have been our customers for years, we say thank you. To others who want the best plants it is humanly possible to develop and grow, we say send us your orders for the coming season. They will receive the best of care and attention. And we shall do everything in our power to make you a regular Munson customer.

FREE

FREE—With every order of grapes amounting to \$15.00 or over, we will give you absolutely free of charge one copy of "THE FOUNDATION OF AMERICAN GRAPE CULTURE", written by the late T. V. Munson. This wonderful book contains 252 pages with 87 full page illustrations. Contains all the necessary information for growing grapes such as preparation of soil, planting, cultivation and pruning. It is beautifully printed and bound and contains references to all the best known varieties grown on this continent as well as some of the best known imports. If you are at all interested in grapes you cannot afford to be without this outstanding book.

If ordered separately, the regular retail selling price is \$2.00 per copy postpaid.

Our Policies, Service and Business Information

TERMS. Our terms are cash with order. The prices are net cash. All prices have been so figured and discounts deducted. If we extended any credit or opened accounts, it would be necessary to have higher or increased prices.

We do not accept orders for less than \$1.00.

RESERVATIONS of stock will be made when one-third of the price accompanies the order. This is to accommodate those who are not ready to plant early in the season, but wish to secure the stock before same is sold.

ERRORS AND COMPLAINTS. We want every order to be satisfactorily filled. If there is any error or dissatisfaction we will appreciate it if you will let us know not later than five days to admit of adjustment. We cheerfully correct any errors.

IT IS TO OUR INTEREST to send out the very best stock possible, true to label, healthy and packed to arrive in good condition, and this we will do. But as we cannot prevent drouths, freezes, ravages of insects, rabbits, diseases, planting in unsuitable soils, or locations, careless or improper planting, indifferent or ignorant cultivation, **WE DO NOT GUARANTEE STOCK TO LIVE** that arrives in good condition.

All prices quoted in this catalog are F. O. B. Denison, Texas.

THE MUNSON GUARANTEE TO YOU: WE GUARANTEE TO SEND: (a) Healthy Stock. (b) Free from insects, diseases, etc. (c) TRUE to Label. (d) Delivered in good condition. Then our responsibility ceases. **IF WE FAIL IN THESE, WE WILL** (a) Replace with other stock of same value. or (b) Refund the purchase price of stock in question.

The Munson Nursery---Famous For Grapes

The Munson family has originated 60 improved varieties of grapes. The Munson grapes listed in this catalog are the best grapes, developed from many thousands of tests, which included the world's best known varieties. This nursery is known in America and Europe as America's leading grape nursery.

A. This ancient fruit is at home on any character of soil and there is not a place that should be without it. Whether in the vineyard or arbors, backyards, or trained on fences, porches, or buildings, the grape bears with astonishing regularity.

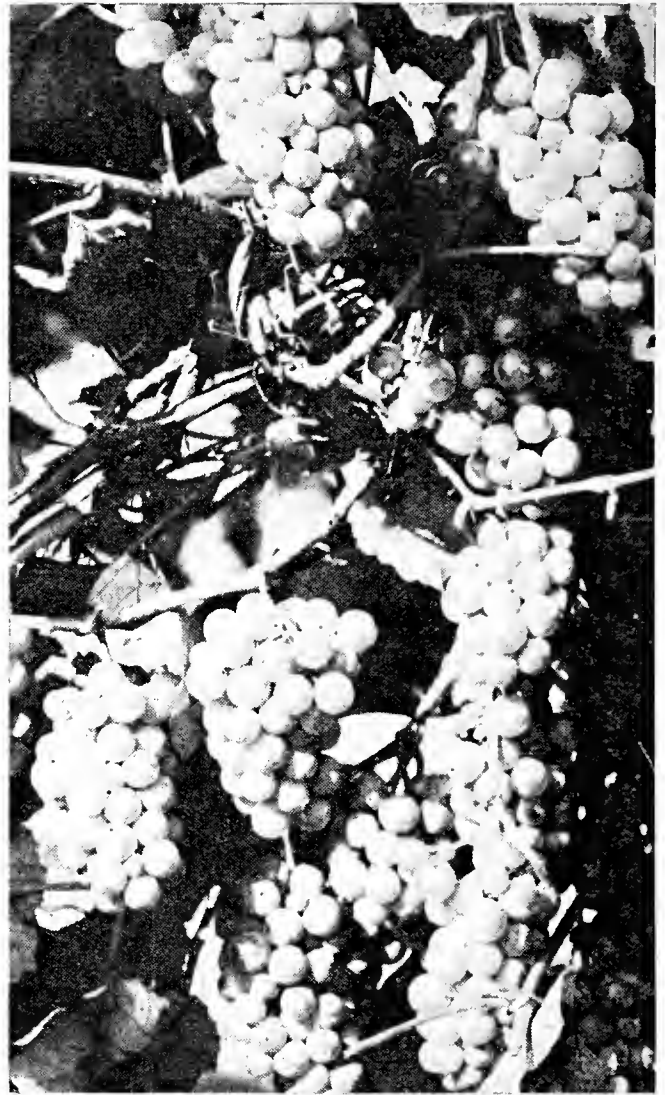
B. All bearing grapes have one of two kinds of flowers—both kinds are pistillate, but one has perfect stamens and will bear alone; the other has imperfect stamens and will require a perfect stamen variety blooming at the same time planted near to render the imperfect stamen variety fruitful. Some of the best varieties are those having imperfect stamens. In the following descriptions characters are given after the name of the variety, which will indicate to the reader the kind of flower and date of flowering. So in selecting mates for the imperfect stamen kinds, select those varieties with perfect stamens, blooming within three days earlier or at the same time. The perfect flowering kinds are indicated with (†) and the imperfect flowering with (*). In respect to date of blooming, A is for April and M is for May, and the figure following is the date as A9 means April 9th. The dates mentioned are for Denison for the average period of years. They will vary in other sections and vary from year to year in any place.

C. All the varieties possessing Post-Oak blood, in order to get best results in cropping, should be treated the same as Herbemont; that is, plant wide apart, as much as 12 to 16 feet in the rows, and have long arm pruning. They do especially well upon the Munson Canopy Trellis.

Distance apart to plant is mentioned with each variety, just by mentioning the number of feet, as "8 feet". Those mentioned to be planted 8 feet should have SHORT ARM pruning, say 3 to 4 feet. Those mentioned to be planted 12 feet should have MEDIUM ARM pruning, say arms 4 to 6 feet long; and those mentioned to be planted 16 feet apart should have LONG ARM pruning, say with arms 6 to 8 feet long. Distances mentioned are for vines in row. All rows can be 10 feet apart regardless of distance in the row.

D. For marketing and long distance shipments, large berry, large cluster, good quality, skin tough. Lomanto, Concord, R. W. Munson, Niagara, Bailey, Armalaga, Carman, Muench, Fern, Last Rose.

E. For local marketing, quality grapes, good appearance, not well adapted for distance shipment: Headlight, Brilliant, Captivator, Rommel, Mericadel, Ellen Scott, Edna, Ronaldal, and all paragraph D.



Carman

F. For home use where extra high quality is wanted, but varieties otherwise may have too small berry for market or too tender skin for shipping long distances: Bell, Wapanuka, Albania, Manito. All those mentioned in paragraphs D and F are also fine home use varieties.

Helpful Suggestions

G. While all of varieties in the catalog are adapted and successful in most parts of the South and Southwest, some wish a selected list for certain purposes. To help make such selections, we offer the following suggestions:

H. For red juice or for making red wine: America, Cloeta, R. W. Munson, Concord, Jacquez.

I. For light amber colored juice or wine: Marguerite, Ellen Scott, Herbemont, Blondin.

J. For limy soils where Post-Oak Grape hybrids will not succeed: Lomanto, Ladano, Bell, Salamander, Lukfata, Champanel, Elvicand and Valhallah.

K. For Coastal Plain or near the coast: Carman, R. W. Munson, Bailey, Ellen Scott, Edna, Niagara, Beacon, Extra. Where Phyloxera is present or Root Rot varieties will have to be grafted upon resistant stocks. Varieties named in paragraph J have nearly resistant roots.

Grape Jelly---The Healthiest Sweet for Children
Recommended by Leading Physicians---Why Not
Put Up Your Own Jelly?



Concord Grapes

Grapes Are Described in Order
of Ripening
July 1 to 10

BACHMAN'S EARLY.† Cluster large. berries large, black, ripens evenly. Skin thin, but tough. Quality of the best. Seeds small and few. Pulp juicy and melting. The vine is vigorous, hardy and productive. The flowers are self fertile. It is a fine market grape.

BRILLIANT. (†A-17. 8 feet). (Lindley x Delaware). Growth strong. Vine endures winters anywhere up to 15 degrees below zero. Clusters large, cylindrical. Berries large, globular, light to dark red, translucent, with a thin bloom, handsome, skin thin, tender, seldom cracks; pulp meaty, yet tender, melting and delicious; yields heavy crop.

MANITO. (*A20. 12 feet). Hybrid of America and Brilliant. Growth similar to America, endures extremes of climate. Clusters long, cylindrical, rather open, with long peduncle; prolific; berries medium, globular, persistent, dark purple, with white specks; very distinct and unique in appearance; skin thin and tough, pulp very tender, juicy, sweet and agreeable. Ripens early, about with Moore Early, packs and ships excellently. A very profitable market grape, also a good wine grape. Adapted for general North and South.

LOMANTO. (†A20. 12 feet). Hybrid of Salado and Malaga. Vine vigorous, prolific, no rot nor mildew; cluster above medium; medium to large; dark purple or black, skin thin, tough; pulp melting, excellent quality; juice claret red. Valuable for limy soils and hot climates. Resistant to root rot.

CAMPBELL EARLY.† (A-15. 12 feet). Hybrid of Concord, Moore Early, and Muscat-Hamburg. Cluster large, shouldered, berry very large, black, slightly ovoid. Better in quality than Concord.

PRESIDENT. (†A18. 12 feet). Pure seedling of Herbert. Has a better vine, which is strong, healthy, and prolific. Cluster, medium, compact; berry large, black, does not crack. Ripens with Moore's Early and of far more value in the South than that variety. Quality excellent. Recommended for the latitude from Texas to 40 degrees north.

CACO. A cross of the Concord and Catawba, originated in the North. Very handsome pink, large berry, medium cluster. Of high quality and flavor. Has done well here the short time we have had the variety. Vine seemingly as vigorous as Catawba.

July 10 to 20

CAPTIVATOR. (†A18. 12 feet). Cross of Herbert with Meladel. Growth fairly vigorous, prolific. Cluster above medium. Berry large, round, beautiful bright translucent pinkish red. Skin thin, tough, without cracking. Pulp melting, exceedingly delicious flavor.

ROMMEL. (†A18. 8 feet). Hybrid of Elvira and Triumph. Growth medium, prolific. Clusters medium to small, compact, peduncle short. Berries large, globular, persistent, greenish yellow when fully ripe, skin thin and delicate, too tender for long shipment. Profitable for a home market, is always in demand on account of its agreeable and fine eating qualities. Pulp melting and perfectly delicious when well ripened.

WAPANUKA. (†A22. 8 feet). Rommel x Brilliant). Growth medium to strong. Clusters medium to large, cylindrical, shouldered, properly compact. Berries large, globular, persistent, rich yellowish white, translucent; skin very thin and delicate.

BELL. (†A15. 12 feet). A hybrid of Elvira with Delaware. Vine vigorous, healthy, free from mildew and leaf folder, very hardy, a sure producer; cluster medium, cylindrical, often with a shoulder, fairly compact; berry medium, round, greenish, yellow, rarely attacked with Black Rot; skin thin, sufficiently tough to prevent cracking under ordinary weather changes; pulp tender, juicy, very sweet and agreeably flavored; ripens just before Concord.

July 20 to August 1

CLOETA. (*A25. 16 feet). America x R. W. Munson. Vine vigorous, healthy. Fruit quite handsome with medium size conical clusters, rich black medium size berries. Fine for wine.

CONCORD. (†A18. 12 feet). This is the standard variety. It ships well and is a good market grape. Fine for jellies. Cluster medium to large, berry large, black with foxy flavor. It is a good variety to use for pollenating R. W. Munson, Fern, and some other of the extra fine, but imperfect flowering varieties.

Prices quoted in this catalog are F. O. B.
Denison, Texas.

Chilled Grapes for Breakfast--Nature's Oldest Remedy--The Sugar from Grapes is not Fattening

August 10 to 20

R. W. MUNSON. (*A3. 16 feet). (Big Berry Post-Oak x Triumph). Growth strong. Clusters medium to large. Berries when well grown, medium to large, black without bloom; skin never cracks; pulp tender, juicy and of a very good quality, better than Concord or Beacon. Gives good satisfaction on market. Bears heavily on long pruning and when pollinated by other erect stamened varieties flowering at same time, its own pollen not being fully adequate, although its flowers are perfect. Resistant to Root Rot.

NIAGARA. (*A18. 12 feet). Originated in the North, but does quite well over most of the South, and better near the Coast than Concord. A good white mate for the Concord. Cluster very large, berry very large, skin thick and tough, making it an excellent shipping variety, and opens up well and makes good appearance. Quality same as Concord.

DELICATESSEN. A cross of Delicious with R. W. Munson, that is a combination of Post-Oak Concord, Muscat and Herbemont, the four best species. Vine vigorous, healthy and prolific. Cluster above medium, cylindrical with shoulder. Berry about size of Concord, black, thin skin. Pulp tender, juicy, possessed of an exquisite peculiar flavor, very rich. An excellent market, table and wine grape.

MATHILDA. (†A25. 12 feet). (Record symbol—R8P3V3). Seedling of Violet Chasselas, probably crossed with Brilliant. Large, handsome clusters of medium red berries. The berry is firm, but very tender pulp. The quality of the very best.

August 1 to 10

MERICADEL. (†A26. 12 feet). Hybrid of America with Delaware. Vigorous and productive; clusters large, berry medium, purple, persistent to cluster; skin thin, tough; pulp tender and meaty, best quality; fine for table and market. Ripens late, just after Concord.

BEACON. (*A22). (Big Berry Post-Oak x Concord). Growth medium in South Texas, becoming stronger in North Texas, to very strong in Missouri. Very prolific, of large cylindrical clusters, often shouldered, moderately compact. Berries as large as Concord, black, with heavy white bloom. Skin a little tougher than Concord, never cracks; pulp rather more tender than Concord, very juicy, sprightly and of a very similar flavor to Concord; rather more agreeable; seeds readily leave the pulp.

EXTRA. (†M1. 16 feet). (Big Berry Post-Oak x Triumph). Growth strong, cluster oblong to cylindrical, sometimes shouldered, moderately compact. Berries persistent, globular, medium to large, dark purple to black, with moderate bloom; skin thin, tough, never cracks; pulp tender, juicy, sprightly, agreeable, sweet.

BAILEY. (†A26. 16 feet). (Big Berry Post-Oak x Triumph). Growth strong. Clusters large, cylindrical or often branching, generally compact. Berries persistent, large, black, with little bloom; skin thin and tough, never cracking; pulp mealy, but not tough; juicy, sprightly, of good quality, considerably above Concord; seeds readily parting from pulp. A valuable market grape, easily superseding Concord, especially in South-Central and Southwest Texas, where it has done remarkably well.

CHAMPANEL. (†A20. 16 feet). (V. Champini x Worden). Growth rampant, very resistant to heat and drouth, grows well in limy blacky soils. Clusters large, conical, long peduncle, rather open. Berries globular, large, black, white bloom, persistent. Does well in any soil, but especially valuable for limy soils of the South. Resistant to Root Rot.

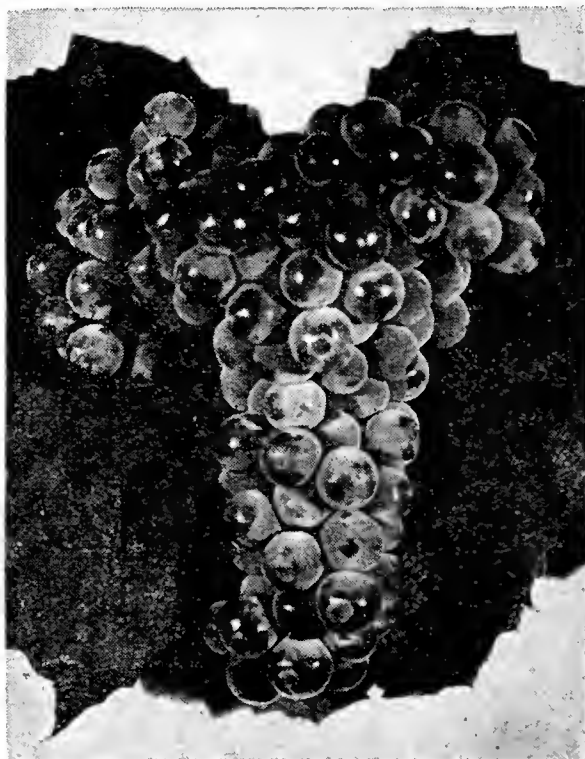
AMERICA. (*A23. 16 feet). (Seedling of Jaeger, No. 70). Growth strong. Cluster conical, compact. Berries persistent, medium size, black; skin thin and tender; does not crack; pulp melting, juicy, rich in sugar; also rich in agreeable acid; possesses a very distinct peculiar flavor, making a good combination market and wine grape. Very prolific with long arm pruning and when pollinated by other varieties, as it does not thoroughly pollenate itself.

GOETHE. † Cluster medium and rather open; berry large, pale pink; pulp tender, juicy, and highly flavored. Ripe August to September. Selections A B and C.

WINE KING. (†A26. 16 feet). A hybrid of Winona and America. Winona is a pure seedling of Norton Virginia, and quite an improvement on that celebrated variety, hence Wine King is a thoroughbred pure American blood of the finest wine properties. Cluster large, berry medium, black, persistent. Skin thin, never cracks, pulp tender and juicy, rich and sprightly, intensely red juice.

ARMALAGA. (†M2. 12 feet). A hybrid of Armlong (which is a hybrid of native Post-Oak grape with Black Eagle) and Malaga. The vine is vigorous and healthy. Flower perfect. Cluster large and compact. Berry large, yellowish-green, translucent, persistent to cluster. The skin is thin, tough, yet pleasant to taste, without astringency. Endures shipping as well as Tokay. In quality equal to best foreign grapes. This promises to be very valuable in all of the drier portions of the Southwest; it is hardier than pure Vinifera kinds.

CATAWBA. (†A18. 12 feet). Cluster medium, conical. Berries above medium, clear dark red. Skin thin, but tough to make good shipper. Pulp tender, juicy and sprightly with fine flavor. Fine for table, market and wine. A good variety to plant among America, R. W. Munson, and Fern to pollenate them.



Beacon

Prices quoted in this catalog are F. O. B. Denison, Texas.

Home-Made Grape Juice---Best of All Beverages

August 20 to 30

BLACK SPANISH. (†M2. 16 feet). (Le Noir, Jacquez). Very prolific. Cluster rather open, but long and large. Berries small, very juicy and sprightly. Fine for red wine. Does well in Southwest Texas in semi-arid regions. In moister regions requires spraying to keep off mildew and black rot, to which it is subject.

ELLEN SCOTT. (†M3. 12 feet). Armlong hybridized with Herbemont. Vine beautiful, vigorous, prolific. Cluster large, conical. Berry large, translucent, violet, covered with delicate bloom. Skin thin, tough. Pulp tender, juicy and sprightly, high quality. Handsome table and market grape. Especially valuable in West and Southwest Texas where European varieties will grow; is becoming a valuable commercial variety.

CARMAN. (†A26. 12 feet). (Post-Oak No. 1 x Triumph). Growth vigorous; foliage never attacked by leaf folder or mildew; prolific. Cluster large, conical, compact. Berries persistent, medium, globular, black with thin bloom; skin thin, tough, never cracking; pulp meaty, firm, tender when ripe; rich quality, superior to Concord; seeds easily leaving pulp.

EDNA. (*M3. 16 feet). One of handsomest grapes we have. Large clusters, white berries. Best quality. A hybrid of Armlong with Malaga. Has flavor of the Muscat that is good, but in this variety is superior. Sets fruit well, has recurved stamens. Ronalda, Ellen Scott and Armalaga are good pollenators for it.

LONGFELLOW. (Perfect flowering). A30. Hybrid of Armlong with Griesa, the latter a very fine Italian grape. Vine fair grower, very prolific, healthy. Clusters extremely large, often 10 to 12 inches in length. Berries large, oval, persistent, black, of high quality. One of the most magnificent market and show grapes. Adapted to all varieties of soil and for regions as far North as Missouri. Will compete with foreign grapes in market.

September

September grapes, while ripening here the last week of August, and first week in September will hang on for several weeks without deteriorating, as nights are cool and birds have left.

MINNIE. (†M4. 12 feet). Is a seedling of Edna, probably crossed with Longfellow. Cluster large, conical and handsome. Berry white covered with a bloom resembling frost. The berry is large, pulp tender, quality of the very best.

MARGUERITE. (†M18. 16 feet). A Post-Oak grape and Herbemont hybrid. Clusters medium, berry medium. Pulp very tender and juicy, of best flavor. Dark in color. Very late to ripen. Most excellent wine variety. Resistant to Root Rot.

MUENCH. (†M2. 16 feet). Hybrid of Neosho (a Missouri Post-Oak grape found by H. Jaeger) and Herbemont. Vine vigorous, free from all diseases; cluster large; berries above medium, purplish black; pulp tender and meaty, fine quality for table. Well adapted to the South.

ALBANIA. (†M2. 12 feet). Parentage, Post-Oak x Norton x Herbemont. Cluster large, shouldered; berry medium translucent white, skin thin and tough; pulp tender and juicy, sprightly, with Herbemont character, but sweeter; vigorous and prolific; uses, late market, table and white wine.

NEVA. (Perfect flowering). In parentage a sister to Muench, but later in ripening. Cluster longer and more compact, with medium-sized clear translucent dark berries. A fine wine variety.

EUROPEAN or VINIFERA VARIETIES. Violet Chasselas.

September

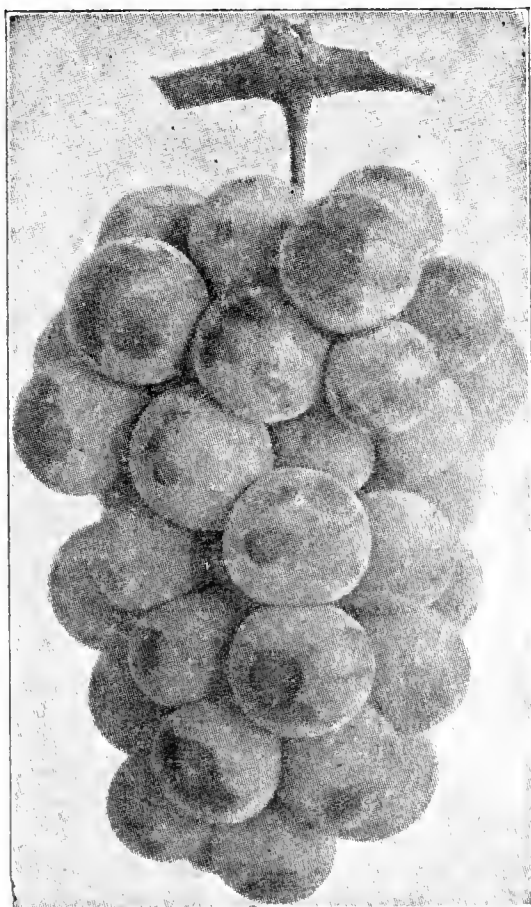
FERN MUNSON. (*M4. 16 feet). (Post-Oak No. 1 x Catawba). Growth strong. Cluster medium to large. Berries globular, medium to large, persistent; dark purplish red to nearly black; skin thin, tough; pulp firm, but not tough; juicy, sprightly, with agreeable Catawba flavor. Profitable. Free from black rot. Has endured 27 degrees below zero and has borne well the following season. Endures drouth. It shows up well, ships well, and vines are vigorous, long-lived, and very prolific when well pollinated. Catawba, Muench, Herbemont, are good pollenators.

LAST ROSE. (*M5. 16 feet). A hybrid of Armlong and Jefferson. Vine vigorous and prolific. Cluster large, compact, conical, with heavy shoulder. Berry medium bright red, round. Pulp tender, of good quality. Ripening late, probably latest grape in the list. Adapted to same regions as Ellen Scott. A very handsome market grape.

COLUMBIAN. (†M10. 12 feet). Seedling of Isabelle. Cluster small; berries immensely large, purple. Quality fair. Ripens unevenly. Each, 20c; 10, \$2.00; 100, \$16.00.

RONALDA. (†M4. 16 feet). Armlong-Malaga hybrid. Long large clusters of white berries. Handsome as Edna, berries round. The Edna and Ronalda are full sisters.

FREE With every order for grapes amounting to \$15.00 or over we will give you free of charge the late T. V. Munson Book, "Foundations of American Grape Culture".



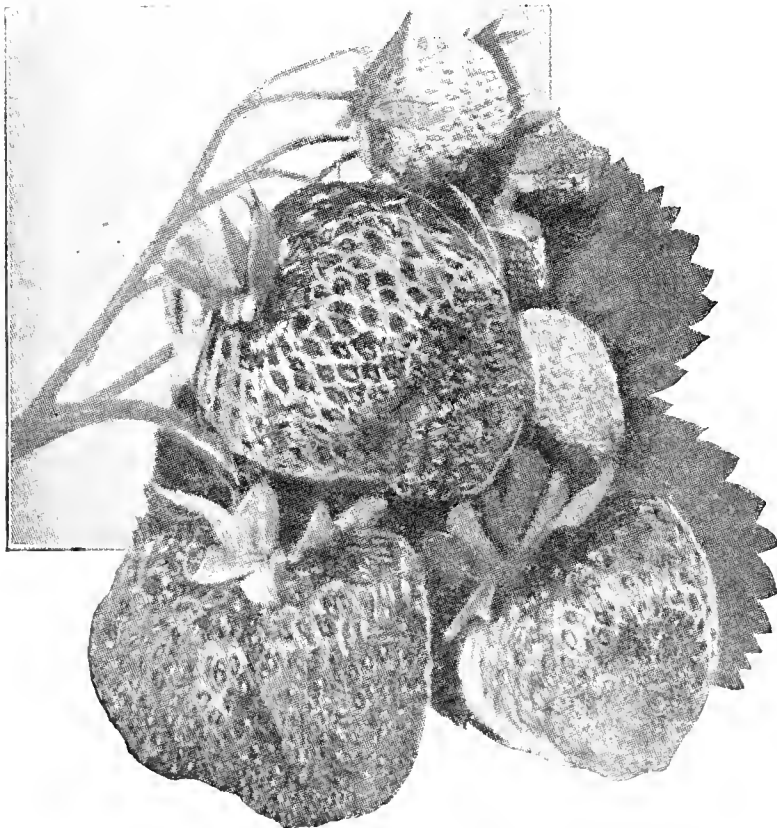
Fern Munson

FOR PRICES ON ALL GRAPES SEE PAGE 8.

Prices on All Munson Grapes Listed

	Each	10	100	1000		Each	10	100	1000
America	\$.20	\$1.50	\$11.50	\$ 95.00	Goethe	\$.25	\$2.00		
Armalaga	.30	2.50			Longfellow	.25	2.00		
Albania	.25	2.00	17.50		Lomanto	.30	2.50	\$19.00	
Black Spanish	.25	2.25	19.00		Last Rose	.20	1.50	12.00	
Beacon	.30	2.50	19.00	150.00	Manito	.20	1.50	12.50	
Bailey	.30	2.50	19.00	150.00	Muench	.20	1.75	14.00	
Brilliant	.20	1.50	12.50	100.00	Minnie	.30	2.50	19.00	
Bell	.20	1.50	12.50		Mathilda	.25	2.00		
Bachman Early	.25	2.00	16.00		Marguerite	.25	2.00	16.00	
Carman	.20	1.50	12.50	100.00	Mericadel	.20	1.75	15.00	
Concord	.15	1.25	9.50	75.00	Neva	.30	2.50		
Caco	.25	2.00	16.50		Niagara	.20	1.50	12.50	
Catawba	.20	1.50	12.50		President	.25	2.00	16.00	\$145.00
Champanel	.25	2.00	16.50		Rommel	.25	2.00		
Cloeta	.20	1.50	12.00		Ronalda	.25	2.00		
Captivator	.30	2.50			R. W. Munson	.20	1.50	12.50	100.00
Campbell Early	.25	2.00			Rupert	.25	2.00		
Delicatessen	.25	2.00	16.00		Sheridan	.30	2.50		
Ellen Scott	.20	1.50	12.50		Violet Chasselas	.25	2.00		
Extra	.20	1.50	12.50	100.00	Wine King	.20	1.50		
Edna	.20	1.50	12.50		Wapanucka	.25	2.00	16.00	
Fern Munson	.20	1.50	12.50	105.00	Vitis Champini, graft stock	.10	.90	8.00	

Strawberries and Other Small Fruits Can Be Grown for Profit as Well as for Your Table



Mastodon

Blackberries

DALLAS. This is one of the most sure of all Blackberries and endures Texas climate well. Ripens after McDonald and before Robison. Has rather drooping vine, thorny, very productive, medium size berry of fine quality. Price: 25 for \$1.00; 50 for \$1.40; 100 for \$3.00; 1000 for \$18.00.

MASTODON. Giant Everbearing. As a spring berry Mastodon produces bigger crops than most common varieties. It is mid-season, ripening its fruit with the Klondike.

On account of the high total amount of fruit produced during spring, summer and fall it is especially profitable when grown for sale at roadside markets.

The plants are large, vigorous, heavy crowned and deep rooted. This explains their ability to produce enormous loads of fine fruit. Every plant produces heavily; also the runner plants will often begin blooming and making fruit before taking root.

The berries are large and firm. As a market berry it is far superior to any other everbearing berry. Price: 25 for \$1.25; 50 for \$2.00; 100 for \$3.50.

AROMA. (Standard). Perfect flowering. A splendid late berry; large, deep red, and of excellent flavor. The skin is somewhat tougher than the early varieties and the flesh is firm, making it a good market sort. Price: 25 for 40c; 50 for 60c; 100 for \$1.00; 500 for \$4.00.

THE NEW BLAKEMORE. Introduced by the U. S. Department of Agriculture. Color bright, light red; seeds yellow, small, even with surface; flesh, light red; texture, tender, firm, juicy; shipping quality, excellent; flavor, acid, aromatic. Strong plants. Price: 25 for 50c; 50 for \$1.00; 100 for \$1.75.

Dewberries

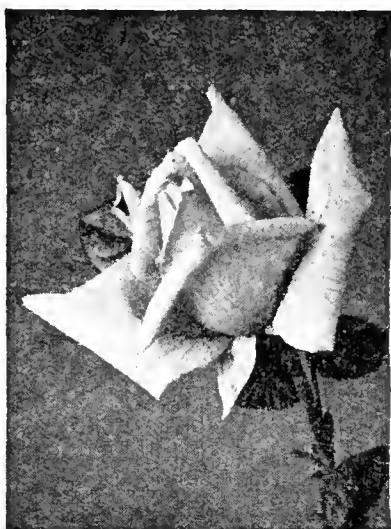
AUSTIN DEWBERRY. Probably the best commercial variety for Central and North Texas. Very large, fine flavor, and especially good for jams and jellies. A vigorous grower and very prolific. Ripe in May and June. Price: 25 for \$1.00; 50 for \$1.40; 100 for \$3.00; 1000 for \$18.00.

ASPARAGUS. One of the finest early spring vegetables and should be grown in all gardens. We list the best variety, the Martha Washington. One year. Dozen, 40c; 50, \$1.25; 100, \$2.25.

Munson's Roses Are Everblooming



Betty Uprichard



Lady Hillingdon



Red Radiance

Munson Specials

Each, 50c; Per Dozen, \$5.00

BETTY UPRICHARD. HT. Copper-red buds, opening to semi-double flowers of above average size; brilliant orange-carmine on outer surface of petals, showing light salmon reflexes; spicy fragrance. Strong growing, persistent blooming, and healthy.

DAME EDITH HELEN. HT. Shapely buds and substantial, high-centered blooms of clear pink, sweetly scented and freely produced on long, strong stems. Vigorous.

E. G. HILL. HT. Large, ovoid buds and immense, dazzling red flowers, shading to darker crimson without turning purple, on long stems. Plant vigorous and free flowering.

EDITH NELLIE PERKINS. HT. Large, double flower with fine pointed center, inside of petals salmon-pink, outside dark coppery red and orange. A good grower and bloomer with few thorns and splendid foliage.

PRESIDENT HERBERT HOOVER. HT. Large flowers of a very charming combination of cerise-pink, flame, scarlet, and yellow, with broad, thick petals; very fragrant. The clean, handsome foliage is an added attraction.

ROSELANDIA. HT. Typical Ophelia buds and blooms of rich golden yellow, fragrant and free flowering. Excellent foliage.

TALISMAN. HT. Brilliant red and gold buds, opening to well-shaped blooms of scarlet-orange and rich yellow. Tall, vigorous growth. Constantly in bloom.

Munson's Standards

Each, 35c; Per Dozen, \$3.50

GOLDEN OPHELIA. HT. Well-shaped blooms with a heart of golden yellow, shading lighter toward the edges of the flower, and delicately perfumed. The plant is robust and healthy, blooming with great freedom.

KAISERIN AUGUSTE VIKTORIA, HT. Well-formed, creamy buds which develop slowly to blooms of absolutely perfect form, snowy white with a slight tint of lemon at center; fragrant. Plant moderately vigorous and hardy.

Munson's Standards

Each, 35c; Per Dozen, \$3.50

LADY HILLINGDON, T. Slender pointed buds and elegantly cupped flowers of deep saffron-yellow, paling toward the edges and becoming lighter as they expand; fragrant. The plant is erect, with perfect foliage.

RADIANCE. HT. Brilliant rose-pink buds, opening to well-formed shining flowers with lighter tints on the reverse of the petals; globular in shape and very fragrant. The plant makes splendid growth; has wonderful blooming qualities.

RED RADIANCE. HT. Big, globular flowers of deep rose-red on strong, individual canes which are freely produced all summer until frost. Foliage excellent.

SENSATION. HT. Enormous, double, scarlet-crimson blooms of fine, deep form; sweetly scented. Plant strong and very active. 45 large petals.

SUNBURST. HT. Fine yellow flowers, strongly suffused with orange at the center, fragrant, and well shaped. Plant spreading.

Munson's Everblooming Climbers

All Climbing Roses, except those specially priced, 50c.

CLIMBING PRESIDENT HOOVER. Cl.HT. Sport of President Hoover. The plants we sell are adapted to the South. Each, 75c.

CLIMBING RADIANCE. Cl.HT. Large flowers of the Radiance type on a vigorous climbing plant. Color exactly the same.

Tested in Pennsylvania three winters, it has withstood temperatures near zero without protection. It has bloomed profusely in June and scatteringly thereafter.

CLIMBING RED RADIANCE. Cl.HT. A strong climber with flowers like the original bush HT.

A very handsome and free-flowering new variety. Give it time to develop.

CLIMBING SUNBURST. Cl.HT. Fine yellow flowers, strongly suffused with orange. Strong climbing growth and a most excellent blooming habit.

CLIMBING TALISMAN. Cl.HT. Sport of Talisman. We tested this climber and recommend it for the South. The most wonderful new climber in existence. Each, 75c.

A Small Orchard of Munson Fruit Trees Will Supply Your Table the Year 'round at Small Cost

Apples

Early Summer

RED JUNE. Tree slow grower, but bears young. Small to medium size; bright red skin; flesh tart and quality good. Fine table and market; best shipper of extra early varieties.

JONATHAN. Medium, if thinned on the tree grows larger. Roundish, conical, rich bright red on light yellow ground, few minute white dots; flesh yellowish white, tender, juicy, sprightly, sub-acid, a standard of excellence in market apples. Tree has a dropping pendant habit; very productive, and requires rich soil. Universally popular. Should be gathered in August and stored to obtain best results.

Fall and Late

BEN DAVIS. Tree healthy, vigorous, an abundant bearer; fruit large, handsome, striped; flesh whitish, tender, juicy, sub-acid, only fair in quality. Popular on account of its good bearing quality.

STAYMAN'S (Stayman's Winesap). Medium to large; oblate, conical; greenish-yellow, mostly covered and indistinctly splashed and mixed with dull dark red, with numerous medium gray dots; flesh yellow, firm, tender, juicy, mildly sub-acid, aromatic; quality best. Another seedling of Winesap originated in Kansas; is much larger, more beautiful in color and better in quality and equal or better keeper.

DELICIOUS. Of peculiar and distinctive shape; brilliant dark red, shading off to golden yellow at the blossom end; flesh fine grained, juicy, crisp and melting; flavor sweet, with a slight acid taste. Tree vigorous, thrifty and a good, dependable cropper.

Prices on Apple Trees

	Each	10	100
2-3 ft.	\$.35	\$3.00	\$19.00
3-4 ft.40	3.50	25.00
4-5 ft.50	4.50	28.00

APRICOTS

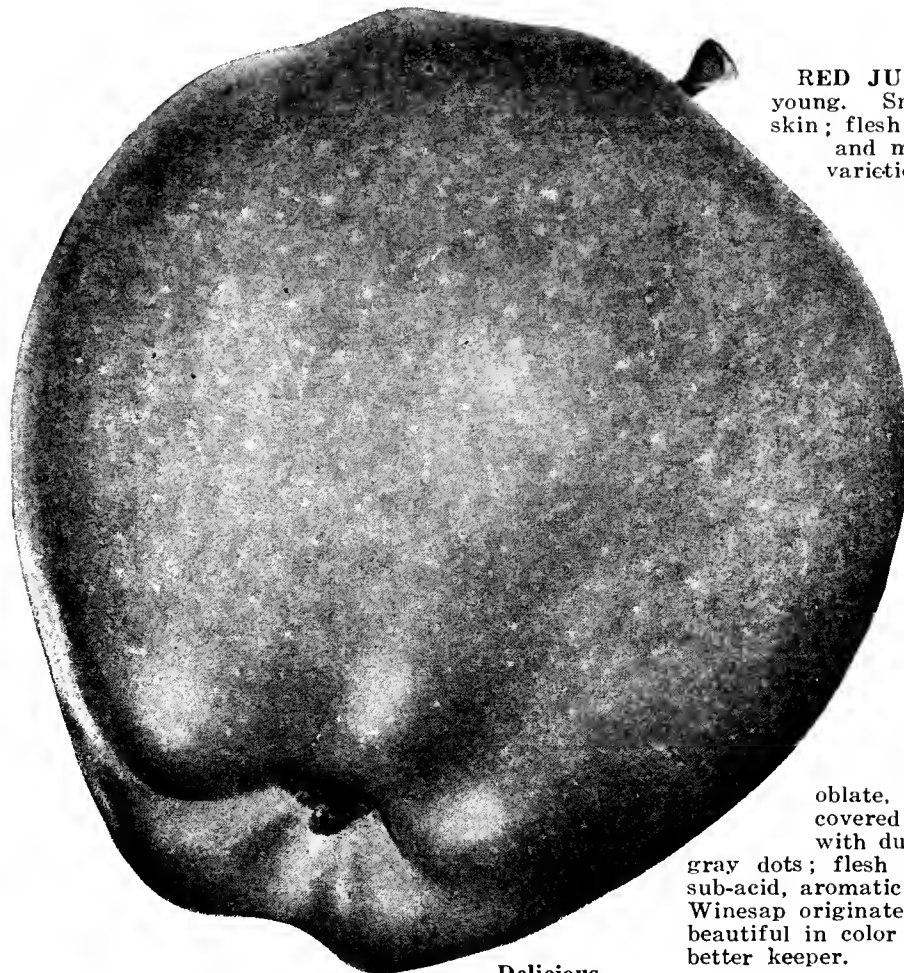
EARLY GOLDEN. Medium in size; yellow; rich juicy and of delightful flavor; freestone. Ripe in June.

MOORPARK. Large; yellowish-green with dull red on sunny side, marked with dark flecks; flesh bright orange, separating easily from the seed. Grown largely for commercial purposes and is especially fine for canning and drying. Tree vigorous and prolific. Ripe in June.

TOYAHVALE. Originated in Toyah Valley. Blooms very late, hence a good variety for general planting. Fruit medium; yellow, of fine flavor. Tree vigorous and an enormous bearer. Ripe June and July.

Prices on Apricot Trees

	Each	10	100
2-3 ft.	\$.35	\$3.00	\$19.00
3-4 ft.40	3.50	25.00
4-5 ft.40	4.25	28.00



Delicious

Pears

For Toothsome Preserves

As a rule, Pears are most successfully grown in a very heavy clay, or clayey loam, that has been well fertilized. If grown in sandy soil, coarse manure or litter should be worked into the soil. Mulching is of great benefit, and the orchard should be kept cultivated at all times.

This list of select varieties has been reduced to such as have been thoroughly tested and have proven valuable throughout the largest section of the South. Distance for planting; Standard trees, 20 to 25 feet.

BARTLETT. Large, buttery, melting, of rich flavor. Very popular. Ripens end of July and during August.

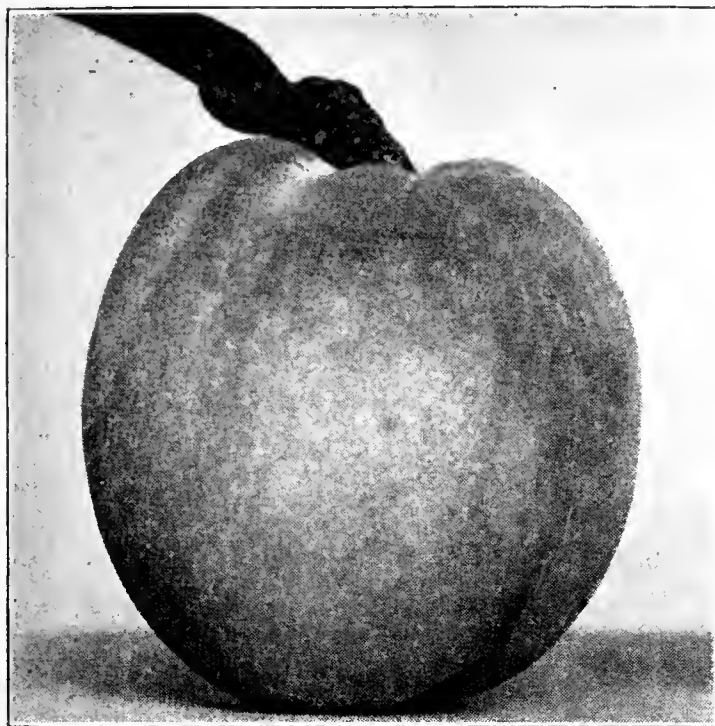
GARBER. Resembles the Kieffer in size, appearance and quality, but matures here in August, and between the Le Conte and Kieffer. A thrifty grower and valuable variety.

KIEFFER. Fruit large to very large, skin yellow, with a light vermilion cheek; flesh brittle; very juicy, with a marked musky aroma; quality good. Matures from September to October. Tree vigorous and very prolific. Begins to bear when four years old.

WILDER EARLY. Small, bell-shaped; greenish-yellow with red cheek; flesh tender and juicy. Tree hardy and a young bearer of heavy crops. Ripe in July.

Prices on Pear Trees

	Each	10
2-3 ft.	\$.35	\$3.00
3-4 ft.40	3.50
4-5 ft.50	4.50



Frank

Investigate Before You Invest

We Offer You the Peaches of the Century—Stubenrauch

The Stubenrauch varieties of peaches are developed by Mr. J. W. Stubenrauch of Mexia, Texas, and we believe without a question of doubt that his varieties are without equal. Many of his trees have been known to bear an abundance of fruit for over thirty consecutive years.

Especially do we call your attention to the Frank, a tree that has just recently borne an average of ten bushels to a tree in an orchard of only sixteen trees. A three year orchard under our observation bears a crop of six to seven bushels per tree.

The Frank, Tena and Katie are especially adapted to regions where late frosts kill the fruit.

SPECIAL NOTICE: The Munson Nursery is the only nursery that Mr. Stubenrauch has given permission to grow and sell his trees. So we caution you not to accept any of these varieties unless you are positive as to their source and that they are true to name.

The Varieties Are Described About in Their Order of Ripening.

IMPROVED VICTOR. In appearance and color similar to Victor or Mayflower, but much larger in size. White, semi-eling. Ripens before Carman.

ANNA. A decided favorite of Mr. Stubenrauch. We believe the finest early ripening peach that grows. Medium in size, white freestone. Small seed with red flesh next to seed. Very sweet. Ripens about the 20th of June.

TENA. A week or ten days in advance of Elberta. Color a brighter red and yellow than the Elberta with quality much better. It is a cross of Mamie Ross with Elberta. It blooms late with Mamie Ross and rarely injured by cold. It is a high class yellow freestone.

FRANK. Has already made quite a record as many have testified. It was first introduced in the fall of 1915. Begins to ripen as Elberta is passing out, about August 10th in Central Texas and August 20th in North Texas. The past summer makes its thirtieth year it has fruited without a miss in the Stubenrauch orchard. It is a rich yellow and red eling, above medium in size, of very fine eating quality. In shape and color it resembles its mother parent, the Bell October.

CARRIE. Another Frank seedling, equally productive and certain. A yellow cling. Round, and larger than Frank, with beautiful red cheek.

BARBARA. A freestone ripening with the Carrie. Barbara was introduced in the fall of 1916. It is a Bell October and Elberta cross. Round, large. Excellent quality, extra fine for canning. A fine grower and immense producer. A fifteen-year old tree in the Stubenrauch orchard has a spread of limbs of 37 feet, and has borne ten bushel crops at several different times.

KATIE. Can well be called the September Elberta on account of its large size and shape similar to Elberta. It begins to start ripening as the Barbara passes out. Large size, yellow flesh, freestone, with yellow and red skin. Of best quality. Blooms late and rarely injured by frosts or winter colds. It is an Elberta and Bell October cross.

FREDERICKA. One of the young generation originations of the Stubenrauch productions. A fine companion for Katie. A large yellow freestone of very fine flavor. Skin yellow and red of high color.

Prices on Stubenrauch Varieties

	Each	Doz.	100		Each	Doz.	100
6-12 in.	\$.14	\$1.50	\$10.00	3-4 ft.	\$.50	\$4.75	\$32.50
12-18 in.20	2.00	13.50	4-5 ft.65	6.00	43.00
18-24 in.30	3.00	19.75	5-6 ft.80	8.00	52.00
2-3 ft.40	3.75	27.00				

FREE

FREE—With every order of grapes amounting to \$15.00 or over, we will give you absolutely free of charge one copy of "THE FOUNDATION OF AMERICAN GRAPE CULTURE", written by the late T. V. Munson. This wonderful book contains 252 pages with 87 full page illustrations. It is beautifully printed and bound and contains references to all the best known varieties grown on this continent as well as some of the best known imports. If you are at all interested in grapes you cannot afford to be without this outstanding book.

If ordered separately, the regular retail selling price is \$2.00 per copy postpaid.

Good Fruit is An Asset to Good Health---Grow Your Own, Save on the Food Bill

Peaches

June 1st or Earlier
First Part of June

EARLY WHEELER. Originated in Collin County, Texas. A large showy white cling, with red cheek. Very firm, of fair quality. It is valuable as a variety to reach distant markets as it is a good shipper.

Latter Part of June

MAMIE ROSS. Originated in Dallas County, Texas. A very successful and sure bearing variety, very prolific. Large, white with cream blush on one side. White flesh, semi-cling.

PALLAS. Medium, almost round; flesh white, of excellent quality; freestone. Succeeds best in coast section where it ripens late in June.

J. H. HALE. A large yellow freestone of finer quality, coming in before Elberta. Round and not pointed like Elberta. Originated in Georgia and doing well over the South.

DR. BURTON. A long-lived, vigorous heavy bearing variety of peach. It is similar to Mamie Ross in vigor, but superior in quality. Flesh white, streaked with pink, a perfect freestone of large size. Ripening middle to last of June.

MUNSON FREE. Originated by T. V. Munson, Denison, Texas. High-colored, good quality, better than Elberta. More certain and prolific bearer than Elberta. A superior peach which we are pleased to offer again this season. Yellow freestone.

Late July and Early August

ELBERTA. Originated in Georgia. Well known for its regular bearing of large crops of large size peaches. The size, however, dependent upon the soil and, when thinned, you get a fine crop of extra fine show peaches, but if tree overbears and on thin soil, the size and appearance are accordingly lowered. Flesh yellow, freestone, large size and of good quality, while not the richest. A standard for shipping and canning.

MINNIE STANFORD. Large, oblong; bright yellow with lots of red on cheek; flesh yellow, red next to seed, firm and juicy; particularly fine for preserving, pickling and canning, and one of the best all-purpose peaches. Tree vigorous, hardy and prolific. A clingstone which is ripe in July.

Prices on Peach Trees

	Each	10	100
18-24 in.	\$.18	\$2.00	\$15.00
2- 3 ft.25	2.25	17.00
3- 4 ft.30	2.75	18.50
4- 5 ft.35	3.50	23.50
5- 6 ft.45	4.25	28.50

Figs

MAGNOLIA. Very large, brownish straw color; excellent for canning and for preserves. Will bear on one-year stems. More widely grown than any of the other varieties of Figs. Bears over a long period, having young green fruit at the same time as mature, ripe fruit.

BROWN TURKEY. Medium size; purplish-brown; sweet and good. Very prolific. Has habit of bearing on new wood, even fruiting in the nursery row.

Prices on Fig Trees

	Each	10
18-24 in.	\$.35	\$3.00
2- 3 ft.45	3.75

Plums

MUNSON PLUM. A large yellow plum, juicy and when full ripe has a tinge of pink in the skin. Tree is spreading and set very full every year. Our trees have never failed. Its size and color make it a very showy plum, both on the tree and in the basket. While it ripens early, it blooms late thus escaping freezes that kill the earlier blooming varieties.

Prices Munson Plum

	Each	10
6-12 in.	\$.15	\$1.25
12-18 in.25	2.25
18-24 in.35	3.25

GOLD. July. Large, firm, glowing yellow, with some red. Has a wide range, sure bearer, and a money maker.

AMERICA. A hybrid of Robinson with Abundance. Tree very thrifty, symmetrical, spreading; fruit medium to large bright golden ground with pink cheek, dotted white; flesh firm, stone medium to large, cling.

BURBANK. Large, clear purplish red, flesh deep yellow, very sweet and agreeable flavor. Very prolific.

BRUCE. June 1. Large, red, productive. A hybrid originated by Mr. A. L. Bruce of Donley County, Texas. On account of early ripening, large size, firm shipping quality, productiveness, and deliciousness of flavor, we believe we should have to consider this the most profitable of all plums.

SHIRO. One of the most desirable plums over a wide area. Large to very large; oblong; clear, transparent yellow; with very small seed; firm and fine texture; quality unsurpassed for eating and for cooking purposes. Ripe in July.

Prices on Plum Trees

	Each	10	100
2-3 ft.	\$.30	\$2.90	\$19.00
3-4 ft.35	3.50	25.00
4-5 ft.40	4.25	28.00
5-6 ft.50	4.90	32.50

Plum-Cherry

COMPASS. A hardy fruit, supposed to be a cross between Miner Plum and one of the Cherries. Tree a vigorous grower, hardy, prolific, and bears extremely young, often fruiting in the nursery row. Fruit rather small, dark red; good for cooking purposes. Should not be gathered until fully ripe in order to develop its fine flavor. Ripe in June.

OPATA. A beautiful sight when in bloom and is very fragrant. Fruit medium; purplish-red splashed with green; flesh greenish in color and very pleasant in flavor. Clingstone. Ripe last of June and first of July. Tree hardy, a spreading grower, and bears quite young.

SAPA. Tree somewhat dwarfish, thrifty, and often sets fruit in the nursery row at one year. Fruit large, dark purple with greenish splotches; flesh rich, dark purple-red, of rich flavor, and with small pit. Excellent for cooking purposes. Clingstone. Ripe last of July.

WANETA PLUM. Largest in size of all the Hansen hybrids. Cross of America with a Japanese variety. Flesh dark yellow covered with rich dark red skin. Very attractive. Ripens after Burbank.

Prices on Plum-Cherry Trees

	Each	10	100
2-3 ft.	\$.30	\$2.90	\$19.00
3-4 ft.35	3.50	25.00
4-5 ft.40	4.25	28.00
5-6 ft.50	4.90	32.50

Shrubs Add to the Value of Property

FORSYTHIA (Golden Bell). A valuable genus of shrubs from China and Japan, blooming very early in spring. Flowers yellow, drooping, borne in great profusion. Entirely hardy here and of the easiest culture. These splendid old shrubs growing 8 to 10 feet tall eventually, light up the garden with glinting masses of yellow, very early in spring before leaves appear. The upright forms make excellent tall hedges, and are bright-hued fillers for massed shrub groups.

Size	18/24	2-3 ft.	3-4 ft.
Price	\$.30	\$.40	\$.50

WEIGELIA ROSEA. Hardy, profuse-blooming shrubs of spreading habit. These are among the showiest of the garden shrubs, producing in early April great masses of showy flowers.

Size	18/24	2-3 ft.	3-4 ft.
Price	\$.30	\$.40	\$.50

ABELIA GRANDIFLORA. A hardy, free blooming shrub with shiny, purplish, evergreen leaves; bears a profusion of clusters of tubular shaped flowers about 1 inch long, white inside, delicate pink outside. Fragrant. Very desirable. For best results in transplanting, it is best to cut tops off to within 4 inches of crown.

Size	18/24	2-3 ft.	3-4 ft.
Price	\$.30	\$.40	\$.50

Cydonia Japonica

SCARLET JAPAN QUINCE. One of the best flowering shrubs; flowers a bright scarlet crimson, borne in great profusion in early spring, foliage retains its color of bright glossy green the entire summer; hardy; make good hedge plants.

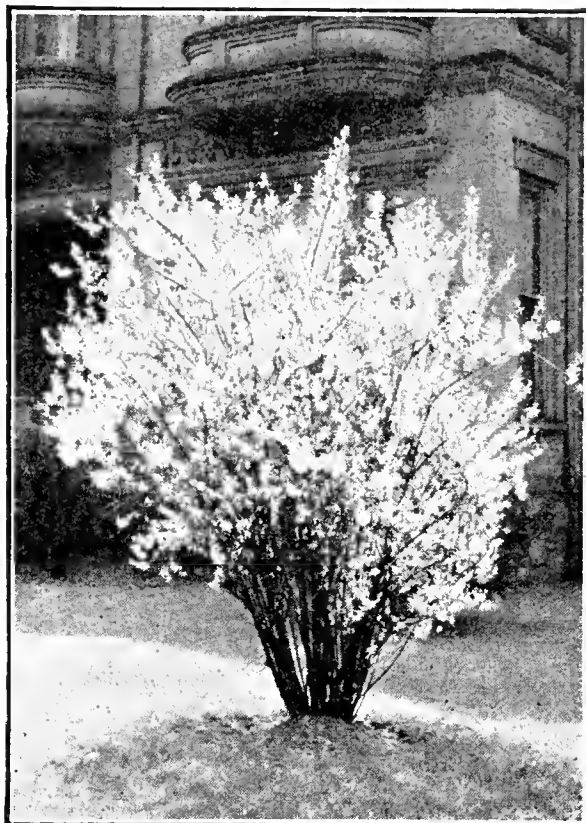
Size	18/24	2-3 ft.	3-4 ft.
Price	\$.30	\$.40	\$.50

MINT TREE (Chase Tree) (Vitex Agnus Castus). Will grow to height of 20 feet in five or six years, but has shrub-like shape, globular in form. Leaves are deeply five-fingered. Has spikes of blue flowers all summer. Foliage has mint-like fragrance. Attractive to bees and fine for honey.

Size	18/24	2-3 ft.	3-4 ft.
Price	\$.20	\$.30	\$.40



Philadelphus or Mock Orange



Forsythia

FLOWERING WILLOW (so-called) (Chilopsis linearis). A tall tree-like shrub, with narrow leaves resembling willow, also the branches have the willow drooping effect. Blooms all summer in hottest of weather, and fine for arid regions as well as moist. Has tubular flowers, 1½ inches long. We have two colors, white and purple.

Size	18/24	2-3 ft.	3-4 ft.
Price	\$.30	\$.40	\$.50

TAMARIX PLUMOSA (Salt Cedar). Fine willowy foliage, and habit perfectly informal. Flowers red, small flowerlets in large terminal spike. Blooms in March and early April, over a short season. To get most graceful effects, trim severely each year. Fine for hedging and for windbreaks. It will grow most anywhere.

Size	18/24	2-3 ft.	3-4 ft.
Price	\$.30	\$.40	\$.50

PHILADELPHIA VIRGINALIS. A magnificent new variety. Moderately tall, with good foliage and compact habit. The flowers are the largest, handsomest, and most sweetly fragrant of any known variety, with longest blooming season. Stem completely covered with bloom before foliage develops to any extent.

Size	18/24	2-3 ft.	3-4 ft.
Price	\$.30	\$.40	\$.50

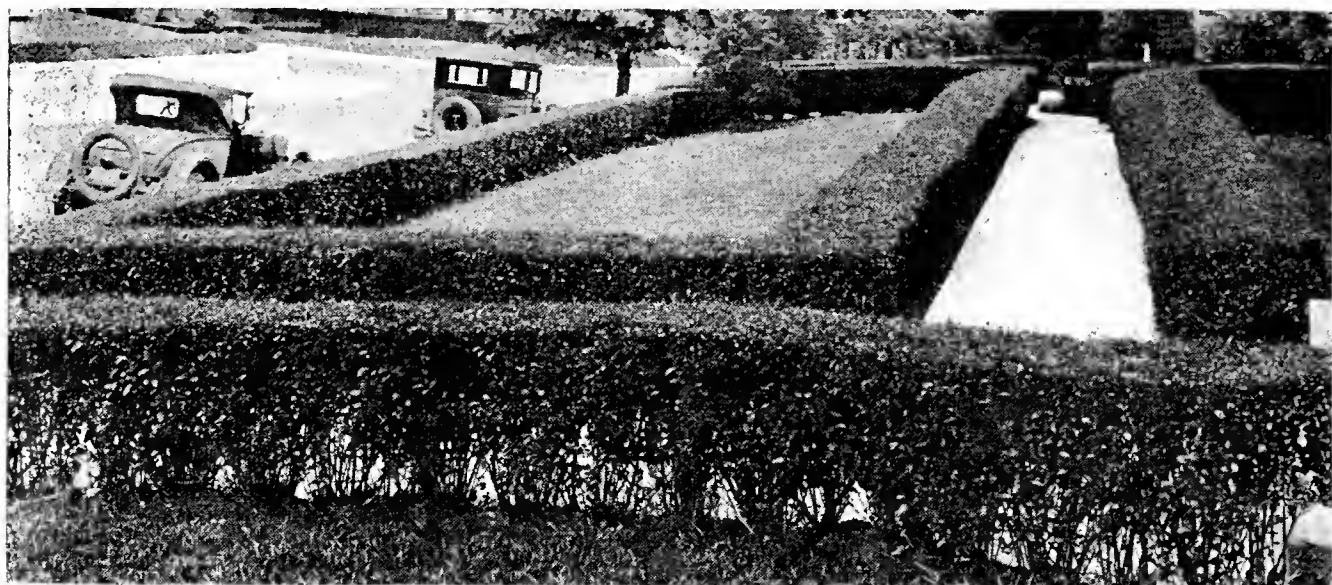
PHILADELPHIA GRANDIFLORUS. The big scentless Mock-orange. Larger white flowers than Coronarius, but not so sweet scented.

Size	18/24	2-3 ft.	3-4 ft.
Price	\$.30	\$.40	\$.50

CREPE MYRTLE. This is typically a Southern shrub, attaining 20 feet high at ten or so years old. Blooms from June to September in hottest summers. Has plume-like clusters of crepe flowerlets. Can be planted singly, in groups or in hedge formation. **Imperial Pink, Red.**

Size	18/24	2-3 ft.	3-4 ft.
Price	\$.30	\$.40	\$.50

You, too, Can Have An Out-Door Living Room



Privet, Amur South

PRIVET, AMUR SOUTH (*Ligustrum amurense*)—An evergreen plant which makes one of the most satisfactory and one of the most beautiful hedges of all the plants used for this purpose. It is a fast grower, graceful, upright, somewhat spreading, and almost entirely evergreen. The plant may be allowed to grow freely, when it will make an attractive background plant or screen, or it may be kept sheared into formal shapes. Hedges of this plant may be kept to any height desired.

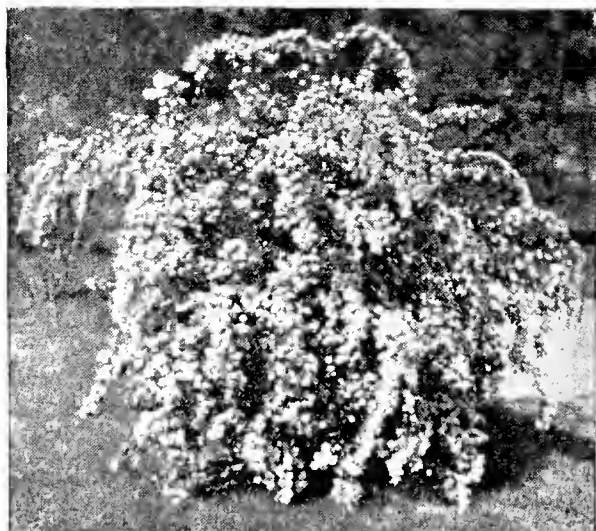
Prices **AMUR PRIVET:**

	25	50	100
12-18 in.	\$1.00	\$1.75	\$3.00
18-24 in.	1.50	2.50	4.00
2- 3 ft.	2.00	3.50	5.50

DEUTZIA. Valuable self-sustaining shrubs which vary considerably in height and habit, but bloom alike in dainty bell or tassel-shaped flowers borne thickly in wreaths along their branches. The taller sorts are useful for specimens, groups, and the background of shrubberies; the dwarfier, for borders or for planting near the house.

DEUTZIA GRENATA. Tall light pink. Same as *Watsonii*.

Size	18/24	2-3 ft.	3-4 ft.
Price	\$.30	\$.40	\$.50



Bridal Wreath. *Spirea Van Houttii*

BUTTERFLY BUSH (Summer Lilac). One of the most admired and sought-after shrubs in the trade. Of quick, bushy growth. The lovely bloom spikes appear in July and bloom profusely until cold weather. The blossoms have the tint and the shape of the Spring Lilac and their delightful perfume attracts numerous large and gorgeously colored butterflies that swarm about it as though vying with it in brilliancy of color. Flower spikes ten inches in length by three inches in diameter are not unusual. 1-year, 30c each.

SPIREA ANTHONY WATERER. Bright rose pink. June and July. A compact, low growing shrub with dense foliage usually deep green with occasional variegated leaves of pink and white on young growth. Flowers are borne in full flat clusters on erect stems. If these are cut away when they fade the shrub will usually bloom intermittently during the summer. Very valuable for edging in front of shrubbery or sometimes used as a dwarf hedge.

Size	12/18	18/24
Price	\$.20	\$.30

SPIREA VAN HOUTTEI. White. This is the most useful of the hardy shrubs. The flowers are in flat clusters usually an inch or more across, produced on spreading, pendulent branches often drooping to the ground. In full bloom they are a mass of white. The foliage is an attractive green which it retains late in the year.

Size	12/18	18/24	2-3 ft.	3-4 ft.	4-5 ft.
Price	\$.25	\$.30	\$.40	\$.50	\$.60

SPIREA THUNBERGII. Forms a dense feathery bush, 3 to 5 feet high, the foliage, which is a peculiar, but pleasing shade of yellowish green, changing in autumn to bright red and orange. Flowers pure white, borne in feathery masses in early spring.

Size	18/24	2-3 ft.	3-4 ft.
Prices	\$.15	\$.20	\$.25

MUNSON NURSERIES.

Denison, Texas:

Allow me to thank you for the grape vines. They arrived in perfect condition, were well grown, well graded, well pruned and well packed.

H. H. CUMMINS.

Planting Instructions

More nursery stock is lost through **NEGLECT** than any other cause. It should be borne in mind that these products are perishable—that they will not live long and prosper unless they receive proper attention at planting time, and afterwards. Entirely too few people follow transplanting directions, even when these are available. We urge every customer to follow the directions herein given, if they are in the least doubt as to the correct course to pursue.

Care Upon Arrival

On arrival of the trees from the Nursery, if **unable to plant immediately**, and if the trees are dug without a ball of earth intact (Balled) they should be taken from the bale or box at once, counted and the individual tree examined. **Should there be a shortage it should be reported at once.** Bare-rooted stock should immediately be heeled in a well-drained, moist piece of **sandy ground** in order that the soil may thoroughly pulverize between the roots, keeping them from **air-drying**. The soil should be thoroughly packed around the roots. **Water freely and frequently** until the trees are planted.

Stock Arriving in Freezing Weather

If frozen when received, do not open the bales or boxes, but place them in a cellar or some cool, dark room that is free from frost, and let them remain until all frost is drawn out. If no cellar or frost-proof room, bury the box or bales in saw-dust or dirt until thawed. The point is to get the frost entirely out without sudden exposure of stock to heat, light or air. Even if frozen solid, the stock will not be injured if handled in this manner.

Time of Planting

In this climate, vegetation, although inactive in winter for the formation of leaves and new wood, is never so as to new roots. A tree transplanted in the **early winter** will, by the ensuing spring, have grown sufficient new roots to give it a firm hold in the ground, and will grow off rapidly when active vegetation commences. Plant as early after the first killing frost as practicable, although hardy stock can be safely transplanted any time during the winter

when the ground is not too wet or frozen. Planting can be continued until the middle of March, or until just before the buds begin to swell.

Preparation of the Soil

The most desirable soil for fruit trees is a rich loam, naturally dry or made so by drainage. Peaches and plums must be planted on high, well-drained soil. Before planting, prepare the land by thoroughly plowing and subsoiling, first using a two-horse plow, followed by a sub-soil plow. Lay off the rows at required distances, and dig holes at least two feet wide and two feet deep; fill the holes by breaking in the sides, commencing at the bottom.

Preparation of Trees and How to Plant

Before planting, remove the broken roots; cut back one-year peach, apple, pear, cherry and plum trees to a naked stem $1\frac{1}{2}$ to $2\frac{1}{2}$ feet high, leaving no side branches. Two-year-old trees should have their branches cut back to half their length or less; the lower limbs less than those above, cutting in shorter as you go upward, leaving the leader the longest. The trees should be set about 2 inches deeper than they stood in the nursery.

Cultivation

You cannot expect to get good results from your trees unless you keep them well cultivated. The soil must be frequently stirred during summer. The area immediately around the trees must be kept free from grass and weeds, and this portion of the orchard should receive especial attention. All suckers or branches which start below the head of the tree should be removed.

The Proper Time and When to Plant

All of the stock listed in this catalog can be transplanted any time during the dormant period, that is from the time the leaves drop in the fall until the buds begin to grow in the spring, which season here is from November 10th to March 15th. However, if your ground is in good shape and well prepared, we would suggest fall planting as it has some advantages over spring planting, especially for all deciduous trees. Evergreens are better planted in the spring. Strawberries in late October to December 10th, and again February and March. In the catalog, special remarks will be made concerning each class of stock.

This catalog contains all that we grow and sell, but by no means contains all that can be grown in your

locality or any other section. Its purpose is to let you know what we have, and if you are in need of any of the things listed, we will be most pleased to have your order.

It is our purpose and desire to supply you with the best that can be grown, and we wish for you every success. But that success depends largely upon yourself, for no matter how good the stock, it must have proper attention in handling, planting, fertilizing and cultivating to get the best results. On the other hand if you plant poor stock, no amount of good or even extra care will bring success. It is our business to supply that **GOOD** stock, and we know we can, since we have been satisfactorily doing so for 57 years.

Fertilizing

Do not use unrotted stable manure or compost fertilizer when trees are planted. A few pounds of bone meal or a few shovels full of **well rotted** stable manure can be used at the bottom of the hole with good results at the time trees are planted. When filling the hole after placing the tree, put the **top soil** in the bottom of the hole and that which came from the bottom of the hole at the surface. Best results with unrotted manure are attained by using it as a **mulch**,

after the trees are planted. Commercial fertilizers should be used when trees start to bud out. It is applied by digging a trench around the tree or plant, a few inches past the end of the newly planted roots. Then fill trench to cover fertilizer. For the first two years cultivate the orchard during summer in some crop suited to the location, such as cotton, vegetables, melons, peas, peanuts, velvet or soy beans, giving the preference to leguminous crops. Never plant corn or small grain in your orchard.

One of the Many Awards of Merit Received
by the Late T. V. Munson

