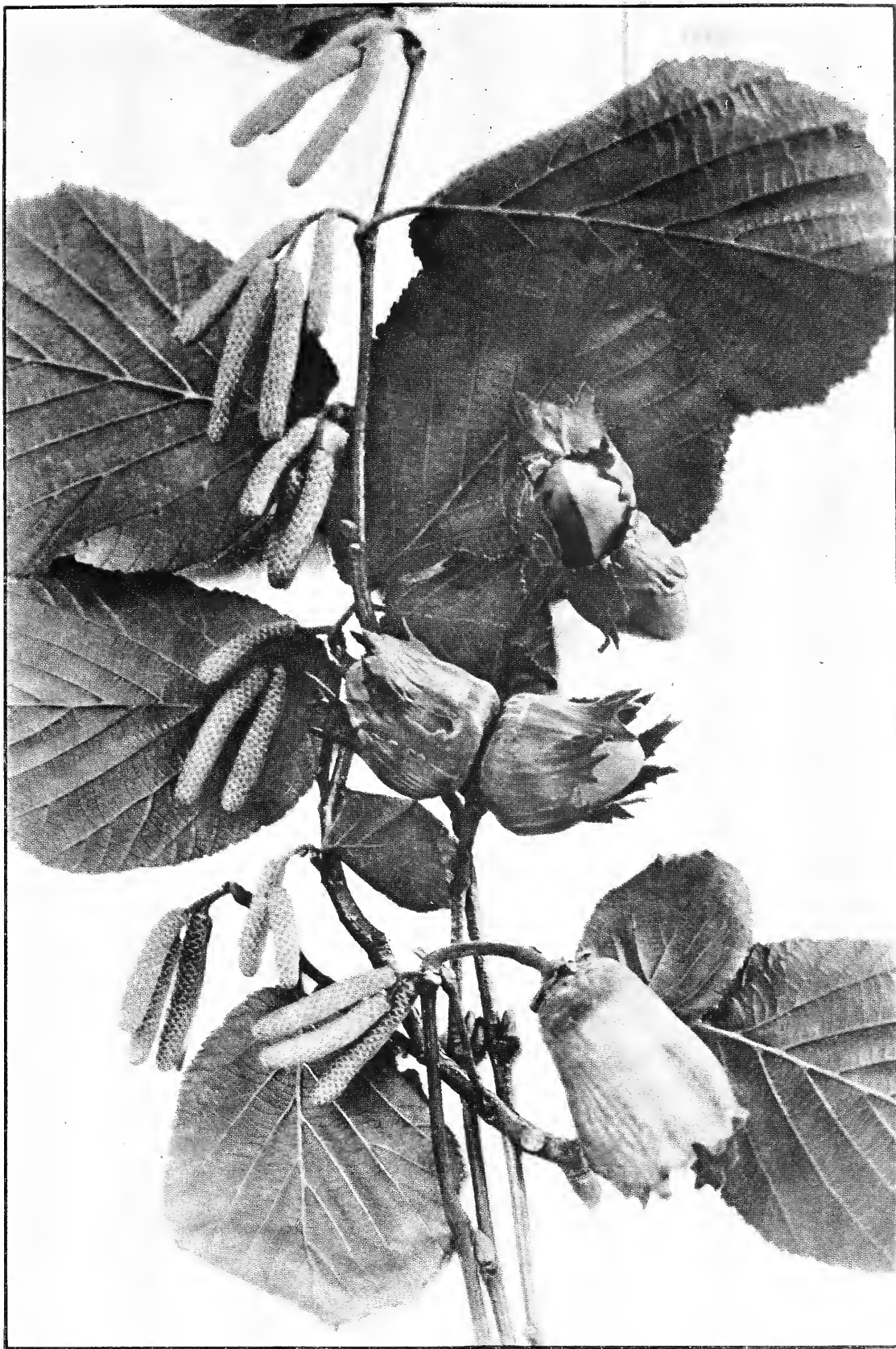


Historic, Archive Document

Do not assume content reflects current scientific knowledge, policies, or practices.



—IMPROVED EUROPEAN FILBERTS—
GROWN EXCLUSIVELY IN AMERICA BY

L. W. HALL COMPANY, Inc.

GROWERS OF HIGH GRADE NURSERY STOCK

ROCHESTER, NEW YORK



Showing How Artistically Filberts Can Be Planted Along the Walks or Driveways.

Nut Trees

Everyone Who Has a Place to Grow any Tree Should Grow a Nut Tree

Nuts should be so largely planted as to become a staple article of our food. They are most nutritious, rich in vitamins, and are one of our most important food products. For use as a luxury alone, thousands of acres of nut orchards should be set out.

Improved European Filberts

(Trees Bear Second or Third Year After Transplanting.)

We are the only nursery in the United States propagating these Pedigreed Varieties of Improved Filberts.

For years we had enquiries for Improved Filberts as grown in Europe, but heretofore no nursery in the United States has succeeded in producing a Filbert of the improved European type.

Acting on the advice of Mr. Conrad Vollertsen, an eminent European horticulturist, now a resident of Rochester, N. Y., we imported from Germany in 1912, twenty-one of the best varieties of European Filberts.



Two-year Plant in the Nursery Row, Bearing 18 Large Nuts.

Mr. Vollertsen is acknowledged as the leading authority on Improved Filberts in the United States. He has worked incessantly through-out a period of seven years, experimenting, until his wonderful work has now given to the people of the United States, Filberts of the finest improved type that will produce abundantly even here in New York where the temperature has registered 5 to 10 degrees below zero, without the slightest injury to the plants or to the crop of the nuts.

C. A. Reed, Nut Culturist of the Department of Agriculture, Washington, D. C., personally inspects our Filbert nurseries from time to time each year and has watched the development from their infancy, and we are pleased to refer any of

our patrons to him. Mr. Reed gives as his opinion that our Improved Filberts are especially valuable because of the very wide range of territory and latitude in which they can be successfully grown, and that because of their hardiness they are adapted to the more Northern States, where other kinds of nut trees will not fruit successfully.

Mr. Willard G. Bixby, Treasurer of the Northern Nut Growers' Association, a student of nut culture, has also inspected our Filbert Nurseries, and predicts a wonderful future for the culture of Filberts in the United States, and that it will become one of the leading nut industries of America.

You are cordially invited to come to Rochester and inspect our Filbert Nurseries. From July to early September, you will see thousands of young plants bearing abundant crops of these wonderful nuts. To anyone interested, we say, "Come and see for yourself."

OUR PEDIGREED VARIETIES ARE ENDORSED BY THE NORTHERN NUT GROWERS ASSOCIATION AND PLANTS ARE GROWING AND FRUITING SUCCESSFULLY IN THE UNITED STATES GOVERNMENT EXPERIMENT GROUNDS AT WASHINGTON, D. C.



Improved Filberts—Actual Size.

HANDSOME AS A SHRUB—COMBINES BEAUTY WITH PROFIT.

In addition to its wonderful nut-bearing qualities (which increase each year as the bush grows larger), the Improved Filbert is one of the most beautiful of shrubs and has an important place in ornamental landscape plantings. The pride of many beautiful old European Gardens are their **Nut Walks**, and beautiful effects can be produced in your gardens by planting the Filberts each side of the walk or along drive-ways. Plants have a deep green, leathery foliage during the summer months, and are loaded with husks of delicious nuts, making a very effective contrast. The new catkins or staminate blossoms form late in the summer for the next season's crop and hang on the bushes all winter, giving a beautiful winter decoration after the foliage has gone.

CULTURE OF FILBERTS.

The Improved Filberts will thrive anywhere that the Native or Wild American Filbert will grow, which is practically the entire United States. They will grow in practically any soil that is moderately rich and well drained, and require very little cultivation, only sufficient to keep the ground free of grass and weeds. Fertilizer should be used sparingly, except where ground is very poor and stony.

When planting, cut back the tops of the bushes about one-half. All Filberts are inclined to produce suckers, or young shoots growing up from the roots during the first few years. These suckers should be removed as soon as they appear. And for commercial orchard plantings the bushes should be pruned to form low-headed trees with trunks 10 to 15 inches high, with all weak and unnecessary wood removed from the center, not merely cut back.

For garden culture or planted as ornamental shrubs the plants should be set about 6 feet apart. For screen or hedge planting set about 4 feet apart.

For commercial orchards the Improved Filberts should be set 12 feet apart each way, making 300 bushels to the acre. They begin to bear profitably the third or fourth year. We have produced over 2 pounds per bush on five-year-old bushes. Suppose we say these bushes will bear 1 pound per bush in the fifth year. It is estimated they will double in production for five years after, making a minimum production of 32 pounds per bush the tenth year. To be most conservative, figuring 25 pounds per bush at the tenth year, one acre should produce 7,500 pounds of nuts, and at 20 cents per pound make a return of \$1,500.00 per acre. This production, under proper care, will continue indefinitely.

PRICE OF THE IMPROVED EUROPEAN FILBERTS.

	Each	Per 10	Per 100
18 inches	\$2.00	\$17.50	\$150.00
2 feet	2.25	20.00	175.00
3 feet	2.75	25.00	200.00

All our plants are grown on their own roots and are absolutely true to type. They will bear the second or third year after planting, and we advise planting at least three different varieties for perfect pollenization. The nuts ripen in September and should not be gathered until thoroughly ripened, the condition indicated by the browning of the husks.

No trace of blight has appeared at any time during the ten years we have been growing our Improved Filberts, and we believe our varieties will continue immune from blight.

WE ARE THE ONLY FIRM IN ROCHESTER, N. Y., OR IN THE UNITED STATES PROPAGATING THESE IMPROVED EUROPEAN FILBERTS.

Do not be misled and confuse these with the Filberts of the American type (*Corylus Americana*), the small wild seedling Filberts, which are of little value, or with the Purple Filbert, which is ornamental but of very little nut value.

We offer the following varieties, which are the best of the 21 sorts we originally imported, and we guarantee these to be the finest in quality and equal to the best European-grown filberts.

ALTHALDENS LEBEN. A fine upright growing variety. Nuts medium size, beautiful brown color, with peculiar shaped husk. Kernel very fine flavor. Ripens early in September. Very productive, and one of the best for pollenizing other varieties.

HALLERSCHE RIESEN. This is another fine variety for pollenizing purposes. Nuts medium in size, but exceptionally well filled, and of excellent flavor. Plants conical in growth, very productive.

ITALIAN RED. One of the finest of the Improved Filberts. A very large, oblong nut of excellent flavor. Plant a strong, upright grower, very productive, ripens about September 10th.



Showing the Beauty of Improved Filberts as a Shrub.

LARGE OR EARLY GLOBE. Very fine oval-shaped nuts of large size and excellent flavor, handsome brown in color, and produced in large clusters. A very productive, fine-growing plant; one of the first to ripen in the fall.

MEDIUM LONG NUT. Medium sized oval or long nut. An erect growing bush, very hardy and productive, coming into bearing very early. Nuts mature about September 15th.

MINNA'S ZELLER. Beautiful round nut of good size and quality. Ripens very early, about September 1st. A fine grower, somewhat inclined to spread.

RED LAMBERT. Large, conical-shaped nut of extra good quality, deep reddish-brown in color. Produced in clusters. Ripens somewhat late, middle to last of September. Plant strong grower, and spreading in habit, with foliage about the same as White Lambert.

WHITE LAMBERT. One of our most beautiful Filberts. Nuts large size, beautiful in color, deep brown overcast with white or grey bloom. Very rich in flavor. Plants make a beautiful spreading bush, very ornamental, with leaves the largest of any of the Filberts.

October 15, 1920, Dr. E. F. Horine, of Louisville, Kentucky, writes: "The trees which I purchased from you last fall were quite satisfactory and have made excellent growth. Particularly was I impressed with your Improved Filberts, as more than half the trees bore from one to six nuts this first fall after planting. Kindly quote prices in dozen lots on your improved Filberts."

Budded or Grafted English Walnuts

Succeed where Seedling Trees fail. Budded or grafted on Hardy Black Walnut Stock. More vigorous, hardy in all sections, bear earlier, produce nuts in 3 to 4 years that equal the best imported sorts in size and quality. Recommended by the American and Northern Nut Growers Associations, and the U. S. Department of Agriculture as the only dependable English Walnuts to plant. We offer two of the best varieties, the Vrooman Franquette and Wiltz Mayette.

VROOMAN FRANQUETTE. Large, oblong; rich exquisite flavor, a favorite for dessert. A popular variety, highly recommended and extensively planted. Tree robust, bears abundantly and regularly. The peer of all the French varieties. 3 to 4 ft., \$2.50 each.

WILTZ MAYETTE. Considered one of the finest that reaches New York markets, where it always brings highest prices. Large, smooth, fine appearance, flesh oily, rich, sweet and very good. Tree strong, vigorous and handsome. 3 to 4 ft., \$2.50 each.

Budded or Grafted Black Walnuts

THOMAS. Originated in Pennsylvania, one of the finest and best of all large nuts in cracking qualities. Nut very large, with large kernel, and of very good quality. Tree a wonderful grower. 3 to 4 ft., \$2.50 each.



Wiltz Mayette English Walnuts.

Budded or Grafted Pecans

PECANS. Best budded or grafted varieties. Indiana, Busserson, Butterick, and Posey. 3 to 4 ft., \$2.50 each.

Seedling Nut Trees

BLACK WALNUT. Most valuable for timber; rapid grower; bears large, round nut of excellent quality. 3 to 6 ft., \$1.50 each.

ENGLISH WALNUT. Seedling trees, grown from selected nuts. Exceedingly handsome for lawn. Produce large crops of nuts, but apt to vary in size and quality. 3 to 4 ft., \$1.50 each.

JAPAN WALNUT (Sieboldi). Perfectly hardy, rapid grower; one of the finest ornamental trees. Nuts resemble butternuts, but somewhat smaller, with thinner, smoother shell. Worthy of extensive planting. 3 to 4 ft., \$1.50 each.

BUTTERNUT. Valuable for timber; bears an oblong, thick-shelled nut of delicious flavor. 3 to 6 ft., \$1.50 each.

Chestnuts

Because of Federal quarantine laws prohibiting the shipment of Chestnut trees into so many states, we are not offering these this year.

Northern Grown Apples

The Apple is the first in importance of all fruits. It will thrive on nearly any well drained soil. Its period of ripening, unlike other fruits, extends nearly through the whole year. By making a careful selection, a constant succession can be obtained. For family use there is no fruit that is more indispensable. No other fruit is so healthful. Besides this, and just as important, is the fact that the average price on the market is steadily increasing and the immense demand for home consumption, foreign shipping, canning, and evaporating assures high prices. The apple, if given the same care and attention as other farm crops, will yield greater returns per acre. The following list we consider to be the best for general planting.

Standard Apples and Crabs, grown on Best Imported French Whole Root Each 10 100
Seedlings, extra strong, selected trees, 2 and 3 year, 5 to 7 feet.....\$1.00 \$8.50 \$75.00

Summer Apples

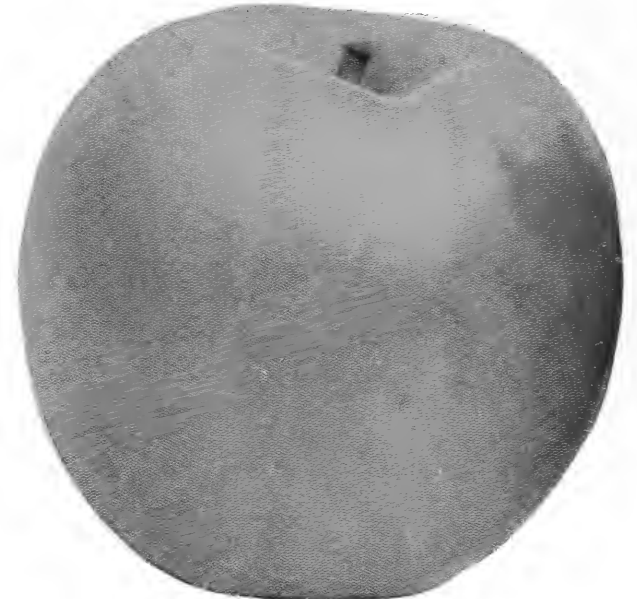
EARLY HARVEST. Medium to large; pale yellow, fine flavor. Tree moderate, erect grower; a good bearer. Middle to end of August.

EARLY CRIMSON BEAUTY. Best early red apple. Good size, white flesh, tender, juicy, pleasant flavor. Sells better than Astrachan. Very hardy, bears young, very productive.

SWEET BOUGH. One of the finest summer apples. Bears young and abundantly. Fruit is large, pale green; flesh fine, very tender, juicy, sweet, with rich flavor. (August.)

ASTRACHAN, RED. Good size, deep crimson over-spread with thick bloom. Flesh tender, juicy and rich; excellent for cooking or dessert. Tree very hardy, vigorous grower, comes into bearing while very young. (August.)

YELLOW TRANSPARENT. One of the best extra early apples for all sections. Good size, clear white, turning to pale yellow; flavor acid, very good. Bears very young, yields immense crops every year. Extremely hardy.



Winter Banana Apple.

Fall Apples

DUCHESS OF OLDENBURG. One of the best. Handsome, good size, streaked red and yellow. Excellent quality. Very hardy, bears very young and abundantly. An extra good shipper, one of the best money-makers; one of the most important varieties for all sections.

FAMEUSE (Snow Apple). One of our finest dessert fruits. Medium size, smooth, regular, deep crimson, with snowy white, tender, melting flesh of delightful flavor.

FALL PIPPIN. Very large, yellow, tender, juicy and rich. Tree vigorous.

GRAVENSTEIN. Large, greenish-yellow with red stripes. Juicy, sub-acid, aromatic; very good to best.

MAIDEN BLUSH. Medium to large; pale waxen-yellow with crimson blush. Flesh tender, juicy, sub-acid. Hardy, and a fine grower.

TWENTY-OUNCE. Very large, yellow and red; tender, juicy, crisp, sub-acid; productive.

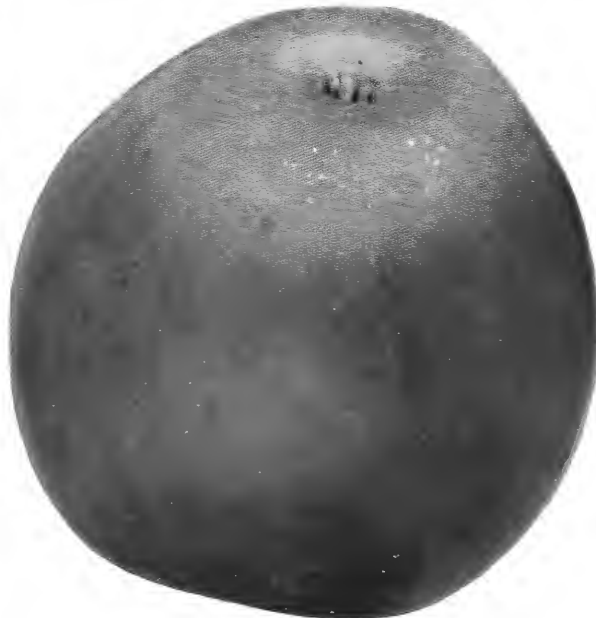
Winter Apples

BALDWIN. Large, deep red; crisp and juicy, of fine, rich, sub-acid flavor and delightful aroma. Keeps splendidly well into winter; an excellent shipper. The market always pays well for Baldwins. A quick, strong grower.

DELICIOUS. The National Dessert Apple. Successful wherever Apples grow. Large, conical shaped, beautifully colored, striped red over yellow. Flesh tender, with rich, distinctive flavor, very aromatic and pleasant to the taste. Truly Delicious. Hardy, bears young and abundantly. Brings more money per box than other sorts bring per barrel.

GOLDEN RUSSET. Medium size, clear golden russet with slight blush. Juicy and high flavored.

GRIMES GOLDEN. The most popular golden apple, prized for its beauty and quality. Golden, transparent yellow, tender, rich and delicious; keeps well without losing any of its crispness or flavor. One of the best for fancy box trade.



Stayman's Winesap Apple.



Yellow Transparent Apples.

A Well Pleased Customer

Easton, Pa., Sept. 13, 1920.

It is with a sense of pleasure that I am writing to tell you of the good fortune I have had with the trees ordered from you in the Spring, 1919. One of the Dwarf Duchess of Oldenburg apple trees, planted on May 16, 1919, was fifty-one inches tall on August 19, 1920, and bore eight well formed apples this season. I have one other of this same variety, forty-one inches tall, which bore seven apples. Of the same lot of stock ordered last year there are still others that have borne or still bearing apples this season. This speaks well for Hall nursery stock, and now that the stock is fruitful it has given me an opportunity to know that the stock is true to name.

COLLINS TRITTENBACH.

WINTER APPLES

—Continued.

R. I. GREENING. A great and constant bearer in nearly all soils and situations. Large, greenish-yellow; flesh yellow, fine grained, tender, crisp, juicy, sub-acid; fine for cooking. Excellent variety to grow with Baldwin for the commercial orchard.

ROME BEAUTY. Large, handsome, bright red apple. Flavor and quality are above average. Comes into bearing in three years, and never fails to have heavy crops each year.

SPITZENBERG (Esopus.) Medium, dull red; flesh yellow, firm, juicy, delicious, sub-acid.

STAYMAN'S WINESAP. Truly a great apple. Dark, rich red, striped with yellowish green. Firm, fine grained, exceedingly juicy and spicy. Wonderfully productive.

HUBBARDSTON (Nonesuch or American Blush). Large, striped yellow and red; tender and juicy.

JONATHAN. Brilliant red apple of high flavor. Juicy, fine-grained, tender. Productive; bears young.

KING OF TOMPKINS COUNTY. Superb red apple of extraordinary size and fair quality.

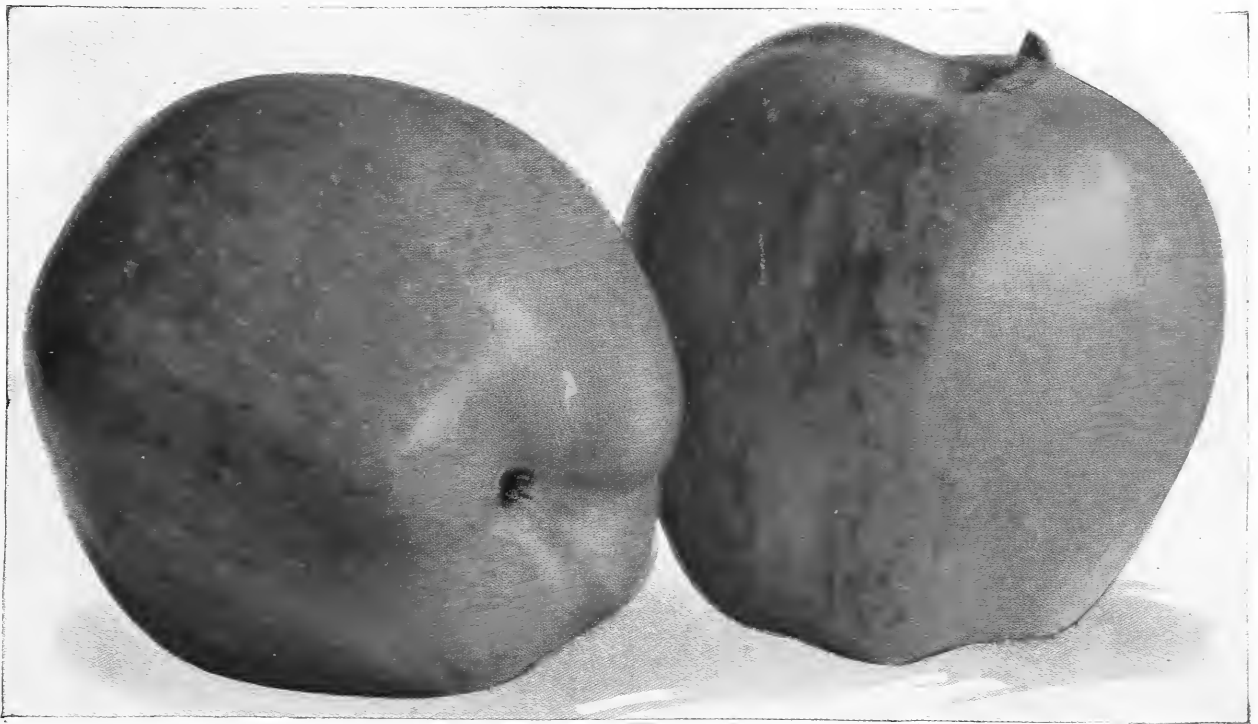
McINTOSH RED. Fruit bright red, wondrously beautiful, with tender white flesh of splendid flavor and highest quality; juicy and aromatic. An excellent shipper. Tree most hardy and vigorous; will bear in three to four years, and has heavy crops. Adapted to a wide range of territory.

NORTHERN SPY. Red, usually striped with yellow. Tender, crisp, highest quality. One of the best.

NORTHWESTERN GREENING. Tree vigorous, strong grower, productive. Fruit greenish-yellow, large, mild, sub-acid. Very hardy.

TALMAN SWEET. The best winter sweet apple. Medium, pale whitish-yellow; flesh white, fine grained; much esteemed for baking and cooking.

WEALTHY. One of the best money-making sorts. Bears young. Heavy crops annually. Brilliant red, large and handsome. Splendid quality. Good keeper. Extremely hardy. One of the most profitable varieties.



Delicious Apples.

WINTER BANANA. An excellent new apple. Very showy in appearance, large size, roundish, deep yellow with red cheek, heavily waxed; attracts attention at once. Tender and delicious, with banana perfume.

WOLF RIVER. Highly colored red giant show apple. Flesh white, sub-acid, good quality. Tree very hardy and productive, bears early and annually; a most profitable commercial variety: 80 to 100 apples fill a bushel box.

Crab Apples

HYSLOP. Large, dark red, sub-acid.

TRANSCENDENT. Large, yellow with crimson cheek.

WHITNEY. Large, greenish, striped with carmine. Juicy and rich.

Dwarf Apples

Price of Dwarf Apples, \$1.25 Each.

We can furnish the following varieties in Dwarf Apples; for descriptions of fruit see same varieties under Standards.

Yellow Transparent
Duchess of Oldenburg
McIntosh Red
Red Astrachan

Wealthy
Baldwin
Rhode Island Greening
Delicious

Plums

	Each	10	100
Extra fine, selected trees, 2 and 3 yr., 5 to 7 ft.	\$1.25	\$11.50	\$100.00

BEAUTY OF NAPLES. New, large greenish-yellow, very sweet; excellent flavor.

BRADSHAW. Large, handsome, bluish-purple; juicy, excellent. Very productive.

FELLEMBURG (Italian Prune). Largest size, superb quality; rich, juicy, very sweet; productive.

GRAND DUKE. One of the best late plums. Dark, violet red; juicy, sweet, and mild.

GERMAN PRUNE. Grows to perfection everywhere; very hardy, very productive. Large, dark blue with dense bloom; juicy, sweet, rich and pleasant.

LOMBARD. Most popular and widely planted variety in America. Large, violet-red, juicy and good.

MONARCH. Large, dark purple, delicious quality, juicy, very free from stone. Tree strong grower, bears

young, yields abundant crops. One of the most valuable and profitable varieties.

REINE CLAUDE (Green Gage). Large, juicy, melting, sugary, delicious. Hardy and very productive.

SHIPPER'S PRIDE. Very large, dark purple, juicy, sweet, fine quality. Excellent for all purposes.

SHROPSHIRE DAMSON (Prune Damson). Most popular Damson in America. Does well everywhere.

YELLOW EGG. Large, golden-yellow, sweet and mild.

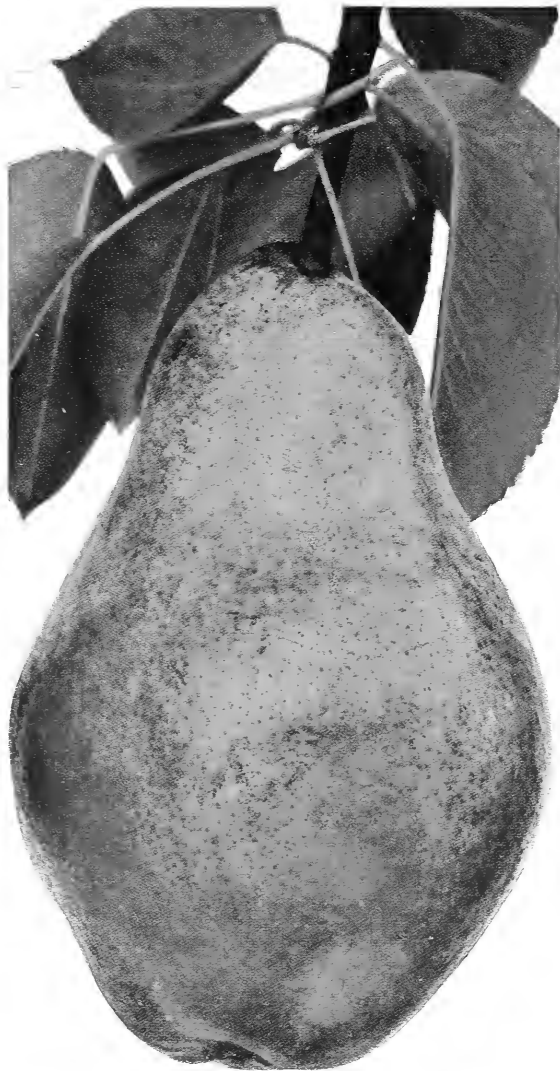
Japanese Varieties

ABUNDANCE. Large; amber, turning to bright red. Juicy, tender, delicious; freestone. Hardy, productive.

BURBANK. Very large, rich dark red; tender, very juicy, rich, sweet, and aromatic. Hardy, productive.



Wealthy Apple.



Bartlett Pear.

The Hale Peach

King of All Peaches. Combines all qualities most desired, either for home or market. Brilliantly colored, deep golden yellow with carmine blush. Skin thick, without fuzz, smooth as an Apricot. Flesh deep yellow, firm, fine grained, tender, melting, luscious flavor. Very solid and heavy peach of immense size, fully one-half larger and harder than Elberta; enormously productive. Perfect freestone. Wonderful keeper and shipper. Sells for one-third more than ordinary sorts.

Quinces

Extra strong 2- and 3-year, 4 to 5 feet: Each, \$1.25; ten, \$11.50; hundred, \$100.00.

ORANGE (Apple). Best of the older sorts. Very large, bright golden yellow, fine quality.

REA'S MAMMOTH. Larger than Orange, tree more vigorous and productive. Ripens very early.

Apricots

SUPERB. The best Apricot now offered. Perfectly hardy, has no superior in productiveness. Beautiful yellow with slight blush; flesh firm and solid. One of its many desirable traits is its long season, covering a period of three weeks. Price, \$1.00 each.

New York City, March 27, 1921.

The several hundred fruit trees purchased from you over a year ago have proved very satisfactory. GEO. C. VEDDER.

Pears

Price of Standard Pears (except Beurre Bosc)—Extra fine, selected trees, 2 and 3 yr., 5 to 7 ft. Each 10 100
 \$1.25 \$11.50 \$100.00

Summer Pears

BARTLETT. General favorite. Large, beautiful and excellent; yellow, tinged with red; buttery and melting; rich, musky flavor.

CLAPP'S FAVORITE. Large, showy, fine looking pear of good quality, profitable for market. Golden yellow with red cheek; melting, juicy, with sweet, delicate flavor.

Autumn and Winter Pears

BEURRE D'ANJOU. Equals Bartlett in quality. Large, handsome, greenish-yellow blushed with crimson. Tree hardy, succeeds everywhere, bears heavy crops.

BEURRE BOSCH (Thanksgiving Pear). Extra large, superb quality. Deep russet yellow. Flesh white, rich and delicious. Keeps well until Christmas. Price, \$1.50 each.

CLAIRGEAU. Valuable for market. Smooth yellow skin shaded with orange and scarlet; flesh yellow, juicy, aromatic. Bears early and abundantly.

DUCHESS D'ANGOULEME. Large, greenish yellow; tender, buttery. Best as dwarf.

FLEMISH BEAUTY. Large, beautiful, juicy, melting, rich and fine. Strong

grower and good bearer; hardy everywhere. (September and October.)

KIEFFER. Wonderfully abundant regular bearer. Always sells at good prices. Golden yellow when ripe; flesh white, crisp, juicy.

LAWRENCE. Medium to large, golden yellow, with melting, aromatic flesh. Unsurpassed as an early winter pear. Tree hardy, healthy and productive, bearing large crops annually. (November.)

SECKEL (Sugar Pear). Small, finest flavor; excellent for pickling and dessert.

SHELDON. Medium size, round, russet and red, melting, rich, very juicy, delicious. Fine for dessert; very productive; keeps well; October.

WORDEN-SECKEL. An improved Seckel; golden yellow with bright crimson cheek; flesh white, buttery, fine grained, and melting; tree an upright, vigorous grower, very hardy, abundant bearer.

Dwarf Pears

2- and 3-year, extra fine, 3 to 4 feet: Each, 85c; per 10, \$7.50; per 100, \$65.00.

Varieties: Bartlett, Beurre D'Anjou, Clapp's Favorite, Duchess D'Angouleme, Clairgeau, Seckel, Worden-Seckel.

Peaches

Strong, selected trees, 4½ to 6 feet. Each 10 100
 \$0.60 \$5.00 \$40.00

BELLE OF GEORGIA. Uniformly large and showy, skin white with red cheek; flesh firm, white, excellent flavor. Very prolific bearer, fine shipper, a most profitable commercial variety in the North as well as the South. Ripens with Crawford Early.

CARMAN. Large, yellow, with deep blush. Fine flavor. Extra hardy; bears heavy. Nearly free.

CHAMPION. Best white freestone. Delicious flavor, sweet, rich, juicy. Hardy and productive.

CRAWFORD'S LATE. Very hardy; large, yellow, rich, sweet, free. September.

CRAWFORD'S EARLY. Very large, yellow, rich, sweet, luscious; free. Sept.

EARLY ELBERTA. Golden yellow with red blush. Ten days ahead of Elberta; larger, more highly colored, better quality; splendid shipper. Extra hardy, and a heavy and reliable bearer. Free.

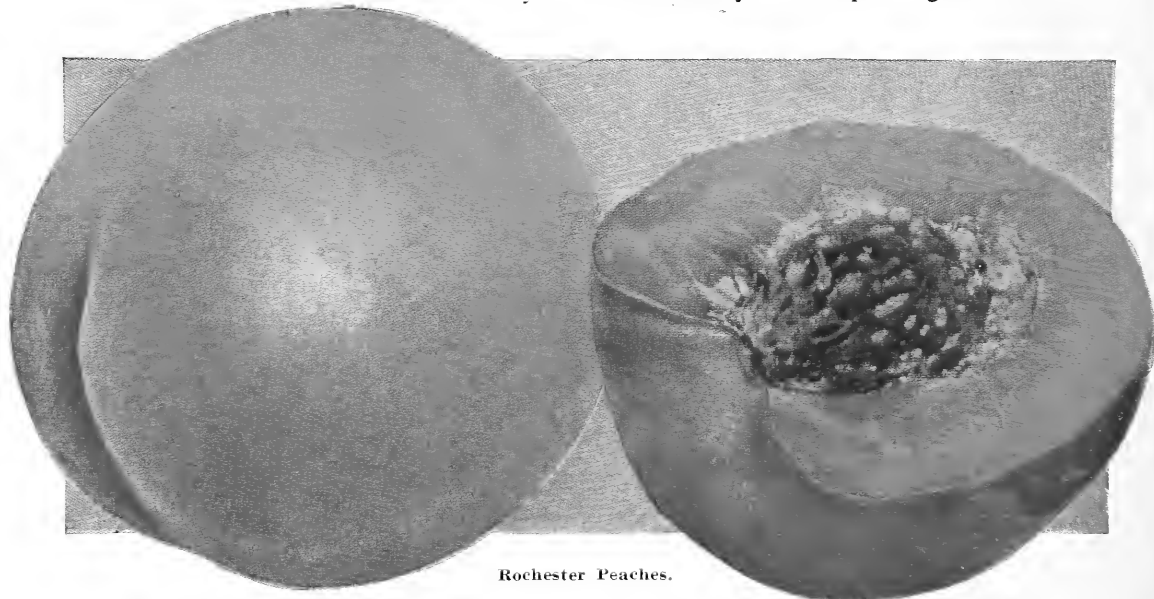
ELBERTA. One of the finest yellow freestones. The standard market sort both North and South; a big money maker.

GREENSBORO. Extra large, very early. White with crimson blush. Good flavor. Extremely hardy, productive. Semi-cling.

MOUNTAIN ROSE. Early white freestone; one of the best. Large, juicy, rich.

The Celebrated Rochester Peach

Earliest and best yellow freestone for home or market. Ripens two weeks before Early Crawford, when there is no other yellow freestone of quality on the market; commands double the price of any other variety of its season. Beautiful golden yellow and red peach of immense size, solid and heavy; very highly flavored, juicy and delicious; far sweeter than Crawford. Exceptionally hardy, more productive than Elberta and usually bears the second year after planting.



Rochester Peaches.



Montmorency Cherries.

Sweet Cherries

Extra fine, selected trees, 2 and 3 year, 5 to 7 feet Each 10 100
 \$1.25 \$11.50 \$100.00

BING. A new black cherry; size large; color blackish-purple; flesh very solid and of the highest flavor.

BLACK TARTARIAN. This fine old variety produces immense crops of very large, purple-black fruits of high quality; juicy, meaty, mild and sweet.

GOVERNOR WOOD. Very large, rich; light yellow with red cheek; juicy and sweet. One of the very best.

NAPOLEON. Very large, yellow and amber with bright red blush; flesh firm; juicy and delicious. Bears enormous crops.

SCHMIDT'S BIGGAREAU. Unsurpassed in size. Glossy black, flesh crisp, firm, juicy, sweet, rich flavor.

WINDSOR. Large liver-colored cherry, remarkably firm and good.

YELLOW SPANISH. Large, pale yellow with light red cheek; firm and delicious.

Sour Cherries

Extra fine, selected trees, 2 yr., 5 to 6 ft., Each, \$1.00; ten \$9.00; hundred, \$80.00.

EARLY RICHMOND. Medium size, dark red, melting and juicy, acid flavor. Very hardy, exceedingly productive.

ENGLISH MORELLO. The standard late sour cherry. Large and handsome, dark red, becoming almost black. Fruit good quality, tender, juicy, acid, rich.

MONTMORENCY. Beautiful, large, red, acid cherry of great value, very profitable; more largely planted for market than any other. Hardy, vigorous, very productive; the greatest money-maker in the list.

Grapes

Extra strong select 2 yr. vines with long tops and good roots. Price, except noted, 50 cents each; \$4.00 per 10. If by parcel post, add 2 cents per plant.

BRIGHTON (Red). Large bunch and berry. Highest quality. Hardy.

CACO (Catawba Concord). A perfectly hardy grape that equals the finest hot-house product in its delicious quality and melting texture. Beautiful large berries, wine-red, with abundant bloom, rich in sugar. Bunch good size, compact and of good form. Ripens before Concord. Vines very strong growers, healthy, and prolific bearers. Price, 75 cents each.

CAMPBELL'S EARLY. New Early Black Grape; most valuable for market. Flavor rich, sweet. Bunch and berry extra large.

CATAWBA. One of the best late keepers, lasts till February or March. Fine quality, largely used for wine and champagne. Large, coppery-red berries, purplish when fully ripe.

CONCORD (Black). The great Business Grape; succeeds everywhere. 35 cents each; \$3.00 per ten; \$25.00 per hundred.

DELAWARE. A delicious little red table grape; juicy, sweet, hardy, productive.

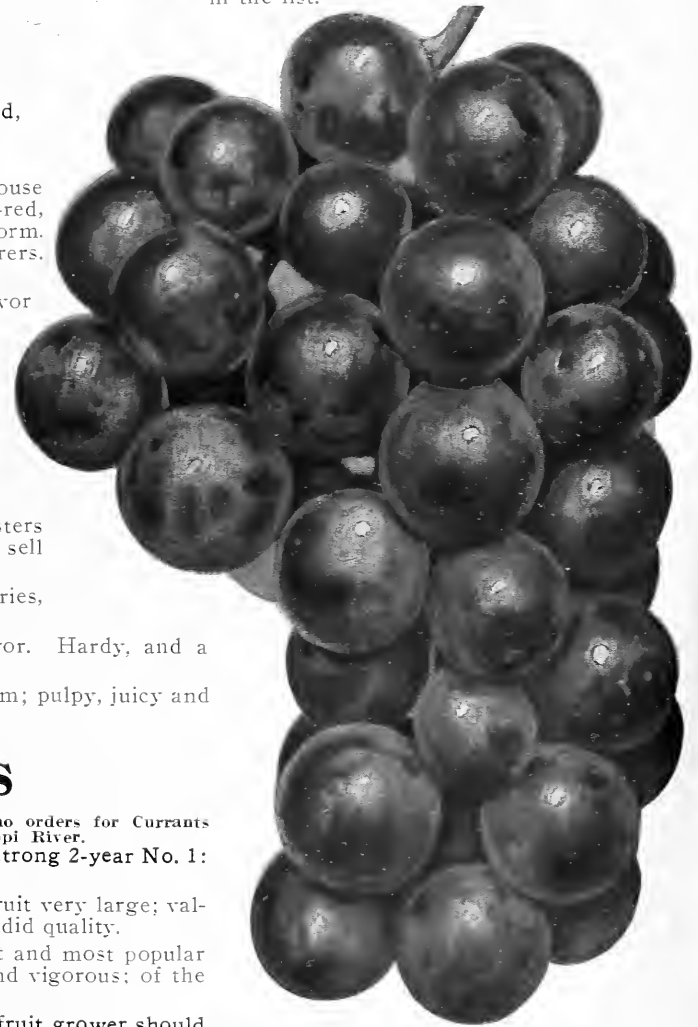
DIAMOND. Delicious early white grape; large, juicy, rich. Hardy; productive.

LUCILE. New red grape. Extra hardy; crops exceed Concord. Good quality, clusters and berries large, attractive in form and color. The beauty of the fruit will always sell it at extra high prices.

MOORE'S EARLY. Ten days earlier than Concord. Large, purplish-black berries, sweet and very good. Extremely hardy.

NIAGARA. The leading white grape for market. Bunch and berry large, fine flavor. Hardy, and a great yielder.

WORDEN (Black). Bunch large and compact, berry round, black with blue bloom; pulpy, juicy and very pleasant; ripens several days earlier than Concord.



Lucile Grape.

Currants

NOTE.—On account of Federal quarantine, no orders for Currants can be accepted for shipment West of Mississippi River.

Price of Currants (except noted), Extra strong 2-year No. 1: Each, 35 cents; ten, \$2.50; hundred, \$20.00.

CHERRY. The standard red Currant. Fruit very large; valuable alike for market and garden; splendid quality.

FAY'S PROLIFIC. One of the very best and most popular red Currants. Very productive, hardy and vigorous; of the finest quality.

PERFECTION (New). One every small fruit grower should have. Originated at Rochester, N. Y., awarded the Barry Gold Medal and other first prizes. Hardy, very productive. Color an attractive red; flavor and quality the best; juicy, tender, sprightly, sub-acid. Clusters long and compact; berries are uniformly large to the tip of cluster. 50c each; \$3.50 per 10; \$25.00 per 100.

RED CROSS. A strong growing variety. Cluster long; berry medium to large, bright red; quality good to best. Exceedingly productive, and currants are of large size. Sweeter than ordinary currants.

WHITE GRAPE. Greatest of the white varieties. Delicious, mild, excellent quality; good for table use; very distinct and valuable. Immensely productive.



Blowers Blackberry.

Blackberries

BLOWERS. The Best Blackberry. Hardest and most productive of all. Brings highest prices on the market. Berries rich in quality and quantity, big and luscious. Also Eldorado and Rathbun. Price, strong root cuttings, not sucker plants, \$1.50 per doz., \$7.50 per 100. If by parcel post, add 1 cent per plant.

Gooseberries

NOTE. On account of Federal Quarantine, no orders for Gooseberries can be accepted for shipment West of Mississippi River.

Strong 2- and 3-year plants.

CHAUTAUQUA. Light yellow, largest size, 1 to 1½ inches in diameter; very sweet and delicious. 50c each; \$4.00 per 10.

DOWNING. The Business Gooseberry. Pale green; juicy, sprightly and sweet. Strong grower, very productive. 35c each; \$3.00 per 10.

RED JACKET. (Josselyn.) The best of the American sorts, as large as the largest English variety. Strong, vigorous grower, hardy, wonderful cropper. Berry rich, juicy, highest quality. 50c each; \$4.00 per 10.

Note.—If by parcel post add 2 cents per plant.

Strawberries

Extra fine plants from fresh, new propagating beds. Price of Strawberries, postpaid, \$1.00 per 25; \$2.00 per 100; \$12.00 per 1,000.

PROLIFIC. (New.) Originated at New York State Experiment Station; considered so desirable a commercial variety that it is being planted extensively. Perfect blossom. Plants vigorous and very productive; have yielded 14,502 quarts per acre. Fruit matures in mid-season, ripening period long; easily picked; berries very large, retaining size well as season advances. Color handsome, bright scarlet; flesh firm, well colored at center, juicy, pleasantly acid, aromatic; of good quality. On account of the vigor and productiveness of the plants and the attractiveness of the large, uniform, well colored berries, Prolific is well worthy of commercial planting. Also Brandywine, Glen Mary, Parsons Beauty, Big Joe and Senator Dunlap.

Everbearing Strawberries

Price, \$1.50 per 25; \$2.50 per 100 (except where noted), postpaid.

PROGRESSIVE. Bears heavily the first summer and fall. Berry rather long, dark red, good quality, extra sweet; good shipper. Recommended by Horticultural Societies everywhere. Perfect blossom.

SUPERB. Produces splendid fruit; with us outyields all other fall bearers. Berries very large, dark red, finest flavor. Perfect blossom.

NEVERFAIL. New Everbearing Strawberry. Originated by D. J. Miller, Millersburg, Ohio. The most vigorous plant maker, most productive and profitable fall-bearing variety. Berries large, holding size well until the last berries ripen, beautifully colored, flesh dark red and of excellent flavor. Price, \$2.00 per 25; \$6.00 per 100, postpaid.

Raspberries

Red and Purple Varieties

Price of Raspberries (except where noted), \$1.00 per doz.; \$4.00 per 100.

Note.—If by parcel post add 1 cent per plant.

COLUMBIAN. Fruit very large; color dark reddish purple; adheres firmly to the stem; seeds small; has a distinct flavor of its own, making it a most delicious table berry. For canning purposes it is much superior to any other. Bears enormous crops.

CUTHBERT or QUEEN OF THE MARKET. Large, rich crimson; sweet, rich, luscious. Leading market variety for main crop. Hardy.

HERBERT. The Raspberry with the real Raspberry flavor. Takes first place in hardiness. Bright red; very sweet and juicy. Enormously productive. Price, \$1.25 per doz.; \$5.00 per 100.

GOLDEN QUEEN. Large, beautiful translucent yellow color and exceptionally firm; very productive. The canes are of the strongest growth and quite hardy. Price, \$1.25 per doz.; \$5.00 per 100.

EARLY JUNE. Earliest of all Red Raspberries, and the most valuable early variety. Ripens in June. Fruit large, quality the best, and one of the most productive. Keeps and ships well and on account of its early bearing, brings the highest prices. Price, extra strong plants, \$1.25 per doz.; 100, \$5.00.

ERSKINE PARK. A New Everbearing Red Raspberry for which there will be an immense demand as soon as its merits are known. A seedling of the Cuthbert, originated at Erskine Park, the Estate of Geo. Westinghouse, at Lee, Mass. Berries very large for a Red Raspberry, conical, juicy and of fine flavor. Price, \$2.50 per doz.; 100, \$10.00.

ST. REGIS (Ranere) EVERBEARING RED RASPBERRY. Greatest money maker ever produced. Bears fruit four months first season planted. Begins to ripen middle of June. Wonderfully prolific, main crop as great as any other red variety, summer or autumn crops full to heavy pickings all the time. Berries large, firm and full flavored until the very last; rich, sugary. Hardy.

Black Raspberries

Price, \$1.00 per dozen; \$4.00 per 100. Note.—If wanted sent parcel post add 1 cent per plant.

CUMBERLAND. Largest of the Black Caps. The most profitable variety for main crop. Fruit firm, fine quality. Very hardy.

PLUM FARMER. Wonderful new berry, one of the best for all sections. Hardy and very productive. Matures early.

Asparagus

Strong 2-year plants, \$1.00 for 25; \$2.50 per 100.

GIANT ARGENTEUIL. Very early, produces heavy crops of the largest white stalks. Makes good show in market, always brings the best prices.

CONOVER'S COLOSSAL. Standard kind of first quality.

PALMETTO. Fine early variety of large size.

Note.—If by parcel post add 25 cents per 100 plants.

Rhubarb

Strong 2-year whole roots.

STRAWBERRY RHUBARB. Early, tender, without being in the least tough or stringy; color a beautiful strawberry red. 25c each; 10 for \$2.00.

CHAMPAGNE RHUBARB (New). Excels all in size, flavor, and delicate tenderness of its crimson stalks. Brings highest market price. 35c each; 10 for \$2.50.

Note.—If by parcel post add 2 cents per plant.

Early June Raspberries.



Prolific Strawberries.



Cumberland Raspberries.

Deciduous Trees for Shade and Ornament

BIRCH, CUT LEAF WEEPING. Tall, slender, vigorous growth; graceful, drooping; bark silvery white; foliage delicately cut. 6 to 8 feet, \$2.50 each.

BEECH, PURPLE (Copper Beech). Highly ornamental and desirable lawn tree. Dark purplish foliage, a striking contrast to the green of other trees. 3 to 4 feet, \$3.00 each.

CATALPA BUNGEI. (Umbrella Catalpa.) A unique tree, desirable for lawn and park. Makes an umbrella-shaped top without pruning. Perfectly hardy. 6 to 7 feet, \$2.50 each.

CATALPA SPECIOSA. One of the most beautiful lawn or street trees, also valuable for timber. Very rapid growing. Has magnificent flowers early in spring. 8 to 10 feet, \$1.00 each.

CORNUS FLORIDA. (White-flowering Dogwood.) American variety of irregular habit, with spreading, open top. The flowers are white, produced in May, followed by scarlet berries and gorgeous autumnal coloring of the leaves. 3 to 4 feet, 85c each.

CORNUS FLORIDA RUBRA. (Red-flowering Dogwood.) This merits all of the favor which has been shown it by the public. The flowers are like *Cornus florida*, except that they are a deep rose color, freely produced. A fit companion to the white form. 3 to 4 feet, \$2.00 each.

CRAB, BECHTEL'S DOUBLE FLOWERED. In early spring covered with beautiful double pink fragrant flowers. 3 to 4 feet, \$1.50 each.

CRAB, FLORIBUNDA. One of the handsomest and most satisfactory of all flowering trees. Blooms every year without fail. Rose red flowers in great profusion in May. 3 to 4 feet, \$1.50 each.

CRAB, PARKMANI. Bright rose-colored flowers hang on long, slender stems. One of the showiest. 3 to 4 feet, \$1.50 each.

ELM, AMERICAN WHITE. Noble, spreading, drooping tree. One of the grandest park and street trees. 8 to 10 feet, \$1.50 each; 10 to 12 feet, \$2.00 each.

ELM, CAMPERDOWN. One of the best weeping trees. Large, glossy, dark green leaves overlapping to form compact, roof-like head. 6 to 7 feet, \$2.50 each.

HORSE CHESTNUT. Has magnificent spikes of white flowers. 6 to 8 feet, \$2.00 each.

LINDEN, AMERICAN. (Basswood.) Rapid growing; large, fragrant flowers. 7 to 8 feet, \$1.50 each; 8 to 10 feet, \$2.00 each.

LINDEN, EUROPEAN. Fine pyramidal tree, large leaves, fragrant flowers. Smaller than American Linden, more valuable for lawn planting. 7 to 8 feet, \$1.50 each; 8 to 10 feet, \$2.00.

MAPLE, Sugar or Rock. Excellent shade tree of large size. Its stately form, rapid growth and fine foliage make it a desirable tree for street, park or lawn. 8 to 10 feet, \$2.00 each; 10 to 12 feet, \$2.50.

MAPLE, Silverleaf, or Soft Maple. Fast growing, succeeds everywhere; in big demand where immediate shade is required. 8 to 10 feet, \$1.25 each; 10 to 12 feet, \$1.75.

MAPLE, Norway. (Hard Maple.) Most popular shade tree in America. Ideal for street, drive or lawn. Large, handsome tree of fairly rapid growth, with symmetrical round head, broad, shining foliage of deep rich green. 8 to 10 feet, \$2.50 each; 10 to 12 feet, \$3.00.

MAPLE, Schwedler's Purple. Very large bronze-red leaves and young shoots of same color. Vigorous growing, handsome ornamental tree. Its beautiful foliage attracts attention at all seasons. 8 to 10 feet, \$3.50.

MOUNTAIN ASH, European. Fine, hardy tree, covered from July till winter with clusters of bright red berries. Very ornamental. 8 to 10 feet, \$2.00 each.

MULBERRY, Downing. Rapid grower. Bears mild, pleasant berries of good quality. 5 to 7 feet, \$1.50 each.

MULBERRY, Tea's Weeping. Perfectly hardy; fine lawn tree; forms natural umbrella-shaped top. 6 to 7 feet, \$2.50 each.

PLANE, Oriental. Leaves heart-shaped at base, deeply cut. Is among our tallest trees, growing rapidly into massive proportions. Hardy and free from disease. 8 to 10 feet, \$1.50 each.

POPLAR, Carolina. Rapid grower; large, glossy leaves; fine for shade. 8 to 10 feet, 75c each; 10 to 12 feet, \$1.00 each.

POPLAR, Lombardy. A picturesque and ornamental tree, useful in landscape work for screen purposes and to break the average height and form of other trees. Tall, spire-like form, very rapid grower. 8 to 10 feet, 75c each; 10 to 12 feet, \$1.00 each.

PRUNUS PISSARDI. (Purple-Leafed Plum.) One of the finest small trees with colored foliage. Covered with small white single flowers in early spring. 4 to 5 feet, \$1.25 each.

SALISBURIA. (Maidenhair.) A rare, beautiful tree with remarkable fern-like foliage. Rapid growing, highly desirable lawn tree. 6 to 8 feet, \$1.50 each.

THORN, Paul's Double Scarlet, and Double White. Highly ornamental both in foliage and flowers. 3 to 4 feet, \$1.75 each.

WILLOW, Babylonian. (Weeping Willow.) An old favorite. Tall, graceful, drooping tree with wavy, bright green foliage. 6 to 8 feet, \$1.00 each.

WILLOW, Golden. Upright growing, very showy variety with golden bark of high color, very conspicuous in winter. 6 to 8 feet, \$1.00 each.

Glen Echo, Md., 8-17-21.

Kindly send your catalog to Mrs. M. B. Woodward. She has seen my trees and shrubbery ordered last year from you. Everything I purchased from you has been an entire success, most beautiful roses, and fruit trees are flourishing splendidly.

MRS. PEARL V. THOMAS.

Sussex, N. J., May 2, 1921.
Bought some trees and shrubs of you some years ago and have not forgotten that same were very satisfactory. Please send catalog for this year.

A. A. DRAKE.

New York City, Sept. 23, 1921.
I bought a bunch of trees from you last fall that you shipped to Paris, Mo., over a hundred trees and every one came through the winter and were 100 per cent good this summer. Why should I want to change nurseries under the circumstances?

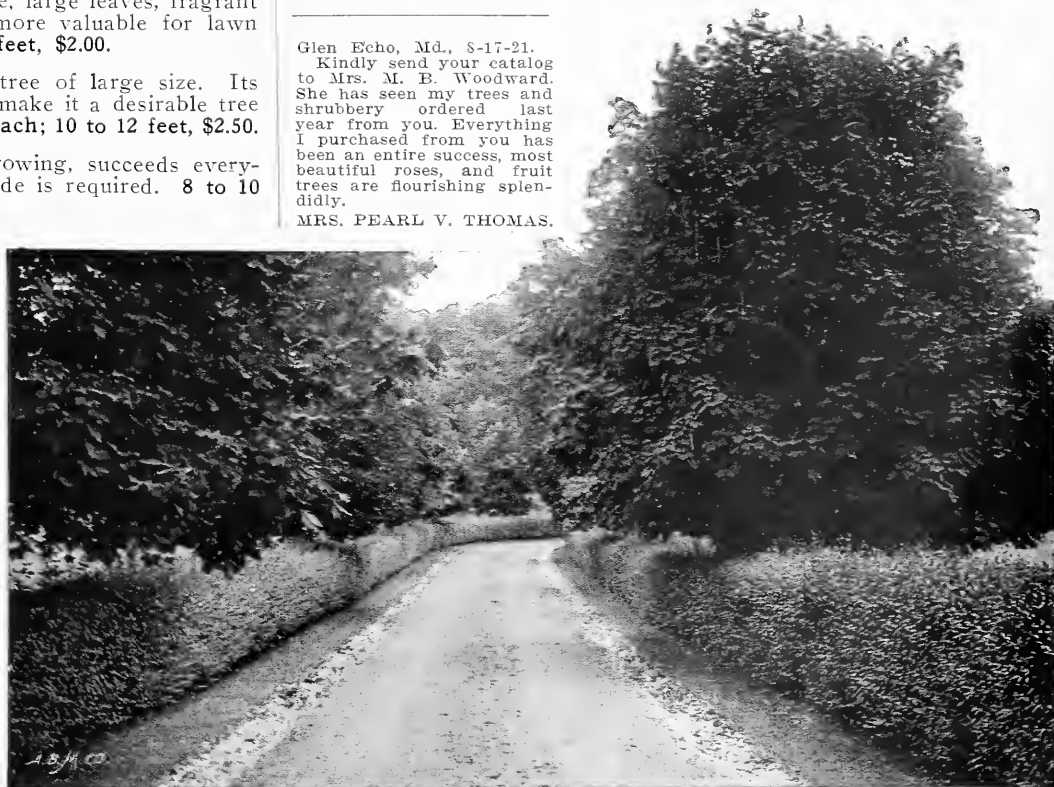
D. N. BOATNER, D. D. S.

Harrisburg, Pa., Nov. 3, 1920.
More than pleased with the condition and appearance of the trees. You may count on me for future orders and we are also recommending you to our friends.

JOHN W. SWARTZ.

Rochester, Pa., May 2, 1921.
Trees arrived in good condition and look like very fine trees, much nicer than I got before from another concern.

T. S. ARNOLD.



A Very Attractive Roadway—Norway Maples and Privet Hedge Used.



Hydrangea Paniculata Grandiflora.

Hardy Ornamental Shrubs

Strong 2- and 3-year specimens. Price of shrubs (except where noted), 50c each.

ALMONDS. Pink Double Flowered and White Double Flowered. Covered with small rose-like blossoms in May. Price, \$1.25 each.

ALTHEA, ROSE OF SHARON. Large, bell-shaped flowers in August and September. Colors white, red, purple.

Tree Form. The Althea, as a shrub, is fine and attractive, but grown in tree form becomes doubly beautiful and interesting. It is hardy and of easy cultivation. Colors same as preceding. Price, \$1.00 each.

BARBERRY THUNBERGII. (See description under Hedge Plants.)

CALYCANTHUS—SWEET SHRUB. Flowers in June of a rare chocolate color; deliciously fragrant.

BUDDLEIA. Everblooming Butterfly Bush or Summer Lilac. (Flowers very sweet and fragrant, blooming in spikes of 6 to 10 inches long, continuing all summer until frost comes.)

CLETHRA ALNIFOLIA. (Sweet Pepper Bush.) Very hardy. Flowers pure white, richly perfumed.

DEUTZIA GRACILIS. Dwarf grower, covered with white flowers in June.

DEUTZIA, PRIDE OF ROCHESTER. Very large double white flowers; blooms profusely.

DEUTZIA CRENATA. Double white flowers tinged with rose color.

DEUTZIA LEMOINE. Pure white flowers on stout, upright branches. Dwarf grower, very free flowering.

ELDER, GOLDEN. Golden green foliage when planted in sun. White blossoms followed by handsome berries.

EUONYMUS ALATUS. (Winged Burning Bush.) One of the most brilliant plants in the landscape in the fall, with its bright red leaves and berries. Branches winged with a corky layer. Fine specimen shrub or for massed plantings. 3 to 4 feet, \$1.00 each.

EUONYMUS EUROPAS. (European Spindle Tree.) Bright yellow flowers in spring, followed by clusters of brilliant red berries which hang till mid-winter. Leaves turn to beautiful crimson scarlet in fall. 3 to 4 feet, 75c each.

FORSYTHIA FORTUNEL. (Golden Bell.) Upright growing shrub with deep green foliage. Drooping yellow flowers early in the spring before leaves appear.

FORSYTHIA SUSPENS. (Weeping Golden Bell.) Similar to above but branches droop like arches of gold.

HYDRANGEA ARBORESCENS STERILIS. (Hills of Snow.) Grand, new, everblooming. Perfectly hardy. Enormous snow white flowers. 75c each.

HYDRANGEA PANICULATA GRANDIFLORA. Hardy in all sections. Flowers immense; greenish white, changing to pure white and turning pink with age. Price, 75c each.

HYDRANGEA P. G., Tree Form. Same as above but in tree form with but a single stem. Very desirable. Price, \$1.50 each.

UPRIGHT HONEYSUCKLES. Make very desirable and attractive shrubs, with bright flowers followed by showy berries in the fall. Varieties as follows:

Fragrantissima. Small pink and white fragrant flowers appearing early in the spring, before the leaves.

Grandiflora Rosea. Bright pink flowers.

Morrowii. Pure white flowers, followed by bright red fruit.

Pink Tartarian. Pink flowers in June.

White Tartarian. Creamy white, very fragrant flowers.

Ruprechtiana. Fine variety with showy white flowers, and valuable for its showy red fruit.

KERRIA JAPONICA. (Globe Flower.) Orange yellow double flowers. Handsome.

LILAC, Purple. Bluish purple flowers. Standard variety; always good.

LILAC, White. Cream-colored flowers; very fine.

LILAC, Charles X. Large, shining leaves; flowers large, single, reddish purple. \$1.00 each.

LILAC, Lemoine. A choice variety, bearing large clusters of double white flowers. \$1.00 each.

LILAC, Ludwig Spaeth. New, and believed to be the finest of the class. Color, purplish red. \$1.00 each.

LILAC, Pres. Grevy. Very large blue flowers; largest of all. \$1.00 each.

PHILADELPHUS CORONARIUS. (Common Syringa or Mock Orange.) Pure white, highly-scented flowers; blooms very early.

PHILADELPHUS FOLIIS AUREUS. (Golden Syringa.) The best golden-leaved shrub. 75c each.

SYMPHORICARPOS RACEMOSUS. (Snowberry.) Very ornamental hardy shrub. Small pink flowers, followed by large, waxy white berries which persist into mid-winter.

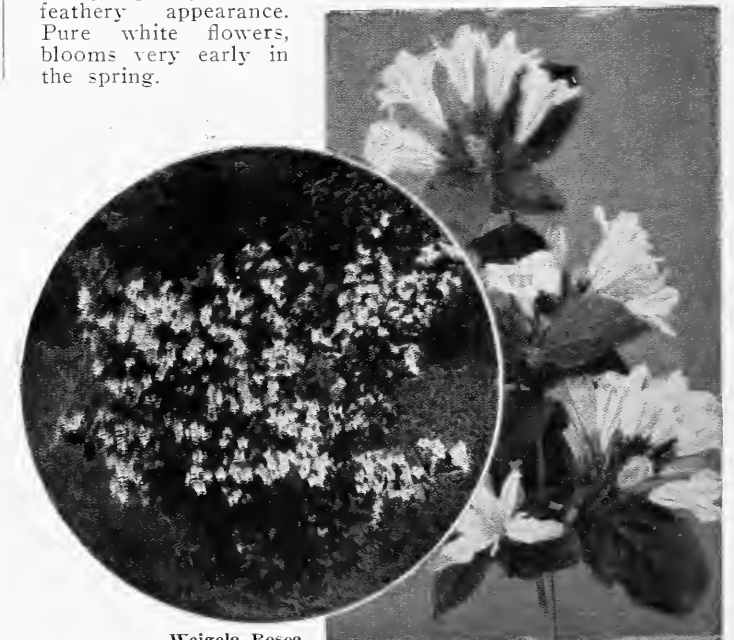
SYMPHORICARPOS VULGARIS. (Coral Berry.) Vigorous, quick-growing shrub, similar to Snowberry except its fruit is red.

SPIREA, Anthony Waterer. New, dwarf-growing variety, crimson flowers; blooms all season. Useful in foundation plantings in front of other shrubs. 75c each.

SPIREA Billardi. Fine foliage, with spikes of red colored flowers during summer and fall.

SPIREA Prunifolia. (Bridal Wreath.) A superb old-fashioned variety with graceful, upright, slender branches covered with a wreath of white flowers in May. Leaves turn to beautiful orange. 75c each.

SPIREA THUNBERGII. Dwarf growing shrub of graceful form; slender, drooping branches. Narrow, yellowish green foliage, giving a light feathery appearance. Pure white flowers, blooms very early in the spring.



Weigela Rosea.

SHRUBS—Continued.

SPIREA, Van Houttei. Grandest of all. A fountain of white flowers in early spring.

VIBURNUM PLICATUM. (Japan Snowball.) Completely covered with large balls of pure white flowers in June. Its dark plicated foliage and massive clusters of bloom are not equalled by any other shrub. \$1.00 each.

VIBURNUM OPULUS STERILIS. (Common Snowball or Guelder Rose.) An old-time favorite, without doubt one of the best flowering shrubs. Handsome showy flowers in large, globular clusters. 75c each.

VIBURNUM OPULUS. (High Bush Cranberry.) Very fine in flower, and berries are scarlet and hang on well into winter. Flat-topped clusters of white flowers late in spring. 75c each.

WEIGELA Candida. Pure white blossoms in great profusion in June. 75c each.

WEIGELA Rosea. Rose-colored flowers in May and June. 75c each.

WEIGELA, Variegated Leaved. One of the best dwarf shrubs. Silvery-variegated leaves, flowers nearly white. 75c each.

WEIGELA, Eva Rathke. Charming new variety. Brilliant crimson flowers twice in one season. \$1.00 each.



Showing Spirea Van Houttei in its Natural Grace and Beauty as a Foundation Plant.

Hedge Plants

A living fence—one made of plants, attractive with their green leaves, formal trained or arched branches, colored foliage or bright berries is surely more pleasing than the still, rigid, mechanical effect obtained by the similar use of wood or metal. A lawn hedge is permanent—once planted, only occasional pruning or shearing is required.

CALIFORNIA PRIVET. Most popular half-evergreen hedge. Remarkably beautiful, glossy, dark green foliage; strong, rapid grower. It transplants easily, grows quickly, making a hedge the first year, and succeeds in almost any soil. The plants should be set about 8 inches apart and cut to 3 or 4 inches above the ground after planting to make the hedge bushy at the bottom. This shrub is ideal when a formal hedge is desired, as it stands shearing to any extent. See illustration page 9. 12 to 18 inches, \$6.00 per 100; 18 to 24 inches, \$8.00 per 100; 2 to 3 feet, \$10.00 per 100.

BARBERRY THUNBERGII. (Japan Barberry.) Brilliant green foliage, turning to most glowing colors from autumn to December. Loaded with scarlet crimson berries after leaves fall. Hardy where Privet is not. One of the best shrubs to plant against the foundations of a house or in front of taller growing shrubs. 12 to 18 inches, \$35.00 per 100; 18 to 24 inches, \$40.00 per 100. Extra strong 3 year plants for planting as shrubs or for screen in front of porches, 50c each.

Other Hedge Plants

Other desirable hedge plants, American Arbor-Vitae and Norway Spruce, Altheas, Hydrangeas, Spiraeas.

Climbing Vines

Nothing lends such a pleasing effect to wall or veranda as the judicious use of vines. The hardy vine is best adapted for covering an unsightly wall or for furnishing shade and ornament to verandas. With the advent of spring the tendrils are given new life and as the season advances they soon become a beautiful covering. Hardy vines practically take care of themselves after once established, and are much more desirable and less trouble than the annual or tender varieties. Without climbing vines many beautiful homes would present a sad picture during the hot summers.



An Effect Obtained by the use of Boston Ivy.

AMPELOPSIS VEITCHII. (Boston Ivy.) Requires no support, clings closely to smoothest surface. 50c each.

CLEMATIS Paniculata. Very popular. Blooms profusely; small, single, white flowers borne in large panicles. 50c each.

CLEMATIS HENRYII. Finest white Clematis. Flowers very large; single. \$1.00 each.

CLEMATIS JACKMANII. Best purple sort. Single, very large. \$1.00 each.

CLEMATIS, MAD. ED. ANDRE. Distinct and fine. Flowers deep crimson, velvety. \$1.00 each.

CLEMATIS, RAMONA. (New.) Deep sky blue, distinct from any other kind; very attractive. Extremely hardy. \$1.00 each.

DUTCHMAN'S PIPE. Large, heart-shaped leaves. Brownish flowers resembling small pipe. Hardy, rapid grower. \$1.50 each.

EUONYMUS RADICANS VEGETUS. (Evergreen Bittersweet.) Strong, robust climber, covered the whole year with green foliage. 75c each.

HONEYSUCKLE, Hall's Japan. Almost evergreen. Covered from July to December with fragrant white flowers, turning to yellow. 50c each.

WISTERIA, Purple. Perfectly hardy; very beautiful. Flowers in spring in long, drooping racemes. 75c each.

WISTERIA, White. A very beautiful and choice variety, with pure white flowers, that hang in clusters like fringe. \$1.00 each.

Roses

Strong 2-year field grown plants.

There is no more beautiful flower than the Rose and they are among the easiest of all to raise. The love of the Rose is universal, and with the selection of varieties we offer no one need look elsewhere for their supply. Price, except noted, 90c each; \$8.50 per 10.

Superb Everblooming Roses

- AARON WARD.** Beautiful rich yellow, changing to pinkish fawn. One of the best.
- BETTY.** Glorious coppery rose overspread with golden yellow.
- BRITISH QUEEN.** One of the finest white roses in existence. Large full flowers of Tea Rose form and refinement.
- CHATEAU DE CLOS VOUGET.** Magnificent rose of wondrous color, the blackest of all roses, each petal appearing as if cut from deep crimson velvet.
- COLUMBIA.** One of the finest new roses. Lovely shade of pink, shading deeper at center. Strong grower, almost thornless. Very free bloomer, and fragrant. \$1.00 each.
- DEAN HOLE.** Gorgeous silvery carmine, shaded salmon.



1. Ophelia.
2. Hoosier Beauty.
3. Double White Killarney.

4. Mrs. Aaron Ward.
5. My Maryland.
6. Red Radiance.

- DOUBLE WHITE KILLARNEY.** One of the most exquisite pure white roses.
- DUCHESS OF WELLINGTON.** Intense saffron yellow, stained crimson. Long pointed buds, wonderfully fragrant and productive. \$1.00 each.
- EDWARD MAWLEY.** One of the finest of all dark crimson Roses.
- EDITH PART.** Rich red with suffusion of deep salmon and coppery yellow. Perfectly built flowers, sweetly perfumed.
- FRANCIS SCOTT KEY.** A glorious Rose. Perfectly formed buds opening into blazing red flowers of largest size, full and double, very fragrant. Strong, healthy grower, hardy everywhere.
- GEORGE AHRENDTS.** Delicate pink, wonderfully beautiful.
- GORGEOUS.** Flowers large and full. Deep orange yellow, heavily veined with reddish copper. One of the most striking roses in existence, delightfully fragrant. \$1.00 each.
- GRUSS AN TEPLITZ.** Brilliant scarlet, shading to velvety crimson.
- HADLEY.** Rich velvety crimson. Large, double, and intensely fragrant. Highly desirable.

HOOSIER BEAUTY. Glowing crimson scarlet with darker shadings. Large and double, with velvety petals. A magnificent bloom of dazzling brilliance and delicious fragrance.

- JONKHEER J. L. MOCK.** Giant pink Rose.
- KILLARNEY.** Brilliant, sparkling pink. Unusually hardy.
- LADY ALICE STANLEY.** Shell-shaped outside petals of deep coral rose, inside pale flesh. Large fragrant blooms. One of the best.
- LADY HILLINGDON.** Beautiful apricot yellow shaded to orange.
- LAURENT CARLE.** A large, brilliant, velvety carmine Rose of perfect form and intense fragrance. Strong, robust grower, hardy everywhere.
- LOS ANGELES.** A magnificent Rose of enormous size. Color a luminous flame pink, toned with coral and shaded with translucent gold at the base of the petals. Fragrant as American Beauty. Buds long and pointed, expanding into flowers of mammoth proportions. Vigorous grower. By all admitted to be one of the finest Roses ever introduced. Beauty of form and ever-increasing wealth of color are maintained until the last petals fall. \$1.50 each.
- LYON.** Shrimp pink, shading to intense coral red; very large and full flowers.
- MADAME CAROLINE TESTOUT.** Brilliant satiny rose color.
- MAD. RAVARY.** One of the most beautiful Roses. Fine, oval-shaped buds opening to large orange yellow flowers. Exceedingly free flowering and hardy.
- MRS. A. R. WADDELL.** Beautiful pointed buds of rosy scarlet, opening into extremely showy large blooms of coppery salmon.
- MRS. GEO. SHAWYER.** Brilliant rose pink. Large, well-formed blooms, freer in growth and bloom than Killarney.
- MY MARYLAND.** Brilliant, glowing, intense pink.
- OPHELIA.** Brilliant salmon flesh shaded with rose on outer edges of petals, with a heart of glowing peach pink and orange yellow blendings. Very fragrant and faultless in form and color.
- PREMIER.** Deliciously fragrant. Clear, pure shade of rose pink. Beautiful foliage, very free bloomer. A valuable addition to the list of good roses. \$1.00 each.
- RADIANCE.** Glorious new Rose, beautiful blendings of carmine rose with opal and coppery reflections.
- RED RADIANCE.** Splendid even shade of clear red without a trace of any other color. Large, bold, double flowers on heavy erect stems, conspicuous even among the choicest kinds.
- SUNBURST.** Magnificent giant yellow Rose, suffused with orange copper, all intense shades, giving an extremely brilliant effect. Buds long and pointed on long stout stems; full and double.
- WILLOWMERE.** A magnificent rich shrimp pink Rose, toning to carmine pink toward edges of petals. Beautiful coral red buds on stout stems, opening into very large, full flowers.

New Everblooming Rugosa Rose, F. J. Grootendoorst

A Hybrid between Rosa Rugosa Rubra and Red Baby Rambler

We consider this the most beautiful of any of the Rugosa Roses, and a most valuable acquisition. The foliage is of the true Rugosa type, always healthy and clean, attractive, and free from mildew. In habit the plant is of vigorous but compact, dwarfish growth. Flowers in clusters, good size for this class of rose, double, with edges beautifully fringed so that each cluster of bloom resembles a bunch of red carnations. Color a clear, fine red and holds exceptionally well. Blooms continuously from early summer until cut off by cold weather in the fall. Very effective, not only as a single specimen, but especially valuable in landscape work for massing and as a low-growing hedge or border. We predict very great popularity for it as soon as it becomes better known. **Extra strong field grown plants, \$1.50 each; \$12.50 per 10.**

Rugosa and Hybrid Rugosa Roses

These hardy roses can be used in so many places that they are almost indispensable. Sturdy, shrubby bushes, adapted for hedges and hardy borders, or to mix in other shrubbery. Foliage very ornamental, dark, shiny, rich green.

BLANC DE COUBERT. A splendid double pure white. 75c each.

CONRAD F. MEYER. Flowers very large and well filled. Clear, silvery rose. Very fragrant. 75c each.

ROSA RUGOSA RUBRA. Crimson flowers are large and single, followed by glossy red berries. 60c each.

ROSA RUGOSA ALBA. Single white flowers, followed by yellow berries. 75c each.

Best Hardy Hybrid Perpetual or June Roses

Prices, 85c each; \$8.00 per 10.

ANNA DE DIESBACH. Lovely shell pink.

CLIO. (New.) Flesh color, center shaded rosy pink.

GENERAL JACQUEMINOT. Brilliant scarlet crimson.

GLOIRE LYONNAISE. Rich, creamy white to pale yellow.

FRAU KARL DRUSCHKI. (White American Beauty.) The ideal pure white Rose.

J. B. CLARK. Intense deep scarlet. Immense size.

MARSHALL P. WILDER. Deep, rich, glowing red.

MRS. JOHN LAING. Soft pink, beautiful form; fragrant.

PAUL NEYRON. Largest size; bright, clear, shining pink.

PRINCE CAMILLE DE ROHAN. Deep velvety crimson, shaded black.

ULRICH BRUNNER. Bright cherry red, large and full.



New Everblooming Rugosa Rose—F. J. Grootendoorst.

Magnificent New Hardy Climbing Roses

Splendid new sorts of unusual beauty and merit that you will surely want to include in your planting.

Climbing Roses can be put to so many good uses that it seems as if every household should have at least a few.

They are perfectly hardy, requiring comparatively little care after once being planted, and they bear great quantities of lovely flowers.

AVIATOR BLERIOT. A magnificent new variety. Rich, deep, copper color. Beautiful buds, opening into medium sized, full fragrant flowers. Large clusters of bloom, borne in great profusion. 75c each.

CLIMBING AMERICAN BEAUTY. Rosy crimson, same exquisite fragrance as old American Beauty. Flowers large, produced profusely from spring until frost comes. \$1.00 each.

DR. W. VAN FLEET. A superb variety. Flowers full and double, of delicate perfume, will run 4 inches and over in diameter when open; buds pointed; flesh pink on outer surface, deepening to rosy flesh in center. 85c each.

PAUL'S SCARLET CLIMBER. Wonderful new climbing rose. Vivid scarlet, making a brilliant display during a long season. Blooms in clusters, strong climbing habit, perfectly hardy. \$1.50 each.

SILVER MOON. Grand new white climbing Rose. Clear, silvery white, with centers a mass of bright yellow stamens, giving a wonderful contrast. Petals of splendid substance, beautifully cupped. Exceedingly large, fragrant flowers. Vigorous grower and very free blooming. 75c each.

Miscellaneous Hardy Climbing Roses

DOROTHY PERKINS. The only fragrant Rambler. Shell pink, very double. 50c each.

WHITE DOROTHY PERKINS. 50c each.

EXCELSA, Red Dorothy Perkins. Finest of all crimson ramblers. Great quantities of full, double flowers, crimson maroon, tips of petals scarlet. Hardy everywhere. 50c each.

FLOWER OF FAIRFIELD. (Everblooming Crimson Rambler.) 75c each.

CRIMSON RAMBLER. Immense clusters of rich, glowing crimson flowers that remain for more than two weeks. 60c each.

TAUSENDSCHOEN. (Thousand Beauties.) Covered with bright blossoms of every shade from white to deep pink, borne in clusters; quite double. 75c each.



Laurent Carle.

Gladiolus

Most attractive and useful of all summer-flowering bulbs. As a cut flower during the summer and autumn months Gladiolus hold a place that cannot be taken by any other flower, as they develop in water to a greater perfection than if left on the plant. Set bulbs 2 to 4 inches deep in rows 12 inches apart, or plant in beds 4 to 6 inches apart each way.

Choice Varieties of Gladiolus

AMERICA. Beautiful delicate pink, faintly tinted lavender. 10c each.

LOVELINESS. Creamy white, throat slightly suffused with apricot. 15c each.

MRS. FRANK PENDLETON, Jr. Lovely flushed salmon pink with blood red blotches in the throat. 15c each.

PINK PERFECTION. Dainty apple blossom pink. 15c each.

PRINCIPINE. Dazzling scarlet, marked with white on lower portion. 10c each.

SCHWABEN. Best yellow variety, clear, canary yellow with small blotch of garnet in throat. 15c each.

Dahlias

One of the best late summer and autumn flowering bulbs. Plant 4 to 6 inches deep, laying the tubers flat, with eyes or sprouts up. Set about 3 feet apart. We offer a selection giving wide variety of form and color, extra strong bulbs.

AMERICAN BEAUTY. (Show Dahlias.) Large, brilliant crimson red, a rich glowing color. 50c each.

ATTRACTION. (Cactus Dahlia.) Flowers six inches in diameter. Soft, silvery mauve rose with white suffusion. One of the most striking sorts. \$1.00 each.

BREEZE LAWN. (Decorative Dahlia.) Ideal red. Very large blooms of an intense fiery red not found in any other sort. \$1.00 each.

GOLDEN GATE. (Cactus Dahlia.) Great, full flowers of deep, rich golden yellow shaded with fawn. 75c each.

GEISHA. (Peony Flowered Dahlia.) Rich, gorgeous mingling of scarlet and gold. The showiest and most attractive of its type. \$1.00 each.

HORTULANUS FIET. (Decorative Dahlia.) Colossal blooms of the most delicate shade of shrimp pink, tips of petals touched with gold. 75c each.

KALIF. (Cactus Dahlia.) Giant flowers of pure scarlet, a most effective sort. \$1.00 each.

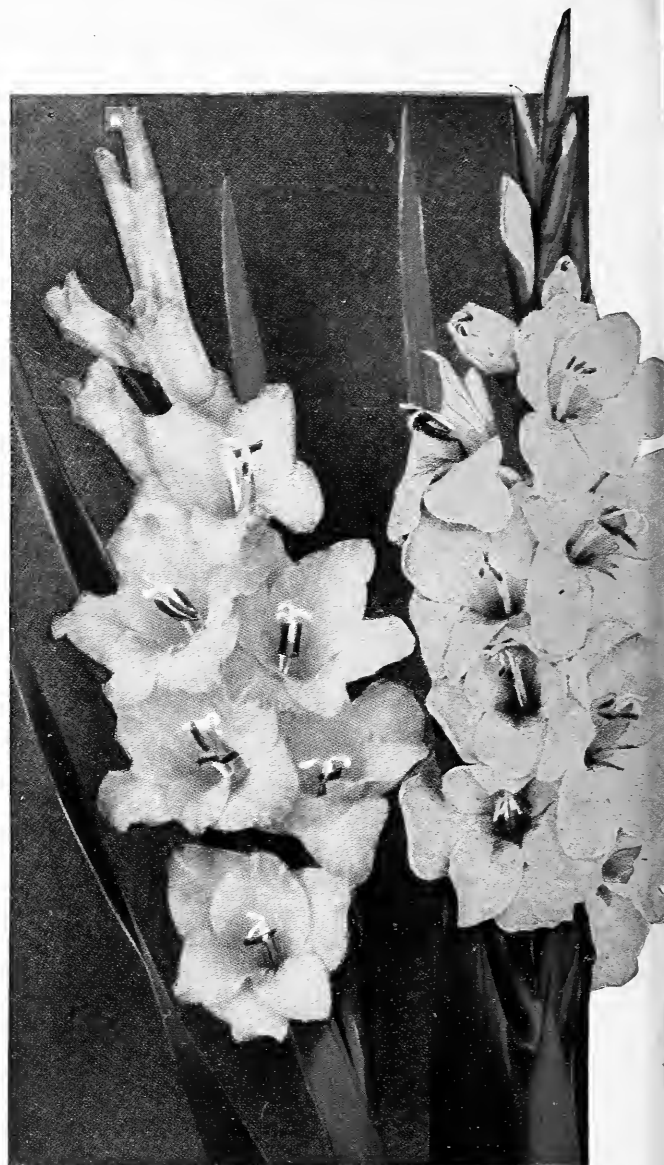
KING OF AUTUMN. (Decorative.) Large blooms of a charming combination of autumn tints, luminous salmon pink passing to golden suffused buff near the edges. \$1.00 each.

MARGARET BOUCHON. (Cactus Dahlia.) One of the largest and unquestionably the finest pink in this class. Perfect in form, color a lovely warm pink, with large white center and distinctly defined white tips. \$1.00 each.

MINA BURGLE. (Decorative Dahlia.) Rich, luminous dark scarlet, extra large flowers on long, stiff stems, splendid for cutting. 50c each.

PRINCESS JULIANA. (Decorative.) Pure white, well-formed flowers, ideal pure white variety. 50c each.

MRS. WARNAAR. (Cactus Dahlia.) Flowers of gigantic size, creamy white with faint apple blossom suffusion. A novelty of unusual merit. \$1.50 each.



Gladiolus Pink Perfection and Loveliness.

Phlox

Very fine, perfectly hardy; beautiful plants. The following is a selection of the best varieties. Price, 25c each.

COQUELICOT. Crimson scarlet, a fine variety.

ELIZABETH CAMPBELL. Soft pink, large flowers.

ECLAIREUR. Bright rosy carmine with lighter halo.

G. A. STROHLINE. Scarlet orange with bright carmine eye, extra large flowers and enormous clusters.

LOTHAIR. Salmon red with dark carmine eye.

MISS LINGARD. Earliest white, pale pink eye, long, graceful panicles.

MRS. CHAS. DOOR. A beautiful shade of lavender.

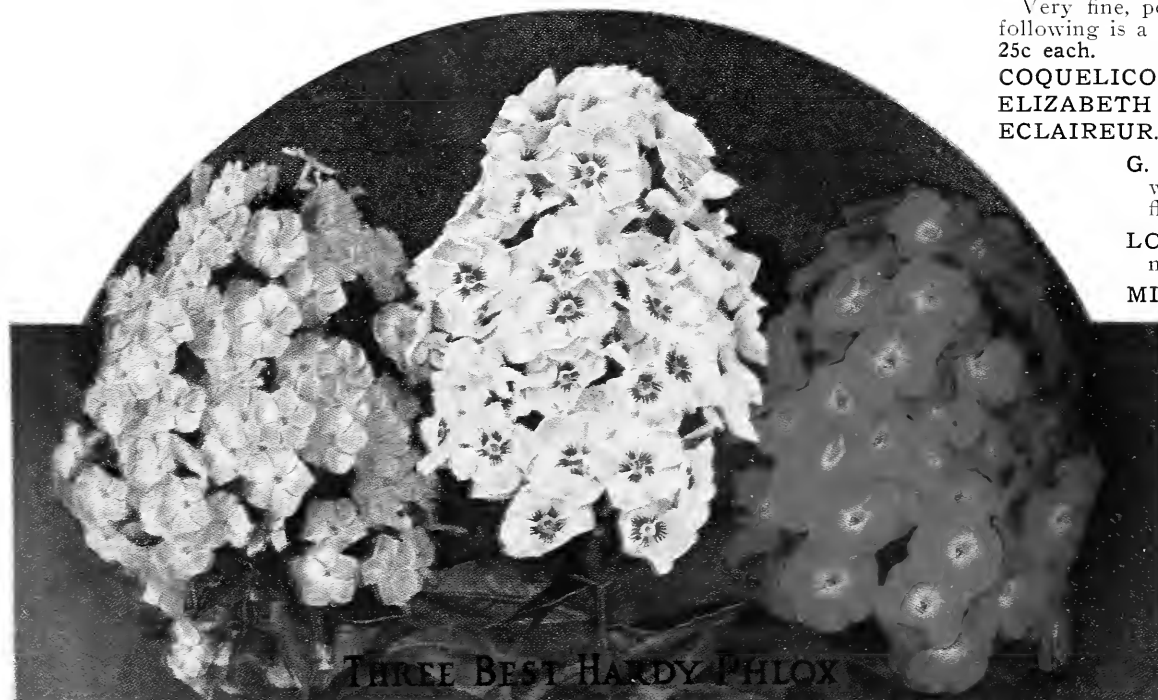
PANTHEON. Pink, or salmon rose, large flower, extra fine.

PURITE. Pure white, immense panicles.

RICHARD WALLACE. White with large carmine eye.

RYNSTROM. (New.) Beautiful clear pink, immense trusses and flowers, extra fine.

SELMA. Tender soft pink with crimson center. A lovely variety.



THREE BEST HARDY PHLOX

Phlox Pantheon.

Richard Wallace.

Coquelicot.

Of Interest to Our Customers



TAKE PLEASURE in sending our latest catalogue and hope you will look it over carefully. You will find in it full information about the stock we grow, the best of the old kinds as well as many new varieties of merit that have been well tested. We have described our stock fully and honestly. Our statements of quality are just as **direct promises** of what we will deliver to you as if you were here in our office and we made these statements to you in person. We regard every order as important, and whether your order is large or small, we will look upon it as another opportunity to demonstrate that we can meet your planting needs satisfactorily.

QUALITY. Our constant aim is to produce trees and plants as nearly perfect as can be grown. And while price is important, **quality must always be considered first**, as the future growth of your trees depends largely upon the **quality** of the stock you buy. Every tree, plant or shrub we send out are specimens in their class, sure to please the most critical buyer. We offer you the best stock you can buy at prices as low as it is possible to grow and sell this strictly high grade stock. **Our stock is dug fresh from the ground in the spring**, is packed to reach you in perfect condition, and is backed by our iron-clad guarantee of **quality** and **satisfaction** or money cheerfully refunded.

ORDER EARLY. The production of nursery stock was largely curtailed during the war. It takes from 2 to 4 years to produce most kinds of trees and plants, so that on many items there has not been sufficient time to build up stocks to anything like normal quantities and **there is still a short supply on many items.** All indications point to a **great revival of planting this coming season.** It is therefore most important that you **get your order in early** to avoid disappointment. Don't wait until the last minute, but **prepare** for your planting now, while you have time to think and plan, and **send us your order without delay.**

TERMS are net cash with order, except where otherwise arranged. **SPECIAL DISCOUNT** of 5% allowed on cash orders received before March 15th. 2% discount on all Cash orders after March 15th.

SHIPPING SEASONS. Our spring shipping season opens about the first of April and continues to about May 20th. In the fall we start shipping about October 10th and continue to about December 1st.

PLANTING SEASON is not governed by any particular date or condition of vegetation in your section, but by the **condition of stock on arrival.** Everything we ship in the spring is dug while still in dormant winter state, before it has commenced its new season's growth. The way we pack for shipment, stock keeps perfectly in this dormant state until received by you. So that regardless of the condition of vegetation in your section when you get our shipment—whether advanced or retarded—that does not affect our stock in any way, and if you will plant it according to directions and give it reasonable care you will find it will live and thrive.

To Our Canadian Customers

Nursery stock is admitted from the United States into Canada in the spring, commencing March 15th and continuing till May 15th, and in the fall, commencing September 26th and continuing until December 1st. Nursery stock is not admitted through the mails into Canada at any season of the year, so kindly order shipments made by freight or express. We cannot send by parcel post into Canada.

No Orders for Less than \$1.00 Accepted

As it costs us just as much to pack and prepare small orders as it does large ones, and inasmuch as the prices we ask are so close to the actual cost of production, we cannot afford to fill orders amounting to less than \$1.00.

Guarantee

We depend upon the merit of our stock to hold and extend our trade, and every tree, bush or plant is guaranteed up to size specified and strictly A No. 1, healthy, thrifty, well rooted, true to name, and free from San Jose Scale or disease of any kind. We use the greatest precaution to have everything we send out true to name, but if through any fault of ours any stock proves not true to label, we will on proper proof, replace double the number of trees or plants not true, or we will refund the purchase price, plus 6 per cent compound interest and also replace stock.

We are Members of the American Association of Nurserymen and are on the accredited list of The Northern Nut Growers' Association.

General Planting Directions

CARE OF STOCK ON ARRIVAL. All stock should be planted immediately on arrival but if not convenient to do so, open bundle and heel roots in ground, covering them thoroughly.

PLANTING. Dig holes twice the size necessary to take in all the roots; throw out top soil to one side, and use it for filling around the roots; tread the earth hard after planting. The use of water around the roots when filling in the earth depends on the moisture conditions of the ground. If dry, use plenty of water. After planting and during the summer sufficient water should be used to keep the earth moist.

PRUNING. The limbs of all fruit and ornamental trees, shrubs and roses should be cut back two-thirds when planted. Remove all surplus branches from trees, leaving say three main stems as a basis for head. Always prune to an outside bud, thus insuring outward growth. Peach trees should be pruned to a whip and a head established the second year either high or low as preferred. All roots should be pruned smoothly before planting, cutting off the ends where bruised by digging and shortening others. This is as important as pruning the top.

MULCHING. Mulching is a most necessary factor in successful planting. Cover a space around the tree or shrub to a distance of three feet, using coarse manure, lawn clippings or grass is effective for this purpose if manure cannot be secured. The mulching retains moisture, retards the growth of weeds and facilitates quick growth. When straw or manure is left on the ground all winter, clear a space of 15 inches around the tree to avoid damage from mice.

LABELS. Labels should be removed and some other method adopted for recording varieties. The wires will cut and damage the limbs.

CULTIVATION. Hoe or cultivate frequently. Nothing can thrive if the weeds are allowed to sap the life of the soil.

Special Instructions

Grape Vines should be planted so that the first bud next to the stem will come on a level with the surface of the ground. Grape vines have two layers of roots, from 6 to 8 inches apart, and in planting spread the lower layer of roots in their natural position; fill in the earth and press down in the soil firmly, then spread the second layer of roots and fill in the balance of the hole. After planting, trim the vines back to two buds. A strong stick four feet long should be driven in at each vine to support the canes

the first two years. **Strawberries** should be planted so as to leave the crown even with the surface. Too deep planting will smother the plant. **All other small or bush fruits, such as raspberries, currants, gooseberries, etc.,** should be planted about one inch deeper than they stood in the nursery, and, after planting, the tops should be cut back to four or five inches of the ground. In pruning **ornamental trees** two-thirds of the top should be cut off on all ornamental trees except cut-leaved birch and horse chestnut, which should not be pruned at all.

Ornamental shrubs should be planted two inches deeper than they were in the nursery, and the tops cut back one-half. **Roses** are planted three inches deeper and the tops cut back to within three or four inches above the ground.

Distances for Planting

Standard Apples	30 to 40 feet apart each way
Standard Pears and Strong Growing Cherries.....	20 feet apart each way
Duke and Morello Cherries	18 feet apart each way
Standard Plums, Peaches, Apricots, and Nectarines.....	16 to 18 feet apart each way
Dwarf Pears	10 to 12 feet apart each way
Dwarf Apples	10 to 12 feet apart each way
Quinces	10 to 12 feet apart each way
Grapes	Rows 10 feet apart; 7 to 8 feet in rows
Currants and Gooseberries	4 feet apart
Raspberries and Blackberries.....	3 to 4 by 5 to 7 feet
Strawberries, for Field Culture.....	1 by 3 to 3½ feet
Strawberries, for Garden Culture.....	1 to 2 feet apart
Asparagus, for Field Culture	1 by 3 feet
Asparagus, for Garden Culture.....	1 by 1½ feet

Rule.—Multiply the distance in feet between the rows by the distance the plants are apart in the rows, and the product will be number of square feet for each plant or hill, which, divided into the number of square feet in an acre (43,560), will give the number of plants or trees to the acre.

Choice Hardy Perennial Plants

Hardy Perennials are ideal flowers for the home grounds; give great satisfaction when used for borders, along the front of shrubberies, along driveways and walks; do not have to be taken up in winter and replanted the next year. They are the "old-fashioned" hardy garden plants, always beautiful, and a quantity of them should be found in every garden. We list the most desirable species, all showy, beautiful plants, easy of culture and of various seasons of flowering, from May to November. Price, except noted, 30c each; \$2.50 per 10.

ACHILLEA, The Pearl. Strong, showy heads of pure white double flowers, borne in great profusion. June to September.
ACHILLEA, Millefolium. Finely cut, deep green foliage, flowers pink in dense heads, all summer.
ANCHUSA, Dropmore. Strong, vigorous plant, with large, gentian blue flowers during June and July.
ANEMONE, Whirlwind. Showy autumn-blooming plant, very hardy, blooms freely from August till cut down by frost. Semi-double, white. 35c each.
ANEMONE, Queen Charlotte. Very large, semi-double flowers of a soft, silvery pink. 35c each.
AQUILEGIA, Chrysantha. (Golden Columbine.) Bright yellow, long-spurred flowers.
AQUILEGIA, Coerulea. (Rocky Mountain Columbine.) Bright blue and white long-spurred flowers.
CAMPANULA, Bluebells. The beauty of the Bluebell is well known and the plants are most hardy, very easily grown.
CARYOPTERIS, Blue Spirea. Low, free blooming plant producing lavender blue flowers in large, dense cymes from August to November.
COREOPSIS GRANDIFLORA. Splendid plant, rich golden yellow flowers from early summer until fall.
CHRYSANTHEMUM. Beautiful plants that produce a profusion of bloom at a time when other plants have been nipped by frost. Colors: White, Yellow, Brown, Red, Pink, and Bronze.
DELPHINIUM, Bella Donna. (Larkspur.) Beautiful, hardy plant, stately habit, handsome spikes of clear, turquoise blue flowers.
DELPHINIUM, Formosum. (Larkspur.) The old favorite, flowers dark blue with white center.
DIANTHUS. (Sweet William.) Old time favorites, bearing during May and June a profusion of round-topped clusters of flowers of all shades of red and pink to white.
DICENTRA, Bleeding Heart. Heart-shaped, rose-colored flowers in drooping spikes, in early summer. 50c each.

DIGITALIS, Foxglove. Old favorites, producing bold masses of leaves and flower spikes. June-July.
GAILLARDIA, Blanket Flower. Large showy flowers, yellow and orange red, early summer to November.
GYPSOPHILA, Baby's Breath. Masses of minute, pure white flowers during June and July.
HIBISCUS, Crimson Eye. Flowers of immense size, pure white with large spot of deep velvety crimson in center. August and September.
HIBISCUS, New Giant Flowering. (Mallow Marvels.) Wonderful improved new varieties, with richest colors, enormous flowers, frequently 10 to 12 inches in diameter. Perfectly hardy. Colors: Pink, White, and Crimson. 35c each.
HOLLYHOCKS. Double; Red, Pink, and White.
IBERIS, Hardy Candytuft. Covered with clusters of fragrant white flowers in early spring.
GERMAN IRIS. Flowers large, colorings exquisite. Blue, Lavender, Maroon, Purple, White, and Yellow.
JAPAN IRIS. Flowers broad and flat, wonderful variety of colors.
LYCHNIS CHALCEDONICA. (Jerusalem Cross.) A most desirable plant, heads of brilliant orange scarlet in June and July.
LYCHNIS VISCARIA. Ablaze with close spikes of crimson flowers in June and July.
MONARDA, Oswego Tea. Compact heads of bright red flowers. June to August.
PAPAVER, Oriental Poppy. Showiest of all poppies, large scarlet and red flowers on long stems.
PLATYCODON, Balloon Flower. Star-shaped, bluish flowers, very large. June-July.
STOKESIA, Cornflower Aster. Handsome plant with large flowers of sky blue color. July to early fall.
TRITOMA, Red-hot Poker or Flame Flower. Tall spikes surmounted by brilliant orange scarlet flower heads. August-September.
YUCCA, Adam's Needle. Tropical looking plant with immense, pyramidal clusters of creamy flowers. June-July. 35c each.



Larkspur—Delphinium.

The Peonies

Fine, hardy plants, rivaling the rose in perfection of bloom and coloring, requiring little extra care, as they thrive well in any soil. Our list of varieties has been made up with great care to include only the best and most distinct kinds. We give you sorts that are really worth while, presenting a wide range of color and shade, coming into bloom throughout the season. Prices are for divisions with three to five eyes, and good roots.



Peony Livingstone

Festiva Maxima.

Felix Crousse.

Rival the Rose in Perfection of Bloom

CHARLEMAGNE. Creamy white, center light lilac, flesh shaded with chamois. Large, globular, very compact. Late. 60c each.
COURONNE D'OR. Immense, very full, ball-shaped blooms, snowy white with yellowish stamens. Fragrant, perfect cut flower sort, very late, comes in after all other long-stemmed whites are gone. 75c each.
DELACHEI. Deep crimson purple, one of the best dark sorts. Late mid-season. 60c each.
EDULIS SUPERBA. One of the best early varieties. Large, loose, flat crown, bright mauve pink. 75c each.
FELIX CROUSSE. Brilliant, flaming red. By far the best red; very popular with florists. Late mid-season. \$1.00 each.
FESTIVA MAXIMA. Very large, a well known and almost perfect peony. High built flowers on long stems, pure white with inner petals slightly tipped carmine. The ideal early white. 75c each.
FRANCOIS ORTEGAT. Semi-double, large purplish crimson bloom with brilliant golden yellow anthers. Very striking. 60c each.
LA TULIPE. Late; very large, full, shell formed blooms on long, erect stems. Delicate rose, fading to creamy white. One of the best. 60c each.
LIVINGSTONE. (True Crousse Variety.) Soft rosy pink, with silvery reflex. Large, compact, rose type, with tall, very strong stems. Best late pink. \$1.00 each.
MADAME CALOT. A grand variety, produces more flowers than any other and exceedingly fragrant. Pale hydrangea pink, with darker center. 75c each.
OFFICINALIS RUBRA PLENA. Very early. Old double red from Grandmother's garden. 75c each.
ROSEA SUPERBA. Brilliant, deep cerise pink, compact, perfectly formed blooms on long stems. Keeps well. Mid-season. 75c each.