

## **Historic, Archive Document**

Do not assume content reflects current scientific knowledge, policies, or practices.

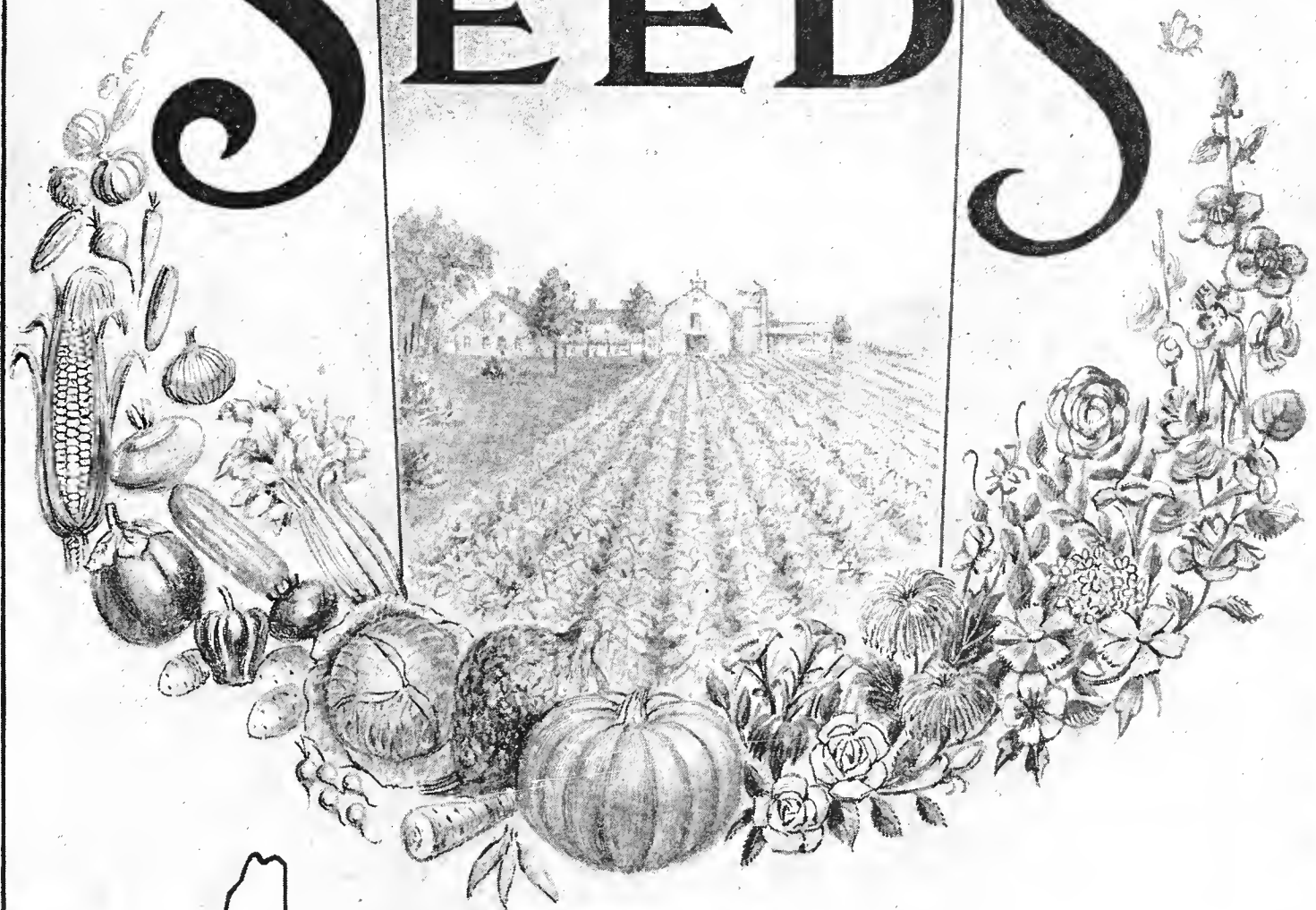


62,35

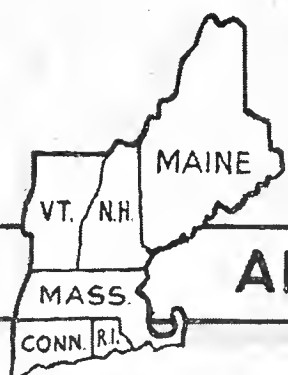
U. S. Department of Agriculture  
★ JUL 16 1935

# Trustworthy GARDEN·FIELD·FLOWER

# SEEDS



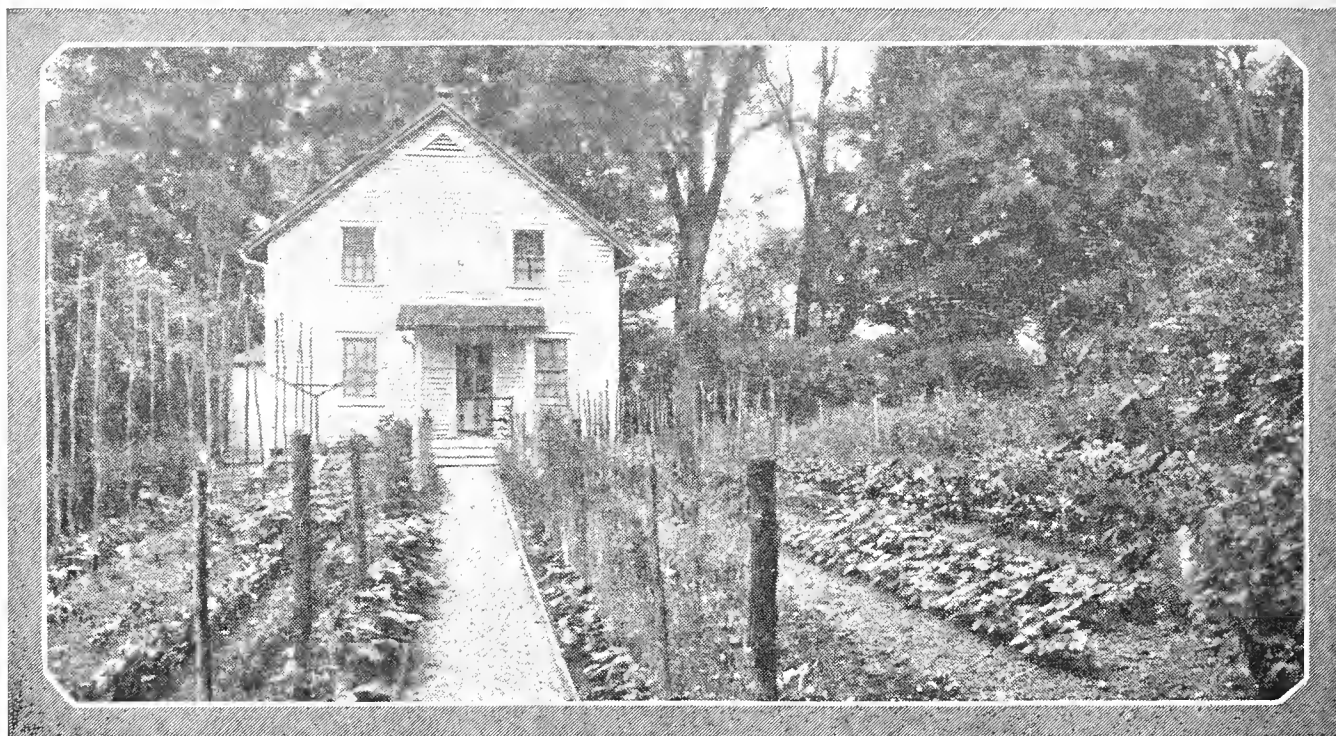
1935



ADAPTED TO NEW ENGLAND SOIL

**PINE TREE STATE SEED CO.**  
**P.O. BOX 168, PORTLAND, MAINE**  
FORMERLY OF BATH, MAINE

# FLOWER AND VEGETABLE SEED COLLECTIONS



**EVERY HOME AND FARM SHOULD HAVE A KITCHEN GARDEN**

Save time and money by ordering one of the following collections. The seeds are of the best quality and regular full sized packets. All collections sent prepaid.



**This Handy Garden Tool  
FREE**

With Every Collection on This Page

## VEGETABLE COLLECTION NO. 1. Price 50c Postpaid

One 10 cent packet each of the following and the Handy Garden Tool.

**BEET**—Early Blood      **SWISS CHARD**—Lucullus. **SPINACH**—Long Standing. **LETTUCE**—Hanson.  
**CABBAGE**—All Seasons. **RADISH**—Scarlet Globe. **CARROT**—Chantenay      **SQUASH**—Marrow  
**CUCUMBER**—White Spine.      **TURNIP**—White Egg.

## VEGETABLE COLLECTION NO. 2. Price 75c

The Handy Garden Tool and one 10 cent packet each of the 14 varieties following.

**BEET**—Crimson Globe; **CABBAGE**—Succession; **CARROT**—Chantenay; **LETTUCE**—Hanson; **PARSNIP**—Hollow Crown; **RADISH**—Scarlet Globe; **WINTER SQUASH**—Hubbard; **SWISS CHARD**—Lucullus; **BUSH BEANS**—Horticultural; **CUCUMBER**—Davis Perfect; **SWEET CORN**—Golden Bantam; **ONION**—Yellow Globe; **SUMMER SQUASH**—Crookneck; **TURNIP**—White Egg.

## FLOWER SEED COLLECTION. Price 50c

One 10c packet each of the following. If purchased separately would cost \$1.10

**ASTER**—All kinds; **BACHELORS' BUTTONS**—Single Mixed; **CALENDULA**—Best Mixed; **TALL NASTURTIUM**—Best mixed; **MIGNONETTE**; **ALYSSUM**—Sweet Scented; **CALIFORNIA POPPY**; **MORNING GLORY**—All colors; **PETUNIA**—Single Mixed; **POPPY**—All kinds; **SWEET PEAS**—Grandiflora and Spencer mixed.

## SPENCER SWEET PEA COLLECTION. Price 50c

Eight regular 10c packets of the following choice Spencers and a Handy Garden Tool

<b>ASTA OHN</b>	<b>HELEN LEWIS</b>	<b>PICTURE</b>
<b>COUNTESS</b>	<b>KING WHITE</b>	<b>TANGERINE</b>
<b>DOBBIE'S CREAM</b>		<b>WARRIOR</b>

## OUR DOLLAR BOX OF VEGETABLES

A Complete Vegetable Garden for \$1.00, with Handy Garden Tool

This box contains an ideal selection of Vegetables suited to New England. If purchased alone would cost \$2.00. Sent prepaid to any address.

One Packet Each: **BEET**—Detroit Dark Red; **CARROT**—Oxheart; **CABBAGE**—Succession; **CABBAGE**—Danish Ball Head; **CUCUMBER**—White Spine; **LETTUCE**—Beefsteak; **LETTUCE**—Hanson; **MUSK MELON**—Hearts of Gold; **PARSNIP**—Hollow Crown; **PUMPKIN**—Mixed varieties; **RADISH**—Scarlet Globe; **TURNIP**—White Egg; **SQUASH**—True Hubbard; **SQUASH**—Marrow; **SPINACH**—King of Denmark; **SWISS CHARD**—Lucullus; **TOMATO**—Earliana; and one half lb each; **SWEET CORN**, Golden Bantam; **BUSH BEANS**, Bountiful.

Also our Handy Garden Tool FREE with each of the above collections.

**FREE—EXTRA COMPLIMENTARY PACKETS WITH EVERY COLLECTION**

## SPECIAL MESSAGE TO MY CUSTOMERS

**A**T the end of our 1934 season we were gratified with the support which our new and old customers gave us, at our new location. In accordance with the trend of the times we are making a decided departure from our policy in the past. This year, as you will note below, we will prepay the postage on all flowers and vegetable seeds up to and including five pounds of each variety. This will make ordering easier for you and will also save you money.

You will note that all peas, beans, and corn are offered by the half pound and pound, instead of by the pint and quart.

May we be favored with your orders?

PINE TREE STATE SEED COMPANY.

### IN MEMORIAM

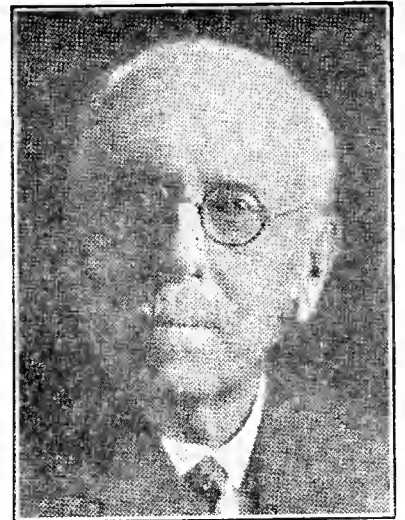
This little catalogue is respectfully dedicated as a tribute to my life long friend and helper, Dr. George M. Twitchell.

With the passing of Dr. Twitchell, I and the Granges throughout the State, have lost a real friend and advisor. He, probably more than any other man in Maine, was responsible for the advancement of the Grange and its maintenance on a high plane.

Dr. Twitchell was an enthusiastic and thorough agriculturist, always endeavoring to improve existing varieties and to better agricultural conditions.

He and his influence will be greatly missed by us all.

WILLIAM R. KIMBALL.



### AGENTS WANTED

To the members of the Grange, Home Demonstration Clubs, 4-H Clubs, Farm Bureaus and Agricultural and Home Economic Clubs you can make good money acting as our agent and taking orders for our seeds. Write for liberal terms to agents.

### APPRECIATION

We appreciate the many kind words spoken for our seeds and we want to thank all our friends for the business given us last year. We know old customers will favor us with their order again. We hope for a trial order, no matter how small from each reader of this book.

### TO MEMBERS OF THE GRANGE

You can save money by getting up a Seed Club in your Grange and sending the order to us.

We will send you some extra Catalogs and order blanks free. (We will also wrap each order separately and properly label them and will include a lot of free packets). Write for full information about the advantages secured on Grange orders. Address Grange Department.

### FRATERNITY

Perhaps your neighbor would like to see our catalog. It would be a real service of helpfulness to pass this little book along, after you have finished with it, or if you will send us their address we will be glad to mail them a copy. There is a fraternity among garden lovers that makes us all appreciate suggestions and help—even though it may only be the passing along of a seed catalog to a friend.

### GENERAL INSTRUCTIONS FOR CUSTOMERS

**ORDER EARLY.** Practically all vegetable, flower and farm seeds, due to the drought, were short crops last season. Order early and be assured of receiving the seeds you require. **Terms**—Our terms are cash. **Remittances**—May be made by check, express or post office order or money in registered letter; small amounts in stamps. **Packing**—We make no charge for boxes or packing, or delivery to depot or express office. **Seeds Postpaid by mail**—We pay the postage on all vegetable and flower seeds quoted in this catalogue up to and including five pounds of each variety. This will include safe and proper packing.

**Address**—In ordering be particular to sign your name, postoffice, R. F. D. route, county and state, plainly. **Small Orders**—If you only want a single packet do not hesitate to send for it. **Seed Packets**—Our Vegetable and Flower Seeds are put up in neat packets, large and well filled. **Agents**—We want an agent in every town. **Write for terms.**

**LEND THIS SEED BOOK TO YOUR NEIGHBOR—THANK YOU.**

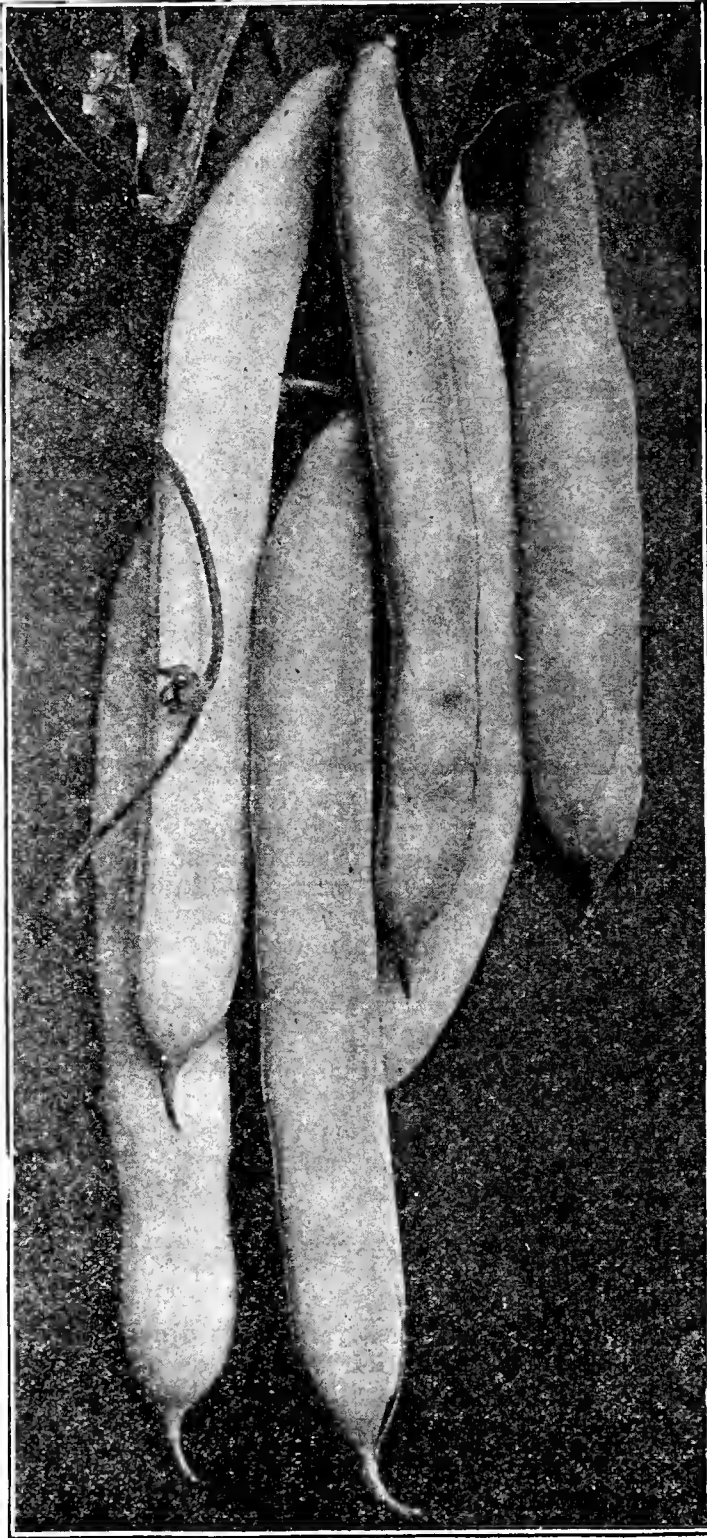




## VEGETABLE NOVELTIES--1935

For the 1935 season we are offering four pages of outstanding varieties of vegetables. Some of them, such as Bobolink bean, are well known to our customers but many are of recent introduction. Any, or all, of these varieties are worthy of special trial and should be included in your order. May we call your attention particularly to New Stringless Green Pod Bean, Bobolink Pole Bean, Good for All Beet, Penn State Ballhead Cabbage, Emperor Carrot, Fordhook Giant Swiss Chard, and Whipple's Early Sweet Corn.

We are offering to you the best Tested seeds for New England conditions.



New Pole Bean—Sunset or Golden Podded Bobolink

**Beet—ASGROW WONDER.** Unsurpassed in earliness, uniformity and in depth of interior color makes this desirable for home and market gardens. It matures in 56 days, producing semi-globular, deep red, smooth roots with small neck and tap roots. The purplish red flesh is tender, sweet and of superior quality. Try a packet and be convinced.

Pkt. 15c; oz. 25c; ¼ lb. 70c

If You Want the Best All-around Musk Melon, Plant Our Thousand Dollar Melon

**Bush Bean—GIANT STRINGLESS GREEN POD.** One of the favorite stringless green pod varieties for home, market and canning. It is excellent for succession plantings. The plants are large, sturdy, prolific and disease resistant, while the pods are round, meaty, brittle and strictly stringless. It matures in 62 days.

Pkt. 10c; ½ lb. 25c; lb. 35c; 2 lbs. 60c

**Bush Bean—NEW STRINGLESS GREEN POD.** This is an outstanding, new, absolutely stringless variety maturing in 53 days. The plants are medium, large, erect and prolific. Pods nearly straight, dark green, round, meaty, succulent, stringless and free from fiber. Because of its outstanding quality, it is desirable for home and market gardeners.

Pkt. 10c; ½ lb. 25c; lb. 35c; 2 lbs. 60c

**Bush Bean—PENCIL POD BLACK WAX.** An excellent desirable variety for home and market gardens. The pods are slightly curved, fleshy, round, golden yellow, tender, crisp and absolutely stringless, without fiber and of the highest quality. Pods available in 52 days from date of planting. Excellent for early planting.

Pkt. 10c; ½ lb. 20c; lb. 30c; 2 lbs. 50c

**Bush Lima Bean—WOOD'S PROLIFIC.** In New England where the growing season is relatively short this variety is excellent and will mature a crop of luscious, green-shell lima beans. It matures in 69 days, producing flat pods 4½ inches long, containing 4-5 seeds. Superior as a green shell bean, for canning, and also for dry Winter beans.

Pkt. 10c; ½ lb. 25c; lb. 40c; 2 lbs. 70c

**Pole Bean—BOBOLINK.** This variety, which we introduced, we still maintain to be the "Best on Earth." It originated in Maine and is ideally adapted for New England conditions. It is extremely early and prolific, producing long, flat, meaty pods entirely free from strings or fiber. The rich, light green pods are of superb quality. It is hardy, easily grown, enormously productive and excellent for canning.

Pkt. 15c; ½ lb. 25c; lb. 40c; 2 lbs. 70c

**Pole Bean—SUNSET or GOLDEN PODDED BOBOLINK.** This valuable wax podded variety originated as a sport from our famous Bobolink Pole Bean. It was originally grown for us by Mr. Donald Ellis at Sunset Ridge Farm. Sunset has all of the good qualities of Bobolink and in addition, it is a few days earlier.

The long, golden yellow pods are extremely tender, entirely stringless and have a rich, melting buttery flavor that is not found in other varieties. If you want the very best, most tender and delicious String Bean, plant the Sunset.

Pkt. 15c; ½ lb. 25c; lb. 40c; 2 lbs. 70c

**Beet—GOOD FOR ALL.** A marvelous new beet particularly adapted for home gardens and canning. The roots are smooth, even in shape and size, almost globular and of a deep crimson. The crisp, tender, sweet, crimson flesh is free from zones and fiber. Tops and neck very small. It has no superior for the home.

Pkt. 15c; oz. 25c; ¼ lb. 70c

## Vegetable Novelties---1935—continued

**Cabbage—PENN STATE BALLHEAD.** This variety has been thoroughly tested in New England and has been found to be well adapted for our conditions. It matures in 110 days, producing heads 8 inches in diameter, weighing 6 pounds. They are attractive, slightly flattened, 6 to 7 inches deep, yielding a heavy tonnage per acre. It is desirable for shipping, Winter storage and the making of Kraut.

Pkt. 15c; ½ oz. 45c; oz. 80c; ¼ lb. \$2.75

**Carrot—IMPERATOR.** An outstanding variety of recent introduction, excellent for bunching and shipping. The roots are 7 to 8½ inches long and mature in 77 days. Roots have sloping shoulders, smooth, deep rich orange; uniformly tapered to a semi-blunt end. The flesh is rich orange, fine grained, tender, excellent quality and free from core.

Pkt. 10c; oz. 25c; ¼ lb. 85c; lb. \$2.50

**Carrot—RED CORED CHANTENAY.** A decided improvement over Chantenay, with exceptionally good internal color. The roots, maturing in 72 days, are the same size and shape as Chantenay. The flesh is reddish orange, with an indistinct core of the same color as the flesh. It is tender and sweet.

Pkt. 15c; oz. 25c; ¼ lb. 85c

**Celery—WONDERFUL.** A planting of this novelty will convince you of its superiority. The plants are medium height, with a compact, full, excellent quality heart which blanches readily to a beautiful golden yellow.

Pkt. 15c; ½ oz. 70c; oz. \$1.20; ¼ lb. \$4.00

**Swiss Chard—FORDHOOK GIANT.** No garden is complete without Swiss Chard and the best variety should be planted. Fordhook Giant has no equal for either quality or quantity. The dark green closely savoyed leaves measure 10 inches in width by 2½ feet long while the pearly white, crisp, tender stems are 2½ inches wide. The quality of the leaves is superior to spinach and the stalks make a tasty dish when cooked like asparagus.

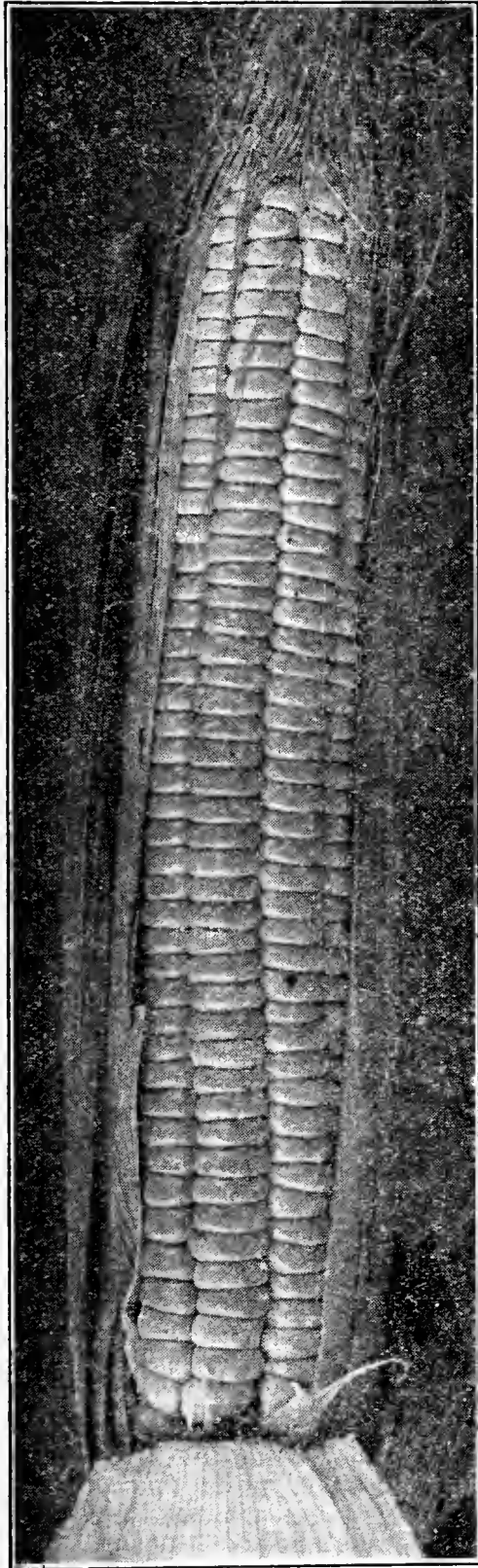
Pkt. 15c; oz. 25c; ¼ lb. 70c; lb. \$2.00

**Sweet Corn—GOLDEN EARLY MARKET.** One of the best extra early yellow varieties for home and market garden. Ears, which are well protected with strong husks, have 8 to 12 rows of golden yellow, tender, sweet kernels of excellent quality.

Pkt. 10c; ½ lb. 25c; lb. 40c; 2 lbs. 70c

**Sweet Corn—SELECTED GOLDEN BANTAM.** This is the wonderful strain of Golden Bantam, originated by the late Dr. G. M. Twitchell. It is the result of fifteen years of careful, rigid selection, and is outstanding for its earliness, size of ear and productiveness. This strain of Golden Bantam was selected, produced and introduced in Maine and will produce the maximum results throughout New England.

Pkt. 15c; ½ lb. 25c; lb. 40c; 2 lbs. 70c



Wonder Golden Bantam

**Sweet Corn—WHIPPLE'S EARLY YELLOW.** Deservedly popular as a large eared, second early sort for home and market garden. Stalks sturdy and erect; ears 12 to 14 rowed, well filled to the tip, protected by strong husks. Kernels golden yellow, fairly deep, sweet and excellent flavor. It is excellent for succession plantings to assure a supply of sweet, succulent corn.

Pkt. 10c; ½ lb. 25c; lb. 40c; 2 lbs. 70c

**Sweet Corn—WONDER BANTAM.** For those desiring a larger eared variety, having the Golden Bantam quality, we can most highly recommend this variety. The stalks grow 6 feet tall, producing ears 8 to 10 inches long, having eight rows of rich golden yellow kernels of a luscious flavor. It will appeal to the most critical market and home garden trade.

Pkt. 15c; ½ lb. 25c; lb. 40c; 2 lbs. 70c

We pay the postage on all vegetable and flower seeds up to and including 5 pounds of each item.  
Order early, seed supplies are limited.

**OUR 10c PACKETS OF VEGETABLE SEEDS ARE EXTRA LARGE AND WELL FILLED**

## Vegetable Novelties---1935---continued

**Cucumber—IMPERATOR.** A handsome, very dark green cucumber, growing 8½ to 10 inches long and maturing in 63 days. The fruits taper slightly at both ends while the flesh is firm, crisp and sweet. Emperor holds its color and firmness for prolonged periods so that it is well adapted for the home, local markets, or for shipping.

Pkt. 15c; oz. 30c; ¼ lb. \$1.00; lb. \$3.00

**Lettuce—WHITE BOSTON.** This is rapidly becoming one of the most popular varieties for home and commercial gardens. It is similar to Big Boston except the leaves are slightly lighter in color and lack the reddish brown tint. The hearts are buttery, yellow and of excellent quality. As a butter heading variety it is unsurpassed.

Pkt. 15c; oz. 35c; ¼ lb. \$1.00

**Peas—ONWARD.** Quality, productivity and uniformity are its outstanding characters. Vines grow 27 inches high producing a wealth of pods, 4 inches long, containing 6 to 8 luscious, tender, sweet, bright green peas. It is midseason, maturing in 74 days.

Pkt. 10c; ½ lb. 25c; lb. 40c; 2 lbs. 70c

**Peas—WYOMING WONDER.** A new, large podded, high quality pea, resistant to the wilt. The plants grow 24 to 28 inches tall, producing a wealth of pods 5 to 6 inches long, maturing in 75 days. The peas are of unusual quality, remaining tender and sweet for ten days after reaching the picking stage.

Pkt. 15c; ½ lb. 30c; lb. 45c; 2 lbs. 80c



The above cut was made from a photo taken at Dr. Twitchell's farm early in September. From a patch fifteen feet square he gathered 235 fine Golden Champion melons

**Muskmelon—BENDER'S SURPRISE.** One of the most delicious, high quality melons available. Fruits are oblong, 8 by 6 inches, with full rounded ends, and weigh about seven pounds. They are distinctly ribbed, coarsely netted on a hard greenish yellow skin at maturity. The flesh is a bright salmon, of delicious quality, tender, sweet and aromatic. It is an excellent shipper.

Pkt. 10c; oz. 25c; ¼ lb. 75c

**Muskmelon—GOLDEN CHAMPION.** We consider this to be one of the best early varieties. The fruits are nearly round, slightly ribbed and netted, with thick, juicy, succulent, tender, bright salmon flesh. It is a heavy cropper and dependable. Its quality is unique and outstanding. If you are interested in a real melon, try Golden Champion.

Pkt. 20c; oz. 50c; ¼ lb. \$1.50

**Muskmelon—HALE'S BEST.** An outstanding, early shipping and home garden melon. The fruits are oval, 6½ inches long by 5 inches in diameter;

maturing in 85 days. The ribbing is inconspicuous covered with a heavy netting, while the flesh is extremely thick, salmon orange, sweet and of fine quality. The thick rind is tough making the variety well adapted for shipping and local market.

Pkt. 10c; oz. 25c; ¼ lb. 75c

**Muskmelon—METCALF'S THOUSAND DOLLAR.** This favorite with our customers is one of the best melons for New England. It originated and is grown in New England. The fruits are elongated, well rounded at the ends, distinctly ribbed and closely netted. The thick flesh is fine grained, luscious, tender, sweet and of a deep orange. The fruits grow large, often growing as large as 20 pounds. It is outstanding. The Boston Post of October 5th, 1934, commented on this variety as follows, "Perhaps some of them will one day find their way out of Maine into our markets." Quality, size, prolific, hardy, what more could be desired?

Pkt. 15c; oz. 50c; ¼ lb. \$1.50

Davis Perfect is Among the Finest of Our Extra Fine Cucumbers. See Page 9.

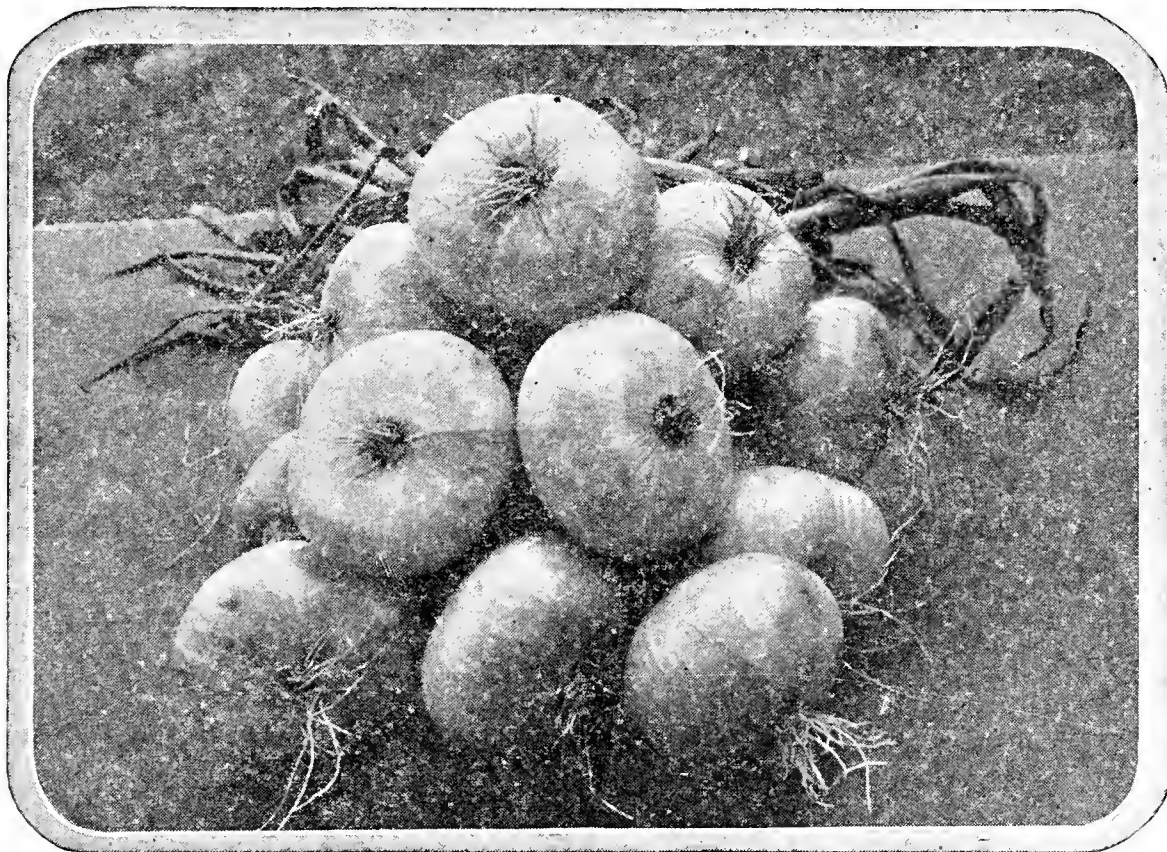


## Vegetable Novelties---1935—continued

**Onion—EBENEZER.** For an all around onion, this variety is difficult to beat. It is, today, the outstanding variety for the production of Sets. By sowing the seeds thickly a heavy crop of sets can be produced for planting the following season, and if a normal planting is made, sizable bulbs for Winter use can be grown.

The bulbs are deep, flat, of medium size, dark yellow, very firm, with a heavy skin which adequately protects the bulbs. There is no variety which will keep as well and as long in storage as Ebenezer. We can most highly recommend it for the home and market gardener.

Pkt. 10c; oz. 30c; ¼ lb. 95c; lb. \$2.75



Onions Grown From Our Japanese Sets

**Pepper—CALIFORNIA WONDER.** An outstanding medium late variety, maturing in 75 days from date of setting. Plants vigorous, upright, and prolific. Fruits 4-lobed, 4½ inches long by 4 inches in diameter, chunky, very attractive, smooth, deep green turning to bright crimson. The flesh is very thick, sweet and mild.

Pkt. 15c; ½ oz. 35c; oz. 60c

**Pepper—EARLY GIANT.** Plants are dwarf, upright and very productive, maturing in 63 days from date of setting. Fruits gently tapered; 3-lobed, of mild flavor. The fruits are deep green changing to bright red. An excellent first early, sweet variety.

Pkt. 15c; ½ oz. 30c; oz. 50c

**Pepper—RUBY KING.** Although this is not a new variety, it is one of the most popular. The plants are medium dwarf, erect, vigorous and very productive. Fruits tapering dark green changing to ruby red. The flesh is thick, mild and sweet. From date of setting it matures in 69 days.

Pkt. 10c; ½ oz. 30c; oz. 50c

**Radish—SAXA.** This is primarily a forcing variety for greenhouses and frames, but it is superior as an extra early variety in the open. It matures in 22 days, producing small, globular roots, ¾ inches diameter, of a bright scarlet color, with crisp, mild, pure white flesh. Try it!

Pkt. 10c; oz. 15c; ¼ lb. 50c; lb. \$1.50

**Squash—TABLE QUEEN, also called ACORN.** An ideal individual squash maturing in 58 days, producing fruits 5 to 6 inches long by 4½ inches in diameter. Trailing in habit, with acorn-shaped fruits ribbed, smooth, thin shelled, dark green. Flesh light yellow, bakes well with a sweet inviting flavor.

Pkt. 10c; oz. 20c; ¼ lb. 70c; lb. \$2.00

**Tomato—PRITCHARD.** Originated and introduced by the United States Department of Agriculture. The fruits are large, smooth, globular, solid with thick flesh and small seed cavity. They are bright scarlet with excellent colored flesh. The fruits ripen well at the stem end and are free from a green core. It is wilt resistant.

Pkt. 15c; ½ oz. 45c; oz. 75c

**Turnip—PURPLE TOP WHITE GLOBE.** The most popular all around main crop variety of turnips. The roots grow 6 inches in diameter and mature in 55 to 60 days. Tops dark green, large, erect, and strap leaved, while the roots are large, globe shaped, very smooth, with the upper part purplish red and the base white. The flesh is white, crisp, sweet and tender.

Pkt. 10c; oz. 20c; ¼ lb. 50c; lb. \$1.50

SWEET PEAS ARE ONE OF OUR SPECIALTIES. WE OFFER A LARGE ASSORTMENT

# LIST OF CHOICE VEGETABLE SEEDS



## ASPARAGUS

**MARY WASHINGTON.** Bright green color; very desirable. Oz. 30c; ¼ lb. \$1.00. .... 10c

## BEANS (DWARF OR BUSH)

### GREEN PODDED

**BOUNTIFUL.** Extra early, flat green pods, tender, stringless, excellent quality. Plants very prolific. ½ lb. 20c; lb. 30c; 2 lbs. 50c. .... 10c

**BURPEE'S STRINGLESS GREEN POD.** One of the best, hardy, absolutely stringless varieties. Pods rich green, round, straight, meaty, tender and brittle. ½ lb. 20c; lb. 30c; 2 lbs. 50c. .... 10c

**DWARF HORTICULTURAL.** Excellent as a green shell bean. Plants are hardy, vigorous and prolific. ½ lb. 20c; lb. 30c; 2 lbs. 50c. .... 10c

**DWARF RED CRANBERRY.** Early, tender, prolific and stringless. Adapted for early planting. Excellent as shell or snap bean. ½ lb. 25c; lb. 35c; 2 lbs. 60c. .... 10c

**EARLY YELLOW SIX WEEKS.** Very early, maturing in 50 days, vigorous, prolific. Pods long, flat, light green, absolutely stringless. ½ lb. 20c; lb. 30c; 2 lbs. 50c. .... 10c

**GIANT STRINGLESS GREEN POD.** Plants large, sturdy, prolific. Pods round, meaty, brittle, stringless, medium green. Quality excellent. ½ lb. 25c; lb. 35c; 2 lbs. 60c. .... 10c

**IMPROVED GODDARD.** A standard variety of shell bean, very prolific, long, highly colored pods. Very attractive. ½ lb. 25c; lb. 35c; 2 lbs. 60c. .... 10c

**LOW'S CHAMPION.** A standard New England variety. Early, hardy, productive, large podded, stringless and very tender. ½ lb. 20c; lb. 30c; 2 lbs. 50c. .... 10c

**NEW STRINGLESS GREEN POD.** Pods long, round, very meaty and dark green. Absolutely stringless. Delicious flavor. Early maturing. ½ lb. 25c; lb. 35c; 2 lbs. 60c. .... 10c

## BEANS (DWARF OR BUSH) WAX PODDED

**BRITTLE WAX.** Matures in 52 days. Pods straight, round, bright yellow, meaty, brittle, stringless and prolific. Superior quality. ½ lb. 20c; lb. 30c; 2 lbs. 50c. .... 10c

**GOLDEN EYE WAX.** Prolific, hardy, nearly rust proof. The handsome pods are straight, flat, slightly stringy. ½ lb. 20c; lb. 30c; 2 lbs. 50c. .... 10c

**PENCIL POD BLACK WAX.** An exceedingly desirable, hardy sort. Pods round, slightly curved, meaty, crisp, tender, stringless, excellent quality. ½ lb. 20c; lb. 30c; 2 lbs. 50c. .... 10c

**RUSTPROOF WAX.** Pods long, nearly straight, broad, flat, golden yellow, stringless and brittle. ½ lb. 25c; lb. 35c; 2 lbs. 60c. .... 10c

**BURPEE'S IMPROVED BUSH.** Earlier and larger podded than Burpee's Bush. Pods contain 4 to 5 large flat, plump seeds. Excellent quality. ½ lb. 25c; lb. 40c; 2 lbs. 70c. .... 10c

**WOOD'S PROLIFIC.** Extra early and exceedingly prolific. Pods small containing 4 seeds Excellent as shell bean or canned. ½ lb. 25c; lb. 40c; 2 lbs. 70c. .... 10c

### POLE BEANS

**BOBOLINK.** An outstanding, quality pole bean. See page 2 for full description. ½ lb. 25c; lb. 40c; 2 lbs. 70c. .... 15c

**GOLDEN CLUSTER.** Pods long, very large, flat, golden yellow, tender, stringless, excellent texture and quality. ½ lb. 25c; lb. 35c; 2 lbs. 60c. .... 10c

**HORTICULTURAL.** A hardy, vigorous, excellent climber; pods flat, slightly curved, stringless. Excellent as a snap or shell bean. ½ lb. 20c; lb. 30c; 2 lbs. 50c. .... 10c

**KENTUCKY WONDER.** Very early and productive. The large, fleshy pods cook tender and delicious. ½ lb. 20c; lb. 30c; 2 lbs. 50c. ... 10c

**KENTUCKY WONDER WAX.** Similar to Kentucky Wonder, except the pods are waxy yellow. ½ lb. 25c; lb. 35c; 2 lbs. 60c. .... 10c

1 Pint Beans Equals 1 Pound—1 Quart Equals 2 Pounds

**POLE BEANS—(Continued) Per Pkt.**

- LAZY WIFE.** Medium late, very prolific. Pods thick, fleshy, stringless, fine texture and quality. ½ lb. 20c; 1b 30c; 2 lbs. 50c. .... 10c
- MAMMOTH PODDED HORTICULTURAL.** Vines vigorous; pods very large, bright carmine. Very prolific. Excellent as a green, shell or dry bean. ½ lb. 25c; 1b. 35c; 2 lbs. 60c. .... 10c
- SCARLET RUNNER.** Used largely as an ornamental. Flowers brilliant scarlet. Excellent climber. Can be used as a shell bean. ½ lb. 25c; 1b. 35c; 2 lbs. 60c. .... 10c
- SUNSET or GOLDEN BOBOLINK.** See page 2 for a full description. ½ lb. 25c; 1b. 40c; 2 lbs. 70c. .... 15c

**FIELD BEANS**

- NATIVE PEA.** A decided improvement over the common pea bean, early, very productive.
- RED KIDNEY.** Fine for baking.
- STATE OF MAINE YELLOW EYE.** Early, very productive, free from rust, one of the best for baking.
- Any of above: 1b. 25c; 2 lbs. 40c; 15 lbs. \$2.00

**BEEF—Table Varieties**

- ASGROW WONDER.** A new outstanding variety, well adapted for home or market garden. Roots semi-globular, deep red, smooth, small neck. Tops small, erect and slender. Oz. 25c; ¼ lb. 70c; 1b. \$2.00. .... 15c
- BEEF SEED.** To sow for greens only. Oz. 15c; ¼ lb. 35c; 1b. 95c.
- CRIMSON GLOBE BEEF.** This beef is remarkable for its smooth skin and fine shape, and it does not grow large and coarse. The flesh is very dark, quality fine, sweet and tender. Oz. 20c; ¼ lb. 50c; 1b. \$1.50. .... 10c
- DETROIT DARK RED.** One of the very best sorts, either for market or home use. Tops small, roots globular and very smooth, skin dark red, flesh bright red. Very crisp, tender and sweet. Oz. 20c; ¼ lb. 60c; 1b. \$1.75. .... 10c
- CROSBY'S EGYPTIAN.** Early, for market or family gardens, this variety easily takes the lead. Oz. 20c; ¼ lb. 60c; 1b. \$1.75 10c
- EARLY BLOOD TURNIP.** A standard, early, round, smooth. Oz. 15c; ¼ lb. 40c; 1b. \$1.25. .. 10c
- ECLIPSE.** One of the best early sorts, fine grained, crisp and tender. Oz. 20c; ¼ lb. 50c; 1b. \$1.50. .... 10c
- EDMAND'S TURNIP.** The flesh is deep, blood red in color and exceedingly sweet and tender in quality. Oz. 20c; ¼ lb. 50c; 1b. \$1.50. .... 10c
- EARLY WONDER.** Tops medium, small erect. Roots semi-globular, blood red, with small tap root. Flesh blood red, slightly zoned. Excellent as first early. Oz. 20c; ¼ lb. 60c; 1b. \$1.75. .... 10c

- GOOD FOR ALL.** This new variety is a selection from Detroit Dark Red but it is decidedly earlier. The top and crown are very small. The globular roots are medium size, smooth, dark red and the flesh is dark blood red indistinctly zoned. An excellent canner. Oz. 25c; ¼ lb. 70c; 1b. \$2.00. .... 15c
- MIXED VARIETIES.** Of all of the above kinds. Oz. 15c; ¼ lb. 35c; 1b. \$1.00. .... 10c

**SPROUTING BROCCOLI**

Per Pkt.

- CALABRESE—ITALIAN GREEN.** We have a very fine strain of this choice Italian vegetable, which only recently has become a favorite in American markets. Does not make solid heads, but produces an abundance of green, tender sprouts with loose flower-heads at the end. Cook like Spinach or Cauliflower. Delicious and tasty. Sow in May, harvest in August. .... 15c

**MANGEL WURZEL**

- MAMMOTH LONG RED.** Producing roots of mammoth size. This is the best long red.
- GIANT SUGAR BEET.** Desirable for stock feeding of high nutritive value, rich in sugar.
- GIANT SLUDSTRUP.** The best of all the Mangolds, the largest yield per acre and of great feeding value.
- Price each of the above varieties. Large Pkt. 10c; oz. 15c; ¼ lb. 30c; ½ lb. 50c; 1b. 85c. ... 10c

**SPECIAL OFFER**

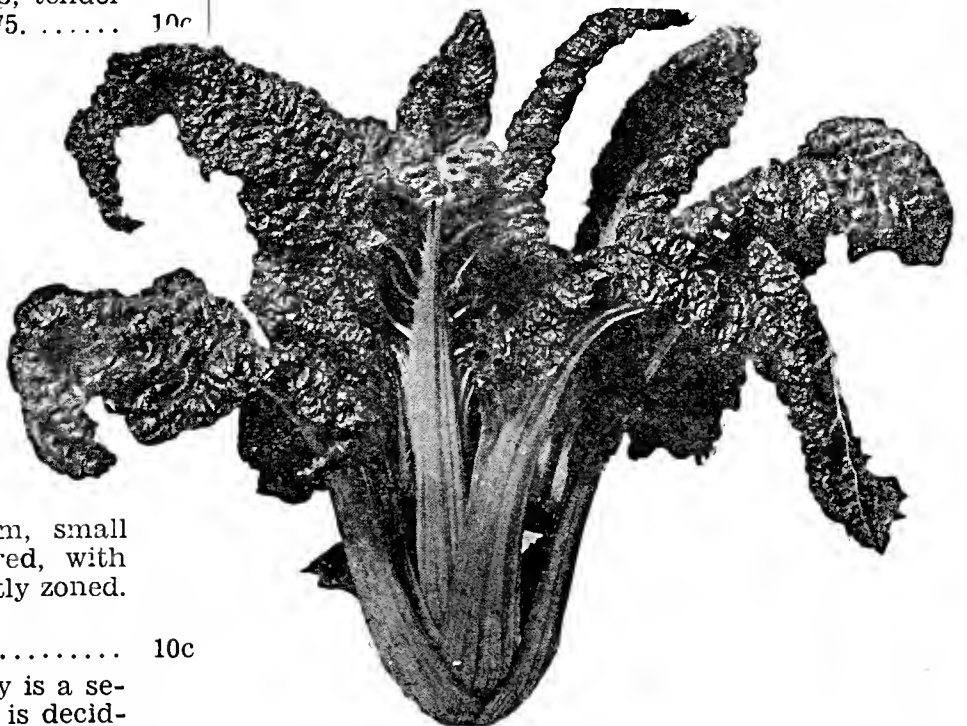
- VARIETIES OF MANGOLDS MIXED.** Oz. 15c; ¼ lb. 25c; 1b. 75c, postpaid.

**BRUSSELS SPROUTS**

- IMPROVED EXTRA.** Closely covered with large, compact sprouts. The very best sort. Oz. 30c. .... 10c

**SWISS CHARD**

- LUCULLUS.** Swiss Chard has long been popular in the home garden and is deserving of plantings in every garden. The quality of the leaves is equal to or superior to spinach and the stalks make a very tasty dish when cooked and served like asparagus. The plants are upright, producing large leaves, light green, heavily crumpled, with thick, light green stems. Easy to grow and prepare. Oz. 20c; ¼ lb. 60c. 10c



- FORDHOOK GIANT.** This is a comparatively new, vigorous growing, prolific variety, producing huge leaves 2½ feet long and 10 inches wide. The stems, 2½ inches wide, are pearly white, crisp and tender. Despite of the size, the leaves are tender and palatable. Oz. 25c; ¼ lb. 70c; 1b. \$2.00. .... 15c

**INSURE SUCCESS IN YOUR GARDEN BY SOWING OUR HIGH GRADE TESTED SEEDS**



**CABBAGE**

	Per Pkt.
<b>ALL SEASONS.</b> An early drumhead, sure heading, solid variety. ½ oz. 20c; oz. 35c; ¼ lb. \$1.00. ....	10c
<b>COPENHAGEN MARKET.</b> Is certainly a valuable early maturing cabbage, producing round, hard heads of the finest quality for the table, or market. The plants are short stemmed. The light green colored leaves are medium in size, saucer shaped, and are always tightly folded. ½ oz. 30c; oz. 50c; ¼ lb. \$1.50	10c
<b>DANISH BALL HEAD.</b> The hardest heading cabbage in existence, and of excellent quality, white, crisp and tender. The heads are round, fine grained and a good keeper. ½ oz. 20; oz. 35c; ¼ lb. \$1.25 .....	10c
<b>EARLY JERSEY WAKEFIELD.</b> A standard early market variety. ½ oz. 20c; oz. 35c ....	10c
<b>EARLY SUMMER.</b> Earliest of all the large cabbages, solid and compact. ½ oz. 25c; oz. 40c; ¼ lb. \$1.25. ....	10c
<b>GOLDEN ACRE.</b> A first-early variety of the round-headed type. The head and leaves are a little smaller than that of the Copenhagen Market, and is ready to cut from 8 to 10 days sooner. It is wonderfully true to type. ½ oz. 35c; oz. 60c. ....	15c
<b>MAMMOTH RED ROCK.</b> Best and deepest blood red. ½ oz. 25c; oz. 40c. ....	10c
<b>PENN STATE BALLHEAD.</b> A new, hard headed, heavy yielding strain of Ballhead type. Plants medium, short stemmed. Heads 8 inches in diameter, 7 inches deep, extremely hard and an excellent keeper. ½ oz. 45c; oz. 80c; ¼ lb. \$2.75. ....	15c
<b>PE-TSAI or Chinese Cabbage</b> .....	10c
<b>PREMIUM FLAT DUTCH.</b> Excellent Winter variety. ½ oz. 20c; oz. 35c; ¼ lb. \$1.00. ..	10c
<b>SUCCESSION.</b> One of the finest cabbages in existence, whether for medium, main crop or Winter use. ½ oz. 25c; oz. 40c; ¼ lb. \$1.25	10c
<b>SUREHEAD.</b> Heads remarkably uniform, very hard and firm. A good keeper. ½ oz. 20c; oz. 35c; ¼ lb. \$1.00. ....	10c
<b>WARREN STONE MASON.</b> A fine late variety. In reliability for heading, no cabbage surpasses it; an excellent sort to carry through the Winter. ½ oz. 30c; oz. 50c; ¼ lb. \$1.50. ..	10c
<b>MIXED VARIETIES.</b> A large packet of all the above mixed, .....	10c
Oz. 35c; ¼ lb. 90c; lb. \$2.75.	

**CARROTS**

<b>CHANTENAY.</b> Early, of a rich dark orange color, fine for bunching. Oz. 20c; ¼ lb. 60c; lb. \$1.75. ....	10c
<b>EARLY FRENCH FORCING.</b> Very early and small. The roots are round, small, deep orange, crisp and tender. Excellent for forcing in frames or to produce the earliest crop. Oz. 20c; ¼ lb. 60c. ....	10c
<b>HUTCHINSON.</b> A New England variety adapted to New England conditions. Tops medium. Roots deep orange with a greenish shoulder, nearly cylindrical, stump rooted, flesh deep orange. Tender and of good quality. Oz. 40c; ¼ lb. \$1.35; lb. \$4.00. ....	15c

**CARROTS (Continued)**

	Per Pkt.
<b>IMPERATOR.</b> A recent, outstanding introduction having rich orange flesh, extending to the center of the root, with an indistinct core. Fine grained, tender and of fine quality. Roots 7 to 8½ inches long by 1¾ inches in diameter. It matures in 77 days. Oz. 25c; ¼ lb. 85c; lb. \$2.50. ....	10c
<b>IMPROVED DANVERS.</b> Best main crop variety, fine quality, a great yielder. Oz. 20c; ¼ lb. 65c; lb. \$2.00. ....	10c
<b>LARGE WHITE BELGIAN.</b> Very large, good keeper, fine for stock. Oz. 20c; ¼ lb. 45c; lb. \$1.25. ....	10c
<b>LONG ORANGE IMPROVED.</b> Roots large and long, yields large crops. Oz. 20c; ¼ lb. 60c; lb. \$1.75. ....	10c
<b>OXHEART.</b> Very thick, enormous cropper. Oz. 20c; ¼ lb. 60c; lb. \$1.75. ....	10c
<b>RED CORED CHANTENAY.</b> Roots same size and shape as Chantenay but the flesh is a uniform reddish orange, with an indistinct core. Quality excellent. Oz. 25c; ¼ lb. 85c; lb. \$2.50. ....	15c

**CAULIFLOWER**

<b>DANISH GIANT. (Dry Weather).</b> The growth is very similar to that of Early Dwarf Erfurt but with heavier foliage, and is less liable to blight in hot weather. It has been grown with excellent results where other varieties fail to form heads. ¼ oz. 85c; ½ oz. \$1.45; oz. \$2.50. ....	15c
<b>EARLY DWARF ERFURT.</b> Very early dwarf, compact heads, tender and delicious. ¼ oz. 85c; ½ oz. \$1.45; oz. \$2.50. ....	15c
<b>EARLY FAVORITE.</b> One of the best large growing, early kind, forming solid heads. ¼ oz. 65c; ½ oz. \$1.15; oz. \$2.00. ....	15c
<b>EARLY SNOWBALL.</b> An extremely early, dwarf variety, producing large white heads of the finest quality. ¼ oz. 85c; ½ oz. \$1.45; oz. \$2.50. ....	15c
<b>MIXED CAULIFLOWER.</b> A mixture of all the above kinds. ½ oz. 90c; oz. \$1.50. ....	10c

**CELERY**

<b>BOSTON MARKET.</b> A favorite variety, peculiarly mild flavor; keeps well. Oz. 50c. ....	10c
<b>EASY BLANCHING.</b> One of the best varieties for general use. In quality it is very sweet and tender. Oz. 75c; ¼ lb. \$2.25. ....	10c
<b>GOLDEN SELF-BLANCHING.</b> Solid and crisp, in color a beautiful golden yellow; very tender. ½ oz. 55c; oz. 90c; ¼ lb. \$3.00. ....	10c
<b>WHITE PLUME.</b> Crisp, solid and of a sweet, nutty flavor; needs very little earthing up. Oz. 50c; ¼ lb. \$1.50. ....	10c
<b>WONDERFUL.</b> Of the self blanching type, but the stalks are decidedly thicker and of a superior flavor. The compact, full heart blanches readily to a golden yellow. A superb strain. ½ oz. 70c; oz. \$1.20; ¼ lb. \$4.00. ....	15c
<b>ALL KINDS MIXED.</b> Oz. 40c. ....	10c

**CRESS; OR PEPPER GRASS**

Extensively used as a small salad. Oz. 20c; ¼ lb. 50c. ....	10c
---	-----



**POPCORN**

Per Pkt.

- POPCORN, BLACK BEAUTY.** An extra early variety, pops very large, most tender and crisp of all. .... 10c
- POPCORN, RED BEAUTY.** An improved variety, very prolific and tender when popped. .... 10c
- WHITE RICE.** One of the best. .... 10c
- Price each of the above. ½ lb. 25c; lb. 40c. .... 10c

**SWEET CORN**

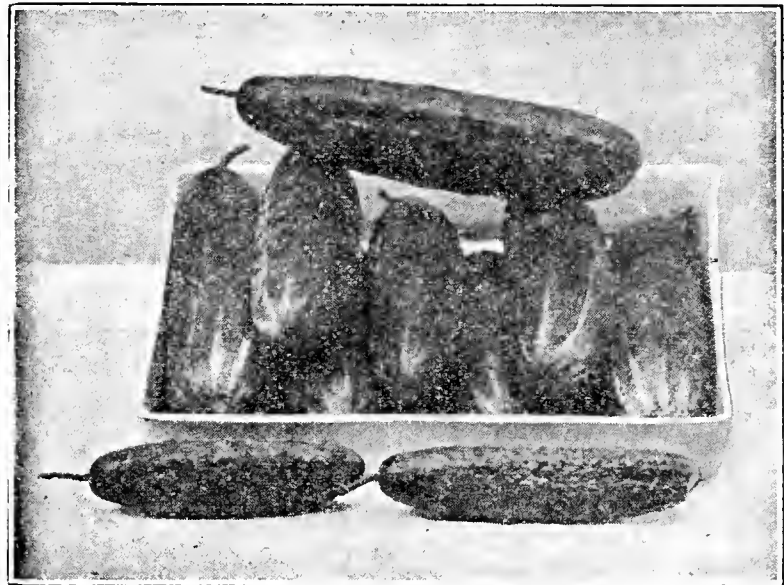
- BLACK MEXICAN.** Late, sweetest of all. ½ lb. 25c; lb. 40c; 2 lbs. 70c. .... 10c
- EARLY CROSBY.** The very best early sweet corn, habit dwarf ears set low, twelve to sixteen rowed and of rich flavor. ½ lb. 25c; lb. 35c; 2 lbs. 60c. .... 10c
- EARLY MAYFLOWER.** This is the earliest variety yet produced, seven to ten days earlier than Cory. Very productive and for so early a variety, is of excellent quality. ½ lb. 25c; lb. 40c; 2 lbs. 70c. .... 10c
- GOLDEN BANTAM.** The standard second early, golden yellow, quality Sweet Corn. Plants grow 6 feet tall, producing 2 ears per stalk. Ears 6½ inches long, 8-rowed. Superb quality. ½ lb. 25c; lb. 40c; 2 lbs. 70c. .... 10c
- EXTRA EARLY GOLDEN BANTAM.** A special, extra early, Maine grown selection of Golden Bantam. It is extremely hardy, withstanding early plantings. Unsurpassed for its luscious flavor. ½ lb. 25c; lb. 40c; 2 lbs. 70c. .. 15c
- GOLDEN EARLY MARKET.** One of the best extra early yellow varieties. Plants vigorous, 5 feet tall, producing ears 7 inches long. The ears are 8 to 12 rowed with golden yellow, tender, sweet kernels. ½ lb. 25c; lb. 40c; 2 lbs. 70c. .... 10c
- GOLDEN GIANT.** A very desirable 12 to 16 rowed, second early yellow eared variety. The stalks are short, sturdy, and produce two large ears. It excels in productivity and quality. ½ lb. 25c; lb. 40c; 2 lbs. 70c. .... 10c
- GOLDEN NUGGET.** The earliest, very dwarf, yellow variety. Plants 4 to 4½ feet tall, ears 6 inches long. Kernels deep yellow, tender, exceptionally sweet and of good flavor. ½ lb. 30c; lb. 50c; 2 lbs. 90c. .... 15c
- GOLDEN SUNSHINE.** An early yellow variety, maturing four to five days earlier than Golden Bantam. Ears 10 to 12 rowed with medium broad, golden yellow, sweet, tender kernels. ½ lb. 25c; lb. 40c; 2 lbs. 70c. .... 10c
- SELECTED GOLDEN BANTAM.** This is the famous Dr. Twitchell strain of Maine grown Bantam. It is hardy, prolific and of superior quality. See page 3. ½ lb. 25c; lb. 40c; 2 lbs. 70c. .... 15c
- WHIPPLE'S EARLY YELLOW.** Deservedly popular as a large eared, second early sort. Ears 12 to 14 rowed. Kernels golden yellow, fairly deep, sweet and of excellent quality. ½ lb. 25c; lb. 40c; 2 lbs. 70c. .... 10c
- WONDER BANTAM.** A desirable second early, eight rowed variety with somewhat larger ears and taller stalk than Golden Bantam. Kernels broad, tender, sweet and of good flavor. ½ lb. 25c; lb. 40c; 2 lbs. 70c. .... 15c

1 PINT CORN EQUALS ¾ POUND; 1 QUART EQUALS 1½ POUNDS

**CUCUMBERS**

Per Pkt.

- BOSTON PICKLING.** Splendid for pickles. Oz. 30c; ¼ lb. 95c; lb. \$2.75. .... 10c
- DAVIS PERFECT.** This variety beats all others in points of beauty, quality and productiveness, a beautiful dark green color, handsome shape and enormously productive. This variety enables one who has no glass to produce the same high priced cucumbers as those grown in a greenhouse. Oz. 30c; ¼ lb. 95c; lb. \$2.75. .... 10c
- EARLY CLUSTER.** Bears in clusters, early and productive. Oz. 25c; ¼ lb. 85c; lb. \$2.50. .. 10c



- EARLY FORTUNE.** A superior, disease resistant, white spine variety, maturing in 64 days. Fruits 8 inches long by 2½ inches in diameter. Flesh white, firm and crisp. Oz. 30c; ¼ lb. 85c; lb. \$2.55. .... 10c
- IMPROVED LONG GREEN.** Fruit twelve inches long, tender and excellent. Oz. 30c; ¼ lb. 90c; lb. \$2.60. .... 10c
- JAPANESE CLIMBING.** Oz. 35c. .... 10c
- WEST INDIA GHERKIN.** Grown exclusively for pickling. Oz. 30c; ¼ lb. 95c. .... 10c
- WHITE SPINE IMPROVED.** A great bearer, an excellent variety for the table. Oz. 30c; ¼ lb. 95c; lb. \$2.75. .... 10c
- WOODRUFF'S HYBRID.** An excellent, rich, dark green slicing cucumber. The flesh is white, crisp and tender. It is prolific, early and superior for home or commercial gardens. Oz. 30c; ¼ lb. 95c; lb. \$2.80. .... 10c
- ALL VARIETIES MIXED.** Oz. 25c; ¼ lb. 85c; lb. \$2.50. .... 10c

**DANDELION**

- IMPROVED.—Large Leaved.** Oz. 50c. .... 10c

**ENDIVE**

- GREEN CURLED.** One of the best salad plants. Oz. 20c; ¼ lb. 55c. .... 10c

**KALE**

- GREEN CURLED SCOTCH.** A round dwarf variety rarely exceeding eighteen inches in height but spreading out under good cultivation to three feet. Oz. 20c; ¼ lb. 50c; lb. \$1.50. .... 10c

**KOHLRABI, OR TURNIP CABBAGE**

Per Pkt

**EARLY PURPLE.** Tender, best market sort. Oz. 25c; ¼ lb. 75c. .... 10c

**BEEFSTEAK.** Leaves soft green tinged with red. Plants immense, producing large, loose heads of a rich buttery flavor. Oz. 35c; ¼ lb. \$1.00. .... 10c

**BIG BOSTON.** Is of unusual size and solidity of head. Oz. 35c; ¼ lb. \$1.00. .... 10c

**BLACK SEEDED TENNIS BALL.** Fine for forcing. Oz. 25c; ¼ lb. 75c. .... 10c

**BOSTON CURLED.** Curled variety. Oz. 30c; ¼ lb. 85c. .... 10c

**BOSTON MARKET.** Forms fine, perfect heads, crisp and tender, grows very compact, good for forcing. Oz. 30c; ¼ lb. 85c. .... 10c

**EARLY CURLED SIMPSON.** Curled variety. Fine for cutting. Oz. 25c; ¼ lb. 75c. .... 10c

**GRAND RAPIDS.** Best of the curled leaved sorts. Large beautiful leaves, crisp and tender. Oz. 25c; ¼ lb. 75c. .... 10c

**ICEBERG.** Heads compact, crumpled, crisp sweet with white heart. Foliage light green, tinged brown. Oz. 30c; ¼ lb. 85c. .... 10c

**LEEK**

Per Pkt.

**GIANT. CARENTAN.** A large variety of superior quality. Oz. 25c; ¼ lb. 75c. .... 10c

**LETTUCE**

**HANSON.** Large, solid heads and fine flavor. Oz. 35c; ¼ lb. \$1.00. .... 10c

**MAY KING.** A sure heading, medium size, quality, butter heading, early variety. Excellent for frames. Oz. 35c; ¼ lb. \$1.00. .... 10c

**MIGNONETTE.** Forms a small but very compact head of finest quality. The outer leaves are tinged with brown. One of the best varieties for the home garden. Oz. 35c; ¼ lb. \$1.00. .... 10c

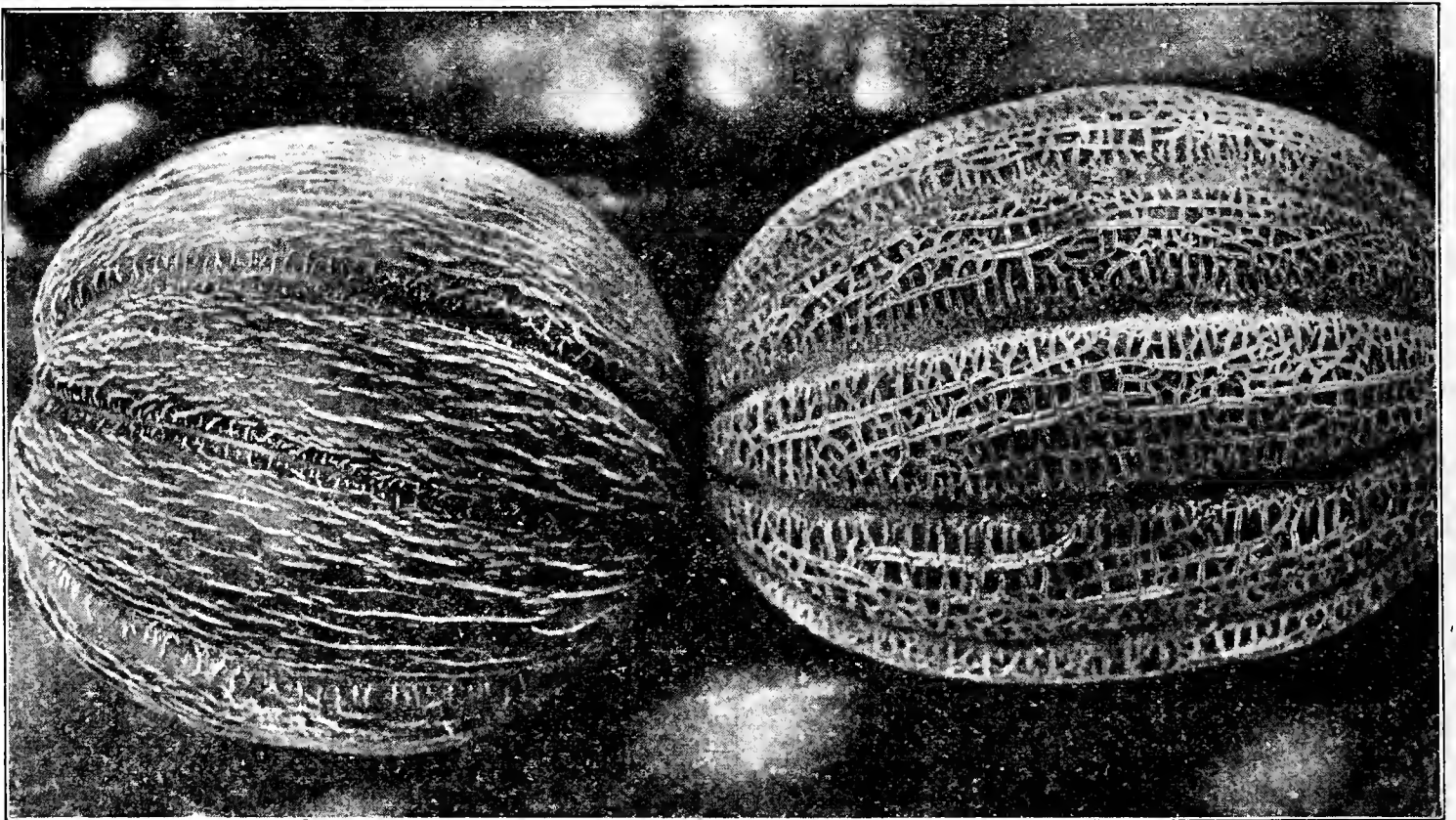
**NEW YORK NO. 12.** The best crisp heading, quality variety for New England. White heart with delicious flavor. Oz. 35c; ¼ lb. \$1.00... 10c

**PRIZE HEAD.** Large, loose heads tinged with red; very fine. Oz. 30c; ¼ lb. 85c. .... 10c

**WHITE BOSTON.** (See page 4). Similar to Big Boston but foliage is lighter green and lacks the reddish tinge. Oz. 35c; ¼ lb. \$1.00. ... 10c

**WHITE SEEDED TENNIS BALL.** A fine early sort and very hardy. Oz. 30c; ¼ lb. 85c. 10c

**CHOICE VARIETIES** mixed in one package, try it. Oz. 15c; ¼ lb. 50c; lb. \$1.50. .... 10c



If You Want the Best All-around Musk Melon, Plant Our Thousand Dollar Melon

**MELON (MUSK)**

**BANANA.** The fruits are from fifteen to twenty inches in length, having a banana-like aroma, of delicious flavor. Oz. 25c; ¼ lb. 75c. 10c

**BENDER'S SURPRISE.** (See page 4). An early, delicious, salmon fleshed, prolific quality variety. Oz. 25c; ¼ lb. 75c. .... 10c

**GOLDEN CHAMPION.** (See page 4). A superb early, quality melon with thick, juicy, succulent, tender flesh. Oz. 50c; ¼ lb. \$1.50. .... 20c

**HALE'S BEST.** (See page 4). One of the best early melons for home gardens and for shipping. Flesh salmon orange, succulent and sweet. Quality superior. Oz. 25c; ¼ lb. 75c. ... 10c

**HEARTS OF GOLD.** The melons are almost round, thickly netted and very firm. The flesh is deep orange color, firm, very sweet and of delicious flavor. Oz. 25c; ¼ lb. 75c. .... 10c

**METCALF'S "THOUSAND DOLLAR" MELON.** (See page 4.) Oz. 50c; ¼ lb. \$1.50. .... 15c

**ROCKY FORD.** The fruit is oval, slight'y ribbed, densely covered with coarse netting, greenish flesh and delicious flavor. Oz. 25c; ¼ lb. 75c. .... 10c

**ALL VARIETIES MIXED.** Oz. 20c; ¼ lb. 50c 10c

INSURE SUCCESS IN YOUR GARDEN BY SOWING OUR HIGH GRADE TESTED SEEDS

**MELON (WATER)** Per Pkt.

- COLE'S EARLY.** Extra early, one of the best for New England. Oz. 20c; ¼ lb. 55c. . . . . 10c
- COLORADO CITRON.** Fine for preserves. Oz. 25c; ¼ lb. 70c. . . . . 10c
- SWEETHEART.** This new melon is uniformly of good size, skin light green mottled. The bright red flesh is solid and sweet. Oz. 25c; ¼ lb. 70c. . . . . 10c
- YANKEE.** Best for New England. Flesh bright red, tender, cool, crisp and sweet. Will mature anywhere in Yankee land. Oz. 25c; ¼ lb. 70c; lb. \$2.00. . . . . 10c
- ALL VARIETIES MIXED.** Oz. 20c. . . . . 10c

**MUSTARD**

- LARGE LEAVED GIANT.** Fine for greens. Oz. 20c; ¼ lb. 45c. . . . . 10c
- TENDER GREEN or MUSTARD SPINACH.** A new vegetable green considered by many to be superior to spinach. Harvest when young, cook and prepare the same as spinach. Oz. 25c; ¼ lb. 75c. . . . . 10c

**OKRA OR GUMBO**

Excellent for soups, stews, etc. They impart a rich flavor. Oz. 15c; ¼ lb. 45c. . . . . 10c

**ONIONS**

- EBENEZER OR JAPANESE.** This is the mildest flavored onion we have ever tasted. The flesh is white, firm and of a very delicate flavor. The onions are large, somewhat flattened, yellow skinned and have very small tops and mature early. They will keep sound and hard all Winter. Oz. 30c; ¼ lb. 95c; lb. \$2.75. . . . . 10c
- PRIZE TAKER.** Bulbs large, globe shaped, thin skinned, of a glossy straw color. Flesh tender and mild. Bulbs grow to immense size if seedlings are started early and transplanted. Oz. 30c; ¼ lb. 90c. . . . . 10c
- RED WETHERSFIELD.** Very large, of finest flavor, keeps well. Oz. 25c; ¼ lb. 85c; lb. \$2.50. . . . . 10c
- WHITE SILVERSKIN.** This beautiful white onion is a splendid sort for pickles and early bunching, medium size bulbs and has a fine mild flavor. Oz. 30c; ¼ lb. 95c; lb. \$2.75. . . . . 10c
- YELLOW GLOBE DANVERS.** (True stock). A good cropper, medium late, hardy; used largely for storage. Bulbs medium large, round, yellow, firm and solid. Flesh white, tender and succulent. Oz. 30c; ¼ lb. 95c; lb. \$2.75. . . . . 10c

**ONION SETS**

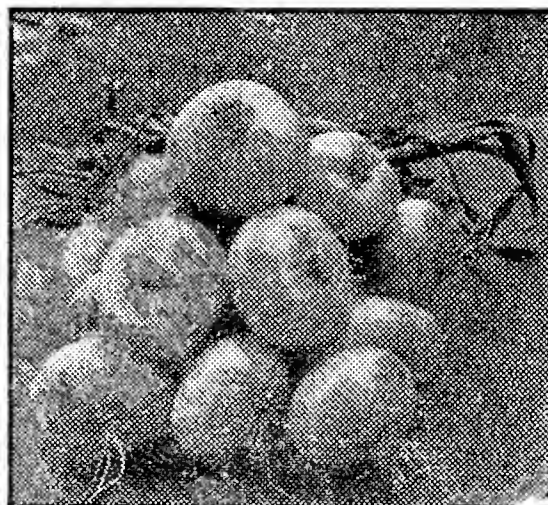
- YELLOW SETS.** The small bulbs are used in the Spring for setting out, in place of sowing the seed, and produce large onions earlier than can be done from the seed. Pound 35c; 5 lbs. \$1.40, postpaid. 8 lbs. (peck) \$2.00.
- JAPANESE EBENEZER SETS.** The best, prolific variety for the production of scallions and mature onions. The onions are large, flattened, yellow skinned with firm, white flesh of a delicate flavor. Pound 35c; 5 lbs. \$1.40 (postpaid); 8 lbs. (peck) \$2.00.

**PARSNIPS**

- HOLLOW CROWN.** Good old sort, fine flavor.
- LONG SMOOTH WHITE.** Smooth and quite large. Each, per Pkt. 10c; oz. 20c; ¼ lb. 60c; lb. \$1.75

**PARSLEY**

- EXTRA FINE CURLED.** Fine for garnishing. Oz. 15c; ¼ lb. 45c. . . . . 10c



**PEPPER**

- CALIFORNIA WONDER.** (See page 5). A thick fleshed, highly colored pepper. Fruits 4-lobed, chunky, very attractive, smooth, deep green turning to bright crimson. ½ oz. 35c; oz. 60c. . . . . 15c
- EARLY GIANT.** (See page 5). Plants dwarf, upright and very productive. Fruits 3-lobed, deep green changing to bright red. An excellent first early. ½ oz. 30c; oz. 50c. . . . . 15c
- LARGE BELL.** Large, bright red, a handsome variety. ½ oz. 25c; oz. 40c. . . . . 10c
- RUBY KING.** (See page 5). One of the best standard varieties maturing in 69 days from date of setting. Fruits tapering dark green, changing to ruby-red. The flesh is thick, mild and sweet. ½ oz. 30c; oz. 50c. . . . . 10c
- SWEET MOUNTAIN.** Large and fine. ½ oz. 25c; oz. 40c. . . . . 10c
- FINE CHOICE VARIETIES.** Mixed in one package. ½ oz. 25c; oz. 40c. . . . . 10c

**PUMPKINS**

- GOLDEN OBLONG.** Fine for pies. Oz. 15c; ¼ lb. 45c; lb. \$1.25. . . . . 10c
- KING OF MAMMOTHS.** Grows to enormous size, a splendid keeper, always a prize winner at fairs. Oz. 20c; ¼ lb. 55c; lb. \$1.55. . . . . 10c
- LARGE FIELD.** The common large yellow, good for stock. Oz. 15c; ¼ lb. 40c; lb. 95c. . . . . 10c
- SUGAR.** A small variety, fine-grained and sweet. Oz. 15c; ¼ lb. 45c; lb. \$1.25. . . . . 10c
- WINTER LUXURY.** We consider this the best pumpkin grown for making pies, medium in size, very finely netted, and in color it is golden russet. Oz. 15c; ¼ lb. 45c; lb. \$1.25. . . . . 10c
- CHOICE MIXED.** Mixed in one package. Oz. 15c; ¼ lb. 30c; lb. 85c. . . . . 10c

Your Thousand Dollar Musk Melon is the best melon I ever saw, very meaty and the finest flavor. Grew some that weighed 14 lbs. and they were just as good as those that weighed 5 to 8 pounds.

W. P. JONES.

Auburn, Me.



**GARDEN PEAS**

	Per Pkt.		Per Pkt.
<b>ADMIRAL DEWEY PEA.</b> Without exception the largest podded pea grown, a tremendous cropper, dark green pods, of excellent quality. Remarkably healthy and vigorous, producing abundance of pods of very large size and well filled. Height 3½ ft. The very best of the late varieties. ½ lb. 20c; lb. 30c; 2 lbs. 50c. ....	10c	<b>LAXTONIAN.</b> A superb dwarf, quality variety. Vines 18 inches tall. Pods 4½ inches long, dark green, containing 8 large, succulent, sweet, luscious peas. ½ lb. 25c; lb. 40c; 2 lbs. 70c. ....	10c
<b>ALDERMAN.</b> A handsome large podded variety of Telephone type. Vines 40 inches high. Pods 5 inches long, dark green, containing 8 to 10 peas of highest quality. ½ lb. 20c; lb. 30c; 2 lbs. 50c. ....	10c	<b>LAXTON'S PROGRESS.</b> The largest podded and most attractive dwarf variety. Plants 18 inches tall. Pods 5 inches long, containing 9 large peas of excellent quality. ½ lb. 30c; lb. 45c; 2 lbs. 80c. ....	10c
<b>AMERICAN WONDER.</b> A dwarf, early variety, producing pods 2¾ inches long, light green, blunt, straight, containing 6 peas of good quality. ½ lb. 20c; lb. 30c; 2 lbs. 50c. ....	10c	<b>LITTLE MARVEL.</b> An outstanding dwarf variety. Very prolific and of excellent quality. Pods dark green, 3 inches long, well filled with 8 tender peas. ½ lb. 20c; lb. 30c; 2 lbs. 50c. ...	10c
<b>BOSTON UNRIVALLED.</b> Improved Telephone, extra large, light green pods, containing 8 to 10 peas. Excellent quality and very prolific. ½ lb. 30c; lb. 45c; 2 lbs. 80c. ....	10c	<b>NOTT'S EXCELSIOR.</b> Similar to American Wonder but taller and with larger pods. Plants 16 inches tall. Pods 3 inches long. Quality excellent. ½ lb. 20c; lb. 30c; 2 lbs. 50c. ....	10c
<b>BLUE BANTAM.</b> One of the best, dwarf, early, large, dark podded strains. Plants 18 inches tall. Pods 4½ inches long containing 7 to 8 luscious peas. ½ lb. 25c; lb. 40c; 2 lbs. 70c. ....	10c	<b>ONWARD.</b> See page 4.	
<b>CARTER'S EARLY EIGHT WEEKS.</b> The earliest sort in common use. Pods 3 inches long, pointed, dark green, slightly curved, containing 7 to 9 peas of good quality. ½ lb. 20c; lb. 30c; 2 lbs. 50c. ....	10c	<b>SUTTON'S EXCELSIOR.</b> Vines medium 18 inches tall. Pods light green, 3½ inches long, containing 6 to 8 good quality peas. ½ lb. 25c; lb. 40c; 2 lbs. 70c. ....	10c
<b>DWARF TELEPHONE.</b> A dwarf variety with light green pods of the Telephone type. Pods contain 8 to 10 peas of excellent quality. ½ lb. 25c; lb. 40c; 2 lbs. 70c. ....	10c	<b>TELEPHONE.</b> Immensely productive of the finest quality, pods of large size and filled with large, delicious peas. ½ lb. 20c; lb. 30c; 2 lbs. 50c. ....	10c
<b>EARLY MORN PEA.</b> The earliest large wrinkled pea in cultivation, a great cropper. Larger pod and more prolific than Gradus. The best moneymaking pea grown. ½ lb. 25c; lb. 40c; 2 lbs. 70c. ....	10c	<b>THOMAS LAXTON.</b> A new extra early, large podded pea, very hardy and productive. As early as the Gradus and the pods a little larger and a deeper green. ½ lb. 20c; lb. 30c; 2 lbs. 50c. ....	10c
<b>GRADUS.</b> One of the best standard sorts. Vines 36 inches tall, pods 4 inches long, containing 8 to 10 sweet, delicious peas. ½ lb. 20c; lb. 30c; 2 lbs. 50c. ....	10c	<b>WORLD'S RECORD.</b> Of Gradus type but five days earlier. Plants 30 inches tall. Pods medium green, 4 inches long, containing 8 large, tender, luscious peas. ½ lb. 20c; lb. 30c; 2 lbs. 50c. ....	10c
		<b>WYOMING WONDER.</b> See page 4.	

Price on any of the above varieties: ½ peck \$1.75; peck \$3.00.

**RADISH**

<b>CRIMSON GIANT GLOBE.</b> Large size, remains solid a long time. Oz. 15c; ¼ lb. 45c; lb. \$1.25. ....	10c
<b>FRENCH BREAKFAST.</b> A variety of quick growth, mild, tender, olive-shaped. Oz. 15c; ¼ lb. 40c; lb. \$1.15. ....	10c
<b>ICICLE.</b> A handsome first class early long variety, snow white in color. Very mild. Oz. 15c; ¼ lb. 40c; lb. \$1.25. ....	10c
<b>SCARLET GLOBE.</b> Small top, very crisp and tender. Oz. 15c; ¼ lb. 50c; lb. \$1.50. ....	10c
<b>SPARKLER.</b> A popular variety. An excellent strain of the old Scarlet Turnip White Tip. Small round roots with bright scarlet top, a clear white base, and small, slender tap-root. The juicy flesh is pure white and of an agreeably snappy flavor. Oz. 15c; ¼ lb. 45c; lb. \$1.25. ....	10c
<b>WHITE TIPPED SCARLET GLOBE.</b> Early, crisp and tender. Oz. 15c; ¼ lb. 50c; lb. \$1.50. ....	10c
<b>MIXED RADISH.</b> All of the above kinds mixed. Oz. 15c; ¼ lb. 45c; lb. \$1.25. ....	10c

**RHUBARB**

<b>VICTORIA.</b> Oz. 30c; ¼ lb. 90c. ....	10c
---	-----

**SAGE**

Large leaf. Oz. 40c. ....	10c
---------------------------	-----

**SALSIFY, OR VEGETABLE OYSTER**

<b>MAMMOTH SANDWICH ISLAND.</b> The roots are very large and very delicate in flavor. Oz. 30c; ¼ lb. 85c. ....	10c
--	-----

**SPINACH**

<b>BLOOMSDALE.</b> A very hardy variety; large thick, crumpled leaves, a favorite with Market Gardeners. The best for early Spring or Fall.	
<b>KING OF DENMARK.</b> The large spreading plants carry broad, rounded, very dark green leaves, slightly crumpled. Long standing. Excellent for Spring planting.	
<b>LONG STANDING.</b> One of the best varieties, dark green, slow in running to seed.	
<b>VICTORIA SPINACH.</b> We can recommend this variety as very large, thick dark green leaf. As early as any other.	

Each: Pkt. 10c; oz. 15c; ¼ lb. 25c; lb. 75c	
<b>NEW ZEALAND.</b> Oz. 20c; ¼ lb. 60c. ....	10c

1 PINT PEAS EQUALS 1 POUND; 1 QUART EQUALS 2 POUNDS



**SQUASH**

Per Pkt.

- BLUE HUBBARD SQUASH.** A selection from the original Hubbard. The fruit is of a gray-blue color, grows very large and keeps remarkably well as the shell is extremely hard. The quality is equal to or even better than the original Hubbard. The meat is thick, fine grained, dry and very sweet. Oz. 20c; ¼ lb. 70c; lb. \$2.00. .... 10c
- BOSTON MARROW.** A standard early Fall squash, rich orange color, sweet and dry. Oz. 20c; ¼ lb. 50c; lb. \$1.50. .... 10c
- DELICIOUS.** A superior Fall and Winter variety, that is unsurpassed for thickness of flesh and richness of flavor. Color a handsome green, weighing from 5 to 10 lbs. Oz. 20c; ¼ lb. 70c; lb. \$2.00. .... 10c
- EARLY PROLIFIC ORANGE MARROW.** No variety can compete with it for earliness, very productive. Oz. 20c; ¼ lb. 50c; lb. \$1.50. .... 10c
- ESSEX HYBRID TURBAN.** Productive, with very hard shell, of excellent flavor, and keeps well. Oz. 20c; ¼ lb. 70c; lb. \$2.00. .... 10c
- GOLDEN HUBBARD.** A true Hubbard except in color, which is a beautiful orange red. Oz. 20c; ¼ lb. 70c; lb. \$2.00. .... 10c
- HUBBARD.** Standard Winter squash, an excellent keeper. Oz. 20c; ¼ lb. 70c; lb. \$2.00. .... 10c
- MAMMOTH CHILL.** Grows to an immense size. Oz. 30c; ¼ lb. 85c; lb. \$2.50. .... 10c
- MAMMOTH SUMMER CROOKNECK.** Early, large, fine for Summer use. Oz. 20c; ¼ lb. 50c; lb. \$1.50. .... 10c
- MAMMOTH WHALE.** Largest and heaviest of all squashes, fine for exhibition. Oz. 25c. .. 10c
- MAMMOTH WHITE BUSH SCALLOPED.** Oz. 20c; ¼ lb. 50c; lb. \$1.50. .... 10c
- TABLE QUEEN.** Trailing in habit, with small, ribbed, smooth, thin shelled, dark green, acorn shaped fruits. Flesh yellow. Excellent for baking. Flavor sweet. Oz. 20c; ¼ lb. 70c; lb. \$2.00. .... 10c
- WARTED HUBBARD.** This excellent strain of Hubbard squash grows to a large size, is blackish green in color, well warted. Excellent keeper. Oz. 20c; ¼ lb. 70c; lb. \$2.00. .... 10c
- MIXED SQUASHES.** All above varieties mixed. Oz. 15c; ¼ lb. 40c; lb. \$1.25. .... 10c

**TOMATO**

- BONNY BEST.** Early, productive, smooth and uniform in size. Oz. 35c. .... 10c
- CHALK'S EARLY JEWEL.** An excellent early variety, producing large, smooth, sweet, fine flavored scarlet fruits. Oz. 40c. .... 10c
- DWARF CHAMPION.** Plants dwarf, with dark green leaves. Fruits medium, smooth, globular, pink. Excellent quality. Oz. 35c. .... 10c
- EARLIANA.** Best early. Oz. 40c. .... 10c
- HUSK OR STRAWBERRY.** Small yellow fruit used for preserves. .... 10c
- JOHN BAER.** An excellent scarlet fruited, early variety. Fruits medium sized, smooth, firm, bright scarlet. Excellent for local markets and canning. Oz. 45c. .... 10c

**TOMATO (Continued)**

Per Pkt.

- MARGLOBE.** Developed by U. S. Dept. of Agriculture, produces large, smooth, meaty globular red fruits, which ripen evenly, and are free from cracks. An extremely heavy cropper. Wilt resistant. Especially valuable to those who are in districts troubled with rust and wilt. ½ oz. 30c; oz. 50c. .... 10c
- PONDEROSA.** Very large, solid, and of good flavor. Oz. 45c. .... 10c
- RED HEAD.** An exceptionally fine, large, bright red variety. Fruits nearly globular, solid, sweet, excellent flavor. Oz. 45c. .... 10c
- RED PEAR.** For preserving. .... 10c
- SMALL FRUITED VARIETIES.** Mixed. Oz. 40c. .... 10c
- STONE.** Large, perfectly smooth, scarlet, one of the best. Oz. 35c. .... 10c
- YELLOW PEAR.** For preserving. .... 10c
- YELLOW PONDEROSA.** Mammoth yellow. .... 10c
- PRITCHARD.** The newest and best Wilt Resistant variety. Very prolific. Fruits solid, of excellent color. A superb canning and market variety. ½ oz. 45c; oz. 75c. .... 15c

**TURNIPS**

- GOLDEN BALL.** Root of fine form and bright yellow color; a fine keeper; unsurpassed for table use. Oz. 15c; ½ lb. 40c; lb. \$1.00. .... 10c
- EARLY PURPLE TOP STRAPLEAF.** Very early, sweet, mild and a rapid grower. Oz. 20c; ¼ lb. 50c; lb. \$1.50. .... 10c
- PURPLE TOP WHITE GLOBE.** The best main crop variety. Roots large, round, white, with purple top. Flesh white, fine grained. Oz. 20c; ¼ lb. 50c; lb. \$1.50. .... 10c
- WHITE EGG.** Excellent early variety, egg shaped, mild flavor. Oz. 20c; ¼ lb. 50c; lb. \$1.50 .... 10c

**SWEDE, OR RUTA BAGA**

- CANADIAN GEM.** Purple topped variety of fine appearance. heavy cropper, roots clean and handsome, unexcelled for cooking and shipping purposes. Oz. 20c; ¼ lb. 50c; lb. \$1.50 .... 10c
- CARTER'S IMPERIAL.** Very popular, flesh very solid and a fine keeper. Oz. 20c; ¼ lb. 45c; lb. \$1.25. .... 10c
- IMPROVED PURPLE TOP** Very early, free growing, the best Purple Top Swede in cultivation Oz. 15c; ¼ lb. 40c; lb. \$1.00. .... 10c
- LARGE WHITE FRENCH.** The best of the white varieties, sweet and excellent. Oz. 15c; ¼ lb. 40c; lb. \$1.00. .... 10c
- NE PLUS ULTRA.** A new English turnip, superior to our American varieties. Flesh richly colored, fine grained and sweet. Cooks quickly, free from strong odor. Oz. 20c; ¼ lb. 50c; lb. \$1.50. .... 10c
- MILLPOND.** A superior imported Canadian strain. Roots very smooth, globular, purple top. Flesh yellow, fine grained. Oz. 20c; ¼ lb. 50c; lb. \$1.50. .... 10c
- PERFECT MODEL.** A heavy cropping purple top Swede with small tops of fine flavor, and a long keeper. Matures early. Oz. 20c; ¼ lb. 50c; lb. \$1.50. .... 10c

PLANT  
THE BEST

## RELIABLE FARM SEEDS

PLANT  
THE BEST

ALL FARM SEEDS are quoted F.O.B. Portland, Me. Bags extra at cost but returnable for credit if in good condition. We ship your grass and field seeds in heavy cotton bags.

**SPECIAL NOTICE.** Farm seeds are in very short supply this season. Order early to be assured of a supply for your plantings.

Too much emphasis cannot be laid upon the importance of selecting the purest seed obtainable. Clean seed means clean crops. It is economy to buy the best, for results will justify the slight increase in cost over cheaper grades. The crop is what counts.

### GRASSES, GRAINS, CLOVERS, Etc.

(Prices on all field seeds subject to change)

We wish our customers to know that we deal only in the very highest grade of grass seed, quality and purity our first considerations. Every farmer has learned to his sorrow that the ordinary and low priced grass seed contain more or less foul weeds, chaff, sand, etc. Our choice Timothy and Red Clover guaranteed 99% to 99.5% pure U. S. Government test.

**ALFALFA.**—Pine Tree State Brand. 30c lb.

**ALFALFA.**—Grimm's genuine strain. 40c lb.

**BARLEY**—90c pk.

**BUCKWHEAT JAPANESE**—\$1.00 pk.

**ALSIKE CLOVER**—Pine Tree State Brand. 40c lb.

**RED CLOVER**—Pine Tree State Brand. 38c lb.

**SWEET CLOVER**—A valuable sown for soiling and for ensilage and bees. 20c lb.

**WHITE CLOVER**—50c lb.

**MILLET HUNGARIAN**—12c lb.

**MILLET JAPANESE**—12c lb.

**SWEDISH SELECTED OATS**—The culms are erect, medium large, and stiff. The panicles are medium, rather broad, stiff and erect. Grains practically white, plump, and short pointed. Bu. \$1.60.

**PINE TREE STATE BRAND OATS**—One of the most productive oats we have ever introduced. The straw is of good height, and does not readily lodge, ripens uniformly, free from rust. Price, pk. 60c; bu. \$1.75.

**RAPE DWARF ESSEX**—20c lb.

**RED TOP**—Pine Tree State Brand. lb. 30c.

**RED TOP**—Fancy re-cleaned. lb. 25c.

**RYE, WINTER ROSEN**—90c pk.

**SUNFLOWER**—Mammoth Russian. lb. 15c.

**TIMOTHY, PINE TREE STATE BRAND.**—Extra choice, clean, plump seed. Lb 28c; pk. \$3.00; bu. \$11.70.

**TIMOTHY AND ALSIKE MIXED**—Extra fancy, large plump berries, no inferior seed. Lb. 34c.

**TIMOTHY AND RED CLOVER MIXED**—lb. 33c

**WHEAT, SPRING**—Pk. 95c; bu. \$2.20.

### FODDER AND FIELD CORN

**EUREKA ENSILAGE CORN**—Grows from 12 to 15 feet high and will produce more tons of good material for the silo than any other kind. Also very productive of ears. Our seed is the genuine Eureka grown from stock seed procured from Ross Bros., the originators. Lb. 30c; ½ pk. 85c; pk. \$1.50; bu. \$4.50.

**EXCELSIOR ENSILAGE**—Grows 12 to 15 feet high, will yield 20 to 25 tons to the acre. Lb. 30c; pk. \$1.50; bu. \$4.50.

**LEAMING**—An early, hardy, dented flint variety. It is tall and leafy, with large ears, will mature in New England. The best for ensilage. Lb. 25c; pk. \$1.00; bu. \$3.25.

**MAMMOTH 90 DAY YELLOW FLINT**—A fine, early yellow variety, extra large ears. Stalks 10 to 12 feet high. Matures early. lb. 30c; pk. \$1.35.

**SWEEPSTAKES ENSILAGE**—As an ensilage corn it has repeatedly yielded from 15 to 20 tons to the acre. Nearly every stalk has two large ears, which add much to the value of the ensilage. There is more food value per acre from our Pedigree Sweepstakes Corn than from any other known kind or brand. Lb. 30c; ½ pk. 75c; pk. \$1.50; bu. \$4.50.

**SWEET FODDER CORN**—This variety excels all others for feeding to stock. Lb. 30c; pk. \$1.25.

### LAWN SEEDS

**EVERGREEN LAWN SEED**—A superior mixture for lawns, tennis courts, etc. Gives a fine, smooth, velvet sward within a few weeks after sowing. ½ lb. 30c; lb. 50c.

**KIMBALL'S VELVET LAWN GRASS MIXTURE**—A very fine mixture and will give general satisfaction. ½ lb. 35c; lb. 60c.

**SHADY SPOT LAWN SEED.** For shady places and under trees. ½ lb. 40c; lb. 70c.

**ENGLISH LAWN SEED**—Imported mixture, makes the finest lawn. Lb. 60c.

We are prepared to make special mixtures for Tennis Courts, Golf Links, Shady Lawns, etc.

**WHITE CLOVER**—50c lb.

**KENTUCKY BLUE GRASS.** For lawns. lb. 50c.

If small orders of grass or field seeds are to be sent by parcel post, add at the rate of 8c for first pound and 2c for each additional pound to cover postage and packing.

The prices on Farm and Field Seeds are constantly changing, write for prices.

FARM SEEDS ARE SENT BY FREIGHT OR EXPRESS at customer's expense. We pack carefully and deliver to transportation company here, and always make the shipments via the best and quickest route.

PRICES ON ALL FARM SEEDS ARE SUBJECT TO MARKET CHANGES

## Fertilizers

(F.O.B. Portland, Me., Not Prepaid)

**GARDEN FERTILIZER.** A superior all around 4-12-4 fertilizer to meet garden requirements. It has as a base sheep manure and organic tankage. A complete balanced fertilizer.

50 lb. bag \$2.00; 100 lb. bag \$3.75.

**GROUND BONE.** One of the best and safest fertilizers to use for flowers and lawns. It is relatively high in nitrates and phosphates in a slowly available form. 1 lb. 5c; 10 lbs. 40c; 100 lbs. \$2.75

**LOMA.** A nationally advertised scientifically prepared plant food testing 5-10-4. It will produce velvety lawns, sturdy, full bloomed flowers and quality vegetables.

1 lb. 10c; 5 lbs. 50c; 10 lbs. 85c; 25 lbs. \$1.60; 50 lbs. \$2.75; 100 lbs. \$4.50.

**NITRATE OF SODA.** This is a tonic fertilizer to invigorate flowers and vegetables. It is readily soluble and acts quickly, forcing stem and foliage growth. Apply sparingly for flowers and vegetables except greens. 1 lb. 10c; 10 lbs. 70c.

**SHEEP MANURE.** Excellent for lawns and gardens, because of its fertilizing value and organic matter. It contains the three essential elements in a slowly available form.

5 lbs. 35c; 10 lbs. 60c; 25 lbs. \$1.00; 100 lbs. \$3.25.

**VIGORO.** A high grade, balanced, 4-12-4 fertilizer. Besides the usual elements it contains several ingredients necessary to plant growth. Apply to lawns when the grass is dry.

12 oz. 10c; 5 lbs. 50c; 10 lbs. 85c; 25 lbs. \$1.60; 50 lbs \$2.75; 100 lbs. \$4.50.

## Garden Supplies

(F.O.B. Portland, Me., Not Prepaid)



**GARDEN GLOVES.** The famous, all leather, durable, washable Eezy Wear Gloves. They are soft, pliable, comfortable to wear, keeping the hands soft and smooth. Protect your hands and enjoy gardening. State size, small, medium or large.

Price 75c per pair.

**CARBOLA.** A combined disinfectant and white wash. One pound covers 250 square feet. Excellent for chicken houses, cellars and out buildings.

5 lbs. 75c; 10 lbs. \$1.25; 50 lbs. \$5.00.

**CROW REPELLANT.** Protect your corn and soft seeds from the ravages of crows, pheasants and rodents. Applied directly to seeds before planting.

Bu. size 60c; 2 bu. size \$1.00.

**PEAT MOSS.** An ideal top dressing for lawns, perennial flower beds and shrubs. It greatly improves the physical condition of the soil through the addition of humus.

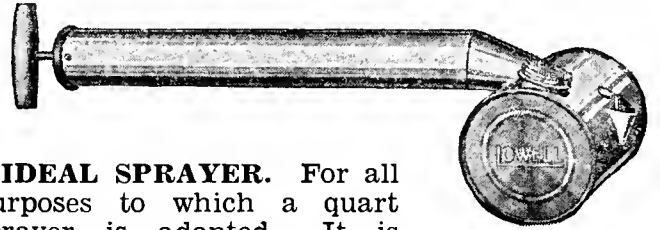
One-half bale (11 bus.) \$1.50; bale (22 bus.) \$2.50.

**SANASEED.** A seed that kills mice. No preparing, mixing, fuss or muss. Simply place it about the infested areas. Can be safely used indoors or out of doors. Package 15c.

**TOPZOL.** Rat Baits. Harmless to humans, poultry and pets, but death to rats. It is a red squill preparation which attracts and destroys them. Kills rats only. Package (10 Baits) 15c.

## Sprayers and Dusters

(F.O.B. Portland, Me., Not Prepaid)



**IDEAL SPRAYER.** For all purposes to which a quart sprayer is adapted. It is strongly made, attractive and sure acting, producing an intermittent spray. All Tin 50c each.

**AMBASSADOR SPRAYER.** This is one of the best, small continuous sprayers on the market. Pump heavy tin, container 24 ounce heavy glass jar. Very efficient in the application of household and garden insecticides and disinfectants.

Price \$1.20 each.

**WARRIOR DUSTER.** Designed for use in garden, field, barns and poultry houses. It will handle powders of any kind. Powder compartment 2 3/4 inches in diameter by 5 inches. Strong, sturdy and anti clogging. Price \$1.25 each.

**SENTRY DUSTER.** A medium size, low price, efficient duster, which will handle all powdered insecticide for the home or garden. Well made and attractive. Price 50c each.

## Insecticides

(F.O.B. Portland, Me., Not Prepaid)



**ANTROL.** A scientific liquid which will safely combat ants, destroying the colonies in the hills. Sets include 4 containers, 4 oz. bottle syrup. Not mailable.

Price per set 75c

**ANT-ZIX.** A new poison in handy tubes which will eradicate ants. 80% more efficient than arsenate or strychnine. Not mailable. Large tube 25c.

**BLACK LEAF 40.** A tobacco product containing 40% nicotine sulphate. Highly recommended for destroying all sucking and many chewing insects. Not mailable. 1 oz. 35c; lb. \$2.25.

**BUG DEATH.** A non-poisonous powder which will control all types of sucking insects. 1 lb. Sifter top package 25c. Mailable.

**GREENTOX.** A standardized Rotenone-Pyrethrum, contact and stomach poison, plant spray. Non-poisonous. Harmless to people and pets. 1 oz. 35c; 6 oz. \$1.00; 16 oz. \$2.00. Mailable.

**NEW EVERGREEN.** A non poisonous insecticide for flowers and vegetables. High pyrethrin content. Effective and harmless. 1 oz. 35c; 6 oz. \$1.00; 16 oz. \$2.00. Mailable.

**Q-B DUST.** A new, safe Derris-Rotenone insecticide dust, to control all types of insects. Non-poisonous, effective and safe. Mailable. 3 oz. can 35c

**SNAROL.** This prepared poisonous bait will control cut worms, slugs, snails, grass hoppers and other chewing insects.

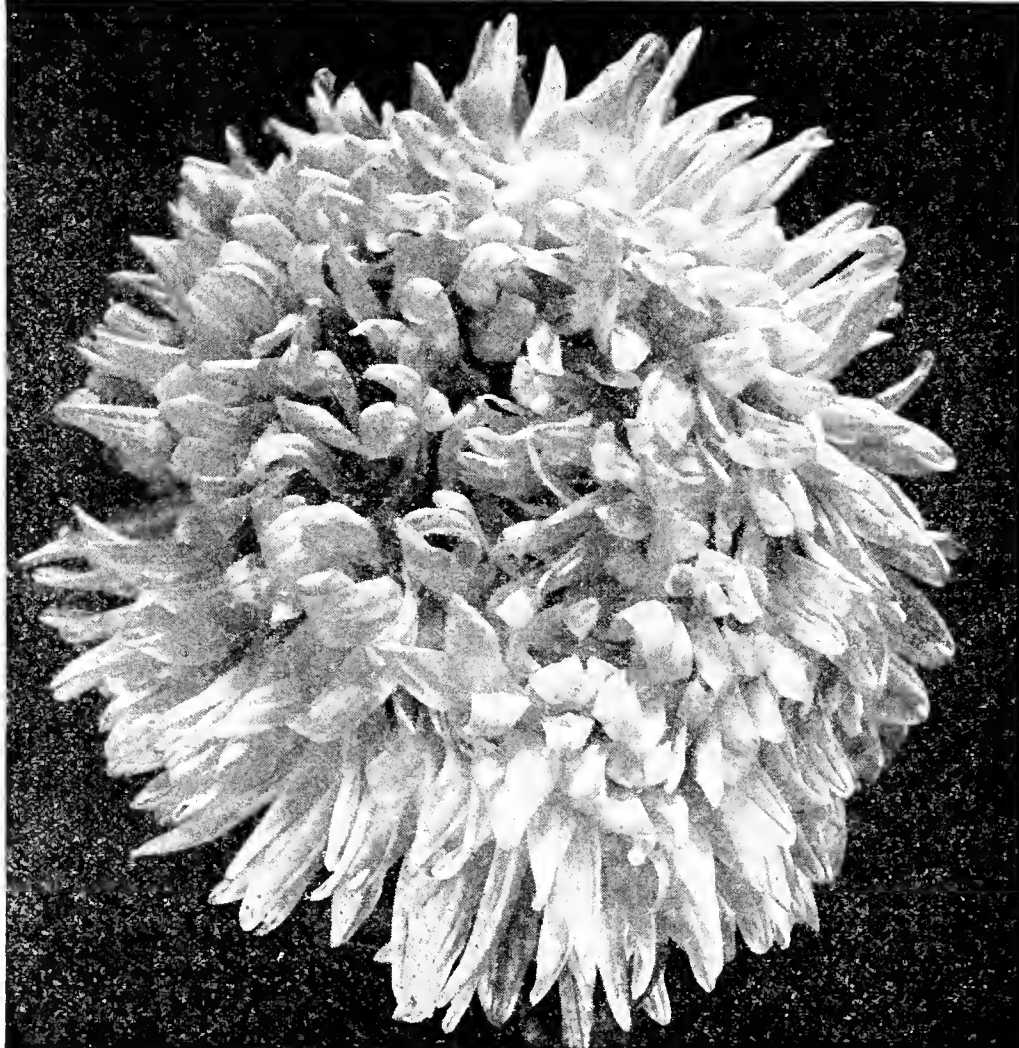
1 1/2 lb. pkg. 35c; 4 lb. pkg. 85c; Not mailable.

ALL ITEMS QUOTED F. O. B. PORTLAND, MAINE

## FLOWER NOVELTIES--1935

Each year flower plantings become more popular. The improvements in flowers have been very marked and the newer strains are far superior to those of yesterday. We now have Wilt Resistant Asters, Double Sweet Scented Nasturtiums, Gorgeous Delphiniums, Fluffy Calendulas, Stately Larkspurs, Giant Stocks and imported varieties without number.

May we submit for your approval our offerings for this season?



**Aster Mammoth Paeony Flowered**

**ASTER—Los Angeles.** The largest and most fully double aster known. Flowers 6 inches across, full petaled, feathery and artistically graceful. Color is a lovely soft shell pink. **Pkt. 25c.**

**ASTER—Mammoth Paeony Flowered.** A superb strain with immense fully double flowers resembling the Beauty type. Stems long, stout, non-lateral. Wide range of colors. **Mixed Pkt. 25c.**

**CALENDULA—Chrysantha.** The Gold Medal, 1934, All American Selection. Large double, buttercup yellow flowers, with long loosely arranged petals, like a chrysanthemum. Ideal for cutting. **Pkt. 25c.**

**CANDYTUFT—Miniature Gem.** An ideal rock garden plant about 3½ inches high, producing four to six spikes of the hyacinth flowered type. **Pkt. 20c.**

**DELPHINIUM—Cliveden Beauty.** A superb new strain of the hardy, perennial Delphinium, producing long, stately, large, light blue flowered spikes. **Pkt. 20c.**

**LARKSPUR—Imperial Blue Bell.** An All American 1934 Selection. Plants upright, with long basal branched spikes of a clear medium blue. **Pkt. 25c.**

**MARIGOLD—Royal Scot.** A charming combination of mahogany and gold in symmetrical stripes which radiate from the center of the flower. **Pkt. 25c.**

**NASTURTIUM—Gleam Hybrids.** Award Merit 1935. There are several striking colors and blends which come true to form, half dwarf, semi-double, ruffled, fragrant flowers. **Pkt. 25c.**

**NASTURTIUM—Scarlet Gleam.** Gold Medal 1935 All American Selection. Flowers ruffled, fragrant, semi-double, similar to Golden Gleam except flowers are a rich scarlet. **Pkt. 35c.**

**STOCK—Giant Imperial Shasta.** A giant, vigorous, robust, glistening, new white stock, producing a high percentage of doubles. **Pkt. 20c.**

**TITHONIA SPECIOSA.** A South American novelty. Plants vigorous, six feet tall, with dahlia like growth and foliage. Orange vermilion blooms similar to a single zinnia. **Pkt. 25c.**

**VENIDIUM FASTUOSUM.** Award of Merit 1933. A very beautiful annual imported from Africa. The large, daisy like flowers are deep orange, with a wide, brown central ring. **Pkt. 25c.**

**VERBENA—Beauty of Oxford Hybrids.** A new outstanding large flowered strain, shading from rose pink to rose red. Foliage dark green. **Pkt. 20c.**

**ZINNIA—Fantasy.** Award of Merit 1935. Very outstanding. Of the curled and crested type. Flowers shaggy, in the brightest shades of red, yellow, orange and pastel shades. **Pkt. 25c.**

**LEND THIS SEED BOOK TO YOUR NEIGHBOR—THANK YOU.**



# Choice Flower Seeds and Bulbs

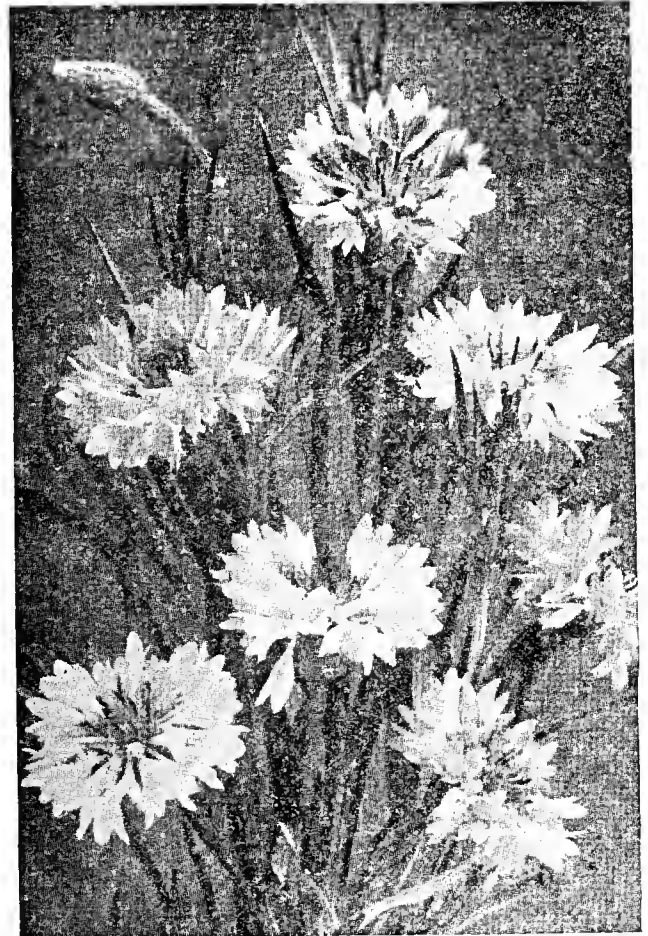
- |  | Per Pkt. |
|--|----------|
| <b>ABRONIA</b> (Sand Verbena). A quick growing, trailing plant with verbena like, rose colored flowers. Pkt. ....  | 10c      |
| <b>ACROCLINIUM</b> . One of the handsomest everlastings, and used extensively in bouquet of dried flowers, mixed. Pkt. ....  | 10c      |
| <b>AGERATUM BLUE</b> . Free flowering; good for the beds and pots. Pkt. ....   | 10c      |
| <b>ALYSSUM</b> . Sweet scented, white flowers. ½ oz. 30c; oz. 50c. ....  | 10c      |
| <b>AMARANTHUS</b> . Highly ornamented foliage and flowering plants of easiest culture. Annual, mixed. Pkt. ....  | 10c      |
| <b>ANCHUSA</b> (Capensis). Plants compact, 2 feet high, hardy, free growing, producing forget-me-not like flowers. Pkt. ....   | 10c      |
| <b>ANTIRRHINUM</b> or <b>SNAPDRAGON</b> . One of the most beautiful and useful border plants. Half hardy perennial, flowering the first season. Tall mixed; dwarf mixed; all kinds, mixed. Pkt. .... | 10c      |
| <b>ARCTOTIS</b> (African Lilac Daisy). Daisy like flowers are pure white with sky blue eye. An excellent cut flower. Pkt. ....   | 10c      |

## ASTERS

- |  |     |
|--|-----|
| <b>AMERICAN BRANCHING</b> . Magnificent large flowers borne on long stems. The long petals are frequently twisted and curled, giving the blossoms the appearance of a large graceful chrysanthemum. Finest mixed. ¼ oz. 50c. . . | 10c |
| <b>ASTERMUM</b> . The flowers are very large, with curled and twisted petals, closely resembling Japanese Chrysanthemum. An excellent mixture. Pkt. ....   | 10c |



Calendula

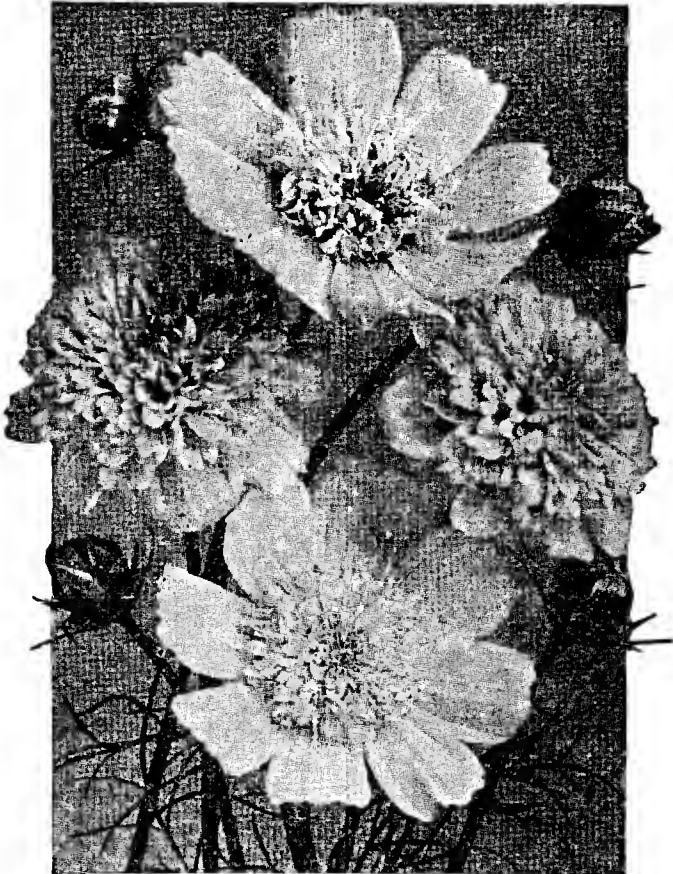


Bachelor's Button

- |  | Per Pkt. |
|--|----------|
| <b>CALIFORNIA GIANTS</b> . Flowers of large size and of heavy substance, with long graceful petals attractively curled and twisted. Plants grow two feet tall with long stems. Pkt. .... | 15c      |
| <b>CREGO GIANT MIXED</b> . Grand large flowers, measuring four inches. The petals are double the length of the old varieties and are twisted and curled. Pkt. ....                       | 10c      |
| <b>HEART OF FRANCE</b> . A startling new beautiful type of Aster of the purest deep red flowers on long, strong stems. Pkt. ....   | 15c      |
| <b>LOS ANGELES</b> . See page 16.  |          |
| <b>MAMMOTH PAEONY FLOWERED</b> . See page 16.  |          |
| <b>QUEEN OF THE MARKET</b> . Very early, many beautiful colors, mixed. Pkt. ....   | 10c      |
| <b>ROYAL</b> . An early flowering aster. The plants are branching, producing very double flowers on long, sturdy stems. A superior mixture. Pkt. ....                                    | 10c      |
| <b>FINEST MIXED</b> . This collection includes all colors and shades of many choice varieties.   | 10c      |
| <b>BACHELOR'S BUTTONS</b> . A fine deep blue. Oz. 50c. ....  | 10c      |
| <b>BACHELOR'S BUTTONS</b> . Various colors, mixed: Oz. 45c. ....   | 10c      |
| <b>DOUBLE BLUE</b> . Large deep blue. Pkt. ....  | 10c      |
| <b>DOUBLE MIXED</b> . All colors. Oz. 50c. ....  | 10c      |
| <b>BALSAM</b> . Superb, fine double mixed. ½ oz. 30c; oz. 50c. ....  | 10c      |
| <b>BRACHYCOME</b> (Swan River Daisy). Excellent for beds or borders. Flowers dainty, small, star shaped, in a rich assortment of colors. Plants 12 inches high. Pkt. ....                | 10c      |
| <b>BROWALIA</b> . Graceful, pyramidal plants, 18 inches high. Foliage dark green. Flowers star shaped, blue and white. Excellent blend.  | 10c      |

SWEET PEAS ARE ONE OF OUR SPECIALTIES. WE OFFER A LARGE ASSORTMENT

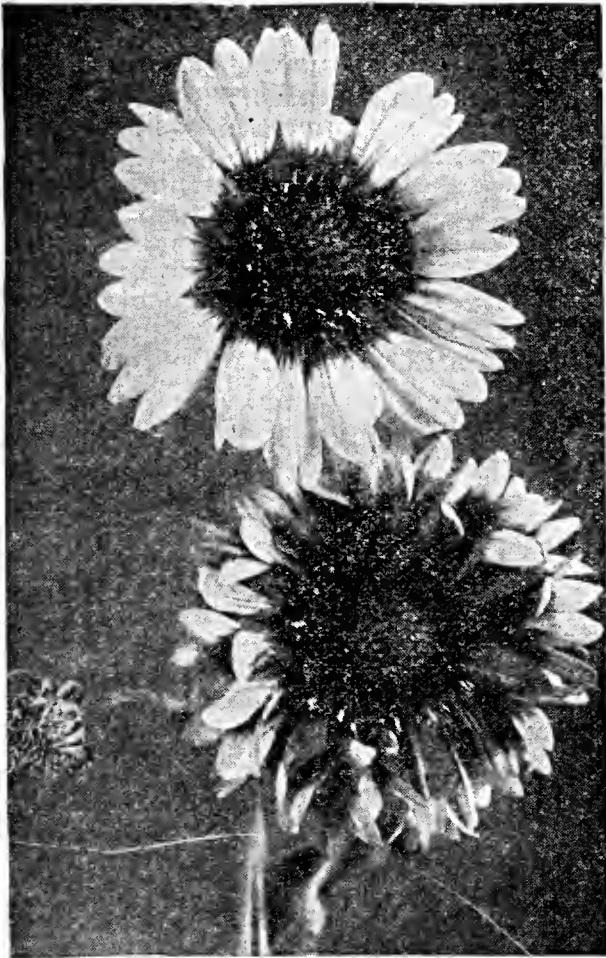
**CALENDULA (Meteor).** Beautifully striped Per Pkt. 10c  
**CALENDULA (Orange Giant).** ½ oz. 30c. . . 10c  
**CALENDULA (Prince of Orange).** Color intense orange, blooms all Summer. ½ oz. 30c. 10c  
**CALENDULA (Choice Mixed).** ½ oz. 30c. . . 10c  
**CALENDULA CHRYSANTHA.** See page 16.  
**CALIFORNIA POPPY.** Hardy annual, profusion of rich single, yellow flowers. Mixed. Oz. 45c. . . . . 10c  
**CANARY BIRD FLOWER.** A beautiful climber with bright yellow flowers. . . . . 10c  
**CANDYTUFT (Empress).** Large flowering, white. . . . . 10c  
**CANDYTUFT (White Queen).** A mass of white flowers. ½ oz. 30c; oz. 50c. . . 10c  
**CANDYTUFT (Finest Mixed).** All colors. Oz. 45c. . . . . 10c  
**CANDYTUFT (Miniature Gem).** See page 16.  
**CARNATION MARGUERITE.** A very large percentage of the flowers come double and of good size, fine form and great beauty. They begin to bloom four months from the time the seeds are sown. Finest mixed. 10c  
**CELOSIA (Cockscomb).** Dwarf mixed, strikingly brilliant. . . 10c  
**CELOSIA CHILD-SII.** A very beautiful annual producing myriads of fluffy, lacy, vivid crimson blooms. 10c  
**CENTAUREA IMPERIALIS.** Very desirable for cutting. Plants produce an abundance of deeply fringed, graceful, upright, delicately scented blooms. . . . . 10c  
**CHRYSANTHEMUM.** Glorious, showy, summer flowering annuals which are easily raised from seed. Plants upright, producing excellent single flowers, adapted for cutting. . . 10c  
**CLARKIA.** Plants hardy, flowering from July to October. The rose and pink toned flowers, resemble sprays of flowering almond. . . 10c  
**COBOEA.** A tall rapid-growing climber, with handsome foliage. Large blue bell-shaped flowers. Pkt. . . . . 10c  
**COREOPSIS.** Also known as Calliopsis. A beautiful annual, producing daisy like flowers in contrasting tones of yellow, orange, brown, maroon and almost crimson. Plants thrifty, vigorous, blooming throughout the summer. Mixture. . . . . 10c  
**COREOPSIS DRUMMONDI (Golden Wave).** A vigorous plant, 2 feet tall. Flowers gorgeous yellow, with a circle of rich crimson-brown around the eye. Pkt. . . . . 10c



Double Cosmos

**COSMOS (Mammoth California).** This vigorous, tall growing strain, produces beautiful single, red, pink and white flowers. Sow seeds early to produce its maximum results. . . 10c  
**COSMOS (Extra Early Flowering).** The best strain for northern plantings. Plants 4 feet tall, blooming profusely. An excellent mixture crimson, pink and white. Pkt. . . . . 10c  
**DAHLIA.** Double mixed. Pkt. . . . . 20c  
**DIANTHUS CHINENSIS (China Pink).** Finest mixed, double, in great variety of colors. 10c  
**DIANTHUS HEDDEWIGI (Japan Pink).** Large double, blooms with fringed petals of a wide range of bright colors. Pkt. . . . . 10c  
**DIDISCUS (Blue Lace Flower).** A beautiful dainty annual with umbels of lavender and blue flowers. Foliage lacy and attractive. . . 10c  
**DOLICHOS (Hyalanth Bean).** A rapid climber, with clusters of white or purple flowers. . . . . 10c  
**ESCHSCHOLTZIA (California Poppy).** One of the daintiest low growing annuals for edging. Foliage finely cut, silvery blue, Poppy like flowers in a wide range of colors. An excellent mixture 10c  
**EVERLASTING FLOWERS (Mixed).** An excellent blend of the different types of straw flowers. Excellent for winter, dry bouquets. 10c  
**FORGET-ME-NOT (Myosotis).** Beautiful little plants, with bright, star-like flowers; useful for cutting. Succeed best in moist situations. Half hardy perennial. Pkt. . . . 10c  
**GAILLARDIA (Blanket Flower).** One of the most profuse blooming annuals. The flowers are of red and orange shades tinted with rose at the base. It thrives in the full sunlight. Mixed Pkt. . . . . 10c  
**GILIA (Blue Thimble Flower).** Handsome plants with beautiful, thimble-shaped blue flowers. Foliage fine and feathery. Can be dried for winter bouquets . . . . . 10c  
**GODETIA.** Profuse blooming plants, which are very showy, deserving more extensive cultivation . . . . . 10c  
**GOURDS.** Ornamental climbers, varieties of singular shaped fruit, mixed. Pkt. . . . . 10c  
**GYPSOPHILA (Baby's Breath).** Graceful plants of light, fairy-like growth. The white, dainty flowers are popular for cutting and for combining with other flowers to make light, airy bouquets. Pkt. . . . . 10c

OUR SEEDS ARE DEPENDABLE BECAUSE THEY ARE TESTED SEED



Gaillardia

Per Pkt.

**HELIANTHUS.—(Sunflower).**

**Chrysanthemum.** Flowered Sunflower, very double, a truly beautiful variety. Pkt... 10c

**Mammoth Russian.** Grown for its exceedingly large, single flowers. Valuable for the dry seeds which are used for feeding birds and hens. Pkt. .... 10c

**Red Sunflower.** A novel type of sunflower producing flowers of beautiful shades of red tipped and suffused with yellow. Very ornamental. Pkt. .... 10c

**Many Fine Varieties.** Mixed. Oz. 25c. .. 10c

**HOLLYHOCK.** One of the oldest garden favorites, which ranks among the finest of our Autumn flowers. The beautiful flowers of almost every shade and color, on the tall spikes, are very striking. Pkt. .... 10c

**HUMULUS JAPONICUS (Japanese Hop).** One of the best rapidly growing ornamental climbers, for covering fences, trellises and unsightly places. Plants very vigorous with luxuriant foliage. Flowers inconspicuous. .... 10c

**HUNNEMANNIA (Santa Barbara Poppy).** Plants are vigorous, two feet tall, producing large, yellow, cup-shaped flowers, with broad crinkled petals. Pkt. .... 10c

**KOCHIA or MEXICAN FIRE PLANT.** Excellent for individual specimens, for backgrounds and temporary hedges. The brilliant green, globular plants turn a vivid scarlet during the Fall months. Very showy. Pkt... 10c

Per Pkt.

**LARKSPUR.** Annuals of great beauty, stock flowered, all colors, mixed. ½ oz. 30c; oz. 50c. .... 10c

**Hyacinth Flowered.** The plants produce one large spike, thickly set with beautiful double flowers not unlike hyacinths. Mixed. 10c

**Double Rocket.** Dainty little plants, 1 foot tall with handsome spikes, closely set with double blooms of many bright colors. .... 10c

**Imperial Blue Bell.** See page 16.

**LOBELIA.** Highly desirable for edging, ribbon bedding and garden decoration as well as pot culture. Plants dainty, attractive and floriferous. Mixed. .... 10c

**MARIGOLD (Tall African).** One of the most popular, hardy, prolific, annuals. Foliage finely cut. Plants upright, 30 inches tall and studded with orange and yellow flowers. Excellent for cutting. Mixed. .... 10c

**MARIGOLD (Dwarf French).** Plants dwarf 12 inches, vigorous, compact, erect and floriferous, in shades of orange, yellow, mahogany red and striped. Very attractive. .... 10c

**MARIGOLD (Guinea Gold).** One of the outstanding, All American Selections in 1933. A compact pyramidal plant, 2½ feet high, covered with attractive, brilliant orange, semi-double, loosely, ruffled flowers. Excellent for cutting and a superior keeper. .... 20c

**MARIGOLD (Royal Scot).** See page 16.

**MARVEL OF PERU (Four O'Clock).** This old fashioned flower of bushy growth bears profusely flowers of white, yellow, crimson and violet. Mixed. .... 10c

Per Pkt.

**MIGNONETTE.** An old fashioned favorite. Plants erect, large flowering, sweet scented, excellent colors. Mixed. .... 10c

**MORNING GLORY (Double Mixed).** An excellent climber, vigorous, well foliated. Flowers semi-double and double. .... 10c

**MORNING GLORY (Imperial Japanese).** Of exquisite beauty and enormous size. .... 10c

**MORNING GLORY.** Splendid climbers, profusion of blooms, 12 colors. ½ oz. 25c; oz. 45c 10c



Variegated Leaved Dwarf Nasturtiums



**MOONFLOWER (Heavenly Blue).** One of the most beautiful, vigorous climbers. Plants well foliated. Flowers exceedingly large, 3½ to 4 inches in diameter, beautiful sky blue shading to white at the base. .... 20c

**TALL NASTURTIUM**

Our seeds of these popular flowers have gained a reputation for brilliancy and variety of color, form and substance of flower, which cannot be surpassed. In our mixture, which we make up from separate and distinct sorts, will be found a very great variety of most beautiful colors.

**RAINBOW MIXTURE.** Oz. 20c; ¼ lb. 50c; lb. \$1.50. .... 10c

**LOBB'S.** This magnificent climber is of unusual vigorous growth, with beautiful foliage and splendid large flowers in the richest and most brilliant colors. Mixed. Oz. 20c; ¼ lb. 50c; lb. \$1.50. .... 10c

**VARIEGATED LEAVED.** The flowers are of many bright colors in charming contrast to the handsomely variegated foliage. Oz. 20c. .... 10c

**IVY LEAVED.** Choice mixed. Oz. 20c. .... 10c

**DWARF NASTURTIUM**

**NEW DOUBLE SWEET-SCENTED NASTURTIUM (Golden Gleam).** The plant forms a vigorous, large bush which throws out short runners, averaging eighteen inches. The flowers commence as soon as the plant nears complete development, and at the time it is in full bloom the entire plant, including the runners, is a blaze of color. The large, golden-yellow flowers average two and one-half to three inches across. Very fragrant. .... 15c

**RAINBOW MIXED.** Oz. 15c; ¼ lb. 50c; lb. \$1.50. .... 10c

**SCARLET GLEAM.** See page 16.

**GLEAM HYBRIDS.** See page 16.

**PANSIES**

**MASTERPIECE.** New Giant Curled or ruffled pansy. Mixed. .... 15c

**TRIMARDEAU or GIANT.** Extra choice strain of vigorous growth and flowers of enormous size. ¼ lb. \$1.00. .... 15c

**GOOD MIXED.** Fine showing of flowers. ¼ oz. 65c; ½ oz. \$1.25. .... 10c

**GIANT SPENCER TYPE OF SWEET PEAS**



- ASTA OHN.** Pinkish lavender.
  - BLANCHE FERRY.** Bright rose, white wings, flushed pink.
  - CAMPFIRE.** Vivid scarlet.
  - COUNTESS.** Rose pink.
  - CRIMSON KING.** Rich deep crimson
  - DAINTY.** Delicate pink.
  - DOBBIE'S CREAM.** Deep cream.
  - GLADYS.** Lilac lavender.
  - HAWLMARK CERISE.** Cerise pink.
  - HAWLMARK LAVENDER.** True lavender.
  - HAWLMARK PINK.** Rose pink.
  - HAWLMARK SALMON PINK.** Salmon pink.
  - HEBE.** Large, bright pink.
  - HELEN LEWIS.** Rich crimson orange.
  - HERCULES.** Pure pink.
  - KING WHITE.** Large, pure white.
  - KING EDWARD.** Dazzling crimson.
  - MARY PICKFORD.** Cream pink, suffused salmon.
  - MARGARET ATLEE.** Rose pink on cream.
  - MISS CALIFORNIA.** Salmon cream pink.
  - MRS. TOM JONES.** Delphinium blue.
  - PICTURE.** Pink on cream.
  - PINKIE.** Best, large rose pink.
  - POWERSCOURT.** Large lavender.
  - SUNPROOF SCARLET.** Brilliant, dazzling scarlet.
  - TANGERINE.** Rich orange.
  - VALENTINE.** Bluish pink.
  - VERMILLION BRILLIANT.** Vermillion red.
  - WARRIOR.** Red maroon.
  - WEMBLY.** Pale lavender.
  - YOUTH.** White, edged rose pink.
- Price each of above Spencers. ½ oz. 20c; oz. 30c; ¼ lb. 90c. lb. \$2.50. .... 10c
- SUPERB MIXED SPENCER.** This blend contains the cream of all the best Spencers, including many novelties. It is the finest and most gorgeous mixture ever offered and will delight all who want a good variety of colors. ½ oz. 15c; oz. 25c; ¼ lb. 75c; lb. \$2.25. .... 10c

**TRY OUR GIANT DAHLIA FLOWERED ZINNIA. 15c PKT.**



	Per Pkt.
<b>PETUNIA.</b> (Finest Mixed). Colors mixed in great variety. ....	10c
<b>Rose of Heaven.</b> Brilliant rose .....	10c
<b>Rosy Morn.</b> Soft rose pink .....	10c
<b>Balcony.</b> Indigo blue .....	15c
<b>Balcony (Mixed).</b> A beautiful blend, fine for window boxes. ....	15c
<b>PHLOX.</b> Unequalled, showy for bedding, all colors. ....	10c
<b>PORTULACA.</b> Valuable for bedding, showy colors. Mixed. ....	10c

**POPPY**

<b>POPPY.</b> Exceedingly showy annual, making a gorgeous display, fine mixed. Oz. 40c. ....	10c
<b>CARNATION FLOWERED.</b> Mixed, splendid large double. Oz. 40c. ....	10c
<b>PEONY FLOWERED.</b> All colors, mixed. Oz. 40c. ....	10c
<b>THE SHIRLEY.</b> Beautiful light shades of white and pink, desirable. ½ oz. 30c; oz. 50c.	10c
<b>RICINUS (Castor Bean).</b> Large tropical plants, ornamental leaved. ....	10c
<b>SALPIGLOSSIS (Grandiflora)</b> Finest mixed.	10c
<b>SALVIA (Scarlet Sage).</b> An old time favorite red bedder. ....	10c
<b>SCABIOSA (Mourning Bride).</b> Old time plant, but better and larger, choice mixed. ..	10c
<b>SCHIZANTHUS (Butterfly Flower).</b> ....	10c
<b>SILENE (Catchfly).</b> A beautiful genus of profuse flowering plants, with bright and attractive flowers, mixed. ....	10c
<b>SNAPDRAGON.</b> Mixed. See Antirrhinum	10c
<b>STOCK (Giant Shasta).</b> See page 16.	
<b>STOCK (German Ten Weeks).</b> Double, fine mixed. ....	10c
<b>THUNBERGIA.</b> A rapid climbing vine. ....	10c
<b>TITHONIA SPECIOSA.</b> See page 16.	
<b>VENIDIUM FASTUOSUM.</b> See page 16.	
<b>VERBENA.</b> Finest mixed, a splendid strain	10c
<b>VERBENA.</b> Mammoth, mixed. ¼ oz. 35c...	10c
<b>VERBENA (Beauty of Oxford Hybrids).</b> See page 16.	

**ROCK GARDEN MIXTURE.** Rock gardens are yearly increasing in popularity. Our mixture includes both annuals and perennials. Large pkt. .. 15c

**DAHLIAS**

Dahlias will grow in any kind of soil, producing continuous blooms from July until frost.

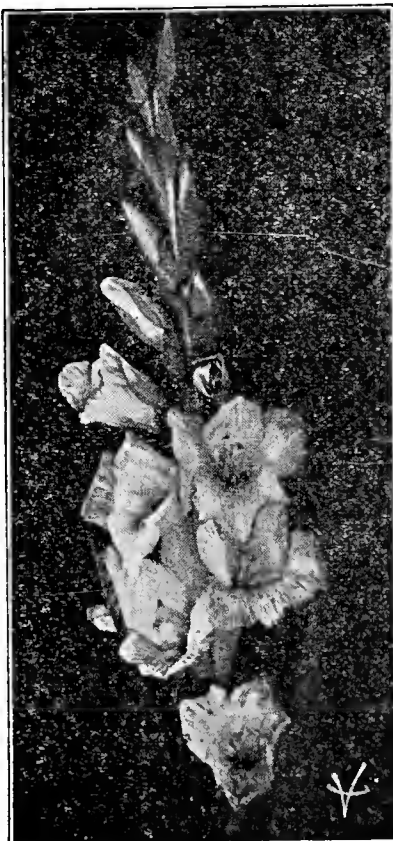
**Special Offer:** Our selection 5 roots for 50c; 10 roots \$1.00, mailed postpaid to your door.

**CINNAMON VINE**

Beautiful, hardy, fragrant, vigorous climber, growing in any location. Can be grown in the house in the Winter.

Each 10c; 3 for 25c; 12 for 90c.

<b>VISCARIA (Rose of Heaven).</b>	10c
<b>WILD CUCUMBER (Creep- ing Jennie).</b> A rapid climber.	10c
<b>XERANTHEMUM.</b> Showy, everlasting flowers. ....	10c



**ZINNIA**

	Per Pkt.
<b>ZINNIA.</b> Always popular, easily grown, brilliant display all Summer. Double mixed. ½ oz. 50c. ....	10c
<b>DWARF MIXED.</b> Large flowering. ½ oz. 50c.	10c
<b>GIANT or ROBUSTA.</b> Extra large, beautiful double flowers in great variety of colors. ½ oz. 60c. ....	10c
<b>SCARLET ZINNIA.</b> ....	10c
<b>ALL ABOVE KINDS MIXED.</b> ½ oz. 50c. ..	10c

**GIANT DAHLIA-FLOWERED ZINNIA**

The latest development in Zinnias. Flowers of mammoth size, in form like perfect decorative dahlia, the flowers often measure 6 to 8 inches in diameter. Choice mixed. 2 Pkts. for 25c. .... 15c

**Wild Garden Mixed Flower Seed**

A splendid mixture of over one hundred varieties of beautiful, free-blooming, hardy growers, which can be offered at a much less price than when sold in separate packages. When flowering commences something new blooms almost daily. Extra large packages, Pkt. 10c; ½ oz. 25c; oz. 40c; ¼ lb. \$1.00.

**4-H CLUB**

**GAZON FLOWER GARDEN**

A mixture of the easiest and surest growing flower seeds mostly annuals but included are perennials, everlastings and ornamentals grasses that can be sown broadcast or in narrow drills.

With little or no care the results are both surprising and charming and on account of the various seasons of blooms flowers can be had from early Summer till frost. Desirable for 'boys' and girls' gardens and grown-ups, too.

Large packet 10c; oz. 30c.

**CUT FLOWER GARDEN MIXTURE**

A mixture of choice annuals suitable for cut flowers. A splendid mixture of over fifty choice varieties.

Pkt. 10c; ½ oz. 25c; oz. 40c; ¼ lb. \$1.00.

**Gladioli Bulbs**

One of the most attractive and easily grown bulbous plants. The stately, floriferous flower spikes produce a wealth of color in the Summer and Fall garden. Excellent for cutting.

**Rainbow Mixed.** A splendid mixture, including all of the above kinds and many others. 6 for 30c; 12 for 50c; 100 for \$3.25.

**Everlasting or Straw Flowers**

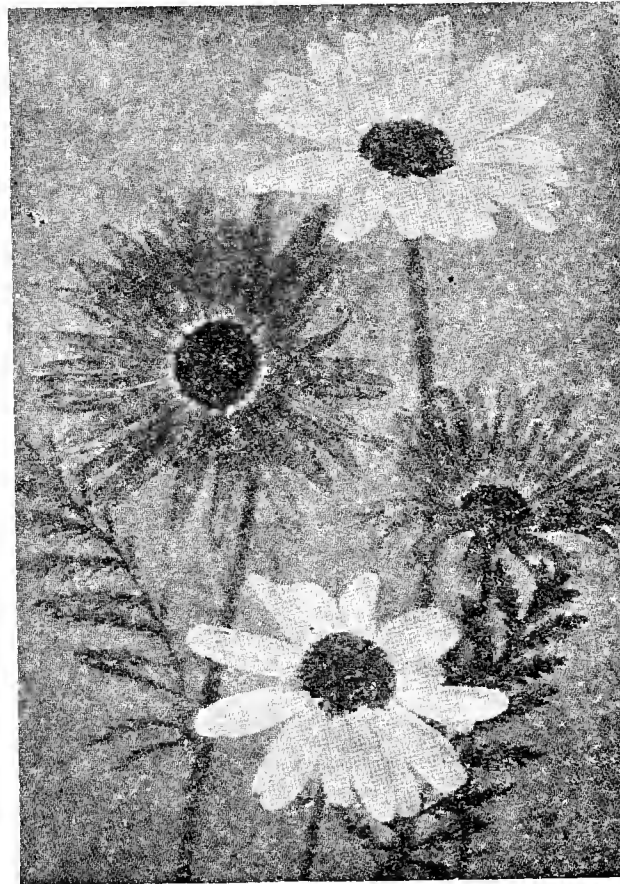
The Everlasting flowers with their rich, brilliant colors, are very valuable for Winter decorations. They should be cut as soon as they come into full bloom, tied in small bunches and dried slowly in the shade. Choice mixed, large packages, 10c.

<b>Acroclinium.</b> Mixed, Pkt. 10c.
<b>Gomphrena.</b> Mixed, Pkt. 10c.
<b>Helichrysum.</b> Mixed, Pkt. 10c.
<b>Xeranthemum.</b> Mixed, Pkt. 10c.

## Hardy Perennials and Biennials

There is a place for Perennials in every garden because they are easily grown from seeds sown in the Spring or during July and August. Very satisfactory when used for basic plantings to be supplemented with annual flowers. Why not try a few packets?

- |   | Per Pkt. |
|---|----------|
| <b>ACHILLEA (The Pearl).</b> Excellent for cutting. Plants 2 feet tall. Flowers satiny white. . .                       | 10c      |
| <b>ACONITUM (Monkshood).</b> Blue helmet-shaped flowers. Plants 4 feet tall. Thrives in any good soil. . . . .          | 15c      |
| <b>AGROSTEMMA (Mullien Pink).</b> Downy, silvery gray foliage. Vivid blood red flowers. . .                             | 10c      |
| <b>ALYSSUM (Basket of Gold).</b> Extra early, floriferous, golden yellow flowers. Dwarf rock garden plants. . .         | 15c      |
| <b>ANCHUSA (Italica).</b> Hardy, vigorous plants 3 feet tall. Flowers gentian blue, long loose sprays. . .              | 10c      |
| <b>ANEMONE (Windflower).</b> Dainty, cup-shaped flowers. . . . .  | 15c      |
| <b>AQUILEGIA (Columbine)</b> Delicate, odd, airy flowers. . . . .   | 10c      |
| <b>ARABIS.</b> Dwarf rock plants. Early pure white blooms. . .  | 10c      |
| <b>ASTER (Michaelmas Daisy).</b> Fall flowering. Daisy like flowers. . . . .  | 10c      |
| <b>BELLIS (Double Daisy).</b> Plants dwarf. Flowers double pink and white. . . . .                                      | 10c      |
| <b>CANTERBURY BELLS.</b> Large bell shaped flowers. Mixed. . . . .  | 10c      |
| <b>CARNATION.</b> Hardy, double, sweet scented. Mixed. . . . .  | 10c      |
| <b>CERASTIUM (Snow in Summer).</b> Rock plant, silvery foliage, white flowers. . . . .                                  | 15c      |
| <b>COREOPSIS.</b> Golden yellow flowers. Excellent for cutting. . . . .   | 10c      |
| <b>DELPHINIUM.</b> Gorgeous, stately spikes of blue flowers. . . . .  | 15c      |
| <b>DIANTHUS.</b> Single hardy pink, with fringed petals, fragrant. Mixed. . . . .                                       | 10c      |
| <b>FORGET-ME-NOT (Myosotis).</b> Plants dwarf, hardy, easily grown. Flowers blue. Excellent for rockeries. . . . .      | 10c      |
| <b>FOXGLOVE (Digitalis).</b> Large flower spikes, covered with beautiful spotted thimble shaped flowers. . . . .        | 10c      |
| <b>GAILLARDIA.</b> Showy, hardy perennials. Daisy like flowers, yellow, shaded with red. . .                            | 10c      |
| <b>GEUM.</b> Hardy, 2 feet tall, producing large, double, dazzling orange scarlet flowers. . . . .                      | 25c      |
| <b>GYPSOPHILA (Baby's Breath).</b> Three feet tall, producing dainty, white flowers. Excellent for bouquets. . . . .    | 10c      |
| <b>HELIANTHEMUM (Dwarf Sun Rose).</b> Dwarf rock plant. Rose, pink and white blossoms produced in May and June. . . . . | 15c      |



- |  | Per Pkt. |
|--|----------|
| <b>HEUCHERA (Coral Bells).</b> Dwarf, rock plant, for semi-shaded location. . . . .  | 25c      |
| <b>HOLLYHOCK.</b> Upright and stately plants, 6 feet tall, wide range of desirable colors. . . .                             | 10c      |
| <b>IBERIS (Perennial Candytuft).</b> Low, spreading growth, covered with flat clusters, white flowers . . . . .              | 15c      |
| <b>LATHYRUS (Perennial Sweet Pea).</b> Hardy, vigorous, producing large clusters of crimson, pink and white waxy blooms. . . | 10c      |
| <b>LINUM (Flax).</b> Beautiful light blue flowers, borne profusely on graceful plants. . . . .                               | 10c      |
| <b>LUPINUS (Lupin).</b> Hardy, excellent for cutting. Graceful spikes, pea-like flowers. . . . .                             | 10c      |
| <b>LYCHINIS (Jerusalem Cross).</b> Plants vigorous, 2 feet tall. Flowers brilliant scarlet, cross shaped. . . .              | 15c      |
| <b>PLATYCODON (Balloon Flowers).</b> Large, deep blue, bell shaped flowers . . . . .   | 15c      |
| <b>POLYANTHUS (Hardy Primrose).</b> Dwarf, early Spring flowering. . . . .   | 10c      |
| <b>POPPY (Oriental).</b> Enormous orange scarlet flowers. . . . .  | 10c      |
| <b>PHYSALIS (Chinese Lantern).</b> Excellent for Winter bouquets . . . . .   | 10c      |
| <b>PHYSTEGIA (False Dragon Head).</b> Plants tall, flowers rosy lilac. . . . .   | 15c      |
| <b>PYRETHRUM (Painted Daisy).</b> Beautiful, colored, daisy-like flowers. . . . .  | 10c      |
| <b>RUDBECKIA (Cone Flower).</b> Hardy, vigorous, floriferous. . . . .  | 10c      |
| <b>SCABIOSA CAUCASICA.</b> Fall flowering. Lavender blooms. . . . .  | 15c      |
| <b>SHASTA DAISY.</b> Enormous white daises. . . . .  | 15c      |
| <b>STOKESIA (Stoke's Aster).</b> Produces rich blue flowers, July until October. . . . .                                     | 10c      |
| <b>SWEET ROCKET.</b> Fragrant old fashioned favorite. . . . .  | 10c      |
| <b>SWEET WILLIAM.</b> Large, beautifully colored flowers. Hardy, easily grown. . . . .                                       | 10c      |
| <b>TRITOMA (Red Hot Poker).</b> Peculiar flower spikes shading from yellow to scarlet. . . . .                               | 15c      |
| <b>VIOLA CORNUTA.</b> Hardy, tufted pansies. Plants dwarf, flowering profusely throughout season. . . . .                    | 10c      |
| <b>WALLFLOWER.</b> Lance-like leaves, fragrant, single yellow and orange flowers. . . . .                                    | 10c      |



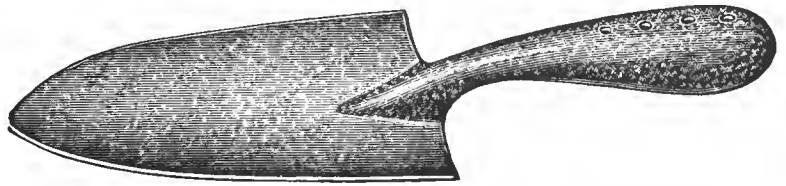




# Collections at Reduced Prices

The collections we offer contain the best seed obtainable. Because they are made up in advance of the busy season we cannot make any changes in the assortments, but of course, anyone may order additional seed to go with the collections.

Save money by ordering one of our Bargain Collections.



**FREE:** One extra heavy GALVANIZED TROWEL and EXCELSIOR WEEDER free with each Collection on this page.

Extra GALVANIZED TROWELS or EXCELSIOR WEEDERS 30c each, prepaid.

## HOME GARDEN COLLECTION \$1.25 PREPAID

A splendid collection for the Home Garden. If purchased separately would cost \$2.25—Prepaid for \$1.25

ONE 10c PACKET EACH OF THE FOLLOWING

BEET—Early Blood; CABBAGE—Succession; CARROT—Oxheart; CUCUMBER—White Spine; CORN—Golden Bantam; ONION—Yellow Globe; RADISH—Scarlet Globe; PUMPKIN—Sugar; SPINACH—Bloomsdale; SQUASH—Marrow; LETTUCE—Beefsteak; RUTA BAGA—Purple Top; SWISS CHARD—Lucullus; PARSNIP—Hollow Crown; LETTUCE—May King; MUSK MELON—Rocky Ford; TOMATO—Earliana; BUSH BEAN—Bountiful; PEAS—Gradus.

## KITCHEN GARDEN COLLECTION \$1.50 PREPAID

A complete assortment that will meet the requirements of the Suburban or Country Garden. Every farm and home should have a Kitchen Garden

If purchased separately would cost \$2.50—Prepaid for \$1.50.

BEET—Crimson Globe; BEET—Early Wonder; CARROT—Chantenay; CABBAGE—All Seasons; CUCUMBER—White Spine; LETTUCE—Beefsteak; CORN—Golden Bantam; CORN—May flower; ONION—Yellow Globe; PARSNIP—Hollow Crown; RADISH—Scarlet Globe; PUMPKIN—Mixed; SQUASH—Hubbard; SQUASH—Marrow; SWISS CHARD—Lucullus; TOMATO—Earliana; TURNIP—White Egg; RUTA BAGA—Purple Top; one-half pound PEAS—Gradus; one-half pound BUSH BEANS—Bountiful.

## LAWN SEED FOR EVERY PURPOSE

Make your home grounds beautiful. We blend our own lawn seed mixtures.

For the best lawns we recommend our Evergreen Lawn Seed. It contains a well-balanced blend of various fine-bladed and deep-rooting varieties which will produce the best results under varied conditions as to soil and climate. Our "Evergreen Mixture" contains the right kind of grasses in correct proportions and will produce a thick sod of rich deep green throughout the entire growing season.

We use only the finest grades of re-cleaned seeds in this mixture. It contains no chaff and will give a green, smooth, velvety sod within a few weeks after sowing. It is the best value at any price.

Quantity required for new lawns, one pound to 200 square feet.

Price ½ lb. 35c; 1 lb. 60c. By Parcel Post prepaid.

SHADY SPOT LAWN SEED—For shady places and under trees, ½ lb. 40c; 1 lb 70c. Postpaid.

WHITE CLOVER—60c 1b. Postpaid.

1935 NOVELTIES { VEGETABLES, see pages 2, 3, 4, 5  
FLOWERS see pages 16, 17

WE WILL ALSO INCLUDE EXTRA COMPLIMENTARY PACKETS WITH EACH COLLECTION.

# SOME NEW VARIETIES OF SPECIAL MERIT

## BEAN—New Stringless Green Pod

An outstanding variety of recent introduction being similar to Full Measure, but hardier and more dependable. Plants erect, medium large, very productive. Pods straight, dark green, round, meaty, and absolutely stringless with no fibre. Quality superior. Matures in 53 days.

Pkt. 10c; ½ lb 25c; lb 35c; 2 lbs 60c

## BEET—Asgrow Wonder

This is undoubtedly one of the best all around beets of recent introduction. It is a pedigreed stock unsurpassed in earliness, uniformity, and in depth of internal color. Tops are small, erect and slender, while the roots are semi-globular, deep red, smooth, with a small neck and tap root. Flesh is purplish red with slightly lighter zones, tender and of excellent quality.

Pkt. 15c; oz. 25c; ¼ lb 70c; lb \$2.00

## CABBAGE—Golden Acre

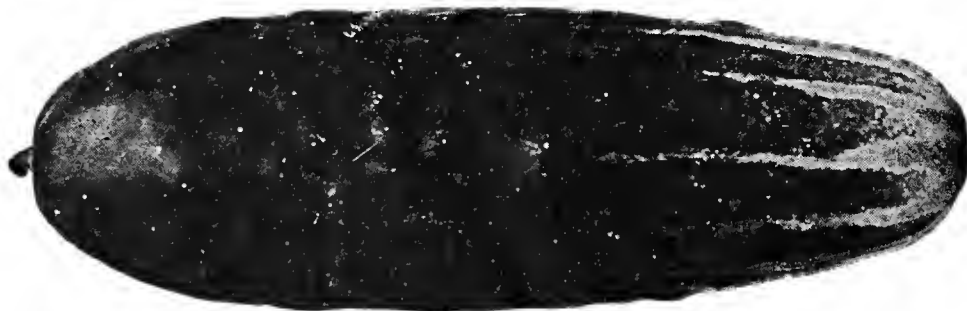
An extra early variety of the Copenhagen Market type, with small, round, solid heads, maturing with Early Jersey Wakefield. The plants are dwarf, with few outer leaves, producing heads 5 inches in diameter, weighing 2½ pounds. It matures in 63 days from time of setting the plants.

Pkt. 10c; ½ oz. 25c; oz. 40c

## CARROT—Hutchinson

An excellent prolific variety, particularly adapted to New England conditions. The deep orange roots, 11 to 12 inches long, are nearly cylindrical with an abrupt stump end. The flesh is deep orange, tender, crisp and of excellent quality. It will mature in 88 days from date of sowing.

Pkt. 15c; oz. 40c; ¼ lb \$1.35; lb \$4.00



## CORN—Whipple's Early Yellow

As a large eared second early sort for home and market gardens, it is extremely popular. Stalks sturdy, erect, 6½ feet tall; ears 12 to 14 rowed and 7½ inches long. Kernels golden yellow, fairly deep, sweet and of a luscious flavor. It will mature in 84 days.

Pkt. 10c; ½ lb 25c; lb 40c; 2 lbs 70c

## CUCUMBER—Woodruff's Hybrid

One of the finest all around cucumbers in existence. The fruits are long, straight, attractive shape, and of a very rich green. It holds its color well for local markets or for shipping. Fruits measure 8 to 10 inches long, 3 inches in diameter and mature in 60 days. This is worthy of special trial.

Pkt. 10c; oz. 30c; ¼ lb 95c; lb \$2.80

## LETTUCE—White Boston

A very desirable variety for the home garden and for the local market. It is similar to Big Boston but the leaves are slightly lighter green and free from the reddish brown tint. The hearts are buttery, yellow, of excellent quality. It requires 70 days to produce heads. If interested in quality, test this variety.

Pkt. 15c; oz. 35c; ¼ lb \$1.00; lb \$3.00

## PEAS—Onward

If luscious, sweet, tender peas appeal to you, why not try this outstanding variety? The plants grow 30 inches tall, producing pods 3½ inches long, ¾ inch wide, medium green, straight, attractive and well filled with 6 to 8 large tender succulent peas of superb quality. ONWARD matures in 70 days.

Pkt. 10c; ½ lb 25c; lb 40c; 2 lbs 70c

