

## **Historic, Archive Document**

Do not assume content reflects current scientific knowledge, policies, or practices.





This illustration shows a natural planting of *Rhododendron catawbiense compacta* in the Carolina mountains, at an altitude of about 6,000 feet. I am able to furnish nursery-grown plants up to about 2 feet high, and an unlimited quantity of collected specimen clumps in much larger sizes.

SPRING 1935

# Hardy American Ornamental Plants

FOR IMMEDIATE EFFECTS

All Strong, Nursery-grown Plants  
Unless Otherwise Stated

[[ **Cash Discount 10 per cent**, including free  
packing, on orders received before April 1, 1935 ]]

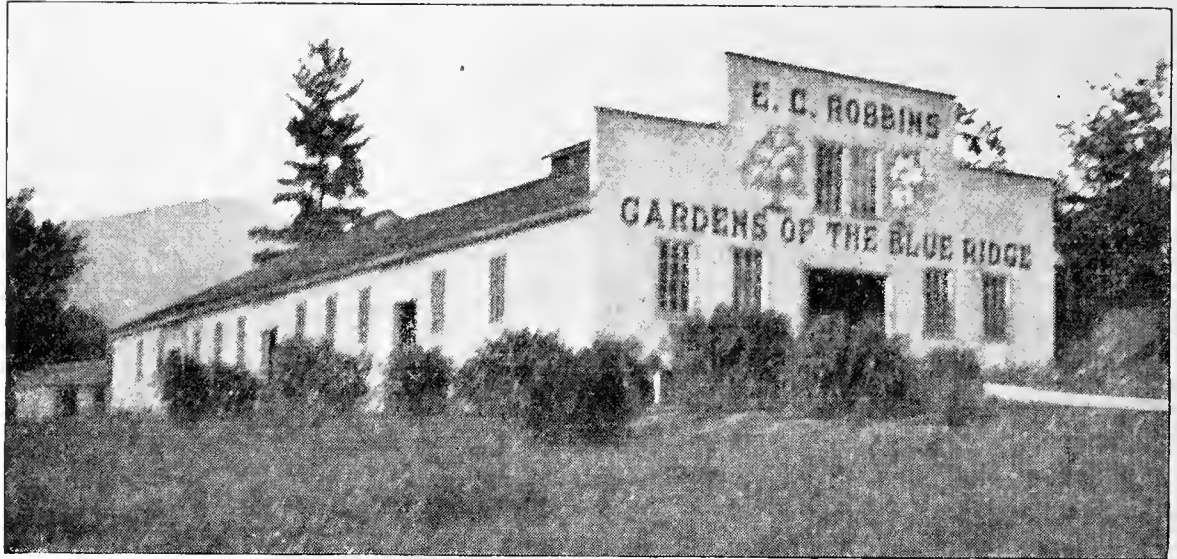
**GARDENS OF THE BLUE RIDGE**

*E. C. Robbins, Nurseryman*

**ASHFORD, McDowell County, NORTH CAROLINA**

Our long experience in the nursery business should recommend your careful consideration before buying elsewhere. Satisfaction guaranteed.

*Visitors Are Always Welcome, and Are Invited to Inspect Our Stocks*



Our Main Packing House at Ashford

## NOTE TO CUSTOMERS

### OUR LOCATION

Is in the heart of the Blue Ridge Mountains, "the most beautiful mountain region on the continent," in western North Carolina, nearly 4,000 feet above sea-level. My permanent headquarters is Ashford, McDowell County, North Carolina, on the scenic Clinchfield Railroad.

### QUOTATIONS

*This list cancels all previous offers. Please do not order from old catalogues*

All offers of stock are made subject to conditions beyond my control

### PACKING AND GRADING

Will be done in the most careful way. Orders will be packed to insure arrival in good condition. Shipments will be delivered to the local freight, express, or post office at prices named in this Catalogue. All shipments delivered at cost and risk of customer. Certificate of inspection attached to all shipments. We specialize in carload lots.

### REMITTANCE OR REFERENCE

Should accompany orders from unknown correspondents. Discount of 5 per cent on cash orders. All bills due and payable 30 days from date of invoice. Interest charged after 30 days.

### SHIPPING INSTRUCTIONS

Should always be given fully, unless you prefer to leave to our best judgment. In this we assume no risk, our responsibility ceasing upon receipt of signed bill of lading by forwarders. All claims for damages in transit must be handled by consignee.

### CLAIMS

All claims for errors must be reported upon receipt of goods and will be rectified promptly. Unless this is done we can accept no responsibility of any kind.

No GUARANTEE is made that stock will grow, whether planted by us or not. As we have no control over after-treatment or weather conditions, the purchaser must assume all risks after stock leaves our Nursery in good condition.

In no case shall we be held for damage exceeding original purchase price and only to this extent when proper proof is furnished that stock has been wrongly labeled.

*All orders are accepted and filled on these terms, unless otherwise agreed*

---

SPRING SHIPMENTS are forwarded according to customers' wishes and subject to conditions beyond our control, March 1 to May 15. PLEASE ORDER EARLY.

FALL SHIPPING SEASON begins late in August and extends usually till about December 1, according to weather conditions.



*Azalea calendulacea*. See page 4

## Hardy Native Deciduous Trees and Shrubs

### Cultural Directions for Azaleas, Broad-Leaved Evergreens, and Similar Plants

Azaleas, Kalmias, Leucothoë, Pieris, and Rhododendrons are acid-soil plants and will not succeed well in limestone soils. A deep, porous soil is essential. The ground should be excavated to a depth of about 2 feet, working in leaf-mould, humus, or well-rotted stable manure. This mixture must be worked in carefully and packed tight around the roots. Fill in the excavation with rotted sods, muck or peat soil, mixed with a small quantity of sand.

The plants should be set the same depth as in the nursery, which is shown by the earth-line near the base. After planting, mulch with several inches of leaves or light litter, allowing this mulch to remain around the plants, and renew it annually in the autumn. A thin covering of rich soil may be used to advantage in holding mulch in place and to assist in decomposition. The mulch also tends to keep the soil cool in summer and protects against freezing in winter. If these simple instructions are observed, your planting of Broad-leaved Evergreens will be entirely successful.

For use in beds of Rhododendrons, Azaleas, and other similar plants we recommend the following: Galax, Shortia, Ferns, Orchids, Lilies, Trilliums, Cimicifugas, Iris, Polygonatum, Sanguinarias, and most of our other perennials.

ABBREVIATIONS—XX, specimens; B&B, balled and burlapped

<b>ACER pennsylvanicum.</b> Striped Maple. Small tree or large shrub. Good for lawn or group planting. Large foliage coloring beautiful yellow in late summer. Green and white striped bark very showy in winter.	10	100	1,000
1 to 2 feet.....	\$2 60	\$20 00	
<b>saccharum.</b> Sugar Maple. Handsome, rapid-growing tree for general use. Splendid fall coloring of foliage.			
9 to 12 inches. Seedlings.....	1 00	5 00	\$40 00
3 to 4 feet.....	4 00	32 50	
4 to 6 feet.....	4 65	37 50	
6 to 8 feet.....	6 50	55 00	

**Cash Discount 10 per cent, including free packing, on orders received before April 1, 1935**

## HARDY NATIVE DECIDUOUS TREES AND SHRUBS, continued

<b>ÆSCULUS octandra.</b> Yellow Buckeye. Medium size tree. Large, vigorous foliage. Cream-colored flowers in early spring.	10	100	1,000
1 to 2 feet.....	\$2 25	\$15 00	\$130 00
<b>ALBIZZIA julibrissin.</b> Silk Tree. Attractive tree of moderate size, with acacia-like foliage and clusters of fuzzy pink flowers followed by big pods.			
1 to 2 feet.....	2 20	12 50	110 00
<b>ALNUS viridis.</b> European Green Alder. Low shrub with at- tractive foliage. From high altitudes.			
Heavy clumps cut back to ground.....	6 00	45 00	
<b>AMELANCHIER lævis.</b> Allegheny Service Berry. Very handsome small tree, with snow-white flowers in early spring. The edible fruit ripens in July.			
4 to 6 feet. Collected.....	6 00	45 00	
<b>ARONIA arbutifolia.</b> Red Chokeberry. Large-flowering shrub, with clusters of red berries in autumn and early winter.			
1 to 2 feet.....	2 50	18 50	
2 to 3 feet.....	3 50	25 00	
<b>melanocarpa.</b> Black Chokeberry. A very desirable orna- mental shrub with white flowers in early spring and clusters of black fruit in autumn and early winter. Foliage colors dark red in early fall.			
2 to 3 feet.....	2 25	17 50	160 00
3 to 4 feet. Extra heavy.....	3 00	25 00	220 00
<b>AZALEA arborescens.</b> Sweet White Azalea. Large, fragrant, white flowers in early summer. Of easy culture and lasting beauty.			
1 to 1½ feet. Heavy clumps B&B.....	15 00	130 00	
1½ to 2 feet. X heavy clumps B&B.....	24 50	220 00	
2 to 3 feet. XX heavy clumps B&B.....	35 00		
3 to 4 feet. XXX heavy clumps B&B.....	50 00		
<b>calendulacea.</b> Flame Azalea. The most beautiful and varied native species. Flowers vary from orange to canary. Conspicuous in early summer throughout the Carolina mountains.			
12 to 18 inches, bushy.....	4 60	40 00	350 00
1 to 1½ feet. Heavy clumps B&B.....	10 00	85 00	800 00
1½ to 2 feet. X heavy clumps B&B.....	12 50	100 00	900 00
2 to 3 feet. XX heavy clumps B&B.....	17 50	150 00	
3 to 4 feet. XX heavy clumps B&B.....	22 50	200 00	
2 to 3 feet. Collected clumps B&B.....	8 75	70 00	665 00
3 to 4 feet. Collected clumps B&B.....	12 50	90 00	800 00
Cut-back collected clumps B&B.....	2 60	20 00	180 00
<b>canescens.</b> Piedmont Azalea. Excellent rare species. Very similar to <i>A. vaseyi</i> . We are headquarters for this splendid Azalea.			
1 to 1½ feet. Clumps B&B.....	10 00	85 00	760 00
1½ to 2 feet. Clumps B&B.....	12 50	100 00	900 00
2 to 3 feet. Clumps B&B.....	15 00	135 00	
3 to 4 feet. Collected clumps B&B.....		110 00	1000 00
Cut-back collected clumps B&B.....	3 50	30 00	275 00



*Azalea nudiflora*

**HARDY NATIVE DECIDUOUS TREES AND SHRUBS, continued**

	10	100	1,000
<b>Azalea nudiflora.</b> Pinxter Bloom. Very handsome, free-flowering shrub, with showy, deep pink flowers in profusion in early spring.			
6 to 12 inches. Strong.....	\$5 00	\$42 50	\$375 00
1 to 1½ feet. X heavy clumps B&B.....	10 00	85 00	775 00
1½ to 2 feet. XX heavy clumps B&B.....	12 50	100 00	900 00
2 to 3 feet. XX heavy clumps B&B.....	17 50	160 00	
Cut-back collected clumps.....	3 00	25 00	220 00
<b>vaseyi.</b> Pink-shell Azalea. A distinct and remarkably free-flowering hardy shrub of extreme rarity and beauty. The flowers are an exquisite shade of pink or rose and appear in profusion before the leaves unfold in early spring. In autumn the foliage assumes deep rich shades of red and crimson. An attractive ornamental shrub which is very scarce.			
6 to 12 inches.....	5 00	40 00	350 00
1 to 1½ feet. B&B.....	10 00	80 00	750 00
1½ to 2 feet. B&B.....	16 50	140 00	1300 00
2 to 2½ feet. X heavy B&B.....	20 00	180 00	1650 00
<b>viscosa.</b> Small White Swamp Azalea. Fragrant; late bloomer. Thrives well along streams and in varied situations. 6 to 12 inches.....	6 00	45 00	375 00
1 to 1½ feet. Clumps B&B.....	10 00	90 00	
<b>BETULA lenta.</b> Sweet Birch. Large tree. Shining green, thick foliage. Twigs and bark fragrant. Recommended for lawn or street planting.			
6 to 8 feet. B&B.....	9 00	75 00	
<b>lutea.</b> Yellow Birch. 6 to 8 feet.....	10 00	85 00	
<b>BUDDLEIA magnifica.</b> Oxeye Buddleia. Rose-purple flowers.			
1 to 2 feet.....	4 00	27 50	
<b>CARPINUS caroliniana.</b> American Hornbeam. Leaves oval with sharp teeth on the edge; turn to golden in autumn.			
4 to 6 feet.....	10 00		

## HARDY NATIVE DECIDUOUS TREES AND SHRUBS, continued

<b>CASTANEA pumila.</b> Chinquapin. Coarsely toothed leaves, white on the under side. Tree may grow to 40 feet or more in height.	10	100	. 1,000
1 to 2 feet.....	\$3 00	\$22 50	
2 to 3 feet.....	6 00	45 00	
<b>CHIONANTHUS virginica.</b> White Fringe. Small tree. Free bloomer in early spring. Large white flowers in drooping panicles.			
6 to 12 inches. Seedlings.....	1 00	7 00	\$60 00
1 to 2 feet.....	4 50	30 00	
2 to 3 feet.....	7 50	60 00	
<b>CORNUS florida.</b> Flowering Dogwood. Most beautiful small flowering trees in early spring.			
2 to 3 feet.....	6 00	45 00	
5 to 6 feet. X B&B.....	15 00	125 00	
<b>florida rubra.</b> Pink-flowering Dogwood.			
3 to 4 feet. B&B.....	17 50	150 00	
4 to 6 feet. B&B.....	22 50	200 00	
<b>CRATÆGUS coccinea.</b> Thicket Hawthorn. Thorny shrub 10 feet high, with pretty leaves and clusters of fragrant white flowers followed by scarlet berries.			
6 to 12 inches. Seedlings.....	1 00	9 00	75 00
1 to 2 feet.....	3 50	25 00	
2 to 3 feet.....	4 50	35 00	
<b>punctata.</b> Dotted Hawthorn. Small tree 30 feet high, with stout thorns and clustered white flowers followed by dull red fruits.			
6 to 12 inches. Seedlings.....	1 50	9 00	
1 to 2 feet.....	3 00	22 50	
<b>CYTISUS scoparius.</b> Scotch Broom. Leafless shrub of many bright green stems and twigs adorned with bright yellow pea-blossoms in late spring.			
6 to 12 inches. Seedlings.....	2 00	16 00	145 00
1 to 2 feet.....	2 50	20 00	
<b>DIERVILLA sessilifolia.</b> Southern Bush Honeysuckle. A shrub 4 feet high, with crowded clusters of tubular yellow flowers tinged with brown.			
2 to 4 feet.....	4 00		
<b>trifida.</b> Dwarf Bush Honeysuckle. A similar species of about the same height with scattered yellow flowers.			
1 to 2 feet.....	4 00	30 00	
<b>EUONYMUS americanus.</b> Brook Euonymus. A big, 8-foot shrub with wavy, green, deciduous leaves, and bright pink fruits, attractive in autumn.			
1 to 2 feet.....	2 50	15 00	
<b>FORSYTHIA suspensa.</b> Weeping Forsythia. Extremely vigorous, half-climbing shrubs bearing myriads of bright yellow, ball-like flowers in early spring.			
2 to 3 feet.....	2 00	16 00	
<b>viridissima.</b> Greenstem Forsythia. A shrub of erect habit with light green stems and deep yellow flowers.			
1 to 2 feet.....	1 85	15 00	
<b>HALESIA tetraptera.</b> Great Silverbell. Bell-shaped flowers are carried in drooping clusters in early spring.			
6 to 12 inches.....	1 50	10 00	90 00
1 to 2 feet. Seedlings.....	2 50	16 00	150 00
3 to 4 feet. Heavy.....	8 50	70 00	

**Cash Discount 10 per cent, including free packing, on orders received before April 1, 1935**



HARDY NATIVE DECIDUOUS TREES AND SHRUBS, continued

<b>HAMAMELIS virginiana.</b> Common Witch-hazel. Large shrub with heart-shaped leaves that are beautifully colored in the fall. Blooms in early autumn.	10	100	1,000
1 to 2 feet.....	\$3 00	\$20 00	
2 to 3 feet.....	4 50	30 00	
3 to 4 feet.....	5 50	37 50	
4 to 5 feet.....	7 50	60 00	
<b>HYDRANGEA paniculata grandiflora.</b> Large-panicked Hydrangea. Hardy, tall shrub with creamy white flowers and dark green leaves. Splendid for mass planting or single specimens. Very popular.			
1 to 2 feet.....	2 25	15 00	\$122 50
2 to 3 feet.....	2 60	21 00	190 00
3 to 5 feet. XX heavy.....	3 50	27 50	250 00
<b>arborescens grandiflora.</b> Hills of Snow. Excellent low, summer-blooming shrub which produces its large, snow-white clusters of flowers in shady places.			
2 to 3 feet.....	2 00	16 00	
<b>radiata.</b> Silverleaf Hydrangea. Leaves dark green above and silvery white beneath, becoming very noticeable at first touch of frost.			
2 to 3 feet.....	4 50	35 00	
<b>HYPERICUM densiflorum.</b> Common St. John's-wort. A widely distributed ornamental shrub, with narrow green leaves and clusters of bright yellow flowers.			
1 to 2 feet. Collected.....	1 50	9 00	75 00
<b>prolificum.</b> Shrubby St. John's-wort. Vigorous, hardy shrub, with compact branches and dark green leaves. Flowers bright yellow, in terminal clusters in late summer.			
2 to 3 feet. X strong.....	4 00	30 00	



Azalea vaseyi makes a glorious show of color

## HARDY NATIVE DECIDUOUS TREES AND SHRUBS, continued

<b>ILEX monticola.</b> Mountain Winterberry. Deciduous small tree, with spreading branches, bright green leaves, and scarlet berries in autumn.	10	100	1,000
1 to 2 feet.....	\$2 25	\$18 00	
2 to 3 feet.....	3 50	27 50	
3 to 4 feet.....	4 50		
<b>verticillata.</b> Common Winterberry. Large shrub with white flowers in May or June and red berries, similar to common holly, ripening in September and often remaining till late in winter, proving very attractive to birds.			
6 to 12 inches. X strong.....	1 50	10 00	\$86 00
1 to 2 feet. X strong.....	2 25	15 00	135 00
<b>LARIX laricina.</b> American Larch. This is the native Tamarack, a deciduous conifer which looks like an evergreen in summer, but the foliage turns yellow and drops completely each autumn.			
2 to 3 feet. B&B.....	4 50	32 50	
3 to 4 feet. B&B.....	6 00	45 00	
4 to 6 feet. B&B.....	8 00	65 00	
<b>MAGNOLIA acuminata.</b> Cucumber Tree. Vigorous tree of oak-like habit, with deep green foliage and curious cucumber-like fruits which burst open in autumn to show brilliantly colored seeds.			
1 to 2 feet.....	4 50	35 00	
4 to 5 feet.....	9 00	75 00	
<b>tripetala.</b> Umbrella Magnolia. Magnificent tree with large, glossy green foliage and white flowers nearly 10 inches across.			
4 to 5 feet.....	10 00	85 00	
<b>OSTRYA virginiana.</b> American Hop Hornbeam. Slender tree; leaves oval, bright green, turning yellow in autumn; fruit clusters resembling hops.			
2 to 3 feet.....	5 00	37 50	
3 to 4 feet.....	6 50		
<b>OXYDENDRUM arboreum.</b> Sourwood. Handsome, hardy tree that succeeds well under varied conditions. Beautiful autumn foliage.			
1 to 2 feet.....	2 25	16 00	140 00
2 to 3 feet.....	3 50	25 00	235 00
3 to 4 feet.....	4 50	32 50	300 00
4 to 5 feet.....	6 00	45 00	
<b>PLATANUS occidentalis.</b> American Plane Tree. Large, lofty, rapid-growing tree. Splendid for planting along streams.			
8 to 10 feet.....	9 00	75 00	
<b>POPULUS tremuloides.</b> Quaking Aspen. A medium-sized tree, with very conspicuous drooping catkins in early spring. Its greatest charm is its leaves from late spring till early autumn.			
3 to 4 feet.....	3 50	25 00	
4 to 6 feet.....	6 00	45 00	
6 to 8 feet.....	8 50	75 00	

**Landscape Architects, Nurserymen, and Large Planters**

Find this stock particularly suited to their requirements. Those who have known us longest are the largest users of our products. Prices reasonable to the extreme, quality considered. Your correspondence is invited and your orders will be given prompt attention. Send your list of requirements as quickly as possible to insure getting the stock in good time for planting. *Prices named include all packing costs and delivery to our station.*

## HARDY NATIVE DECIDUOUS TREES AND SHRUBS, continued

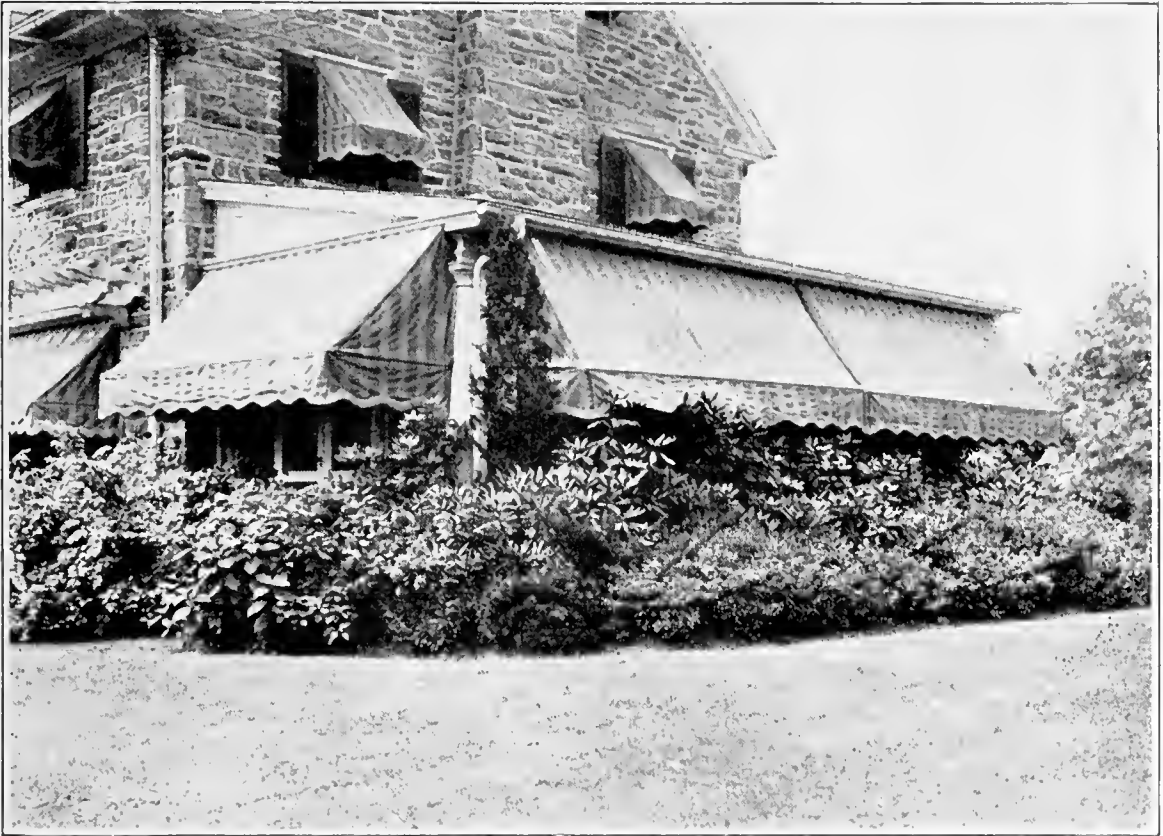
<b>QUERCUS alba.</b> White Oak. Noble forest tree of bold outline with attractively cut foliage. Stately and permanent.	10	100	1,000
9 to 18 inches. Seedlings.....	\$1 25	\$6 00	\$45 00
1 to 2 feet. ....	3 00	22 50	200 00
<b>phellos.</b> Willow Oak. Handsome tree of moderate size with narrow, willow-like foliage.			
6 to 12 inches.....	1 25	9 00	75 00
1 to 2 feet.....	2 75	20 00	
<b>prinus.</b> Chestnut Oak. Very tall tree with large, soft leaves of downy appearance on the under sides.			
1 to 2 feet.....	2 75	21 00	
2 to 3 feet.....	4 00	30 00	
3 to 4 feet.....	6 00		
<b>rubra.</b> Red Oak. Tough, enduring tree with splendid foliage which withstands city conditions. Grows about 80 feet high.			
2 to 3 feet.....	3 00	24 00	
3 to 5 feet.....	4 50	35 00	
<b>RHUS canadensis.</b> Fragrant Sumac. Shrub 3 to 5 feet in height. Very sweet-scented, compound leaves, consisting of three bright green leaflets. Flowers yellow, in short spikes or clusters along branches. Fruit bright red, covered with short, silky hairs. Succeeds under various conditions and especially recommended for rock-gardens.			
6 to 12 inches. Seedlings.....	1 25	9 00	75 00
3 to 4 feet. Heavy.....	6 00	45 00	
<b>copallina.</b> Shining Sumac. Strong shrub with dark green, compound foliage turning dark brown in autumn. Panicles of brilliant red flowers in late summer; bright red berries in autumn.			
2 to 3 feet.....	3 50	27 50	
1 to 2 feet. Collected.....	1 25	9 00	75 00
<b>cotinoides.</b> American Smoketree. Big shrub or small tree with inconspicuous flowers in big clusters. Foliage attractive in autumn.			
2 to 3 feet.....	8 00	65 00	
<b>typhina.</b> Staghorn Sumac. Small tree or large shrub with compound, beautifully colored leaves in autumn; large spikes of crimson flowers.			
3 to 4 feet.....	3 00	21 00	
<b>ROBINIA hispida.</b> Rose Acacia. Shrub about 10 feet tall, with drooping clusters of rose-colored, pea-blossom flowers in early summer.			
1 to 2 feet.....	2 50	18 00	
1½ to 3 feet. Collected.....	2 50	16 00	145 00
<b>RUBUS odoratus.</b> Flowering Raspberry. Vigorous, upright shrub, with large leaves resembling those of the maple. Flowers rose-purple; berries light red, edible.			
1 to 2 feet.....	1 25	8 00	70 00
2 to 3 feet.....	1 75	12 00	90 00
<b>SAMBUCUS pubens.</b> Scarlet Elder. Shrub with warty branches and red pith. Large white flowers in late spring, followed by large red berries in clusters.			
1 to 2 feet.....	1 75	12 00	90 00
2 to 3 feet.....	2 75	21 00	175 00

**Cash Discount 10 per cent, including free packing, on orders received before April 1, 1935**

## HARDY NATIVE DECIDUOUS TREES AND SHRUBS, continued

<b>SORBUS americana.</b> American Mountain-Ash.	10	100	1,000
3 to 4 feet.....	\$5 00	\$37 50	
4 to 6 feet.....	7 50		
<b>STEWARTIA pentagyna.</b> Mountain Stewartia. Oval, bright green leaves; large, white, showy flowers, with waxy bordered petals and golden anthers in midsummer.			
6 to 12 inches.....	3 50		
<b>VACCINIUM pallidum.</b> Blue Ridge Blueberry. Best of all Blueberries and a desirable ornamental shrub.			
1 to 2 feet. Clumps.....	4 50	36 00	\$345 00
2 to 3 feet. Heavy clumps B&B.....	6 50	55 00	475 00
1½ to 3 feet. Collected clumps B&B.....	4 50	32 50	275 00
<b>stamineum.</b> Deerberry.			
1 to 2 feet. B&B.....	4 50	36 00	
<b>VIBURNUM cassinoides.</b> Withe-rod. Very hardy flowering shrub that is widely distributed. The oval green leaves color beautifully in autumn. Flowers creamy white; berries pink to black. Desirable for planting along streams and in shrubby border.			
1 to 2 feet. X strong.....	3 50	27 50	250 00
2 to 3 feet. Heavy.....	4 50	30 00	285 00
3 to 4 feet. X heavy.....	6 00	45 00	375 00
4 to 6 feet. X heavy.....	7 50	60 00	
<b>dentatum.</b> Arrowwood. A 15-foot shrub with white, long-stemmed flowers in clusters. Fruits blue-black.			
9 to 18 inches. Seedlings.....	1 00	7 00	60 00
1 to 2 feet.....	2 50	20 00	
<b>lentago.</b> Nannyberry. Small tree with flat clusters of white flowers and dark bluish fruits.			
6 to 12 inches.....	2 00	16 00	
<b>nudum.</b> Smooth Withe-rod. Shrub about 15 feet tall with yellowish white flowers in broad, flat cluster; fruit black.			
6 to 12 inches.....	2 00	16 00	
1 to 2 feet.....	3 50		
<b>WEIGELA, Eva Rathke.</b> Red Weigela. Drooping or arching shrub covered in early summer with dark crimson, tubular flowers enlivened with white anthers.			
1½ to 2½ feet.....	2 50	18 00	165 00
<b>rosea.</b> Pink Weigela. Charming landscape plant producing masses of soft pink, tubular flowers in late spring.			
1 to 2 feet.....	2 50	18 00	
<b>ZANTHORHIZA apiifolia.</b> Yellow-root. Attractive shrub, usually 1 to 2 feet tall, with yellow wood and roots. Leaves compound, consisting of about five deeply lobed, bright lustrous green leaflets. Flowers brownish purple, in drooping racemes in early spring.			
1 to 1½ feet.....	2 35	21 00	185 00
6 to 18 inches. Collected.....	1 25	9 00	80 00

Home-owners and gardeners who require large quantities of plants will do well to consult with us. We specialize in *Pieris floribunda*, Azaleas, Rhododendrons, Kalmias, Oxydendrum, *Leucothoe catesbæi*, Trilliums, *Stenanthiums*, and other rare native plants.



Foundation plantings of Broad-leaved Evergreens are both unusual and beautiful, giving color and character all the year

## Hardy Native Evergreen Trees and Shrubs

<b>ABIES concolor.</b> White Fir. Handsome, pyramidal tree with bluish green foliage. Hardy northern Fir.	10	100	1,000
6 to 12 inches. Seedlings.....	\$1 00	\$4 50	\$30 00
<b>fraseri.</b> Fraser Fir. Southern species. Very handsome tree and extremely hardy. Foliage fragrant, dark green.			
6 to 12 inches. X quality.....	1 25	7 00	60 00
1 to 1½ feet. X quality.....	1 75	12 50	110 00
1½ to 2 feet. X heavy B&B.....	4 50	30 00	275 00
2 to 3 feet. X heavy B&B.....	7 50	60 00	500 00
3 to 4 feet. X heavy B&B.....	12 50	100 00	
4 to 6 feet. X nice trees B&B.....	25 00	225 00	2100 00
<b>AZALEA amœna.</b> Amœna Azalea. Evergreen shrub 3 to 6 feet high, bearing a mass of bright crimson-purple flowers in spring. Very showy and the hardiest of the Evergreen Azaleas.			
1 to 1½ feet.....	6 00	45 00	
<b>BUXUS suffruticosa.</b> Old English Box. Fine edging plant, or the larger sizes unsurpassed for specimens in conspicuous places. Boxwood becomes more valuable every year, and soon assumes the status of an heirloom.			
4 to 6 inches. B&B.....	6 00	45 00	
6 to 9 inches. B&B.....	8 50	70 00	
9 to 12 inches. B&B.....	12 50	110 00	
1 to 1½ feet. B&B.....	20 00	185 00	
1½ to 2 feet. B&B.....	32 50	300 00	
<b>CHAMÆDAPHNE calyculata.</b> Leatherleaf. Shrub about 5 feet high, with leathery evergreen foliage and small, urn-like white flowers.			
6 to 12 inches.....	2 50	18 00	165 00

NOTE.—5 plants at the 10 rate, 25 at 100 rate, 250 at 1,000 rate. For less than 5, where unit price is not given, add 25 per cent

## HARDY NATIVE EVERGREEN TREES AND SHRUBS, continued

<b>ILEX glabra.</b> Inkberry. Upright, well-branched shrub with dark green, shining leaves retained throughout the winter. Berries black.	10	100	1,000
6 to 12 inches. Clumps B&B.....	\$5 00	\$37 50	\$345 00
1 to 2 feet. Clumps B&B.....	12 50	100 00	
2 to 3 feet. Clumps B&B.....	17 50	160 00	
<b>opaca.</b> American Holly. A handsome, broad-leaved evergreen, known to many as "Christmas Holly," and much used for holiday decorations. Easy of culture and adapts itself to varied soil conditions.			
6 to 12 inches.....	2 00	15 00	135 00
1 to 2 feet.....	4 00	30 00	270 00
2 to 3 feet. Real Bargain.....	5 50	45 00	375 00
3 to 4 feet. B&B.....	45 00	425 00	
4 to 5 feet. B&B.....	60 00	550 00	
5 to 6 feet. B&B.....	70 00		
6 to 7 feet. B&B.....	85 00		
<b>JUNIPERUS communis depressa.</b> Prostrate Juniper. Very hardy shrub, with spreading, prostrate branches which curve upward at the ends. Foliage grayish green. Splendid for ground-cover or rock-garden.			
1 to 2 feet. Extra strong B&B.....	6 00	45 00	375 00
<b>hibernica.</b> Irish Juniper.			
6 to 12 inches.....	2 25	18 00	165 00
6 to 8 feet. Heavy B&B.....	60 00	550 00	
<b>pfitzeriana.</b> Pfitzer's Juniper. Plume-shaped branches covered with dull, bluish gray foliage. Useful in cities.			
6 to 12 inches.....	3 25	26 00	240 00
2 to 3 feet. X heavy B&B.....	12 50		
<b>sabina.</b> Savin. A trailing type with erect sprays of heather-like foliage 1 to 2 feet high.			
6 to 12 inches.....	3 50	27 00	250 00
2 to 3 feet. Extra heavy B&B.....	12 50		
<b>virginiana.</b> Redcedar. Beautiful lawn tree for border planting with other large evergreens.			
1½ to 3 feet. B&B.....	4 50	30 00	
6 to 8 feet. Heavy B&B.....	50 00	450 00	
<b>KALMIA latifolia.</b> Mountain Laurel. This matchless Laurel is, without question, one of the most beautiful and attractive of the broad-leaved evergreen shrubs on account of its dark green, lustrous foliage and masses of glorious pink or rose-colored flowers, appearing in lavish profusion in late spring and early summer. Our stock is equal to the demand. We are able to make shipment in season.			
4 to 6 inches. X heavy.....	1 75	15 00	135 00
6 to 12 inches. X heavy.....	2 50	20 00	175 00
4 to 12 inches. Collected seedlings.....	1 00	5 00	40 00
1 to 1½ feet. X heavy clumps B&B.....	10 00	75 00	675 00
1½ to 2 feet. XX heavy clumps B&B.....	12 50	100 00	900 00
2 to 3 feet. XX heavy clumps B&B.....	17 50	150 00	1400 00
3 to 4 feet. XX heavy clumps B&B.....	22 50	200 00	1800 00
1½ to 2 feet. Collected clumps B&B.....	8 00	65 00	575 00
2 to 3 feet. Collected clumps B&B.....	10 00	75 00	665 00
3 to 4 feet. Collected clumps B&B.....	15 00	135 00	1250 00

## SPECIAL CARLOAD OFFERS

A carload of Mountain Laurel containing 500 clumps, 1½ to 4 ft., \$390.

A carload of Rhododendron maximum, containing 400 clumps, 2 to 4 ft., \$375.

HARDY NATIVE EVERGREEN TREES AND SHRUBS, continued

<b>LEIOPHYLLUM buxifolium.</b> Sand Myrtle. Neat, attractive shrub. Splendid border plants. White or pinkish flowers in early spring.	10	100	1,000
4 to 6 inches. Clumps B&B.....	\$3 00	\$22 50	
6 to 9 inches. Clumps B&B.....	4 50	36 00	
1 to 1½ feet. X heavy clumps B&B.....	7 50	60 00	
6 to 12 inches. Strong collected.....	2 00	15 00	\$135 00
<b>buxifolium prostratum.</b> Allegheny Sand Myrtle. Small, desirable border plant, and also an unusual rock-garden subject.			
4 to 6 inches. Spreading clumps.....	4 50	36 00	335 00
6 to 9 inches. Spreading clumps B&B.....	6 50	50 00	
2 to 4 inches. Strong collected for growing on.....	1 00	9 00	75 00
<b>LEUCOTHOE catesbæi.</b> Drooping Leucothoe. Hardy, graceful shrub of wide distribution. Very ornamental and much used for florist's trade. Flowers fragrant, showy creamy white. Too much cannot be said in favor of this wonderful shrub.			
6 to 12 inches. Strong.....	2 00	16 00	150 00
1 to 1½ feet. X heavy clumps B&B.....	5 50	45 00	400 00
1½ to 2 feet. XX heavy clumps B&B.....	7 50	55 00	500 00
2 to 3 feet. XX heavy clumps B&B.....	9 00	75 00	675 00
Extra-quality cut-back clumps.....	1 75	16 00	150 00
<b>MAGNOLIA glauca.</b> Sweetbay. Slender tree or large evergreen shrub. Leaves oblong or oval, green on upper surface, pale or nearly white beneath. Flowers creamy white, very fragrant, cup-shaped, borne for several weeks in spring or early summer.			
1½ to 3 feet. Strong.....	4 50	35 00	300 00
3 to 4 feet. XX heavy B&B.....	17 50		



Planting of *Kalmia latifolia*. See page 12

**HARDY NATIVE EVERGREEN TREES AND SHRUBS, continued**

<b>NANDINA domestica.</b> Japanese Nandina. A pretty shrub for southern gardens, with willow-like foliage in great sprays, bearing great quantities of scarlet berries in autumn and throughout the winter.	10	100	1,000
12 to 18 inches. B&B.....	\$5 50	\$45 00	
1 1/2 to 2 feet. X heavy B&B.....	12 50	100 00	
3 to 4 feet. X heavy B&B.....	17 50	160 00	
<b>PICEA canadensis.</b> White Spruce. Native tree of dense habit. Foliage light bluish green. Cones 1 to 2 inches long, glossy brown, attractive, shapely. Very hardy tree. 6 to 12 inches.....	2 00	16 00	
1 to 2 feet. B&B.....	4 75	36 00	\$325 00
2 to 3 feet. X nice B&B.....	7 25	60 00	500 00
3 to 4 feet. X nice B&B.....	11 25	90 00	
<b>excelsa.</b> Norway Spruce. One of our best imported evergreen trees. Handsome, hardy, and very graceful, with large brownish cones. 6 to 12 inches.....	1 25	9 00	70 00
1 to 2 feet.....	2 50	17 50	150 00
2 to 3 feet. B&B.....	6 00	45 00	
<b>mariana.</b> Black Spruce. Medium-sized tree. Foliage dark bluish green. Very ornamental. 6 to 12 inches..	1 25	8 00	75 00
1 to 2 feet. B&B.....	4 50	32 50	300 00
2 to 3 feet. B&B.....	6 50	45 00	400 00
<b>pungens.</b> Colorado Spruce. Hardy, symmetrical tree. Very ornamental and highly recommended for general planting. 4 to 6 inches. Seedlings.....		3 00	20 00
9 to 12 inches.....	2 00	15 00	135 00
<b>PIERIS floribunda.</b> Mountain Andromeda. Extremely hardy ornamental evergreen, and a gem for any planting. Showy white flowers produced in clusters in early spring, lasting a long time.			
8 to 12 inches. Clumps B&B.....	9 00	67 50	645 00
1 to 1 1/2 feet. X heavy clumps B&B.....	15 00	115 00	1000 00
2 to 3 feet. Collected clumps B&B.....		100 00	885 00
3 to 4 feet. Collected clumps B&B.....		135 00	1250 00
Cut-back collected clumps for growing on.....		30 00	250 00

<b>PINUS STROBUS.</b> White Pine. Best known American evergreen tree. Tall and most beautiful.	10	100	1,000
1 to 2 feet. B&B.....	\$4 00	\$30 00	\$275 00
2 to 3 feet. B&B.....	8 50	65 00	575 00
3 to 4 feet. B&B.....	12 50	90 00	800 00
4 to 6 feet. B&B. <b>Bargain</b> .....	17 50	125 00	1100 00
6 to 8 feet. B&B. <b>REAL BARGAIN</b> .....	30 00	165 00	1500 00
8 to 10 feet. B&B.....	50 00	425 00	
10 to 12 feet. B&B.....	60 00	500 00	

**Very special carload prices will be made on 8 to 12-foot size. Prepaid to destination. Let us quote on your requirements**



Leucothoe catesbaei. See page 13





*Pieris floribunda*. See page 14

**HARDY NATIVE EVERGREEN TREES AND SHRUBS, continued**

<b>TAXUS canadensis.</b> Canada Yew. A splendid evergreen rarely exceeding 2 to 3 feet in height. The slender branches are clothed with yellowish green foliage. Splendid for rock-gardens, especially in cold sections.	10	100	1,000
6 to 12 inches.....	\$3 50	\$26 00	\$220 00
1 to 1½ feet. B&B.....	7 00	45 00	
<b>THUJA occidentalis.</b> American Arborvitæ. A beautiful, symmetrical evergreen, extensively planted and too well known to need description.			
6 to 12 inches.....	1 00	8 00	70 00
1 to 2 feet.....	2 25	15 00	135 00
2 to 3 feet. B&B.....	3 50	25 00	210 00
3 to 5 feet. B&B.....	6 00	45 00	425 00
5 to 6 feet. B&B.....	10 00	80 00	700 00
6 to 8 feet. B&B.....	35 00		
<b>TSUGA canadensis.</b> Canada Hemlock. Tall, graceful tree with spreading branches; beautiful for park or landscape. One of our best hedge products and becoming more popular for general planting.			
3 to 6 inches. Seedlings.....	1 00	4 00	30 00
6 to 12 inches. X strong.....	1 50	11 00	100 00
1 to 1½ feet. X strong.....	3 00	22 50	200 00
1½ to 2 feet. XX quality B&B.....	6 00	42 50	400 00
2 to 3 feet. XX quality B&B.....	12 50	100 00	900 00
3 to 4 feet. XX quality B&B.....	22 50	200 00	1900 00
4 to 5 feet. Heavy B&B.....	37 50	325 00	3100 00
5 to 6 feet. Heavy B&B.....	47 50	400 00	3850 00
6 to 7 feet. Heavy B&B.....	60 00	575 00	
7 to 8 feet. Heavy B&B.....	75 00	700 00	
<b>caroliniana.</b> Carolina Hemlock. Queen of American evergreen trees. One of the hardiest evergreens from the Carolina mountains. 3 to 4 inches. Seedlings..			
6 to 12 inches. X strong.....	2 50	4 50	32 50
1 to 1½ feet. X strong B&B.....	5 00	21 00	185 00
1½ to 2 feet. XX strong B&B.....	7 50	35 00	325 00
2 to 3 feet. XX heavy B&B.....	7 50	62 50	600 00
3 to 4 feet. XX heavy B&B.....	32 50	300 00	
4 to 5 feet. XX heavy B&B.....	42 50	390 00	
5 to 6 feet. XX heavy B&B.....	50 00	475 00	
6 to 7 feet. XX heavy B&B.....	60 00	575 00	
6 to 7 feet. XX heavy B&B.....	75 00	700 00	





This picture shows *Rhododendron catawbiense compacta*. Natural planting in the Carolina mountains. Altitude 6,000 feet. My collected plants come from these fields

## Rhododendrons

### RHODODENDRON CATAWBIENSE · Catawba Rhododendron

Probably the most vigorous, hardy, free-blooming variety, with gorgeous display of rosy purple flowers in early summer. Foliage dark green and exceedingly showy. Hardest of all Rhododendrons. We have the largest stock in existence of this variety. Special price on carload orders.

	10	100	1,000
4 to 8 inches. Strong transplanted seedlings. . . . .	\$2 25	\$17 50	\$160 00
8 to 12 inches. Strong transplanted seedlings. . . . .	2 50	21 00	200 00
1 to 1½ feet. Bushy B&B. . . . .	4 75	36 00	340 00
9 to 18 inches. Heavy clumps B&B. . . . .	10 00	85 00	800 00
1½ to 2 feet. X heavy clumps B&B. . . . .	18 00	150 00	1,350 00
2 to 3 feet. X heavy clumps B&B. . . . .	27 50	250 00	
Cut-back collected clumps. . . . .	3 50	27 50	265 00
4 to 12 inches. Collected seedlings. . . . .		5 00	35 00
2 to 3 feet. Collected clumps B&B. . . . .	18 00	165 00	1,500 00
3 to 4 feet. Collected clumps B&B. . . . .	25 00	235 00	2,250 00

### RHODODENDRON CATAWBIENSE COMPACTA

A compact variety of Catawba Rhododendron from high altitude. Hardest of all Rhododendrons. Unlimited supply.

	10	100	1,000
4 to 6 inches. Bushy. . . . .	\$3 00	\$22 50	\$200 00
6 to 12 inches. Bushy. . . . .	4 65	32 50	300 00
1 to 1½ feet. Bushy. X strong B&B. . . . .	6 50	50 00	475 00
1 to 1½ feet. X heavy clumps B&B. . . . .	12 50	100 00	900 00
1½ to 2 feet. X heavy clumps B&B. . . . .	22 50	190 00	1,800 00
Cut-back collected clumps. . . . .	5 00	40 00	385 00
2 to 3 feet. Collected clumps B&B. . . . .	23 50	200 00	1,800 00
3 to 4 feet. X heavy collected clumps B&B. . . . .	40 00	325 00	3,150 00

### RHODODENDRON CAROLINIANUM · Carolina Rhododendron

A species from the southern Alleghany Mountains. Earliest flowering native Rhododendron. It is a fine bloomer, with light to deep pink flowers.

	10	100	1,000
4 to 8 inches. X strong. . . . .	\$2 35	\$18 00	\$160 00
8 to 12 inches. X strong. . . . .	3 50	27 50	260 00
1 to 1½ feet. Heavy clumps B&B. . . . .	11 50	90 00	850 00
1½ to 2 feet. XX heavy clumps B&B. . . . .	15 00	125 00	1,175 00
2 to 3 feet. X heavy clumps B&B. . . . .	20 00	175 00	
Cut-back clumps for growing on. . . . .	3 50	27 50	260 00
2 to 4 feet. Collected clumps B&B. . . . .	23 50	200 00	1,900 00
4 to 12 inches. Collected seedlings. . . . .	1 25	5 00	35 00

#### carolinianum album. White Carolina Rhododendron.

Dwarf, early-blooming variety from Piedmont Section. Rare and most beautiful.

1 to 1½ feet. Clumps B&B. . . . .	16 50	125 00	
1½ to 2 feet. Heavy clumps B&B. . . . .	18 50	160 00	
2 to 3 feet. Heavy clumps B&B. . . . .	22 50	190 00	
Cut-back collected clumps. . . . .	5 00	40 00	350 00
3 to 4 feet. Collected clumps B&B. . . . .	40 00	350 00	3,250 00

#### RHODODENDRON MINUS (punctatum). Bold shrub with pinkish white flowers curiously spotted with green dots.

1½ to 2 feet. Heavy clumps B&B. . . . .	17 50	150 00	
2 to 3 feet. X heavy clumps B&B. . . . .	20 00	175 00	

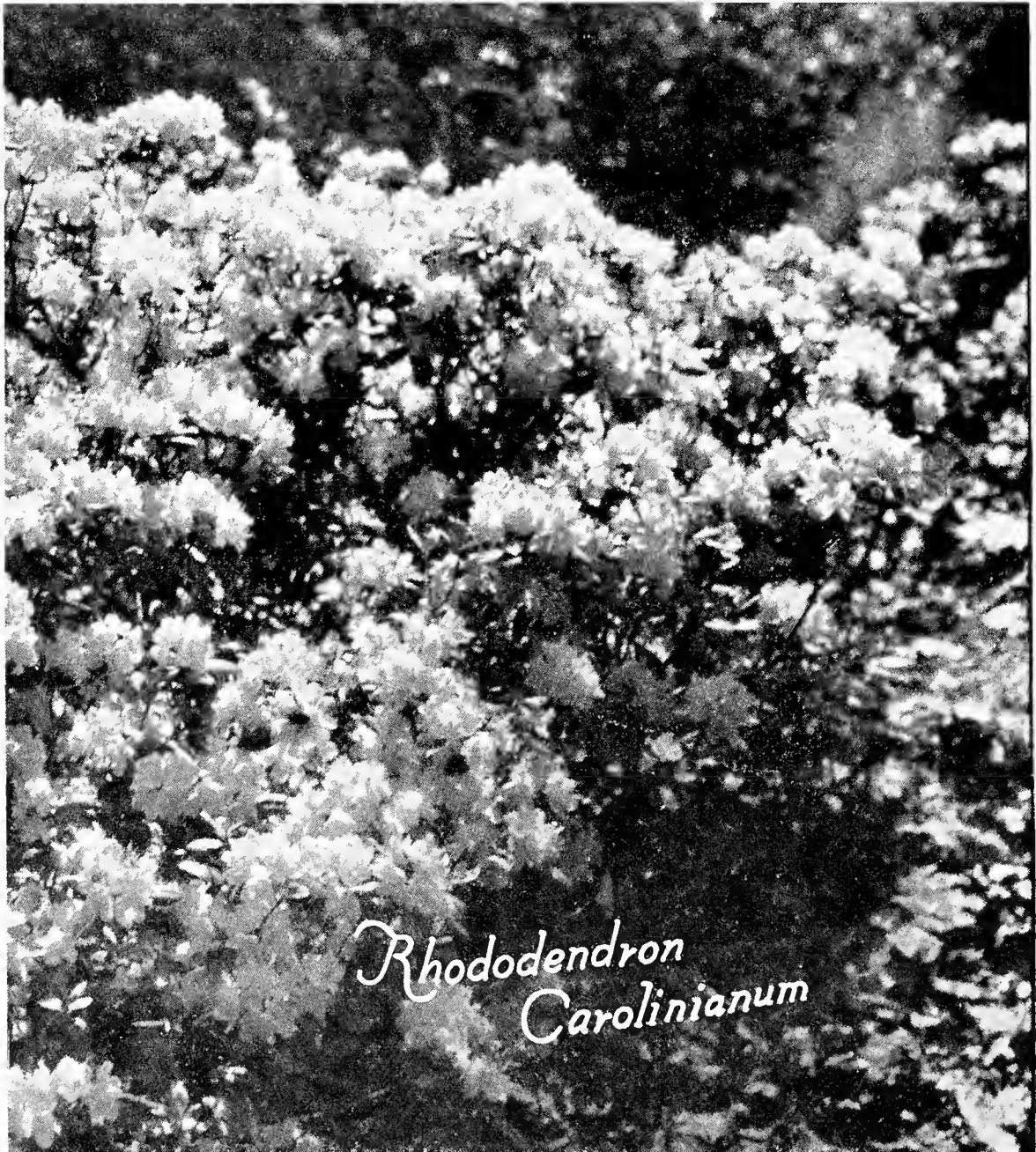
NOTE.—5 plants at the 10 rate, 25 at 100 rate, 250 at 1,000 rate. For less than 5, where unit price is not given, add 25 per cent

Cash Discount 10 per cent, including free packing, on orders received before April 1, 1935

**RHODODENDRON MAXIMUM · Rosebay**

This is the most familiar and grandest species and most used for massing and naturalistic planting of all native broad-leaved evergreens. Flowers pinkish white, in large clusters in July. We are prepared to supply splendid plants in all sizes. Special quotations for carload shipments. Send in your list of requirements early to allow best opportunity of serving.

	10	100	1,000
4 to 6 inches. Bushy.....	\$1 35	\$10 00	\$85 00
6 to 12 inches. Bushy.....	2 25	17 50	150 00
1 to 1½ feet. Bushy B&B.....	4 50	36 00	325 00
1 to 1½ feet. X heavy clumps B&B.....	9 00	70 00	650 00
1½ to 2 feet. XX heavy clumps B&B.....	13 50	100 00	900 00
2 to 3 feet. XX heavy clumps B&B.....	18 00	150 00	1375 00
3 to 4 feet. XX heavy clumps B&B.....	26 50	240 00	
1½ to 2 feet. Collected clumps B&B.....	8 00	65 00	600 00
2 to 3 feet. Collected clumps B&B.....	12 50	100 00	900 00
3 to 4 feet. Collected clumps B&B.....	20 00	170 00	1600 00
4 to 5 feet. Collected clumps B&B.....	35 00	275 00	2600 00
5 to 6 feet. Collected clumps B&B.....	47 50	425 00	
4 to 12 inches. Collected seedlings.....	1 00	4 00	30 00



*Rhododendron  
Carolinianum*



*Epigaea repens* (Mayflower, or Trailing Arbutus)

## Hardy Vines, Climbers, and Creepers

<b>AMPELOPSIS engelmanni.</b> Scarlet Virginia Creeper. Clinging form of the well-known Virginia Creeper. Splendid climber with brilliant-colored foliage in fall.	10	100	1,000
Strong collected root cuttings.....		\$5 00	\$35 00
<b>quinquefolia.</b> Virginia Creeper. High-climbing vine, clinging to walls and trees, with beautifully colored foliage in autumn.			
Collected root cuttings.....	\$1 00	5 00	35 00
<b>ARISTOLOCHIA siphon.</b> Dutchman's Pipe. Extra-strong, vigorous-growing vine.			
1½ to 3 feet.....	4 50	30 00	
<b>BIGNONIA radicans.</b> Trumpet Creeper. Bold shrub with interesting foliage and partially climbing habit. The huge flowers are trumpet shaped and vary from bright, brownish orange to vivid scarlet.			
1 to 2 feet. Seedlings.....	1 00	6 50	50 00
<b>CELASTRUS scandens.</b> American Bittersweet. High-climbing vine; very ornamental.			
6 to 12 inches. Seedlings.....	1 00	5 00	40 00
1½ to 3 feet. X strong.....	1 50	11 00	100 00
3 to 4 feet. X strong.....	2 65	18 00	165 00
<b>CLEMATIS crispa.</b> Curly Clematis. Graceful vine. Purple flowers in midsummer.			
Strong.....	1 50	12 50	
<b>paniculata.</b> Sweet Autumn Clematis.			
Strong.....	2 25	16 00	145 00
<b>virginiana.</b> Virgin's Bower. Popular for general planting.			
X strong.....	1 25	8 00	60 00
<b>DIOSCOREA villosa.</b> Yam. Showy vine, with leaves turning golden yellow in autumn.			
Strong.....	1 00	7 00	60 00
<b>EPIGÆA repens.</b> Trailing Arbutus. Charming plant, with very fragrant, white or pink flowers.			
Strong clumps.....	1 50	10 00	90 00

**Cash Discount 10 per cent, including free packing, on orders received before April 1, 1935**

## HARDY VINES, CLIMBERS, AND CREEPERS, continued

<b>GALAX</b> <i>aphylla</i> . Galax. One of our best ground-cover plants for shady locations. The very ornamental bronze and green leaves are much used in florist's trade.	10	100	1,000
X heavy clumps. . . . .	\$1 35	\$9 00	\$80 00
<b>GAULTHERIA</b> <i>procumbens</i> . Wintergreen. Very desirable ground-cover, with brilliant green and bronze leaves. Bright red, edible fruit in winter.			
Strong clumps. . . . .	1 35	9 00	80 00
<b>HOUSTONIA</b> <i>serpyllifolia</i> . Creeping Bluets. 3 to 6 inches. Light blue or white, blooming about all summer. Splendid for rock-garden, potting, or border. Unlimited supply of this unusual ground-cover.			
Clumps. . . . .	1 45	10 50	90 00
<b>IRIS</b> <i>cristata</i> . Crested Iris. Splendid ground-cover for shady or open locations. Leaves green. Flowers blue.			
Strong clumps. . . . .	1 35	9 00	80 00
<i>germanica</i> . German Iris. Vigorous-growing species with large, showy flowers of assorted colors. . . . .	2 25	15 00	135 00
<i>verna</i> . Vernal Iris. Blue flowers. Splendid ground-cover. Clumps. . . . .	1 35	9 50	87 50
<b>LONICERA</b> <i>japonica halliana</i> . Hall's Honeysuckle. Very strong-growing vine. Fragrant white and yellow flowers in summer and autumn. Best for trellises and ground-cover.			
X strong. . . . .	1 50	7 50	60 00
Second size. <b>Bargain</b> . . . . .	75	4 00	30 00
<b>MITCHELLA</b> <i>repens</i> . Partridge Berry. A splendid evergreen ground-cover best suited to shady places. Flowers white or purple tinged. Berries bright red in winter.			
Clumps. . . . .	1 40	10 00	90 00
<b>PACHYSANDRA</b> <i>terminalis</i> . Japanese Pachysandra. Evergreen ground-cover. Recommended for shady locations.			
X strong. . . . .	1 75	10 00	90 00
Strong second size. . . . .	1 00	6 00	50 00
<b>PHLOX</b> <i>stolonifera</i> . Creeping Phlox. A free-growing ground-cover. Reddish purple flowers in early spring.			
Strong. Collected. . . . .	1 35	10 00	90 00
<i>subulata</i> . Moss Pink. Splendid for ground-cover or rock-garden.			
Strong clumps. . . . .	1 65	12 00	110 00
<b>RANUNCULUS</b> <i>repens</i> . Creeping Buttercup. Splendid ground-cover. Best suited to damp, shady situations.			
Strong clumps. . . . .	1 25	8 00	65 00
<b>SEDUM</b> <i>telephoides</i> . Wild Live-forever. Fleshy leaves and flowers. Suitable for rockery and other dry situations.			
X strong. . . . .	1 50	12 00	110 00
<i>ternatum</i> . Mountain Stonecrop. Handsome creeping ground-cover with white flowers in early spring. Widely distributed.			
Strong clumps. . . . .	1 00	7 00	60 00
<b>SHORTIA</b> <i>galacifolia</i> . Oconee Bells. Esteemed rare evergreen ground-cover, best suited to shade.			
Heavy clumps. . . . .	1 75	15 00	135 00
Second size. . . . .	1 00	6 00	50 00
<b>VINCA</b> <i>minor</i> . Common Periwinkle. Hardy, old-fashioned evergreen vine, well adapted for ground-cover and rockery. Succeeds best in cool, shady locations. Blue flowers in midsummer. Foliage very dark green.			
Strong. . . . .	1 25	7 00	60 00
Second size. . . . .	75	5 30	30 00

## Hardy Native Ferns

For shady locations, no class of plants can equal the Ferns. They are easily grown in ordinary soils and will often thrive where it is impossible to make flowering plants succeed. We handle large quantities of Ferns annually and recommend the following:

<b>ADIANTUM pedatum.</b> American Maidenhair Fern. Deciduous. One of the most distinct and beautiful.	10	100	1,000
Extra strong.....	\$1 25	\$6 50	\$55 00
<b>ATHYRIUM filixfemina.</b> Lady Fern. Large, deciduous Fern. Exceedingly showy.			
X strong.....	1 25	7 00	60 00
<b>BOTRYCHIUM virginianum.</b> Rattlesnake Fern. Deciduous. Triangular fronds, deeply cut. Showy.			
Strong.....	1 25	8 00	70 00
<b>CYSTOPTERIS bulbifera.</b> Berry Bladderfern. Deciduous.			
Strong.....	1 35	9 00	80 00
<b>DICKSONIA punctilobula.</b> Hay-scented Fern. A very handsome, vigorous-growing, deciduous species. Recommended for shade or open locations. Widely distributed.			
Extra-heavy clumps.....	1 25	5 00	45 00
<b>DRYOPTERIS filixmas.</b> Male Fern. Deciduous.			
Strong.....	1 75	10 00	90 00
<b>goldiana.</b> Golden Fern. Deciduous.			
X strong.....	2 00	16 00	145 00
<b>hexagonoptera.</b> Winged Woodfern. Deciduous. Broad, triangular fronds.			
Strong.....	1 00	7 00	60 00
<b>marginalis.</b> Leather Woodfern. Robust, evergreen, showy species.			
X heavy.....	1 25	7 00	60 00
<b>spinulosa.</b> Toothed Woodfern. Evergreen.			
Strong.....	1 15	6 00	50 00
<b>thelypteris.</b> Marsh Fern. Deciduous.			
Strong.....	1 25	8 00	70 00
<b>ONOCLEA sensibilis.</b> Sensitive Fern. Deciduous. Suitable for dry or moist locations.....	1 00	6 50	60 00
<b>OSMUNDA cinnamomea.</b> Cinnamon Fern. Deciduous; stately; very large.			
X strong.....	1 25	7 00	60 00
<b>claytoniana.</b> Interrupted Fern. Deciduous. Very bold, attractive species.			
X strong.....	1 25	8 00	70 00
<b>regalis.</b> Royal Fern. Large, deciduous Fern, bearing attractive foliage.			
Strong.....	1 25	8 00	70 00
<b>POLYPODIUM vulgare.</b> Common Polypody. A charming little evergreen Fern. Excellent for rockery.			
Clumps.....	1 50	8 00	70 00
<b>POLYSTICHUM acrostichoides.</b> Christmas Fern. Evergreen and extremely ornamental. Much used for florist's trade.			
Clumps.....	1 00	5 00	45 00
<b>PTERETIS nodulosa.</b> Ostrich Fern. Deciduous, bold-growing Fern of immense size.			
X strong.....	1 35	9 00	80 00
<b>PTERIDIUM aquilinum.</b> Bracken. Deciduous; tall-growing.			
Strong.....	1 00	5 00	40 00

**SPECIAL COLLECTION. 100 assorted Ferns, \$6; 1,000 \$50**

## Hardy Aquatic and Bog Plants

<b>ASTER novæ-angliæ.</b> New England Aster. Narrow grayish leaves and many star-like lavender to purple flowers.	10	100	1,000
X heavy.....	\$1 35	\$10 00	\$85 00
<b>puniceus.</b> Swamp Aster. Lilac-blue; tall-growing.			
Heavy clumps.....	1 00	6 00	50 00
<b>CALTHA palustris.</b> Marsh Marigold. Beautiful marsh plants. Leaves bright green, heart-shaped. Flowers bright yellow. Showy.			
Medium size.....	1 00	8 00	70 00
<b>CHELONE glabra.</b> White Turtlehead. Strong grower. Flowers white to rose. Suitable for dry or wet locations.			
X strong.....	1 00	7 00	60 00
<b>lyoni.</b> Pink Turtlehead. Flowers red or rose. Splendid bog plant.			
X strong.....	1 00	7 00	60 00
<b>DARLINGTONIA californica.</b> California Pitcher Plant. A very interesting bog plant. Nodding purple flowers.			
Strong.....	4 75	37 50	
<b>DIONÆA muscipula.</b> Venus' Flytrap. A strong and most unusual plant that captures flies and other insects for food. Rare and very interesting.			
Strong.....	2 35	15 00	135 00
<b>HEMEROCALLIS fulva.</b> Tawny Day Lily. Stems 2 to 4 feet high. Flowers tawny orange, very showy.			
Strong.....	1 50	10 00	90 00
<b>IRIS pseudacorus.</b> Yellow Flag. Stems 3 to 5 feet high. Large, sword-shaped leaves, yellow flowers.			
X strong.....	1 75	13 50	120 00
Medium size.....	1 00	6 50	55 00
<b>versicolor.</b> Blue Flag. Height 2 to 4 feet. Suitable for border planting along ponds and streams.			
Strong.....	1 50	9 00	80 00
<b>MERTENSIA virginica.</b> Virginia Bluebells. Height 9 to 18 inches. Green foliage and showy blue flowers.			
Flowering size.....	1 25	9 00	80 00
<b>MONARDA didyma.</b> Oswego Bee-Balm. Height 3 to 5 feet. One of our most brilliant perennials. Leafy stems with bright scarlet flowers.			
Strong.....	1 25	8 00	70 00
<b>SARRACENIA flava.</b> Trumpet Pitcher Plant. Interesting bog plant. Height 1 to 2 feet. Yellowish green trumpet-shaped leaf. Flowers large, yellow, very conspicuous. X strong.	2 25	18 50	170 00
<b>purpurea.</b> Common Pitcher Plant. Hardy plant 9 to 15 inches high. Succeeds best in mossy bogs. Flowers purplish yellow. Strong.	2 25	18 50	170 00
<b>SAXIFRAGA virginicensis.</b> Virginia Saxifrage. Height 6 to 18 inches. Lettuce-like foliage. Flowers white. Damp locations. Strong.	1 35	9 00	80 00
<b>VACCINIUM macrocarpon.</b> Cranberry. Slender, trailing plants, with pink, nodding flowers in June, oblong leaves, and large red, edible, acid berries in late summer.			
X strong clumps.....	1 25	9 00	80 00
<b>VERATRUM viride.</b> American False Hellebore. Height 2 to 4 feet. Yellowish green plant with large leaves. Succeeds well in either dry or moist soil. Flowers greenish white, in early spring.			
X strong.....	1 50	11 00	100 00



## Hardy Native Lilies and Bulbous Plants

<b>ARISÆMA triphyllum.</b> Jack-in-the-Pulpit. Height 1 to 1½ feet. Strong, fleshy top and conspicuous greenish white flowers. First size .....	10	100	1,000
	\$1 25	\$9 00	\$80 00
<b>CONVALLARIA majalis.</b> Lily-of-the-Valley. Height 6 to 18 inches. Soft green leaves. Flowers fragrant, white. Of easy cultivation, preferring partial shade. Strong .....	1 25	8 00	70 00
<b>DICENTRA canadensis.</b> Squirrel Corn. Small plant growing best in shade. White flowers in early spring. Strong.	1 25	7 00	60 00
<b>cucullaria.</b> Dutchman's Breeches. Oddly shaped yellow-white flowers in early spring. Strong .....	1 25	7 00	60 00
<b>eximia.</b> Fringed Bleeding-Heart. Height 6 to 18 inches. Graceful fern-like foliage and deep rose flowers nodding in slender scape-like racemes all summer. A splendid rock-garden subject. Heavy clumps .....	3 00	24 00	225 00
First size .....	2 00	15 00	140 00
Second size .....	1 00	8 00	75 00
<b>ERYTHRONIUM americanum.</b> American Trout Lily. Height 5 to 10 inches. Green mottled leaves. Bright yellow flowers in early spring. Flowering size .....	90	6 00	45 00
<b>LILIUM canadense.</b> Canada Lily. Slender stems 2 to 4 feet high. Flowers in various shades of orange, yellow, and red. Very ornamental. First size .....	2 00	14 00	130 00
Second size .....	1 00	6 00	50 00
<b>carolinianum.</b> Carolina Lily. A showy Lily somewhat dwarfer than <i>L. superbum</i> , with flowers a little lighter in color, but enriched with a delicate and pervasive fragrance. It grows 2 to 4 feet high, and, in spite of its common name of Swamp Lily, thrives best in well-drained soil and in partial or even fairly dense shade. Its habit is peculiarly airy and graceful, the petals recurving sharply but not bent back so completely as <i>L. superbum</i> , so that the long, slender tips are frequently erect or barely touch each other. First size .....	2 00	16 00	145 00
Second size .....	1 00	7 00	60 00
<b>philadelphicum.</b> Orange-cup Lily. Height 1 to 3 feet. Reddish orange flowers, with purple spots. Flowering-size bulbs .....	1 75	14 00	120 00
<b>superbum.</b> American Turk's-cap Lily. This is the tallest and most spectacular native Lily. Under favorable conditions it reaches 8 feet, bearing scores of 3 to 4-inch flowers of brilliant orange-scarlet, shaded yellow and dotted and tinged with brown in the center. The petals curve backward sharply, forming a turban-shaped flower which accounts for its common name, the "Turk's-cap Lily." It particularly likes to stick its head up through an opening in overhanging shrubs. Blooms in July, and is easily adaptable to garden conditions. Early orders solicited. XX largest bulbs .....	3 00	22 50	
First size .....	1 75	11 00	90 00
Second size .....	90	6 00	55 00
<b>NARCISSUS.</b> Daffodil. Best assorted varieties. Home-grown. Strong .....	1 00	6 00	50 00
Second size .....	65	3 00	25 00

NOTE.—5 plants at the 10 rate, 25 at 100 rate, 250 at 1,000 rate. For less than 5, where unit price is not given, add 25 per cent



*Trillium undulatum* and *Tiarella cordifolia*

HARDY NATIVE LILIES AND BULBOUS PLANTS, continued

<b>TRILLIUM erectum.</b> Purple Trillium. Large, very ornamental plants 9 to 18 inches high. Large red fruit. Flowers brown to purple. Early, vigorous spring bloomer. Large stock ready for prompt delivery.	10	100	1,000
First size.....	\$1 25	\$5 00	\$37 50
Second size.....	65	2 50	18 00
<b>erectum album.</b> Flowers white. Blooms in early May.			
First size.....	1 00	6 00	50 00
<b>grandiflorum.</b> Snow Trillium. The finest and largest species. Flowers 2 to 3 inches across, in early spring, white turning to rose color. One of our best spring bloomers. We have more than 150,000 strong flowering bulbs for prompt shipment. This plant flourishes and blooms to perfection in woodland and border plantings and cannot be recommended too highly for general use. Early orders solicited.			
XX largest.....	1 75	11 00	100 00
First size.....	1 25	5 00	40 00
Second size.....	65	2 50	20 00
<b>stylosum.</b> Rose Trillium. Height 10 to 18 inches. Large, rose-pink, nodding flowers. Rare and beautiful southern species.			
Flowering size.....	90	4 00	30 00
<b>undulatum.</b> Painted Trillium. Strong, vigorous grower. Height 8 to 15 inches. Earliest bloomer of all Trilliums. Large flowers with scarlet and white markings.			
XX largest.....	1 75	10 00	85 00
Strong first size.....	1 25	4 00	35 00

**Cash Discount 10 per cent, including free packing, on orders received before April 1, 1935**

## Hardy Native Orchids

<b>CALOPOGON pulchellus.</b> Grass-pink Orchid. Height 1 to 1½ feet. Grass-like foliage. Pink flowers. Showy and succeeds well in cultivation.	10	100	1,000
Strong.....	\$1 50	\$11 00	\$100 00
<b>CYPRIPEDIUM acaule.</b> Pink Lady's Slipper. Height is 6 to 15 inches. Thick clusters of leaves flat on ground. Large, bright purple-pink, upright flowers in early spring. One of the most beautiful native orchids.			
X strong. First size.....	2 50	21 00	190 00
Flowering second size.....	1 25	9 00	80 00
<b>pubescens.</b> Common Lady's Slipper. Height 12 to 20 inches. Flowers bright yellow in May.			
X first size.....	2 50	21 00	190 00
Flowering second size.....	1 25	9 00	80 00
<b>spectabile.</b> Showy Lady's Slipper. Height 1 to 2½ feet. Extra-strong grower in peat soils. White to rose-colored flowers in June and July. By far the best of all <i>Cypripediums</i> . We have splendid stock of several thousand strong clumps, and shipment can be made promptly.			
X first size.....	4 00	30 00	270 00
Heavy clumps.....	10 00	85 00	
<b>HABENARIA ciliaris.</b> Yellow Fringe Orchid. Height 12 to 20 inches. Yellow flowers. Very handsome free bloomer. Suitable for rockery.			
Strong.....	1 75	13 50	120 00
<b>psycodes.</b> Small Purple Fringe Orchid. Height 9 to 18 inches. Best suited to shade.			
Strong.....	1 75	11 00	100 00
<b>ORCHIS spectabilis.</b> Showy Orchis. Best adapted to shady locations. Height 6 to 12 inches. Flowers showy, pink-purple, in early spring.			
Strong.....	1 50	12 00	



*Cypripedium spectabile*



*Cypripedium pubescens*. See page 25

## Hardy Native Herbaceous Perennials

This list contains a variety of Herbaceous Plants furnishing a succession of bloom from early spring to late autumn, all having been tried out with success in cultivation. The height indicates the approximate height of each plant as found in wild state. The time of blooming naturally depends on locality.

<b>ACONITUM uncinatum.</b> Clambering Monkshood. Height 3 to 6 feet. Blue, hood-shaped flowers. Strong . . . .	10	100	1,000
	\$1 50	\$8 00	\$70 00
<b>ACTÆA alba.</b> White Baneberry. Height 1½ to 3 feet. Flower-stalk red. White flowers and berries. Strong . . . . .	1	25	9 00
<b>rubra.</b> Red Baneberry. Height 1 to 3 feet. White flowers in May. Red berries. Strong . . . . .	1	35	9 00
<b>AQUILEGIA canadensis.</b> American Columbine. Height 1 to 2 feet. Showy, cut leaves. Reddish flowers with scarlet-yellow inside in May and June. Splendid for rock-garden. Strong. . . . .	1	25	9 00
<b>ARALIA racemosa.</b> American Spikenard. Height 2 to 5 feet. Smooth stem; large compound leaves. White paniced flowers in July. Strong. . . . .	1	25	8 00
			70 00
<b>ARUNCUS sylvester.</b> Goat's Beard. Height 4 to 6 feet. Cut leaves and white flowers in May and June. X strong. . . . .	1	20	8 00
			70 00
<b>ASARUM canadense.</b> Canada Wild Ginger. Kidney-shaped leaves. Grows 2 to 4 inches high with single purplish flower close to the ground. Succeeds best in shady locations. Strong. . . . .	1	00	7 00
			60 00
<b>shuttleworthi.</b> Mottled Wild Ginger. Evergreen. Leaves large, round, heart-shaped. X strong. . . . .	1	25	9 00
			75 00
<b>ASCLEPIAS tuberosa.</b> Butterfly Weed. Height 1 to 2 feet. Very showy orange or red flowers. X strong. . . . .	1	50	9 00
			80 00
Second size. . . . .		75	4 50
			40 00

NOTE.—5 plants at the 10 rate, 25 at 100 rate, 250 at 1,000 rate. For less than 5, where unit price is not given, add 25 per cent

HARDY NATIVE HERBACEOUS PERENNIALS, continued

<b>ASTILBE biternata.</b> False Goat's Beard. Naturally 3 to 5 feet in height. Large, compound leaves. Yellowish white flowers. Very ornamental. Succeeds best in shady locations. X strong.....	10	100	1,000
	\$1 00	\$6 00	\$50 00
<b>BAPTISIA tinctoria.</b> Yellow Wild Indigo. Height 2 to 3 feet. Abundant yellow flowers in June. Showy. X strong.....	1 20	8 00	65 00
<b>CAMPANULA divaricata.</b> North Carolina Harebell. Height 1 to 2 feet. Pale blue, bell-shaped flowers in July. Good for rockery. Strong.....	1 20	8 00	70 00
<b>CAREX fraseri.</b> Fraser Sedge. Height 9 to 18 inches. Rare, broad-leaved evergreen. White flowers in spikes, in March. Best suited for shade. Strong.....	1 35	10 00	90 00
<b>CAULOPHYLLUM thalictroides.</b> Blue Cohosh. Height 2 to 3 feet. Yellowish green flowers in April. Fruit blue and showy. Strong.....	85	6 00	45 00
<b>CHAMÆLIRIUM luteum.</b> Fair Wand. Height 1 to 2 feet. Spike of small flowers in June. Showy. X strong..	1 20	7 00	60 00
<b>CIMICIFUGA americana.</b> American Bugbane. Height 3 to 6 feet. Snowy white flowers in August. Leaves divided. Strong.....	1 20	7 00	60 00
<b>racemosa.</b> Cohosh Bugbane. Height 4 to 8 feet. Flowers white. Decomound leaves. X heavy.....	1 20	7 00	60 00
<b>CLINTONIA borealis.</b> Bluebead. Height 6 to 12 inches. Greenish yellow flowers in June. Showy species. Strong.....	1 20	7 00	60 00
<b>umbellulata.</b> Speckled Clintonia. Height 9 to 15 inches. Fragrant white flowers in June. Strong.....	1 20	7 00	60 00
<b>COREOPSIS lanceolata.</b> Lance Coreopsis. Height 2 to 4 feet. Free bloomer. Yellow flowers in July. Strong.....	1 20	7 00	60 00
<b>DIPHYLLEIA cymosa.</b> Umbrella Leaf. Height 1 to 3 feet. Large lobed leaves. White flowers in May. Purple showy fruit in bunches. Prefers moist locations. X strong.....	1 25	9 00	
<b>DISPORUM lanuginosum.</b> Fairy Bells. Height 1 to 3 feet. Greenish flowers in May. Fruit red and drooping. Strong.....	1 20	8 00	70 00
<b>DODECATHEON media.</b> Common Shooting-Star. Very showy pink and purple flowers. Strong.....	1 75	12 00	110 00
<b>EPILOBIUM angustifolium.</b> Blooming Sally. Tall plant with spire-like clusters of purple flowers. Strong....	1 25	9 00	80 00

## Plants for the Rock-Garden

- |   |   |
|---|---|
| <p>5 <b>Leiophyllum buxifolium prostratum.</b> Allegheny Sand Myrtle.</p> <p>10 <b>Sedum ternatum.</b> Mountain Stonecrop. White flowers in early spring.</p> <p>5 <b>Habenaria ciliaris.</b> Yellow Fringe Orchid. Handsome yellow flowers suitable for the rock-garden.</p> <p>5 <b>Dicentra eximia.</b> Fringed Bleeding-Heart. Deep rose flowers and fern-like foliage all summer. Height 10 to 18 inches.</p> <p>5 <b>Campanula divaricata.</b> North Carolina Harebell. Pale blue, bell-shaped flowers in early summer. Height 12 to 18 inches.</p> | <p>5 <b>Asclepias tuberosa.</b> Butterfly Weed. Orange or red flowers. Height 15 to 24 inches.</p> <p>5 <b>Heuchera americana.</b> American Alum-root. Greenish white flowers in June. Foliage mottled bronze in late fall.</p> <p>5 <b>Houstonia purpurea.</b> Mountain Houstonia. Purple flowers all summer. Height 6 to 12 inches.</p> <p>5 <b>Xerophyllum asphodeloides.</b> Turkey's Beard. White flowers on spikes 3 to 5 feet tall.</p> <p>5 <b>Yucca filamentosa.</b> Common Yucca. White bell-shaped flowers in July and August, on spikes that may be 6 feet or more in height.</p> |
|---|---|

**Five to 10 plants of each variety (55 plants in all) for only \$7**

*Hepatica triloba*

## HARDY NATIVE HERBACEOUS PERENNIALS, continued

<b>EUPATORIUM purpureum.</b> Joe-Pye-Weed. Height 4 to 8 feet. Purple flowers in large panicles in June. X strong.....	10	100	1,000
	\$1 20	\$8 00	\$70 00
<b>EUPHORBIA corollata.</b> Flowering Spurge. Height 1 to 4 feet. White flowers in August. Strong.....	1 20	8 00	70 00
<b>GENTIANA andrewsi.</b> Closed Gentian. Height 10 to 18 inches. Foliage green. Blue closed flowers in September. Strong.....	1 20	9 00	70 00
<b>GERANIUM maculatum.</b> Wild Geranium. Large, showy perennial with cut leaves. Light blue flowers in April and May. Strong.....	1 20	8 00	70 00
<b>GILLENIA trifoliata.</b> Bowman's Root. Height 2 to 4 feet. Handsome cut foliage. Pure white or rose-tinted flowers in June. Splendid for massing among shrubbery. X strong.....	1 20	7 00	60 00
<b>HELENIUM autumnale.</b> Common Sneezeweed. Height 3 to 5 feet. Handsome yellow flowers in August. Strong clumps.....	1 20	6 00	50 00
<b>HEPATICA acutiloba.</b> Sharp-lobed Hepatica. Height 5 to 10 inches. White and purple flowers in March and April. X strong.....	1 20	8 00	65 00
<b>triloba.</b> Round-lobed Hepatica. Flowers vary in color from lovely blue to pink or white. Among the earliest flowers to appear in the spring. Strong.....	1 25	9 00	70 00
<b>HEUCHERA americana.</b> American Alum-root. Height 1 to 2 feet. Large-lobed leaves beautifully mottled bronze in early winter. Flowers greenish white in June. Splendid rock-garden subject. X strong.....	1 20	8 00	70 00
<b>villosa.</b> Hairy Alum-root. Height 12 to 18 inches. Good for rockery. White flowers in August. X strong.....	1 20	7 00	55 00

HARDY NATIVE HERBACEOUS PERENNIALS, continued

<b>HOUSTONIA purpurea.</b> Mountain Houstonia. Height 6 to 18 inches. Purple flowers in July.	10	100	1,000
Strong.....	\$1 20	\$7 00	\$60 00
<b>HYDRASTIS canadensis.</b> Golden Seal. Height 10 to 20 inches. A medicinal herb of great value. We have a large stock of this item on hand and can make prompt shipment on sizes named and seeds.			
X heavy.....	2 25	16 00	145 00
First size.....	1 20	8 00	65 00
Second size.....	75	4 00	27 50
<b>IRIS kaempferi.</b> Japanese Iris. Assorted Colors.			
X strong.....	2 25	17 50	
<b>LIATRIS pycnostachya.</b> Cattail Gayfeather. X strong.....	1 25	9 00	80 00
<b>scariosa.</b> Large Button-Gayfeather. Strong.....	1 20	9 00	75 00
<b>spicata.</b> Spike Gayfeather. Height 3 to 5 feet. Spikes of purple flowers in August. Strong.....	1 20	9 00	80 00
<b>LOBELIA cardinalis.</b> Cardinal Flower. Height 3 to 5 feet. Showy scarlet flowers in August. Strong.....	1 20	8 00	70 00
<b>syphilitica.</b> Large Blue Lobelia. Height 1 to 3 feet. Large blue flower in late August. Strong.....	1 20	8 00	70 00
<b>PHLOX divaricata.</b> Blue Phlox. Height 10 inches. Bears a profusion of large, fragrant, lavender flowers in May. Strong.....	1 75	11 00	100 00
<b>pilosa.</b> Downy Phlox. Hairy plant 18 inches tall. Purple or bluish flowers. Strong.....	1 25	8 00	70 00
<b>PODOPHYLLUM peltatum.</b> Common May Apple. Height 1 to 1½ feet. Large, light green leaves. White flowers in May. Prefers shade. Strong.....	1 00	6 00	50 00
<b>POLYGONATUM biflorum.</b> Dwarf Solomon's Seal. 12 to 18 inches. Shade or sun. Flowers greenish white underneath curved stems. Strong.....	1 00	8 00	70 00
<b>commutatum.</b> Great Solomon's Seal. Height 3 to 6 feet. Drooping greenish white flowers in June. X strong.....	1 20	7 00	60 00
<b>POTENTILLA tridentata.</b> Wineleaf Cinquefoil. Creeper plant with tiny, starry white flowers. Strong.....	1 75	12 00	
<b>SANGUINARIA canadensis.</b> Bloodroot. Height 5 to 8 inches. One of our best perennials. Large white flowers in early spring. Strong.....	1 20	7 00	60 00

**LEAF-MOLD—NATURE'S PLANT-FOOD**

This is the food nature provides for Azaleas, Rhododendrons, Kalmias, Leucothoe, Andromedas, Hemlocks, Pines, Ferns, Lilies, Trilliums, Native Orchids, and Perennials. Leaf-Mold gives the proper acid elements to the soil, insuring the best root-systems, foliage, and flowers. Valuable for old or new lawns. Leaf-Mold is collected from old Rhododendron beds, without artificial or chemical treatment.

200 lbs. \$2; ton \$12.50; carload (20 tons) \$185. Shipped in bags

## HARDY NATIVE HERBACEOUS PERENNIALS, continued

<b>SAPONARIA officinalis.</b> Bouncing Bet. Stout grower 1 to 2 feet in height. Leaves oval, opposite. Rosy-tinged flowers in midsummer. Easy of cultivation and a choice perennial.	10	100	1,000
Strong.....	\$1 20	\$8 00	\$65 00
<b>SILENE stellata.</b> Starry Champion. Height 2 to 4 feet. White flowers in showy panicles in July.			
Strong.....	1 20	8 00	70 00
<b>virginica.</b> Fire Pink. Very showy crimson flowers in June.			
Strong.....	2 00	15 00	135 00
<b>SMILACINA racemosa.</b> False Solomon's Seal. Height 2 to 3 feet. White flowers in June. Red speckled berries in August.			
Strong.....	1 20	7 00	60 00
<b>SOLIDAGO canadensis.</b> Canada Goldenrod. Tall species growing in open places. Numerous small flowers in flat heads. One of the finest and most showy of all our garden friends.			
Strong.....	1 00	6 00	50 00
<b>odora.</b> Fragrant Goldenrod. Height 2 to 4 feet. Yellow flowers in August and early September.			
Strong.....	1 20	7 00	60 00
<b>SPIGELIA marilandica.</b> Pinkroot. A 2-foot perennial with clusters of red and yellow flowers.			
Strong.....	1 50		
<b>STENANTHIUM robustum.</b> Feather Fleece. Long, white, delicate flowers on stems 3 to 5 feet high in late summer. Extremely ornamental and altogether one of our finest perennials. Thrives in damp situations as well as in drier soil.			
X heavy.....	1 75	11 00	100 00
<b>THERMOPSIS caroliniana.</b> Carolina Thermopsis. Grows 3 to 5 feet high. Yellow flowers in terminal racemes in May and June. Very showy for massing.			
X strong.....	1 65	10 00	90 00
<b>TIARELLA cordifolia.</b> Allegheny Foam Flower. Height about 10 inches. White flowers in May or June.			
Strong.....	1 20	8 00	70 00
<b>TRADESCANTIA virginiana (montana).</b> Virginia Spiderwort. Ribbon-like foliage and showy blue flowers.			
Strong.....	1 20	8 00	70 00
<b>UVULARIA grandiflora.</b> Big Merrybells. Largest species with bright yellow flowers.			
Strong.....	1 20	8 00	70 00
<b>perfoliata.</b> Wood Merrybells. Height 6 to 18 inches. Pale yellow flowers in early spring.			
Strong.....	1 20	8 00	70 00
<b>sessilifolia.</b> Little Merrybells. Height 10 to 20 inches. Yellow flowers in May. Strong.....			
Strong.....	1 20	8 00	70 00
<b>VERONICA virginica.</b> Culver's Physic. Showy; 2 to 4 feet in height with long spikes of white flowers in midsummer. Strong.....			
Strong.....	1 35	10 00	







HARDY NATIVE HERBACEOUS PERENNIALS, continued

<b>VIOLA blanda.</b> Sweet White Violet. Height 2 to 4 inches. Fragrant white flowers in early spring. X strong. . . . .	10	100	1,000
	\$1 20	\$8 00	\$70 00
<b>canadensis.</b> Canada Violet. The common blue Violet of the fields. X strong. . . . .	1 20	8 00	70 00
<b>cucullata.</b> Blue Marsh Violet. Height 6 to 10 inches. Blue flowers all summer. X strong. . . . .	1 00	6 50	50 00
<b>pedata.</b> Bird's-foot Violet. Height 3 to 7 inches. Showy blue flowers in May.			
First size. . . . .	1 20	7 00	60 00
Second size. . . . .	80	4 00	35 00
<b>pedata bicolor.</b> Two-color Bird's-foot Violet. Height 4 to 6 inches. Velvety light blue and purple pansy-like flowers in May. Rare and beautiful.			
First size. . . . .	1 25	9 00	80 00
Flowering size. . . . .	85	4 50	40 00
<b>rotundifolia.</b> Round-leaf Violet. Height 3 to 4 inches. Large yellow flowers in early spring. Large prostrate shining leaves. Strong. . . . .	1 20	8 00	70 00
<b>sagittata.</b> Arrowleaf Violet. Height 4 to 8 inches. Deep blue flowers in May. Strong. . . . .	1 20	9 00	
<b>XEROPHYLLUM asphodeloides.</b> Turkey's Beard. Height 3 to 5 feet. Long grass-like leaves. Tall spikes of very attractive white flowers. Rock-garden subject.			
Strong. . . . .	1 50	11 00	100 00
<b>YUCCA filamentosa.</b> Common Yucca. Height 3 to 8 feet. Large panicles of white flowers in July and August.			
Strong, 2-year. . . . .	1 50	11 00	100 00
<b>flaccida.</b> Weak-leaf Yucca. Height 2 to 5 feet. Stiff narrow leaves. White flowers in June and July.			
Strong, 3-year. . . . .	1 65	11 00	100 00
<b>gloriosa (patens).</b> Moundlily Yucca. Noble plant with flower-spike 8 feet high. Blooms rusty white or reddish. X strong. . . . .	1 75	11 00	100 00
<b>ZYGADENUS muscætoxicum.</b> Crow-poison. Long grass-like leaves with attractive spikes of showy white flowers in early spring. . . . .	1 20	8 00	70 00

We know how to pack to insure delivery in good condition, even to foreign countries.  
Let us handle your orders for high-class native plant material



Pachysandra terminalis



## Special Collections of Foundation Plant Material

These collections are valuable to home-owners who are not entirely familiar with Broad-leaved Evergreens. The plants are from my regular stock, and I feel sure they will please you when they arrive—and for many seasons thereafter.

### Special Collection No. 9

*Azalea arborescens*. Sweet White Azalea. Fragrant white flowers in spring and early summer.

*Azalea calendulacea*. Flame Azalea. A native species. Color varies from orange to canary.

*Azalea canescens*. Piedmont Azalea. Pink and rose.

*Azalea nudiflora*. Pinxter Bloom. Deep pink flowers.

Five plants of each, 12 to 18 in. **\$19.90**  
(20 plants in all), for only

### Special Collection No. 10

*Rhododendron carolinianum*. Carolina Rhododendron. The earliest flowering variety. Color light to deep pink.

*Rhododendron catawbiense*. Catawba Rhododendron. Vigorous, hardy, free blooming. Color rosy purple.

*Rhododendron maximum*. Rosebay. Pinkish white flowers in July. The grandest of all.

Five plants of each, 12 to 18 in. **\$14.75**  
(15 plants in all), for only

### Special Collection No. 11

*Kalmia latifolia*. Mountain Laurel. A lovely native, with pink or rose flowers.

*Leucothoe catesbaei*. Drooping Leucothoe. Flowers creamy white, drooping and showy.

*Pieris floribunda*. Mountain Andromeda. White flowers in elusters in April and May.

Five plants of each, 12 to 18 in. **\$14.10**  
(15 plants in all), for only

### SPECIAL COMBINATIONS

Collections No. 9 and 10.....\$32 50      Collections No. 10 and 11.....\$27 50  
Collections No. 9 and 11..... 32 00      Collections No. 9, 10, and 11..... 47 50

## Gardens of the Blue Ridge

E. C. ROBBINS, Nurseryman

ASHFORD, McDowell County, NORTH CAROLINA