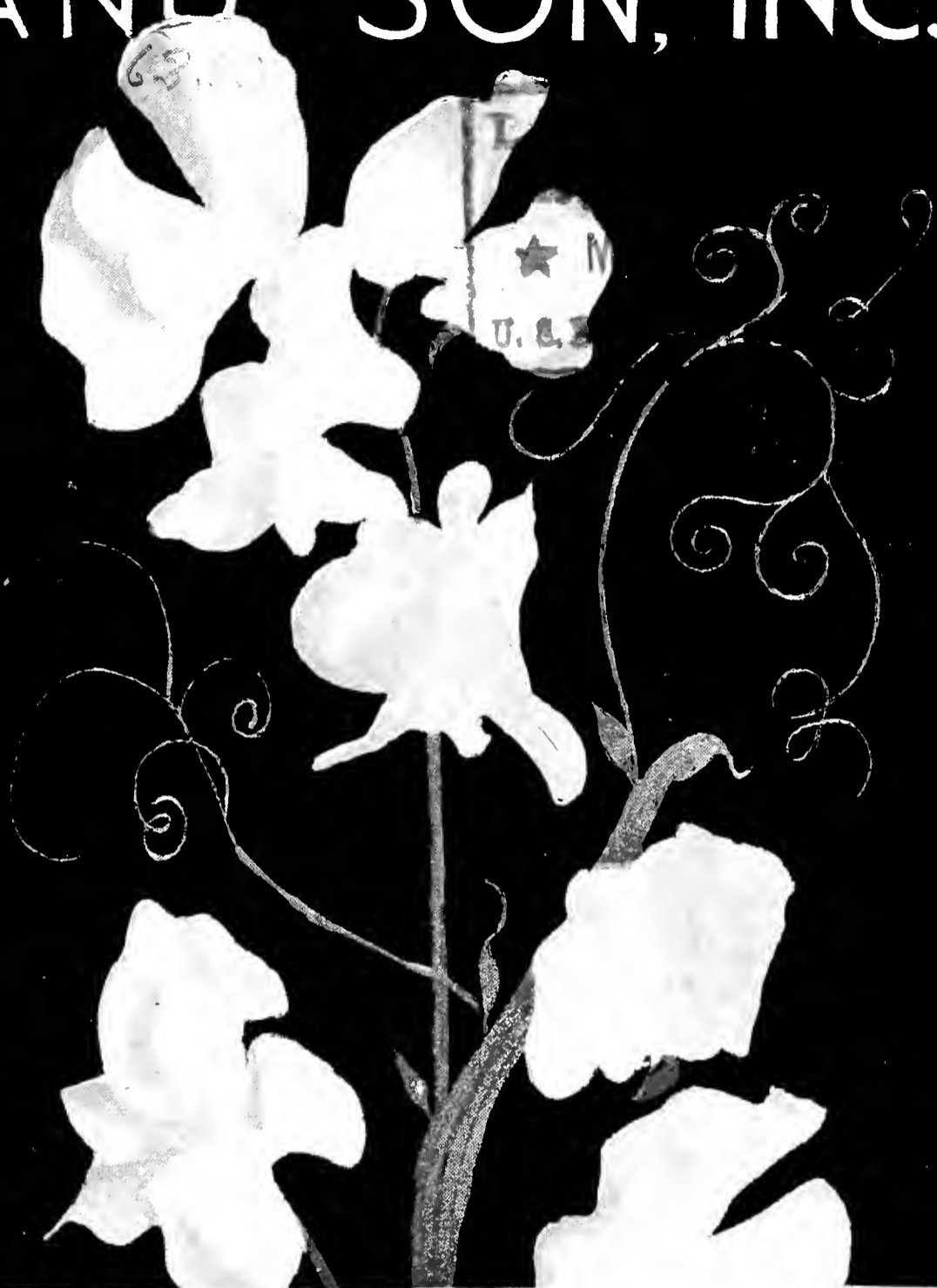


Historic, archived document

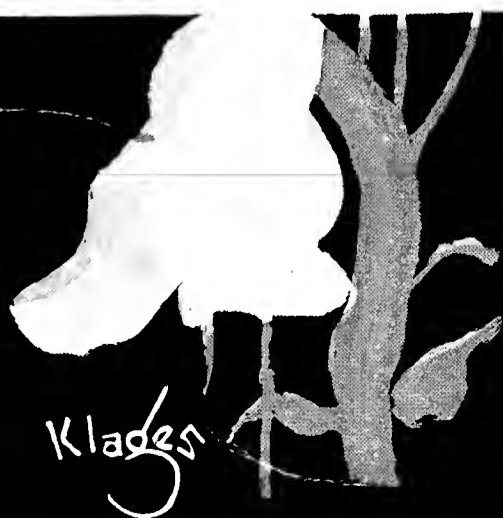
Do not assume content reflects current scientific knowledge, policies, or practices.



ZVOLANEK AND SON, INC.



COMMERCIAL GROWERS OF
EARLY- OR WINTER-FLOWERING
SWEET PEA SEED
SWEET PEA RANCH
LOMPOC, CALIFORNIA



JUNE 1934
to
JUNE 1935



Our New Specialty
ZVOLANEK WHITE TWIN
(No. 93-33)

After hundreds of trials we are now ready to market ZVOLANEK WHITE TWIN, a marvelous new specialty Sweet Pea that we have developed. Tests have proven that this strain begins to bloom three weeks earlier than any other Winter-Flowering Sweet Pea, starting from the time it is 12 inches in height until it exceeds two feet in height, when it begins to branch out and produce an abundance of striking blossoms.

This early and prolific producer is pure white. We are developing other colors and they are now being proven under test by commercial growers before being placed on the market

ANT. C. ZVOLANEK & SON, INC.

SWEET PEA RANCH
LOMPOC, CALIFORNIA

NEW VARIETIES

Already grown and tested by many expert commercial growers for many years under number only, but first time listed this year:

ZVOLANEK WHITE TWIN (No. 93-33)—Pure white, long stem, one of the earliest bloomers; starts to bloom three weeks earlier than any Winter Sweet Pea. When it is only 12 inches high it starts to bloom, when it is 2 feet high it starts to branch, producing most after each leaf, two and sometimes even three perfect stems, with 3 to 4 flowers on each. Higher they grow, better flowers they produce. One of the best bloomers we have seen. We have already many other colors developed from this particular twin strain which are under test among many commercial growers now.

ZVOLANEK JOSIE (No. 46-33)—Pink. Beautiful large wavy flowers; extra long stem, tall grower and free bloomer. It is much larger than Zvol. Pink, which will outclass it entirely.

ZVOLANEK YVONE WILLSA (No. 71-33)—Dark rose with beautiful salmon ground. Large wavy flower, big bloomer. This is a cross by Orange Limit and Superior Pink.

ZVOLANEK SUPREME ORANGE (No. 90-33)—Clear orange, loaded always with mass of large flowers. Another cross by Orange Limit and Superior Pink. It outclasses the Burpee Orange entirely, on account of better production and does not need to be shaded in the greenhouse.

ZVOLANEK LAVENDER SUPREME (No. 104 - 33) — Very large, long stem and mostly with 4 flowers.

ZVOLANEK BOY BLUE—Dark blue, without any trace of maroon. Much larger than Indigo Blue and longer stems.

(These 6 novelties have the highest recommendation from the growers. Out of 100 different separate trials, which we have sent out in the last few years.)

Price: 1 oz. \$1.50; 4 oz. \$4.00; 1 lb. \$15.00

COLLECTION OF BIG 15 EXHIBITION WINTER SWEET PEAS

Our intention is to reduce our list of Winter Sweet Peas to 25 or 30 varieties in the next few years. To introduce the cream of our Sweet Peas, which we think are the best in the world, we have put up a Limited Collection of the best straight varieties. Many of them are Novelties under number only. Each packet of different color, contains sufficient seed for at least a 35 ft. row. These Collections are just suitable for the retail grower, private gardener, or as experiment for the largest commercial growers.

This collection contains over 1 lb. of seed, Pink, Salmon and Lavender colors predominating. Red, White, Variegated only in small proportion and many novelties.

We believe that these collections are the best obtainable. After you see them in bloom and if you should not be satisfied, tell us frankly and we will gladly refund your money.

Each year we are selling many hundreds of this collection, and no kick. Many have recommended such splendid lot.

**Ant. C. Zvolanek's Big 15 Commercial or Exhibition
\$10.00 net**

Standard Early Varieties

PINK

- ANTON C. ZVOLANEK**—Fiery rose, extremely long stems, even larger and better producer than the famous Zvol. Rose which we believe will be the leader for the next generation in rose color.
1 oz. \$1; 4 oz. \$3.00; 1 lb. \$10.00
- ZVOL. MISS ALBANY**—Fiery pink on white ground, large flower, well formed, long stem.
1 oz. 75c; 4 oz. \$2.00; 1 lb. \$6.00
- MISS CALIFORNIA**—Bright large pink with slightly carmine touch, the form and color is better than Miss Gude. Long Stems.
1 oz. 75c; 4 oz. \$2.00; 1 lb. \$6.00
- ZVOL. MISS MAINE**—Clear carmine pink, very large well formed flowers, wide apart, longest stem and big bloomer.
1 oz. 50c; 4 oz. \$1.50; 1 lb. \$5.00
- MISS TEXAS**—Fiery dark rose with orange touch, between our Perfection and Beauty. Long stems, flowers wide apart.
1 oz. 50c; 4 oz. \$1.50; 1 lb. \$5.00
- ZVOL. MISS CANADA**—Light pink, every flower coming with double standard or wings or both. Large flower and long stems. Begins to bloom 3 weeks earlier than any other Sweet Peas when only 18 inches high, with 2 flowers but after it is 5 feet high is covered with a mass of flowers with all 4's, lasting longer than any other. We believe this type will be the best for dark winter months.
1 oz. 75c; 4 oz. \$2.00; 1 lb. \$6.00
- ZVOLANEK'S MRS. DAISY CLUFF**—Mammoth light pink by opening, turning darker when full open. It is even larger, with more substance than Zvolanek's Empress, with long stem. First class for green houses or outdoors.
1 oz. 50c; 4 oz. \$1.75; 1 lb. \$6.00
- ZVOL. MRS. H. R. HOLSCHER**—Clear pink, very large and robust grower. I have seen these in full bloom in eastern greenhouses from November until late in spring. Also one of the best for outdoors.
1 oz. 75c; 4 oz. \$1.75; 1 lb. \$6.00
- ZVOLANEK'S CHICAGO PINK**—A bright pink with a pleasing salmon touch, long stems. It has proven to be a first class commercial variety for wholesale market.
1 oz. 50c; 4 oz. \$1.75; 1 lb. \$6.00
- ZVOLANEK'S ROSE**—This is the Queen of all Rose Peas. For many years it has reigned with its dominating color, of unusually large size, shape and productiveness. Many seed dealers advertising this variety, some even as Improved Zvol. Rose, but if not grown by us, it is only a pink mixture, because if not kept in full control it reverts in short time like any other Winter Sweet Peas.
1 oz. 50c; 4 oz. \$1.25; 1 lb. \$4.00
- ZVOLANEK'S PERFECTION**—A mammoth dark rose. All year round variety in winter or outdoors. One of the best in the Pacific and Gulf States.
1 oz. 50c; 4 oz. \$1.25; 1 lb. \$3.50
- ZVOLANEK'S EMPRESS**—A light pink, one of the largest mammoth Sweet Peas, even larger than Zvol. Rose, with long stems.
1 oz. 50c; 4 oz. \$1.25; 1 lb. \$4.00
- ZVOLANEK'S MISS LOISE GUDE**—Improved large shell pink. Old favorite with growers. This is practically a novelty, much larger and longer stems than the old variety.
1 oz. 50c; 4 oz. \$1.50; 1 lb. \$5.00

Ask for Special Prices on 5, 25 and 100 lb. Lots

SALMON AND ORANGE COLORS

- ZVOL. SALMON**—This is a great improvement of the famous Irene Pilot, but double the size and length of stem and more fiery.
1 oz. \$1.00; 4 oz. \$3.00; 1 lb. \$10.00
- ZVOL. PRESIDENT**—Dark salmon, exquisite color, and extremely long stems. Another first class commercial variety, doing well all over the world.
1 oz. \$1.00; 4 oz. \$3.00; 1 lb. \$10.00
- ZVOL. MISS NEW YORK**—Brightest orange salmon, large flower and very long stems. Under consistent trials by many hundreds of growers, and declared to be the best seller all over.
1 oz. 75c; 4 oz. \$2.00; 1 lb. \$6.00
- ZVOL. MISS DELAWARE**—Light salmon pink, one of the largest, well shaped flower.
1 oz. 75c; 4 oz. \$2.00; 1 lb. \$6.00
- ZVOL. MISS WISCONSIN**—Deep salmon, long stem, the best bloomer we have ever introduced.
1 oz. 75c; 4 oz. \$2.00; 1 lb. \$6.00
- ZVOL. MISS PENNSYLVANIA** — Bright scarlet orange, large, long stem, big producer and recommended by everyone, as a commercial variety.
1 oz. 75c; 4 oz. \$2.00; 1 lb. \$6.00
- ZVOL. MISS OREGON**—Clear salmon pink, larger than our Princess, producing profusion of flowers from Nov. all winter, and one of the best outdoor varieties.
1 oz. 75c; 4 oz. \$2.00; 1 lb. \$6.00
- ZVOL. MISS AMY DU PONT** — Large light salmon pink. Long stem, perfect built flower, has proved to be first class commercial variety for greenhouses and outdoors.
1 oz. 75c; 4 oz. \$2.00; 1 lb. \$6.00
- ZVOL. MISS ALICE M. RAINFORD** — Dark salmon with cream touch, very wavy, much substance. Miss Rainford, who is long lived florist in San Diego, thinks this is the best Sweet Pea in this color.
1 oz. 75c; 4 oz. \$2.00; 1 lb. \$5.00
- ZVOL. MISS FLORIDA**—Large fiery orange, extremely long stems, good producer under glass and outdoors.
1 oz. 50c; 4 oz. \$1.25; 1 lb. \$4.00
- ZVOL. NEW JERSEY**—Orange red, medium, but larger and brighter than Eldorado; does not burn, and we recommend it for greenhouse culture in mid-winter. Very early bloomer.
1 oz. 50c; 4 oz. \$1.25; 1 lb. \$4.00
- VALENCIA**—Exact duplicate of our New Jersey.
- ZVOL. LOUISIANA**—Very pleasing large orange salmon, long stems.
1 oz. 50c; 4 oz. \$1.25; 1 lb. \$4.00
- ZVOLANEK'S PRINCESS**—Bright light salmon of immense size, does not fade but improves in color. One of the best producers from Nov. until spring.
1 oz. \$1.00; 4 oz. \$3.00; 1 lb. \$8.00
- ZVOLANEK'S SANTA BARBARA**—A mammoth dark orange red, long stems, well built flowers and good producer.
1 oz. 75c; 4 oz. \$2.00; 1 lb. \$5.00
- ZVOLANEK'S EXQUISITE**—Dark salmon pink with a touch of orange, giving the flower a lively appearance. Large size, long stem and 100 percent true.
1 oz. 75c; 4 oz. \$2.00; 1 lb. \$6.00
- ZVOLANEK'S ORANGE**—Fiery scarlet orange; very long stems and for the last 15 years most widely grown commercial orange.
1 oz. 50c; 4 oz. \$1.25; 1 lb. \$3.00
- BURPEE'S ORANGE** — Glistening orange; must be shaded to avoid burning.
1 oz. 50c; 4 oz. \$1.25; 1 lb. \$4.00

Special Prices on 5, 25 and 100 lb. Lots

LAVENDERS

ZVOLANEK'S MICHIGAN — A mammoth, darker, pure lavender, with long stems and excellent producer. Introduced only few years ago. We are getting repeated larger orders each year from all commercial growers. 1 oz. 75c; 4 oz. \$2.00; 1 lb. \$6.00

ZVOLANEK'S BOSTON — Is practically the same mammoth beautiful shape; only several shades lighter and earlier. One of the best lavender under glass, being loaded with flowers from November.

1 oz. 75c; 4 oz. \$2.00; 1 lb. \$6.00

ZVOLANEK'S PHILADELPHIA—A fine large clear lavender that has a tendency to bloom a week in advance of all others, and a great producer, much better than Harmony. It is the favorite with greenhouse men.

1 oz. 75c; 4 oz. \$2.00; 1 lb. \$6.00

ED. ZVOLANEK—Well known extra large commercial market lavender; many double and mostly with four flowers.

1 oz. 50c; 4 oz. \$1.50; 1 lb. \$5.00

MRS. CHAS. ZVOLANEK—A beautiful clear lavender, early bloomer of 20 years' standing. Much improved.

1 oz. 50c; 4 oz. \$1.50; 1 lb. \$4.00

HARMONY—A good clear lavender.

1 oz. 50c; 4 oz. \$1.50; 1 lb. \$5.00

Ask for Special Prices on 5-, 25- and 100-lb. Lots.

WHITE

ZVOLANEK'S WHITE ROSE—A mammoth, beautifully formed pure white. It is the duplicate of our Zvolanek's Rose except in color, and the Queen of all whites. Very poor seeder, as all other mammoth varieties.

1 oz. 50c; 4 oz. \$1.50; 1 lb. \$5.00

ZVOLANEK'S EARLY WHITE ROSE — Practically the same only one week earlier. This variety has proved to be one of the best for early winter all over the northeastern states, being laden with flowers from November until late in spring.

1 oz. 50c; 4 oz. \$1.50; 1 lb. \$4.00

WHITE HARMONY — Practically the same as our Watchung.

1 oz. 50c; 4 oz. \$1.25; 1 lb. \$4.00

ZVOLANEK'S VENUS—White, edged pink, with orange scent; most extensively used and highly praised by all growers over twenty years.

1 oz. 50c; 4 oz. \$1.25; 1 lb. \$4.00

Ask for Special Prices on 5-, 25- and 100-lb. Lots

BLUE AND MAROON

ZVOLANEK ELK PURPLE—Large purple, long stem and good producer.

1 oz. \$1.00; 4 oz. \$3.00; 1 lb. \$10.00

ZVOLANEK'S MISS ALABAMA—Darkest maroon or mahogany color of largest size and longest stem.

1 oz. 50c; 4 oz. \$1.25; 1 lb. \$4.00

ZVOLANEK'S MISS ANNIE HOLSCHER — Blue, white variegated, one of the earliest artistic varieties. Best bloomer in November and December.

1 oz. 75c; 4 oz. \$2.00; 1 lb. \$6.00

ZVOLANEK'S SILVERBLUE — Large, light blue, large size and well formed flower.

1 oz. 75c; 4 oz. \$2.00; 1 lb. \$6.00

ZVOLANEK'S INDIGO BLUE—A very fine shaped, large flower with long stems, dark blue self color. Good producer even during the darkest winter months. Introduced only a few years ago and grown by many thousand commercial greenhouse men all over the world.

1 oz. 75c; 4 oz. \$2.00; 1 lb. \$6.00

ZVOLANEK'S BLUE WONDER — A mammoth clear blue. The same size and shape as our Zvolanek's Rose. Robust grower and good bloomer.

1 oz. 75c; 4 oz. \$1.75; 1 lb. \$6.00

ZVOLANEK'S BLUE SENSATION—Is a duplicate of the former, only being several shades lighter clear blue. Both varieties are largely grown by many thousands of market growers. Both are good winter bloomers. 1 oz. 50c; 4 oz. \$1.50; 1 lb. \$4.00

ZVOLANEK'S LILAC—An immense size of well formed flowers. 1 oz. 75c; 4 oz. \$2.00; 1 lb. \$6.00

ZVOLANEK'S BLUE—One of our oldest introductions and still largely grown by many greenhouse men on account of the color and stem. 1 oz. 50c; 4 oz. \$1.25; 1 lb. \$5.00

ZVOLANEK'S MARQUIS—Is true navy blue and good greenhouse grower. 1 oz. 50c; 4 oz. \$1.25; 1 lb. \$4.00

RED AND SCARLET

ZVOLANEK'S CHERRY RED — Very large flower, practically each stem brings 4 flowers and one or more are double. Two to 3 weeks earlier than others. 1 oz. 75c; 4 oz. \$2.00; 1 lb. \$6.00

MISS OKLAHOMA—Large blood red of large size and extremely long stems. 1 oz. 75c; 4 oz. \$2.00; 1 lb. \$6.00

ZVOLANEK'S RED HOOD—Scarlet red of medium size and largely grown by greenhouse men during dark winter months. Has very long stems and is the earliest red to bloom. 1 oz. 50c; 4 oz. \$1.75; 1 lb. \$6.00

ZVOLANEK'S KANSAS CITY—An extra large dark red, pleasing color and long stems. Good for early or late planting. 1 oz. 50c; 4 oz. \$1.25; 1 lb. \$4.00

ZVOLANEK'S RED—Very large scarlet and extremely long stems. Likes plenty of sunshine and should be planted to bloom in February or later. Unsurpassed for outdoor planting. 1 oz. 50c; 4 oz. \$1.25; 1 lb. \$4.00

GRANADIER—Medium flower but fine bright red. 1 oz. 50c; 4 oz. \$1.25; 1 lb. \$4.00

BYCOLORS AND ART COLORS

ZVOLANEK'S YELLOW CHARM — Light yellow, black seeded, extra long stems. We believe this will outclass every cream or yellow Sweet Pea. 1 oz. \$1.00; 4 oz. \$3.00; 1 lb. \$10.00

ZVOLANEK'S XMAS PINK, ORCHID—This is one of the greenhouse favorites for over 20 years standing. Keeps its color for days. All the bycolors begin to take well lately with the public, and we are prepared to have plenty of seed. 1 oz. 50c; 4 oz. \$1.25; 1 lb. \$4.00

VEILED LADY—One of the best artistic flowers. Color white, beautiful carmine variegated, stems very long and the large flowers apart. For the last three years we were unable to fill our orders in full. 1 oz. 75c; 4 oz. \$2.00; 1 lb. \$6.00

ZVOLANEK'S GUEMORRE — Light yellow, marbled with pink. It is one of the most artistic Sweet Peas. and fits in any design. 1 oz. 50c; 4 oz. \$1.75; 1 lb. \$5.00

ZVOLANEK'S GOLDEN ORCHID — Canary yellow, large flowers and stem. 1 oz. 50c; 4 oz. 75c; 1 lb. \$5.00

ZVOLANEK'S PRIMROSE—Cream flushed with pink and bronze edges, large flowers and long stems. 1 oz. 50c; 4 oz. \$1.75; 1 lb. \$5.00

Ask for Special Prices on 5-, 25- and 100-lb. Lots.

EARLY MIXED SWEET PEAS

The past few years we have had a big call on early-flowering outdoor MIXTURE, especially from florists who sell seed as a side line to their clients. Our Mixture cannot be duplicated anywhere. We are using only the best of the largest varieties, and for the convenience of florists we are raising several kinds.

ZVOLANEK'S GRAND MIXTURE—One row of this mixture is a revelation in a garden row. It consists of all the best colors properly graded and at least 150 varieties, including many novelties never seen before. Any retail florist should have a quantity on hand to please their customers.

LAVENDER MIXTURE—The best lavender and light blue.

WHITE MIXTURE—White and black seeded.

PINK MIXTURE — All best pinks from lightest to darkest color.

ORANGE AND SALMON MIXTURE—

Price on any mixture: 1 oz. 40c; 8 oz. \$1.50; 1 lb. \$3.00

Special Prices on 50-, 100- and 500-lb. Lots.

We do not sell less than one ounce of each variety. If you wish to have more colors, better order any mixture.

WARRANTY

All varieties in this list are true and fixed as represented. Should any mistake occur by us, we will return the full amount paid for the seed or replace the same, but we will not be responsible for a failure caused by climatic conditions or neglect of the grower. We are interested in your Sweet Peas, even after the seed has germinated, and any questions will be cheerfully answered.

Most of the commercial varieties will be ready to ship early in June. Please send your order early. We are usually sold out early each year, and perhaps of such varieties as you may need. In case of shortage or failure of crop we will take the liberty of substituting with the best and nearest color, as this list is made out just before the harvest, and we are not yet certain about the crop. If no substitute is wanted mark your order "**No Substitute.**"

Dropping the Buds

In the northern and eastern states, dropping off buds during November and December is common, but a great deal of this can be prevented. We all know that Sweet Peas like plenty of moisture to get long stems, but during the cloudy weather in November and December it is better to sacrifice the long stems for good flowers. As soon as the moist and cloudy weather the latter part of October sets in, keep the greenhouses dry as possible, even when the soil is dry three to four inches on the surface. Keep the ventilator open even during the night as much as possible and during frosty nights turn the heating pipes on so there is plenty of dry air circulating.

Should you find a few spots which need some water, water only between the rows in ditches and away from the plants, so they get the moisture from underneath. This will save you at least 50 percent of the flowers.

SHORT CULTURE ON SWEET PEA

HOW TO START THE SEED:

Every year I personally visit many old Sweet Pea growers who all agree that to get the best results the seed should be soaked in water for 6 to 10 hours, and such seed that have not swelled up must be chipped or filed and dropped back in water until swelled up.

Some varieties like **Xmas Triumph** and several lavender varieties have very hard shell and must be soaked longer in water.

You will find also many seeds which will not respond so quickly. Such seed has either been just hand picked or has ripened during a very hot spell, and all these must be helped by chipping the skin.

1. Any soil is good for Sweet Peas except heavy clay or too much sand.
2. Work the soil at least 18 inches deep, 2 feet is better, with plenty of rotten stable manure. Cow manure is best; use some lime and crushed bone.
3. Tramp the soil down firm; never plant in loose soil.
4. Take the hose and water down to the base. Let stand a few days until moderately moist.

NEVER PUT SEED IN TOO WET SOIL.

5. Rake off the surface nice and smooth, make rows and drop seed not over two inches deep, and two inches apart. Rake off again. **DO NOT WATER UNTIL THE SEED IS UP AT LEAST HALF AN INCH OUT OF THE SOIL.** (Nine-tenths of the failures are caused by watering too soon). When the seed is all up give a good soaking about once a week. It is better to keep moisture below than on top. Do not plant Sweet Pea seed when the weather is too hot, shade the glass first.
6. When all the seed is up, thin to at least 6 inches apart, if outdoors, cover the rows with old strips of wire netting to protect the young plants from birds. All birds like the tender young sweet pea shoots when just out of the ground.
7. Look from the start for Green Aphis. They are the greatest enemy. When you discover any, take the spray gun at once, load it with one part of 40 percent nicotine and 400 parts of water, if the Sweet Peas are outdoors; in the greenhouse 1 to 600 will do if you spray them in time, or use Nico Dust 6 percent. Shoot any black birds that are around your Sweet Peas. They do not pick on the Aphis as many people think, but they feed most exclusively on the lady bugs, who are the greatest exterminator of Aphis. Protect all frogs, they feed only on insects. Build them little water ponds where they will propagate quickly and they keep your garden free of insects.
8. Give the young plants good substantial supports so that they can climb from the start and have a chance to produce nice straight flowering stems. Crooked stem flowers are worthless.
9. When the plants begin to bloom give them liquid manure water often; it will produce 100 percent better flowers. Cow manure or a weak sheep manure solution is the best.
10. Pick daily, even the poorest flowers; it will lengthen the flowering season. Always keep the surface earth loose to about two inches. Never allow any crust to form on top.

SPECIAL OFFER

Any order accompanied with remittance will be sent Parcel Post or Express free of charge.

Cash orders of \$10.00 or more 10 percent discount, besides you can ask for one or more **Novelties Free**.

Ask for Special Prices on 5-, 25-, or 100-lb. Lots.

Canadian and any Foreign orders must be Draft on any Bank of United States, or Postal Orders, as Personal Checks are subject to heavy discounts.

Special delivery letters are not of any value, as we get our mail three times each day in our box 30 minutes after arrival. If you are late, send your letter by AIR MAIL which costs less and comes two days earlier from eastern states.

Kindly keep this List for further reference as we do not advertise extensively. 90% of all sales come from this List.

New Semi-Cupids or Baby Dwarf Winter Sweet Peas.

This type of Sweet Pea grows only about 16 inches high, producing a mass of flowers of big size. Do not need any supports, and can be grown either as pot plants for Xmas or Easter, or as cut flowers for funeral work, where short stems can be used. It is also excellent for out of door planting as a border, blooming practically all summer or winter when climate permits.

We have now about 30 separate colors of this new Sweet Pea, consisting of the best pink, rose, salmon, lavender, white, blue, red and maroon.

Price: 1 oz. of any separate color \$1.00; 1 lb. \$10

In mixtures, over 20 now: 1 oz. 75c; 1 lb. \$6.00

How To Grow Baby Sweet Peas.

All Baby Sweet Peas which grow only 16 inches high can be sown in flats; but should be transplanted when they are one inch out of the ground. One individual plant in two and a quarter inch pots, then transplant in large pots. Such a plant, when in 8 or 12 inch pots are the best.

The temperature should be as cool as possible, cooler the better. Only when they begin to bloom the temperature can be raised 52 deg. F. at night. They bloom like any other Winter Flowering Sweet Peas from 90 to 120 days after sown, according to climate.

After they start to bloom use plenty of liquid manure water. Nothing more beautiful for borders on lawns or in driveways, because they bloom as long as they get water, and not allowed to go to seed, so long as temperature does not go over 90 for any length of time. They are excellent in window or balcony boxes.

ANTON C. ZVOLANEK.

TO OUR GROWERS:

THIS is our 38th year, since we have introduced our first original Winter-Flowering Sweet Pea Seed to very few commercial florists. Since, we have originated more than 400 of these wonderful money-makers, and our mailing list is over 20,000 copies, distributed in all parts of the world. This is more than all combined Trade Papers can accomplish.

Our motto is quality first. If there are any new, better Sweet Pea seed advertised, 100 to 1 is that we have had them many years before, under the right name and not renamed. We grow many tons of Winter-Sweet Pea Seed each year, all under my personal direction. All varieties, which are not to the standard are weeded out and only the best producers, with the best flowers and longest stems are retained. Besides we are sending lots of new varieties free for a trial years before they are introduced, which enables us to guarantee them. So that any one who paid the price must be satisfied, or money back can be asked by any commercial grower.

All our older varieties are carefully reselected each year, and they improve in size, length in stem and production.

To avoid disappointment address all letters to **Ant. C. Zvolanek and Son, Inc., Lompoc, Calif.** We have no connection with any other Zvolanek name in Lompoc, Calif.

Yours truly,

ANTON C. ZVOLANEK, President
Originator of Winter-Flowering Sweet Peas

Few Out of a Big Stack of Testimonials:

Ghatsila, British India, February 14, 1934.

.....Your sweet peas were very good and everybody admired them in our gardens and our customers speak highly of them. D. & S.

* * * * *

Boonsboro, Md., June 12, 1933

.....all satisfied with your seeds. We have been using your seeds for 27 years. D.H.D.

* * * * *

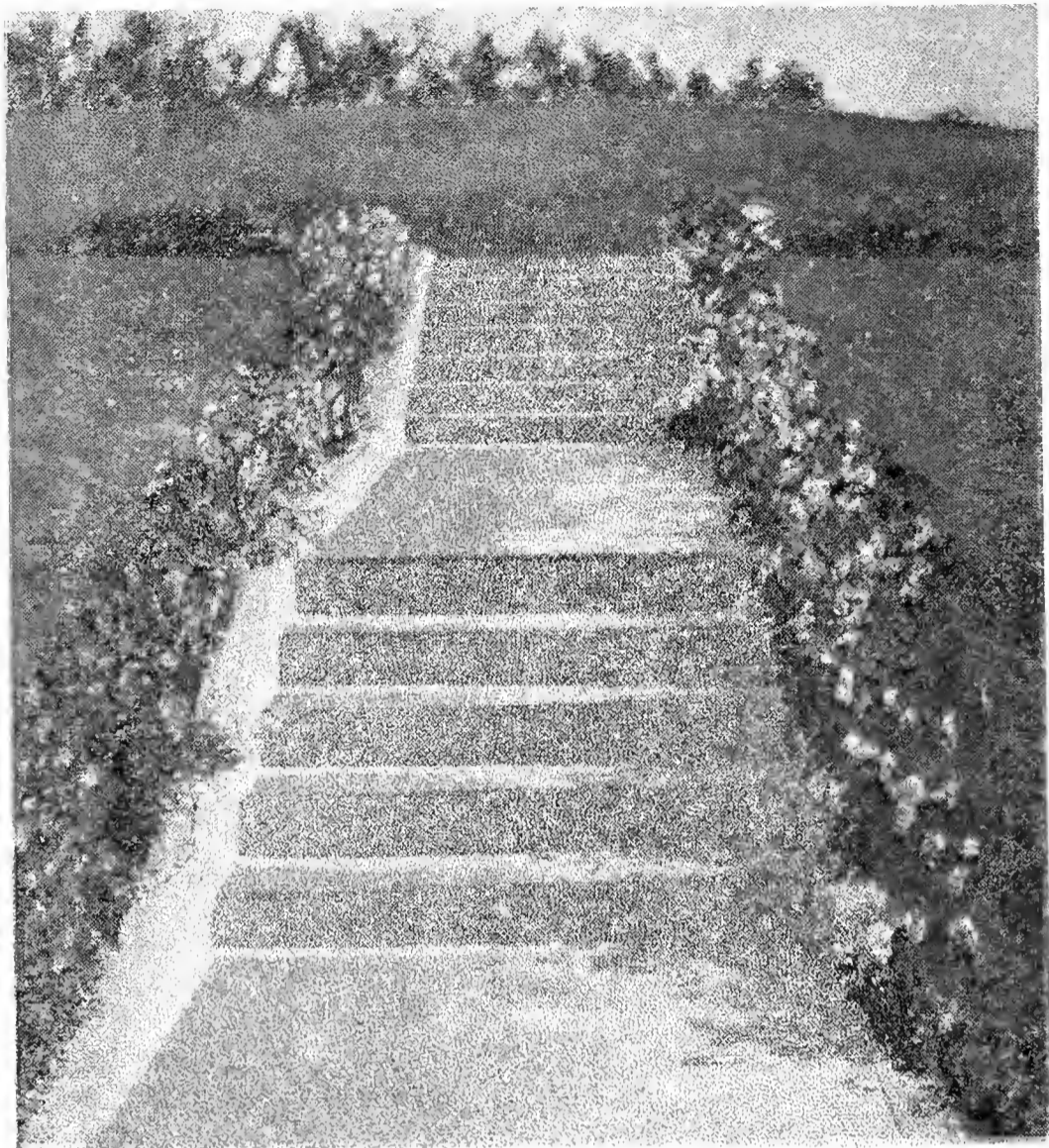
Gainesville, Fla., October 1, 1933

.....the sweet peas were beautiful beyond description, the Florida State Agricultural Experiment Station is located here in this city and members of the staff frequently visit our gardens. Several members of the staff saw these peas last year in our gardens and pronounced them the finest they had ever seen. Strong vigorous vines with great quantities of unsurpassed flowers. R.M.C.

* * * * *

Arkadelphia, Ark., September 29, 1933

.....I have never had better Sweet Pea Seed than those I have procured from you, immense husky blossoms, true to name. M.R.Mc.



NEW SEMI-CUPIDS OR BABY DWARF WINTER PEAS USED
AS BORDER AT ANT. C. ZVOLANEK HOME IN
SANTA BARBARA, CALIFORNIA



TO PROTECT OUR FRIENDS FROM FRAUD, EVERY PACKAGE
OF OUR WINTER-FLOWERING SWEET PEA SEED MUST
BEAR OUR ABOVE TRADE-MARK, OR THEY ARE NOT ZVOL-
ANEK'S. DO NOT ACCEPT ANY OTHERS AS GENUINE.

Ant. C. Zvolanek & Son, Inc.

**SWEET PEA RANCH
LOMPOC, CALIFORNIA**