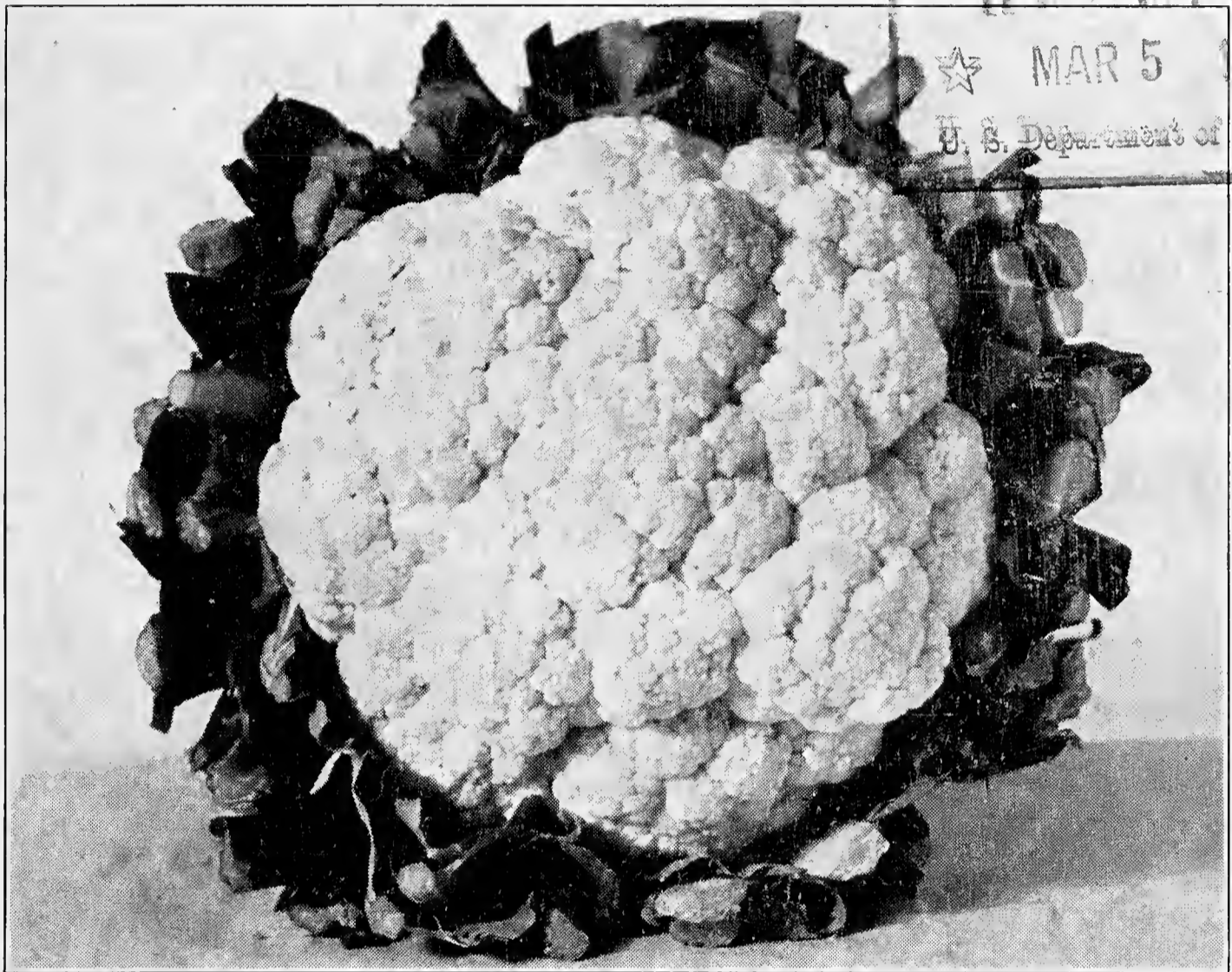


Historic, archived document

Do not assume content reflects current scientific knowledge, policies, or practices.

BOFFERDING'S

DEPENDABLE
SEEDS — PLANTS — BULBS



For the MARKET and
HOME GARDENER

1936

BOFFERDING SEED CO.
Seedsmen

121 7th Street North

Minneapolis, Minn.

Vegetable Seed Novelties and Specialties

CARROT

Long Chantenay—New early, roots fully an inch longer than the regular strain, smooth, less tapering and of a fine, deep interior

color. The ideal bunching, market and canners' carrot. Oz. 15c; $\frac{1}{4}$ lb. 45c; lb. \$1.50; 10 lbs. \$13.50.

TOMATO

Asgrow Scarlet Dawn—Received All-American Gold Medal for 1935. A cross of Clark's Early and Marglobe, earlier in season than either parent. Vines of medium growth, fairly open, very prolific. Fruits medium large with thick wall structure, globular, smooth, free from flat sides, bright scarlet, ripening well to the stem. Highly desirable for market, shipping and canning. 70 days. Pkt. 10c; oz. 50c; $\frac{1}{4}$ lb. \$1.75.

Michigan State Forcing—This tomato was recently developed at Michigan State College especially for greenhouse forcing. It has high productivity under restricted daylight conditions. Attractive medium-sized fruits, of rich, deep scarlet and free from blemishes, are borne in clusters of five to eleven. The flesh is thick and firm. We believe this is one of the best forcing tomatoes yet introduced. Pkt. 50c; oz. \$2.00.

ENDIVE

Florida Deep Heart, Escarolle—New. Large plants, 16-18 inches across with wide leaves somewhat twisted, forms a compact head and easily blanched. Pkt. 10c; oz. 20c; $\frac{1}{4}$ lb. 50c; lb. \$1.50.

Giant Green Curled, New—A remarkable new curled endive and the largest of all varieties, measuring 22-24 inches across. Pkt. 10c; oz. 20c; $\frac{1}{4}$ lb. 50c; lb. \$1.50.

SWEET CORN

Golden Cross Bantam—A cross of two inbred Bantams developed at the Purdue Experiment Station, Mid-season hybrid, and is resistant to bacterial wilt (Stewart's Disease). Ears ten to fourteen rows of light

golden yellow kernels are about eight inches long, uniform and of excellent quality. Matures about a week later than our Golden Bantam. Lb. 40c; 5 lbs. \$1.90; 12 lbs. \$4.20; 100 lbs. \$30.00.

BUSH LIMA BEANS

McCrea BUSH LIMA—Introduced in 1934. Desirable for home, garden, market and canners' use. Plant medium, stocky, erect, dark green and of medium season, prolific.

Pods thick, flat, slightly curved. Contain 3 to 5 seeds, thick potato type. Pkt. 10c; lb. 40c; 5 lbs. \$1.75.

TULIPS

Dutch and Domestic Bulbs for fall planting. We import the finest. Ask for price list about September 1st.

DAHLIAS

And Bulbs for spring planting. Write for price list.

Bofferding Seed Co. gives no warranty, express or implied, as to description, purity, productiveness or any other matter of any seeds, plants or bulbs we send out, and we will not be in any way responsible for the crop.

TERMS—We deliver orders over \$10.00 provided at least half the order is for small seed (other than Peas, Beans and Corn). No charge for bags and other containers.

All prices subject to change and unsold and all orders subject to approval and acceptance by the Bofferding Seed Co., at Minneapolis, Minn.

Let us quote our special prices for large quantities.

GENERAL LIST

BOFFERDING'S VEGETABLE SEEDS

Our list comprises only the tried and best varieties and our stocks are secured from the most reliable sources; every lot of seed tested for germination.

Super Select is used to designate varieties which are best in their class, and in most cases proven stock. Order **Super Select** strains for the biggest returns.

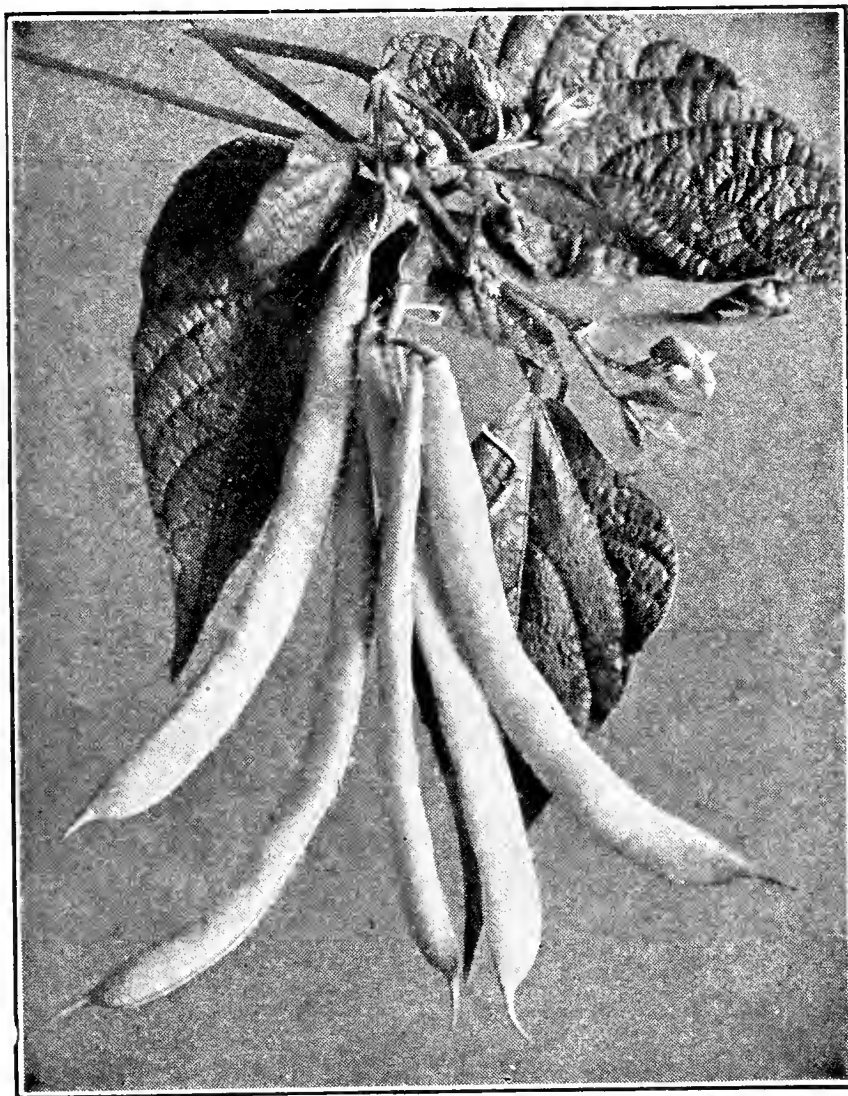
Packets, ounces, and quarter pounds, post paid at prices listed.

ASPARAGUS

1 oz. 500 Plants

Palmetto—An early maturing and prolific variety with thick, dark green shoots, distinctly pointed at the tip. A popular canning variety. Pkt. 5c; oz. 10c; ¼ lb. 25c; lb. 85c.

Mary Washington—An improved strain of the Washington type asparagus, heavy yielding variety, with long, thick, heavy stalks; rich green color. Should be planted exclusively. Pkt. 10c; oz. 15c; ¼ lb. 35c; lb. \$1.25.



Unrivald Wax

BEANS

No seedman lists all varieties of beans. The best variety of a type is what we list and sell. Fewer and better kinds make our friends and customers. Select from the best which we have listed for you.

DWARF WAX POD

2 lbs. 100 feet drill—60 lbs. per acre.

Unrivald Wax—Early and immensely productive. Pods 5 to 5½ inches long, matures in 50 days. One of the best for market. Lb. 25c; 5 lbs. \$1.00; 15 lbs. \$2.50.

Black Wax, Pencil Pod—Early and very productive. Pods round, 6 to 7 inches long, stringless. 57 days. Lb. 25c; 5 lbs. \$1.00; 15 lbs. \$2.50.

Round Pod Kidney Wax—Early round podded and stringless, highest quality. Pods 6 to 7 inches. 56 days. Lb. 30c; 5 lbs. \$1.10; 15 lbs. \$2.85.

Webber Wax (Cracker Jack Wax)—Lb. 25c; 5 lbs. \$1.00; 15 lbs. \$2.50.

DWARF GREEN PODDED VARIETIES

Black Valentine, Stringless—50 days. Lb. 30c; 5 lbs. \$1.00; 15 lbs. \$2.70.

Tendergreen, Improved Full Measure—Lb. 30c; 5 lbs. \$1.05; 15 lbs. \$2.70.

Bountiful—50 days. Best flat podded stringless. Lb. 30c; 5 lbs. 95c; 15 lbs. \$2.40.

Full Measure—53 days. Lb. 30c; 5 lbs. \$1.00; 15 lbs. \$2.50.

Giant Stringless Green Pod—56 days. Lb. 30c; 5 lbs. \$1.00; 15 lbs. \$2.55.

Longfellow—60 days. Lb. 30c; 5 lbs. \$1.00; 15 lbs. \$2.50.

ASPARAGUS ASSISTS IN THE CURE OF KIDNEY TROUBLE

DWARF LIMA

Burpee's Bush Lima—77 days. Lb. 35c; 5 lbs. \$1.25; 15 lbs. \$3.00.

Henderson's Bush—Sometimes called Baby Lima and known in the South as butter beans. Extra early, good quality. 68 days. Lb. 30c; 5 lbs. \$1.10; 15 lbs. \$2.85.

Fordhook Bush Lima—76 days. Lb. 35c; 5 lbs. \$1.25; 15 lbs. \$3.30.

Broad Windsor—Bush shell bean. Plant in April. Plants not sensitive to cold. Lb. 35c; 5 lbs. \$1.50.

POLE BEANS

Giant Podded Lima—Lb. 30c; 5 lbs. \$1.25; 15 lbs. \$3.25.

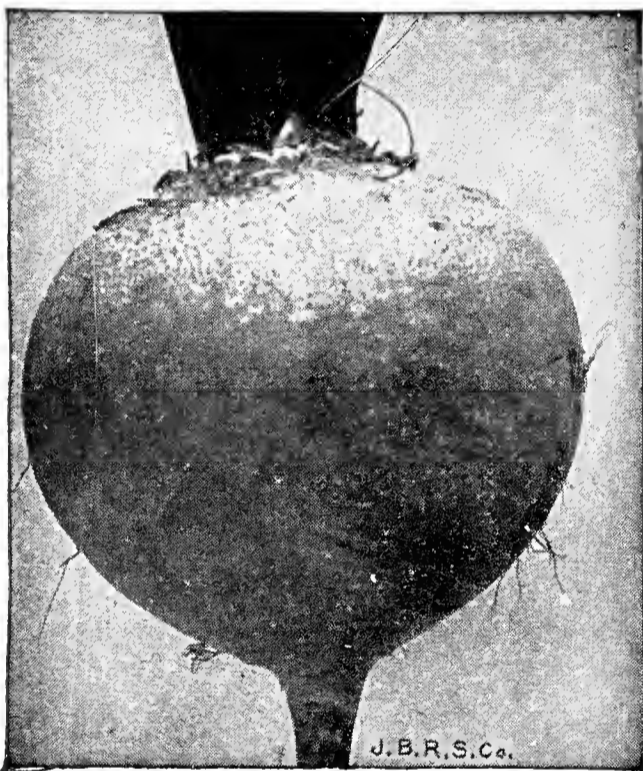
Kentucky Wonder—68 days. Lb. 30c; 5

lbs. \$1.35; 15 lbs. \$3.75.

Kentucky Wonder, Wax—68 days. Lb. 30c; 5 lbs. \$1.35; 15 lbs. \$3.75.

BEETS

1 oz. 50 feet drill—6 to 7 lbs. per acre



Detroit Dark Red

Detroit Dark Red, Special—

Uniform gray green tops, roots smooth and true globe shape. But its greatest claim to superiority is the deep uniform fresh-blood color of the flesh of the root. Rings quite inconspicuous, fine grained, crisp and sweet. Oz 15c; ¼ lb. 35c; lb. \$1.25.

Detroit Dark Red—An excellent strain; dark red and no white zones. Oz. 10c; ¼ lb. 30c; lb. 90c; 5 lbs. \$4.00.

Boston Crosby—A globe shaped selection from Crosby's Egyptian, dark red, flesh deep purplish red, with little tendency to zoning. One of the most popular and handsome of the early beets. Oz. 10c; ¼ lb. 30c; lb. \$1.00; 5 lbs. \$4.50.

Early Wonder—Splendid early variety for home or market garden. Oz. 10c; ¼ lb. 35c; lb. \$1.00; 5 lbs. \$4.50.

MANGEL BEETS FOR STOCK

Giant Sludstrup—Long reddish yellow.
Improved Mammoth Long Red—

Giant Half Sugar, Green Top—
All mangels, ¼ lb. 20c; lb. 50c; 5 lbs. \$2.25.

BROCCOLI

New York Green Sprouting—A distinct variety extensively grown by Italian gardeners. It should be started in plant beds and transplanted to the field so that it will mature during the late spring or early fall. It requires a definitely cool season for its proper growth. When the central head is cut numerous sprouts will develop from the leaf axis, each sprout terminating in small green heads. These are cut leaving about six inches of the stem, and are tied in bunches for market. Both stems and heads are cooked and served like cauliflower. Ready for market in about 90 days. Pkt. 10c; oz. 50c; ¼ lb. \$1.50.

Green Extra Early—(True Italian Strain.) Pkt. 10c; oz. 75c.

BRUSSELS SPROUTS

Long Island Improved—Pkt. 10c; oz. 25c; ¼ lb. 85c.

SWISS CHARD

Lucullus—An improved type of chard. Of more upright growth than the Silver variety; leaves yellowish-green, much crumpled and curled, mid-rib and veins white; stalks thick, broad and flat, and as large as rhubarb. Pkt. 5c; oz. 10c; ¼ lb. 30c; lb. \$1.00.

CABBAGE

Early and Second Early Varieties

Babyhead—Extra early hard heading sort. Pkt. 10c; oz. 35c; $\frac{1}{4}$ lb \$1.25.

Golden Acre—An extra early selection of the Copenhagen type, and the earliest of the round headed cabbages, maturing with Jersey Wakefield. Plants small dwarf and compact, with few outer leaves; heads of medium size, round as a ball, hard, solid and very uniform. Pkt. 5c; oz. 30c; $\frac{1}{4}$ lb. \$1.00; lb. \$3.50.

Golden Acre Select—The best strain of Golden Acre obtainable. Oz. 50c; $\frac{1}{4}$ lb. \$1.75; lb. \$6.00.

Copenhagen Market—Very fine, nearly as early as Jersey Wakefield; stem short, heads large, round and solid, with few outer leaves; of an upright growth. Our stock of this popular variety is very early,

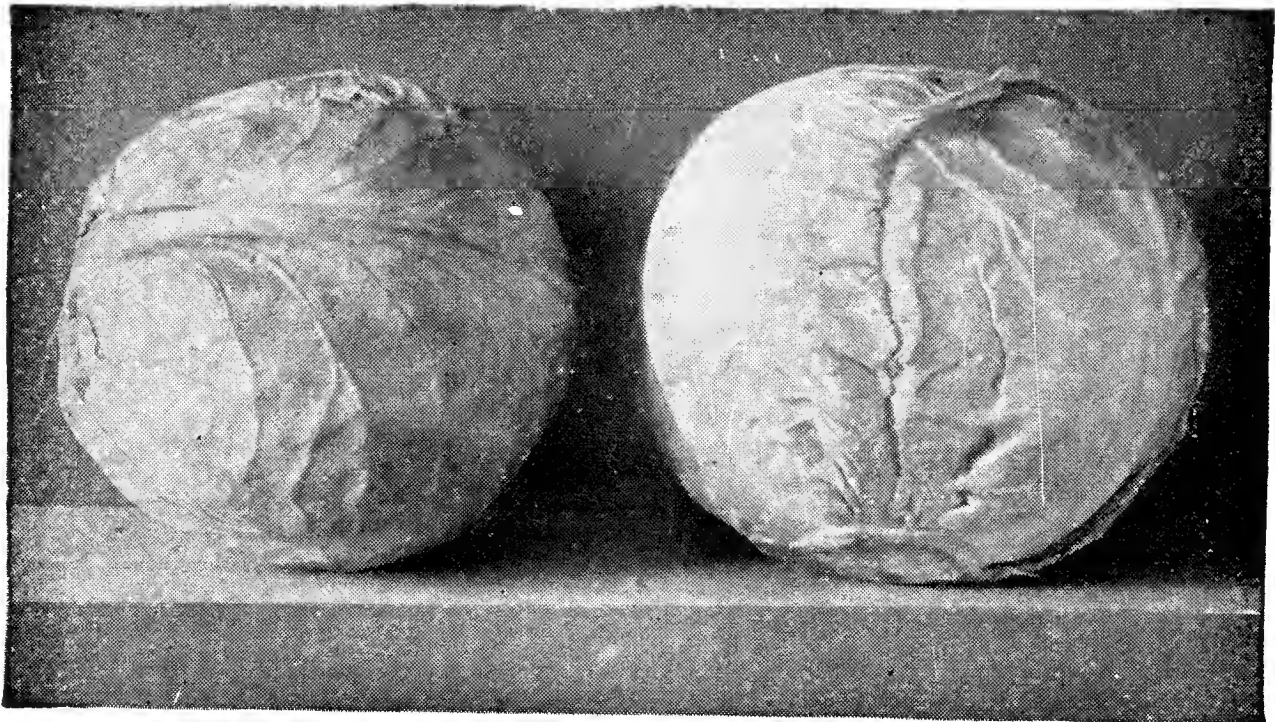
uniform and dependable. Pkt. 5c; oz. 35c; $\frac{1}{4}$ lb. 95c; lb. \$3.00.

Copenhagen Market—Midseason, for kraut. Pkt. 5c; oz. 35c; $\frac{1}{4}$ lb. \$1.00; lb. \$3.50.

Glory of Enkhuizen—Excellent medium early, short stemmed, foreign variety; heads large, round and very solid, with few outer leaves. One of the most uniform and desirable varieties, suitable alike for garden or field culture. Pkt. 5c; oz. 25c; $\frac{1}{4}$ lb. 80c; lb. \$2.50.

All Seasons—Popular kraut cabbage. Pkt. 5c; oz. 30c; $\frac{1}{4}$ lb. 85c; lb. \$3.00.

Earliest Round Red—The earliest red cabbage. Heads large, very uniform and solid. An excellent variety similar to Haco. Pkt. 10c; oz. 35c; $\frac{1}{4}$ lb. \$1.25; lb. \$4.00.



Hollander, Ferry Type—Our Own Grown Stock
LATE VARIETIES

Hollander, Ferry Type, Our Own Grown—Very hardy, sure heading, very solid, of good quality and as one of the very best keepers this is particularly desirable for distant markets or for late spring use. The plants are vigorous and compact, with stem of medium length. They are exceedingly hardy in resisting cold and stand dry weather well. The leaves are distinctly upright, in growth, few but rather large, long and narrow, thick, smooth, bluish green covered with whitish bloom. The heads are medium sized, round, exceptionally solid and stand shipment better than any other late sort.

Plant 14 to 18 inches apart in the row to produce the best shipping size heads. Pkt. 5c; oz. 30c; $\frac{1}{4}$ lb. 90c; lb. \$3.00.

Red Cabbage—Danish Stonehead. Pkt. 5c; oz. 30c; $\frac{1}{4}$ lb. \$1.00.

Savoy—Perfection. Pkt. 5c; oz. 30c.

Hollander, Ferry's Own Grown—Pkt. 10c; oz. 40c; $\frac{1}{4}$ lb. \$1.25; lb. \$4.00.

Danish Ball Head—One of the very best winter sorts and one of the most hardy; heads round and very solid. Our selected stock of this cabbage is unexcelled. Pkt. 5c; oz. 25c; $\frac{1}{4}$ lb. 85c; lb. \$2.50.

Penn State Ball Head—Days to maturity 130 to 140.

Penn State shows an average yield of over 20 tons per acre. Hard, tight heads, keeping qualities and the few cracked heads make this one of the best late varieties on the market. Plant 14 to 18 inches apart. Pkt. 10c; oz. 35c; $\frac{1}{4}$ lb. \$1.25; lb. \$4.00.

“The good will of our customers is our greatest asset—without it we cannot exist”

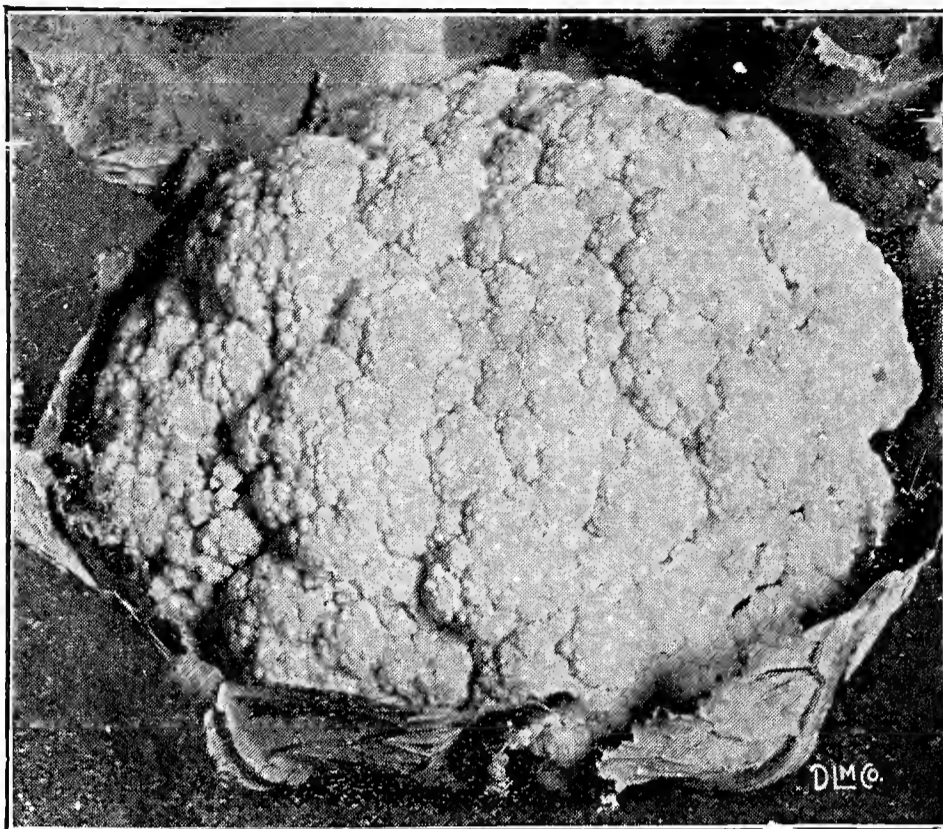
CAULIFLOWER

1 oz. 3,000 plants

Super Select Snowball—Undoubtedly the finest and most popular early variety. Heads very early, of medium size, firm, compact, solid and very white; plant compact in growth with few short, upright leaves. Pkt. 25c; oz. \$2.00; ¼ lb. \$7.00.

Dry Weather (Danish Giant)—One of the very best varieties; especially adapted for growing in dry locations. Pkt. 10c; oz. \$1.75; ¼ lb. \$6.00.

No. 121 Catskill Type Snowball—Main Crop variety for outdoor planting we believe it to be unsurpassed; its vigorous growth makes it able to withstand weather conditions that make Cauliflower culture a gamble. Not all soils will make the heads that this seed is capable of producing under good soil and temperature conditions. Handsome appearance, high quality heads are the combination of this seed and proper cultural conditions. Its all around worth as the highest type, where cauliflower is successfully produced, entitles it to the widest planting. Pkt. 25c; oz. \$1.75; ¼ lb. \$6.00; lb. \$21.00.



Super Select Early Snowball

No. 132 Snowball is prize winner Stock. Features self covering with broad, vigorous leaves; freedom from disease; quick growth; matures all at one time. Recommended for EARLY and Late planting or a succession planting. A marvel of perfection when favored by soil and climate. Pkt. 25c; oz. \$2.50; ¼ lb. \$8.00.

New Strain Regular Type Snowball

No. 291—Large, sure heading, for main or late crop. Pkt. 25c; oz. \$2.50; ¼ lb. \$8.00.

Snowdrift—New Danish grown Snowball. Large white solid heads. Pkt. 25c; oz. \$2.00; ¼ lb. \$7.00.



INOCULATE ALL LEGUMES

Garden Size Nitragin—For peas, Beans, Sweet Peas and Lupines.

Price, 25c

FELINS BUNCH TYER

Foot and Electric power. Ties a neat bow knot with either 6 or 8 ply cotton twine or No. 13 braid without change of knotter. Adjusts itself to any size bunch one-quarter inch to six inches in diameter.

Market Gardeners, Florists, Nurserymen, if you have bunches to tie, the New Felins will pay you a big dividend.

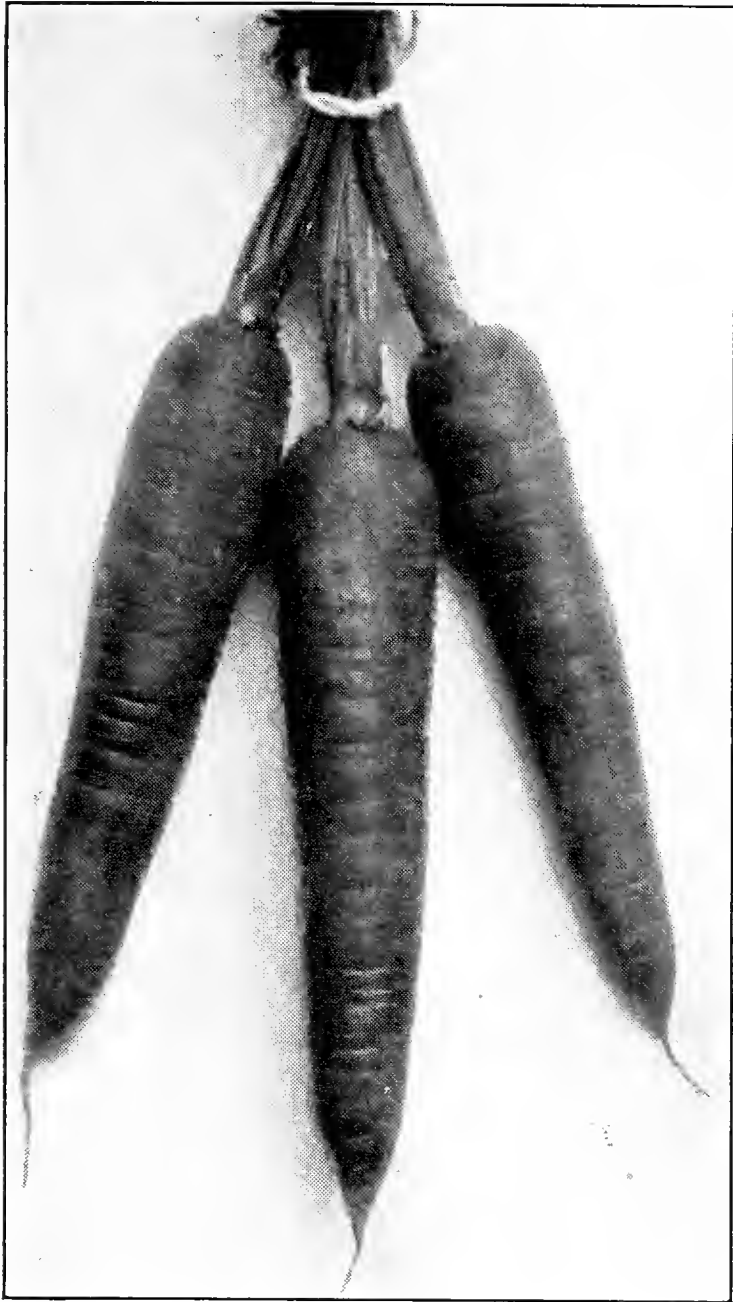
TORRENT BUNCH VEGETABLE WASHERS—

FELINS ELECTRIC ROOT WASHER.

Write for catalog and price list.

CARROTS

1 oz. 100 feet drill—3 to 4 lbs per acre

**Imperator**

Chantenay Half Long (The Model)—Excellent medium early half-long stump rooted variety; roots about 6 inches long, very thick, smooth and of a deep orange-red color. Best for bunching. Pkt. 5c; oz. 15c; ¼ lb. 30c; lb. 90c; 10 lbs. \$8.00.

Half Long Stump Rooted Nantes—Roots 6 to 8 inches long, nearly cylindrical, blunt ended, smooth and of bright orange color. Flesh red, sweet and mild, almost coreless. Pkt. 5c; oz. 10c; ¼ lb. 35c; lb. \$1.25.

Danvers Half Long—The best known second early, half-long sort; roots 6 to 8 inches long, tapering to a blunt point; flesh deep orange, tender and good quality. Pkt. 5c; oz. 10c; ¼ lb. 30c; lb. 90c.

CHINESE CABBAGE (Chihli)

The seed should be sown any time in July or August, half-inch deep in the row and rows about 24 inches apart. When the plant has grown up 5 to 6 inches thin out to 10 inches apart. Cultivate well and when large enough they should be bleached by earthing up and tying closely with raffia. Any good soil is sufficient, but they seem to head up best in rich, heavy black soil. Six pounds will sow an acre.

Sometimes called Celery Cabbage; resembles Cos Lettuce as much as cabbage, though with a decided cabbage flavor.

Pkt. 5c; oz. 25c; ¼ lb. 75c; lb. \$2.50.



Chinese Cabbage

CARROT—IMPERATOR

This is the popular, long-type carrot now being shipped to all markets from California.

An outstanding type bred for market garden use and shipping. Tops medium, but strong enough for bunching. Roots have sloping shoulders, smooth, deep rich orange; uniformly tapered to semi-blunt end. Flesh rich orange color, extending to the center of root, with indistinct core; fine grained, tender and of fine quality. Length 7 to 8 inches. Shoulder diameter 1¾ inches. 77 days. Pkt. 5c; oz. 10c; ¼ lb. 30c; lb. \$1.10; 10 lbs. \$10.00.

CELERY

3 oz. to Plant an Acre

Golden Self-Blanching — Old style, French seed. Pkt. 15c; oz. 75c; $\frac{1}{4}$ lb. \$2.50.

Tall Golden Self-Blanching—(Paris or New French). This is entirely different from the Old Style of Golden Self-Blanching, fully a month earlier, blanches easier and white, makes a larger and much taller plant. Requires a little more room than the Golden Self-Blanching and there are apt to be a few green stalks. American grown. Pkt. 10c; oz. 65c; $\frac{1}{4}$ lb. \$2.25; lb. \$8.00. French Grown. Pkt. 25c; oz. \$1.00; $\frac{1}{4}$ lb. \$3.50.

Golden Plume New Super Select—This new variety is the result of a cross between Easy Blanching and Golden Self-Blanching. It has the hearty robust habit of Easy Blanching and the color of Golden Self-Blanching. It has a very full heart and proved blight resistant. Pkt. 25c; oz. \$1.00; $\frac{1}{4}$ lb. \$3.50.

Giant Pascal—A superior late, long winter keeping, green celery. Stalks long, thick and solid, brittle and of excellent flavor. Pkt. 10c; oz. 30c; $\frac{1}{4}$ lb. 85c; lb. \$3.00.

Golden Crisp or Utah — Oz. 50c; $\frac{1}{4}$ lb. \$1.50.

Michigan Golden—Oz. \$1.50; $\frac{1}{4}$ lb. \$5.50.



Golden Self-Blanching Celery

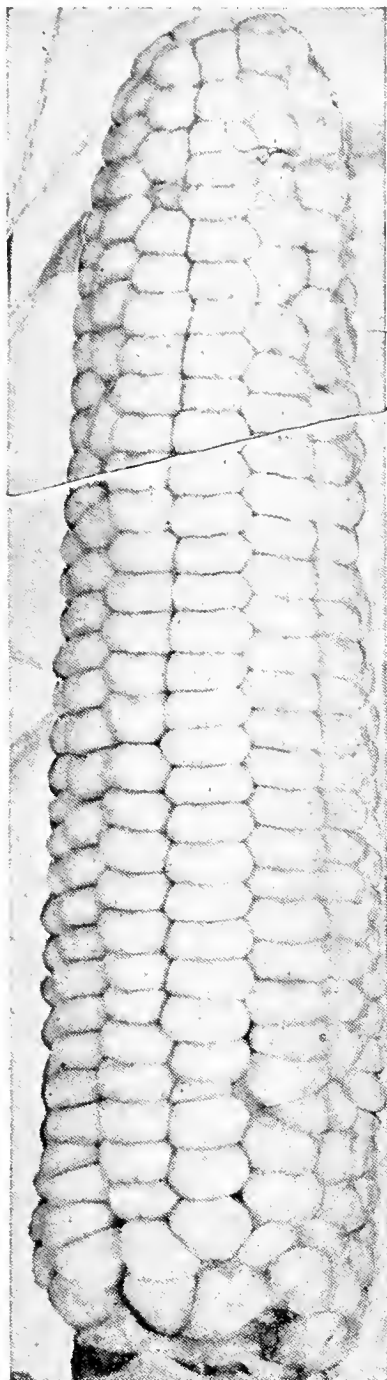
Celeriac or Turnip-rooted Celery
Large Smooth Prague—One of the largest; smooth and almost spherical. Pkt. 5c; oz. 25c; $\frac{1}{4}$ lb. 75c.

CABBAGE, YELLOWS RESISTANT

Marion Market—Copenhagen Market type, about ten days later than the Improved Copenhagen Market and somewhat larger heads. 75 days. Pkt. 10c; oz. 40c; $\frac{1}{4}$ lb. \$1.25; lb. \$4.50.

Wisconsin No. 8—Late winter keeping Hollander. 110 days. Pkt. 10c; oz. 25c; $\frac{1}{4}$ lb. 85c; lb. \$3.00.

Enkhuizen Glory—Yellows. Resistant (Globe). Fine mid-season; uniform, round heads and short core. Pkt. 10c; oz. 50c; $\frac{1}{4}$ lb. \$1.75; lb. \$6.00.



CORN—Sweet

12 pounds per acre—Any variety, Packet 10c

Golden Gem—The earliest yellow or golden eared corn, being a week earlier than Sunshine, of more dwarf habit and bearing a sweet 8-rowed ear equal in size to Golden Bantam, although two weeks earlier than that variety. Pkt. 10c; lb. 30c; 5 lbs. \$1.25; 12 lbs. \$2.50.

Golden Sunshine—Golden Bantam type, maturing a week to 10 days earlier than that variety. Ears 6½ inches long, 12-rowed and sweet. Pkt. 10c; lb. 30c; 5 lbs. \$1.25; 12 lbs. \$2.75.

Golden Hummer—Earlier than Golden Bantam. Large 12-rowed ears. Lb. 30c; 5 lbs. \$1.25; 12 lbs. \$2.75.

Whipple's Early Yellow—A remarkable new yellow sweet corn of much merit. While the stalks grow 6 feet or more in height and the 14-rowed ears are 7 to 8 inches in length, this variety matures three days earlier than Golden Bantam. The kernels are broad, deep and of excellent quality. Lb. 25c; 5 lbs. \$1.25; 12 lbs. \$2.75; 100 lbs. \$20.00.

Golden Bantam—Early, golden yellow in color and of highest quality. Ears 6 to 7 inches long, 8-rowed. Our stock has been most carefully selected and is superior to much that is offered. Lb. 25c; 5 lbs. \$1.00; 12 lbs. \$2.00; 100 lbs. \$16.00.

Golden Cross Bantam—A cross of two inbred Bantams developed at the Purdue Experiment Station, midseason hybrid, and is resistant to bacterial wilt (Stewart's Disease). Ears with 10 to 14 rows of light golden yellow kernels are about 8 inches long, uniform and of excellent quality. Matures about a week later than our Golden Bantam. Lb. 40c; 5 lbs. \$1.90; 12 lbs. \$4.20.

Stowell's Evergreen—Lb. 25c; 5 lbs. \$1.00; 12 lbs. \$2.50.

Bantam Evergreen—A cross between Golden Bantam and Stowell's Evergreen and a most excellent sort of fine quality. Ears 8 inches long, 12 to 14 rowed; matures with Howling Mob; grain rather broad and deep, and a rich golden-yellow color. Lb. 25c; 5 lbs. \$1.25; 12 lbs. \$2.50.

Tendergold—Hybrid. Four days earlier than Golden Bantam and more productive, 8 inch, 12 rowed, tender and sweet. Bacterial wilt (Stewart's Disease) resistant. Lb. 50c; 5 lbs. \$2.10; 12 lbs. \$4.50.

CRESS

Extra Curled—A small, curled plant having a pungent flavor and used as a salad. Sometimes called Peppergrass. Pkt. 5c; oz. 15c; ¼ lb. 25c.

True Water Cress—For growing along banks of ponds and streams; wholly unlike Extra Curled; leaves are quite large and thick. Pkt. 10c; oz. 45c; ¼ lb. \$1.35.

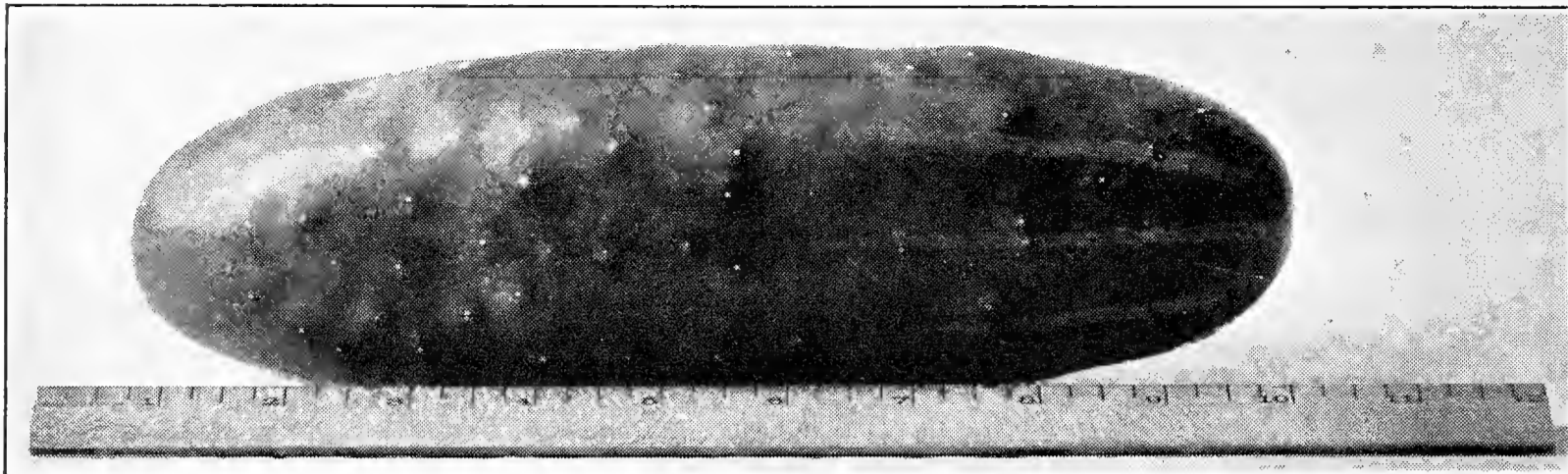
CORN—Spanish Gold

Extra early yellow. First early market and home garden. Stalks slender, frequently bearing 2 to 3 ears; ears well filled to the tips. Kernels bright golden yellow, plump, sweet, tender and of good quality. 72 days. Lb. 25c; 5 lbs. \$1.15; 12 lbs. \$2.50.

Golden Early Market

This is the earliest large, golden sweet corn. The ears are tightly filled with large, sweet kernels of exceptional flavor. The outstanding corn for the best early market prices. Lb. 25c; 5 lbs. \$1.15; 12 lbs. \$2.50.

CUCUMBERS



Early Fortune

1 oz. 60 hills, 2 to 3 lbs. per acre.

Number of days to maturity given for each variety.

Davis' Perfect—An extra long, dark green type of White Spine; retains its color and good qualities long after being picked; fruit is exceptionally long, smooth, and tapering at both ends; flesh crisp, solid, with few seeds; mid-season. 11x2½ inches. 58 days. Pkt. 5c; oz. 15c; ¼ lb. 35c; lb. \$1.25.

Long fellow—An excellent long, slender, dark green variety equally desirable for greenhouse forcing or out door culture. An ideal type for the private garden or as a "straight pack" variety for shipment to market. 12 to 14 inches long by 2½ inches in diameter. 65 days. Pkt. 5c; oz. 15c; ¼ lb. 45c; lb. \$1.50.

Long Green Improved—Pkt. 5c; oz. 15c; ¼ lb. 45c; lb. \$1.50.

Early Fortune—The finest type of White Spine yet produced. Early, very productive and disease-resistant; fruit 9 inches long, slightly tapering; flesh white, very firm and crisp, with very few seeds; color rich, dark green, which does not fade when shipped a long distance. 58 days.

9x2½ inches. Pkt. 5c; oz. 15c; ¼ lb. 40c; lb. \$1.25.

B. Co. Pickling—56 days. A large type of pickling cucumbers. The ends are abrupt or square and the hardness is unexcelled. Medium green; black spined and one of the best pickling varieties. Pkt. 5c; oz. 15c; ¼ lb. 30c; lb. \$1.00.

Japanese Climbing—58 days. Pkt. 10c; oz. 25c; ¼ lb. 70c.

Jersey Pickling—A very productive variety; fruit long, tapering and bottle-necked; pickles long and very slender. 54 days. 6x2 inches. Pkt. 5c; oz. 15c; ¼ lb. 30c; lb. \$1.00.

Snow's Perfected Pickle—The most symmetrical, best formed and productive pickling sort; early, small, square ended and dark green. Our select strain of this variety is much superior to stocks generally sold under this name. 5x2¼ inches. 56 days. Pkt. 5c; oz. 15c; ¼ lb. 30c; lb. \$1.00.

Chicago Pickling—The most popular pickling variety. Pkt. 5c; oz. 15c; ¼ lb. 30c; lb. \$1.00.

EGG PLANT

1 oz. 1,000 plants

Black Beauty—Earlier and nearly as large as New York Purple; fruit very dark pur-

ple, which color it holds for a long time. Pkt. 10c; oz. 40c; ¼ lb. \$1.25.

ENDIVE

1 oz. 100 feet drill

Green Curled Winter—The most hardy and vigorous sort; leaves bright, deep green with the outer midribs usually show-

ing a trace of rose; readily blanches a creamy white. Pkt. 5c; oz. 15c; ¼ lb. 45c; lb. \$1.25.

KALE

Dwarf Curled Scotch—A handsome, very fine curled, dwarf spreading variety; foliage long and of an attractive bright green; very hardy. Pkt. 5c; oz. 15c; $\frac{1}{4}$ lb. 35c.

Tall Curled Scotch—2 to 3 feet in height, long plume like leaves. Pkt. 5c; oz. 15c; $\frac{1}{4}$ lb. 35c.

KOHL RABI

Early White Vienna—Extremely early, with distinctly small tops; bulbs medium size, very light green or nearly white and of best quality. Pkt. 5c; oz. 25c; $\frac{1}{4}$ lb. 75c.

Early Purple Vienna—Early and with small top; bulbs medium size and purple in color, flesh white. Pkt. 5c; oz. 25c; $\frac{1}{4}$ lb. 75c.

LEEK

1 oz. 100 feet drill

Broad American Flag—The favorite gardener's variety; strong growing, broad

leaved and productive. Pkt. 5c; oz. 20c; $\frac{1}{4}$ lb. 60c.

LETTUCE

Grand Rapids

Grand Rapids (Selected Stock)—The favorite loose-leaved forcing lettuce, and does well in the North for early planting outside. Leaves short, spatulate in shape, excessively blistered and crumpled, and the border heavily fringed; color very light green, with no trace of brown. Our stock of Grand Rapids is unsurpassed. Pkt. 5c; oz. 15c; $\frac{1}{4}$ lb. 45c; lb. \$1.50.

Black Seeded Simpson—A very popular early variety, succeeds most anywhere, and a reliable lettuce. Has broad, crumpled and blistered leaves. The color is a light green. Pkt. 5c; oz. 15c; $\frac{1}{4}$ lb. 40c; lb. \$1.35.

Prize Head Early—(W. S.) A crisp and tender loose-leaved, non-heading sort, and one of the most popular; leaves much crumpled and excessively frilled at the borders; color light brown on a medium green base; quality good. Pkt. 5; oz. 15c; $\frac{1}{4}$ lb. 50c.

New York (Wonderful)—A very large, late, globular heading variety; leaves broad, of thick texture, fairly blistered and crumpled and the borders frilled; color clear dark green; quality good. Known in California and the west as "Los Angeles," and shipped to eastern markets under the misleading name of "Iceberg." Pkt. 10c; oz. 20c; $\frac{1}{4}$ lb. 50c; lb. \$1.75.

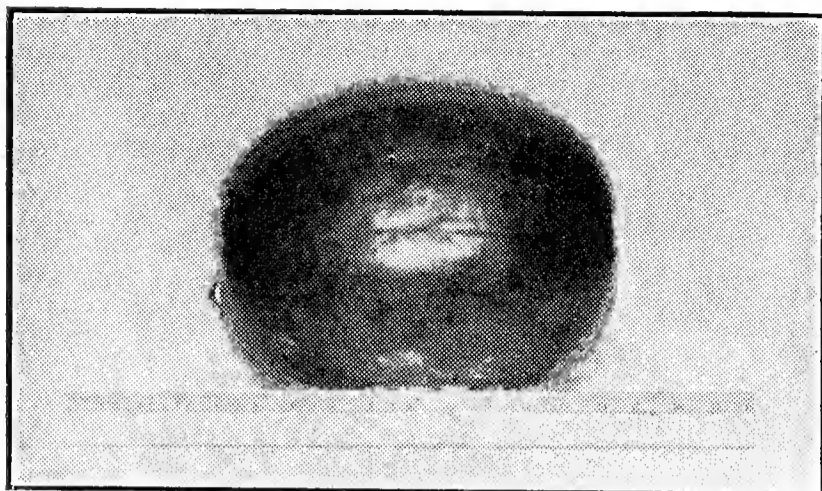
New York No. 12 (Growers Description)—This is a single plant selection of our own culture which we have been breeding for several years. We believe it to be the outstanding selection of this variety and a great improvement over any existing types of New York.

No. 12 is much earlier, makes large solid heads, uniform in maturing and of the flat head type. Several fields of this strain produced better than 80% No. 1 heads in 65 days from planting. Pkt. 10c; oz. 25c; $\frac{1}{4}$ lb. 60c; lb. \$2.00.

White Paris Cos (Romaine) (W. S.)—A medium large, strictly self-closing lettuce, making a well-blanching, firm, loaf-shaped head; leaves oval in form, flat and smooth; color medium dark green; quality excellent. Also known as Trianon Cos. Pkt. 5c; oz. 15c; $\frac{1}{4}$ lb. 50c.

New Chicken Lettuce—Here is a genuine lettuce which will yield as much or more chicken or rabbit feed as any "greens" plant. When once cut it starts to grow again. The leaves can be pulled off each stem like a kale. Chicken Lettuce does not make a head, but sends up a stout stalk three or four feet high, just loaded with leaves. Oz. 15c; $\frac{1}{4}$ lb. 35c; lb. \$1.25.

WATERMELON



Angelino

Angelino Black Seeded—It is a very attractive melon, nearly round, of medium size with dark green skin, irregularly striped a deeper shade. The flesh is a very sparkling scarlet, and its edible qualities are unexcelled. We believe this variety, on account of its shipping qualities, earliness and productiveness, to be one of the best we offer. The average weight of the melons is 20 pounds. The veining on the Angelino stands out when they are ripe, hence there is no difficulty in telling when they are ripe. Edible in 90 days. Oz. 10c; $\frac{1}{4}$ lb. 30c; lb. \$1.00.

Northern Sweet—Extra early. Oz. 15c; $\frac{1}{4}$ lb. 35c; lb. \$1.25.

Will Rogers—New. Oz. 15c; $\frac{1}{4}$ lb. 35c; lb. \$1.25.

Red Russian—Large, dark and light green striped. Oz. 15c; $\frac{1}{4}$ lb. 45c; lb. \$1.50.

No. 522—This Japanese melon is the earliest of all watermelons. White, round, 8-9 inches in diameter, sweet and black seeded. Oz. 15c; $\frac{1}{4}$ lb. 45c; lb. \$1.50.

Stone Mountain—Round in shape, flesh deep red, unexcelled for sweetness. Early, round blocky shaped melon. Pkt. 5c; oz. 10c; $\frac{1}{4}$ lb. 30c; lb. \$1.00.

Winter Queen—Also King and Queen—Of Russian origin; long keeping and an excellent shipper. Fruits small, nearly round, creamy white with faint irregular pale green stripes; rind tough. Flesh deep red, very firm and of fine quality. Pkt. 5c; oz. 10c; $\frac{1}{4}$ lb. 30c; lb. \$1.00; 10 lbs. \$9.00.

Tom Watson—Probably the best shipping melon, and one of the best main crop sorts; grows to a very large size. Fruit large and long in shape, colored a medium green with a light tracing of a darker shade, not unlike Peerless in its coloring; flesh rich red and of good quality; seeds brown. Selected stock. Pkt. 5c; oz. 10c; $\frac{1}{4}$ lb. 25c; lb. 85c.

Round Dark Icing—Medium to large in size, moderately early and good in quality; fruit round and dark green; flesh bright red; seeds white. Pkt. 5c; oz. 10c; $\frac{1}{4}$ lb. 30c; lb. 90c.

Improved Kleckly Sweet—Pkt. 5c; oz. 10c; $\frac{1}{4}$ lb. 30c; lb. 90c.

Citron, Red Seeded—The old, well-known, red-seeded preserving melon. Pkt. 5c; oz. 10c; $\frac{1}{4}$ lb. 35c; lb. \$1.00.

OKRA

Perkins' Mammoth (Long Green)—Very early and productive. Plants 3 feet high; pods deep green, very long, slender and slightly corrugated; a desirable market variety. Pkt. 10c; oz. 15c; $\frac{1}{4}$ lb. 25c; lb. 75c.

CUCUMBER

Clark's Special—The very best of the white spine varieties; long, brilliant dark green. Holds its color and firmness when handled long distances. Matures in 63 days. Pkt. 5c; oz. 15c; $\frac{1}{4}$ lb. 40c; lb. \$1.25.

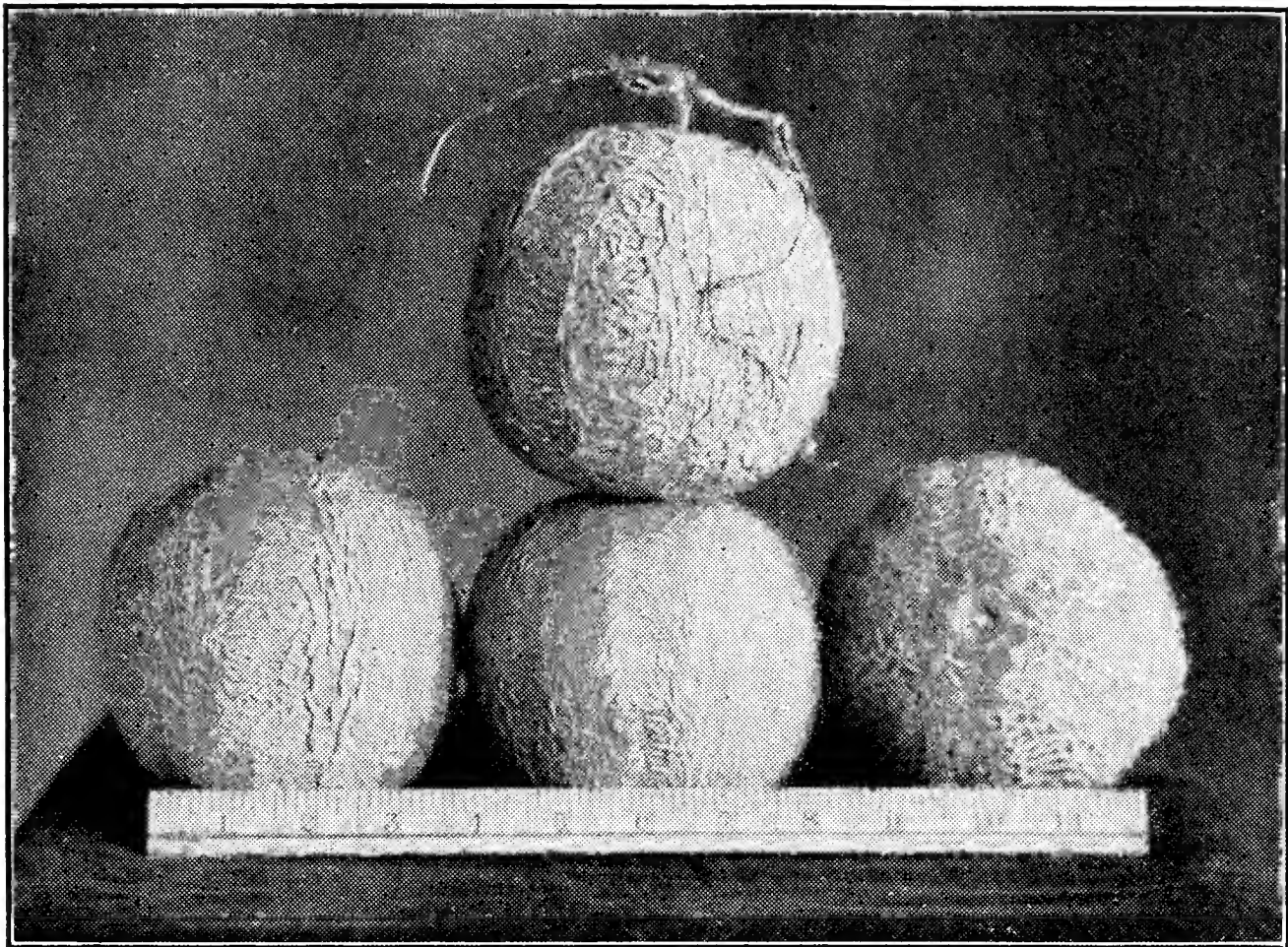
National Pickling—A highly desirable strain developed at the Michigan Agricultural College in collaboration with the National Pickle Packers' Association. Dark green, symmetrical, square ended; resembles Snow's Perfection. 56 days. Pkt. 5c; oz. 15c; $\frac{1}{4}$ lb. 30c; lb. \$1.00.

LETTUCE

Grand Rapids—Special outdoor strain. Pkt. 5c; oz. 10c; $\frac{1}{4}$ lb. 35c; lb. \$1.25.

MUSKMELON

1 oz. 30 Hills
4-5 lbs. per Acre



Honey Rock

Our melon growers demand the best strains of melon seed obtainable and we aim to supply seed that satisfies the most critical.

Honey Rock—A rather new melon originating in Indiana and acquiring immediate popularity on account of its high quality. Of medium size with a gray-green skin moderately covered with a heavy, coarse netting; rich salmon flesh. One of the best sellers where buyers demand a real sweet, salmon fleshed melon. Pkt. 5c; oz. 10c; $\frac{1}{4}$ lb. 35c; lb. \$1.25.

Delicious—Best described as an early strain of the famous Bender or Golden Osage melon and while a trifle smaller, possesses all the good qualities of its parent. Pkt. 5c; oz. 10c; $\frac{1}{4}$ lb. 30c; lb. \$1.00.

Lake Champlain—Plants vigorous, healthy, melons medium sized, densely netted, flesh deep, sweet and golden yellow in color. The first and best muskmelon in the Minneapolis market. Pkt. 5c; oz. 10c; $\frac{1}{4}$ lb. 35c; lb. \$1.25.

Hearts of Gold—Splendid midseason variety. Thinly covered with a fine grey netting and distinctly ribbed. Flesh is rich orange color. Pkt. 5c; oz. 10c; $\frac{1}{4}$ lb. 35c; lb. \$1.25.

Golden Osage—A very popular variety in the east. A selection from Surprise and a close kin to Irondequoit, differing from that variety in being more oblong, more full and rounded at the ends, not quite as well netted or as early; skin light greenish-yellow when ripe. A very delicious, large salmon-fleshed melon with superior shipping and keeping qualities. Pkt. 5c; oz. 10c; $\frac{1}{4}$ lb. 30c; lb. \$1.00; 5 lbs. \$4.50.

Milwaukee Market—A variety very popular in Chicago and Milwaukee markets. Of Surprise parentage and close kin to Bender's Surprise, although earlier. Fruits of medium size, nearly round, lightly ribbed and fairly netted; skin light green; flesh thick, salmon colored and very sweet. Pkt. 5c; oz. 10c; $\frac{1}{4}$ lb. 30c; lb. \$1.00.

Hale's Best No. 36—Fruits oval; well netted, sutures netted over but distinct. The fine grained rich, salmon colored flesh holds up better than most sorts. Excellent for roadside markets. 85 days. Pkt. 5c; oz. 10c; $\frac{1}{4}$ lb. 35c; lb. \$1.10; 5 lbs. \$5.00.

Honey Dew—Pkt. 5c; oz. 10c; $\frac{1}{4}$ lb. 35c; lb. \$1.25.

Long Yellow Cantaloupe—Large, long, oval and deeply ribbed; flesh light salmon, very thick and sweet. Pkt. 10c; oz. 15c; $\frac{1}{4}$ lb. 50c.

PARSLEY

Champion Moss Curled—A compact growing sort; leaves are a uniform dark green color, very finely cut and so closely curled as to resemble bunches of moss; one of the most useful and decorative sorts. Pkt. 5c; oz. 15c; $\frac{1}{4}$ lb. 35c; lb. 90c.

Large Rooted Hamburg—The edible roots of this variety resemble a small, thick parsnip in shape and color, and are extensively used for flavoring soups and stews;

leaves plain. Pkt. 5c; oz. 15c; $\frac{1}{4}$ lb. 35c; lb. \$1.00.

No. 622—A fine selection of the Moss Curled Type. This strain is very hardy, will remain deep green when all other varieties have gone yellow. Right length for bunching. We recommend this variety as it has the color and growing qualities desired for a market growers strain. Pkt. 5c; oz. 15c; $\frac{1}{4}$ lb. 50c.

PARSNIP

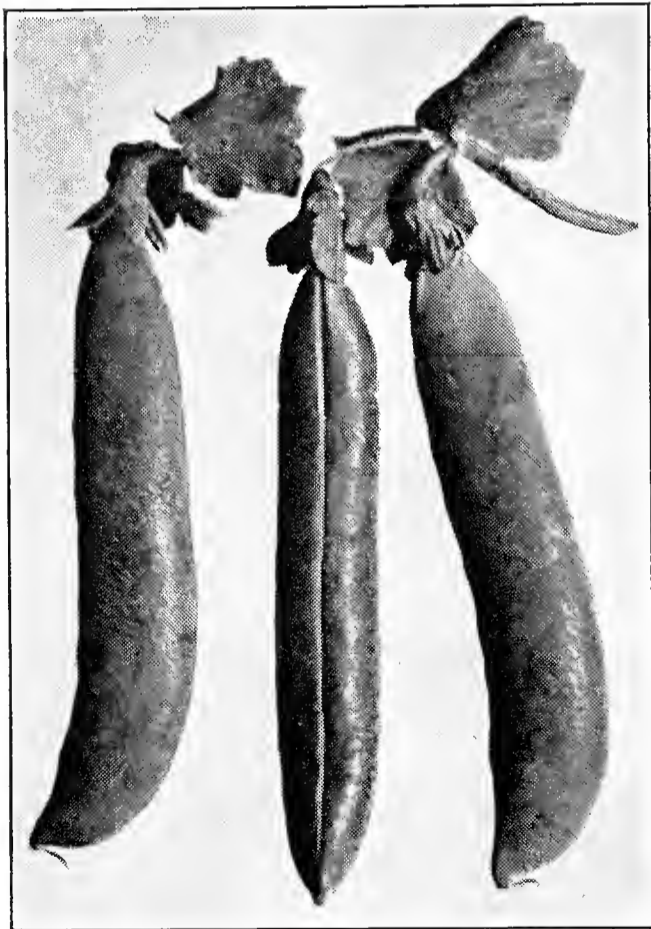
1 oz. 200 feet drill—3 to 4 lbs. per acre

Hollow Crowned (Large Sugar)—Better known and more generally grown than any other sort; roots smooth, usually 15 inches long by 3 inches in diameter at the top; tender and sugary. Pkt. 5c; oz. 10c; $\frac{1}{4}$ lb. 25c; lb. 75c.

PEAS

2 lbs. to 100 feet drill—150 lbs. Dwarf—50 lbs. tall per acre

Any variety, Pkt. 10c



Asgrow No. 40

Inoculate garden peas for better yields.

Peas grow bigger and better when "inoculated". NITRAGIN contains billions of efficient legume bacteria. The peculiar ability to assimilate the nitrogen from the air is what makes them so valuable.

Garden size will treat up to 8 lbs., 25c.

Mammoth Podded Extra Early—Larger than Alaska and matures practically as early. Height 3 feet. Pods dark green, 4 inches long, broad and containing 7 extra large light green peas. Lb. 25c; 5 lbs. \$1.00; 14 lbs. \$2.25.

Onward—The best mid-season pea of recent introduction. Lb. 30c; 5 lbs. \$1.25; 14 lbs. \$2.95.

Laxton's Progress—The earliest large podded dwarf sweet pea. Height 18 inches. In season four days earlier than Laxtonian. Pods 4 inches long, broad and pointed, deep green in color, containing 8 large, dark green peas of high quality. Lb. 25c; 5 lbs. \$1.10; 14 lbs. \$2.80; 100 lbs. \$18.00.

Thomas Laxton—Lb. 25c; 5 lbs. \$1.10; 14 lbs. \$2.80; 100 lbs. \$17.00.

Little Marvel—Lb. 30c; 5 lbs. \$1.35; 14 lbs. \$2.80.

Hundredfold—Lb. 30c; 5 lbs. \$1.25; 14 lbs. \$2.80.

Potlach—Lb. 25c; 5 lbs. \$1.10; 14 lbs. \$2.80.

Asgrow No. 40—Bred particularly for shippers and market gardeners. Unexcelled in pod size, and exceptional in quality. Pods contain from 8 to 10 large peas. 75 days. Lb. 25c; 5 lbs. \$1.10; 14 lbs. \$2.50; 100 lbs. \$18.00.

Wyoming Wonder—Resistant to fusarium wilt. Matures in 75 days. Pods 5 to 6 inches long. Unexcelled in quality. Very sweet. Highly recommended to market gardeners. Lb. 25c; 14 lbs. \$2.50; bu. \$9.00.

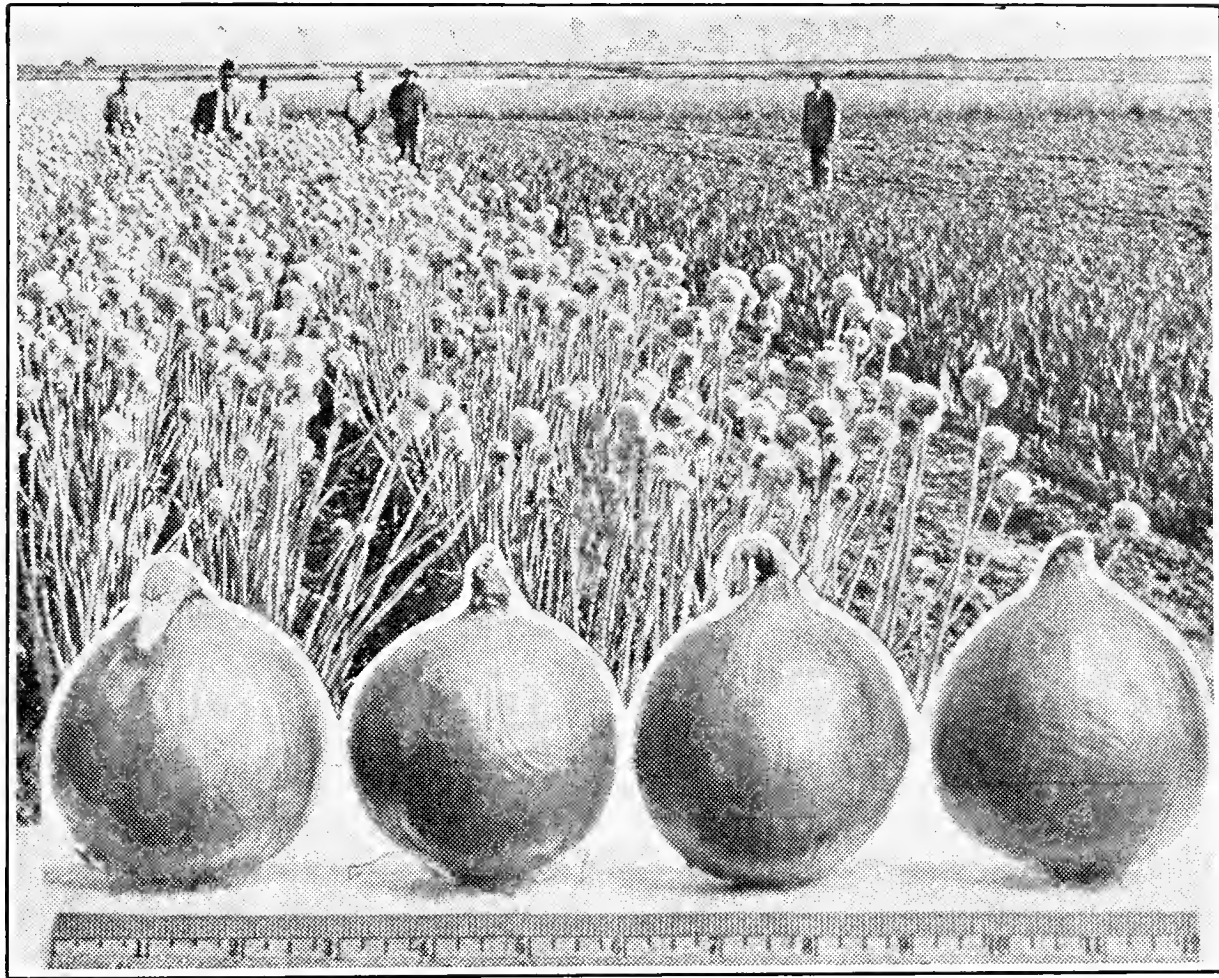
Giant Sugar—A new edible pod sort producing large pods of excellent quality. Seeds brown, blossoms purple. Lb. 35c; 5 lbs. \$1.40.

Over 14 pounds at the 100 pound rate.

PRICES SUBJECT TO CHANGE WITHOUT NOTICE

ONION

1 oz. 100 feet drill—4 lbs. per acre

**Mountain Danvers**

Our Selected strains of Red, Yellow and White Globe seed is grown only from the most perfect bulbs for an especially critical trade.

Mountain Danvers—Onion seed grown for us on the western slope of the Rocky Mountains at an elevation of 5,000 feet is an early selection from Yellow Globe Danvers. Bulbs medium globe shaped, small neck, good color and long keeping. Fully ten days earlier than Southport Yellow Globe, especially adapted for peat and muck soils, yields of 600 bags from one acre are reported. Illustration above is reproduced from actual photograph. Pkt. 10c; oz. 25c; $\frac{1}{4}$ lb. 75c; lb. \$2.50; 10 lbs. \$22.50.

Mountain Yellow Globe—(110 days.) A companion type to the Mountain Danvers, not quite as early, but a deeper bulb, being a true ball-shaped globe. Originally from the Southport Yellow Globe type, continued mountain growing has made this Onion earlier, a better keeper and a somewhat darker skin. Like the Mountain Danvers this onion is an immense cropper and an excellent market variety. Pkt. 10c; oz. 25c; $\frac{1}{4}$ lb. 75c; lb. \$2.75; 10 lbs. \$25.00.

Mountain Red Globe—Like the Mountain Yellow Globe the Red is earlier than our Select Southport Red Globe, good color and shape, thin necked and an excellent keeper. High altitude Colorado grown. Supply limited. Pkt. 10c; oz. 25c; $\frac{1}{4}$ lb. 75c; lb. \$2.50; 10 lbs. \$22.50.

Southport Yellow Globe Selected—Pkt. 10c; oz. 25c; $\frac{1}{4}$ lb. 75c; lb. \$2.75; 10 lbs. \$25.00.

Southport Red Globe Selected—Pkt. 10c; oz. 25c; $\frac{1}{4}$ lb. 65c; lb. \$2.50; 10 lbs. \$22.50.

Southport White Globe Selected—Pkt. 10c; oz. 25c; $\frac{1}{4}$ lb. 75c; lb. \$2.75; 10 lbs. \$25.00.

Riverside Sweet Spanish—A very large globe-shaped, light yellow onion with small top and an exceptionally fine shipper. It is a Spanish variety resembling Prizetaker, which has quickly become very popular. Pkt. 10c; oz. 25c; $\frac{1}{4}$ lb. 75c; lb. \$2.75.

White Sweet Spanish—The largest of the white onions. Bulbs globular with small neck, pure white; flesh clear white, firm and mild. Very attractive and a fair keeper. Pkt. 10c; oz. 30c; $\frac{1}{4}$ lb. 85c; lb. \$3.00.

White Portugal or Silverskin—Flat, white onion of mild flavor and early. Excellent for pickling and early onions. Standard for bunching. Pkt. 10c; oz. 25c; $\frac{1}{4}$ lb. 75c; lb. \$2.50; 10 lbs. \$22.50.

Ebenezer or Japanese—Used extensively for growing sets. Flat and light yellow, good keeper. Pkt. 10c; oz. 25c; $\frac{1}{4}$ lb. 75c; lb. \$2.50; 10 lbs. \$22.50.

White Bunching—A quick growing White Globe onion for bunching and not recommended for large onions. Pkt. 10c; oz. 25c; $\frac{1}{4}$ lb. 75c; lb. \$2.50; 5 lbs. or more, lb. \$2.25.

HAVE A GARDEN. GROW YOUR OWN, AND BE WELL SUPPLIED

ONIONS—Continued

Extra Early Yellow Globe—Matures three weeks ahead of Southport Yellow Globe. Bulbs medium sized with thick skins; rich in color; productive and a good keeper; valuable on account of its earliness in escaping thrips damage. Pkt. 10c; oz. 30c; $\frac{1}{4}$ lb. 90c; lb. \$3.00.

BUNCHING ONION**FOR EARLY SPRING AND FALL BUNCH ONIONS**

Delas or Japanese Bunching—This is a species of onion which does not form a bulb, a decided improvement over the old bunching kind, rapid grower and mild. Pkt. 10c; oz. 25c; $\frac{1}{4}$ lb. 75c; lb. \$2.50.

PEPPER

1 oz. 1,500 Plants

California Wonder—One of the best early, large and productive peppers. Pkt. 10c; oz. 50c; $\frac{1}{4}$ lb. \$1.75.

Large Bell or Bull Nose—Pkt. 10c; oz. 40c; $\frac{1}{4}$ lb. \$1.25.

Super Select, Long Thick Red—Similar to the Long Red Cayenne, thicker meat and averages about 1 inch at stem end. Early, prolific and one of the best sellers in the Minneapolis Market. Specially selected stock grown for us by one of the experienced and successful pepper growers in the state. Pkt. 15c; oz. 50c; $\frac{1}{4}$ lb. \$1.75.

Super Select Harris' Early Giant—A valuable addition to our list of Peppers; in size and appearance like the old Giant Crimson, but much earlier, thicker walled, and more prolific. Vines about 20 inches high, fruit $4\frac{1}{2}$ inches long, $3\frac{1}{2}$ inches through. Heavy in yield and weight. Especially adapted to our northern climate where the

later varieties will not fully mature. Exceptional yielder. We recommend this to the gardner with confidence that it will be more than satisfactory. Pkt. 10c; oz. 45c; 4 oz. \$1.50.

Worldbeater—One of the very best of the large pepers, being a cross between Chinese Giant and Ruby King, having the longer form and earliness of the latter with the size of the former. Fruits 4 lobel, 5 inches long by $3\frac{1}{2}$ inches in diameter; flesh very thick and mild; exceedingly productive and a good shipper. Pkt. 10c; oz. 40c; $\frac{1}{4}$ lb. \$1.35.

Worldbeater, Select Stock—Supply limited. Pkt. 25c; oz. 75c.

Long Red Cayenne—Pkt. 10c; oz. 35c; $\frac{1}{4}$ lb. \$1.25.

Pimento—Sunnybrook strain. The sweetest and most prolific of all Pimento peppers, with smooth, bright scarlet fruits, 3 inches thick and 2 to $2\frac{1}{2}$ inches deep. The flesh is thick and sweet. Plants grow 15 inches tall. Pkt. 10c; oz. 50c; $\frac{1}{4}$ lb. \$1.35.

PUMPKINS

$\frac{1}{4}$ lb. 100 Hills—4 to 5 lbs. per acre

Sweet or Sugar (New England Pie)—Fruit small, round, flattened at the ends, and slightly ribbed; skin and flesh deep orange-yellow; flesh very thick and of high quality. Pkt. 5c; oz. 10c; $\frac{1}{4}$ lb. 25c; lb. 75c.

King of the Mammoth (Potiron)—The giant among pumpkins; specimens have been grown to weigh 250 pounds and

reaching 2 feet or more in diameter; fruit round and flattened. Slightly ribbed; skin salmon-orange, flesh bright yellow and very thick. Pkt. 5c; oz. 15c; $\frac{1}{4}$ lb. 50c; lb. \$1.50.

Large Cheese, or Connecticut Field—Large, round, flattened fruits, much ribbed and creamy-buff in color; flesh yellow, very deep and of fine quality; one of the best canning sorts. Oz. 10c; $\frac{1}{4}$ lb. 20c; lb. 65.

RADISH

1 oz. 100 feet drill—8 to 10 lbs. per acre

EARLY SCARLET GLOBE SUPER SELECT

We have an exceptionally fine stock of this superb variety. It is one of the very earliest of the forcing radishes and does equally well outside; roots are of fair size, globe-shaped and with a very small top; always crisp and tender; color a bright scarlet. By **Super Select**, applied to our stock of this radish, we mean: seed is grown by Rice in Michigan, stock seeds are all produced from carefully sorted, selected and transplanted roots and are not surpassed for earliness and purity.

Samples are drawn from every bag, sown in greenhouse and proven for germination and variety. Pkt. 5c; oz. 10c; $\frac{1}{4}$ lb. 25c; lb. 65c; 10 lbs. \$5.50; 100 lbs. \$50.00.

Forcing Scarlet Globe—Crisp, thin skinned, brilliant scarlet. Matures in 22 days. Grown from transplanted roots and specially recommended for greenhouse culture. Pkt. 10c; oz. 15c; $\frac{1}{4}$ lb. 30c; lb. 90c; 10 lbs. \$7.00.

Sparkler White Tipped—Pkt. 5c; oz. 10c; $\frac{1}{4}$ lb. 25c; lb. 90c.

French Breakfast—Pkt. 5c; oz. 10c; $\frac{1}{4}$ lb. 30c; lb. \$1.00.

Crimson Giant—Extremely large, but never pithy. One of the best for out-door culture. Top is a little too large for a forcing sort; intermediate in season. Pkt. 5c; oz. 10c; $\frac{1}{4}$ lb. 25c; lb. 90c.

Icicle—The leading long white radish and one of the earliest; roots are somewhat shorter, broader at the top and more square shouldered than Lady Finger, also matures a little earlier; about 6 inches long and white throughout. Pkt. 5c; oz. 10c; $\frac{1}{4}$ lb. 25c; lb. 80c.



Super Select, Early Scarlet Globe

Vick's Scarlet Globe—Imported seed. Pkt. 5c; oz. 10c; $\frac{1}{4}$ lb. 20c; lb. 50c; 10 lbs. \$4.50.

FALL OR WINTER VARIETIES

California Mammoth White Winter—Pkt. 5c; oz. 10c; $\frac{1}{4}$ lb. 30c; lb. \$1.00.

Rose China Winter (Scarlet China)—Pkt. 5c; oz. 10c; $\frac{1}{4}$ lb. 30c; lb. \$1.00.

Round Black Spanish—Pkt. 5c; oz. 10c; $\frac{1}{4}$ lb. 25c; lb. 80c.

SALSIFY, OR VEGETABLE OYSTER

1 oz. 60 feet drill—10 lbs. per acre

Mammoth Sandwich Island—An improvement on the ordinary type, producing larger, thicker, tapering, almost white

roots, which are less liable to branch; leaves larger and flowers rose colored. Pkt. 10c; oz. 20c; $\frac{1}{4}$ lb. 55c; lb. \$1.75.

SPINACH

1 oz. 100 feet drill—12 to 15 lbs. per acre



Giant Leaved Nobel

Giant Leaved Nobel—By far the best of the smooth leaved sorts. It produces a large mass of rather smooth, very thick, rounded leaves, of enormous size and although it is a very quick grower, it stands long before bolting. "Nobel" is an ideal variety for truckers and for canners. Oz. 10c; $\frac{1}{4}$ lb. 15c; lb. 30c; 10 lbs. \$2.50.

Virginia Blight-Resistant Bloomsdale Savoy—Best suited for fall crop. Lb. 30c; 10 lbs. \$2.50; 100 lbs. \$20.00.

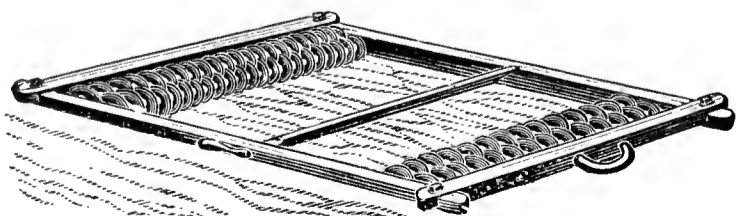
Long Standing Bloomsdale—Darker green and more crumpled than Bloomsdale, a little later and will stand ten to twelve days longer before bolting to seed. Oz. 10c; $\frac{1}{4}$ lb. 15c; lb. 30c; 10 lbs. \$2.50.

Extra Dark Green Bloomsdale—A darker and better strain of the Reselected Bloomsdale, crumpled leaves. Matures in 40 days. Oz. 10c; $\frac{1}{4}$ lb. 15c; lb. 30c; 10 lbs. \$2.50.

Juliana—One of the best second-early varieties; grows close to the ground; has very dark green crumpled leaves which keep fresh looking and retain their crispness a long time after being cut; stands well. Pkt. 5c; oz. 10c; lb. 30c; 10 lbs. \$2.50; 100 lbs. \$22.00.

New Zealand (Tetragonia Expansa)—Entirely distinct from the true Spinach; plant tall and spreading with numerous side shoots; leaves medium green, rather small and pointed; grows well in hot weather and under adverse conditions. Pkt. 10c; oz. 15c; $\frac{1}{4}$ lb. 25c; lb. 75c.

MEEKER SMOOTHING HARROW



WRITE FOR
CATALOG AND PRICES

Meeker Harrow—Has become a great favorite among all types of gardeners and farmers. It has two sets of rollers containing 58 disks. These grind all lumps and clods into a fine, powdery soil, and with the smoothing board makes a field into a better seed bed than any other harrow known. Regular size, 6 ft. 8 in. by 6 ft.

SQUASH

2 oz. 100 hills—3 to 4 lbs. per acre



Warted Hubbard

Hubbard, Warted—Similar in size and quality to the well-known Hubbard, but is more heavily warted and a very dark green, almost black in color. Our stock of this variety is exceptionally true. Pkt. 5c; oz. 10c; $\frac{1}{4}$ lb. 35c; lb. \$1.25; 5 lbs. \$5.

Mammoth Chili—Grown for exhibition and stock feeding; specimens have been grown to weigh upwards to 150 pounds; fruits oblong, skin quite smooth but with broad open netting and rich orange-yellow color. Pkt. 5c; oz. 15c; $\frac{1}{4}$ lb. 40c; lb. \$1.35.

Blue Hubbard—A very large squash of the Hubbard shape, but the color is blue-gray. The shell is very hard and the squash keeps a long time. Pkt. 5c; oz. 10c; $\frac{1}{4}$ lb. 35c; lb. \$1.00; 5 lbs. \$4.50.

Marrow, Italian Vegetable (Cocozella)—A summer variety of bush habit; fruits oblong, furrowed with 5 ribs, 12 to 16 inches in length and 5 inches in diameter,

color dark green, marbled with yellow and dark green stripes. Pkt. 10c; oz. 15c; $\frac{1}{4}$ lb. 50c; lb. \$1.50.

Table Queen or Des Moines—Vines vigorous and productive; fruits 6 to 8 inches long and 4 to 6 inches in diameter. Shell hard, smooth with ridges, dark green and long keeping. Pkt. 5c; oz. 10c; $\frac{1}{4}$ lb. 30c; lb. \$1.00.

Crookneck, Giant Summer (Bush)—Pkt. 5c; oz. 15c; $\frac{1}{4}$ lb. 40c; lb. \$1.25.

Scallop, Mammoth White Bush—Pkt. 5c; oz. 15c; $\frac{1}{4}$ lb. 40c; lb. \$1.25.

Straightneck, Giant Summer—A selection from the Crookneck squash but with a straight rather than a crooked neck. Fruits intensely warted, 18 to 20 inches long, deep orange in color with a thick, meaty neck. Pkt. 10c; oz. 15c; $\frac{1}{4}$ lb. 45c; lb. \$1.25.

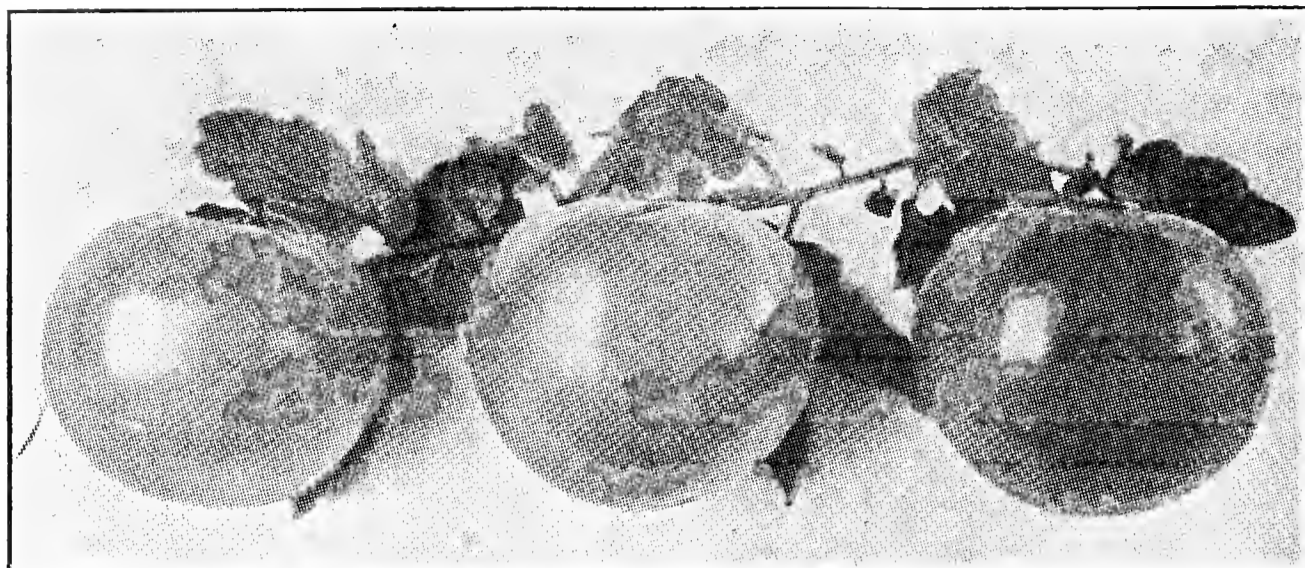
SQUASH

Sweet Potato—Improved Delicata. Fruits 6 to 8 inches long, thick flesh, sweet, popular in this market. 55 days. Pkt. 5c; oz. 15c; $\frac{1}{4}$ lb. 45c; lb. \$1.50.

Buttercup—A cross developed by Professor A. F. Yeager, of the North Dakota Experiment Station. The squashes weigh from 3 to 5 pounds, with thin, tough, green skin. Rich orange flesh, flavor very like that of a sweet potato. Pkt. 10c; oz. 20c; $\frac{1}{4}$ lb. 50c; lb. \$1.75.

TOMATO

1 oz. 1,500 Plants



Earliana, Super Select

Super-Select Bonny Best—

An exceptional outstanding strain, heavy yielder of uniform large, smooth, round, high-colored scarlet fruits, very early. This seed selected with great care and cost will produce top price tomatoes. Yields reported as high as 14 tons to the acre, maturing before market glut. We recommend a trial against the best tomato you have. For Greenhouse or Outdoor. Pkt. 25c; oz. 75c; $\frac{1}{4}$ lb. \$2.50.

Bonny Best—Standard. Pkt. 5c; oz. 40c; $\frac{1}{4}$ lb. \$1.25.

Clark's Early—Medium early, globe shaped and very prolific, bright scarlet, solid, with thick walls. Desirable for canning and slicing. Pkt. 10c; oz. 45c; $\frac{1}{4}$ lb. \$1.50.

Rutgers—This fine second early tomato is bred up from a cross of Marglobe and J. T. D., the plants are strong and vigorous, generously foliated, preventing scald, and produce fruits resembling Marglobe; average about $5\frac{1}{2}$ to 6 ounces. Fruits sparkling red and ripen from the center out. Oz. 60c; $\frac{1}{4}$ lb. \$1.65; lb. \$6.00.

Pritchard, Or Scarlet Topper—Pkt. 10c; oz. 50c; $\frac{1}{4}$ lb. \$1.75.

Oxheart—Fruits extremely large, somewhat rough, heart-shaped, pink; very solid and meaty. Especially desirable for home use. Pkt. 10c; oz. 75c; $\frac{1}{4}$ lb. \$2.25.

John Baer—An early, productive, red tomato on the order of Chalk's Jewel. We have a splendid, uniform stock of this variety. Pkt. 5c; oz. 35c; $\frac{1}{4}$ lb. \$1.20.

Earliana, Super Select—Seed saved from crown-set globe-shaped fruit from selected extra early plants. Pkt. 10c; oz. 75c; $\frac{1}{4}$ lb. \$2.50.

Earliana, Spark's—The earliest and best of the very early tomatoes; very productive for an early sort; fruit of fair size, round, smooth and solid, and produced in clusters in the center of the plant; color bright scarlet. Pkt. 5c; oz. 40c; $\frac{1}{4}$ lb. \$1.30.

Stone—A large, smooth, bright red late tomato. A great favorite with market gardeners and canners. Very productive and dependable. Pkt. 5c; oz. 40c; $\frac{1}{4}$ lb. \$1.25.

Golden Queen—A large yellow tomato. Smooth, solid and fine flavor. Pkt. 5c; oz. 40c; $\frac{1}{4}$ lb. \$1.50.

Dwarf Champion—Pkt. 10c; oz. 40c; $\frac{1}{4}$ lb. \$1.50; lb. \$5.00.

Marglobe—Pkt. 15c; oz. 50c; $\frac{1}{4}$ lb. \$1.75.

Ponderosa—Pkt. 10c; oz. 55c; $\frac{1}{4}$ lb. \$2.00.

Yellow Plum—A small plum-shaped tomato, used for pickling and preserving. Pkt. 5c; oz. 40c; $\frac{1}{4}$ lb. \$1.50.

Yellow Husk—Ground cherry, used for preserving. Pkt. 5c; oz. 50c; $\frac{1}{4}$ lb. \$1.50.

RUTABAGAS

TURNIPS

White Egg—An early oval variety, Medium sized, white flesh a clear white, very mild and sweet. Pkt. 5c; oz. 10c; $\frac{1}{4}$ lb. 20c; lb. 60c.

Purple Top White Globe—One of the best for market gardeners. It is a perfect globe-shaped and of finest quality. Pkt. 5c; oz. 10c; $\frac{1}{4}$ lb. 20c; lb. 60c.

American Purple Top—Roots yellow below ground and purple above. It is large, globular and short necked. Flesh yellow and sweet. Pkt. 5c; oz. 10c; $\frac{1}{4}$ lb. 20c; lb. 60c.

Canadian Gem—Roots nearly round, purple above ground, yellow beneath, very small top and neck. Flesh yellow and of excellent quality. This variety is resistant to drought and mildew to a remarkable degree. Pkt. 10c; oz. 15c; $\frac{1}{4}$ lb. 25c; lb. 75c.

HERBS

Pot, Sweet and Medicinal

Saffron—Flowers used for coloring; leaves for flavoring. Pkt. 10c; oz. 25c; $\frac{1}{4}$ lb. 75c.

Sage—A highly aromatic herb; most useful of all. Pkt. 10c; oz. 20c; $\frac{1}{4}$ lb. 60c.

Savory, Summer—Leaves for flavoring soups. Pkt. 10c; oz. 20c; $\frac{1}{4}$ lb. 50c.

Lavender—Leaves very fragrant. Pkt. 10c; oz. 40c.

Marjoram, Sweet—Used as a seasoning. Pkt. 10c; oz. 25c; $\frac{1}{4}$ lb. 75c.

Coriander—Seeds used for flavoring. Pkt. 5c; oz. 15c; $\frac{1}{4}$ lb. 35c.

Dill—Used for flavoring pickles. Pkt. 5c; oz. 10c; $\frac{1}{4}$ lb. 25c; lb. 75c.

Caraway—Seeds used for flavoring. Pkt. 5c; oz. 15c; $\frac{1}{4}$ lb. 35c.

Fennel, Sweet—Seeds aromatic. Pkt. 10c; oz. 15c.

Thyme—Used as a seasoning. Pkt. 10c; oz. 45c; $\frac{1}{4}$ lb. \$1.75.

BOFFERDING'S
SUPER SELECT

LAWN GRASS SEED

RECLEANED
HIGH GERMINATION

Our lawn grass seed contains only the highest grade of grasses for the making of a beautiful and durable lawn. It germinates quickly. Root deeply. This enables it to withstand the intense heat of summer and the severe cold of winter, showing beautiful rich green from early spring until late fall.

No annual grasses for making quick show are used to the detriment of a permanent lawn, but only those which are lasting and hardy.

A lawn once established from our Super Select seed will last for years. From six to eight weeks time is all that is required to form a close, thick turf, of rich, velvety lawn.

Bofferding's Super Select Lawn Grass Seed—For new lawns use one pound to 300 sq. ft. Lb. 35c; 5 lbs. 1.50; 100 lbs. \$25.00.

Shady Place Mixture—On all lawns there are shaded spots which are bare and unsightly, for these places a mixture has been made comprising some of the grasses adapted to shady spots and our mixture will grow where ordinary grasses would fail. Lb. 45c; 5 lbs. \$2.00.

Kentucky Blue Grass—Used alone or mixed with white clover for the lawn. Lb. 25c; 5 lbs. \$1.10; 100 lbs. \$20.00.

White Clover—The best clover for lawns. Lb. 50c; 5 lbs. \$2.25.

There are many grasses that can be used to advantage to meet soil and use requirements. We make special mixtures based on the root system, coarse, rough or fine smooth stocks and leaves. Deep rooted and creeping grasses. Let us know the conditions.

BOFFERDING FLOWER SEEDS

Our list comprises many of the new and tried novelties of recent introduction and all of the old favorites.

We recommend the following for your 1936 garden, all leaders in their class.

Zinnia—Fantasy

The very informal, quilled and shaggy appearing flowers are graceful and quite distinct from the stiff formal Zinnias we are accustomed to. Color range includes the brightest shades as well as the pastels. Don't fail to grow some Fantasy this year. Pkt. 25c.

Cosmos—Klondike Orange Flare

"America's best loved novelty since Golden Gleam Nasturtium". Blossoms in four months with long stemmed vivid orange flowers. Plants well shaped with light green foliage. Pkt. 15c; ¼ oz. 35c.

Nasturtium—Dwarf Double Golden Globe

Golden Globe is the first named color of the new gem-like type of dwarf compact Nasturtium. Free flowering, with double flowers of deep golden yellow, delicately sweet scented. Pkt. 25c.

ACHILLEA

The Pearl—Splendid for cutting, easy cultured. 2 foot, clusters of small white flowers. P. Pkt. 10c.

ACONITUM—Monkshood

Fischeri—Deep blue flowers in dense spikes. Pkt. 15c; oz. \$2.25.

Napellus—Long spikes of dark blue flowers. Pkt. 10c; oz. \$1.50.

AGERATUM

Blue Cap—The best dwarf Ageratum yet offered. Flowers rich deep blue. Pkt. 15c; ¼ oz. 80c.

Imperial Dwarf Blue—Pkt. 10c; oz. 50c.

ANCHUSA

Italica, Dropmore Variety—A gentian blue perennial. 4 feet. Very attractive. P. Pkt. 10c; ¼ oz. 25c.

ALYSSUM

Little Gem or Carpet of Snow—The best for beds or borders, pure white. Pkt. 10c; ¼ oz. 20c.

Lilac Queen—Compact growing; pretty deep lavender-lilac. Pkt. 10c; ¼ oz. 20c.

Saxatile, Compactum—H. P. Yellow Alyssum. 12 inches. Pkt. 10c.

AQUILEGIA (Columbine) P.

Dobbies Imperial Hybrids—New. Long spurred variety. Mixed. Pkt. 15c; ¼ oz. 80c.

Double Mixed—Pkt. 5c; ¼ oz. 30c.

Mrs. Scott Elliotts, Hybrid—Pkt. 10c; ¼ oz. 75c.

ARCTOTIS

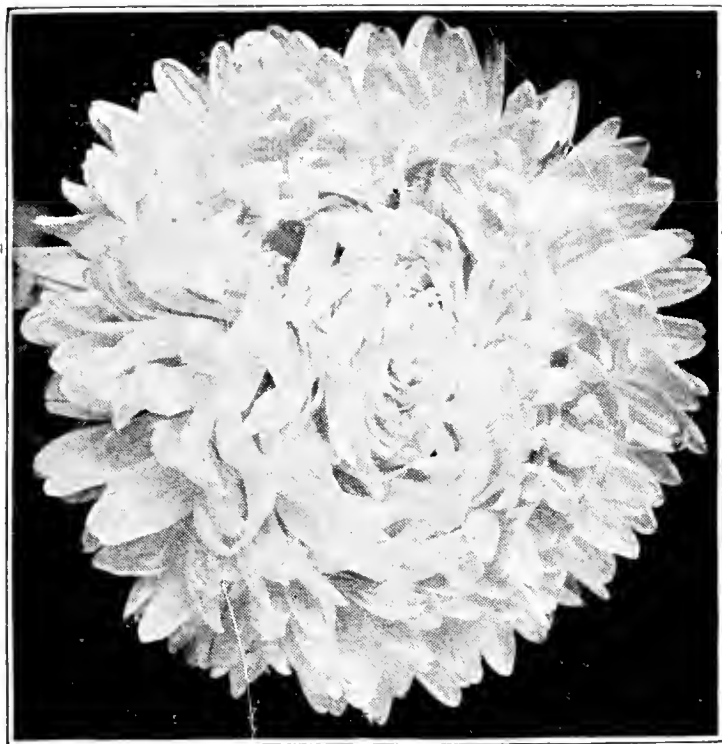
Grandis, African Daisy—Large flowers, upper petals white, reverse side pale lilac blue. A. Pkt. 10c; ¼ oz. 30c.

Hybrida (Novelty)—Height 12 inches. The flowers are of beautiful shades of colors with a dark disc at the center. Pkt. 25c.

ASTERS

The Fusarium Wilt has been most prevalent in the last few years, making it nearly impossible for gardeners to grow nice Asters. Wilt Resistant strains have proven very satisfactory and we recommend the following varieties and colors.

Improved Crego—Wilt Resistant. Early. Plants robust, branching about 2½ feet tall, flowers large, double and well formed. White, Rose, Pink, Crimson and Mixed. Pkt. 10c; ¼ oz. 50c; oz. \$1.75.



Aster

Early Beauty—Wilt Resistant. Blossom from early August until frost. 2½-3 feet tall with long, stout stems bearing large double flowers. Keeping qualities excellent. Azure Fairy (blue or dark lavender), Crimson, Deep Rose, Purple, White, September Beauty (flesh pink), Lavender (outside use only) and Mixed. Pkt. 10c; ¼ oz. 50c; oz. \$1.75.

Improved Queen of the Market—Wilt resistant. Early July. Medium tall, large flowers, long stems. Excellent for early market. Crimson, Dark Blue, Light Blue, Peachblossom, Scarlet, White and Mixed. Pkt. 10c; ¼ oz. 50c; oz. \$1.75.

American Branching—Wilt resistant. Late blooming. Mixed. Pkt. 10c; ¼ oz. 50c. Not wilt resistant, Purple, Rose, Shell Pink, Azure Blue, Yellow, Dark Blue, Light Rose, Rose, Crimson, White and Mixed. Pkt. 10c; ¼ oz. 30c; oz. \$1.00.

Super Giant Los Angeles—Shell Pink, feather petaled flowers. Pkt. 25c; ¼ oz. \$1.00.

Double Giants of California—Mixed colors. Pkt. 15c; ¼ oz. 60c.

Perennial Aster (Michaelmas Daisy)—Large flowering mixed. Pkt. 10c; ¼ oz. 65c; oz. \$2.00.

BALSAM (Lady Slipper)

Camellia Flowered—Mixed. Pkt. 10c; ¼ oz. 20c; oz. 65c.

Rose Flowered—Mixed. Pkt. 10c; ¼ oz. 20c; oz. 60c.

BEANS

Scarlet Runner—Quick growing vine. Pkt. 5c; oz. 10c.

BELLIS OR DOUBLE ENGLISH DAISY

Giant Mammoth White (Novelty)—Long stemmed. Pkt. 15c; ¼ oz. 60c.

Giant Mammoth Rose—Pkt. 15c; ¼ oz. 60c.

Montrosa Pink—Pkt. 15c; ¼ oz. 60c.

Montrosa Red—Pkt. 15c; ¼ oz. 60c.

Crispa (Novelty) Cherry—Pkt. 25c.

Montrosa—Finest Mixed—Pkt. 10c; ¼ oz. 50c.

BOLTONIA

Showy Native Perennial—4 to 6 feet, daisy-like flowers. July to September.

Asteriodes—H. P. White. Pkt. 10c.

Latisquama—H. P. Lilac Pink. Pkt. 10c.

BRACHYCOMBE

Swan River Daisy—H. A. Fine mixed. Pkt. 10c.

BROWALIA

Elata—Mixed Blue and White; fine bedder. Pkt. 5c; ¼ oz. 30c.

BUTTERFLY FLOWER

Schizanthus—Dr. Badger's mixed colors. Pkt. 10c.

CALENDULA

The Ball—Color Golden Orange, long stemmed. Pkt. 10c; ¼ oz. 50c; oz. \$1.50.

Radio—Large petals, double flowers beautifully quilled. Color Glittering Orange. Pkt. 10c; ¼ oz. 30c; oz. \$1.00.

Campfire or Sensation—Large flowers. Color Rich Orange with Scarlet Sheen. Pkt. 10c; ¼ oz. 45c; oz. \$1.50.

Orange King—Orange Red. Florists strain. Pkt. 5c; oz. 60c.

Lemon King—Lemon Yellow. Pkt. 5c; oz. 50c.

CALLIOPSIS

Easy growing annual, thrives in any soil. Mixed—All colors. Pkt. 5c; ¼ oz. 20c.

CAMPANULA (Canterbury Bells)

Old fashioned and a favorite with all. Stately and showy and easy to grow. Hardy Biennials.

Calycanthema—"Cup and Saucer," mixed colors. Pkt. 10c; ¼ oz. 35c; oz. \$1.25.

Medium—Single mixed. Pkt. 10c; ¼ oz. 20c; oz. 50c.

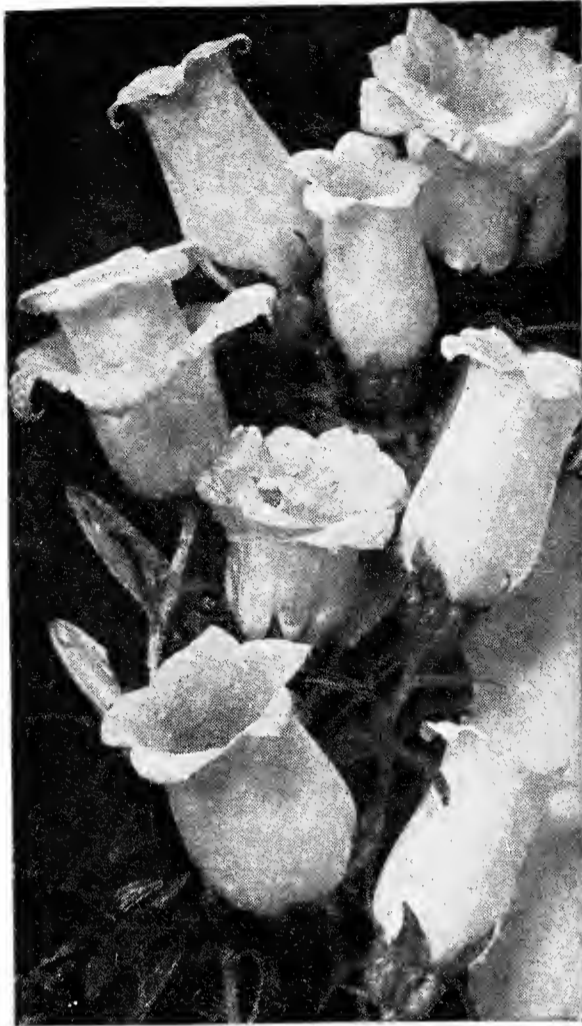
CANDYTUFT

Giant White Hyacinth Flowered—Florists strain, for forcing or outdoor culture. Pkt. 5c; oz. 50c; ¼ lb. \$1.50.

Lilac Umbellata—Pkt. 5c; oz. 40c.

Mixed Umbellata—Pkt. 5c; oz. 30c.

Gibraltarica—P. Lilac. Pkt. 10c; ¼ oz. 40c.



Campanula

CANNA

Mixture from the newest named varieties. Pkt. 5c; oz. 25c.

CANARY BIRD VINE

Rapid climber, charming canary-yellow flowers. Pkt. 5c; oz. 25c.

CARDINAL CLIMBER

One of the best annual climbers, free bloomer, fiery cardinal red. Pkt. 10c; $\frac{1}{4}$ oz. 45c; oz. \$1.50.

CARNATION

Marguerite—Mixed colors. Annual. Pkt. 10c; $\frac{1}{4}$ oz. 40c.

Chabauds—Giant double. Pkt. 10c; $\frac{1}{4}$ oz. 50c.

CASTOR BEANS (Ricinus)

Zanzibarienses—Mixed. Pkt. 5c; oz. 15c.
Red Spire—A new and very effective variety with bronzy green foliage and brilliant rosy crimson seed spikes. 6 ft. Pkt. 10c; oz. 40c.

CELOSIA

Cristata or "Cockscomb"—Dwarf, mixed colors. Pkt. 10c; $\frac{1}{4}$ oz. 50c.

Plumosa, Thompsonii—Crimson flowers. Pkt. 10c; $\frac{1}{4}$ oz. 25c.

Plumosa, Thompsonii—Mixed colors. Pkt. 10c; $\frac{1}{4}$ oz. 25c.

Childsii, Chinese Woolflower—Pkt. 10c; $\frac{1}{4}$ oz. 45c.

CENTAUREA

Cyanus—Bachelor Button. Double Blue, Red, White and Rose Florist's strains. Each Pkt. 5c; $\frac{1}{4}$ oz. 15c; oz. 50c.

Mixed—All colors. Pkt. 5c; $\frac{1}{4}$ oz. 15c; oz. 40c.

Imperialis, Sweet Sultan—Lavender, Purple, Red, White. Each Pkt. 10c; $\frac{1}{4}$ oz. 25c; oz. 75c.

Mixed—All colors. Pkt. 10c; $\frac{1}{4}$ oz. 20c.

Suaveolens—Large, Bright Yellow, Sweet Sultan. Pkt. 10c; $\frac{1}{4}$ oz. 20c.

Candidissima—Silvery White, leaves broadly cut. Pkt. 10c; $\frac{1}{4}$ oz. 50c.

Gymnocarpia—Dusty Miller. Fine cut leaves. Pkt. 10c; $\frac{1}{4}$ oz. 20c.

Montana—Perennial. Blue. Pkt. 10c; $\frac{1}{4}$ oz. 50c.

CHRYSANTHEMUM (Annual Varieties)

Large daisy-like flowers in a variety of brilliant colors, easily grown and fine for cutting.

Carinatum—Tri-color mixed. Pkt. 5c; $\frac{1}{4}$ oz. 15c; oz. 45c.

Coronarum—Fine mixed, double. Pkt. 10c; oz. 40c.

CLARKIA

Elegans—Free flowering hardy annual. Mixed. Pkt. 5c.

COBEA

Scandens—Blue, large bell-shaped flowers. Rapid growing climber, will cling to any rough surface. Pkt. 10c; oz. 40c.

COREOPSIS

Lanceolata—Grandiflora, H. P. One of the best hardy plants; large showy yellow flowers. June until frost. Pkt. 10c; $\frac{1}{4}$ oz. 25c.

COSMOS

Early Express—Extra early, flowering in 45 days. Crimson, Pink, White and Mixed. Pkt. 10c; oz. \$1.25.

Extra Early Flowering Mammoth—Crimson, Pink, White and Mixed. Pkt. 5c; $\frac{1}{4}$ oz. 15c; oz. 40c.

Extra Early Double Crested—Mixed colors. Pkt. 10c; oz. \$1.75.

CYNOGLOSSUM

Amabile—Chinese Forget-me-not—Blue. Pkt. 10c; $\frac{1}{4}$ oz. 30c.

CYPRESS VINE

Popular vine with fern-like foliage, masses of star-shaped flowers. Soak seed. Mixed. Pkt. 5c; oz. 30c.

DAHLIA

Finest double varieties, mixed colors. Pkt. 15c; oz. \$2.50.

Unwins Mixed—Plants 18 inches high. Blossoms the first year. Semi-double, wide range of colors. Pkt. 25c; $\frac{1}{4}$ oz. \$1.25.

DELPHINIUM (Perennial Larkspur)

Belladonna—Finest Light Blue shades. Pkt. 10c; $\frac{1}{4}$ oz. 75c.

Bellamosum—Dark Blue. Pkt. 10c; $\frac{1}{4}$ oz. 75c.

Our Own—Special mixed Hybrids. Pkt. 15c; $\frac{1}{4}$ oz. \$1.00.

Wrexham Hollyhock Flowered Hybrids—Pkt. 25c; $\frac{1}{4}$ oz. \$1.50; oz. \$5.00.

DIANTHUS (Pinks)

Chinensis—Chinese double mixed. Pkt. 5c; $\frac{1}{4}$ oz. 20c; oz. 75c.

Heddewig—Double mixed. Pkt. 10c; $\frac{1}{4}$ oz. 30c.

Caesius—Dwarf tufted variety. Various colors. Pkt. 15c; oz. \$1.00.

Deltoides—Dwarf Brilliant Carmine. Pkt. 10c.

Latifolius Atrococcineus Fl. Pl.—Pkt. 10c; oz. \$1.50.

Sweet Wivelsfield—Mixed colors. Pkt. 10c.

DIDISCUS

Blue Lace Flower—Very pretty, much used in design work by florists. Pkt. 10c; $\frac{1}{4}$ oz. 40c.

DIGITALIS (Fox Glove)

Gloxiniiflora—Handsome. 3 to 5 feet. H. P. Mixed. Pkt. 10c; $\frac{1}{4}$ oz. 40c.

DIMORPHOTHECA

(African Golden Daisy)

Mixed Hybrids—Pkt. 10c; $\frac{1}{4}$ oz. 40c.

DOLICHOS (Hyacinth Bean)

Rapid Climber. A.

Darkness—Rich Purple Violet. Pkt. 5c; oz. 30c.

Purple and White—Pkt. 5c; oz. 30c.

ESCHSCHOLTZIA

Aurantiaca—True California poppy, Rich Yellow. Pkt. 5c; $\frac{1}{4}$ oz. 30c.

Mixed Hybrids—Pkt. 5c; $\frac{1}{4}$ oz. 30c.

EUPHORBIA

Variegated—Snow in the mountain. P. Pkt. 10c; oz. 50c.

EVERLASTING FLOWERS

Flowers retain their color for years if cut in bud and hung head downward to dry.

Acroclinium—Mixed. Pkt. 10c; oz. 40c.

Globe Amaranth—Mixed. Pkt. 10c; oz. 40c.

Helichrysum—Mixed. Pkt. 10c; oz. 50c.

Rodanthe—Mixed. Pkt. 10c; oz. 75c.

Xeranthemum—Mixed. Pkt. 10c; oz. 50c.

Statice—Latifolia Perennial. Pkt. 10c; oz. \$1.00.

Statice—Sinuata "True Blue." Pkt. 10c; oz. 75c.

Statice—Suworowii. Crimson. Pkt. 10c; $\frac{1}{4}$ oz. 75c.

FOUR O'CLOCK

Mirabilis—Pretty annual. Pkt. 5c; oz. 25c.

GAILLARDIA

Picta, Indian Chief—Single Bronzy Red. Pkt. 5c; $\frac{1}{4}$ oz. 20c.

Picta—Single Mixed—Pkt. 5c; $\frac{1}{4}$ oz. 20c.

Portola Hybrida Perennial—Shades of Bronzy Red, Gold Tipped, very robust. Pkt. 15c; $\frac{1}{4}$ oz. 75c; oz. \$2.50.

Superba Choice Mixed—Perennial. Pkt. 10c; oz. 75c.

GODETIA

Choice Mixed—Pkt. 10c; $\frac{1}{4}$ oz. 20c.

GOURDS

Ornamental—Mixed. Pkt. 5c; oz. 25c.

GYPSOPHILA (Baby's Breath)

Grandiflora White—Paris Market. A. Pkt. 5c; oz. 20c; lb. \$1.50.

Paniculata—Single White. P. Pkt. 10c; $\frac{1}{4}$ oz. 15c.

HOLLYHOCK

Imperator—Double fringed flowers resembling a huge crested Begonia. Charming color combinations of Salmon and Pastel shades. Pkt. 25c; $\frac{1}{4}$ oz. 60c; oz. \$1.75.

Chater's Double—Blood Red, Maroon, Newport Pink, Rose, Salmon Rose, White and Yellow. Pkt. 10c; oz. \$1.25.

Chater's Double Mixed—Pkt. 10c; oz. \$1.00.

KOCHIA

Mexican Fire Bush—Pkt. 5c; oz. 25c.

LANTANA

Mixed Colors—Half hardy perennial. Pkt. 10c; 1/4 oz. 30c.

LINUM (Flax)

Perrene—Bright Blue flowers. P. Pkt. 10c.

Annual Scarlet Flax. Pkt. 5c.

LOBELIA

Bedding Queen—Blue, White Eye. Pkt. 10c; 1/4 oz. 60c.

Crystal Palace Compacta—Dark Blue. Pkt. 10c; 1/8 oz. 50c.

Hamburgia—Sky Blue trailing. Pkt. 10c; 1/8 oz. 40c.

Speciosa—Dark Blue, tall. Pkt. 10c; 1/4 oz. 50c.

Sapphire—Dark Blue trailing. Pkt. 10c; 1/8 oz. 35c.

LUPINS

Annual—Mixed colors. Pkt. 5c; oz. 25c.

Polyphyllus—Mixed colors. P. Pkt. 10c; oz. \$1.00.

MARIGOLD

Guinea Gold—Reselected seed. Pkt. 10c; 1/4 oz. 45c; oz. \$1.50.

Monarch Dwarf French Strain Mixed—Tight double flowers in color combinations of Orange, Bronze, Yellow and Mahogany. Pkt. 10c; 1/4 oz. 20c.

Tall African—Orange Prince. Pkt. 5c; 1/4 oz. 30c.

Tall African—Lemon Queen. Pkt. 5c; 1/4 oz. 30c.

Tall African—Mixed. Pkt. 5c; 1/4 oz. 25c.

Tall French Double Mixed—Pkt. 5c; 1/4 oz. 20c.

Dwarf French Mixed—Pkt. 5c; 1/4 oz. 20c.

Legion of Honor—Pkt. 5c; 1/4 oz. 25c.

Tagates—Signate Pumila. 8 inch, covered with small flowers. Ideal border plant. Pkt. 10c; 1/4 oz. 25c.

MIGNONETTE

Machet, Sweet Scented—Pkt. 5c; 1/4 oz. 25c; oz. 75c.

New York Market—Select florist's strain. Pkt. 10c; 1/4 oz. 45c; oz. \$1.50.

Mixed Large Flowering Sorts—Pkt. 5c; 1/4 oz. 15c; oz. 35c.

MORNING GLORY

Rose Marie—Semi-double Rose. Pkt. 25c; 1/4 oz. 50c.

Setosa—Brazilian Morning Glory, Red. Pkt. 10c; 1/4 oz. 15c; oz. 50c.

Heavenly Blue—Immense flowers, Sky Blue. Pkt. 10c; 1/4 oz. 25c.

Imperial Japanese—Giant flowering. Pkt. 10c; oz. 25c.

Mixed—Early flowering. Pkt. 5c; oz. 15c.

LABELS

POT LABELS—PAINTED

1000 in a Carton

| | | |
|---------------------|-----|--------|
| | 100 | 1000 |
| 4 x 5/8 inches..... | 35c | \$2.25 |
| 5 x 5/8 inches..... | 40c | 2.75 |
| 6 x 5/8 inches..... | 50c | 3.00 |

GARDEN LABELS—PAINTED

250 in a Carton

| | | |
|--------------------|-----|------|
| | 100 | 1000 |
| 8 x 1 inches | 75c | 5.50 |
| 10 x 1 inches..... | 90c | 6.50 |

TREE LABELS—COPPER WIRED

| | | |
|-------------------------|-----|------|
| | 100 | 1000 |
| 3 1/2 x 5/8 inches..... | 50c | 3.00 |

We carry the best quality labels, smooth, strong and neat.

FOR BIGGER, BETTER LEGUME CROPS



Garden NITRAGEN for Peas, Beans, Sweet Peas and Lupines can be used on any amount of seed, up to 8 pounds.

Price 25c.

When Ordering Always Specify Name of Seed

Alfalfa, All Clovers

| | |
|-----------------------|--------|
| 1/2 bushel, each..... | \$.35 |
| 1 bushel, each..... | .60 |

Soy Beans, Cow Peas, Lima Beans

| | |
|----------------------|--------|
| 1 bushel, each..... | \$.35 |
| 2 bushels, each..... | .60 |

Vetch, Austrian Peas, Canadian Peas, Beans

| | |
|-----------------------|--------|
| 1/2 bushel, each..... | \$.30 |
| 1 bushel, each..... | .45 |

Always Fresh—High Count—Moist Soil Culture—Approved—Easy to Apply—Dependable

MYOSOTIS

Palustris Blue—Rich Indigo-blue flowers. The finest and most effective Dark Blue variety; 9 inches. Pkt. 10c; $\frac{1}{4}$ oz. 75c.

Ruth Fisher—Large flowering Light Blue, best for pot culture and bedding. Pkt. 25c; $\frac{1}{8}$ oz. \$1.50.

NASTURTIUM

Golden Gleam—Sweet scented Double Yellow. Pkt. 10c; oz. 30c.

Scarlet Gleam—Sweet scented Double Scarlet. New this year. Pkt. 25c; $\frac{1}{4}$ oz. 50c.

Double Gleam Hybrids Mixed—Mixture of sweet scented doubles. Pkt. 10c; oz. 50c.

Tall Growing—Finest mixed. Pkt. 5c; oz. 15c.

Dwarf Growing—Mixed named varieties. Pkt. 5c; oz. 15c.

NICOTIANA (Flowering Tobacco)

Affinis—A. Sweet scented, Pure White. Pkt. 10c.

Sylvestris—Pure White drooping flowers. A. 4 feet. Pkt. 10c.

Sanderae—Hybrids mixed. Pkt. 10c.

GIANT PANSIES

Steele's "400" Mixed—Giant in size, form, color and substance. Pkt. 25c; $\frac{1}{4}$ oz. \$2.00; oz. \$8.00.

Steele's Miracle Mixed—Finest types of our strains, latest novelties. Pkt. 25c; $\frac{1}{4}$ oz. \$2.00; oz. \$7.00.

Steele's Greenhouse Special Mixed—Fine market strain. Pkt. 25c; $\frac{1}{4}$ oz. \$1.50; oz. \$5.00.

Bofferding's Super Select Mixture—Pkt. 25c; $\frac{1}{4}$ oz. \$1.75; oz. \$6.00.

Improved Swiss Giant—The flowers are flat, of immense size and the mixture is outstanding, very attractive colors, mostly large blotched. Pkt. 25c; $\frac{1}{4}$ oz. \$1.50; oz. \$5.00.

Pure Yellow, Snow White and Lord Beaconsfield—Pkt. 10c; $\frac{1}{4}$ oz. 60c; oz. \$2.00.

PETUNIAS

Dwarf Single Bedding

Celestial Rose—Improved Rose of Heaven. Pkt. 25c; $\frac{1}{8}$ oz. 50c.

Gloria—Golden Rose. Pkt. 10c; $\frac{1}{8}$ oz. 40c.

Heavenly Blue—Lilac Blue. Pkt. 25c; $\frac{1}{8}$ oz. 80c.

Inimitable—Striped and blotched. Pkt. 10c; $\frac{1}{8}$ oz. 30c.

Pink Gem—6 inches high. Plants covered with pink blossoms. Pkt. 25c; $\frac{1}{8}$ oz. 60c.

Rose Gem—6 inches high. Plant compact covered with deep rich rose colored blooms, some measuring 2 inches across. Pkt. 25c; 1000 seeds 75c.

Rose of Heaven—Rose Pink. Pkt. 10c; $\frac{1}{8}$ oz. 40c.

Rose of Heaven—Improved strain. Pkt. 35c; $\frac{1}{8}$ oz. 70c.

Rosy Morn—Pink with white throat. Pkt. 10c; $\frac{1}{8}$ oz. 40c.

Rosy Morn—Improved. Pkt. 35c; $\frac{1}{8}$ oz. \$1.00.

Violacea—Violet Purple. Pkt. 10c; $\frac{1}{8}$ oz. 40c.

Snowball—Pure White. Pkt. 10c; $\frac{1}{8}$ oz. 30c.

Norma—Dark Blue with White Star. Pkt. 25c; $\frac{1}{4}$ oz. \$1.00.

Nana Compacta Mixed—Our own mixture. Pkt. 10c; $\frac{1}{8}$ oz. 50c.

Large Flowering Single

Lace Veil—Pure White. Dwarf. Fringed. Pkt. 50c; 1000 seeds \$1.00.

Theodosia—Rose Pink, Yellow Throat. Pkt. 25c; 1000 seeds 75c.

Ruffled Monsters—Choice mixture of ruffled varieties. Pkt. 50c.

Dwarf Giants of California—Choice mixed. Superb strain of dwarf single petunias with giant ruffled flowers with extra large veined throats. Pkt. 50c; 1000 seeds \$1.00.

Double

All Double "Victorious" Giant Fringed—Nearly 100% double flowers. Wide range of fine colors. Pkt. 50c; 1000 seeds \$2.00.

California Double Fringed—Extra fine double flowers. Pkt. 50c; 1000 seeds \$2.00.

Balcony

Balcony—Blue, Crimson, Rose, White and mixed. Pkt. 10c; $\frac{1}{8}$ oz. 75c.

Star of California—Violet and Crimson with White Star. Pkt. 25c; $\frac{1}{8}$ oz. 80c.

Black Prince—Deep Velvety Red. Pkt. 35c; $\frac{1}{8}$ oz. \$1.00.

Hybrida—Mixed all colors, 1 $\frac{1}{2}$ feet high. Pkt. 5c; $\frac{1}{8}$ oz. 25c.



Ramona Strain Mixed

PHLOX

Drummondii Gigantea Art Shades—9 inches tall. Annual. Flowers measure from 1 inch to 1½ inches across. No harsh colors. 1935 Award of Merit. Pkt. 35c; ¼ oz. 75c.

Drummonds—Grandiflora, mixed. Pkt. 10c; ¼ oz. 30c.

Drummonds—Dwarf mixed colors. Pkt. 10c; ¼ oz. 50c.

PLATYCODON

Mariesi (Japanese Bell Flower)—Large open bell-shaped, Violet and Blue. Pkt. 10c.

POPPIES

Paeony Flowered—Double mixed. Pkt. 5c; oz. 30c.

American Legion, Flanders Poppy—Orange Scarlet, single. Pkt. 5c; oz. 25c.

Shirley—Large flowering mixed. Pkt. 5c; oz. 35c.

Shirley—Single Blue Shades, Grey Blue. Pkt. 10c; oz. 75c.

Shirley—Double Ryburgh Hybrids mixed. Pkt. 10c; oz. 60c.

Oriental Hybrids—Mixed. Pkt. 10c; ¼ oz. 40c; oz. \$1.25.

Oriental—Scarlet. Pkt. 10c; ¼ oz. 30c.

Iceland—Mixed. Pkt. 10c; ¼ oz. 40c; oz. \$1.00.

Iceland—Bright Yellow. Pkt. 10c; ¼ oz. 30c.

**PORTULACA
(Moss Rose)**

Beautiful race of dwarf plants for rock work or dry sunny locations, bearing glossy cup-shaped blossoms in brilliant colors. Annual.

Double Mixed—Saved from the finest flowers only, and will produce a large percentage of doubles. Pkt. 10c; ¼ oz. 50c.

Single Mixed—Large flowers. Pkt. 5c; ¼ oz. 25c.

PYRETHRUM—PAINTED DAISY

Hybridum, Single Mixed—Hardy perennial, bearing large Daisy-like flowers, ranging in color from White to Deep Red, with Bright Yellow centers; blooms in May and June, and again in the fall; and is one of the most graceful and long-lasting cut flowers. Pkt. 10c; ¼ oz. 50c.

Hybridum Double—Seed saved from the finest double flowers; only a small percentage can be expected to come double the first year; mixed colors; 1½ feet. Pkt. 25c; ⅛ oz. 50c.

SALPIGLOSSIS

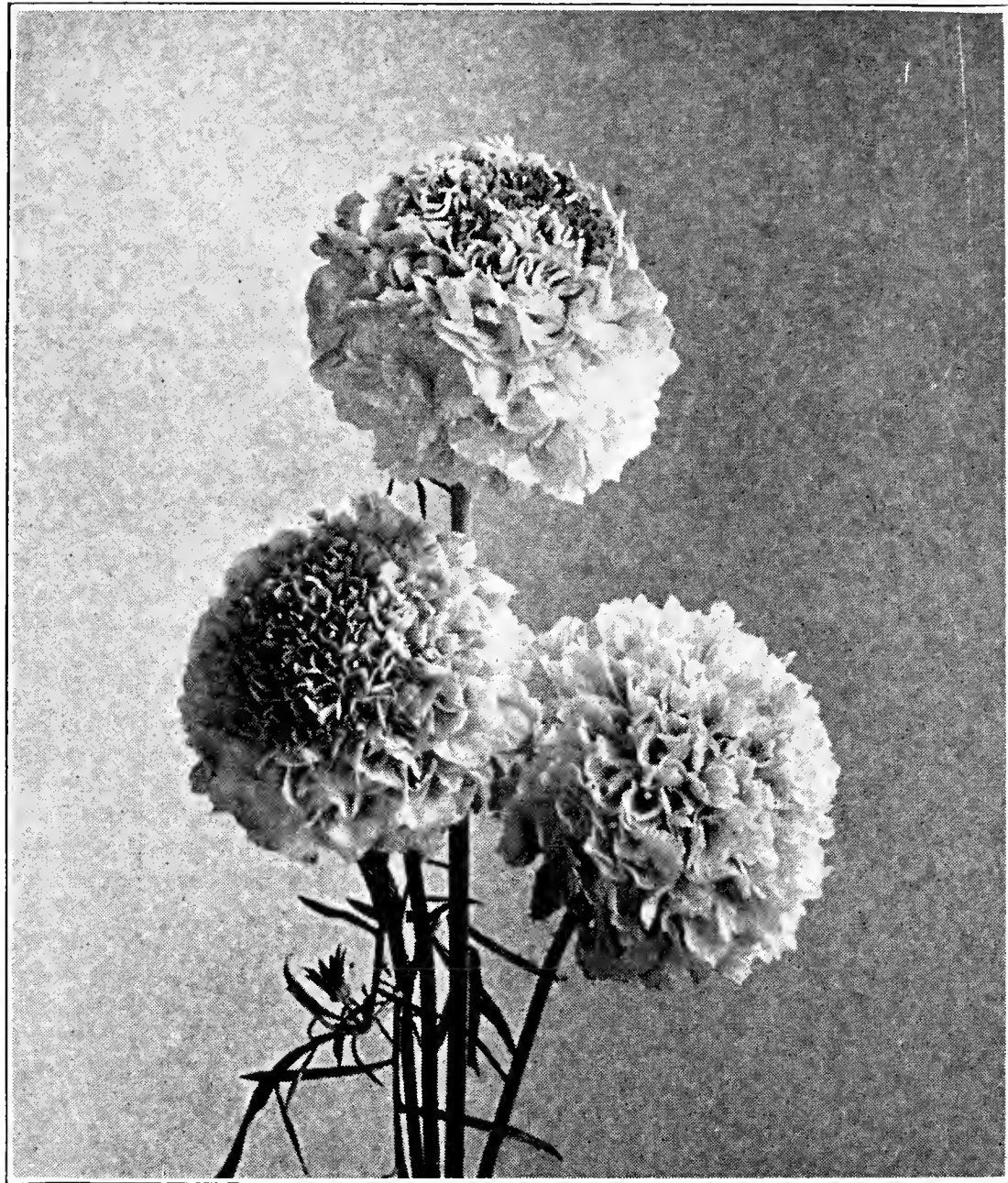
Emperor—Mixed. Pkt. 10c; ¼ oz. 40c.

SALVIA—SCARLET SAGE

Harbinger—Early flowering Scarlet. Pkt. 10c; ¼ oz. 75c; oz. \$2.50.

Bonfire (Clara Bedman)—Pkt. 10c; ¼ oz. 50c; oz. \$1.75.

HIGH GRADE SWEET PEAS ARE ONE OF OUR SPECIALTIES



Scabiosa (Mourning Bride)

SCABIOSA

Desirable, easily-grown, hardy annual. 2½ feet high; excellent cut flower. Also suitable for bedding.

Improved double large flowering.

Ageratum Blue—Highly recommended.

Fire King—Fiery Scarlet.

Snowball—Pure White.

Black Prince—Maroon Red with White
Rose—Rich Rose. [Anthers.

Flesh Pink.

Sulphur Yellow.

Mixed, all colors.

Pkt. 5c; ¼ oz. 20c; oz. 60c.

Blue Cockade—New. Blue with White
Anthers. Pkt. 25c.

House's Hybrids—P. Colors from Dark
Blue to Lavender. Pkt. 25c.

SHASTA DAISY

New Giant Double White—Fully double and
semi-double sorts. Pkt. 25c.

Alaska—Pure White. Pkt. 10c; ¼ oz. 60c.

Westralia—Blooms early. Pkt. 10c; ¼ oz.
75c.

SNAPDRAGON

Afterglow—Deep Golden Orange. Tr. Pkt.
\$1.00.

Cheviot Maid Supreme—Early Rose Pink.
Tr. Pkt. \$1.00.

Ceylon Court—Yellow. Tr. Pkt. \$1.00.

Jenny Schneider—Soft Pink. Tr. Pkt.
\$1.00.

New Cincinnati—Finest Light Rose. Tr.
Pkt. \$1.00.

Roman Gold—Deep Yellow with Copper
and Pink suffusion. Tr. Pkt. \$1.00.

White Rock—Standard White. Pkt. 25c;
Tr. Pkt. \$1.00.

Tall Mixed—For outdoor culture. Pkt.
10c; ¼ oz. 50c.

Semi-dwarf—Mixed, for outdoor culture.
Pkt. 10c; ¼ oz. 40c.

University of California—Rust proof strain.
Mixed colors. Very fine. Pkt. 25c.

STOCKS

Large Flowering—10 weeks. Mixed colors.
Pkt. 10c; ¼ oz. 60c.

SUN FLOWERS

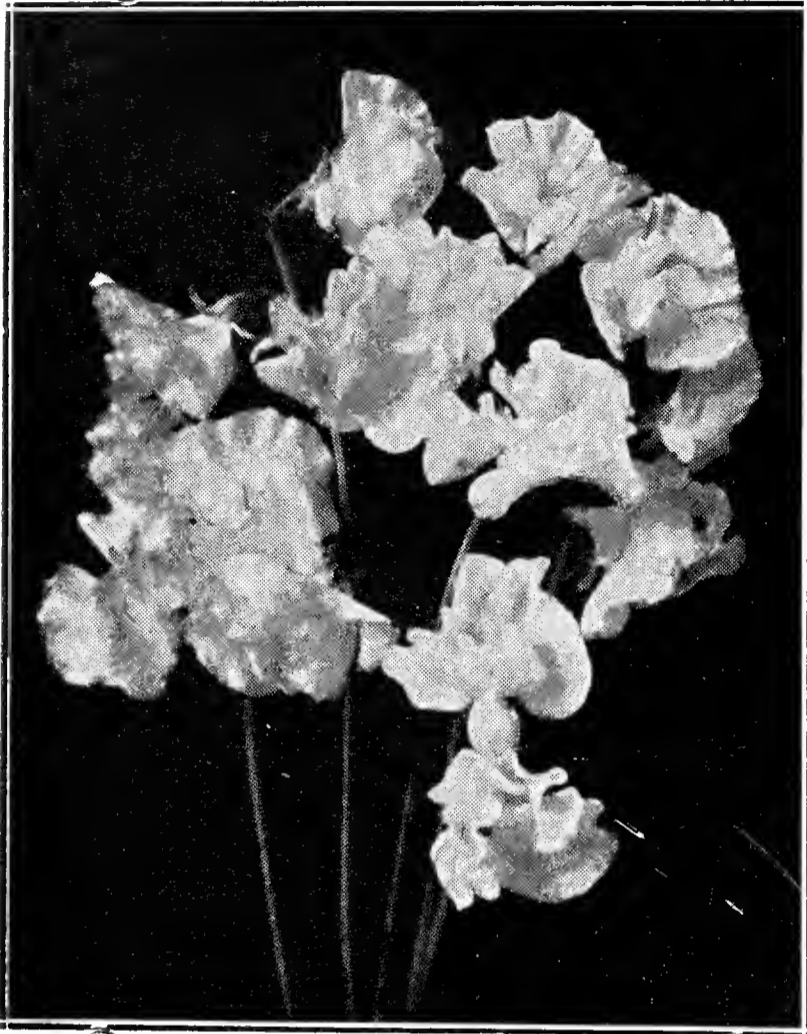
"True Red"—Pkt. 5c; oz. 35c.

Stella—Improved miniature, Golden Yel-
low with Black disc. Pkt. 5c; ¼ oz. 25c.

Double Chrysanthemum Flowered—Yel-
low. Pkt. 5c; oz. 40c.

SWEET PEAS

True to name, thoroughly rogued and hand picked new crop seed.



Early Flowering Spencer

SPENCER SUMMER FLOWERING

- Ascot—Bright Pink.
- Austin Frederick—Giant flowered Lavender.
- Avalanche—Glistening White.
- The Cardinal—Poppy Scarlet.
- Dora—Rosy Cerise, Cream Wings.
- Fortune—Rich Dark Blue.
- Gleneagles—Very large Lavender.
- Hawmark Salmon Pink.
- Hercules—Rosy Pink.
- Huntsman—Bright Scarlet.
- Illuminator—Salmon Orange.
- Pinkie—Large Rose Pink.
- Prince of Orange—Deep Orange.
- Warrior—Maroon.
- Powerscourt—Lilac Lavender.
- Welcome—Dazzling Scarlet.
- Extra Choice Mixed.
- All of the above—Pkt. 10c; oz. 20c; ¼ lb. 60c; lb. \$2.00.

Eileen—Begonia Rose Shaded Salmon. Oz. 60c; ¼ lb. \$2.00.

Harmony—Lavender, slightly Shaded Rose. Oz. 35c; ¼ lb. \$1.25.

Improved Ball's Blue—Bright Mid-Blue. Oz. 40c; ¼ lb. \$1.40.

Jeanne Mamitsch—Long stemmed Rose. Oz. 35c; ¼ lb. \$1.25.

Laddie—Bright Rose, extra large. Oz. 40c; ¼ lb. \$1.40.

Mrs. Herbert Hoover—Best Blue. Oz. 35c; ¼ lb. \$1.25.

Snowstorm—Improved White. White-seeded. Oz. 35c; ¼ lb. \$1.25.

Sparkle—Vivid Scarlet. Oz. 35c; ¼ lb. \$1.25.

Sunray—Light Cerise. Long stems. Oz. 40c; ¼ lb. \$1.40.

Valencia—Desirable Orange. Oz. 50c; ¼ lb. \$1.50.

Vogue—Lavender with Blue Shading. Oz. 40c; ¼ lb. \$1.40.

Zvolanek's Rose—Giant Rose Pink. Oz. 35c; ¼ lb. \$1.25.

White Harmony—Pure White. Black-seeded. Oz. 40c; ¼ lb. \$1.40.

Choice Mixed—From above varieties. Pkt. 15c; oz. 40c; ¼ lb. \$1.35. Separate colors, Pkt. 15c.

SWEET WILLIAM

- Pink Beauty—Single. Pkt. 10c.
- Blood Red—Pkt. 10c.
- All Colors—Mixed. Pkt. 10c; ¼ oz. 30c.

TRITOMA (Red Hot Poker)

- New Hybrids—Pkt. 15c; ¼ oz. 35c.

VERBENA

- Grandiflora Hybrids—Robust, compact, large and free flowering. New. Pkt. 10c; ¼ oz. 50c; oz. \$1.75.
- Luminosa—Luminous Flame Pink shading to Salmon. Pkt. 10c; ¼ oz. 50c.

VIOLA CORNUTA

- Apricot—Apricot Yellow tinged with Orange. Pkt. 25c; ⅛ oz. \$1.00.
- Jersey Gem—Deep Violet Blue. Pkt. 25c; ⅛ oz. \$2.00.
- Mixed—All colors. Pkt. 10c; ⅛ oz. 35c.

For Winter Bouquets the Everlasting Helichrysums are splendid

ZINNIAS

GIANT DOUBLE DAHLIA
FLOWERED

Crimson Monarch—Largest and best of the Red shades.

Dream—A fine Deep Lavender, turning to Purple.

Exquisite—Color, Light Rose with center a deep Rose.

Giant Attraction—A distinct shade of Brick Red.

Golden State—A very rich Orange Yellow.

Lemon Beauty—Light Lemon Yellow.

Old Rose—Real Old Rose shade.

Purple Prince—Fine Deep Purple.

Scarlet Flame—Large beautiful Bright Scarlet.

Violet.—Pkt. 10c; $\frac{1}{4}$ oz. 35c; oz. \$1.25.

Choicest Mixed Colors—Pkt. 10c; oz. \$1.25.

ZINNIA ELEGANS "LILLIPUT"

Scarlet Gem—Bright Red.

Rosebud—Rose Pink.

Choicest Mixed Colors.

Pkt. 10c; oz. 60c; $\frac{1}{4}$ lb. \$2.25.

CALIFORNIA GIANTS OR ROBUSTA

Enchantress—Light Rose, deep center.

Miss Wilmott—Soft Pink.

Rose Queen—Striking Bright Rose.

Orange Queen—Golden Yellow.

Orange King—Burnt Orange.

Cerise Queen.

Scarlet Gem—Glowing Scarlet.

Purity—Beautiful White.

Purple.

Choicest Mixed Colors.

Price—Pkt. 10c; $\frac{1}{4}$ oz. 30c; oz. \$1.00.

Desert Gold—A variety containing the light and deep hues of gold. Pkt. 25c.

Tom Thumb Mixture—Dwarfest Zinnia known. Ideal border and rock garden plant. Pkt. 10c; $\frac{1}{4}$ oz. 30c; oz. \$1.00.

Sanvitalia (Creeping Zinnia) Procumbens—Double yellow, low growing. Pkt. 10c; $\frac{1}{4}$ oz. 35c.



SEED DISINFECTANTS

SEMESAN

Semesan can be applied in either dry or liquid form to prevent or control effectively a most diversified variety of disease borne by seeds, seed-pieces, plants, and soils. 2 oz. 50c; lb. 2.50; 5 lbs \$11.75.

SEMESAN BEL—New Improved

An excellent dust or water-mixture disinfectant for controlling diseases and increasing yields of seed potatoes and other tubers. 4 oz. 50c; lb. \$1.65; 5 lbs. \$7.00.

SEMESAN JR.—New Improved

Semesan Jr. provides an unusually effective but inexpensive dust treatment for the prevention and control of field and sweet corn seed diseases. 4 oz. 35c; lb. \$1.00; 5 lbs. \$4.75.

CERESAN—New Improved

Effectively controls smut diseases of wheat, barley, and oats. Used on seed grain before sowing; requires only 2 to 3 ounces to the bushel. Lb. 75c; 5 lbs. \$3.00.

Above seed disinfectants are now mailable.

RUBBER BANDS

All sizes for bunching, pure rubber, best quality. Lb. 70c; 5 lbs. \$3.25, postpaid. Write for prices if larger quantities are wanted.

STIM-U-PLANT

The Magic Fertilizer In Tablet Form
GLORIOUS GARDENS
PERFECT HOUSE PLANTS

STIM-U-PLANT is the most complete plant food in tablet form. Guaranteed analysis 11 per cent Nitrogen, 12 per cent Phosphoric Acid, 15 per cent Potash—all of which elements are water-soluble and immediately available to the feeding root-hairs of the plant.

EASY TO USE

Simply insert tablets in soil about 3 inches from stem of plant, or dissolve in water at the rate of four tablets to the gallon and apply as liquid manure. Complete directions with every package.

Order STIM-U-PLANT¹ tablets with your seed and plant order. Price: 30 tablets 25c; 100 tablets 75c; 1,000 tablets \$3.50.

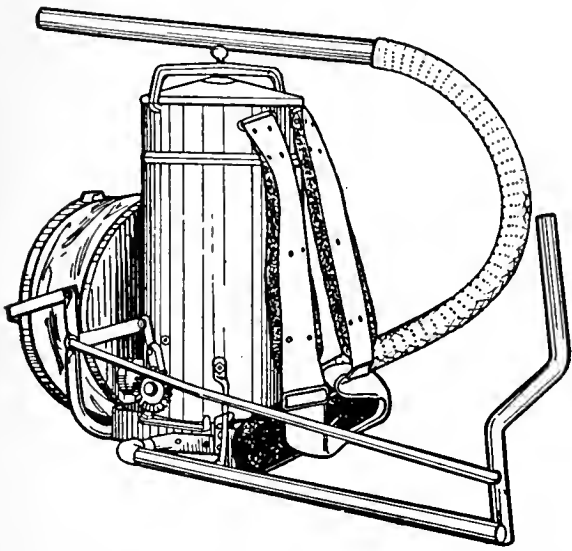
FIELD SEEDS AND SEED GRAINS

LATEST PRICE LIST SENT ON REQUEST. At the time this catalog goes to press it is impossible to fix prices as market changes. Always glad to send samples and quote firm prices on your requirements.

Our Policy—Long experience has shown that it is necessary to have only one quality of seed. There are many varieties. Our policy is to stock only the best varieties and qualities. This simplifies the business and enables us to make close prices. The price for the same quality and quantity, at the same time, is alike to all. Value is what we give. Lowest price consistent with our standard quality. Confidence is the basis of all business and a satisfied customer is our best asset.

All quotations are for BOFFERDING STANDARD QUALITY. Judge us by the goods we sell.

AMERICAN BEAUTY DUSTER



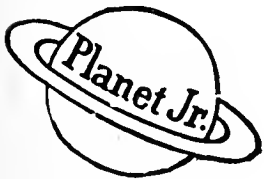
AMERICAN BEAUTY DUSTER

Net Weight—15 pounds

Shipping Weight—18 pounds

PRICE—\$20.00

Carried and operated by one man. The Duster is equipped with shoulder straps and backrest heavily padded, insuring the maximum of comfort. The bellows is operated by the right hand, and delivers the largest cloud of any one man duster. The spreader, when attached to the end, deflects the dust upward. In this way the lower sides of leaves on low growing plants are easily reached without stooping. By means of the rubber hose and tubing it is possible to dust trees up to twenty-five feet. The bellows places the cloud under constant control where you want it and when you want it. No material is wasted.



PLANET JR.

WHEEL HOES, CULTIVATORS AND SEEDERS



Planet Jr. tools save time, lighten labor and get bigger, better crops at less cost. Designed by a practical farmer and manufacturer with 40 years experience. Lasts a life time. Fully guaranteed. 72 Page Planet Jr. Catalog Free. Send for copy today.

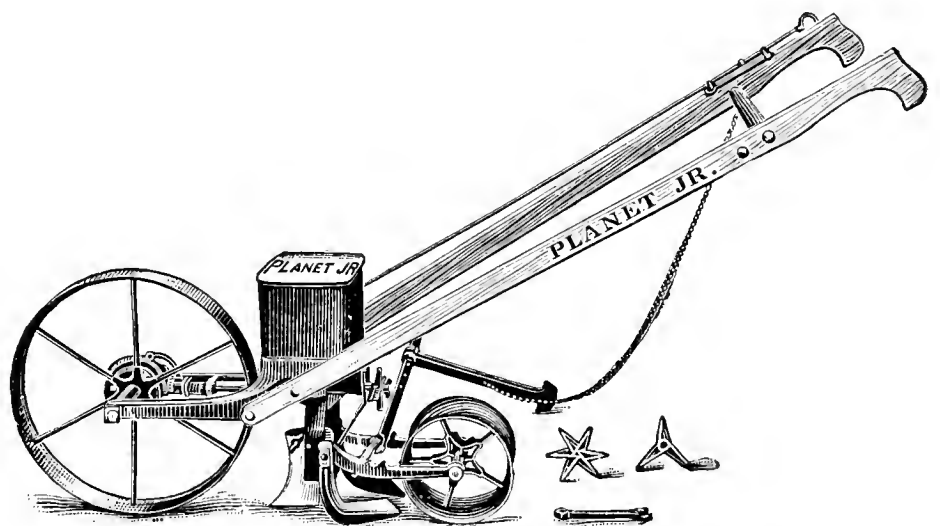
No. 4 Planet Jr.—Combined Hill and Drill Seeder, Wheel Hoe Cultivator and Plow.

Price, complete \$16.75.

No. 4D—As a seeder only, \$13.50.

No. 300. Planet Jr. Drill Seeder—New style plate seeder. Price \$18.75

Iron King No. 4—Steel frame seeder, equipped with Regular and Special onion plate, removable seed hopper. Specially recommended for sowing onion seed. Price \$16.00.



No. 4 Planet Jr.

No. 12 Planet Jr.—Double and Single Wheel Hoe. Combined price \$10.25.

No. 13 Planet Jr.—Double and Single Wheel Hoe. Price \$7.65.

No. 17 Planet Jr.—Single Wheel Hoe. Equipment: 1 pr. 6 inch hoes, 3 cultivator teeth, 1 large garden plow, double wheel arms. Price \$7.35.

No. 18 Planet Jr.—Single Wheel Hoe. Equipment: 1 pr. 6 inch hoes, 3 steel cultivator teeth, double wheel arms. Price \$5.50.

PRICES SUBJECT TO CHANGE WITHOUT NOTICE

INSECTICIDES AND FUNGICIDES



New Ever Green Spray—Kills garden insects the New Simple way. No spreader required. Retains its strength. Kills both chewing and sucking insects. Non-poisonous when used as directed. 1 oz. bottle 35c; 6 oz. can \$1.00; 16 oz. can \$2.00; 1 gallon \$12.00.

Acme All Around Spray—Containing Nicotine Sulphate 40 per cent, Arsenate of Lead and Bordeaux Mixture. For the control of fungus diseases, chewing and sucking insects. $\frac{1}{4}$ lb. 25c; 1 lb. 50c.

Arsenate of Lead—It kills the bugs, sticks to the leaves and does not burn or injure the foliage. Lb. 30c; 4 lb. bag 75c.

Bordeaux Mixture—Powder. Can be used dry or as a spray. For spray use 6 to 7 lbs. to 50 gallons of water. Lb. 25c; 4 lbs. 70c.

Calcium Arsenate—Used dry or spray, the cheapest arsenical insecticide. Lb. 20c; 4 lbs. 60c.

Dusting Sulphur—For mildew, black spot on roses, and other plant diseases. 3 lbs. 35c.

Above insecticides are now available.

Acme Lime Sulphur—Acme Lime Sulphur is a standard 330 Baume Lime and sulphur solution, converted into dry powder form, having all the effectiveness without the bother in handling. 1 lb. cartons 35c; 5 lb. cartons \$1.25; 10 lbs. \$2.25.

Paris Green—Always uniform, fluffy, and free running, insuring maximum results. Write for prices.

Spray Soap "Fish Oil"—To protect trees and shrubs from parasitic sucking insects. Lb. 30c; 5 lb. cartons \$1.25.

Black Leaf "40"—A liquid insecticide, kills Aphis on peas, radish and other plants. For all sucking insects. 1 oz. 35c; 5 oz. \$1.00; 1 lb. \$2.25; 2 lbs. \$3.25; 5 lbs. \$5.85; 10 lbs. \$9.85.

Nico Fume Liquid—Free nicotine liquid. 1 lb. \$2.25; 4 lbs. \$5.85; 8 lbs. \$10.00.

Nico-Fume Powder Pressure Fumigator—Is now burned under pressure in the can in which it is packed. $\frac{1}{2}$ lb. can 45c; dozen \$4.20; 1 lb. can 75c; dozen \$7.00.

Cyanogas "G"—Fumigant. The most effective greenhouse fumigation material for killing Mealy Bug, Aphis, White Fly, Soft Scale, Thrips and Greenhouse Leaf Tyer. Price 5 lb. tins, \$3.00; 25 lbs. \$10.00.

Kolodust—An improved fungicide that sticks. Strictly a fungicide; to be used in the prevention of outbreaks of Lettuce Blight in greenhouses, Apple Scab, Brown Rot and many other fungus diseases by the Dusting method. Lb. 25c; 10 lbs. \$1.50.

Ask for prices in larger quantities.

MELO-GROND — THE BALANCED FERTILIZER



80% Pulverized Sheep Manure and 20% Sun-Cured Ground Bone Meal. No better combination has yet been found than this highly concentrated, odorless, NATURAL plant food.

For better lawns and gardens, flowers and shrubs, use MELO-GROND. It is free from impurities. Never burns or damages plant life.

A descriptive circular will be furnished on request.

100 lb. bags — \$2.75

50 lb. bags — 1.75

Special prices in ten and twenty bag lots to large users.

DARLING'S SPECIAL LAWN AND GARDEN FERTILIZER



PRICES

100 lb. Bags....\$4.00
50 lb. Bags.... 2.25
25 lb. Bags.... 1.25

For rich green velvety lawns, beautiful flowers, luxuriant shrubs and early succulent vegetables use a perfectly balanced, concentrated plant food. These classes of plants need large amounts of nitrogen (Ammonia) and Potash. Nitrogen gives the rich color in stems and leaves together with vigorous growth, while the Potash helps develop the roots and stalks and makes the plants more resistant to diseases.

Darling's Special Lawn and Garden Fertilizer has no offensive odor, is easy to apply and results are quickly noticed. A hundred pound bag contains as much food as a whole wagon load of stable manure. Its continued systematic use will materially aid in eradicating weeds from lawns.

Complete instructions for application are given with each bag.

CERTIFIED STRAWBERRY PLANTS

Strong Field Grown Plants, Shipped from Early Spring up to May 15th

Mastodon (Everbearing)—Is one of the largest varieties, attractive, rich color, the best all purpose large strawberry. 25 for 50c; 100 for \$1.50; 1000 for \$12.00.

Progressive (Everbearing)—A good medium-sized berry. The sweetest of the everbearers. 25 for 40c; 100 for \$1.25; 1000 for \$10.00.

Senator Dunlap (June Bearing)—The Dunlap is one of the standard varieties; vigorous grower and withstands considerable dry weather. Berries good sized, beautiful

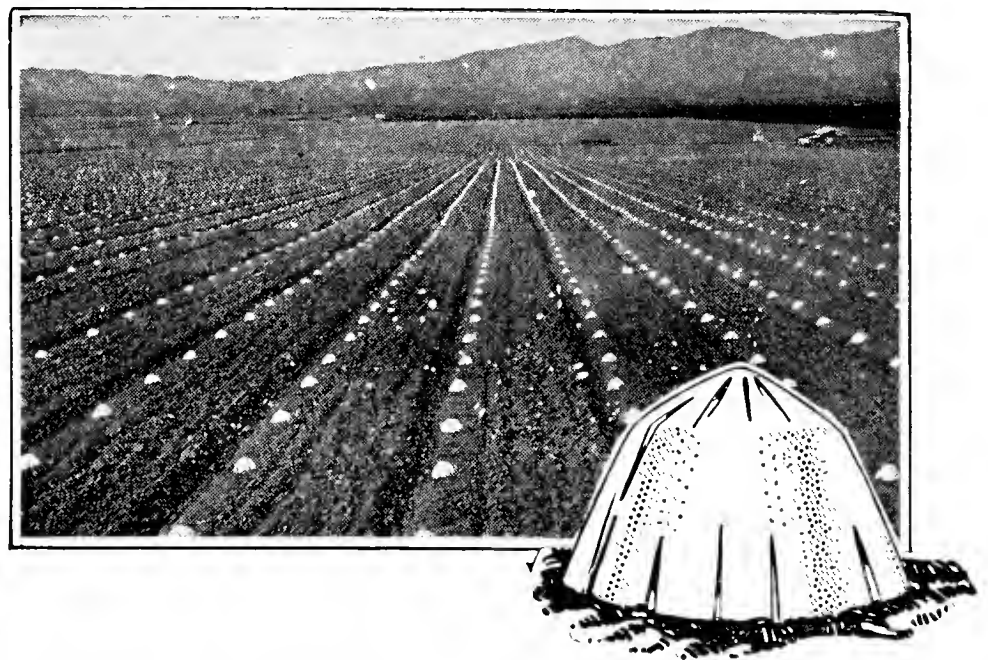
glossy red, very firm. 25 for 25c; 100 for 75c; 1000 for \$5.00.

Premier—One of the earliest strawberries grown—a week to ten days earlier than other varieties. Commands first place for early market. Medium red berry with large green cap and very attractive. Frost resistant and sure cropper. 25 for 30c; 100 for \$1.00; 1000 for \$7.50.

If desired by parcel post, include for packing and postage: 13c for 50; 15c for 100. Subject to plants being available.

Germāco Hotkaps

New Method of
Plant Protection



GERMACO HOTKAPS can make you extra dollars this season. They protect plants from frost, wind, rain, insects and ground crusting. Thus they produce hardier, quicker crops. You get higher prices!

Prices: 1,000 lots, \$9.75; 250 Trial Package, including Garden Setter with Tamper, \$3.65; 100 Home Package, including Garden Setter with Tamper, \$2.40; Germaco Hotkap Steel Setter with Tamper, \$1.50; postage extra.

Weights: 1,000 package HOTKAPS, 26 lbs; 250 package, 9 lbs;
100 package, 5 lbs; Steel Hotkap Setter, 3 lbs.

LARKSPUR



Our double flowering varieties, with their long spikes are excellent for cut flowers. They should be planted in beds, as a background for other small plants. They are easily grown and we know of nothing that will produce a greater show. It requires 15 to 20 days for the seed to germinate and the seed bed must be kept moist. Annual.

BLUE SPIRE—Deep Oxford Blue.

EXQUISITE PINK IMPROVED—Soft Pink.

EXQUISITE ROSE—Rich Deep Rose.

LILAC SPIRE—Beautiful Lilac Color.

MISS CALIFORNIA—Deep Pink, Shaded Salmon.

THE EMPRESS IMPROVED—Salmon Rose.

WHITE SPIRE—Pure White.

Separate Colors—Pkt. 15c; $\frac{1}{4}$ oz. 35c; oz. \$1.00.

Mixed Colors—Pkt. 10c; $\frac{1}{4}$ oz. 30c; oz. 75c.