

Historic, archived document

Do not assume content reflects current scientific knowledge, policies, or practices.

From BASS BEGAN COMPANY, Lumberton, Mississippi

The Largest Concerns of Personalities in the World

Grow Your Own Old-Age Pension!



Share the Wealth Program of Nature » »

She is always ready and willing to yield you a Livelihood and a Good Income for Life!

REG. 221, P. O. R.

U. S. POSTAGE

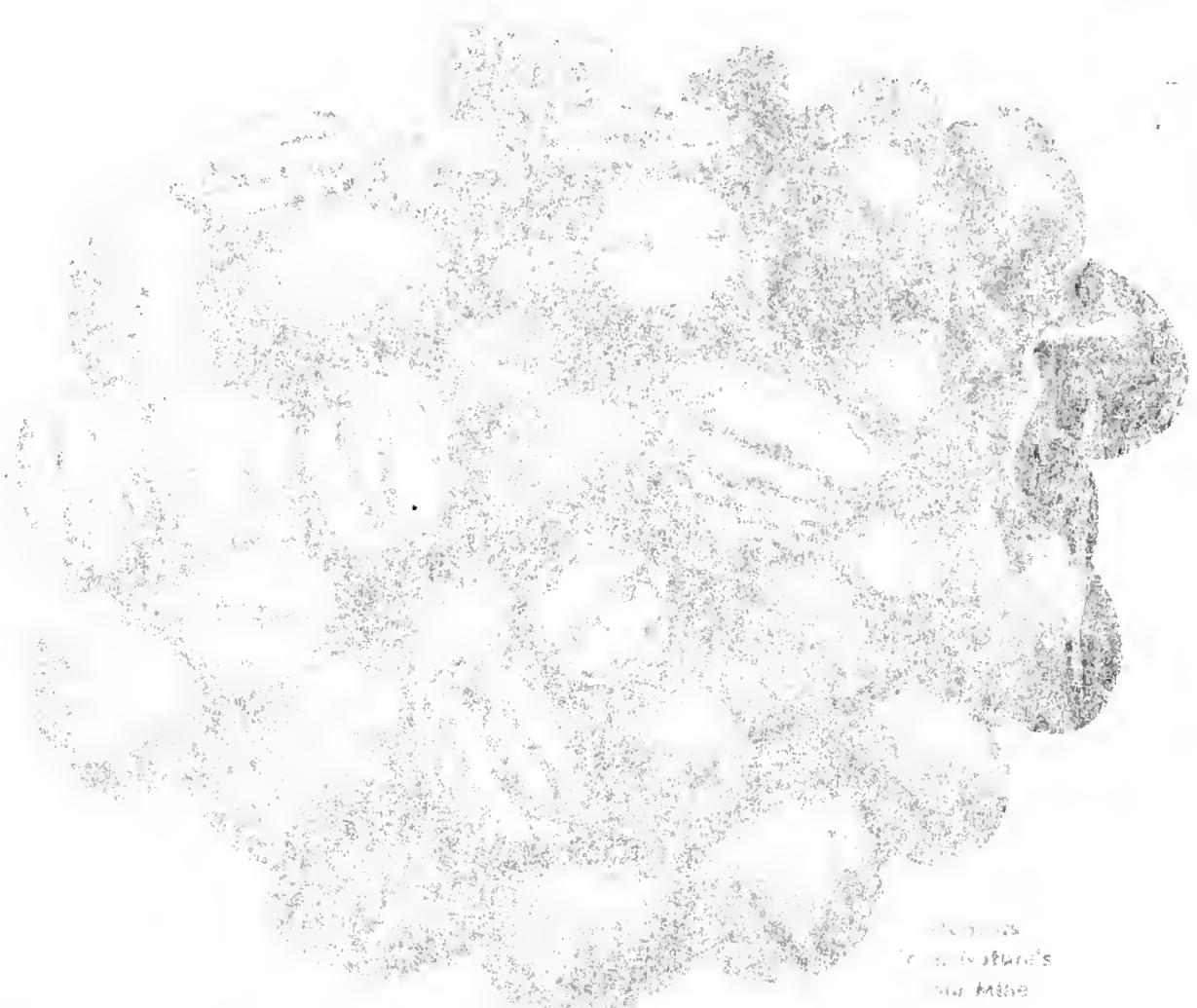
1c Paid

Lumberton, Miss.
Permit No. 1

J.A. [unclear]

1000 [unclear]

*Fruit & Vegetable
Crops & Dairies
Bureau of Plant
U. S. Dept. of Agt.
Washington - D. C.*



...ature's
... Mine

H

Tis
wealth

N.
penden

W.
erosion.
worthle

You
working

P

Pecar
in proport
and have l

How
be entirely

Two or three

Zero Times

... but not

you are also

... do not to ... use

... at ...

During the

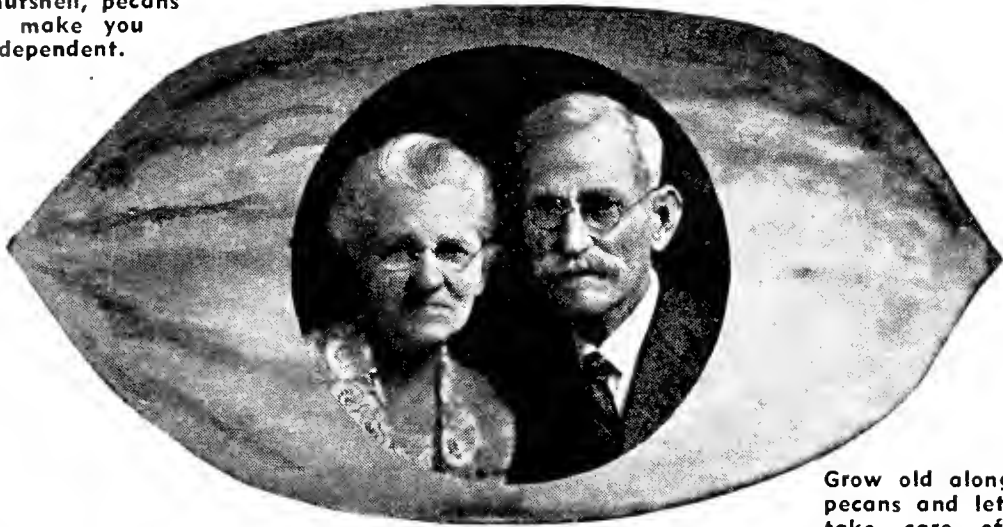
... have held up better,
... growing or bearing

... attention than to
... growing crops!

are break up down

Plant Bass Pecan Trees and Be Independent in Your Old Age.

In a nutshell, pecans
can make you
independent.



Grow old along with
pecans and let them
take care of you.

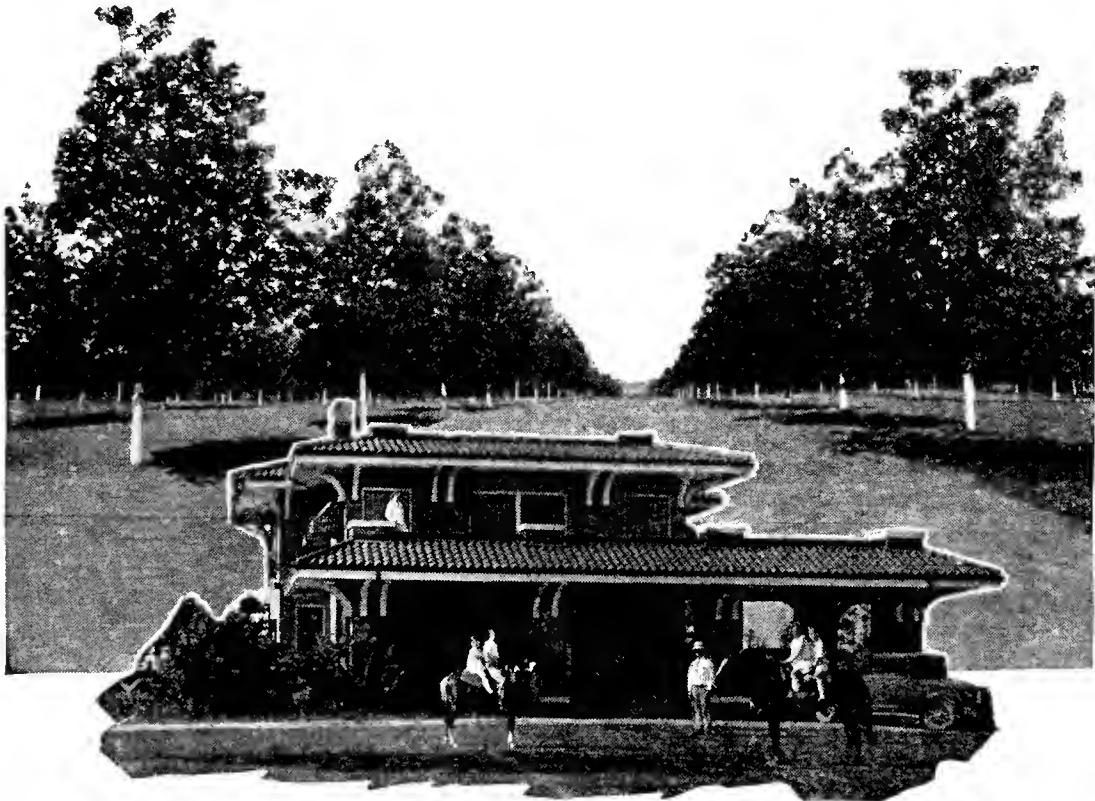
PECANS . . .

An Investment for the Future!

A Steady and Growing Income Assured, and an Old Age Pension

NOTHING is more tragic than to see old people completely dependent upon relatives or charity. How miserable are their lives! You can avoid a similar predicament and also get a great deal out of life as you grow older, living with Nature and having Nature provide for you. Picture yourself in a lovely home amid shady pecan trees and birds, which are attracted by them, living your remaining days in ease, contentment, happiness and prosperity.

By planning now for the future and planting a grove of pecans, you can grow your own Old Age Pension and have the assurance of years of pleasure free from financial cares, and not being dependent upon others.



Pecans built this home and are sending these children to college.

"Thank you so much for the beautiful trees you sent me. They are the best I ever saw."

LYNCHBURG, VA.



A Pecan Grove Can Give You Lifelong Contentment!

THIS PICTURE shows a long lane which has no turning back, for the owners would now never be happy without it—the shade, beauty, birds and prosperity it has brought with a dependable and ever increasing income for life.

1 1 1

In Dallas, there is a so-called "million dollar pecan tree." This tree was a tiny injured sprout in 1866, but taken care of by a veteran and is now the most conspicuous tree in the city, beautifying a fine residential section. It has increased the value of the property so much that the total bids for the land and the tree reached approximately \$1,000,000. Pecan trees are planted on the streets and school grounds of various cities for their beauty and shade. You can have an exquisite estate or homestead with the loveliness of pecan trees. And besides, *those trees will produce a livelihood for you!*

1 1 1

A Living Memorial and a Valuable Legacy to Leave Behind

Most men hope to leave behind wealth. But how much better it is to leave an estate more valuable than gold—that will yield a steady income to one's heirs, to say nothing of a thing of beauty and a living monument that will carry your name, and foresight down through the ages.

NATURE'S TRUST FUND

A PECAN GROVE will send your children, grandchildren and future generations to college. It will provide a dependable income, and not deplete itself. Each year those dividends will be larger for the older the trees, the more they produce, and the greater the value of the estate. Leave as an heirloom, a pecan grove!

"My trees are very pretty and paying dividends. They were planted in January, 1928. I am one more satisfied customer and a booster for Bass pecans." WETUMKA, OKLA.

How to Profit by the Passing Depression

—And Make A Continuous Fine Living Besides

YOU may have some idle land or even farm land which produces hardly enough to pay taxes. It would pay you to plant that land in pecans! The very minute the land is planted in growing trees you will have increased its value. Then the older the trees, the more valuable the land. You could do as we do here at Lumberton, not only grow pecan trees, but crops between the rows, along with fruits and berries, and have live stock grazing among the trees. It would even pay you to buy up cut-over or other idle land and plant it in pecans for resale. Land is cheap now and before values increase you could make considerable money by following our suggestion.

Meanwhile as the land increases in value, due to improved conditions, and also to the growing trees, you could have an additional source of revenue. Ordinarily our trees start bearing the third year. In time, those trees would furnish you with an abundance of nuts, an easy living and independence in old age.

1 1 1

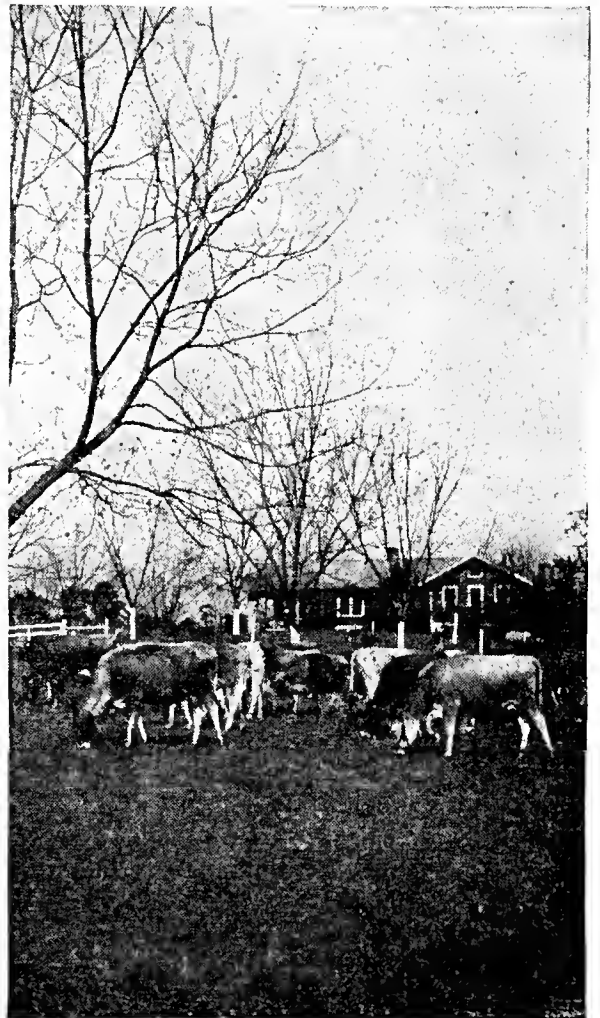
How to Make Two Blades Grow Where One Grew Before

YOU will find a happy combination in pecan orchards and cattle. Livestock can pasture between the rows and thus fertilize the land. Good clover planted will produce good milk and good meat—thus an income from the cows—meanwhile your pecans will be growing just the same.

Peas, beans, clover and other leguminous crops will also enrich the soil. Cotton, corn, sweet potatoes, watermelons and all kinds of truck, as well as strawberries and other fruits may be grown. After the trees are a few years old, cattle, hogs, mules, horses and other livestock, which is the most profitable type of farming, can be handled to advantage.

1 1 1

Perhaps you are a professional or business man, especially in the city, and your hope is to retire some day in a quiet place in the country. Pecans will make it possible.



Cows and pecans mix nicely—to their owner's profit.

"The ten trees we bought from you three years ago are very fine and all bloomed this year and a few bore nuts of fine size. We recommended your trees to our good friend, Dr. and he has a fine grove, too." JACKSON, TENN.



Pecan trees growing in our nursery. Note size and uniformity of our straight healthy stock.

Bass Pecan Trees Are Bred-Up From Known Bearing Parents

YOU would probably not buy an animal unless it had a pedigree. You would not purchase an automobile of an unknown make. When you buy Bass trees you know just what you are getting and are protected in every way. Bass trees bear early and heavily, and compared to others it may be said, *earlier and heavier*. This is due to breeding, the same as in thoroughbred stock. Our trees are actually bred-up from known bearing parent trees. Larger nuts are planted to start with and the young trees are budded or grafted from early and heavy bearing trees. Then like children, they are given constant attention and lots of care as they are growing.

Three Generations of Culture

It takes years of training, cultivation, experiments and experience to produce thrifty pecan trees. The Bass Nursery has behind it two generations, with a third ready to carry on. These trees are a science and a life business with us. For 27 years we have served the south, and trees sold even in our first year are now in great producing groves.

"Would Do Your Eyes Good"

"In 1926 I purchased from you about 40 Stuart pecan trees 2-3 feet and if you should be passing through Folsom, La., in the next month or two I would appreciate it if you would visit my grove and see my trees. They would do your eyes good to see them, as they are really loaded. All our trees are nice and healthy while others there who purchased from other nurseries have lost most of the pecans on account of rust and just fall off the trees." Oma, Miss., September 10, 1935.

"I received the pecan trees. They are the finest trees I have ever seen for the price paid. My neighbors ordered some elsewhere and paid \$1.25 each, but they are just switches compared to mine." LAGRANGE, GA.

You Can Retire Early in Life With Trees Like These

WITH healthy, thrifty trees, bred-up from early and heavy bearing parents, with our experience in selection and inspection, with the matured root systems—all of which roots are dug up—and our proper packing and shipping, we know what our trees can do for you. We know, too, what they have done for others. With such fine trees as we will ship you, you can rest assured of production in possibly the third year, if not before, and a vigorous growth and increasing yield, if the trees are properly cared for.

Then you can depend on a steadily growing income, and, in time, with a grove of these fine trees you will be able to retire, as others have done.



One of our three-year-old trees heavily loaded with blooms!

“If the root is neglected, what springs from it cannot be in good condition.—”
Chinese Proverb.

Healthy, Hardy Trees With Vigorous Root Systems

YOU are definitely assured well-developed roots, good, strong, straight trunks and pedigreed stock.

Thousands of our pecan trees bear even in our Nursery before they are three feet high. This typical Bass bred-up tree (see illustration) growing vigorously in our Nursery has a heavy foliage, a healthy look, and is even bearing nuts. Note the root system—a good hardy tap root with a fine spread of lateral roots. *Furthermore, we do not charge you for the roots, as some do.* Our trees are all measured from the ground up instead of from the tip of the tap root to the top of the tree. Our three-to-four-foot trees, therefore, are often as large as others' "five-to-six-foot trees." You pay us for a smaller sized tree, you see! See reference to pruning, Page 20.

WARNING!

For your sake, beware of the nurseryman who calls at your door with a truckload of pecan trees for sale and offers to plant them for you. Sun and wind quickly dry out roots, and trees in trucks, unprotected, also previously half dug and poorly packed, are often dead before they are set in the ground. Don't lose that money and the time in waiting for them to grow.

Ask that traveling agent if he will make the same written guarantee that we do (see pages 16, 17); then ask yourself if there is a firm back of him that will make the guarantee good. Suppose the guarantee is made good, what about the five years you have wasted to learn your mistake and what insurance have you that the new trees will be any better? Why take the chance?



We measure our trees from ground up. You pay only for this!



You do not pay for the roots.

A Bass bred-up tree, less than three feet high, already bearing pecans.

“I thank you most kindly for your promptness and for the fine specimen of trees shipped me. The root system on all of them was wonderful.” BIRMINGHAM, ALA.

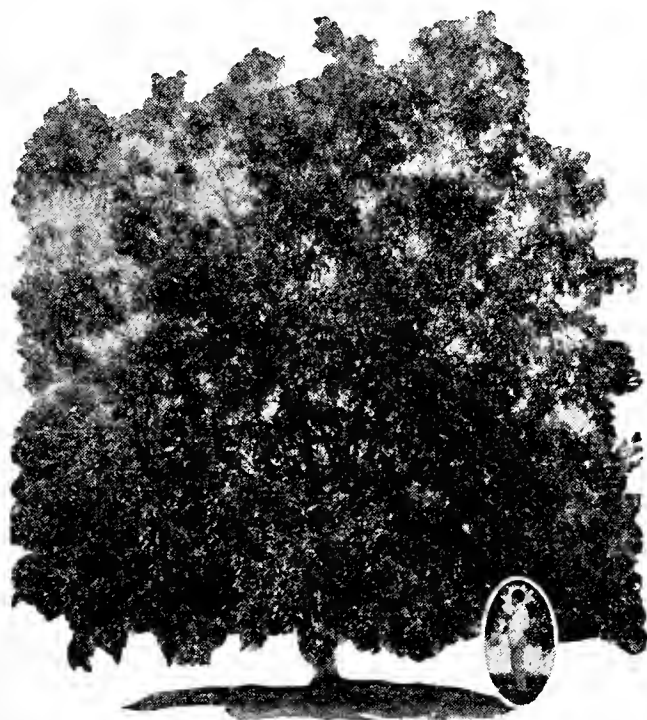


Plant the big nut and you will get the small nut. Read below!

Bass Pecan Trees Are Budded or Grafted

PECAN TREES have that natural tendency to revert to the way they were produced ages ago, and even a large pecan is almost certain to bear a tiny nut. Ordinarily, a nursery will plant these tiny nuts, depending upon their buds or grafts to produce the larger nuts. In our nursery we plant the *larger nuts*, which cost us *twenty-five times* as much as the smaller ones. We get the proper start for our nuts, assuring quality for you.

To produce large and profitable pecans, the young trees must be budded or grafted. Some prefer the budded, and others the grafted, but each method is equally as valuable and productive, and we do both. We do not buy buds or grafts from unknown sources, but produce them ourselves from heavy bearing parents in our own orchards. Therefore, we know their history. We take the grafts and buds, not from prunings off nursery stock, as is often customary, *but from branches of our own bearing trees*, thereby causing us to lose thousands of pounds of nuts each year from our own crop.



This \$1.00 Bass tree now produces over 240 pounds of nuts annually, with a steadily increasing yield.

Bass Trees Are Therefore Early Bearers and HEAVY Bearers

EVEN in our nursery there are thousands of little trees blooming and bearing—so happy and so anxious to start producing. Since our trees are protected by guarantees, why take a chance of losing 5 years time by testing unknown or “cheap” trees? Better buy fewer trees and better ones!

It will also pay you to plant our extra special sizes, since they have had a better start and will bear much sooner.

1 1 1

We urge you not to wait until the last minute to order, as many people do, and after our better trees have been selected. Place an order now for shipment later. *If you want to plant your trees on a holiday or week-end, we can time the shipment to reach you then.*

“I have received my order. The trees were mighty fine. I bought some of your pecan trees about three years ago and they are doing fine. In 1934 they bloomed.” COVINGTON, KY.



Some of our own cattle grazing by a barn right in a pecan orchard.

A Few Instances of Profitable Investments in Pecans

A COLORED FARMER in Texas has averaged 800 pounds of nuts from one tree bringing about \$300 and as much clear money as all the rest of his sandy farm of 120 acres. He has refused \$1000 for the tree.

The tree shown on the opposite page, planted 18 years before, produced \$80 worth of nuts in its 18th year alone, although it started bearing the third year. Now the tree produces more than 240 pounds each year.

A tree in San Saba, Texas, more than 1000 years old, it is claimed by tree experts, produces an annual crop of from \$500 up to even \$1000.

In Hollandale, Miss., there is a 37-year-old tree that produced in one year 1200 pounds of nuts which sold for \$480.

Twenty years ago an acquaintance bought 5 acres of land for \$20 per acre. After planting in Bass trees he refused the price of \$1000 per acre a few years later.

A Mississippian got 200 pounds of nuts from an 18-year-old tree, and another produced 273 pounds one year on an 18-year-old tree, and two years later 330 pounds off the same tree.

Five dollars invested in 5 trees produced in 18 years \$6,336.41.

One of our customers bought two trees for shade, and eight years later got 100 pounds of nuts off the two trees, selling half of them for \$25.

A woman customer wrote she would not take less than \$30,000 for her pecan grove of Bass bred-up trees.

Numerous other instances of specific profits could be cited!

1 1 1

"I received my trees in fine shape. They are surely nice, and especially are those 'Extra Specials,' so much nicer than I expected. Thanks for such nice trees. Your culls are as nice or nicer than the nurseries have here for their best trees. The pear trees are so nice, too. I am delighted with them all. So you see I'll be a booster for your trees." MRS. W. C. DUKE, N. Little Rock, Ark. March 4, 1935.

"The pecan trees arrived in splendid condition and we were delighted with the unusually fine trees you sent. If I need any more, I'll know where to send for them." SUFFOLK, VA.

Plant Pecan Trees on Your Idle Land. If You Sell, You Profit; If Not, You Profit More!



Some of Nature's stock that is better than Wall Street's. This is one of our own groves with nursery stock growing in between. Notice man-sized young trees.

A Safe and Sound Investment That Yields More Dividends Each Year

PECULIARLY as we go through the hangover of the Depression there are millions of dollars idle because some people are a bit dubious about stocks, and various enterprises. The surest, safest and most profitable investment, *we have found by experience of many years*, has been in pecans. With pecans planted, that land becomes more valuable each year, requires less attention, and the income is also greater, as the trees grow older. If you have land, plant it in pecans. You can still grow crops or cattle between the trees. If you have idle funds it will pay you to buy land to convert into pecan orchards. We have some ideal land in our vicinity for sale on easy terms. We would supply our finest trees backed by a guarantee which no other nursery has ever dared to duplicate.



The tree shown on Page 8 was a \$1.00 tree, such as this.

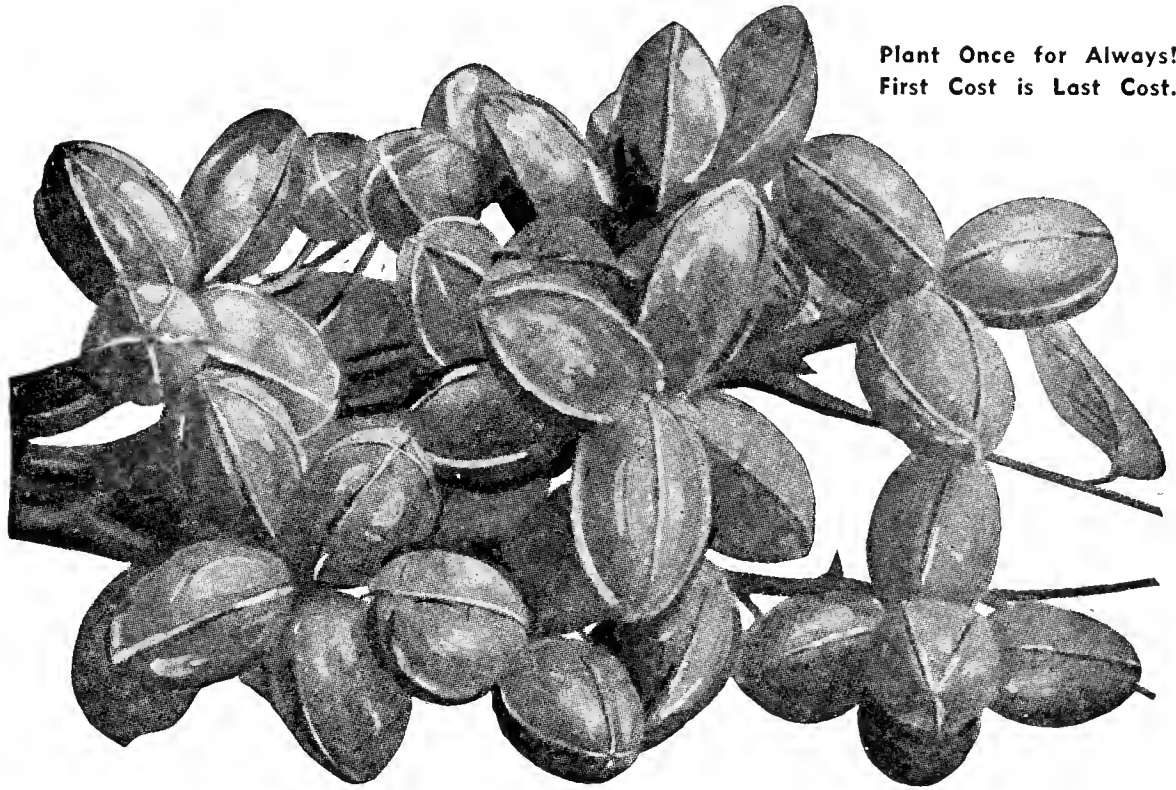
An Unusual Legacy

The late Governor James Stephen Hogg of Texas, a lover of trees, bequeathed to the people of Texas, pecan trees so that Texas would become a land of beautiful trees. A few days before his death Governor Hogg said, "I want no monument of stone or marble, but plant at my head a pecan tree and at my feet an old-fashioned walnut—and when these trees shall bear, let the pecans and walnuts be given out among the plain people of Texas so that they may plant them and make Texas a land of trees."

About a score of young pecan trees have been sent to various high schools and courthouses in Texas to beautify the grounds.

South Mississippi is the mother section of the finest varieties of pecans. More fine varieties of pecans, now being planted, originated within 150 miles of Lumberton, than all the world put together. Lumberton, therefore, is the HEART of this district, and virtually the heart of the entire Pecan area.

"The four Stuart pecan trees I bought from you have just done beautifully, and this year we are having quite a few pecans on them. They are beautiful trees and the envy of our section of the town." MEMPHIS, TENN.



Plant Once for Always!
First Cost is Last Cost.

Why We Urge You to Plant Only the Finest Trees Why Take a Chance Otherwise?

IN PLANTING pecan trees you are reckoning with pedigree and time. While price should be considered, unfortunately it is so often THE consideration.

It may take several years for you to learn that you have made a bad deal if you have purchased inferior trees, runts that don't bear or weak stock that soon dies. Why lose from three to five years time waiting to see whether your "bargain" was a bargain or poor economy? When you buy Bass trees you get proved, early and heavy bearing pedigreed stock, backed by the reputation of the world's largest pecan nursery, and with a guarantee that protects you.

Tree-Topping

Poor trees are high at any price. Many have bought them elsewhere that won't bear a nut, and we've had to come in to save the wreck by tree-topping and budding with our bred-up stock.

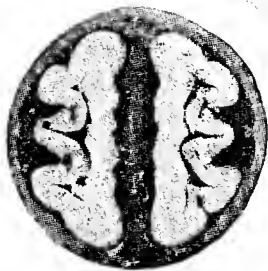
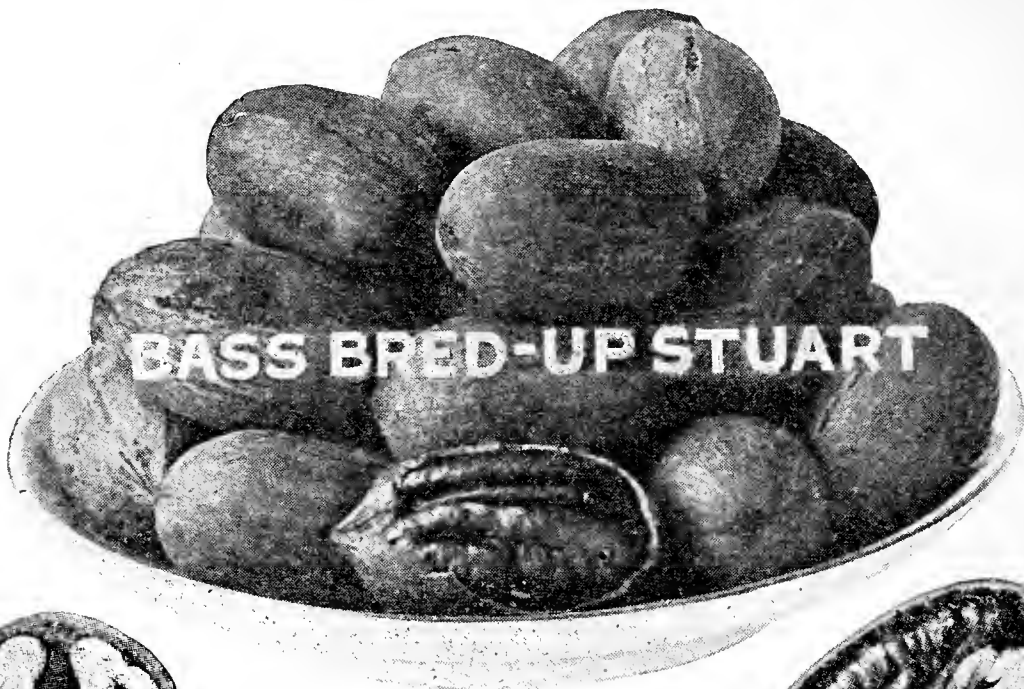
Tree-topping and budding is a special craft and we are prepared to perform this service, going anywhere to rejuvenate non-bearing orchards, provided there is large number of trees to topwork.

Have a Hobby! Grow Pecans!

A business man, banker or professional man needs an avocation—a hobby—"a safety valve" to take his mind from his work. Perhaps you have idle land. Why not plant it in pecans? Then you'll have something to interest you and at the same time will reap in a wonderful dividend each year, enough to allow for retirement. Better than life insurance, considering an income for posterity. This is not merely a painted picture of wealth. Facts are facts.

"The last order arrived in excellent condition. The pecan trees were the best I ever remember seeing. We are greatly pleased and appreciate your extreme care." AUBURN, ALA.

Bass Pecan Trees Are Early Bearing!



Bass Bred-Up STUARTS Are Big Producers

THE STUART is our first choice, and incidentally it is the most popular of the improved variety of pecans. This nut has been planted more extensively than any other. The trees are vigorous, bear regularly, and resist scab. They are early and heavy bearers. The nuts are large and well filled, the kernels being plump, with a meat content of 49%, and of good flavor. Note the actual photographs of the inside of the STUART pecan.

These nuts are the easiest to grow, sell well on the market, and bring a higher market price. We recommend the Bass Bred-Up Stuarts, as the most profitable and satisfactory of the pecan trees. We have an unusually fine stock of our large trees in this variety—it would pay you to plant them in preference to others.

Prices on Top-Grade (No. 1) Trees—All Varieties

	Each	Six	Twelve	Sixty	100	1000
2-3 Feet	\$.80	\$ 4.20	\$ 7.80	\$ 36.00	\$ 60.00	\$ 500.00
3-4 Feet	.90	5.10	9.60	45.00	70.00	600.00
4-5 Feet	1.00	5.70	10.80	51.00	80.00	700.00
5-6 Feet	1.20	6.90	13.20	60.00	100.00	900.00
6-7 Feet	1.35	7.80	15.00	72.00	120.00	960.00
7 Feet to Large	2.00	10.80	19.80	90.00	150.00	1200.00
Large	2.50	14.40	27.00	120.00	200.00	1600.00
Extra Large	3.50	20.40	36.00	165.00	275.00	2200.00
Extra Special	4.00	22.80	42.00	195.00	325.00	2600.00

We recommend the planting of our large trees. They bear earlier.

Special Price on Large Orders

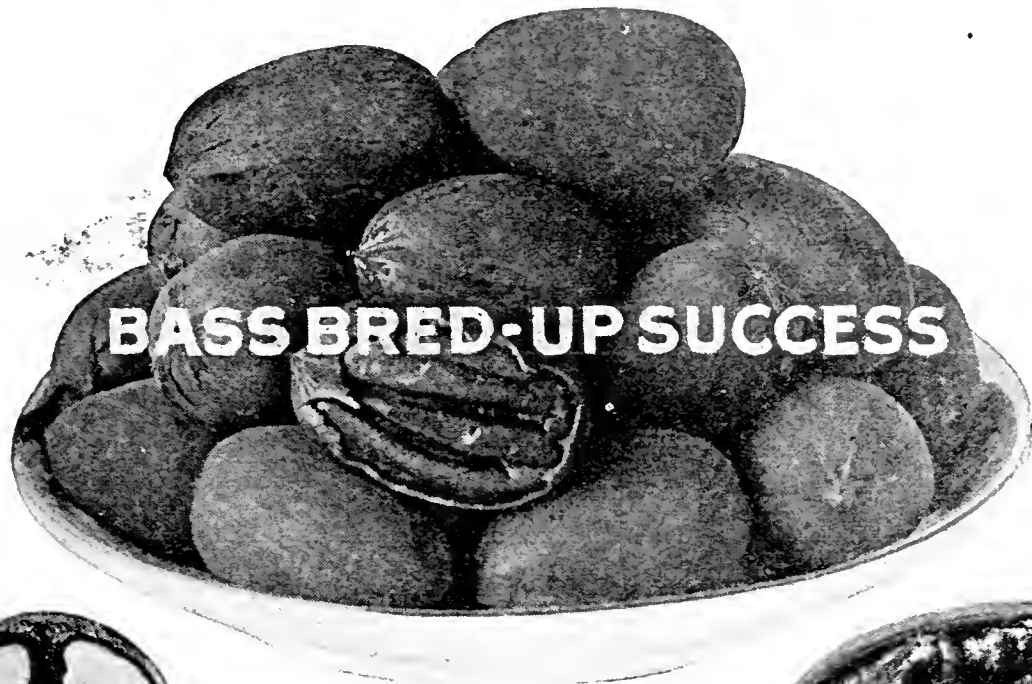
One to five trees take the each rate price; six to eleven trees take the six rate price; twelve to forty-nine take the twelve rate price; fifty and up take the one hundred rate price; 500 and up take the 1,000 rate price. Special prices cheerfully quoted on larger lots.



All Prices F. O. B. Lumberton, Miss.



No orders for less than \$5.00 — Please!



Another Successful
Variety




Bass Bred-Up SUCCESS

OUR second choice is the SUCCESS Pecan, and a mighty popular variety, 40 to 45 to the pound. This tree is also an excellent grower, and a heavy bearer in fertile soil. It bears early, too. The nuts, as you can see, are large, though are not the largest, but the kernel has proved to be the heaviest in a test of 14 varieties made recently. The meat is plump, and of excellent flavor. The nut itself is ovate in form, has a thin shell, and cracks easily. This variety does well in most sections, and the nuts bring a high market price. The Bass Bred-Up SUCCESS Trees are among our biggest sellers of our fine Papershell Pecan Trees. Plant our larger size trees and save that initial growing period.

Plant Fruit Trees Between the Rows
See Pages 21, 22, 23, 24

For Sale—Some of Our Culls or “Seconds”

NO, INDEED, we do not sell all the trees we grow—that is to our own customers. We neither sell our cull pecan trees to other nurseries or burn them. We frequently throw out around 22% of our trees as being “seconds.” If too poor, we destroy them, regardless. When trees are not straight, or scarred, when the root systems are not so well developed, or the trees do not come up to our own high standard, we will not sell them as our top grade trees. Many of these trees are good and MAY do as well as the others, but we play SAFE for our customers. We sell those No. 2 Pecan Trees at half price of No. 1 trees (see opposite page), but with the understanding that they are our culls, and without our usual guarantee. (Prices F. O. B. Lumberton). Many nurserymen and dealers buy these trees and sell them as their own No. 1 trees.  Remember, Our Unfit Culls Are Burned!

“We take this opportunity to testify as to the quality of your trees. In 1929 we set two of the ‘7-ft. to large’ trees and they have been bearing now three years.” BARLOW, KY.

Let Your Land Do Double Duty! Plant Fruits Between the Rows!



Bass Bred-Up
SCHLEY



For Prices See
Page 12

Pay Big Dividends

OUR third choice is the SCHLEY. This is also a popular nut on account of its thin shell, excellent cracking qualities, beautiful color, and unusual flavor, and the market price is very satisfactory. The fact that we grow and sell this nut shows our confidence and our recommendation.

In some localities, however, the SCHLEY has a tendency to scab a little, so before purchasing this variety be sure that they grow in your section without this disease. If so, you will find these to be profitable nuts; excellent and full nuts with 61% meat, and a kernel that can be easily removed without breaking. The tree itself while an early bearer is a slender grower—smaller than STUART or SUCCESS, and not quite as hardy.

1 1 1

REPLACEMENTS

OF COURSE, we cannot say that every tree will grow, for all trees don't grow, just as all baby chicks you buy don't grow; and, in fact, all babies don't grow (most do!). But should any of our No. 1 pecan trees fail to grow, we are willing to share the loss, and will replace within one year, at half price, any pecan trees that die, *where properly planted and cared for*. The average nursery doesn't replace any at all, but this shows our confidence, and our willingness to aid even after the sale has been made.

[[Let us suggest that you order our Extra Special size trees. The little difference in price justifies the extra time you would have to wait for your trees to bear.]]

No orders for less than \$5.00 — Please!



A few orders on one day's shipment, awaiting train at Lumberton. Note the careful packing.

After Good Trees Are Grown, They Must Be Treated With Kindness —And Not Killed By Carelessness

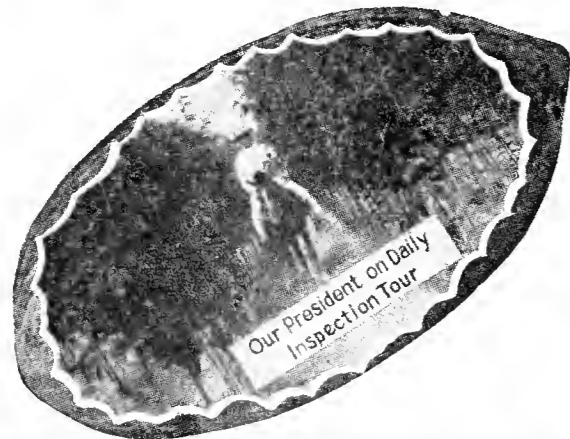
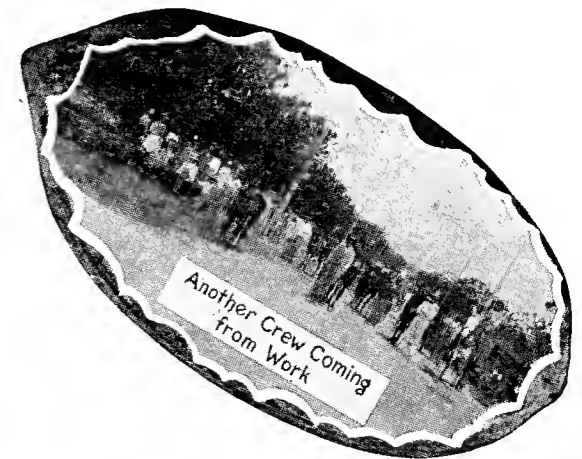
TREES may be fine in the nursery, but when they reach you, their roots may be dried out, or they may have been bruised or damaged in transit unless properly packed and shipped. No other nursery, anywhere, packs trees as we do! We dig deeper to get all the roots and then we pack them carefully with damp moss. The upper parts of the trees are packed so as to protect them from being skinned or bruised. The entire trees are then wrapped in waterproof and airproof paper to keep the moisture in and the air out, and are then securely covered with burlap to keep out the sun, wind and air. Such packing requires experts. Thus the trees are well protected to reach you in excellent condition.

We have even shipped trees to China three times; every shipment reached there in perfect condition, and all trees are growing. The result of good trees, plus good packing and shipping.

WARNING!

Call for trees as soon as they arrive, as we pack them to reach you in excellent condition if taken out immediately upon arrival. Inspect trees at the station, and refuse if in bad order, so we may make claim against railroad. If any damage has been done in shipping, have agent write on express receipt that they were damaged. Send us Damage Receipt and we'll promptly replace trees.

"Received the trees in fine shape and must compliment you on your packing and healthy condition of the trees. Thank you for your promptness and fine selection." NEW ORLEANS, LA.



Bass Trees Guaranteed to Fully Protect You!

IT'S easy for anyone to make any guarantee, but have you assurance that the guarantee will be carried out? No other nursery has dared duplicate our guarantee above or any of our other guarantees or propositions listed on this page. It pays to deal with the largest Pecan Nursery in the world.

1 Should any of our No. 1 pecan trees die within one year—if properly cared for—we'll share the loss with you and replace the trees for one-half the regular catalog prices.

3 If you will visit us, especially in order to be sure about the trees you buy, we shall pay all expenses and pay you liberally for your time if you do not find our nursery to have more and better pecan trees than any nursery anywhere. You might care to visit around to make comparisons.

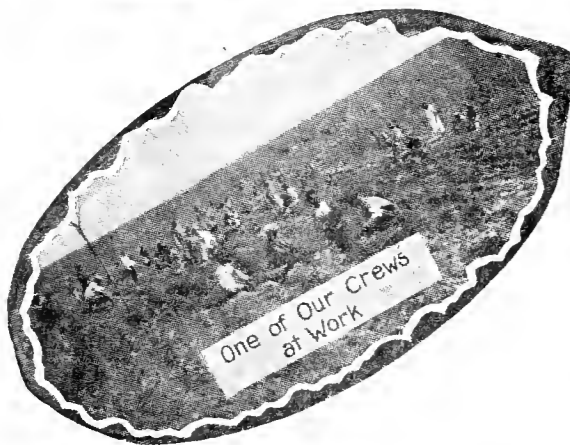
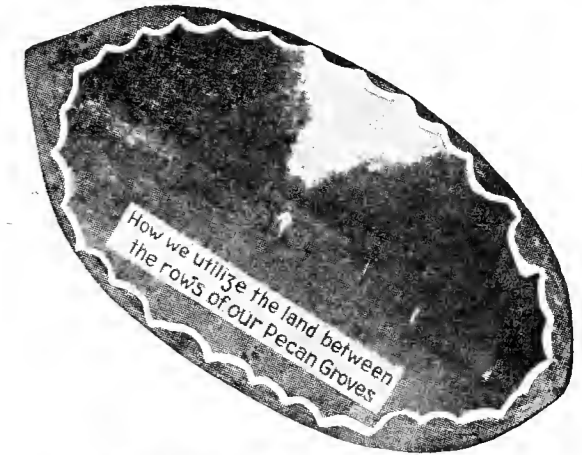
5 Our fruits (other than Pineapple Pears) are supplied by reputable nurseries. We guarantee them to be true to name, high in quality, good healthy stock, free from disease. Stock damaged in transit, if notified immediately, will be replaced, if express or freight receipt indicates damages. Should any stock prove not true to name we will return money or replace it with other stock, but are not liable for any damages beyond this.

2 If you're in doubt as to the quality of our trees, we'll ship them to you in competition with any others and allow you to select the trees with the finest developed root systems. Does anybody else have such confidence in their trees? WE KNOW OUR TREES AND THOSE OF OTHERS.

If we were not positive about our own trees, would we dare to make such an offer?

4 Our Pineapple Sand Pears are positively blight-proof. They are guaranteed not to blight in any section.

6 REFERENCES: Dun or Bradstreet; Lamar County Bank, Purvis, Miss.; First National Bank of Hattiesburg, Miss., and thousands of our customers.



BASS TREES HOLD THE WORLD'S RECORD!

THIS is the remarkable bearing record of nine of our Extra Special pecan trees set out the last of February, 1923, by Dr. D. B. Stevenson, of Lumberton, Miss. Most all of these trees bore pecans the first year set out. They were our largest size trees and have been given the very best attention by Dr. Stevenson. He has fertilized the trees very heavily with barnyard manure and worked around them often, so that weeds and grass would not get the fertilizer. Results have been remarkable.

The record that follows was carefully kept by Dr. Stevenson, who is one of the best known physicians as well as loved and respected citizens of South Mississippi, and is absolutely authentic as he gathered and weighed the pecans himself. The

trees bearing the heaviest crops were the ones most favorably located. Trees with smallest yields were greatly handicapped by being near big oaks, sidewalks, etc. The nuts were gathered in October and November of 1925—actually before the trees had been set in the ground three years.

Trees No.	Age	Yield
1 Bass Papershell	2 years 8 months	25½ lbs.
2 Bass Papershell	2 years 8 months	15 lbs.
3 Bass Papershell	2 years 8 months	16 lbs.
4 Success	2 years 8 months	17½ lbs.
5 Success	2 years 8 months	28¼ lbs.
6 Nelson	2 years 8 months	12 lbs.
7 Nelson	2 years 8 months	10 lbs.
8 Success	2 years 8 months	4½ lbs.
9 Success	2 years 8 months	4 lbs.

Wouldn't Sell for \$500

"I have a Stuart pecan tree I bought from you and set out in my yard in 1913. This year it hasn't less than 500 or 600 pounds on it. It is the fullest of any tree that I ever saw. Everyone that sees it thinks it perfectly wonderful. I would not take \$500.00 for it." Dr. G. A. Moore, Eutaw, Ala.

Trees to China
Our last year's catalog told of shipping trees to China. Now read this letter: "I am pleased to report to you that all six of the trees which you shipped to me are not only living but flourishing, and I have high hopes that in due time Bass Pecans will be famous in China as they are elsewhere in the world."—C. S. Franklin, Shanghai, China.

"Even your culls or No. 2 were better than any first-grade trees I have seen bought from other nurseries." RALEIGH, N. C.

"If there is a place in the country that can surpass your packing and shipping department, I would like to know who they are." LAKE CHARLES, LA.

To Answer Your Questions:—

How to Plant Pecan Trees

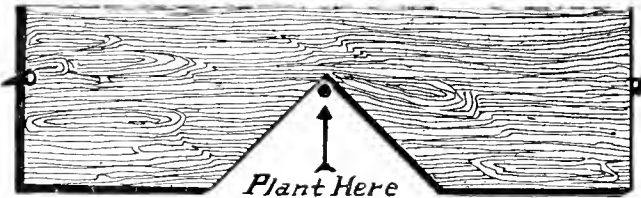
(How Many Trees to the Acre, Etc.)

TWO usual questions asked us are how many trees to plant to the acre, and what kind of soil in which to plant them.

On lands of only fair fertility, plant trees every 50 feet, but we generally recommend 60x60. If the ground is very rich, plant farther apart, such as 70x70, but for the average, figure on every 60 feet—12 trees to the acre. Please refer just below. You can get more trees to the acre by the triangle method of planting (14 as against 12).

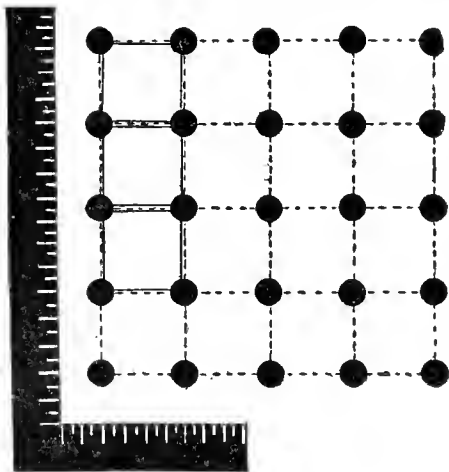
As to soils—land that will grow hickory or oak trees will grow fine pecans. It has been well said that any land that will grow cotton will grow pecans. Well drained land is needed for best results. Practically any average land in the South will grow fine pecans.

The sooner you set out your pecan trees the better will be your prospects for them living, the more vigorous will they grow up, and the earlier they will begin to bear. Set out pecan trees as soon as possible after the leaves shed in the Fall, in November, December, January, February or March. Even if you cannot set your trees early, *book your order now so we may reserve some of our finest trees for you.*



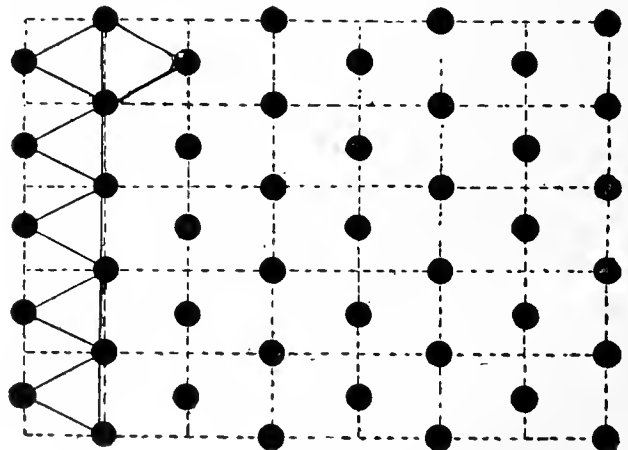
Use a planting Board in setting your trees. This is easily made by taking any board or plank about six feet long and cutting a V-shaped groove in the center of it. This groove in the planting board is made to fit down over the stake you have driven down in the ground where the tree is to be planted. Then at each end of

the planting board place a small peg. When you dig the hole for the tree, all you will have to do is to lay this planting board across the hole dug so that each end will be against the pegs and your tree will come right in the groove and be exactly in line. If you do not use a planting board it is hard to get trees in line again after holes are dug, even if lined up exactly right to start with.



Square Method

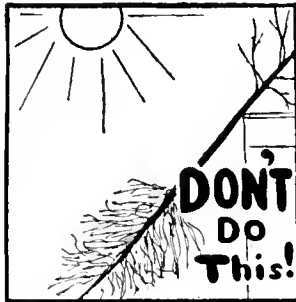
To plant the square method, take an ordinary L-square and place on ground in order to get your lines true. Sight and place a stake sixty (preferably) feet away on each line until you reach the ends of the field. Then stake off on parallel lines at every sixty feet and plant trees at each stake. Planting sixty feet apart, you have 12 trees to the acre.



Triangle Method

By planting the triangle method you get more trees to the acre, and besides all trees are exactly sixty feet apart in ALL directions. To get a true equilateral triangle easily, drive a stake in the corner of the field. Then with the aid of an L-square find stakes along the outside lines. In order to get proper and exact distance inward toward the field, get a wire sixty feet long. Attach to stake. Get another wire of same length and attach to next stake. Let one man make an arc with his wire, and another man an arc with his. When the two wires meet, properly taut, drive stake for tree. Work from that stake and so on until field is covered.

Rules for Setting Pecan and Fruit Trees RIGHT



Protect the Roots

Never allow the roots of the trees to become dry or exposed to the atmosphere for any length of time from the time they reach you until they are set in the ground.

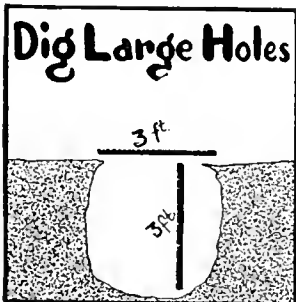
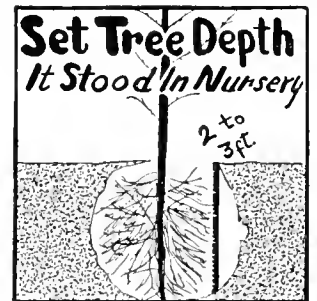
Wet the bundle just as soon as you can and if not ready to set out at once, dig a hole and put roots in and cover up well. Place in a shady place if possible.

Set your trees at once upon arrival or heel-in promptly as above.

Plant as Deep as in the Nursery

Set the tree about the same depth it stood in the nursery.

Fill in the hole with the best top soil, packing the dirt well around the roots, especially the tap root. Keep the roots of the trees out straight in their natural position and do not bend them down by the tree.



Dig Large Holes—Protect the Roots

Have a large hole for your tree. Three feet wide and three feet deep will not be too large for pecans. Holes about 12 inches wide and one to two feet deep will do for fruit trees.

Mix thoroughly with the soil to be used to fill in the hole a peck or half bushel of well-rotted manure or compost or some good guano, being very careful *not to allow it to come into contact with the roots* in ANY QUANTITY, for if it does it will scald them and do more harm than good.

Fertilize Properly

If you desire to plant on land rather poor in fertility, thoroughly mix with the soil two or three shovelful of well-rotted compost when you plant the tree, or one or two pounds of bone meal. The best fertilizer after the tree is planted is to scatter manure around the trees. The more the better—one-half to one bushel to the tree, if possible. Do not bank it up around the tree, but scatter it around for two or three feet. When it rains the substance will be taken down to the roots. Put this around your trees in the late winter, if possible, so that the trees will be able to get a fine growth in the spring. When the trees are old enough to bear, use potash in some form—wood ashes will do.



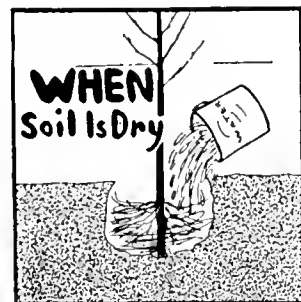
If Soil Is Dry

If the soil is dry when the trees are set, it is a good idea to pour a bucketful of water to each tree when the hole is nearly filled, and then fill the hole completely up.

Pour one bucketful of water to each tree once a week during very dry spells in Summer. Make a basin-like hole at the base of the tree. Pour water and as soon as it is soaked in good, fill completely up with dry dirt. This holds in the moisture and also keeps the ground from baking. If you cannot pull soil back, covering the wet earth well, DO NOT water at all. Water poured on top of the ground and left this way does more harm than good, as it causes the earth about to bake

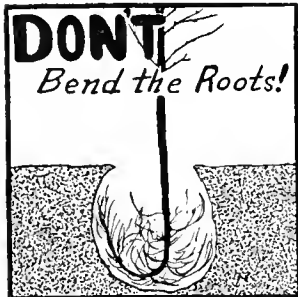
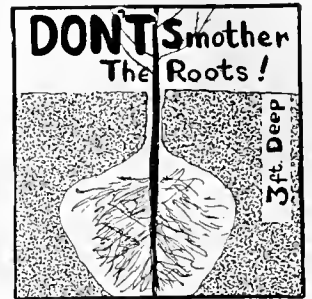
and the tree to scald.

Cultivate for four to six feet around each tree thoroughly all during the Summer. Never let grass or weeds grow up around your trees. Keep the ground dug up and soft at all times.



Cultivate the Ground

Cultivate for four to six feet around each tree thoroughly all during the Summer. Pecan trees do best where the land is cultivated well. Our own experience has taught us that no tree responds to care and cultivation better than the papershell pecan. Frequent shallow cultivation is best. Keep the weeds and grass down, for they take the moisture and nourishment needed badly by the young growing pecan trees.



Special Notice About Fertilizer

Recent experiments in our own orchards have shown us that one pound of Nitrate of Soda or Sulphate of Ammonia for each year the tree has been planted will be of great benefit and cause the trees to grow very fast. Merely spread it around the trees for two or three feet and hoe or dig in well. This can be done at any time from April 1st to last of June, usually the earlier the better.

Care of Young Trees

No pruning is necessary after you once get the trees branching high enough. The larger trees we sell will branch high enough anyway, but the smaller trees have to have sprouts cut off occasionally that come out on the body of the tree until the branches get high enough. This may be done at any time required, either summer or winter. We do not let our own pecan trees start branching lower than shoulder high. They look better and you can work around them better where they are not allowed to head too low.



Bass Trees Come Pruned, Ready to Plant



We endeavor to send our properly pruned trees, just as if we were going to plant them ourselves, leaving the planter nothing to do but to set them out. The taller grades of trees should be top-trimmed, as it balances the top against unavoidable loss of some roots when the tree is transplanted. Proper pruning insures the tree living and a good growth. Where trees are properly pruned, handled and planted, there is no reason why any of them should die. *Our prices are made on the height of the trees when dug. When properly top-trimmed, the height is often materially reduced. Therefore, if the height of a trimmed tree, when received, is less than the catalog*

height, this is the explanation. We measure our trees from the ground up and not from the tip of the tap roots as many nurserymen do. Our 3 to 4 feet trees are often as large as their "5 to 6 feet" trees—we don't charge for roots. You pay us for a smaller size tree. See Page 7.

Advice on Pecan Culture

Ask us all the questions you wish to in regard to pecan growing. We will gladly give you our opinion. And as experts, let us advise you not to put off setting out your pecans. Remember the loss of a year's time in getting started means the loss of a year's splendid income later on, at a time when you may appreciate it most. And speaking of the time element, it would pay you to buy and plant our larger trees, for you would save that initial growing period. Let Bass solve your pecan problems.

For further information or definite instructions on Pecan growing, write the U. S. Dept. of Agriculture, Washington, D. C., for free Farmers' Bulletin Number 700, on "Pecan Culture," and Number 1501, on "Nut-Tree Propagation," and other available bulletins on Pecans.

It will pay you to plant our Extra Special or large sizes for earlier and heavier bearing. A better start. See prices on Page 28.

"While in Arkansas I bought two trees from your nursery, about twenty years ago. They are the finest I have ever seen today." WICHITA, KANSAS.



One of our beautiful Blight-Proof Pineapple Pear orchards in full bloom.

Plant Bass BLIGHT-PROOF Pineapple Sand Pears

WE first grew Pineapple Sand Pears for our own use, and finding them of such prolific growth, such fine fruit, such a ready market, and such a splendid profit, we decided to pass on our experience to our customers and grow these trees for them. 40 to 75 bushels per year from many of the older trees in our section is nothing unusual and some orchards yield over 1,000 bushels to the acre.

Have you ever seen an orchard of pears in bloom? Was there anything more beautiful than these graceful trees in their mantle of white? Even when the blooms and fruit are gone, the trees are ornamental as well as useful and will beautify any home or land along a roadside. They take up but little room and require no cultivation. These Sand Pears are positively blight-proof!

SO we now produce these pear trees for our customers, and have thousands of young, thrifty growing trees ready for shipment. These trees, when mature, will be better than our own, since they have been propagated from our producing trees; thus fine parent stock, and a better start than our own trees had.

The Bass Pineapple Sand Pears grow rapidly—they are extremely hardy. All trees have a well developed root system.

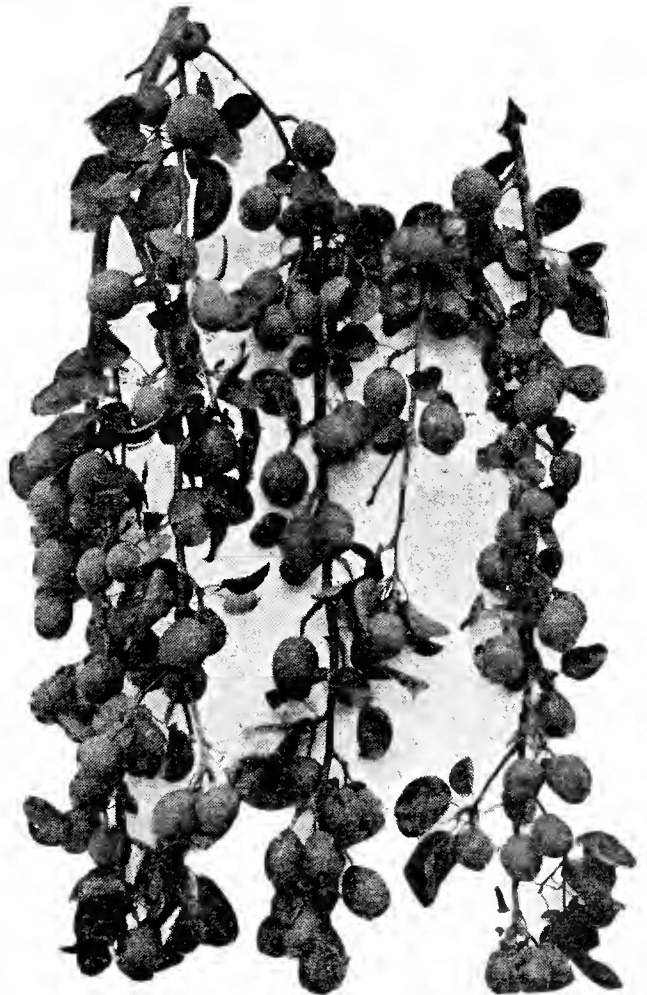
We suggest that you plant our Extra Special size, so beautifully headed.

G U A R A N T E E

The Bass Pineapple Sand Pears are guaranteed not to blight in any section.

PINEAPPLE SAND PEARS

	Each	10	100
3 to 4 feet.....	\$.45	\$ 4.00	\$ 30.00
4 to 5 feet.....	.55	5.00	40.00
5 to 6 feet.....	.70	6.00	50.00
6 to 7 feet.....	.90	7.00	60.00
Large size.....	1.15	10.00	75.00
Extra Special size.....	1.50	12.50	100.00



Branches of our Blight-Proof Pineapple Pears loaded to capacity.

Peaches



Big Fruit Tree Shortage This Year. May Have to Substitute in Peaches and Apples.

WE need not elaborate on the eatability and marketability of Peaches. Plant this profitable fruit between the rows of your pecan orchard, or in your garden.

RED BIRD. Very early, hardy grower, good bearer; has large fruit of bright glowing color and splendid quality. Ripens last of May or early June. Cling.

HILEY BELLE. Very rapid grower, prolific bearer, with a fresh, firm, excellent creamy white flesh and real peach flavor. Ripens in June. Freestone.

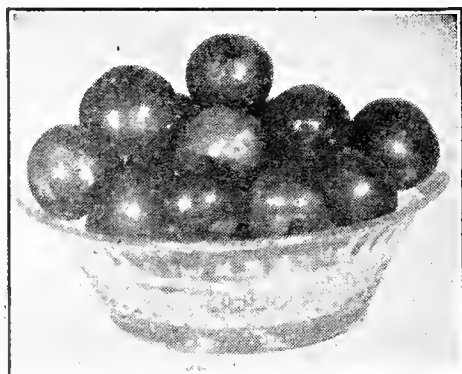
ELBERTA. Large, yellow, with red cheeks; juicy and of good flavor; flesh yellow. Ripens middle of July. This is an excellent shipping variety. Freestone.

PRICES—ALL VARIETIES

	Each	10	100
June buds 1 to 2 feet.....	\$.20	\$1.50	\$12.50
3 to 4 feet.....	.30	2.50	20.00
4 to 5 feet.....	.60	5.00	35.00

Please! Because of our care in inspecting, packing and shipping, and the huge expense to which we are put, it hurts to fill orders that amount to less than \$5.00. So please order enough, even for friends, to make at least that much of an order. However, we will fill your order amounting to less than \$5.00 if you cannot increase it, rather than disappoint you.

Plums



RED JUNE. Early market plum, large size, deep vermilion red color. Good variety, very firm. Flesh light yellow. Free from rot. Very heavy bearer and easy to grow. A wonderful plum, in our estimation.

	Each	10	100
3 to 4 feet.....	\$.50	\$4.50	\$30.00
4 to 5 feet.....	.65	6.00	40.00

Let your land do double duty—Plant Pecan Trees between the rows.

BASS GUARANTEE ON FRUITS

Our fruit trees and berry plants (other than Pineapple Sand Pears) are supplied by reputable nurseries. We guarantee them to be true to name, high in quality, good healthy stock, free from disease. Stock damaged in transit, if notified immediately, will be replaced, if express or freight receipt indicates damage. Should any stock prove not true to name, we will return money or replace it with our other stock, but are not liable for any damages beyond this.

NOTICE. If your order calls for a variety we do not have on hand, we shall, unless advised to the contrary, substitute another which should prove as satisfactory. Thus we save you disappointment and loss of time. Ask for our special prices on large orders.

It takes as much land, time, handling and experience, on "sorry" trees as it does on Bass Trees. The only savings you make if you buy so-called cheaper trees is in buying. But you may be wasting time, effort and money in not getting the finest trees to start with.

"The pecan trees were received in good shape. They look good, vigorous, and are the best that I have received from you." NINETY-SIX, S. C.

Why We Sell Fruit Trees, Too

BECAUSE we were asked so often to recommend or buy fruit trees for our customers who wanted to plant them along with pecans—or otherwise—we decided for their accommodation to handle a few fruits. This is good, strong, hardy stock, with well-developed root systems. We can relieve you of much trouble and extra expense if you order fruit trees along with pecans. The selection may be left to our judgment. Write for SPECIAL PRICES ON LARGE QUANTITIES.

Japanese Persimmons

THE JAPANESE PERSIMMON can be grown on as wide a range of soil as the native Persimmons, and will succeed with the minimum of care and attention. The trees are vigorous, prolific, and have few enemies. As the fruit keeps and ships well, it can be placed on the market in good condition. It meets with ready sale.

We recommend the TANE-NASHI variety. In high favor. Large fruit, flesh yellow and seedless. Vigorous, prolific; uniform size—most desirable to market.

	Each	10
3 to 4 feet.....	\$.50	\$4.50
4 to 5 feet.....	.60	5.00

Apples

RED JUNE. A choice fruit of a well-known variety—medium conical; deep red; juicy. Very productive.

DELICIOUS. No new variety gained popularity in so many different sections so quickly. Fruit large, nearly covered with brilliant dark red; flesh fine grained; crisp, melting, juicy, with delightful aroma; highest quality. Splendid keeper and shipper. Tree one of hardiest, vigorous grower, with good foliage. Regular annual bearer.

	Each	10	100
3 to 4 feet.....	\$.30	\$2.50	\$20.00
4 to 5 feet.....	.60	5.00	35.00

Bass Grapes

GROW your own Grapes for the table or your own grape juice or jelly.

CONCORD. The most widely grown, most popular of all grapes, for vineyards. Black. Healthy, hardy, vigorous vine. large bunch and berry, and a good yielder. Grows quickly. Our Concord's this year are extra fine.

NIAGARA. Leading white grape. Widely planted. Bunch large; handsome, juicy and fine flavor.

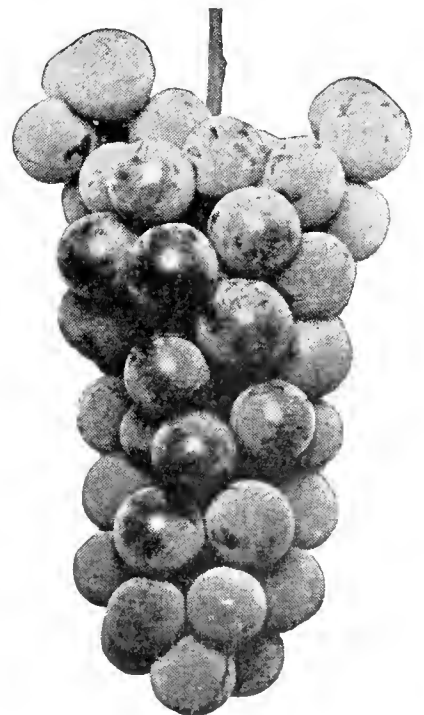
2-Year	Each	10	100	1000
No. 1.....	\$.25	\$2.00	\$15.00	\$100.00

Bass Figs

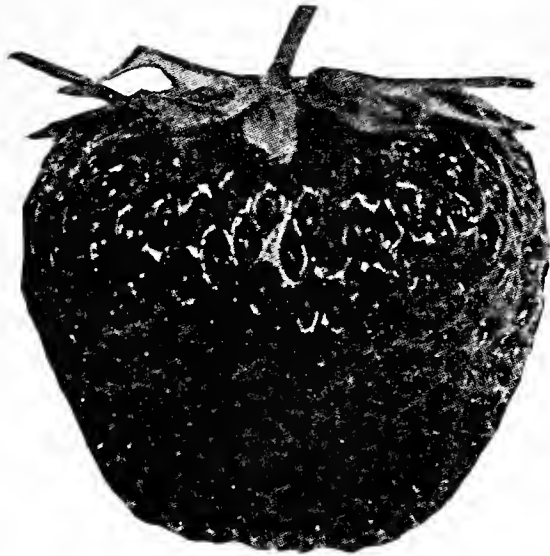
THE fig-canning industry is gradually extending throughout the South. Since several tons of figs can be produced on an acre of ground, it is profitable to give them intensive culture. The fresh fig is quickly finding its way into market, and meeting with ready sale.

Figs require little or no cultivation. Our favorite is the CELESTE, one of the hardiest varieties. Very desirable for canning and preserving. Small to medium, pear-shaped, ribbed. Flesh firm, juicy, sweet, excellent quality.

	Each	10	100
3 to 4 feet.....	\$.35	\$3.00	\$20.00
4 to 5 feet.....	.50	4.50	35.00



"Your trees are twice as tall and much better root system than one I paid \$3.00 for. Experience is a good but expensive teacher." MOUNT CALM, TEXAS.



Strawberries

Show Which Way the Wind Blows

THERE is nothing like having strawberries growing about the home for pleasure and PROFIT. Besides home use and the market for strawberry preserves, the sale of strawberries themselves is enormous. Whole communities have been built by their profits. On one acre, an Arkansas man made \$422.80, net. One farmer made more than \$5,000 net on 17 acres. A Mississippi county sold \$80,000 worth of berries from 140 acres, netting each farmer an average of \$571 per acre. Hundreds of other instances could be cited of worthwhile profits from strawberries.

Some plant berries with other crops; others grow them exclusively. You could plant those idle rows between your pecan or fruit trees, or even your other crops. Grow berries for your own use or for market. Set out about 16 to 18 inches apart in 3½ foot rows. It will require about 7,500 plants per acre—and will pay you to follow these planting instructions. All are healthy plants with a good established root system. We ship these plants from October 15th to April 1st.

The New Blakemore

There is a new berry that has been recommended highly by the Department of Agriculture at Washington, D. C. It is claimed that ninety per cent of the fruit will run as No. 1's. The Blakemore is firm, well colored, deliciously flavored—very productive and marketable fruit.

Mastodon

Everbearing. This is the finest everbearing strawberry. New large fall-bearing berry. Mammoth berries. Eighteen of the larger ones fill a quart. Big, strong plants. Firm berries, highly flavored, very sweet. Most productive and profitable of all everbearers. We recommend them above all everbearing.

Improved Klondike

This variety is planted more in the southwest than any one variety grown today. Season is second early, and the Improved Klondike are bred up and are more productive than the old original Klondike.

STRAWBERRIES

	POST PAID			EXPRESS COLLECT				
	25	50	100	250	500	1000	5000	10,000
Imp. Klondike	\$.60	\$.75	\$1.25	\$1.50	\$2.50	\$3.50	\$13.50	\$25.00
Blakemore	.75	1.00	2.00	3.00	5.00	9.00	40.00	75.00
Mastodon	1.00	1.75	3.00	4.00	7.50	15.00	65.00	125.00

Youngberries

HERE'S a unique berry that is becoming most popular. It is a cross between a Loganberry and a Dewberry. This berry is remarkable for its dessert, beverage, preserving and cooking qualities. Fruit is large, deep wine-color, sweet, juicy. The plants are vigorous, propagate freely and resist disease. The U. S. Department of Agriculture recommends this variety. Keep up with the times and plant Youngberries for the increasing market. We grow our own Youngberries for our customers.

YOUNGBERRIES

Single lots	25c each	50 plants	15c each
10 plants	20c each	100 plants	10c each

"Trees were magnificent. Please ship at once five more extra special Stuart Trees."
(Telegram) SCOTTSVILLE, VA.



\$1400 worth of nuts (3500 pounds). Just one truck load from our orchards.

There Is Always a Market for Pecans!

THE most popular nuts are pecans. Because growers realize that the market has hardly been scratched, cooperative associations have been formed to further their sale. Pecans have sold on their own merits because of their delightful taste and flavor, and food value. There is no telling what the demand will be when they are advertised.

But regardless of the future market, the immediate consumption is enormous. Confectioners use them by the carload. Fruit cakes, so popular in the Fall, require tons. Bakeries use them all year round. Cracking companies—and by the way, that is a comparatively new industry which can be carried on in the home—cannot always secure enough nuts. Chain and grocery stores sell them. Pecans may be advertised and sold by mail from the home.

So there is already a tremendous and ever increasing market for pecans, *and the industry is yet in its infancy.* Grow along with it and profit accordingly as the consumption increases.

1 1 1

Papershell Pecans for Sale

Our own pecan groves produce thousands of pounds of papershell pecans each season which we offer for sale. Prices are as follows: 5-pound box of fine Stuart, Success, or Bass Papershell nuts delivered by Parcel Post, \$2.50; 10-pound box as above, \$4.50; and 100 pounds delivered by express, \$40.00 prepaid.

"Thanks for prompt shipment. I mailed order Thursday and trees were delivered Sunday morning—that's good service." HOUSTON, TEXAS.



Here's a Beautiful Pecan Grove—but more than Beauty—PROFIT!

Pecan Buds and Grafts for Sale

THOUSANDS of grafts and buds are cut and sold by us each year from our early and heavy bearing pecan trees. Do not top-work your trees with poor scions—insure success in your work with our buds, grafts, and prepared wax. Grafts furnished during December, January, February and March not kept on cold storage are \$2.00 per 100, or \$15.00 per 1,000. In lots of 5,000 and up at \$10.00 per 1,000. Cold storage grafts keep for late top-working in April, May and June are \$3.00 per 100, or \$25.00 per 1,000. Buds furnished during July, August and September are \$1.50 per 100 or \$10.00 per 1,000. Varieties are Stuart, Success, Schley, Bass Papershell, Nelson, Hale, Frotscher's Eggshell, Pabst, Dependable, Moneymaker. No less than 100 of a kind sold.

Prepared Wax, ready to use, 50c per pound.

TERMS AND CONDITIONS OF SALE

Terms Are Cash With Order. We pay spot cash for everything and sell the same way. It saves us a lot of bookkeeping and annoyance and enables us to sell our high-grade, bred-up trees cheaper. Some prefer to have goods sent C. O. D., but why pay that extra collection fee? Why not send money with order? Prices are F. O. B. Lumberton, unless otherwise stated.

How to Send Money. Send money any way that is most convenient for you. Why not send the money and save the C. O. D. fee? We prefer money order.

We cannot ship trees by mail except smallest pecans and fruits.

Our Shipping Facilities are exceptionally good. We are near the depots of two railroads and have open stations both day and night. Also have long distance telephone and telegraph service at all times. You can get us over the telephone any time.

Our Trees Always Freshly Dug. We can dig and ship your trees any day.

Order Early. The demand for our high-grade, bred-up trees far exceeds the supply, and it is very imperative that you send in your order early. Those who order early naturally receive the choicest stock.

Time of Shipment. Unless otherwise instructed, orders received during the shipping season, November 1st to April 1st, will be forwarded as soon as possible after receipt of the order.

Substitution. If out of the varieties ordered, we will send the ones we think to be the equal or superior unless instructed not to substitute.

No Charge for Packing. We carefully pack and tag all trees free of charge.

Our Trees Free of Disease. A certificate of inspection of the Mississippi State Entomologist certifying our trees to be free of disease accompanies each bundle of trees. All inspection laws of other States are complied with.

We are not connected with any other nursery. We do not employ agents.

"My trees bought from you in years past are bearing heavily and have repaid purchase price long ago." WOODVILLE, MISS.

It's advisable to plant our larger trees — You save the initial growing period.

PLEASE MAKE YOUR ORDER FOR \$5.00 OR MORE IF POSSIBLE

ORDER BLANK

TO
BASS PECAN COMPANY
Largest Pecan Nursery in the World
 LUMBERTON, MISSISSIPPI

For prices, see back of this blank, page 28, and for complete descriptions, please refer to the following pages:

Pecans Page 12 Pears Page 21 Plums Page 22 Peaches Page 22 Apples Page 23	Japanese Persimmons Page 23 Grapes Page 23 Figs Page 23 Strawberries Page 24 Youngberries Page 24
---	---

Kind	Quantity	Size	Price
PECANS			
Stuart			
Success			
Schley			
PEARS			
Pineapple Sand Pear			
PLUMS			
Red June			
JAPANESE PERSIMMONS			
Tane-Nashi			
PEACHES			
Red Bird			
Hiley Belle			
Elberta			
FIGS			
Celeste			
APPLES			
Red June			
Delicious			
GRAPES			
Concord			
Niagara			
STRAWBERRIES			
Blakemore			
Improved Klondike			
Mastodon Everbearing			
YOUNGBERRIES			
Pecan Buds			
Pecan Grafts			
Prepared Wax			

SEE NEXT PAGE FOR PRICES

Total Amount of Bill		
----------------------------	--	--

I Guarantee to Take This Order and Pay For It.

Signed _____

Post Office _____

Express Office _____

Date to Ship _____

P R I C E S



Top-Grade (No. 1) Pecan Trees—All Varieties

	Each	Six	Twelve	Sixty	100	1000
2-3 Feet	\$.80	\$ 4.20	\$ 7.80	\$ 36.00	\$ 60.00	\$ 500.00
3-4 Feet90	5.10	9.60	45.00	70.00	600.00
4-5 Feet	1.00	5.70	10.80	51.00	80.00	700.00
5-6 Feet	1.20	6.90	13.20	60.00	100.00	900.00
6-7 Feet	1.35	7.80	15.00	72.00	120.00	960.00
7 Feet to Large	2.00	10.80	19.80	90.00	150.00	1200.00
Large	2.50	14.40	27.00	120.00	200.00	1600.00
Extra Large	3.50	20.40	36.00	165.00	275.00	2200.00
Extra Special	4.00	22.80	42.00	195.00	325.00	2600.00

We recommend the planting of our large trees. They bear earlier.

Special Price on Large Orders

One to five trees take the each rate price; six to eleven trees take the six rate price; twelve to forty-nine take the twelve rate price; fifty and up take the one hundred rate price; 500 and up take the 1,000 rate price. Special prices cheerfully quoted on larger lots.

 All Prices F. O. B. Lumberton, Miss. 

CULLS For information as to our culls, please see bottom of page 13. These No. 2 pecan trees sold at 1/2 the price of our No. 1 trees (Bass' First Class). See above. Prices f. o. b. Lumberton.

For prices on Bass Pecan buds, grafts and prepared wax, see page 26.

PLUMS—RED JUNE

	Each	10	100
3 to 4 feet.....	\$.50	\$4.50	\$30.00
4 to 5 feet.....	.65	6.00	40.00

FIGS

	Each	10	100
3 to 4 feet.....	\$.35	\$3.00	\$20.00
4 to 5 feet.....	.50	4.50	35.00

PEACHES

All Varieties

	Each	10	100
June buds 1 to 2 feet.	\$.20	\$1.50	\$12.50
3 to 4 feet30	2.50	20.00
4 to 5 feet.....	.60	5.00	35.00

GRAPES

Both Varieties

	Each	10	100	1,000
2-Year No. 1.....	\$.25	\$2.00	\$15.00	\$100.00

JAPANESE PERSIMMONS

	Each	10
3 to 4 feet.....	\$.50	\$4.50
4 to 5 feet.....	.60	5.00

PINEAPPLE SAND PEARS

	Each	10	100
3 to 4 feet.....	\$.45	\$ 4.00	\$ 30.00
4 to 5 feet.....	.55	5.00	40.00
5 to 6 feet.....	.70	6.00	50.00
6 to 7 feet.....	.90	7.00	60.00
Large size.....	1.15	10.00	75.00
Extra Special size..	1.50	12.50	100.00

APPLES

All Varieties

	Each	10	100
3 to 4 feet.....	\$.30	\$2.50	\$20.00
4 to 5 feet.....	.60	5.00	35.00

STRAWBERRIES

	POST PAID			EXPRESS COLLECT				
	25	50	100	250	500	1000	5000	10,000
Imp. Klondike	\$.60	\$.75	\$1.25	\$1.50	\$2.50	\$ 3.50	\$13.50	\$ 25.00
Blakemore75	1.00	2.00	3.00	5.00	9.00	40.00	75.00
Mastodon	1.00	1.75	3.00	4.00	7.50	15.00	65.00	125.00

YOUNGBERRIES

Single lots	25c each	50 plants	15c each
10 plants	20c each	100 plants	10c each

"We appreciate your promptness, careful selection of stock, and your business-like methods."

LITTLE ROCK, ARK.



THIS is a familiar scene around the Bass Nurseries. The man in the foreground does nothing but inspect trees. This official inspector is a trained nurseryman, and it is his job not to let a single tree pass that is in any way inferior, defective in root system or trunk, or have any scars. The trees are first placed in the vat of water to wash the dirt off the roots, so they may be inspected and properly packed for shipment. The other men gather and tie the trees carefully, packing as described on page 15. As the trees are growing the entire nursery is inspected every week. The inspection is daily, but it requires a week to walk through all the rows of all the fields. Trees are carefully watched to keep free of any pests and diseases, and to see that they are in a fine growing condition.

1 1 1

Pecan Trees Are Our Life Business— You Will Be Dealing With an INSTITUTION

OUR sole business is the growing and selling of pecan trees. It requires our attention 365 days a year. This is not a company which buys trees each year for resale, or sends out agents to peddle them, but a large organization operating throughout the year, and selling our own trees direct. Nor is it a one-man, one-truck concern, nor a backyard "nursery". This nursery comprises 15,000 acres, of which 1,000 is planted in orchards and nurseries, and in which over 2,000,000 trees are growing at all times. The remainder of the land is held for continued development and enlargement.

From 50 to 100 men are employed the year 'round, many of whom have been with us since we began business. They live in their own homes, which we furnish, and are happy, contented labor, who take pride in our trees and whose hearts are in their work. Thirty mule teams and all kinds of farm machinery are used on our place.

Visitors Welcome! *Here's an Unusual Proposition!*

Visitors are always welcome, and we have hundreds of them each year. We'll gladly take you over our place, show every operation and the many details of precaution in growing, grafting, budding, caring, packing, and shipping our trees.

If you will visit us, in order to be sure about the trees you buy, *and you do not find our nursery to have more and better trees*, we shall pay all expenses and liberally for your time. You might thus care to visit around to make comparisons.

If we were not positive about our own trees, would we dare make such an offer?

"I have never seen more beautiful nor more carefully packed trees. They were in perfect condition."

NORFOLK, VA.

Plan Now to Plant Pecans So You May Retire Early in Life

MANY MEN start planning early to create a fund so they may retire, and also to build up an estate on which they can spend their remaining years in comfort and leave something worthwhile behind. This is ordinarily done with insurance.

This may also be done, whereby there will be not only insurance of independence in your old age, retirement and a valuable estate, but, *more than that, you may enjoy life meanwhile, watching your investment grow, and living among the trees, and birds they invite, in your own home.*

Yes, pecans can do all this! Plant your land in pecans or buy up land which you can get these days for a low price, and make of it pecan groves. Then those pecans will take care of you and even generations to come. *Be among the 2% of the people who are not failures and who look ahead!*

We Have 15,000 Acres of Fine Land for Sale

Here at Lumberton, where pecan growing conditions are so ideal, we have for sale 15,000 acres of fine land. This land is well located—lots of it right along fine gravel highways that are soon to be concreted at no extra cost to the landowner. It is extra fine land for Papershell pecans, peaches, pears, plums, grapes, figs, Satsuma oranges, all kinds of early and late vegetables and truck growing, and also excellent land for cotton, corn, peas, beans and other farm crops. There is a wonderful climate, being warmed in the winter by a breeze from the warm Gulf stream and cooled in the summer by light winds most all the time. No finer section can be found for cattle, sheep and horse grazing—ample rainfall to make grasses grow fast and stay tender. Green feed for stock can be had every day in the year. Health conditions are unusually fine—Lamar County ranking right among the healthiest counties in the United States. Fine schools, churches, good gravel roads, good citizens and as fine water as you can find in the country—water is pure, odorless, tasteless and clear and soft—most ideal. This land is cheap—priced at from \$5.00 to \$15.00 per acre for uncleared land. This land is easy to clear—usually costing from \$5.00 to \$10.00 per acre. *Easy terms are offered by us.*

Large Orchard Planting

We are in position to not only sell you our choice bred-up trees, but to set out and care for large orchards by our own experts. Thus a positive assurance of not only good trees, but the attention they need to get a good start. Write us for our very reasonable terms.

IF YOU HAVE LAND FOR SALE

Perhaps you have land that you want to sell. Plant it in pecan trees! You will immediately increase the value of your land and, anyway, make it more salable. Twenty years ago a person of our acquaintance bought five acres of land at \$20.00 per acre. A few years later he planted the land in Bass trees and was offered \$1,000 per acre, which price was refused. He realized that by planting pecan trees he had increased the value of his land by \$950 per acre, for he could have got only \$50 an acre for the land as he bought it. His land, taxes, and trees were readily paid for in the actual increased value, and it was worth a big difference besides.

"I ordered trees from you when I lived in Summit, Miss. They have lived and are good bearers."

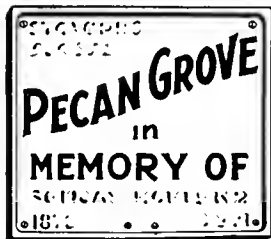
BROOKHAVEN, MISS.



A Bass tree planted 1 year, 2 years, 3 years, and longer.

Leave Behind a Living Memorial

"Make the World a Bit More Beautiful and Better Because You Have Been In It."



Plant a grove in memory of someone!

ALL OF US cannot leave a name that will go down in history, but we can leave a legacy and an estate that will live for ages. We can do even more than did the Pharaohs of ancient Egypt. We can "build" *living monuments* to perpetuate our name, foresight and love of Nature. Let your spirit live on in the whispering, lulling breeze of beautiful pecan trees.

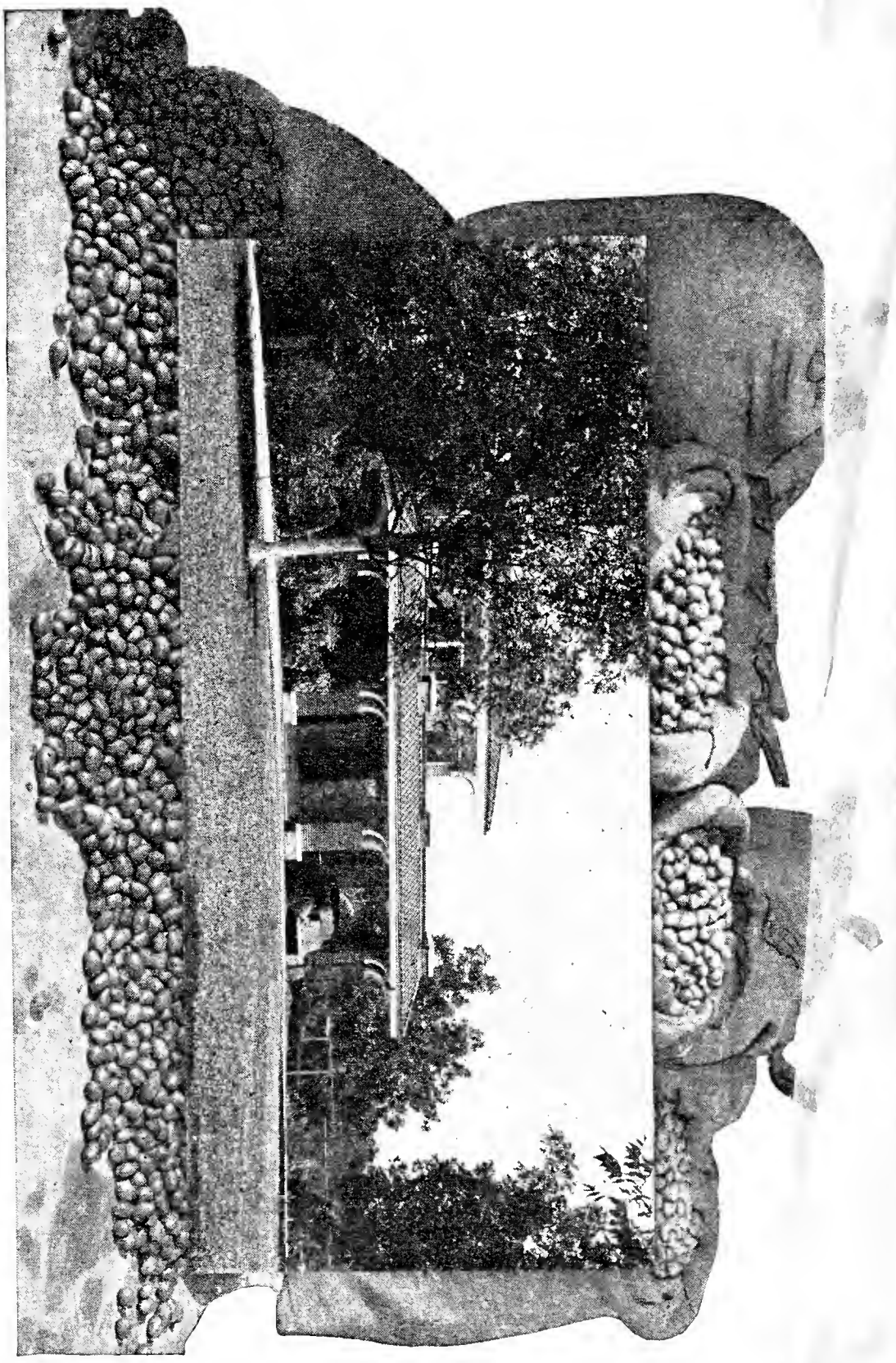
By planting a pecan grove, which trees grow for centuries, you may bequeath a valuable estate, and a place of beauty.

So in your community and among coming generations, you may leave a pleasant memory, and a perpetual income, instead of a lump sum which might be squandered by the immediate heirs.

In considering such an estate, why not plant the grove in memory of your parents, your wife, husband or other loved ones? Perpetuate his or her name in this beautiful way.

"Plant a pecan grove and later on in life it will support you. It will do as much for your children, and your children's children," said J. B. Wight, before the American Pomological Society.

Can bring you an income for life. Too!



Prepared by and sent to you with the compliments of

BASS PECAN COMPANY

The Largest Pecan Nursery in the World

LUMBERTON MISSISSIPPI