

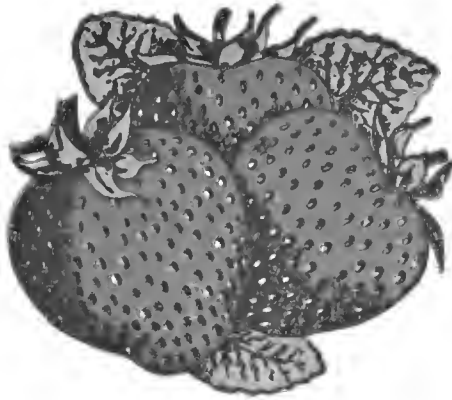
Historic, Archive Document

Do not assume content reflects current scientific knowledge, policies, or practices.

62.07

Annual Catalogue
of
J. A. Bauer Plant Co.
Judsonia, Arkansas

FOUNDED 1880



*Strawberry Plants and
Nursery Stock*

Fall 1935 - Spring 1936

Long Distance Phone No. 121 or Western Union Telegraph Co.

J. A. BAUER PLANT COMPANY'S BLUE RIBBON BRAND PLANTS



WHY NOT TRY STRAWBERRIES?
NO ORDER TOO LARGE OR TOO SMALL.



You Will Not Be Disappointed When You Set Bauer's Blue Ribbon Brand
Strawberry Plants.

Bigger Yields ————— Bigger Profits
Our Plants Are Guaranteed True To Name.

Friends and Customers

It is a great pleasure to us to present to you our annual catalogue, knowing that for years we have served you faithfully, and by our careful and unselfish methods we have been able to make staunch supporters and friends of all of our customers.

While we exercise the greatest care in filling your orders, we are not perfect, and if anyone has a just complaint we want them to write us. Our greatest desire is to "Do unto others as we would have them do unto us."

The Bauer's have been in the strawberry plant business for fifty-five years and are well known all over the United States for their integrity. Our "Blue Ribbon Brand" strawberry plants are as good quality as you can secure ANYWHERE.

We sincerely thank each and every one of our customers for their support, and express our desire to serve you as well this season as we have in the past. To those who have never dealt with us, we invite you to join our many friends and be convinced that we can serve you with satisfaction and profit.

Why not try some strawberries this season?—There is no crop that we consider so sure a money maker as strawberries.

Let us supply your wants with true to name—Bauer's Blue Ribbon Brand Plants.

We solicit your business.

J. A. BAUER PLANT COMPANY.

Strawberry Plants and How To Grow Them

Shipments—We pack all of our plants in slatted crates and guarantee safe arrival on all shipments up to April 10th. After that date they travel at risk of purchaser. We do not advise shipment of strawberry plants by freight but advise shipping by express or mail.

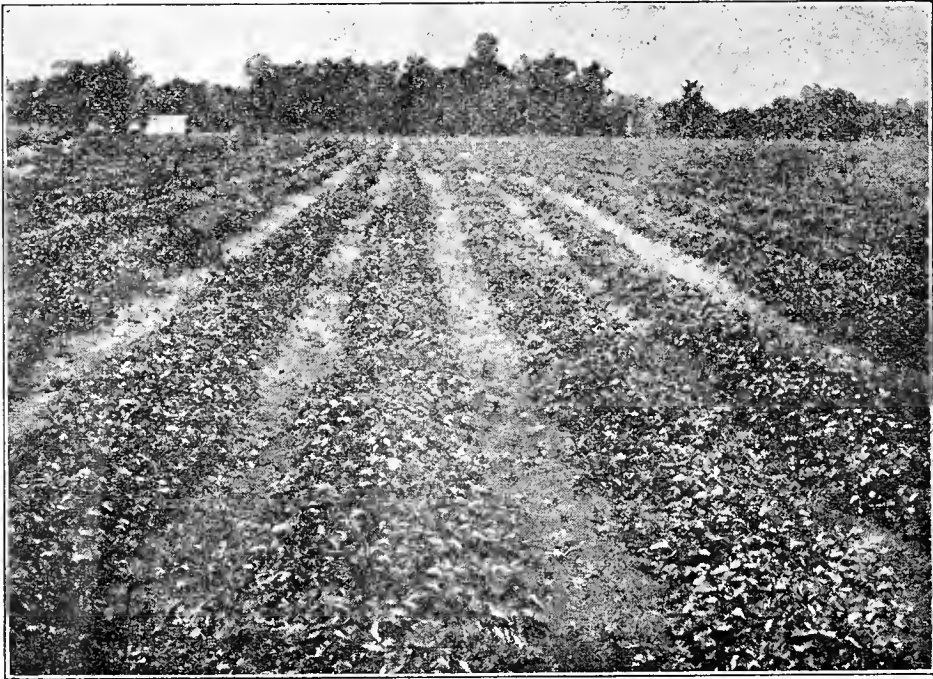
Terms—We ask cash before shipment is made, or will take one-half cash and balance C. O. D. If you send check please add exchange fee. We prefer money orders.

Mail Orders—On our mail orders we send just the same plants as if they went by express, and we sell as few as twenty-five plants to one person. But we hope you will make your order for \$1.00 or more. Remember we guarantee safe ar-

rival.

Prompt Shipment—When you are ready to set your plants you usually want them at once and we can get them to you promptly. When you place your order with us, if the weather permits digging the plants they will go out to you promptly. We are one of the largest growers of strawberry plants in the southwest and have been established since 1880. Every patron must be a pleased patron.

How To Grow Strawberries—We have many requests from people wanting information as to how to grow strawberries. We will say that each section has different soil conditions and there is also a difference in the climate, so what does well with us might not do well in your sec-



New Blakemore is a Good Plant Maker. We Like Them Fine

tion. But we will give a brief description of the way we grow them.

We advise using new land if possible. Use well drained land, having it cleared and broke in the fall. Then in the spring break the land again and harrow. Now lay off your rows about three and one-half feet apart. Now take one horse turning plow and throw two furrows together one from each side of the original row. Then harrow off ridge with light one-horse harrow. Then set plants 16 to 18 inches in row in middle of ridge. Work

with hoe and plow as often as necessary through summer. With proper season you should have a fine row of plants by October if set early in spring. If you care to do so you may give them about 300 pounds of bone meal, scattered broadcast, late in September. Land that is inclined to be wet or overflow should never be used for strawberries. We usually use about 7,000 plants to the acre.

In Southern Texas they use what they call the double hedge row, using from twenty to fifty thousand to the acre.

Description of Varieties

EXCELSIOR, (Extra Early, Perfect)—The very earliest berry we have grown and one that is fine for home use as well as shipping. Unexcelled for preserves, jams, and jellies. We advise you to plant some of this grand old variety.

LADY THOMPSON, (Early, Perfect)—An improved strain of the old Lady Thompson variety, firmer and will carry well, stands hot dry summers and comes on about a week after Excelsior. Does well

in Southwest.

MISSIONARY, (Medium Early, Perfect)—This is the leading berry for the South. They grow them with success in Florida, Alabama and South Texas. A good selling berry. We sold one firm in Florida over a million of this variety last season.

IMPROVED KLONDYKE, (Medium Early, Perfect)—We introduced this berry

J. A. BAUER PLANT COMPANY'S BLUE RIBBON BRAND PLANTS



We have Millions of Imp. Klondyke. This Shows One Block of Them

and know it to be good. One of the standard varieties used for shipping in this section. A good variety for all purposes. Try them.

DUNLAP, (Medium Early, Perfect)—This variety does well in the North and West, not so good for the South as others of the same season. We have good pure stock and can fill all orders.

AROMA, (Late, Perfect)—We sell more of this variety than all other late ones combined. This is the standard late berry for this section and is shipped in carlots. Let us have your orders for true to name stock.

ST. LOUIS, (Early, Perfect)—The best early berry grown today for home or nearby markets, but is not so good for shipping a long distance. We originated and introduced the St. Louis. It is large size, very productive, sweet and light scarlet in color. A very good variety for local market.

PREMIER, (Early, Perfect)—A very successful berry in the North and East, ripens early and has a long fruiting season of unusually large berries of fine color and uniform size. Foliage strong and healthy, and not subject to disease.

MICHEL, (Early, Perfect)—We have a nice stock of this variety to offer this season, an old standard variety, very fine for home use. We advise your planting

some of these in your garden.

GANDY, (Late, Perfect)—This is another old standard variety and excepting the Evening Star, is one of the best late berries we have ever grown. Fine large berries of good flavor. No garden is complete without a few rows of Gandy for home use. And they also ship well.

BLAKEMORE, (Early, Perfect)—Acclaimed by many to be the finest strawberry ever introduced by the United States Department of Agriculture. We find them very productive, almost twice as productive as Klondyke or Missionary.

Very firm, will keep for days after being picked. We predict they will take the place of Klondyke in this section as the standard shipping variety. We advise setting this variety as they have more berries and of better grade than Klondyke or Missionary and ripen about the same time.

MASTODON EVERBEARING, (Perfect)—The greatest everbearing strawberry that has ever been grown and one that will please you. We have a good supply of this variety and the plants are fine large ones.

If you want an everbearing strawberry you will be wise to choose Mastodon.

PROGRESSIVE EVERBEARING, (Perfect)—We consider this the second best Everbearing variety on the market. We have a good stock of these and will be glad to have your order.

J. A. BAUER PLANT COMPANY'S BLUE RIBBON BRAND PLANTS

Price List of Strawberry Plants

	(Post Paid) (Express Collect)
	25	50	100	250	500	1,000	5,000		
Excelsior,	\$.35	\$.60	\$.85	\$ 1.25	\$ 1.75	\$ 3.00	\$ 14.00		
Missionary,35	.60	.85	1.25	1.75	3.00	14.00		
Imp. Klondyke,35	.55	.85	1.25	1.75	2.75	13.00		
Dunlap,35	.65	.90	1.25	1.75	3.00	14.00		
Blakemore,35	.65	.90	1.25	1.75	3.00	14.00		
Thompson,35	.65	.90	1.25	1.75	3.00	14.00		
Aroma,35	.65	.90	1.25	1.75	3.00	14.00		
Michel,35	.65	.90	1.25	1.75	3.00	14.00		
Gandy,50	.80	1.30	1.85	2.20	3.50	16.50		
St. Louis,50	.80	1.30	1.85	2.20	3.50	16.50		
Premier,50	.80	1.30	1.85	2.20	3.50	16.50		

EVERBEARING VARIETIES

	(Post Paid) (Express Collect)
	25	50	100	250	500	1,000	5,000		
Progressive,50	.80	1.30	1.85	3.10	4.50	21.00		
Mastodon,60	.90	1.40	2.20	4.00	7.00	32.50		

YOUNGBERRY PRICES

	(Post Paid) (Express Collect)
1 Doz.	25	50	100	250	500	1,000	5,000		
Youngberry,75	\$1.40	\$2.25	\$3.75	\$5.00	\$8.00	\$15.00	\$70.00	

(These prices cancel all previous prices)

All lots of 25 to 100 sent post paid at prices named and all lots of 250 and over are shipped express collect.

We ask that you order plants as priced above. We do not allow you to make up an order for three or four kinds at above prices as they are so much trouble to pack we must have a better price for

orders of this kind. If you want them mixed write us for special prices. In making out your order please write plainly as this is the only way we have of addressing your plants to you. While our list is not as large as some have, we feel that you will make no mistake in planting any of the varieties we have listed.

Youngberry

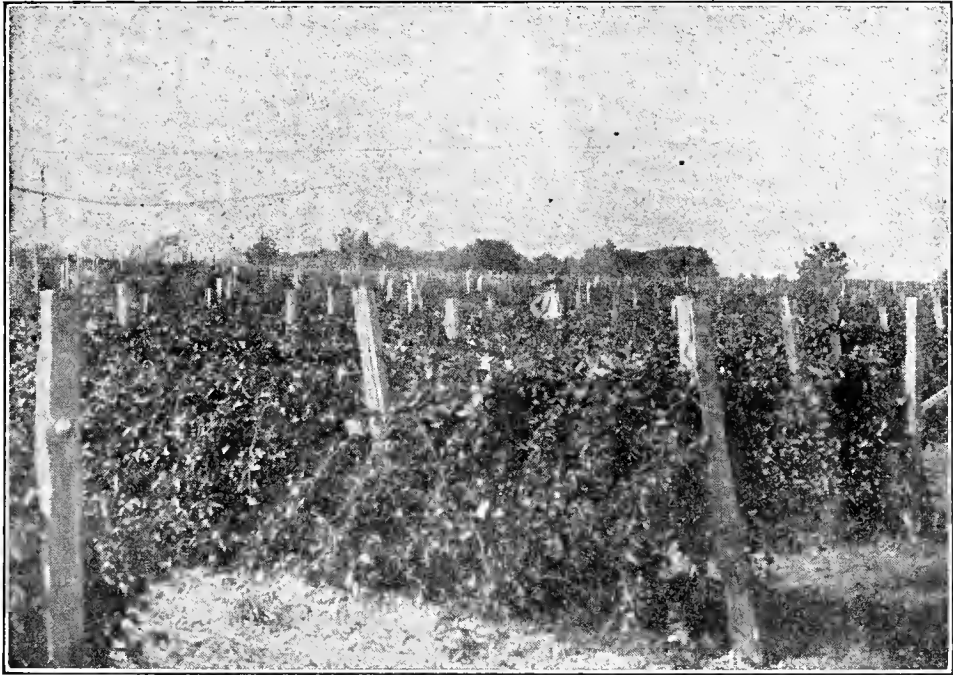
This is a grand new fruit and we think it will pay you to try them.

They have made yields of 20,000 pints to the acre in California and have also made good yields in Alabama and Georgia.

The berries run about an inch long; are purple in color; have a fine flavor and

are very productive. The flavor is somewhat like a raspberry instead of a dewberry. The vines are vigorous and sometimes grow twenty feet in one season. Although the vines are thorny, the fruit stems hang out from the vines making them easy to pick. We set 1,000 plants to the acre; making the rows about 9 feet

J. A. BAUER PLANT COMPANY'S BLUE RIBBON BRAND PLANTS



This Shows the Youngberry Vines Like They Look In The Spring

apart and setting them about five to six feet in the row. Should be set as early in the spring as possible although some set in the fall. As vines start to run, keep them trained along the rows so they will not be in the way of the plow. In winter place posts along the rows every ten feet and string two wires on to them, the first wire being about eighteen inches from the ground. In the early spring tie your vines up to the wires, stretching the vines out full length. One set of posts and wires will last the lifetime of the plants

or ten or fifteen years. After fruiting, cut out all old wood and train and cultivate the vines as you did at the first. Plow and hoe when needed.

Whatever you do plant some Youngberries, they have the flavor of the Red Raspberry and are a cross between the Austin Dewberry and the Loganberry. They make the best jelly, marmalade and jam ever. In Southern Alabama they have cleared from \$550.00 to \$650.00 per acre from Youngberries and in California as much as \$1,000.00 per acre.

Grohoma

This is a new kaffir corn and we find it a wonderful grower on our farm; we truly think it will make 100 bushels of threshed grain to the acre on good soil. Should be planted in May but will do well planted as late as July 4th. Will do well in dry weather and is fine feed for stock and chickens. Three pounds will

drill an acre. You should try some of this fine feed.

Price of Seed: 1 lb., 35c; 5 lbs., \$1.50; 10 lbs., \$3.00; 25 lbs., \$8.00; 50 lbs., \$14.00. In lots of one to five pounds we pay postage; larger lots, express collect. Don't fail to plant an acre; 3 pounds will drill an acre.

Blackberry and Raspberry Plants

We offer a full line of these plants and will be glad to have your orders.

BLACKBERRY PLANTS

Varieties: Blower, Dallas, Erie, Early Harvest, McDonald, Rathburn, Robinson, Snyder and Ward.

Sucker Plants Post paid, 25, \$1.00; 50,

\$1.75; 100, \$3.00. Express Collect, 250, \$4.50; 500, \$8.50; 1,000, \$15.00.

Root cuttings, larger than above 20 per cent additional.

RASPBERRY PLANTS

Varieties: (Red), Cuthbert, St. Regis, King and Latham. (Black), Black Pearl, Cumberland and Kansas.

Post paid, 25, \$1.75; 50, \$3.00; 100, \$5.00. Express Collect, 250, \$8.00; 500,

\$15.00; 1,000, \$25.00.

If you want transplants of these varieties add 20 per cent to your order. All of these do well in the South.

Onion Plants

We have our onion plants grown by a reliable man in Texas and they have always given complete satisfaction. Fine well grown plants of pencil size, 6,000 to a

crate, varieties, Yellow Bermuda and White Crystal Wax.

Price: \$4.00 per crate f. o. b. shipping point.

NOTICE

If you should order strawberry plants and fruit trees or vines and they do not all reach you at once, do not be alarmed as the others will follow at an early date. As sometimes we are able to get the plants dug and off before the weather will permit us getting the trees and vines dug. We usually start shipping strawberry plants about October 10th, and trees and vines about November and ship until the first of May.

RAILWAY EXPRESS AGENCY

Hitchcock, Tex. February 19, 1935

Messrs J. A. Bauer Plant Co.

Judsonia, Arkansas.

Gentlemen:

Mrs. Volk and I want to thank you for those plants. There were approximately 1400 of them and we never saw stronger, better plants.

We put them out yesterday in good ground and are very sure they will bear this year.

Yours truly,

J. T. McCarty.

FRUIT TREES

Peaches

Arp Beauty—Yellow with bright blush; a firm, juicy, excellent peach of unusually good flavor; free stone, ripe the last of June.

Early Wheeler—Originated by Mr. E. W. Kirkpatrick, in his experimental orchards at McKinney, Texas. The most profitable peach grown for commercial purposes. Very showy and always attracts attention on the market. Cling stone, early.

Early Cling—Seedling of Elberta, large yellow with bright red cheek. Especially good for pickling, canning and preserving. Tree is vigorous grower and very productive.

Hobson—Large, red cheeked, showy, cling; of excellent quality. Tree of vigorous growth. Ripe in latter part of June and July.

Mayflower—Semi-cling, red all over, of splendid quality. This tree should be in every back yard. Ripens in May.

Belle of Georgia—The best white peach for home and commercial planting. Ripens a week before Elberta. Free stone, of splendid quality.

Champion—Free stone, large, juicy and delicious. Bears fruit while the tree is young, ripens in July and August.

Chinese Cling—Well known and popular for home orchards. Oblong, creamy and occasionally tinged with red. Ripens in July and August.

Early Crawford—A superb large yellow peach. One of the best. Ripens late September.

Elberta—The most widely known of all peaches. Large size, yellow splashed with crimson. Can be grown anywhere. Very

productive.

Indian Cling—Dark red in color and the ideal pickling peach of them all. Very juicy and of rich flavor, an old standard peach. Try one of these in your back yard. Ripens in August.

Stinson—White with red cheeks, one of the best peaches. Ripens in October.

Niagara—A very large yellow peach, ripening between Crawford and Elberta; surpassing both in size, color and quality.

Rochester—A yellow free stone, ripening in early August. Large size and delicious flavor; ships well. Tree is very hardy.

J. H. Hale—This peach has been tested and largely planted in many sections. About five days earlier than Elberta and averages one third larger. Yellow with red cheek.

Heath Cling—An old favorite. White thin skin, very firm; fine for preserves and pickles. Ripens in August.

Lemon Cling—Large, oblong, pointed; bright yellow with red cheek. One of the best canning peaches. Ripe in August.

Mamie Ross—One of the most widely planted of the white peaches in the South. flesh white tinged with red near the seed. Semi-cling; ripens ten days before Elberta; Tender, juicy and sweet.

Matthew—A fine Georgia peach. Large, yellow; of fine quality similar to Elberta, but ripens two weeks later. Free stone.

Salway—An excellent late peach. Flesh deep yellow; excellent flavor, very productive. Ripens in September.

Sneed—Medium early; round, cream color; semi-cling and fair quality.

PEACH TREES—(Two Year Old)

	Each	Per Doz.	Per 100	Per 1,000
2-3 ft.,	\$.18	\$2.00	\$15.00	\$125.00
3-4 ft.,25	2.50	18.75	150.00
4-5 ft.,38	4.00	32.50	200.00
5-6 ft.,50	5.50	45.00	300.00

JUNE BUD PEACHES

	Per 100	Per 1,000
6-12 in.,	\$6.00	\$45.00
12-18 in.,	8.00	75.00
18-24 in.,	10.00	80.00
24-36 in.,	12.00	100.00

Apples

What tastes better than fruit picked from your own trees? Every home owner should have his own fruit trees. Our small town markets are never fully supplied.

Arkansas Black—Dark red, almost black, medium to large size; of very attractive appearance. Reaches perfection in the Pecos Valley in Texas and New Mexico. Ripens in September.

Ben Davis—The well known standard variety, medium to large, color yellowish covered with red. Ben Davis apples grown in the southwest are much superior to those grown to the north. Ripens in September.

Early Harvest—Medium; bright straw color; tender, sub-acid, fine cooking apple. Must be handled very carefully for market. Ripens in June.

Gano—Large; oblong, very similar in every respect to Ben Davis, but of a rich red color. Largely planted in commercial orchards in the southwest. Ripens in September.

Grimes Golden—A golden yellow apple that is an old favorite over the United States on account of its beauty and size. A splendid variety for commercial purposes as well as home use. Ripens in September.

Horse—A popular Southern apple; large, oblong; yellow; fine for cooking and drying. Ripens July.

Jonathan—One of the best varieties. A brilliant red with spicy flavor. A favorite with all lovers of a juicy apple. If you have room for only one apple tree, plant a Jonathan.

Delicious—A remarkable variety rapidly taking first rank both for commercial purposes and home orchards. Fruit large;

brilliant red and juicy, with a delightful aroma. A splendid shipper. Ripens in September.

Dixie—This beautiful yellow apple originated from seed of some fine apples from Kentucky, planted by Mrs. Emiline Burge of Ector, Texas, in 1898. Sub-acid and is fine for cooking and eating. Ripe last of June.

York Imperial—An attractive red apple with faint stripes of darker red; good quality, crisp, firm and of fine texture. The tree is long lived and bears regularly. Does well in the Southwest. Ripens September and October.

Mammoth Black Twig—Large yellow shaded red. Flesh pale yellow, tender juicy, mildly sub-acid. A seedling of Winesap. Ripens from September to December.

Red Astrachan—Medium; flat; deep crimson. Flesh white, moderately juicy, flavor quite acid; very productive. Ripens July.

Red June—One of the best early apples for market. Medium; deep red; flesh white, crisp, excellent. Ripens June.

Winesap—One of the oldest of American apples and still increasing in favor. Its size, color and particularly its quality have given this apple its well deserved popularity. One of the best keepers of them all. Ripens September.

Yellow Transparent—Widely known and well liked. Large size, good quality, crisp, sub-acid, and very fragrant. Tree bears young and is of rather dwarfish growth; is very hardy. Ripens in June.

TWO YEAR APPLE TREES

	Each	Per Doz.	Per 100
2-3 ft.,	\$.25	\$2.50	\$20.00
3-4 ft.,30	3.00	24.00
4-5 ft.,40	4.50	36.00
5-6 ft.,55	6.00	48.00

ONE YEAR APPLE TREES

In Lots of 100 and Up

	Per 100	Per 1,000
2-3 ft.,	\$16.00	\$150.00
3-4 ft.,	18.50	170.00
4-5 ft.,	21.00	195.00

Plums

America—Successful anywhere. The fruit is always in demand and prices are good. Bears while tree is young and has enormous crops of perfect fruit. This wonderful plum should be in every orchard.

Damson—A medium sized, dark purple variety; which is very productive.

Abundance—One of the most dependable of the plums. Sure to have a crop each year. Large size; cherry red, carries well.

Burbank—Very popular in all sections. Richly colored. A heavy fruiter. Ripens July.

Red June—One of the best early plums. A dark red color showy and of excellent quality. Tree hardy and a sure bearer.

Wickson—Large size, heart shaped, flesh yellow with excellent flavor. Tree an upright vigorous grower. Ripens July.

Wild Goose—An old, well known variety. Color yellow with red. Fine for preserving and jellies. Ripens in June.

Pears

No home can afford to be without a few pear trees.

Bartlett—Clear lemon yellow with faint blush. Juicy and highly flavored. The most popular of all pears. Ripens July to August.

Garber—Should be planted in the South. Is a large yellow pear with red cheek. Keeps remarkably well and is a splendid shipping pear. Ripens August.

Kieffer—The best known of all pears.

Very large; yellow and successful everywhere. Should be gathered when mature and allowed to ripen in storage. Tree vigorous and very productive. Garber should be planted with Keiffer to insure best pollenizing. Ripens August to September.

Wilder—Small to medium; bell shaped, tender and juicy, tree hardy and bears young. Ripens June and July.

Mulberries

Fine for shade and an ideal tree for planting in your chicken yard or near your orchard; as chickens and birds are especially fond of them.

Downing—Large, rich, sub-acid. Ripe in June and July.

Hick's Everbearing—Does well all over the South. Fruiting for several months.

Large black and sweet.

Russian—A good bearer. Ripens July and August.

Apricots

Apricots do best in the West and should be planted in limited numbers elsewhere. All varieties listed ripen in June and July and a few trees should be in every orchard.

J. A. BAUER PLANT COMPANY'S BLUE RIBBON BRAND PLANTS

Moorpark—Large, yellow color, flesh bright orange; separate readily from the seed. Grown largely for commercial purposes and good for canning and drying. Tree vigorous and prolific.

Royal—An European variety; large, slightly oval, dull yellow with red cheek. Good quality and produces fruit freely.

Early May—Medium to small, light orange, flecked with red. Flesh juicy and sweet and of good quality.

Toyahvale—This is remarkable Russian seedling. Originated in Toyahvale, Texas. Blooms very late, hence the best variety for general planting. Fruit medium size, juicy and of fine flavor. Try one of these.

PEAR, PLUM, APRICOT AND MULBERRY TREES

	Each	Per Doz.	Per 100
2-3 ft.,	\$.25	\$2.50	\$17.50
3-4 ft.,38	4.00	22.50
4-5 ft.,50	5.00	42.50
5-6 ft.,63	7.00	50.00

Figs

The Fig is half hardy and luxuriant in growth. Each home should have some.

Magnolia—Large, pale violet; of the Adriatic class; flavor excellent; bears on one year stems.

Brown Turkey—Adriatic; medium size, sweet and of almost brown color. Has the

habit of bearing on new shoots even in nursery rows.

Brunswick—Large; light violet color; excellent quality. Very reliable and prolific.

FIG TREES

	Each	Per Doz.
1-2 ft.,	\$.25	\$3.00
2-3 ft.,38	4.75
3-4 ft.,50	5.50

Cherries

Cherries are one of the most universally favorite fruits. The sour cherries are most successful in the South.

Black Tartarian—Large, black; heart shaped, very juicy and prolific.

Early Richmond—Medium size, clear red and quite acid.

English Morello—Very dark, sour, latest to ripen. Tree does not grow very large, good for garden planting.

Montmorency Ordinaire—Large, red, acid, exceedingly productive. Ripens late June.

Dyehouse—A sure bearer, largely planted for early market; ripening a week before Early Richmond.

SWEET CHERRIES

Bing—A sweet cherry. Very large, dark brown color. Delicious flavor and one of the most profitable sorts. Ripens July.

Governor Wood—Large, round, color yellow mottled with red. Sweet, juicy and delicious. Fruit hangs on tree well. Ripens in June.

J. A. BAUER PLANT COMPANY'S BLUE RIBBON BRAND PLANTS

CHERRY TREES

	Each	Per Doz.	Per 100
2-3 ft.,	\$.38	\$4.00	\$27.50
3-4 ft.,50	5.00	35.00
4-5 ft.,75	7.50	50.00

Pecans

Plant your Pecan Orchard NOW. Then you can be independent in your old age. As a food, nuts rank with meats and cereals and can be served in many appetizing ways. Pecans do well through the South.

Success—A fine nut of oblong shape: tree making a fine upright growth. A regular producer, you will be pleased with it.

Money Maker—A very popular Pecan and one that is largely planted. The tree is a vigorous grower; nuts of good size, paper shell.

Delmas—Large, good quality, shell medium, fills out well. Tree strong and healthy. One of the best commercial varieties.

Frotscher—Originated in Louisiana. Nuts cylindrical, slightly tapering; shell thin, parting easily from the meats. Tree hardy and productive. One of the best.

Schley—Medium long, pointed, shell thin; meats plump; separating easily from shell. Good quality.

Stuart—A standard variety among high class pecans for commercial purposes. Nuts large; well shaped and of fine appearance. Reasonably thin shelled and well flavored. The best all round pecan of all.

PECAN TREES, BUDDDED

	Each	Per Doz.	Per 100
18-24 in.,	\$.55	\$ 6.00	\$ 37.50
2-3 ft.,80	9.00	70.00
3-4 ft.,	1.05	12.00	95.00
4-5 ft.,	1.25		120.00
5-6 ft.,	1.50		142.50
6-7 ft.,	1.75		170.00
7-8 ft.,	2.00		195.00

Grapes

Grapes do well all over the United States. There is no fruit more satisfactory for home use. If you do not have space for a vineyard you should by all means have a few vines in your back yard for grape juice, jellies and marmalade. Profits from two to five hundred dollars per acre have been made from vineyards. By chemical analysis, good ripe grapes have been found to supply a greater supply of sugar and muscle building material, per pound, than any other fruit.

Campbell's Early—Clusters very large, color almost black, with somewhat less pulp and better quality than Concord. A very showy grape that sells well. Ripe with Moore's Early.

Ives—Bunch and fruit of medium size; dark purple, very acid until ripe. A good ordinary variety. Mid-season.

Moore's Early—Very large, early, black and of fine quality. A fine grape for

J. A. BAUER PLANT COMPANY'S BLUE RIBBON BRAND PLANTS

market and very prolific.

Concord—The best known of all varieties. Large, black, suited for table or market. Ripe in July.

Niagara—Large, greenish white, semi-transparent; quality good, a seedling of

Concord. Successful over a wide range of territory. Mid-season.

Scuppernong—First found on an island in the Scuppernong River in North Carolina. Is the only white grape ever found wild. Ripens in August and September.

GRAPES—ALL VARIETIES

	Each	Per Doz.	Per 100
One Year	\$.18	\$1.50	\$ 8.75
Two Year30	3.00	16.25

Currants

Fay—Very large, red and of fine flavor. Universally praised as a great currant for the market. Very prolific.

London—Very small, red, ships well. Bush hardy and is planted extensively in

northern climates. Long clusters and very productive.

Perfection—Large, red, quality very superior, sub-acid. Bush hardy and very productive.

Gooseberries

Downing—Called "The Great American Gooseberry." The most widely grown. Bush is a strong upright grower and very productive. Color pale green, very juicy.

Houghton—An early variety, fruit is round and dark red when ripe, skin thin juicy and sweet.

CURRANTS AND GOOSEBERRIES

Per Doz.	\$2.50	Per 100	\$17.50
---------------	--------	---------------	---------

Horseradish Roots

We have the Maliner variety. This is fine for growing in your garden and stands cold weather well.

Price: Post paid, 10, \$1.00; 25, \$1.75; 50, \$2.50; 100, \$4.00.

Rhubarb Roots

Can furnish you this grand garden plant, one of the earliest things to come on in the spring for pies and sauce and is a good tonic for one in the springtime. We furnish one year divided roots, of

the Victoria variety.

Price: Post paid, 10, \$1.50; 25, \$2.50; 50, \$3.50. Express Collect, 100, \$5.50; 250, \$10.00; 500, \$18.00.

J. A. BAUER PLANT COMPANY'S BLUE RIBBON BRAND PLANTS

❖-----❖
Asparagus Roots

We have one year old roots of the Martha Washington variety and we ship post paid in lots of 10 to 100 and over that amount we ship express collect.

Prices: 10, \$1.00; 25, \$2.00; 50, \$3.00; 100, \$4.25; 250, \$5.25; 500, \$7.50; 1,000, \$14.00.

Roekport, Ill., April 22, 1934

J. A. Bauer Plant Co.
Gentlemen:

I received my plants in good shape; well pleased with them.

Yours Respectfully, Nett Baker.

Wauchula, Fla., August 12, 1935

J. A. Bauer Plant Co.
Dear Sir:

I am writing you for information about strawberry plants. We have been buying our berry plants from you for our nursery stock and I wish to state that I would buy no other berry plants as they are and have been the best we ever had. Years ago we bought our plants from ----- of ----- Md..

We bought our last plants from you in February and we made the finest plants in this part of the State but we sold many thousands in June and we set one acre of June plants and in our section here everybody's plants have died. They scalded out on account of excessive heat and dry weather. I wish to ask you if you have Missionary plants and what 32 thousand will cost us delivered the last week in September. I am a believer in your plants and can and have recommended them all through Hardec County, Fla. Please let me hear from you at once about the plants. I remain,

H. A. Shafer. R. F. D. 1

Homestead, Fla., February 8, 1935

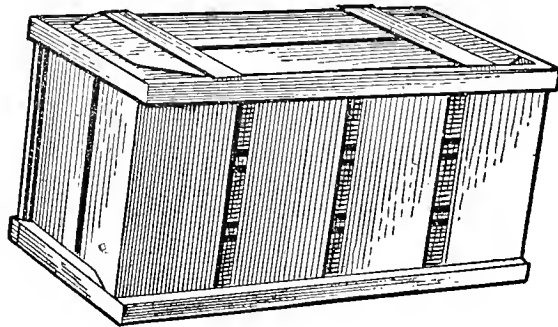
J. A. Bauer Plant Company.
Gentlemen:—

Thought you might be interested in knowing of my good results with my plants from your nursery. I set 500 of your Missionary strawberry plants last week in December, and am getting plenty berries now. I have planted your plants for 12 years, and I think these last are doing better than any so far, and all I ever have used did just extra fine.

Just wish you could see my plants and I never have had such wonderful large berries. Several of my friends ordered plants after seeing mine.

Yours truly, Mrs. Jesse E. Gossman.

American Ventilated
24 QUART BERRY CRATES



Universal Folding
24 QUART BERRY CRATES

SWEET POTATO CRATES

TOMATO CRATES AND LUGS

Metal Rim Berry Cups, Pint and Quart
Wood Rim Berry Cups, Pint and Quart

THREE QUART TILLS

Write Us For Prices

ENTERPRISE BOX COMPANY

BOX 100-A

Judsonia,

Arkansas