

## **Historic, archived document**

Do not assume content reflects current scientific knowledge, policies, or practices.



62,23

*Gro* Ball  
INC.

WEST CHICAGO, ILL.

U. S. A.



*Ball*

**Dwarf Giants No. 1**

Most uniformly large-flowered dwarf strain of this valuable pot plant class of Petunias.

Turn this page for trial ground photo of our "All Double" Petunias in true colors

**"FLOWER SEEDS FOR FLORISTS"**

Catalog No. 28

Jan.-June 1936

# ALL DOUBLE PETUNIAS



**A**ROUND 75 per cent "All-Double," the rest partly so, gives high value to these strains. They make extra choice pot plants and when produced from seed growth is strong, giving them attractive value for bedding. In sowing we use peat moss, no covering until seed germinates except a piece of glass to protect from droughts; and keep warm—about 65 degrees. Good double petunia seed must be carefully tended after sowing.

## ALL DOUBLE **Victorious**

*Our  
Most Popular  
Mixture*

Photo on left—natural color reproduction from our trial ground flowers

### *Prices*

All-Double VICTORIOUS

\$2<sup>00</sup> PER PKT. (About 1000 Seeds)

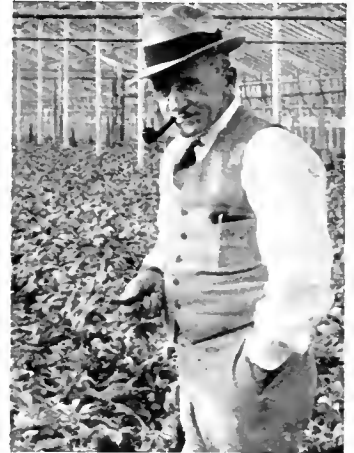
3 PKTS., \$5<sup>00</sup>

# YOUR 1936 BUSINESS —Will Be What You Make It

If actively and carefully prepared for, it will be better the coming year. No doubt about it, for natural forces of recovery are increasing pay-rolls and bank-deposits—spending power. These forces cannot be held up indefinitely by pig-killing and crop-destroying politicians. Money will loosen up for attractive, well-grown stock. In the production of such stock, suitable varieties are highly important. It will pay you to go over this catalog carefully, for in making it up we have tried to accurately describe and fairly price all that is offered. We find this policy mutually profitable.

GEO. J. BALL, INC.

*Geo. J. Ball.*  
President.



## BUSINESS TERMS

**WE PAY POSTAGE AND INSURANCE** to any post office in the U. S. A. or Canada on all orders at prices quoted in this catalog. This simplifies figuring the cost of your order.

**CASH DISCOUNT.** When remittance is enclosed with order we allow a cash discount of 5 per cent on all orders from \$1.00 to \$25.00. On this amount or over, 8 per cent cash discount is allowed. These discounts cannot be allowed on Cyclamen or Asparagus seed, prices on which are net.

**IF UNKNOWN TO US,** or if overdue accounts are standing (60 days), cash must be enclosed with order unless other arrangements are agreed to.

**SMALL ORDERS ARE WELCOMED** gladly and receive our well known service. In return we suggest cash be enclosed with such orders.

**PRICES** in this catalog and in all our offerings are subject to change without notice.

**CROP FAILURES.** All items in this catalog are offered subject to crop shartages or failures.

**IMPORTANT.** Make all checks or money orders payable to Geo. J. Ball, Inc., West Chicago, Illinois.

**OUR BUSINESS** and prices are exclusively for florists. Please do not give this catalog to amateur planters.

**NO COMMISSION BOXES.** Our seed is not put in packets suitable for resale to home gardeners.

**NO CROP GUARANTEE.** For reasons that should be clear to any planter, seed crops cannot be guaranteed. We use every precaution to supply only seeds of the highest quality in every respect, and we will promptly refund the price paid for same should they prove unsatisfactory under reasonable care. All seed is sold under the necessary seedsmen's disclaimer as follows:

**DISCLAIMER.** We, Geo. J. Ball, Inc., give no warranty, express or implied, as to description, quality, productiveness or any other matter of any seeds we sell, and we will not be in any way responsible for the crop. If the purchaser does not accept the seeds on these terms they are at once to be returned, and the money paid for same will be refunded promptly.

**WE REGRET** very much that unusually wet weather in many seed-growing sections has developed some seed crop shortages, notably in Asters and Petunias a few varieties are short. We suggest covering requirements early.

*Have one name for your business and use it only, to avoid confusion.*

## PLEASE NOTE

Our seed cannot be bought from dealers or agents, **except in our printed packets or containers.** Avoid uncertainty and possible loss by ordering direct from us, or through our regular representatives who sell in our containers only.

## General Index

(See page 40 for complete index).

Annuals (Miscellaneous) . . . . .	22-35
Asters . . . . .	4-8
Begonias . . . . .	23
Calceolarias . . . . .	23
Calendula . . . . .	19
Cinerarias . . . . .	21
Cyclamen . . . . .	26
Larkspur . . . . .	18
Novelties . . . . .	2, 3
Pansies . . . . .	31
Perennials (Miscellaneous) . . . . .	36-38
Petunias . . . . .	9-11
Primulas . . . . .	21
Snapdragons . . . . .	14, 15
Stacks—Non-branching . . . . .	13
Stacks—Branching . . . . .	13, 14
Sweet Peas—Winter or Early . . . . .	12
Sweet Peas—Summer or Late . . . . .	11
Violas . . . . .	35

## Novelties and Specialties of Extra Value

THIS listing of special items is a departure for this catalog and we believe a valuable one. It is our intention to very carefully consider every item under this heading, entering only such as we know from experience are valuable.

Please note that the cost of growing superior varieties is not greater and if carefully selected they will add real value to your stock. Also, varieties of outstanding value are not always high-priced novelties as you will note if you go over this list. The selection of the following is based on our greenhouse and trial ground experience and we feel certain of their value under all climatic conditions.

### AGERATUM, Blue Cap

No strain of Ageratum will come uniform in habit from seed, but we find Blue Cap clearly improves all other dwarf blue varieties in this respect. Indispensable for use in plant combinations of all kinds because of its rich blue color. Tr. pkt., 25c; ¼ oz., 80c; 1 oz., \$3.00.

### ALYSSUM, Carpet of Snow (Extra select)

Our trial ground report and comparisons elsewhere clearly show the strain we offer of this to be the most uniformly dwarf available. It will be found practically free of any unevenness in height, a very important point in dwarf Alyssum when used for bedding or edging. 4 inches. Tr. pkt., 15c; 1 oz., 60c; 4 ozs., \$2.25; 1 lb., \$7.00.

### BEGONIA, Elegant

We find this a highly attractive fibrous-rooted or bedding variety. Color clear white with petals edged rose-pink, and large flowered. The general effect is light and most pleasing against the background of green foliage. Of compact habit and free flowering. Tr. pkt., \$1.00; 1/64 oz., \$2.00.

### BEGONIA, Lightning

Strong, brilliant carmine-scarlet flowers of extra size with foliage dark green edged brown. We believe this to be the finest red on the list and like Elegant, we find that it comes quite true from seed. ½ tr. pkt., 60c; tr. pkt., \$1.00; 1/64 oz., \$2.00.

### BEGONIA, Darling

We find this new variety of perfect compact habit, ideal for bedding or pots. Attractive soft rose under glass, deepening to a carmine-rose outdoors. Extra large and effective winter flowering habit. Tr. pkt., \$1.25.

### CALENDULA, Orange Shaggy

(Fringed). The petals of this new variety are distinctly fringed, adding to it an attractive effect for bedding purposes. Not long-stemmed for winter cutting, but a pleasing variation in Calendulas for outdoor work. Tr. pkt., 50c; ¼ oz., 75c; 1 oz., \$2.50.



Candytuft, Giant Hyacinth-Flowered.

### CANDYTUFT, Giant Hyacinth White

(Ball Strain). After four years single plant selection we have a strain of this that comes truer to a fine type than will ordinary commercial stock. A January sowing planted 6x6 inches in cold house will make a fine crop for late May or Memorial Day. Tr. pkt., 25c; 1 oz., 75c; 4 ozs., \$2.50.

### CELOSIA, Fiery Feather

Similar to Flame of Fire, but 2-4 inches taller and with somewhat smaller plumes more freely produced. Both are highly colorful and with us make a brilliant show beginning six weeks before frost from outdoor sowing June 5. We find the seedlings do not transplant easily. Tr. pkt., 50c; ⅓ oz., \$1.00.

### CELOSIA, Golden Feather

Habit same as Fiery Feather, but with golden yellow plumes. Tr. pkt., 50c; ⅓ oz., \$1.00.

### COSMOS, Early Orange Flare



Cosmos, Early Orange Flare.

Early flowering, bright orange flowers freely produced throughout the season on nice stems for cutting. Growth quite free, two to three feet, depending on conditions. Though we haven't tried it for flowering under glass, we believe it will produce freely on a raised bed, carnation house temperature, and suggest it be sown in January for early spring flowering. A valuable novelty cut flower or pot plant. Tr. pkt., 25c; ¼ oz., 50c; 1 oz., \$1.60.

### COSMOS, Sensation

Sent out last season and we find it a highly desirable early flowering strain. Flowers medium to large in a mixture of white and rose-pink with long stems. Growth about 2 feet and quite vigorous. Valuable for cutting because of its very early flowering habit. If started too early for outdoor growth, it becomes hardened. We find it best sown out late in May. Tr. pkt., 200 seeds, 50c; ⅓ oz., \$1.80.

### DELPHINIUM, Cambridge Blue

We find this annual Chinensis type valuable for spring flowering under glass. Not quite so long-stemmed as the perennial Belladonna and a shade deeper blue, but will not rot out as frequently do the perennial kinds. We find it profitable to plant after 'mums. Can be sown in January but will not be so long-stemmed as earlier start. Tr. pkt., 35c; ¼ oz., 60c; 1 oz., \$2.00.

### LARKSPUR, Imperial Lilac Queen

We find this the choicest lilac-lavender color and are listing it here particularly to draw attention to the value of this rich color in Larkspur. Tr. pkt., 25c; 1 oz., \$1.25; 1 lb., \$10.00.

NOVELTIES AND SPECIALTIES—Continued.

**MARIGOLD, Fire Cross**

A single dwarf French that clearly improves Legion of Honor in being more compact in growth and freer and earlier flowering; light orange with brown center. We consider this the preferred variety for spring flowering in 3-inch pots. Valuable for combination boxes. Tr. pkt., **20c**; 1 oz., **75c**.

**MARIGOLD, Golden Ball**

Monarch strain. Golden yellow, medium size, comes 90 per cent perfect round, double flowers; growth rather dwarf. Admirably suited to bedding purposes and should head the list of dwarf double strains. Tr. pkt., **20c**; 1 oz., **75c**.

**MARIGOLD, Harmony**

(New). Double dwarf French, crested golden yellow center with outer petals or collar maroon-red, suggesting a Scabiosa in form. Original and effective. The past season we have noted this 8-10 inches under Middle West conditions and up to 18-24 inches in California. We would say it will be found medium dwarf and valuable for bedding and boxes. Tr. pkt., **25c**; ¼ oz., **40c**; 1 oz., **\$1.25**.



Marigold, Yellow Supreme.

**MARIGOLD, Yellow Supreme**

The medium large, fluffy flowers are rich lemon-yellow with a mild agreeable fragrance, resembling a yellow Carnation in form. Gets up about 2 feet, flowering freely throughout the summer. Valuable for cutting and garden decoration. Tr. pkt., **25c**; ¼ oz., **40c**; 1 oz., **\$1.25**.

**MATRICARIA (Feverfew) Ball's Double White**

For cut flower purposes this distinctly improves the type generally grown from cuttings. The flowers are more solidly double, somewhat smaller, and stand handling better. Comes 98 per cent true to type from seed we offer. Seed crop frequently a total failure and for this reason we suggest working up a stock from cuttings. Tr. pkt. only, **35c**.

**MYOSOTIS, Ball's Early**

This is a valuable early flowering, rather dwarf strain for forcing. Clear blue with good stems under favorable greenhouse conditions. A January sowing will flower freely during early spring. Tr. pkt., **50c**; ¼ oz., **\$1.50**.

**PETUNIAS, "ALL-DOUBLE" Strains**

No longer any question about the value of this class. Varieties we offer with their percentage of doubles are from our outdoor trial ground reports of the past season. We find that the proportion of doubles runs 5-10 per cent higher when flowered in pots under favorable greenhouse conditions.

**All-Double "Victorious."** A well balanced mixture of colors and a most popular variety. 68 per cent fully double, balance semi-double. ½ tr. pkt., **\$1.00**; tr. pkt., **\$2.00**; 1/64 oz., **\$6.00**; 1/32 oz., **\$11.00**.

**All-Double "Pink Perfection."** (World Beauty). A very attractive shade of clear bright rose-pink. This is the lower flower in colored plate inside front cover. 61 per cent fully double, balance semi-double; no color rogues. ½ tr. pkt. only (500 seeds), **\$1.25**.

**All-Double "White Glory."** (Peony-flowered). Though semi-double, the flowers are quite large, freely produced and pure white except about 5 per cent that are attractively and lightly marked deep rose. An outstanding fine white Petunia for bedding. 62 per cent large-flowered, balance medium size. ½ tr. pkt., **\$1.00**; tr. pkt., **\$2.00**; 3 tr. pkts., **\$5.00**.

Refer to Petunia page 9 for other double strains.

**PETUNIA, Flaming Velvet**

Rich velvety red, a new and distinct color in bedding Petunias. This is a break from General Dodds and has the same free flowering habit. One of the striking novelties of the year and gold medal winner in All-America trials. Tr. pkt., **40c**; 1/16 oz., **\$1.25**.

**PETUNIA, "Celestial Rose"**

Introduced by us to the American trade two years ago, this has become the standard deep rose bedding variety. Growth is quite compact and flowers of deeper color than Rose of Heaven, that it improves very decidedly. Tr. pkt., **35c**; ⅛ oz., **75c**; ¼ oz., **\$1.25**; 1 oz., **\$4.00**; 2 ozs., **\$7.00**.

**SALVIA SPLENDENS, "Firebrand"**

Our strain of this is produced for us by a European grower and according to our trial ground tests for several seasons it is the most valuable strain available. It is more dwarf by 3-4 inches than a good strain of "America" and fully three weeks earlier flowering. Tr. pkt., **50c**; ¼ oz., **90c**; 1 oz., **\$3.25**.

**STOCK, Santa Maria**

We find this the best branching white strain available because of its high percentage of doubles and extra vigorous growth. In our latitude Stocks of all classes can be sown to advantage up to February 20. Tr. pkt., **25c**; ¼ oz., **\$1.00**; 1 oz., **\$3.50**.

**SWEET PEA, Bonnie Briar**

(Summer Flowering). We find this clearly improves Pinkie in depth of color—sparkling rose-pink. This should be considered noteworthy, for it represents the most valuable cut flower color. 1 oz., **20c**; 4 ozs., **60c**; 1 lb., **\$2.25**.

**SWEET PEA, Josie**

(New Early Flowering). Extra large, attractive, fairly deep rose-pink. Extra long-stemmed. The coming variety in its class. ½ oz., **75c**; 1 oz., **\$1.25**; 4 ozs., **\$4.00**; 1 lb., **\$15.00**.

*The success of our business depends on attractiveness of stock and service.*

## FINE ASTERS

Why can we some seasons produce a perfect crop of Asters and occasionally fail completely? Puzzling to most of us is the belief that growing conditions were the same, which, of course, cannot be so. There is a definite reason for an outstanding success or failure. The rot-resistant strains take a long stride in overcoming failure by being able to definitely resist stem rot—the principal form of Aster trouble. Of course only such resistant strains should be used, no longer any uncertainty on this point; but there are various forms of rust and scald or forms of rot that, under some conditions, become disastrous—a crippling or partial development of buds sometimes causes loss. There is strong evidence, indicating that an excess of nitrogenous fertilizers is responsible for this partial or restricted development. Accordingly we recommend that phosphate be the favored fertilizer.



Long experience in growing Asters convinces us that much can be done in overcoming most forms of disease by avoiding, especially in the early stages, any form of check to growth. Transplanting from greenhouse to field and permitting them to wilt badly is a greater harm than most of us realize, not only to Asters, but other plants as well. We have repeatedly sown seed direct in flowering beds with perfect results as to growth. Also, how disconcerting to see amateur gardeners scatter seed in a flower bed and be

rewarded with a wealth of flowers while our early-started transplanted stock so frequently fails, but this sowing direct method doesn't permit enough time to produce **fine Asters**. All classes tend to flower when their season for doing so arrives regardless of growth made, so the early start is necessary to get strong stems and flowers, therefore we must overcome the check of transplanting, as far as possible, by not sowing too early. Our rule is to sow a month before we can safely transplant, and in transplanting, follow closely with water.



A check lot of ordinary strains of Asters in the foreground with rot-resistant in the background.

We annually devote this  $\frac{3}{4}$ -acre cloth house to the breeding of rot-resistant strains, also to the strengthening of such strains. This same location or soil has been used for this purpose for six consecutive years, and is, of course, filled with rot. What becomes of non-resistant checks is well shown in the foreground—some difference in strains, isn't it?

Our further suggestions for growing Asters, also details for the construction of cloth houses that greatly improve our construction ideas of former years, will be found in our new Aster Bulletin No. 7. A copy will be enclosed with every Aster seed order and is gratis to any application for it.

Our further suggestions for growing Asters, also details for the construction of cloth houses that greatly improve our construction ideas of former years, will be found in our new Aster Bulletin No. 7. A copy will be enclosed with every Aster seed order and is gratis to any application for it.



## Stem Rot RESISTANT ASTERS

IN THE production of these strains, that fundamental law of all life, “survival of the fittest” is made use of. Growers of Asters, as well as other seed crops, should be familiar with and make use of its simple application. When a lot of Asters drop out badly with rot, a few survivors will be found; not coming in contact with rot might be responsible for some, but generally these survivors are more resistant. If, say a half-dozen of the cleanest and most vigorous are selected, and seed of them saved and grown on separately the following season, some should be found definitely more resistant than others. If out of these the most promising lot is selected, and this selecting process is carried on, a resistant strain will result. In making such selections, perfection in form and doubleness of flower must, of course, be considered.

Ordinarily, Asters will not cross under cloth houses, though we have known them to do so in the field. The resistant strains are sometimes carried away by various other troubles, especially forms of rust as well as rot, other than the ordinary stem rot. Very wet seasons such as we experienced the past year are especially favorable to trouble of this nature. Possibilities for breeding against such rot and rust can be developed to better advantage in our cloth houses, than in California, where conditions are more favorable for the production of seed.

The transplanting of Asters, and most other plants as well, is more of a check or injury than we generally realize. Sowing seed direct overcomes this and makes a difference in their growth, but it brings the crop in some later and shorter stemmed. In planting out, do so on a cloudy, cool day if possible, and water promptly. When Asters are ordinarily planted in the field and without water they brace up in a few days and grow right along, but all too frequently the open field crop and method of handling is a failure; and we wonder why. We do not believe any florist crop, during an average season, can be made profitable without the protection of water, especially Asters.



Our field of the original Ball White Aster grown during 1903 at Berteau and Western Ave., Chicago.



## BALL RESISTANT ASTERS

THE following varieties run from 80 per cent to nearly 100 per cent stem-rot-resistant in our diseased soil. However, we occasionally get more unfavorable reports. When more than 25 per cent rot out in soil that hasn't been used more than a season or two for Asters, other forms of trouble will be responsible. Excessive rains, especially early in the season and on heavy soils, favor the spread of stem rot. Dates given are for flowering in the latitude of Chicago and seem to vary some according to weather conditions.

**Best Colors.** Good white Asters usually enjoy the most active demand in any market. The following colors are listed in the order of their value as we find them: White, Rose-Pink, Azure-Blue or Lavender, Shell-Pink, Deep Rose, Peach-Blossom Pink, Purple, Orchid.

The varieties starred (\*) rank especially high with us from the standpoint of resistance, color, or both. **Prices on all following resistant Asters, EXCEPT WHERE NOTED:** Tr. Pkt., 40c; 1/4 oz., 50c; 1 oz., \$1.75.

The following are of our development in Rot-Resistant Asters:

### FIVE EXCELLENT BALL ASTERS

- \***Ball White. Early.** Resistant selection from our original Ball White. Selection for resistance has not left this quite so large and fine as the original but a very excellent white-flowering, between Royal White and Ball White Late. Sept. 5-10. Price: On account of crop shortage—available only in trade packets. Tr. pkt., 50c.
- \***Ball White. Late.** Typical American Branching type and habit. Fine long stem and size. The best American Branching strain in white, following in flowering season our Ball White Early. Sept. 10-15. On account of crop shortage, available only in trade packets, and 1/4 oz. Suggest American Beauty White as an excellent substitute.
- \***Ball Phlox Pink.** Fairly light rose-pink, an especially attractive commercial color, with perfect American Branching habit and form. Sept. 5-10.
- \***Ball Deep Rose.** Extra bright shade of deep rose with attractively incurved petals, medium size, extra long stem and highly resistant. One of our most successful productions. Aug. 20 to Sept. 1.
- \***Ball Deep Purple.** Attractive bright deep purple; in flowering season and long stem, this is an exact duplicate of our Ball Deep Rose. The crop of both these fine Ball varieties is cut out before the main midseason supplies are ready. Aug. 20 to Sept. 1.

**QUEEN OF THE MARKET.** The most popular early flowering class of moderately strong growth, stem and size. The class as a whole is only fairly resistant, and should be grown in fresh soil. Quite profitable when well done because of early flowering habit. July.

**Crimson.** Somewhat lighter than a true crimson, giving it commercial cut flower value.

\***White.** The leading cut flower color.

\***Mid-Blue.** Moderately dark blue. We find it fairly good commercial color.

**Dark Blue.** We find all blues strongly resistant.

**Flesh-Pink.** Light or blush-pink.

**Scarlet.** A rather heavy color.

**ROYALS.** This class follows Queen of the Market and is a very popular one. Excellent size and stem for the early flowering date, that varies some as will be noted.

\***Shell-Pink.** A bright shade of Semple or shell-pink with extra large flower for this class, stems fairly long. One of our best commercial varieties. Sept. 1 to 5.

\***Azure-Blue.** Color same as Branching Azure-Blue and nearly as large. One of our best commercial colors that might be called lavender-blue. Sept. 5 to 10.

\***White.** Best commercial color and should be largely used. Aug. 25 to Sept. 1.

**Purple.** Our Ball Deep Purple much better.

**Royal Maroon.** Sept. 1. Slightly short-stemmed deep purple-maroon. Should not be grown in large quantities for wholesale markets. Available in **Trade packets only.**

**AMERICAN COMETS.** We group the Cregos, Astermums and Comets under this heading. All are attractive American Asters, producing more or less the same interlocked or fluffy petal effect. A highly attractive type with many choice colors in the resistant strains.

**Astermum Lavender.** Fairly dark lavender-blue. Sept. 5 to 10.

**Astermum Rose-Pink.** Bright rose-pink; upright growth. Very good market color. Sept. 1 to 5.

\***Astermum White.** Earlier but not so full or large as Crego White. Sept. 1 to 5.



**AMERICAN COMETS—Continued.**

- Ostrich Feather Peoch Blossom.** Attractive fairly deep rose-pink. Excellent for market. Sept. 10 to 15.
- Comet Blush-Pink.** Light or blush-pink. Valuable for earliness and very free-flowering habit. Fairly long-stemmed. Aug. 25 to Sept. 1.
- Comet. Light blue.** Medium size, good cut flower color. Sept. flowering.
- \***Crego Azure-Blue.** Attractive light blue. Excellent market color. Sept. 10 to 15.
- Crego Shell-Pink.** Nice bright shade. Sept. 10 to 15.
- \***Crego Deep Rose.** Rich deep rose. One of our fine market colors. Sept. 10 to 15.
- \***Crego Blue Flame.** Rich fairly deep blue, with extra long-stemmed flowers. Highly resistant and a good dark color. Sept. 5 to 10.
- \***Crego White.** Large full flowers. Pure white. Sept. 5 to 10.
- Crego Peoch Blossom.** Attractive rose-pink. Sept. 10 to 15.
- \***Crego Orchid.** Rich rosy lavender. A true orchid color and original; long though not very stiff stemmed, large flowered, and highly resistant. Sept. 5 to 10.

**UPRIGHT BRANCHING.** This class is distinctive for strong, upright, instead of spreading or branching, habit. Not so long or stiff stemmed as the Branching class, but there are a few very excellent varieties in this group that should be better known.

- \***White.** Produces fine large full double flowers. Sept. 5 to 10.
- Peoch Blossom.** A rich shade of lavender-rose-pink. Sept. 5 to 10.
- Purple.** A strong dark purple. A rich shade. Sept. 5 to 10.

**AMERICAN BRANCHING.** A term generally used to cover a number of midseason strains of various producers. All are alike of spreading or branching habit and for best results should be disbudded. Varieties Ball White Late and Ball White Early, heading this list, are typically American Branching.

- White.** This is an excellent American Branching strain of White developed by Bodgers. Under our conditions, its resistance to rot and flowering season is identical with Ball White Late, that is some larger and fuller petalled under our conditions. Sept. 10 to 15.
- \***Azure-Blue.** Clear mid-blue or lavender-blue. Some consider this the second best commercial color. Long-stemmed, highly resistant, and should be used freely. Sept. 15 to 20.
- Blockish Blue.** Rich dark purple-blue, with some cut flower value. Sept. 15 to 20.
- \***Improved Semple Pink.** (Ball). Our strain of this attractive shell-pink is of extra strong long-stemmed growth. Improved Semple Pink is one of the best commercial colors. Sept. 5 to 10.
- Purple.** A strong growing, highly resistant strain. Sept. 10 to 15.

**KING TYPE.** Attractively pointed or quilled petals give this class real distinction. Flowers harder than most classes and for this reason they do not spot or bruise so easily.

- Peoch Blossom.** Light rose-pink, good market color. Sept. 10 to 15.
- Crimson.** Bright deep color. Sept. 10 to 15.

**AMERICAN BEAUTY.** A valuable and popular class because of late flowering and large, long-stemmed, attractively incurved flowers. For northern locations flowering dates should be noted to escape early frosts. This class tends to be non-lateral.

- \***Azure Foiry.** Shade darker than Branching Azure-Blue, large flower, fine commercial color. Sept. 20 to 25.
- \***Rose.** Bright, strong color; large-flowered. Sept. 15 to 20.
- Crimson.** Long-stemmed, brightly colored, medium sized flowers. Sept. 15 to 20.
- Purple.** Long-stemmed and large-flowered. Sept. 15 to 20.
- Shell-Pink.** (September Beauty). Semple pink color, fair size, long stem. Sept. 25 to Oct. 1.
- White.** Large long-stemmed excellent white. Sept. 20 to 25.

**CALIFORNIA GIANTS. Purple.** Rich purple and highly resistant.

**PRICES on any of the above resistant Asters, EXCEPT AS NOTED:** Tr. pkt., 40c; ¼ oz., 50c; 1 oz., \$1.75.

**VARIOUS RESISTANT ASTERS**

- \***Auroro Golden Sheof.** Cushioned center type, center petals quilled with broad outer petals. Color light yellow with deeper shading, flowers long-stemmed and large. We find this highly resistant and of cut flower value. Sept. 15 to 20. Tr. pkt., 50c; ¼ oz., \$1.00; 1 oz., \$3.00.
- Heart of France.** Well-known rich scarlet, highly resistant. Sept. 10 to 15. Tr. pkt., 50c; ¼ oz., \$1.00; 1 oz., \$3.00.

**RESISTANT STRAINS IN MIXTURES.**

- Queen of the Market Mixture. American Branching Mixture. King Mixture.
- Crego Mixture. Royal Mixture. American Beauty Mixture.

**Prices on above MIXTURES ONLY:** Tr. pkt., 30c; ¼ oz., 40c; 1 oz., \$1.50.

**All Varieties Mixed.** Resistant. This mixture is all of above double-flowering varieties and should be used for growing plants to sell from flats for home gardeners. Valuable to the producer of such plants because of reduced loss in young plants from rotting. Tr. pkt., 20c; ¼ oz., 30c; 1 oz., \$1.00; 1 lb., \$12.00; 4 ozs. at lb. rate.

\***Single Mixed.** (Ball). A highly resistant strain of single branching type. Attractive for any cut flower work. Colors varying shades of blue, rose, and white, with some darker colors. Tr. pkt. only, 40c.

**PRICES on all Resistant Asters on this page, EXCEPT AS NOTED:** Tr. pkt., 40c; ¼ oz., 50c; 1 oz., \$1.75.

*Keep your benches filled all the time—idle bench space is costly.* [7]

## REGULAR AMERICAN ASTERS

We are very certain that the resistant strains are well worth their slight added cost. For this reason we are no longer offering regular strains or varieties that are available in resistant form.

We find varieties starred (\*) very excellent commercial ones and are not available in resistant strains.

**IMBRICATED POMPONS.** Becoming increasingly popular for cut flower use. Favorable growing conditions, including clean soil, are necessary for this class. Will not draw up long stemmed without some shelter from full sun. We space them 8x8 inches and use wire and string support. We offer only the nicely rounded pompon type in the following colors:

- \*Rose.
- Light Blue.
- Light Blue with white center.
- Crimson with white center.

- \*Violet.
- White.
- Mixture of all colors.

Prices: Tr. pkt., 35c; 1/4 oz., 65c; 1 oz., \$2.25.

EARLY WONDER.	Tr. pkt.	1/4 oz.	1 oz.
Lovender .....	\$0.25	\$0.50	\$1.75
Rose .....	.25	.50	1.75
White .....	.25	.50	1.75
Mixed .....	.25	.40	1.50

QUEEN OF THE MARKET.	Tr. pkt.	1/4 oz.	1 oz.
Dark Lovender .....	.25	.30	1.00
*Deep Rose .....	.25	.30	1.00
Rose-Pink .....	.25	.30	1.00

ROYAL.	Tr. pkt.	1/4 oz.	1 oz.
Lovender .....	.25	.35	1.30
Deep Rose .....	.25	.35	1.30
Rose-Pink .....	.25	.35	1.30

KING TYPE.	Tr. pkt.	1/4 oz.	1 oz.
Lovender .....	.25	.35	1.30
Violet .....	.25	.35	1.30

CREGO.	Tr. pkt.	1/4 oz.	1 oz.
Lovender .....	.25	.35	1.30
Rose-Pink .....	.25	.35	1.30

AMERICAN BRANCHING.	Tr. pkt.	1/4 oz.	1 oz.
Deep Rose .....	.25	.30	1.00
Lovender .....	.25	.30	1.00
Peoch Blossom .....	.25	.30	1.00
Peerless Pink .....	.25	.30	1.00
Peerless Yellow (Golden Sun) .....	.35	.60	2.25
Sensation. Red .....	.25	.30	1.00

CHINENSIS SINGLE.	Tr. pkt.	1/4 oz.	1 oz.
Carmine-Rose .....	.15	.25	.75
Dark Blue .....	.15	.25	.75
Flesh-Pink .....	.15	.25	.75
Lovender .....	.15	.25	.75
Marshall Jaffre. Dark scurlet .....	.15	.25	.75
Mixed .....	.15	.20	.65

CALIFORNIA GIANTS.	Tr. pkt.	1/4 oz.	1 oz.
*Deep Rose .....	.35	.75	2.25
*Light Blue .....	.35	.75	2.25
Peochblossom .....	.35	.75	2.25
*White .....	.35	.75	2.25
Mixed .....	.35	.60	1.80

SUNSHINE.	Tr. pkt.	1/4 oz.	1 oz.
Lovender .....	.25	.50	1.50
Pink .....	.25	.50	1.50
Mixed .....	.20	.40	1.25



Shows type of both Super Giants El Monte and Los Angeles. Stems are quite long and non-lateral. Under favorable conditions will produce 6- to 8-inch flowers. Neither variety is rot-resistant.

GIANT CALIFORNIA SUNSHINE.	Tr. pkt.	1/4 oz.	1 oz.
Lovender .....	\$0.35	\$1.00	\$3.50
Rose .....	.35	1.00	3.50
Shell-Pink .....	.35	1.00	3.50
White .....	.35	1.00	3.50
Mixed .....	.35	.60	2.25

	Tr. pkt.	1/4 oz.	1 oz.
*BALL WHITE. Finest white Aster. Original stock .....	\$0.35	\$0.60	\$1.75
*BOLTZE'S DWARF BOUQUET. Mixed. Fine for pot plants .....	.25	.50	1.50
JUGEND (Youth). Chamois-rose, extra double, fine color .....	.25	.75	2.50
*SUPER GIANT EL MONTE. (New). Extra large rich crimson beautifully interlaced. The largest flowered Aster we have ever seen. Non-lateral .....	.50	1.00	3.50
*SUPER GIANT LOS ANGELES. Soft shell-pink. Extra large and fully double. One of the very choicest and finest Asters in cultivation .....	.35	.75	2.50

# EXCELLENT PETUNIAS

**E**ASILY and economically grown and pleasing to our public explains their ever-increasing popularity. We specialize in Petunias. Through annual inspection of our seed crops in California and Europe, and through our extensive annual trials at West Chicago, we carefully acquaint ourselves with all varieties offered and with some we don't feel justified in offering. We are as sure as we can be that better strains and varieties of Petunias than we offer are not available.

**Sowing the Seed.** If you have a successful plan, stay with it. In testing such very small seed, our method is to use screened peat moss. It is comparatively sterile, or free of the rot that destroys good seed; leading growers too mistakenly believe the seed is old or—dead. Also peat moss retains moisture uniformly. Any well sterilized light material is all right. We use no cover on Petunia seed, though a light covering of charcoal dust or similar sterile material might be safer for the average attention seed flats receive. An overhead spraying will splash uncovered seed into the soil enough to germinate it in a week in 60 to 65-degree temperature. When no covering is used it is very necessary to protect the pan or flat from draughts and sun. Damping off of seedlings is due to lack of air and excessive atmospheric and soil moisture. Outstanding cause of most failures is really due to lack of plain careful attention to maintaining conditions we all know are necessary. Stars (\*) indicate varieties we find particularly valuable.

**ALL-DOUBLE STRAINS.** Most valuable class for either bedding or pot plants. All strains will produce around 75 to 80 per cent full double flowers, balance semi-double. Extra care must be used in germinating seed because the weakest seed or seedlings produce the most double flowers. Growth of seedlings is vigorous after they are well started, giving this class exceptional value for bedding. Sow early.

\***All-Double "Victorious."** A finely balanced mixture, well represented by our colored inside cover. 1/2 tr. pkt. (500 seeds), **\$1.00**; tr. pkt., **\$2.00**; 1/64 oz., **\$6.00**; 1/32 oz., **\$11.00**.

The following four varieties are priced as follows:

1/2 tr. pkt. (500 seeds), **\$1.00**; tr. pkt., **\$2.00**; 3 tr. pkts., any variety, **\$5.00**.

**All-Double "Cormine Glory."** Large Peony-flowered, deep carmine-rose, deeper than Pink Perfection and comes quite true to color.

**All-Double "White Glory."** Dwarf mammoth Peony-flowered. Of extra size and highly effective white for bedding. Both above come quite true to Peony-flowered type.

## VARIOUS DOUBLE STRAINS.

**Giant Double Fringed "Madonna."** Extra large, fringed, pure white. About 30 per cent full doubles.

**Giant Double Fringed "Pink and White"** Extra large fringed pink and white.

**Double "Shepherd's Pride."** A very highly attractive shade of salmon or shrimp-pink. Very large flowered.

While above three strains are not so high in doubles, the double flowers are even larger than "All-Double" strains. These strains are of particular value for selecting double strains to be grown from cuttings.

**Prices:** Each, 1/2 tr. pkt., **75c**; tr. pkt., **\$1.50**; 3 full tr. pkts., any varieties, **\$4.00**.

**Double Rosy Morn.** Our stock of this is the true 100 per cent dwarf type, 10 inches, and produces fully 50 per cent semi-double rose-pink flowers. Selections should be made from this and propagated from cuttings. Tr. pkt. (1000 seeds), **\$1.00**; 1/64 oz., **\$1.75**.

**CALIFORNIA GIANTS IN MIXTURES.** An extra large-flowered, open throat type. Highly valuable for flowering in 3-inch or 4-inch pots. Very choice for bedding under favorable conditions. From personal inspection of the growing crops, we can assure the quality of our California Giants. Should be sown in January. Please order by number and name.

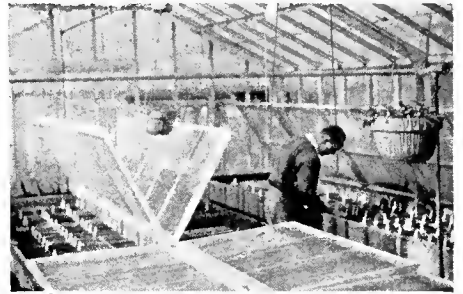
**No. 1. Boll Dwarf Giants.** In natural colors on front cover. This is the most uniformly dwarf Giant strain available. Produced especially for us by a European Petunia specialist. Tr. pkt., **\$1.50**; 1/64 oz., **\$2.50**; 1/32 oz., **\$4.75**.

**No. 2. Dwarf Giants—Ramona Strain.** While not quite so dwarf as our No. 1, this is a most excellent strain of Giant Petunias. We have personally gone over every plant of our seed crop of this strain. Tr. pkt., **\$1.00**; 1/64 oz., **\$1.75**; 1/32 oz., **\$3.00**; 1/16 oz., **\$5.00**.

**No. 3. Giants of California, Medium Dwarf.** This is the same true Giant strain as above, except that the growth is somewhat taller and stronger. Our selection for a strain well adapted to outdoor bedding where summers are trying. Fairly dark in colors. Tr. pkt., **\$1.00**; 1/64 oz., **\$1.75**; 1/32 oz., **\$3.00**; 1/16 oz., **\$5.00**.

**No. 4. Giants of California, Medium Dwarf.** Same as No. 3 except that it is a fairly light color mixture. Tr. pkt., **\$1.00**; 1/64 oz., **\$1.75**; 1/32 oz., **\$3.00**; 1/16 oz., **\$5.00**.

**No. 5. Giants of California.** Regular or tall. Strictly Giants, of tall habit. Fairly dark colors. Tr. pkt., **50c**; 1/64 oz., **\$1.25**; 1/32 oz., **\$2.00**; 1/16 oz., **\$3.50**.



All lots of seed we send out must and do grow under actual greenhouse conditions before it leaves us. Above are two views of our "germinating" house.

\***All-Double "Pink Perfection."** (World Beauty). Attractive rosy carmine color, fine size and growth; ideal for bedding. 1/2 tr. pkts. only (500 seeds), **\$1.25**.

**All-Double "White with Blue Vein."** Our trial ground line of this the past two seasons proves it outstanding for light color effect, the blue veins not being prominent.

**All-Double "Amoronth Red."** Rich amaranth-red. 60 to 70 per cent full double, strong attractive color.



# "FLOWER SEEDS FOR FLORISTS"

## CALIFORNIA GIANTS IN SEPARATE COLORS.

	Tr.	1/64	1/32		Tr.	1/64	1/32
quite true to color.	pkt.	oz.	oz.		pkt.	oz.	oz.
* <b>Copper Red Dark.</b> Rich cop- perly crimson, dark throat	\$0.75	\$1.25	\$2.25				
<b>Copper Red Light.</b> Rich old rose	.75	1.25	2.25				
<b>German Empress.</b> Bluish white with rich dark throat, colors contrast very effectively	.50	1.50	2.75				
<b>Harlequin.</b> Coppery scarlet, blotched white. Dark throat	.75	1.75	3.00				
				<b>King Alphansa.</b> Rich crim- son-rose. Dark throat	\$0.50	\$1.50	
				* <b>Prince of Wuerttemberg.</b> Deep rose with black throat, a rich dark color	.75	1.50	2.75
				* <b>Princess of Wuerttemberg.</b> Rose-pink with rich dark throat	.50	1.25	2.25
				<b>Rheingold.</b> Large clear white, yellow throat	.50	1.50	
				<b>Robin Hood.</b> Deep rose with rich black throat	1.00	1.75	

**GRANDIFLORA FRINGED.** An increasingly popular class, combining nice size, beautifully fringed effect, and free-flowering habit. This class adapts itself admirably to any use that Petunias are put.

	Tr.	1/64	1/32		Tr.	1/64	1/32
	pkt.	oz.	oz.		pkt.	oz.	oz.
* <b>Apple Blossom.</b> Very pleasing shell- pink. Finely fringed	\$0.75	\$1.50		<b>Gottfried Michaelis.</b> Rich amaranth- red	\$0.50		
<b>Aurora.</b> Light rose, veined purple; ex- tra attractive	.75	1.50		* <b>Lace Veil.</b> (New). Richly fringed dwarf. White	.75	2.00	
* <b>Brilliant Rose.</b> Very effective bright rose	.75	1.50		<b>Maculata.</b> Very attractive rose and white	.75	1.50	
* <b>Calumbia.</b> (New). Pleasingly attractive pink and white. This new variety has a distinctly strong, upright habit of growth, making it admirably effec- tive for border work	.50			<b>Pepita.</b> Carmine and white. Dwarf	.75	1.50	
<b>Dainty Lady.</b> (New). Beautiful light yellow. Trade Pkts. only	1.00			<b>Pink Triumph.</b> Brightly fringed rose- pink	.50	.75	1.25
<b>Dwarf Fringed Lilac.</b> Extra large, heavy blue veins on light ground with deep- ly colored throat. Beautifully fringed and of very compact growth	.75			<b>Pride of Portland.</b> Well known rose- pink	.50	.75	1.25
<b>Gaiety.</b> (New). Dwarf growth with daintily fringed pink and white flow- ers	.75			<b>Romany Lass.</b> Crimson	.50	1.25	
				* <b>Fringed Royal Purple.</b> (Marine) Rich deep purple. Comes fairly true to type	.75	1.50	2.75
				* <b>Setting Sun.</b> Brilliant rose, compact growth, exceptionally valuable for pot plants	.50	1.50	2.50
				<b>Theodosia.</b> Rose-pink with gold throat.	.50	1.00	1.75
				<b>White Beauty.</b> Well fringed. Clear white	.50	.75	1.25

### SINGLE FRINGED MIXTURES

- \***Na. 1. Ball Single Fringed.** This is an extra free-flowering, medium size fringed Grandiflora strain. We cannot too strongly recommend it for growing young stock in flats. Valuable for bedding because of its strong, medium tall growth. Tr. pkt., 50c; 1/16 oz., \$1.50; 1/8 oz., \$2.50; 1/4 oz., \$4.50.
- Na. 2. Grandiflora Fringed Mixed.** A mixture of named Grandifloras, all of excellent colors, medium tall growth, with an attractive mixture of all colors. Tr. pkt., 50c; 1/32 oz., \$1.50; 1/16 oz., \$2.50; 1/8 oz., \$4.00.
- Fluffy Ruffles.** We offer the original stock of this finely fringed mixture. Tr. pkt., 50c; 1/32 oz., \$1.25.

**GRANDIFLORA, Ruffled and Plain Edge.** Some of the most valuable and well known Grandifloras will be found under this heading.

	Tr.	1/64	1/32		Tr.	1/64	1/32
	pkt.	oz.	oz.		pkt.	oz.	oz.
<b>Balcony Queen.</b> Irregularly blotched purple and white	\$0.50	\$1.25	\$2.00	<b>Purple Prince</b>	\$0.50		\$1.00
* <b>Elk's Pride Improved.</b> The finest vel- vety purple	.50		1.25	* <b>Queen of the Market.</b> Attractive dork carmine	.50	1.25	2.00
<b>Giant Steel Blue.</b> Light blue with dark veins	.50		1.25	<b>Viola</b> . Violet and blue	.75	1.50	
<b>Kermesina.</b> Extra large clear rose	.75	1.25	2.00	* <b>White Cloud.</b> An excellent dwarf bed- ding. Clear white	.50	1.00	1.75
<b>Dwarf Pink Glory.</b> Of perfect dwarf habit. Glowing deep rose. Comes about 40 per cent true	.75	1.40	2.50	<b>Silver Seam.</b> Dark blue with edge of petals clearly seamed white. 500 seeds, 75c.			

**BALCONY TYPE.** Of heavy free growth and as profuse flowering as the Hybridas, but with larger flowers. Though nat of compact habit, the Balconies are showy far bedding as well as window boxes.

**Alba. Blue. Crimson. Rose. Royal Purple. Mixed.**

Prices: Each, tr. pkt., 25c; 1/8 oz., 65c; 1 oz., \$3.50.

\***Black Prince.** (New). Rich velvety crimson-red. We found this showy variety in Europe and believe it a valuable addition to Balcony Petunias. Same velvety red as Flaming Velvet. Tr. pkt., 35c; 1/16 oz., 60c.

**VARIOUS TYPES.** The two "Gem" Petunias—o miniature small-flowered class of ideal rounded, compact, very free-flowering habit. 8 to 10 inches in height.

- \***Rose Gem.** (New). Clear deep rose about the shade of Rose of Heaven. Will probably produce about 10 per cent rogue colors. In every other respect this will be found a real Gem. Tr. pkt., 35c; 1/64 oz., \$1.25.
- Pink Gem.** Of the same compact growth with rather light rose-pink flowers. Tr. pkt., 25c; 1/8 oz., 60c; 1/4 oz., \$1.00.
- \***Martha Washington.** Another ideal dwarf variety covers itself with medium to small, somewhat frilled flowers of light blush color with reddish dork throat. Excellent for bedding. Tr. pkt. only, 25c.
- \***Howard's Star Improved.** Our strain of this comes fully 95 per cent true under the same conditions that the ordinary strains produce practically 100 per cent flowers without stars. Tr. pkt., 35c; 1/4 oz., \$1.00.
- \***Howard's Star Dwarf.** A dwarf strain of this well known attractive variety, gets about half the height of the regular, increasing its value for bedding. Tr. pkt. only, 50c.



**HYBRIDA NANA ERECTA.** The most popular and satisfactory dwarf bedding class.

\***Ball's Celestial Rose.** Introduced by us to the American trade, this has immediately become the heaviest selling dwarf bedding Petunia. Bright deep rose in color, greatly improving Rose of Heaven in dwarf habit and color. Tr. pkt., **35c**; 1/8 oz., **75c**; 1/4 oz., **\$1.25**; 1 oz., **\$4.00**; 2 ozs., **\$7.00**.

**Flaming Velvet.** (New). Flaming velvet-red. Color similar to the new Black Prince, which see under Balcony type. Gold medal winner in All American Trials. Tr. pkt., **40c**; 1/16 oz., **\$1.25**.

	Tr. pkt.	1/4 oz.	1 oz.
<b>Adonis.</b> Purple-rose, white throat, small free-flowering .....	\$0.25	\$0.40	\$1.35
<b>Alderman.</b> Clear deep violet-blue ...	.35	.60	2.00
<b>Admiral.</b> Clear wavy edged blue, compact habit .....	.75		
<b>Blue Bedder.</b> (Sutton's). Deep blue with some violet .....	.40	1.25	4.00
<b>Blue Bird.</b> Deep velvety purple-blue ..	.35	.75	2.50
* <b>Blue Perfection.</b> Medium deep blue...	.25	.75	2.50
<b>Cackatoa.</b> Violet irregularly marked white. 1/32 oz., <b>\$1.00</b> .....	.50		
* <b>Heavenly Blue.</b> Light or silvery blue. Extra select stock. 1/8 oz., <b>\$1.25</b> ..	.40	2.25	

	Tr. pkt.	1/4 oz.	1 oz.
* <b>Norma.</b> Violet-blue, white star. Choice dwarf variety .....	\$0.25	\$0.50	\$1.50
<b>Rose of Heaven.</b> Well known rose-pink	.30	.50	1.75
* <b>Rasy Morn.</b> Fairly deep rose with white throat .....	.35	.75	2.50
<b>Senatar.</b> Violet with white throat ...	.35	.75	2.75
* <b>Snowball.</b> A fine true white for bedding .....	.25	.40	1.50
<b>Special Mixed</b> .....	.25	.50	1.75

**Parviflora.** Creeping habit with diminutive flowers, valuable as a cover .....

	Tr. pkt.
	<b>\$0.50</b>

**HYBRIDA—SMALL FLOWERED**

	Tr. pkt.	1/4 oz.	1 oz.
<b>Alba.</b> Free flowering white .....	\$0.15	\$0.25	\$0.75
<b>Blue Bee.</b> Violet-blue .....	.25	.40	1.50
* <b>Carmen Sylva.</b> Violet, white throat ..	.20	.40	1.25
<b>Countess of Ellsmere.</b> Rose, white throat .....	.15	.25	.75
* <b>General Dadds.</b> Velvety blood-red ...	.25	.40	1.50
<b>Inimitable.</b> Deep cormine, striped white .....	.25	.40	1.50
* <b>Lord Courtenay.</b> Golden rose .....	.20	.35	1.25
<b>Violet Gem.</b> Deep violet .....	.25	.40	1.50
<b>Exquisite Mixed</b> .....	.25	.50	1.50

**DIENER'S VARIETIES IN ORIGINAL PACKETS**

	Tr. pkt.	1/64 oz.
<b>No. 1. Ruffled Monster Pink</b> .....	\$0.50	\$2.50
<b>No. 2. Ruffled Giant Flesh-Pink.</b> With deep center .....	.50	
<b>No. 5. Ruffled Monster Red</b> .....	.50	
<b>No. 8. Ruffled Monster Mixed</b> .....	.50	2.50
<b>No. 11. Ruffled Monsters.</b> Blue, semi-dwarf.	.25	
<b>No. 19. Giant Pink Glory.</b> Improved Pink Glory .....	.50	2.50
<b>No. 20. Mauve Ruffled Manster Type</b> .....	.50	
<b>No. 22. Rose Calar.</b> Improved Rosy Morn ..	.25	
<b>No. 47. Jumba Mixture.</b> A select Giant Mixture .....	1.00	

# LATE or SUMMER SWEET PEAS

**T**HIS late flowering or original class will do well in nearly every section of America if we know their requirements and treat them accordingly. With the coming of hot weather they weaken so the crop must be made before such weather sets in. This calls for the earliest possible start. In the Northern States sow outdoors in well-drained soil, before it freezes. Cover the surface soil some to prevent washing and alternate thawing and freezing. A more dependable plan is to sow in the greenhouse about February 1st, pot in 3 inch early in March and plant out when hard frosts are over. Such a start flowers heavily in June and early July. South of the Ohio River, if sown out in October, and well started, they can usually be wintered with some protection. The early kind can be sown to advantage in the greenhouse up to February 15th. In the row with this late sowing of Earlies should go some of the late kind. They will not climb up with the Earlies but branch quite freely at the base. As the Earlies become exhausted, the Lates push up and over-grow them, producing a heavy long-stemmed crop, that lasts well into June if shaded some and watered freely. Remember that aphid and hot weather are the arch enemies of Sweet Peas. (\*) Starred varieties we find the most desirable.

The following varieties are distinct improvements:

## TESTED NOVELTIES FOR 1936

- Gigantic.** The largest and finest black-seeded white. Tr. pkt., **20c**; 1/2 oz., **35c**; 1 oz., **65c**.
- Chinese Blue.** A solid bright blue with much life in the color. Tr. pkt., **25c**; 1/2 oz., **75c**; 1 oz., **\$1.50**.
- \***Pinnacle.** Deep rose-pink, deeper than Pinkie; a fine commercial cut flower color. 1/2 oz., **25c**; 1 oz., **40c**; 4 ozs., **\$1.50**; 1 lb., **\$5.00**.
- Lady Loch.** Light blush-pink, flushed salmon, extra large, and of cut flower value. 1/4-oz. pkts. only, **25c**.
- \***Bonny Briar.** A distinct improvement on Pinkie in depth of color. 1 oz., **20c**; 4 ozs., **60c**; 1 lb., **\$2.25**.
- \***Ambition.** Finest deep lavender.
- Austin Frederick Imp.** Large rosy lavender.
- \***Avalanche.** Finest white-seeded white.
- \***Beatall.** Sparkling pink, suffused salmon.
- Blanche Ferry.** Rose and white bicolor.
- Blue Bird.** The finest clear blue.
- \***Blue Flame.** Deep blue.
- Campfire.** Sun-proof deep scarlet.
- Chieftain.** Rich satiny mauve.
- Commander Godsall.** Deep violet-blue.
- \***Constance Hinton.** Best black-seeded white.
- Crimson King.** Fine sun-proof crimson.
- Debutante.** Soft salmon-shaded peach-pink.
- Doreen.** Large rich carmine.
- Elfrida Pearson.** Clear light pink.
- Fluffy Ruffles.** Cream-pink.
- Giant White.** Pure white.
- Gleneagles.** Clear even lavender.
- Hawmark Lavender.** Finest light lavender.
- Hawmark Pink.** Rose-pink, shaded salmon.
- \***Heavenly Blue.** Delphinium-blue.
- Hebe.** The finest large rose-pink.
- Hercules.** Standard deep rose-pink.
- \***Hera.** Cerise.
- Lady Ruffles.** Large ruffled soft pink.
- Magnet.** An improved Miss California.
- Mary Pickford.** Fine cream-salmon-pink.
- Mastercream.** Black-seeded, extra large cream.
- Matchless.** Deep cream.
- Miss California.** Large salmon-rose.
- \***Madel.** Best black-seeded white.
- Mrs. Cuthbertson.** Pink and white bicolor.
- Olympia.** Deep purple.
- \***Pinkie.** The finest rose-pink, strong grower.
- \***Powerscourt.** Finest lilac-lavender.
- Royal Purple.** Large rich purple.
- Royal Scot.** Sun-proof orange-scarlet.
- Sunkist.** Cream picotee.
- Supreme.** Soft delicate pink.
- The Clown.** Crimson and white.
- Warrior.** Deep bronze-maroon.
- \***Welcome.** Deep bright scarlet, sun-proof.
- Youth.** Light picotee-pink.

Prices on all above standard varieties: 1/2 oz., **15c**; 1 oz., **20c**; 4 ozs., **60c**; 1 lb., **\$1.75**.  
 Ball Florist's Mixture: 1 oz., **15c**; 4 ozs., **50c**; 1 lb., **\$1.65**; 5 lbs., **\$7.50**.

Figure on one ounce of Sweet Pea seed to cover 30 feet of row.



# EARLY or WINTER SWEET PEAS

**D**O NOT overlook the fact that the early class can be sown to advantage in our latitude up to February 15th. Late sowings should be spaced closer, two or three rows together in place of one or two as for the earlier sowings. This for the reason that the growth hasn't time to become so heavy or make more than 4 to 6 ft. of height. A January or early February sowing will usually make Easter and be in fine shape for Mother's Day. The value of planting a few late flowering kind with this late sowing of Earlies should not be missed, for they will double the crop and carry it well into June, when worth-while Peas are usually scarce. And here is another good use for the early class. If sown outdoors under the protection of cloth, around June 10th in our latitude, they can be had in full crop from September until cut down by frost. This crop gets up 5 to 6 feet and we support it as we do under glass. Regular spraying to keep down aphid is very important with this sowing, also watering.

We have been specializing in early Peas under glass for over 25 years. Our experience is at your service. We are not only interested in improving varieties, but annually test the new ones of all responsible growers Only such as have florists' value find their way on our list.

Starred (\*) varieties are our choice of the best standard cut flower kind for florists.

### Our suggestion for the 12 best varieties is as follows:

	1/2 oz.	1 oz.	4 oz.	1 lb.
* <b>Ball Rose Improved.</b> Rich even deep rose-pink .....	\$0.25	\$0.40	\$1.50	\$5.00
* <b>Majestic Rose.</b> Bright fairly deep rose .....	.20	.35	1.30	4.50
* <b>Jasie.</b> Extra large, extra long-stemmed rich rose-pink .....	.75	1.25	4.00	15.00
* <b>Harmony.</b> We find this continues to be the best standard lavender .....	.20	.35	1.30	3.50
<b>Ball's Blue.</b> Bright mid-blue, with an extra free flowering habit .....	.20	.35	1.30	4.00
* <b>Mrs. Haaver.</b> Long-stemmed and large flowered fairly dark blue .....	.20	.35	1.30	3.50
* <b>Hape.</b> Black-seeded white, clearer in color than White Harmony .....	.20	.35	1.30	4.50
* <b>Ball Orange.</b> The best clear deep orange, free of cerise shading .....	.20	.35	1.30	4.25
* <b>Pride.</b> Extra long-stemmed cerise that should entirely replace Glitters .....	.20	.35	1.30	3.75
<b>American Beauty.</b> Extra large, long-stemmed crimson-rose .....	.20	.35	1.30	4.00
* <b>Sequoia.</b> Rich salmon-rose. Extra large .....	.75	1.25	4.00	15.00
<b>Early Baan.</b> No seed available until August.				

### The following standard cut flower kinds are priced as follows:

Prices each: 1/2 oz., 20c; 1 oz., 35c; 4 ozs., \$1.30; 1 lb., \$3.50.

- |  |   |
|--|---|
| <p><b>Amethyst.</b> Rich bright purple.<br/> <b>Annie Laurie.</b> Bright rose-pink. Medium size.<br/> <b>Apalla.</b> Salmon-cerise, long-stemmed. Fine for spring.<br/> <b>Attraction.</b> Rich salmon-rose, long-stemmed.<br/> <b>Aurora.</b> Orange-scarlet striped. Novelty color.<br/> <b>Ball Rose.</b> The finest rich deep rose.<br/> <b>Ball Rose Queen.</b> Extra long-stemmed rose-pink.<br/> <b>Blue Bird.</b> Mrs. Hoover is better.<br/> <b>Bright Light.</b> Vivid orange-scarlet.<br/> <b>Burpee's Orange.</b> Lighter shade.<br/> <b>Cattleya.</b> Attractive rosy lilac.<br/> <b>Chevalier.</b> Dark rose.<br/> <b>Calumbia.</b> Pink and white bicolor.<br/> <b>Eldarada.</b> Light orange.<br/> <b>Fascination.</b> Attractive cream-pink.<br/> <b>Flaminga.</b> Orange-salmon. Long-stemmed.<br/> <b>Giant Rose.</b> Well named, but not long-stemmed.<br/> <b>Glitters.</b> Early Pride much better.<br/> <b>Gargeaus.</b> Cerise.<br/> <b>Grenadier.</b> Poppy-scarlet, rather heavy shade.<br/> <b>Harlequin.</b> Bicolor chocolate. Attractive novelty.<br/> <b>Heather Bell.</b> Rosy lavender, medium size but free flowering.</p> | <p>*<b>Indiga Blue.</b> Dark shade of clear blue.<br/> *<b>Jeanne Mamitsch.</b> Clear rose, long stems.<br/> <b>Louise Gude.</b> Bright rose, medium size.<br/> <b>Maroon Prince.</b> Dark maroon, rather heavy.<br/> <b>Mauve Beauty.</b> Rich clear mauve.<br/> <b>Michigan.</b> Large lavender.<br/> <b>Miss Spakane.</b> Rich orange-scarlet.<br/> <b>Mrs. Calvin Coolidge.</b> Salmon-pink.<br/> <b>Mrs. Kerr.</b> Salmon.<br/> <b>Pink Cherakee.</b> Cream-pink.<br/> <b>Pink Profusion.</b> Rose-pink.<br/> <b>Red Bird.</b> Crimson-red.<br/> <b>Snowstarm.</b> White (white-seeded).<br/> <b>Springsang.</b> Large rich salmon-pink, medium stem.<br/> <b>Sunray.</b> Light cerise, fine long-stemmed.<br/> <b>Superiar Pink.</b> Deep rose. Ball Rose is superior.<br/> <b>Susanna.</b> Carmine-red, rather heavy.<br/> *<b>Tarch.</b> Orange-salmon.<br/> <b>Vulcan.</b> Prefer Early Bright Light.<br/> *<b>White Harmony.</b> Extra long-stemmed black-seeded.<br/> <b>Zvolanek's Rose.</b> Clear rose. (Laddie is better).</p> <p><b>Ball Early Pea Mixture.</b> A combination of above colors including a large proportion of the standard cut flower kinds.</p> |
|--|---|

	1/2 oz.	1 oz.	4 oz.	1 lb.
* <b>Eileen.</b> Salmon-pink .....	\$0.35	\$0.50	\$1.75	\$6.00
<b>Eleanor Blue.</b> Light blue .....	.25	.40	1.50	4.80
<b>Farty-niner.</b> Bright orange ....	.25	.40	1.25	4.40
<b>Fragrance.</b> Lavender .....	.25	.40	1.50	4.80
* <b>Laddie.</b> Long-stemmed rose ...	.25	.40	1.35	4.40
<b>Lavanda.</b> Clear lavender .....	.35	.50	1.75	6.00
<b>Mrs. Halscher.</b> Rose-pink ....	.25	.40	1.25	4.20
<b>Prosperity.</b> Rose-cream .....	.35	.50	1.50	5.40
<b>Vague.</b> Light bluish lavender ..	.25	.40	1.25	4.00

In ordering Sweet Pea seed don't forget that there are 2 distinct classes, Early or Winter-flowering and Late or Summer-flowering. **State which is wanted.**





Our Non-Branching Ball White hit it just right for Easter, 1935. Sown November 1st, run quite cool, about 40- to 45-degree nights, will stand some forcing if necessary. We found this a nice Easter crop.

## BALL NON-BRANCHING STOCKS

This and the Branching class are safely sown up to February 15 in our latitude, flowering early in June. Sown later they are liable to come blind with us. Early January sowing makes Mother's Day—a fine time to have them, especially "White."

**Ball Stocks.** One of our leading specialties. We annually devote a 300x50-ft. house exclusively to single plant selections of our Non-Branching Stocks. This is to improve existing colors and produce new ones. As a result of this costly work we expect to release this season a clear dark orchid-blue and a rose-pink, the shade of Bismarck Rose. We admit that the proportion of doubles must be increased in some varieties of this class. We are doing all we can along this line.

We have good seed to offer of the following:

- |                                |                             |
|--------------------------------|-----------------------------|
| <b>No. 1. Lilac-Lavender.</b>  | <b>No. 8. Ruby.</b>         |
| <b>No. 2. Ball White.</b>      | <b>No. 9. Chamois-Pink.</b> |
| <b>No. 6. American Beauty.</b> | <b>No. 11. Mixture.</b>     |
| <b>No. 7. Malmaison Pink.</b>  |                             |

**Also No. 5. Ball White Extra Dwarf.** This is an ideal variety for outdoor bedding where Stocks can be used for this purpose. Height about 12 inches under most outdoor conditions.

**Prices each:** ½ tr. pkt., 60c; tr. pkt., \$1.00; ¼ oz., \$2.25; 1 oz., \$8.00.

## BISMARCK OR BRANCHING STOCKS

- |   |   |
|---|---|
| <b>Antique Copper.</b> Fine copper-red. | <b>Golden Ball.</b> Clear ivory-yellow. |
| <b>Apple Blossom.</b> Light pink.       | <b>Golden Rose.</b>                     |
| <b>Blood Red.</b>                       | <b>Lavender.</b> A standard color.      |
| <b>Chamois.</b> Choice market color.    | <b>Lilac.</b> Lilac-lavender.           |
| <b>Elk's Pride.</b> Rich deep purple.   | <b>Rose.</b> Fine standard color.       |
| <b>Flesh.</b> Delicate shade of pink.   | <b>White.</b> Early. Clear white.       |

**Prices each:** Tr. pkt., 35c; ¼ oz., \$1.00; 1 oz., \$3.00.

**Mixed.** All colors. Tr. pkt., 25c; ¼ oz., 60c; 1 oz., \$2.25.

**Shasta.** New giant white. Tr. pkt., 25c; ¼ oz., \$1.00; 1 oz., \$3.25.

**Buttercup.** Deep yellow. Strong growth. Tr. pkt., 25c; ¼ oz., \$1.00; 1 oz., \$3.25.

**Santa Maria.** A giant new pure white. Tr. pkt., 25c; ¼ oz., \$1.00; 1 oz., \$3.50.

(See navelty page 3 for full description).

*Young Stocks exposed to much hot weather will come blind.*

**BALL BRANCHING STOCKS—Continued**

**PERPETUAL BRANCHING**

(Giant Perfection)

- Rose.** A clear even shade.
- Sapphire.** Violet or dark lavender. (Identical to dark blue).
- May Queen.** Lavender or pale blue.
- Snowdrift.** Fine clear white.
- Princess Alice.** Early white.
- La France.** Blush, nearly white.
- Heatham Beauty.** Terra cotta rose, very fine.
- Empress Augusta Victoria.** Silver-lilac and very fine.
- Blood Red.** Not a standard market color.
- Dark Blue.** A rather heavy color.

	Tr. pkt.	¼ oz.	1 oz.
Prices, each . . . . .	\$0.25	\$0.65	\$2.25
Mixed, all colors . . . . .	.25	.50	1.75

**TEN WEEKS**

Of dwarf growth and valuable for pot plants:

- Blood Red.** **Carmine-Pink.** **Deep Rose.**
- Lavender.** **Purple.**
- Canary-Yellow.** **White.**

	Tr. pkt.	¼ oz.	1 oz.
Price, each . . . . .	\$0.25	\$0.75	\$2.00
Mixed, all colors . . . . .	.25	.50	1.60

**BEAUTY OF NICE**

- Mont Blanc.** Clear, extra early white.
- Mante Carla.** Rich canary-yellow.
- Aurara.** Golden buff, fine.
- Beauty of Nice.** Flesh-pink.
- Cote d’Azure.** Light or lavender-blue.
- Summer Night.** Extra early purple.
- Sou. de Monaco.** Best crimson, late.
- American Beauty.** Deep rose.
- Queen Alexandra.** Rosy lilac, fine.

	Tr. pkt.	¼ oz.	1 oz.
Prices, each . . . . .	\$0.25	\$0.65	\$2.25
Mixed, all colors . . . . .	.25	.50	1.75

**Snowflake** (Wallflower Leaved). Dark green foliage that contrasts effectively with the pure white flowers; 12 inches, and valuable as a pot plant. Tr. pkt., 35c; ¼ oz., \$1.50.

We would not think of planting a bed of Stocks without first thoroughly saturating the soil with hot water at about 200 degrees. Try it.

**Rust-Resistant SNAPDRAGONS**

After carefully looking over what has been done in this line in California, we feel convinced of the rust resistance under unfavorable conditions of the strains offered. The tall kinds are valuable for summer cutting, especially under cloth. Much favorable publicity is being given these strains which will create demand for young stock, especially for bedding. For this purpose select the more dwarf varieties. Height will vary with growing conditions. Will probably be slight color variations in most varieties. Following we consider the season’s best rust-resistant varieties.

- ALASKA.** Maximum. Identical to Maximum Snowflake. Pure white and long-stemmed. 3½ feet.
- Golden Orange.** Nanum. Light golden orange with apricot suffusion. White tube. 2 feet.
- Loveliness.** Maximum. Pure soft rose-pink. Fine for cutting. 3 feet.
- Fair Lady.** Maximum. Same shade of rose-pink as the forcing variety, Jennie Schneider. White tube and vigorous grower. 3 feet.
- Defiance.** Majus Grandiflora. Bright scarlet-red with small yellow spot on lip of flower. Attractive for bedding. 2 feet.
- Indian Girl.** Nanum Grandiflora. Brownish orange and yellow, giving an old gold effect. Attractive for bedding. 1½ feet.
- Wildfire.** Nanum Grandiflora. Orange-scarlet with a bright yellow lip. A very dazzling color effect. 1½ feet.
- Buttercup.** Majus Grandiflora. Canary or creamy yellow. Large-flowered and excellent for bedding or cutting. 2 feet.
- Pinkie.** Majus. Fairly light pure rose-pink. Extra early flowering. Valuable for bedding or outdoor cutting. 3 feet.

**PRICES,** all above varieties: Tr. pkt., 75c; 1/16 oz., \$1.25; 1/8 oz., \$2.25; ¼ oz., \$4.00; 1 oz., \$15.00.

**University of California Mixture.** A well-balanced color mixture, medium tall habit. Well adapted to bedding purposes or for cutting. Tr. pkt., 40c; ¼ oz., \$1.25; ½ oz., \$2.25; 1 oz., \$4.00.



Rust Resistant variety as grown in California shows the possibilities of Snapdragons for bedding purposes.

# GREENHOUSE SNAPDRAGONS

**A**LL our forcing Snapdragon seed, except novelties, is produced by us in our greenhouses to insure trueness to color. Also a test of every lot of this seed is flowered by us to check its trueness. Regular trade packets of our own growing of this seed will produce 500-1000 seedlings and more, depending on the care with which it is sown and looked after.

**IN SOWING.** Our germination tests of such small seed is made on peat moss, because it is usually sterile or free of the rot that attacks seed and explains much loss. We use no covering. Light overhead spraying will wash the seed into the soil enough to germinate it if carefully protected from draughts and sun until it comes up, after which gradually expose to air and light or the seedlings will “damp off”.

## NEW VARIETIES

- Yellow Cheviot Maid.** (Frank Volz.) A new yellow with the ideal growth and early flowering habit of its parent.
- White Cheviot Maid.** (J. S. Yoder & Son.) Another Cheviot Maid break and into a color we need. Said to be identical in growth and flowering habit to the parent stock.
- Celestiol.** (Witterstaetter.) The originator of Rose Queen, Afterglow, and Cincinnati has put the same excellent growth and earliness into this new fairly deep yellow—his latest introduction.
- Doybreak.** Briarcliffe rose-pink. Vigorous growth with heavy flower spikes.
- Sunset.** A heavy spiked golden-bronze. Exceptionally large flowered.
- Captor.** Pure white, long-stemmed and flowers throughout the winter.

Any of the above in originator's pocket, \$2.00 each. Any 3 packets of the 6 varieties, \$5.00.

## STANDARD FORCING VARIETIES

\*Stars indicate the choicest forcing varieties according to our experience and demand for them.

	Tr. Pkt.	3 Pkts.	5 Pkts.		Tr. Pkt.	3 Pkts.	5 Pkts.
*Afterglow. Finest golden orange . . . .	\$1.00	\$2.50	\$3.50	<b>New Deal.</b> Very early, fragrant, rich golden bronze, should be valuable because of earliness. . . . .	\$1.50	\$4.00	\$6.50
<b>Allman's Pink.</b> Silvery rose-pink . . . .	1.00	2.50	3.50	<b>Philadelphia Pink.</b> Standard pink . . . .	1.00	2.50	3.50
*Bertha Baur. The only early lavender. 1.50	1.50	4.00	6.50	<b>Radiance.</b> Valuable large flowered pink 1.00	1.00	2.50	3.50
*Ceylon Court. Standard earliest yellow. 1.00	1.00	2.50	3.50	<b>Roman Gold.</b> Bright coppery yellow . . .	1.00	2.50	3.50
<b>Ceylon Court Dark.</b> A selection for a deeper golden yellow color and more even growth . . . . .	1.00	2.50	3.50	*Rose Queen. Finest deep rose-pink. Very fine . . . . .	1.00	2.50	3.50
<b>Cheviot Maid.</b> Original strain . . . . .	1.00	2.00	3.00	*Sun Tan. Orange-tan; extra early. Choice for winter . . . . .	1.00	2.50	3.50
<b>Cheviot Maid.</b> Yoder strain. Light shade . . . . .	1.00	2.50	3.50	*Terry's Surprise Imp. Rich rose shaded orange. Very choice. . . . .	1.50	4.00	6.50
*Cheviot Maid Supreme. Best fairly deep rose; THE standard pink . . . .	1.00	2.50	3.50	*Velvet Beauty. American Beauty red—early flowering . . . . .	1.00	2.50	3.50
*Coates' Yellow Perfection. Finest deep yellow; fine color . . . . .	1.00	2.50	3.50	<b>White Prosperity.</b> Long-stemmed clear white . . . . .	1.50	4.00	6.50
<b>Geneva Pink.</b> Rich clear pink . . . . .	.50	1.25	2.00	<b>White Rack.</b> Standard white, tall . . . .	.50	1.25	2.00
<b>Golden Pink Queen.</b> As named . . . . .	1.00	2.50	3.50	<b>Winter Helen.</b> Improved Helen . . . . .	1.00	2.50	3.50
<b>Helen.</b> Salman-rose . . . . .	1.00	2.50	3.50	<b>Winter King.</b> Free-flowering pink, not extra early; continuous flowering . . .	1.00	2.50	3.50
<b>Jennie Schneider.</b> Light rose; not extra early . . . . .	1.00	2.00	3.00	<b>Ball Forcing Mixture.</b> Our special winter-flowering mixture. Contains fully half the best pinks with balance in yellow, white, and orange. We suggest this where a limited amount of all colors are wanted . . . .	.75	2.00	3.00
<b>Judd's Light Pink.</b> Light rose-pink . . . .	1.00	2.00	3.00	<b>Write us for quantity quotations on any of the above.</b>			
<b>Kirkwood Beauty.</b> Bronze-orange . . . .	1.50	4.00	6.50				
<b>Laura.</b> Deep rose . . . . .	1.00	2.50	3.50				
<b>Lucky Strike.</b> White. Plant early for winter flowering . . . . .	1.00	2.50	3.50				
*New Cincinnati. The finest light rose; large and very choice . . . . .	1.00	2.50	3.50				

## STANDARD VARIETIES FOR OUTDOOR PLANTING (Not early or winter flowering)

HALF-DWARF VARIETIES			Tr. Pkt.	¼ oz.	MAJESTIC VARIETIES			Tr. Pkt.	¼ oz.
<b>Climax.</b> Bronze-orange . . . . .		\$0.25		\$0.50	<b>Golden Dawn.</b> Glorified Afterglow. ⅛ oz., 75c		\$0.50		
<b>Fawn.</b> Terra cotta . . . . .		.25		.50	<b>Orange King.</b> Bright orange . . . . ⅛ oz., 75c		.50		
<b>Flame.</b> Fiery bright scarlet . . . . .		.25		.50	<b>Twilight.</b> Golden tan-yellow . . . . ⅛ oz., 75c		.50		
<b>Gloria.</b> A good pink . . . . .		.25		.50	<b>Rose Beauty.</b> (new). Rich rose-pink . . . . .		.50		
<b>Purity.</b> Pure white . . . . .		.25		.40	<b>Evensong</b> (new). Buff or chamois pink. Extra large flowers . . . . . ⅛ oz., 75c		.35		
<b>Mixture</b> . . . . .		.25		.40	<b>Fair Lady.</b> Light rose or flesh pink. Clear or self color and valuable for cutting. Extra large . . . . . ⅛ oz., 75c		.35		
<b>HALF-TALL VARIETIES</b>			Tr. Pkt.	¼ oz.	<b>Mixture</b> . . . . .		.25		.50
<b>Empress.</b> Velvety crimson . . . . .		\$0.25		\$0.40	All Majestic varieties are valuable for cutting if planted early, not later than January.				
<b>Golden Queen.</b> Deep yellow . . . . .		.25		.40	*"ENGARDE" (NEW) <b>Majus Grandiflora.</b>				
<b>Harmony.</b> Rose with yellow center . . . . .		.25		.35	Coral-pink and amber, yellow lip. ⅛ oz., \$1.00 . . . . .		.50		
<b>His Excellency.</b> Brilliant orange-scarlet . . . . .		.25		.75	<b>MAXIMUM VARIETIES</b>			Tr. Pkt.	¼ oz.
<b>Orchid.</b> Lavender-mauve . . . . .		.25		.50	<b>Appleblossam.</b> Delicate pink, white throat . . . \$0.25		\$0.60		
<b>Mixture</b> . . . . .		.25		.40	<b>Canary Bird.</b> Light yellow . . . . .		.25		.60
<b>TOM THUMB VARIETIES</b>			Tr. Pkt.		<b>Cattleya.</b> Mauve-pink . . . . .		.25		.60
Very dwarf, 6 in., and nice for pots or bedding, but they do not hold out well under our middle west summers.					<b>Copper King.</b> Heavy copper-red . . . . .		.25		.60
					<b>Ruby.</b> Rich heavy red . . . . .		.25		.60
<b>Alba.</b> White . . . . .		\$0.35			<b>Snowflake.</b> White . . . . .		.25		.60
<b>Brilliant.</b> Crimson . . . . .		.35			<b>The Rose.</b> Clear rose . . . . .		.25		.60
<b>Delicate Pink</b> . . . . .		.35			<b>Mixture</b> . . . . .		.25		.50
<b>Mixed</b> . . . . .		.25							

Nearly every new Snapdragon is an improvement—all are from greenhouse growers. [15]

# FLORISTS' ZINNIAS

**WHEREVER SUMMERS ARE WARM, ZINNIAS HAVE REAL VALUE.** From the Giant Dahlia-Flowered specimens to the miniature Lilliputs or Pompons will be found highly attractive variations, in color as well as form—very necessary to any retail grower. When sheltered with either a greenhouse or cloth the flowers come nicely finished and long-stemmed. Lilliputs are especially nice under protection, especially fine for bedding, too, as is the more dwarf and smaller red Gracillima; and the newer Tom Thumb class, while not so uniform in its very dwarf habit as it will be in another year or two, is quite ideal for bedding under favorable conditions.

**SOWING SEED.** Don't forget that seed might be condemned as "old" or "dead" if sown in cold, wet soil; the same seed in light warm material will jump into life in four or five days. For perfect Giant flowers outdoors during late August until frost, sow outdoors in our latitude late as July 10th, and don't overlook the nice margin in growing Zinnia seedlings for home gardeners. Besides a bulletin we issue on Zinnias, we supply a 20-page booklet, "The Zinnia and Its Uses," published by Bodgers, originators of and specialists in Zinnias. Bodger produces all our Zinnia seed. These publications are gratis.

**DAHLIA-FLOWERED CLASS.** Generally accepted as the largest and finest type of the Giants.

- Canory Bird.** A delicate primrose-yellow.
- Crimson Monorch.** Very large crimson-red.
- Dream.** A fine deep lavender.
- Eldorado.** Salmon-apricot.
- Exquisite.** Fine light rose. Good for cutting.
- Golden Down.** Rich golden yellow, dark center.
- Golden Stote.** A very rich orange-yellow.

- Illumination.** Deep rase-pink.
- Meteor.** Rich deep rose.
- Old Rose.** Real ald rose shade, very fine.
- Oriole.** Orange and gold. Excellent.
- Polor Bear.** A very large white.
- Purple Prince.** A very large deep purple.
- Scarlet Flame.** Well named glawing color.

**PRICES, seporote colors:** Tr. pkt., 25c; ¼ oz., 40c; ½ oz., 75c; 1 oz., \$1.25; 1 lb., \$12.00.

**SPECIAL OFFER:** One trade packet of each of above varieties for \$2.75.  
One trade packet of each of any ten above varieties for \$2.00.

**GOLD MEDAL MIXED.** Best Giant Dahlia-flowered mixture available. Tr. pkt., 20c; ½ oz., 60c; 1 oz., \$1.00; 1 lb., \$10.00.

**GIANT MAMMOTH TYPE.** Size and general effect of this group closely approaches the Dahlia-flowered class, the difference being in a mare imbricated placement of petals.

- Brightness.** Extra bright deep rase. Comes fairly true to color.
- Cerise Queen.** Very choice cerise-rose. Varies some.
- Golden Queen** (Lemon Queen). Same as Golden Dawn. Very fine.
- Grenodier.** (New). Bright dark red. Same color as Dahlia-flowered Crimson Manarch.
- Lovender Gem.** Same as Dream in the Dahlia-flowered class.
- Miss Willmott.** Medium cream-pink, very nice soft shade. Very true.
- Oronge King.** Similar in color to our Ball Orange Calendula.
- Pink Profusion.** (New). Light pink shade, lighter than Miss Willmott.
- Purity.** A very good clean white, but not a big selling calar.
- Rose Queen.** Striking bright rose, deeper and brighter than Brightness.
- Scarlet Gem.** Best real scarlet in this group.
- Violet Queen.** Same calar as Purple Prince in Dahlia-flowered.

**PRICES, seporote colors:** Tr. pkt., 20c; ¼ oz., 35c; ½ oz., 60c; 1 oz., \$1.00; 1 lb., \$11.00.

**SPECIAL OFFER:** One trade packet each of the above 12 varieties for \$2.00.

**MIXED.** A mixture of all Giant Mammath type. Tr. pkt., 15c; ¼ oz., 30c; ½ oz., 50c; 1 oz., 85c; 1 lb., \$10.00.



Zinnia Lilliput, Rosebud.

This neat little Pompon type is, we believe, the most valuable one for cut flower work. Either cloth or greenhouse protection is necessary to draw out the stems. Such protection seems to reduce the size of the Giants while it increases some thot of the Pompons.

**COLOSSAL or NEW GIANTS.** This group is so clearly inferior to the Mammoth or Dahlia-flowered that we will no longer offer them except in mixture. Mixed, all colors: Tr. pkt., 20c; 1 oz., 65c; 1 lb., \$7.00.

**PUMILA TYPE.** Of medium size. Fairly compact growth. Nice for either bedding or cut flowers. We feel that this class deserves greater attention for either purpose.

**Conory-Yellow.**

**Fire Boll.** Very bright scarlet.

**Each, separate colors:** Tr. pkt., 15c; 1 oz., 50c.

**Mixed, all colors:** Tr. pkt., 10c; 1 oz., 40c.

**Solmon-Rose.** Extra choice for cut flowers.

**Golden Yellow.**

**LILLIPUT or POMPON CLASS.** About the size of a large button type pompon 'Mum. Highly effective for cut flower work. Fairly compact growth. We find both Pumilas and Lilliputs valuable when grown under glass or cloth house.

**Conory-Yellow.**

**Crimson Gem.**

**Purple Gem.**

**Golden Gem.**

**Solmon-Rose.**

**Scorlet Gem.**

**White Gem.**

**Each, separate colors:** Tr. pkt., 20c; 1/2 oz., 40c; 1 oz., 75c; 1 lb., \$8.00.

**Mixed, all colors:** Tr. pkt., 15c; 1/2 oz., 35c; 1 oz., 60c; 1 lb., \$7.50.

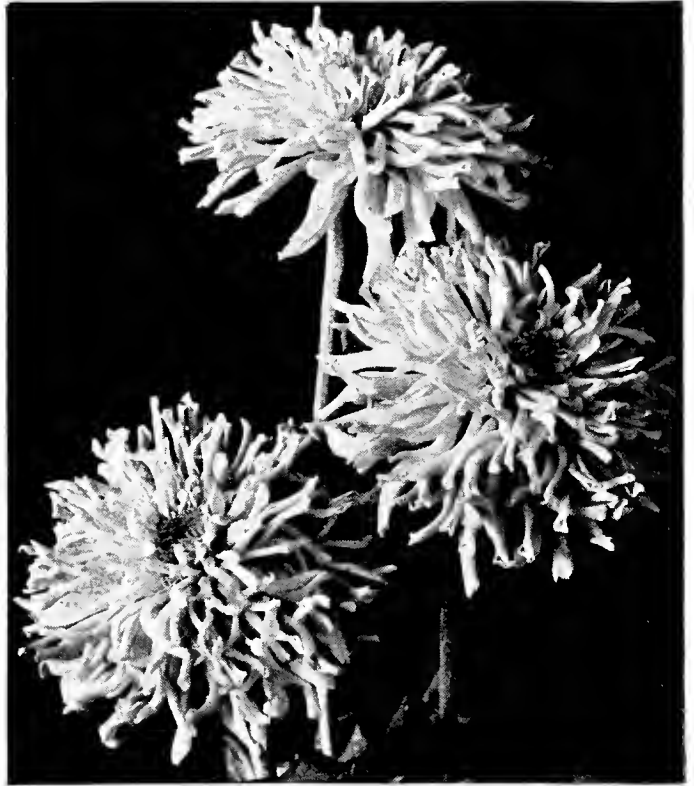
**SPECIAL OFFER.** Trade packet of each of the 7 Lilliput varieties for \$1.10.

**PICOTEE DELIGHT TYPE.** A fairly tall growth and attractive flower formation, curled or ruffled petals, makes this class well suited to cut flower uses. Comes fairly true to flower type.

**Golden Roy.** (New). Golden orange with brick red markings. Tr. pkt., 40c.

**Solmon-Rose.** Attractively shaded light to dark salmon-pink. Tr. pkt., 25c; 1/2 oz., 85c; 1 oz., \$1.50.

**Mixed.** A good mixture. Tr. pkt., 25c; 1/2 oz., 75c; 1 oz., \$1.25.



New Zinnia "Fantasy" is a really attractive variation as this cut shows. (See description below).

**CROWN O' GOLD TYPE.** Base of each petal golden yellow adding a distinct and attractive color effect.

**Desert Gold.** While this new variety varies some in coloring, the light and deep yellow effect of the true type is most attractive. Tr. pkt., 35c; 1/4 oz., 75c; 1 oz., \$2.50.

**Mixed.** Tr. pkt., 35c; 1/4 oz., 60c.

### MISCELLANEOUS TYPES.

**New Zinnia "Fontosy."** (See cut). Well-rounded flowers with irregular petal formation that gets away from the stiff formality of the regular class. Attractive for cutting. Comes in pleasing mixture of colors. Tr. pkt., 50c; 1/4 oz., 75c; 1 oz., \$2.50.

**Early Wonder.** Salmon-cerise-pink. Of medium size, fairly long-stemmed. Outstanding point is early flowering—6 to 7 weeks from sowing. With this habit necessarily goes lack of strong growth. We find it valuable for early spring greenhouse crop. Tr. pkt., 25c; 1/4 oz., 75c; 1/2 oz., \$1.25; 1 oz., \$2.00.

**Grocillimo.** Bright crimson. Ideal for bedding. About 1 foot and comes true to habit and color. Tr. pkt., 25c; 1/2 oz., 80c; 1 oz., \$1.50.

**Haogeona Hybrids.** An especially valuable class for bedding. Very free flowering, compact growth. Small semi-double flowers that have some value for cutting. Attractive colors. Tr. pkt., 25c; 1/2 oz., 80c; 1 oz., \$1.50.

**Scobious-Flowered.** (New). Fairly tall and long-stemmed variety, with flower formation resembling Scabiosa. Comes 50 per cent true to this type. Tr. pkt., 35c; 1/2 oz., \$1.25; 1 oz., \$2.25.

**Tom Thumb Type.** Very dwarf form of Lilliput type. A 4- to 6-inch height gives this new class value for the border and rock garden. Some taller rogues will show up and can be picked out from young stock. Mixed colors. Tr. pkt., 35c; 1/2 oz., 85c; 1 oz., \$1.50.

# ANNUAL LARKSPUR

WE find the demand for and interest in Larkspur increasing. Easily grown, producing long, attractive flower spikes of soft pleasing colors. Can be sown any time up to early March for a spring crop. It is heavily grown outdoors also. Sow early as the ground can be worked and every two weeks until May for a succession crop. Seed will not germinate satisfactorily in a high temperature. We made an outdoor sowing last June that lay in the hot, dry ground all summer, germinating 100 per cent when the cool weather and rains of September set in.

For outdoor growing especially, the Base-branching class should be used, as the lower breaks have a better chance in the open than when planted closer in a greenhouse. It should be stated that no Base-branching variety comes entirely true to this type, on the other hand some Stock-flowered kinds show Base-branching tendencies.

We annually flower a trial of every new and standard variety of Larkspur. This keeps us in direct touch with the value of all varieties. Our suggestions of the best, indicated by a star (\*), is based on these trials.

## BASE-BRANCHING OR IMPERIAL VARIETIES

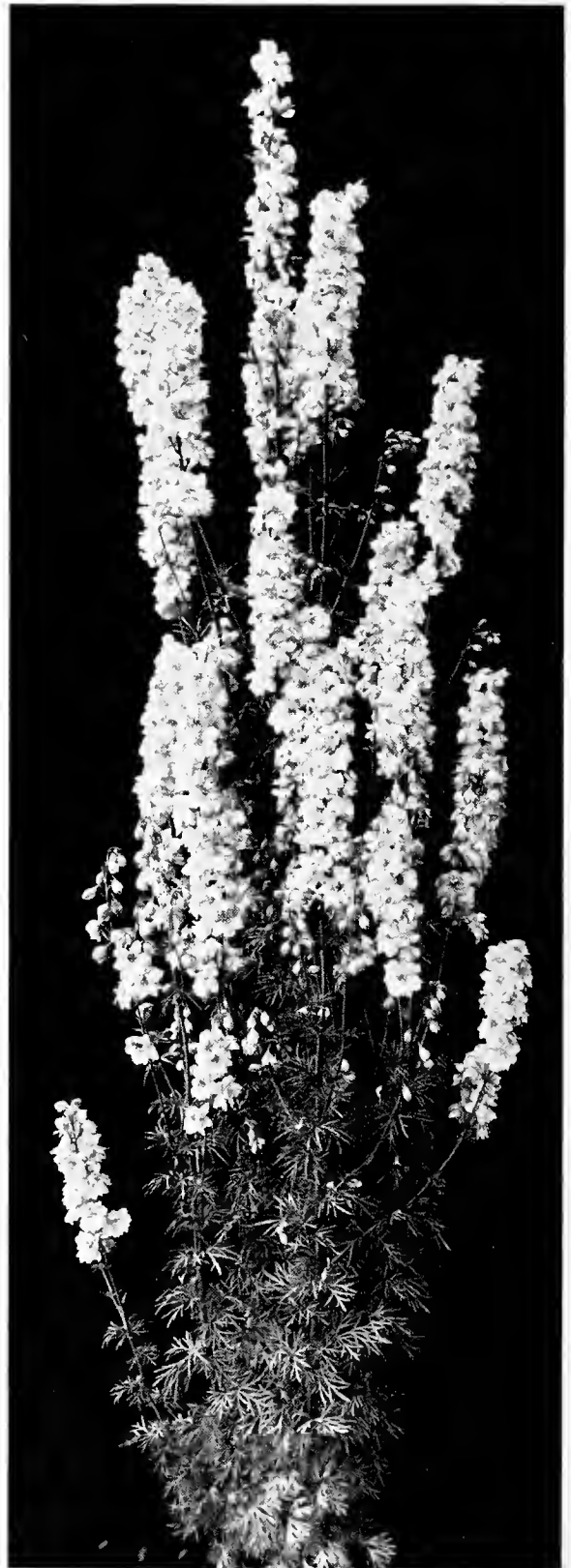
	Tr. pkt.	1 oz.	1 lb.
*Blue Bell. Fairly deep blue. Excellent.	\$0.25	\$1.00	\$10.00
Blue Spire. Very deep-violet-blue . . .	.25	1.00	10.00
Carmine King. Carmine-rose . . . . .	.25	1.00	10.00
*Daintiness. Light lavender-blue . . .	.25	1.00	10.00
Exquisite Pink Imp. Rich soft pink. . .	.25	1.00	10.00
*Gloria. Deep rose-pink. Excellent . .	.25	1.00	10.00
*Lilac Queen. Rich lilac-lavender. (See description on page 2) . . . . .	.25	1.25	10.00
Los Angeles Imp. Salmon-rose . . . .	.25	1.25	10.00
*Miss California. Pink shaded salmon. .	.25	1.00	10.00
The Empress. Salmon-pink . . . . .	.25	1.00	10.00
White Spire. The best white . . . . .	.25	1.00	10.00
Mixed. . . . .	.20	1.00	10.00

## STOCK-FLOWERED VARIETIES

	Tr. pkt.	1 oz.	1 lb.
*Dork Blue. A rather heavy color . . .	\$0.20	\$0.50	\$5.50
Empress Rose. An excellent pink . .	.20	.50	5.50
Lo Fronce. Salmon-pink . . . . .	.20	.50	5.50
*Lilac Queen. Rich lilac-lavender. See description on page 2 . . . . .	.25	1.25	10.00
Los Angeles Imp. Salmon-rose . . . .	.25	1.25	10.00
*Rosamond. Deep rose . . . . .	.25	1.00	10.00
*Rose Queen. (New). Very attractive rose-pink . . . . .	.25	1.25	
Rosy Scarlet. Not much of this . . . .	.20	.50	5.50
Sky Blue. Good light blue . . . . .	.20	.50	5.50
White. Prefer White Spire . . . . .	.20	.50	5.50
Mixture . . . . .	.15	.30	3.50

## DWARF EMPEROR TYPE

	Tr. pkt.	1 oz.
Ageratum Blue. Well named and a pleas- ing color for any purpose . . . . .	\$0.25	\$0.75
Enchantress. Soft salmon-pink. Choice for pots or bedding . . . . .	.35	1.50
Pink Delight. Rich rose-pink. Same shade as Exquisite Pink . . . . .	.25	.75



Stock-Flowered Type of Larkspur Rosamond, the Finest Deep Rose-Pink.

## GIANT HYACINTH-FLOWERED

Produces one long, non-branching spike. Dork Blue, Lilac, \*Pink, \*Purple, White, Mixture. Each, Tr. pkt., 25c; 1 oz., 80c; 1 lb., \$8.00.

# BALL Calendula

**W**HILE the most profitable Calendula crop is the one flowered around Christmas and January, every retail grower should have them during the spring months; after the winter crop is cut down it will come back with a heavy spring supply. Also a January or early February sowing will flower freely from Easter until overcome by heat.

**Single Flowers.** Under favorable conditions not over 1 per cent of the plants will be true singles. When a crop is nearly cut down singles will appear due to the check or drain on the plant of cutting nearly all of it away. Unfavorable conditions, such as shallow, poor soil, not enough water, too high temperature, or aphids drawing the life out of them, in fact, any condition threatening their life, will tend to produce single flowers. This is Nature's effort to facilitate seed production before they perish.

**Wilting** is caused by soft growth that in turn is overcome by carrying them rather dry at the roots during the depth of winter, also run cold, 40-45 degrees nights with air whenever possible.

We originated the "Ball Calendula" fifteen years ago and we are more active than ever in improving our existing varieties and originating new ones of this fine strain.

Following are the best cut flower strains:

**Ball's Masterpiece.** Long-stemmed orange with brown center.

**Ball's Long Orange.** Long-stemmed orange with light center.

**Ball's Sensation.** Closely resembles Long Orange, but preferred by some growers.

**Ball's Gold.** Extra long-stemmed, large, deep golden yellow.

**Ball's Lemon Queen.** Clear, fairly deep yellow with attractive brown center. Medium long stemmed.

**Ball's Supreme.** Light orange, brown center; medium size and stem, but extra free flowering.

**Ball's Apricot.** Light brown or straw color with attractive contrasting brown center, habit same as Supreme; color varies some.

**Ball's White.** Creamy white of Apricot type. The lightest color in Calendulas we have. A little should be grown for variety.

**Ball's Supreme.** Light orange, brown center; medium size and stem, but extra free flowering.

**Prices on each of the above Ball Calendulas:** Tr. pkt., 40c; 1/4 oz., 60c; 1 oz., \$2.00; 2 ozs., \$3.50; 4 ozs., \$6.50; 1 lb., \$25.00.

Price on weight lots will be accepted on two or more lots together. For instance, on 1/4 oz. each of 4 varieties, instead of 60c each or \$2.40 for the 4 lots, the oz. price of \$2.00 will apply.

NOTE: Our strains of Ball Calendulas are sold by us ONLY in our sealed packets.

**BALL CALENDULA MIXTURE.** A mixture of the above with fully half orange. Intended for the retail grower whose planting is limited but wants some of all colors. Tr. pkt., 35c; 1/4 oz., 50c; 1 oz., \$1.75; 1 lb., \$20.00.



A Christmas Crop of Our Ball Calendula.

## CALENDULAS FOR BEDDING

Following varieties are of compact growth not suitable for cutting because short-stemmed, but highly attractive for bedding except during very hot weather.

**Prices each, except as noted:** Tr. pkt., 20c; 1 oz., 60c; 2 ozs., \$1.00.

**Orange Shaggy.** (New). Tip of petals of this bright orange variety are finely fringed, giving it a distinctive appearance. Tr. pkt., 50c; 1/4 oz., 75c; 1 oz., \$2.50.

**Radio Bright Orange.** Quilled petals, quite attractive.

**Radio Golden Beam.** Clear yellow Radio.

**Sunshine.** Semi-double, bright yellow, upright growth with good stems. Identical to variety Chrysantha.

**Orange King.** Dark centered, deep orange. Standard orange for bedding.

**Lemon Queen.** Light or lemon yellow. Somewhat straggly growth.

**Nankeen.** Cream flushed apricot, small flowered, dwarf.

**Trionon.** Yellow striped orange, dark center, small flower.

**Ball Bedding Mixture.** Well-proportioned mixture of all dwarf bedding varieties. Tr. pkt., 15c; 1 oz., 50c; 4 ozs., \$1.50; 1 lb., \$5.00.

# MARIGOLDS

INCREASING interest is being taken in all types of Marigolds. Both the dwarf kind for bedding and the long-stemmed for cutting have been greatly improved the past few years. A sowing made of any tall kind up to February 15 will flower in the greenhouse during April-May. Our Ball Red Book details cultural points. The extensive trials we ran of all Marigolds the past summer was most interesting and has enabled us to offer new and improved varieties that will greatly enrich this, one of the most attractive annuals for American climatic conditions. Heights given can only be approximate, as they will vary under different conditions.

\*Stored varieties we find particularly fine.

**GIANT AFRICAN CLASS.** 3 ft. Large double-flowered. A valuable class for cutting.

Tr. pkt. 1/4 oz. 1 oz.

*All Double Orange. While not quite so large as the Prince of Orange strain, the percentage of doubles will run about 80-85% with a few semi-doubles. We suggest the All-Double strain be preferred .....	4 ozs., \$5.00	\$0.25	\$0.50	\$1.50
*All Double Lemon. Same high percentage of doubles as in All-Double Orange. We suggest that about 25% of this clear lemon-yellow be used for cut flowers .....	4 ozs., \$5.00	.25	.50	1.50
All Double Mixed. Mixture of Orange and Lemon .....	4 ozs., \$4.00	.25	.40	1.25
Prince of Orange. For size and perfect flowers this is the finest Giant African strain. Around 60% double, balance all single.		.25	.50	1.75
Lemon Queen. Same as Prince of Orange in lemon color .....		.25	.50	1.75
Golden Emblem. Dark golden yellow. An attractive addition to the Prince of Orange type ....		.25	.40	1.50

## AFRICAN DWARF.

*Golden Queen (new). A dwarf large-flowered full double orange of outstanding merit for outdoor planting. 18 in. ....		.25	.40	1.50
---	--	-----	-----	------

**CARNATION-FLOWERED.** The loosely ruffled petals and size of this class suggest Carnations. Valuable for summer cutting or greenhouse forcing.

*Yellow Supreme. Creamy lemon-yellow, loose petaled, 2-3 in. flowers produced on nice stems for cutting. 2 1/2 ft. ....	Tr. pkt. 1/4 oz. 1 oz.	\$0.25	\$0.40	\$1.25
Guineo Gold. Light attractive orange color flowers, about 2 in. and very freely produced throughout the summer. No retail grower should be without a row of this and Yellow Supreme. 3 ft. ....	4 ozs., \$5.00	.25	.45	1.50

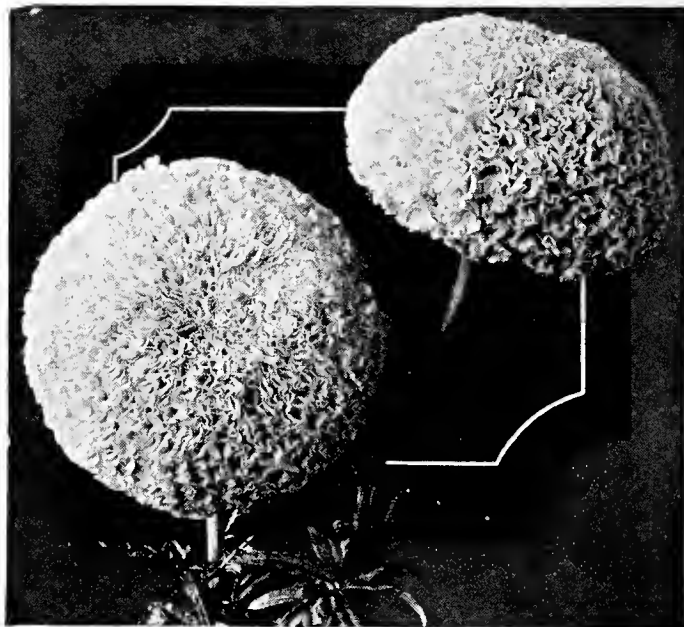
## TALL SMALL-FLOWERED.

Double Scotch Gold Striped. Highly effective and true but rather late flowering for early frost sections. 2 1/2 ft. ....		.20	.35	1.00
Single Josephine. Small dark brown. 2 ft. ....		.15		.50

**DWARF SMALL-FLOWERED.** The most popular class. Go over it carefully and note the several new ones.

Tr. pkt. 1/4 oz. 1 oz.

*Harmony (new). Medium size scabious-like flowers. Deep orange center with maroon-red outer petals. Quite striking and distinct. Valuable for cutting and bedding. 14-18 in. ....	{ For full description see novelty page 3.	\$0.25	\$0.40	\$1.25
Electric Light. A new dwarf French double pompon variety; lemon-yellow blotched maroon. ....		.25	.50	1.50
French Double Striped. Orange and yellow striped and mixture of colors. A very excellent bright mixture, and with us gets into flower fairly early. Fully 80% double, uniformly 16-20 in. ....		.25		.75
Double French Monarch Strain. Colors mostly dark mahogany, orange and yellow. About 50% full double, balance semi- and single. Fairly large flowered, uniformly 16-20 in.		.20		.75
Robert Beist. Extra deep rich mahogany-red, medium size, fully 80% double. Fairly uniform in height, 16-20 in. ....		.20		.50



Fistuloso type of Giant African Marigold make popular cut flowers. They can be flowered in mid-winter.

*Monarch Golden Ball (new). Most valuable, uniformly double, 98% golden orange. Most uniform in every respect in our trials the past season. 12-15 in. ....	Tr. pkt. 1/4 oz. 1 oz.	\$0.20	\$0.75
Lilliput Mixed. Mahogany shades, orange and yellow. Flowers resemble double French Monarch strain, that we prefer .....		.15	.60
*Pollido. Double lemon-yellow, a bright color. Height about 15 in. Very uniform. Medium size flowers, no singles .....		.15	.65
*Fire Cross. Single dwarf light orange with brown center, resembling Legion of Honor, except that it is earlier and freer flowering and more compact, all valuable improvements. We strongly recommend Fire Cross in place of Legion of Honor, especially for our climate, because of earlier flowering. 12 in. ....	{ See novelty page 3 for full description.	.20	.75
Legion of Honor. Yellow in this is some lighter than Fire Cross with same brown center. Both above two varieties are valuable to flower early in pots for use in combinations .....		.15	.50
Signota Pumila. Very small, freely produced, bright orange color. Very uniformly compact, 16 in. Fine for borders .....		.15	.60

**WINTER FLOWERING.** This class seems to belong to the short day class of plants and should be used only for flowering in the greenhouse during winter and spring. For this purpose they are choice.

Tr. pkt. 1/4 oz. 1 oz.

*Australian Giant Tree. Strong growth, fairly long-stemmed mahogany-red flowers, with crested golden yellow center .....	\$0.25	\$0.75
Lieb. Not so long-stemmed or heavy growth as above, but more uniformly double flowering. Some singles will show up in both strains	.50	



# PRIMULAS—NOTICE!

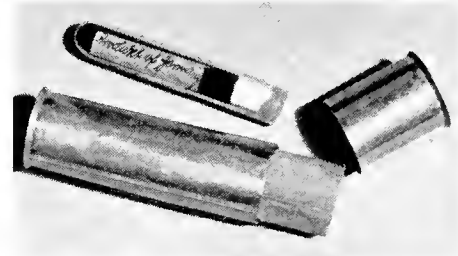
Obconico Primula, because of the rather rapid loss of germination of this valuable seed, resulting in much loss to all concerned, we are having all lots, **including trade packets**, put up by our German grower in

## SEALED GLASS TUBES

to insure our seed being good when received. We have absorbed part of the added cost on the trade packets, and all the glass tube cost on 1/32 and 1/64 ounce lots.

**NO ADDED COST IN GLASS TUBES FOR 1/64 AND 1/32 OUNCE LOTS**

**TEN CENTS ADDED ON TRADE PACKETS**



Showing seed in sealed glass tube and tin container.

Our Obconico Primula seed is grown and put up for us by a well-known German Primula specialist. Through personal inspection of this grower's stock, we make certain of its high standard. **All in sealed glass tubes**, unless ordered in regular packets.

### OBCONICA.

	Tr. pkt.	1/64 oz.	1/32 oz.
<b>Mahnstein's Dark Red.</b> Well-known dark red .....	\$1.10	\$2.00	\$3.75
<b>Fasbender's Red.</b> Extra large deep crimson .....	1.10	2.00	3.75
<b>Mahnstein's Atrasanguinea.</b> Dark red .....	1.10	2.00	3.75
<b>Mueller's (Berlin) Rose.</b> Bright, clear rose .....	1.10	2.00	3.75
<b>Mueller's Rasea</b> .....	1.10	2.00	3.75
<b>Caerulea.</b> Fairly dark blue .....	1.10	1.50	2.75
<b>Salmon Queen.</b> Salmon or coral-rose .....	1.10	1.50	2.75
<b>Alba (White).</b> Increasingly popular .....	.85	1.50	2.75
<b>Mixture.</b> All colors of above .....	.60	1.00	1.75
<b>Portland Beauty.</b> (New). Double-flowering rose-pink. Orders taken for late July delivery. Tr. pkt.,	\$1.50.		

**MALACOIDES.** An increasingly popular class because of the wider range of colors becoming available.

### Erikssoni Strains.

- New Baby.** Extra large, fairly deep rose.
- Baby Rose.** Compact growth, extra deep rose.
- Wander Baby.** Fairly deep rose, medium size.
- Prices on the above Erikssoni strains: Each, tr. pkt., \$1.00; 6 pkts., \$5.00.
- Mixture.** A mixture of the above varieties: Tr. pkt., 75c.

- Brilliancy.** (New). Attractive dark red.
- Baby Alba.** Pure white.

### Various Malacoides.

<b>Double White.</b> (New). Attractive distinct type. 1000 seeds, \$1.00.	Tr. pkt.	1/64 oz.	Tr. pkt.	1/64 oz.
<b>Salmon-Pink</b> (Weihenstephan). Attractive shade .....	\$0.50	\$1.00		
<b>Rasea Superba.</b> Large flowered, clear lavender-rose. 1/16 oz., \$1.00..	\$0.50			
<b>Dwarf Eclipse.</b> Extra large, light lilac .....		.75		
<b>Grandiflora Rosea.</b> Fairly deep rose. ....		.75		1.50

**CHINESE.** We note a revival of interest in this fine class, probably due to the wide range of available colors.

<b>Chiswick Red</b> .....	Tr. pkt.	1/64 oz.	Tr. pkt.	1/64 oz.
<b>Caerulea.</b> Light blue .....	\$0.50	\$1.00		
<b>Rose Queen</b> .....	\$0.50			\$1.00
<b>Special Mixture</b> .....	.50	.75		1.00

# CINERARIAS

One of our leading specialties. We annually flower trials of all seed we offer and of all new strains and varieties available. We are also trying through single plant selections to improve the strains we offer. Following covers the finest available varieties:

<b>Cremer's Prize Mixture.</b> Medium size flowers produced in extra large well-shaped heads. Semi-dwarf. The most popular American strain .....	Tr. pkt.	1/64 oz.	1/32 oz.	Tr. pkt.	1/64 oz.	1/32 oz.
..... 1/16 oz., \$7.50.	\$1.50	\$2.25	\$4.00			
<b>Berlin Market.</b> (Weissensee Strain). Fairly large, light centered, attractive flowers. Fairly compact habit. We consider this a most attractive strain. ....	1.00	1.60	2.75			
<b>Berlin Market Strain.</b> In <b>Dark Crimson</b> and <b>Dark Blue.</b> Both come about 90 per cent true to these very attractive colors. <b>Each</b> .....	1.00	1.80				
<b>Hybrida Gigantea.</b> Large-flowered dark red with white eye. Compact and attractive .....	1.00	2.25				
<b>Hybrida Grandiflora Mixed.</b> A semi-dwarf large-flowered strain with an excellent color range .....	.50	1.25	2.00			
<b>Hybrida Grandiflora.</b> Separate colors. <b>Azure Blue,</b> a very bright shade.....	.75					
<b>Kermesina,</b> velvety red .....	.75					
<b>Eriksson's Private Stock.</b> A fairly large-flowered strain developed by a Chicago grower .....	\$1.50					
<b>Giant Exhibition Mixed.</b> The largest flowering strain, medium tall growth and with a choice range of colors ...	1.00	2.00				
<b>Multiflora Nano Mixed.</b> Of distinctly dwarf growth that completely covers itself with small flowers of a full range of colors .....	1.00				2.00	
<b>Multiflora Nano.</b> Separate colors. <b>Dark Crimson</b> and <b>Dark Blue</b> .....	Each 1.00					
<b>Stellata or Star Type.</b> Under favorable conditions grows 3 feet. Small-flowered and valuable for cutting or pot plants .....	.50				1.25	
<b>Plenissima Double Mixed.</b> Finely rounded full double flowers, 1 1/2 inches diameter. An attractive novelty type ....	.75					

Use clean sterilized soil to prevent Cineraria root rot.

# MISCELLANEOUS ANNUALS



Acroclinium.

**Note:** We have starred (\*) the varieties in this list that we have found the most dependable and generally satisfactory.

- Tr. pkt.
- ABUTILON. Mixed.** Flowering Maple. Ours is an extra large flowered strain, flowering six months from seed. 1/8 oz., **\$1.50** . . . **\$0.50**
- ACHIMENES. Mixed.** Valuable for pot plants and hanging baskets . . . . . **1.00**
- \***ACROCLINIUM.** New Hybrids. Tr. pkts. only. **.40**
- AGERATUM, Mexicanum.** Most strains except where noted vary considerably in height.
- DWARF VARIETIES.** 4 to 8 inches. For bedding and edging.
- \***Blue Cap.** Our best most dwarf Ageratum. See Novelty list on page 2 for complete description. 1/4 oz., **80c**; oz., **\$3.00** . . . **.25**
- \***Little Darrit Blue.** Small-flowered and free flowering. Good strain. Oz., **75c** . . . . . **.15**
- \***Little Blue Star.** Small-flowered, free flowering. Deep blue. Good. 1/4 oz., **60c**; oz., **\$2.00** . . . . . **.25**
- Blue Ball.** Deep blue. 1 oz., **75c** . . . . . **.15**
- Purple Perfection.** Deep violet-blue, large-flowered. 1 oz., **75c** . . . . . **.15**
- SEMI-DWARF VARIETIES.** 8 to 18 inches.
- Blue Perfection.** Large-flowered. Deep blue color. 1 oz., **60c** . . . . . **.15**
- Imperial Dwarf White.** Large-flowered. Not clear white. 1 oz., **60c** . . . . . **.15**
- Little Darrit White.** Small-flowered. Oz. **80c** . . . . . **.15**
- TALL VARIETIES.** Up to 30 inches.
- Tall Blue.** Has value for cutting. Very free-flowering. 1 oz., **40c** . . . . . **.15**
- \***ALOE VARIEGATA.** Tiger Aloe. Attractive and generally satisfactory succulent. Seed can be sown any time. 100 seeds, **\$1.25**; 1000 seeds, **\$10.00**.
- ALYSSUM.** Our extensive annual trials give us confidence in recommending the following strains as the finest available.
- ALYSSUM—Continued.** Tr. pkt.
- PROCUMBENS.** Carpet of Snow. The most dwarf compact type. 4 to 6 inches tall.
- \***Extra Select.** 4 inches. Our best dwarf Alyssum. See Novelty list on page 2 for complete description. 1 oz., **60c**; 4 ozs., **\$2.25**; 1 lb., **\$7.00** . . . . . **\$0.15**
- \***Semi-dwarf.** 5 inches. Differs from the above strain in being slightly taller and spreading out into a considerably wider row. A very excellent strain of dwarf Alyssum. 1 oz., **50c**; 4 ozs., **\$1.75**; 1 lb., **\$6.50** . . **.15**
- COMPACTA TYPE.**
- Little Gem.** 6 inches. White. 1 oz., **60c**; 4 ozs., **\$1.75** . . . . . **.15**
- Lilac Queen.** 6 to 7 inches. Medium deep lilac shade that deepens with cooler weather. 1 oz., **75c**; 4 ozs., **\$2.00** . . . . **.15**
- MARITIMUM.**
- Sweet Alyssum.** Medium tall, 10 inches. 1 oz., **20c**; 4 ozs., **60c** . . . . . **.15**
- AMARANTHUS, Molten Fire.** 4 ft. Dark red foliage. Highly ornamental summer plant. 1/4 oz., **50c** . . . . . **.25**
- \***ANCHUSA CAPENSIS, Blue Bird.** Deep Forget-me-not-blue flowers, 18 to 24 inches. Very attractive. 1 oz., **60c** . . . . . **.15**
- ARCTOTIS, Breviscapa Aurantiaca.** 2-in. Daisy-like orange flowers with dark centers. 6 in. Must be sown early. 1/4 oz., **90c** . . . . . **.40**
- Grandis.** Single Daisy-like flowers, silvery white with lilac tinge and dark center. 2 to 3 ft. 1 oz., **50c** . . . . . **.20**
- ASPARAGUS.** Because of difficulty in germinating this seed, we have thoroughly acquainted ourselves with every dependable source of supply throughout the world, buying from only the most consistently dependable sources.
- Plumosus.** 100 seeds, **30c**; 250 seeds, **50c**; 1000 seeds, **\$1.50**; 5000 seeds, **\$6.60**; 1 lb., **\$10.00**.
- Sprengeri.** 100 seeds, **25c**; 250 seeds, **40c**; 1000 seeds, **\$1.00**; 5000 seeds, **\$4.50**; 1 lb., **\$8.00**.
- BALSAM.** Double Camellia-flowered. Attractive bright mixture. May be sown outdoors in May for August flowering in the latitude of Chicago. 30 inches. 1 oz., **50c** . . **.20**
- BRACHYCOME IBERIDIFOLIA.** Swan River Daisy.
- Azure Fairy.** Nice azure blue, early and free-flowering. 1 oz., **75c** . . . . . **.25**
- Mixture.** Shades of blue, pink and white. 1 oz., **65c** . . . . . **.15**
- BROWALLIA.**
- Speciosa Major.** Standard blue winter flowering pot plant. 10 to 12 inches. 1/32 oz., **\$1.00** . . . . . **.40**
- \***Viscosa Compacta Sapphire.** Improves the above by more compact habit and attractive white-eyed flowers. The preferred pot plant strain. Sown early and planted outdoors from pots this made a very solid even hedge in our trial ground the past season. 2 ft. high outdoors. Try it. 1/16 oz., **\$1.00** . . . . . **.50**



MISCELLANEOUS ANNUALS—Continued.

**BEGONIA.**

Tr. pkt.

**FIBROUS ROOTED.** This class comprises the common single bedding or pot Begonias. Seed sown January 1st will make nice small-flowering pot plants by late spring. For large specimen plants next winter sow in March and April. We annually run extensive trials of all the varieties listed below and are in position to accurately describe them from our own experience.

- Albert Martin.** Bright carmine, large-flowered. 1/32 oz., **\$1.00**..... **\$0.50**
- \***Carmen.** Bright pink flowers with richly contrasting green foliage. 1/64 oz., **\$1.75**.. **1.00**
- Christmas Cheer.** Large-flowered crimson-scorlet. 1/64 oz., **\$1.50**..... **1.00**
- \***Darling.** See Novelty list on page 2..... **1.25**
- \***Elegant.** See Novelty list on page 2. 1/64 oz., **\$2.00** ..... **1.00**
- Erfordia.** Light pink, free flowering. Special Benary Heterosis stock. .... **1.25**
- \***Fire Sea** (Blaze of Fire). Extra dwarf compact growth. Large fiery red flowers. Green foliage. 1/32 oz., **\$2.00**..... **1.00**
- Glory of Erfurt.** Large-flowered bright carmine. **Special Heterosis stock**..... **1.00**
- Glory of Erfurt.** Carmine-rose-pink. 1/32 oz., **\$2.00** ..... **.50**
- Gustav Knaake.** Bright salmon-pink. Color like Melior. 1/32 oz., **\$1.75**..... **1.00**
- \***Indian Maid.** A bright scarlet selection from Carmen with the latter's attractive deep bronze foliage. .... **1.00**
- \***Lightning.** See Novelty list on page 2. 1/64 oz., **\$2.00**; 1/2 tr. pkt., **60c**..... **1.00**
- Luminosa.** Deep scarlet with reddish brown foliage. 1/32 oz., **\$1.75**..... **1.00**
- Luminosa Compacta.** A dwarf free-flowering strain of this popular variety. Tr. pkt. only ..... **1.00**
- Mignan.** Brilliant salmon-scarlet. Semi-dwarf. 1/32 oz., **\$1.75**..... **.50**
- \***Prima Donna.** Light rose shading to carmine. Very excellent standard variety. 1/32 oz., **\$3.00** ..... **1.00**
- \***Radia.** Extra large-flowered, carmine-scarlet with green foliage. Very good. 1/32 oz., **\$3.00** ..... **1.00**
- Scarlet Queen.** Large-flowered scarlet, dark bronzy green foliage. 1/32 oz., **\$1.50**.. **.50**
- Vernan.** Deep blood red. Dark-leaved, 1/16 oz., **50c** ..... **.25**
- Semperflarens Mixture** of above colors. 1/8 oz., **75c** ..... **.25**

**TUBEROUS ROOTED.** This class comprises a new line of double and single tuberous rooted varieties easily propagated from seed. They require no special care and make very satisfactory free-flowering pot plants.

- \***Lloydii. Red Shades.** Nice 4-inch pot plants can be had from a January sowing during June. A pendulous habit adapts it very well to hanging basket work. 1/64 oz., **\$6.00** ..... **1.00**
- \***Lloydii. Mixed colors.** Contains shades of light and dark pink to carmines and reds with some white. 1/64 oz., **\$5.00**..... **1.00**
- Narcissus-flowered Mixture.** Contains yellows, pinks and salmon-reds. A striking novelty type of tuberous rooted Begonia. **1.00**

**CACALIA. Caccinea.**

Tr. pkt.

Tassel flower. Scarlet. 1 oz., **50c**..... **\$0.15**

**CALCEOLARIA.** For large specimen plants next season sow seed in May and June.

**HYBRIDA GRANDIFLORA** or Large-flowered Type.

- Albert Kent.** Flowers golden yellow with red blotch. Attractive. 1/64 oz., **\$2.50**.... **1.00**
- Tigrina.** A very attractive mixture of tigered or spotted types. 1/64 oz., **\$2.50**..... **1.00**
- Albert Kent Hybrids.** A good mixture of large-flowered varieties. 1/64 oz., **\$3.25** **1.00**
- Kelway's Perfect Madel.** We supply originator's seed of this well known mixture. 1/64 oz., **\$2.25**..... **1.00**
- Mixture** of all varieties in this class. 1/64 oz., **\$2.00** ..... **1.00**

**MULTIFLORA NANA.** 10 to 12 inches. An improved class—free-flowering and dwarf compact habit. At its best in not larger than a 4- or 5-inch pot.

- \***Golden Tiger.** Golden yellow, richly spotted red. Very attractive..... **1.00**
- \***Indian Prince.** A rich deep scarlet shade. Very excellent ..... **1.00**
- \***Mixture** of above two colors. 1/2 tr. pkt., **50c**; 1/64 oz., **\$4.50**..... **1.00**

**RUGOSA MAJOR Perennial Hybrids.** Very small-flowered. For large specimen work as well as outdoor beds in southern climates ..... **1.00**

**CALLIOPSIS.**

- Drummandii.** Golden Wave. 1-inch single flowers, golden yellow with dark red eye. Free-flowering. 1 oz., **25c**..... **.15**
- Dwarf Mixture** (Bicolor). 6 to 8 inches. Attractive dwarf compact plants. Mixture of yellows and red shades. 1 oz., **30c**... **.15**

**CAMPANULA.**

- Annual Cup and Saucer Mixture.** (New). A strain we are introducing this season of the double Campanula that flowers 6 to 8 months from seed. About 60% true. 1/4 oz., **\$1.50**; 1 oz., **\$4.50**..... **.50**
- Annual Canterbury Bells Single Mixed.** 2 ft. Flowers 6 months from seed. Single. 1/4 oz., **50c**; 1 oz., **\$1.75**..... **.25**
- Fragilis.** Light azure blue, pendulous habit, excellent for hanging baskets. Free-flowering. .... **.50**

**CANDYTUFT.**

**HYACINTH-FLOWERED.**

- \***Giant White.** Ball's Strain. Our selected greenhouse strain. See Novelty list on page 2. 1 oz., **75c**; 4 ozs., **\$2.50**..... **.25**
  - Miniature Gem.** A very dwarf selection from the standard kind. Produces 4 to 6 miniature spikes about 4 inches high. Flowers early in the season and makes a very attractive rock-garden or pot plant. 1/4 oz., **50c**; 1 oz., **\$1.50** ..... **.25**
- UMBELLATA.** A popular spring cut flower from a January sowing. The best market varieties are starred (\*).
- \***Carmine, Crimsan, Flesh Pink, \*Lavender** (Lilac), **\*Rose Cardinal, White.** Each, 1 oz., **40c**; 4 ozs., **\$1.25**..... **.15**
  - Mixed.** 1 oz., **25c**; 4 ozs., **75c**..... **.15**

MISCELLANEOUS ANNUALS—Continued.



The *Enfant de Nice* strain of Carnations is the finest available and easily grown from seed.

**CARNATION.**

Tr. pkt.

Given a slight protection from the bright sun and disbudded, seed-produced Carnations furnish very satisfactory summer cutting material. We handle only the new Chabaud early-flowering strains.

\***ENFANT DE NICE.** The finest strain. Comes 75% to 80% true to color.

**Red, Rose, Solmon, White.** Each: 1/8 oz., \$1.00; 1/4 oz., \$1.75.....\$0.50  
**Mixed.** 1/4 oz., \$1.25..... .35

**GIANT STRAIN.**

**Cordinal Red, Deep Rose, Flesh Pink, Rose Pink, White.** Each: 1/4 oz., 60c; 1 oz., \$2.00 ..... .25  
**Mixed.** 1/4 oz., 50c; 1 oz., \$1.75..... .25

**CELOSIA.**

Celosia doesn't seem to like transplanting from an early sowing. If sown direct the first to the middle of May, they make a considerable showing by mid-August. Especially do the dwarf Plumosa varieties make very symmetrical showy beds or borders.

\***Spicata.** 5 ft. Of extremely upright habit, plant being not over 6 in. wide. Flowers 3 or 4 in. long, borne on the end of each stem and of a bright rose color. Adapted very well to drying for winter use. Try it. 1/4 oz., 40c; 1 oz., \$1.25..... .25

**CELOSIA—Continued.**

Tr. pkt.

**CRISTATA.** The popular Cockscomb type.

\***Dwarf Golden Yellow.** 12 inches. Deep golden yellow comb set in light green foliage. 1/4 oz., 60c; 1 oz., \$1.75.....\$0.35

\***Dwarf Empress.** 12 inches. Deep scarlet set in deep bronzy green foliage. 1/4 oz., 60c; 1 oz., \$1.75 ..... .35

**Toll Mixture.** 3 to 4 ft. Mixture of yellow and red shades. 1 oz., 75c..... .20

**PLUMOSA.** (*Pyramidalis*). Plumed or feathery type producing spire-like plumes branching from the base of the plant. Very showy.

\***Dwarf Fiery Feather.** See Novelty list on page 2. 1/8 oz., \$1.00..... .50

\***Dwarf Golden Feather.** See Novelty list on page 2. 1/8 oz., \$1.00..... .50

\***Flome of Fire.** Quite an outstanding dwarf compact strain. May have value as a pot plant. Trade packet only..... .50

**Tall Fiery Red.** 4 ft. Brilliant crimson and scarlet. 1/4 oz., 40c; 1 oz., \$1.20..... .25

**Pride of Costle Gould.** 3 to 4 ft. Mixture of yellow, orange, and red shades. 1/4 oz., 75c; 1 oz., \$2.75 ..... .35

\***Thompsonii Magnifico.** 4 ft. Well balanced mixture of all colors in this class. We have a fine strain of this very showy variety. 1/4 oz., 60c; 1 oz., \$2.00 ..... .25

**CHILDSII.** 4 ft. tall. Has an elongated comb, intermediate between *Cristata* and *Plumosa*.

**Crimson.** 1/4 oz., 40c; 1 oz., \$1.25..... .25  
**Mixture.** 1/4 oz., 40c; 1 oz., \$1.25..... .25

**CENTAUREA.**

**Condidissimo and Gymnocorpa.** See Dusty Miller.

\***Suaveolens.** Yellow Sweet Sultan. Very good bright yellow thistle-like flowers. Does very well indoors from a January sowing. Stems 18 in. long indoors. 1 oz., 40c... .15

**CYANUS DOUBLE.** Bachelor Button or Cornflower. Very free-flowering and good for cutting either outdoors or in the greenhouse from a January sowing.

\***Blue Boy.** (New). A large-flowered improvement over the regular blue. 1 oz., 40c; 4 ozs., \$1.40..... .15

**Blue, Cormine, Rose, White.** Each: 1 oz., 40c; 4 ozs., \$1.40..... .15

**Mixture.** 1 oz., 25c; 4 ozs., 80c..... .15

**IMPERIALIS.** Sweet Sultan. Larger-flowered than *Cyanus*. Double thistle type flower.

**Amoranth Red, \*Brilliant Rose, \*Deep Lavender, \*Delicate Lilac, Rose, White.** 1 oz., 50c ..... .20

**Mixture.** 1 oz., 40c..... .15

**AMERICANA.** Still larger-flowered than the *Imperialis*. Fine for retail growing.

**Lilac, the best color; White.** Each: 1 oz., 50c ..... .15

**CHORIZANTHE PALMERI.**

Turkish Rugging. Flowers 4 months from seed, making a heavy mat of deep pink *Statice*-like flowers, the foliage turning deep autumn bronze in the Fall. Didn't do very well for us in Chicago. Needs more favorable climate. 1/2 oz., 60c; 1 oz., \$1.00 ..... .25

MISCELLANEOUS ANNUALS—Continued.

**CHRYSANTHEMUM.**

Tr.pkt. 1 oz.

The two types listed furnish on attractive line of colors in single Daisy-like flowers for spring greenhouse forcing. Respond readily to electric light treatment for early flowering.

**SEGETUM.**

- \***Eldorado.** Bright yellow with dark brown disc. One of the best. 1/4 oz., **25c** ..... **\$0.15**    **\$0.75**
- Eastern Star.** Primrose with brown disc ..... **.15**    **.35**
- Evening Star.** Golden yellow ..... **.15**    **.35**
- Morning Star.** Pale primrose..... **.15**    **.25**
- Gloria Alba.** White, pale yellow disc **.15**    **.25**
- Mixture** of above..... **.15**    **.25**

**CARINATUM.**

- Burridgeanum.** White, scarlet zone **.15**    **.25**
- \***Narthern Star.** White with dark center and yellow band. Very nice. **.15**    **.25**

**CINERARIA, Maritima Diamond.** See Dusty Miller.

**CLARKIA, Elegans Double.** Our market stands a considerable quantity of this attractive cut flower. Sow in January, grow on in a flat or shallow raised bed. Must be run dry and not fed during growing season. Improved by disbudding two or three spikes to a plant.

- Albatross.** The best white..... **.20**    **.60**
- Apple Blossam.** Light pink, rather light for market purposes..... **.20**    **.60**
- \***Brilliant.** Bright deep rose. Very good color ..... **.20**    **.60**
- Chieftain.** A deep bright mouve.. **.20**    **.60**
- Enchantress.** Light salmon-pink. Pleasing color ..... **.20**    **.75**
- Firebrand.** Fairly deep scarlet.... **.20**    **.60**
- Gloriaus.** Brilliant crimson-scarlet. 1/4 oz., **\$1.00**..... **.50**    **3.00**
- \***La France.** Light salmon-pink. Best in this class..... **.20**    **.60**
- \***Orange King.** Large, fully double orange-scarlet. Excellent market variety ..... **.20**    **.60**
- \***Salman Queen.** Medium light salmon-pink. Very good..... **.20**    **.60**
- Vesuvius.** Orange King much better ..... **.20**    **.60**
- Mixture** of above colors..... **.15**    **.50**

**COBAEA, Scandens.**

Excellent annual climber.

- Purple** ..... **.15**    **.50**
- White** ..... **.20**    **.75**

**COLEUS, Hybrida.** Seedling Coleus vary considerably but produce beautiful color variations from which new and exhibition stock may be propagated.



**Chrysanthemum Segetum**—a very excellent spring cut-flower item and easily handled.

Tr.pkt. 1 oz.

**Giant Exhibition Mixture.** The finest strain we are able to find. Produces 50% to 60% unusually marked plants. 1/32 oz., **\$2.00** **\$1.00**

**Rainbow Mixture.** A very good mixture. 1/16 oz., **\$1.00**..... **.35**

**Hybrida Mixture.** 1/8 oz., **60c**.... **.35**    **3.50**

**COSMOS.**

**EXTRA EARLY EXPRESS.** Flowers in 45 days from an outdoor sowing.

**Pink, White, and Mixture.** Each, 1/2 oz., **45c**..... **.20**    **.75**

**EARLY SINGLE MAMMOTH FLOWERING.** The standard large-flowered type.

**Crimson, Pink, White, Mixture.** Each ..... **.15**    **.40**

**EXTRA EARLY DOUBLE ANEMONE-FLOWERED** or Crested. Our strain produces fully 50% large crested flowers.

**Carnelia, Crimson; Peach Blossom; Whirlwind, White; Mixture.** Each, 1/4 oz., **60c**..... **.25**    **2.00**

**GIANT-FLOWERED LADY LENOX.** Single. Flowers from outdoor sowing in 120 days

**Pink, White.** Each..... **.15**    **.25**

**HYBRIDA KLONDYKE**

**Orange.** Late single, 135 days from seed to flowering. Orange Flare the same but considerably earlier. **.15**    **.60**

\***Orange Flare.** See Novelty list on page 2. 1/4 oz., **50c**..... **.25**    **1.60**

**Sensation.** See Novelty list on page 2. 1/8 oz., **\$1.80**..... **.50**

MISCELLANEOUS ANNUALS—Continued.

**CYCLAMEN**

We handle what we consider to be the best strain available, our seed all coming direct from the originator, E. Binnewies of Alfeld, Germany. To avoid errors, please order by number and name.

	100	1000	5000
<b>Na. 1 Dark Blood Red</b> . . .	\$1.15	\$10.00	\$46.00
<b>Na. 2 Bright Red</b> . . . . .	1.20	10.00	46.00
<b>Na. 3 Pure Rose</b> . . . . .	1.15	10.00	46.00
<b>Na. 4 Soft Rose</b> , cormine eye. (Improved Rose of Morienthol). . . . .	1.15	10.00	46.00
<b>Na. 5 White, carmine eye</b> . . . . .	1.15	10.00	46.00
<b>Na. 6 Pure White</b> . . . . .	1.15	10.00	46.00
<b>Na. 7 Banfire</b> . Brilliant salmon . . . . .	1.70	15.00	69.00
<b>Na. 8 Salmon Scarlet</b> . Americo Improved . . . . .	2.00	16.00	73.00
<b>Na. 10 Glory of Wandsbek</b> or Perle of Zehlendorf, dark salmon . . . . .	1.50	12.00	55.00
<b>Na. 11 Rose of Zehlendorf</b> . Light salmon . . . . .	1.50	12.00	55.00
<b>Na. 12 Orange Beauty</b> . Orange-vermilion. No seed available until July . . . . .	1.80	17.00	78.00
<b>Na. 14 Marning Red</b> . . . . .	1.60	13.00	60.00
<b>Na. 15 Saffron Red</b> . . . . .	1.40	11.00	50.00
<b>Na. 16 Saffron Red, silver edged</b> . No seed available until July . . . . .	1.75	16.00	75.00
<b>Na. 17 Striata Mixed</b> . . . . .	1.50	12.00	55.00
<b>Na. 18 Mazart</b> . Deep pink. No seed available until July . . . . .	1.85	17.00	78.00
<b>Na. 19 Lavender</b> . . . . .	1.15	10.00	46.00
<b>Na. 20 New Ruffled</b> in colors. Especially attractive class, fringed petals . . . . .	2.00	18.50	86.00
<b>Na. 21 Pink Pearl</b> . Salmon-pink . . . . .	1.80	17.00	78.00



We know from observation that when two equally well-flowered plants are put up for the judgment of the average buyer, the double flowered strain will usually be favored.

**CYCLAMEN—Continued.** 100 1000 5000

<b>Cristata</b> , pure white feathered . . . . .	\$1.60	\$13.00	\$60.00
<b>Mixture</b> of above colors . . . . .	1.10	10.00	46.00
<b>VOGT'S DOUBLE STRAIN</b> . We handle only the originator, John Vogt's seed of this attractive class. . . . .	100	250	500 1000
<b>Cerise Brilliant</b> . Rich cerise-red. . . . .	\$3.00	\$7.25	\$13.00 \$25.00
<b>Prosperity</b> . Flaming rich rose . . . . .	3.00	7.25	13.00 25.00
<b>Admiration</b> . Salmon-rose with shaded eye . . . . .	3.00	7.25	13.00 25.00
<b>Rosea</b> . Soft rose shading with light at tip of petals . . . . .	3.00	7.25	13.00 25.00
<b>Mixture</b> of above four colors . . . . .	3.00	7.25	13.00 25.00

<b>CYNOGLOSSUM Amabile</b> . Chinese Forget-me-not. 24 in. . . . .			Tr. pkt. 1 oz.
<b>Blue</b> . The preferred color. . . . .	\$0.15	\$0.30	
<b>Pink</b> . 1/4 oz. . . . .	35c	.20	.80

<b>CYPERUS Alternifolius</b> . (Umbrella Plant) . . . . .	.20	1.00	
---	-----	------	--

**DAHLIA**. The strains we offer are all easily grown from seed and flower the first season if sown early in the spring and transplanted outdoors. Valuable for cutting and garden decoration as well as a source of specimen plants for tuber propagation.

<b>Unwin's Dwarf Hybrids</b> . 18 in. Semi-double with a wide range of colors. 1/4 oz., 75c. . . . .	.25	2.75	
--	-----	------	--

**Decorative and Cactus Mixed**. 30 in. Varies considerably in flower type and height. Some very excellent specimens appear in this strain. 1/4 oz., \$2.25. . . . .

<b>Lilliput or Pompon Mixture</b> . A good proportion of these are perfectly formed double pompon-like flowers. 24 in. 1/4 oz., \$3.50. . . . .	1.00		
---	------	--	--

**COLTNESS STRAIN**. Single. 18 in. These strains are very uniformly dwarf and true to color and are excellent for garden decoration.

* <b>Scarlet Gem</b> . 1/4 oz., 90c. . . . .	.50	3.00	
* <b>White</b> . 1/4 oz., 90c. . . . .	.50	3.00	
* <b>Yellow</b> . 1/4 oz., 90c. . . . .	.50	3.00	
<b>Mixture</b> . 1/4 oz., 60c. . . . .	.35	2.00	

\***DELPHINIUM. Chinensis**. This annual Delphinium type has considerable value for spring forcing in the greenhouse. Seed should be sown in October.

<b>Cambridge Blue</b> . Standard Belladonna-blue annual. See Novelty page 2 for full description. 1/4 oz., 60c . . . . .	.35	2.00	
--	-----	------	--

<b>Dark Blue, White</b> . Each. . . . .	.20	.75	
<b>Mixture</b> . . . . .	.15	.60	

MISCELLANEOUS ANNUALS—Continued.

**DIANTHUS** Tr.pkt. 1 az.

**SWEET WILLIAM.**

**Annual Sweet William.** (D. Barbato-sinensis). 12 in. Single Mixed ..... \$0.15 \$0.50

\***Sweet Wivelsfield.** 12 in. Improved farm Annual Sweet William. Extra large-flowered with brilliant mixture of colors. Very excellent strain ..... .20 .75

\***Double Sweet Wivelsfield.** (New). Combines the same attractive features of the above with large double flowers. Comes about 50% double. Trade pkts. only ..... .50

**HEDDEWIGII.** Double Japanese Pinks. 10 in. and free-flowering. Fine for rack gardens.

**Fireball.** Deep scarlet. 1/4 oz., 30c ..... .20 .80

**Pink Beauty.** Blush pink ..... .20 .80

**Snowdrift.** Extra large-flowered pure white ..... .20 .80

**Mourning Cloak.** Blackish maroon margined white, very attractive type ..... .15 .50

**Diadem Mixture** of above colors.. .20 .75

\***Laciniatus Splendens.** (New). Extra large 2 in. flowers. Brilliant crimson with a large white eye. An outstanding last season's introduction to this class. Excellent for rock gardens. 1/4 az., 50c.. .25 1.50

**DIDISCUS Caeruleus**

Blue Lace Flower. Valuable for spring greenhouse forcing .... .20 .80

**DIMORPHOTHECA Aurantiaca**

**Hybrids Mixed.** 12 in. Orange flowers. Makes nice early flowering garden annual. Same value for cutting ..... .20 .75

**DRACAENA**

**Australis.** Broad-leaved ..... .20 .75

**Indivisa.** Narrow-leaved and most popular ..... .15 .40

**DUSTY MILLER**

We have deemed it advisable this year to again list these different varieties together for the sake of comparison.

**Centaurea Candidissima.** 6 in. Of slow growth. 1/4 oz., 50c..... .25 1.40

**Centaurea Gymnocarpa.** 24 in. See illustration ..... .20 .50

**CINERARIA MARITIMA DIAMOND**

According to the past two seasons' trial ground reports, this is the outstanding Dusty Miller from the standpoint of dwarf compact habit and white foliage. Notice that we list two strains.

\***Extra Dwarf.** As the accompanying photo shows, this is the most dwarf compact strain ..... .35 .75

**Medium Dwarf.** A very even strain useful where a very dwarf habit is not necessary ..... .20 .50



Gerbera Jamesoni—flowers last 10 days to 2 weeks after cut.

**EUPHORBIA**

Tr.pkt. 1 az.

**Heterophylla.** Annual Poinsettia or Mexican Fire Plant. Makes good solid hedge with small poinsettia-like flowers at tip of branches. 36 in. .... \$0.15 \$0.65

**Variegata.** Snow-an-the-Mountain .15 .35

**EXACUM Affine**

A very attractive, easily grown, richly fragrant pot plant.

**Light Blue.** 1/64 az., \$1.75..... 1.00

\***Atracaeruleum.** The deeper color of the two and the preferred variety. 1/64 az., \$2.00..... 1.00

**GAILLARDIA. Lorenziana**

Double mixture of yellow and red shades. 18 in. .... .15 .40

**GERBERA**

**Jamesonii Hybrids.** A popular greenhouse forcing plant also hardy if well protected. We supply only freshly harvested seed. Mixture. 100 seeds, 40c; 500 seeds, \$1.75; 1000 seeds, \$3.00.

**GILIA Capitata.** (Blue Thimble Flower). 24 in. Ball-shaped flowers with same cutting value. Attractive feathered foliage..... .15 .25



From left to right: Centaurea Candidissima; Cineraria Moritima, extra dwarf; some but medium dwarf; Centaurea Gymnocarpa.

MISCELLANEOUS ANNUALS—Continued.



Ornamental Gourds—all types mixed.

**GOURDS.** Ornamental.

The varieties listed below should be well worth becoming acquainted with. Gourds are easily grown and when properly dried and varnished last indefinitely.

\***La Montagne Strain.** This is the finest mixed strain we have ever seen. Our seed comes direct from the originator, Louis La Montagne of Woburn, Mass., who has spent considerable time developing this specialty of his. Mr. La Montagne has written a circular outlining his method of growing Gourds, a copy of which we will gladly enclose with your order if requested. Tr. pkt., **35c**; 1/4 oz., **50c**; 1 oz., **\$1.50**.

**We Also List the Following Segregated Types That are Well Worth Trying**

	Tr.pkt.	1 oz.
<b>GLOXINIA.</b> 4-5 in. pot plants may be grown in 6-8 months from seed. Requires a uniformly moist and warm atmosphere and protection from direct sun.		
<b>Defiance.</b> Rich glowing scarlet . . .	<b>\$1.00</b>	
<b>Emperor William.</b> Dark violet bordered white . . . . .	<b>1.00</b>	
<b>Benary's Giant Mixture.</b> The finest mixed strain we know of . . . . .	<b>1.00</b>	
<b>GODETIA.</b> Require shallow soil the same as Clarkia. Following varieties are all good commercial colors in the large-flowered class.		
<b>The Bride.</b> Attractive combination of white and crimson . . . . .	<b>.20</b>	<b>.60</b>
<b>Sweetheart.</b> Dwarf. 24 in. Double Poppy-like flower. Nice clear pink color . . . . .	<b>.25</b>	<b>1.00</b>
<b>Sybil Sherwood.</b> Bright salmon-pink edged white. Medium dwarf. 1/4 oz., <b>35c</b> . . . . .	<b>.20</b>	<b>1.25</b>
<b>Thunderbolt.</b> Deep crimson. Medium dwarf. 1/4 oz., <b>50c</b> . . . . .	<b>.25</b>	<b>1.75</b>
<b>Duchess of Albany.</b> Pure satiny white. Extra large-flowered and tall . . . . .	<b>.20</b>	<b>.50</b>
<b>Wild Rose.</b> (New). Dwarf single. Pleasing shade of medium deep pink. Choice for pot plant and border work. 1/4 oz., <b>50c</b> . . . . .	<b>.25</b>	<b>1.50</b>
<b>Tall Double Mixture.</b> Mixture of above colors . . . . .	<b>.15</b>	<b>.50</b>
<b>GOMPHRENA.</b> (Globe Amaranth). Everlasting. Makes nice material for garden decoration and cutting.		
* <b>Aurea Superba.</b> Brilliant orange. Large-flowered, choice for cutting but needs supporting . . . . .	<b>.15</b>	<b>.40</b>
<b>GLOBOSA.</b> Round ball-like flowers.		
<b>Rose.</b> Light rose-pink. 30 in. . . . .	<b>.15</b>	<b>.25</b>
<b>Rubra.</b> Bluish purple. A very bright deep purple. 30 in. . . . .	<b>.15</b>	<b>.25</b>
<b>White.</b> Grayish white. 30 in. . . . .	<b>.15</b>	<b>.25</b>
* <b>Nana Compacta Rubra.</b> 8 in. Dwarf strain of Rubra. Very choice for edging . . . . .	<b>.15</b>	<b>.40</b>
<b>Mixed</b> . . . . .	<b>.15</b>	<b>.25</b>

	Tr.pkt.	1 oz.
<b>LARGE TYPES.</b>		
<b>Calabash.</b> Pipe or Powder Horn Gourd. Light green. 10 in. long, tapering to bottom . . . . .	<b>\$0.10</b>	<b>\$0.25</b>
<b>Dipper.</b> Light green, slightly mottled white. 18 to 24 in. and very slender . . . . .	<b>.10</b>	<b>.25</b>
<b>Sugar Trough</b> or Corsican Gourd. Light green turning to white. 4 in. high by 6 to 8 in. wide . . . . .	<b>.10</b>	<b>.25</b>
<b>SMALL TYPES.</b>		
<b>Small Bottle.</b> Greenish white, shape of small bottle. 2 to 4 in. high and 1 to 2 in. through . . . . .	<b>.10</b>	<b>.25</b>
<b>Orange.</b> About the color and shape of an orange. About 2 in. through . . . . .	<b>.10</b>	<b>.25</b>
<b>Pear.</b> Striped alternately with green and yellow bands with some white markings. About 2 in. high by 1 in. through . . . . .	<b>.10</b>	<b>.25</b>
<b>Spoon.</b> More or less spoon shaped. Orange and white striped. 4 to 6 in. long by 1 in. . . . .	<b>.10</b>	<b>.40</b>
<b>Warted types mixed.</b> Not over 4 in. in diameter. A rather novel and attractive mixture . . . . .	<b>.10</b>	<b>.25</b>
<b>GREVILLEA Robusta.</b> (Australian Silk Oak). Seeds sown in early spring and grown in a 60° house should produce nice 5-in. pot plants by fall. Enjoy plenty of bottom heat and a well-drained loose soil . . . . .	<b>.25</b>	<b>.75</b>
<b>GYPSOPHILA Elegans.</b> (Baby's Breath). We are constantly running trials of all available European and American strains of annual "Gyp" and are certain that we have not missed any worth-while strains.		
<b>Covent Garden Market.</b> Large-flowered and full-petalled flowers. Have 6 to 8 petals instead of the usual 4 to 5. 4 ozs., <b>50c</b> ; 1 lb., <b>\$1.60</b> ; 5 lbs., <b>\$6.50</b> . . . . .		<b>.20</b>
<b>London Market.</b> Slightly taller growth than Covent Garden Market and larger. 4 ozs., <b>50c</b> ; 1 lb., <b>\$1.50</b> ; 5 lbs., <b>\$6.50</b> . . . . .		<b>.20</b>
<b>Paris Market.</b> Standard medium size strain. 4 ozs., <b>40c</b> ; 1 lb., <b>\$1.00</b> ; 5 lbs., <b>\$4.50</b> . . . . .		<b>.15</b>
<b>Carminea.</b> Same habit as others but rather small, bright carmine-pink flowers . . . . .	<b>.15</b>	<b>.25</b>



MISCELLANEOUS ANNUALS—Continued.

**HELIANTHUS.** (Sunflower). Tr.pkt. 1 oz.  
**Dwarf Chrysanthemum-flowered.**  
 Good proportion of fully double  
 flowers . . . . . \$0.10 \$0.20  
**Russian.** Large, single. 1 lb., 50c. .10

**HELICHRYSUM MONSTROSUM.**  
 Popular double strawflower.  
**Canary Yellow, Crimson, Golden  
 Globe, Salmon, Rose Carmine,  
 Scarlet, Fireball, Rose Queen,  
 White.** Each. . . . . .15 .60  
**Mixture** of above colors. . . . . .15 .50

**HUNNEMANIA. Fumariaefolia.**  
 Bush Eschscholtzia. Yellow. . . . . .15 .50

**IMPATIENS.**  
 Standard pot plant. Does well in  
 the garden in partial shade.  
**Sultanii.** Bright rose. 18 in. 1/32  
 oz., \$1.00 . . . . . .35  
**Halstii Liegnitzia.** 10 in. Deep ver-  
 milion-red. Very free-flowering.  
 Good. 1000 seeds, 75c.  
**Halstii Hybrids.** Mixture. 1/32 oz.,  
 \$1.00; 1000 seeds, 50c.

**IPOMOEA.**  
**Rose Marie.** Double deep rose. Very  
 free-flowering and early. Nice. .25 .60  
**Heavenly Blue.** Sky blue shading  
 white at throat. Ours is the  
 early-flowering strain . . . . . .25 1.00  
**Quamaclit.** Cardinal Climber. . . . .15 .60

**NOCTIFLORA.** Moonflower. Large-  
 flowered white.  
**Black-seeded. White-seeded.** Each .15 .40

**ISOLOMA Hirsutum Multiflorum.**  
**Hybridum.**  
 Choice tuberous rooted pot plant.  
 6 to 8 in. Requires about the  
 same care as Gloxinias. . . . . 1.00

\***KALANCHOE Glabulifera Caccinea.**  
 Popular spring flowering pot plant and easily  
 grown from seed. Responds readily to black-  
 cloth shading for Christmas flowering. Liberal  
 tr. pkt., 60c; 3 tr. pkts. for \$1.50.

**KOCHIA.** (Summer Cypress).  
**Childsii.** We have a very even strain  
 of this ornamental bush. Stays  
 green throughout the season. .10 .20  
**Trichophylla.** Same as above but not  
 quite so dense foliage and turns  
 a flaming red late in the summer. .10 .20

**LANTANA. Dwarf Hybrids Mixed.**  
 Seed must be sown early and with  
 bottom heat . . . . . 15 .50

**LEPTOSYNE Stillmanii.**  
 18 in. Golden yellow. Good for cut-  
 ting, especially indoors. . . . . .15 .75

**LINARIA. Maraccana.**  
**Fairy Bauquet.** Miniature Snap-  
 dragon. 10 in. Flowers early  
 and very freely. Very bright mix-  
 ture of colors. 1/4 oz., 75c. . . . .25 2.50

**LOBELIA.** Tr.pkt. 1 oz.  
 The following come very true to  
 their dwarf compact or pendulous  
 habit and make excellent border  
 or rock garden subjects.

**COMPACTA.** Dwarf compact habit.  
 \***Blue Gawn.** 6 in. Deep blue,  
 slight white eye. Dark green  
 foliage. 1/4 oz., \$1.25; 1/8 oz.,  
 75c . . . . . \$0.35  
**Blue Stone.** 5 in. Deep blue. 1/4  
 oz., 75c . . . . . .35  
 \***Cambridge Blue.** 4 in. Light blue,  
 white eye. Light green foliage.  
 1/4 oz., \$1.00 . . . . . .35  
**Crystal Palace.** 4 in. Dark blue,  
 slight white eye. Dark green  
 foliage. Good. 1/4 oz., 50c. . . . .25 1.75  
**Emperor William.** 6 in. Deep blue,  
 slight white eye. Light green  
 foliage. 1/4 oz., 40c. . . . . .25 1.50  
 \***Mrs. Clibran Improved.** 4 in. Dark  
 blue, white eye. Light foliage.  
 Good. 1/4 oz., \$1.00 . . . . . .25

**PENDULA.** Of trailing habit, suitable  
 for window boxes.  
 \***Hamburgia.** Deep blue, white eye.  
 Dark foliage. Very even strain.  
 1/4 oz., 50c. . . . . .25 1.50  
**Sapphire.** Deep blue, very pro-  
 nounced white eye. Light green  
 foliage. 1/4 oz., 50c. . . . . .25 1.75  
**Angelina.** White. Light green  
 foliage. Not extra free-flowering.  
 1/4 oz., 50c. . . . . .25 1.80

**LUPINUS.**  
 Standard green-  
 house forc-  
 ing crop to  
 follow mums  
 or Fall Peas.

\***Sulphureus Su-  
 perbus.** Golden  
 yellow.  
 28 in. Tr.  
 pkt., 15c; 1  
 oz., 40c.

**Luteus Romu-  
 lus.** Dwarf  
 yellow, rich-  
 ly fragrant.  
 15 in. Tr.  
 pkt., 15c; 1  
 oz., 50c.



The Giant King type is a considerably improved greenhouse strain of Annual Lupine.

**MISCELLANEOUS ANNUALS—Continued.**

**LUPINUS—Continued.**

<b>HARTWEGII.</b>	Tr.pkt.	1 oz.
<b>Dark Blue.</b> The best selling standard color. 4 ozs., <b>75c</b> .....	<b>\$0.15</b>	<b>\$0.30</b>
<b>Sky Blue.</b> Very good market color. 4 ozs., <b>75c</b> .....	<b>.15</b>	<b>.30</b>
<b>Roseus.</b> Of limited commercial value. 4 ozs., <b>75c</b> .....	<b>.15</b>	<b>.30</b>
<b>White.</b> 4 ozs., <b>75c</b> .....	<b>.15</b>	<b>.30</b>
<b>Mixed.</b> 4 ozs., <b>75c</b> .....	<b>.15</b>	<b>.30</b>
<b>Giant King Oxford Blue.</b> An extra large-flowered tall strain. Deep blue with white stripe. Base-branching. ¼ oz., <b>50c</b> .....	<b>.25</b>	<b>1.50</b>
<b>Giants Mixed.</b> Various colors in this new type.....	<b>.20</b>	<b>.75</b>

**MIGNONETTE.**

<b>*Ball Strain.</b> Light colored flowers and 2 to 3 weeks earlier than New York Market. We have found a crop of this special greenhouse forcing strain a profitable one when sown in August in pots and transplanted while still small. Disbudding necessary for large spikes. May also be sown in January for spring crop. ¼ oz., <b>\$1.75</b> .....	<b>1.00</b>	<b>6.00</b>
<b>New York Market.</b> ¼ oz., <b>\$1.75</b> .....	<b>1.00</b>	<b>6.00</b>

<b>MACHET.</b> Suited for summer bedding work.		
<b>Golden Galiath. Galiath Red.</b> Each	<b>.15</b>	<b>.75</b>
<b>MIMOSA Pudica.</b> Sensitive Plant....	<b>.20</b>	<b>.50</b>

<b>MYOSOTIS.</b> Forget-me-not.		
<b>*Ball's Early.</b> Not quite as long-stemmed as Blue Bird but very free and <b>early-flowering</b> . For full description see Novelty page 3. ¼ oz., <b>\$1.50</b> .....	<b>.50</b>	
<b>Ruth Fischer.</b> Clear blue, very compact habit. Fine for pot culture. 1/32 oz., <b>75c</b> .....	<b>.35</b>	

**NASTURTIUM.**

<b>DOUBLE OR GLEAM VARIETIES.</b> A revival of this old time plant has been brought about by this new double type. Bright colors, free-flowering and long stems suit them ideally for the home gardener as well as the florist for combination work, window boxes, and cutting. No retail grower should be without them. We offer only Bodger strains.		
<b>*Golden Gleam.</b> The original semi-trailing double Nasturtium. Deep golden yellow. 1 lb., <b>\$1.25</b> ; 4 ozs., <b>40c</b> .....		<b>\$0.15</b>
<b>*Scarlet Gleam.</b> Identical to Golden Gleam except in color, a brilliant scarlet. ½ oz., <b>30c</b> .....	<b>.15</b>	<b>.50</b>
<b>*Gleam Hybrids.</b> A brilliant mixture of 6 to 8 distinct color types covering the range from light yellow through orange and scarlet and attractively variegated combinations. ¼ oz., <b>50c</b> .....	<b>.25</b>	<b>1.50</b>
<b>*Golden Globe.</b> (New). Identical to Golden Gleam except of a distinctly dwarf compact habit....	<b>.15</b>	<b>.40</b>

**SINGLE VARIETIES.**

<b>Cloth of Gold.</b> Scarlet, golden foliage. Dwarf. 1 lb., <b>\$1.00</b> ; 4 ozs., <b>30c</b> .....		<b>.10</b>
<b>Empress of India.</b> Deep scarlet, dark foliage. Dwarf. 1 lb., <b>\$1.00</b> ; 4 ozs., <b>30c</b> .....		<b>.10</b>
<b>Golden King.</b> Indian yellow, dark foliage. Dwarf. 1 lb., <b>\$1.00</b> ; 4 ozs., <b>30c</b> .....		<b>.10</b>
<b>Mixture</b> of all colors in the dwarf class. 1 lb., <b>\$1.00</b> ; 4 ozs., <b>30c</b> .....		<b>.10</b>
<b>Vesuvius.</b> Salmon-rose, dark foliage. Of tall or trailing habit. 1 lb., <b>\$1.00</b> ; 4 ozs., <b>30c</b> .....		<b>.10</b>
<b>California Giants Mixed.</b> Mixture of all colors in the tall or trailing class. 1 lb., <b>\$1.00</b> ; 4 ozs., <b>30c</b> .....		<b>.10</b>

**NEMESIA. Strumosa Suttonii.**

<b>GRANDIFLORA.</b> Large-flowered and long-stemmed. 24 in. Fine for spring cutting. The following varieties come quite true.		
<b>Blue.</b> 1/16 oz., <b>50c</b> .....	<b>.35</b>	
<b>Cherry Red.</b> ¼ oz., <b>75c</b> .....	<b>.35</b>	
<b>Orange.</b> Good bright color. ¼ oz., <b>75c</b> .....	<b>.25</b>	
<b>Scarlet.</b> ¼ oz., <b>75c</b> .....	<b>.25</b>	
<b>Rose.</b> Rather deep heavy color. ¼ oz., <b>75c</b> .....	<b>.25</b>	
<b>Mixture</b> of all colors in this class. ¼ oz., <b>50c</b> .....	<b>.25</b>	

<b>NANA COMPACTA.</b> More dwarf than the Grandifloras. 18 in. and branches profusely from base. Excellent for bedding and pot work, also for combination boxes.		
<b>*Aurora.</b> Carmine-crimson with white. Attractive. ¼ oz., <b>75c</b> ..	<b>.35</b>	



**New Dwarf Double Nasturtium, Golden Globe—**  
an attractive addition to the Gleam type.

MISCELLANEOUS ANNUALS—Continued.

<b>NEMESIA. Strumosa Suttonii.</b>			
<b>NANA COMPACTA.</b>	Tr. pkt.	1 oz.	
* <b>Blue Gem, Improved.</b> Nice Delphinium-blue. Varies some.	1/8 oz., 50c.....		\$0.25
<b>Fire King.</b> Scarlet.	1/8 oz., 75c...		.25
* <b>Orange Prince.</b> A rich bright orange.	1/8 oz., 75c.....		.25
<b>Triumph Mixed.</b> A mixture of all colors in this class.	1/4 oz., 50c.		.25
<b>NICOTIANA. (Tobacco Plant).</b>			
<b>Suaveolens.</b> Miniature White. Small-flowered, sweet-scented.	18 in. 1/16 oz., 75c.....		.35
<b>AFFINIS.</b>			
<b>White.</b> Sweet-scented. Tall. 36 in.		.15	.30
* <b>Crimson Bedder.</b> 15 in. Makes very compact row. Free-flowering.	1/4 oz., 75c.....		.35
<b>NIGELLA. Damascena Double.</b>			
<b>Miss Jekyll.</b> Love-in-a-Mist. Cornflower-blue			.15
<b>Mixture</b> containing shades of light and dark blue and white.....			.15
<b>OENOTHERA. (Evening Primrose).</b>			
<b>Afterglow.</b> Yellow with bright red calyx. 32 in.....		.20	.50
<b>Lamarckiana.</b> Yellow. 40 in....		.15	.25
<b>PANSY.</b>			
A very profitable way of handling Pansies is to sow the seed indoors during January and sell the small plants out of pots or flats during May and June. We have complete stock of new crop seed on all the following varieties.			
* <b>Ball Giant Mixture.</b> We recommend this as the best all-purpose strain available after 4 years of trying out Pansies from all over the world. Fairly long-stemmed with an especially bright mixture of original colors. Extra large-flowered.	1/4 oz., \$1.50; 1/2 oz., \$3.00; 4 ozs., \$18.00.....	.40	5.00
<b>Ball Giant Mixture—Dwarf.</b> Identical to the above except of a distinctly more dwarf and compact habit.	1/4 oz., \$3.00; 1/2 oz., \$5.00; 4 ozs., \$30.00.....	.50	8.00
* <b>Engelmann's Special.</b> Particularly choice for bedding because of an extra dwarf compact habit. Predominating in rich brownish-red shades. 5-blotched.	1/4 oz., \$2.50; 1/2 oz., \$4.50.....	.50	8.00
<b>Engelmann's Giants.</b> A good large-flowered mixture of bright colors. Compact habit.	1/4 oz., \$2.50; 1/2 oz., \$4.50.....	.50	8.00
<b>Maple Leaf Giants.</b> Probably the largest flowered strain we have. An especially strong growth producing long stems makes it suitable for greenhouse forcing for cut flowers.	1/4 oz., \$2.25; 1/2 oz., \$4.00; 4 ozs., \$25.00....	.50	7.00
<b>Super Maple Leaf Giants.</b> A selection from the above for larger flowers and strong growth.	1/4 oz., \$3.00; 1/2 oz., \$5.50....	.75	10.00

<b>PANSY—Continued.</b>		Tr. pkt.	1 oz.
<b>Rogli Giants.</b> An imported strain of especially rich coloring. Large-flowered.	1/4 oz., \$1.50; 1/2 oz., \$2.50; 4 ozs., \$15.00.....	\$0.50	\$4.50
<b>Steele's Jumbo Mixture.</b> We believe this to be Mr. Steele's finest strain of Pansies and we find it in considerable demand. Strong growth, extra long-stemmed and large-flowered. Originator's seed.	1/4 oz., \$3.25; 1/2 oz., \$6.25..	.75	12.00
<b>Steele's Masterpiece.</b> A medium large-flowered highly ruffled strain.	1/4 oz., \$2.50; 1/2 oz., \$4.75 .....	.75	9.00
<b>Super Swiss Giants.</b> An especially selected Swiss Giant mixture.	1/4 oz., \$2.00; 1/2 oz., \$3.75.....	.50	7.00
<b>Improved Swiss Giants.</b> A mixture of all the colors in this group.	1/4 oz., \$1.75; 1/2 oz., \$3.25; 4 ozs., \$20.00 .....	.50	6.00
<b>SWISS GIANT SEPARATE COLORS.</b>			
<b>Alpenglow.</b> Rich garnet-red.	1/4 oz., \$1.75; 1/2 oz., \$3.25.....	.50	6.00
<b>Rhinegold.</b> Yellow with brown blotches.	1/4 oz., \$1.75; 1/2 oz., \$3.25 .....	.50	6.00
<b>Lake of Thun.</b> Rich deep blue with darker blotches.	1/4 oz., \$1.50; 1/2 oz., \$2.75 .....	.50	5.00
<b>Mont Blanc.</b> Clear white with very little penciling.	1/8 oz., \$3.00... ..	1.00	
<b>SMALL-FLOWERED BEDDING VARIETIES.</b> These come very true and are of a dwarf compact habit.			
<b>Golden Queen.</b> Clear yellow.	1/4 oz., 50c .....	.25	1.60
<b>Lord Beaconsfield.</b> A standard blue bedding variety.	1/4 oz., 45c... ..	.25	1.50
<b>Snow Queen.</b> Clear white.	1/4 oz., 40c .....	.25	1.50
<b>PENTSTEMON. (Beard Tongue.)</b>			
<b>Southgate Gem.</b> Glowing scarlet.	1/4 oz., \$1.00 .....	.40	
<b>GLOXINOIDES.</b>			
<b>Red Shades. Rose Shades.</b> Each.	1/4 oz., \$1.00 .....	.40	
<b>Sensation Mixture.</b>	1/4 oz., 75c... ..	.35	2.75
<b>PHLOX. Drummondii.</b> Annual. Very attractive bedding subjects. Come very true.			
<b>GRANDIFLORA.</b> Tall. 12 to 15 in.			
<b>Alba.</b> White.	1/4 oz., 30c.....	.25	1.00
<b>Carnea.</b> Flesh-pink with rose eye.	1/4 oz., 30c.....	.25	1.00
<b>Chamois Rose,</b> With carmine eye.	1/4 oz., 30c.....	.25	1.00
<b>Cinnabar.</b> Rich scarlet.	1/4 oz., 30c .....	.25	1.00
<b>Leopoldi.</b> Deep rose with white eye.	1/4 oz., 30c .....	.25	1.00
<b>Rosea.</b> Rose-pink shading deeper in center. Very good.	1/4 oz., 30c .....	.25	1.00
* <b>Gigantea Art Shades.</b> (New). 9 in. An extra large-flowered mixture of soft pastel shades including light and dark pinks, salmons, blues, and mauve shades. No harsh colors. This strain is quite distinct from the following two in habit, flower size and color range.	1/4 oz., \$1.00.....	.40	3.00

Growing and selling Pansies in flats is nice business.

MISCELLANEOUS ANNUALS—Continued.



Phlox should be sown direct in our latitude for best results outdoors.

- |  |          |       |                      |
|--|----------|-------|----------------------|
|  | Tr. pkt. | 1 oz. |                      |
| * <b>Cuspidata Mixture.</b> Star of Quedlinburg. A bright mixture of colors, mostly pink and red shades marked white and coming quite true to a star-shaped flower. Quite attractive. 1/4 oz., <b>30c</b> .. |          |       | <b>\$0.20 \$1.00</b> |
| <b>Special Mixture</b> of all colors in this tall class. 1/4 oz., <b>35c</b> .....   |          |       | <b>.20 1.00</b>      |
| <b>NANA COMPACTA.</b> Dwarf type ideally suited to bedding. 6 to 8 in.   |          |       |                      |
| * <b>Apricat.</b> A very excellent color. 1/4 oz., <b>75c</b> .....  |          |       | <b>.35 2.50</b>      |
| * <b>Mirabilis.</b> Salmon-pink with white eye. 1/4 oz., <b>75c</b> .....  |          |       | <b>.35 2.50</b>      |
| <b>Chamais.</b> With carmine eye. 1/4 oz., <b>75c</b> .....  |          |       | <b>.35 2.50</b>      |
| * <b>Fireball.</b> Fiery scarlet. 1/4 oz., <b>75c</b> .....  |          |       | <b>.35 2.50</b>      |
| <b>Isabellina.</b> Pure yellow. Each, 1/4 oz., <b>75c</b> .....  |          |       | <b>.35 2.50</b>      |
| <b>Sky Blue. Snowball.</b> Each, 1/4 oz., <b>75c</b> .....   |          |       | <b>.35 2.50</b>      |
| * <b>Cecily Mixture.</b> A very excellent bright mixture of all the above colors. 1/4 oz., <b>60c</b> .....  |          |       | <b>.35 2.25</b>      |

**POPPY.**

- ICELAND (P. Nudicaule).** This type lends itself very well to greenhouse forcing from January sowing. They also do well outdoors.
- |  |  |  |                 |
|--|--|--|-----------------|
| * <b>El Mante.</b> Bright tangerine-orange. Very good. 1/4 oz., <b>65c</b> .....                                 |  |  | <b>.25 2.00</b> |
| <b>Gartref Strain.</b> A large-flowered mixture of pastel shades. 1/16 oz., <b>75c</b> .....                     |  |  | <b>.35</b>      |
| * <b>Fakenham Hybrids.</b> Extra large-flowered and long-stemmed. 1/4 oz., <b>65c</b> ; .....                    |  |  | <b>.25 2.25</b> |
| * <b>Sandford's Giants.</b> We find this the finest strain we have for indoor forcing. 1/4 oz., <b>75c</b> ..... |  |  | <b>.50 2.40</b> |

**SHIRLEY.**

- |  |  |  |                |
|--|--|--|----------------|
| * <b>American Legian.</b> Single orange-scarlet .....                |  |  | <b>.15 .40</b> |
| <b>Double Begonia-flowered Pink Shades</b> .....                     |  |  | <b>.15 .50</b> |
| <b>Double Begonia-flowered Salmon</b> ..                             |  |  | <b>.15 .50</b> |
| <b>Double Begonia-flowered Sweet Briar.</b> (New). Deep rose-pink .. |  |  | <b>.15 .80</b> |

**POPPY—Continued.**

Tr. pkt. 1 oz.  
CARNATION-FLOWERED. Double. 3 ft.

**Fairy Blush Hybrids.** Mixture of light pink shades ..... **\$0.10 \$0.20**

PEONY-FLOWERED. Double. 3 ft.

**Shrimp Pink** ..... **.10 .30**

**Mixture of all colors in this class**.. **.10 .20**

**PORTULACA.**

A very excellent plant for dwarf bedding or border work. Very easily grown. Should be sown direct as early as possible.

\***Double Mixture.** Very bright free-flowered mixture. 4 in. 1/4 oz., **60c** .....

**Single Mixture.** 6 in. .... **.15 .50**

**RHODANTHE.**

Everlasting. Semi-double flowers. Choice for cutting. 12 in.

**Maculata Rose.** Dark-centered. ... **.15 .50**

**Atrasanguinea.** Deep cormine. Good bright color. 1/4 oz., **75c**..... **.25 2.50**

**RICINUS.** (Caster Bean).

**Barbaniensis Arboreus.** 10 ft. 4 ozs., **50c**; 1 lb., **\$1.50** .....

**Zanzibariensis.** Carmine. 12 ft. 4 ozs., **60c**; 1 lb., **\$2.25**..... **.20**

**SAINTPAULIA.** (African Violet.)

A very attractive pat plant. Special care is required to germinate this seed.

**Cardata.** Lavender-violet. .... **1.00**

**Ionantha.** Deep blue. .... **1.00**



Iceland Poppies are easily grown for spring cutting.

MISCELLANEOUS ANNUALS—Continued.

Tr. pkt. 1 oz.

**SALPIGLOSSIS. Emperar.**

Besides being an attractive garden subject, Salpiglossis will furnish the retail florist with attractive cutting material either from a February sowing in the greenhouse or outdoors during the summer.

**Brown and Gold, Rose and Gold, Scarlet and Gold, Violet and Gold, White and Gold, Yellow and Gold.** Each, ¼ oz., 40c. \$0.20 \$1.20

**Emperar Mixed.** A choice large-flowered mixture of above colors. ¼ oz., 30c .20 .85

**SALVIA.**

The following varieties constitute our opinion of “All the Best—” in Salvias and is based on observation in our West Chicago trial ground.

**SPLENDENS.**

\***America.** (Globe of Fire, Extra Select). Our strain of this standard variety grows 20 in. tall and is very uniform in height. ¼ oz., 75c .50 2.50

\***Firebrand.** Our most dwarf and early-flowering strain. See Novelty list on page 3 for complete description. ¼ oz., 90c .50 3.25

**Harbinger.** Very similar to Firebrand except not quite so dwarf. ¼ oz., 90c .50 3.25

**Banfire.** Not quite so dwarf as America but very uniform. ¼ oz., 60c .40 2.00

**Splendens Tall.** 30 in. Not extra early-flowering. ½ oz., 80c... .35 1.50

**Maraan Prince.** Rich velvety maroon. Rather heavy color. 24 in. ¼ oz., 85c... .35 3.25

**FARINACEA.**

\***Blue Bedder.** Blue Salvia, 30 in. with long stems suitable for cutting. Flowers July 15 from an early spring sowing. ¼ oz., 90c .50 3.50

**Pale Blue.** Slightly lighter color than above and not quite so compact. 36 in. ¼ oz., 50c .25 1.50

**SAPONARIA Vaccaria.**

18 in. Gypsophila-like flowers. **White, Rose.** Each, .15

**SCABIOSA.**

Adapted equally well to greenhouse forcing and outdoor conditions. A valuable spring and summer cut flower item.

\***Ageratum Blue.** Good rich azure-blue. Large-flowered and one of the best .15 .50

\***Loveliness.** Extra large-flowered and a very good deep salmon-pink. Excellent color... .15 .75

\***Cherry Red.** A bright color... .15 .50

**Shasta.** White... .15 .50

**King of the Blacks.** Deep rich maroon .15 .50

\***Giant Hybrid Mixture.** A special strain containing only the new large-flowered varieties in a well balanced color mixture... .25 .75



Evolution of Schizanthus.

Left, the original Pinnotus type, obsolete for most purposes. Center, Wisetanensis type, such as is supplied in any good mixture or blend. Fine for large pot plants or cutting. Right, the new dwarf type. Ideal for 4- or 5-inch pot plants. Seed all three sown October 9, and all three received one pinch when at a height of 4 to 6 inches. Grown in a 45° house and came in just right for the spring shows, around April 1.

Tr. pkt. 1 oz.

**Tam Thumb.** 10 in. Very compact dwarf plants for bedding or edging. Well balanced mixture containing mostly blues and pinks \$0.15 \$0.50

**SCHIZANTHUS.**

Increasing interest has been taken in this showy annual the past two seasons. In the following list some excellent cut flower strains will be found as one bred for very dwarf compact growth, making excellent pot plants.

\***Ball Dwarf Mixed.** A strain developed by us strictly for pot plant work. Seed sown the first part of October with plants pinched once and shifted to 4 or 5 in. pots make ideal pot plants, covering themselves with flowers that hold for several weeks. Tr. pkt., 50c; ½ oz., \$1.00.

\***Ball Brilliant Blend.** A mixture we make up ourselves from named varieties of cut flower value. Should be planted in a shallow raised bed or a 3 or 4 in. flat for best results. 24 in. ¼ oz., \$1.00 .35

**Bridal Veil.** Medium dwarf habit. Pure white... .50

**Brilliance.** Rich amaranth-red. 18 in. ¼ oz., \$1.00... .40

\***Compactus Reddish Shades.** Of a medium dwarf habit with rich shades of deep rose and reds predominating. ¼ oz., \$1.00.. .50

**Giant Blotched Strain.** A new strain from Blackmore and Langdon, England. Each flower has a dark blotch in center. We believe this to be the finest strain available. Originator's packets. . . . . 1.00



# "FLOWER SEEDS FOR FLORISTS"

## MISCELLANEOUS ANNUALS—Continued.

	Tr. pkt.	1 oz.	Tr. pkt.	1 oz.
<b>SCHIZANTHUS—Continued.</b>				
<b>Giant Butterfly Mixture.</b> (New). A large giant-flowered extra showy mixture. ¼ oz., \$1.00 . . . . .	.50			
<b>Rose and Amber Shades.</b> Of the medium tall cut flower type. Good bright colors. ¼ oz., \$1.00 . . . . .	.40			
<b>Rose and Carmine Shades.</b> Same as above except in color. ¼ oz., \$1.00 . . . . .	.40			
<b>Purple Shades.</b> A mixture of rich purple and deep lavender shades. ¼ oz., \$1.00 . . . . .	.40			
<b>SHAMROCK.</b> Sow January 1 in Carnation house temperature for 2 in. St. Patrick's Day plants . . . . .	.15	.50		
<b>SMILAX.</b> Well known greenhouse climber. 4 ozs., \$1.50; 1 lb., \$5.00 . . . . .	.20	.50		
<b>SOLANUM.</b> We have developed our own special strains of this valuable pot plant item, raising the seed ourselves, assuring you of good even strains—as good as any available. We are successful in raising good plants by growing them in the field during the summer, bringing them in just before frost.				
* <b>Christmos Cherry.</b> Ball's Strain. A compact growing strain that fruits very freely . . . . .	.25	1.00		
* <b>Christmos Pepper.</b> A compact strain producing brilliant purple and red berries. ¼ oz., 60c . . . . .	.25	2.00		
* <b>Bird's Eye Pepper.</b> Not quite so compact as the above two. Produces many very small red berries. ¼ oz., 50c . . . . .	.25	1.75		
<b>STATICE.</b> We receive numerous complaints every season on the germination of Statice seed, especially in the Sinuatas. Please note that we handle nothing but the best grade of seed available and that a germination of 50% to 60% is a very satisfactory one for Statice.				
<b>Bonduelli.</b> Similar in type to the Sinuatas. Yellow. 1 lb., \$2.25 . . . . .	.15	.25		
<b>Sinensis.</b> 18 in. Pure white with canary-yellow. Quite attractive. 4 ozs., \$2.50 . . . . .	.25	.75		
* <b>Suworowii.</b> Russian or Rat Tail Statice. Excellent for spring cutting from either large pots or beds or can be sown in January for a late spring crop. 4 ozs., \$2.25 . . . . .	.25	.75		
<b>SINUATA.</b> Largely used outdoors but can be forced indoors.				
<b>Kompf's Toll Improved.</b> Extra long-stemmed deep blue. The best blue cutting variety. 1 lb., \$5.00 . . . . .	.20	.60		
<b>True Blue.</b> The standard blue. 1 lb., \$3.00 . . . . .	.15	.30		
<b>Roseo Superbo.</b> 1 lb., \$3.00 . . . . .	\$0.15	\$0.30		
<b>White.</b> 1 lb., \$1.75 . . . . .	.15	.25		
* <b>New Hybrid Mixture.</b> A mixture of the above colors as well as new shades that add a bright variation to the mixture. 1 lb., \$5.00 . . . . .	.25	.60		
<b>THUNBERGIA.</b>				
<b>Aloto.</b> Black-Eyed Susan. 4 ozs., \$1.75 . . . . .	.15	.65		
* <b>Gibsonii.</b> Large-flowered rich orange strain. Very good. 50 seeds, \$1.25; 100 seeds, \$2.25.				
<b>TITHONIA Specioso.</b> Golden Flower of the Incas. Should have value for greenhouse forcing from a sowing made in January. Ours is the early flowering strain. Trade packets only . . . . .	.35			
<b>TORENIA.</b>				
<b>Fournieri.</b> Very rich combination of deep blue with darker blotches on lip. Standard spring pot plant item. ¼ oz., 65c . . . . .	.25	2.25		
<b>Fournieri Compacta.</b> Extra dwarf form of above. Excellent for either bedding or pots. ¼ oz., 50c; ¼ oz., 85c . . . . .	.25			
<b>TRACHELIUM Coeruleum.</b> Flowers resemble in shape and color Statice Latifolia. A deep blue. 12 in. high. Makes a very good pot plant. Must be started early . . . . .	.35			
<b>URSINIA Anethoides.</b> Brilliant orange with purple center. 10 in. Makes nice garden subject, flowering 3½ months from seed. ¼ oz., 65c . . . . .	.35	2.00		
<b>VENIDIUM.</b> Does very well forced in the greenhouse from a Fall sowing or outdoors where some protection from the direct sun is afforded.				
<b>Fostuosum.</b> Brilliant orange with dark center. ¼ oz., 90c . . . . .	.35	3.25		
<b>Boll Hybrids.</b> A very interesting and varied array of colors ranging from silvery white through oranges and salmons. ¼ oz., \$1.25 . . . . .	.50			
<b>VERBENA.</b> Because of their hardiness, free-flowering, and brilliant array of colors, Verbenas make a very excellent garden subject. The following varieties except where noted come very true from seed.				
* <b>Venoso.</b> An upright deep lilac form. Very attractive and free-flowering. 18 in. ¼ oz., 40c . . . . .	.25	1.25		
<b>Erinoides.</b> Our trial of this the past season made a row planted 6 in. apart, about 10 in. high by 40 in. wide. A very spreading habit. Color a nice lavender shade, small-flowered, ¼ oz., 40c . . . . .	.25	1.25		

MISCELLANEOUS ANNUALS—Continued.



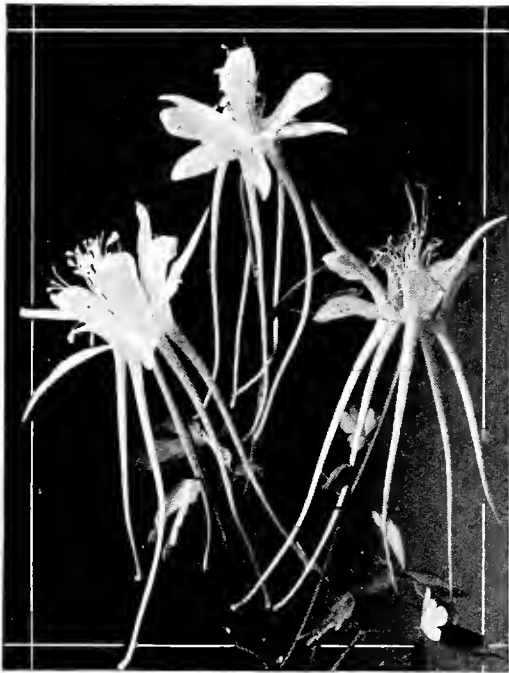
**Tithonia Speciosa** has possibility as a spring forcing crop indoors.

**VERBENA—Continued.**

	Tr. pkt.	1 oz.
<b>GRANDIFLORA GIGANTEA.</b> Upright growth. 18 in. high.		
* <b>Beauty of Oxford Hybrids.</b> Very good fairly even strain of irregular germination. Extra deep shades of pink with eye. Medium dwarf. 1/4 oz., 60c.....	\$0.35	\$2.25
* <b>Lavender Glory.</b> This variety produces about 2/3 lavender flowers with balance mostly white with a few deep blues. All are of true Grandiflora type and very good. 1/4 oz., 75c.....	.35	2.50
* <b>Blue.</b> A deep lilac shade. Very nice. 1/4 oz., 40c.....	.25	1.50
* <b>Carmine Pink.</b> Bright color, white eye. 1/4 oz., 40c.....	.25	1.50
<b>Coccinea.</b> A bright light red. 1/4 oz., 50c.....	.25	1.60
<b>Etna.</b> A bright deep scarlet with white eye. 1/4 oz., 50c.....	.25	1.60
<b>Lucifer.</b> Solid color, light red. 1/4 oz., 50c.....	.25	1.60
* <b>Luminasa.</b> Deep pink, white eye. 1/4 oz., 50c.....	.25	1.60
<b>Moyflower.</b> Light pink with white eye. Color varies slightly light to dark. 1/4 oz., 35c.....	.25	1.25
* <b>Pure White.</b> Very good free-flowering strain. 1/4 oz., 50c.....	.25	1.60
<b>Rasea Stellata.</b> Medium pink, white eye. 1/4 oz., 50c.....	.25	1.60
<b>Mixture</b> of above colors. 1/4 oz., 40c.....	.25	1.25
<b>COMPACTA.</b> A very neat and compact class, particularly adapted for bedding and border work.		
* <b>Carmine Ball.</b> Bright carmine. 10 in. 1/4 oz., 65c.....	.35	2.25
<b>Chamois.</b> A buff-chamois shade. 6 in. 1/4 oz., 65c.....	.35	2.25
<b>Dark Blue.</b> 1/4 oz., 65c.....	.35	2.25

* <b>Fireball.</b> Bright scarlet. Very dwarf and nice. 6 in. 1/4 oz., 65c.....	\$0.35	\$2.25
* <b>Violet Bauquet.</b> A deep violet with cream eye. 8 in. 1/4 oz., 80c....	.50	3.00
<b>White.</b> 6 in. 1/4 oz., 65c.....	.35	2.25
* <b>Royal Bauquet.</b> Shades of lilac and blue with a few reds and whites. 8 in. 1/4 oz., 65c.....	.35	2.25
<b>VINCA Rasea.</b> (Periwinkle.) Requires heat and an early start. 12 in.		
<b>Pink.</b> 1/4 oz., 25c.....	.15	.75
<b>Delicata.</b> Soft pink. 1/4 oz., 25c..	.15	.75
<b>Alba Oculata.</b> White with rose eye. 1/4 oz., 25c.....	.15	.75
<b>Alba Pura.</b> Pure white. 1/4 oz., 25c	.15	.75
<b>Mixture</b> of above colors. 1/4 oz., 25c	.15	.75
<b>VIOLA Cornuto.</b> Miniature Pansy. As easily grown as Pansies and earlier and more free-flowering. Very choice for bedding and comes very true.		
* <b>Apricot.</b> Large-flowered true apricot. Very good variety. 1/8 oz., 65c; 1/4 oz., \$1.25.....	.35	4.25
<b>Black Prince.</b> Extra deep violet blue. 1/4 oz., 50c.....	.25	1.75
<b>G. Wermig.</b> Rich violet-blue, between Jersey Gem and Mauve Queen in color. 1/8 oz., 85c; 1/4 oz., \$1.60.....	.50	6.00
* <b>Puck.</b> Purple standard with yellow wings and dark pencilings. Dwarf compact growth and small-flowered. Very attractive. 1/4 oz., 75c.....	.35	2.50
<b>Jersey Gem.</b> Deep Cattleya. Varies some, 1/16 oz., \$1.25; 1/4 oz., \$3.75.....	.75	
<b>Mauve Queen.</b> Light Cattleya. Very true. 1/4 oz., 50c.....	.25	1.75
* <b>Papilio.</b> Blue and white. Extra dwarf and free-flowering. Small-flowered. 1/4 oz., 50c.....	.25	1.50
<b>White Perfection.</b> Small-flowered with yellow center. 1/4 oz., 50c.	.25	1.75
<b>W. H. Waadgate.</b> Bright violet. Varies some in color and habit. 1/8 oz., \$1.50.....	.35	
* <b>Lutea Splendens.</b> Golden yellow. Good. 1/4 oz., 50c.....	.25	1.50
<b>Large-flowering Mixture.</b> 1/4 oz., 40c.....	.25	1.50
<b>Small-flowering Mixture.</b> .....	.25	1.25
<b>WALLFLOWER. Annual.</b> In our latitude should be sown in September for spring flowering. Very choice if handled properly.		
<b>Gold Standard.</b> Deep golden yellow. The standard commercial variety. 1/4 oz., \$1.50.....	.35	5.00
<b>Golden Yellow Flaked Brawn.</b> 1/4 oz., \$1.50 ..	.35	5.00
<b>Dark Brown.</b> 1/4 oz., \$1.50.....	.35	5.00
<b>Violet.</b> .....	.50	

# MISCELLANEOUS PERENNIALS



**Aquilegia Langissima**—quite a striking novelty.

<b>ACHILLEA Ptarmica.</b>	Tr. pkt. ¼ oz.	1 oz.	
<b>The Pearl.</b> 30 in. Double white. Excellent for cutting .....	\$0.35	\$0.75	\$2.50
<b>ACONITUM Fischeri.</b> Monkshood. Deep blue, seeds must be sown outdoors and frozen over winter for good germination .....	.25	.60	2.00
<b>AGATHAEA Caelestis.</b>			
<b>Felicia</b> or Blue Daisy. Excellent .....	.25	.40	1.25
<b>ALYSSUM Saxatile Compactum.</b>			
Golden yellow. 12 in. Excellent for rock gardens .....	.15	.25	.85
<b>ANCHUSA.</b>			
<b>Myasatidiflora.</b> Forget-me-not blue. 15 in. Tr. pkts. only .....	.50		
<b>Italica.</b> Dropmore strain. Blue. 6 ft. ...	.15		.50
<b>AQUILEGIA.</b> (Columbine.) Valuable for outdoor cutting and spring forcing.			
<b>Langissima.</b> (New). See accompanying photo. Extra long-spurred—up to 4 in. long. In shades of light yellow. Supply very limited and no seed available before August. A very outstanding novelty. Tr. pkts. only...	.50		
<b>Caerulea.</b> Rocky Mountain Blue Columbine. Sky blue with white spurs....	.35	.50	1.75
<b>LONG-SPURRED.</b>			
<b>Silver Queen.</b> White, fragrant .....	.40	.75	2.50
<b>Jaetschauli.</b> Large yellow with red spurs .....	.40	.75	2.50
* <b>Mrs. Scott Elliott's Hybrids.</b> Our finest long-spurred mixture .....	.50	1.25	4.00
<b>Mixture</b> of all colors .....	.25	.60	2.00
<b>ARABIS Alpina.</b>			
Rock Cress. White. Dwarf .....	.15		.50
<b>ASCLEPIAS Tuberosa.</b>			
2 ft. Orange, fine for cutting. Needs ample drainage .....	.35	.60	2.00
<b>ASPARAGUS Verticillatus.</b>			
Climbing Asparagus. Red berries. Seeds should be frozen over winter for good germination. Hardy in favorable locations .....	.35	.60	2.00

<b>ASTER.</b>	Tr. pkt. ¼ oz.	1 oz.	
<b>Dark Beauty.</b> Alpinus. Single deep blue. 12 in. June flowering .....	\$0.35	\$0.90	\$3.00
<b>Wartburg Star.</b> Subcoeruleus. Lighter than Dork Beauty and considerably longer-stemmed and larger flowered. June flowering. Should make very excellent cutting material for table decorations and low vases..	.50	2.00	
<b>Navi-belgii.</b> New Hybrids. Fall-flowering .....	.50	1.00	3.50
<b>BELLIS Perennis.</b> (Double English Daisy). 6 in. The choicest are the Monstrosa varieties as follows:			
<b>Rose, White, Red.</b> Each .....	.40	.75	3.50
<b>Mixture</b> .....	.35	.60	2.00
<b>CAMPANULA.</b>			
<b>MEDIUM CALYCANTHEMA.</b> Double or Cup-and-Saucer varieties. 3 ft. Biennial.			
<b>Dark Blue, Light Blue, Rose, White.</b> Each .....	.25	.40	1.40
<b>Mixture</b> .....	.20	.30	1.00
<b>MEDIUM SINGLE.</b> Single or Conterbury Bells. 3 ft. Biennial.			
<b>Blue, Lilac, Rose, White, Mixture.</b> Each .....	.15		.50
<b>CARPATICA.</b> Perennial. Dwarf for rock gardens. 12 in			
<b>Blue, White, Mixture.</b> Each.....	.20	.30	.90
<b>CANDYTUFT. Sempervirens.</b>			
White. 12 in. ....	.35	.50	1.50
<b>CATANANCHE Caerulea.</b>			
Everlasting. 30 in. Light lavender-blue flowers resembling Centaurea Cyanus. Good for cutting either indoors or outdoors. Very free-flowering the first season from seed.....	.25	.40	1.25
<b>CENTAUREA Mantana.</b>			
Cornflower Blue. 24 in. Large-flowered .....	.20		.60
<b>CERASTIUM Tamentasum</b>			
Snow-in-Summer. Silvery white foliage. White flowers. 15 in. ....	.25	.40	1.25
<b>CHRYSANTHEMUM Indicum.</b>			
Double and semi-double hybrid strain. An early sowing flowers in October. Very hardy. ⅓ oz., \$1.00	.50		
<b>COREOPSIS Grandiflora.</b>			
Very good cut flower material.			
* <b>Double Yellow.</b> Greatly improves in size and doubleness the old semi-double strain .....	.25	.40	1.25
<b>Lanceolata Single</b> .....	.15		.30
<b>Mayfield Giant.</b> Extra large-flowered deep golden yellow .....	.25		1.00

**DAISY.**

The following are all excellent cut flower varieties both for outdoor growing and for indoor forcing. Daisies respond very readily to electric light treatment for extra early flowering. Following cover the flowering season from May to July. Listed in flowering order.

<b>Elder.</b> Comes quite true. Tr. pkt., 20c; ½ oz., 40c; 1 oz., 75c.	
<b>June Marguerite.</b> Free-flowering. Tr. pkt., 25c; 1 oz., 75c.	
<b>Spring Marguerite.</b> Follows the above closely. Tr. pkt., 15c; 1 oz., 50c.	
<b>Mayfield Giant.</b> Extra large-flowered. Tr. pkt., 25c; 1 oz., 75c.	
<b>Alaska.</b> Well-known Shasta Daisy. Tr. pkt., 25c; ½ oz., 60c; 1 oz., \$1.00.	
<b>Double Fringed.</b> Comes 50% to 60% true. Tr. pkt., 50c.	
<b>Conqueror.</b> Giant late white. Tr. pkt., 20c; ¼ oz., 30c; 1 oz., \$1.00.	

**DELPHINIUM Elatum.**

* <b>Belladonna Improved.</b> (Cliveden Beauty). The standard light blue cut flower strain. Spring sown seed produces very good clumps for forcing. 1 lb. \$25.00 .....	.35	1.75
---	-----	------



# "FLOWER SEEDS FOR FLORISTS"



## DELPHINIUM—Continued.

	Tr.pkt.	¼ oz.	1 oz.
<b>Belladonna.</b> The regular or original strain .....	\$0.25		\$1.65
<b>Bellamosum.</b> Same as Belladonna Improved except a deep marine-blue .....	.25		1.75
* <b>Lamartine.</b> Deep blue, with light center. Very good cut flower variety. Smooth leaves. Not nearly as susceptible to mildew as other Delphinium. ⅛ oz., \$1.00 .....	.50		1.75
<b>Iceberg.</b> The best white Delphinium. 48 in. ....	.50		2.00
<b>Gold Medal Hybrids.</b> A standard strain	.25		1.00
<b>Wrexham or Hollyhock Strain.</b> A very fine hybrid strain with long tapering spikes. ....	.50	1.50	5.00
* <b>Blackmore and Langdon Hybrid Strain.</b> For size and length of spikes and a varied color range, we consider this the best Hybrid Delphinium on the market .....	.50	.90	3.25

## DIANTHUS.

<b>Allwoodi Alpinus Mixed.</b> Flowers first season. 8 to 10 in. Mixture of light and dark pink shades with a few white. 100 seeds 40c; 1000 seeds, \$3.25.			
<b>BARBATUS.</b> Sweet William. 24 in.			
<b>Newport Pink.</b> (Pink Beauty). Single. Bright salmon-rose .....	.15	.25	.75
<b>Purple Beauty.</b> Single. Bright deep purple .....	.25	.60	2.25
<b>Scarlet Beauty.</b> Single. Very bright color .....	.15	.25	.75
<b>White.</b> Single .....	.15		.50
<b>Mixture of above single varieties</b> ....	.15		.50
<b>Double Mixture</b> .....	.15		.60

## DELTOIDES.

<b>Rose.</b> Maiden Pink. For rock gardens .....	.25	.50	1.50
<b>Brilliant.</b> Rich rose-pink. ....	.25	.50	1.50

## DICTAMNUS Fraxinella.

Gas Plant. Pink with dark veins. Good border plant. Seeds should be sown outdoors in the fall for spring germination .....	.25	.40	1.25
--	-----	-----	------

## DIELYTRA Spectabilis.

Bleeding Heart. 32 in. Seedlings flower second year. Seeds require exposure to a winter's freezing for proper germination .....	.50	1.75	6.50
---	-----	------	------

## DIGITALIS. (Foxglove).

<b>GLOXINOIDES.</b>			
<b>Purple, Rose, White.</b> Each .....	.20		.50
<b>Mixed.</b> .....	.15		.40



Coreopsis Mayfield Giant.

<b>GIANT SHIRLEY Mixed.</b> A splendid large-flowered strain .....	Tr.pkt.	¼ oz.	1 oz.
	\$0.15		\$0.50

## DORONICUM Caucasicum.

Single yellow Daisy-like flowers. 24 in. 1/32 oz., \$2.50 .....			1.00
---	--	--	------

## GAILLARDIA. Grandiflora.

Excellent outdoor cut flower material.			
<b>Maxima Aurea.</b> Deep golden yellow. Very good .....	.25		1.00
<b>Burgundy.</b> Deep rich wine-red shade .....	.25	.75	2.50
<b>The King.</b> Extra large-flowered strain .....	.35	.75	2.50
<b>Dazzler.</b> Standard golden yellow with red center .....	.35	.40	1.25
<b>Portola Hybrids.</b> Varying shades of deep red petals tipped yellow .....	.25	.50	1.50

## GEUM.

<b>Borisi.</b> Brilliant scarlet. Flowers the second season from June on. 16 in. ....	.50	1.25	4.00
<b>Lady Stratheden.</b> Double golden yellow .....	.25	.50	1.65
<b>Mrs. Bradshaw.</b> Double glowing red. 2 ft. Good for cutting .....	.25	.50	1.65

## GYPSOPHILA.

<b>Pacifico.</b> Small bright pink flowers. Excellent .....	.50		1.00
<b>Oldhamiana.</b> A light rose-pink, October flowering Gypsophila. 24 in. tall with dense flower heads. Recommended to us as hardy. Flowers first season from an early sowing. ....	.25	.40	1.50

## PANICULATA.

<b>Double Snow White.</b> 40 in. 35% double .....	.50	1.00	3.25
<b>Single White</b> .....	.15		.40

## REPENS. 6 in. Excellent for rock gardens.

<b>White</b> .....	.25	.40	1.25
<b>Rose</b> .....	.25	.75	2.50

## HELIANTHEMUM Mutabile. Rock Rose.

Dwarf evergreen. 8 to 10 in. ....	.25		.75
-----------------------------------	-----	--	-----

## HEUCHERA Sanguinea.

<b>Crimson.</b> A very attractive novelty cut flower item. ⅛ oz., 75c. ....	.50	1.35	4.75
---	-----	------	------

## HOLLYHOCK.

<b>Imperator.</b> Choice double mixed. Excellent mixture of large fringed types .....	.25	.50	1.60
---	-----	-----	------

## CHATER'S DOUBLE.

<b>Chamois, Deep Rose, Newport Pink, Scarlet, Sulphur Yellow, White.</b> Each .....	.25	.40	1.25
<b>Mixed</b> .....	.20	.35	1.00

## ALLEGHENY TYPE. Single.

<b>Alameda Pink.</b> Shades of light pink. ....	.25	.35	1.00
<b>Mixed</b> .....	.15		.50

## LATHYRUS Latifolius.

Hardy or Everlasting Sweet Peas.			
<b>Pink Beauty, White Pearl, Mixed.</b>			
Each .....	.15		.50

## LIATRIS.

<b>Spicata.</b> Blazing Star. Purple-rose. 24 in. ....	.25	.60	2.00
<b>Pycnostachya.</b> Purple. Flowers in August. 4 ft. ½ oz., 75c. ....	.25	.40	1.25

## LILIUM.

Every year sees an increasing interest taken in Lilies from seed. Successive sowings make flowers available the year round. In our latitude Lilium Philippinense Formosanum Improved is hardy if given a good mulch protection.			
<b>Philippinense Formosanum Improved.</b> From an early spring sowing, this strain flowers from the end of summer on. White with slight rose shading under some conditions. 1 lb., \$22.00. ....	.25	.50	1.75
<b>Regale.</b> Regal Lily. Pink outside, inside a primrose yellow .....	.20		.50
<b>LOBELIA Cardinalis.</b> (Fulgens). Cardinal Flower. 36 in. ....	.50	1.25	4.00

A trim, well-landscaped florist's grounds advertises, and most effectively, too.

	Tr.pkt.	1/4 oz.	1 oz.
<b>LUNARIA Biennis.</b> (Honesty).			
<b>White.</b> 40 in. ....	\$0.20		\$0.65
<b>Crimson.</b> 48 in. ....	.15		.65
<b>Mixed</b> .....	.15		.50
<b>LUPINUS Polyphyllus.</b>			
Hardy Lupine. Germination rather irregular.			
<b>Rose</b> .....	.15		.50
<b>Dark Blue, White.</b> Each .....	.15		.30
<b>Luteus, yellow</b> .....	.20	.35	1.00
<b>Chocolate Soldier.</b> Yellow shading to chocolate .....	.35	.75	2.50
<b>Harkness Regal Mixture.</b>			
Fine hybrid mixture containing all shades in this type .....			
	.20		.65
<b>LYCHNIS.</b>			
<b>Alpina Rose.</b> Dwarf. 12 in. Excellent for rock gardens. 1/8 oz. \$1.25....	.50		
<b>Chalcedonica Scarlet.</b> 36 in. ....	.15		.50
<b>MATRICARIA. Capensis.</b> (Feverfew).			
* <b>Ball Double White.</b> A very excellent cut flower crop from seed. For complete description see Novelty list on page 3. Tr. pkt., only .....			
	.35		
<b>Double Golden Ball.</b> Yellow center. 10 in. Outdoors .....	.25	.50	1.60
<b>MYOSOTIS.</b> Forget-me-not).			
<b>Palustris.</b> True Marsh Forget-me-not Blue .....	.25	.50	1.75
<b>ALPESTRIS.</b> All in this class are biennials.			
<b>Pink Bouquet.</b> Medium deep pink. 12 in. ....	.25	.50	1.75
			Tr.pkt. 1/4 oz. 1 oz.
<b>Royal Blue</b> (Stricta Grandiflora). Deep blue. 12 in. Tr. pkts., only ....	\$0.35		
<b>Blue Basket.</b> Deep blue. 12 in. ....	.25	.75	
<b>Alba, white,</b> 12 in. ....	.20		.60
<b>OBLONGATA.</b> Perennial flowering first season from seed.			
<b>Blue Bird.</b> Standard deep blue Forget-me-not. 12 in. ....	.25	.75	2.75
<b>NEPETA. Mussini.</b>			
<b>Light blue.</b> 12 in. ....	.25	.50	1.75
<b>PHYSALIS Franchetii.</b>			
Chinese Lantern Plant. Large orange berries .....			
	.25		.75
<b>PLATYCODON. Grandiflora.</b> (Tufted Harebell). Balloon Flower. Early flowering. 28 in. ....			Tr.pkt. 1/4 oz. 1 oz.
<b>White</b> .....	\$0.25	\$0.40	\$1.50
<b>Blue</b> .....	.15	.30	.75
<b>POPPY. Orientale.</b>			
ORIENTAL POPPY. The following varieties do not come especially true.			
<b>Brilliant.</b> Vivid fiery-red. 40 in. ....	.25	.50	1.50
<b>Beauty of Livermere.</b> Dark oxblood-red .....	.35	.75	2.50
<b>Mixture</b> of all shades in this class. ....	.25	.35	1.25
<b>PRIMULA.</b>			
<b>Vulgaris.</b> True yellow English primrose. 6 in. Seeds should be exposed to a winter's freezing for proper germination .....			
	.40	.80	
<b>Bulleesiana Hybrids.</b> 18 in. Bright mixture of yellow, orange, opriocot and carmine shades. 1/8 oz., 80c. ....	.40		
<b>VERIS.</b>			
<b>Polyanthus Mixture.</b> 12 in. 1/4 oz., \$1.25 .....	.50		
<b>PYRETHRUM.</b>			
* <b>Parmicaeflorum.</b> See illustration. Extremely dwarf, finely feathered foliage. Silvery white. Excellent for rock garden or spring pot sales. Sow in February. 1/16 oz., \$1.50. ....			
	.50		
* <b>Parthenifolium Aurea Excelsior.</b> Same as above but foliage of a deep golden yellow. 1/8 oz., \$1.00. ....			
	.50		
<b>Uliginosum.</b> Single white Daisy-like flowers. 4 ft. ....	.40	1.00	3.25

	Tr.pkt.	1/4 oz.	1 oz.
<b>ROSEUM.</b> 30 in. Makes excellent cut flower material.			

**Semi-double Mixture.** A very excellent strain that requires the strength of two-year old clumps to produce fully double flowers. Tr. pkt., 50c; 1/4 oz., \$1.00; 1 oz., \$3.50.

<b>Kelway's Strain.</b> Dark red. Very good .....	\$0.50	\$0.90	\$3.00
<b>Single Mixture</b> .....	.25	.40	1.25

<b>SALVIA. Patens.</b>			
Navy blue. 30 in. ....	.25	.75	2.00

<b>SAPONARIA Ocymoides.</b>			
Rose. Trailing. 12 in. ....	.20		.60

<b>SCABIOSA.</b> Excellent perennial cut flowers. Hardy. Germination about 50%.			
---	--	--	--

<b>Columbaria Lavender.</b> Delicate lavender .....	.35	.65	2.25
---	-----	-----	------

<b>Columbaria Pink.</b> Orchid-pink. ....	.40	.65	2.25
---	-----	-----	------

<b>Caucasica.</b> Lilac-lavender .....	.35	.60	2.00
--	-----	-----	------

<b>House Hybrids.</b> Shades of lavender and blue. Very good strain. ....	.50	.90	3.00
---	-----	-----	------

<b>SEDUM Acre.</b>			
3 in. Golden Moss. 1/8 oz., 90c. ....	.25		

<b>SEMPERVIVUM.</b>			
House Leek. Perennial Mixture ....	.75		

**STATICE.** Most of the following varieties very hardy and furnish very satisfactory cutting material. Some are well suited to drying for winter use.



**Pyrethrum ptarmicaeflorum** on left and **P. parthenifolium** on right—both very satisfactory perennial border and bedding plants. Cut indicates habit.

<b>Puberula.</b> A dwarf form with about same color as Lotifolia. Flowers first season. Very free-flowering and good in pots or the rock garden .....	.35	.60	2.00
---	-----	-----	------

<b>Caspia.</b> Soft Lilac. 30 in. Flowers second year .....	.40	.60	2.00
---	-----	-----	------

<b>Dumosa.</b> Dense clumps of silvery gray flowers. 30 in. Flowers second year .....	.25	.50	1.75
---	-----	-----	------

<b>Incana.</b> (Tatarica). Small white flowers. Dries very well. 14 in. ....	.20		.50
--	-----	--	-----

<b>Latifolia.</b> The standard blue perennial Statice. 30 in. Very hardy. Flowers second year .....	.25	.40	1.25
---	-----	-----	------

<b>Perezii.</b> Similar to Lotifolia but flowers first season. ....	.25	.40	1.50
---	-----	-----	------

<b>THALICTRUM Dipterocarpum.</b>			
Very graceful tall plant with attractive fern-like foliage. Good for cutting. 3 to 4 ft. Flowers rosy purple and in clusters. Flowers second year. ....			
	.25	.50	1.50

<b>TRITOMA Mirabilis Hybrids.</b>			
Yellow shades. Varies considerably. ....			
	.35	.50	1.75

<b>TROLLIUS Ledebouri.</b> (Globe Flower).			
Seed should be exposed to a winter's freezing for proper germination.			

<b>Golden Queen.</b> Large orange flowers. 3 to 4 ft. Extra fine, early-flowering. 1/8 oz., \$1.25 .....	.50		
--	-----	--	--

<b>Orange.</b> 2 ft. ....	.50	1.35	
---------------------------	-----	------	--

<b>TUNICA Saxifraga.</b>			
10 in. Small rosy lilac flowers. Very dwarf .....			
	.15		.60

<b>VERONICA.</b>			
<b>Longifolia.</b> Compact clusters of blue flowers. 30 in. ....	.25	.35	1.25
<b>Repens.</b> White with light blue. Very dwarf and trailing. Early .....	.40	.80	3.00

# VEGETABLE SEEDS FOR FLORISTS

More people than ever are planting gardens these days, giving the florists the opportunity of furnishing vegetable plants in increasing numbers and varieties. Well grown plants for this trade are quickly and easily grown in quantity and no florist should neglect the opportunity to cash in on this demand. We secure our vegetable seed from the most dependable sources—you can depend on us.

		1 oz.	4 ozs.
<b>BEET.</b>			
<b>Crasby Egyptian.</b> (Original Strain) 50 days. Fine for home and market gardeners. Globe shaped. Dark purplish red. . . . .	1 lb., \$1.10	\$.10	\$.40
<b>Detroit Dark Red.</b> (Improved Strain) 52 days. Excellent all purpose variety. Uniform globe shaped. Blood red. . . . .	1 lb., \$1.10	.10	.35
<b>CABBAGE.</b>			
<b>All Head Early.</b> Good winter keeper. Deep heads, firm, fine quality. 77 days. . . . .	1 lb., \$2.15	.20	.65
<b>Capenhagen Market.</b> Regular Early. Medium-sized heads; compact. 66 days. 1 lb., \$2.50	.25	.80	
<b>Danish Ball Head.</b> Short stem. Best late, keeps perfectly in storage until spring. 1 lb., \$2.65	.30	.85	
<b>Early Dwarf Flat Dutch.</b> Almost ball-shaped, short-stemmed. 71 days. . . . .	1 lb., \$2.10	.25	.65
<b>Early Jersey Wakefield.</b> Standard Early 62-day cabbage . . . . .	1 lb., \$2.25	.25	.70
<b>Golden Acre</b> —Earliest round head variety for early market and shipping. Short stem. Firm heads, 62 days. . . . .	1 lb., \$3.90	.35	1.10
<b>Large Wakefield.</b> Larger but fully a week later than Early Jersey Wakefield. . . . .	1 lb., \$2.25	.20	.70
<b>Late Flat Dutch.</b> Large heading. Very popular, 110 days. . . . .	1 lb., \$2.10	.20	.65
<b>Mammoth Rock Red.</b> Best red variety. Good keeper, deep purplish red. 90 days. 1 lb., \$3.50	.35	1.00	
<b>Savoy Imp. American.</b> Attractive light yellow; distinct flavor. Best of the Savoy Group. 85 days . . . . .	1 lb., \$3.10	.30	.80
<b>Wisconsin All Season Resistant.</b> Valuable in localities infested with "Cabbage Yellows." Good winter keeper, large heads—90-95 days. . . . .	1 lb., \$3.25	.35	1.00
<b>CARROT.</b>			
<b>Gansheimer, Forcing Special.</b> Fine forcing or home garden variety. Nearly coreless. Half-long. Especially adapted for forcing. . . . .		.25	.85
<b>Chantenay.</b> Fine for home and market. Heavy yielder. 70 days. . . . .	1 lb., \$1.25	.15	.40
<b>Danvers Half Lang.</b> Very productive and uniform. Good shipper. 75 days. . . . .	1 lb., \$1.25	.15	.40
<b>CAULIFLOWER.</b>			
<b>Danish Giant, Dry Weather.</b> Most dependable. 65 days. . . . .	¼ oz., 75c; ½ oz., \$1.25	2.10	
<b>Early Snowball.</b> Best early greenhouse-forcing variety. The standard of excellence. 52 days. . . . .	¼ oz., 60c; ½ oz., \$1.00	1.75	
<b>CELERIAC. Large Smooth Prague.</b> . . . . .		.25	.80
<b>CELERY.</b>			
<b>Golden Plume, or Florida Golden.</b> A new early, developed from Golden Plume. Valuable for early and late in Florida and far early in the North . . . . .	¼ oz., 35c; ½ oz., 65c	1.00	
<b>Golden Yellow Self-blanching Dwarf.</b> Standard market variety. . . . .	¼ oz., 25c; ½ oz., 40c	.65	
<b>CUCUMBER.</b>			
<b>Chicago Pickling.</b> (Westerfield). Valuable for pickling and slicing. 6-7 in. Uniform. 60 days		.20	.50
<b>Davis Perfect.</b> Fine slicing variety. Good shipper. 9-11 in. Few seeds. 68 days. . . . .		.25	.65
<b>Early Fortune.</b> Best for slicing or shipping. Dark green. 8-9 in. long. Uniform. 68 days. . . . .		.25	.65
<b>EGGPLANT.</b>			
<b>Black Beauty.</b> Popular home and market variety. . . . .		.45	1.50
<b>Large New York Purple.</b> The standard home and market sort . . . . .		.45	1.40
<b>KALE. Dwarf Green Curled.</b> Very hardy; 12 to 15 inches tall, 30-inch spread. Finely curled. . . . .		.15	.35
<b>KOHLRABI. Early White Vienna.</b> Standard sort for forcing and home garden. Globe shaped. . . . .		.20	.55
<b>LETTUCE.</b>			
<b>All Seasons Head.</b> Valuable market and home garden variety, round firm heads. 1 lb., \$1.40	.15	.45	
<b>Big Boston.</b> Select stock. Most widely popular of all Heading Lettuce, largely used for summer and fall hotbed and cold frame culture. . . . .	1 lb., \$1.10	.15	.40
<b>Black Seeded Simpson.</b> Early; dependable everywhere and largely used by home and market gardeners. Loose-leaved and frilled. . . . .	1 lb., \$1.50	.15	.40
<b>Grand Rapids Forcing.</b> The standard loose-leaved variety for greenhouse forcing. Tender and sweet under glass. . . . .	1 lb., \$1.50	.15	.50
<b>ONION.</b>			
<b>Prizetaker.</b> Sweet Spanish class; large globular; yellow; good shipper. . . . .		.35	1.00
<b>Yellow Globe Danvers.</b> Very popular; medium large; pure yellow; firm and hard. . . . .		.35	.85
<b>PARSLEY. Extra Tripled Curled.</b> (Moss Curled). Very compact. Dark green. . . . .		.15	.35
<b>PEPPER.</b>			
<b>California Wander.</b> 72 days. Standard of excellence in sweet peppers. Deep green, becoming bright crimson. . . . .	½ oz., 35c	.60	2.00
<b>Chinese Giant.</b> (Sweet). 80 days. The largest sweet pepper. Deep green, becoming scarlet-red . . . . .	½ oz., 30c	.50	1.75
<b>Crimson Giant.</b> 85 days. Very mild—popular home and market sort. Deep green, becoming deep crimson. . . . .	½ oz., 30c	.50	1.60
<b>Harris' Early Giant.</b> (Sweet). 63 days. Very early for home and market; very prolific and large fruited; deep green, turning red. . . . .	½ oz., 25c	.40	1.25
<b>Hungarian Yellow Wax.</b> (Hot). Very early. Desirable for canning or market garden. Light yellow, becoming bright red. . . . .	½ oz., 35c	.60	1.75
<b>Large Bell.</b> Sweet, mildly pungent. 55 to 60 days. Deep green becoming scarlet. ½ oz., 20c	.35	1.10	
<b>Large Sweet Spanish.</b> 80 days, for home and market garden; heavy producer; dark green to rich red . . . . .	½ oz., 25c	.45	1.25

Don't forget our address is not Chicago, but WEST CHICAGO.

**VEGETABLE SEEDS FOR FLORISTS—Continued.**

			1 oz.	4 azs.
<b>Lang Red Cayenne.</b> (Hot). 70 days. For pickles, canning or drying; very prolific; deep green, becoming bright red. . . . .	1/2 oz.,	<b>25c</b>	<b>\$0.40</b>	<b>\$1.20</b>
<b>Magnum Dulce.</b> Mild; fine for salad. Grows very large . . . . .	1/2 oz.,	<b>30c</b>	<b>.50</b>	<b>1.60</b>
<b>Pimenta.</b> (Perfection). Mild. 72 days. Standard variety for home or market garden and for canning whole. Deep green, becoming deep red . . . . .		<b>.30</b>	<b>.85</b>	
<b>Ruby King.</b> Standard for home or market. Deep green, turning bright red. 68 days . . . . .	1/2 oz.,	<b>20c</b>	<b>.35</b>	<b>1.00</b>
<b>Sweet Mountain.</b> Strong grower, very productive; fruit deep green, turning red, . . . . .	1/2 oz.,	<b>20c</b>	<b>.35</b>	<b>1.30</b>
<b>World Beater.</b> 70 days. Large oblong, green turning deep red; thick flesh. . . . .	1/2 oz.,	<b>20c</b>	<b>.35</b>	<b>1.25</b>
<b>RADISH.</b>				
<b>Early Scarlet Globe.</b> (Short top strain). Our strain of this very early forcing variety is a superior one; small tops make it right for bunching. 23 days. This is an ideal florists' "catch crop" for selling to local stores. . . . .	1 lb.,	<b>\$1.00</b>	<b>.15</b>	<b>.30</b>
<b>Icicle.</b> White . . . . .	1 lb.,	<b>80c</b>	<b>.15</b>	<b>.30</b>
<b>Scarlet Turnip.</b> White tipped. . . . .	1 lb.,	<b>75c</b>	<b>.10</b>	<b>.25</b>
<b>SPINACH.</b>				
<b>Giant Thick-leaved.</b> (Nobel). 43 days. Best of thick leaved group; long standing; heavy yielder; deep green; smooth leaves. . . . .	1 lb.,	<b>40c</b>		<b>.15</b>
<b>New Zealand</b> . . . . .	1 lb.,	<b>60c</b>	<b>.10</b>	<b>.25</b>
<b>SWISS CHARD. Lucullus.</b> Deep green. . . . .			<b>.15</b>	<b>.35</b>
<b>TOMATO.</b>				
<b>Banny Best.</b> Unexcelled for all purposes including forcing. 73 days. . . . .	1 lb.,	<b>\$3.00</b>	<b>.30</b>	<b>.90</b>
<b>Break O' Day</b> . . . . .			<b>.40</b>	<b>1.25</b>
<b>Chalk's Early Jewel.</b> 75 days. Fine for home and market; heavy producer; scarlet-red. . . . .			<b>.30</b>	<b>.90</b>
<b>Crimson Cushion.</b> Large, round, bright scarlet; solid; very prolific. 120 days. . . . .	1 lb.,	<b>\$4.75</b>	<b>.45</b>	<b>1.40</b>
<b>Dwarf Champion.</b> Tree-like. Requires no support; medium size, purplish pink fruit. 78 days . . . . .			<b>.35</b>	<b>1.20</b>
<b>Dwarf Stone.</b> Largely used by market gardeners and canners. Heavily productive; smooth and solid. 85 days. . . . .			<b>.35</b>	<b>1.25</b>
<b>Earliana.</b> Particularly valuable for home and early market garden. Medium size, deep scarlet. 64-66 days. . . . .	1 lb.,	<b>\$3.60</b>	<b>.35</b>	<b>1.00</b>
<b>Early Detroit.</b> Valuable for shipping. Purplish pink, large smooth fruit. 78 days . . . . .	1 lb.,	<b>\$4.25</b>	<b>.35</b>	<b>1.10</b>
<b>Golden Queen.</b> 83 days. Best large yellow fruited; golden yellow, firm and smooth. . . . .			<b>.40</b>	<b>1.30</b>
<b>Jahn Baer.</b> Standard all-purpose variety, used largely for canning in Northern sections; medium to large. 71 days. . . . .	1 lb.,	<b>\$3.25</b>	<b>.25</b>	<b>.90</b>
<b>June Pink.</b> 65 days. Best extra early. Purplish pink . . . . .			<b>.40</b>	<b>1.25</b>
<b>Livingston's Globe.</b> Heavy producer. Large purplish pink fruit; smooth and solid. 81 days . . . . .			<b>.35</b>	<b>1.10</b>
<b>Marglobe.</b> Particularly valuable for shipping and highly resistant to disease. Smooth; of distinct quality and long bearing. 75 to 78 days. . . . .	1 lb.,	<b>\$4.00</b>	<b>.40</b>	<b>1.25</b>
<b>Oxheart.</b> Late home garden variety. Extra large heart-shaped; few seeds and mild flavor. Very choice for salads. . . . .			<b>.75</b>	<b>2.50</b>
<b>Ponderosa.</b> Valuable for home use. Extremely large; purplish pink, with few seeds. 85 days. . . . .			<b>.45</b>	<b>1.40</b>
<b>Pritchard.</b> (Scarlet Topper). Heavy yielder; second early; wilt resistant; fruit solid; brilliant red . . . . .			<b>.35</b>	<b>1.20</b>
<b>Stane.</b> 85 days. Valuable for market and canning; heavy producer; deep scarlet; smooth. . . . .			<b>.30</b>	<b>.90</b>
<b>TURNIP. Purple Top White Globe</b> . . . . .	1 lb.,	<b>75c</b>	<b>.10</b>	<b>.25</b>

**INDEX**

	Page		Page		Page		Page
Abutilon . . . . .	22	Carnation . . . . .	24	Euphorbia . . . . .	27	Lunaria . . . . .	38
Achillea . . . . .	36	Catananche . . . . .	36	Exacum . . . . .	27	Lupinus, Annual, 29, 30	38
Achimenes . . . . .	22	Celosia . . . . .	2, 24	Feverfew . . . . .	38	Perennial . . . . .	38
Aconitum . . . . .	36	Centaurea . . . . .		Gaillardia, Annual	27	Lychnis . . . . .	38
Acroclinium . . . . .	22	Annual . . . . .	24	Perennial . . . . .	37	Marigold . . . . .	2, 20
Agathoa . . . . .	36	Perennial . . . . .	36	Gerbera . . . . .	27	Matricaria . . . . .	2, 38
Ageratum . . . . .	2, 22	Cerastium . . . . .	36	Geum . . . . .	37	Miganette . . . . .	30
Aloe . . . . .	22	Chorizanthe . . . . .	24	Gilia . . . . .	27	Mimosa . . . . .	30
Alyssum, Annual, 2, 22		Christmas Cherry . . . . .	34	Glaxinia . . . . .	28	Myosotis, Annual, 3, 30	38
Perennial . . . . .	36	Christmas Pepper . . . . .	34	Gadeta . . . . .	28	Perennial . . . . .	38
Amaranthus . . . . .	22	Chrysanthemum . . . . .		Gomphrena . . . . .	28	Nasturtium . . . . .	30
Anchusa, Annual, 22		Annual . . . . .	24, 25	Gourd . . . . .	28	Nemesia . . . . .	30, 31
Perennial . . . . .	36	Perennial . . . . .	36	Grevillea . . . . .	28	Nepeta . . . . .	38
Aquilegia . . . . .	36	Cineraria . . . . .	21, 27	Gypsophila . . . . .		Nicotiana . . . . .	31
Arabis . . . . .	36	Clarkia . . . . .	25	Annual . . . . .	28	Nigella . . . . .	31
Arctatis . . . . .	22	Cabaea . . . . .	25	Perennial . . . . .	37	Oenothera . . . . .	31
Asclepias . . . . .	36	Caleus . . . . .	25	Helianthemum . . . . .	37	Pansy . . . . .	31
Asparagus, Annual	22	Coreopsis . . . . .	36	Helianthus . . . . .	29	Pentstemon . . . . .	31
Perennial . . . . .	36	Cosmas . . . . .	2, 25	Helichrysum . . . . .	29	Periwinkle . . . . .	35
Aster, Perennial. . . . .	36	Cyclamen . . . . .	26	Heuchera . . . . .	37	Petunia . . . . .	3, 9-11
Regular . . . . .	8	Cynoglossum . . . . .	26	Hollyhock . . . . .	37	Phlox . . . . .	31, 32
Resistant . . . . .	6, 7	Cyperus . . . . .	26	Hunnamania . . . . .	29	Physalis . . . . .	38
Balsam . . . . .	22	Dahlia . . . . .	26	Iberis . . . . .	35	Platycodon . . . . .	38
Begonia . . . . .	2, 23	Daisy . . . . .	36	Impatiens . . . . .	29	Pappy, Annual. . . . .	32
Bellis . . . . .	36	Delphinium . . . . .		Ipomaea . . . . .	29	Perennial . . . . .	38
Bird's Eye Pepper . . . . .	34	Annual . . . . .	2, 26	Isalama . . . . .	29	Portulaca . . . . .	32
Brachycome . . . . .	22	Perennial . . . . .	36, 37	Kalanchoe . . . . .	29	Primula, Annual. . . . .	21
Brawallia . . . . .	22	Dianthus . . . . .		Kochia . . . . .	29	Perennial . . . . .	38
Cacalia . . . . .	23	Annual . . . . .	27	Lantana . . . . .	29	Pyrethrum . . . . .	38
Calceolaria . . . . .	23	Perennial . . . . .	37	Larkspur . . . . .	18	Rhodanthe . . . . .	32
Calendula . . . . .	2, 19	Dictamnus . . . . .	37	Lathyrus . . . . .	37	Ricinus . . . . .	32
Calliopsis . . . . .	23	Didiscus . . . . .	27	Leptosyne . . . . .	29	Saintpaulia . . . . .	32
Campanula . . . . .		Dielytra . . . . .	37	Liatris . . . . .	37	Salpiglassis . . . . .	33
Annual . . . . .	23	Digitalis . . . . .	37	Lilium . . . . .	37	Salvia, Annual. . . . .	3, 33
Perennial . . . . .	36	Dimorphotheca . . . . .	27	Linaria . . . . .	29	Perennial . . . . .	38
Candytuft, Annual . . . . .	2	Doranicum . . . . .	37	Lobelia, Annual. . . . .	29	Sapanaria, Annual	33
Perennial . . . . .	36	Dracaena . . . . .	27	Perennial . . . . .	37	Perennial . . . . .	38
Cardinal Climber. . . . .	29	Dusty Miller . . . . .	27				

The event of a lifetime. National Flower and Garden Show, Baltimore, Md., March 14-22, 1936



TRIAL GROUND.

## Service

**BALL RED BOOK** (By Geo. J. Boll). Steady advances in cultural methods and varieties make necessary almost annual rewriting of any book on florists' crops. This gives outstanding value to the regular editions of the BALL RED BOOK. Its information is based on practical tests and experience. A real grower's pocket-book. 20c.


**CULTURAL BULLETINS** are frequently issued by us on important subjects and sent gratis on request.

**BETTER SWEET PEAS** (By Geo. J. Boll). A cloth bound book of 210 pages freely illustrated. Covers the growing of sweet peas in- and outdoors. Only American book on this subject. Postpaid, \$1.00.

VIEW OF ASTER HOUSE, NORTH OF OFFICE.



## *BALL Resistant Asters*



**W**E pioneered interest in rot-resistant Asters and their culture under the protection of cloth. This catalog offers you a complete list of all worth-while Asters, a specialty with us for 40 years. With the help of our extensive trials we try to accurately describe all items in this catalog, for we appreciate the importance of suitable varieties.